

THE ADVERTISEMENTS IN THE MAUI NEWS THIS WEEK ARE WORTH STUDYING CAREFULLY. THE FIRMS WHO ADVERTISE IN THE MAUI NEWS ARE THE ONES WORTHY YOUR FULLEST CONFIDENCE.

# Maui News

MAUI PEOPLE READ THE MAUI NEWS BECAUSE IT GIVES THE NEWS OF MAUI COUNTY AS NO OTHER PAPER DOES. THIS IS THE REASON DISCERNING ADVERTISERS USE ITS COLUMNS.

NINETEENTH YEAR

THE MAUI NEWS, FRIDAY, DECEMBER 13, 1918.

NUMBER 979

## War Stamp Drive Is Making Good On Maui

Believed Returns From Outside Districts Will Put Island Well Toward Top—Limit Club Now Has Over 70 Members

While at the present time it is impossible to learn the full results of the War Savings Stamp drive of the past two weeks on Maui, Director R. A. Wadsworth is strongly confident that Maui will make the goal before the end of the year, even if this has not already been accomplished. Many of the districts have not yet reported, but a number which have already more than sold their allotment.

### Maui's Limit Club

Maui now has a Limit Club of over 70 members and this is growing daily. In the short time still left it will be necessary to have a good many more such members or at least a large number in order to make this island safe. A analysis of the list is interesting. It shows the part which has been taken by men and women of small or moderate means. It also gives some indication of the activity of the committees in the different districts.

The limit list as it now stands is as follows:  
**Wailuku—**  
Bank of Maui.  
R. A. Wadsworth.  
Aloha Lodge No. 3 K. of P.  
Mrs. Will J. Cooper.  
Wailuku Sugar Co.  
C. D. Lufkin.

(Continued on Page Eight.)

## Red Cross Roll-Call Starts Next Friday

Hope To Get Many Renewal And New Members For Great Organization—H. W. Rice In Charge On Maui—Message From Headquarters

A 2-day membership drive for the Red Cross is to be held next Friday and Saturday, December 20 and 21 throughout the territory. This is a part of the great national drive for members all over the United States which begins next Monday on the mainland. The aim of the organization is to enroll every person, big and little, as members in the greatest relief organization the world has ever known.

It is expected that all other sorts of drives for the Red Cross will end with this big enrollment.

The work on Maui is to be handled by Harold Rice, who received a copy of a radiogram from national headquarters this week, which explains the object of the drive. It is as follows:

American Red Cross, Honolulu.  
No more Red Cross money drives. The Christmas roll call is of highest importance. All annual memberships expire with the calendar year except those enrolled since September 1. Make every effort to secure 100% adult population as members. Renewals and new members at \$1 per annum or \$2 if Red Cross Magazine is desired. Necessary benefit work will continue on great scale but requires practically universal membership support of American people as its foundation. This roll-call of the nation is a message to our soldiers overseas and to the peoples of the world of our abiding purpose of sympathy and service during both war and peace.  
(Signed) CUTLER.

## Japanese Compliment Mr. and Mrs. Baldwin

Hundreds of Japanese employees of the Puunene plantation formed a big lantern parade last Saturday evening, complimentary to Manager and Mrs. Frank Baldwin. The big procession marched up to the Baldwin home which they encircled with their myriads of dancing lights, forming a fascinating picture. Mr. Baldwin and Assistant Manager Thomson addressed the crowd thanking them for their expression of good-will.

James Lindsay, of Haiku, territorial forester for Maui, asks that anyone finding specimens of the new pest, "California morning-glory," or a small twining vine which is new to them, communicate the facts to him at once. The board of agriculture is extremely anxious to prevent the spread of this pest on Maui if possible, and the cooperation of everybody is asked to this end.

## Small Steamer Sinks In Molokai Channel

Eight Chinese And Engineer Lost—Twelve Survivors Reach Lanai—Vessel Overwhelmed—Chief Officer Former Maui Man

The 12 survivors of the ill-fated steamer Benito Juarez, which foundered in the Molokai channel Tuesday afternoon of last week in the heavy gale, and who managed to reach Lanai in small boats about 30 hours later, are now in Honolulu. They are—Capt. E. O. Denzog, First Mate R. H. Anderson, Second Mate E. Adamson, Chief Engineer Francis J. Matthewson, First Asst. Engineer Chas. Brandt, and seven Chinese who were being deported from the United States, and were working as members of the crew.

The captain, the two engineers, and 4 of the Chinese, who reached the Chas. Gay's place at Keamokoa, were picked up by the Mikahala last Saturday evening. The other five, who were being cared for at the ranch headquarters at Kooke, were not able to catch the Mikahala but were sent down by the Mauna Kea from Lahaina on Monday evening.

**Big Seas Overwhelm Ship**  
It is practically certain that Second Assistant Engineer Byrne was drowned, as well as the 8 Chinese who took possession of one of the lifeboats. They drifted away in the storm and have not been heard of since.

The Benito Juarez ran into the storm early Tuesday morning. By Tuesday noon the wind had freshened into half a hurricane. "It was the worst storm I ever saw in my life," said the captain.

Just before noon the vessel shipped a heavy sea which broke away the port oil tank and gave the ship a bad lurch to port. The hold continued to fill with water despite the efforts of the captain to hold the ship to. The chief engineer did his best to keep

(Continued on Page Eight.)

## Maui Teachers Ask 50% Salary Raise

Annual Meeting Of County Association Is Most Successful—Many Interesting Papers Read—Fine Luau—Officers For Next Year

With the adoption of a resolution demanding an increase in pay for teachers equivalent to 50 percent of their present salaries, the Maui Teachers' Association concluded last Friday afternoon, what is considered to have been perhaps the most interesting and instructive meeting of teachers yet held on Maui. The resolution in question was submitted by F. W. Hardy, E. A. Brown, and B. O. Wisl, committee.

The day was bad, with rain, off and on, all day long, but in spite of this fact 110 teachers from all sections of Maui managed to reach Lahaina where the convention was held.

Before the meeting adjourned new officers for the ensuing year were elected as follows:  
E. A. Brown, Puunene, president.  
F. W. Hardy, Makawao, vice-president.  
R. C. Bowman, Wailuku, secretary-treasurer.

A committee to draft resolutions to be acted upon at the next annual meeting was also named as follows: E. A. Brown, Mrs. Laura A. Sabey, Miss Mary E. Fleming.  
An assessment was levied of 75 cents per member to cover a portion of the cost of the cost of the luau served by the Lahaina school, and to provide a fund for incidentals during the year.

**Good Program**  
The program was an interesting one and was carried out complete as arranged.

(Continued on Page Four.)

## Volley Ball League Being Formed At Gym

A commercial league for playing volley ball at the Alexander House Gymnasium is being formed and entries of teams and members can be made until December 26th.  
Six men are considered a team for a volley ball match, but it has been decided that eight men be allowed, that is, two for substitutes on each team.

The county office force has signified their willingness to enter a team, as well as the Wailuku Hardware Company. Other commercial organizations are invited to take part in the playing of this series. Any commercial organization is allowed a representative in the forming of this league provided he enters his organization by December 26th.

## Christmas Mail? You'll Have To Hurry

If you have a Christmas greeting that you wish to reach the Coast before Christmas you will have to get it away by the mail which closes at Wailuku at 4 o'clock this afternoon for Mauna Kea at Lahaina tonight. The transport Sherma leaves Honolulu tomorrow and will probably reach San Francisco on December 23.

## Haiku Cannery Says Will Buy Road Bonds

Reports To Supervisors On Work Of Maintaining East Maui Roads—Asks For More Money For Next Year

Advising that the Haiku Fruit & Packing Co., Ltd., is willing to buy territorial bonds authorized by the last legislature for the macadamizing of the belt road eastward through the east Maui pineapple section towards Ulumalu, H. W. Rice, manager of the cannery company, in a communication to the board of supervisors this week also makes an interesting report on the work of road maintenance done by the company during the past seven months in the district under contract from the county.

An interesting fact brought out is that the rainfall in the district has been heavier this year than in 1914, when many of the pineapple growers were practically put out of business by the combination of bad roads and low prices.

The cannery company, which had been getting \$500 per month for maintaining some 35 miles of roads, is now asking the supervisors for \$700 per month.

The company's report is as follows:  
Dec. 9, 1918.  
To the Honorable Board of Supervisors, For the County of Maui, Wailuku, Maui, T. H.

Gentlemen:  
The taking over of the roads in the Haiku District by the Haiku Fruit & Packing Company, I believe, working out to the satisfaction of the people. This has not been a dry year as

(Continued on Page Seven.)

## Fleming's Long Absence Much Alarmed His Family

Serious alarm was occasioned last week for the safety of Supervisor David T. Fleming, who left his home at the Honolua ranch on Thursday morning in a small power boat to search for a Japanese employee who had gone fishing in another boat several days before and had been through the big storm on Tuesday. When Fleming did not come back Thursday afternoon his family and friends grew seriously uneasy, and on Friday morning a general alarm was given. A general search for the missing man was well under way when he arrived at Lahaina safe and sound just before dark Friday night, bringing his two boats and his missing Japanese with him, and also the news of the foundering of the steamer Benito Juarez.

It seems that Fleming found his man on Lanai where he had finally managed to land in the storm, but his boat was grounded and damaged and he could not return.

Fleming stayed by getting the boat in shape which kept him all night. Although the sea had been rough he states that he had not been in danger. It was while on Lanai that he was handed messages from the members of the wrecked steamer crew to deliver to the wireless company.

In the meantime Fleming's brother John, in Honolulu, had got the navy department out in the search and the patrol boat Hermes and the light tender Kukui were sent out, and other vessels notified to keep a lookout.

## Hunting Party Visits Lanai This Week

Lanai was the scene of action of a party of Maui and Honolulu sportsmen this week, among the pheasants, plover and doves. In the party was John Waterhouse, of Alexander & Baldwin, who visited Lanai for the first time.  
The party went over from Lahaina on Tuesday morning on the sampan Makaiwa, returning last night. Those included in it are—F. F. Baldwin, H. A. Baldwin, John Waterhouse, Tom, King, Sam Weller, A. H. Rice, Dr. Fitzgerald, D. T. Fleming, Ed. Deinert, and Harold Rice.

## Big Rain Damages Olinda Pipe Line

Nearly 35 Inches Of Rain At Pipe Intake Last Week—Olinda Gage Showed Nearly 18 1/2 Inches—Olinda Reservoir No Injured

County Engineer Low, returning from an inspection trip to Olinda, on Wednesday, reports some damage last week from the storm along the Olinda pipeline. Most of the damage however was from heavy rainfall and not from wind.

The wooden stave pipe was broken by the washing out of the trestling over a small gulch just Kula of the new reservoir. The car tracks into the quarry of Contractor Mellor, in the same gulch, were also carried away by the downpour, but no damage resulted to the new reservoir itself, where work is reported progressing well. The concrete bottom has been entirely laid and the sides are now being concreted.

Engineer Low states that the intake reservoir of the pipe line at Waikamoo gulch, was completely filled up with sand washed down from above. This is now being sluiced out. The break in the pipe line was repaired several days ago.

**Rather Wet Week**  
The rainfall record for last week showed a total of 33.64 inches at Waikamoo; 34.82 inches at Puohakamoo; and 18.44 inches at Olinda. On December 4 it rained between 12 and 13 inches in the one day at both Waikamoo and Puohakamoo, and 6.45 inches at Olinda. Olinda had the same amount of rain recorded on the 6th on which day the Waikamoo gage showed 10.23 inches, and the Puohakamoo gage, 10.39 inches.

## Lodge Maui To Go Under New Control

Transfer Of Jurisdiction From Scotland To California Takes Place Tomorrow Night—Honolulu Man Come For Ceremonies

Tomorrow night Lodge Maui, No. 984, A. F. & A. M., Scottish Rite, will cease to exist and in its place will be born Maui Lodge, No. 472, F. & A. M. The occasion is a momentous one in local Masonic circles, marking the cutting loose from the jurisdiction of the Scottish grand lodge and the coming under the American jurisdiction of California.

The ceremonies incident to the transition will be conducted by members of Honolulu lodges who will arrive tomorrow morning for the purpose. The ceremonies will be in charge of James Fenton Fenwick, of Honolulu, representative in the Islands of the Scottish Rite bodies. The other visitors will be—J. R. M. MacLean, James Friel, T. H. Hughes, Ed. Towse, Malcolm MacIntyre, and James S. McCandless.

Lodge Maui has for years been the only lodge in the Islands under Scottish jurisdiction, and it has been seriously handicapped in its activities for a long time past on account of distance and difficulty in communicating with the grand lodge. The obstacles to coming under California jurisdiction have, however, been finally overcome, with result that the lodge will go ahead with the present officers and in almost all respects the same as before.

**Reception On Sunday**  
A reception for the Honolulu visitors is planned for Sunday afternoon at the beach homes of C. C. Campbell and H. D. Stoggett, at which all Maui Masons and their ladies are invited.

At 5 o'clock, Sunday evening, following the beach party, the delegation with Maui friends, will drive to D. C. Lindsay's home in Paia for a buffet dinner.

On Monday evening, a banquet for members of the order will be held at the Maui Hotel, after which the visiting delegates will leave for Lahaina on their return to Honolulu.

## Here's A Chance To Buy A Graveyard

To settle the ownership of a Japanese graveyard at Paia, Judge Burr, in the 2nd circuit court this week granted the application of D. C. Lindsay, guardian of the minor heirs of the late Dr. Soga, to sell the grave yard in question at public auction. It is presumed that the Japanese community of Paia through the local Buddhist temple will buy the property.  
It seems that the land now being used by the Japanese at Paia at a burying ground, was tendered to the community by Dr. Soga for the purpose, but the purchase price was never paid nor a deed given. After Dr. Soga's death it developed that the estate owned the burying ground. It is said that the property is worth several thousand dollars.

## GERMANY TOLD OF WAR MONTH BEFORE START

Many Propaganda Agents Sent Over World To Preach Pan-Germanism—Senate Probe Committee Hearing Some Still Startling Facts About Hun Perfidy—Wilson And Peace Party Now In France—Big Reception—Lipton Challenges For Another Yacht Race

### PRESIDENT WILSON NOW IN FRANCE

(By The Associated Press)  
BREST, December 13—President Wilson reached Brest harbor at 1 o'clock and stepped ashore an hour later. Mrs. Wilson carried an American flag and a bouquet. The transport George Washington moved into the harbor between lines formed by battleships. French ministers, American officials, and Miss Margaret Wilson, the president's daughter, boarded the George Washington in the harbor. The President and his party departed for Paris at 4 o'clock.

### FRENCH IN CHARGE OF BLACK SEA PORTS

(By The Associated Press)  
PARIS, December 13—French marines have entered Odessa where they were cordially welcomed. German soldiers were expelled from the wireless stations military posts.

Sebastopol was also cleared out of German soldiers who with Bolsheviks had been causing disorders.

### AMERICAN SQUADRON IN CHARGE AT POLA

(By The Associated Press)  
AMSTERDAM, December 13—An American squadron has arrived at Pola and has taken command of the post. Yugoslav war vessels in the harbor hoisted the American flag, according to a Leibach dispatch.

### YANKEES TAKE POSITION ON RHINE

(By The Associated Press)  
WASHINGTON, December 13—The American army has come to a stand at the Rhine. It did not advance yesterday, according to Pershing.

### GERMANY'S PERFIDY STILL COMING TO LIGHT

(By The Associated Press)  
WASHINGTON, December 13—The German government, in July 1914, informed 130 civilian employees in Berlin that a world war would be started soon. This was the testimony of Capt. Lester, of the army intelligence department before the senate committee investigating German propaganda. These employees, Capt. Lester testified, were then dispatched to all parts of the world, 31 coming to the United States, to stimulate pan-Germanism. This information had come from an unnamed informant now interned in the United States. The propagandists landed in U. S. August 1914.

NEW YORK, December 13—President Carleton, of the Western Union Telegraph Co., has been placed in charge of the marine cables systems for the United States government by Postmaster General Burleson. George Ward, vice-president of the commercial cables Co. declined the position recently.  
Hundred city employees and labor council are mediating.

### HUNS ARE GOING TO TRY TO REJOICE

(By The Associated Press)  
AMSTERDAM, December 13—January 1 is fixed as the day for general rejoicing in Berlin in honor of the revolution by the Ebert government.

### EX-EMPRESS HAS HEART ATTACK

(By The Associated Press)  
AMSTERDAM, December 13—The ex-empress of Germany has had another heart attack, and Berlin doctors have been summoned.

### LIPTON CHALLENGES FOR ANOTHER YACHT RACE

(By The Associated Press)  
BELFAST, December 12—The Royal Ulster Yacht Club, on behalf of Lipton has cabled a challenge to the New York Club for a race for America's cup. The Shamrock IV is the challenger.

### RAILROADS OBJECT TO GOVERNMENT CONTROL

(By The Associated Press)  
PHILADELPHIA, December 12—Railroad executives representing 92% of the country's mileage gave out a statement declaring that MacAdoo's suggestion that the government retain control of railroads until 1924, "would lead to delay and confusion and defer indefinitely the settlement of the problem."

### BRITISH GUARD COLOGNE WELL

(By The Associated Press)  
COLOGNE, (Sunday)—While feeling grieved over British rule Cologne is keenly interested in the occupation of troops at the great fortified Hohenzollern bridge which is occupied by British machine-guns dominating the bridge and the roads to cathedral. - Britishers who fired the first shot of the war occupy Cologne.

### MORE LIBERTY LOANS COMING SOON

(By The Associated Press)  
WASHINGTON, December 12—MacAdoo told the house ways and means committee that 5 to 5 1/2 billion more bonds must be issued to finance the government this year.

# CHRISTMAS GIFT SUGGESTIONS FOR OUR MAIL ORDER CUSTOMERS

The merchandise represented here is of the best quality and the newest styles—all useful and practical and most suitable for Xmas giving.

## THE LIBERTY HOUSE

HONOLULU, HAWAII.



### GLOVES

No. 12—A fine quality dress kid gloves in black, white, pongee, and tan; 2-button length, sizes 5 1/4 to 7 1/2 ..... \$2.75 pr.

No. 903—Women's Silk Gloves in black or white; 2-button length, sizes 5 1/4 to 7 1/2 ..... \$1.50 pr.

No. 13—A novelty silk glove in white with black stitching on back and cuffs, 2-button length, sizes 5 1/4 to 7 1/2 .. \$1.65 pr.

No. 4162/18—White Chamois Gloves, 1-button length, sizes 5 1/4 to 7 1/2 ..... \$2.25 pr.

### IVORY TOILET ARTICLES

Combs, 50c, 60c, 85c, 90c \$1.00.

Brushes, \$2, \$3.25, \$3.50, \$4, \$5.50.

Minors, \$2.50, \$3.50, \$6.50.

Clocks, \$2.50, 3.00, \$3.75.

Trays, 40c, 60c, 75c, \$1.50, \$2.00.

Buffers, 50c, 60c, 75c, 85c, \$1.25.

Nail Files, 20c, 50c, 90c.

Shoe Horns, 20c, 50c, 90c.

Button Hooks, Cuticle Knives, 50c.

Jewel Boxes, \$1.50, \$3, \$4, \$4.50.

Puff Boxes, \$1.50, \$1.75, \$2.

Hair Receivers, \$1.50, \$1.75, \$2.

Hairpin Cabinets, \$1.25

Powder Shakers, \$1.35.

Clothes Brushes, \$1.50, \$2.60, \$2.75.

Perfume Bottle, 60c, 90c \$1.25 and up to \$3.25.

### TRAVELING CASES

Fitted Traveling Cases, leather covered, containing all necessary articles for the toilet when traveling—most suitable for gift, outfits for men and women, \$7.00 to \$15.00

Fancy Boxed Stationery—we are showing a fine selection, all prices to suit any purse, when writing describe about what you want—we are sure to have it.

Manicure Sets in soft leather rolls, very convenient and practical—they make excellent gifts, \$1.50 \$2.50, \$4.25, \$6.50, \$7.00 \$10.00.

Emergency "First Aid" Cases, containing bottles, bandages, tape, pins, etc., always useful and a fine gift, \$1.25, \$2.50, \$5.25.



### COLLARS

No. 14—An assortment of organdy collars, including the very smartest styles, lace trimmed, hemstitched and embroidered, 65c, 75c, \$1.25 and \$1.50 each.

No. 15 of Georgette Crepe, in sailor and roll collar effects, embroidered and lace trimmed, 65c, 75c, \$1.25, \$1.35, \$1.50.

No. 16—This assortment includes hand embroidered and hand finished collars of organdy and Georgette in unusually clever and individual styles, \$2.00 to \$10.00 each.



### WAISTS

No. 1 of fine quality voile, tailored style, convertible collars, front, back, and cuffs hemstitched and tucked, sizes 36 to 46 ..... \$7.50

No. 2 of fine voile, hand embroidered and lace trimmed, small or large collars, sizes 36 to 46 ..... \$7.50

No. 3 an assortment of lingerie waists, showing several styles. One has the new round collarless neck, finished with fine tucks, another has a square neck with small roll collar, another has a V neck with medium size flat collar.

These waists are all of fine voile with a touch of embroidery, all sizes, priced ..... \$8.00 to \$10.00

No. 4 an assortment of French Voile models in exclusive designs, exquisitely trimmed with filet and other fine laces, sizes 36 to 46, priced ..... \$12.50 to \$16.50

No. 5 of white Georgette in either V or round neck styles, lace trimmed, sizes 36 to 44 ..... \$8.00

No. 6 of white Georgette, beautifully embroidered in pink and white, this model has a small round pink satin collar, turned back flare cuffs and bullet buttons, sizes 36, 38 and 40 ..... \$12.50

No. 7 of fine Georgette, hand embroidered in white, body of waist trimmed with fine pin tucks, this model has a square neck, large square collar extending to the waist line in front reverse effect, sizes 36 to 44 ..... \$11.00

No. 8 of imported Georgette in splendid dress suit styles, shown in white, flesh, black, grey and navy and black and white, sizes 36 to 44 ..... \$15.00 to \$27.50

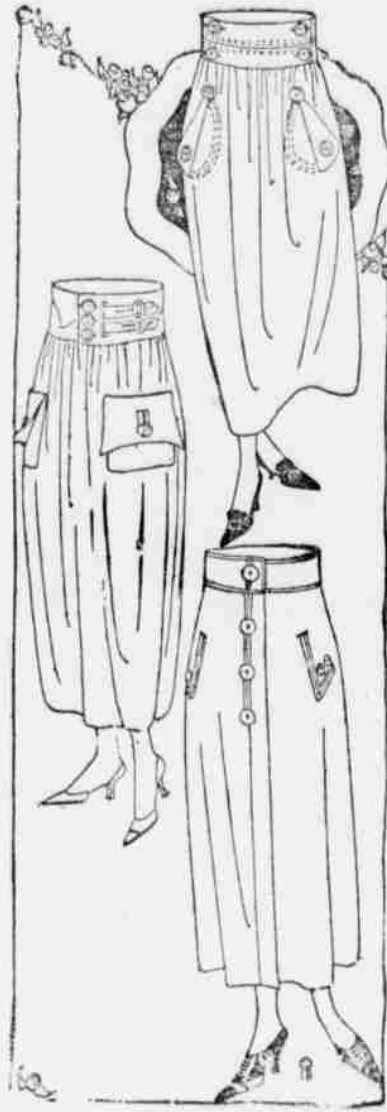


### SKIRTS

No. 9 of extra fine quality Crepe de Chine in white and flesh, trimmed with wide hemstitched tucks, fringe trimmed, narrow sports mash or crushed girdle, sizes 26, 28, 30, 32— ..... \$27.50, \$32.50, \$35.00

No. 10 of Unfinished Serge, in plain and pleated models, shown in plaid and broad stripes, sizes 26 to 32—\$22.50 & \$25.

No. 11 of all wool serge, sports models, shown in black and navy, sizes 25 to 36, prices ..... \$15.00 to \$25.00



### SILK

#### Four-In-Hands

the most elegant and exclusive designs in a heavy staple quality silk \$2.75 each.

a wide selection of the newest and smartest patterns to be seen this season—heavy quality silk, made to wear long and look well, \$1.00, \$1.25, \$1.50, \$1.75.

a splendid assortment at 50c, 65c, and 75c.

### HOSIERY

a fine quality silk hose in black, white, tan, grey and navy 50c. pr.

Holeproof cotton hose, lightweight, in black, white and tan—40c, pr.

Holeproof silk hose in black, white, tan, navy, grey, taupe, champagne, Bergundy and bottle green 75c, pr.

the Herber hose, knit to fit of splendid quality silk in black, white, tan, natural and brown 75c, pr.

a fine quality cotton initial handkerchief packed in fancy Xmas boxes, 3 in a box, 50c, box.

Cambric handkerchiefs in Holiday boxes, 4 to the box, 85c, box.

fine quality initial linen handkerchiefs 60c and 75c each.

plain linen handkerchiefs 35c, 50c, 65c, 75c, 85c, \$1.10, \$1.25.

plain cotton handkerchiefs 10c, 2 for 25c, 20c, 25c.

Purses, Bags, Suitcases, Trunks, Umbrellas, Toys, Dolls, Table Damask, Madeira Works, Towels, Curtains, Men's Furnishings, Xmas Boxes, Tags, Seals, Cards, Cord.

### HANDKERCHIEFS

No. 1706—Women's fine hemstitched linen handkerchiefs, with plain block initial, 3 for \$1.00 or \$1.75 per box of six.

No. 2016—Women's colored initial linen handkerchiefs, 35c each, \$2.00 per box of six.

No. 2025—Women's hemstitched linen handkerchiefs, one inch initial with a small embroidered design, 35c each, \$2.00 per box of six.

No. 17—An assortment including a splendid selection of handkerchiefs with pretty embroidered designs in the corner 35c, 40c, 60c, 65c, 75c, 85c, \$1.25

No. 18—Madeira embroidered handkerchiefs—fine plain scalloped edges to most elaborate designs, 60c, 65c, 75c, \$1.00.

No. 19—Spanish hand-embroidered and hemstitched linen handkerchiefs in many neat and pretty designs. 60c, 75c, 90c, \$1.00, \$1.15, \$1.25, \$1.50 \$1.75.



No. 20—Plain linen hemstitched handkerchiefs, 3 for 50c, 25c, 35c.

No. 22—Children's fancy handkerchiefs, 20c, 35c, 50c, 60c per box of 3.

No. 21—Plain 9-inch linen centers, 25c, 35c

No. 23—Children's initial handkerchiefs with colored borders and initials, also, plain white, 30c per box of 3.



Our store is full of useful, practical and appropriate merchandise suitable for Christmas giving, so if you do not see what you want here, write for it, giving a careful description and we will send you an assortment on approval.

If you are going to do your Xmas shopping in Honolulu The Liberty House can serve you best.

### Says Islands Plot Against Harbor Plan

Advertiser Digs Up Old Re-Appropriation Bone And Grows And Whines Over It—Looks Like Overstimulated Imagination

The Honolulu Advertiser in last Sunday's issue, claims to have discovered a plot against Oahu on the part of the other islands, and on Monday follows it up with an editorial entitled—"Serves Us Right." Both are of interest on Maui as elsewhere in the territory and are reprinted below as follow:

#### HARBOR PLAN TO BE USED AS LEVER BY OUTSIDE ISLANDS

Full Advantage of Failure to Make Reapportionment To Be Taken By Legislators

Honolulu Must Grant Or Give Up Its Plans

Other Counties Are Already Listing Up Appropriations Which They Would Exact

Meeting the demands of the other counties for the appropriations which they seek for themselves is to be the price of Honolulu's post-war harbor program unless plans which are well under way miscarry. It is proposed to take full advantage of the majority which lies with the other islands by reason of the long continued failure to reapportion and, at the same time, to utilize the urgent need of Honolulu for a great harbor to meet peace conditions and the vastly increased commerce which will come to the Pacific.

#### Program Shapes Up

Letters have gone about between the other islands, reports have it, calling for meetings of civil bodies and legislators in each county for the purpose of outlining a program of improvements, roads, harbors and other projects for the support of which funds must be secured from the Territory. These county programs outlined, it is proposed to have a meeting or meetings of those islands at which a general appropriation program will be outlined which is to be carried out before the other legislators will fall in line to support the Honolulu program.

Under the simple plan which has been outlined there will be no dickering between legislators of Maui and Kauai, or Kauai, or Maui, or either or any of these and Honolulu. A solid front would be presented for once and Honolulu could take it or leave it. Perhaps the treasury of the Territory would suffer but, the various counties would get what they ask.

#### Demands To Be Many

Improvements which have been halted by the war and the governmental policy of subserving all else to the winning of the war will now be brought to the fore again and each of the counties will have new proposals for which they will seek funds, just as this county must have funds to enable Honolulu Harbor to take the place in the world's commerce which awaits its occupancy. This may be expected to bring up for consideration appropriation bills which will aggregate far in excess of any expenditures which the Territory has ever undertaken or even considered in its history.

The editorial comment on the situation follows:

#### Serves Us Right

Announcement that the members of the legislature from the other islands are planning to combine against the Oahu senators and representatives and hold this island up for everything they want out of the legislature before they will let us have anything we want, need cause no surprise. The only wonder is that they haven't done it before. They have, of course, to some extent, but never before on as extensive a scale as is now threatened.

It's our own fault for not forcing our weak backed senators and representatives to do their sworn duty and compel a reapportionment of members of the legislature as is provided for and made compulsory by the Organic Act. The only reason this has not been done is that the Oahu members have lacked the courage to do their duty. Each of them has had his own ax to grind and has depended upon members from the outside districts to turn the grindstone for him. Of course, this has required that the members from the other islands be paid, and they have been paid by not having the representation of the other islands cut down as is called for by law.

It's been a case of "you scratch my back and I'll scratch yours." We have been selling our birthright for a mess of pottage. We've traded off our majority in the legislature for votes for pretty projects in which certain of our senators or representatives, happened to be interested.

We have danced and now it looks as if we'd have to pay the piper. We are not to be allowed to have any of the many things Honolulu needs and must have to become a real city, until the other islands have held us up for everything they want—if the next little scheme works out. Perhaps they don't want anything they shouldn't have. That doesn't alter the fact that we have put ourselves in their power. Our delegation in the legislature has been afraid to do its duty.

Reapportionment is not only our interest; it is our duty. Failure to carry it into effect is a distinct and plain violation of the provisions of the Organic Act. Other legislatures have failed in their duty. It should be seen to that the next one doesn't.

### Thinks Major Leagues Will Take Year Off

ST. LOUIS, Mo., Nov. 27.—(By Associated Press Correspondence.)—Stockholders of the St. Louis club of the National league lost between \$25,000 and \$30,000 last season, according to James C. Jones, president and chief stockholder of the club. President Jones made this statement in denying rumors that the club would be transferred to Kansas City. He also asserted that he would consider an offer at this time to purchase his interests in the Cardinals.

He said he did not believe there would be professional baseball next season, although several other National league club owners are making plans for resumption of the game.

"I shall very likely attend the national league meeting in New York next month, and unity of acting in regard to plans for 1919 will be agreed upon at that time," he continued. "Whatever seems to be the majority opinion will receive my support."

"The idea of community ownership of the Cardinals has not been abandoned. However, it appears that several of the largest stockholders will have to carry the club along. I, for one, am preparing to do this."

Concerning the National League presidency, Jones said he had not pledged to vote for any candidate.

My ballot will go to the man best qualified to direct the affairs of the league," he added.

### Don't Take Chances-- Hold Your Liberty Bonds

Army authorities report that many soldiers, as well as many civilians, are being mulcted by alleged Liberty Bond brokers who advertise to pay market value for Liberty Bonds but who in reality pay a good deal less.

It is, of course, contrary to the desires of the government and against public policy for Liberty Bond holders to dispose of their bonds except in case of necessity. But there are such cases. When they do occur, it is no trouble to sell the bonds to reliable banking companies and get full market value for them. There is no need whatever of going to pawnshops and such places.

The army proposes to launch a campaign against those who are mulcting soldiers, and in so doing will likewise protest civilians who feel obliged to dispose of their bonds.

Hang on to your bonds if you can; if you can't take them to a bank or to some reliable broker. Don't take chances.—Advertiser.

### Lightfoot Says No Booze Vote Possible Till 1920

The Islands may not vote on the re-establishment of booze at the elections next spring, according to Deputy Attorney General J. Lightfoot, who holds that the county elections to be then held are not "general elections," as prescribed by the Sheppard Act.

Mr. Lightfoot, according to the Star-Bulletin, was commenting upon the story in the Maui News of two weeks ago to effect that with the close of the war the matter of going "wet" again might be taken up on petition of 20 percent of the electors, and be voted upon at the general election following. An attorney on Maui had expressed his belief that the county elections, coming as they do at the same time, would be considered a "general election."

If Mr. Lightfoot's opinion is correct, it of course will make it impossible to take the subject to the people before the fall elections in 1920.

### Big Opportunities Opening In Alaska

Commission Believes Land Will Attract Many Returning Soldiers—Rich Agricultural Land Opened By Railroad

SAN FRANCISCO, Nov. 27.—(By Associated Press Correspondence.)—The vast undeveloped reaches of Alaska's 586 square miles of valleys, streams and mountains offer a suitable habitat for America's returned soldiers, in the opinion of E. O. McCormick, of San Francisco, member of a commission authorized by Secretary Lane to make a survey of the northern territory.

The reports of McCormick, vice president in charge of traffic for the Southern Pacific company, and two others, L. O. Gabany, chemist and geologist, and George C. McFadden, coal mining expert, both of Chicago, are to be used, McCormick said, in connection with Secretary Lane's plan to establish returned soldiers on the land and to acquaint the American people with opportunities offered in the territory.

"Alaska is to be the mecca for discriminating world travelers. It is the dream land of artists," he said. The territory's 120,000 reindeer, developed from 1280 imported by the government between 1892 and 1902, will figure in the effort to supply the world with food, McCormick said. Fox farms, where animals bearing pelts worth \$2500 each have been developed, and skunk farms are among the many unusual pursuits of the region, he said.

The government railroad, now complete from Seward to Anchorage, will keep the later city, heretofore ice bound in winter, open the year round, McCormick noted. From Anchorage north, toward the ultimate terminal at Fairbanks, the railroad now extends as far as Montana, running 60 miles through as productive a country as may be found anywhere.

"The building of the government railroad is being accomplished by some of the most formidable engineering feats I have ever seen," said McCormick. "An example is the 'ice loop' where, emerging from a tunnel at the top of a bowl shaped valley, the tracks double back five times within a distance of a mile before they reach the valley floor."

"On the way to Fairbanks, reached over a solid automobile road are the Matanuska coal fields, where coal is being developed in commercial quantities. These and other features of the vast mining district tapped by the railroad were given particular attention by other members of the commission. Forest of spruce, from which some was taken for America's newly built planes, fir and other timber lie along the railroad.

"In this district are produced the finest of vegetable—potatoes, beets, carrots, 16-pound cabbages, rhubarb four feet high and fine celery. Native grass in places grows eight feet high. Alaskan berries are already widely recognized.

#### Disliked Absent Treatment

"Even the field-hospitals close up to the firing line in France find time for an occasional laugh," writes Malcolm Adams, of the Red Cross.

A party of wounded marines were being taken to a base-hospital on a much over-crowded motor-truck. The nurse accompanying them became anxious about their wounds.

"I hope I am not hurting any of you," she said.

"You're hurting me a lot," replied one of the soldiers.

"But I am nowhere near you," exclaimed the nurse indignantly.

"That's what's hurting me," was the calm reply.—Washington Star.

#### Made Him Blush

Magistrate—"You certainly committed this burglary in a remarkably ingenious way; in fact, with quite exceptional cunning."

Prisoner—"Now, yer Honor, no flattery, if you please; if there's one thing I 'ates, it's flattery."—Tit-Bits.

### Good Things To Eat For Red Cross Shop

Highly Successful Undertaking To End With Big Sale Of Christmas Dainties Tomorrow—Shop To Be Closed For Present After This Week

(Communicated.)

The Red Cross sale tomorrow promises to rival that of the opening day of the Shop. Enormous quantities of delicious foods have been promised by the ladies of Maui, not to mention a number of men who have done their share in this good work, and yet it is believed that there will be none too much, as evidenced by the spoken intentions of our leading citizens to buy all they can obtain. This is not to be wondered at, for it is not every day that we have the opportunity to buy goods prepared in the homes of Maui.

For instance Mrs. Worth Alken's baked hams are famous; she is baking one donated by Mr. Rosecrans of the Pala Store. Other delicious hams will come from the kitchens of Mrs. H. P. Baldwin, Mrs. Frank Baldwin and Miss Clara Mosser. Mrs. Jack Walsh excels with her pickled tongue, and there will be one to scramble for on Saturday.

Madame Penhallow is making her wonderful mince pies; the Maui Agricultural Company has donated a fine young pig, which will be converted into lulaulau pie by Carl Rose. Those who have eaten pie prepared by Mr. Rose know the treat that is in store for those fortunate enough to secure some of this with sweet potatoes. Mrs. Rice is sending in a roast of beef.

There will be candies, cakes, pies, salads, jams, jellies, fresh breads, and other delicacies and substantial foods. We should like to mention all who are preparing foods for the sale, but fear we would crowd out the daily news if we did. The Shop will open at 8:20 a. m. with a general sale. Much fresh merchandise has been received, and there will be a good showing of bargains in all lines. The food sale starts at 11 o'clock, and from indications, it will be well for intending purchasers to be on hand promptly.

The Red Cross Shop feels that for the time being at least, it has accomplished its purpose. Also, after this sale, merchandise will again be low, and after tomorrow the Shop will be closed, until further notice.

#### Ferns And Plants

Mrs. Kepoikai has a supply of fern logs and lily buds for sale for the Red Cross Shop. She is caring for these at her home, that they may receive proper attention, but they can be secured through any of the Red Cross Shop attendants, or from Mrs. Kepoikai herself. Prices are reasonable and the bulk and loss very desirable.

Last week a number of Japanese boys were a great help to the attendants of the Shop, coming in and opening boxes and in many ways saving steps and hard work on the part of the ladies who were marking, sorting and placing goods. These boys were: Sada Yoshimura, Haruo Makashima, Kazu Yoshimura, Kenzo Sugita, Takeshi Nagamatsu, Tariki Ikeda and Shigeo Ikeda, and they have the sincere thanks of these they so kindly assisted.

#### YAKIMA, Wash., Nov. 29.—(By Associated Press.)—Construction of a comprehensive irrigation system by which water may be piped to residence lots in all parts of the city will be an after-the-war construction project undertaken by the Yakima city commissioners. Use of water wheels and open ditches has been compelled heretofore in those sections of the city where the piping system has only been tried in a limited way.

#### Her Little Plan

"I see you a good deal with young Flubdub."

"Yes, auntie."


"I hope you are not going to marry a spendthrift."


"Oh, no. I don't think I'll marry him. But it's nice going around with one."—Louisville Courier-Journal.

**When in Honolulu stop at**

**The Blaisdell**

EUROPEAN PLAN





**Running water in every room; rooms singly or with baths; comfortable beds; close to best restaurants and all car-lines. Highest class service.**

Centrally located in the theatre and shopping centers.

**J. F. CHILD, Proprietor**

**Longer Life**

for delicate hangings is given by the use of

**Peets Crystal White Soap**

This pure, white, vegetable oil soap cleanses curtains, dainty laces, drapes and hangings quickly and without injury to fabrics or hands.

It's the preferred household soap in Hawaii. Order from your dealer.

**AMERICAN FACTORS, LTD.**

Wholesale Distributors for Hawaii.

**Catton, Neill & Co., Ltd.**

ENGINEERS

Works 2nd and South Streets

General Offices  
Merchandise Department.  
Electrical Department

} Queen and  
} Alakea Streets

Hawaiian Representatives for—  
JEFFREY MANUFACTURING CO'S  
LINK BELT CHAINS  
CONVEYING MACHINERY  
PULVERIZERS—ALGARROBA BEAN, LIMA, CORAL, AL-FALFA.

If you are not now receiving the REXALL MONTHLY MAGAZINE please send your name for mailing list. The Magazine has recently been enlarged, and improved by the addition of stories by prominent writers and pictures of current events.

THIS SERVICE IS ABSOLUTELY FREE.

**Benson, Smith & Co., Ltd.**

SERVICE EVERY SECOND

The Rexall Store      Box 426      Honolulu, T. H.

**Are you still patriotic?**

Then prove it by the continued use of

**VICTORY FLOUR**

We have just received a large shipment. Help us prevent waste or loss, by your continued loyalty.

Remember, the liberated civilian population will need wheat products.

**Maui Dry Goods & Grocery Co., Ltd.**

**CHRISTMAS Gift Suggestions**

CARVING SETS	WRENCH SETS
KNIVES	MECHANIC'S TOOL BOXES
TOOL SETS	MECHANIC'S TOOL BOXES
SHEARS	HOUSEHOLD TOOL SETS
RAZORS	

MAIL ORDERS SOLICITED.

**Lewers & Cooke, Ltd.**

169-177 So. King Street      HONOLULU

# THE MAUI NEWS

Entered at the Post Office at Wailuku, Maui, Hawaii, as second-class matter.

A Republican Paper Published in the Interest of the People  
Issued Every Friday.

MAUI PUBLISHING COMPANY, LIMITED,  
Proprietors and Publishers.

SUBSCRIPTION RATES, \$2.50 PER YEAR IN ADVANCE

WILL. J. COOPER : : : EDITOR AND MANAGER

FRIDAY : : : DECEMBER 13, 1918.

## HONOLULU AND RE-APPORTIONMENT

The Advertiser assumes to have discovered a deep, dark plot on the part of the counties outside of Oahu to hold up and rob Honolulu in the next legislature. These conspirators will demand appropriation for pretty nearly every thing ever suggested in way of public improvements, and Honolulu will have to agree, the Advertiser gloomily foresees, or else see all hope of adequate harbor plans for a greater-Honolulu go a-glimmering.

And all this because the mendacious outside counties object to a re-apportionment of representation in the legislature which would put Honolulu in position to dictate absolutely to all the rest of the territory on all legislative matters whatsoever.

There may be such a conspiracy on foot as the Advertiser alleges, though we hadn't heard of it before and do not believe it now. It looks to us as though the story were deliberately cooked up in Honolulu to provoke ill-feeling where there should be none.

Moreover the Advertiser's assumption that the development of Honolulu harbor is a Honolulu affair is about the acme of narrow-mindedness. Honolulu's harbor facilities are as much the concern of all Hawaii as of Honolulu and for this reason should, and doubtless will receive the fullest support from all sections in the legislature. The importance of a first class and ample harbor at Honolulu to attract and to care for the great tide of commerce which must soon develop in the Pacific, is so paramount as to overshadow all other projects. It is much more than a Honolulu affair—more than of territorial importance. It is really a matter of national or even inter-national importance as evidenced by the consideration the matter has received and will continue to receive from federal sources.

The legislature of Hawaii, we believe, will act as a unit in the Honolulu harbor matter. But the Territory of Hawaii will never consent willingly to become a mere tail to Honolulu, which is really what the Advertiser is driving at.

What should be done with Honolulu is to give her a definite corporate boundary, apart from the county of Oahu, and then, like most mainland cities give her a large measure of self-government, including power of taxing herself for her own maintenance. In this way she could be made independent of the legislature for financial support, and there could be little occasion for the bi-ennial ax-grinding and log-rolling of which the Advertiser complains so bitterly. If Honolulu is really in earnest in wanting simply freedom to handle her own local affairs in her own way, and is not merely inspired by the same sort of ambition that made the Hun unpopular, we suggest she get busy drafting a charter along these lines to present to the next legislature, and see what happens.

## WORRY-INSURANCE FOR WORKERS

A correspondent suggests as a means of holding laborers in the Islands, and of developing a more contented and efficient class of workers, that some form of health insurance and old age pensions should be provided for them. The writer who is a native of Hungary, recalls that in most of the European countries such system of compulsory insurance has been in vogue for upwards of half a century, and as he points out, it removes from the worker the ever present dread that misfortune over which he has no control, may render him or those dependent upon him, paupers.

There is little doubt that some such plan will in time become universal in the United States. The trend has long been in that direction. Large employers of labor have already put into force insurance and pension systems of their own with generally very gratifying results. But such provision can only be made by very large corporations, because of the heavy endowment fund necessary to guarantee payments, and the great mass of workers as a result have no protection whatever against bad luck in half a dozen forms.

Here in Hawaii it would seem that the sugar interests might very advantageously adopt a pension system, such as have the Standard Oil Company, the great railroad systems, and other big corporation. Such system ought to result in a more contented class of workers. But this of course, would leave out a considerable number of employees equally deserving of such protection, and equally important to the prosperity of the territory.

The solution would therefore seem to be in some plan of industrial insurance and pensions that would be administered by the territory. This should preferably be compulsory upon employers in much the same way as is compensation to employees for accidents under the workmen's compensation law, which has been in successful operation in the territory since 1915.

So far as we know there is no state that has yet taken such a step, but there is no question that it soon will be taken and that it will develop rapidly when once the working details are thought out. Those who may be skeptical may need to be reminded that the first workmen's compensation law adopted in any state in the union was enacted less than seven years ago. At the present time 40 states and territories have such acts in force, and the scope of such is rapidly extending. Laws that will insure laborers against the poor house or the potter's field are no more radical in theory than were accident compensation laws but a few years ago, and which are now all but universal.

The storm last week demonstrated beyond doubt that Kahului has as safe a harbor as there is in the Territory. At no time during the storm would a vessel in the harbor have been in the least danger. Except when prevented by the rain, the stevedores worked constantly on lighters in the harbor without any trouble from waves or current. The Claudine had no trouble on Tuesday morning, and would have been very glad to have gotten back into the harbor again after her failure to make Hana in the storm, but was afraid to risk the entrance in the gale that was blowing. On Thursday, when she finally did get back, she lay at the wharf with only her ordinary lines as moorings.

The statement in a Honolulu paper to effect that during the storm no vessel could remain in the harbor, is entirely incorrect.

## WOMAN'S NEW PLACE IN WORLD

The war has done many revolutionary things, not the least of which is in changing woman's status in the world. From now on women will have a recognized place in industry. The antediluvian superstition that the female of the human species was, of all creation the only one unfitted by sex for the work and responsibilities of the race, has been exploded. Woman has demonstrated her ability under stress of circumstances to do real work in almost any capacity commensurate with her strength, and often more satisfactorily than it had previously been done by men.

Moreover the war has swept away the notion that a woman should receive less pay than a man simply because she is a woman. She is now beginning to be paid on the same basis.

It is for such reasons as these that school boards are beginning to find it hard to keep up their teaching staffs. Women capable enough to be teachers have found that they can sell their services to better advantage in other callings. It simply means that teachers must hereafter be paid more money.

If Hawaii is wise it will make this increase enough more to get the best there is in the market. The new order of things should be good for the schools as it is bound to be for the women who are teachers. Moreover it is probable that the future may see more men engaged in teaching, which should be good for the pupils. Economy is a good thing, but niggardliness in the schools in mighty poor economy.

## WRONG WORK FOR CHILDREN

The sending of children out upon the streets to collect money for charity is something that should be done with circumspection. No matter how worthy the cause represented, people should refuse to give money to children (or to grown folk either, for that matter) unless they can show proper credentials, can give proper receipts, and show that they are keeping a proper record of what is paid them. To do otherwise is wrong to the cause, wrong to the subscriber, and perhaps most of all wrong to the young collector.

In many places indiscriminate soliciting of funds in public is forbidden by law. It might well be made illegal here.

This does not include the sale by children of Thrift and War Savings Stamps. Such is not a donation but a sale of something of definite and recognized value.

Maui discovered some two years ago that the kiawe is a poor tree to stand wind, and now Honolulu realizes the fact also. Most of the trees blown down in storm last week in Honolulu were of this variety. There is now a move on foot there to discourage further planting of the algaroba for shade purposes in the city or along public roads.

## Maui Teachers Ask 50 Percent Salary Raise

(Continued from Page One.)

ranged for. The only member on the program who was not able to be present was Mrs. H. D. Sloggett, of Hamaupoko, whose paper, "Junior Red Cross Work", was however, read by T. J. O'Brien.

Rev. J. Charles Villiers, of Wailuku, spoke on "German Psychology," in a most interesting way. His address was much to the point at the present time, and made a splendid impression.

"Glimpses of French Life," was the subject of a paper by Miss Holliday, which was also particularly timely and had added interest from the fact that the speaker spoke from intimate first hand knowledge.

Miss Cribble gave some excellent suggestions on the "Geography of the War," a subject fraught with unusual difficulties these days not only for pupils but for teachers and the general public as well.

Rev. E. E. Pleasant's subject was "German Propaganda," another timely topic which had much interest for all who heard it. Mr. Pleasant told of various insidious ways in which the Huns sought to spread their poison in the minds of neutral and enemy nations.

"War Work in the Schools," by B. O. Wist, was one of the addresses that held direct help to the teachers in their daily work.

W. O. Aiken, the Paia banker, talked on "War Finance." He outlined the methods by which the great conflict had been financed, and told of the plans of the government for the future in this connection. The tremendous sums of money which the American people have raised has been one of the amazing accomplishments of the age.

"Primary Equipment," as the title of a paper by Mrs. E. A. Brown, and was a useful and careful technical outline of method in the school room, of general interest to teachers of the lower grades.

F. W. Hardy's exposition of "One Hundred Percent Efficiency" was an outline of a doctrine that efficiency is only to be understood as a physical quality. He illustrated his theme with various examples. It was one of the thought-compelling papers of the day.

Robt. Judd talked on "American Citizenship," telling something of the plans and endeavor of the workers who are aiming to advance American citizenship ideals among the people of Hawaii.

D. C. Lindsay, school commissioner from Maui, spoke on various phases of school work, particularly as it affects Maui. He was listened to with much interest and attention.

Luau Was Good  
The luau, which was partaken of during a recess in the program, had been prepared by the boys of Lahainaluna, and was an unusually good one. It was especially appreciated by the malihini teachers on Maui of whom there are an unusual number this year.

There was also some excellent singing by the boys of the Lahainaluna school, during the day, as well as some spirited mob singing by the entire gathering.

The program of the day was directed by C. A. MacDonald, principal of Lahainaluna School.

## In The Churches

**WAILUKU UNION CHURCH**  
Rowland B. Dodge, Minister.  
Mrs. Joseph H. Kunewa, Church Organist.

Miss Gertrude B. Judd, Superintendent of the Bible School.  
10:00 A. M. Bible School.  
7:00 P. M. Organ Recital.  
7:30 P. M. Preaching service with sermon by Rev. John P. Erdman.  
A most cordial invitation is extended to all to worship in this Church.

**MAKAWAO UNION CHURCH**  
A. Craig Bowdish, Minister.  
10:00 Sunday School.  
11:00 Morning Service.  
6:45 Christian Endeavor.  
6:45 Discussion Club.  
All of these gatherings are arranged with the whole community in mind.

**DIED**  
**BISMAL**—In Honolulu, December 6, 1918, John Bismal, of Campbell Avenue, Kapahulu, married, railroad section hand, native of Kipahulu, Maui, 22 years old. Buried last Sunday in Catholic cemetery.

**ROOSEVELT**, Utah, Nov. 28.—(By Associated Press.)—What was said to have been the nearest approach to the genuine, old-time wild-west celebrations occurred here upon the occasion of the signing of the armistice terms by Germany. This town named after the former president who is said to have taken part in wild-west demonstrations during his cowboy days "turned loose" when the news arrived and every revolver, shotgun and rifle in the community was used to make noise.

The town was literally "shot-up" by several dozens of cowboys who came in from neighboring ranches, the riders riding through the main street at break-neck pace, shooting their revolvers as they rode. No casualties resulted, nor was any damage done to property. The celebration stopped only when the participants and ammunition were exhausted.

**BOZEMAN**, Mont., Nov. 26.—(By Associated Press.)—Agriculture's part in the post war program of the United States is to be considered during Farmers' Week, December 9 to 14, when Montana farmers will be addressed by Dr. Elwood Mead, land settlement leader, and other well known authorities on agricultural problems.

The conference will deal particularly with plan for providing returned soldiers with land. The farm bureau's part in this work and the laws needed to make it effective will be taken up.

The "little farm tractor" will be thoroughly demonstrated under the direction of H. B. Donchright, formerly professor of agricultural engineering at the state college, and H. E. Murdock, who succeeded him in that position.

**Equal To The Occasion**  
"Say, that lot you sold me is three feet under the water."

"Is it?"  
"Yes, it is, you know it is."  
"Well, it's a good thing you told me. I can let you have a bargain in a canoe."—Kansas City Journal.

## A Complete Trust Service

Great discrimination should be used in the selection of your investments at this time.

Let our years of experience be of assistance to you. Call or write,

**The Henry Waterhouse Trust Co., Ltd.**

HONOLULU.  
BONDING — INSURANCE — REAL ESTATE

## Make Your Butter Go Twice As Far

Two pounds of merged butter from one pound of butter and one pint of milk, is possible with



## The Wonder Butter Merger

Simple and specially constructed, it merges butter and milk into a truly delicious and creamy product. Tastes like Country Butter.

one size only, \$1.25

**E. O. Hall & Son, Ltd.**

The house of dependable merchandise. Honolulu, T. H.

Try to find new ways of making the old clothes do, says Uncle Sam. Send us your old suits, gowns, draperies, linens, etc., for

## Cleaning and Dyeing

and general restoring to usefulness.

## FRENCH LAUNDRY

J. ABADIE, Proprietor.

Jno. D. Souza, Paia Agent M. Uyeno, Kahului Agent  
Jack Linton, Wailuku Agent.

## LADIES' BLACK KID LACE BOOTS

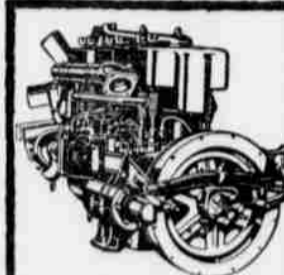
\$5. \$5.50 and \$6.



We recently received these, lace boots with cloth tops, and are able to sell them at the prices quoted. We cannot buy more to sell at this price, our advices from the manufacturers being conclusive that shoes will cost more.

## Manufacturers' Shoe Co., Ltd.

P. O. Box 469 : : : HONOLULU



## Experts Say, "Zerolene Is Better"

Why are the majority of cars now lubricated with ZEROLENE? Because—

ZEROLENE does hold better compression, does give better protection to the moving parts, does deposit less carbon. And this is the testimony of the leading automobile distributors of the Coast.

They know from the records of their service department—and we know from exhaustive tests—that ZEROLENE, correctly refined from selected California asphalt-base crude, gives perfect lubrication with less wear and less carbon deposit.

ZEROLENE is the correct oil for all types of automobile engines. It is the correct oil for your automobile. Get our lubrication chart showing the correct consistency for your car.

At dealers everywhere and Standard Oil Service Stations.

## Correct Lubrication for the "T"-Head Type Engine

The "T"-Head, illustrated here, is one of several types in popular use today. Engines of this type, like all internal combustion engines, require an oil that maintains its full lubricating qualities at cylinder heat, burns clean in the combustion chambers and goes out with exhaust. ZEROLENE fills these requirements perfectly, because it is correctly refined from selected California asphalt-base crude.

ZEROLENE is made in several consistencies to meet with scientific exactness the lubrication needs of all types of automobile engines. Get our "Correct Lubrication Chart" covering your car. At dealers everywhere and Standard Oil Service Stations.

**ZEROLENE**  
The Standard Oil  
for Motor Cars

## On The Other Islands

### Legal Services For Employees

The attorney general's department has announced that it stands ready to supply attorney's services to persons who have claims for compensation against employers which have been appealed to the courts, in cases where the claimants are financially unable to pay for same.

### Will Sell Alien Enemy Sugar Shares in January

The 20,262 shares of Hawaiian sugar shares, of par value of over \$2,500,000, owned by enemy aliens, which have been ordered sold by Custodian Palmer, will probably be put up at auction in January by R. H. Trent, local representative. Most of the shares are of Oahu and Pioneer plantations. Each plantation lot will probably be sold separately.

### Says Japanese Soliders Not Be Citizens

U. S. District Attorney S. C. Huber differs from U. S. District Judge Vaughan who recently stated that in his opinion Japanese who have served as United States soldiers may be naturalized. Huber takes the opposite view. The matter will probably come to a climax soon when a special agent from the coast arrives to handle the naturalization of several hundred alien soldiers of various nationalities. The matter will probably not be definitely settled until it is carried to the U. S. supreme court.

### White Slaver Gets Jail Sentence

Ralph Lopez, a Honolulu chauffeur, who was found guilty last week of forcing girls into a life of prostitution, and fined \$500 was on Saturday convicted on other charges of having induced 5 girls into lives of shame, and was given a year's imprisonment on top of the fine.

### C. G. Owen Now Head Fertilizer Co.

At a meeting of the Hawaiian Fertilizer Co., Ltd., last week C. G. Owen, for a number of years San Francisco manager of the company, was appointed general manager succeeding Norman Watkins, who resigned some time since to join the American Factors Ltd. In the general reorganization which took place at the same time, the following officials were appointed: C. G. Owen, general manager; Chris F. Jankins, Honolulu manager; Walter Noble, San Francisco manager; Robt. F. Clarke, Honolulu Superintendent; O. Herlocker, San Francisco superintendent.

### Will Homestead Kekaha Sugar Lands

According to Attorney General Irv in, all of the sugar lands at Kekaha, Kauai, now under lease to the Knudsen estate, will be opened for home-

standing as soon as the leases expire in 1920. The territory is making plans now for a grinding contract with the Kekaha Sugar Co., on behalf of the prospective home-owners.

Frank C. Atherton will probably be elected president of the Honolulu chamber of commerce, at the annual meeting of the organization on January 15. He has been vice-president during the past year. J. A. Kennedy's name has also been nominated for the position.

### Many Ships Will Come For Sugar

Word has been received from the U. S. shipping board that 20 new wood on ships are to be sent to the islands soon to carry the new crop of sugar. Nothing is said about providing any passenger vessels.

### Asks War Department For Sand Island

Governor McCarthy has made public his letter to the Secretary of War asking that Sand Island be turned over to the territory for harbor improvement purposes. The project has the approval of General Heard, of the Hawaiian department. Upon the acquiring of this land depends in large measure the plans for adequate harbor facilities to meet future needs.

Word has been received from France that Charles R. Forbes, former superintendent of public works, has been promoted to rank of lieutenant-colonel. Forbes has been in the signal corps branch since early in the war.

### Ernest J. Morgan Formerly Manager of Honolulu Dray Company, Died

Ernest J. Morgan, formerly manager of the Honolulu Dray Company, died recently in southern California, according to letters received in Honolulu this week.

### Plans Y. M. C. A. Work On Plantations

A. E. Larimer, secretary of the Y. M. C. A., in Honolulu, who returned this week from six months work in the army camps on the mainland, states that plans for greatly enlarging the scope of the organization's activities in the islands are on foot. It is planned to carry the work into the plantation camps, much as it was carried into the army camps on the mainland and abroad.

### Pupil Teachers Get Raise

The board of education this week increased the pay of pupil teachers from \$1 per day to \$1.50 per day. These teachers are sometimes necessary in absence of a regular teacher. They are selected from the older pupils in the schools.

The liner Manoa, enroute from Manila to San Francisco, is expected to

arrive at Honolulu on or possibly before the 20th for fuel oil. She has accommodations for 40 passengers from Honolulu.

Over 200 trees in Kapiolani Park Honolulu, were blown down by the storm last week. The wood will be worth \$1000 to \$1500, Park Superintendent Hobby estimates.

### Girl's Skeleton May Clear Up Mystery

HILO, Dec. 9.—The skeleton of a girl about 12 years of age, was found buried at Olaa plantation. It had been in the ground about ten years. It is estimated. The discovery may clear up the Warren girl's disappearance years ago. The father and mother were arrested on suspicion of murder. A coroner's inquest is now being held.

Will Wayne, formerly adjutant of the national guard of Hawaii, and well known as a newspaper man, is in New York city where he is connected with the Tribune, according to letters received this week from E. D. Burrows, also a former Honolulu newspaper man who is now in New York.

### Changes Due In Promotion Committee

Chairman Emil Berndt, of the Hawaii promotion committee has announced that he will positively refuse to accept a reappointment on the promotion committee from the Honolulu chamber of commerce in January. The Hilo Tribune's correspondent is responsible for the statement that A. F. Wall will not be reappointed either, for the reason that he is a "reactionary" and opposed to plans for improving Waikiki beach.

### Plan Another Paper For Hilo

E. J. Smith, R. T. Guard, O. T. Shipman, W. J. Stone and Benjamin Rose were appointed a committee by a meeting of Democrats held in Hilo Tuesday evening to organize a corporation for the purpose of publishing a party paper in the second city.

### Senator Chas. F. Chillingworth Plans to Introduce Bills in the Legislature

Senator Chas. F. Chillingworth plans to introduce bills in the legislature next winter which will enlarge the College of Hawaii to the scope of a university.

### Territorial Food Board May Quit Soon

The territorial food commission is considering closing up its work at the end of this year. This would leave only the federal food administration in the field. It is hoped to have the county agents of the various islands maintained permanently by some other branch of the territorial government.

### Ralph Balding, Representative of C. Brewer & Co., and the Matson Navigation Co., at Hilo, Died Suddenly of Heart Disease

Ralph Balding, representative of C. Brewer & Co., and the Matson Navigation Co., at Hilo, died suddenly of heart disease last Saturday night. He was 41 years of age and unmarried. He came to the island in 1898. His birthplace was Milwaukee, Wis.

## Entered Of Record

### Deeds

SAMPO et al. to K. P. Habakuka, 2 A land, Moloaa, Honuaulu, Maui, Nov. 30, 1918. \$40.

IAELA & WF. to Lahaina Agrecl. Ltd Aps. 2 & 3 of R. P. 6169 Kul. 4793-B Honokawai, Lahaina, Maui, Nov. 28, 1918. \$100.

KAUWILA ENOS & WF. to Joshua Kannehele, int. in R. P. 3228 Kul. 3275-H. Kalahape, Waiehu, Maui, Nov. 20, 1918. \$300.00.

FRANK R. SOUZA & WF. to Antone R. Souza, Jr., 2-3 in share in hui land, Huelo, Maui, Nov. 25, 1918. \$300.

ANTONE DOS SANTOS & WF. to Lahaina Agrecl. Co. Ltd., Aps. 1 & 3 of R. P. 4559 Kul. 6869, Makila, Lahaina, Maui, Dec 5, 1918. \$350.

HAKUOLE PAMAIAULU & WF. to James K. Hakuole, int. in R. P. 7663 Kul. 5127e Kalenauki, Kipahulu Maui, Aug. 19, 1918. \$5 & love.

### Chattel Mortgages

A. McPHEE to Bank of Maui, Ltd., Mooreland Truck & War Saws, Stamps, Dec. 5, 1918. \$3800.

### Releases

C. D. LUFKIN Tr. to Phillip Espinda, per. R. Ps. 3459 Ap. 1 & 498 Alfo etc., Lahaina, Maui, Dec. 3, 1918. \$300.

### Leases

MRS. M. E. AKANA to Pioneer Mill Co., Ltd., int. in pes. land, (Maui) Natural life at \$25 per annum, Nov. 25, 1918.

### Assignment Of Lease

JOSE RICARDO to Antonio dos Santos, pe. land, Kapekape, (Lahaina, Maui) Sept. 29 1900.

### Surrender Of Lease

ANTONE DOS SANTOS to Pioneer Mill Co., Ltd., (pe. land, Kapekape, Lahaina, Maui) Dec. 5, 1918. \$350.

### Bill Of Sale

ANTONE DOS SANTOS to Lahaina Agrecl. Co., Ltd., buildings, Lahaina, Maui, Dec. 5, 1918. \$600.

SPOKANE, Wash., Nov. 29.—(By Associated Press).—Spokane and the Inland Empire will celebrate the war victory won by the Allies and the advent of peace with a monster victory fete for three days beginning Thanksgiving Day, November 28. Governor Ernest Lister of Washington will be here to participate in the program, and invitations have been sent to Governor S. V. Stewart of Montana, Governor Moses Alexander of Idaho and Governor James Withycombe of Oregon. Among the features will be the presence of the Marine band from the Mare Island Navy Yard.

## Fair Retail Prices On Maui

November 16, 1918.

The Maui Fair Price Committee, appointed by the United States Food Administration, issues the following list of retail prices which are deemed to be reasonable to both consumer and dealer.

The difference in prices given are intended to allow for the difference in cost to merchants in different localities on account of freight, deliveries to customers, etc.

The list is based upon cost figures submitted by dealers in all parts of the county and is subject only to changes which may have occurred in wholesale prices since the above date.

**SPECIAL NOTICE**—The Fair Price Committee has had some few complaints that they have been charged higher prices than indicated in the Fair Price List. The Committee will be glad to have complaints of this kind with all particulars concerning the transaction. When possible a dealer's charge slip should be sent.

MAUI FAIR PRICE COMMITTEE,  
U. S. Food Administration,  
Wailuku.

COMMODITY	Cost	Del'd. at Store	Selling Price
Wheat Flour, per 24½-lb. bag	1.59 to 1.68	1.70 to 1.80	
Wheat Flour, per 49-lb. bag	3.20 to 3.35	3.59 to 3.65	
Wheat Flour, per 10-lb. bag	.65 to .67½	.70 to .75	
Barley Flour, (bulk) per lb.	.06½ to .07	.07½ to .08½	
Rice Flour, (bulk) per lb.	.08 to .10	.10 to .12½	
Corn Flour, size (....) per lb.	.05 to .08½	.06 to .10	
Corn Meal, size (....) per lb.	.06 to .07½	.06 to .09	
Roll'd Oats, per pkg., small	.13½ to .20	.20 to .25	
Rice, (Hawaiian) per bag	8.77 to 9.50	9.15 to 10.05	
Rice, (Hawaiian), (bulk) per lb.	.08 to .09½	.09 to .11	
Rice, (Japan), (bulk) per lb.	10.75 to 12.00	11.40 to 12.55	
Rice, (Japan), (bulk) per lb.	.10½ to .12½	.11½ to .13½	
Beans, (white) per lb.	.07 to .18	.08 to .24	
Beans, (Maui Red) per lb.	.07 to .10½	.10 to .15	
Potatoes, (Maui) per lb.	.03 to .04½	.03½ to .06	
Potatoes, (California) per lb.	.02½ to .05	.03 to .06	
Potatoes, (sweet) per lb.	.01 to .04	.02 to .05	
Onions, per lb.	.02½ to .05	.03 to .06	
Butter, per lb.	.50 to .83½	.60 to .90	
Eggs, (fresh island) per doz.	.75 to .80	.85 to .90	
Cheese, (American) full cream, p. lb.	.30 to .38	.36 to .46	
Milk, (Evaporated) 16 oz., per can	.10 to .15	.15 to .20	
Milk (Evaporated) 6 oz., per can	.05½ to .07	.07 to .10	
Milk, (Condensed) Eagle, per can	.18 to .25	.20 to .25	
Lard Compound, No. 3, per can	.59 to .80	.75 to .90	
Lard Compound, No. 5, per can	1.10 to 1.45	1.30 to 1.60	
Lard Compound, No. 10, per cap.	2.21 to 2.58	2.35 to 3.00	
Crisco, Small, per can	.31 to .41	.32 to .60	
Crisco, Med., per can	.38 to .56	.45 to .75	
Crisco, large, per can	.39 to 1.05	1.00 to 1.25	
Crisco, large, per can 6-lb.	1.79 to 1.88	1.95 to 2.30	
Salad Oil, (glass) per qt.	.45 to .60	.60 to .75	
Canned Salmon, No. 1, pink, per can	.15 to .29½	.17 to .35	
Canned Salmon, No. 1, Med. red, p. c.	.16 to .23	.20 to .27	
Canned Salmon, No. 1, Sockeye, p. c.	.18 to .35	.35 to .40	
C'd Salmon, No. 2, Sockeye, p. c. ½ lbs.	.16 to .19	.20 to .25	
Sardines, No. 1, Oval Tomato, per c.	.12 to .23	.15 to .25	
Sardines, Domestic, ¼	.04½ to .10	.06 to .15	
Canned Tomatoes, 2½, Stand., p. c.	.08 to .15	.11½ to .20	
Canned Tomatoes, 2½, sol. p., p. c.	.11 to .17	.14 to .20	
Tomato Hot Sauce, small, per can	.05½ to .08	.06½ to .10	
Corn, No. 2, Stand., per can	.12 to .17	.15 to .25	
Peas, No. 2, Stand., per can	.10½ to .25	.15 to .30	
Corned Beef, No. 1, per can	.22 to .40	.25 to .45	
Deviled Meat Ham Flavor, ¼, p. c.	.04 to .06	.05 to .10	
Vienna Sausage, ¼, per can	.10 to .18	.12 to .20	
Bacon, whole piece, per lb.	.47 to .56½	.53 to .60	
Bacon, cut, per lb.	.47 to .56½	.58 to .60	
Ham, whole, per lb.	.29 to .42	.37 to .60	
Ham, cut, per lb.	.28 to .41½	.37 to .45	
Salt Salmon, red, per lb.	.11 to .23	.15 to .20	
Sugar, washed, per lb.	.05½ to .06½	.06½ to .07½	
Sugar, Granulate, per lb.	.08 to .09½	.08½ to .10½	
Bread, 1-lb. loaf	.08 to .10	.10 to .12½	

**DO NOT SELL  
YOUR LIBERTY BONDS  
BELOW FACE VALUE!**

If you are forced to sell, see

**BANK OF MAUI, LTD.**

WAILUKU-PAIA-LAHAINA.

Assets Over One Million Dollars.

We appreciate your confidence and we deserve it.

C. H. Cooke, President.

C. D. Lufkin, Manager.

RED CROSS NOTES

CASTLE TELLS OF CONDITIONS IN SERBIA

Vladivostok, October 12, 1918

The American Red Cross has established and in operation in Siberia: Russian Island Hospital, near Vladivostok . . . . . 300 Beds

A sanatorium is now being prepared for 100 tubercular patients.

The business offices, warehouses, for the receiving and distribution of supplies have been well equipped and organized in Vladivostok, with a staff of 9 men and 4 women.

The medical service has 20 American doctors, 30 nurses, 2 dentists, ably assisted by 9 Japanese doctors and 16 Japanese nurses from Tokyo.

There is a force of two American men, six American women and five Russian assistants engaged in refugee work. The refugees in Vladivostok are composed of Europeans from Galicia, Serbia, Poland, and Southern Russia who have been driven from their homes by the Germans and Bolsheviks.

In my opinion the great need here is relief to the civil population. More money does not do us any good. Clothing simply cannot be had here in Russia. The food supply on the other hand is rather simple, except for distribution. There is plenty of good food available to those who can pay a reasonable price.

The need for warm clothes is really terrible. If you in Honolulu have any clothes of reasonable warmth send them and send them quick. This applies particularly to women and children. Those can be used in quantities. We really have splendid supplies of men's shoes but nothing much for the children.

Here in Vladivostok the American Red Cross has taken over one of the stone barracks for use as a Red Cross Club. Fortunately this country is full of barracks. In this barracks will be quartered the engineers, Red Cross employees, and other people connected with the government service who are not otherwise provided.

Please tell the good ladies of Honolulu that they were just about out of surgical dressings here when our shipment of some 450,000 articles arrived. Orders were just being sent out for 10,000 pajamas when fortunately our hospital supply lot of 5194 pajamas arrived to fill the gap.

Statement of Cash Contributions Other Than Dues Pledged Month of November, 1918.

Table with 2 columns: Date/Event, Amount. Includes entries for Boys of St. Anthony's School, Miss L. R. Merriman, Geo. Freeland, Kookoa School Children, Wainee Church and Sunday School, Lodge Maul, Kaupo School, Hawaiian Commercial & Sugar Co., Total Receipts \$2,417.66, Total Expenditures \$3,448.13.

BY AUTHORITY

IN THE CIRCUIT COURT OF THE SECOND CIRCUIT, TERRITORY OF HAWAII. At Chambers. In Equity.

Antone Pombo and Joe Sylva, Petitioners, vs. W. A. McKay and Apia Lilia Kokua and Thomas Kokua, her husband, Respondents. IN PARTITION.

NOTICE OF SALE.

The undersigned duly appointed Commissioner in the above-entitled cause will expose for sale at the premises below described on Saturday, the 4th day of January, 1919, at the hour of twelve o'clock noon of said day the following described lands and premises:

Lot 1.

A portion of L. C. A. 3399 to Pae, Wailuku, Maui, T. H. BEGINNING at a 3/4" iron pipe at the S. W. corner of L. C. A. 3399 on the N. side of Main Street, whose coordinates, referred to Maui County street center monument at the corner of Main and High Streets, are South 186.8 feet and West 727.9 feet, and running by true azimuths:

- 1. 260° 14' 63.0 ft. along N. side of Main Street to fence corner.
2. 163° 43' 100.0 ft. along W. side of Martin's lot to fence corner.
3. 189° 20' 60.4 ft. along Lot 2 to 3/4" iron pipe.
4. 85° 05' 49.4 ft. along Peepee Kuleana, owned by Antone Pombo, to an iron pipe.
5. 158° 20' 71.0 ft. along Peepee Kuleana, owned by Antone Pombo, to an iron pipe.
6. 262° 32' 71.7 ft. along Peepee Kuleana, owned by Antone Pombo, to an iron pipe.
7. 154° 22' 89.0 ft. along Lot 2.
8. 64° 22' 64.6 ft. along S. side Vineyard Street to hydrant.
9. 332° 27' 23.2 ft. along Kawahalamas—L. C. A. 10, 993, to a 3/4" pipe.
10. 64° 00' 33.7 ft. along Kawahalamas—L. C. A. 10, 993, to an iron bolt.
11. 335° 24' 29.0 ft. along Kawahalamas—L. C. A. 10, 993, to a 3/4" pipe.
12. 60° 55' 63.3 ft. along Kawahalamas—L. C. A. 10, 993, to a 3/4" pipe.
13. 333° 09' 72.6 ft. along Kawahalamas—L. C. A. 10, 993, to a 3/4" pipe.
14. 251° 40' 54.8 ft. along Kawahalamas—L. C. A. 10, 993, to an iron bolt.
15. 346° 49' 153.5 ft. along Kawahalamas—L. C. A. 10, 993, to initial point, and containing an area of 0.552 acres.

Lot 2.

A portion of L. C. A. 3399 to Pae, Wailuku, Maui, T. H. BEGINNING at fence corner on South side of Vineyard Street, whose coordinates, referred to Maui County street monument at corner of Vineyard and High Streets, are South 248.5 feet and West 510.2 feet, and running by true azimuths:

- 1. 337° 32' 61.0 ft. along L. C. A. 515 to Peepee to fence corner.
2. 248° 21' 98.5 ft. along L. C. A. 515 to Peepee and Poalima to iron bolt.
3. 337° 41' 210.5 ft. along L. C. A. 416 B to Malahi, to an iron bolt.
4. 76° 00' 135.1 ft. along L. C. A. 7742 to Kahale to old fence corner.
5. 163° 24' 17.7 ft. along Frank Medeiros Lot to fence corner.
6. 81° 13' 100.0 ft. along Medeiros and Martins to fence corner.
7. 189° 20' 60.4 ft. along Lot 1.
8. 176° 34' 71.2 ft. along L. C. A. 515 to Peepee.
9. 154° 22' 89.0 ft. along Lot 1.
10. 244° 22' 80.9 ft. along S. side Vineyard Street to initial point, containing an area of 0.932 acres.

Lot 3.

Portion of L. C. A. 3399 to Pae, Wailuku, Maui, T. H. BEGINNING at a pipe set in a cement post on the North side of Vineyard Street, the coordinates of which, referred to Maui County Street center monument at the corner of Vineyard and High Streets, are South 284.0 ft. and West 653.2 ft., and running by true azimuths:

- 1. 243° 13' 115.9 ft. along North Side Vineyard Street to a pipe.
2. 159° 43' 126.3 ft. along L. C. A. 444 to Lumlani to an iron bolt.
3. 60° 43' 43.0 ft. along L. C. A. 2478 to Kaukahu to a 3/4" pipe.

4. 165° 46' 43.0 ft. along L. C. A. 2478 to Kaukahu to a 3/4" pipe.

5. 67° 50' 31.7 ft. along L. C. A. 515 to a 3/4" pipe.

6. 165° 17' 27.8 ft. along L. C. A. 515 to a 3/4" pipe.

7. 245° 50' 31.6 ft. along L. C. A. 515 to stake at ditch.

8. 165° 11' 47.8 ft. along L. C. A. 444 to pipe at end fence at top of pall.

9. 149° 41' 68.9 ft. along Lot 8 to N. bank Mill Ditch.

10. 62° 09' 124.9 ft. along N. bank said Ditch along lots 6 and 5.

11. 327° 50' 213.3 ft. along Lot 4 to an iron bolt.

12. 334° 58' 94.0 ft. along Poalima to initial point, and containing an area of 9.796 acres.

Lot 4.

Portion of L. C. A. 3399 to Pae, Wailuku, Maui, T. H. BEGINNING at an iron bolt at the N. E. corner of Poalima, the coordinates of which, referred to the Maui County Street center monument at intersection of Vineyard and High Streets, are S. 198.7 ft. and W. 692.9 ft., and running by true azimuths:

- 1. 147° 50' 213.3 ft. along Lot 3.
2. 62° 09' 33.8 ft. along North side Mill Ditch along Lot 6.
3. 328° 40' 79.1 ft. along L. C. A. 2432 AP. 2 to Kahilikaula, to an iron pipe at top of pall.
4. 327° 44' 128.3 ft. along property of W. A. McKay to an iron bolt.
5. 251° 30' 35.3 ft. along Poalima to initial point, and containing an area of 0.165 acres.

Lot 5.

Portion of L. C. A. 3399 to Pae, Wailuku, Maui, T. H. BEGINNING at a 3/4" iron pipe at the N. W. corner of L. C. A. 3399, the coordinates of which, referred to Maui County street center monument at intersection of Vineyard and High Streets, are N. 209.6 ft. and W. 924.1 ft., and running by true azimuths:

- 1. 325° 33' 95.0 ft. along L. C. A. 2432 AP. 2 to Kahilikaula.
2. 328° 40' 30.3 ft. along L. C. A. 2432 AP. 2 to Kahilikaula.
3. 244° 22' 8.7 ft. along Lot 6.
4. 160° 34' 49.4 ft. along Peepee Kuleana, A. Pombo, owner.
5. 237° 05' 34.4 ft. along Peepee Kuleana, A. Pombo, owner.
6. 155° 33' 73.5 ft. along L. C. A. 399 Ap. 3 to Kaumu, owned by A. rombo, to river bank.
7. 62° 16' 67.3 ft. along river bank to initial point, and containing an area of 0.134 acres.

Lot 6.

Portion of L. C. A. 3399 to Pae, Wailuku, Maui, T. H. BEGINNING at a point on the North side of Mill Ditch, the coordinates of which, referred to Maui County Street center monument at intersection of Vineyard and High Streets, are North 40.5 ft. and West 696.2 ft., and running by true azimuth

- 1. 149° 44' 58.3 ft. along Lot 7.
2. 56° 35' 72.2 ft. along L. C. A. 2478 to Kaukahu, owned by A. Pombo.
3. 326° 11' 19.9 ft. along L. C. A. 515 to Peepee, owned by A. Pombo.
4. 64° 22' 88.7 ft. along L. C. A. 515 to Peepee, owned by A. Pombo, also along Lot 5.
5. 328° 40' 35.2 ft. along L. C. A. 2432 AP. 2 to Kahilikaula.
6. 242° 09' 158.7 ft. along North bank of Mill Ditch along Lots 4 and 3 to initial point, and containing 0.156 acres.

Lot 7.

Portion of L. C. A. 3399 to Pae, Wailuku, Maui, T. H. BEGINNING at a point on the North side of Mill Ditch, the coordinates of which, referred to Maui County street center monument at intersection of Vineyard and High Streets, are North 40.5 ft., and West 696.2 ft., and running by true azimuths:

- 1. 237° 28' 73.2 ft. along North bank Mill Ditch.
2. 155° 35' 64.5 ft. along Lot 8 to 3/4" galv. pipe and elbow.
3. 173° 26' 47.9 ft. along L. C. A. 3396 owned by A. Pombo.
4. 150° 00' 75.2 ft. along Lot 9 to point 5 ft. North of river bank.
5. 49° 50' 137.7 ft. along in river bed.
6. 321° 30' 36.0 ft. along L. C. A. 399 Ap. 3 to Kaumu, A. Pombo, owner, to an iron bolt.

7. 233° 03' 26.8 ft. along L. C. A. 399 Ap. 3 to Kaumu, A. Pombo, owner, to an iron pipe.

8. 327° 55' 57.7 ft. along L. C. A. 399 Ap. 3 to Kaumu, A. Pombo, owner, to an iron pipe.

9. 318° 00' 14.4 ft. along L. C. A. 2478 to Kaukahu, owned by Pombo.

10. 329° 44' 58.3 ft. along Lot 6 to initial point, and containing an area of 0.337 acres. (.078 in river bed; .309 arable).

Lot 8.

Portion of L. C. A. 3399 to Pae, Wailuku, Maui, T. H. BEGINNING at an iron pipe at top of pall, the coordinates of which, referred to Maui County street center monument at the intersection of Vineyard and High Streets, are South 19.6 feet and West 161.5 feet, and running by true azimuths:

- 1. 215° 00' 264.0 ft. along L. C. A. 444 to Lumlani, to a point 12 feet below North bank of Mill Ditch.
2. 155° 56' 75.4 ft. along L. C. A. 3209, Ap. 1, to Uwe.
3. 52° 15' 45.8 ft. along L. C. A. 3396, Ap. 3, to Pih-powahine and Lanu, to an iron pipe.
4. 336° 28' 31.7 ft. along L. C. A. 3396, Ap. 3, to Pih-powahine and Lanu, to an iron pipe.
5. 71° 06' 65.8 ft. along L. C. A. 3396, Ap. 3, to Pih-powahine and Lanu, to an iron pipe.
6. 335° 35' 64.5 ft. along Lot 7 to North bank Mill Ditch.
7. 57° 28' 73.2 ft. along Lot 7 along North bank Mill Ditch.
8. 329° 44' 68.9 ft. along Lot 3 to initial point, and containing an area of 0.295 acres.

Lot 9.

Portion of L. C. A. 3399 to Pae, Wailuku, Maui, T. H. BEGINNING at a 3/4" iron pipe at the N. W. corner of L. C. A. 3209 to Uwe, whose coordinates, referred to Maui County street center monument at intersection of Vineyard and High Streets, are N. 246.4 feet and West 558.4 feet, and running by true azimuths:

- 1. 52° 21' 98.6 ft. along L. C. A. 3396, Ap. 3, to Pih-powahine and Lanu to an iron bolt.
2. 150° 00' 75.2 ft. along Lot 7 to

point 5 ft. N. of river bank.

3. 229° 50' 102.0 ft. along river bank.
4. 322° 12' 89.1 ft. along Poalima, passing 3/4" iron pipe at 21.4 ft. to initial point, and containing an area of 0.175 acres.

TERMS OF SALE:

Ten per cent. of the purchase price to be paid upon the fall of the hammer. Balance to be paid within twenty days after date of sale, or sooner. Dated, Wailuku, Maui, T. H., December 9, 1918.

HUGH HOWELL, Commissioner. (Dec. 13, 20, 27)

LOGAN, Utah, Nov. 29—(By Associated Press.)—The Utah Agricultural college has just issued a report of its activities during the war which shows that 1375 former students of the college have entered the army and that there are 41 faculty and former faculty members enrolled in the service. On this vast service flag are 33 gold stars. The institution gave military training to 1880 men during the last two years, the report shows.

TERRITORY OF HAWAII THE ADJUTANT GENERAL'S OFFICE, HONOLULU.

Honolulu, T. H., Nov. 25, 1918. NOTICE

All parties having claims against the National Guard of Hawaii, will file same with the Adjutant General of the Territory with the least possible delay.

Claims must be duly authenticated by the party contracting the same. HARRY S. HAYWARD, Colonel, N. G. H., The Adjutant General, T. H.

BY AUTHORITY

IN THE CIRCUIT COURT OF THE SECOND CIRCUIT, TERRITORY OF HAWAII. At Chambers.

In the Matter of the Estate of Victoria Meyer, Deceased.

Petition of Henry R. Meyer, Administrator of the above Estate for Approval of Accounts, Distribution and Discharge.

IT IS ORDERED that, Thursday, the 26th day of December, 1918, at 10 o'clock A. M., be and the same is hereby appointed for hearing said petition, in the Court Room of this Court, in Wailuku, Maui, T. H. Dated at Wailuku, Maui, this November 21, 1918.

BY THE COURT, HENRY C. MOSSMAN, Clerk. (Nov. 22, 29; Dec. 6, 13)

Washington State Also Developing New Home Sites

SEATTLE, Wash., Nov. 27—(By Associated Press.)—Washington may someday become a miniature Japan as far as intensive cultivation is concerned, if the plans of the Washington State Land Settlement are carried out.

Opening of 5,500,000 acres of logged off, arid and swampy land is included in the plans. The association hopes the state will put the land in shape for occupation.

The Washington legislature which meets in January will be asked to authorize the opening, to set aside money for the work and to delegate the governor to appoint a commission of five to handle the task. About \$1,000,000 will be raised.

City workers and returned soldiers, it is hoped, will occupy the reclaimed lands. All settlers must be American citizens. Lands will be sold on easy terms.

JUNEAU, Alaska, Nov. 15—(By Mail.)—Associated Press.—Alaska is looking forward to an influx of returned soldiers seeking the great outdoors. An editorial in The Juneau Dispatch on the coming of peace says: "On every hand there is a feeling Alaska will now come into her own. We expect this northland will receive thousands of young soldiers looking for the big outdoors."

Those Who Travel

Departed

By Mauna Kea, Dec. 6—Mrs. Akl, T. Yamamura, K. Sasaki, E. Okamoto, J. Morreira, Peter De Mello, F. Takamatsu, Chas. Savage, Y. Endo, K. Omori, Goo Lip.

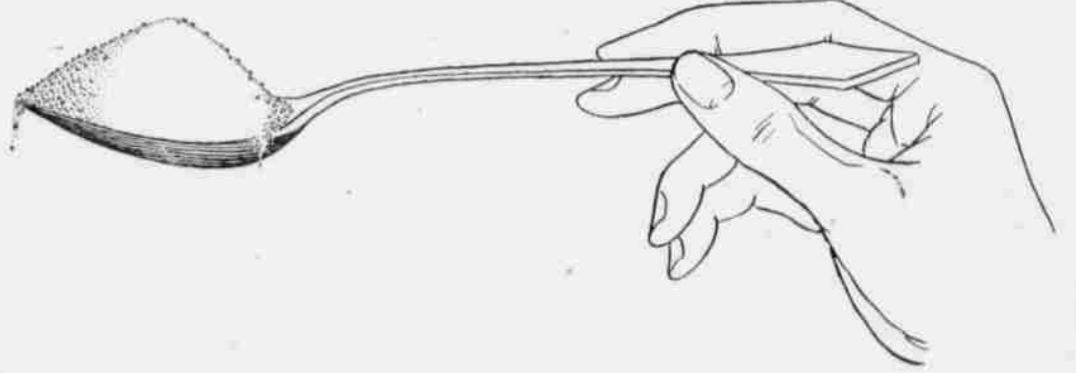
Per. S. S. Claudine, Dec. 5—Sudligawa, T. Tasoya, D. W. Driscoll, Mrs. H. W. Ludwig and infant, Miss R. Ludwig, Miss M. Ludwig, Mrs. Valle, Mrs. Creevey, S. K. Sylva, N. Takei, Yoneishi, L. F. Leo, J. S. Lang, H. W. Kinney.

By Mauna Kea, Dec. 9—Miss Ellen Ogan, Miss Alice Malkat, E. R. Bevins, Eugene Murphy, D. B. Espinda, Miss Emily Espinda, Kishimoto, M. Adamson, R. H. Anderson, R. W. Brink, Mrs. J. Garcia, Mrs. G. Gilliland, Mrs. L. Distel, W. T. Frost, David Rattray, Mrs. J. H. Roberts, Rev. R. B. Dodge, Dr. A. S. Baker

Arrived

By Claudine, Dec. 10—Miss A. Vierra, Miss R. Ahua, Dr. Osmer, A. Valentine, Seramoto, Murota, K. Hori, Mrs. B. J. Bridgeford, H. B. Penhalow, F. M. Anderson, F. M. Perriera, Mrs. Hiloluli, Mrs. Pomakai, Miss M. Kohahi, Mr. Hokaina, Mrs. Hokaina, D. Rattray, J. T. Moir, J. Webster.

Make your one-teaspoonful-per-meal ration of sugar spread further:



Here's a delightful way to save SUGAR,---use

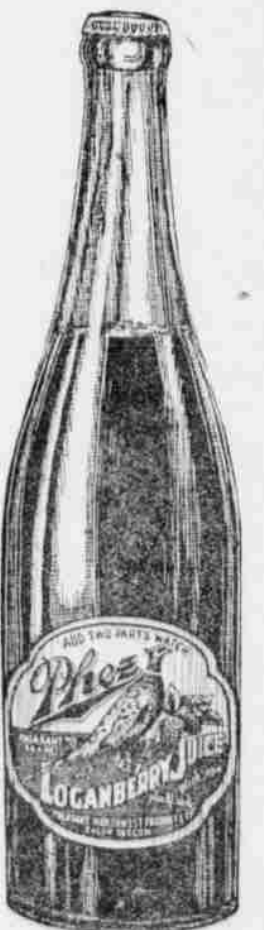


---Pure juice of the Logan Berry

in place of iced tea, lemonade or other "made" drinks. It has sufficient sweetening. Just add 2 parts water---and drink.

This rich, glorious red juice also makes delightful frozen desserts, punches and jellies.

Buy from your dealer for home use.



American Factors, Limited Wholesale Distributors for Hawaii

### Haiku Cannery Says Will Buy Road Bonds

(Continued from Page One.)

You can judge by comparison with 1914, the year in which over \$50,000 worth of fruit was left in the fields, and the growers had to pay tremendous prices for transportation.

Following is a comparative statement of rainfall recorded for the period beginning January 1st to November 30th, at

Haiku	1914	1918
94.22 inches	93.39 inches	
McKibbin's		
1914	1918	
104 inches	121.73 inches	
Tonnage Hauled during 1914, Approximately, 8,610 tons.		
Tonnage Hauled during 1918, Approximately, 12,090 tons.		
The district is just now beginning to recover from the disaster of 1914. The macadamizing of 2 1/2 miles of road through the heart of the district has been very beneficial and we hope this can be extended to Ulumalu this next year. We would propose to sell enough bonds, so that this work could be taken up the first of next year.		
The expense of upkeep of roads which has been charged to the County from the first of May, is by months, as follows:		
May . . . . . \$1043.13		
June . . . . . 1988.66		
July . . . . . 838.00		
August . . . . . 257.89		
September . . . . . 314.82		
October . . . . . 125.26		
November . . . . . 297.30		

From the above, you will see that our expenses for the first three months after we took the roads over were very heavy. This was due to our re-owning practically every mile of road in this district. Fifteen miles of which has not been touched for years. We find we have approximately 35 miles of road under our supervision.

This month our expenses will be high, as we have purchased No. 4 rock for our macadamized road, which we hope to oil when the weather permits.

There are three recommendations which I would make to your Board: 1st. That your Board appropriate enough money to pay as the balance due us from the County at the end of this year.

2nd. That your Board authorize the Haiku Fruit & Packing Company to float enough bonds to macadamize the belt road as far as Ulumalu, and reimburse the Haiku Fruit & Packing Company and growers for building that section of the belt road between the present County road and Ulumalu.

3rd. That your Board allow us to spend \$8,400.00 for 1918, which would be at the rate of \$700.00 per month or \$20.00 per mile per month.

The roads in this district are of such vital importance and are so very necessary in building up the district, that I hope you will give these requests your careful attention.

Very truly yours,  
(Signed) H. W. RICE, Manager,  
Haiku Fruit & Packing Company.

#### Shock Was Too Severe

Once there was a woman who moved into an apartment and found everything swept and scrubbed and as clean as if she had done it herself. The shock left her lying helpless on the floor, but soon she managed to drag herself to the telephone, where her strength fast ebbing away, she gave central a number. Presently a voice came over the telephone. "I just wanted to tell you," said the suffering woman, "how thankful I am to find the apartment in such lovely condition. You are one in a million, and I shall never forget—"

There was a sudden clatter at the other end of the line. The woman who had just moved out of the apartment fell to the floor with a crash, tearing the telephone connections from their fastenings. She had swooned, for she had cleaned apartments annually since her wedding-day no succeeding tenant had ever admitted it before.

They met in the hospital three weeks later, in a ward marked "Quiet." Both recovered slowly and whiled away the long hours getting acquainted. They became friends—such good friends, indeed, that they have canceled their leases, broken up housekeeping, and have moved their husbands off to a family hotel, in order that they may be together forever and forever.—Kansas City Star.

#### No Time For Pickers

"John," exclaimed the nervous woman, "I believe there is a burglar in the house."

"I haven't time to fool with small fry," was the sleepy response. "I've spent the entire day fighting regular profters."—Washington Star.

## Latest News By Wireless

### PLANNING TO CONVOKE THE REICHSTAG

(By The Associated Press)  
LONDON, December 12—The German cabinet, expecting that the Allies will refuse to deal with the present government of soldiers' and workmen's council, is considering convoking the reichstag thus giving the government a parliamentary basis, according to the Tagesblatt.

### SOLF'S RESIGNATION ACCEPTED

(By The Associated Press)  
The cabinet has accepted the resignation of Minister of Foreign Affairs Solf.

### U. S. BEET SUGAR ESTIMATES

(By The Associated Press)  
WASHINGTON, December 11—Field crops estimates of sugar beets are 5,222,000 tons. Beet sugar total output, 1,480,200,000 pounds.

### SWEDES GETTING OUT OF RUSSIA

(By The Associated Press)  
WASHINGTON, December 11—The state department advised that because of food shortage and the general state of insecurity in Russia, the Swedish government has requested its nationals to leave that country. It has also reduced its representation there to the minimum.

### BRITAIN WILL KEEP HER NAVY, SAYS LLOYD GEORGE

(By The Associated Press)  
LONDON, December 11—Lloyd George, in a speech at Brisco, said the Allies will pool their demand for war reimbursement from Germany which must receive Germany's own war debt. He said if a lasting peace is wanted we must end the conscription of armies in Europe. The British fleet is a defensive weapon which would be retained. "If you want peace, you want a lasting peace. If you want to prevent the horrors of war repeated you must end the conscription of armies on the continent. The navy is a defensive weapon and not a 'offensive one. That is why we do not mean to give it up," said Premier George.

### AMERICANS NOT HAMPERING IN GERMANY

(By The Associated Press)  
AMSTERDAM, December 11—The commander of the American army in Coblenz has announced that public life there is to continue as usual with no hampering measures taken, says the Cologne Gazette.

### LONDON WILL BAR GERMAN MATERIALS

(By The Associated Press)  
LONDON, December 11—City and country aldermen have decided that contracts for commercial enterprises shall contain a clause prohibiting the use of material of German origin under forfeiture of 25% of the amount involved.

### TROOPS IN BERLIN TURN BACK ON SOCIALISTS

(By The Associated Press)  
COPENHAGEN, December 11—Representatives of the troops guarding Berlin took an oath of loyalty to the German people's republic despite socialists' exhortation that they disarm.

### ESTHONIA IN CRITICAL PLIGHT

(By The Associated Press)  
STOCKHOLM, December 12—The Estonian front is still holding against the Bolsheviki attacks, but the situation is grave on account of a shortage of ammunition. Russian ships have bombarded the Marva coast in a Bolsheviki effort to land, which was frustrated. Bolsheviki have captured Neuhausen.

### BOLSHEVIKI SOON TO BE ALONE IN WORLD

(By The Associated Press)  
CHRISTIANA, December 12—The Norwegian delegation has left Petrograd. Denmark is the last neutral country to continue relations with Bolsheviki, but is about to withdraw.

### WOUNDED SOLDIERS RETURNED

(By The Associated Press)  
LONDON, December 12—After soldiers had landed from the hospital ship "Mercy" each had a thrilling tale to tell of "how we licked the Huns". Many wore French medals D. S. C.

### COAL DUST KILLS ON U. S. CRUISER

(By The Associated Press)  
WASHINGTON, December 11—An explosion of coal dust on the United States cruiser Brooklyn, at Yokahama on Monday result in six dead and thirty injured.

### PUTTING PRESSURE ON HUNS

(By The Associated Press)  
COPENHAGEN, December 11—Berlin reports say the entente interns have refused food to Germany until the soldiers' and workers' council is dissolved. The Allies reserve the right to march into Germany.

### SAY BRITISH DEMAND THAT HUNS SALUTE

(By The Associated Press)  
AMSTERDAM, December 9—Berlin official dispatches say that British authorities in occupied zones have ordered all German men to raise hats to British officers.

### KNUDSEN ESTATE LEASEHOLDS SOLD

(By The Associated Press)  
HONOLULU, December 6—Kekaha Sugar Co., has purchased the Knudsen estate lease of all the Kekaha lands on Kauai and paid more than \$200,000.

### ATTEMPT TO ASSASSINATE PORTUGUESE PRESIDENT

(By The Associated Press)  
LISBON, December 8—An unidentified man fired a wild shot at Doctor Fidonis Paes, president, in the street. He was arrested.

## First Log Cabin In Utah Will Be Preserved

SALT LAKE CITY, Nov. 29—(By Associated Press Correspondence)—

The first log-cabin built in Utah, which has had several temporary resting places, will soon find a permanent location within the grounds of the Mormon Temple here. For some years the cabin was among the exhibits in the desert museum here, but when preparations were made to move the museum to its new quarters within the temple grounds the cabin was dismantled.

Care is to be taken to see that the cabin is put together in its new and permanent resting place with precision. When taken apart each log was given a paper place number and it will be re-assembled in the same manner.

The exact date when this pioneer cabin was built is not definitely known but it is the opinion of pioneers that it was erected in 1847 within the pioneer fort by those who first entered Salt Lake valley. In early days, because of danger from Indians, all houses were placed within this pioneer fort. It was not until 1849 that it was deemed safe for settlers to reside without the enclosure. The interior of the cabin has been preserved, including the fireplace and the old substantial, homemade furniture.

## Honolulu Wholesale Produce Market Quotations

ISSUED BY THE TERRITORIAL MARKETING DIVISION

Wholesale Only.

Week ending, December 9, 1918.

Small Consumers Cannot Buy at these Prices

Island butter, . . . . .	None	Bananas, Chinese, lb. . . . .	.01 1/4
Eggs, Select, doz. . . . .	.90	Figs, 100 . . . . .	1.00
Eggs, No. 1, doz. . . . .	.85	Grapes, Isabella, lb. . . . .	.07 to .08
Eggs, Duck, doz. . . . .	.70	Limes, 100 . . . . .	.50 to .60
Young Roosters, lb. . . . .	.55 to .60	Pineapples, cwt. . . . .	2.25
Hens, lb. . . . .	.45	Papayas, lb. . . . .	.02 1/4
Turkeys, lb. . . . .	.55	Strawberries, . . . . .	.25
Ducks, Musc. lb. . . . .	.35		
Ducks, Peking, lb. . . . .	.35		
Ducks, Haw'n, doz. . . . .	10.00		
		<b>Livestock</b>	
		Cattle and sheep are not bought at live weight. They are slaughtered and paid for on a dressed weight basis.	
		Hogs, up to 150 lb. . . . .	.21 to .23
		<b>Dressed Meats</b>	
		Beef, lb. . . . .	.16 1/4
		Veal, lb. . . . .	.16 1/2
		Mutton, lb. . . . .	None
		Pork, lb. . . . .	.27 to .30
		<b>Hides, Wet Salted</b>	
		Steers, No. 1, lb. . . . .	.12 1/4
		Steer, No. 2, lb. . . . .	.10 1/2
		Steer, hair, slip lb. . . . .	.07 1/2
		Kips, lb. . . . .	.10 1/2
		Goat, white . . . . .	.30 to .40
		<b>Feed</b>	
		Corn sm. yel. ton . . . . .	75.00
		Corn, lg. yel. ton . . . . .	None
		Corn, cracked, ton . . . . .	85.00
		Bran, ton . . . . .	55.00
		Barley, ton . . . . .	60.00
		Scratch food, ton . . . . .	92.00
		Oats, ton . . . . .	75.00
		Wheat, ton . . . . .	None
		Middling, ton. . . . .	None
		Hay, Wheat, ton . . . . .	55.00
		Hay, Alfalfa, ton . . . . .	42.00
		<b>Vegetables</b>	
Beans, string green, lb. . . . .	.06		
Beans string, wax, lb. . . . .	.06 1/4		
Beans, Lima in pod, lb. . . . .	.04		
Beans, Maul red, cwt. . . . .	8.50 to 9.00		
Beans, Calico cwt. . . . .	9.00 to 9.50		
Beans, sm., white, cwt. . . . .	10.50 to 11.00		
Beans, lg. white cwt. . . . .	7.50 to 8.00		
Beets, doz., bunches . . . . .	.40		
Carrots, doz., bunches . . . . .	.40		
Cabbage, cwt. . . . .	5.00 to 6.00		
Corn, sweet, 100 ears . . . . .	None		
Corn, Haw. yel. ton sm. 72.00 to 74.00			
Corn, Haw., lg. yel. ton . . . . .	None		
Peanuts, lg. lb. . . . .	.09 to .10		
Peanuts, sm. lb. . . . .	.10 to .12		
Green peppers bell lb. . . . .	.06		
Green peppers, chili lb. . . . .	.05		
Pot. Is. Irish, cwt. . . . .	2.75 to 3.00		
Pot. sweet white, cwt. . . . .	1.30		
Pot. sweet red, cwt. . . . .	1.50		
Taro, cwt. . . . .	None		
Taro, bunch . . . . .	.35		
Tomatoes, lb. . . . .	.06 to .07		
Green, peas, lb. . . . .	None		
Cucumbers, doz. . . . .	.50 to .70		
Pumpkins, lb. . . . .	.02 to .02 1/4		
		<b>Fruit</b>	
Bananas, Chinese, lb. . . . .	None		

# Last Chance Sale!

## Red Cross Shop

After tomorrow the Red Cross Shop will be closed at Wailuku

## WONDERFUL BARGAINS

in dresses, waists, shirts, neckties, collars, laces, veiling, toys, pictures, household furnishings, etc.

## Special "Good Eats" Sale

begins at 11 o'clock

Roast goose, roast chicken, roast duck, laulau pig and sweet potatoes, baked beans, boiled ham, boiled tongue, frosted cakes, crisp cookies, pumpkin pies

Home-made bread, home-made rolls, lemon pies, mince pies, jam tarts, home-made candies, jams, jellies, pickles, salads, kukui dressing, fresh vegetables, fruits, raw taro.

We will not serve any lunches but there will be ice-cold lemonade for sale at the Shop during the sale.

## :: B. B. C. Gives Health, Strength, Pep And Nerve Power ::

That Remarkable Remedy

# B.B.C.

Endorsed by many leading physicians and people in public life.

B. B. C. is a marvelous reconstructive tonic. It infuses the system with the iron force of health and vitality of youth, building up the body stronger than sickness and disease, and that is all there is to it. If the body is strong and normal and the organs of it well regulated and performing their functions, there is no sickness. B. B. C. does that very thing—builds up your body and makes it stronger

than the ailments that assail it and they are beaten and utterly routed, and health is the result. That's why rheumatism, blood impurities, sick headaches, nervous depressions, sleepless nights, anemic and run-down condition, biliousness, torpid liver, constipation, kidney and bladder ailments give way to an extended course of B. B. C. even in cases of long standing and the body vibrates with health. The extraordinary merit of B. B. C. is proved by the many prominent local people who have testified to that effect. B. B. C. is a bottled liquid, therefore far superior to tablet remedies which lose their strength and are often soiled in handling.

B. B. C. is sold by all druggists, plantation stores and dealers. \$1.25 per bottle; 6 for \$7. We pay shipping charges on all \$7.00 cash orders. B. B. C. Headquarters, 161 King St., below Fish Market.



Ben Bruns, tropical traveler, whose B. B. C. Medicine cures have made the whole country talk.

# LIBERTY CATERING

No. 65.  
BY MAUI WOMEN

A Department Of Domestic Economy Intended To Serve A Patriotic Purpose In Conserving Food Needed By The Allied Armies In Europe

### MUST SAVE FOOD EVEN

#### THOUGH WAR IS OVER

The following message from Food Commissioner Hoover was sent all over the United States and was read in most churches last Sunday and will be read in most fraternal and other organizations during the present week. It tells why the American people are asked to continue saving food, even though the war is over.

Again, in full confidence, I call upon the American people to set aside, Sunday, December 1st, and the week following for the consideration of American opportunity for renewed service and sacrifice.

Last summer when the military situation was acute, we assured the incalculable food conference in London that whatever the war food program of the Allies required, we were prepared to meet; that the conference need not consider whether or not we had the supplies we were prepared to find them; we pledged ourselves by the voluntary economy of our people to have the reserves in food to supply all necessary. The ending of the war does not release us from the pledge. The same population must be fed and until another season has passed, they cannot feed themselves.

The change in the foreign situation necessarily alters the details of the food program because the freeing of the sea from the submarine menace, renders accessible the wheat supply of India, Australia, and the Argentine. The total food demand upon the United States is not diminished, however. On the contrary, it is increased. In addition to the supplying of those to whom we are already pledged, we now have the splendid opportunity and obligation of meeting the needs of those millions of people in the hitherto occupied territory, who are facing actual starvation. The people of Belgium, Northern France, Serbia, Romania, Montenegro, Poland, Russia, and Armenia rely upon America for immediate aid. We must also participate in the presentation of the newly liberated Nations in Austria; nor can we ignore the effect on the future world developments of the famine conditions among those other people whom we have recently released from our enemies. All these conditions mean that upwards of two hundred million people in addition to those we are already pledged to serve, are now looking to us in their misery and famine. Our appeal today is therefore larger than the former appeal to the "War Conscience" of our people. The new appeal is to the "World Conscience" which must be the guiding inspiration of our future program.

"The President of the United States has asked me to take charge for this government of this work; to perfect and enlarge the arrangements for foodstuffs to the population of Belgium and France now being released, and to organize and determine the need of provisions to the liberated peoples of southern Europe to prevent such debacle as has taken place in Russia."

The determining factor for the success of such an enlarged appeal will be the vivid consciousness in every individual in each community of obligation and opportunity. It is the common recognition of obligation that we now wish to create. Such an intelligent "World Conscience" in the American people must be the main dependence of the stricken countries of the world until normal conditions are once more restored.

America, by her participation in the war, has accomplished her objectives of self defense and of vindication of the efficiency of a government in which the people, and the people only, are sovereign. She has established the foundation of government by the people throughout the enemy countries and this thernal bulwark of world peace. We have yet to build on these foundations. No government nor nation can stand if its people are starving. We must do our part if the world be not consumed in a flame of anarchy.

The American people in this most critical period of their history, have the opportunity to demonstrate not only their ability to assist in establishing peace on earth, but also their consecration by self-denial to the cause of suffering humanity.

HERBERT HOOVER.

### WHEAT RECOVERED

#### FROM ENEMY

More than 137,500 acres of wheat recovered from the enemy in the successful counter-offensive of July and August were harvested under the direction of the department in charge

of French agricultural reconstruction. In the zone held by the British armies, 6,500 acres were harvested; in that held by the first French Army, 26,725 acres; fourth Army 16,555 acres, fifth Army, 21,250 acres, sixth Army 18,217 1/2 acres, and tenth Army 28,482 1/2 acres.

In the zones held by the fourth and sixth French armies the work was particularly rapid and well managed. The work in the entire section liberated during this drive required the services of 16,993 men, 3,324 horses, 823 binding machines and 9,895 scythes or sickles. The binding machines were furnished by the French office of Agricultural Reconstruction, which also supplied over one hundred new and powerful threshing machines. When the harvesting and threshing was completed, the binding and threshing machines were sold by this office at very reduced prices to farmers or groups of farmers who have been victims of the war.

### CHILD THANKS MERCHANTS

#### To the Merchants of Hawaii:

Now that the backbone of the terrific conflict has been broken and Prussian autocracy shattered through the signing of an armistice with Germany and the abdication of the kaiser, many of the restrictions imposed by the Food Administration are no longer necessary and are now being modified or rescinded altogether.

That the conservation of food has been a material factor in the winning of the war, no one will deny. Hawaii has made a remarkable showing in the matter of food saving, and I take this occasion to state this is due primarily to the wholehearted and loyal co-operation of the merchants of this territory.

It was you who bore the brunt of the burden of enforcement in every single conservation measure put over. It was you who had to take the stings of criticism from the disloyal and disgruntled ones.

It was you who almost without exception loyally followed our instructions and complied strictly with every change in the regulations. The remarkable few violations in this territory has been one of the pleasing surprises of our work.

It was you who made the 50-50 rule 100 per cent efficient and enabled us to send millions of pounds of flour to the Allies and our fighters.

And so we wish to thank the merchants of this territory for the part they have played in this great work of food conservation, to congratulate and compliment them upon the loyal attitude which they have at all times evinced, and to assure them that they can take pride in having done their part in winning the war.

The need of conservation, however, is not at an end. Permanent peace must first be established and millions facing starvation in Europe, through no fault of their own, must be cared for during the coming winter. This means a shifting of conservation to lines which have not heretofore been considered necessary and a far greater effort on the part of all for genuine and thorough saving in all directions.

Sincerely yours,  
J. F. CHILD,  
Federal Food Administrator  
For Hawaii.

REDWOOD CITY, Cal., Nov. 29—(By Associated Press.)—Ballots with the name of William Hohenzollern written in are made the basis of an election contest filed here by Justice of the Peace George S. Seelye, who was defeated for re-election, 928 to 925 by Ray Griffin. Seelye charged there were several ballots in which votes for Mr. Hohenzollern were recorded and that those ballots also carried Griffin's name.

An Eye On The Future  
Maggie had a new baby brother, which everybody agreed was such a baby as had never been seen before. One day the baby was being weighed, and Maggie asked what that was for. "Oh," said her father, "Uncle George has taken a great fancy to baby, and he's offered to buy him for a shilling an ounce."

Maggie looked startled. "You're not going to sell him, are you daddy?" "Of course not, precious," answered daddy, proud to see his little girl loved her brother so.

"No. Keep him till he gets a bit bigger," the child went on; "he'll fetch more money then."—Tit-Bits.

Helpful Herbert  
What a friend we have in Hoover, All the skins and thieves to bare. What a surplus-fat remover, All our hungry pangs to share. Ever present help in trouble, Guide, philosopher, and friend. Pass the shark-meat and fried stubble.

Will the conflict ever end?—Credited to "Exchange" by American Motherland.

## Latest News By Wireless

### WILSON URGES JOIN RED CROSS

(By The Associated Press)

WASHINGTON, December 9—President Wilson's proclamation calls upon every American to join the American Red Cross during the Christmas roll-call week, December 16 to December 23, and to—"Thus send forth to the whole human family the Christmas greetings for which it waits and for which it stands in greatest need."

### WILSON NOT TO SIT AT PEACE TABLE

(By The Associated Press)

ABOARD THE GEORGE WASHINGTON, December 10—The President will probably not sit at the peace table, delegates representing him there while he remains in close contact with heads of other nations.

### PLAN BIG RECEPTION FOR WILSON IN ROME

(By The Associated Press)

ROME, December 9—Italian government has arranged a great reception for President Wilson. The cabinet, and mayor of Rome will receive him at the station. Americans will use carriages to the Quirinal where Queen will welcome them in the royal palace. There will also be a demonstration of welcome in streets.

### DAMNING EVIDENCE AGAINST HEARST

(By The Associated Press)

WASHINGTON, December 10—Government copies of telegrams signed by Hearst, giving instructions as to the policy of newspapers correspondence during the war, were read at the senate hearing investigation of alleged German propaganda. In the telegrams Hearst said he believed a large majority of people of America opposed the United States' entering the war and concluded: "We earnestly desire to employ this country's influence not for extension and protraction of the war but to the promotion of a just and lasting peace." A message addressed to S. Cravalho, New York American, declared the Zimmermann note, in which Germany proposed an alliance with Mexico and Japan, was probably a forgery prepared by the attorney general to frighten congress into giving the president the powers he demanded and perhaps also to secure passing of the espionage bill.

### SENATE COMMITTEE HEARS ABOUT HEARST

(By The Associated Press)

WASHINGTON, December 10—Bruce Bielaski told the senate committee that a Hearst representative brought Bolo Pasha to the United States and introduced him to Hearst by letter. Bielaski said—"Of all the newspapers published in the United States Hearst's were the most pronounced in favor of Germany. There was no other man whose attitude was so friendly to Germany in the war. There is no evidence that Hearst received any profit from the German government. After we entered the war his attitude continued very questionable, many articles published in his papers, if published after the passage of the Espionage Act as amended, would have subjected him to prosecution." He explained that Hearst's attitude was probably because Hearst was always anti-British. He was also friendly with von Bernstorff. Bielaski is the former chief of the bureau investigation of the department of justice.

### 17,000 DEATHS IN ARMY FROM FLU

(By The Associated Press)

WASHINGTON, December 10—An official summary of the result of the influenza epidemic in army camps and military centers in the United States, showed 338,257 cases up to December 1st with approximately 17,000 deaths.

### FLU RAVAGING DUTCH COLONIES

(By The Associated Press)

AMSTERDAM, December 11—It is officially estimated that a million cases of influenza exist in the Dutch East Indies.

### HOPE TO KEEP AUSTRALIA FREE OF DISEASE

(By The Associated Press)

MELBOURNE, December 11—Prospects of keeping Australia free from influenza is more hopeful. There are no cases outside quarantine where Anzacs are quarantined.

### INFLUENZA BAD IN SOUTH AMERICA

(By The Associated Press)

WASHINGTON, December 9—Influenza is violent in Paraguay where 25,000 cases are reported at Asuncion.

### BILL TRIES SUICIDE AND WRITES BIOGRAPHY

(By The Associated Press)

LONDON, December 10—Ex-emperor Bill attempted suicide on account of mental depression, says the Leipzig Tagblatt. A member of the ex-emperor's retinue who prevented ex-kaiser from carrying out his intention, received a wound.

The ex-kaiser has a council of 10 German experts on international law at Amerongen, relative to his personal position, says an Amsterdam dispatch. It is understood Hohenzollern is writing his auto-biography, a history of his reign, and an explanation of his attitude before and during the war.

### HENRY HOHENZOLLERN LOOKING FOR PILIKIA

(By The Associated Press)

PARIS, December 10—Prince Henry, brother of the ex-kaiser, has proclaimed the establishment of a royalist party in Germany, according to a Holland reports.

### KRUPPS TO BE PEACEFUL, HEREAFTER

(By The Associated Press)

AMSTERDAM, December 11—The directors of the Krupp works have announced the transformation of the big gun plant into a factory to be devoted to the arts of peace, says the Cologne Gazette.

### NEW BALLOON GAS IS ANNOUNCED

(By The Associated Press)

WASHINGTON, December 10—The discovery of an inert, non-inflammable gas designed for use in balloons and other lighter air craft, has been revealed by the navy department. The new element is called Argon. It will eliminate the hazard of fire and explosion that heretofore has accompanied balloon operations where hydrogen was used for inflation.

### 24-INCH GUNS NOW POSSIBLE

(By The Associated Press)

WASHINGTON, December 10—Major-General Coe, chief of coast artillery, has reported that the ordnance development during the war had brought cannon makers to a point where a 24-inch rifle with range of 40 miles, is easily practicable.

### U. S. WANTS NO SPECIAL APPEALS

(By The Associated Press)

WASHINGTON, December 10—The state department has sent a note to Berlin and Vienna advising the German and Austrian governments that the United States desires to receive no further communication from them which should properly be addressed to the Allied nations.

### McCARTHY'S POLICY HANDS OFF LEGISLATURE

(By The Associated Press)

HONOLULU, December 10—Governor McCarthy expects that

Land Commissioner Rivenburgh will return to the Islands about February 1.

Asked about report that the Hawaii delegation will oppose the Honolulu harbor plans unless they receive certain legislation for Hawaii, Gov. McCarthy made it plain that his policy regarding the coming legislature will be "hands off."

### MACKENSEN'S ARMY DISARMED

(By The Associated Press)

AMSTERDAM, December 7—Disarming Mackensen's army begun in Hungary. No disorder.

Holland suggests internment of both kaiser and crown prince in Dutch East Indies where they would be guarded by Dutch fleet.

Anticipated Holland be asked for compensation on account of permitting violation neutralities in allowing German troops to pass through Limburg on retreat out of Belgium, and receiving German ships from Antwerp.

## Christmas Suggestions



### Buy dishes for your Christmas gift.

The most satisfactory way to buy Dinner-ware is to select from open stock just those pieces that you actually need. You can come to W. W. Dimond & Co., Ltd., Dinner-ware Headquarters, and choose the most attractive patterns in Semi-porcelain and China from all leading potteries.

You can select any style of service you want; a breakfast set, a luncheon set, a dinner set, salad and fish sets, or any other composition for 3, 4, 6, or as many people as you wish.

FIRELESS COOKERS are sold on the "Easy-Pay" plan.

### W. W. DIMOND & CO., LTD.

"The House of Housewares."

53-65 King St.

HONOLULU, HAWAII.

### "J-M"

Exterior

## WASHABLE PAINT

Especially efficient and economical for mill work

Sanitary—weatherproof fireproof. A high grade cold water paint for exterior and interior work. Put up in 350-lb. barrels. "A reputation behind it", and approved by the National Board of Fire Underwriters.

## Honolulu Iron Works Co.

HONOLULU, T. H.

## Time Table--Kahului Railroad Co.

Daily Passenger Train Schedule (Except Sunday)

The following schedule went into effect June 4th, 1913

TOWARDS WAILUKU						TOWARDS HAIKU					
9	7	5	3	1	Distance	9	7	5	3	1	Distance
P.M.	P.M.	P.M.	A.M.	A.M.	Miles	Miles	A.M.	P.M.	P.M.	P.M.	Miles
					15.3						15.3
					12.0						12.0
					8.4						8.4
					5.5						5.5
					3.4						3.4
					1.4						1.4
					0						0

### PUUNENE DIVISION

TOWARDS PUUNENE				TOWARDS KAHULUI			
3	1	Distance	STATIONS	Distance	Passenger	Passenger	Passenger
P.M.	A.M.	Miles	Miles	A.M.	P.M.	P.M.	P.M.
		0	L. Kahului..A	2.5	6 22	3 15	
		2.5	A. Puunene..L	0	6 12	3 05	

- All trains daily except Sundays.
  - A Special Train (Labor Train) will leave Wailuku daily, except Sundays, at 5:30 a. m., arriving at Kahului at 5:50 a. m., and connecting with the 6:00 a. m. train for Puunene.
  - BAGGAGE RATES: 150 pounds of personal baggage will be carried free of charge on each whole ticket, and 75 pounds on each half ticket, when baggage is in charge of and on the same train as the holder of the ticket. For excess baggage 25 cents per 100 pounds or part thereof will be charged.
- For Ticket Fares and other information see Local Passenger Tariff I. C. O. No. 3, or inquire at any of the Depots.



# Latest News By Wireless

## GUARD OFFICERS OUT FIRST—PRIVATE LATER

(By The Associated Press)  
 HONOLULU, December 10—Demobilization orders have been received here. The instructions are that officers go back into civil life first, and nothing is known yet about privates. Officers who want to quit army altogether are to go out first, then those who are willing to remain in the reserve corps, and then officers who want regular army commissions.

## SCHOOL BOARD RECOMMENDS MORE TEACHERS' PAY

(By The Associated Press)  
 HONOLULU, December 10—The board of education approves the budget for the next 2 years for submission to the legislature. A total of \$1,249,630 is recommended, providing a substantial increase in teachers' pay. Hawaii gets \$336,000, of which \$206,000 is for new buildings. Hilo gets \$115,000, of which Piopio gets \$40,000 for a new school. Maui is slated for \$132,650, of which \$78,050 is for new buildings.

## BAILEY MAY SUCCEED RIVENBURGH

(By The Associated Press)  
 HONOLULU, December 9—The Star-Bulletin says that possibly Land Commissioner Rivenburgh will remain on the mainland on account of his wife's health, and that probably Charles Bailey, district engineer U. S. geological survey, now acting commissioner, will succeed him. Governor McCarthy denies the report that W. J. Stone, of Hilo, is slated for the berth.

## AL. CASTLE NOW IN MANILA

(By The Associated Press)  
 A returning Red Cross worker says Alfred Castle been sent to Manila from Siberia to organize work there. He said Castle did splendid work in Siberia.

## CHILE-PERU ROW ABOUT SETTLED

(By The Associated Press)  
 BUENOS AIRES, December 6—The Chile and Peru controversy is approaching a peaceful solution the La Nation is informed as a result of Brazilian and Uruguayan foreign offices.

## HONORING A POPULAR HERO

(By The Associated Press)  
 NEW YORK, December 6—The space in front of the grand central terminal has been officially designated as Pershing Square.

## ESTHONIA TIRED OF BOLSHEVIKISM

(By The Associated Press)  
 PARIS, December 6—A British warship has entered Reval in response to a request of the Esthonian government.

## PRELIMINARIES TO START ON 17th

(By The Associated Press)  
 PARIS, December 6—Inter-Allied conference dealing with peace preliminaries will meet December 17, says the Echo de Paris, and end January 15.

## BRITISH LOSS OF MERCHANT TONNAGE

(By The Associated Press)  
 LONDON, December 6—British merchant tonnage losses since the beginning of the war to October last, were 9,031,628 gross tons, according to official report. Deducting additions by construction and captures the net loss is 3,400,000 tons.

## SPANISH FLU BAD IN SAMOA

(By The Associated Press)  
 LONDON, December 6—Six-thousand deaths from Spanish influenza in Samoa, have occurred according to a Melbourne dispatch. Australia has dispatched a medical staff to handle situation.

## ROAD LABORERS TO GET MORE PAY

(By The Associated Press)  
 HONOLULU, December 9—Supervisors held a caucus on Sunday and agreed to raise the pay of road laborers from 30 to 37½ cents per hour, because of increase in cost of living.

## SPAIN WILLING TO KICK GERMANY NOW

(By The Associated Press)  
 PARIS, December 9—Premier Romanones of Spain intends to expell the German ambassador and several members of the Spanish embassy for notoriously engaging in spying and their anti-dynastic agitation, says a Madrid dispatch.

## QUITE NATURALLY!

(By The Associated Press)  
 MUNICH, December 9—A crowd of armed soldiers forced an entrance to the house of Minister of the Interior Auer, and gave him 2 minutes to resign at point of pistols. He complied.

## SHIP-WRECK SURVIVORS REACH HONOLULU

(By The Associated Press)  
 HONOLULU, December 9—The survivors of the Benito Juarez arrived here. The 2nd engineer, Chas. Byrne, and 7 Chinese were lost, their boat probably being swamped.

## PLANS FOR BIG KAMEHAMEHA DAY

(By The Associated Press)  
 HONOLULU, December 8—At a meeting held in Kuhio's office plans for a great celebration on hundredth anniversary of Kamehameha's death next June 11th, were discussed. Hawaiians all over territory are to cooperate and make an elaborate affair. A feature will be a big pagent.

## SCHWAB'S RESIGNATION ACCEPTED

(By The Associated Press)  
 WASHINGTON, December 8—Chas. M. Schwab has resigned as head of the ship production board. Wilson wirelessly acceptance. Senate confirmed nomination Carter Glass to succeed MacAdoo.

## BIG U. S. NAVY SURE SOON

(By The Associated Press)  
 WASHINGTON, December 8—It is announced that the American navy on July 1st, 1920, will total 1291 vessels including 40 battleships and 329 destroyers.

## MORE TURKISH ATROCITIES REPORTED

(By The Associated Press)  
 AMSTERDAM, December 8—Turks massacred 10,000 Armenians while evacuating Baku, Olti, and Ardahan, according to a Berlin dispatch. In the Baku fighting 30,000 were killed. Turks permitted Tatars plunder Armenians.

## ROWS IN BERLIN BRING BLOODSHED

(By The Associated Press)  
 LONDON, December 8—An exchange of shots killed 16, and wounded 15, when soldiers paraded in Berlin in protest because they were not represented in the executive council of soldiers' and workmen. LONDON, December 8—Berlin dispatch says serious riots occurred in Berlin last night. Shots were exchanged outside the reichstag. Post troops have occupied the university building. The executive committee of soldiers' and workmen's council was arrested. The government disclaims issuing order to troops.

## AT THE THEATERS

### Charley Chaplin in "A Dog's Life"

There are several things that go to make "A Dog's Life" the greatest comedy Charles Chaplin ever produced. First and foremost after the inimitable comedian himself comes his method of production. Chaplin realizes what many other comedy producers do not—that a piece of funny business is heightened in effect providing it follow after a stretch of action in which planing and serious business hold the main positions. He does not strive for "a laugh in every scene"—this is a snappy catch-line, but a poor aim. If there are laughs in every scene they grow less riotous with every scene. Chaplin, as capable a producer as he is a comedian, knows the value of his highlights and bridges from one to another with the skill of a dramatist.

Neither does Chaplin ever stoop to the obvious; or if he so performs he follows it up with something totally unexpected. In "A Dog's Life" there are many surprising turns. And, of course, one can laugh with more abandon when everything is anticipated. This skill of Chaplin's is in evidence right up to the last, when he is seen happily married, safe on his farm, gazing down into a cradle, his arm about his wife. A close-up of a baby is anticipated; those accustomed to the Chaplin type of comedy perhaps expected triplets. But it is neither one nor three. The dog who has been Charles' companion throughout the three reels occupies the cradle with her litter of puppies.

It is these things which go to make "A Dog's Life" the best comedy ever made; yes, even on second thought, the best comedy ever made. These and the elimination of all waste footage, the accuracy with which Chaplin has gaged the value of each trick and each bit of business, and the extra-clever little dog. And Chaplin realizes that to strike the human note every once in a while, even in his comedies, is to make them more appealing. Edna Purviance does a clever piece of work as the heroine—for there is a heroine, and Charlie is the hero, and there is a plot with a happy ending, as all good plots have.

### Dorothy Dalton in "The Mating Of Marcella"

Marcella Duranzo, the part played by Dorothy Dalton, the star of the cast, is a Spanish girl who is sent to the home of Robert Underwood with some new frocks, and attracts the attention of Lois Underwood, his wife. Lois is in love with Count Louis Le Favri, and has agreed to get a divorce from her husband. Having her choice between a trip to Reno and a yachting tour with the count she prevails upon Marcella to go to Reno in her place and pose as Mrs. Underwood. The husband goes to Reno himself with his little son. The boy is taken ill, and Marcella helps to nurse him back to health. Underwood had met

the girl in New York, and is surprised when he learns that she is known in the hotel as his wife. The real Mrs. Underwood discovers that Marcella spent the night at the bedside of the child in company with her husband, and names her as co-respondent in her divorce suit. She then quarrels with the count, and he ends her life when she tries to throw him over. Underwood and Marcella are married later on.

### "The Heart Of Romance"

The picture is so rich in humanity that you can look at it from many an angle and find matter worthy of comment. The hero, played by Bernard Thornton, is a poet living in a garret with manuscripts all over his room, any one of which (if the publishers weren't so flat-headed) is worth a mint. Frances Crowley, who wrote the story, plainly knows a lot about it, too, and also where a poet can pick up a ten-spot occasionally. The picture is rich in matter along this line. A thoroughly amusing love story develops in which the poet is semi-consciously master of the situation every time. It is one of the most pleasing pictures I've seen in a long time.

### Enid Bennett in "The Vamp"

The picture does not make the slightest pretense of digging beneath the surface of life, but is always consistent to its class. Intended for entertaining purposes only, it is not morally obliged to take part in the uplift game or to point out the wonderful new forces that are at work in the world today. The very nature of its theme forbids it. Nothing but high-brow preachment would make the screen patron disgusted with the shadow stage. "The Vamp" belongs to the recess hour. No one wants to be instructed every time he enters a moving picture theater.

A humorous old fishman, capitably played by John P. Lovekney, is one of the best features of the picture. Douglas MacLean, Charles French, Robert McKim, Melbourne MacDowell, complete the well-selected cast. The production was directed by Jerome Storm and is a thoroughly satisfactory one. Most screen patrons will enjoy "The Vamp."

### "Selfish Yates"

"Selfish Yates" is a dive-keeper in a little mining town in Arizona. His theory is that his own personal interests should engage his attention solely and refraining from interfering in the business of others, he sternly prohibits anyone else from interfering with his. One day a young woman of the loftiest character enters into the sphere of his existence and by her purity and softness effects a spiritual regeneration in this ruffianly character. This is not accompanied without much trouble on his part, but after a serious of thrilling incidents he comes to a realization of his great love for the girl.

### Catty

Edith—"What makes you think Jack loves me so desperately?"  
 Maud—"Oh, a thousand things! He always looks so pleased, for instance, when you sing and play."—Boston Transcript.

## Weekly Program At Wailuku And Kahului Theatres



Saturday, December 14th.  
**DOROTHY DALTON**  
 in  
**"THE MATING OF MARCELLA"**  
 Paramount Comedy  
 Bray Cartoon

Sunday, December 15th.  
**NELL SHIPMAN**  
 in  
**"THE GIRL FROM BEYOND"**  
 TRAVELOGUE  
 1-Reel Reg Ser Comedy

Monday, December 16th.  
**JUNE CAPRICE**  
 in  
**"THE HEART OF ROMANCE"**  
**CHARLIE CHAPLIN**  
 in  
**"A DOG'S LIFE"**  
**"THE EAGLE'S EYE"**

Tuesday, December 17th.  
**EMILY STEVENS**  
 in  
**"OUTWITTED"**  
**"THE SEVEN PEARLS"**

Wednesday, December 18th.  
**WILLIAM S. HART**  
 in  
**"SELFISH YATES"**  
**"FIGHT FOR MILLIONS"**  
 PATHE NEWS

Thursday, December 19th.  
**"TARZAN OF THE APES"**  
 PATHE NEWS

Friday, December 20th.  
**ENID BENNETT**  
 in  
**"THE VAMP"**  
**"THE BULL'S EYE"**

Notice  
 Matinee, Saturday, December 21st.  
**CHARLIE CHAPLIN**  
 in  
**"A DOG'S LIFE"**  
 And  
**JANE and KATHERINE LEE**  
 in  
**"TROUBLE MAKERS"**  
 Prices—Children, 15 ; Adults, 25

## Kahului Theatre

Saturday, December 14th.  
**WALLACE REID**  
 in  
**"BELIEVE ME XANTIPPE"**  
**"THE EAGLE'S EYE"**  
 TRAVELOGUE

Monday, December 16th.  
**"THE MATING OF MARCELLA"**  
 Featuring  
**DOROTHY DALTON**

Tuesday, December 17th.  
**JUNE CAPRICE**  
 in  
**"THE HEART OF ROMANCE"**  
**"FIGHT FOR MILLIONS"**  
 And  
**CHARLIE CHAPLIN**  
 in  
**"A DOG'S LIFE"**

Wednesday, December 18th.  
**"THE GIRL FROM BEYOND"**  
 Featuring  
**NELL SHIPMAN**  
 Paramount Comedy  
 PATHE NEWS

Thursday, December 19th.  
**WILLIAM S. HART**  
 in  
**"SELFISH YATES"**  
**"THE SEVEN PEARLS"**  
 PATHE NEWS

Friday, December 20th.  
**"TARZAN OF THE APES"**  
**"THE BULL'S EYE"**  
 Bray Cartoon.

FOR SALE  
 Imported Jersey Bull, Royally bred, Good disposition. Apply Miss R. E. Crook, Makawao.

NOTICE  
 Peahi Hui Shareholders.  
 They will be a meeting of the Hui Kaula o Peahi, on the 21st day of December, 1918, at the Peahi Church, Peahi, at 10 a. m.  
 For the purpose of leasing 200 acres of land on the makai side of the Gov. road.  
 President, J. K. SMYTHE,  
 Sec'y., FRED WILHELM.  
 (Nov. 22, 23, Dec. 6, 13, 20.)

**The Gasoline of Quality**

Red Crown is a straight-distilled, all-refinery gasoline, not a mixture. Its continuous, uniform chain of boiling points make easy starting, quick acceleration power and mileage sure. Look for the Red Crown sign before you fill.

STANDARD OIL COMPANY (California)



K. MACHIDA Drug Store  
 ICE CREAM  
 The Best in Town  
 And a Up-To-Date Soda Fountain  
 Give Us a Trial  
 MARKET STREET, WAILUKU.

N. SANO  
 CONTRACTOR AND BUILDER  
 Just received a new stock of Mattresses, poultry netting, paints and oils, furniture, etc. Coffins and General Hardware.  
 Phone  
 Market Street Wailuku

Kodak Pictures  
 You have taken will prove highly acceptable  
**Christmas Gifts**  
 Have them properly finished. We do finishing—the better kind.  
 Honolulu Photo Supply Co.  
 P. O. Box 769 HONOLULU  
 "Everything Photographic"

THE HOME OF THE  
**Steinway and Starr PIANOS**  
  
 We have a large stock of  
**Inside Player Pianos**  
 at fair prices and easy terms. We take old pianos in exchange.  
**Thayer Piano Co., Ltd**  
 HONOLULU, HAWAII

LODGE MAUI, NO. 884, A. F. & A. M.  
  
 Stated meetings will be held at Masonic Hall, Kahului, on the first Saturday night of each month at 7:30 P. M.  
 Visiting brethren are cordially invited to attend.  
 F. W. PEACOCK, R. W. M.  
 W. A. CLARK, Secretary.

ALOHA LODGE NO. 3 KNIGHTS OF PYTHIAS.  
  
 Regular meetings will be held at the Knights of Pythias Hall, Wailuku, on the second and fourth Friday of each month.  
 All visiting members are cordially invited to attend.  
 H. S. PERRY, C. C.  
 J. C. BLAIR, K. R. & S.

GRAND HOTEL  
 WAILUKU, MAUI, T. H.  
 Reasonable Rates  
 Dinner parties given special attention.

DELCO-LIGHT  
 The complete Electric Light and Power Plant  
 Lights the barn. Runs the milking machine. Makes chores easy.  
  
 The Hawaiian Electric Co., Ltd.  
 Distributors — Honolulu.

FOR  
**Christmas:**  
 NOVELTIES  
 CARDS  
 RIBBONS  
 CHILDREN'S BOOKS  
 FICTION  
 WAR BOOKS  
 A big stock to select from.  
 HAWAIIAN NEWS CO., LTD.  
 Young Hotel Bldg. Honolulu.

IF YOU ARE GOING TO CELEBRATE  
**Peace Christmas**  
 BY BUYING A PAIR OF NEW SHOES, BE SURE TO BUY  
**REGALS**  
 —Made of best grade of real leather, they'll help you continue to observe real economy.  
 We'll fit you by mail.  
**Regal Shoe Store**  
 HONOLULU.

MAUI BOOKSTORE  
 BOOKS, STATIONERY NEWS DEALERS  
 Hawaiian Views and Post Cards  
 Souvenir-Jewelry  
 Kodaka and Films  
 Koa Novelties  
 Fine Candles  
 Ukuleles  
 WAILUKU, MAUI

### Cattle Thieves At Work In Makawao

**Haleakala Ranch And H. W. Rice Offer Reward Of \$500 For Thieves —Kill Animals For Beef Leaving Hide Behind**

A reward of \$500 is offered by the Haleakala Ranch and by Harold Rice for information leading to the arrest and conviction of the person or persons guilty of stealing cattle from the two ranches. There is reason to believe that a number of head of cattle have been stolen recently.

### War Stamp Drive Is Making Good On Maui

- Mrs. C. D. Luffkin.
  - Chas. Savage.
  - Winifred A. Wadsworth.
  - Mrs. R. A. Wadsworth.
  - J. C. Blair.
  - Maui Soda & Ice Works
  - Raymond Ranch.
- Lahaina—**
- Pioneer Mill Co.
  - E. Brecht.
  - Wm. Kuhlman.
  - Frank Kuhlman.
  - C. A. McDonald.
  - C. F. Turne.
  - A. Valentine.
  - F. N. Luffkin.
  - A. W. Collins.
  - E. Haneberg.
  - D. T. Fleming.
- Haiku—**
- Haiku Fruit & Packing Co.
  - Dr. W. D. Baldwin.
  - Mr. Andrew Weber.
  - Mrs. D. D. Baldwin.
  - Mrs. W. A. Baldwin.
  - G. H. Farnsworth.
- Paia—**
- H. A. Baldwin.
  - H. P. Baldwin, Ltd.
  - Maui Agricultural Co.
  - Mrs. H. A. Baldwin.
  - Mrs. H. W. Rice.
  - Paia Plantation.
  - Haiku Sugar Co.
  - Kallalini Plantation.
  - Pulehu Plantation.
  - Makawao Plantation.
  - Kailua Plantation.
  - Kula Plantation.
  - S. E. Hubbard.
  - S. Hocking.
  - W. O. Aiken.
  - J. A. Medeiros.
- Makawao—**
- Mrs. H. P. Baldwin.
  - F. W. Hardy.
  - Mr. S. A. Baldwin.
  - Mrs. S. A. Baldwin.
  - A. McKibbin.
  - Mrs. Dowsett.
- Puunene—**
- F. F. Baldwin.
  - Mrs. F. F. Baldwin.
  - Hawaiian Com'l. & Sugar Co.
  - Dr. F. E. Sawyer.
  - C. C. Campbell.
  - E. F. Deiner.
  - E. J. Walsh.
  - Asa Baldwin.
  - Lawrence Baldwin.
  - Camp 5 Store.
  - Camp 1 Store.
- Hamakuaoko—**
- H. D. Sloggett.
  - Mrs. H. D. Sloggett.
  - S. Taylor.
  - J. P. Foster.
- Hana—**
- John Chalmers.
  - Kaeleku Sugar Co.
- Kahului—**
- Mrs. Wm. Walsh.
  - H. S. Perry.
- Hana is still behind on its allotment, but an order for more stamps received this week indicates that East Maui may be waking up. On the other hand the district from Kailua eastward to Nahiku has made a wonderful record. It was allotted \$3500 in the last drive and has already gone over this. Besides this section has been consistently buying stamps throughout the year so that it now has the remarkable record of \$41 per capita, counting every man, woman and child in that district. When it is considered that there are practically no limit members in the section, the subscriptions practically all being from laborers, an appreciation is gained of what the district has done.
- Haiku will, if it has not already done so, make its quota of \$14,000. Puunene also reports good progress, while Paia and Hamakuaoko were on the point of going over the top several days ago.
- Victory Boys**  
Carl Rose's Victory Kids did some good work this week, though rain again interfered to some extent with their plans. They gathered a good crowd on Market street, Wailuku on Monday night, and on Wednesday night they woke things up at Kahului and later the same evening at Puunene. Last night they roused considerable enthusiasm at the Wailuku Orpheum where a big crowd gathered to see Guy Empey's picture "Over the Top."
- Will Keep Up Work**  
Chairman Wadsworth states that the work will be kept up without check until it is certain that Maui has made good. It is hoped to have complete figures on the past two weeks' work within a few days.

### Pertinent Paragraphs

Charlie Chaplin is announced for the Wailuku Orpheum next Monday night in "A Dog's Life."

The Maui Industrial board will hold its monthly meeting at the Wailuku district court room on next Tuesday morning, at 10:30 o'clock.

Aloha Lodge, No. 3, Knights of Pythias, will hold an important meeting this evening.

An enjoyable afternoon was spent with Mrs. Samuel P. Woods on Tuesday, her guests being Mrs. W. S. Chillingworth, Mrs. Robert Lindsay, Mrs. Caum, Mrs. William Ensko, Mrs. Henry, L. White, Mrs. William H. Hill, Bridge was the afternoon's diversion. —Star-Bulletin.

Mrs. Caum was hostess at a two table bridge afternoon on Thursday. The players were Mrs. William S. Chillingworth, Mrs. Frank O. Brigham, Mrs. James T. M. Penrose, Mrs. Cornell Franklin, Mrs. William Bibee, Mrs. S. W. Webb, and Mrs. Clarence Carter. —Star-Bulletin.

Mrs. Clarence Carter, Mrs. William S. Chillingworth, Mrs. Caum, and Mrs. Robert Lindsay, enjoyed an afternoon of bridge at Mrs. Chillingworth's quarters on Monday. —Star-Bulletin.

Judge Barr, in the 2nd circuit court, this week, granted a divorce to Akino Sorayama from Kanichi Sorayama on grounds of failure to provide. The parties to the case live at Puunene. The divorce takes effect on December 20.

R. V. Resiter, head of the Mormon mission work on Maui, and well-known in Wailuku where he lives, was taken suddenly ill while at the theater on Wednesday evening, and he is at present in the Paia hospital. Rumors that he had suffered a serious paralytic stroke are said to be incorrect.

Kahalemanna Apapuu vs. W. T. Robinson, ejectment, is the title of a suit filed in the 2nd circuit court this week. It involves the title to two small pieces of land in the ill of Hana, Wailuku. Damages in sum of \$500 are demanded.

Ab Kul Dang Nam, of Pauwela, has filed suit for a divorce in the 2nd circuit court against her husband Dang Nam, on charge of cruelty and non-support.

A divorce is asked by Haru Shigematsu of Puunene from her husband Yonegoro Shigematsu, on grounds of non-support.

Yoshi Horimoto asks a divorce from her husband Mitsuko Horimoto on grounds of desertion and non-support. The couple last lived together at Kanapali.

Judge Barr this week refused to consider a settlement of the bill of exceptions by the defendant in the case of Frank Santos vs. C. H. McBride, on a motion to dissolve attachment. The case has to do with the purchase of an automobile by McBride from the plaintiff.

In the 2nd circuit court this week, Harry Alu was granted a divorce from his wife Annie Alu on grounds of desertion, to take effect December 20. Alu is in the U. S. Army, stationed on Oahu. His wife is now living at Keanae.

The Susan Maru, a fishing sampan from Hilo, was towed into Malamae bay last Saturday after her engines had become disabled in the heavy half-gale blowing at the time.

Ben Bruns was the 6-minute speaker at the Orpheum last Saturday night. He made a fine address for War Savings Stamps, and sang some popular war songs in addition. D. H. Case spoke on Wednesday evening on War Stamps, and also on the Red Cross Shop.

### Big Dance At Lahaina Armory Saturday, 21st

A Christmas dance, the proceeds of which will go to the Belgian relief fund, is being arranged by the ladies of Lahaina for Saturday evening of next week—December 21—at the Lahaina Armory. The affair promises to be the most important social event of the year in west Maui, and a large attendance of central Maui folks are expected. Tickets will be 50 cents.

**FAIRBANKS, Alaska, Nov. 20—(By Associated Press.)—**By Mail.—Tin ore recovered from gold placer deposits in this section of Alaska has been proving a source of revenue that in former years was given no attention. In the Hot Springs district alone, along the Yukon river, 50 tons of tin ore have been recovered from placer claim and shipped to the United States. From the large quantity recovered, some miners believe a ledge of tin will eventually be found in the hills around the head of Sullivan creek.

All operators in the Hot Springs district have closed down mining work for the year, scarcity of labor, as unusually dry summer and the high cost of supplies contributing to the camp's smallest output of gold since its founding. The output amounted to \$175,000.

**Trench Repartee**  
Australian Soldier (to American)—"You Yanks think you've done a lot, but you forget we Australians have been at the game for four years."  
"Well, what have you done, anyway?"  
"Done? We've been at Gallipoli, Mesopotamia, the plains of Bethleem and—"  
"The plains of Bethleem?"  
"Yes; I slept a week there myself."  
"Well, I guess that was a busy week for the shepherds watching their flocks!" —Tit-Bits.

### New Church At Pauwela To Be Dedicated Sunday

The new native church at Pauwela recently completed, is to be dedicated next Sunday, December 15, with fitting exercises. Rev. John P. Erdman, of Honolulu, will preach the dedicatory sermon at 10 o'clock. At 11 o'clock a Christian Endeavor rally will be held presided over by J. W. Kalua, of Wailuku. A number of glee clubs will unite with the choir in furnishing music.

At 2 o'clock an elaborate luau is to be served.

The pastor of the new church will be Rev. Moses Kahiapo. The church cost in the neighborhood of \$1700.

Assisting in the dedication will be Rev. E. E. Pleasant, Rev. R. B. Dodge, Rev. A. C. Bowditch, Rev. L. B. Kamehewa, Rev. Inaina, Rev. Kahoopii.

### MARRIAGE LICENSES

Dec. 12.—Salkichi Goto, 29, and Kanio Sato, 20, both of Paia.

Isagawa Kametaro, 20, and Furlina Matsui, 20, both of Camp 4, Puunene.

**BERKELEY, Cal., Nov. 28—(By Associated Press.)—**The Military Bureau of the University of California, together with its branches in various parts of the state, is organizing to assist man returning to civil life from the Army and Navy to find employment. Representatives of the bureau are gathering data on the need for additional workers in different industries. Previous to the signing of the armistice the bureau served the important functions of information bureau, personnel agency and liaison office.

### Annual Catholic Fair Was Great Success

The annual fair of the Catholic Ladies' Aid Society of the St. Anthony's Church, held last Saturday evening at the Grand Hotel was an unusually successful event and was largely attended. The proceeds amounted to about \$300.

The program given during the evening was of an unusually high order. Miss Eva Rodrigues in a number of vocal selections, charmed her audience with her beautiful voice. She was accompanied on the piano by Mrs. Kunewa.

Miss do Rego sang a number of selections which were much appreciated, as was the pretty sextet of dancers directed by her.

Joaquin Garcia's selections on the violin came in for much favorable comment.

The decoration of the booths was unusually pretty.

Following the sale, the floor was cleared, and the young people enjoyed dancing for several hours.

**MAKIMA, Wash., Nov. 28—(By Associated Press.)—**But one tunnel remains uncompleted on the Selah-Naches irrigation canal. Tunnel No. 12, the last completed is 895 feet long and so large that three horses can pass through it abreast.

The irrigation district is spending \$375,000 on tunnels, flumes, canal lining and other improvements. The tunnels are designed to shorten the main canal, eliminate detours and largely increase the canal capacity.

### Personal Mention

D. C. Lindsay, of Kahului, was in Honolulu this week attending the meeting of the Territorial board of public instruction of which he is the member from Maui.

Mrs. A. E. Turner, of Kulaha, left last Saturday for Honolulu where she will spend the winter.

Chas. Savage, of Wailuku, was a business visitor in Honolulu this week going down last Saturday.

Mrs. B. J. Bridgeford returned to Makawao on Tuesday's Claudine from Honolulu where she visited several weeks with her husband who is in the army service at Schofield Barracks.

David Rattray, formerly of the officer force of the Puunene plantation but now serving in the military forces in Honolulu, is on Maui this week for a short leave of absence.

J. T. Moir, of Puunene, returned this week from a business trip to Honolulu.

Mr. and Mrs. Frank Baldwin returned home last Saturday from Honolulu where they spent a week during the meeting of the sugar planters' association.

Mrs. D. C. Lindsay, of Paia accompanied her husband to Honolulu this week, where the latter attended the meeting of the school board.

Attorney Enos Vincent, of Wailuku, was in Honolulu this week attending to a number of cases in the supreme court.

J. J. Walsh, manager of the Kahului Store, was a business visitor in Honolulu this week.

A. J. Fernandez, for the past fifteen years head stevedore for the Kahului Railroad Company, who resigned the first of this month, will leave for Honolulu tomorrow evening where he will make his home in the future.

Rev. R. B. Dodge, of Wailuku, was a passenger to Honolulu on Monday night on business of the Hawaiian board.

Mrs. G. Gilliland, of Honolulu, who has been the guest of Mrs. Louis Distel, at the Grand Hotel for some weeks, returned to her home by the Mauna Kea on Monday night. She was accompanied by Mrs. Distel who will visit in Honolulu for some time.

E. R. Bevins, county attorney, returned from Honolulu on Wednesday after spending several days there on business in the supreme court.

Rev. A. S. Baker, of Kona, who was the guest last week of Rev. R. B. Dodge, of Wailuku, went to Honolulu on Monday evening before returning to his home on Hawaii.

R. W. Brink, of San Francisco, who has been visiting Joaquin Garcia for the past week, left for Honolulu on Monday night on his way home. During his stay on Maui he was the guest of honor at a number of pleasant social affairs.

Sheriff Crowell made a business trip to Hana on Tuesday, returning on Wednesday and leaving the following morning for Molokai, where he has a number of small matters demanding his attention.

Supervising Principal H. M. Wells is visiting the schools on Molokai this week.

Mrs. J. Garcia, of Wailuku, departed Monday night for Honolulu where she will visit friends for some time.

Attorney E. R. Bevins, Enos Vincent, and E. Murphy returned home on Wednesday from Honolulu where they were called to attend the supreme court on Tuesday.

### "Victory Dance" At Kahului Tomorrow

The annual dance under the auspices of the Ladies' Aid Society of the Kahului Union Church, will this year be the "Victory Dance", and will take place tomorrow evening in the Kahului Community House. The ladies have been making elaborate preparations for the event, and indications are that there will be a large attendance.

**SANTA FE, N. M., Nov. 28—(By Associated Press.)—**As part of its plan for the preservation of the record of New Mexicans in the world war, the state bureau of historical service is appointing representatives in each of the twenty-eight counties of the State. These will complete records of men who were unducted or who enlisted in the various branches of military service.

The bureau has an outline map of New Mexico and is placing a gold star in each county for every man who died in the service. When this record is completed it will be placed in the state museum at Santa Fe.

**Keeping The Secret**  
Stella—"Molly told me you told her that secret I told you not to tell her."  
Bella—"It's beastly of her to have told you that! Why, I told her not to!"  
Stella—"Well, I told her I wouldn't tell you she told me. So don't tell her I did." —Tit-Bits.

**Wouldn't Take A Chance**  
"Why don't you get out and hustle? Hard work never killed anybody," remarked the philosophical gentleman to whom Rastus applied for a little charity.  
"You're mistaken dar, boss," replied Rastus; "I've lost four wives dat way!" —People's Home Journal.

### Small Steamer Sinks In Molokai Channel

(Continued from Page One.)

the water out of the split doorway, working in the bilge up to his neck. The bilge pumps amidships refused to work. Then the port water tank was torn away. At 1:40 o'clock the captain gave the order to clear away.

Eight of the Chinese being deported who were working as part of the crew took possession of No. 1 boat and refused to get out. Then the ship started to settle and the captain went below to get his papers. Meanwhile No. 3 boat was also taken by the Chinese and in it got away. No. 2 boat with the white officers and four Chinese broke away while the captain was below. The ship began to sink. Captain Denzog was caught in the wash and had to drop the ship's log and papers.

When he came up he swam to some wreckage and finally reached boat No. 2, in which the chief engineer had taken refuge. No. 3 boat with the eight Chinese drifted away in the storm and has not been seen since.

It was at the moment that the two lifeboats were drifting away from the ship that Second Assistant Engineer Byrne was lost. His body was seen lying upon a drifting hatch and he was either dead or too exhausted from his struggles in the water to move. Such was the velocity of the storm that No. 2 boat was unable to rescue him.

The survivors rowed in a tremendous sea, constantly bailing their boats to keep from swamping, until late Wednesday afternoon when they made a landing at Awala, the extreme western point on Lanai. Although almost exhausted they set out to find help, part of the party taking the road to the ranch house and the rest the road around to Keaumoku. The walk of upwards of 20 miles was made the more severe for the reason that none of the men had shoes and the sharp lava cut their feet badly.

The Benito Juarez was a small steamer of 364 net tons. She operated on the Mexican coast under Mexican register up to 1914 when she was given American register. She was engaged in carrying general supplies to Manila at the time of her disaster. Capt. Denzog is known in the Islands as an officer formerly aboard the steamer Sachelm.

**Chief Officer Lived Here**  
R. H. Anderson, chief officer on the lost vessel, was at one time a resident of Maui, being connected with the Nahiku Rubber Company some 10 or 12 years ago. He is a brother of W. A. Anderson, until a few years ago manager of the Nahiku Rubber Company, and now chief pay clerk in the navy, stationed at Pearl Harbor.

Anderson states that owing to the high sea and the crowded condition of their boat they were not able to turn into Molokai for fear of swamping, although they drifted close past the shore of that island on Tuesday afternoon. They thought Molokai was Maui, however, and when they landed on Lanai after dark on Wednesday night they still thought they were on Maui.

That they were not wrecked again on the rocks of Lanai is considered simply good luck, as they simply happened to strike a piece of beach instead of cliffs. The landing was made against the captain's orders, it is reported, the latter fearing the rocks in the darkness.

### Death Of Mrs. Jerry Burns

Mrs. Jeremiah Burns, a kamaaina resident of Maui, died about 4 o'clock Wednesday afternoon at the Kalua place, Wailuku, where she had been for some time receiving medical treatment. She had been seriously ill for about two months. The body was taken to her late home in Kanaloa on Wednesday night, the funeral taking place yesterday afternoon.

Mrs. Burns was about 60 years of age. Before her marriage she was Miss Kaele Uwekoolani, of Kanaio, of a Hawaiian family well known and prominent on that part of Maui. She is survived by her husband and four children—two sons, Alfred aged 21, of Honolulu; Richard, aged 12; and two daughters, Annie, 18, and Lei, 14.

**Ought To Be Genuine**  
Sam, the choreman, returned from the city with a scarpin that contained a "diamond" of no usual size. It was the pride of his heart and the envy of his village companions. He treated all inquiries from them as to its value and its authenticity with high scorn.

His employer, after a week of basking in its radiance, asked Sam about its history.

"Sam," he said, "is it a real diamond?"  
"Well," said Sam, "if it ain't I've been skunk out of a half-dollar!" —Pittsburgh Chronicle-Telegraph.

**New Name, Old Disease**  
Two girls were quarreling.  
"Oh," said one, "I'm sick of you! I believe you can't help it, tho. You've got a chauffeur's tongue!"  
"What?" cried the other girl, scared. "Is it catching? How does one get it?"  
"Oh," said the other pointedly, "through constantly running people down." —Pittsburgh Chronicle-Telegraph.

## Latest News By Wireless

**MORE DETAILS OF HUN DEVILTRY SOON**  
(By The Associated Press)

WASHINGTON, December 12—Documents shedding light on the German system of blowing up munition factories and practicing sabotage and espionage, are being assembled by the department of justice preparatory to disclosure.

**U. S. TRIED TO KEEP PEACE IN PERU-CHILE**  
(By The Associated Press)

WASHINGTON, December 12—The state department has made public a note recently sent to the presidents of Chile and Peru urging that these nations owe it to the rest of the world to compose their differences and informing them that the United States "stands ready to tender alone or in conjunction with other countries of this hemisphere all possible assistance" to bring about an equitable solution. It said that the United States viewed the severance of consular relations between the two governments with the gravest apprehension, particularly on the eve of the Paris peace conference, "in which it is confidently expected steps are to be taken to provide for everlasting peace among all peoples."

**ASKS FOR BIGGEST NAVY IN WORLD**  
(By The Associated Press)

WASHINGTON, December 12—Admiral Badger before the house naval committee, urged appropriations which by 1925 will give the United States a navy larger than that of any other country. He said that according to Admiral Sim's reports 150 German and 7 Austrian submarines were sunk during war prior to August.

**INVESTIGATING POLISH DISORDERS**  
(By The Associated Press)

WASHINGTON, December 12—Foch has sent armistice commission from Allied armies to investigate reported pogroms in Poland. It is believed released German and Austrian prisoners caused the disorders.

**WILL NOT CALL REICHSTAG**  
(By The Associated Press)

BERLIN, December 12—(Official)—It is denied that the government is considering convening the reichstag.

**CHINA'S PEACE ENVOY ON HAND**  
(By The Associated Press)

PARIS, December 12—Woo, China's peace congress representative has arrived at Bordeaux.

**RUSSIAN GOLD SURRENDERED BY HUNS**  
(By The Associated Press)

PARIS, December 12—More than \$60,000,000 in gold, taken from Russia by the Germans, has arrived and been deposited in the Bank of France, in conformity with armistice terms.

Negotiations for the prolongation of the armistice have been begun at Treves.

**UNEMPLOYMENT PROBLEM IN ENGLAND**  
(By The Associated Press)

LONDON, December 12—Government reports an increase in unemployment through demobilization. Donation men to receive 29 shillings weekly, and women 25 shillings.

**SOVIETS EXECUTE OFFICERS**  
(By The Associated Press)

STOCKHOLM, December 12—Generals Russki and Dimitrieff of the Russian army, and minister Rukhoff, of the Austrian cabinet, have been shot by order of Soviets, according to a Petrograd dispatch.

**AMERICAN COMMISSION NOW IN BERLIN**  
(By The Associated Press)

BERLIN, December 12—Brigadier General Harris and Lts. Gaillard and Schilling composing the American commission for the repatriation of prisoners, have arrived in Berlin.

**RUMANIANS WELCOME RULERS**  
(By The Associated Press)

LONDON, December 11—King Ferdinands and Queen Maria, of Rumania were received enthusiastically upon their official entry to Bucharest. Children threw flowers in their path.