

TELEPHONE 365  
STAR  
BUSINESS OFFICE

# HAWAIIAN STAR

The Star Is An Intelligent, Progressive Newspaper

Want Ads---Three Lines, Three Times, 25 Cents

SECOND  
EDITION

VOL. XVI. HONOLULU, HAWAII, WEDNESDAY, AUGUST 5, 1908. No. 5101

## BAD ENDING OF ZEPPELIN'S FLIGHT

### Fearful Shock On Hilonian

WIRELESS OPERATOR MADDAMS TAKES BETWEEN 500 AND 1000 VOLTS THROUGH HIS HEAD OWING TO DISARRANGEMENT OF RECEIVING WIRE—STIFFENED IN HIS CHAIR—CLOSE TO DEATH FOR A MOMENT—HAS HAD 2000 VOLTS.

Radiotelegrapher Sidney Maddams of the Matson Navigation S. S. Hilonian, which arrived from San Francisco at 2 o'clock this afternoon, was this morning within an ace of death when between 500 and 1000 volts passed through his head while he had the phone receivers at his ears. Through an accident the wire attached to the ear caps became entangled among the Leyden jars and the silken insulation was not sufficient to protect him from the current. Maddams did not know what hit him. He straightened in his chair, standing on his heels, tense, rigid and so startled out of all sensation that he could not think. Fortunately the motion of his body

### YACHTING PARTY AT THE VOLCANO

HILO, August 1.—It need hardly be said that the visit to the Volcano of Kilauea was the greatest treat the citizens of Hilo had to offer to the yachtsmen. All of them yesterday received coupon tickets covering the rail and stage journey and the best entertainment the Volcano House affords. They accepted the glorious excursion with great vim and the combination of Seattle, San Diego and Honolulu young blood made high jinks on trails and stage coach all the way. Everything along the route was cheered and made the occasion for rollicking song. When the keen mountain air began to be felt a distinct elation was added to the jollity. The feelings of delight in the outing were expressed by the coast visitors in all manner of ways—explosive ejaculations, comical figures of speech and comparisons with the atmosphere and scenes of other places. When the thimble berry patches in the woods were reached, the coaches would be almost emptied of passengers as they sprang to the ground to pick handfuls of the fruit. It was figured that nearly half a ton of weight came off one wagon, which was a decided relief to the four-in-hand team on the heavy grades, and it was suggested by several that it would pay the company to cultivate the luscious berry on the roadside for the saving in wear of horseflesh. With vociferous cheering the excursionists alighted in the port cochere of the hotel and crowded the reception room, where logs were cheerily blaz-

ing in the open fire place. One plumped down at the piano and several began executing jigs. A lively Caledonian performed the sword dance with Japanese umbrellas crossed on the floor. This recalls the fact that there was a great run on the Hilo stores for this type of umbrella, which is in common use by the people of that town. Members of the party were asked to write their names on the light spaces inside the bumblehooths to add to their souvenir value. Host Demosthenes with remarkable expedition had dinner prepared for the large party, and it was a very fine meal including juicy frog's legs and baked suckling pig. Without a moment's delay after the repast the descent into the crater was made. Halemauau was reached about 9:30 and a great many other sightseers were already perched on the margin of the cliff directly overlooking the lake of fire. Although comparatively quiet on the surface at this time, the scene presented by the lava was one of great beauty. All over the field said to be more than fifteen acres in extent, the dark crust was criss-crossed in fanciful patterns of glowing fire. Two or three major and countless minor focuses of action were at irregular intervals and sometimes all together welling forth boiling lava of dazzling golden color, so that there was always a brilliant illumination of the walls of the pit and the ascending vapors. At the edges of the

(Continued on Page Five.)

### The Drive of The Year

A regular round up of good things for men. Prices have no comparison with the values we offer this time. We have never done so much for our customers as we are going to do during the big drive which we will start on Friday. Men's Suits, Men's Cut-Away Coats, Men's Blue Serge Suits, Men's Trousers. All at the lowest prices ever heard of in Honolulu. Remember the Date FRIDAY, JULY 31 L.B. Kerr & Co., Ltd ALAKEA MARKET.

### BIG SHARK INSIDE REEF

The presence of a big shark inside the reef somewhere between the Seaside Hotel and Kepo harbor, a channel running through the great coral barrier, some little distance on the Waikiki side of Honolulu harbor, has been creating much excitement the past few days among the waterside community which, whenever the tide serves, goes a-gathering the many varieties of sea-food with which the Kalia flats abound. One day last week a young native woman hunting for squid off H. L. Herbert's place, was observed by those on shore to beat some object in the water with the handle of her squid-iron, and then to come splashing shoreward as fast as her legs could carry her, screaming loudly the while. As soon as she reached the beach the woman went into hysterics and was taken care of by some native people who had watched her speedy journey to the shore. When the woman had recovered sufficiently from her fright to be able to talk coherently she said that while poking about for squida she saw a long black object in a deep pool in front of her which, while she was watching it, turned on its side, showing itself to be a shark, and made at her with open jaws. She struck at the monster with her squid-iron and then fled in fright. The shark, the woman said, was about two feet and a half across its back. Last week some of the boys at the Outrigger Club saw a big shark cruising about off the club's headquarters, and what was presumably the same fellow was seen by a couple of fishermen in one of the channels off Kalia last Sunday. It is probable that the shark came over the reef during the recent high tides and has been unable to find his way back to sea again. Or the fish may have found the supply of fish food inside the barrier reef so plentiful and to his liking that he has concurred to hunt in the shallow water of the lagoon for a spell.

### BRYAN TRYING TO MAKE FRIENDS

CANDIDATE'S APPOINTMENTS INDICATE A PLAN TO CONCILIATE INTERESTS. CHICAGO, July 26.—William Jennings Bryan rounded out a busy Sunday by departing at 10:30 p. m. for Omaha, the shouts and cheers of an attending delegation of enthusiasts speeding the departing guest. Continuous conferences during the afternoon kept the commoner secluded in his apartments until the moment for his departure. John E. Lamb, corporation attorney and intimate friend of John W. Kern and Norman E. Mack, was named as chairman of the advisory committee, which will fill the most important part in the coming campaign. His selection was the personal preference of Bryan and is accepted as another indication of the desire of the nominee to surround himself with representatives of interests which formerly he ignored or denounced. Chairman Hitchcock was one of the many callers at the apartments of Bryan in the afternoon, being accompanied by Victor Rosewater, Republican National Committeeman from Nebraska, and William Hayward, State chairman of Nebraska. The three are

(Continued on Page Five.)

### IAUKEA MATTER

"No, I have nothing to say today," said County Sheriff Iaukea this morning. "I consider it best to remain silent pending the investigation I have asked the Attorney General to make or all matters having to do with Iau's attempt to bribe me. "I do not see how the investigation can result in anything as far as I am concerned except the proof of my innocence. What it will develop in regard to others I do not know." REMNANT SALE WEEK. This week the annual remnant sale will be held at Sachs'. Great bargains in a big variety. Fine Job Printing, Star Office.

### KEPOIKAI CASE TO WASHINGTON

In an interview this morning Governor Frear stated that he had written to Washington in regard to the charges which had been made against Judge Kepoikai. He also said that he had not cabied the information obtained was in answer to a question as to whether he had made any recommendation in regard to Kepoikai's dismissal. This the Governor refused to answer, basing his refusal on several grounds of etiquette. He did not talk freely on the subject but evidently wished to wait for news from Washington before making a definite statement.

### ISOI-IAUKEA MATTER TO COME BEFORE THE GRAND JURY

The Ioi-Iaukea matter will come up before the grand jury according to a statement made today by one of its most prominent members. At present an investigation is being conducted by Attorney General Hemenway and it is possible that he will submit his findings to the inquisitorial body before taking any action, but if this is not done the grand jury will conduct an investigation of its own. In speaking of the matter this morning the member mentioned said: "The grand jury, knowing that the matter is being investigated by Attorney General Hemenway, does not care to take the initiative. We have found that in all cases the matters have been submitted to us very carefully and would be showing a disrespect to the head of the department, if we took the matter up before he had been given a chance to take it through and decide what was best to be done. "Regardless of this, the grand jury has talked the matter over as a body, not in a personal way between its members, and we will look into the matter. Of course it has been brought to our attention through the newspapers and we are bound to notice matters of this kind. We do not feel that we are obliged to do police work and rake up these things ourselves, but when they have been brought before the public in the manner that they have they certainly should receive some cognizance." Attorney General Hemenway stated this morning that he had made some progress with the investigation but had not completed the work. Whether he would simply end the matter with his investigation, or take it before the grand jury, he declined to say. At present he has his hands full, with many matters of importance to be handled, among which are a number of Territorial cases that come up this fall, before the Supreme Court of the United States and which he will present in person.

### ONE ON TAFT HONOKAA BONDS

AUTHORIZED FIRST ISSUE OF \$300,000 HAS BEEN DISPOSED OF AT PAR. One half of the total issue of Honokaa Sugar Company's bonds has been sold at par. The amount is \$300,000 leaving \$100,000 of the \$400,000 to be placed on the market. As previously reported the total issue is \$600,000, of which \$200,000 is to be kept in the treasury. Thus far \$300,000 has been authorized for immediate sale, which has now been effected. They are six per cent bonds and therefore a fine investment for the times.

### HILONIAN HAS FORT MATERIAL

Castle & Cooke, agents for the Matson Navigation Company, this morning received a wireless message from the S. S. Hilonian to the effect that she expects to dock at the foot of Nuuanu street at 2 o'clock this afternoon. She has 1500 tons of general cargo from San Francisco, including twenty-two pieces of material for the Diamond Head fortifications. This fortification shipment completes the Diamond Head equipment. A MESSAGE FROM AUSTRALIA. Messrs. Williamson & Co., Junjah, Queensland, writes: "Chamberlain's Colic, Cholera and Diarrhoea Remedy enjoys a great reputation in these parts. It has effected some really re-

### AIRSHIP DROPS ENGINE IN STORM

STUTTGART, Germany, August 5.—Zeppelin, the famous aeronaut, has stopped here for repairs. In a storm his airship broke her moorings and took fire from an explosion occasioned by a defect in the machinery brought about by the violence of the motion of the airship in the storm. The machinery fell to the earth but the airship itself disappeared. The aeronauts are safe.

### BRYAN TO VISIT COAST

SAN FRANCISCO, August 5.—William Jennings Bryan, the Democratic nominee for the Presidency, will visit the coast during the campaign.

### SULTAN IS STABBED

LONDON, August 5.—It is reported here that the Sultan of Turkey has been stabbed in the breast in his palace in Constantinople. The official advice are to the effect that his coat of mail saved him from death.

### FOUR DIE FROM HEAT

CHICAGO, August 5.—This is the twentieth day of intense heat in this city and the fifteenth day of drouth. There were four deaths last night on account of the heat.

### FUNERAL ON SATURDAY

DUBUQUE, August 5.—The funeral of the late Senator Allison will be held on Saturday.

### FOR POLE NEXT YEAR

NEW YORK, August 5.—Wellman will start for the North Pole in his balloon in 1909.

### HALF THE MONEY HAS BEEN RAISED

There is likelihood of the completion of the Children's Hospital fund within a few days. "We have secured \$4500 of the \$9000 required for the hospital," James F. Morgan said this morning. Asked about hopes of getting the balance soon he said: "The prospects are all right. In fact, we have got to get the whole thing." Up to last night Mr. Morgan had received \$1000 each from P. C. Jones, W. R. Castle and G. P. Castle. This forenoon he received two donations of \$1000 and \$500 respectively.

### ROYAL BAKING POWDER

Absolutely Pure The only baking powder made with Royal Grape Cream of Tartar No Alum, No Lime Phosphate. Castle & Cooke, agents for the Matson Navigation Company, this morning received a wireless message from the S. S. Hilonian to the effect that she expects to dock at the foot of Nuuanu street at 2 o'clock this afternoon. She has 1500 tons of general cargo from San Francisco, including twenty-two pieces of material for the Diamond Head fortifications. This fortification shipment completes the Diamond Head equipment. A MESSAGE FROM AUSTRALIA. Messrs. Williamson & Co., Junjah, Queensland, writes: "Chamberlain's Colic, Cholera and Diarrhoea Remedy enjoys a great reputation in these parts. It has effected some really re-



Our No. 305.....Price \$3.00 Made of Calf Leather. MANUFACTURERS' SHOE CO. LIMITED. 1051 Fort Street. Tel. 353

Be sure that the Executor you name is Honest, as well as Competent. We charge no more than the regular fee allowed by the courts for Executors. Hawaiian Trust Co., Limited, 923 Fort Street

# Oceanic Steamship Company

## Alameda Schedule

ARRIVE HONOLULU.	LEAVE HONOLULU.
ALAMEDA ..... AUGUST 21	ALAMEDA ..... AUGUST 26
ALAMEDA ..... SEPT. 11	ALAMEDA ..... SEPT. 16
ALAMEDA ..... OCTOBER 2	ALAMEDA ..... OCTOBER 7

On and after June 24th, 1908, the SALOON RATES between Honolulu and San Francisco will be as follows:  
 ROUND TRIP, \$110.00. SINGLE FARE, \$65.00.  
 In connection with the sailing of the above steamers, the Agents are prepared to issue to intending passengers coupon through tickets by any railroad from San Francisco to all points in the United States and from New York by steamship line to all European Ports.  
 FOR FURTHER PARTICULARS, APPLY TO

# W. G. Irwin & Co., Ltd

AGENTS FOR THE OCEANIC S. CO.

# Canadian-Australian Royal Mail Steamship Co

Steamers of the above line running in connection with the CANADIAN-PACIFIC RAILWAY COMPANY between Vancouver, B. C., and Sydney, N. S. W., and calling at Victoria, B. C., Honolulu and Brisbane, Q.  
 FOR FIJI AND AUSTRALIA. FOR VANCOUVER.

AORANGI ..... AUGUST 22	MANUKA ..... AUGUST 19
MANUKA ..... SEPT. 19	MARAMA ..... SEPTEMBER 15
MARAMA ..... OCTOBER 16	AORANGI ..... OCTOBER 14

Will call at Fanning Island.

CALLING AT SUVA, FIJI, ON BOTH UP AND DOWN VOYAGES

# Theo. H. Davies & Co., Ltd., Genl Agents

# American - Hawaiian Steamship Company

From New York to Honolulu---Weekly Sailings via Tehuantepec

Freight received at all times at the Company's wharf, 41st Street, South Brooklyn.

FROM HONOLULU TO SAN FRANCISCO.

ALASKAN.....TO SAIL AUGUST 8	ARIZONAN.....TO SAIL AUGUST 9
ARIZONAN.....TO SAIL AUGUST 9	ALASKAN.....TO SAIL AUGUST 30
COLUMBIAN.....TO SAIL JULY 29	MEXICAN.....TO SAIL AUGUST 12

Freight received at Company's wharf Greenwich Street.

# Pacific Mail Steamship Co. Occidental & Oriental S. S. Co. Toyo Kisen Kaisha S. S. Co.

Steamers of the above companies will call at Honolulu and leave this port on or about the dates mentioned below:

FOR THE ORIENT.	FOR SAN FRANCISCO.
AMERICA MARU.....AUGUST 8	MANCHURIA.....AUGUST 10
SIBERIA.....AUGUST 17	NIPPON MARU.....AUGUST 14
CHINA.....AUGUST 24	ASIA.....AUGUST 23
MANCHURIA.....AUGUST 31	MONGOLIA.....AUG. 29
NIPPON MARU.....SEPT. 5	TENYO MARU.....SEPT. 9
ASIA.....SEPT. 15	KOREA.....SEPT. 21
MONGOLIA.....SEPT. 21	

FOR FURTHER INFORMATION APPLY TO

# H. HACKFELD & CO., LTD

# MATSON NAVIGATION COMPANY

Arrive Honolulu.	Leave Honolulu.
S. S. HILONIAN.....AUG. 5TH.	SEPT. 5TH.
S. S. LURLINE.....AUG. 6TH.	SEPT. 15TH.
S. S. HILONIAN.....SEPT. 5TH.	AUG. 11TH.

PASSENGER RATES TO SAN FRANCISCO: FIRST CABIN, \$60.00. ROUND TRIP, FIRST CLASS, \$110.00.

# Castle & Cooke Limited, Agents

# Union-Pacific Transfer Co., Ltd

Baggage Shipping  
Storage Wood  
Packing Coal

PHONE 58

123 King Street. FURNITURE AND PIANO MOVING.

# STAR Printing :- Office

For years the Star's printing office has been a busy place. We have gained a reputation for doing good work at fair prices and delivering the job when promised. Few printing offices can make a similar claim. With addition to our plant we are in a better condition than ever to handle commercial printing. Our three Linotypes are at your service for book and brief work. If you are not a Star customer, send us a trial order; you will be pleased with the result.

# Star Printing Office

McCandless Building. Telephone 308

# SHIPPING INTELLIGENCE

## TIDES, SUN AND MOON.

First Quarter of the Moon Aug. 4th.

Date	High Tide Large	High Tide Small	Low Tide Large	Low Tide Small	Sun Rises	Sun Sets	Moon Rises	Moon Sets
3	8:30	1:1	5:18	1:36	5:50	6:36	11:01	
4	9:30	1:3	6:05	2:15	6:30	6:35	11:26	
5	10:45	1:4	6:52	3:00	6:59	6:35		
6	11:50	1:6	7:39	3:40	7:30	6:34	0:18	
7	12:45	1:8	8:25	4:20	8:25	6:33	1:00	
8	1:32	2:0	9:15	5:04	9:37	6:32	1:50	
9	2:18	2:1	10:00	5:45	10:45	6:31	2:46	

Times of the tide are taken from the U. S. Coast and Geodetic Survey tables. The tides at Kahului and Hilo occur about one hour earlier than at Honolulu. Honolulu standard time is 10 hours 30 minutes slower than Greenwich time, being that of the meridian of 157 degrees 30 minutes. The time whistle blows at 1:30 p. m. which is the same as Greenwich, 9 hours, 0 minutes. The Sun and Moon are for local time for the whole group.

## Shipping in Port

(Army and Navy).  
 U. S. S. Iroquois, Moses, station tug. (Steamships.)  
 A. H. S. S. Columbia, S. F., Aug. 5. (Sailing vessels.)

Br. bk. Hollywood, Smith, Junit, May 7.  
 Br. bk. Carranale, Smith, Newcastle, July 20.  
 Am. sc. Mary E. Foster, Johnson, Taltal, July 25.  
 Am. bkt. Irngard, Christiansen, S. F., July 30.  
 Am. bk. Kaulani, Colly, S. F., Aug. 4.

## The Mails

OUTGOING.  
 For Orient, America Maru, Aug. 8.  
 For San F., Manchuria, Aug. 9.

INCOMING.  
 From S. F., Hilonian, Aug. 5.  
 From S. F., America Maru, Aug. 8.

U. S. A. TRANSPORTS.  
 Thomas left Hon. for Manila, July 15.  
 Logan at San Fran.  
 Buford left Guam for Manila, July 1.  
 Dix at Manila.  
 Sherman at S. F.  
 Warren at Manila.  
 Crook at Nome.  
 Sheridan at S. F.

## FOREIGN MAIL SERVICE

Date.	Name.	From.
Aug. 1	China	Yokohama
5	Hilonian	San Francisco
6	Columbian	San Francisco
8	America Maru	San Francisco
10	Manchuria	Yokohama
14	Nippon Maru	Yokohama
17	Siberia	San Francisco
19	Lurline	San Francisco
19	Manuka	Colonies
20	Mexican	San Francisco
21	Alameda	San Francisco
22	Aorangi	Victoria
23	Asia	Yokohama
24	China	San Francisco
29	Mongolia	Yokohama
31	Manchuria	San Francisco
Sept. 2	Hilonian	San Francisco
3	Texas	San Francisco
5	Nippon Maru	San Francisco
9	Tenyo Maru	Yokohama
11	Alameda	San Francisco
15	Asia	San Francisco
15	Marama	Colonies
17	Virginian	San Francisco
19	Manuka	Victoria
21	Mongolia	San Francisco
21	Korea	Yokohama
22	Lurline	San Francisco

Date.	Name.	For.
Aug. 1	China	San Francisco
5	Alameda	San Francisco
8	Alaskan	San Francisco
8	America Maru	Yokohama
10	Manchuria	San Francisco
11	Hilonian	San Francisco
14	Nippon Maru	San Francisco
17	Siberia	Yokohama
19	Manuka	Victoria
22	Aorangi	Colonies
23	Asia	San Francisco
24	China	Yokohama
26	Alameda	San Francisco
29	Arizonan	San Francisco
30	Mongolia	San Francisco
31	Manchuria	Yokohama
Sept. 1	Lurline	San Francisco
5	Nippon Maru	Yokohama
8	Hilonian	San Francisco
9	Tenyo Maru	San Francisco
15	Asia	Yokohama
15	Marama	Victoria

# AIRSHIP GAILY SAILS ALONG

Governor Cummins Wishes to Succeed Senator Allison at Washington.

FIRE DEATH COUNT REDUCED.

Progress of Fleet—Bubonic Plague in Azores—Burns Wins Fight.

FRIEDRICHSHAFEN, August 5.—At a late hour last night Zeppelin was still flying, with the prospects good for completing the twenty-four hour's test.

FIRES ABATED.

VANCOUVER, British Columbia, August 5.—The forest fires are dying down. The losses are fifty dead and six millions of dollars in property. At first the deaths were said to be 200.

CUMMINS A CANDIDATE.

DUBUQUE, Iowa, August 5.—Governor Cummins is a candidate for the vacancy in the United States Senate caused by the death of Senator Allison.

A CANADIAN STRIKE.

WINNIPEG, Manitoba, August 5.—A strike has been ordered for today.

FLEET IN SOUTH SEAS.

SUVA, August 5.—The United States fleet is now 1017 miles from Auckland.

BURNS A WINNER.

MELBOURNE, Australia, August 5.—Burns won the fight.

PLAGUE IN AZORES.

FAYAL, August 5.—The bubonic plague is spreading here.

APPEAL TO THE SENSE OF HUMOR.

"Must I have my picture taken again?" said the candidate. "It is imperative," answered the manager.

EASILY INDUSTRIOUS.

The busy bee can work all day because (so nature fakers say) He doesn't stay up nights to mix with crowds discussing politics.

WASHINGTON, July 11.—Great interest was manifested at the State Department and in the Central American diplomatic colony over the news that Honduras had instituted suit before the Central American Court of Justice against Salvador and Guatemala.

It is the first suit of that character brought before that Court, and the outcome will be watched closely. Involving, as it must, the question whether a regularly constituted government can be civilly held for damages for acts committed by any of its subjects against another with which the government sued may be at peace.

Salvador and Guatemala, through their diplomatic representatives in Washington, have declared their absolute neutrality in the present uprising in Honduras, and the former Government has arrested various persons believed to have been implicated in the affair.

The efforts of Mexico and the United States are being exerted in every way to prevent violations of neutrality by any of the Central American countries.

One report which has reached the State Department was that there was an invasion of Honduras territory by

Guatemala, but the American Consul at Porto Cortez, who is in communication with the legation at Guatemala City, has not confirmed it.

Nicaragua declares that whatever action it may be taking is entirely for the purpose of patrolling its own coasts, and that it has no ulterior designs against Honduras, while Salvador, according to advices which have just reached the State Department, has arrested both Hondurans and Salvadoreans who are believed to be implicated in the uprising against Honduras.

The American Government has a consular agent at Amapala, William Heyden. He is a Venezuelan by birth.

CAN'T HELP ITSELF.

Heart disease never grows better of itself. Unless something is done to assist its recovery, it will surely lead to death, through some chronic disorder which it has induced, or by sudden heart failure. The very best restorative known is Dr. Miles' Heart Cure, which strengthens the heart muscles and nerves. If first bottle fails to benefit, money back.

Fine Job Printing, Star Office.

# WEEKLY WEATHER BULLETIN

FOR THE WEEK ENDED JULY 25, 1908. Honolulu, July 27, 1908.

GENERAL SUMMARY. The mean temperatures were lower than those of the preceding week at all stations in the section, excepting at two in the Kohala district of Hawaii, one in the Kula district of Maui, and one in the Koolau district of Oahu. The deficiencies, as a rule, were less than 1.0 deg., and the greatest reported was 1.8 deg.

The rainfall was below the average of ten or more years at all stations in the section having such records, excepting at those in the northern portion of the Hilo district of Hawaii. The deficiencies, in inches, in the several districts were: Hawaii—Kohala and Hamakua 0.02 to 0.31, Puna and southern Hilo 0.48 to 0.53, Kau 0.22 to 0.26, and Kona 0.12; Oahu—Koolauloa and Ewa 0.09 to 0.16, Koolau 0.23 to 0.68, and Honolulu 0.32; Kauai—Kona 0.01 to 0.02, and Koolau 0.23.

The greatest amounts of rainfall, in inches, were reported from the central and northern portions of the Hilo district of Hawaii, and ranged from 2.98 to 4.20. In the remaining portions of Hawaii the amounts were: Kohala 0.67 to 0.98, Hamakua 0.82 to 1.05, southern Hilo 1.61 to 1.77, Puna 0.76 to 1.31, Kau 0.00 to 0.24 and Kona 1.76.

The amounts on the other islands were: Maui—Hamakua and Koolau 2.02 to 2.36, Hamakua 1.32, Hana 0.31, Kula and Lahaina 0.00, and Waialua 0.04 to 0.16; Oahu—Koolauloa and Koolau 0.04 to 0.29, and trace to 0.02 in the remaining districts; Kauai—Puna and Koolau 0.63 to 0.88, and Kona 0.12 to 0.07; and Molokai 0.03.

There was 0.12 to 0.87 inch more rainfall than during the preceding

# HAWAIIAN Macaroni Manufacturing Co., LIMITED

Beretania Street near Aala Street. MANUFACTURERS OF MACARONI (HOSHI UDON) and BUCKWHEAT (HOSHI SOBA)

The largest and only incorporated concern of its kind in Honolulu. A new enterprise launched by enterprising merchants.

K. Yamamoto SALES AGENT. Tel. 399. Hotel St. near Nuuanu. P. O. Box 810

# 日布時事社

To ATTRACT THE JAPANESE TRADE advertise in THE DAILY NIPPUN JIJI, the most popular and widely circulated evening paper among the Japanese colony. JOB PRINTING A SPECIALTY with either language of Japanese, Chinese, Korean or English.

The Nippu Jiji Co., Ltd., Y. SOGA, Manager. Phone Main 44. Hotel Street near Nuuanu.

week at all stations on Kauai. On the remaining Islands the changes, in inches, were: Molokai—0.01; Oahu—Koolauloa +0.13; Koolau—0.06 to +0.11, and 0.00 to +0.01 in the remaining districts; Maui—Koolau +0.92, Hamakua +0.48, Hamakua +1.31, Hana—0.20, Kula 0.00, and Waialua +0.04 to +0.12; and Hawaii—Kohala—1.35 to—1.81, Hamakua—0.25, Hilo +0.06 to +1.55, Kau and Puna +0.03 to +0.09, and Kona +1.44.

Temperature	Rainfall.
Hawaii ..... 72.3 deg.	1.57 inches.
Maui ..... 74.8 deg.	0.92 inch.
Oahu ..... 76.9 deg.	0.11 inch.
Kauai ..... 75.6 deg.	0.64 inch.
Molokai ..... 74.2 deg.	0.03 inch.

Entire Group ... 74.3 deg. 1.02 inches. At the local office of the U. S. Weather Bureau in Honolulu partly cloudy weather obtained, with .02 inch of rainfall on the 25th, .33 less than the normal for the week, and .01 more than during the preceding week. The maximum temperature was 84 deg., minimum 70 deg., and mean 76.8 deg., 1.2 deg. below the normal, and 0.2 deg. lower than last week's. The mean daily relative humidity ranged from 64 per cent to 67 per cent, and for the week was 64.3 per cent. Northeast and east winds prevailed, with an average hourly velocity of 8.4 miles. The mean daily barometer ranged from .01 to .07 inch above the normal, and the mean for the week, 30.06 inches, was .05 inch above normal.

## U. S. DEPARTMENT OF AGRICULTURE. WEATHER BUREAU.

The following data, covering a period of 33 years, have been compiled from McKibbin and the Weather Bureau records at Honolulu, T. H. They are issued to show the conditions that have prevailed, during the month in question, for the above period of years, but must not be construed as a forecast of the weather conditions for the coming month.

Month August for 33 years. TEMPERATURE. (1890-1907). 18 years.

Mean or normal temperature, 78 deg. The warmest month was that of 1900, with an average of 80 deg. The coldest month was that of 1894, with an average of 77 deg. The highest temperature was 88 deg. on the 10th, 11th, 15th, 1896; the 4th, 1897; and the 9th, 1901.

The lowest temperature was 63 deg. on the 23d, 1894. PRECIPITATION. (Rain, 1877-94, 1905-7). 21 years.

Average for the month, 1.50 inches. Average number of days with .01 of an inch or more, 14. The greatest monthly precipitation was 4.47 inches in 1888. The least monthly precipitation was 0.16 inch in 1894. The greatest amount of precipitation recorded in any 24 consecutive hours was 2.51 inches on the 13th, 1888.

RELATIVE HUMIDITY. Average 9 a. m., 66 per cent; average 9 p. m. 72 per cent; (1893-1904.) Average 8 a. m., 68 per cent; average 8 p. m., 70 per cent; (1905-7.)

CLOUDS AND WEATHER. (1890-1907.) 18 years. Average number of clear days, 11; partly cloudy days, 18; cloudy days, 2.

WIND. (Direction 23 years; velocity 3 years.)

The prevailing winds are from the N.E., (1875-94, 1905-7.) The average hourly velocity of the wind is 8.9 miles (1905-7.) The highest velocity of the wind was 31 miles from the N.E., on the 10th, 1907.

Station: Honolulu, T. H. Date of issue: July 30, 1908. \* 9 o'clock averages from records of Territorial Meteorologist; 8 o'clock averages from Weather Bureau records. WM. B. STOCKMAN, Section Director, Weather Bureau.

# FOR RENT OR SALE

Cottage in Makiki District, ten minutes walk from car line; living room, dining room, three bedrooms, bath, kitchen and pantry.

Servants' quarters.

Rental, \$27.50 per month  
Selling Price, \$3,500.00

# BISHOP TRUST CO., LTD.

924 BETHEL ST.

# SUPPLIES

ALL KINDS  
Cash Register  
Typewriter  
Mimeograph and  
Globe Wernicke  
CARD SYSTEMS

# Hawaiian Office Specialty COMPANY

931 Fort Street, Telephone 142.

# C. BREWER & CO., LTD.

QUEEN STREET,  
HONOLULU, T. H.

### AGENTS FOR

Hawaiian Agricultural Company, Onomea Sugar Company, Honoumou Sugar Company, Wailuku Sugar Company, Ooakala Sugar Plantation Company, Pepeekeo Sugar Co., Kapapala Ranch

Charles M. Cooke.....President  
Geo. H. Robertson, V-Pres. & Mgr.  
E. Faxon Bishop.....Treas. & Secy.  
F. W. Macfarlane.....Auditor  
F. C. Jones.....Director  
C. H. Cooke.....Director  
J. R. Galt.....Director  
All of the above named constitute the Board of Directors.

# Y. WO SING CO.

GROCERIES, FRUITS,  
VEGETABLES, ETC.

California Butter, 40c lb.; Cookin. Butter, 30c lb.; Island Butter, 25c lb. 1186-1188 Nuuanu Street. Telephone Main 283. Box 963

# ALEXANDER & BALDWIN LTD.

J. P. COOKE, Manager.

OFFICERS AND DIRECTORS.  
H. P. Baldwin.....President  
J. B. Castle.....1st Vice-President  
W. M. Alexander.....2nd Vice-President  
J. P. Cooke.....3rd Vice-President  
J. Waterhouse.....Treasurer  
E. E. Faxon.....Secretary  
W. O. Smith.....Director  
G. R. Carter.....Director  
W. R. Castle.....Director

# SUGAR FACTORS AND COMMISSION MERCHANTS

AGENTS FOR  
Hawaiian Commercial & Sugar Company.  
Haiku Sugar Company.  
Pala Plantation.  
Maui Agricultural Company.  
Kihel Plantation Company.  
Hawaiian Sugar Company.  
Kahuku Plantation Company.  
Kahului Railroad Company.  
Haleakala Ranch Company.  
Honouliuli Ranch.

# BOOKS

(Second Hand)  
TO LOAN  
FOR SALE and  
IN EXCHANGE  
San Antonio Building—263 Vineyard Street.

## Wall, Nichols Co.,

STATIONERS, BOOKSELLERS AND MUSIC DEALERS.  
Subscriptions taken for COAST AND EASTERN PAPERS AND PERIODICALS.  
Republican Building, King Street.

## W. G. IRWIN & Co.

AGENTS FOR THE  
Royal Insurance Co. of Liverpool, Eng.  
Scottish Union & National Ins. Co., of Edinburgh, Scotland.  
Commercial Union Assurance Co. of London.  
The Upper Rhine Ins. Co., Ltd.

## Y. ISHII

Corner Beretania and Nuuanu Sts.  
JAPANESE DRUGGISTS  
GENERAL MERCHANDISE  
All kinds of American Patent Medicines at Low Prices.

Is there any reason why our advertising matter should not help your business? Let's see.

## HAWAII PUBLICITY CO.

Telephone 173.

## CASTLE & COOKE, LTD.

Honolulu, T. H.

### SHIPPING AND COMMISSION MERCHANTS.

SUGAR FACTORS and GENERAL INSURANCE AGENTS, representing  
Ewa Plantation Co.  
Wailuku Agricultural Co., Ltd.  
Kohala Sugar Co.  
Waimea Sugar Mill Co.  
Apokas Sugar Co., Ltd.  
Fulton Iron Works of St. Louis.  
Blake Steam Pumps.  
Westons Centrifugals.  
Babcock & Wilcox Boilers.  
Green's Fuel Economiser.  
Marsh Steam Pumps.  
Mason Navigation Co.  
Planters Line Shipping Co.  
New England Mutual Life Insurance Company of Boston.  
Aetna Insurance Co.  
National Fire Insurance Co.  
Citizens' Insurance Co. (Hartford Fire Insurance Co.)  
Protector Underwriters of the Phoenix of Hartford.

## F. S. NAGAMI - Photographer

Kodak Developing, Printing, Enlarging and Interior Photographing.  
GOOD WORK GUARANTEED.  
220 Hotel St., bet. Nuuanu and Bethel Sts., Honolulu, T. H.

## NEW CHOP HOUSE.

P. John, late of the Manhattan Lunch Rooms, has opened a new Chop House on Hotel street near Nuuanu. First class meals served at all hours.  
HOFFMAN CHOP HOUSE.

## Misses Johnson & Olsen

Dressmaking and Tailoring  
Are now in their new quarters, Elite Building. The latest New York and Parisian styles.  
170 Hotel street, opp. Young Hotel.

# Union Pacific

Railroad  
SUGGESTS  
Speed and  
Comfort

Three trains daily, through first and second class to all points. Reduced rates take effect soon. Write now.

## S. F. Booth

GENERAL AGENT.

NO. 1 Montgomery Street, SAN FRANCISCO.

CHOICE EGGS FOR HATCHING  
—from—  
PRIZE WINNER STOCK.  
"Crystal" White Orplingtons, S. Gray Dorkings, Black Minorcas, White Leghorns "Nonpareils," Brown Leghorns and Buff Wyandottes.  
Orders filled in rotation and carefully packed.  
WALTER C. WEEDON,  
P. O. Box 658, Honolulu.

### SAD, BUT TRUE.

A precocious son of 5 years old looked very philosophically at his mother one day and remarked: "Isn't it wonderful how one's skin is put on? Is it sewed together or pasted with glue?"  
Realizing the folly of any physiological explanations she replied, "No, dear, it is all in one piece."  
Still a quizzical expression o'er-spreading his face. Peering at his mother's forehead he raised his finger and exclaimed, "Well, mother, I really think you have a seam across there."  
After the humor of the remark has passed it awakened a note of pathos, for that mother, with the aid of the mirror, discovered that the hitherto unobserved seam was there, her first wrinkle.

### QUICK RESULTS.

It is seldom necessary to take a second dose of Dr. Miles' Anti-Pain Pills. One pill will, in most cases, relieve all distress caused by headache, backache, neuralgia, nervousness, car-sickness, stomach ache, etc. When not entirely relieved, take another in 30 minutes. That's about the limit to which you endure pain. 25 doses, 25c. Never sold in bulk.

### AS APPLIED TO BOOKS.

"Frost has just had a new book published."  
"Is it skyscraper or bungalow?"  
"What on earth do you mean?"  
"Fifty stories or one."

### IN THE CIRCUIT COURT OF THE First Judicial Circuit, Territory of Hawaii—At Chambers—in Probate.

In the Matter of the Estate of Mary Dame Hall, deceased.

### NOTICE TO CREDITORS.

Notice is hereby given that Samuel M. Damon of Honolulu, Island and County of Oahu, Territory of Hawaii, has been appointed Ancillary Administrator with the Will annexed of the Estate of Mary Dame Hall, late of Atlantic City, County of Atlantic, State of New Jersey, deceased.

All persons having any claims against the said Estate are hereby notified to present the same duly authenticated and with the proper vouchers, if any exist, even though the said claims are secured by mortgage upon real estate, to the undersigned Samuel M. Damon, care of Bishop Trust Company, Limited, at its office at No. 924 Bethel Street in said Honolulu within six months from the date hereof (which is the date of the first publication of this notice) otherwise such claims, if any, shall be forever barred.

And all persons indebted to said Estate are hereby notified to make payment to the said Samuel M. Damon at the above address.  
Dated at Honolulu, T. H., July 28, 1908.

SAMUEL M. DAMON,  
Ancillary Administrator with the Will annexed of the Estate of Mary Dame Hall, deceased.  
5th—July 29, Aug. 5, 12, 19 and 26.

### IN THE CIRCUIT COURT OF THE First Circuit, Territory of Hawaii.

—Before the Judge Presiding at Chambers—in Probate.  
In the Matter of the Estate of Pedro Augusto Dias, Deceased.  
Order of Notice of Hearing Petition for Probate of Will.

A Document purporting to be the Last Will and Testament of Pedro Augusto Dias, deceased, having on the 21st day of July, A. D. 1908, been presented to said Probate Court, and a Petition for Probate thereof, praying for the issuance of Letters Testamentary to Julia Augusta Dias and John P. Dias having been filed by said Julia Augusta Dias and John P. Dias.

It is Ordered that Monday, the 24th a. m., of said day, at the Court Room day of August, A. D. 1908, at 9 o'clock of said Court at the Judiciary Building in Honolulu, Oahu, he and the same is hereby appointed the time and place for proving said Will and hearing said application.

It is Further Ordered, that notice thereof be given, by publication once a week for three successive weeks in the Hawaiian Star newspaper, the last publication to be not less than ten days previous to the time therein appointed for hearing.

Dated at Honolulu, Oahu, July 21, 1908.  
J. T. DE BOY.  
First Judge of the Circuit Court of the First Circuit.

Attest:  
JOHN MARCALINO, Clerk.  
4th—July 22, 29, Aug. 5, 12.

### NOTICE TO CREDITORS.

The undersigned, having been duly appointed administrator of the estate of JOAO DA CAMBRA, alias Joao Lambar, deceased, hereby gives notice to all creditors of said estate to present their claims, duly authenticated and with the proper vouchers, if any exist, even if the claim is secured by mortgage upon real property, to the said administrator at the Bank of Hawaii, Ltd., Honolulu, within six months from the date of the first publication hereof, or such claims will be forever barred.

Dated at Honolulu this 13th day of July, 1908.  
J. D. MARQUEZ,  
Administrator Estate of Joao da Cam-bra, alias Joao Lambar.  
4th—July 15, 22, 29, Aug. 5.

# FORMOSA TO MAKE SUGAR FOR ORIENT

### JAPANESE ARE PLANNING TO DEVELOP THE PLANTATIONS ON A LARGE SCALE.

Experts declare that the soil and climatic conditions of the island of Formosa are peculiarly well adapted to the growing of sugar. The Formosan government is doing everything possible to encourage the growing of cane in the island. Furthermore, the Japanese government is determined that Formosa, which at present supplies but 20 per cent of the Japanese consumption, shall supply the entire consumption, as well as enter the markets of China and the rest of the far east. That capitalists in Japan have every confidence in the sugar industry of Formosa is attested by the fact that, in face of a financial stringency during the past year, over \$10,000,000 has been subscribed to sugar manufacturing companies in Formosa.

The government sugar bureau recently purchased three American windmills for experimental purposes in connection with irrigating their experiments. Water can be found at a depth of from 10 to 20 feet on the lowlands, and it is quite possible that the windmills may be found to be profitable in irrigation work. Whether windmills prove a success or not, the introduction of pumps throughout many of the plantations will be a necessity.

There is much activity at present in south Formosa in the erection of large modern sugar mills. Machinery for several millions of dollars, is at present lying on the beach in Takao harbor awaiting transportation to the sugar plantations. There are 10 vessels now engaged in discharging or attempting to discharge cargoes of sugar machinery and mill equipments.

There is much ignorance on the part of the American business public as to the facilities which Formosa furnishes for the traveler. Boats of 2,000 to 2,500 registered tonnage ply between Formosa and Japan on regular three and five day schedules. These have good passenger accommodations. From Kobe, Japan, to Kelung, Formosa, about 950 miles, is covered in three and a half days. The government railway extends from Kelung in the north to Takao harbor in the south, about 200 miles. The various sugar plantations can be easily reached from this railway; in fact, many of the mills are being erected along the road. A splendid modern hotel is in course of erection in Taihoku, the capital city. Good Japanese hotels can be found all along the railway. Reports have been published in the United States from time to time in regard to savage warfare in Formosa, which would make it appear that the island is overrun with head hunting tribes, but savage tribes in Formosa are all confined to the heavily timbered mountain regions, and one may live on the lowlands for years and never see one of them. Life and property on the lowlands in Formosa are as safe from the attack of savages as they are in Japan. The island is remarkably well policed, and law and order obtain throughout the civilized portions.—S. F. Call.

### THE GOOD LISTENER.

On my morning walk I frequently find myself behind two gentlemen who usually accompany each other to their places of business. Both are men of culture and of standing in the community. Yet I notice that one does nearly all the talking. He seems extremely interested in his own views and presents them to his companion with much animation. Sometimes he gesticulates vigorously. I am seldom near enough to play unintentionally the part of eavesdropper, but I should judge that a variety of timely and profitable themes were being discussed, as might naturally be expected when men get to be pretty intimate acquaintances. But the silence of one of these men and the volubility of the other are what impress me, and I find myself wishing that the lips of Mr. Ready-to-Talk would be sealed for a while in order to give the man who listens to him with such uniform politeness a chance to air his views; being a man of ideas and of convictions, he certainly has something well worth saying. These men represent two types. One has cultivated the art of expression and the other the art of listening. One art is perhaps as important as the other, but does not the listening capacity come first in order of time? If as a child you did not listen to your parents, your teacher, your minister, if you did not learn to hold your attention firmly upon the speaker, if you did not gain some comprehension of the fact that the acquisition of knowledge depends on the ability to listen at the right time and in the right way to the right person, then you are to be pitied. The single, beautiful glimpse we have of the boyhood of the Perfect Child reveals him in the temple among the doctors "both hearing them and asking them questions." Even one possessed with wisdom far beyond his years needed to maintain all through his life the attitude of a listener.

When we undertake to co-operate with others we find it essential to listen to what they have to say. Have

# ENGLISH VIEWS OF THE CAMPAIGN

### LONDON, July 18.—The English press and public generally has taken it for granted that Taft will be the next President of the United States. At the time of the Denver Convention Bryan's chances of election were considered so small that one of the leading newspapers dismissed the nomination with a three-line dispatch.

More recently advices have reached London which have altered this view considerably. The Economist has an article this week which indicates the belief that the contest will be very close. As the Economist's editor is in close touch with many Americans whose opinion is of great value, the following extracts of the article are of interest.

"Financiers appear to count upon the election of Mr. Taft and regard that certainty as reassuring to investors, but we think it quite arguable that, so far as the American railways are concerned, the Democratic platform is more promising than the Republican, for a great increase in transit trade would certainly follow the reduction of the tariff and the repeal of duties upon trust-controlled products.

"Now that silver has been abandoned by Bryan, the 'sound money' Democrats have rallied to his side, supporting his organization, and he probably can count upon the united support of the Democratic party if he can manage to avoid blazing indiscretions in the course of the campaign.

"The chief reason for supposing that Mr. Bryan will win is that no party in the United States ever has survived a financial panic and severe business depression. This is very much our own English experience."

This opinion by the Economist has attracted much attention here.

When you never talked with a person who, you were absolutely sure, was not hearing a word you said, though for politeness' sake he tried to appear as if he were listening? But he was only waiting for you to get through, so that he could ventilate his own opinions. A genuine conversation with that sort of person is an impossibility. He is to all practical purposes a soliloquist. He seeks your society for the moment, not because he wants to know your views, but because he cannot repress his own any longer.

The more civil attitude, the attitude which enables men actually to center on subjects of common interest, presupposes that one's own information is not complete and that the other man or the other group of men has something to offer which will instruct and enrich you.

These are days when it is of the ut-

most importance for each of us to cultivate the listening attitude, to be hospitable to new ideas at least to the extent of informing ourselves as to exactly what those who advocate them mean. Here is a new theory of the inspiration of the Bible, here is a new program for our social and industrial relationships. Why should we close our ears to its advocates? Who knows but we may hear something of our lasting advantage? There are voices not of earth to which it pays us to turn a listening ear occasionally. There is no deafness so deplorable as that which prevents us from hearing what God would say to us, in the quiet of the dawn or in the lull that comes at sunset, in the solitude of the woods and along crowded human highways. Let us take to heart Longfellow's exquisite lines:

Listen to voices in the upper air,  
Low not thy simple faith in mysteries.—The Parson in Washington Sunday Star.

Fine Job Printing, Star Office.

### Fraternal Meetings

### HARMONY LODGE NO. 3, I. O. O. F.

Meets every Monday evening at 7:30 in Odd Fellows' Hall, Fort Street. Visiting brothers cordially invited to attend.

BEN F. VICKERS, N. G.  
E. R. HENDRY, Sec.

### HONOLULU LODGE 616, B. P. O. E.

will meet their hall, King street, near Fort, every Friday evening, by order of the E. R.

WM. H. McINERNEY, E. R.  
H. C. EASTON, Secy.

### DIVISION No. 1, A. O. H.

Meets every first and third Wednesday, at 8 p. m., in C. B. U. Hall, Fort Street. Visiting brothers are cordially invited to attend.

FRANK D. CREEDON, Pres.  
JAMES T. CAREY, Sec.

## ASSOCIATED GARAGE, LTD.

E. O. HALL & SON, LTD., Proprietors.  
Importers and Dealers in Automobiles and Auto Supplies, Repairing and Storage.  
Sole Agents for the Pierce Great Arrow, Franklin, Kissel Kar, Thomas, Cadillac.  
151 Merchant Street.

4 SUITS FOR \$1.50.  
We will clean and press 4 suits a month for \$1.50 if you join our clothes cleaning club. Good work guaranteed.  
JOIN NOW.

## The Ohio Clothes Cleaning Co.

Harrison Block, Beretania st Fort.

### ALWAYS AHEAD

## THE ROUGH RIDER CIGAR

Fitzpatrick Bros.  
and  
Myrtle Cigar Store.

# MIRRORS

NEW LINE AT  
**J. HOPP & CO.**  
185 KING STREET  
MAY'S  
OLD KONA COFFEE.  
PHONE 22.

# The Gunther

Candies appeal to ladies of refinement because of their excellent flavor and peculiarly fascinating fragrance. Our newest assortment has just arrived.

Palm made candies always fresh.

## The Palm Cafe

HOTEL STREET, NEAR FORT.

# LOS ANGELES LIMITED

DAILY TO  
SALT LAKE CITY OMAHA CHICAGO  
'tis truly  
A PALATIAL TRAIN FOR PALATIAL PEOPLE

Your next trip to Chicago or East will be much more enjoyable if you go through Los Angeles, thence on this superb "Limited" through Salt Lake City and Omaha.

Only 3 days Los Angeles to Chicago—with beautiful scenery to view. Just remember to

## Ask For Tickets via Salt Lake Route

# PURITAN CREAMERY BUTTER

This pure California Butter has the finest flavor and quality of any sold in the Territory.  
It is of uniform quality.

## Henry May & Co., Ltd.

Telephone 22

# The Hawaiian Star

DAILY AND SEMI-WEEKLY.

Published every afternoon (except Sunday) by the HAWAIIAN STAR NEWSPAPER ASSOCIATION.

### SUBSCRIPTION RATES.

Local, per annum ..... \$ 8.00  
Foreign, per annum ..... 12.00  
Payable in Advance.

Entered at Post Office at Honolulu, Hawaii, as second class mail matter.  
Subscribers who do not get their papers regularly will confer a favor by notifying the Star Office; Telephone 365.

The Supreme Court of the Territory of Hawaii has declared both THE HAWAIIAN STAR (daily) and THE SEMI-WEEKLY STAR newspapers of general circulation throughout the Territory of Hawaii, "suitable for advertising proceedings, orders, judgments and decrees entered or rendered in the Courts of the Territory of Hawaii."

Letters to THE HAWAIIAN STAR should not be addressed to any individual connected with the office, but simply to THE HAWAIIAN STAR, or to the Editorial or Business Departments, according to tenor or purpose.

GEORGE F. HENSHALL ..... MANAGER

WEDNESDAY ..... AUGUST 5, 1908

### AIRSHIPS AND AUTOMOBILES.

The world is getting accustomed now to accounts of successful handling of airships. The cable bring news that the Count Zeppelin yesterday travelled hundreds of miles, landed when he wanted to, and generally handled his machine "with perfect control." After the numerous other more or less successful experiments that have recently taken place, this does not cause a sensation, yet it marks the beginning of a solution of the problem of Darius Green, which the world wrestled with so long without success that it seemed passing into the status of the perpetual motion machine,—a matter for cranks and dreamers, or the insane.

It is a very short time since the automobile was a subject of fear, distrust and ridicule. Little more than a decade back, the first machines were exploding and the comic papers, whose jokes are always more or less a reflex of the opinions and happenings of the day, were full of jibes at the efforts of the horseless carriage cranks to make their machines go. Today the very term "horseless carriage" is lost, and perfect running automobiles are a daily matter of course. How long will it be before airships are in the same class? The fact that they have reached the practical experiment stage indicates that progress in improving them is likely to be rapid. One year of testing machines in actual use is worth many years of theorizing and inventing on paper, as far as results go, in such a matter as perfection of machinery, and the airship men who are now pioneers in the dangerous work of "flying" will probably, at the cost of considerable life and money, finally produce a practicable airship. The effect that such a machine will have on human affairs is almost beyond the imagination.

### A HILL OF SMALL POTATOES.

The Advertiser's editorial heading of this morning, "A Hill of Small Potatoes"—is the heading that should have been put over all its quibbling about some petty fleet committee accounts. There is nothing to add to The Star's remarks of yesterday, as to the need or desirability of publishing these little items. But in commenting upon The Star's remarks the Advertiser this morning almost makes a record in misquotation. It is actually stated that The Star's reference to the fact that visiting correspondents with the fleet were "aided" by the local press committee "simply means that the correspondents borrowed small sums through them (the committeemen) and didn't pay the money back!" Only the fact that it appears in Honolulu's only morning newspaper makes such a ridiculous statement as this worth denying. We risk the terrible assertion that most of the officers on the Atlantic fleet were "aided" by the Entertainment Committee, the Transportation Committee, Reception Committee and various others. Those who have no other understanding of the word "aid" than is shown by assuming that aid inevitably involves a small touch, may consider the officers insulted, but we can help it.

### MILLIONS IN IT.

According to calculations based upon some figures given by Gifford Pinchot, there is much more money in eucalyptus trees than in sugar, for him who can afford to plant and wait a few years for returns. It is stated that near Bakersfield, California, there are trees 30 years old which would bring \$250 each, on the stump. One acre of land will easily afford room for over 650 trees, and they require so little care that it is estimated that one man can look after a "small farm" of 100 acres, if he has a little help at plowing time. At this rate the one acre of land would produce about \$150,000 in 30 years. This is \$5,000 per acre per year, in growth. The 100-acre eucalyptus farm would grow half a million dollars' worth a year and in thirty years have on it lumber worth fifteen millions. Of course there would be losses and prices of lumber will probably go down before 30 years lapses, as a result of the present forestation movements. But \$5,000 an acre a year leaves allowance for many big losses.

### THE BASEBALL SQUARE DEAL.

An impression had got abroad, no matter how, that both the Japanese and the California visiting baseball teams had been given a bit the worst of it in some umpires' decisions and that they were not getting altogether a "square deal," in their strenuous tussles with our champions. The result was a fine local example of that sense of "fair play" of which our civilization boasts. It was crowded grandstands cheering for the visiting teams against their own. The Santa Claras and the Keios got the howls of the fans when they lined up for the last games. Thus were they helped to some cheering victories. It is unfortunate that some errors should have led to much discussion of umpires during the present splendid season of matches of Japan, California and Hawaii, but nothing could have brought out more strongly the public disposition of sportsmanlike fairness than the demonstrations which have followed.

It is Hilo that proposes making an annual yacht race from Honolulu to Hilo. Citizens of Hilo applauded the author of the proposition in his remark, "You find the yachts and we will find the luncheon." Any legitimate thing which will foster the fraternal relations of the two cities is desirable for that object simply, and there can be no doubt that an annual yacht race to Hilo will do much toward helping Honolulu to win the biennial transpacific event.

Instead of shaving the keel or cutting any part of the hull of the yacht Hawaii, the vessel ought to be tried with more sail as several recognized experts have advised. Make her lean over in a breeze with spread of canvas, not with the heaving out of ballast as if she were a balloon, and see if she will not show her heels to anything in the Pacific. A yacht that will stand up like a church steeple, in such squalls as were met in Waialae on Tuesday of last week, surely needs additional clothes more than anything else.

## THE "STAR" SPECIAL ARTICLE PAGE---

Wit, Wisdom, Humor  
Politics and Nonsense

# TAFT OUTLINES HIS POLICIES

REPUBLICAN CANDIDATE FOR PRESIDENT SPEAKS FOR A SHIP SUBSIDY LAW—SOME OF THE STRIKING UTTERANCES OF THE CANDIDATE IN DISCUSSING THE BIG POLITICAL ISSUES OF THE DAY—ASIATIC IMMIGRATION.

(From Wm. H. Taft's address accepting the Republican nomination for President, received this morning via S. S. Columbian.)

The man who formulated the expression of the popular conscience and who led the movement for practical reform was Theodore Roosevelt. He laid down the doctrine that the rich violator of the law should be as amenable to restraint and punishment as the offender without wealth and with influence and he proceeded by recommending legislation and directing executive action to make that principle good in actual performance. \* \* \* The chief function of the next Administration is to perfect the machinery by which these standards may be maintained; by which the lawbreaker may be promptly restrained and punished, but which shall operate with sufficient accuracy and dispatch to interfere with the great business as little as possible.

### FAVORS SHIP SUBSIDY.

The only respect in which nothing has been done is in the department of our merchant marine. As long as we upheld the system of protection for our home industries, we must recognize that it is inapplicable to assist those of our citizens engaged in the foreign shipbuilding, because there is no feasible means of excluding foreign competition, and that the only other method of building such a business is by direct aid in the form of a mail subsidy. I am in favor of the bill being considered in the last Congress as a tentative step. The establishment of direct steamship lines between our Atlantic ports and South America would certainly do much to develop a trade that might be made far greater. On the Pacific the whole shipping trade threatens to pass into control of Japan. Something ought to be done, and the bill which failed was a step in the right direction.

### STANDS BY PROTECTION.

The Republican doctrine of protection as definitely announced by the Republican Convention of this year and by previous conventions is that a tariff shall be imposed on all imported products, whether of the factory, farm or mine, sufficiently great to equal the difference between the cost of production abroad and at home, and that this difference should, of course, include the difference between the higher wages paid in this country and the wages paid abroad and embrace a reasonable profit to the American producer.

### ASIATIC IMMIGRATION.

In the matter of the limitation upon Asiatic immigration referred to in the Democratic platform, it is sufficient to say that the present Republican administration has shown itself able by diplomatic negotiations and without unnecessary friction with self-respecting governments to minimize the evils suggested and a subsequent Republican administration may be counted on to continue the same policy.

### ROASTS A DEMOCRATIC FLANK.

The proposal to compel a corporation to sell its commodities at the same price the country over, allowing for transportation, is utterly impracticable. If it can be shown that in order to drive out competition a corporation owning a large part of the plant producing an article is selling in one part of the country where it has competitors at a low and unprofitable price, and in another part of the country where it has none at an exorbitant price, this is evidence that it is attempting an unlawful monopoly and justifies conviction under the anti-trust laws; but the proposal to supervise the business of corporations in such a way as to fix the price of the commodities and complete the sale at such price is as absurd and socialistic a plank as was ever inserted in a Democratic platform.

### CURBING THE TRUSTS.

In law trusts should be restrained with all the efficiency of injunctive process, and the persons engaged in maintaining them should be punished with all the severity of criminal prosecution, in order that the methods pursued in the operation of their business shall be brought within the law. To destroy them and to eliminate the wealth they represent from the producing capital of the country would entail enormous loss and would throw out of employment myriads of workmen and women. Such a result is wholly unnecessary to the accomplishment of the needed reform.

CINCINNATI, July 28.—Officially notified today of his nomination for the Presidency by the Republican party, William H. Taft, standing on the porch of his brother's home in this city, the city of his nativity, formally accepted the honor, pledged anew his allegiance to the policies of President Roosevelt, and declared that the chief function of the next Republican Administration would be to clinch what already has been accomplished by the present occupant of the White House.

## TAFT'S PHILIPPINE TARIFF POLICY

Many unfortunate circumstances beyond human control have delayed the coming of business prosperity to the (Philippine) islands. Much may be done in this regard by increasing the trade between the islands and the United States under tariff laws permitting reciprocal free trade in the respective products of the two countries, with such limitations as to sugar and tobacco imported into the United States as will protect domestic interests. The admission of 350,000 tons of sugar from the Philippine islands in a foreign importation of 1,600,000 tons will have no effect whatever upon the domestic sugar interests of the United States, and yet such an importation from the Philippine islands, not likely to be reached in ten years, will bring about the normal state of prosperity in those islands in reference to sugar culture. The same thing is true of a similar limitation on the importation of tobacco. It is not well for the Philippines to develop the sugar industry to such a point that the business of the island shall be absorbed in it, because it makes a society in which there are wealthy landowners, holding very large estates, with valuable and expensive plants, and a large population of unskilled labor. In such a community there is no farming or middle class, tending to build a conservative, self-respecting community capable of self-government. There are many other products, notably that of Manila hemp, to which the energy of the islands can be and is being directed, the cultivation of which develops the class of small and intelligent farmers.—From Taft's speech accepting nomination.

### Tales Worth Telling

#### CAUGHT ON THE REBOUND.

"John, dear," said Mrs. Skimpem, as she poured the coffee at the breakfast table, "if I remember rightly, you have often said you disliked to see a woman constantly getting herself into print."  
"That's right," rejoined Skimpem. "You consider it indelicate and unwomanly, don't you?"  
"I certainly do."  
"And you don't think a sensible man would allow his wife to do anything like that?"  
"Most assuredly not."  
"Well, John, I'm glad you have such radical views on the subject, because they justify me in asking you for a new silk dress."  
"What?"  
"You heard what I said, John. For the last five years I've had nothing but bargain-counter calico, and I'm tired of getting into print."  
"And what could poor John do?"

#### HOW A WOMAN FIGURES.

She had worked her leopards prerogative, but he was trying to dodge the issue.  
"I appreciate your proposal," he said, "but my income is not sufficient for two."  
"Oh, that's all right," she replied.

#### OLD AGE.

"Well, said a traveler in the trap one evening, 'speaking of long lives, my dear aunt died at the age of one hundred and six.'  
"That's nothing," said a silly-looking drummer. "I had a grandmother who died at two hundred and twenty-three."  
"Bosh, do you want us to believe that a relation of yours died at two hundred and twenty-three? It is not only improbable but utterly impossible," snapped the first.  
"Not at all. She died at two hundred and twenty-three Broad street."

#### A BARGAIN FEVER.

Patient—Doctor, what do you call this fever of mine?  
Doctor (looking at clinical thermometer)—Well, I'd call it a bargain—103 reduced to 98.

#### A DIFFERENCE.

Mother—Frances, don't tease. You know mother does not like her little girl to eat between meals.  
Frances (aged 3)—Mother, this isn't between meals. It's before meals.

#### LIKE A MANUSCRIPT.

Friend—Has she rejected you?  
Suitor—No, she just keeps me and doesn't take the trouble to send me back.

### When we are married we'll be one, you know.

#### OLD AGE.

"Well, said a traveler in the trap one evening, 'speaking of long lives, my dear aunt died at the age of one hundred and six.'  
"That's nothing," said a silly-looking drummer. "I had a grandmother who died at two hundred and twenty-three."  
"Bosh, do you want us to believe that a relation of yours died at two hundred and twenty-three? It is not only improbable but utterly impossible," snapped the first.  
"Not at all. She died at two hundred and twenty-three Broad street."

#### A BARGAIN FEVER.

Patient—Doctor, what do you call this fever of mine?  
Doctor (looking at clinical thermometer)—Well, I'd call it a bargain—103 reduced to 98.

#### A DIFFERENCE.

Mother—Frances, don't tease. You know mother does not like her little girl to eat between meals.  
Frances (aged 3)—Mother, this isn't between meals. It's before meals.

#### LIKE A MANUSCRIPT.

Friend—Has she rejected you?  
Suitor—No, she just keeps me and doesn't take the trouble to send me back.

## NOTICE!

On and after AUGUST 1st I will be located in the ELITE BUILDING, corner of Adams Lane, where I shall give my personal attention to all branches of work in the

### PAINTING BUSINESS

and shall be pleased to have both old and new friends call on me. And, as usual,

### A SIGN

from the

### SHARP SIGN SHOP

I will still have the merit so well known. Yours for Trade,

TOM SHARP.

Phone 397.

## PORTIA REGAL.

One of the most fascinating models seen this season in the women's shoe-stores of Paris was the original of the Portia.

This Pump has a beautiful pointed toe and a neat-trimmed sole—features which give the foot a slim, graceful appearance that will appeal to every woman.

A high degree of skill is required in the fashioning of the one-piece Patent leather vamp and the fitting of the special pump counter.

The result is a pump that fits perfectly. The inside lining is of Black Kid. The snap and crispness of this style are further enhanced by a chic pump bow of Patent leather.

Expert Repairing done while you wait.

## Regal Shoe Store

McCandless Building, Corner of King and Bethel Sts.

## The Snap Of It

That is what makes soda water palatable. The fact that ours has more go to it than any other sold makes us leaders in that branch of the business. No store in Honolulu has the soda water patronage we enjoy.

## BENSON, SMITH & CO., Limited

HOTEL AND FORT STREET.

## PURE ICE CREAM

Our Ice Cream is made from the best Pond's Dairy cream and unskimmed milk.

You can tell that there are real cream and milk in it; it leaves a creamy taste that is rich and satisfying.

And there is no corn starch or condensed milk used in our Ice Cream.

Ask our Soda Man for it.

## HOLLISTER DRUG CO. LIMITED.

FORT STREET.

KNOX HATS  
See Them at  
King Street near Fort.  
SILVA'S TOGGERY  
King Street near Fort

## Good Lenses

ground light are necessary to give relief to defective eyes. Our specialty is grinding lenses for oculists prescriptions.

## H. F. WIGHMAN & CO., LTD

OPTICAL DEPARTMENT.

DR. F. SCHURMANN,  
Graduate Optician.

## STEINWAY

STARR AND OTHER PIANOS.  
THAYER PIANO CO.  
156 Hotel St., Opp. Young Hotel.  
Phone 218.  
TUNING GUARANTEED.

## PAPER

All kinds WRAPPING PAPERS and TWINES, PRINTING and WRITING PAPERS.

AMERICAN-HAWAIIAN PAPER & SUPPLY CO., LTD.

GEO. G. GUILD, General Manager.  
Fort and Queen Streets,  
Honolulu. PHONE 410.

### FOR SALE.

French Ranges—Brick setting sizes 4 ft. to 9 feet at right prices. Set up ready for a fire. Zinc lined Redwood Bath tubs complete. Wind mill force pumps, all brass cylinders. Large variety of special pipe and fittings. Prompt attention to job work in plumbing.

EMMELUTH & CO., LTD.  
Phone 211. 145 King Street.

### WE ARE THE

### Exclusive Agents

FOR

Little Tudor Play Suits  
AND

Little Tudor Sleepers  
ideal garments for the little ones for both day and night wear.

Price, 65c garment.

## EHLERS

Whose Sales Are Sales

## SUN CHUNG KWOCK BO, LTD

CHINESE NEWSPAPER PUBLISHING AND JOB PRINTING.

No. 48 Cor. of Smith and Hotel Sts.

## Koa Furniture

UPHOLSTERING AND REPAIRING

WING CHONG CO.

Cor. King and Bethel, P. O. Box 1888

**RAINIER**  
The Beer That Will Stand All Tests...  
Rainier Bottling Works  
Telephone 1881

**Smith Premier**  
This machine represents the highest point of attainment in typewriters.  
It is easy-running, simple in operation, and rarely gets out of order. If it does, it is easily repaired.  
All the most modern improvements are embodied in this machine. Over 300,000 users will have no other.  
Hawaiian News Company, Ltd.  
AGENTS—Young Building.

**Thurlow's Cafe**  
(Formerly Scott's Cafe.)  
Corner of Nuuanu and Merchant Streets.  
Under the management of Al Thurlow, late steward of the S. S. Alameda.  
FIRST-CLASS MERCHANT'S LUNCH 25 Cents.

**Glass Comfort**  
depends to a great extent upon accuracy in frame adjustment especially in Double Vision lenses.  
OUR GLASSES ARE JUST RIGHT.  
**J. A. Savoy's OPTICIAN**  
Boston Building, Fort St.

**NEW ENGLAND MUTUAL LIFE INSURANCE CO.**  
of Boston, Massachusetts  
New Policy  
The contract embodies, in an absolutely COMPLETE and PERFECT form, the principle of strictly MUTUAL life insurance.  
**CASTLE & COOKE, LTD.**  
AGENTS.  
Also representing  
Aetna Insurance Co.  
National Fire Insurance Co.  
Citizens Insurance Co.  
Protector Underwriters.

**Don't Think**  
that you have had the best Sundaes in town till you have tried our very latest—the  
**Guava Sundae**  
Honolulu Drug Co., Ltd., FORT STREET, ABOVE KING

**YAMATOYA**  
Grade Mark  
**IWAKAMI & CO.**  
Sole Agents For  
**Yamatoya's Crepe Shirt**  
New Shipments Received by Every Steamer.  
88 and 89 Robinson Block, HOTEL STREET.  
Fine Job Printing, Star Office.

**Amusements**  
**Orpheum Theatre**  
COMMENCING AUGUST 6TH.  
**Henri French, Hallen and Fuller**  
ALL STAR  
**Advanced Vaudeville Co.**  
10 BIG ACTS BY WORLD RENOWNED  
**Head Liners**  
—POPULAR PRICES—  
TICKETS NOW ON SALE, 75c, 50c, 25c  
**Art Theater**  
MATINEE, 2:30 TO 4 P. M.  
EVENING, TWO PERFORMANCES, 7 TO 8:30; 8:40 TO 10:15.  
**Illustrated Songs**  
Accompanied by the Piano  
Change Mondays and Thursdays.  
POPULAR PRICES.  
**EMPIRE THEATER**  
HOTEL AND BETHEL STREETS.  
Up-to-Date Vaudeville and  
**New Moving Pictures**  
TONIGHT, TONIGHT.  
NEW FILMS.  
FRANK VIERRA, Pianist.  
Program Changed Monday, Wednesday and Fridays.  
**Baseball**  
LEAGUE GROUNDS  
SATURDAY, AUGUST 8  
PICKED TEAM VS. PUNAHOU.  
SANTA CLARA VS. KEIO.  
SUNDAY, AUGUST 9.  
CHINESE A. C. VS. KEIO.  
SANTA CLARA VS. ST. LOUIS.  
Admission 25c and 50c.  
Reserved Seats Grandstand 25c extra  
New Oahu Carriage Mfg. Co.  
Removed to Cor. Queen and River Streets.  
Telephone 202—P. O. Box 970  
**New Suitings**  
JUST RECEIVED  
Suits Made to Order at "Ready Made" prices.  
**Sang Chan**  
No. 42 Building, King Street next to W. W. Diamond & Co.  
Fine Job Printing, Star Office.

**YACHTING PARTY AT THE VOLCANO**  
(Continued from page one.)

lake, too, on all sides there were angry pans of bubbling fire, sometimes spreading for many yards on either hand. Right below the point of observation those who had seen the pit in daylight were able to show the night comers an active cone, said to be from fifteen to twenty feet high, from the base of which a stream of red lava was flowing. Near to that point also could be seen a ledge of hardened lava, like a raised reef on the seashore, which later became an interesting sight. Along its margin small fountains of fire would now and then burst out. At the time there seemed to be lava flows in different directions, mainly toward the major fire fountains before mentioned. This process had curious pictorial results in the ever-changing crisscross markings of fire. One gazer cried out at what he imagined a Gibson girl head and all who looked quickly enough acknowledged the resemblance. An almost perfect outline of a whale, the tail being absolutely correct, was another picture. When one pointed to the letter W he was squeaked with the jeer. "That's an M; it stands for the Lady Maud."

About 11 o'clock the glacier-like movements of the black masses became general, making an impressive sight with their borders demarcated in living fire. At the same time the big fountains alternately approached each other and receded, the belched out liquid from two of them often running together. Then the fountains more frequently and strongly would explode, throwing golden showers high in the air. Finally everything seemed to be moving toward the conjunction of the two central fountains, where a raging maelstrom of lava had now been created, its almost blindingly intense colors of gold and orange mingled with greenish streaks making an indescribable chaos of beauty. Now the whirlpool roared like Niagara and heaved up the floating black masses of lava by the acre as readily as if they were cakes of tallow. Huge flows would tilt upon edge like the ice in a river, breaking in spring flood, and plunge out of sight in the tumultuous vortex. Great waves of the molten vomit every few moments would dash with fearful impact against the ledge before noted, sending up a golden spray that in falling covered the top of the ledge with a million stars.

At 12 the whole lake was in violent agitation, floods of lava coming to center from all sides. Very reluctant-

**HONOLULU GETS A GREAT SHOW**

The demand for seats for the big vaudeville show which opens at the Orpheum tomorrow evening is very large and the house seems likely to be crowded all the rest of the week. It is the highest class vaudeville performance promises to be the best vaudeville show ever given here, being a thoroughly up to date metropolitan variety show.

Among the features will be acrobatic stunts, such as the bicycle performance of Wilson, and the great equilibrist feats of Adonis, Rinaldo, the great violinist, whose playing is sure to prove a sensation; Polk, the banjoist, and Miss Agnes A. Miles, the serio-comic singer.

Seats can be booked a week ahead at the box office by ringing up 681. All orders for the expected opening of Monday night have been transferred to Thursday (tomorrow) night.

By the last ones to linger on the margin started for the hotel, but their final view of Halemauau was among the very best that anyone had seen since the present activity had begun.

Delightful weather was enjoyed between Hilo and the Volcano House going and coming. The tropical forest and the sugar plantation, its cane fields scattered through the woods, were the subjects of expressions of amazed delight. Some of the older cane on Oahu looks as fine as anything to be seen throughout the islands.

Much more might be written of the yachting visit to Hilo, but the story is already long enough. It is likely to be one of the best promotion events for Hilo in a long time, and certainly Hilo showed its appreciation of the occasion with great and generous hospitality. An annual yacht race from Honolulu to Hilo was as good as mutually arranged at the festive board on Saturday.

After the luncheon at Demosthenes, Mr. C. C. Kennedy treated the writer along with Prof. Kyle and Captain Lew B. Harris of the Lady Maud and Mr. Scott, owner of the Kamehameha, to an automobile ride, visiting the Puaeoa tract, Rainbow Falls, the pineapple cannery, Mr. Kennedy's seaside resort and the beginning of the breakwater works.

DANIEL LOGAN.

The regular meeting of Division No. 1, A. O. H. will be held this evening. All members are requested to attend.

**ALAMEDA LEAVES FOR THE COAST**

With over a hundred passengers, seventy-five in the cabin and thirty-five in the steerage, the Oceanic steamship Alameda, Captain Dowdell, sailed at 10 o'clock this morning for San Francisco. She took about 1,600 tons of cargo in all, including 10,000 bags of sugar, 3,500 cases of canned pineapples, 900 cases of green pineapples, 3,000 bunches of bananas and 2,000 bags of rice. Her passengers included the following rifle team: Lieutenant Colonel John W. Short, Lieutenant Colonel Arthur Coyne, Major W. R. Riley, Captain M. M. Johnson, Captain A. W. Neely, Captain Charles M. Carter, First Lieutenant O. J. Whitehead, First Lieutenant L. A. K. Evans, Sergeant E. S. Barry, Sergeant E. Hopkins, Sergeant Jose Ferreira, Sergeant Sumner, Corporal Joe Gouveia, Corporal John Stone, Privates William Chillingworth, D. K. Lemon, E. B. Blanchard and T. J. K. Evans.

**NEW TOWN QUESTION**

"I don't think the United States Government favor the creation of a town right up against the naval station," an O. R. & L. Co. man observed this morning.

"At Bremerton house lots for the men were laid out, 25 feet by 108 feet, which at Pearl Harbor and in this climate would simply mean a burial lot."

"It is not to the interest of Honolulu to have a new town spring up at Pearl Harbor. This city should have the benefit of the trade of the large population to be employed at the naval station. With cheap and speedy transportation the business should be kept mostly in Honolulu."

Relative to talk of extension of the electric car lines to Pearl Harbor, I don't think it would pay the Rapid Transit Company. The railway will carry passengers to Puuloa as quick as the trolley car will to the fertilizer works at Kalihi. So it would be slow transit to take the street cars."

A farewell banquet to Consul General Saito was given at the Mochizuki Club by the Japanese colony last night. Speeches were made and after the feast getsha girls danced. There were 160 present. Tonight Consul General and Madame Saito will give a farewell party, invitation, at the consulate.

**JOE**

Everybody knows Joe, the big bottled cat that has for fourteen years decorated the counter and welcomed countless visitors in the steamship office of William G. Irwin & Co., on Fort street. And all who know Joe are sorry, as for a friend, to see that he is suffering. He is partly paralyzed and crawling around very much the worse for what is supposed to have been an encounter with an automobile. Joe was found in Schuman's yard, apparently dead. But kind hands worked over him and he was sent to the hospital and cared for. He was evidently run over by an auto, probably while a machine was backing in the yard. It is not known how many of his nine lives Joe has used up, but he had one to spare this time.

**BRYAN TRYING TO MAKE FRIENDS**  
(Continued from Page One.)

old acquaintances of the Democratic nominee and he greeted them effusively. "I want to say, Mr. Bryan," said Chairman Hitchcock, "that I wish you success in this campaign except on one Tuesday in November."

Bryan was asked if he met William Randolph Hearst during the day or had been in communication with him. "I have neither seen nor heard from Mr. Hearst," he replied.

Chairman Norman E. Mack determined this afternoon to establish Democratic headquarters in the Auditorium Annex in this city. He also announced that the New York sub-headquarters of the committee would be in the Hoffman House.

TRY IT FOR A DAY.

There is something about the atmosphere of Halewa that builds up the system quicker than any tonic one may take. Maybe it's the food and the atmosphere combined; they're both pure and there is plenty of calcium. The rooms at Halewa are mosquito-proof, the service is good and the golf links all that the most enthusiastic golfer could dream of. Take a run down a day, letting Manager Biddgood know if you will remain longer, and see if you are not benefited.

Fine Job Printing, Star Office.



**FOR SALE!**

Building lots in the Paupueo Tract. Size and price of lots to suit purchasers.

If you are contemplating building, do not fail to consider this tract before deciding.

Here are fine marine and mountain views, good soil and drainage and location convenient to the car line.

We are ready to assist in building homes on these lots.

**"Waterhouse Trust"**  
Corner of Fort and Merchant Sts.

**The Wireless**  
for Business Deals with Other Islands

**Classified Advertising**

**LOST.**  
Pass book No. 3302 on Savings Dept. Bank of Hawaii, Ltd., has been lost. Finder please return to bank.

Child's gold chain and heart locket; probably at ball grounds. \$5 reward at The Star office.

**FOR RENT.**  
Furnished cottage and housekeeping rooms. Apply Cottage Grove, King St.

First class furnished rooms centrally located. Hot and cold baths, Arlington Hotel, 215 Hotel St.

House, eight rooms, with modern conveniences; pleasant grounds. Is Punahou district, convenient to car lines. Enquire W. C. Weedon, Stangenwald Bldg or P. O. Box 653.

**WANTED.**  
Pupils for Pianoforte. Concert and dance music a specialty; one hour per week, 75c. Apply for particulars at Star Office.

We want you to try a massage with our Electric Vibrator for that tired feeling and headache. Nothing better in town. Union Barber Shop.

**New Advertisements**

**NOTICE OF REDEMPTION OF BONDS OF PAIA PLANTATION.**

PAIA PLANTATION, pursuant to the terms of that certain Deed of Trust, dated September 28, 1903, made by it to Hawaiian Trust Company, Limited, hereby gives notice to the holders of bonds of Paia Plantation, issued under said Deed of Trust, of the election of the said Paia Plantation to redeem and pay, and of the redemption and payment of the following numbered bonds of said Paia Plantation on the first day of October, 1908, at the office of Hawaiian Trust Company, Limited, Honolulu, Territory of Oahu, Territory of Hawaii, to-wit:

Bonds of the par value of \$1,000.00 each numbered:

4	82	161	229	326
19	84	162	231	327
22	91	166	238	329
23	93	167	240	331
25	94	172	241	337
26	100	175	246	339
27	107	178	250	344
37	110	185	253	351
48	111	186	254	355
49	114	190	255	361
50	116	192	258	362
56	120	193	280	363
61	129	195	291	366
63	136	197	292	375
65	137	200	299	381
70	139	205	303	384
71	146	209	316	386
72	152	215	318	388
73	154	222	321	399
76	159	223	324	392

Bonds of the par value of \$500.00 each numbered:

403	421	436	463	483
408	422	442	463	490
411	423	447	475	492
412	428	451	479	495
415	431	453		

The holders of the above numbered bonds are hereby notified to present for payment of principal and interest accrued to October 1, 1908, and to surrender, said bonds at the place and on the date last above mentioned, and that after October 1, 1908, all interest on said bonds numbered as aforesaid shall cease.

Honolulu, August 3rd, 1908.  
PAIA PLANTATION.  
By J. P. COOKE,  
Treasurer.

20th—Aug. 5, 13, 19, 26, Sept. 2, 9, 16, 17, 18, 19, 21, 22, 23, 24, 25, 26, 28, 29, 30, Oct. 1.

**NOTICE OF REDEMPTION OF BONDS OF HAIKU SUGAR COMPANY.**

HAIKU SUGAR COMPANY, pursuant to the terms of that certain Deed of Trust, dated September 23, 1903,

Bonds of the par value of \$1,000.00 each numbered:

1	45	106	160	214
7	48	113	171	219
8	51	114	182	224
9	71	119	183	226
10	73	122	185	232
12	76	126	186	233
17	82	127	194	237
26	85	134	197	241
33	91	135	200	245
38	98	137	203	246
40	99	153	204	248
43	102	157	209	250
44	104	158	211	

Bonds of the par value of \$500.00 each numbered:

254	272	295	322	334
255	278	315	327	335
260	280	317	330	338
264	282	320	333	342
266	284			

The holders of the above numbered bonds are hereby notified to present for payment of principal and interest accrued to October 1, 1908, and to surrender, said bonds at the place and on the date last above mentioned, and that after October 1, 1908, all interest on said bonds numbered as aforesaid shall cease.

Honolulu, August 3, 1908.  
HAIKU SUGAR COMPANY,  
By J. P. COOKE,  
Treasurer.

20th—Aug. 5, 13, 19, 26, 30, Sept. 7, 9, 16, 17, 18, 19, 21, 22, 23, 24, 25, 26, 28, 29, 30, Oct. 1.

**People are beginning to understand that beer is not an intoxicant, and that, if used as a tonic and beverage, there is nothing more beneficial to the human system.**

Primo Beer has been pronounced by competent judges to be the most healthful of all beers, as well as the most palatable.

It contains only 2½ per cent of alcohol—the tonic and nutritive properties lie in the hops and malted barleys.

**Primo for Health**



The woman on the right never used Ayer's Hair Vigor. She neglected her hair, and now herself suffers from neglect. On the contrary, the woman on the left has always used Ayer's Hair Vigor, and owes to it much of her youthful appearance and attractiveness.

**Ayer's Hair Vigor**  
produces beautiful hair. Long, rich, heavy hair. Soft and silky hair, free from dandruff.

Prepared by Dr. J. C. Ayer & Co., Lowell, Mass., U.S.A.

**PURE PREPARED PAINT**

There is no other paint that is so pure, so lasting, so beautiful, or so economical in the long run. Have your house painted with W. P. Fuller & Co.'s Pure Prepared Paint, and it will look well long after other paints peel and look shabby. Let us see you about it.

**LEWERS & COOKE LIMITED.**

177 S. King Street. Phone 775.

**68 HOURS To Chicago**

From San Francisco, The Fastest transcontinental train.

**OVERLAND LIMITED**

Electric lighted, Buffet, Library and Drawing room compartment, observation car, with dinner. Telegraphic news posted on train.

**Southern Pacific**

**J. CARLO**

Buys old Watches and Diamonds at both stores, Nuuanu street and Fort above Hotel.

**EXCELLENT LAUNDRY WORK**  
done by the FRENCH LAUNDRY with their new FRENCH dry cleaning process  
258 Beretania St. Phone 1491

**Removal Notice.**

M. Ohta removed to 636 South Hotel Street between Punchbowl and Beretania.

**ST. VITUS DANCE**  
yields quite readily to the soothing and strengthening influence of Dr. Miles' Nervine, because it is a purely nervous affection. Even the chronic form, while often stubborn, is eventually cured by its persistent use. Sold by druggists on a guarantee that first bottle will benefit, or money refunded.

# SPORTS

## LITTLE STORIES OF THE BASEBALL PLAYERS

By REVERE RODGERS.

### JIMMY McALEER'S COMMENTS.

When the St. Louis club was last in Washington the manager of the speedy outfit, one James McAleer, for reasons best known to the American League president, Mr. Ban Johnson, was debarred from appearing on the ball field, and this necessitated that the effervescent Jimmy take a seat in one of the private boxes that are located in front of the grandstand.

It was here that the writer found the St. Louis manager, and while sitting talking with McAleer, Clyde Milan, the nervy little outfielder of the Washington club, stole third base after having purloined the second bag a few moments before, and when he did this stunt the St. Louis manager began to regard Milan with quite a degree of interest. After watching Clyde's actions about the third base corner McAleer, with that famous left-eye squint of his, said:

"That youngster over there, with practice and some coaching, should make the most dangerous base runner in the business, for he has all the actions of Arlie Latham when that champion base stealer was in his prime, and though Latham was a lighter man than the Washington kid, still they are both of the same height, and both throw themselves in the same manner when going into the bag. What is another great factor in Milan's base running is his speed and his nerve as well as the nifty in timing his slide, all of which attributes were possessed by Latham."

Hardly had Jimmy finished speaking when a short outfield fly was knocked not more than twenty feet back of shortstop, and Stone, who should have taken the ball, was steered off by Wallace, the captain of the St. Louis club, who signalled for Hoffman, the center fielder, to make the catch on account of his having a stronger throwing arm than the heavy-hitting left fielder.

As the ball fell into Hoffman's hands Clyde Milan, who really had no business trying to come home on the play, put his head down and tore for the home plate, and, though big Ed Spencer the catcher of the Mound City team, had the ball in his hands when Milan was ten feet away from the plate, yet that clever youngster, with a slide that was perfect in every particular, came in like something shot from a cannon. Just as Spencer was going to put the ball on the kid that nervy player gave a regular "King" Kelly twist of his body, and when his feet hit the home plate big Spencer was pawing the ground with the ball in his hand, three feet away from Milan's body, while McAleer, with his eyes ablaze, was pounding the edge of his private box in appreciation of Milan's great slide.

### TIM HURST AND HIS WAY.

Of all umpires before or since there are none that have had so much newspaper space accorded to them as the chubby little umpire Tim Hurst. There has never been one who has ruled the field with the same rod of iron as has Sir Timothy, and this in the days when ball players were men who would as soon trim an umpire as they would attend to any of the ordinary avocations of the day.

Such fistic giants of the grassy diamond as Pat Teehan, Jimmy McAllister, Jack O'Connor, Glasscock, Virgil Garvin and many others too numerous to mention, who made it a point to go after the umpire of a decade and more ago, never tried any of their games on Hurst and came out of the big end of the horn. Tim always won on hands down, and, in addition, made the other fellows eat crow of the bitter variety. Hurst always adapted himself to the situation in hand, and as the song goes in the opera of "The Mikado," he invariably made the "punishment fit the crime."

Bill Bernhard, when in Washington last year with the Cleveland club, told a story concerning Hurst and Dick Cooley, who was then a member of the Philadelphia team, as was Bernhard himself. This story, which has perhaps never before been in print, treats of one day when Cooley in running backward to make a difficult catch, fell over on his head, and in addition got such a shaking up that he asked his manager to allow him to retire from the game, but Dick was a swell batter, and the manager, thinking that he was faking, refused his request.

But Cooley was surely hurt badly, for he began to miss balls and also to strike out, and then he suddenly thought of a plan that would enable him to get out of the game, and he started in to abuse Hurst, but Tim was wise to the situation, and he let Dick "chew the rag" to his heart's content, and as Bernhard says, it was estimated by Sam Thompson, the mathematician of the Philadelphia team, that

Dick did enough to be fined, at the smallest calculation, \$11,000 and to be put out of the game for 355 years.

Every decision made Dick would come running in and would abuse Tim frightfully, but Hurst, with a knowing smile on his face, would wave him to one side. Finally, after an unusually fervid burst of billingsgate, Dick, sticking his face close up to Tim's shrieked:

"Going to chase me from the game, eh?"

"Naw," leisurely replied Tim, "I'm going to keep you in the game, just to show the people what a bum ball player you really are."

### BILLY SULLIVAN'S EXPERIENCE.

Billy Sullivan was in 1901 catching ball for the Dubuque (Iowa) club, and the season out there at that particular period was none of the best from a financial standpoint, and it finally got so bad that the clubs in that league had to play exhibition games with yap clubs scattered throughout Iowa or adjoining states. This necessitated much traveling by the spike-shoe lads. The adventures they met on the way were varied enough to destroy any possible monotony that was liable to arise.

When Sullivan was in Washington with the Chicago team he was talking to some of the local players regarding his experiences during the barnstorming days above referred to, when Joe Cantillon, the stocky manager of the Washington club, came up to where the group was talking and as Joe is a native of the section of the country over which Billy traveled he butted in with the following:

"You say that you played in Water-ville, eh? Well, how did you like that town?"

"Why, the first time I saw the place I was simply carried away with it," said Sully.

"You were?" queried Cantillon whose face lighted up with pleasure at Billy's assertion.

"That's what I was," reiterated Sullivan as he slyly winked at Davy Alizer; "for you see, Joe, we hadn't been in the town ten minutes before the worst cyclone ever known in those parts struck that dinky burg and scattered it all over the surrounding counties."

### SAM TROTT'S STORY.

Sam Trott, the veteran ball player, who in his day was one of the greatest of players, ran over from Baltimore one day last week in order to see his old time friend, McAleer of the St. Louis. While standing in the grandstand talking to Tommy Evers, once a swell second baseman of the Washington club and a contemporary of Sam Trott, the two old ball players began talking about queer plays that frequently arise in base ball, and Trott finally said:

"One of the most peculiar plays I ever remember occurred one day when we were playing the Detroit team. I was in left field and Mentzell was playing center, and as you know, Tommy," went on Trott, as he turned toward Mr. Evers, "we were coached by our managers in those days to get as close as we could to a felder making a fly catch and with this in my noodle I made for Mentzell's territory when Deacon White hit a high fly toward him."

"In running, though, I slipped and just as the ball struck Mentzell's hands I was about twenty-five feet away from him, but that ball went through Mentzell's hands, and, striking him on the chest, bounded clear over to where I was. I held on to it, with the result that I was given credit for an out, and Mentzell was credited with an assist on a fly-out, which is a record that is hardly made once in twenty years."

The best of the play, though," added Sam, "was the fact that three men were on bases at the time, with two out, and if any of them had gone home we would have probably lost the game, as we only beat the Detroit by one run that afternoon."

### NICK ALTROCK'S NARRATIVE.

Nick Altrock, the comedian pitcher of the White Sox club, and one of the very best fellows in the game today personally, related in his usual inimitable style an experience that he and Jiggs Donahue, the first sacker of the Sox, had when they were on their way east. The way Nick gets the story off is in the following manner:

"When we was all coming back east," started off Altrock, who cares not a thing for grammar, and who no doubt holds Lindley Murray and his work in the utmost contempt, "me'n Jiggs-Donahue slipped away from the bunch one night and took a trip 'bout Cleveland, and along 'bout 11 o'clock that night Jiggs he got hungry, and as we all heard how the fish you get up in Cleveland are the best in the world, as they catch them right out of the lake

there, we went into a restaurant and Jiggs called for two orders of lake trout; but the waiter, who was one of those fresh guys, who wore side whiskers and looked like he might be something in the sky-pilot line, like Billy Sunday, couldn't see us at all when it came to producing the fish, and he told us that they didn't have any fish.

"But," went on Altrock, "me'n Jiggs we put up a holler and swore we wasn't going to leave until the whiskered guy produced something in the scaly line, and we got so brash with the fellow he began to back water, and as he did so he called a funny face 'sinker hustler,' who came over on the run, and he told us what the other guy had said, and then Jiggs he shouted out, 'But I know you have some fish because I can smell them.' And that nervy garcon he smiled sweetly at Jiggs an' me as he said:

"But that ain't fish that you smell, mister; that's only the perch in the bird cage."

"And hen," concluded the merry Nick "me'n Jiggs knew that it was high time to beat it for the hotel."

### GOTCH IS THROUGH.

Will Not Wrestle Any More, He Says.

ST. LOUIS, Mo., July 18.—Announcement that Frank Gotch, heavyweight champion wrestler of the world is permanently through with the game is received with regret by many in this country.

Gotch like Jim Jeffries, pugilistic champion, sees no other worthy foes to conquer. Europe has one or two mat stars who, it is thought, could give Gotch a tussle for the world's title, but as those wrestlers have nothing more than a local reputation it is doubtful if they would make any sort of a showing if pitted against the American. Gotch won his title fairly from George Hackenschmidt, "the Russian lion," at Chicago last April, the "lion" quitting after two hours wrestling. Before this contest Hackenschmidt was regarded as the greatest wrestler the world ever had produced.

Gotch was conceded small chance with the foreigner before the match, but after the contest had gone an hour it was apparent to the thousands of spectators that the "Lion" had met his tamer. Hackenschmidt's exhibition was a sorry one, while Gotch displayed gameness and skill of high order.

Gotch is well fixed in this world's goods, a thrifty nature having enabled him to pile up a fair share of the emoluments that fall to a successful gladiator. His future years are to be spent in the quiet of an Iowa farm. The American public always will regard Gotch as the greatest exponent of the wrestling game that modern history has produced.

### GREAT RACE EXPECTED.

The Grand Prix Shortly to Be Run at Savannah.

SAVANNAH, Ga., July 18.—That the Grand Prix race is going to be the greatest thing in the automobile line ever held in America is evident from the enormous preparations that are being made by those in charge of the course at Savannah, and the manufacturers throughout the United States who now know that all of the foreign manufacturers are going to be represented, are showing a keen interest in the big event.

The first bona fide entry to reach Savannah was made this week by J. E. Finney, the representative here for the Atme car, and while no particulars have been given out relative to the design of the car it is well known that it will be of their six-cylinder type, the bore of which will be four and nine-tenths inches, but the stroke has been kept under cover.

Letters from different manufacturers were received this week asking for particulars about the course. The Savannah course will be open to the drivers for practice two hours every day for ten days in advance of the race. This will give the drivers an opportunity to test out their cars, which they could not do at Dieppe, as they were permitted to go on the course in touring cars only prior to the race.

Those defeated in the first round of the McInerney Golf Cup Tournament under match conditions will have an opportunity to show themselves in medal play on Sunday when a regular fixture will be played, entries closing on the grounds at 10:30 a. m. when the tournament starts. There are two prizes, for the best gross score and for the best net score. The Country Club links are in splendid condition.

Boekus, Roth, Anderson, Castle and a number of other tennis experts are rustling up teams to go to Maui for Flag Day, August 12, and Maui is doubtless anxious for a chance to win back the cup that Honolulu took a couple of years ago. With the polo teams also Maui bound there will be big doings a week from today.

Jack McPadden has agreed to the terms of the Central Club which is promoting the MacPadden-Reilly bout and the two will get together for fifty per cent of the gate receipts, the win-

### BY AUTHORITY

HIGH SHERIFF'S SALE NOTICE.

Under and by virtue of a certain Writ of Alias Execution, issued out of the Circuit Court of the First Judicial Circuit, Territory of Hawaii, on the 27th day of June, 1908, in the matter of Samuel L. Wong, Plaintiff, against Isaac S. Kaku, Defendant, I did, on the 3rd day of August, A. D. 1908, make a demand on defendant Isaac S. Kaku at Honolulu, Island and County of Oahu, Territory aforesaid, for payment of said execution, and said Isaac S. Kaku having failed to comply with such demand, either in whole or in part, I did, on the said 3rd day of August, A. D. 1908, levy upon, and shall offer for sale and sell at public auction, to the highest bidder, at the front entrance of the Capitol Building, in Honolulu, Island and County of Oahu, Territory of Hawaii, at 12 o'clock noon of SATURDAY, the 5th day of September, A. D. 1908, all the right, title and interest of the said Isaac S. Kaku, defendant, in and to so much of the property hereinafter described as may be necessary to satisfy the said Writ of Alias Execution, unless the sum of Six Hundred and Five and 30-100 (\$605.30) Dollars, that being the amount for which said Alias Execution issued, together with interest, costs and my fee and expenses are previously paid:

PROPERTY TO BE SOLD.  
All the right, title and interest of said Isaac S. Kaku in the following Personal Property:  
Leasehold Interest in R. P. 7520, L. C. A. 5408, situate at Kalapaki, Kauai, and containing 2 acres, 2 roods and 33 perches, and being more particularly described in the lease recorded in Hawaiian Registry of Conveyances in Liber 106, at page 219.

Real Property:  
1. R. P. 3846 and R. P. 3873, L. C. A. 3283, situate at Nawiliwili, Kauai, 2 Apanas.  
2. R. P. 7348, L. C. A. 3553, situate at Hanalei, Kauai, and containing 1 acre, 37 perches.  
3. R. P. 3798, L. C. A. 3563, situate at Nawiliwili, Kauai, and containing 1 acre, 3 roods and 37 perches.  
4. R. P. 6548, L. C. A. 3244, situate at Niumalu, Kalunahawai, Kauai, and containing 1 acre, 12 perches.  
5. R. P. 4082, L. C. A. 3629, situate at Niumalu aforesaid, and containing 59 perches.  
6. R. P. 7347, L. C. A. 5190, situate at Anahola, Kauai, and containing 1 acre, 58 perches, more or less.  
7. L. C. A. 4712, situate at Anahola aforesaid, and containing 3 roods, 6 perches.  
8. L. C. A. 4971, situate at Anahola aforesaid, and containing 3 roods 25 perches.  
9. R. P. 7234, L. C. A. 3813, situate at Kapaa, Kauai, and containing 2 roods.  
10. R. P. 5264, L. C. A. 9081, at Kapu, situate at Waioli, Halelea, Kauai, containing 1 acre, 34 perches.  
11. R. P. 3748, L. C. A. 3286, to Walewale, 4 apanas, situate at Koloa, Kauai.

12. R. P. 6685, L. C. A. 4718, to Mau-mau, situate at Anahola, Kauai.  
13. R. P. 3841, L. C. A. 3249, to Hao, 2 Apanas, situate at Kalapaki, Kauai.  
14. Seven shares in the Hul of Mo-loaa, Kauai.  
15. R. P. 830, L. C. A. 5371, to Ehu, situate at Hanalei, Waipio, Ewa, Oahu, containing an area of 1 acre, 2.34 square chains.  
16. R. P. 810, L. C. A. 8241 SM, at Ohihau, situate at Hopenui, Waipio, Ewa, Oahu, containing an area of 1 acre and 3.95 square chains.  
17. R. P. 5293 L. C. A. 8241 HH, to Paumanu, situate at Kamalua, Waipio, Ewa, Oahu, and containing an area of one acre and 1.89 square chains.  
18. R. P. 2242, L. C. A. 19013, and R. P. 5732, L. C. A. 8241, situate at Hanalei, Waipio, Ewa, Oahu, and containing an area of 77-100 acres.

The above lands are subject to the following encumbrances:  
1st: A mortgage made by said Isaac S. Kaku and wife to J. Alfred Magoon, dated Dec. 26th, 1906, and recorded in the Registry of Conveyances in Honolulu, in Liber 289, at page 252 et seq., the same being for the payment of \$950.00 in two years from said date.  
2nd: A deed of trust made by said Isaac S. Kaku and wife to said J. Alfred Magoon on Feb. 12, 1907, and recorded in Registry of Conveyances in Liber 287, at page 323, the same transferring to said Magoon all rents and profits from the above described lands to said Magoon to be applied to the payment of the mortgage aforesaid.

Terms: Cash.  
Deeds at the expense of purchaser. Dated August 5th, 1908, at Honolulu, Oahu.

WM. HENRY,  
High Sheriff, Territory of Hawaii.  
3ts—Aug. 5, 19, Sept. 4.

ner to take sixty and the loser forty per cent of the purse, the contest to come off the latter part of this month. This should be a good fight, both are clever and it is difficult to pick the winner. Charles Chillingworth will be asked to draw up the articles and numerous local sports will be invited to be present.

CIRCUMFERENTIAL.  
If it takes ten secret service men to guard Roosevelt, how many will it take to surround Taft?—Wilkesbarre Leader.

## The Newest Thing

IN  
Ladies' Neck-wear  
Ruching, Fancy Belts  
India Linon, Nainsook  
Linen Lawn 36 in. wide at  
35c. a yard

Also Ladies' Lingerie Waists

AT

**E. W. Jordan & Co., Ltd.**

### WHY

use either a dim or unsteady light?

### WHY

use too strong a light?

### WHY

let spots or streaks of light fall on work or book?

### WHY

indeed, do any of these things when eyes are too precious to be endangered and electric light permits you to avoid them all?

**Hawaiian Electric Co., Ltd**

King Street near Alaka.

Telephone 390

## Fresh and Tender

We received a small invoice of fresh SALMON, tender GEESE and TURKEYS by the Lurline. They are first quality and extra fine. Your order, sir?

**The Metropolitan Meat Co.**

TELEPHONE 45.

## HEINZ

**Apple Butter**

IN SANITARY TINS.

You know Heinz Apple Butter; but do you know that you can get this delicious relish in a sanitary tin?

Owing to the special construction of this tin, there is absolutely no chance of contamination from the solder.

Order a can from your grocer.

**H. Hackfeld & Co., Ltd**

WHOLESALE GROCER.

## Garden Tools

What do you think of a nice little set of weeding and cultivating tools for 35c? We have just received a lot and they are just the thing for ladies. Our assortment of Hoes, Rakes, Shovels, Mattocks, Axes, Hedge Shears, Border Trimmers, Lawn Mowers and every tool used about a garden, or small farm, is most complete.

Now that you are doing a little gardening try a little FORCE-GROWTH, nothing like it to make the grass and plants grow fast and bright green.

**E. O. Hall & Son, Limited**

**BANK OF HAWAII**  
LIMITED.

Incorporated Under the Laws of the Territory of Hawaii.

CAPITAL, SURPLUS AND PROFITS,  
**\$1,028,982.39**

**OFFICERS:**  
Chas. M. Cooke, President  
P. C. Jones, Vice-President  
F. W. Macfarlane, 2nd Vice-President  
C. H. Cooke, Asst. Cashier  
J. Hustace, Jr., Asst. Cashier  
F. B. Damon, Asst. Cash. & Secty  
Z. K. Meyers, Auditor  
Board of Directors: Chas. M. Cooke, P. C. Jones, F. W. Macfarlane, E. F. Bishop, E. D. Tenney, J. A. McCandless, Geo. R. Carter, C. H. Atherton, F. C. Atherton, C. H. Cooke, F. B. Damon.

COMMERCIAL AND SAVINGS DEPARTMENTS.

Strict attention given to all branches of Banking

JUDD BUILDING, FORT STREET.

Claus Spreckels, Wm. G. Irwin.  
**Claus Spreckels & Co.**  
BANKERS  
HONOLULU, H. T.

San Francisco Agents—The Nevada National Bank of San Francisco.

DRAW EXCHANGE ON

SAN FRANCISCO—The Nevada National Bank of San Francisco.

LONDON—Union of London & Smith's Bank, Ltd.

NEW YORK—American Exchange National Bank.

CHICAGO—Corn Exchange National Bank.

PARIS—Credit Lyonnais.

BERLIN—Dresdner Bank.

HONGKONG AND YOKOHAMA—The Hongkong and Shanghai Banking Corporation.

NEW ZEALAND AND AUSTRALIA—Bank of New Zealand, and Bank of Australasia.

VICTORIA AND VANCOUVER—Bank of British North America.

TRANSACT A GENERAL BANKING AND EXCHANGE BUSINESS.

Deposits Received, Loans Made on Approved Security, Commercial and Travellers' Credits Issued, Bills of Exchange Bought and Sold.

COLLECTING PROMPTLY ACCOUNTED FOR.

ESTABLISHED IN 1830.  
**BISHOP & CO.**  
BANKERS

Commercial and Travellers' Letters of Credit issued on the Bank of California and The London Joint Stock Bank, Limited, London.  
Correspondents for the American Express Company, and Thos. Cook & Son.  
Interest allowed on term and Savings Bank Deposits.

**THE YOKOHAMA SPECIE BANK**  
LIMITED.

Capital (Paid Up).. Yen 24,000,000.00  
Reserved Fund..... 15,050,000.00  
Special Reserved Fund 2,000,000.00

HEAD OFFICE, YOKOHAMA.

Branches and Agencies:

Tokio, Kobe, Osaka, Nagasaki, London, Lyons, New York, San Francisco, Bombay, Hong Kong, Shanghai, Hankow, Chefoo, Tientsin, Peking, New-chang, Dalny, Port Arthur, Antung-Hsien, Liaoyang, Mukden, Tientsin, Chungchun.

The bank buys and receives for collection bills of exchange, issues Drafts and Letters of Credit, and transact a general banking business.

Honolulu Branch 67 King Street

**Fire Insurance**

Atlas Assurance Company of London  
New York Underwriters Agency  
Providence Washington Insurance Company

**The B. F. Dillingham Co., Ltd.**  
General Agents for Hawaii.

Fourth Floor, Stangenwald Building.

IF YOU WISH TO ADVERTISE IN NEWSPAPERS ANYWHERE AT ANYTIME Call on or Write  
**R. C. DAKE'S ADVERTISING AGENCY**  
124 Sansome Street  
SAN FRANCISCO, CALIF.

**PRESCOTT'S COUPONS**

MEAT AND DRINK.

It does give one delight to see the immense piles of squash and water-melons, coming up from "down the line" and dumped, into the depot.

NEED AND GRATITUDE.

We should not forget the many kind deeds of Mr. Pinkham for the poor lepers; and the many words of love and pity he gave to them, in his visits to the Settlement. We believe, while we do not know the ex-President, that they, the lepers, had many good reasons in their aloha for the man.

FINE PLACE TO SETTLE.

It is a splendid open country, out at Kailih and beyond—the rice fields are looking lovely and the taro promising.

Is the very man to send on a junket, so it would seem; for, he has the real endurance and tenacity that can go hungry or "sit up" to the table; he is too, like a cat, in that he not only can scratch hard and does but can catch a nap (when on the lookout), and comes back in yacht shape, ready to star it for another season. He too has nothing but praise for "Hawaii."

PUBLIC OFFICE.

The U. S. Marshal Hendry is a powerful man in point of intellect as is too U. S. Breckons. They are men not to be thrown off their base. The Federal Government, he sure, picks its men leisurely (go haste) analytically and with keen and subtle acumen.

They may and must be somebody's "favorites," and why? But, they were experts before they were "called." The tape-measure of a government or of a community is apt to be as correct as the town scales for weighing hay-loads, when we were children.

POTATO AND APPLE.

Sometimes, when we go to a restaurant for our dinner, we feel like saying with that great man in his disappointment, "We never eat a potato just because it is a (bad) potato."

And every wise man does like a good Irish potato with the dinner. But, really, how few No. 1 potatoes we see in Honolulu—the "early rose," the delicious "kidney" and "lady's fingers"—the dry, mealy "Shenango," etc. It is like talking of the "golden russet" apple, the "New York pippin," the Baldwin, the Porter, the seek-no-farther, the "blueberry-maine." Alas! only names on memory's wall.  
A Chinaman said to us, "Lovely apples," and they were like the little cheap windfall of N. E. And they were appetizing that is true.

TOO FAST.

It's a funny world we live in, And not so very slow; But the most important matter, Is to know, which way to go— (Is to know which road to go).

Take this way, dear; come over here, Can be heard most every day; You must learn to say, that is queer, For, I know a much better way— (Yes, we know a far better way.)

And does one want to hurry you, Then take it slow and learn; Who is it, that is pushing so, Trying to make me turn. (Trying to make you turn.)

But the most important matter, Is to know which way to go; For, a funny world we live in, And not so very slow— (Not so very slow).

OUR FIRST MAYOR.

If we can't have the first letter in Alphabet for Mayor, then we must have the second; and that's (ah) there is to it. (Atkinson or Lucas).

EDITOR TIMES.

AALA PARK BAND CONCERT.

The Hawaiian band will give a public moonlight concert at Aala Park at 7:30 this evening:

PART I.

March—"The Gun Fire" (new)...Heed  
"The Soldiers in the Bushes" (new).....Emmanuel  
a. "The Love's Passing" (new).....Bergere  
b. "The Kissing Spell" (new)...Sablon  
"The Musical Smiles" (new)...Casey

PART II.

Vocal—Hawaiian Songs, ar by Berger  
"The Entrance of the Cortège".....Vanderpool  
a. "Oriental Patrol, Halimar"...Bante  
b. "Dance: The Dervishes"...Bendix  
"Maunawili" and "Moanalu"...Berger  
"Star Spangled Banner."

**URINARY DISCHARGES RELIEVED IN 24 HOURS**  
**SANTAL MIDY**  
Each Capsule contains 100 mg. of the active principle.  
Beware of counterfeits.  
ALL DRUGGISTS

**"SMALL FARMS" IN VARIOUS STATES**

HOW HAWAII COMPARES WITH OTHER PLACES IN FARMING POPULATION.

By digging into the returns and figures compiled for the last United States census, some interesting facts can be obtained regarding the comparative size of farms in this Territory and on the mainland, also how the number of farms stands in relation to population in different places. When the word "farms" is used it means and includes the plantations of Hawaii and the western ranches.

It will, we believe, surprise many to know that the average size of a farm in this Territory is 1148 acres which is more than three times greater than the size of a farm in Arizona, Colorado, North or South Dakota, and more than four times larger than the average farm in Oregon and Washington. Wyoming alone, in the whole of the United States has farms of an average size larger than those on Hawaii. Here are the figures:

State or Territory	Average acreage per farm	No. of farms per capita of population
Hawaii	1148	1 to 68
Arizona	333	1 to 21
New Mexico	417	1 to 16
Colorado	384	1 to 22
North Dakota	343	1 to 7
South Dakota	352	1 to 7.6
Wyoming	1333	1 to 15
Oregon	371	1 to 11.5
Washington	256	1 to 15.5

The island of Oahu has a population of 1 person to each 61-2 acres of land. The island of Hawaii has a population of 1 person to every 55 acres of land.

In regard to population, Hawaii stands in a decidedly unfortunate position, having only one farm to every 68 people, whereas in the eight other States and Territories given the average is one farm to every 12-2 persons, the best ratio being in the Dakotas with one farm to seven people. Of course this Territory's result comes from the fact that we have large sugar plantation areas and only a small population.

One other comparison is of particular local interest, namely, where the island of Oahu has one person living

on it to every 61-2 acres of land, the island of Hawaii has only one individual to every fifty-five acres, clearly showing the need for further settlement on the Big Island.—Hawaii Herald.

A WELL KNOWN REMEDY.

There are few people in this country who have not used or at least heard of, Chamberlain's Colic, Cholera and Diarrhoea Remedy. It is the first thing they think of when they or any member of the family are stricken with diarrhoea, pain in the stomach or cramp colic. It has probably saved the lives of more people than any other medicine in use, and once it has been used in a home and its valuable properties become known, they rely upon it as confidently as on their family physician. For sale by all dealers, Benson, Smith & Co., agents for Hawaii.

The fewer creditors a man has the easier it is for him to look the world in the face.

**Oahu Railway TIME TABLE**

**OUTWARD.**  
For Waianae, Waiailua, Kahuku and Way Stations—\*9:15 a. m., \*3:30 p. m.  
For Pearl City, Ewa Mill and Way Stations—\*7:30 a. m., \*9:15 a. m., \*11:05 a. m., \*2:15 p. m., \*3:30 p. m., \*5:15 p. m., \*9:30 p. m., 11 p. m.  
For Wahiawa—\*9:15 a. m. and \*5:15 p. m.

**INWARD.**  
Arrive Honolulu from Kahuku, Waiailua and Waianae—\*8:36 a. m., 5:31 p. m.  
Arrive Honolulu from Ewa Mill and Pearl City—\*7:46 a. m., \*8:36 a. m., \*10:35 a. m., \*1:40 p. m., \*4:31 p. m., 5:31 p. m., \*7:30 p. m.  
Arrive Honolulu from Wahiawa—\*8:36 a. m. and \*5:31 p. m.  
\*Daily. \*Ex. Sunday. \*Sunday Only.  
The Haleiwa Limited, a two-hour train (only first-class tickets honored), leaves Honolulu every Sunday at 8:22 a. m.; returning, arrives in Honolulu at 10:10 p. m. The Limited stops only at Pearl City and Waianae.  
G. P. DENISON, F. C. SMITH, Supt. G. P. & T. A.

**EDZWORTH TOBACCO—QBOD**  
Two Best Smoking Tobaccos on the Market.

**MYRTLE CIGAR STORE**  
and  
**FITZPATRICK BROS.**  
Agents.

**Trent Trust Company, Ltd**  
STATEMENT OF CONDITION, JUNE 30, 1908.

ASSETS.	
Cash on Hand and in Bank	\$ 9,288 35
Stocks and Bonds	5,970 40
Loans on Real Estate	61,773 92
Loans, Demand and Time	19,453 53
Real Estate	9,047 19
Furniture & Fixtures	4,457 22
Other Assets	6,361 09
	\$107,351 66
LIABILITIES.	
Capital—	
Subscribed	\$100,000 00
Paid in	\$ 50,500 00
Stockholders Liability	49,500 00
Trust & Agency Accounts	34,771 37
Bills Payable	9,500 00
Undivided Profits	4,164 74
All other Liabilities	8,415 55
	\$107,351 66

I, Richard H. Trent, President of the Trent Trust Company, Limited, do solemnly swear that the foregoing statement is true to the best of my knowledge and belief.

RICHARD H. TRENT,  
President.  
Subscribed and Sworn to before me this 24th day of July, A. D. 1908.  
M. G. K. HOPKINS,  
Notary Public, First Judicial Circuit, Territory of Hawaii.

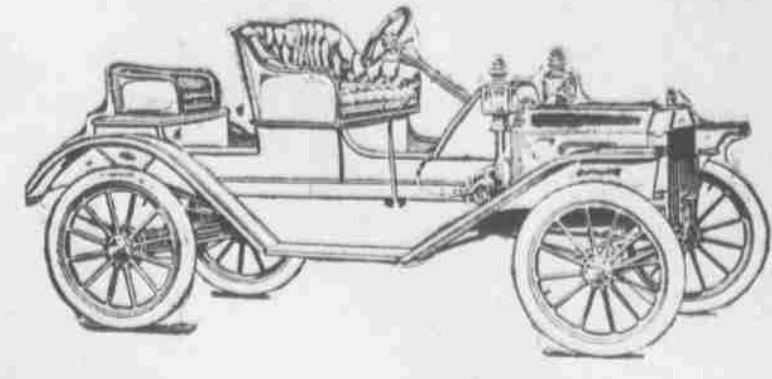
**Mutual Building & Loan Society of Hawaii, Limited**  
STATEMENT OF CONDITION, JUNE 30, 1908.

ASSETS.	
Cash on Hand and in Bank	\$ 1,922 16
Real Estate Loans	42,174 60
Stock Loans	3,932 09
	\$ 48,028 76
LIABILITIES.	
Installment Stock	43,202 70
Paid-up Stock	4,640 75
Reserve Fund	1,000 00
Undivided Profits	185 31
	\$ 48,028 76

I, Richard H. Trent, Secretary of the Mutual Building & Loan Society of Hawaii, Limited, do solemnly swear that the foregoing statement is true to the best of my knowledge and belief.

RICHARD H. TRENT,  
Secretary.  
Subscribed and Sworn to before me this 24th day of July, A. D. 1908.  
M. G. K. HOPKINS,  
Notary Public, First Judicial Circuit, Territory of Hawaii.

**Trent Trust Co., Ltd., Agents, Honolulu**



**Ford S Roadster**  
"A Satisfactory Car at A Satisfactory Price"

This car is the result of the recent evolution in car manufacture. It is built and designed for simplicity, service, and low operating expense. This is a 15 H. P., four-cylinder car of rakish appearance, and capable of making any speed from 3 to 45 miles per hour on any road without change of gear. It lasts longest and costs least while it lasts. And the original cost is down to bed-rock.

Come and see this Model

**Schuman Carriage Co., LIMITED**

Merchant Street, between Fort and Alakea



**GOOD TASTE AND JUDGMENT**  
are more essential to having a beautifully appointed table, than large expenditure.  
Let us show you unusual patterns in  
**Community Silver**  
It has a distinct richness of appearance and charm of design which rival sterling.  
It's more than triple plate—it costs but a trifle more than ordinary plated ware—it lasts a life time.  
W. W. DIMOND & CO., LTD.  
63-7 KING STREET.

Large Assortment

Always on Hand Calabashes, Coral, Seed and Shell Leis, Tapas, Mats, Necklaces and Fans.

Woman's Exchange

Hotel St. near Union.

W. G. Irwin & Co., Ltd

SUGAR FACTORS, COMMISSION AGENTS

Wm. G. Irwin, President and Manager John D. Spreckels, First Vice-President W. M. Giffard, Second Vice-President H. M. Whitney, Treasurer Richard Ivers, Secretary D. G. May, Auditor

AGENTS FOR

Oceanic Steamship Co., San Francisco, Cal. Baldwin Locomotive Works, Philadelphia, Pa. Hakalau Plantation Co., Hilo Sugar Company, Honolulu Plantation Co., Hutchinson Sugar Plantation Co., Kilauea Sugar Plantation Co., Olowalu Company, Paauhau Sugar Plantation Co., Waimanalo Sugar Co.

Pure Distilled Water

delivered anywhere by

CONSOLIDATED SODA WATER WORKS COMPANY, LTD. TELEPHONE 71.

Why be pestered by the heat when a GAS STOVE in the kitchen will keep you cool.

HONOLULU GAS CO., LIMITED. Bishop Street.

OAHU TAILORING CO. Merchant Tailors. Cigar Stand on the Corner. Seretania and Emma Streets.

Catton, Neill & Co. LIMITED

Engineers, Machinists, Blacksmiths and Boiler-makers. First class work at reasonable rates.

Honolulu Iron Works.

STEAM ENGINES, SUGAR MILLS, BOILERS, COOLERS, IRON, BRASS AND LEAD CASTINGS.

Machinery of Every Description Made to Order, Particular Attention paid to Ship's Blacksmithing. Job Work Executed on Short Notice.

PORTO RICAN HATS.

A large assortment of the best Porto Rican Hats just received. Lowest Prices prevail. See our window display.

LEADING HAT CLEANERS.

Fort Street, Opposite the Convent. TELEPHONE 493.

Choice

Kaneohe Beef

Always on Hand

YOUNG PIGS POULTRY EGGS FRESH BUTTER AND CHEESE

SAM WO MEAT COMPANY

King Street Market, next C. Q. Yee Hop & Co.

YOUNG TIM, Manager. Tel. 888.

NEW ADVERTISEMENTS.

Primo Beer (special) Page 9 Ehlers Page 4 Primo Beer Page 8 Sheriff's Sale Page 6 Hahn Bond Redemption Page 5 Pala Bond Redemption Page 4 Benson, Smith & Co. Page 4

THE WEATHER.

Local Office, U. S. Weather Bureau, Young Building.

Honolulu, T. H., Aug. 5, 1908. Temperatures, 6 a. m.; 8 a. m.; 10 a. m.; and morning minimum. 75; 79; 78; 81; 75. Barometer reading: absolute humidity (grains per cubic foot); relative humidity and dew point at 8 a. m.: 30.04; 6.573; 62; 65. Wind: Velocity and direction at 6 a. m.; 8 a. m.; 10 a. m.; and noon: 3 NE; 14 NE; 15 NE; 18 NE. Rainfall during 24 hours ending 8 a. m.: None. Total wind movement during 24 hours ended at noon: 232 miles. WM. B. STOCKMAN, Section Director.

NEWS IN A NUTSHELL.

Paragraphs That Give Condensed News of the Day.

Pass book No. 3302 on the Savings Dept. Bank of Hawaii has been lost. Ehlers & Co., are exclusive agents for little Tudor play suits and sleepers.

Notices in regard to redemption of bonds of Haiku and Pala Plantations appears in this issue.

A high sheriff's sale in the matter of Samuel L. Wong vs. Isaac S. Katu appears in this issue.

There is no reason for the wife in the kitchen to be bothered by the stove heat. Cook with gas. See the Honolulu Gas Co.

All the latest moving pictures are shown at the Art Theater, only famous subjects portrayed. Program changed Mondays and Thursdays.

The Burns-stor flight pictures are the hit of the season. The Empire is crowded at all performances, the pictures will be shown as long as patronage warrants it.

You will find few dyspeptic and nervous wrecks among those who make beer a beverage. The best beer in Honolulu is Primo Beer, because it is brewed to suit the climate.

Japanese Consul Saito called on Governor Freat this morning and presented Mr. K. Abe, who will occupy his position till the Japanese Government appoints a permanent consul.

The commissions for the members of the board which will have charge of the Hawaiian exhibit at the Alaska-Yukon exposition arrived this morning. They are signed by Acting Secretary of the Interior Jesse E. Wilson.

People are beginning to understand that beer is not an intoxicant, but a good healthful beverage as harmless as soda water and much more beneficial. Drink Primo Beer for health. It's pure.

The public made Benson, Smith & Co., Ltd., the leading firm in dispensing soda water on account of the superior flavor and service. There is no snappier soda in town than you get there.

DIAMOND HEAD ROAD IS BAD

After an inspection of the Diamond Head road Tom Cummins states that he cannot but appreciate the complaints which have been made by those living in that section. The ruts and holes are enough to make a man seasick, according to the head of the road department, and in fact gave him a fine headache before he got back to the good roads of the city.

Several men and a water wagon have been placed on the job of filling the holes, wetting them down and then packing the coral with which they are filled. This will help a little, but the fact remains that the road can never be repaired decently. What is needed is macadam, with an oiled surface. There is no money available for this work now, but it seems to have a first claim on the Board of Supervisors after the work in hand is completed.

\$2500 will buy a fine home. Easy terms.

RENT TRUST CO

A PERFECT FIT

Guaranteed

With our expert cutter who has just returned from the coast we guarantee every suit to fit.

W. W. AHANA CO., LTD.

Merchant Tailors. Waity Building King Street.

TAKING A REST

SECRETARY OF TERRITORY RUSTICATING AND SMALL FARMING AT WAIKALAE BEACH.

Secretary Mott-Smith is rustivating at Waialae at present, taking a rest from the labors of office and incidentally turning into a small farmer, from the reports which have come back from the labors of office and incidentally yesterday afternoon he had not seen a single Honolulu newspaper and greeted a friend who brought him a copy of the Star with great effusion. In the small farm line he is stated to be doing very well and is raising a fine crop of whiskers. The variety is not stated and whether the Waialae soil is suitable for the production of side chops or of a Van Dyke could not be learned from the U. S. Experiment Station before going to press. It is certain that he will make a good job of it though, as the Secretary plays just as hard as he works.

DAILY STOCK REPORT

Between Boards: 70 Oahu, \$19.125; 1000 Pioneer 6s, \$104; 20 Paauhau, \$18.50; 100 Oahu, \$29.25. Session Sales: 5 I. S. N. Co., \$116; 5 Oahu Railway, \$101.

Dividends, Aug. 5, 1908: Haw. Com., 80c. share; Onomea, 2 pct.; Honomu, 2 pct.

Memorandum:—A special dividend of \$2.50 per share will, by vote of the Directors, be paid on Hawaiian Commercial and Sugar Co. Stock on Aug. 10, 1908.

Table with columns: Stock, Bid, Asked. Includes Ewa Plant Co., Haw. Com., Haw. Sug. Co., Honokaa Sug. Co., McBryde Sug. Co., Oahu Sug. Co., Onomea Sug. Co., Ookala Sug. Co., Oloa Sugar Co., Paauhau Sug. Co., Pala, Pepeekeo Sug. Co., Pioneer Mill, Waialua Agr. Co., I. S. N. Co., Hon. R. T. Co., Nahuiku Rub. As., O. H. & L. Co., Hon. B. & M. Co., Haw. Pineapple, Haiku, Haw. Sugar Co., Kahuku Co., McBryde Co., Oahu Co., Pala Co., Pioneer Co., Waialua Co., Honokaa Co.

PASSENGERS ARRIVED.

Per S. S. Hilonian, August 5, from San Francisco: Miss E. G. Olsen, Miss Fodlan, Miss S. McKay, O. Harris, Miss Anderson, Mrs. T. Wyser and child, Mrs. D. S. Radard, S. T. Haywood, S. C. Haywood, Miss C. Haywood, Mrs. H. T. Haywood, Mrs. J. Poly, Mrs. N. Stewart, G. B. Curtis and wife, H. T. Hayselden, Mrs. M. A. Ross, Miss G. Ferguson, Mrs. W. J. Robinson and 2 children, Master Lombardo A. Feirela, Miss G. Feirela, Mrs. A. Feirela, M. Demello, J. M. Jones, S. J. Jones, J. R. Seava, E. C. Pierre.

PASSENGERS DEPARTED.

Per O. S. S. Alameda, August 5, for San Francisco—Mrs. A. B. Arleigh, F. A. Batchelor, J. W. Bergstrom, Miss B. Bunnelle, W. M. Cooper, Mrs. W. C. Crook, Jr., L. R. Crook, S. A. Crook, Miss S. De Forrest John Duke, Miss Duke, Mrs. Thos. Dunn and infant, Miss J. Earley, Mrs. A. C. Emery, F. Eudey, Mrs. W. M. Giffard, H. Haneberg, A. S. Kaaua, Miss Mae Keane, E. G. Keane, Mrs. E. G. Keane, Mrs. A. Kiedlin, J. S. Low, Mrs. J. S. Low, H. Marshall, Mrs. F. C. Moffit, F. E. Montgomery, St. C. Moore, Mrs. St. C. Moore, Mrs. C. McCarthy, Miss Ida McDonald, Miss E. McLean, D. McKay, Mrs. H. Price, I. Purdy, J. W. Pratt, G. A. Riggs, Mrs. G. A. Riggs, Mrs. W. R. Riley, Mrs. J. W. Short, W. K. Tucker, Mrs. A. A. Wilder, Otto Winkler, Mrs. M. Whiston, C. R. Woodhouse, S. G. Wilder and son, National Rifle Team—Lieut. Col. John W. Short, Lieut. Col. Arthur Coyne, Major W. R. Riley, Capt. M. M. Johnson, Capt. A. W. Neely, Capt. Chas. M. Coster, Ist. Lieut. O. J. Whitehead, Ist. Lieut. L. A. K. Evans, Sergt. E. S. Barry, Sergt. E. Hopkins, Sergt. Jose Ferreira, Sergt. Sumner, Corp. Joe Gouvoia, Corp. John Stone, Private Wm. Chillingworth, Private D. K. Lemon, Private E. B. Blanchard, Private T. J. K. Evans.

O TEMPORA!

Howard—Why did he marry her at all if he were going to get a divorce so speedily? Coward—Because he didn't think it would be honorable to break their engagement.

Fine Job Printing, Star Office.

SUGAR QUOTATIONS

96° TEST LONDON BEETS

Table with columns: Date, Per Lb., Per Ton, Price. Includes July 17, 18, 20, 21, 22, 23, 24, 25, 27, 28, 29, 30, July 31, August 1, August 3, Aug. 4.

James F. Morgan's Hawaiian Tobacco Plantation Co., Limited

AUCTIONEER AND STOCK BROKER. Member of Honolulu Stock and Bond Exchanges. Stock and Bond Orders receive prompt attention. Information furnished relative to all STOCKS AND BONDS. LOANS NEGOTIATED. Phone 72 P. O. Box 594.

INTER-ISLAND TO BUILD BIG BOAT

TO START SUGAR FLEET OF HIS OWN AND TAKE THE PLACE OF THE AMERICAN-HAWAIIAN S. S. CO. WHOSE CONTRACT EXPIRES THIS YEAR—TO PUT FIRST BOAT OF 9,000 TONS ON RUN, BEFORE DECEMBER, 1908.

The Inter-Island Steam Navigation Company has practically decided to branch out into the trans-Pacific trade and put on a 9,000 or 10,000-ton passenger and freight steamship between Honolulu and San Francisco before December of next year.

Those who are interested in the transportation of sugar here are also largely interested in the Inter-Island Steam Navigation Company and the idea is to keep the interests combined and the money in the country.

W. R. Castle last Sunday had an interview in the Advertiser in which it was announced that a proposal was being framed, by responsible people for presentation to the Planters' Association and the Inter-Island Steam Navigation Company to build a 9,000-ton passenger and freight steamer for the Honolulu-San Francisco trade.

The idea is to control the sugar transportation business here in Honolulu and take it out of the hands of New York, where it is now controlled by the American-Hawaiian S. S. Co. The Inter-Island will spread itself to duplicate, in time, the service that has been given by the American-Hawaiian S. S. Co., the contract of the latter company with the sugar planters expiring this year.

U. S. DEPARTMENT OF AGRICULTURE, WEATHER BUREAU. MONTHLY METEOROLOGICAL SUMMARY.

Station, Honolulu, T. H.; month, July, 1908.

Table with columns: Date, Max., Min., Mean, Precipitation, Clouds, Wind, etc. Includes data for July 1 through July 31.

ATMOSPHERIC PRESSURE.

(Reduced to sea level; inches and hundredths.) Mean, 30.05; highest, 30.11; date, 22nd; lowest, 29.95; date, 29th.

TEMPERATURE.

Highest, 84; date, 22nd; lowest, 68; date, 8th. Greatest daily range, 12; date, 8th. Least daily range, 7; date, 15th.

Mean for this month in 1890, 78; 1891, 79; 1892, 78; 1893, 77; 1894, 76; 1895, 78; 1896, 78; 1897, 78; 1898, 77; 1899, 78; 1900, 79; 1901, 78; 1902, 78; 1903, 78; 1904, 78; 1905, 77; 1906, 78; 1907, 78; 1908, 76.

Mean of this month for 19 years, 77.7. Absolute maximum for this month for 19 years, 88.

ANNUAL Remnant Sale Now In Progress

A SALE OF EXTREME IMPORTANCE. A gigantic collection of remnants accumulated from our big Sale. Many of these remnants are in lengths sufficient for dresses others will make Skirts or Waists. In short, there are lengths for most any purpose.

N. S. Sachs' Dry Goods Co., Ltd

THE STORE WITH THE MONEY-BACK POLICY.

People who drink BEER as a beverage are, as a rule, strong and healthy. It's because their digestive and nervous systems are "all right." Good Beer is the best kind of tonic and Aid to digestion. In Honolulu, drink the Beer that's brewed to suit the climate—Primo Beer.

HUSTACE-PECK CO., LTD. - DRAYMEN -

Phone 295. 63 Queen Street. P. O. Box 818

ESTIMATES GIVEN ON ALL KINDS OF TEAMING DEALERS IN FIRE WOOD, STOVE, STEAM AND BLACKSMITH COAL Crushed Rock, Black and White Sand, Garden Soil, HAY, GRAIN, CEMENT, ETC., ETC.

Honolulu Construction & Draying Co., Ltd., GENERAL CONTRACTORS.

Phone Office 281. Fort St., Opp. W. G. IRWIN & CO., LTD. P. O. Box 154

We do all kinds of Teaming; also deal in Crushed Rock, White and Black Sand, Broken Coral, Garden Soil, Etc. SAFE MOVING A SPECIALTY.

Cut Price Household Store! One-Third Off For 3 Weeks 33 1/3% Special Sale On! 33 1/3%

Agate Ware, Glass Ware, Crockery Ware, Household Utensils, NOW'S YOUR OPPORTUNITY!

LEWIS & COMPANY, Ltd. CUT PRICE HOUSEHOLD EMPORIUM.

169 King Street. Telephone 240.



THE KING OF ICE SAVERS

The famous "Gurney" has all other refrigerators beaten a mile. We back our assertion. It is the Best by actual Test. Made in 45 styles. Sold on the installment plan.

W. W. Dimond & Co. - 53-57 King St. Fine Job Printing, Star Office.