

THE DAILY BULLETIN

PUBLISHED BY J. W. ROBERTSON & Co.

No. 47.

HONOLULU, H. I., MONDAY, MARCH 27, 1882.

Subscription: 25 cents per month.

THE DAILY BULLETIN
Is published every morning, and circulated throughout the town, and forwarded to the other islands by every opportunity.
Subscription, - 25 cents per month.

A SHIP BURNED AT SEA

By the steamer Likelike, yesterday morning, came as passengers from Hawaii, the master and twenty of the crew of the British ship Norval, which was abandoned on fire at sea on the 4th of the present month. Capt. Halliday informs us that the Norval was an iron ship of about 1400 tons, left Hull, England, on the 31st October last, bound for San Francisco, with a cargo of 1865 tons of coal. All went well until the 1st of March, when it was discovered that the cargo was on fire. Endeavored to extinguish the fire by pumping water into the hold, to the depth of seven feet, then pumped it out again partially, much burnt coal coming up with the water. Battened down the hatches in order to smother the fire.

At 5 o'clock p. m. on the 3rd, the coal gas in the hold suddenly exploded, blowing off the hatches and doing a great deal of damage, besides wounding the first officer and the steward. The latter, engaged in setting the cabin table for supper, was blown off his feet and his head cut badly against the deck beams. The mate was slightly cut on the neck by the fragments of two panes of glass which blew out of a door and past his head.

The ship was abandoned at 1 p. m. on the 4th, in lat. 13° 30' N., long. 120 W., about 2000 miles E. by S. of Hawaii. There were four boats on leaving, commanded respectively by the captain, first and second officers and the boatswain.

During the first night after leaving the ship, the first officer's boat, containing 8 persons, parted company and has not been seen since. This, as well as the others, was well supplied with food and water, and unless picked up by some passing ship, will probably soon reach Hawaii. During the first six days, experienced rough weather, since which it has been fine. On the 6th day, took the boatswain and his men on the other two boats, making 21 persons altogether, and destroyed his. On the 20th day, made the land near Laupahoehoe; spoke a schooner and learned that the Likelike was at Mahukona, proceeding to which place were taken on board. When last seen, the Norval was before the wind, the main and mizen-masts gone, and the foremast in flames.

CONSIGNEE'S NOTICE—The bktne W. H. Dimond, from San Francisco will commence discharging to-day. Consignees will call at the office of the undersigned, pay freight, and receive their orders. G. W. Macfarlane & Co.

WANTED, immediately, a first-class Sugar Boiler. Apply to H. Hackfeld & Co. or A. Unna. 41

"AMERICAN ART JOURNAL."
Any one having back numbers of the above magazine to dispose of, will please inform
44 1w -J. W. ROBERTSON & Co.

NOTICE—The Draying Business of my late husband will be carried on by me, in the same manner as heretofore. Also on hand and for sale, Firewood, Ka'ala Salt, White and Black Sand, in quantities to suit.
VICTORIA WARD.
Honolulu, March 24, 1882. 45

Yesterday, eleven Chinese were arrested for gambling.

The steamer Jas. Makee for Kauai, leaves this afternoon at 4 o'clock.

8,320 packages of sugar came to hand this morning.

The schooner Claus Spreckels arrived at Kahului on the 24th inst, 14 days from San Francisco.

The Band will give a Concert at the Hawaiian Hotel this evening, in honor of the Planters' Association.

The steamers Lehua for Molokai and Maui, and Mokoli for Koolau, leave at 5 p. m. to-day.

Regular monthly meeting of Lodge Le Progres de la Oceanie No. 124 A. F. & A. M. will be held this Monday evening at 7:30 p. m.

As a result of the heavy rains on East Maui, the snow on Haleakala is reported as half-way down to Ulupalakua.

The bark Ferris S. Thompson is still at Kahului, from which port she is expected to sail the last of this month.

The John D. Spreckels, which arrived at Kahului on the 15th inst, took a general cargo to that port consisting of merchandise, machinery, and 31 horses, valued at \$30,231 45-100. She is nearly discharged, and is expected to sail again tomorrow or Wednesday for San Francisco, with a full cargo of sugar.

At a meeting of the Board of Trustees of the "Planters' Labor and Supply Company," held on Saturday last, it was unanimously resolved that the Committee on Legislation use every exertion and influence in their power to procure the passage by the Legislature of an Act prohibiting the importation and sale of spirituous or intoxicating liquors.

AN ENTERTAINMENT
Will be given at the Lyceum
On Monday Evening,

March 27th,
Under the auspices of the Young Men's Christian Association.
There will be Music and a Lecture on the Chinese, by the Rev. J. M. Alexander.
Admission 50 cents. Tickets may be had at J. W. Robertson & Co's and T. G. Thrum's stores. 46 2t

FRANK GERTZ,

144 Fort St., Honolulu,

Importer and Dealer in

Ladies', Misses' and Childrens'

Shoes and Slippers!

Gentlemen's and Youth's

BOOTS AND SHOES!

Just Received, ex steamer City of New York,

Direct from Philadelphia,

A very superior assortment of

BOOTS & SHOES!

Honolulu, March 24, 1882. 45

TELEPHONIC.

DIAMOND HEAD, March 27, 6:40 a. m. Weather clear calm. Bark off port.

Arrivals.

March 26
Stmr Likelike, from Hilo
Stmr C R Bishop, from Kaula
Stmr Jas Makee, from Kaula
Bktne W H Dimond, from S F
Schr Kekauluohi, from Haualei
Schr Uilama, from Hanalei
Schr Meefoo, from Koolau
Schr Pohohiki, from Pohohiki
Bk Earl Dalhousie, from St Michaels

Departures.

March 25—
Bk Reverse for Nanaimo
Whale bk Gazelle for cruise

Vessels Leaving this day.

Stmr Lehua for Molokai and Maul
Stmr James Makee for Kaula
Stmr Mokoli for Koolau

Vessels in Port.

Tern Compeer
Am bk D. C. Murray
Topsail schr Leo.
Am bk Henry Buck
Am bk Reverse
Am tern Eva
Am Miss. Lgtne Morning Star, repairing
Am schr Ida Schnauer, repairing
Am bk Eline Ella
Ger bk C R Bishop, for New York
Am bk Amy Turner, for New York

Vessels Expected.

Bk Atalanta, fm Liverpool, due in Meh
Stmr Ceylon, from Yokohama, due Meh
Bk Lady Lamson, fm S F, Meh
Bktne W H Dimond, from S F, Meh
Schr Claus Spreckels, fm S F, Meh
Bk Buena Vista, fm Port Grmble, Meh
Ship Fiona, from Newcastle, April
Stmr City of Sydney, fm Sydney, Apl 10
Stmr Zealandia, from S. F. April 16
Bktne Amelia, fm Port Blakely, Apl
Bk Lizzie Bell, from Liverpool, Apl
Bk Stella, from New York, Apl
Bk Edward May from Liverpool, May
Bk Furness Abbey, from Boston, May
Bk Priscilla, from Newcastle, May
Bktne Klhikat, from Port Gamble
Tern W. L. Beebe, from Utsalady
Schr Rosario, fm S. F., for Kahului
Bk Earl Dalhousie, fm St. Michaels, due
—Escort, fm Newcastle, for Mahukona
Bk Paradox, from Bremen

WANTED a smart BOY, about 14 years of age. Apply to J. W. Robertson & Co. 44 1w

CORAL STONES FOR SALE.

Apply to
45 1w M. D. MONSARRAT.

HONOLULU

CLOTHING EMPORIUM!

Just Received, a new line of Ladies', Gent's and Children's

BOOTS, SHOES, And Slippers!

At A. M. MELLIS',
42 1w 104 Fort Street.

"TWO ORPHANS."—Any party having a copy of the Two Orphans, in printed form or manuscript, and willing to sell or loan the same, will oblige by leaving word to that effect at this office. 34

MAX ECKART, Manufacturing Jeweler, No. 6 Kaahumanu st. 31

A. KRAFT,

JEWELER, & OPTICIAN,

Dealer in Hawaiian Curiosities.
Store—in the "Hawaiian Gazette" building, opposite the Bank.

D. W. CLARK,

Watchmaker

Repairing Watches and Clocks a Specialty, No. 68 Fort Street. 32

Cultivators

For Sale by
Dillingham & Co.

FOR SAN FRANCISCO

The fast sailing Schooner
"LEO," : : Harrington, master,
Will have immediate dispatch for the above port. For freight or passage apply to F. A. SCHAEFER & Co, Agents.

FOR SAN FRANCISCO.

The Am. bktne
"ELLA," - - Brownell, master
Will have immediate dispatch for the above port. For freight or passage apply to BREWER & Co., Agents.

FOR SAN FRANCISCO.

The Clipper Bark
"D. C. MURRAY,"
Ravens, master.
Will have quick dispatch for the above port. For freight or passage apply to F. A. SCHAEFER & Co., Agents.

FOR NEW YORK

DIRECT.
The Al American bark
"AMY TURNER," Newell, master
Will have quick dispatch for the above port. For freight or passage apply to H. HACKFELD & Co., Agents.

STEAMER LIKELIKE

King, - Master.
Leaves Honolulu each Tuesday at 4 p. m., touching at Lahaina, Maalaea Bay, Makona, Mahukona, Kaula, Laupahoehoe and Hilo.
Returning, will touch at all the above ports, arriving at Honolulu each Sunday a. m.

PACIFIC MAIL Steamship Company.

FOR SAN FRANCISCO,
The splendid steamship
"CITY OF SYDNEY,"
Dearborn, Commander.
Will leave Honolulu for San Francisco on or about April 10.

FOR SYDNEY VIA AUCKLAND
The splendid steamship
"ZEALANDIA,"
Webber, Commander,
On or about April 10th,
For freight and passage apply to H. Hackfeld & Co., Agents.

Professionals.

J. M. DAVIDSON, Attorney at Law
24 Merchant street. 16

S. B. DOLE, LAWYER, corner
Fort and Merchant streets. 11

RICHARD F. BICKERTON,
Attorney and Counselor at Law.
Money to lend on Mortgages of Freeholds. Office, No. 23 Merchant st. 1

CECIL BROWN, ATTORNEY
and Counselor at Law, Notary Public, and Agent for taking Acknowledgments of Instruments for the Island of Oahu. No. 8 Kaahumanu street, Honolulu. 1

W. R. CASTLE,
Attorney at Law and Notary Public. Attends all the Courts of the Kingdom. 1

FRANCIS M. HATCH, Attorney
at Law, 15 Kaahumanu st. 23

DR. CHARLES T. RODGERS,
Office, Odd Fellow's Building, Fort street. Residence, Hawaiian Hotel. 1

WRAY TAYLOR, Teacher of Piano-forte and Organ. Tuning in all its branches. 40 6m

WANTED—A neat tidy young woman, Norwegian or Portuguese preferred, as a house servant, on the island of Kaula. Good wages given and comfortable home; small family. Apply to J. E. Wiseman, Employment Agent, 27 Merchant street. 36 1m

LIFE OF

PRES. GARFIELD,
By Col. R. H. Cornwell,
With Introduction
by Hon. John D. Long, Governor of Massachusetts;
400 pages, 12mo. Subscription price—
cash, \$2 per copy; morocco, sprinkled
edges, \$2.50. William Clark, agent for
the W. I. Islands. 36 2w

PEOPLE'S LINE OF OMNIBUSES.

JAMES DODD, - - - Proprietor.
NUUANU VALLEY ROUTE:
Up trips: Leave W. G. Irwin & Co's
A. M.—6:15, 7:00, 8:00, 10:30.
P. M.—12:05, 2:00, 4:00, 5:10, 6:50, 9:00
Down trips: Leave Res. of J. H. Paty.
A. M.—6:30, 7:30, 8:30, 11:00.
P. M.—12:45, 2:30, 4:40, 5:40, 7:00, 9:20

SUNDAY TIME TABLE.
Up trips: Leave W. G. Irwin & Co's.
A. M.—9:00, 10:00.
P. M.—12:15, 2:00, 4:00, 6:30, 8:15.
Down trips: Leave Res. of J. H. Paty.
A. M.—9:30, 10:30.
P. M.—12:45, 2:30, 4:30, 7:10, 9:10.

BERETANIA & PUNAHOU ST. ROUTE
Up trips: Leave W. G. Irwin & Co's.
A. M.—6:10, 6:50, 7:45, 10:00.
P. M.—12:05, 2:00, 4:15, 5:10, 6:45, 10:
Down trips: Leave Punahou street.
A. M.—6:30, 7:30, 8:20, 10:30.
P. M.—12:45, 2:30, 4:30, 5:40, 7:10, 10:20

SUNDAY TIME TABLE.
Leave the Stables, cor. Fort and Hotel
sts., for Punahou Street, Long Branch
Baths, fare 50 cts., baths included:
A. M.—6:30 to Waikiki; 9:15, 10:15,
and 12:15.
P. M.—2:00, 4:00 to Waikiki; 7:00,
and 8:30.

Down trips: Leave Punahou street.
A. M.—8:00, 9:30, 10:30.
P. M.—12:40, 2:30, 5:30, 7:15, 9:05.

WAIKIKI ROUTE:
Out trips: Leave W. G. Irwin & Co's
A. M.—7:45, 10:00.
P. M.—2:00, 5:05.
Down trips: Leave Waikiki.
A. M.—8:10, 10:35.
P. M.—2:50, 5:35.

Sunday trips: Leave Stables.
A. M.—6:30.
P. M.—2:00, 4:00.

Leave Waikiki:
A. M.—7:30.
P. M.—2:40, 5:00.

The Long Branch Baths will be the terminus.

Commission Merchants.
Claus Spreckels. Wm. G. Irwin.
W. M. G. IRWIN & COMPANY,
Sugar Factors and Commission
Agents, Honolulu. 1

G. W. MACFARLANE & CO.,
Importers and Commission Merchants. Robinson's Fire-Proof Building, Queen street, Honolulu. 1

H. HACKFELD & COMPANY,
General Commission Agents,
Queen street, Honolulu. 1

H. A. P. Carter. P. C. Jones, Jr.
C. BREWER & CO.,
Shipping and Commission Merchants
Queen street, Honolulu. 1

ED. HOFFSCHLAEGER & CO.,
Importers and Commission Merchants, Honolulu, Oahu. 1

JOHN T. WATERHOUSE,
Importer and Dealer in General
Merchandise, Queen st., Honolulu. 1

C. AFONG, IMPORTER,
Wholesale and Retail Dealer in
General Merchandise and China goods,
in the Fire-proof store, corner King and
Nuuanu streets. 1

M. S. GRINBAUM & CO.,
Importers of General Merchandise and Commission Merchants,
Honolulu. 1

M. S. GRINBAUM & CO.,
Commission Merchants, 214
California street, San Francisco, Cal. 1

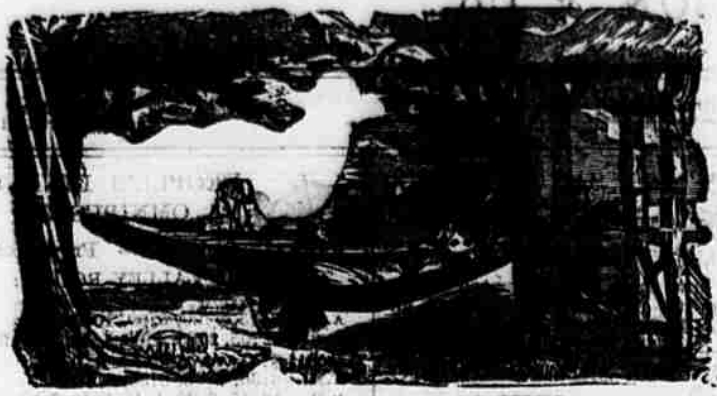
F. T. LENEHAN & CO.,
Importers and Commission Merchants,
Nuuanu st., Honolulu. 1

S. N. Castle. J. B. Atherton.
CASTLE & COOKE,
Shipping and Commission Merchants. Importers and Dealers in General Merchandise, No. 80 King street, Honolulu. 1

CHARLES T. GULICK,
NOTARY PUBLIC,
Agent to take Acknowledgments to
Labor Contracts,
AND GENERAL BUSINESS AGENT.
Office, in Makee's Block, corner Queen
and Kaahumanu streets, Honolulu. 21

J. U. KAWAINUI, AGENT TO
take Acknowledgments to Labor
Contracts for the District of Kona. Office
in the New "Gazette" Building. 1

DILLINGHAM & CO.
Importers and Dealers in
Hardware, Agricultural Implements,
House Furnishing Goods, Paints, Oils, Varnishes, &c.



Hammocks from \$2 to \$7.50.

We have lately received several invoices of

Plows, made specially for the Island trade,

by the Moline Plow Co., and are still able to furnish all styles and sizes, with extra parts, at lowest prices.

In addition to our regular stock, which is more complete than ever before, we have received many NOVELTIES to which we invite the attention of buyers.

A Fine Line of Revolvers

At the Lowest Prices ever offered in the market.

25 DILLINGHAM & CO., Fort Street.

THE VERDICT OF GUILTY!

All Ladies having visited the

CALIFORNIA ONE PRICE BAZAR,

During the last week have found us guilty of

Selling Goods at Slaughtering Prices!

In addition to our large and new stock of Staple Dry Goods, we have opened one of the most elegant collections of

Shoes! Shoes! Shoes!

Ever placed before the Ladies of this city, surpassing in quality and price

A full line of the

"Sarah Brenhardt Sandals."

GIVE US A CALL.

CHAS. J. FISHEL,

Corner of Fort and Hotel Sts.

44

New Zealand Potatoes!
Ex stmr. Zealandia.

A FINE LOT, new and in fine order.
For sale by
March 15. (37 1 w) BOLLES & Co.

Eucalyptus Seed.

A FRESH LOT just received, ex Zealandia, for sale by
86 A. S. CLEGHORN & Co.



HONOLULU ICE MANUFACTORY.
Ice delivered to all parts of the City. Shipping supplied in quantities to suit. Telephone, No. 58. Office at Wilder & Co.'s. 18

G. H. ROBERTSON,
Drayman—best teams in town. Telephone No. 65. 15

ALL PERSONS SEEKING
Employment, and all parties either in Honolulu or at any of the Islands in the Group in want of Employees will please make their wants known to the undersigned, who will do all in their power to fill their orders.
P. C. Jones, Jr., J. B. Atherton, B. E. Dillingham, Employment Committee Y. M. C. A. 1

CONFECTIONERY,
P. McInerney, No. 71 Fort st., above Hotel street, keeps always on hand an assortment of the best French and California manufactured confectionery, which he offers for sale to the trade or at retail, at reduced prices; also the best brands of choice cigars to be had in the market. The best ice cream, soda water and cordials—Call and try them. 1

HONOLULU IRON
Works Co. Steam engines, sugar mills, boilers, coolers, iron, brass and lead castings; machinery of every description made to order. Particular attention paid to ship's blacksmithing. Job work executed on short notice. 1

FOR SALE—A PIECE OF LAND
at Waikeiki, near the seashore, containing 5 7-10 acres surrounded by a new fence, for sale as a whole or in parts.
TO LET—THE PREMISES IN
Nuuanu Avenue, lately occupied by F. A. Harnden. Inquire of
20 A. JAEGER.

Drink Palmer & Co.'s
GINGER ALE
75 cents per dozen. 43

HONOLULU CLOTHING EMPORIUM
OF
A. M. MELLIS,
Honolulu.
104 Fort Street,

MRS. MELLIS'
DRESS-MAKING
ESTABLISHMENT
26 On the Premises.

WILDER & Co., Dealers in
Lumber, Paints, Oils, Nails, Salt and Building Materials of every kind, cor. Fort and Queen sts., Honolulu. 1

Robert Lowers, C. M. Cooke.
LEWERS & COOKE,
(successors to Lowers & Dickson.)
Importers and Dealers in Lumber and all kinds of Building Materials, Fort street, Honolulu. 1

Affairs in the Sandwich Islands.

SAN FRANCISCO, Feb. 18.—The *Alta California* publishes a letter from the Chamber of Commerce of Honolulu to W. L. Green, Minister of Foreign Affairs, calling his attention to articles in certain American newspapers charging the Kingdom with maintaining the slave labor system and merchants with violation of the Reciprocity Treaty. The Chamber denies these charges, and asks that an investigation be made by United States officers, either those present in Honolulu or specially appointed, and pledges itself to give every facility for such an investigation. A letter from Mr. Green in reply is published, saying that the injustice and extravagance of the charges are so notorious as to hardly merit contradiction, but that the Government will grant every facility for an investigation, and will so instruct its Minister at Washington, although it cannot, of course, recognize officially any foreign official investigation into the domestic affairs of the Kingdom. A letter from Mr. Green to the Hon. J. M. Comly, United States Minister, is also given, asking his opinion as to whether foreign sugars have been imported into the island and shipped to the United States as Sandwich Island sugars. The reply of Mr. Comly states that it is his belief that no such infraction of the treaty has occurred, and gives at great length the reasons for his belief.—*New York Times.*

BROWN & CO., Importers and
Dealers in Ales, Wines and Spirits,
No. 9 Merchant st., Honolulu. 12

BROWN & PHILLIPS, Practical
Plumbers, Gas Fitters and Copper-
smiths, No. 15 Nuuanu st., Honolulu.
House and Ship Job Work promptly
executed. 17

J. E. WISEMAN, 27 Merchant st.,
Real Estate Broker, Employment
Agent and General Office Business.
Telephone, No. 172. 16

JOHN A. HASSINGER,
Agent to take Acknowledgments to
Contracts for Labor. Interior Office,
Honolulu. 1

THE CELEBRATED
Lilikalani Manifesto!
OF THE
ELECTION CAMPAIGN
of February, 1882,
Translated by H. L. Sheldon; published
by T. G. Thurum.
Price, : : 25 cents.
May be had at J. W. Robertson & Co's.
40

WANTED—Small Cottage, furnished
or unfurnished, with paddock at-
tached preferred. Address stating full
particulars to X Y Z, care of
88 J. W. ROBERTSON & Co.

FOUND, on Liliha street, a pair of
Sleeve Studs, which the owner can
have by proving property and
paying the sum of one dollar.
31 J. W. ROBERTSON & Co.

LOST—FROM THE PREMISES
of the Royal Hotel, a Canary Bird,
with a black spotted top-knot. The
finder will be reasonably rewarded on
returning it to the Royal Hotel. 19

NOTICE TO SMOKERS.
JUST RECEIVED, per S.S. City of
New York, a fresh consignment of
Durham long cut Smoking Tobacco,
2oz. pkgs;
Durham granulated Smoking To-
bacco, 1-4 lb. bags;
Durham Cigarettes, 10s and 20s.
These goods are absolutely pure and
guaranteed.
43 1 w A. S. CLEGHORN & Co.

UNION FEED COMPANY, A. W.
BUSH, Manager. See advertise-
ment on other page. 28

Redwood and Cedar
POSTS

7 FEET LONG, for sale in any quan-
tities, by
34 ALLEN & ROBINSON.

FOR SALE, a black saddle pony,
beautifully trained, perfectly quiet
with children, will follow like a dog, and
goes well and easy. For particulars ap-
ply to J. W. Robertson & Co. 37

COIN WALLETS!
Something new, for sale by
J. W. ROBERTSON & Co.

M. M'INERNEY,

Importer and Dealer in

Clothing, Boots and Shoes, Perfumery,

Toilet Articles, Pocket Cutlery, etc., etc.

Gents' Furnishing Goods, Trunks, Valises,

Traveling Bags, Watches, Diamonds, Jewelry and Silver-ware, etc.

Northeast Corner of Fort and Merchant sts., Honolulu.

AT THIS WELL KNOWN ESTABLISHMENT

Can always be found

Fall Lines of Superior Furnishing Goods,

Men's and Boy's Fine White Shirts, Men's Oxford Shirts,
Men's and Boy's Fine Percale and Gingham Shirts, Men's Regatta Shirts,
Men's Wool Over Shirts, with or without colors,
Boy's Wool Over Shirts, Men's half Silk and Cashmere Over Shirts,
Men's Bathing Suits, Men's Collars and Cuffs,
Boy's Collars and Cuffs, Men's Linen Handkerchiefs,
Men's Hemmed-stitched Hkfs., Ladies' Hemmed-stitched Hkfs.
March 20th. (32) M. McINERNEY.

Bruce Cartwright.

W. S. Luce.

A. W. Bush.

Union Feed Company

—CARRIES THE—

Largest and Best Stock

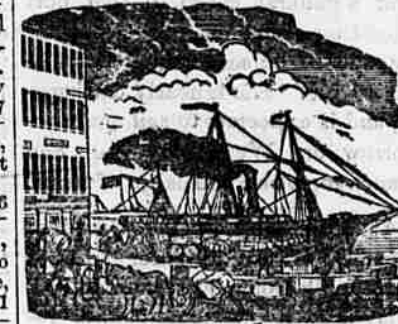
—OF—

HAY, GRAIN AND FEED

Of all description, and guarantees to keep a full supply
constantly on hand.

25

Send orders to A. W. BUSH, Fort St., Honolulu.



FINE PIANOS

Shipped direct to

GEO. F. WELLS'

MUSIC STORE.

Call and Select one for yourself,

And avoid the risk and expense from ordering abroad.

At 107 Fort Street you will find the

Largest Stock of Musical Merchandise

Ever seen in this Kingdom, including the

**Steinway Pianos, Mathushek Pianos,
Weber Pianos, Fischer Pianos,
Westermeyer Pianos, and
Woodward & Brown Pianos.**

Also, a large stock of ORGANS, ranging from \$45 to \$250.

GEO. F. WELLS,

107 Fort Street, Honolulu.

THE BEST SUSPENDER
WORN is the
ARGOSY SUSPENDER,



For sale at
A. W. RICHARDSON'S.

"PREADAMITES, OR A DE-
MONSTRATION of the ex-
istence of men before Adam," with
charts and illustrations, by Alex.
Winchell, LL.D. Bound in cloth,
Price \$3.75. For sale by
J. W. ROBERTSON & Co.

TELEPHONE NO. 179 connects
with Wells' New Music Store!
If you want your Pianos tuned, ring
us up! 13

GEORGE LUCAS,
Contractor
and Builder,

Honolulu Steam Planing Mills, Espla-
nade, Honolulu.

Manufactures all kinds of Mouldings,
Brackets, Window Frames, Blinds,
Sashes, Doors, and all kinds of Wood-
work finish. Turned, Scroll and Band
Sawing. All kinds of Sawing and Plan-
ing, Mortising and Tenoning.
Orders promptly attended to and work
guaranteed. Orders from the other Is-
lands solicited. 21

FIREMAN'S FUND INSUR-
ANCE COMPANY of San Fran-
cisco. Fire and Marine. Cash capital
Gold, \$5,000,000. Insuring risks a spe-
cialty. Detached dwellings and contents
insured for a period of 3 years, for two
premiums in advance. By writing small
lines or carefully selected risks, well
distributed, offers indemnity second to
none. Losses promptly adjusted.
BISHOP & Co., Agents, for the
Hawaiian Islands. 10

HOLLISTER & Co., Wholesale
and Retail Druggists, and Import-
ers of Fine Tobaccos and Cigars, and
Manufacturers of Soda Water, Ginger
Ale, &c., &c. 13

PIONEER STEAM CANDY
Manufacture and Bakery. F.
Horn, Practical Confectioner, Pastry
Cook and Baker, No. 71 Hotel street, be-
tween Nuuanu and Fort. 1