

HONOLULU ACADEMY OF ARTS

NEWS BULLETIN AND CALENDAR

VOLUME VI

FEBRUARY, 1944

No. 2

FROM CLUBS TO BREN GUNS

Weapons used by the warring peoples of the Pacific area—from ancient times down to the present—will form the exhibition that opens in Galleries I and II on February 1 and which will probably exceed in popular appeal all other war-time Academy shows.

In the long span of history—from the time when clubs and stones served as implements against the enemy, to our own day—there lie centuries of development in the progressive efficiency of weapons. Between the time of the primitive missile and the machine-made weapons of today there occurred periods when native craftsmen in many countries applied their greatest ingenuity and skill to the creation of beautiful designs with which to decorate the swords, daggers and firearms of their countrymen.

The Academy is fortunate in possessing the C. J. Hedemann collection of ancient weapons of the Pacific area, which illustrate the consummate artistry of the early craftsman. A selected number of these weapons will be included in the February show. Of added interest will be a section of modern weapons lent to the Academy through the courtesy of the United States Army Ordnance Department of the Central Pacific Area. Thus it will be that within the confines of two galleries one may see evidences of the change in the method of war-making, as it occurred in the Pacific—from the use of poisoned arrows by the Moros of the Philippine Islands, to that of the deadly accurate rifles of 1944 employed by both Japan and the Allies.

Chosen to represent the weapons of an-

(Continued on Page 2)

HONOLULU ART SOCIETY

POST-WAR HONOLULU

Honolulu, like many other American cities, has in the short space of two years suffered the growing pains of several ordinary decades. Hastily built houses—many of them ugly in the extreme—overcrowded public buildings, and inadequate recreational facilities are the result of the greatly increased demands of a war-time population. Already post-war conditions loom as a major problem to be solved by the permanent residents of the Islands, and with this in view, a Post-War Planning Committee was organized by the Chamber of Commerce many months ago. Working with this Committee and with a group of interested local architects, the Honolulu Art Society has outlined a far-reaching program designed to clarify certain phases of the problem and to make plans for order and beauty in the city of the future.

The series of talks and discussions arranged by the Art Society's Study Interests Committee, of which Mrs. Colin G. Herrick is chairman, will cover a period of ten months, the meetings to be held at seven-thirty on one Thursday evening of each month. The first meeting is scheduled for February 24. Mr. Philip Clarke Fisk of the Federal Housing Authority is chairman of the entire project.

Since the supper given for members of the Society on the occasion of the last Annual Meeting met with such enthusiastic approval, it has been decided to arrange a supper to precede each of the monthly meetings. However, these will only be continued after the February meeting if

HONOLULU ACADEMY OF ARTS

C. M. Cooke, Jr., *President*

Honolulu, Hawaii

C. H. Cooke, *Treasurer*

there is sufficient demand for them. The first will be held at six o'clock on February 24 and reservations, accompanied by a check for \$1.50 per person, payable to the Honolulu Art Society, should be sent to the office of the Society not later than Tuesday afternoon, February 22. Early reservations will be appreciated.

An idea of the general scope of the extensive program planned for this series may be seen in the following outline:

February 24—I. *Honolulu Past and Present*

Introduction—Dr. Arthur L. Dean, chairman of Post-War Planning Committee of the Honolulu Chamber of Commerce.

Honolulu Architecture—Kenneth W. Roehrig, architect with C. W. Dickey Associates. Slides and original drawings and plans will be shown. (An exhibition—including prints and photographs of Honolulu from the 1860's onwards—will be arranged for this meeting.)

March 23—II. *Slums and Blighted Areas*. Speakers: (Architect and Social Worker.)

April 20—III. *The Master Plan*—George Houghtailing, Principal Engineer for the City Planning Commission.

May 18—IV. *The Master Plan*—Commercial, Industrial and Residential Areas.

June 15—V. *The Master Plan*—

Transportation and traffic.

Mass transportation (bus lines and railway).

Commercial transportation (trucking).

Private transportation (autos), helicopters.

Airways and airports.

Waterways and harbors.

July 13—VI. *The Master Plan*—

Public memorials (an open forum).

August 17—VII. *The Master Plan*—

Public and semi-public buildings.

Civic center, churches, museums, schools, theaters.

September 14—VIII. *The Master Plan*—

Recreation centers.

Beaches, parks and playgrounds.

October 12—IX. *The Master Plan*—

Maintenance and service.

Water, sewer and garbage.

November 16—X. *Public Works Program*—of the City and County of Honolulu.

Public works program of the Territory of Hawaii. Summary.

CHINESE ART

An exhibition of Chinese art—consisting of paintings, sculpture, bronzes, etc.—borrowed from members of the Honolulu

Art Society, is planned for April. If you have things which you would like to lend for this show, will you please advise Mrs. Arthur E. Restarick of this fact as soon as possible?

NEW MEMBERS

New members who have joined the Society since January 1 are as follows:

Annual: Mr. Louis Bouclin, Mr. Donald Lewis Emblen, Mr. Robert M. Jones, Mrs. Ruth E. Klein, Ensign George Stone Phalen, Miss Alice Grey Welsh and Mrs. George J. Wimberly.

Contributing: Mr. Hjalmer Ludwig H. Kinberg, Miss Helen Poindexter, Mr. and Mrs. James B. Richardson and Mr. George J. Wimberly.

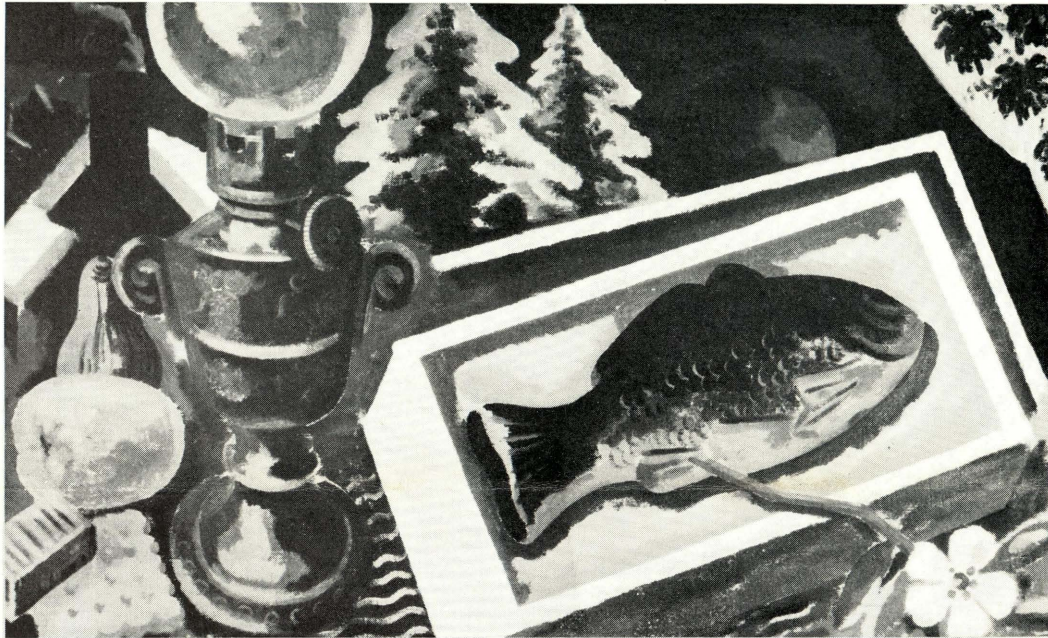
FROM CLUBS TO BREN GUNS

(Continued from Page 1)

cient Pacific cultures will be carved wooden clubs from New Zealand, polished spears from Hawaii, shields from Australia, a disc-shaped Moro shield decorated with incised geometric designs, an iron Japanese battle hat and a Japanese suit of armor, Japanese swords and knives with elaborately chased hilts and sheaves, Chinese beheading swords and ceremonial swords with jade hilts and inlaid gold ornamentation.

In Gallery I where modern weapons will be displayed, the exhibits will be more spectacular and will serve to contrast finely machined implements of war with those in Gallery II which bear the stamp of the individual craftsman. Cannons, with rounds of ammunition, a thirty calibre machine gun, Browning rifles, pistols, and even a Jeep with machine gun mount will be on view. Civilians will be particularly fascinated by the display of captured Japanese weapons which will include light and heavy machine guns, rifles, a knee mortar and a Japanese copy of a British Bren gun. An authentic British model of the same gun will likewise be shown.

The print exhibition in Gallery III will likewise feature the war theme in a series of sixteen large copper engravings depicting the *Conquests of the Emperor Chien Lung* in the eighteenth century.



STILL LIFE

Gift of Donald Angus

GEORGE GROSZ

Apart from their unusual size (20½" x 35"), these prints are unique in that they were engraved in Paris, after original drawings made at the command of the Chinese Emperor by four Jesuit Brothers attached to Chinese Missions in Peking. Two other engravings of the same subject, made by eighteenth century Chinese artists, are also shown. A comprehensive review of these eighteen prints, written by Dr. S. Y. Ch'en, formerly Professor of Chinese History at the University of Hawaii, appeared in the Academy's *Annual Bulletin*, Vol. II, 1940.

SIXTEENTH ANNUAL

The Sixteenth Annual Jury Exhibition of the Association of Honolulu Artists—the third since the beginning of war—opens on February 29 in Galleries I, II and XIII. It closes on March 12. A reception, honoring the exhibiting artists, will be held on Thursday evening, March 2, at seven-thirty o'clock, at which time the various awards will be announced. It is hoped that a special program of Hawaiian dances and music may be arranged for this occasion, giving to it the color and gaiety of a pre-war opening.

THE WAR IN MOVIES

A series of dramatic sound-films, concerning various aspects of the war, has been secured by the Academy and will be shown at seven-thirty o'clock on Thursday evenings during February in connection with the exhibition of weapons on view in two main galleries.

The first film, *The World at War*, to be shown on February 3 through the courtesy of the U. S. Army Signal Corps, deals with events of the past ten years which led up to the present conflict—the establishing of Manchukuo by the Japanese, the development of German power in Europe, etc.

The February 10 program will be *Divide and Conquer*, which includes portions of a captured German film recording the ruthless invasion of Poland, the Lowlands and France. This is being shown through the courtesy of the U. S. Army's Overseas Motion Picture Service.

The third picture, *The Battle of Russia*, scheduled for February 17, has also been lent by the armed forces. It gives a vivid picture of the magnificent spirit and power of the Russian people in the present conflict.

PEAK IN ATTENDANCE

It is with gratitude, not unmixed with a sprinkling of justifiable pride, that the Academy announces its attendance figures for 1943 in the *Annual Report* recently presented to the Trustees. In spite of the difficulties of obtaining mainland exhibitions and of the absence from the Islands of many musicians who formerly gave recitals here, the number of people visiting the Academy exceeded one hundred and one thousand. It is especially interesting to record that this increase in attendance over previous years is largely due to the ever-growing number of service men who wander into the Museum to visit exhibitions, to hear special recitals or to read and rest in the Library or on the Service Men's Lanai.

FEBRUARY CALENDAR

ACTIVITIES

FEBRUARY

- 1—2:00 p.m.—Public phonograph concert.†
- 3—7:30 p.m.—Sound Movie—"The World at War."
- 4—2:30 p.m.—Story Hour for Children, conducted by Mrs. Gerald Corbett.*
- 6—3:00 p.m.—Recorded program of the Gilbert and Sullivan Comic Opera, "The Mikado."

- 9—9:30 a.m.—Community Singing for Children, conducted by Fritz Hart.
- 10—7:30 p.m.—Sound Movie—"Divide and Conquer."
- 13—2:30 p.m.—Recorded program of the Gilbert and Sullivan Comic Opera, "The Yeomen of the Guard."
- 17—7:30 p.m.—Sound Movie—"The Battle of Russia."
- 20—3:00 p.m.—Symphony talk by Fritz Hart.
- 23—9:30 a.m.—Community Singing for Children, conducted by Fritz Hart.

EXHIBITIONS

- To Feb. 6—Main Collection Acquisitions for 1943. Gallery 8.
- To Feb. 13—Fall Term Art Work by Children in Creative Art Classes. Educational Wing.
- To Feb. 27—Stone Age Polynesian Art. Gallery 13.
- To indefinite date—Missionaries and Monarchs in Hawaii. Gallery 14.
- To indefinite date—Sculpture in Review. Gallery 6.
- To indefinite date—Painting Without Prejudice. Gallery 4.
- 1 to Feb. 27—Conquests of the Emperor Chien Lung, in Prints. Gallery 3.
- 1 to Feb. 27—Implements of War in the Pacific—Ancient and Modern. Galleries 1 and 2.
- 29 to Mar. 12—Association of Honolulu Artists' Sixteenth Annual Jury Show. Galleries 1, 2 and 13.

† One of a series held on Tuesdays, Thursdays and Saturdays of each week. The Saturday afternoon program is repeated on Sundays at the same hour.

* One of a series held every Friday at 2:30 p.m.

HOURS OF ADMISSION—Free at all times: Open Tuesday, Wednesday, Friday and Saturday from 10 a.m. to 4:30 p.m. Thursdays from 10 a.m. to 9 p.m. Sunday from 2 to 5 p.m. **EDUCATIONAL DEPARTMENT**—The lending collection of objects, pictures, slides and phonograph records is available to all teachers. Schools wishing appointments for visiting the Academy for talks by staff members may make them by calling the Educational Office. **PRINT ROOM AND REFERENCE LIBRARY**—Open during Academy hours. **THE HONOLULU ART SOCIETY**, affiliated with the Academy, has an office in the building. Executive Secretary, Mrs. Arthur E. Restarick.

EDGAR CRAIG SCHENCK, *Director.*

MARVELL ALLISON HART, *Editor.*

HONOLULU ACADEMY OF ARTS

900 SOUTH BERETANIA STREET
HONOLULU 34, HAWAII

| |
|--|
| Sec. 562, P.L. & R. U. S. POSTAGE PAID Honolulu, T. H. Permit No. 119 |
|--|