

Supplemental Information

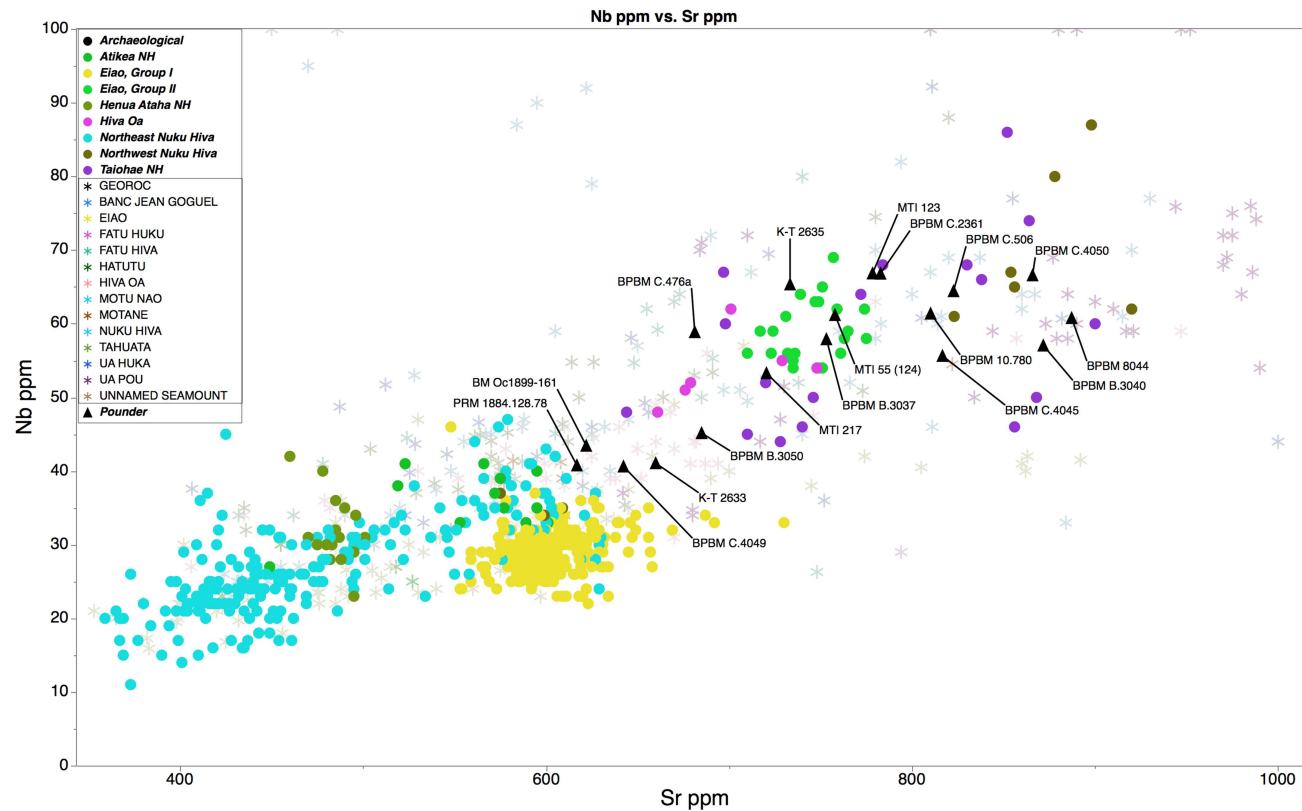


Figure S1: Bivariate scatter plot Strontium (Sr ppm) and Niobium (Nb ppm) with the archaeological (coloured circles), GEOROC data (faded colored stars) and the Tiki-headed pounders (black triangles). The Tiki-headed pounders have higher Sr and Nb values and group with the Eiao Group II, Hiva Oa, Henua Ataha, and Taiohae (Nuku Hiva) archaeological reference samples (McAlister and Allen 2017).

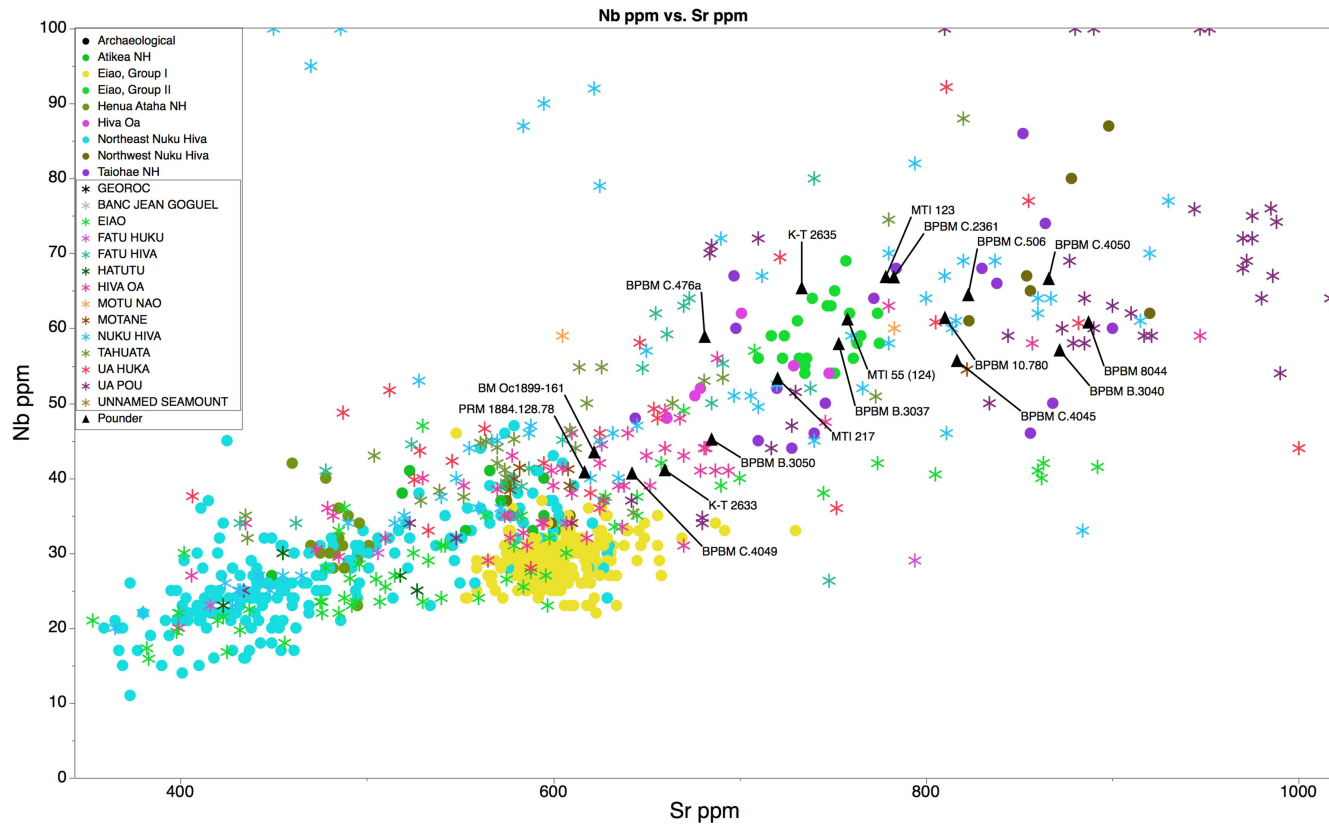


Figure S2: Bivariate scatter plot Strontium (Sr ppm) and Niobium (Nb ppm) with the archaeological (colored circles), GEOROC data (colored stars) and the Tiki-headed pounders (black triangles). The GEOROC data form less well-defined island clusters.

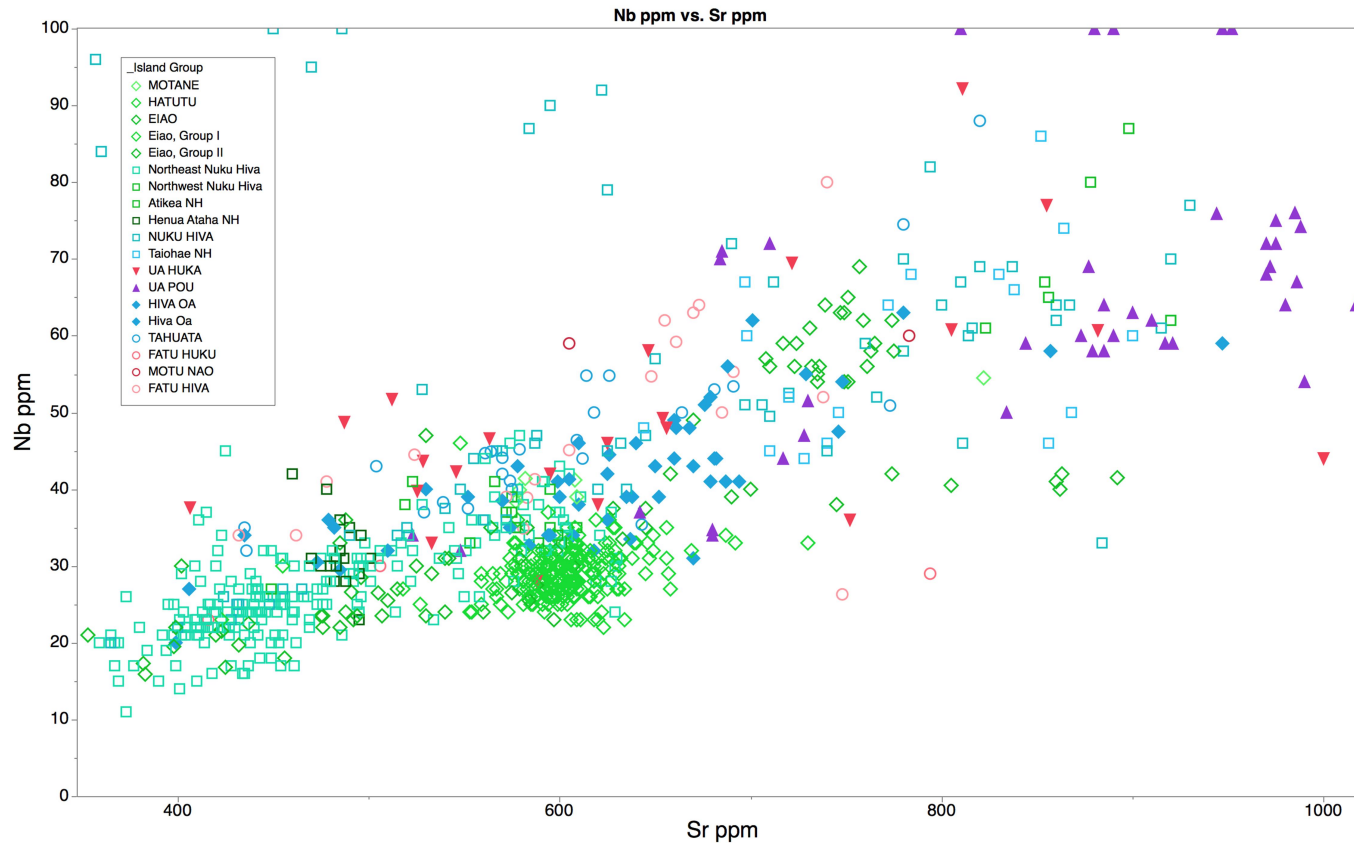


Figure S3: Bivariate scatter plot Strontium (Sr ppm) and Niobium (Nb ppm) with the archaeological GEOROC data with Ua Huka, Ua Pou, and Hiva Oa emphasized (solid red, purple and blue shapes).