

HAWAIIAN STAR

Telephone 365 Star Business Office

SECOND EDITION

VOL. XVII.

TEN PAGES

HONOLULU, HAWAII, MONDAY, DECEMBER 27, 1908.

TEN PAGES.

NO. 5531

CHINA RAISES ANOTHER ISSUE

\$500,000 LOAN TO COMPLETE WATER WORKS

SUPERINTENDENT CAMPBELL WILL ASK THE LEGISLATURE FOR BOND ISSUE OF HALF A MILLION DOLLARS TO COMPLETE WATER WORKS SYSTEM—IN THE MEANTIME THE NUUANU DAM AND HIGH LIFT PUMP WILL IMPROVE CONDITIONS.

First reassuring a Star reporter, in answer to a question, on the matter of clearing the bed of Nuuanu reservoir No. 4, or the big dam, notwithstanding the abruptness of the recent flood, Marston Campbell, Superintendent of Public Works, this morning gave a comprehensive statement of the status of the Honolulu water problem. According to him the completion of the dam means a solution of the supply question but not of the puzzle of distribution. Campbell will ask the next Legislature to authorize a bond issue of half a million dollars to pipe the town properly. This amount of additional debt he has been convinced the revenues of the water works can stand.

"The storm came a little earlier than was of advantage to the work in the waste tunnel of the dam. Yes, the waste pipe is ample for getting rid of the water as soon as necessary for the work of clearing. The clearing will begin next month. There is seven and a half acres of the bed cleared now. Thirty-five acres is yet to be cleared under the present contract."

Asked regarding the wash from one and a quarter miles of the Pali road above the level of the dam, Mr. Campbell said:

"The wash from the Pali road has

always gone into No. 1, 2 and 3 reservoirs. I have always contended that we could use the turbid water for power to pump artesian water and as the demand increased a filtration plant could be put in to clarify the surface water. During the construction of the dam it has been demonstrated that the estimated supply from this reservoir will be greatly exceeded.

"The estimate was 7,800,000 gallons a day, but it will unquestionably be over 8,000,000 gallons. That eight million gallons under the available head we have can be converted into power that will pump eight million gallons to a head of 300 feet. Then, as the demand for water increases a filtration plant can be put in to filter the eight million gallons of surface water, making the efficiency of Nuuanu dam sixteen million gallons a day, or an excess of 2,500,000 gallons over and above the present consumption excluding the present artesian supply. So that with the present artesian system we will get a tremendous supply of water and at comparatively little over the present rate of operating expenses. Even with all of this, however, the government should not lose sight of the importance of securing all of the available sources of water supply in and around the city of Honolulu."

MONGOLIA'S BIG CROWD

The S. S. Mongolia from San Francisco docked about 12:15 p. m. She arrived off port much earlier in the morning but was delayed in docking owing to the inability of the boarding officers to go out to her on account of the heavy weather outside.

The steamer has 554 tons of cargo for here and 596 sacks of mail. She brought 150 cabin passengers for here, 21 second class and 2 Asiatics. She has 81 through cabin passengers, 17 second class and 631 steerage.

A fine trip was experienced until yesterday when the vessel encountered a nasty sea.

The Mongolia will leave for the

Orient at 5 p. m. today, cutting out Shanghai this trip and going to Manila.

Among the passengers for Honolulu were:

Major-General Barry, U. S. A., commanding the department of California which included the Hawaiian Islands, who will inspect the military establishment in and around Honolulu.

A. W. T. Bottomley of the firm of Bishop & Co.

Mrs. J. B. Castle, Mr. and Mrs. Harold Dillingham, Mrs. Alexander Isenberg and child, Miss Alice Macfarlane, Mr. and Mrs. L. L. McCandless and Miss Elizabeth McCandless.

Edward Pollitz, the financier.

Miss Constance Restarick, Mr. and Mrs. George Richardson and child, R. H. Trent and D. L. Withington.

HIT BLIND MAN

Uua was in police court this morning sentenced to fifteen days in jail for striking a blind man. Uua was intoxicated and it is said the blind man was also drinking. Uua probably thought the blind Hawaiian would be unable to identify him, but the case was proved nevertheless, witness being plenty.

LADIES AND MISSES COATS.

Ladies and misses coats in fine assortment at Sachs Dry Goods' Co. These are the 1910 styles, made of new materials, and very handsome. Call and see the display.

NO EXPERIMENT.

You are not experimenting when you buy Chamberlain's Cough Remedy. You are getting a preparation that has an established reputation for good backed by a third of a century's constant use. It is famous for its prompt cures of fevers, colds, croup and whooping cough. For sale by all dealers, Benson, Smith & Co., agents for Hawaii.

Fine Job Printing, Star Office.

FREAR PAYING A FINE

Acting Governor Mott-Smith this morning received a cablegram from a Governor Frear stating that he would steam, but it is the only way he start home tomorrow on the Tenyo can get home.

MILITARY CHIEFS HERE TO INSPECT ARMY PROGRESS

United States Army chiefs, here for duty of a special nature, are numerous among arrivals this afternoon in the P. M. S. S. Mongolia.

General T. H. Barry, U. S. S. A., commanding the Department of California, in which Hawaii is included, is here to make an inspection of all Army matters.

Colonel John Biddle, U. S. A., here several times before, is on his annual inspection of works, purposing to take in all military operations. He and General Barry will, to a considerable extent, make their inspections together and their visit means that the War Department is very much in earnest in regard to military advancement, and that the making of this island the strongest fortified center in the Pacific ocean is Uncle Sam's firm resolve. Colonel W. L. Finley, U. S. A., also arrived. He is Adjutant General of the Department of California. Other United States Army officers arriving are: Captain F. K. and Major J. P. Haines. Colonel Biddle is Chief of Engineers, U. S. A.

Major Winslow, U. S. A., the local chief of Engineers, met the distinguished military men at the Hackfeld wharf.

General Barry will investigate the Leilehua region to determine where the new brigade post is to be built. This post will be built to accommodate 4,000 men.

"BOTH BLUFFERS," SAYS M'CANDLESS

"Link" McCandless, who today re-

turned from the mainland States in the S. S. Mongolia, summing up the land matter dispute of recent sensation, in which Governor Frear and Delegate Kuhio expressed themselves in no mild terms concerning each other, gives it as his opinion that both gentlemen are wrong on the land ques-

tion.

"I am afraid they are both bluffers," said Mr. McCandless, "and I feel they have always been too far removed from the people's interests on the land question."

"Link" met the Governor in Washington, but at that time had not heard of the exchange of the "shorter and uglier" word between Frear and Kuhio.

STORMS ALONG COAST.

(Special Cable to The Star).

ST. JOHNS, N. F., Dec. 27.—Great damage has been done along the coast by heavy storms.

MARINES TO BLUEFIELDS

(Special Cable to The Star).

COLON, Dec. 27.—U. S. S. Prairie has sailed for Bluefields with U. S. Marines.

HAVE YOUR TYPEWRITERS CASH REGISTERS AND ADDING MACHINES REPAIRED BY THE OFFICE SUPPLY CO. THEY HAVE A COMPLETE REPAIR DEPARTMENT FOR THIS WORK.

Miss Johnson's curio store on Fort street, opposite the Club stables, was robbed Christmas eve, \$150 worth of jewelry being taken.

TWO BANANA BOATS.

(Special Cable to The Star).

SEATTLE, Dec. 27.—Schubach & Hamilton have purchased the steamships Yale and Harvard now in the Atlantic.

SEATTLE GETS THE TURBINES

(Special Cable to The Star).

SEATTLE, Dec. 27.—The Jepsen line has put on two new steamships for the Mexican banana trade.

PEKIN PROTESTS TO JAPANESE

(Associated Press Cable to The Star.)

PEKIN, Dec. 27.—The Chinese government has protested against the Japanese violation of the terms of the Manchuria telegraph convention.

TWELVE DROWNED IN SHIPWRECK

(Associated Press Cable to The Star.)

HULL, Mass., Dec. 27.—The five-masted sailing vessel Davis Palmer has been wrecked on Harding's Ledge, twelve of her crew being drowned.

ZELAYA VISITS MEXICO CITY

SALINA CRUZ, Dec. 27.—Former President Zelaya of Nicaragua states that he will go to the City of Mexico to remain a month.

COMMITTEE OF 200 FOR CANAL FAIR

SAN FRANCISCO, Dec. 27.—A committee of two hundred of the leading business men of this city has been formed for the purpose of promoting a great world's fair to celebrate the opening of the Panama canal in 1915.

EIGHTEEN PERISH IN BIG BLIZZARD

NEW YORK, Dec. 27.—Eighteen persons have perished in a blizzard affecting this city and vicinity.

JACKSON, Miss., Dec. 27.—James Gordon has been appointed United States senator.

NEW RICE MILL

The K. Yamamoto Rice Mill is the largest as well as the finest in the Islands. All the machinery is of the very latest pattern. The famous Tengu Rice is cleaned at this mill. With the large cleaning capacity they are able to handle considerable outside particular work which they guarantee.

Fine Job Printing, Star Office.

ROYAL BAKING POWDER

Absolutely Pure

The only baking powder made with Royal Grape Cream of Tartar

No Alum, No Lime Phosphate



sole. Flap Jack Last. Soft new kid Blucher. Light

MANUFACTURERS SHOE CO., LTD. 1051 Fort Street, Telephone 282.

FOR SALE

A 9 room house and 60,000 square feet of cleared land, fruit trees, chicken run, etc.

AN ADMIRABLE HOMESITE

\$4000.00

No encumbrances.

Inquire Real Estate Department

Hawaiian Trust Co., Ltd. 923 Fort Street.

Oceanic Steamship Company Alameda Schedule

LEAVE S. F.	ARRIVE HON.	LEAVE HON.	ARRIVE S. F.
DEC. 11.....	DEC. 17.....	DEC. 22.....	DEC. 28.....
JAN. 1.....	JAN. 7.....	JAN. 12.....	JAN. 18.....
JAN. 22.....	JAN. 28.....	FEB. 2.....	FEB. 8.....
FEB. 12.....	FEB. 18.....	FEB. 23.....	MAR. 1.....
MAR. 5.....	MAR. 11.....	MAR. 16.....	MAR. 22.....

Connects at Honolulu with C. A. Line for Sydney. C. A. Line leaves Honolulu for Australia Jan. 8, 10 and every 28 days.
*Arrives in Honolulu a week in advance of C. A. Line steamer en route to Sydney.

RATES from Honolulu to San Francisco—First Class, \$65; Round Trip, \$110. Family Room, extra.

FOR PARTICULARS, APPLY TO

W. G. Irwin & Co., Ltd

AGENTS FOR THE OCEANIC STEAMSHIP CO.

Canadian-Australian Royal Mail Steamship Co

Steamers of the above line running in connection with the CANADIAN-PACIFIC RAILWAY COMPANY between Vancouver, B. C., and Sydney, N. S. W., and calling at Victoria, B. C., Honolulu and Brisbane, Q.

FOR FIJI AND AUSTRALIA.		FOR VANCOUVER.	
MAKURA.....	FEB. 1 MOANA.....	JAN. 5	JAN. 5
STEAMER.....	MAR. 2 MOANA.....	FEB. 5	FEB. 5

CALLING AT SUVA, FIJI, ON BOTH UP AND DOWN VOYAGES.
Theo. H. Davies & Co., Ltd., Gen'l Agents
American - Hawaiian Steamship Company

From New York to Honolulu---Weekly Sailings via Tehuantepec

Freight received at all times at the Company's Wharf, 41st Street, South Brooklyn.	
FROM SAN FRANCISCO TO HONOLULU, DIRECT.	FROM SEATTLE AND TACOMA TO HONOLULU.
S. S. MEXICAN to sail.....Jan. 3	S. S. VIRGINIAN.....to sail Dec. 14
S. S. NEVADAN to sail.....Jan. 15	S. S. MISSOURIAN.....to sail Jan. 14

Pacific Mail Steamship Co. Toyo Kisen Kaisha S. S. Co.

Steamers of the above Companies will call at HONOLULU and Leave this Port on or about the Dates mentioned below:

LEAVE HONOLULU FOR ORIENT.	LEAVE HONOLULU FOR S. F.
TENYO MARU.....JAN. 4	1910. NIPPON MARU.....DEC. 31
KOREA.....JAN. 13	SIBERIA.....JAN. 7
NIPPON MARU.....JAN. 25	CHINA.....JAN. 14
SIBERIA.....JAN. 31	MANCHURIA.....JAN. 21
MONGOLIA.....FEB. 18	CHIYO MARU.....JAN. 28
CHINA.....FEB. 8	ASIA.....FEB. 4
MANCHURIA.....FEB. 14	TENYO MARU.....FEB. 25
CHIYO MARU.....FEB. 22	KOREA.....MAR. 5
ASIA.....MAR. 2	SIBERIA.....MAR. 26
MONGOLIA.....MAR. 14	CHINA.....APR. 2
TENYO MARU.....MAR. 22	MANCHURIA.....APR. 9

FOR FURTHER INFORMATION APPLY TO
H. HACKFELD & CO. LTD

MATSON NAVIGATION COMPANY

Schedule S. S. HILONIAN in the Direct Service between San Francisco and Honolulu.

S. S. HILONIAN.....	Arrive Honolulu.	Leave Honolulu.
.....	DEC. 22.....	DEC. 28.....

Castle & Cooke Limited, - - Agents

UNION-PACIFIC TRANSFER CO. LTD
126 KING ST. FURNITURE AND PIANO MOVING.
BAGGAGE, SHIPPING, STORAGE, WOOD, PACKING, COAL.
PHONE 58

Draying and Heavy Teaming
—PHONE 295—
Hustace-Perk Co. LTD.
SAME OLD NUMBER 63 QUEEN STREET.

We are always equipped to handle any thing in the draying line, from a keg of nails to a sugar mill.
SPECIAL ATTENTION
PROMPT DELIVERY

SHIPPING INTELLIGENCE

(Later Shipping News on Page Five)

TIDES, SUN AND MOON.

New Moon Dec. 12th at 9:47 a. m.

Time	High Tide Large	High Tide Small	Low Tide Large	Low Tide Small	Sun Rises	Sun Sets	Moon Rises	Moon Sets
6:00 A. M.	1:11	11:00	5:41	5:52	6:12	5:10	1:15	
7:00	1:3	11:49	6:07	7:00	6:27	6:19	2:02	
8:00	1:28	12:30	6:37	8:00	6:48	6:10	2:51	
9:00	2:00	1:12	7:09	8:58	6:28	5:70	3:41	
10:00	2:32	1:53	7:38	9:40	6:10	5:23	4:33	
11:00	3:04	2:34	8:08	10:23	6:29	5:21	5:27	
12:00	3:36	3:15	8:38	11:05	6:40	5:21	6:23	

Times of the tide are taken from the U. S. Coast and Geodetic Survey tables. The tides at Kahului and Hilo occur about one hour earlier than at Honolulu. Honolulu standard time is 10 hours 30 minutes slower than Greenwich time, being that of the meridian of 167 degrees 30 minutes. The time whistle blows at 1:30 p. m. which is the same as Greenwich, 0 hours, 0 minutes. The Sun and Moon are for local time for the whole group.

Shipping in Port

Dix, U. S. A. T., Ankers, Seattle, Dec. 25.
(Army and Navy.)
Iroquois, U. S. station tug, Shepley. Kukul, U. S. lighthouse tender, Middleton.
Thetis, U. S. R. C., Jacobs, Seattle, Dec. 25.

(Merchant Vessels.)
Hilonian, Am. S. S., Fredericksen, San Francisco, Dec. 22.
Alden Besse, Am. bk., Hilo, America Maru, South America, Dec. 27.
Churchill, Am. sch., Johnson, Columbia River, Dec. 5.
Celtic Chief, Br. shp., Henry, Hamburg, Dec. 5.
Dunedin, Br. S. S., Norfolk, Dec. 26.
Earl of Elgin, Br. S. S., Norfolk, Dec. 26.

Kaulani, Am. bk., Colly, Auckland, Sept. 20.
Masunda, Br. S. S., Newport News, Dec. 16.
Nuanuu, Am. bk., Josselyn, from New York, Dec. 8.
R. P. Rithet, Am. bk., Drew, San Francisco, Dec. 18.
Virginian, Am. S. S., Seattle, Dec. 24.

THE MAILS.
Mails are due from the following points as follows:
San Francisco—Per Mongolia, Dec. 27.
Yokohama—Per Nippon Maru, Dec. 31.
Vancouver—Per Aorangi, Jan. 8.
Colonies—Per Moana, Jan. 5.
Mails will depart for the following points as follows:
San Francisco—Per Hilonian, Dec. 28.
Yokohama—Per Mongolia, Dec. 27.
Vancouver—Per Moana, Jan. 5.
Colonies—Per Aorangi, Jan. 8.

THE TRANSPORTS.
Buford, ar. S. F., from Hon., Oct. 15. Dix in port.
Logan, from Hon. for Man'ia, Dec. 15. Thomas, at San Francisco.
Sheridan, from Nagasaki for Honolulu, Dec. 22.

ARRIVED.
Friday, Dec. 24.
S.S. Rosecrans, Moore, from Gaviota, 6 p. m.
Saturday, Dec. 25.
U. S. R. C. Thetis, Jacobs, from Seattle, 7:40 a. m.
U. S. A. T. Dix, Ankers, from Seattle, 7 a. m.
Str. Mauna Kea, Freeman, from Hilo and way ports, 7:30 a. m.
Str. Likelike from Maui ports, 11:45 a. m.
Str. Maui, from Kawahae, a. m.
Str. Kinau, Gregory, from Kauai ports, a. m.
Str. Mikahala, Tullett, from Molokai and Maui ports, a. m.
Str. W. G. Hall, from Kauai ports, a. m.

Sunday, December 26.
Br. S. S. Dunedin, from Norfolk, 7:35 a. m.
Br. S. S. Earl of Elgin from Norfolk, 6 p. m.

Monday, December 27.
S. S. America Maru, from South American ports, 7 a. m.

DUE TODAY.
P. M. S. S. Mongolia, from San Francisco, a. m.

SAIL TODAY.

P. M. S. S. Mongolia, for Yokohama, 5 p. m.
Schr. Concord, Weisbarth, for Fanning Island.

DUE TOMORROW.

Nor. S. S. Selja, from Yokohama.

SAIL TOMORROW.

M. N. S. S. Hilonian, for San Francisco, 10 a. m.
Str. Mauna Kea, for Hilo and way ports, 12 noon.
Str. Kinau, for Kauai ports, 5 p. m.
Str. Mikahala, for Maui and Molokai ports, 5 p. m.
Str. Mauna Loa, for Kona and Kauai ports, 12 noon.

DUE THURSDAY.

T. K. K. S. S. Nippon Maru, from Yokohama.

PASSENGERS.

Arrived.
Per Str. Kinau, from Nawiliwili, December 25.—Geo. Williams, John Kapahu, Miss Julia Paul, Mrs. E. Mat-suora, Miss Kapahu, Miss Helen Kapahu, Miss Reece, Mrs. S. Kaya, S. Spitzer, S. Matsuura, A. C. Souza, Judge Dole, M. Osaki, R. L. Wilcox, J. L. Hjorth, Master Eric, Jock Hjorth, S. E. Pierce and 40 deck.
Per Str. Mikahala from Molokai and Maui ports, Dec. 25.—H. Vincent, Mrs. Hoopli, Mrs. Kaulili, D. O. Clark, A. Dudoit.

Departed.
Per Str. Claudine for Hawaii and Maui ports, December 24.—W. Hala, L. S. Peck, R. J. Richardson, G. G. Hammond.

Booked.
Per M. N. S. S. Hilonian, for San Francisco, Dec. 28.—H. A. White, Gordon Osborne, G. B. Curtis, Miss K. Renton, Mr. and Mrs. J. G. Reed, A. N. Haysenden, Miss M. Voss, Miss G. Darcy, Miss Paucell, T. J. Levy, R. G. Henderson, Miss A. Sparrow, M. Schulte, Mrs. Phelps, P. J. Levy.

THE LOG-BOOK

The S. S. Virginian came into port late on Friday afternoon. Her freight included 18,000 sacks of feed, 10,000 cases kerosene, 7000 sacks of flour, 1000 barrels of cement, 425 kegs of white lead, 500 cases of salmon, 6000 sacks of oats, 2000 bales of hay. She will carry about 12,000 tons of sugar from the islands to Salina Cruz.

The S. S. Hilonian leaves for San Francisco at 10 a. m. tomorrow. Her cargo will include 800 tons of raw sugar, 400 tons refined sugar, 6000 cases canned pineapples, 3000 crates fresh pineapples, 2000 bags Kona coffee, 2000 sacks of rice, and a lot of bananas.

The freight and passenger offices of the old Oceanic company have been combined into one general office in the old Irwin offices.

The S. S. Selja is expected from Yokohama tomorrow. She has about 1500 tons of freight for this port.

The S. S. Nippon Maru is due here from Yokohama on Thursday.

The pitch of the S. S. Hilonian's propeller blades has been changed and the alteration is expected to improve the vessel's speed slightly.

The S. S. Rosecrans which arrived on Friday night has a new skipper in the person of Captain W. H. Moore who is making his first visit to this port.

The schooner Churchill will proceed to Puget Sound probably tomorrow.

The British steamship Earl of Elgin which arrived from Norfolk yesterday will proceed to Mare Island to discharge her cargo of coal.

The U. S. A. transport Dix at noon on December 19 spoke the French bark Jean Bart from Portland to Dunkirk. The vessel was then in Lat. 40:06 N., Long. 130:52 W. The Jean Bart was in ballast.

The transport Dix, arriving from Seattle on Saturday, has 611 horses and mules for the Philippines. The Hawaiian exhibit at the Seattle fair was brought back on the transport in charge of Lloyd Childs. The Dix is taking on 600 tons of coal here and will get away as quickly as possible as she is already behind schedule.

L. B. Reaves has been appointed a night inspector of the customs force and enters on his new duties today.

The American bark Kauliani is reported to have been sold to the Alaska Packers' Association, along with the ship Hawaiian Isles. She is taking on cargo here and will be ready for sea some time this week.

The schooner Eva arrived at Mahukona on Thursday with lumber.

The S. S. Asgard is at Port Allen discharging coal.

The steamer Keauhou arriving on Saturday from Anahola brought 3475 bags of sugar.

The steamer Nocu arriving on Friday night from Anahola brought 865 bags of rice and sundries.

The steamer Kinau arriving from Kauai brought 4600 'ags K. S. M. sugar, 1015 cases pineapples and 83 cases honey.

The steamer Maui arriving Saturday from Kawahae brought 50 head of cattle.

The transport Sheridan is due from Manila early next week.

The steamer Mikahala arriving yesterday from Maui and Molokai ports brought 30 head of cattle from the Molokai ranch, 22 crates crickets and 156 hogs.

Paauhau plantation started grind-

ing last week.

The S. S. Virginian will proceed to Maui tomorrow.

The British steamer Masunda has finished discharging and may leave port this afternoon.

The cargo of the steamer Mauna Kea included 12 crates turkeys, 13 crates chickens, 18 crates pigs, 200 sheep, 197 bales vegetables, 39 bags cabbage, 4 fern logs and 3 dogs.

The bark St. Katherine arrived at Hilo last Sunday 26 days from San Francisco.

The schooner Kona sailed from Hilo last Wednesday is ballast for Port Townsend.

The S. S. America Maru arriving from South American ports this morning brought 2400 tons of nitrates consigned to Grace & Co., of San Francisco, whose local agents are W. W. Diamond & Co. The steamer goes from here to Japan.

The United States revenue cutter Thetis arrived here from Seattle on Christmas Day, in command of Captain W. V. E. Jacobs. Her mission is to keep an eye open for poachers on the bird reservations.

The Thetis' officers are Capt. W. V. E. Jacobs, commander; First Lieut. Henry W. Pope, executive officer; Second Lieut. George E. Wilcox, navigating officer; Second Lieut. James L. Ahern, watch officer; First Lieut. of Engineers James H. Chalker, in charge of machinery; Second Lieut. James E. Sheedy, Third Lieut. Hugh B. Robinson. Warrant officers: Boatswain William Hallberg, Gunner Henry E. Smith, Carpenter Rudolph Hardensen, Machinist Wendt. The crew numbers sixty-five men.

The Thetis came down from Seattle in ten days under sail. She is equipped with a wireless plant. Several years ago she was stationed in these waters with Captain Hamlett in command.

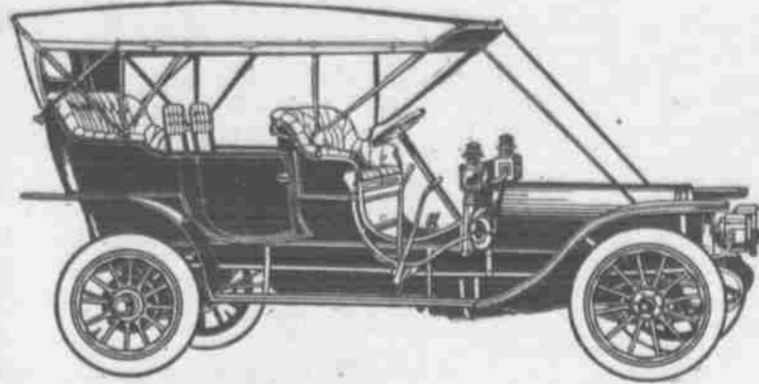
HAWAIIAN Macaroni Manufacturing Co., LIMITED
Beretania Street near Aala Street.
MANUFACTURERS OF
MACARONI (HUSHI UDON)
—AND—
BUCKWHEAT (HUSHI SOBA)
The Largest and Only Incorporated Concern of Its Kind in Honolulu.
A New Enterprise Launched by Enterprising Merchants.
K. Yamamoto
SALES AGENT.
Tel. 399. Hotel Street near Nuanuu. P. O. Box 819.

VICTOR
Records and Machines
PIANOS ON INSTALMENTS
JAMES W. BERGSTROM & BRO.,
MASONIC TEMPLE

New Franklin Here!

The First Franklin Automobile of 1910 Model arrived ex Hilo-nian on Tuesday. This is Good, Big News to many people who have been anxiously awaiting a chance to see this famous Car.

It is a Twenty-eight Horsepower Touring Machine, and presents Features which immediately attract the attention of the observing Motorist.



THE 1910 FRANKLIN

The Motor of this Car carries an innovation in Gasoline Engine construction, which, while stopping short of being revolutionary, is a long advance in engine cooling and efficiency. This advantage is obtained by means of a Light, Sheet-Metal Air Jacket for each Cylinder, through which cooling is direct and equal for every part of the Cylinder circumference. Franklin engines have always been air cooled, and the 1910 improvement is a development of the Franklin Idea instead of a departure from it.

The Air Jackets of the Cylinders form funnel like openings in the deck of an otherwise air-tight compartment formed with sheet-metal about the engine base. At the rear of this compartment is a new suction Fly Wheel which by the creation of a partial vacuum draws a strong current of cooling air down about the sides of the Cylinders, which are studded with vertical cooling flanges.

The downward currents of air are applied when they are coolest to the Hottest part of the Cylinder, the head and valves, giving them the maximum benefit of the cooling system. There is no opportunity for chance in this application, and the course of the currents is accurately determined by the air jacket. The cooling air is kept close to the Cylinder Walls from top to bottom.

With this gain in efficiency is a gain in simplicity, for the fan, which is a necessary feature of most automobile engines, is eliminated.

The Franklin Car needs little introduction to the people of these Islands, as many of them are now in use here and they have invariably given the best of satisfaction. The new 1910 Machine is a duplicate of the preceding model, except that important improvements, shown by experience to be essential—have been added. The new car, therefore, is as nearly perfect as the knowledge and skill of the manufacturers can make it.

ASSOCIATED GARAGE Merchant Street Foot of Bishop



Softening

and preserving the hair, there is nothing better than

PACHECO'S DANDRUFF KILLER
This is a preparation of soothing and healing properties; it removes dandruff and cures itching scalps. The quieting, refreshing and invigorating effects after one application of this tonic are the pleasantest sensations possible.

Sold by all druggists and at Pacheco's Barber Shop, Phone 232.

Territorial Board of Immigration
OFFICE: 405 Stangenwald Bldg. HONOLULU.

Auto Fenders, \$2.50 up. Will Examine Gutters free of charge also do Plumbing Work. Lowest Prices. Work Guaranteed.
JOHN MATTOS.
Telephone 657, 1175 Alakea St.

LAST WEEK BEFORE XMAS
Toys, Books, Novelties
A. B. ARLEIGH & CO., LTD.
Hotel St., opp. Union.

BEAUTIFUL ROCKERS
Chairs, Bureaus and Furniture of all kinds made from select Koa.
Wing Chong Co.,
Corner King and Bethel.

RAGING STORMS ON BOTH SIDES OF ATLANTIC

The United States Permits Zelaya to Retire Peaceably to Mexico.

HOPE FOR SHIP SUBSIDY BILL.
Remington The Artist Dies—Death Takes Off Indicted Financier.

(Associated Press Morning Service.)
PHILADELPHIA, December 27.—The worst storm for years is raging along the Atlantic coast. In this city the snow has fallen twenty-two inches deep on the level and it has drifted in places to a height of ten feet.

Railroad service is disrupted and trains throughout the country are stalled.

Three persons are known to have died here yesterday as a result of exposure to the cold.

BOSTON, December 27.—A disastrous storm is raging throughout the New England States, this city seeming to be the storm center.

Yesterday the tide, driven by the gale, reached the highest point on record here, the rushing waters being driven across the docks and on to the lowlying streets along the waterfront. Three persons have been drowned.

The electric wires are down and the railroads are blocked.

Millions of dollars' worth of property has been damaged.

Many towns and cities along the coast are in darkness, the lighting system being rendered useless through broken poles and tangled wires.

TRANSATLANTIC TEMPEST.
SAN SEBASTIAN, Spain, December 27.—Twenty villages have been inundated as a result of the great storm

that is raging in the Bay of Biscay and several steamers have been driven ashore on the north coast of Spain.

MADRID, December 27.—The latest advices from the north are to the effect that the storm is abating and that conditions in the flooded district are improving.

Many of the coasting vessels are missing and many deaths from drowning have been reported.

ZELAYA IN MEXICO.
CITY OF MEXICO, December 27.—Ex-President Zelaya, of Nicaragua, is now a refugee in this country, having arrived at Salina Cruz last night as a passenger aboard the Mexican gunboat General Guerrero.

The defeated dictator, fleeing before the victorious arms of General Estrada and fearing the vengeance of the United States, boarded the Mexican warship at Corinto. Although the American cruiser Albany was lying alongside the Mexican vessel and it had been expected that the reported instructions of Secretary of State Knox to seize him would be carried out should he attempt to flee the country, no attempt to interfere in Zelaya's embarking were made.

KNOX IN THE WRONG.
WASHINGTON, December 27.—The flight of ex-President Zelaya from Nicaragua in some quarters here is regarded as a relief, his departure from the scene of the past trouble being regarded as an assurance that America is not to become further embroiled in the Central American trouble.
The failure of the United States to block his escape is generally accepted as a sign that the position taken by the secretary of state has been found, on reflection, to be untenable.

MADRIZ STARTS CLEANING UP
MANAGUA, December 27.—Ernesto Martinez, who had been the minister of finance for Nicaragua under the Zelaya regime, was arrested yesterday by President Madriz' orders. The charge against the former custodian of the country's funds is that he misappropriated a large portion of the moneys for his own use.

AMENDED SUBSIDY BILL.
WASHINGTON, December 25.—It is

now believed that a ship subsidy bill is in sight which can pass congress and meet with the approval of the President.

FAMOUS PAINTER DIES.
BRIDGEFIELD, Connecticut, December 26.—Frederick Remington, the painter, died here today, death following an unsuccessful operation for appendicitis.

DEATH FOLLOWS DISGRACE.
GREENWICH, Connecticut, December 27.—George Sheldon, the deposed president of the Phoenix Fire Insurance Company, who was recently indicted on a charge of misappropriating a million dollars of the company's funds, died at his home here yesterday.

Latest Paquin Models for the Swellest Gowns

DAVISON
YOUNG BUILDING, ROOM 72

USE Sweet Violet BUTTER
C. Q. YEE HOP TEL. 251

7 SEATED STODDARD DAYTON
By Trip or Hour
JOE LEAL
Chauffeur.
Telephone 609. Independent Auto Stand.

Castle & Cooke, LIMITED
Honolulu, T. H.

SHIPPING AND COMMISSION MERCHANTS.
SUGAR FACTORS AND GENERAL INSURANCE AGENTS.

—representing—
Ewa Plantation Co.
Wailua Agricultural Co., Ltd.
Kohala Sugar Co.
Waimoa Sugar Mill Co.
Apokaa Sugar Co., Ltd.
Fulton Iron Works of St. Louis.
Blake Steam Pumps.
Westons Centrifugals.
Babcock & Wilcox Boilers.
Green's Fuel Economizer.
Marsh Steam Pumps.
Matson Navigation Co.
Planters Line Shipping Co.
New England Mutual Life Insurance Company of Boston.
Aetna Insurance Co.
National Fire Insurance Co.
Citizens' Insurance Co. (Hartford Fire Insurance Co.)
The London Assurance Corporation.

Forcegrowth
WILL DO IT.

FIRE INSURANCE
ATLAS ASSURANCE COMPANY OF LONDON.
NEW YORK UNDERWRITERS AGENCY.
PROVIDENCE WASHINGTON INSURANCE COMPANY.
The B. F. Dillingham Co., Ltd.
General Agents for Hawaii.
Fourth Floor, Stangenwald Building.

Look Here!

We want to show you the smart lines and custom shapes of our new Regal models for this season. Look these shoes over carefully—and then try to find the equal of these Regal custom styles anywhere else in town. You'll search in vain, because

REGAL SHOES

are the *only* ready-to-wear shoes at Regal prices that reproduce the latest custom styles—and we are the exclusive local agents for this world-famous footwear.

REGAL SHOE STORE
King and Bethel Streets

The Hawaiian Star

DAILY AND SEMI-WEEKLY.

Published every afternoon (except Sunday) by the HAWAIIAN STAR NEWSPAPER ASSOCIATION.

THE STAR ACCEPTS NO LIQUOR ADVERTISEMENTS.

SUBSCRIPTION RATES:

Local, per annum \$ 8.00
 Foreign, per annum 12.00
 Payable in Advance.

Entered at Post Office at Honolulu, Hawaii, as second class mail matter.

Subscribers who do not get their papers regularly will confer a favor by notifying the Star Office; Telephone 365.

The Supreme Court of the Territory of Hawaii has declared both THE HAWAIIAN STAR (Daily) and THE SEMI-WEEKLY STAR newspapers of general circulation throughout the Territory of Hawaii, (suitable for advertising proceedings, orders, judgments and decrees entered or rendered in the Courts of the Territory of Hawaii.)

Letters to THE HAWAIIAN STAR should not be addressed to any individual connected with the office, but simply to THE HAWAIIAN STAR, or to the Editorial or Business Departments, according to tenor or purpose.

GEORGE F. HENSHALL, EDITOR.

MONDAY DECEMBER 27, 1909.

A GREAT CHRISTMAS IDEA.

Three weeks since, in urging a repetition of the Malihini Christmas tree, The Star said that a year ago it was perhaps the finest feature of our Christmas season and that as an annual event "it might become more famous, as a distinctly Honolulu celebration, than our Floral Parade or any other among our annual events."

Saturday's tree in front of the Young Hotel justified these expressions. A couple of thousand children made happy, and heaven only knows how many adults equally happy through helping or watching them; a vast gathering, including such variety in race, color, costume, class and religion as few communities on earth could match, and all of them Christmas-glad together, indeed made an inspiring sight.

The "Malihini" tree will retain its name, though not every year earning it. We cannot ask strangers here to take up the task of providing it, for that task is our own. But as a reminder of the generous impulses in stranger breasts from which a year ago the idea sprang, the name will never be inappropriate. There is no finer Christmas custom in the world. Honolulu may well be proud of the citizens who took leading parts in carrying out the idea, and they are happy that they had the chance.

Some people have their Christmas so merry that they have a sad New Year.

There ought to be a fortune for someone in the invention of a rapid street-destroying machine. It would simplify one of our leading industries. No sooner is a street expensively paved, than along comes a pick and shovel brigade to break it up for some purpose or other. The destruction could be done quicker by machinery.

Probably it is good thing for Zelayas than Bwana Tumbo is not in the White House.

Dr. Cook seems to have made De Rougemont look like an amateur.

FUTURE POLITICAL CAMPAIGNS.

Woman suffrage is coming according to most of the competent judges of the trend of our civilization. Perhaps one sign in its favor is that Bryan, whose surfboard seems to have dipped when he tried to ride the Prohibition wave, is flirting with the suffragettes. Of course it might be said that Bryan is such a steady loser that his espousal of the suffragette cause should be regarded as a hoodoo, but really it isn't in human possibility for a man to lose all the time,—the laws of chance forbid it,—and so Bryan's inclination to support woman suffrage needn't discourage Lady Pankhurst, the Rev. Anna Shaw and Carrie Nation. The thing for all to worry about is what will happen to our politics-ridden country when it comes. Ten years of it will probably leave few things unregulated and as for political campaigns,—just watch Pankhurst and Carrie Nation. Both use hatchets, figuratively speaking. When rebuked, both have the same irrefutable answer. "The things they are striking at are wrong,—how can it be wrong to strike in any old way? It is all right for mere man to think he sees very clearly the logical flaw in this argument, but a judge who tried to point it out to Carrie Nation the other day made a very hopeless and miserable failure of it."

It isn't very likely that Frear and Kuhio will meet in San Francisco. Probably neither one is very anxious to see the other. However if Kuhio should decide to call on the governor he would doubtless be received calmly and judicially and told which of his self-dissenting opinions the governor is willing to sign.

The prohibitionists and the suffragettes are both moving on Chicago filed with enthusiasm for plans to make a record campaign. Windy will be together too mild a word to apply the Illinois metropolis when the rumpus is in full blast.

THE WONDERFUL WAKING ORIENT.

The year 1909 is memorable in the annals of the waking east, says the Christian Science Monitor. Turkey saw the constitution firmly established; Persia, despotism banished. In India reforms of far-reaching scope answered the clamor for self-government. China took the first step toward a parliamentary regime in the opening of provincial assemblies elected by the people. Japan entered on an epoch of concentration, the first since her amazing rise to power. But more than this. Slavery, by British decree, ceased to exist in Zanibar, the East African slaver sultanate and one-time center of the slave traffic in the India ocean. Slavery was driven out of its last stronghold when the French took the fort of Abeshr, in the central Soudan. Morocco, though still the scene of turmoil, was again brought to acknowledge a central authority and proved singularly impotent to trouble the peace of Europe. Egypt and the Soudan witnessed steady improvements through great public works, and vast strides were made toward final penetrate and possession of the deserts of north Africa. Yet more, even, than this. Russia and China reached a point in their colonization of central Asia where the magnitude of the stupendous enterprise suddenly burst upon an amazed world. Siberia and Mongolia, Thibet and Turkestan are coming into their own. And the entire Orient, in its broadest sense, that is,

the Mohammedan world and the far east, during this year 1909 have been resounding with unprecedented constructive activity.

That is on the surface. What is beneath it is still more more marvelous. A new west and a new east are in process of formation. The Asia of today is on the verge of being forever rent asunder and its peoples pitted against each other in two camps. The Orient will no longer begin at the Balkans, for western thought is riot merely permeating but linking together all peoples west of Hindu and Chinese lands. The Orient is becoming synonymous with Brahmin, Buddhist and Confucian thought and the Occident is rapidly claiming the entire Mohammedan world. The line of cleavage runs through India. There the grapple is now on, for the present unrest in India, whatever its immediate causes, signalizes the recasting of eastern thought. The descendants of the Moslem conquerors, Arab, Turkish, Persian, Afghan, and their countless native converts, are putting in the field their entire strength against Hindu supremacy.

The cleavage is preeminently one of thought. The awakening of the Mohammedan world is a counter-blast to the far-eastern movement which cries "Asia for the Asiatics" but means "Asia—the world—for pantheism." The poly-panteism of the Hindu, the utter pessimism of the Buddhist and ancestor-worship with its earth bondage are rapidly mobilizing against the advance of monotheism. History has placed Islam is frisking up, inspired by a unifying thought; thought unity and Islam is frisking up, inspired by a unifying thought; thought unity and thought conflict have never been so clearly traced as in the waking of the east.

Commercial News

BY L. D. TIMMONS.

Stock brokers entered upon their vacation in earnest today, and it was just as well; for, with the accumulation of three days' business and the arrival of outside mails they had their hands pretty full as it was. There was some bidding on the streets for stocks, but no sales of interest were made. Prices all along the line ruled high, street quotations being upon much the basis of last Friday.

YEAR AGO AND NOW.

One often hears people talk about putting money into stock and forgetting about it, as it were, for a year, two years or more,—and then noting the results.

Let us have something practical on this matter. Suppose Christmas eve a year ago you had invested in stocks—any stocks, dividend paying or not—what would be the present status of your investment? Leaving out the small (but oftentimes intensely interesting) subject of dividends received during the year, the results would have been something like this:

Christmas eve, 1908, the stock of C. Brewer & Company was worth \$200 per share. During the year the capital was increased for the purpose of buying out the property, good-will, etc., of W. G. Irwin & Company, and yet on Christmas eve just passed we find \$300 per share bid for the stock—a clean advance of 50 per cent.

On the same date in 1908 Ewa stock was offered on the Stock Exchange at \$28.25 per share. This Christmas eve \$32.50 was bid and \$32.75 asked—a healthy profit within itself.

Same date last year Hawaiian Agricultural was \$155 bid and \$170 asked. Last Friday the same stock was offered at \$200 and was worth close to that figure—another advance of 50-odd per cent.

The next remarkable showing was in Hawaiian Sugar, for which last year \$35 was bid and \$36 asked. The holders are probably glad they didn't sell, for the stock this Christmas eve was \$51 bid and \$52.25 asked.

Honokaa a year ago was offered at \$14.25, and the records show that there were no buyers. Last Friday the figures were \$20.75 bid and \$21.25 asked.

Kolon a year ago was \$147.50, and now \$155 is asked. McBryde on the same date a year ago was \$3.50 bid. This Christmas eve it was \$5 bid and \$5.25 asked.

Oahu Sugar was \$27.50; on Friday it was \$32.75 bid and \$33.25 asked. Olan a year ago was \$4.375, and on the same date this year \$6 bid and \$6.25 asked.

Pioneer Mill last Christmas eve was \$155, while this time it was \$107 bid and \$198 asked.

Wafalua would have made an excellent pigeon-hole investment a year ago, it being \$73 bid and \$75 asked. This Christmas eve \$120 was bid for the stock and holders were demanding \$122.

Another remarkable advance has been in Waimea, it being only \$48 a year ago. This Christmas eve \$150 was bid and \$175 asked, an increase of more than 200 per cent!

Last Christmas eve Inter-Island, then capitalized at \$1,500,000, was \$125 bid. A year later, with the capital \$2,225,000, the stock is found to be \$114 bid, which is not bad.

O. R. & L. Company at the last period was \$110 bid, and now \$144 bid, \$147.50 asked.

Hawaiian Pineapple at the 1908 Christmas eve was \$23, and at this period it is \$29.

In bonds it could not be expected that there would be much advance, they bringing the same interest all the time; but there were some changes of interest. For instance, Hilo R. R. sixes a year ago were \$91.50. This Christmas eve \$100.75 was asked for them. Honokaa sixes, the figures were \$101 last and \$102 this period.

One remarkable change was in O. R. & L. bonds. Last Christmas eve the sixes were \$101.25, while this Christmas eve \$102 was bid for the 5 per cent. issue.

Oahu Sugar sixes advanced from \$100 to \$101; Pacific Mill sixes from \$101 to \$102.50.

On the whole lot Pioneer sixes showed the only weakness, the previous figure being \$105 bid and the present one \$104.

The showing requires no comment. It is remarkable enough on the face of it, indicating a most satisfactory growth in prosperity.

ED. POLLITZ ARRIVES.

Ed. Pollitz, the San Francisco stock broker, arrived in the Mongolia this morning. He comes down in regard to the agency of Hutchinson plantation and other matters in which he is interested. While here he will be the business guest of the Henry Waterhouse Trust Company.

A GENERAL RAIN.

The rain of the past few days was general throughout the group. Maui

(Continued on Page Five.)

Colds Follow

The Rain. Better that ounce of prevention and be free from Grippe.

HOBSON'S ANTI GRIPPE TABLETS DO THE WORK.

Benson, Smith & Co., Ltd.
 HOTEL and FORT STS.

THE PALM CAFE HAS THE REPUTATION THAT THE OWNER OF EVERY RESTAURANT IS STRIVING TO GET. THAT OF HAVING THE BEST OF EVERYTHING PROPERLY SERVED AND PROPERLY PREPARED. HOTEL STREET NEAR UNION

"OLIVER TWIST" AND "SAPHO" BURLESQUE

All who saw the "Two Kings" at the Orpheum last week were loud in their praises at the performance which was voted by nearly all to be the best yet given by Jack Golden. Tonight the bill will be changed again.

There will be a big olio of vaudeville consisting of seven good numbers, among them being one by Jack Golden in which he will depict a scene from "Oliver Twist." For the afterpiece the entire company will appear in the farce comedy entitled "Sophena," which is a burlesque on the celebrated play "Sapho."

The entire bill is a good one and promises much amusement to the big audiences that are nightly attending the Orpheum.

The public are beginning to appreciate the good clean performances of the Golden company, and as long as the present standard is kept up, a good business is assured.

BABY WEED'S NARROW ESCAPE

Myron, Police Court Officer Fred. Weed's strapping 27-months-old baby, narrowly escaped drowning on Christmas Day. He slipped away while his mother was at the telephone, stumbled on the wet board walk and fell into the waters of the harbor, at the Aloha

boathouse. Having received from his father one or two lessons in swimming he paddled for all he was worth, kept his head above water, and yelled lustily for his mother, who on no time in going overboard after him.

SWAM AFTER THE BALL

The soccer game between the Malles and the Punahou which was to have been played yesterday had to be abandoned on account of the rain. The High School and the Iron Works played their game on a ground which was a veritable slough of despond, the former team winning by the score of 1 to 0.

Henry Chillingworth scored the solitary goal in the second half. The postponed game between the Malles and the Punahou will be played after the present series is finished.

Despite the wretched weather quite a few people witnessed the game.

Just One More

Fruit Steamer out before the year is over—the Hilo-nian, Dec. 28. Don't Miss It.

Island Fruit Co.
 72 King Street. Phone 15

FAMILY ORDERS SOLICITED FOR

WOOD and COAL

Honolulu Construction & Draying Co., Ltd.

OFFICE FORT STREET BELOW MERCHANT.

BEFORE THE NEW YEAR

Get a Diary!

Complete stock of Excelsior Diaries, both office and pocket. Leather and cloth covers.

Hawaiian News Company, Ltd.
 Alexander Young Building.

START

In The New Year By Using An **AnSCO Camera** **AnSCO Films** and **Cyko Paper**

And See The Results **FILMS at COAST PRICES**

GURREY'S
 FORT NEAR HOTEL

THE ART THEATRE

Feature Film

The Escape from
ANDERSONVILLE

Orpheum Theatre

TONIGHT
JACK GOLDEN
MUSICAL COMEDY COMPANY.
IN
THE GREAT FARCE COMEDY
"SOPHENA."

An Olio of Good Vaudeville
Matinees Wednesdays and Saturdays.
PRICES—Evening 15, 25c and 50c
Matinees: Adults 25c, Children 15c.

Park Theater

Fort Street Below Beretania
Moving Pictures
AND
Vaudeville
—Changes—

MONDAY,
WEDNESDAY
AND FRIDAY

Empire Theater

HOTEL STREET
Vaudeville
MOTION PICTURES
Return of the Popular Favorite
MAY WALLACE
Extra Attractions
ANNA GALION
Premier Soprano
KALALUHI TWINS
Funmakers
NO INCREASE IN PRICES

Princess Rink

OPEN EVERY AFTERNOON AND
EVENING.

MASQUERADE BALL NEW YEAR'S EVE

ADMISSION: 15c; Skates, 15c.

Honolulu Athletic Park

J. A. C. vs. DIAMOND HEADS
First Meeting of Major and
Minor Leagues,
SUNDAY, DEC. 26, 3:30 p. m.

Sugar 4.05c

Beets, 12s, 7 1-2d

Henry Waterhouse Trust Co.
Members Honolulu Stock and Bond
Exchange.
FORT AND MERCHANT STS.
TELEPHONE 736

PAU THIS WEEK

RETIRING FROM BUSINESS Stock Now Below Cost!

We are offering, this week only, immense bargains in Fancy and Standard Groceries. Our Christmas Sales were heavy, but we have choice items left in every line.

Household goods remaining in stock will be closed out at astonishingly low prices. Each article a bargain.

The popular OLD PLANTATION CIGARS at a sacrifice.
CUT PRICES ON CASE GROCERIES.

Everything must be sold regardless of cost and without exception.

Lewis & Co. Ltd.

The Closing-Out Grocers

169 KING STREET

TELEPHONE 240

KAOO LIKES DRY FEET

The quartet of runners and walkers billed to perform at the Athletic Park on New Year's Day all weathered the festive season successfully and will do some earnest training this week.

Kaoo, who doesn't like to get his feet wet, kept indoors over Christmas on account of the rain but Teukamoto, who is a famous mudder, was out in the slush on Saturday and Sunday. He wants to win this race very badly and it will certainly be an occasion for much banal should he be the first to forecast the time on the first day of the year, his countrymen's greatest holiday.

Sullivan took a turn at handball on Saturday and was out on the road in the wind this morning. He is always fit and needs but little work to put him on edge.

Ayres tramped to Waialua yesterday and wandered over the reef for three or four hours, seeking fish and finding principally ley rain squalls. Tonight he will work over the Kalakaua Avenue course.

It looks as if the full moon brought a change for the better in the weather. The high wind is drying out the Athletic Park very quickly and tomorrow the course will be laid out for the runners and walkers to practice on.

The races loom up as about the only sporting events of consequence this week and judging from the talk on the streets they are arousing widespread interest.

COMMERCIAL NEWS

(Continued from page four.)
was treated to about the same wetting as visited Oahu. On Kaula the downpour was general at all points heard from. At Hitebinson, on Hawaii, the fall was 6 1-2 inches, while at Pahala it reached 2 1-2 inches. At the Robert Hind ranch, where there had been no rain for sixteen or eighteen months, there was a young flood, the whole country being swept by the torrents and the gulches overflowing. As far as can be learned, the rain was general all over the islands, even the dry districts coming in for their share of the downpour.

ANOTHER LAND DEAL.

A. H. Dondero and L. Kirkpatrick (The Hawaiian Realty Company) have purchased from the Palolo Land & Improvement Company 25 acres of fine land on the mauka side of the Rapid Transit terminus in Kaimuki, which they will open up at once. The papers will be filed during the afternoon. The lots will be 75 by 225 feet in area. Contracts have already been let for paving the streets in the section, and a gang of workmen started in today clearing the land of superfluous growth.

MERCHANTS' ASSOCIATION.

An important business meeting of the directors of the Merchants' Association has been called for 4 o'clock Wednesday afternoon. Among the matters to be discussed are that of the widening of Hotel street.

REAL ESTATE.

Despite the fact that attention last week was bent upon Christmas affairs, there was quite a little doing in real estate. The Kaimuki Land Company, for instance, report two days just before Christmas as being among their very best, \$6,000 worth of lots in their new Ocean View Tract being disposed of.

WATER AT WAIALUA.

The water at Waialua dam measured 58 feet this morning, a rise during the storm from 21 feet. This assures ample water for irrigation purposes for a long time to come. The capacity of the dam, it may be stated in this connection, is 80 feet, so that the water at present is pretty well up toward the top.

NEW PUBLISHING CONCERN FORMED

The American-Hawaiian Publishing Co., Ltd., is a new corporation whose articles have just been filed with the Treasurer. Its first purpose is to engage in the business of publishing and printing in all its branches to which are added powers of doing a merchandise business, holding property, etc. The capital stock is \$30,000 in \$10 shares with the privileges of extension to \$100,000. Offices and shares respectively are held as follows: W. Pfortenhaer, president, 250; F. Klamp, vice president, 250; George Rodlek, treasurer, 250; Ambrose J. Wirtz, secretary, 1500; F. W. Macfar-

lane, a director with the foregoing 100. The amount paid in is \$3000, or ten per cent. of the capital stock.

STABBING AFFRAY.

Chiefs of Detectives Arthur McDuffie this morning went to Water town, Pearl Harbor, to investigate a stabbing affair between two men employed there. Ostrasen, the victim, is in the Queen's hospital.

The late Isaac Testa, whose funeral was held last evening, was a member of the San Antonio Society and of Court Canoes, A. O. F. He was a nephew of F. J. Testa, was 43 years of age, and had been seriously ill for several months. For a number of days he was too ill for friends to see him. Interment occurred in the Puca cemetery, the pallbearers being W. T. Rawlins, Captain Naopala, A. O. F., Paul Jarrett, J. S. Azevedo, of the San Antonio; Eugene Allen, Senator F. R. Harvey, Sheriff W. P. Jarrett, and J. B. Ponte, A. O. F. The Rev. R. H. Chamberlain officiated.

A heavy sea has been running outside all day with a strong wind blowing from the Kona quarter.

The big British collier Earl of Elgin, and the S. S. American Maru are both anchored outside, it being too rough for her doctor to go out to pass them.

Bank Books Office Dairies and Journals

WALL, NICHOLS, CO.,
Fort and Merchant

Make Sure

THAT YOUR
Watch
IS CLEAN!
By Having It Cleaned and Oiled on
Time May Save You Money and Worry.

J. A. R. VIEIRA & CO.,
113 Hotel Street

LATE SHIPPING.

ARRIVED.
S. S. Mongolia, Morion, from San Francisco, 9 a. m. Sails at 5 p. m.
Arrived.
Nor. S. S. Selja, from Yokohama, 2 p. m., with 1500 tons of freight for this port.

LATEST SHIPPING.

Monday, Dec. 27.
Brisbane—Sailed Dec. 24, S. S. Moana for Honolulu.
San Francisco—Arrived Dec. 25, S. S. Lurline, from Honolulu.
San Francisco—Arrived Dec. 26, S. S. Korea, from Honolulu.
Hilo—Sailed Dec. 22, Schr. Kona, for Port Townsend.
Midway Island—Arrived Dec. 26, sch. Flaurance Ward, hence.

DANCE THE OLD YEAR OUT.

The guests at the Haleiwa Hotel are to dance the old year out and the new one in at that famous place of enjoyment. The management will arrange a dance and will have the best music obtainable for the purpose. Haleiwa dances are all that the heart can wish for and not a detail is overlooked. The year 1909 has been particularly prosperous for the people and blessing have been showered upon them in many ways and from many directions. Being the case there is every reason for feeling happy and in a mood to put the year aside in a joyful way. Manager Kimball provides the means and it is up to the public to do the rest. By Friday the roads will be dry enough to make motoring enjoyable. Persons intending to stop over Sunday had better arrange for rooms beforehand.

Chief Justice Hartwell has reappointed Charles S. Dole as district magistrate of Lihue for the ensuing term of two years. His commission, bond and oath have been mailed to him.

Fine Job Printing, Star Office

STOCK BOOKS CLOSED.

The Stock Book of the Pioneer Mill Co., Ltd., will be closed to transfers from December 27th 1909 to January 3rd 1910, both dates inclusive.
(S. W. PFOTENHAUER,
Treasurer Pioneer Mill Co., Ltd.)

TERRITORY OF HAWAII.

Treasurer's Office, Honolulu, Oahu.
In re Dissolution of the City Meat Company, Limited.

Whereas, the City Meat Company, Limited, a corporation established and existing under and by virtue of the laws of the Territory of Hawaii, has pursuant to law in such cases made and provided, duly filed in this office, a petition for the dissolution of the said corporation, together with a certificate thereto annexed as required by law.

Now, therefore, notice is hereby given to any and all persons that have been or are now interested in any manner whatsoever in the said corporation, that objections to the granting of the said petition must be filed in this office on or before 12 o'clock noon of March 10, 1910 and that any person or persons desiring to be heard thereon must be in attendance at the office of the undersigned in the Executive Building, Honolulu, at 12 o'clock noon of said day, to show cause, if any, why said petition should not be granted.

D. L. CONKLING,
Treasurer Territory of Hawaii.
Honolulu, December 23, 1909.
10ts—Dec. 27, Jan. 3, 10, 17, 24, 31, Feb. 7, 14, 21, 28 1910.

NOTICE.

I will not be responsible for any debts contracted in my name without my written order.
WILBUR M. KENNEDY,
Honolulu, Dec. 24, 1909.

S. E. LUCAS PARISIAN OPTICIAN.

Masonic Bldg. cor. Hotel and Alakea.

WANTED.

Diamond and Jewelry bought, sold and exchanged. J. Carlo, Fort St.
Assistant book-keeper—Chinese or any nationality. References. Room 3, Young Building.
Names of parties living about ten miles South-East of Honolulu whose house was looted in June 1907. Address: O. E. Musgrove, Fort Worden, Wash.

I want to sell one marble top washstand, oval bowls, hot and cold water faucets patent Non Syphon Traps. All nickle plated in fine condition. Complete \$25.00.

JEFFS,
Barber, Bethel Street.

PIANO-TUNING AND REPAIRING
James Sheridan, tuner and repairer of pianos and organs. No. 163 Hotel street, orders left at Hawaiian News Co., Young building Good pianos to rent or sell at cheapest rates.

MURDERER WANTED

MAN WHO WORKS ON AMERICAN-HAWAIIAN BOATS HAS KILLED GIRL.

J. A. Norman is wanted for murder. He is supposed to have been here as a member of the crew of one of the American-Hawaiian steamships. He has followed the sea for a living and has also been employed as a laborer. He worked aboard American-Hawaiian boats as a quartermaster and on the Clyde Line, in the Atlantic, as a seaman.

Norman is a native of Sweden, about 24, 170 pounds, blue eyes, blond, and wears tattoo marks; anchor on right wrist; woman's head and bust in wreath on left forearm; figures or markings on chest.

He is wanted for the murder of Annie Keaster in New York City, by striking her in the head with a hammer, fastening a towel around her neck and stuffing a towel into her mouth. The crime was committed on November 1.

HERO HARD HIT.

Khruns, a German, on Christmas eve was smashed in the jaw by a drunken soldier whom he rescued from drowning after the boozed fellow had fallen into the Nuuanu stream. The soldier is in the hospital with a cut chin, having scraped his face in falling from the embankment. Khruns is philosophizing on the kindly reward he received.

Miss Margaret Wong Leong wishes to thank her many friends who have voted for her in the recent doll contest held at L. B. Kerr & Co., on Christmas Eve and also wish them a very Happy New Year.

WATERHOUSE TRUST

REAL ESTATE FOR SALE

We'll, we have sold our College Hills bargain, advertised last week. Our bargains seem to take.

Here's a few more.
Two building lots in Manoa \$2000 and \$250 respectively. Good soil, good elevation and price and terms right.

At Kaimuki on 12th Avenue we have four (4) of the best lots left. This is the locality that has an unrivaled view of Honolulu Harbor and the Waianae Mountains, and where the best residences in the tract have been built.

These lots are cleared and improved. A bargain at \$3,500.

"Waterhouse Trust"

Corner Fort and Merchant Streets.

Save Money by Using the
WIRELESS
Instant Communication.
Office Open Sunday Morning
from 8 to 10.

Classified Advertising

DRESS MAKING.
Mrs. Nellie Johnson. Reasonable Rates. 1119 Union Street.

LOST.
Ewa Plantation Dividend Warrant No. E 8414 dated Nov. 30, 1909 in favor of C. A. Gilman. Amount \$35.00. Payment stopped.

FOR RENT.
Clean furnished rooms for working men from \$1 a week up. 1231 Fort street.

WANTED TO BUY.
Old books, magazines, Hawaiian stamps and curios. Books exchanged. Weedon Curio Bazaar. Fort Street, above Pauahi.

DRAMATIC.
MARIE KENNY, Dramatic Studio from San Francisco, 175 Beretania. Practical 3-months' private course. Acting, Elocution, Monologues, Vaudeville, Dancing, Reading, Grace Culture. Phone 33.



Poor little fellow! He coughs so hard he cannot sleep. That makes him weak and sickly all the next day. His brother thinks this coughing is terrible. So do we, for we know that just a few doses of

Ayer's Cherry Pectoral will stop the cough. For sixty years it has been the standard remedy with men, women, and children for colds, coughs, and all throat and lung diseases. It contains no narcotic or poison of any kind. Be sure that you get Ayer's Cherry Pectoral. Accept no cheap and worthless substitute.

Prepared by Dr. J. C. Ayer & Co., Lowell, Mass., U. S. A.

Kodak Films At Eastern Prices

We are selling all Kodak films at the same prices prevailing in New York, Chicago and San Francisco. Be sure to get the genuine Kodak Films.

HONOLULU PHOTO SUPPLY CO.
Fort below Hotel St.

Empire Chop House
(Lately Palace Grill.)
Bethel St. Opp. Empire Theatre.
Open Day and Night. Cuisine Unsurpassed.
BEST MEALS AT ALL PRICES!

O. M. TAI
King Street, makai of Nuuanu

HARDWARE, GUNS AND AMMUNITION at lowest prices
Baseball Goods A Specialty

Autos
INDEPENDENT AUTO STAND.
King and Bishop Streets.
Phone 609

RESOLVE
To have your pictures framed by us next year.
PACIFIC PICTURE FRAME CO.
Nuuanu below Hotel

A sensible Gift for Christmas

Every house needs new rugs from time to time and there is nothing at anywhere near the price that will compare with the beautiful Chinese matting rugs we have just received. Come and look these over. Also our line of Japanese blue and white cotton rugs.

Lewers & Cooke, Ltd.,
177 S. King St. Phone 776.

Diamonds and Jewelry
BOUGHT, SOLD AND EXCHANGED
J. CARLO
FORT STREET.

PARAGON PAINT AND ROOFING CO
PETER HIGGINS, Manager.
Estimates Free of Charge.
PHONE 60.
Office No. 339 Bethel St. near Hotel.

SPORTS

HILLO SPORTS PROGRAM

The Hillo sports program for New Year's Day is as follows:

- 10 a. m.—Baseball.
- 10:15 a. m.—1-4 mile match race for \$50 a side, between Mr. Mof's John T. and Mr. McLennan's Pockontas.
- 10:30 a. m.—1-4 mile match race between Weber and Major Collier. \$1,000 a side, making purse \$2,000.
- 10:50 a. m.—1-2 mile Japanese race. Purse \$25. 3 to enter. 2 to start. No entrance fees. All money to winner. Post entries.
- 11 a. m.—15 mile Marathon race. 30 laps of Hoolulu Park race course. Prizes: 1st \$50; 2nd, \$25; 3rd \$10. Entrance fee \$1.50. Start and finish in front of judges' stand.
- 1 p. m.—1-2 mile Luna race. Purse \$15. Post entries. No fee. Must be field plantation lunas and ridden by owners. 2 must enter.
- 1:30 p. m.—3-4 mile Hawaiian bred. Purse \$250. Free for all. 4 to enter. 3 to start. Entrance fee \$10.
- 2 p. m.—3-4 mile free for all. Purse \$500. 4 to enter. 3 to start.
- 2:30 p. m.—3-4 mile free for all Hawaiian bred maidens. Purse \$250.
- 3 p. m.—1-2 mile bronco busting race. Purse \$15. Anybody to ride any wild horse never ridden or exhibited before. Post entries. No fee. Two must start.
- 3:30 p. m.—1-2 mile cowboy race. Purse \$15. Post entries. No fee. Two must enter. Must be cowboys who ride their own horses.

Throwing hammer, 17 lbs.
Putting shot, 14 lbs.
Throwing the weight, 32 lbs.
100 yards dash.
Hop, skip and leap.
Long jump.
High jump.
Pole vault.

1 Mile race, 2 laps of track.
Prizes in above sports: First prize \$5. Second prize \$2.50 (third prize takes the entrance money of 25 cents for each event. Post entries.

Field sports start at 10 a. m. and will be interspersed with other events.

Prizes in above sports: First prize \$5. Second prize \$2.50 (third prize takes the entrance money of 25 cents for each event. Post entries.

Field sports start at 10 a. m. and will be interspersed with other events.

YOUTH WILL BE SERVED

(By Associated Press.)
SYDNEY, New South Wales, December 27.—Bob Fitzsimmons, the onetime heavyweight champion of the world, was knocked out by Lang in the twelfth round of a fight last night for the championship of Australia. Fitzsimmons is forty-seven years old and has been knocked out only twice before in his thirty years of fighting. Both his former defeats were by Jeffries in 1899 and in 1902.

CARNIVAL AT RINK

This is the last week of the present season of the Princess Skating Rink. The rink will be closed after the season.

Can't be Beat

HERE can be none better than the BEST. The best printing is STAR printing. Don't think for a minute that your stationery is good enough. Keep abreast of the times and have THE BEST. : : : The STAR has up-to-date type, up-to-date presses, and up-to-date workmen, who design and construct MODERN PRINTING.

sion next Sunday night for the purpose of laying a new floor and making other improvements. To celebrate the management will give a big carnival and masquerade ball on New Year's eve. The festivities will continue until midnight so as to see the old year out and the new year in. Favours of all kinds will be given away and the affair will be one big jolly event.

GEE PLAYED GREAT GAME

E. S. Gee once again demonstrated his right to the title of champion tennis player of the Territory, by on Friday afternoon defeating Alfred Castle in the challenge round of the Wall cup competition, played on the Beretania courts.

Gee won in straight sets, the score being 6-3, 6-1, 6-3. He practically won all the way, his opponent being palpably off his game.

The winner holds, besides a number of local honors, the singles and doubles championships of the Far East, including China, Japan and the Philippine Islands.

LIST OF PARDONS

There were six acts of executive clemency to give the best kind of Christmas cheer to five convicts in Oahu Prison and one who completed time there two years ago but whose offense deprived him of the rights of a citizen. That all were the results of profound deliberation is evidenced by the fact that Acting Governor Mott-Smith had taken many days in considering the applications for pardons and remissions of time.

Kansiora Tanda, convicted in March 1905, of murder in the second degree and sentenced to imprisonment at hard labor for thirty years, received a full pardon. E. C. Peters, who as deputy attorney general prosecuted him, voluntarily urged his pardon as he had become convinced that the case was one of self-defense.

Paula Danson Kellett, Jr., who served one year for embezzlement of probate court funds, was restored to his civil rights.

Sujimoto Kekashi, sentenced for twenty years in January, 1901, for murder in the second degree, had his term commuted to eighteen years.

Manuel Robello, sentenced for three years in October 1907, for an unmentionable crime, received a full pardon.

Snow Taylor, in for burglary for ten years from February 10, 1905, was July pardoned.

Yaomatsu Amimoto, under sentence of twenty-five years from August, 1900, for murder in the second degree, had two years sheared off his term.

AT LEAHI HOME

The inmates at the Leahi Home were cheered yesterday afternoon by the Christmas services held there in the afternoon by the Epworth League. Dr. Wadman had charge and addressed

the meeting briefly. Mr. and Mrs. Mishoff played beautifully on the guitar and zither, and Mr. Lee sang. Some slight tokens were taken by the visitors to brighten the men and women confined there. The league wants to express its thanks to Mr. and Mrs. Bischoff, to the gentleman who furnished a conveyance for the ladies and to the merchant whose liberality was a blessing to Leahi Home.

ISAAC TESTA DEAD

Isaac Testa, one of the best known and highest esteemed young Hawaiians of Honolulu, died of dropsy at his home Kalia, on Christmas Day. He was a skillful printer and shortly before his death was employed in the job office of the Hawaiian Star Newspaper Association. Mr. Testa was noted for his industry and thrift and in his all too short lifetime had been a potent example and a leader to his young fellow countrymen in those qualities. A retiring but genial disposition made friends of all who knew him.

BORN.
SHINGLE—In Honolulu, December 26, 1909, to the wife of Robert W. Shingle, a daughter.

ALEXANDER & BALDWIN LTD

OFFICERS AND DIRECTORS
H. P. BALDWIN.....President
J. B. CASTLE.....1st Vice-President
W. M. Alexander.....2nd Vice-President
J. P. Cooke.....3rd Vice-Pres. & Mgr.
J. Waterhouse.....Treasurer
E. E. Paxton.....Secretary
W. O. Smith.....Director
J. R. Galt.....Director
W. R. Castle.....Director

SUGAR FACTORS COMMISSION MERCHANTS AND INSURANCE AGENTS.

AGENTS FOR
Hawaiian Commercial & Sugar Company.
Haiku Sugar Company.
Paia Plantation.
Maui Agricultural Company.
Hawaiian Sugar Company.
Kahuku Plantation Company.
Kahului Railroad Company.
Haleakala Ranch Company.
Honolulu Ranch.

IN THE CIRCUIT COURT, FIRST Circuit, Territory of Hawaii.—In Probate—At Chambers, No. 4064.

In the Matter of the Estate of David Kawananao, deceased.
On Reading and Filing the Petition and accounts of John F. Colburn, Executor under the will and of the estate of David Kawananao, deceased, wherein petitioner asks to be allowed \$49,229.10 and charged with \$49,334.23 and asks that the same be examined and approved and that a final order be made of Distribution of the remaining property to the persons thereto entitled and discharging petitioner and sureties from all further responsibility herein:

It is Ordered, that Saturday, the 15th day of January, A. D. 1910, at 9:30 o'clock a. m., before the Judge presiding at Chambers of said Court at his Court Room in the Judiciary Building, in Honolulu, County of Honolulu, be and the same hereby is appointed the time and place for hearing said Petition and Accounts, and that all persons interested may then and there appear and show cause, if any they have, why the same should not be granted, and may present evidence as to who are entitled to the said property.
Dated the 10th day of December, 1909.

By the Court:
JOHN MARCALLINO,
Clerk of the Circuit Court of the First

IN THE CIRCUIT COURT OF THE First Circuit Territory of Hawaii. At Chambers—In Probate.

In the Matter of the Estate of Ida Schaffer.
On reading and filing the Petition of Herman Starkloff, Executor of the estate of Ida Schaffer, deceased, praying for an order of sale of certain real estate belonging to said estate to wit, a parcel of land situate at Puunui, in Honolulu containing 10,500 square feet, being a portion of Royal Patent (Grant) No. 3050 to H. A. Widemann and setting forth certain legal reasons why such real estate should be sold, to-wit: That the personal property of the estate of said decedent is insufficient to pay the debts of said Estate.

It is hereby Ordered, That the heirs and next of kin of said Ida Schaffer and all persons interested in the said estate, appear before this Court on MONDAY, the 17TH day of JANUARY A. D. 1910, at 10 o'clock a. m., at the Court Room of this Court, in the City of Honolulu, then and there to show cause why an order should not be granted for the sale of such estate.

Dated Honolulu, December 9, 1909.
W. S. Edgington, Attorney for Executor.

By the Court:
J. A. THOMPSON,
Clerk.

For Sale

Four fine lots in the best district in
KAIMUKI
These lots are a bargain.
High and Slightly.

Bishop Trust Co., LIMITED
Bethel Street

OPENS JANUARY 1ST.

The ladies department under the direction of Miss McIntyre. Ladies are cordially invited to inspect this department. Consultation free of charge.

BISHOP TRUST CO., LTD
Bethel Street

IF YOU WANT
To Buy, Sell or Rent REAL ESTATE

IF YOU WANT
To Borrow Money On Real Estate

"PRATT THE LAND MAN"
125 Merchant Street

Pau ka Hana
There Is No Other Soap as Good . . .
SOLD BY GROCERS



Stenciling Have you Tried It?

If you have never tried it, you most certainly should, it is the latest idea in decoration and fancywork. Stenciling on fabrics gives very pleasing results, as you can make such attractive presents for your friends or you can beautify your home with artistic curtains, pillow covers, table covers, etc.

Stenciling is not hard to do, you can learn how very easily. The chief requisite is to get the right materials to work with—colors that will be clear and brilliant and will remain fast in the fabric when it is washed.

SHERWIN-WILLIAMS STENCIL OUTFITS

are complete in every respect and contain stencils, brushes and colors in tubes that are of the proper consistency for stencil work. Come in and look over our stock or write us for pamphlet describing these outfits.

E. O. Hall & Son, Ltd.

Fraternal Meetings
HONOLULU LODGE No. 62, B. P. O. ELKS.
Meets in their hall on King Street near Fort, every Friday evening. Visiting Brothers are cordially invited to attend.
E. A. DOUTHITT, E. R. H. C. EASTON, Secretary.

HARMONY LODGE, No. 3, I. O. O. F.
Meets every Monday evening at 7:30 in Odd Fellows' Hall, Fort street. Visiting brothers cordially invited to attend.
F. D. WICKE, N. G. E. R. HENDRY, Sec.

DIVISION No. 1, A. O. H.
Meets every first and third Wednesday, at 8 p. m., in C. B. U. Hall, Fort Street. Visiting brothers are cordially invited to attend.
FRANK C. CREEDON, Pres. JAMES T. CAREY, Sec.

J. W. KERSHNER AUTO TIRE REPAIRING
1177 Alakea St. Phone 436

FRENCH LAUNDRY
J. Abadie, Prop.
Agent for
F. THOMAS DYING WORKS, San Francisco.

FINE ROLLS AND CAKES, BUNS, PIES and all the delicacies of the table at
ASAHI BAKERY
Beretania near Alakea.

PAPER
All kinds WRAPPING PAPERS and TWINES, PRINTING and WRITING PAPERS.
AMERICAN-HAWAIIAN PAPER & SUPPLY CO., LTD.
GEO. G. GUILD, General Manager
Fort and Queen Streets.
Honolulu. PHONE 411

PURITAN BUTTER
Big New Shipment.
HENRY MAY & CO., LTD
Agents.

JOHN K. COOK
Practical Tailor, Busheler and Presser
Gentlemen's Own Cloth Made Up.
Thirty-five Years Experience. Give Me a Call.
Room 4, Oregon Block upstairs, Hotel and Union, Entrance 111 Union.

NEW ARRIVALS IN SILK GOOD
For years our line of Silk goods has been the best in town and our last shipment proved no exception.
Iwakami & Co., - - Hotel St

Catton, Neill & Co. LIMITED
Engineers, Machinists, Blacksmiths and Boiler-makers.
First class work at reasonable rates.

WE INVITE INSPECTION OF OUR GOODS
K. FUKURODA
Hotel near Nuuanu. Honolulu

DR. F. SCHURMANN
OSTEOPATHIC PHYSICIAN, OSTEO-PATHIC OCULIST
Hours:—Consulting, 2-3 p. m. Saturdays Excepted. Operating, 8-12 a. m., 3-6 p. m.
Telephone 33. Office, corner Beretania and Union streets.
HONOLULU, T. H.

Begin the New Year With a New Suit of
Hart, Schaffner & Marx Clothes.
SILVA'S TOGGERY

FURNITURE
Your Credit Is Good
J. HOPP & CO. - King St

TERRITORY OF HAWAII. BOARD OF AGRICULTURE AND FORESTRY, DIVISION OF ANIMAL INDUSTRY.

RULES AND REGULATIONS PERTAINING TO THE INSPECTION AND TESTING OF LIVE STOCK INTENDED FOR IMPORTATION FROM THE MAINLAND OF THE UNITED STATES TO THE TERRITORY OF HAWAII AS ADOPTED DECEMBER 8, 1909, AND APPROVED BY THE GOVERNOR ON DECEMBER 31, 1909, EFFECTIVE JANUARY 1, 1910.

RULE I.—INSPECTION OF IMPORTED LIVE STOCK.

In order to prevent the introduction into this Territory of infectious, contagious and communicable diseases among live stock and other animals, local managers or agents of Steamship and Navigation lines or the commanding officer of any ship shall notify the Territorial Veterinarian or the local Live Stock Inspector immediately upon the arrival of any ship, of the presence on board, if any, of live domestic animals, including poultry and dogs, when same is intended to be landed in this Territory, and shall upon arrival of any ship furnish the inspecting officer with a list of the number and kind of animals taken on board from any port outside of this Territory, the number and kind destined for the Territory, the names of the owners or consignees, and a report as to the condition of health and cases of sickness or death among the animals while on board.

If necessary to remove such animals before the arrival of the inspector they must be confined on the pier in such a manner as to facilitate inspection, but should in no case be turned loose on the pier. Hogs and sheep shall be confined in temporary pens. Cattle and horses shall be tied on the pier. No animal of any description shall be allowed to leave the pier until the Territorial Veterinarian or his deputy has issued a certificate of health permitting the landing of the animal or animals in question.

In no case shall the removal of live animals from the ship for inspection or other purposes, constitute a landing until a certificate of health or such animals has been issued.

RULE II.—GLANDERS AMONG HORSE STOCK WITHIN THE TERRITORY.

It having been brought to the notice of this Board that a contagious disease known as glanders and farcy prevails among the horse stock in various portions of this Territory; therefore, in case any animal shows symptoms of glanders, the owner or person having charge of the same, or any person having reason to believe to suspect that an animal has glanders shall immediately notify the Territorial Veterinarian or his deputy.

If the Territorial Veterinarian or his deputy decides that there is reason to believe an animal is suffering from glanders he shall at once isolate the suspected animal or animals and either submit them to the mallein test or remove them to quarantine, where they shall be kept under observation until the nature of the disease can be definitely established.

All animals which upon examination by the Territorial Veterinarian or his deputy are found to exhibit symptoms of glanders shall be destroyed and the carcass disposed of under the supervision of one of the above mentioned officers.

All other animals which have been exposed to the infection by being in the same stall, yard or premises, or which in any way have come in contact with an affected animal, shall be quarantined for such period as shall be required by the Territorial Veterinarian or his deputy, or submitted to the mallein test or both.

The premises where affected animals have been kept shall be disinfected under the supervision of the Territorial Veterinarian or his deputy.

All expenses in connection with the examination, testing, destroying and disposing of affected animals, as well as quarantine and disinfection, shall be paid by the owner.

RULE III.—INSPECTION AND TESTING FOR GLANDERS AND TUBERCULOSIS OF LIVE STOCK INTENDED FOR IMPORTATION.

In order to prevent the further introduction of glanders and farcy into this Territory, it is hereby ordered that:

No horse stock, (including mules and asses), shall be admitted to the Territory unless accompanied by a certificate of health showing that the animal or animals in question have been submitted to the mallein test and found to be free from glanders. Said test must be made and certificate issued by a veterinarian authorized by the United States Bureau of Animal Industry, and endorsed by the Bureau

Inspector in Charge at the port of shipment. (x)

Any person contemplating the importation of horse stock to this Territory shall notify the Territorial Veterinarian, his assistant or deputy of the approximate time of arrival of such stock, the name and address of the consignee, the name of the vessel and the port of entry.

Upon arrival of the stock the Territorial Veterinarian or his local representative shall be notified at once and the stock held as directed in Rule I until the same and the accompanying papers have been examined by him and a permit of landing issued.

In order to prevent the further introduction of tuberculosis in cattle it is hereby ordered, that:

No cattle above the age of six months shall be admitted to the Territory unless accompanied by a certificate of health showing that the animal or animals have been submitted to the tuberculin test and found to be free from tuberculosis. The said test must be made and certificate issued in the same manner and by the same authorities as prescribed for the importation of horse stock, and the same general rules governing the latter shall apply to the importation of cattle.

In case horse stock or cattle should be landed at a port of entry where no local representative of the Division of Animal Industry is stationed and where it would be impossible for him to reach within a reasonable time after the arrival of the stock the owner or consignee shall be allowed to remove the animals to convenient premises where care can be taken of them and where they can be kept isolated from other stock of the same kind, upon the following conditions: The owner or the consignee shall without delay notify the Territorial Veterinarian or his nearest representative by telephone, wireless or otherwise of the arrival of the stock and the place where he has taken them to. If so directed he shall forward the papers accompanying the stock for examination by the Territorial Veterinarian or his representative.

(See also Rule 5.—Quarantine of Horse Stock arriving from or through the State of California.)

Until the arrival of either of these officials or until he receives notification that the accompanying papers are satisfactory, the owner or consignee shall consider the animals quarantined—that is they shall be kept in a stable or enclosure where no other animals of their kind are kept and where they cannot come in contact, direct or indirect with any such animals. Special care should be taken that the imported animals are not watered where other stock drink, but that a separate watering place is provided or the animals watered with a bucket used for no other purpose. No animal shall leave the stable or enclosure until officially admitted to the Territory.

If any horse stock shall be found by the Territorial Veterinarian or his representative upon arrival in the Territory to be infected with glanders or any cattle to be infected with tuberculosis, the same shall be immediately destroyed and the carcass disposed of at the expense of the owner, under the supervision of the Territorial Veterinarian or his representative.

RULE IV.—INSPECTION OF SHEEP AND SWINE INTENDED FOR IMPORTATION.

In order to prevent the further introduction into this Territory of the diseases known as sheep scab, hog cholera and swine plague it is hereby ordered that:

No sheep shall be admitted to this Territory unless accompanied by a certificate of health issued or approved by an officer of the United States Bureau of Animal Industry, and to the special effect that the animals are free from sheep scab or have been dipped in accordance with the regulations of the United States Bureau of Animal Industry and under the supervision of an officer of the said Bureau, and No swine shall be admitted to this Territory unless accompanied by a certificate from the same authorities to the effect that the animals have passed a careful veterinary inspection and are free from any indication of disease, and that neither hog cholera nor swine plague has existed within a radius of 5 miles of the premises in which they have been kept for a period of six months immediately preceding the date of shipment.

The owner or importer must present an affidavit, on forms supplied by this Board, that the said certificate refers to the swine in question, that the same have been shipped from the premises mentioned in the said certificate in clean and disinfected cars, and without unloading. Swine arriving in the Territory without such certificate and affidavit will

be subject to a quarantine of two weeks at the expense of the owner or importer. Shipments of swine which upon arrival show symptoms of hog cholera and swine plague will be placed in quarantine and will remain there for an indefinite period or until disposed of by slaughter, under the supervision of the Territorial Veterinarian or his deputy.

Owner of..... swine shipped from..... California, and consigned to..... Territory of Hawaii, do solemnly swear that, for the past six months, there has been no hog cholera or swine plague on the premises from which these swine are being shipped, nor within a radius of five miles of the same. Furthermore, that the swine were shipped direct from the said premises to San Francisco, without unloading, in clean and disinfected cars.

Owner & Shipper. Subscribed to and sworn to before me this..... day of..... 1909. Seal.

Notary Public.

RULE V.—QUARANTINE OF HORSE STOCK (HORSES, MULES AND ASSES) ARRIVING FROM OR THROUGH THE STATE OF CALIFORNIA.

Owing to the fact that glanders has again made its appearance among mules arriving from California, and to the further fact that the Board of Commissioners of Agriculture and Forestry has definite information to the effect that glanders prevails in the State of California to an extent which makes it unsafe to rely on the present regulations governing the importation of live stock to this Territory, it is hereby ordered that: Until further notice all horse stock (horses, mules and asses) arriving in this Territory, from or through the State of California, shall be quarantined, at the port of entry, for twenty-one days, counting from the date of departure from California. By quarantine shall be understood the absolute segregation of such animals, on premises provided by this Board or by its officers. If at the end of the stipulated period the Territorial Veterinarian or his deputy is not satisfied that the animals are free from glanders or other contagious diseases, the same shall be either subjected to the mallein test or continued in quarantine, or both, until released and admitted to this Territory. All expenses in connection with the quarantining of horse stock as above specified shall be borne by the owner, importer or consignee. While this rule remains in force the ports of Honolulu, Hilo and Kahului shall constitute the only ports of entry for horse stock (including mules and asses) coming from or through the State of California. These rules (I-V, Division of Animal Industry) as adopted by the Board of Commissioners of Agriculture and Forestry at a meeting held in Honolulu on December 8, 1909, shall take effect upon their approval by the Governor, all previous rules of the Division of Animal Industry being repealed from the same date. (S) MARSTON CAMPBELL, President and Executive Officer, Board of Commissioners of Agriculture and Forestry. Approved Dec. 22, 1909. (S) E. A. MOTT-SMITH, Acting Governor.

Any violation of these regulations is a misdemeanor and punishable by a fine not to exceed \$500.00 (See Sec. 390, Chapter 28, Revised Laws 1905, and amendment thereto, Sec. 3, Act 82, Session Laws, 1905, and Act 112, Session Laws of 1907). For the information of all concerned see Act 112 of the Session Laws of 1907 and Act 138 of the Session Laws of 1909.

GAVE MERRY CHRISTMAS TO 2000 CHILDREN



CHAIRS We have a large invoice of Chairs—Dining, Rockers, Baby Rockers and high Chairs. We wish all our friends a MERRY CHRISTMAS and HAPPY NEW YEAR. Nothing the matter with Honolulu, anyway. Honolulu Wire Bed Co., Kapiolani Block (J. S. Bailey) General Furniture Dealers. Cor. Alakea and King Sts.

IN ORDER THAT YOU may get the greatest possible good from publicity, your printing must be attractive and well composed, and above all the work must be convincing to the prospective customer you're soliciting. If you have any doubt regarding the quality of your printing, call or write to us at once. We can help you. HAWAIIAN STAR NEW PAPER ASS'N. LTD.

BY AUTHORITY

RESOLUTION 210. Honolulu, T. H., Nov. 16, 1909. RESOLVED, by the Board of Supervisors for the City and County of Honolulu, Territory of Hawaii, that the sum of FIFTEEN HUNDRED DOLLARS (\$1500.00) be and the same is hereby appropriated from the Road Tax Special Deposit against the district of Ewa and Waianae for the purchase of Mules and Harness. Presented by Supervisor J. C. QUINN. Approved: JOSEPH J. FERN, Mayor. 10th—Dec. 21, 22, 23, 24, 27, 28, 29, 30, 31; Jan. 3, 1910.

RESOLUTION. BE IT RESOLVED by the Board of Supervisors of the City and County of Honolulu, Territory of Hawaii, that the sum of SEVEN HUNDRED AND FIFTY (\$750.00) DOLLARS be and the same is hereby appropriated from the General Fund, for the payment of account known as "Repairs, Kailua and Maunawili Bridges, Koolauapoko District." Honolulu, T. H., November 26, 1909 Presented by Supervisor J. C. QUINN. Approved: JOSEPH J. FERN, Mayor. 10th—Dec. 21, 22, 23, 24, 27, 28, 29, 30, 31; Jan. 3, 1910.

NOTICE. Payment of Sewer Rates. In accordance with Chapter 84 of the Revised Laws of 1905, all those holding sewer privileges or paying sewer rates are hereby notified that the sewer rates for the six (6) months ending June 30, 1910, will be due and payable at the office of the Superintendent of Public Works, on the first day of January, 1910. A failure to pay such rates within fifteen (15) days thereafter will subject the holder to 10 per cent additional. MANUEL K. COOK, Chief Clerk. Approved: MARSTON CAMPBELL, Superintendent of Public Works, Department of Public Works, Dec. 20, 1909. 3th—Dec. 21, 24, 29

NOTICE. Payment of Water Rates. As provided for in Chapter 45 of the Revised Laws of Hawaii, 1905, all persons holding water privileges or those paying water rates are hereby notified that the water rates for the six (6) months ending June 30, 1910, will be due and payable on the 1st day of January, 1910. A failure to pay such water rates within fifteen (15) days thereafter an additional charge of 10 per cent will be made. All privileges upon which rates remain unpaid on January 16, 1910, are subject to immediate shut off without further notice. Rates are payable at the office of the Honolulu Water Works, Capitol building. Honolulu, T. H., Dec. 20, 1909. J. M. LITTLE, Superintendent of Honolulu Water Works. 3th—Dec. 21, 24, 29. Fine Job Printing, Star Office

Honolulu Iron Works

STEAM ENGINES, SUGAR MILLS, BOILERS, COOLERS, IRON, BRASS AND LEAD CASTINGS. Machinery or Every Description Made to Order. Particular Attention Paid to Ship's Blacksmithing. Job Work Executed on Short Notice.

IF YOU WISH TO ADVERTISE IN NEWSPAPERS ANYWHERE AT ANYTIME Call on or Write C. D. DAK'S ADVERTISING AGENCY 124 Sansome Street SAN FRANCISCO, CALIF. Fine Job Printing, Star Office.

Compliments of the Season and A Happy New Year SHARP SIGNS are Trade Promoters. Begin the year right Yours, TOM SHARP, Signographer.

Curios of all Descriptions

Woman's Exchange

Hotel Street near Union.

W.G. Irwin & Co., Ltd

SUGAR FACTORS, COMMISSION AGENTS

Wm. G. Irwin, President and Manager
John D. Spreckels, First Vice-President
W. M. Giffard, Second Vice-President
E. M. Whitney, Treasurer
Richard Ivers, Secretary
A. G. May, Auditor

AGENTS FOR

Desane Steamship Co., San Francisco, Cal.

Baldwin Locomotive Works, Philadelphia, Pa.

Hakalan Plantation Co., Hilo Sugar Company, Honolulu Plantation Co., Hatcher's Sugar Plantation Co., Kilauea Sugar Plantation Co., Oloana Company, Pahuau Sugar Plantation Co., Waimanalo Sugar Co.

NEW ADVERTISEMENTS.

W. W. Dimond & Co.	Page 8
Lewis & Co.	Page 5
Wall, Nichols & Co.	Page 5
Coyne Furniture Co.	Page 6
Hawaiian Wire Bed.	Page 4
J. A. R. Viera & Co.	Page 5
Trading Stamps.	Page 9
Tom Shrip.	Page 7
Mfg. Shoe Co.	Page 1
Regal Shoe Store.	Page 3
Dissolution Notice.	Page 3
Metropolitan Market.	Page 8
Pacific Picture Frame Co.	Page 6
Benson, Smith & Co.	Page 4
Palm Cafe.	Page 4
Hawaiian Electric Co.	Page 4
Pioneer Mill Co.	Page 5
A. B. Arleigh.	Page 5
Flax, Con. & Draying Co.	Page 5
N. S. Sachs Dry Goods Co.	Page 8
Wireless Telegraph Co.	Page 5

THE WEATHER.

Local Office, U. S. Weather Bureau, Young Building, Honolulu, T. H., Dec. 27, 1929.

Temperatures: 6 a. m.; 8 a. m.; 10 a. m.; and morning minimum. 70; 72; 73; 74; 67.

Barometer reading: Absolute humidity (grains per cubic foot); relative humidity and dew point at 8 a. m.: 229.83; 5.445; 64; 59.

Wind: Velocity and direction at 6 a. m.; 8 a. m.; 10 a. m.; and noon: 26 SE; 20 SE; 25 SE; 24 SE.

Rainfall during 24 hours ending 8 a. m.: .44 inch.

Total wind movement during 24 hour ended at noon 517 miles.

WM. S. STOCKMAN, Section Director.

NEWS IN A NUTSHELL

Paragraphs That Give Condensed News of the Day.

It is money in your pocket to use the Wireless. The instant communication will bring you many an order that you would lose if you waited for the mail. Office open on Sundays from eight to ten in the morning.

Silent be! It was the cat. See the original cat in Lewers & Cooke's window, 177 S. King street.

An assistant bookkeeper is wanted. See classified ads.

The clothes made by the W. W. Ahana Co., 62 So. King street, have an individuality, style, and fit that cannot be obtained in ready-made clothes or in clothes made by the average tailor.

Ladies and misses' coats in fine assortment at Sachs Dry Goods Co. These are the 1910 styles, made of new materials, and very handsome. Call and see the display.

Leah Chapter, Order Eastern Star, has elected the following officers for next year: Worthy matron, Nellie J. Stephens; worthy patron, Arthur Coyne; associate matron, Carrie B. Riley; secretary, Adelaide Webster; treasurer, Amelia B. Reidy; conductress, May E. Paty; associate conductress, Margaret Smith.

Carnegie's donation of \$100,000 for a building for the Library of Hawaii is conditioned on the procuring of a site. Another question confronting the promoters is that of maintenance, as the appropriation of \$10,000 for the present biennial period may not be repeated by succeeding legislatures.

Harmony Lodge No. 3, I. O. O. F., meets this evening at 7:30 o'clock. All members are asked to be present.

Honolulu Construction & Draying Co. is rapidly building up a large trade in stove wood and coal through generous measure, good quality, and low prices. Give them your next order on trial. Phone 281.

Office and pocket diaries and memoranda desk pad calendars for 1910 at A. B. Arleigh & Co., Hotel street, opposite Union.

The Manufacturers Shoe Store has been a busy place this week. The store has been thronged all day and well into the night. The idea of making useful presents is growing, and their exclusive style of Christmas shoe orders has met with much favor.

For anything and everything in the curio line go to the Woman's Exchange. See their display of card trays with Hawaiian subjects.

The quality of the meats sold at the Metropolitan Market, telephone 45, cannot be excelled.

Patronize the Palm Cafe for anything wanted in the line of sweets. The pastry is superior to any sold in Honolulu.

If pictures are taken to the Pacific Picture Frame Co., Nuuanu below Hotel, for framing, satisfaction will result.

Rain is a great promoter of colds, and Hobron's anti-grippe tablets will generally bring instant relief. They are to be had from Benson, Smith & Co., at the corner of Hotel and Fort streets.

Don't forget Mrs. Dickerson's great clearance sale. Everything in the store goes.

The new Gem lamps will give you 20 per cent. more light and 10 per cent. reduction in current over the ordinary 16-c.p. lamp. Hawaiian Electric Co.

The stock books of Pioneer Mill Co. will be closed to transfers from Dec. 27 to January 3.

A \$10,000 Christmas box was received by the Children's Hospital. It was in the form of 6 per cent. bonds and the donor was the Mary Castle Trust. This handsome contribution brings the endowment fund up to \$75,000.

Four patients were received in the Children's Hospital the first week it was open.

Lloyd Childs, manager of the Hawaiian exhibit at Seattle, arrived in the transport Dix on Saturday. The Dix brought back the exhibit.

A dissolution notice re City Meat Co., Ltd., is published in this issue.

Regal shoes at \$3.50 and \$4 are better than any other shoes at \$5 sold in this city. Try a pair and you will be convinced of this statement; or ask any wearer of Regal shoes.

Herman Dinklage of the customs department, who went away for his health came home on the Mongolia, being met at the steamer by his daughter and Dr. Hoffman. He is seriously ill.

Going through in the Mongolia, to the Orient, are Rear Admiral J. Hubbard, U. S. N., and Lieutenant C. Watts, U. S. N.

Jailer Asch of the City and County jail wishes to thank the following firms for their kind Christmas donations to the unfortunate of the County prison: Love's Bakery, Arctic Soda Works, and the Oahu Ice and Electric Co.

Cant & Bolte, Ltd., is the title of a new corporation formed by E. H. Cant of Kaneohe, Puna, and C. Bolte W. A. Purdy, Jos. P. Mendonca and J. G. Spencer of Honolulu. Its main purpose is to do a general lumber, milling, manufacturing and mercantile business. The head office is at Honolulu. The capital stock is \$40,000 in \$100 shares, with the privilege of extension to \$100,000. Mr. Cant holds 120, Mr. Bolte 277 shares and the others one share each. Messrs Cant, Purdy and Bolte are the directors.

The S. S. Mongolia was boarded by Pilot Lorenzen, after a couple of unsuccessful attempts had been made. The quarantine and customs officers boarded the liner inside the harbor.

Judge Robinson admitted the will of the late Louisa Brownscombe Brickwood to probate, appointing W. M. Giffard and Henry Holmes as executors. The estate is valued at \$12,500 and is left to relatives and near friends.

Judge Robinson appointed William Savidge administrator of the estate of Marlianno J. Borjes, which is valued at \$1750.

KAU LANDS TO BE OPENED

Appraisements of the Kamaoa and Kealakeha homesteads and the Waiohinu town lots and taro lots have been received at the Department of Public Lands from sub-agent Thomas C. White of Kau district. All will be advertised in January for sale at an early day. These lands were the occasion for Delegate Kuhio's attack upon Governor Frear for breach of faith with the Kau people.

PASSENGERS Arrived.

Per P. M. S. S. Mongolia, December 27, from San Francisco—For Honolulu L. Aaron, A. Adams, Mrs. C. J. Barclay, Mrs. H. Barnum, W. H. Barringer, Chas. D. Barry, Mrs. Chas. D. Barry, Gen. T. H. Barry, U. S. A., Miss Julia Barry, Keo, A. Bell, Col. John Biddle, U. S. A., Miss M. Biggart, Mrs. L. F. Briggs, L. F. Briggs, C. H. Birdseye and wife, Master C. W. Birdseye, Stacey Birdseye, Mrs. John S. Bliss, A. W. Bottomley, Geo. I. Brown, A. E. Bungay, E. W. Burgess, J. S. Burgess, J. Cartwright, Mrs. J. B. Castle, Mrs. J. K. Clark, J. E. Connelly, Z. Cushing, E. M. de Leon, F. A. Deming, F. G. Deming, Miss Ruth Deming, J. T. Dille, Harold G. Dillingham, Mrs. Harold G. Dillingham, Miss A. W. Duisenberg, A. W. Eames, Miss R. Ehrlick, F. H. Emmons, W. Empson, Mrs. W. Empson, Capt. F. K. Ferguson, U. S. A., Col. W. L. Kinley, U. S. A., Horace Fogg, Mrs. Horace Fogg, A. T. Fowler, H. Fowler, Mrs. F. H. Fowler, M. F. Gallagher, Mrs. M. F. Gallagher, G. T. Garland, A. W. Gilbert, Mrs. A. W. Gilbert, Mrs. Lucy Glenn, Mrs. M. E. Green, Major J. P. Hains, U. S. A., Miss Z. K. Hart, Mrs. D. J. Hennessey and servant, Miss Margaret Hennessey, Master D. J. Hennessey, Master Paul Hennessey, C. K. Henry, Mrs. C. K. Henry, Stanley Henshaw, H. Hinkel, O. H. Ickel, Leon Honinsberger, Mrs. Leon Honinsberger, Mrs. Alex. Isenberg, Master Rudolph Isenberg, Master Alexander Isenberg, D. J. Johnson, L. M. Kallsky, Miss M. Kelly, B. C. Kennedy, Mrs. B. C. Kennedy, L. T. Kibler, Mrs. A. F. Knudsen and maid, Miss Ruth Knudsen, J. L. Lewis, Mrs. C. G. Long, Miss Alice Macfarlane, L. L. McCandless and wife, Miss E. L. McCandless, H. L. McDonald, A. J. Mitchell, Mrs. A. J. Mitchell, T. H. Moncre, J. C. Montgomery, E. Nelde, A. J. Ogle, C. L. Palmer, Mrs. E. W. Peterson, Wm. Plotts and wife, Isaac Pollard, Edw. Pollitz M. F. Prosser, Miss H. R. Prosser, A. J. Quigley, Mrs. C. H. Raven, Master Walter Raven, A. Ray, Miss C. Restarick, Mrs. W. H. Rice, E. E. Richards and wife, G. J. Richardson, Mrs. G. J. Richardson and infant, Miss Gertrude Ripley, Mrs. G. E. Rockwood, Jack Ryan, C. Sanford, Miss Santina, H. Taxi, G. A. N. Schaafsma, Mrs. G. A. N. Schaafsma, Jay Scott, J. H. Scoville, Mrs. J. H. Scoville, Miss M. Scoville, Mrs. L. Shotwell, W. H. Smith, Mrs. W. H. Smith, W. O. Taylor, S. E. Thompson, Mrs. S. E. Thompson, R. H. Tarent, Mrs. Joseph W. Vail, F. D. Wetherby, Mrs. F. D. Wetherby, Mrs. R. L. Wilcox, Gen. G. P. Wilson, Mrs. G. P. Wilson, D. L. Withington.

LAST OF BIG SALE.

This is the last week of the great bargain sale at Lewis & Company's store. The Christmas rush made big holes in the stock, but all kinds of bargains are left. Fancy and staple groceries are to be sold at prices absolutely regardless of cost, as they must be disposed of before January 1. Prompt and careful attention is given every customer, and satisfaction is assured to everybody. Bear in mind that everything must go this week.

LADIES' CRAVENETTE COATS, latest cut in Tan and Oxford, all sizes at \$8.50.

LADIES' STYLISH CLOTH COATS semifitting, the very latest in new Grey and Tan, \$10.00 and \$11.50 each.

CHILDREN'S AND MISSES STYLISH COATS. A fine assortment to select from; sizes from 3 years up.

LADIES' SWEATERS new assortment stylish, up-to-date. The Long Knit Coat the Alice Coat, the Mother Coat.

CHILDREN'S SWEATERS, white, navy, blue and red from \$1.00 up.

SACHS' DRY GOODS CO.,

Cor. Fort and Beretania. Opposite Fire Station.

Clothes for the New Year

Order now, selecting from our large stock of exclusive patterns.

W. W. AHANA CO.

GOOD MEATS

Cannot be had outside this Market. Our source of Supply Enables us to get first chance at the best.

Metropolitan Market

W. F. Heilbron, Proprietor. Phone 45.

IT TASTES CLEAN BECAUSE IT IS CLEAN.

The Pond Dairy Milk

Is pleasant and wholesome. "There's a difference." The Baby notices it instantly.

The Pond Dairy

PHONE 890. P. O. BOX 162.

Before TAKING A POLICY OF LIFE INSURANCE IN ANY OTHER COMPANY,

ASK TO SEE THE

Contract IN THE

NEW ENGLAND MUTUAL LIFE INSURANCE COMPANY Of Boston, Massachusetts.

AND COMPARE THE MANY ADVANTAGES

IT OFFERS WITH THOSE OF OTHER COMPANIES.

Castle & Cooke, Ltd. GENERAL AGENTS.



One of the recently NEW YORK PA. HERN HATS. Special Christmas Importation.

Ehlers

ANTIQUES

Hawaiian collections for team museums. Any price. Largest Curio-Souvenir Store in the Pacific.

Hawaii & South Sea Curio Co. Young Building, Bishop Street next Cable Office. Open Nights.

JAMES F. MORGAN STOCK and BOND BROKER

Member of Honolulu Stock and Bond Exchange. Stock and Bond Orders receive prompt attention.

Information furnished relative to all STOCKS AND BONDS. LOANS NEGOTIATED. Phone 73. P. BOX 894

HAWAIIAN TOBACCO PLANTATION CO. Limited

Capital Stock \$100,000.00 5000 Shares Par Value \$20.00

Subscription list now open at the office of

HARRY ARMITAGE Stock and Bond Broker

Campbell Block, Mercant Street. Prospectus may be had on application.

WATCH FOR SYMPTOMS OF CROUP

Do not allow croup to develop. Chamberlain's Cough Remedy will prevent the attack. Watch for the first symptom, which is usually hoarseness and give this remedy freely. It should always be kept in the home where there are young children. For sale by all dealers, Benson Smith & Co., agents for Hawaii.

OUR STERLING SILVER



Showing for the Holidays is Particularly Strong this Year, Combining the Most Excellent Features in Both Flat and Hollow Goods, in which line we have Everything from an Olive Spoon to a Salad Service, and from a Cream Ladle to a Coffee or Tea Set. Never before has our Display been so Complete or has the like of it been Attempted in This City. We have this Silver in Shaving Cups, Baby Mugs and a Thousand and One Other Things. Our Plated Ware Department is Larger than Ever—Simply Bristling with Seasonable Goods.

Our Showing in the Famous Community Silver was never so Complete as it is this Season. These Goods are Guaranteed to be Triple Plus Plate, Which Places them among the Very Best on any Market. Community Silver is Guaranteed for Twenty-Five Years.

Attention is again called to our Facilities for Displaying Goods, and Gentlemen has ranged that a view of it is easily obtained, and Our Force of Salesmen and Gentlemen has been so Distributed that Customers will Receive Attention, That is remember.

We Wish to Call Especial Attention to the Following:

- Coffee Spoons Diagrammed for each month of the year, Sterling Silver, \$1.00
- Sterling Silver After-Dinner Coffee Spoons, \$7.50 the Dozen
- Sterling Silver Tea Spoons, \$10.50 the Dozen
- Sterling Silver Berry Spoons, \$3.50 each
- Sterling Silver Cold Meat Forks, \$3.00 each

It is Probably Needless to say that Silver Ware is Standard Gift Projects. No Prettier Present Than Community Silver is to be had, and it has the Additional Advantage of Utility for a Great Many Years.

W. W. DIMOND & COMPANY, LTD. 53, 55, 57 KING STREET, HONOLULU

PAY CASH!

when you Buy at the Stores and ask for Green Cash Stamps (they're free.) Call at the showrooms and see the many useful and valuable articles you can get for Green Cash Stamps.
 Showrooms Beretania Street, opposite Fire Station

Claus Spreckels. Wm. G. Irwin
CLAUS SPRECKELS & CO.
BANKERS
 HONOLULU : : : : T. M.
 San Francisco Agents—The Nevada National Bank of San Francisco.
 DRAW EXCHANGE ON
 SAN FRANCISCO—The Nevada National Bank of San Francisco.
 LONDON—Union of London & Smith's Bank, Ltd.
 NEW YORK—American Exchange National Bank.
 CHICAGO—Cora Exchange National Bank.
 PARIS—Credit Lyonnais.
 BERLIN—Dresdner Bank.
 HONGKONG AND YOKOHAMA—The Hongkong and Shanghai Banking Corporation.
 NEW ZEALAND AND AUSTRALIA—Bank of New Zealand, and Bank of Australasia.
 VICTORIA AND VANCOUVER—Bank of British North America.
 TRANSACT A GENERAL BANKING AND EXCHANGE BUSINESS.
 Deposits Received, Loans Made on Approved Security, Commercial and Travellers' Credits issued. Bills of Exchange Bought and Sold.

COLLECTING PROMPTLY ACCOUNTED FOR.

Capital and Surplus \$1,000,000.00
Get Ready for 1910
 by opening a Saving Account at the
BANK OF HAWAII, LTD.
 It is within your power to make next year a banner one for saving. Open a Saving Account, which you can do with one dollar, and deposit each week or month all above your necessary expenses. Interest will be paid you at four and one-half per cent.

ESTABLISHED IN 1836.
BISHOP & CO.
BANKERS
 Commercial and Travellers' Letters of Credit issued on the Bank of California and The London Joint Stock Bank, Limited, London.
 Correspondents for the American Express Company, and Thos. Cook & Son.
 Interest allowed on term and Savings Bank Deposits.

American Steam Laundry
 W. D. McINTYRE, Manager.
FIRST CLASS LAUNDRY WORK.
 1382 Liliha Street, corner Vineyard.
Y. Yoshikawa
 153 King Street, opp. Young Building
 Good, new bicycle, \$25; second hand, any kind, cheap. Tricycles for sale. Motorcycles repaired and re-tired.

Why Portuguese Immigration Was So Small

HILO, December 23.—M. A. Silva, of Honolulu, came up with the Portuguese immigrants on Sunday, having just returned from Madeira where he went to help A. J. Campbell get the laborers who arrived by the steamer Swanley. While Campbell has been criticized in Honolulu for not doing better work, Silva sustains him against many of the charges made, saying to the Herald on Monday:
 "From three to four months elapsed between the first bookings for the steamer and her sailing, so that some of the Portuguese were tired of waiting and withdrew their names. There were plenty we could have brought but they were not desirable. It is a long voyage to Hawaii and against this is the fact that a hundred men go to Boston every month to work on farms. They get \$25 a month and their board, stay a couple of years, then return to Madeira and their families with money enough to buy land for a home. If there were a line of steamers calling there every month and landing immigrants to come by Tehuantepec we could easily get three hundred families on each trip. There were more than 150, who had been examined by the doctor and accepted, that backed out on account of the long time they had to wait.
 "Storekeepers circulated false reports about these island, but the authorities did not take any action either way. It must be remembered also, that conditions are much better in Madeira now than they were five years ago, so there is not as much reason for people to leave. Again there were a number of families who wanted to come, but could not because they had boys over 14 years of age, for each of whom a bond of \$75 must be given, according to Portuguese law, by a property owner or the father as a guarantee that the boys will present themselves for military service. Many of the father are unable to secure such a bond or furnish the cash in place of it.
 "The Swanley brought 350 working men, and about 200 people came to this island on the Claudine and were distributed to the following plantations:

	Adults	Children
Honolulu	16	14
Hilo Sugar Co.	13	13
Hakalau	18	18
Onomea	15	16
Hawaii Mill	21	10
Pepeekeo	19	6
Waiakea	7	1
Hanakua Mill Co.	11	5
Olaa	7	8

 "On the voyage there were three deaths of children and eight born. Dr. Ritson and Dr. Gaspar were the physicians on board, and there were two nurses. There was not a single stow-away, but one boy came to Hilo by accident getting on to the wrong steamer but he goes back with me tonight to his parents.
 "I do not consider that Mr. Campbell is to be blamed in any way. We both did the best possible but, as I have said there are and were some things that worked against us and which we could not avoid."

REORGANIZING HILO REPUBLICANS

HILO, December 21—The Republican County Committee held a meeting last Tuesday evening at which arrangements were made for the strengthening of the organization of the party in various ways. Chairman Beers presided, while assistant secretary B. H. Brown acted as secretary.
 The chairman reported that he had appointed the provisional committee members as follows: Messrs. Ross, Austin, Patten, Swain, Capellas, Afonso and himself, and that all these gentlemen had expressed their willingness to serve.
 Beers asked the county committee whether it had any suggestions to make for the provisional committee to act upon, as that organization would hold a meeting two weeks from the night of the meeting. He stated that the Republican members of the Board of Supervisors would be invited to be present at the meeting of the provisional committee.
 A. M. Cabrinha raised an objection to the appointment of two members from the same outside precinct, namely of Ross and Capellas from Hakalau, on the provisional committee. He gave as his reason the fact that in cases where immediate action was required, for instance, for the making of endorsements for the filling of vacancies, these two members could not be de-

immediate action be taken towards getting the members of the Board of Supervisors into harmony before the matter of the organization of precinct clubs be proceeded with, and this suggestion was unanimously adopted.
 The secretary was also instructed to communicate with the Executive committee in Honolulu, to ascertain whether that body would recognize the endorsements made by the county committee.
 NEW YEAR'S DAY WEDDING.
 The wedding of Miss Agnes Cassidy and Mr. Spencer Bickerton will take place on New Year's Day, it will be private, only the immediate family being invited.
 Fine Job Printing, Star Office.

Closing Out Sale !!!

No Reservation-- Everything at a Sacrifice!

Household Utensils, Toilet Articles, Nickel Plated Ware, Glassware, Crockery, Cigars, Agateware Etc., Etc.

Lewis & Co. Ltd.

Household Emporium
 169 King Street Telephone 240

Object Lessons

ARTISTIC PRINTING is our occupation. If you are preparing a catalogue or booklet, circular or announcement, or any other matter designed to make your business increase, our services will be of value to you. The utmost care is taken that all leaflets, folders, booklets, catalogues, etc., executed by us, may be an eloquent and truthful Object Lesson in the art of type arrangement.

THE HAWAIIAN STAR
 NEWSPAPER ASSOCIATION, LTD.

High-Class MUNICIPAL IRRIGATION, And PUBLIC UTILITY BONDS

Real Estate Investments and Loans.

CHAS. A. STANTON
Room 28 Alexander Young Building, Honolulu, T. H.

W.G. Irwin & Co.,

AGENTS FOR THE Royal Insurance Co. of Liverpool, Eng. Scottish Union & National Ins. Co., of Edinburgh, Scotland. Commercial Union Assurance Co. of London. The Upper Rhine Ins. Co., Ltd.

Y. WO SING CO.

GROCERIES, FRUITS, VEGETABLES, ETC. California Butter, 40c lb.; Cooking Butter, 35c lb.; Fresh Dried Fruits, 1186-1188 Nuuanu Street. Telephone Main 235. Box 453

BUY REGAL SHOES

1910 DIARIES All Kinds, All Sizes, All Prices. OAT & MOSSMAN Merchant St. near Postoffice.

Your Picture Taken With Greatest Care

HONOLULU ART PHOTO GALLERY. Hotel near Nuuanu.

Watch Repairing

Watch Repairing done by us fully Guaranteed. Popular Prices. J. A. R. VIEIRA & CO. 115 Hotel St. Phone 512

STEINWAY STARR AND OTHER PIANOS. THAYER PIANO CO.

156 Hotel St. Opp. Young Hotel. Phone 218. TUNING GUARANTEED

The Yokohama Specie Bank Ltd.

Capital (Paid Up) Yen 24,000,000 Reserve Fund Yen 15,940,000 HEAD OFFICE, YOKOHAMA. The bank buys and receives for collection bills of exchange, issues Drafts and Letters of Credit, and transacts a general banking business. The Bank receives Local deposits and Head Office Deposits for fixed periods. Local Deposits \$25 and upwards for one year at rate of 4% per annum. Head Office Deposits Yen 25 and upwards for one-half year, one year, two years or three years at rate of 5 1-2% per annum. Particulars to be obtained on application. Honolulu Office—67 S. King Street. P. O. Box 168. M. TOKIEDA, Manager.

C. BREWER & CO. LIMITED.

QUEEN STREET Honolulu, T. H. AGENTS FOR Hawaiian Agricultural Company, Onomea Sugar Company, Honoumua Sugar Company, Wailuku Sugar Company, Pepeekeo Sugar Co., Kapapala Ranch, Thomas Pineapple Co. E. F. Bishop, President. Geo. H. Robertson, V-Pres. & Mgr. W. W. North, Treas. & Secy. George R. Carter, Auditor. P. C. Jones, Director. C. H. Cooke, Director. J. R. Galt, Director. R. A. Cooke, Director. All of the above named constitute the Board of Directors.

CONSOLIDATED SODA WATER

IS ABSOLUTELY PURE. PHONE 71.

EUREKA PERFECTION ROOF PAINT

The Best Roof Paint for use in Hawaii. Postal to P. O. Box 93 brings booklet. THEO. H. DAVIES & CO. Agts.

JONG KONG SURRENDERS

EMBEZZLING CLERK ABANDONS APPEAL FROM SENTENCE—TWO APPEALS FROM THE DISTRICT COURT.

Jong Kong, a Chinese who appealed from sentence of three months for embezzlement, came into court on Friday morning with his attorney, E. A. Donthitt, and surrendered. Judge De Bolt made an order rescinding all previous orders relative to bail and extension of time therefor. Jong Kong will now serve his time. His offense was taking money belonging to the Y. Q. Hop Meat Co. while in its employ as clerk.

APPEAL FROM ANDRADE.

An appeal has been taken to the Circuit Court, jury waived, by defendant in the suit of Gustave Rose and Helen Kruger against Trent Trust Co., administrator of the estate of Bertha C. Rumbel, deceased. District Magistrate Andrade gave judgment for plaintiffs for the claim of \$252, rent for premises in Adams lane, with interest, costs, etc., making the total amount \$291.40. The records are voluminous, including a decision by Judge De Bolt quieting title to the plaintiffs in this case for two-thirds of the property. There are several pathetic letters from the late Miss Rumbel, who was a tenant by sufferance, written to the attorney for plaintiffs in connection with their demand that she pay rent or vacate the premises.

JURY TRIAL DEMANDED.

William B. Harrub has demanded a jury trial of his case against Honolulu Rapid Transit & Land Co., in which defendant appealed from judgment of Honolulu District Court awarding damages to plaintiff for injury to his automobile from collision of a car.

AT THE THEATERS

Both Friday and Saturday nights were great ones for the theaters, although the rain made it rather bad on the latter evening. However, the show houses as a rule were packed and the programs successful in every way. New features will be the rule this week all around.

THE PARK TONIGHT.

Manager Congdon, of the Park theater, reports a damp Christmas—and the public will concede the handicap. It was a pity, too, for a fine holiday program had been arranged. However, it has been kept over and will be presented tonight. A feature at the Park is the music, the best in both vocal and instrumental being provided nightly.

THE EMPIRE'S BEST.

Despite the rain, the Empire theater was filled to the doors Saturday night. A special feature was the singing of Miss Galleon, her appearance being the signal for rounds of applause. Her rendition of "Jerusalem" made an immense hit. Tonight's program will be up to the same high mark, and as the weather is now fine another large audience should be on hand.

MAKES STRONG HEARTS.

Thousands of weak hearts have been made strong and healthy by the use of Dr. Miles' New Heart Cure. It acts directly upon the heart muscles and nerves, quieting the excited condition, nourishing and building up their wasted energies. It regulates the circulation, stimulates the appetite and tones up the stomach. If first bottle fails to benefit, money back.

Friday, December 24, 1909.

Gaviota, Dec. 19—Sailed, ship Falls of Clyde, for Honolulu. Gaviota, Dec. 23—Arrived, ship Marion Chilton, from Honolulu. The schooner Churchill went on the marine railway on Friday.

Judge Robinson, after a hard-fought battle in court between Billing for plaintiff and Peterson and Aehl for defendants, at noon Friday overruled the demurrer of defendants in the foreclosure suit of H. Hackfeld & Co., Ltd., vs. Frank Medcalf, administrator, and others. Defendants are allowed ten days to answer and five days to appeal if the latter course be their choice. Land in Hilo is the stake, the mortgage debt being about \$400. In a previous ruling the defendants won a point. The present one turns the tables and gives effect to an injunction restraining certain minor defendants from prosecuting an action at law against H. Hackfeld & Co., until final determination of this equity suit.

MAUNA LOA'S BIG CARGO

The steamer Mauna Loa, arriving on Friday from Kona and Kau, brought the following large and diversified cargo: 1044 bags coffee, 87 bags potatoes, 52 bags taro, 36 bags beans, 4 bags sugar, 63 barrels oranges, 368 boxes oranges, 11 bundles dried fish, 17 boxes dried fish, 27 boxes potatoes, 8 bags ginger, 9 empty gas drums, 14 bundles hides, 17 bags coconuts, 259 packages sundries, 30 head cattle, 5 calves, 1 cow, 2 horses, 4 goats, 55 hogs, 53 crates chickens, 55 crates turkeys, 69 bunches bananas, 114 crates pigs, 3 bags awa, 11 kegs poi, 2 kegs wine, 35 cases of fruit.

The sundry packages were piled in the company's office on the wharf, and the combined odor of the dried fish, sea-eggs, ophio, limu and hala leis can better be imagined than described. The subtle smell wafted down the wharf made even the dray-horses standing outside the wharf-gates restive.

Purser Friel reported 3982 bags of H. A. C. sugar ready and 2583 bags of H.

Owing to strong northeast wind and heavy swells at Punaluu, 500 bags of fertilizer couldn't be landed, and had to be brought back.

Heavy rains have fallen in Hanalei, Kohala, and Kau.

BUY IT NOW

There are but four days to the time when the excursion to the volcano will start. If your tickets have not been secured buy them now. No berths will be kept for those who wish to pay at the dock. There will be no overcrowding of steamer or hotel and the trip should be one of the most satisfying and the most profitable in a sight seeing way that has been made here since the lava flow in Hilo in 1886. There is plenty of fire and innumerable fountains spouting liquid fire all of the time.

For those who do not care to go to the crater and who prefer to stay in Hilo and see the sports there is an opportunity. The company is selling round trip tickets to Hilo for fifteen dollars and only twenty five dollars to the crater and return. There is much to see in Hilo. It is, in fact, the prettiest place outside Honolulu there is on the islands and the water falls and caves are an attraction at this season. If you are undecided about the trip decide to buy a ticket and buy it now.

TIRED BRAIN.

means that you are losing control of your will power; it is difficult to concentrate your thoughts; you are forgetful, languid, nervous, irritable. Refresh your tired brain with Dr. Miles' Nervine, which will soothe, feed and strengthen the exhausted nerves, and renew your brain power. The first bottle will not fail to help you; if so, your druggist will return your money.

SUN CHUNG KWOCK BO LTD

CHINESE NEWSPAPER PUBLISHING AND JOB PRINTING. No. 49 Cor. of Smith and Hotel Sts.

Manila Cigars

Finest Quality and Every Variety. Large Stock Now on Hand. LEE TOMA 33 N. King St. Phone 640.

COYNE FURNITURE CO.

For Good Furniture Young Building, - Honolulu

M. OHTA CONTRACTOR & BUILDER

Estimates given on all kinds of work. 436 South Hotel St. between Punchbowl & Alapai

FOR SALE

Briggs and Beach Stoves for Coal or Wood. Quick Meal Blue Flame Oil Stoves. Perfection Oil Stoves. Giant Burner Gasoline Stoves. EMMELUTH & CO., LTD. Phone 211. No. 145 King St.

YOU MAY HAVE NOTICED that your face gets red, you have a fullness in the chest, breath comes short and quick and feel a sinking sensation, when you walk fast, go up stairs are excited or frightened. This is the first stage of heart disease, and must have immediate attention. Don't delay. Take Dr. Miles' New Heart Cure, which will strengthen the nerves of the heart and restore it to health. Money back if first bottle fails to benefit.

Flowers and Trees SALE

We are closing out our nursery at Beretania and Smith sts, and are selling everything at very low prices. California Roses, Asters, Pansies, Carnations and all kinds of flowers, Chinese Lichee trees, orange trees, Christmas trees, maidenhair ferns, potted plants, all kinds of young trees, shrubs, etc.


Len Choy Corner Beretania and Smith streets.

TRY

HAND SAPOLIO

THE BEST TOILET SOAP MADE.

SOLD BY ALL GROCERS.



Call or write for one of our beautiful color catalogs. They are free for the asking, and will give you an idea of the many different uses to which ARMORITE PAINT may be put.

Armorite is prepared specially to resist the salt air of this climate and is the only paint you should use

Theo. H. Davies & Co., Ltd

Hardware Department

One-Third Discount on Japanese Cotton Rug

Here's a chance to buy a useful and valuable Christmas Gift. Our beautiful blue and white Japanese Cotton Rugs one-third off until Christmas. The patterns are very attractive and we have a good assortment. Here are some of the prices:

BLUE AND WHITE COTTON RUGS.

8x10—Regular	\$20.00	Reduced to	\$13.35
8x12—Regular	\$24.00	Reduced to	\$16.00
9x12—Regular	\$27.00	Reduced to	\$18.00
10x10—Regular	\$25.00	Reduced to	\$20.00
10x12—Regular	\$30.00	Reduced to	\$20.00
10x14—Regular	\$35.00	Reduced to	\$23.35
12x12—Regular	\$36.00	Reduced to	\$24.00

LEWERS & COOKE, LTD.

177 South King Street near Alakea