

The Garden Island.

ESTABLISHED 1904. VOL. 16. NO. 44.

LIHUE, KAUAI, TERRITORY OF HAWAII, TUESDAY, NOVEMBER 9, 1920

SUBSCRIPTION RATES, \$2.50 PER YEAR 5 CENTS PER COPY

G. OF C. BANQUET IMPORTANT EVENT

The annual banquet session of the Kauai Chamber of Commerce was held at Lihue, Friday evening last and was a notable event, enjoyed by all. The chamber has grown to such proportions that it is difficult to find anyone who will handle such a big affair, and it was a question whether the plan could be carried out. But an appeal was made to the Hui Hele Loa, the new trail and mountain club, and they at once took the matter up with enthusiasm, and carried it through most successfully.

The Mokihana hall was tastefully decorated for the occasion and the long U-shaped table laid with a central band of Mexican creper, was very effective. Places were set for 75, and the guests and the places just nicely tallied. At first there was some anxiety as to whether they would.

The novel feature of the affair was the very daintily costumed young lady waiters of the club, who rendered a service that was as gracious and charming as it was prompt and intelligent. The dainty crepe paper caps were particularly effective—in addition each wore the badge of the club.

Promptly at 6:30 the doors were thrown open and the hungry and expectant crowd surged in. The supper was simple, but excellent in quality—all home cooking of the very best kind.

When the last course had been disposed of and the dishes removed, the president called the chamber to order for the business of the evening. The minutes being disposed of, nominations for membership were called for and an uncommonly long list was reported, partly by J. I. Silva and partly by J. M. Lydgate, while a number of volunteer names were suggested—bringing the total number up to 33. Never in the history of the chamber has there been such a landslide as that. They were approved by acclamation, and become active members upon payment of the annual membership fee of \$5.00.

Calling for reports of committees, Mr. E. H. W. Broadbent reported for the harbors committee that great things were doing for the Nawiliwili harbor. There had been, he reported, more or less opposition to this harbor enterprise, which, taken with the indifference, or disaffection of Col. Newcomer, of the U. S. Engineers, had held up the enterprise for years. Col. Flagler had now succeeded Col. Newcomer, and saw things in quite a different light, and was ready to cooperate in every possible way.

The limiting condition of the bond issue of \$200,000.00 had also been solved, and the bonds would be taken in one block by a Kauai man much interested in the success of the enterprise—so that the money would be forthcoming immediately for the inception of the work. There would be a slight delay consequent on the technical requirement of the President's approval of the bond issue, but the necessary documents had gone on to Washington, and presumably by the end of the month this approval would be secured—and the money would become immediately available.

(Continued on Page 8)

Nawiliwili Harbor Project Now Assured

SPECIAL SESSION OF LEGISLATURE

The special session of the legislature, which meets to-morrow morning, will be made up of the newly elected members, who take office immediately on election.

This special session is called to meet certain special emergencies substantially as follows:

Deficit and Taxation
There is a big deficit resulting from a failure of the revenue to come up to estimate. Provision must be made for this and a change made in the tax laws to meet present and future requirements, and this change must be made to take effect January 1st, 1921.

Teachers' Salaries
The matter of inadequate teachers' salaries must be met, and provision made for a new and larger budget.

Language Schools
The language school problem must be solved, and some adequate guarantee must be given that all the children of the Territory will be given a thorough American education.

Wharf at Kawaihae
A suitable inter-island wharf at Kawaihae, Hawaii, is a necessity of that island and should be built.

Sundry Matters
Other matters that will come up are: The continuation of the topographical survey; the inauguration of a geological survey of the islands for the development of water; hydrographic survey of the near Pacific ocean; loan fund appropriations; Territorial Fair, etc.

It is expected that the session will last not longer than fifteen days.

Automobilist Hits Man and Runs Away

How it is possible that an automobilist on this fair island of ours could be such a mean skunk that he would deliberately leave a man he had knocked down to take care of himself, while he put on more gas to hasten away from the possibility of his identity being discovered, is hard to conceive, but this actually happened in Kapaa about seven o'clock on Saturday evening.

Isami Inuma, for many years employed by the Hawaiian Canneries as truck driver, while walking towards Kapaa near the road where the track of the Makee Sugar Company crosses the main road, was struck and had his leg broken below the knee by an unknown Ford car with only one headlight burning. According to the victim of the accident, he, with four other companions, was walking on the right side of the road in the opposite direction from which the Ford was travelling. Seeing only one light, he did not notice that the light was on the right side instead of the left, and it was only when the machine was a few feet away that he noticed but it was too late for him to get away, and the left front wheel struck him, knocking him unconscious. He was immediately taken to his home and Dr. Yanagihara was summoned to attend to his injuries.

The companions of the injured man yelled to the driver of the Ford to stop, but he did not heed them and sped away. It was too dark at that particular spot to notice who the driver was or the number of the car, but a sharp lookout is being maintained for this beast masquerading in human form and it is hoped that the police will be able to locate him. That ancient law of a tooth for a tooth and an eye for an eye, would not be too severe for this brute.

MINSTRELS POSTPONED

On account of numerous other events taking place the latter part of this month demanding the attention of the people, it has been decided to postpone the minstrel show until some time in January. This will give more time for rehearsals and will insure a much better program.

C. W. Kinney, expert ukulele man, is on Kauai, having arrived this morning.

All the Conditions Have Been Met and Work Will Start Within a Month—Local Man Takes Bonds Necessary to Start the Work

That work on the Nawiliwili harbor project is to start almost immediately, or as soon as the necessary documents, which are now on their way to Washington for the President's signature, can get back, is the assurance now given the people of Kauai, after virtually all hope of ever securing the harbor had been abandoned.

Colonel Flagler, head of the U. S. Engineers in Hawaii, and a gentleman on Kauai, are the men responsible for this fact, as it is owing to the interest and clear understanding of the situation shown by Colonel Flagler and his recommendation to Washington, and the taking of the whole \$200,000 worth of bonds by the Kauai gentleman, that the last obstacle has been overcome.

Colonel Flagler, in his letter to the Kauai Chamber of Commerce, states that Nawiliwili is the only site on Kauai acceptable to the U. S. engineers, and that to try to get the appropriation transferred to some other point, would simply result in the island not getting a harbor at all. This being the case, there is no doubt but that Nawiliwili will have the enthusiastic backing of the entire island.

MINUTES OF THE SUPERVISORS' MEETING

The Board of Supervisors of the County of Kauai held its regular monthly business meeting at the usual place on Wednesday, November 3rd, 1920, at 9:45 a. m.

Present: A. Menefoglio, Chairman pro tem, T. Brandt, W. D. McBryde, J. F. Bettencourt Jr.

The minutes of October 6th, being the last meeting, were read and approved.

The several demands submitted after their examination were approved against the appropriations listed hereinbelow.

A demand from Dr. E. N. Young for \$110.00 for treatments given Deputy Sheriff Enoke Lovell and Police Officer Enoke Jr. of Lihue was received, but action was deferred until a later meeting.

Bids for furnishing building material for the construction of an Art Industrial Building on the Lihue Grammar School grounds:

- Three were received, as follows:
 - 1. Allen & Robinson, Ltd \$2,750.00
 - 2. Lewers & Cooke, Ltd 2,781.80
 - 3. Lihue Store 2,939.00
- and later, upon the advice of the County Road Supervisor, Mr. Middleton, the bid of Allen & Robinson Ltd., which was the lowest, was accepted.

Bids for furnishing building materials for the construction of bungalows at Hanamaulu for the use of the school of that name:

- Two were received, as follows:
 - 1. C. B. Hofgaard & Co. Ltd \$865.00
 - 2. Lihue Store 800.00
- and later, the bid of the Lihue Store being the lowest was accepted upon the advice of the County Road Supervisor.

A petition (P 1833) from Kapaa signed by 160 of the residents, tax payers and business men of the town, praying for the establishment of a Fire Department in the town under proper rules and regulations, was received and after having heard Albert Horner, Jr., who presented this petition, upon the motion of Mr. Bettencourt, Jr., seconded by Mr. Brandt, the Board, by a unanimous vote, authorized the County Road Supervisors to secure data concerning fire chemical engines and to supply the town with a good chemical fire engine.

Circuit (Banai County), appeared before the Board and after stating the urgent need for an Assistant Clerk for his Court, requested an appropriation of \$300.00 for salary for such assistant for the ensuing two months, and upon the motion of Mr. Bettencourt seconded by Mr. Brandt, the said sum of \$300.00 was appropriated, out of available moneys in the Treasury for this purpose.

After general expression of opinion regarding estrays that are frequently found at large on the public roads; also on matters pertaining to the authority and duties of the Trustees of the Samuel Mabelona Memorial Hospital, particularly in relation to the expending of appropriations approved.

(continued on Page 10)

AUTOMOBILES IN BAD SMASH-UP

Mr. J. M. Spalding's Packard Twin-Six roadster and Joseph Silva's new Chandler speedster met in a bad collision on the road between Kapaa and Kealia last Saturday evening about 6:30. The Chandler, coming from Kealia to Kapaa, met the Packard returning to Kealia near one of the small curves on the road.

According to one of the occupants of the Chandler, Joseph Silva, at the wheel, saw the Packard coming and tried to dim his lights by switching off the regular lights and putting on his dimmers. The dimmers, however, gave no lights, with the result that before he could again switch on his regular lights, the Packard's hind wheel and the Chandler's rear wheel collided. The force of the collision swung the Chandler completely around and caused it to topple over into a nearby ditch with its top resting on the ground and its wheels in the air.

The Packard sustained a broken rear fender and a few broken spokes on its rear wheel. The Chandler however, was pretty seriously damaged. It had its windshield, top, both front fenders, and one front wheel smashed, but was insured against accident.

Nobody was with Mr. Spalding in his car, but with Joseph Silva in the Chandler was Alvin Branco of the Kapaa Branch of the Bank of Hawaii and two small boys. How the occupants escaped serious injury was certainly miraculous, judging from the condition of the car and the report of the accident, but not one of the four in the Chandler received as much as a single scratch although A. Branco was underneath the car when it turned over.

J. W. Kealoha, the senator elect from Kauai, will be the only Democrat in the senate. How lonesome he will be,—but that won't phase John.

Mr. Nicholas Akana, book-keeper for the Kauai Fruit and Land Co., is leaving this evening for a two week's vacation in Honolulu.

REPUBLICANS WIN GREAT VICTORY

PRESIDENT ELECT WARREN G. HARDING



VICE-PRESIDENT ELECT CALVIN COOLIDGE



That the days of Democratic dominance of national politics were over was a foregone conclusion from the start, but few expected the great landslide that has fallen. On the whole, the change back to Republican policies will be a welcome one and for no part of the union more so than these islands.

Harding and Coolidge will be safe men; the more so that they are average men, not paragons of the ideal and the impractical. And such are the men and the policies that we need and are grateful for.

FILIPINO COMMISSIONER ON KAUAI

Mr. Francisco Varona, the new Filipino commissioner, spent most of last week on Kauai making the nearer acquaintance of his people, and looking into their treatment and conditions. He spent the first two or three days on the Lihue to Kekaha side of the island as the guest of the various managers, who rendered him every courtesy and every facility for seeing for himself just how the Filipinos are being treated.

Later he made a similar trip to the plantations on the East side of the island. Everywhere he was received most enthusiastically, especially by his own people, who tendered him special attentions whenever there was time for the same.

Mr. Varona gives every evidence of being a man of ability and education, and good judgment, a valuable factor in maintaining good working relations between the Filipino labor element and the plantations.

Mr. Varona is the editor of El Debate, a leading and influential Manila paper. He was a member of the Philippine commission to Washington and is in close touch with the department of labor there.

R. E. Matthews, homesteader of Kapaa, was among returning passengers by the Kinau this morning.

RESULTS OF THE ELECTION

FOR DELEGATE	
Kuhio	879
McCandless	814
FOR SENATOR	
Coney	779
Kealoha	852
FOR REPRESENTATIVE	
Fernandez	1065
Hayselden	934
Hoopali	1173
Hoopii	1084
Henriques	758
Lucas	331

The two big surprises of the general election on Kauai was the close run McCandless gave the Prince, and the defeat of Coney by Kealoha. Kuhio certainly cannot give Kauai the credit of electing him to another term at Washington.

The election of Kealoha over Coney is as yet the unsolved mystery of the day, as it was generally believed throughout the island that Coney would lead by a good, safe majority.

Representatives Republican
Although Kauai was badly split over the Delegate and Senatorship, it went solid republican for the four Representatives, as Fernandez, Hayselden, Hoopali and Hoopii, the Republican candidates, won hands down.

Niihau Solid Republican
The returns from Niihau show that the little island is solid Republican. Out of the 65 registered voters on the island, 64 cast their ballots and voted a straight Republican ticket.

EFFICIENCY IN THE CIRCUIT COURT

Judge Wm. C. Achi, Jr., reports that the Court is now far ahead of any former period in its history. One hundred and seventy cases have been disposed of for the year thus far, and the calendar will run to two hundred completed cases for the year, as against last year's record of 152 cases. The work has increased very much of late, and the court equipment is unequal to it, hence the request for an assistant clerk, which has been granted by the board of supervisors.

Judge Achi has broad, conservative and progressive plans for the greater efficiency of the judicial service on Kauai which we will outline later.

LAST SUNDAY'S SOCCER

Last Sunday's soccer games resulted in McBryde winning from Makawell, 4 to 0; Lihue winning from Koloa, 2 to 0. Next Sunday's games will be, McBryde vs Lihue at Lihue, and Makawell vs Koloa at Eleele. The former game will probably bring out an immense crowd, as McBryde is the only team so far this season to win from Lihue, and the return game next Sunday is sure to be a battle royal.

WOMEN'S EXCHANGE OF WAIMEA TO HOLD SALE

The Women's Exchange of Waimea will hold a sale of work in the Hawaiian Church, Lanai, Waimea, Saturday November thirteenth, from 10 to 5. A large variety of pretty and useful articles suitable for Christmas gifts have been prepared.

R. E. Hodgson, of the American Factors, is on the Island in pursuit of business.

Lihue Union Church

Sunday School 10 o'clock. Morning worship 11 A. M., with an anthem by the choir and the sermon by the pastor. UNION NIGHT SERVICE At 7:30 there will be a union service, with plenty of singing and the special music will be rendered by a chorus of 20 voices from the Hawaiian church. The public is very cordially invited to be present. R. W. Bayless, Pastor.

Wall & Dougherty

JEWELERS

Mr. J. D. Dougherty is now touring the Island of Kauai with suggestions for the Holidays in the form of precious stones, jewelry, engraved greeting cards and stationery, and the latest importations of gift novelties.

Young Hotel Building

Honolulu

VALUE QUALITY VARIETY



The Oldest and Largest
TRUST COMPANY
in the Territory of Hawaii

Capital, Surplus and Undivided Profits
Over One Million Dollars

INCOME FROM INVESTMENTS

is a point of exceptional importance at this time because of the uncertainty caused by changing conditions.

Get in touch with us---we may have information that will help you---Come in and talk it over.

CORRESPONDENCE INVITED
We Are Here To Serve You

Hawaiian Trust

Company Limited

Honolulu

SAFE DEPOSIT VAULTS

HOLT CATERPILLAR

STATIONERY ENGINES

Due to the great success of the Holt Caterpillar engine for tractor work The Holt Manufacturing Co. now have on the market a stationary engine suitable for all classes of work. This engine operates on gasoline, distillate or kerosene. Standard sizes are 30, 45, 60 and 75 horse power.

If you know engines you will be pleased with the Holt.

Write or see us for particulars.

Catton, Neill & Co., Ltd.

Engineers, Honolulu

ELEELE STORE

J. I. SILVA, Prop.

ALWAYS LEADS IN LOWEST PRICES ON

Dry Goods, Boots and Shoes,
Mens Furnishings, Cigars and
Tobacco, Notions of all kinds.

MAIN STORE, ELEELE,
PHONE 72 W.

BRANCH STORE
KALAHEO HOMESTEAD

Geo. Fairchild to Be Governor-General of Philippine Islands

That George Fairchild, former Senator from Kauai and manager of the Makee Sugar Company, is to be the governor-general of the Philippines seems to be assured according to information received by the Advertiser. That paper received word that shortly after the inauguration of President Harding, George Fairchild, former senator from Kauai and for many years identified with the plantation interests of Hawaii, will be appointed governor-general of the Philippines to succeed Francis Burton Harrison.

Information received by the Advertiser from Manila says that so far has the movement gone out there to have the former Honolulu man appointed head of the insular government that it is considered certain he will be one of the new president's first appointees. It has been known for several months in certain quarters in Honolulu that Fairchild was being considered in Manila as the successor of Harrison.

While almost from the time he first went out to those islands as the representative of large sugar interests in these islands, his capabilities were recognized, and the fact that he has been the only man out there who has ever been able to bring outside capital into the islands for the development of the sugar industry—and sugar there, like in Hawaii, is the staple crop and one that will eventually solve the economic problems of the country—has given him splendid standing with the men who count.

The American business men of the islands, who have borne the brunt of the economic battle, have seen in Fairchild a man of extraordinary ability, not only as a business man, but as an executive, and during the last two years, when there has been talk of a successor to Harrison in the event of a Republican victory this year, Fairchild's name has been mentioned often.

When the congressional party visited the Philippines last June, a deluge of anti-American sentiment swept over the islands, fostered by the native politicians. The Spanish and vernacular press became positively rabid in their vituperation, and at this stage of the situation Fairchild went to bat. He purchased the controlling interest in the Manila Times, and many powerful editorials written by himself, began to appear, in which he told the native politicians that they were due to "head in."

Fairchild's vigorous attitude in what was considered a very ticklish situation won the admiration of certain members of the congressional party, and it is understood that upon their return to the mainland the former senator from Kauai was proposed to Senator Harding as the next governor-general of the islands.

WIERD LOOKING FISH GIVEN TO BISHOP MUSEUM

Said to be the only one of the species ever found in local waters, a "Sun" or "Head" fish, caught with a hook in about 20 fathoms of water off the coast of Kauai, has been turned over to the Bishop Museum, and a cast will shortly be placed on exhibition, says the Star Bulletin.

After consulting books, experts at the museum say they have been unable to find any data exactly describing this peculiar species. The fish is oval in shape, and is colored dark gray on the body and black on the two large fins. It has no tail, the body ending abruptly where the ventral and dorsal fins, which are about 15 inches long, protrude. Theweight is about 70 pounds. The breadth from the fin tips is three feet, seven inches, and the length three feet, five inches.

The mouth is small, with the teeth fused, and the eyes are large. The fish is believed to have fed on mollusks and crustaceans requiring crushing.

A fish having a body similar to the fish just taken was caught at Pearl Harbor some years ago and sent to Stanford University by C. B. Wilson, father of Mayor John H. Wilson. The body of the fish probably will be preserved.

GROWING IN FAVOR

At a meeting of the Hui Hele Loa, or Trail and Mountain Club, held last week at the home of Mr. and Mrs. Lydgate, after careful consideration it was decided that ordinarily 25 is about the limit for an outing. A larger body becomes unwieldy and involves serious problems of transportation, commissariat, etc.

Accordingly it was deemed wise to organize a new section to accommodate any who may wish to join the same from this time on.

If such candidates will give their names to the secretary, Miss Soule, or the president, Mr. Lydgate, it will facilitate getting the new section under way.

MAUI MISREPRESENTED

While Sgt. Tilly was over from Honolulu for the ball games he asked about stories coming to him to the effect that he was not wanted on Maui. The stories, he said, came to him in Honolulu after the Fourth of July games here. The matter was investigated by the Athletic Committee and it reported Wednesday night the rumors were without even the slightest basis and seem to have started in Honolulu.

Tilly had wanted to come to Maui but on the strength of the stories has taken a position on Kauai and Maui loses one of the best pitchers in the Islands—Maui News.

Y. Shido the veteran Kapaa merchant, returned from a business visit to Town last week.

Announcing

the Consolidation of the

Hawaiian News Co., Ltd.

and

Thrum's Ltd.

of Honolulu

to be known as the

Hawaiian News & Thrum's Ltd.

After 50 years of successful service to its patrons, Thrum's Ltd. has joined forces with the Hawaiian News Co. Ltd. with its entire stock of valuable Hawaiian Literature, choice Books, Society Stationary and Artistic Novelties.

Miss Morrison, so well known to the friends of Thrum's Ltd. will still be in attendance to meet her former patrons at the new location, the present place of business of the Hawaiian News Co. Ltd.

The former president, C. H. Atherton, and vice-president T. G. Thrum, will be connected with the new firm as first and second vice-presidents.

The personnel of the directorate of the new corporation is

J. H. Soper, President
C. H. Atherton, 1st. Vice-president
T. G. Thrum, 2nd. Vice-president
W. J. Coon, Secretary
W. H. Soper, Treasurer and Manager
E. A. Mott-Smith, Director

Henry Davis Audit Co., Auditors

The objects of the new concern, with the combined personnel and experience of the two pioneer stationers and paper houses, is to better serve and better meet the demands of the buying public.

The old firms of the Hawaiian News Co. Ltd. and Thrum's Ltd. wish to sincerely thank their friends and cordially invite their continued patronage under the new name of

HAWAIIAN NEWS & THRUM'S LTD.
YOUNG HOTEL BUILDING
BISHOP STREET
HONOLULU

Kapaia Garage Co.

Exclusive Kauai
Agents for

U. S. TIRES

AND



Automobile---Motorcycle---Gas
Engine and General Repairing

VULCANIZING.

Tel. 228 - - - P. O. Box 236

Kapaia, Lihue

WALL PAPER

CLEARANCE SALE

To make room for new stock we are now selling more than twenty thousand rolls of wall paper at discounts varying from fifty to twenty per cent. This is your chance to replace that old, soiled wall paper with something bright, artistic and up-to-date in every respect.

Call or write for samples and make your selections early.

The Home Beautiful Department

Lewers & Cooke, Ltd.

Established 1853

Lumber and Building Materials, Honolulu
169-177 S. King St., Honolulu

The last word in

Novelty Low Shoes

They are just received from the factory and are the prettiest shoes that we have seen for a long time. Made with turn soles, long narrow toes and slender French heels.

Buckles of different designs to suit the individual taste.

Black Satin.....	\$8.50 to \$12.50
White Satin.....	10.00
Silver Cloth.....	12.50
White Kid.....	12.50 to 15.00
Black Suede.....	15.00

Manufacturers' Shoe Store

1051 Fort Street

Honolulu, T. H.

Waimea Stables, Ltd.

At Waimea and Nawiliwili

The most famous Garages on Kauai. The place to get transportation to

The Barking Sands, Olokele Canyon,
Waimea Canyon, Kokee Camps,
Kukuiohono Park, Wailua Falls,
Hanalei, Haena Caves

Our autos are comfortable, our Drivers are Reliable and have been with us for years, and know every inch of the country.

We Rent Ford Cars Without Drivers.

We do Draying and Hauling by Trucks all over the Island. We run the Stage Line between Lihue and Kekaha three round trips per week

WAIMEA BRANCH
Tel. 43 W
A. GOMEZ, Mgr.

NAWILIWILI BRANCH
Tel. 492 L
CLEM GOMES, Mgr.

DON'T MISS THIS

KEALIA CATHOLIC CHURCH FAIR

AT KAPAA

Opposite Baseball Park

November 27th - 28th

Afternoon and Evening

Get Your Xmas Gifts Here

Fancy Work, Dry Goods
Lauhala Work

Men's Dept.---Luau, Sweet bread

Flowers and Plants

Side Shows - - - Dance

Personals

Mr. and Mrs. L. D. Larsen, of Kilauea, welcomed the arrival of a baby daughter to their home on Friday, Oct. 29th. Her name is Katharine.

Mr. and Mrs. G. W. Sahr, of Lihue, were returning passengers from Honolulu Friday morning.

Dr. A. R. Glaisyer returned Friday from a week's visit to Honolulu.

Mr. and Mrs. E. Cropp, of Koloa, returned to their home Friday morning from a vacation spent on the mainland.

Mrs. M. McGregor, of the Lihue Hospital who has been away on a three months vacation, returned last week.

Judge Dickey went to Town last Tuesday and returned Friday morning.

Mrs. F. W. Glade went to town last week and will spend some weeks on the other islands, returning to her daughter, Mrs. Sinclair Robinson, for Christmas.

Dr. and Mrs. W. T. Dunn, of Maikawai, returned last week from their vacation in Honolulu.

E. H. W. Broadbent went to Honolulu last Tuesday to meet his wife and daughter who returned from the mainland by the Wilhelmina. They returned to Lihue by the Kinau Friday morning.

Representative E. K. Fernandez, of Honolulu, who is one of the successful candidates for reelection, arrived on Kauai by the Kinau Friday. He has a show with him.

Miss Jane Gregg is the new board of health nurse who has recently come to succeed Miss Pepper. Miss Gregg was head surgical operating nurse at the Queen's Hospital, and is well fitted for the responsible position which she now assumes. She is living at the school cottage, Lihue. Her territory extends to Haena.

Mr. and Mrs. C. A. Rice went to town on Saturday.

Miss Pepper, of the Mahelona Hospital went to Honolulu on Saturday. She will return this week. She will bring an assistant trained nurse with her.

Dr. Lane, osteopath, is over from town this morning.

Mr. Carl Roendahl returned from town by the Kinau this morning.

Dr. Hobby, father of engineer W. R. Hobby, of Lihue, will arrive from the mainland by the Lurline tomorrow morning on a visit to his son and family. He visited the islands some 20 years ago and went to the volcano on the Kinau. He is surprised to find her still running and not superseded, but only moved down one. So are we!

M. R. Jardin, of the Kalaehe Store, returned from town this morning.

Dr. and Mrs. Monsarratt are over from town.

TRAFFIC MARKS ON COUNTRY ROADS

Regulation of traffic by means of white center lines and arrows painted directly on a country roadway is described in "Municipal and County Engineering" (Indianapolis) by K. I. Sawyer, Superintendent of the Marquette County (Mich.) Road Board. Mr. Sawyer states his opinion, at the outset, that the handling of motor traffic upon main highways through the country is rapidly becoming as serious a problem as traffic control has ever been in cities. It has been necessary in some cases, as in that here described, to borrow the methods of city traffic control for handling traffic upon congested rural trunk lines. He continues:

"One interesting illustration of this is in Marquette County, Michigan, where the traffic on the trunk line between Marquette and Ishpeming has become heavy enough to make travel dangerous unless some means of control is adopted.

"To relieve this situation, the writer painted white eight-inch center lines upon the black surface of the road upon the more dangerous curves, with an arrow pointing down the right hand side of the road at either end, this to counterbalance the tendency of auto-drivers to hug the inside of a curve regardless of the danger of hitting the traffic approaching which might be invisible to them at the time. The effect was immediately apparent, as the auto-drivers accustomed to obeying control signs in the city immediately responded to the appeal of the white line and kept to the right-hand side of the road, and the immediate reduction in the number of accidents indicated that the scheme was worth while.

"The writer has had this center-line system of control in use for three years, and is well satisfied that it is the best thing he can do to protect traffic using this road. The road is the main highway between two rapidly growing communities, and the wonderful country through which it leads is drawing tourists in greater numbers every year, so that his problem never becomes less but rather

IN THE CIRCUIT COURT OF THE FIFTH CIRCUIT, TERRITORY OF HAWAII - AT CHAMBERS - IN PROBATE.

In the Matter of the Estate of LIANG YIN FOOK, otherwise known as DAVID NIUM FOOK LEONG, deceased. No. 735

Order of Notice of Petition for Allowance of Accounts, Determination of Trust and Distribution of the Estate.

On Reading and Filing the Petition and accounts of Bishop Trust Company, Limited, Administrator of the Estate of Liang Yin Fook, otherwise known as David Nium Fook Leong, deceased, wherein petitioner asks to be allowed \$499.02 and charged with \$4,960.41, and asks that the same be examined and approved, and that a final order be made of Distribution of the remaining property to the persons thereto entitled and discharging petitioner and sureties from all further responsibility herein.

It is Ordered, that Friday, the 26th day of November, A. D. 1920, at 9 o'clock A. M. before the Judge of said Court presiding at Chambers at his Court Room in Lihue, County of Kauai, Territory of Hawaii, be and the same hereby is appointed the time and place for hearing said Petition and Accounts, and that all persons interested may then and there appear and show cause, if any they have, why the same should not be granted, and may present evidence as to whom are entitled to the said property. And that notice of this Order, be published in the "Garden Island" newspaper printed and published in this Circuit for three successive weeks, the last publication to be not less than two weeks previous to the time therein appointed for said hearing.

Dated the 16th day of October, 1920. (SEAL)

(Sgd.) WILLIAM C. ACHI, JR., Judge of the Circuit Court of the Fifth Circuit, Territory of Hawaii.

Attest: (Sgd.) J. C. CULLEN, Clerk of the Circuit Court of the Fifth Circuit, Territory of Hawaii.

Oct. 19, 26; Nov. 2, 9, 1920.

IN THE CIRCUIT COURT OF THE FIFTH CIRCUIT, TERRITORY OF HAWAII - AT CHAMBERS - IN PROBATE.

In the matter of the estate of JOAQUIM ANTONIO de SOUZA, deceased. No. 757

Order of Notice of Petition for Allowance of Accounts, Determination of Trust and Distribution of the Estate.

On Reading and Filing the Petition and accounts of Joaquim de Souza, executor of the Estate of Joaquim Antonio de Souza, deceased, wherein petitioner asks to be allowed \$354.56 and charged with \$559.37, and prays that his accounts be examined and approved, that he and his sureties be discharged from all further responsibilities concerning said estate and that a final order of distribution be made of the property remaining in his possession to the persons thereto entitled.

It is Ordered, that Wednesday, the 15th day of December, A. D. 1920, at 9:30 o'clock A. M. at the Court Room in Lihue, Kauai, of this court, be and the same hereby is appointed the time and place for hearing said Petition and Accounts, and that all persons interested then and there appear and show cause, if any they have, why said petition should not be granted, and present evidence as to who are entitled to the said property. And that notice of this Order be published in the "Garden Island" newspaper printed and published in this Circuit for three successive weeks, the last publication to be not less than two weeks previous to the time herein appointed for said hearing.

Dated the 4th day of November, 1920. (SEAL)

(Sgd.) WILLIAM C. ACHI, JR., Judge of the Circuit Court of the Fifth Circuit, Territory of Hawaii.

Attest: (Sgd.) JOSEPH ANDRE SOUZA, Clerk of the Circuit Court of the Fifth Circuit, Territory of Hawaii.

Nov. 9, 16, 23, 30, 1920.

tends to become greater. "The scheme has been so successful that the writer does not hesitate to recommend it to other county road engineers who have similar problems to meet. Not every road surface lends itself so readily to center-line painting, for the smooth black surface in this case was ideal to make the white center line stand out in sharp relief.

"Some color scheme can usually be worked out so that the traffic can be reminded that the right-hand side of the road is the only side that properly belongs to them. The motor public as a whole is only too willing to take a hint which is for its own safety, and the scheme is sufficient reminder to keep traffic within bounds and allow a much heavier traffic to use the roadway without danger, which is not usually the case on our county highways."—Literary Digest.

IN THE CIRCUIT COURT OF THE FIFTH CIRCUIT, TERRITORY OF HAWAII - AT CHAMBERS - IN PROBATE.

In the Matter of the Estate of WILLIAM RICHMOND, late of Lihue, Kauai, Hawaii, deceased. Probate No.

Order of Notice of Hearing Petition for Administration

ON READING and Filing the Petition of Laika Richmond, widow of said deceased, alleging that said William Richmond of Lihue, County of Kauai, Territory of Hawaii, died intestate at said Lihue on the 14th day of October, A. D. 1920, leaving property in the Hawaiian Islands necessary to be administered upon, and praying that Letters of Administration issue to Philip L. Rice of said Lihue;

IT IS ORDERED that Saturday, the 11th day of December, A. D. 1920, at 9 o'clock A. M., be and hereby is appointed the time for hearing said Petition in the Court Room of this Court at Lihue, County of Kauai, at which time and place all persons concerned may appear and show cause, if any they have, why said Petition should not be granted; and that notice of this order shall be published for three successive weeks (four insertions) in the "Garden Island" newspaper in said Lihue.

Dated at Lihue, County of Kauai, T. H., November 6th, 1920. (SEAL)

(Sgd.) WILLIAM C. ACHI, JR., Judge of the Circuit Court of the Fifth Circuit, Territory of Hawaii.

Attest: (Sgd.) JOSEPH ANDRE SOUZA, Clerk of the Circuit Court of the Fifth Circuit, Territory of Hawaii.

Nov. 9, 16, 23, 30, 1920.

IN THE CIRCUIT COURT OF THE FIFTH CIRCUIT, TERRITORY OF HAWAII - AT CHAMBERS - IN PROBATE.

In the Matter of the Estate of Takeshi Kuroda, deceased.

Order of Notice of Hearing Petition for Administration

ON READING and Filing the Petition of Shige Kuroda, widow of Takeshi Kuroda, alleging that said Takeshi Kuroda of Lihue, Kauai, died intestate at Lihue, Kauai, on the 23rd day of September, A. D. 1920, leaving property in the Hawaiian Islands necessary to be administered upon, and praying that Letters of Administration issue to Shige Kuroda.

IT IS ORDERED that Monday, the 22nd day of November A. D. 1920, at 9 o'clock A. M., be and hereby is appointed the time for hearing said Petition in the Court Rooms of this Court at Lihue, County of Kauai, at which time and place all persons concerned may appear and show cause, if any they have, why said Petition should not be granted; and that notice of this order be published for three successive weeks (four insertions) in the Garden Island newspaper in Lihue, Kauai.

Dated at Lihue, County of Kauai, T. H., October 11, 1920. (SEAL)

(Sgd.) WILLIAM C. ACHI, JR., Judge of the Circuit Court of the Fifth Circuit.

Attest: J. C. CULLEN, Asst. Clerk of the Circuit Court of the Fifth Circuit.

LYLE A. DICKEY, Attorney for Petitioner.

Oct. 19, 26; Nov. 2, 9, 1920.

NOTICE OF SALE OF GOVERNMENT LEASES

At 10 o'clock A. M., Saturday, November 27, 1920, at the office of the Sub-Agent, Mr. G. W. Sahr, Lihue, Kauai, there will be sold at Public Auction, under Section 380 of the Revised Laws of Hawaii of 1915, General Leases to the following described lands:

1. Portion of the Government land of Hanakapiai, Hanalei, Kauai, containing an area of 155 acres, more or less; term of lease, 15 years from November 27, 1920; upset rental, \$50.00 per annum, payable semi-annually in advance.
2. Portion of the Government land of Hanakoa, Hanalei, Kauai, containing an area of 185 acres, more or less; term of lease 15 years from November 27, 1920; upset rental, \$30.00 per annum, payable semi-annually in advance.

The purchaser to pay the costs of advertising and other charges in connection with the preparation of these leases. The purchaser to pay the first six months rental at the drop of the hammer. For maps and further particulars, apply at the office of the Sub-Agent Mr. G. W. Sahr, Lihue, Kauai, or at the office of the Commissioner of Public Lands, Capitol Building, Honolulu, T. H. C. T. BAILEY, Commissioner of Public Lands. Dated at Honolulu, October 25, 1920. Nov. 2, 9, 16, 23.

NOTICE OF SALE OF GOVERNMENT LEASES

At one thirty o'clock P. M. Friday, November 26, 1920, at the Court House at Kapa'a, Kawaihau, Kauai, there will be sold at public auction to the highest bidder, under Section 380 of the Revised Laws of Hawaii of 1915, general lease of the following described land in the District of Kawaihau, Island of Kauai:

Lots 15 to 49, both inclusive, of the Kapa'a House Lot Tract, containing an aggregate area of 33.74 acres, more or less; term of lease, six years from November 26th, 1920; upset rental Fifteen Dollars (\$15.00) per acre, per annum, payable semi-annually in advance.

The purchaser shall pay the costs of advertising and other charges in connection with the preparation of the lease.

For maps and further particulars apply at the office of the sub-Agent, Mr. G. W. Sahr, Lihue, Kauai, or at the office of the Commissioner of Public Lands, Capitol Building, Honolulu, T. H.

C. T. BAILEY, Commissioner of Public Lands. Dated at Honolulu, October 14, 1920. Oct. 26, Nov. 2, 9, 16, 23.

NOTICE OF SALE OF GOVERNMENT LOTS

At one thirty o'clock P. M. Friday, November 26th, 1920, at the Court House at Kapa'a, Kawaihau, Kauai, there will be sold at public auction to the highest bidder, the following House Lots at Kapa'a, Kona, Kauai:

Lot No.	Area	Upset Price
1.	1.02 Acres	\$2,222.00
2.	.96 "	2,091.00
3.	.90 "	1,960.00
4.	.87 "	1,895.00
5.	.76 "	1,525.00
6.	.74 "	1,612.00

Terms: Cash, or on Time Payment; 25 per cent payable each year with 6 per cent interest on deferred payments.

The purchaser shall pay the costs of advertising and other charges in connection with the preparation of necessary papers.

For maps and further particulars apply at the office of the Sub-Agent, Mr. G. W. Sahr, Lihue, Kauai, or at the office of the Commissioner of Public Lands, Capitol Building, Honolulu, T. H.

C. T. BAILEY, Commissioner of Public Lands. Dated at Honolulu, October 20, 1920. Oct. 26, Nov. 2, 9, 16, 23.

TERRITORY OF HAWAII

Treasurer's Office, Honolulu, Oahu

In re Dissolution of the Garden Isle Fruit Company, Limited.

Whereas, the GARDEN ISLE FRUIT COMPANY, LIMITED, a corporation established and existing under and by virtue of the laws of the Territory of Hawaii, has pursuant to law in such cases made and provided, duly filed in this office, a petition for the dissolution of the said corporation, together with a certificate thereto annexed as required by law.

Now, therefore, notice is hereby given to any and all persons that have been or are now interested in any manner whatsoever in the said corporation, that objections to the granting of the said petition must be filed in this office on or before 12 o'clock noon of January 3d, 1921 and that any person or persons desiring to be heard thereon must be in attendance at the office of the undersigned, in the Executive Building, Honolulu, at 12 o'clock noon of said day, to show cause, if any, why said petition should not be granted.

DELBERT E. METZGER, Treasurer Territory of Hawaii. Honolulu, October 21, 1920. Oct. 25, Nov. 1, 8, 15, 22, 29, Dec. 6, 13, 20, 27, 1920.

CO-PARTNERSHIP NOTICE

Notice is hereby given that the undersigned have on the 1st day of October, 1920, formed themselves in co-partnership for the purpose of raising taro, rice and vegetables, and making poi.

Firm name: Waimea Poi Company. Place of business: Waimea, Kauai, T. H. Names and residences of partners: Matsushiro Yokotake, of Waimea, County of Kauai, T. H. Tsumamatsu Watanabe, of Waimea, County of Kauai, T. H. Mannosuke Sasaki, of Waimea, County of Kauai, T. H. Noboro Harada, of Waimea, County of Kauai, T. H. Tokusaburo Takahashi, of Waimea, County of Kauai, T. H. Kosaku Harada, of Waimea, County of Kauai, T. H. Tomezo Ueda, of Waimea, County of Kauai, T. H. Saburo Harada, of Waimea, County of Kauai, T. H. Heematsu Nakamura, of Waimea, County of Kauai, T. H. Yutaro Yamamoto, of Waimea, County of Kauai, T. H.

No Matter What You Do

No matter what you do, you are going to spend some money needlessly:

All the precautions taken are not going to wholly avail, because you are a human being with weaknesses peculiar to the race.

One safe way to assure yourself of some savings, is to arbitrarily take a certain amount each week or month and place it to your credit in a savings account at this bank; then recognize your particular weaknesses by using your will power to guard against them. You will thus spend a minimum needlessly and at the same time will be building up an excellent savings account.

4% Interest Paid on Savings

THE BANK OF BISHOP & CO., LTD.

Waimea Branch

ARE YOU SITTING ON A WISHING STUMP?

Nothing good comes to us without effort and little is really worth while unless we have a hand in its creation. Its the joy of conquest. It may be an effort to you now to carry sufficient Life Insurance, but you will be rewarded with the satisfaction that comes of attainment.

PACIFIC MUTUAL POLICIES PAY FIVE WAYS

Henry Waterhouse Trust Co., Ltd.

Honolulu

JAS. F. MORGAN

Company, Limited

REAL ESTATE AND INSURANCE STOCKS, BONDS,

No. 125-131 Merchant St.

P. O. Box No. 594

Honolulu

HOTEL LIHUE

(The Fairview)

Twenty-two elegant rooms
In Main Building
Three Airy Cottages
Cuisine unexcelled in country districts

W. H. Rice, Jr.,
Proprietor

THE GARDEN ISLAND

Issued Every Tuesday

KENNETH C. HOPPER
TUESDAY

Managing Editor
NOVEMBER 9, 1920

WHAT THE HARBOR WILL MEAN

Now that there is every assurance that we will have the Nawiliwili harbor within a reasonable period of time it is fitting that we should consider what it means to us.

First, it means that we who live here, and have had to stand in line on the heaving deck of the island steamer in the darkness and scramble down the gang ladder, and tumble, hit or miss, into the surging boat wheres we found what place we could and held our souls in patience until we got ashore and then waited for what seemed like hours for our baggage,—will walk ashore comfortably and safely like free and independent citizens. The horrors of the midnight landing at Nawiliwili will be a thing of the past.

Second, it means that we will really have tourists, not merely the vague promise of them. So long as we have the present antiquated, cumbersome, nauseating, and dangerous facilities for landing at Nawiliwili we will never have tourists enough to amount to anything, and there is very little use in boosting our island attractions abroad. But when we have eliminated the horrors of the midnight landing we have disposed of the worst lion in the way, and we can look the prospective tourist frankly in the eye and say "Come and see our island we have a wharf now!"

Third, it will mean a better freight service. It is simply scandalous, the way that freight comes ashore at Nawiliwili,—smashed and broken, and damaged, and stolen, unavoidably perhaps, but none the less shamefully. The public pays for all that loss. It goes into the selling price of the goods, and onto the high cost of living. When it can be landed directly on the wharf, from a steamer lying peacefully in smooth water, all that sort of thing will be obviated.

It will also mean much more direct importing from the mainland, with the elimination of the Inter Island freight and handling, and much of the Honolulu middleman's profit.

Fourth, it will mean the development of our island. Harbors, wharves, steamship lines and railways, the wide world over, mean progress and development. If there is any country to be built up, that will do it. We haven't yet reached the limit of our development by any means. We have thousands of acres of excellent land lying idle and untouched, within ten miles of the Nawiliwili harbor. With steamships in that harbor looking for freight these lands will be developed.

To get some idea of what a good harbor and railways and roads will do for a country, one only needs to go along the Hilo Coast and compare it with what it was 25 years ago, and note the teeming population, and the comfortable homes, and the thrifty way that every inch of the country is made to produce a paying crop. We have got the roads, or are getting them. The Nawiliwili harbor will cap the climax of Kauai's development and prosperity.

ORDER IN HAYTI

Order in Hayti has been established by American troops, although at a cost of thousands of human lives. The operations of the American marines in that island republic, have been under investigation with the result that an unofficial report has been given to the public in which it is stated that 3250 natives have been killed in efforts to establish law and order.

The casualty list looks big, but it is quite probable that it would have been greater had not the marines suppressed insurrections and established a stable government, under which the natives may live in peace. Had they been left to continue their revolutions the loss of life would have been far greater, and there

would not today be a government worthy of the name. None of the natives have been killed unnecessarily or wantonly, and the greater number perished in the one battle of Port au Prince, when the native insurgents attacked the city.

The murderous charges that have been brought against the American administration in Hayti are not borne out in facts; yet there may have been some violations of the those guilty of murder, if any there be, should be brought to justice. If the charges are not warranted the world should know it. The facts should be made public, in the interest of rules of war; and it is not more than just that good government.

Hayti has for many years been a seething plague-spot of revolution and crime, and it was to suppress those disturbances and establish a government where the lives and property of American citizens would be safe that the United States sent its armed forces there to maintain order and secure redress for wrongs that had been committed in defiance of the protests of this government.

HUNGARY BANISHES JEWS

Hungary wants to be rid of her Jewish population, and has ordered 15,000 Jews to leave the country immediately. The expelled Jews want to go to Palestine, and they should go; but mass immigration to that country is said to be now impossible.

Palestine is the home of the Jew, and if it is impossible to receive the people in their ancient home-land at the present time, all possible effort should be made by the allied nations to prepare a place for them there.

The main difficulty now is the fact that the land is occupied by people who are not Jews: Arabs, Syrians, Turks and others, who cannot be removed ruthlessly from their homes.

All the world is praying for the early restoration of the Jews to their native land. Thousands are going there from all parts of the world; but it would be placing needless burdens upon the present occupants of the land to drive them away, regardless of consequences.

Palestine will yet, under Jewish management become a land of plenty; but the evil results of hundreds of years of Turkish mis-rule must be overcome, and the present inhabitants reasonably disposed of by purchase before the land will again "flow with milk and honey", under Jewish culture, and the Jewish government becomes an administration of a re-united people.

Notwithstanding the fact that France considers the League of Nations incomplete and lacking in force to properly function without the help of the United States, we Americans feel that we have no interests in Europe that will justify our entry into a pact that reads, in every section of the preamble and subject matter, trouble for us. The best we can do is to let Europe take care of its own, settle its own disputes, and conduct its affairs in its own way. We have business of our own to attend to, and participation in European affairs will bring troubles that we should by every possible means try to avoid.

United States Attorney Gallagher is busily engaged in mathematical computations for the purpose of ascertaining how one boiled potato, served in a Boston hotel, can be charged to the consumer at 20 cents, when a peck of raw potatoes can be purchased for 35 cents; or how two tomatoes can be charged at \$1.70. From a legal standpoint of the hotel or restaurant such charges are profiteering to the extent that an investigation is demanded.



KEEP YOUR PICTURES IN

PHOTO ALBUMS

It preserves them for future entertainment.

Complete new assortment from 35c to \$10.25.

Special Attention to Orders by Mail

HONOLULU PHOTO SUPPLY CO.

Everything Photographic

1059 Fort Street . . . Honolulu

Koloa Plantation Store

Wholesale and Retail Groceries
Dry Goods of all Descriptions.

General Plantation Supplies

CALIFORNIA FEED CO. LIMITED

Dealers in

Hay, Grain and Chicken Supplies

SOLE AGENTS FOR

International Stock, Poultry Food

and other specialties, Arabic for

cooling Iron Roofs, Petaluma Incubators and Brooders.

King's Special Chick Food

P. O. Box 452 Honolulu

JEWELERS

Everything in the Silver and Gold Line,
Rich Cut Glass and Art Goods

Merchandise of the Best Quality Only.

H.F. WICHMAN & Co., Ltd

Leading Jewelers.

P. O. Box 342 Honolulu

Tank Building Reinforced Bracing

W. M. MULLIN
WELDING ENGINEER

Acetylene and LIHUE HOTEL
Electric Welding Kaula

BANKING HOURS:

9 A. M. TO 3 P. M. ON AND
AFTER AUGUST 16th

The Bank of Hawaii Ltd.

LIHUE BRANCH

W. C. BREWER

Painter and Interior Decorator

Paper Hanging

Auto Painting and Varnishing

Paint Shop at Grove Farm, Lihue

Near Blacksmith Shop

TERRITORIAL MESSENGER SERVICE

TAKES ORDERS FOR ALL KINDS OF

Dry Cleaning and Laundry Work

SEND BY PARCEL POST TO

1112 UNION ST. HONOLULU





100 Per Cent Fine

You won't have to dodge the carving if you'll just make up your mind to have a Keen Kutter carving set. The edge on a Keen Kutter carver stays on a long time, and it goes through. Yes, sir!

KEEN KUTTER
Carving Sets

are made from the finest of materials, by men who have gained rare skill through long experience. If you find any Keen Kutter carving set not giving satisfaction, the dealer is authorized to return the money.

"The Revolution of Quality Remains Long After the Price is Forgotten."
—E. C. SIMMONS

Simmons Hardware Co.
St. Louis New York Philadelphia
Tulsa Minneapolis St. Paul Chicago



Theo. H. Davies & Co., Ltd.

HONOLULU AND HILO

Sugar Factors and Commission Merchants

IMPORTERS OF GENERAL MERCHANDISE

GENERAL HARDWARE

Bulldozers	Hardware	Crockery	Glassware	Silverware
Sporting Goods	Fishing Tackle	Firearms	Ammunition	Flashlights
Safes	Refrigerators	Spark Plugs	Oils	Greases
Paints	Varnishes	Brushes	Trunks	Suit Cases
Harness	Saddlery	Roofing	etc.	etc.

GROCERIES

Fancy and Staple Lines, Feed, etc.

DRY GOODS

Shoes Toilet Supplies Stationery etc. etc.

INSURANCE AGENTS

Writers of Fire, Marine, Compensation, Automobile and Miscellaneous Insurance Policies.

AGENTS FOR

Canadian-Australian Royal Mail Steamship Line.

Upon application information will be cheerfully furnished in regard to any of our lines in which you may be interested.

Order It By Mail!

Our Mail Order Department is exceptionally well equipped to handle all your Drug and Toilet wants thoroughly and at once.

We will pay postage on all orders of 50¢ and over, except the following: Mineral Waters, Baby Foods, Glassware and articles of unusual weight and small value.

None-Mailable: Alcohol, Strychnine, Rat Poison, Iodine, Ant poison, Mercury Antiseptic Tablets, Lysol, Carbolic Acid, Gasoline, Turpentine, Benzine and all other poisonous or inflammable articles. . . .

If your order is very heavy or contains much liquid, we suggest that you have it sent by freight.

Benson, Smith & Co., Ltd.

"Service Every Second"

The Rexal Store

Honolulu

Armistice Eve Dance

There will be a Dance on the eve of Armistice Day

November 10th 1920

Given by the Lihue Jazz Band at

LIHUE ARMORY

8 P. M.

Classy and Peppy Music

Admission \$1.00

Ladies Free

Read The Garden Island

Save Your Clothing

ECONOMY demands that the expensive shirt, the fine gown or the suit be laundered, cleaned or dyed only by
THE METHOD EXQUISITE

FRENCH LAUNDRY

and DYEING AND CLEANING WORKS
J. ABADIE, Prop. Honolulu
(Send the package by Parcels Post)

THE DIESEL ENGINE

AN extraordinary efficiency, the highest so far known to the engineering world, an ability to assume immediately any change of load within its capacity automatically and with practically no variation in speed, economy of fuel consumption and small cost of attendance are some of the Diesel's claims upon your consideration. Seventy thousand horsepower of Diesel engines are in successful operation in twenty-six States of the Union. For full particulars and literature address

Honolulu Iron Works Co.

Distributors—Honolulu



Copyright Hart Schaffner & Marx

Silva's Toggery, Honolulu.

Dealers in General Merchandise

American Factors Paints
AmFac Red Label Coffee
Yale Locks & Hardware



FISK

E. O. HALL & SON Ltd.
HONOLULU
Distributors
for the
TERRITORY OF HAWAII
Get our latest prices

FISK

LIHUE SOCCER TEAM FORFEITS KOLOA AND MAKAWELI GAMES

Because they played a man who is not on their list of players, the Lihue Soccer team forfeits the two games they have won from Koloa and Makaweli. Such was the decision rendered by the officials of the soccer league at a meeting held at Koloa hall last week.

The strange part of it is that Lihue was not aware that they were playing a man not on the list. There are two Schumacher boys on the team and their names were both on the original list, but in typing the copy to send to the secretary of the league, Captain Kuhlmann inadvertently left one of the names out, and was not aware of the fact until the secretary of the league notified him that Makaweli had protested the game.

We are extremely gratified to announce, however, that both Koloa and Makaweli teams have flatly refused to accept the games thus awarded them because of a clerical error. Both teams declare they were out-played by Lihue and were beaten fairly and squarely. They have signified their willingness to play the games over again in case it is necessary to decide the championship. This is what we call true sportsmanship.

The following letter from Captain A. Siebel, of the Makaweli team, was received by Captain Kuhlmann of the Lihue team, regarding the matter:
Makaweli, Kauai.
November 5, 1920.

Mr. C. Kuhlmann,
Captain Lihue Soccer Team,
Dear Sir:

Realizing that it was not the intention of the Lihue Soccer Team to play in opposition to the Soccer League rules and also that Makaweli desires to win its games by actual playing, it was decided at a meeting of the Makaweli Soccer team held today to propose to the Lihue team the following:

That the forfeited game of last Sunday be considered a postponed game under the following conditions:

1. That the League sanctions such action.
2. That said postponed game be played in Eleele, thus making two games at each ground—Lihue and Eleele.
3. That the present standing of the teams remain as they are until the close of the season and that the game in question be played then if it in any way affects the championship.
4. That the line up for this game shall be made up entirely from the list of the secretary of the league at the time of playing the forfeited game.

Yours very truly,
A. Siebel.

MIDWINTER LEAGUE OPENS SEASON

The Lihue mid-winter baseball league opened their season last Sunday with two games. Lihue won from Hanamaulu on the latter's field in a two to three game, with Okuda and Tank as battery for Lihue. Rego's beaubs were up against a hard proposition but held up their end in grand style. Regorio and Souza were the battery for Hanamaulu.

The game between the Filipinos and Puhī on the latter's grounds, went to the home team by a score of 9 to 3. Although Grove Farm had much the best of the argument, it was a lively game and brought out a good crowd.

At the last moment Nawiliwili decided they would enter a team. So the league is now composed of five teams instead of four.

Next Sunday's games will be Puhī vs Lihue at Puhī, and Hanamaulu vs Nawiliwili at Hanamaulu.

Following is the schedule of games:

- Nov. 7 Hanamaulu vs Lihue at Hanamaulu
- Puhī vs Filipino at Puhī
- Nov. 14, Puhī vs Lihue at Puhī
- Hanamaulu vs Nawiliwili at Hanamaulu
- Nov. 21, Lihue vs Nawiliwili at Lihue
- Filipino vs Hanamaulu at Lihue (Double Header, 1:30-3:30)
- Nov. 28, Puhī vs Hanamaulu at Puhī
- Filipino vs Nawiliwili at Hanamaulu
- Dec. 5, Puhī vs Nawiliwili at Puhī
- Filipino vs Lihue at Hanamaulu
- Dec. 12, Hanamaulu vs Lihue at Hanamaulu
- Puhī vs Filipino at Puhī
- Dec. 19, Lihue vs Puhī at Lihue
- Nawiliwili vs Hanamaulu at Lihue (Double Header, 1:30-3:00)
- Dec. 26, Lihue vs Nawiliwili at Lihue
- Filipino vs Hanamaulu at Lihue (Double Header, 1:30-3:00)
- Jan. 2, Hanamaulu vs Puhī at Puhī
- Filipino vs Nawiliwili at Lihue
- Jan. 9, Puhī vs Nawiliwili at Lihue
- Filipino vs Lihue at Lihue
- Jan. 16, Lihue vs Hanamaulu at Lihue
- Puhī vs Filipino at Lihue

PUHĪ TEAM ELECTS OFFICERS

The Puhī baseball club held a meeting last Saturday evening and elected the following officers:—E. H. W. Broadbent, president; E. H. Case, manager; Silva, treasurer; Sam Carter, coach; Inecencio, captain.

P. O. Box G

Tel. W-15

C. B. HOFGAARD & CO., LTD.

WAIMEA, KAUAI

—DEALERS IN—

General Merchandise

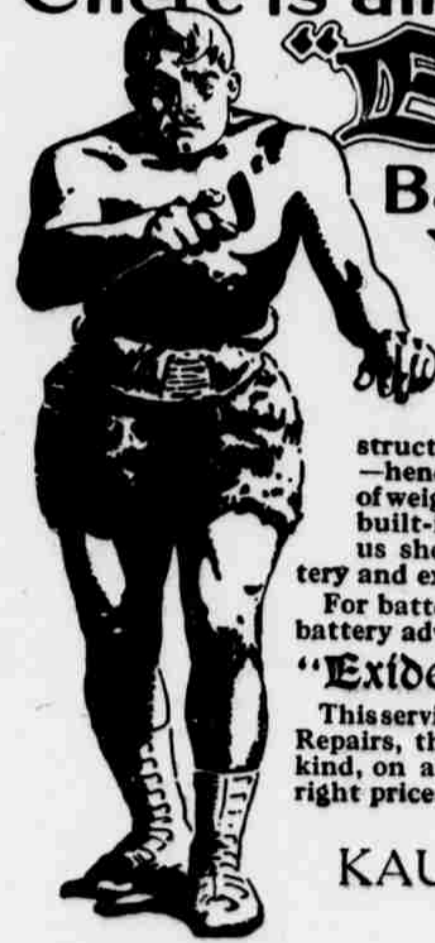
—AND—

Building Materials

BRANCH STORES

Kekaha Waimea Mana

There is an
"Exide"
Battery for
Your Car



and it will give "punch" and "pep" to your starting system. The space saving "Unit Seal" construction gives extra plate surface—hence greater capacity per unit of weight and volume. This means built-in durability and power. Let us show you your "Exide" Battery and explain its special features. For battery testing, filling or expert battery advice come to our
"Exide" Service Station
This service is free to all battery users. Repairs, the prompt and satisfactory kind, on any make of battery at the right price.

KAUAI GARAGE
AGENTS

Are You Playing A Safe Game?

Just stop and think it over. Are you following a definite, systematic plan for saving money?

A SAVINGS ACCOUNT with this progressive bank will prove its worth in later years.

ONE DOLLAR
starts an account
TODAY
With

THE BANK OF KAUAI, LTD.

Assets \$200,000.00
TERRITORIAL DEPOSITARY
KAPAA, KAUAI

HEALTH TALK

NERVOUSNESS

The great mistake made in dealing with nervousness consists in drug treatment to hasten restoration of natural nerve function.

Where this error is followed it will cause shock to the nerves and defeat the efforts the natural forces of the body are all the time making to relieve the sufferer and give a rest to the already overstrained nerves.

Nervousness manifests itself in a good many ways. People are fussy, fidgety, weak, emaciated and diseased as a result of it. It gets hold to the system insidiously, and is expressed in varying degrees of intensity while developing through stages from minor to serious conditions.

Most people suffering from nervousness are poor eaters, their appetite is poor, their stomach is not in condition to properly take care of the food. Also, they are not heavy sleepers; they rarely get enough sleep at night, sometimes falling short several hours of the required amount. These two conditions of troubles are the key to most all forms of nervousness.

Now the stomach is the organ that must be first when considering treatment for nervousness, for with a good appetite and an increase in weight the trouble is bound to lessen.

Almost every patient taking Chiropractic adjustments reports an increase in appetite and better sleep at night, because, instead of treating symptoms, adjustments get right at the cause of trouble.

Whether you are young or old, sick or well, a course of spinal adjustments is the best investment you can make. The cost is small when compared with the benefit you will receive. Most every one has displaced vertebrae or small curvatures in their spine, which can be easily overcome by my method of adjustment and it will add years to your life.

Let me explain what adjustments will do for your case.
Consultation and examination FREE.

FRANK C. MIGHTON, D. C.

Tip Top Bldg., Lihue
Tel. 157 L.

Hours: 9-12, 3-6
excepting Sundays.

SCHOOL NOTES

Kauai High School

The students of Kauai high school are going to get out a school annual. This will be the first thing of the kind that has been attempted by this institution. It is only a theory, as yet; the idea being only a week old, but we feel confident that the student body is going to dive right into the thing with all the interest that could be desired. We hope that every one on Kauai will have a big interest in this undertaking. It will be a medium by which the high school and the people of the island will be brought into closer sympathy and understanding with each other. Without the cooperation of the people no school can live and grow. A high school is one of the biggest assets that a community can have. To show its appreciation of the struggles of a young institution to get to the top and be the best, the community should take an active interest in its welfare, and keep in touch with the things that it is doing. One way to do this is to read the annual, for in it will be recorded, by the students themselves, the activities of the school from its first year of life.

On Thursday and Friday of last week Mrs. Wood very kindly took charge of the commercial work.

Luck seems to be coming our way of late. Last week brought us our mathematics teacher, Mr. Townsend, and this week our commercial teacher, Miss McClellan, whom we had given up for lost, arrived. Our faculty is now complete, and the work is running along in good order. As soon as the domestic science building is completed, which, we hope, will be soon, we can settle down permanently to our year's work in perfect bliss.

The boys of the foot ball teams are very busy practicing for the big game on Armistice Day, while those not on the teams are practicing their yells and songs. A great deal of rivalry exists between the classes, and if something doesn't happen soon to decide the question of superiority between the teams, we are not going to be able to stand the suspense.

Lihue Grammar School.

On Monday November 1, Koloa school came over to play playground ball against our school. Lihue girls' Team won the game 13-5, and Lihue Boys' Team won with a score of 15-2. The boys and girls on the Koloa teams are good sports. They played a fast clean game and never lost their enthusiasm throughout. One thing in particular that we noticed was that Koloa played with a fine spirit to the end of the game. We are glad that we are going to play against them again on "Victory Day", November 11. It is going to be a most exciting game for both teams.

Mr. and Mrs. Hoag of Pasadena, California, visited our school Monday November 1st, and gave a psychological test in grades 5 to 8 inclusive. It was lots of fun.

We have cleared off a large space of hlahila on the new school yard, but it has grown so large now that we cannot pull it out by the roots. Mr. Middleton has promised to send some men to help us. We are glad, because the hlahila sticks our hands so. Instead of pulling hlahila, our teachers are going to teach us some folk dances, games and setting-up exercises. We will like this much better.

Last Friday our school reporters did not send in any news because we had no school.

The carpentry class has just completed eight typewriter tables for the commercial class of the night school. The new Underwood typewriters are here and Mrs. Wood of Lihue is conducting the commercial class.

Little Hazel Simpson, daughter of Mr. H. S. Simpson principal of the Lihue Grammar School, was doing her bit to coach for the Lihue teams—both boys and girls—to earn the game. There were also many other good coaches besides Hazel.

Hanamaulu School.

Monday afternoon at Hanamaulu, the boys and girls crossed bats with the boys and girls from the Huleia school. The girls went to bat first and the score was in favor of Hanamaulu. Then the boys had their turn and again the score was in Hanamaulu's favor. The games were much enjoyed by all who witnessed them. The Huleia boys and girls deserve much credit for the sportsmanlike way in which they took their defeat.

Mr. Pugh, vocational instructor for the Island, spoke very highly of the school garden and also of the school kitchen which has lately been established through the kindness of Mrs. Wm. Hyde Rice Sr.

Night school was opened this week with three classes. It will be held on two nights of the week—Tuesdays and Thursdays.

(Continued on Page 7)



KAUAI'S EMPORIUM

Reduction Sale, Reduction Sale.

In order that the people of Kauai may reap the benefit of

Any Market Changes

Which have taken place, and to Reduce our Stock, previous to inventory

We offer during the month of November

These liberal discounts in our

DRY GOODS DEPARTMENT

MENS' SILK SHIRTS	30%
" GOLF AND WORK SHIRTS (except Henda)	15%
" SILK HOSIERY	25%
" COTTON AND LISLE HOSIERY	10%
" NECKWEAR	20%
" COLLARS	15%
" PAJAMAS AND NIGHTGOWNS	20%
" AND BOYS' HATS AND CAPS	20%
" AND BOYS' TROUSERS AND OVERALLS	15%
" "CROWN" ARMY SHIRTS	10%
" ARM BANDS, BELTS, GARTERS, SUSPENDERS	15%
BOYS' SUITS AND READY TO WEAR ARTICLES	20%
LADIES' SILK AND LACE WAISTS	30%
" MIDDIES AND MUSLIN WAISTS	25%
" SILK HOSIERY	25%
" COTTON AND LISLE HOSIERY	10%
" READY TO WEAR UNDERGARMENTS	20%
" AND GIRLS' TRIMMED HATS	25%
" AND GIRLS' COATS	25%
" AND GIRLS' DRESSES AND READY TO WEAR ARTICLES	20%
CHILD'S BONNETS, CAPS, BOOTIES	15%
DRESS GOODS (except Gingham, Flannelettes, Prints)	20%
DRAPERIES, SCRIMS, CURTAIN GOODS	15%
RIBBONS, LACES AND EMBROIDERIES	25%
BATHING SUITS AND CAPS	15%
JEWELRY (except Watches) and HAIR ORNAMENTS	25%
GUITARS, UKULELES, VIOLINS	20%
PERFUMES, TOILET ARTICLES, POWDERS, CREAMS, TOILET SOAPS	10%
AND ON ALL	

Mens, Womens and Childrens Shoes in our SHOE DEPARTMENT

Bought by us prior to 1920

25 per cent

on

TRUNKS, SUITCASES, HANDBAGS

in our

HARDWARE DEPARTMENT

15 per cent

The above discounts apply also at our

HANAMAULU STORE

LIHUE STORE

KAUAI'S EMPORIUM

Armistice Day

NOVEMBER 11, 1920

Waipouli Field

UNDER THE AUSPICES OF
THE AMERICAN LEGION, KAUAI POST NO. 2
 Department of Hawaii

POLO GAME
 17th Cavalry vs. Kauai Legion

HORSE RACES

- 3/4 Mile Open, 1st Prize, \$50.00; 2nd Prize, Entrance Fee Returned.
- 1/4 Mile 3 yr. olds, 1 Prize, \$30.00; 2nd Prize, Entrance Fee Returned.
- 3/8 Mile Open, 1st Prize, \$35.00; 2nd Prize, Entrance Fee Returned.
- 1/2 Mile Open, 1st Prize, \$40.00; 2nd Prize, Entrance Fee Returned.
- 1 Mile Cowboy Relay Race. No Entrance Fee. Prize \$20.00.
- 3/4 Mile Kauai bred ponies. Cup 1st Prize, \$50.00; 2nd Prize, \$10.00. This cup has been presented by Mr. James M. Spalding and is to be won twice. G. Sakamoto's "Lady" has one leg on the cup—won July 4, 1920.

Entrance fees: 3/4 mile races, \$10.00. All other races, \$5.00.

RACES START AT 10:00 A. M. ENTRIES CLOSE SAT., NOV. 6th, 1920

FIELD SPORTS

Tug-o-War, 12 men teams One Mile Relay 8 men teams

GRAMMAR SCHOOLS

Races—100 Yards and 50 yards Play Ground Baseball

Polo Game Starts at 3:00 P. M.

ENTRANTS FOR HORSE RACES AND FIELD SPORTS, SEE:

Waimea, Gerhaard Hofgaard; Eleele, Charles D. Rea; Koloa, Marcus Monsarrat; Grove Farm, A. Hebard Case; Lihue, Philip L. Rice; Kapaa, Albert S. Bush; Kealia, Charles Fern; Kilauea, Wm. K. Akana.

General admission to grounds for the day \$.50;
 Automobiles \$.75; Bleachers, extra charge \$.50;
 Automobile space for Polo Games \$1.50

All Prices Include War Tax

SCHOOL NOTES

(Continued from page 6)

Koloa School.
 Koloa played playground ball with Lihue Monday and was shut out by a one-sided score. The Koloa boys and girls have no regrets, however, and will show Lihue something next time. Both of the Koloa teams were new and suffered considerably from stage fright. Play was clean and fast.

Corn is up a foot high at Koloa and is coming along finely. It should have been two feet high by this time, but the principal was awakened one night by mules which broke into the school yard and ran riot amidst the corn until driven out. The number of stray cattle and horses on the Koloa roads is a disgrace.

The Koloa teachers have enjoyed a number of social affairs. A moonlight picnic at Lawai beach was certainly enjoyed by all. Through the courtesy of Dr. and Mrs. Waterhouse all took a big truck to the beach, where games were played in the moonlight and a picnic lunch was consumed with gusto. This is the second time Koloa teachers have been indebted to Dr. and Mrs. Waterhouse for this particular picnic, besides which they have to thank these hospitable people for many other courtesies.

Shortly over a week ago the ladies of Koloa gave a lunch and entertainment to all the new teachers at the Wilcox beach house at Koloa. Following this, on Hallowe'n, the ladies invited the teachers to a supper and dance at the plantation boarding house.

These two events, and numberless other courtesies have well sustained Koloa's hospitable and friendly reputation.

ISLAND ELECTRIC DEAL DEFINITELY ABANDONED

The deal which has been pending between the Hawaiian Electric Company and the Island Electric Company of Maui for the purchase of the plant of the latter by the former has been definitely called off, the Hawaiian Electric retiring from the proposition. It is reported that Robert Bond, Principal owner of the Island Electric Company, is negotiating on the coast to finance and continue the business.—Star Bulletin.

FAREWELL PARTY FOR DR. MIGHTON

About 25 guests gathered at the home of Mr. J.H.Hall, Lihue, on Saturday evening to bid farewell to Dr. F.C.Mighton, on the occasion of his leaving Kauai this week.

Games of various kinds were played, and the hit of the evening was a pantomime "Wild Nell, the Pet of the Plains" enacted, moving-picture style, by the Misses Thompson, Bissinger, Barker, Hardell, Cheek and Dr. Mighton.

Another feature of the evening was the "Butterfly Dance" by Miss Hardell. Among those attending were Mr. and Mrs. and Mrs. Bayless, Miss Bissinger, the Misses Barker Miss Cheek, Miss Cutler, Miss Hardell, Mr. and Mrs. Hobby, Mr. and Mrs. Jamieson, Mr. and Mrs. Lydgate, Mr. de Lacey, Mr. and Mrs. Morgan, Mrs. Monroe, Dr. Mighton, Miss Edith Rice and her house guest, Miss Focke, of Honolulu, Mr. Scribner, Miss Thompson, Mr and Mrs. Wood.

HAWAII RECOGNIZED AT LEGION MEETING

Returning from the national convention of the American Legion in Cleveland, Leonard Withington, one of the three delegates from Honolulu Post No. 1, the other two being A. Lester Marks of Honolulu and Burt E. Grabo of Schofield Barracks, returned to this city on the Wilhelmina.

Mr. Withington said Hawaii's delegates at the convention won a great victory by securing an amendment to a resolution which if carried in its original form would have asked Congress to bar from American citizenship all Chinese, Japanese and Koreans born in this country or to be born. The amendment took out the retroactive feature. The delegation from Hawaii also secured the reference to a recess committee of the oriental citizenship and all other phases of the Japanese question, including picture brides and the stoppage of naturalization.—Advertiser.

THE RAINFALL FOR OCTOBER

Lihue	4.10
Hanamaulu	6.61
Koloa	8.17
Kealia	2.72
Kilauea	6.39
Makaweli	2.20

The maximum temperature for October at Lihue was 84, the minimum 62. About the same time it was 25 below zero in Idaho.

Who wouldn't live in Hawaii?

AN EASY OUTING

Equipped with the supper surplus of the Chamber of Commerce from the night before the Hui Hele hoo hiking Club, to the number of a dozen or more, made a tour of the Huleia Valley on Saturday.

Dropping down into the valley in its upper reaches they wended their way, Indian file, down devious trails and along narrow kuunas until they emerged at the sea at the mouth of the river.

On the way they made the acquaintance of a Hawaiian imu, or native oven, a stalwart pounder of poi with the batch of poi before him in the process and were prevailed upon, very gingerly, to taste a sample of the same. They visited the veteran rice planter Ahana, who showed them his mill and held forth in vigorous terms on the trials of a rice planter in these degenerate days of shrinking prices and high wages. They skirted the edge of the famous monehune fish pond and listened with much interest to the story of its construction.

Through it all they enjoyed the beautiful vistas and the varied sunlit coloring of this most beautiful little valley lying at our very doors largely unknown.

Y. W. C. A. NOTES

The Girl Reserves of Kapaewere the guests of the Lihue Girl Reserves at a picnic and hike up Niimalu river. There were forty-nine girls including guests and hostesses.

Waimea, Koloa, and Lihue Girl Reserves are busy making attractive picture books for the children who have to be in the hospitals.

The Girl Reserves of the high school have been addressed by Miss Cheek on "Prevalent Ailments, Their Prevention and Correction." The girls spent the following meeting-hour preparing bandages and pledges to be used in district nursing.

Waimea women have organized a volley ball team and meet for practice every Tuesday evening in Waimea hall, which has been equipped for athletic use by the Y. W. C. A.

It is hoped that similar teams may be organized on the island so that there may be some competition.

Armistice Day Ball

given by

The American Legion
SATURDAY, NOV. 13TH

The American Legion is planning new and amusing features and surprises.
 Don't miss it.

Admission \$1.00 for gentlemen

Chamber of Commerce Banquet

(Continued from page 1)

Mr. Broadbent then read Col. Flagler's letter, which emphasized the fact that Nawiliwili alone met the conditions and requirements for a suitable deep-sea harbor for the Island; and that there ought to be a unanimous and earnest cooperation on the part of all interests to push the work to an early conclusion.

Judge Dickey added by way of explanation and elucidation that the Governor not being at all convinced that the enterprise would go forward at this time, had not taken any steps to secure the approval of President Wilson to the special bond issue for Nawiliwili, but now that an immediate purchaser was found, he had instituted the necessary steps to secure this approval, and by the end of the month the bonds would probably be ready for delivery and the money available for immediate work on the enterprise.

Mr. Broadbent thought that the matter and the situation were important enough to merit a little more time, and a little fuller consideration. This was a time for the whole Island to show an interest and enthusiasm in this important project, and to stand behind it as a thoroughly vital and significant interest for the whole Island. As long as there was some question as to what the decision of the engineers would be, or even as long as there might be some question as to the final outcome of the scheme, there might be some excuse for more or less opposition in certain quarters. But now, that the decision was rendered and the outcome was assured, we ought to bury our differences and stand by it loyally and heartily.

"Perhaps some people might say we don't need any such harbor—that Port Allen and Ahukini will meet our requirements, and that there is no occasion for the large expenditure which Nawiliwili will involve. Well, gentlemen, if we were building only for immediate requirements there might be some force in that. But we are not—we are building for the future, and a future that moves rapidly.

"Perhaps we have about come to the end of our extension in sugar, but there are other lines provided for. A few years ago who would have foreseen the proportions to which the pineapple culture has grown, and that is only in its infancy on Kauai.

"And there are other possibilities. Did you read that article in the Garden Island lately giving much valuable information in regard to bananas and their possibilities for these Islands? This Island, I am sure, has large possibilities in this direction, and the day is not far off when large shipments of bananas will be made to the coast from Kauai, especially if we can have direct shipment by means of large steamers that lie along-side the wharf.

"At present we consume locally most of the cattle we can raise, but we are going to have cattle to ship. Formerly with our poor stock and poor grasses, it took 15 acres to one head of stock—now, with better stock and better fodder grasses, we can raise one head to the acre. That is going to mean cattle for shipment. We will need Nawiliwili harbor and it will be none too good."

K. B. Morgan spoke of the importance of the Boy Scout movement, and thought that the Chamber of Commerce should keep in touch with the movement locally and lend it the favor of their interest and sympathy.

Mr. McCluskey, as president of the organization, was called upon, and in turn passed the matter along to Mr. Warner, the scout commissioner. Mr. Warner outlined what had been done, and made an appeal for a larger and more vital interest on the part of the business men, in this most important movement. It was hard to keep up the enthusiasm of the boys when their elders failed to stand behind them. Especially was there great need for scout leaders, who understood boys and looked on them from a sympathetic interested point of view.

Mr. Warner gave notice that Ezra Crane, of Honolulu, who ranked as one of the leading scouts of America, was expected soon to make a visit to Kauai, bringing with him one of the best Honolulu patrols.

On behalf of the parks committee, J. M. Lydgate exhibited a sketch map of a proposed new park reservation at the mouth of the Waialua river. This, he declared, was notably historic ground; the home of the Kings in old times; the site of the only pauhonua, of city of refuge, on Kauai; a region of

A BIG STEP FORWARD

Having passed successfully through the Preliminary stages of its growth, The Pond Company, Ltd., now 2 years old, approaches an important step forward in its career as purveyors of automotive merchandise and service to the people of Hawaii.

Though virtually a newcomer, the Company already has gained a definite place in this field. It is on a solid basis and on the verge of entering that large class of prosperous, conservative business organizations which characterize Hawaiian industry in general.

Today The Pond Company possesses 6 big points of strength in the automotive field. Any one of these alone is sufficient to insure the Company's future success. These points are as follows:



P. M. POND
President and Manager.



FRANK SHANER
Mechanical Superintendent



E. P. DOUGHERTY
Sales



O. N. TYLER
Assistant Manager



CHAS. N. KEPHART
Manager Accessory Dept.



JOE STICKNER
Sales

Studebaker Agency

In the class of motor cars ranging from \$2000 to \$3000 the Studebaker today easily dominates, by its beauty of line and finish, powerful motor, endurance, simplicity and economy. Because it has in highest degree those things which every motorist wants, it is, generally speaking, the most difficult car to get. Buyers who are determined to have no other—and such buyers are many—invariably have had to wait months for its delivery.

But this condition is all changed now. We are receiving, and are assured continuous delivery of at least 10 cars per month, for which we have many buyers waiting.

Mack Truck Agency

Business men think of transportation in terms of dollars. That is why, more and more, the Mack "Bulldog," a truck which lives up to its popular name in both appearance and performance, is coming to be accepted as the standard truck for heavy duty through America. Big organizations such as the Standard Oil Company, City of New York, United States Army, Bell Telephone Company and Consolidated Ice Company of Chicago employ great numbers of Macks, also. Officials of the Kahului Railway

In Hawaii it has proved its character, speak in highest terms of the service still given by the two Macks that Company has been using 10 years.

Willard Battery Agency

Best known and most popular among experienced motorists, the Willard Battery is standard equipment on 191 different makes of passenger cars and trucks. Willard Battery service is efficient and helpful to the motorist. Merely to have this agency places a dealer on extremely good terms with the car-owning public, since the dealer is known by the merchandise he sells.

Ever since the organization of The Pond Company, Ltd., its name has been linked with that of Willard Batteries and it has sought ever to live up to the ideals of service set by the Willard Battery builders.

The New Site

Realizing two years ago that the Company's present quarters would soon prove far too small Mr. P. M. Pond began quietly buying up residential properties at Beretania and Alapai streets. He acquired 80,391 square feet of land at an average cost of 50 cents a square foot. It can be sold today for at least 50 per cent more than it cost The Pond Company.

This property allows ample room for expansion of the Company's business. It means business can be handled at far less cost in interest, taxes and rent. The location is ideal. By actual count more than 30,000 people pass the site every day. For advertising and selling, the new site will be far superior to anything of the kind in the Territory.

Miller Tire Agency

The Miller, both fabric and tread, has made good wherever it has gone, by its long service and skid-proof qualities. It grows more and more popular in Hawaii each month, as The Pond Company's records testify. It has sold as fast as the Company could get shipments from the factory, the demand indicating that this branch of its business is destined to grow to several times the present volume.

The new salesrooms, which the contractor has guaranteed to have ready for occupancy by February 10, 1921, will be of concrete, fire-proof construction, modern in every way; with magnificent 30-foot plate glass display windows fronting Beretania and Alapai streets.

The Organization

This is far the most important and strongest of the Company's points. It is a closely knit group of departments, headed by men selected for their specialized knowledge and experience. For the most part the men of this Company are young—ambitious, wideawake, and energetic.

They realize that modern business is built on good service and reliability and adhere to this as a part of the Pond Company policy. Wherever you go in the Islands you will find a host of friends of this Company. This is "goodwill," the most valuable asset any enterprise can have.

That this rapidly growing business may be financed to permit continuous, healthy expansion, an issue of \$200,000 of 9 per cent cumulative Preferred Stock is now available. The limited amount remaining after holders of common stock have taken their share will be offered to the investing public.

The Pond Company, Ltd.

AUTOMOTIVE PRODUCTS

KING ST., HONOLULU

much natural beauty, and one which ought to be preserved to the public. In addition to these claims, it furnished a very excellent natural amphitheatre where games, sports and other spectacular events might be conducted in the presence of a vast concourse of people who could overlook the same from the rim of the bowl. Neither Lihue nor Kapaa had any such park accommodations, or any prospect of them, and this was half way between them and would be available for both communities. The park as proposed would contain some 40 or 45 acres, mostly land unsuitable for cultivation. He moved that the supervisors be requested to make application to the Governor and the land department to have this tract set aside as a park reservation to be known as the Pukonua Park. Carried.

A. Horner, Jr., recommended that a fish and game committee be appointed to care for the interests and preservation of the game, especially of our Island. He commented particularly on the growing scarcity of the Hawaiian wild ducks and other similar games. Concurring, the president said he would appoint the committee later.

D. S. Bowen being present as a special guest of the Chamber, was called upon, and responded by expressing his grateful appreciation of the honor done him and Mr. Varona, the Filipino commissioner. Mr. Varona, unfortunately, had an important engagement which prevented him from attending, but had requested him to speak in his stead, and had furnished him with notes of the message. Mr. Bowman then proceeded to interpret that message, which he declared was in Tagalog and a little difficult to translate. This will appear in our columns next week.

NON-STOP FLIGHT TO MAINLAND IS PLANNED

The first non-stop trip by air from Hawaii to the mainland will be undertaken next summer, according to David R. Davis of the Davis-Douglas Company, Los Angeles, who informed the Hawaii Tourist Bureau of his plan shortly before his departure for the coast Wednesday morning, according to the Star Bulletin.

Davis was in Honolulu several days collecting data on weather and atmospheric conditions for the proposed flight, for which the estimated time is 18 hours. Early next year a non-stop flight from Los Angeles to New York will be undertaken by Davis under the auspices of the Aero Club of Southern California. Davis was formerly chief United States aeronautical engineer and has designed 19 types of planes accepted by the government.

The K. C. Hopper News Agency

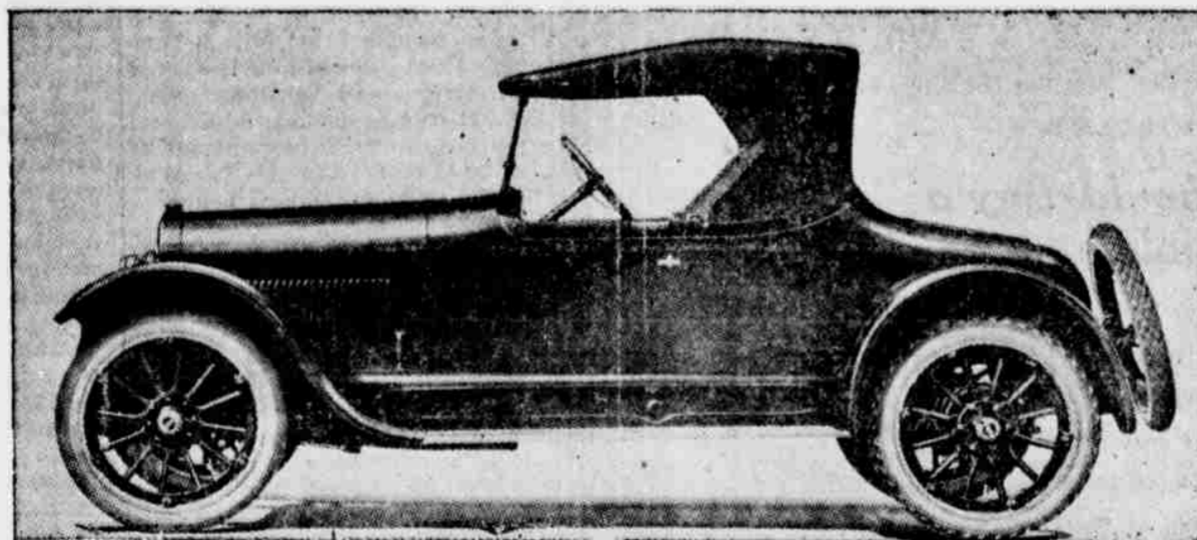
Lihue, Kauai

Subscriptions received for Magazines, Newspapers and Periodicals from all parts of the world.

All Languages Foreign and Domestic

Patronize Home Industry and Save Money

"WHEN BETTER CARS ARE BUILT BUICK WILL BUILD THEM"



3 PASSENGER BUICK ROADSTER

1921 BUICK

has arrived on

KAUAI

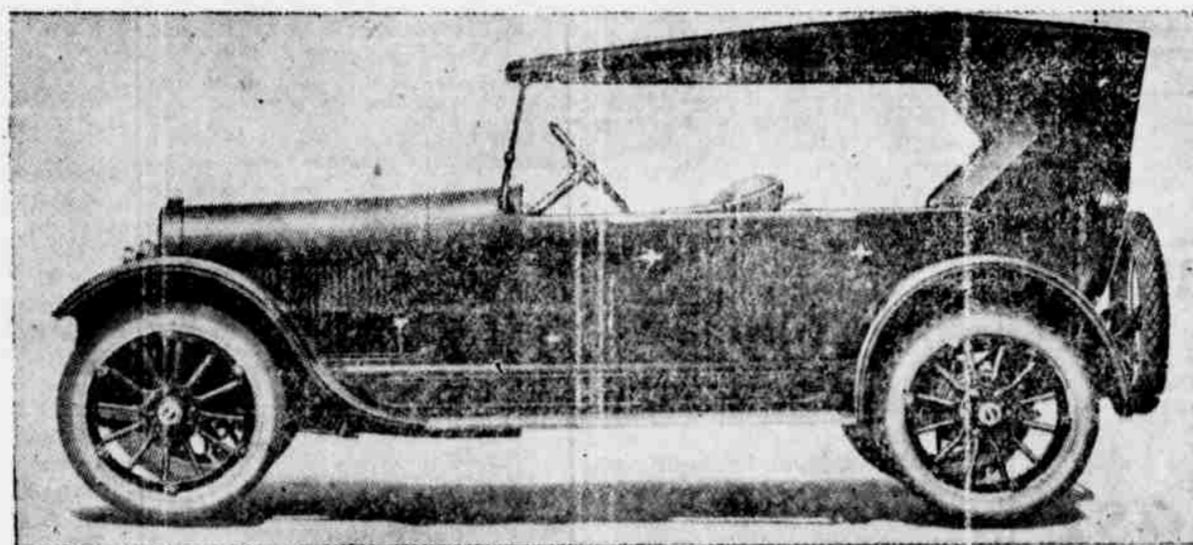
Phone or call upon our

MR. WALTER EKLUND

at the Lihue Hotel, who will gladly demonstrate the
new Buick creation

The von Hamm-Young Co., Ltd.

HONOLULU



5 PASSENGER BUICK TOURING CAR

"WHEN BETTER CARS ARE BUILT BUICK WILL BUILD THEM"

Buy A Hupmobile

Absolutely the best automobile in its Class.

We have a shipment of Hupmobiles on the "Lurline" arriving this week and can make immediate delivery.

Why You Should Buy a Hupmobile

1. They are comfortable, good-looking and roomy.
2. Plenty of power, easy to drive and well built.
3. Extremely economical and remarkably free from trouble.
4. Owing to the fact that they are shipped direct to Port Allen, you save the extra Inter-island freight and double handling. We deliver them on Kauai at the Honolulu price.
5. Last, but not least, they are sold by a local organization that is equipped to give satisfactory service.

Phone for demonstration

SERVICE WITH EVERY SALE

Nawiliwili Garage, Ltd.

Eat at CHILD'S

When in Honolulu

New, modern, high class restaurant, centrally located. Cool and comfortable; best food and service. European plan.

Operated in connection with the

Blaisdell Hotel

J.F. CHILD, Proprietor.

Detor and Company

JEWELERS

Gifts That Last

Diamonds, Watches, Silverware and Fine Leather Novelties

Manufacturers

Silver Gold and Platinumsmiths
Efficient Service By Mail

COR. HOTEL AND FORT STS.
HONOLULU, HAWAII

Supervisors Hold Regular Meeting

(Continued from Page 1)

proved by this Board, upon the motion of Mr. McBryde seconded by Mr. Bettencourt it was voted to request the County Attorney:

1. To submit a new Ordinance regulating the seizure and impounding of estrays that are found on any public road;
2. To submit an Ordinance amending Ordinance No. 8, providing for a Board of Trustees, etc. for the Samuel Mahelona Memorial Hospital.

Communications (2) (attached to P 1391) from Miss Mabel Wilcox and C. B. Hofgaard, respectively, accepting their appointments as Trustees of the Samuel Mahelona Memorial Hospital were received and filed.

A Resolution (P 1834) by the Women's Auxiliary of Kauai Post No. 2, American Legion, was received and same was filed as follows:

RESOLUTION

Resolved: That the Women's Auxiliary of Kauai Post No. 2, American Legion strongly urge upon the proper authorities to supervise the moving pictures shown on the Island of Kauai, with the purpose of maintaining a good and wholesome standard to all pictures; and that a copy of this resolution be published in the "Garden Island" and a copy sent to the Board of Supervisors of the County of Kauai.

Forwarded by direction (Sgd) Mrs. Albert Horner Jr. Corresponding Secretary Woman's Auxiliary Kauai Post No. 2, American Legion.

A communication (P 1835) from Grove Farm Plantation per E. H. W. Broadbent, manager, requesting the use of one Steam roller and two or three rock wagons on macadamizing work to be done on a piece of road on Grove Farm and for permission to cross the County Road at Puhii with lighting (electric) wires, was received and the Board by vote:

(a) permitted the crossing of the road with lighting wires, but the work shall be done under the

supervision of the County Road Supervisor; and,

(2) the request for the use of the steam roller and wagons be granted on condition that a reasonable fee, to be ascertained by the County Road Supervisor, shall be paid for the use of the roller and wagons.

A communication (P 1836) from Honorable C. T. Bailey, Com. of Public Lands, asking the County Road Supervisor to prepare plans and specifications preparatory to calling in bids for macadamizing the Anahola Home-steads Road, as provided in Act 239, Session Laws of 1919 as the \$3,000.00 appropriation is now available for the work, was received and referred to the County Road Supervisor for report.

Upon the motion of Mr. McBryde seconded by Mr. Bettencourt Jr. the sum of nine thousand and thirty-one 04/100 dollars (\$9,031.04) was set aside as additional appropriations, to be paid out of available moneys in the Treasury for the purposes named below:

General Fund:			
Dist. Courts & Jails, Waimea	\$4,000.00		
Water Works:			
Omao	150.00		
Kalaheo	254.55		
Kapaa	600.00		
Puukapele	51.49	1,056.04	
Incidentals: Co. Attorney 50.00			
Official Bond Premium 25.00			
Schools: Jan. Serv. & Sup. 900.00			
\$6,031.04			
Permanent Improvement Fund:			
Nawiliwili Bridge	2,000.00		
Hanalei: Asphalt			
Macadam	1,000.00	3,000.00	

The accounts hereinbelow listed which have been charged against the accounts for special deposits, the Auditor, by vote of the Board was given authority to transfer same so that the bills may be paid out of the General Fund, viz:

Janitor Service & Supplies	\$ 381.90
Koloa: Rd. Tax Spec. Dep.	2,495.37
Kawaihau: Rd. Tax. Spec. Dep.	457.26
A communication (P1837) from Miss Hundley, supervising principal, requesting for supplies for Anahola, Kilauea, Kapaa and Kekaha were referred to the County Engineer with full power to act in the premises.	
By a vote of the Board, the County Engineer was authorized to purchase a dozen paper baskets from the Kapaa school for distribution amongst schools where most needed.	
A requisition (P1837) from the High School for a fence between its new lot and the Grove Farm field adjoining; for electric lights to be installed in the assembly room and in the new building; and for taking down the old flag pole which cannot be used, was received, and the matter of fencing the premises and taking down the flag pole as prayed for, was referred to the engineer, with power to act in the premises. The request for electric lights was tabled.	
A requisition (P1837) from Frank S. Pugh, industrial instructor, on behalf of the Anahola school for the removal and replacement of the garden fence at that school, was received and filed.	
A communication (1837) from Hon. T. H. Gibson, deputy superintendent of public instruction, enclosing forms for information regarding expenditures under the Special Fund of the school Budget for the coming biennial period, was received and filed.	
M. G. Santos, principal of Oloheua school, verbally requested that the school premises be fenced in and a tank for drinking water be put on the premises, and by unanimous vote, the matter was referred to the engineer with full power to act in the premises.	
A communication (P1838) from Hon. T. H. Gibson, deputy superintendent of public instruction, enclosing Executive Order No. 77, setting aside a tract of 6.25 acres for the Kekaha school, was received and filed, and the clerk was asked to acknowledge the receipt of same with thanks.	
A communication (P1839) from Hon. John E. Stone, secretary to the Governor (Hawaii), handing Executive Order No. 83, setting aside certain land at Hanapepe, Waimea, Kauai, for park purposes, was received and filed and the clerk was also asked to acknowledge the receipt of same with thanks.	
Reports (P1840) for October, on the condition of school buildings, etc., were received from Anahola, Kilauea and Hanalei, and were placed on file.	
The report (P1830) of the pound-master of Lihue for the quarter ending September 30, 1920, was approved upon the advise of Mr. Brandt, to whom same was referred for report.	
Financial Reports (R256) for August, being Treasurer, Treasurer-Auditor, Auditor's report of receipts and disbursements, etc., and the joint report; were approved upon the advise of Mr. Brandt, while those (R258) for October, being Treasurer, Treasurer-Auditor, Auditor's reports and disbursements, and the Joint Report; and Bank Examiner's Report for 6 months to June 30, 1920, on the condition of the	

County, were referred to the latter gentleman for advise.

The contract of Wise & Wise, contractors, and the County of Kauai, for the construction of one story I.O.O.F. school building at Kalaheo, Kauai, \$20,681.00, according to plans and specifications, accompanied by a bond on the construction of one story frame formance of the work, by a unanimous vote of the Board, and signed by the chairman pro tem, Mr. Menefoglio, who was duly authorized to do so by the same vote of the Board.

The County Road of Supervisor's report (P1842) for October was received and filed. It is substantially as follows:

ENGINEER'S REPORT
Waimea District:
Patching work on the main road in the district was carried on. The court house was moved to a position parallel to the main road, and the new addition begun and is well under way.

Koloa District:
Only a few day's work was done on the macadamizing of the Catholic church road as the men were transferred to the main road. The work of putting down asphalt commenced at Wahiawa hill and has now reached a point several hundred feet Koloa side of Kalaheo. Rain stopped the work some.

Patching of the road was started at the old Koloa Mill road and has continued through to Knudsen's place. As the road was very bad it was necessary to use the roller in this work.

As much grading as the weather permitted was done on the homestead road near Kukuilono park. Some work was done on the Omao road.

Lihue District:
Nawiliwili Bridge: One half of the bridge is now open to traffic and the other half will be opened as soon as the fill can be put in, which must be done after the old bridge is removed.

A few day's of patching was done on the road.

A few day's grading work has done in the Wallua section of the homesteads.

Kawaihau District:
Kapaa Homestead Roads: Some grading work was done on the road, but was held up every few days on account of rain. Some finishing work was done on several culverts lately put in.

A few day's work of patching the main road was done.

Hanalei District:
Hanalei Landing Road: The macadamizing of the road has been completed and the outfit will soon be removed. Some patching was done in the Kilauea section.

Buildings:
The Kapaa school addition of two rooms will be completed this week. The domestic science building at the Kauai high school is well under way.

List of appropriations and the amounts affected by the approval of the demands submitted this afternoon:

Salary Co. Rd. Supervisor	\$300.00
Pay of Police:	
Specials	290.00
Waimea	460.00
Koloa	280.00
Lihue	410.00
Kawaihau	370.00
Hanalei	280.00
	2,090.00

Child Welfare Board	233.50
Coroner's Inquest	144.00
Co. Bldg: Jan. Service	31.50
County Jail	540.34
County Lot & Bldg.	108.90
Dist. Cts. & Jails: Waimea	2,450.43
Expenses, Auditing Co. Books	100.00
" of Election	384.67
" of Witnesses	45.00

Incidentals:	
Attorney	21.00
Auditor	237.22
Clerk	12.00
Sheriff	185.35
Supervisors	3.50
Treasurer	17.55
Co. Rd. Sup.	241.90
	718.52

Premium Official Bond	2.80
Registration Autos	100.00

Schools:	
Furn. & Fix.	270.75
Jan. Serv. etc.	797.10
New Bldgs.: Kalaheo	
	1,207.74
Ind. Art. Bldg. Lihue	12.91
High School	3,861.53
Hanamaulu	33.00
Wallua-Oloheua	92.95
Kapaa	1,079.45
Hanalei	110.22
	7,465.65

New Grounds	51.30
Rep. & Maint. Bldgs, etc.	99.45
" Houses & Teach. Cots.	
Mana	1.75
Waimea	39.87
Kekaha	3.25
Elele	101.70
Kalaheo	188.74
Koloa	263.70
Huleia	4.50
Kapaa	5.60
Hanalei	5.35
	614.46

Stationery	71.00
Support of Prisoners	1,187.81
Water Works:	
Puukapele	7.00
Kekaha	5.60

Personals

Mrs. L. L. Patterson and son, of Kilauea, will leave Thursday on the Lurline for a month's visit in Honolulu.

Miss Eva Focke is spending a week or so as the guest of Miss Edith Ross. They will both leave for town on Saturday.

L. E. Goss and wife, from San Jose, California, are registered at the Lihue Hotel. Mr. Goss is here to construct a bungalow for Manager C. A. Baggott of Nawiliwili Garage.

W. F. Dillingham, of Honolulu, is registered at Lihue Hotel, having arrived this morning.

W. E. Eklund, auto salesman for the von Hamm-Young Company, returned from Honolulu Friday morning, where he went to arrange for the shipment to Kauai of a new 1921 Buick, which arrived this morning.

Kalaheo	213.48
Waimea	77.59
Omao	49.00
Koloa	17.40
Kapaa	101.70
	471.77

Road Work:	
County Road Machinery	136.16
Waimea: Puukapele Road	
Survey, Territorial	5.00
Oiling Roads, Spec. Dep.	481.05
Rd. Tax Spec. Dep.	887.39

Koloa: Macadam Koloa New	
Mill Rd. P.I.F.	803.10
Oiling Roads	2,686.49
Roads & Bridges	627.30

Lihue: Nawiliwili Bldg. P.I.F.	
Oiling Rds. Spec. Dep.	4,062.15
Oiling Rds. Spec. Dep.	67.85
Rd. Tax Spec. Dep.	638.04

Kawaihau: Anahola Bldg. P.I.F.	
Oiling Roads	366.65
Roads & Bridges	2,379.40

Hanalei: Asphalt-Macadam,	
Landing Rd. P.I.F.	1,008.10
Oiling Roads	326.96
Roads & Bridges	537.39

Total	
	\$32,258.73

Upon a verbal request by the County Road Supervisor, he was, upon the motion of Mr. Brandt, seconded by Mr. Bettencourt Jr., and by a unanimous vote of the Board, authorized to expend the sum of \$1000.99 for a shed to be built at Lihue for housing the county machines and storing county supplies.

Upon the motion of Mr. Bettencourt Jr., seconded by Mr. Brandt, the County Sheriff was given full authority to put in the necessary repairs to the jailor's cottage at Kapaa, the cost whereof, however, shall not exceed \$150.00.

At 2:30 p.m. the meeting adjourned to meet again at the call of the chair.

KAPAA NOTES

Only one game, which was called off in the seventh inning, was played in the Kawaihau League on Sunday, the other game between the Liberties and Allies being prevented by rain.

In the game played, the Pacifics defeated the Farmers by the score of 4-1. The game was started with light showers, and was stopped twice to allow the rain to have an inning by itself, but in the seventh, such a heavy downpour occurred that the teams considered it advisable to call off the game, which however is legal, more than five innings having been played.

BORN

LARSEN—At Kilauea, Kauai, October 29, 1920, to Mr. and Mrs. L. D. Larsen a daughter, Katharine.

TENDERS ASPHALTUM

The Board of Supervisors of the County of Kauai will receive bids up to ten o'clock of December 1st, 1920, for furnishing 500 barrels of grade "C" (Pen. 30-40) asphalt in single headed barrels, to be delivered ex ships' tackle, Port Allen, Kauai.

R. F. Middleton.

TO THE VOTERS OF KAUAI

Please accept my most sincere thanks for the wonderful support you gave me at the late general election. May God crown your days with long life.

Your obedient servant,
JOHN A. HOOPALE,
Republican Representative, County of Kauai.

TO THE VOTERS OF KAUAI

I wish to thank you most sincerely for the generous support accorded me at the general election.

D. K. HAYSELDEN,
Republican Representative, County of Kauai.

VARIETY REPAIR SHOP

Lock and Gun Smith
We repair Electric Irons, Perculators, Phonographs, and all other electrical and mechanical appliances. Shop on King Street, opposite Young Hotel, Honolulu.—Adv.