

THE GARDEN ISLAND

THURSDAY, MAY 2, 1911.

BIG SUNDAY BALL GAMES

**Homesteads Defeat Kilauea
5 To 3--Makaweli Scores
20 To 5 Over Koloa,
While Lihue Increases
Percentage By Sending
The Eleees To The Green
With 9 To 6.**

Making a noise like thirty-seven dollars and nine cents gate receipts, close score of 5 to 3, Kilauea grounds staged the scene of one of the most interesting ball games, not only of the present series but probably of any game ever put on a diamond on Kauai. The new field was completed but a few hours prior to the time the game was called, and as a result, it was very poor for the runners. Just covered and be-spattered the plucky Homesteaders arrived shortly after one o'clock, having been cooped up in a truck and bus since six o'clock. As they piled out, straightened their extremities, and greeted the home team, there was an expression of sympathy displayed in the various remarks of the husky Ellenautes, one of whom remarked that no dust would linger on the Pineapple farmers after the game.

A few minutes elapsed during which the "farmers" did a little "mosh" to sort of get their compass directed properly. The game was called with the visiting team at the stick and from the very start it became apparent that the "crack" team of the league must "cut come" or else go on the shelf as "second rate." The Kilaueas were so badly deceived in the appearance of the opposing team, that the latter's excellent work got the home boys all befuddled. This condition prevailed throughout the entire game, being the only reason given for their defeat by the "plucky" little Homesteaders. It was a highly exciting game, the fan-numbersing more than three hundred, declaring it by far the best ever seen in Kilauea. At the

Continued on page 4.

TUBERCULOSIS TRICKEN HANAIEI

Hanaiei, of world-wide fame as the healthiest spot on earth, has by rumor, been placed in an entirely different light. Within the last year, quiet, sleepy Hanaiei, has been invaded by the tuberculosis germ, which has increased to such an extent as to alarm even Hanaieites.

Within the last year, nearly a dozen persons have died of this dread disease, with another lying at death's door, all these cases occurring within a radius of one mile.

All that is possible to do under prevailing conditions, has been done by the community doctor, who has done much to check the spread of the disease, but as he is unable to specialize on this and see that instructions are carried out, his aims are in a great measure thwarted.

Now that the Board of Health has appointed a specialist on tuberculosis, we hope the usual string of red-tape will be severed and that he will be allowed a free hand in an effort to better conditions in this beautiful little Hamlet.

Koloa School Celebrates

A very pretty May Pole exercise was carried out by the pupils of the Koloa school under the supervision of Principal Bush and his able assistants. The program began at twelve o'clock and was enjoyed immensely by visitors and pupils alike, the latter doing their parts in a highly pleasing manner.

We Carry
**Baseball
Tennis
Golf**
and a general line of Sporting
and Athletic Goods.
S.S.S.
Wall-Nichols & Co.,
LIMITED
Honolulu - - - Hawaii

Educator \$4 Shoes



Are a treat for the feet. Made on a broad toe last with room for all five toes. This gives perfect rest for the foot at all times.

They come in Black Gun Metal, Galf, Vici Kid and Tan Russia, both in high and low cuts.

When ordering, add 25 cts. to cover freight.

Manufacturers' Shoe Co.,

LIMITED
1051 FORT STREET HONOLULU

CRYSTAL WHITE SOAP

The kind that helps with the work.
Your Grocer has it.

H. Hackfeld & Co., Ltd.

DISTRIBUTORS

Coyne Furniture Company, Limited

Alexander Young Building, Honolulu
FURNITURE OF ALL DESCRIPTIONS
Bureaus, Chiffoniers, Sideboards, Box
Couches, Mattresses, Etc.
UPHOLSTERING AND REPAIRING

S. OZAKI

WAIMEA

Wholesale Liquor Dealer

ALSO

Complete Line of Oriental Goods

Telephone No. 102. Branch Wahiawa, Telephone No. 7.

TO THE KAUAI PUBLIC

DAMAGING FIRES SWEEP McBRYDE

THE ENDING OF THE SIXTH

I wish to present for your careful consideration the most attractive and best money making oil proposition ever offered to the people of Hawaii. 'Tis true it is a gamble, but a good one. All investments, no matter where you may place your money, is more or less a gamble. Lake View No. 1 Oil Well came in March 15, 1910. The stock cost 90c per share and sold for \$40.00 per share. To make it plain to you 100 shares cost \$90.00 and sold for \$4000.00, a profit of \$3910.00 on 100 shares. Lake View No. 2 is located only 1-4 miles from Lake View No. 1. The Sunset Monarch Oil Company, located between our properties, has just brought in a well which they claim is bigger than Lake View No. 1. Our soil



and log formations are identically the same. We are putting down 2 wellson our property Nos. 1 and 2, and expect to bring in gushers equally as large as the Lake View No. 1 or the Sunset Monarch and expect our stock will sell at as high a figure on the market. The gamble in this case is almost a certainty. We are surrounded with gushers which makes our property proven oil territory.

There is as much difference in the size of oil wells as there are in ships. A Japanese sampan in common parlance is a ship, and the Muritania of 50,000 tons is a ship. You cannot expect very large dividends from a sampan, but you can from the Muritania.

The profits on oil is a fairy tale. No other business can compare with it. No other business could produce a Rockefeller, who, when a young man, toiled for his living, and now draws an income exceeding all the crowned heads and potentates of Europe. Reflect and consider carefully what you are reading: you have the opportunity right now to buy some stock. My price is 50 cents a share. You can remit me by check or post office order to cover the amount of stock you desire and receive your certificate of stock by return mail, or you can remit one third of the amount to secure the stock and the balance payable in 60 days. Everybody should avail themselves of this opportunity. You owe it to yourself to take a chance and better your condition in life. Our tourists, capitalists, and wealthy men were in your position before they became rich. They took a chance, invested their money and made good. Rockefeller could still be a bookkeeper, but he took a chance and his income is now about a million dollars a day.

You can put 200 men to work building a house if necessary, and hasten its completion, but only six men can be employed to put down a well. It takes time to go down half a mile in the ground through rock and the different formations encountered.

I have sold stock to the ablest lawyers in Honolulu. These men have not paid in their money for stock before making exhaustive enquiries from their friends in California regarding the personnel of the officers title and prospects of success of Lake View No. 2. Judging from the fact that in many instances they have double and tripled their stock leads me to believe that the answers received must have been very satisfactory. Another convincing fact as regards our property is that the Standard Oil Company is laying a pipe line with pumping stations at an expense of hundreds of thousands of dollars within 200 feet of our two wells. Anticipating our gushers coming in soon, these people know what they are doing and are preparing themselves to handle our oil which we expect will be in three or four months.

There is a time in the tides of life which leads to fortune. You have the opportunity now. Are you content to be a clerk and live on a clerk's salary, which, as a rule, cannot afford the luxury of an automobile, or buy some stock in an oil proposition that might make you independant for life? Read this carefully. If you have any doubts or questions you wish explained, write me. Show this to your friends. Talk it over --- it concerns you and them. Some men won't buy a genuine \$5.00 gold piece for \$3.00, afraid they may be stung. These men remain clerks all their lives.

I am a large stock holder in this

McBRYDE April 28. A third attempt to destroy growing cane on this plantation occurred here about eleven o'clock last night, which resulted in a small blaze as it was discovered at the start by a watchman, of whom there has been several employed since the second fire which took place Tuesday night.

The first fire was discovered on Tuesday evening shortly after six o'clock. There was small chance for this fire to occur from locomotive sparks, yet suspicions were not aroused until the second fire alarm was turned in shortly after eleven o'clock. This fire proved to be much more destructive than the first, burning over some forty or fifty acres of cane. Hundreds of men turned out who, after nearly four hours of fierce fighting gained control of the flames.

The cane being about ready to cut, as many men as possible were put to work cutting with a view of saving the crop before the juice soured. The second fire, convinced all who first saw the source of its origin that it was the work of incendiaryism and as a result, the management is taking every precaution to protect the interests of the plantation, placing watchman at points where an attempt might be made. The wisdom of such a plan, is indicated by last night's experience, when an alarm turned in by one of these men, prevented what might have been a destructive fire.

company and I positively believe that it will make me big money. I bought this stock at the market price, just the same price as other stock holders paid for it. You can write to any bank in Los Angeles and find out the standing of this company. The stock is offered now for 50c per share. There is not very much left and when sold the price will be par value \$1.00 per share. When we strike oil it may jump to \$40.00 per share, same as Lake View No. 1. I dont know any reason why it should not.

Read this all over again. Write me and make enquiries about anything you wish to know. If you can't buy 500 shares or more, buy what you can and send me 1-3 cash, 1-3 in 30 days and 1-3 in 60 days for the amount of stock you wish to order. Do it now or you will regret it later on.

J. OSWALD LUTTED.

The retiring gentlemen of the Sixth Legislature, have made a record for doing the best work ever known in this Territory and well do they deserve all the complimentary expressions by governor Frear. Our Territory is not what it has been, but instead, is advancing by strides. The improvement noted in the work of the Legislature just closed, over all former sessions, indicates ability on the part of the members to keep apace with the times. It is but natural to suppose that many bills which would greatly benefit the country, were unable to get to the front, and it is also true that, among the many bills passed, some are of a doubtful nature, yet our members have done well, and we are proud of them.

THE BANK OF HAWAII,

Limited

LIHUE BRANCH

LIHUE, KAUAL, HAWAII

Deposits are received subject to check. Certificates of deposit issued payable on demand. Loans made on approved security.

DRAFTS DRAWN ON

Honolulu	Bremen
San Francisco	Berlin
New York	Hong Kong
London	Yokohama

SAVINGS DEPARTMENT

Interest paid on Savings Deposits. 4 1-2 per cent on ordinary and 4 per cent on Term Deposits. Ordinary Savings Deposits will be received \$2,500 in any one account.

SAFE DEPOSIT BOXES
RENT \$2 AND \$3 A Y

H. F. WICHMAN & CO., Ld. JEWELERS

EVERYTHING IN THE
SILVER AND GOLD LINE,
RICH CUT GLASS AND
ART GOODS.

MERCHANDISE OF THE
BEST QUALITY ONLY.

H. F. WICHMAN & CO., Ld.

LEADING JEWELERS
P. O. Box 342 Honolulu

NOTICE

The Board of License Commissioners for the County of Kauai will hold a meeting at the County Office Building on Thursday, June 1st 1911, at ten o'clock A. M. to consider the application of S. Ozaki for a renewal of the Wholesale License now held by him to sell intoxicating liquors at Waimea, Kauai, under the provisions of Act 119. Session laws of 1911.

All protests or objections against the issuance of a license under said application should be filed with the Secretary of the Board not later than the time set for said hearing.

W. D. McBRYDE,
Secretary Board of License Commissioners. (4ts May 2-9-16-23)

The Board of License Commissioners for the County of Kauai will hold a meeting at the County Office Building on Thursday, June 1st 1911, at ten o'clock A. M. to consider the application of Waimea Wine Co. Waimea, Kauai, for a renewal of the Wholesale License now held by it to sell intoxicating liquors at Waimea, Kauai, under the provisions of Act 119. Session laws of 1911.

All protests or objections against the issuance of a license under said application should be filed with the Secretary of the Board not later than the time set for said hearing.

W. D. McBRYDE,
Secretary Board of License Commissioners. (4ts May 2-9-16-23)

The Board of License Commissioners for the County of Kauai will hold a meeting at the County Office Building on Thursday, June 1st, 1911, at ten o'clock A. M. to consider the application of C. W. Spitz, Nawiliwili, Kauai, for a renewal of the Wholesale License now held by it to sell intoxicating liquors at Nawiliwili, Kauai, under the provisions of Act 119. Session laws of 1911.

All protests or objections against the issuance of a license under said application should be filed with the Secretary of the Board not later than the time set for said hearing.

W. D. McBRYDE,
Secretary Board of License Commissioners. (4ts May 2-9-16-23)

The Board of License Commissioners for the County of Kauai will hold a meeting at the County Office Building on Thursday, June 1st 1911, at ten o'clock A. M. to consider the application of Kapaa Wine Co. Kapaa, Kauai, for a renewal of the Wholesale License now held by it to sell intoxicating liquors at Kapaa, Kauai, under the provisions of Act 119. Session laws of 1911.

All protests or objections against the issuance of a license under said application should be filed

with the Secretary of the Board not later than the time set for said hearing.

W. D. McBRYDE,
Secretary Board of License Commissioners. (4ts May 2-9-16-23)

The Board of License Commissioners for the County of Kauai will hold a meeting at the County Office Building on Thursday June 1st 1911, at ten o'clock A. M. to consider the application of J. I. Silva for a renewal of the Wholesale License now held by him to sell intoxicating liquors at Hanapepe Kauai, under the provisions of Act 119. Session Laws of 1911.

All protests or objections against the issuance of a license under said application should be filed with the Secretary of the Board not later than the time set for said hearing.

W. D. McBRYDE,
Secretary Board of License Commissioners. (4ts May 2-9-16-23)

The Board of License Commissioners for the County of Kauai will hold a meeting at the County Office Building on Thursday June 1st 1911, at ten o'clock A. M. to consider the application of John K. Gancall for a renewal of the Wholesale License now held by him to sell intoxicating liquors at Lihue, Kauai, under the provisions of Act 119. Session Laws of 1911.

All protests or objections against the issuance of a license under said application should be filed with the Secretary of the Board not later than the time set for said hearing.

W. D. McBRYDE,
Secretary Board of License Commissioners. (4ts, May 2-9-16-23)

Business Locals

(Locals under this head are charged at the rate of 10c per line each issue.)

J. I. Silva, Eleele, is the agent for Victor talking machines. Ring up 71 w.

Don't throw that old hat away. Have it cleaned by the Expert Hat Cleaner, 1123 Fort st. Honolulu.

Ring up Spitz for anything to relieve you of that dry feeling.

Invitations will be issued shortly by the members of the Mokuiaua Social Club for their annual ball which is to be held in the Lihue Hall, Saturday evening, May 13 th.

WHITE LEGHORNS FOR SALE

Thoroughbred prize strain. Settings of 15, \$2.50. Selected incubator lots of 100, \$12.00. Week old chicks and a few choice young cockrels. All terms net.

S. BICKERTON,
Honolulu.

FOR SALE

One Piano and Pianola in first-class condition, together with fifty three records, very reasonable. Address, C. H. Jennings, K. Kauai, or call and see demonstration.

The Only Way

—to be sure of getting the very latest correct custom style in your footwear at a reasonable price, is to come to us for a pair of

REGAL SHOES

They have every style-feature to be found in the most expensive New York custom-built shoes—and in Regal quarter-sizes we can give you a made-to-measure fit.



Regal Shoe Store
Honolulu

B Waggoner, of Hackfeld & Co., Honolulu returned on Saturday's Kinan having made his last trip as "one of the boys."

SPECIFICATIONS

Axle (front)—Single piece drop forging, I-beam section, large annular ball bearings.

Axle (rear)—Full floating type, heat-treated nickle steel shafts. Large annular ball bearings bearings.

Brakes—Contracting band on drive shaft, 7-inch diameter, 3-inch face. Internal expanding on rear wheels, 14-inch diameter, 2-inch face. All breaks double acting.

Bearings—Full type annular ball bearings throughout running gear; silent type annular ball bearings in transmission and crank shaft.

Carburetor—Float feed, automobile type, hot water jacketed.

Clearance—10 inches.

Clutch—Multiple disc running in oil.

Colors—Chassis and underbody black with body and stripping English Vermilion, Napier Green or Chalmers Blue.

Drive—Bevel gear, two universal joints. Pressed steel torque arm.

Frame—Pressed steel, channel section.

Gear Ratio—Standard 3 3/4 to 1.

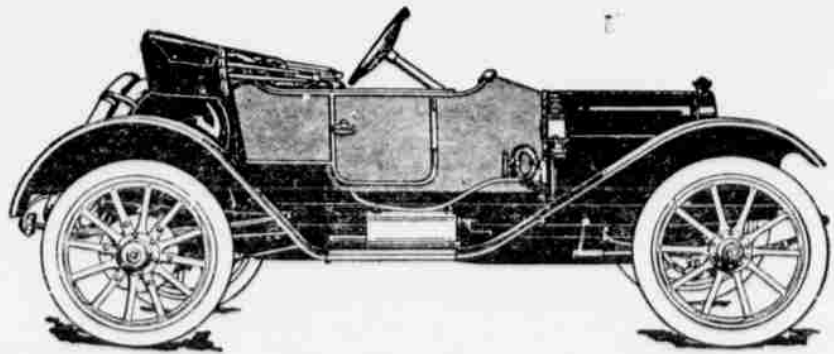
Ignition—Bosch Magneto.

Lubrication—Constant level splash system operated by pump. Sight feed on dash.

Horse power—26-30.

Motor—Four cylinders cast en bloc; 4 inch bore, 4 1/2-inch stroke.

Rims—Universal quick detachable.



Spring—Front, half elliptic; rear, three-quarter elliptic.

Steering gear—Worm and gear type.

Tread—36 inches.

Tires 34x3 1/2 inch all around. Option of Morgan & Wright or Continental.

Transmission Selective sliding gear type, three speeds forward and reverse.

Valves Nickel steel, large diameter. Exhaust valves at side; inlet valves at top of cylinders.

Wheels 34 inch diameter, wood, artillery type. Rear wheel spokes bolted to brake drums.

Wheel base 104 inches.

Seat Width, 37 inches; depth, 19 inches.

Leg Room 35 inches.

Price \$1500, l. o. b. Detroit, including Bosch magneto, gas lamps, two extra tire irons, Prest O Lite tank and Chalmers top with side curtains and storm front.

ASSOCIATED GARAGE, LTD.

FRANK E. HOWES, MANAGER
HONOLULU.

SUNDAY GATE MONEY HAS BEEN TABUED

Much regret is expressed by members of the Ball League at not being permitted to charge entrance fees to the Lihue ball games played on the grounds on Sundays. This is a sad blow to the organization, as it had counted on the Lihue grounds for the largest gate receipts. Not however, from a money making point of view, but simply as a revenue from which much of the League's expenses might be met. When we consider the expenses of the League teams it becomes very evident that there must be some source of income to counterbalance them. The members composing the different teams, came through personally, with the sum of one hundred and seventy five dollars, paid their monthly dues amounting to fourteen dollars more, and in addition to this, supplied their own uniforms. As to the Kauai Athletic Association, it pays out every Sunday, nine dollars for new balls, and held responsible for the payment of all transportation, which on last Sunday for instance, amounted to nearly sixty dollars. With this sixty dollars expenditure, must be added the nine dollars for balls, which totals sixty-nine dollars but a dollar or so, less than our gross receipts for the day. This shows clearly the necessity of conducting the league on a business basis and a strong argument in favor of an admittance fee. The games so far

have been good and are certainly worth the small sum required to witness them, especially since each ten-cent piece goes to support the good cause.

On the other hand, all must admit that the original aim of the donor of this beautiful park, was to afford a recreation ground for the laboring class—a place where, on Sundays, games of various kinds could be indulged in with the utmost freedom and equality. That the present arrangements interrupt this plan must also be conceded as the ball game practically takes up the entire afternoon. The Directors of the Park realizing this state of affairs, have notified the President of the Kauai Athletic Association that no further gate receipts are to be collected at the park ball games. They have granted collecting privileges in the grand stand, however, and it is hoped that at next Sunday's games, all our public spirited fans will do their utmost to fill the grand stand.

WEBERS ENTERTAIN

Mr. and Mrs. Weber entertained at a sumptuous luncheon at their home on Saturday evening in honor of Mr. Mahm. Everyone in the community was present and the charming hospitality of the host and hostess was greatly enjoyed by all.

Tickets have been printed for a grand ball which is to take place in Waiwaea Hall next Saturday night. It is given by the members of the Waiwaea basket ball team.

The County road force, brought the rock crusher and other paraphernalia over from Eleele on April 19th, and is now at work on the newly graded hill this side of Kōhō and will complete the section.

Coney Garage Co., Ltd.

J. H. CONEY, Manager

AUTOMOBILES TO ALL PARTS OF KAUAI
DAY OR NIGHT.

Telephone 104

Autos and Light Machinery Repaired, Plumbing and Gas Fitting. Automobile Supplies. Agents for the Kissel Kar, Franklin, Chalmers Detroit, Hudson, Gramm, Logan Truck, and Colt Acetylene Lighting Plant.

Agents for the L. L. STEAM NAV. CO., Ltd., Nawiliwili, Kauai

Nawiliwili,

Kauai

The ONLY PLACE to buy your office supplies and general stationery is at our store, 951 Fort Street. Write us your want and we shall be pleased to look after it for you.

Our Repair Department for Typewriters, Cash Registers and Adding Machines is the most extensive in the Territory. Before buying a typewriter consult us. We handle exclusively the well known Remington Typewriter which is the BEST that money can buy.

Office Supply Co., Ltd. FORT STREET HONOLULU

BRO. BENJAMIN REMEDIES are the BEST

PAU OPU PILIKIA

Bro. Benjamin COMPOUND HERBALO

STOMACH, LIVER, KIDNEY AND BLOOD REMEDY

cures Rheumatism, Impure Blood, Scrofula, Indigestion, Dyspepsia, Sour Stomach, Lack of Appetite, Fluttering of the Heart, Gas and Wind on the Stomach, Bloating feeling, Pains in the Stomach after eating, Sick-headache, Dizziness, Coated Tongue, Billiousness, La Grippe, Dengue Fever, Chills and Fever, Malaria, Breakbone Fever, That Tired Feeling, Jaundice, Backache, Diabetes, Gravel, Incipient Bright's Disease, Bladder Trouble, Euresis, (Bed-Wetting by Children,) Melancholia, Worms of All Kinds, Nervous and Female Disorders, Sleeplessness. Cures Constipation, Anaemic Condition. A great Tonic for women. Directions in English, Hawaiian, Portuguese, Spanish, Italian and French on blue carton and in the bottle. \$1.00 per bottle; 3 for \$2.50; 6 for \$5.00.

- BRO. BENJAMIN WOUND LIMEBENT—Greatest relief for Aches and Pains 50; 5 for \$2.00
- BRO. BENJAMIN CATARRH REMEDY—for difficult breathing, catarrh, cold in head 50; 5 for \$2.00
- BRO. BENJAMIN COUGH REMEDY—for throat, chest and lung troubles, asthma etc. 50; 5 for \$2.00
- BRO. BENJAMIN SALVE—for cuts, bruises, burns, sores, itchi, piles 25; 5 for \$1.00
- BRO. BENJAMIN PILLS—Great laxative after dinner pill 25; 5 for \$1.00

Ask your Plantation Store or nearest Dealer to get these medicines for you.

HONOLULU DRUG Co., Ltd.

DISTRIBUTORS
FOR
HAWAII

1024 Fort Street, Near King
ODD FELLOWS' BUILDING

Trade Mark Registered
in U. S. Patent Office.



The Words Bro. Benjamin and this picture must be on every package.

\$15
15
30

DOUBLE YOUR SALARY

Don't spend spare time thinking what you might do if your salary were doubled! *Do it*, not thinking, will make your wish a reality. Our free booklet, "Are Your Hands Tied?" tells you what to do and how to do it. Thousands have already doubled or largely increased their salaries by following our plan. Under our guidance you can do the same. Act today! I. C. S. Text-books make it easy for those already at work.

Learn By Mail

Mechanical, Steno, Electrical, Civil, Mining, Telephone, and Telegraph Engineering, Ship and Laundry Practices, Mechanical Drawing, Architecture, Plumbing, Sheet Metal Pattern Drafting, Chemistry, Ornamental Bookbinding, Lettering, Bookbinding, Stenography, English Grammar, Teaching, Correspondence, Business, Electrotherapeutics, German, Spanish, French.

Circular free. State subject that interests you.
INTERNATIONAL CORRESPONDENCE SCHOOLS,

Hawaiian Agency

1139 Fort St. Honolulu

Victor Talking Machines



FROM \$10.00 UP

Eleele Store Kauai Agents
J. I. SILVA, Proprietor.



Sole Agent

Alexander Young Hotel Laundry

Address all laundry to the Messenger Service
Union and Hotel Sts., Honolulu.

LET US DO YOUR SHOPPING

Waimea Stables LIMITED

Up-to-date Livery, Draying and Boarding Stable and Auto Livery Business.

AUTOMOBILE STAGE-LINE
BETWEEN LIHUE and KEKAHA

Leaving Lihue every Monday, Wednesday and Friday.
Leaving Kekaha every Tuesday, Thursday and Saturday.
ARRIVING AT THEIR DESTINATION IN THREE HOURS

W. WEBER Manager.

Telephone 4 W Waimea P. O. Box 48

LIHUE LIBRARY NEW BOOKS

JUVENILES

Silver Sun Valley. M. Bronson.
Adventures of the Peterkin Family. Fule.
The Missing Merchantman. H. Collingwood.

Redden Everel. Coleridge.
Darkness and Daylight. L. T. Meade.

FICTION

The Second Generation. David Graham Phillips.
The Rules of the Game. Stewart White.

Rest Harrow. M. Hewlett.
Max. Katherine Thurston.
Clay Hanger. Arnold Bennett.
The Silent Call. Edwin M. Royle.
Mary Cary. Kate L. Basher.
Langford of the Three Bars. Boyles.

Dorothy South. Eggleston.
The Gift of the Grass. J. T. Moore.

By the Light of the Soul. Freeman.

Like Another Helen. Geo. Horton.

The Last Continent. Cutcliffe Hyne.

Confessions of a Detective. Alfred Lewis.

A Little Garrison. Bilse.
The Heritage of Unrest. G. Onerton.

Master of the Vineyard. Myrtle Reed.

Kilmeny of the Orchard. M. Montgomery.

The Broad Highway. Jeffery Farnol.

Marie Claire. Margaret Andean.

GENERAL LITERATURE

In the Foot prints of Heine. Henry Hornum.

Papa's Diary. A. A. A.

Physiand Poems of Yeats. The Russian Road to China. Linden Bates Jr.

The Digressions of V. K. a Vedder.

A Sailor's Log. Robley D. Lyman.

The Spirit of Youth and the City streets. Jane Addams.

The Winter Queen. Marie Bay.

Three Normandy Inns. Ann Dodd.

In and out of a French Country House. Ann Dod.

Danish Life in Town and Country. Brochner.

Myths of Northern Lands. Guerber.

Oberammergau. J. H. Short.
J. M. Lyocann.

April, 26, 1911.

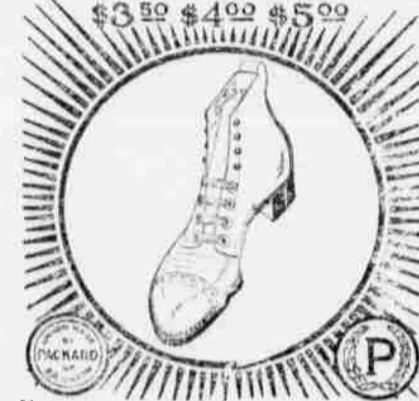
EYES TESTED



MAIL YOUR BROKEN LENSES AND FRAMES TO ME AND I WILL DO THE BEST.

Alfred D. Fairwithier
Manufacturing Optician
Harrison Bldg. Honolulu

THE Packard FOR MEN SHOE



College men find
THE PACKARD
the thoroughbred
of its class
It holds
its stylish
shape and
clean-cut ap-
pearance long-
er than many
shoes of twice
its cost. Have
you seen the
latest lasts?

McINERNEY SHOE CO., Ltd.
HONOLULU

We will clean and block your old hat and make it look as good as new. Expert Hat Cleaner 1125 Fort St. Honolulu.

B. Waggoner, for many years connected with Hackfeld & Co. in the capacity of traveling salesman, has accepted a position as assistant manager in a New York office which the company will open as an eastern branch of their Honolulu and Hilo Houses. Mr. Waggoner gave his numerous Kauai friends the parting hand-shake Saturday, leaving on the Kinau. One of his Kauai friends, however, will accompany him and remain a permanent guest through his future successful career, and that is the GARDEN ISLAND. Mr. Waggoner has long been known as one of the most popular traveling men among the many who come to our shores and while we regret to lose him, yet most heartily join his many friends in best wishes for a successful future.

Mr. Paul Schmidt a well known Honolulu Commercial man, will represent Hackfeld & Co. in the future, taking Mr. Waggoner's place. He returned to Honolulu Saturday, having made the island for the first time in company with his predecessor by way of getting "on to the job."

Next Sunday's Ball Games

Lihue vs. Makaweli at Makaweli.
Kilauea vs. Eleele at Lihue.
Kawaihaus vs. Homesteads at Kapaa grounds.

Owing to the non-arrival of necessary parts to the Garden Island's new plant, we regret our inability to give our readers the new paper complete. We hope that our next issue will find us fully equipped for the future and greater Garden Island.

Doctor Huddy came over on the ¹²/₁₂ Hall last Friday morning to make final arrangements for his departure for Hilo in which place he will locate upon his return from the coast for which place he leaves shortly for the purpose of purchasing supplies for his new office. The Doctor has made many friends during his residence here, all of whom are loathe to see him leave and who wish him health and prosperity in his new home.

Jack Bergstrom, the genial Jack, is registered at the Fair View Hotel, and has threatened to tune every piano on Kauai before departing.

Bishop & Co. BANKERS

Established 1859

HONOLULU, HILO, WAIMEA
KAUAI.

Transacts a General Banking and Exchange Business
Commercial and Travelers' Letters of Credit issued available in all principal cities of the world.

Interest allowed at the rate of 4 1-2 per cent per annum on Savings Bank deposits.

Interest paid on Time Deposits at the following rates:
3 Months 3 per cent per annum.
6 Months 3 1-2 per cent per annum.
12 Months 4 per cent per annum.

All business entrusted by customers on other islands receives careful and prompt attention.



The government one of our best customers.

Uncle Sam is the most particular builder we know of. When he puts his stamp of approval on

Malthoid Roofing

you are safe in using it for any class of buildings.

Write for descriptive matter and samples.

THE von HAMM-YOUNG CO. Limited.

A Complete Stock in Honolulu.

The Lihue Band gave its regular monthly concert Saturday evening to an appreciative audience.

LIHUE STORE
Kauai Distributors

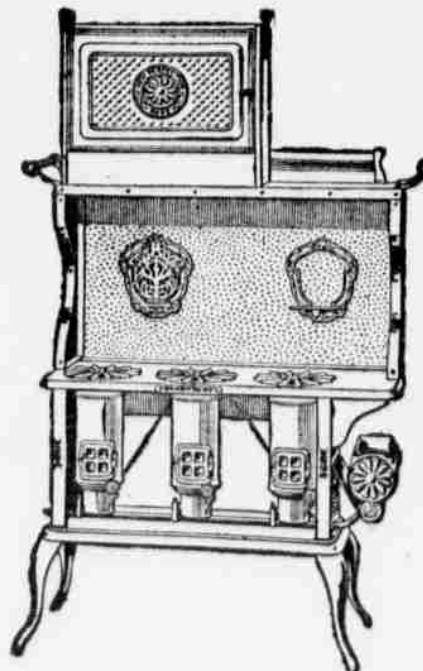
Blue Flame Oil Stoves

1 Flame \$ 3.50
2 " 8.50
3 " 12.00

Cabinet and Oven Extra

Honolulu Prices

YOU SAVE THE FREIGHT



GERMAN OIL STOVES

in great varieties just arrived per bark H. Hackfeld

Prices from 75c up to \$1.25, 1.50, 2.25, 2.75, 3.75.

LIHUE KAUAI'S EMPORIUM STORE

Clothing from \$6.50 to \$21.50 per suit. We will send a suit to any responsible person and guarantee to save you from 25 to 30 per cent on your garments. Give color and price desired.

Regular wholesale price allowed to merchants buying in quantity.

THE LEADER, CLOTHIERS

FORT STREET, NEAR BERETANIA

HONOLULU

HONOLULU MONUMENT WORKS, LTD.

Successors to SHAW & SEVELLE

We are the only practical firm in the Islands today, strictly in the monument business. We do all our work with pneumatic tools, driven by compressed air, and the saving in labor we give to our customers in the reduced price of monuments sold. We give any class of lettering, V Sunk or raised, but recommend raised letters as more artistic. We sell monuments at San Francisco prices, and as a further inducement to purchase from us, we will give the full name, and the year of birth and death, beautifully carved in raised letters, in panel work, with frosted background, absolutely free. We are direct importers of American and Scotch marble and granites.

We Pay the Freight to Kauai Ports.

THE GARDEN ISLAND

Issued Every Tuesday.

Entered at the post office at Lihue, Kauai, as second-class matter.

SUBSCRIPTION RATES \$2.50 PER YEAR, \$1.50 FOR SIX MONTHS. IN ADVANCE

ADVERTISING RATES, 50 CENTS AN INCH PER MONTH.

E. B. BRIDGEWATER EDITOR
K. C. HOPPER MANAGER

TUESDAY, MAY 2, 1911

CASE OF WHITEWASHING

The retaining of any of the Hilo teachers connected with the late Hilo scandal is a game of white washing that reflects anything but credit on those responsible for such a decision. It is the opinion of most persons of mature judgment that a clean sweep should have resulted, that other teachers should have been appointed or else had the school closed. There are few parents who would appreciate sending a child to a teacher whose name had been connected with charges of immorality and such other conduct as has been given the public in the late disgraceful affair.

Notwithstanding the Department's generosity in this matter, it is not likely that the public will so by and accept a teacher who is considered morally unfit to fill a position in another school.

White washing the Hilo High school matter by transferring certain teachers to other schools, would indicate that any old standard of teachers is good enough for any other place than Hilo.

The Department of Public Instruction would greatly oblige the public and perhaps the two Principals in the Hilo High school, if it could transfer both to the same school.

WINNERS NAMED

The members of the Commission of Public Instruction have been nominated by Governor Freat and approved by the senate, as follows: Wm L. Stanley, Mrs. May Wilcox, John F. Moir, Ella H. Paris, Worth O. Allen and William H. Rice Sr.

Representatives Rice, Coney and Huddy returned from Honolulu Friday.

WANTED: A JOB THE SHELDON PARK

(By a Capable Young Man)

I'd like to get some pleasant job that's suited to my skill—
Some daily task whose duties I could completely fill.
Just what it is I'd do the best, or where I'd better go
To look for it, I must confess I really do not know;
But if some one is looking for a well-built, handsome chap,
Who's just the kind dame fortune likes to dandle on her lap,
If she will call me on the phone, or write a note off hand,
She'll find me always ready to be dandled at command.
But best of all the things I do is hanging round a house,
Protecting dainty ladies from the predatory mouse;
Escorting timid ladies to the falls on sunny days
And making myself useful in many little ways.
I ornament a boarding house, I look well in a car,
And I am full of lively talk on subjects popular.

WANTED: A JOB

(By a Capable Young Lady.)

Young man, if you're seeking for a living ornament
To grace a quiet drawing room you'll find that I'm content,
I look well beside a mantle-piece; I'm graceful in a chair;
I occupy a sofa, with a most distinguished air
Of all the human bric-a-brac that ever you did see
There's precious little anywhere superior to me.
I go well with all colors and am really at my best
In giving to a drawing room, a tasteful sense of rest.
Or if, perchance, some tailor man would like a figure smart
To advertise a perfect fit for garments a la carte,
He'll find a figure in this very graceful form of mine
That's said by "judges" to be O. K. in every line.
I'm willing, if this tailor man should wish to use the same,
To wear his garments in a way that's sure to win him fame;
And every afternoon each day, a little after two,
To put them on and walk abroad upon the avenue.
Or if some traveler on a cruise would like an extra guest,
Who would enjoy an ocean trip with an unusual zest,
I'll gladly go along with him to lands and seas afar—
I really do not care a jot how very far they are—
I'll do my share in helping him enjoy the things he sees
And give him some relief from all the irksomeness of ease—
I carry ease so very well, indeed, with such iclat,
I'd be a find at any cost in such a line as that.
—HORACE DODD GASTIT,

Waimea has, through the efforts of Representative Sheldon, been awarded a prize package in the shape of a public park. It is to be known as "Sheldon's Park," and is probably today as much of a park as it ever will be. Waimea's citizens were not consulted on the park proposition, and the only excuse for the existence of such, is the evident desire upon the part of the worthy Representative of Waimea District, to establish an everlasting monument to his memory. It is to be hoped that this memory will out-last the proposed park for there is little hopes of getting the land for such purpose for several years as it is at present under a lease for time enough to carry the lessees beyond the next Legislature before which the present park scheme will come and in all probability be dismissed. The chief objection to establish-

ing the Sheldon Park, is the fact that the property is covered with residences, the owners of which have resided therein for years, improving the property, knowing in the meantime that the land belonged to the government, but with the hope of ultimately buying it. Now comes Hon. Mr. Sheldon, whose autumnal promises rang with sincerity; whose promises bespoke the man in whom the district placed sufficient confidence to do him the highest honor in its power; promises that the people are not likely to forget, and if carried out, would certainly have allowed them a voice in the park question. Mr. Sheldon has been an active and able man in the House, and it is difficult to see just why he should so totally disregard the ideas of those to whom his park would most largely concern.

Coming

On Wednesday, May 3rd, Messrs. Andrade and Welbourn, representing **SILVA'S TOGGERY, Ltd.** of Honolulu, will arrive on Kauai with a complete line of the well known **Hart Schaffner & Marx Clothing** and a general assortment of furnishing goods.

It is the intention of Messrs. Andrade and Welbourn to canvas the Island, and they respectfully invite the public to inspect their line of goods.

Hart Schaffner & Marx Clothing are of the highest quality and are worn by the most exclusive dressers throughout the Territory.

SILVA'S TOGGERY, Ltd.
Honolulu, Hawaii

BIG. SUNDAY GAMES

Continued from page 1.
close of the 9th inning, the score stood 5 to 3 in Homestead's favor.

The receipts justify fully the contention that games should be played according to schedule i. e. in every place called for in said schedule. Lihue is the only place with larger receipts than those of Kilauea while Makaweli, a plantation with a population and valuation many times that of Kilauea, came over the pike with but \$15.00. To Koloa, however, must the credit be given for not coming through with receipts. There is considerable discussion over Koloa's inability to gather sheekles at their home grounds, another occurrence of which will likely call for action looking toward collecting the total day's expenses from the Koloa League. It is not that Koloa is expected to collect a large amount, but that she should at least make an effort to collect. This, we understand, was not done at the last game on her grounds and the Kauai Athletic Association has a right to ascertain just why it was not done.

LIHUE vs. ELEELE

A small but appreciative audience whooped her up in a most gingerly manner at the Lihue Park Sunday, when the Eleele team faced the Lihues. Both teams were even on honors, which accounted for the determination to play for blood which seemed so evident in every play by members of both teams.

MAKAWELIS vs. KOLOAS

The Makaweli diamond was the scene of another strife on Sunday afternoon when the Koloas lined up against the Makawelis. Notwithstanding the "zero" which

stood opposite the Kalonites record, these "midgets" got down to the green and played up to the Makaweli "fire eaters" in a way that called forth admiration from the fans. Their superior playing and knowledge of field work on the part of the Makawelis struck the "Home sweet Home" note, ending the last bar on reaching the 20th note, by the time the Koloas had reached the 5th.

Kilauea line-up.

W. Kerr, ss; Werner, c; J. Akana, lf; Wood, p; Joe Pacheco, cf; J. Huddy, 2b; M. Jocinth, 3b; A. Rapozo, rf; C. Huddy, 1b.

Homestead line-up.

Andrade, cf; Jordan Macchies, rf; M. Robello, c; John Madeiros, ss; Antone Silva, 1b; Palama, lf; Ornalkes, 2b; Manuel Robello, p; Ah Yet, 3b. W. F. Sanborn umpire. Scorer Nicholas Akana and Joe Ida. Time of game 1 hour and 40 minutes.

Makaweli line-up.

Joe Costa, p; Akana, 1b; Honan, 3b; Hoffman, 2b; Antone Fernandez, ss; Rankin, lf; Keola, cf; Burges, rf; Puntado, c; Thomason, cf; Jno. Costa, rf.

Koloa line-up.

Antone Souza, 3b; Clement, lf; Jas. Kula, 2b; J. Paris, c; Antone Perry, ss; Bento, cf; E. Kapiko, rf; McKeague, p; Oyama, 1b; Dick Oliver umpire. H. A. B. Fergie scorer. Time of game 2 hours and 5 minutes.

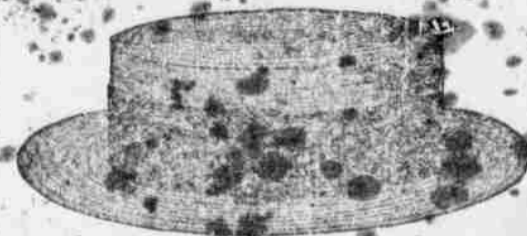
Lihue line-up.

Ogawa, cf; W. Puaoi, ss; H. Malina, lf; J. Malina, 1b; W. Makanui, p; K. Keaula, rf; A. Souza, c; S. O. Ching, 3b; J. Smith, 2b.

Eleele line-up.

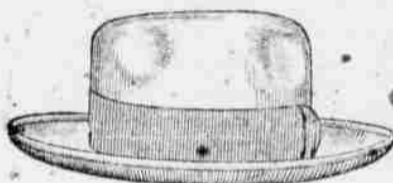
K. Taketani, rf; I. Akana, cf; J. Ferreira, 2b; Geo. Kauthi, E. K. Richardson, p; D. Sheldon, 3b; J. Gabriel, c; O. Johnson, lf; M. Fernandez, 1b. Umpire William Kamatt. Scorer Y. Yoshimoto.

To live in Hawaii without wearing a Sensy Hat is the same as wearing a White Duck Suit in Alaska.



We carry the most exclusive styles and shapes in a law, and therefore can satisfy the most exclusive tastes.

\$1.50 to \$3.50



We are agents for the famous J. B. Sisson Hats. These hats are very popular with the natives and are the best in the world.

Price \$5.00

Mail Orders Promptly Attended To

M. McInerney, Ltd.

HONOLULU

BEAVER DIE STOCKS

THE ADVANTAGE OF THE "BEAVER" DIE STOCKS lie in the fact that they thread all sizes of pipe without using any dies; are adjustable, and built on easy working (creeping die) principle which positively enables one to thread any size of pipe, and produce absolutely tight joints for all applications including hot water.

THE "BEAVER" PRINCIPLE IS PROVEN AND REMAINS UNCHANGED

Honolulu Iron Works Company

Agent for Hawaiian Islands

SPALDING Baseball Goods



are the best and absolutely guaranteed.

E. O. HALL & SON, LTD.

HONOLULU

carry a full line with prices the same as sold in all the large cities of the States. A postal will get you a catalogue with prices.

HOLEPROOF HOSE

Guaranteed for Six Months
Six Pair to the Box

Ladies' Lisle, in black, white and tan, \$2.50 box; Children Ribbed, black only, \$2 box; Men's Cotton Lisle, in black, white and tan, \$3 box; Men's Lisle, blue and tan, \$3 box; Men's Cotton, white and assorted colors, \$2 box.

B. F. Ehlers & Co.,

Sole Agents
Honolulu, T. H.