



# THE HAWAIIAN STAR.

The Hawaiian Star is the paper that goes into the homes of Honolulu.

VOL. X.

HONOLULU, H. I., TUESDAY, SEPTEMBER 9, 1902.

No. 3268

## HAWAII HAS MANY NEEDS

### SECRETARY COOPER OUTLINES SOME OF THEM

LETTER FROM GOVERNOR DOLE IN WHICH SOME IMPROVEMENTS ARE MENTIONED—MANY PEOPLE WISHED TO BE HEARD.

The senatorial commission opened session at the naval station this morning promptly at ten o'clock. The session was opened to the public and accommodations were provided for the press. Those who attended on the commission were Governor Dole, Secretary H. E. Cooper, Special Agent Haywood, S. M. Damon, E. S. Boyd, Winston, Fisher, Carter, Crabbe and Atkinson of the Republican committee, A. S. Humphreys, Assistant Superintendent of Public Works Marston Campbell, A. H. R. Viera and J. F. Durao of the Portuguese colony and some others who were in waiting but left before securing an audience. Both E. S. Boyd and A. S. Humphreys were present for a hearing but Secretary Cooper's testimony occupied the whole morning and then left him with several points untouched upon. Governor Dole came first before the commission and after stating that he would be pleased to give any additional information desired later, read the following letter addressed to chairman Senator Mitchell adding that this was all he cared to say at the present juncture.

It is with great satisfaction that I have received your letter on behalf of the sub-committee of the Senate Committee on Pacific Islands and Porto Rico, commissioned to investigate the general condition of the Islands of Hawaii and the administration of the affairs thereof, inviting me to confer with the committee upon the general question of legislation in the interest of the people and government of the Territory of Hawaii.

I feel that the presence of your committee in these islands for the purpose of investigating matters relating to this subject cannot fall in the acquisition of information to be laid before Congress, or resulting in important benefits to the Territory.

The subject of the administration of our public lands is one of extreme importance to the inhabitants of this territory, inasmuch as the present system and policy having developed gradually in accordance with local conditions and the topography of the country, and the public having become accustomed to its methods, radical changes should not be introduced without assured benefits corresponding with the probable expense and disturbance of such innovations.

I shall make it my duty to lay before your committee all possible information that may aid in reaching a full understanding of this subject in all its bearings. I would further call your attention to the following matters, the investigation of which would probably be of benefit to the Hawaiian community.

Hawaiian coins now in circulation; the Kohala ditch scheme; payment of the claims awarded by the Fire Claims Commission; insufficiency of the territorial revenues for carrying on the public business; the necessity of the establishment of a bureau of forestry; to be administered upon scientific principles; the need of a Federal building in Honolulu for the accommodation of the Federal court, the post office and internal revenue officers; the question of the introduction of Chinese laborers for limited periods and for the performance of agricultural labor only, and protection of sea fisheries.

Pardon this very brief statement. Not knowing the methods your committee would adopt in making its investigations, the Government of the Territory had refrained from taking the initiative but holds itself in readiness to respond to the plans of your committee and to aid in all possible ways. Very respectfully, SANFORD B. DOLE.

Secretary Cooper was then duly sworn, giving his age, official capacity and tenure of office. He was asked, in his own words, to lay before the commission what he deemed necessary.

Starting with appropriations, the secretary commenced on light houses as maintained by the territorial government, this not being the case elsewhere. In answer to questions of Senator Foster, Mr. Cooper explained that neither the board or individuals had visited Ha-

### Appointment May Be Known By The Sonoma

The Sonoma, due tomorrow from San Francisco, is likely to bring news of the appointment of a new first judge of the first circuit court. No news was received by the Korea. It is thought by some attorneys that this is due to the fact that Humphreys' term had not expired when the last news started here. The Korea left on August 30, two days before Humphreys went out, and it is thought that the President would not name a successor until the place was actually vacant. J. T. De Bolt, whom the Bar Association has recommended for the place, takes this view, and thinks that the appointment is likely to have been made after September 1. The other candidates are still in the field.

### CLAUDINE AND MAUNA LOA RACE

There was much excitement at the Inter-Island and Wilder wharves at noon today when the steamers Mauna Loa and Claudine departed on their regular runs. The Mauna Loa backed away from the Inter-Island wharf a few moments ahead of the Claudine and just as Captain Simerson of the Mauna Loa was preparing to signal "Go ahead" the Claudine began backing out of the Wilder ship. Captain Parker sounded five toots of his whistle. This was a new signal and evidently meant for Captain Simerson not to take the right of way. In any case, the Claudine waited and when the Mauna Loa started up, then ensued a very pretty race.

"It's going to be a race sure," declared the crowds. At the Wilder wharf the people crowded the end of the pier to watch the contest, while the employees at the Inter-Island wharf got their dinner and scrambled onto the tops of the various steamers to watch the two vessels. The Claudine turned the spar buoy about half a minute ahead of the Mauna Loa. Both of them had the bone in their teeth and were driving along at a fast race. The Mauna Loa soon began to crawl up on her opponent and by the time the bell buoy was reached, she had cut down the other boat's lead by ten seconds, and finally passed her before Diamond Head. Both boats were crowded with passengers, and the little incident was quite exciting to all of them.

President J. A. Kennedy of the Inter-Island was aboard the Mauna Loa. He had conferred with the board while at Washington and that they, with the Secretary of the Treasury, had approved all of his recommendations and had, in the case of lighthouse tenders and revenue cutters raised his estimates. New lighthouses were built at Makapu point, in the channel between Kaula and Molokai, nearly all Pacific ocean traffic passed. On this side of the channel a lighthouse was needed at an estimated cost of \$10,000, also a light at Kaula, there being none on the exposed coast of Maui. Estimate \$20,000. This to be erected on the reef of concrete. One on the Puna coast of Hawaii at a cost of \$10,000 with a fixed white light distinguishable from the one situated at Aila ope. One at Kailua, Hawaii for local steamers, of the sixth order at an estimated cost of \$5,000.

One in Honolulu harbor at a cost of \$4,000 to replace the present light on this island which is dilapidated and needed raising and replacing. It was explained that the Myrtle boat house by its present position prevented the range from being picked up until vessels were directly off the harbor. The total maintenance, including salaries and repairs was given at \$6,727 for the year ending June 30, 1902.

The chairman brought out the point that the secretary of the treasury had recommended appropriations and that the fault, if any, for non-appropriation by the general government lay with Congress. The improvements asked for estimated \$49,000 for lighthouses, \$125,000 for lighthouse tenders and \$150,000 for revenue cutter.

Harbor dredging was next taken up and the lines, as established by the local government and the war office, with

## INCOME TAX RETURNS COMMENCE TO SHRINK

### GREAT FALLING OFF IN PROFITS OF HONOLULU BUSINESS MEN—RETURNS FROM OTHER ISLANDS WILL SHOW A DECREASE.

The incomes of residents of the island of Oahu as shown by the income tax returns, were one third less during last year than during the year previous. There was a falling off of \$4,500,000 in the income of individuals and firms on the islands, mostly in Honolulu.

Last year the income tax paid on Oahu, including Honolulu, amounted to \$260,443.09. This year, the figures so far tabulated show that it will be between \$160,000 and \$175,000. Complete figures have not yet been arrived at, but the result is known nearly enough to make it sure that the payments will not be over \$175,000.

The total income tax for all the islands last year was \$287,396.80. It is expected that the returns from the other islands will show the same falling off as those of Honolulu, and the complete figures will be an impressive showing of the effect of Hawaii's year of "hard times". The island of Hawaii paid \$143,047.31; Maui and Molokai, \$4,374.92, and Kauai \$9,501.48. The total amount of the tax in all the islands will probably be only \$200,000.

### WAR OF WORDS.

Attorneys Henry E. Highton and George A. Davis again had a wordy war in Gear's court this morning, when the matter of granting an immediate hearing in the Sumner estate case was brought up. Highton was not accustomed to the vigor with which the Honolulu man goes at a case, and the terrible Davis glare was a startler to him. He remarked that he didn't want anyone to jump down his throat, and didn't like personalities. "I have always avoided personalities," said Highton, "and discussed law, and I don't want to learn to do differently now."

### PAIN'S ARKS IN COURT.

The preliminary skirmish between the Rapid Transit and the Tramway Company over the obstruction of the Rapid Transit Company line on King street near Smith occurred in the police court this morning. The Tramway came out victorious. For some days past the Tramway cars have been in the habit of deliberately blocking the Rapid Transit cars by standing on the switch on King between Mānakea and Smith streets, so that the Electric cars can not pass as the Rapid Transit track runs very close to the switch. Yesterday Police Officer Oliver Akau forced Hans Mortensen, one of the drivers, offending to move the tram car out of the way. Both men were in the police court today to answer to charges of assault and battery. Judge Wilcox held that the Rapid Transit people had moved their tracks over close to the Tram car tracks, so the prosecution did not attempt to prosecute either case.

### MOONLIGHT CONCERT.

Complimentary to the Congressional party on this Tuesday evening at 7:30, at Hawaiian Hotel.

PART I.  
Overture—"Welcome".....Elliot  
Barcarole—"On the Ocean".....Conterno  
Grand Selection—"Il Trovatore".....Verdi  
(a) "Hooheo."  
(b) "Lili Kalo Ohele."  
(c) "Miss J. Keilua."  
(d) "Wal Magapua."  
(e) "Ahae Oe."  
Mrs. N. Alapai.

### CASE FOR HANGMAN.

Kimura was found guilty of murder in the first degree last night and must hang for killing Kane Yamaneke, a Japanese woman, unless the Supreme Court or the Governor intervenes. Kimura attempted to defend himself with a story of a mutual agreement to commit suicide. He had a written agreement signed by himself and the woman which bound each to self-murder. The murderer declared that the woman was successful in carrying out the agreement, while he failed. When arrested he had attempted to cut his own throat.

The defendant's story contained many contradictions and the jury was not long in reaching a verdict. The defense was conducted by H. W. Robinson, who was assigned to the case by the court, and noted an appeal. The murder was committed at Wailua, on May 18.

### TO RELIEVE CAPT. HARRINGTON.

SAN FRANCISCO, August 31.—Among the passengers that sailed yesterday on the Korea was Captain George Ryder, port captain for the California Shipping Company. He is bound for Manila to bring home the ship St. David, whose skipper, Captain Harrington, is said to be very low with consumption. Captain Harrington is well known in San Francisco and the news that he may not live to leave the Philippines will come as a shock to an extensive circle of friends.

A COMMUNICATION.  
Mr. Editor.—Allow me to speak a few words in favor of Chamberlain's Cough Remedy. I suffered for three years with the bronchitis and could not sleep at nights. I tried several doctors and various patent medicines, but could get nothing to give me any relief until my wife got a bottle of this valuable medicine, which has completely relieved me.—W. S. Brockman, Bagnell, Mo., U. S. A. This remedy is for sale by all druggists Benson Smith & Co., general agents.

## DEPARTMENT CLERK TAKEN INTO CUSTODY

### CHIEF CLERK WRIGHT IS RELIEVED OF HIS DUTIES BY TREASURER—WRIGHT DID NOT TURN UP LAST SATURDAY.

B. H. Wright was taken into custody this afternoon and turned over to Jailor Henry at the Oahu Prison for detention. No charge was filed against Wright and the circumstance of his incarceration appears on the "small book." He is being held pending investigation. It is understood that he is being held for several days in order to give him an opportunity of making good the alleged shortage if such be discovered by the expert accountant. Treasurer Wright said this afternoon that the books were being examined, but refused to state what discoveries had been made. There is talk of a big shortage, and it is said that an immediate arrest was made because of the fact that there is a steamer leaving this afternoon for San Francisco. Wright will probably be held for several days by the authorities before any character of charge is made against him. It is possible that no charge may ever be brought against the imprisoned man. Measures are now in progress, which may result in a settlement being effected and the shortage, if it be found to be what is expected, being made good. The proceedings against the suspected clerk have not reached the point where actual proceedings against him will be begun by the police, the matter being still in abeyance.

It is understood that Wright is reported to have declared that he was not alone in the trouble, and that if an attempt was to be made to make him suffer he would not remain silent as there were others concerned in the present trouble, and they would have to come to his assistance. To what extent he or his friends were concerned in the "trouble" Wright is not reported to have said.

The chief clerk was not on hand last Saturday morning, though much in evidence about town late on the previous evening, and the Treasurer could not locate him. Yesterday the High Sheriff was asked to find him, as the safe in the office had not been opened, and Clerk Wright has the combination. Brown soon found the absent clerk, and the Acting Superintendent suspended him at once.

The fact that Clerk Wright's presence was demanded to open the safe led to reports about the government building that there was something wrong with his accounts, but Treasurer Wright said this morning that he knew of no shortage. "All I can say at present is that Wright was suspended on account of his conduct last week," said the Acting Superintendent. He added that the condition of affairs in the office would be known when Wright turned over his books and cash, which has not yet been done. Deputy Auditor Henry C. Meyer was in the place of the chief clerk this morning, going over the books, etc.

### CHARGED WITH ROBBERY.

Geronimo a Porto Rican, is under arrest charged with the theft of \$45 from Arnaldo Rodriguez, another Porto Rican. The latter arrived here last Sunday from Kauai. Monday night, his room was entered and \$45 which had been concealed under his pillow, stolen. Rodriguez is accused of the theft.

### PASSENGERS.

Per str. Maui, September 9, for Honolulu—C. T. Day, A. S. Palkino, T. A. Hays and wife, Q. B. Berry, A. Riley, H. S. Overend, C. P. Benton, T. H. Travis, Mrs. A. Ahrens, child and maid, Mrs. Richardson, J. C. Coope, A. H. Jackson, J. E. Godley, R. J. Balkley, H. M. Ayers, Rev. C. E. Leland, wife and 2 children, Rev. F. Spencer, P. Peck, for Maalea, A. J. Rodriguez, Master E. Richardson, Miss I. K. Richardson; for Kawaihae, Mrs. S. Kobayakawa, Tom Lindsay, John Lindsay, Mrs. Danford, child; for Mahukona, C. Kaiser, James Renton, Henry Buck, John Hind, Mrs. K. Fulbrook; for Laupahoehoe, Mrs. W. Green.

Per str. Maui, September 9, for Kaula—L. Scott, Dr. Dinegar, Miss Crook, Miss J. Asbury, D. H. Lewis and servant, Miss Lucy Kahuna, Miss L. Ahia, Mrs. Kaubimale, P. J. Linderman, Father Stephen, for Lahaina, W. Kakuakihi; for Keanea, Rev. S. K. Kaula.

### NEW COAL FLEET PLANNED.

LONDON, Aug. 28.—"A scheme is on foot," cables the correspondent of the Daily Mail from Paris, "for French and American capitalists to build a fleet of steamers to sail under the French flag between the United States and the Mediterranean Sea to enable American coal owners to capture European markets."

### WELCOME RAINS IN INDIA.

LONDON, Aug. 29.—An official dispatch received here from Lord Curzon, Viceroy of India, confirms previous reports of a great improvement in agricultural conditions as a result of a general rainfall in India, but says that more rain is needed before the serious pressure for relief work will be materially diminished.

### BEDSPREADS.

Big values in bedspreads at L. B. Kerr & Co., Ltd. The largest assortment in the city with prices ranging from 65 cents to \$5.

### BARGAINS IN TOWELS.

You know you cannot do better elsewhere. L. B. Kerr & Co., Ltd. offer genuine bargains in towels. Only 50 cents a dozen.

Star Want ads pay at once.

## SECOND PRINCE IN FIELD

### Many Small Plants From Large Sisal

A sisal plant on Alakea street has just been cut down by Agricultural Commissioner Wray Taylor, having gone to seed. On the large stem that grows out of the plant, he found about 2,500 small plants. This is enough from a single plant to set out several acres. Sisal grows anywhere, and is supposed to yield about a thousand pounds of fibre, worth 9 cents a pound, to the acre, and Taylor is receiving many inquiries from holders of lands who are considering planting it. In rocky soil, or on barren wastes of coral or lava, without water or care of any kind, sisal appears to thrive, but years are required to get a crop. The plant which matured on Alakea street was seven years old.

## JAPAN AND THE PACIFIC ISLANDS

TOKIO, (Japan), August 15 (via Victoria B. C., August 26).—This is a period when the United States seems to be looking after the Pacific Islands. First it was Marcus Island, but news came that the Washington authorities recognized Japan's claim there. The incident caused a little flutter at first, and a Japanese man of war was dispatched with an official in board to await the arrival of Captain Rosehill the American alleged concessionaire. The war ship landed its official cargo with documents, on being from United States Minister Buck, but so far no word has been received of Captain Rosehill's arrival. The telegraphed solution of the matter has been hailed with pleasure by the Japanese, which excites the indignation of America and points out how consistently she has shown herself to be the friend of Japan.

Just on top of that favorable impression, however, there arrives telegraphic word that the United States has sent a war ship to oust Japanese from Wake Island, south of Marcus Island. The Japanese papers claim the island was uninhabited until some of their birdcatchers visited it, and profess to fail to understand of what benefit the island would be to any nation. So far the nature of America's claim to the island and the purposes of the present enforcement if the news is correct, are unknown here.

### HONOLULU STOCK EXCHANGE.

Session Sales.—200 Ewa, \$29; 23 Oiaia, paid, \$7.75; 77 Oiaia, paid, \$8.		
Quotations.	Bid.	Asked.
C. Brewer & Co.	.....	400.00
Ewa Plan. Co.	.....	19.00
Haw. Agricultural Co.	.....	250.50
Haw. Com.	.....	30.70
Haw. Sugar Co.	.....	19.00
Honolulu	.....	120.00
Kihel	.....	8.00
Kipahu	.....	70.00
Koloa	.....	140.00
McBryde	.....	4.00
Oiaia, as	.....	3.50
Oiaia, paid	.....	7.50
Piikoi	.....	120.00
Pepeekeo Sugar Co.	.....	150.00
Pioneer	.....	60.00
Wailua	.....	40.00
Wailuku	.....	255.00
Waimanalo	.....	170.00
Wilder	.....	100.00
Inter-Island	.....	100.00
Raw, Electric	.....	85.00
H. R. Trans.	.....	61.50
Mutual Telephone	.....	19.00
Oahu Railway	.....	84.00
Hilo B. R. Co., '68	.....	100.00

### CAMMY IS REFUSED.

The application of D. G. Camarpos for a saloon license has been refused, on the ground that the Gambrianus gardens are outside the limits. Renewals were granted to T. B. Lyons of Wailuku, John Richardson of Lahaina, J. Birkenshaw of Honokaa and A. N. Steiner of Kahului.

### FRUITS AND VEGETABLES.

Don't forget Camarpos of the Callifornia Fruit Market when you want fruit and vegetables. He always has on hand a fresh supply of both California and Island fruits. Telephone Main 378.

## ROYAL Baking Powder

Made from pure cream of tartar.

Safeguards the food against alum.

Alum baking powders are the greatest menaces to health of the present day.

ROYAL BAKING POWDER CO., NEW YORK.

## THE CHOICE OF THE DEMOCRATIC FUSION

### PRINCE DAVID FOR SENATOR—FOUR MEN SELECTED FOR THE HOUSE—HOME RULERS TURN DOWN PRENDERGAST.

The Democratic Central Committee held a meeting last night and made up its slate for the fusion legislative ticket. One senator and four representatives are the Democratic share of the ticket, and the Home Rulers will name the other two senators and eight representatives. Prince David was the Democratic choice for Senator last night, and for the House the nominations were J. O. Carter, Col. C. J. McCarthy, S. M. Damon and Frank H. Harvey.

There is much doubt about Damon's candidacy. He announced some time ago his withdrawal from any political activity, and may refuse a nomination. When seen this morning he refused to discuss the matter at all, simply saying "I am out of politics." It is said that McCarthy will refuse to run if Damon refuses. Carter has also to be seen as to his willingness to run.

The Home Rule end of the ticket, except for the Senate, will contain the names of most of their men who were in the last House. For the Senate the probable selections are Edgar Cripps and C. B. Madie, making the fusion senatorial ticket consist of Prince David, Cripps and Madie.

J. R. Mossman, J. K. Paole, J. P. Makalain and J. H. Mahoe, all of them Home Rulers of the last House, are slated for nomination again. Prendergast has been "turned down." He will probably be left in the cold, and the next House will not have the benefit of his fluency of eloquence. Prendergast was chairman of the committee on printing in the last House, and this committee's slow work in reporting bills was largely responsible for the failure to pass many of them. August Prendergast is another probable nominee.

On Maui "Billy" Corwell will probably be the man for the Senate. Senator William White has been nominated by the Home Rulers, but this was before the fusion was agreed upon, and the senator is said to have indicated his willingness to withdraw in favor of Corwell. Corwell leaves today for Maui, and the matter will probably be settled while he is there.

The Democrats and Home Rulers have not decided yet whether they will hold separate conventions or meet together. If the conventions are separate they will be held on the same day, and the nominations as agreed upon, as far as party affiliations are concerned, will be made.

The Fourth District Republican committee will meet in the Castle & Cooke building this evening, to name their candidates for the House. The leading candidates for nominations are Frank Andrade, John Lucas, R. W. Aylett, Jonah Kumalae and W. W. Harris, and these will probably be the ticket. Aylett and Kumalae were Republican members of the last House.

The Republican Central Committee meets this evening at the party headquarters, to organize and prepare for the campaign. Senator Clarence Crabbe will probably be made permanent chairman and there is talk of A. L. C. Atkinson or E. G. Keen for secretary. The committee may decide to move the party headquarters to the new Wally building on King street, as some of the members want larger and more centrally located party headquarters than they now have.

W. C. Peacock, a Britisher, was made a citizen of the United States today.

Keep your insurance money at home and buy a policy in the Oriental Life Insurance Company.

## Ladies' Oxfords

Well shoes at a price you can afford to pay. Well Oxfords with extension soles. Choice of low or Cuban heels. Come and see them.

Price \$3.50

### MANUFACTURER'S SHOE COMPANY, LIMITED

1067 FORT ST.

## Our Best Service is at Your Disposal

### HAWAIIAN TRUST CO., LTD

925 Fort Street

(Continued on page five.)

### PEARSON & POTTER CO., LTD

UNION AND HOTEL STREETS  
PHONE 11.

# Canadian-Australian Royal Mail STEAMSHIP COMPANY

Steamer of the above line, running in connection with the CANADIAN PACIFIC RAILWAY COMPANY between Vancouver, B. C., and Sydney, N. S. W., and calling at Victoria B. C., Honolulu and Brisbane, Q.

Due at Honolulu on or about the dates below stated, viz:

FOR AUSTRALIA.		FOR VANCOUVER.	
MIOVERA.....	AUG. 30	AORANGI.....	AUG. 27
AORANGI.....	SEPT. 27	MOANA.....	SEPT. 24
MOANA.....	OCT. 25	MIOVERA.....	OCT. 22
MIOVERA.....	NOV. 23	AORANGI.....	NOV. 19
AORANGI.....	DEC. 20	MOANA.....	DEC. 17

Calling at Suva, Fiji, on Both Up and Down Voyages

THEO. H. DAVIES & CO., Ltd., Gen'l Agts.

## Pacific Mail Steamship Co. Occidental & Oriental S. S. Co and Toyo Kisen Kaisha.

Steamers of the above Companies will call at Honolulu and leave this port on or about the dates below mentioned:

FOR CHINA AND JAPAN.		FOR SAN FRANCISCO.	
KOREA.....	SEPT. 2	CHINA.....	SEPT. 5
GALIC.....	SEPT. 10	DORIC.....	SEPT. 12
HONGKONG MARU.....	SEPT. 18	NIPPON MARU.....	SEPT. 20
CHINA.....	SEPT. 26	KOREA.....	SEPT. 30
DORIC.....	OCT. 4	COPTIC.....	OCT. 7
NIPPON MARU.....	OCT. 14	AMERICA MARU.....	OCT. 14
PERU.....	OCT. 22	KOREA.....	OCT. 22
COPTIC.....	OCT. 29	GALIC.....	NOV. 1
AMERICA MARU.....	NOV. 6	HONGKONG MARU.....	NOV. 3
PERU.....	NOV. 13	CHINA.....	NOV. 13
GALIC.....	NOV. 21	DORIC.....	NOV. 25
HONGKONG MARU.....	DEC. 2	NIPPON MARU.....	DEC. 5
CHINA.....	DEC. 10	PERU.....	DEC. 13
DORIC.....	DEC. 18	COPTIC.....	DEC. 19
NIPPON MARU.....	DEC. 26	AMERICA MARU.....	DEC. 27

For general information apply to

## H. Hackfeld & Co. Oceanic Steamship Company.

### TIME TABLE

The fine Passengers Steamers of this line will arrive at and leave this port as hereunder:

FROM SAN FRANCISCO.		FOR SAN FRANCISCO.	
*ALAMEDA.....	AUGUST 29	*ALAMEDA.....	SEPT. 2
*SONOMA.....	SEPT. 10	VENTURA.....	SEPT. 9
*ALAMEDA.....	SEPT. 19	*ALAMEDA.....	SEPT. 24

\*Local Boat.

In connection with the sailing of the above steamers, the Agents are prepared to issue to intending passengers coupon through tickets by any railroad from San Francisco to all points in the United States, and from New York by steamship line to all European Ports.

## W. G. Irwin & Co. (LIMITED)

General Agents Oceanic S. S. Company.

### AMERICAN HAWAIIAN STEAMSHIP COMPANY.

DIRECT MONTHLY SERVICE BETWEEN NEW YORK AND HONOLULU, VIA PACIFIC COAST.

The splendid new steel steamers

S. S. "AL KAN" to sail about August 20th.  
 S. S. "CALIFORNIAN" to sail about September 15th.  
 S. S. "AMERICAN" to sail about October 15th.

Freight received at Company's wharf, 43d Street, South Brooklyn, at all times.

FROM SAN FRANCISCO:  
 S. S. "NEVADAN" to sail August 25th.  
 S. S. "NEVADAN" to sail October 9th.  
 S. S. "NEBRASKAN" to sail October 30th.

Freight received at Company's wharf, Stewart Street, Pier No. 20.

FROM HONOLULU TO SAN FRANCISCO:  
 S. S. "NEVADAN" to sail August 9th.  
 S. S. "NEVADAN" to sail September 20th.  
 S. S. "NEVADAN" to sail November 1st.

FROM SEATTLE AND TACOMA:  
 S. S. "HAWAIIAN" to sail August 10th.

C. P. MORSE, General Freight Agent. H. Hackfeld & Co., AGENTS.

## Oriental Bazaar.

A New Lot of Goods Just Opened. They were received by the Gaelic and Hongkong Maru. Among them is a fine lot of Carved Ebony Furniture, Decorated China-ware, Rattar Goods, Silk Embroidered and Paper Screens, Pongee and Pineapple Silks, Linen Embroidered Goods, Vases, Etc., Etc.

66-72 King Street, corner of Smith. Phone Blue 3551. P. O. Box 947.

25c. Pays for a Want Ad in The Star A BARGAIN

## SHIPPING INTELLIGENCE

(For additional and later shipping see pages 4, 5, or 8.)

### ARRIVING.

Tuesday, September 9.  
 S. S. Ventura, Hayward, from Sydney Auckland and Pago Pago at 8 a. m.  
 Wednesday, September 10.  
 S. S. Sonoma, Van Oterendorp, from San Francisco, due in morning.  
 S. S. Gaelic, Finch, from San Francisco, due in morning.

### DEPARTING.

Tuesday, September 9.  
 Strmr. Claudine, Parker, for Hilo and way ports, at noon.  
 Strmr. Maul, F. Bennett, for Maul ports at 5 p. m.  
 Strmr. Mikahala, Gregory, for Kaula ports at 5 p. m.  
 Strmr. Mauna Loa, Simerson, for Lahaina, Maiala, Kona and Kau, at noon.  
 S. S. Ventura, Hayward, for San Francisco at 4 p. m.  
 Wednesday, September 10.  
 S. S. Gaelic, Finch, for the Orient, probably sail in the afternoon.  
 S. S. Sonoma, Van Oterendorp, for Pago Pago, Auckland and Sydney, probably sail at night.

### PASSENGERS.

Arriving.  
 Per S. S. Ventura, September 9, from Sydney, Auckland and Pago Pago for Honolulu—Mr. and Mrs. W. A. Lingham and child, Mr. and Mrs. E. W. Carpenter, F. B. Morley, C. A. Peacock, Franz Wiese, C. E. Bryant, Mr. and Mrs. G. H. Bigelow and Peter Ander and 128 through passengers for San Francisco.

Booked To Depart.  
 Per S. S. Ventura, September 9, for San Francisco—M. M. O'Shaughnessy, Mr. and Mrs. J. K. Brown, Miss M. Widdfield, Mrs. H. P. Wood and daughter, Dr. L. E. Cofer, wife and child, Mr. and Mrs. C. E. Jaques, Miss D. Kerr, A. L. Castle, R. A. Cooke, A. D. G. J. H. Renton, Mrs. H. T. Moore, C. A. Smith, Mr. and Mrs. B. B. Pender and infant, A. Welsert, wife and 3 children, J. F. Lenaghan, Arthur Huddell, J. L. Peterson and wife, S. Bates and wife, Mrs. George de la Vergne, T. K. James and wife, Walter G. Hyman, D. G. Kerrell, M. Bryant, Mr. and Mrs. Marsh, Miss F. J. Scott, D. McK. Manwell, W. Morrison, L. Brinkmeyer, C. Nall, W. Smith, F. H. Carter, Mrs. Faxon, Mrs. Gerrard, C. F. Macfarlane, T. A. Cousin, Mrs. A. M. L. Smith, Miss Christin Wilson, Miss E. F. De Merritt, C. A. Jacobus, J. W. Givens, John W. King, Mrs. E. Haneberg, Mrs. Andrew, Dr. Garvin.

### THE MARIPOSA'S VOYAGE.

WASHINGTON, August 28.—Although the official report of Lieutenant Winchell, who was detailed to accompany the oil-burning steamer Mariposa on her recent trip from San Francisco to the Society Islands and return for the purpose of making a comparative report upon every feature of the oil-burning devices used by that steamer, has not yet reached the Navy Department, unofficial data has arrived which is considered very satisfactory to those interested. The run from San Francisco is 3243 knots. It was made by the Mariposa at the rate of 12 1/2 knots per hour, the whole run lasting eleven days, during which a little over 400 tons of oil were consumed. The number of pounds of oil per knot used on the run was 250.9, which is equivalent to 8.55 knots per ton of oil. It required 1.55 pounds of oil per horsepower per one-hour power. This is considered quite satisfactory, as under ordinary sea-going conditions it requires between two and one-half and three pounds of coal to develop one horse power.

### MAIL BOATS TOMORROW.

The S. S. Gaelic is due tomorrow morning from San Francisco with three days later news and mail. The S. S. Sonoma is due the same time with one day later mail and news. The reason for this occurrence is that the Gaelic left San Francisco September 3 a day earlier than the Sonoma, but the latter boat comes down a day faster than the Gaelic.

### VENTURA FOR COAST.

She Arrives On Time This Morning From Colonias.

The S. S. Ventura arrived off the port this morning from Sydney, Auckland and Pago Pago, after a pleasant passage. The vessel left Sydney August 25, Auckland August 29, and Pago Pago September 2. She came up from Sydney in 15 days, 12 hours and 15 minutes.

The vessel brought very little freight for either this port or San Francisco. She brought 4 tons for Honolulu and 555 tons for San Francisco. The vessel has an exceptionally large list of passengers however, there being no less than eleven for Honolulu and 128 through passengers.

Frank Wilczek is a violinist who stops over at this port. He is accompanied by F. B. Morley, a pianist. Among the through passengers are Mr. and Mrs. C. W. Van Dyne, who were formerly with the Josephine Stanton Opera Company.

Mrs. H. W. Lake is from Pago Pago. She is going to San Francisco with two Samoan children who are to be sent to school. The vessel is scheduled to sail at 4 p. m. today for San Francisco. She will take a number of passengers from this port.

### SAW KOREA DEPART.

Took Long Time To Get Vessel Turned Around.

The departure of the S. S. Korea for the Orient yesterday was witnessed by large crowds. During the afternoon the band gave a concert aboard the vessel. Many people visited the big liner during the day and the concert was very successful.

The vessel had hauled into the Naval slip and her stern extended fully sixty feet beyond the end of the wharf into the stream. It was not until 3:25 p. m. that the lines were cast loose and the vessel began to back out of the slip. This performance was watched with special interest, especially by shipping people, as many had expressed doubt as to the ability of the steamship to be turned in the harbor without considerable trouble. It took exactly 35 minutes from the time the boat started to back out of the slip, for the tug Fearless to swing the vessel about 120 degrees so that the Korea was headed out of the harbor. Captain Sanders, the pilot, took the vessel out at a good clip, the tug holding onto the Korea's bow until after the bar had been reached. Captain Seabury probably breathed a sigh of relief when he dropped the pilot and was able to get under way

for the Orient, as this harbor is much smaller to make the entrance of a big boat like the Korea very desirable.

### ALICE KIMBALL FOR SEATTLE.

Island Schooner Leaves Kahului For the Coast.

KAHULUI, September 6.—The American Shipping Co.'s schooner Alice Kimball was sold on Monday of this week to Cyrus T. Green of Walluku, the consideration being private. The Alice Kimball sailed September from Kahului for San Francisco with a cargo consisting of koa wood from Kendall's saw-mill, Laupahoehoe, old iron and empty bottles.

Mr. Green will join the vessel at San Francisco, being detained by private business from joining her on the present trip. He will go on to Seattle and endeavor to close negotiations now pending between him and some Seattle merchants, by which a trade may be established between Seattle and the islands.

James T. Taylor, former owner of the Kimball, went to the Coast on board the vessel as mate, and will extend his trip to Los Angeles, before returning to the islands.

A negro boy in Savannah sang "Nearer My God, To Thee," while lurching a mule with a rawhide whip, and the mule made the song prophetic. And yet they say a mule has no sense of humor.



### LEGAL NOTICES.

IN THE CIRCUIT COURT OF THE First Circuit, Territory of Hawaii.—At Chambers.—In Probate.

In the Matter of the Estate of James Woods, Deceased.

On reading and filing the Petition of the Executors and Administrators of the Estate of said deceased, wherein they ask that a final order be made of distribution of the property remaining in their hands to the persons thereto entitled, and discharging them from all further responsibility as such Executor and Administrator.

It is Ordered, that Monday, the 13th day of October, A. D. 1902, at ten o'clock, a. m., at the Court Room of the said Court, at Honolulu, Island of Oahu, be and the same hereby is appointed as the time and place for hearing said Petition, and that all persons interested may then and there appear and show cause, if any they have, why the same should not be granted, and may present evidence as to who are entitled to the said property.

Honolulu, September 4th, 1902.

BY THE COURT: GEORGE LUCAS, Clerk.

IN THE CIRCUIT COURT OF THE First Circuit, Territory of Hawaii.—At Chambers.—In Probate.

In the Matter of the Estate of Paul Friedrich August Ehlers, deceased.

On reading and filing the Petition and Accounts of the Administrator with the Will Annexed of said deceased, wherein he asks that his account be examined and approved, and that a final order be made of distribution of the property remaining in his hands to the persons thereto entitled, and discharging him from all further responsibility as such administrator.

It is Ordered, that Monday, the 13th day of October, A. D. 1902, at ten o'clock a. m., before the Judge of said Court at the Court Room of the said Court at Honolulu, Island of Oahu, be and the same hereby is appointed as the time and place for hearing said Petition and Accounts, and that all persons interested may then and there appear and show cause, if any they have, why the same should not be granted, and may present evidence as to who are entitled to the said property.

Honolulu, August 29, 1902.

BY THE COURT: GEORGE LUCAS, Clerk.

IN THE CIRCUIT COURT OF THE First Circuit, Territory of Hawaii.—At Chambers.—In Probate.

In the Matter of the Estate of Iwakichi Kato, otherwise known as Kato Iwakichi.

The last Will and Testament of said deceased, having been presented to said Court, together with a Petition for Probate thereof, and for the issuance of Letters Testamentary to Kiku Kato and Yachi Mitsuda having been filed, notice is hereby given that Monday, the 6th day of October, A. D. 1902, at 10 o'clock a. m., of said day, at the Court Room of said Court, at Honolulu, Oahu, be and the same hereby is appointed the time and place for proving said Will and hearing said application.

Honolulu, August 29, 1902.

By the Court: GEORGE LUCAS, Clerk.

IN THE CIRCUIT COURT OF THE First Circuit, Territory of Hawaii.—At Chambers.—In Probate.

In the Matter of the Estate of John Umi late of Waianae Oahu, deceased.

On reading and filing the petition and accounts of the Administrator of the Estate of said deceased, wherein he asks that his account be examined and approved, and that a final order be made of distribution of the property remaining in his hands to the persons thereto entitled, and discharging him from all further responsibility as such administrator.

It is ordered, that Monday, the 29th day of September, A. D. 1902, at ten o'clock, A. M., at the Court room of the said Court at Honolulu, Island of Oahu be and the same hereby is appointed as the time and place for hearing said Petition and accounts, and that all persons interested may then and there appear and show cause if any they have why the same should not be granted, and may present evidence as to who are entitled to the said property.

Honolulu, August 22, 1902. By the Court: GEORGE LUCAS, Clerk.

## FIRE-PROOF SAFES

### Another Large Shipment Just Arrived

Our Stock of

## Herring-Hall-Marvin Safe Co's SAFES

Is as complete as can be found at any of the branch mainland offices. Our delivered prices in Honolulu will not exceed the net export prices charged in San Francisco.

Hardware Department

## Theo. H. Davies & Co., LIMITED

### A BUNCH OF GOOD THINGS TO EAT

You get many dainty edibles out of the ordinary, at our delicacy counter. This week we have among the good things

- SMOKED HAMBURG EELS.
- EELS IN JELLY.
- KIEHLER SPROTTEIN, ERBSEN WURST,
- MARROW FAT PEA MEAL,
- SARDINES IN OIL AND
- HOLLAND SARDELLEN.

Don't forget our CRYSTAL SPRINGS BUTTER.

## Metropolitan Meat Co., Ltd

Telephone Main 45

### Elegant Stores For Rent

Two of the finest store premises in Honolulu on King street, between Fort and Alakea. New Lewers & Cooke Building. Water-tight basement and three floors, each 50x80.

Shipping rooms in rear with approach from Merchant Street. Two electric elevators and every modern convenience and improvement.

Well lighted and on the line of the electric cars.

For further information call at office of

## LEWERS & COOKE, LIMITED

FORT STREET, - HONOLULU

L. J. SUN, Nuanuu Street, - - - Near Pauahi. DRESSING & KID DRESSES, Ladies' Underwear, Mosquito Netting, Pillow Cases, Underwear, Skirts and Chemises always on hand. FIRST-CLASS WORK.

## Furniture

Our stock is complete in every particular. We can suit you, whether you want CHEAP, MEDIUM OR FINE GRADES. Goods in MAHOAGANY, OAK, BIRDS' EYE MAPLE, IMITATION MAHOAGANY, and other choice woods. LATEST DESIGNS WINDOW SHADES, MATTING, LINOLEUM AND PORTIERS.

Our REPAIR AND UPHOLSTERY DEPARTMENT is first class in every way.

## Hopp & Co.,

KING & BETHEL STREETS Telephone Main 111.

Ads under "Situations Wanted," inserted free of charge in the Star.

## DO IT NOW....

### Insert Your

## Want Adv't

## In the STAR

DR. J. M. WHITNEY, DENTIST. Boston Building, Fort Street Over H. May & Co.

DR. A. C. WALL, DR. O. E. WALL, DENTISTS. LOVE BUILDING, FORT STREET, Telephone 434.

OFFICE HOURS, 9 a. m. to 4 p. m.

C. BREWER & CO., LIMITED. QUEEN STREET, HONOLULU, H. I.

...AGENTS FOR...

Hawaiian Agricultural Company, Ono-sua Sugar Company, Honoumou Sugar Co. pany, Wailuku Sugar Company, Wahee Sugar Company, Makee Sugar Company, Haleakala Ranch Company, Kapapala Ranch.

LIST OF OFFICERS. Charles M. Cooke, President. Geo. H. Robertson, V-Pres. & Mgr.

THE GOLDEN RULE BAZAAR. 156 HOTEL STREET.

Has just received a New Line of Papeteries and Tablets, in dainty tints and odd shapes, which have been MARKED DOWN from 25% to 33% BELOW THE REGULAR PRICE.

35c. and 50c. Papeteries, now 25c. and 35c.

NEW BOOKS BY EVERY LOCAL STEAMER.

NOTICE. Persons needing, or knowing of those who do need protection from physical or moral injury, which they are not able to obtain for themselves, may consult the Legal Protection Committee of the Anti-Saloon League, 9 McIntyre Building.

Hawaiian Curios. Kapa, Calabashes, Leds, Native Hats, Hula Skirts, Nihaui Mats, Fans, Shells, Seeds, Etc.

BEAVER LUNCH ROOM, Fort Street. Opposite Wilder & Co. H. J. NOLTE, Prop'r.

WON & LOUI CO. Hotel street, near Smith.

Sanitary Plumbers, Tinsmiths, and Sheet Iron Workers.

OHTA, Contractor and Builder, House Painter.

Wawa, Sheridan Street, near King Honolulu, H. I.

S. Kojima. IMPORTER AND DEALER IN LIQUORS, Japanese Provisions, General Merchandise, AND PLANTATION SUPPLIES.

Telephone White 2411. P. O. Box 905.

L. KONG FEE, Merchant Tailor, Fort St. opposite Club Stables.

CORPORATION NOTICES.

NOTICE.

At a meeting of the stockholders of the Maul Sugar Company, Limited, held at 8 o'clock p. m., on the 27th August, (Wednesday), 1902, in the office of Mr. Wong Kwai, Smith street, Honolulu, the following gentlemen were elected as officers of said company:

C. MING HYM, Secretary.

August, 28, 1902.

Olaa Sugar Co., Ltd.

ASSESSMENTS.

The twenty-first assessment of 10% or two dollars (\$2.00) per share has been called to be due and payable June 20, 1902.

May 12, 1902.

Notice to Shippers.

On and after this date bills of lading will be issued by this Company, instead of shipping receipts as heretofore.

NOTICE

The Board of Commissioners, H. F. D., hereby give notice of the extension of time, from Sept. 17th, 1902, until Oct. 1st, 1902, at 12 o'clock m. in which they will receive tenders for 1 5/8-foot Aerial Turn-Table Hook & Ladder Truck all other conditions remain as in former call.

BY AUTHORITY

SEALED TENDERS.

Sealed Tenders will be received by the Superintendent of Public Works till 12 m. of Tuesday, the 30th of September, for furnishing 4" Cast Iron Pipe for Hilo Water Works.

NOTICE

Table and hanging lamps, ice cream freezers, ready mixed paints, door mats, paper bags, Manila wrapping paper, tin-ware, China-ware, glass-ware, crockery and kitchen utensils, which we are offering at very low prices.

HONOLULU HARDWARE CO. LTD

P. O. Box 609. Tel. Main 393. 39 N. King St.

Notice to Shippers.

Shippers of freight by steamers of the Inter-Island Steam Navigation Company Ltd., are hereby notified that a new form of Shipping Receipt has been adopted by the Company to go into effect at once.

INTER-ISLAND S. N. CO., LTD.

JOHN ENA, President.

SOLDIERS GET OUTING.

Will March Around Oahu Next Week.

On Monday next the company of Captain Pierce, Coast Defense Artillery, U. S. A., now situated at Camp McKinley, will start on a lengthy outing tour of the island.

ADAMS TO BE COMMISSIONED

WASHINGTON, August 23.—The training ship Adams will be placed in commission at Mare Island in a few days. She will go on a cruise under the command of Commander U. E. Fox.

CANDIDATES NAMED

JOINT MEETING OF FOURTH AND FIFTH DISTRICTS.

Isenberg, McCandless and Achi Are Nominated For the Senate—The Fifth Selects Men For the House.

W. C. Achi, D. P. R. Isenberg and L. L. McCandless were nominated for the Senate last night as candidates of the Third Senatorial district, by the Republican joint convention of the Fourth and Fifth Representative districts, and they are the Republican candidates for the upper house from the island of Oahu.

The convention was called to order in Progress hall by Senator Clarence Crabbe, chairman of the Senatorial Central Committee, and J. P. Cooke moved that he be made permanent chairman. The motion carried, and William Savidge was chosen for secretary and Judge Wilcox for interpreter.

The business of the convention was done very quietly and without any spirited contest. A question arose as to the proxy of Dr. Burgess, sent by mail to Frank L. Hoogs. Burgess was regularly elected but was not able to return in time for the convention, and he sent his proxy to the Korea. In the meantime the committee had declared Burgess' seat vacant and elected F. C. Smith. Hoogs presented the proxy and claimed the seat. G. B. McClellan moved that the proxy be not received and that Smith's election stand. On the suggestion of Brooks the matter was temporarily postponed. Later in the evening the Fourth district members reported in favor of disregarding the proxy of Burgess and seating their own substitute rather than the proxy of the man elected at the primaries. Hoogs protested, declaring that it was shabby treatment of one of the party's strong workers.

The unfair deal which ended in unseating Dr. Burgess was engineered by G. B. McClellan. This young man was formerly in the employ of the Hawaiian Electric Company. During a brief period he raised a crop of enemies for that concern. Those who know him state that if he is given any authority in the Republican Party he will raise a larger crop of enemies for the party.

Prince Kuhio entered the hall early in the evening and was called to the platform, the chair appointing D. P. R. Isenberg and Judge Kaulukou to escort him. The Prince was called on for a speech and spoke a few words, declaring that the time had come for hard campaign work. Col. Sam Parker was also called up, and spoke in a similar strain.

The Fifth district, as expected, failed to come to any agreement. When the time for caucus came, Senator Achi, the chairman, would not call the delegates to order and W. G. Godale, in behalf of the district, presented the names of the four nominees, Achi, Lane, Huddy and McCandless. The Fourth district held a caucus and voted on Mark P. Robinson and Isenberg. The vote was 27 to 25 in favor of Isenberg and his selection was made unanimous.

The three choices of the convention were not apparent until nearly the end of the vote, though Huddy dropped out of the race early. The vote was: Isenberg, 81; McCandless, 62; Achi, 57; Lane 48; Huddy 13. The three successful candidates Isenberg, McCandless and Achi, were called upon for speeches and each made a few remarks.

The Fifth district met to nominate representatives immediately after the adjournment of the joint convention. Nainoa from the first and second precincts, Naukana from the third, fourth and fifth, Ezera from the sixth and Henry Vida from the seventh were nominated without contest. Kauiloku won from Kaneakua in the eighth and tenth and in the ninth the delegates voted on four candidates, as follows: James L. Shaw, 12; Kalakiele, 3; Ailo, 2; Seabury 12.

THE FIRES ARE LOW.

Telegrams from Hilo to President Wright of the Wilder Steamship Company, dated September 8, report the fire as "disappearing" in one message and "out" in another.

REMAINS OF THE FAIRS.

LONDON, August 30.—The American line steamer St. Louis sailed from Southampton today for New York, having on board the remains of Mr. and Mrs. Charles L. Fair.

NEW TOWBOAT DELAYED.

SAN FRANCISCO, August 28.—The Spreckels Towboat Company's new steel tug, ordered from the Risdon Iron Works nearly six months ago, is not progressing very rapidly and the prospect indicates that it will be fully a year before she enters commission. The engines are under construction and the stern post has been completed, but the material for the keel and the plates must be brought from the East and delivery is exceedingly slow.

THE FACT THAT LIGHTNING NEVER STRIKES TWICE IN THE SAME PLACE IS ABOUT AS MUCH SATISFACTION TO THE MAN WHO HAS

never been stricken as to the man who has.

A CERTAIN CURE FOR DYSENTERY AND DIARRHOEA.

"Some years ago I was one of a party that intended making a long bicycle trip," says F. L. Taylor, of New Albany, Bradford Co., Pa., U. S. A. "I was taken suddenly with diarrhoea, and was about to give up the trip, when Editor Ward, of the Laceyville Messenger, suggested that I take a dose of Chamberlain's Colic, Cholera and Diarrhoea Remedy. I purchased a bottle and took two doses, one before starting and one on the route. I made the trip successfully and never felt any ill effect. Again last summer I was almost completely run down with an attack of dysentery. I bought a bottle of this same remedy and this time one dose cured me." Sold by all druggists, Benson Smith & Co., general agents.

NOTICE

All persons having claims against the Oahu Carriage Mfg. Co., Ltd., are hereby notified to present same within 30 days from date at the company's office on River street between Peretania and Faahala streets, and all persons owing said firm are requested to settle at once.

THE BANK OF HAWAII LIMITED.

Incorporated under the Laws of the Territory of Hawaii.

PAID-UP CAPITAL - \$600,000.00 SURPLUS - 200,000.00 UNDIVIDED PROFITS - 35,000.00

OFFICERS AND DIRECTORS.

Charles M. Cooke, President. P. C. Jones, Vice-President. C. H. Cooke, Cashier. F. C. Atherton, Assistant Cashier.

COMMERCIAL AND SAVINGS DEPARTMENTS.

Strict attention given to all branches of Banking.

JUDD BUILDING. FORT STREET.

CLAUS SPRECKELS, WM. G. IRWIN.

Claus Spreckels & Co. BANKERS.

HONOLULU. H. I.

San Francisco Agents—The Nevada National Bank of San Francisco.

DRAW EXCHANGE ON

SAN FRANCISCO—The Nevada National Bank of San Francisco. LONDON—The Union Bank of London, Ltd. NEW YORK—American Exchange National Bank. CHICAGO—Merchants' National Bank. PARIS—Credit Lyonnais. BERLIN—Dresdner Bank. HONGKONG AND YOKOHAMA—The Hongkong and Shanghai Banking Corporation. NEW ZEALAND AND AUSTRALIA—Bank of New Zealand. VICTORIA AND VANCOUVER—Bank of British North America.

TRANSACTION A GENERAL BANKING AND EXCHANGE BUSINESS.

Deposits Received. Loans Made on Approved Security. Commercial and Travelers' Credits Issued. Bills of Exchange Bought and Sold. COLLECTIONS PROMPTLY ACCOUNTED FOR.

ESTABLISHED IN 1858.

BISHOP & CO. BANKERS.

BANKING DEPARTMENT.

Transact business in all departments of Banking. Collections carefully attended to. Exchange bought and sold.

Commercial and Travelers' Letters of Credit issued on The Bank of California and N. M. Rothschild & Sons, London.

Correspondents: The Bank of California, Commercial Banking Co. of Sydney, Ltd., London.

Drafts and cable transfers on China and Japan through the Hongkong and Shanghai Banking Corporation and Chartered Bank of India, Australia and China.

Interest allowed on term deposits at the following rates per annum, viz: Seven days' notice, at 2 per cent. Three months, at 3 per cent. Six months, at 3 1/2 per cent. Twelve months, at 4 per cent.

TRUST DEPARTMENT.

Act as Trustees under mortgages. Manage estates (real and personal). Collect rents and dividends. Valuable Papers, Wills, Bonds, Etc., received for safe-keeping.

ACCOUNTANT DEPARTMENT.

Auditors for Corporations and Private Firms. Books examined and reported on. Statements of Affairs prepared. Trustees on Bankrupt or Insolvent Estates. Office, 924 Bethel Street.

SAVINGS DEPARTMENT.

Deposits received and interest allowed at 4 1/2 per cent per annum, in accordance with Rules and Regulations, copies of which may be obtained on application.

INSURANCE DEPARTMENT.

Agents for FIRE, MARINE, LIFE, ACCIDENT AND EMPLOYERS' LIABILITY INSURANCE COMPANIES. Insurance Office, 924 Bethel Street.

IWAKAMI Japanese Groceries. 36 and 42 Hotel Street. SOLD AT WHOLESALE AND RETAIL. SPECIAL ATTENTION GIVEN TO PLANTATION ORDERS FOR Rice and Japanese Provisions. Write for Prices. No trouble to show goods.

Every Adams-Bagnall Enclosed Arc Lamp installed in Honolulu is giving perfect satisfaction. If you are interested in getting the best store lighting for the least money, let us know where to find you. HAWAIIAN ELECTRIC CO., LIMITED. TELEPHONE 390.

wholesome budweiser. Clear, sparkling, palatable. Has a flavor peculiarly its own, making it the popular bottled beer for table use in cottage and mansion all 'round the wide, wide world. The product of Anheuser-Busch Brewing Association, St. Louis, U. S. A. H. Hackfeld & Co., Ltd. General Agents for the Territory of Hawaii.

THE OLD RELIABLE TO THE FRONT AGAIN WITH IMMENSE CUT IN PRICES Wonderful Values Come and be Convinced. Men's Woolen Coats... Were \$ 3.00, Now \$1.50. Blue Serge Coats... 4.00, 2.00. Colored Serge Coats... 5.00, 2.50. Extra Fine Men's Blue Serge Suits... 15.00, 7.50. Custom Made Blue Serge Suits... 17.50, 8.50. Men's Fine Felt Hats... 2.00, 1.00. Large White Bedspreads... 1.50, .65. Large White Towels... Were 25c, now only 10c, One Dozen \$1.00. All other goods in our immense stock, consisting of SHOES, HOSIERY, SHIRTS, UNDERWEAR, HANDKERCHIEFS, Etc., Etc., will be sold at cut prices as above. Come and be convinced. This sale will be for Three Weeks From Date YEE CHAN, 1095-1099 NUUANU STREET, COR. KING. Sale Begins Saturday, August 30, 1902

The Hawaiian Star, DAILY AND SEMI-WEEKLY.

Published every afternoon (except Sunday) by the Hawaiian Star Newspaper Association, Limited.

Frank L. Hoogs, Manager

TUESDAY, SEPTEMBER 9, 1902.

ABOUT CABLES.

In view of the approaching connection of the Islands with the mainland across the floor of the Pacific, the Bureau of Statistics has prepared information with regard to the submarine cable system of the world.

The submarine telegraphs of the world number 1,759, their length is 200,000 miles, and total cost estimated at \$275,000,000; while the number of messages annually transmitted exceeds six millions.

In the short half century since the practicability of submarine telegraphy was demonstrated, the electric wires have crossed every ocean except the Pacific. Nearly a score of wires have been laid across the Atlantic, of which no less than thirteen now successfully operated between the United States and Europe.

Along the eastern coast of Asia, cable lines loop from port to port, and island to island, receiving messages overland from Eastern Europe via the Russian-Siberian land lines and forwarding them to Japan, China, Australia, New Zealand, the Straits Settlements, Hongkong, and the Philippines; and receiving others in return.

Prince Kuhio will carry the banner of the Delegate to Washington.

Register as soon as you can. "Stand not on the order of your going, but go at once."

The Home Rulers and their democratic tail are in the position of the legal gentleman with a bad case. Having no tangible argument to go upon, they devote themselves to abusing the other side.

The income tax question in spite of Tom Fitch's confident bearing, has made no headway in Judge Estee's court and has been relegated to the exterior of the temple of justice once more.

Last evening the Senators for the Third District were nominated. They were D. P. R. Isenberg, Achi and L. L. McCandless. The choice is a good one, and now all Republicans should drop local differences and work for the party success.

The commissioners have gone to work and yesterday organized their commission. During the period of investigation they will gather together a great deal of information which will be of use during the committee work of next session.

"Work" is the party watch word, and it will be carried out by our banner bearers. Prince Kuhio, our chief banner bearer will echo the word from Ka Lae to Haena, and will be followed by an army of enthusiastic voters and workers.

From south, where they are brought into intercommunication by land lines. Along the entire coast of Africa, cables loop from place to place and from colony to colony, stretching along the entire circumference and penetrating the interior by land lines at various points.

Every body of water lying between the inhabited portions of the earth, with the single exception of the Pacific Ocean, has been crossed and recrossed by submarine telegraphic lines. Even our vast expanse of water has been invaded along its margin, submarine wires stretching along its western border from Siberia to Australia, while its eastern borders are skirted with lines which stretch along the western coasts of the two Americas.

Into this system we are now about to enter. Within a few months we shall be in direct communication with every part of the inhabited globe. The only limit to our communication will be the cost. But there are no places mentioned by the Bureau of Statistics' report to which we could not communicate were we so minded, and our purses prove long enough.

It will be noted that these various companies do not seem in the least perturbed by the wireless telegraph. That the wireless telegraph works is demonstrated upon these Islands. Messages are sent and received, with success. But the method has not been taken by in many places, where it certainly should work as well as here.

We received the Korea, the largest and best fitted liner which had ever entered our harbor with blowing of whistles and much enthusiasm. But the arrival of the cable will have to be celebrated as one of the greatest events in the history of the Hawaiian Islands.

merical prosperity of the Territory hangs. If the Republican party carries the day, as the Star believes it will, we shall have the assistance of the great Republican party on the mainland, and public works will become a factor upon which the working man can reckon.

If a fair conquest of yellow fever has been made in the West Indies, small pox has taken its place. The spread of this disease has been phenomenal, and the test kind of quarantine is now being enforced. This has virtually put a stop to the inter island trade.

Fred Beckley seems in danger of being read out of the Home Rule party and relegated to a small Hades of his own with a private box of lucifer matches, like poor John Emmeluth. Representative Beckley's crime lies in the fact that he has started a paper which he says will strive to be impartial.

Willcox has thrown over his old supporter Kalaokalani as leader of the Home Rulers and has replaced him by Cayless, who will not go to Washington but will remain here to keep the Home Rulers and Democrats together.

The Latest

"Zephyr"

THE SACHET POWDER

Pendants

COMPRESSED SACHET POWDER. In All The FASHIONABLE PERFUMES.

For the Chatelaine

And a Nice Addition to the Ladies Toilet.

Ask to see Them and You Will Buy one. Only a Limited Supply on Hand.

Price 25 Cents

HOLLISTER DRUG CO.

FORT STREET

MARK HANNA.

Is Senator Hanna trying to steal some of Tom Johnson's thunder?—Hartford Post.

Hereafter Senator Hanna will be compelled to label his jokes.—Toledo Blade.

Mr. Hanna's little joke about retiring caused some of the old Democratic dames to make a grab for the remaining seats.—Marion (Ohio) Star.

Senator Hanna says the report that he will resign his Senatorship is a joke. He does not say who the joke is on, but probably on the little army of Ohio politicians who would love to wear his shoes.—Richmond (Va.) Times.

The assertion made by a prominent mining official in the anthracite region that Mr. Hanna is "simply playing the workmen in order to keep them on a strike, so that his bituminous mines and railroads will make new fortunes for their owners while the anthracite mines are idle," is about the unkindest cut of all.—Boston Herald.

Very few people will subscribe to the story that Senator Hanna will leave this country to extend his sphere as mediator between capital and labor. There are too many bad boys in politics for this master to look after. He can easily keep them under restraint while he is among them, but he knows them too well to trust them alone.—Cincinnati Enquirer.

SCHWAB.

If "health is wealth," Mr. Schwab may be a poor man after all.—Boston Herald.

It would be a pity if the steel trust should lose a name like Schwab.—Milwaukee Journal.

Then again Mr. Schwab's illness may be something that a sudden turn in the stock market would cure.—Detroit Evening News.

Well, Mr. Schwab can afford to retire from business. And he can't afford to keep on working no matter how big his salary may be.—Boston Globe.

Strict moralists will no doubt locate that Monte Carlo plunge of Steel Trust Schwab as the starting point in his toboggan career.—Philadelphia Press.

Perhaps Mr. Schwab is sick and perhaps not. He is too important a personage in the stock market for any truthful details to reach the public.—Milwaukee Journal.

Yet Mr. Carnegie did not break down in building up the steel business that Mr. Schwab has been managing. These young fellows are pert, but they lack staying powers.—Detroit Free Press.

Mr. Schwab is very indignant over the reports that he is disabled, and to prove the contrary he will take a rest of a year. That is not a bad rest of good health in these strenuous vacation days.—Buffalo Evening News.

THE WEATHER.

Weather Bureau, Punahou, 1 p. m. Wind, light N. N. E.; weather, clear, with tendency to be unsettled. Morning minimum temperature, 71; midday maximum temperature, 83; barometer, 9 a. m., 30.92, falling; (corrected for gravity); rainfall, 24 hours ending 9 a. m., 0.27; dew point, 9 a. m., 67; humidity, 9 a. m., 68 per cent.

CURTIS J. LYONS, Observer.

A Few Specials In

Glassware

- 7 pieces berry sets comprising 1 large bowl and 6 small saucers ..... 60c.
4 pieces table sets consisting of covered sugar, covered butter, cream jug and spoon holder ..... 50c.
2 quart jugs ..... 35c.
Pickle, Jelly or preserve dishes, each ..... 10c.
and many other articles.

See the displays in one of our show windows.

W. W. DIMOND & CO., LIMITED

DEALERS IN Crockery, Glass and House Furnishing Goods

Sole agents for the Celebrated Detroit Jewel Stoves and Gurney Refrigerators.

Nos. 53, 55 and 57, King Street

HONOLULU.

Classified Ads in Star.

A Three-Line Advertisement (15 words) will be inserted in the STAR'S Classified Columns for 25 cents. Each additional line at the rate of 10 cents extra.

Ads under "Situations Wanted," inserted free until further notice.

For Sale

Building lot corner King and McCully streets, Pawa tract. Rapid Transit line will pass the door. Apply at Star office.

A magnificent building site on the 1 1/2 inch bowl slope, near Thurston avenue. Particulars at Star office.

Building lot corner 21st and Kamehameha road, Palama terminus of P. pid Transit road. Apply at Star office.

Furnished Rooms To Let

Furnished rooms in the central part of the city, "Arlington" Hotel street. A nicely furnished room. Apply at 348 Beretania street.

For Lease for One Year

Comfortable premises at Manoa valley, partly furnished country place, fine view. Also stables, etc. Fruit trees. Terms reasonable to right party. Address "Country Home," P. O. Box 347, City.

Lost

One gold seal watch fob, attached to black silk. Liberal reward on return to Lewis & Co., Ltd., 1660 Fort St.

Room and Board

Nicely furnished room with board in private family. Apply 494 Beretania street.

Situation Wanted

An honest Japanese woman wants place to do housework and learn sewing. Address, S. F., 1416 Fort street, City.

By a responsible young man. Can give best of city references. Address E. L. K., this office.

Position as cook, steward or clerk is wanted. References given. Address B. J. E. this office.

As wheelwright or machinist, willing to accept any kind of work. Good recommendation. Address J. W., this office.

As wheelwright or carpenter or any other work. Address J. O., this office.

Position as cane weaver by man of experience, address, C. B. Black, City.

Note Heads, Bill Heads, Letter Heads and all kinds of Job and Commercial Printing neatly and promptly executed at the Star Office.

The Exhibit

OF THE

Pacific Hardware Co., Ltd

At the Merchants' Fair was a surprise to many who did not know of the choice stock of

Fine Cut Glassware, China, Table Cutlery and Pictures

carried at their Household Department, Bethel Street, and their Art Room, on Fort Street.

Garland Stoves

which took the First Prize at the Paris Exposition; of the EDDY REFRIGERATORS and ICE CHESTS which have proved the best in the world, and many other articles of household utility.

A large assortment of these will be found at the Bethel Street store, while at Fort Street will be found ART GOODS, ARTISTS' SUPPLIES, and a PICTURE FRAMING DEPARTMENT fully up to date.

PACIFIC HARDWARE COMPANY, LIMITED,

SOLE AGENTS FOR THE TERRITORY OF HAWAII.

SAN FRANCISCO, 215 Front St. HONOLULU, Queen St. NEW YORK, 43 Leonard St.

M. S. GRINBAUM & CO., LTD.,

Importers and Commission Merchants

Sole Agency FOR....

Blanche Bates Cigar

AGENTS FOR British America Assurance Comp'y, of Toronto, Ontario. Philadelphia Underwriters

Special attention given to consignments of coffee and rice

CASTLE & COOKE, LIMITED

Life and Fire Insurance Agents

AGENTS FOR

NEW ENGLAND MUTUAL

LIFE INSURANCE CO. OF BOSTON.

ETNA FIRE INSURANCE CO. OF HARTFORD.

CASTLE & COOKE, LIMITED

Commission Merchants SUGAR FACTORS

AGENTS FOR

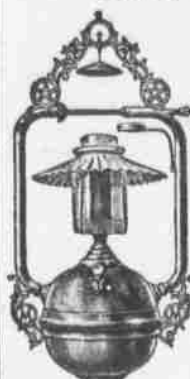
- The Ewa Plantation Company. The Waialua Agricultural Co., Ltd The Kohala Sugar Company. The Waimea Sugar Mill Company. The Fulton Iron Works, St. Louis, Mo. The Standard Oil Company. The George F. Blake Steam Pumps Weston's Centrifugals. The New England Mutual Life Insurance Company of Boston. The Aetna Fire Insurance Company of Hartford, Conn. The Alliance Assurance Company of London.

Health, Cleanliness AND Happiness

Our Porcelain Enamelled Ware with their moderate cost furnish many reasons why every home should have the constant comfort and protection of a sanitary modern bathroom, furnished with fixtures that combine the purity of China and the durability of iron.

E. R. BATH, 165 King Street, Opposite Young Building, Telephone 41.

MORE LIGHT, LESS EXPENSE,



Can be obtained by using our old reliable M. & M. Arc Portable Lamps for Stores, Street Lighting, Churches, Halls, and in fact, any place where you want light of 500 Candle-power.

This is sold on trial subject to perfect satisfaction; is fully guaranteed for one year; over \$3,000 in actual commercial use in the U. S. today. If you want MORE LIGHT, do a little figuring. Note how many hours your burn your Gas, or Electric Lights, then figure cost of our Gasoline Arc Lamps, which are ABSOLUTELY non-explosive. They meet in every way the requirements of the National Board of Fire Underwriters. You will be astonished at the CUT IN YOUR LIGHT BILLS, and you will be MORE astonished at the INCREASE of your light.

Don't turn us down because you have had some other lamp that did not work satisfactorily, but GIVE US A TRIAL; if not perfectly satisfactory it COSTS YOU NOTHING TO FIND IT OUT. Write for particulars. Agents wanted for all unoccupied territory. Dept. 3. CHICAGO, ILL.

Before going to the Coast this Summer look over the line of

Trunks and Bags SARATO A DRESS SUIT CASES SQUARE COAT CASES STEAMER CABIN BAGS HAT GLADSTONE BAGS

JUST RECEIVED BY The Von Hamm-Young Co., Ltd., QUEEN STREET.

Exactly what you need and at the lowest possible prices.

Wm. G. Irwin & Co., Ltd.

FIRE AND MARINE INSURANCE AGENTS

AGENTS FOR THE..

Scottish Union National Insurance Company of Edinburgh. Wilhelma of Magdeburg General Insurance Company. Associated Assurance Co., Ltd., of Munich and Berlin. Alliance Marine and General Assurance Co., Ltd., of London. Royal Insurance Company of Liverpool. Alliance Assurance Company of London.

Chicago In Less Than 3 Days

From San Francisco at 10 a. m.

CHICAGO, UNION PACIFIC & NORTHWESTERN LINE

Pullman fourteen-section Drawing-Room and Private Compartment Observation Sleeping Cars, with Telephone. Electric-reading Lamps in every Berth, Compartment and Drawing-Room. Buffet, Smoking and Library Cars, with Barber and Bath, Dining Cars—meals a la carte. Electric-lighted throughout.

Daily Tourist Car Service at 6 p. m. and Personally Conducted Excursions every Wednesday and Friday at 8 a. m. from San Francisco. The best of everything.

R. R. Ritchie, Gen. Agent Pacific Coast San Francisco.

617 Market Street, Palace Hotel.

Twenty-five cents pays for a want ad in the Star. A bargain.

## Big Stock

OF

## Rent Pianos

ON HAND.

PRICES TO SUIT THE TIMES

Bergstrom Music Co., Ltd

PROGRESS BLOCK  
HONOLULU.

## S. SAIKI,

### Bamboo Furniture

AND  
PICTURE FRAMES

Neat and Handsome  
Designs, made to order.  
663, Beretania Street, near Punchbowl.  
Advertise your wants in the Star.

Now is the time to use the Star's  
classified columns.

### Houses to Rent.

We have houses to rent in all parts of the city furnished or unfurnished.

### Houses for Sale.

A few choice bargains. Terms very reasonable.

### Loans.

We are prepared to accept a few applications for gilt-edge loans. We have a client who wishes to loan \$10,000 on best real estate security.

### Stocks and Bonds.

A careful, prompt execution of orders for the purchase or sale of stocks and bonds on commission.

## HENRY WATERHOUSE & CO

Fort and Merchant Sts.

Telephone Main 313.

## JOHN JUDGE,

The Plumber on  
King Street, does  
First Class work.

**GIVE ME A CALL**

## SHIPPING INTELLIGENCE

(Continued from page two.)

**DEPARTING.**  
Tuesday, September 9.  
Am. bark R. P. Ribbet, McPhail, for San Francisco at 10:30 a. m.  
Gasco. schr. Eclipse, Townsend, for Molokai, Maui and Kona ports at 5 p. m.  
Schr. Kawaiiani, Moses for Koolau ports at 2 p. m.  
Schr. Nobeau, Mosher, for Lahaina, Kaanapali, Honokaa and Kukulhae at 5 p. m.  
Wednesday, September 10.  
Schr. Charles Levi Woodbury, Harris, for Hilo at 5 p. m.  
Schr. Kua Moa, for Puna at 2 p. m.

**PASSENGERS.**  
Departing.  
Per bark, R. P. Ribbet, September 9, for San Francisco—Mrs. F. M. Henkels and 3 children, A. L. Mace, Fred Bacmeister, Mrs. H. L. Larrabee, Mrs. Henry A. Mossman, G. M. Donahue, F. S. Gillette.  
Per stmr. Mauna Loa, September 9 for Lahaina, Maui, Kona, Kau, and Volcano—W. H. Cornwell, W. Nahole, W. Hall, L. A. Thurston, Mrs. Nahole, Mrs. Clara Schmidt, P. E. Lamar, S. W. Kekuewa, W. Muller, Rev. O. P. Emerson, C. Smith, Clarence H. Smith, J. W. Kuaikoku, Miss Mary Pickard, James Cowan, S. Lazaro, F. F. Lansing, Z. B. Batchelor, W. F. Kelley, Mrs. W. J. Wright, J. A. Kennedy, Mrs. G. Bryant, James Edwards, Miss Ben Taylor, Dr. A. R. Rowatt, A. K. Kuniakaka and 12 deck.

**C. A. PEACOCK RETURNS.**  
C. A. Peacock, a brother of Walter C. Peacock of this city was a passenger from Australia on the Ventura. He has been for many years in Australasia engaged in business and will stay here for a while on a visit to his brother.

## THE NEEDS OF HAWAII

(Continued from page one.)

the dredging work already done by the territory. Illustrated by maps which were accepted as testimony. Estimates for dredging as asked for in 1901 were shown to aggregate \$200,000 since when the territory had actually paid out \$61,958 in said dredging, stopping only for lack of funds. Many questions as to depth of water, changes of lighthouse dimensions of channels, harbor bottom, buoys and the claims or ownership of riparian land possessors on the harbor front, were asked by the commission and answered by the Secretary. The channel through the reef to Kaili harbor and the dredging of the same was emphasized by Mr. Cooper as wise and practical. The contract and agreements concerning Summer or Quarantine Island were entered into but Secretary Cooper was unable to enlighten the commission as to the terms of agreements except in a general way. The maintenance of buoys was also brought forward as an unjustifiable local expense.

The Hilo breakwater at a cost of \$500,000 brought out a question from Senator Burton when Secretary Cooper proclaimed the roadstead unsafe in portly gales. The senator asked if the secretary was aware that the finding of the naval board differed from his and answered with a personal experience of his own when the survey ship Pathfinder was at Hilo and many ships were compelled to run to the open seas, while several steamers kept their screws going to save their cables and a ship lying at the wharf was towed to a safer mooring by two steamers.

The purchase of ground for Federal property on the lot bounded by Merchant, King and Alakea, was next mooted, the Secretary explaining that no public lands were available in Honolulu, but were in Hilo, where a new post office and a customs house were asked for separate buildings being needed on account of the configuration of the land and the position of the town necessitating the customs house being built on the Waiala side and the post office on the opposite or town side of the harbor.

The labor question was then taken up at some length. Secretary Cooper explained the former system under which limited numbers of Chinese were allowed to land as unskilled laborers for a limited time, the plantations setting aside their passage money with the Treasury. These, with Japanese, provided the unskilled labor in the days of 1890 and 1901 when affairs were prosperous and trade with the United States for machinery, food and clothing amounted to twenty millions annually, reduced now by increased labor prices, (submitted to the commission) fifty or sixty per cent. Skilled labor had also left through this depression, not through Oriental interference, instanced by the reductions of hands at the Honolulu Iron Works.

By request of Governor Dole the question of the practical destruction of the rice industry from high priced labor and the importation of Japanese rice, was included and the point shown that the Chinese invariably left after securing certain sums. Hawaiians were depicted as skilled laborers only and not available for agricultural labor.

Being questioned by Chairman Mitchell, Mr. Cooper stated that he knew of no instances of watering stock in plantation shares, that the dividends were a fair profit on the capital invested, and that when paid amounts were also paid out from surplus profits into improvements. That now many dividends had ceased and others were greatly reduced. He asked for the old conditions of importing a limited number of Chinese for a limited term of years and Senator Burton, summing up, asked the direct question.

"Under the old conditions you could meet any competition, even Cuban, with tariff reductions; but with the cheap labor door closed in Hawaii and open in Cuba, with reciprocity, you would meet a danger almost amounting to a prohibition of your product." "It appears to me that way," replied the Secretary. Governor Dole, on appeal, substantiated the remarks made by Mr. Cooper.

The Porter question was referred to as one on which deep sentiment was felt and which should be coped with, as it always had been, by local control and not opened to the stigma of foreign laborers being introduced through Federal aid being established. The number of lepers and cost of maintenance was quoted. Governor Dole offered the use of the legislative hall with its proximity to records and the greater accommodations. The commission will consider the matter.

The Portuguese will submit a letter concerning Punchbowl early this afternoon. The Republican committee paid their respects. S. M. Damon was granted an interview on the currency question for 2 o'clock sharp, to be answered by A. S. Humphreys and later by E. S. Boyd.

### DECORATED WITH A FLAG.

The schooner Mary E. Foster and other sailing vessels in port are decorated with flags today in honor of September 9th, California Admission Day.

## NEW ADVERTISEMENTS BY AUTHORITY

### NOTICE TO CANDIDATES FOR ELECTION.

Territory of Hawaii,  
Secretary's Office.

Notice is hereby given that, whereas it is required by law that Candidates for Election to the Legislature on all Islands, except Oahu shall file their nominations with the Secretary of the Territory not less than thirty days before the General Election, it will be necessary that said nominations be on file in this office not later than four o'clock p. m. on Saturday, October 4th, A. D. 1902.

HENRY E. COOPER,  
Secretary of the Territory.  
Capitol, Honolulu, Sept. 8th, 1902.

### NOTICE TO TAXPAYERS.

The Taxpayers are hereby notified that the Property Taxes for 1902 are now due and payable to the Deputy Assessors of the several districts, at the times and places mentioned in the notices posted throughout the districts.

Section 23, Act 51, Session Laws 1896—"If any Property Tax shall remain unpaid after the 15th day of November in any year 10 per cent of the amount of such Taxes shall be added by the Assessor to the amount of such Taxes at said date, and shall become and be collected as part of such Taxes."

All Property Taxes not paid by November 15th will be delinquent.

The Delinquent List will be published after December 1st, 1902.

JAMES W. PRATT,  
Assessor, First Division, Island of Oahu.  
Sept. 1st, 1902.

### Office of the Board of Health.

Honolulu, Hawaii, Sept. 9, 1902.

Notice is hereby given that Section 3 of the Rules and Regulations of the Board of Health, of the Territory of Hawaii, relating to "Fishing and the sale of fish in the District of Honolulu" is amended to read as follows: viz:

Section 3. Taking of fish, shell fish, or any product of the sea, or salt water between John Cassidy's pier, Waikiki, in the City of Honolulu, and Kaili Detention Camp, in the City of Honolulu, including the Kaili stream extending from high water mark to the makai edge of the reef, and including Honolulu Harbor and Nuuanu stream to Kukul street, is hereby prohibited.

Per order of the Board of Health,  
H. C. SLOGGETT,  
President of the Board of Health.

### REGISTRATION NOTICE.

The Board of Registration for the Island of Oahu will meet at the places hereinafter named at the time given, for the purpose of examining applicants for Registration as voters at the coming election and determining their eligibility:

Monday, Sept. 15, 1902.  
Puuloa R. R. Station, 7:45 to 9:15 A.M.  
Alaia R. R. Station, 9:45 to 11:15 A.M.  
Manana Court House, 4 to 7 P.M.

Tuesday, Sept. 16, 1902.  
Waipahu Mill, 8:15 to 10:15 A.M.  
Ewa Mill, 10:30 to 12:30 P.M.  
Waianae Court House, 5 to 7 P.M.

Wednesday, Sept. 17, 1902.  
Makua R. R. Station, 10 to 11 A.M.  
Wahala Court House, 2 to 3 P.M.  
5 to 7 P.M.

Thursday, Sept. 18, 1902.  
Kahuku Mill, 2 to 4 P.M.  
Lala Hall, 5 to 8 P.M.

Friday, Sept. 19, 1902.  
Hauula Court House, 8 to 9 A.M.  
Walkane Church, 11 to 12 noon  
Kaneohe Court House, 6 to 10 P.M.

Saturday, Sept. 20, 1902.  
Kaliua (Sam Bo's), 8 to 9 A.M.  
Waimanalo Plantation Office, 10 to 11 A.M.

The Board will return to Honolulu Monday, Sept. 22, and sit for the purpose of registration between the hours of 7 and 10 A. M., and 4 to 7 P. M.

LORRIN ANDREWS,  
Chairman.  
M. A. GONSALVES,  
W. J. COELHO,  
Honolulu, Sept. 8, 1902.

### THEO F. LANSING,

INSURANCE AND  
COMMISSION AGENT

Temporary Office in Former Office of First National Bank, Campbell Block.

### NO CATCHING AT STRAWS.

Drowning men, they say, will catch at straws. Naturally enough, because they see nothing better to catch at. It is the principle of any port in a storm. All the same the straw does not save the drowning man, nor is the tempest-tossed mariner likely to find a safe harbor every time he runs for the shore. The scientifically constructed life preserver is better than a straw, and to know how to ride out a storm is better than to trust to luck in finding a port in time of need. Just so it is in disease and all manner of sickness. A ship takes a pilot on the theory that he knows the right channel and can avoid the dangerous places. And when your life is threatened by disease you naturally desire a mode of treatment founded on absolute knowledge—a treatment that has proved effective in other cases like your own. This is the common-sense of the subject and no one will dispute it. And it is because the well-known effective remedy **WAMPOLE'S PREPARATION** never fails in the complaints for which it is recommended, that it enjoys the confidence of the people and the medical profession everywhere. The doctor who prescribes and the patient who takes it are not catching at straws, for it does what it is said to do on the same principle that water puts out a fire. It is palatable as honey and contains the nutritive and curative properties of Pure Cod Liver Oil, combined with the Compound Syrup of Hypophosphites, Malt and Wild Cherry. It quickly arrests the loss of flesh in wasting diseases, builds up the body, and expels from the blood those pernicious germs which cause Fevers, La Grippe, Scrofula, Bowel Complaints, Throat and Lung Troubles, etc. Effective from the first dose. "You cannot be disappointed in it." Sold by all chemists.

### KAWAILANI SAILS THIS WEEK

The schooner Kawailani did not sail last week on her regular Koolau run as there was no freight on hand for her. She will get away this afternoon for Koolau ports, or else will sail tomorrow.

### NEW ADVERTISEMENTS

#### Hawaiian Lodge No. 21, F. & A. M.

There will be a special meeting of Hawaiian Lodge, No. 21 F. & A. M., at its hall, Masonic Temple, corner of Hotel and Alakea this (TUESDAY) EVENING, September 9, at 7:30 o'clock.

WORK IN THIRD DEGREE.

Members of Pacific Lodge, Lodge Le Progress, and all neighbouring brethren are fraternally invited to be present. By order of the W. M.,  
K. R. G. WALLACE,  
Secretary.

### CHAMBER OF COMMERCE.

The regular monthly meeting of the Honolulu Chamber of Commerce, will be held at its room in the Hackfeld Building on Wednesday, September 10, at 10 a. m.

A full attendance is requested.  
JAS. GORDON SPENCER,  
Secretary.  
Honolulu, September 9, 1902.

### NOTICE.

Dr. R. W. Anderson having returned, the public is notified that he will resume his practice. Office, Alakea street, near Hotel. Hours, 9 a. m. to 4 p. m.

### ELECTION OF OFFICERS.

At the stockholders' meeting of E. W. Jordan & Co., Ltd., held this day, the following list of officers were elected to serve during the ensuing year:  
E. W. Jordan, President.  
J. Waterhouse, Vice-President.  
R. A. Jordan, Treasurer and Secretary.  
A. W. T. Bottomley, Auditor.  
Messrs. E. W. Jordan, J. Waterhouse, R. A. Jordan and D. W. Anderson constitute the Board of Directors.  
R. A. JORDAN,  
Secretary.  
Honolulu, H. I., Sept. 4th, 1902.

## Wilder's Steamship Co.

### A Second Excursion to the Volcano by Steamer Helene

Steamer Helene, Nicholson, Master, will sail from Honolulu on Saturday, September 13th, at 12 noon, arriving in Hilo Sunday afternoon in time to connect with train, reaching the Volcano the same evening; returning passengers will leave the Volcano House Wednesday afternoon connecting with the steamer that evening arriving at Honolulu early Friday morning.

THREE DAYS AND THREE NIGHTS AT THE VOLCANO.

Latest reports indicate that the Volcano is increasing in activity from day to day.

Inasmuch as the crater of Kilauea may become extinct, this may be the last opportunity for seeing it in activity.

Tickets for the round trip, first class accommodations all through, \$40.00.

Passengers are requested to book early that suitable reservations on the 13th and at the Volcano House can be made.

## Waikiki Inn

ON THE BEACH.

SPECIAL RATES FOR TOURISTS.  
A FAMILY RESORT.

L. H. Dee, proprietor.  
Ring up Phone Red 71.

## Fatigue AND Weakness

Yield to the Persuasive Powers of

## Royal Malt Extract

Strength comes with the first bottle. You can sleep soundly after taking it. It lifts the system into a robust condition that defies the enervating heat of summer. If your appetite is poor this is the tonic you require. It tones the digestive apparatus.

Royal Malt Extract is malted from the finest barley and new hops and stands at the top of the list of malt extracts. One bottle will convince anyone of the claims we make. Try it.

25c. the Bottle  
\$2.50 the Dozen

HOBRON DRUG CO.  
FORT STREET,  
EHLERS' BLOCK.

## Pretty Fancy Draperies

THERE'S ALWAYS SOME PART OF THE HOUSE THAT WOULD LOOK MORE COSY WITH A PRETTY DRAPERY OR A DOORWAY THAT NEEDS PORTIERES. PERHAPS THEY ALREADY HAVE THAT DECORATION, BUT IT NEEDS TO BE CHANGED FOR NEW.

WE HAVE JUST OPENED THE EITHER DOTTED OR IN IN BEAUTIFUL ORIENTAL STRIPES AT 10c., 15c., and 20c. PER YARD.

SWISS CURTAIN MATERIALS, EITHER DOTTER OR IN STRIPES, THIS WEEK AT 10c. PER YARD.

SILKOLINE, PLAIN AND FIGURED, 10c. AND 15c.

FINE PORTIERES IN ALL SHADES AT FROM \$3.00 TO \$4.00 A PAIR.

SEE THEM ON DISPLAY IN OUR WINDOWS.

A. BLOM.  
Proress Block Fort Street near Beretania

Telephone White 3171 P. O. Box 484

# The Planters' Favorite

## Our High Grade Cane Fertilizer

# Brand "A"

Soluble. Dry and Fine,  
Sure, Quick and Reliable

Manufactured from the Best Materials. Few are as Good, None Better on the Market

# Pacific Guano and Fertilizer Co.

C. HAGENS, Manager

## FOURTH DISTRICT COMMITTEE

### MEETING NOTICE.

A meeting of the Fourth District Committee is hereby called for

TUESDAY, SEPTEMBER 9, 1902

at 8 o'clock p. m., in the assembly room over the offices of Castle & Cooke, Ltd. The object of the meeting is to nominate candidates for the Fourth Representative District on the Republican ticket.

J. P. COOKE,  
Chairman Fourth District Committee.  
WILLIAM SAVIDGE,  
Secretary Fourth District Committee.

### NOTICE.

Sing Hing Kee having purchased the interest of Lai Sing Kee, doing business as Plumber, at 1182 Nuuanu street, near Beretania, assumes all liabilities, and all persons owing said firm should settle with him.

## Are You Troubled With Your Teeth?

The SKILLED EXPERT DENTISTS can remove the TROUBLE  
Prices very low; work as good as ANY dentist can do  
A HINT to the WISE IS SUFFICIENT

Arlington Block, Hotel St. - - - Opposite Union

summer Proposition.

Well, now there's the QUESTION! know you'll need ice; you know a necessity in hot weather. We've you are anxious to get that ice will give you satisfaction, and like to supply you. Order from

THE OAHU ICE & ELECTRIC CO., OFFMANN AND MARKHAM.

Phone 3151 Blue, Postoffice Box 606

Celebrated

W B Corsets

JUST RECEIVED EX ALAMEDA.

Craze Game

Ping Pong

Just Received

E. W. JORDAN,

10 FORT STREET

V. G. IRWIN & CO., LTD.

G. Irwin, President and Manager Sprockels... First Vice-President M. Giffard... Second Vice-President M. Whitney, Jr., Sec'y and Treasurer J. Ross... Auditor

Sugar Factors, Commission Agents

AGENTS OF THE OCEANIC STEAMSHIP COMPANY OF SAN FRANCISCO, CAL.

Hirose Shoten,

1079 AALA STREET.

JAPANESE PROVISIONS AND DRY GOODS

NEW GOODS BY EVERY STEAMER.

TEL. BLUE 392. P. O. BOX 885.

Jahu Tailoring Company,

MERCHANT TAILORS.

Suits Made To Order, Cleaning, Repairing and Pressing a Specialty.

Corner Beretania and Emma Streets.

GRAND CLEARANCE SALE

OF

..Hats..

WE ARE RETIRING FROM THE HAT BUSINESS AND ARE THEREFORE OFFERING OUR ENTIRE STOCK OF HATS AT COST PRICES. HATS FROM 35 CENTS UPWARDS.

S. OZAKI.

17 S. HOTEL ST.

Silent Barber Shop

Hotel Street.

HOT AND COLD BATHS. BEST BARBER SHOP IN HONOLULU.

Want ads in Star cost but 25 cents.

Be Strong

Why not be strong? Why not have a good appetite and a good digestion? Why not feel well and hearty all the time? You can just as well have it your own way as not, for there is strength, vitality, power, and good health in every bottle of Ayer's Sarsaparilla. Always keep it on hand.



Here are the words and the photograph of Mr. R. H. Archer, of Lowell, Massachusetts. "I often find myself weak, without appetite, and my whole system all run down. My blood gets impure and I have boils and eruptions. Then I always use Ayer's Sarsaparilla, for it makes my blood pure and rich, gives me strength and vitality, and traces me up wonderfully."

AYER'S Sarsaparilla

There are many imitations "Sarsaparillas." Be sure you get Ayer's.

Keep Ayer's Pills on hand and quickly correct any tendency to constipation. It's an easy way to prevent sickness.

Prepared by Dr. J. C. Ayer & Co., Lowell, Mass., U.S.A.

BEFORE BUYING

LUMBER, DOORS, SASH, BLINDS, GLASS, PAINTS, WALL PAPER, OILS OR COAL.

SEE

WILDER & CO., LTD.,

THE YOKOHAMA SPECIE BANK LIMITED.

Subscribed Capital..... Yen 24,000,000 Paid Up Capital.....Yen 18,000,000 Reserved Fund.....Yen 8,710,000

HEAD OFFICE, YOKOHAMA.

The Bank buys and receives for collection Bills of Exchange, issues Drafts and Letters of Credit, and transacts a general banking business.

INTEREST ALLOWED:

On fixed deposits for 12 months, 4 per cent per annum. On fixed deposits for 6 months, 3 1/2 per cent per annum. On fixed deposits for 3 months, 3 per cent per annum. Branch of the Yokohama Specie Bank.

New Republic Building, Honolulu B. I.

REMOVAL NOTICE.

Wing Wo Lung Co., Ltd., dealers in general merchandise and Chinese provisions, have removed from 21 Hotel street to 34 Hotel street, near Smith, and are now ready for business.

Immense Reductions.

For one month only commencing Tuesday, August 26, our entire stock of Crockery, Glassware, Cutlery, Tinware, Oil Stoves, Chinaware, Agateware, hanging and Table Lamps, Carpenter Tools, Etc., will be sold at greatly reduced prices.

LAI SING KEE,

Nuuanu Street near Beretania.

NEVADAN FROM THE COAST.

The S. S. Nevada arrived yesterday afternoon from San Francisco with one day's later news. She sailed from San Francisco August 31. No mail was placed aboard her however. The vessel came down in eight days and about five hours. She has a couple of thousand tons of freight for this port and Kahului. She brought a couple of horses and two cows. The only incident during the trip was the birth of a calf.

PRESIDENT WILL TOUR.

SAN FRANCISCO, August 28.—United States Senator A. G. Foster of Washington, who is at present a guest at the Palace Hotel, is authority for the statement that President Roosevelt will visit Coast next fall. The chief executive will be accompanied by his wife and family, and will remain, it is said in San Francisco for at least three days. The President will visit during his tour all cities by the way of Washington and Montana, and will return via the Union Pacific.

The statement of Senator Foster tends to corroborate publications formerly made to the effect that President Roosevelt and in contemplated a visit to the principal cities of the West.

BUILDERS' AND TRADERS' MEMORIAL

Hon. John M. Mitchell, Hon. J. R. Burdett and Hon. A. G. Foster, Sub-Committee of the United States Senate on Pacific Islands and Porto Rico. Sir:—The undersigned, being a committee duly authorized by vote of the Builders' & Traders' Exchange of Honolulu, Hawaii, to draft and present a memorial to your Honorable Committee on behalf of said Exchange, have the honor to respectfully request that you will memorial and to respectfully request full consideration of the matters and things therein set forth.

L. E. PINKHAM, A. GARTLEY, W. W. HARRIS.

Honolulu, August 18th, 1902.

To the Honorable Committee of the United States Senate, Honorable John M. Mitchell, Chairman, Gentlemen:—The present deplorable condition of the affairs of the Territory of Hawaii, in its relation to the general government of the United States, renders it incumbent upon representative local business organizations to call your attention to matters of public welfare.

Isolation: The Hawaiian Islands are so distant from the mainland, in fact, the most distant large insular body in the world, that there is necessarily a multiplication of governmental, social, and business institutions, and attendant expense out of all proportion to the character and number of inhabitants as compared with Continental United States.

Exposure: Situated directly in the highway of the Pacific, with frequent, after almost daily, steamship communication with Oriental and Australian ports, en route to and from the Pacific coast, Honolulu and Hawaii are extremely exposed to the violent epidemic diseases such as create public apprehension and terror. This occasions public expenditure beyond comparison with the numbers and wealth of this community. This expenditure is ceaseless, as, by such vigilance only, is the safety of health secured.

Hawaii, at its present sole expense, stands as a guard and quarantine between the Orient and United States ports.

Expense of Leper Maintenance: While the number of these unfortunate beings, the lepers, is gradually decreasing, yet, at the present they and their children and attendants, public charges, segregated on the Island of Molokai, number one thousand and nine, costing the Territorial Government to maintain, one hundred and thirty-eight thousand, two hundred and sixty dollars, annually.

To comprehend what a charge this special misfortune imposes on this small community, let your Committee realize this charge is equal to the people of the Continental United States maintaining 297,000 persons in complete idleness, at an annual cost of \$70,095,500.00. Such a burden would seem to the people of the United States as too onerous to be borne.

In addition, Hawaii is obliged to maintain all other enlightened institutions, prison, reform, charity, hospital and educational establishments.

This unusual condition and phenomenal burden should make a profound and lasting impression on your minds and recommendations.

Race and Social Conditions: In Hawaii, Occidental and Oriental civilization meet in a contest paralleled in no other country on the globe.

When the time comes that the Oriental alien, as a body, insist on a corresponding standard of living and family status to that of the white men, the danger of the overthrow of Caucasian civilization will cease. To attempt to regulate by law, these differences, is well nigh impossible. It is in the power of the National Legislature, and particularly in the power of the National Executive Departments, the Army and Navy, to throw their Government patronage in support of the civilization they cherish and expect to have preserved for them and their successors.

Labor Situation: It is not in the province of this committee to attempt recommendations as to the labor problem confronting our main and almost exclusive industry, the raising of sugar. We do request your keen attention to the fact that skilled labor is being driven from employment, from the Islands, or to a lower, meaner and almost intolerable scale of living, through the competition of alien labor. Private selfishness cannot be controlled. We, however, most emphatically protest against any action of the United States Government, through its legal and official representatives, in employing, directly or indirectly, through contracts, contractors, or otherwise, alien labor.

So far as Hawaii is concerned, such action by United States officials or contractors undermines the body politic, and must react on the general welfare, social and political.

We believe all United States Contracts or enterprises requiring nominal skilled labor, should, by law, if possible, or by Executive instruction, be confined to labor other than alien, and on a scale of compensation permitting American civilized standards of living.

Politics as Related to Business: The peculiar political and specially legalized economic conditions existing for many years in the Hawaiian Islands, produced a bias, an expectation of continued special privileges, that many, even of our most intelligent and interested citizens, could not overcome during the earlier periods of annexation. On their support and patriotism this Territory must rely for sound economic and political conditions. Their better judgment will ultimately prevail, and a campaign of education and more elevated politics be inaugurated. It is doubtful if a peaceful community can be secured by discrimination in suffrage.

Business has been unfavorably affected by many apprehensions as to the course of general and local government, and the misgiving still exists. However, there are enough good, intelligent citizens, who by sound, unselfish measures, and public election this fall, will disclose the situation. We submit if the issue of good government is forced by events, the United States should so amend its organic act as to provide a most stringent and enlarged, veto power in proper hands, for the control of local affairs, Territorial and Municipal.

Losses from Bubonic Plague: The facts have been fully laid before Congress, in Senate Report No. 1933, 57th Congress, 1st Session, and relief petitioned. The justice and necessity of such relief should be apparent.

Public Federal Improvements: To date they have been of minor impor-

tance, and devoted almost exclusively to facilities for operations between the Continental United States and the Philippines and the Orient.

Light Houses: Are inadequate and still a local charge.

Harbors: Are still maintained and improved at local expense.

Projected Federal Improvements: The projected improvements at Pearl Harbor, and camps and fortifications, while of great local importance, are a vital part of the vast scheme of public defence of the entire nation, and should not be unduly weighed in our financial relations to the Government.

Extraordinary Reimbursement of Federal Treasury: From the extracts from official statistics, given below, we ask your Committee to consider the remarkable reimbursement made to the United States Treasury, of not only the entire Federal Government expenditures in Hawaii, but the great per cent already paid toward extinguishment of the payment on account of the public debt of Hawaii upon annexation.

Federal Revenue from Hawaii: From June 14th, 1890, to March 31st, 1902.

Customs Revenue Receipts, \$2,293,224 33 Internal Revenue Receipts, 168,543 88

Gross Revenue, \$2,461,768 49 Deduct—

Expense of Collection, Customs & Internal Revenue, 192,135 72

Net Revenue 2 1/2 months, \$2,269,632 77

How Applied and Expended—Annexing Hawaiian Islands to the United States, \$ 9,848 34

Salaries District Courts Territory of Hawaii, 7,230 97

Salaries of Governor, etc., Territory of Hawaii, 71,839 61

Contingent Expenses, 4,300 02

Improving Pearl Harbor, 20,300 00

Quarantine Service, 55,809 29

Repayment to Importers, 27,273 90

Debentures, Drawbacks, etc, 11,971 79

\$ 208,626 95

Net Revenue above all ordinary expenditures, \$2,061,055 84

or at the rate of \$95,860 72 per month.

Hawaiian Debt Paid by the United States Treasury—

Payment of Debt of Territory of Hawaii, \$3,193,129 79

Liquidation of Deposits in Hawaiian Postal Savings Bank, 761,457 52

Total, \$3,954,587 31

Balance, \$1,893,581 48

Balance against Hawaiian Debt, March 31, 1902, \$1,893,581 48.

Should the above-named average continue, by the beginning of the next fiscal year of the United States, July 1st, 1903, the Hawaiian Islands will have practically reimbursed the United States Government for every dollar paid out in behalf of annexation, furnished the Government with lands and sites for its various purposes, leaving the title of all public lands and property in the United States Government without cost to itself.

This is an unparalleled public financial showing and it is doubtful if ever one country was absorbed by another at no cost in so short a period.

The withdrawal of such proportionally enormous sums of money would hopelessly bankrupt any like population in numbers in Continental United States, and cannot be indefinitely continued here without dire results.

Reciprocity Advantages: These were not all on the side of Hawaii. A very large per cent of the accumulations from the financial benefits of Reciprocity have been re-invested in now and situated; much of it has been thus lost or become absolutely non-income producing.

The sugar situation throughout the world is a disturbing problem; to us, a vital one. The Federal Government should not look backward, but adjust our relations to the conditions.

Relations to Continental United States: This organization does not pretend to indicate the Constitutional remedies to be applied to, or limitations that affect our status, nor point out how our welfare must be brought about by enactments of Congress, but we do submit that from distance and circumstances we do not enjoy the direct and immediate benefits that cover the Continental United States and Territories in the financial operations of the Federal Government.

We submit our situation resembles more that of a colony, and that the revenues should not be unduly transferred from our Territory to the United States, and expended elsewhere.

Recommendations: We ask of your Committee, that by its recommendations it urge:

That all Government contracts and work so far as skilled labor is concerned, both directly and indirectly, be let only to other than alien labor, and so stipulated.

That should political unrest and incompetency continue the fundamental law be so amended that business interests may have the protection at least of an enlarged veto power, placed in unbiased and impartial hands.

That a means be promptly and earnestly sought to, by suitable appropriations or a proportional return of revenue to the Territorial Treasury, cease the Federal drain upon the resources of the Hawaiian Islands.

That there be a positive reimbursement by some legal means from the Hawaiian Federal Revenues, of an amount equal to the cost of the Leper maintenance, and sound financial condition, and a proportional cessation of the present drain on our resources.

Respectfully submitted, The Builders' and Traders' Exchange of Honolulu, Hawaii. A. GARTLEY, F. J. AMWEG, L. E. PINKHAM, W. W. HARRIS, Committee.

There Will Come a Time When you will need a new hose and when it does, be sure and remember that the brand you need is DOLPHIN This is a 5-ply hose made especially for the family trade and is something that will stand the climate and plenty of hard use. It sells at \$9.00 a 50-ft. length, but will last you 3 times as long as a \$6.00 hose will. We have the cheaper kinds too, as low as \$4.50. Try Us on HOSE E. O. HALL & SON, LTD New Building Corner Fort and King Streets

Good Things for the Tea Table Crisps, fresh cakes and biscuits just opened. You can telephone for any of the following and know they will be just right: Dainty Minuet Wafers, Social Teas, Nablaco in assorted flavors, Brownie Cottages with Brownie Cakes, Sultana Fruit Biscuits. English Fruit Cake in one lb. packages, Ramonas and Athenas. High Teas, in two-lb. tins. Assorted Cakes, in two-lb. tins. Ginger Nuts, in two-lb. tins. Jenny Linds, in two-lb. tins. Vanilla, Chocolate, Orange, Lemon and Ginger Wafers. CALL AND SEE AND CRISP. H. MAY & CO., Ltd THE POPULAR GROCERY. Boston Block, Fort St. 22, 24, 92

NEW GOODS. LATEST STYLES IN NECKWEAR, SHIRTS AND GENT'S WEARING APPAREL. STRAW HATS OF ALL KINDS MADE IN THE PREMISES. OUR JAPANESE GOODS ARE IMPORTED DIRECT FROM JAPAN AND THE PRICES ARE RIGHT. CALL AND BE CONVINCED. K. ISOSHIMA KING STREET, NEXT TO CASTLE & COOKE.

Sayegusa Shoten, 1121 NUUANU ST. AND COR. KING AND LILIEA. Importer and Dealer in JAPANESE SILK GOODS, HANDKERCHIEFS, KIMONAS, MATTING, BAMBOO WARE AND AMERICAN DRY GOODS. Wholesale Japanese Provisions Fancy Goods Received by Every Steamer and Island Orders Promptly Attended to. TELEPHONES WHITE 3271 and BLUE 1561. P. O. BOX 883.

NEW STORE. JAPANESE AND AMERICAN DRY GOODS. MERCHANT TAILOR. K. FUKURODA. ROBINSON BLOCK, PHONE WHITE 2421, 14 HOTEL STREET.

THE PLEASURE OF GOOD WRITING PAPER IS FELT BY THOSE WHO USE THE NEW SIZES AND TINTS OF Crane's Linen Bond. We have just received a new stock of the sizes and tints now in vogue—the kind that folds once and fits in an oblong envelope, and at prices that are right. Four different sizes—Billet, Astoria, Douglas and Gladstone. CALL AND SEE THEM. Hawaiian News Co., Limited Merchant Street

Star want ads pay at once. Want ads in Star cost but 25 cents.

# EL PROVISIO

# Genuine Porto Rican

# BEST 5c CIGAR

THERE IS NOW ON HAND A PLENTIFUL SUPPLY OF

## White Rock Lithia Water

ORDER THROUGH YOUR DRUGGISTS, OR FROM

**W. C. PEACOCK & CO., AGENTS . . . .**

## Fills the Bill

NO OTHER BEER IN HONOLULU TO EQUAL IN PURITY, FLAVOR AND HEALTHFUL QUALITY THE SPARKLING

## primo lager

ORDER A CASE FROM THE BREWERY. TELEPHONE MAIN 341.

### POLITICS ON MAUI

#### PRINCE KUHIO STANDS GOOD CHANCE.

He is Expected to Poll a Great Majority Democrats Endorse Two Republicans. Tom Clark and Wilcox.

WAILUKU, Maui, H. T., Sept. 6.—The choice of the Territorial Convention for Delegate to Congress was well received on Maui, even by some of the leading Democrats. "Tom" Clark is ir-reconciled. He has Wilcox in his pocket, he declares, and so he must down the Prince. How the Honolulu Home Rulers will receive this intelligence, it is hard to tell, but the Wailuku district Home Rulers have moved, at mass meeting held last night, that Wilcox's being in Tom's pocket is worth looking into, and therefore the fusion talk in the Home Ruler's camp last night was postponed until the 17th inst.

Hon. S. E. Kauiue, one of the leading Home Rulers here, is not favorable to having the Democrats absorb the Home Rulers. The chances are that he will throw Wilcox overboard and join the Republican forces.

The Democrats held a nominating mass meeting at Waihee last Wednesday night. Notwithstanding the inclement weather, Clark's followers turned out in good style. The Republicans also turned out, and there were as many of the latter as there were of the Democrats and Home Rulers. At the balloting which was conducted later on, however, the Republicans did not vote.

Clark hit upon a novel way of conducting his nomination. He gave to the meeting the names of the proposed Republican candidates, the names of the Home Ruler nominees, and six of his own selecting. The balloting resulted in the endorsement of S. Keiinoi and P. Pail, two proposed Republican nominees, and the selection of T. B. Lyons, J. Hapaihu, A. K. Forsythe and T. Clark for the representative slate and J. K. Richardson for the senatorial ticket.

With the nominations to take place next Monday at Republican headquarters, the organization of the Republican party on Maui will be complete, and the workers will get right down to hard work.

W. F. Pogue, chairman of the District Central Committee, has workers all over the island, and he himself has left headquarters to consult with workers in Kula. There was an enthusiastic meeting at Kokea last night where Kauiue showed the names and six of his own selecting. If Kula does not go Republican this time, it will not be the fault of these leaders.

It is rumored around streets today that C. H. Dickey is not anxious to get the nomination of the Republican District Committee for the Senate. A. N. Kopeikai is said to be the logical choice of the convention, but the latter is urging Keiinoi to stand for the nomination. It is doubtful if Keiinoi's supporters for the lower houses will agree to this proposition.

The Republican candidates will make their maiden speeches next Monday night at the Skating Rink. A grand rally is expected, and the result of the quiet work of the party precinct workers will be manifested. Trains will run from Pala, Kihel, Paunene and Kahului. The Republican candidates will leave for Molokai sometime next week, where they expect to meet the Prince. From there the whole delegation will come to Maui. It is confidently expected that the Prince will poll a great majority on Maui.

#### OIL BOAT AT KAHULUI.

Barkentine Fullerton Arrives Safely From San Francisco.

KAHULUI, September 6.—The oil ship Fullerton, Captain McDonald, reached Kahului on Wednesday afternoon, 19 days out from San Francisco with the first cargo of fuel oil ever shipped to the Islands.

The interior of the hull of the Fullerton is fitted up with 24 bulkheaded tanks of an average capacity of 1000 barrels each. Sixteen of these tanks are for oil and the remaining eight for water ballast. The Fullerton brought down about 15,000 barrels of oil for the Kihel Plantation.

It will require at least a thousand feet of canvas hose to unload the Fullerton at Kihel, and as the hose had not been received from the East, the Fullerton left San Francisco without it. Consequently it will be necessary to unload the oil in the tanks at Kahului from which point it will be conveyed to Kihel in the oil tank cars of the Kahului R. R.

The Fullerton expects to begin to unload today and Captain McDonald estimates that it will take about fifteen

hours to pump his cargo into the Kahului oil tanks.

WILL ASK AN EXTRA SESSION. NEW YORK, August 25.—President Roosevelt will be asked to call a special session of Congress to take action to end the coal strike. This was decided at a meeting today of the Central Federated Union, representing 250,000 workmen. A mass meeting under the auspices of the labor unions of New York city and vicinity will be held, at which resolutions will be adopted urging President Roosevelt to convene Congress immediately and decide upon plans which will bring the strike to a speedy termination.

Star Want ads pay at once.

## Lands For Sale!

To be sold at auction at Honolulu on Monday October 29, 1902, at 12 o'clock noon, unless previously disposed of.

All the right, title and interest of the Hamoa Plantation Company in and to the following lands which comprise the Company's undivided interests in Hul lands and other individual parcels situate in the District of Hana, Island of Maui:—

AT MAKAAALAE.			
Acres.	more or less in	R. P.	No.
1 75-100	more or less in	R. P.	3256
49 88-100	"	"	3612
14	"	"	3541
6	"	L. C. A. 4876-B	4990
8	"	R. P.	2954
16	"	"	4916
4 60-100	"	"	4939
6 95-100	"	"	2880
3 88-100	"	"	5328
24	"	"	2941

AT KAWALOA.			
Acres.	more or less in	R. P.	No.
1 15-100	more or less in	R. P.	2553

AT MUOLEA.			
Acres.	more or less in	R. P.	No.
3	more or less in	R. P.	4884
23	"	"	4388
1	"	L. C. A.	5181
6 65-100	"	"	5181-15

AT KAUUKUHALAHALA.			
Acres.	more or less in	R. P.	No.
4 17-100	more or less in	R. P.	2550
7 77-100	"	"	1909

AT POHAKANELE.			
Acres.	more or less in	R. P.	No.
19 25-100	more or less in	R. P.	2089
2 71-100	"	"	3114

AT KOALL.			
Acres.	more or less in	R. P.	No.
63	more or less in	R. P.	382

AT KAWAIPAPA.			
Acres.	more or less in	R. P.	No.
9-100	more or less in	R. P.	3227

AT POHAKUULA.			
Acres.	more or less in	R. P.	No.
3 59-100	more or less in	R. P.	4578

AT MOKAE.			
Acres.	more or less in	R. P.	No.
38 21-100	more or less in	R. P.	2821
7	"	"	3965
5 50-100	"	"	5399

AT PUKULUA.			
Acres.	more or less in	R. P.	No.
3 48-100	more or less in	R. P.	2834

AT KAPOHUE.			
Acres.	more or less in	R. P.	No.
31 12-100	more or less in	R. P.	2547

AT PUEOKAUIKI.			
Acres.	more or less in	R. P.	No.
4 59-100	more or less in	R. P.	4947

AT WAIKONUUI.			
Acres.	more or less in	R. P.	No.
10	more or less in	R. P.	3435

AT HAMOA.			
Acres.	more or less in	R. P.	No.
15 50-100	more or less in	R. P.	6923

AT HULIHANA.			
Acres.	more or less in	R. P.	No.
12 58-100	more or less in	R. P.	2532

AT KIHAPUHALA.			
Acres.	more or less in	R. P.	No.
26 10-100	more or less in	R. P.	2505
1 12-100	"	L. C. A.	5032

AT PAPAHAHAWAHA.			
Acres.	more or less in	R. P.	No.
16 25-100	more or less in	R. P.	1813

AT PUUIKI.			
Acres.	more or less in	R. P.	No.
13 50-100	more or less in	R. P.	1923

And in District of Kaupo, at WAI-A-HOLE 12 Acres more or less in R. P. No. 2674.

A total of 47 acres more or less for sale as a whole or in part.

Quit claim title given. Needs to be at the expense of the purchasers.

For further particulars apply to C. Brewer & Company, Agents of the Hamoa Plantation Company, Queen street, Honolulu.

Date: Honolulu, September 6, 1902.

## Sterling The Painter

HAS ADDED TO HIS PAINT SHOP A LARGE STOCK OF

## Wall Paper

Also an experienced Paper Hanger as salesman who will be pleased to give information about paper hanging and decorating. Competent Paper Hangers employed and always on hand.

REASONABLE PRICES.

Same Old Stand Union Street

### BY AUTHORITY

SHERIFF'S SALE NOTICE.

Under and by virtue of a certain Execution issued by Lyle A. Dickey, Second District Magistrate of Honolulu, Island of Oahu, Territory of Hawaii, on the 29th day of August, A. D. 1902, in the matter of Chu Suck Bau, doing business as Sam Kee, vs. Chang See, doing business as Hop Chan, I have, on this 30th day of August, A. D. 1902, levied upon, and shall expose for sale and sell at public auction, to the highest bidder, at the Police Station, Kalaikoa Hale, in said Honolulu, at 12 o'clock noon of Friday, the 3rd day of October, A. D. 1902, all the right, title and interest of said Chang See, doing business as Hop Chan, in and to the following described personal property, unless the judgment and cost of execution amounting to Eighty-one and 30/100 Dollars, interest, costs and my expenses are previously paid:

Goods, wares and merchandise consisting of canned goods, pickles, tables, chairs, stove, kitchen utensils, counter scale and weights, show case, lamp, etc., etc.

See inventory of said property at my office.

Honolulu, Oahu, CHAS. F. CHILLINGWORTH, Deputy Sheriff, Territory of Hawaii.

The Board of Registration for the Island of Oahu will meet at Honolulu Hale, next to the Post Office, in Honolulu, between the hours of seven and ten a. m. and five and eight p. m. each day except Sunday, beginning September 2nd, 1902, and continuing until further notice, for the purpose of examining applicants for registration as voters in the coming election and determining their eligibility.

LORRIN ANDREWS, Chairman.

M. A. GONSALVES, W. J. COELHO.

Twenty-five cents pays for a want ad in the Star.

## Honolulu Iron Works.

STEAM ENGINES, SUGAR MILLS BOILERS, COOLERS, IRON, BRASS AND LEAD CASTINGS.

Machinery of Every Description Made to order. Particular attention paid to Ship's Blacksmithing. Job Work Executed on Short Notice.

### M. PHILLIPS & CO.,

Wholesale Importers and Jobbers of AMERICAN AND EUROPEAN DRY GOODS

Corner of Fort and Queen Sts



HOT DAYS and warm nights, with their perspiration and heated blood, bring discomfort which quickly gives way to refreshing coolness after using Pacheco's Dandruff Killer.

This preparation not only cools but also cures dandruff, preventing inevitable baldness and that annoying irritation of the scalp.

PACHECO'S DANDRUFF KILLER Sold by all Druggists and at the Union Barber Shop. Telephone Main 232.

## SING HOP LEE,

FORT STREET CORNER VINEYARD.

## BUTCHER SHOP

FRESH ISLAND CORNED BEEF EVERY SATURDAY.

Island Beef, Pork, Mutton, Ham Sausages, Liver, Butter, Cheese, Groceries and Vegetables always on hand

Jas. F. Morgan.....President Cecil Brown.....Vice-President F. Hustace.....Secretary Chas. H. Atherton.....Auditor W. H. Hoogs.....Treas. and Mgr.

TELEPHONE MAIN 295.

## Hustace & Co., Ltd

QUEEN STREET

DEALERS IN

Firewood, Stove, Steam and Blacksmith

## Coal

WHOLESALE AND RETAIL

Special attention given to DRAYING

CO. WHITE AND BLACK SAND

OAHU RAILWAY AND LAND CO'S



### TIME TABLE

FROM AND AFTER JANUARY 1, 1901

#### TRAIN

STATIONS (Outward)	Daily		Daily	
	ex. Sun.	Dly	ex. Sun.	Dly
	A.M.	P.M.	A.M.	P.M.
Honolulu	7:10	8:15	11:45	3:15
Pearl City	8:05	9:10	12:40	4:10
Ewa Mill	8:55	10:00	1:30	5:00
Waianae	9:50	10:55	2:25	5:55
Waiawa	10:45	11:50	3:20	6:50
Kahuku	11:40	12:45	4:15	7:45

STATIONS (Inward)	Daily		Daily	
	ex. Sun.	Dly	ex. Sun.	Dly
	A.M.	P.M.	A.M.	P.M.
Kahuku	5:35	9:05	8:05	11:35
Waiawa	6:30	10:00	9:00	12:30
Waianae	7:25	10:55	9:55	1:25
Ewa Mill	8:20	11:50	10:50	2:20
Pearl City	9:15	12:45	11:45	3:15
Honolulu	10:10	1:40	12:40	4:10

G. P. DENISON, Superintendent. F. C. SMITH, Gen. Pass. & Ticket Agent

If you want to buy or sell anything, place a classified ad in the Star. Three lines three times for 25 cents.

## For the Preparation of Cooling Drinks.

- Pineapple, Strawberry, Raspberry, Blackberry, Blood Orange, Orange Phosphate Vanilla, Lime, Raspberry Shrub, Lime Juice Cordial, Lime Juice, Grenadine, Raspberry Vinegar, Champagne Cider, Grape Juice, (Concord and Catawba) Carbonated Russet Cider, Carbonated Crab, Apple Cider.

## LEWIS & CO., LTD.

THE CROCCERS.

1089 FORT STREET. TWO TELEPHONES—240.

## H. G. IRWIN & CO.

(Limited.)

...AGENTS FOR...

- Western Sugar Refining Company of San Francisco, Cal.
- Baldwin Locomotive Works of Philadelphia, Penn.
- Newell Universal Mill Company, (National Canine Shredder), New York, U. S. A.
- N. Ohlandt & Co.'s Chemical Fertilizers.
- High Grade Fertilizers for Cane and Coffee.
- Alex. Cross & Son's High Grade Fertilizers for Cane and Coffee.
- Reed's Steam Pipe Cars.

### Also Offer for Sale

- Paraffine Paint Co.'s P. & B. Paints and Papers.
- Lucol and Linseed Oils, raw and boiled.
- Indurine (a cold water paint) in white and colors.
- Filter Press Cloths, Cement, Lime and Brick.

## C. Q. Yee Hop & Co.

Kahikinui Meat Market And Grocery

Fruits and Vegetables

HERETANIA ST., COR. ALAK

Also at the

Fish Market, Stalls 19 and 20 Phone Blue 3511.

## You Should Have Had One Before Now . . . .

The greatest stride ever made in camera-making for the amateur is the production of the wonderful

## "Al Vista" Panoramic Camera

Call for descriptive and beautifully illustrated catalogue at

Honolulu Photo Supply Company, FORT STREET

# 25c DOES THE BUSINESS

A Three Line Advertisement (18 words) will be inserted in the STAR'S classified columns for 25 cents. Each additional line at the rate of 10c. extra.

ADVERTISEMENTS IN THE CLASSIFIED COLUMNS OF THE

# STAR

BRING QUICK AND SURE RESULTS.

If it is help wanted, or house for rent, or boarding, 25 cents covers the investment.

\$2750

WILL BUY YOU A HOME. SIZE OF LOT 50X110 FEET. COTTAGE IS NEW AND UP-TO-DATE.

Location, Makiki. TERMS, EASY.

L. C. ABLES, Real Estate Agent

TELEPHONE MAIN 139 P. O. BOX 243

Fire Insurance!

THE B. F. DILLINGHAM CO., LIMITED, General Agents for Hawaii.

Atlas Assurance Company of London, Phoenix Assurance Company of London, New York Underwriters Agency, Providence Washington Insurance Company, Phoenix Insurance Company of Brooklyn.

Albert Raas, Manager Insurance Department office Fourth Floor, Stangenwald building.

On hand the following plantation shares: Hawaiian Agricultural Co., Ewa, Oahu, Wai'alua, Kahuku, Pioneer Mill, Haiku, Paia, Koloa, McBryde, Hawaiian Sugar, Kekaha.

Harry Armitage, STOCK AND BOND BROKER

Member Honolulu Stock and Bond Exchange

Office, Campbell Block, Merchant Street Honolulu, T. H. Telephone Main, 101 P. O. Box 653.

HART & CO., LTD THE ELITE ICE CREAM PARLORS

Chocolates and Confections Ice Cream and Water Ices Bakery Lunch.

THE FINEST RESORT IN THE CITY

Before starting for the Volcano

Secure one Electric flash light. They are invaluable for exploring the hot caves, and examining volcanic formations, also warning earth cracks, fissures, for night trips across the lava to the crater



and are of great value to miners, hunters, plumbers (to look for Gas leaks), physicians (going through dark stairways in tenements), Oil men (in tanks where it is impossible to carry candles or lanterns for fear of explosion), Liquor dealers (in cellars where a match is dangerous), Useful for Watchmen, Policemen, Soldiers in the field, and for all purposes where a light is instantly.

Can be carried into a cellar full of leaking gas, into an oil tank, into Alcohol and Malt vats, or placed in a keg of Gunpowder without the slightest danger.

PEARSON & POTTER CO., LIMITED UNION AND HOTEL STS. Phone Main 317

NEW ADVERTISEMENTS.

Hawaiian Lodge Page 5 E. W. Jordan-Election Page 5 Notice (Dr. R. W. Anderson) Page 5 Notice to Candidates of Election Page 5 By Authority Page 5 Notice Page 5 Notice to Taxpayers Page 5 Registration Notice Page 5 Chamber of Commerce Page 5 Fourth District Com. Meeting Page 5 J. Hopp & Co. Page 2 Jas. F. Morgan Page 8 Insurance Card (Lansing) Page 5

NEWS IN A NUTSHELL

Paragraphs That Give Condensed News of the Day.

Dr. A. J. Derby has returned from Kauai.

Captain Hubbard, well known at this port, is dead.

For new and up-to-date furniture go to J. Hopp & Co.

Lai Sing Kee has sold his business to Sing Hing Kee.

The Ventura will sail at 4 p. m. today for San Francisco.

T. F. Lansing leaves for Hawaii today for a short vacation trip.

The Board of Health has a notice in regard to fishing in this issue.

Dr. R. W. Anderson has returned and will resume his practice at once.

Judge Kistee will adjourn court next Friday to the following Wednesday.

Special meeting of Hawaiian Lodge this evening. Work in Third Degree.

The list of officers of E. W. Jordan & Co. appears elsewhere in this issue.

The Territorial Central Committee of the Republican party will meet tonight.

Regular monthly meeting of the Chamber of Commerce, Wednesday, at 10 a. m.

This is Admission Day for the State of California. No celebration will be held in Honolulu.

Two steamships with four days later news will arrive tomorrow morning from San Francisco.

The Fourth District Committee will meet this evening in the rooms over Castle & Cooke, Ltd.

Property taxes are now due and will become delinquent and subject to penalty on November 15.

Morgan will hold a big curio sale at the Old Curiosity Shop on Hotel street on Thursday morning at 10.

The Phoenix Building and Loan Association now occupies the offices formerly used by Gear, Lansing and Co.

The temporary office of Theo. F. Lansing is located in the old quarters of the First National Bank, Campbell block.

The concert by the band this evening is in honor of the Congressional party. The concert will occur at the Hawaiian Hotel.

Rev. W. M. Paden, a prominent churchman of Salt Lake, Utah, leaves for home today, after a pleasant visit to Honolulu.

Candidates for election except those of Oahu, are requested to file their nominations one month prior to the general election.

The Board of Registration gives notice that it will meet at different places on Oahu and of Oahu between September 15 and 29, both inclusive.

If you want a good tonic and at the same time a delightfully refreshing beverage, order a case of Primo Lager from the Brewery, Telephone Main 541.

There will be a yacht owner's meeting of the Hawaii Yacht Club on Thursday, Sept. 11, 1902, at the office of P. L. Weaver, Jr., Merchant street, opposite the post office, at 5 o'clock. The principal subject discussed will be the re-classification of yachts.

The Phoenix Building and Loan Association of San Francisco has been in the local field but a short time. The proposition they have appeals so much to people who wish to save money, that the local agents of the company were compelled to secure larger and better quarters than could be obtained at their former location in the insurance department of Bishop and Company and now the offices of the company are located in the Judd Building on the ground floor.

Building Associations have helped more wage earners to own homes of their own than any other method devised. The Phoenix company has the reputation of being a solid concern and their terms are as liberal as good business policy will admit. Loans will be made right in Honolulu, thus saving any vexatious delays, as the question of loans is settled in this city without waiting to hear from the main office in San Francisco.

The business operations of the Phoenix Savings, Building and Loan Association have been confined to the safe investment of the deposits of savings made with it.

It presents a combination of a savings bank and a mortgage loan company, but with an element of security and safety not to be found in either class of corporations.

It does not accept large sums of money which it may be suddenly called to repay during times of financial stringency, but rather, deposits of small sums which are not subject to withdrawal until after one year.

Its investments are confined to loans upon real estate, and never to exceed one-half the value of the property, and those loans being repaid in monthly installments, the security rapidly becomes better, thus reducing possible chance of loss by reason of depreciation of value and the investments of the members are further protected by its reserve fund.

Clarence Grange secretary and managing director of the Association at San Francisco came down on the last Alameda and has perfected all arrangements for the company's future operations in the Islands. Robert Slaughter is the general agent, and R. Campbell is the cashier and in charge of the loan department.

Attention!

If you want good Groceries of all descriptions at reasonable prices, call at the Grocery Store of

L. F. STERNEMANN, Fort Street, opposite Club Stables, Telephone 511 Blue.

All Goods Delivered Free of Charge in Town.

BIG AUCTION FIRE SALE -OF- CURIOS.

ON THURSDAY, SEPT 11, AT 10 O'CLOCK A. M.

On the premises of the Old Curiosity Shop, Hotel street, near the corner of Fort street, I will sell at public auction all of the entire stock of rare and old Hawaiian and South Sea Island curios, some of which have been slightly damaged by fire and water.

Fine Koa calabashes, carved coconuts, Kona mats, hats, fans, canes, coral, shells, hula-hula dresses, baskets, tapas, clubs, spears, arrows, feather leis, beads, seeds, etc., etc.

JAS. F. MORGAN, AUCTIONEER.

Fresh Apples AT AUCTION

ON WEDNESDAY, SEPT 10, AT 12 O'CLOCK NOON.

On Wednesday, Sept. 10, at 12 o'clock noon, at my salesroom, 65 Queen street, I will sell at Public Auction 75 Boxes of Fresh Apples, just received per strmr. "Neveadan."

JAS. F. MORGAN, AUCTIONEER.

WOODEN BUILDINGS.

ON WEDNESDAY, SEPT 10, AT 12 O'CLOCK NOON.

On the premises, Beretania street just Ewa of the new Sachs building, I will sell at public auction, the main dwelling house, together with all of the outdoor buildings and the fruit and shade trees.

JAS. F. MORGAN, AUCTIONEER.

ADMINISTRATOR'S SALE.

ON WEDNESDAY, SEPT 10, AT 10 O'CLOCK A. M.

At my salesroom, 65 Queen street, I will sell at public auction by order of Mr. H. Armitage, administrator of the estate of F. Peroutka, deceased, a large Saratoga trunk and a valise, together with all of the balance of the wearing apparel and other effects.

JAS. F. MORGAN, AUCTIONEER.

Assignee's Sale.

ON WEDNESDAY, SEPT. 10, AT 10 O'CLOCK A. M.

At my salesroom, 65 Queen street, I will sell at public auction by order of Mr. A. Lewis Jr., assignee of For Chow doing business as Chu Hing Kee, all of the balance of the stock of goods consisting of khaki trousers, denim shirts, overalls, shirts, trimmings, duck trousers, cloth trousers, bolts of cloth, ladies' dress goods, chairs, store lamps irons, sewing machines, etc., etc.

JAS. F. MORGAN, AUCTIONEER.

AUCTION SALE OF A PIANO.

ON WEDNESDAY, SEPT 10 AT 10 O'CLOCK A. M.

At my salesroom, 65 Queen street, I will sell at public auction an upright piano in very good condition.

JAS. F. MORGAN, AUCTIONEER.

AUCTION SALE OF FURNITURE AND SUNDRIES

ON WEDNESDAY, SEPT. 10, AT 10 O'CLOCK A. M.

At my salesroom 65 Queen Street, I will sell at public auction, household furniture, consisting of oak beds, bureau, washstands, center tables, chairs rockers, couch, garden hose, sewing machines, large quantity, photograph mounts, new rugs, cigars, large quantity new and fresh soda crackers, blankets, comforters, cigarettes, crockery, hoes, breakfast food, pictures, groceries, graphophones, camera, two bolts ladies' new dress goods.

JAS. F. MORGAN, AUCTIONEER.

★ PING PONG SETS

We have just opened a new line of the most up to date sets.

16 VARIETIES TO SELECT FROM.

"INDIVIDUAL RACKETS" a fine Assortment.

PING BALLS PONG of the best make.

WALL, NICHOLS CO., LTD. (The Trade Supplied.)

THE Pleasure OF Drinking

IS NEVER APPRECIATED QUITE SO MUCH ON A HOT DAY BEFORE OUR SODA FOUNTAIN. THEN AND THERE, IT IS A JOY NOT TO BE DENIED. OUR SODA WATER IS VERY POPULAR, AND STEADILY GAINING IN POPULARITY BECAUSE IT REPRESENTS A RARE COMBINATION OF CHOICE MATERIALS, PERFECT EQUIPMENT AND EXPERT SKILL IN PREPARING, MIXING AND SERVING. THAT IS A GOOD DEAL TO SAY IN ONE BREATH, BUT COME AND TASTE THE SODA DRINKS. ALL FLAVORS, AND SEE FOR YOURSELF HOW GOOD THEY ARE.

Hobron Drug Co., Ehlers' Block Fort Street, Honolulu.

THE MERITS OF Primo Lager

HAVE STOOD THE TEST. THOSE THAT DRINK IT SAY IT IS ABSOLUTELY PURE.

Kept on Ice

FOR THE CONVENIENCE OF CUSTOMERS BY

CAMARA & CO.,

S. E. Corner Queen and Alaeka Streets.

DEALERS IN WINES, BEERS AND LIQUORS.

P. O. Box 644. Telephone Blue 492.

\$2.00 A DOZEN QUARTS.

DELIVERED TO ALL PARTS OF THE CITY.

CHIN KEE,

Liliha Street near King.

CARRIAGE AND SIGN PAINTER, TRIMMING AND REPAIRING.

FIRST CLASS WORK A SPECIALTY.

CONSOLIDATED SODA WATER WORKS (COMPANY, LTD.)

Esplanade, cor. Allen and Fort Sts.

Manufacturers of Soda Water, Ginger Ale, Saraparilla, Root Beer, Cream Soda, Strawberry, Etc., Etc.

Whitney & Marsh,

Just Open

Ladies' Washable Skirts

MADE OF

PIQUE, DUCK AND LINEN

The Tailoring Much Better Than Any We Have Heretofore Been Able to Secure

Whitney & Marsh, Ltd

SPECIAL SALE OF HATS, SHIRTWAISTS AND COLLARS COMMENCING, MONDAY, AUGUST 18

A choice line of trimmed hats at \$1.50, \$2 and \$3. Untrimmed shapes and Sailor Hats at 25 and 50 cents. Flowers, all kinds, 10 and 15 cents bunch. Trojan brand shirtwaist now 50 cents, all sizes, all colors. Former price \$1.50 and \$2.00. Linen Collars. Linen Collars. All sizes and styles, 4 for 25c. Regularly 15 cents each.

Montano's Store HOTEL STREET, ARLINGTON BLOCK.

REDUCTION SALE ALEXANDER & BALDWIN, LTD.

Japanese Kimonos

TEA SETS, ETC.

American Goods and Curios at

M. CHIYA

Telephone 3311 White. Corner of Nuuanu and Hotel Streets.

NEW GOODS RECEIVED BY EVERY STEAMER FROM JAPAN

HAWAIIAN CONSTRUCTION AND ENGINEERING COMPANY

ROOMS 508-510, STANGENWALD BUILDING.

Engineers and Contractors

P. O. BOX 537, PHONE MAIN 59.

IN GOOD COMPANY Many dollars are turned away annually by The Star in rejecting offensive and improper advertisements offered for insertion in its columns. This is a cogent reason why The Star's advertising columns are so generally used and so widely read.