

# EVENING BULLETIN

Register Your Votes for Your Favorite!

ONE VOTE FOR  
Capt.  
THE MOST POPULAR CAPTAIN OF THE ISLAND FLEET.

VOL. VIII. No. 1445

HONOLULU, H. I., FRIDAY, FEBRUARY 2 1900

PRICE 5 CENTS.

## HILO SCORES ONE SCARE

Illness of a Portuguese That Proved to Be Not Serious.

Everything Running Smoothly—Awaiting Outcome of Delegate Loebenstein's Work—Beckley Comes in for Some Criticism.

(Special to the Bulletin.)

Hilo, Jan. 28.—Health matters have been running smoothly here for a week under the guidance of the Board of Health for Hawaii selected during Minister Cooper's visit. The "scavenger committee" has continued work and most of the places in Chinatown and Japtown have been whitewashed and placed in sanitary condition.

Representative Loebenstein has gone to Honolulu to confer with the Board of Health as to what should and what should not come to Hilo but as the situation there according to our last advice, is unchanged, except for the worse, it is not probable he will come back with any more knowledge of the subject than he carried away with him. The death of Mrs. Boardman caused some excitement here and is deeply regretted by those who were acquainted with her. That death more than anything else, perhaps, was deemed sufficient excuse for one of the leading business men to call a meeting of merchants at the engine house this morning, but it was sparsely attended.

The consensus of opinion was that the island of Hawaii should not be open to receive anything from Honolulu while the plague continues there. Many of the men do not want the mails to come and they especially object to freight of any character. Several merchants spoke and the tenor of their remarks indicated a lack of confidence in Beckley of the Kinau and anything in which he is in anyway interested. They admire the course taken by the officers and men on the Noenu but deprecate the actions and persistency of Beckley.

Yesterday a Portuguese employed in one of the large retail houses here was taken suddenly ill with pains in his groin and he developed a high fever. He was at once sent home and a physician sent for, but owing to a misunderstanding did not see the patient. The man's family sent for a Japanese doctor who reported the case as suspicious at the Sheriff's office. Doctors Grace and Moore were sent for and they pronounced the case not plague, but said they would give a final answer in twenty-four hours, which expires tonight. We do not believe it is plague.

At a meeting of the Board of Health held last night it was resolved to suspend all operations of a sanitary nature as a body until it was learned whether the members were to receive authority for their acts as a Board of Health. Dr. Russell remarked that the position of a member of the local Board was very much the same as the man who received instructions to do some sort of labor which required the use of his arms, but as he was a paralytic he could do nothing. The Board has received information that unauthorized freight and mail is being landed at other ports of the island and as they have no authority to stop it they decided to suspend work and wait developments. This throws this island open to receive any old thing your people want to send up.

In the merchants' meeting today Sheriff Andrews was endorsed by those present. In spite of anything the Honolulu papers may say the people here have confidence in him and will stand by him. Andrews says he will obey the orders of his superiors in Honolulu so long as he is Sheriff and when he does not do so it will be as a private citizen. Certain it is that at one of the early meetings held here he kept the obstreperous one in control. He has not been led by Mr. Wilson or anyone who is excitable during a crisis; Andrews did not lose his head for a moment.

The custom of sending foreign invoices to Hilo by way of Honolulu is causing some inconvenience to the importers, as the mails not arriving prevents their entering their goods.

The Courtney Ford and the Amy Taylor sailed this morning for San Francisco the former carrying a full load of sugar.

The Aztec may load her mules tomorrow for her trip to Manila. The stock was in poor condition when shipped. Captain Gale in an interview published in the Hawaii Herald states that the animals were green when shipped and that after a seven day storm in San Francisco they left with the germs of pneumonia in their systems. There were eleven dead before reaching here, another died as soon as landed and three have since died. The captain speaks favorably of transports coming here and says a coal pile is not needed.

The Roderick Dhu will sail for the Coast about February 10. Launch Lurline (Matson & Co.) founded here last Friday.

WEDDING STATIONERY, Engraved Cards, Embossing. H. F. WICHMAN.

## QUANTITY OF ANTITOXIN

Received From Pasteur Institute by Moana Yesterday.

Bad of Health Also Receives a Lot of Hoffkine Prophylactic From Washington—Fluids Sent to Cold Storage.

The Board of Health received by the Moana yesterday 100 bottles of antitoxin from the Pasteur Institute in Paris and a large quantity of what is known as the Hoffkine Prophylactic from Washington. The former is, of course, for use on plague patients, but according to the present outlook, there is not much chance of its being used for the people at the pest house as all getting better and no new cases are appearing. The prophylactic is for use on people who have been exposed to the plague. The following instructions for use of the fluid accompanied the shipment:

This fluid is purely prophylactic in character; is in no sense curative and should not be confounded with Antipest Serum.

It should not be used on those already exposed to the infection of plague, but its employment should be limited to the immunization of persons or communities threatened with the disease.

The prophylactic is a toxin and should be used on individual treated with it contract the disease prior to the production of its antitoxic effects he would probably succumb. In a week or ten days after its use this antitoxic effect is produced and renders him immune to the disease. The immunity thus conferred lasts an undetermined time, probably several months and may be increased by a second or third treatment. The inoculation is followed by a reaction.

The fluid should be injected hypodermatically into the loose connective tissue of the back, arm or other convenient regions and with the usual precautions employed in such operations as sterilizing the area by some antiseptic solution and by boiling the syringe.

In view of the importance of the subject the Marine Hospital Service requests that you report the effect of the prophylactic to the Director of the Hygienic Laboratory of the U. S. Marine Hospital Service, Washington, D. C.

Some of the antitoxin and prophylactic has been retained in the ice box of the Board of Health laboratory, but the most of it has been sent to the cold storage department of the Hawaiian Electric Co. as it is necessary to keep the fluids at a temperature of about 40 degrees F.

## DIVING AT THE WRECK.

Yesterday the divers of the marine railway were operating at the wreck of the barkentine William Carson. John, the native diver, went down and inserted the air hose in the vessel. This was to test the lifting power the apparatus on the vessel. There proved to be too free an escape of air for any practical effect. The air came up through the water in bubbling volume. Alex. Lyle afterward descended and closed a cabin light that was supposed to be the principal vent for letting out the air. He made a visual examination of the hull, finding it seemingly all right with the exception of the damage from the collision. The water was sixty feet deep from the forward rail. So clear was the water that the diver could not only see his hose and lines all the way to the top, but could plainly discern the workmen on the stage at the surface and tell what they were doing.

## NOW DOYLE'S WORKING.

Chester Doyle has the disinfecting and fumigating plant at the drill shed camp in full blast today. He began bathing his Japanese wards at 9 o'clock and by 12 had put fully three-fourths of them through the operation. Behind a board screen are tubs of hot water diluted with carbolic acid wherein the people are required to wash themselves. Then Mr. Doyle, perched on the angle of the screen, gives them a good douching of cold water from a garden hose. After each batch of, say, ten bathers the acidulated water in the tubs is changed. As the people leave the bathing place they go to the fumigating shed, where they receive clean and fumigated clothing to replace the garments they had put off.

## Charged With Vagrancy.

H. Kawamahi was arrested yesterday on the charge of violation of section 370 of the Penal Laws, relating to vagrancy. It is alleged that Kawamahi was found in the Arlington billiard parlors, Hotel street, after that place was closed last evening. The case has been set for the 6th inst.

The Board of Agriculture is meeting this afternoon.

## HARTWELL IS IGNORED.

(Special Correspondence to the Bulletin.)

Washington, Jan. 20.—The statement published by the Bulletin that A. S. Hartwell, special agent of President Dole was properly called down, at a dinner given by him, for remarks concerning annexation, is a statement of fact your local official people to the contrary notwithstanding. Prince David, who is likely to be in Honolulu soon, can confirm the statement and give additional incidents in connection with Hartwell's discomfiture.

Hartwell made a big mistake in coming to Washington and now he is fully aware of it. He may be a General and a self important man in Honolulu, but he is far from it in Washington. Hartwell is ignored here. He feels it and on more than one occasion has said that he wants to go home. He has said that had he known how he would be received in Washington he would not have come and actually cried over it one night after dinner when he was feeling particularly dubious.

When Col. Parker returned to Washington after his western trip he was invited to a reception at the White House. Hartwell and W. O. Smith were ignored as they

have been at all social functions. Congressman Hitt has told Col. Parker and Prince David that it was a mistake for Hartwell to come here. Congressmen knew why he came and would not be influenced by him. Parker repeated this conversation to Hartwell who wanted to know if it could be true. He wanted to leave then and there saying that the statement that private matters demanding attention would be a good excuse.

The influential men of Washington know Hartwell is working for Mr. Dole's personal interests. He has stated to Parker and Prince David that he came here to work for Dole. Members of Congress know how to take him. They consider it an outrage that Hartwell should be paid from public funds to work for a candidate whom the people have not apparent necessity for.

Congressmen suggested that the people of the Islands should bring an injunction against the Dole government to prevent Mr. Hartwell from receiving public funds when his mission is merely one of personal campaign for President Dole.

## KAUAI NEWS NOTES.

The steamer Keauhou came in from Kilauea this morning with a load of sugar consigned to various parties. Purser Clapham kindly furnished the Bulletin with the following notes of the doings on Kauai:

"There was a great excitement at Makaweli Wednesday. A large whale, 45 feet in length, got in too far and was stranded. Frightened by the contact with the sand the whale thrashed about until it became blinded by the sand and, instead of making any headway out to sea, it worked in closer to shore. The fishermen for miles around were soon on the scene and soon made an end of the whale. Hundreds of people went to the beach to get a view of the monster. Among these were the children from the schools near by.

"The Kinau did very quick work at loading sugar in Makaweli. According to Captain Freeman she was to sail today for San Francisco with a full load.

"There were 147,500 bags of sugar on Kauai when the Keauhou sailed last evening.

"The James Makee and Waialeale put a load of sugar each into the Robert Lewers on Wednesday last. Captain Goodman stated yesterday that he had 17,000 bags of sugar aboard and that he would be able to sail for San Francisco early next week.

"The Niihau was at Koloa when we left yesterday. She will take a cargo of sugar at Kilauea.

"The weather on Kauai has been fine for several days."

The Keauhou brought five or six good sized boxes of clothes from Mrs. Ewart of Kilauea. They are addressed to the Hawaiian Relief Society in care of Miss McIntyre and are sent to relieve the wants of the people made homeless by the fire in Chinatown. Ladies from all over Kauai and those of Kilauea in particular assisted in making the clothes.

## Pilikia on the Hill.

The W. G. Hall sailed for Kauai ports yesterday with a half load of freight and a half crew. Previous to departure yesterday half the native sailors walked ashore with their bundles, refusing to be confined aboard any longer. This of course will make it very hard for the Hall and she will not be back until next Wednesday or Thursday.

## Will Go Into Quarantine.

The steamer Mikahala will go into quarantine outside late this afternoon on account of having been taken on the marine railway for repairs. Captain Pedersen will be accompanied by his wife. The Mikahala will very likely resume her trips to Kauai.

## Flea Bite and Plague.

Sydney, N. S. W., Jan. 25.—A wharf laborer has been stricken with the bubonic plague, and the attending doctors are of the opinion that he was inoculated with the disease through the bite of a flea.

## TO CURE A COLD IN ONE DAY

Take Laxative Bromo Quinine Tablets. All druggists refund the money if it fails to cure. W. Grove's signature is on each box. 25 cents.

DON'T PASS OUR OPERA GLASSES for the World. They're made by Le Maire. "Nuff said." H. F. WICHMAN

## THE CRIMINAL CALENDAR.

Clerk Henry Smith has completed the criminal calendar for the February term with the following 28 cases in addition to those previously published:

Foreign Jury—Lau Wai Guck and Kim Soon, assault with weapon; Chun Tai, larceny 1st degree; Isadore Issabert, violating section 100 penal laws 1897; C. H. Mann, larceny 2d degree; Wing Wo Tai, Chuck Tong, manager, violating section 1507 penal laws; Wing Wo Chan, Kat Poo, manager, same as last; Shisaku Doniski, larceny 2d degree; Millie Lancaster, assault and battery; Ah Nee, larceny 2d degree; Jock Maguire, perjury; Geo. Cavanaugh, perjury; J. Banavitz, manslaughter 1st degree for shooting a Portuguese boy; O. Herrick, larceny, second degree; O. Lewis and F. Turk, violating shipping license law; John Sylva, larceny 2d degree; W. H. Palm, common nuisance for laying street railway track against government orders; Lo Kam, vagrancy; Geo. Piggott, burglary; Mow Kong, violating section 3B, Act 34, laws 1898; Ah Hang, larceny 2d degree.

Hawaiian Jury—Makau, larceny 2d degree; Komohilli, larceny 1st degree; Geo. Houghtaling, selling liquor without license; Keawe, distilling liquor; Lelaioha, assault and battery; Joe Kaula, perjury; Geo. Houghtaling, perjury.

## MORE WRETCHED VANDALISM.

The offer of a reward of \$25, by the Minister of the Interior, for the arrest of anyone concerned in the recent uprooting of cocoanut plants along the Beach boulevard has failed even to prevent more of the disgraceful vandalism. There is on view in the Agricultural office a cocoanut seedling chopped off close to the ground, together with the seed itself broken open as if the guilty scamp had been seeking the milk in the cocoanut. As the seedlings had been coming on beautifully, this dastardly sort of thing is very discouraging to Commissioner Haugs and Secretary Wray Taylor, who took pains with the planting and then the tending of the growths.

## Extreme Cruelty.

The man in charge of the large pasture near the Kalihi detention camp complained to Deputy Marshal Chillingworth that a Hawaiian lad had killed a colt at his place yesterday by tying the poor animal to a tree and then lashing it until the poor thing fell exhausted in its efforts to get away. It seems that the boy has been in the habit of lassoing horses in the pasture and riding them about without the consent of the owners. The colt he lassoed yesterday was choked so badly that it fell on a rock and was killed. The boy will be arrested. People of the locality from which he hails are anxious that he be put into the reform school.

## Custom House Inspectors.

Geo. W. Klester, M. J. Scanlon and E. A. Jacobsen are the three district inspectors for February. Mr. Scanlon is the boarding officer, while Messrs. Klester and Jacobsen will alternate on the night watch. The discharging inspectors are as follows: J. P. Howait, H. Kruger, L. Gay, E. C. Miller, R. Henderson, C. K. Spencer, Dan Vida and R. J. Taylor.

## Death at Kawaiahao.

Elizabeth Nabale, aged 10 years, died at Kawaiahao Seminary this morning. The patient was attended by Dr. Miner. As the cause of death was said to be pneumonia a post mortem was held at the undertaking parlors to which the body was taken. There were no suspicious symptoms.

## ANOTHER DAY OF PROMISE

Last Night's Death Carefully Investigated By Physicians.

Work of Fumigating Going On at All the Detention Camps Tearing Down More of the Chinatown Shacks.

2 P. M.—No cases today.

Wong Chin, male Chinese, aged 23, died at the pest house of the Chinese hospital yesterday afternoon. A post mortem was held and the body cremated, although positively no signs of plague were found. Slides were made, but examination by both Drs. Wood and Garvin did not show a single bacillus. Five culture tubes have been treated with matter from the spleen and, if these give no plague bacilli, there will, of course, be no doubt whatever. Pneumonia of a type that closely resembles that found in plague cases, was clearly demonstrated.

Wong Chin was taken sick at the Pantheon stables Sunday. He was told to go home but, having no place to go to, went to the same house on Wylie street that his friend Quon Fat Man went to and died. He must have slept out under the bushes for there was a guard on the house. Monday he went to the Chinese hospital. There were no suspicious symptoms until yesterday when he succumbed suddenly. As the Chinaman had been associated with Quon Fat Man it was deemed best to cremate the body. This is a summary of the statement made by Dr. Wood today.

## Waikamilo Camp.

Superintendent Wilson and his men have finished their work at the camp. Two thousand people have been bathed, their clothes fumigated, their apartment at Camp Jones for the emigrated. There are in all 5,600 people at the camp so that not half the number has been attended to so far.

There is not very much sickness in the camp. Four nurses are now on duty in the hospitals. The guard house has been completed and some people are already thinking over their sins in its cells. None of these are from the detention camp.

## Y. M. C. A. at Camp Jones.

The Y. M. C. A. has organized a de-Entertainment will be arranged every day by the N. G. H. Col. Jones has very generously offered his cooperation in the work. The large tent used in the New York Volunteer camp was sent out this morning with papers and magazines and a number of books from the library to be circulated. An organ was sent to be used in song services. Entertainment will be arranged every evening, talent from the city and in the camp having volunteered to take part. Westervell will give a stereopticon entertainment Saturday night.

## In Chinatown.

A corps of men are busy today tearing down the sheds and lean-to back of the buildings in the block bounded by King, Nuuanu, Hotel and Smith streets and those back of the Wing Wo Chan and Wing Wo Tai buildings. The work is being very thoroughly done. Houses disinfected and have been segregated in Fowler's yard condemned yesterday by the Board of Health. These will be burned by the fire department tomorrow.

## Dr. Garvin.

Some time ago Dr. Garvin was detailed by the Board of Health for duty at the Kalihi camp. It has been found that the work at the camp is so arduous that the men out there cannot possibly do it all. Dr. Garvin will go out today or tomorrow and, it is probable, Dr. Davis, now at Kalihi, will be as the furniture and valuable house furniture Hoffman's absence on Tantalus Dr. Garvin is attending to the work at the pest house.

## Fumigated Household Goods.

Prof. Ingalls went to the Boardman premises with his corps of assistants this morning and there fumigated the recently erected shed in which some of the Appraisers are also busy with the nishings had been placed previous to setting fire to the house in which Mrs. Boardman lived. Some of his men are at work in the Wing Wo Tai and Wing Wo Chan buildings on Nuuanu street.

## Death at Kawaiahao.

Elizabeth Nabale, aged 10 years, died at Kawaiahao Seminary this morning. The patient was attended by Dr. Miner. As the cause of death was said to be pneumonia a post mortem was held at the undertaking parlors to which the body was taken. There were no suspicious symptoms.

## The 1895 Claims Are

Ordered for Settlement

President Dole informed the members of the press today that the Minister of Foreign Affairs had received a communication from the United States Government, through Mr. Sewall, Special Agent, in regard to the British, Portuguese and Danish claims. It intimated that those claims, which arose out of the suppression of the insurrection of 1895, have been referred to the Hawaiian Government "for investigation, determination and payment."

## RUSHING WORK ON WHARF

Cotton Brothers & Co. are not letting barnacles grow on their contract for building the wharf and warehouse out the channel. They had no sooner delivered the plans and specifications to the Government on Monday morning than they began looking up material for construction. It was a foregone conclusion that, if the work was to be done in time to be of greatest service, this firm alone could figure on the job.

The assembling of the material is progressing. This morning the contractors were staking out the site. It will be seen from the Cabinet meeting proceedings that Commander Merry has deferred to the Government's views regarding location. Mr. Rowell, Superintendent of Public Works, is having trestles put up to carry the pipes for the dredging.

Eighty feet of the width of construction will be warehouse and the remaining forty feet wharf, the length being 400 feet. There will be nine openings in the warehouse front, the doors to have patent hinges.

## FIRE LOSSES DISCOUNTED

Minister Young reported to the Executive Council this morning that Commander Merry had agreed to the desired change of location of the channel-side wharf, which will place the end of it 110 feet away from the Henlani boat-house.

Minister Young also reported on the communication of the Board of Health, recommending an appropriation of \$2,500 for reimbursing firemen for the loss of effects in recent fires. He had been informed by Commissioner Andrew Brown that the firemen's losses would amount to but a very small portion of \$2,500. The Minister was directed by the Council to ascertain the actual losses. Any question of extra pay must be referred to the Legislature.

Through the Minister of the Interior, a copyright was granted to Thos. G. Thrum for his Annual for 1900.

## Board Dissolved Into Splinters.

A late note from Hilo says: "The situation is easy here now as we see by the papers you folks are determined to keep up the quarantine. Our 'Board of Health for Hawaii' disbanded last Saturday evening. Mails had been landed on the other side of the island, contrary to orders of the Board. The Sheriff came on the scene and stated, in answer to queries, that he owed allegiance to the Honolulu Board of Health and the Attorney General first, so the Board for Hawaii nel thought there was little use passing motions and resolving things without an executive and quietly, on the top of a motion and dissolved itself into its usual number of splinters and went to its beguiling several vocations. It dreams untroubled by plaguey speculations."

The Evening Bulletin, 75 cents per month.

Just received the very thing to gladden the hearts of the ladies.

The most acceptable Xmas gift your wives, sisters or daughters—a pair of our BEADED STRAP SLIPPERS



These are included in the 7000 pairs of shoes just opened ex S. S. Australia and hold premier place for beauty.

The Manufacturers' Shoe Co

### HENRY R. WORTHINGTON,

(INCORPORATED).

Engineers and Builders of High Duty Pumping Engines for Water Works and Irrigation.

THE SPECIAL ATTENTION OF PLANTATION MANAGERS AND AGENTS is called to the fact that we carry in stock at our Queen street warehouse a large assortment of pumps for all kinds of sugar house service, including vacuum pumps, air pumps, condensers, feed pumps, juice pumps, molasses pumps, etc., together with a complete stock of spare parts and valves for all sizes. Careful attention given all orders, and prompt shipment guaranteed. Estimates furnished for complete irrigation pumping plants of any capacity or size.

Office: Cor. Fort & Queen Sts., Honolulu, H. I.  
Warehouse: Cor. Queen & Cook Sts. Telephone 506.

### RISDON IRON WORKS,

San Francisco, California.

ENGINEERS AND BUILDERS.

High Duty Pumping Machinery,

Helix Boilers, Plain Tubular Boilers, Corliss Engines, Cane Cars, Vacuum Pans, and all machinery for the complete equipment of Sugar Mills.

Office: Progress Block,

FORT AND BERETANIA STREETS. HONOLULU, H. I.

#### Paternal Directory.

**HARMONY LODGE No. 3,**  
I. O. O. F.,  
Meets every Monday evening at 7:30, in Harmony Hall, King street.  
J. D. McVEIGH, N. G.  
E. R. HENDRY, Secretary.  
All visiting brothers very cordially invited.

**MYSTIC LODGE No. 2, K. of P.,**  
Meets every Wednesday evening at 8:30 o'clock, Castle Hall, Fort street. Visiting brothers cordially invited to attend.  
S. J. SALTER, C. C.  
A. E. MURPHY, K. R. S.

**MONOLULU CHAPTER No. 1,**  
R. A. M.,  
Meets every third Thursday evening in Masonic Temple. All visiting companions cordially invited.  
A. F. GILFILLAN, H. P.  
J. D. TUCKER, Secretary.

**HONOLULU COMMANDERY**  
No. 1, K. T.,  
Meets in Masonic Temple on the second Thursday evening of each month. All visiting Sir Knights courteously invited.  
HENRY E. COOPER, E. C.  
J. D. TUCKER, Recorder.

**OAHU LODGE No. 1, K. of P.,**  
Meets every Thursday evening at their Castle Hall, 420 1/2 Fort street, at 8:00. Members of Mystic Lodge No. 2, and visiting brothers, cordially invited.  
A. N. SINCLAIR, C. C.  
M. ROSENBLIEDT, K. of R. and S.

**NUUANU CHAPTER ROSE CROIX,**  
No. 1, A. & A. S. R.,  
Meets the first Thursday in each month, at Masonic Temple. Sojourning and visiting brothers cordially invited to attend all meetings.

**W. M. FRANK B. AUERBACH,**  
ALLAN B. SCRIMGEOUR, Secretary.

**LODGE LE PROGRES DE L'OCEANIE,**  
No. 124, A. & A. S. Rite.  
Stated meetings on the last Monday of each month, in its hall, Masonic Temple.

**C. M. WHITE, W. M.**  
E. B. FRIEL, Secretary.

**GEO. W. DeLONG POST No.**  
45, G. A. R.,  
Department of California and Nevada. Meets at Harmony Hall, King street, first Thursday evening of every month. Sojourning comrades are cordially invited to attend.

**W. L. EATON, P. G.**  
JAS. T. COPELAND, Adjt.

**HAWAIIAN LODGE No. 21,**  
F. AND A. M.,  
Stated meetings, first Monday each month. Special meetings, when called (will be noted in this space).

**Members Lodge Le Progres, Pacific Lodge, and all sojourning brethren cordially invited.**  
ED. I. SPALDING, W. M.  
E. R. G. WALLACE, Secretary.

**ENSIGN WORTH BAGLEY GARRISON,**  
No. 171,  
Regular Army and Navy Union of the United States of America, meets at Harmony Hall, King street, every second and fourth Friday in each month at 7:30 p. m. Visiting comrades are cordially invited.

**All honorably discharged soldiers or sailors, either regulars or volunteers, are eligible for membership.**  
E. J. WILSON, Commander.

**J. E. SHEAHAN, Adjutant.**

**THE WAVERLY CLUB.**  
Waverly Block, Bethel street. Standard magazines and periodicals; library; billiard, pool and card tables for free use of members. Arrangements for transient visitors. Entrance fee \$1.25, monthly dues \$1. Open from 9 a. m. to 11 p. m.

**A. V. GEAR, President.**  
JAMES T. COPELAND, Recording Sec.  
ALLEN B. SCRIMGEOUR, Fin. Sec'y

**The Mercantile Printing Co.**  
FINE JOB PRINTING.

119 King St.  
CHURCH AND SOCIETY WORK.

The Evening Bulletin, 75 cents per month.

#### LOCAL AND GENERAL.

Oahu mill reports grinding 170 tons daily.

Geod. E. Boardman is the guest of Judge Whiting in Hassinger street.

Miss Louise Boardman is the guest of Mrs. D. Logan in Magazine street.

All kinds of carriage painting by up-to-date painters at the Stocky shop.

Ring up 191 when you want a reliable driver, a good hack and no over charging.

Horses and rigs may be kept now at Walkiki now in the stables at Long Branch.

Fred. B. Oat is staying at the home of his brother, Postmaster General J. Mort Oat.

Waikiki Inn took a sulphur bath this week and every nook and corner cleaned out. One room to rent, \$12 per week.

The people of Waiwala have donated over \$700 in aid of the sufferers by the plague and fire. All nationalities contributed.

Captain Campbell has been appointed a special agent along the water front to regulate shipping matters during the quarantine period.

In the absence of Dr. Day aboard the China the other day, George W. Smith signed a permit to allow A. B. Loebenstein to go aboard the Kilauca Hou.

Hon. Sam. Parker will return in the Doric due on the 8th inst. He delayed his departure to attend to the shipment of horses and cattle from San Francisco.

The Le Munyon Photo Supply Co. will receive on the Australia the largest line of moulding that ever came to Honolulu, also the latest machinery to make up same into frames.

Wm. Kenake, brother of Louis T. Kenake of the postoffice, returned from San Francisco in the Moana yesterday after quite a stay on the Coast. He says that it is extremely cold up there and is glad to get back.

Mr. and Mrs. W. P. Vanderlip, the latter better known here as Elsie Adair will pass through here in the near future. Mr. Vanderlip intends going back to the mines in Siberia where he has already done very well. His wife will accompany him as far as Japan.

"The Hawaiian Scenic Calendar" for 1900, published only by the Golden Rule Bazaar, 316 Fort street, is a beautiful work of art. It eclipses all previous efforts in this line, and nothing would be more appropriate at this time than to mail one of these to the "folks at home." Price 50 cents.

Mr. Yim Quon, President of the United Chinese Society, has thankfully received a draft for \$100 from Rev. Hans Isenberg and wife, of Lihue, Kauai; also \$10 from Miss Lulu Grau, of the same place, being donated by them to be used in assisting the poor Chinese who have suffered from the late fire.

The Circuit Court term must formally open at the appointed time by law. It could only have been postponed by timely publication of an order which has not been done. At the same time, if the health situation require, the presiding judge may adjourn court from day to day without doing business.

As A. B. Loebenstein was about to leave for Hilo in the Kilauca Hou the other day, he shouted: "This little business of causing me unnecessary trouble while in your port will give me a lot of votes in Hilo when I need them. I am amused at the attempt on the part of certain irresponsible persons to do me up."

If you are fond of pictures, drop in and look over the fresh lot of Copley Prints, Carbons, and London Prints, covering over fifty subjects of the very latest publications.

KING BROS.,  
110 Hotel street.



**CHAS. D. WALKER,**  
Designer and Builder of High-Grade Yachts, Boats and Launches!  
Works, 692 KING ST.  
P. O. Box 613. Telephone 760.

#### Won't Fight the Trust.

New York, Jan. 22.—Officials of the Independent Sugar Refining Companies repeat that there is nothing to say in respect to the report that they have been in conference with a view to perfecting an organization to fight the American Sugar Refining Company. James B. Post of B. H. Howell, Son & Co., representing the Mollenhauer and National Companies, characterized as "for stock jobbing purposes" a report that a settlement of the sugar war was in sight.

"You may say emphatically," Mr. Post said, "that there is nothing in the report. There is no settlement of the war, nor can we see when there will be any. Those people who argue because of the recent advances in refined sugar prices that these signify a settlement do not know what they are talking about. The advance in raw sugar was responsible for the advance in refined—that and nothing else."



#### Henry Waterhouse & Co.

AGENTS FOR

German American Ins. Co.,  
Of New York, and

Union Assurance Co.,  
Of London.

MEMBERS HONOLULU STOCK EXCHANGE.

—Wernicke Book Cases, —  
—AND—

The Globe Company's Desks,  
Filing Cases and office novelties,  
Secured at lowest prices.

OFFICE FURNITURE JUST ARRIVED.

Telephone, 313, Queen street.

#### PARQUETRY,

.....THE.....

#### Sanitary Flooring,

Harbors no germs. It is the only floor suitable for residences, and its cleanliness and moderate cost recommend it to all householders.

Plans and estimates cheerfully furnished upon application to

#### Lewers & Cooke,

—Sole Agents for—

Johnson's Celebrated Parquetry,  
Johnson's Floor Wax,  
Johnson's Floor Brushes,  
Johnson's Restorer,  
Johnson's Solvent.

## BASEBALL TRACT

Bounded by Keeaumoku, Kinau, Piikoi and Lunallo streets; only one block from the Beretania street car line.

This tract is situated in one of the finest residential portions of Honolulu, and in a direct line with the cooling breezes of Makiki.

Lots 50 x 90 feet will be sold for the reasonable price of \$1,250. Terms, \$250 cash, balance on installments, payments to suit purchaser.

This land has a very gentle slope, and purchasers can immediately commence building operations. Early purchasers can secure choice locations.

For further particulars apply to

GEAR, LANSING & CO.,  
Judd Building.

#### HONOLULU COFFEE MILLS

Headquarters

— FOR —

#### PURE HAWAIIAN COFFEES,

Green or Roasted

Large stock of Coffees from the Kona, Hamakua, Oiaa Districts always on hand. Old Coffees a speciality.

H. HACKFELD & CO., LTD.  
Proprietors.

## APPLES!

75c. Box

## Salter's Grocery

Telephone 680. Orpheum Block.

#### HENRY MAY & CO., Ltd.

Wholesale and Retail Grocers. . . .

2—Big Stores—2

The Waterhouse Store, The McIntyre Store,  
Bethel street. Telephone 24. Cor. King and Fort streets. Telephone 21.

#### Just Received:

Cape Cod Cranberries,  
Atmore's Mince Meat,  
Condensed Mince Meat,  
Apples, Turnips, Hams,  
New Crop Nuts and Raisins,  
Cream Chocolate Tablets, Jams,  
Jellies, Shrimps, Table Fruits, Olives,  
Oregon Burbank Potatoes, Crackers and Cakes, &c., &c.

#### Chas. Hustace,

Telephone 119. 212 King street, next to the Arlington.

## Royal Here and Everywhere

You are worn out, tired, can't put the energy you desire into your duties. Well, then, you must try something that will overcome this feeling and restore you to perfect health.

### Pleasant

From childhood we are taught to respect the curative features of herbs. Our grandfathers used them, and were, as a rule, versed in the art of preparing remedies from various plants

as

We have a preparation that is of the old-fashioned type—purely vegetable, made of herbs with wine. For a general tonic to produce vigor and strength, you cannot find a better one.

### Wine.

For malarial disorders, loss of appetite, that tired feeling, loss of energy, it is a true panacea.

Royal Bitters is the name,  
They gave me at my birth,  
From Royal no one need refrain,  
Its use will surely bring mirth.

Put up in pint bottles at 50 cents. Only of

Hollister Drug Co.

+++++

100 Volt Incandescent Lamps Of the Genuine Edison Type

Oceanic Gas & Electric CO., LIMITED.

+++++

The swellest line of golf capes and traveling rugs ever imported, are now being displayed by

## N. E. SACHS DRY GOODS COMPANY, LTD.,

THE PEOPLE'S PROVIDERS.

Ladies contemplating taking a trip to the coast should avail themselves of the choice assortment.

# DO YOU DRINK AERATED WATERS?

If so, make them AT HOME with pure water from your own filter, by means of . . .

## Sparklets

The latest scientific method, simple to operate, perfect in result, absolute purity guaranteed. Every home should have them.

### HOLIDAY GIFTS!

**Benson, Smith & Co., Ltd**

OFFER:

ATOMIZERS,

New Styles in Iridescent and Colored Glass, EBONITE TOILET SETS AND OASES, PERFUMES,

In Baskets, Bottles, and Bulk.

New Odors, New Styles.

PUFF BOXES,

TOILET REQUISITES,

MAILE COLOGNE.

FORT AND HOTEL STS.

## FOR SALE CHEAP!

On Easy Terms.

## BUILDING LOTS AT PAWAA.

This desirable property, bounded by Beretania, Punahou and King streets, on the town side of the McCully Homestead, is now offered for sale. The extension of Young street passes through the land. An artesian well on the premises supplies the purest water. The breezes from Manoa valley render the locality extremely healthful. The property is on the line of cars, and the Rapid Transit cars will run through or by it.

There is no better or more refined neighborhood in Honolulu. For terms, etc., apply to F. WUNDENBERG, At J. A. Magoon's office, next to P. O. Or to J. LIGHTFOOT, on the adjoining premises.

## HAWAIIAN SONGS

40 Selected ones for \$3.00

—FOR SALE AT THE—

HAWAIIAN BAZAAR, MASONIC TEMPLE.

Corner Hotel and Alakea Streets.

### Just Landed,

EX MOHICAN,

A Splendid Consignment of Surreys, Phaetons, Buggies, Road Carts, and Harness. Specially Selected for Local Requirements.

Honolulu Carriage Manufactory

W. W. WRIGHT, Prop'r.

211 FORT STREET, ABOVE HOTEL.

## Horses, Cattle, Sheep and Dogs ALL HAVE THEIR ILLS.

REMEDIES MADE BY JOHN POTTIE & SONS,

Veterinary Surgeons of World-wide Fame, will

CURE THOSE ILLS.

Money is Saved by Investing in Pottie's Remedies.

Black Oils for Sprains, Gall Salve for Sore Necks, White Oils for Swollen Glands, Green Lotion, great healing agent, Soothing Oils for Skin Eruptions, Black Ointment for Horses' Feet, Electric Oils, a mild blister, Pottie Eye Salve for Sore Eyes,

Vermin Soap for Dogs, Sheep, Cattle, Horses, Shrubs and Tree

This is only a partial list; if you don't see what you want ask

C. W. MACFARLANE,

Agent for the Hawaiian Islands.

### CARRIAGE, WAGON AND TRUCK

Repairing, Painting, Trimming and Manufacturing

Fine Horseshoeing a Specialty.

Agency Rubber Tire Wheel Company.

HAWAIIAN CARRIAGE MANUFACTURING CO.

Queen Street near Fort.

### Hotels and Restaurants.

#### CIVIL SERVICE RULES

IN OUR RESTAURANT.

It has to. Our waiters are trained to be civil, quick and attentive to our guests. Our chef is unrivaled in preparation of jainty and appetizing dishes. Everything is scrupulously clean, everything as comfortable as we can make it. And the prices are always in reason.

Home Bakery Cafe. The Best Meal Cafe.

WE OFFER YOU THE

Best 5c. Cigar

To be had for the money.

CLOSING OUT ALL OUR DOMESTIC CIGARS.

Beaver Lunch Rooms. H. J. NOLTE.

Beer and Wine Dealers.

LOVEJOY & CO.

IMPORTERS, AND WHOLESALE Wine and Liquor Dealers.

Agents for the Bottled Rainier Beer of Seattle. No. 19 NUUANU STREET, FOSTER BLOCK, HONOLULU, HAWAIIAN ISLANDS. P. O. Box 137. Mutual Telephone 308.

GONSALVES & CO., Ltd

WHOLESALE GROCERS AND WINE MERCHANTS.

225 Queen street, Honolulu, H. I.

Consolidated Soda Water Co., Ltd Esplanade,

Corner Allen & Fort Sts., Honolulu, H. I.

HOLLISTER & CO.,

Agents

Markets and Grocers.

METROPOLITAN MEAT CO.

108 KING STREET.

G. J. WALLER, : : MANAGER

Wholesale and Retail

BUTCHERS

—AND—

Navy Contractors.

BEST OF MEATS.

Families desiring tender roasts, juicy steaks and chops should call on the

Central Meat Market

We make a specialty of family trade and sell the best at reasonable figures.

214 Nuuanu St. Telephone 104.

APPLES

PRUNES

LEMONS

ORANGES

For sale cheap at

J. R. MILLS

Lincoln Block, King street.

"BREAKFAST

Is the foretaste of the whole day. Spol. that and we probably spoil all." Be sure the coffee is good, and—that it is from

LEWIS & CO.,

LEADING GROCERS Telephone 240. 111 Fort St.

DIAMOND

And other Rings, Watches, Bracelets, Pins, and an extensive variety of Jewelry.

H. G. BLART, Manufacturing Jeweller,

404 1/2 FORT STREET

WOMAN'S EXCHANGE

112 HOTEL STREET.

KAPA, CALABASHES, LEIS, NATIVE HATS, HULA SKIRTS, NIHAU MATS, FANS, SHELLS, SEEDS, ETC., HOMEMADE POI, etc., etc., on hand. Telephone 759.

### NEWS OF THE TRANSPORTS

The Pennsylvania has been rechartered for the transport service. She was expected to leave San Francisco for Manila about January 25 with 3,500 tons of freight, treasure, mail and some passengers.

The naval supply ship Scindia sailed yesterday for Guam and Manila with 5,000 tons of coal and 3,000 tons of naval stores. In addition to her regular crew she took 100 apprentice boys from the Mare Island station for distribution among the vessels in the Asiatic squadron. Lieutenant Commander Kilburn of the Scindia is a brother of President Paris Kilburn of the State Harbor Commission.—S. F., Jan. 21.

Arrangements are being made for the shipment of \$1,500,000 in gold and silver coin on the transport Pennsylvania. The coin is to pay the soldiers now at the front.—S. F., Jan. 21.

The steamer Centennial, recently dismissed from the horse transport service, is now at Mission 2, where she will commence loading today for Kahului.—S. F., Jan. 22.

The transport Warren sailed from Manila for San Francisco, via Guam and Honolulu, January 23.

The horse transport Conemaugh has been rechartered for Manila. She will go tomorrow to the Hunter's point dry dock to be cleaned, and after that will take on horses, going to Manila probably by way of Hilo. The Leelanaw is destined for the same route and will get away before the Conemaugh.—S. F., Jan. 23.

### ELECTRIC ROAD FOR HAWAII.

San Francisco, Jan. 19.—L. P. Matthews, of Cleveland, Ohio, who arrived from Hawaii several weeks ago, and has been visiting different parts of the State since that time, left for Cleveland yesterday. Mr. Matthews said yesterday that he is connected with an Eastern syndicate, which will construct a number of electric railroad lines in Hawaii this year at an outlay of \$4,000,000 or \$5,000,000.

"The islands," Mr. Matthews explained, "are to have a veritable railroad boom. In the near future more than a million dollars worth of ties and lumber will be shipped from Puget Sound points to Hawaii for the projected roads. Plans already perfected call for the construction of some 310 miles of electric lines. Most of the roads will be in and around Honolulu and elsewhere on Oahu Island. Ferry boats will be run between the termini of these roads, and the various islands.

"The Kohala and Hilo Railroad Company is one of these enterprises. The first section of it is to run from Honolulu to Kohala. This company will build 130 miles of road at a cost of \$2,500,000. There is not the least doubt that the proposed electric lines will greatly stimulate and simplify the development of the islands by putting the extensive sugar and coffee producing areas in quick and direct communication with the commercial communities of the islands."

### Arrivals and Departures

Following are the latest arrivals at and departures from Coast ports: Eureka—schr. Jessie Minor from Honolulu, arrived Jan. 16; schr. Helen N. Kimball from Hilo, Jan. 20; bk. Cardigan Castle from Honolulu, Jan. 20; bk. Geo. C. Perkins from Honolulu, Jan. 24. Port Townsend—Schr. Defender from Kahului, Jan. 16; bk. B. P. Cheney from Honolulu, Jan. 19; schr. Ethel Jane from Honolulu (for Olympia), Jan. 19; schr. Esther Buhne from Honolulu, Jan. 20; schr. Columbia from Honolulu, Jan. 24.

Departures: San Francisco—Ship Geo. Curtis from Honolulu, Jan. 17. Tacoma—schr. F. S. Redfield for Honolulu, Jan. 16.

The bark Rufus Wood sailed from Newcastle for Honolulu, Jan. 18.

The barkentine Arago sailed from Pisagua for Honolulu, Jan. 19.

### Freights and Charters.

Helen N. Kimball, schooner, 182 tons, lumber from Eureka to Hilo—chartered by Charles Nelson.

St. Francis, ship, 1757 tons, sugar from Honolulu to Delaware Breakwater for orders, \$6.00, direct port \$5.75—chartered prior to arrival.

Esther Buhne, schooner, 272 tons, lumber from Eureka to Honolulu—chartered by J. R. Hanley & Co.

Coryphene, bark, 733 tons, coal from Departure Bay to Honolulu.

### On the Berth at 'Frisco

The following vessels are on the berth at San Francisco for ports in these islands: Ship Falls of Clyde, J. D. Spreckels & Bros. Co., to load Jan. 18 and sail Jan. 27 for Hilo; bk. Albert, Williams, Dimond & Co., to load Jan. 24 for Honolulu; bk. Planter, Williams, Dimond & Co., to load Jan. 25 for Lahaina and Kailua; sp. Tillie E. Starbuck, Williams, Dimond & Co.

### Light-Ship for Pacific Coast.

A bill has been introduced in the Senate calling for the appropriation of \$75,000 for the purpose of constructing, complete for service, an additional lightship for use on the coast of California, Oregon, Washington or Alaska, as exigencies may determine.—Com. News, Jan. 24.

### Bark Himalaya Damaged.

San Francisco, Jan. 18.—A dispatch to the Merchants' Exchange from Auckland reports the arrival there of the Hawaiian bark Himalaya from San Francisco. On her trip the bark lost part of her deck cargo and two of her water tanks. Considerable damage was suffered by the vessel above decks.

American Messenger Service, Masonic Temple. Tel. 444.

Horses properly shod to correct faults of gait at the Stockyards shop.

### Real Estate and Insurance.

CASTLE & COOKE, IMPORTERS

LIFE and FIRE INSURANCE AGENTS.

AGENTS FOR..

NEW ENGLAND MUTUAL LIFE INSURANCE CO. OF BOSTON.

ETNA FIRE INSURANCE COMPANY OF HARTFORD.

HENRY ST. GOAR, EDWARD POLLITZ.

Members Stock and Bond Exchange.

EDWARD POLLITZ & Co

COMMISSION BROKERS AND DEALERS IN INVESTMENT SECURITIES.....

Particular attention given to purchase and sale of Hawaiian Sugar Stock. Loans Negotiated. Eastern and Foreign Stocks and Bonds.

403 California St., San Francisco, Cal. 1173

W. C. ACHI & CO.,

Brokers & Dealers

REAL ESTATE

We will Buy or Sell Real Estate in all parts of the group. We will Sell Properties on Reasonable Commissions.

OFFICE, 10 WEST KING STREET

DAVID DAYTON,

Real Estate Broker.

223 MERCHANT ST.

FOR SALE.

Twelve Chinese Granite Hitching Posts, \$5 each. Property in town.

HOUSES TO LET.

Real Estate Transaction:

Subscribers are furnished with from five to six lists per week, giving an accurate record of all deeds, mortgages, leases, releases, powers of attorney, etc., etc., which are placed on record. Subscription Price, \$2.00 per Month.

A. V. GEAR.

Judd Building, Honolulu.

F. W. THURM,

Surveyor.

ROOM NO. 10, SPRECKELS BLOCK Plantation Work a Specialty. 1243

OHAS. J. FALK,

STOCK AND BOND BROKER

Member Honolulu Stock Exchange. Room 301, Judd Building. 1250

JAS. F. MORGAN,

OPTIONEER AND STOCK BROKER No. 45 Queen Street.

Expert Appraisal of Real Estate and Furniture

WILLIAM SAVIDGE,

Stock and Bond Broker

Member of Hawaiian Stock Exchange.

McInerney Block, Fort Street.

P. E. R. STRAUCH,

Real Estate Broker

Vineland Agent and Collector.

Lincoln Block, 839 King street. Telephone 245.

A. J. CAMPBELL,

Stock and Bond Broker.

Member of the Honolulu Stock Exchange. Office Queen street, opposite Union Feed Company. Telephone 206. P. O. Box 174.

JAS. F. MORGAN,

Real Estate and Stock Broker

Member of Honolulu Stock Exchange. Queen street. P. O. Box 300. Telephone 79.

BRUCE CARTWRIGHT

General Manager of

The Equitable Life Assurance Society

Of the United States for the Hawaiian Islands.

Office: Merchant street, Honolulu.

### Agents, Brokers and Jobbers.

W. G. Irwin & Co. Limited

AGENTS FOR—  
Western Sugar Refinery Co., of San Francisco.  
Baldwin Locomotive Works Philadelphia, Penn., U. S. A.  
Newell Universal Mill Co. (National Case Shredder), New York, J. S. & N. Ohlandt & Co's Chemical Fortification Co.  
Alex. Cross & Sons, high grade millers for Cane and Coffee.  
Reed's Steam Pine Covering.

ALSO OFFER FOR SALE  
Paraffine Paint Co's P. & B. Paints and Papers; Luciol and Linoleum. Oils, raw and boiled.  
Indurine (a cold water paint, in white and colors.  
Filter Press Cloths, Cement, Bricks and Bricks.

CASTLE & COOKE,

LIMITED HONOLULU.

Commission Merchants,

SUGAR FACTORS.

AGENTS FOR

The Ewa Plantation Co.,  
The Waialua Agricultural Co., Ltd.  
The Kohala Sugar Co.  
The Waialeale Sugar Plant Co.  
The Kona Agricultural Co.  
The Filton Iron Works, St. Louis, Mo.  
The Standard Oil Co.  
The Geo. F. Blake Steam Pumps.  
Wason's Centrifugals  
The New England Life Insurance Co. of Boston  
The Aetna Fire Ins. Co. of Hartford, Conn.  
The Alliance Assurance Co. of London.

Alexander & Baldwin

SUGAR FACTORS AND COMMISSION MERCHANTS

Agents for the California and Oriental Steamship Company.

JUDD BUILDING,

FORT STREET.

1180

Wm. G. Irwin & Co.

(LIMITED).

Wm. G. Irwin, President and Manager. Claus Spreckels, Vice-President. W. A. Giffard, Second Vice-President. H. M. Whitney, Jr., Treas. and Sec. Geo. J. Ross, Auditor.

Sugar Factors

—AND—

Commission Agents

AGENTS OF THE

MERICAN STEAMSHIP COMPANY OF SAN FRANCISCO, CAL.

BREWER & CO., LTD.,

Queen street, Honolulu, H. I.

Agents for—

Hawaiian Agricultural Company, American Sugar Company, Oahu Sugar Plant Co., Oahu Sugar Co., Honolulu Sugar Co., Waialua Sugar Co., Maunaloa Sugar Co., Haeakala Plant Co., Molokai Ranch—Planter's Line San Francisco Packet Lines—H. W. & Co.'s Line of Box and Packers

LIST OF OFFICERS

C. M. Cooke, President; George H. Robertson, Manager; E. F. Bishop, Treasurer and Secretary; Col. W. F. Allen, Auditor; P. C. Jones, E. Waterhouse, Geo. B. Carter, Directors.

M. PHILLIPS & CO.

Wholesale Importers and Jobbers

European and American Dry Goods

Fort and Queen Streets.

I. HACKFELD & CO., Ltd

GENERAL COMMISSION AGENTS.

319 Fort and Queen Streets Honolulu

Honolulu Iron Works Co

Improved and modern SUGAR MACHINERY of every capacity and description made to order. Boiler work and RIVETED PIPES for irrigation purposes a specialty. Particular attention paid to JOB WORK and repairs executed at shortest notice

T. R. MOSSMAN

Real Estate Agent.

Abstractor and Searcher of Titles

Loans negotiated Rents collected.

Campbell Building, Merchant street.

1440

JOHN H. SOPER

Stock and Bond Broker.

116 Merchant Street.

**EVENING BULLETIN.**

Published Every Day, except Sunday, at 230 King street, Honolulu, H. I., by the BULLETIN PUBLISHING COMPANY  
 W. R. FARRINGTON, Editor  
 DANIEL LOGAN, City Editor

**SUBSCRIPTION RATES:**  
 Per month, anywhere in H. I., \$ .75  
 Per year, in H. I., 8.00  
 Per year, postpaid, U. S., Canada or Mexico, 10.00  
 Per year, postpaid, other foreign countries, 13.00  
 Payable invariably in advance.

Telephone 255  
 Post Office Box 714  
 FRIDAY, FEBRUARY 2, 1900.

All "proper expenditures" the President approves. We trust the officials will see the point.

Jameson raiders now have a brilliant opportunity to contemplate where they would have been had they been allowed to fight a second battle with the Boers.

The captain of the horse transport Aztec says he has accomplished at Hilo in one day work that takes two days in Honolulu harbor. Score another point for Hilo.

Put in plain language the latest order from the Washington officials to Mr. Dole demands that the business of the United States be done promptly and without further unnecessary talk about it.

Hartwell has given another dinner to another general and again the question arises whether the guests were asked to pay the price per plate or the expense was charged up to the Diplomatic and Consular appropriation.

President Dole is fast discovering that the knife thrusts he is receiving come from those purporting to be his friends. In his relations with the Hartwell-Smith combination he has been like a lamb led to the slaughter.

If Senator Platt wants arguments favoring his amendments to the Hawaiian bill, he has only to turn to the decisions of our local judges and the requests of those powerful in the councils of the local government following annexation.

Letting down the Dole idol as a possibility for the governorship pedestal and moving it toward the Chief Justice throne has caused a general tumbling of local idols, not pleasant for our official friends to contemplate. Prospects for the general welfare of the people's interests are constantly growing brighter.

If the legislative power to extend the fire limits of Honolulu does not now exist, the Board of Health can at least prevent the construction of wooden buildings within the section that will be included in the fire limits when we do have a legislature. There is nothing to prevent the Council of State outlining a new fire district. While this might not have force in the courts, the business community would doubtless see to it that new regulations are not violated.

As was forecast by the Bulletin some days ago, the bill providing special regulations for retaining men of the island dependencies in office meets with the hearty approval of the local government. Mr. Dole tells his government organ that he considers it "a pretty good proposition." So the provision in the Hawaiian bill retaining local judges in office was considered a particularly good proposition by the local faction. In fact these good people consider anything a good proposition that keeps American principle in the background and the official power in the hands of the compact.

**EXTEND FIRE LIMITS.**

Conflicting opinions regarding the rebuilding of Chinatown should impress the authorities with the necessity of making haste slowly. The interests of the community will be served far better by a temporary delay than by going at the matter with a rush, only to find that the new foundation is laid on much the same lines of the old.

The plague, the fire, the general condition of Chinatown and the whole business section have demonstrated conclusively that the fire limits of the city must be extended. This ought not to be done piecemeal as in years gone by. Let the fire limits include all that district bounded by Alapai, Vineyard, Liliha streets and the sea. This district includes all the strictly mercantile section and a little more, but the time is not far distant when the business section of Honolulu at its present rate of development will have reached these limits and possibly extend beyond. Half way measures are

worse than useless. The energy and careful consideration that has characterized the fight against the plague must be kept up to concert pitch if the new Honolulu is to be the modern model city which the people now have the opportunity to make it at comparatively small expense.

The new street plan however perfect will be of comparatively little benefit unless the new buildings are modern fire proof structures. This may necessitate greater expense, but the reduction of insurance rates and the increased safety to the city will in the long run more than compensate the property holders for the additional outlay. The authorities and the business men should build for the future as they have never done before.

**HARTWELL BETTER RETURN.**

More surprise would have been occasioned had W. O. Smith been found on the side of the American officials advocating the application of American laws to Hawaii's lands. So far as Smith is concerned, his influence on legislation for Hawaii has been nullified by the personal campaign in which he is seconding the efforts of Mr. Dole's personal representative. The public men of Washington thoroughly understand the lobby which is practically headed by Unofficial Delegate Hartwell, who admits that not the least of his duties is to forward the personal interests of Mr. Dole.

Smith's intimacy with the unofficial delegate has not helped him any and the prominence which the new official slate has been given by men supposed to represent purely business interests is accomplishing just what the people here want as regards future officials, but it is damaging to the business community. Fortunately the old time friends of Hawaii, while indifferent to the delegates, are still true to American principle and are forwarding the campaign for thoroughly Americanizing these islands with energy and enthusiasm that assures success.

As a matter of fact Hartwell and Smith, by their ever jealous watchfulness for personal power and promotion of factional interests, are doing more to assist Senator Platt and the guardians of the sugar interests, than they are to accomplish the ends sought by the Administration and Congressional friends of Hawaii.

Hartwell wants to come home. Really we can't blame the man. He has found that the friends of the Islands are true to the cause of annexation now, as they have been in years past. The Republic of Hawaii is a defunct proposition. That Hartwell, or Smith as influenced by him, should still uphold personal interests and still attempt to maintain the autonomy of this government as against the sound judgment of American statesmen, is further evidence of how little these men appreciate the true situation in Washington and to what extent they are in reality hampering the Administration.

**STREETS AND ALLEYS.**

Editor Evening Bulletin:—I note with great interest the remarks made by Minister Young and other citizens as to the future streets of this city and more especially referring to Chinatown lands.

It appears that some who spoke have not really studied the matter of streets and lanes whilst abroad or they would hardly recommend lanes in the center of a city in a tropical climate like this where our cosmopolitan crowd from old associations cling to narrow and ill ventilated streets and homes.

Now is the opportunity to prove that modern improvements of Eastern and Southern countries show that health is preserved only when plenty of light, air and good water are allowed.

May I mention that in Australasia which is second only to the United States in population, the matter of streets has received much attention.

Sydney, the oldest capital of Australia, in its young days did not receive any attention in the matters above referred to, seeing these mistakes, Melbourne, the second city, gave the best attention in its power to these matters, the main thoroughfares were splendidly laid out, but they allowed lanes at the back of the main business properties, in a few years, the stables facing these lanes were turned into small storehouses, these grew into large warehouses, so that now the principle wholesale warehouses face these lanes.

The northern and younger Colonies saw the evil of these lanes, especially where climate and a more mixed community might live and they made laws that prevent any public thoroughfare being less than 66 feet (1 chain) and this is carried out without any favours, or might I say as a law that has to be respected and upheld.

If a merchant requires a back or side entrance to his property for his own convenience, it must be on his private property and he is held responsible for its keeping.

I write the above hoping it will be accepted as from one who wishes to give the best help to the powers that be.

Yours, &c.,  
 LOOKING FORWARD.

P. S. The idea of a portion of Chinatown as a public park is a good one, if not too central commercially.

**ART GOODS - -**

Just opened, direct shipments from the manufacturers. An invoice of

**French White China for Decorating.**

The finest assortment ever exhibited in Honolulu, direct from France.

Direct from the Fry Art Co.,

**Fry's Vitrifiable Colors in Powder. Lustre Paint.**

Thirty thousand feet of

**Picture Mouldings in the Latest Patterns.**

Our selection of **Pictures are the Latest from Art Centres.**

**Howard Hitchcock's Oils, Water Colors, of Island Scenery and Fruits.**

**China Firing a specialty, at reduced rates.**

**The Latest in Lamp Goods.**

**The Pacific Hardware Co.,**

LIMITED

**Art Rooms, - - Fort Street.**

**Only a Few Ladies'**

**"White" and**

**"Remington" Bicycles**

Will be sold at **\$40! cash,**

To clear out the line. Call early and inspect

**Pacific Cycle & Mfg Co.**  
 R. A. DEXTER, Manager.

RETIERS BLOCK. - - FORT ST

**GET IT!**

**SOMETHING NEW!!**

**Hawaiian Souvenir China**

(Nine Different Views.)

**Children's Books and Toys at Reduced Rates.**

**Hawaiian News Co., Limited.**  
 Merchant Street.

**Notice.**

At the regular Annual Meeting of the Stockholders of the Honolulu Rapid Transit & Land Company, held the 29th instant, the following persons were elected as officers:  
 L. A. Thurston, President.  
 J. B. Castle, Vice President.  
 J. H. Fisher, Treasurer.  
 J. A. Gilman, Secretary.  
 J. A. Kennedy, Auditor.

The foregoing, together with Messrs. J. A. McCandless, T. F. Lansing, C. H. Atherton and W. R. Castle, constitute the Board of Directors for the ensuing year.

J. A. GILMAN,  
 Secretary, H. R. T. & L. Co.  
 Honolulu, January 30th, 1900.  
 1443-3t

**REMOVAL NOTICE.**

On and after February 1st the UNION EXPRESS CO. will have their office with the Evening Bulletin.  
 1441-4f TELEPHONE 86.

**A Beautiful Calendar for 1900!**

THAT IS WHAT EVERYBODY SAYS OF THE.....

**Hawaiian Scenic Calendar!**

PUBLISHED AND FOR SALE ONLY BY THE

**Golden Rule Bazaar**

Thirteen Beautiful Views!  
 Four Pieces Hawaiian Music!  
 Rainfall and Temperature Tables!

Make this year's Calendar particularly valuable. Price, ready for mailing, 50 cents. Send the address, enclosing 50 cents, and we will do the rest.

Books and Stationery!

**316 FORT STREET.**

**We Are Still In the Swim!**

That's an old saying, yet true, and when we say we are in the swim, why we mean every word of it.

We have the swellest TIES for the Holidays that you want to lay your eyes on, in all of the Latest Styles and Shapes. We have just replenished our stock of GOLF SHIRTS, and are strictly speaking right up-to-date in as complete a line of men's and boys' FURNISHINGS as can be shown in the largest city of the Mainland.

At our Hotel Street Store, Nos. 9 and 11, Waverley Block, we are going to give you a chance to win a fine BICYCLE. For every purchase of \$100 the customer is entitled to one ticket. The party who holds the greatest number of tickets on Christmas morning at 10 o'clock gets the wheel.

**"The Kash,"**

TELEPHONES 679 and 96.

**Two Stores.**

**Two Large Stocks of the Best Furnishings.**

Mechanics' Home, corner Hotel and Nuuanu streets, lodging by day, week or month. Terms: 25 and 50 cents per night. \$1 and \$1.50 per week.

**Good Air. Good View. Good Health.**

A special invitation is extended to everybody to visit Honolulu's most delightful residence site

**PACIFIC HEIGHTS.**

+++++

**Via Maxima**

Kaiulani Drive aptly termed, the Via Maxima or Grand Boulevard, and in itself an artistic piece of engineering—affords easy access to all points, as also scenic and marine views of exquisite grandeur at every turn.

**Electric Railway.**

Contracts have been let for material, and the work of construction, equipping and installation placed in the hands of a competent electrical engineer to be fully completed by June 1st. Having an independent power plant we are prepared to furnish electric power for lighting, heating and other purposes, to our home builders at most reasonable rates.

**As Promised.**

Our reservoirs are now completed and water mains laid so as to supply each lot. Permits for making water connections will be granted on application.

An inspection of the attractive homes now building, or the names of purchasers of lots, will convince anyone that PACIFIC HEIGHTS is the choicest and most select of all the residence sites of Honolulu.

+++++

For further information, prices, terms, etc., apply at the office of

**BRUCE WARING & CO.**  
 Progress Block.

**Grand Sale**

.....AT THE.....

**TEMPLE OF FASHION**

**Commencing Next Monday, December 4th, 1899.**

—Our entire stock of Dry Goods will be offered to our customers at very low figures.

—Laces, Ribbons, Fine Lawns, Indian Linen, Fine Cashmeres, Ladies' Capes suitable for the holidays.

**HAWAIIAN DRY GOODS ASSOCIATION.**  
 M. PALAU, Manager.

**DURING QUARANTINE**

**The Harness Factory And Office of : : :**

**C. R. COLLINS**

.....IS SITUATED IN THE.....

**Lincoln block, King street,**  
 NEAR ALAKEA.

Any orders entrusted to me will receive prompt attention. Orders already booked will be delivered from there.

**C. R. COLLINS,**  
**Largest Manufacturer of Harness and Horse Goods in the Islands.**

Telephone No. 402 P. O. Box No. 407. 14

Established 1860. Assets \$25,211,910.15.

**INSURE YOUR LIFE**

— IN —

**The : Germania : Life**

Insurance Company of New York.

The GOLD BOND ENDOWMENT POLICY is BETTER than U. S. Government Bonds.

Merchant Street 616 Judd Building

EMMETT MAY, Manager.

**A Thing of  
Beauty Is A  
Joy Forever**

Just arrived per S. S. Australia a grand display of assorted silver-ware viz.:

- Cruet Stands,
- Fancy Berry Dishes,
- Cake Baskets,
- Fruit Stands,
- Pudding Dishes,
- Celery and Pickle Stands
- Ice Tubs, Ice Water Pitchers (with or without Filters.)
- Fancy Card Receivers,
- Spoon Holders,
- Toilet Stands,
- Fancy Vases,
- Individual Salts, Peppers and Mustard and Napkin Rings.

A great variety of Rodger's celebrated silver plated ware viz.:

- Table,
- Desert and Tea Spoons,
- Medium and
- Desert Forks.

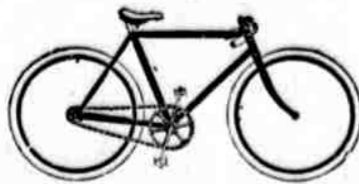
Just the thing for Christmas and New Year presents. Please call and examine for yourself. Lowest market price less 10 per cent for cash.

**The Hawaiian Hardware Co.**

Fort street. opposite Spreckels' Bank.

There is only one Jesse Moore Whiskey in the world and that is cold and pure. Lovejoy & Co. are distributors for the Hawaiian Islands

**THE TRIBUNE.**



**THE CALCIUM KING.**



Repairing a Specialty.

Bicycle Sundries.

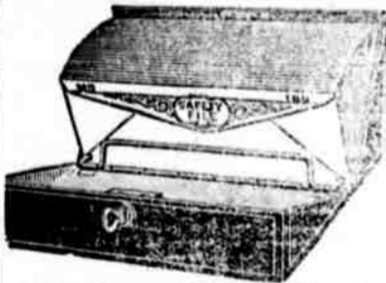
Renting.

**WHITMAN & CO.,**

Sole Agents for the Hawaiian Islands.

**Office Supplies  
FOR 1900.**

Sole Agents for SHANNON FILING CABINETS AND DOCUMENT FILES. See the RAPID ROLLER COPIER—best in the world.



Safety Document File Boxes like cut. Many other good things, call and see them.

**WALL, NICHOLS CO., LIMITED.**

**LOCAL AND GENERAL.**

A fine bay gelding for sale. See For Sale column.

The hospital ship Missouri got away for San Francisco this morning.

Boarder's and livery rigs delivered and called for at all hours. King Stables.

The gasoline schooner Surprise from Kona anchored off port late yesterday afternoon.

**DIAMONDS** bought before the Boer war to be sold at low figures. GEO. HAFNER, Manufacturing Jeweler.

Assessment No. 7 of 10 per cent on the assessable stock of the Kona Sugar Co. is due and payable on February 2d, 1900. See New Today.

The regular monthly meeting of the Pioneer Building & Loan Association will take place at the Chamber of Commerce on Monday evening, February 5th, at 7:30 o'clock. See New Today.

Anyone desiring the services of laborers, servants, butlers, yardmen, laundrymen and women, should make application to Supt. C. A. Doyle at the Drill Shed detention camp. See New Today.

On Wednesday, Feb. 7, at 12 o'clock noon, on the premises of E. O. Hall & Son, Auctioneer Morgan will sell all the woodwork, flooring, flooring joist and other building material in connection with the building. See New Today.

A commissioner's sale of real and personal property will take place at 12 o'clock noon, of Saturday, March 3d, 1900; comprising pieces and parcels of land on the Islands of Oahu, Maui, Hawaii and Molokai. Full detailed particulars can be seen on page 7 of this issue.

The Le Munyon Photo Supply Co. calendar for 1900 arrived on the Gaelic and is on sale at their store at No. 426 Fort street. Mr. Le Munyon has spared no pains to make it the finest and most elite calendar ever published in the world. It will be strictly three color process work and very elaborate, being done from Mr. Le Munyon's own negatives.

The use of the Singer in millions of homes shows the unprecedent success of these ideal sewing machines. It is convincing proof that the Singer excels in all kinds of family sewing and art needle work. All our machines are of the best construction, beautifully decorated, and are mounted on selected woods in finely finished cabinets of artistic designs. B. Bergersen, agent, 16 1/2 Bethel street.

**MORTUARY RECORD.**

The mortuary record for January stands 176 deaths. In the same month 1899, the death rate was 93; in 1898, 71; in 1897, 52; in 1896, 51, and 1895, 49. By nationalities the deaths were as follows: Hawaiians, 74; Chinese, 32; Portuguese, 12; Japanese, 44; British, 3; Americans 4, and other nationalities 7. In Ward 1 there were 45 deaths; Ward 2, 44; Ward 3, 27; Ward 4, 21; Ward 5, 38; outside, 1, and non-residents, 6. Annual death rate per 1,000 for the month, 47.46; Hawaiians, 69.37; Chinese, 35.88; Japanese, 70.40; Portuguese, 26.18, and all others, 21.00. Reported age: Under 1 year, 42; 1 to 5, 8; 5 to 10, 3; 10 to 20, 11; 20 to 30, 28; 30 to 40, 33; 40 to 50, 25; 50 to 60, 10; 60 to 70, 7, and over 70, 9. The causes of death were as follows: Bubonic plague, 35; consumption, 20; pneumonia, 17; meningitis and enteritis 9 each; bronchitis and typhoid fever, 3 each; inanition, 7; malarial fever, 5; heart disease and peritonitis, 4 each; beri beri and old age, 3 each; carcinoma, convulsions, cholera infantum, croup, diarrhoea, debility, Hawaiian fever, puerperal fever, cerebral hemorrhage, intestinal catarrh, malnutrition, oedema pulmonum, syphilis, 2 each; accident, asthma, burns, colic, cardiac incompetency, drowning, dysentery, remittent fever, gastritis, gangrene, nephritis, locomotor taxia, pharyngitis, paralysis, premature birth, septicaemia, strangulation, uraemia and unknown, 1 each.



**Style : Comfort : and : Neatness.**

**AN ELEGANT SOFT VICI KID BALMORAL FOR \$4.00—ONE OF THE NEW POPULAR-PRICED SHOES**

Per the last Australia, we received a grand line of new styles in Men's, Women's and Children's. Just in season for the Holiday trade. The Children's White Canvas Slippers, Men's House Slippers, and Ladies' Evening Slippers, are especially nice, and are selling readily. Our stock is complete. We are in position to fit you.

**M'INERNY SHOE STORE.**

**New Stock**

OF

**Dry Goods**

Embracing all departments being opened by

**WHITNEY & MARSH, Ltd.,**

Importers, 519 Fort street.

**NOVELTIES!**

House Furnishing Goods!

**CORK MATS** prevent colds and cold feet and absorb the moisture; just what is wanted for the bathroom floor. It is a pleasure to stand on one of these mats after your bath.

**OCEAN CHURNS** make butter in half the time or any other kind and are easily cleaned. Simple and effective.

**FLY-CATCHING PLATES.**—They hold six sheets of sticky fly paper. As soon as one is filled it can be pulled off without soiling the figures; is self-protecting and will not soil carpets or furniture, and is non-poisonous. Protection from first to last. The cleanest and surest Sticky Fly-Catcher on the market.

Housefurnishing Goods Department is on the second floor. Take the safety elevator.

**W. W. Dimond & Co., Ltd.**

Importers of Crockery and Glass and House Furnishing Goods.

Sole Agents Jewel Stoves, Gurney Cleanable Refrigerators. Store open from 7 a. m. to 5:30 p. m.

**Funeral of John Ruskin.**

London, Jan. 25.—The remains of John Ruskin, which were removed from Brantwood yesterday, were interred at Coniston this afternoon amidst universal signs of sadness and with a ceremonial typically rural. The coffin was hidden beneath a mass of blooms, including a floral tribute from the Queen. The body was laid in a grave lined with white lilies, and close, according to Mr. Ruskin's desire, to the last resting place of the three Miss Severs, to whom he had addressed his famous Brantwood letters. All parts of the country were represented at the graveside.

A memorial service in honor of Mr. Ruskin in Westminster Abbey this afternoon was largely attended.

**THE LAST CAR.**

The last cars of the King street line going to Waikiki and Palama pass the Anchor Saloon. The cleverest mixologists in the city are there always to put you up anything you may desire. Drop in and take a drop before you take the car. The celebrated Seattle beer is to be had here on draught. A full line of liquors, including the famous Jesse Moore Whiskey, etc., always on hand. Received per Warrimoo, Rainier Beer on draught. The Anchor Saloon is here to please its patrons.

**SEATTLE BEER.**

The ever popular Rainier beer is becoming a household word and "will you have a glass of Seattle," is more often heard than anything else. The Criterion Saloon has the beer on tap or in bottles.

**Hawaii Ships Quarantined.**

Eureka, Jan. 25.—The barkentine Cardigan Casette, George C. Perkins and schooner Helen N. Kimball are all in quarantine at this port. The vessels have arrived from the Hawaiian Islands within a few days of each other and this action on the part of the health officers is in accordance with instructions received from Washington. There is no disease on board, but the vessels are being fumigated merely as a matter of precaution. The schooner Jessie Minor, which arrived from Honolulu about ten days ago, has been released from quarantine. The Perkins arrived yesterday, and her crew are in the best of health. The Norwegian bark Solvig, now en route from Honolulu to this port, will also go into quarantine.

For rough sailor hats, ribbons, etc., try Mrs. Hanna, Fort street.

Nicely furnished rooms at the Popular House, 154 Fort street, from \$1.00 per week up.

**Gram-o-phones!**

NEW RECORDS



NEW RECORDS

Talks Talk

Sings Sing

Laughs Laugh

SOLD ON EASY PAYMENTS  
COME AND HEAR THEM

**THE BERGSTROM MUSIC CO.'S,**

Progress Block, Fort St.

.....GRAND.....

**Clearance Sale**

To Make Room for New Stock.

Bargains to be had in Elegant Silk Waists and Skirts, Underwear, Millinery, Feathers, Ribbons, &c.

ALL GOODS WILL BE SOLD AT GREATLY REDUCED PRICES.

**MISS M. E. KILLEAN.**

Hairdressing and Manicuring Parlors.

Arlington Block, 205-207 Hotel St.

**I AM OPENING**

A splendid assortment of Unbleached, Bleached and Colored Linen Table Damask, with Napkins and Doilies to match.

**E. W. Jordan,**  
Fort Street.

ATKINSON & JUDD, A.L.C. Atkinson and Albert F. Judd, Jr. Attorneys and Counsellors at Law.

Office over Bishop & Co.'s Bank, cor. Kaunani and Merchant streets.

T. MCQUANTS STEWART, Attorney and Counsellor at Law.

Office - Block, opposite Catholic Church Fort street, Honolulu, H. I. Telephone 1122

R. D. SILLIMAN, LAWYER.

308 Judd Building. Telephone 213.

CHARLES F. PETERSON, Attorney at Law and Notary Public.

Kaahumanu Street.

J. M. KANEAKUA, Attorney and Counsellor at Law.

Office: In the Occidental Hotel, corner of King and Alakea Streets, Honolulu. 1442

W. C. ACHI, ENOCH JOHNSON, ACHI & JOHNSON, Attorneys and Counsellors at Law.

Office No. 10 West King street. Telephone 884.

F. M. BROOKS, Attorney at Law

Spreckels Building, Fort Street, Honolulu.

G. A. MOTT-SMITH, ATTORNEY,

145 MOVED to the Judd Block, Fort St.

Surgeons, Physicians and Dentists.

Dr. W. J. Galbraith.

Practice limited to Surgery and Gynecology.

OFFICE AND RESIDENCE: HAWAIIAN HOTEL. 1436

DR. WALTER HOFFMANN.

BERETANIA STREETS, (opposite the Hawaiian Hotel.)

Office Hours: 8 to 10 a. m.; 1 to 3 p. m. 7 to 8 p. m. Sundays: 8 to 11 a. m. Telephone 510. P. O. Box 501.

DR. A. GORDON HODGINS.

OFFICE AND RESIDENCE, GEDGE COTTAGE, corner Hotel and Richards streets. Office Hours: 9 to 11; 2 to 4. 7 to 8 Telephone 953. 1245

DR. A. N. SINCLAIR

School street, between Emma and Fort.

Hours: 9-10 a. m., 2-4 p. m., 7-8 p. m. Sundays 9-10 a. m. 1416

DR. I. MORI,

116 Beretania street, between Emma and Fort streets.

Telephone 277. P. O. Box 843. Office Hours: 9 to 12 a. m. and 7 to 8 p. m.; Sundays, 9 to 12 a. m. 1229

A. C. WALL, D. D. S., O. E. WALL, D. D. S., DENTISTS.

New Love's Building, Fort Street. TELEPHONE 434.

HONOLULU

EYE AND EAR INFIRMARY

Supported by Voluntary Contributions. FREE TREATMENT to the poor of all nationalities.

For information as to care, admission and the services, etc., etc., apply at the

Infirmary.

Third Floor, Progress Block. Subscriptions may be left with J. F. Hackfeld, L. C. Ables or Dr. Sloggett. 1396-6m

Mercantile Agencies.

Telephones 1086 & 950. P. O. Box 779

HAWAIIAN

Mercantile Agency

O. H. BERREY, Manager. Judd Building.

Difficult Collections a Specialty.

Honolulu Mercantile Agency

Room 10, Spreckels Building, Fort street.

— Collections a specialty. Prompt remittances. No fee charged unless collection is made. 1442

Kaiulani Tract

Situated on the east side of Kalihi Valley. The view to Pearl Harbor is the best in the city of Honolulu. The soil is very deep; no stones or rocks on the place.

Water will be laid before purchasers are ready to build. A space will be set apart, in memory of the Princess Kaiulani, for a park. The lots will be sold at the lowest prices in the market, with which other real estate agents will not afford to compete.

Applications for lots will be received at our office, and will be given preference of choosing lots in the order they are received.

For further particulars apply to

W. C. ACHI & CO.

Real Estate Brokers

10 WEST KING ST. October 4th, 1899. 1343

Coney Estate LANDS.

A FEW VERY DESIRABLE BUILDING LOTS on Nuuanu Avenue, at Nio Iopa, Nuuanu Valley, for sale. Apply to

J. M. MONSARRAT, Cartwright Block, Merchant street. 1258

Dairies.

DAIRYMEN'S ASSOCIATION

532 Fort Street.

PURE MILK PURE CREAM

Best on the Islands

Delivered twice daily to any part of City. 1385

FOR SALE,

Fresh Milk

at 12 cents

a Quart!

Delivered in any quantities to suit. Leave your orders at STAR DAIRY, or TELEPHONE 103. 1247

Thirty Head Of Fine Buggy and Draft Horses

Just received ex Mauna Ala. To be seen at the Sale Yards

AI AKEA AND QUEEN STREETS.

Cus. Schuman.

When You Want a Rig

.....RING UP THE.....

C - L - U - B

Livery, Boarding and Sales Stables, : : :

..... 618 FORT STREET.

Stable Phone, 47

Black Stand Phones, 319 and 77

O. H. BELLINA.

BY AUTHORITY.

SANITARY REGULATIONS OF THE BOARD OF HEALTH FOR HONOLULU DISTRICT.

The following regulations shall apply to, and be in force within, the portion of Honolulu described as follows:

Beginning at the seashore, at the west corner of Loko Kawaii 2 near the east corner of the Kapalama Detention Camp and running mauka, along the Waipiole road to the old line of the Oahu Railway, thence along Oahu Railway to the boundary of Maunakea, thence mauka, along the Mokuaea boundary and the Kailhi road to the survey station at the lower end of Mokuaea ridge, thence in a straight line to the survey station above the north end of Wyllie street, thence along the central line of Wyllie street to Nuuanu street, thence in a straight line to the forks of the Manoa road, thence in a straight line to the corner of the Waialae road and the Kapahulu road, thence down the Kapahulu road and along Campbell Avenue to Monsarrat road, and thence in a direct line over the summit of Diamond Head to the seashore at high water line, and thence to the initial point.

REGARDING BUILDINGS AND YARDS. RAIN WATER.

1. Where the space between the buildings is less than fifteen feet, the water from the roofs of the buildings on the sides of such space shall be conducted in water tight leaders and made to discharge into suitable drains leading into street or alley gutters; and if the building abuts on an alley or roadway of like width the same rule shall apply.

AIR SPACE BETWEEN BUILDINGS.

2. There shall be a clear air space of ten feet between all buildings except those fronting on a street. No building except such as fronts on a street shall be built within five feet of a boundary line. The word "buildings" in this paragraph shall be construed to mean and include sheds, lean-tos, privies, and all other structures.

LIGHT AND VENTILATION OF DWELLINGS.

3. Each and every room intended or used for human habitation shall be provided with at least eight square feet of window area having unobstructed access into the open air for each 100 square feet of floor space in said room, and free access shall at all times be had to the same by the occupants of the room; and at least one-half of such window space shall be movable and available for ventilation.

AIR SPACE UNDER BUILDINGS.

4. Every building shall have on an average at least twenty inches of clear space for the circulation of air between the floor timbers and the ground, and shall have sufficient openings for ventilation in the outer walls to admit a free circulation of air; but, in case this air space cannot be secured without reaching "ground water level" then there shall be no air space, but the floor shall be of concrete or masonry.

YARDS, AREAS, COURTS, ETC.

5. Yards, areas, courts, alleyways and other open spaces within or between buildings, where water is used for washing of any kind, shall be properly graded and cemented, or paved so as to be water proof, and drained into trapped drains properly connected with sewer or cesspool, and no permanent wooden floor or grating shall be maintained over the same.

WATER TIGHT FLOORS.

6. All houses, structures, rooms or parts thereof, in which water is used, or intended to be used, in such quantity as to render the floor or floors thereof constantly damp, shall have such floor or floors, made absolutely water-proof, with proper drainage into trapped leaders conveying the water away into cesspool or sewer; and the water proofing of all such floors shall be done in a manner satisfactory to the Board of Health.

7. No building or structure shall be used as a residence or place for human habitation or abode which is situated upon land where there is standing water within eighteen inches of the surface of the ground; nor shall any building or structure be so used that is placed on land that has been made by filling in with refuse or garbage, or that is declared by the Board of Health to be of foul or corrupt material.

REGARDING PRIVY-VAULTS AND CESSPOOLS.

8. No privy-vault, sink or cesspool in Honolulu, shall hereafter be located or constructed within fifty feet of any stream, lake, pond, well or spring of water, nor within two feet of the line of any lot; nor shall it be made more than eighteen or less than six feet deep, or placed in such position that it is not easily accessible for emptying and cleaning.

Board of Health, the sides and bottoms of any privy-vault, sink or cesspool, shall be made either wholly or in part water tight, so as to prevent any saturation of the ground about the said vault, sink or cesspool, and shall be provided with suitable ventilating arrangement.

10. No structure or cover shall be put upon or over any privy-vault, sink or cesspool, until it has been inspected by the proper Agent of the Board of Health and approved as meeting the requirements of these regulations and of public health.

11. Any privy-vault, sink or cesspool, already constructed in Honolulu which has become a nuisance, or in any way dangerous to life or detrimental to health, shall be removed, re-constructed, or altered to meet the requirements of these regulations and of public health, as directed by the Board of Health or its Agent.

12. The Board of Health or its Agents may cause the emptying or disinfecting of any privy-vault, sink or cesspool that may be deemed offensive, or when required by public health, at the expense of the owner or occupant of the premises.

13. When thirty days after the public sewer system is put into operation the use of privy vaults and cesspools shall be entirely discontinued within the limits of such sewer system, and all privies shall be removed, except in so far as permission may be granted by the Board of Health to transform the same into approved water closets connected with the sewer system.

14. No privy vault or cesspool shall be excavated or maintained within ten feet from any dwelling house or inhabited building or cook house or place where cooking is done.

15. No privy vault or cesspool shall be maintained or excavated in any place where for any reason free and unimpeded access may not be had to the same by an excavator cart.

16. No privy shall be built or maintained so as to entirely cover the cesspool or vault under the same, but the cesspool or vault shall project out on one side beyond the superstructure in such a manner as to allow the inspection and removal of the contents of said cesspool or vault. The contents of any privy vault or cesspool shall not be allowed to rise within eighteen inches of the top of the same or to such a height as to flow out onto the surface of the ground.

17. No cesspool or privy vault shall be built or maintained in any location except the same shall have a substantial water-tight curb which shall retain the earth without and the contents of the cesspool or vault within, and shall be provided with a substantial water-tight cover, having a small, movable lid in the same to facilitate examination and removal of the contents.

18. All cesspools or privy vaults shall have four-inch cast iron vent pipes with caulked lead joints, or galvanized iron pipes, extending not less than twelve feet into the open air, and if within twenty feet of an inhabited building the top of such vent pipes shall extend above the roof of the highest building within a distance of twenty feet of the same. All such vent pipes shall run as direct as possible. Every privy shall have proper seats with hinged lids to cover the opening of same, which shall be kept closed when not in use.

19. All connections to cesspools or privy vaults shall be made with cast iron, lead, or vitrified, sewer pipe. All urinals shall be connected to cesspools, vaults or sewer by trapped waste pipes.

20. All cesspools shall be properly cleaned out at once, and hereafter at least once every four months, and shall be thoroughly disinfected at least once each week with such disinfectant as the Board of Health shall direct; all such cleaning and disinfecting to be at the expense of the owner of the property.

21. All waste, soil, sewer or drain pipes shall be of cast iron, lead or vitrified clay. If of iron or lead the joints shall be caulked with molten lead; if of vitrified clay, they shall have tight cement joints, all joints to be smooth in the inside; open drains may be of water tight masonry.

22. All cesspools or privy vaults when abandoned and the use thereof discontinued shall be at once entirely emptied of liquid and solid contents, and shall be disinfected and filled with earth, sand, ashes, or other such clean materials; and the wooden curbing about the same removed to a depth of at least four feet below the surface of the ground. In no case shall refuse, garbage or any unclean material be used in filling such privy vault or cesspool.

23. All buildings and premises which

requirements of the foregoing regulations are hereby declared nuisances and dangerous to the public health.

REGARDING GARBAGE. 24. Garbage will be carried away free of charge by the Board of Health carts within these limits, i. e.: School street mauka; Alapai street east; Liliha street west; and seaward by the water front.

25. It shall be the duty of each house owner, householder, lessee, or tenant who is a housekeeper, within the district in which the free removal of garbage is provided, to supply, and keep ready for use suitable container or containers, of not more than eighteen cubic feet capacity and provided with tight covers, for the reception of all garbage, and to cause the same to be set out in such places and at such times as the Board of Health shall direct for the convenience of garbage collectors. All empty containers shall be kept clean and thoroughly disinfected.

26. Yard scrapings, tree cuttings and stable manure will not be removed by the Board of Health carts.

27. All garbage and refuse which is subject to decay shall be collected by householder or occupiers of dwellings each day; and if within the limits named in section 24 the same shall be placed in containers as provided in section 25 for collection; and if beyond said limits the same shall be burnt or removed.

28. No garbage shall be used for filling house lots or other tracts of land.

29. No garbage shall be deposited in any place not authorized by the Board of Health.

Extract from Penal Code: "Section 874. Every person who shall violate any regulation of the Board of Health, after the same shall have been published, as provided in the last preceding section, shall be fined not exceeding one hundred dollars."

C. B. WOOD, President Board of Health. 1441-2w

IRRIGATION NOTICE.

Holders of water privileges, or those paying water rates, are hereby notified that the hours for irrigation purposes are from 6 to 8 o'clock a. m. and from 4 to 6 o'clock p. m.

ANDREW BROWN, Superintendent Water Works. Approved by A. YOUNG, Minister of Interior. Ho: Iulu, June 14, 189. 1244-1f

Notice.

All persons having claims against the Drill Shed Camp are requested to present same at once. C. A. DOYLE, Superintendent, Approved by Minister Cooper. 1442-5t

The First American Bank OF HAWAII, LTD.

Incorporated Under the Laws of the Republic of Hawaii.

Authorized Capital, \$1,000,000

Subscribed Capital, 750,000

Paid Up Capital, 500,000

OFFICERS AND DIRECTORS. Cecil Brown, President. M. P. Robinson, Vice-President. W. G. Cooper, Cashier. E. M. Boyd, Secretary.

Directors—Cecil Brown, Mark P. Robinson, Bruce Cartwright, W. G. Cooper and H. M. Von Holt.

DRAW EXCHANGE ON: San Francisco—The Anglo-California Bank, Limited. Chicago—The Merchants Loan and Trust Company. New York—J. & W. Seligman & Company. London—The Anglo-California Bank, Limited. Paris—Societe Generale. Hamburg—M. M. Warburg & Company. Hongkong and Yokohama—The Chartered Bank of India, Australia and China. Australia—The Union Bank of Australia, Limited. Canada—Bank of Montreal. Berlin—Gerbruder Meyer.

Exchange bought and sold Letters Credit issued on all parts of the world.

Bouquets !

FINKE & CO., Florists.

Supply every variety of Cut Flowers and Growing Plants. Sprays, Bouquets and Funeral and Wedding Floral Designs supplied on short notice.

Office, corner Fort street and Chaplain street, opposite the Catholic Mission. 1317

BANKERS.

CLAUS SPRECKELS. W. N. G. INY. Claus Spreckels & Co. BANKERS.

HONOLULU

San Francisco Agents—THE NEVADA NATIONAL BANK OF SAN FRANCISCO. SAN FRANCISCO—The Nevada National Bank of San Francisco. LONDON—The Union Bank of London Ltd., NEW YORK—American Exchange National Bank. CHICAGO—Merchants National Bank. PARIS—Credit Lyonnais. BERLIN—Dresdner Bank. HONGKONG AND YOKOHAMA—Hongkong & Shanghai Banking Corporation. NEW ZEALAND AND AUSTRALIA—Bank of New Zealand. VICTORIA AND VANCOUVER—Bank of British North America.

Transact a General Banking and Exchange Business. Deposits Received. Loans made on Approved Security. Commercial and Travelers Credits Issued. Bills of Exchange bought and sold. COLLECTIONS PROMPTLY ACCOUNTED FOR.

BISHOP & CO.

Savings Bank

..... Savings Deposits will be received and interest allowed by this Bank at four and one-half per cent per annum. The terms, rules and regulations of the Hawaiian Postal Savings Bank have been adopted as far as it is practicable to apply them, and the Cash Reserve of \$50,000 as required under the Postal Act will be maintained. Printed copies of the Rules and Regulations may be obtained on application BISHOP & CO.

—Established 1888—

BISHOP & Co. BANKERS.

Transact a General Banking and Exchange Business.

Commercial and Traveler's Letters of Credit issued, available in all the principal cities of the world.

Interest allowed after July 1, 1898, on fixed deposits 3 months 3 per cent., 6 months 3 1/2 per cent., 12 months 4 per cent.

Pioneer Building and Loan Association.

Assets, Dec. 31, 1898, \$116,808.88

Money loaned on approved security. A Savings Bank for monthly deposits. Houses built on the monthly installment plan. Eighteenth Series of Stock is now opened.

OFFICERS: T. F. Lansing, President; S. B. Rose, Vice-President; C. B. Gray, Treasurer; A. V. Gear, Secretary. DIRECTORS: T. F. Lansing, S. B. Rose, A. V. Gear, A. W. Keesh, J. G. Rothwell, Henry Smith, J. J. McLean, J. D. Holt, C. B. Gray.

For further particulars apply to A. V. GEAR, Secretary. Chamber of Commerce rooms. Office Hours: 12:30-1:30 p. m.

The Yokohama Specie Bank LIMITED.

Subscribed Capital ..... 24,000,000 yen Paid-up Capital ..... 12,000,000 yen Reserve Fund ..... 7,500,000 yen.

The Bank buys and receives for collection Bills of Exchange, issues Drafts and Letters of Credit, and transacts a general banking business.

INTEREST ALLOWED—

On Fixed Deposit for 12 months, 4 per cent p. a. On Fixed Deposit for 6 months, 3 1/2 On Fixed Deposit for 3 months, 3

INTEREST ALLOWED— By the Head Office, at Yokohama, on Current Deposit, 2 1/2 per cent per day. On Fixed Deposit for 12 months, 3 1/4 per cent p. a.

New Republic Building, 111 King St. Honolulu

The ... Hawaiian Electric Company,

Cor. Alakea & Halekuanua Sts.

Has a large assortment of Chandellers and Electrical Goods

Constantly on hand.

Estimates given for home wiring and Electrical plants.

Marine Wiring a specialty; THEO. HOFFMANN.

Lines of Travel.

Oceanic Steamship Company.

TIME TABLE.

The Fine Passenger Steamers of This Line Will Arrive at and Leave This Port as Hereunder.

Table with columns for destinations (Australia, Alameda) and dates (February, March).

In connection with the sailing of the above steamers, the Agents are prepared to issue, to intending passengers, coupon through tickets by any railroad from San Francisco, to all points in the United States, and from New York by any steamship line to all European ports.

Wm. G. Irwin & Co., Limited General Agents Oceanic S. S. Co.

Pacific Mail Steamship Co. Occidental and Oriental Steamship Co. Toyo Kisen Kaisha

Steamers of the above companies will call at Honolulu and leave this port on or about the dates below mentioned:

Table with columns for destinations (Japan and China, San Francisco) and dates (February, March, April).

H. Hackfeld & Co., Ltd., Agents.

Canadian-Australian Royal Mail Steamship Company.

Steamers of the above line, running in connection with the CANADIAN PACIFIC RAILWAY CO., between Vancouver, B. C., and Sydney, N. S. W., and calling at Victoria, B. C., Honolulu and Brisbane are DEPARTING FOR HONOLULU on or about the dates below stated:

Table with columns for destinations (Vancouver and Victoria, B. C., Sydney and Brisbane) and dates (February, March, April).

Theo. H. Davies & Co., Ltd., Gen'l Agents.

Lines of Travel.

Wilder Steamship Co., Ltd.

TIME TABLE.

S. S. Kinau, FREEMAN, Master. MOLOKAI, MAUI, HAWAII

Change in Sailing of Steamer "Kinau."

On and after Tuesday, Nov. 6, the steamer KINAU will sail from Honolulu on Tuesdays at 12 noon, for Kaunakakai, Lahaina, Maalaea Bay, Kihel, Makana, Kawaihae, Mahukona, Laupahoehoe and Hilo.

Returning, will sail from Hilo on Fridays at 2 p. m. for above named ports, arriving in Honolulu on Saturdays.

Passengers and freight will be taken for Makana, Mahukona, Kawaihae, Hilo, Hakalau, Honomu, Papaikou, and Pepeekeo.

Passengers and PACKAGES ONLY will be taken for Kaunakakai, Lahaina, Maalaea Bay, Kihel and Laupahoehoe.

S. S. Claudine, CAMERON, Master. MAUI. Will leave Honolulu every Tuesday at 5 P. M., touching at Lahaina, Kaunakakai, Naha, Hana, Hamoa and Kihel, Maui. Returning, touches at above named ports, arriving in Honolulu Sunday mornings.

Will call at Nuu, Kaupo, once each month. S. S. Lehua, BENNETT, Master. MOLAKAI, MAUI, LANAI. Sails every Monday for Kaunakakai, Kamalo, Maunalei, Kalaupapa, Lahaina, Honolulu, Olowalu. Returning arrives at Honolulu Saturday mornings.

This company reserves the right to make changes in the time of departure and arrival of its steamers WITHOUT NOTICE, and it will not be responsible for any consequences arising therefrom.

Consignees must be ready to receive their freight. The company will not hold itself responsible for freight after it has been landed.

Live stock received only at owner's risk. This company will not be responsible for money or valuables of passengers unless placed in the care of the company.

Passengers are requested to purchase tickets before embarking. Those failing to do so will be subject to an additional charge of twenty-five per cent. The company will not be liable for loss of, nor injury to, nor delay in the delivery of baggage or personal effects of the passenger beyond the amount of \$100.00, unless the value is declared, at or before the time of the ticket, and freight paid thereon.

Lines of Travel.

All employees of the company are forbidden to receive freight without delivering a shipment receipt therefor in the form prescribed by the Company, and which may be seen by shippers upon application to the pursers of the Company's steamers.

Shippers are notified that if freight is shipped without such receipt it will be solely at the risk of the shipper. C. L. WIGHT, President. S. E. ROSE, Secretary. CAPT. T. K. CLARKE, Port Supt.

O. R. & L. Co. TIME TABLE.

From and After January 1, 1899.

Table with columns for stations (Honolulu, Pearl City, Ewa Mill, Waianae, Kahala, Kalaheo) and times (Daily, Sun. Daily).

Table with columns for stations (Kahala, Waianae, Pearl City, Honolulu) and times (Daily, Sun. Daily).

F. C. SMITH, Gen'l Pass. & Ticket Agent. G. P. DENISON, Superintendent.

Artesian Wells.

L. E. PINKHAM, - CONTRACTOR. Office with the Pacific Hardware Co., Honolulu, H. I.

Estimates given and contracts made for wells on any of the Islands. SIX NEW PLANTS for heavy work operated by the most skillful highest class drillers. 1275

FRED J. CROSS, - Consulting and Superintending - Electrical and Hydraulic ENGINEER.

Electro-Hydraulic Power Transmission, REPORTS AND ESTIMATES FURNISHED. With Catron-Neil Co., Queen street. Office next to Po. Office. 1223

JAMES T. TAYLOR, M. Am. Soc. C. E. CONSULTING

Hydraulic Engineer. 306 Judd Block. Tele. 633.

CHARLES CRAMER, Merchant Tailor

534 FORT ST., Near corner of Chapin Lane. Cleaning and Repairing at Short Notice, and in the best possible manner.

COMMISSIONER'S SALE OF REAL AND PERSONAL PROPERTY.

Pursuant to an order made by Honorable A. Perry, First Judge of the Circuit Court of the First Judicial Circuit, filed the 31st day of January, A. D. 1900, I am directed to sell at public auction, subject to confirmation by the Circuit Court,

ON SATURDAY, MARCH 3d, 1900.

At 12 o'clock noon of that day, all the right, title and interest of Genevieve Dowsett, Marion C. Dowsett, being an undivided one-twelfth interest each of said minors, and also the one-twelfth interest of Madeline C. K. Dowsett and Annie H. K. Dowsett, Minors, in the Estate of James I. Dowsett, deceased, in and to all those certain pieces and parcels of land situate on the Islands of Oahu, Maui, Hawaii and Molokai, and more particularly described as follows:

1. The land situated in Nuuanu Valley, Island of Oahu, described in deed from John H. Wood to the Honolulu Dairy Company, dated April 30th, 1892, and recorded in the Registry of Conveyances in Honolulu in Liber 136, at pages 174 to 177. Containing an area of 271 acres more or less.

2. The land situated at Kapalama, in Honolulu, Island of Oahu, known as the Akepo lot, being a part of Royal Patent No. 5572, and described in deed made by Knaea and J. W. Akepo to James I. Dowsett, dated the 2d day of February, 1882, and recorded in Liber 73, on pages 219 to 212. Containing an area of 1.13 acres.

3. The land situated at Apia, in Honolulu, described in deed from A. Francis Judd to David Kahanu, dated March 21st, 1870, recorded in Liber 29, on pages 424 and 425, and the land described in the deed from John O. Dominis and E. Mahia, Administrators of the estate of Jesia Kaunani, to David Kahanu, dated June 7th, 1866, and recorded in Liber 21 on pages 313 and 316, and in a deed from Kahanaui and Keohokii, her husband, and Kahuahine to David Kahanu, dated September 14th, 1866, and recorded in Liber 22, on pages 106 and 107.

4. The land situated at Kakaako, in Honolulu, described in the deed from Mookolobe and Nainoaehua to David Kahanu, dated March 30th, 1880, and recorded in Liber 63 on pages 415 and 416. Containing an area of 1-5 of an acre.

5. The land at Aala, on Liliha street, in Honolulu, described in the deed from Nika and Puniakia, his wife, and Keaka to David Kahanu, dated October 9th, 1869, and recorded in Liber 29, on pages 40 and 41; also the land described in the deed from John Thomas Waterhouse and Eleanor, his wife, to David Kahanu, dated January 25th, 1878, and recorded in Liber 68, on pages 62 and 64; also land described in the deed from Kia Nahaolelua and Nahahele to David Kahanu, dated January 10th, 1876, and recorded in Liber 49, on pages 385 and 386. Containing an area of 3.03 acres.

6. The land situate on King street, in Honolulu, described in the deed from F. M. Hatch to James I. Dowsett, dated October 18th, 1888, and recorded in Liber 115, on pages 66 and 69. Containing an area of 17-100 acres.

7. The land situate at Kapahaha, Kapalama, in Honolulu, being a portion of Apana 1, Royal Patent No. 2256, L. C. A. 2440B; described in the deed from Thomas Carry and Mary, his wife, to James I. Dowsett, dated June 14th, 1887, and recorded in Liber 106, on pages 193 and 194. Containing an area of 1900 square feet.

8. The one undivided half of the lands situated in Honolulu, known as the land of Kahaobao and Kahololoa, L. C. A. 153 to Wm. Sumner, dated March 5th, 1849.

9. The land situated at Puhawai, Waianae, Island of Oahu, described in Royal Patent, 1073, L. C. A. 7465, and in the deed of Pine and Kinkia to James I. Dowsett, dated April 30th, 1888, and recorded in Liber 110, on page 256. Containing an area of 6.71 acres.

10. The land situated on Pearl River Bay near Honolulu, known as Puuloa, containing an area of 2224 acres, and described by metes and bounds in the deed from Kekanono to Isaac Montgomery, dated September 7th, 1849, and recorded in Liber 4, on page 4.

11. The land situated at Honouliuli, at Ewa, on the Island of Oahu, comprising 86 acres, more or less, now under lease to Sing Chong & Co.

12. The land situated at Kapalama, Island of Oahu, described in Royal Patent 2386 issued to John Meek, and comprising 9 58-100 acres; and also the land situated at the same place part of the III of Kahuopa described in L. C. A. 8545, Apana 1, Part 1, and comprising 1 728-1000 acres, more or less, which said two last mentioned parcels of land are now held under lease dated September 15, 1896, by Y. Ah In.

13. The land situated on the Island of Maui, known as Rose Ranch, comprising all the lands described in certain Royal Patents and deeds as follows: all the land described in the deed from Parker N. Makee and others to James I. Dowsett, dated March 3d, 1886, and recorded in Liber 101, on pages 200 et seq.; also the leasehold estates in the following lands: Lease of the Hawaiian Government of the Ahupuaa of Kanaia to Catherine N. Makee, No. 292, dated February 9th, 1881; Lease from John M. Kapeua to James Makee dated December 22d, 1876, and recorded in Liber 47, on page 498. Containing an area of 21,650 acres.

14. The land known as Kaula situate at Ewa, Island of Oahu, being part of Hoanae. Containing an area of about 1 acre.

15. The land with an orange grove situated at Hana, Island of Maui, known as Dowsett's land. Containing an area of 1 1/2 acres.

16. The taro land situated on the Island of Molokai, described in Royal Patent 2330.

17. The land situated at Waipio, on the Island of Hawaii, known as Dowsett's land.

18. The land situated at Kapulona, in Honokaa, Island of Hawaii, formerly leased to J. M. Horner & Sons and now occupied under said lease by the Pacific Sugar Mill. Containing an area of 17 1/2 acres.

Also the leasehold estates in the following lands: The land of Halawa, the land of Kahauiki, the land of Lelehu, the land of Mikihua, the land of Nannukuli and the land of Aien, all situated on the Island of Oahu.

Also all the live stock belonging to the Estate of James I. Dowsett, deceased, comprising: 6000 head of cattle, more or less, 60 head of oxen and bulls, and 213 head of horses and mules.

Also all and singular, the lands, chattels, choses in action, and property, real and personal, belonging to the Estate of James I. Dowsett, deceased, or to which said Estate may be entitled, whether herein enumerated and specified or not.

Terms of sale are Cash in U. S. Gold. Deed at the expense of purchaser. For further particulars, apply to Paul Neumann, Esq., or

GEORGE LUCAS, Commissioner.

Chinese and Japanese Firms.

W. W. AHANA Merchant Tailor

323 Nuuanu St.

fine Suitings in English, Scotch and American Goods made to order. Telephone 698. Postoffice box 986.

IWAMOTO. Watchmaker and Jeweller.

GOLD AND SILVER PLATING. 213 1/2 King street. 1277

Y. MAN SING Has Removed from Fort Street to 311 Nuuanu Street, opp. Goo Kim's.

LADIES' UNDERWEAR. Dresses Made To Order.

HOP HONG, Merchant Tailor, HAS MOVED

From 314 Nuuanu street to larger premises, No. 319, on the opposite side of the street. 1293

L. CHONG, No. 6 Nuuanu St., below Merchant, Honolulu.

MERCHANT TAILOR. Suits guaranteed to fit and in latest style. Clothing made to order; Uniforms a specialty. Clothes cleaned and repaired at reasonable rates.

Architects, Contractors and Builders. G. A. HOWARD, JR. ROBT. F. TRAIN

HOWARD & TRAIN, Architects. Suite 7, Model Block, - HONOLULU, OAHU, H. I. P. O. Box 703. Telephone 989 1346

H. L. KERR & CO., Architects and Builders (Rooms 11-12, - PROGRESS BLOCK. Telephone 131

Geo W Page F. W. Beardslee P. O. Box 728

BEARDSLEE & PAGE Architects & Builders Office: Rooms 2-4, Arlington Annex, Honolulu, H. I. Sketches and Correct Estimates furnished at Short Notice. 1441

BUILDING MATERIALS OF ALL KINDS. Dealers in Lumber and Coal.

ALLEN & ROBINSON, Queen street, Honolulu

The World Register Keeps the Cash while you are busy. Try one

Rock Prices On Marble and Granite, MONUMENTS and CEMETERY WORK. Fences and Lawn Furniture.

Haw'ii Iron Fence and Monumental Co. 641 King Street.

A GOOD THING 4-U-2-C Job's, Algebrs and Pine Firework Cut and Split (ready for the Stove). Also, STOVE, STEAM & BLACKSMITH COA WHITE AND BLACK SAND Lowest Prices, delivered to any part of the City. TELEPHONE 414

HUSTACE & CO. 31 Queen Street.

THEO. H. DAVIES & CO., Ltd.

Merchants and Commission Agents.

Carry a Complete Line of Hardware, Crockery, Saddlery, &c. Paints Oils and White Lead.

GENERAL PLANTATION SUPPLIES.

Agents for Clariphos & Dick's Balata Belting.

This Belting is acknowledged by several of the most expert engineers on the Islands to be the best, most durable, and least expensive. Also Agents for Keilner Bros.' GRAY AGATE WARE, of which a full list is carried. A good selection of IRON BEDSTEADS, MATTING, LINOLEUM, LAWN MOWERS, GARDEN HOSE AND FITTINGS.

Lime, Cement, Fire Clay and Fire Bricks.

Honolulu Tobacco Co., Limited, IMPORTERS OF - HAVANA AND MANILA CIGARS, SMOKERS' ARTICLES, Fine Grades of Smoking Tobacco. Cor. Fort and Merchant Streets, Honolulu.

Photographers.

Preserve the Memory of your Friends and Dear Ones

By having their PHOTOS BEAUTIFULLY ENLARGED at

LICHTIG'S, Nuuanu St., Next to the Honolulu Hotel.

PHOTO BUTTONS MANUFACTURED TO ORDER.

J. J. WILLIAMS, Photographer.

Portrait WORK A SPECIALTY.

Visitors are cordially invited to call and inspect our gallery of life-size royal photos, from Kamehameha I. to date.

At the Old Stand On Fort Street

W. H. SEA, TEACHER OF

Guitar, Mandolin, Zither, and Ukulele.

During my absence at Omaha Mr. Ames, of Wall, Nichols Co., will have charge of my pupils.

PIANO TAUGHT By a New, Quick Method!

Proficiency guaranteed in six months. Terms, \$5.00 monthly. Special attention to adult beginners. Address PIANO, Bulletin office. 1419

Paul Egly, VIOLINIST. - 16 Beretania Street, -

Will receive a limited number of pupils. Music furnished for concerts, afternoon or evening parties.

MUSIC. ANNIS MONTAGUE TURNER - Vocal Studio, "Mignon," 720 Beretania street. Tel. 1114. 1376

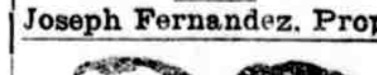
E. K. KAAI, Teacher of Star, Mandolin, Zither Ukulele and Taro Patch.

Orders to be left care of Wall, Nichols Co., and at Bergstrom Music Co.'s 1265

Barbers.

Silent Barber Shop.

Arlington Block, - Hotel Street. Joseph Fernandez, Prop'r



Pacheco's Dandruff Killer! For sale by all druggists, and at the Union Barber Shop. Telephone 696.

Plumbers, Etc.

John Nott, PLUMBER, 75 and 79 King Street TELEPHONE NO. 31.

NOW is the time to get leaks and breakages seen to, and your

Roofs Put in Order By competent workmen.

H. T. SHAW & CO. Sanitary Plumbing and Tinsmithing.

Old Fire Tower, Union Street.

We figure on nothing but the best of work and material, testing all work, thus insuring you against all sewer gas. Estimates carefully given. Jobbing promptly attended to.

For the Plumbing On that new house that you are about to build or the alterations you are intending to make on your property. Call and see me and get an estimate.

JAS. NOTT, Jr. Practical Tinsmith and Plumber. Shop: Beretania street, 4 doors east of Punchbowl. Phone 844. Hour: 7 a. m. to 5 p. m. Jobbing promptly attended to.

N. F. BURGESS Does All Kinds of.....

Small Repairing LAWN MOWERS and GARDEN HOSE

Are specialties. Lawn Mowers will be called for, by RINGING UP 220. Also, a few for rent.

PENSACOLA ST. W. H. BARTH. H. W. BARTH

Honolulu Sheet Metal Works. Galvanized Iron Skylights and Ventilators, Metal Roofing, Conductor Pipe and Gutter Work. Richards Street, bet. Queen and Merchant, Honolulu. Jobbing promptly attended to.

BEK HAAHEO, King street, near Railroad Depot, Plumber and Tinsmith. Satisfaction guaranteed. All work promptly and carefully attended to. 1377

**Honolulu Drug Co.,**  
**HEADQUARTERS FOR DISINFECTANTS:**  
**ELECTROZONE,**  
**CHLOROZONE,**  
**PURIFINE,**  
**CHLORIDE OF LIME,**  
**&C., &C.**

**Honolulu Drug Co.,**  
**Von Holt Block, King st.**

**The 1900**

Columbia, Rambler & Hartford bicycles seem to be just about the right thing. We have had samples of these wheels and will have a big stock by the "Australia" in two weeks. Most of the Chainless Columbias are sold to arrive there is such a demand for this wheel. They are a pound lighter this year and are fitted with the **SPECIAL TROPICAL TIRE** which makes them a perfect mount for these Islands. The Columbia Chainless weighs less than 25 pounds and we guarantee it for any rider weighing up to 300 pounds. Our **HARTFORD** and **RAMBLER** chain wheels are beauties, call and see the samples. We have as complete repair shop as ever, though it is not conveniently located at present. During this year we expect to get back to the old corner, where a fine modern department is to be fitted up in our new store. At present we sell, rent and repair wheels in the brick building on the upper side of King street opposite to where our old stand was and are able to do the best repair work done in town, rent the well known Columbia Chainless, and sell any model of Columbia, Rambler or Hartford for cash or on easy installments. We want your custom.

**E. O. HALL & SON, Ltd,**  
**Cor. Fort and King Sts.**

**The Bank of Hawaii, Ltd.**

SECOND ANNUAL STATEMENT OF THE BANK OF HAWAII, LTD., AT THE CLOSE OF BUSINESS DECEMBER 30, 1899:

Section 14 of the Banking Laws of 1884 requires that on the last Monday in January of every year, banks must make a statement of their affairs as of the 1st day of January. The following is the statement of the condition of the Bank of Hawaii, Ltd., on the 1st day of January, 1900. The capital of the corporation is \$4,000,000, divided into 4,000 shares of \$100 each, paid up in full:

**ASSETS:**

|  |                |
|--|----------------|
| Loans and Discounts                              | \$1,036,499.43 |
| Call Loans and Overdrafts                        | 300,818.17     |
| Hawaiian Govt. Bonds                             | 15,400.00      |
| Lease Safe Deposit Building and Office Furniture | 9,800.00       |
| Miscellaneous Assets                             | 1,242.38       |
| Hawaiian Govt. Warrants and Coupons              | \$ 8,830.60    |
| Due from Other Banks                             | 154,014.51     |
| Cash on Hand                                     | 227,280.18     |
|  | 391,034.20     |
|  | \$1,754,794.27 |

**LIABILITIES:**

|   |                |
|---|----------------|
| Capital, 4,000 shares                     | \$ 400,000.00  |
| Undivided Profits                         | 66,698.56      |
| Deposits                                  | 1,174,091.99   |
| Certified and Cashier's Checks            | 9,032.00       |
| Due to Other Banks                        | 102,526.72     |
| Dividends uncalled for                    | 1,575.00       |
| (Total Dividends paid in 1899, \$24,000.) |                |
|   | \$1,754,794.27 |

I, C. H. COOKE, Cashier, do solemnly swear that the above statement is true to the best of my knowledge and belief.  
 C. H. COOKE, Cashier.

Examined and found correct:  
 H. WATERHOUSE, TOM MAY, Directors.  
 GEO. R. CARTER, Auditor.

Subscribed and sworn to before me this 3rd day of January, A. D. 1900.  
 HARRIET E. WILDER, Notary Public.

**Departure Bay**

**COAL.**

JUST RECEIVED AND FOR SALE BY

**A'len & Robinson.**

Telephone 105.

**NOTICE.**

I beg to announce to the public that I have disposed of to the Pacific Vehicle and Supply Co., Ltd. the business heretofore carried on by me in Honolulu, of buying, selling importing and dealing in ready made Carriages, Wagons and Vehicles, and Carriage Materials, Lamps, Harness, Saddles, Leather, Whips, Robes, etc. This however does not apply to the General Blacksmithing and Carriage Repairing business, which will still be carried on by me at the old stand, 615 Fort street, 1443 ft. W. W. WRIGHT.

**WANTS.**

Ad. in this column will be inserted at 5 cents a line first insertion; 3 cents second insertion; 2 cents a week and 1 cent a month. This is the cheapest advertising ever offered the people of Honolulu.

**WANTED.**

**SITUATIONS WANTED.**—Anyone desiring the services of laborers, sawyers, gardeners, tailors, dressmakers, seamstresses, etc., call on Capt. C. A. Doye, at the Drill Signal Detachment Camp. 1443-11

**WANTED.**—A bright, honest office boy. Apply to H. LOSE, Mutual Telephone Office. 1443-11

**WANTED.**—Men to know that they can get shaved by a white barber for 15 cents at H. JEFFS, 614th Fort street, near Cape Street. 1443-11

**WIRING AND ACCOUNTING.**—No. 1 accuracy by a moderate rate. MR. MUM, care People's Express Co.; or General Delivery, P. O. 1443-11

**COMPETENT GERMAN GIRL WANTED** for general housework and care of children. References required. Apply G. M., Bulletin office 1443-11

**FOR SALE.**

**FOR SALE.**—Bay Gilding in fine condition, quiet and reliable cheap. Owner leaving country. 1443-11

**FOR SALE.**—\$1500. Lease of a large tenement house situated near the heart of the town. Present Net Monthly Income \$3.50. Apply to WILLIAM SAVIDGE, No. 310 Fort street. 1443-11

**FOR SALE.**—\$1200. Lease of Cottage centrally located near the heart of the town. Apply to WILLIAM SAVIDGE, No. 310 Fort street. 1443-11

**FOR SALE.**—\$1500. New Modern Cottage and lot at Kewalo. Lot 60x100. A bargain as a home. Apply to WILLIAM SAVIDGE, No. 310 Fort street. 1443-11

**FOR SALE.**—A 2nd Anthony Camera, reversible back, with wide angle Morrison lens. Inquire at this office. 1443-11

**FOR SALE.**—LANDS IN ALL PARTS OF THE CITY. By J. M. VIVAS. 1443-11

**LOST.**

**LOST.**—Bishop & Co.'s Certificate of Deposit No. 12166, for \$1000, in favor of Wm. H. Conroy, has been lost. Payment has been stopped, and all parties are cautioned against negotiating the same. Honolulu, Feb. 1, 1900. 1443-11

**LOST.**—A Silver MEDAL engraved Otto Bumeister. Finder kindly return to Bull-tin office. 1443-11

**LOST.**—Small Sorrel Mare. Suitable reward if returned to H. F. Bertelman's shop, King street, or residence at Waikane. 1443-11

**FOUND.**

**FOUND.**—A Golf Cape, gray cloth with fine blue and maroon stripes and Scotch plaid lining. Finder can have same by calling at this office and paying costs of advertising. 1443-11

**TO LET.**

**TO LET.**—A suite of 10 sleeping Rooms unfurnished. 1411 Huihau street. 1443-11

**THE ALOHA ROOMING HOUSE,** Fort St. Best rooms and attendance in city. 1443-11

**NEW TO-DAY**

**Kona Sugar Co., Ltd.**  
 Notice is hereby given that Assessment No. 7 of 10 per cent on the assessable stock of the KONA SUGAR CO., is due and payable February 2, 1900.  
 F. W. McCHESNEY, Treasurer.  
 Honolulu, Feb. 1, 1900. 1443-11

**PIONEER Building & Loan Association.**  
 The Regular Monthly Meeting of the Pioneer Building and Loan Association will be held at the Chamber of Commerce on MONDAY EVENING, Feb. 5th, 1900, at 7:30 o'clock.  
 Payments are required in gold.  
 A. V. GEAR, Secretary.  
 NOTICE.  
 All concerned are hereby notified that the February, 1900, Term of the Circuit Court of the First Judicial Circuit, will be formally opened on Monday, the 5th inst., at 10 o'clock a. m., and the session then adjourned until the following Monday morning.  
 Jurors, both Hawaiian and foreign, are excused from attendance until further notice.  
 Dated: Honolulu, H. I., Feb. 2nd, 1900.  
 W. L. STANLEY, Second Judge Circuit Court, First Judicial Circuit, Presiding at the Term. 1443-21

**Auction Sale**  
 ...OF...  
**Wooden Buildings**  
 HARDWARE, PAINTS, OILS, ETC.  
 On WEDNESDAY, Feb. 7, AT 12 O'CLOCK NOON,  
 At the premises corner King and Fort streets, I will sell at Public Auction, by order of E. O. Hall & Sons, all the wood-work, flooring, flooring joists, iron shutters doors and frames, glass sashes, slate roof, ing, etc., of their former place of business flagstaff with irons, in good condition; a large tree, etc.  
 Also a large supply of paints, oils, hardware, etc., for which they now have no storage room.  
 JAS. F. MORGAN, Auctioneer.

**PAPERS WANTED.**  
 Ten cents each will be paid for a few copies of the Evening Bulletin of SATURDAY, January 20, 1900. Please bring to Bulletin Business Office, 210 King street. 1444

**SHIPPING INTELLIGENCE**

**Weather Bureau, Punahou, Feb. 2.**  
 —Temperature — Morning minimum, 68; Midday maximum, 78.  
 Barometer at 9 a. m. 30.05. Steady.

**Dew Point 57F.**  
 Humidity at 9 a. m. 55 per cent.  
 Diamond Head Signal Station, Feb. 2.—Weather clear; wind fresh NE.

**ARRIVALS.**  
 Friday, Feb. 2.  
 Am. schr. k. W. Bartlett, Nielsen, from Aberdeen, Dec. 29; 644,000 feet lumber to Lewers & Cooke.  
 Am. bktn. S. N. Castle, Lanfeldt, from San Francisco; 900 tons gen'l mds.  
 Stmr. Keauhou, Mosher, from Kilauea; 4,000 bags sugar.  
 Stmr. Iwailani, Gregory, from Hawaii ports.

**DEPARTURES.**  
 Thursday, Feb. 1.  
 Ger. bk. Paul Isenberg, Kruse, for San Francisco.  
 Br. bk. Kinfauns, Creighton, for the Sound.  
 Schr. Ada, for Kauai ports.  
 R. M. S. Moana, Carey, for the Colonies.  
 Schr. Luka, for Hawaii.  
 Stmr. W. G. Hall, Thompson, for Kauai.

Friday, Feb. 2.  
 U. S. Hospital Ship Missouri, Dillon, San Francisco.

**PASSENGERS ARRIVED.**  
 From San Francisco, per bktn. S. N. Castle, Feb. 2.—W. S. White, F. Paxton, H. Paxton, J. Demartine and J. Povell.

**CONSIGNEES.**  
 The Moana that arrived yesterday brought the following cargo: Thirty-five cs butter, 50 bags onions, 10 cs merchandise, 25 lbs beef, 3cs merchandise, 344 pkgs transshipments, 1 cs books, 102 cs whisky, 1 cs chow cards, 50 cs mullet, 50 cs potatoes, 5 cs lamps, 5 bbls globes, 1 bag coin, \$3,549.44; 39 pkgs, parcels, boxes, etc., consigned to Order, Wm. G. Irwin & Co., Von Hamm Young Co., Washington Light Co., T. H. Davies & Co., E. W. Jordan, Chas. O'Brien, B. L. Durham, S. C. Humphreys, Benson, Smith & Co., Miss Nettelford, Mrs. S. M. Mills, H. E. Walker, Gum Chong, F. Wundenberg, J. F. Wichman, Risdon Iron Works, Andrew Moore, Pearson & Potter Co., H. F. Cook, John Foster, City Furniture Store, Oceanic Gas & Electric Co., Hawaiian Carriage manufacturing Co., Von Hamm-Young Co., Mercantile Printing Co., King Bros., W. C. Peacock & Co., Q. H. Berrey, Paauhau Plantation Co., C. Brewer & Co., C. J. Healey, I. J. Taylor, B. Lichtig, Benson, Smith & Co., Hart & Co., Macfarlane & Co., H. H. Clark, Bishop & Co., Castle & Cooke, L. M. Mills.

**ITEMS FROM HARBOR FRONT**  
 The Jabez Howes sails today.  
 The schooner Ada sailed for Kauai yesterday.  
 There are at the present time 44 foreign vessels in port.  
 The Keauhou brought only one passenger, a native, who comes to attend to some court matters.  
 The ship Iolani is anchored outside. It is expected that she will go to Kaula to discharge her cargo.  
 The schooner Golden Shore at the railroad wharf and the steamer Blomfontein at the Oceanic discharged freight all night.  
 The Keauhou that arrived this morning will go on the marine railway for a cleaning and repairs as soon as she has discharged her cargo of sugar.  
 The S. N. Castle brought a colored stowaway from San Francisco. He will be kept locked up aboard ship until some other disposition of him can be made.

**Foraker is Positive.**  
 Washington, Jan. 18.—Senator Foraker, chairman of the Committee on Pacific Islands and Porto Rico, regards the enactment of Hawaiian legislation as certain, and is confident that a code of laws embodying a government for Porto Rico will be passed. He does not expect, however, that there will be any serious attempt at legislation at this session for Guam and the other Pacific Islands, other than Hawaii, coming under the jurisdiction of his committee.

**PER S. S. AUSTRALIA.**  
 Just landed a full line of grapes, plums, peaches, apples, Bartlett pears, oranges, lemons, celery, cabbage, cauliflower, cranberries, burbank and red potatoes, dates, salmon founders, halibut, crabs, eastern and California oysters (in tin and shell), turkeys, chickens, ducks, quail, chestnuts. A full line of canned goods. CAMARINOS' REFRIGERATOR.  
 The Evening Bulletin, 75 cents per month.

**Pound Master's Notice of Estrays.**  
 Notice is hereby given, that the animals described below have been impounded in the Government Pound at Makiki, Kona, Island of Oahu, and unless the pound fees and damages are sooner satisfied, will be sold at the date hereunder named, according to law:  
 Jan. 26, 1900.—1 jack, undescrivable brand, half blind and fore legs lame.  
 The above described animal will be sold at public auction, on SATURDAY, Feb. 10 at 12 o'clock noon, if not called for before the date mentioned.  
 K. KEKUENE, Poundmaster.

**Jas. F. Morgan**

33 Queen Street

**Guardian's Sale of Real Estate.**

By direction of Belle F. Jones, Guardian of Edwin Austin Jones, Helen Jones, Margaret Jones and Catherine May Jones, minors, and acting in and by virtue of an order issued out of the Circuit Court of the First Circuit, dated the 2nd day of January, 1900, I am directed to sell at public auction, at my salesroom in the city of Honolulu, Island of Oahu, on Saturday, the 27th day of January, 1900, at 12 o'clock noon of that day, all the right, title and interest of said minors, being an undivided half of, and to all those certain pieces or parcels of land situate at Waikane, District of Koolaukoo, Island of Oahu, and more particularly described as follows:

1. All that land described in R. P. 186, L. C. A. 5723 and 8095 to Kalkaina, more particularly described as follows:  
 Apana 1. 6 lot kolo me ke Kakuahale Mamane. E hoomaka ma ke kahi Hema makai o kela ma ke kahi o ka pa hau, ke kahi akau makai o ka Makalukae pili ana i ko Ku hulu, a e holo ana He, 60 1/2 Kom. 2. 51 Kaul. ma ka pa hau, ma ko Makalukae, a hiki i ka lili kae pili i ke kahi Ak. makai o ka lolo o Kaheana; Alaila He. 75 1/2 Kom. 2. 38 Kaul. ma ka ka pili ana ma ka auwai ma ko Kaheana; He. 55 1/2 Kom. 1. 22 Kaul. ma ko Kaheana a hiki i ke kahi Hema mauka o kela; Alaila He. 31 1/2 Kom. 2. 40 Kaul. ma ko Kaheana ame ko Ku a hiki i ke kumu pili; Alaila Hik. 1. 47 Kaul. ma ke kumu pili; Alaila Hik. 2. 25 Kaul. ma ko Kaheana, a pili ana a hiki i ka lili kae pili, Alaila Ak. 50. 2. 4 Hi. 1. 90 Kaul. ma kula a hiki i ka puhalu, ke kahi akau makai o kela, a ke kahi Akau mauka o ko Ku hulu. Alaila He. 31 1/2 Kom. 2. 04 Kaul. ma ko Kahuahale a hiki i kahi i hoomakal. Maloko o la Apana 1 13-100 Eka.

2. All that portion of the land described in R. P. 158, L. C. A. 5019 to Paluuhulu, as is described in deed of Paluuhulu to Nakea, dated May, 1857, and of record in Liber 27 on page 410.

3. All that land, being a portion of the makai half of R. P. 158, L. C. A. 5019, to Paluuhulu, more particularly described as follows:  
 Beginning at the northwest corner of the land of M. Phillips & Co., adjoining the Protestant church yard, and running south 33 East 5.25 chains along the line dividing the land of the Makai half of R. P. 158; thence south 63 West 1.05-100 chains along the land of Puka to the Government road; thence north 33 1/2 West 5.30 chains along the Government road to the Protestant church yard; thence north 64 1/2 East 1.05 chains along the said church yard to the point of commencement. Containing an area of 1.027-1000 acres.

4. Five undivided shares or interest in the land known as the Ahupuaa of Waikane, and held and owned by a number of people as tenants in common, and called the Hul of Waikane.

5. All that land at Kumunui, Waikane aforesaid, and more particularly described in R. P. 152, L. C. A. 6051, together with dwelling houses, cook house, servants' dwellings, stable and bath house situate thereon.

6. That certain spring of water known as Ulawini, situate in the Ahupuaa of Waikane, conveyed by the officers of said Hul of Waikane to P. C. Jones, together with the pipes leading the water from said spring to the last above mentioned premises.

7. Lease from the officers of said Hul of Waikane of about ten acres of land known as the Peterson lot; rent paid in full to October 1st, 1907.

8. Note for \$120 secured by mortgage dated May 17, 1890, at 12 per cent per annum, made by Pini to Peterson, Larsen and Hopkins, of his interest in the Hul of Waikane.

The property above described has for the most part been used as a country residence, and has on a portion thereof two dwelling houses, outhouses, stables, etc., all in good order and condition. A portion of the land's three pieces are leased, and bring in a rental of \$155 a year.

P. C. Jones, Esq., who is the owner of the other undivided half of said property, has consented to a sale of his half at the same time and place, and will join in the deed for his half interest with the Guardian, so that the party buying can secure the whole property. The five shares in the Hul of Waikane represent nearly a sixth interest in between 1,500 and 1,600 acres, consisting of Kula and rice land, the land being known as the Ahupuaa of Waikane.

Upset price for all the above property will be \$12,000.00.  
 Deeds at the expense of purchaser.  
 Dated Honolulu, January 3rd, 1900.  
 For further particulars apply to Cecil Brown, Esq., or

J. F. MORGAN, Auctioneer.

**MALOKO IA APANA 1 EKA.**  
 Apana 3, 1 lol. Kahalo. E hoomaka ma ke kahi Akau makai o kela pili ana i na lilo o Kuluahai ame ko Kauli; a e holo ana He. 47 1/2 Hi. 1 Kaul. ma ko Kuluahai.

**Pacific Import Co.**

(INCORPORATED),  
**PROGRESS BLOCK.**

**Great News!**

We beg to inform the Ladies that we have just opened out five cases of Embroideries, Insertions, and All-Over Embroideries—1,000 pieces of Embroideries of all grades in widths and qualities to select from, high novelties in new patterns that must be seen to be appreciated. Having imported the same direct from the largest manufacturer in Switzerland, we are able to sell the same at very reasonable prices.

We invite inspection.  
**PACIFIC IMPORT CO.**  
 S. EHRlich, Manager.