

## Dr. McLaren To Direct Gym. Work

Dr. Ian McLaren, who arrived in Maui as a visitor last week has decided to cast his lot among the people of the best island in the group. On Tuesday he accepted a proposition from the directors of the Alexander House Gymnasium to remain in Wailuku as director of the gymnasium and physical culture work. Already he has entered upon his new duties, and the enthusiasm with which he is starting indicates a most successful future for athletics on Maui.

Dr. McLaren is a graduate of the medical department of the King's College, of London, and he has made a specialty of physical culture work. For the past few years he has spent most of the time traveling in Europe and also in the Orient. He but recently arrived in Honolulu from a trip through the Malay states, although this is not his first trip to Hawaii.

Dr. McLaren has taken charge of the Wall & Dougherty cup bowling tournament which opens next Monday evening, and which is open to business men. Entries for this series will be taken until Monday. The tournament is limited to three months time, and 50 games are to be bowled.

Classes are to be organized at the Gymnasium for men, women, boys and girls, for various branches of physical culture and athletic work, and special attention will be given to such as may be physically deficient in any particular. The athletic work will include boxing, wrestling, swimming, drill work, etc.

The hours for gymnasium work will continue the same as heretofore.

Dr. McLaren has opened an office on the second floor of the Gymnasium, and may be found there after one o'clock each afternoon, where he will be glad to receive the names of any wishing to enter classes, or advise those contemplating physical culture work.

## Successful Church Fair

One of the most successful fairs ever held on Maui was that given in the grounds of the St. Joseph's Church, Makawao, last Sunday. The occasion was the celebration of St. Joseph's Day. A very large crowd was in attendance throughout the day, and everybody had a most enjoyable time.

High Mass was celebrated at 10 o'clock by the Rev. Father Justin, assisted by Fathers Francis and Athanasius. Throughout the day a Paia Band played excellent music.

As a result of the fair \$160 was realized above expenses, which will be used to pay for new benches in the church.

Much of the credit for the success of the day belongs to the ladies and gentlemen who made up committees, and these committees were as follows: Bazaar Committee—Father Athanasius, Mrs. P. Freitas and Mrs. D. Mattos. Refreshments Committee—Mr. and Mrs. J. V. Maciel and J. V. Maciel, Jr.

The committees have expressed thanks to the many persons who assisted with donations and otherwise in making the fair the success it was.

## HOMESTEADERS TO TRY SHIPPING FRESH PINES

### Big Meeting of Haiku Farmers Decides to Adopt Plan of Dr. Wilcox—Railroad Will Help—Hope to Prevent Loss That Low Cannery Indicate.

If the present plans of the homesteaders in the Haiku district can be carried out as expected, fresh Maui pineapples will be one of the features on the mainland markets during the coming summer. At a very largely attended meeting held in the Kuiaha schoolhouse last Saturday evening, Dr. E. V. Wilcox, director of the federal experiment station, addressed the settlers, having come to Maui at the invitation of the Haiku Farmers' Association for that purpose.

Dr. Wilcox declared that the shipping of fresh pines to the coast is entirely feasible, and dependent almost solely upon the treatment they receive in transit. He told of his investigation into this transportation matter, and stated that the steamship companies are much better prepared to give fresh fruit proper ventilation than formerly. Moreover the possibilities of fresh pines as a source of tonnage for ships is now beginning to be appreciated by steamship men.

As a result of the meeting it was virtually decided to give the fresh fruit shipments a thorough trial, and this will be done by the growers working co-operatively. Dr. Wilcox expects to be able to secure for the settlers the services of Leslie Clark, of the College of Hawaii, who is an expert in the grading and packing of pineapples. The fruit will be packed in improved crates, and in excelsior.

It is possible that an experimental shipment will be made within the next few weeks, but the bulk of the crop will not come to maturity before July and August. The fact that the bulk of the sugar has been shipped before the pineapple crop comes on, makes it the more likely

that the steamship companies will make even unusual effort to make the business a success and thus guaranty its permanency. Before returning to Honolulu, Dr. Wilcox had a conference with Wm. Walsh, superintendent of the Kahului Railroad, and received every assurance that the railroad company will do its full part in handling the fruit from the Pauwela or Haiku stations until it is upon the steamer. "It isn't a matter of helping the homesteaders," declared Mr. Walsh, "It's a matter of business with the Kahului Railroad. We're after business where ever we can get it, and we are willing to help out in anything that promises more freight for the railroad."

Because of the fact that under the present prices which the canneries will pay for pineapples, the growers will not be able to pay their cost of production, there is the keenest kind of interest in the fresh fruit project. Oahu growers have been able to make from \$30 to \$60 net per ton on successful shipments, though on others they have barely paid expenses owing to damage to fruit enroute. This damage is declared to be almost solely due to lack of proper ventilation on the vessels, or through the fruit's becoming wet.

Dr. Wilcox also urged the Haiku farmers to devote themselves to the raising of other products than pineapples. This is already being undertaken by almost all of the settlers, in some degree, and already the outlook for quite a large range of products is considered excellent. With new soil to deal with, however, and new climatic conditions, it is not surprising that a great deal of experimenting is necessary.

## Big Tennis Tournament For Sunday

Unusual interest among the tennis enthusiasts centers in the games to be played on the Paia courts on Sunday and Monday, between teams of the Beretania Tennis Club and Paia Tennis Club. These matches comprise the first round of the inter club tournament of the Hawaii Tennis Association, and the results will be watched for with greatest interest throughout the Territory. The visiting teams arrived last night from Honolulu by the Mauna Kea, and are guests of the Paia members.

The matches to be played at this time are 2 singles and 3 doubles as follows:

- 1st singles—A. L. Castle, Beretania; Stanley Richardson, Paia.
  - 2nd singles—C. Henoch, Beretania; A. W. Collins, Paia.
  - 1st doubles—W. H. Hoogs, Jr. and L. L. Robertson, Beretania; A. W. Collins and D. C. Lindsay, Paia.
  - 2nd double—A. L. Castle and C. Henoch, Beretania; Stanley Richardson and F. P. Rosecrans, Paia.
  - 3rd doubles—A. M. Nowell and D. W. Anderson, Beretania; H. W. Rice and W. S. Beeman, Paia.
- Beginning Sunday afternoon at 2

o'clock, the two singles matches and the No. 3 doubles will be played off.

On Monday afternoon, beginning at 4 o'clock, the 1st and 2nd doubles matches will be played.

The Paia Tennis Club extends a general invitation to all persons interested in tennis to attend the games, which undoubtedly will be very interesting, and it is expected that a large crowd of spectators will be present. The visiting players expect to return to Honolulu on Monday evening.

## Howell to Do Lahaina Water Job

Hugh Howell was awarded the contract for extension of the pipeline of the Lahaina water works, and for other improvement of the service, by the Board of Supervisors at its meeting on Thursday morning. Howell's bid for the job was \$9718. Two other bids were submitted, J. C. Foss, Jr., offering to do the work for \$10,425; and A. A. Wilson, whose bid was 12,400.

The new work, it is said will place the Lahaina water system in first class conditions, and remove the cause of complaint which the Territorial Board of Health has had for some time that the source of supply was liable to contamination.

## COMMISSION KICKS WHEN SUPERVISORS USE AUTO

### Loan Fund Custodians Say Supervisors Took Machine and Damaged It—Landing Improvement at Pukoo—Territory Refunds Money Spent.

The right of Supervisors Drummond and Lake to make use of an automobile owned by the Maui Loan Fund Commission, occasioned some little discussion in the board at its meeting Wednesday afternoon. The matter came up through the reading of a communication which Mr. Drummond received from R. A. Wadsworth, secretary of the Commission, in which the claim was made that the machine in question had been taken without authorization, and against the express wishes of the Commission. Moreover, that the trip in question had been made without oil and as a consequence heavy repairs are necessary before the car can again be used. The commission asked Mr. Drummond and Mr. Lake to make good the damage.

Mr. Drummond explained that the car had been taken in order to make an official inspection trip of the Keokea reservoir, and in order to save the county the expense of a hired car. He believed the machine in question was to all intents and purposes a county machine. As to damage claimed, he said the auto had been in bad condition in the first place.

As the matter was finally left, it was practically decided that the County should assume the responsibility, and have the machine put in repair and that until the Loan Fund Commission quits business, the supervisors will find other means of transportation.

Mr. Wadsworth, who happened in at the time the matter was under discussion, explained the attitude of the loan commission, which is that until its work is ended it is not justified in permitting the use of property for which it may have further use.

In reply to a query from Wadsworth, it was stated that the county at present owns three automobiles,

and maintains three others for various departments.

The Territorial Board of Harbor Commissioners has asked the county supervisors to make a fill at the approach to the Pukoo wharf, on Molokai, in order that the landing facilities there may be made adequate. The matter will be looked into.

The territory has turned over to the County of Maui \$2,000 to apply on the amount expended in opening the new road through the Kuiaha-Pauwela homesteads. By act of the last Legislature the counties may undertake such improvements for homesteads, and later be reimbursed from monies coming in from the payments made by the settlers. This is the first instalment which the territory has paid on this work.

D. T. Fleming asked the supervisors to recommend to the secretary of the territory that the polling place at Honolulu be changed to Hanalei, a more central point in the Lahaina district. The suggestion was approved, and the recommendation will be made accordingly. The members of the board also expressed themselves favorably regarding the proposal to divide the 12th precinct (Hamakua) into two precincts.

Supervisor T. T. Meyer, of Molokai was not able to be present at the board's meeting this week, owing to illness in his family.

The important matter of framing a new schedule of water rates for all three of the systems owned by the County, was the chief business before the Board of Supervisors yesterday. According to evidence before the board in shape of detailed reports, the present schedules are ridiculously inadequate. It is hoped to pass the new schedules on first reading at this meeting of the board.

## Refrigerate Fruit Fly Says Wilcox

That alligator pears, which are now shut out of the mainland markets on account of the Mediterranean fruit fly, may again be exported, seems probable from the experiments which have been made recently by the Hawaii Experiment Station. For some time past the federal station has been experimenting on the effect of refrigeration upon various Hawaiian fruits, and the interesting discovery has been made that the larvae and eggs of the fruit fly are killed by exposure to the low temperature.

In his address to the Haiku Farmers' Association last Saturday night, Dr. E. V. Wilcox, director of the station, stated that avacados had been kept in perfect condition for a period of six weeks in a temperature near the freezing point, and that in every instance the fruit fly larvae and eggs has been destroyed. If it can be thoroughly demonstrated, that this treatment is absolutely effective, Dr. Wilcox states that there will probably be

no serious difficulty in having the quarantine ban removed for such fruit as bears the proper refrigeration certificate. The process also has the advantage that pears may be held for several months, thus permitting their being placed on the markets at the most advantageous times as regards prices.

The exportation of alligator pears had begun to assume important proportions when the fruit fly came into prominence, and it seems probable that with this handicap removed, Hawaii should, in a few years have another asset of importance in this one fruit alone.

## May Split Precinct

A petition is being circulated among the Haiku homesteaders and other residents living between Haiku and Peahi, for the subdivision of the 12th, or Hamakua, voting precinct, of the district of Makawao. The petition sets forth that the precinct is too large, and that a large number of voters are greatly inconvenienced by being required to go to Hamakua to cast their ballots.

The petitioners ask that the new precinct include Haiku, Pauwela, Kuiaha, Kaupakalua and Peahi.

## Winery Control Changes

As soon as the business details can be worked out, the Kaupakalua Wine & Liquor Company's business will be handled through the Maui Wine & Liquor Company. This was definitely decided upon on Monday when the stockholders of the last named corporation authorized an increase of the capital stock of their company by \$12,500, which is to be used in taking over the stock of a number of the larger Kaupakalua shareholders. It is stated that by this move the financial crash of the wine making company, which has been imminent, will be averted.

The Kaupakalua Wine & Liquor Company was organized some years ago and has been in the business of manufacturing wine from grapes raised principally by the small Portuguese farmers of the Kaupakalua district.

The stock which the Maui Wine & Liquor Company will take over, it is stated, will be on the basis of \$7 per share (par \$10). There are between 200 and 300 small shareholders, most of whom have depended to a considerable extent for their livelihood in furnishing grapes to the winery, and to them the news that the business is not to be suspended is of very vital importance.

It is understood that in the reorganization of the winery company J. V. Maciel will continue as president, but that W. T. Robinson, R. A. Wadsworth, John Vasconcellos and J. Garcia of the Maui company, are to hold four of the seven places on the directorate.

## Polo Afoot Gets Boys In Trouble

John Souza Baltizado, aged 11, and Tokio Shimoto, aged 10, probably never heard of the game of "shinny," but they do know about polo. In their fertile brains the idea suggested itself that polo might be played with some success without ponies. They decided to try it. Apparently, however, their inventive genius was not equal to devising a shinny club from crooked stick, and a ball from a stone or block of wood, as their mainland cousins are wont to do, so when the impulse became too strong they broke into the stables of the Makawao Polo Club, at Sunnyside, and helped themselves to such equipment as struck their fancy.

But the polo clubs were too long for effective work on foot, so they cut off the handles to a length that suited their stature. Also they thought they needed some gauntlets, or wrist bands, and these were easily provided by cutting up a number of leather horse-boots. In all they ruined property to the value of \$37.50, according to the complaint filed against them before Judge Kingsbury, in the Juvenile court, on Wednesday of this week.

The boys were found guilty, but the Court declined to send them to the reform school, releasing them on parole. They will be under the guidance of probation officers to be appointed, and will be given another chance.

## THE MAUI NEWS

Entered at the Post Office at Wailuku, Maui, Hawaii, as second-class matter

A Republican Paper Published in the Interest of the People  
Issued Every Saturday.

Maui Publishing Company, Limited.  
Proprietors and Publishers

SUBSCRIPTION RATES, IN ADVANCE \$2.00 per Year, \$1.25 Six Months  
\$2.50 per year when not in advance

Will. J. Cooper - - - Editor and Manager

SATURDAY, - - - - - MAY 9, 1914

### MAUI NO KA OI.

IN taking charge of THE MAUI NEWS, the new editor and manager hopes to be of real service to the Island of Maui. In his efforts towards this end, he is inspired by a most sincere belief in this Island and its future. It has been his home for nearly two years, and he hopes to make it his home for many years to come. The motto of the Valley Isle rings true to him. For him no other island of the group combines in equal degree such beauty and natural resources and so progressive and liberal minded a citizenship. To play a small part in such a field is a joy and a privilege. It were trite to say that an editor cannot please everybody; but he may set up before him the welfare of the community as a whole, and to that end strive according as he has the light. The Editor of THE MAUI NEWS reserves to himself the privilege of his own opinions, while according to others the same right in fullest measure. The spirit of THE MAUI NEWS is broad-gauged. Its columns are open to any honest expression of opinion. The spirit of the times is team-work, and to this end for the best interests of all Maui, the editor of this paper pledges himself.

WILL. J. COOPER.

### WHERE THE RESPONSIBILITY RESTS.

TO loose business methods, more than to any other one cause, may be ascribed the humiliating position in which the County of Hawaii finds itself today. The officials of the Big Island who are today serving felon's sentences would in all probability be today filling their positions with honor to themselves and to their community, had not the people of Hawaii been almost criminally negligent of their duty as citizens. Few men become criminals in a day, and most often graft develops gradually as the opportunities for graft remain. Human nature is weak. The other Islands should take the lesson of Hawaii very much to heart. Under like conditions of slovenly system, or lack of system, the same sort of scandal is not only possible, but probable, in any community. And this will ever be so as long as human nature remains the same. Maui has been fortunate, but it were well for the citizens of Maui to remember that they cannot side-step responsibility for the acts of their public servants.

### HOPE FOR THE PINEAPPLE GROWERS.

THERE is more than a ray of hope for the pineapple growers of Maui in the plan to ship the fruit to the mainland in the fresh state. It has been proven beyond any doubt that it can be done successfully. The only element of uncertainty is in the transportation. With proper care in handling, and adequate ventilation on the journey, pineapples reach not only San Francisco, but points as far east as Denver in almost perfect condition and with a minimum loss. Heretofore the business has not appealed to the steamship companies as of enough importance to justify any especial provision being made to care for perishable freight in transit, but there are indications that a change has come in this respect.

And the Haiku homesteaders are going to give the matter a thorough tryout this summer. It will be a joint effort. An expert will superintend the grading and packing, and if possible a man will be sent with the first few shipments to see just how they are handled and in what condition they reach their destination. The fact that the bulk of the sugar crop is out of the way before the main crop of pineapples is ready to ship is one reason to believe that the steamship men will be glad to co-operate with the growers when they come to appreciate the possibilities of the fresh fruit cargoes. Under present cannery prices the growers cannot hope to make expenses unless some new outlet is found. If the fresh fruit shipping proves successful the returns it is believed will be much better than even under the best prices that have ever been offered by the canneries.

Jeff McCarn is an ardent advocate of prohibition. Since prohibition and temperance are not synonymous it does not necessarily follow that the U. S. district attorney is inconsistent, but he certainly is intemperate.

# Kahului Railroad Company's

Merchandise Department.

Distributors.

## DOUGLAS FIR

(NOR'WEST LUMBER)

### Its Value to Builders

"Douglas Fir may perhaps be considered as the most important of American woods. \* \* \* \* As a structural timber, it is not surpassed, and probably it is most widely used and known in this capacity." Extract from U. S. Government Forest Service Bulletin No. 88.

## Distributors

Kahului Railroad Co's  
Merchandise Department

Tel. No. 1062.

Kahului, Maui, T. H.

# MATSON NAVIGATION CO.

268 Market Street, San Francisco, California.

FREIGHT AND PASSENGER SERVICE

San Francisco—Puget Sound

**No. 1 HAWAIIAN ISLANDS 1914**

Steamer	Leave S. F.	PUGET Arrive	SOUND Leave	Hawaiian Arrive	Islands Leave	Arrive S. F.	Voyage
*Hilonian	Jan 1	Jan 4	Jan 10	Jan 19	Jan 28	Feb 5	75
†Enterprise	Jan 3			Jan 11	Jan 21	Jan 31	111
Lurline	Jan 6			Jan 13	Jan 20	Jan 28	67
Wilhelmina	Jan 14			Jan 20	Jan 28	Feb 3	52
Honolulu	Jan 20			Jan 27	Feb 3	Feb 11	38
*Hyades	Jan 22	Jan 25	Jan 31	Feb 10	Feb 18	Feb 28	42
Matsonia	Jan 28			Feb 3	Feb 11	Feb 17	1
Lurline	Feb 3			Feb 10	Feb 17	Feb 25	68
†Enterprise	Feb 7			Feb 15	Feb 25	Mar 7	112
Wilhelmina	Feb 11			Feb 17	Feb 25	Mar 3	53
*Hilonian	Feb 12	Feb 15	Feb 21	Mar 2	Mar 11	Mar 19	76
Honolulu	Feb 17			Feb 24	Mar 3	Mar 10	39
Matsonia	Feb 25			Mar 3	Mar 11	Mar 17	2
Lurline	Mar 3			Mar 10	Mar 17	Mar 25	69
*Hyades	Mar 5	Mar 8	Mar 14	Mar 24	Apr 1	Apr 11	43
Wilhelmina	Mar 11			Mar 17	Mar 25	Mar 31	54
†Enterprise	Mar 14			Mar 22	Apr 1	Apr 11	113
Manoa	Mar 17			Mar 24	Mar 31	Apr 7	1
Matsonia	Mar 23			Mar 31	Apr 8	Apr 14	3
*Hilonian	Mar 26	Mar 29	Apr 4	Apr 14	Apr 22	Apr 30	77
Lurline	Mar 31			Apr 7	Apr 14	Apr 22	79
Wilhelmina	Apr 8			Apr 14	Apr 22	Apr 28	55
Manoa	Apr 14			Apr 21	Apr 28	May 5	2
*Hyades	Apr 16	Apr 19	Apr 25	May 5	May 13	May 23	44
†Enterprise	Apr 18			Apr 26	May 6	May 16	114
Matsonia	Apr 22			Apr 28	May 6	May 12	4
Lurline	Apr 28			May 5	May 12	May 20	71
Wilhelmina	May 6			May 12	May 20	May 26	56
*Hilonian	May 7	May 10	May 16	May 26	June 3	June 11	78
Manoa	May 12			May 19	May 26	June 2	3
Matsonia	May 20			May 26	June 3	June 9	5
†Enterprise	May 23			May 31	June 10	June 20	115
Lurline	May 26			June 2	June 9	June 17	72
*Hyades	May 28	May 31	June 6	June 16	June 24	July 4	45
Wilhelmina	June 3			June 9	June 17	June 23	57
Manoa	June 9			June 16	June 23	June 30	4
Matsonia	June 17			June 23	July 1	July 7	6
*Hilonian	June 18	June 21	June 27	July 7	July 15	July 23	79
Lurline	June 23			June 30	July 7	July 15	73

\* Indicates that Steamer carries freight and combustibles only.  
† Sails from Hilo.

### PORTS OF CALL.

- S. S. MATSONIA.....To Honolulu and Hilo.
- S. S. WILHELMINA.....To Honolulu and Hilo.
- S. S. MANOA.....To Honolulu and Kahului.
- S. S. LURLINE.....To Honolulu and Kahului.
- S. S. ENTERPRISE.....To Hilo direct. (Does not call at Honolulu.)
- S. S. HYADES.....To Honolulu, Port Allen, Kaanapali, Kahului and Hilo.
- S. S. HILONIAN.....To Honolulu, Port Allen, Kaanapali, Kahului and Hilo.

The above dates are subject to change without notice.  
KAHULUI RAILROAD CO., Agents, Kahului.

Shoes Delivered to any Post-Office on Maui  
**Free of Charge**  
No matter what you may want in shoes we have it or will get it for you if possible.  
Our stock of shoes consists of Infants size 1 to Men's size 13 and are selected from responsible Manufacturers. We don't sell shoddy goods. We want your account. Our Mail-Order Department is ready to serve you and give you the best results of its long experience.

We will prepay the mail charges on all original orders only asking customers to pay on returns and exchanges.

Let us have your order and see how it works.

## MANUFACTURER'S SHOE COMPANY, Ltd.

P. O. BOX 469 HONOLULU, T. H.

Telephone 1111 Wailuku, Maui, T. H. P. O. Box 93  
**WAILUKU HARDWARE CO.,**  
Successors to  
**LEE HOP**  
General Hardware, Enamelware, Oil Stoves, Twines,  
Mattings, Wall Papers, Mattresses, Etc., Etc., Etc.  
COFFINS MADE AT SHORT NOTICE.

## Read the MAUI NEWS

LODGE MAUI, No. 984, A. F. & A. M.



Stated meetings will be held at Masonic Hall, Kahului, on the first Saturday night of each month at 7:30 P. M.  
Visiting brethren are cordially invited to attend.  
E. R. BEVINS, R. W. M.  
A. L. CASE, Secretary.

### MAUI STABLES

WAILUKU -- PHONE -- 57

Drays, Express Wagons, Buggies, etc. Harness and Saddle Horses; 7-seater Cadillac, Frank Medeiros, Chauffeur; also 2-Ton Buick Truck, for hire Day and Night. Special rates for large parties. We guarantee to make all steamer and train connections.

In the Circuit Court of the Second Circuit, Territory of Hawaii.

At Chambers—In Probate.  
In the Matter of the Estate of SAMUEL R. DOWDLE, Deceased.  
Notice to Creditors.

The undersigned, having been duly appointed Executor of the Will of Samuel R. Dowdle, deceased, hereby gives notice to all creditors of said deceased to present their claims duly authenticated and with proper vouchers, if any exist, even if the claim is secured by mortgage upon real estate, to it at its office 923 Fort Street, Honolulu, within

six months from the date of the first publication of this notice, said date being May 2, 1914, or within six months from the day they fall due, or the same will be forever barred.

Wailuku, Maui, T. H., May 2, 1914.  
HAWAIIAN TRUST COMPANY, LIMITED,  
Executor of the Will of Samuel R. Dowdle, deceased.  
FREDERICK ANDERSON & MARX, Attorneys for Executor.  
May 2, 9, 16, 23, 30, 1914.



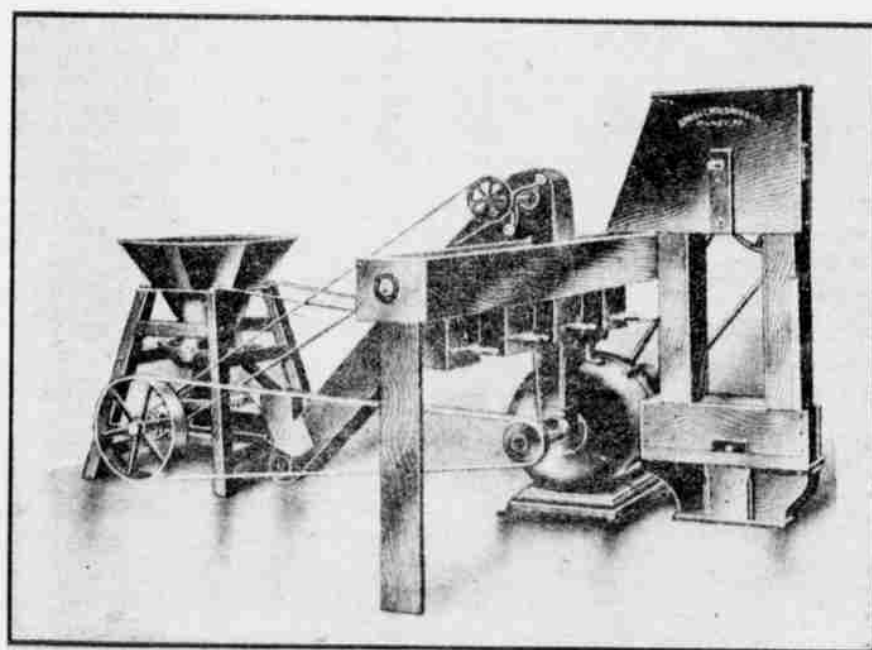
HONOLULU, T. H.

Eggs for Hatching, Day-Old Chicks, Young—, Laying and Breeding Stock. Our birds are trap-nested, pedigreed, standard—and line bred. Custom hatching. Fancy Table Eggs and Poultry. Write for price list. Visit our plant.

## Mr. FARMER!

Here is Your Opportunity.

**3,468,752 Pounds of Corn** were imported into this Territory last year—which amount could just as well have been raised right here. The money value was **\$54,738.**



The Honolulu Iron Works Co. carries in stock Corn Shellers, Crackers, Bur Mills, Elevators, and all other necessary equipment for handling a feed-corn crop. We will furnish plans and estimates for the complete equipment of Corn Mills.

(Sprout, Waldron & Co.'s Apparatus.)

## Honolulu Iron Works Co.

HONOLULU

We send goods free by parcels post anywhere on Maui.

Let us have your orders.

## Benson Smith & Co., LTD.

Hotel and Fort Streets HONOLULU

**PURE**

## KAUPAKALUA

PURE KAUPAKALUA is becoming the favorite table wine of Maui just because it is pure and wholesome.

Ask your dealer to give you a free sample and then order a gallon.

Kaupakalua Wine & Liquor Co. Ltd. Haiku, Maui.

C. H. COOKE, President. C. D. LUFKIN, Cashier.

COMBINED STATEMENT OF CONDITION

MARCH 31st, 1914.

THE FIRST NATIONAL BANK OF WAILUKU. LAHAINA NATIONAL BANK. THE FIRST NATIONAL BANK OF PAIA.

Resources.		Liabilities.	
Loans, Discounts, Overdrafts.....	\$295,644 43	Capital Stock.....	\$ 85,000 00
United States Bonds.....	41,250 00	Surplus & Profits.....	56,827 08
Bonds, Securities, etc.....	91,251 86	Circulation.....	41,247 50
Cash & Due from Banks.....	128,861 13	Due to Banks.....	703 92
Real Estate, Banking Houses, Fixtures.....	17,840 73	Total Deposits.....	393,142 15
Five Percent Redemption Fund.....	2,062 50		
	\$576,920 65		\$576,920 65

Territory of Hawaii, )  
Island & County of Maui ) SS.  
I, C. D. Lufkin, Cashier of the above named three National Banks, do solemnly swear that the above combined statement is true and correct, to the best of my knowledge and belief.  
C. D. LUFKIN, Cashier.  
Subscribed and sworn to before me,  
this 3rd day of April, A. D. 1914.  
W. F. CROCKETT, Notary Public. Second Judicial Circuit.

Telegraph News of the Week.

HONOLULU, May 6.—The Star-Bulletin last night published a reproduction of County warrants for checks drawn by Hawaii County officials. One is without name as payee or endorser, and one not signed, but all paid by First National Bank of Hilo. Originals supplied by Field with statement as to his work as auditor.

Jeff McCarn applied a vile epithet to Claudius McBride after court adjourned yesterday and McBride returned in kind. McCarn struck McBride in the jaw, and McBride landed on district attorney's eye. McCarn then drew a 44-Calibre revolver and McBride clinched in effort to disarm him. Both rolled to floor. The pistol was taken away by bystanders, and McCarn arrested. Attorneys Humphreys, Ashford and Magoon claim district magistrate has no jurisdiction as assault took place in Federal Building. Will be heard today.

Attorney General Stainback has amended his report on the McCarn disbarment proceedings so as to take sting out of one paragraph Customs Collector E. R. Stackable has been asked by cable for his resignation. Successor believed to be from mainland. Name not given.

The Matson Steamship Company may extend its service to take in San Pedro. Many advantages of new line are pointed out. Big time at Schofield Barracks today. Army's county fair. Stores are closed and a big crowd will attend.

Big banquet held by Y. M. C. A. last night a success. Two women in auto on Punchbowl, yesterday, asked driver to stop and gather flowers. Machine backed down hill. Women jumped before it went over 200-foot cliff.

PERTH, May 6.—West Australia decided yesterday to make exhibit at Panama-Pacific exposition.

TORREON, Mex., May 5.—Fifteen hundred troops marched in review before Villa today and demanded leader to proceed to City of Mexico.

VERA CRUZ, May 6.—Thirteen Americans are reported to be under arrest at Metlatlonyca, where fighting continues.

CHIHUAHUA, May 6.—Four constitutionalist generals have refused to unite with the forces against the United States.

DURAZZO, Turkey, May 6.—Four hundred and fifty Mohammedans were crucified in a church here and then burned.

LONDON, May 6.—Huerta has told the London Mail correspondent that he has no thought of resigning.

England may exhibit at the Panama fair.

VERA CRUZ, May 4.—A woman, said to have killed 8 Americans by "sniping" them from a roof, was caught and will answer to a charge of murder today.

General Zapata has issued a proclamation that he will make an attack on the City of Mexico today.

John Stillmann, American consular agent, is in jail, held by General Maas, and is threatened with execution.

General Velasco has threatened to lead a revolt against Huerta. He is dissatisfied with the treatment he has received at hands of the government.

CITY OF MEXICO, May 4.—American Representative Ryan has been turned over to the Brazilian minister and ordered out of Mexico. He will be sent to the United States as early as practicable.

VALPARAISO, May 4.—Fire has destroyed a large part of the business section of this city. Fifty dead as result.

NEW YORK, May 6.—Survivors of the British Columbian, which burned at sea, have reached here. They were in boat which was picked up by steamship Franconia. Search being made for second boat which is still missing.

WASHINGTON, May 6.—The woman suffrage and prohibition bills have been referred back to committees.

WASHINGTON, May 6.—Mexican constitutionalists here deny report that Otto Muller, German, had been killed by Yaqui Indians.

Mediators on Mexican situation are to meet at Niagara Falls on May 18.

A strong rebel force is reported to have arrived at Tampico. Fighting continued yesterday between federals and rebels. A blockade has been declared and no vessels are being allowed to clear either to or from the United States.

The American hospital ship Solace has sailed north with wounded Americans.

Two sailors wounded at time of occupation of Vera Cruz have since died.

GALVESTON, May 6.—Seventy American refugees who arrived here after occupation of Vera Cruz by the Americans, have returned to Tampico.

PORTLAND, May 6.—American-Hawaiian steamers are being loaded in spite of shipping strike.

DECATUR, Ill., May 6.—Thirty passengers and trainmen injured yesterday in collision on Wabash.

WASHINGTON, May 6.—Parcel Post is now operating with Greece.

Richard Olney has declined chairmanship of National Reserve Bank commission. Place may be offered to Secretary of Agriculture Houston.

INDIANAPOLIS, May 6.—A committee has been appointed by the United Mine Workers to arbitrate coal strike differences.

TRINIDAD, Colo., May 6.—Col. Lockett has assumed the command in strike zone and semblance of order is showing through maze of disturbance.

WASHINGTON, May 4.—The mediators have withdrawn their invitation to Carranza to participate in any further negotiations for peace. Huerta has named Ramboza and Calindo. Third name to come later.

INDIANAPOLIS, May 4.—A national strike is threatened unless some amicable settlement is made of the Colorado strike.

WASHINGTON, May 4.—The cruiser Washington has been ordered to Santo Domingo where foreigners are reported to be in panic in consequence of bombardment of Puerto Plata.

DENVER, May 4.—The legislature met today to consider the strike situation. Rumors are afloat that Governor Ammons may be impeached.

WALLENBURG, Col., May 4.—Strikers have announced that all arms have been surrendered.

CHICAGO, May 4.—Eight members of the Board of Education have been sent to prison for 30 days for contempt of court, and John Jelke, millionaire oleomargarin maker, was fined \$2,000 and sentenced to 2 years in prison on charge of conspiracy. Four members of the board of education were refused reinstatement because they voted against Mrs. Young, as superintendent of schools.

WASHINGTON, May 4.—President Wilson has announced that the Clayton Anti-trust matter, the Covington Inter-state Commission, the stock securities and rural credit bills, will be considered by congress before the July adjournment.

**DE LAVAL CREAM SEPARATORS**

Every User a Booster. Skim Cleanest. Turn Easiest. Most Sanitary. Are Simplest. Last Longest.

That is a strong statement but we'd make it stronger if we knew how, because we are sure that the De Laval will more than make good every claim.

We don't ask you to take our "say so." We prefer to let the machine itself talk for us.

Why not let us set one up at your house? You can test it yourself alongside of any other machine you like for capacity, cleanness of skimming, and ease of operation.

We don't ask you to buy a De Laval upon "claims." We do ask you to be sure and give it a fair trial before you purchase any cream separator.

Don't put it off. Do it now.

Used Exclusively by 98% of the World's Creameries

**SOONER OR LATER YOU WILL BUY A DE LAVAL**



E. O. HALL & SON, LTD. Agents

Time Table--Kahului Railroad Co. Daily Passenger Train Schedule (Except Sunday) The following schedule will go into effect July 1st, 1913.

TOWARDS WAILUKU							TOWARDS HAIKU						
9	7	5	3	1	Distance	STATIONS	Distance	2	4	6	8	10	
PM	PM	PM	AM	AM	Mile		Miles	AM	PM	PM	PM	PM	
5:33	3:30	1:25	8:42	6:35	15.3	A. Wailuku..L	0	6:40	8:50	1:30	3:35	5:38	
5:23	3:20	1:15	8:30	6:25		L. " " ..A	0.6	6:59	9:00	1:40	3:45	5:48	
						" Kahului ..L	3.3	7:02	9:05	1:52	3:57		
5:20	3:17	1:10	8:27	6:20	12.0	A. " " ..L	6.9	7:03	9:05	1:53	3:58		
5:10	3:07	1:00	8:17	6:10		L. Spreck..A	9.8	7:15	9:15	2:05	4:10		
5:09	3:05	1:00	8:15	6:05	8.4	A. " " ..L	9.8	7:15	9:15	2:05	4:10		
5:00	2:55	0:55	8:05	6:00	5.5	L. Paia ..A	7:17	7:24	9:20	2:14	4:19		
4:58	2:53	0:53	8:03	5:58		A. " " ..L	7:24	7:24	9:20	2:14	4:19		
4:52	2:47	0:47	7:57	5:52		L. Hama ..A	11.9	7:25	9:20	2:15	4:20		
4:51	2:46	0:46	7:56	5:51	3.4	L. "kuapoko..L	7:33	7:33	9:25	2:23	4:28		
4:45	2:40	0:40	7:50	5:45		L. " " ..A	13.9	7:35	9:25	2:25	4:30		
4:44	2:39	0:39	7:49	5:44	1.4	A. Pauwela..L	15.3	7:40	9:25	2:30	4:35		
4:40	2:35	0:35	7:45	5:40	0	L. Haiku ..A							

PUUNENE DIVISION

TOWARDS PUUNENE				TOWARDS KAHULUI			
3	1	Distance	STATIONS	Distance	2	4	
Passenger	Passenger	Miles		Miles	Passenger	Passenger	
PM	AM				AM	PM	
2:50	6:00	0	L. Kahului..A	2:56	2:23	1:5	
3:00	6:10	2.5	A. Puunene..L	0:6	1:23	0:5	

- All trains daily except Sundays.
  - A Special Train (Labor Train) will leave Wailuku daily, except Sundays, at 5:30 a. m., arriving at Kahului at 5:50 a. m., and connecting with the 6:00 a. m. train for Puunene.
  - BAGGAGE RATES: 150 pounds of personal baggage will be carried free of charge on each whole ticket, and 75 pounds on each half ticket, when baggage is in charge of and on the same train as the holder of the ticket. For excess baggage 25 cents per 100 pounds or part thereof will be charged.
- For Ticket Fares and other information see Local Passenger Tariff I. C. C. No. 8, or inquire at any of the Depots.

**LAHAINA STORE**  
Importers & Dealers in  
**GENERAL MERCHANDISE**  
WHOLESALE AND RETAIL  
GASOLINE and DISTILLATE IN DRUMS  
**LAHAINA STORE.**

You must know that  
**"IN 'UNION' THERE IS STRENGTH."**  
If you are a fuel user you're sure that in  
**"Union" Gasoline**  
**"Union" Distillate**  
**"Union" Kerosene**  
there is more strength and less waste during combustion than other brands can claim.  
**SPECIFY "UNION" FUEL OILS**  
**WHEN**  
**YOU CALL AT YOUR DEALER'S**

**Regal Shoes Mean Solid Comfort Plus Style**  
In Regal Shoes you not only secure the most popular styles, but also the utmost foot-comfort—for Regal Shoes are made in Quarter sizes, and everyone can get exactly the size his (or her) foot requires.  
**REGAL SHOE STORE, HONOLULU.**  
We gladly pay Parcel Post charges on all new shoes ordered, and also pay charges one way on shoes sent to us for repairing—and we insist on repairing shoes well.



**The Henry Waterhouse Trust Co., Ltd.**  
BUYS AND SELLS—REAL ESTATE, STOCKS & BONDS  
WRITES FIRE AND LIFE INSURANCE  
NEGOTIATES LOANS AND MORTGAGES  
SECURES INVESTMENTS  
A List of High Grade Securities mailed on application  
CORRESPONDENCE SOLICITED  
HONOLULU, HAWAII P. O. Box 346

Snap these little scenes with a  
**VEST POCKET KODAK**  
WHICH COSTS ONLY \$6.00.  
**HONOLULU PHOTO SUPPLY CO.**  
"Everything Photographic" Fort Street, Honolulu



# California Team May Play Here

The cream of Maui's baseball material, it now seems likely, will have the opportunity of trying conclusions with the University of California aggregation which is to spend several weeks in the Islands shortly. June 6th and 7th are the probable dates of the games which Maui will get, and these games will be played on local grounds. A. L. Castle, of Honolulu, who is head of the committee which is arranging for the visit of the Coast players, is expected in Maui today, and will doubtless be able to furnish more details than are now at hand.

There were no games last Sunday on account of rain, but unless for the same reason, games will be played tomorrow as follows: Kahului vs. Gymnasium, 10:30 a. m.; Cubs vs. Valley Isle, 1:30 p. m.; and Senior League game, Paunene vs. Wailuku, 3:30 p. m.

# Ask Chamber To Support Stackable

The Honolulu commercial bodies have undertaken a movement of protest against the removal of E. R. Stackable as customs collector. The Maui Chamber of Commerce received by wireless Friday afternoon a lengthy resolution on the subject, sent by the Honolulu bodies to the Secretary of the Treasury, requesting that similar action be taken by the local body. If a change must be made, the resolution urges that a local man be named for place.

# Waihee Beats Wailuku

The basket ball game last Saturday night between the girls of the Alexander House Gymnasium and the girls team of the Waihee school, was an exciting one for the large number of spectators. In the first half the Gym. girls scored 13 points to their opponents 11; but in the second half the Waihee girls headed the score 16 to 9. While the town girls showed much skill, it was evident that they have not had sufficient training in endurance, while in this latter respect the Waihee girls showed up very strong. The game was an interesting one, however.

Following the game dancing was indulged in for several hours.

## Locals

Mrs. A. E. Brune has returned home from a visit to Honolulu.

Dr. J. H. Raymond, of Ulupaikua, was a visitor to Honolulu this week.

J. C. Foss, Jr., has moved his office from the corner of Main and Market streets to his residence on Upper Main street.

A. W. Brown, of the insurance department of the von Hamm-Young Company, was a business visitor in Wailuku this week.

Rev. R. B. Dodge was called to Honolulu on Wednesday on business connected with the Hawaiian Board. He is expected home this morning.

The meeting of the Maui Teachers' Association to be held at Paia next Friday, May 15, gives promise of being an unusually interesting one.

A. A. Wilson, the contractor, from Honolulu, was in Wailuku this week to be present at the opening of the bids for the Lahaina pipeline contract, on Thursday.

Miss Lena Monroe, trained nurse in the Girls' Industrial School, Honolulu, is spending a month's vacation on Maui, and is the guest of Miss Florence Wood, of Kuiaha.

The schooner Honoipusailed from Hana on Tuesday with 16,520 sacks of sugar from Kaeleku mill. The vessel arrived at Hana on April 24, and returns direct to San Francisco.

The lumber schooner W. F. Jewett, which arrived at Kahului with a cargo for the Kahului Railroad Company, was unloaded in record time, and got away for the coast again last Sunday morning.

Mrs. A. Craig Bowdish will direct the meeting of the Woman's Aid Society of the Wailuku Union Church, at the meeting to be held on next Wednesday, May 13, at the home of Mrs. V. A. Vetlesen.

Kaunama Wine is a product of the "Big Island," and is absolutely pure. J. G. Serrao is the wine expert of Hilo and his winery is famous all over the group. Kaunama Wine may be obtained from all dealers, or direct from the winery.

The light at Kauiki Head, Hana, and the light at Hamoa Point, on the northwest coast of Maui, which have been extinguished for some time past, have been relighted, according to information sent out by the local lighthouse inspector.

Mr. and Mrs. Gerrit P. Wilder and Mrs. E. D. Tenney, of Honolulu, who have been on Maui for the past week, touring the island by motor and visiting Maui friends, left for home on the Lurline last evening.

Supervisor Wm. Henning was unable to attend yesterday's session of the board, being storm-bound at his ranch in Kuiaha. Reports from all points along the north coast of East Maui are to effect that the rains on Friday were unusually heavy.

Matt. M. Young, of the Honolulu Wire Bed Company, was in Wailuku this week in the interests of his firm. The company has recently moved into new quarters and is selling additional capital stock for the purpose of enlarging its business in considerable degree.

Dang Choy, a Wailuku Chinese, is again in trouble, charged with having opium in possession. He was arrested last week by Deputy Sheriff John Ferreira, and his case will come up next Monday. Dang was convicted once before on a like charge, for which he paid a fine of \$75.

Dr. E. V. Wilcox, of the Hawaii Experiment Station was a visitor in Wailuku on Monday, during which time he made a brief study of the cultural methods employed on the Wailuku plantation. He expressed keen appreciation of the system by which Manager Penhallow is undertaking to keep up the fertility of his fields.

H. G. Plummer, superintendent of the Hawaiian Dredging Company, accompanied by his wife, left last Monday for Honolulu. Mr. and Mrs. Plummer has been residing at the Maui Hotel for some six weeks, while the dredging work in Kahului harbor was in progress. Their friends are sorry to see them leave.

"Mother's Day," will be observed on next Sunday morning, at the Paia Church, with a special sermon by the pastor, the Rev. A. Craig Bowdish. A general invitation is extended to all to attend this service. Mother's Day is now generally recognized in many of the states, in some of which it is regularly proclaimed by proclamation of the governor.

Because he had been discharged from the Paunene plantation and ordered to leave his quarters near the Paunene hospital, Nakamura, a Japanese laborer bored holes in a

large number of papaya trees surrounding the house, and filled them with kerosene, thus killing the trees. He was convicted on a charge of malicious mischief in the district court, and fined \$10.

### Peculiar Japanese Rite.

Segitara temple, in the province of Ise, Japan, is the scene each July of a peculiar rite dedicated to the worship of Acanatha, the faithful servant of Buddha. The rite is known as a "goma" (a corruption of Sanskrit "homa") or "burning." Buddha taught that the cause of suffering is desire, and therefore the priests of the Shingon, a Japanese sect of Buddhism, kindle a fire to consume all human desires, at the same time offering prayers to Acanatha. In one matter the rite may be said to defeat its own ends, for it attracts a crowd of farmers full of desire to obtain embers or ashes from the fire which is supposed to have consumed all desires. The tradition is that the possession of an ember or ashes from the sacred fire insures a farmer good crops the next autumn.—Argonaut.

### Most Civilized Nation.

The question "Which is the most civilized nation on earth?" is difficult to answer. Civilization is a very elastic term and is understood differently in different times and places. In scientific attainment, education, wealth and all the things that go along with the United States, Great Britain and Germany would appear to lead the procession, with some other nations following closely; but, taking all things into consideration, eliminating the sole matter of wealth, the most civilized country on earth is probably Norway. In that far northern land the ideal civilization—that is, the civilization that rests on common sense and justice—seems to have matured to a greater extent than it has anywhere else.—New York American.

### His Card.

E. H. Sothern, the actor, confesses to a habit which sometimes has its disadvantages. It is his custom to make memoranda of things which occur to him from time to time on his calling cards or other odd bits of paper he may have in his pockets. He tells this as one of his experiences: "I had occasion to call at the home of Grover Cleveland, and I sent up my card. In a few minutes Mrs. Cleveland came in to receive me, the card still in her hand and about her mouth a rather odd smile.

"I think perhaps I had better return this to you," she said. "I took it. On the back I had written: 'Socks, pajamas, one dozen collars.'"—New York Tribune.

**James C. Foss, Jr.,**  
Architect,  
Engineer,  
& Contractor  
Wailuku Maui

### IN THE CIRCUIT COURT OF THE SECOND CIRCUIT, TERRITORY OF HAWAII.

At Chambers—In Divorce.  
MASA NAKATA, Libellant, vs. SOICHI NAKATA, Libellee.

LIBEL FOR DIVORCE.  
NOTICE.

Territory of Hawaii:  
To Soichi Nakata, Libellee.  
You are hereby notified that the above entitled suit, the same being for a divorce from you on the grounds of neglect and failure to support and maintain, the Libellant herein, is now pending in the above entitled Court, and that the same will be heard and determined on Monday, the 6th day of July, 1914, at 10 o'clock in the forenoon of said day, or as soon thereafter as may be, by the Judge of said Court, sitting at Chambers.  
Dated at Wailuku, Maui, May 7, 1914.  
(Seal) EDMUND H. HART, Clerk.

W. F. CROCKETT,  
Attorney for Libellant.  
May 9, 16, 23, 30, 1914.

### IN THE CIRCUIT COURT OF THE SECOND CIRCUIT, TERRITORY OF HAWAII.

At Chambers—In Divorce.  
MANGORO FUKUMOTO, Libellant, vs. KAME FUKUMOTO, Libellee.

LIBEL FOR DIVORCE.  
NOTICE.

Territory of Hawaii:  
To Kame Fukumoto, Libellee.  
You are hereby notified that the above entitled suit, the same being for a divorce from you on the grounds of utter and willful desertion, is now pending in the above entitled Court, and that the same will be heard and determined on Monday, the 6th day of July, 1914, at 10 o'clock in the forenoon of said day, or as soon thereafter as may be, by the Judge of said Court, sitting at Chambers.  
Dated at Wailuku, Maui, May 8, 1914.  
(Seal) EDMUND H. HART, Clerk.

W. F. CROCKETT,  
Attorney for Libellant.  
May 9, 16, 23, 30, 1914.

### NOTICE.

Treasurer's Office, County of Maui.  
Notice is hereby given that Registered Warrants, General Fund, Numbers 251 to 400 inclusive (Registered Number) will be paid on the 14th day of May, 1914, after which day said warrants will cease to draw interest.

L. M. BALDWIN,  
Treasurer, County of Maui.

### Mortgagee's Notice of Intention to Foreclose and of Sale.

NOTICE IS HEREBY GIVEN THAT, under the power of sale contained in that certain mortgage of date April 29, 1912, from Manuel Faustino, of Wailuku, Maui, to J. Pia Cockett, of Kihei, Maui, of record in the Office of the Registrar of Conveyances in Honolulu, in Liber 361, on pages 490, 491 and 492, the owner and holder thereof (J. Pia Cockett) intends to foreclose the same, and sell the mortgaged properties therein named because of the non-payment of the principal sum now due and owing on the promissory note of \$300.00 secured thereby. The above mentioned mortgage was given to secure the payment of a promissory note of \$300.00, of even date therewith, payable two years after date, bearing interest at the rate of 10% per annum, payable semi-annually, and executed and delivered by said Manuel Faustino to said J. Pia Cockett.

NOTICE IS LIKEWISE GIVEN THAT, after the expiration of three weeks from date of first publication of this notice, to-wit, on Monday, June 1st, 1914, at twelve o'clock noon of said day, said mortgaged property (hereinbelow specifically mentioned) for the reasons hereinabove stated, will be sold at public auction, at the front entrance to the Court House, in Wailuku, Maui, Territory of Hawaii.

Terms of Sale—Cash.  
Deeds at expense of purchaser.

For further particulars apply to J. Pia Cockett, Kihei, Maui, or to D. H. Case, of Wailuku, Maui, his Attorney.  
(Sgd) J. PIA COCKETT,  
Mortgagee.

Dated at Wailuku, Maui, May 9, 1914.

### Description of Property to be Sold.

All of the undivided one-half right, title and interest of said Manuel Faustino (Mortgagor aforesaid) in and to those certain premises situate at and in Iao Valley, in Wailuku, County of Maui, Territory of Hawaii, more particularly described as follows:

Beginning at a x on a large stone on North side of government road in Iao, at the South-East corner of Royal Patent 6863, L. C. A. 2414 to Kailihuna, by corner of stone wall, and running by bearings taken from the Magnetic Meridian passing through initial point, (February 22, 1911.) as follows:

- N. 21° 10' W., 235 feet along stone wall dividing this from L. C. A. 2414;
- N. 55° 40' E., 253 feet along stream;
- S. 8° 53' E., 336 feet along East half of L. C. A. 5336;
- S. 80° 16' W., 178 feet along stone wall on North side of government road to initial point, and containing an area of 1.18 Acres, more or less; and being all of the premises conveyed by Antone Borha to Nahinuholo Faustino, mother of said Mortgagee (now deceased,) by deed dated September 28, 1910, and recorded in the

Hawaiian Registry of Deeds, in Honolulu, Oahu, in Liber 332, folio 385.

May 9, 16, 23, 30, 1914.

### Hoolaha a ka Mea Paa Moraki No ke Paniku ame Kuai.

Ke hoolaha ia aku nei, mamuli o ka mana kuai i loa maloko o kela moraki i hana ia na ka la 29 o Aperila, 1912, mai a Manuel Faustino, o Wailuku, Maui, ia J. Pia Cockett, o Kihei, Maui, a i kope ia ma ke Keena Kakau Kope ma Honolulu, ma ka Buke 361, noo 490, 491 ame 492, o ka ona a o ka mea hoi nana e paa nei i ka moraki (J. Pia Cockett,) ke mana nei e paniku ia ua moraki nei, a e kuai aku i ka waiwai i moraki ia i hoakaka ia maloko no ka hookaa ole ia o ke kumupaa i aie ia maluna o ka nota o \$300.00 i hoopaa ia ai. O ka moraki i olelo ia ua hana ia aku no ia no ka hoopaa ana i uku ia o ka nota no \$300.00, o ia la hookahi no me ka moraki, a e uku ia elua makahiki mahope mai, a e paa ana no hoi i ka ukupanea o 10% o ka makahiki, e uku ia ma ka hapa makahiki, a i hanaia a hawaiia e Manuel Faustino i olelo ia J. Pia Cockett i oleloia.

Ke hoolaha pu ia aku nei no hoi, mahope iho o ka hala ana o na pule ekolu mai ka manawa aku o ka puka maa ana o kea hoolaha, oia hoi, ma ka Poakahi, la 1 o Iune, 1914, ma ka hora 12 awaka o ia la, o na waiwai i moraki ia, (i hoakaka ponoia malalo iho nei,) no na kumu i hoikeia maluna a'e, e kuai ia aku ana ma ke Kudala akea, ma ka puka koma o ka Hale Hookolokolo, ma Wailuku, Maui, Teritoro o Hawaii.

Ke ano o ke kuai ana—Ma ke Dala Kuike.  
Na lilo palapala ma ka noo ia o ka mea kuai mai.

No na mea i koe e ninau ia J. Pia Cockett, Kihei, Maui, a i ole ia ia D. H. Case, o Wailuku, Maui, kona Loo.  
(Kakauinooia:)

J. PIA COCKETT,  
Mea Paa Moraki.  
Hanaia ma Wailuku, Maui, Mei 9, 1914.

### Ke Ano o ka Waiwai e Kuai ia Ana.

O ke kuleana hapalua apau i mahole ole ia o Manuel Faustino i oleloia, (Mea Moraki i oleloia,) iloko o kela wahi e waiho 'ia ma a iloko o ke Awawa o Iao, ma Wailuku, Kalana o Maui, Teritoro o Hawaii, a i hoakaka paha ia penei:

E hoomaka ana ma ke x maluna o ka pohaku nui ma ka noo Akau o ke Alanui Aupuni o Iao, ma ke kahi Komohana-Hikina o ka Palapala 'Silā Nui 6863, Kuleana Helu 2414 ia Kailihuna, ma ke kahi o ka pa pohaku, a e holo ana na ihu panana i laweia mai ka Meridina Magenet e holo ana ma ke kiko maa, (Februari 22, 1911,) penei:

- Akau 21° 10' Kom., 235 kapuai ma ka pa pohaku e hookaa-wale ana i keia mai a Kuleana 2414;
- Akau 55° 40' Hik., 253 kapuai ma kahawai;
- Hem. 8° 53' Hik., 336 kapuai ma ka hapalua Hikina o Kuleana 5336;
- Hem. 80° 16' Kom., 178 kapuai ma ka pa pohaku ma ka noo Akau o ke Alanui Aupuni a i kahi i hoomaka ai, a nona ka ili o 1.18 Eka, oi aku a emi mai paha; a oia no hoi kahiapau i hoolilo ia e Antone Borha ia Nahinuholo Faustino, mother of said Mortgagee (now deceased,) by deed dated September 28, 1910, and recorded in the

ma ka la 28 o Sepatemaba, 1910, a i kope ia ma ka Keena Kope o na Palapala, ma Honolulu, Oahu, ma ka Buke 332, nono 385.

Mei 9, 16, 23, 30, 1914.

### In the Circuit Court of the Second Circuit, Territory of Hawaii.

In Probate—At Chambers.

In the Matter of the Estate of AUGUSTINE ENOS, Late of Wailuku, Maui, Deceased.

Order of Notice of Petition for Allowance of Accounts, Determining Trust and Distributing the Estate.

On Reading and Filing the Petition and accounts of J. V. Maciel et al, Executor and Administrators of the Estate of Augustine Enos, deceased, wherein petitioners ask to be allowed \$3369.92 and charged with \$4784.25, and ask that the and that a final order be made of Distribution of the remaining property to the persons thereto entitled and discharging petitioners and sureties from all further responsibility herein.

It is Ordered, that Monday, the 15th day of June, A. D. 1914, at 10 o'clock A. M., before the Judge of said Court at Chambers at his Court Room in Wailuku, County of Maui, be and the same hereby is appointed the time and place for same be examined and approved, hearing said Petition and Accounts, and that all persons interested may then and there appear and show cause, if any they have, why the same should not be granted, and may present evidence as to who are entitled to said property. And that notice of this Order be published in the MAUI NEWS, a newspaper printed and published in Wailuku, Maui, for three successive weeks, the last publication to be not less than two weeks previous to the time therein appointed for said hearing.

Dated Wailuku, Maui, May 4, 1914.

(Sd) S. B. KINGSBURY,  
Judge of the Circuit Court of the Second Circuit.

Attest:  
(Sd) EDMUND H. HART,  
Clerk of the Circuit Court of the Second Circuit.

May 9, 16, 23, 30, 1914.

### In the Circuit Court of the Second Circuit, Territory of Hawaii.

At Chambers—In Probate.

In the Matter of the Estate of IHEI TAKAHASHI, Late of Kihei, Maui, Deceased.

Order of Notice of Hearing Petition for Administration.

On Reading and Filing the Petition of Iana Takahashi, widow of Ihei Takahashi, deceased, of Kihei, Maui, alleging that Ihei Takahashi, of Kihei, Maui, died intestate at Kihei, Maui, on the 21st day of March, A. D. 1914, leaving property in the Territory of Hawaii, necessary to be administered upon, and praying that Letters of Administration be issued to W. F. Crockett.

It is Ordered, that Monday, the 15th day of June, A. D. 1914, at ten o'clock A. M., be and hereby is appointed for hearing said petition in the Court Room of this Court at Wailuku, Maui, at which time and place all persons concerned may appear and show cause, if any they have, why said Petition should not be granted, and that notice of this order shall be published once a week for three successive weeks in the MAUI NEWS, a newspaper printed and published at Wailuku, Maui, the last publication to be not less than ten days previous to the time therein appointed for hearing.

Dated Wailuku, Maui, May 4, 1914.

(Sd) S. B. KINGSBURY,  
Judge of the Circuit Court of the Second Circuit.

Attest:  
(Sd) EDMUND H. HART,  
Clerk of the Circuit Court of the Second Circuit.

May 9, 16, 23, 30, 1914.

## Kearns Says His Job Is About Pau

Ralph A. Kearns, director of the Territorial Immigration Station, spent several days on Maui this week looking into the condition of the European laborers on the various plantations and elsewhere. Kearns has recently been on Hawaii on the same mission, which is to get a comprehensive idea of the results of the immigration work carried on by the territory in recent years. The Spanish and Portuguese, which form the bulk of the immigrants in which the Territorial bureau is interested, are getting along very well, according to Mr. Kearns, and none of the grievances which he has found have been of more than trivial character.

On the Maui plantations, particularly, Mr. Kearns says that the Spanish and Portuguese seem to be doing well and to be generally well satisfied. On Paumotu he found a considerable number of families who have been continuously at the same place since their arrival in the Islands five or six years ago. They have, in most instances developed their house lots in a very pleasing manner, and their camps present a very different appearance than they did originally when they were new and in most instances were utterly devoid of vegetation. One woman told him that she had been in the same house ever since she came, and that she proposed staying there until the house burned or fell down.

On some of the Hawaii plantations, the stress of hard times as well as unfavorable weather conditions had compelled the managers to reduce the working time by one or two days per week, but there has been none of this on this island. There are now very few Russians on plantations at present, Mr. Kearns says.

Mr. Kearns admits that he is not optimistic as to the future of immigration work in the islands. In fact it seems very probable that the next legislature will abolish the bureau entirely. Recent figures indicate that the cost of every male European immigrant in the Territory has been \$766.90. This big cost is due to the fact that about 64 per cent. of the assisted immigrants brought here between 1905 and 1914 failed to remain, but continued on to the mainland for the most part to help boost a California's population. During the period mentioned 17,359 men, women and children had their expenses paid to Hawaii, and of these 11,083 have left. The total cost of bringing these people here has been \$1,226,976.48. Immigration work was stopped some months ago, and it does not seem likely that it will be resumed.

## Paia Boosts Water Report

The Makawao Waterworks, according to a report made to the Board of Supervisors by County Auditor Chas. Wilcox, is furnishing water to 214 different privilege holders. These are distributed as follows: Kula section, Omaopio to Kamaole, 100; Ulupalakua section, 15; Olinda and Makawao section, 41; Paia section, 58. Of these 108 pay by meter at the rate of 25 cents per 1,000 gallons, and 106, including the 58 Paia privileges, pay a flat rate of 50 cents per month each.

Water rates charged on the books for the period January 1st to March 31st, amounted to \$908.60. Of this amount \$655.22 had been paid in by 152 privilege holders; while \$253.38 is delinquent from 62 subscribers.

## Changes In Pineapple Company

The Maui Pineapple Company, which has a cannery at Pauwela, inaugurated a number of changes in its management on May 1st. A. F. Favares has been made manager of the company in place of S. Yoshimasu, who, it is understood has been asked to remain with the company as superintendent of the factory. The Company has also changed its fiscal agency from the First National Bank to the Baldwin National Bank.

It is understood that the Japanese who control the cannery have been able to secure additional financial backing through which means it has been possible to pay off certain outstanding obligations. The pack of the cannery last year was about 46,000 cases, and it is expected to pack between 90,000 and 100,000 cases the present season.

## Stole Bride Money and Glad Rags

For stealing another man's bride-to-be, as well as all his Sunday clothes and \$35 in cash, Heneroso Pontamilla, a Filipino, was on Tuesday sentenced to six months in jail on charge of adultery. He must also answer to the charge of larceny.

Pontamilla, who is a married man, recently left his wife on Hawaii and came to Paumotu. Here he met Malacella Castro, a Filipino beauty, who was about to wed to a laborer on the plantation. The license had been procured, when the new arrival persuaded her to run away with him. They were caught at Haiku. The woman was sentenced to three months in jail on her plea of guilty.

## Island Produce Wanted

A. T. Longley, superintendent of the Territorial Marketing Division, Honolulu, has the following to say concerning the demand for various island products:

"The demand for most articles is in excess of the supply. The market desires more cooking bananas, Chinese bananas, waterlemons, sweet potatoes, limes, island oranges, corn, dry beans, green peas, string beans, sweet corn and eggs. The price of eggs is firm, but the supply is quite inadequate. An additional 500 dozen a week is needed and also 100 additional dozen of duck eggs. The market is almost bare of beans and corn, both dry and green, and demand for these products, especially for dry beans and green peas, string beans and sweet corn, is active. More carrots, beets and turnips are also wanted, as well as papayas. The supply of these products is quite regular but not large enough.

"The supply of chickens is steady, but fowls moved rather slowly during the past week. Most fowls received at the market are not fat enough. The supply of ducks is increasing but the demand is firm and price has not fallen. Turkeys stand at the same price as prevailed in the previous week and the supply is about equal to the demand. Fewer calls are made for hogs and the price has fallen slightly, due to shipments from California. The price of onions is likewise on the

down-grade on account of shipments from Australia. Watermelons are supplied spasmodically; too many at a time. Quality is rather poor and price falling. The call for cabbage has increased and price is a little better. The demand for pohos is slightly falling off. Sweet potatoes hold their own and a little more, while Irish potatoes are falling slightly due in part to poor keeping qualities.

"Besides the usual consignments, shipments of beef, pigs, lathala matting material and awa root are expected next week. Lettuce and radishes arrive from the other islands in bad condition. Until better methods of shipment are worked out, it is best not to send these products."

### PUZZLED THE DRIVER.

Now He Believes the Policeman Is a Real Mind Reader.

A certain truckman in the habit of using the new Manhattan bridge on his morning trip to Brooklyn has abandoned that route because of superstition. Several days ago while the truckman was taking a load of chicken crates to Brooklyn a fine cap flopped down before him just as his team had passed under the Manhattan tower. He looked around, and seeing that none of the teamsters ahead of him or behind him was bareheaded, he picked up the cap and put it under the cushion of his seat.

Now, it chanced that the cap had been blown from the head of one of the engineers of the bridge department who was high up in the tower at the time. On reaching the tower base he called up the policeman at the Brooklyn approach on the telephone, described the teamster and his wagon and told how he had lost his cap.

As the long file of trucks passed by the policeman the latter halted the thieving driver, saying: "I'll trouble you to hand over that cap you picked up on the Manhattan side. It's a black and white check, and you've got it right there under your seat."

Amazed and frightened at the cop's demand, the driver pulled out his hidden find and tossed it to him. "Here you are," he said. "You're a mind reader or one of them guys what can see around corners."—New York Tribune.

### MASSENET'S HOBBY.

A Story of the Composer and His Dear Friend, the Bookbinder.

In the recollections of Massenet a story is told, says the Hamburger Nachrichten, illustrating the composer's passionate admiration for beautiful bindings. Not a week passed without a visit from him to his bookbinder when he brought a new book or a new edition to be bound. In the course of time he and his bookbinder became the best of friends, and when Massenet arrived the talk was at first of everything on earth except the real object of his visit.

"Look here!" Massenet would say eventually, giving the man the volume to be bound.

"Splendid!" replied the bookbinder, and then for his customer and friend he would devise some fresh wonder in the art of binding.

One morning Massenet suddenly learned that his friend was giving up business. He hurried to his shop. "Heavens! Is it true you are leaving Paris?" he asked.

"Why, certainly! I have bought a charming little country house near Nantes."

"What! A country house! And in the provinces?" And he added sadly, "Ah, my poor friend, I am partly responsible for that!"

### ALOHA LODGE NO. 3 KNIGHTS OF PYTHIAS.



Regular meetings will be held at the Knights of Pythias Hall, Wailuku, on the second and fourth Saturdays of each month.

All visiting members are cordially invited to attend.

J. T. FANTOM, C. C.  
A. C. RATTRAY, K. R. & S.

**A. E. Bruur**  
Civil Engineer and Surveyor.

Office at Wailuku Hotel, Wailuku, Maui.

### In the Circuit Court of the Second Circuit, Territory of Hawaii.

In Probate—At Chambers.  
In the Matter of the Estate of JOHN HOOMALU, Late of Paia, Maui, Deceased.

Order of Notice of Petition for Allowance of Accounts, Determining Trust and Distributing the Estate.

On Reading and Filing the Peti-

tion of D. C. Lindsay, Administrator of the Estate of John Hoomalu, deceased, wherein petitioner asks to be allowed \$175.00, and charged with \$1000.00, and asks that the same be examined and approved, and that a final order be made of Distribution of the remaining property to the persons thereto entitled and discharging petitioner and sureties from all further responsibility herein.

It is Ordered, that Monday, the 1st day of June, A. D. 1914, at 10 o'clock A. M., before the Judge of said Court at Chambers at his Court Room in Wailuku, County of Maui, be and the same hereby is appointed the time and place for hearing said Petition and Accounts, and that all persons interested may then and there appear and show cause, if any they have, why the same should not be granted, and may present evidence as to who are entitled to said property. And that notice of this Order be published in the MAUI NEWS, newspaper printed and published in Wailuku, Maui, for three successive weeks, the last publication to be not less than two weeks previous to the time therein appointed for said hearing.

(Sd.) S. B. KINGSBURY, Judge of the Circuit Court of the Second Circuit.

Attest:  
(Sd.) EDMUND H. HART, Clerk of the Circuit Court of the Second Circuit.

Dated Wailuku, Maui, April 21, 1914.  
April 25, May 2, 9, 16, 1914.

### In the Circuit Court of the Second Circuit, Territory of Hawaii.

In Probate—At Chambers.

In the Matter of the Estate of MARY SYLVA, Late of Lahaina,

Maui, Deceased.

Order of Notice of Petition for Allowance of Accounts, Determining Trust and Distributing the Estate.

On Reading and Filing the Petition and accounts of D. C. Lindsay, Administrator-with-the-Will-annexed of the Estate of Mary Sylva, deceased, wherein petitioner asks to be allowed \$25.00, and charged with \$188.10, and asks that the same be examined and approved, and that a final order be made of Distribution of the remaining property to the persons thereto entitled and discharging petitioner and sureties from all further responsibility herein.

It is Ordered, that Monday, the 1st day of June, A. D. 1914, at 10 o'clock A. M., before the Judge of said Court at Chambers at his Court Room in Wailuku, Maui, County of Maui, be and the same hereby is appointed the time and place for hearing said Petition and Accounts, and that all persons interested may then and there appear and show cause, if any they have, why the same should not be granted, and may present evidence as to who are entitled to said property. And that notice of this Order be published in the MAUI NEWS, a newspaper printed and published in Wailuku, Maui, for three successive weeks, the last publication to be not less than two weeks previous to the time therein appointed for said hearing.

Dated Wailuku, Maui, April 21, 1914.

(Sd.) S. B. KINGSBURY, Judge of the Circuit Court, of the Second Circuit.

Attest:  
(Sd.) EDMUND H. HART, Clerk of the Circuit Court, of the Second Circuit.

April 25, May 2, 9, 16, 1914.

### In the Circuit Court of the Second Circuit, Territory of Hawaii.

At Chambers—In Probate.

In the Matter of the Estate of DE BLOIS PEARCE PENHALLOW, Late of Wailuku, Maui, Deceased.

Order of Notice of Hearing Petition for Administration.

On Reading and Filing the Petition of H. B. Penhallow, of Wailuku, Maui, son of above deceased, alleging that De Bois Pearce Penhallow, of Wailuku, Maui, died intestate at Wailuku, Maui, on the 28th day of March, A. D. 1914, leaving property in the Territory of Hawaii necessary to be administered upon, and praying that Letters of Administration be issued to Henry Balch Penhallow.

It is Ordered, that Monday, the 1st day of June, A. D. 1914, at ten o'clock A. M., be and hereby is appointed for hearing said petition in the Court Room of this Court at Wailuku, Maui, at which time and place all persons concerned may appear and show cause, if any they have, why said Petition should not be granted, and that notice of this order shall be published once a week for three successive weeks in the MAUI NEWS, a weekly newspaper printed and published at Wailuku, Maui, the last publication to be not less than ten days previous to the time therein appointed for hearing.

Dated Wailuku, Maui, April 21, 1914.

(Sd.) S. B. KINGSBURY, Judge of the Circuit Court, of the Second Circuit.

Attest:  
(Sd.) EDMUND H. HART, Clerk of the Circuit Court, of the Second Circuit.

April 25, May 2, 9, 16, 1914.

## Maui Racing Association

SATURDAY, JULY 4, 1914.

### OFFICIAL PROGRAM

- No. 1—JAPANESE OWNED HORSES, running race, 1/2 mile dash; first prize..... \$ 75  
second prize..... 25
- No. 2—FREE FOR ALL, running race, 1/2 mile dash; purse. 200
- No. 3—TROTting AND PACING, 2:15 class, mile heats, best three out of five; purse..... 300
- No. 4—HAWAIIAN BRED, running race, 1/2 mile dash; purse..... 200
- No. 5—PONY RACE, 1/2 mile dash, free for all, Ponies 14:3 and under, purse..... 100
- No. 6—FREE FOR ALL, running race, 1/2 mile dash, 2 years old; purse..... 500
- No. 7—HAWAIIAN BRED, running race, 5/8 mile dash, purse..... 200
- No. 8—FREE FOR ALL, Trotting and Pacing, 1 mile heats; best three out of five, purse..... 500
- No. 9—FREE FOR ALL, running race, 1 mile dash, purse 250