

From San Francisco:
Alameda April 9
For San Francisco:
Asia April 9
From Vancouver:
Aorangi May 1
For Vancouver:
Marama April 27

EVENING BULLETIN

THE BULLETIN is delivered to the largest number of Honolulu homes at the time of day when the REAL BUYER for the Household has the most leisure to read a newspaper.

3:30 EDITION That Merchant Gets The Most For His Money Who Lets The Bulletin Do It For Him

VOL. XI. NO. 4279.

10 PAGES—HONOLULU, TERRITORY OF HAWAII, WEDNESDAY, APRIL 7, 1909.—10 PAGES.

PRICE 5 CENTS.

FAIRBANKS' PARTY WILL STOP IN HONOLULU HOUSE REMOVES COFFEE PROTECTION

DIRECT PRIMARY BILL IN SENATE

Measure Is Taken Up In Committee Of The Whole

SOLONS BEAR IDEAS OF UNOFFICIAL SUPPORTERS

Chairman's Job Goes Begging When Chamber Resolves Into Committee To Consider Election Law

SENATE

42d Day—Morning Session
Senate Bill No. 8, the long-deferred "direct primary bill," came before the Senate this morning on second reading. On motion, the Senate resolved itself into Committee of the Whole to consider the bill, section by section.

By special invitation, A. G. M. Robertson and Deputy Attorney General Whitney occupied seats near the clerk's desk and took a prominent part in the discussion. C. H. Dickey and John Emmeluth were also on hand, and chimed in once in a while. Right at the start there was a little.

(Continued on Page 3)

SENATE STILL BUSY ON PRIMARY BILL

General Election Law Stands In Way Of Measures

SENATE

43d Day—Afternoon Session
But little was accomplished this afternoon by the Senate, sitting in

(Continued on Page 2)

What You Eat

is not more important than WHERE YOU EAT. Try the

A. Y. CAFE

TO DIVIDE HAWAII INTO TWO COUNTIES

Kawewehi's Bill Passes Its Second Reading By Close Vote

ADVERSE REPORT OF THE COMMITTEE IS TABLED

Democrats and Home Rulers Vote Down the Real Republicans of the Lower House of Legislature

HOUSE

42d Day—Morning Session
The Democrats and Home Rulers of the House, aided by a few Republicans who are always Democratic or Home Rule in their views when it comes to matters of local government, voted down the real Republicans this morning and tabled the report of the Judiciary Committee, which recommended the tabling of Kawewehi's bill to divide the present County of Hawaii into two counties.

Absolutely no argument was made in favor of the bill except that the County has the money to spend and

(Continued on Page 3)

BIG SUM ASKED IN SUIT BY M. F. SCOTT

Claims Kona Developm't Company Owes Him \$74,194.97

M. F. Scott and his wife, Nellie R. Scott have, through their attorneys, John Cathcart and Fred Milverton, commenced suit in the Circuit Court of the Third Circuit against the Kona Development Company for \$74,194.97, with interest.

The suit is brought on a planting contract. The complaint sets forth

(Continued on Page 2)

SUGAR

SAN FRANCISCO, Cal., April 6.—SUGAR: 96 degree Centrifugals, 3.985 cents, or \$79.70 per ton. Previous quotation, 3.99 cents. BEETS: 88 analysis, 10s. 33-4d. Parity, 4.18 cents. Previous quotation, 10s. 4 1/2d.

FAIRBANKS TO STOP HERE

GOVERNOR FREAR, Honolulu:
Sail 16th. Leave Honolulu May 1. Wife and daughter accompany me.

April 7.

April 7th, '09.
JAMES F. MORGAN, President Chamber of Commerce, Honolulu:
Sail sixteenth per Chiyo Maru; due Honolulu April 23rd; leave Hawaii May 11th.

CHARLES W. FAIRBANKS.

These cablegrams received this morning speak for themselves. Arrangements will begin immediately for the proper reception and entertainment of ex-Vice President Fairbanks and his family. Mrs. Fairbanks is a former head of the National organization of the Daughters of the American Revolution.

NEGRO HARRIS RUN TO EARTH

Joe Leal, Chief of Detectives, is certainly cleaning up things in style. A wireless from Maui this morning informed Sheriff Jarrett that the negro, Harris, who escaped from the police station some weeks ago, was captured last night. Leal left on the Mauna Kea yesterday for Maui, having ferreted out the fact that the dusky escaped one was on that island.

It appears that a letter which was written to an officer at Lihou, was forwarded to Leal. The Chief at once went on a still hunt to find the individual who had presented the letter to the Army man. The letter, which stated that the writer had a friend who wanted to get passage on a transport to the Coast, carefully avoided any direct allusion to the whereabouts of the "friend" who was anxious to visit California. Lieutenant James, who received the letter, at once informed Leal, and the latter quickly located the man who delivered it.

On information obtained from this individual, Leal went to work, and soon found out where the negro was living. Catching the Mauna Kea at the last moment, Leal sailed for Lahaina, and, after a brief hunt, surprised Harris, who was little expecting anything of the sort. It is not yet known if the negro showed fight, but as the arrest took place in the early hours of the morning, the colored man was probably asleep.

Leal and his prisoner are returning on the Claudine, and should be here tomorrow morning early. Then the mystery as to how Mr. Harris walked out of the police station will be cleared up. The officials at the receiving office are much interested in the matter, and the day shift say the night officers are to blame. How-

ADVERTISING HAWAII

The handsome industrial issue of the Evening Bulletin has made its appearance. Those having friends in other parts can do much toward advertising Hawaii by sending copies of the issue to them.—Garden Island.

TANSAN CUP.

The Tansan cup is to be played for at Moanalua next Sunday, April 11. Entries close at club house at 10 a. m.

The Hawaiian Gun Club will hold a challenge shoot at 5 o'clock this afternoon at its range on Ala Moana road. Henceforth these shoots will be held weekly on Wednesday afternoons.

"For Sale" cards at Bulletin.

Machine-Made Poi in small quantities—sanitary containers. Leave orders for delivery with

Island Fruit Co.,
72 S. KING. PHONE 15.

Seats for the Pollard Show

may be had through this office and at a slight advance over the regular price of tickets. There will be no disappointments.

TERRITORIAL MESSENGER SERVICE. PHONE 361.

Spring Mattresses

NEW SHIPMENT OF HIGH GRADE, IMPORTED SPRING MATTRESSES, FOR WOOD OR IRON BEDS, JUST RECEIVED.

J. Hopp & Co.,
185 KING ST.

BROWN FOR COMMIS'N'R

Willard E. Brown is mentioned as one of the men Governor Frear will probably appoint on the Oahu Board of Liquor Commissioners. Brown is not looking for the position, but will consent to serve if there is no opposition.

Jones To Be "It"

There is a well-defined rumor current that Colonel J. W. Jones, Adjutant General of the National Guard of Hawaii, will be named by Governor Frear as Territorial Purchasing Agent in compliance with the provisions of Senate Bill No. 62, which lately became a law.

WHO TOOK UP BIG BOND ISSUE

Million Dollars Was Absorbed Quietly And Quickly

LIST OF SUBSCRIBERS; WORK TO START AT ONCE

General Market Conditions—Stocks Quiet for Time Being—Wailuku Increases Its Dividend

The final closing up of the million dollar bond issue of the Hawaii Irrigation Company is the biggest item of the local business world of the past two days.

As was exclusively announced by the Bulletin, the bonds were all subscribed on Monday and the whole deal was finished up in its final details by The Henry Waterhouse Trust Company and Ed. Pollitz late yesterday afternoon.

The subscribers of the bond issue are given below. The notable feature of the list is that some of the people always figuring in previous bond deals

(Continued on Page 4)

Edward Payson Weston, the famous pedestrian, recently left New York for the Alaska-Yukon-Pacific Exposition at Seattle and expects to walk across the continent in ninety days. Weston is now seventy-one years of age, but says that he will be none the worse for his long journey when he reaches the fair grounds.

TEA TO BE FREE; ALSO COFFEE

WASHINGTON, D. C., April 7.—The House of Representatives today adopted the amendment to the tariff bill that provides for free tea and removing the countervailing duty on coffee. This leaves coffee on the free list.

CASTRO HAS LANDED

FORT DE FRANCE, Martinique, April 7.—Former President Castro of Venezuela landed here today.

TORPEDO DESTROYER SUNK

LONDON, England, April 7.—The British torpedo destroyer Blackwood was sunk today in collision with the steamer Hero. No lives were lost.

REPUBLICANS WIN IN ST. LOUIS

ST. LOUIS, Mo., April 7.—The Republican candidate for Mayor and almost the entire Republican ticket was elected today.

NO FIGHT OVER BALDWIN WILL

LOS ANGELES, Cal., April 7.—The will of the late "Lucky" Baldwin was probated today. It is not contested.

FULTON FOR CHINESE MISSION

WASHINGTON, D. C., April 7.—Former Senator Fulton of Oregon has been offered the post of American Minister to China.

INDIANA PASSENGERS ARRIVE

SAN FRANCISCO, Cal., April 7.—The cruiser California arrived here today with the passengers of the wrecked steamer Indiana.

BY WIRELESS

The following news dispatches were received at the Kahuku Point wireless station last night, they having been sent to the Alameda for the benefit of the passengers, and relayed to Honolulu:

INDIANA MAY BE SAVED

SAN FRANCISCO, Cal., April 6.—The steamship Indiana, which was wrecked on Saturday on the shoals of Point Tomkat, at the mouth of Magdalena Bay, is sheltered from all but east winds. Should these spring up she will go to pieces. The passengers were taken off and conveyed to San Diego by the cruiser California. The cruiser Albany is standing by.

STANDARD OIL FIGHT IS ON

ST. LOUIS, Mo., April 6.—The principal case against the Standard Oil Company was opened here today and every force of the Government will be brought to bear against the monopoly. It is an action to dissolve the hundred-million-dollar trust, and is considered to be the case which the Taft Administration has selected as the most probable to win as well as the most dangerous to Standard Oil. Oral arguments will begin Wednesday.

MODJESKA CRITICALLY ILL

LOS ANGELES, Cal., April 6.—Helen Modjeska is still in a critical condition and at the point of death. She passed the day with no change.

BONI'S HOPES ARE SHATTERED

PARIS, France, April 6.—Count Boni de Castellane, the former husband of Anna Gould, has suffered a shattering of his financial hopes by the announcement that his former wife, the Princess de Sagan, expects the arrival of a new heir to the de Sagan title and the Gould millions.

NEW YORK PRIMARY LAW WINS

NEW YORK, N. Y., April 6.—The primary law has passed both houses of the State Legislature.

SUES FOR DIVORCE

NEW YORK, N. Y., April 6.—Madam Morgan has sued her husband for divorce.

OAKLAND TEAM WINS

OAKLAND, Cal., April 6.—The Oakland team won its series of baseball games with the Santa Cruz team.

KETCHEL TO FIGHT SAILOR BURKE

NEW YORK, N. Y., April 6.—Ketchel has been matched to fight a ten-round go with Sailor Burke in London.

PASSENGERS WERE SAVED

LONDON, England, April 6.—A dispatch was received by Lloyd's today from Punta Arenas which says that five officers, eighteen of the crew, and the passengers were saved from the steamer Oak Branch, sunk in the Straits by a derelict. The captain and eighteen of the crew are missing.

We Can Accomplish

what we believe we can accomplish—AND WE HAVE. We've secured

The Best \$4.00 Men's Patent Colt Oxford Tie

on the market. We'll convince you of this, if you'll call and ask to see it. No. 414.

Manufacturers' Shoe Co., Ltd.
1051 FORT ST. "The Place to Buy Shoes." Tel 282.



MISTER MAN!

We have something to say to you about CLOTHES. You can get a suit in any clothing store that will fit you, more or less, and look more or less dressy for a while. But if you want a really dressy suit—one that will ALWAYS look well—

Benjamin Clothes

are the ones you want. They are tailored to fit, and tailored in style.

The Point Is Here

When you are providing for the future, it is wisdom to patronize a concern whose name and reputation stand for something; whose methods of doing business are known to be fair and square.

Let us explain our methods to you. It will require but a moment.

Hawaiian Trust Co. Ltd.,
923 FORT STREET



"Benjamin" Standard Sack Suit

The Kash Co., Ltd.,
CORNER OF FORT AND HOTEL STS.

EASTER WEARING APPAREL

ANOTHER NEW SHIPMENT JUST OPENED. NEW SAMPLE LINE of PRINCESS GOWNS, in white and delicate tints. LINEN COSTUMES and TWO-PIECE SUITS direct from New York, the latest-style ideas of the most famous designers. The advance models, one of a kind, that we are showing, are very Moderately Priced, and therefore will not last long. We would urge an early visit to this Department.

DRESSY WHITE SERGE SKIRTS, very latest cut and styl. ... very stylish

BLACK SILK AND VOILE SKIRTS with drop skirts.

See Our Window Display.

Easter Waists

Another New Lot Just Opened THE CHRISTY in Lingerie and Tailored effects, entirely new styles, hand embroidered and tacked, some embroidered in delicate colors, others in black and white. Exquisite CHRISTY WAISTS from \$3.50 up. SEE WINDOW DISPLAY.

LA TOSCA NETS for costumes, in black, blue, brown, and pink. Very stylish, double width. \$1.50 A YARD.

The Rosebury Coat

an Auto and Street Coat made from Ericstley's Cravenotted Cloths; stylish, dressy, and rain-proof, in black, navy blue, brown, Taupe and Tabac, Price \$23.50.

NEW WASH TRIMMINGS in pink, light blue, navy and cardinal 10¢ A YARD \$1.10 A PIECE.

NEW FEATHER STITCH BRAIDS in pretty designs at 10¢ and 12½¢ a piece.

Easter Parasols

A New Stock Just Opened

White Lingerie Parasols in plain, hemstitched, and hand-embroidered.

Persian and Dresden Parasols in pretty color combinations.

Pongee Silk Parasols with colored silk lining.

Directoire Handles, Carved Bamboo and Natural Wood

Fancy Border Pongee Parasols in Entirely New Effects

Prices from \$1.25 up. SEE WINDOW DISPLAY.

Sachs Dry Goods Co., Ltd. FORT AND BERTANIA, OPP. FIRE STATION.

Best Milk in Honolulu delivered daily to all parts of the city.

The Pond Dairy Tel. 890

Call and See the New 30-H.P.

BENNY & CO., LTD.

Chalmers-Detroit Roadster

DEALERS IN Bottles And Buyers Of Raw Material

THE 7-PASSENGER, 40-H.P.

515 Queen St. Phone 443.

Kissel Car

Dunn's Hat Shop 1001 STREET HONOLULU, T. H.

and 40-H. P. CHALMERS. DETROIT TOURING CAR.

at the

ASSOCIATED GARAGE, Ltd Merchant St. Phone 363.

Victor TALKING MACHINE BERGSTROM MUSIC Co., Ltd.

LOOK

at the automobiles, buggies and carriages we have recently overhauled and painted THEN SEE US.

W. W. Wright Co. King Street near South Tel. 252

For Sale

Gentle Driving Mare with Phaeton. Price reasonable. Suitable for lady.

CLUB STABLES Fort St.

Centennial's Best Flour HENRY MAY & CO., Phone 22

Wah Ying Chong Co. King Street, Ewa of Fishmarket. DRY GOODS AND FURNISHING GOODS OF EVERY DESCRIPTION.

Don't Forget To take your Films and Negatives to Gurrey's

European Homesteaders Make Good Progress



HOMESTEAD OF EUROPEANS WHO ARE GROWING PINEAPPLES ON KAU AI

LILUÉ, Kaula, April 3.—The Garden Island says:

A very favorable year is reported by the youthful but promising pineapple canning company on this island—The Kaula Fruit and Land Company, located in Lual Valley, between Koloa and Wahiawa.

This company was incorporated three years ago and the cannery was built one year later—in 1907. The main intent of the incorporators in starting the business was to encourage the employes of the McBryde plantation to develop their homes and work up an employment in connection therewith which would give them an income outside of their plantation wages, and thus enable them to have an added incentive towards becoming stable and permanent citizens of the district.

The basis of this plan has been the homesteads of Kaula, which were put on the market especially to further the interests of the laborers on the McBryde plantation and to give them plots of land which they could call their own, and which they could develop and beautify with the certain knowledge that they would not be deprived of the benefits of their labor. The starting of the pineapple business has been very beneficial to the homesteaders, and the prospect is that the promoters of the homestead plan will have every reason to be satisfied with the results achieved and will meet with constantly increasing success in their development of a stable and industrious community of small farmers, in the foothill lands around the fields of the McBryde plantation.

At the present time there are

about eighty independent homesteaders in the district, and the number is constantly increasing.

W. G. McBryde, the manager of the Kaula Fruit and Land Company, is very hopeful over the good prospects for a successful and prosperous settlement of independent farmers in this locality, and he is putting all his spare time and energy into the plans for the success of the project, and incidentally for the success of the pineapple company.

The board of directors of the latter is composed wholly of men residing in Honolulu—most of them being also officers of the McBryde Sugar Company.

Besides the pineapples raised by the homesteaders—at present about one-third of the total product—the Kaula Fruit and Land Company have thirty acres in cultivation of pines, the Garden Island Fruit Company, which H. H. Brodie of Hanapepe is the manager of—the other partners being J. Nevin, H. A. Jaeger, Walter McBryde, and J. E. Silva—is planting an acreage of thirty-five acres—which will be raised next season to sixty acres; and there are other independent planters whose plantations will raise the total acreage to about 125 acres, from which this year's crop will amount to about 8000 cases of canned pines. The crop last year was 6500 cases.

Agreat increase in the area cultivated is expected for next season, and a corresponding increase in the output of canned pines; and the prospect is that the pineapple business of Kaula will in a short time develop into one of the most valuable commercial assets of the island.

HOUSE

(Continued from Page 1) it might as well be spent in maintaining two County governments instead of one. Kawewehi contended, with figures to bear him out, that it would not take all the revenues of the Big Island to pay salaries; there would still be some left to spend on the roads and in other public improvements. These arguments proved so potent that the bill passed its second reading over the report of the committee, and was placed on the order of the day for third reading tomorrow.

There is little probability, however, that it will pass the Senate, or that, if it does, it will be signed by the Governor. There is no possibility of its passing in the House over the veto of the Governor.

About all the work of the House this morning consisted in receiving and acting upon the reports of the various committees. As there was only a short session of the House yesterday morning, and none in the afternoon, the committees had nearly all day to work on the various bills that had been referred to them, and they made good progress in disposing of them. When the noon-hour came there were still other reports to be made, but they were deferred until afternoon.

Election Measure in House The election law bill, Senate Bill 121, which passed the Senate yesterday,

is now before the House. It was received this morning and passed first reading by title. One of the hardest fights of the session is expected when the measure comes up on second and third reading, the prevailing opinion being that the bill will ultimately be killed.

Other Senate bills were received and passed first reading, as follows: Senate Bill 126, "To permit poor persons to prosecute civil actions in forma pauperis."

Senate Bill 124, relating to accounts of executors and administrators.

Senate Bill 125, relating to Honolulu water works.

Senate Bill 103, to provide for the payment of the \$3002 judgment against the Territory in favor of David K. Baker and others.

Children Should Shoot The Health and Police Committee believes that the young idea should be taught to shoot, and therefore in a report rendered this morning, recommended the tabling of Sheldon's bill, House Bill 182, relating to hunting with firearms. The committee said:

"Your committee believes that prohibiting minors from shooting would work an injustice to the larger portion of the population of this Territory, by prohibiting them from teaching their children the use of firearms. We believe in encouraging minors to use firearms and become more acquainted with their use, thereby diminishing the amount of danger to themselves as well as others. They would also be better able to protect their country if it should ever become necessary."

The report of the committee was adopted, tabling the bill.

On recommendation of the Finance Committee, House Bill 164, Kaniho, relating to funds for the payment of the expenses of the several Counties," was tabled, the subject matter of the bill being covered by House Bill 19. For a similar reason, the committee recommended the tabling of House Bill 42, Kama, relating to the same

subject. The report was adopted.

The Finance Committee also recommended that Alfonso's Bill, House Bill 147, "To provide for the appointment and duties of license inspectors and collectors in the several Counties," be tabled. The committee found that the enactment of this Act would create unnecessary offices and entail additional expense. The bill was tabled.

The Committee on Accounts and Public Expenditures reported favorably on House Bill 174, "An Act for the relief of the Hilo Electric Light Company," but amended the bill, as it was improperly drawn. The bill provides for the payment of a balance of \$497.77 due the company for electric lighting and supplies.

Redemption Bill Favored. The Judiciary Committee recommended the passage of H. B. 23, Fardio, but with very material amendments. The bill provides for the redemption of real estate sold under foreclosure of mortgages or execution. The report was adopted. The committee also recommended the passage of H. B. 181, Kalelopa, relating to the Court of Land Registration. Senate Bill 119, was, on recommendation of the Judiciary Committee, tabled, its subject matter being covered by H. B. 163, which has passed the House.

Affonso's Bill Killed. Affonso failed to get far with his bill, No. 181, "to provide for county recorders and to define their duties." The Judiciary Committee, following the example of the Miscellaneous Committee, which had previously reported unfavorably on a similar bill, recommended that the bill be tabled. It was. The committee recommended the passage of H. B. 185, Kalelopa, to amend the laws relating to dependent and delinquent children, but reported unfavorably on S. B. 28, Moore, to amend the liquor laws.

On recommendation of the Judiciary Committee the House passed on second reading Chillingworth's S. B. 83, the object of which is to adopt a uniform system with regard to acknowledgments to various documents required by law to be acknowledged before the same may be recorded. Kalama's S. B. 93, relating to the lien of District Court judgments, was also recommended for passage.

Kawewehi's Pet Measure. The Judiciary Committee struck Kawewehi a sad blow when it recommended that his pet measure, H. B. 129, to divide the present county of Hawaii into two counties, which he has been carefully nursing all session, be tabled. The committee stated in its report that there have been many objections to the passage of the bill from various business interests and others on the island of Hawaii; for the reasons that were the present county divided into two, it would greatly complicate county matters and would entail great expense. The committee was of the opinion that the matter is a serious one which should be left to the entire people of the island for decision. For the Legislature to undertake to make the division at this season would be to assume grave responsibility without being in a position to act intelligently in the premises.

Kawewehi was frantic and jumped to his feet to move the tabling of the committee's report. He spoke long and loudly in support of his bill, his chief argument being that as the County of Hawaii has the money to afford such a luxury, they might as well spend it to run two counties instead of one. He concluded by moving that the report of the committee be tabled and the bill referred to a special committee from the island of Hawaii.

Something New. The Speaker remarked that in all his experience he had never heard of such a thing as tabling the unanimous report of a committee on a bill and referring the bill to another committee. Still, the motion was in order, and being seconded, must be put. But, the Speaker added, the special committee to which Kawewehi wanted the bill referred had other work to do.

Kalelopa opposed the bill on the ground that the expenditure of so much money for extra salaries would leave less for the road laborers.

Kawewehi talked again in support of his bill, dwelling on the fact that it would not take more than \$25,000 to pay the salaries of the officers of the new county, leaving as much as \$28,000 to be expended on road work, etc.

Kaniho likewise expressed the opinion that it would be a shame not to create a new county and pay a few more salaries so long as there is money enough to spend. Besides, if the expense should prove too heavy, the people of West Hawaii have some enough to reduce the expenses.

Rough on the Counties. Rice couldn't see how, if the bill were passed, it would be possible to keep up the roads at all. He thought it would be better for the laborers to get the money rather than to pay it out for more salaries. There would, too, be one very rich county and one very poor county. East Hawaii would be liable to go bankrupt, which would give county government a black eye.

"We on Kaula," he said, "are satisfied with county government and we don't want to go back." He thought the matter ought to be put up to the people of the Big Island. Rice moved the previous question, Kawewehi asked him to withdraw the motion so he could talk some more, but Rice refused. Alfonso also wanted to talk but was refused the floor and the motion for the previous question was put and carried 2 to 9.

The motion to adopt the report of the committee was lost, and the bill passed its second reading.

Lawyer Bill Not Favored. In one of the most interesting reports that has yet been rendered in the House, the Judiciary Committee recommended the tabling of Alfonso's House Bill 127, to prohibit the Attorney General and his deputies, county attorneys and their deputies, the High Sheriff and his deputies and District Magistrates from engaging in the private practice of law.

The committee held that such a law would prevent competent attorneys from taking official positions on account of the generally small salaries. The only way to get competent lawyers for government positions would be to increase the salaries so as to compensate them for the loss of income from private practice. This would mean an increase in the burden of taxation and add to the expenses of government, which is neither desirable nor possible.

Instead of adding to the efficiency of officers required to be filled by lawyers such a law would impair the efficiency by putting into office only such lawyers as the public will not trust with any private business. "In other words, it will require the people to elect as incumbents of such offices to do the public work only those lawyers whom the people will not intrust to do their private work. Is the Legislature prepared to say that the proper qualification for a law officer of the government is that he shall not possess the ability or the confidence of the community sufficiently to be entrusted with the private business of the members of the community? Yet this is just what the Act in effect declares."

Several other arguments were made against the bill by the committee. Sheldon did not concur in the majority report, though he filed no minority report. He expressed himself as ready, however, to declare himself orally on the matter. Seeing a long debate in sight, and 12 o'clock having arrived, the House took its recess, leaving the matter to be threshed out this afternoon.

Lilue, April 3.—Reverend Hans Isenberg has received several cables from Mrs. Isenberg at Singapore, which give the information that Miss Grau has had a serious relapse from the good recovery that she was making after her attack of typhoid fever. The first two cables were received last week, stating that Miss Grau had taken a turn for the worse and requesting that Mrs. Christ, the head nurse at Lilue Hospital, be sent to Singapore immediately, where she could take charge of the patient.

The third cable, received in Honolulu on Sunday, and delayed there by the unfortunate rule of the Wireless Company which forbids any messages to be delivered on Sunday, was received on Monday by Mr. Isenberg and stated that the patient was very low, and that Mrs. Christ had better stay here. Mr. Isenberg, however, decided that Mrs. Christ should go, as she can make things more comfortable for Mrs. Isenberg even if she should be too late to help Miss Grau, so Mrs. Christ departed for Yokohama on Tuesday, taking the Hall from Nawiliwili and expecting to catch the Siberia on its way to the Orient. She will await news from Mrs. Isenberg in Yokohama. The cable from Mrs. Isenberg stated that Miss Grau's typhoid fever had been complicated with spinal meningitis, which is a form of brain sickness which often attacks typhoid patients.

Miss Munroe arrived by the Ke Au Hou on Tuesday, from Honolulu, to take the place of Mrs. Christ in the hospital, while the latter is away—Garden Island.

President Taft walked to and from the All Souls' Unitarian church in Washington on a Sunday, followed each time by a throng. In the afternoon, the president, accompanied by Capt. Archibald Butt, his military aid, took an automobile ride, returning in time to greet Mrs. Taft on her arrival from New York.

A special committee has suggested that six years of elementary and six years of high school work make up the educational system in the New York public schools. The committee also asks amendment of the charter to allow \$3,000,000 additional expenditure each year for teachers' salaries.

The battleship Idaho, which has been assigned to duty with the special squadron in the vicinity of Guantanamo for maneuvers and target practice, sailed from Hampton Roads. She was followed by the auxiliary Ajax, with coal for the squadron.

FAIR COMMISSIONER ON BOARD THE ASIA

Shanghai Representative Is Passenger On Liner

A. J. de Sousa, Commissioner from Shanghai to the Yukon Exposition, is a passenger on the Pacific Mail liner Asia, which arrived this morning from the Orient and docked at the Hackfeld wharf shortly before 9 o'clock.

The Asia brought six cabin passengers for this port and carries seven for the mainland. In the steerage she has twenty Japanese and six Chinese.

According to the purser, the liner experienced good weather throughout the trip.

The liner, which brought forty-three bags of mail and 1100 bags of freight for Honolulu, will resume her voyage this afternoon at 5 o'clock.

SENATE

(Continued from Page 1)

the discussion concerning the meaning, in paragraph 3 of Section 1, of the provision that the Act should be construed liberally. Nobody seemed ready to answer the question, but the provision was allowed to pass.

Senator McCarthy objected strongly to the provision that every man must declare his politics publicly, charging that it is directly opposed to the sentiment which resulted in the adoption of the Australian ballot system.

No Mayor? When the form of the ballots came up, there was some little discussion over the fact that no provision had been made for voting for the Mayor of the City and County of Honolulu. The suggestion was jokingly made that the measure, being a Republican one, it might have been considered unnecessary to include the office. The ballot was allowed to go without alteration, other than the striking out of the words "Deputy Sheriff," that office having been abolished as an elective job.

Paragraphs 3 and 4 of Section 5 also induced more or less discussion. The first section provided that no person should sign the nomination papers of more than one candidate for the same office. The second paragraph provided that all signers should be residents of not more than two adjoining precincts.

Kalama feared that the first paragraph might make it impossible for a voter to sign the nomination papers of more than one candidate for an office in cases where the law allowed more to be voted for by each elector. Robertson bore him out in the suggestion. The two paragraphs were finally stricken out, but not until Emmeluth had spoken in favor of allowing them to remain as part of the bill.

At 12 o'clock, there still remaining the greater part of the bill to be faced, the committee arose, reported progress, and asked leave to sit again. The remaining portions of the bill will be considered this afternoon, the Senate again going into Committee of the Whole for that purpose.

No One for Chairman When the Senate voted to resolve into Committee of the Whole, a little pillika arose over the choice of a chairman. Senator Moore was the President's first choice. He declined to serve. Senator Brown next was called upon; he also declined the honor. Then, in turn, Senators Fairchild, Knudsen, and Robinson were named. "Twas in vain; they declined to preside. Finally Knudsen relented and took the Chair.

Routine House Bill No. 116, protecting the birds of the Territory, fixed up in proper shape by the Judiciary Committee, was again brought up, and passed third reading without opposition. Chairman Knudsen of the Judiciary Committee explained that the bill had, in reality, gone through three readings already, an error having been made in the announcement of the previous reading.

Senate Bill No. 117, amending the law relative to tax collections, passed third reading by unanimous vote.

Senator Makela introduced a bill providing for the disposition of road tax money coming into the Treasury.

A communication from H. Hackfeld & Co. and other firms, asking that the office of Assistant Harbor-master be not abolished, was referred to the Committee on Ways and Means.

Representative Bennet of New York has introduced a resolution in the house at Washington, deploring the violence and "inhumanity" in Russia, which are declared to be a shock to the world and retarding universal progress.

Bulletin Business Office Phone 256. Bulletin Editorial Room Phone 155.

EVENING BULLETIN

DAILY and WEEKLY Published by BULLETIN PUBLISHING CO., LTD.
At 130 King Street, Honolulu, Territory of Hawaii.

Daily every day except Sunday. Weekly issued on Tuesday of each week.

MEMBER OF THE ASSOCIATED PRESS.

Wallace R. Farrington, Editor

SUBSCRIPTION RATES PAYABLE IN ADVANCE.

EVENING BULLETIN		WEEKLY BULLETIN	
Per Month, anywhere in U.S.	\$ 1.75	Per Six Months, anywhere in U.S.	\$ 10.00
Per Quarter, anywhere in U.S.	2.40	Per Year, anywhere in U.S.	18.00
Per Year, anywhere in U.S.	18.00	Per Year, anywhere in Canada	18.00
Per Year, postage, foreign	12.00	Per Year, postage, foreign	2.00

CIRCULATION LARGEST OF ANY NEWSPAPER PUBLISHED
in the Territory of Hawaii.

Editorial Rooms, - 185
Business Office, - 256

Entered at the Postoffice at Honolulu
as second-class matter.

WEDNESDAY APRIL 7, 1909

It is not to be supposed that any person of proved criminal attributes will see anything wrong in the letter of a citizen to a member of the Legislature withdrawing "favors" on account of his vote on a public measure!

Congress now has the women on its trail, and no one believes it will dare stand against the onslaught.

Mr. Pollock is coming. Honolulu should be prepared to celebrate and forget the iceberg and the butter-cream-sockal job.

Let us have temperance in Hawaii no opposed to reckless agitation that retards progress and discredits honorable efforts at reform.

Queensland sugar people thought they would go to the wall under the burden of white labor. They were not only mistaken but they are enjoying a steadily increasing prosperity.

One million dollars of bonds taken up without the participation of capitalists who have hitherto held the record of controlling everything, speaks well for the financial status of Honolulu at the present time.

The Bulletin is disposed to think well of Mr. Woolley and recognize his right to become a member of any political party he sees fit to join. But when Woolley or anyone like him displays himself in public as the exponent of all that is right and all who have reached other conclusions are not only wrong but enemies of the Common Good, he is taking a course that must hurt the cause he has served with enthusiasm. The liquor problem is not solved but there is an increasing number of men who have lived in Prohibition States who know that Prohibition is a failure.

Abropos of nothing in particular, "A Setta," published in Hilo, delivers itself of the following:

If you're not fit for anything else, if you are drunk and hungry, you can get a job on the roads. Sure! There are no poor houses, so it is a good thing a man can get work on the roads when he is turned off a job at the Masonic building and another at the Volcano Station. Having the job he can get something to eat and he won't get drunk. Nine men out of ten when asked for money even to buy food, will buy a drink instead and an empty belly can't stand many of them.

There may be some deep meaning in the reference to a man turned off the Masonic Temple or Volcano Station job. What attracts this paper in relation of work on the roads to Hawaii's lack of poor-houses. If the roads save men from becoming public charges, the construction is cheap at double the price per day.

MR. RICHARDS' LETTER AND REFORM.

It is an interesting commentary on the moral standard of Honolulu that certain elements claiming the privilege of moral censorship over the community look upon the letter of Theodore Richards to Senator Coe as little short of criminal on the part of Coe who received it!

A letter of that character addressed to a State legislator of Iowa, for instance, would call for a Grand Jury investigation and action on the part of judicial officers that would at least furnish a moral example if it did not eliminate that style of business from public affairs.

Here in Honolulu the member of the Legislature is attacked for having been the recipient of such a letter, and the general atmosphere of the "moralists" is apparently one of sadness that the favors given in the hope of securing a vote were not accepted in the spirit in which they were extended.

Yet in the face of this some of our people try to make out that new blood is not needed in the official lists of the Territory, in order that common justice and common honesty may not

publish from the Territory of Hawaii! Campaigns with the "moral" tag on them have been so frequently conducted in this city with threats and blackmail as their chief weapons, that honest men of the islands and an increasing number from the mainland believe that Hawaii will move forward toward honest Americanism with markedly quickened step when a fair number of the reformers, reform.

WRITE WORKMEN IN SUGAR FIELDS.

The labor problem, as regards the sugar industry, seems to be solved as far as Queensland is concerned. Northern Australia is a much hotter and more tropical country than Hawaii; still, after the deportation of the South Sea Islanders, the last of whom left Queensland some time ago, a rush of good, hard-working white labor has set in, and the supply is ample at present. White cane-cutters are earning from \$15. to \$20.50 per week, and that is good pay for a laborer in Australia. This the planters are able to pay on account of the bonus paid by the Government on sugar produced by white labor.

Shanters, of course, earn more, but their expenses are very heavy, as they have to travel from one sheep station to another, and they are not very long in the one place. On the other hand, cane-cutters are at the same place for the whole season, and when the crop is harvested tackle the other plantation jobs.

The "Town and Country Journal," than which there is not a more reliable paper in Australia, gives a very good review of the labor situation that is of vast interest to Hawaii, where the sugar industry must employ a steadily increasing force of citizen labor.

"There is a charm about the planter's life that reminds one of the pleasures of fruit culture on an irrigation colony," says the Journal. "Cane culture has its drawbacks. One runs risks with regard to labor. This, however, is an old trouble that is gradually disappearing, though the boyie is raised by self-deluded agriculturalists producing cane from time to time.

"It has been said from the beginning that white men cannot work in the sweltering heat of a cane field, and no distinction was made between Southern and Northern Queensland. This affirmation crystallized into a dogma, and was unconsciously adopted as an article of faith. But, in the fulness of time, discredit was cast upon this creed by experience, and it was admitted that white men can stand the heat and burden of the day cultivating or cutting cane.

"It was then said, 'White labor is unreliable, and fails in performance of its promises at the critical moment when so much depends on its stability.' However, no argument based on practice or theory could stem the tide, and the deportation of the South Sea Islander came. It was inevitable as things stood. Planters, nevertheless, hoped against hope. The passage was a painful one, and opening the recording angel's book at this chapter one will imagine he is reading the Book of Lamentations. The mountains groaned, not in pangs of birth, but in fear of death. It seemed like the end of all things, for the planter, who, at that stage, could not see—or be expected to see—that it was, after all, not the beginning of the end, but the commencement of a new era, cast in a different mould, and that things being at their apparent worst would begin to mend by virtue of the inherent properties possessed by circumstances in finding a satisfactory solution for the ill the world is heir to. The 8000 South Sea boys went in dribs and drabs until 'the last of the Mohicans' (shipped some time ago, were returned to the enchanted isles of the South Pacific.

"Nature abhors a vacuum," and that created by the repatriation of the South Sea Islander is being filled with a rather fine type of Australian workman, many of whom hate the white 'waster' possibly more than they would have hated the Polynesian had they known him by contact.

A WOMAN'S SAVING PLAN

A FEW YEARS AGO a mahini school teacher who was able to save a few dollars out of her salary every month (she was engaged in a private school) went to a leading business man and asked him to advise her how to invest her small surplus. He told her to buy Ewa stock. She purchased a few shares, and then every time she got a little money ahead she bought more. Now she has fifty shares; they cost her on an average \$25.00 a share, making a total investment of \$1,250.00. She has paid no attention to fluctuations in market prices of stocks; she did not buy for speculation, but for investment, and now her monthly income from her Ewa shares is \$10.00—or \$120.00 a year. That is 9.6 per cent. on her investment. This is not intended as advice; it is simply a little bit of history. But if you wish to discuss the question of stocks and bonds, or investments of any kind, it is our business to serve you. Command us.

Trent Trust Company, Ltd.

Member Honolulu Stock & Bond Exchange.

The 'waster' (loafer) is doomed as a gang of cutters averaged nearly far as cane labor is concerned. For \$15. a week, while the maximum weekly wage was \$20.50. The Federal bonus on white-grown sugar tapers off to nothing in 1911, but the standard of wages, however, is now a fixed law. In a season like the present, owing to frosted cane, it is, of course, not possible to earn so much when cutting is paid for by contract, but it would be a pity if the many excellent workmen who came from northern New South Wales to try cane-cutting this season for the first time should allow themselves to feel discouraged, and stay away in future.

"Consequently the workmen of doubtful character, who could not hold their own in the open market against workmen of good character, drifted further afield. This floatam and jetsam reached the canefield; became a nuisance and a menace, and being entitled to call itself 'white,' created a false impression, which is now being slowly rooted out.

"The reputable workman never suffers a human parasite long. He has summary ways, and the 'waster'—who is a parasite—is soon shouldered out. The walk-about or hotel-leaving variety of 'waster' was in evidence this season at Bundaberg. The nomadic or frog-hopper, camping-out variety hovered around towns in sugar districts, where he could get rations from the police, or could live by begging, because ashamed to dig, but he is a vanishing quantity.

"The group of workmen the writer has in view sporting on the glade before their tents may be classed as Lloyd's. This class is an increasing quantity. It is Saturday afternoon. The camp employs a cook, so that the drudgery common to camp life when the camper is his own cook and laundress is done away. Cane-cutters earn good wages, and can afford to pay for reasonable comfort. At Goodwood Plantation, last season,

WHO TOOK UP BIG BOND ISSUE (Continued from Page 1) are not in on this, all of which shows that there is an increasing number of large investors in the market: Paauhau Sugar Plantation Co., Ed. Politz & Co., Honokaa Sugar Co., Pacific Sugar Mill, Theo. H. Davies & Co., Lewis & Co., H. Hackfeld & Co., Allen & Robinson, Ltd., F. Halstead, F. A. Schaefer, Morris Rosenblatt, Muriel C. Shingle, W. H. McInerney. The bonds are sold at ninety-three, and the amount of subscription will be paid in at intervals in keeping with the progress of the work that will start immediately. Those "on the job" say they will soon have a thousand men at work.

This is the biggest financial deal of recent years and now that everything is finished up those who held off are now said to be rushing in and demanding a share of the issue. It all shows the excellent financial condition of the city and best of all demonstrates an increasing readiness of local capitalists to back local enterprises.

The stock market this morning was a little quiet but there is no weakening at any point in the stock list. The first announcement of a dividend increase was made this morning by Wailuku which advances its dividend from one and a half to three per cent. The stock is held at \$200 and can't be had in any quantity at that. Hawaiian Commercial is enjoying a temporary lull, selling this morning at \$117. Honokaa is strong at \$38. Wailuku is coming out in very small lots at \$97.50. This stock will pass par on the next spurt. Hutchinson says a little but the report on the plantation are generally favorable and an advance seems probable. Oiaa is in the running again, selling at \$5 today and not much offering. The general outlook is for a fairly quiet week but as the crop is marketed and there is a fair prospect for some increase in dividends, the whole list will advance in a comparatively short time.

The slight drop in sugar had no disquieting effect although beeta went lower than had been anticipated. Nothing has happened to change the general belief that the price will hold at a good average throughout the season.



For Sale

College Hills

Six-room cottage, convenient car line; lot 100x150. . . \$4000.

Makiki District

Corner lot on Wilder avenue; modern house in good condition . . . \$4750.

Kaimuki

On high ground, corner lot containing 33,000 square feet, with story and half house. . \$4100.

Also a good real estate investment in small cottages near town.

Waterhouse Trust

COR. FORT AND MERCHANT STS.

1000

MILES OF SEA BRIDGED BY ONE

Wireless



ONE OWNERSHIP FOR ALL SALOONS

Third of Million Offered for Exclusive Privilege for Saloon Business in Portland—Gothenburg System

PORTLAND, Ore., March 24. — Portland may adopt the Gothenburg system of placing all saloons under a single ownership. An association that seeks a franchise for the control of the retail liquor business for ten years today began the circulation of initiative petitions for a law granting them this privilege.

For such a franchise the association agrees to pay \$365,000 a year for the first five years and \$400,000 for the second five years. It also promises to reduce the number of saloons from 449 to 250 and properly regulate them.

PRESIDENT TAFT SHIES AT FACTIONAL FIGHTS

Weight of Administration Will Not Be Loaned to Any Candidate.

Mr. Taft has laid down the hard and fast rule that he will not interfere in any political squabble in any state or assist in a factional war within the party. The occasion was the appeal made to him by Senator Hopkins of Illinois, who is a candidate for reelection before the Legislature at Springfield and who, after a contest extending over more than six weeks, is still as far from re-election as ever.

Senator Hopkins argues that he has a mortgage on the office, because he received the greatest number of votes at the primary election. He has never been near a majority of the Legislature on joint ballot, and his friends have begun to despair of his ultimate success.

An unsuccessful appeal was made to President Roosevelt and then Senator Hopkins decided to wait until he could get a chance at Mr. Taft and make his plea. Mr. Taft, it is understood, has made it plain that he cannot aid any particular candidate for Senator when there are others equally deserving.

He regards what he and President Roosevelt did in the New York senatorial election as standing by itself. There could be no question that Eltha Root was the best man for the position in point of standing and equipment, and the influence of the outgoing and the incoming administrations was thrown in favor of Mr. Root with the result that he was elected harmoniously.

The refusal of the President to support Mr. Hopkins was a great disappointment, but Mr. Taft, it is said, will adhere to his position that the President of the United States has no business interfering in the internal party troubles of any particular locality.

Bulletin Business Office Phone 256. Bulletin Editorial Room Phone 185

CASTORIA

For Infants and Children.

The Kind You Have Always Bought

Bears the Signature of *Chas. H. Fletcher*



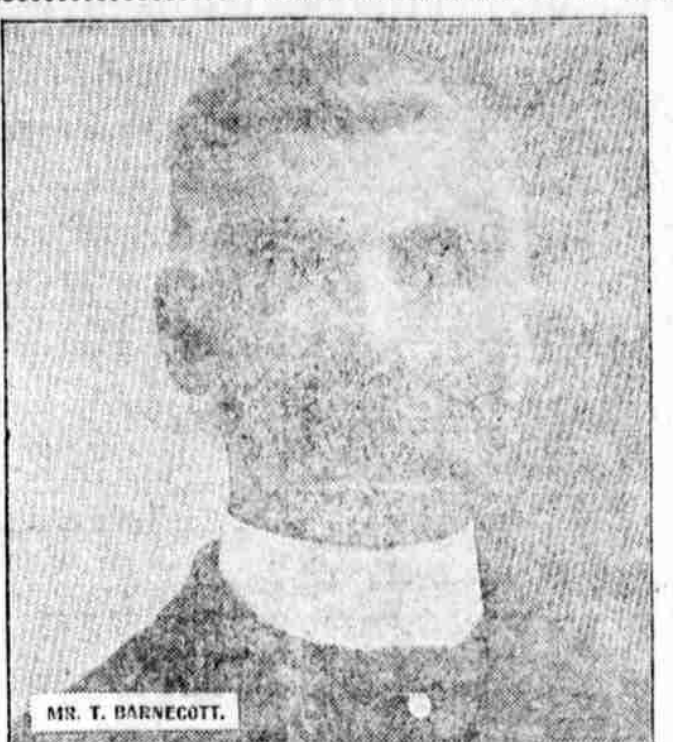
Is a Guarantee of Value?

We think so. That's what makes us guarantee our work. Isn't it worth something to you when you have a diamond ring or a fine watch at the jeweler's, to know that it will receive proper care and attention? OUR GUARANTEE COVERS ALL OUR WORK. Our Work is First Class Only.

H. F. Wichman & Co. LIMITED LEADING JEWELERS

Severe Cold and La Grippe.

Mr. T. Barnecott, West Aylmer, Ontario, Can., writes: "Last winter I was ill with pneumonia after having la grippe. I took Peruna for two months, when I became quite well, and I can say that any one can be cured by it in a reasonable time and at little expense. Every time I take a cold I take some Peruna, which makes me well again. I also induced a young lady, who was all rundown and confined to the house, to take Peruna, and after taking Peruna for three months she is able to follow her trade of tailoring. I can recommend Peruna for all such who are ill and require a tonic."



EVERY year, during the inclement weather of winter, there is an epidemic of la grippe. The disease is really catarrhal in nature, but from the form it assumes, has been commonly termed the "grip."

Splendid Remedy for La Grippe. Mr. Frank H. Fielder, 213 Pleasant Ave., Montgomery, Alabama, U. S. A., formerly principal of Hayneville High School, writes:

"I can truthfully say that Peruna is a splendid remedy for la grippe and a good tonic for building up the system." La grippe is very tenacious when it once gets a firm hold upon the system, and in addition to a thorough, systematic

catarrh remedy, a great deal of patience and persistence in the treatment are required to eradicate the disease. Peruna, an internal catarrh remedy, is one of the best medicines ever devised to meet the exigencies of these cases. The large number of commendatory letters received by Dr. Hartman, the inventor of Peruna, in behalf of his remedy is proof sufficient of its value as a reliable medicine for the "grip."

Prompt Relief. Mr. Frank Bauer, Minneapolis, Minnesota, U. S. A., writes: "I suffered with la grippe. My lungs felt as if knives were sticking in them. I took Peruna and in four days I was able to go out."

The following wholesale druggists will supply the retail trade: HAWAII HONOLULU, BENSON, SMITH & CO.

Easter Days

WE WILL SHOW THE LARGEST AND MOST ELEGANT ASSORTMENT OF EASTER NOVELTIES EVER SEEN IN HONOLULU BEGINNING

Next Monday

PANORAMA EGGS, EGGS IN NESTS, BUNNIES, Handsomely Colored CANDY EGGS and Canning Little CHECKS.

Hot X Buns

Delivered to residences early GOOD FRIDAY MORNING. ORDER TODAY.

THE PALM CAFE,

HOTEL NEAR UNION STREET. PHONE 311.

DRY CLEANING

Laces, feathers, curtains, etc., Shirts, Collars, Cuffs, Linens.

FRENCH LAUNDRY

258-Beretania St. Phone 1491.

Received ex Alameda a New Shipment of Latest Styles in LADIES' HATS.

BOOKS

ALAKEA AND MERCHANT STREETS

Brown & Lyon Co.

K. UYEDA,

1028 NUUANU ST.

LUNCHES and DRINKS

The most popular place in town.

The Fashion Saloon

Hotel St. near Fort. Jack Sully. Jack Roberts.

NO PLACE LIKE THE

Orpheum Saloon,

FOR A COOL DRINK OF BEER

FORT near KUKUI

W. L. EATON,

Collector Evening Bulletin; Financial Secretary Hawaiian Engineering Association. Office Hours: From 12 to 1 at Bulletin office. 1941 SO. KING ST. HONOLULU, T.H.

WEEKLY BULLETIN

\$1 a Year

Answer This Question

When a remedy has lived for over thirty years, steadily growing in popularity and influence, and thousands upon thousands of women declare they owe their very lives to it, is it not reasonable to believe that it is an article of great merit?

We challenge the world to show any other one remedy for a special class of disease which has attained such an enormous demand and maintained it for so many years as has Lydia E. Pinkham's Vegetable Compound, the famous woman's remedy for woman's ills. Unless it is a very good medicine and the claims made for it are honest, such a record would have been impossible—fraud or misrepresentations would long ago have been detected and the business gone into oblivion. Read this unsolicited letter:—

Melbourne, Iowa:—"I suffered for many years with female troubles, inflammation, and bearing-down pains, so that I was unable to do my work.

"Lydia E. Pinkham's Vegetable Compound was recommended, and I am so thankful for the great good it has done me. I feel that I am a living advertisement for this medicine as I have influenced so many of my friends to use it, so thankful am I that it restored me to health."—Mrs. Clara Watermann, R. D. 1, Melbourne, Iowa.

When a woman like Mrs. Watermann is generous enough to write such a letter as the above for publication, she should at least be given credit for a sincere desire to help other suffering women. For we assure you there is no other reason why she should court such publicity.

We say it in all sincerity and friendship—try this medicine.

For 30 years Lydia E. Pinkham's Vegetable Compound has been the standard remedy for female ills. No sick woman does justice to herself who will not try this famous medicine. Made exclusively from roots and herbs, and has thousands of cures to its credit.



Mrs. Pinkham invites all sick women to write her for advice. She has guided thousands to health free of charge. Address Mrs. Pinkham, Lynn, Mass.

Good Friday IS HERE AND THAT MEANS

HOT + BUNS

DELIVERED AT YOUR RESIDENCE FRIDAY AND SATURDAY MORNINGS.

FOR FRIDAY, SATURDAY, AND EASTER SUNDAY.

The Best and Freshest in the City, at

Vienna Bakery,

1129 FORT STREET.

TELEPHONE 197.

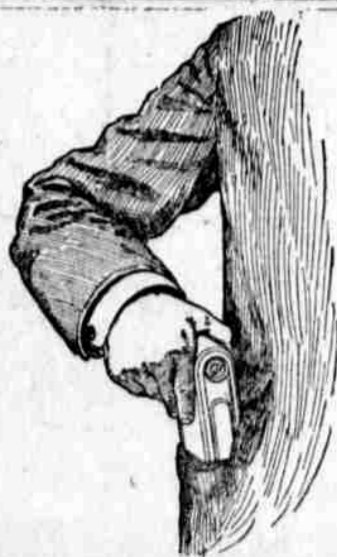


LECOULTRE RAZOR

The Common Sense Razor, combining the best qualities of the safety detachable razor with the comfort and easy-cutting qualities of the old-style blade.

These blades, of specially hardened English steel, hold their edge for years without requiring honing. Sold by BENSON, SMITH & CO., LTD. AND

T. H. Davies & Co., Ltd. Hardware Department



Put a Kodak In Your Pocket

Honolulu Photo Supply Co., Ltd.

Women Protest Against Tariff

PAYNE TARIFF RAISES BARS AGAINST FEMININE LUXURIES THAT MANY BELIEVE ARE NOW NECESSITIES — CONGRESSMEN ARE SWAMPED WITH PETITIONS. WHAT THE NEW BILL DOES

WASHINGTON, D. C., April 6.—Wrangling, confusion, and personalities bordering on abuse marked the first day's debate on the tariff amendments. Mr. Payne defended the duty on hosiery and gloves as a means of increasing the protection of American manufacturers.

CHICAGO, Ill., April 6.—The petition of women against the proposed increase of duty on hosiery and gloves now contains half a million names. It will go to Washington at once.

Washington, D. C.—Hats are bigger than ever and the tariff on them is going to be taller than ever. Millady is going to be a more expensive luxury than ever before. If the schedules of the Payne bill relating to her adornment become law.

It's a mighty serious thing that the Ways and Means Committee has undertaken. Silk stockings are going to come higher than they have been known in the past. Feathers, alpacas, furs and the like will be "out of sight." The only ones known to be pleased are the ostriches. They will be able to run around the Sahara in their natural togs, for the milliners says the duties are almost prohibitive. Perfumes get a big lift, and scented soaps are raised scandalously, so women declare.

Glove Tariff Raised. The increased duties on gloves constitute one of the great sorrows of the bill. The New York glove making interests up around Gloversville got the increases put in, on the ground that the time has now come when the American manufacturers are able to compete, with proper encouragement, against the French and Italian makers.

So gloves are raised various amounts, going up to \$4 per dozen for the fourteen-inch gloves, with thirty-five cents additional per dozen for every increase in the length of the glove. The twenty-four button shoulder length gloves will cost so much that the possession of six pairs will be evidence of possessing prodigious wealth. The women were the persons whom the old McKinley bill of 1899 hit hardest. The measure lifted the duties on household hosiery, all kinds of clothing, dishes and the like. It didn't get so much action on articles of luxury as does the Payne bill. Which is nearest and dearest to a woman, her vanities or her household interest?

The Democrats are going to get very busy with these women schedules of the new law. They opine that even if the women don't vote they will have influence about the time they announce that a hat which used to be \$50 is now \$75, and its "Just the only one in town that mother can wear." The women defeated the Republicans in the Congressional election of 1890 because of the McKinley bill; defeated them harder than before or since. And when Champ Clark scanned the "women schedules" of the Payne bill he sniffed, chuckled and observed: Champ Clark Hopeful.

"Ah, dear creatures, you will be on our side when we are done telling you what all this means. Methinks I see where we get off in the next Congressional fight." Women's anti-tariff clubs will be organized and protests from all sorts of organizations of women will be made a feature by the interests that are getting ready to fight the big increases in what the makers of the bill call luxuries.

"Luxuries, indeed," snapped a woman in a thirty-six inch Merry Widow, with a plume which would be taxed \$23.45 under the new bill. "Don't they know ostrich plumes are necessary? See any increase in the beer tax? Not a cent. Insignificant increase on cigarettes and a huge advance on gloves. Oh, we'll show them whether the women can make themselves felt."

Here are some revised definitions, based on the constructions employed by the new tariff measure, as drawn up by women critics of the bill:

Luxury—Something which is used by a person who can't vote. Necessary—Something which isn't necessarily necessary, but which is used by a person who can vote.

"Luxuries" Used By Women. "Most of the articles on which duties have been increased are luxuries," avers the official explanation of the changes proposed by the new bill. Investigation also shows that most of them are articles used by women. A woman who says she went through the bill with a fine toothed comb, declares that she can't find a single article whose use is personal to men, on which the duty has been raised, while almost every article on which the duty is raised relates to the feminine equipment. Just observe this succession of outrages:

Perfumes and toilet articles, raised from 5 to 60 per cent ad valorem. Bottle caps, enamelled, from 45 to 55 per cent ad valorem. Coal tar dyes or colors, from 30 to 35 per cent ad valorem. Pins (that or otherwise), with ornamental heads, including those set with precious stones, pearls or coral, from 10 to 50 per cent ad valorem. So much for a typical schedule. But consider now the candy industry, a

traffic already under scandalous burdens by reason of the pure food law, which has made candy cost more than ever before.

Cocoa, crude, from the free list to the dutiable at four cents per pound.

Cocoa, prepared or manufactured, valued at not over fifteen cents per pound, increased from two and one-half to five cents per pound. Valued at over fifteen cents per pound, increased from two and one-half to varying figures up to nine cents per pound.

Spices, increases all along the line; generally, they are raised from the free list to about thirty per cent ad valorem.

Fancy soaps, from fifteen to twenty cents per pound.

Who shall say that feathers are luxuries, just because men don't wear them? Nobody but this mean Mr. Payne. He thinks they're luxuries, and increases them thus:

Feathers, from fifteen to twenty per cent ad valorem.

Furs, dressed on the skin, from twenty to twenty-seven and one-half per cent ad valorem.

Manufactures of hair, from twenty to twenty-five per cent ad valorem.

Stockings—a Luxury?

And stockings. Are they a luxury? Doesn't Mr. Payne, perhaps, think we need 'em? Is there anything that people use more? There are even some few men who don't drink beer or whiskey, or smoke cigars. But those things don't suffer. Not a cent increase in the tax on the things that men use. Yet there is increase in the duties on stockings all the way along the list, with the beautiful silk and thread work ones bearing the heaviest burden, of course. Could anything be meaner or more inconsiderate?

And gloves. Think of gloves being regarded as a luxury! Is there a woman who doesn't wear 'em? Here's what this Payne person does in the way of increasing the duties:

Women's and children's gloves not over fourteen inches in length as follows:

"Schmaschen," from 1.75 per dozen pairs;

"Glace," of sheep origin, from \$2.50 per dozen;

"With exterior grain surface removed," from \$2.50 per dozen;

"Kid of other leathers than of sheep skin," from \$3 per dozen pairs;

—all raised to \$4 per dozen pairs and thirty-five cents additional per dozen for every inch of additional length.

And that isn't all. It's only a little suggestion. They have written some jokers into the bill that will make it harder than ever for the milliners to bring in their stuff from Germany and France at low valuations, so as to save a little on the duty. They're just after the women all along the line, and the women are going to join the suffragette movement and storm the House and Senate and insist on going to jail or making cart Cal speeches, as they do in London.

So, there!

ELLEFORDS OBSERVED SEASON OF LENT

Willis Bass, business manager of the Elleford Company tells a clever story that is very appropriate now in the Lenten season. He was ahead of his attraction at Ventura, Cal., last year during Lent, and on the night of his arrival in town, a colored concert company was holding forth at the theatre. The town's population is made up largely of Catholics, and as they were observing the season, the house was very tight to hear the "cullied brethren." The man who was on the door heard several people remarking something about "Lent hurting the business." After settling up the receipts of the house he went back on the stage to turn over the cash to a colored lady who was the proprietor. When she saw the box office statement and the size of the house, she exclaimed, "My, Bill, that's tight, what's the matter?" The door-keeper scratched his head and replied, "I don't know, Missus, do only thing I could learn was something about 'Lent.' 'Pears dat all de people has lent out dere money, somehow." The manageress sniffed and replied, "Well, it's sartin Bill, dey didn't lend it in dis head town, to look at dat house."

Mr. Bass states that Mr. Elleford intended opening here Friday, April 9th, on the arrival of the company on the Alameda, but knew that it would please Honolulu play-goers who observe Lent to make the opening Monday, April 12, the day after Easter,

John D.

didn't lay the foundation of his stupendous fortune by spending his week's salary on Saturday and Sunday. His advice to the man who would be wealthy is: "Work as hard as you can, earn as much as you can, and SAVE ALL YOU CAN."

We'll lend you one of our handy home savings banks if you start an account with us. We pay 4 1-2 per cent. on savings deposits.

Bank of Hawaii, Ltd., FORT AND MERCHANT STS. Capital and Surplus, \$1,000,000

Whitney & Marsh

New Suits and Costumes

Are Now on Display

Just One of Each

Hot + Buns

FOR GOOD FRIDAY: GERMAN EASTER CAKE. ORDER BYPHONE 658 OR 115.

The German Bakery

W. H. ZIMMERMAN, Prop. Bakery, King St. Sales Depot, Fort near Hotel.

GOOD FRIDAY SERMON BY FATHER CHASE

Rev. Father Chase, Chaplain at Lihue, will preach at the Catholic Cathedral at 8 o'clock Friday evening instead of 8 o'clock Sunday morning, as previously announced. This will be the evening service at the Cathedral of Good Friday, and people of every faith are invited to attend.

Bulletin Business Office Phone 256. Bulletin Editorial Room Phone 185.

Residents of Hawaii

PURPOSING to visit SEATTLE during the time of the EXPOSITION, JUNE 1st TO OCTOBER 15th, will find it to their advantage to call at the rooms of the Hawaii Promotion Committee and register in order that assistance may be rendered them in securing desirable hotel accommodation.

Complete information as to Hotel Rates, Steamship and Railway Fares on file.

A Real Sale

THE CLOSING-OUT SALE we are now conducting is the most successful in the history of our mercantile business. More sales were made, and more cash taken in by our sales force on Monday than on the day before Christmas last year. It was a record day

Ladies Recognize the Value

of our offerings and are quick to take advantage of them. The sale is genuine, bona fide, legitimate. It will continue until every article advertised is sold. The old style of renewing stock as the sale advances will not be practiced here; we are selling out, not buying in.

Embroidery

All that the most exacting taste could demand.

Laces

from every part of the world where lace is constructed.

Notions

all that the term implies, from thimbles to back combs and everything between.

Gloves

silk and lisle thread, from wrist lengths to the length of an arm.

WE HOLD THE CENTER OF THE STAGE UNTIL THIS SALE CLOSSES.

L. B. Kerr & Co., Ltd., Alakea Street

- ### Ribbons, Muslin Underwear, Shirtwaists
- SKIRTS, White, Poplin, White Rep, Wash Skirts.
 - RAGLAN COATS IN THE SWELL PATTERNS and SHADES.
 - DOMESTICS — TURKISH BATH TOWELS, Face Towels, Etc.
 - CURTAINS in lace silkoline, scrim and net.
 - Millinery, Pattern Hats, Dress Goods
 - Persian Lawns, Percaloes, Piques, Glen-Tissue, Monotone Silks, Etc.



Ready Today

PRIMO BOCK BEER

On draught and in bottle at every bar in Honolulu

Best Bock Beer Brewed

Call up your Dealer for a Case

Honolulu Brewing & Malting Co.

EVER READY BOTTLE



A keen pleasure and a great comfort to

- AUTOMOBILISTS
- BOATING PARTIES
- PICNIC PARTIES
- HUNTERS
- FISHERMEN
- TRAVELERS
- INVALIDS
- ATHLETES
- SOLDIERS
- ENGINEERS
- PHYSICIANS



A wonderful convenience for the mother with a nursing child. Warm milk at all hours of day or night.

It differs from other bottles in that it has a PATENT SPRING CORK which stays in place and absolutely guards against spilling of contents, no matter in what position the bottle is carried.

It has a drinking cup with a smooth, polished surface both inside and outside; has no unsanitary screw threads, and can be kept scrupulously clean, and the drinking cup serves also as a cap for the bottle.

We have the bottles in the quart and pint sizes and the cases for one or two bottles.

The EVER-READY CARRYING CASE is Strong and Attractive.

Before buying any kind of a bottle be sure and examine the EVER-READY.

E. O. HALL & SON, LTD.

Baseball
Boxing
Boating

SPORTS

Racing
Bowling
Rowing

Japanese Show Wonderful Skill

The Boys' Field was again crowded yesterday afternoon, and a great many more haoles attended the festivities than on the first day. All the side-shows were in evidence and were just as well patronized as before. The swordsmen gave some fine exhibitions, and most of their bouts were very much in earnest. The champion was again on deck, and his easy manipulation of the two-handed sword was remarkable. At times he would have his opponent guessing as to where the next blow would land.

The charming geisha girls were as good as ever and their dancing and poses were the delight of the large audience, which applauded the turns with great fervor. The juggler did some wonderful work with a bow and arrows. His accuracy is remarkable, and he seems to be able to hit his mark at any angle and from any position. His target consisted of another arrow held upright by an assistant; the archer knocked the target down every time. Even when the assistant wobbled the thin object back and forth the modern William Tell always managed to score. Then, to cap all, the artist fixed an arrow in his bow and drawing the string back with his teeth, let fly. Much to everyone's astonishment, down went the target; this man's skill is hardly credible, and his exhibition is in itself well worth a visit to the Boys' Field.

The refreshment booths were in full swing, and it was a hard job to avoid devouring too much of the good things provided. One would arise from a chair feeling at peace with the world and pleased with ev-

STODDARD DAYTON
7-Seater

By Hour or Trip.

G. C. Beckley, Jr.
PHONE 199.

PROGRAM
Baseball
Apr. 11: Waialua vs. Aiea.
Apr. 11: Ewa vs. Waianae.
Apr. 25: Cavalry vs. Fort Shafter.
Apr. 25: N. G. H. vs. Marines.
Marathon
Apr. 18: League Grounds.
Golf
Apr. 25: Team.

everything, and then suddenly would run into another smiling invitation which was impossible to refuse. The Japanese certainly are the original Princes at entertaining, and all their efforts were directed to give everyone a good time. Banzai!

Lahaina Ball is Booming Well

The Mid-Pacifics put it over the David Malos last Saturday at Lahaina to the tune of 23 to 11. A large crowd attended the game and excitement ran high at times, especially when the Pacifics started to get a lead on the Malos. Wallau pitched good ball for the winners, striking out no less than nine men. Smith, Kamaka, and Chas. Mokeau made home runs for the Mids.

There are three teams in the Lahainaluna League, and the Mid-Pacifics are leading with a percentage of .750; East Maui comes second with .333; and the David Malos, who have not yet won a game are in the zero class. The Mids have won three out of four games; the Easts one out of three, and the Davids have lost all three games. Great interest is taken in baseball around Lahaina, and the citizens of the ancient capital are to be commended on the fact that they have a flourishing league.

Additional Sports on Page 10

Doubts of Jack Starting in Marathon

As some doubt is expressed as to the rules applying to Marathon runners being rubbed down, etc., during the course of a race, a cable has been sent to the mainland asking that a copy of the rules governing such contests be forwarded at once to this city. From the press accounts of indoor or track Marathons, it appears that no outside assistance, excepting refreshment, is allowed. Cross-country Marathons are in a different class, however, and there is not much doubt that massaging and such like stunts are carried on.

With reference to the Marathon to be run on April 18, all the men are in active training, and quite a number of them seem to have a good chance of winning. The veteran Paddy Walsh, is anxiously awaiting the arrival of his elastic bandage from the Coast, and if it comes in time, P. W. will start in the contest and then the public will see the race of its life.

Nigel Jackson, on being interviewed yesterday afternoon, stated that he had doubts about starting in the big race. "I took a spin over twenty miles this morning," he remarked, "and made good time. Still, I find that training is going to interfere with my work, and it may be that I will not start in the Marathon."

This is bad news for the sports who are all looking forward to seeing "Jack" perform on the enclosed track. Of course Nigel may find time to train, but it is a hard proposition for a man to work all day and then train at night. Well, let us all hope for the best, and trust that the first Marathon winner will be a starter in the second race.

Schorsch is going to run a great race on April 18, and the man who beats him will about win. His run in the Haleiwa event was a corker, and only for getting cramped whilst resting, he would have been closed up to the winner.

Pottie's Bots and Worms Specific

These remedies not only cause the evacuation of these troublesome pests, but they destroy them and clean up the injury they have produced in the stomach and bowels.

Stock may be given these medicines on the pasture without handling, or while at work.

Obtained at Leading Druggists, or

Pottie & Sons, Honolulu

HOTEL AND FORT STREETS.

Fine Grass Linen White and Blue, at 85c a Yard

YEE CHAN & CO., King and Bethel Sts.

Ask Your Grocer For It

Alpine Milk

Makes Everything Taste Better

OPERA HOUSE, Saturday, April 10

POLLARD'S NO. 1 CO.

"Charity Ball"

Seats on sale at Bergstrom Music Co., 25c, 50c, 75c and \$1.00.

Oceanic Steamship Company

TIME TABLE S.S. ALAMEDA

The steamers of this line will arrive and leave this port as hereunder:

Leave S. F.	Arrive Hon.	Leave Hon.	Arrive S. F.
APR. 3	APR. 5	APR. 14	APR. 20
APR. 24	APR. 26	MAY 26	JUNE 1
MAY 15	MAY 21	JUNE 16	JUNE 22
JUNE 5	JUNE 11	JULY 17	JULY 13
JUNE 26	JULY 2		

Rates from Honolulu to San Francisco—First-class \$85; Round Trip \$110; Family Rooms extra.

Wm. G. Irwin & Co., Ltd

OCEANIC S. S. CO. GENERAL AGENTS

PACIFIC MAIL STEAMSHIP CO. & TOYO KISEN KAISHA

Steamers of the above companies will at Honolulu and leave this port on or about the dates below mentioned:

FOR JAPAN AND CHINA:		FOR SAN FRANCISCO:	
CHINA	APR. 9	ASIA	APR. 6
MANCHURIA	APR. 15	MONGOLIA	APR. 17
CHIYO MARU	APR. 23	TENYO MARU	APR. 27
ASIA	MAY 1	KOREA	MAY 4
MONGOLIA	MAY 11	NIPPON MARU	MAY 15

FOR GENERAL INFORMATION APPLY TO

H. Hackfeld & Co., Ltd, Agents

AMERICAN-HAWAIIAN STEAMSHIP COMPANY.

Weekly Sailings via Tehanstepe.

FROM NEW YORK TO HONOLULU.

FROM SAN FRANCISCO TO HONOLULU DIRECT.	FROM SEATTLE AND TACOMA TO HONOLULU DIRECT.
FLYING DUTCHMAN, TO SAIL, APR. 17	MISSOURIAN, TO SAIL, APR. 15
Freight received at Company's wharf, Greenwich Street.	COLUMBIAN, TO SAIL, APR. 29

For further information apply to

H. HACKFELD & CO., LTD., Agents Honolulu.

C. P. MORSE, General Freight Agent.

Canadian-Australian Royal Mail Steamship Company.

Steamers of the above line, running in conjunction with the CANADIAN PACIFIC RAILWAY CO. between Vancouver, B. C. and Sydney, N. S. W., and calling at Victoria, B. C. Honolulu and Suva, Fiji, and Brisbane, are DUE AT HONOLULU on or about the dates below stated, viz:

FOR FIJI AND AUSTRALIA:		FOR VANCOUVER:	
AORANGI	MAY 1	MARAMA	APR. 27
MARAMA	MAY 28	MAKURA	MAY 25
MAKURA	JUNE 25	AORANGI	JUNE 28
AORANGI	JULY 24	MARAMA	JULY 30

Through Tickets issued from Honolulu to Canada, United States and Europe. For Freight and Passage and all general information, apply to

Thos. W. Davies & Co., Ltd. General Agents.

Matson Navigation Company

Schedule S. S. HILONIAN, in the direct service between San Francisco and Honolulu:

ARRIVE HONOLULU	LEAVE HONOLULU
APRIL 14, 1909	APRIL 20, 1909
MAY 12, 1909	MAY 18, 1909
JUNE 9, 1909	JUNE 15, 1909

The Steamship "HYADES" of the Matson Navigation Company's line sails from Seattle for Honolulu direct, on or about April 27th, carrying freight only.

The Steamship "LURLINE" of the above line sails from San Francisco for Honolulu direct on or about April 14th, carrying both freight and passengers.

Passenger Rates to S. F.: First Cabin, \$60; Round Trip First Class \$110.00

For further particulars apply to CASTLE & COOKE, LTD., Agents.

Union-Pacific Transfer Co., Ltd.

Baggage Shipping
Storage Wood
Packing Coal

PHONE 58

Hustace-Peck Co., Ltd.

Phone 295. DRAYMEN 66 Queen Street. P. O. Box 218. Estimates Given on all kinds of teaming.

FIREWOOD, STOVE, STEAM AND BLACKSMITH COAL. CRUSHED ROCK, BLACK AND WHITE SAND, GARDEN SOIL. HAY, GRAIN, CEMENT, ETC.

FINEST FIT and cloth of A-1 quality can be purchased from

SANG CHAN, McCANDLESS BLDG., P. O. Box 951. Telephone 931. AGENTS FOR EDGEWORTH and QUIDO Tobacco. The only two good smoking Tobacco in the Market. FITZPATRICK BROS. and MYRTLE CIGAR STORE

Weekly Bulletin, \$1 Year

BISHOP & CO.

ESTABLISHED IN 1858. BANKERS. Commercial and Travelers' Letters of Credit issued on the Bank of California and The London Joint Stock Bank, Ltd., London. Correspondents for the American Express Company and Thos. Cook & Son. Interest allowed on term and Savings Bank Deposits.

Claus Spreckels & Co.

BANKERS. HONOLULU, T. H. San Francisco Agents - The Nevada National Bank of San Francisco. Draw Exchange on the Nevada National Bank of San Francisco. London - The Union of London and Smith's Bank, Ltd. New York - American Exchange National Bank. Chicago - Corn Exchange National Bank. Paris - Credit Lyonnais. Hongkong and Yokohama - Hongkong-Shanghai Banking Corporation. New Zealand and Australia - Bank of New Zealand and Bank of Australasia. Victoria and Vancouver - Bank of British North America. Deposits received. Loans made on approved security. Commercial and Travelers' Credits issued. Bills of Exchange bought and sold.

The Yokohama Specie Bank, Limited

Capital (Paid up) Yen 24,000,000 Reserve Fund Yen 15,940,000 HEAD OFFICE, YOKOHAMA. The bank buys and receives for collection bills of exchange, issues Drafts and Letters of Credit, and transacts a general banking business. The Bank receives Local Deposits and Head Office Deposits for fixed periods. Local Deposits \$25 and upwards for one year at rate of 4% per annum. Head Office Deposits, Yen 25 and upwards for one-half year, one year, two years, or three years at rate of 5 1/2% per annum. Particulars to be obtained on application. Honolulu Office - 87 S. King Street. P. O. Box 168. M. TOKIEDA, Manager

The First AMERICAN SAVINGS AND TRUST CO.

OF HAWAII, LTD. SUBSCRIBED CAPITAL, \$800,000.00 PAID UP CAPITAL, \$100,000.00 President, Geo. B. Brown Vice President, M. P. Robinson Cashier, L. T. Peck Office: Corner Fort and King Sts. SAVINGS DEPOSITS received and interest allowed for yearly deposits at the rate of 4% per cent. per annum. Rules and regulations furnished upon application.

FIRE INSURANCE THE B. F. DILLINGHAM CO. LIMITED.

General Agent for Hawaii! Atlas Assurance Company of London. New York Underwriters' Agency. Providence Washington Insurance Co. 4th FLOOR, STANGENWALD BLDG. Wm. G. Irwin & Co., Ltd. AGENTS FOR THE Royal Insur. Co. of Liverpool, Eng. Commercial Union Assurance Co., Ltd., of London, England. Scottish Union & National Ins. Co. of Edinburgh, Scotland. The Upper Rhine Ins. Co., Ltd

Alexander & Baldwin LIMITED.

OFFICERS AND DIRECTORS. H. P. Baldwin, President J. B. Castle, Vice President W. M. Alexander, Second Vice Pres. J. P. Cooke, Third Vice Pres. and Manager J. Waterhouse, Treasurer E. E. Paxton, Secretary W. O. Smith, Director J. R. Galt, Director W. R. Castle, Director SUGAR FACTORS, COMMISSION MERCHANTS and INSURANCE AGENTS Agents for Hawaiian Commercial & Sugar Co. Haiku Sugar Company. Paia Plantation. Maui Agricultural Company. Hawaiian Sugar Company. Kahuku Plantation Company. Kahului Railroad Company. Haleakala Ranch Company. Honolulu Ranch.

Castle & Cooke, Ltd

HONOLULU, T. H. SHIPPING AND COMMISSION MERCHANTS, SUGAR FACTORS and GENERAL INSURANCE AGENTS representing Ewa Plantation Co. Waialua Agricultural Co., Ltd. Kohala Sugar Co. Waimea Sugar Mill Co. Apolaha Sugar Co., Ltd. Pulton Iron Works of St. Louis Blake Steam Pumps Weston's Centrifugal Boilers Babcock & Wilcox Boilers Green's Fuel Economizers Marsh Steam Pumps Watson Navigation Co. Planters' Line Shipping Co.

Wm. G. Irwin & Co. LIMITED.

SUGAR FACTORS and COMMISSION AGENTS. Wm. G. IRWIN, President JNO. D. SPRECKELS, 1st V. Pres. W. M. GIFFARD, 2d V. Pres. H. M. WHITNEY, Treasurer RICHARD IVERS, Secretary D. G. MAY, Auditor Agents for Oceanic Steamship Co., San Francisco, Cal. Baldwin Locomotive Works, Philadelphia, Pa. Hakala Plantation Co., Hilo Sugar Co., Honolulu Plantation Co., Hutchinson Sugar Plantation Co., Kilauea Sugar Plantation Co., Olouahu Company, Paunahu Sugar Plantation Co., Waianalo Sugar Co.

C. Brewer & Co., Ltd.

QUEEN STREET, HONOLULU, T. H. AGENTS FOR: Hawaiian Agricultural Co., Ooaka Sugar Plant Co., Onomea Sugar Co., Honoumuli Sugar Co., Waialua Sugar Co., Pepeekeo Sugar Co., The Planters Line of San Francisco Packets. LIST OF OFFICERS: C. M. Cooke, President; George Robertson, Vice President and Manager; E. P. Bishop, Treasurer and Secretary; F. W. Macfarlane, Auditor; P. C. Jones, C. M. Cooke and J. R. Galt, Directors.

LIFE INSURANCE

is not a Luxury; it is a Necessity. But you must have the BEST and that is provided by the famous and most equitable Laws of Massachusetts, in the New England Mutual Life Insurance Co. OF BOSTON, MASSACHUSETTS. If you would be fully informed about these laws, address

Castle & Cooke, GENERAL AGENTS.

DAVID DAYTON

137 MERCHANT STREET. LOTS FOR SALE IN KAPIOLANI PARK ADDITION and other desirable localities. For Sale at a Bargain - Premises at Maunaloa on the beach, a two-story house and furniture, at a bargain. R. MIYATA & CO., CONTRACTORS, BUILDERS, PAINTERS, PAPER HANGERS and MASON WORKERS. Second Hand Lumber, Doors and Sashes Bought and Sold. KING ST., PALAMA JUNCTION Phone 594. Blank books of all sorts, ledgers, etc., manufactured by the Bulletin Publishing Company.

Real Estate Transactions

Entered for Record April 3, 1909, From 10:30 a. m. to 12 noon. Est of S G Wilder Ltd et al to Hans Anderson, D Kapahulu Kapakaula to H H Parker, PA Gaspar Silva by atty to E C Rowe, RI C Thompson to Kau Agricultural Co Ltd, D Henry C Brown to Oahu Railway & Land Co, L Hee Man to L Koon Chan, AL Wong Lai by Atty to L Koon Chan, AL Hee Chan by Atty to L Koon Chan, AL Entered for Record April 5, 1909, from 9 a. m. to 10:30 a. m. C B Cockett and wf to A N Hayes, den, D John T Moir to Adelaide K Pua, R William Savidge Tr to Sol Meheula, Rel Solomon Meheula and wf to William Savidge Tr, M Isaac Ithi and wf to C B Malle, D Luika Hawae to Sun Wa Chan, AL First Bank of Hilo, Ltd. to Elsa Richardson, D Entered for Record April 5, 1909, From 10:30 a. m. to 4 p. m. A M Cabrinha to J Umiltol Mol, Rel J U Mol to A M Cabrinha, D Edw H P Welter tr to Territory of Hawaii, D Fredk C Miller and wf to John F Humburg, M Mary K Akino and hsb to Bank of Hawaii Ltd, M W L Decoto to G G Seong et al, Rel G G Seong and wf to H P Baldwin, D G G Seong and wf to H P Baldwin, BS MHiama to H L Holstein, D Bank of Hawaii Ltd to Mary K Akino, Rel Bishop & Co to Charles A Hartwell, AM J Marsden by atty to Genevieve G Wood, Rel Entered for Record April 6, 1909, From 9 a. m. to 10:30 a. m. N Kallio and wf to H John Ahu, D Antonio P Moranha to J P Mendouca, AL E Alice Langton to Cora Bradish, CM Recorded March 25, 1909. J R Hornberger Tr to Manuel Rodriguez, D: int in Lots 15, 16 and 17, Blk 14, Kapiolani Tract, Honolulu; \$250. B 316, p 89. Dated Mar. 22, 1909. Martha Berger by Atty to Pang Chong et al; Rel: 15,835 sq. ft. land, bldgs, etc, Alexander St, Honolulu; \$2000. B 306, p 365. Dated Mar 25, 1909. Carrie E Godfrey (w) by atty to Trent Trust Co Ltd; D: lot 525 of Gr 2505, S. slope Punchbowl Hill, Honolulu; \$1200. B 316, p 90. Dated Mar 25, 1909. M R Freitas Jr et al to Olua Sugar Co Ltd; CM: cane crops, etc, on 42 9-10 a land, Olua, Puna, Hawaii; \$4109.02 and adv to \$4500. B 306, p 262. Dated June 1, 1907. Recorded March 26, 1909. Tong Yock et al Trs to Mo Hock Ke Lok Bo; D: 15950 sq ft land, Kailu, Honolulu; \$1. B 316, p 92. Dated Oct 24, 1908. Ida J S Weedon and hsb (W C) to F A Schaefer; M: 12615 sq ft land, Alexander St, Honolulu; \$1400. B 306, p 366. Dated Mar 24, 1909. Harriet E W Wight to Joseph S de Nobrega; Rel: R P 1694, Kul 1341, Mah 1, Nuuanu Valley, Honolulu; \$300. B 306, p 367. Dated Mar 23, 1909. A P Way and wf to James T Taylor; D: int in por Kul 1341, Nuuanu valley, Honolulu; \$800. B 316, p 97. Dated Feb 19, 1909. Lowers & Cooke Ltd to Charles M Cooke Ltd; Rel: lot 7, blk 16, bldgs, etc, College Hills Tract, Honolulu; \$2000. B 306, p 368. Dated Mar 26, 1909. Manuel Machado to Mary M Azevedo; D: int in lots 8 and 9, blk "F", Kapiolani Tract, Honolulu; \$5, etc. B 316, p 99. Dated Dec 15, 1908. Charles M Cooke Ltd to Grace M Cooke; D: lot 7, blk 16, College Hills Tract, Honolulu; \$4300. B 316, p 100. Dated Mar 26, 1909. C Thompson to Kau Agrel Co Ltd; D: R P 7381, Kul 9858, Kahukoua; Kau, Hawaii; \$60. B 316, p 94. Dated Mar 16, 1909. Kapiolani Estate Ltd to Annie T K Parker; D: Ap 58 of R P 6091, Kul 9971, Waimea, Kohala, Hawaii; \$750. B 316, p 95. Dated Mar 19, 1909. Hannah L Kaloanili to Mrs. Emily K Kaubi; D: pe land, Hoimaloa, N. Kona, Hawaii; 1 share in hui land, Huihaka 1 and 2, N. Kona, Hawaii; \$40. B 316, p 96. Dated Mar 26, 1909. Carrie K Kani to Elizabeth Ison; D: int in pe land, Pahohoe, S. Kona, Hawaii; \$20. B 316, p 408. Dated Mar 26, 1909. W O Aiken and wf to Joe Rapozo; D: 2 a land Hailu, Kokomo, Gov. Rd. Makawao, Maui; \$100. B 311, p 482. Dated Oct 21, 1908. John Andrade and wf to John F Morfe; D: pe land, Paia, Makawao, Maui; \$350. B 311, p 483. Dated Mar 17, 1909. Luka (K) to E H Kekapi (K); D: Ap 2 of R P 5145, Kul 8816, Pulehu, Kula, Maui; \$90. B 311, p 484. Dated Mar 23, 1909. R A Wadsworth to Mary Carrillo; Par Rel: R P 3221, Kul 3275-S Kaula, Waiehu, Maui; \$175. B 307, p 494. Dated Mar 23, 1909. Mary Carrillo and hsb (J) to Frank Summerfield; D: R P 3221, Kul 3275, S



There's nothing so bad for a cough as coughing. There's nothing so good for a cough as Ayer's Cherry Pectoral. When you have a genuine cold or a hard cough, or when there is inflammation in the throat or lungs, then you need Ayer's Cherry Pectoral. It is a carefully prepared, accurately compounded medicine for all diseases of the throat and lungs. It contains strong and active ingredients, such as are extensively prescribed by the medical profession. It is the oldest, strongest, and best medicine for coughs and colds you can possibly buy. Accept no cheap and worthless substitute. Be sure you get Ayer's Cherry Pectoral. It contains no narcotic or poison of any kind. Prepared by Dr. J. C. Ayer & Co., Lowell, Mass., U. S. A.

Legal Notices.

IN THE CIRCUIT COURT OF THE First Circuit, Territory of Hawaii. At Chambers; In Probate. In the Matter of the Estate of Elizabeth K. Nahaolelua, late of Honolulu, Oahu, Deceased. Order of Notice of Hearing Petition for Administration. On reading and filing the petition of John Nahaolelua of Honolulu, Oahu, alleging that Elizabeth K. Nahaolelua, of said Honolulu, died intestate at Honolulu on the 8th day of March, A. D. 1909, leaving property in the Territory of Hawaii necessary to be administered upon, and praying that letters of administration issue to William O. Smith, of said Honolulu, without bond, it is ordered that Monday, the 26th day of April, A. D. 1909, at 10 o'clock a. m., be and hereby is appointed for hearing said petition in the court room of this court at said Honolulu, at which time and place all persons concerned may appear and show cause, if any they have, why said petition should not be granted, and that notice of this order shall be published once a week for three successive weeks in the Evening Bulletin, a newspaper published in said Honolulu in the English language. Dated at Honolulu, March 16th, 1909. (Sgd.) W. J. ROBINSON, Third Judge of the Circuit Court of the First Circuit. Attest: (Sgd.) L. P. SCOTT, Clerk.

Corporation Notices

SPECIAL MEETING OF STOCK-HOLDERS OF KAHULUI RAILROAD CO. A special meeting of the Stockholders of the Kahului Railroad Company will be held at the office of the Corporation, Stangenwald Building, Honolulu, on Monday, the 19th day of April, 1909, at 10 o'clock a. m., for the purpose of accepting the provisions of Act 23 of the Legislature of the Territory of Hawaii, approved on the 25th day of March, 1909, and for the consideration of such other business as may come before the meeting. ELMER E. RAYTON, Secretary Kahului Railroad Co. April 5, 1909. By order of the First Vice-President. 4278-1d

Business Notices

REMOVAL. Drs. V. E. Collins and A. N. Sinclair now occupy offices at the corner of Hotel and Richards, Dr. Collins will have office hours from 11 a. m. to 3 p. m. Sunday and evenings by appointment. Dr. Sinclair's hours will be 8:30 to 10 a. m., 4 to 5 p. m. Sunday and evenings by appointment.

WING CHONG CO

KING ST. NEAR BETHEL. Dealers in Furniture Mattresses, Etc., Etc. All kinds of KOA and MISION FURNITURE Made To Order. HAND EMBROIDERIES made by women immigrants from MADEIRA. MRS. J. ROSENBERG Rooms 9 and 10 Young Hotel Bldg. Unique Chinese Goods Wing Wo Tai & Co. 941 NUUANU ST.

BUSINESS DIRECTORY

EMPLOYMENT AGENCY
Japanese male and female help supplied promptly for any work. 1128 Union St.; Phone 579. 4239-1m

OSTEOPATHY.
Dr. Schurmann. Hours 8-9 a. m.; 4-6 p. m. 224 Ethma Square.

REPAIRING.
Woven Wire Mattresses repaired at the Factory Honolulu Wire Bed Co., 1250 Alapai St. Telephone 635. 3945-tf

PLUMBING.
Yee Sing Kee—Plumber and Tinmith. Smith St., bet. Hotel and Pauahi.

PACIFIC HEIGHTS
House For Rent
An opportunity of securing a large six-bedroom house, thoroughly modern and in good condition. Fine location and view.
We only ask \$30 per month.

Bishop Trust Co. Ltd.
NO. 924 BETHEL STREET

BENNY & CO., Ltd.
AGENTS FOR THE
WHITE
Sewing Machine
1266 Fort St. Phone 483.

Mr. and Mrs. HASHIMOTO
MASSEURS,
RHEUMATISM,
BRUISES,
SPRAINS,
TIRED FEELING,
and other ailments quickly RELIEVED.
444 KING ST., PALAMA
Telephone 637

The Encore Saloon
Try a drink at the new place and have MIKE PATTON serve you.
COR. HOTEL and NUUANU.

ICE
manufactured from pure distilled water. Delivered to any part of city by courteous drivers.

OAHU ICE AND ELECTRIC CO.,
Kowalo. Telephone 628.

Ice
Delivered to residences and offices at 25c per hundred in 10-lb. lots or more.
W. O. BARNHART,
133 Merchant St.
Tel. 146.

BUILDING MATERIAL
OF ALL KINDS.
DEALERS IN LUMBER.

ALLEN & ROBINSON.
Queen Street :: :: Honolulu.

M. Phillips & Co
Wholesale Importers and Jobbers
EUROPEAN AND AMERICAN DRY GOODS.
FORT and QUEEN STS.

S. SAIKI,
Bamboo Furniture Made to Order.
Picture Framing a Specialty.
563 S. BERETANIA ST.
TELEPHONE 497.

HONOLULU IRON WORKS
Improved and Modern SUGAR MACHINERY of every capacity and description made to order. Boiler work and RIVETED PIPES for irrigation purposes a specialty. Particular attention paid to JOB WORK, and repairs executed at shortest notice.

Steinway
AND OTHER PIANOS.
THAYER PIANO CO.
156 HOTEL STREET.
Phone 218.
TUNING GUARANTEED.

Furniture, Iron Beds, Mattresses
Coyne Furniture Co., Ltd.
BISHOP STREET, HONOLULU.

Best Papeteries
All the finest Society Stationery in perfectly finished lines.
Oat & Mossman,
76 Merchant St., near P. O.
TELEPHONE 403.

Oahu Railway Time Table.
OUTWARD.
For Waiwae, Waiwae, Kahuku and Way Stations—9:15 a. m., 3:30 p. m.
For Pearl City, Ewa Mill and Way Stations—17:30 a. m., 9:15 a. m., 11:05 a. m., 2:15 p. m., 3:30 p. m., 6:15 p. m., 9:30 p. m., 11:05 p. m.
For Wahiawa—9:15 a. m. and 5:15 p. m.
INWARD.
Arrive Honolulu from Kahuku, Waiwae and Waiwae—8:26 a. m., 5:31 p. m.
Arrive in Honolulu from Ewa Mill and Pearl City—7:46 a. m., 8:26 a. m., 10:38 a. m., 1:40 p. m., 4:31 p. m., 5:31 p. m., 7:30 p. m.
Arrive Honolulu from Wahiawa—8:36 a. m. and 5:31 p. m.
* Daily.
† Ex. Sunday.
‡ Sunday Only.
The Haleiwa Limited, a two-hour train (only first-class tickets honored), leaves Honolulu every Sunday at 8:22 a. m.; returning, arrives in Honolulu at 10:10 p. m. The Limited stops only at Pearl City and Waiwae. P. DENISON. F. C. SMITH.

Autos Repaired
Your machine will be ready for you when we say it will be. We don't experiment on autos; we repair them.
Von Hamm - Young Co., Ltd.
ALEXANDER YOUNG BUILDING.

PRIMO BEER
FOR SALE.
Sclar Heaters, 30 to 100 gallon capacity. Galv. Tanks, 5 gallon to 500 gallon capacity. French Ranges, size 4 ft. to 10 ft., for brick setting. Range closets and seats suitable for use in schools or plantations. Sheet Metal Work and Plumbing, Estimates, Jobbing promptly executed.
EMMELUTH & CO., LTD.
TEL. 211. 145 KING ST.

KANE OHE BEEF
Always on Hand. Young Pigs, Poultry, Eggs, Fresh Butter and Cheese.
Sam Wo Meat Co.,
King Street Market. Tel. 288
YOUNG TIM, Manager.

HAWAIIAN FERTILIZER CO., LTD.
Dealers in FERTILIZERS suitable for all crops, climatic and soil conditions.
OFFICE—Brewer Building, Honolulu; Tel. 272.
FACTORY at Iwilei; Tel. 430.

AMUSEMENTS.
Orpheum Theater
STARTING MONDAY, APRIL 12TH
The Popular Favorites!!
The Elleford Company
Presenting a Repertoire of the Latest Dramatic Successes.
FIRST WEEK'S BILLS:
Monday and Tuesday — Edmond Day's Newest Comedy Drama, "PALS"
Wednesday and Thursday — The Pleasing Comedy, "THE AMERICAN GIRL," Featuring the Osborn Children.
Friday and Saturday — Joseph R. Grier's Greatest Success "BEACON LIGHTS."
Vaudeville Features headed by the Wonderful OSBORN CHILDREN, in a New Line of Taking Specialties.
The Best Company Mr. Elleford has Ever Brought to Honolulu.
The sale of seats for the first week's engagement opens at the Orpheum Box Office on Thursday, April 8th.
Popular Prices 25c, 50c, 75c.

ROYAL THEATER
HOTEL ST. opp. KEKAULIKE ST.
MOVING PICTURES
HAWAIIAN MUSIC
Changes Every Monday and Thursday
COLORED FILMS THIS WEEK
PRICES 5 AND 10 CENTS

San Francisco THEATER
The New Open-Air Theatre.
LATEST MOVING PICTURES
CHANGES MONDAYS AND THURSDAYS
LOTS OF FUN—GOOD MUSIC
Two entrances: Pauahi St. near Nuuanu and Hotel St. on site of old Merry-Go-Round.

ART THEATER
Wonderful Motion Pictures bringing to view scenes from many lands and embracing Comedy and Pathos. Two changes each week.
The Padrone
By Request
Salome
Dance of the Seven Veils
—THE—

Gem Theater
HOTEL STREET
Motion Pictures
Changes Mondays, Wednesdays and Fridays
ADMISSION 10c. and 20c.
Children 5c.

Park Theater
FORT ST. opp. CONVENT.
LATEST MOTION PICTURES
and
UP-TO-DATE ILLUSTRATED SONGS
Admission 10c and 15c
Children 5c

HARPER WHISKY

"Medals mean merit — Highest awards Chicago 1893; Paris 1900; St. Louis 1904; New Orleans 1885."
W. C. PEACOCK & CO., Ltd.
Sole Agents

TO CURE A COLD IN ONE DAY
Take Laxative Bromo Quinine Tablets. All druggists refund the money if it fails to cure. E. W. Grove's signature is on each box.
PARIS MEDICINE CO., St. Louis, U. S. A.

SUPERVISORS HOLD USUAL LOVE FEAST
Session Passes Off Without Single Jarring Note

Unless some legal obstacle stands in the way, the lane in front of St. Louis College, running from Kukui street to Beretania, will be closed to vehicle traffic.
Last night, Chairman Quinn of the Road Committee of the Board of Supervisors presented a committee report, recommending the closing of the lane, and but for the suggestion of Supervisor Cox that it might be beyond the power of the Board to take such action, the report would have been adopted. It was finally decided to place the report in the hands of the City and County Attorney.

Should it be found that the Board has not the authority to close the lane, the report will probably be handed over to the Superintendent of Public Works.
In making the report, Quinn said that the lane is used extensively by children going to and from St. Louis College, and that backs passing through are a continual menace to the little ones. He said that the public would suffer no inconvenience from having the lane closed to vehicles.

No Pay for Japanese
Solomon Peck's stableboy will have to whistle for his pay. Last night the Road Committee reported unfavorably on the demand for \$25 remuneration for the man, and the report was adopted.

When an investigation of the demand was made, it developed that Peck had employed a Japanese in defiance of the City Charter, which provides that none but citizens shall have work in any of the City and County departments. It was for that reason that the committee recommended the tabling of the pay demand.

A communication from the Superintendent of Public Works, requesting that shades be placed on the makai side of all waterfront street lights, was read. The communication stated that complaint had been made by the Masters and Pilots' Association concerning the glare from the unshaded lamps.

This glare was one of the reasons given for the recent grounding of the Logan, by Pilot Sanders.
As the Superintendent of Public Works announced that his department would stand all of the expense connected with the installation of the shades, the request will be granted.

Aylett Likes His Job
No more will Supervisor Aylett represent the Board of Supervisors in the legislative halls; likewise Ahia will grace the Capitol no more. Last night both men handed in their resignations as members of the Legislative Committee, and the resignations were accepted with regret.

Ahia explained that other business made it impossible for him to attend the sessions of the Legislature, but Aylett, with a grin, suggested that he, himself, had no desire to get fired in accordance with the anti-lobbying resolution recently passed by the solons. Aylett is watchman at the Capitol.

Chairman Cox of the Police Committee stated that the Police Committee would like to take official cognizance of the charge that former Chief of Detectives Kalakiele had forced an alleged confession from a boy at the point of a gun. The matter was referred to the committee.

P. O. for City Hall
Logan introduced a resolution, asking the Territorial Government, when the present Postoffice property shall be restored by the United States authorities on the completion of the proposed Federal building, to turn the vacated property over to the City and County of Honolulu, to be used as a City Hall and municipal building.

Kane introduced a resolution directing all City and County employees to direct all of their communications to the Mayor and Board of Supervisors. Logan amended the resolution to make the rule hold only in the case of communications asking appropriations, and explicitly stipulating that reports of progress in the road department may be made to the County Engineer. Kane and Quinn opposed the amendment, but it carried despite their opposition.

Supervisor Logan, who, when he left supervising, is telling the public of the doings of the Territorial Senate, took pity on the struggles of the City Hall reporters, and introduced a resolution directing that carbon copies of all reports, resolutions, and ordinances introduced, be prepared for the press. His resolution was adopted.

185 editorial rooms—256 business office. These are the telephone numbers of the Bulletin office.

MALARIA AND WEAK HEART

The following interesting story told by Mr. J. H. Riley, Pensioned Fireman of South Boston, Mass., is a sample of the thousands received from grateful men and women who have been benefited by the World's great tonic-stimulant.

In an interview, Mr. Riley said: "I joined the Fire Department of South Boston in 1890 and was lately pensioned off because of a bad fall while in service, which telescoped my spine.

"A little over a year ago I was taken sick while in the engine house, and it developed into heart trouble and malaria. I went to a number of doctors and two different hospitals and went through a course of treatment from each, but I did not receive much benefit from any of them. The doctors would not let me go in swimming, nor smoke, nor drink anything but water. I stopped both tea and coffee. My case was getting very serious when a friend said to me: 'Why don't you get a bottle of Duffy's Malt Whiskey? I know a man who was given up for all time, and he took Duffy's Malt Whiskey and to-day he is as well a man as you can find.' So I commenced taking Duffy's Pure Malt Whiskey and the result is that the doctors now say that I am all right, and I never felt better in my life. Of course, I am very little good as far as heavy work is concerned, owing to my injury, but I am well, and that is a good thing to be able to say. I thank you for the remedy that put me on my feet again."

Duffy's Pure Malt Whiskey is an absolutely pure distillation of malted grain; great care being used to have every kernel thoroughly malted, thus destroying the germ and producing a predigested liquid food in the form of a malt essence, which is the most effective tonic stimulant and invigorator known to science; softened by warmth and moisture, its palatability and freedom from injurious substances render it so that it can be retained by the most sensitive stomach.

(Dose):—One teaspoonful in each glass of drinking water during the hot weather will kill all germs.
If weak and run down, take a teaspoonful four times a day in half a glass of milk or water. It stimulates the heart action, causes the blood to course more quickly through the veins, and builds new tissue.
Duffy's Pure Malt Whiskey is sold throughout the world by druggists, grocers and dealers, or shipped direct.

If in need of advice, write Consulting Physician, Duffy Malt Whiskey Company, Rochester, New York, U. S. A., stating your case fully. Our doctors will send you advice free, together with a handsome illustrated, medical booklet containing some of the many thousands of gratifying letters received from men and women in all walks of life, both old and young, who have been cured and benefited by the use of the World's greatest medicine.

THE Chas. R. Frazier Company
FOUR ADVERTISERS
Phone 371. 122 King St.

Paragon Market
ALAKEA-UNION-BERTANIA
Under Management
Fred'k Klein
And Catering Particularly to the Meal Needs of Families.

Superior Quality Excellent Service
WHEN
You Want Electric Wiring Done or Private Telephone Installed or Dry Batteries, call the
UNION ELECTRIC CO.,
Harrison Block. Phone 315.

MAGOON & WEAVER
Attorneys-at-Law
186 MERCHANT STREET

Real Property, Law and Land Title Registration A Specialty
Bulletin Business Office Phone 356.
Bulletin Editorial Room Phone 135.

WANTS

WANTED
Advertisements Under this Heading One Cent Per Word Each Day. No Advertisements Inserted for Less Than Ten Cents.

Well-educated young man with some banking and mercantile experience, wants work. Is willing to turn his hand to anything and for anything until he proves his worth. Address "C-14," Bulletin office. 4274-1w

Employment as engineer, steam or gasoline engines; willing to do other work. Address "H." Bulletin office. 4273-1w

Everybody to make money by planting coconuts. Inquire for plants, Box 102 Lihue, Kauai. 4190-1f

A canvasser. Apply 1250 Fort St. 4278-2t

LOST
Pambook No. 5647, in the name of Jose Ventura, and Passbook No. 6411 in the name of Maria de Sorrelcao, both issued by Bishop & Co.'s Savings Bank. 4276-3t

Gold watch and fob, on Alexander St. near Wilder Ave. Finder call at this office and receive reward. 4276-3t

Lady's watch, on Keesumoku St. Finder return to Mrs. Moore. Reward. 4276-3t

GOOD SERVICE IS A BUSINESS ASSET

Live Comfortably By Burning Gas

No unpleasant odor; no big expense; no heat except in the stove. : : : : : Cleanliness and food well cooked will promote health. We can convince you. : : : :

Honolulu Gas Co.,
BISHOP ST.

Andrew Usher's Scotch Whiskey
O.V.G. Special Reserve
W. C. Peacock & Co., Ltd., Agents.

Glass
Plain Fancy Colored
For windows, fern houses, picture frames, office doors, and windows, show cases, etc., etc.
We will cut it to your order. Our stock is the largest and finest in the city.

Lewers & Cooke, LIMITED
177 S. King Street
Phone 775.

FOR SALE
Advertisements Under this Heading One Cent Per Word Each Day. No Advertisements Inserted for Less Than Ten Cents.

Statie Machine combining X-Ray and therapeutic work; 1 Cane Seat Steamer Chair; 1 Blickensderfer typewriter (new); 1 Pine Table; 1 Oak Extension Dining Table; 1 Small Oil Stove; 1 Water Bottle and Tray (beautifully decorated). At Union-Pacific Transfer Co., Ltd., 126 King Street. 4272-6t

Fine Gasoline Engine, 15 H. P.; complete running order; steady, reliable, economical; can be seen at factory of Honolulu Wire Bed Co., 1250-1256 Alapai St. 4259-1f

Shooting gallery, No. 19 Hotel St., near Nuuanu. Enquire of owner or P. H. Burnette, Merchant St. 4273-1f

Cheap — Studebaker trap, complete in good condition. Inquire at Beckley's, Waikiki. 4270-1f

Pedigreed English buldog, brindle color. Inquire at Beckley's, Waikiki. 4270-1f

Home and common pigeons. Telephone 1087. 4274-1f

TO LET

Neatly furnished, mosquito-proof room, with board. Tel. 1333; Nos. 749-50, Beretania St. 4272-1f

Two furnished rooms. 1071A Like-like St., near Campbell Lane. 4241-1f

Two furnished rooms. Apply Mrs. D. McConnell, 1223 Emma St.

REAL ESTATE REAL ESTATE EXCHANGE, LTD.
FOR SALE.
LOTS.
We have over 100 lots for sale in all parts of the city, improved and unimproved, business sites, residence sites and farming sites, for prices ranging from \$50 to \$30,000; some for cash sales, some for installment sales and some for exchange.

HOUSES.
We have over 60 homes for sale, located in every residence section of the city, and suburbs; all comfortable, some elegant, on various terms; some for spot cash, some on installment payments, some for exchange, and some for part cash and part mortgage on easy terms.

HOUSES.
We can arrange to build houses on the installment plan on lots purchased from us by responsible parties.

FOR EXCHANGE.
We have a number of good exchange bargains.

TO LET.
We rent houses and may locate you.

TO BUY.
We have eight or ten prospective buyers on our lists at present; perhaps you have just the place that would suit one of them. Come and see us.

REAL ESTATE EXCHANGE, LTD.
A. V. GEAR, Manager.

YOU NEED NOT WAIT FOR ANOTHER MARRIAGE — GO TO HALEIWA ANY TIME.
ST. CLAIR BIDGOOD, Manager.

Ask for
Rainier Bock

Now On Sale

A trial glass is its best advertisement

Rainier Bock

The Standard of Quality



The Barrier

BY REX BEACH
Author of The Spoilers

A picture of the Klondike, a story of the conflict of passions universal—hatred born of terrible wrong, heart hunger unsatisfied and love that sweeps away every barrier. Poleon, the Great Heart, the character who caught the artist's fancy, will captivate the reader. Such high authority as the Boston Transcript says:

In The Barrier Mr. Beach has written a story that is far stronger, far more gripping and powerful than The Spoilers.

BULLETIN'S NEXT SERIAL

SPORTS

Local and National

Surfing Is To Be Summer Race Hilo Is Making Ready For Fourth

The Outrigger Club is making preparations for the opening of the season, and it is proposed to mark the event with a ball and illumination of the lagoon during the dancing. The ladies' annex building is completed and everything is now in good shape. Every afternoon parties of children, accompanied by a chaperone, are to be seen enjoying themselves in the surf. The last few days have been ideal for swimming, and the water is just right now.

The Outrigger Club is undoubtedly one institution that will be kept going in style. A fine lot of officials are in charge of the affairs of the club, and surf-boarding, etc., is going to boom this coming summer as never before. Even now a great number of would-be freeths can be seen every morning and evening doing circus tricks on a surf-board, which is balanced on the crest of a huge breaker. Some of the youths are very expert at the game and the cries of astonishment from the new arrivals at the beach are as incense to the boys.

NEWS NOTES FROM KAMEHAMEHA SCHOOLS

The Kamehameha Cadets left school last Monday morning at 8 o'clock and the battalion reached Makua at 11 o'clock. The boys at once got to work unloading the freight. After the cars were unloaded a squad was detached for kitchen duty. Then the three companies began pitching tents. Company C was the first company to have all its tents up. This work took about an hour. Different squads were put to work on teachers' and hospital tents. At 2 o'clock the boys had their lunch of poi, corn beef and tea with crackers. The rest of the afternoon was spent in swimming. On Tuesday morning the cadets were up early. The first squad of Company C was put on kitchen duty for the day, while the third squad of Company B was put on fatigue duty. After breakfast, which was at 6 o'clock, six hunting squads were allowed out for the day. Some of the boys bought their ammunition from the school supply. The school rifles were allowed to be used. The day was clear, which was a help to the boys. During the morning the boys had target practise, George Kinney making the highest score of 21 points out of 25.

The afternoon was spent in fishing and swimming; the water was pretty rough. About 3 o'clock the hunting parties began to return. Eight goats were brought back to camp. The next day, Wednesday, was not so clear as the day before. Hunting and fishing parties went out early in the morning and were given orders to be back at 3:30 o'clock. All the boys were present at camp at 4 o'clock for drill. The cadets went through the manual of arms for an hour and then were dismissed. Twelve goats were brought back on Wednesday. In the evening different music clubs rendered some songs on the beach. Big bonfires were built on the sea-shore.

Thursday was a windy day, so many of the boys stayed in camp. Friday was a bad day; both wind and rain came along in the afternoon. This was the last day of hunting, and so a big crowd went out for wild goats. The record was broken for killing the animals; sixteen goats were brought back to camp. This ended the week's hunting. In the forenoon more target practise was taken up. Frank Mackenzie made the highest score, making 18 points.

Saturday was the last day in camp, and most of it was spent in clearing up the baggage and tents. In the morning many of the boys went in swimming for the last time. After dinner different squads were detailed to pack up and strike tents. This work was over in about one hour.

By 2 o'clock everything was in readiness for starting back to school. All the squad tents, numbering sixteen, were left standing on the grounds. These tents were left for the Kamehameha girls, who go down today for four days' camping.

When the boys reached school they were all tired out and Principal Horne was glad that no accidents had occurred while at camp. The boys have great aloha for Lieutenant Winters, U. S. A., for allowing the cadets the use of the new rifles and the manner in which he allowed their use. About sixty goats were killed in all, but only fifty-one were

Hilo is making great preparations for the Fourth and, as usual, horse-racing will be the trump-card. Still, a great deal of interest is always taken in the field events, and the hammerthrow, shotput, high jump, and hurdle races are the cause of much excitement in the rainy city and its surrounding districts. Plantation men from the extremes of Hamakua to the ends of Kau, manage somehow to get into town for the Fourth—and don't they whoop up things, too, in style! There is nothing like it in any other part of Hawaii.

Men, who at their last meeting had clasped hands somewhere north of the Tweed, run into one another in Demosthenes', and then what a howl of delight goes up. "What! Is that you, Sandy!" "Aye, mon, how is it wi' you, Jock? When did you arrive?" And then the national beverage is called for and yarns are swapped until it is time to depart for the racetrack.

One year is much like another, and that means that they are all good. Everyone has money, and no one is scared of risking a wad on a favorite gee-gee. O'Rourke is one of the leading sportsmen of the town, and his horses, always trained to the minute, can be relied upon to run straight. Many visitors are planning to make the trip to Hilo for the Fourth, and those who have been there before, and who have tasted the delights of the Crescent City, are simply longing to wander up Front street and around the corner to where the bunch congregates. The races promise to be real good this year, as no one horse in particular seems to stand out so much better than the rest, as was the case with Banonica last race-day. Dicky Davis of Maul and Louis Warren of Oahu may be relied upon to take a horse or two over for the Fourth, and if the latter cleans up things as he did last year there will be some surprised sports in Hilo.

ENTERTAINMENT FOR JAPANESE SQUADRON

Wednesday, April 7—
At 9 a. m., officers and cadets leave on special train for Haleiwa, as guests of the Honolulu Chamber of Commerce.
After 2 p. m., both ships open to public inspection.
From 7 to 9 p. m., flagship band will play at Emma Square.
Tuesday, April 8—
Officers and cadets who did not go on the Haleiwa trip will be taken to the Pali by auto, as guests of the Honolulu Chamber of Commerce.
Friday, April 9—
Officers and cadets will be the guests of Hon. S. M. Damon at his country estate at Moanalua.
From 9 to 11 a. m., the flagship band will play in the Capitol grounds.
Saturday, April 10—
Depart for Hilo.

BAND CONCERT.

There will be a public moonlight band concert this (Wednesday) evening at 7:30 at Aala Park.
PART I.
March—The Bersaglieri Ellenberg
Overture—Light Cavalry Suppe
Ballad—The Holy City Adams
Reminiscences of Verdi Godfrey
PART II.
Vocal—Hawaiian songs, ar. by Berger
Selection—Sunday Parade Hume
Introduction—Carmen Bizet
Finale—Japanese Medolies
The Star Spangled Banner.
The band will play this afternoon at the naval wharf for the Japanese men-of-war.

THE REAL BOCK

Brewing Bock Beer requires facilities which exist only in the largest breweries on the mainland. The best of it comes from the State of Washington and the best in that State is brewed in the Rainier Brewery. It will be on sale at all bars and cafes in Honolulu on Wednesday. Order Rainier for purity.

brought back to camp. All of the school-teachers from Principal Horne down are well satisfied with the outing, as it has developed the boys in firearm practice and camp life. Not a single accident occurred to mar the outing.
H. G.

YOU can't tell by the appearance of milk whether or not it is pure. It may be rich and reasonably clean, but unless the BACTERIA have been DESTROYED, it is not safe.



Carnation Milk

is trustworthy. It has been cooled to stop bacteria development, the water taken out, and the rich remaining product immediately sterilized.

If you have an idea that tinned milk isn't just as delightful to the taste as fresh milk its because you have in mind the old-fashioned condensed milks. Try CARNATION for cooking, for tea or coffee, on berries. Its delicious.

Henry May & Co., Ltd., Distributors
Phone 22

A BRAHAM LINCOLN once asked a friend a conundrum that runs something like this: "If you called a sheep's tail a leg, how many legs would the sheep then have?"

When his friend said "Five," Lincoln replied: "No, it would have only four, because CALLING a sheep's tail a leg doesn't make it so."

Suppose we apply this conundrum to modern advertising.

CALLING every scheme "advertising" that masquerades under the name of advertising does not make it so. The merchant needs be sharp to select the sheep from the goats, for he can lose money just as fast turning down advertising mediums of proven value as he can in scattering his force in every catch-penny device that comes up.

The best way is to employ the services of a trained advertising man and rely upon his advice just as he does on the advice of his lawyer in legal matters.

We're here to serve.

The Chas. R. Frazier Co.,
122 King Street Phone 371

Tom Sharp
the
Painter
HIGH-CLASS PAPER-HANGING, DECORATING,
AND GENERAL PAINTING.
SHARP SIGNS
SPEAK FOR THEMSELVES.
ELITE BUILDING. PHONE 397.

OWL
S-CENT CIGAR
M. A. Gunst & Co.
FORT AND KING STREETS.
SPECIAL DISPENSATION FOR APRIL.
This is to your advantage. Look it up. DO IT NOW.
HARRISON MUTUAL ASSOCIATION
Nos. 69-71 Beretania St.
Phone 411.

Pau Ka Hana
THE ENEMY TO DIRT.
At Your Grocer's.
Bulletin Business Office Phone 254.
Bulletin Editorial Room Phone 185.