

EVENING BULLETIN

From the Progressive Bulletin

Advertisers Their Money's Worth.

Vol. IX. No. 1651.

HONOLULU, TERRITORY OF HAWAII, WEDNESDAY, OCTOBER 3, 1900

Price 5 CENTS.

PROFESSOR LOMBARD WANTS DAMAGES

He Claims \$2000 Against High Sheriff Brown for Arrests.

HIS LANDLADIES PERSECUTED HIM.

The Action Brought in Federal Court—Large Grist of New Citizens Ground Out This Morning.

F. Lombard, a Frenchman and teacher of continental languages, is pursuing High Sheriff Brown for \$2000 damages for false arrest and imprisonment. He has instituted a suit to that effect in the United States District Court.

"The professor," as he is known is a conspicuous figure on the streets. Of lank and lean figure and tall stature, he goes along humming tunes to himself. His troubles for which he seeks compensation are apparently due to a lack of cordiality between himself and successive landladies of lodging houses.

The other day he lay in wait for Governor Dole to seek redress. When the Governor advised him that his case was one for which the courts afforded a remedy he exclaimed:

"I am a poor man. I have no money to pay lawyers. I come to you as ze head of ze government to give me justice."

His complaint alleges four separate assaults and arrests committed upon himself. He was assaulted by a policeman under the control of the Marshal, now High Sheriff, on Sept. 20, 1898, and carried to the police station. Mrs. Ludzwako was brought to the station and a dialogue took place between the officer in charge and the policeman. Plaintiff was searched and private papers and \$7.50 were taken from his body. He was locked in a cell and kept there until 11 o'clock next day, when he was liberated by order of Deputy Chillingworth and his effects restored to him. At the time of his arrest he had no committed any offense against the laws and was not committing any such. The deputy refused to give any reason for his arrest.

On January 26, 1897, at the Sailors' Home, he was assaulted by a special policeman in citizen's clothes and dragged on his back on the steps from 20 to 25 in number, on the staircase when helpless owing to his trousers trailing on his heels. He was detained three hours without a warrant and given no explanation for his arrest.

On March 16, 1897, Mrs. Braun, his landlady, broke into his room while he was dressing and attacked him, shouting at the same time: "Get out. The Marshal told me to turn you out." He rose and pushed her out the door but she had the key on the other side. She came after him again and he pushed her back once more. This time she raised an outcry and two men came out of her lodgings. One attacked him, grabbing him by the coat collar. Lombard made him let go. A few minutes afterward a policeman was sent for, but plaintiff demurred to his request to accompany him to the station. The officer went away and came back with a warrant, under which he was taken to the station but released on bail. On returning to his lodging he found Mrs. Braun had packed his belongings out into a shed. The following day he was tried and acquitted.

On May 17, 1897, he was ejected from his lodgings by Mrs. Smith, landlady. A patrolman handcuffed him and walked through the streets to the station at 4 p. m. His arrest was made without a warrant and he was confined the whole night.

In the evening of June 3, 1897, he was arrested by a special and he spent the night in a cell with Chinese and Japanese, being released the day after. There was no warrant.

Before releasing him the Marshal

told him, "as a blind," that his landlady, Mrs. Lamson, did not care to make a charge against him. "It was in vain," his complaint states, "that I asked to be tried in the Police Court."

Judge Widemann's Large Estate

W. C. Burnett, administrator of the estate of H. C. Norton, late of Waianae, deceased, has filed an inventory. Besides leases and stock in a general store, there are accounts of \$1051.97. Judge Humphreys gives him 60 days more time to file a more complete inventory.

Judge Humphreys has approved the accounts of J. L. McLean, and terminated his guardianship of W. L. Grieve with an order to deliver to the said Grieve all property belonging to him and the estate of Robert Grieve, also discharging him as guardian.

Harry Armitage petitions to be appointed administrator of the estate of Frank Peroutka, deceased, valued at \$5100. The dead man will be remembered as a stranger who arrived in the Mariposa on January 4 and a few weeks later shot himself in a Fort street lodging house.

H. R. Macfarlane, J. M. Dowsett and F. W. Macfarlane, trustees of the estate of H. A. Widemann, have filed their final account, showing receipts of \$194,728 and payments of \$182,378.17, leaving a balance of \$11,349.83.

The Supreme Court has under consideration John Bell vs. Palea. This is one of the Koolau cases stricken from the calendar by Judge Humphreys for non-appearance of counsel, against the orders doing so the defendants appealed. J. A. Maxson for plaintiff; Robertson & Wilder for defendant.

Territorial Taxation May Be Increased

In view of the loss of revenues from the Custom House, amounting to about \$100,000 a month, and of the draining of the Treasury in suppressing the plague the Governor some time ago asked an opinion of the Attorney General as to whether the Legislature at its next regular session would have power to increase the rate of taxation, dating from January 1st, 1901, or, whether, if such increase should become unavoidable, it would be necessary to call a special session of the Legislature after election.

A thirteen page opinion was read this morning, the conclusion of which is as follows:

"To sum up, if, as I think, the Constitution of the late Republic has been repealed by the Organic Act, it is my opinion, based upon the foregoing decision of the Supreme Court of the United States and the other authorities cited, that an increase of the rate of taxation, fairly apportioned among all taxpayers, dating from January 1st, 1901, would not be beyond the power of the Legislature at its next regular session."

Governor's Council This Morning

Treasurer Lansing, at the Governor's council, read a letter from the High Sheriff asking for regulations for hacks and public vehicles. It was deemed the duty of the Superintendent of Public Works to furnish such regulations.

The liquor license renewal for Wai-kiki Inn was approved.

H. Hamano's application for a license in Patzig block was held in reserve.

H. Vida, who had been granted a saloon license for Patzig block, wanted on account of a raise in rent, to have it transferred to the premises adjoining the old Mossman building at King and Nuuanu streets. No objection was made.

P. Cockett's application for a light wine and beer license for Waikapa road, Maui, was approved.

The Kohala and Hilo Railway Co.'s notice of election of officers and increase of capital to \$3,500,000, was received and approved.

Superintendent McCandless read the tenders for bridges on Beretania and Schoolstreets, which appeared exclusively in yesterday's Bulletin.

Registration rolls are open only till Tuesday.

Beretania Tennis Club. There will be a meeting of the Beretania Tennis Club in the Y. M. C. A. at 4 p. m. Thursday, October 4. This meeting is of special importance as the club has received notice from the Board of Education to immediately vacate the present grounds and some action relative to procuring new grounds will have to be taken.

The latest styles in shirts and ties are to be found at Iwakami's, Hotel street. Tel. 2361 White.

A complete new stock of gents shirts, collars and cuffs at L. B. Kerr's Queen street.

It is the duty of all Republicans to REGISTER AT ONCE.

THE WATERMAN IDEAL FOUNTAIN PEN. All sizes, all shapes. H. P. WICHMAN.

KAULIA AND WILCOX SEE TWO FUNERALS

Pass By While Haranguing the Natives at Naa-lehu, Kau, Hawaii.

AND ARE MADE TO TREMBLE WITH FEAR

So That They Hesitate and Set Down Only to Observe Their Audience Dwindle Away as if a Tabu Had Been Violated.

The delegates of the Fourth and Fifth Districts met in the Republican headquarters yesterday afternoon to hear the report of the committee appointed to gain from the Supreme Court an opinion as to the eligibility of B. F. Dillingham as a Senatorial candidate. The meeting was called to order by Jas. H. Boyd, chairman of the Fourth District committee.

A. G. M. Robertson reported for the committee to the effect that the decision of the Supreme Court, handed down in the morning, settled the matter completely. Mr. Dillingham could not run as a candidate for the Senate.

Geo. R. Carter nominated Henry Waterhouse to take Mr. Dillingham's place on the ticket. The nomination was seconded by J. L. Kaulukou. Clarence Crabbe nominated Col. C. P. Iaukea and this nomination was seconded by C. B. Wilson. After a thorough discussion during which it was brought out that Col. Iaukea's tendency was against running as a candidate to the Legislature, Mr. Crabbe, with the consent of his second, withdrew the name and left Mr. Waterhouse the only candidate.

The delegates thrashed out the matter of any other possible candidates to a finish and then all agreed that Mr. Waterhouse was the best and strongest man. There was some disposition to postpone consideration of the matter for a day but the argument that there should be no further delay prevailed and Mr. Waterhouse was unanimously decided on to take the place of Mr. Dillingham, the secretary casting the ballot. Dr. Burgess, George R. Carter and J. W. Kelki were appointed a committee to notify Mr. Waterhouse of his nomination. As soon as the meeting was over, the committee called on Mr. Waterhouse. The nomination was accepted.

Kau has a good story to tell about Kaulia and Wilcox, the former independent leader and the present independent dictator, respectively. During the course of their travels through the former stamping grounds of Madame Pele, they stopped at Naa-lehu and announced a meeting in the open air.

In the afternoon Kaulia and Wilcox appeared on the scene with Mrs. Wilcox close at their elbows. Kaulia stood up and began to harangue the natives and others who were out to see the fun. Suddenly his voice weakened, his words came haltingly and great beads of perspiration stood out upon his forehead. He clutched at the back of his chair and stared at something coming down the road. The people turned to see what could have happened and there moving slowly in their direction was a funeral procession. When this dampening spectacle had passed out of sight, Kaulia mumbled a few words and then sat down, whispering the while in a friend's ear: "We've done for. The Independents cannot win the election."

Bob Wilcox came to the rescue. Spurred on by his wife, he sprung to his feet, struck an attitude and began in a loud voice to laud the aims and principles of the Independent party. In about ten or fifteen minutes, he was seen to tremble and turn to his wife. The latter gazed in the direction his eyes took and became dizzy with fright. Then the crowd turned again and there, coming up the road was another funeral procession much larger than the first. Bob could stand one but two was just one too many and he sat down an unstrung man. The procession advanced, passed by and disappeared in the distance and then the natives left the place for good.

The committee on speakers has arranged the following program: Thursday, Oct. 4, Waimanalo—Speakers, Jonah Kumalae, J. W. Kelki, Archie Gillfillan.

Tonight, Oct. 3, Kamohilili Church—Speakers, Wm. Aylett, Cecil Brown, Archie Gillfillan, J. H. Boyd.

Friday, Oct. 5, Makiki Reservoir—Speakers, A. G. M. Robertson, Clarence Crabbe, Andrew Brown.

Friday, Oct. 5, 7:30 p. m., Manoa Valley—Speakers, J. H. Boyd, Clarence Crabbe, A. V. Gear, Wm. Aylett, Frank Pahia.

Saturday, Oct. 6, Walkiki Church, evening—Speakers, Cecil Brown, Clarence Crabbe, Archie Gillfillan, T. McCants Stewart.

Monday, Oct. 8, Cyclomere Park, evening—Speakers, Clarence Crabbe, Geo. R. Carter, Frank Pahia, Jonah Kumalae, Lorrin Andrews.

Tuesday, Oct. 9, Ii house lot—Speakers, Geo. R. Carter, T. McCants Stewart, J. L. Kaulukou, L. L. McCandless.

Wednesday, Oct. 10, drill shed—Speakers, Cecil Brown, Clarence Crab-

be, A. G. M. Robertson, J. T. Green, Jonah Kumalae.

Friday, Oct. 12, Puna School House—Speakers, Wm. Aylett, J. W. Kelki, J. Kamae, Clarence Crabbe.

Saturday, Oct. 13, Royal School—Speakers, Geo. R. Carter, A. V. Gear, Enoch Johnson, Frank Pahia, Clarence Crabbe.

Saturday, Oct. 12, Normal School—Speakers, W. C. Achi, W. J. Coelha, Lorrin Andrews, Wm. Aylett, Archie Gillfillan, J. L. Kaulukou.

The meeting which was to have been held by the Republicans in Kalihi church this evening has been postponed. The other meetings arranged by the Fifth District are as follows:

Thursday evening, Oct. 4—Kauluwela School.

Friday evening, Oct. 5—Reformatory School.

Monday evening, Oct. 8—Kalihi-waena School House.

Tuesday evening, Oct. 9—Detention camp, Kalihi.

Wednesday evening, Oct. 10—Niolapa Church, Wylie street.

Thursday evening, Oct. 11—Moanalua School House.

Friday evening, Oct. 12—Aala school house.

The Independents of this island will gather at their various precinct polling places tonight and vote for their delegates, who will meet in convention in this city next Wednesday night. There are twelve precincts in the Fourth District and seventeen in the Fifth and a total of 120 delegates are to be named tonight. It was stated by one of the leaders of the party today that these delegates would represent over 3000 votes. It has not yet been decided where the convention will be held but it will be in the drill shed or the Orpheum.

It is not known whether or no the occurrence was prophetic but certain it is that Kaulia broke away from Wilcox immediately and returned to Honolulu and then came the splits in the party. Bob immediately procured a piece of awa root and a white rooster but the rooster never crowed except when entering Republican strongholds so he silently made away with it and now carries only the awa root.

At a meeting of the officers of the various Republican precinct clubs of the Fifth District last evening, there were many discussions on the work of the present campaign. Each person present contributed his suggestions and the sum total was a valuable store of material upon which to work. Geo. R. Carter presided.

The Republicans of the Second Precinct of the Fourth District were to have met last night but the program has been postponed to 8 o'clock tonight. J. A. Gilman has had a tent placed at the corner of Piikoi and Kinua streets and it is here that the men will meet. The object of the meeting is to appoint a committee to canvass the precinct to see that every Republican is registered. The other precincts of the Fourth and Fifth Districts should follow this lead.

Kalaukalan of the Independent party must certainly be put down as a genuine hustler. He arrived back in the Mauna Loa in the morning and, after packing a valise full of campaign literature, started off again in the Maui in the afternoon.

There will be an important meeting of the Democratic Central committee in headquarters at 4 o'clock this afternoon to talk over arrangements for the campaign on this island. It is probable that plans will be decided on.

The Republicans are expecting several thousand McKinley and Roosevelt buttons by the next steamer.

The Territorial convention of the Democratic party will be held on Monday next.

The sending of W. J. Coelha to Hawaii cripples the Republican quartet but he will be back in ten days and then the boys intend to get to work with renewed vigor.

CANDIDATES

OF THE

Democratic Party

SENATORS, ISLAND OF OAHU:

- Hon. D. P. R. Isenberg, Jr., Col. John D. Holt, Jr., Abraham Fernandez, Hon. E. K. Liliikalani, Hon. J. O. Carter, F. J. Testa.

REPRESENTATIVES:

FOURTH DISTRICT. Charles W. Booth, Major J. M. Camara, S. W. Spencer, Hon. E. C. Macfarlane, John H. Wise, Hon. John E. Bush.

FIFTH DISTRICT. Hon. S. M. Damon, H. J. Mossman, Hon. Frank Brown, Frank Harvey, Hon. Samuel K. Pua, Jesse P. Makapua.

JAP TRIES BULLDOZING

OGAWA CHARGED WITH AN ASSAULT ON OTA

Trouble Comes About Over Sale of Lease in Iwilei to C. J. Fishel and Others—Cause to be Tried Tomorrow.

Ogawa was arrested this morning on a warrant charging him with assault and battery. The complaint was sworn to by Otha, another Japanese. A little later on, a friend of Ogawa bailed him out. The case will come up in the Police Court tomorrow morning. The story leading up to the trouble that led to Ogawa's arrest is as follows:

Not many days ago Otha, who held the lease of certain buildings in Iwilei near Oahu jail, sold this lease to C. J. Fishel and others for a bonus of \$1700. Several Japanese, among whom was Ogawa, immediately swooped down on Otha, claiming that they held an interest in the lease, although this had not been specified on paper and they threatened to do him bodily injury if he refused to divide the bonus. Otha immediately went to police headquarters and asked for protection.

Last night the Dairyman's Association on Sheridan avenue, opposite the residence of J. N. Wright, called up police headquarters. There was trouble in Otha's home near by. When Deputy Sheriff Chillingworth reached the place he found Otha seated at a table and Ogawa in the act of throwing down a pen on the table in front of him and at which the former was seated. In company with the latter was Ogawa. The two were trying to get Otha to sign an agreement to divide the money. The two aggressors were quickly hustled out of the place. Otha stated that, previous to the arrival of Mr. Chillingworth, Ogawa had struck him in the head.

Ogawa has an unenviable reputation. He it was who assaulted Dr. Wengel at Hana plantation and who had his contract cancelled in order that the management might be rid of him. He caused trouble at Kihai and, when in Kalihi camp, was the ringleader of the Japanese pimps who caused so much trouble there. He is a member of the Rising Sun Society, made up of just such men as himself.

Electric Works Burned. The America Maru brought the news yesterday that the big electric light works in Yokohama had been burned to the ground. As the plant in this place furnished the electricity for the whole city, Yokohama was in total darkness for several nights. However, connections were made with the plant in Kanagawa so that the situation has been very much relieved.

New Citizens. Judge Estee this morning naturalized the following named aliens: Otto A. Graef, Olaf Bergstrom, James D. Young, August Schuit, Fritz J. Wilhelm, Fred Philp, Morley Philp, Franc Becher, Fred J. Turner, August J. Freitas, Louis R. Medeiros, Wm. Berlowitz, Joseph D. Marques, James Edwards, Joseph Rosen, Nils Oberg, Joseph Patrick, Heinrich Fosa.

Death of Princes' Aunt. Lydia Piikoi Kamakala, an aunt of the Princes David Kawanakou and Jonah Kalaniana'ole, died at her home in this city this morning after a long illness. The funeral will take place from the Catholic Cathedral at 3 p. m. tomorrow. All friends are invited to attend.

It is the duty of all Republicans to REGISTER AT ONCE.

Copyright in Speeches. The House of Lords, in the suit brought by the London Times against a publisher, Mr. Lane, for publishing the verbatim reports of Lord Rosebery's speeches as printed in the Times decided in favor of the plaintiff. This definitely establishes the right of a reporter of his employer to the reports of speeches.—Public Opinion.

Jesse Holden of Chicago is said to be the first foreign born lawyer to be president of an American bar association. He was born an Englishman, but has spent his whole active life in Illinois, and has just been chosen head of the Illinois bar association.

Great sale of boots and shoes at 5 cents on the dollar at L. B. Kerr & Co.'s shoe house, corner of Fort and Queen street.

The best two for 25 cigar in town is the Lurline to be had at the Myrtle cigar store next to Orpheum. All kinds of Manila cigars a specialty.

Republicans Attention! You have only till Tuesday to register.

Foot Wear!

TIES, SLIPPERS, BOOTS, SHOES.

We carry only the best line of FOOT WEAR Manufactured

OUR DISPLAY WINDOW SHOW

The very Latest Styles, at Prices to...

Suit All

REGISTRATION ROLLS ARE NOW OPEN IN HONOLULU IT IS THE DUTY OF EVERY REPUBLICAN TO REGISTER AT ONCE

Among the speakers at the second precinct, fourth district, Republican rally to-night are Alex. Robertson, J. L. Kaulukou, Wm. Haywood and, probably, John Lane.

Judge Hardy

Has Not Resigned

Governor Dole was questioned as to the truth of a report in this morning's Republican, to the effect that Judge Hardy of the Fourth Circuit, Kauai, had resigned and that Deputy Attorney General J. W. Cathart had been strongly recommended to Washington for the position.

"It is the first I heard about it," said the Governor. "When Judge Hardy came over here from Kauai I talked with him, but he said nothing about resigning his office. If he had resigned, I am sure, the matter would not have been treated as a secret. I think Judge Hardy is still in Honolulu, staying with Mr. Thurston."

A telephonic inquiry from the Bulletin office gets the reply from Mr. Thurston's house that Judge Hardy is still a guest there.

Halvorsen to Waimea. Mr. Halvorsen, now a member of the mounted patrol, has been appointed deputy sheriff of Waimea, Kauai, in place of Mr. Omsted, resigned. Mr. Halvorsen knows Waimea thoroughly and has worked with and under Mr. Omsted as a police officer. He is a steady-going young man and will undoubtedly prove a valuable addition to the police force of the Garden Isle.

Electric Works Burned. The America Maru brought the news yesterday that the big electric light works in Yokohama had been burned to the ground. As the plant in this place furnished the electricity for the whole city, Yokohama was in total darkness for several nights. However, connections were made with the plant in Kanagawa so that the situation has been very much relieved.

New Citizens. Judge Estee this morning naturalized the following named aliens: Otto A. Graef, Olaf Bergstrom, James D. Young, August Schuit, Fritz J. Wilhelm, Fred Philp, Morley Philp, Franc Becher, Fred J. Turner, August J. Freitas, Louis R. Medeiros, Wm. Berlowitz, Joseph D. Marques, James Edwards, Joseph Rosen, Nils Oberg, Joseph Patrick, Heinrich Fosa.

Death of Princes' Aunt. Lydia Piikoi Kamakala, an aunt of the Princes David Kawanakou and Jonah Kalaniana'ole, died at her home in this city this morning after a long illness. The funeral will take place from the Catholic Cathedral at 3 p. m. tomorrow. All friends are invited to attend.

It is the duty of all Republicans to REGISTER AT ONCE.

Copyright in Speeches. The House of Lords, in the suit brought by the London Times against a publisher, Mr. Lane, for publishing the verbatim reports of Lord Rosebery's speeches as printed in the Times decided in favor of the plaintiff. This definitely establishes the right of a reporter of his employer to the reports of speeches.—Public Opinion.

Jesse Holden of Chicago is said to be the first foreign born lawyer to be president of an American bar association. He was born an Englishman, but has spent his whole active life in Illinois, and has just been chosen head of the Illinois bar association.

Great sale of boots and shoes at 5 cents on the dollar at L. B. Kerr & Co.'s shoe house, corner of Fort and Queen street.

The best two for 25 cigar in town is the Lurline to be had at the Myrtle cigar store next to Orpheum. All kinds of Manila cigars a specialty.

Republicans Attention! You have only till Tuesday to register.

Foot Wear!

TIES, SLIPPERS, BOOTS, SHOES.

We carry only the best line of FOOT WEAR Manufactured

OUR DISPLAY WINDOW SHOW

The very Latest Styles, at Prices to...

Suit All

REGISTRATION ROLLS ARE NOW OPEN IN HONOLULU IT IS THE DUTY OF EVERY REPUBLICAN TO REGISTER AT ONCE

Among the speakers at the second precinct, fourth district, Republican rally to-night are Alex. Robertson, J. L. Kaulukou, Wm. Haywood and, probably, John Lane.

MANUFACTURERS SHOE COMPANY

McCLELLAN POND & CO. REAL ESTATE - INSURANCE - INVESTMENTS. A COZY HOME. In a choice neighborhood near Oahu College. Price Only \$3800. SEE US AT ONCE. McCLELLAN POND & CO., TEL. MAIN 66. JUDD BUILDING

THE ARLINGTON BLOCK
The Lace House
TABLE CLOTHS
NAPKINS
DOYLIES
Austrian and Irish Linens
 Phone 157 **M. BRASCH & CO.** Phone 157

LOCAL AND GENERAL.

Lodge Le Progres meets tonight. Work in the second degree.
 Mystic Lodge No. 2 K. of P. meets tonight in Castle hall, Fort street.
 Camara & Co., wine and liquor merchants, tel. Main 140, Alakea street.
WEDDING STATIONERY. Engraved Cards, Embossing.
H. F. WICHMAN.
 Camara & Co. can now be found on Alakea street between King and Merchant.
 The R. P. Rithet hauled alongside the Mauna Loa yesterday to take on sugar for San Francisco.
 The friends of Wm. Savidge are congratulating him on the arrival in the family of a fine daughter.
 Oscar K. Davis, the war correspondent of Harper's Weekly and the New York Sun, passed through in the America Maru.
REGISTRATION ROLLS ARE NOW OPEN IN HONOLULU. IT IS THE DUTY OF EVERY REPUBLICAN TO REGISTER AT ONCE.
 When the Enterpe sails for Kahului, Chas. Wells, assistant weigher of the Custom House, will go to Kahului to weigh the coal of that vessel.
 "Sid," the butcher of the Australia, will return as a passenger on the next trip of the Australia. He intends to go into business in Honolulu.
 Shortly before the departure of the Australia yesterday Purser McCombe was presented with a package which he was admonished not to open until he was at sea. The presentation was made by L. H. Dee, assisted by Dr. Clapham and T. B. Richards.
 Mary A. S. Rose petitions that she and W. H. Charlock Jr., the latter a minor one year old, be appointed administrator of the estate of her late daughter, Katie Ellen Sims, of Kailhi which is valued at \$10,500. The heirs are Harry Rose Sims aged 10, Columbus Markeya Sims 9, George Ross Sims 7 and William Henry Sims 1.
 The annual meeting of the Free Kindergarten and Children's Aid Association will be held in the Y. M. C. A. hall Friday, October 5, at 10 a. m. Reports from the various kindergartens in the city will be read. A report of the progress of the work at the recently established Castle Home for homeless children will also be read. All those interested are cordially invited to attend.
 The use of the Singer in millions of homes shows the unprecedented success of these ideal sewing machines. It is convincing proof that the Singer excels in all kinds of family sewing and art needle work. All our sewing machines are of the best construction, beautifully decorated, and are mounted on selected woods in finely finished cabinets of artistic design. B. Bergersen, agent, 16 1/2 Bethel street.
 Antone Manuel petitions that he be appointed guardian of his brother David, an alleged spendthrift. It is stated that David Manuel is 21 years old and unmarried; has living a mother, two brothers, a sister and half sister; owns real estate in Honolulu worth \$7000 now unencumbered and \$1000 money in J. A. Magoon's hands, lately sold a valuable piece of land for \$4000 and has been squandering money in riotous living.

New York Central & Hudson River Railroad Co.
GRAND CENTRAL DEPOT.
 New York, Jan. 7, 1911.
 Messrs. S. Ottenberg & Bros.
 New York.
 GENTLEMEN: If you think it will add anything to the value of the cigar which you make or distillatively mark, a better article than any now in the market, it affords me great pleasure to give you the right to use my name and portrait.
 Yours very truly,
CHAUNCEY M. DEPEW.
Chauncey M. Depew Cigars!
The Washington Mercantile Co., Ltd.
 Corner Fort and Queen streets.
 Distributing Agents for the...
HAWAIIAN ISLANDS
 L. W. MERRILL. H. G. MIDDLEBICH.

LADIES!
 You Are Cordially Invited to Attend My
Grand : Fall : Opening!
 On THURSDAY, FRIDAY AND SATURDAY
SWELL PARISIAN HATS! AND THE LATEST NOVELTIES IN HAIR GOODS AND DRESS TRIMMINGS
 Will Be On Exhibition.
MISS M. E. KILLEAN.

HARMONY LODGE NO. 3,
 L. O. O. F.
 Meets every Monday evening at 7:30 in Harmony Hall, King street.
 L. H. DEE, N. G.
 E. R. HENDRY, Secretary.
 All visiting brothers very cordially invited.

MYSTIC LODGE, No. 2, K. of P.
 Meets every Wednesday evening at 8:00 o'clock, Castle Hall, Fort street. Visiting brothers cordially invited to attend.
 S. J. SALTER, C. C.
 A. E. MURPHY, K. R. S.

HONOLULU CHAPTER No. 1,
 R. A. M.
 Meets every third Thursday evening in Masonic Temple. All visiting companions cordially invited.
 A. F. GILFILLAN, H. P.
 S. D. TUCKER, Secretary.

HONOLULU COMMANDERY
 No. 1, K. T.
 Meets in Masonic Temple on the second Thursday evening of each month. All visiting Str Knights courteously invited.
 HENRY E. COOPER, E. C.
 S. D. TUCKER, Recorder.

OAHU LODGE No. 1, K. of P.
 Meets every Friday evening at their Castle Hall, 420 1/2 Fort street, at 7:30. Members of Mystic Lodge No. 2, and visiting brothers, cordially invited.
 A. N. SINCLAIR, C. C.
 ALFRED ARENDI, K. of R. and S.

MUWANU CHAPTER, ROSE CROIX,
 No. 1, A. & A. S. R.
 Meets the first Thursday in each month, at Masonic Temple. Sojourning and visiting brothers cordially invited to attend all meetings.
 W. M. FRANK B. AUERBACH.
 HILAN B. SCRIMGEOUR, Secretary.

LODGE Le PROGRES DE L'OCEANIE,
 No. 124, A. & A. S. Rite.
 Stated meetings on the last Monday of each month, in its hall, Masonic Temple.
 C. M. WHITE, W. M.
 E. B. FRIEL, Secretary.

GEO. W. De LONG POST No. 46, G. A. R.
 Department of California and Nevada, meets at Harmony Hall, King Street, first Thursday evening of every month. Sojourning comrades are cordially invited to attend.
 W. L. EATON, P. C.
 SAM. T. COPELAND, Adj.

HAWAIIAN LODGE, No. 21,
 F. & A. M.
 Stated meetings, first Monday each month. Special meetings, when called (will be noted in this space).
 Members Lodge Le Progres, Pacific Lodge, and all sojourning brethren cordially invited.
 J. M. CAT, W. M.
 E. R. G. WALLACE, Secretary.

Q...What Is Champagne?
 A...It Is
Moët & Chandon
'WHITE SEAL'

N. B.—The accuracy of this answer is endorsed by connoisseurs the world over.
LOVEJOY & CO.,
 SOLE AGENTS FOR TERRITORY OF HAWAII.

Waikiki Inn.

BEGINNING THURSDAY, August 30, the WAIKIKI INN will run a wagonette for the benefit of its patrons, leaving the corner of Fort and King streets as follows:
 FOR WAIKIKI INN:
 9:30 a. m. 12:30 p. m.
 5:30 p. m.
 FROM WAIKIKI INN:
 7:40 a. m. 4:30 p. m.
 10:00 a. m.
 Single Fare, 25 cents; 8 tickets, \$1.00.
PROF. VAN PRAAG'S ORCHESTRA will play during dinner at the Inn on Wednesday and Sunday evenings.
H. N. ALMY,
 Manager.

THE ALOHA BRANCH OF THE THEOSOPHICAL SOCIETY.
 Every Saturday at 7:30 p. m. The Aloha Branch of the Theosophical Society, will hold its regular meeting in the Knights of Pythias Hall, next door to Hollister & Co., Fort street. Public cordially invited. Books lent at the Library on Mondays, Wednesdays and Fridays, from 3 to 4 p. m. Information on Theosophy given by writing to P. O. Box 554.

The Merchants' Collecting Agency,
 Custom House Brokerage
 113 KAAHUMANU ST.
 Makes A SPECIALTY of Monthly Accounts and Rents.

White Teeth!
 are generally perfect and sound, and at all events are a much prettier feature of the mouth than dirty and discolored teeth.
 Then again when kept clean and white are less liable to decay which rather is due to thoughtlessness in teeth care.
 All teeth preparations, in a general way are good—we have them all—some better than others.
Prophylactic Tooth Powder 25 cts.
 we know is as near a perfect tooth cleaner and antiseptic as it is possible to make because every one of its ingredients is the purest obtainable.
 That's the feature of our tooth powder.

Hollister Drug Co.
 FORT STREET.

CHAS. D. WALKER,
 Designer and Builder of High-Grade Yachts, Boats and Launches!
 Works, Opp KING ST.
 P. O. Box 611. Telephone 470

Notwithstanding the assertions made by the Smith Premier Typewriter Co. that their Machine secured the Grand Prix at the Paris Exposition we wish to state to the Public that such statement is not based on facts, as the
REMINGTON STANDARD TYPEWRITER
 has secured the
GRAND - PRIX
 which is the HIGHEST AWARD
 The Diploma for which the Remington Typewriter Co. now have in their New York Office.
H. HACKFELD & CO., Ltd.
 Sole Dealers, REMINGTON STANDARD TYPEWRITER For the Territory of Hawaii.

Canned Meats
 CORN BEEF
 ROAST BEEF
 CHIPPED BEEF
 SMOKED BEEF
 LUNCH TONGUE
 DEVILED HAM
 DEV.'d TONGUE
 VILINA SAUSAGE
 FRANKFURT SAUSAGE
 BRATWURST SAUSAGE
 SAUSAGE MEAT
 HAM LOAF
 VEAL LOAF
 CHICKEN and COTTAGE LOAF

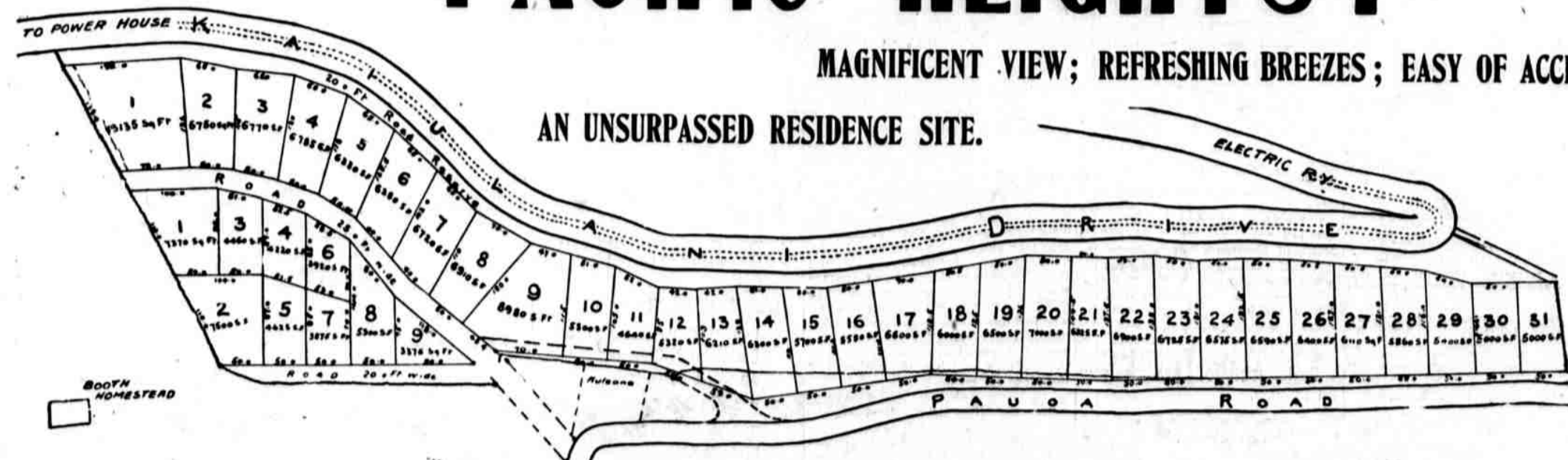
SALTER & WAITY, Grocers
 ORPHEUM BLOCK, Fort St.
 BY THE AUSTRALIA
 Our regular supply of
GRUENHAGENS CHOCOLATES
 (Glaze Fruits and Marshmallows)
H. MAY & CO., Ltd.
 2—Big Stores—2
 The Waterhouse Store | The McIntyre Store
 BETHEL ST. | COR. KING AND FORT STS.
 TELEPHONE 24. | TELEPHONE 22.

Burnham's
CREAM CUSTARD
 CONTAINS NO CORN STARCH.
 Requires no eggs, no cooking. Prepared in a moment by simply adding one quart boiling milk ACCORDING TO DIRECTIONS. Will produce ten cups of delicious Custard or two quarts of rich Ice Cream that cannot be surpassed.
 For sale by **CHAS. HUSTACE.**
 Telephone 119. 212 King street, next to the Arlington.

PACIFIC HEIGHTS!

MAGNIFICENT VIEW; REFRESHING BREEZES; EASY OF ACCESS;

AN UNSURPASSED RESIDENCE SITE.



These Lots are on the Paoua side of Pacific Heights. They face on Paoua Road, now being widened and macadamized, and ADJOIN THE PACIFIC HEIGHTS ELECTRIC RAILWAY.

A CHANCE FOR INVESTORS

Any one with money to invest looking for something that will bring good returns on sums invested, has here a fine opportunity. Houses built on these lots will find ready rental at strong rates by good tenants. **ATTRACTIONS OFFERED IN THIS SITE TO HOMESEEKERS:**

Location. They are located on high ground at an elevation of from 200 to 500 feet, affording unsurpassed scenic and marine views.	Electric Railway and Lighting. The Electric Railway makes access most easy, and power for lights may be had at most reasonable rates.	Water. Water will be supplied at the rate of \$15 per year for each lot, from our Pacific Heights Water System. This is less than city rates.	Special Inducements to Builders. To all who will begin the erection of houses within 60 days, we will make special inducements in the matter of transportation of building material over our railway.	Low Prices, Good Terms. Prices of lots range from \$400 to \$750 each, according to size and location. One-fourth cash only is asked. Balance in installments at terms to suit purchasers.	Healthful and Cool. The air is always cool and bracing. We can recommend this property as being especially desirable and attractive to persons seeking a choice location for a home at a moderate cost.
---------------------------------------------------------------------------------------------------------------------------------------------	-------------------------------------------------------------------------------------------------------------------------------------------------	---------------------------------------------------------------------------------------------------------------------------------------------------------	-----------------------------------------------------------------------------------------------------------------------------------------------------------------------------------------------------------------	------------------------------------------------------------------------------------------------------------------------------------------------------------------------------------------------------	-------------------------------------------------------------------------------------------------------------------------------------------------------------------------------------------------------------------

For Further Particulars Apply to **BRUCE WARING & CO., Progress Block, Fort Street.**

The "Penown" Cigar

DAVID LAWRENCE
532 FORT ST.

JUST RECEIVED A LARGE SHIPMENT Alsen Portland Cement

is the strongest and most serviceable cement made and will permit the construction of a larger amount of work in a shorter time than any other brand. It is also the most economical, as it weighs less than any other brand, and its use saves in cost of transportation and handling. It is therefore an economical cement to use and especially adapted for the construction of concrete work.

COMPARATIVE TESTS.
Tensile Strength in Pounds Per Square Inch Made at Royal Testing Station, Berlin, 1899-1900.

After 7 days.	After 14 days.	After 28 days.	After 56 days.
10,000	10,000	10,000	10,000

ALSEN'S PORTLAND CEMENT is made from the best quality of raw materials and is produced in accordance with the most modern methods. It is the only cement in the world that is made from a single source of raw materials. The yearly sales of Alsen's Portland Cement in the United States is greater than that of any other brand. The following test, made in actual work by Col. D. C. Houston, Corps of Engineers, U. S. A., at the sea wall around Governor's Island, New York Harbor, has never been equaled by any other cement. It is as follows:

TENSILE STRENGTH PER SQUARE INCH: One Day, 14 pounds; Seven Days, 600 pounds; Twenty Days, 815 pounds. For sidewalks it gives the best color and the most durable wearing surface. Testimonials from most eminent engineers, architects and contractors endorsing the high grade quality of "ALSEN" furnished on application to

Theo. H. Davies & Co., Ltd.

PHILADELPHIA ICE CREAM

.....With Crushed Fruits.....

ONLY AT
HONOLULU - DRUG - CO.

All others are imitations
Families and Parlors Supplied at SHORT NOTICE.

Our Ice Cream Soda is the talk of the town.

HONOLULU DRUG CO.,

We Watch While You Sleep

BOWER'S MERCHANT PATROL AND CONFIDENTIAL AGENCY

Reliable Watchmen furnished for stores and property. Best City references furnished. Detective and confidential work of all sorts.

Office Room 4 Model Block - - - TEL. 708
P. O. BOX 284.

MAKE A LEMONADE SHASTA WATER

The first thing in the morning for a **BIG HEAD**, it will make you **ALL RIGHT** for the days work.

—x Shasta Water and Ginger Ale x—
ORDER THEM FOR TABLE USE.

W. C. PEACOCK & CO., LTD.

Sole Agents

...THE...
Honolulu - Tobacco - Co., - Ltd.,
COR. FORT AND MERCHANT STREETS
HAS RECEIVED PER "AUSTRALIA" FROM
—New York—
The World Renowned Brand of Cigars.....
Lillian Russell-PURITANOS.
This elegant CIGAR can be purchased for FIVE CENTS only.
TRY THEM. NONE BETTER.

Architects, Contractors and Builders

Fred Harrison,

CONTRACTOR AND BUILDER

Jobbing: Promptly: Attended: To.

WM. T. PATY,

Contractor and Builder.

Store and Office Fitting, Plans and Estimates Furnished.

1488 Hotel Street, near Barracks.

H. L. KERR & CO.,

Architects and Builders

Rooms 11-12
—PROGRESS BLOCK.

Telephone 131.

Geo. W. Page P. O. Box 284
P. W. Beardslee P. O. Box 284

BEARDSLEE & PAGE

Architects & Builders

Office: Rooms 2-4, Arlington Annex, Honolulu, H. I.
Sketches and Correct Estimates furnished at Short Notice. 1441

MATTINGS!

Chinese and Japanese in both White and Fancy.

Matting Rugs of all sizes.

Cotton Rugs in Blue and White.

Wall Papers in large variety.

Architects and Builders

Rooms 11-12
—PROGRESS BLOCK.

Telephone 131.

Geo. W. Page P. O. Box 284
P. W. Beardslee P. O. Box 284

BEARDSLEE & PAGE

Architects & Builders

Office: Rooms 2-4, Arlington Annex, Honolulu, H. I.
Sketches and Correct Estimates furnished at Short Notice. 1441

Lewers & Cooke,

A Specialty!
FLAT TOP DESKS

FOR OFFICE USE

ALSO
Desks,

FOR TYPEWRITERS

Call and see them.
We also have a Fine line of . . .

WERNICKE BOOK CASES

IN ALL SIZES
Hundreds in use in this city.

Henry Waterhouse & Co.

QUEEN STREET
AND SEE THE DISPLAY.

Fine Job Printing at the Bulletin Office.

BUILDING MATERIALS OF ALL KINDS.

Dealers in Lumber and Coal

ALLEN & ROBINSON,

Queen street, Honolulu

H. F. BERTELMAN'S

Carpenter Shop

.....IS REMOVED

To rear of old stand. Entrance on King street. Orders left at either shop, or office, at John Nett's store, King street, will receive prompt attention. 1411-14

Druggists will refund the money if they fail to cure.

GESSLERS MAGIC HEADACHE WATERS

Price 10 cents.

Beer and Wine Dealers.

LOVEJOY & CO.

IMPORTERS AND WHOLESALE
Wine and Liquor Dealers.

Agents for the Boston Superior Beer of Canada.
210, 19 BROADWAY BRASSERY
FOSTER BLOCK, HONOLULU, HAWAIIAN ISLANDS.
P. O. Box 170. Mutual Telephone 241.

GONSALVES & CO., Ltd

WHOLESALE GROCERS AND WINE MERCHANTS.

225 Queen street, Honolulu, H. I.

Consolidated Soda Water Co., Ltd

Esplanade,
Corner Allee & Fort Sts., Honolulu.

HOLLISTER & CO.,

Agents

The Pantheon Saloon

HAS REOPENED FOR BUSINESS

In Its New Quarters on Hotel St UNDER THE MANAGEMENT

T. A. SIMPSON

LATE OF THE CRITERION

VERBUM SAPIENTI SUPPICIIT

"Wela Ka Hao"

You will find it at the corner of Hotel and Bethel streets.

Headquarters for ALL the Sports and Race Horse Men.

A No. 1 Liquors a specialty.

B. Lemon and F. Woodman will attend to the WANTS of the Weary.

Seattle Beer kept at a Temperature Unequalled in Town.

John Dewar, Kellock's AA, Green River and Old Government Whiskies and the very best of everything else. 1332

IN THE CIRCUIT COURT OF THE FIFTH CIRCUIT, HAWAIIAN ISLANDS.

FRANK LOUIS vs. MARIA GLORIA COSTINA
—The Republic of Hawaii. To the Marshal of the Hawaiian Islands, or his Deputy, Greeting.

You are commanded to summon MARIA GLORIA COSTINA, defendant, in case she shall file written ANSWER WITHIN TWENTY DAYS after service hereof, to be and appear before the said Circuit Court at the September Term thereof, to be holden at Lihue, Island of Kauai, on WEDNESDAY, the 5th day of September next, at 10 o'clock a. m., to show cause why the claim of Frank Louis, plaintiff, should not be awarded to him pursuant to the tenor of his annotated libel for divorce. And have you then there this Writ with full return of your proceedings thereon.

Witness Hon. J. Hardy, Judge of the Circuit Court of the Fifth Circuit, at Lihue, Kauai, this 19th day of May, 1900.
(Signed) HARRY D. WISHARD, Clerk.

I hereby certify the foregoing to be a true and exact copy of the original summons in said cause and that said Court ordered publication of the same and a continuance of said cause until the next March, 1901, term of this Court.
Dated Lihue, Kauai, September 26th, 1900.
(Signed) HARRY D. WISHARD, Clerk.

IN THE CIRCUIT COURT OF THE FIFTH CIRCUIT, TERRITORY OF HAWAII.

KAAPUWAI vs. E. LINDEMANN, Summons—
The Territory of Hawaii, To the High Sheriff of the Territory of Hawaii, or his Deputy, the Sheriff of the Island of Kauai, or his Deputy, or any Constable in the Territory of Hawaii:

You are commanded to summon E. LINDEMANN, defendant, in case he shall file written ANSWER WITHIN TWENTY DAYS after service hereof, to be and appear before the said Circuit Court at the September Term thereof, to be holden at Lihue, Island of Kauai, on WEDNESDAY, the 5th day of September next, at 10 o'clock a. m., to show cause why the claim of Kaapuwai k, plaintiff, should not be awarded to him pursuant to the tenor of his annotated Petition. And have you then there this Writ with full return of your proceedings thereon.

Witness Hon. Jacob Hardy, Judge of the Circuit Court of the Fifth Circuit, at Lihue, this 9th day of August, 1900.
(Signed) HARRY D. WISHARD, Clerk.

ASSESSMENT NOTICE.

Stockholders are hereby notified that the Fourth Assessment of 5 per cent or two and one-half dollars per share on the Capital Stock of THE INTER ISLAND TELEGRAPH CO., LTD., is due and payable July 1st, at the office of the undersigned, 411 Fort Street. J. H. FISHER, Actg. Treas. Inter Island Telegraph Co., Honolulu, June 1, 1900. 1550

Guard Against Smallpox.

Reno, Nevada, Sept. 20.—Dr. J. E. Cohn, quarantine officer of California, and Dr. M. P. Matthews, secretary of the State Board of Health of California, are here to inspect all west bound trains to guard against the possible introduction of smallpox in their State. Smallpox is said to be very prevalent in Green River, Wyo., and several cases have developed in the Eastern part of the State. Dr. Matthews goes to the eastern part of the State in his official capacity this evening.

REGISTRATION ROLLS ARE NOW OPEN IN HONOLULU. IT IS THE DUTY OF EVERY REPUBLICAN TO REGISTER AT ONCE

PUSH BUTTON ORDERS

CAUSED ONE MAN TO LOSE HIS JOB

Ordered Office Luxuries Without Consulting His Superior—Result Was Wrath on Both Sides and Resignation.

The sudden departure for Japan in the Nippon Maru of a young attorney who came to Honolulu not long ago and immediately picked up a job in the government, brings to light a very good story about the young man. He intended remaining here until after Christmas and his rather abrupt change of plans naturally brought about a number of questions.

It seems that after trying to run matters at the police station and having been called down in good shape by the High Sheriff and later by his superior, the young man sought to make some changes in his own office.

Going to certain people down town he had a telephone and an electric light put in his own desk and, in addition to this, had several push buttons installed.

On the day previous to the sailing of the steamer on which the young man left Hawaii's shores, the superior officer happened to be looking about the office. Noticing a number of electric wires running along the wall and to the desk of his assistant, he naturally became rather curious and when the young man came in, asked him to open his desk.

"What is this?" quoth the superior officer.

"Oh, that is a telephone to facilitate matters of business and that is an electric light to enable me to see better when I am at work. I have made a year's contract and charged the whole thing to the department."

"Well, what are these?"

"Oh, those are push buttons. You see when I want to call the clerk, I push one of these, he appears and does the rest."

"Well, I'll do the rest, young man." With this, the irate superior officer grabbed a handful of wires and gave a jerk that came very near dislocating his arm, let alone the wires. The electrical experts were sent for and told to take away every bit of the apparatus and if this could not be done quickly, to take deak and all and smash the whole outfit to atoms.

And it came to pass that the young man left his next day for other regions.

TO CURE A COLD IN ONE DAY.
Take Laxative Bromo Quinine Tablets. All druggists refund the money if it fails to cure. E. W. Grove's signature is on each box. 25 cents.

BIG ODDS ON MCKINLEY.

New York, Sept. 22.—Louis Wormser in Wall street today made two big bets on McKinley, Bell & Co. taking the Bryan end. One bet was \$10,000 to \$4,000 on McKinley and the other \$22,000 to \$10,000 the same way. It is said Wormser had also bet \$24,000 to \$8,000 with J. J. Judge that McKinley would win.

A man in a position to know the facts said today that already there had been wagered, the money being in the hands of Wall street stakeholders between \$1,000,000 and \$1,250,000 on the result of the Presidential election. The bets represent odds on McKinley ranging from 4 to 1 to 11 to 9, the last mentioned odds representing the bet made by Wormser with Bell & Co. The report that Richard Croker had bet \$20,000 to \$50,000 that Bryan would be elected was quite generally credited today in Wall street. Members of the Stock Exchange firm that it was said placed the bet stated that they did not care to discuss the matter. John G. O'Keefe of H. L. Morton & Co., announced today that he had \$25,000 to bet against \$10,000 Bryan money.

PER B. S. AUSTRALIA.
Just landed a full line of grapes, apples, oranges, lemons, celery, cabbage, cauliflower, cranberries, burbank and red potatoes, jates, salmon, flounders, halibut, crabs, Eastern and California oysters (in tin and shell), turkey, chickens, ducks, quail. A full line of canned goods. CAMARINOS' REFRIGERATOR

HAWAII LAND CO. LIMITED.

Capital Stock . . . \$100,000.
Capital, paid up, . . . \$48,860

OFFICERS.

W. C. Achi, President & Manager
M. K. Nakulua, Vice President
J. Makinai, Treasurer
Snook Johnson, Secretary
Geo. L. Deaba, Auditor

BOARD OF DIRECTORS:
Jonah Kumaleo,
J. Makinai
J. W. Biplkano.

The above Company will buy, lease, or sell lands in all parts of the Hawaiian Islands; and also has houses in the City of Honolulu for rent. 1489-7

J. J. WILLIAMS,

Photographer.

PORTRAIT WORK A SPECIALTY.

Visitors are cordially invited to call and inspect our gallery of life-size royal photos, from Kamehameha I. to date.

At the Old Stand On Fort Street—:—

W. C. ACHI & CO.,

Brokers & Dealers

REAL ESTATE

We will Buy or Lease Real Estate in all parts of the group.
We will Sell Properties on Reasonable Commissions.

OFFICE, 10 WEST KING STREET

DAVID DAYTON,

Real Estate Broker.

223 MERCHANT ST.

FOR SALE.
Property in town and suburbs and HOUSES TO LET.

T. R. MOSSMAN

Real Estate Agent

Abstractor and Searcher of Titles . . .
Loans negotiated.
Rents collected.

Campbell Building, Merchant street.

P. E. R. STRAUOH,

Real Estate Broker

Financial Agent and Collector

No. 9 Bethel St., near P. O.
Telephone 641.

WE OFFER YOU THE

Best 5c. Cigar

To be had for the money.

CLOSING OUT ALL OUR DOMESTIC CIGARS.

Beaver Lunch Rooms.

H. J. NOLTE.

CHAS. CRAMER

C. A. GROTE

Merchant Tailors

CLOTHING
Cleaned and Repaired
OUR SPECIALTY.

FIRST-CLASS WORK - GUARANTEE
Union St. near Hotel 1500

PROPOSALS FOR FIRE HOSE.

Sealed proposals will be received at the office of the Board of Commissioners of the Honolulu Fire Department, until 12 o'clock p. m., Oct. 6th, 1900, for furnishing 3000 feet of 2 1/2 inch cotton-covered Fire Hose, to be delivered within sixty days after notification of acceptance of tender. All tenders must be accompanied by samples.

K. R. G. WALLACE,
Secretary Board of Commissioners of the Honolulu Fire Department. 1610d

Fine Job Printing at the Bulletin Office.

Agents, Brokers and Jobbers.

ALEXANDER & BALDWIN, Ltd

OFFICERS:

H. P. BALDWIN, President
J. B. CASTLE, 1st Vice-President
W. M. ALEXANDER, 2nd Vice-President
J. P. COOKE, Treasurer
W. O. SMITH, Secretary and Auditor

Sugar Factors and Commission Agents

AGENTS FOR—

Hawaiian Commercial & Sugar Co.
Olas Sugar Co.
Haiku Sugar Co.
Paia Plantation Company.
Nahiku Sugar Company.
Kihei Plantation Co.
Hawaiian Sugar Co.
Kahului Railroad Company.

—AND—

The California and Oriental S. S. Co.

W. G. Irwin & Co.

Limited

AGENTS FOR—

Western Sugar Refinery Co., of San Francisco.
Baldwin Locomotive Works, of Philadelphia, Penn., U. S. A.
Newell Universal Mill Co. (National Cane Shredder), New York, U. S. A.
N. Ohlandt & Co.'s Chemical Fertilizers.
Alex. Cross & Sons, high grade Fertilizers for Cane and Coffee.
Reed's Steam Pipe Covering.
ALSO OFFER FOR SALE—
Paraffine Paint Co.'s P. & B. Paints and Papers; Lucol and Linseed Oils, raw and boiled.
Indurine (a cold-water paint), white and colors.
Filter Press Cloths, Cement, Lime and Bricks.

CASTLE & COOK

LIMITED.

HONOLULU.

Commission Merchants
SUGAR FACTORS.

AGENTS FOR

The Pine Plantation Co.
The Hawaiian Agricultural Co., L. & C.
The Kohala Sugar Co.
The Waialeale Sugar Plant Co.
The Kilauea Agricultural Co.
The Pullen Iron Works, St. Louis, Mo.
The Standard Oil Co.
The Geo. F. Blake Steam Pumps.
Weston's Centrifugals.
The New England Life Insurance Co. of Bos
The Atlas Fire Ins. Co. of Hartford, Conn.
The Alliance Assurance Co. of London.

Wm. G. Irwin & Co.

(LIMITED).

Wm. G. Irwin, President and Manager
Claus Spreckels, Vice President
W. M. Giffard, Second Vice President
H. M. Whitney Jr., Treas. and Sec.
Geo. J. Ross, Auditor

Sugar Factors and Commission Agents

AGENTS OF THE
GRAND STEAMSHIP COMPANY OF SAN FRANCISCO, CAL

The Von Hamm-Young Co., Ltd

Importers and Commission Merchants

QUEEN ST., - HONOLULU.

AGENTS FOR—

The Lancashire Insurance Co.
The Balaise Insurance Co.
Union Gas Engine Co.
Domestic Sewing Machine, Etc

Agents for—

Hawaiian Agricultural Co., American Sugar Company, Oahu Sugar Plant Co., Oahu Sugar Co., Honolulu Sugar Co., Waikuku Sugar Co., Sugar Co., Haleakala Ranch Co., Molokai Ranch, Waialeale Line Sugar Co. 125000 Packed See. By 1900 & Co.'s Line of Boxes & Packages.

LIST OF OFFICERS

C. M. Cooke, President; George M. Robertson, Manager; E. F. Bishop, Treasurer and Secretary; Col. W. S. Allen, Auditor; P. C. Jones, H. Waterhouse, Geo. R. Carter, Directors.

BRUCE CARTWRIGHT,

General Manager of

The Equitable Life Assurance Society

Of the United States for the Hawaiian Islands.
Office: Merchant street, Hon.

M. PHILLIPS & CO.,

Wholesale Importers and Jobbers

European and American Dry Goods

Fort and Queen Streets.

H HACKFELD & CO., Ltd

GENERAL COMMISSION AGENTS.

Cor. Fort and Queen Streets Honolulu

EVENING BULLETIN

Published Every Day except Sunday, at 210 King Street, Honolulu, T. H., by the

BULLETIN PUBLISHING COMPANY.

WALLACE R. FARRINGTON, Editor

DANIEL LOGAN, City Editor

Entered at the Post Office at Honolulu as second class matter.

SUBSCRIPTION RATES.

Per month, anywhere in U. S. . . . \$.75

Per year 8.00

Per year, postpaid, foreign 13.00

Payable invariably in advance.

Telephone 256

Post Office Box 718

WEDNESDAY OCTOBER 3, 1900.

FOR PRESIDENT.

WM. MCKINLEY.

FOR VICE-PRESIDENT.

THEO. ROOSEVELT.

FOR DELEGATE TO CONGRESS.

SAMUEL PARKER.

FOR SENATORS:

Clarence L. Crabbe,

Cecil Brown,

W. C. Achi,

Frank Pahia,

Henry Waterhouse

George R. Carter.

FOR REPRESENTATIVES:

A. G. M. Robertson,

J. W. Keiki,

William Aylett,

A. F. Gillfillan,

Wm. H. Hoogs,

Jonah Kumalae,

L. L. McCandless,

J. L. Kaulukou,

Enoch Johnson,

L. J. McCabe,

H. R. Hitchcock,

W. J. Coelho.

Mr. Waterhouse's native name, Waiakahaiki bids fair to work in well as a campaign cry. With Sam Parker at the head the Republicans have a Waiakahaiki ticket that can't be beat

The Friend has thrown up its hands and announces that "there seems little doubt that Mr. Wilcox will be the first Delegate from our Territory to Congress." Not if the people know it dear Friend.

Mr. Robbins seems to be a man of marked capacity, unfortunately misplaced in the list of Territorial appointments. If his aspirations are properly represented, he ought to have made a bid for the Governorship.

The selection of Henry Waterhouse as a candidate for the Senate in the place of B. F. Dillingham, disqualified by failure to register, rounds out the Republican ticket in a manner that should be acceptable to all supporters of Republican business principles.

Born and reared in the Territory, intimate with the native citizens and speaking their language fluently, Mr. Waterhouse can well be classed as a man of the people. He has often been called to positions of legislative trust and not found wanting. His allegiance to Republican principles has always been firm and positive, and when the question of liberal franchise was before Congress he was one of the first to publicly declare himself in favor of manhood suffrage by an interview published in the columns of the Bulletin.

While the Organic Act was under discussion by the Commission and in Congress, Mr. Waterhouse expressed full confidence in the capacity and ability of Hawaiian-Americans, and there is every reason to believe that the people will give expression of their appreciation of his position when casting their ballots in November.

Honolulu, Sept. 14.—Something of a sensation and a good deal of indignation was aroused on Tuesday of this week when it was learned that Judge R. D. Billman, second Judge of the Circuit Court, had resigned some time before, keeping the fact secret until this resignation, accompanied by his own and Judge Humphreys' recommendation of George D. Gear for the vacancy could reach the President. This was looked on as an attempt on their part to forestall action by the President and secure the appointment of their favorite, as their recommendation must reach the President at least three weeks ahead of any other. The bar with almost entire unanimity has signed a petition to the President asking for the appointment of John T. De Bolt, a leading attorney and Republican. The business community with almost equal unanimity has also joined in a petition for De Bolt's appointment.

The foregoing, published in the San Francisco Chronicle under the title of

"special correspondence" furnishes a good example of the manner in which the Associated Press and the Chronicle are used for the circulation of misrepresentations regarding public matters in Hawaii. The statement that "the bar with almost entire unanimity has signed a petition" for Mr. De Bolt is an absolute falsehood and the whole tenor of the dispatch is one of studied misrepresentation of the judges, the bar and the business community.

LOCATION OF HOMES.

It is an open question whether the crowding of the population on the lower levels has not as much to do with the increased death rate as poor sanitation due to lack of a sewer system. Honolulu is one of the few cities in the tropics where Providence is tempted by the majority of its residents establishing their homes on the flats hardly above the level of the sea. The people are gradually coming to a realization that they have banked too heavily on the "trade winds," and that even this beneficent feature of the "climate" cannot overcome the unhealthful conditions created by crowding the lower sections of the city with cottages packed almost as closely as New York tenements.

With the splendid scenery and cool atmosphere that can be obtained in almost any location in the hills and valleys back from the city it is indeed remarkable that such a large proportion of the population is satisfied to dwell in the city proper where rents are high and surroundings not attractive. There are immense tracts on both sides and on the hills back of the city where good locations can be secured at nominal figures and on easy terms. As the population gradually moves to these locations and the higher altitudes become dotted with homes, it is safe to predict that not only will the monthly health records show an improvement, but the reputation of Honolulu as a city of comfort and beauty will receive a marked impetus.

The Orientals will always crowd together in squalid quarters wherever they may choose to locate. Other elements of the population, however, naturally seek homes with plenty of light and air and a garden plot. As the extension of rapid transit lines makes the business portion of the city easily accessible, the gradual exodus to the higher levels will prove a boon to the community in more ways than one.

POTTED THE PLOTTER.

San Diego, Sept. 17.—Officers of the Kosmos steamer Herodot, which arrived yesterday from Hamburg, tell of the quick suppression of an incipient insurrection in Salvador. Minister of War Castro was the instigator of a plot to remove the present President, Thomas Regalado, and have himself proclaimed president of the republic. In his plans to bring about the insurrection Castro deemed it necessary to remove the Colonel of the barracks and shot him down in cold blood. It was not known until after his arrest for that crime that the murder was a part of the plot to overthrow the present government; but in the investigation that followed the whole scheme was unearthed. Castro was found guilty of murder, and at 5 o'clock on the afternoon of September 3d he was shot by order of the president. With the death of the leader the threatened insurrection subsided.

Coming Men of America.

Honolulu Lodge No. 1594 of the Coming Men of America entertained quite a number of friends at their hall last evening. After the following musical program, the floor of the young men's meeting place was cleared and a delightful program of dancing indulged in:

STARTLING FIGURES

IMPORTS OF CHAMPAGNE

into the United from January 1st to July 1st, 1900.

Table with 2 columns: Brand Name and Amount. Includes G. H. MUMM & CO'S EXTRA DRY, Moet & Chandon, Pommery & Greno, Hiedsick & Co., Dry Monopole, Louis Roederer, and All other brands.

—Compiled from the Official Custom House Records

MACFARLANE & CO., LTD., Sole Agents.

Cure morning headaches while dressing. GESSLERS MAGIC HEADACHE WAFERS. 10 cents all druggists.

The Pacific Hardware Co., HAVE JUST RECEIVED

Goods for the household, for the plumber, for contractors, builders and carpenters.

New line of Staple Articles have been brought here by the Australia, Geo. Curtis, Alden Besse, Irmgard, Rosamond and W. H. Dimond, which are now opened up

A complete line of Sanitary Plumbing Goods direct from the Wolfe Manufacturing Co. is on hand. Elliptic Boiler Tube Serapus, 1 1/2 to 4 inches.

Pacific - Hardware - Co., LIMITED

Stores: Fort, King and Bethel Sts.

Residence Tract FOR SALE AS A WHOLE! ...150 ACRES...

PALOLO HEIGHTS!

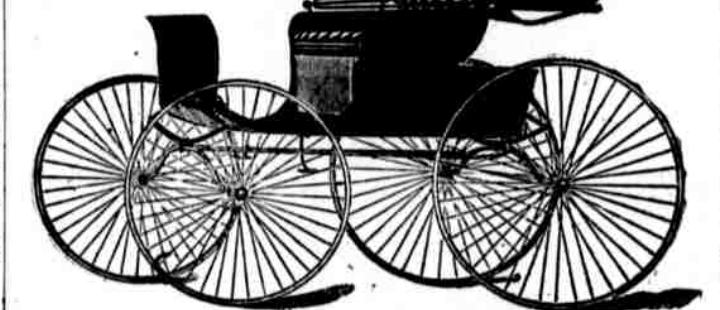
Beautifully situated mauka of the Government Waialae Road.

An Unexcelled Site for Hotel or Sanitarium!

MAGNIFICENT VIEW! The tract slopes gently up to an elevation of over 800 feet. It commands a land and sea view from Koko Head to the Waialae Mountains. WATER can be piped from a natural flowing stream from an elevation of 1,200 feet. For further particulars apply to Palolo Land and Improvement Co., A. F. COOKE, Manager, Room 8, Model Block.

SCHUMAN'S Carriage & Harness Repository

HAS ON EXHIBITION FORTY SWELL TURNOUTS



Every One of Them a Different Style!

WE SELL CARRIAGES AS CHEAP AS YOU CAN BUY THEM IN 'FRISCO!

BECAUSE we buy direct from the factories same as dealers on the Coast.

SOME REASONS

Why You Should Buy Your Carriages From Us:

YOU TAKE NO RISKS of damage in transportation. YOU HAVE A CHANCE TO PERSONALLY INSPECT stock and select something to your liking. If you order from the Coast by catalogue you are taking chances of getting something entirely different from what it looks on paper. REMEMBER! A suit of clothing for \$5.00 looks as well on paper as one costing \$20.00.

MAPS

Set of 5 maps, \$2.00 50 CENTS EACH

On sale at office of THE EVENING BULLETIN

KIHEI ASSESSMENT NOTICES.

The EIGHTH ASSESSMENT of the above stock of 5 per cent. or \$2.50 per share was due August 1st, 1900, and is now delinquent.

The NINTH ASSESSMENT of 5 per cent. or \$2.50 per share was due on Sept. 1st, 1900, pays penalty from this date, and will be delinquent on Oct. 31, 1900.

The TENTH ASSESSMENT of 5 per cent. or \$2.50 per share is due today Oct. 1st, and will pay interest on and after Nov. 1st, 1900, becoming delinquent Nov. 30th, 1900.

All of the above are payable at the offices of Alexander & Baldwin, Ltd., Judd Building.

J. P. COOKE, Treasurer, Kihei Plantation Co., Ltd. Honolulu, Oct. 1st, 1900.

NOTICE.

All persons wishing to subscribe to the Democratic Campaign Fund are requested to make payment of their subscriptions to any member of the Finance Committee.

E. B. MCCLANAHAN, J. F. COLBURN, C. J. CAMPBELL, Finance Committee.

Transcendent Light. Best Light known to science and the Cheapest! ARCH LIGHTS for indoor and Outdoor Illumination. Installed on short notice for Lawn Parties Luau or Halls. Lights Rented by Month. 1500 or 500 Candle Power. WASHINGTON LIGHT CO., Sole Agents. C. W. MACFARLANE, Manager.

SHREVE & CO., San Francisco. To facilitate trade with the Hawaiian Islands, will deliver all goods purchased or ordered of them, free of all charges for transportation to Honolulu, or returning same to San Francisco. Goods will be sent on selection to those known to the firm, or who will furnish satisfactory references in San Francisco. Market & Post Sts., S. F. Jewelers, Gold and Silver Manufacturers. Illustrated CATALOGUE and prices furnished upon receipt of request. We have the largest manufactory of Jewelry and Silverware west of New York City, and are prepared to furnish special designs.

W. W. WRIGHT Carriage Maker General Repairing. Painting, Blacksmithing, Trimming. Phaetons, Buggies and Hacks Manufactured. HIGH-CLASS WORK.

VARIETY OF DESIGNS. Nowhere else can you find so large a variety of..... Electroliers and Fixtures.... PRICES - THE - LOWEST

HAWAIIAN ELECTRIC CO., LTD., Alakea St., nr. Merchant. Before Insuring Your Life consult the best company and secure the best and most liberal policy as issued by the

GERMANIA LIFE INSURANCE CO. of New York. EMMETT MAY, Judd Building, Manager for Hawaii.

Catton, Neill & Co., Ltd. ENGINEERS. Boilermakers : : and : : Electricians. Agents for..... The - General - Electric - Company

S. SHIMAMOTO. General Merchandise, Dry Goods, Groceries. Japanese Provisions, etc. MAGOON BLOCK, MERCHANT STREET. P. O. Box 886 Main 215

GRAND CLEARANCE SALE. For One Month Only. In all lines commencing Saturday, September 29, 1900. Bargains in Grass Cloth (various colors), Handkerchiefs (embroidered), Heavy Pongee Silk for Suits or Skirts, etc. GOO KIM, 210 NUUANU ST, Above Hotel

Telephone FSO CO. P. O. Box 878. Contractors and Builders. GENERAL BUSINESS AGENCY. All kinds of Laborers' Supplies. King Street, near Liliha (Ewa side), Honolulu, T. of H.

WING WO CHAN. THE OLDEST CHINESE FIRM IN HONOLULU. COMMISSION MERCHANTS. Dealers in Fine Silks and Grass Linens. Chinese and Japanese Goods of All Kinds. 220-212 NUUANU STREET.

H. HAMANO. IMPORTER AND DEALER IN..... JAPANESE PROVISIONS & GENERAL MERCHANDISE. 500 BERNANIA STREET - OPPOSITE QUEEN'S HOSPITAL.

CLEVELAND CYCLES. HONEST VALUE. Hotel St., nr. Port - HONOLULU BICYCLE Co., Sole Agents

Attorneys.
GEO. A. DAVIS — GEO. D. GEAR
DAVIS & GEAR
 Attorneys and Counsellors at Law
 Rooms 202, 203, 302, Judd Building.
 Cor. Fort and Merchant Sts., Honolulu
CHARLES F. PETERSON
 Attorney at Law and Notary Public.
 Kaahumanu Street.
J. M. KANEAKUA,
 Attorney and Counsellor at Law.
 Office: In the Occidental Hotel, corner of King and Alakea Streets, Honolulu.
 W. E. Aehl. Enoch Johnson.
AOHI & JOHNSON,
 Attorneys and Counsellors at Law.
 Office No. 10 West King Street. Telephone 884.
E. A. MOTT-SMITH,
 ATTORNEY.
 WAS MOVED TO THE JUDD BLOCK, FORT STREET.
 Surgeons, Physicians and Dentists.

DR. J. T. WAYSON,
 Has removed to his new office and residence, Beretania St., nearly opposite Methodist Church.
 OFFICE HOURS: 10 a.m. to 3 p.m.; 7 to 8 p.m. to 7:30 p.m.
 1633-1m TEL. Main 346

DR. W. H. MAYS
 has opened an office for the practice of Medicine and Surgery, at 319 Beretania Street, next house beyond Central Union Church.
 HOURS: 10 to 12, 2 to 4 and 7 to 8; Sundays, 9 to 11. TELEPHONE 662. 1644

DR. C. A. PETERSON
 Has re-opened his office at . . .
 26 Emma Street
 HOURS: (9-11 A.M.) 2-4 P.M. TELEPHONE: 493
 (7-8 P.M.)

DR. E. C. WATERHOUSE
 Office and Residence: King St., near Alapai. : : : : :
 OFFICE HOURS: 9 to 11 A.M. 2 to 4 P.M. 7 to 8 P.M.
 SUNDAYS—9:30 to 11:30 A.M. TELEPHONE 931. WHITE. 1552

Dr. W. J. Galbraith.
 Office and Residence: Beretania and Alakea streets.
 Office Hours: 9 to 10 a. m.; 2 to 4 p. m.; 7 to 8 p. m.
 TELEPHONE 204.

DR. WALTER HOFFMANN.
 BERETANIA STREET, (opposite the Hawaiian Hotel.)
 Telephone 516. P. O. Box 501.
 Office hours, 8 to 10 a. m.; 1 to 3 p. m.; 7 to 8 p. m. Sundays, 8 to 11 a. m.

DR. A. N. SINCLAIR
 Belmont Street, between Emma and Fort.
 Hours: 9 to 10 a. m., 2 to 4 p. m. 7 to 8 p. m.; Sundays, 9 to 10 a. m.

DR. R. I. MOORE,
Dentist.
 Office: 222 Hotel Street.
 Office Hours: 9 to 12 and 1 to 4.

A. C. WALL, D. D. S., O. E. WALL, D. D. S., DENTISTS
 Save Building, Fort Street.
 Hours: 8 to 4. Telephone 484.

PERFECT PRINTING
 Prepared to fill orders until 4 p. m. Saturdays . . .
 TELEPHONE 2000.

The MERCANTILE PRINTING COMPANY, Limited.
 Queen Street,
 Corner of Fort Street.

DIAMOND
 And other Rings, Watches, Bracelets, Pins, and an extensive variety of Jewellery.

E. G. BLART,
 Manufacturing Jeweller
 404 1/2 FORT STREET.

W. THURM
 Surveyor.
 ROOM NO. 10, SPRECKELS BLOCK
 Plantation Work a Specialty.
 1238

Subscribers to the BULLETIN not receiving their papers promptly will confer a favor by notifying the Business Office, Telephone 256.

BY AUTHORITY
Proclamation.

Whereas, the act to provide a government for the Territory of Hawaii, requires that a general election shall be held on the Tuesday next after the first Monday in November A. D. 1900, and that at least forty days before any election, the Governor shall issue an election proclamation:

Now, therefore, in accordance therewith, I, Sanford B. Dole, Governor of the Territory of Hawaii, hereby give notice that a general election for a Delegate to the House of Representatives of the United States to serve during the Fifty-sixth Congress, a Delegate to the House of Representatives of the United States to serve during the Fifty-seventh Congress, and for Senators and Representatives of the Legislature of the Territory of Hawaii, will be held on Tuesday, November 6th, A. D. 1900, throughout the Territory between the hours of 8 o'clock a. m. and 5 o'clock p. m.

The Senatorial Districts are as follows:

FIRST DISTRICT—The Island of Hawaii.

SECOND DISTRICT—The Islands of Maui, Molokai, Lanai and Kahoolawe.

THIRD DISTRICT—The Island of Oahu.

FOURTH DISTRICT—The Islands of Kauai and Niihau.

The electors in said Districts are entitled to elect Senators as follows:

In the First District, four.
 In the Second District, three.
 In the Third District, six.
 In the Fourth District, two.

The Representative Districts, Registering Precincts and Polling Places and Inspectors of Elections are as follows:

FIRST DISTRICT.
 Puna, Hilo and Hamakua, Island of Hawaii.
 First Precinct—All the District of Puna excepting Keauau and Olaa. Polling place: Pohoiki Court House.
 Inspectors—Harry Rycroft, J. M. Kauwila, J. N. Kamoku.
 Second Precinct—The lands of Keauau and Olaa in Puna and that portion of Hilo extending from the boundary of Puna to the bed of the Honouliuli Gulch. Polling Place: Court House in Hilo.
 Inspectors—G. K. Wilder, Wm. Nalima, Wm. Vannatta.
 Third Precinct—Extending from the bed of the Honouliuli Gulch to the bed of the Kawaiuli Gulch. Polling Place: Papaikou School House.
 Inspectors: W. A. Ray, J. M. Malakalo, J. M. Kauli.
 Fourth Precinct—Extending from the bed of Kawaiuli Gulch to the bed of the Waikamalo Gulch. Polling Place: Honouliuli School House.
 Inspectors: J. K. Dillon, J. K. Unea, J. B. Oliveira.
 Fifth Precinct—Extending from the bed of the Waikamalo Gulch to the bed of the Kaula Gulch. Polling Place: Court House, Laupahoehoe.
 Inspectors—E. W. Barnard, H. S. Rickard, A. C. Palfrey.
 Sixth Precinct—Extending from the bed of the Kaula Gulch to the bed of the Kalopa Gulch (Kulu Gulch.) Polling Place: Kaohoe School House. Inspectors: Albert Horner, S. Maikone, Wm. Green.
 Seventh Precinct—Extending from the bed of the Kalopa Gulch to the bed of the Malanahae Gulch. Polling Place: Honokaa Court House. Inspectors: E. W. Estep, John Ai, J. Moanauili.
 Eighth Precinct—Extending from the bed of the Malanahae Gulch to the boundary of Kohala. Polling Place: School House, Kukihale. Inspectors: W. Y. Horner, Jas. Kuuwelu, W. H. Jones.

SECOND DISTRICT.
 Kohala, Kona and Kau, Island of Hawaii.
 First Precinct—Consisting of North Kohala. Polling Place: Kohala Court House.
 Inspectors: W. P. McDougall, Joseph Hussy, J. F. Woods.
 Second Precinct—Consisting of South Kohala. Polling Place: Waimea Court House.
 Inspectors: J. Crowley, H. Akona, J. K. Malaloa.
 Third Precinct—South Kohala to the north boundary of Hoolualoa. Polling Place: Court House, Kailua.
 Inspectors: L. S. Aungst, C. Katalwi, J. K. Laloha.
 Fourth Precinct—North boundary of Hoolualoa to and including Keel, South Kona. Polling Place: School House, Konawaena.
 Inspectors: Henry Greenwell, J. Keaweahawai, J. Hakole.
 Fifth Precinct—From south boundary of Keel to north boundary of Kau,

Polling Place: Court House, Hookena. Inspectors: J. K. White, J. Nahinu, G. W. Naope.
 Sixth Precinct—From the boundary between South Kona and Kau to the westerly boundary of Punahou. Polling Place: Waiohina Court House.
 Inspectors: J. H. S. Martin, J. N. Namomoku, O. K. Apiki.
 Seventh Precinct—The remainder of the District of Kau. Polling Place: Pahala School House.
 Inspectors: W. P. Fennell, E. Ikaaka, J. K. Hoopili.

THIRD DISTRICT.
 Islands of Maui, Molokai and Lanai.
 First Precinct—That portion of Molokai consisting of Kalawao and Kalapapa. Polling Place: Kalapapa Store House.
 Inspectors: Wm. Notley, W. K. Makakoa, J. K. Waiamanu.
 Second Precinct—The remainder of the Island of Molokai. Polling Place: Pukoo Court House.
 Inspectors: J. H. Mahoe, S. Kawahoa, Geo. Kekipi.
 Third Precinct—The District of Lahaina. Polling Place: Lahaina Court House.
 Inspectors: Henry Dickenson, C. V. Dudolt, J. W. Makekau.
 Fourth Precinct—The Island of Lanai. Polling Place: Kahalepaia Store House.
 Inspectors: S. Kahoohalahala, Kealaka, Keoni Nakiheh.
 Fifth District—District of Kaanapali. Polling Place: Honokahai School House.
 Inspectors: Geo. Kauli, D. Kapaku, L. K. Kalama.
 Sixth Precinct—Consisting of the portion of Waikuku lying north of the sand hills, including Wahee and the Island of Kahoolawe. Polling Place: Waikuku Court House.
 Inspectors: W. T. Robinson, Dr. R. W. Boote, Thos. K. Clark.
 Seventh Precinct—The remaining portion of the District of Waikuku, excepting the District of Honuaula. Polling Place: Custom House, Kahului.
 Inspectors: D. Quill, Walter Lowry, C. S. Kookoo.
 Eighth Precinct—The District of Honuaula. Polling Place: Honuaula Court House.
 Inspectors: L. R. Crook, J. D. Uwekoolani, G. K. Kunukau.
 Ninth Precinct—All that portion of the said District known as Kula, and that portion of the land of Hamakua-poko, lying south and west of the Maliko Valley and mauka of a line drawn along the center of the road running from Kalaupani to the Makawao Jail, and a line drawn in extension thereof. Polling Place: Makawao Court House.
 Inspectors: Geo. Forsyth, E. H. Kekapa, D. P. Eldredge.
 Tenth Precinct—The remainder of the District of Makawao to the Gulch of Oopoula. Polling Place: Hamakua-poko School House.
 Inspectors: W. F. Mossman, J. E. Kekipi, C. K. Pa.
 Eleventh Precinct—Kahikinui, Kaupae and Kipahulu. Polling Place: School House, Kipahulu.
 Inspectors: J. K. Pihimanu, P. M. Kaluna, H. W. Kahala.
 Twelfth Precinct—From Kipahulu to and including Makapu. Polling Place: Hana Court House.
 Inspectors: F. Wittrock, G. W. Kaulane, B. K. Kalwaiaea.
 Thirteenth Precinct—District of Koolau to the Gulch of Oopoula. Polling Place: School House, Keanae.
 Inspectors: D. P. Kapewa, G. W. Kawahamae, D. W. Napihaa.

FOURTH DISTRICT.
 All that portion of the Island of Oahu lying east and south of Nuuanu street, and line drawn in extension thereof from the Nuuanu Fall to Mokapu Point.
 First Precinct—All that portion of said District comprised in Honolulu or Kona and bounded by Punahou street, and a line drawn in extension thereof, mauka and makai. Polling Place: Near foot of Punahou street.
 Inspectors: John Effinger, J. L. Rees, H. McCullom.
 Second Precinct—All that portion of said District comprised in Honolulu or Kona, and lying between the westerly boundary of the First Precinct and a line drawn as follows, viz: From the foot of South street along South, King and Alapai streets and from the head of Alapai street to the flagpole on the old battery on Punchbowl; thence to and along the ridge on the easterly side of Pauoa Valley to the summit of the mountain. Polling Place: Beretania street School House.
 Inspectors: C. M. White, D. K. Kalaukalanani, W. C. Wilder Jr.
 Third Precinct—All that portion of said District comprised in Honolulu or Kona and lying between the westerly boundary of the Second Precinct and Nuuanu street and mauka of School street and a line drawn from the junction of School and Punchbowl streets to the flagpole on the old battery on Punchbowl. Polling Place: Building

at entrance to lower reservoir grounds, Nuuanu avenue.
 Inspectors: W. H. Hoogs A. Borja, J. P. Kahahawai.
 Fourth Precinct—All that portion of said District comprised in Honolulu or Kona and bounded by the Second and Third Precincts Beretania and Nuuanu streets. Polling Place: Royal School.
 Inspectors: W. C. King, R. N. Boyd, F. S. Peachy.
 Fifth Precinct—All that portion of said District comprised in Honolulu or Kona and bounded by the Second Precinct, Beretania street, Richards street, and the Harbor. Polling Place: Kapu-aiwa Building.
 Inspectors: Jno. Short, W. Kapela E. K. Lillikalanani.
 Sixth Precinct—All that portion of said District comprised in Honolulu or Kona and bounded by Richards street, Beretania street, Nuuanu street and the Harbor. Polling Place: Honolulu Hale.
 Inspectors: H. J. Mossman, T. E. Wall, John Mahuka.
 Seventh Precinct—All that portion of said District comprised in the Judicial and Taxation District of Koolau-poko, and lying east and south of a line drawn from the Nuuanu Fall to Mokapu Point. Polling Place: School House, Waimanalo.
 Inspectors: G. C. Chalmers, Kimo, A. Irvine.

FIFTH DISTRICT.
 All that portion of the Island of Oahu lying west and north of Nuuanu street and a line drawn in extension thereof from the Nuuanu Fall to Mokapu Point.
 First Precinct—All that portion of the Judicial and Taxation District of Koolau-poko lying west and north of a line drawn from the Nuuanu Fall to Mokapu Point. Polling Place: Kaneohe Court House.
 Inspectors: H. Cobb-Adams, James Olds, E. P. Alkue.
 Second Precinct—The Judicial and Taxation District of Koolauloa. Polling Place: Koolauloa Court House.
 Inspectors: W. A. Baldwin, J. H. Keana, C. Andrews.
 Third Precinct—The Judicial and Taxation Districts of Waialua. Polling Place: Waialua Court House.
 Inspectors: W. S. Wond, C. P. Lane, Chas. David.
 Fourth Precinct—The Judicial and Taxation District of Waianae. Polling Place: Waianae Court House.
 Inspectors: R. L. Gilliland, J. Hul, G. W. Nawaakoa.
 Fifth Precinct—All that portion of the Judicial and Taxation District of Ewa comprised in the lands of Hoaeae and Honouliuli. Polling Place: Railroad Station, Ewa Plantation.
 Inspectors: E. B. Mikalemi, Jos. Fernandez, J. P. Kuoha.
 Sixth Precinct—All the remaining portion of the Judicial and Taxation District of Ewa. Polling Place: Ewa Court House.
 Inspectors: H. D. Johnson, J. A. Low, John de Fries.
 Seventh Precinct—All that portion of Honolulu or Kona lying makai of the King street road from the Ewa line to the King street bridge and all mauka of said road from the Ewa line to the main road up Kalihi Valley. Polling Place: Reform School Premises.
 Inspectors: Julius Asche, S. K. Kalona, K. R. G. Wallace.
 Eighth Precinct—All that portion of Honolulu or Kona lying mauka of the King street road from the main road up Kalihi Valley to Liliha street and a line drawn from the head thereof in extension of the line of Judd street to and along the ridge forming the westerly border of Nuuanu Valley. Polling Place: W. C. Achi's Warehouse, near north corner of Liliha and King streets.
 Inspectors: C. R. Dement, Asa Kaulia, W. W. Bristol.
 Ninth Precinct—All that portion of Honolulu or Kona lying between the Eighth Precinct and Nuuanu street and mauka of a line drawn along School street, the Nuuanu stream and Beretania street. Polling Place: Building northwest corner Kuakini and Nuuanu streets.
 Inspectors: W. J. Coelho, S. H. Mee-kapu, F. W. Weed.
 Tenth Precinct—All that portion of Honolulu or Kona bounded by King, Liliha and School streets, the Nuuanu stream Beretania and Nuuanu streets and the Harbor. Polling Place: Aaia Warehouse.
 Inspectors: M. K. Keohokalole, Abraham Bolster, W. K. Kaleihua.

SIXTH DISTRICT.
 Islands of Kauai and Niihau.
 First Precinct—The Island of Niihau. Polling Place: School House.
 Inspectors: J. B. Kaomea, J. W. Kola, Nohokula.
 Second Precinct—That portion of the District of Waimea extending from the Third Precinct to the Puanaua Point. Polling Place: Kekaha School House.

Inspectors: E. Knudsen, P. Kaiala-waawa, Max Schlemmer.
 Third Precinct—That portion of the District of Waimea extending from Hanapepe to the boundary line between Waimea and Keolu Plantations and extending along a line in continuation of said boundary to the sea. Polling Place: Waimea Court House.
 Inspectors: C. B. Hofgaard, G. W. K. Nawal, E. L. Kaula.
 Fourth Precinct—From and including Kalahea to and including Hanapepe. Polling Place: Hanapepe School House.
 Inspectors: J. A. Palmer, J. K. Palama, H. H. Brodie.
 Fifth Precinct—The District of Koloa from its junction with Lihue to and including the land of Lawai. Polling Place: Koloa Court House.
 Inspectors: W. H. Neal, A. K. Mika, H. Blake.
 Sixth Precinct—The District of Lihue. Polling Place: Lihue Court House.
 Inspectors: W. T. Lucas, C. H. Bishop, Kanikanthia.
 Seventh Precinct—Extending from the land of Papaa to and including the land of Waialua. Polling Place: Court House, Kapaa.
 Inspectors: J. W. Neal, K. Kaumua-ili, S. W. Meheula.
 Eighth Precinct—Extending from Kaliahwal River to and including the land of Papaa. Polling Place: Government School House, Kilauea.
 Inspectors: John Bush, P. Migela, I. Kahliena.
 Ninth Precinct—Extending from Kaliahwal River to the north boundary of the district of Waimea. Polling Place: Waiohi Court House.
 Inspectors: C. H. Willis, J. W. Alo-hikea, C. B. Makee.
 The electors in said districts are entitled to elect representatives as follows:
 In the First District, four.
 In the Second District, four.
 In the Third District, six.
 In the Fourth District, six.
 In the Fifth District, six.
 In the Sixth District, four.
 Given under my hand and the great seal of the Territory of Hawaii, this 24th day of September, A. D. 1900.
 SANFORD B. DOLE.
 By the Governor.
 Henry E. Cooper,
 Secretary of the Territory.
 1845-6t- oaw

Real Estate and Insurance.
CASTLE & COOKE
 IMPORTERS
LIFE and FIRE INSURANCE AGENTS.
 AGENTS FOR . . .
 NEW ENGLAND MUTUAL LIFE INSURANCE CO. OF BOSTON.
 ETNA FIRE INSURANCE COMPANY OF HARTFORD.
 HENRY ST. GOAR, EDWARD POLLITZ.
 Members Stock and Bond Exchange.
EDWARD POLLITZ & Co
 COMMISSION BROKERS AND DEALERS IN INVESTMENT SECURITIES
 Particular attention given to purchase and sale of Hawaiian Sugar Stock. Loans Negotiated. Eastern and Foreign Stocks and Bonds.
 408 California St., San Francisco, Cal. 1172

WILLIAM SAVIDGE,
Stock and Bond Broker
 Member of Hawaiian Stock Exchange.
 McInerney Block, Fort Street.
BOYD, SCOTT & CO.,
 Custom House Internal Revenue Brokers
 315 FORT ST., opposite Irwin & Co.
A. J. CAMPBELL,
 Stock and Bond Broker
 Member of the Honolulu Stock Exchange.
 Office Queen street, opposite Union Feed Company.
 Telephone 506 P. O. Box 375

FRED J. CROSS,
 Consulting and Superintending
Electrical and Hydraulic ENGINEER.
 Electro-Hydraulic Power Transmission REPORTS AND ESTIMATES FURNISHED
 With Cation-Neil Co., Queen street. Office next to Pa...-dice. 1234

JAMES T. TAYLOR,
 M. Am. Soc. C. E.
CONSULTING Hydraulic Engineer.
 806 Judd Block. Tele. 638.

Bankers.
CLAUS SPRECKELS. Wm. G. LEWIS
Claus Spreckels & Co. BANKERS.
 HONOLULU
 San Francisco Agents—THE NEVADA NATIONAL BANK OF SAN FRANCISCO. SAN FRANCISCO—The Nevada National Bank of San Francisco.
 LONDON—The Union Bank of London Ltd.
 NEW YORK—American Exchange National Bank.
 CHICAGO—Merchants National Bank.
 PARIS—Credit Lyonnais.
 BRUSSELS—Dresdener Bank.
 HONGKONG AND YOKOHAMA—Hongkong Shanghai Banking Corporation.
 NEW ZEALAND AND AUSTRALIA—Bank of New Zealand.
 VICTORIA AND VANCOUVER—Bank of British North America.
 Transact a General Banking and Exchange Business
 Deposits Received. Loans made on Approved Security. Commercial and Traveler's Credits Issued. Bills of Exchange bought and sold.
 COLLECTORS PROMPTLY ACCOUNTED FOR.

THE BANK OF HAWAII, Ltd.
 JUDD BUILDING.
 (INCORPORATED UNDER THE LAWS OF THE HAWAIIAN REPUBLIC.)
 Capital \$400,000
 OFFICERS AND DIRECTORS:
 CHAS. M. COOK, President.
 F. C. JONES, Vice-President.
 C. H. COOK, Cashier.
 F. C. ATHERTON, Assistant Cashier.
 Henry Waterhouse, Tom May, F. W. Macfarlane, E. D. Tenney, J. A. McCandless.
 Solicits the Accounts of Firms, Corporations, Trusts, Individuals, and will carefully and promptly attend to all business connected with banking entrusted to it. Sell and purchase Foreign Exchange, issue Letters of Credit.

SAVINGS DEPARTMENT
 Ordinary and Term Deposits received, and interest allowed in accordance with rules and conditions printed in Pass-books, copies of which may be had upon application.
BISHOP & CO.

Savings Bank
 Savings Deposits will be received and interest allowed by this Bank at four and one-half per cent. per annum.
 Printed copies of the Rules and Regulations may be obtained on application. Office at bank building on Merchant street.
BISHOP & CO.
 —Established 1868—

BISHOP & Co. BANKERS.
 Transact a General Banking and Exchange Business.
 Commercial and Traveler's Letters of Credit issued, available in all the principal cities of the world.
 Interest allowed after July 1, 1898, on fixed deposits 7 day notice 2 per cent., (this form will not bear interest unless it remains undisturbed for one month), 3 months 3 per cent., 6 months 3 1/2 per cent., 12 months 4 per cent.

Pioneer Building and Loan Association.
 ASSETS, DEC. 31, 1899, \$112,877.58
 Money loaned on approved security. A Savings Bank for monthly deposits. Houses built on the monthly installment plan.
 Twentieth Serl. of Stock is now opened.
 OFFICERS—T. F. Lansing, President; S. B. Rose, Vice President; C. M. Gray, Treasurer; A. V. Gear, Secretary.
 DIRECTORS—T. F. Lansing, S. B. Rose, A. V. Gear, A. W. Keech, Henry Smith, J. L. McLean, J. D. Holt, C. M. Gray, W. L. Howard.
 A. V. GEAR, Secretary.
 Chamber of Commerce rooms. Office Hours: 12:30—1:30 p. m.

The Yokohama Specie Bank
 LIMITED.
 Subscribed Capital . . . Yen 24,000,000
 Paid Up Capital Yen 18,000,000
 Reserved Fund Yen 8,000,000
 The Bank buys and receives for collection Bills of Exchange, issues Drafts and Letters of Credit, and transacts a general banking business.
 INTEREST ALLOWED—
 On Fixed Deposit for 12 months, 5 per cent p. a.
 On Fixed Deposit for 6 months, 4 1/2
 On Fixed Deposit for 3 months, 4
 INTEREST ALLOWED—
 By the Head Office, at Yokohama, on Current Deposit, 2-1/2 per cent per day.
 On Fixed Deposit for 12 months, 5 1/2 per cent p. a.
 New Republic Building, 111 King St., Honolulu

REAL ESTATE TRANSACTIONS
 Subscribers are furnished with from five to six lists per week, giving an accurate record of deeds, mortgages, leases, releases, powers of attorney, etc., etc., which are placed on record.
 SUBSCRIPTION PRICE, \$2.00 PER MONTH.
A. V. GEAR,
 Judd Building, Honolulu.

Lines of Travel.

Oceanic Steamship Company

TIME TABLE.

The Fine Passenger Steamers of This Line Will Arrive at and Leave This Port as Hereunder.

Table with columns for destination (San Francisco, Honolulu, etc.) and dates.

In connection with the sailing of the above steamers, the Agents are prepared to issue, to intending passengers, coupon through tickets by any railroad from San Francisco, to all points in the United States, and from New York by any steamship line to all European ports.

Wm. G. Irwin & Co., Limited

General Agents Oceanic S. S. Co.

Pacific Mail Steamship Co.

Occidental and Oriental Steamship Co. Toyo Kisen Kaisha

Steamers of the above companies will call at Honolulu and leave this port on or about the dates below mentioned:

Table with columns for destination (Japan and China, San Francisco) and dates.

H. Hackfeld & Co., Ltd., Agents.

Canadian-Australian Royal Mail Steamship Company.

Steamers of the above line, running in connection with the CANADIAN PACIFIC RAILWAY CO. between Vancouver, B. C., and Sydney, N. S. W., and calling at Victoria, B. C., Honolulu and Brisbane on the route AT HONOLULU on or about the dates below stated:

Table with columns for destination (Sydney and Brisbane, San Francisco) and dates.

Theo. H. Davies & Co., Ltd., Gen'l Agents.

American-Hawaiian S. S. Co.

Direct Service between NEW YORK, PACIFIC COAST and HAWAIIAN ISLANDS.

S. S. "AMERICAN" will leave New York for San Francisco, Portland and the Sound on route to Honolulu on October 10th, due at San Francisco about December 12th, at the Sound about December 21st. Will receive freight at Tacoma and Seattle for Honolulu at lowest rates.

H. HACKFELD & CO., LTD., Agents, Honolulu

Wilder Steamship Co., Ltd.

S. S. Kinau, FREEMAN, Master. MOLOKAI, MAUI, HAWAII.

Will sail from Honolulu on Tuesdays at 12 noon, for Kaunakakai, Lahaina, Maalaea Bay, Kihai, Makona, Kawaihae, Mahukona, Launapahoehoe and Hilo.

Passengers and freight will be taken for Makona, Mahukona, Kawaihae, Hilo, Hakalau, Honoumahu, Papahou and Pepeekeo.

S. S. Claudine, McDONALD, Master. MAUI.

Will leave Honolulu every Tuesday at 5 p. m. touching at Lahaina, Kaunakakai, Naha, Hana, Hamoa and Kihai, Maui. Returning, touches at above named ports, arriving in Honolulu Sunday mornings.

S. S. Lehua, BENNETT, Master. MOLOKAI, MAUI, LANAI.

Sails every Monday for Kaunakakai, Makalo, Maunaloa, Kalaupapa, Lahaina, Honolulu, Olowalu. Returning arrives at Honolulu Saturday mornings.

This company reserves the right to make changes in the time of departure and arrival of its steamers WITHOUT NOTICE, and it will not be responsible for any consequences arising therefrom.

Consignees must be at the landing to receive their freight. This company will not hold itself responsible for freight after it has been landed.

Passengers are requested to purchase tickets before embarking. Those failing to do so will be subject to an additional charge of twenty-five per cent.

All employees of the company are forbidden to receive freight without delivering a shipment receipt therefor in the form prescribed by the Company, and which may be seen by shippers upon application to the pursers of the Company's steamers.

Curios! WOMAN'S EXCHANGE

Kapa, Calabashes, Lids, Native Hats, Hula Skirts, Nihau Mats, Fans, Shells, Seeds, Etc. Home-made Poi, constantly on hand.

Chinese and Japanese Firms.

Y. MASUDA

Portraits

DONE IN CRAYON OR OIL.

..... Pictures Framed in any style Framed Pictures for sale. New Mouldings for Frames have arrived.

King and Alapai streets, Near Honolulu Stock Yards. TELEPHONE 869

T. KATSUNUMA & Co.

A. K. OZAWA, Manager.

GENERAL BUSINESS AGENCY.

Temporary Office: Room 7 upstairs Spreckels building Tel. 342.

Wong Sai Kee

MERCHANT - TAILOR

A PERFECT FIT GUARANTEED

-404 Fort St., near King St. - HONOLULU, H. I.

Cleaning, Dyeing and Repairing a Specialty

Y. MAN SING

Has Removed From Fort Street to 311 Nuuanu Street, opp. Goo Kim's.

LADIES' UNDERWEAR.

Dresses Made To Order.

HOP HONG, Merchant Tailor,

A FINE ASSORTMENT OF AMERICAN, ENGLISH AND SCOTCH CLOTH OF HAND

No. 219 Nuuanu street, Honolulu, H. I.

Good work and first-class fit guaranteed. Clothes Cleaned and Repaired.

WING LUNG

..... CORNER ALAKEA AND KING STREETS.....

GROCERY AND FRESH FRUITS always on hand. FRESH PINEAPPLES for special order, and CALIFORNIA FRUITS by every steamer and also ISLAND BUTTER. Delivery Free. Tel. 367

The Astor House Restaurant

Corner King and Alakea streets

FIRST CLASS FAMILY RESTAURANT

Meals at all hours

Ah Chuck Proprietor

The World Register

Keeps the Cash while you are busy. Try one

Scott Prices

On Marble and Granite.

MONUMENTS and CEMETERY WORK.

Fences and Lawn Furniture.

Haw'ii Iron Fence and Monumental Co.

641 King Street.

E-Z to carry

E-Z to take

E-Z way to cure a headache

10 cents all drugstores

GESSLER'S MAGIC HEADACHE WAFERS

AT ALL DRUGGISTS PRICE 10¢ AND 25¢. THE 25¢ SIZE HELD FOUR TIMES AS LONG AS THE 10¢.

I will give \$100 REWARD for any trace of counterfeit, stolen or forged substitutes of any kind found on my headache wafers.

F. C. SMITH, Gen'l. Man. & Ticket Agent.

G. F. DUNN, Superintendent.

P. O. Box 732 Island Correspondence Solicited.

FINKE & ASBAHR, FLORISTS

Cut and Growing Plants, Sprays, Bouquets.

Decorators for Weddings and Receptions.

Floral Designs for Funerals a Specialty.

FORT STREET

Next to Williams' Undertaking Parlors. 1635-ft

Mrs. Annis Montague Turner, WINTER SEASON.

Vocal Studio, "Mignon"

720 Beretania street; Tel. 1114. 1637-ft

E. K. KAAL,

Teacher of Star, Mandolin, Zitar, Ukulele and Taro Patch.

Orders to be left care of Wall, Nieboer Co. or Astrom Music Co.'s 127

DEATHS IN SEPTEMBER

MOST TERRIBLE INFANTILE MORTALITY

Veritable Slaughter of the Innocents Among Hawaiians, Portuguese and Japanese --- Tuberculosis a Scourge,

C. Charlock, registrar of births, marriages and deaths for Honolulu, reports 88 deaths for September, against 79 for the same month in 1899. There were 21 deaths of infants under one year, the tremendous proportion of nearly one-fourth of the entire mortality. Counting in four from 1 to 5 and one from 5 to 10, much more than one-fourth of the deaths is represented by what may be called the slaughter of the innocents. This is a fearful showing—a disgrace to our boasted civilization.

The next largest proportion is 13 deaths of persons from 30 to 40, then 16 from 20 to 30 and 12 from 40 to 50, all other ages than those already mentioned ranging from three to five deaths, the last figure being of those aged over 70. Males dying were 54 and females 34. By nationalities the Hawaiians lost 30, a good deal more than a fourth of the entire loss of population, and reverting to ages it is found that of the 21 under one year 6 were Hawaiian, 7 Portuguese and 5 Japanese, leaving only 2 American and 1 Chinese babes to complete the sad list. The Chinese deaths were 9, Portuguese 12, Japanese 25, British 1, American 5 and others 5. Fifteen of the dead were non-residents.

The annual death rate per thousand for month was 23.73, Hawaiian exhibiting 28.12, Chinese 10.09, Japanese 41.50, Portuguese 26.18 and all others 16.50. Tuberculosis is again found the most prolific cause of death with 10 victims, while typhoid fever follows with 9, malarial and remittent fevers respectively claiming 4 and 1. Pneumonia carried off 8, enteritis 6, disease of the heat 5, and 26 other causes divide the fell harvest between them with from 1 to 4 cases each. One death was accidental.

SEATTLE BEER.

The ever popular Rainier beer is becoming a household word and "will you have a glass of Seattle?" is more often heard than anything else. The Criterion Saloon has the beer on tap or in bottles.

New Demand on the Ports.

Constantinople, Sept. 19. — Lloyd Griscom, United States Charge d'Affaires, has made verbal representations to the Porte, demanding the release of an Armenian who, it is claimed, is a naturalized American citizen, and who was arrested upon the charge of belonging to the Armenian revolutionary committee. An investigation has been ordered, and if the prisoner is found to be an American citizen he will be released.

Steamship Rates Advanced.

Montreal, Sept. 19.—The different steamship lines running into Montreal yesterday notified shippers of an advance in freight rates of 10 per cent on account of the increased cost of coal and other ship's stores.

Markets and Grocers.

Potatoes, Naval Oranges, Lemons, Dried Fruit, Ranch Eggs, Butter, Cheese, &c.

Per Australia

J. R. MILLS

Lincoln Block, King street.

Novelties

for dinner giving and for luncheons and for entertaining may be had here constantly

LEWIS & CO., Grocers.

Telephone 240. 111 Fort St.

For Sale.

No. 1. Business property on Smith street, between Pauahi and Beretania streets.

No. 2. Residence property on Punchbowl street, near Vineyard street, suitable for cottages.

No. 3. Fine suburban property fronting on McCully street and running from Beretania to King streets.

Will sell on easy terms, viz: part in cash, or approved stocks or bonds, balance on mortgage.

For Sale or Lease.

Valuable business property, corner of King and Smith streets.

For Rent.

A few office suites in Model Block. For particulars apply to BRUCE CARTWRIGHT, Cartwright Building, Merchant Street. 1623-ft

Mexican Carved Leather Goods!!

BELTS, PURSES, ETC., ETC.

A fine Sample line

Just Received by...

HAWAIIAN NEWS CO., LTD.

Honolulu Iron Works Co.

Improved and modern SUGAR MACHINERY of every capacity and description made to order. Boiler work and RIVETED PIPES for irrigation purposes a specialty. Particular attention paid to JOB WORK, and repairs executed at shortest notice.

REGISTRATION ROLLS ARE NOW OPEN IN HONOLULU IT IS THE DUTY OF EVERY REPUBLICAN TO REGISTER AT ONCE

Plumbers, Etc.

John Nott, PLUMBER,

75 and 79 King Street

TELEPHONE NO 314

NOW is the time to get leaks and breakages seen to, and your

Roofs Put in Order

By competent workmen

For the Plumbing

On that new house that you are about to build or the alterations you are intending to make on your property. Call and see us and get an estimate.

JAS. NOTT, Jr

Practical Tinsmith and Plumber, Shop: Beretania street, 4 doors east of Punchbowl. Phone 844. Hours 7 a. m. to 5 p. m. Jobbing promptly attended to.

Honolulu Sheet Metal Works

Galvanized Iron Skylights and Ventilators. Metal Roofing.

Conductor Pipe and Gutter Work.

Richards Street, bet. Queen and Merchant. Honolulu. Jobbing promptly attended to.

Tel. White 41. P. O. Box 370

The Walkiki

BOARDING AND LIVERY

Stables

Rigs sent to any part of the City.

HACKS - AT - ALL - HOURS

Waikiki Road, - - - Waikiki.

TEL. BLACK 141.

When You Want a Rig

.....RING UP THE.....

C - L - U - B

Livery, Boarding and Sales Stables, : : :

.....518 FORT STREET

Stable Phone, 477

Hack Stand Phones, 319 and 772. C. H. BELLINA.

THE UNION EXPRESS CO.

Safes, Pianos, Furniture MOVED

Drays for Freight and Lumber.....

Our representative meets all incoming steamers from the Coast and we check baggage on all outgoing steamers.

White and Black Sand For Sale.

Office with Evening Bulletin, 210 King street. Tel. 86.

W. LARSEN, M'gr.

ROCK.....

FOR BALLAST!!

{ White and Black Sand }

{ In Quantities to Suit..... }

EXCAVATING - CONTRACTED

For

CORAL AND SOIL FOR SALE.

Dump Carts furnished by the day on Hour's Notice.

H. R. HITCHCOCK.

Merchant St., in M. D. Monsarrat's office.

A GOOD THING

4-U-S-C

Ohio, Algorta and Pine Firewood

One and Spills (ready for the stove).

Also,

STOVE, STEAM & BLACKSMITH COAL

WHITE AND BLACK SAND

Lowest Prices, delivered to any part of the City.

TELEPHONE 414

HUSTACE & CO.,

21 Queen Street.

Pacific Transfer Co.

227 King St., next to Bailey's Cycles.

EXPRESS WAGONS, DRAYS

LUMBER WAGONS AND

DUMP CARTS : : : :

Always on Hand.

Trunks, Furniture and Sales Carefully Handled.

.....TELEPHONE 38

MAIN 199

Masonic Temple

The Evening Bulletin, 75 cents per month.

Advertisement for Gessler's Magic Headache Wafers. Includes text 'To Cure a Headache in 20 minutes take Gessler's Magic Headache Wafers.' and an illustration of a woman in distress holding her head.

MILCH COWS At your own price. HONOLULU STOCK YARDS CO., LTD.

Jas. F. Morgan AUCTIONEER AND BROKER 83 Queen Street

Auction Sale DELINQUENT STOCK IN THE Nabiku Sugar Co., Ltd.

SATURDAY, Oct. 20, 1900, AT 12 O'CLOCK NOON.

At my salesroom, 33 Queen street, Honolulu, I will sell at Public Auction by order of the Treasurer, Mr. J. P. Cooke, the following certificates of stock in the Nabiku Sugar Co., Ltd., unless the 4th Assessment due June 20th, 1900, delinquent Oct. 1st, 1900, with interest thereon and advertising expenses is paid on or before the day and hour of sale.

Table with columns: No. Cts., Names, Shares. Lists various stock certificates and their values.

JAS. F. MORGAN, Auctioneer. J. P. COOKE, Treasurer. Honolulu, Oct. 3rd, 1900.

ANNOUNCEMENT.

DR. C. B. COOPER having this day formed a partnership with DR. J. T. McDONALD, formerly of San Francisco, the firm of DR. COOPER & McDONALD will carry on the practice, occupying the offices formerly used by Dr. Cooper.

OFFICE HOURS: Dr. Cooper—8:30 to 10 a. m., 2 to 4 and 7 to 8 p. m. Dr. McDonald—10 a. m. to 2 p. m., 7 to 8 p. m. Sundays—Dr. Cooper, 8:30 to 10 a. m.; Dr. McDonald, 1 to 2 p. m. Telephone 154. September 17, 1900.

Dr. Cooper will present all bills incurred prior to the formation of the partnership through his collector. 158811

NOTICE.

THE CITY OFFICE OF THE Star Dairy Co., Ltd. Is in the Magoon Building, Room 1, corner Merchant and Alakea streets. TELEPHONE MAIN 391. Dairy Telephone: Blue 3171. 1645-1m A. B. DOAK, Manager.

NOTICE.

A meeting of the members of the Bar of Honolulu will be held at 4 p. m. on Wednesday, October 3, 1900, in the United States District Court Room, to discuss the proposed Supreme Court Rules. PAUL NEUMANN, President Hawaiian Bar Association. 1650-21

Art Embroidery Taught. Lessons in ART EMBROIDERY will be given by Mrs. H. H. Williams at the City Furniture Store, Fort street. First Class stamping done. MRS. H. H. WILLIAMS.

NOTICE

Miss Adaline Papu Jones gives notice that the power of attorney given to S. F. Chillingworth is hereby revoked. 164973 The Evening Bulletin, 75 cents per month.

CONLEY DIES IN MANILA

C. J. Adams of the Quartermaster's department at Manila sends the Bulletin the following account of the death of C. C. Conley Jr., well known in Honolulu:

Chas. C. Conley Jr., a prominent member of the Improved Order of Red Men, died yesterday at the Third Reserve Hospital in this city, where he had undergone an operation for appendicitis. The deceased had many friends here in Manila and was well and favorably known in the States. His father, Charles C. Conley, is the Great Chief of Records of the Red Men order and lives in Philadelphia. It is understood that the funeral will take place under the direction of the order here in Manila, and that full honors will be observed.

Mr. Conley was admitted to the hospital on the 6th inst and was operated on on the 9th. He was suffering with appendicitis and perforation of the bowels and died from the effects on Monday night.

Mr. Conley was a familiar personage in the Water Transportation Department. He came here with the 15th Minnesota Volunteers, joining the regiment at Honolulu. In Honolulu he served a number of years in the mounted police and held a commission in that organization. Mr. Conley's parents are living and his death will be a great shock to them, as well as to the numerous friends he has made in Manila.

The Third Rail.

The commissioner of public buildings, lighting and supplies and the elevated railroad officials of Brooklyn are working on plans for doing away with the danger to life in the "third-rail" system in use on the elevated railroads. The recent fatal accidents attributable to the third rail have impelled the commissioner to take steps to compel the company to make a system less dangerous to life. One plan that has been proposed is to place the rail in the middle of the track instead of on one side, and protect it with upright boards projecting a few inches above it—Puolic Opinion.

Republicans Attention! You have only till Tuesday to register.

REGISTER NOW!

NEW TO-DAY



LOWNEY'S Chocolate Bon-Bons "Name on Every Piece." FOR SALE BY

LEWIS & CO., Sole Agents.

240! 240! 240! THREE TELEPHONES

Lodge Le Progres de l'Oceanie, No. 124, A & A. S. RITE.

There will be a special meeting of Lodge Le Progres de l'Oceanie, No. 124, A & A. S. R., at its hall, Masonic Temple, THIS (WEDNESDAY) EVENING at 7:30 o'clock. WORK IN SECOND DEGREE. Members of Hawaiian Lodge No. 21 and Pacific Lodge No. 822 and all sojourning brethren are cordially invited to be present. By order of the W. M. E. B. FRIEL, Secretary. 1651-11

EGRY'S Violin - Studio ROOM 4, LOVE BUILDING.

Cure morning headaches before breakfast. GESSLER'S MAGIC HEADACHE WAFERS. 10 cents all druggists.

SHIPPING INTELLIGENCE

For additional Shipping News see seventh page.

TIDES table with columns: DAY, High Tide, Low Tide, etc. for Monday through Sunday.

Full moon on the 8th at 2:48 a. m. Tides from the United States Coast and Geodetic Survey Tables.

The tides at Kahului and Hilo occur about an hour earlier than at Honolulu. Hawaiian Standard Time is 10h. 30m slower than Greenwich time, being that of the meridian of 157 30'. The time whistle blows at 1:30 p. m., which is the same as Greenwich Oh. 0m.

MOVEMENTS OF STEAMERS.

Steamers due and sailing for the remainder of this and the whole of next month are as follows:

ARRIVE table with columns: Steamers, From, Due.

DEPART table with columns: Steamers, For, Due.

Weather Bureau, Punahou, October 3.—Temperature—Morning minimum, 75; Midday maximum, 83. Barometer at 9 a. m. 30.00, irregular. Rainfall .01. Dew Point 65F. Humidity at 9 a. m. 60 per cent. Diamond Head Signal Station, October 3.—Weather cloudy; wind light NE.

ARRIVALS.

Tuesday, October 2. Am. sp. Star of Russia, Mortensen, 45 days from Newcastle. Wednesday, October 3. Smt Upolu, Dalton, from Hawaii ports. Am. schr. Rosamond, Ward, from San Francisco. Brk. Addeley, Berquist, from Newcastle with coal. Am. schr. Luzon, from Gray's Harbor with lumber for Lewers & Cooke.

DEPARTURES.

Tuesday, October 1. O. S. S. Australia, Lawless, for San Francisco. Smt W. G. Hall, Thompson, for Kauai ports. Smt Kilaukea Hou, McAllister, for Kihel. Smt Maui, Parker, for Maui ports. Br. bk. Dunregan, Dixon, for Seattle. Gas schr. Surprise, Gahand, for Kauai ports. Wednesday, October 3. T. K. K. America Maru, Going, for San Francisco. TO SAIL THIS AFTERNOON. Smt Kaula, Bruhn, for Elele and Makaiwai at 4 p. m. Smt Helene, Sachs, for Paauhau, Kulaui, Ooikala and Laupahoehoe at 5 p. m. Smt Kilaukea Hou, McAllister, for Olo-walu and Kihel at 4 p. m.

PASSENGERS ARRIVED.

From the Orient, per T. K. K. America Maru, Oct 2—For Honolulu: O Shioda, C. Shiozawa, 2 European and 25 Asiatic steerage. From San Francisco, per schr. Rosamond Oct 2—Mrs. H. M. French, Mrs. C. J. Roberts, Mrs. F. J. Russell, Miss Sarah Lyett, Miss Osterwaldt, Miss Heltramm, Morgan Hayes, Wm. King, Wm. S. Fleming, F. J. Russell, Julian D. Harris and H. J. Gallagher. PASSENGERS DEPARTED. For San Francisco, per O. S. S. Australia, Oct 2—T. F. Stevenson, Mrs. Simpson and 2 children, C. N. Weaver and wife, T. B. Richards and wife, Capt. Greig and wife, G. King and wife, Mrs. Macpherson, Miss Porter, H. C. Haysling, Mr. and Mrs. Kinghorn, B. Tucker, Mrs. G. C. Stratemeyer and 5 children, Mr. and Mrs. Thirkield, Mr. Remensbeger, Mrs. Berger, Miss A. Lishman, R. M. Robertson, W. G. Green, B. F. Cooke, Mrs. H. C. Austin, Miss A. Ballins, Mrs. C. H. Dasher, Miss Averdam, W. Fink, W. Dow, Mrs. S. I. Shaw, Miss E. F. Smith, J. M. Chesney, H. T. Marsh, L. S. Abraham, T. S. Young, Miss E. Alleman, Miss L. Alleman, F. L. Hoops, wife and daughter, Dr. H. Hayes, L. A. Rostin, E. W. King, E. K. Wood and wife, Prof. Berger, H. C. Paul-smier, J. G. Rothwell, R. Kengard, H. A. Allen, Col. Macdonald and wife, Mrs. Corbett and child, Col. and Mrs. De La Vergoe, Mrs. Ryle and daughter, E. M. Boyd and wife, Geo. Rodick, C. S. Hall, Miss M. Tapin, Miss A. Twombly, Major Greigg and wife, Miss Greigg, Miss Bard, Miss Mathewson, M. Stafford and child, Mrs. Richmond.

PASSENGERS DEPARTED.

For San Francisco, per O. S. S. Australia, Oct 2—T. F. Stevenson, Mrs. Simpson and 2 children, C. N. Weaver and wife, T. B. Richards and wife, Capt. Greig and wife, G. King and wife, Mrs. Macpherson, Miss Porter, H. C. Haysling, Mr. and Mrs. Kinghorn, B. Tucker, Mrs. G. C. Stratemeyer and 5 children, Mr. and Mrs. Thirkield, Mr. Remensbeger, Mrs. Berger, Miss A. Lishman, R. M. Robertson, W. G. Green, B. F. Cooke, Mrs. H. C. Austin, Miss A. Ballins, Mrs. C. H. Dasher, Miss Averdam, W. Fink, W. Dow, Mrs. S. I. Shaw, Miss E. F. Smith, J. M. Chesney, H. T. Marsh, L. S. Abraham, T. S. Young, Miss E. Alleman, Miss L. Alleman, F. L. Hoops, wife and daughter, Dr. H. Hayes, L. A. Rostin, E. W. King, E. K. Wood and wife, Prof. Berger, H. C. Paul-smier, J. G. Rothwell, R. Kengard, H. A. Allen, Col. Macdonald and wife, Mrs. Corbett and child, Col. and Mrs. De La Vergoe, Mrs. Ryle and daughter, E. M. Boyd and wife, Geo. Rodick, C. S. Hall, Miss M. Tapin, Miss A. Twombly, Major Greigg and wife, Miss Greigg, Miss Bard, Miss Mathewson, M. Stafford and child, Mrs. Richmond.

Come early and avoid the rush. Tuesday is the last day for registration.

The Democratic Central Committee publishes today the official list of the candidates of the Democratic party.

The Niihau sails at 4 p. m. today for Anahola.

WANTS.

Ads. in this column will be inserted at 10 cents a line one insertion, at 7 cents two insertions, at 5 cents one week, at 4 cents two weeks, and at 3 cents one month. This is the cheapest advertising ever offered the people of Honolulu.

The Fort Employment Office,

307 KING STREET. PHONE MAIN 38. HELP WANTED. SITUATION WANTED. Japanese with wife, Japanese woman housemaid, Man 35 day, wife makes about \$25 per month. Give house to Living Country. Japanese boy or Chinese, general servant, take care of one horse. Japanese first cook \$6 week, board and room. Japanese or Chinese first cook, \$20 per month board and room. Japanese woman housemaid and little washing \$25 per week, board and room. Japanese yard boy, \$2 week, board and room. American boy, about 12 years old as Clerk and salesman cigar store, \$2 week.

SPECIAL NOTICES.

THAT J. P. MELIM, shoemaker, has removed his shop from Hotel St., to Union St., next door to McDonald & Lamson, contract no. 15889.

SPECIAL NOTICE—Dr. Huddy, the dentist, has resumed practice in his office on Fort St., 154-156.

NOTICE TO OWNER'S ARCHITECTS & BUILDERS, E. N. Quinn of 115 Union St., is prepared to furnish estimates on first class modern plumbing. Particulars solicited. E. C. Box 122. Office, 107-108.

NOTICE TO BUILDERS—The Union Express Co. has WHITE SAND FOR SALE. 154111

WANTED.

WANTED—A YOUNG LADY as a Cashier, Pacific Import Co. 16474. WANTED—A HOUSEKEEPER at the Waikiki Inn. WANTED—at once two ladies of pleasing address for special work among ladies. For particulars address Mrs. Hartman, E. C. Box 122.

WANTED—WATCHES to repair by jeweler of 15 years experience. G. DIETZ, 417 Nuuanu St. 1573-11

OLD PAPERS TO EXCHANGE for clean Cotton Bags. Apply at Bulletin Office. 1574-11

EXPERIENCED SEWING GIRLS in dressmaking department. Whitney & Marsh. 1566.

THE OWL LUNCH AND OYSTER ROOM—Oysters served in the shell only. Try his famous Ham and Egg. Office, 107-108 Nuuanu and Hotel streets. DICK DALY, Proprietor. 157111

TO LET.

FROM October 1, office on Hotel street, at present occupied by Miss De Larigue. Suitable for doctor's office. Apply to Mrs. Cowles, Hotel St. next Y. M. C. A. 1648-11

TO LET—FURNISHED HOUSE on Young St. between Keawakumu and Pilihi streets. Apply on premises or telephone 158.

WELL FURNISHED rooms, with bath. Sefton House, Young Street, near Pilihi. 1648-11

TO LET—a nicely furnished room. Apply at 69, Hotel street. 1648-11

FOR RENT—OFFICE. Apply to J. M. Monsarrat, No. 19 Merchant street. 157111

FOR SALE.

A PHAETON in first-class condition; just repaired and painted. Apply to G. E. Smith, 1646-11

CHEAP—50.00 test rustic; net cash. Inquire at Washington Mercantile Co., Ltd., Fort and Queen streets. 1648-11

FOR SALE—A beautiful high grade upright PIANO. Must be sold at once. No reasonable offer refused. Address J. W. this office. 1648-11

FOR SALE—A NICE MODERN COTTAGE with fruit and shade trees. Corner Anapuni and Pilihi streets. \$1000 cash. Balance in easy installments. Apply next door to J. H. Cummings. 1646-11

FOR SALE—\$500. Leasehold on Fort street, near Pilihi, 5 years to run. Ground rent only \$55 per annum. Apply to WILLIAM SAVIDGE & CO., 1648-11

FOR SALE—LOTS in Palama near town. All sizes and prices. Apply to WILLIAM SAVIDGE & CO., 1648-11

FOR SALE—\$500. Leasehold on Queen street, near Honolulu from Works. 24 years to run. Splendid Warehouse Location. Apply to WILLIAM SAVIDGE & CO., 1648-11

FOR SALE—This means I will sell a large stock of Manila Cigars at 4c per hundred. F. J. ZEPHRAK, Myrtle Cigar Store.

FOR SALE—A pair of black coach horses formerly the property of Wm. G. Irwin, Esq. Apply to James Carry, American Stables, Merchant and Richards streets. 1648-11

FOR SALE—Lots 52220 in Nuuanu tract \$25 down \$50 per month. J. H. Schnack, 121 Merchant street. 1573-11

FOR SALE—LANDS IN ALL PARTS OF THE CITY. By J. M. VIVAS. 1588

LOST.

LOST—Solitaire diamond ring in the vicinity of the Hawaiian Hotel, Sunday night, Sept. 31. Finder will please leave same at hotel office and receive suitable reward. 1648-11

LOST—a gold enameled pin; monogram U. S., 96 L in crimson and gold. Finder please return to this office and receive reward. 1648-11

FOUND.

FOUND—AN IMPERIAL BICYCLE. Owner can obtain same by calling at this office, giving number and paying for this advertisement. 1648-11

FOUND—A BUNDLE OF BLACK CRAWP on Hotel street opposite the Arlington. Owner can obtain same at this office by paying for this advertisement. 1648-11

FOUND—a receipt for Postal Savings Bank Book, No. 628 B. Owner can obtain same by calling at this office and paying for this advertisement. 1648-11

A Regular Raricy.

Horsemen are talking about the fine bit of training done by S. H. Grigsby. Live stock superintendent of the Honolulu Stock Yards Co. Four wicked horses—they were called man-eaters on the Coast, where they chewed some hostlers up—were imported by the company. Mr. Grigsby in the short space of four days quelled the proud temper of the brutes, and they are now as tractable creatures as any lady would wish to drive. The company received 20 first-rate driving horses in the bark Olympic the other day.

The First Decision.

Inadvertently the Bulletin omitted to mention that Judge Humphreys rendered an oral decision on the petition of Mr. Clarke for a writ of mandamus to compel the Board of Registration to register him the day before the Supreme Court decided the case of Loucks. The First Circuit Judge's decision was in harmony with that of the Supreme Court coming later.

RAMBLER BICYCLES \$40.00 Old wheels taken as Part Payment ALSO SOLD ON Installments E. O. HALL & SON, Ltd. Bicycle Department King street, next to Bulletin Office

THE I. X. L. FURNITURE HOUSE Has made another Big Reduction in Bedroom Sets, Sideboards, Tables, Chiffoniers, Chairs, Rockers, Baby Carriages, Bureaus, Ice Chests and Refrigerators, American and Hawaiian Flags, Etc.

Selling Agents for MACNEALE & URBAN FIRE and BURGLAR PROOF SAFES S. W. LEDERER, Propr. Day Building Beretania St., near Fire Station

Constantly - On - Hand BURNETTE & DECKER Real Estate Brokers and Collectors PROPERTY FOR SALE in All Parts of the City Good Paying Leasehold, cheap. House and Lot, Punahou, only \$3000. House and Lot, Wilder Ave., \$3200. 14 Lots, each 50x100, Kapahulu Park. Four Beautiful Lots, Kapiolani Road. Addition, only \$200 each. Beautiful Home, Waikiki, \$3600; good House and Lot, Palama, only \$2600, cheap. Corner King and Bethel streets.

Pacific Import Co. (INCORPORATED). PROGRESS BLOCK, FORT STREET BY STEAMER AUSTRALIA We received large invoices of Seasonable Goods in every department. Goods will be open and ready for inspection in a few days. The latest European Novelties suitable for Xmas Presents; the largest variety of articles ever imported by any one store. We call attention, that quantities are not large, therefore we advise you to pay attention when we advertise our opening.

SPECIAL We received ex Australia 2,000 DOZEN HANDKERCHIEFS! For Ladies, Gentlemen and Children. No better assortment will be shown anywhere. Our own importation, direct from Switzerland. Our prices are the lowest. Large Invoices of SILKS will be opened. We call attention to our complete line of Tafetas. MUSLIN UNDERWEAR. In this department we lead. Our prices, our styles and assortment is so complete that Ladies will not only find a great saving, but it is easy to make selections. BOYS' CLOTHING DEPARTMENT A large, complete stock of Wash Suits, Blue Serges and Tweed Suits are now opened. Mother's Friend Shirt Waists in all styles and prices. 15 doz. Ladies' SHIRT WAISTS. Do not miss seeing them. Our RIBBON Department is complete, our prices "Bed Rock."