

TELEPHONE 365
STAR
BUSINESS OFFICE

The Star Is An Intelligent, Progressive Newspaper

HAWAIIAN STAR

Want Ads---Three Lines, Three Times, 25 Cents

SECOND
EDITION

VOL. XV.

HONOLULU, HAWAII, SATURDAY, FEBRUARY 15, 1928.

No. 4956

Asking Congress For Prohibition

HONOLULU MINISTERIAL ASSOCIATION CONSIDERING A QUICK MEANS OF ENDING THE LIQUOR TRAFFIC HERE ALTOGETHER—CONGRESS MAY ADD A CLAUSE TO THE PENAL CODE AFFECTING ALL THE TERRITORIES—GAMBLING ALSO IN IT.

The local Ministerial Association has been discussing the act now before Congress, for a revision and codification of the penal laws of the United States, with the result that it may make a move in Congress to have incorporated in the coming volume three propositions which are considered specially applicable to Hawaii. The most important is a Prohibition clause. The others are a thorough re-enactment of the Edmunds law, and a law against gambling.

The Prohibition matter, as stated, is regarded as the most important. It is recognized that there is a very powerful Prohibition movement on just now in the United States, and Congress has complete power to legislate for the Territories. As Congress is at present engaged in codifying the laws, the opportunity is regarded by some as a good one for trying to get in a prohibition section. Such a law would apply in Hawaii, New Mexico, Arizona, Alaska and the District of Columbia, unless the latter should be specially legislated for in the matter.

The discussion of the codification occupies more of the present session than any other one matter. The Edmunds Act has already been reached and it went through unopposed. The law against prize fighting appears to be similarly without opposition. The matter of gambling is thought very likely to pass, but it is difficult to forecast what will be done about prohibition, if the fight starts.

Say Rev. Thwing Made Complaint "Teacher" Decision Is Given To-Day

CHINATOWN MUCH DISTURBED OVER DEPORTATION CASE OF CHINESE EDITOR.

No case under the Chinese exclusion act has so agitated the local oriental quarter for a long time as has the case of Editor Lo Sun, who is before the Federal court fighting an action to deport him on the ground that he is unlawfully in the country. Lo Sun has the strongest kind of backing among the Chinese of the best class here and the case will probably be fought to a finish. A remarkable feature of the case, according to Chinese merchants who discussed the matter this morning, is that the complaint in the case was made by Rev. E. W. Thwing, who is now leading the defense of the editor.

Lo Sun would never have been molested, said a Chinese merchant, but for a complaint against him made by Mr. Thwing. Lo Sun was brought here to teach for Mr. Thwing, but instead he became an editor, which caused all the trouble. I don't see why an editor should not stay here just as much as a teacher anyhow. An editor ought to be a teacher if he is a good editor, oughtn't he?

"I have it from what you American journalists would call 'authoritative source' that the case against Lo Sun was started by Mr. Thwing's complaint. In these cases there is no prosecution unless somebody goes to the immigration office or the district attorney and makes a charge.

"What do I think of Lo Sun's right to stay? I think he is a very good and bright young Chinaman, a very good man for the country, and he ought to remain. All the Chinese here are angry over this deportation case and we hope he will win the fight."

A subscription has been started by the Advertiser to raise funds for the defense of the case, and the contest

United States Commissioner Frank L. Hatch this morning gave a decision in a "teacher" case under the Chinese exclusion law, by which deportation proceedings against several Chinese are dismissed. The decision was in the case of Kong Mau Tet, who entered as a teacher and engaged in other occupation. He had, however, a certificate of registration, obtained in 1904, after his entry, and the commissioner found that the courts held this to be final, as far as the question of right to be in the country is concerned.

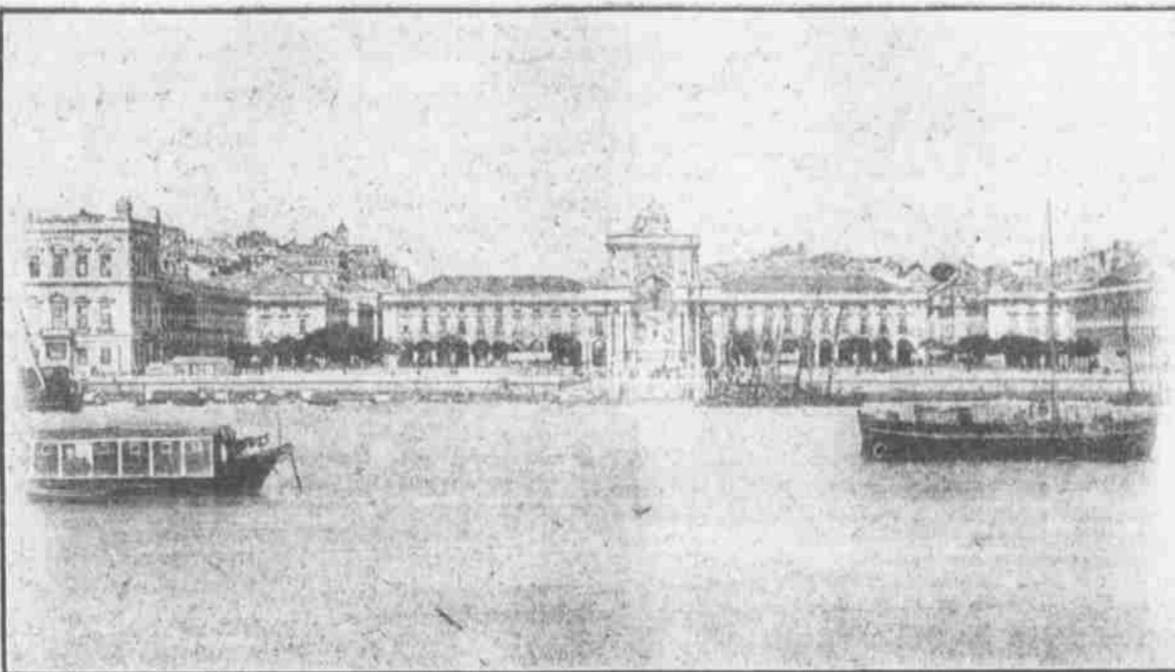
The case is a parallel to that charged against the Chinese Editor Lo Sun, except that the latter has no certificate of registration, having entered after registration was all over. Commissioner Hatch's opinion therefore appears to have an important bearing on the Lo Sun case, and indicates that Lo Sun is up against a hard proposition.

(Continued on Page Five.)

will probably be carried out to a finish. Lo Sun is well known as an educated and cultured young Chinese, and a desirable resident.

District Attorney Breckons this morning was asked as to the statement that Mr. Thwing had made a complaint and refused to discuss that phase of the matter. As to the legal side of the question he said that the question of whether an editor was a "laborer" or not was not involved. "What we shall have to settle," he said, "is whether Mr. Lo Sun belongs to any of the special classes of Chinese allowed to enter. He might be a man we should all much like to have remain here and still not be among those classes."

WHERE THE KING AND PRINCE WERE KILLED



PRACA DE COMMERCIO, THE LARGE SQUARE IN LISBON, WHERE ASSASSINS WAITED FOR PARTY.

"A band of men waiting at the corner of the Praca de Comercio and the Rua de Arsenal, suddenly sprang toward the open carriage in which the royal family were driving to the palace and, leveling carbines which they had concealed upon them, fired. The band of murderers had selected the most advantageous spot for the commission of their crime, for they were concealed from the eyes of the party until the vehicle had come into the Praca de Comercio, a large square. Before any of the guard were aware of their presence, the assassins leaped to the carriage and instantly a fusillade of shots rang out. The fact that the royal family were returning from Villa Vicosa had been made public in advance and the authorities had arranged what they considered an effective guard along the route which the royal carriage was to take. A great throng was grouped about the Barreiro railroad station and the neighboring streets when the members of the royal family disembarked to drive across the Tagus in the limits of Lisbon. The carriages awaited them before the landing stage, and the king and queen and the two princes entered the leading carriage, which started immediately, wheeling into the Praca de Comercio. Suddenly the sharp crack of a carbine startled the assemblage. Then the air was filled with a succession of sharp reports and the king was seen to jump up and reach for his throat, then to drop back on the cushions. The crown prince almost simultaneously was seen to collapse and fall toward the side of the carriage, while the queen, driven to frenzy, was seeking to save the crown prince and the Infante Manuel by shielding them with her body."—Cabled account of the tragedy.

PIONEER MILL WITH GOOD CROP

NEARLY 24,000 TONS OF SUGAR TURNED OUT IN 1927—AN EQUAL AMOUNT FOR 1928.

Pioneer Mill Company held an annual meeting this morning; reports were read and the election resulted in the old board of officers being retained for another year. The report of Manager Barkhausen reports that 23,099 tons of sugar were manufactured; about the same output is the estimated amount for the present year. The following is the manager's report:

Gentlemen:—I beg to submit herewith my annual report as Manager of your Company for the year ending December 31st, 1927.

The crop of 1927 fell somewhat short of my expectations, caused by the introduction of some 250 acres of Caledonia cane. This cane was planted on various fields and altitudes for experimental purposes. Unfortunately it proved a sad disappointment, and a costly experiment, yielding about one-half the sugar of Lahaina cane grown under corresponding conditions on the same fields.

The purity of the juice of the 1927 crop was unusually low right through, and it required nearly half a ton of cane more per ton of sugar than in former years. We manufactured 23,099 tons of one grade sugar polarizing between 95 degrees and 97.5 degrees. The operating expenses were reduced from \$921,693.83 in 1926, and \$913,288.92 in 1927, to \$877,788.14 last year. A considerable saving has been effected by the substitution of fuel oil for coal, viz:

Expended for coal in 1926, \$75,345.89.
Expended for coal in 1927, \$76,239.24.
Expended for coal and oil in 1927, \$38,725.24.

It is fortunate that the Kamaula power proposition has been abandoned. The oil used at the Lahaina pumping station, amounting to \$12,419.96, is considerably less than interest and depreciation on the calculated initial cost of the electric and power plant.

Soil.—By using more effective, but also more expensive fertilizer, and more thorough cultivation, we have so far succeeded to keep up the average yield per acre. We have inaugurated a systematic resting of the poorest lands for two years in rotation. Use of stable manure, mud cake, camp refuse, etc., will preserve the fertility of the better class of land. The strict adherence, especially to resting of the land as much as practicable, will insure the present yields indefinitely.

Crop 1928.—My estimate for this crop is again 170,000 tons of cane which if the present purity of the juices continues should yield 24,000 tons of sugar. The mill commenced grinding on the 4th of December, 1927. The purity of the juice is better than last year. We turn out two grades of sugar, the first polarizing 98 degrees to 99 degrees, and the second 96 degrees to 97.5 degrees.

Crop 1927.—The weather last year and so far this year has been favorable for the growing cane of this crop.

DAHU SUGAR CO. IS PROSPEROUS

TWELVE PER CENT IN DIVIDENDS PAID DURING 1927—MANAGER BULL'S GOOD WORK.

The output of Oahu Sugar Company for 1927 in round number amounted to 28,482 tons of sugar, exceeding the estimate by 482 tons; this cheering information was given to the stockholders this morning at the annual meeting of the company. The net profit of plantation, for the year, was \$487,882.32, out of which dividends to the amount of 12 per cent were paid. Prospects for 1928 are good. Manager E. K. Bull furnished the following interesting report.

Gentlemen:—I beg to submit the following report, covering the year ending December 31st, 1927.

The past season, like the preceding one, has been very satisfactory; the weather conditions have been favorable for the growing crops, and although we had some stormy weather during the early part of the year, no damage was done by floods or wash-outs. The total rainfall for the year amounted to 28.75 inches, and we had a far better supply of water from our mountain ditches than during the previous year.

Crop of 1927: This crop was harvested from the following areas: 679 acres plant cane, 2,826.5 acres long ratoons, 361.3 acres short ratoons, making a total of 3,876.8 acres, which yielded 28,289 tons of sugar, which, together with 193 tons sugar manufactured from cane purchased from outside planters, brought the total crop up to 28,482 tons, an excess over the estimate of last year's report of 482 tons. The average yield for this crop was 7.29 tons sugar per acre.

Crop of 1928: For this crop we have 653.5 acres plant cane, 3,265.6 acres long ratoons, 557 acres short ratoons, a

(Continued on Page 8.)

New England Bakery candles are nourishing and delightful. Try them.

AN ENTERPRISING MERCHANT K. Yamamoto is the biggest importer of Japanese goods in Hawaii. Eve y steamer from the Orient (tramp or passenger) brings him the largest shipment consigned to one firm. By getting his goods in large quantities the freight and other charges are greatly reduced which enables him to undersell all competitors.

The average is the same as the last four years—about 3,500. Respectfully submitted, L. BARKHAUSEN, Manager.

SPRECKELS' FORM NEW RAILROAD

LINE TO POIN SAN DIEGO WITH THE SOUTH AND EAST WILL BE BUILT.

SAN DIEGO, Jan. 30.—Not only will San Diego be connected with the Imperial Valley and Yuma by railroad in a short time, but there also will be a railroad line constructed and in operation between this city and Ensenada, Lower California, thus affording this port direct communications east and south.

Articles of incorporation were filed yesterday, forming a company with a capital of \$5,000,000 to do the work, the incorporators being John D. and A. B. Spreckels, John D. Spreckels Jr., William Clayton and H. L. Titus. Besides the line to Ensenada, the corporation proposes to build and operate a line around the bay to Coronado and another to La Presa, Jamul and Jamacha, all in this county.

The estimated length of the line to be constructed is 150 miles. The road to be constructed will open a new territory and connect the Lower California town, which has nearly 2,000 inhabitants, with the outside world.

WALLACH.

Up to the hour of going to press no money has been forthcoming for Wallach, although Mrs. Atcherley stated this morning that he would be free by noon. The friends who stood by Wallach during his overtures with the Board of Health, have failed to come to his aid since he was taken over to the prison to serve his time at the rate of \$1 a day.

WANT TO COME

Since the first of the year the Governor's office has been in receipt of over fifty inquiries from persons on the mainland who have ideas of coming to the Territory to live. A good proportion of these come from the states of the Northwest, especially Oregon and Washington.

FROM BREAD TO PASTRY.

Everything is the best at the Alexander Young Cafe. The service and surroundings are unparalleled.

Best cup of coffee in the city. New England Bakery.

CHAMBERLAIN'S COUGH REMEDY ABSOLUTELY HARMLESS.

Every mother should know that Chamberlain's Cough Remedy is perfectly safe for children to take, as it contains nothing harmful. For sale by all dealers, Benson, Smith & Co., agents for Hawaii.

ADMIRAL EVANS TALKS BY WIRELESS FROM BIG FLEET

(Associated Press Cable to The Star.)

VALPARAISO, February 15.—Admiral Robley D. Evans aboard the flagship Connecticut of the American fleet of sixteen battleships this morning exchanged wireless messages with the President of Chile, Admiral Sampson and Minister Hicks.

TO INCREASE PAY OF ENLISTED MEN

WASHINGTON, D. C., February 15.—The military bill, covering an appropriation of \$85,255,000, also provides for the increase of the pay of enlisted men.

NEGROES TAKEN ON

TRANSPORT BUFORD IS REFUSED PERMISSION TO LEAVE THEM HERE.

The hundred negro recruits aboard the transport Buford will not be left here as was desired by the Captain Quartermaster. A cablegram was this morning received from Washington, by the Depot Quartermaster, merely announcing that permission would not be granted for the negroes to be put ashore here to wait for the transport Crook.

The Buford sails at 5 this afternoon.

DISCUSSED APPOINTMENTS? Governor Frear had a half hour conference at noon with a member of the Republican committee, regarding which, however, he declined to say anything. In the committee were W. O. Smith, John C. Lane, C. F. Childersworth, A. G. M. Robertson and George C. Hewitt.

FLETCHER THE MAN.

An afternoon cable dispatch on Thursday stated that Rear Admiral Farquhar died July 3, 1907, and a salute of thirteen minute guns was fired in honor of his memory at the local Naval station September 24—Advertiser.

No afternoon cable was received on Thursday stating that Admiral Farquhar was dead, though an incorrect version of a cable was published and the Advertiser repeated the error. The cable, published in The Star Thursday afternoon, stated that "Rear Admiral Fletcher" was dead.

The Fletcher referred to is probably Montgomery Fletcher, a naval engineer, who had the relative rank of rear admiral, in his department.

VALENTINE CANDLES.

People who are looking for novelties in the valentine line can find them at the Alexander Young Cafe.

CUT PRICES AT SACHS!

N. S. Sachs Dry Goods Co., is having another week of special cut prices. The values in shirt waists and skirts are especially good.

FLOODS IN MANY STATES

(Associated Press Cable to The Star.) PITTSBURG, February 15.—All rivers in this section are over their banks and great damage has been done by floods. Numerous mills have been closed. Similar reports are received here from New York, West Virginia, Ohio, Indiana and Tennessee.

BURTON IS UP AGAIN

(Associated Press Cable to The Star.) CLEVELAND, February 15.—Congressman Burton has been renominated.

WARSHIP TO WEST INDIES

(Associated Press Cable to The Star.) PHILADELPHIA, February 15.—The battleship Mississippi sailed today for the West Indies.

MRS. PRASER'S FUNERAL.

The funeral of the late Mrs. Jane D. Praser took place from Central Union church parlors yesterday afternoon, interment being in Nuanuan cemetery. Rev. Dr. Scudder conducted the services. Hymns being led by Mr. and Mrs. Theodore Richards and Miss Charlotte Hall. The pall-bearers were Colin McLennan of Laupahoehoe, Rob. McKeague, Fred Harrison, Geo. Osborne, Louis Brown and John Nott.

SPRING STYLES.

The new 1928 Spring styles of Hart, Schaffner & Marx suits for men have just arrived at Silva's Toggery. They are of the finest fabrics, beautiful in pattern, and tailored in the latest styles. You will do well to look at these before getting your Spring suit.

FAMOUS HEYWOOD SHOE FOR MEN

There's another big shipment just in on the Alameda. The Heywood Shoe is just right for Style, Quality, and Price, and you'll do well to treat yourself to a pair of them.

There are two styles, No. 453 is a Vici Kid with soft, flexible welt and Medium Round Toe. It is a straight-lace shoe, made from the Highland Last. Price \$4.50.

Style No. 505 is exactly the same shoe, except that it has the Rubber Heel. Price \$5.00.

MANUFACTURERS' SHOE

Company Limited, Fort Street, P. O. Box 469. PHONE 282.

Every Man Puts

his own interests first; the man who is managing your estate, business, or private property, if he is a capable man, must also be a busy man. He has his own private interests.

If things come to a pinch,—if his affairs are in danger—whose business will come first, yours or his own?

Our own business is handling the business affairs of others, and we have made a success of it.

Hawaiian Trust Co., Limited, Fort Street

Clothes to Fit

MADE ON THE PREMISES BY WHITE LABOR

New Cutter New Goods Latest Styles Perfect Fitting

L. B. KERR & CO., LTD. ALAKEA STREET.

Oceanic Steamship Company

Alameda Schedule

ARRIVE HONOLULU.		LEAVE HONOLULU.	
S. S. ALAMEDA	MAR. 6	S. S. ALAMEDA	FEB. 19
S. S. ALAMEDA	MAR. 27	S. S. ALAMEDA	MAR. 11
S. S. ALAMEDA	APR. 17	S. S. ALAMEDA	APR. 1
S. S. ALAMEDA	MAY 8	S. S. ALAMEDA	APR. 22

In connection with the sailing of the above steamers, the Agents are prepared to issue to intending passengers coupon through tickets by any railroad from San Francisco to all points in the United States, and from New York by steamship line to all European Ports.

FOR FURTHER PARTICULARS, APPLY TO

W. G. Irwin & Co., Ltd

AGENTS FOR THE OCEANIC S. S. CO.

Canadian-Australian Royal Mail Steamship Co

Steamers of the above line running in connection with the CANADIAN-PACIFIC RAILWAY COMPANY between Vancouver, B. C., and Sydney, N. S. W., and calling at Victoria, B. C., Honolulu and Brisbane, Q.

DUE AT HONOLULU ON OR ABOUT THE DATES BELOW STATED, VIZ:

FOR AUSTRALIA.		FOR VANCOUVER.	
AORANGI	MAR. 7	MOANA	MAR. 4
MOANA	APR. 8	MARAMA	MARCH 31
MARAMA	MAY 1	AORANGI	APRIL 29

CALLING AT SUVA, FIJI, ON BOTH UP AND DOWN VOYAGES.

Theo. H. Davies & Co., Ltd., Gen'l Agents

American - Hawaiian Steamship Company

FROM NEW YORK TO HONOLULU.

Weekly Sailings via Tehuantepec.

Freight received at all times at the Company's wharf, 41st Street, South Brooklyn.

FROM HONOLULU TO SAN FRANCISCO DIRECT.

S. S. NEVADAN	TO SAIL FEB. 22	S. S. TEXAN	TO SAIL MARCH 4
FROM SAN FRANCISCO TO HONOLULU DIRECT.		S. S. COLUMBIAN	TO SAIL MAR. 18
S. S. VIRGINIAN	TO SAIL, FEB. 21		

Freight received at Company's wharf Greenway street.

MATSON NAVIGATION COMPANY

The S. S. "HILONIAN" of this line, carrying passengers and freight, will run in a direct service between this port and San Francisco, sailing and arriving on or about the following dates:

Leave S. F.	Arrive Honolulu.	Leave Honolulu.
FEB. 12	FEB. 19	FEB. 25
MAR. 11	MAR. 18	MAR. 24
MAY 6	MAY 13	MAY 19
JUNE 3	JUNE 10	JUNE 16

PASSENGER RATES TO SAN FRANCISCO: FIRST CABIN, \$60.00. ROUND TRIP, FIRST CLASS, \$110.00. For Further Particulars, Apply To

Castle & Cooke Limited, Agents

Union-Pacific Transfer Co., Ltd

Baggage Shipping
Storage Wood
Packing Coal

PHONE 58

FURNITURE AND PIANO MOVING.

Pacific Mail Steamship Co.

Occidental & Oriental S. S. Co.

Toyo Kisen Kaisha S. S. Co.

Steamers of the above companies will call at Honolulu and leave this port on or about the dates mentioned below:

FOR THE ORIENT.		FOR SAN FRANCISCO.	
HONGKONG MARU	FEB. 18	AMERICA MARU	FEB. 14
KOREA	MAR. 3	SIBERIA	FEB. 22
AMERICA MARU	MAR. 10	CHINA	FEB. 29
SIBERIA	MAR. 16	MANCHURIA	MAR. 7
CHINA	MAR. 23	NIPPON MARU	MAR. 13
MANCHURIA	MAR. 30	ASIA	MAR. 21
NIPPON MARU	APRIL 7	MONGOLIA	MAR. 28
ASIA	APRIL 14	HONGKONG MARU	APRIL 10
MONGOLIA	APRIL 20	KOREA	APRIL 24

FOR FURTHER INFORMATION APPLY TO

H. HACKFELD & CO., LTD.

May's New Old Kona Coffee

Yes, that's it—New Old. It's the same Old Kona Coffee made by a New process of gas-roasting. This saves 25 per cent. more of the aroma, which, by the Law of Selection, makes it 50 per cent. more popular with people who use it.

Sold at the same old price, 25c. the pound. Try some.

Henry May & Co., Ltd

RETAIL 22 PHONES WHOLESALF 92

SHIPPING INTELLIGENCE

(For additional and later shipping see pages 4, 5 or 8.)

TIDES, SUN AND MOON.

Full Moon February 16th, at 10:35 p. m.

Date	High Tide Large	Low Tide Small	Sun		Moon
			Rises	Sets	
10	10:10	6:11	7:07	6:31	1:29
11	9:15	11:45	8:08	6:32	2:22
12	1:02	1:10	9:04	6:32	3:16
13	1:42	2:00	9:54	6:31	4:03
14	2:11	2:39	10:40	6:30	4:51
15	2:48	3:12	10:59	6:30	5:38
16	3:19	3:45	11:25	6:29	6:18

Times of the tide are taken from the U. S. Coast and Geodetic Survey tables. The tides at Kahului and Hilo occur about one hour earlier than at Honolulu. Honolulu standard time is 10 hours 30 minutes slower than Greenwich time, being that of the meridian of 157 degrees 30 minutes. The time whistle blows at 1:30 p. m. which is the same as Greenwich, 0 hours, 0 minutes. The Sun and Moon are for local time for the whole group.

PASSENGERS ARRIVED.

Per S. S. Kinau, February 15, from Hilo and way ports—Miss M. Kinney, Miss G. Wood, Miss A. Wood, Mrs. G. Bell, Mrs. E. T. Simpson, Mrs. Potter, Mrs. C. Rideout, Mrs. A. E. Emmons, Mrs. R. W. Emmons, C. M. Robbins, T. H. Barnard, J. C. Cohen, W. H. Moore, A. Anderson, C. Schillings, P. C. Rossi, Mrs. P. C. Rossi, Miss Rossi, Mrs. J. B. Atherton, Miss R. Atherton, Miss C. Flannery, Judge S. B. Dole, Mrs. S. B. Dole, Miss E. Kapu, Mrs. E. Kato, Miss Gurrey, Mrs. C. Schillings, Mrs. A. Anderson, Miss J. Barnard, Miss Dora Shipman, Miss Carrie Shipman, Miss J. F. Martin, Miss J. M. Barnard, Mrs. J. W. Martin, Mrs. Reinhardt, Mrs. W. P. Giberson, J. V. Marcel, A. L. Austin, T. R. Robinson, D. Haughs, Robert Hind, E. R. Hendry, J. G. Wooley, Mrs. J. G. Wooley, J. O. Young, W. Vannatta, Carl Wideman, Miss Hartweg, Mrs. A. P. Blake, J. W. Lloyd, C. A. Bailey, W. T. Greig, D. B. Murdoch, Mrs. J. F. Hagens, Miss M. Post, S. S. Parson.

PAINFUL TRAGEDY CAUSED BY DRINK

STANFORD UNIVERSITY, February 5.—W. Merle Cooley, a senior student at Stanford University, returning to his lodgings here in a bozzed state after a night of drinking and carousal with some fellow-students in Menlo, this morning entered a house in the next block to the one in which he lived and was immediately shot down by the occupant, Walter Uhlman, who had been awakened from a deep sleep by the screams of his wife and had drawn his rifle on the intruder. Cooley sank to the floor without a groan, the bullet having entered the brain through the right temple. He was taken to the Guild Hospital, but all efforts to save his life were futile, and he died at 3 a. m.

Cooley had been spending the evening in company with a class mate, A. B. Cox, in Menlo. The two had been imbibing all evening, and Cooley was considerably the worse for liquor when they parted after 1 o'clock this morning. He lived at 318 Emerson street, but in the darkness and in his bozzed state he went to the next block. The house numbered 420 Emerson street is in a similar position in the block to the one he was looking for, so he entered the gate, and, finding the outside door not latched, stepped into the hallway.

The opening of the door aroused Mrs. Uhlman, who, thinking it was a burglar, gave vent to a terrified scream and ran into her husband's room. Uhlman, who was in a deep sleep, heard only the scream and immediately reached for his rifle, a 22-caliber Winchester, cocked it ready to fire, and stepped out into the hallway. He saw the figure of a man standing facing him in the half-open doorway, for Cooley, dazed with drink, the sudden screams and the unexpected situation which confronted him, had been unable to gather his wits and was rooted to the spot. Uhlman fired without hesitation and the figure sank to the floor. A light was immediately brought and it was found that although the bullet had entered the brain through the temple Cooley was not dead. Uhlman immediately conveyed him to the Guild Hospital, where it was found that he could not live, and he died at 3 o'clock this morning without regaining consciousness.

W. Merle Cooley, who was 29 years old, was a student in his senior year at the University, and the son of C. M. Cooley a well-known newspaper man of Kallispell, Mont. The owner of the Kallispell Bee. Young Cooley was a popular student. Walter Uhlman is mechanical engineer at the University.

MORE STANFORD MONEY IS GIVEN

BROTHER OF THE FOUNDER OF THE GREAT UNIVERSITY IS ALSO AIDING IT

(Special Correspondence.)

STANFORD UNIVERSITY, February 7.—Although it has always been surmised that Thomas Welton Stanford, brother of the founder of Stanford University, would devise his whole fortune to this institution, such has now become a certainty, through definite knowledge obtained by Dr. Jordan upon his recent trip to Melbourne, where Mr. Stanford is still engaged in business. Perhaps the most attractive feature of the legacy is the setting aside of a fund of \$250,000 to endow a number of scholarships at Stanford University to enable Australian students to continue their education in America. It may be interesting to note that more than ten years before the splendid bequest of Cecil Rhodes Mr. Stanford had already determined upon this scholarship endowment.

In a published interview Mr. Stanford is reported as saying that the sum set aside would probably yield a sufficient revenue to permit of six or eight students leaving for Palo Alto annually. Continuing, he said: "No definite sum will be set aside for each student, and the length of his training at the University will vary, the trustees being the sole judges of how long a student shall remain. Above everything else, my desire is that Australia shall reap the entire benefit of this higher training of her rising men. The difficulty is to make some binding stipulation that the students shall give Australia the benefit of the training they receive, but I hope and believe that in spite of the attractions that America with its wide field of enterprise, offer, they will be patriotic enough to return to their native land." It is chiefly in the higher branches of technical training in which Mr. Stanford believes the Australian universities are deficient, that the scholarships shall apply.

While Mr. Stanford has never seen the college that bears the family name he has always shown a deep interest in it and on the smallest details of its life, and has for many years been a member of the Board of Trustees. It was he who, when the California senator died leaving him a generous bequest, turned the gift over for the erection of the present library; and it was he who put into this building a collection of Australian literature second only to that at the Smithsonian Institute at Washington; and finally it was he who materially added to the contents of the museum, having stocked it, among other things, with many paintings that were once the pride of Melbourne. So it will hardly seem strange when it is said that Mr. Stanford despite his forty-seven years of residence in Australia is still a loyal American and that he has filled the position of vice-consul for the United States.

Mr. Stanford, an elderly man "over six feet tall, slight, very erect, and a most active man for his years," has had a varied life's history. He followed his elder brother from the New York home to California in the days when gold could still be found in the placer camps, and like him, opened up a store from which he could supply "anything from a needle to a ship's anchor." After a few successful years of this life he decided to take a holiday and set out for Europe. In New York he casually met an American miner who had just returned from the gold fields of Australia and who, in talking about mining conditions, incidentally mentioned the fact that the tallow dip, which had long since been discarded in America for the coal oil lamp, was the only light used. The business instinct of Mr. Stanford immediately suggested to him a new field of operations. He knew the need of a mining camp. Why couldn't he introduce American goods into the Australian fields? He hurriedly sailed off, not to Europe, but to Australia with a large supply of lamps and oil, and opened up a shop in Melbourne, which, it is related, he had to close again in a few days because his entire stock was sold out—miners thronged in, grabbed lamps put down the purchase price and left. In the course of a short time he introduced additional commodities, such as condensed milk, condensed coffee and sewing machines, commodities which were essential in the locality and which seemed to satisfy the lack of the community. With regard to his continuance in business today, Mr. Stanford said: "The only thing that keeps me at this desk when I gladly would be away in the hills, is the fact that when I die I want to leave something worth while behind me, something that will really count."

F. SCHNACK.

HAWAIIAN Macaroni Manufacturing Co., LIMITED

Beretania Street near Aala Street.

MANUFACTURERS OF

MACARONI (HOSHI UDON)

and

BUCKWHEAT (HOSHI SOBA)

The largest and only incorporated concern of its kind in Honolulu.

A new enterprise launched by enterprising merchants.

K. Yamamoto

SALES AGENT.

Tel. 399. Hotel St. near Nuuanu. P. O. Box 510

日布時事社

To ATTRACT THE JAPANESE TRADE advertise in THE DAILY NIPPUN JIJI, the most popular and widely circulated evening paper among the Japanese colony.

JOB PRINTING A SPECIALTY with either language of Japanese, Chinese, Korean or English.

The Nippu Jiji Co., Ltd.,

Y. SOGA, Manager.

Phone Main 48. Hotel Street near Nuuanu.

FOREIGN NEWS BY CABLE

VIENNA, February 15.—An unconfirmed report is current that the Shah of Persia has been assassinated.

LONDON, February 15.—The rumor of the assassination of the Shah of Persia followed news of severe tension at Teheran.

SOUTHWESTERN CYCLONE.

MOBILE, Ala., February 15.—Three towns have been destroyed and eight people killed by a tornado which swept over this state.

HOUSTON, Tex., February 15.—Twelve people have been killed and forty injured in a cyclone.

PARADES BEFORE VALPARAISO.

VALPARAISO, February 15.—The American battleship fleet passed close in shore yesterday, making a magnificent spectacle of naval power, which was witnessed by thousands of people along the beach.

HUNDRED NEW LIEUTENANTS.

WEST POINT, February 15.—One hundred and eight cadets graduated from the United States Military Academy yesterday. Secretary Taft presented the diplomas.

AN OCEAN TRAGEDY.

PORTLAND, Ore., February 15.—The American ship Emily Reed which left Newcastle November 3, bound for Portland, has been wrecked at the mouth of the Nehalem. Ten of the crew were drowned and six saved.

LABOR LEADERS INDICTED.

NEW ORLEANS, February 15.—Several labor leaders have been indicted for violating the anti-trust law.

BAND TODAY.

The band plays this Saturday at one o'clock at the Robert Wilcox memorial meeting at the Haleaenani Hall at Kukui street.

At 3 o'clock the band will play at the fair in benefit of the Palama Pure Milk Association.

The Sunday afternoon concert will be omitted as the band goes in the morning with the N. G. H. regiment to Kapiolani Park.

A northern railroad, charged with failure to water stock, has entered a plea of guilty. The explanation that the unwatered stock was of the four-footed variety is probably unnecessary.—New Orleans Times-Democrat.

CORPORATION MEETINGS

Annual meeting of Alexander & Baldwin, Ltd., will be held on Monday, Feb. 24, at 9 a. m., at the office of the company, Stangenwald Building.

Annual meeting of Ewa Plantation

Co. will be held on February 26, at 10 a. m., at the office of Castle & Cooke, Ltd.

Annual meeting of the Waimea Sugar Mill Co. will be held on February 26, at 2 p. m., at the office of Castle & Cooke, Ltd.

Annual meeting of Waiulua Agricultural Co. will be held on February 27, at 10 a. m., at the office of Castle & Cooke, Ltd.

Annual meeting of Ponahawai Coffee Co., Ltd., will be held on Thursday, February 27, at 10:30 a. m., at the office of Wm. G. Irwin & Co.

Annual meeting of Wahiawa Water Co., Ltd., will be held on February 27, at 11:30 a. m., at the office of Castle & Cooke, Ltd.

Annual meeting of Woodlawn Fruit Co., Ltd., will be held on Thursday, Feb. 27, at 11:30 a. m. at the office of Wm. G. Irwin & Co.

Annual meeting of Kahuku Plantation Co. will be held on Thursday, Feb. 27, at 2 p. m., at the office of Alexander & Baldwin, Ltd.

Annual meeting of Pacific Guano & Fertilizer Works will be held on Thursday, February 27, at 2 p. m., at the office of H. Hackfeld & Co., Ltd.

Annual meeting of Kau Agricultural Co., Ltd., will be held on Thursday, Feb. 27, at 3:30 p. m., at the office of Wm. G. Irwin & Co.

Annual meeting of the Kihai Plantation Co., Ltd., will be held on Friday, Feb. 28, at 10 a. m., at the office of Alexander & Baldwin, Ltd.

Annual meeting of Hawaii Mill Co. will be held on Friday, February 28, at 10 a. m., at the office of H. Hackfeld & Co., Ltd.

Annual meeting of Kipahulu Sugar Co. will be held on Friday, February 28, at 11 a. m., at the office of H. Hackfeld & Co., Ltd.

Annual meeting of Hawaiian Sugar Co. will be held on Friday, Feb. 28, at 2 p. m., at the office of Alexander & Baldwin, Ltd.

Annual meeting of Haiku Sugar Co. will be held on Saturday, Feb. 29, at 9 a. m., at the office of Alexander & Baldwin, Ltd.

Annual meeting of Paia Plantation will be held on Saturday, Feb. 29, at 9:30 a. m., at the office of Alexander & Baldwin, Ltd.

Annual meeting of Kailua Plantation Co., Ltd., will be held on Saturday, Feb. 29, at 10 a. m., at the office of Alexander & Baldwin, Ltd.

Annual meeting of Kahaia Sugar Co. will be held on Saturday, Feb. 29, at 10:05 a. m., at the office of Alexander & Baldwin, Ltd.

Annual meeting of Kula Plantation Co., Ltd., will be held on Saturday, Feb. 29, at 10:10 a. m., at the office of Alexander & Baldwin, Ltd.

Annual meeting of Maui Agricultural Co. will be held on Saturday, Feb. 29, at 11 a. m., at the office of Alexander & Baldwin, Ltd.

Annual meeting of Honokaa Sugar Co. will be held on Saturday, February 29, at 11 a. m., at the office of F. A. Schaefer & Co.

Annual meeting of Hawaiian Electric Co., Ltd., will be held on February 29, at 2 p. m., at the office of the company.

Annual meeting of Pacific Sugar Mill will be held on Saturday, February 29, at 2 p. m., at the office of F. A. Schaefer & Co.

So long as there are billion-dollar insurance companies, why worry about the support of our ex-presidents?—Portland Telegram.

Y. WO SING CO.

GROCERIES, FRUITS, VEGETABLES, ETC.

California Butter, 40c lb; Cooking Butter, 30c lb.; Island Butter, 35c lb. 1186-1188 Nuuanu Street. Telephone Main 238. Box 952.

THE CRANE-SPENCER CO., LTD

Dealers in

Sewing Machines

of All Kinds. Also Hawaiian Souvenirs, Hats and Curios.

108 N. King St., near Maunakea. Phone Main 494. P. O. Box 549

New Suitings

JUST RECEIVED

Suits Made to Order at "Ready Made" prices.

Sang Chan

McCandless Building, King Street next to W. W. Dimond & Co.

Oriental Rugs

On Sale a few days more at

J. HOPP & CO. FURNITURE.

Lewers & Cooke Building.

IN THE CIRCUIT COURT OF THE FIRST CIRCUIT, TERRITORY OF HAWAII.

HOLDING TERMS AT HONOLULU, COUNTY OF OAHU.

MARSTON CAMPBELL, Superintendent of Public Works of the Territory of Hawaii, Plaintiff Petitioner, vs. WILLIAM M. MAHUKA, AMOY MAHUKA, wife of William M. Mahuka, LUUKIA MAHUKA, JOHN DOE and MARY STILES, unknown heirs at law of M. K. Mahuka, deceased, JOHN EMMELUTH, ALETHEIA EMMELUTH, wife of John Emmeluth, WALTER C. PEACOCK, MARY ALICE PEACOCK, wife of Walter C. Peacock, BATHSHEBA M. ALLEN, JOSEPH O. CARTER, PAUL MUEHLENDORF and M. P. ROBINSON, Trustees under the Will of Samuel C. Allen, deceased, JOSEPH O. CARTER, ALFRED W. CARTER, WILLIAM O. SMITH, SAMUEL M. DAMON, and E. FAXON BISHOP, Trustees under the Will and of the Estate of Bernice Pauahi Bishop, deceased, MARY E. FOSTER, HEINRICH WILHELM EHLERS, PAUL J. F. EHLERS, JOHN F. HACKFELD, Trustees, HENRY WATERHOUSE TRUST COMPANY, LIMITED, a Hawaiian Corporation, JOHN BROWN, JAMES BLACK, MARY PURPLE and JANE BLUE, unknown owners and claimants, Defendants Respondents.

TERM SUMMONS.

THE TERRITORY OF HAWAII: TO THE HIGH SHERIFF of the Territory of Hawaii, or his Deputy; the Sheriff of the County of Oahu, or his Deputy:

YOU ARE COMMANDED to summon William M. Mahuka, Amoy Mahuka, wife of William M. Mahuka, Luukia Mahuka, John Doe and Mary Stiles, unknown heirs at law of M. K. Mahuka, deceased, John Emmeluth, Aletheia Emmeluth, wife of John Emmeluth, Walter C. Peacock, Mary Alice Peacock, wife of Walter C. Peacock, Bathsbeba M. Allen, Joseph O. Carter, Paul Muehlendorf and M. P. Robinson, Trustees under the Will of Samuel C. Allen, deceased, Joseph O. Carter, Alfred W. Carter, William O. Smith, Samuel M. Damon, and E. Faxon Bishop, Trustees under the Will and of the Estate of Bernice Pauahi Bishop, deceased, Mary E. Foster, Heinrich Wilhelm Ehlers, Paul J. F. Ehlers, John F. Hackfeld, Trustee, Henry Waterhouse Trust Company, Limited, a Hawaiian corporation, John Brown, James Black, Mary Purple and Jane Blue, unknown owners and claimants, defendants respondents, in case they shall file written answer within twenty days after service hereof, to be and appear before the said Circuit Court at the term thereof pending immediately after the expiration of twenty days



Wall, Nichols Co., Republic Building.

Fire Insurance Atlas Assurance Company of London New York Underwriters Agency

The B. F. Dillingham Co., Ltd. General Agents for Hawaii. Fourth Floor, Stangenwald Building.

W. G. IRWIN & Co. AGENTS FOR THE Royal Insurance Co. of Liverpool, Eng. Scottish Union & National Ins. Co., of Edinburgh, Scotland.

THE EXPERT DENTISTS OUR LIFE WORK We have spent 20 years in the study of our profession...

C. BREWER & CO., LTD. QUEEN STREET, HONOLULU, T. H.

AGENTS FOR Hawaiian Agricultural Company, Onomea Sugar Company, Honomu Sugar Company, Waialua Sugar Company, Oekala Sugar Plantation Company, Pepeekeo Sugar Co., Kapapala Ranch

ALEXANDER & BALDWIN LTD. J. P. COOKE, Manager.

OFFICERS and DIRECTORS. H. P. Baldwin, President J. B. Castle, 1st Vice-President W. M. Alexander, 2nd Vice-President L. T. Peck, 3rd Vice-President J. Waterhouse, Auditor E. E. Paxton, Secretary W. O. Smith, Director G. R. Carter, Director

SUGAR FACTORS AND COMMISSION MERCHANTS AGENTS FOR Hawaiian Commercial & Sugar Company.

Hauku Sugar Company, Pala Plantation, Maui Agricultural Company, Kihel Plantation Company, Hawaiian Sugar Company, Kahuku Plantation Company, Kahului Railroad Company, Haleakala Ranch Company, Honolulu Ranch.

CASTLE & COOKE LTD. Honolulu, T. H.

SHIPPING AND COMMISSION MERCHANTS. SUGAR FACTORS AND GENERAL INSURANCE AGENTS.

Ewa Plantation Co. Waialua Agricultural Co., Ltd. Kohala Sugar Co. Waimea Sugar Mill Co. Apokaa Sugar Co., Ltd. Fulton Iron Works of St. Louis. Blake Steam Pumps. Westons Centrifugals. Babcock & Wilcox Boilers. Green's Fuel Economiser. Marsh Steam Pumps. Matson Navigation Co. Planters Line Shipping Co. New England Mutual Life Insurance Company of Boston. Aetna Insurance Co. National Fire Insurance Co. Citizen's Insurance Co. (Hartford Fire Insurance Co.) Protector Underwriters of the Phoenix of Hartford.

\$2,500.00

will secure you a home within a few minutes walk of the City. Four bedrooms, parlor, dining room, kitchen, bath, etc. House in first class condition. Let us talk it over.

BISHOP TRUST CO., LTD. Agents. 924 BETHEL ST.

Clothes Neatly CLEANED AND PRESSED. Honolulu Clothes Cleaning Co. Alakea St., near King. Phone Main 143

The Aetna Fire Ins. Co. OF HARTFORD. PAID DOLLAR FOR DOLLAR IN SAN FRANCISCO Castle & Cooke, Ltd. Are the Agents for this company in Hawaii. (Confession Proof Policies) RING UP EXCHANGE 23. Immediate attention given to Phone Orders.

SUPPLIES ALL KINDS Cash Register Typewriter Mimeograph and Globe Wernicke CARD SYSTEMS

Hawaiian Office Specialty COMPANY 351 Fort Street : Tel. Main 143

Union Pacific Railroad SUGGESTS Speed and Comfort

Three trains daily, through cars, first and second class to all points. Reduced rates take effect soon. Write now.

S. F. Booth GENERAL AGENT. NO. 1 Montgomery Street, SAN FRANCISCO.

M. OHTA, JAPANESE CONTRACTOR AND CARPENTER. House No. 762 Sheridan St Telephone Whitt 601.

OF INTEREST TO Women and Others

LEAP YEAR SONG. WHY don't the girls propose, papa? Why don't the girls propose? The glad leap year at last is here: I'm ready, goodness knows! My little shy, consenting ways My willingness disclose. And yet they do not seem to mind— Why don't the girls propose?

LACK of the conspicuous is perhaps the most marked feature of this season's fashions. Good taste in color, material and design characterizes all models, whether for morning, afternoon or evening wear, and not for many years has there been shown such evidence of the appropriate for all occasions. Never has the walking suit been more severely simple and severe, yet a plain tailor costume never falls to be peculiarly smart. For afternoon there is a richness of color in all cloth and velvet costumes, but nothing brilliant or glaring. Long, trailing skirts, with sweeping, graceful trains, are seen on all reception gowns, while the jackets also are long and fitted to the figure just enough to obtain the best and most becoming lines. In the evening at ball or opera white is once again much in evidence, while the soft, pale shades of yellow, pink, green, blue and mauve make up together an exquisitely delicate and artistic color scheme. Perfection of details is of great importance this year, but more necessary than anything else is the fit of the gown or coat. On these two points depends the secret of all the charm and the good style of this winter's models.

ABOUT the most interesting revelation made by a writer lately is that the Empress Eugenie is the granddaughter of an American. True, he was a naturalized American, but there are few families of any kind in the United States which can claim relationship with a real, live empress. The history begins with William Kirkpatrick. He was a small grocer in Belfast and as thorough an Irishman as ever lived. The best of his countrymen were emigrating to the United States, and so Kirkpatrick sold out and embarked for the golden west. He settled in New York, took out citizenship papers, went into business, made a fortune, became a politician and was rewarded with the United States consulship at Malaga, in Spain. It was there that he met a Belgian grocer of wealth named Greigny. The eldest daughter of Greigny became Mrs. Kirkpatrick and grandmother of the future empress. Mrs. Kirkpatrick's sister married De Lesseps, father of the famous Ferdinand.

MAUDE ADAMS has been invited to give two performances at Harvard University next June. Miss Adams is to be congratulated on the honor, but there are also some congratulations to be given to the university. WITH all the modern talk of the bondage of woman to the tyrant man, the abundant admonition and exhortation to the effect that all women should live their own lives, firmly putting aside the love which might hinder, the ties which might hamper them, the indubitable fact is that marriage is and ought to be the chief end of woman in general; that her primary mission in life is that of wife and mother. True, it is not her only one; there is much room, and more work, in the world for women who have neither husbands nor children. For only suppose all the women were married, by whom would superfluous babies be cared? Where would be the kind aunts who would knit all the stockings, and nurses to do up the trottings and rockings?

To be sure, modern science has abolished the cradle as perilous to infantile health of body and wind, and home-knit hosiery is a thing of the past, nevertheless the principle is the same, and the lines may be accepted as a fitting figure of speech, says Helen Oldfield in the Chicago Tribune. None the less the tradition of all nations, corroborated by the stronger testimony of sacred history, is that the first woman was created as companion and wife for the first man. Woman was an afterthought, so to speak, a fact which is often quoted as substantial proof of the saying that second thoughts are best. It is not to be denied that Eve was the source of much trouble to the Adam whom she was intended to bless, being the cause of "man's first disobedience and his fall." Still, as the mother of mankind, she should be gently judged of her children. It may safely be asserted that no woman got seamed and scarred by an unfortunate love affair has any serious or deep-rooted aversion to matrimony in itself; any and every woman is ready and willing to marry when the right man—alas! sometimes when the wrong one—comes along. Recently an eastern journal stated that a prominent merchant was steadily filling all his important clerical positions with men, and for a significant reason. He did not deny that women clerks and stenographers are mentally equal, even superior, to men. But, he said, it usually happened that when he got a woman trained to a difficult position she left him to get married. "The instinct of the race is more powerful than the pride of individual independence. When men marry, on the other hand, they become better workers, more ambitious, more intelligent, which brings the matter down to bed-rock. Woman is primarily intended to be the helpmate of man, and the power of women is felt most when it is the power behind the throne. It is only natural that marriage should seem desirable and important to a normal woman. It means companionship, a home of her own, motherhood, and added dignity, with the respect and interest of her fellow men, sentiments which frequently are withheld from single women of greater worth and larger usefulness. For, however unjust it may be, the fact remains that there is an indefinable courtesy and attention paid to the most uninteresting woman who pre-fires Mrs. to her name which is rarely accorded to a spinster, and that respect is doubled and trebled when the man whose name she bears is "known in the gates." The lesson of all the ages is that woman, however gifted, finds her most congenial abiding place in "the sweet, safe corner of the household fire, behind the heads of children." Love makes a woman's world. "Man's love is of man's life a thing apart; 'Tis woman's whole existence." And if, as has been charged, this is because that existence is narrow, it in no degree lessens the fact. There is no greater joy for the woman who loves than to spend and be spent for the man whom she loves, to feel that she helps, strengthens and comforts him, that he could not well do without her. The love of a good man and true, when that love is mutual, is the most precious gift which God bestows upon a woman. All the same, it is many times better that a woman should stand alone all the days of her life than leap upon a broken reed which, perchance, will not only fall her but pierce her to the heart. It is better not to marry at all than to marry badly. Moreover, there are some women for whom marriage is always more or less of a mistake. There are many people in this world who are incapable of the devoted affection which asks nothing but love and can bear all things, hope all things and endure to the end. More of these are men than women, still she who belongs to this class will be wiser to work out her own salvation and carve for herself the career to which she can give her whole soul unreservedly. Yet it is forever doubtful whether it ever wholly satisfies a woman's heart. "Sit by lonely fires And hear the nations praising her far off." There is much truth in the saying that woman's work, however successful, is vanity in her eyes without the approbation of the man whom she loves. The treasure of a good man's love may well be the crown of any woman's life, and the beneficial influence of a wise and appreciative husband can scarcely be overestimated. The wife's womanly weakness may profit much by the husband's manly strength, and if the wife have talent such a one would be the last to permit her to hide it in the napkin of domestic drudgery. It was Mr. Platt who gave "A Woman's Poems" to the world, and it is much to be doubted whether, without her husband, John Strange Winter would have achieved name and fame. The women who have failed because of marriage are those who have loved "not wisely, but too well."

BELONGED TO OTHER DAYS. The caddy touched the man in the silk hat on the arm. "Excuse me, sir," he exclaimed in haste, "but this dollar has a plug in it." "Oh, well, so has your blamed old cab," retorted the man in the tall silk hat. The caddy frowned scornfully. "Go wan," he blurted in high dudgeon "that joke might have been work before the horseless age, but not now. There is no plug in this cab mister; it is run by electricity."

JOY AND REUTER BOTH TO LEAVE

HONOLULU IS LOSING BOTH OF HER CHAMPION TWIRLERS THIS SEASON.

Barney Joy and Dick Reuter will not be seen this season on the local diamond unless something should happen to make the present plans miscarry. Reuter has been signed on the San Francisco team, while Joy is to be in the box for the Boston National team. Every one of the players who made the trip on the Fisher All Star team have the highest praise for Dick Reuter the crack pitcher of the Kamehameha team. Fisher has made several statements that Reuter would be a much better pitcher than Joy ever was after he had been in fast company for a little while. Joy expects to leave with Reuter some time this month to join the Boston forces, and his many friends are anxious to know if he is going to make good with the Boston team. Reuter will have a chance to play against the Chicago White Sox team as the Frisco team will play a series of games with the crack American league team during March. The majority of players on the coast think that Barney should go in for catching instead of pitching, as he is much better behind than before the bat, however it remains to be seen how Barney will act when he is in faster company.

SPORTING EVENTS

- ***** ***** * Socker football Makiki Field * 2:30 today. Y. M. C. A. vs. * Malles, Diamond Heads vs. Pu- * nahou. * White Rock Golf Tournament * at Haleiwa, Sunday. * Tomorrow Riverside Junior * baseball league Aala Park * morning. Aala A. C. vs. Chinese * Alohas Oriental A. C. vs. Asahi * A. C. * Valleyside League Champion- * ship game for second series Ka- * piolani Park afternoon Buffalo * Bills vs. Lei Lehuas. * First game in the champion- * ship series of the Kalaianaoie * League Aala Park afternoon * between the Chinese A. C. and * the Kaalas. * ***** ***** * Fine Job Printing, Star Office. * ***** *****

CORPORATION NOTICES.

ANNUAL MEETING OF STOCK-HOLDERS. PULEHU PLANTATION CO., LTD. The annual meeting of the Stockholders of the Pulehu Plantation Co., Ltd., will be held at the office and principal place of business of the Corporation, Stangenwald Building, Honolulu, on Friday, February 28th, 1908, at 2 p. m. The Stock Books of the Corporation will be closed for transfers on February 21st, 1908, by order of the Board of Directors. E. E. PAXTON, Secretary.

ANNUAL MEETING OF STOCK-HOLDERS. KULA PLANTATION CO., LTD. The annual meeting of the Stockholders of the Kula Plantation Co., Ltd., will be held at the office and principal place of business of the Corporation, Stangenwald Building, Honolulu, on Saturday, February 29th, 1908, at 10:10 a. m. The Stock Books of the Corporation will be closed for transfers on February 21st, 1908, by order of the Board of Directors. E. E. PAXTON, Secretary.

ANNUAL MEETING OF STOCK-HOLDERS. KAHUKU PLANTATION CO. The annual meeting of the Stockholders of the Kahuku Plantation Co. will be held at the office and principal place of business of the Corporation, Stangenwald Building, Honolulu, on Thursday, February 27th, 1908, at 2 p. m. The Stock Books of the Corporation will be closed for transfers on February 21st, 1908, by order of the Board of Directors. E. E. PAXTON, Secretary.

ANNUAL MEETING. MAUI AGRICULTURAL CO. The annual meeting of the Partners of the Maui Agricultural Company will be held at the office and principal place of business of the Partnership, Stangenwald Building, Honolulu, on Saturday, the 29th day of February, 1908, at 11:00 a. m. W. O. SMITH, Secretary.

CORPORATION NOTICES.

ANNUAL MEETING. KAU AGRICULTURAL CO., LTD. The regular annual meeting of the Stockholders of the Kau Agricultural Co., Ltd., will be held at the office of its Agents, Wm. G. Irwin & Co., Ltd., Honolulu, on Thursday, February 27, 1908, at 3:30 p. m. RICHARD IVERS, Secretary. Honolulu, February 12, 1908.

ANNUAL MEETING. PONAHAUAI COFFEE CO., LTD. The regular annual meeting of the Stockholders of the Ponaheawai Coffee Co., Ltd., will be held at the office of its Agents, Wm. G. Irwin & Co., Ltd., Honolulu, on Thursday, February 27th, 1908, at 10:30 a. m. H. M. WHITNEY, Secretary. Honolulu, February 12, 1908.

ANNUAL MEETING. WOODLAWN FRUIT CO., LTD. The regular annual meeting of the Stockholders of the Woodlawn Fruit Co., Ltd., will be held at the office of its Agents, Wm. G. Irwin & Co., Ltd., Honolulu, on Thursday, February 27, 1908, at 11:30 a. m. RICHARD IVERS, Secretary. Honolulu, February 12, 1908.

ANNUAL MEETING OF STOCK-HOLDERS. ALEXANDER & BALDWIN, LTD. The annual meeting of the Stockholders of the Alexander & Baldwin, Ltd., will be held at the office and principal place of business of the Corporation, Stangenwald Building, Honolulu, on Monday, February 24th, 1908, at 9:00 a. m. The Stock Books of the Corporation will be closed for transfers on February 17th, 1908, by order of the Board of Directors. E. E. PAXTON, Secretary.

ANNUAL MEETING OF STOCK-HOLDERS. KIHAI PLANTATION CO., LTD. The annual meeting of the Stockholders of the Kihai Plantation Co., Ltd., will be held at the office and principal place of business of the Corporation, Stangenwald Building, Honolulu, on Friday, February 28th, 1908, at 10:00 a. m. The Stock Books of the Corporation will be closed for transfers on February 21st, 1908, by order of the Board of Directors. E. E. PAXTON, Secretary.

ANNUAL MEETING OF STOCK-HOLDERS. HAWAIIAN SUGAR CO. The annual meeting of the Stockholders of the Hawaiian Sugar Co. will be held at the office and principal place of business of the Corporation, Stangenwald Building, Honolulu, on Friday, February 28th, 1908, at 2 p. m. The Stock Books of the Corporation will be closed for transfers on February 21st, 1908, by order of the Board of Directors. E. E. PAXTON, Secretary.

ANNUAL MEETING OF STOCK-HOLDERS. HAIKU SUGAR CO. The annual meeting of the Stockholders of the Haiku Sugar Co. will be held at the office and principal place of business of the Corporation, Stangenwald Building, Honolulu, on Saturday, February 29th, 1908, at 9 a. m. The Stock Books of the Corporation will be closed for transfers on February 21st, 1908, by order of the Board of Directors. E. E. PAXTON, Secretary.

ANNUAL MEETING OF STOCK-HOLDERS. PAIA PLANTATION. The annual meeting of the Stockholders of the Paia Plantation will be held at the office and principal place of business of the Corporation, Stangenwald Building, Honolulu, on Saturday, February 29th, 1908, at 9:30 a. m. The Stock Books of the Corporation will be closed for transfers on February 21st, 1908, by order of the Board of Directors. E. E. PAXTON, Secretary.

ANNUAL MEETING OF STOCK-HOLDERS. KALIALINUI PLANT. CO., LTD. The annual meeting of the Stockholders of the Kallaliniui Plantation Co., Ltd., will be held at the office and principal place of business of the Corporation, Stangenwald Building, Honolulu, on Saturday, February 29th, 1908, at 10:00 a. m. The Stock Books of the Corporation will be closed for transfers on February 21st, 1908, by order of the Board of Directors. E. E. PAXTON, Secretary.

CORPORATION NOTICES.

ANNUAL MEETING. KOHALA SUGAR COMPANY. The annual meeting of the shareholders of the Kohala Sugar Company will be held at the office of O'Connell & Cooke, Ltd., in the Stangenwald building, on Merchant street, in the city of Honolulu, H. T., on Saturday, February 20, at 10 o'clock a. m. T. H. PETRIE, Secretary, Kohala Sugar Company. Honolulu, T. H., February 10, 1908.

ANNUAL MEETING. WAIALUA AGRICULTURAL CO., LTD. The annual meeting of the shareholders of the Waialua Agricultural Co., Ltd., will be held at the office of Castle & Cooke, Ltd., in the Stangenwald building, on Merchant street, in the city of Honolulu, H. T., on Thursday, February 27, 1908, at 10 o'clock a. m. Notice is also hereby given that at said meeting it is proposed to amend the by-laws of said company. T. H. PETRIE, Secretary, Waialua Agricultural Co., Ltd. Honolulu, T. H., February 10, 1908.

ANNUAL MEETING. EWA PLANTATION COMPANY. The annual meeting of the shareholders of the Ewa Plantation Company will be held at the office of Castle & Cooke, Ltd., in the Stangenwald building, on Merchant street, in the city of Honolulu, H. T., on Wednesday, February 25, 1908, at 10 o'clock a. m. Notice is also hereby given that at said meeting it is proposed to amend the by-laws of said company. T. H. PETRIE, Secretary, Ewa Plantation Company. Honolulu, T. H., February 10, 1908.

ANNUAL MEETING. WAIIAWA WATER CO., LTD. The annual meeting of the shareholders of the Waiiawa Water Co., Ltd., will be held at the office of Castle & Cooke, Ltd., in the Stangenwald building, on Merchant street, in the city of Honolulu, H. T., on Thursday, February 27, 1908, at 11:30 o'clock a. m. T. H. PETRIE, Secretary, Waiiawa Water Co., Ltd. Honolulu, T. H., February 10, 1908.

ANNUAL MEETING. THE WAIMEA SUGAR MILL CO. The annual meeting of the shareholders of The Waimea Sugar Mill Co. will be held at the office of Castle & Cooke, Ltd., in the Stangenwald building, on Merchant street, in the city of Honolulu, H. T., on Wednesday, February 26, 1908, at 2 o'clock p. m. T. H. PETRIE, Secretary, The Waimea Sugar Mill Co. Honolulu, T. H., February 10, 1908.

LEGAL NOTICES.

IN THE UNITED STATES DISTRICT COURT FOR THE TERRITORY OF HAWAII.

In the exercise of its Jurisdiction of cases cognizable in and powers of a Circuit Court of the United States.

THE UNITED STATES OF AMERICA, for the use and benefit of LEWERS & COOKE, LIMITED, a Corporation, Plaintiff, versus BURRELL CONSTRUCTION COMPANY, a Corporation, and THE AETNA INDEMNITY COMPANY, of HARTFORD, CONNECTICUT, a Corporation, Defendants.

NOTICE OF PENDENCY OF SUIT. TO ALL WHOM IT MAY CONCERN: Notice is hereby given that said LEWERS & COOKE, LIMITED, has on this 5th day of February, 1908, instituted suit in the name of the United States of America for its use and benefit in the above entitled Court and cause against said BURRELL CONSTRUCTION COMPANY and said THE AETNA INDEMNITY COMPANY, of that certain bond and contract hereafter mentioned for the recovery of amounts due for materials and labor by it furnished said Burrell Construction Co. in the prosecution of work provided for in that certain contract dated June 20, 1905, between Colonel Wm. S. Patton, U. S. A., etc., and said Burrell Construction Co., for construction of buildings, etc., at Kahuku, Honolulu, T. H., the payment for which is secured by the bond executed in connection with said contract. Any and all creditors of said Burrell Construction Co. who have furnished labor or materials in the prosecution of work provided for by said contract are hereby notified of the pendency of said suit and of their right to intervene, file their claim and be made a party in such suit. Honolulu, February 5, 1908.

UNITED STATES OF AMERICA, for the use and benefit of LEWERS & COOKE, LIMITED, Plaintiff, versus SMITH & LEWIS, Attorneys for Plaintiff.

Fine Job Printing, Star Office.

The Hawaiian Star

DAILY AND SEMI-WEEKLY.

Published every afternoon (except Sunday) by the HAWAIIAN STAR NEWSPAPER ASSOCIATION, LIMITED.

SUBSCRIPTION RATES:

Local, per annum \$5.00
 Foreign, per annum 12.00
 Payable in advance.

Entered at Post Office at Honolulu, Hawaii, as second class mail matter.

Subscribers who do not get their papers regularly will confer a favor by notifying the Star Office; Telephone 365.

The Supreme Court of the Territory of Hawaii has declared both THE HAWAIIAN STAR (daily) and THE SEMI-WEEKLY STAR newspapers of general circulation throughout the Territory of Hawaii, "suitable for advertising proceedings, orders, judgments and decrees entered or rendered in the Courts of the Territory of Hawaii."

Letters to THE HAWAIIAN STAR should not be addressed to any individual connected with the office, but simply to THE HAWAIIAN STAR, or to the Editorial or Business Departments, according to tenor or purpose.

FRANK L. HOOGS MANAGER
 SATURDAY FEBRUARY 15, 1908

SCHMITZ APPEAL.—TO GET RUEF.

San Francisco Prosecution Is Allowed to Take Appeal Under New System Recently Adopted.

The appeal which has just been taken in San Francisco in the Schmitz case is by the prosecution, from the San Francisco appellate court to the Supreme court of the state and is under a legal system only recently adopted allowing such appeals. The appellate court is in fact a new court, and the Schmitz decision is sometimes referred to as an unfortunate first example of how the system works in an important case. Under the law as San Francisco now has it, the prosecution may appeal the same as the defense, and the district attorney, according to the brief cable advices, has decided to take advantage of the right. There has long been much advocacy of such a system, and an appeal at least on legal points, after a conviction by a jury, would seem only fair.

According to the recent San Francisco discussions of the prospective appeal, the prosecution was paying particular attention in preparing its brief to the ruling that the indictment was insufficient,—the extraordinary decision that it is no crime for an official to extort money by a threat to do a lawful act, such as to influence commissioners against granting a license. If there is a reversal on this point it will make the remaining indictments good, but will not revive the Schmitz conviction already had unless the higher court also reverses the decision in its criticisms of the rulings made during the trial. Making the indictments good, however, will accomplish the all-important purpose of making good Ruef's plea of guilty, and this may be the milk in the coconut.

OUR GREAT WHITE FATHER, CONGRESS

The Baby Territory May Suddenly Find Herself Legislated Into a Condition of Almost Blue Law Virtuousness.

If the Ministerial Association of Honolulu makes a move on Congress to have prohibition inserted in the federal penal code now being slowly whipped into shape by the national legislature, and if the association succeeds in getting the matter brought up, it may precipitate a fight likely to be memorable in the history of the nation and a debate of the most absorbing interest. The code which is being passed consists of laws applicable to all the Territories. The Edmunds Act is among them and it is to be presumed that it will be incorporated in the new code,—the discussions so far show no differences of opinion except over details. Prohibition, however, is an entirely new federal doctrine, which a few years ago no one would have hoped to get through Congress. But in the wave of Prohibition sentiment which has recently swept the country, carrying most of the South,—home of the red-nosed "cunneel" and the famed mint julep,—the prohibitionists see a chance greater than they have ever had before. The fight may be made over a proposition to make the District of Columbia Prohibition and it may be over the plan being discussed here, to put Prohibition in the federal code, which applies to all the Territories. Whichever way the contest comes, if Congress can be carried for one proposition it can probably be carried for the other.

In addition to this liquor regulation, Congress is not unlikely to take up the matter of prohibiting gambling in the Territories. A special bill to carry out this plan was up in the last session. It will give federal officers the duty of enforcing laws against gambling and, in view of the severity of federal courts, both in the matter of procedure during trial and sentence after conviction, it will make gambling as a profession exceedingly hazardous,—no one sees a convicted prisoner in a federal court fined a simple \$5 and costs. The federal law as being discussed, does not apply to odd games in private premises, either of orientals or whites, such as are sometimes raided here, but only to gambling where there is a "bank" or some evidence of professional conduct of a game of chance for profit.

The news that the Spreckels interests have formed a new railroad corporation at San Diego shows activity on their part which may eventually have something to do with Honolulu efforts to get steamship communication with Southern California.

It appears that the fleet's call at Valparaiso is not to be more than a mere parade there, to give the people of that vicinity a salute and a chance to see the vessels. The arrival at Callao therefore may be but a little behind the original schedule date, February 18.

If the fleet comes here in squadrons we shall of course miss the great spectacle it presents as a whole, but on the other hand Honolulu can much more easily handle a succession of squadrons satisfactorily.

The loss of the ship Emily Reed, with ten lives, adds another disaster to a season record which is a very bad one.

The statement from Manila, printed in The Star, that Judge Wiley had been sustained, is now confirmed from Washington.

It appears from the various cable dispatches that Admiral Evans takes no part in the various festivities so much enjoyed by the other officers of the fleet. At every port so far he has been confined to his flagship by illness, as it is reported. It is possible that the admiral does not care to leave his ship under the circumstances. The responsibility on his shoulders is an almost overwhelming one.

Attention has many times been called in these columns to the barbarous injustices of the Chinese exclusion law. In recent years there have been several modifications of the rules and some very stern admonitions to officials, particularly in California, to abandon their rude, insulting attitude towards those subject to the law and treat them with courtesy. But the law remains and is not likely to be got rid of. The case of Editor Lo Sun is on the face of it an absurdity and an outrage, viewing simply the question of whether he is of the character which the law should allow in the country. If, however, the question at issue is, as we understand to be the case, whether there was fraud or violation of law in the manner in which he obtained residence in the

The Man and His Job

By HERBERT J. HAPGOOD.

When we say that a man is "Johnny on the Spot" we mean that he is Johnny on the right spot; for Johnny on the wrong spot would not be nearly so clever. If a man isn't in the right place, he might just as well be nowhere.

They say that an oyster cannot live in the Black Sea. Oysters require water that contains 37 per cent. of salt. Unless the water is of nearly this density, the oyster cannot survive.

There are certain forms of bacteria which can only thrive at a certain temperature and in a definite degree of moisture.

A giraffe would find it mighty uncomfortable to take up his abode in the catacombs of Rome.

A few facts such as these go to show that you cannot put square pegs into round holes, and that it is absolutely necessary, in order to reach the acme of success, to put the right man in the right place, at the right time. The father of Benjamin West, the greatest of the early painters of America, desired his son to study for the ministry, or at least to learn a trade; but he who had painted pictures with the hair taken from the tail of a cat, could not best vent his talents from the pulpit or in the marketplace.

After graduating from West Point, Ulysses S. Grant tried his hand at selling goods, but was an utter failure.

Patrick Henry lost the capital his father invested for him in a small business, and only after making a complete failure of an attempt at farming, did he at last find his place when he came before the Virginia House of Burgesses and made his famous speech denouncing the Stamp Act.

One of the first essentials of success for the employee is to get the right place—for the employer, to get the right man.

GROCERY DEPARTMENT OF LEWIS & CO., LTD

HOUSEHOLD EMPORIUM.

Tea and Coffee Cups, Saucers, Dinner, Side and Dessert Plates, Fruit Dishes, Casseroles, Covered Dishes, Poi Bowls, Platters, Cream and Sugar Jugs, Sauce Boats. Also

Fine Table Glassware

Lewis & Company, Ltd

CROCKERY AND GLASSWARE.

169 King St. Telephone 240.

Tales Worth Telling

THE IMPUDENT WAITER.

Oscar Hammerstein at a theatrical dinner in New York, told some reminiscences of theatrical deadheads.

"Then there was Blank," said Mr. Hammerstein. "Blank's impudence was second only to that of a waiter I heard about the other day.

"Look here, waiter," said a guest, "this fish is not cooked properly."

"I know it, sir," said the waiter, "but you told me it was for your wife."

"Well, what of that?" asked the surprised guest.

"Why," said the waiter, "I knew that if the lady was your wife she couldn't be very particular."

SPECULATION'S UPS AND DOWNS.

To a reporter who recently consulted him about his many charities Charles M. Schwab gave some good advice on speculation.

"Ignorant as you are of the stock market," said Mr. Schwab, "you would be more than foolish to speculate. You would have to rely on others for advice, and you know what other people's advice come to. For instance:

"You thought that stock on Smith's advice, didn't you?" said one man to another.

"Yes," said the second man. "Smith gave me five excellent reasons why it had to go up?"

"And what has he got to say now?"

"He now gives me five excellent reasons why it had to go down."

ECONOMY IN EXCESS.

James J. Hill, the railway magnate, was talking in Kansas City about economy:

"Economy is excellent," he said, "but even economy must not be carried to excess. Railways must not be managed as a certain New York necktie manufacturer manages his business. A drummer in this man's employ showed me the other day a letter from the firm. It ran thus:

"We have received your letter with expense account. What we want is orders. We have big families to make expenses for us. We find your expense account 50 cents for billiards. Please don't buy any more billiards! Also we see \$2.25 for horse and buggy. Where is the horse, and what did you do with the buggy? The rest of your expense account is nothing but bed. Why is it you don't ride more in the night time.

country, the legal issue is of course a very different one, and has nothing to do with the question of how desirable a resident he may be.

Handsome Gifts

for Birthdays, Weddings and other occasions. Presents that will leave sweet memories of the donor. There's something delicate about them—something suggestive of refinement.

Perfumes

made by WHITLATCH, HOBURGANT, PIVEK, ROGER & GALLLET,—the very best on the market.

IVORY BACK BRUSHES are our latest novelty. We have a fine line of them.

HOLLISTER DRUG CO. LIMITED.

FORT STREET.

STEINWAY

STARR AND OTHER PIANOS
 THAYER PIANO CO.
 154 Hotel St., Opp. Young Hotel.
 Phone Main 53
 TUNING GUARANTEED

EL PALENCIA

The Choice of the Smoker.
 Hayselden Tobacco Co.
 SOLE DISTRIBUTORS.
 Alexander Young Building.

H. F. WICHMAN & CO. LTD.

Opticians.

All kinds of complicated lenses ground to order. Frames adjusted and repaired.

Factory on the premises.

H. F. WICHMAN & CO., LTD.
 1042-1050 Fort St.

Cable Address: "Armitage," Honolulu.
 Lieber Code.
 Postoffice Box 683, Telephone Main 101.

HARRY ARMITAGE

Stock and Bond Broker...
 MEMBER OF HONOLULU STOCK AND BOND EXCHANGE.

Office:

Campbell Block, Merchant Street,
 HONOLULU, T. H.

You wouldn't use another's tooth brush—

Keep your toilet soap for your personal use by getting a West Soap Dispenser from us

Benson, Smith & Co., Ltd

Hotel and Fort Streets.

WE HAVE IT

IF IT'S ANYTHING IN THE

Dry Goods Line

EHLERS

Fine Job Printing, Star Office.



One of McCall's Child's Patterns

WE ALSO KEEP MATERIAL AND LACES FOR SAME

E. W. JORDAN & CO. LIMITED.

Clear, Steady LIGHT

The light that is Clear, Steady, Bright, and yet soft, like daylight, is the INCANDESCENT light.

It is the best light to read by, the best light to have. It is cheerful, and bright, and convenient.

There is no respect in which it is not better than any other form of lighting. Have your home wired by the

Hawaiian Electric Co., Ltd

Office 223 King Street.

PHONE 390.

HOME SMOKED

HAMS and BACON

Sweet and Tender

The Metropolitan Meat Co.

TELEPHONE 46.

Always in Stock

FINE DRIVING REINS, WHIPS, HARNESS, RIDING BRIDLES, BITS, SPURS, SADDLES AND ROBES.

C. R. COLLINS,

82-84 King Street near Fort.

WEIGHT IS WHAT GRINDS AWAY TIRES

If you wanted to grind a tire to pieces on a grindstone you would press down on it as hard as you could. The harder you pressed, the quicker the tire would wear out. Isn't that so?

Every ounce of weight in your motor-car costs you money for your tires. Every ounce means dollars out of your pocket.

The light-weight, strong, high-power Franklin saves you a lot of good money that you spend on the tires of a heavy automobile and gives you equal or better service.

Franklins are economical in every way. Highly efficient—easy on gasoline. (No other 4-cylinder motor-car ever went 95 miles on 2 gallons.) Unusually handy and durable—light on repairs; and above all they are unequalled tire-savers.

Come and see the tire-saving dollar-saving Franklin.

E. O. HALL & SON, LTD

AGENTS

BUTTERNUT BREAD

is delicious at the

The PALM CAFE

HOT DOGS

Alias Red Hots, otherwise known as Sausages. We have a whole kennel of these dear little dainties and serve them free with a drink every afternoon.

"The Hoffman" (Billy Howell's Place.)

Koa Furniture

UPHOLSTERING AND REPAIRING

WING CHONG CO.

Cor. King and Bethel. P. O. Box 1030

W. G. Irwin & Co., Ltd

Wm. G. Irwin...President and Manager
 John D. Spreckels...First Vice-President
 W. M. Giffard...Second Vice-President
 H. M. Whitney...Treasurer
 Richard Ivers...Secretary
 W. F. Wilson...Auditor

SUGAR FACTORS, COMMISSION AGENTS

AGENTS FOR

Oceanic Steamship Co., San Francisco, Cal.

Western Sugar Refining Co., San Francisco, Cal.

Eldwin Locomotive Works, Philadelphia, Pa.

Newall Universal Mill Co., Manufacturers of National Case Shredder, New York, N. Y.

Pacific Oil Transportation Co., San Francisco, Cal.

Can You See Well

enough to read this at a distance of one foot without making faces?

IF YOU CAN'T you can always see a reliable optician.

A. N. Sanford,
OPTICIAN.

Beston Bldg. Port St.



FOR SALE.
Ten acres of pineapple land at Wahiawa. Good location. More land adjoining if desired.

Building site: College Hills, 40,000 sq. ft. Owner will accept mortgage for full purchase price of land provided buyer builds house.

FOR RENT FURNISHED.

Hotel Street.....	\$50.00
Prospect Street.....	50.00
Kamiki.....	37.00

FOR RENT UNFURNISHED.

Kinua Street.....	\$35.00
Lunalilo Street.....	25.00
Young Street.....	25.00
King Street.....	25.00
Kinua Street.....	30.00
Kewalo Street.....	22.50
King Street.....	15.00
Aloha Lane.....	18.00
Mattlock Avenue.....	25.00
Emma Street.....	24.00
Beretania Street.....	40.00

Henry Waterhouse Trust Co., Ltd.,
Fort and Merchant Sts., Honolulu.

Classified Advertising

For Rent

Nice housekeeping rooms. Address 706 Quarry street, corner Alapai.

EMPLOYMENT WANTED.

A Chinese woman desires employment as cook, kitchen assistant or to take care of children; willing to do any kind of work. Can furnish good references. Address K. Ah Chong, Box 13, or apply to Ah Young, 1898 Kalaikua Ave.

WANTED.

Man acquainted on outside islands for high-grade canvassing proposition; salary and expense paid. Address "Business," this office.

Experienced lady hat trimmer. Good position to right party. Address, P. O. Box 868.

Boy with bicycle to carry papers. Apply Star Office.

FOR SALE.

Young island single-footer saddle horse. Address, P. O. Box 207.

Eggs from the following prize winners at \$5.00 per setting: Silver Spangled Hamburg, Shamo (Japanese) Games, Pure Asels (Games), Muscovy Ducks. Jeffs, Union Barber Shop.

A brake in good condition, 1 set light harness. Cheap. Apply Stockyards Stables.

CITY'S CHURCHES

METHODIST.
First Methodist Episcopal Church, 408 Beretania Avenue, David W. Crane pastor.

Announcements for Sunday: Sunday School, 9:45 a. m.; R. H. Trent, superintendent. International lesson: "Jesus Heals the Nobleman's Son." Morning worship 11 a. m. Preaching by the pastor; subject, "Beginning to Know God." Epworth League, 6:30 p. m.; P. E. Tosh, president. Topic for study: "Turning Defeat Into Victory." Evening service, 7:30 p. m. Sermon by the pastor; subject, "Solomon's Wisdom."

H. H. Winslow will favor us with a tenor solo, in the morning service; and Miss Hall will sing at night. Come and worship with us.

CHRISTIAN CHURCH.
A. C. McKeever, pastor. 9:45, Bible School; 6:30 p. m. Y. P. S. C. E. subject, "Ministering to Poor." 11 a. m. and 7:30 p. m. sermons by Rev. O. A. Hushaw. Rev. Hushaw has just arrived in our city from California. He will remain here and take up mission work under the oversight of the Christian church.

CENTRAL UNION CHURCH.
Corner of Beretania Avenue and Richards streets. Doremus Scudder, Minister.

Services for the day will be as follows: Bible School—Clifton H. Tracy, Superintendent, with classes for all ages at 9:45 a. m.

Morning Worship at 11 o'clock. The Minister will preach; subject, Old Testament Topics III "In the Beginning." Choir and Chorus—Stanley Livingston, Conductor, will sing Back's "It is a Good Thing to Give Thanks" and lead the Congregation. Offertory solo "Like as a Father" by Mrs. Mackall.

The Christian Endeavor Society will meet at 6:30 p. m.

Evening Worship at 7:30 o'clock. Sermon by the Minister subject "Bathing and Washing." Choir, chorus and congregational singing. The chorus will sing Gounod's "Word of God, Incarnate."

A cordial invitation is hereby extended to strangers, seamen, travelers, visiting friends and the public to attend all these services.

Y. W. C. A. TALKS.
A series of pleasant and profitable Sunday afternoon talks is promised for this spring the first talk beginning tomorrow afternoon at the house of Mrs. B. F. Dillingham at four o'clock when Mrs. C. M. Hyde will speak of her cruise in the Mediterranean. All ladies are most cordially invited.

Fine Job Printing, Star Office.

TOURISTS BACK FROM VOLCANO

KINUA BRINGS TWENTY-SIX WHO HAVE VISITED THE GREAT HAWAII SPECTACLE.

With twenty-six satisfied volcano sightseers the S. S. Kinua this morning arrived on schedule from Hilo and way ports. Twenty-six returning enthusiasts, enthusiastic over the awesome splendors of Kilauea, is a pretty good record for this time of year, and the volcano not very active at that.

Ross and his wife, and Rossi is president of the American-Swiss Wine Company, were among the returning, as were also United States Judge S. B. Dole and his wife, and former Lieutenant-Governor Anderson of California.

Major Dunning went to Hilo to inspect the militia there and he took the Kinua from the Crescent City to McGregor's landing, whence he inspects the Walluku regiment, N. G. H., returning to Honolulu in the S. S. Claudine.

Purser Phillips of the Kinua, than whom it would be impossible to find a man who wins popularity more instantaneously, has the following Hawaii shipping to report: A. H. S. S. Mexican sailed from Hilo for Salina Cruz last Thursday afternoon. Bark Andrew Welch arrived at Hilo on Tuesday, from San Francisco. The St. Katherine will sail on Wednesday next for San Francisco with sugar, she, as have other sailing vessels, has been delayed on account of the unpreparedness of the mills to supply sugar for the sailing fleet. The big boats of the American-Hawaiian S. S. Co. have been gobbling up the sweets and making the windjammers wait. The Mexican, for example, sailed away the day before she was due to arrive according to schedule.

A. H. S. S. Nevada reached Hilo on Saturday last from Honolulu, but was unable to accomplish anything until the Tuesday following on account of heavy rains. It was raining so heavily on Monday last that all shipping was idle at Hilo. During the trip of the Kinua, however, the weather was delightful.

S. S. Maui will arrive here tomorrow with cattle and sugar, full loaded. On Saturday next, Washington's birthday and the day of the Floral Parade, the Kinua will get in as early as possible. She was delayed a little today on account of loading sheep.

The twenty-fifth golf tournament for the White Rock trophy will be played at Haleiwa tomorrow. The following players have entered:

Handicap.	Scr.
Angus, George.....	12
Bidgood, St. C.....	12
Cheatham, E. M.....	12
Cox, Oscar.....	12
Copeland, Z. K.....	18
Edmunds, C. E.....	10
Gaines, J. D.....	11
Halstead, Frank.....	2
Hitchcock, D. H.....	18
Johnson, H.....	10
Little, J. M.....	18
Mahaula, A. S.....	3
Melneray, J. D.....	15
Orme, J.....	15
Phillips, M.....	18
Robinson, Mark A.....	18
Smith, F. C.....	15
Woon, W.....	15
White, Austin.....	18
Waterman, E. J.....	18
Wilder, H. A.....	9
Wilder, S. G.....	9
Wilder, J. A.....	9
Wood, Dr.....	9

SHIPPING INTELLIGENCE

ARRIVING.
Saturday, February 15.
S. S. Kinua, Clarke, from Hilo and way ports, 9:30 a. m.

DEPARTING.
Saturday, February 15.
U. S. A. transport Buford, for Manila, via Guam, from Naval wharf, 6 p. m.
Am. bk. Nuanuu, Josselyn, for New York, expects to sail p. m.

service the course on Old Testament Topics will be resumed by the Pastor. The subject will be "In the Beginning" and will deal with the First Chapter of Genesis.

ROMAN CATHOLIC CATHEDRAL.
Sunday services:
6 and 7 a. m. Low masses with Portuguese instruction and Holy Communion.
9 a. m. Low mass with singing and English sermon.
10:30 High Mass with Native instruction.
2 p. m. Rosary and Native instruction.
7 p. m. Portuguese sermon and benediction of the Blessed Sacrament.
During the week low masses at 6 and 7 a. m.

SAINT AUGUSTINE'S CHAPEL.
(Waikiki)
9 a. m. Low mass with singing and English sermon. F. Valentin in charge.

GOING SLOW.
An heir to a fortune of \$1,000,000 has become a messenger boy. Evidently he is determined not to live a fast life.—Chicago Post.

THE FANS HAVE IT.
It takes courage to talk base ball in this kind of weather.—Cincinnati Times-Star.

KUHO ASKS HILO FOR SOME KOA

WANTS THE HAWAIIAN WOOD IN NEW BUILDING ERECTED FOR CONGRESS.

HILO, February 13.—Delegate Kuhio has secured a new office for the Territory of Hawaii in the new building erected for offices for the use of Congressmen, and he has asked the Hilo Board of Trade to assist him in getting a koa book case that will be both useful, ornamental and an advertisement for Hawaii. Here is his letter:

COMMITTEE ON TERRITORIES
House of Representatives, U. S.
Washington, D. C.,
January 17, 1908.

Dear Sirs: Replying to your favor of December 28, I beg to say that I have already introduced a bill asking Congress to appropriate the sum of \$150,000 for a Federal building in Hilo. This bill I shall press before the proper committee as soon as it can be reached. I worked hard to secure the splendid site for this building, and shall be equally glad if I can secure the building itself.

I am just moving into the new office room, provided for me in the House office building, and it is my purpose to gather a library of reference books, documents and maps of the Territory of Hawaii as I can do so.

Unfortunately our rooms are not provided with any bookcases whatever, although several will be ultimately required to hold our collection. It has occurred to me that possibly your Board of Trade would be glad to have one book case made of selected koa wood, and place it in this room both for the purpose of accommodating necessary books and for attracting the attention of Congressmen to our Hawaiian mahogany. If your Board would like to make such a contribution to this Hawaiian room, I would be very glad to receive it.

Very truly yours,
J. K. KALANIANOLE M. C.

"TEACHER"

(Continued from Page One.)

If it is proved that he entered as a teacher and didn't teach:

"I think, from the impression made upon me at the hearing and without a careful study of the evidence, I would be in great doubt as to whether or not respondent was lawfully in the United States if it were not for the decision of Judge De Haven in the case of the United States vs. See Ho How, 101 Fed. 115, where it is specifically held that the right which the certificate of residence confers is a valuable one, of which the holder can only be deprived by the judgment of a Court of Equity, in a direct action brought by the United States for the purpose of annulling it, or in a proceeding for deportation, by proof that since its issuance, the holder has forfeited his right to remain in the United States by departing therefrom, without procuring from the Collector of Customs of the District from which he departed, a certificate entitled him to re-enter the United States."

"The above case I consider absolutely binding upon me, as it concerns the chief ground on which respondent claims the right to remain in the United States. I will admit that I do not see just why a person who might be unlawfully in the United States should be allowed to purge himself of the offense by securing a certificate of evidence as a laborer. Still I feel that the decision above cited, which has never been appealed from, and which stands as law, and which has been contradicted by no authority brought to my notice, is binding upon me.

"And pursuant to stipulation entered into between counsel the same action is taken in the cases wherein Dal Ea Kin, Kong Kiu Fong, Kong Yau Chong and Kong Kiu Chiu are named as respondents.

"FRANK L. HATCH,
"U. S. Commissioner."

AT THE ORPHEUM

The engagement of Frank Cooley and company at the Orpheum Theatre will terminate Tuesday night, the company sailing for San Francisco on the Alameda Wednesday. Four more performances are to be given. "The Man From Mexico" is to be played tonight. Monday night Mr. Cooley proposes to repeat "A Daughter of Dixie," pronounced by many people the prettiest drama of the season. On Tuesday night another of the season's successes, "The Scout's Revenge," is to be repeated. This was presented the first week of the company's engagement and is perhaps the strongest play of the melodramatic type in the entire repertoire.

An extra matinee is to be given Tuesday afternoon. Many requests have been received from the matinee patrons for a performance of "The Man From Mexico," the order having been changed this afternoon and a special performance of "Peck's Bad Boy" put on. Tuesday affords the last opportunity for a matinee and Manager Cooley therefore decided to present "The Man From Mexico."

A CASE OF NERVOUS PROSTRATION

Relieved In a Remarkable Manner By Pe-ru-na.

Pe-ru-na is a Systemic Catarrh Remedy.

Especially Adapted to Cases of Nervous Prostration

Caused By Overwork, Mental Strain or Extreme Summer Heat.

IN latitudes where warm weather is of long continuance, the inhabitants become more or less accustomed to it. In Temperate Zones, however, where the change from winter to summer is great, the system is sometimes poorly prepared to meet the exigencies of hot weather. This is the cause of much sickness.

Stomach catarrh, indigestion and dyspepsia are not among the least of summer ailments. When the digestion is disturbed, the assimilation is also affected, and as a result the body does not receive the nourishment it should. Lassitude, weakness, brain fog, loss of flesh and nervous prostration are the natural results.

What is needed is a remedy that will restore the digestive organs to their normal condition.

Such a remedy has been found in Pe-ru-na. It has proven itself of great value in thousands of cases of this kind.

Its action has been remarkable at times in restoring some patients who had given up all hope of recovery.

But there is nothing strange about Pe-ru-na's action. It simply tones up the mucous membranes of the organs involved, restoring them to their normal conditions and leaving Nature to perform her duties unhindered.

That person who has sound, healthy mucous membranes lining the entire digestive tract is well-guarded against the usual summer ailments.

Pe-ru-na is the means whereby to attain this most desirable condition.

If you suffer from any of the above mentioned symptoms, try a bottle of Pe-ru-na.

One bottle of this remedy is often sufficient to convince any one of its merits as a safe and reliable remedy for all catarrhal conditions.

We have many letters of gratitude received from persons who have experienced its benefits.

These testimonials are proof to us that Pe-ru-na has not failed in the mission for which it was intended, that of relieving suffering and restoring health.

Ask your druggist for a copy of our booklet "The Ihs of Life," giving instructions covering the most effective use of Pe-ru-na. Pe-ru-na is for sale by all chemists and druggists. The following wholesale druggists will supply the retail trade in Honolulu, Hawaii: Benson, Smith & Co., Honolulu Drug Co. and Hobron Drug Co.



MR. P. BRIÉN, 23 Third Street, Limolou, Quebec.

"The fatigues entailed by my duties as accountant began to weaken my system about a year ago. I felt that I would not long be able to withstand the severe strain upon my nerves, as, a thing unknown to me before, I would long for office hours to be over in order to rest."

"I gradually grew weaker and a few months later my sight was impaired. I then broke down completely and was obliged to take to my bed. I was also suffering from palpitation of the heart."

"After a few weeks' treatment by a local physician, I was in the same critical condition and as the doctor held out no great prospects for me, I decided to experiment on myself."

"I took several remedies advertised as tonics, but did not derive any benefit. Pe-ru-na was then given a trial, and before I had taken it a week I felt my condition improving. After a few weeks more had elapsed, during which time I followed the directions carefully, my shattered nervous system became firmer, my sight stronger and I hoped to be out soon again."

"My expectations were realized, for in three weeks I assumed my duties as accountant at the office."

"Pe-ru-na certainly worked wonders on my system, and for persons run-down from overwork, I believe it is the most efficacious tonic."

acts as a good, true friend and is the tonic needed.

"I have tried it for months and am only too glad to acknowledge it as a true, loyal standby in times of trouble. I do not hesitate to recommend it to all."

Completely Run Down—Pe-ru-na Restored to Health.

Mrs. J. Colson, 851 Notre Dame street, Maisonneuve, Montreal, Can., writes:

"Last winter I contracted a severe cold which affected my head and throat so I had to take to my bed and could not do my housework. A friend advised me to get a bottle of Pe-ru-na, and I procured a bottle. I felt better from the start. I have taken three bottles and am a new woman. My daughter's system was also completely run down and after using Pe-ru-na she is again restored to health."

"Or if you suffer with sleeplessness or if your appetite is poor, again Pe-ru-na acts as a good, true friend and is the tonic needed."

NEW ADVERTISEMENTS

LAST NIGHTS

—OF THE—

Frank Cooley COMPANY

Performances

SATURDAY EVENING, "THE MAN FROM MEXICO."

MONDAY EVENING, "A DAUGHTER OF DIXIE."

TUESDAY EVENING, "THE SCOUT'S REVENGE."

TUESDAY MATINEE, "THE MAN FROM MEXICO."

ELECTION OF OFFICERS.

At annual meeting of shareholders of the Concrete Construction Co., Ltd., held this day, the following Officers and Director were elected for the ensuing year:

Mr. L. C. Ables.....	President
Mr. F. T. P. Waterhouse.....
.....	Vice President
Mr. E. P. Chapin.....
.....	Treasurer and Secretary
Mr. Theo. Bauman.....	Auditor
Mr. F. E. Clark.....	Director
E. P. CHAPIN, Secretary.	

Honolulu, February 11th, 1908.

NOTICE.

Notice is hereby given that a new Directory of Subscribers of the Mutual Telephone Co., will shortly be published.

All subscribers desiring any change of name or address are requested to leave instructions in writing at the office of the company, corner Alakea and Merchant St., on or before Saturday, February 22nd 1908, after which date no changes will be made in the directory.

Honolulu, February 15, 1908.
MUTUAL TELEPHONE CO., LTD.

Fine Job Printing, Star Office.

ANNUAL MEETING.

HONOKAA SUGAR CO.
The annual meeting of the stockholders of the Honokaa Sugar Company will be held at the office of F. A. Schaefer & Co., Limited, in Honolulu, Saturday, February 29th, 1908 at 11 o'clock a. m.

J. W. WALDRON,
Secretary, Honokaa Sugar Co.
Honolulu, February 15th, 1908.

ANNUAL MEETING.

PACIFIC SUGAR MILL.
The annual meeting of the stockholders of the Pacific Sugar Mill will be held at the office of F. A. Schaefer & Co., Limited, in Honolulu, on Saturday, February 29th, 1908, at 2 o'clock p. m.

J. W. WALDRON,
Secretary, Pacific Sugar Mill.
Honolulu, February 15th, 1908.

ANNUAL MEETING.

KIPAHULU SUGAR CO.
The annual meeting of the Stockholders of the Kipahulu Sugar Co. will be held at the office of H. Hackfeld & Co., Ltd., Honolulu, T. H., Friday, February 28th, 1908, at 11 o'clock a. m.

H. HUGO,
Acting Secretary.
3th—Feb. 15, 21, 27.
Fine Job Printing, Star Office.

Arabian Nights

AT
OPERA HOUSE

ON
FEBRUARY 27TH AND 29TH.

Dramatic Circle

KILOHANA ART LEAGUE

ALL SEATS—\$1.

HATS

Such as you would wear are to be bought at this SHOP for less than anywhere else the birth place of hat fashion.

MRS. DUNN'S
HARRISON BLOCK
Fine Job Printing, Star Office.

"The Pleasanton"

MRS. J. W. MACDONALD, Proprietor,
Wildler Avenue and Punahou Street,
Telephone 368.

Rooms Single and en suite with or without baths.
Bell service in each room. Every modern convenience.
Best table in the islands.
Rates on application.

Weakened Vitality Impoverished Blood

Read what Ayer's Sarsaparilla did for a well-known city missionary, who writes:

"I was for many years a sufferer from boils and other eruptions of a like nature, caused by the impoverished state of my blood. My appetite was poor and my system a good deal run down. Knowing the value of

AYER'S Sarsaparilla

by observation of the good it had done to others, I began taking it. My appetite improved almost from the first dose, then my general health improved, and now it is excellent. I feel a hundred per cent. stronger, and I attribute this result to Ayer's Sarsaparilla, which I recommend with all confidence as the best blood medicine ever devised."

As now made, Ayer's Sarsaparilla contains no alcohol.

There are many imitation Sarsaparillas.

Be sure you get "Ayer's."

Prepared by Dr. J. C. Ayer & Co., Lowell, Mass., U.S.A.

AYER'S PILLS, the best family laxative.

Scratches

WILL MAR the most beautiful woodwork or furniture. But there is no need of their staying there. Anyone can apply a little

JOHNSON'S PREPARED WAX

and make it look like new. It's no trouble; just clean the wood and apply the polish with a woolen cloth or with Johnson's Polishing Mt. It preserves the wood, and brings out its natural beauty.

LEWERS & COOKE LIMITED.

AGENTS 177 S. King Street. Phone Ex. 20.

68 HOURS To Chicago

From San Francisco, The Fastest transcontinental train.

OVERLAND LIMITED

Electric lighted, Buffet, Library and Drawing room compartment, observation car, with dinner. Telegraphic news posted on train.

Southern Pacific

Is there any reason why our advertising matter should not help your business? Let's see.

HAWAII PUBLICITY CO. Telephone 173.

HOW A SOUTH AFRICAN MERCHANT WARD OFF AN ATTACK OF PNEUMONIA.

There is always cause for alarm when a severe cold is accompanied by pain in the chest. Mr. H. L. La Grange who is manager of a store at Jansenville, C. C., believes Chamberlain's Cough Remedy is better than the prescription of a physician. He says: "I had a boy in my employ who had been suffering from cold and a pain in the chest and got so bad he had to go to bed. I had the doctor attend him and used several other remedies, but he got no better. I finally tried Chamberlain's Cough Remedy, and in a short time he was up and about his work. We sell lots of it in the store."—For sale by all dealers, Benson, Smith & Co., agents for Hawaii.

SOCIAL EVENTS OF THE WEEK

DEBUTANTE'S BUTTERFLY BALL

MISS PAUL'S COMING OUT BALL A SOCIAL SENSATION RIVALING FAIRYLAND.



MISS MARY ASTOR PAUL

Maud Muller threw her rake away just as the judge was passing. Said he: "This work of raking hay is far below my classing. I'll start a 'get-rich' school today and advertise for scholars." She did, and now instead of hay Wise Maud is raking dollars. —Chicago News.

Ella Wheeler Wilcox has been the honored guest at many mansions in Honolulu since the celebrated writer and Robert M. Wilcox, whose wife is Ella Wheeler, arrived in the Mongolia, and the impressions the noted poetess has gained will live long and favorably in her memory.

Much as Roosevelt might enunciate "de-lighted", Ella Wheeler Wilcox pronounced "s-s-s-pien-did" on returning from a visit to Mrs. Governor Frear. "She's splen-did."

Then Ella, sometimes referred to as "our American humane poet and writer" found Princess Kawananakoa a humane worker of great enthusiasm. Truth to tell, the diaries of the Wilcoxes are likely to contain much of happy interest concerning impressions received of Hawaii's charming Princess and others of "the aristocracy."

Colonel Samuel Parker, Mrs. Campbell-Parker, Governor Cleghorn, and well, this is no Blue Book census, are recorded as aristocrats.

One of the first days here Mr. Wilcox called at the office of the Hawaii Promotion Committee and on returning to the hotel cottage gave a little dissertation on the beautiful types of Hawaiian loveliness he had seen thereat. Going further into details he declared that the young ladies whom he found in charge had impressed him as exquisite examples of Honolulu beauty.

Of course Ella Wheeler had to go and "take a look see." She went, she saw and she was conquered.

Ella Wheeler is very much in love with Hawaii, as is Robert M., and they have been gathering pictures to immortalize their impressions. Of course they have taken in the sights on this island and have been much entertained.

"We have had good opportunity," says Mr. Wilcox, "for a real study of early missionary work here, through the people we have met." And then he inquires if there are any missionaries here now, meaning, of course, as he explained, whether Hawaii is still considered a field requiring missionary endeavor.

Ella Wheeler Wilcox is a playwright as well as a poet and writer and her latest, which she terms a curtain raiser, goes under the title of "Art Versus Cupid." Lillian Randolph Desmond, a sister of Nance O'Neill, appeared in the playlet in Los Angeles and there is a prospect of it being produced here for some charity or humane work, at least there are many who are requesting the author to put it on in Honolulu.

A few chosen Honolulu friends have had a peek into the latest book of verse by the Intentional Ella, "The Love Sonnets of Abelard and Heloise." These, as a noted critic says, are "the immortal mislives of the immortal lovers dressed in beautiful verse by Ella Wheeler Wilcox, a volume that is at once a pleasure, a satisfaction and a demonstration that Ella Wheeler Wilcox writes today verse more subtle and beautiful than she has written before."

Versaille is a feeble word to describe the sweep of the Ella Wheeler Wilcox pen. Read her "Abelard and Heloise" and then listen to her declare that "we need a new religion which will make it impossible for self-respecting men and women to go away from their homes and leave dogs or cats with no provision for their comfort." No wonder she is liked!

The elaborate preparations and the interest taken in the arrangements for the Fair being held this afternoon at the home of Mr. and Mrs. Frederick J. Lowrey on Lunailo street makes it certain that it will be one of the greatest successes of the kind ever held in this city. The worthy object of the undertaking (to assist the milk fund of the Palama Settlement) has called out the most liberal contributions in time and painstaking handiwork on the part of the ladies who have the affair in charge.

The fair will continue this afternoon and evening. As before indicated the proceeds are to be used in the fund by which a pure milk supply will be secured for infants of the poor, it being recognized that through impure food for infants, hundreds of little lives go out annually. It is one of the most humane undertakings which the charitable people of Honolulu have ever taken up.

The various departments of the Fair are in the hands of the following committees: Ice Cream: Mrs. Wells Peterson, Mrs. W. E. Brown, Madame Angus, Miss Jennie Parke.

Waitresses: Miss Thomas, the young ladies from Punahou.

Cake: Mrs. J. A. Gilman, Miss Carrie Gilman, Mrs. H. E. Cooper.

Coffee: Mrs. Andrew Fuller, Mrs. Ernest Ross, Mrs. Edwin Hall, Mrs. A. Gartley.

Sandwiches: Mrs. Henry Waterhouse.

PHILADELPHIA, Pa., Jan. 7.—The coming out of Miss Mary Astor Paul, daughter of James W. Paul, Jr., was a social sensation.

Fairyland was rivalled. Myriads of beautiful and gorgeously spotted butterflies, imported from South America, fluttered around the ball room, and fountains of perfumed water sparkled and twinkled in the subdued tint of shooting colored lights and music, soft and sweet, floated through the hall, all tending to delude the imagination and waft one to realms foreign to mortal conception.

Mr. Paul has made Philadelphia sit up and take notice before. On the

occasion of the debut of another daughter, Miss Ellen Drexel Paul, now Mrs. Paul Denela Mills, he gave what has gone into the social history of the city as the "Four Seasons" ball. But the "Butterfly Ball" affair eclipsed it. Vying with the splendor of the decorations were the gowns of the women guests. Jewels valued at many hundreds of thousands of dollars sparkled from fair throats and elaborate coiffures. Never has a Philadelphia society function seen a more elaborate or imposing display of hand-gems and jewels or a more animated and brilliant scene than that which prevailed in the hall throughout the evening.

On account of the heavy rains of the past week there has been little going on at Haliwa. Several motor parties have started down but have been obliged to turn back on account of the bad condition of the roads.

Mr. and Mrs. J. D. Gaines and Mr. and Mrs. Frank Halstead are motoring around the island today, and will remain at the hotel over Sunday, as Mr. Halstead and Mr. Gaines are entered for the White Rock tournament which will be played tomorrow.

Mr. C. A. Brown entertained a number of her friends at bridge Wednesday night at her new home "The Pleasantry."

Gate Keepers: Alan J. Lowrey, Stanley Kennedy, William Lydgate. Ice: Mrs. Winne.

Jack: F. F. Cooke, S. Tannestad, Jack Desha, William Lydgate, Charles Davis, Charles Lyman, Theodore Cooper, Herbert Kinslea, Lewis Renton, F. Stack, David Townsend, Stanley Kennedy, Kenneth Lydgate.

The Orpheum is becoming quite a place for Society to gather in an informal way on Monday nights. Last Monday a large number of the "400" were on hand to witness the opening performance of the "Squaw Man," which by the way was the best play put on by the Elfeford Company.

Mrs. George Fairchild had quite a large party with her as her guests bringing them to the theater in her large auto-car. Among those that I saw during the evening were the Macfarlanes, Fairchilds, Johnsons, Captain Humphreys and many others.

Miss Helen Chaffee, who for the past several days has been the guest of General and Mrs. Frederick Funston at their home at Fort Mason, was among the best-known passengers who sailed yesterday on the transport Buford for Manila. Miss Chaffee will spend a number of months in the Philippines visiting a married sister and different friends. Since General Chaffee's retirement he and his family have made their home in Los Angeles, where Miss Chaffee is one of the most popular belles.—S. F. Bulletin.

The floral parade for next Saturday is being looked forward to with great expectation. The large number of visitors in the city are especially interested in the affair which has come to be known of very widely on the mainland. Manager Gartley has everything working smoothly and the parade promises to be larger than in any previous year.

Walter and Harold Dillingham left for the Korea last Saturday.

The marriage of Miss Margaret Hyde-Smith and Harold Dillingham will be solemnized on Monday evening, February 24th, at the residence of the bride on Fillmore street, San Francisco.

Bishop da Silva, who also left on the Korea, will perform the ceremony, assisted by the Bishop of San Francisco. Miss Smith being a Catholic. Special dispensation being granted by His Holiness The Pope.

Colonel Sam Johnson and family have moved to the Clarke house, corner Aloha lane and King street.

Miss Vanderbilt's \$10,000 wedding gown was so closely guarded that, it is said, she even dispensed with the services of her maid while she and her mother examined the fit in the latter's boudoir. The modistes who made the gowns to be worn by the bride, her attendants, Miss Ruth Twombly and Miss Dorothy Whitney and her dower girl, little Flora Whitney, have promised that these costumes will be simple, yet superb. There will not be a single thread of bright color about the girls' dresses. They will be of pure white, relieved only by cream-tinted ornaments.

There has been much speculation as to Miss Vanderbilt's trousseau. It probably means an outlay of \$75,000, including as it does a large number of importations from Paris and London. It included:

Blue point coat \$2,000
Duchess coat 1,000
Irish coat 500
Sable coat 1,500
Broadtail 950
White cloth 200
Eru coat with nink 450
Pale-blue cloth, lined with yellow satin and trimmed with cloth of gold and Russian sable 750
Automobile coat 100
Fur auto coat 500
Blue broadcloth coat 100
Tan covert 100
Black cloth, lined with squirrel 250
The outlay of furs is declared to be imposing, some of them being priced at:

Broadtail \$ 300
Silver fox 500
Blue lynx 350
Brown marten 400
Black marten 400
Urborn lamb 700
Russian pony 150
Siberian squirrel 100
White fox 200
Ermine-Russian sable, trimmed with ermine 1,500
Mink and broadtail 700
In the rest of the trousseau there are to be found, it is declared, the following:

Twelve ball gowns \$10,000
Twelve dinner gowns 6,000
Twelve matinee gowns 3,000
Twelve morning gowns 2,500
Twelve negligees 1,500
Twelve matinees 600
Shoes and silk stockings to match every gown 1,000
Satin slippers to match negligees 400
Hats to match 1,000
Ten ostrich or chiffon muffs and boas 1,500
Six dozen gloves 400
Twenty purses 3,000
Twelve dozen handkerchiefs, made in the French convents, 400
Two dozen parasols 500
Eight dozen suits of underclothes 1,500
Two dozen silk petticoats 1,200
Two dozen lingerie blouses 500
Two lace and chiffon blouses 1,500

Word comes from Honolulu of the illness of Mrs. Harry Macfarlane, pretty Polly Dunn that was. Her condition is not thought to be serious and is more of a nervous breakdown than anything else. Mrs. Macfarlane had contemplated visiting friends in San Francisco this winter, but her illness has upset all of her plans. This attractive young matron's popularity has not waned in her several years' absence from San Francisco and her visits, which have been so few since her marriage, are always hailed with delight by her many old friends here. Mrs. Macfarlane's home at Honolulu is an ideal one and she has, ever since her introduction to Honolulu society as a bride, been a great favorite. Mrs. Macfarlane's physicians at present fear that it may be a month or more before they will allow her to leave her apartments.—S. F. Bulletin.

In honor of her birthday, Miss Mabel N. Taylor entertained a number of her friends last Saturday night. Her home was prettily decorated with cut flowers and ferns. Pedro was indulged in until a late hour, after which refreshments were served. Among those present were Misses Irene Boyd, Emily and Beatrice Taylor, Lily Williams, Maggie Williams, Flora Chaney, Blossom Montu, Mr. Alapuni Boyd, Willie Taylor, David Desha and others.

Miss Florence Ingersoll, who has been visiting her sister Mrs. McNamara on Sheridan street for some time, expects to leave for her home in Buffalo shortly.

St. Andrew's Cathedral Wednesday afternoon was the scene of a very pretty wedding in which Robert Rudland Bode, organist of the Cathedral, and Miss Ada M. Coster were joined together in holy matrimony by the Rt. Rev. Henry B. Restarick, Bishop of Hawaii. The bride was handsomely gowned in white silk, and carried a large bouquet of white roses. Mrs. S. E. Damon was matron of honor, while D. W. Anderson acted as best man.

The bride was given away by John M. Mackinnon. As she entered the church the band, under the direction of Captain Berger, played the wedding march from Lohengrin.

As the party neared the chancel the choir of the Cathedral, assisted by the choir from the Priory, sang the wedding hymn, "The Voice That Breathed O'er Eden."

An incident that is hoped will prove a good omen to the young couple happened as the ceremony was being performed. The sun as it streamed in from the western front of the Cathedral, shone alone on the bride.

After the service was over, and during the signing of the register the choir rendered another hymn. As the bridal party passed down the aisle the band played the Mendelssohn wedding march. The couple stopped at their carriage a few minutes to receive the good wishes of their friends and then started for the railroad station where they took the train for Haliwa, where they will spend their honeymoon.

Among those present at the church were Mrs. S. M. Damon, Mrs. H. B. Restarick, President and Mrs. Griffiths, Mr. and Mrs. Paul Isenberg, Rev. A. C. Hall, Dr. and Mrs. W. L. Moore, Mr. and Mrs. E. Kopke, Mr. and Mrs. Charles L. Rhodes, Miss Blair, Mrs. Douglass, Mr. and Mrs. Frank Damon, Dr. and Mrs. C. B. Cooper, Mr. A. J. Blackman.

Mr. and Mrs. D. H. Case of Walluku returned home by the Kinai on Tuesday.

The following well known people have been cast for the coming amateur play "Arabian Nights," which will be presented here in a few weeks: Misses McLennan, McLain, Waldron, Bell and Arleigh, and Messrs. Jordan, Warren, Arnold and Major Potter.

Japanese Consul General Miki Satro and Manager Y. Akai of the Yokohama Specie Bank, in honor of the birthday of Emperor Jimmu of Japan, entertained at dinner at the Mochizuki Club, Waikiki, Wednesday night. About a hundred gentlemen were present.

Mrs. Gardner Wilder entertained at dinner on Thursday night at the Seaside in honor of Treasurer and Mrs. A. J. Campbell. L. C. Conness was also present. The party staying for the dance afterwards.

Mr. and Mrs. Charles F. Chillingworth had as their guests in a box Tuesday night at the Orpheum Mr. and Mrs. Ferdinand Hons and George E. Davis.

Princess Kawananakoa was the hostess at a box party on Tuesday night at the Orpheum. In honor of Ella Wheeler Wilcox, the famous authoress who is at present visiting here.

The Princess looked very handsome in a white lace gown with hat to match.

Mrs. C. W. Case Deering, one of the party, looked very chic and pretty in a light drab colored walking gown with hat trimmed with light flowers.

Besides the guest of honor, the following were present in the box: Mesdames Hawes and Deering, and Messrs. Deering and Wilcox.

Mrs. Charles Frederick Chillingworth entertained at a pot luncheon a number of her friends on Thursday afternoon at her King street residence, in honor of her sister-in-law, Mrs. Frederick Hons who is in town for a short visit.

The table was tastefully decorated with carnations and malle, the place cards being very pretty hand-painted scenes of Hawaiian life.

Besides the guest of honor the following were present: Princess Kawananakoa, Mesdames Parker, Roth, Beckley, Chillingworth, Hatch, Whitney, Crook, Lorenzen and Murray, and Messrs. Hatch, Whitney, Capt. Wenzel, F. and S. L. Chillingworth. After luncheon bridge was indulged in until 5 o'clock.

Two dances this week at the Seaside (on Thursday and Friday evenings) were very pleasant affairs. They were well attended by officers and ladies of the 23rd Infantry passing through on the transport Buford as well as by a large number of local people. On both evenings the weather was all that could be desired with moon and air cool enough to make dancing pleasant.

The College Club had for its guest of honor yesterday afternoon, Mrs. Ella Wheeler Wilcox, the noted writer who is sojourning in Honolulu. The hostess of the occasion was Mrs. Walter F. Frear, and the feature of the afternoon was limericks. Each member and guest contributed a limerick, and some of them were exceedingly clever. The one submitted by Mrs. Wilcox was reproduced by mimeograph and distributed among those present as souvenirs of the occasion. Follows the verse in question:

THE BELLE OF OAHU.
The beautiful Liliulau,
Was known as the Belle of Oahu,
Yet single she stayed
For this modest young maid
Would meet only men that her ma knew.

—Ella Wheeler Wilcox.
Mrs. Frear entertained her guests in her usual charming manner, and the meeting was considered by all to have been one of the most enjoyable ever held, albeit the matter of serious work was tabu and the afternoon made pre-eminently a social event. A very dainty luncheon was served after the limericks had been turned in.

Mr. and Mrs. J. F. C. Hagens left on Tuesday for Lahaina by the Kinai.

Among the outgoing passengers by the Kinai at the pier yesterday were Mrs. E. T. Simpson, Mrs. William Emmons of Seattle, and Mrs. Arthur Emmons of Portland. The two latter arrived by the Mongolia and have been guests of Mrs. Simpson.

A delightful valentine party was given on Thursday evening by the young people of Engleide to which a large number of outside guests were invited. The house was brightly decorated with long festoons of colored paper hearts, and with green foliage. The color scheme of red and green was carefully carried out in all the decorations. A very pleasant program was

rendered including a one-act play by the Engleide Dramatic Club which caused boundless merriment. There were also various selections of music and recitations all well rendered and greatly appreciated. Partners for the evening were decided by hearts of paper bearing appropriate valentine sentiments, which had been divided and the different halves distributed among the ladies and gentlemen, the matching of which pieces caused much merriment. Delicious refreshments were served during the evening.

The program of the evening follows: Piano solo by Miss Wier.
Vocal solo by Miss Helmestein.
Reading by Miss Hendricks.
Farce by Engleide Dramatic Club.
Recitation by Mrs. Perle.

Among those present were: Misses Meyer, Stahr, Hopkins, Wier, Thompson, Starbird, Helmestein, Frances and Nina Eaton, Florence Scott, Bindt, Kelter, Blair, Lucas, Hendricks, Johnson, Olson, E. Hall, Cook, Kelley, Haven, Duffot, Lemon, Lyons, Yarrow, Mae Paty, Tullock, Lee, Dyke, Misses Woodward, Misses Gurney, Misses Winters, Mrs. Hall, Mrs. and Miss Carden, Mrs. Boardman, Mrs. Petrie, Mrs. Douglas, Mr. and Mrs. Smith, Mr. and Mrs. Cooper, Mr. and Mrs. Tarleton Messrs. Dutot, Robbins, Gilman, Deverell, Tosh, Douglas, McCaughey, Coffin, Winant, Tracy, Dr. Chandler, Bank, Bailey, Thompson, Parson, Ballard, Simpson, Wallin, Martin, Bolton, Tullock, Brown, Medaef, Axtell.

The Morning Music Club, which is composed of thirty of the most talented ladies of the musical circles of Honolulu, met with Miss Schaefer at the home of Mrs. F. A. Schaefer on Nuuanu Avenue, on Wednesday morning, and the following very beautiful program was rendered:

Alr de Salome from Heriodade..... Massenet
..... Mrs. C. B. Cooper.
Mazurka Bizet
..... Mrs. Frank Atherton
a Berceuse from "Jocelyn".....Godard
b "Open Thy Blue Eyes".....Massenet
..... Mrs. C. Weight.
Shepherd and Shepherdes.....Godard
..... Mrs. A. Constabel.

To TheseLe Bran
..... Miss Ward.
Concerto in d minor.....Vieuxtemps
a Andante recitativo.
b Adagio religioso.
..... Mrs. Ingalls, violin;
..... Mrs. Werthmuller, piano.
Invocation.....d'Hardelot
..... Miss Schaefer.

Pan Godard
..... Mrs. W. T. Whitney.
Vocal Quartette, Charity.....Rossini
Mrs. Hetzer, Miss Restarick,
Miss Schaefer, Miss Rhodes.
a La Cloche.....Saint Saens
b Aria from Manon Lescant.....Puccini
..... Mrs. Mackall.

David Dowsett was the host at a very pretty dinner party last Sunday at his Nuuanu Valley home, in honor of the Misses Winston. Besides the guests of honor the following were present: Mr. and Mrs. Newell and Mr. and Mrs. Pillsbury.

Mr. and Mrs. A. S. Wilcox of Kauai left on Tuesday evening for home after spending a week in Honolulu.

Bridge still continues to be the rage among the smart set, and during the past week many informal parties have been given. The Waikiki Diamond Colony seem to be the most strenuous devotees to the game, every night some one invites their friends over to a quiet game which lasts until quite late.

There is some talk of a bridge tournament being given in the near future for the benefit of some charity, and with the large number of bridge players in town the receipts should be quite large.

Miss Hazel Hellbron will be the hostess at a house party at Wahiawa home, Sunday at the Davis' home. Mrs. George Martin will act as chaperon. Those who have been invited are Miss Eva McLain, Miss Methena, Mrs. Taylor, and Messrs. Martin, Albright, Davis, Cooke, Jones and Batchelor.

Miss Alice Cooke was the hostess for a most charming luncheon party on Tuesday in honor of Miss Ethel Wilcox of Kauai. The other guests, all of the younger set, were Miss Beatrice Castle, Miss Violet Damon, Miss Nora Sturgeon, Miss Bessie Hopper, Miss Margaret Castle, Miss Irene Fisher, Miss Katherine Hopper, Mrs. Richard Cooke and Mrs. George Cooke.

Miss Mary Alexander of Oakland, who has a very wide circle of friends and relations in Honolulu, was the honored guest at a most elaborate luncheon given by Miss Margaret Hopper at her mother's residence on Keamoku street on Tuesday. The ladies asked to meet Miss Alexander were Mrs. Walter F. Frear, Mrs. Hugo Frear, Mrs. Joseph P. Cooke, Mrs. C. H. Dickey, Mrs. Henry Waterhouse, Mrs. Clarence H. Cooke, Mrs. Theodore Richards, Mrs. Hopper and Mrs. Laura Wright.

Mrs. A. A. Young gave a large bridge party at her home on King street on Wednesday afternoon.

Mrs. Calhoun, who made many friends in Honolulu in the years when she traveled with her husband, the late Captain George Calhoun, on his many trips to the islands, is now living in Oakland, Cal.

Mrs. D. H. Case, of Walluku, who has been visiting with her sister, Mrs. Charles Atherton, for several weeks, returned to Maui last Tuesday accompanied by Mr. Case who had been in town for a few days.

Mrs. W. W. North entertained a large number of friends with bridge on Thursday night in honor of Mr. and Mrs. Goslin, a brother and sister-in-law of Mrs. M. Phillips, who are visitors in Honolulu, and guests at the Young.

Hand-Made Work

Embroidered handkerchiefs, dollies baby's bibs and collars all neatly finished; made by the recently arrived Portuguese immigrants. On sale at

WOMANS EXCHANGE, Hotel St. near Union.



THESE HOT DAYS

And warm nights, with their perspiration and heated blood, bring discomfort which quickly gives way to refreshing coolness after using PACHECO'S DANDRUFF KILLER. This preparation not only cools but also cures prickly heat and stops that awful itching.

Sold by all druggists and at Pacheco's Barber Shop, Telephone 232.

NOTHING SO REFRESHING. Aromatic Ginger Ale.

Consolidated Soda Water Works Co., G. S. LEITHEAD, Manager. Telephone 71.

THERE ARE LADIES WHO WILL NOT LIVE IN A HOUSE THAT IS NOT FITTED FOR A

Gas Stove

PROPERTY OWNERS FIND IT PROFITABLE TO INSTALL IT BEFORE OFFERING HOUSES FOR RENT.

HONOLULU GAS CO., Limited

BISHOP STREET

New Season Goods

FINE QUALITY MEN'S COAT SHIRTS at 90c. to \$1.50. ALSO MEN'S FOUR IN HAND TIES, AND BELL BRAND COLLARS.

Yat Loy Co., King Street near Nuuanu.

4 SUITS FOR \$150. We will clean and press 4 suits a month for \$150 if you join our clothes cleaning club. Good work guaranteed. JOIN NOW.

The Ohio Clothes Cleaning Co., Harrison Block, Beretania nr Port.

Won Loui & Co., Plumbers and Tinner, 71 Hotel Street near Maunakea.

CONSOLIDATED SODA WATER WORKS COMPANY, LTD.

Sole manufacturers and Agents of Genuine Kola Mint. (Don't buy poor imitations.) PHONE 71.

HOP WO All kinds of Ladies' Woolen Overcoats, Dresses ready made or made to order at very reasonable prices.

Y. ISHII Corner Beretania and Nuuanu Sts JAPANESE DRUGGISTS GENERAL MERCHANDISE All Kinds of American Patent Medicines at Low Prices.

NEW ADVERTISEMENTS.

Corporation Meetings Page 5 Election of Officers Page 5 Woman's Exchange Page 8 Manufacturers' Shoe Co. Page 1 A. N. Stanford Page 5 X. S. Sachs Dry Goods Co. Page 8 Siva's Toggery Page 7

THE WEATHER.

Local Office, U. S. Weather Bureau, Young Building.

Honolulu, T. H., Feb. 15, 1908. Temperatures, 6 a. m.; 8 a. m.; 10 a. m.; and morning minimum. 70; 74; 74; 75; 79. Barometer reading; absolute humidity (grains per cubic foot); relative humidity and dew point at 8 a. m.: 30.41; 5.44; 69; 59. Wind: Velocity and direction at 6 a. m.; 8 a. m.; 10 a. m.; and noon. 12, SE.; 1, NE.; 6, NE.; 13, E. Rainfall during 24 hours ending 8 a. m.; no rain. Total wind movement during 24 hours ended at noon: 224 miles.

W. M. STOCKMAN, Section Director.

NEWS IN A NUTSHELL

Paragraphs That Give Condensed News of the Day.

Auto at back fare. Lillie, Tel. 405. Fry Luttet's Tahaeo Sauce. For sale at all grocers.

Fifty feet of 5 ply hose for \$8.50 at W. W. Diamond & Co. Ltd. A number of corporation meetings noticed appear in this issue.

Augusta Walsh has filed a suit for divorce from P. J. Walsh on statutory grounds.

The Leading Hat Cleaners will make your old hat look like new. Fort St. opposite the Convent.

Col. J. W. Jones is able to be out again after being confined to his home for a week or more by illness.

Al Fong and Tam Lam fined in the District Court \$6 and costs each for malicious injury, have withdrawn their appeals.

James T. Carey, administrator of the estate of Thomas Carey, has filed an inventory giving the estate a valuation of \$7800.

The Frank Cooley and company engagement at the Orpheum closes Tuesday night and the company will leave on the Alameda.

You can get one of West's Liquid Soap Dispensers at Benson, Smith & Co. Ltd., and keep your toilet soap for your personal use.

Every seat has been sold for the moving picture show which will be given tonight at the Opera House for the benefit of the Yacht fund.

The response to the attractions of Sachs' special cut-price sale has been so general that he is giving another week of even bigger bargains.

The case of Inoguchi, et al. charged with assault and battery, was this morning nolleed at the request of the prosecuting officer, J. W. Cathcart.

A number of prisoners against whom indictments were found by the grand jury this week were arraigned this morning before Judge Lindsay for plea.

If you can't read this easily at the distance of one foot, you would better go to a reliable optician at once. A. N. Sanford, Optician, Boston Bldg., Fort St.

On Sunday, the 15th, the Christian Endeavor Society of Central Union church will conduct the usual service at Leahi Hospital. Car leaves for Kaimuki at 2 p. m.

Among the arrivals this week at The Pleasonton were Colonel and Mrs. Tom Fitch, and Vladimir Swinoborsky, Professor of Political Economy at the University of St. Petersburg.

There will be a meeting of all riders (other than pa-u) 4:30 p. m. Monday, February 17th at the Old Baseball Grounds, Makiki, Koaumoku and Kinau streets, W. A. Greenwell, Chairman.

Henry Smith trustee under the will of Charles Titcomb, has presented his annual accounts, showing receipts of \$1247.17 and payments of \$1391.74, making an overpayment of \$144.57 to next account.

We have another shipment of the Heywood shoes for men, in two styles, with and without rubber heels. It's a Vici Kid from the Highland Lane, at \$4.50 and \$5.00. Manufacturers' Shoe Co., Fort St.

J. Colbran, a business man of Seoul, Korea, who arrived last week on the Korea, entertained a number of his friends at luncheon in the private dining room of The Pleasonton. Covers were laid for seventeen.

Supervisors Hustace, Dwight and Archer and County Engineer Gere started early this morning on a round the island tour of inspection in an automobile. They started first for Waiulua, and will return by the way of the Paia.

Judge Lindsay this morning overruled the challenge of the array of the grand jury made by E. C. Peters in behalf of his client Jacob Rosenberg who was indicted for receiving stolen goods belonging to the Territory.

Judge Dole arrived home this morning from Hawaii where he has been spending a vacation of a week or two since finishing the recent term of United States court at Hilo. He has spent part of this time at the Volcano.

In the case of the Territory vs. Oatso for murder in the second degree, Judge Lindsay this morning overruled a plea in abatement made by E. C. Peters, after the motion had

SUGAR QUOTATIONS

96° TEST

LONDON BEETS

Table with columns: Date, Per Lb., Per Ton, Price. Includes entries for Dec 28, Jan 17, Jan 21, Jan 22, Jan 23, Jan 24, Jan 25, Jan 27, Jan 29, Jan 31, Feb 3, Feb 4, Feb 5, Feb 6, Feb 7, Feb 10, Feb 11, Feb 13, Feb 14, Feb 15.

JUDGE LONG IN A SOLDIER CASE

been argued by prosecuting Attorney Cathcart and Peters. John Kanaka and seven others who were fined \$1 and costs for working on Sunday, and who appealed their case, yesterday withdrew their appeals. They were employes of Hustace-Peck Co., and had handled a lot of firewood.

There will be two good games of football at Makiki this afternoon. The first game, commencing at 2:30, will be between the Y. M. C. A. and the Mallees; the second game will be Punahou vs. Diamond Heads. Referee: D. W. Anderson.

The list of officers of the Concrete Construction Co. appears in this issue. Hand made embroidered handkerchiefs, dollies, baby's bibs and collars made by the recently arrived Portuguese immigrants on sale at the Women's Exchange, Hotel street near Union.

A tax suit of the Territory by the Collector against Alice Metcalf was this morning continued three weeks at the motion of E. W. Sutton of the Attorney General's office for the reason that at present there is no one holding the position of collector since the removal of James L. Holt from the office.

To all those who have received invitations to the Red Men's ball and entertainment, to be given on next Saturday night, Washington's birthday, a jolly good time is assured. Mrs. Dr. Mackall has kindly consented to take part in the musical program. Ernest Kaal will have charge of the dance music and it will be a fitting celebration of the Immortal George's birthday.

James F. Morgan, Harry Armitage and John Marcellino, appraisers of the estate of Genevieve Dowsett Dunbar, deceased, have reported a total valuation of \$44,355.80, as follows: Real estate, \$4625; 50 bonds of Raymond Ranch for \$1000 each, \$37,500; 455 shares of Dowsett Co., Ltd., par value \$100 a share hypothecated to the Henry Waterhouse Trust Co., Ltd., for a loan of \$48,195.05 at 7 per cent on which \$28,000 is due, \$6825; cash, \$30.80.

The injunction of the McBryde Sugar Company, vs. the Koloa Sugar Company will come up for hearing before Judge Lindsay on Monday morning. This is the quarrel over water rights on Kauai, which nearly resulted in armed hostilities a week or two ago. An immense amount of affidavits and other evidence on the subject have been filed, and indications are that they will be one of the warmest legal battles over the island that has occurred in local courts for some time.

EDITORIAL SNAPSHOTS. Literary men are going into politics almost as enthusiastically as politicians have been going into literature.—Washington Star. Is the Crowned Heads' Union going to stand quietly aside and see Abd-el-Aziz pushed out by a "scab" sultan?—Chicago Record Herald. The tunnels under New York have been completed, and in a short time travelers will enjoy the economical advantage of passing under it city instead of through it.—Indianapolis News. The fleet started out for "a fight or a frolic." The sailors seem to be having both at Rio Janeiro.—Boston Transcript. We don't care if the Panama canal costs \$500,000,000. All we want is a canal. And we want it in a hurry.—Philadelphia Inquirer. It is said that graft was known in China thousands of years ago. Thus is the boast of an ancient civilization forever thrown in our teeth.—Portland Telegram. Whatever the literary experts may say about the shooting qualities of the .22, we are certain of one thing—it made a hit at Rio de Janeiro.—Portland Telegram.

DAHU SUGAR CO. (Continued from Page One.) total of 4,577.1 acres which is estimated to yield 31,000 tons of sugar. We commenced harvesting this crop on the 17th of last December, and at this date have manufactured 8,000 tons of sugar. The long ratoons for this crop include 264 acres which, until the erection of the pump purchased from the McBryde Sugar Co., were depending on mountain water, and this cane is, on this account not up to the average of our usual long ratoon, and this will tend to reduce the average yield on the whole area of this crop. Crop of 1909: For this crop we have planted 736.35 acres, 252 acres of which are virgin soil in Honolulu section. We have also 2791.5 acres of long ratoons for this crop, which, with an approximate area of 622 acres of short ratoons, will make the total area of this crop 4,199.85 acres. The planting was finished in good time, and all the cane is looking well. Improvements: The principal item under this heading was the cost and erection of the pump purchased from the McBryde Sugar Co.; the object of this extension was fully explained in last year's report. This pump has run satisfactorily from its start, and with good results. The expenditure for buildings has been mainly for new dwellings for the recent Portuguese and Spanish arrivals; we have also on the whole improved the condition of our laborers' quarters. We have added another mile to our railroad track, and have replaced the principal section of our road with heavier rails. We have converted our locomotives into fuel oil burners, which has worked very satisfactorily, and will undoubtedly prove a saving both in fuel and labor. One more reservoir (No. 37) has been built, with a capacity of eight million gallons, at Honolulu in connection with the new field already taken in. The whole property of the plantation is in first class condition, the mill and pump buildings and smokestacks have been painted, which has added somewhat to our expenditures for repairs. The cane on the whole is looking better than it has for years, the leafhopper pest being well under control; and in conclusion I would state that the prospects for the coming year are bright. Respectfully submitted, E. K. BULL, Manager, Oahu Sugar Co., Ltd. Waiulua, T. H., Feb. 10, 1908.

A PERFECT FIT Guaranteed With our expert cutter who has just returned from the coast we guarantee every suit to fit. W. W. AHANA CO., LTD. Merchant Tailors. Waiulua Building King Street.

TRENT TRUST CO will buy a fine home. Easy terms.

JUDGE LONG IN A SOLDIER CASE

DECISION THIS MORNING THAT CAUSED SOMETHING OF DEMONSTRATION OF DISAPPROVAL.

James Carney, a soldier, who is en route to Manila by the Buford, was arrested last night by Officer Parker for an assault on Joseph Kauai, a young Hawaiian boy at Aiaia Park.

Joseph was in court this morning and when called to testify against his assailant, was hardly able to walk on account of the kick that he had received.

Joseph, as well as the defendant, and a witness for the defense, and also Parker, testified to the assault, but Judge Long decided that the soldier was not guilty. A sound that came very near being a sign of disapproval was heard in the court room after the words not guilty.

Shikata, a young Japanese, was found guilty of adultery with one Kona, and was fined \$100 and costs. Kona had sentence suspended in her case for a period of thirteen months. Two drunks were fined \$3 and \$6 each, while two others had sentence suspended for thirteen months.

DAHU SUGAR CO. (Continued from Page One.)

total of 4,577.1 acres which is estimated to yield 31,000 tons of sugar. We commenced harvesting this crop on the 17th of last December, and at this date have manufactured 8,000 tons of sugar. The long ratoons for this crop include 264 acres which, until the erection of the pump purchased from the McBryde Sugar Co., were depending on mountain water, and this cane is, on this account not up to the average of our usual long ratoon, and this will tend to reduce the average yield on the whole area of this crop. Crop of 1909: For this crop we have planted 736.35 acres, 252 acres of which are virgin soil in Honolulu section. We have also 2791.5 acres of long ratoons for this crop, which, with an approximate area of 622 acres of short ratoons, will make the total area of this crop 4,199.85 acres. The planting was finished in good time, and all the cane is looking well. Improvements: The principal item under this heading was the cost and erection of the pump purchased from the McBryde Sugar Co.; the object of this extension was fully explained in last year's report. This pump has run satisfactorily from its start, and with good results. The expenditure for buildings has been mainly for new dwellings for the recent Portuguese and Spanish arrivals; we have also on the whole improved the condition of our laborers' quarters. We have added another mile to our railroad track, and have replaced the principal section of our road with heavier rails. We have converted our locomotives into fuel oil burners, which has worked very satisfactorily, and will undoubtedly prove a saving both in fuel and labor. One more reservoir (No. 37) has been built, with a capacity of eight million gallons, at Honolulu in connection with the new field already taken in. The whole property of the plantation is in first class condition, the mill and pump buildings and smokestacks have been painted, which has added somewhat to our expenditures for repairs. The cane on the whole is looking better than it has for years, the leafhopper pest being well under control; and in conclusion I would state that the prospects for the coming year are bright. Respectfully submitted, E. K. BULL, Manager, Oahu Sugar Co., Ltd. Waiulua, T. H., Feb. 10, 1908.

DAHU SUGAR CO. (Continued from Page One.) total of 4,577.1 acres which is estimated to yield 31,000 tons of sugar. We commenced harvesting this crop on the 17th of last December, and at this date have manufactured 8,000 tons of sugar. The long ratoons for this crop include 264 acres which, until the erection of the pump purchased from the McBryde Sugar Co., were depending on mountain water, and this cane is, on this account not up to the average of our usual long ratoon, and this will tend to reduce the average yield on the whole area of this crop. Crop of 1909: For this crop we have planted 736.35 acres, 252 acres of which are virgin soil in Honolulu section. We have also 2791.5 acres of long ratoons for this crop, which, with an approximate area of 622 acres of short ratoons, will make the total area of this crop 4,199.85 acres. The planting was finished in good time, and all the cane is looking well. Improvements: The principal item under this heading was the cost and erection of the pump purchased from the McBryde Sugar Co.; the object of this extension was fully explained in last year's report. This pump has run satisfactorily from its start, and with good results. The expenditure for buildings has been mainly for new dwellings for the recent Portuguese and Spanish arrivals; we have also on the whole improved the condition of our laborers' quarters. We have added another mile to our railroad track, and have replaced the principal section of our road with heavier rails. We have converted our locomotives into fuel oil burners, which has worked very satisfactorily, and will undoubtedly prove a saving both in fuel and labor. One more reservoir (No. 37) has been built, with a capacity of eight million gallons, at Honolulu in connection with the new field already taken in. The whole property of the plantation is in first class condition, the mill and pump buildings and smokestacks have been painted, which has added somewhat to our expenditures for repairs. The cane on the whole is looking better than it has for years, the leafhopper pest being well under control; and in conclusion I would state that the prospects for the coming year are bright. Respectfully submitted, E. K. BULL, Manager, Oahu Sugar Co., Ltd. Waiulua, T. H., Feb. 10, 1908.

AFONG LITIGATION. In the case of Riggs et al vs. Afong et al, Judge Lindsay this morning granted a decree pro confesso against the plaintiffs, as far as all parties except Mr. and Mrs. I. R. Burns are concerned. The decree was on motion of A. Perry and was not opposed.

DON'T FAIL TO VISIT Kilauea Volcano The Great Natural Wonder of the World. The round trip can be made in four days and costs only \$42.50. Comfortable transportation, Good Hotels, Varied Scenery, Picturesque, Novel and Awe-Inspiring. Don't be dissuaded from taking the trip. You will be sorry if you leave the volcano out of your itinerary. For tickets and information regarding the trip apply to Henry Waterhouse Trust Co., Ltd. Cor. Fort and Merchants St.

James F. Morgan's AUCTION Department

547-555 Kaahumanu St. Telephone 72.

For Rent.

Cottage with modern improvements, Emma Square, adjoining the residence of Jas. F. Morgan. Rent, \$25 per month.

JAS. F. MORGAN.

James F. Morgan's Stock and Bond Department

Member of Honolulu Stock and Bond Exchange. Stock and Bond Orders receive prompt attention.

Information furnished relative to all STOCKS AND BONDS. LOANS NEGOTIATED.

Phone 72. P. O. Box 594.

DAILY STOCK REPORT

Between Boards—Sales: 20 O. R. & L. Co., \$95.00; 100 Oahu Sugar Co., \$24.00. Session Sales: 10 O. R. & L. Co., \$95.00.

Dividends—Feb. 15, 1908: Hawaiian Sugar Co., 1 1-2 per cent; Oahu Sugar Co., 1 per cent; O. R. & L. Co., 2-4 per cent.

Table with columns: Quotations, Bid, Asked. Lists prices for various commodities like Ewa, Hawaiian Agri, Hawaiian Com, etc.

AFONG LITIGATION. In the case of Riggs et al vs. Afong et al, Judge Lindsay this morning granted a decree pro confesso against the plaintiffs, as far as all parties except Mr. and Mrs. I. R. Burns are concerned. The decree was on motion of A. Perry and was not opposed.

DON'T FAIL TO VISIT Kilauea Volcano The Great Natural Wonder of the World. The round trip can be made in four days and costs only \$42.50. Comfortable transportation, Good Hotels, Varied Scenery, Picturesque, Novel and Awe-Inspiring. Don't be dissuaded from taking the trip. You will be sorry if you leave the volcano out of your itinerary. For tickets and information regarding the trip apply to Henry Waterhouse Trust Co., Ltd. Cor. Fort and Merchants St.

Henry Waterhouse Trust Co., Ltd. Cor. Fort and Merchants St.

LADIES' WAISTS

White Shirt Waists at after inventory prices. All good, durable styles, mostly Lingerie. \$1.25 Waists \$.80 1.50 "95 2.00 " 1.40 2.25 " 1.60 2.75 " 1.90 3.75 " 2.90

SEE WINDOW DISPLAY! Colored Shirt Waists VALUES UP TO \$2.00 AT 50c EACH.

LADIES' SKIRTS

Brown Linen Skirts \$2.50 Skirts \$1.25 2.75 " 1.50 4.50 " 2.50 White Dress Skirts \$1.25 Skirts \$.75 1.75 "90 2.00 " 1.25 2.50 " 1.45 3.25 " 1.60 Champagne Skirts \$4.00 Skirts \$2.90 4.25 " 3.00

N. S. Sachs' Dry Goods Co., Ltd CORNER FORT AND BERETANIA STREETS.

The Ukulele

is an instrument that is distinctly Hawaiian. Every one who loves music in Honolulu should have one. You will want one when you go to the Coast,—why not get it now, and learn how to play it? It's easy to learn. That, in itself, gives it a mark of distinction. Then it is full of melody, if you get a good one. We have a line of Ukuleles that you will be pleased to see.

Hawaiian News Company, Ltd, Young Building

I DO SOMETHING THAT NEVER WAS DONE BEFORE

Advertisement for Thermos bottles. Includes image of a Thermos bottle and text: 'I Keep Contents Ice-Cold For Days and Days, Even Though You Keep Me on A Red-Hot Stove.' 'I Keep Contents Red-Hot For Hours and Hours, Even Though You Keep Me on A Cake of Ice.'

H. Hackfeld & Co., Ltd., - Agents

HUSTACE-PECK CO., LTD. - DRAYMEN -

Phone 295. 63 Queen Street. P. O. Box 212

ESTIMATES GIVEN ON ALL KINDS OF TEAMING

DEALERS IN FIRE WOOD, STOVE, STEAM AND BLACKSMITH COAL. Crushed Rock, Black and White Sand. Garden Soil. HAY, GRAIN, CEMENT, ETC., ETC.

GOOD GARDEN HOSE

A good hose is as necessary to the household as a good cooking stove. Life is a drudgery without either. We lead in both articles just as we do in all other household articles.

5-Ply Hose, \$8.50, 50 Feet It is called "SUCCESS" and is the best in the market today. Try it out for yourself. Other grades from \$5.00 to \$12.00 for 50 feet. W. W. DIMOND & CO., LTD. 51-57 King St., Honolulu.