

Sierra... Aug. 20
For San Francisco—
Sonoma... Aug. 19
Galle... Aug. 20
For Victoria—
Acrangi... Aug. 27
From Victoria—
Miwera... Aug. 30

EVENING BULLETIN

WILL OFTEN SAVE MANY DAYS OF WORRY—TRY IT.

YOUR ADVERTISING—IT ADVERTISING
worked wonders always there
would be no need of advertising
solicitors.

"NAKED TRUTH."

VOL. XI. No. 2225.

HONOLULU, TERRITORY OF HAWAII, FRIDAY, AUGUST 15, 1902

PRICE 5 CENTS.

LOTTERY TICKETS BEING DISTRIBUTED

Big Game at Waipahu
Started Up Ten
Days Ago.

EACH GAME HAS ITS
ATTORNEY TO ADVISE

ALMOST IMPOSSIBLE TO SECURE
CONVICTIONS—TICKETS MUST
DEPEND ON THE EVENT
OF A LOTTERY.

For several days past people of the city have been receiving communications from various parties with all manner of notorious names signed thereto, the calculation being to drum up interest in the lottery business. This is one of the samples of communications sent out, accompanied by a ticket.

Gentlemen: I the undersigned am to give you a little news do you want agent, and buy Chinese lottery tickets ask the Banker Places on King st. who K— and T— that is good bargain and best benefit business in town for the people the bank has about \$300 capital in each bank, those Chinese agents carried all round the town and to sale the store or dwelling house also the family bank establish on 9th of August, 1902, open twice in a day 12 noon and mid night P. M. 10 o'clock. Choose character in Waipahu, Ewa and I hope.

On the ticket accompanying the communication are the following instructions:—
"This is Chinese plain lottery ticket if man buy this ticket and choice ten or 12 or 20 those characters when ever who bought 19 cents 2 choice 10 of this No. if man win ten of this characters will sure get \$36 from the agent."

Great care has been taken by the writers of these anonymous communications to keep their identities unknown and to shroud in mystery the times and places of the lotteries. Indeed, letters have been sent directly to various people in the police department.

The Chinese lottery business in the city and in places such as Waipahu was investigated yesterday and several facts were established by information obtained at the police department.

First of all, it was learned that the managements of the principal lotteries of the city have their regular attorneys who receive handsome sums for giving advice by which these games may be carried on so as to evade the laws of the Territory.

Next it was learned that there is no reason whatever why a hundred or any number of lottery games should not start up in the city, this being due to the construction of the law bearing thereon by both the District and Circuit courts.

In the past, men charged with the possession of lottery tickets were fined a stipulated amount if the prosecution succeeded in proving that such tickets were really in possession of the defendants at the time the arrests were made.

This is no longer sufficient. By a recent decision of the District Court, followed by one on the part of the Circuit Court, it must be shown positively that a ticket found in possession of any person depends upon the event of a lottery.

In the tickets now being distributed, there is nothing to show when the lottery will take place and the only thing the prosecution can do is to hire informers to go to the lottery games and play afterwards going into court to testify against the banks.

Here again the prosecution runs up against a snag. In the Circuit Court, jurors have been warned not to believe the testimony of informers and as this was the only thing the police had to depend on, it became impossible to secure convictions.

It was further learned that while many of the tickets being sent around contain the name of the city, still the big game and the one for which the largest number of tickets are being distributed, is at Ewa. This lottery was running some six months ago. It kept going for three or four weeks but the people in charge were so closely watched by the deputy sheriff of the district that they were forced to discontinue.

The new lottery was started up at Waipahu on the 8th or 9th of this month and has been running ever since.

Primo and Rainier beer 10 cents a glass at the Pantheon.

SIX FOR A QUARTER AND BETTER THAN MANILA'S
NATHAN HALE
CUBAN 5c CIGAR
L. F. STERNEMANN, Fort Street, opposite Club Stables

Pacific Cable Plans APPROVED BY PRESIDENT Extend to the Orient

Oyster Bay, N. Y., Aug. 8.—The conference this afternoon between the President and Attorney General Knox developed into one of the most important held at Sagamore Hill. Several months ago the Pacific Commercial Cable Company sought permission from the executive branch of the Government to lay a cable running from San Francisco, via Honolulu and Guam, to China, there to connect with the British cable to the Philippines. The proposition of the company was to assume all expense of laying and operating the cable. For the concessions of the landings at San Francisco, Honolulu and Guam the company proposed to grant to the United States Government special rates, and in certain conditions of war practically absolute control of the cable. The conditions, as presented by the company to the President, were naturally such as any corporation might make. They had been drawn for the protection of the company's interests.

Mr. Roosevelt referred the whole subject to Attorney General Knox, with a request that he go carefully over the proposed conditions, eliminating such as he might regard as impracticable and adding such others as he might believe would observe the interests of the Government. The results of his investigations and conclusions Knox presented to Roosevelt in verbal form, the papers in the matter previously having been laid before the President.

President Roosevelt approved of the amended conditions, and so far as the executive branch of the Government is concerned, the company now may proceed with the work of laying the cable. It is regarded as essential, however, that the conditions be ratified by act of Congress, as some doubt exists of the right of the executive branch of the Government alone to grant such privileges as are included in the Pacific Commercial Cable Company's proposition.

The conditions as approved by Mr. Roosevelt are regarded as particularly favorable to the Government, and it is believed that, with the cordial indorsement of the President, which he will give the proposition in his message next December, Congress will ratify the conditions without serious delay.

Attorney General Knox advised several important conditions to those proposed by the company, including these: That the United States Government at all times shall have priority of service.

That the Government, through the Postmaster General, as is customary in such contracts, shall have the right to fix the rates to be charged by the company.

That in time of war the Government shall have the right absolutely to control the cable.

That in order to protect not only the Government, but also individual private customers of the company, the Pacific Commercial Cable Company is required to lay a distinct line of cable from China to Manila, so that it will not be necessary to depend upon the British company which now controls the only cable from Hongkong to Manila.

And finally, that the United States, at any time after the completion of the line, may purchase the line at an appraised valuation to be fixed by arbitrators selected in the usual manner by the two parties to the transaction.

By those who have studied the subject, the conditions are regarded as particularly favorable to the Government.

It is believed that, with the cordial indorsement of the President, which he will give the proposition in his message next December, Congress will ratify the conditions without serious delay.

Attorney General Knox advised several important conditions to those proposed by the company, including these: That the United States Government at all times shall have priority of service.

That the Government, through the Postmaster General, as is customary in such contracts, shall have the right to fix the rates to be charged by the company.

That in time of war the Government shall have the right absolutely to control the cable.

That in order to protect not only the Government, but also individual private customers of the company, the Pacific Commercial Cable Company is required to lay a distinct line of cable from China to Manila, so that it will not be necessary to depend upon the British company which now controls the only cable from Hongkong to Manila.

SUIT AGAINST BRITISH CONSUL

An Action Unprecedented
in Courts of
Hawaii.

TO RECOVER PAYMENT
FOR SEAMEN'S SUPPLIES

AFTERMATH OF BURNING OF THE
SHIP FANNY KERR AT SEA.
M. ROSENBERG & CO.
THE PLAINTIFFS.

An unusual case and unprecedented in the courts of the Hawaiian Islands was filed in the clerk's office of the United States District Court this morning. It is a suit brought by a private firm against the British Consul in his official capacity. When Hawaii had an independent government any similar case of action would have been matter for settlement by diplomatic means.

Mr. Gill & Farley are solicitors for the plaintiff, the firm of M. Rosenberg & Co., and the suit is to recover the price of supplies procured for the relief of the shipwrecked crew of the British ship Fanny Kerr, burned at sea. The complaint, addressed to the Honorable Morris M. Estee, Judge of the United States District Court, in and for the District of Hawaii, reads as follows:

"The complaint of Samuel Rosenberg, doing business in Honolulu, Island of Oahu, Territory of Hawaii, under the name and style of M. Rosenberg & Company, respectfully alleges:

"That said plaintiff is and at all times herein mentioned, has been engaged in business in Honolulu, Island of Oahu, Territory of Hawaii;

"That said defendant is, and at all times herein mentioned, was for the Territory of Hawaii the duly appointed and accredited Consul of his Britannic Majesty, King Edward VII.

"That heretofore, to wit: On or about June 10th, A. D. 1902, said defendant was justly indebted to said plaintiff in the sum of \$372.85 for goods bargained and sold, and sold and delivered by said plaintiff to A. Gebbons, A. Grotefeld, H. Dolson, George Rendall, K. Hantz, Z. Rania, David Longwell, Thomas Miles, D. Keatzeil, Edward Sullivan, W. Munday, Peter Green, T. Harnett, C. Peterson, William Barrows, John Kollman, J. Sanchez, Edward Conley, Prince Thompson, C. R. Jones, M. Jones, Charles Richards, James Robertson, B. Pearson, Samuel Murphy, M. Coleman; and the said goods were bargained and sold and sold and delivered at the special instance and request of said defendant and the promise of said defendant to pay for the same, an itemized account of which is hereto annexed and made a part hereof and marked Exhibit A; that said sum is just, is due and is wholly unpaid and no part thereof has been paid and defendant refuses to pay the same although often requested so to do; and there is interest due on said account from the 19th day of June, A. D. 1902.

"That this action is brought in the United States District Court, in and for the District of Hawaii, in accordance with Section 562 of the Revised Statutes of the United States, which gives jurisdiction to United States District Courts in suits against foreign consuls in the United States.

"Wherefore, said plaintiff prays this Honorable Court that judgement be awarded to this plaintiff against said defendant for the principal sum of \$372.85, with interest from the 19th day of June, A. D. 1902, together with all costs and charges by said plaintiff in this behalf incurred, and also attorney's fees as provided in Section 824 of the Revised Statutes of the United States, and that the process of this court do issue to cite said defendant to appear and answer this demand."

"The Bulletin, 75 cents per month."

"The Bulletin, 75 cents per month."

"The Bulletin, 75 cents per month."

"The Bulletin, 75 cents per month."

"The Bulletin, 75 cents per month."

"The Bulletin, 75 cents per month."

"The Bulletin, 75 cents per month."

"The Bulletin, 75 cents per month."

"The Bulletin, 75 cents per month."

"The Bulletin, 75 cents per month."

"The Bulletin, 75 cents per month."

"The Bulletin, 75 cents per month."

Wounded and Surrounded BY SHERIFF'S POSSE Tracy Takes His Life

Spokane, Wash., August 6.—Harry Tracy is dead, but in dying he made one of the grimmest fights for life and vengeance ever made by a desperado. The battle was short but fierce. It was fought to the bitter end on the part of Tracy. Wounded twice, so that further flight was impossible even if life itself remained more than a brief time, realizing the futility of resistance of further combat with the determined little band who had at last brought him helpless to earth, possibly crazed by his desperate plight and by the pain of a broken bone and a strap pulled tight in an attempt to staunch his flowing life-blood, Tracy ended his life by his own hand. Lying hidden in a field of wheat, the yellow stalks of which were reddened by his blood, he retreated on all sides cut off, even if he were able to do more than crawl, with his shattered and torn leg. Just after darkness had fallen the notorious criminal, who has sent so many to death with cold-blooded precision of eye and aim, reversed his revolver and with a pressure of his thumb on the trigger blew off the top of his head. When day broken his pursuers found the stilled body and read the story.

The battle began with a shower of bullets from a posse of five men who came over from Creston, about eleven miles southwest of the Eddy ranch, where Tracy was stopping, and surprised him there. That occurred about 6:30 o'clock last evening.

C. A. Straub, local deputy sheriff; Dr. E. C. Lanter, Attorney Maurice Smith, Joe Morrison, track foreman, and Frank Lillengreen, a young farmer, started a little after noon yesterday from Creston for the reputed rendezvous of the outlaw. When they reached the ranch of Mrs. Anderson, a short distance south of Fellows siding, eight miles east of Creston, the party put up their teams and went on foot the remaining two miles till within easy range of the Eddy ranch.

Coming to the top of a ridge overlooking the barn and outbuildings, they saw Tracy come out of a shed apparently unarmed. Dr. Lanter and Smith raised their guns and drew beads on the suspect, but concluded that it would be better to be sure of their man before firing. They were only about fifty yards distant. Tracy was dressed in blue overalls, white shirt and a white bicycle cap.

A couple of the party then stepped around a little elevation to the flow where Eddy was cutting hay, near the barn, and asked him for information. He told them the man was Tracy. They signaled to their companions, and Eddy drove his team into the barnyard. Tracy assisted him in unloading.

The party then advanced into full view, leveled their guns at Tracy and commanded him to throw up his hands. Tracy slipped behind a shed and exclaimed: "Who are those men?"

With no further parley the outlaw compelled Eddy to place a horse so that it protected him from the guns of the advancing party, and then ordered the farmer to lead the animal to the barn. Tracy, hesitating in hurrying the horse along.

When near the barn door he made a dash for the inside, and almost immediately emerged on the opposite side, with his rifle and revolver, and opened fire, without damage, however. He then started down a draw, pursued by a hail of lead. He dodged behind a projecting rock, and from there fired several more shots, still without effect, though all close. Then he made a dash for the barnyard.

When near the barn door he made a dash for the inside, and almost immediately emerged on the opposite side, with his rifle and revolver, and opened fire, without damage, however. He then started down a draw, pursued by a hail of lead. He dodged behind a projecting rock, and from there fired several more shots, still without effect, though all close. Then he made a dash for the barnyard.

When near the barn door he made a dash for the inside, and almost immediately emerged on the opposite side, with his rifle and revolver, and opened fire, without damage, however. He then started down a draw, pursued by a hail of lead. He dodged behind a projecting rock, and from there fired several more shots, still without effect, though all close. Then he made a dash for the barnyard.

When near the barn door he made a dash for the inside, and almost immediately emerged on the opposite side, with his rifle and revolver, and opened fire, without damage, however. He then started down a draw, pursued by a hail of lead. He dodged behind a projecting rock, and from there fired several more shots, still without effect, though all close. Then he made a dash for the barnyard.

When near the barn door he made a dash for the inside, and almost immediately emerged on the opposite side, with his rifle and revolver, and opened fire, without damage, however. He then started down a draw, pursued by a hail of lead. He dodged behind a projecting rock, and from there fired several more shots, still without effect, though all close. Then he made a dash for the barnyard.

When near the barn door he made a dash for the inside, and almost immediately emerged on the opposite side, with his rifle and revolver, and opened fire, without damage, however. He then started down a draw, pursued by a hail of lead. He dodged behind a projecting rock, and from there fired several more shots, still without effect, though all close. Then he made a dash for the barnyard.

When near the barn door he made a dash for the inside, and almost immediately emerged on the opposite side, with his rifle and revolver, and opened fire, without damage, however. He then started down a draw, pursued by a hail of lead. He dodged behind a projecting rock, and from there fired several more shots, still without effect, though all close. Then he made a dash for the barnyard.

When near the barn door he made a dash for the inside, and almost immediately emerged on the opposite side, with his rifle and revolver, and opened fire, without damage, however. He then started down a draw, pursued by a hail of lead. He dodged behind a projecting rock, and from there fired several more shots, still without effect, though all close. Then he made a dash for the barnyard.

When near the barn door he made a dash for the inside, and almost immediately emerged on the opposite side, with his rifle and revolver, and opened fire, without damage, however. He then started down a draw, pursued by a hail of lead. He dodged behind a projecting rock, and from there fired several more shots, still without effect, though all close. Then he made a dash for the barnyard.

When near the barn door he made a dash for the inside, and almost immediately emerged on the opposite side, with his rifle and revolver, and opened fire, without damage, however. He then started down a draw, pursued by a hail of lead. He dodged behind a projecting rock, and from there fired several more shots, still without effect, though all close. Then he made a dash for the barnyard.

When near the barn door he made a dash for the inside, and almost immediately emerged on the opposite side, with his rifle and revolver, and opened fire, without damage, however. He then started down a draw, pursued by a hail of lead. He dodged behind a projecting rock, and from there fired several more shots, still without effect, though all close. Then he made a dash for the barnyard.

When near the barn door he made a dash for the inside, and almost immediately emerged on the opposite side, with his rifle and revolver, and opened fire, without damage, however. He then started down a draw, pursued by a hail of lead. He dodged behind a projecting rock, and from there fired several more shots, still without effect, though all close. Then he made a dash for the barnyard.

When near the barn door he made a dash for the inside, and almost immediately emerged on the opposite side, with his rifle and revolver, and opened fire, without damage, however. He then started down a draw, pursued by a hail of lead. He dodged behind a projecting rock, and from there fired several more shots, still without effect, though all close. Then he made a dash for the barnyard.

When near the barn door he made a dash for the inside, and almost immediately emerged on the opposite side, with his rifle and revolver, and opened fire, without damage, however. He then started down a draw, pursued by a hail of lead. He dodged behind a projecting rock, and from there fired several more shots, still without effect, though all close. Then he made a dash for the barnyard.

When near the barn door he made a dash for the inside, and almost immediately emerged on the opposite side, with his rifle and revolver, and opened fire, without damage, however. He then started down a draw, pursued by a hail of lead. He dodged behind a projecting rock, and from there fired several more shots, still without effect, though all close. Then he made a dash for the barnyard.

When near the barn door he made a dash for the inside, and almost immediately emerged on the opposite side, with his rifle and revolver, and opened fire, without damage, however. He then started down a draw, pursued by a hail of lead. He dodged behind a projecting rock, and from there fired several more shots, still without effect, though all close. Then he made a dash for the barnyard.

When near the barn door he made a dash for the inside, and almost immediately emerged on the opposite side, with his rifle and revolver, and opened fire, without damage, however. He then started down a draw, pursued by a hail of lead. He dodged behind a projecting rock, and from there fired several more shots, still without effect, though all close. Then he made a dash for the barnyard.

When near the barn door he made a dash for the inside, and almost immediately emerged on the opposite side, with his rifle and revolver, and opened fire, without damage, however. He then started down a draw, pursued by a hail of lead. He dodged behind a projecting rock, and from there fired several more shots, still without effect, though all close. Then he made a dash for the barnyard.

When near the barn door he made a dash for the inside, and almost immediately emerged on the opposite side, with his rifle and revolver, and opened fire, without damage, however. He then started down a draw, pursued by a hail of lead. He dodged behind a projecting rock, and from there fired several more shots, still without effect, though all close. Then he made a dash for the barnyard.

ENGLAND'S KING IS FINALLY CROWNED

Returned to London In
Excellent Health and
Spirits.

CEREMONIES CURTAILED
BUT CROWDS ATTEND

CORONATION MORNING DAWN
GLOOMY BUT REPORTS FROM
KING ARE CHEERING—IS
READY FOR THE TASK.

Officers of the Captive, just before sailing, received a telephone from the Merchants' Exchange giving a cable-gram recording crowning of King Edward VII. of England:

"The King was crowned at 12:33 p. m. The news of the crowning was announced by an official outside the Abbey. It was repeated by signal through London and was received with cheers which spread throughout the stands and crowds far up the street and the bells pealed joyfully. The Queen was crowned at 12:56 p. m. The return journey of Their Majesties commenced at 1:23 p. m. As Their Majesties were leaving the Abbey the rain commenced to fall and they deferred their journey until the rain ceased. They left at 2:06 p. m. The return journey, which was slow, was marked by scenes of enthusiasm. Their Majesties arrived at the Palace at 2:55 p. m."

London, August 9.—Salutes from the Tower of London and Hyde Park are just booming at sunrise of coronation day.

It was announced at Buckingham Palace at a quarter after 8 o'clock this morning that King Edward was in excellent health and spirits.

Simla, India, August 9.—Salutes were fired here this morning and coronation services were held in the churches throughout India.

It is believed in at the proposed visit to Delhi for the coronation Durbar, January 3, 1903, of the Duke of Connaught, brother to King Edward, has been decided upon.

London, August 8.—The eve of the coronation of King Edward VII. was marked in London by large crowds, which wandered all the evening somewhat aimlessly through the semi-illuminated streets. Down Whitehall, where the Canadian arch was the center of attraction, around Westminster Abbey and along the Strand, the sidewalks were blocked with the expectant populace. The people were deterred from any signs of rowdiness by the acute recollection of the recent postponement of the coronation and those who had seen the unrestrained exhibitions which occurred upon the slightest pretext during war times could not fail to notice the different temperament shown tonight. With a few exceptions it might have been well said of the metropolis of the empire that it was living up to the national reputation of taking its pleasures somewhat sadly.

The absence of blatant horns and annoying feathers was pleasantly atoned for by the lighting up of many buildings. The brilliancy of the illumination held the country visitors to the city so spell bound that vehicular traffic became more and more difficult as the night wore on. Until a very late hour the stand speculators did a thriving business and around those stands occupying good locations there

(Continued on Page 4.)

MILE IN 2:00 3-4.

Columbus, O., Aug. 2.—The feat of the closing day of the Grand Circuit harness meet was the successful attempt of the undefeated pacing stallion Dan Patch, to beat the record of his sire, Joe Patchen, 2:01 1/4. Driven by his trainer, Myron McHenry, the handsome brown horse circled the track in 2:00 3/4, half a second faster than his sire's mark. The quarters were as follows: 0:21, 0:29, 0:30 1/2, 0:30 1/2. The horse finished pulled up, and there is no question but that he could have made the mile in 2:00, or even faster, if McHenry had driven him out in the last quarter.

The track was lightning fast and the weather was calm when McHenry brought the stallion out for the trial. He scored down once, and the next time was sent away, accompanied by a runner. The first quarter around the turn was paced in 0:21. When he turned into the back stretch McHenry let him fly and the horse was reached in 1:00 flat. The third quarter, around the upper turn, was reached in 1:30 1/4, and the horse was going so easily when he straightened away for the wire that it was evident that he could not fail to break the record. About fifty yards from the wire McHenry began to pull Dan and, though he succeeded in partially stopping him before the wire was reached, the mile was finished in 2:00 3/4.

JUDGMENTS ENTERED

Judgment with order of sale of property to satisfy it has been entered in favor of Gehring & Burzke against W. W. Ahana for damages of \$142.27 on a jury's verdict and \$57.35 costs. The property is situated at Kukul and River streets.

Judgment in ejectment with \$118.95 costs has been entered on a verdict in favor of John Kaitelki against Nalolelela for 1.55 acres of taro land at Hikipuu, Koolahouka.

These cases were tried at the last special term.

The Bulletin, 75 cents per month.

S. S. ALAMEDA, AUGUST 13,
Next express steamer to Coast.
Express closes 10 a. m. day of sailing.
Wells, Fargo & Co. Express
TEL. MAIN 199.
Masonic Temple, with American Messenger Service.

HEYWOOD

'SOMERSET'
STYLE
Here's a shoe we're proud of. VICI KID, double welt, and has all the appearance and qualities of a more expensive shoe.
\$5.00
BUYS A PAIR
MANUFACTURERS' SHOE CO., LTD.
1057 FORT STREET

TO LEASE

We offer for a short or long lease at very reasonable rates, the

FINE STORE

in the WAVERLY BLOCK on Bethel street, formerly occupied by the Honolulu Paint Co.

Henry Waterhouse & COMPANY

Fort and Merchant Sts.
Tel. Main 315. Honolulu.

MASONIC TEMPLE

WEEKLY CALENDAR.

MONDAY
Pacific—Stated.

TUESDAY
Le Progress—Third Degree.

WEDNESDAY
Pacific—Third Degree.

THURSDAY
Honolulu Commandery—Regular and Red Cross.

FRIDAY
Hawaiian—Second Degree.

SATURDAY

All visiting members of the order are cordially invited to attend meetings of local lodges.

HARMONY LODGE, No. 3, I. O. O. F.

Meets every Monday evening at 7:30 in Harmony Hall, King street.
E. L. CUTTING, N. G.
E. R. HENDRY, Secretary.
All visiting brothers very cordially invited.

MYSTIC LODGE No. 2, K. of P.

Meets every Tuesday evening at 7:30 o'clock in Harmony Hall, King street. Visiting brothers cordially invited to attend.

H. H. WILLIAMS, C. C.
A. E. MURPHY, K. R. S.

OAHU LODGE, No. 1, K. of P.

Meets every Friday evening at Harmony Hall, King street, at 7:30. Members of Mystic Lodge, No. 2, Wm. McKinley Lodge, No. 8, and visiting brothers cordially invited.

F. W. DUNNE, C. C.
ED. C. GREGORY, K. R. S.

WM. M'KINLEY LODGE No. 8, K. of P.

Meets every Saturday evening at 7:30 o'clock in Harmony Hall, King street. Visiting brothers cordially invited to attend.

C. M. V. FORSTER, C. C.
H. S. GREGORY, K. R. S.

HONOLULU LODGE 616, B. P. O. E.

Honolulu Lodge No. 616, B. P. O. E., will meet in their new hall, on Miller and Beretania streets, every Friday evening.

By order of the E. R.
D. L. CONKLING,
F. M. BROOKS, E. R. Secretary.

THEOSOPHICAL SOCIETY.

Mr. THOMAS PRIME will lecture on **THE AURA** Thursday, Aug. 14th, 1922, 8 p. m., at ARION HALL, (back of Opera House). A cordial welcome extended to all. Library open Friday, 3 to 4 o'clock.

MARY D. HENDRICKS,
President Aloha Branch, T. S.

Look at This

If you don't buy these lots you'll miss it, because you will miss doubling your money in one year or less. Prices bed-rock. Finest, coolest and healthiest location in Honolulu, right on King St. below Waikiki Turn, on line of Rapid Transit, seven minutes' straight run to Fort St. Will build houses from \$700 up and guarantee renters for this price, \$25.00.

Call and see

W. M. CAMPBELL

at his office on premises or my special agent, W. M. Minton, with Honolulu Investment Co., Judd Bldg.

Weekly edition of the Bulletin, \$1 a year.

NEW ENGLAND BAKERY

have enlarged and refitted their popular Dining Room in order to accommodate their many customers.

handsome private rooms

for ladies, with Electric Lights and Fans—Cool and Pleasant.

LIGHT LUNCHEON

served, suitable for this climate and at such prices that only a First-Class Bakery could afford to make, including the finest cup of coffee in the city.

GIVE US A CALL.

HONOLULU CANDY CO.

in rear of New England Bakery

—MANUFACTURERS and Wholesale CONFECTIONERS.

—We carry everything in our line, such as Chewing Gums, Pop Corn Goods, Prize Goods, and a large stock of quick selling Scented Candies, just the thing for retail stores.

—Special inducements to plantation stores and others buying in large quantities.

—Goods sold at wholesale only.

F-O-R-R-E-N-T

CORNER BERETANIA and VICTORIA STS., opp. Thomas Square—House with five bedrooms and large mosquito proof dining room. Electric lighting and good, up-to-date plumbing. Admirably suited for boarding house.

RENT \$50 PER MONTH.

Castle & Lansdale

REAL ESTATE AND INSURANCE AGENTS; INVESTMENTS.

506-507 Stangenwald Building.
Telephone Main 70.

Cabot's Creosote Shingle Stains

They are better than paints for exterior finishing of a house for many reasons, but principally for the artistic effect produced.

They are the best wood preservatives known, cost about 50 per cent less than paint, are fully as durable as the best paints, and are much simpler in application.

Ask for booklets telling all about them at

Lewers & Cooke, Ltd

FORT STREET.

Keystone-Elgin WATCHES

DURABLE AND ACCURATE

The Keystone Watch Case Co. Philadelphia, U.S.A.

America's Oldest and Largest Watch Factory

For sale by The Principal Watch Dealers in Hawaiian Islands

FOR—

Tools, Materials and Findings used by Watchmakers, Jewelers and kindred trades, go to

JOS. SCHWARTZ,
Room 303 Boston Building, over Henry May & Co., Fort St., near King.

Money Loaned.

TO SALARIED PEOPLE ON NOTES.

Room 8,
Agoon Bldg., Merchant & Alakea Sts.
Office hours 9 a. m. to 4 p. m.

COTTON BROS. & CO

ENGINEERS AND GENERAL CONTRACTORS

Plans and estimates furnished for all classes of contracting work.

Tel. Main 245.
ROOM 300 BOSTON BLDG., HONOLULU.

Fine Job Printing at the Bulletin office.

LOCAL AND GENERAL

Read "Wants" on page 6.

Kona coffee to be good must be pure, C. J. Day sells it.

Leaky roofs made good as new with PEERLESS PRESERVING PAINT.

Oahu Lodge, No. 1, K. of P., will meet tonight at 7:30 in Harmony Hall, King street.

Mr. and Mrs. J. T. Crawley and family are spending a two weeks vacation in Waialua.

The weekly edition of the Evening Bulletin gives a complete summary of the news of the day.

Corns and ingrowing nails successfully treated without pain, Dr. Hoake, Oregon block, Hotel street. Office hours 1 to 5 p. m.

The annual fair of St. Clement's church will be held this year on or about October 11, instead of just before Christmas, as formerly.

B. G. Holt, Clifford Kimball, S. de Freest and John Dias are among those out for the position of United States Shipping Commissioner.

Cards are out for a reception to be tendered to Sisters Beatrice and Alberta by their pupils on Saturday, August 16, from 8 to 11 p. m. There will be dancing.

A meeting of native born Californians will be held at the drill shed this evening to make arrangements for celebrating the coming anniversary on September 9.

A meeting of the executive committee of the Young Men's Republican Club will be held this afternoon at 4 o'clock in Lotrin Andrews' office, Stangenwald building.

The reception of St. Andrew's Cathedral and St. Clement's church parishioners to Bishop and Mrs. Restarick will take place next Thursday evening at the Hawaiian hotel.

The Y. P. S. C. E. of Central Union church will give a boat ride this (Friday) evening, leaving Brewer's wharf at 8 o'clock sharp. A cordial invitation is extended to all.

The best market affords at the most reasonable prices. The Palace Grill meals and service can't be beat. Family dinners in private rooms a specialty. Palace Grill, Bethel street.

Don't forget Camarinos of the California Fruit Market when you want fruit and vegetables. He always has on hand a fresh supply of both California and island fruit. Telephone Main 278.

Mrs. Paul Neumann has issued invitations for the wedding of her niece, Pauline Elizabeth Neumann, to George Frederick Rodick, Monday, August 28, at 8 p. m., in the German Lutheran church, Beretania street.

The Young People's Society of Central Union church will give an excursion on the harbor this evening in one of Young Bros' launches. The launch will leave Brewer's wharf at 7:45 sharp. The public generally is invited to attend.

The band boys are anxious to make a trip to the Coast for a series of concerts during their regular vacation. A proposition is on foot for the Merchants' Association to put up the amount of the steamer fares, the boys doing their work on the Coast by way of advertising Hawaii.

F. W. Smith, formerly chief clerk of the Hawaiian hotel, has been advanced to the managership, vice H. Wingate Lake, resigned. Mr. and Mrs. Lake will leave soon for the Coast. Mr. Lake will purchase furnishings for the new hotel in the Young building.

This evening the Myrtle Boat Club boys will entertain at a smoker to be given in the boat house. No set program has been arranged. Outside of the club members, only the officers and crews of the Healan Boat Club, members of the press and a few specially invited friends will be present.

Captain Berger of the Territorial band, is of the opinion that concerts should be given at some place in Kapapa or Kailua or at some place half way between as there are hundreds of Ewa side residents who rarely hear the band play, the concerts all being given this side of the Nuuanu stream.

The many patrons of Goo Kim this general merchant, will be pleased to know that he will continue his business on Nuuanu street for about nine months longer. This is necessary to complete term of his lease. New goods are arriving on each steamer and are being displayed at the old stand.

To stand the test of time dentistry must be done right. The Expert dentists are doing as good dentistry as any skilled dentist can produce. They are in the city to stay and are building up a reputation on the merits of their work. Visit their up-to-date office in the Arlington block, 215 Hotel street off Union. Their prices are very low.

The concert by the band out at the Hotel Annex last evening proved to be an experiment that many people of the city will demand to have repeated. The boys were stationed on the land that runs out upon the beach and hundreds of people sat around on the lawn and the beach while a large number donned bathing suits and went out into the water. The concert was most thoroughly enjoyed by every one and each number played by the band was heartily applauded.

WOMAN SLAVERY CASE

CHINESE WOMAN BEFORE COMMISSIONER GILL

EVIDENCE FOR THE DEFENSE IS CONTRADICTORY AND INCONSISTENT—WOMAN REPEATS STATEMENT.

One of the two Chinese women held by the customs officers for deportation had her trial before Commissioner Gill yesterday afternoon. This was Ah Sue, whom Lum Fong claims as his wife. District Attorney Breckons prosecuted, while F. M. Brooks conducted the defense.

Lum Fong testified that he had lived here for sixteen years and was married to the defendant eighteen years ago in Canton. He was a merchant, and had sent Ah Sue to China to bring his wife and child back, giving him \$250 in gold to pay expenses.

Lum Fong's examination of the witness made contradictory statements as to his marriage and business here. He said that Wong Loy had accompanied his wife and child to Honolulu at his request.

Wong Loy testified that he had gone to China to collect money due him, and had invested it in rice plantations, in Canton he had met the defendant for the first time and was requested at the store of Fook Sing Wo to accompany the two women to Honolulu on the City of Peking. He testified that he had looked after the women on the trip and took them to his house.

Li Cheng, official interpreter, testified as to letters received by Lum Fong from Ah Sue, in which she said she wanted to join him. A portion of the letters had been cut away. The woman had told witness that she was bought by Wong Loy for \$50 in Canton, and that she was a stranger to the other girl. She told him further that Wong Loy had promised to marry her, and that she had been staying two months with Wong Loy, and compelled to be a prostitute.

A statement made by Ah Sue to J. K. Brown was read, being in substance as follows: "My real name is Ah Sue; don't know what name I came here under. I am thirty-four years of age; was married in China but husband is dead. I have been in Hawaii over two months. I came from Hong Kong in the S. S. Peking; was a second cabin passenger and went to Quarantine Island. One other Chinese person was a passenger with me, Wong Loy. He went to quarantine also. Yes, there was also another woman with us. She took the name of Ah Foon after she got here. Wong Loy gave me a paper on the steamer and told me that would let me land. While at quarantine I heard Wong Loy and another Chinaman whom I have since seen at Wong Loy's house, talking. After that the strange Chinaman told me I must say Lum Fong was my husband. This was before I was examined. When I was examined by the white man, there was a Chinaman present, the same I have since seen at Wong Loy's.

"I came ashore in a hack; Lum Fong came for me. I paid \$10 Mexican for passage. Wong Loy told me in China that I was to be his wife, when we got here, but at quarantine he told me to say I was the wife of Lum Fong. Wong Loy told me he paid \$50 for me in China, and that I must now be a prostitute to repay him for his expenses in getting me here. So far as I know the expenses were \$50 and my passage money, but Wong Loy told me that it had cost over \$1000 to get the other woman and myself here."

The testimony of Deputy Sheriff Chillingworth and of the man from whom Wong Loy had rented the house was admitted and the defendant Ah Sue was then put on the stand. She said that she had been forced to make the statement by Policeman Ah On, who had threatened to put her in jail for life if she didn't plead guilty.

Mr. Breckons in the closing argument called attention to the remarkable coincidence of Wong Loy leaving for China on the same day that Lum Fong had been given his merchant's certificate.

When Deputy Marshal Handy started to take away Lum Fong, the alleged husband, there was a scene. The woman, who had been holding Lum Fong's hat, refused to let it go, clinging desperately to the headgear and to her husband. It was finally explained to the woman that her husband was not being taken to jail, and she let him take the hat.

Commissioner Gill promised a decision on Monday.

POLO SOON.

The following is the prospective make up of the teams which are soon to open the polo season at Kapiolani park:

Blues: C. S. Dole, 5 goals handicap, 1 horse; S. E. Damon, 4 goals, two horses; Prince Cupid, 2 goals, two horses, and Dr. McAdory and Harold Castle with two horses between them as alternate players. Dr. McAdory is penalized with one goal.

Whites: A. F. Judd, 4 goals, two horses; H. F. Damon, 4 goals, two horses; R. W. Shingle, 3 goals, two horses, and J. P. Erdman and G. E. Brown as alternates with two horses between them. Erdman is penalized to the extent of two goals.

Reds: W. F. Dillingham, 5 goals, two horses; G. C. Potter, 4 goals, two horses; J. T. Irvine, 2 goals and A. M. Brown, and C. F. Chillingworth, penalized two goals apiece as alternates with two horses between them.

Unattached players, or general substitutes: Judge Stanley, 0 goals, one horse; Frank Andrade, 0 goals, one horse; P. R. Helm, 0 goals, one horse; G. G. Fuller, 1 goal, one horse; William Walker, 1 goal, one horse.

Nicely furnished rooms, Popular House, 1249 Fort St., \$1.50 per week up.

KULA CROP DESTROYED.

D. L. Van Dine, special agent for the Agricultural Department, who has just returned from his tour through the Kula district of Maui, reports that the corn and potato crop in the district, comprising 7000 acres, is almost a total failure on account of the ravages of the green fly in the corn and the black rot on the potatoes. The farmers of the district, consisting principally of Hawaiians, Portuguese and Japanese, did not discover the cause of the damage until it was too late. Important measures are all in preparation in cases of the kind but no report was made until practically the entire crop had been ruined and it was too late to do anything.

INDIANAPOLIS PROGRESS BEER

Finest bottled beer sold in Honolulu. Pure and palatable. Has all the tonic properties and the delightful flavor of the best hops.

Family Orders Solicited.

Gomes & McTigue

93 and 95 King St.
Phone Main 140.

WHY WE ADVERTISE

Because Making and Fitting SPECTACLES and EYEGLASSES is our exclusive business. Because a long course of special study has been followed by years of practical experience. Because our factory is well equipped for grinding special lenses, as well as the usual routine of spectacle making and repairing.

A. N. SANFORD,

Manufacturing Optician.
Boston Building, Fort Street.
Over May & Co.

A.B.C. BOHEMIAN

Pure, Pale and Sparkling. Bottled Only at the Brewery in St. Louis.
SOLD EVERYWHERE.

G. W. Quinn,

modern plumbing

Patronage of Owners, Architects and Builders solicited.

1168 Union St. Phone, Main 394

French Laundry

600, Corner of Beretania Avenue and Punchbowl Street.

All Work Done by Hand

LACE CURTAINS A SPECIALTY.
J. ABADIE, Proprietor.
Telephone Blue 3552.

P. H. Burnette

Agent to Grant Marriage Licenses.
Notary Public and Typewriter.
Real Estate, Insurance, Collections.

Office, 79 Merchant Street, Honolulu.

Fred. L. Waldron

BROKER AND COMMISSION MERCHANT.

P. O. Box 553; Tel Blue 781; Room 8, Spreckels Building.
The Bulletin, 75 cents per month.

Jas. T. Taylor

CIVIL AND HYDRAULIC ENGINEER

306 Judd Building.
Telephone Main 294.

Fred Harrison,

CONTRACTOR AND BUILDER

Tel. Main 193.
Jobbing promptly attended to.

H. F. BERTELMAN'S

Carpenter Shop
IS - MOVED

To rear of old stand. Entrance on King street. Orders left at either shop or office at John Not's store, King street, will receive prompt attention.

BUILDING MATERIALS

OF ALL KINDS.

Dealers in Lumber and Coal.

Allen & Robinson,

Queen Street, Honolulu.

A. C. WALL, D.D.S.

O. E. WALL, D.D.S.

DENTISTS.

Love Building, Fort Street.
Hours, 9 to 4. Telephone Main 337

INDIANAPOLIS PROGRESS BEER

Finest bottled beer sold in Honolulu. Pure and palatable. Has all the tonic properties and the delightful flavor of the best hops.

Family Orders Solicited.

Gomes & McTigue

93 and 95 King St.
Phone Main 140.

WHY WE ADVERTISE

Because Making and Fitting SPECTACLES and EYEGLASSES is our exclusive business. Because a long course of special study has been followed by years of practical experience. Because our factory is well equipped for grinding special lenses, as well as the usual routine of spectacle making and repairing.

A. N. SANFORD,

Manufacturing Optician.
Boston Building, Fort Street.
Over May & Co.

A.B.C. BOHEMIAN

Pure, Pale and Sparkling. Bottled Only at the Brewery in St. Louis.
SOLD EVERYWHERE.

G. W. Quinn,

modern plumbing

Patronage of Owners, Architects and Builders solicited.

1168 Union St. Phone, Main 394

French Laundry

600, Corner of Beretania Avenue and Punchbowl Street.

All Work Done by Hand

LACE CURTAINS A SPECIALTY.
J. ABADIE, Proprietor.
Telephone Blue 3552.

P. H. Burnette

Agent to Grant Marriage Licenses.
Notary Public and Typewriter.
Real Estate, Insurance, Collections.

Office, 79 Merchant Street, Honolulu.

Fred. L. Waldron

BROKER AND COMMISSION MERCHANT.

P. O. Box 553; Tel Blue 781; Room 8, Spreckels Building.
The Bulletin, 75 cents per month.

Jas. T. Taylor

CIVIL AND HYDRAULIC ENGINEER

306 Judd Building.
Telephone Main 294.

Fred Harrison,

CONTRACTOR AND BUILDER

Tel. Main 193.
Jobbing promptly attended to.

H. F. BERTELMAN'S

Carpenter Shop
IS - MOVED

To rear of old stand. Entrance on King street. Orders left at either shop or office at John Not's store, King street, will receive prompt attention.

BUILDING MATERIALS

OF ALL KINDS.

Dealers in Lumber and Coal.

Allen & Robinson,

Queen Street, Honolulu.

A. C. WALL, D.D.S.

O. E. WALL, D.D.S.

DENTISTS.

Love Building, Fort Street.
Hours, 9 to 4. Telephone Main 337

HAVE YOU TRIED primo lager?

It has no equal either as a tonic or a beverage and we guarantee it to be absolutely pure. Drink it to build up health and strength.

BREWERY TELEPHONE MAIN 341

Porter Furniture Co.

First-class FURNITURE of all descriptions. Upholstering Department unequalled in the City. Now located in the FISHER BLOCK, Fort Street, opp. Love Building.

PORTER FURNITURE CO., LTD.

ASTI WINES

MADE BY THE ITALIAN SWISS COLONY AT ASTI, SONOMA COUNTY, CALIFORNIA. THE LARGEST VINEYARD IN THE WORLD.

These wines have taken the gold medals and received the highest awards at all the recent World's Expositions, and are now noted the world over for their purity and excellence of quality. Trade and families supplied by the following jobbers:

WALTERS-WALDRON CO., LTD.
GONSALVES & CO.
GOMES & MCTIGHE,
JOS. HARTMAN & CO.
S. I. SHAW & CO.
CAMARA & CO.

why not try HERPICIDE

FOR THAT FALLING OUT OF THE HAIR, DANDRUFF AND OTHER SCALP DISEASES : : :

IT IS THE IDEAL HAIR DRESSING. WE CAN HONESTLY RECOMMEND IT.

Hollister Drug Company

FORT STREET.

WHITE ROCK LITHIA WATER

A fresh supply is on hand and for sale by your druggist or

W. C. Peacock & Co

LIMITED.
DISTRIBUTING AGENTS.

OUR WINES ARE PURE AND OUR PRICES are RIGHT

TOKAY SHERRY PORT RIESLING ZINFANDEL } 75c per Gal.

CHOICE TABLE CLARET, 50c per Gal.

HOFFSCHLAEGER Co., Ltd.

The Pioneer Wine & Liquor House
NO. 25 KING ST., Near Bethel.

EXCELLENT PICKLED HERRING GERMAN STYLE

to be had at the grocery store of

L. F. STERNEMANN,

FORT ST., OPP. CLUB STABLES.
Tel. Blue 511.

C. Q. Yee Hop & Co.

Kahikinui Meat Market and Grocery.
FRUITS AND VEGETABLES
Beretania Street, Corner Alakea
Phone Blue 2511.
ALSO AT THE FISHMARKET MEAT STALLS 19 AND 20.

SANG CHAN

MERCHANT TAILOR

Fine English and American Goods

TWO STORES
65 Hotel street, and Hotel near Nuuanu
P. O. Box 951. TEL—WHITE 43

Our Soda Waters

are everywhere conceded to be the highest quality. We sell them at 35c THE DOZEN. Delivery free anywhere in the city. All orders promptly attended to.

TELEPHONE BLUE 1871.
HAWAIIAN SODA WATER WORKS

S. SAIKI, BAMBON FURNITURE

—AND—
PICTURE FRAMES.
Neat and Handsome Designs Made to Order.

563 Beretania St., Near Punchbowl.

AH PAT & CO.,

1256 Fort St. above Orpheum.
MERCHANT TAILORS.
AH PAT, expert cutter, late foreman of D. Tregloan. Suits latest styles and cleaned and repairing.

5¢

SMOKE American Insular

MANILA

LONDRES

5¢

SACHS'

what to find here this week

So many pretty things have been opened that came by the last steamer that you will enjoy seeing them. The daintiest goods for summer dresses, hosiery, gloves, etc., are all on display on our counters, and we find the greatest pleasure in showing them. We'll tell you about some of them below, but be sure to come to the store.

THE LATEST LADIES' WHITE LACE LISLE GLOVES

We have had many calls for them, so have them in stock now. Cool and dressy for street wear.
60c a pair

Ladies' black lisle lace hose
fast black dye and very pretty lace work.
35c pair—3 pair \$1.00

Children's white lace hose
Shoes from 5 to 9. Entirely new stock.
35c pair—3 pair \$1.00

NEW WHITE GOODS tempting attractions

The most exquisite line of white goods we have handled. See them displayed on our center counter, with prices plainly marked.

LACE STRIPES

Very dainty for summer dresses, several different patterns at following prices:
7 yards for \$1.00
6 yards for \$1.00
5 yards for \$1.00
4 yards for \$1.00

LACE CHECKS

Very pretty.
7 yards for \$1.00
DOTTED SWISS
With stripes, 31 inches wide.
25c per yard

NEW GINGHAMS

very swell
Not ordinary gingham by any means. Don't buy until you see the patterns. Broad white stripes on these colors:
BLUE
RED
GREEN
PINK—27 inches wide.
8 yards for \$1.00

CHEVIOTS

for Shirt Waists
handsome patterns, in pretty stripes. Colors:
BROWN
RED
PINK
BLUE—25 inches wide.
8 yards for \$1.00

N.S.SACHS' DRY GOODS COMPANY, LTD.

EX VENTURA AND NEVADAN NEW GOODS

Shrimps, 1 lb. and 2 lb. tins. "Sea Gull" Fresh Crabs
"Snow Flake" Asparagus, Tomatoes, Corn and Salmon.
Lemon and Chocolate Sugar Wafers, Fresh Turnips,
Salinas and Barnets Potatoes, Enchilados, Tamales,
Olives, Russian Sardines, Anchovies, Holland Herrings,
Etc., Etc.

Salter's Grocery

FIRE PROOF SAFES

OUR STOCK OF
HERRING-HALL-MARVIN SAFE COMPANY'S SAFES
is as complete as can be found at any of the branch Mainland offices. Our delivered prices in Honolulu will not exceed the net export prices charged in San Francisco.

Theo. H. Davies & Co., Ltd. Hardware Department

Large stock of new goods ex. Alameda. Take advantage of our low prices.

GOO KIM

DRY GOODS AND GENTS' FURNISHINGS, 1116 Nuuanu St.

WING WO CHAN

THE OLDEST CHINESE FIRM IN HONOLULU.
COMMISSION MERCHANTS.
Dealers in Fine S. I. and Grass Linens. Chinese and Japanese Goods of All Kinds.



REAR ADMIRAL HIGGINSON, WHO WILL DIRECT THE NAVAL MANEUVERS.

The first of the series of naval maneuvers planned by the navy department, which will consume probably three weeks of August, will be under the direction of Rear Admiral Higginson, commander of the north Atlantic squadron. Two or three of the vessels of the station will represent an enemy's fleet and will endeavor to elude a defensive squadron commanded by Rear Admiral Higginson and accomplish a landing on the New England coast. The vessels participating in these maneuvers include the battleships Rear Admiral, Alabama, Massachusetts and Olympia, comprising the north Atlantic squadron, as well as the Montgomery, Scorpion, Marblehead, Hist and other vessels.

National Committeemen On Bryan's Chances

New York, July 27.—William J. Bryan's speechmaking trip to the Eastern States has revived interest in his present position in the Democratic party and in what attitude he and the party will stand toward each other in the Presidential campaign of two years hence.

To ascertain the Democratic view of the present situation and that which is likely to be presented in 1904, the Herain asked the members of the Democratic National Committee to express their opinion upon Bryan's standing in the party and what they regard as the leading issues in the coming Congressional campaign.

Answers received from many of the committeemen show a general belief that, while Bryan must be considered a very important factor, he is not at all likely to be again nominated for President, nor is it generally believed that he desires to be nominated.

As for the issues to be fought out, trusts, tariff revision and imperialism appear to be regarded as the most important. Here are some of the replies: Bryan is not a candidate. Impediment to the chief issue.—T. C. Blanchard, Louisiana.

Farber and Shepard types of coming candidates.—Joseph Daniels, North Carolina.

Bryan stands well with party and will so continue, but cannot be nominated.—John H. Senter, Vermont.

Bryan's influence stronger than at any time since he entered public life.—James C. Dahlman, Nebraska.

Has the largest personal following and should be considered in shaping party issues.—L. E. Ryan, Wisconsin.

Revision of tariff laws and opposition to trusts, two of the leading issues.—John T. McGarry, West Virginia.

Bryan is undisputed party leader and as popular as ever.—Homes S. Cunniff, Connecticut.

Bryan strong with the masses, but without any chance of being their nominee.—R. M. Johnson, Texas.

The people believe in Bryan, who neither desires nor expects a third nomination.—H. B. Ferguson, New Mexico.

Kentucky Democrats are devoted as ever to William J. Bryan and ready to vote for him.—Urey Woodson, Kentucky.

Opposition to tariff and to great trusts the Democratic campaign issues. Bryan is therefore a lost important factor.—Norman E. Mack, New York.

Party reorganizers may do much to bring about Bryan's nomination for a third time.—Henry D. Clayton, Alabama.

Bryan is the logical and natural leader and will yet be President.—John G. Johnson, Kansas.

Tennessee Democrats look for another man than Bryan to run for the presidency.—J. M. Head, Tennessee.

Bryan more popular than ever and sure to be nominated.—John E. Osborne, Wyoming.

Bryan stands very high with his party, but too early to predict who will be nominated for President by the Democrats.—Joseph R. Ryan, Nevada.

Bridgeport, Conn., July 27.—William J. Bryan left Bridgeport late this afternoon on a yacht owned by Lewis Nixon of New York, whose guest he will be for the next two days. The yacht will be put into New Haven harbor tonight and will cruise to the eastward through Long Island Sound tomorrow. It is expected that on Tuesday Bryan will land at Block Island, where he will stay for several days.

with gambling defaulted appearance and a bench warrant was issued for their arrest.

Tam Wan, unlawful liquor selling, has his bond forfeited and a warrant issued for him.

The case of Frank Blackburn, the bookman who ran over Col. A. G. Hawes, went over one week, as the prosecuting witness was not yet able to appear in court.

W. S. Fleming, at commissioner in the case of Sophia Hunter Kahalaahu vs. Manuel Silveira Pereira and S. Kobayashi, made a report to Judge Robinson yesterday. This was the case wherein plaintiff was found to have a dower right in certain property left by Wm. H. Pease, and Fleming was appointed to fix the cash value. This he fixes at \$129.55, being the interest on the amount she should have received as dower. This amount is assessed against the defendant Manuel Silveira Pereira.

There was nothing ready for the trial jury at Circuit Court term yesterday. Manuel Vieira, unlawful liquor selling, had a jury drawn but the prosecution did not have its papers on hand.

Willie Forrest, a Hawaiian boy owned up to stealing chickens. His sentence was suspended until November. Judge Gear censured the police department for sending the lad into court clad in the blue denim of the prison. It was not the first time that defendants awaiting trial, until when they were presumed to be innocent, had been sent up for trial clad in prison garb, and the judge uttered a warning to officers for the future.

Montano Colon, charged with assault and battery, was released owing to default of witnesses for the prosecution.

Tan Ping Sin by his attorney, F. M. Brooks, withdrew his appeal from a fine of \$25 for assault and battery.

Seventy thousand cochineal insects go to a single pound of dried cochineal. The world's crop of cochineal is 700,000 pounds.



OFFICE OF THE ADMIRAL
1747 Rhode Island Avenue
WASHINGTON
Feb. 18, 1901
A. R. Bremer Co.,
Chicago.
Gentlemen:—I have used **Coke Dandruff Cure** for the past year and found it an excellent preparation.
A. R. Bremer

FOR SALE BY HOBSON DRUG CO. Fort and King Sts.

LOGGED UP HIS PANAMA

FATE OF NATION THOUGHT TO HANG ON CLOSED SAFE

ATTORNEY GENERAL'S STRONG BOX HAD NOT BEEN LOCKED FOR YEARS—HE FORGOT COMBINATION.

Washington.—Please send a safe expert down here at once. This is the office of the Assistant Attorney General for the Post Office Department. Someone shut the big vault. It hasn't been closed in five years and we don't know the combination. Please rush a man because there's something in the safe that must come out right away. Hurry up.

This message was received over the phone at the Treasury Department today and a messenger rushed around, found an expert on safes and the expert gathered his tools and hurried to the Assistant Attorney General's office. He found half a dozen men grouped around a big vault in the back room, one of them looking first at the closed steel door and then at the clock on the wall.

The expert knew it must be something very important and did his best with the result that in a few moments the massive door swung open. The safe was empty, save for a packet of dust-covered papers in a compartment and a new Panama hat on one of the shelves. The man who had been fidgeting and looking at the clock gave a cry of delight, grabbed the hat, thanked the safe expert, glanced again at the clock and rushed out of the room. Everybody, except the safe expert, laughed.

The safe man was about to make a few side remarks about the man who had telephoned for him, when a clerk took him aside and explained that a few days before the man who had grabbed the Panama headgear had walked into the office and told the Assistant Attorney General and all the clerks within hearing that the hat had cost him only 98 cents and that it was a wonderful imitation, made by a new process and not to be told from the original. He named the store where there were only a few more left.

As a result, every official and clerk who had examined the hat took a few minutes off that day and went to the store in question and asked for a 98-cent Panama, and each of the prospective purchasers was very much astonished when the man behind the counter pulled out a slip of paper which bore the name of the prospective purchaser and checked it off on his list. Then the salesman explained that it was all a joke, and that a bet was on to see how many people would take a \$40 Panama hat for a cheap imitation on a mere 98-cent, during the day about 200 officials and clerks in the Post Office Department tried to buy hats for 98 cents apiece.

When the man who had started the trouble next appeared in the office he placed his hat on a shelf in the safe, knowing that it was never closed. It closed on this occasion, however, as one seems to know now, and the hat stayed there all night, for no one remembered the combination and while the Assistant Attorney General was trying to think of it, the clock came and the Treasury safe expert went home.

The man whose hat was in the safe had to catch a train and he did not want to leave without his Panama, so the safe expert was to be believed that the fate of the nation hung in the balance.

There are no less than 2262 different species of fish inhabiting the waters of America north of the latitude of Panama.

There is no Family Medicine so favorably known as PAIN-KILLER. For sixty years it has been used by Missionaries in all parts of the world, not only to counteract the climatic influences on their families, but for the cure of all diseases of the bowels, and for wounds, burns, bruises, etc. Avoid substitutes, there is but one Pain-Killer, Perry Davis'. Price 25c and 50c.



Do You Understand About Enclosed Arc Lamps?

The history of the arc lamp has been a story of improvement and we now have the highest state of perfection in the

ADAMS-BAGNALL LAMP

Many of these lamps are giving satisfaction and saving money in Honolulu business houses, and we want them to do the same for you.

Telephone for us to call, or write for circular which gives full description.

Especially adapted for Plantations.

HAWAIIAN ELECTRIC CO., LTD.
KING STREET, NEAR ALAKEA - TEL. MAIN 390

How to Get Along with a Husband!

In a recent offer by a New York newspaper, giving a handsome prize for the best essay, by a woman on the above subject, the prize awarded to the one who wrote just three words, viz. "Feed the Brute." Try the application and visit our delicacy counter. There you find the choicest delicacies obtainable, including **CHEESE OF THE FOLLOWING KINDS:** Edam, Pineapple, Oregon full cream brick, California full cream, Fromage de Bri, Camembert, Kronen, Neufchâtel, Sierra, Schloss Kase and Breakfast Cheese.

Pickled Pearl Onions, Spiced and Sweet Pickles, German Dill Pickles, Mixed Pickles and extra fine ripe Olives—all these in bulk. Smoked Beef Tongue, Chipmunk Beef, New Smoked Salmon, Boaters and Aberdeen Herrings, Blanzack, Holland and Special Herring a specialty.

Metropolitan Meat Co., Ltd.
Telephone Main 45.

That Clever Booklet
that's in your mind ought to be in your customer's hands.
We'll help you to put it there.
The first thing to do is to telephone to us and we will send an intelligent representative to figure with you.
If it's any inducement for you to get the right work at the right price and get it **WHEN WE PROMISE**, drop us a line or telephone to **MAIN 256**.

BOOK BINDING

The style of our binding will surprise you. The quickness with which we do it will surprise you. The neatness, the correctness, the absolute up-to-dateness of everything we do for you if you give us a chance will surprise you into becoming one of our regular customers. Want to be surprised?

PRINTING AND BINDING DEPT. BULLETIN PUBLISHING CO.,
TELEPHONE MAIN 256.

Bulletin 750

TO LEASE

We offer for a short or long lease at very reasonable rates, the

FINE STORE

In the WAVERLY BLOCK on Bethel street, formerly occupied by the Honolulu Paint Co.

Henry Waterhouse & COMPANY

Fort and Merchant Sts. Tel. Main 313. Honolulu.

MASONIC TEMPLE



WEEKLY CALENDAR.

MONDAY
Pacific—Stated.

TUESDAY
Le Progress—Third Degree.

WEDNESDAY
Pacific—Third Degree.

THURSDAY
Honolulu Commandery—Regular and Red Cross.

FRIDAY
Hawaiian—Second Degree.

SATURDAY

All visiting members of the order are cordially invited to attend meetings of local lodges.

HARMONY LODGE, No. 3, I. O. O. F.

Meets every Monday evening at 7:30 in Marmony Hall, King street.
E. L. CUTTING, N. G.
E. R. HENDRY, Secretary.
All visiting brothers very cordially invited.

MYSTIC LODGE NO. 2, K. of P.

Meets every Tuesday evening at 7:30 o'clock in Harmony Hall, King street. Visiting brothers cordially invited to attend.

H. H. WILLIAMS, C. C.
A. E. MURPHY, K. R. N.

OAHU LODGE, No. 1, K. of P.

Meets every Friday evening at Harmony Hall, King street. Visiting brothers cordially invited to attend.

C. M. V. FORSTER, C. C.
B. S. GREGORY, K. R. S.

WM. M'KINLEY LODGE No. 8, K. of P.

Meets every Saturday evening at 7:30 o'clock in Harmony Hall, King street. Visiting brothers cordially invited to attend.

C. M. V. FORSTER, C. C.
B. S. GREGORY, K. R. S.

HONOLULU LODGE 616, B. P. O. E.

Honolulu Lodge No. 616, B. P. O. E., will meet in their new hall, on Miller and Beretania streets, every Friday evening.

By order of the E. R.
D. L. CONKLING, Secretary.

THEOSOPHICAL SOCIETY.

Mr. THOMAS PRIME will lecture on THE AURA Thursday, Aug. 14th, 1922, 8 p. m., at ARION HALL (back of Opera House). A cordial welcome extended to all.

Library open Friday, 3 to 4 o'clock.

MARY D. HENDRICKS,
President Aloha Branch, T. S.

Look at This

If you don't buy these lots you'll miss it, because you will miss doubling your money in one year or less. Prices bed-rock. Finest, coolest and healthiest location in Honolulu, right on King St. below Waikiki Turn, on line of Rapid Transit, seven minutes' straight run to Fort St. Will build houses from \$700 up and guarantee renters for this price, \$25.00. Call and see

W. M. CAMPBELL

at his office on premises or my special agent, W. M. Minton, with Honolulu Investment Co., Judd Bldg.

Weekly edition of the Bulletin, \$1 a year.

NEW ENGLAND BAKERY

have enlarged and refitted their popular Dining Room in order to accommodate their many customers.

handsome private rooms

for ladies, with Electric Lights and Fans—Cool and Pleasant.

LIGHT LUNCHEON

served, suitable for this climate and at such prices that only a First-Class Bakery could afford to make, including the finest cup of coffee in the city.

... GIVE US A CALL.

HONOLULU CANDY CO.

in rear of New England Bakery

MANUFACTURERS and Wholesale CONFECTIONERS.

We carry everything in our line, such as Chewing Gums,

Pop Corn Goods, Prize Goods, and a large stock of quick selling 5-cent Candies, just the thing for retail stores.

Special inducements to plantation stores and others buying in large quantities.

Goods sold at wholesale only.

F-O-R-R-E-N-T

CORNER BERETANIA and VICTORIA STS., opp. Thomas Square—

House with five bedrooms and large mosquito proof dining room. Electric lighting and good, up-to-date plumbing. Admirably suited for boarding house.

RENT \$50 PER MONTH.

Castle & Lansdale

REAL ESTATE AND INSURANCE AGENTS; INVESTMENTS.

506-507 Stangenwald Building. Telephone Main 70.

Cabot's Creosote Shingle Stains

They are better than paints for exterior finishing of a house for many reasons, but principally for the artistic effect produced.

They are the best wood preservatives known, cost about 50 per cent less than paint, are fully as durable as the best paints, and are much simpler in application.

Ask for booklets telling all about them at

Lewers & Cooke, Ltd
FORT STREET.

Keystone-Elgin WATCHES

DURABLE AND ACCURATE

The Keystone Watch Case Co., Philadelphia, U.S.A. America's Oldest and Largest Watch Factory

For sale by The Principal Watch Dealers in Hawaiian Islands

FOR—

Tools, Materials and Findings used by Watchmakers, Jewelers and kindred trades, go to

JOS. SCHWARTZ,

Room 303 Boston Building, over Henry May & Co., Fort St., near King.

Money Loaned.

TO SALARIED PEOPLE ON NOTES.

Room 8,

Aagoon Bldg., Merchant & Alakea Sts.

Office hours 9 a. m. to 4 p. m.

COTTON BROS. & CO

ENGINEERS AND GENERAL CONTRACTORS

Plans and estimates furnished for all classes of contracting work.

Tel. Main 245.

ROOM 300 BOSTON BLK. Honolulu

Fine Job Printing at the Bulletin office.

LOCAL AND GENERAL

Read "Wants" on page 6.

Kona coffee to be good must be pure. C. J. Day sells it.

Leaky roofs made good as new with PERELESS PRESERVING PAINT.

Oahu Lodge, No. 1, K. of P., will meet tonight at 7:30 in Harmony Hall, King street.

Mr. and Mrs. J. T. Crawley and family are spending a two weeks vacation in Waialua.

The weekly edition of the Evening Bulletin gives a complete summary of the news of the day.

Corns and ingrowing nails successfully treated without pain. Dr. Bogie, Oregon block, Hotel street. Office hours 1 to 5 p. m.

The annual fair of St. Clement's church will be held this year on or about October 11, instead of just before Christmas, as formerly.

B. G. Holt, Clifford Kimball, S. de Frest and John Dias are among those out for the position of United States Shipping Commissioner.

Cards are out for a reception to be tendered to Sisters Beatrice and Alberta by their pupils on Saturday, August 16, from 8 to 11 p. m. There will be dancing.

A meeting of native born Californians will be held at the drill shed this evening to make arrangements for celebrating the coming anniversary on September 9.

A meeting of the executive committee of the Young Men's Republican Club will be held this afternoon at 4 o'clock in Lorrin Andrew's office, Stangenwald building.

The reception of St. Andrew's Cathedral and St. Clement's church parishioners to Bishop and Mrs. Restarick will take place next Thursday evening at the Hawaiian hotel.

The Y. P. S. C. E. of Central Union church will give a boat ride this (Friday) evening, leaving Brewer's wharf at 8 o'clock sharp. A cordial invitation is extended to all.

The best market affords at the most reasonable prices. The Palace Grill meals and service can't be beat. Family dinners in private rooms a specialty. Palace Grill, Bethel street.

Don't forget Camarinos of the California Fruit Market when you want fruit and vegetables. He always has on hand a fresh supply of both California and island fruits. Telephone Main 378.

Mrs. Paul Neumann has issued invitations for the wedding of her niece, Pauline Elizabeth Neumann, to George Frederick Rodick, Monday, August 28, at 8 p. m., in the German Lutheran church, Beretania street.

The Young People's Society of Central Union church will give an excursion on the harbor this evening in one of Young Bros' launches. The launch will leave Brewer's wharf at 7:45 sharp. The public generally is invited to attend.

The band boys are anxious to make a trip to the Coast for a series of concerts during their regular vacation. A proposition is on foot for the Merchants' Association to put up the amount of the steamer fares, the boys doing their work on the Coast by way of advertising Hawaii.

F. W. Smith, formerly chief clerk of the Hawaiian hotel, has been advanced to the management, vice H. Wingate Lake, resigned. Mr. and Mrs. Lake will leave soon for the Coast. During his absence on the Coast, Mr. Lake will purchase furnishings for the new hotel in the Young building.

This evening the Myrtle Boat Club boys will entertain at a smoker to be given in the boat house. No set program has been arranged. Outside of the club members, only the officers and crews of the Heulani Boat Club, members of the press and a few specially invited friends will be present.

Captain Berger of the Territorial band, is of the opinion that concerts should be given at some place in Kapaemahu or Kalia or at some place half way between as there are hundreds of Kapaemahu residents who rarely hear the band play, the concerts all being given this side of the Nuuanu stream.

The many patrons of Goo Kim the general merchant, will be pleased to know that he will continue his business on Nuuanu street for about nine months longer. This is necessary to complete term of his lease. New goods are arriving on each steamer and are being displayed at the old stand.

To stand the test of time dentistry must be done right. The Expert dentists are doing as good dentistry as any skilled dentist can produce. They are in the city to stay and are building up a reputation on the merits of their work. Visit their up-to-date office in the Arlington block, 215 Hotel street off Union. Their prices are very low.

The concert by the band out at the Hotel Annex last evening proved to be an experiment that many people of the city will demand to have repeated. The boys were stationed on the lawn that runs out upon the beach and hundreds of people sat around on the lawns and the beach while a large number donned bathing suits and went into the water. The concert was most thoroughly enjoyed by every one and each number played by the band was heartily applauded.

KULA CROP DESTROYED.

D. L. Van Dine, special agent for the Agricultural Department, who has just returned from his tour through the Kula district of Maui, reports that the corn and potato crop in the district, comprising 2000 acres, is almost a total failure on account of the ravages of the green fly in the corn and the black rot on the potatoes. The farmers of the district, consisting principally of Hawaiians, Portuguese and Japanese, did not discover the cause of the damage until it was too late. Precautionary measures are all important in cases of the kind but no report was made until practically the entire crop had been ruined and it was too late to do anything.

WOMAN SLAVERY CASE

CHINESE WOMAN BEFORE COMMISSIONER GILL

EVIDENCE FOR THE DEFENSE IS CONTRADICTORY AND INCONSISTENT—WOMAN REPEATS STATEMENT.

One of the two Chinese women held by the customs officers for deportation had her trial before Commissioner Gill yesterday afternoon. This was Ah Sue, whom Lum Fong claims as his wife. District Attorney Breckons prosecuted, while F. M. Brooks conducted the defense.

Lum Fong testified that he had lived here for sixteen years and was married to the defendant eighteen years ago in Canton. He was a merchant, and had sent Ah Sue to China to bring his wife and child back, giving him \$250 in gold to pay expenses.

Upon cross-examination the witness made contradictory statements as to his marriage and business here. He said that Wong Loy had accompanied his wife and child to Honolulu at his request.

Wong Loy testified that he had gone to China to collect money due him, and had invested it in rice plantations, in Canton he had met the defendant for the first time and was requested at the store of Fook Sing Wo to accompany the two women to Honolulu on the City of Peking. He testified that he had looked after the women on the trip and took them to his house.

Li Chong, official interpreter, testified as to letters received by Lum Fong from Ah Sue, in which she said she wanted to join him. A portion of the letters had been cut away. The woman had told witness that she was bought by Wong Loy for \$60 in Canton, and that she was a stranger to the other girl. She told him further that Wong Loy had promised to marry her, and that she had been staying two months with Wong Loy, and compelled to be a prostitute.

A statement made by Ah Sue to J. K. Brown was read, being in substance as follows: "My real name is Ah Sue; don't know what name I came here under. I am thirty-four years of age; was married in China but husband is dead. I have been in Hawaii over two months. I came from Hong Kong in the S. S. Peking; was a second cabin passenger and went to Quarantine Island. One other Chinese person was a passenger with me, Wong Loy. He went to quarantine also. Yes, there was also another woman with us. She took the name of Ah Fong after she got here. Wong Loy gave me a paper on the steamer and told me that would let me land. While at quarantine I heard Wong Loy and another Chinaman whom I have since seen at Wong Loy's house, talking. After that the strange Chinaman told me I must say Lum Fong was my husband. This was before I was examined. When I was examined by the white man, there was a Chinaman present, the same I have seen since at Wong Loy's."

"I came ashore in a hack; Lum Fong came for me. I paid \$10 Mexican for passage. Wong Loy told me in China that I was to be his wife, when we got here, but at quarantine he told me to say I was the wife of Lum Fong. Wong Loy told me he paid \$60 for me in China, and that I must now be a prostitute to repay him for his expenses in getting me here. So far as I know the expenses were \$60 and my passage money, but Wong Loy told me that it had cost over \$1000 to get the other woman and myself here."

The testimony of Deputy Sheriff Chillingworth and of the man from whom Wong Loy had rented the house was admitted and the defendant Ah Sue was then put on the stand. She said that she had been forced to make the statement by Policeman Ah On, who had threatened to put her in jail for life if she didn't plead guilty.

Mr. Breckons in the closing argument called attention to the remarkable coincidence of Wong Loy leaving for China on the same day that Lum Fong had been given his merchant's certificate.

When Deputy Marshal Handy started to take away Lum Fong, the alleged husband, there was a scene. The woman, who had been holding Lum Fong's hat, refused to let it go, clinging desperately to the headgear and to her husband. It was finally explained to the woman that her husband was not being taken to jail, and she let him take the hat.

Commissioner Gill promised a decision on Monday.

POLO SOON.

The following is the prospective make up of the teams which are soon to open the polo season at Kapiolani park.

Blues: C. S. Dole, 5 goals handicap, 1 horse; S. E. Damon, 4 goals, two horses; Prince Cupid, 2 goals, two horses and Dr. McAdory and Harold Castle with two horses between them as alternate players. Dr. McAdory is penalized with one goal.

Whites: A. F. Judd, 4 goals, two horses; H. F. Damon, 4 goals, two horses; R. W. Shingle, 3 goals, two horses, and J. P. Erdman and G. E. Brown as alternates with two horses between them. Erdman is penalized to the extent of two goals.

Reds: W. F. Dillingham, 5 goals, two horses; G. C. Potter, 4 goals, two horses; J. T. Irvine, 2 goals and A. M. Brown, and C. F. Chillingworth, penalized two goals apiece as alternates with two horses between them.

Unattached players, or general substitutes: Judge Stanley, 0 goals, one horse; Frank Andrade, 0 goals, one horse; P. R. Helm, 0 goals, one horse; G. G. Fuller, 1 goal, one horse; William Walker, 1 goal, one horse.

Nicely furnished rooms. Popular House, 1249 Fort St., \$1.50 per week up.

INDIANAPOLIS PROGRESS BEER

Finest bottled beer sold in Honolulu. Pure and palatable. Has all the tonic properties and the delightful flavor of the best hops.

Family Orders Solicited.

Gomes & McTigue
93 and 95 King St.
Phone Main 140.

WHY WE ADVERTISE

Because Making and Fitting SPECTACLES and EYEGLASSES is our exclusive business. Because a long course of special study has been followed by years of practical experience. Because our factory is well equipped for grinding special lenses, as well as the usual routine of spectacle making and repairing.

A. N. SANFORD,
Manufacturing Optician.
Boston Building, Fort Street.
Over May & Co.

A.B.C. BOHEMIAN

Pure, Pale and Sparkling. Bottled Only at the Brewery in St. Louis. SOLD EVERYWHERE.

E. W. Quinn, modern plumbing

Patronage of Owners, Architects and Builders solicited.

1168 Union St. Phone, Main 394

French Laundry

600, Corner of Beretania Avenue and Punchbowl Street.
All Work Done by Hand
LACE CURTAINS A SPECIALTY.
J. ABADIE, Proprietor.
Telephone Blue 3552.

P. H. Burnette

Agent to Grant Marriage Licenses. Notary Public and Typewriter. Real Estate, Insurance, Collections.

Fred. L. Waldron

BROKER AND COMMISSION MERCHANT.
P. O. Box 653; Tel. Blue 791; Rooms 5, Spreckels Building.
The Bulletin, 75 cents per month.

Jas. T. Taylor

CIVIL AND HYDRAULIC ENGINEER
308 Judd Building.
Telephone Main 294.

Fred Harrison, CONTRACTOR AND BUILDER

Tel. Main 193.
Jobbing promptly attended to.

H. F. BERTELMAN'S Carpenter Shop IS - MOVED

To rear of old stand. Entrance on King street. Orders left at either shop or office at John Nott's store, King street, will receive prompt attention.

BUILDING MATERIALS OF ALL KINDS.

Dealers in Lumber and Coal.
Allen & Robinson, Queen Street, Honolulu.
A. C. WALL, D.D.S.
O. E. WALL, D.D.S.
DENTISTS.
Love Building, Fort Street.
Hours, 9 to 4. Telephone Main 337

HAVE YOU TRIED primo lager?

It has no equal either as a tonic or a beverage and we guarantee it to be absolutely pure. Drink it to build up health and strength.
BREWERY TELEPHONE MAIN 341

Porter Furniture Co.

First-class FURNITURE of all descriptions. Upholstering Department unequalled in the City. Now located in the FISHER BLOCK, Fort Street, opp. Love Building.
PORTER FURNITURE CO., LTD.

ASTI WINES

MADE BY THE ITALIAN SWISS COLONY AT ASTI, SONOMA COUNTY, CALIFORNIA. THE LARGEST VINEYARD IN THE WORLD. These wines have taken the gold medals and received the highest awards at all the recent

World's Expositions,

and are now noted the world over for their purity and excellence of quality. Trade and families supplied by the following jobbers:

WALTERS-WALDRON CO., LTD.
GONSALVES & CO.
GOMES & MCTIGUE.
JOS. HARTMAN & CO.
S. I. SHAW & CO.
CAMARA & CO.

why not try HERPICIDE

FOR THAT FALLING OUT OF THE HAIR, DANDRUFF AND OTHER SCALP DISEASES : : : :

IT IS THE IDEAL HAIR DRESSING. WE CAN HONESTLY RECOMMEND IT...

Hollister Drug Company

FORT STREET.

OUR WINES ARE PURE AND OUR PRICES are RIGHT

TOKAY SHERRY PORT 75c per Gal.
RIESLING ZINFANDEL
CHOICE TABLE CLARET, 50c per Gal.

HOFFSCHLAEGER Co., Ltd.

The Pioneer Wine & Liquor House
NO. 25 KING ST., Near Bethel.

Our Soda Waters

are everywhere conceded to be the highest quality. We sell them at 35c THE DOZEN. Delivery free anywhere in the city. All orders promptly attended to.
TELEPHONE BLUE 1871.
HAWAIIAN SODA WATER WORKS

WHITE ROCK LITHIA WATER

A fresh supply is on hand and for sale by your druggist or

W. C. Peacock & Co LIMITED.

DISTRIBUTING AGENTS.

EXCELLENT PICKLED HERRING GERMAN STYLE

to be had at the grocery store of

L. F. STERNEMANN,

FORT ST., OPP. CLUB STABLES. Tel. Blue 511.

C. Q. Yee Hop & Co.

Kahikini Meat Market and Grocery. FRUITS AND VEGETABLES Beretania Street, Corner Alakea. Phone Blue 2511. ALSO AT THE FISHMARKET MEAT STALLS 19 AND 20.

SANG CHAN

MERCHANT TAILOR
Fine English and American Goods

TWO STORES

65 Hotel street, and Hotel near Nuuanu
F. O. Box 64. TEL.—WHITE 43

S. SAIKI, BAMBOO FURNITURE

AND—PICTURE FRAMES. Neat and Handsome Designs Made to Order.
563 Beretania St., Near Punchbowl.

AH PAT & CO.,

1256 Fort St. above Orphanum. MERCHANT TAILORS. AH PAT, expert cutter, late foreman of D. Tregloan. Suits latest styles and good fit. Cleaning and repairing.

5¢ American Insular 5¢

SMOKE MANILA LONDRES

SACHS'

what to find here this week

So many pretty things have been opened that came by the last steamer that you will enjoy seeing them. The daintiest goods for summer dresses, hosiery, gloves, etc., are all on display on our counters, and we find the greatest pleasure in showing them. We'll tell you about some of them below, but be sure to come to the store.

THE LATEST LADIES' WHITE LACE LISLE GLOVES

We have had many calls for them, so have them in stock now. Cool and dressy for street wear.

60c a pair

Ladies' black lisle lace hose

fast black dye and very pretty lace work.

35c pair—3 pair \$1.00

Children's white lace hose

Sizes from 5 to 9. Entirely new stock.

35c pair—3 pair \$1.00

NEW WHITE GOODS tempting attractions

The most exquisite line of white goods we have handled. See them displayed on our center counter, with prices plainly marked.

LACE STRIPES

Very dainty for summer dresses, several different patterns at following prices:

7 yards for \$1.00
6 yards for \$1.00
5 yards for \$1.00
4 yards for \$1.00

LACE CHECKS

Very pretty.

7 yards for \$1.00

DOTTED SWISS

With stripes, 31 inches wide.

25c per yard

NEW GINGHAMS

very swell

Not ordinary gingham by any means. Don't buy until you see the patterns. Broad white stripes on these colors:

BLUE
RED
GREEN
PINK—27 inches wide.

8 yards for \$1.00

CHEVIOTS

for Shirt Waists

handsome patterns, in pretty stripes. Colors:

BROWN
RED
PINK
BLUE—25 inches wide.

8 yards for \$1.00

N.S.SACHS'

DRY GOODS COMPANY, LTD.

EX VENTURA AND NEVADAN NEW GOODS

Shrimps, 1 lb. and 2 lb. tins. "Sea Gull" Fresh Crabs
"Snow Flake" Asparagus, Tomatoes, Corn and Salmon.
Lemon and Chocolate Sugar Wafers. Fresh Turnips,
Salinas and Garnets Potatoes. Enchilados, Tamales,
Olives, Russian Sardines, Anchovies, Holland Herrings,
Etc., Etc.

Salter's Grocery

FIRE PROOF SAFES

OUR STOCK OF
another large shipment just arrived
HERRING-HALL-MARVIN
SAFE COMPANY'S SAFES
is as complete as can be found at any of the branch Mainland offices. Our delivered prices in Honolulu will not exceed the net export prices charged in San Francisco.

Theo. H. Davies & Co., Ltd. Hardware Department

Large stock of new goods ex. Alameda. Take advantage of our low prices.

GOO KIM

DRY GOODS AND GENTS' FURNISHINGS, 1116 Nuuanu St.

WING WO CHAN
THE OLDEST CHINESE FIRM IN HONOLULU.

COMMISSION MERCHANTS.



REAR ADMIRAL HIGGINSON, WHO WILL DIRECT THE NAVAL MANEUVERS.

The first of the series of naval maneuvers planned by the navy department, which will consume probably three weeks of August, will be under the direction of Rear Admiral Higginson, commander of the north Atlantic squadron. Two or three of the vessels of the station will represent an enemy's fleet and will endeavor to elude a defensive squadron commanded by Rear Admiral Higginson and accomplish a landing on the New England coast. The vessels participating in these maneuvers include the battleships Kearsarge, Alabama, Massachusetts and Olympia, comprising the north Atlantic squadron, as well as the Montgomery, Scorpion, Marblehead, Hiss and other vessels.

National Committeemen On Bryan's Chances

New York, July 27.—William J. Bryan's speechmaking trip to the Eastern States has revived interest in his present position in the Democratic party, and in what attitude he and the party will stand toward each other in the Presidential campaign of two years hence.

To ascertain the Democratic view of the present situation and that which is likely to be presented in 1904, the Herald asked the members of the Democratic National Committee to express their opinion upon Bryan's standing in the party and what they regard as the leading issues in the coming Congressional campaign.

Answers received from many of the committeemen show a general belief that, while Bryan must be considered a very important factor, he is not at all likely to be again nominated for President, nor is it generally believed that he desires to be nominated.

As for the issues to be fought out, tariff revision and imperialism appear to be regarded as the most important. Here are some of the replies: Bryan is not a candidate. Imperialism the chief issue.—T. C. Blanchard, Louisiana.

Parker and Shepard types of coming candidates.—Josephus Daniels, North Carolina.

Bryan stands well with party and will so continue, but cannot be nominated.—John H. Senter, Vermont.

Bryan's influence stronger than at any time since he entered public life.—James C. Dahlman, Nebraska.

Has the largest personal following and should be considered in shaping party issues.—L. E. Ryan, Wisconsin.

Revision of tariff laws and opposition to trusts, two of the leading issues.—John T. McGarry, West Virginia.

There was nothing ready for the trial jury at Circuit Court term yesterday. Manuel Vieira, unlawful liquor seller, had a jury drawn but the prosecution did not have its papers on hand.

Willie Porrett, a Hawaiian boy, owned up to stealing chickens. His sentence was suspended until November. Judge Gear censured the police department for sending the lad into court clad in the blue denim of the prison. It was not the first time that defendants awaiting trial, until when they were presumed to be innocent, had been sent up for trial clad in prison garb, and the judge uttered a warning to officers for the future.

Montano Colon, charged with assault and battery, was released owing to default of witnesses for the prosecution.

Ton Ping Sia by his attorney, F. M. Brooks, withdrew his appeal from a fine of \$25 for assault and battery.



Feb. 18, 1901
A. R. Bremer Co.,
Chicago.

Gentlemen:—I have used **Coke Dandruff Cure** for the past year and found it an excellent preparation.

Ray Denny

FOR SALE BY HOBSON DRUG CO., Fort and King Sts.

LOCKED UP HIS PANAMA

FATE OF NATION THOUGHT TO HANG ON CLOSED SAFE

ATTORNEY GENERAL'S STRONG BOX HAD NOT BEEN LOCKED FOR YEARS—HE FORGOT COMBINATION.

Washington.—Please send a safe expert down here at once. This is the office of the Assistant Attorney General for the Post Office Department. Someone shut the big vault. It hasn't been closed in five years and we don't know the combination. Please rush a man because there's something in the safe that must come out right away. Hurry up.

This message was received over the phone at the Treasury Department today and a messenger rushed around, found an expert on safes and the expert gathered his tools and hurried to the Assistant Attorney General's office. He found half a dozen men grouped around a big vault in the back room, one of them looking first at the closed steel door and then at the clock on the wall.

The expert knew it must be something very important and did his best with the result that in a few moments the massive door swung open. The safe was empty, save for a packet of dust-covered papers in a compartment and a new Panama hat on one of the shelves. The man who had been fidgeting and looking at the clock gave a cry of delight, grabbed the hat, thanked the safe expert, glanced again at the clock and rushed out of the room. Everybody, except the safe expert, laughed.

The safe man was about to make a few side remarks about the man who had telephoned for him, when a clerk took him aside and explained that a few days before the man who had grabbed the Panama hatgear had walked into the office and told the Assistant Attorney General and all the clerks within hearing that the hat had cost him only 98 cents and that it was a wonderful imitation, made by a new process and not to be told from the original. He named the store where where he had purchased it and said there were only a few more left.

As a result, every official and clerk who had examined the hat took a few minutes off that day and went to the store in question and asked for a 98-cent Panama. And each of the prospective purchasers was very much astonished when the man behind the counter pulled out a slip of paper, asked the name of the prospective purchaser and checked it off on his list. Then the salesman explained that it was all a joke, and that a bet was on to see how many people would take a \$49 Panama hat for a cheap imitation on a mere say-so, limiting the day about 200 officials and clerks in the Post Office Department to buy hats for 98 cents apiece.

When the man who had started the trouble first appeared in the office he placed his hat on a shelf in the safe, knowing that it was never closed. It closed on this occasion, however, no one seems to know how, and the hat stayed there all night, for no one remembered the combination and wrote the Assistant Attorney General was trying to think of it. A clock came and the Treasury safe expert went home.

The man whose hat was in the safe had to catch a train and he did not want to leave town without his Panama, so the safe expert was led to believe that the fate of the nation hung in the balance.

There are no less than 3262 different species of fish inhabiting the waters of America north of the Isthmus of Panama.



Do You Understand About Enclosed Arc Lamps?

The history of the arc lamp has been a story of improvement and we now have the highest state of perfection in the

ADAMS-BAGNALL LAMP

Many of these lamps are giving satisfaction and saving money in Honolulu business houses, and we want them to do the same for you.

Telephone for us to call, or write for circular which gives full description.

Especially adapted for Plantations.

HAWAIIAN ELECTRIC CO., LTD.

KING STREET, NEAR ALAKEA - TEL. MAIN 390

How to Get Along with a Husband!

In a recent offer by a New York newspaper, giving a handsome prize for the best essay, by a woman, on the above subject, the prize awarded to the one who wrote just three words, viz: "Feed the Brute." Try the application and visit our delicacy counter. There you find the choicest delicacies obtainable, including **CHEESE OF THE FOLLOWING KINDS:** Edam, Pineapple, Oregon, full cream brick, California full cream, Fromage de Bril, Camembert, Kronen, Nonchattel, Sierra, Schloss Kase and Breakfast Cheese.

Pickled Pearl Onions, Spiced and Sweet Pickles, German Dill Pickles, Mixed Pickles and extra fine ripe Olives—all these in bulk.

Smoked Beef Tongue, Chippec Beet, New Smoked Salmon, Bloaters and Aberdeen Herrings, Blomatch, Holland and Special Herring a specialty.

Metropolitan Meat Co., Ltd.

Telephone Main 45.

That Clever Booklet

that's in your mind ought to be in your customer's hands.

We'll help you to put it there.

The first thing to do is to telephone to us and we will send an intelligent representative to figure with you.

If it's any inducement for you to get the right work at the right price and get it **WHEN WE PROMISE**, drop us a line or telephone to **MAIN 256**.

BOOK BINDING

The style of our binding will surprise you. The quickness with which we do it will surprise you. The neatness, the correctness, the absolute up-to-dateness of everything we do for you if you give us a chance, will surprise you into becoming one of our regular customers. Want to be surprised?

PRINTING AND BINDING DEPT.,
BULLETIN PUBLISHING CO.,
TELEPHONE MAIN 256.

Bulletin The Sun mont

EVENING BULLETIN

Published Every Day Except Sunday, at 120 King Street, Honolulu, T. H., by the

BULLETIN PUBLISHING CO., LTD. WALLACE R. FARRINGTON, Editor

Entered at the Postoffice at Honolulu as second-class matter. SUBSCRIPTION RATES.

Evening Bulletin. Per month, any where in U. S. \$ 75 Per quarter, anywhere in U. S. 2.00 Per year, anywhere in U. S. 8.00 Per year, postpaid, foreign 11.00 Weekly Bulletin. Six month 50 Per year, anywhere in U. S. 1.99 Per year, postpaid, foreign 1.50 Telephone 256 Postoffice Box 718 FRIDAY, AUGUST 15, 1902.

MARY McLANE.

Out of the wilds of Montana has come a woman with the plebeian name of Mary McLane who has written a book glowing with a warmth and color that puts this young lady before the world as no ordinary Mary. She writes of herself with such sizzling force and originality that she has become the nine days' wonder of modern literature. She appears to have studied her own physiology and anatomy with remarkable attention to internal detail which puts the rosebud lips, bewitching forms and love-me-with-thine-eyes of song and story into the darkened depths of shade. She finds a world of interest in herself and discourses on her own "sweet body" and its "wonderful graceful mechanism" in a descriptive vein of which this is a fair sample:

"My sound, sensitive liver rests gently within its thin yellow bile in sweet content."

"My calm, beautiful stomach silently sings, as I walk, a song of peace."

"My lungs, saturated with mountain ozone and the perfume of the pines, expand in continuous ecstasy."

"My heart beats like the music of Schurman in easy, graceful rhythm with an undertone of power."

"My strong and sensitive nerves are seeking and swimming in sensuality like drunken little Bacchantes, gay and garlanded in mad reveling."

"Presently I lie flat on my back and stretch my little slimmers to its utmost like a mountain flosser taking her comfort. I am intensely thankful to the devil for my two good legs, not the full use of them under a short skirt, when, as now, they carry me out beyond the pale of civilization, away from tiresome dull people. There is nothing in the world that can become as magnificently worthless as people, people, people!"

As a splinter on the ecstasy of herself Mary McLane has no peers. She is at perfect peace with the mechanical arrangements of her carnal construction. Only the hard necessities of earthly life set her into a twitter or excited rage when she throws adjectives like scrape shot from the common mouth. The family roughhouse on the sabbath throws her into a passion of wrath, not because the foolhardy has done anything wrong but because of its "obnoxiousness" and its unbecoming suggestion of the "prudent, barren, contemptible, damnable nothingness" of Mrs. Mary Cook out of maddest all tooth-grinders "Oh damn them, damn them," and Mary is only nineteen years of age.

Now Mary has come to Boston to commune with the sweet spirits of higher intellects. She has obtained a reception at the hands of the press that has given her a place as one of the sensations of the hour. She is young and ambitious and while her life may be all flight and the red blood which courses through symbolized heart may be rich and warm, it won't take Bostonese long to teach her that there are several attics in her upper story that have yet to be plastered with average common sense.

WHITE HAS RESIGNED.

Berlin, August 5.—Embassador Andrew D. White mailed his resignation to the United States several days ago. It is to take effect early in November. Mr. White's resignation may now be in the hands of President Roosevelt. The date set by the Ambassador for his resignation to take effect was November 7th. He is now at Homburg, where he is taking the waters and where he probably will remain until the end of the month.

JAPAN MAY EXCLUDE CHINESE.

New York, August 2.—Governor Goto of the province of Formosa, Japan, has visited Ellis Island to study American methods of excluding Chinese immigrants. Japan is said to be preparing to adopt an exclusion act, and Governor Goto is gathering data as to the manner in which this country has carried out the system of keeping Chinese from our ports.

CHOLERA'S RAPID SPREAD.

St. Petersburg, August 6.—Cholera is spreading in Manchuria with alarming rapidity. The deaths at Harbin and Eastern China Railway and 139 daily, chiefly Chinese.

THE POLICE REMINDED

THAT EVERY MAN'S HOUSE IS HIS CASTLE

TRIAL OF SEVENTEEN CHINESE FOR GAMBLING—DETECTIVE KAAPA TELLS OF RAID BY POLICE.

Lee Kio and sixteen others were brought into court before Judge Gear this morning under a bench warrant to stand their trial for gambling. E. A. Douthitt prosecuted, while F. E. Thompson and W. L. Stanley appeared for the defendants. The following jury was empaneled: P. Kuylenstierna, W. M. Ahia, H. Meles, H. Meek, Samuel Parker, A. Nicholas, S. W. Cronk, W. H. Stone, D. McNichol, W. R. Foster, L. K. Sheldon, Sol. Meheula.

Mr. Thompson, in the course of the trial, objected to the introduction of a subpoena obtained by the police in raiding the premises where the gambling was alleged to have been committed. He recalled a ruling of the presiding judge in a Waialua assault case. Judge Gear denied that he made the ruling as quoted. He delivered a lecture to a plantation lama for having forcibly entered a laborer's room and procured evidence, reminding him that he was not lord of the manor.

Mr. Thompson then cited Judge Humphreys as ruling that evidence procured by officers in a place they entered without a search warrant was not admissible. Mr. Douthitt, being asked for the opinion of the prosecution, said that illegality in the manner of procuring evidence did not make such evidence inadmissible. Judge Gear took a recess for ten minutes to look into the question. On returning he quoted at length from a recent case on Evidence a New Hampshire case on the seizure of lottery tickets, upon the strength of which he overruled the objection and Mr. Thompson noted an exception. In making the ruling, the court continued, he would inform the police authorities that it was a violation of the constitution of the United States when any police officer broke into a place without a search warrant. One day a policeman was confronted with a pistol or a knife and if he lived to come into court for redress he would run up against the constitutional principle that every man's house was his castle and must not be violated without authority of law. No private premises could be lawfully entered without a search warrant, which should specify the names of persons and the nature of articles desired to be seized.

Detective Kaapa while testifying identified certain articles as belonging to some of the defendants, but could not indicate any individual as the owner. An objection to this evidence was made and to the court's inquiry as to how the witness knew about the ownership, the detective naively answered that it must be some of them as none of them escaped.

Mr. Douthitt having stated that the point would be cleared up by subsequent evidence, the court overruled the objection.

JAPAN IS EXCITED OVER MARGUS ISLAND

Tokio, Japan, July 26, via Victoria, B. C., Aug. 5.—The Japanese ship Kasagi sailed for Margus Island July 25, having on board Mr. Ishii, secretary of the Foreign Office, the object being to reach the island before Captain Rosehill left Honolulu July 11 in a schooner, so the Kasagi will have no difficulty in reaching her destination ahead. The rival claims of America and Japan to this speck in the ocean have made a considerable stir in Japan.

The ownership of Margus Island, called Minamitori Shima here, was tangibly established by the following announcement, issued under instructions from the home office under date of July 19, 1898:

No. 55 notification of Tokio-Fu. An island situated at latitude 24 1/4 north and longitude 154 east shall be called herewith Minamitori Shima and it included as one of the Bonin group, shall be under the administration of Tokio-Fu.

KOYESECKA RYO, Governor of Tokio-Fu.

July 24th, the thirty-first year of Meiji (1898).

The origin of the ownership claimed by the Japanese is rather difficult however to trace. It is said Mizutani Shinroku, claiming to be the discoverer of the island, applied for the lease of it. But there was another applicant and a keen competition between them arose. The term of the lease is understood to be ten years. In this contest Captain Kawamuro of the Nippon Yusen Kaisha's ship and line Hyogo Maru, in an interview says among other things that there are about fifty Japanese inhabitants, including three or four women. Mizutani Shinroku, who has two schooners for his own use, has been doing a tolerably fine business in catching birds and fishing. His takes have been transported by schooners, about 100 tons each, to the main island of the Bonin group, where they are reshipped. One of the schooners left for Margus Island on July 12th.

There is evidence that Americans occupied the island before the Japanese, but they are said to have abandoned it. The island is not particularly rich, the entire revenue from fishing, hunting, etc., being placed at about \$10,000 annually, but the question is looked upon as being interesting diplomatically.

NEW HOTEL COMPANY

MACFARLANES INCORPORATE THE ANNEX PROPERTY

TO HAVE ITS OWN ELECTRIC LIGHT AND COLD STORAGE PLANTS AND PLEASURE GARDEN.

Waikiki Seaside Hotel, Limited, is the name of a new corporation, whose articles of association have been filed in the Territorial Treasurer's office. H. R. Macfarlane, G. W. Macfarlane, F. W. Macfarlane, William Lishman and M. W. W. Gilbert are the incorporators. The capital stock is \$50,000 in 500 shares of a par value of \$100 each, with the privilege of increasing it to \$250,000, and the term is fifty years. Among the purposes declared, implied generally in the name of the corporation, are the maintenance of a clubhouse or bar for the sale of wines and spirituous liquors, also of a laundry for the use of the hotel and for public accommodation, the operation of electric lighting and cold storage plants, the establishing of a garden of amusement or pleasure grounds, the engaging in lively stable business, etc. The usual property-holding provisions are made.

The capital stock is represented by the property and good will of the Hawaiian Hotel Annex of which conveyance is made to the corporation by H. R. Macfarlane and G. W. Macfarlane in their individual capacity and F. W. Macfarlane, H. R. Macfarlane, G. W. Macfarlane and Florence I. Macfarlane, executors and executrix of the estate of E. C. Macfarlane, the consideration being one dollar and 500 paid-up shares of Waikiki Seaside Hotel, Ltd. The stock is thus apportioned: H. R. Macfarlane, G. W. Macfarlane and Estate of E. C. Macfarlane, 165 shares each; F. W. Macfarlane, 3 shares; M. W. W. Gilbert and William Lishman, 1 share each. Officers and directors are: G. W. Macfarlane, president; William Lishman, treasurer; M. W. W. Gilbert, secretary. The property taken over by the corporation consists of the following: Four houses from the Bishop Estate valued at \$28,000, buildings at \$19,750, miscellaneous property including furnishings and stores at \$7,225 and the goodwill of Hawaiian Hotel Annex at \$5,000.

ENGLAND'S KING IS FINALLY CROWNED

(Continued from Page 1.)

score lines of people anxious to get seats at the last moment. Many of the thousands who walked through the streets exhibited unmistakable signs of an intention to stay up all night in the hope of securing a free point of vantage from which to view tomorrow's procession.

Waikemen were still busy putting the finishing touches to the abbey and its approaches and every detail of this work was watched eagerly by the spectators in a undramatic sort of way. London has been transformed by the multitude wishing to see any part of the ceremonies into a city of great unrest. The idea of sleep or an adequate allowance of time for rest has quite been given up by the people. The streets and underlying this intensity of expectation there is a serious nervousness among the majority that they should awake from their shortened slumbers to find the great event once more postponed.

Among the many incidents of the night one of the most curious occurred at Scotland Yard, where a Scottish magnate who had received a sudden telegraphic invitation to be present at Westminster Abbey with the prince that he appear in court dress, appeared at a late hour to the police to help him late or borrow the clothes necessary for admittance.

All signs point to an orderly celebration and doubtful weather conditions and with public enthusiasm tempered by heretofore relief over the passing of the shadow which so recently overcast the empire.

King Edward passed a busy day at Buckingham Palace and did not appear to the public at all. At a late hour tonight he was reported as feeling quite strong and as looking forward to tomorrow's ceremonies without the slightest misgiving.

Acting upon medical advice Lord Salisbury has obtained the King's permission to absent himself from the coronation. The ex-Premier will shortly leave for the Continent.

London, August 5.—A number of important changes in the coronation program were announced today. The recognition in which the King is presented to the people by the Archbishop of Canterbury as "the undoubted King of the realm" will be performed but once instead of four times, as given in the official program. "The Itany," which was to have followed the recognition, will not be said; the sermon will be omitted and the "Te Deum," which was placed in the order of the service after the reading of the Bible, will not be given at that time, but will be sung during the recess, at the close of the coronation office when the King visits St. Edward's chapel. Owing to the age of the Very Rev. George Grosvenor Bradley, the dean of Westminster, who is 81 years old, the King has relieved him of the duty of placing the regalia upon the altar and this service will be performed by Canon Duncroft, but the dean will present the crown to the Archbishop for the act of coronation and will present the communion cup to the King. Canon Duncroft will lay the amfulla and spoon upon the altar, will place upon His Majesty the colobium sindonis and the consecration of the chalice will be done

FLOWER POTS

Sizes and shapes adopted by the Society of American Florists. Standard Pots from 7-inch up have Patent Excelsior Bottom, which insures Perfect Drainage. A large invoice just to hand ex S. S. "Nevadan."

STANDARD FLOWER POTS BULB PANS FERN PANS FERN DISH LINERS SAUGERS, ETC., ETC.

PACIFIC HARDWARE CO., LTD. FORT STREET, HONOLULU

Mutual Reserve Life Insurance Co'y

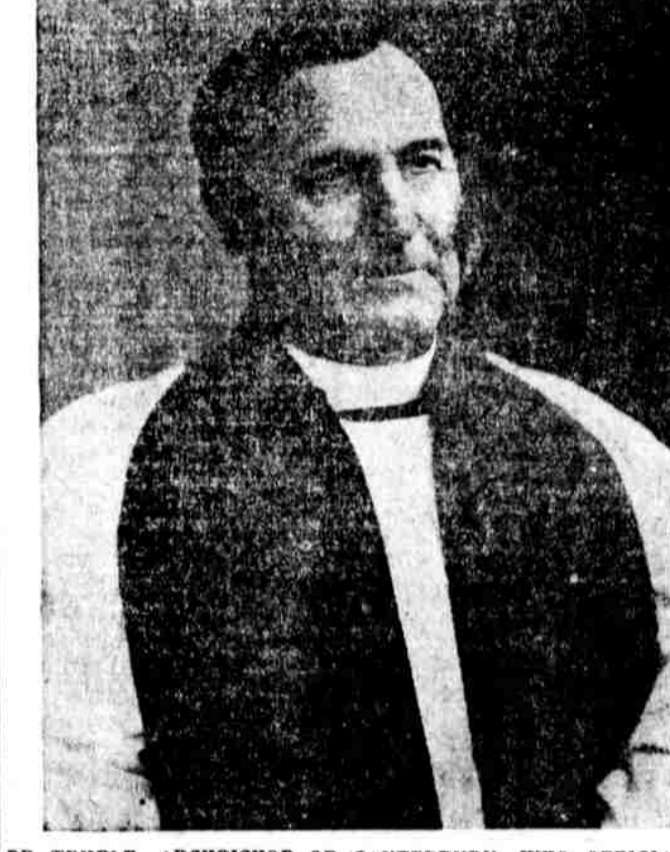
FREDERICK A. BURNHAM, President Mutual Reserve Building, Broadway, New York

Third Largest Mutual Legal Reserve Company in the State of New York STATE OF NEW YORK INSURANCE DEPARTMENT.

FRANK L. WINTER, General Agent, Territory of Hawaii, 318 FORT ST. LIBERAL TERMS MADE WITH RELIABLE AND ENERGETIC AGENTS.

TOTAL ASSETS \$ 5,790,400.73 NET SURPLUS 466,885.48 DEATH CLAIMS PAID, over \$50,000,000.00

DR. TEMPLER, ARCHBISHOP OF CANTERBURY, WHO OFFICIATED AT THE CORONATION



PETER SPRECKELS FAILS

Berlin, August 4.—Peter Spreckels, a kinsman of the San Francisco Spreckels family, is the principal owner of the private banking house of Edouard Rockhs, which closed its doors on Friday with assets nominally 10,000,000 marks (\$2,500,000), and liabilities of 3,000,000 marks (\$750,000). Spreckels, before and after the fall ure, called to his American relative for help. It appears that the American Spreckels family kept a considerable deposit at Dresden, which Peter Spreckels now asks to have used for the benefit of his creditors.

DEATHS IN A MINE.

Trinidad, Col., August 7.—A most disastrous explosion occurred this evening at 6:30 o'clock at No. 3 mine at Bowen, a small camp about ten miles north of this place, in which thirteen lives are known to have been lost. The exact number of men working on the night shift and in the mine at the time of the explosion is unknown. The mine is worked by the Union Coal Company of Denver and is a steep mine, situated on the mountain side and about 400 yards from the triple level. The explosion occurred about 800 feet from the mouth of the shaft and was caused by fire damp.

A VANDERBILT ENGAGED.

Newport, R. I., August 4.—Formal announcement has just been made by her son, Reginald, of the engagement of her son, Reginald, to Miss Kathleen Neilson, daughter of Mrs. Frederic Neilson, of New York, sister of Mrs. Arthur T. Kepp, and niece of Frederic Gebhard. Miss Neilson was introduced to society about a year ago. She is considered a great beauty. Miss Neilson is a devout Roman Catholic.

The First American Savings and Trust Co. OF HAWAII, LTD.

CAPITAL, \$250,000.00. President, Cecil Brown Vice President, M. P. Robinson Cashier, W. G. Cooper Office, Corner Fort and King Sts.

SAVINGS DEPOSITS received and interest allowed for yearly deposits at the rate of 4 1/2 per cent per annum. Rules and regulations furnished upon application.

BISHOP & CO BANKERS.

Established in 1855. BANKING DEPARTMENT. Transact business in all departments of Banking. Collections carefully attended to. Exchange bought and sold. Commercial and Travelers' Letters of Credit issued on the Bank of California and N. M. Rothschild & Sons London.

Correspondents—The Bank of California, Commercial Banking Co. of Sydney, Ltd., London. Drafts and cable transfers on China and Japan through the Hongkong & Shanghai Banking Corporation and Chartered Bank of India, Australia and China.

Interest allowed on term deposits at the following rates per annum, viz: Seven days' notice, at 2 per cent. Three months, at 3 per cent. Six months, at 3 1/2 per cent. Twelve months, at 4 per cent.

TRUST DEPARTMENT. Act as Trustees under mortgages, Mortgage estates (real and personal) Collect rents and dividends. Valuable papers, Wills, Bonds, etc. received for safe-keeping.

ACCOUNTANT DEPARTMENT. Auditors for Corporations and Private Firms. Books examined and reported on. Statements of Affairs prepared. Trustees on Bankrupt or Insolvent Estates.

OFFICE, 924 BETHEL STREET. SAVINGS DEPARTMENT. Deposits received and interest allowed at 4 1/2 per cent per annum, in accordance with Rules and Regulations, copies of which may be obtained on application.

INSURANCE DEPARTMENT. AGENTS FOR FIRE, MARINE LIFE, ACCIDENT AND EMPLOYERS' LIABILITY INSURANCE COMPANIES. Insurance Office, 924 Bethel Street

Claus Spreckels & Co. BANKERS. HONOLULU, T. H.

San Francisco Agents—The National Bank of San Francisco San Francisco—The Nevada National Bank of San Francisco. London—The Union Bank of London, Ltd.

New York—American Exchange National Bank. Chicago—Merchants' National Bank Paris—Credit Lyonnais. Berlin—Dresdner Bank. Hongkong and Yokohama—Hongkong Shanghai Banking Corporation. New Zealand and Australia—Bank of New Zealand. Victoria and Vancouver—Bank of British North America. Deposits received. Loans made on approved security. Commercial and Travelers' Credits issued. Bills of Exchange bought and sold. Collections Promptly Accounted For

Pioneer Building and Loan Association.

ASSETS, JUNE 30, 1901, \$80,048.87 Money loaned on approved security. A Saving Bank for monthly deposits. Houses built on the monthly installment plan.

Twenty-third Series of Stock is now opened. OFFICERS—J. L. McLean, President; A. A. Wilder, Vice President; U. B. Gray, Treasurer; A. V. Gear, Secretary.

DIRECTORS—J. L. McLean, A. Wilder, A. V. Gear, C. H. Gray, J. D. Holt, A. W. Keech, J. A. Lytle, Jr., J. M. Little, M. S. Boyd, A. V. Gear, Secretary.

Office hours: 12:30-1:30 p. m. The Yokohama Specie Bank LIMITED.

Subscribed Capital, Yen 24,000,000 Paid Up Capital, Yen 18,000,000 Reserved Fund, Yen 8,710,000 HEAD OFFICE, YOKOHAMA.

The Bank buys and receives for collection Bills of Exchange, Issues Drafts and Letters of Credit, and transacts a general banking business. INTEREST ALLOWED.

On Fixed Deposit. Per cent Per annum. For 12 months, 4. For 6 months, 3. For 3 months, 2. Branch of the Yokohama Specie Bank, New Republic Bld., 11, King Street HONOLULU.

Bruce Cartwright General Manager of THE EQUITABLE LIFE ASSURANCE SOCIETY OF THE UNITED STATES for the Hawaiian Islands. OFFICE, Merchant Street, Honolulu. KAAHUMANA STREET.

THE DEUCE YOU SAY Come in and play PING PONG - TWO TABLES HONOLULU BOWLING PARLOR

W. G. Irwin & Co. LIMITED.

AGENTS FOR—Western Sugar Refining Company of San Francisco. Baldwin Locomotive Works of Philadelphia, Pa., U. S. A.

Newell Universal Mill Co. (National Cane Shredder), New York, U.S.A. N. Ohlandt & Co.'s Chemical Fertilizers. Alex. Cross & Sons' high-grade Fertilizers for Cane and Coffee.

Reed's Steam Pipe Covering. ALSO OFFER FOR SALE: Paraffine Paint Co.'s P. & B. Paints and Papers; Lucol and Linseed Oil, raw and boiled.

Indurine (a cold-water paint), in white and colors. Filter Press Clothes, Cement, Lime and Bricks.

CASTLE & COOKE, Ltd HONOLULU

Commission Merchants Sugar Factors

AGENTS FOR—The Ewa Plantation Co. The Wailua Agricultural Co., Ltd. The Kohala Sugar Co. The Wailua Sugar Mill Co. The Fulton Iron Works, St. Louis, Mo. The Standard Oil Co. The Geo. F. Blak Steam Pumps. Weston's Centrifugals. The Aetna Fire Ins. Co. of Hartford, Conn. The Alliance Assurance Co. of London.

ALEXANDER & BALDWIN, Ltd OFFICERS:

H. P. Baldwin, President J. B. Castle, First Vice President W. M. Alexander, Second Vice Pres. J. P. Cooke, Treasurer W. O. Smith, Secretary Geo. R. Carter, Auditor

Sugar Factors and Commission Agents

AGENTS for Hawaiian Commercial & Sugar Co., Haiku Sugar Co., Paia Plantation Co., Niihau Sugar Co., Kihai Plantation Co., Hawaiian Sugar Co., Kahului Railroad Co.

Wm. G. Irwin & Co LIMITED.

Wm. G. Irwin, President and Manager Claus Spreckels, Vice President W. M. Giffard, Second Vice President H. M. Whitney, Jr., Treas. and Sec. Geo. J. Ross, Auditor

Sugar Factors and Commission Agents

AGENTS OF THE Oceanic Steamship Co. OF SAN FRANCISCO, CAL.

CASTLE & COOKE IMPORTERS

LIFE and FIRE Insurance - Agents

AGENTS FOR—NEW ENGLAND MUTUAL LIFE INSURANCE CO. OF BOSTON. AETNA FIRE INSURANCE COMPANY OF HARTFORD.

C. Brewer & Co., Ltd. Queen Street, Honolulu, T. H.

Hawaiian Agricultural Co., Ooakala Sugar Plant Co., Onomea Sugar Co., Honoumou Sugar Co., Wailuku Sugar Co., Mahee Sugar Co., Haaloakala Ranch Co., The Planters' Line of San Francisco. Packets, Chas. Brewer & Co.'s Line of Boston Packages.

LIST OF OFFICERS: C. M. Cooke, President; George Robertson, Manager; E. F. Bishop, Treasurer and Secretary; Col. W. F. Allen, Auditor; P. C. Jones, H. Waterhouse and Geo. R. Carter, Directors.

THE VON HAMM-YOUNG CO., LIMITED.

are now offering the famous "Lion Brand" NEGLIGENCE SHIRTS

at such low prices that you cannot afford to let the opportunity go. They are so cool and the price so comfortable that they seem made for this weather. B. BERGERSEN, the old Sewing Machine Agent, is still in business at 942 BETHEL STREET, Honolulu.

Stock on Hand—Standard, Domestic, National, Seamstress, New Home, Household, Expert and Vintage. Call and see. Try and buy. The weekly edition of the Evening Bulletin is published every Friday.

RATES FOR WANT ADS.

Ads in this column will be inserted at: Per line, one insertion . . . 15c Per line, two insertions . . . 25c Per line, one week . . . 30c Per line, two weeks . . . 40c Per line, one month . . . 60c This is the cheapest advertising ever offered the people of Honolulu.

EVERYDAY WANTS AND BUSINESS DIRECTORY

HAWAII'S GREATEST OPPORTUNITY FOR LARGE RETURNS ON SMALL INVESTMENTS

DO YOU WANT ANYTHING?

If so, consult these columns. If you want employes or if you want employment. If you want lodging or boarding or have them to let. If you want to rent rooms advertise in the Bulletin Want Columns. Advertise any want you have and advertise your business.

WANTS

SITUATIONS WANTED.

SPECIAL NOTICES.

USE PACHECO'S DANDRUFF KILLER for Itches, uneven and sticky hair; it keeps the scalp clean and free from disease. At Union Barber Shop.

BOWERS' MERCHANT PATROL AND CONFIDENTIAL AGENCY—Competent watchmen furnished for business houses and residences. Office, 175 Beretania St.; Tel. White 9911; P. O. Box 281.

WANTED

WANTED—By gentleman, one room furnished cottage, distant from street. N.Z. this office. 2221-15

WANTED—To purchase upright piano. Address: stating price, etc., "J," P. O. Box 812. 2213-10

FOR SALE.

FOR SALE—Halter bred plover in good condition, with harness and lamp. Price \$75. A. C. Scott, room 507 Strandward Bldg. 2221-10

FOR SALE—One large bay horse, suitable for express wagon, hack or family use and two wagons, one nearly new. Address G. H. this office. 2217-10

FOR SALE—Fine lot on College Hill, 100 x 150, each \$1100. W. L. Eaton. 2200-10

GASOLINE ENGINE FOR SALE—44 horsepower gasoline engine, in perfect condition. Apply to M. L. Smith Superintendent of The Honolulu Clay Co., Ltd., telephone white 2321, or to Castle & Lansdale, Stangenwald Bldg. 2165-10

FOR SALE—1 Lodge & Shipley power lathe, 1 drill press, 1 pipe cutter, cuts up to six inches; all new machines, now on hand in Honolulu; also one steam launch. W. H. Pain, Punahou. 2126-10

FOR SALE—Coral rock for filling. Address R. M. Duncan, at Bulletin office. 1991-10

TO LET.

FOR RENT—One 4-room cottage at Waikiki within 2 minutes' walk from car line, between Hopkins and Blackup's switch. Apply to L. E. Sternemann, Fort St. opp. Club Stables. 2222-10

TO LET—From room, suitable for two gentlemen, with two beds and bath. Mrs. Dickerson, Gandalls lane, off Emma St. 2224-10

THREE newly furnished mosquito proof rooms. 1409 Punchbowl St. 2218-10

FOR RENT—Six room cottage, servants' quarters and nice grounds, Leialua St. near Penanola. Honolulu Investment Co., Ltd., Judd Bldg. 2114-10

FOR RENT—Room 308 Judd building. Apply room 308. 2159-10

TO LET—Cottages, all modern improvements; \$10 to \$20. Apply to A. G. Cunha, 2d house above Morrison Church. 2202-10

FOR RENT—Two elegant suites of 2 rooms, suitable for office or living. Metropole bldg., Alakoa St. Apply Honolulu Investment Co., Ltd., Judd Bldg. 2201-10

TO LET—Rooms Nos. 11 and 12, McIntyre building, formerly occupied by Vickers' Art Exhibit. Apply to E. F. Bishop, at C. Brewer & Co's. 2117-10

TO LET—Roomy bath tub, with either hot or cold water, with all modern improvements. All at Silent Barber Shop. 8019-10

TO LET—Furnished rooms at Mrs. McConnell's Garden lane. 2055-10

ROOM AND BOARD.

HELEN'S COURT—Most centrally located mosquito-proof rooms in town; \$2.50 and up per week; Adams lane. Mrs. J. Dugan, Prop. 2055-10

LOST.

STOLEN—Three catfishes, from Mrs. Puhli's house at Palama. \$100 reward for return of same to George Kelli, Alakoa St. 2224-10

LOST—A female fox terrier, two black spots on head; very short tail; brass collar with tag. Answers to name of Tullie. Reward for return to Geo. A. Martin, Boston Bldg. 2223-10

LOST—Many thousands of dollars through neglecting to have stock sufficiently insured. Honolulu Investment Co. represent four of the strongest fire insurance companies. 2051-10

FOUND.

FOUND—Insurance against the breakage of plate glass at The Honolulu Investment Co. 2051-10

Fine job printing at the Bulletin office.

HELP WANTED.

STENOGRAPHERS.

Have your machine put in condition for neat work. We repair the best and cheapest. For positions leave your address with us. WASHINGTON LIGHT CO.

F. E. KING'S LIST.

FOR RENT. Nicely furnished housekeeping rooms at Cottage Grove. Five-room cottage, King Place; \$20.

FOR LEASE.

LOTS at the Beach, 18 years to run, good bathing. \$75 to \$100 per year.

FOR SALE.

COTTAGE, barn, bath house, all new, at the Beach; \$800; terms \$100 down, balance \$20 per month on 18 year lease.

F. E. KING.

Cottage Grove, King Street.

FOR RENT.

WATERHOUSE & PODMORE, 33 S. King St. cor. Bethel, are offering:

COTTAGE of 4 rooms at Waikiki.

RESIDENCE of Fred T. P. Waterhouse, Wylie St., Nuuanu Valley, near the Rapid Transit Terminal.

AGENTS.

Phoenix Insurance Co. of Hartford. Columbia Bar-Lock Typewriters.



MME. FREDERIC HUMBERT, SAID TO HAVE BEEN AT THE HEAD OF THE GREAT FRENCH SWINDLE.

Mme. Humbert is the Frenchwoman who is supposed to have been at the head of the most daring and successful swindle of the century. By representing herself as the heir to a fictitious American fortune of many millions she and her husband were able to borrow from French bankers the enormous sum of \$10,000,000. The Humberts recently disappeared from Paris.

SHORT STORY FOR EVENING HOURS

A BACHELOR'S ROMANCE

Mrs. Lewisham is young and vivacious, and if she is not specially pretty she dresses exquisitely, and has quite as much charm as any woman should be allowed. When one reflects on the skill with which the people who, so to speak, don't fit in, are excluded, one realizes that it is a big compliment to be expected to drop in frequently on Sunday nights to supper, and to stay on afterwards and join in discussions which range over almost all the subjects contained in the encyclopedia.

Keaton, one of the men who are looked for on Sundays, was sitting in his room, one desolate November afternoon and sadly regarding a pile of blank paper. It was necessary that he should work, for his finances were in such a condition that comfortable living was no longer possible. But the anxiety of the day depressed him, and there seemed to be nothing in the world worth writing about. He was altogether unhappy, and went very gladly to answer a lively knock at his door.

"I hoped you were in," said Mrs. Lewisham. "Jim has business in the Strand, and when we parted I was to have waited for him at an A. B. C. But I like your tea, and so he is to call here. May I come in?" She was given the most appropriate chair, and the fire was induced to burn brightly. Keaton lighted all his candles, which were many, since he had a particular fancy for Sheffield plate and for old brass. If ever he made a mistake, as one must occasionally, there was bound to be sooner or later the necessity of making a wedding present, and the things came in well.

He made the tea, and they talked at large. Then—Heaven only knows why—Mrs. Lewisham said: "You are altogether too comfortable here." "I didn't notice it until you came," said Keaton. "Why?" "You are too comfortable, and there fore, too satisfied with things as they are. You ought not to get so much for giving so little. Somewhere or other there may be a girl who, without knowing it, wants to be your wife."

Keaton answered a little roughly: "Somewhere or other there may be a girl that I would give my head to marry."

Mrs. Lewisham bent forward eagerly: "You don't mean—?" "No," said Keaton; "I mean nothing of that kind. Shall I explain?" "Yes, please."

"We will start with an account of my average day. I get up—well, at all sorts of times. I have breakfast, and while I am reading my papers I am in a very much improved mood as to what I shall write for the Sphinx. You know they like my toilet verses, and they pay well. Sometimes the verses come easily, and sometimes they make me ashamed of myself. Anyhow, they've got to be done. And then I go out to lunch."

THE SAVAGE FILIPINO WHICH DEFENDS FRIARS

ANCIENT LETTER FOUND OF LIBRARY OF CONGRESS. WAR NOT CAUSED BY THE MEN OF GOD.

Washington, July 31.—An important document bearing on the Philippine (war) question has been discovered in the Library of Congress. It is a letter from Fra Gabriel Casanova, a Franciscan to Senor Moret, at one time Spanish Minister for the Colonies. This letter was published in Madrid in 1897 by W. E. Retana, at that time a member of the Spanish Cortes, and at the time of its publication Senor Moret was trying to have reform measures inaugurated in the Philippines. Father Casanova was held in high esteem by his religious superiors and was subsequently named as member of the College of Theology in Manila.

His attitude toward the Filipinos reflects largely the opinion of them held by the members of the four church orders. In official circles here it is said that Father Casanova's letter explains fully the method used by Spain to conquer and hold in subjection the natives of the islands. Casanova opposes the proposed reforms and declares in substance that the Filipinos are bestial savages. He says: "Since I wrote you my last letter affairs in the remote Philippine Islands have continued to improve visibly—thanks to the activity, the well-aimed blows and the energy of Gen. Polavieja, the principal leaders of the insurrection are paying with their heads for the treasons committed by them against the fatherland."

He then takes up Rizal, the famous Filipino patriot, and says: "If it had been the methods of the friars and the Jesuits, which, by their bad results, produced the war and placed the integrity of the country in danger Rizal would have said so, when, sincerely repentant, he prepared to present himself before the tribunal of God. Do you not think, Senor Moret, that if he had anything to say against the friars he would have said so frankly? Why did he not do so? Ah, Don Sigmundo, the answer is very easy, because any one who knows the country of overgrown children, who looks at things without bias and with a desire to know the whole truth, will see that in the Philippines the only policy is the policy of the Cross—the only policy which the friars pursue there."

Father Casanova continues: "Who is our enemy here, Senor Moret? Does it not seem to you that it is Masonry and those debased Spaniards who taught Rizal, and with him many other Indians, to hate the representatives of Catholicism whose beneficent influence sustained the sovereignty of Spain in the Philippines? The only enemies of the friars in the Philippines are the enemies of Spain. They hate them because they understand that they are the greatest obstacle to be overcome before attaining their desires."

This, it is asserted by certain officials, confirms the declaration that the root of all the trouble in the Philippines had been the hatred of the natives for the friars, and it is pointed out that Father Casanova acknowledges the existence of this hatred, and at the same time admits the close relationship between the Spanish Government and the religious orders. He confirms this joint control of the natives by quoting as follows from a book by Gen. Botero on "The Policy of Spain in the Philippines":

"As the friar is the genuine representative of the fatherland in the archipelago, knowing the language of the people he lives among, the spirit and tendencies of the native, he is considered the principal obstacle to the realization of the ideals of the filibuster, and on Spain is based the desire of the enemies of Spain to get rid of the religious orders, because they believe that if it is done they will have covered half of their journey."

Father Casanova says that the weakening of the moral authority of the friars in the archipelago is looked upon as the beginning of the end of the Spanish dominion in the Philippines, adding that as far as carrying out office and retaining them, "you see what he (Gen. Botero) tells us, such a thought is an attempt against the sovereignty of Spain in the Philippines."

Father Casanova then says: "The only liberty which the Indians want is the liberty of savages. Leave them to their fighting covaks and their hohobos, and they will thank you more than if you had them down with old and new laws."

That the friars gave free rein to their expressions of contempt for the natives and delighted in calling them beasts and animals and savages, is shown by this letter. Father Casanova says that at the library of Manila is preserved the elevation of Padre Cereno to the Cardinal's purple, the following verses quoted from Don Vicente Barrera were recited by one of the Church dignitaries as descriptive of the Filipinos:

"He sows his rice wherever there is a chance of its growing; He builds his nest like a bird in a tree; And dies without knowing how he has lived. Father Casanova says of these verses: "I must admit that they brilliantly reflect the savage instincts and the bestial inclinations of those faithful imitators of apes. . . . But as neither Spain nor the friars can change the ethnological character of that race, naturally so inferior to ours, it will be always idle to desire to apply the same laws to them as to us."

These observations, reflecting as they do the opinion of the friars of the natives, is said to show the cause for the opposition of the Filipinos to the friars and to be responsible for their expulsion from the parishes where they ruled so long as the representatives of Spain.

Waikiki Inn ON THE BEACH SPECIAL RATES FOR TOURISTS. A FAMILY RESORT. Cottages and pleasant rooms, American and European Plan. Excellent Cuisine and Service. Special weekly or monthly rates. Best of Surf Bathing and Canoeing all the year round. Hot and Cold Water Bath. Buffet. Livory Electric Lights. L. H. DER Proprietor. Ring up Phone Red 71.

A \$20.00 BELT for \$5.00 The Dr. Alden Electric Belt (with suspension) is guaranteed to possess all the electric properties of the expensive belts now sold by doctors and druggists. It gives a very strong current of electricity and is easily regulated. Bound to supersede others. Can be had from the undersigned only; no agents or discount. Circular free. Address Pierce Electric Co., 206 Post St., San Francisco. Sent free to Hawaii for \$5.00

MAUNA LOA ARRIVES The steamer Mauna Loa arrived from Kau, Naha and Maui ports this morning at 5:10 o'clock. She brought the following freight: 7964 bags sugar, 395 bags coffee, 482 bags taro, 5 bags arrow, 146 bunches bananas, 43 cases fruit, 28 kegs butter, 4 boxes trolleys, 20 pigs, 1 horse and 191 pigs sundries. Passengers given the following report: H. A. C. 3500 sacks sugar left in the warehouse; C. cleared out, H. S. C. 1000; P. S. M. none; K. S. C. 2500 sacks sugar. Heavy easterly winds and winds along Honolulu coast. Lots of rain. The steamer Nihau was at Kukulua discharging freight yesterday noon. She attempted to land at Honolulu but failed on account of rough seas. Smooth seas and soft NE winds along Kau coast throughout the trip. Little rain. The schooner Metha Nelson is still at Punaluu discharging lumber. Blow a NE gale and rough seas across the channels coming home.

BUSINESS DIRECTORY

ATTORNEYS.

KELLETT & ROBINSON—Attorneys at Law; Rooms 11 and 12, Magoon bldg.; Phone Main 103. M. BROOKS—Attorney; rooms 9-10, Spreckels bldg.; Tel. Main 344. CARLOS A. LONG—Attorney; 15 Kaahumanu St.; Tel. 181 Main. J. M. DAVIDSON—Attorney-at-Law; 109 Kaahumanu St.

BUILDERS.

MCDONALD & LANGSTON—Contractors and Builders; 1108 Union St. BICYCLE REPAIRING. C. A. GOWAN—1186 Union St. opp Pacific Club; sundries, etc.

BROKERS.

E. J. WALKER—Coffee Broker; room 4, Spreckels bldg. CARRIAGES. PACIFIC VEHICLE & SUPPLY CO.—Fine carriages, wagons, harness and whips; Beretania near Fort St.

CLOTHING.

THE KASH CO., LTD.—Two stores 23 1/2 Hotel St. and cor. Fort & Hotel St. DENTISTS. ALBERT B. CLARK, D.D.S.—Cor. Beretania and Miller; hours 9 to 4. DR. DERBY—Dentist; Fort and Hotel Sts.; Gas administered for extracting.

ENGINEERS.

E. TAPPAN TANNATT—Civil and electrical engineer; office, room 4, Spreckels Block; residence, 1313 Wilder Ave.; Tel. Main 132. W. BEAKBANE—Card engraving and stamping; room 2, Elite bldg.

EXPRESS.

MERCHANTS' PARCEL DELIVERY—Bethel St. opp. Waverley Bldg.; Tel. 821 Blue; pks. called for and del'd. HARNES AND SADDLERY. CALIFORNIA HARNES SHOP—Fort St. opp. Club Stables; P. O. box 791.

HOTELS.

THE PACIFIC HOTEL—1182 Union St. opposite Pacific Club. Newly furnished rooms; mosquito proof; electric lights; hot and cold water; first-class table board. Mrs. Hana, Prop. JEWELER. THOS. LINDSAY—Mfg. Jeweler and watchmaker; 530 Fort St.; Love bldg.; latest in novelties.

MESSANGER SERVICE.

TERRITORIAL MESSANGER SERVICE—Union St. nr. Hotel; Tel. 351 Main. MUSIC. COOK'S MUSIC SCHOOL—Love bldg. will hold summer term during July and August. 2200-10. VOLANI QUINTET—E. P. Hatfield, Mgr. Music for all occasions. E. K. Kaa's studio; Tel. M. 231.

MUSIC.

ANNIS MONTAGUE TURNER—Vocal Instructor; "Mignon," 1024 Beretania St. MOANA QUINTET CLUB—Music for all occasions. Leave orders Bergstrom Music Co.; J. S. Ellis, Mgr. E. K. KAAI—Teacher of string instruments; studio, Love bldg., Fort St. Telephone Main 231. MILLINERY. HAWLEY'S MILLINERY PARLORS—The latest in millinery, etc.; Boston bldg.; Tel. 264 Main. PLUMBING. ANTON PILARES & CO.—Plumbers and Tinsmiths. All kinds of sanitary work. Sewer connections a specialty. Charges to suit the times. Corner Vineyard and Emma. Tel. Blue 1862. PHYSICIANS. DR. SLOGGETT—Eye, Ear, Nose and Throat; office at Eye and Ear Infirmary, Alakoa St. Hours 9 a. m. to 4 p. m. DR. WM. G. ROGERS—Eye, Ear, Nose and Throat; 1146 Alakoa St. REAL ESTATE. P. E. R. STRAUH—Real Estate handled to best advantage; houses rented; loans negotiated; money invested on best securities. 32 Campbell Block, 216 Fort street. STRAW HATS. E. MORIKUCHI—14 Hotel St. nr. Nuuanu. Felt, straw, panama hats. TAILORS. ALBERT BERNDT—Tailoring and repairing; Elks bldg., 616 Miller St. ISLAND OF MAUI, LAHAINA. SUGAR ESTATES, MAGNIFICENT SCENERY, BEAUTIFUL DRIVES, SHIPPING FACILITIES, ETC. DRAYAGE. G. H. DUNN—Express and drayage; Agt. Wilder and Inter-Island. Tel. 113. STABLES. BISMARCK STABLES CO., LTD.—Waikuku Maui. New vehicles, live stock. Prices reasonable. Carriages attend arrival and departure of all regular steamers at Kahului and Maalaea Bay. ORDER rig from Pioneer Stables. Electric turnouts; Telephone No. 124. GENERAL STORES. LAHAINA STORE—Lumber, Wholesale Liquors, Merchandise. C. R. Olsen, Manager. HOTELS. WAILUKU HOTEL—Waikuku, Geo. B. Schraeder, prop. Fine grounds and best accommodations. \$2.00 per day. NOTARY PUBLIC. G. H. DUNN—Notary Public, Conveyances, Deputy Tax Collector, Legal Documents, Office Government bldg.

MUSIC.

ANNIS MONTAGUE TURNER—Vocal Instructor; "Mignon," 1024 Beretania St. MOANA QUINTET CLUB—Music for all occasions. Leave orders Bergstrom Music Co.; J. S. Ellis, Mgr. E. K. KAAI—Teacher of string instruments; studio, Love bldg., Fort St. Telephone Main 231. MILLINERY. HAWLEY'S MILLINERY PARLORS—The latest in millinery, etc.; Boston bldg.; Tel. 264 Main. PLUMBING. ANTON PILARES & CO.—Plumbers and Tinsmiths. All kinds of sanitary work. Sewer connections a specialty. Charges to suit the times. Corner Vineyard and Emma. Tel. Blue 1862. PHYSICIANS. DR. SLOGGETT—Eye, Ear, Nose and Throat; office at Eye and Ear Infirmary, Alakoa St. Hours 9 a. m. to 4 p. m. DR. WM. G. ROGERS—Eye, Ear, Nose and Throat; 1146 Alakoa St. REAL ESTATE. P. E. R. STRAUH—Real Estate handled to best advantage; houses rented; loans negotiated; money invested on best securities. 32 Campbell Block, 216 Fort street. STRAW HATS. E. MORIKUCHI—14 Hotel St. nr. Nuuanu. Felt, straw, panama hats. TAILORS. ALBERT BERNDT—Tailoring and repairing; Elks bldg., 616 Miller St. ISLAND OF MAUI, LAHAINA. SUGAR ESTATES, MAGNIFICENT SCENERY, BEAUTIFUL DRIVES, SHIPPING FACILITIES, ETC. DRAYAGE. G. H. DUNN—Express and drayage; Agt. Wilder and Inter-Island. Tel. 113. STABLES. BISMARCK STABLES CO., LTD.—Waikuku Maui. New vehicles, live stock. Prices reasonable. Carriages attend arrival and departure of all regular steamers at Kahului and Maalaea Bay. ORDER rig from Pioneer Stables. Electric turnouts; Telephone No. 124. GENERAL STORES. LAHAINA STORE—Lumber, Wholesale Liquors, Merchandise. C. R. Olsen, Manager. HOTELS. WAILUKU HOTEL—Waikuku, Geo. B. Schraeder, prop. Fine grounds and best accommodations. \$2.00 per day. NOTARY PUBLIC. G. H. DUNN—Notary Public, Conveyances, Deputy Tax Collector, Legal Documents, Office Government bldg.

MILLINERY.

HAWLEY'S MILLINERY PARLORS—The latest in millinery, etc.; Boston bldg.; Tel. 264 Main. PLUMBING. ANTON PILARES & CO.—Plumbers and Tinsmiths. All kinds of sanitary work. Sewer connections a specialty. Charges to suit the times. Corner Vineyard and Emma. Tel. Blue 1862. PHYSICIANS. DR. SLOGGETT—Eye, Ear, Nose and Throat; office at Eye and Ear Infirmary, Alakoa St. Hours 9 a. m. to 4 p. m. DR. WM. G. ROGERS—Eye, Ear, Nose and Throat; 1146 Alakoa St. REAL ESTATE. P. E. R. STRAUH—Real Estate handled to best advantage; houses rented; loans negotiated; money invested on best securities. 32 Campbell Block, 216 Fort street. STRAW HATS. E. MORIKUCHI—14 Hotel St. nr. Nuuanu. Felt, straw, panama hats. TAILORS. ALBERT BERNDT—Tailoring and repairing; Elks bldg., 616 Miller St. ISLAND OF MAUI, LAHAINA. SUGAR ESTATES, MAGNIFICENT SCENERY, BEAUTIFUL DRIVES, SHIPPING FACILITIES, ETC. DRAYAGE. G. H. DUNN—Express and drayage; Agt. Wilder and Inter-Island. Tel. 113. STABLES. BISMARCK STABLES CO., LTD.—Waikuku Maui. New vehicles, live stock. Prices reasonable. Carriages attend arrival and departure of all regular steamers at Kahului and Maalaea Bay. ORDER rig from Pioneer Stables. Electric turnouts; Telephone No. 124. GENERAL STORES. LAHAINA STORE—Lumber, Wholesale Liquors, Merchandise. C. R. Olsen, Manager. HOTELS. WAILUKU HOTEL—Waikuku, Geo. B. Schraeder, prop. Fine grounds and best accommodations. \$2.00 per day. NOTARY PUBLIC. G. H. DUNN—Notary Public, Conveyances, Deputy Tax Collector, Legal Documents, Office Government bldg.

PLUMBING.

ANTON PILARES & CO.—Plumbers and Tinsmiths. All kinds of sanitary work. Sewer connections a specialty. Charges to suit the times. Corner Vineyard and Emma. Tel. Blue 1862. PHYSICIANS. DR. SLOGGETT—Eye, Ear, Nose and Throat; office at Eye and Ear Infirmary, Alakoa St. Hours 9 a. m. to 4 p. m. DR. WM. G. ROGERS—Eye, Ear, Nose and Throat; 1146 Alakoa St. REAL ESTATE. P. E. R. STRAUH—Real Estate handled to best advantage; houses rented; loans negotiated; money invested on best securities. 32 Campbell Block, 216 Fort street. STRAW HATS. E. MORIKUCHI—14 Hotel St. nr. Nuuanu. Felt, straw, panama hats. TAILORS. ALBERT BERNDT—Tailoring and repairing; Elks bldg., 616 Miller St. ISLAND OF MAUI, LAHAINA. SUGAR ESTATES, MAGNIFICENT SCENERY, BEAUTIFUL DRIVES, SHIPPING FACILITIES, ETC. DRAYAGE. G. H. DUNN—Express and drayage; Agt. Wilder and Inter-Island. Tel. 113. STABLES. BISMARCK STABLES CO., LTD.—Waikuku Maui. New vehicles, live stock. Prices reasonable. Carriages attend arrival and departure of all regular steamers at Kahului and Maalaea Bay. ORDER rig from Pioneer Stables. Electric turnouts; Telephone No. 124. GENERAL STORES. LAHAINA STORE—Lumber, Wholesale Liquors, Merchandise. C. R. Olsen, Manager. HOTELS. WAILUKU HOTEL—Waikuku, Geo. B. Schraeder, prop. Fine grounds and best accommodations. \$2.00 per day. NOTARY PUBLIC. G. H. DUNN—Notary Public, Conveyances, Deputy Tax Collector, Legal Documents, Office Government bldg.

PHYSICIANS.

DR. SLOGGETT—Eye, Ear, Nose and Throat; office at Eye and Ear Infirmary, Alakoa St. Hours 9 a. m. to 4 p. m. DR. WM. G. ROGERS—Eye, Ear, Nose and Throat; 1146 Alakoa St. REAL ESTATE. P. E. R. STRAUH—Real Estate handled to best advantage; houses rented; loans negotiated; money invested on best securities. 32 Campbell Block, 216 Fort street. STRAW HATS. E. MORIKUCHI—14 Hotel St. nr. Nuuanu. Felt, straw, panama hats. TAILORS. ALBERT BERNDT—Tailoring and repairing; Elks bldg., 616 Miller St. ISLAND OF MAUI, LAHAINA. SUGAR ESTATES, MAGNIFICENT SCENERY, BEAUTIFUL DRIVES, SHIPPING FACILITIES, ETC. DRAYAGE. G. H. DUNN—Express and drayage; Agt. Wilder and Inter-Island. Tel. 113. STABLES. BISMARCK STABLES CO., LTD.—Waikuku Maui. New vehicles, live stock. Prices reasonable. Carriages attend arrival and departure of all regular steamers at Kahului and Maalaea Bay. ORDER rig from Pioneer Stables. Electric turnouts; Telephone No. 124. GENERAL STORES. LAHAINA STORE—Lumber, Wholesale Liquors, Merchandise. C. R. Olsen, Manager. HOTELS. WAILUKU HOTEL—Waikuku, Geo. B. Schraeder, prop. Fine grounds and best accommodations. \$2.00 per day. NOTARY PUBLIC. G. H. DUNN—Notary Public, Conveyances, Deputy Tax Collector, Legal Documents, Office Government bldg.

REAL ESTATE.

P. E. R. STRAUH—Real Estate handled to best advantage; houses rented; loans negotiated; money invested on best securities. 32 Campbell Block, 216 Fort street. STRAW HATS. E. MORIKUCHI—14 Hotel St. nr. Nuuanu. Felt, straw, panama hats. TAILORS. ALBERT BERNDT—Tailoring and repairing; Elks bldg., 616 Miller St. ISLAND OF MAUI, LAHAINA. SUGAR ESTATES, MAGNIFICENT SCENERY, BEAUTIFUL DRIVES, SHIPPING FACILITIES, ETC. DRAYAGE. G. H. DUNN—Express and drayage; Agt. Wilder and Inter-Island. Tel. 113. STABLES. BISMARCK STABLES CO., LTD.—Waikuku Maui. New vehicles, live stock. Prices reasonable. Carriages attend arrival and departure of all regular steamers at Kahului and Maalaea Bay. ORDER rig from Pioneer Stables. Electric turnouts; Telephone No. 124. GENERAL STORES. LAHAINA STORE—Lumber, Wholesale Liquors, Merchandise. C. R. Olsen, Manager. HOTELS. WAILUKU HOTEL—Waikuku, Geo. B. Schraeder, prop. Fine grounds and best accommodations. \$2.00 per day. NOTARY PUBLIC. G. H. DUNN—Notary Public, Conveyances, Deputy Tax Collector, Legal Documents, Office Government bldg.

STRAW HATS.

E. MORIKUCHI—14 Hotel St. nr. Nuuanu. Felt, straw, panama hats. TAILORS. ALBERT BERNDT—Tailoring and repairing; Elks bldg., 616 Miller St. ISLAND OF MAUI, LAHAINA. SUGAR ESTATES, MAGNIFICENT SCENERY, BEAUTIFUL DRIVES, SHIPPING FACILITIES, ETC. DRAYAGE. G. H. DUNN—Express and drayage; Agt. Wilder and Inter-Island. Tel. 113. STABLES. BISMARCK STABLES CO., LTD.—Waikuku Maui. New vehicles, live stock. Prices reasonable. Carriages attend arrival and departure of all regular steamers at Kahului and Maalaea Bay. ORDER rig from Pioneer Stables. Electric turnouts; Telephone No. 124. GENERAL STORES. LAHAINA STORE—Lumber, Wholesale Liquors, Merchandise. C. R. Olsen, Manager. HOTELS. WAILUKU HOTEL—Waikuku, Geo. B. Schraeder, prop. Fine grounds and best accommodations. \$2.00 per day. NOTARY PUBLIC. G. H. DUNN—Notary Public, Conveyances, Deputy Tax Collector, Legal Documents, Office Government bldg.

TAILORS.

ALBERT BERNDT—Tailoring and repairing; Elks bldg., 616 Miller St. ISLAND OF MAUI, LAHAINA. SUGAR ESTATES, MAGNIFICENT SCENERY, BEAUTIFUL DRIVES, SHIPPING FACILITIES, ETC. DRAYAGE. G. H. DUNN—Express and drayage; Agt. Wilder and Inter-Island. Tel. 113. STABLES. BISMARCK STABLES CO., LTD.—Waikuku Maui. New vehicles, live stock. Prices reasonable. Carriages attend arrival and departure of all regular steamers at Kahului and Maalaea Bay. ORDER rig from Pioneer Stables. Electric turnouts; Telephone No. 124. GENERAL STORES. LAHAINA STORE—Lumber, Wholesale Liquors, Merchandise. C. R. Olsen, Manager. HOTELS. WAILUKU HOTEL—Waikuku, Geo. B. Schraeder, prop. Fine grounds and best accommodations. \$2.00 per day. NOTARY PUBLIC. G. H. DUNN—Notary Public, Conveyances, Deputy Tax Collector, Legal Documents, Office Government bldg.

ISLAND OF MAUI, LAHAINA.

SUGAR ESTATES, MAGNIFICENT SCENERY, BEAUTIFUL DRIVES, SHIPPING FACILITIES, ETC. DRAYAGE. G. H. DUNN—Express and drayage; Agt. Wilder and Inter-Island. Tel. 113. STABLES. BISMARCK STABLES CO., LTD.—Waikuku Maui. New vehicles, live stock. Prices reasonable. Carriages attend arrival and departure of all regular steamers at Kahului and Maalaea Bay. ORDER rig from Pioneer Stables. Electric turnouts; Telephone No. 124. GENERAL STORES. LAHAINA STORE—Lumber, Wholesale Liquors, Merchandise. C. R. Olsen, Manager. HOTELS. WAILUKU HOTEL—Waikuku, Geo. B.

BLACKSMITHS AND FARRIERS TOOLS

A most complete assortment of Forges, Blowers, Bellows, Anvils, Tongs, Hammers, Horse Shoes, Horse Shoe Nails. A full line of Heller Bros. Farriers Tools. BLACKSMITH'S COAL SOLD BY THE TON OR BAG.

E. O. HALL & SON, LTD

Climax Arc Lamp



100 to 600 candlepower. This is the best lamp on the market. Manufactured by The Standard Gas Lamp Company. Asphaltum, Grades C, D, and natural in lots to suit. Asphaltum Coating. Alpine Cement. Herringbone Expanded Metal Lath. Ready Rock Roofing.

HAWAIIAN TRADING CO., LTD
SOLE AGENTS.
1142 Fort Street, Love Building.

GOLD IN SOUTH SEAS

San Francisco August 9.—The little schooner W. S. Phelps arrived yesterday, seventy-five days from Naititi, Galapagos Islands. She left here eight months ago on a prospecting voyage. The adventures that made the trip think they have discovered something valuable. F. D. Spalding of this city is behind the venture. Captain R. W. Nye commanded the schooner and had with him Captains Noyes and Stevens, the former a mariner, the latter a soldier retired from active service. A number of islands were visited, including the famous Cocos Islands, where the Phelps called for a supply of fresh fruit. The prospectors brought back twenty-seven turfs, two of them monsters in size and many times centenarians in age. 1,500 pounds of quartz and half a cord of Palo Santo wood. They discovered on one island, location known only to the Phelps party, a large deposit of gold-bearing volcanic rock, which is readily accessible and said to assay handsomely. This island belongs to one of the South American republics from which an attempt will be made to get favorable concession before any mining is commenced. There is enough of the rock on hand to admit of a fair estimate being made of the value of the find. Expert opinion will be asked, and when the concession matter has been favorably arranged the party will return to the South Seas fully equipped for mining their discovery on a large scale. The Phelps was eighty-two days going from here to Galapagos and seventy-five days coming up. She encountered few weather throughout the voyage.

NEWS OF THE KOREA

San Francisco, August 6.—Private advices have been received that the Pacific Mail steamer Korea, Captain Seabury, sailed from Honolulu, Oahu, on July 24th, bound from Newport News to this port. She is, therefore, out thirteen days, and is expected to arrive Saturday or Sunday. There is great curiosity in shipping circles regarding the big liner, and her coming will draw a large crowd of sightseers to the Mall dock to any point along the front where a good view of the vessel may be obtained. The Korea having a length of 412 feet, is really greatly larger than any vessel that ever entered this port, and is, moreover, the finest passenger steamer in the Pacific. The original orders for the Korea before she sailed from Newport News directed Captain Seabury to bring her to San Francisco in thirty-two days, which would have been a feat, however, it was soon that there was no necessity for such quick time, and orders were given to sail coal and arrive here about August 13. Considering her speed of seventy knots an hour on her trial trip, Korea is probably to have made a brilliant record for speed on the trip from the eastern coast.

PASSING OF WINDJAMMERS.

San Francisco, August 4.—Fuel oil and the advent of the American Hawaiian Steamship Company as a factor in the carrying trade between this port and island ports has almost ended the business of the old-time sailing fleet, heretofore enjoying a monopoly of the sugar-carrying trade. At present there are eight of these sailing vessels in port. The list includes the bark Amy Turner, Mohlen and Peralta, which are at least temporarily laid up. The barkentine Irma and the schooner Amy are on the berth, but are waiting for freight at reduced rates made necessary by the coming of steamships. The schooner Kallia has been taken out of the route and will go to Honolulu to load lumber for Kohala. The bark St. Katharine's sailing is uncertain and the big schooner W. H. Mason will return to the balance with probably half her ordinary cargo.

THEOSOPHICAL SOCIETY.

Mr. THOMAS PRIME will lecture on REINCARNATION: Why We do Not Remember Past Lives, at ARION HALL, back of Opera House. A cordial welcome extended to all. Library open Friday, 3 to 4 o'clock. MARY D. HENDRICKS, President Aloha Branch, T. S.

DAY.

DAY.	High Tide	Low Tide	High Tide	Low Tide
Monday	10:10	4:10	10:10	4:10
Tuesday	10:15	4:15	10:15	4:15
Wednesday	10:20	4:20	10:20	4:20
Thursday	10:25	4:25	10:25	4:25
Friday	10:30	4:30	10:30	4:30
Saturday	10:35	4:35	10:35	4:35
Sunday	10:40	4:40	10:40	4:40
Monday	10:45	4:45	10:45	4:45

Full moon on the 18th, 7:33 p. m. Tides from the United States Coast and Geodetic Survey Tables. The tides at Honolulu and Hilo occur about an hour earlier than at Honolulu.

Hawaiian Standard Time is 10h 30m slower than Greenwich time, being that of the meridian of 157.50. The time whistle blows at 1:30 p. m., which is the same as Greenwich, 6h 0m.

Weather Bureau, Honolulu, August 15.—Temperature—Morning minimum 74; Midday maximum, 84. Barometer at 9 a. m. 30.05. Rising. Rainfall 0.01. Dew Point 66°. Humidity at 9 a. m. 65 per cent. Diamond Head Signal Station, Aug. 15.—Weather hazy; wind fresh NE.

ARRIVED.

Friday, Aug. 15. S. S. Coptic, Rubber, from San Francisco, at 11 a. m. Mr. Mauna Loa, Stinson, from Kona, Kau and Maui ports, at 7:10 a. m. Am. bk. R. H. McPhail, from San Francisco.

DEPARTED.

Friday, Aug. 15. Mr. H. K. Griffiths, for San Francisco.

For Kona ports per ste. Kona, Aug. 15.—H. P. Baldwin, S. T. Alexander, Adam Bush, Florence Bush, Julia K. Carthy, Mrs. J. W. Robertson, Mrs. J. E. Conrad, Mrs. D. McGrew, Miss Alice Gillet, E. E. Conant, J. Passoth, J. K. Farley, John Kamaunui, John Bush and wife, R. Puniki, Mrs. Puniki, Miss Puniki, A. H. Rice, Rev. G. L. Kopa.

PASSENGER ARRIVED.

From San Francisco, per O. & O. S. S. Coptic, August 15.—Captain Henry Harford, Arthur Boardlee and Dr. C. E. Miller. For Yokohama—L. Comdy, F. S. Carter, Miss Gertrude M. Lannan, Mrs. James Lawry and son, Surgeon P. A. Lovering, Mr. and Mrs. G. T. Marsh, Paul Meyer, C. Platonow, Mr. and Mrs. R. Thompson and Miss Lena Zureh. For Kona—Miss H. Wilberforce. For Nagasaki—Rev. and Mrs. S. A. Moffat. For Shanghai—Mrs. E. Ashton and Mr. and Mrs. G. Gippereh. For Hongkong—Miss J. Bixby, Rev. A. V. Casselman, Mrs. Fay Dickerson, M. Estermaux, Miss H. Gross, Mrs. L. Johnstone, C. Thiel and Miss Young. From Honolulu—Mr. and Mrs. Wm. Elliot Smith, Miss Emma C. Smith, Miss Ellen C. Smith.

From Kona, Kau and Maui ports, per ste. Mauna Loa, Aug. 15.—Mrs. A. Malino and child, E. Kani, E. J. Amos and wife, P. J. Amos and wife, Mrs. A. M. Brown and wife, Dr. J. S. McClelland, Mrs. J. McMillan, Miss N. Cooke, Mrs. S. A. Hamilton, C. J. Haas, J. C. Rogers, Kona—M. Fernandez, wife and infant, C. Stevens, Mrs. W. K. Stinson, Mrs. M. S. Ziegler, Mrs. A. S. McWayne, Mrs. W. D. Westervelt, G. P. Kamaunui, W. C. Ash Jr., Mrs. S. A. Ash, John Greenwell, Mrs. Ah Pa, Mrs. J. K. Van, Manuwa—Mrs. J. Colvin, W. H. Cornwell, A. A. Brayner, Mrs. W. Cornwell, C. Walters, Laehaina—G. Schuman, C. Bellina, Mrs. M. Sul, Master W. Sul, Mrs. J. Anasi, and child W. Lucas, A. H. Hodson and 89 deck.

STEAMSHIP COMPANY HELD RESPONSIBLE

Washington, August 1.—Suit is to be brought against the Toyo Kisen Kaisha by the United States Government to compel the payment of \$1,000,000 due the prescribed by law for the unlawful entry of Chinese into the United States through the culpability of the carrying company. It is charged that through the negligence of the steamship company a Chinese, Dr. Yang Wing, managed to get ashore at San Francisco without examination, and was half way to his home at Harkford, Conn. before the authorities were aware of his arrival. Dr. Yang is a graduate of Yale of the class of 1874, and is probably entitled to enter this country providing his entry is according to regulations. In this case it is alleged that his entry was unlawful.

It is estimated that there are fewer than 10,000 wild elephants left in all the countries on the globe, and that five of these will be killed off where one is born. It is a matter of only a few years when the last must go.

General Ottolenghi, new Italian Minister of War, is of Jewish faith and lineage.

NOTICE.

Notify the captain or the agent of the American ship L. E. Chapman will be responsible for debts contracted by the crew and paid vessel while in this port. C. S. KENDALL, Master.

Honolulu, August 9, 1902. Weekly edition of the Bulletin, \$1 a year.

MIDSUMMER CLEARANCE SALE

It is to your advantage that our stock is twice too big for our store for broken lots are crowded out by new goods arriving. It is also a basic principle of our business that no accumulations are tolerated, or odds and ends permitted. So we gather together all such lots and closing our eyes to the cost of the goods, put on prices that will speedily clear them out.

NOTE THESE SAMPLE BARGAINS

- Ladies' Silk Ribbed Vests, worth \$1.00.....25c each
- Ladies' Swiss Ribbed Vests, silk trimmed and silk tape.....10c each
- Ladies' One Dollar Neckwear.....10c each
- Men's 75c Neckwear.....10c each
- Men's Washable Four-in-Hands.....5c each
- Corsets, some of them were \$2.....25c each
- A lot of Fancy Dress Trimmings.....10c yard
- Belt Buckles, 25c and 50c kinds.....10c each
- Men's Leather Suspenders.....5c pair
- Fancy Hair Pins.....1c each
- Gold Plated Collar Buttons, 2 for.....5c
- A Book of Belt Pins.....5c
- Shirt Waist Studs.....5c dozen
- Boys' Shirts.....25c each

And a thousand other good things. SALE ENDS AT CLOSING HOUR SATURDAY.

WHITNEY & MARSH, LTD.

KAWAIAKEAKUA

From the Springs at Puna. Arrangements have been made to have this fine mineral water bottled in this city at the Fountain Soda Works. TERMS:— One Case of 100 Bottles (pints).....\$8.50 One case of 50 Bottles (pints).....\$4.25 A rebate of One Dollar will be made upon the return of shipping case and 100 bottles. Telephone Main 270.

The Pride of the Home

IS A **WHITE SEWING MACHINE**
A Combination of Art and Utility. Used by many in preference to other makes of the same price. It demonstrates its merits. Built to Sew Well and to Last. Call and inspect the different styles.

H. Hackfeld & Co., Ltd.
Sole Agents for the Hawaiian Islands.

WANTS

For Want Column See Page Six
The following letters, in answer to advertisements, remain uncalled for at this office: "Porter," "Mr. Duncan," "K. J. Eng" (4); "A. C.," "J.," "A. G.," "M. H.," "M. B.," "C. L.," "Du Ring Bros.," "B. U.," "M. J. (3).

BY AUTHORITY

PUBLIC LANDS NOTICE.
On Saturday, September 13th, 1902, at 12 o'clock noon at the front entrance of the Judiciary building, will be sold at Public Auction, the following parcels of Government land, situated in the town of Lahaina, Island of Maui:
Area. Upset Price.
Lot 1.....50 acres.....\$ 3,000
Lot 2.....57 acres.....3,000
Lot 3.....23 acres.....2,000
Lot 4.....72 acres.....3,000
Lot 5.....142 acres.....6,000
Lot 6.....50 acres.....2,000
Lot 7.....233 acres.....9,000
Lot 8.....50 acres.....3,000
Lot 9.....29.60 acres.....87,000
Lot 10.....1.32 acres.....6,000
Lot 11......32 acres.....3,000
Lot 12.....3.55 acres.....12,000
Terms—Cash, payable in U. S. Gold Coin.
2221-22

SEALED TENDERS

Will be received at the office of the Board of Honolulu Fire Commissioners until 12 o'clock noon of Wednesday, September 17, 1902, for 1 1/2-ton Aerial Trench Hook and Ladder Truck, complete with Standard equipment and of first-class workmanship and material. The Commissioners do not bind themselves to accept the lowest of any bid. ANDREW BROWN, Chairman Board of Fire Commissioners. 2223-24

NEW - TO-DAY

E. R. BATH, Plumber
Located at 145 King St., Opposite Young Bldg. Telephone Main 61.

AGENT FOR THE CELEBRATED DOUGLAS COLSET.

Marshall Field of Chicago is handling a movement to eliminate the name being substituted for New England with farmers and merchants from the Old World. Several railroads are also interested in the subject.

MORGAN

Auctioneer and Broker
65 Queen St.

Auction Sale

OF **VEHICLES**

ON SATURDAY, AUGUST 16th AT 12 O'CLOCK NOON, At my saleroom, 65 Queen street, I will sell at Public Auction rubber-tired phaetons, rubber tired surries, runabouts, top buggies, delivery wagons carts, etc., etc.

Jae. F. Morgan, AUCTIONEER.

Auction Sale

OF **horses**

ON SATURDAY, AUGUST 16th AT 12 O'CLOCK NOON, At my saleroom, 65 Queen street, I will sell at Public Auction the two horses known as "VIRGIE A" and "GEORGE H."

JAS. F. MORGAN, AUCTIONEER.

FOR SALE !!

HERE ARE BARGAINS

FIRST—1 offer at Private Sale, premises on Beretania street, adjoining residence of C. Hustace Esq.; 134 feet on Beretania street, 171 feet deep; price \$9000; one-half cash, balance on mortgage at 7 1/2 per cent.
SECOND—Premises 259 Kinau St., at present occupied by Mr. A. Lucas. Property has a frontage on Kinau St. of 115 feet and a depth of 112 feet. Dwelling comprises three Bedrooms, Parlor, Dining room, Kitchen, Bath, large Carriage House. Price \$1500. Terms, one-half cash; balance on mortgage at 7 1/2 per cent net. The lot has a right of way entrance to Beretania St.
THIRD—Premises on Kinau St. adjoining lot 2. Frontage on Kinau St. 100 feet, depth 121 feet. Roomy dwelling on the lot. Price \$4000. One-half cash, balance on mortgage at 7 1/2 per cent net. Has right of way to Beretania St.

Further particulars of **JAS. F. MORGAN, AUCTIONEER.**

New York Dental Parlors

Room 4, Elite Building, Hotel Street. Ladies in Attendance. Hours, 9 a. m. to 5 p. m. Sundays, 9 a. m. to 11 a. m.

We are now paying especial attention to catering to Family Parties, Receptions, Weddings, etc., and the success that has attended our efforts to please, together with our reputation for serving the best that the market affords, is a sufficient guarantee that we will give you perfect satisfaction. We have the finest display of the better grade of BAKERY GOODS and the CHOCOLATES and BON BONS ever put on exhibit here; we also carry HUYLER'S CANDIES and LOWNEY'S CHOCOLATES and BON BONS.

JAS. F. MORGAN

Auctioneer and Broker

65 Queen St

FAMILY TRADE
In what we are looking for. We want your orders for a dozen of our celebrated **Manilla Anchor Lager**
A delicious pale brew of the finest Bohemian hops and malt, perfectly pure. Made at Lobbs Ferry, New York, by Manilla Bros. Telephone to **LOVEJOY & CO.,** Corv Nuanuu and Merchant Sts. TELEPHONE 308

A DOWN TO DATE LINE
TRUNKS, DRESS SUIT CASES, Etc.,
AND ALL OF THE CONVENIENCES FOR TRAVEL ARE NOW OPEN FOR YOUR INSPECTION.
C. R. COLLINS,
82 and 84 SOUTH KING STREET

GRAND Athletic Tournament And Fistic Carnival at THE ORPHEUM Saturday Evening, Aug. 16th,

The Many Art of Self-Defense will be demonstrated by Honolulu's best experts of boxing.
The Main Event of the evening will be a Ten Round Glove Contest, Marquis of Queensbury Rules, between—
JACK WEEDAY AND PHIL KAMISKY
There will be several preliminaries, among them being A FOUR-ROUND CONTEST BETWEEN **ULYSSES HARRIS AND GRANT SNOW** for the Middleweight Championship of Hawaii.
ALSO A FOUR-ROUND CONTEST BETWEEN **SPIDER JACKSON AND JACK EDWARDS** for the Lightweight Championship of Hawaii.

PRICES AS FOLLOWS:—

Stage Seats limited to 50.....	\$2.50
Box Seats.....	2.00
Orchestra.....	1.50
Dress Circle.....	1.00
Gallery.....	.50

ALL WORK THOROUGHLY GUARANTEED. NO-PAIN SPECIALISTS
THE UP-TO-DATE EXPERT-DENTISTS
PRICES as LOW as the LOWEST IN THE CITY
WORK AS GOOD AS THE BEST
ARLINGTON BLOCK, HOTEL STREET, OPPOSITE UNION