



Solomon Islands Government

Statistical Bulletin: No: 6/2013

VISITOR STATISTICS

(Fourth Quarter 2012)

Solomon Islands National Statistics Office

Ministry of Finance

Honiara

TABLE OF CONTENTS

Introduction.....	3
COMMENTARY OF RESULTS	5
<i>International Arrivals</i>	5
<i>Arrivals by Country of Residence</i>	5
<i>Visitor by Month</i>	5
<i>Tourists</i>	5
<i>Visitors by Purpose of Visit</i>	5
<i>Visitor by Age Group</i>	5
<i>Visitor by Occupation:</i>	5
<i>Visitor by Carrier</i>	5
Charts	
<hr/>	
Chart 1: Arrivals by Category, 4 th Quarter 2012.....	6
Chart 2: Visitor Arrivals by Country of Residence by quarter: 4 th Quarter 2012.....	7
Chart 3: Visitor Arrivals by Month, 2007 to 4 th Quarter 2012	8
Chart 4: Tourist Arrivals by Country of Residence, 4 th Quarter 2012	9
Chart 5: Visitor Arrivals by Country of Residence by Purpose of Visit, 4 th Quarter 2012.....	10
Chart 6: Visitor Arrivals by Age group category by sex, 4 th Quarter 2012.....	11
Chart 7: Visitor Arrivals by Occupation by sex, 4 th Quarter 2012.....	12
Chart 8: Visitor Arrivals by Carrier by sex, 4 th Quarter 2012	13
Tables	
Table 1: Total Arrivals Classified by Purpose of Travel by Sex by Year by Quarter: 4 th Quarter 2012.....	6
Table 2: Visitors Arrivals by Country of Residence by Year by Quarter: 4 th Quarter 2012	7
Table 3: Visitors Arrivals by Month: 2006 to 4 th Quarter 2012.....	8
Table 4: Visitors Classified as Tourists by Country of Residence by Year, Quarter and Average Length..... of Stay: 2010 to 4 th Quarter 2012.....	9
Table 5: Visitor Arrivals by Country of Residence by Purpose of Visit by sex: 4 th Quarter 2012.....	10
Table 6: Visitors Arrivals by Country of Residence by Age Groups by sex: 4 th Quarter 2012.....	11
Table 7: Visitors Arrivals by Country of Residence by Occupation and Sex: 4 th Quarter 2012	12
Table 8: Visitors Arrivals by Country of Residence by Carrier By Sex: 4 th Quarter 2012.....	13
Appendix 1	14
<i>Concepts and Definitions</i>	14
Appendix 2.....	15
Table 9: Intending Resident Arrivals by Country of residence by Occupation and sex: 4 th Quarter 2012.....	15
Table 10: Intending Resident Arrivals by country of Residence by Age Groups by Sex: 4 th Quarter 2012	16
Table 11: Returning Resident Arrivals by country of Residence by Occupation and sex: 4 th Quarter 2012	17
Table 12: Returning Resident Arrivals by country of Residence by Age Groups and sex: 4 th Quarter 2012	18

Introduction

This quarterly bulletin is produced by the National Statistics Office NSO in the Ministry of Finance and Treasury. It provides information on international arrivals comprised of the returning resident, intending resident, and visitor. The explanation of these categories is provided in Appendix 1 of the bulletin.

Visitor category comprised the bigger share of the bulletin, (portrayed in tables 1 to 8); compared to the returning and intending resident category portrayed in Tables 1, and 9 to 12. The bulletin includes twelve tables and eight charts stretched over cross-field tabulation, preferably to meet information need of local, regional, and international researchers.

The information captured through a self fill Disembarkation form that was completed by all disembarking passengers. The forms were collected by Immigration officials at international check-in counters on arrival. The coverage of the bulletin is complete.

Sheer acknowledgement is owed to the Immigration Department for their continuous support of this bulletin, by providing an office space and permitting the statistics office to input completed forms. With the official arrangement in-placed between the Statistics and Immigration departments this bulletin is possible.

The inclusion of four new tables 9 to 12 in Appendix 2 of the bulletin anticipates to complete the distribution portrait of Intending and Returning resident. The distribution is by age groups, occupation and by country of usual residence.

Data limitations, highlighted in the previous bulletin still remain, though some have substantially improved but noted again for ease of reference as follows:-

- Data entry duplication by the Immigration and Statistics departments was a long standing issue. Discussion of the issues had been made by the two departments, though resolution has been recognized, this was yet to be put in place.
- Timeliness of visitor statistics has improved but the bulletin may be delayed by the production process.
- The information contained in the bulletin is based on information captured from the data source by the SINSO.
- The monetary value of the industry is not available and thus not possible in this bulletin. The concepts and definitions of the arrival categories were included in Appendix 1. The symbols that are likely to be used are:

-	zero if representing a value
-	negative change if representing a percentage change
+	positive change if representing a percentage change
p	preliminary figure, subject to revision
r	revised
e	estimate
n/a	not available

For more information contact the Statistics Office, Department of Finance and Treasury:

TELEPHONE : (677) 27835

FACSMILE : (677) 23775

E-MAIL : STATS-management@mof.gov.sb

: STATS-SocialDemography@mof.gov.sb

WEBSITE : **<http://www.spc.int/prism/country/sb/stats>**

Contact persons: 1. Mrs. Irene KALAUMA, Chief Statistician (Ag)
 2. Mrs. Anterlyn TUZAKANA, Senior Statistician

COMMENTARY OF RESULTS

International Arrivals

Total Arrivals for the Fourth quarter of 2012 was 10,866. This figure showed a decrease of 8% compared to the previous quarter (3rd Quarter 2012). Compared to the same quarter last year, it showed a decrease of 11%.

Arrivals classified by the category for the fourth quarter of 2012 showed that returning resident comprise of 46%. Another 46% was also recorded for visitors while intending resident 8%.

Visitor arrivals for the fourth quarter showed a decrease of 31.1% to 5,038 compared to the third quarter 2012 figure of 7,307. Compared to the same quarter in 2011 it showed a further decrease of 17.0%. Table 1 showed, visitor and returning resident categories comprised the larger proportion of all arrivals while the intending resident represents the lesser share during the quarter. Chart 1, gives a clear picture of all the categories.

Visitor by Country of Residence

Arrivals by country of residence for fourth quarter showed that Australians (49.1%) are frequent travellers to Solomon Islands as in the previous quarters, followed by Other Asia (9.6%), PNG (9.2%), New Zealand (7.1%), Fiji (6%), US (4.6%) and Vanuatu (2.9%).

Visitor by Month

Visitors by monthly arrivals for fourth quarter showed that October has the highest number of arrivals with 1,929 persons. This was followed by the month of December which recorded a total of 1,564 persons and November the least with 1,545 persons.

Tourists

Tourist¹ arrivals for fourth quarter of the year totalled to 1,390 persons and they spent an average of 16 days in the country. The highest number of tourists recorded for the quarter comes from Australia (58.1%) and staying in the country for an average of 14 days. This was followed by USA (8.3%), Other Asia (7.5%), PNG (4.7%), NZ (4.1%) and Japan (3.7%).

Visitor by Purpose of Visit

Distribution of visitors by purpose of visit confirmed Business & conference (32.5%) as most popular during the quarter. This was followed by Holiday & Vocation (26.8%), Other (25.8%), Visit friends & relatives (14.1%) and Transit & stopover the least by 0.8%.

Visitor by Age Group

Visitor Arrivals by broad age groups showed that 77.4% of arrivals were in the 25years to 64years age range. The younger and the older age brackets represent 18.6% while the remaining 4% represents arrivals who did not state their age. Male represent 70.9% of the arrival and female 29.1%. (Refer to Chart 6)

Visitor by Occupation

Visitor by occupational category revealed that those who stated Other (36.6%) as their occupation recorded the highest during the quarter. This was followed by Professional & Technical (33.8%), Administration and managerial (9.5%), No work (7.1%), Service worker (5.5%), and Production Related Work (3.7%). Table 7 further revealed that Australia not only dominated the Arrivals in terms of markets but also dominated most of the categories of occupations during the quarter. Refer to Table 7 for further analysis.

Visitor by Carrier

The most popular carriers during the quarter were Solomon Airlines (49.3%) followed by Virgin Blue (24.9%), Air Niu Gini (16.9%) and Air Pacific (7.0%). Other category declined, because all arrivals by Virgin Blue was recorded under Other in the previous quarters. Virgin Blue is now a separate category which results in the decline in Other category.

¹ Refer to Appendix 1 for the definition

Table 1: Total Arrivals Classified by Purpose of Travel by Sex, by Year by Quarter: 4th Quarter 2012

Year / Quarter	Returning Resident						Intending Resident				Visitor			Total		
	Solomon Islander			Non-Solomon Islander			All	M	F	T	M	F	T	M	F	All
	M	F	T	M	F	T										
2007 1 st	1,528	901	2,429	5	-	5	2,434	740	206	946	2,144	673	2,817	4,417	1,780	6,197
2 nd	1,798	913	2,711	102	31	133	2,844	696	195	891	2,817	1,037	3,854	5,413	2,176	7,589
3 rd	1,826	929	2,755	59	12	71	2,826	487	172	659	2,195	1,225	3,420	4,567	2,338	6,905
4 th	2,107	1,095	3,202	486	235	721	3,923	589	153	742	2,525	1,132	3,657	5,707	2,615	8,322
2008 1 st	1,537	938	2,475	4	2	6	2,481	537	174	711	2,094	879	2,973	4,172	1,993	6,165
2 nd	2,492	1,268	3,760	3	1	4	3,764	312	87	399	2,857	1,344	4,201	5,664	2,700	8,364
3 rd	1,593	952	2,545	761	437	1,198	3,743	605	155	760	3,138	1,480	4,618	6,097	3,024	9,121
4 th	2,507	1,366	3,873	969	453	1,422	5,295	396	125	521	3,063	1,409	4,472	6,935	3,353	10,288
2009 1 st	1,173	760	1,933	677	436	1,113	3,046	659	315	974	3,015	1,258	4,273	5,524	2,769	8,293
2 nd	1,427	728	2,155	471	238	709	2,864	611	244	855	3,242	1,374	4,616	5,751	2,584	8,335
3 rd	1,182	709	1,891	425	220	645	2,536	786	355	1,141	3,263	1,519	4,782	5,656	2,803	8,459
4 th	2,145	1,152	3,297	393	197	590	3,887	722	282	1,004	3,177	1,412	4,589	6,437	3,043	9,480
2010 1 st	1,045	695	1,740	550	342	892	2,632	808	380	1,188	3,115	1,095	4,210	5,518	2,512	8,030
2 nd	1,337	707	2,044	494	272	766	2,810	808	307	1,115	3,370	1,384	4,754	6,009	2,670	8,679
3 rd	1,421	730	2,151	485	274	759	2,910	835	316	1,151	4,494	1,768	6,262	7,235	3,088	10,323
4 th	2,783	1,550	4,333	13	4	17	4,350	848	284	1,132	3,766	1,529	5,295	7,410	3,367	10,777
2011 1 st	1,187	724	1,911	694	332	1,026	2,937	1,058	362	1,420	3,972	1,147	5,119	6,911	2,565	9,476
2 nd	1,601	880	2,481	615	292	907	3,388	716	258	974	4,071	1,434	5,505	7,003	2,864	9,867
3 rd	1,716	739	2,455	642	282	924	3,379	930	275	1,205	4,523	1,721	6,244	7,811	3,017	10,828
4 th	3,297	1,765	5,062	4	2	6	5,068	805	268	1,073	4,341	1,732	6,073	8,447	3,767	12,214
2012 1 st	1,915	994	2,909	15	3	18	2,927	1,029	387	1,416	3,554	1,097	4,651	6,513	2,481	8,994
2 nd	1,782	967	2,749	667	312	979	3,728	695	278	973	4,921	2,008	6,929	8,065	3,565	11,630
3 rd	2,169	1,218	3,387	22	12	34	3,421	840	255	1,095	5,123	2,184	7,307	8,154	3,669	11,823
4 th	3,192	1,784	4,976	5	1	6	4,982	631	215	846	3,572	1,466	5,038	7,400	3,466	10,866
Percentage change																
09 ^{2nd} -09 ^{3rd}	-17.2	-2.6	-12.3	-9.8	-7.6	-9.0	-11.5	28.6	45.5	33.5	0.6	10.6	3.6	-1.7	8.5	1.5
08 ^{3rd} -09 ^{3rd}	-25.8	-25.5	-25.7	-44.2	-49.7	-46.2	-32.2	29.9	129.0	50.1	4.0	2.6	3.6	-7.2	-7.3	-7.3
09 ^{3rd} -09 ^{4th}	81.5	62.5	74.4	-7.5	-10.5	-8.5	53.3	-8.1	-20.6	-12.0	-2.6	-7.0	-4.0	13.8	8.6	12.1
08 ^{4th} -09 ^{4th}	-14.4	-15.7	-14.9	-59.4	-56.5	-58.5	-26.6	82.3	125.6	92.7	3.7	0.2	2.6	-7.2	-9.2	-7.9
09 ^{4th} -10 ^{1st}	-51.3	-39.7	-47.2	39.9	73.6	51.2	-32.3	11.9	34.8	18.3	-2.0	-22.5	-8.3	-14.3	-17.4	-15.3
10 ^{1st} -10 ^{1st}	-10.9	-8.6	-10.0	-18.8	-21.6	-19.9	-13.6	22.6	20.6	22.0	3.3	-13.0	-1.5	-0.1	-9.3	-3.2
10 ^{1st} -10 ^{2nd}	27.9	1.7	17.5	-10.2	-20.5	-14.1	6.8	0.0	-19.2	-6.1	8.2	26.4	12.9	8.9	6.3	8.1
09 ^{2nd} -10 ^{2nd}	-6.3	-2.9	-5.2	4.9	14.3	8.0	-1.9	32.2	25.8	30.4	3.9	0.7	3.0	4.5	3.3	4.1
10 ^{2nd} -10 ^{3rd}	6.3	3.3	5.2	-1.8	0.7	-0.9	3.6	3.3	2.9	3.2	33.4	27.7	31.7	20.4	15.7	18.9
09 ^{3rd} -10 ^{3rd}	20.2	3.0	13.7	14.1	24.5	17.7	14.7	6.2	-11.0	0.9	37.7	16.4	30.9	27.9	10.2	22.0
09 ^{4th} -10 ^{4th}	29.7	34.5	31.4	-96.7	-98.0	-97.1	11.9	17.5	0.7	12.7	18.5	8.3	15.4	15.1	10.6	13.7
10 ^{1st} -11 ^{1st}	13.6	4.2	9.8	26.2	-2.9	15.0	11.6	30.9	-4.7	19.5	27.5	4.7	21.6	25.2	2.1	18.0
10 ^{4th} -11 ^{1st}	-57.3	-53.3	-55.9	5238.5	8200.0	5935.3	-32.5	24.8	27.5	25.4	5.5	-25.0	-3.3	-6.7	-23.8	-12.1
11 ^{1st} -11 ^{2nd}	34.9	21.5	29.8	-11.4	-12.0	-11.6	15.4	-32.3	-28.7	-31.4	2.5	25.0	7.5	1.3	11.7	4.1
11 ^{2nd} -11 ^{3rd}	7.2	-16.0	-1.0	4.4	-3.4	1.9	-0.3	29.9	6.6	23.7	11.1	20.0	13.4	11.5	5.3	9.7
11 ^{3rd} -11 ^{4th}	92.1	138.8	106.2	-99.4	-99.3	-99.4	50.0	-13.4	-2.5	-11.0	-4.0	0.6	-2.7	8.1	24.9	12.8
11 ^{4th} -12 ^{1st}	-41.9	-43.7	-42.5	275.0	50.0	200.0	-42.2	27.8	44.4	32.0	-18.1	-36.7	-23.4	-22.9	-34.1	-26.4
11 ^{2nd} -12 ^{2nd}	11.3	9.9	10.8	8.5	6.8	7.9	10.0	-2.9	7.8	-0.1	20.9	40.0	25.9	15.2	24.5	17.9
12 ^{1st} -12 ^{2nd}	-6.9	-2.7	-5.5	4346.7	10300.0	5338.9	27.4	-32.5	-28.2	-31.3	38.5	83.0	49.0	23.8	43.7	29.3
11 ^{3rd} -12 ^{3rd}	26.4	64.8	38.0	-96.6	-95.7	-96.3	1.2	-9.7	-7.3	-9.1	13.3	26.9	17.0	4.4	21.6	9.2
12 ^{2nd} -12 ^{3rd}	21.7	26.0	23.2	-96.7	-96.2	-96.5	-8.2	20.9	-8.3	12.5	4.1	8.8	5.5	1.1	2.9	1.7
11 ^{4th} -12 ^{4th}	-3.2	1.1	-1.7	25.0	-50.0	0.0	-1.7	-21.6	-19.8	-21.2	-17.7	-15.4	-17.0	-12.4	-8.0	-11.0
12 ^{3rd} -12 ^{4th}	47.2	46.5	46.9	-77.3	-91.7	-82.4	45.6	-24.9	-15.7	-22.7	-30.3	-32.9	-31.1	-9.2	-5.5	-8.1

Chart 1: Arrivals by category 4th quarter 2012

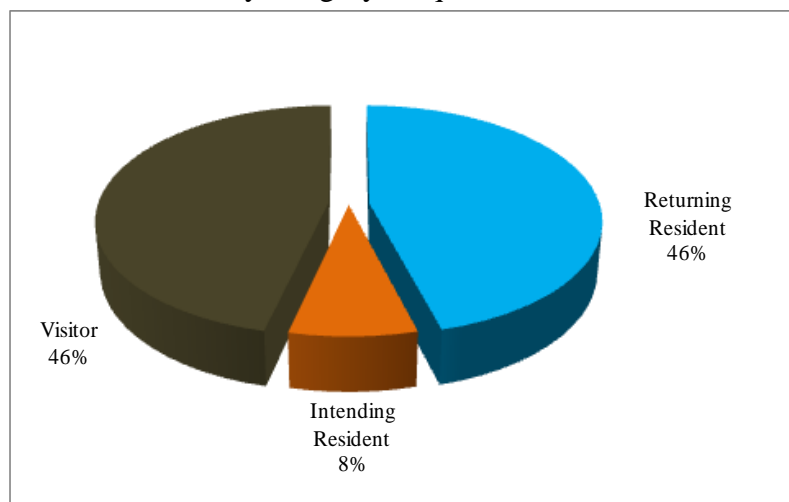


Table 2: Visitor Arrivals by Country of Residence by year by quarter: 4th Quarter 2012

Country of Usual Residence	2009				2010					2011					2012			
	Q2	Q3	Q4	Total	Q1	Q2	Q3	Q4	Total	Q1	Q2	Q3	Q4	Total	Q1	Q2	Q3	Q4
Australia	2,361	2,354	2,235	8,902	2,087	2,544	3,362	2,758	10,751	2,569	2,763	3,042	3,018	11,392	2,238	2,963	3,404	2,474
PNG	260	228	356	1,098	305	248	339	469	1,361	443	479	589	546	2,057	431	602	476	464
US	263	345	249	1,034	127	236	287	212	862	188	243	368	241	1,040	183	356	561	234
NZ	324	379	298	1,364	274	335	647	454	1,710	385	433	479	427	1,724	285	545	560	357
UK	111	121	75	419	82	108	141	101	432	78	110	101	91	380	81	84	151	69
Japan	142	159	380	873	166	95	151	177	589	145	106	229	161	641	162	112	211	129
Germany	15	25	23	100	24	33	26	18	101	22	26	38	25	111	22	40	29	26
Canada	20	21	24	88	32	22	25	34	113	51	30	55	56	192	29	25	30	27
Oth.Pacific	213	281	144	950	167	125	123	170	585	185	185	170	223	763	101	811	371	135
Vanuatu	72	65	85	308	48	86	126	145	405	125	103	100	185	513	121	148	179	147
Hong Kong	9	5	-	17	10	-	23	5	38	12	12	22	84	130	14	20	21	25
Fiji	257	247	188	917	206	278	273	234	991	262	327	285	330	1,204	300	510	444	301
Other Asia	447	326	317	1,409	503	477	509	336	1,825	487	523	562	484	2,056	500	544	577	484
Netherlands	12	10	15	51	11	9	16	17	53	18	13	20	13	64	12	11	23	11
Oth.Europe	57	100	91	374	78	63	100	66	307	60	62	63	61	246	76	74	121	50
France	6	29	27	81	12	24	24	22	82	10	20	22	8	60	24	19	36	9
Italy	4	22	27	66	4	3	13	19	39	13	17	20	30	80	13	12	40	28
Oth.Country	43	65	55	209	74	68	77	58	277	66	53	79	90	288	59	53	73	68
Total	4,616	4,782	4,589	18,260	4,210	4,754	6,262	5,295	20,521	5,119	5,505	6,244	6,073	22,941	4,651	6,929	7,307	5,038
Percentage																		
Australia	51.1	49.2	48.7	48.8	49.6	53.5	53.7	52.1		50.2	50.2	48.7	49.7	49.7	48.1	42.8	46.6	49.1
PNG	5.6	4.8	7.8	6.0	7.2	5.2	5.4	8.9		8.7	8.7	9.4	9.0	9.0	9.3	8.7	6.5	9.2
US	5.7	7.2	5.4	5.7	3.0	5.0	4.6	4.0		3.7	4.4	5.9	4.0	4.5	3.9	5.1	7.7	4.6
NZ	7.0	7.9	6.5	7.5	6.5	7.0	10.3	8.6		7.5	7.9	7.7	7.0	7.5	6.1	7.9	7.7	7.1
UK	2.4	2.5	1.6	2.3	1.9	2.3	2.3	1.9		1.5	2.0	1.6	1.5	1.7	1.7	1.2	2.1	1.4
Japan	3.1	3.3	8.3	4.8	3.9	2.0	2.4	3.3		2.8	1.9	3.7	2.7	2.8	3.5	1.6	2.9	2.6
Germany	0.3	0.5	0.5	0.5	0.6	0.7	0.4	0.3		0.4	0.5	0.6	0.4	0.5	0.5	0.6	0.4	0.5
Canada	0.4	0.4	0.5	0.5	0.8	0.5	0.4	0.6		1.0	0.5	0.9	0.9	0.8	0.6	0.4	0.4	0.5
Oth.Pacific	4.6	5.9	3.1	5.2	4.0	2.6	2.0	3.2		3.6	3.4	2.7	3.7	3.3	2.2	11.7	5.1	2.7
Vanuatu	1.6	1.4	1.9	1.7	1.1	1.8	2.0	2.7		2.4	1.9	1.6	3.0	2.2	2.6	2.1	2.4	2.9
Hong Kong	0.2	0.1	0.0	0.1	0.2	-	0.4	0.1		0.2	0.2	0.4	1.4	0.6	0.3	0.3	0.3	0.5
Fiji	5.6	5.2	4.1	5.0	4.9	5.8	4.4	4.4		5.1	5.9	4.6	5.4	5.2	6.5	7.4	6.1	6.0
Oth.Asia	9.7	6.8	6.9	7.7	11.9	10.0	8.1	6.3		9.5	9.5	9.0	8.0	9.0	10.8	7.9	7.9	9.6
Netherlands	0.3	0.2	0.3	0.3	0.3	0.2	0.3	0.3		0.4	0.2	0.3	0.2	0.3	0.3	0.2	0.3	0.2
Oth.Europe	1.2	2.1	2.0	2.0	1.9	1.3	1.6	1.2		1.2	1.1	1.0	1.0	1.1	1.6	1.1	1.7	1.0
France	0.1	0.6	0.6	0.4	0.3	0.5	0.4	0.4		0.2	0.4	0.4	0.1	0.3	0.5	0.3	0.5	0.2
Italy	0.1	0.5	0.6	0.4	0.1	0.1	0.2	0.4		0.3	0.3	0.3	0.5	0.3	0.3	0.2	0.5	0.6
Oth.Country	0.9	1.4	1.2	1.1	1.8	1.4	1.2	1.1		1.3	1.0	1.3	1.5	1.3	1.3	0.8	1.0	1.3
Total	100	100	100	100	100	100	100	100.0		100.0	100.0	100.0	100.0	100.0	100.0	100.0	100.0	100.0

Chart 2: Visitors Arrival by Country of residence by quarter, 4th quarter 2012

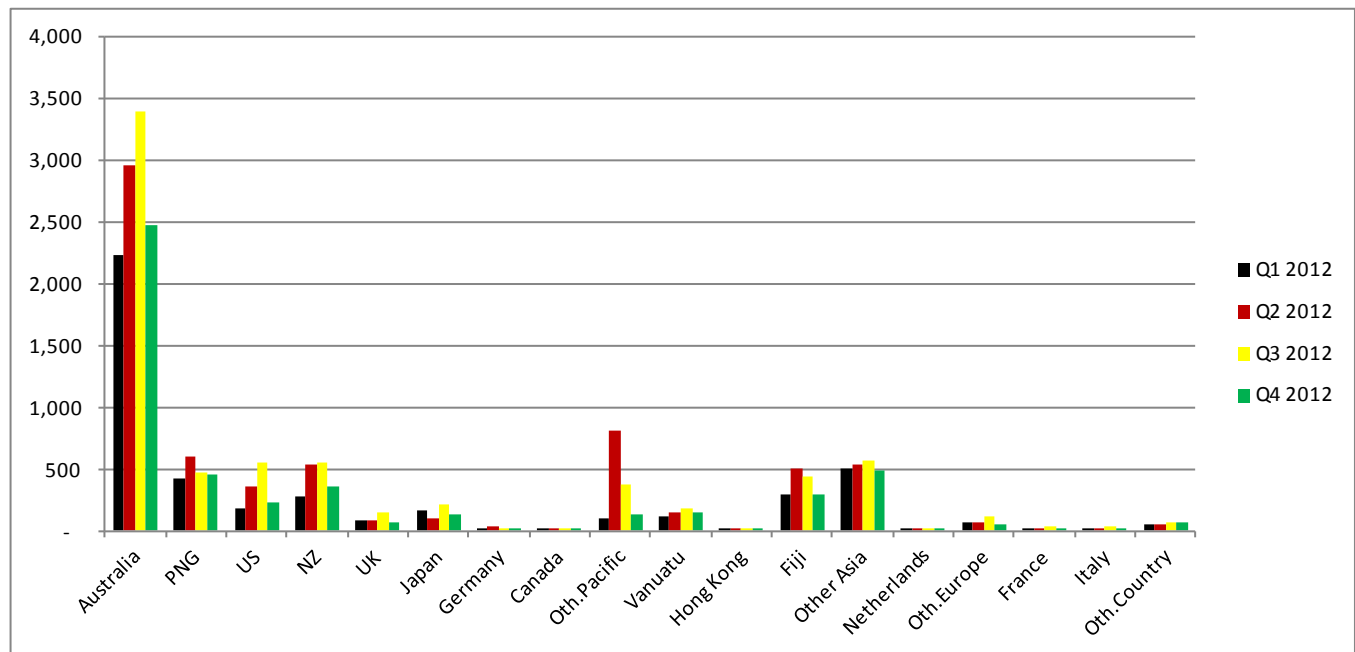


Table 3: Visitor Arrivals by Month: 2006 – 4th Quarter 2012

Month	2006	2007	2008	2009	2010	2011	2012
January	952	546	889	1,602	1,235	1,600	1,383
February	838	1,020	1,282	1,422	1,209	1,658	1,591
March	972	1,251	802	1,249	1,766	1,861	1,677
April	994	1,452	1,388	1,499	1,820	1,736	1,839
May	858	1,137	1,261	1,393	1,137	1,760	1,968
June	1,289	1,265	1,552	1,724	1,797	2,009	3,122
July	865	822	1,692	1,603	2,264	2,185	2,865
August	892	1,299	1,469	1,520	1,845	1,900	2,133
September	681	1,299	1,457	1,659	2,153	2,159	2,309
October	942	1,260	1,399	1,709	1,813	1,931	1,929
November	1,118	1,246	1,545	1,475	1,624	2,195	1,545
December	1,081	1,151	1,528	1,405	1,858	1,947	1,564
Total	11,482	13,748	16,264	18,260	20,521	22,941	23,925
	Percentage						
January	8.3	4.0	5.5	8.8	5.5	7.0	5.8
February	7.3	7.4	7.9	7.8	5.4	7.2	6.6
March	8.5	9.1	4.9	6.8	7.8	8.1	7.0
April	8.7	10.6	8.5	8.2	8.1	7.6	7.7
May	7.5	8.3	7.8	7.6	5.0	7.7	8.2
June	11.2	9.2	9.5	9.4	8.0	8.8	13.0
July	7.5	6.0	10.4	8.8	10.0	9.5	12.0
August	7.8	9.4	9.0	8.3	8.2	8.3	8.9
September	5.9	9.4	9.0	9.1	9.6	9.4	9.7
October	8.2	9.2	8.6	9.4	8.0	8.4	8.1
November	9.7	9.1	9.5	8.1	7.2	9.6	6.5
December	9.4	8.4	9.4	7.7	8.2	8.5	6.5
Total	100	100.0	100.0	100.0	100.0	100.0	100.0

Chart 3: Visitors Arrival by month, 2009 – 4th quarter 2012

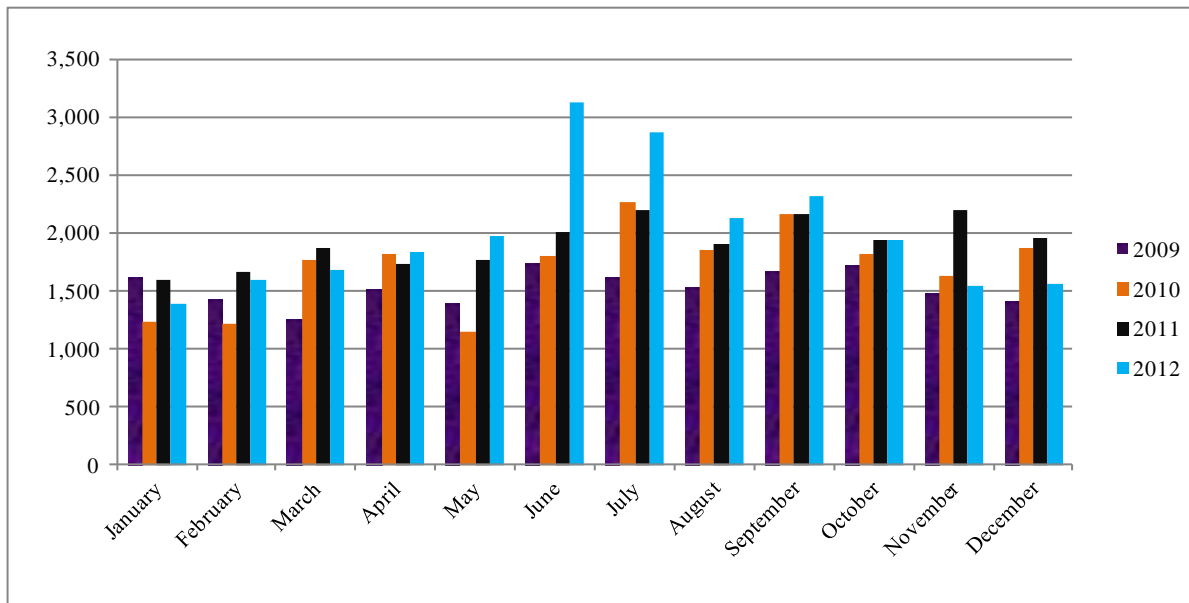


Table 4: Visitors, classified as tourists by Country of residence by year, quarter and average length of stay: 2nd Quarter 2010 – 4th Quarter 2012

Country of Usual Residence	2010						2011								2012							
	Quarter 2		Quarter 3		Quarter 4		Quarter 1		Quarter 2		Quarter 3		Quarter 4		Quarter 1		Quarter 2		Quarter 3		Quarter 4	
	tourist	day	tourist	day	tourist	day	tourist	day	tourist	day	tourist	day	tourist	day	tourist	day	tourist	day	tourist	day	tourist	day
Australia	756	11	1,010	12	854	15	611	14	872	13	1,034	15	915	20	511	12	891	13	1193	12	808	14
PNG	41	11	36	15	60	27	34	13	53	15	72	16	67	30	23	14	54	13	58	15	66	20
US	122	11	166	12	114	13	91	11	104	16	191	13	102	13	65	10	182	12	251	10	116	11
NZ	62	14	140	14	65	19	29	23	56	15	102	17	70	20	24	11	69	13	115	12	57	16
UK	48	19	72	23	54	13	26	19	49	25	42	23	34	16	25	18	28	32	36	20	40	18
Japan	23	5	56	12	94	6	45	12	24	10	95	15	51	7	53	7	41	7	92	9	52	7
Germany	23	13	13	17	13	14	15	35	12	13	24	17	17	12	14	18	21	20	15	12	12	17
Canada	8	33	7	12	11	14	27	17	8	23	14	14	28	15	8	15	10	22	12	15	13	11
Oth.Pacific	8	7	16	12	23	27	19	15	14	12	15	16	21	23	11	14	38	14	68	13	7	17
Vanuatu	9	15	10	18	12	14	20	15	13	14	20	17	27	25	21	7	15	10	19	10	25	19
Hong Kong	-	-	8	10	2	3	5	5	7	8	11	12	23	19	3	18	6	16	8	9	10	20
Fiji	10	25	15	31	21	29	15	13	23	18	26	20	20	21	22	19	29	26	42	20	22	32
Oth.Asia	106	19	126	13	107	23	127	20	103	25	142	22	81	16	107	22	101	22	126	29	104	24
Netherlands	4	15	6	15	5	7	6	34	5	18	9	20	10	20	5	21	7	27	10	14	7	15
Oth.Europe	33	17	72	16	34	16	35	18	32	14	37	18	26	18	43	14	43	14	86	13	17	20
France	13	23	9	16	8	21	4	28	5	17	15	20	4	12	14	16	2	25	19	13	1	14
Italy	1	8	11	17	5	52	5	22	5	10	6	18	18	19	4	21	1	30	28	13	13	54
Oth.Country	15	9	24	14	14	18	23	12	14	21	26	16	44	16	14	9	9	18	30	12	20	12
Total	1,282	12	1,797	13	1,496	18	1,137	16	1,399	15	1,881	16	1,558	15	967	13	1,547	14	2,208	13	1,390	16

Chart 4: Tourist Arrivals by Country of Residence, 4th Quarter 2012

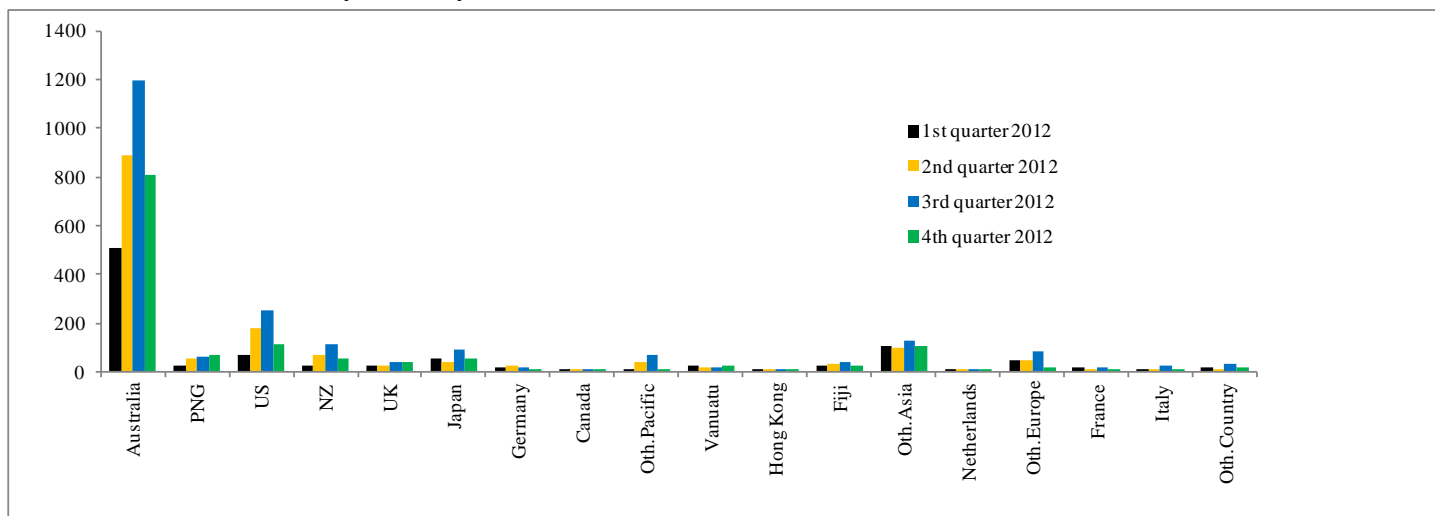


Table 5: Visitor Arrivals by Country of Residence by Purpose of Visit by sex: 4th Quarter 2012

Country of Usual Residence	Business & Conference			Holiday & Vocation			Transit & Stopover			Visit friends/Relatives			Other			Total		
	M	F	T	M	F	T	M	F	T	M	F	T	M	F	T	M	F	All
Australia	497	140	637	468	331	799	8	1	9	200	193	393	489	147	636	1,662	812	2,474
PNG	119	42	161	36	25	61	3	2	5	32	29	61	151	25	176	341	123	464
US	48	19	67	75	39	114	1	1	2	10	-	10	31	10	41	165	69	234
NZ	103	22	125	38	19	57	-	-	-	32	20	52	102	21	123	275	82	357
UK	10	8	18	20	20	40	-	-	-	1	2	3	6	2	8	37	32	69
Japan	48	7	55	34	18	52	-	-	-	7	4	11	8	3	11	97	32	129
Germany	4	-	4	7	5	12	-	-	-	2	2	4	3	3	6	16	10	26
Canada	4	5	9	9	4	13	-	-	-	2	1	3	2	-	2	17	10	27
Oth.Pacific	61	28	89	6	1	7	-	-	-	6	6	12	22	5	27	95	40	135
Vanuatu	53	23	76	7	7	14	7	4	11	6	4	10	25	11	36	98	49	147
Hong Kong	5	2	7	7	3	10	-	-	-	5	2	7	1	-	1	18	7	25
Fiji	96	48	144	12	9	21	-	1	1	33	25	58	57	20	77	198	103	301
Oth.Asia	170	16	186	80	15	95	9	-	9	65	7	72	103	19	122	427	57	484
Netherlands	2	1	3	5	2	7	-	-	-	1	-	1	-	-	-	8	3	11
Oth.Europe	19	3	22	14	2	16	1	-	1	3	1	4	6	1	7	43	7	50
France	2	1	3	1	-	1	-	-	-	-	1	1	2	2	4	5	4	9
Italy	5	2	7	12	1	13	-	-	-	2	1	3	3	2	5	22	6	28
Oth.Country	17	7	24	13	7	20	-	-	-	2	2	4	16	4	20	48	20	68
Total	1,263	374	1,637	844	508	1,352	29	9	38	409	300	709	1,027	275	1,302	3,572	1,466	5,038
Percentage																		
Australia	20.1	5.7	25.7	18.9	13.4	32.3	0.3	-	0.4	8.1	7.8	15.9	19.8	5.9	25.7	67.2	32.8	100.0
PNG	25.6	9.1	34.7	7.8	5.4	13.1	0.6	0.4	1.1	6.9	6.3	13.1	32.5	5.4	37.9	73.5	26.5	100.0
US	20.5	8.1	28.6	32.1	16.7	48.7	0.4	0.4	0.9	4.3	-	4.3	13.2	4.3	17.5	70.5	29.5	100.0
NZ	28.9	6.2	35.0	10.6	5.3	16.0	-	-	-	9.0	5.6	14.6	28.6	5.9	34.5	77.0	23.0	100.0
UK	14.5	11.6	26.1	29.0	29.0	58.0	-	-	-	1.4	2.9	4.3	8.7	2.9	11.6	53.6	46.4	100.0
Japan	37.2	5.4	42.6	26.4	14.0	40.3	-	-	-	5.4	3.1	8.5	6.2	2.3	8.5	75.2	24.8	100.0
Germany	15.4	-	15.4	26.9	19.2	46.2	-	-	-	7.7	7.7	15.4	11.5	11.5	23.1	61.5	38.5	100.0
Canada	14.8	18.5	33.3	33.3	14.8	48.1	-	-	-	7.4	3.7	11.1	7.4	0.0	7.4	63.0	37.0	100.0
Oth.Pacific	45.2	20.7	65.9	4.4	0.7	5.2	-	-	-	4.4	4.4	8.9	16.3	3.7	20.0	70.4	29.6	100.0
Vanuatu	36.1	15.6	51.7	4.8	4.8	9.5	4.8	2.7	7.5	4.1	2.7	6.8	17.0	7.5	24.5	66.7	33.3	100.0
Hong Kong	20.0	8.0	28.0	28.0	12.0	40.0	-	-	-	20.0	8.0	28.0	4.0	-	4.0	72.0	28.0	100.0
Fiji	31.9	15.9	47.8	4.0	3.0	7.0	-	0.3	0.3	11.0	8.3	19.3	18.9	6.6	25.6	65.8	34.2	100.0
Oth.Asia	35.1	3.3	38.4	16.5	3.1	19.6	1.9	-	1.9	13.4	1.4	14.9	21.3	3.9	25.2	88.2	11.8	100.0
Netherlands	18.2	9.1	27.3	45.5	18.2	63.6	-	-	-	9.1	-	9.1	-	-	-	72.7	27.3	100.0
Oth.Europe	38.0	6.0	44.0	28.0	4.0	32.0	2.0	-	2.0	6.0	2.0	8.0	12.0	2.0	14.0	86.0	14.0	100.0
France	22.2	11.1	33.3	11.1	-	11.1	-	-	-	0.0	11.1	11.1	22.2	22.2	44.4	55.6	44.4	100.0
Italy	17.9	7.1	25.0	42.9	3.6	46.4	-	-	-	7.1	3.6	10.7	10.7	7.1	17.9	78.6	21.4	100.0
Oth.Country	25.0	10.3	35.3	19.1	10.3	29.4	-	-	-	2.9	2.9	5.9	23.5	5.9	29.4	70.6	29.4	100.0
Total	25.1	7.4	32.5	16.8	10.1	26.8	0.6	0.2	0.8	8.1	6.0	14.1	20.4	5.5	25.8	70.9	29.1	100.0

Chart 5: Visitors Arrival by Country of Residence by Purpose of Visit, 4th quarter 2012

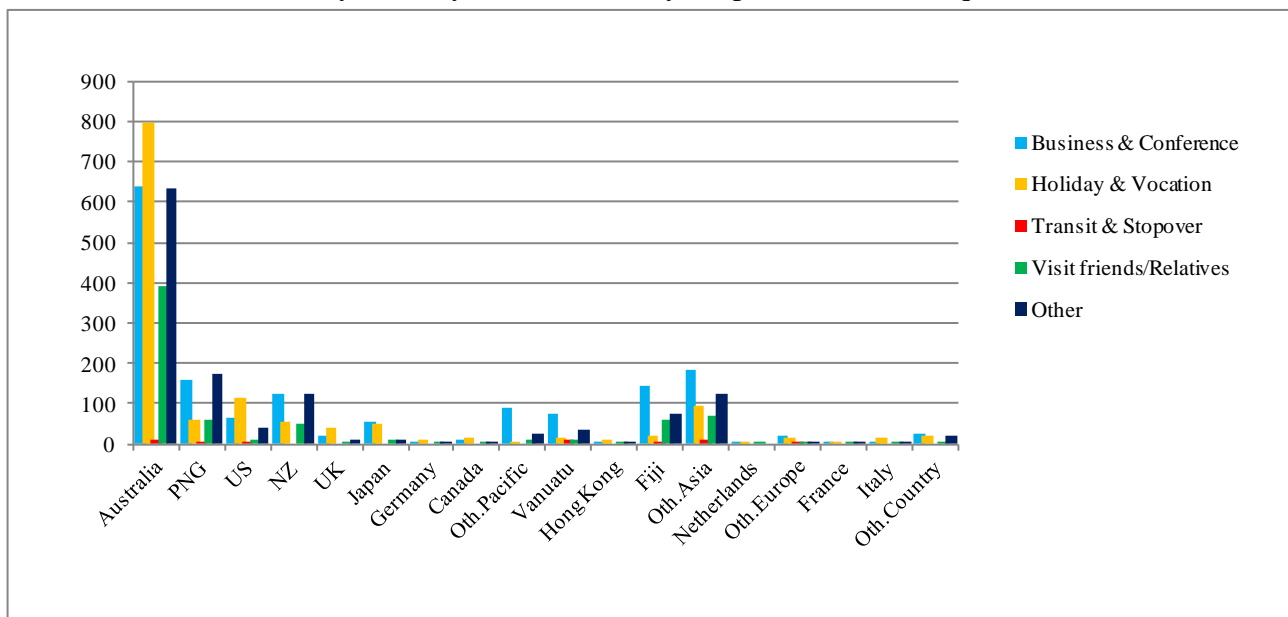


Table 6: Visitor Arrivals by Country of Residence by Age Groups by Sex: 4th Quarter 2012

Country of Usual Residence	Age-Group																		
	0-14		15-24		25-34		35-44		45-54		55-64		65+		Not Stated		Total		
	M	F	M	F	M	F	M	F	M	F	M	F	M	F	M	F	M	F	All
Australia	57	56	131	137	258	152	388	138	350	142	297	106	133	39	48	42	1,662	812	2,474
PNG	9	11	18	15	60	21	107	32	89	27	36	9	3	19	8	341	123	464	
US	2	1	8	4	15	7	26	9	40	12	41	22	24	10	9	4	165	69	234
NZ	7	9	26	9	42	17	48	15	67	15	60	9	19	4	6	4	275	82	357
UK	-	1	3	3	7	6	9	7	8	6	5	4	5	4	-	1	37	32	69
Japan	-	-	2	3	13	10	22	2	28	1	15	1	15	13	2	2	97	32	129
Germany	-	-	1	1	3	2	4	3	1	4	6	-	-	-	1	-	16	10	26
Canada	-	-	1	-	2	2	2	2	3	2	8	3	1	1	-	-	17	10	27
Oth.Pacific	1	1	2	6	11	15	31	10	29	4	12	2	3	1	6	1	95	40	135
Vanuatu	3	1	11	5	12	12	29	10	22	9	11	6	3	2	7	4	98	49	147
Hong Kong	-	-	1	1	2	-	4	3	6	1	1	2	2	-	2	-	18	7	25
Fiji	7	4	10	10	40	20	53	27	45	24	24	13	6	1	13	4	198	103	301
Oth.Asia	1	2	24	8	85	16	119	13	99	7	75	6	11	-	13	5	427	57	484
Netherlands	-	-	-	-	-	-	3	1	3	1	2	1	-	-	-	-	8	3	11
Oth.Europe	-	-	2	-	9	1	3	-	13	2	11	1	4	3	1	-	43	7	50
France	-	-	2	1	2	-	-	3	1	-	-	-	-	-	-	-	5	4	9
Italy	-	-	-	-	1	1	4	1	5	2	10	1	2	1	-	-	22	6	28
Oth.Country	-	-	3	-	7	4	12	9	12	3	7	4	6	-	1	-	48	20	68
Total	87	86	245	203	569	286	864	285	821	262	621	190	237	79	128	75	3,572	1,466	5,038
Percentage																			
Australia	2.3	2.3	5.3	5.5	10.4	6.1	15.7	5.6	14.1	5.7	12.0	4.3	5.4	1.6	1.9	1.7	67.2	32.8	100.0
PNG	1.9	2.4	3.9	3.2	12.9	4.5	23.1	6.9	19.2	5.8	7.8	1.9	0.6	-	4.1	1.7	73.5	26.5	100.0
US	0.9	0.4	3.4	1.7	6.4	3.0	11.1	3.8	17.1	5.1	17.5	9.4	10.3	4.3	3.8	1.7	70.5	29.5	100.0
NZ	2.0	2.5	7.3	2.5	11.8	4.8	13.4	4.2	18.8	4.2	16.8	2.5	5.3	1.1	1.7	1.1	77.0	23.0	100.0
UK	-	1.4	4.3	4.3	10.1	8.7	13.0	10.1	11.6	8.7	7.2	5.8	7.2	5.8	-	1.4	53.6	46.4	100.0
Japan	-	-	1.6	2.3	10.1	7.8	17.1	1.6	21.7	0.8	11.6	0.8	11.6	10.1	1.6	1.6	75.2	24.8	100.0
Germany	-	-	3.8	3.8	11.5	7.7	15.4	11.5	3.8	15.4	23.1	-	-	-	3.8	-	61.5	38.5	100.0
Canada	-	-	3.7	-	7.4	7.4	7.4	7.4	11.1	7.4	29.6	11.1	3.7	3.7	-	-	63.0	37.0	100.0
Oth.Pacific	0.7	0.7	1.5	4.4	8.1	11.1	23.0	7.4	21.5	3.0	8.9	1.5	2.2	0.7	4.4	0.7	70.4	29.6	100.0
Vanuatu	2.0	0.7	7.5	3.4	8.2	8.2	19.7	6.8	15.0	6.1	7.5	4.1	2.0	1.4	4.8	2.7	66.7	33.3	100.0
Hong Kong	-	-	4.0	4.0	8.0	-	16.0	12.0	24.0	4.0	4.0	8.0	8.0	-	8.0	0.0	72.0	28.0	100.0
Fiji	2.3	1.3	3.3	3.3	13.3	6.6	17.6	9.0	15.0	8.0	8.0	4.3	2.0	0.3	4.3	1.3	65.8	34.2	100.0
Oth.Asia	0.2	0.4	5.0	1.7	17.6	3.3	24.6	2.7	20.5	1.4	15.5	1.2	2.3	-	2.7	1.0	88.2	11.8	100.0
Netherlands	-	-	-	-	-	-	27.3	9.1	27.3	9.1	18.2	9.1	0.0	-	-	-	72.7	27.3	100.0
Oth.Europe	-	-	4.0	-	18.0	2.0	6.0	-	26.0	4.0	22.0	2.0	8.0	6.0	2.0	-	86.0	14.0	100.0
France	-	-	22.2	11.1	22.2	-	0.0	33.3	11.1	-	-	-	-	-	-	-	55.6	44.4	100.0
Italy	-	-	-	-	3.6	3.6	14.3	3.6	17.9	7.1	35.7	3.6	7.1	3.6	-	-	78.6	21.4	100.0
Oth.Country	-	-	4.4	-	10.3	5.9	17.6	13.2	17.6	4.4	10.3	5.9	8.8	-	1.5	-	70.6	29.4	100.0
Total	1.7	1.7	4.9	4.0	11.3	5.7	17.1	5.7	16.3	5.2	12.3	3.8	4.7	1.6	2.5	1.5	70.9	29.1	100.0

Chart 6: Visitor Arrivals by Age group category by sex, 4th quarter 2012

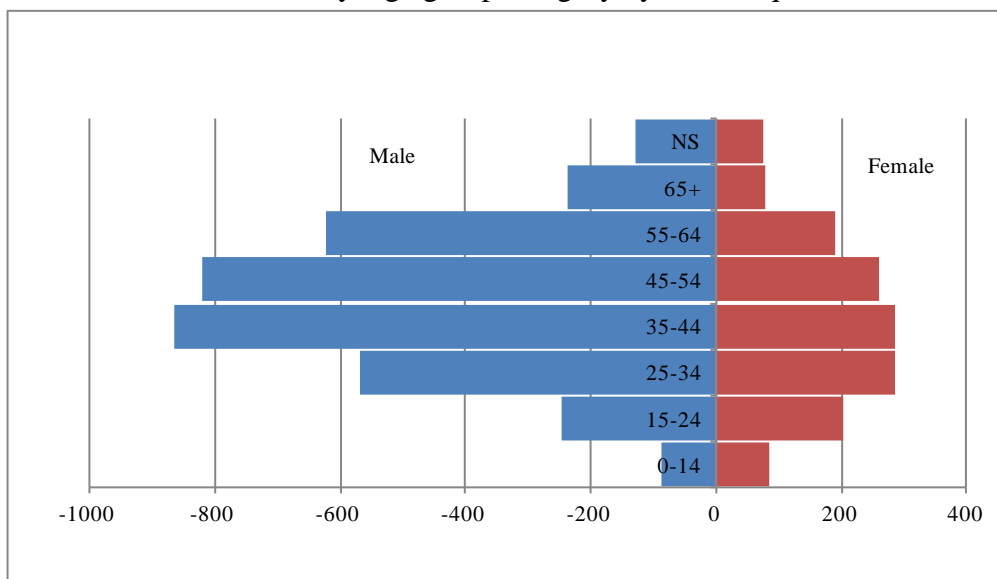


Table 7: Visitor Arrivals by Country of Residence by Occupation and Sex: 4th Quarter 2012

Country of Usual Residence	Professional and Technical		Administration and Managerial		Clerical & Related Work		Sales Worker		Service Worker		Agriculture Forestry Fishery		Production & Related Work		Other		No Work		Total		
	M	F	M	F	M	F	M	F	M	F	M	F	M	F	M	F	M	F	M	F	All
	Australia	566	352	209	50	4	8	17	5	91	52	15	1	100	1	569	278	91	65	1,662	812
PNG	103	56	35	7	-	2	1	-	14	8	7	-	22	2	148	38	11	10	341	123	464
US	65	29	4	4	-	-	2	-	2	3	1	-	-	2	69	22	22	9	165	69	234
NZ	100	25	31	6	-	1	1	-	23	6	2	1	17	-	90	29	11	14	275	82	357
UK	16	11	4	2	-	-	-	-	-	2	-	-	1	-	13	12	3	5	37	32	69
Japan	26	6	6	-	1	-	3	-	-	2	1	1	2	-	49	14	9	9	97	32	129
Germany	6	6	1	1	-	-	-	-	-	-	-	-	-	-	9	3	-	-	16	10	26
Canada	7	1	-	1	-	2	-	-	1	-	-	-	-	-	5	5	4	1	17	10	27
Oth.Pacific	17	15	8	-	2	2	-	-	8	2	-	-	-	-	56	19	4	2	95	40	135
Vanuatu	35	15	-	5	3	3	-	-	8	13	2	-	3	-	35	12	12	1	98	49	147
Hong Kong	5	-	3	2	2	-	-	-	-	1	-	-	-	-	7	4	1	-	18	7	25
Fiji	64	41	26	5	5	-	3	1	15	6	10	1	3	1	64	40	8	8	198	103	301
Oth.Asia	71	14	52	3	3	-	67	1	4	6	9	1	28	1	158	25	35	6	427	57	484
Netherlands	1	-	1	-	-	-	-	-	-	-	-	-	-	-	6	2	-	1	8	3	11
Oth.Europe	10	2	3	1	-	-	2	-	-	-	-	-	2	-	21	1	5	3	43	7	50
France	2	2	-	-	-	-	1	-	-	-	-	-	-	-	2	2	-	-	5	4	9
Italy	4	4	1	-	1	-	-	-	-	1	-	-	1	-	12	-	3	1	22	6	28
Oth.Country	18	7	7	1	-	-	-	-	1	6	1	-	-	-	19	6	2	-	48	20	68
Total	1116	586	391	88	21	18	97	7	167	108	47	5	179	7	1332	512	221	135	3,572	1,466	5,038
<u>Percentage</u>																					
Australia	22.9	14.2	8.4	2.0	0.2	0.3	0.7	0.2	3.7	2.1	0.6	-	4.0	-	23.0	11.2	3.7	2.6	67.2	32.8	100.0
PNG	22.2	12.1	7.5	1.5	-	0.4	0.2	-	3.0	1.7	1.5	-	4.7	0.4	31.9	8.2	2.4	2.2	73.5	26.5	100.0
US	27.8	12.4	1.7	1.7	-	-	0.9	-	0.9	1.3	0.4	-	-	0.9	29.5	9.4	9.4	3.8	70.5	29.5	100.0
NZ	28.0	7.0	8.7	1.7	-	0.3	0.3	-	6.4	1.7	0.6	0.3	4.8	-	25.2	8.1	3.1	3.9	77.0	23.0	100.0
UK	23.2	15.9	5.8	2.9	-	-	-	-	-	2.9	-	-	1.4	-	18.8	17.4	4.3	7.2	53.6	46.4	100.0
Japan	20.2	4.7	4.7	-	0.8	-	2.3	-	-	1.6	0.8	0.8	1.6	-	38.0	10.9	7.0	7.0	75.2	24.8	100.0
Germany	23.1	23.1	3.8	3.8	-	-	-	-	-	-	-	-	-	-	34.6	11.5	-	-	61.5	38.5	100.0
Canada	25.9	3.7	-	3.7	-	7.4	-	-	3.7	-	-	-	-	-	18.5	18.5	14.8	3.7	63.0	37.0	100.0
Oth.Pacific	12.6	11.1	5.9	-	1.5	1.5	-	-	5.9	1.5	-	-	-	-	41.5	14.1	3.0	1.5	70.4	29.6	100.0
Vanuatu	23.8	10.2	-	3.4	2.0	2.0	-	-	5.4	8.8	1.4	-	2.0	-	23.8	8.2	8.2	0.7	66.7	33.3	100.0
Hong Kong	20.0	-	12.0	8.0	8.0	-	-	-	-	4.0	-	-	-	-	28.0	16.0	4.0	-	72.0	28.0	100.0
Fiji	21.3	13.6	8.6	1.7	1.7	-	1.0	0.3	5.0	2.0	3.3	0.3	1.0	0.3	21.3	13.3	2.7	2.7	65.8	34.2	100.0
Oth.Asia	14.7	2.9	10.7	0.6	0.6	-	13.8	0.2	0.8	1.2	1.9	0.2	5.8	0.2	32.6	5.2	7.2	1.2	88.2	11.8	100.0
Netherlands	9.1	-	9.1	-	-	-	-	-	-	-	-	-	-	-	54.5	18.2	-	9.1	72.7	27.3	100.0
Oth.Europe	20.0	4.0	6.0	2.0	-	-	4.0	-	-	-	-	-	4.0	-	42.0	2.0	10.0	6.0	86.0	14.0	100.0
France	22.2	22.2	-	-	-	-	11.1	-	-	-	-	-	-	-	22.2	22.2	-	-	55.6	44.4	100.0
Italy	14.3	14.3	3.6	-	3.6	-	-	-	-	3.6	-	-	3.6	-	42.9	-	10.7	3.6	78.6	21.4	100.0
Oth.Country	26.5	10.3	10.3	1.5	-	-	-	-	1.5	8.8	1.5	-	-	-	27.9	8.8	2.9	-	70.6	29.4	100.0
Total	22.2	11.6	7.8	1.7	0.4	0.4	1.9	0.1	3.3	2.1	0.9	0.1	3.6	0.1	26.4	10.2	4.4	2.7	70.9	29.1	100.0

Chart 7: Visitors Arrival by occupation by sex, 4th quarter 2012

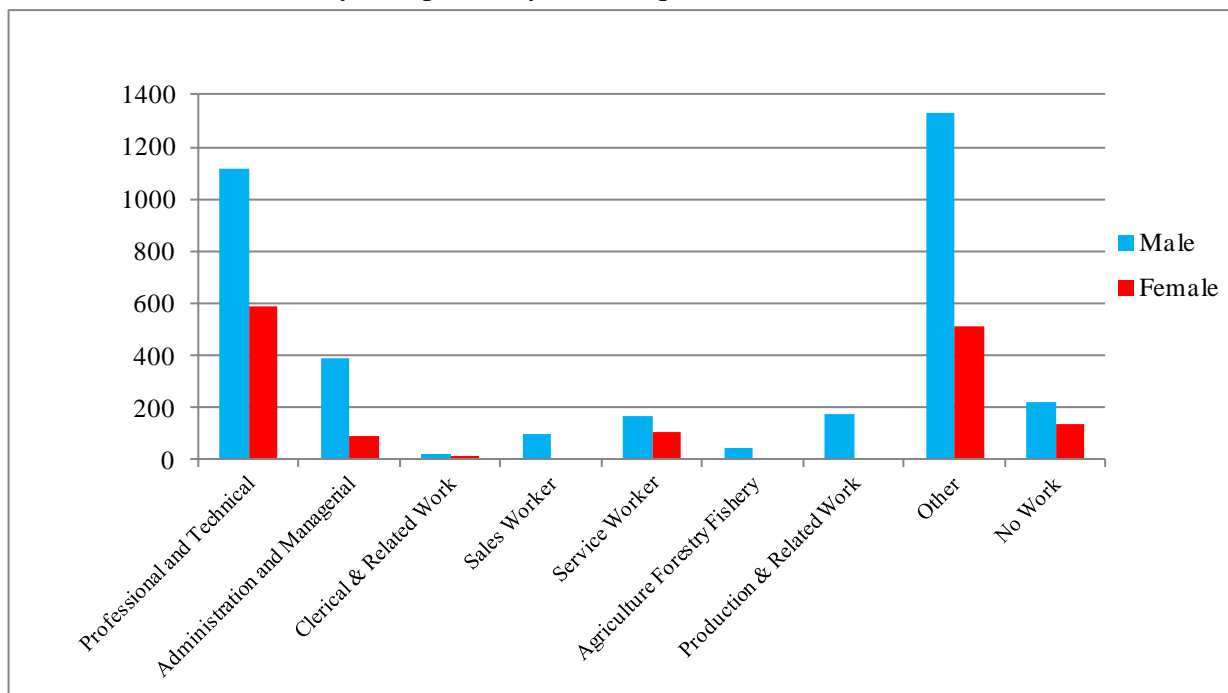
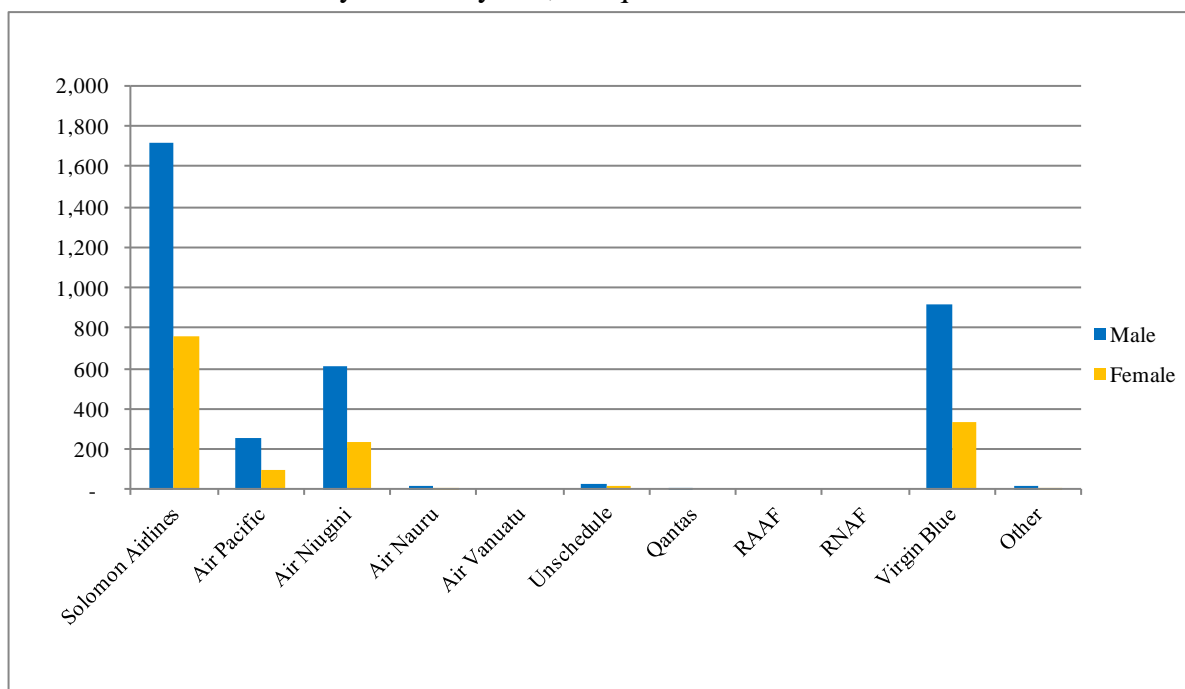


Table 8: Visitor Arrivals by Country of residence by Carrier by Sex: 4th Quarter 2012

Country of Usual Residence	Solomon Airlines		Air Pacific		Air Niugini		Air Nauru		Air Vanuatu		Unschedule		Qantas		RAAF		RNAS		Virgin Blue		Other		Total		
	M	F	M	F	M	F	M	F	M	F	M	F	M	F	M	F	M	F	M	F	M	F	M	F	All
	Australia	986	536	11	7	39	10	4	-	-	-	8	4	-	-	-	-	-	-	597	245	17	10	1,662	812
PNG	29	7	2	1	303	113	-	-	-	-	-	-	-	-	-	-	-	-	7	2	-	-	341	123	464
US	37	20	52	16	38	24	2	-	-	-	2	-	-	-	-	-	-	-	34	9	-	-	165	69	234
NZ	99	29	6	1	6	3	4	1	-	-	12	10	-	-	-	-	-	-	148	38	-	-	275	82	357
UK	19	21	3	-	4	-	1	-	-	-	-	-	-	-	-	-	-	-	10	11	-	-	37	32	69
Japan	28	6	7	-	56	24	-	1	-	-	-	-	-	-	-	-	-	-	6	1	-	-	97	32	129
Germany	7	5	3	1	4	2	-	-	-	-	-	-	-	-	-	-	-	-	2	2	-	-	16	10	26
Canada	8	6	3	1	2	1	-	-	-	-	-	-	-	-	-	-	-	-	4	2	-	-	17	10	27
Oth.Pacific	49	18	11	10	23	5	1	-	-	-	-	-	-	-	-	-	-	-	11	7	-	-	95	40	135
Vanuatu	23	11	63	31	7	4	-	-	-	-	-	-	-	-	-	-	-	-	5	3	-	-	98	49	147
Hong Kong	14	5	1	-	-	-	-	-	-	-	-	-	-	-	-	-	-	-	3	2	-	-	18	7	25
Fiji	49	38	74	24	53	38	4	2	-	-	-	-	1	-	-	-	-	-	17	1	-	-	198	103	301
Oth.Asia	288	41	14	4	69	8	-	-	-	-	-	-	-	-	-	-	-	-	55	4	1	-	427	57	484
Netherlands	6	2	2	1	-	-	-	-	-	-	-	-	-	-	-	-	-	-	-	-	-	-	8	3	11
Oth.Europe	30	4	2	-	2	1	-	-	-	-	-	-	-	-	-	-	-	-	8	2	1	-	43	7	50
France	3	2	-	2	1	-	-	-	-	-	-	-	-	-	-	-	-	-	1	-	-	-	5	4	9
Italy	15	3	-	-	3	2	-	-	-	-	-	-	-	-	-	-	-	-	4	1	-	-	22	6	28
Oth.Country	33	8	-	1	4	1	-	-	-	-	3	4	-	-	-	-	-	-	8	6	-	-	48	20	68
Total	1,723	762	254	100	614	236	16	4	-	-	25	18	1	-	-	-	-	-	920	336	19	10	3,572	1,466	5,038
Percentage																									
Australia	39.9	21.7	0.4	0.3	1.6	0.4	0.2	-	-	-	0.3	0.2	-	-	-	-	-	-	24.1	9.9	0.7	0.4	67.2	32.8	100.0
PNG	6.3	1.5	0.4	0.2	65.3	24.4	-	-	-	-	-	-	-	-	-	-	-	-	1.5	0.4	-	-	73.5	26.5	100.0
US	15.8	8.5	22.2	6.8	16.2	10.3	0.9	-	-	-	0.9	-	-	-	-	-	-	-	14.5	3.8	-	-	70.5	29.5	100.0
NZ	27.7	8.1	1.7	0.3	1.7	0.8	1.1	0.3	-	-	3.4	2.8	-	-	-	-	-	-	41.5	10.6	-	-	77.0	23.0	100.0
UK	27.5	30.4	4.3	-	5.8	-	1.4	-	-	-	-	-	-	-	-	-	-	-	14.5	15.9	-	-	53.6	46.4	100.0
Japan	21.7	4.7	5.4	-	43.4	18.6	-	0.8	-	-	-	-	-	-	-	-	-	-	4.7	0.8	-	-	75.2	24.8	100.0
Germany	26.9	19.2	11.5	3.8	15.4	7.7	-	-	-	-	-	-	-	-	-	-	-	-	7.7	7.7	-	-	61.5	38.5	100.0
Canada	29.6	22.2	11.1	3.7	7.4	3.7	-	-	-	-	-	-	-	-	-	-	-	-	14.8	7.4	-	-	63.0	37.0	100.0
Oth.Pacific	36.3	13.3	8.1	7.4	17.0	3.7	0.7	-	-	-	-	-	-	-	-	-	-	-	8.1	5.2	-	-	70.4	29.6	100.0
Vanuatu	15.6	7.5	42.9	21.1	4.8	2.7	-	-	-	-	-	-	-	-	-	-	-	-	3.4	2.0	-	-	66.7	33.3	100.0
Hong Kong	56.0	20.0	4.0	-	-	-	-	-	-	-	-	-	-	-	-	-	-	-	12.0	8.0	-	-	72.0	28.0	100.0
Fiji	16.3	12.6	24.6	8.0	17.6	12.6	1.3	0.7	-	-	-	-	0.3	-	-	-	-	-	5.6	0.3	-	-	65.8	34.2	100.0
Oth.Asia	59.5	8.5	2.9	0.8	14.3	1.7	-	-	-	-	-	-	-	-	-	-	-	-	11.4	0.8	0.2	-	88.2	11.8	100.0
Netherlands	54.5	18.2	18.2	9.1	-	-	-	-	-	-	-	-	-	-	-	-	-	-	-	-	-	-	72.7	27.3	100.0
Oth.Europe	60.0	8.0	4.0	-	4.0	2.0	-	-	-	-	-	-	-	-	-	-	-	-	16.0	4.0	2.0	-	86.0	14.0	100.0
France	33.3	22.2	-	22.2	11.1	-	-	-	-	-	-	-	-	-	-	-	-	-	11.1	-	-	-	55.6	44.4	100.0
Italy	53.6	10.7	-	-	10.7	7.1	-	-	-	-	-	-	-	-	-	-	-	-	14.3	3.6	-	-	78.6	21.4	100.0
Oth.Country	48.5	11.8	-	1.5	5.9	1.5	-	-	-	-	4.4	5.9	-	-	-	-	-	-	11.8	8.8	-	-	70.6	29.4	100.0
Total	34.2	15.1	5.0	2.0	12.2	4.7	0.3	0.1	-	-	0.5	0.4	-	-	-	-	-	-	18.3	6.7	0.4	0.2	70.9	29.1	100.0

Chart 8: Visitor Arrivals by Carrier by Sea, 4th quarter 2012



Appendix 1

Concepts and Definitions

Persons entering Solomon Islands classify themselves into three (3) categories; returning resident, intending resident, and visitor. The concepts and definitions of the various categories are as follows:

(i) *Returning residents*

- Solomon Islanders and non-Solomon Islanders who have left the country and are returning to continue their residence.
- Non Solomon Islanders includes resident permit holders and Diplomatic officials, and their immediate family members. This may also includes legal or official arrangements that fall out side of the above.

(ii) *Intending residents*

- Non-Solomon Islander who wish to take up residence in Solomon Islands.

(iii) *Visitors*

- Any traveller who is not a Solomon Islander and who purposely spend less time – at most a period of 120 days², in the country and with the intention and purpose of visiting.
- *Tourist*
 - Visitors who further classify themselves stating their visit are purposely for '*holiday and vacation*'. This exclude, tourist arrivals by cruise ships.
 - Wife accompanying husband on business purpose is a private tourist unless also working.
 - *World Tourism Organization WTO definition of Tourism:*
*It comprises the activities of persons travelling to and staying in places outside their usual environment for not more than a year for leisure, business and other purposes not related to the exercise of an activity remunerated from within the place visited*³.

(iv) *Markets*

- *Country of Usual Residence*

² Solomon Islands 1993 Statistical Yearbook.

³ Dimensions of Hospitality, Study guide 1. p17

Appendix 2

Table 9: Intending Resident Arrivals by Country of Residence by Occupation and Sex: 4th Quarter 2012

Country of Usual Residence	Professional and Technical		Administration and Managerial		Clerical & Related Work		Sales Worker		Service Worker		Agriculture Forestry Fishery		Production & Related Work		Other		No Work		Total		
	M	F	M	F	M	F	M	F	M	F	M	F	M	F	M	F	M	F	M	F	All
Australia	28	21	14	12	-	1	-	-	43	13	-	-	2	-	57	47	12	11	156	105	261
PNG	12	8	6	-	-	-	-	-	38	5	1	-	1	1	10	3	5	2	73	19	92
US	3	1	-	-	-	-	-	-	-	-	1	-	1	-	1	2	-	-	6	3	9
NZ	7	6	-	-	-	-	-	-	10	2	-	-	-	-	12	11	1	-	30	19	49
UK	-	2	-	-	-	-	-	-	-	-	-	-	1	-	-	1	-	-	1	3	4
Japan	4	-	-	-	-	-	-	-	-	-	-	-	-	-	6	2	2	-	12	2	14
Germany	-	-	-	-	-	-	-	-	-	-	-	-	-	-	-	-	-	-	-	-	-
Canada	2	-	-	-	1	-	-	-	-	-	-	-	-	-	1	-	-	-	4	-	4
Oth.Pacific	4	1	1	2	-	-	-	-	16	2	-	-	-	-	2	3	3	-	26	8	34
Vanuatu	3	-	-	-	-	-	1	-	4	2	-	-	-	-	2	1	2	-	12	3	15
Hong Kong	1	-	-	-	-	-	-	-	-	-	-	-	-	-	-	-	-	-	1	-	1
Fiji	13	5	1	1	-	1	1	-	3	1	1	-	-	-	4	4	3	-	26	12	38
Oth.Asia	19	6	45	7	-	3	19	1	6	8	11	1	28	-	107	6	39	6	274	38	312
Netherlands	1	-	-	-	-	-	-	-	-	-	-	-	-	-	-	-	-	-	1	-	1
Oth.Europe	-	1	-	-	-	-	-	-	1	-	-	-	2	-	1	-	-	-	4	1	5
France	-	-	-	-	-	-	-	-	-	-	-	-	-	-	-	-	-	-	-	-	-
Italy	-	-	-	-	-	-	-	-	-	-	-	-	-	-	-	-	-	-	-	-	-
Oth.Country	4	-	-	-	-	-	-	-	-	1	-	-	-	-	1	-	1	-	5	2	7
Total	101	51	67	22	1	5	21	1	121	34	14	1	35	1	203	81	68	19	631	215	846
Percentage																					
Australia	10.7	8.0	5.4	4.6	-	0.4	-	-	16.5	5.0	-	-	0.8	-	21.8	18.0	4.6	4.2	59.8	40.2	100.0
PNG	13.0	8.7	6.5	-	-	-	-	-	41.3	5.4	1.1	-	1.1	1.1	10.9	3.3	5.4	2.2	79.3	20.7	100.0
US	33.3	11.1	-	-	-	-	-	-	-	-	11.1	-	11.1	-	11.1	22.2	-	-	66.7	33.3	100.0
NZ	14.3	12.2	-	-	-	-	-	-	20.4	4.1	-	-	-	-	24.5	22.4	2.0	-	61.2	38.8	100.0
UK	-	50.0	-	-	-	-	-	-	-	-	-	-	25.0	-	-	25.0	-	-	25.0	75.0	100.0
Japan	28.6	-	-	-	-	-	-	-	-	-	-	-	-	-	42.9	14.3	14.3	-	85.7	14.3	100.0
Germany	-	-	-	-	-	-	-	-	-	-	-	-	-	-	-	-	-	-	-	-	-
Canada	50.0	-	-	-	25.0	-	-	-	-	-	-	-	-	-	25.0	-	-	-	100.0	-	100.0
Oth.Pacific	11.8	2.9	2.9	5.9	-	-	-	-	47.1	5.9	-	-	-	-	5.9	8.8	8.8	-	76.5	23.5	100.0
Vanuatu	20.0	-	-	-	-	-	6.7	-	26.7	13.3	-	-	-	-	13.3	6.7	13.3	-	80.0	20.0	100.0
Hong Kong	100.0	-	-	-	-	-	-	-	-	-	-	-	-	-	-	-	-	-	100.0	-	100.0
Fiji	34.2	13.2	2.6	2.6	-	2.6	2.6	-	7.9	2.6	2.6	-	-	-	10.5	10.5	7.9	-	68.4	31.6	100.0
Oth.Asia	6.1	1.9	14.4	2.2	-	1.0	6.1	0.3	1.9	2.6	3.5	0.3	9.0	-	34.3	1.9	12.5	1.9	87.8	12.2	100.0
Netherlands	100.0	-	-	-	-	-	-	-	-	-	-	-	-	-	-	-	-	-	100.0	-	100.0
Oth.Europe	-	20.0	-	-	-	-	-	-	20.0	-	-	-	40.0	-	20.0	-	-	-	80.0	20.0	100.0
France	-	-	-	-	-	-	-	-	-	-	-	-	-	-	-	-	-	-	-	-	-
Italy	-	-	-	-	-	-	-	-	-	-	-	-	-	-	-	-	-	-	-	-	-
Oth.Country	57.1	-	-	-	-	-	-	-	-	14.3	-	-	-	-	-	14.3	14.3	-	71.4	28.6	100.0
Total	11.9	6.0	7.9	2.6	0.1	0.6	2.5	0.1	14.3	4.0	1.7	0.1	4.1	0.1	24.0	9.6	8.0	2.2	74.6	25.4	100.0

Table 10: Intending Resident Arrivals by Country of Residence by Age Groups by Sex: 4th Quarter 2012

Country of Usual Residence	Age-Group																		Total		
	0-14		15-24		25-34		35-44		45-54		55-64		65+		Not Stated		M	F	All		
	M	F	M	F	M	F	M	F	M	F	M	F	M	F							
Australia	12	3	6	2	19	28	39	25	38	27	29	10	6	1	7	9	156	105	261		
PNG	1	4	4	1	17	6	27	3	13	1	3	2	1	-	7	2	73	19	92		
US	1	1	-	-	-	1	-	1	3	-	-	-	1	-	1	-	6	3	9		
NZ	1	4	1	-	1	2	10	2	10	2	5	8	-	-	2	1	30	19	49		
UK	-	1	-	-	-	-	-	-	1	2	-	-	-	-	-	-	1	3	4		
Japan	-	-	-	-	4	-	3	1	1	-	2	-	1	-	1	1	12	2	14		
Germany	-	-	-	-	-	-	-	-	-	-	-	-	-	-	-	-	-	-	-		
Canada	-	-	-	-	1	-	-	-	-	-	2	-	-	-	1	-	4	-	4		
Oth.Pacific	4	-	1	2	5	3	11	-	4	3	-	-	-	-	1	-	26	8	34		
Vanuatu	1	-	2	-	2	-	4	3	2	-	1	-	-	-	-	-	12	3	15		
Hong Kong	-	-	-	-	1	-	-	-	-	-	-	-	-	-	-	-	1	-	1		
Fiji	2	-	3	2	6	3	3	1	5	3	2	1	1	-	4	2	26	12	38		
Oth.Asia	7	1	19	6	47	16	84	6	65	4	33	2	1	-	18	3	274	38	312		
Netherlands	-	-	-	-	-	-	1	-	-	-	-	-	-	-	-	-	1	-	1		
Oth.Europe	-	-	-	-	-	1	3	-	-	-	1	-	-	-	-	-	4	1	5		
France	-	-	-	-	-	-	-	-	-	-	-	-	-	-	-	-	-	-	-		
Italy	-	-	-	-	-	-	-	-	-	-	-	-	-	-	-	-	-	-	-		
Oth.Country	-	-	-	1	-	-	2	1	2	-	1	-	-	-	-	-	5	2	7		
Total	29	14	36	14	103	60	187	43	144	42	79	23	11	1	42	18	631	215	846		
	Percentage																				
Australia	4.6	1.1	2.3	0.8	7.3	10.7	14.9	9.6	14.6	10.3	11.1	3.8	2.3	0.4	2.7	3.4	59.8	40.2	100.0		
PNG	1.1	4.3	4.3	1.1	18.5	6.5	29.3	3.3	14.1	1.1	3.3	2.2	1.1	-	7.6	2.2	79.3	20.7	100.0		
US	11.1	11.1	-	-	-	11.1	-	11.1	33.3	-	-	-	11.1	-	11.1	-	66.7	33.3	100.0		
NZ	2.0	8.2	2.0	-	2.0	4.1	20.4	4.1	20.4	4.1	10.2	16.3	-	-	4.1	2.0	61.2	38.8	100.0		
UK	-	25.0	-	-	-	-	-	-	25.0	50.0	-	-	-	-	-	-	25.0	75.0	100.0		
Japan	-	-	-	-	28.6	-	21.4	7.1	7.1	-	14.3	-	7.1	-	7.1	7.1	85.7	14.3	100.0		
Germany	-	-	-	-	-	-	-	-	-	-	-	-	-	-	-	-	-	-	-		
Canada	-	-	-	-	25.0	-	-	-	-	-	50.0	-	-	-	25.0	-	100.0	-	100.0		
Oth.Pacific	11.8	-	2.9	5.9	14.7	8.8	32.4	-	11.8	8.8	-	-	-	-	2.9	-	76.5	23.5	100.0		
Vanuatu	6.7	-	13.3	-	13.3	-	26.7	20.0	13.3	-	6.7	-	-	-	-	-	80.0	20.0	100.0		
Hong Kong	-	-	-	-	100.0	-	-	-	-	-	-	-	-	-	-	-	100.0	-	100.0		
Fiji	5.3	-	7.9	5.3	15.8	7.9	7.9	2.6	13.2	7.9	5.3	2.6	2.6	-	10.5	5.3	68.4	31.6	100.0		
Oth.Asia	2.2	-	6.1	1.9	15.1	5.1	26.9	1.9	20.8	1.3	10.6	0.6	0.3	-	5.8	1.0	87.8	12.2	100.0		
Netherlands	-	-	-	-	-	-	100.0	-	-	-	-	-	-	-	-	-	100.0	-	100.0		
Oth.Europe	-	-	-	-	-	20.0	60.0	-	-	-	20.0	-	-	-	-	-	80.0	20.0	100.0		
France	-	-	-	-	-	-	-	-	-	-	-	-	-	-	-	-	-	-	-		
Italy	-	-	-	-	-	-	-	-	-	-	-	-	-	-	-	-	-	-	-		
Oth.Country	-	-	-	14.3	-	-	28.6	14.3	28.6	-	14.3	-	-	-	-	-	71.4	28.6	100.0		
Total	3.4	1.7	4.3	1.7	12.2	7.1	22.1	5.1	17.0	5.0	9.3	2.7	1.3	0.1	5.0	2.1	74.6	25.4	100.0		

Table 11: Returning Resident Arrivals by Country of Residence by Age Groups by Sex: 4th Quarter 2012

Country of Usual Residence	Age-Group																		
	0-14		15-24		25-34		35-44		45-54		55-64		65+		Not Stated		Total		
	M	F	M	F	M	F	M	F	M	F	M	F	M	F	M	F	M	F	All
Australia	-	-	-	-	-	-	1	-	-	-	-	1	-	1	-	2	1	3	
PNG	-	-	-	-	-	-	-	-	-	-	-	-	-	-	-	-	-	-	
US	-	-	-	-	-	-	-	-	-	-	-	-	-	-	-	-	-	-	
NZ	-	-	-	-	-	-	1	-	-	-	-	-	-	-	-	1	-	1	
UK	-	-	-	-	-	-	-	-	-	-	-	-	-	-	-	-	-	-	
Japan	-	-	-	-	-	-	-	-	-	-	-	-	-	-	-	-	-	-	
Germany	-	-	-	-	-	-	-	-	-	-	-	-	-	-	-	-	-	-	
Canada	-	-	-	-	-	-	-	-	-	-	-	-	-	-	-	-	-	-	
Oth.Pacific	-	-	-	-	-	-	-	-	-	-	-	-	-	-	-	-	-	-	
Vanuatu	-	-	-	-	1	-	-	-	-	-	-	-	-	-	-	1	-	1	
Hong Kong	-	-	-	-	-	-	-	-	-	-	-	-	-	-	-	-	-	-	
Fiji	-	-	-	-	-	-	-	-	-	-	-	-	-	-	-	-	-	-	
Oth.Asia	-	-	-	-	-	-	-	-	-	-	-	-	-	-	-	-	-	-	
Netherlands	-	-	-	-	-	-	-	-	-	-	-	-	-	-	-	-	-	-	
Oth.Europe	-	-	-	-	-	-	-	-	-	1	-	-	-	-	-	1	-	1	
France	-	-	-	-	-	-	-	-	-	-	-	-	-	-	-	-	-	-	
Italy	-	-	-	-	-	-	-	-	-	-	-	-	-	-	-	-	-	-	
Oth.Country	-	-	-	-	-	-	-	-	-	-	-	-	-	-	-	-	-	-	
Solomon Is.	162	152	662	511	794	387	677	329	459	207	186	72	70	19	182	107	3,192	1,784	4,976
Total	162	152	662	511	795	387	678	330	459	207	187	72	71	19	183	107	3,197	1,785	4,982
<u>Percentage</u>																			
Australia	-	-	-	-	-	-	33.3	-	-	-	-	33.3	-	33.3	-	66.7	33.3	100.0	
PNG	-	-	-	-	-	-	-	-	-	-	-	-	-	-	-	-	-	-	
US	-	-	-	-	-	-	-	-	-	-	-	-	-	-	-	-	-	-	
NZ	-	-	-	-	-	-	100.0	-	-	-	-	-	-	-	-	100.0	-	100.0	
UK	-	-	-	-	-	-	-	-	-	-	-	-	-	-	-	-	-	-	
Japan	-	-	-	-	-	-	-	-	-	-	-	-	-	-	-	-	-	-	
Germany	-	-	-	-	-	-	-	-	-	-	-	-	-	-	-	-	-	-	
Canada	-	-	-	-	-	-	-	-	-	-	-	-	-	-	-	-	-	-	
Oth.Pacific	-	-	-	-	-	-	-	-	-	-	-	-	-	-	-	-	-	-	
Vanuatu	-	-	-	-	100.0	-	-	-	-	-	-	-	-	-	-	100.0	-	100.0	
Hong Kong	-	-	-	-	-	-	-	-	-	-	-	-	-	-	-	-	-	-	
Fiji	-	-	-	-	-	-	-	-	-	-	-	-	-	-	-	-	-	-	
Oth.Asia	-	-	-	-	-	-	-	-	-	-	-	-	-	-	-	-	-	-	
Netherlands	-	-	-	-	-	-	-	-	-	-	-	-	-	-	-	-	-	-	
Oth.Europe	-	-	-	-	-	-	-	-	-	100.0	-	-	-	-	-	100.0	-	100.0	
France	-	-	-	-	-	-	-	-	-	-	-	-	-	-	-	-	-	-	
Italy	-	-	-	-	-	-	-	-	-	-	-	-	-	-	-	-	-	-	
Oth.Country	-	-	-	-	-	-	-	-	-	-	-	-	-	-	-	-	-	-	
Solomon Is.	3.3	3.1	13.3	10.3	16.0	7.8	13.6	6.6	9.2	4.2	3.7	1.4	1.4	0.4	3.7	2.2	64.1	35.9	100.0
Total	3.3	3.1	13.3	10.3	16.0	7.8	13.6	6.6	9.2	4.2	3.8	1.4	1.4	0.4	3.7	2.1	64.2	35.8	100.0

Table 12: Returning Resident Arrivals by Country of Residence by Occupation and Sex: 4th Quarter 2012

Country of Usual Residence	Professional and Technical		Administration and Managerial		Clerical & Related Work		Sales Worker		Service Worker		Agriculture Forestry Fishery		Production & Related Work		Other		No Work		Total		
	M	F	M	F	M	F	M	F	M	F	M	F	M	F	M	F	M	F	M	F	All
Australia	-	1	-	-	-	-	-	-	-	-	-	-	-	-	1	-	1	-	2	1	3
PNG	-	-	-	-	-	-	-	-	-	-	-	-	-	-	-	-	-	-	-	-	-
US	-	-	-	-	-	-	-	-	-	-	-	-	-	-	-	-	-	-	-	-	-
NZ	-	-	-	-	-	-	-	-	-	-	-	-	1	-	-	-	-	-	1	-	1
UK	-	-	-	-	-	-	-	-	-	-	-	-	-	-	-	-	-	-	-	-	-
Japan	-	-	-	-	-	-	-	-	-	-	-	-	-	-	-	-	-	-	-	-	-
Germany	-	-	-	-	-	-	-	-	-	-	-	-	-	-	-	-	-	-	-	-	-
Canada	-	-	-	-	-	-	-	-	-	-	-	-	-	-	-	-	-	-	-	-	-
Oth.Pacific	-	-	-	-	-	-	-	-	-	-	-	-	-	-	-	-	-	-	-	-	-
Vanuatu	1	-	-	-	-	-	-	-	-	-	-	-	-	-	-	-	-	-	1	-	1
Hong Kong	-	-	-	-	-	-	-	-	-	-	-	-	-	-	-	-	-	-	-	-	-
Fiji	-	-	-	-	-	-	-	-	-	-	-	-	-	-	-	-	-	-	-	-	-
Oth.Asia	-	-	-	-	-	-	-	-	-	-	-	-	-	-	-	-	-	-	-	-	-
Netherlands	-	-	-	-	-	-	-	-	-	-	-	-	-	-	-	-	-	-	-	-	-
Oth.Europe	-	-	-	-	-	-	-	-	-	-	-	-	-	-	1	-	-	-	1	-	1
France	-	-	-	-	-	-	-	-	-	-	-	-	-	-	-	-	-	-	-	-	-
Italy	-	-	-	-	-	-	-	-	-	-	-	-	-	-	-	-	-	-	-	-	-
Oth.Country	-	-	-	-	-	-	-	-	-	-	-	-	-	-	-	-	-	-	-	-	-
Solomon Is.	1763	935	216	78	28	34	42	9	59	214	39	7	56	10	830	360	159	137	3,192	1,784	4,976
Total	1764	936	216	78	28	34	42	9	59	214	39	7	57	10	832	360	160	137	3,197	1,785	4,982
<u>Percentage</u>																					
Australia	-	33.3	-	-	-	-	-	-	-	-	-	-	-	-	-	-	33.3	-	66.7	33.3	100.0
PNG	-	-	-	-	-	-	-	-	-	-	-	-	-	-	-	-	-	-	-	-	-
US	-	-	-	-	-	-	-	-	-	-	-	-	-	-	-	-	-	-	-	-	-
NZ	-	-	-	-	-	-	-	-	-	-	-	-	100.0	-	-	-	-	-	100.0	-	100.0
UK	-	-	-	-	-	-	-	-	-	-	-	-	-	-	-	-	-	-	-	-	-
Japan	-	-	-	-	-	-	-	-	-	-	-	-	-	-	-	-	-	-	-	-	-
Germany	-	-	-	-	-	-	-	-	-	-	-	-	-	-	-	-	-	-	-	-	-
Canada	-	-	-	-	-	-	-	-	-	-	-	-	-	-	-	-	-	-	-	-	-
Oth.Pacific	-	-	-	-	-	-	-	-	-	-	-	-	-	-	-	-	-	-	-	-	-
Vanuatu	100.0	-	-	-	-	-	-	-	-	-	-	-	-	-	-	-	-	-	100.0	-	100.0
Hong Kong	-	-	-	-	-	-	-	-	-	-	-	-	-	-	-	-	-	-	-	-	-
Fiji	-	-	-	-	-	-	-	-	-	-	-	-	-	-	-	-	-	-	-	-	-
Oth.Asia	-	-	-	-	-	-	-	-	-	-	-	-	-	-	-	-	-	-	-	-	-
Netherlands	-	-	-	-	-	-	-	-	-	-	-	-	-	-	-	-	-	-	-	-	-
Oth.Europe	-	-	-	-	-	-	-	-	-	-	-	-	-	-	100.0	-	-	-	100.0	-	100.0
France	-	-	-	-	-	-	-	-	-	-	-	-	-	-	-	-	-	-	-	-	-
Italy	-	-	-	-	-	-	-	-	-	-	-	-	-	-	-	-	-	-	-	-	-
Oth.Country	-	-	-	-	-	-	-	-	-	-	-	-	-	-	-	-	-	-	-	-	-
Solomon Is.	35.4	18.8	4.3	1.6	0.6	0.7	0.8	0.2	1.2	4.3	0.8	0.1	1.1	0.2	16.7	7.2	3.2	2.8	64.1	35.9	100.0
Total	35.4	18.8	4.3	1.6	0.6	0.7	0.8	0.2	1.2	4.3	0.8	0.1	1.1	0.2	16.7	7.2	3.2	2.7	64.2	35.8	100.0