

HAWAIIAN STAR

Telephone 365 Star Business Office

SECOND EDITION.

VOL. XVIII.

HONOLULU, HAWAII, FRIDAY, AUGUST 26, 1910.

No. 5737

GREAT ACTIVITY IN POLITICS

ROOSEVELT DEFINING POLITICAL POSITION

REPUBLICANS' BATTLE ON

ANDREWS WING OF THE PARTY MAKING A WARM STRUGGLE—NOMINATIONS TO BE MADE THIS EVENING MAY CARRY WARFARE NOW ON IN FEW PRECINCTS INTO NEARLY ALL OF THEM.

Republicans who do not attend the meeting of their precinct clubs this evening and enroll themselves on the precinct club roll will not be able, under the rules of the party, to vote at the primaries next week. The party rules provide that the club rolls shall be open until ten o'clock tonight, and again to-morrow night only in precincts where it is impossible to complete the enrollment tonight. After that the rolls need not be open, hence Republicans who do not attend tonight's meetings may lose the right to vote next week.

The Republican precinct nominating meetings are to be held this evening. In at least two of the Oahu precincts there is a very lively contest on. In both cases it is an aftermath of the recent Lorrin Andrews-Buffandeau rumpus, and it is apparently going to lead to a very warm contest indeed a week from tomorrow, when the voting for convention delegates is to be done. In most of the other precincts things are very quiet. It is noticeable, however, that both sides claim most of the precincts, and this may mean a lively contest all along the line next week.

The line up of the opposing forces is the most direct in the third precinct of the Fourth district, known as Manoa precinct. Here Lorrin Andrews and his opponents are in a fight to a finish. Many business men who were antagonized by Andrews' support of Buffandeau, and others who hold him guilty of sharp practice in connection with the precinct club election of officers, are making a very strenuous fight against him and Buffandeau. There will be opposing nominations all along the line in this precinct, and next week will see a very hot tussle for votes.

Kaimuki precinct has been brought into the same fight largely by the activities of Ed Towse, an anti-Andrews worker who is busily charging that the slated ticket is an Andrews machine ticket and making every effort to muster votes against it on this ground. Here the issue seems to be a tussle between a Douthitt slate and a Towse slate. The Towse men are charging that Douthitt's slate is an Andrews machine slate, while Douthitt and his associates deny that they have any affiliations with the machine. Slates are also appearing in the Fourth of the Fourth, the new "Lily

White" precinct, but so far there is not much of a contest in sight. In fact slates are proudly declared by residents to be of no use in this precinct. "You can't buffandeau this precinct," said one politician. "No machine can run us."

Next week, it is said, may develop a contest for Lorrin Andrews for chairman of the county central committee, or manager of the local Republican campaign. Andrews is deep in the primary fight, and will do all he can to maintain his party position by action of the convention. If endorsed by his own precinct and sent to the convention, he will probably show up strong influence in the convention, as it is said that he has large influence among the delegates who will be elected from the many uncontested precincts, where he has been a party worker for some months past.

JOHN CLUNEY IS ACQUITTED

FOUND NOT GUILTY OF HEEDLESS OR RECKLESS DRIVING OF HIS AUTOMOBILE.

One of the most interesting arguments heard in police court in many months, was heard this morning in the case against John Cluney charged with driving his automobile in a heedless and reckless manner.

From nine o'clock until after twelve including a demonstration on the street in front of the station house, Attorney Rawlins for the defendant and Lightfoot, father and son, for the prosecution, fought the case point by point. The final result was that the defendant was found not guilty.

The complaining witness, a Japanese who claimed to have been run over by Cluney on Beretania street near Garden lane while riding a bicycle, was present during the entire trial, being asked to show the court how the machine had wrecked his bicycle as well as to show how he had received injury to his leg.

Lang Yee was found guilty of stealing a quantity of lead and a pair of scales, the result being a sentence of one year and four months.

The other cases on the calendar were continued.

NEW RICE MILL.

The K. Yamamoto Rice Mill is the largest as well as the finest in the islands. All machinery is of the very latest pattern. The famous Tengu Rice is cleaned at this mill. With the large cleaning capacity they are able to handle considerable outside particular work which they guarantee.

Fine Job Printing, Star Office.

MEN WHOM THE TWO PARTIES ARE LIKELY TO PUT UP

REPUBLICAN AND DEMOCRATIC SLATES FOR OFFICE AS THEY LOOK TODAY—SHINGLE WILLING TO OPPOSE TRENT—ACHIMAY RUN FOR SENATE—CATHCART OR THAYER COUNTY ATTORNEY.

Ticket making is going on very rapidly just now in both the Republican and Democratic parties, and it appears that both parties have a surplus of material for the supervisorships, with the heads of both tickets almost settled. The Republicans at this date expect their candidate for mayor to be either Charles Hustace, Jr., or John Lane. The primaries next week will probably settle the question of which it shall be.

"Bob" Shingle has practically agreed to take the Republican nomination for county treasurer, against Trent the Democratic nominee. Trent has won several times now, but the Republicans think that Shingle can bring out the Republican vote against him and land the office.

The county attorney fight is going to be Cathcart against Thayer, according to present plans. Cathcart is said to have nearly a cinch on the Republican nomination, and the Democrats are going to put up Thayer.

Here are comparative slates of the two parties, as so far developed by the politicians:

REPUBLICAN.

Mayor, Chas. Hustace, Jr., or John Lane.

Sheriff, Andrew Cox. Captain Bob Parker is a possibility.

Deputy Sheriff, Charles Coster or H. Van Gieson.

County Attorney, John W. Cathcart, or P. L. Weaver.

Treasurer, R. W. Shingle.

Clerk, D. Kalauokalani, Jr.

Auditor, J. Blecknell or Joe Woodward.

Supervisors, Daniel Logan, Norman Watkins, W. H. Hoogs, J. C. Quinn, R. W. Aylett, W. Ahia, Kane, F. J. Kruger, M. C. Amama, Charles Arnold, of Aiea, Sam Dwight, John De Fries.

Senate, Cecil Brown, A. F. Judd, W. C. Achi, M. C. Amama, A. L. C. Atkinson, W. T. Rawlins, Judge Stanley, J. A. Hughes, John Waterhouse, Chas. F. Chillingworth, Joe Cohen.

House, Supervisor Kane, Ed. Towse, A. D. Castro, John K. Kamanouli, Elia Long, S. P. Correa, Kalelopi, Hiram Kolomoku.

DEMOCRATIC.

Mayor, Joseph J. Fern.

Sheriff, Wm. Jarrett.

Deputy Sheriff, Chas. Rose.

County Attorney, W. W. Thayer or Judge Edings.

Treasurer, R. H. Trent.

Auditor, Anderson.

Clerk, Charles Baker.

Supervisor, W. H. McClellan, J. C. Campbell, Lester Petrie, J. S. Martin, Chan Wilder, H. L. Piemer, H. De Fries, Moses Kupfien, M. E. Silva, W. R. Foster, J. T. Cowles, Fred Weed.

Senate, Col. C. J. McCarthy, J. M. Coke, C. W. Ashford, W. Wolters, J. C. Campbell.

House, S. Maheula, G. K. Kahawaha, R. Pahau, Jimmy Lynch, J. O. Lightfoot, Ed. Lake, Jack Kawaloa, D. Kupfien, Ed. Hanape, R. W. Cathcart, Dan Damien, Moses Makl.

There will be initiation into the Honolulu Lodge No. 616, B. P. O. E., at its lodge room, King and Fort street, at half-past seven this evening.

LAND LAWS BEING PRINTED IN RUSSIAN

STRENUOUS PUBLICITY PLANS OF THE LAND OFFICE TO GIVE NOTICE OF THE COMING DRAWING OF PUBLIC LANDS—APPLICATIONS NOT PROPERLY MADE OUT WILL BE REJECTED AT THE DRAWING.

About sixty applications for public land which are to be drawn for next October are already in the sealed ballot boxes of the land office, and more applications are coming in quite rapidly. In the meantime, Land Commissioner Marston Campbell is conducting a very strenuous publicity campaign to acquaint citizens with the rules of the game.

Information, instructions and extracts from the laws, are being sent out even in the Russian language, and hundreds of pamphlets and circulars in Hawaiian and English are being put in the mails. They are being sent to all public officers of all sorts, to notaries and to prominent citizens in every district. Notices of the land opening, full detailed instructions as to how to apply for land and an annotated digest of the land laws are among the documents which Campbell is spreading broadcast.

"I do not see that there is any ex-

cuse for applications not being properly made out," said Campbell this morning. "We are making probably the biggest publicity campaign ever made here, in the effort to instruct everyone as to how to proceed under the new law.

"If applications are made out wrongly, there will be nothing for us to do, at the time of the drawing, but to throw them out. Of course applicants whose applications are thrown out will be able to apply again. But there is no excuse for making any mistakes in the applications."

A GOOD INVESTMENT.

It costs but a small amount to keep Chamberlain's Colic, Cholera, and Diarrhoea Remedy always on hand, and it is economy in the end. For sale by all dealers, Benson, Smith & Co., agents for Hawaii.

Fine Job Printing, Star Office.

EX-PRESIDENT AGAINST NEW YORK MACHINE

(Associated Press Cable to The Star.)

CARROLL, Iowa, August 26.—Colonel Roosevelt in a speech here today definitely allied himself with the progressives in New York state politics, announcing his personal attitude as an opponent of the present controlling leaders of the party in that state.

Colonel Roosevelt said that he was with the opponents of the Woodruff element of the party, which nominated Vice-President Sherman for temporary chairman of the state convention. He said he was in the fight to wage war against corruption and bossism in the party.

DEATH ROLL GROWS LARGER

SPOKANE, Wash., August 26.—The latest estimates are that over two hundred persons lost their lives in the forest fires.

AVERY, Idaho, August 26.—A forest ranger party of seventy has perished while trying to fight the progress of the flames.

OVER 7,000 DEAD IN A WEEK

ST. PETERSBURG, August 26.—The number of deaths from cholera during the past week was 7,743.

GALESBURG, Ill., August 26.—Colonel Roosevelt has been asked to act as arbitrator in the miners' strike.

BREMEN, August 26.—The ship Harvest Queen has been abandoned burning, by her crew. She was left in the South Atlantic, a burning derelict.

WASHINGTON, D. C., August 26.—The war department has refused the request from Puget Sound that war vessels be instructed to do heavy firing of guns in the hope of causing a rainfall that would stop the forest fires. Assistant Secretary of War Oliver declined to undertake the experiment.

BILBAO, Spain, August 26.—The Workman's Federation has proclaimed a general strike throughout Spain.

MANCHESTER, N. H., August 26.—Fifteen thousand persons have been thrown out of employment here by the closing of seventeen cotton mills. The owners of the mills give over production as a reason for shutting down.

SACHS' SATURDAY MORNING SPECIALS.

The Saturday Specials at Sachs will be unusually attractive this week. There is 32 in. Victoria Madras usually selling at 25c, special 15c, and a great many other bargains. Remember the store closes at one o'clock.

Cravenette Pumps \$4



An ideal shoe for street or dress wear. Made of Black Cravenette cloth. Soft and pliable on the foot and easy to clean. A rich jet black color. We show them in Pumps at \$4.00 and in Button Boots at \$5.00.

Manufacturer's Shoe Co., Ltd., 1051 Fort St., - Honolulu



ROYAL BAKING POWDER Absolutely Pure The only baking powder made with Royal Grape Cream of Tartar No Alum, No Lime Phosphate

The Simple Life Insurance Policy is the one to be preferred. The Prudential policy is simple, straight and honest. It is a standard Life Insurance contract. Insurance Department

Hawaiian Trust Co., Ltd.
223 Fort Street.

Oceanic Steamship Company Sierra Schedule

LEAVE S. F.	ARRIVE HON.	LEAVE HON.	ARRIVE S. F.
AUG. 20	AUG. 26	AUG. 31	SEPT. 6
SEPT. 10	SEPT. 16	SEPT. 21	SEPT. 27
OCT. 1	OCT. 7	OCT. 12	OCT. 18
OCT. 22	OCT. 28	NOV. 2	NOV. 8
NOV. 12	NOV. 18	NOV. 23	NOV. 29

Connects at Honolulu with C. A. Line for Sydney. C. A. Line leaves Honolulu for Australia Jan. 8, 10 and every 28 days.
*Arrives in Honolulu a week in advance of C. A. Line steamer en route to Sydney.
RATES from Honolulu to San Francisco—First Class, \$65; Round Trip, \$110. Family Room, extra.
Reservations will not be held later than twenty-four hours prior to the advertised sailing time unless tickets are paid for in full.

FOR PARTICULARS, APPLY TO
C Brewer & Co., Ltd.
GENERAL AGENTS.

Canadian-Australian Royal Mail Steamship Co.

Steamers of the above line running in connection with the CANADIAN-PACIFIC RAILWAY COMPANY between Vancouver, B. C. and Sydney, N. S. W., and calling at Victoria, B. C., Honolulu and Brisbane, Q.
FOR FIJI AND AUSTRALIA. FOR VANCOUVER.
ZEALANDIA.....SEPTEMBER 16 MARAMA.....SEPTEMBER 13
MARAMA.....OCTOBER 14 MAKURA.....OCTOBER 11
*Calls at Fanning Island.

CALLING AT SUVA, FIJI, ON BOTH UP AND DOWN VOYAGES.
Theo. H. Davies & Co., Ltd., Gen'l Agents

Pacific Mail Steamship Co. Toyo Kisen Kaisha S. S. Co.

Steamers of the above Companies will call at HONOLULU and leave this Port on or about the Dates mentioned below:

LEAVE HONOLULU FOR ORIENT.		LEAVE HONOLULU FOR S. F.	
KOREA.....AUG. 29	SIBERIA.....AUG. 28	MANCHURIA.....AUG. 29	SIBERIA.....AUG. 28
NIPPON MARU.....SEPT. 13	CHINA.....SEPT. 3	MANCHURIA.....SEPT. 13	CHINA.....SEPT. 3
SIBERIA.....SEPT. 19	MANCHURIA.....SEPT. 10	MANCHURIA.....SEPT. 19	MANCHURIA.....SEPT. 10
CHINA.....SEPT. 26	CHIYO MARU.....SEPT. 17	CHIYO MARU.....SEPT. 26	CHIYO MARU.....SEPT. 17
MANCHURIA.....OCT. 3	ASIA.....SEPT. 24	MANCHURIA.....OCT. 3	ASIA.....SEPT. 24
CHIYO MARU.....OCT. 11	MONGOLIA.....OCT. 8	CHIYO MARU.....OCT. 11	MONGOLIA.....OCT. 8
ASIA.....OCT. 18	TENYO MARU.....OCT. 15	ASIA.....OCT. 18	TENYO MARU.....OCT. 15
MONGOLIA.....OCT. 31	KOREA.....OCT. 22	MONGOLIA.....OCT. 31	KOREA.....OCT. 22
TENYO MARU.....NOV. 8	NIPPON MARU.....NOV. 5	TENYO MARU.....NOV. 8	NIPPON MARU.....NOV. 5
KOREA.....NOV. 14	SIBERIA.....NOV. 12	KOREA.....NOV. 14	SIBERIA.....NOV. 12
NIPPON MARU.....NOV. 29	CHINA.....NOV. 19	NIPPON MARU.....NOV. 29	CHINA.....NOV. 19
SIBERIA.....DEC. 5	MANCHURIA.....NOV. 28	SIBERIA.....DEC. 5	MANCHURIA.....NOV. 28
CHINA.....DEC. 12	CHIYO MARU.....DEC. 3	CHINA.....DEC. 12	CHIYO MARU.....DEC. 3

FOR FURTHER INFORMATION APPLY TO
H. HACKFELD & CO. LTD

Matson Navigation Co.'s Schedule, 1910

DIRECT SERVICE BETWEEN SAN FRANCISCO AND HONOLULU.

Arrive from San Francisco	Sail for San Francisco
Lurline.....August 31	Lurline.....September 6
Wilhelmina.....September 6	Wilhelmina.....September 14
Lurline.....September 28	Lurline.....October 4
Wilhelmina.....October 4	Wilhelmina.....October 12

S. S. Nevada of this line sails from Seattle for Honolulu direct on or about Sept. 7th 1910.

For further particulars apply to
CASTLE & COOKE LTD., GENERAL AGENTS.

American-Hawaiian Steamship Co.

FROM NEW YORK TO HONOLULU, via Tehuantepec, every sixth day. Freight received at all times at the Company's Wharf, 41st Street, South Brooklyn.
FROM SEATTLE AND TACOMA TO HONOLULU DIRECT:
S. S. Missourian.....August 18
S. S. Columbian, to sail.....August 30
For further information apply to
H. HACKFELD & CO., LTD., Agents, Honolulu.
C. P. MORSE, General Freight Agent.

UNION-PACIFIC TRANSFER CO., LTD
126 KING ST. FURNITURE AND PIANO MOVING
BAGGAGE, SHIPPING, STORAGE, WOOD, PACKING, COAL. **PHONE 58**

Firewood and Coal
Best Grades Always On Hand
Concrete Brick, Crushed Rock and Sand

Hustace-Peck Co. LTD.
Phone 295 63 Queen Street

TOM SHARP, The Painter
Elite Building
Phone 397

SHARP SIGNS

Signs Of All Kinds. Scenic Work, Decorating, Graining Paper Hanging, Etc., Etc.

TIDES, SUN AND MOON.

Last quarter of the moon, Aug. 27th.

Date	High Tide	Low Tide	High Tide	Low Tide	Sun Rises	Sun Sets	Moon Rises	Moon Sets
22	4:50	1:5	4:44	11:32	10:18	5:42	6:21	8:16
23	5:22	1:6	5:20	11:12	10:18	5:42	6:20	8:36
24	6:15	1:3	6:13	10:50	10:16	5:42	6:19	9:04
25	7:13	1:4	7:09	10:36	10:15	5:42	6:19	10:15
26	8:22	1:5	8:06	1:17	10:14	5:43	6:18	10:59
27	9:40	1:6	9:04	2:02	10:13	5:43	6:17	11:51
28	10:58	1:7	10:02	2:50	10:12	5:43	6:16	

Times of the tide are taken from the U. S. Coast and Geodetic Survey tables. The tides at Kahului and Hilo occur about one hour earlier than at Honolulu. Honolulu standard time is 10 hours 30 minutes slower than Greenwich time, being that of the meridian of 157 degrees 30 mins. The time whistle blows at 1:30 p.m., which is the same as Greenwich 0 hours 0 minutes. The sun and moon are for local time for the whole group.

Shipping in Port

(Government vessels.)
U. S. L. H. T. Kukul, from cruise, August 19.
Merchant vessels.
Transit, Am. schr., from San Francisco, August 3.
Fred J. Wood, Am. schr., from Grays Harbor, August 7.
Flaurence Ward, Am. schr., from Midway, August 11.
Danmark, Dan. bk., from Leith August 12.
Helene, Am. schr., Aberdeen, August 19.
Ethel Zane, Am. schr. Cohal, August 24.
O. S. S. Sierra, from San Francisco, August 26.

TRANSPORT SERVICE.

U. S. A. T. Logan, at San Francisco.
U. S. A. T. Sherman, from Honolulu for Manila, August 12.
U. S. A. T. Dix, from Honolulu for Manila, August 12.
U. S. A. T. Sherman, at Manila.

Arrived

Friday, August 26.
O. S. S. Sierra, from San Francisco, 6 a. m.

PASSENGER

Arrived.
From San Francisco, per S. S. Sierra, August 26.—Guy Adams, Mrs. G. Adams, Miss Adams, J. M. Ambrose, Mrs. M. M. Andrade, Prof. A. L. Andrews, Mrs. Andrews, Miss E. R. Angell, J. J. Armstrong, Major H. Atherton, Miss Estelle Balcom, Master G. C. Ballentyne, Thos. H. Benton, Mrs. T. H. Benton, Miss C. L. Bickford, E. F. Bishop, George Brimble, Miss Katherine Case, Miss Jennie Charlesworth, Miss Sarah Chung, A. F. Cooke, Miss Margaret M. Cooke, Chester Cottor, Mrs. John F. Cowan, Master F. Cowan, Mrs. M. S. Compton, H. O. Cummins and wife, R. S. Denison, Mrs. Denison, Paul Dumuld, B. Faymonville Jr., J. H. Foster, J. E. Garcia, H. Gorman, Miss Gladys Grose, Miss S. E. Hall, J. W. Hamilton, Miss A. Hartnagle, Rev. T. P. Henry, F. L. Hill, S. S. Hymes, Mrs. Hymes, Dr. P. H. Ingalls, Mrs. Ingalls, Mrs. M. Jenness, Rev. D. J. Kennedy, H. L. Kerr, Mrs. Kerr, S. A. Keystone, W. W. Kirkland, J. J. Kirkpatrick, Mrs. Kirkpatrick, C. W. Kitt, Mrs. Wm. Kruse, F. M. Lewis, K. S. Lidgate, C. Mackintosh, Mrs. Mackintosh, E. Madden, Dave Megowen, R. E. Mist, Mrs. F. B. Park, Miss F. A. Perrott, Miss Mary Platter, G. T. Plummer, Mrs. Plummer, Mrs. H. G. Plummer, Mrs. F. A. Potter, Miss G. Putnam, F. A. Richmond, Master Lester Roderick, Master Robert Roderick, Miss Etta Sandry, Wm. Savidge and infant, Mrs. J. Schwartz, Miss Schwartz, M. E. Schayer, Mrs. Schayer, Mrs. N. L. Scott, Miss S. J. Simpson, Mrs. Mary Soares, Master Alford Soares, Ernest Soares, Master Francis Soares, Miss Hermina Soares, Miss Rita Soares, Mrs. C. Sorenson, S. K. Sydes, Miss Hilda Van Deerlin, Rev. F. A. Wilson, Mrs. R. E. Zumalt, C. S. Allbright.

PASSENGERS.

Booked to depart.
Per str. Mauna Loa, for Kona and Kau ports, August 26.—A. Poluna, J. S. Cockett, Mrs. Cockett, H. P. Judd, S. S. Toomey, Mrs. Toomey, Miss Case, Miss L. Meinecke, J. J. Fern, Mrs. Fern.
Per O. S. S. Sierra, for San Francisco, Aug. 31.—W. J. Lynch, Mr. and Mrs. von Hamm, Mr. and Mrs. J. McLatche, Mr. and Mrs. G. Chalmers, Miss Ayers, Miss Kelliam, Mr. and Mrs. F.



"THE RAIDERS"

L. Hill, Miss N. B. Winston, Mrs. W. F. Lucas, Mrs. P. N. Ward, Miss B. Ward, Miss Bryan, Miss M. F. Ellis, Miss O. Burr, L. C. Attee, P. C. Jones, E. O. Faulkner, Captain Marix, Miss C. Schuzger, Doctor and Mrs. Ingalls, R. S. Thurston, B. H. Bond, G. W. Coleman, Doctor and Mrs. White, Miss M. Shaw, Mrs. J. S. Bishop, K. Kaawe, J. Kamakau, A. J. Fairweather, Mr. and Mrs. L. H. Cary, D. Makaena, C. P. Kulekua, E. Kaai, Miss N. Mutch, Mrs. C. A. Bolton, Mr. and Mrs. O. C. Scott, Miss A. Newington, H. F. Hill, C. F. Sackwitz, D. Yarbrough, C. H. Liepperb.

FOREIGN STEAMER TIME TABLE

STEAMERS TO ARRIVE.
Due Name from
28—Siberia.....Yokohama
29—Korea.....San Francisco
31—Lurline.....San Francisco

STEAMERS TO DEPART.
Depart Name For
August
28—Siberia.....San Francisco
29—Korea.....Yokohama
31—Sierra.....San Francisco

PASSED DERELICT BUOY.

PORT TOWNSEND (Wash.), August 13.—In a report made yesterday to the United States Hydrographic Office here the statement is made of an inexplicable phenomenon that marine interests declare is without precedent. The statement is filed by Captain H. Samuelson, of the American barkentine Aurora on arrival from Callao, Peru. On June 17th in latitude 11 degrees south and longitude 80 west, according to the report, the vessel's course brought her

The Yawman & Erbe Business Systems

are recognized the world over by business men as the best that have yet been invented.
The Yawman & Erbe System of Filing will pay for itself the first month in saving of time alone.

Hawaiian News Co., Ltd., Agents
ALEXANDER YOUNG BUILDING.

Ocean View Tract

AN IDEAL PLACE TO LIVE.
Artesian Water, High Elevation, Electric Lights, Delightful Climate, Paved Streets, Koko Head Breeze, Sufficient Rainfall, Excellent Soil, Level Property, Cool and Healthful, Good Location, Pure Atmosphere.
Our fixed prices are \$500 for corner lots and \$400 for inside lots, size 75ft x 150ft. or 11,250 sq. ft. each. Our terms are \$50 cash down, and \$10.00 per month on each lot. Call up telephone 659 and make an appointment with one of our representatives.

Kaimuki Land Co., Ltd.

MAIN OFFICE KING AND FORT STREETS
BRANCH OFFICE WAIALAE & KOKO HEAD AVS
PHONE 659

ELECTRICITY

Will perform much hard domestic labor at small cost.
Sad Irons, Suction Sweepers, Washing Machines, Sewing Machine Motors
May be operated from any electric light socket at very small cost per hour

The Hawaiian Electric Co.,

Pioneer Shingle Stain
W.P. FULLER & CO. MANUFACTURERS SAN FRANCISCO.
Numerous Artistic and Harmonious Combinations OF COLOR.
A preservative for your shingles and rough wood work. Permanent in color.
Lewers & Cooke Ltd.
177 S. King St.

WATERHOUSE TRUST

Special Opportunity

During this month only we offer the following choice Kaimuki residences for purchase, upon terms within the reach of anybody desirous of acquiring a home. Small cash payment and balance in monthly installments. Call and get particulars of these two special bargains before they are withdrawn.

NO. 1:—Three bedroom house on car line. Spacious lanais. Newly papered and painted, throughout. Lot 100 x 225 covered with shade and fruit trees. Stables and servants quarters.

NO. 2:—New two bed room bungalow. Magnificent view of two oceans, adjoining Kaimuki Crater (reserved as park). Either one or two lots as desired.

WE ALSO OFFER FOR LEASE.

3 bedroom furnished bungalow on the Kaimuki car line. One of the most comfortable homes in Honolulu.

WATERHOUSE TRUST

Corner Fort and Merchant Streets.

Space and Time Annihilated by the WIRELESS. Office open Sundays from 8 to 10 a. m.

A CLEAN HOUSE AND

Pau ka Hana

ARE FAST FRIENDS.

Yat Hing Store * Hotel Street, Near Bethel
We have just received a big line of Lace Curtains, which are being offered at from fifty cents a pair up. Greatest values for the money ever shown in Honolulu.

J. W. KERSHNER

AUTO TIRE REPAIRING

1177 Alakea St. Phone 684

SUN CHUNG KWOCK BO LTD

CHINESE NEWSPAPER PUBLISHING AND JOB PRINTING.

No. 49 Cor. of Smith and Hotel Sts.

Territorial Board of Immigration

OFFICE: 405 Stangenwald Bldg. MONOLULU.

Empire Chop House

(Lately Palace Grill.) Bethel St. Opp. Empire Theatre. Open Day and Night, Cuisine Unsurpassed. BEST MEALS AT ALL HOURS.

G. BREWER & CO., LTD

Sugar Factors and Commission Merchants

OFFICERS AND DIRECTORS.

E. F. Bishop.....President
Geo. H. Robertson.....Vice President—Manager
W. W. North.....Treasurer
Richard Ivers.....Secretary
J. R. Galt.....Auditor
Geo. R. Carter.....Director
C. H. Cooke.....Director
B. A. Cooke.....Director

CONSOLIDATED SODA WATER

Is Absolutely Pure

TELEPHONE 71.

Good Display

Visit our store and note the elegant display of curios, novelties, drawn and hand embroidered work.

Woman's Exchange

ROOSEVELT, TAFT, CANNON AND LONGWORTH; STORY OF 1912 CANDIDACY IS DENIED

NEW YORK, August 19.—Colonel Roosevelt's close friends are the authority for the statement today that Colonel Roosevelt has never indicated by the slightest word what his intentions are with regard to 1912.

BEVERLY, Mass., August 18.—Reflecting the views of the Administration, it is generally believed, Representative Nicholas Longworth of Ohio, today gave out a statement in which he says he will never support Speaker Cannon again, and that he does not believe Cannon ever can be re-elected Speaker. This is regarded as the actual beginning of the real fight on Cannon. Longworth has attended the various conferences between Taft and his advisers.

Longworth's statement in part is as follows: "Beverly, Mass., August 18, 1910.—In view of Mr. Cannon's unequivocal declaration that he intends to be a candidate for Speaker of the next House, I think it is incumbent on those of us who are candidates for membership in the next House, who have made up our minds on our course of action and have positive views on the subject, to state our position publicly.

"Had Mr. Cannon not made this announcement, and had it remained doubtful whether he would be a candidate, it was my intention not to commit myself before election as to whom I should or should not support for Speaker. But since Mr. Cannon has in his speeches so far in this campaign and in his recent declaration, made candidacy for the Speakership an issue,

"I shall oppose Mr. Cannon's election as Speaker and I shall do so in the manner that I consider proper and effective in the settlement of controversies in my party, namely, in the Republican caucus. I made up my mind before the adjournment of the last session of Congress that Mr. Cannon could not be re-elected Speaker, and my opinion has been strengthened since through correspondence and talks with my colleagues.

"I am not referring to those who have openly opposed him in the past,

but to those who, like myself, have supported him.

"I am absolutely convinced if there is a full attendance at the Republican caucus that Mr. Cannon cannot again be elected Speaker."

DANVILLE, (Ill.), August 18.—Speaker Cannon when shown the dispatch from Beverly regarding the statement given out by Representative Nicholas Longworth, said:

"I have no quarrel with Longworth as to who shall be Speaker of the next House, and there is no room for disagreement touching this matter between him and myself.

"If any Republican candidate for Congress feels that his position as a candidate on the Republican ticket would be strengthened by pledging that he will not support me in a Republican caucus, I have no objection to him making the pledge.

"It is time enough for me to answer the President of the United States if he has any statement to make on the Republicanism of the Speaker of the House of Representatives when he makes that statement under his own hand. I will not fight windmills fanned by breezes blown from lungs of political personal enemies or co-workers."

There is no doubt that Cannon believes the Longworth statement was inspired by President Taft. He did not say so in so many words, but he intimated as much.

Following the reply made to Longworth early in the afternoon Cannon supplemented it with the following dictated this evening:

"The legislation enacted and the record made by the Republican party during the eight years I have been Speaker speak for themselves. I have contributed what I could toward the enactment of that legislation. I have co-operated with the Republican majority in Congress in the effort to put on the statute books the policies of the party, and I have no apology to make for the part I have taken in the legislative councils of the Nation.

"In the present campaign, so far as I am concerned, I shall do what I can to bring about the election of a Republican House of Representatives in

TERRITORIAL FINANCES ALL RIGHT

Governor Frear's statement of financial condition of the territory, for his annual report, shows that receipts of the Territory of Hawaii during the fiscal year ended June 30, last, amounted to \$3,841,245.35, which was an increase of \$589,718.50 over the previous year. Expenditures for the year ended June 30 amounted to \$3,264,364.20, representing an increase in expenditure of \$329,380.10 over expenditure of the fiscal year preceding.

Receipts exceeded expenditures during the year referred to by \$260,338.44, as compared with an excess of \$116,542.71 in receipts over expenditures of the year preceding the last fiscal year. The receipts and disbursements for the fiscal year ended June 30 last, are:

Receipts.	
Taxes—	
Real property.....	\$ 709,943.35
Personal property.....	720,252.68
Specific property (automobiles, carriages, dogs, etc.).....	46,554.50
Insurance.....	20,141.87
Income, general.....	435,994.55
Income, special.....	327,694.27
Inheritance.....	150,153.11
Personal, (poll, school, road).....	248,663.00
Penalties and costs.....	17,252.71
	\$2,726,650.04
Liquor licenses.....	92,205.83
Documentary stamps.....	68,387.50
Land sales.....	112,589.18
Land revenues (rents, etc.).....	264,923.01
Honolulu water and sewer revenues.....	184,277.14
Harbor, wharf and pilot revenues.....	74,836.54
Recording fees.....	16,097.75
Fines and costs.....	13,214.29
Support of United States prisoners.....	8,334.00
Interest on bank deposits.....	9,368.91
Miscellaneous.....	80,351.16
Total receipts.....	\$3,841,245.35
Cash balance July 1, 1909.....	453,106.76
Total.....	\$4,094,352.11
Transferred from special accounts.....	39,701.72
Total.....	\$4,134,053.83
Disbursements.	
Outstanding warrants June 30, 1909.....	\$ 170,718.67
Expenses for fiscal year 1909-1910—	

Legislature.....	15,180.33
Governor's and secretary's offices.....	6,356.18
National Guard.....	9,651.18
Alaska-Yukon-Pacific expedition.....	12,533.85
Expenses of distinguished visitors.....	15,541.06
Pensions.....	8,500.00
Auditing department.....	10,207.23
Treasury department.....	15,074.65
Tax bureau.....	67,343.01
Public Instruction department.....	434,423.12
College of Agriculture & Mechanical Arts.....	8,820.99
Public Works department.....	115,283.64
Public Lands department.....	14,161.08
Survey department.....	14,036.49
Public Health department.....	325,555.92
Judiciary department.....	82,395.48
Attorney-General's dept.....	15,739.84
Prisons.....	49,172.11
Record bureaus.....	15,208.19
Miscellaneous.....	12,403.24
Interest on public debt.....	163,642.50
Transferred to special accounts—	
Immigration and conservation.....	378,570.16
Road tax (for counties).....	140,086.10
Sinking fund.....	57,018.75
Land purchases.....	62,749.63
Homestead roads.....	8,273.10
Homesteader's improvements.....	1,436.25
Registered land assurance.....	630.33
Industrial school.....	577.88
Lahainaluna school.....	27.50
	\$ 823,646.84
Paid to Counties—	
City and County of Honolulu.....	502,519.66
County of Hawaii.....	215,459.09
County of Maui.....	190,316.43
County of Kauai.....	111,192.26
	\$1,019,478.34
Total disbursements.....	\$3,435,082.87
Current cash balance.....	845,218.51
Less warrants outstanding June 30, 1910.....	146,247.55
Net current cash balance.....	\$ 698,970.96
Total.....	\$4,134,053.83

the Sixty-first Congress, and without a Republican majority in the next House there will be no Republican Speaker. "In the event of my re-election as a member of the House, I shall attend and abide by the action of the Republican caucus, and, from his statement, Mr. Longworth will do the same."

A TIME SAVER.

Keep Chamberlain's Pain Balm on hand. It is an antiseptic liniment and causes wounds to heal in less time than by any other treatment. For sale by all dealers. Benson, Smith & Co., agents for Hawaii.

THE LAST OF THE SEASON.

Vacation is drawing to a close and there are some who have not been away from town during the summer. Haleiwa offers splendid opportunities for the tired man or woman to recuperate their lost energies. The boating and bathing, the golf links and the tennis court offer diversion that will be enjoyed by those who are inclined toward the strenuous life. The scenery around Haleiwa is fine and the climate invigorating.

Fine Job Printing, Star Office

James F. Morgan,

Stock and Bond Broker

Member of Honolulu Stock and Bond Exchange.

Stock and Bond Orders receive prompt attention.

Information furnished relative to all STOCKS AND BONDS.

LOANS NEGOTIATED.

Phone 72. P. O. Box 594

HONOLULU INSTITUTE FOR PHYSIOTHERAPY.—Cor. Beretania and Richard sts.; open from 8 a. m. to 7 p. m., except Sunday. Electric Light Baths, German Naheim Baths, Steam and Hot Air Baths, German Sitz Baths, Finsen Light, Massage, Gymnastic, X-Ray's High Frequency, etc., etc.

Somma's Special Salve For Piles

Guaranteed to contain nothing injurious. Cures chronic sores, cuts, burns and all skin diseases of the human race.

Prepared by

G. SOMMA, Secret Salve Specialist.

No. 10 King St. Honolulu, T. H.

Iwakami & Co

Japanese Silks, Dry Goods and Hats of All Kinds.

Robinson Block Hotel Street.

Silver Plate Flat Ware

30 PER CENT OFF

J. A. R. VIEIRA & CO. 113 HOTEL STREET.

DR. SCHURMANN

OSTEOPATHY

175 BERETANIA STREET. Phone 33.

PAPER

All Kinds Wrapping Papers and Twines, Printing and Writing Papers, American-Hawaiian Paper & Supply Co., Ltd.

Fort and Queen Streets, Honolulu, phone 410. Geo. G. Guild Gen. Mgr.

FOR SALE

Bridge and Beach Stoves for Coal or Wood.

Quick Meal Blue Flame Oil Stoves. Perfection Oil Stoves. Giant Burner Gasoline Stoves.

EMMELUTH & CO., LTD. Phone 211. No. 145 King St.

Catton, Neill & Co., Limited.

Engineers, Machinists, Blacksmiths and Boiler-makers.

First class work at reasonable rates.

IF YOU WISH TO ADVERTISE IN NEWSPAPERS ANYWHERE AT ANYTIME Call on or Write E. C. DAKE'S ADVERTISING AGENCY 224 Sansome Street SAN FRANCISCO, CALIF.

Wall, Nichols Co., Limited.

Keep constantly on hand TENNIS BALLS

TENNIS RACKETS

GOLF BALLS GOLF CLUBS & Everything in the Sporting and Athletic line.

71 King Street

BEFORE

taking a policy of life insurance in any other company ask to see the

CONTRACT

New England Mutual Life Insurance Company Of Boston, Mass.

and compare the many advantages it offers with those of other companies

Castle & Cooke, Ltd. GENERAL AGENTS

The Honolulu Gas Co., Ltd., has moved to corner Alakea and Beretania Streets

EXCLUSIVE PATTERNS IN HANDSOME GREYS

English and American Weaves. Made to your order with style unequalled.

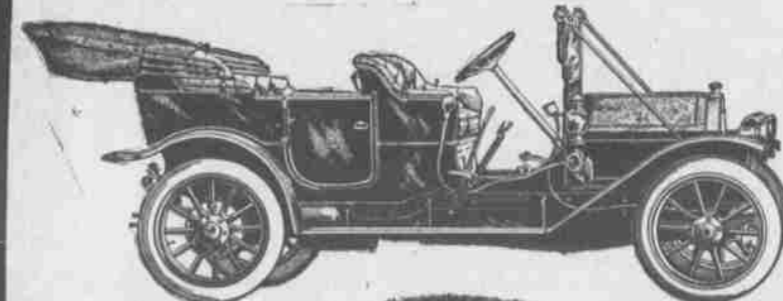
W. W. AHANA 62 South King Street

ABADIE'S FRENCH CLEANING PROCESS.

For Pongee and Flannel Suits and Women's Street and Evening Gowns and Wraps.

FRENCH LAUNDRY. J. Abadie, Prop. 777 KING

TOURING CAR



Price, \$1700 f.o.b. Detroit for Touring Car, Demi-Tonneau or Runabout.

Cadillac "Thirty"

IMPORTANT IMPROVEMENTS IN 1911.

IMPROVED APPEARANCE. Double drop frame, 2 1/2 inch drop, which makes car set lower, and this, with the larger hood and more roomy tonneau greatly improves the appearance.

LARGE RADIATOR. The radiator is slightly larger, hence has greater cooling capacity. This is notwithstanding the fact that the Cadillac was never deficient in that respect.

TIMKEN AXLE. Full floating type, Timken roller bearing rear axle. This is the same axle as used on a number of America's highest priced cars.

LARGER BRAKE DRUMS. More powerful brakes, more easily applied and greatly increased efficiency. Contracting and expanding double acting brakes, both equalized.

TWO IGNITION SYSTEMS. Two complete and independent ignition systems, each with its own set of spark plugs. The two ignition systems consist of Bosch high tension magneto and the new and improved Delco system with single unit coil, high tension distributor and controlling relay. Either system alone is efficient for operating the car.

ENCLOSED WIRING. All electrical wiring enclosed in copper tubes.

COPPER MANIFOLDS. Copper manifolds are used for water inlets and outlets in the circulating system.

REMOVABLE CLUTCH. Clutch may be removed in a very few minutes without disturbing other members.

INCREASED POWER. Cylinder bore increased from 3 1/4 inches to 4 1/2 inches. This, with more efficient carburetor (Schebler), which is water-jacketed, effects a material increase in power. Piston stroke, 4 1/2 inches.

The four cylinders are cast singly, with copper jackets applied, retaining the exclusive Cadillac features throughout.

INCREASED COMFORT. Wheel base increased from 110 to 116 inches, making the car ride easier than ever.

CADILLAC MOTOR CAR CO., DETROIT, MICHIGAN. Licensed under the Selden Patent.

vonHAMM-YOUNG CO., Ltd AGENTS, HONOLULU.

The Hawaiian Star

DAILY AND SEMI-WEEKLY.

Published every afternoon (except Sunday) by the HAWAIIAN STAR NEWSPAPER ASSOCIATION.

THE STAR ACCEPTS NO LIQUOR ADVERTISEMENTS.

SUBSCRIPTION RATES:

Local, per annum \$ 8.00
Foreign, per annum 12.00

Payable in Advance.

Entered at Post Office at Honolulu, Hawaii, as second class mail matter.
Subscribers who do not get their papers regularly will confer a favor by notifying the Star Office; Telephone 365.

The Supreme Court of the Territory of Hawaii has declared both THE HAWAIIAN STAR (Daily) and THE SEMI-WEEKLY STAR newspapers of general circulation throughout the Territory of Hawaii, (suitable for advertising proceedings, orders, judgments and decrees entered or rendered in the Courts of the Territory of Hawaii.)

Letters to THE HAWAIIAN STAR should not be addressed to any individual connected with the office, but simply to THE HAWAIIAN STAR, or to the Editorial or Business Departments, according to tenor or purpose.

DANIEL LOGAN EDITOR

FRIDAY, AUGUST 26, 1910.

HAWAII HANDICAPPED IN PRISON REFORM.

Prison reform is in the air in the United States. Municipal convict farms are being established in different cities, the only thing wrong with them being the name. Convict should not be applied to a place excepting where felons are confined. One chief purpose of the new institutions is to keep misdemeanants from the associations and the stigma of heinous or infamous crime. This should be emphasized in the name. Premier Asquith has a measure of prison reform for Great Britain pending in parliament. One of its chief merits is the embodiment of humane ideas, the product of the modern study of penology, for the treatment of criminals. To make a man of the convict, and not to pour vengeance on his head, is the dominating note. The Asquith bill also provides for leniency toward petty offenders and technical transgressors. Under its terms the suffragettes, for instance, imprisoned for disturbing the peace in their overwrought enthusiasm, would not be subjected to the humiliations of prison which are visited upon pickpockets, sneak thieves and the like. Another provision is that petty offenders sentenced to imprisonment in default of payment of fines will be allowed a reasonable time in which to raise the money if they do not have it on hand when convicted.

Hawaii had one feature of prison reform forced upon it by the United States constitution at annexation. This is the separation of felons from misdemeanants. Previously a man sent to prison thirty days for being drunk would be marched out to work in quarry or park or on the roads in the same gang as contained burglars, murderers and hardened criminals generally. All classes of offenders, too, were confined within the walls of the penitentiary. Eating and exercising were promiscuous. There is no more of this state of things now. Yet the constitution placed a handicap upon the control, management and reform of prisoners in and for misdemeanors which materially interferes with progress in penological methods here. Hawaii, being a Territory, comes under the provisions of the constitution which have been construed as not applicable to states. Among such is that which forbids the imposition of infamous punishment excepting after indictment by a grand jury for felony. Hawaiian law distinguishes felony from misdemeanor in these words: "The term 'felony,' as used in the laws of this Territory, means an offense that is punishable with death or with imprisonment for a longer period than one year. Every offense not a felony is a misdemeanor." Now it appears to be recognized as established law in this country that involuntary labor, distinctive prison garb and parading in public are all and sundry elements of infamous punishment, hence persons convicted of misdemeanor cannot be subjected to any of such humiliations, at least by compulsion.

Yet a way has been found to obviate the maintenance of misdemeanants in idleness. They do work more or less skilled within the jail confines and perform comparatively light toil in keeping the city parks in good condition. This is effected through giving them the alternative of being locked up in the cells by day as well as by night excepting for short periods of exercise in the yard. So far it is well. But the constitutional limitation mentioned would probably stand in the way of the establishment of reformatory farms or workshops to which to sentence those convicted of misdemeanors. Here admitting such to be the case, is where Hawaii is balked from keeping up with the movement for prison reform on the mainland and indeed throughout the civilized world.

Without actually initiating something of the kind to make a test, it is hard to see how a decision of the Federal Supreme Court on the matter could be obtained. No act of Congress will avail against the Constitution. Therefore, if nothing can be done under the Territorial status, Hawaii will have to defer prison reform progress until statehood arrives. It has gone practically to the full length of its rope in establishing a parole system and a juvenile court. Why it can confine minors in reformatories, where they must work, and not adults may be relegated to the wonderful mysteries of law.

Republican voters in every precinct have the power to prevent the handing over of their precinct to machine conspirators. All they have to do is to attend the primaries and elect a ticket in opposition to any ticket that has been framed in secret by those who have conspired to betray the party. The conspirators are boasting that they have a majority of the precincts "fixed." It is for the independent voters of each precinct to resent any form of dictation from the outside. Thus only will the conventions be made representative of the Republican party.

The Advertiser does not dislike silence enough to break it by explaining why a man that the Advertiser calls a "yellow dog" was invited to the Advertiser office by the editor of the Advertiser to propose a political partnership with that man.

If it is "men of respectability" the Advertiser desires elected as it claims, strange that it should attack voters of that class who are fighting crooked schemes.

LEWIS RETURNS.

Fred Lewis, of Lewis Bros., returned this morning from California, where he has spent some time looking over oil properties in which he is interested.

PECK TO RETURN.

L. Tenney Peck, cashier of the First National Bank, will return to Honolulu about December 15, and will resume the duties of his several business posts.

PROVISIONS, ETC.

The following are wholesale quotations for standard groceries and feed-stuffs for this date:

Flour, patent, \$5.75 to \$6.00 a barrel.
Flour, straight, \$5.30 to \$5.55 a barrel.
Corned beef, 2-pound tins \$3.20 to \$3.25 per dozen.
Corned beef, 1-pound tins \$1.90 to 2.00 per dozen.
Corned beef, Australian, 1 lb. tins

\$1.65.
Salmon, red Alaska, in tins, \$5.50 to \$5.75 per case of four dozen, 1s.
Salt Salmon, Red Alaska, in barrels, \$9 to \$10. Large King salmon, nominal.
Rolley barley \$27.50 to \$29.00.
Hay \$26 to \$28.
Bran, \$27.50 to \$30.00.
Rice (Japan), \$4.35 to \$4.50 per 100 lbs. Very weak.
Rice (Hawaiian), \$4.35 to \$4.50 per bag.
Valencia oranges are \$3.90 to \$4.25 a box.
Apples new crop, \$1.50 to \$2.00 per box.
New potatoes, \$1.30 to \$2.25 per hundred.
Onions—New California, \$1.75 to \$2.25.

No. 168. TERRITORY OF HAWAII.

Court of Land Registration.
TERRITORY OF HAWAII TO CHU SAI; CHARLES N. SPENCER and H. H. HAYWARD; Trustees under the Will of Stephen Spencer, deceased, (by J. M. Dowsett, Agent);

Uncle Walt

The Poet Philosopher

When I have lived a few more years where city noises rise, where buildings stand in rows and tiers, and smoke obscures the skies, I'll seek me out a hermitage, a place of grass and trees, and there I'll write life's final page among the birds and bees.

OUT OF DOORS
Among the bees and birds I'll dwell, remote from clanging town, and chase myself through grove and dell, and watch the sun go down. I'll seek the cowslip and the rose, and lie in new mown hay, exulting in the breeze that blows from islands far away. I'll watch the little lambs perform their gambols on the lea, and guard the chickens from the storm—ah, that's the life for me! This thing of working at a desk, in shacks that scrape the skies, and using language picturesque concerning hungry flies, is not the life for man ordained, 'tis but the treadmill's toil; how lucky he who has attained close quarters with the soil. He revels in the rain that pours upon the fragrant sod; his heritage is out of doors, and there he visits God.

Copyright, 1910, by Geo. Matthew Adams

WALT MASON.

CHING HUNG YUEN; JOHN HIRAM; ANNIE EAAUA; HATTIE K. VIVICHAVES; LOI KOON CHAN (k.); IUKEA KAHELE; J. KAEQ; REV. E. O. TIMOTEO; HENRY KAULUKOU; AKAMU W. PAOO; ISIDOR RUBINSTEIN; HEIRS OF JOHN MONTGOMERY; THE TERRITORY OF HAWAII, by Alexander Lindsay, Jr., as Attorney General, and by Marston Campbell, as Superintendent of Public Works; CITY AND COUNTY OF HONOLULU, by Joseph J. Fern, as Mayor and President of the Board of Supervisors; and to ALL whom it may concern:

WHEREAS, an amended petition has been presented to said Court by B. R. BANNING to register and confirm his title in the following-described land:

Land in Hauhaui, on Parker Lane Honolulu, being Apana 2 of L. C. A. 981, to Heleloa, described and bounded as follows:

LOT 1.

Commencing at a driven 1 1/2-inch iron pipe at the North Corner of Grant 2181 to Nika, on West side of Parker Lane at bend, the co-ordinates of said iron pipe referred to a Government Survey Monument at the intersection of Liliha and Vineyard Streets, being North 276.3 feet and West 136.3 feet, (said monument being on a 15-ft. offset, northwesterly to the new southeast line of Liliha Street and on a 10-ft. offset southwesterly to the northeast line of Vineyard Street) and running by true azimuths:—

1. 68° 20' 124.2 feet along Lot 3 across cut on a flat outcropping rock;
2. 47° 44' 69.2 feet along the same to a cross cut on an outcropping rock;
3. 152° 45' 195.0 feet along L. C. A. 8520 to J. Kaeo and L. C. A. 2107, Apana 2, to Kahina, to a small driven iron pipe;
4. 237° 21' 65.7 feet along southeast edge of auwai;
5. 177° 00' 28.0 feet along same;
6. 232° 00' 35.0 feet along same;
7. 253° 00' 35.0 feet along same;
8. 248° 30' 135.0 feet along same;
9. 244° 10' 185.0 feet along same;
10. 253° 00' 66.0 feet along same to a 1 1/2 inch driven iron pipe on south side of auwai;
11. 333° 30' 120.7 feet along L. C. A. 1075 to Umi, and L. C. A. 8520 to J. Kaeo to the center of a large Gate Post;
12. 50° 54' 91.4 feet along Lot 2 to a 1 1/2 inch driven iron pipe;
13. 17° 10' 37.85 feet along same to a 1 1/2 inch driven iron pipe;
14. 58° 02' 209.9 feet along same to the center of an electric light pole;
15. 33° 25' 15.7 feet along same to the initial point.

Area, 2.276 Acres, more or less.

LOT 2.

Commencing on the West side of Parker Lane at a point in bend, by true azimuth 213° 25', 4.8 ft. from a driven 1 1/2 inch pipe at the initial point of Lot 1, and running by true azimuths:—

1. 213° 25' 10.9 feet along Lot 1 to the center of an electric light pole;
2. 238° 02' 209.0 feet along same to a 1 1/2 inch driven iron pipe;
3. 197° 10' 37.85 feet along same to a 1 1/2 inch driven iron pipe;
4. 230° 54' 91.4 feet along same to the center of a large gate post;
5. 333° 30' 12.3 feet across lane to fence;
6. 51° 00' 89.0 feet along fence along L. C. A. 6238, Ap 2, to Kane;
7. 325° 00' 27.6 feet along same;
8. 60° 20' 250.4 feet to the initial point.

Area, 0.088 Acres.

LOT 3.

Commencing at a point by true azimuth 68° 20', 15.7 feet, from a driven 1 1/2 inch iron pipe at the initial point of Lot 1, and running by true azimuths:—

1. 68° 20' 168.5 feet along Lot 1 to a cross cut on a flat outcropping rock;
2. 47° 44' 69.2 feet along same to a cross cut on a rock;

3. 240° 20' 175 feet to the initial point.
Area, 1,321 Square Feet.

You are hereby cited to appear at the Court of Land Registration, to be held at the City and County of Honolulu on the 7th day of September, A. D. 1910, at ten o'clock in the forenoon, to show cause, if any you have, why the prayer of said petition should not be granted. And unless you appear at said Court at the time and place aforesaid your default will be recorded, and the said petition will be taken as confessed, and you will be forever barred from contesting said petition or any decree entered thereon.

Witness the Honorable W. J. ROBINSON, Judge of said Court, this 9th day of August, in the year nineteen hundred and ten.

Attest with Seal of said Court:
(SEAL) M. T. SIMONTON,
Registrar.

TWO WORLD'S RECORDS

BROKEN AT BIG SHOOT.
CAMP PERRY (O.), August 18.—Brilliant marksmanship that in shifting winds and blinding rain smashed two world's records, marked the closing hours of the National Rifle Association's tournament.

In the Leech match the first three range possibles (seven shots at 800, 900 and 1000 yards), was scored by Second Lieutenant Clarence L. Sturtevant of the corps of engineers, United States Army, one point ahead of the 104 in 1908 by Captain K. K. V. Casey of Delaware. Sturtevant scored 24 bullseyes at 1000 yards range in the storm. In the President's match Sergeant W. A. Fragner of the United States marine corps established the record score of 283.

The Leech leaders were: Lieutenant C. L. Sturtevant, United States marine corps, 105; Lieutenant-Colonel C. B. Winder, Ohio, 103; Captain G. H. Emerson, Ohio, 103.

Thursday, Aug. 25, 1910.
Hilo—Arrived Aug. 22 Sch. Sequoia from Grays Harbor.
Seattle—Sailed Aug. 24, S. S. Hyades, for Honolulu.
Gaviota—Arrived Aug. 24, S. S. Rosecrans, from Kananapaui Aug. 15.
Hilo—Arrived Aug. 24, S. S. Hilonian.
Hilo—Sailed Aug. 24, S. S. Hilonian, for San Francisco.

Friday, Aug. 26, 1910.
Delaware Breakwater—Arrived Aug. 26, Ship W. P. Frye, from Kahului Apr. 53.
San Francisco—Arrived Aug. 26, Bk. R. P. Rithet, hence July 22.
San Francisco—Arrived Aug. 26, bktns. S. G. Wilder, from Mahukona, July 29.

FREAR HAS A FALL.

Governor Frear's horse fell under him Wednesday night on Makiki street while he was riding home. The governor's left ankle was severely wrenched.

Trent Trust Co., LIMITED.

UNFURNISHED

Price.
Wahiawa, 2 B. R. \$20.00
Aiea, 3 B. R. 50.00
Kaimuki, 7th, 6 B. R. 45.00
Thurston Ave., 4 B. R. 40.00
Kam. IV Road, 4 B. R. 25.00
Mallock Ave., 2 B. R. 25.00
Lowers Road, 3 B. R. 30.00
Christley Lane, 2 B. R. 15.00
Kaimuki 11th, 2 B. R. 32.00
Kaimuki 9th, 2 B. R. 35.00
Kam. IV Road, 3 B. R. 25.00
Kinau St., 6 B. R. 40.00
Waiata Road, 3 B. R. 25.00
Walpo, 3 B. R. 12.00

Trent Trust Co., LIMITED.

Lots In Fruitvale

One Cent Per Square Foot

Or a trifle over for home sites of more than one acre each, adjoining the celebrated Pukele Homestead in PALOLO VALLEY, ten minutes' walk from the car line.

These lots are adjoining the beautiful homes of Owen Williams, William A. Rideout, Charles J. Schoening, Edward F. Patten and others. The rear of these lots extends to the hill slopes, from which grand views are to be had. Correct soil for all kinds of fruit.

Let me show you this property.

\$500—per acre and up.

Map in my window.

Chas. S. Desky

FORT STREET

THE IMPORTANCE OF

Purity In Food

cannot be overlooked by the careful housewife. Jellies, Preserved Fruits, Ketchups, Relishes, Pickles, etc., are too often put up with harmful preservatives and artificial flavoring and coloring matter.

HEINZ GOODS

ARE ABSOLUTELY PURE.

All of the famous "57" are at your Grocers.

SKEETGO

A Contrivance made for burning Buhac so the odor will not be objectionable to persons in the vicinity.

The Skeeter's Enemy For All Time

75 cents

Benson, Smith & Co., Ltd.

FORT AND HOTEL STREETS.

'Your Credit Is Good'
But
"YOUR CASH WILL DO BETTER"
In Furniture, Wire Mattresses, Iron Beds, Etc., Etc.

HONOLULU WIRE BED CO., LTD.,

Kapiolani Block

Cor. King and Alakea Sts.

FLAXOAP

FLAXOAP is an absolutely pure Linseed Oil Soap. The United States Pharmacopoeia directs soft soap to be made from cold pressed linseed oil and potash. It is well known that a soap prepared in this way is the best soft soap that it is possible to make. Flaxoap contains no animal fat whatever and no free caustic alkali, consequently it can be used on the finest fabrics without fear of injury. Flaxoap lathers freely in hot or cold, hard or soft water. It is especially adapted to cleaning floors, woodwork and furniture. Owing to the fact that Pure Linseed Oil is the life of all Paints and Varnishes, it is the best cleaner for all painted and varnished surfaces. It will be found most excellent for cleaning automobiles, carriages, windows, mirrors, and cut glass. The housewife will find it particularly valuable in the cleaning of carpets and rugs. Mechanics use it for removing dirt or grease from their hands and clothing.

Put up by SHERWIN-WILLIAMS CO. Sold by

E. O. HALL & SON LTD.,

CORNER FORT AND KING STREETS.

Financial and Commercial News

By L. D. TIMMONS

OAHU STOCK BOOST PROVED TOO VIGOROUS

The Oahu stock boom of yesterday and the day before was rather too strong to last, and was almost as absurd as the bear movement which had preceded it. Honolulu is no longer in accord with speculative furies, be they upward or downward; and the players at such games run the risk of being left early with only the bag to hold. Oahu will stand a gradual advance and final return to its old place on the stock list; but it will not reach that point at a bound.

NEW ADVERTISEMENTS.

HAWAIIAN LODGE NO. 21 F. & A. M.



THERE WILL BE A SPECIAL meeting of Hawaiian Lodge No. 21, F. & A. M., at its hall, Masonic Temple, corner of Hotel and Alakea streets, THIS (FRIDAY) EVENING, August 26, 1910, at 7:30 p. m.

Members of The Honolulu Lodge U. D., Oceanic Lodge, and all visiting brethren are fraternally invited to attend.

By order of the W. M.

K. R. G. WALLACE,

Secretary

IN THE CIRCUIT COURT OF THE First Circuit Territory of Hawaii. At Chambers—In Probate.

In the Matter of the Estate of Andrew Fuller, deceased.

Order of Notice of Hearing Petition for Probate of Will.

A document purporting to be the Last Will and Testament of Andrew Fuller deceased, having on the 25th day of August A. D. 1910 been presented to said Probate Court, and a Petition for Probate thereof, praying for the issuance of Letters Testamentary to Ino Susan Fuller, having been filed by Ino Susan Fuller.

IT IS ORDERED, that Wednesday, the 25th day of September A. D. 1910, at 10 o'clock a. m., of said day, at the Court Room of said Court in the Judiciary Building in the City and County of Honolulu, be and the same is hereby appointed the time and place for proving said Will and hearing said application.

BY THE COURT:

JOHN MARCALLINO,

Clerk Circuit Court of the First Circuit.
Dated Honolulu, August 25th, 1910.
4th—Aug. 26, Sept. 2, 9 and 16.

NOTICE TO STOCKHOLDERS.

HAWAIIAN FERTILIZER CO., LTD.

Notice is hereby given that in accordance with the action taken at a meeting of the Stockholders of Hawaiian Fertilizer Company, Limited, held on July 18, 1910, increasing the Capital Stock of the Company, new certificates of stock will be ready for delivery on September 1, 1910.

Stockholders are requested to surrender their old certificates PROPERLY ENDORSED AS PROMPTLY AS POSSIBLE and receive new certificates in exchange.

Books of the corporation will be closed for transfers from date to September 1, 1910.

E. F. BISHOP,

Treasurer, Hawaiian Fertilizer Co., Ltd.
Honolulu, August 25, 1910.

Ohio Clothes Cleaning and Dyeing Co.'s new telephone is

1496

NOTICE.

A meeting of the 1st Precinct, 4th District, Republican club, will be held at Aliiolani College, Kaimuki, Friday evening, Aug. 26, 1910, at 7:30 o'clock for the purpose of nominating delegates for the Territorial and County and District Conventions.

E. A. DOUTHITT,

President

F. H. KILBEY,

Secretary.

Announcement.

I hereby announce myself as a candidate for re-election to the office of

City and County Treasurer,

subject to the action of the Democratic County Convention.

RICHARD H. TRENT.

NOTICE.

A meeting of the 5th Precinct, 4th District, Republican Club will be held at Bailey's Hall, Alapai street on Friday evening, August 26, 1910, at 7:30 o'clock for the purpose of nominating delegates for the Territorial and County and District Conventions.

C. HUSTACE, JR.,

Chairman.

F. B. LOWREY,

Secretary

REPORTS OF DUN AND BRADSTREET

Bradstreet (New York) of August 20 had the following to say on the business situation.

"Crop reports and fall jobbing trade show further improvement.

This is the most marked in the west, where general rains have improved corn, and where house trade has expanded as the result of the arrival of country buyers. Better than expected results from spring wheat have made for a more optimistic feeling also in the northwest. x

"Reports from leading industries are not much changed. Iron and steel are quiet, with crude and finished production a little restricted. Building remains active at many centers, and lumber and hardware are in better demand at the west, while quiet east and south. St. Louis shoe manufacturers are working overtime, and eastern manufacturers report more orders coming in, but production and shipments are still below last year's. Some resumption of woolen goods falls are noted. Curtailment is still in evidence in cotton goods.

"Business failures for the week ending August 18 were 222 in the United States, against 231 last week, 183 in the like week of 1909, 226 in 1908, 153 in 1907 and 105 in 1906.

"Business failures for the week in Canada number 26, which compares with 20 last week and 29 in the corresponding week of 1909."

On the same day R. G. Dunn & Company (also New York) reported as follows:

"While trade contraction continues, situation appears stronger.

"While quietness still prevails in most departments of the iron and steel market, there has been practically no further decline in quotations. The general opinion appears to be that the lowest point has now been reached.

"The tone in the dry goods market is better, especially with jobbers and selling agents, but business is still of limited proportions. Cotton goods and cotton yarns hold firm, with buying showing more breadth. Business on wool firsts and worsteds is of a more limited character, although there is more agreement regarding values.

"Many shoe manufacturers have completed contracts on fall goods and are now doing little owing to lack of supplementary fall orders. Most of the New England factories are running on part time and the local jobbing trade continues to improve, owing to the approaching opening of the schools. The hide market is less active and the advanced prices demanded of late have checked the demand. There is some improvement in leather, and increased sales have been made in certain descriptions, but the situation on the

NEW PROMOTERS TAKE WORK OVER

There were really two Promotion Committee meetings yesterday afternoon—one of the old committee to wind up its affairs and the other of the new committee to take up the work for the ensuing year. Mr. Trent retires from the committee on account of pressure of other business. The new committee will consist of Fred Bush and W. H. McNery, of the Merchants' Association; W. H. Hoogs and Norman Watkins, of the Chamber of Commerce. W. A. Bowen has been elected as the member at large and he will also be the treasurer.

Mr. Bowen is at present abroad and until his return Mr. Trent will look after the finances of the committee.

G. F. Bush will continue to officiate as chairman of the committee

The annual reports of Secretary Wood and of the treasurer were received, read and filed. The latter showed receipts to have been \$17,282.07 and expenditures \$18,567.07, leaving a deficit of \$1,285. An unused balance from the last period will just about make up the deficit but the new committee will have to do a little hustling for funds at the start.

A leading item was the reading of Secretary Wood's lengthy report, most of which was printed in these columns yesterday.

SUGAR THAT WILL REACH HIGH PRICE

The Sugar Factors' Company received a cablegram this morning announcing the arrival of the ship William P. Fry at Delaware Breakwater, 125 days from Kahului with 5550 tons of sugar. She left the Maui port on April 23 last, on which date sugar was 4.30. Inasmuch as sugar was 4.50 yesterday, her cargo has increased considerably in value enroute.

The Foong Suey is 140 days out today, and is supposed to be also near Philadelphia. She is a slower boat than the Fry. The Foong Suey left Port Allen on April 8 and carried 1700 tons of sugar.

The big ship Edward Sewell is 89 days out today, she having sailed from Hilo on May 29 with 5550 tons of sugar. She is now five days over the John Ena's record trip, and should arrive very soon at her destination.

All these cargoes will come in on the high market.

TELEPHONE MEETING.

A meeting of directors of the Mutual Telephone Company is being held at 2 o'clock this afternoon.

Commercial ssm'h? cmf

whole is still far from satisfactory and in a number of instances further concessions have been made in prices in order to effect business.

RAILWAYS FEEL STATE POLITICS

NEW YORK, Aug. 19.—The reactionary undertone which characterized yesterday's stock market became more pronounced today. Trading was in small volume. If anything the market was more professional. At odd times the entire list seemed under pressure, but more often the points of weakness were the Harriman issues. Reading and United States steel, which have long comprised the bulk of the average day's business.

It is a reasonably fair assumption that the pressure directed on the Pacific shares results largely from recent developments in California. The success of the insurgent cause in that state is generally regarded as unfavorable to the Southern Pacific road, which report has long credited with unwonted political activity on the Pacific coast.

Stocks grew increasingly heavy in the afternoon with a generally lower price level. All the leaders went below the bottom prices of the previous day, but the closing was slightly more active, with moderate recoveries in Reading and Union Pacific.

London repeated its tactics of the last few days by open selling in this market, chiefly of coppers. United States steel and the Pacifics, to the extent of fully 15,000 shares on balance. London's home market continued in a state of depression with especial heaviness in the rubber stocks.

The annual report of the American smelting and refining company showed net earnings for the fiscal year, ending April 30 last, of \$7,508,000. This was but a moderate decrease from the previous year and rather favorable on the whole.

Domestic money movements indicate a cash gain by local banks of \$5,000,000 to \$7,000,000. Bank clearings for the week show a loss of 25 per cent, compared with the same week last year. The loss results largely from the decrease in clearings at this center.

The bond market was irregular and dull. Total sales (par value), \$1,237,000.

PAPERS FILED YESTERDAY.

August Reimann, by Co. Sher, to H. Baldwin, sher deed.
Iida W. Waterhouse by Atty. et al. to Elizabeth W. Afong, deed.
W. Matlock Campbell, by Affid of Mtgee, to Est of S. G. Wilder, fore. affd.
Trent Trust Co. Ltd., Tr. to Kaimuki Land Co. Ltd., deed.
David W. Crowley to Kaimuki Land Co. Ltd., deed.

BOOKSTORE CHANGES.

Brown, Lyon Company are fitting up the premises lately vacated by the Honolulu Gas Company, in the Young building, and will shortly occupy the same. The Hawaiian News Company will thereafter occupy all of the present room of the two companies.

HONOLULU MUSIC CO.

The Honolulu Music Company, Limited, will open for business tomorrow in the new premises on King street, Ewa of Fort. Everybody invited to inspect the place. At evening a splendid native orchestra will furnish music.

HAWAIIAN FERTILIZER.

The new certificates of additional stock of the Hawaiian Fertilizer Company will be ready for delivery on September 1. Stockholders are requested to surrender the old certificates properly endorsed as promptly as possible and receive the new certificates. Books for transfers have been closed to September 1.

STOCK EXCHANGE

10.30 A. M.

Between Boards—16 Oahu Sugar Co. \$32.00; 50 Oahu Sugar Co., \$32.00; 75 McBryde \$5.875; 30 Oahu Sugar Co., \$32.00; 20 Oahu Sugar Co., \$32.00; 175 Kahuku \$17.50; 175 Kahuku Plant, \$17.50; 60 Haw. Ag. Co., \$220.00; 30 Haw. Ag. Co., \$220.00; 100 Haw. C. & S. Co., \$1.125; 10 Haw. C. & S. Co., \$41.125; 1000 Cal. Ref. Co. 6s \$100.25; 20 Pahang Rub. pd, \$17.375; 100 Oahu Sugar Co., \$32.25; 100 Oahu Sugar Co., \$32.00; 30 Oahu Sugar Co., \$32.00; 6 Pioneer \$230.00; 100 Oiaa \$6.375; 24 McBryde \$5.875; 25 Pioneer \$230.00.

Session Sales—10 Oahu Sugar Co., \$31.75; 30 Ewa \$33.75; 20 Ewa \$33.75; 10 Ewa \$33.75; 25 Oiaa \$6.3375; 10 Oahu Sugar Co., \$31.75; 5 Oahu Sugar Co., \$31.75; 15 McBryde \$6.00; 5 Oahu Sugar Co., \$31.75; 25 Haw. C. & S. Co., \$41.125; 5 Hon. B. & M. Co., \$21.625; 12 Hon. B. & M. Co., \$21.75; 7 Hon. B. & M. Co., \$21.75.

Stock	Bid.	Asked.
C. Brewer & Co.	\$400.00	\$.....
Ewa Plant	33.75	33.875
Haw. Ag. Co.	219.00	227.50
Haw. C. & S. Co.	41.00	41.125
Haw. Sugar Co.	41.00	42.50
Honoum	150.00	160.00
Honokaa Sug. Co.	18.375	18.625
Hauku Sugar Co.	150.00
Hutchinson	16.75	16.875
Kahuku Plant	16.00
Kekaha Sug. Co.	205.00	220.00
Koloa Sugar Co.	160.00
McBryde Co.	5.875	6.00
Oahu Sugar Co.	31.75	31.875
Onomea	47.50
Oiaa Sugar Co.	6.375	6.50
Olowalu	145.00
Pauhaui	26.50	27.25
Pacific Mill	125.00	140.00
Pala Plant Co.	150.00
Pepeekeo	155.00
Waialuku	180.00
Walmanalo	220.00
Waimea Sugar Co.	140.00	155.00
I. I. S. N. Co.	122.50
Haw. Elec. Co.	170.00	180.00
Hon. R. T. Co. pd.	107.50
Hon. R. T. Co. com.	115.00
Mutual Tel. Co.	14.50	15.00
O. R. & L. Co.	142.50
Hilo R. R. Co.	11.50	12.00
Hon. B. & M. Co. N	21.625	21.875
Haw. Pine. Co.	32.50
Tanjong Olok Co.	38.00
Tanjong Rub. ass.	33.00
Pahang Rub. pd.	17.00	17.50
Cal. Ref. Co. 6sc	99.75
Hamakua Ditch 6s	104.00
Haw. Ir. Co. pd.	103.00
Haw. Com. Co. 5s	105.00
Hilo R. R. 1901 6s	100.00	100.25
Hilo R. R. Ex. 6s	97.50
Honokaa s.	103.00	103.50
Hon. R. T. Co. 6s	106.00
Kaui R. R. 6s	99.00	100.25
Kohala Ditch 6s	100.25
McBryde Sugar 6s	98.00	98.50
O. R. & L. Co. 5s	101.75
Oiaa Sugar s.	94.25
Pacific Mill 6s	102.00
Pioneer Mill 6s	101.50
Waialua Ag. Co. 6s	101.00

MOTHER UNFIT.

Application has been made in the circuit court by Chi Yoeng and wife, for adoption papers for Martha Kim. The petitioners set forth that the child was born last August and that her father, Yisoo Num, left the territory, deserting her, two months ago. They state that the child has been left in their care and that the mother is wholly unfit to care for her, and ask that the court grant them adoption papers.

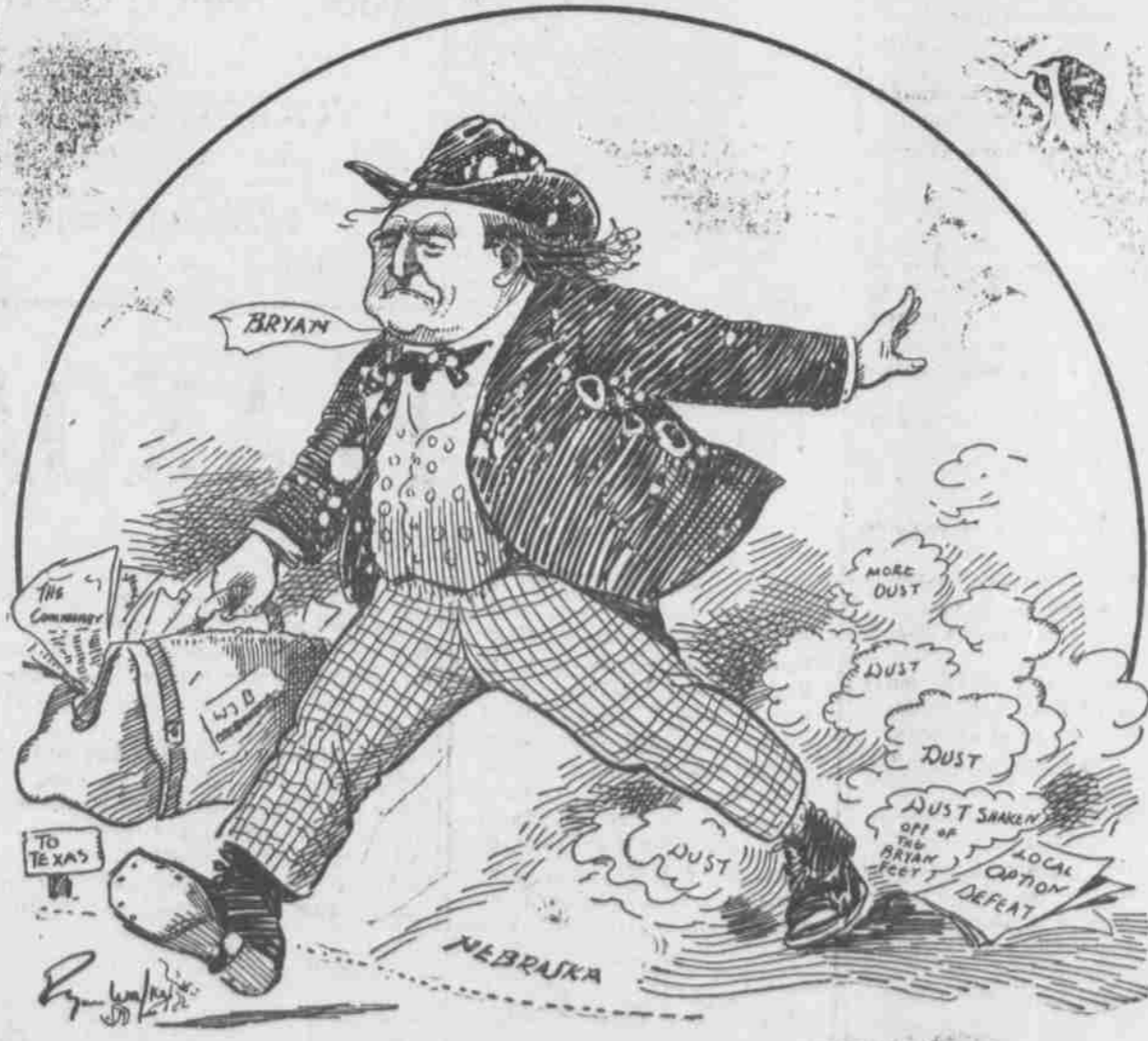
Sugar 4.50c Beets, 14s, 11d

Henry Waterhouse Trust Co.

Members Honolulu Stock and Bond Exchange.
FORT AND MERCHANT STS.

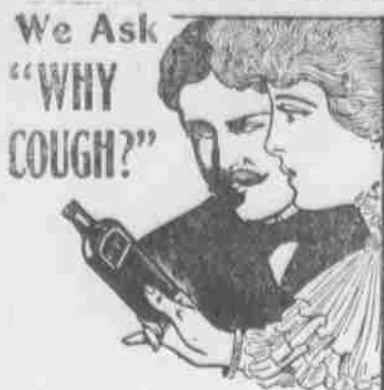
ANNOUNCEMENT.

The Honolulu Music Co., Ltd., beg to announce that on Saturday Night, August 27th, it will hold its Grand Opening at its New Store at No. 88 King Street. The public is cordially invited to make themselves at home and spend a pleasant evening by attending the concert specially arranged for the occasion.



REMOVAL NOTICE.

William Jennings Bryan will move to Texas at an early date.—News Item.



We Ask "WHY COUGH?"

- Q What is good for my cough? A. Ayer's Cherry Pectoral. Q How long has it been used? A. Seventy years. Q Do doctors endorse it? A. If not, we would not make it. Q Do you publish the formula? A. Yes. On every bottle. Q Any alcohol in it? A. Not a single drop. Q How may I learn more of this? A. Ask your doctor. He knows.

Ayer's Cherry Pectoral

Prepared by Dr. J. C. Ayer & Co., Lowell, Mass., U. S. A.

Fraternal Meetings

HONOLULU LODGE NO. 616, B. P. O. ELKS. Meets in their hall on King Street near Fort, every Friday evening. Visiting Brothers are cordially invited to attend. JAMES D. DOUGHERTY, E. R. GEO. T. KLUEGEL, Secretary. HARMONY LODGE, No. 3, I. O. O. F. Meets every Monday evening at 7:30 in Odd Fellows' Hall, Fort St. Visiting brothers cordially invited to attend. H. E. McCOY, N. G. E. R. HENDRY, Sec.

HONOLULU IRON WORKS CO., LTD. Steam Engines, Sugar Mills, Boilers, Coolers, Iron, Brass and Lead Castings, Machinery of every Description Made to Order. Particular Attention Paid to Ship's Blacksmithing. Job Work Executed on Short Notice

Oat & Mossman

STATIONERS AND BOOK SELLERS. Merchant Street near Post Office.

ALEXANDER & BALDWIN LTD

OFFICERS and DIRECTORS. H. P. BALDWIN, President. J. B. CASTLE, 1st. Vice-President. W. M. ALEXANDER, 2nd. Vice-President. J. R. GALT, 3rd. Vice-President. E. E. PAXTON, Secretary. J. WATERHOUSE, Treasurer. W. R. CASTLE, Director. J. GUILD, Director. C. H. ATHERTON, Director. G. G. KINNEY, Acting Auditor

SUGAR FACTORS

COMMISSION MERCHANTS AND INSURANCE AGENTS, AGENTS FOR Hawaiian Commercial & Sugar Company. Hauku Sugar Company. Paia Plantation. Maui Agricultural Company. Hawaiian Sugar Company. Kahuku Plantation Company. Kahului Railroad Company. Haleakala Ranch Company. Honolulu Ranch. McBryde Sugar Company. Kaunali Railway Co.

SEE THE

Grabowsky Truck Honolulu Power Wagon Co. W. M. Minton, Mgr.

Forcegrowth WILL DO IT.

BUY REGAL SHOES

Y. Yoshikawa

165 King Street, opp. Young Building. Good, new bicycles \$25; second hand, any kind, cheap. Tricycles for sale. Motorcycles repaired and retired.

SPORTS

BY JAMES W. W. BREWSTER.

MAUI AND OAHU TO CLASH IN FINAL GAME OF SERIES

Tomorrow afternoon at three o'clock the final game of the 1910 polo series will be played at Moanalua between the Maui and Oahu teams. More than usual interest is being taken in this game as the final standing of the teams depends on the outcome of this game. Maui has won one and lost one, the Oahu team having done the same. If Oahu wins tomorrow they will finish second to Kauai who have won all the games that they have played in. A good deal of talk is being heard about town as to the outcome of the game tomorrow. Enthusiasts who are well up on the game feel that the two teams are too evenly matched to decide which one will win, although judging from the fast showing made

Oahu is likely to go on the field a slight favorite in the betting. It is understood that the Oahu four will have the use of some of the Kauai ponies which will be a great advantage to them. The teams will line up tomorrow the same as they have in the other games this year. The band will be on hand to make the final game a success from a musical standpoint, Captain Berger promising to have a new march in honor of the event. The motor bus will run from the end of the King street line to the grounds, starting at two o'clock. After the game a big reception will be held in the grass lanai, the members of the polo club ending the day with a stag dinner and dance at the Moana hotel.

McFARLANE HOPES TO GET WOLGAST

CHICAGO, August 16.—Ad Wolgast, lightweight champion, and Packey McFarland will hold a conference tomorrow at the Morrison hotel for the purpose of agreeing on the weight question for a fight to settle their differences. If this can be decided, articles will be signed and the two little fellows will meet for the lightweight title early in September. According to Tom Jones, Wolgast's manager, the champion will come to Chicago from his home in Cadillac, Mich., for the purpose of meeting Packey. The stock yards fighter last night said he was going to hold out for the weight being made three hours before the fight, and he also said that he had been informed that Wolgast would agree to this.

Jones, who went with McFarland to the New York-Sox game today, said he thought the prospects of the match were bright, but he would not say anything about the weight question until Wolgast arrived. "It certainly would be a great fight," Jones said, in talking of the proposed match. "The battle would draw a big crowd anywhere and I only hope Wolgast will agree to Packey's weight terms. When this match was talked of before Ad held out for McFarland making 133 pounds ringside, but when he comes down today I think he will not be so firm in his stand." McFarland is elated over the prospects and if the two men can agree to terms it will be the first time Packey ever had a chance to meet the champion of his class.

NEW FOOTBALL RULES THIS YEAR

NEW YORK, Aug. 17.—After working nearly all summer, the football rules committee today made public the rules that are to govern the game during the season of 1910. Changes adopted are revolutionary in character and are calculated to minimize greatly the danger of accidents existing under the old rules. The time of play is divided into four periods of 15 minutes each instead of two 35 minute halves. The usual intermission of 15 minutes is maintained between the second and third periods, but an intermission of three minutes only is allowed between the first and second and third and fourth periods. During this short intermission no player will be allowed to leave the field nor will anyone, save the trainer, be permitted to come on the field. At the beginning of the second and fourth periods the teams change goals and the down, the possession of the ball and the distance to be gained remain as they were at the conclusion of the preceding period. The flying tackle has been entirely eliminated by a new ruling that provides that a player must have at least one foot on the ground when tackling. This year's rules provide that a player is qualified to receive a forward pass only when he is at least one yard back of his own line of scrimmage or occupies the position on the end of the line. No man may make a forward pass or kick the ball unless he is five yards back of the line of scrimmage. The territory forward of the line of scrimmage and consequently in the enemy's camp, is adjudged neutral for a distance of 20 yards pending the completion of a forward pass or kick. A forward pass is not legal if the ball crosses a line 20 yards in advance of the spot where it was put in play, before touching the ground or player. In the case of a kick, the players on the defence within the 20 yard zone must not interfere with the ends, or other players until their opponents have advanced 20 yards beyond the line of scrimmage. Interlocked interference, that is,

players of the side having the ball taking hold of each other, or using their hands or arms to grasp their teammates in any way, is forbidden, and it is also forbidden for any man on the side having possession of the ball, to push or pull in the man running with the ball. Another innovation is to be noted in regard to the substitution of players during a game. A new rule provides that a player who has been removed for any cause except disqualification or suspension, may be returned to the game once at the beginning of any subsequent period. The longitudinal lines formerly marking the field are done away with, as the quarter back may now cross the line of scrimmage at any point.

Yesterday's games in the big leagues resulted as follows: American—Boston 7, Cleveland 4; New York 8, Chicago 4; Washington 2, Detroit 3; Philadelphia 6, St. Louis 9. National—Pittsburg 4, Brooklyn 3; Chicago 6, New York 1; Boston 2, St. Louis 1; Philadelphia 7, Cincinnati 2.

NEW YORK MAYOR STOPS BIG FIGHT

NEW YORK, August 16.—In compliance with an order issued by Acting Mayor Mitchell, the police prevented the bout between Al Kaufman and Lang at the Fairmont Athletic Club tonight. Shortly after 8 o'clock, when the arena was packed to the doors. President William Gibson of the Fairmont Club was notified by a squad of central office detectives that if an attempt was made to pull off the big bout the doors would be broken down and Kaufman and Lang placed under arrest. Gibson tried to explain that his club was operated strictly in accordance with the law and was also protected by a Supreme Court injunction restraining the police department from interfering with the club's affairs, but the sleuths were obdurate and said they would carry out their orders to the letter. Gibson therefore concluded to have no riotous disorder and notified the police that the Kaufman bout would be declared off, but that he would go ahead with four preliminary contests between local boxers. Inspector Hussey, who was in charge of the men from down town, informed Gibson that his Supreme Court injunction had been knocked out by the courts and he would not permit a violation of law but the inspector made no attempts to stop the preliminaries. More than 2500 members had paid \$5, \$7, \$10 and \$20 for reserved seats, but Gibson said all the money would be refunded.

LARNED MAY GO TO AUSTRALIA

NEWPORT, R. I., Aug. 15.—Tennis followers took a more hopeful attitude today with regard to America's prospects for sending a team to New Zealand to participate in the Davis International cup contest. It was suggested that William A. Larned might be persuaded to make the journey though the national champion has not committed himself. Should Larned consent the American team would be complete, for Maurice E. McLoughlin, the rapid fire Californian, is ready to try his hand—an older and perchance a steadier hand than a year ago—once more against the invincible Brookes and Wilding, the Australians who now hold possession of the most coveted tennis trophy in the world. Beals Wright stands ready to make the long journey also. Larned's rapidly developing friendship for McLoughlin is a most consistent step toward such an acceptance. In the minds of many of the tennis sharps it appears to indicate that Larned has seriously considered the advi-

ability of tying up with the speedy westerner in a double team. Such a combination should prove capable of wresting the doubles match from the Australians. Larned's interest in McLoughlin has led to considerable coaching of the Californian by the title holder even to the extent of a few lessons as to how to defeat certain others of notable position in the tennis world. The first round was completed during the forenoon and good progress in the second round was made. The Pell-Johnson match, which attracted a large gallery, was won by the former indoor champion in straight sets, although every match was hard fought.

CALIFORNIA TEAM LOSES MATCH

NEWPORT (R. I.), August 17.—Harold H. Hackett and Fred B. Alexander of New York, the veteran doubles pair, won the national lawn tennis championship in doubles for the fourth successive time today by defeating T. C. Bundy and Trowbridge Hendrick of California in straight sets. The young Westerners who had defeated the champions of the East, South and Middle West at Chicago earlier in the summer, were no match for the two men who have played together for so long, but they put up a plucky fight. It was the superior steadiness and team work of the veterans which brought them the victory. The summary: H. H. Hackett and E. B. Alexander defeated T. C. Bundy and T. Hendrick, 6-1, 8-6, 6-3. One of the most interesting matches in the singles was that between Beals C. Wright, former champion, and N. W. Niles, both of Boston, 6-3, 3-6, 6-3, 6-3.

COMING EVENTS

- BASEBALL. August 27—N. G. H. vs. Punahou; St. Louis vs. Marines. September 3—Military vs. Marines; St. Louis vs. Punahou. September 5—Punahou vs. Marines; N. G. H. vs. Military. TENNIS. September —E. O. Hall cup tournament (Singles.) GOLF. August 23—Foursome, Honolulu Golf Club. POLO. August 24—Maui vs. Cavalry. August 27—Oahu vs. Maui. FOOTBALL. Oct. —Interscholastic games. BOXING. August 27—Cordell vs. Cornyn, 15 rounds. September 5.—Bogey, Country Club. 2 AUTOMOBILES AND COUNTRY'S

The consuming or purchasing power of these men is in turn reduced to nothing and they in turn affect still other producers. The chain is an endless one. Even the farmer is not exempt from the influences. Unemployed labor including foodstuffs. The sale for products of the farm becomes lessened and prices fall accordingly. The great prosperity of the farmer during the past few years has called forth universal comment. What has been back of that prosperity? Not only good crops resulting from advanced scientific methods of farming, but the fact that the farmer has awakened gradually to the realization that there is something in life besides drudgery; that he could avail himself of comforts and pleasures. He had been accustomed to hoarding what little he could scrape together instead of keeping it in circulation—keeping it working. When he began to spend his money for some of the things that helped to make life worth living, that cash soon commenced coming back to him an hundred fold, because, in its travels it had materially enhanced the value of what he himself was producing.

The farmers are the subject of severe criticism for their extravagance in buying automobiles. Yet the very fact that they are so doing is the underlying reason for their being able to buy them. More plainly speaking, the farmers are getting their automobiles and in fact are getting them without cost. This statement, upon first thought, may appear absurd; but let us reverse the process of reasoning and see if it is not true.

BY AUTHORITY

RESOLUTION No. 350. Be It Resolved by the Board of Supervisors of the City and County of Honolulu, Territory of Hawaii, that the sum of SEVEN HUNDRED AND FORTY DOLLARS (\$740.00) be and the same is hereby appropriated from the General Fund of the said City and County of Honolulu for the full payment of account known as "HONOLULU JAIL IMPROVEMENTS." Introduced by Supervisor Andrew E. Cox. Dated August 2, 1910. Approved this 18th day of August A. D. 1910. JOSEPH J. FERN, Mayor.

WE INVITE INSPECTION OF OUR GOODS

K. FUKURODA Hotel near Nuuanu. Honolulu. 10th—Aug. 18, 19, 20, 22, 23, 24, 25, 26, 27, 29.

USE Sweet Violet BUTTER

C. Q. YEE HOP & CO. TEL. 251

SCHOOL BOOKS

Pencils, Paper and all School Supplies. A. B. ARLEIGH & CO., LTD. Hotel, opp. Union.

PRESCRIBED BY DOCTORS.

Lydia E. Pinkham's Vegetable Compound, an honest, tried and true remedy for feminine ills, holds the record for the largest number of actual cures of any similar remedy, and is prescribed and recommended by hundreds of fair-minded doctors who do not fear to recommend a worthy medicine even though it is advertised. Fine Job Printing, Star Office.

WILL MEET TO ARRANGE DETAILS

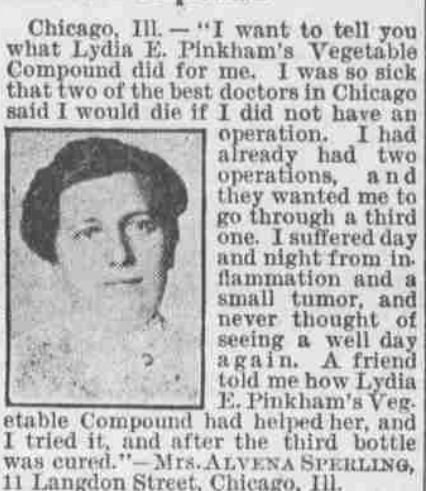
At a meeting held on Wednesday evening after the annual elections of the Hawaiian Rowing Association, Tom King, Irwin Spalding and Bert Heilbron were appointed a committee to look after the plans etc., for the races on Regatta day, September 17. The races this year promise to be even more successful than they were last, although there will be no naval crews in the races this year as there were last. The main event this year will be a six-paddle canoe race between a team of Hawaiians from Kona and a crew composed of the members of the Outrigger club. Last year a race was run between a native and haole crew which was won by the latter after an exciting race. The selection of men for the Myrtle and Healan crews will be made next week according to the coaches.

Governor Frear has set aside forest reserves as follows:

The native Island of Kahoolawe, and certain lands in Hilo, Kaunani and Hamakua on the Island of Hawaii, and in the Ewa district on this island.

THIRD OPERATION PREVENTED

Chicago, Ill.—"I want to tell you what Lydia E. Pinkham's Vegetable Compound did for me. I was so sick that two of the best doctors in Chicago said I would die if I did not have an operation. I had already had two operations, and they wanted me to go through a third one. I suffered day and night from inflammation and a small tumor, and never thought of seeing a well day again. A friend told me how Lydia E. Pinkham's Vegetable Compound had helped her, and I tried it, and after the third bottle was cured."—Mrs. ALYONA SPELLING, 11 Langdon Street, Chicago, Ill.



If you are ill do not drag along at home or in your place of employment until an operation is necessary, but build up the feminine system, and remove the cause of those distressing aches and pains by taking Lydia E. Pinkham's Vegetable Compound, made from roots and herbs.

For thirty years it has been the standard remedy for female ills, and has positively restored the health of thousands of women who have been troubled with displacements, inflammation, ulceration, fibroid tumors, irregularities, periodic pains, backache, bearing-down feeling, flatulency, indigestion, dizziness, or nervous prostration. Why don't you try it?

BY AUTHORITY

RESOLUTION No. 350. Be It Resolved by the Board of Supervisors of the City and County of Honolulu, Territory of Hawaii, that the sum of SEVEN HUNDRED AND FORTY DOLLARS (\$740.00) be and the same is hereby appropriated from the General Fund of the said City and County of Honolulu for the full payment of account known as "HONOLULU JAIL IMPROVEMENTS." Introduced by Supervisor Andrew E. Cox. Dated August 2, 1910. Approved this 18th day of August A. D. 1910. JOSEPH J. FERN, Mayor.

WE INVITE INSPECTION OF OUR GOODS

K. FUKURODA Hotel near Nuuanu. Honolulu. 10th—Aug. 18, 19, 20, 22, 23, 24, 25, 26, 27, 29.

USE Sweet Violet BUTTER

C. Q. YEE HOP & CO. TEL. 251

SCHOOL BOOKS

Pencils, Paper and all School Supplies. A. B. ARLEIGH & CO., LTD. Hotel, opp. Union.

PRESCRIBED BY DOCTORS.

Lydia E. Pinkham's Vegetable Compound, an honest, tried and true remedy for feminine ills, holds the record for the largest number of actual cures of any similar remedy, and is prescribed and recommended by hundreds of fair-minded doctors who do not fear to recommend a worthy medicine even though it is advertised. Fine Job Printing, Star Office.

AMUSEMENTS

New Orpheum

(Phone 660.) TONIGHT. High-Class Vaudeville of Nine Numbers and

Casino Musical Comedy Co., In Another Scream.

"The Schemers" SATURDAY MATINEE.

Reserved Seats..... 25c BUNYEA and GIDEON MAUDE ROCKWELL. HARRIS McGUIRE CARLTON CHASE HARRY GARRY HARRY STUART LAUREL ATKINS OLGA STECH FRANK BLAIR THE CASINO FOUR. VILMA STECH GLADYS CLIFTON ETHEL HAINES RITA ABBOT An Orchestra Seat for 25 cents. PRICES: 15c 25c 50c

Park Theater

CONNIE MARINA Australia's Own Comedian MISS ALMA LYNDON. From the Rickard Circuit BANVARD & FRANKLIN Acrobatic Sketch Team RICHARD D. STROSS, World's Greatest Cornet Soloist. MISS ETHEL MAY From the Keith Circuit.

Admission 5c, 10c, 15c.

Empire Theater HOTEL STREET

2—THE DESMONDS—2 J. E. THOMPSON A GREAT SKETCH TEAM. 2—CHANGE A WEEK—2

Admission.....15c, 10c, 5c

Novelty Theater

Cor. Nuuanu and Paunahi Sts. CLARENCE TISDALE The Greatest Australian Tenor. WISE AND MILTON Singing, Dancing and Comedy Artists —and— LATEST MOTION PICTURES

Look! Look!

Now Showing

Jolly Trixie

World's Fattest Girl. Baby Bliss World's Fattest Boy.

TRIXIE WEIGHS 685 lbs BABY BLISS 596 lbs

"Two of the most wonderful People the World has ever known." N. Y. Sunday Telegraph. DIRECT FROM CONEY ISLAND, NEW YORK.

NOW ON EXHIBITION ALOHA PARK HOTEL ST.

Admission, Adults 25c, Children 10c.

Orpheum Theater

Saturday, August 27

Boxing Contest

JACK CORDELL VS. PAT CORNYN Fifteen Rounds For the Championship of Hawaii

JACK COLL VS. JOE MCGURN 145 lbs.—Six Rounds—145lbs.

Time Called Eight p. m.

Ringside \$3; Reserved, \$2 and \$1.50; General Admission, \$1.

SEATS AT FITZPATRICK BROS., Hotel and Fort.

Y. WO SING CO. Groceries, Fruits, Vegetables, Etc. California Butter, 40c lb.; Cooking Butter, 35c lb.; Fresh Dried Fruits, 1186-1188 Nuuanu Street. Telephone Main 238. Box 952

FINANCIAL Independence

is seldom an accident. It is the result of a persistent plan of saving some part of your earnings. A savings Account where your money is earning four and one-half per cent interest is a great help to Financial Independence.

BANK OF HAWAII, LTD.
Capital and surplus \$1,000,000

ESTABLISHED IN 1830.
BISHOP & CO.
BANKERS

Commercial and Travellers' Letters of Credit issued on the Bank of California and The London Joint Stock Bank, Limited, London.
Correspondents for the American Express Company, and Thos. Cook & Son.
Interest allowed on term and Savings Bank Deposits.

Bank of Honolulu Limited

Issue K. N. & K. Letters of Credit and Traveler's Checks available throughout the world. Cable transfers at lowest rates.

C. Brewer & Co., Ltd.

Fire and Marine Insurance Agencies

Royal Insurance Co. of Liverpool.
London Assurance Corporation.
Commercial Union Assurance Co. of London.
Scottish Union and National Insurance Co. of Edinburgh.
Aledonian Insurance Co. of Edinburgh.
Upper Rhine Insurance Co., (Marine).

The Yokohama Specie Bank Limited.

Capital (Paid Up).....Yen 24,000,000
Reserve Fund.....Yen 16,250,000
HEAD OFFICE, YOKOHAMA.

The bank buys and receives for collection bills of exchange, issues Drafts and Letters of Credit, and transacts a general banking business. The Bank receives Local Deposits and Head Office Deposits for fixed periods.

Local Deposits \$25 and upwards for one year at rate of 4% per annum.
Head Office Deposits Yen 25 and upwards for one-half year, one year, two years or three years at rate of 4 1/2% per annum.

Particulars to be obtained on application.
Honolulu Office—Corner Merchant and Bethel streets. P. O. Box 168.
YU AKAI, Manager.

FIRE INSURANCE

ATLAS ASSURANCE COMPANY OF LONDON.
NEW YORK UNDERWRITERS AGENCY.
PROVIDENCE WASHINGTON INSURANCE COMPANY.

The B. F. Dillingham Co., Ltd.
General Agents for Hawaii.
Fourth Floor, Stangenwald Building.

DISASTER NOW IN WASHINGTON

SEATTLE, August 26.—The forest fires in this state are spreading and the only immediate hope is in producing rain by means of firing heavy guns. The government has been requested to permit a bombardment by large guns on naval vessels in the Puget Sound harbors and coast defenses today.

Death List Growing.

SPOKANE, August 26.—A revised list shows the total number of the deaths in the forest fires in Idaho, Montana and Washington to be one hundred and sixty. Forty-four persons are missing.

Millions Lost.

MISSOULA, August 26.—The forest office has verified a report showing the actual number of fire-fighters alone who have lost their lives in the past few days to seventy-nine. The estimated damage to timber and other property is above twenty millions. The danger is past in Idaho and Montana unless there is a rise of winds.

WOODRUFF EXPLAINS.

NEW YORK, August 26.—Timothy L. Woodruff, former leader of the Republican party in this state, yesterday issued a statement saying that Chairman Griscom never mentioned Colonel Roosevelt's name in connection with the state convention prior to the actual nomination at which time Vice-President Sherman was elected over the ex-President.

Woodruff said there was no scheme on foot to place Colonel Roosevelt's name before the State committee. For that reason, he said, President Taft could not have been involved in the affair.

JAPANESE TARIFF WILL NOT AFFECT KOREA SOON.

LONDON, August 26.—According to an official statement received here, the Japanese tariff will not extend to Korea in several years.

REGGIE VANDERBILT HAS TYPHOID FEVER.

NEWPORT, R. I., August 26.—Reginald Vanderbilt is ill with typhoid fever.

AT THE THEATERS

The theaters are tapering off the week with the old talent, none of them making any extraordinary changes in vaudeville. Last night the weather was fine and as a result the audiences were pretty fair all around. As a rule Tuesday and Thursday evenings are the duller of the week in the playhouse section, and last night rather proved an exception.

AT THE EMPIRE.

The Desmonds and Thompson will continue to be the leading vaudeville attraction at the Empire for the remainder of the week. They are making good, and the public is coming to appreciate them more and more. The little Afague sisters have come into the city again and will appear at the Empire the remaining evenings of this week, in entirely new songs and dances. Manager Overend will present a changed picture program tonight.

THE NOVELTY TONIGHT.

At the Novelty theater this evening Katie Milton's "Sweet Moana" will be repeated by special request, as will also "Stars and Stripes." There will be an entire change of program. Some new talent has been engaged for the Novelty, to appear next Monday evening. Announcements will be made in due season.

THE PARK'S BEST.

At the Park theater this evening Manager Congdon will show new pictures received in the Sierra's mail this morning. Banvard and Franklin will appear in some remarkable comedy sketches, while Connie Mareno will repeat his great success, "The Gaiety Ballet Girl," in costume.

SOMETHING RELIABLE.

"Can be depended upon" is an expression we all like to hear, and when it is used in connection with Chamberlain's Colic, Cholera and Diarrhoea Remedy it means that it never fails to cure diarrhoea, dysentery of bowel complaints. It is pleasant to take and equally valuable for children and adults. For sale by all dealers, Benson, Smith & Co., agents for Hawaii.

Fine Job Printing, Star Office.

WORLD PEACE MOVEMENT, BARTHOLOTT AMERICAN DELEGATE

LONDON, August 9.—The movement for a workingman's international anti-war organization is gaining ground so rapidly in England that today it is being discussed, not only by the union labor leaders, but by the rank and file of unionism as well.

Definite action has not yet been taken, but there is a strong prospect that overtures will shortly be made to unionists abroad for an international congress to put the movement upon a more substantial basis. The are convinced that peace conferences are unlikely ever to end in anything but talk and that if anything is to be accomplished it must be by the workingmen's class, the class that always suffers the most from war.

Maurice Hewlett, the author, is one of the champions of the cause. "If ever such a stroke can be dealt that the pestilence of war can be abated in Europe suddenly and finally," he said, "it will be dealt by the working class. No other can do it; not the aristocracy, for by their

casts they may not; nor the bureaucracy fur under their rules they will not; nor kings for they are negligible in these days; nor the church, for that serves time and has no other god; nor parliaments nor diets, for they serve the newspapers; nor the newspapers, for they serve themselves.

"It will be the working class, through its high organizations, which will impress the bourgeois by a threat and by evidences of the power it has to execute its threat. The threat, which will be international in origin and aim, will be of a strike coincident with war, and the evidence will be the resolution of an international trades union congress.

"Should such a congress be summoned there would probably be no war and, if none then there would never be one again. The newspapers will teethe, but the stock exchanges and miney lenders will draw back—and war is over.

"Here is, I allege, the bounden

duty and privilege of trade unionists—to bid war to cease."



A VISION OF BLISS.

Rambo—Ah dreamed on heaben las' night.

Sambo—Am dat so? An' what did it look like?

Rambo—A monst'us big chicken roost in de middle of a watermelon patch.

Fine Job Printing, Star Office.



Uncle Sam—I certainly will do my part to make your centennial a success



Did You Ever

notice the white flakes of dandruff on the clothes of the man sitting in front of you on the car? Well, that is not a natural condition; it indicates the disorder and its end—baldness.

PACHECO'S DANDRUFF KILLER

will cure the most stubborn cases of dandruff and falling hair.

Sold by all druggists and at Pacheco's Barber Shop, Phone 232.

Castle & Cooke, Limited

Honolulu, T. M.

SHIPPING AND COMMISSION MERCHANTS.
SUGAR FACTORS and GENERAL INSURANCE AGENTS.

- representing—
Ewa Plantation Co.
Waialua Agricultural Co., Ltd.
Kohala Sugar Co.
Waimea Sugar Mill Co.
Apokna Sugar Co., Ltd.
Fulton Iron Works of St. Louis.
Westons Centrifugals.
Babcock & Wilcox Boilers.
Green's Fuel Economiser.
Matson Navigation Co.
New England Mutual Life Insurance Company of Boston.
Aetna Insurance Co.
National Fire Insurance Co.
Citizens Insurance Co. (Hartford Fire Insurance Co.)
The London Assurance Corporation.

Drink
MAY'S OLD KONA COFFEE.
Best in the Market.
HENRY MAY & CO.
Phone 22.

BUY THE GREAT

"WHITE FROST"

The Refrigerator Without a Fault. Specialty Adapted to the Needs of the Hawaiian Islands.

Coyne Furniture Co., Ltd.,
Young Building

For Sale

Very desirable home Corner Penacola and Kinau Streets. Your choice of two properties. Call at our office and we will take you out to see them.

The Price is Right and Terms can be Arranged

Bishop Trust Co., Limited

924 BETHEL STREET
Oahu Railway TIME TABLE

OUTWARD.
For Waianae, Waialua, Kahuku and Way Stations—9:15 a.m., 9:30 p.m.
For Pearl City, Ewa Mill, and Way Stations—7:20 a.m., 9:15 a.m., 11:30 a.m., 2:15 p.m., 3:30 p.m., 5:15 p.m., 7:30 p.m., 11:15 p.m.
For Wahiawa and Lilehua—7:10 a.m., 9:15 a.m., 11:30 p.m., 1:15 p.m.
INWARD
Arrive Honolulu from Kahuku, Waialua and Waianae—9:35 a.m., 5:31 p.m.
Arrive Honolulu from Ewa Mill and Pearl City—7:45 a.m., 9:35 a.m., 11:02 a.m., 1:40 p.m., 4:25 p.m., 5:31 p.m., 7:30 p.m.
Arrive Honolulu from Wahiawa and Lilehua—9:15 a.m., 11:40 a.m., 5:31 p.m., 10:10 p.m.
The Haleiwa Limited, a two-hour train (only first-class tickets honored), leaves Honolulu every Sunday at 8:35 a.m.; returning, arrives in Honolulu at 10:10 p.m. The Limited stops only at Pearl City and Waianae outward, and Waianae, Waiapu and Pearl City inward.
*Daily. †Except Sundays. ‡Sundays only.
G. P. DENISON, F. C. SMITH, Superintendent. G. P. A.

Object Lessons

ARTISTIC PRINTING is our occupation. If you are preparing a catalogue or booklet, circular or announcement, or any other matter designed to make your business increase, our services will be of value to you. The utmost care is taken that all leaflets, folders, booklets, catalogues, etc., executed by us, may be an eloquent and truthful Object Lesson in the art of type arrangement.

THE HAWAIIAN STAR
NEWSPAPER ASSOCIATION, LTD.

Classified "Ads"

NEW ADVERTISEMENTS.

Hawn, Lodge page 5
 Probate Notice " 3
 Hawn, Fertilizer Co. " 5
 Honolulu Music Co. " 5
 Manufacturer's hoe Co. " 1

THE WEATHER.

Local Office, U. S. Weather Bureau,
 Honolulu, T. H., August 26, 1910.

Temperature, 6 a. m.; 8 a. m.; 10 a. m.; and morning minimum:
 75; 78; 80; 80; 74.

Barometer, reading. Absolute humidity (grains per cubic foot); relative humidity and dew point at 8 a. m.:
 30.02; 6.680; 65; 65.

Wind, velocity and direction at 8 a. m.; 8 a. m.; 10 a. m.; and noon:
 7E; 5NE; 8NE; 8NE.

Rainfall during 24 hours ending 8 a. m. trace.

Total wind movement during 24 hour ended at noon, 186 miles.

W. B. STOCKMAN,
 Section Director.

NEWS IN A NUTSHELL

Paragraphs That Give Condensed News of the Day.

A probate notice is published in this issue.

St. Louis College opens Tuesday, September 6th.

The Ohio Clothes Cleaning Co's new telephone number is 1496.

H. Jeffs has just secured the services of an exceptionally fine barber from the Coast. Try him.

The Republican county convention will be held in Honolulu on Friday and Saturday, September 9 and 10.

The territorial convention will be held September 12.

For the best shave in the city, call on Pete, the California expert, at the Silent Barber Shop, Hotel street.

There will be a special meeting of Hawaiian Lodge No. 21, F. and A. M., at half-past seven this evening in Masonic Temple for work in the first degree.

The total public works department receipts for the past year amounted to \$134,377.83, being an increase of \$8377.71, the increase over the previous year being due to the greater number of water privileges granted.

The ideal shoe for street and dress wear is the Pump or Button Boot made of Cravenette Cloth. Rich jet black in color. Pumps \$4.00 Button Boots \$5.00 at Manufacturers Shoe Co. Ltd., 1651 Fort street.

See that you get your green stamps when you are buying at the stores. An't call at the show rooms, and see the many valuable articles you get for them.

The St. Clement's branch of the Woman's Auxiliary will meet at the home of Mrs. H. McK. Harrison, Kapiolani Park, at three this afternoon. Members having mite boxes are requested to bring them.

Governor Frear has appointed Col. Charles E. Davis and Henry A. P. Carter delegates to the national conservation convention to meet in St. Paul, of which enterprise Pinchot is president and at which convention Colonel Roosevelt has promised to speak.

Frank C. Atherton and family will leave Detroit in about ten days for California, and, after spending some two weeks in that State, will sail in the Wilhelmina on September 28 for home. Mr. Atherton's health is improved, but probably not so much as he had hoped for.

Lakeview oil stock will advance to 40 cents per share September 1. J. Oswald Lutted.

For Honolulu waterworks permanent improvements there was spent \$34,078 during the fiscal year, and during that period there was applied to the redemption of bonds for waterworks \$13,437.77, there having been \$29,632.55 applied to interest on waterworks bonds outstanding.

Charles Judd, who is in the United States forestry division service in the Northwest, is not in the zone of the forest fires now raging in Washington and other states. His brother, Albert F. Judd, received a cable gram from the Portland headquarters stating that there was "no danger from fires."

Superintendent of Public Works Campbell states that the overdraft on the wells in the city of Honolulu is estimated at between 10,000,000 and 12,000,000 gallons daily, being mainly made up of preventable wastes. It is recommended that there should be regulation of the artesian water supply. On August 9 the water stood at 29.59 feet in one well in Honolulu, and in another well in Honolulu on August 17 the water stood at 29.42 feet. This is the lowest record yet noted.

The Casino Musical Comedy company will terminate its Honolulu engagement tomorrow afternoon and on Wednesday next the members of the organization which were brought here from San Francisco nine weeks ago, will depart for the mainland. The bill for tonight and tomorrow afternoon will include some new vaudeville numbers in conjunction with the laughable farce "What Happened to Jones."

SIERRA HERE AFTER FINE TRIP

OCEANIC LINER COMES IN ON SCHEDULE TIME WITH 94 CABIN PASSENGERS.

In spite of the delay in leaving San Francisco, the crack liner Sierra of the Oceanic line arrived off the entrance of the harbor this morning five days, eighteen hours and eleven minutes from the San Francisco lights. "The finest trip made across the Pacific," was the statement made by passengers who arrived by the popular liner, from the time the ship left until she arrived this morning fine clear weather was encountered. The next to largest cargo ever brought by an Oceanic liner came to port this morning. Twenty-eight hundred and seven tons, including nearly every kind of merchandise, was brought for local merchants. There were ninety-two cabin passengers.

In addition to the cargo, seven automobiles and a large amount of cold storage and express matter was brought. Two hundred and ten bags of mail, which includes four days, was delivered at the post office within a half hour after the ship got to her wharf.

Wireless communication was had with several steamers, although none were passed near enough to be seen by the passengers. Either San Francisco or Honolulu was heard during the entire trip.

Among the returning Honolulu passengers were:

E. Faxon Bishop, of Brewer & Company, is returning after a several weeks business trip on the coast.

A. Frank Cooke and Miss Cooke are home after a pleasure trip spent in California and Alaska.

R. S. Denison and Mrs. Denison return from a visit of several months spent with relatives on the coast.

Fred M. Lewis, the well known capitalist is home after a five months trip on the mainland and Europe.

C. Arthur Mackintosh and bride nee Clark, are home after a pleasant honeymoon spent in California.

William Savidge and infant are home after a return trip on the Sierra.

Master G. C. Ballentyne is home after a trip of several months spent with relatives on the coast.

A number of tourists are making their first trip to the islands and will return by the Sierra in September.

The Sierra with a number of passengers and a large cargo of freight will sail for San Francisco at ten o'clock on Wednesday morning.

GOLF CONTEST AT MOANALUA

A two ball foursome golf tournament open to any golfer of the city regardless of club, will be held at Moanalua on Sunday under the auspices of the Honolulu Golf club. An auto-bus will leave the end of the King street car line at 1:30, returning from the golf links at 4:30.

Two suitable and handsome prizes will be awarded the winning pair. Entries will close on the grounds fifteen minutes before play is started, the fee being fifty cents.

At first it was decided to make this tournament for club members only, but after considering the matter the greens committee decided to make it an open event. The links at the present time are in excellent condition for play, and if good weather prevails on Sunday a large crowd is expected to be on hand to compete for the prizes offered.

TABLOID FICTION.

This is the nervous age. We live ten times as fast, we understand ten times as rapidly, as did our ancestors, and we have read and heard a hundred times as much as they could read and hear. So it is only natural and logical that we should balk at epics, in the line of verse, and at thousand-page novels, just as we cannot afford to sit at dinner six or eight good hours, for lack of time and constitution. That is why, especially in the last two decades, the short story, something to be taken in, enjoyed, immediately digested, has become our literary favorite, and that is also why our authors have learned to serve it up to us in very spicy, appetizing shape.

Despite the prophets of the "simple life," it does not look as if the tempo of the march, to whose beats humanity is double-timing, will be reduced appreciably in the near future. It rather looks as if humanity could not go at a slower gait because it has acquired so much momentum on its way. On this account may we apprehend that the new generations

DEMOCRATS HARMONIOUS

The Democrats held their primaries last night, and all was harmony, as was expected. It is not expected that there will be any serious contests in their convention, and the party leaders are all hustling together to enroll voters in their precinct clubs.

The following were elected delegates.

First of Fourth.

Territorial Convention—J. W. Keiki, Solomon Mahula, J. W. Lawelawe County Convention—Fred Turfill, Chas. Anauluokalii, D. K. Marthi, Sam Hardesty, M. H. Sanders, Clem Quinn For County Committee—M. H. Sanders

Second of Fourth.

Territorial Convention—J. W. Iona, D. Kalino, Paul Kea, J. Paia County Convention—J. Keaina, S. K. Kialoa, G. H. Kahalemoaku, R. K. Pahaia, S. K. Kaha, G. Iona, K. W. Mikasobe, Hose Iwila, G. Makakehan. County Convention—J. Kialina

Fourth of Fourth.

Territorial Convention—Dr. J. H. Raymond, Kahu, W. C. McGonagle. County Convention—Wm. Kamekoma, Yipine Fern, John J. Sullivan, James Lynch, Dr. John F. Cowes, D. Kahoaka, J. Neill, A. E. Carter

Fifth of Fourth.

Territorial Convention—Wm. Wolters, Henry Gehring, C. W. Ashford, J. W. Aseh.

County Convention—E. M. Watson, A. R. Rowat, C. J. McCarthy, J. F. Colburn, W. C. Wilder, F. J. Aseh, Thos. Young, P. McGrath, F. J. Fitzpatrick, W. W. Klein.

Ninth of Fourth.

Territorial Convention—M. E. S. va, W. H. McClellan, Chas. Spencer, G. H. Nahulua, James Tripp, James McDonald, Jno. Townsend.

County Convention—W. H. McClellan, M. E. Silva, S. Gumpfer, Benj. Dole, R. A. Hefferman, E. K. McFarlane, E. B. Friel, Alex. Tripp, A. H. K. Keohakaloie, T. M. Harrison, James McDonald, Mike Pae, John K. Cook, David Kamaoaha, James Houghton, W. S. Edings, George Hookano.

Tenth of Fourth.

Territorial Convention—B. K. Holo-lulu, B. A. Kahalepuna, L. H. Kahilahlila, J. K. Kallikoa, J. S. Kainalau, N. K. Palau, Uluhi and Awili County Convention—C. A. Alameda, W. Weleakake, P. K. Holululu, B. N. Kahalepuna, L. H. Kahulaula, W. Kaiwi, Kalama Opo, Jose Kauli, Kekua Kaihaluae, D. Kekona, J. K. Kealikoia, J. S. Kinalau, Nahunaili, N. Mokhia, M. K. Palau, J. Pohina, Jesse Uhi, G. K. Walau, G. W. Waiole, J. Wahinea.

County Committee—G. J. Waller.

Tenth of Fifth.

Territorial Convention—J. R. Silva, Joe Ramon, J. S. Chong, W. B. Rice, Antone Perry.

County Convention—W. A. Ackerman, Wm. Kaal, S. Espinda, Ed. Like, Ed. Hanapi, Niolo, George Fern, Captain Schlemmer, Kaulaku, Samuel Moses, Thomas Stroup

County Committee—Wm. Kaal, Territorial Committee—Ed Hanapi

Fourteenth of First.

Territorial Convention—G. Kipapa; H. P. K. Naluanl, Mainae, Sam Kuehni, J. K. Clark.

County Convention—J. Kepono, J. C. Anderson, D. P. Kealehaku, Charles Bamaun Hoopilele, J. A. K. Nawahi, Peleue, D. Ka-ii, G. Kella, S. Kewalo, E. W. Kalau.

which shall follow ours, having no longer term of years than we to live and having a far greater lot of things to think and feel and know, well be still fonder of tabloid entertainment—yes, time-saving pleasure—and will call for fiction concentrated so that their popular novels will in size be little more than fictional epigrams?—Chicago Inter-Ocean

WYNNE GETS 90 DAYS REPRIEVE

United States Marshall E. R. Hendry received by the Sierra mail today the reprieve of murderer Wynne, for ninety days from September 5. Wynne was under sentence to be hanged September 5, and the reprieve has been granted pending the final consideration of petitions for commutation of his sentence to life imprisonment.

WHARF LICENSE IS APPROVED

The license for building the wharf at Hilo by the Hilo Railroad Company was signed this afternoon by Superintendent of Public Works Marston Campbell for the government, by the president and treasurer of Hilo Railroad company and was approved by Governor Frear

Saturday :: Specials Until 1 p.m.

PINK AND WHITE BATH MATS—Heavy quality and a large size. Regular Price 75c. Special 60c each.

BLEACHED COTTON CRASH for Roller and Kitchen Towels. Special 6c per yard or \$1.25 per piece of 25 yards.

LADIES' LISLE THREAD HOSE—Finest quality Hermsdorf Black. Regular \$1.25. Special 75c per pair.

ASSORTED BLACK HEADED PINS 5 dozen to a card. Special 5c a card.

IMPORTED CHINESE PONGEE—Plain and Striped in Natural Colors only. Regular \$1.00 a yard. Special 75c per yard.

32 INCH VICTORIA MADRAS in black and white, checks, spots and stripes 25c quality. Special 15c per yard.

CHIFFON RUCHING—All colors, 35c quality. Special 25c per yard.

LADIES AND CHILDREN'S Camp Hats in Tan and White. Regular 75c each. Special 50c each.

OUR MILLINERY DEPARTMENT will offer a few of their Summer Hats at less than cost. This will be a feature Saturday morning

Sah's Dry Goods Co. Cor. Fort & Beret. Sts. Opp. Fire Sta.

Perfect Cleanliness
 in every department.

Pure Milk and Cream
 from absolutely healthy cows.

The Pond Dairy - Phone 890

If you order your **Wood or Coal** from us you will receive—

THE BEST QUALITY, FULL WEIGHT OR MEASURE, AND IT WILL BE DELIVERED PROMPTLY.

Honolulu Construction and Draying Company, Ltd.
 QUEEN ST., OPP. KAAHUMANU. Phone 281.

OUR MODERN SYSTEM OF SANITATION AND REFRIGERATION HAS WON UNCLE SAM TO OUR CAUSE AND HE BUYS FROM US BECAUSE HE HAS ASSURANCE THAT THE QUALITY OF THE MEATS WE SELL IS THE BEST. YOU MAY FEEL ASSURED THAT WHAT YOU BUY OF US WILL BE RIGHT.

METROPOLITAN MARKET
 W. F. Heilbron, Proprietor. Phone 45.

Gurney Refrigerator
 is the only **Cleanable**

The king of Ice-Savers

We back our assertions

This is the Time one appreciates a GOOD REFRIGERATOR—THE GURNEY is the BEST by actual TEST. Made in 45 styles.

The Special Mid-Summer Sale will continue for only Two Weeks!

Refrigerators at \$9.50, 12.50, 15.00, 18.50, 25.00, 26.50, etc. Ice Boxes at \$7.50, 8.75, 10.00, 11.00, 15.00, 17.50, etc.

W. W. Dimond & Co., Ltd.
 53-57 KING STREET

New Changeable Silk Veils

in many pretty colors, extra large sizes.

Prices, \$4 and \$5.

Shaded Silk Veils, in blue, brown, old rose and lavender, \$2.50 each.

ENLERS

For High Speed Work **The Graphic** fulfills all camera requirements.

Let us explain the superiority of this camera for motion work

Honolulu Photo Supply Co., Ltd., Fort Street below Hotel

SIBERIA SUNDAY

A wireless message received from Captain Zeeder of the Pacific Mail liner Siberia addressed to the agents, announces that the big liner will arrive from Yokohama at three o'clock on Sunday afternoon and will be dispatched for the coast at ten o'clock on Monday morning. The big ship must have been speeded up in the last twenty-four hours, as it was first thought that she would not arrive until Monday morning, enough cabins will be vacant to allow one hundred passengers to go on to the coast, according to Mr. Klebahn, the genial agent of the company. The Korea according to a wireless received last night, will be off port early on Monday morning and will be despatched for Japan at five in the afternoon.