

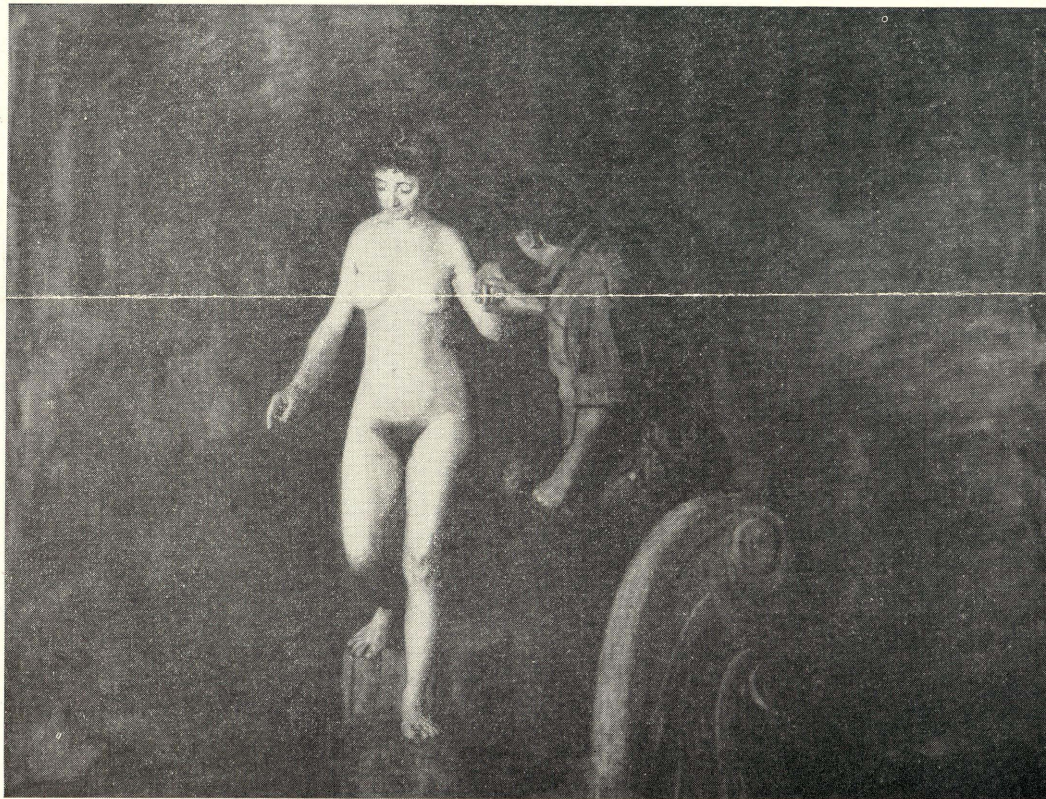
HONOLULU ACADEMY OF ARTS

NEWS BULLETIN AND CALENDAR

VOLUME IX

OCTOBER, 1947

NUMBER 7



"THE SCULPTOR AND HIS MODEL"

Gift of the Friends of the Academy

THOMAS EAKINS

A PAINTING BY THOMAS EAKINS

It is a great honor for the Academy to be able to announce the acquisition of the *Bulletin's* cover picture—"The Sculptor and his Model"—painted by Thomas Eakins (1844-1916), and the gift of the Friends of the Academy in September.

In the field of American painting, Eakins is too well-known to require an introduction here. Suffice it to say that along with Winslow Homer and Albert Ryder, he has become justly classified as one of America's legitimate "old masters." The addition of an Eakins to the permanent collection must be, therefore, of major importance.

"The Sculptor and his Model" is significant for several reasons. The Academy's collection of American art has been slow of development and justifies a larger consideration. In this one picture, however, the Academy has acquired a splendid example not only of the highest expression of one esthetic ideal in American art, but at the same time what might be termed a "thesis-picture" by one of America's really great artists, as well.

Undoubtedly Eakins must be considered our finest figure-painter. His preoccupation with the beauty of the human body springs from his iden-

HONOLULU ACADEMY OF ARTS

C. M. Cooke, Jr., *President*

Honolulu, Hawaii

T. A. Cooke, *Treasurer*

tification of himself and his work with the great tradition of naturalism which had been the history of western art since Renaissance times. His devotion to the ideal which had moved the Italian masters', Rembrandt's, and many another's genius, brought him near-ostracism in the Philadelphia of his time. In spite of all difficulties, however, Eakins maintained a consummate integrity which is the key to his personal genius. "The Sculptor and his Model" is a late version of the theme of William Rush, the early Philadelphia sculptor, carving the allegorical figure of the Schuylkill River, the first completed picture of which, painted in 1877, hangs in the Philadelphia Museum of Art. Our picture, painted in 1907, is a reaffirmation of the principles which underlay the earlier one: the inherent beauty of the human body and the dignified respect which is due it. The figure of the sculptor in our painting might well be considered as an ideal portrait of Eakins himself.

ROBERT P. GRIFFING, JR.

PACIFIC ISLAND ART

On October 14 what promises to be the finest exhibition of Pacific Island Art ever shown in Hawaii will open in four main galleries of the Academy. Two of these galleries have recently been freshly painted and a complete new system of lighting installed especially for this exhibition, which will remain on view until November 20. It is presented under the joint auspices of the Bernice P. Bishop Museum and the Academy and will include outstanding material from both collections, selected for its high aesthetic quality.

The three culture areas of the Pacific—Polynesia, Melanesia and Micronesia—will be represented by tapas and textiles, bowls and decorative carving in wood, wood sculpture, masks, feather work, and jewelry—bracelets, necklaces, belts, combs, anklets and ear-rings—fashioned of tortoise, sea shell, jade, coconut shell, bone and whale ivory. Many of the exhibits have seldom been shown in Hawaii and certainly never before at the Academy. This show will not only demonstrate the high standards of workmanship and design possessed by these native artists working with the most primitive of tools, but will also include the finest examples that could

(Continued on Page 4)

OTHER RECENT GIFTS

In addition to the Eakins' painting reproduced on the cover, the Academy collections have been increased by several other important gifts. These include paintings by Arthur Dove (1880-1946) and Stuart Davis (1894-), both of whom are well known in the field of contemporary American painting. "The Brothers" by Dove is the gift of Mrs. Walter F. Dillingham and was presented through the Friends of the Academy. "Pad No. I" by Davis, also presented through the Friends, is the gift of Mrs. Suydam Cutting of New York in memory of the late Captain Gaylord Dillingham.

Since their formation almost ten years ago, the Friends have greatly enriched the Academy's collection of French painting through gifts of works by Picasso, Matisse, Braque, Tanguy and Leger, among others. With their gift of a work by Thomas Eakins, one of the most notable American artists of the late nineteenth century, and those by Dove and Davis—both of whom may be termed "abstractionists"—the Friends have again given continuity to a period of modern art hitherto only slightly represented in the museum's collection.

A second gift from Mrs. Dillingham, through the Friends, is a gouache painting, "The Pensive Clown" by Lenard Kester, a promising young California artist.

Adding to his last year's gift of American hooked rugs, Mr. Robert Allerton has recently given eleven American paintings, dating from 1800 to 1830, and a metal weathervane of the same period. Though the collection of American painting and folk art is still a small one, nevertheless these recent acquisitions, together with material already owned by the Academy, will make possible an interesting exhibition illustrating the development of our national art.

Through the generosity of Mr. Damon Giffard, seventy-two pieces have been added to the collection of Korean pottery, making it one of the most representative groups of Oriental ware in the Academy's possession. Early roof and decorative tiles, food vessels, vases, bowls and ewers from the Silla, Koryu and I periods are included in this outstanding gift.

HONOLULU ART SOCIETY

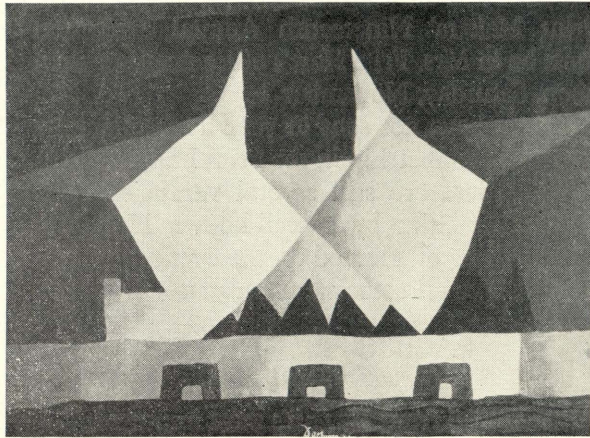
MEMBERSHIP

The large number of new and renewed memberships recently noted are evidence of the growing community interest in the work which the Art Society is carrying on at the Academy. The annual membership fee of two dollars has been small compared with that levied by other museums, yet to carry on the impressive number of lectures, music and dance programs offered during the year, no additional funds have been solicited. Now, however, it has become necessary for the Society to increase its income in order to continue with its present schedule of programs and to broaden these activities to meet the interests of a larger public. Because of this need, a small charge will be made for all racial festivals and dance programs; and, beginning with the new year, the annual membership dues will be three dollars.

The membership drive for next year, under the Chairmanship of Mrs. William J. Sherry, is now under way and the Committee has set as its goal 2,000 annual (\$3.00), 400 contributing (\$10.00) and 200 life (\$100) memberships. These numbers can be reached if each present member produces one new member for the coming year. And it is not too early to suggest that a membership in the Art Society makes a most acceptable Christmas present!

OCTOBER PROGRAMS

The very active Wednesday Morning Study Group, meeting at ten-thirty o'clock, opens its fall program with a series of lectures on subjects of special interest to members: Pottery and Porcelain, Glass, Silver, Table Linens and Laces. There will be invited speakers each week, with special exhibitions illustrating the subject under discussion arranged in Gallery 9-A. On October 8, Claude Horan, Assistant Professor of Art at the University of Hawaii, will speak on "Pottery and Porcelain"; Jean Cochran Fanning, a member of the Academy's Staff, will demonstrate the use of the potter's wheel on October 15; and on October 22 "The Pottery of Egypt and the Near East" will be discussed, the speaker to be announced later.



"THE BROTHERS" * ARTHUR DOVE
*Gift of Mrs. Walter F. Dillingham
 Through the Friends of the Academy*

JOSEPHINE TAYLOR

The two performances of a program of modern dances, to be given by Josephine Taylor at eight o'clock on Tuesday and Wednesday evenings, October 7 and 8, will be among the most attractive of the Society's fall activities. Admission is one dollar, only five hundred and twenty tickets being sold for each performance. These are available at the Academy, the Visitors' Bureau and the Outrigger Canoe Club.

Miss Taylor, one of the Islands' most gifted exponents of the modern dance, has recently returned from New York where she did further study with Martha Graham and appeared in some of her recent productions. Choreography for all the dances is by Miss Taylor. Four of her new works are being presented for the first time.

NEW OFFICERS AND COMMITTEE CHAIRMEN

Members of the Board of Directors and Committee Chairmen elected to serve for the year, July 1, 1947 to June 30, 1948, are listed here.

BOARD OF DIRECTORS

President: Benjamin L. Marx; *First Vice-President:* Mrs. Alice Spalding Bowen; *Second Vice-President:* Mrs. A. G. M. Robertson; *Secretary:* Mrs. James B. Richardson; *Treasurer:* J. Russell Cades; *Assistant Treasurer:* Milton Cades; *Executive Secretary:* Mrs. Arthur E. Restarick; *Auditor:* Hugh C. Tennent.

COMMITTEE CHAIRMEN

Contact Committee: Mrs. Ford Studebaker; *Exhibition Committee:* Mrs. Charles A. Gregory; *Local Art Committee:* Huc M. Luquiens; *Membership Committee:* Mrs. William J. Sherry; *Music Committee:* Norman Rian; *Publicity Committee:* Mrs. Arthur E. Restarick; *Study Interests Committee:* Dr. Ernestine K. Hamre.

REMINDERS

Prints and drawings entered in the Honolulu Print Makers' Nineteenth Annual exhibition must be in Mrs. Fritz Hart's office not later than noon, Saturday, November 1.

If you have not sent in your five dollars for associate membership in the Print Makers, do so today. There are still several vacancies. The 1947 Gift Print by a well-known Honolulu artist will be distributed on the evening of November 6 to all associate members.

PACIFIC ISLAND ART

(Continued from Page 2)

be assembled from Hawaii's most important collections of Pacific Island art.

A special public reception will officially open the exhibition on Thursday evening, October 16, from seven-thirty to nine-thirty o'clock.

CALENDAR

OCTOBER ACTIVITIES

OCTOBER

- 1—Opening, Honolulu School of Art's 1947-48 Session.
- 2—3:00 p.m.—Public phonograph concert.*
- 4—1:30 to 3:30 p.m.—Opening, Academy's Adult Pottery Class, Jean Cochran Fanning, Instructor.
- 5—4:00 to 4:30 p.m.—Special KULA broadcast from the Academy.† Honolulu School of Art.
- 7 and 8—8:00 p.m.—Program of Modern Dances by Josephine Taylor. Sponsored by Honolulu Art Society. Admission \$1.00.
- 8—9:00 a.m.—Community Singing for Fifth Grades, conducted by Fritz Hart.‡
- 8—10:30 a.m.—Introductory lecture on "Pottery and Porcelain," by Claude Horan, Assistant Professor of Art, University of Hawaii. For Honolulu Art Society members only.

- 12—4:00 p.m.—KULA Broadcast. "The Japanese Collection." Interview with Miss Alyce Hoogs.
- 15—10:30 a.m.—Use of Potter's Wheel, demonstrated by Jean Cochran Fanning. For Honolulu Art Society members only.
- 16—7:30 to 9:30 p.m.—Special reception for Pacific Island Art exhibition. Public invited.
- 19—4:00 p.m.—Sonata Recital for Violin and Piano, Polly Jane Kella and Mary Dawson. (To be broadcast over KULA from 4-4:30 p.m.)
- 22—9:00 a.m.—Community Singing for Sixth Grades, conducted by Fritz Hart.‡
- 22—10:30 a.m.—"Pottery of Egypt and the Near East." Speaker to be announced. For Honolulu Art Society members only.
- 26—4:00 p.m.—KULA Broadcast. "Pacific Island Art." Interview with Mrs. Ernest Kai.
- 28—10:30 a.m.—"American Painting," talk by Robert P. Griffing, Jr. For Friends of the Academy only.

NOVEMBER ACTIVITIES

NOVEMBER

- 2—4:00 p.m.—KULA Broadcast. "Prints of Hawaii." Interview with Mrs. Richard Gurrey and Mrs. Fritz Hart.
- 6—7:30 to 9:30 p.m.—Opening, Honolulu Print Makers' Nineteenth Annual exhibition.
- 25—10:30 a.m.—"American Painting," talk by Robert P. Griffing, Jr. For Friends of the Academy only.

OCTOBER AND NOVEMBER EXHIBITIONS

- To Oct. 12—Creative Photography, Museum of Modern Art exhibition. Educational Wing.
- To Nov. 2—Hawaii in Prints—from 1778 to 1860. Gallery 3.
- Oct. 7 to Nov. 2—Pottery. Gallery 9-A.
- Oct. 14 to Nov. 2—Animals in Art. Educational Wing.
- Oct. 14 to Nov. 30—Art of the Pacific Islands. Joint exhibition sponsored by B. P. Bishop Museum and Academy. Galleries 1, 13, 14 and 15.
- Nov. 4 to 30—American Art Since the First Thanksgiving. Educational Wing.
- Nov. 4 to 23—Honolulu Print Makers' Nineteenth Annual—Prints and Drawings. Galleries 2 and 3.
- Nov. 18 to 23—Prize Winning Photographs from the AGF-PAC Competition. Gallery 8.

* One of a series given on Tuesdays, Thursdays, Saturdays and Sundays at 3:00 p.m.

† One of a series of weekly broadcasts over KULA.

‡ Held on the second and fourth Wednesdays of each month during the school year for invited classes.

HOURS OF ADMISSION—Free at all times: Open Tuesday, Wednesday, Friday and Saturday from 10 a.m. to 4:30 p.m. Thursdays from 10 a.m. to 9:30 p.m. Sunday from 3 to 6 p.m. **EDUCATIONAL DEPARTMENT**—The lending collection of objects, pictures, slides and phonograph records is available to all teachers. Schools wishing appointments for visiting the Academy for talks by staff members may make them by calling the Educational Office. **PRINT ROOM AND REFERENCE LIBRARY**—Open during Academy hours. **THE HONOLULU ART SOCIETY**, affiliated with the Academy, has an office in the building. Executive Secretary, Mrs. Arthur E. Restarick.

ROBERT P. GRIFFING, JR., *Director.*

MARVELL, ALLISON HART, *Editor.*

HONOLULU ACADEMY OF ARTS

900 SOUTH BERETANIA STREET
HONOLULU 34, HAWAII

Sec. 562, P.L. & R.
U. S. POSTAGE

PAID
Honolulu, T. H.
Permit No. 119