

WAILUKU WEATHER		
Date	Max.	Min.
Sept. 6	84	73
Sept. 7	83	73
Sept. 8	85	72
Sept. 9	84	73
Sept. 10	85	71
Sept. 11	87	71
Sept. 12	87	71

No rainfall.

# SEMI-WEEKLY MAUI NEWS

"FOR THE VALLEY ISLE FIRST"

THIS WEEK'S MAILED	
From the Coast—Thursday	Persia Maru; Saturday, Niagara from Vancouver.
To the Coast—Wilhelmina, tomorrow.	
To the Orient—Persia Maru, Thursday or Friday.	
From the Orient—Siberia Maru, Monday.	

22nd YEAR—No. 1123.

SEMI-WEEKLY MAUI NEWS, TUESDAY, SEPTEMBER 13, 1921.

PRICE 5 CENTS

## Hundred of Lives Lost in Texas as Result of Floods

### Widespread Storms Extended From Canadian Northwest to Mexican boundary and Swept on Out Over Atlantic

(ASSOCIATED PRESS)  
DALLAS, Texas, Sept. 13.—Unofficial estimates of deaths from the floods are this morning placed at 200. More than 100 bodies have been recovered. Dispatches from San Antonio say that the Express of that city has reports that more than 100 bodies have been recovered along the San Gabriel river in Williamson and Milton counties following the 20-inch rainfall of Friday and Saturday.

Dispatches from Chicago Saturday said that thunderstorms, tornadoes, rains and floods extended from the Canadian Northwest to the gulf. The greatest severity of the storm was in Central, East and South Texas.

Houston reported Sunday that 10,000 square miles of land was under water, and Bryan, Texas, reports 12,000 negroes homeless in the Brazos river bottoms.

San Antonio on Monday reported 47 dead and 200 missing. There were deep floods and 2000 persons were rendered homeless; estimates of the dead ranged to 500. Other towns, as Alazan and San Pedron, on the San Antonio, were swept by floods.

St. Vincent, Windward Islands, reported the entire cotton crop lost and the cane blown down.

Port au Spain, Trinidad, reported 200 deaths and loss to shipping of \$150,000.

Sioux Falls, South Dakota, reported three persons killed and many farm buildings destroyed by tornado, and at Lincoln, Nebraska, hailstones as large as baseballs fell.

Yesterday reports from Texas points indicated communication and transportation was being restored rapidly.

## California's Alien Tax Law Is Held to Be Unconstitutional

(ASSOCIATED PRESS)  
SAN FRANCISCO, Sept. 13.—California's alien poll tax law, directed against Japanese and Mexicans, is unconstitutional, it is held in the decision of the state supreme court, which was handed down this morning.

The opinion of the court said that the law violates the 14th amendment to the constitution and is in contravention of the treaty with Japan. It holds that the treaty-making powers of the federal government undoubtedly include the matters involved in the case at issue.

The prisoners who were arrested for the purpose of testing the law have been discharged.

## Arraignment Postponed

(ASSOCIATED PRESS)  
SALT LAKE CITY, Sept. 13.—Arraignment of Mrs. Southard, brought back here from Honolulu and charged with murder of former husbands, was postponed until tomorrow. Following arraignment the defendant will have 24 hours within which to plead.

Mrs. Southard is suspected of having poisoned a child and several men to whom she was married at the times of their various deaths.

## Underwood Slated as Conference Delegate

(ASSOCIATED PRESS)  
BIRMINGHAM, Ala., Sept. 13.—Oscar Underwood says that he will accept the appointment as delegate to the conference for the limitation of armaments. Undoubtedly, he says, America favors limitation of armament to a certain degree, but he added that the probable problem that will confront the delegates of this country is to convince others of the necessity. Others may be brought to agree that it is thoroughly wise to reduce armaments, and he believed others would be willing to make concessions which will render agreement possible, which would relieve the world of much of the armament burden.

(ASSOCIATED PRESS)  
LONDON, Sept. 13.—Delegates of the Methodist Church in session here passed a strong resolution in favor of world disarmament. The resolution is silent on the league of nations, reference to it being omitted after spirited debate and a motion passing that a further resolution on the subject of the league be prepared for presentation.

(ASSOCIATED PRESS)  
WASHINGTON, Sept. 13.—Representative Taylor of Kansas died here today of pleuro-pneumonia.

## Testimony Against Arbuckle Damages Less Than Expected

(ASSOCIATED PRESS)  
SAN FRANCISCO, Sept. 13.—Something different aspect has been put upon the Arbuckle case in the investigation being held by the grand jury, the testimony being, it is reported, less damaging to the accused than the police had led the public to expect.

The district attorney issued a statement in which he says that he believes perjury has been committed by one of the prosecution's chief witnesses, who gave entirely different testimony before the grand jury from what she had told the prosecution, and he believed undue influence had been brought to bear. He said Miss Zay and Miss Bron, who also called the physician with Miss Bron, changed their testimony. He also said that Alice Blake, another witness for the prosecution, is missing. Miss Bron is under surveillance and the hearing by the grand jury is to be continued further.

Mrs. Sadie Wirt Spreckles told the grand jury that shortly before the death of Miss Rappe the latter sent for her and among her last words said: "To think that I left my quiet life and got into such a party."

Henry J. Boyle, assistant manager of the St. Francis Hotel, testified at the inquest of Miss Rappe that a Mrs. Del Monte called him to Arbuckle's room, where he found the girl unconscious and moaning. Arbuckle told him she had only a few drinks.

The physician who treated her said that nothing to indicate that violence had been committed was found until the autopsy was performed, when it was disclosed that Miss Rappe was injured internally.

Roscoe ("Fatty") Arbuckle, moving picture star comedian and owner of the Vernon baseball team, was arrested by the San Francisco police authorities on Sunday and yesterday was formally charged with responsibility for the death of Virginia Rappe, formerly a moving picture actress.

Miss Rappe was taken from Arbuckle's rooms in the St. Francis and died Friday of congestion of the lungs and peritonitis, following a "party" in Arbuckle's rooms. The management of the hotel says that after the party Arbuckle was ordered to leave the hotel. Detectives are guarding witnesses for the prosecution.

The police assert that they have a clear case against Arbuckle, that an assault was attempted or perpetrated and that in addition to peritonitis and congested lungs the body of Miss Rappe was badly bruised. Arbuckle denies that he was alone with her. Miss Rappe is reported by the nurse who attended her to have said that she took two or three drinks with Arbuckle and remembered no more, not recollecting going to his rooms. Arbuckle is reported as refusing to talk beyond saying that he was "through with liquor."

Yesterday various moving picture theaters announced cancellation of contracts to show Arbuckle films. In San Francisco two theaters ordered such films off their bills. One of the largest picture theaters in Los Angeles announced the withdrawal of one of his films and none of his pictures was shown last night. The mayor of Medford ordered Arbuckle numbers withdrawn, and the board of censors of Tennessee ordered pictures featuring the accused to be barred from the screen.

(ASSOCIATED PRESS)  
LOS ANGELES, Sept. 13.—Roscoe Arbuckle was dropped from membership in the Los Angeles Athletic Club at its meeting last night. The organization is the largest club in this city.

## Both Suspects in Chicago's Murder Case Tell Crimes

(ASSOCIATED PRESS)  
CHICAGO, Sept. 13.—Confessions of the commission of brutal and bloody murder of Bernard J. Dougherty an automobile salesman and Carl Ausmus, his chauffeur have been secured by the police from both of the suspects in custody.

The body of Dougherty was found handcuffed, with throat cut and a cord around his throat in the Desplains river, Saturday. The body of Ausmus was not found.

W. H. Church, a brakeman arrested after a blood stained axe and two hats were found, confessed today when confronted by Leon Parks, who confessed yesterday. Church said they inveigled Dougherty from the car. Parks covered him with a revolver and forced him toward and into the basement. There they beat him to death and cut his throat after handcuffing him. Meantime Ausmus waited in the car. Later they went out and killed him also. Both bodies they threw into the river.

The motive given by Church was that they desired to secure the car.

## County Library to Begin Its Service To Public at Once

### Will Open Tomorrow and Use Old Library Rooms While Alterations Are Being Made to Its New Home.

Maui County Free Library will begin to function tomorrow and to render service to the Maui reading public. It will occupy the old library room in the Alexander House Settlement building until alterations can be made in the new building which the county purchased for it. Miss Marion Ross, the librarian, arrived by the Wilhelmina on Friday and met with the library board Saturday afternoon.

For the time being the library will be open on Tuesday, Thursday and Saturday evenings, Tuesday and Thursday afternoons and Saturday mornings. The Saturday opening hours are a change of policy, the morning hours being especially for the benefit of teachers who come in from up country on Saturday and the Saturday evening hours for the benefit of those who have neglected to get a book to last them over Sunday, until the last minute. When the library enters its new home the hours of service and use of the library will be increased.

The first decision reached by the librarian and the board was for the purchase of the books from the old Maui library. Miss Morse looked the collection over and says it will make an excellent nucleus. She has started looking them over and listing them so as to determine what is available before starting on the list of new books, the purchase of which she will ask of the library board. She will be glad to receive from those who desire to use the library suggestions of books which they desire purchased and such suggestions will receive full consideration in making selections for purchase though with the funds available it will not be possible to buy all that are desired at the outset.

**New Building Plans**  
Miss Morse has started on plans for the alterations of the interior of the building. These would remodel the house as there will be a large reading and service room, a mens meeting and lounge room, a women's meeting and rest room, a shipping room and the living quarters of the librarian. The chairman of the library board went before the board of supervisors Friday and secured permission for the county engineer to make the necessary alterations within the amount previously appropriated by the board for the purchase and remodeling of the building.

Mr. Low says he will start work as soon as there is labor available, following the completion of some of the school buildings now in construction which will not be until well on toward the end of the month.

The proposal to have meeting rooms for men and for women is a recent suggestion and the carrying of it out is dependent upon voluntary contributions from those who desire to have the suggestion carried out for the library funds are available for library equipment, books, maintenance and service and not for the furnishing of such rest or meeting rooms.

Under the plans of cooperation the Library of Hawaii will "loan" to the Maui Library books from its Inter-Island department but such books will be in all library. The territorial institution will also supply from its shelves books for which application is made by Maui readers through the Maui library and which are not in the collection in the county library but it is expected that such books will be other than fiction works, generally.

**More Books Needed**  
Questions of the character of books to be bought, the proportion of juvenile reading, current fiction and standard and reference works is yet to be worked out as is the question of the magazines and periodicals that will go into the reading room.

The library board will be glad to receive and add to the library any and all donations of books that may be given. It is believed that there are large numbers of residents of Maui who have books which they have read and may not care to keep longer, especially current fiction, and such works, in fact any and all books will be a useful addition to the library which has available for use until January 1923 only \$20,000 of territorial funds.

## THOMPSON APPEAL HEARD

Hearing in the appeal of the case of the Territory against Charles Thompson, alleged cattle thief case, was had in Honolulu before the supreme court, reports Enos Vincent, who represented the attorney general's office in the case and returned from Honolulu today. He says the opinion is expected to be handed down in the course of a week.

## Fund Raising Starts for Press Congress; Plans Going Forward

Raising of the necessary funds for the reception and entertainment of visiting members of the World's Press Congress, October 15-16, was started Friday when the board of supervisors responded generously to the request of the committee and appropriated \$500, the amount asked. Chairman Gray of the committee presented the request to the board, explained the purposes and plans of the committee, the value of the publicity that will be secured as a tourist getting asset and more especially in bringing to the attention of the visitors island conditions and needs. The members of the board were unanimous in their action.

L. A. Thurston wireless from Honolulu for the Maui program of entertainment to be sent him by yesterday's Mauna Kea and he was forwarded the program as outlined by the committee at its meeting last week.

Acceptances are coming in from the various heads of departments and it is expected that all will have been heard from this week so it is planned to call a meeting of the new and enlarged committee to be held next Tuesday afternoon.

## Wages of County Laborers Are Cut

### Reduction of 50 Cents a Day Will Come October 1; Wave of Economy On in Face of Fund Shortage.

Pay of county employes engaged in road work and similar unskilled labor on days wages will be reduced 50 cents a day, from \$3 to \$2.50 beginning the first of October, it was decided by the board of supervisors at the meeting on Friday. Chairman Kalamia is to make the arrangements and to have the workers notified his action later to be ratified.

Reduction of pay of county laborers had been a subject of discussion at the two preceding meetings of the board as a part of the policy of re-occupying and economy which the members of the board know must be employed for the balance of the year, but the board members regretted the necessity for such action and were loath to take it. It is felt, however, that the cost of living which occasioned the advance to \$3 a day has declined considerably.

It is the purpose of the board of supervisors to end the present year with a surplus in the county treasury if possible because the members one and all recognize that the revenues of next year will be very much less next year than this even with an increased tax rate. The incomes of the plantations this year are very much less than last year which will mean a very large falling off in the assessed valuation. County funds were not so much affected this year because of the fact that the special tax for the sanitarium and county hospitals made available money in the general fund formerly spent for the support and maintenance of those institutions. Next year the same amount will be raised for such institutions but the reduced assessed valuations of the plantation companies will mean tax receipts for the county thousands of dollars less than receipts of this year.

It was evident in various ways at the meeting this month that the board will be very careful in its appropriations for the balance of the year. It refused to pay rent for a teachers cottage at Lahaina and though it authorized the purchase of new automobiles for the police department that move was made to prevent large expenditures for repair of old cars and the purchase was regarded as absolutely necessary. The request of a contribution of \$300 for the Boy Scouts was refused with sincere regret, the sentiment being that the amount was not available even for that worthy purpose.

Recognizing that the wave of economy was sweeping in the request for funds for athletic training in the schools was not presented as it had been expected that it would.

## Surrender of Plotters Is Demanded by Turkey

(ASSOCIATED PRESS)  
CONSTANTINOPLE, Sept. 13.—British authorities announce that they have discovered evidences of a vast revolutionary plot in Turkey. The allies have invited Turkey to surrender the men involved in such revolutionary plot and to turn them over to the allies within a week and have announced that unless this is done the Turkish government will be held responsible.

British troops are guarding Turkish headquarters and the guns of British warships are trained upon Stamboul.

## Raymond Ranch Will Be Incorporated; Greater Expansion Is Designed

### Vast Holdings on Haleakala to Go to Company, With Majority of Stock Remaining in Present Owners—Dr. Raymond Will Enter Business in Honolulu.

Raymond Ranch, the vast and splendid estate on the slopes of Haleakala, recognized as containing much of the finest grazing lands on Maui, which means in the Hawaiian Islands, with all of its herds of grand Hereford stock, its equipment, slaughter houses and cold storage plants and its many acres of splendid agricultural land, is to be incorporated, to pass into the hands of a company, it is announced by Dr. J. H. Raymond. A stock company is to be formed and Dr. Raymond expects the new company will be operating the ranch within 90 days, by the first of the year. Control of the company, a majority of the stock in new company, will be held by the present owners of the property, the minority of the stock to be offered to the public, subscriptions opened, it is expected, by the first of October.

In connection with the cattle raising and marketing of beef the ranch has its own slaughter houses and two cold storage plants, one at the ranch and one at the wharf and its own transportation in a steamer, these valued at more than \$30,000. There is a meat market in Lahaina, a concrete building with refrigerating plant owned by the ranch and much of the beef goes to Honolulu where it is handled by the Territorial Marketing Division which is now putting in a new \$15,000 cold storage plant to handle such meats. Market facilities and marketing of the meat is assured and larger output can readily be handled.

**Beans Increase Profits**  
In addition to the cattle raising features of the property there is much valuable agricultural land which was included in the old Makee Sugar Company holdings. At present 500 acres are planted in California red kidney beans now being shipped to the coast. Relative to a shipment received August 25, J. T. Sweetland, formerly manager of the California Packing Corporation and now head of J. T. Sweetland Co., wrote:

"The Wilhelmina arrived yesterday with 290 bags of kidneys. We sampled them as soon as they were unloaded and they surely are as beautiful a lot of beans as we ever have seen. In fact, if you can get the rest of your beans in as good condition as these two shipments it will not be long before we are getting a premium on Honolulu for we have nothing in California that can equal this quality."

It is planned to increase the acreage planted to beans to 1500 acres. This branch of industry is economically handled by leases to Japanese who plant and cultivate the lands, the leases being for 20 year periods and the rental being 25 per cent of the gross crops. Such crops average about 10 sacks of 100 pounds to an acre, sometimes running as high as 17 sacks, and sell from 7 to 10 cents a pound making an average yield of \$70 an acre or better.

**Ranch Supplies Equipment**  
Such cultivation is not by any means by hand for the ranch rents to the lessees its splendid farm equipment, caterpillar tractors, plows, cutters, harvesters, etc., and has a cable system that takes the beans to the houses and from houses to warehouses for shipment. The lessees pay for such assistance in beans from their crop in addition to the 25 percent gross. An average of 10 sacks an acre on the 1500 acres would yield \$105,000 at only 7 cents a pound and would make then rental therefrom more than \$26,000 at such minimum figures on that area.

Dr. Raymond says the matter of incorporation is in the hands of D. H. Case and Frank Thompson of Thompson, Cathcart and Lewis. He expects to see subscription lists opened by the first of the month and stock delivered to purchasers by the first of the new year. As yet the par value of the shares has not been determined.

"Were I a few years younger, I should not think of carrying out my present plan," he said. "But there should be new blood and new department heads and a thoroughly energetic policy to make the property what it can be, should be and will be made."

**McKAY LOSES APPEAL**  
Motion to dismiss the appeal from Judge Burr's decision in the McKay citizenship case is granted by the supreme court on the ground that his citizenship is a moot question and its importance in the premises ended by his resignation and retirement as district magistrate. This leaves Judge McKay in the status of a non-citizen under the decision handed down by Judge Burr several months ago.

STOCKS	
Ewa	24 1/2
H. C. & S. Co.	Asked 33 1/2
McBryde	7 1/2
Oahu	23 1/2
Olan	5 1/2
Pioneer	18 1/2
Waialua	21 1/2
Engles	63
Wailuku	23
Haiku Fruit	Asked 26
New York Sugar	4.63

# SPORTS

## Paia Takes Game; Protest Is Lodged

Wacs Now in Lead, as Lahaina Forfeits, Unable to Put Team in Field; Sunday Game Hard Fought.

STANDING OF CLUBS			
Wacs	Won.	Lost.	Pct.
Puunene	4	1	.800
Paia	4	2	.667
Lahaina	4	3	.571
Lahaina	1	6	.143

**Last Sunday's Results**  
 \*Paia, 4; Puunene, 2 (10 innings.)  
 Wacs, 9; Lahaina, 0; (forfeit.)  
 \*Protested by Puunene.

Puunene has entered a protest on the game played Sunday with the Paia team and won by the latter in the tenth, 4 to 2, on the grounds that L. O. McCluskey, Paia's third sacker, was not eligible to play and did play in violation of the residential clause. The protest will be taken up this week.

Lahaina was not able to make an appearance and defaulted to the Wacs.

To come back to the contest: "Lefty" Chartrand crowned himself with glory and won the ten inning fight for his teammates with a homer in the final frame sending in English ahead of himself and making the score, Paia, 4; Puunene, 2, after two were gone.

The old warhorses Bal and Robinson twirled for their respective nines in great fashion. The former allowed but five hits. Nine bingles were gained off Robinson but he counteracted by sending 13 men back to the bench via the S. O. route.

Puunene broke in the run column in the fifth: : : : :  
 Souza singled, advanced to second on Freitas' sacrifice and scored on Silva's bingle. Shim sacrificed Silva taking the keystone sack on the play and Haake fanned.

Paia evened up matters in their sixth canto. English flied out to left. McCluskey was safe on Nakamura's error and when Chartrand doubted managed to make the plate. Souza grounded out second to first and Coleman fanned.

In the seventh Paia forged ahead. Robinson flied out to right; Yemoto got a life, stole second, made third on a fielder's choice and scored on Nakamura's error of Cockett's ground er. English popped out to Freitas.

The eighth saw it two all. Silva got a hit and made second on McCluskey's error and took third on Shim's sacrifice. Haake was hit by pitcher and stole second. Cockett let one of Foster's high ones pass him and Silva scored. Bal grounded second to first and Enos fanned.

In the 10th Puunene look good. Silva fanned. Shim singled and Haake followed suit landing Shim at third. A punt was in order but no such play came for Bal swung, hit the pill skyward, saw it rest in Souza's mitt and to cap the climax, worked itself into a double play, Haake being caught off first.

Paia was more fortunate in the last half. Cockett flied to Maseichi, English singled, McCluskey, popped to Freitas then to bat came Chartrand with a watch-me-expression and lo! a homer and the game.

Puunene									
AB.	R.	B.	H.	P.	O.	A.	E.		
Joe Silva, cf.	5	1	4	3	0	0			
Shim, rf.	3	0	1	3	0	0			
Haake, lf.	4	0	1	3	0	0			
Bal, p.	5	0	1	2	2	0			
Enos, lb.	4	0	0	9	0	2			
Maseichi, 3b.	4	0	1	3	1	0			
Nakamura, ss.	4	0	0	1	5	2			
Joe Souza, 2b.	4	1	1	2	2	0			
Ray Freitas, c.	3	0	0	5	0	0			
Totals	36	2	9	29	10	4			

Paia									
AB.	R.	B.	H.	P.	O.	A.	E.		
Chartrand, lf.	5	1	3	0	0	0			
Souza, ss.	3	0	0	3	0	0			
Coleman, cf.	4	0	1	1	0	0			
Robinson, p.	4	0	0	0	3	0			
Yemoto, rf.	4	1	0	0	0	0			
L. M. McCluskey, lb.	4	0	0	10	0	2			
Cockett, c.	4	0	0	12	2	0			
English, 2b.	4	1	1	4	3	0			
L. O. McCluskey, 3b.	4	1	0	0	1	2			
Totals	36	4	5	30	9	4			

**Hits and Runs by Innings**  
 Puunene: 0 0 0 0 1 0 0 1 0 0-2  
 Basehits: 1 0 1 2 2 0 0 1 0 2-9  
 Paia: 0 0 0 0 1 1 0 0 2-4  
 Basehits: 1 0 0 1 0 1 0 0 0 2-5  
 Summary—Two out when winning run scored; home run: Chartrand; two-base hit: Chartrand; sacrifice hits: Shim 3, Freitas, Souza; Double plays: Puunene, Nakamura to Souza to Enos; Paia, L. O. McCluskey to English to L. M. McCluskey; Souza to McCluskey; stolen bases: Puunene, Silva 2, Haake, Maseichi, Joe Souza; Paia, Coleman, Yemoto; struck out: by Bal 2, by Robinson 13; hit by pitcher: Haake by Robinson; passed ball: Cockett; wild pitches: Robinson; time of game: 1 hr. 39 min.; umpires: Leandro and Enos; scorer: Joe Xavier.

**STOP! LOOK! READ!**  
 IF YOU ARE GOING TO MEET THE STEAMER AT LAHAINA  
 CALL UP  
**KAHULUI AUTO STAND**  
 PHONE 191-A  
 JOHNNIE J. KOHAMA—For comfortable, easy riding cars.  
 Regular trips on Mondays, Wednesdays, Fridays and Saturdays.

## Bowling Match Won by Cummings' Bunch

By scoring 109 pins to the good George Cummings' Amalgamation won another Chinese dinner last Sunday evening at the expense of M. Moura & Co., the surplus being accumulated Saturday afternoon in the regular weekly tournament held by the Wailuku Bowling Club at the Gymnasium. The total pinfall for the three games being as follows: Amalgamation, 2423; Moura & Co. 2314.

Amalgamation				Aver.			
Cummings	193	180	186	539	180		
E. Bal	177	146	126	449	150		
Palmatier	155	164	153	472	157		
W. Affonso	157	189	147	493	164		
Total	2423						

Moura & Co.				Aver.			
M. Moura	140	178	149	467	156		
P. Ledward	172	162	177	511	170		
Kaumeheiva	189	172	170	531	177		
L. Distell	138	156	104	398	133		
W. Cockett	116	142	149	407	136		
Total	2314						

## Business Classes Are Now Forming on Maui

Six employes of Baldwin Bank, Ltd., four in the Kahului main bank and two in the Wailuku branch have organized a class in banking and finances under the La Salle Extension University courses. They will be coached by Mr. Brewster of the bank. It is contemplated starting classes in business administration and accounting also. It is announced by A. Y. Hardy, Islands representative of the La Salle Extension University.

Mr. Hardy spent several days on Maui the latter part of last month, went to the Big Island and returned to Wailuku at the end of last week whence he proceeds to his Honolulu office.

In Honolulu several classes have already been established and are now being conducted and in Hilo one class was started last week and others are contemplated there.

As a former student of the banking and business administration courses of La Salle University Extension, Mr. Hardy plans to make trips to Maui every 20 to 60 days to assist in the conduct of those classes here. A local man will be secured to coach the classes that are to be formed in the other subjects on Maui.

Literature has been left at Maui News office and can be secured on application.

**Pioneer Grind Ends**—At Lahaina the grind of Pioneer Mill Co., ended last week but the mill is still "drying off." The output is about 26,000 tons, approximately a thousand tons less than the estimate of last January, the decrease being attributed to the labor shortage.

## Widening of Trail Ulupalakua-Kihei Not Practicable

Connecting up of Ulupalakua with Kihei will have to wait. The proposal of Dr. J. H. Raymond for the widening of the old trail is found impracticable by the County Engineer and there are not funds for the alternative proposal that Mr. Low offered. In his report to the board of supervisors he said:

"I have been over the old wagon trail which Dr. Raymond at your last meeting recommended putting in shape for travel. The trail is approximately five miles in length, the upper two miles of which are impossible for motor traffic on account of very heavy grades. The last mile is over soft sand on which it would be impractical to construct a public highway. The other two miles are over fairly easy country. In brief there would be nothing gained in following the old trail. If Ulupalakua is to be connected up with Kaluiahakoko it would mean the construction of an entirely new road some five or six miles in length across a hill side much cut up by gullies and water courses.

"The most economical road would very likely be one meeting the present road to Makena at an elevation much lower than that at which the trail in question leaves the Government road."

Puunene Grind—Grinding is all but finished for H. C. & S. Co. and its completion is expected before the end of the week.

**AMERICAN FOOTBALL**  
 The Snappy, Peppy Game That Makes You Think Fast.  
 Come In and Look Over the Equipment and Ask About It.  
**MAUI SPORTING GOODS CO.**  
 PHONE 272  
 MAIN ST. WAILUKU.

**MASQUERADE BALL**  
 Write in your date book now lest you forget  
**Haleakala Nest, Order of Owls**  
 For the Benefit of the Orphanage Fund  
**SATURDAY, SEPTEMBER 24**  
 Paia Orpheum  
 Tickets 50 cents. On sale at Maui Drug Co., Wailuku; Puunene Store, Kahului, and Paia Store, Paia.

**ST. ANTHONY ALUMNI ASSOCIATION**  
**DANCE**  
 TERRITORIAL BUILDING, KAHULUI,  
 SATURDAY EVENING, SEPTEMBER 17.  
 Music by Anderson's Jazz Orchestra.  
 Admission 50 cents per couple.

**THEY'VE ARRIVED**  
 New Novelties and Art Objects, specially selected on the mainland by our buyer, and they certainly are a charming and attractive lot. We shall be glad to show them to our friends and are confident they will please.  
**MAUI BOOK STORE**  
 Main Street, Wailuku.

**The Policies We Write**  
**Put Sure In Insurance**  
 Life, Fire; Casualty, Health, Automobile Policies in the strongest and most substantial companies.  
**INDEMNITY BONDS SECURED**  
**THE BALDWIN BANK, LTD.**  
 MAIN OFFICE, KAHULUI.  
 BRANCH, MARKET STREET, WAILUKU.

**Save \$30 Now**  
 and time, money and labor for years and years to come. Your opportunity is for **TWO DAYS ONLY**, for prices will return to the old figures on September 15.  
 Place your orders now.  
**THOR ELECTRIC WASHING MACHINE.**  
 (400,000 women are now using them)  
 Family, stationery wringer type; former price and price after September 15, \$160 cash.  
**NOW \$130 CASH, \$143 CREDIT**  
 Family, swinger wringer type, were and will be after September 15, \$170 cash.  
**NOW \$140 CASH, \$154 CREDIT**  
 Call and see them at the office of  
**MAUI ELECTRIC CO., LTD.**  
 Main Street, Wailuku.

**STOVES**  
**FLORENCE**  
**PURITAN**  
**PERFECTION**  
**DETROIT VAPOR**  
 There Was Never a Better Opportunity to Make Your Selection Than Now  
**Maui Dry Goods & Grocery Co., Ltd.**  
**WAILUKU BRANCH**  
 Main Street : Wailuku

**JAPANESE GOODS**  
 A SPECIALTY  
**J. ONISHI**  
 GENERAL MERCHANDISE  
 KAHULUI.

**Harada Auto Stand**  
 Prompt auto service on call day or night  
 Meet every steamer  
 Kahului, Maui. Phone 217-E.

**TINN CHONG STORE**  
 Dry Goods, Groceries and General Merchandise  
**Bakery & Restaurant**  
 Cigars, Tobaccos, Fruits, etc.  
 Main Street, Kahului, Maui.

**Paia Mercantile Co.**  
 GENERAL MERCHANDISE  
 Groceries, Cigars, Refreshments  
 Lower Paia, Maui.

**SCHOOL HATS**  
 The children need new hats when they go back to school next week, and as the summer passes away it is time to think of your own needs, too.  
 There is one house on Maui that is an exclusive hat store.  
**THE FASHION**  
 Main and Market Sts., Wailuku.

Look into your home with the eyes of a guest and ask—  
**HAS IT ELECTRIC LIGHT AND GOOD ELECTRIC FIXTURES?**  
 Simple but tasty and thoroughly practical Lighting Fixtures are the idea today.  
 Let our Mr. J. J. Lavelle, who will be with us from the 19th to the 28th, call and explain to you how Good Fixtures will improve the appearance of your home.  
**MAUI ELECTRIC COMPANY, LIMITED.**

  
**"490"**  
 America's Lowest Priced, Fully Equipped Automobile  
**HERE IS THE NEW PRICE REDUCED TO**  
**\$950.00 Cash**  
**975.00 Time**  
 F. O. B. Honolulu  
 Touring Cars and Roadsters  
 Place your order now, as there will be a rush to purchase these cars at the reduced price.  
**The Chevrolet "490" Has Proven Itself On Maui as the Car for Economical Transportation.**  
**ROYAL HAWAIIAN SALES CO., LTD.**

**ON THE OTHER ISLANDS**

**Territorial Finances**—Supplementing Governor Farrington's remarks at Hilo relative to the financial situation, Delbert E. Metzger, territorial treasurer, declares that, unless something happens to remedy the present situation, Hawaii will be broke when the next territorial convention convenes in 1922 to such an extent that it will have difficulty in regaining its feet again.

**Chaulmoogra Trees**—Two thousand chaulmoogra trees have been turned over to the board of agriculture and forestry by Dr. H. L. Lyon of the H. S. P. A. experiment station, and these are to be set out at Waihole, Oahu, at a place selected by Charles S. Judd, superintendent of forestry, with 2000 other trees that the board has raised from seeds. This will be the start, Mr. Judd said of the proposed chaulmoogra oil-producing plantation, and within time will furnish to the territory an adequate supply of chaulmoogra oil which is now being successfully used in the treatment of leprosy.

**Increases Allowed**—The Kauai Telephone Co. was granted a temporary monthly increase of \$1 in telephone rates at a special meeting of the public utilities commission. This increase will take effect October 1 and will continue for three months, ending December 31.

**Hilo Harbor Work**—Bids are advertised by Lyman Bigelow, superintendent of public works, for a wharf sheds and dredging at Hilo. The last legislature appropriated \$500,000 for the project.

**Y. W. Home**—The new girls home of the Y. W. C., located on the mauka side of King St., Honolulu is rapidly nearing completion and when finished will, in the opinion of many, be the finest institution of its kind in the territory.

**Watt Home Destroyed**—Fire totally destroyed the home of John Watt in Honolulu last Wednesday morning. The loss is placed at \$40,000.

**Hawaii Aviation Park**—Hilo looks to see Hoolulu park made the aviation center of the Big Island for army fliers.

**Traffic Laws Enforced**—Police court fines of violators of the traffic law in Honolulu County for the month of August exceeded \$2000.

**Preserve Water Front**—Hawaii's board of supervisors is taking action to preserve the water front at Hilo through a resolution requesting the issuance of no more building permits for "shacks" along the harbor front.

**More Forest Reserve**—The addition of 28,900 acres of land to government reserves will be made as the result of a discovery by Charles S. Judd, superintendent of forestry, who has returned to Honolulu from a two month stay on the big island. The land lies partly behind the Waiakea home steads where 9,690 acres were found. In upper Waiakea 15,000 acres were located, while the Hilo forest reserve has been increased by 2,500 acres. Another addition to the forest reserve will include 1,711 acres beyond Hakalau at Manowalalee.

**Big Coffee Crop**—The coffee season is just coming in along the Kona coastline and in a month or two will be in full swing. The indications are that the crop will be a bumper one, but the growers are despondent over the prevailing low price. In

fact, some of them to pick their crops.

**Porto Ricans Organize**—The Porto Rican Welfare Association has been organized on Hawaii under the leadership of Poling Berrio, luna on the Oiaa Sugar plantation, and several other leading Porto Ricans.

**Course in Journalism**—Hilo High School will offer an elective course in Journalism this year to its Senior class. Only those Seniors displaying journalistic talent, however, will be allowed to take the course. R. M. Meallory, of the English department, will take charge of this course.

**Mark of the True Gentleman**—In a large park in one of the Eastern cities there are seats about the bandstand with this notice posted on them: "The seats in the vicinity of the bandstand are for the use of ladies. Gentlemen should make use of them only after the former are seated."—The American Legion Weekly.

As a special inducement to kick the bucket, we find Yonkers undertakers advertising "Lady Embalmer."—Buffalo Express.

**CHINESE SILKS**  
Headquarters for Chinese Goods on Maui. Dry Goods, Fancy Goods, Merchant Tailor.  
L. APANA  
Puunene Ave., Kahului.

**PROVISIONS & DRY GOODS**  
General Merchandise  
Prompt Attention, Polite Service, Right Prices  
JAPANESE MERCANTILE CO.  
PHONE 218-A. KAHULUI.

**NO BARGAINING HERE**

**No Overcharging      No Profiteering**

WHAT YOU GET FROM US YOU  
BUY AT THE SAME PRICE YOU  
WOULD PAY IF YOU BOUGHT  
THE SAME ARTICLE ON THE  
MAINLAND

SAVE FREIGHT OR PARCEL POST CHARGES  
on any and all electrical appliances you may require  
from a curling iron to a washing machine. No need  
to send away.

A HOME COMPANY RUN FOR HOME PEOPLE

**THE MAUI ELECTRIC COMPANY, LTD.**  
Main Street, Wailuku.      Phone 121.

**First Alligators Found in Whangpoo River**

SHANGHAI, Sept. 10.—(Associated Press Mail.)—An extraordinary incident of the season of great heat that ruled here in July, August and part of this month was the finding, in the Whangpoo river, of two alligators. The first was dragged from the water by Chinese on a cargo junk. It measured more than six feet in length. The second, found several days later, was four feet four inches long. This is the first time alligators have been known to have been found here.

**Alexander & Baldwin**  
Limited

SUGAR FACTORS  
COMMISSION MERCHANTS  
and  
INSURANCE AGENTS

AGENTS FOR—

Hawaiian Commercial & Sugar Company  
Haiku Sugar Company  
Paia Plantation  
Maui Agricultural Company  
Hawaiian Sugar Company  
Kahuku Plantation Company  
McBryde Sugar Company  
Kahului Railroad Company  
Kauai Railroad Company  
Honolua Ranch  
Kauai Fruit & Land Company

**Australia in Fear of Japanese Invasion**

SYDNEY, Sept. 10.—(Associated Press Mail.)—Great prominence has been given the declaration recently by Brigadier General Elliott, a member of the upper house in the federal parliament, that Australia "will be called upon to meet an invasion of Japan if we do not open our doors to immigration."

The declaration was made before a meeting of university students.

"There will be war and an attempted invasion," the general said. "The Japanese first will try to cut off our trade routes. And what is to stop them? Although I have no official information, I have good reason to believe that Japan has ten battleships superior to those of any other country. I recommend that, for the defense of Australia, we make provision for adequate dockyards near Singapore. If we do not build them there, Japan will. I also recommend the immediate construction of naval bases in Australia."

"It is essential to our safety to induce Great Britain to give us an adequate fleet and naval bases, and until this is realized by Great Britain, Australia must be prepared to face the possibility of an invasion. I have heard on reliable authority that if the Japanese landed here it will take two years to get them away from our shores. Thus a two years' defensive war would be necessary. To compete on equal terms it is necessary to have artillery and ammunition."

General Elliott said that Japan was "awarming with population" and had a mercantile fleet capable of transporting troops anywhere. The support of Great Britain in the event of an invasion was uncertain, he said, because of the growing influence of the English labor party, which was likely to be hostile to the policy of a "white Australia."

**Cruelty to Animals Is Too Prevalent in Japan**

TOKIO, Sept. 10.—(Associated Press Mail.)—The Japanese are the cruelest people in the world in their treatment of animals, according to a metropolitan official quoted in the Jiji. Most of the 4,938 horses and 13,405 cows in Tokio receive unkind treatment, the official said.

The police last year admonished several thousand drivers for treating their animals cruelly and punishment was imposed on 1,944 of the men. Official and private societies are endeavoring to inculcate into the populace the idea of kind treatment of animals.

**Return of Crown Prince Brings Suffrage Demands**

TOKIO, Sept. 10.—(Associated Press Mail.)—The return this month of Hirohito, heir apparent to the Japanese throne, will be the signal for a nationwide demand for universal suffrage, according to supporters of the cause for which political groups have been struggling so long. Young men throughout the empire are preparing a series of demonstrations for universal enfranchisement, it is said.

Mr. Businessman: If you believe you are entitled to a full share of the business of the Territory, join the trade at home movement, live up to your belief and supply your own wants

**Weekly Program at Wailuku and Kahului Theaters**

**WAILUKU HIPPODROME**

Tuesday, September 13th. JAPANESE PICTURES

Wednesday, September 14th. THOMAS MEIGHAN  
—in—  
"THE CITY OF SILENT MEN"  
—also—  
"THE VANISHING DAGGER"  
—and—  
PATHE NEWS

Thursday, September 15th. H. B. WARNER  
—in—  
"FOR A WOMAN'S HONOR"  
—also—  
"THE BRANDED FOUR"  
—and—  
PATHE NEWS

Friday, September 16th. GERALDINE FARRAR  
—in—  
"FLAME OF THE DESERT"  
—and—  
BURTON HOLMES

**KAHULUI THEATRE**

Tuesday, September 13th. GEORGE WALSH  
—in—  
"SINK OR SWIM"  
—also—  
"THE LOST CITY"  
—and—  
MUTT and JEFF

Wednesday, September 14th. JAPANESE PICTURES

Thursday, September 15th. ARTHUR BOURCHIER  
—in—  
"THE GREAT DAY"  
—also—  
"THE FIGHTING FATE"  
—and—  
PATHE NEWS

Friday, September 16th. H. B. WARNER  
—in—  
"FOR A WOMAN'S HONOR"  
—also—  
"THE BRANDED FOUR"  
—and—  
PATHE NEWS

**"LEAVE IT TO BUMPS"**  
AUTOMOBILE REPAIRING  
Prompt and Efficient Service  
Batteries Charged and Repaired to Your Satisfaction  
AGENT FOR VESTA BATTERIES  
"Cost Less Per Month of Service"  
**A. POMBO**  
Wells Street, below Armory Building, Wailuku  
Phone Wailuku 252

**HOW ABOUT THE JAPANESE?**

Are you getting all the business from them you want? If not, you can reach them in only one sure way, in their own language. Tell them what you have that they want in advertisements and in hand-bills.

Issued Semi-Weekly **MAUI RECORD** N. K. Otsuka, Prop.  
**JOB PRINTING**  
Translations from English to Japanese and Japanese to English

We now are distributors for

**BISHOP MUSEUM PUBLICATIONS**

and are ready to fill orders at any time. These publications include

"Hawaiian Feather Work,"  
"Mat and Basket Weaving,"  
"The Ancient Hawaiian House," "The Volcanoes of Kilauea and Mauna Loa"—  
By Dr. Wm. T. Brigham.

The Fornander Collection of Hawaiian Antiquities and Folklore—Edited by Thomas G. Thrum.

**Hawaiian News & Thrum's Ltd.**  
Young Hotel Building  
Honolulu.

**KAHULUI RAILROAD COMPANY'S MERCHANDISE DEPARTMENT**

**Standard Steel Angles**

Equal legs—1-2" x 1-2" x 1-8"  
to 8" x 8" x 3-4"

Unequal legs—2" x 1 1-4" x 1-4"  
to 6" x 4" x 3-8"

All Orders Given Prompt and Careful Attention

Tel. Nos. 201 - 202 and 203  
Private Exchange  
Connecting All Departments

WAREHOUSES  
KAHULUI, MAUI.

**Latest Manila Hemp Hats**

With or without fringes; assorted colors and weaves.

Price \$4.00 each for any kind an any style. Sent anywhere without extra cost to you.

These Hemp Hats are specially ordered for these Islands, as they are the right kind of hats suitable to our climate. They have made quite a hit with the Honolulu women and are becoming more popular day by day. They come in all possible shades. They are LIGHT, COOL and COMFORTABLE. Try one.

Just drop a letter or a post card and mention the color and we shall send you on approval FREE of charge to you. If you do not like them, return them free of any obligation.

**EAST INDIAN STORE**  
1150 FORT STREET      HONOLULU, T. H.

# SEMI-WEEKLY MAUI NEWS

"FOR THE VALLEY ISLE FIRST"

A Republican Paper Published in the Interests of the People  
Issued Every Tuesday and Friday

MAUI PUBLISHING COMPANY, LIMITED  
Proprietors and Publishers.

M. R. PEREIRA, Manager

SUBSCRIPTION RATES: \$4.00 PER YEAR IN ADVANCE

Entered at the Post Office at Wailuku, Maui, Hawaii, as second-class matter.

MEMBER OF THE ASSOCIATED PRESS—The Associated Press is exclusively entitled to the use for republication of all news dispatches credited to it or not otherwise credited in this paper and also the local news published herein.

JOSEPH H. GRAY, : : : : EDITOR

TUESDAY, : : : : SEPTEMBER 13, 1921.

## CRATER REST HOUSE

Correspondence read at the meeting of the Chamber of Commerce last week and other complaints and descriptions of experiences met at the Crater Rest House make clearly apparent the need for action to prevent repetition of such experiences and to improve conditions there materially. The subject was referred back to the Rest House Committee and it is expected that body will have recommendations to present to the Chamber at its next meeting.

Custody and control of the Rest House is in a committee of citizens. At one time the committee sought to have a caretaker there all the time, but the situation is so lonely that it was found impossible to keep any one there at the pay offered. Now the key of the Rest House is secured by visiting parties at Olinda and the affairs of the establishment are left practically in the hands of one man, Worth O. Aiken, whose services to the community are voluntary, who gives a considerable amount of time and attention to it. But it is too much to ask of any one man, and he a busy man of affairs, that he shall give so much time and attention to the institution as would be demanded if conditions complained of are to be bettered.

One of the suggestions made is to put a man in charge, to permit him to increase the charge for occupancy of the rest house, and to sell meals or supplies for meals. According to the service he rendered, his patronage would increase or diminish. It would be expected of him that blankets and beds would be kept clean, that fire wood be furnished instead of having to be gathered by the visitors themselves after a hard trip up. Compared with hotel rates in Wailuku, and considering the remoteness of the rest house, a charge of \$2 or even \$3 a night would be very reasonable, the old one dollar rate having been established years ago, long before prices advanced.

This appears to be the best solution offered. It is during the summer months that the largest number go there, and it might be unnecessary to have a man in charge there except for three or four months a year. Judging from reports of the increased numbers making the trip the past summer, a man in charge might make an income satisfactory enough to keep him there during the summer months.

Beyond doubt not all of those who use the rest house pay for it. Some dodge payment deliberately, making false representations as to the number in their party or parties. Other parties find the key taken by persons who have preceded them and journey on up to the crater to the open house. They do not deliberately dodge paying, but without doubt some of them do not pay. A man in charge would be able to collect from all visitors.

Some of the guides appear to be to blame for the conditions that have appeared during the past summer and they are to be censured. It must also be said that not all of the offending parties, by any means, are "ignorant foreigners," and that many who should know better offend. One of the parties most recently complained of was composed of school teachers, it is said.

However, blame should not be placed on the shoulders of Worth O. Aiken, and he should not be criticised for unfortunate experiences encountered. As already said, it cannot be expected of Mr. Aiken that he personally conduct all parties up and keep a constant supervision over conditions there. He has served the community faithfully and deserves warm praise, and not criticism. He has been unable to this time to put a man in charge.

On the other hand, the Rest House is a great community asset to Maui and her citizens are unstintingly praised for having created it. For that very reason action is necessary to prevent the institution's further abuse and to see that it does not fall into further disrepute. A new policy should be prepared during the winter and put into operation not later than the spring. The committee may be expected to do this, and this paper is confident that they will do so.

## COUNTY FREE LIBRARY

After having been closed for more than two months the Maui Library is to be reopened, its property purchased by the new Maui County Free Library and the latter institution will begin to function tomorrow, though it will be unable to get into its own building for perhaps a month. Still the reading public is to be served as well as circumstances warrant from now on.

There is a territorial appropriation of \$20,000 for the support, maintenance and conduct of the County Library until July, 1923, by which time another appropriation will undoubtedly be made available. The county has generously appropriated \$9000 for the building and its remodeling; whether it will be in a position to contribute to the support of the library further another year remains to be determined. From the \$20,000, salaries and expenses have to be paid, shelving and other equipment bought and the delivery system for the whole Island maintained. It is evident that there will not be a large fund available for the purchase of new books.

Right here comes an opportunity for public spirited Mauiites to help the community and assist in building up the library. There must be numbers of persons who have books which they do not care to keep; some may have only one or two, others more. Especially is this so with books for children, for which the library has the greatest need. Such books could not be put to better use than through the County Library, and gifts of books will be gratefully received by the library board. They may be sent to the librarian or she may be notified where to send for them.

Maui County Free Library is a county institution. It belongs to every resident of the Island and they should feel that it is their own and that in helping it they are helping themselves. If the Maui spirit of cooperation is shown in connection with the library, the new institution will advance by leaps and bounds.

When one reads the news despatches of cyclones, floods, hailstones as big as baseballs, flooding rains and rising rivers, it brings realization of how kind nature has been to these Islands.

## THE OPTIMISTIC PESSIMIST

Some men are not aroused half so quickly by an alarm clock as a stocking clock.

The unsuccessful husband wants his wife to reflect his joys and expects her to share his sorrows by putting all the blame upon her. And not a few wives are the same way.

A three year old child that walks in its sleep is the nearest approach yet found to perpetual motion.

When a man purchases yeast it is no sign his wife is away and that he is about to undertake the family baking.

The man who sits back and lets the other fellow do it usually hollers the loudest when it isn't done to suit him. He has more breath to holler with than if he did some of the work himself.

Ireland is true to her emblem and harps almost incessantly. But England is unable to jazz to all the music.

While opposing the carrying of red flags it will be just as well if governments cut some of the red tape.

Hard times is well defined as a season when it is difficult to borrow money for things one does not really need.

Love at first sight is said to frequently end in divorce at first sight.

There are numbers of Mauiites who are glad no military forces are stationed here to reduce the supply of poison oke. It can be retained for home consumption.

A tight shoe is not productive of Maui corn.

## COUNTY EXPENSES

Expenses and expenditures will have to be reduced by the county government for the balance of the year. It is not that funds are short for the needs of the county this year, but that the government, both of the territory and the county, will next year have the closest sailing they have ever been called upon to undertake. The part of wisdom, then, is to economize and recoup now so as to enter on that year with the requisite provision for the "rainy day."

There is no getting away from the fact that even by increasing the tax rate to the limit the county will be unable to raise as much money next year as it has this. Economy reaching to parsimony may then be required, and the board of supervisors is right and foresighted in making its start to economize now instead of spending all it has and so aggravating the bad financial conditions that are unavoidable a few months hence.

Maui has the best board of supervisors of any county in Hawaii and they are entitled to the assistance of all in their efforts. Later taxpayers will probably complain of their burdens. The board will do all it can to alleviate the conditions that lead to such higher taxes, but it can only do its best, and in so doing it needs support and cooperation. The county is not their private possession, but belongs to the citizenry, for whom the board is trustee, and the members of the board recognize that state of affairs and are undertaking to act accordingly. It is a time for economy by the individual, by the community and by the government, and the supervisors are acting accordingly.

## WORLD'S PRESS CONGRESS

Maui is soon to be asked to invest in publicity. Glittering promises of returns to be secured from "investments in oil stocks" and other securities are insignificant when compared with the returns that will come to Maui from a small community investment of \$2500. And there is nothing speculative in the investment except how many fold over the investment the returns will be, for the value received will be many, many times greater than the money expended.

At least 250, perhaps 350, of the leading writers, editors and publishers are coming here October 15 to see first hand the beauties and the resources of Maui. At that time Maui's most urgent necessities could and should be shown the visitors, and they could and should be given a familiarity with conditions of the Islands not securable otherwise.

An opportunity for world-wide publicity! An opportunity to secure columns and pages of news articles and editorials in newspapers and magazines and periodicals! An opportunity to set Maui and the Islands right with the world! An opportunity to end misunderstandings and to promote understandings in the future! It is evident the value of such a visit, as is to be paid is inestimable. And the committee is undertaking to secure this for an expenditure of only \$2500. The announcement needs no red headlines. The facts stand out for themselves as the very best investment ever offered to Maui and to its residents.

If pineapple land owners, pine growers and pine packers want to insure against loss of their crops, buying of bonds to build roads over which crops can be taken to the canneries is the only way. The individual need not invest too deeply, but he should invest all he can afford when the opportunity is offered.

Honolulu has set aside October 3-8 as clean up week. The dates could be utilized on Maui similarly. Citizens are to be urged to get their premises spick and span for the Press Congress. Why not here also?

It is said that R. C. Brown has been offered the secretaryship of the Territory but has not yet decided to accept. If he does the phraseology of the documents issuing from his office will be faultless.

## FAITH MOVES THE WORLD

IT IS FAITH in one form or another which is responsible for the permanence of our whole economic and social life. No business can grow, no community become prosperous and beautiful, no people contented and happy without a certain amount of faith in each other and in the community in which they live.

Only by faith is it possible for the Greater Hawaii to become more than the dream of men who have given their best to the community.

For nearly two decades the name Waterhouse Trust has been a symbol for the faithful performance of work entrusted to it. As the community grows this company is growing and still will continue to serve faithfully when the Greater Hawaii becomes a reality.

WATERHOUSE TRUST CO., LTD.

HONOLULU.

## WHY STAND STILL?

Are you advancing, or are others promoted over your head? If you are not going forward, it's because you're incompetent.

## THE BEST HELP IS SELF HELP

You can continue your education at home and make yourself competent and efficient through the

## LA SALLE EXTENSION UNIVERSITY COURSES

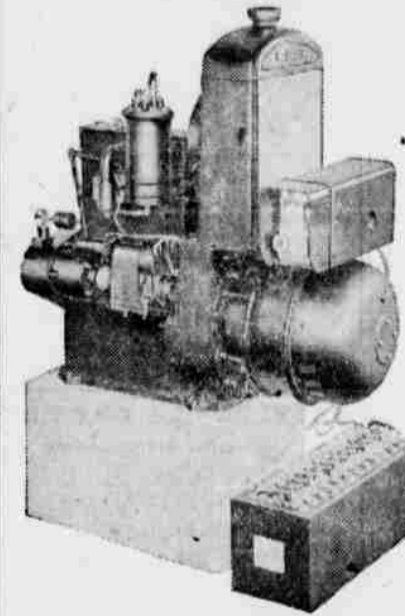
in Law, Accounting, Business Administration, Letter Writing, Business and Finance.

For full information and literature call or address

MAUI NEWS OFFICE, WAILUKU.

HONOLULU OFFICE,  
14 PANTHEON BUILDING

## YOUR OWN POWER PLANT MAKE ELECTRICITY YOUR SERVANT



Here is a complete KOHLER AUTOMATIC POWER AND LIGHT OUTFIT. Note its compactness, simplicity of construction, clean cut appearance and sturdy build.

No storage batteries; constant and uniform delivery of electric current direct from generator.

Automatic start and stop. 1500 watts; ample current for numerous power appliances and for lights in use separately or at the same time.

110 volts means that all standard appliances may be used.

The Kohler Automatic provides electric current anywhere, any time.

For Full Information Address

THE HURD POHLMAN CO., LTD.

Merchant and Nuuanu Streets, Honolulu

## A GASOLINE CURB PUMP EARNS BIG DIVIDENDS

Trade comes to the man who sells gasoline at the curb. Motorists stop at his establishment to purchase many things other than gasoline.

Some kinds of gasoline pumps are expensive. This is not true of the Milwaukee line. These pumps are reasonably priced, they are handsome in appearance, and they are accurate. Good service is assured.

We shall be glad to give advice on your needs.

Honolulu Iron Works Company

HONOLULU

## MUSIC MAKES THE OLD WORLD BRIGHTER

Pianos, Player-Pianos, Brunswick Phonographs, Ukuleles and other musical instruments of all descriptions.

Some splendid bargains in remodeled and remade pianos always on display. New ones coming in frequently.

## PIANOS REPAIRED, TUNED AND RENOVATED

Sheet Music, Rolls and Records, the very latest and most popular songs, melodies and dance music, coming in on nearly every steamer from the Mainland.

What We haven't we can get, but generally have it. Drop in and have them tried out for you and select from those that please you most at the music center of Maui.

HONOLULU MUSIC CO., LTD.

JACK BERGSTROM, REPRESENTATIVE.

MAIN AND HIGH STREETS, WAILUKU.

## IT'S A PLEASURE TO SHOP

In the handsomest store on Maui, where one finds a complete stock of Dry Goods, Furnishings, Notions, Groceries and general merchandise, where service and attention are the best

THE LAHAINA STORE

Phone 27-B, Lahaina.

Branch at Puukohli.

**Premier Hara Seems to Be Gaining New Strength in Japan**

(ASSOCIATED PRESS)  
TOKIO, Sept. 11.—Takashi Hara, Japanese prime minister, far from being overthrown by his political opponents, seems every week to be getting a stronger grip upon the Empire and now stands forth as a powerful dominating figure.

Hara, the imperturbable, some one has styled him. His smooth shaven smiling face seems crowned too young with a coiffure of pure white hair. He never loses his calm even when others of his official family depart for a moment from traditional oriental impassiveness when some such event as, for example the American suggestion to discuss far eastern policies comes unexpectedly and perhaps undesired.

At the cabinet councils he is said to impose his will like a Napoleon and like Napoleon, he sleeps only five hours daily. It is a common opinion among Japanese that he is the man who decides almost all important issues coming before the cabinet, other ministers merely serving as his secretaries, so autocratic is he in handling the government affairs because of his indomitable will power and his political sagacity and cleverness. There is a saying that to understand Japan's foreign and domestic policies, one needs to understand Hara's character.

But Mr. Hara is not a personality to be understood easily. He always keeps his plans to himself and very few of his ministers or close associates know anything about his intended move until the last moment. It is believed that it was Mr. Hara and not the home minister who recommended that drastic steps be taken to handle the labor situation in Kobe when the issue was brought up for a final decision of the cabinet, and his word became law, whether good or bad.

Reporters find Mr. Hara a hard man to interview. He is gracious enough but his flashes of humor disturb them. Some of them tried to get him to talk about the Washington conference the other day. He sparred for a while and then said: "Now let's stop talking shop. I don't like to talk every day about such dry subjects. I feel in Heaven only when I return to this native city of mine. He referred to Morioka, where he was visiting.

"How about my health? It's fine, if I only get my five hours' sleep which is hard enough to get these days. Mrs. Hara? She has recovered—maybe because she has stopped smoking."

**Geological Survey of Australia Necessary**

SYDNEY, N. S. W., Sept. 12.—(Associated Press Mail.)—A comprehensive survey under federal government direction of all country bordering every possible route of the projected north-south railway traversing the entire continent of Australia is considered practically certain as the result of the report of Professor Sir Edgeworth David, of Antarctic fame, on a hasty investigation of certain geological formation in remote parts of Central Australia.

On his return to Sydney, Sir Edgeworth said he was deeply impressed with the vast artesian water, mineral and possibly oil resources awaiting development. Incidentally, he said, his party discovered evidences of glacial activities near Yellow, creek, now an extremely torrid locality, that were insufficiently described by the word, "stupendous." He said these signs would make the district the scene of great geological surveys. Nothing so remarkable in the way of glacial action had been found in the antarctic on the trip of himself and his colleague, Sir Douglas Mawson, he said.

Sir Edgeworth urged the Australasian Science association to negotiate with the federal government to undertake a comprehensive geological survey of the region through which the north-south railway probably will pass. A federal committee is taking evidence from settlers regarding this project. The emphasize the value of such a survey. Sir Edgeworth cited the federal geological survey of the United States which, he said, had been performing work of great value for the past fifty years, not only in coordinating the work of the various state geological surveys, but in taking up such matters of general scientific and economic importance as the structure and origin of artesian water basins, the great oil fields and the copper, iron and other metal ore deposit of North America.

"It is obvious," he declared from the strategic standpoint not a day should be lost, in view of the colossal war preparations in the far east, in constructing a line either from Oodnadatta to Pine Creek—the present southern terminus from Darwin—for from Cloncurry, in Queensland, to Darwin. Both lines should be constructed sooner or later." While this extreme strategic urgency exists a federal parliamentary committee—is enquiring into the conditions for constructing a railway from Oodnadatta to Pine Creek.

Next to nothing is known, from the geological viewpoint, regarding water supply and mineral resources, about the vast area which either of these lines would traverse and it is

**Australian Plants and Hawaii's Alike**

SYDNEY, N. S. W., Sept. 10.—(Associated Press Mail.)—The remarkable similarity between the plant life of Australia and that of the Hawaiian Islands indicates that the two must have been at one time "a great deal nearer than they are now," according to a statement by Professor D. H. Campbell of Leland Stanford Jr. University, California, who is here on a visit.

Dr. Campbell said that he had been surprised at the similarity, especially that between the acacia of Hawaii and the wattle here. He said he accepted the similarity as an indication that there must have been larger land formations in the Pacific for America, much nearer the Hawaiian group, has none of these similarities.

"Hawaii undoubtedly must have been nearer to Australia at one time," he said. "But by earth disturbances at distant periods in the past, areas intervening have been swept away." He also noticed a similarity between the animals of Hawaii and Australia and intends during his visit here to prosecute investigations in North Queensland and Western Australia.

**Silk Testing House Is Established in Shanghai**

SHANGHAI, China, Sept. 12.—(By the Associated Press.)—A testing house, the first in China to give authoritative reports and six standards of silk shipments is being established here by D. E. Dony of New York, representing the United States Testing company, an organization controlled by general silk interests. The establishment is the direct result of a visit to Shanghai last year by an American silk commission.

It is announced that the testing house is being established with the cooperation of the Seam Silk Filature and Cocoon Merchants' Guild of Szechuen, Chekiang and Anhwei provinces. The funds for the equipment and maintenance of the place have been raised by subscription to the stock of the company be members of Chinese silk organizations and of the silk Association of America. The Shanghai testing house is to have the same position in the testing company's organization as any of the other testing houses it operates. It is hoped that the testing house may become self-supporting after a short period.

believed that the federal parliamentary committee inquiry should be supplemented by a reliable geological report.

**Limitation of Naval Programs Japan's Idea**

TOKIO, Sept. 9.—(By the Associated Press.)—Japan's naval experts wish to insist upon a positive limitation principle at the Washington conference, according to the press, and they plan to announce Japan's willingness to reduce the present "eight-eight" capital ship program to one of eight battleships and six battle-cruisers. This is described as the minimum limit of safety of the empire and would be advanced as the Japanese standard provided the United States and Great Britain made similar reductions.

According to the Asahi, the Japanese naval delegates will insist on the abandonment of all fortifications on all Pacific islands and at the same time will propose that the United States suspend her present naval extension program, spread over the next three years. The reason for this suggestion is that, should the United States carry through the present construction program and Great Britain likewise insist on the construction of the four new battleships recently announced for the replacement of super-annuated craft, Japan will not only find it difficult to abandon the construction of the eight-eight squadron but the sentiments of the Japanese nation will be aroused to greater construction needs through these bigger navies of the other powers.

If things come to such a pass, there will be no hope of realizing the armament limitation so warmly advocated by the powers, and the scheme may eventually dwindle away into a mere dream, the principal object of the conference thus becoming nothing. From this viewpoint, the Asahi insists the Japanese navy is going to suggest to the United States the abandonment of her fortifications on her islands in the Pacific, which are regarded as a threat to this empire, and at the same time will urge the suspension of the American three-year program as an equivalent to the abandonment by Japan of the eight-eight squadron program.

**BEST PLACE TO EAT When in Lahaina**

For delicious, well cooked food, daintily served, as well as ice cream, cold drinks and refreshments, is the

**SWEET CAFE**

**Private Airplane Flights Will Be Stopped in China**

SHANGHAI, Sept. 12.—(Associated Press Mail.)—The Peking government is taking steps to forbid any flights by privately owned airplanes over Chinese territory adjacent to the foreign settlements of Shanghai, it has been indicated in inquiries received here in Chinese official circles. Frequent flights were made over Shanghai and its environs through the summer by Major W. R. McBain, who served during the war in the British flying corps. E. E. Fressen, another British airman, also made several flights.

A communication received here from the Chinese ministry of foreign affairs declared that no foreign pilot in Shanghai has obtained sanction to fly over Chinese territory and charges that the flights that have been made were an infringement of the air rights of China.

Iao Valley Road—Work on Iao Valley road is in full swing. The contractors have 30 men at work and are making good headway.

**MOURA GARAGE**

THE OLD RELIABLE AUTO REPAIR SHOP  
Phone 159  
Main Street. Wailuku.

**JUST ARRIVED**

Complete Line of the Famous

Conkey Poultry Remedies and Feed

Wailuku Hardware & Grocery Co., Ltd.  
Main and Market Streets, Wailuku Phone 214

**JAMES M. CAMERON**  
SANITARY PLUMBER

Estimates Furnished. Old Post Office Building, Wailuku

**J. C. TONG**

MERCHANT TAILOR

Civilian Suits Pressed and Repaired

Satisfaction Guaranteed  
Two Experienced Tailors

Foresters' Building, Kahului  
Formerly Between Sun Kwong Store and Hatori Fish Market

Clothes left with us for more than three months and not called for will be burned or otherwise destroyed. Customers who change their address will please let us know.  
**KATO CLOTHES CLEANING SHOP**  
Wailuku, Maui.

**Wasteful Youth**

"What is your boy Josh doing in town?"  
"Far as I know," replied Farmer Cornstossel, "he's doing nothing except wastin' money."  
"How is he wasting it?"  
"Buying 2-cent stamps to write home for extra allowance."—Washington Star.

**DON'T BE A DEAD ONE**

Join the Live Wire Crowd that  
Advertises in Each Issue of

**SEMI-WEEKLY MAUI NEWS**

### Japanese Magazines Devote Much Space to Armament Discussion

(ASSOCIATED PRESS)  
 TOKIO, Sept. 11—The numerous Japanese magazines give limitless space to the forthcoming Washington conference on limitations of armament, Pacific and far eastern questions.

The Diplomatic Review, which is supposed to lean toward imperialism, issued a special number of double size, so important did it consider the proposed discussions. The magazine touches lightly on the extended form of the Anglo-Japanese alliance, which brings it in harmony with the League of Nations without insisting too much on the chagrin felt by many Japanese over the failure to renew the pact definitely.

**Purposes Fulfilled**

"Bluntly speaking, the Anglo-Japanese alliance has fulfilled its mission in its first stage," the magazine said. "Now that the League of Nations has been formed and a treaty of general arbitration made among the principal powers in the world, there is hardly any country against which Britain and Japan are likely to be called upon to act by the treaty of alliance. As regards the United States which is not a member of the league, an understanding has been reached already between Britain and Japan previously to the formation of the league. This being so, the formal renewal or non-renewal of the alliance is not a question of such urgency as it is supposed in some quarters. In diplomatic relations, however, it goes without saying that the traditions of the past twenty years should be sincerely respected."

"Although we may, for the time being, survey quietly the progress of the alliance problem, the suggestion for disarmament, newly made by the American government cannot be trusted in the same way. In principle, no state objects to disarmament, for it is a principle recognized by almost all the world, it being one of the fundamental principles of the league of nations. But the gravity of the proposal does not lie so much in the suggestion for disarmament as the proposal for discussing all questions bearing on the Pacific and far east."

In view of the process by which the new consortium for China was organized, the editor thinks that it is not difficult to guess at America's attitude toward Japan's special interests in the far east, despite the fact that they have been clearly recognized by the Anglo-Japanese alliance and various other agreements between Japan and the United States and Japan and France, and especially by the Ishii-Lansing agreement.

**Open Door Principle**

As regards the principle of the open door and equal opportunity in the far east the Diplomatic Review declares that the "same principle should operate not merely in China, but in all the rest of the world. The principle of open door policy and equal opportunity should be carried into effect as much in America and other countries or their dependencies as in the far east. As the United States claims the Monroe Doctrine for America, so may Japan claim with equal justice the Monroe Doctrine for the far east. If the United States can discuss China problems and claim special interest in Siberian questions, what is there to prevent Japan from discussing Mexican problems and claiming special interest in questions relating to Hawaii and the Philippines? These are claims not in the interest of Japan, but in the cause of justice and humanity and agreeable to the voice of God promoting the common welfare of mankind. For this consideration the conference proposed by the American government is to be received with complete satisfaction; it gives Japan a great opportunity for proclaiming and insisting on the necessity of demolishing all artificial and irrational barriers—economic, racial, political, legal, religious and social—which have been erected on the face of the earth. Japan is inspired with the idea of pushing aside all discrimination and all inequality through the entire range of time and space."

**Must Relinquish Much**

The Oriental Economist, which is paying a great deal of attention to the conference, laughs at the dismay with which the government and the nation received the proposal, which was foreseen long ago. Were it only an outsider, it says that it would only say, "Serves you right." It suggests, however, that if Japan is prepared to give up everything the conference will prove beneficial to the country.

"Suppose that Japan abandoned Manchuria and Chantung, discontinued every pressure which China is believed to be subjected to at the hands of Japan, and granted freedom to the Koreans and Formosans—then both Britain and America would be reduced to an extremely distressing position," it says.

"With Japan acting alone on so liberal a principle, it would be impossible for them to maintain their moral position in the world. In that case China and other weak nations would bow to Japan in confidence. India, Persia, Egypt, Haiti and other possessions of great powers would rise in a body, demanding freedom for themselves as Korea and Formosa had gained the same from Japan. In this way Japan's position would rise from the lowest to the highest pitch, causing a contrary change in the positions of Britain, America and others. In this way and in this way only can Japan be saved. It will also turn her international position from the defensive to the offensive. Some people may, perhaps, regard this suggestion as visionary. How could Japan exist, they may ask, after discarding Korea, Formosa and Manchuria, abandoning Saghalien and Siberia, and withdrawing from China?"

"Christ, however, enjoins us to 'take no thoughts, saying, What shall

### Forest Resources of Philippines Enough to Supply Far East

(ASSOCIATED PRESS)  
 MANILA, Sept. 8—There is enough timber in the Philippine Islands to take care of most of the lumber industry of the far east, according to Major General Leonard Wood, who since the first of May last, has traversed the archipelago from Northern Luzon to the Visayan Islands. Discussing the lumber industry of the Philippines and the necessity for its proper development, General Wood said:

"Few people appreciate the enormous resources in the islands in the way of lumber, much of it lumber of the most valuable kind. In the Philippine Islands there is lumber enough to take care of most of the lumber industry in the far east; nearly 230 million feet of it was cut in 1920, of which in the neighborhood of 15,000,000 was exported."

"In ordinary years there ought to be an enormous amount available for export. Now is the time to initiate those wise forestry measures which would insure the replacement of the trees cut. These forests are full of the most valuable woods, and there is possibility of great development in the production of rubber, comphor, etc., also an enormous amount of other forest and jungle products."

"Lumbermen in the islands ought to unite so as to have better marketing of their products abroad. In other words, here is a great industry which can be developed on sound lines and reproduction of the forest assured."

W. Cameron Forbes, former governor general of the Philippines Islands predicted a great future for the lumber industry of the islands. He said: "On my way to the Philippine Islands for the first time in 1904, I stopped at the forestry exhibit of the Philippine government at the St. Louis fair. I was literally carried off my feet by the beauty and splendor of the Philippine woods there displayed. Right then and there I made up my mind that it was one of my ambitions to have certain rooms in whatever house I might build in the future, finished with especially fine panels of selected Philippine woods. During my ten years stay in the islands I collected a considerable quantity of these woods, took the risk of their not standing the American climate, and sent them home. The wood has stood wonderfully well and seems to be as good today as when first put in and is the admiration of everybody who visits my house just outside of Boston. I am sure that the lumber industry of the Philippines has a marvelous future."

A. F. Fischer, director of forestry of the Philippine Islands estimates there are 72,224 square miles of standing timber in the Philippines and that on this area the stand of timber is 200,000,000,000 board feet. This timber which is owned by the government is estimated to be worth \$400,000,000.

### Changed Traffic Rule Cause of Confusion

SYDNEY, N. S. W., Sept. 10.—(Associated Press Mail.)—Much traffic confusion has arisen in Sydney's crowded streets through the change in the rules of the road from the American to the European manner. The new rule, which became effective July 1, is "keep to the left." The people, following a lifetime habit, "keep to the right." The result can easily be imagined.

The new rule was decided upon after a careful study of many traffic accidents. It was found that while all vehicular traffic kept to the left, and all pedestrians to the right, persons walking on the outer side of the sidewalks were going in the same direction as the vehicles on the nearest side of the road. The result was that any pedestrian who stepped out suddenly from the sidewalk was in danger from vehicles coming from behind him. But if pedestrians also kept to the left, people on the outside of the sidewalk would always be facing the vehicular traffic and the risk of accidents would be less, it was thought.

Every one who remembered the new rule obeyed it. But for every one who remembered the new rule, at least 100 persons seemed to forget it and continued keeping to the right. Police were put on special detail in the busier streets to untangle the complicated snarls in which the confusion tied the traffic. Sooner or later the "keep to the left" traffic would encounter a forgetful "keep to the right" stream and in a moment confusion would rule.

As a result, new tactics have been adopted by the police. Sandwich board men have been hired and wander through the downtown streets with large "Keep to the left" signs hung from their shoulders. Similar notices are being painted on the sidewalks.

Few persons seemed to realize, until they saw the result of the attempt to enforce the new traffic law, how strong a habit may become through years.

we eat? or What shall we drink? or Wherewithal shall we be clothed? but seek ye first the Kingdom of God and His righteousness and all these things shall be added unto you."

The editor uses official figures to prove that Japan's colonies are, economically speaking, not worth the candle. It is the United States, India and England that are necessary to Japanese economic existence.

"It is quite an illusion to think that our occupation of Korea and Formosa and our interference in China and Siberia are bringing economic advantages to Japan, the editorial concluded.

# GLAD TIDINGS

AT THE

## Boston Store

OPEN NIGHTS

OPEN NIGHTS

### Wailuku Orpheum next to the Wailuku Postoffice

Our proprietor, Mr. Louis Amiel, sent us a lot of new goods, and as our sale has been a bigger success than ever, we will extend it for another TWO WEEKS. That means that we will be here until the 30th of this month and that we will give Maui folks another opportunity to supply their children with all their school needs.

Now read these prices carefully, as prices talk in this store.

These new cut prices start Friday, September 16, and will continue until September 30.

#### For the Ladies

- We have only 35 Silk Dresses left, which will go at very special prices.
- 10 Blue Serge Dresses. Value up to \$35.00. Cut prices, \$10.00 and \$13.95.
- 50 Gingham Dresses, good for every-day wear. Value up to \$8.50. Cut prices, \$2.25 up to \$4.25.
- 50 House Dresses. Cut prices, 95c and \$1.25.
- 5 doz. Silk Baronet and Kumsi-Kumsa Skirts. Value \$15.00. Cut price, \$7.45.
- 2 doz. Blue Serge Skirts. Value \$12.50. Sale price, \$5.95.
- 2 doz. White Gabardine Skirts. Value \$4.50. Cut price, \$1.95.
- 10 doz. Silk Poplin Skirts. Cut prices, \$2.95 up to \$5.95.
- 5 doz. Crepe de Chine and Georgette Waists. Cut prices, \$2.95 up to \$9.95.
- 3 doz. only Crepe Kimonos. Special, \$1.75 each.
- 5 doz. Voile Waists. Cut price, 85c each.
- 5 doz. muslin underdrawers, 55c up.
- 10 doz. Ladies' Nightgowns. Cut price, 75c.
- 5 doz. Bloomers. Cut price, 50c each.
- 5 doz. Muslin Underskirts, 55c up.
- 50 doz. Ladies' Ribbed Undervests. Cut price, 15c each, or 2 for 25c.

#### Special Attention to the Men Folks

- There are only 50 doz. Men's Undershirts left (B. V. D. style). Cut price, 5 for \$1.00.
- 25 doz. Men's Ribbed Undershirts. Cut price, 4 for \$1.00.
- 35 doz. Balbriggan Undershirts. Cut price, 2 for 95c.
- 50 doz. Men's Working Shirts with two pockets. Cut price, 65c each.
- 40 doz. Men's Sunday Shirts. Just arrived from the factory. Values up to \$3.25. New cut price, \$1.45.
- 5 doz. Men's Silk Shirts. Value \$10.00. Cut price, \$4.95.
- 100 doz Men's Handkerchiefs at \$1.00 per dozen.
- 50 doz. Silk Neckties. Values up to \$2.00. Sale price, 45c each, or 3 for \$1.00.
- 25 doz. Silk Neckties. Values up to \$2.50. Cut price, 65c each, or 3 for \$1.50.
- 300 LADIES' HATS. Extra Special, 95c each.
- One lot at \$1.75 each.
- 75 Wollen Blankets. Value pre-war price \$12.95. Sale price, \$5.95.
- 100 Baby Blankets. Value \$1.50. Sale price, 45c.
- Extra value on Men's Overalls, made by the Boss of the Road. Cut prices, \$1.50 and \$1.65 each.

#### Jewelry Department

Remember the jewelry is going fast, so it will pay you to visit our Jewelry Department as you will save lots of money by buying jewelry at our store. As we stated in our last week's ad, we are going out of the jewelry business and will close this line before we go back to Honolulu.

#### Our Shoe Department

- 200 pairs of Ladies' Pumps. Values up to \$12.50. Sale price, \$3.45, 2 pairs for \$6.25.
- 50 pairs Ladies' Oxfords. Value \$15.00. These will go also at \$3.45.
- 100 pairs of Ladies' White Pumps and Oxfords in canvas at the new cut price of \$1.25 per pair.
- 10 pairs of Girl's White Buckskins, high cut, good for school wear. Values up to \$7.50. Cut price, \$1.95 per pair.
- 250 pairs of Men's Shoes at the new cut price of \$2.25 up to \$6.95 per pair.
- 200 pairs Shoes for Girls and Boys, good for school wear, at the new cut price of \$2.25 per pair.
- 100 pairs Mary Janes for the Babies. New cut price, 65c per pair.
- 100 pairs Mary Janes, sizes 5 to 7½, at the new cut price of \$1.25 per pair.
- 100 pairs Play Oxfords for Girls and Boys at the new cut price of \$1.25 per pair.
- 100 pairs Sandals for Boys and Girls at the new cut price of \$1.75 per pair.

#### For the Misses, Girls and Children

- 5 doz. Children's Nightgowns. Cut price, 50c each.
- 10 doz. Gingham Dresses. Cut price, \$1.25 up.
- 5 doz. Girls' White Dresses. Cut price, \$1.00 up.
- 4 doz. Infants' Dresses. Cut price, 85c each.
- 1 lot of Ladies' Sweaters at 33 1-3c on the dollar.

#### Hosiery

- 500 doz. Ladies', Men's and Children's Hosiery for every-day wear, at new cut prices; 10c each, 3 for 25c, and up.

#### Corsets

- 50 Corsets of different makes and styles at the big cut price of 75c each.

#### For the Boy

- 15 doz. Boys' Blouses. Cut price, 50c each.
- Only 10 doz., sizes 5 to 14, Boss of the Road brand. Cut price, \$1.35.

Remember, we will be here for another TWO WEEKS and then we will say Aloha Nui.

## Boston Store

"THE IDEAL OF MAUI"

SAM AMIEL.....Sales Manager

OPEN NIGHTS

OPEN NIGHTS

### Introduction by Japan of Racial Equality Issue Grave Mistake

TOKIO, Sept. 8.—(Associated Press Mail).—Count M. Soyeshima, a liberal member of the house of peers, whose campaign against militarism has created international interest, declared in a statement today to the Associated Press his opinion that it would be a great mistake for Japan to introduce the vague question of "racial equality" at the forthcoming Washington conference. He asserted that the Japanese people as a nation are treated on terms of more than equality.

"Japan is, in fact, one of the five great powers and is also one of the greater three powers," he said. "As a nation we belong to the privileged class. What more do we want?"

Regarding immigration, however, Count Soyeshima believed the question was different. He did not see how the United States could attempt to impose her will on Japan and China while she keeps her own doors closed to Asiatics.

Count Soyeshima said that nothing surprised him more than the attitude of that section of the Japanese people who, when President Harding asked the Japanese government if it would participate in a conference among the great powers for a limitation of armament, said that a great national crisis had come and that Japan would be bound hand and foot by the other great powers. "What for? What had Japan done to be thus bound?"

#### Gospel of Peace

In his opinion the President's proposal is a gospel of peace, and therefore the Japanese should most heartily welcome it, for if it is carried out and the United States, Great Britain and Japan agree to limit their armaments, at the least it will be a blessing to Japanese taxpayers, already overburdened.

"Some people are of the opinion that at the conference China will be the plaintiff and Japan the defendant," he continued. "But in the eyes of the Almighty, Japan is no more a defendant than the other great powers."

"The decision of the League of Nations is sacred and inviolable, and although the United States is not a member of it, she was the elading spirit in its making. Therefore we are justified in expecting her to respect its decision. Yap and Shantung should not, therefore, be made subjects of discussion at the conference. But in order to show her good faith Japan should withdraw her troops from Shantung and Siberia without a moment's delay, a suggestion which I have been making during the last 30 months."

#### Right Vile Triumph

"The saying that 'right triumphs over wrong in the long run' applies to nations as well as to individuals. Had we been absolutely blameless and strictly faithful in the observance of all our international duties and obligations we would have been in a position to invite the other great powers to a conference in Tokio. Let Japan go to the Pacific conference with a sense of justice. Let her be frank and outspoken. Let her truly aim at the permanent peace of the world; then she will have nothing to fear and certainly nothing to lose, but everything to gain. In order to attain this end we must send as our delegates men whose records as diplomats are irrefragable. Unfortunately, Viscount Makino is the minister of the imperial household and therefore we cannot avail ourselves of his great qualities as a statesman. Whether he likes to go or not, we must send Count Chinda, who is another very sincere-hearted and able diplomat. Let Baron Shidehara support him with his heart and soul, and then we can be fairly at ease. Some jingoes talk of sending Genro and other obsolete and anachronistic persons, but they have rendered more than their share of services to the state and they should not interfere."

#### Purely Local Question

"The question of immigration has so far been a purely local and economic one, but now that the United States, as I understand, is going to assert for an open door and equal opportunity in China and Siberia, Japan should urge for an open door and equal opportunity in the territories of the powers who are attending the conference. At the same time we should declare a policy of open door and equal opportunity in Japan proper, Formosa, Korea and Manchuria. Let America and Great Britain open their doors to the Japanese and the Chinese and give them equal opportunities. America surely is not going to attempt to impose her will on Japan and China while she keeps her own door closed to Asiatics."

"Regarding the proposed limitation of armaments, it will be a question fraught with all sorts of difficulties, but if the powers are determined to solve it, it will be done. Japan should of her own accord, reduce her army by six divisions, making it consist on peace footing of 15 divisions or about 180,000 men all told. We should then propose at the conference that the comparative strength of the navies of Japan, the United States and Britain be fixed at the ratio of 8, 9 and 10. All ships over and above this ratio should be scrapped. A commission of experts should be appointed by the three countries to decide the fighting powers of ships of different ages and kinds. It should further be agreed that in the future no ships above the dreadnaught class should be built. The aviation forces of the three powers also should be at the same ratio. It should also be agreed to demolish the fortifications of Formosa, Pescadores, Port Arthur, Guam, Hawaii, the Philippines, Hongkong and Singapore. Weihaiwei should be restored to China at the same time as the retrocession of Tsingtao."

#### Limit and Reduce

"Should the three super-powers agree not only to limit but also to reduce armaments, it will be a great

blessing for the whole world; but if the conference proves abortive, owing to another outburst of self-will on the part of its proposer, it will leave a stain on her name which will be even greater than that which was caused by her refusal to join the League of Nations, of which she was really the prime mover.

"President Harding, however, said over the bodies of the dead soldiers, 'It must not be again. It must not be again.' Let all the people of the three great powers lay these words to heart let them cherish the promise of the president to bring about a limitation of armaments and let them help the president in his worthy and noble effort to prevent the world from falling into an abyss of bankruptcy and ruin."

It is hard to tell in some countries whether liberty is preserved or canned.—Washington Post.

### Keep Your Pictures in Photo Albums

It preserves them for future entertainment.

Complete new assortment from 35¢ to \$10.25.

Special Attention to Orders by Mail.

### HONOLULU PHOTO SUPPLY COMPANY

Everything Photographic  
1059 Fort Street Honolulu.

Chinese Reed Furniture  
Chinese Silk  
General Merchandise  
Furniture  
Coffins  
Chinese Goods

### TAM CHONG LOWER PAIA

### Illegal Human Nature

"Some of the laws you have helped to frame have not been rigidly observed."

"I'm not complaining," replied Senator Sorghum. "Even Moses could not insure a strict enforcement of so simple and explicit a set of rules as the Ten Commandments."—Washington Star.

"I saw the cutest little hat this afternoon."

"Did you buy it?"  
"Not yet. I've got to pick out a more expensive one for my husband to refuse to buy so I can compromise on this one."—New York Sun.

### Strained Music

The organist at Gloucester Cathedral declares that the present vogue of wearing hair over the ears is responsible for a lot of poor singing. His opinion is open to criticism, but it is generally admitted that it would be better if some singers wore the hair over their mouths instead.—Eye (London).

### ALOHA LODGE NO. 3 KNIGHTS OF PYTHIAS.



Regular meetings will be held at the Knights of Pythias Hall, Wailuku, on the second and fourth Friday of each month, at 8 p. m. All visiting members are cordially invited to attend.

F. A. LUFKIN, C. C.  
C. E. CHATTERTON, K. R. & S.

### K. MACHIDA DRUG STORE

ICE CREAM  
The Best in Town  
And a Up-To-Date Soda Fountain  
Give Us a Trial  
MARKET STREET, WAILUKU.

## MEAT PRICES DOWN

27½ cents—Choice Cuts of Beef—27½ cents

22½ cents—Stew Beef—22½ cents

40 cents—Pork—40 cents

### KAONOULU RANCH MEAT MARKET

Market Street WAILUKU Phone 134-B

## JUST CALL FOR NICK

and get where you want to be when you want.

1920 PAIGE, 1919 CADILLAC, 1919 NASH AND FIVE-SEATERS ALSO

### NED NICHOLAS

Meets All Steamers. Sightseeing Trips. Reliable Chauffeurs.  
Wailuku, Maui. Phone 17.

# KAHULUI STORE

### THOR WASHING MACHINES

No. 25 with Swinging Wringer.....\$140.00  
No. 27 with Stationary Wringer.....\$195.00

### ELECTRIC TOASTERS

No. 946 .....\$7.65  
No. 944 .....\$8.10  
No. 945 .....\$8.80

### ELECTRIC PERCOLATORS

No. 9676 .....\$12.15  
No. 9876 .....\$13.50

### ELECTRIC GRILL

No. 984 .....\$13.95

### PERFECTION AND PURITAN OIL STOVES

1 Burner .....\$14.40  
2 " .....\$21.15  
3 " .....\$27.45  
4 " .....\$34.65

### RUGS

Japanese Grass	36" x 72"	\$2.05	9' x 12'	\$9.00
Rajah	36" x 72"	2.25	9' x 12'	10.50
Cherokee	36" x 72"	3.75	9' x 12'	19.50
Rattania	36" x 72"	3.95	9' x 12'	21.45
Crex	36" x 72"	4.70	9' x 12'	24.00
Kaba	36" x 72"	6.20	9' x 12'	28.50

OTHER SIZES AT PROPORTIONATELY LOW PRICES

# PUUNENE STORE OR KAHULUI STORE

# From Olinda to Lahaina

YOU'LL FIND THE REAL TIRE FOR MAUI'S ROADS

## GOODYEAR CORDS

MAKE YOUR NEXT TIRE A GOODYEAR

## Royal Hawaiian Sales Co. LIMITED

GOODYEAR SERVICE STATION FOR ABSOLUTE GOODYEAR SERVICE

### Cleaning and Dyeing---

should be trusted only to experts. The same is true of fine garments to be washed. Otherwise such injury to the fabric may result as to cause serious loss. You can depend absolutely on the Method Exquisite of

### THE FRENCH LAUNDRY

J. Abadie, Proprietor, Honolulu.

#### MAUI AGENCIES:

M. UYENO ..... KAHULUI  
JOHN D. SOUZA ..... PAIA

### PLATING MAKES OLD THINGS NEW AGAIN

Silver which has become dull and tarnished can be restored to its original beauty by silver plating. Hardware about the house will profit by plating. Nickel plating of automobile parts—hubs, reflectors, bumper, instruments—will make the car look far better.

Our plating plant is equipped to turn out any kind of plating finish desired, in a short time and at moderate cost.

### LEWERS & COOKE, LTD. HONOLULU

## Theo. H. Davies & Co. Limited

SOLE DISTRIBUTORS HAWAIIAN ISLANDS



Sixty years of experience with preparation of food products are represented in the distinctive goodness of Del Monte Brand Canned Fruits and Vegetables.

Demand the Del Monte Brand From Your Grocer.



## With the Alert Boy Scouts of Maui

passed their tracking trial again. Sorry, boys, but you did well even though you lost the trail. Better luck next time. On Monday a number of the Makawao scouts made a trip to Waihee Gulch and cut bamboo staves. Charles Pillar who is on the island with his father working on the new school buildings at Makawao was with us. Charlie is full of pep and will make a good scout.

### Troop No. 3

Monday night the usual faithful few gathered in the Town Hall and practiced songs and scout tests. Charles Pillar was with the troop as a guest. Troop No. 3, that is those who were present Monday night, will take a ride and hike up into Waihee Gulch. They have promised to take the commissioner to places he has never seen.

School work has begun again. Now for good hard work. Let your teachers see that scouting helps a fellow to shine in school. The impression you make here will be a big boost for scouting.

### THE BIG HIKE (Concluded)

Reaching Kopiliula or the old ditch house at 5:30 p. m. in a pouring rain, we quickly unloaded and unsaddled the animals and got under cover. It was a treat to have a good roof over head, and a surprise to discover a large cooking outfit in the basement. Supper was soon cooked and then the tired bunch was quickly under the blankets.

At break of day on Saturday morning everybody was astir and getting ready for our last ride homeward. Breakfast; then animals fed and saddled and we were off for home. We soon reached the end of the good road and entered upon the real rights of the wonderful Ditch Trail.

About this time Pop's horse went lame and he was in for a good walk. The Ditch Trail was in wonderful condition and it was a treat indeed to have such a safe and splendid trail to ride on (that is all but Pop).

To describe the wonders of that part of the country is absolutely impossible. The great masses of verdure, the great rushing streams and waterfalls were almost unbelievable, especially to those who live on the dry side of Maui. Going down the trail into Keanae Valley we met John Plunkett and a gang of men working on the trail. Mr. Plunkett was very much impressed with the splendid showing made by the scouts and requested that a troop be formed in

Keanae Valley. This the commissioner promised to do.

Climbing out of the Keanae Gulch a most wonderful panorama of the great beauties of nature lay before us, and will long be in our memories.

Pogue's was reached by Mr. Puck and the scouts about 12:45 p. m. Pop and scout Paiva, who stayed back with Pop to help in case of trouble with the horse, reached the place about two hours later. All the scouts had loosened the cinches on the saddles and removed the bridles, and the horses were busy cropping the long luscious grasses. Mr. Puck had gone on in the Scout auto to get some grain for the animals.

He soon returned with a big feed and after the horses were attended to Mr. Puck and the commissioner entered the auto in which all the baggage had been placed, and started for Wailuku. The scouts saddled up and started for Makawao, which they reached about 5:30 p. m., tired but happy. Thus ended one of the most delightful and interesting trips ever undertaken by any troops on this island.

This is only the beginning of this form of scouting, and it is hoped that in the near future, the troops from Hana and Kipahulu will be able to make a visit to the scouts on the other side of Maui.

The Maui Council of the Boy Scouts of America, and the Makawao Bronco Busters extend a hearty vote of thanks to the following people for the splendid service rendered in making this trip the wonderful success it was.

First to Mr. Sam Kalama for the furnishing of horses and mules; to Mr. Cameron and Mr. Puck for the fine scout spirit shown on the trip; to "The Passoths" for the open handed hospitality on our visit to their home; the scouts are still talking of KIPAHULU; to the scouts of Kipahulu and their families for housing the troop while with them in Kipahulu; to Scoutmaster Nevingold and Assistant Scoutmaster Hawkins for the splendid hospitality shown us while in Hana; to Mr. and Mrs. Schuitze and Dr. Lichtenfels for their kindness in entertaining the officials and to Rev. George E. Lake for the use of the Community building; to Mr. J. Herrscher for supplies furnished the scouts on their homeward trip; to Dwight Baldwin and Allan von Heisen for the big goat feed and to Mr. and

Mrs. Plunkett for the use of the Ditch house.

The actual cash outlay for the trip was only \$16.60 and to the Maui Council is tendered the thanks of the Bronco Busters for that money, and to Frank Pomba for driving the scout auto.

"Zip-Zip-Zowie — Zip-Zip-Zowie—  
Makawao-Makawao-Troop Six Maui."

### Her Preference

A small girl was "afraid of the dark." Her mother, anxious to overcome this weakness, said as she was leaving her, "Remember, darling, that an angel will still be with you when I take the candle away."

"Mummy," pleaded a small voice, "I'd much rather you took the angel and left the candle."—Boston Globe.

### Degenerate Times

It is remarked that the number of deaths of celebrated men this year has been exceptionally low. This suggests to us also that not a single birth of any famous person has been recorded during the last 12 months.—London Opinion.

## BANK OF MAUI

Has my Savings Account



WHO HAS YOURS?

## LIBERTY CAFE

Lower Paia

MEALS SERVED DAY AND NIGHT

FIRST-CLASS COOK

CHOP SUI SERVED BY SPECIAL ORDER

## Dealers In General Merchandise

American Factors Paints  
AmFac Red Label Coffee  
Yale Locks and Hardware



## good meals in Honolulu

AWAIT YOU AT CHILD'S

New, modern, high class restaurant, centrally located. Good and comfortable. Intelligent, courteous service. European plan. Operated in connection with the

## Blaisdell Hotel

J. F. CHILD, Proprietor

## The Ability To Pay---

depends upon the Compaines whose financial and moral standing guarantees the reliability of their insurance contracts, both under ordinary conditions and in settling claims which have arisen in conflagrations.

## Why Stand In Jeopardy?

We represent leading companies of the world.

C. Brewer & Company (Limited)  
(Insurance Department)

P. O. Box 347 : : Honolulu, T. H.

CLASSIFIED ADS GET THE RESULTS

# TAKEN WITHOUT A MOMENT'S WARNING

People of Maui had a stunning example of this in the accident of Monday afternoon which shocked the community. It might have been you who met death on the Lahaina-Wailuku Road. Have you thought of that?

### IF YOU SHOULD DIE

Were you to be taken tomorrow, is there any provision for your funeral expenses, or would your relatives and friends have to contribute to the cost of your funeral?

Is your wife able to live in the comfort which you provide for her now, if you be taken? Has she means to support herself? Is she capable through education and training of taking and filling a position which would bring her a living wage? Could she support herself and your children, educate them and train them as you want them to be cared for?

Are your daughters able to take a position which would enable them to be free from the pinch of want? Would they have to take menial positions? Or would they be compelled to leave school before their education is completed?

Hatatsu Shiota of this Island committed suicide. He carried a policy of \$1000 and this company has paid his administrator \$1026. It may not sound like a large sum, but it is everything to the widow and several children.

### THE ONE BEST WAY TO MEET THE INEVITABLE

A WONDERFUL NEW POLICY

ISSUED BY

### WESTERN STATES LIFE INSURANCE CO.

The following figures are for a policy of \$10,000; figures for other amounts of Insurance are in proportion.

#### SPECIAL FEATURES

#### If Killed by Ordinary Accident

\$20,000 (double the regular insurance) will be paid in a lump sum, or else

\$10,000 will be paid in a lump sum and an additional \$13,600 in installments running 20 years.

#### If Killed in a Travel Accident

\$30,000 (three times the regular insurance) will be paid in a lump sum, or else

\$15,000 will be paid in a lump sum and an additional \$20,400 in installments running 20 years.

#### If Permanently and Totally Disabled by Accident or Disease Before Reaching the Age of 60

Premiums on this policy will cease and the Company will pay you \$200 per month, which will continue for twelve months, after which you will receive \$100 per month as long as you live and at your death the full \$10,000 of Insurance will be paid to your beneficiary.

#### If Your Beneficiary Is Killed in a Travel Accident

\$10,000 will be paid you in a lump sum and the policy will continue in force thereafter as per its terms.

This policy contains Cash Loan, Paid-Up and Extended Insurance values, also allows 31 days grace in the payment of premiums, during which time it remains in full force and effect.

### IF YOU BE DISABLED

Should illness overtake you and lay you on your back for weeks and perhaps months, would you be provided for, or would you become an object of charity, yourself and family dependent upon neighbors or upon the county? Have you sufficient money laid by to see you through a long illness? If you have and are not insured against sickness, still your savings would be gone while your income had been stopped. A policy in this company means your income keeps on while you are ill.

If injured in an accident, who would pay your hospital and medical and surgical bills? Left without income, you would see your savings of years melting away.

If incapacitated for your present duties for life, what provision have you for livelihood, let alone comfort? These are not comfortable thoughts, but such situations arise and must be met. You are not immune from illness, nor can you say accidents may not befall you.

# Bank of Maui Insurance Department

**Agriculture**

(By J. F. O'Brien)

As far as agriculture is concerned we divide the upper few feet of the earth into 2 divisions.

1. **Soil and Sub-soil** the prefix "sub" simply meaning under or beneath. Everything that is necessary for our physical existence comes from food that we eat the clothes that we wear, the very bodies in which we live, came from this uppermost of the earth and shall return to it again. And so the cycle goes on for ever. As the poet has said:

All nature dies and lives again,  
The flower that paints the field;  
The trees that crown the mountains  
brow,  
And boughs that blossoms yield.

This surface of the earth was originally rock and composed of various minerals, lime, silica, iron, coal etc. Here in Hawaii which is a comparatively new portion of the earth's surface we have a wonderful opportunity of studying and seeing how the original rock becomes decomposed or rotted and turned into soil. This rotting is caused by heat and cold, water wind, etc. The soil and the subsoil therefore differ only in their state of decomposition (rotteness) and amount of vegetable matter in them.

The soil is darker than the subsoil because it has more of this rotted animal and vegetable matter in it, and animal and vegetable matter we call **humus**. This humus is the life giving principle of the soil and the proportion or amount of humus in the soil greatly influences the crop. If the soil is rich in humus we say it is fertile and will yield good crops, if deficient or poor in humus we call it infertile and will yield a poor crop.

Hawaiian soils owing to their recent formation and volcanic origin are naturally very deficient in humus and extremely deficient in nitrogen the most valuable plant food. Humus makes the soil spongy and retains the water. It makes the soil mellow or crumbly, preventing it from packing. It admits air to the roots of the plants and to the beneficial bacteria which are in the soil and about which we shall speak later. The air and water together dissolve mineral plant food and make it available or fit for the plants to feed upon, for plants are like babies, they cannot eat solid food. Everything they eat must be in a liquid state. This humus contains nitrogen, the most valuable plant food, yet we see people burrowing up this humus when they should plow it under to make more plant food. If it cannot be plowed under it should be placed in a pit, rotted and returned to the soil. We have now dealt briefly with soil, subsoil and humus and we might state here that it is very important for all who intend to study this agricultural course to get the definitions clearly fixed in their mind for we shall use them continually; and also to keep the lessons for future reference.

Let us now consider such portions of the soil as are neither animals or vegetable in their origin commonly called, inorganic soil ingredients.

They are simply particles of rock classified according to size. For convenience we divide all sorts into 3 main divisions. 1 Sand, 2 silt, 3 clay. Sand is the largest rock particles, silt is finer than sand, darker and less angular, and clay is the smallest or finest rock particles of soil. When these inorganic soil ingredients are mixed with the organic or humus containing ingredients we have several subdivisions or types of soil as sandy soil, silty soil, clay soil, peat soil, muck soil, loam soil, named particularly after the ingredient which predominates in their composition. When the farmer talks of a sandy soil he

**Philippines Are Not Ready Government of Selves, Says Forbes**

(ASSOCIATED PRESS)

MANILA, Sept. 11.—On the eve of the departure of the Wood-Forbes mission, former Governor General W. Cameron Forbes forecast the report of the mission, a summary of which was sent secretly to President Harding, in an address to an audience at the University of Philippines, Saturday.

He said the people of the Philippines still were without sufficient resources for maintaining a separate government without protection, but believed it is contrary to the traditions and policy of the American people permanently to hold an alien people in subjection against their will.

Unable to agree upon a joint memorial to the Wood-Forbes mission, the nationalist and democratic parties presented separate memorials.

The memorials agree in their pleas for independence, declaring that a stable government has been established in the Philippines, but the democrats assert that such stable government has been established "despite the errors and irregularities of the nationalist party, which has been in power."

**PERSHING GOES TO FRANCE**

(ASSOCIATED PRESS)

WASHINGTON, Sept. 10.—President Harding today ordered General John J. Pershing to go to France and present the congressional medal of honor to the "unknown soldier of France," who is buried in the Arch of Triumph in Paris.

**Danger Corner Scene of Strange Accident**

Wailuku's most dangerous corner was the scene of a peculiar accident Sunday and a Pole named Czncpeznski, pronounced Stifanchuckchinske, sustained a broken leg.

The Pole, mounted on a horse, was leading three horses down the hill through upper Wells street. The led animals went faster and faster and finally all turned into High street where the led horses became uncontrollable and got away. Down High street toward Main they went and at the corner they skidded and slid into a Ford car that was coming up Main street. A tangle of horses and Ford followed into which the Pole rode. His horse fell or was thrown and the rider sustained the injury mentioned.

Dr. Osmer and D. H. Case were on High street when the horses ran by and hurried to the corner, arriving in the nick of time for Dr. Osmer to render first aid and take the injured man to the hospital.

means a soil which is largely composed of sand, a silty soil largely of silt (a mixture of sand and clay) a clay soil largely of clay, a muck soil, largely of rotted vegetation, a loam soil containing at least 3 of the others. The loam soils are again subdivided into sandy loam, clay loam, silt loam. The sandy soils are of course easiest to work, but poorest in humus or plant food and the hardest to improve, because they allow the water and plant food to pass through them quickly. The day loams are hardest to work, retain the moisture and with the addition of humus make most valuable agricultural land.

**Car Is Wrecked Near Scene Olson Accident**

Within a quarter of a mile of the spot where Clarence Olson lost his life recently there was an accident Sunday in which the driver of the car sustained painful cuts and bruises and a woman was rendered unconscious. The man was a Hawaiian named Meheula and the woman a widow named Kalama.

From the occupants of a car that was directly behind the one that was wrecked on the Lahaina-Wailuku road it is learned that the Ford was swerving rather wildly on the road. Next a cloud of dust was seen and it was evident there had been an accident. Stopping at the scene the Wailuku party found the man cut and bleeding and the woman unconscious. They were loaded into a car and taken to the Lahaina hospital where they refused to stay and asked to be taken to Olowalu, it is reported. It is said Meheula was told he might be seriously injured but merely replied: "No plikia."

The car was badly damaged.

**School Building Work Reported by Engineer**

Dealing with work on new school building the county engineer last week reported that Wailuku teachers' cottage, Halehaku teachers' cottage, Puunene teachers' quarters, Kamelameha III, three room temporary school building, have been completed.

The following buildings are nearing completion: Makawao, three room school building; Makawao, five bed room teachers' cottage; Halehaku two room and porch addition.

Work has commenced on the following: two room school building, Wailuku; one room school building, Wailuku; one room addition, Kahului; one room addition, Spreckelsville.

No work has yet been done on the three room addition at Pain school. Four class rooms at the Maui High School will be ready for the opening of school.

The teachers' cottage at the Maui High School is about half completed. The Office Supply Company completed their contract on the furnishing and delivery of 400 school desks.

**More Complaints of Conditions Found at Rest House Voiced**

Deplorable conditions at the rest house were informally discussed by members of the board of supervisors at the Friday meeting though the board has not control of the situation there. The members are a unit in saying that action must be taken to remedy the conditions that have caused complaints of visitors. They agree that there should be some one permanently in charge of the institution and at the house and a majority favors the idea of raising prices and permitting the person in charge to secure the greater part of such income and to sell meals or provisions for meals as well.

Supervisor Fleming spoke of the experience of Mrs. Fleming and party. While they were at the crater a party from Haiku was also there and among them was one man who was very drunk and quarrelsome, there were fist fights and the drunken man finally drew a pistol and drove another inmate of the house from the building.

U. S. Attorney Huber and U. S. Marshal Smiddy were up to the crater last week. On arrival they found dishes and cooking utensils had not been cleaned up but say there was an excuse for that condition. A party had used them and gone down into the crater, intending to clean up before leaving, but its members got lost in the crater and it was more than seven hours before they were able to return, their shoes worn off. Then they were ready to clean up but Huber and Smiddy had beaten them to it.

They do complain, however, of a party that came in at midnight and woke everyone who was in the house, making coffee. That party took out mattresses and left them out when it rained. They went on the roof of the rest house and walked around there, the guide after having been walking among the horses, his shoes covered with droppings and all the water from the roof flows into the tank for use as drinking water and for cooking and toilet purposes. The horses walked on some of the mattresses that had been left out in the rain and one mattress was torn open by the horses.

Mr. Huber says he has nothing but praise for the rest house but that its privileges are being abused.

**We Have Appointed MAUI SPORTING GOODS CO.**

(LELAND C. LEWIS, Manager)

Our representative to handle Remington Typewriters, Monroe Calculating Machines, Globe Wernicke Goods, Office Equipment, Stationery and Supplies, Brunswick-Balke-Collender Billiard and Pool Tables and Supplies for Billiard and Pool Tables, Bowling Alleys, etc.

**OFFICE SUPPLY CO., LTD.**

FORT ST., HONOLULU, T. H.

**BEST IN THE LONG RUN**

BEST IN ANY RUN

**GOODRICH TIRES**

Full Line of Tires and Full Line of Tubes Solid Tires Pressed On

**DAN T. CAREY**

Main Street. Wailuku.

**LAHAINA ICE CO., LTD.**

Manufacturers of Ice and Pure, Delicious Soda and Mineral Waters

Distributors of Electric Power and Light

WILLIAM SMITH, Manager

Phone Lahaina, 50-A.

**PLANTATION MARKET**

Lahaina.

Choicest Cuts of the Choicest Home-Raised Meats on Maui

A Trial is Worth Your While.

ANTONE FURTADO, Proprietor.

**MATSON NAVIGATION COMPANY**

DIRECT SERVICE BETWEEN HONOLULU, HILO AND SAN FRANCISCO

For San Francisco:

WILHELMINA .....Sept. 14, 10 a. m. Pier 15  
MATSONIA .....Sept. 21, 10 a. m. Pier 15

SAILINGS FROM SEATTLE—

S. S. LURLINE .....Sept. 10  
S. S. MANUKAI .....Oct. 1

Also operating a line of steamers between San Francisco, Tacoma, Seattle and the Hawaiian Islands.

For particulars apply to—

CASTLE & COOKE, LTD.

AGENTS, HONOLULU  
FORT AND MERCHANT STS.

**Don't Make Your Final Decision**

On Furniture Until You Have Seen Us.

We offer a fine grade of furniture at the most reasonable prices in Honolulu.

Four-Piece Ivory Enamel Bedroom Suite \$139.50

Five-Piece Breakfast Room Suite \$28.50

**The Home Furniture Co.**

594 S. Beretania St.  
Jack Drew, Manager.

**HOUSE PAINTING**

Paper Hanging and Interior Decorating

Estimates Furnished on Application

H. YAMAGUCHI

Contractor and Painter

Near Chinese Church.

Vineyard Street. Phone 247-A  
Wailuku

Gasoline, Automobile Parts and Automobile Painting

**LET GEORGE DO IT**

You get a three days' service regularly and more expeditious one if you ask for it, with satisfaction guaranteed.

**Kennedy Klothes Kleaning**

SPEEDY SERVICE SHOP

Main Street, Wailuku. Phone 25  
Next to Orpheum

**BEST SERVICE ON MAUI**

With our new equipment we are able to give the most dependable, prompt and efficient service in cleaning, pressing, repairing and dyeing of Men's and Women's Clothing. Our steam presser can do the work in 15 minutes.

Satisfaction Guaranteed

MAUI CLOTHES CLEANING SHOP

Market St., opp. Kalua Ave.



Greater Yields and Better Crops  
P. O. Box 484 Phone 8197  
2365 N. King St., Honolulu

**Penny Wise and Pound Foolish**

Some concerns think it economy to send orders to Honolulu or to the mainland when they could be filled as well or better at home. They figure they save a few cents on the dollar by doing so and grasp at the nickel in sight.

**BUT**

Every dollar spent with Maui concerns passes from hand to hand, in wages, to the store, to the bank and out again into circulation, back to the concern that sent it out, again to be sent forth on its rounds. The profits accruing from the dollar kept in home circulation are many times larger than the small saving in the dollar sent away.

HAVE YOUR PRINTING AND RULING NEEDS FILLED AT HOME.

**Maui Publishing Co., Ltd.**

TELEPHONE 24. WAILUKU.

**TIME TABLE—KAHULUI RAILROAD CO.**

Daily Passenger Train Schedule (Except Sunday)

The following schedule went into effect November 18, 1918.

TOWARDS WAILUKU						TOWARDS HAIKU					
9	7	5	3	1	Distance	Distance	2	4	6	8	10
PM	PM	PM	AM	AM	Miles	Miles	AM	AM	PM	PM	PM
5:33	3:30	1:25	8:35	6:35	15.3	A..Wailuku..L	6:40	8:40	1:30	3:35	5:35
5:23	3:20	1:15	8:25	6:25		L..Kahului..A	6:50	8:50	1:40	3:45	5:45
5:20	3:17	1:10	8:20	6:20	12.0	A..L..L	6:52	8:52	1:42	3:47	5:47
5:10	3:07	1:00	8:10	6:10		L..Spreck..A	7:02	9:02	1:52	3:57	5:57
5:09	3:05	0:58	8:08	6:08	8.4	A..elaville..L	7:03	9:03	1:53	3:58	5:58
5:00	2:55	0:50	8:00	6:00	5.5	L..A..A	7:12	9:12	2:02	4:06	6:06
4:58	2:53	0:47	7:57	5:57		A..Paia..L	7:15	9:15	2:07	4:11	6:11
4:52	2:47	0:42	7:52	5:52		L..Hama..A	7:20	9:20	2:14	4:19	6:19
4:51	2:46	0:41	7:51	5:51	3.4	A..kuapoko..L	7:22	9:22	2:15	4:20	6:20
4:45	2:40	0:35	7:45	5:45		L..A..A	7:30	9:30	2:23	4:28	6:28
4:44	1:39	0:34	7:44	5:44	1.4	A..Pauwela..L	7:32	9:32	2:25	4:30	6:30
4:22	1:17	0:12	7:22	5:22	0	L..Haiku..A	7:36	9:36	2:30	4:35	6:35

TOWARDS PUUNENE				TOWARDS KAHULUI			
3	1	Distance	STATIONS	Distance	2	4	Passenger
PM	AM	Miles	Miles	Passenger	AM	PM	Passenger
2:50	6:00	0	L..Kahului..A	2.5	6:22	8:15	
3:00	6:10	2.5	A..Puunene..L	0	6:12	8:05	

- All trains daily except Sundays.
  - A Special Train (Labor Train) will leave Wailuku daily, except Sundays, at 5:30 a. m., arriving at Kahului at 5:50 a. m., and connecting with the 6:00 a. m. train for Puunene.
  - BAGGAGE RATES: 150 pounds of personal baggage will be carried free of charge on each whole ticket, and 75 pounds on each half ticket, when baggage is in charge of and on the same train as the holder of the ticket. For excess baggage 25 cents per 100 pounds or part thereof will be charged.
- For Ticket Fares and other information see Local Passenger Tariff I. C. C. No. 3, or inquire at any of the Depots.

Personal Mention

J. H. Trask went over to Honolulu Friday night. C. D. Lurkin returned from Honolulu this morning. Miss Sally Wilcox has returned to Honolulu to continue her studies. Worth O. Alken returned Saturday from a business trip to Honolulu. Mr. and Mrs. Jos. K. Clark will move tomorrow to their farm at Kihel. James M. Cameron has returned from a several days visit in Honolulu. Mrs. Joseph H. Gray is making a brief visit in Lahaina. She is expected home tonight. Mr. and Mrs. Noah P. Waiwaioe welcomed the arrival of a daughter yesterday. F. A. Hawkins, Maui representative of the Standard Oil Company went to Hana today. Mrs. Ida Kalanipili arrived from Keanae Saturday and is visiting friends in Wailuku. U. S. Attorney Huber and U. S. Marshal Smiddy returned to Honolulu Saturday night. Manager H. B. Penhallow has returned from a trip to the Big Island and to Honolulu. Assistant School Superintendent Fred Murphy was a Saturday morning arrival on the Kilauea. Dan Conway, veteran "bagman" of the Islands is on Maui again representing American Factors. Col. D. S. Bowman head of the Planters' Industrial Service bureau has been on Maui since Friday. Attorney Enos Vincent went to Honolulu Friday night and is engaged there on the Thompson case. Mrs. W. F. Crockett was a homecoming passenger from Honolulu on the Saturday morning Kilauea. J. Whitford, Miss Whitford and Miss Alice Whitford were home comers on the Kilauea Saturday. C. S. Childs, headworker of Alexander House Settlement, has been suffering from intestinal influenza. Miss Sara von Oelhoffen has joined Maui Publishing Company forces and is employed in the bindery department. Miss Hannah Kekiea has joined Maui Publishing Company's force and is now employed in its bindery department. Carl Bredhoff, manager of the Film Supply Company was on Maui for the week end as guest of Mr. and Mrs. P. H. Ross. Miss Rebecca Akana, head nurse of the board of health on Maui, began a well earned vacation of three weeks, Saturday. Miss Halley Hardey of Puunene has been spending a few weeks at the home of her grandmother Mrs. Charles Copp. Miss Elizabeth Cup Choy left on last Saturday's Kilauea to resume her studies at the Academy of the Sacred Heart at Kaimuki. Mrs. F. A. Hawkins, who has been visiting friends in Honolulu for the past several days is expected to return home on the Mauna Kea tomorrow. A. Kawamoto, manager of the Honolulu Nippu Jiji Co., was on Maui over Sunday and visited Maui Publishing Company plant to see the new equipment recently installed. Miss Virgil Nance who has been acting as assistant matron for the Hauka cafeteria has returned to her home after having satisfactorily completed her summer duties at the cafeteria. Rev. and Mrs. J. P. Inaina motored in from Huelo Saturday and are visiting their daughter Mrs. William Allen Jr., in Wailuku. Tomorrow they go to Lahaina to attend the convention which his to be held at Waihee Church. Moses K. Inaina, a student in the Theological school in Honolulu, arrived from Keanae Saturday afternoon and is visiting his sister, Mrs. William Allen, Jr., Wednesday he leaves for Lahaina to attend the Island Church convention. Miss Blanche Ralston, a graduate of Maunaloa Seminary '21, left on the Kilauea Saturday night to take up the high school course now being offered at the Kamehameha Girls' School. Miss Ralston has been spending her vacation with her grandmother Mrs. Charles Copp and also with friends and relatives on Maui.

If you want anything in the trimming line, get it at Auto Top Shop.

Extension of Time on Contracts Refused

Extension of time for the furnishing of water pipe for the Wailuku-Kahului intake enlargement by Honolulu Iron Works was refused by the board of supervisors last week as was the request of Contractor Mellor for an extension of time on the new high school building. In each instance the penalty is to run, the county clerk reports. It is said that the difficulty encountered by Honolulu Iron Works has been that mainland factories are running only part time. Meantime the county has a force of men digging trenches and is in readiness to start the laying of the new pipe, the delivery of which is now nearly four weeks overdue. Contractor Mellor's troubles have also been occasioned by slow delivery of materials. It is understood, and it is contended that he has been in no wise in fault for the delays he has met.

Upholstering repaired Auto Top Shop.

KILAUEA GROWS ACTIVE

(ASSOCIATED PRESS) HILO, Sept. 13.—Increasing activity in the fire pit and rising lava in the lake at Kilauea indicates that the equinoctial eruption will occur soon, Jaggard says.

Top dressings at Auto Top Shop.

WANT ADS

LOST—Between Maui Electric Co. and Wailuku Union Church, Tool Kit. Finder please return to C. M. Morton, care Maui Electric Co. LOST—One Packard Truck Crank between Kihel Store and Maui Soda Works. Return to Maui Soda Works Co. FOR SALE—Moving, good bargains in furniture. Offer one set dining room furniture, wicker ware; two large grass rugs, one small grass rug, two burner oven, one baby high chair, one electric lamp shade, window shades, etc. Apply P. M. Mosher, Central Ave. Tire-covers at the Auto Top Shop.

Pertinent Paragraphs

Press Congress Committee—A meeting of the Press Committee is to be called next Tuesday afternoon. Will Dance Saturday—St. Anthony's School alumni will hold a dance at the Territorial Building Saturday night. Will Open Bridge—The new "Five and a half mile" bridge on the Wailuku-Lahaina road has been completed and will be opened for use in a few days. Maunaloa Aided—Under the will of the late Mrs. Juliette M. Atherton Maunaloa Seminary is to receive a gift of \$1000. Numbers of philanthropic institutions are beneficiaries under the will. Will Replace Bridge—At Coopers gulch the old bridge having fallen in to disrepair is to be replaced by a concrete structure and the board of supervisors has authorized the calling for tenders. Fleet at Lahaina—A warship, several mine sweepers and a number of submarines and chasers are anchored at Lahaina. Last night their search lights playing about presented a beautiful sight. Schools Reopen—Yesterday was the first day of school and registration was heavy. In several of the schools crowded conditions prevail which will be relieved to a larger extent when additions are completed. Athletic Committee—The Athletic Committee of the Fair and Racing Association will meet tonight. Consideration of the Puunene protest and of matters connected with the new Maui Athletic Club and the A. A. U. will be the matters of chief importance before the committee. Insurance Campaign—J. P. Leebriek, superintendent of the life insurance department of the Home Insurance Company will arrive from Honolulu tomorrow afternoon and an insurance campaign is to be launched on Maui. Mr. Leebriek cooperating with P. H. Ross of the insurance department of the Bank of Maui. Teachers by Scores—Saturday morning the Kilauea brought 114 first cabin passengers to Maui even mattresses on deck being at a premium. More than half of the passengers were teachers, arriving two days before the schools opened. Saturday evening's Mauna Kea landed still other teachers in droves at Lahaina.

Umpires Believe That Protest Is Not Proper

At last Sunday's game between Puunene and Paia the umpires were not advised by the Puunene management that McCluskey, playing at third for Paia was not eligible to play and that they intended to file a protest. It is the contention of the umpires that no protest should be filed for if we were strict the Puunenes would have lost the game at 3:30 p. m. as they did not have nine players in uniform at the time on the field. Signed: F. J. LEANDRO, Umpire-in-Chief. A. ENOS, Base Umpire.

Planters' Industrial Service Head Is Here

Col. D. S. Bowman, head of the industrial service bureau of the Planters' Association has been on Maui for the past several days, stopping at the Grand Hotel and visiting the various plantations of Maui. Many persons are uninformed of the work of his bureau. It has more to do with housing and working conditions than with social welfare work, with which it is less directly concerned, dealing with such features through other organizations where possible, on Maui through Alexander House settlement. Housing especially has had the attention of the bureau and the more modern camps and the buildings in them recently erected are from designs prepared by his bureau. Col. Bowman was recently appointed a member of the Territorial Board of Health and his appointment is regarded as especially satisfactory since his duties call him out among the plantations so much that he is especially familiar with conditions in the camps. He was formerly in charge of board of health work on the Big Island, also, where he made a fine record of efficiency.

Auto Top Shop tops for quality.

Coming Events

TUESDAY, SEPTEMBER 13 Wailuku Union Church Woman's Aid will meet at home of Mrs. Burns. Athletic Committee meets at 7:30 Chamber of Commerce Rooms. THURSDAY, SEPTEMBER 15 Meeting of Court Valley Island No. 9239, A. O. F., Foresters' Hall Kahu-luku, 7:30 p. m. SATURDAY, SEPTEMBER 17 Hawaiian Cantata for benefit of Waihee Church, Lahaina Armory. Dance of St. Anthony Alumni Association at Territorial Building, Kahu-luku. SUNDAY, SEPTEMBER 18 Dinner at Maui Jinsha, 11 a. m. Baseball at Wailuku. SATURDAY, SEPTEMBER 24 Masquerade ball, Haleakala Neat Order of Owls for benefit of Orphan-age Fund at Paia Orphanum, admission 50 cents a person. Cushions at the Auto Top Shop.

Lahaina Water Works Intake to Be Given Early Attention

Improvements at the Lahaina water works intake have been found necessary by the county engineer and he has been authorized to negotiate with Lahainaluna for a site for a water tender's house and to make such repairs as are found to be immediately necessary. At the last meeting of the board County engineer Low reported: "Immediately after receiving your instructions relative to the Lahaina Water Works intake and water tender's house, I went over the line and up to the intake with Superintendent Kuanu and beg to report as follows: "The intake was nothing more than a low loose rock dam. Considerable water was seeping away thru it so that there was not sufficient quantity to fill the pipe. With your approval, I have instructed the Superintendent to construct a rubble overflow dam across the stream which will divert all the water into the pipe when the stream is low and permit the storm waters to pass over it in times of freshets. "The water tender had been using the settling box at Lahainaluna for sleeping quarters. Occasionally he had been seen cooking thereabouts. This the Lahaina people and the Board of Health objected to so that the man has been asked to seek shelter elsewhere. A water tender's cottage is needed for this water works. I therefore recommend that a small cottage be built at Lahainaluna for this purpose. If the plot of land immediately below the settlement box could be acquired from the Lahainaluna School, it would make an ideal site for a cottage. "The eight-inch spiral rivetted pipe line had rotted out in numerous places particularly where it has been exposed. It will be but a couple of years when the whole line will have to be replaced. A number of lengths needs replacing now. I would respectfully recommend that all replacements henceforth be cast iron. If this is applicable to your honorable board I shall, for the present order enough cast iron pipes for the most immediate needs of the line."

County Will Do Work Pipe Line Extension

Work of laying the extension of the Kula pipe line to the Waihoi-Keokea beach lots will probably be done by the county though there may later be a re-advertising for tenders for the work. Bids were opened last Friday and the contract for the materials let but there are not sufficient funds available at this time to let the contract for the work to any of the bidders therefor and the tenders of all of them were higher than the estimate of the county engineer. Honolulu Iron Works was low bidder for the materials and the cedar tank, Catton, Neill bidding the same amount without the tank, \$1344.92. J. Y. Char was low bidder for the work but made his tender under the wrong item, apparently bidding for materials, not labor. Even so the combined costs of material and work would have brought the total cost above the amount available by nearly \$1000. There is a further appropriation in the loan fund but the bonds therefor have not been sold and it is impossible to guess when they can be disposed of. Under those circumstances the second set of tenders was thrown out and the purchase of materials alone estimated. When the material arrives the county can advertise for bids again with the possibility of lower offers or can have the county engineer do the work.

Tax Revision Plans Go Forward With Smoothness

WASHINGTON, Sept. 13—Further progress in tax revision was made today when the Senate finance committee approved the provision in the House tax bill for the repeal of the excess profits tax but made the provision for the amendment to become operative January 1, next instead of retroactive to the first of January last, as recommendation for the repeal of the capital stock tax, effective a set 1922 and voted to increase the corporation income tax rate from 10 to 15 percent. The house recommendation is for 12 1/2 percent.

Auto Top Shop tops for quality.

ORDINANCE NO. 56

AN ORDINANCE PROVIDING RULES AND REGULATIONS COVERING AND FIXING RATES FOR THE WAILUKU-KAHULUI WATERWORKS SYSTEM, THE LAHAINA WATERWORKS SYSTEM, THE MAKAWAO WATERWORKS SYSTEM, AND THE PAUWELA WATERWORKS SYSTEM, IN THE COUNTY OF MAUI.

Be It Ordained by the Board of Supervisors of the County of Maui, Territory of Hawaii, that:

- 1. Any person, firm, or corporation desiring to be supplied with water from any public waterworks system hereinafter referred to in the County of Maui, shall make application therefor on a printed form supplied by the County of Maui for that purpose, which application shall be signed by such applicant. Every privilege granted upon such application shall be subject to the rules and regulations hereinafter provided. Blank applications will, upon request, be furnished by the local Superintendents of waterworks. 2. The Applicant shall pay, in advance, at the office of the local Superintendent of Waterworks an amount sufficient to cover the actual cost of tapping, connecting and laying of the service pipe leading into the premises upon which the privilege is to be situated to a stop-cock inside of said premises; provided however, that a minimum charge of \$5.00 shall be made for such tapping, connecting and laying of such pipe. 3. All meters shall be owned by the County and shall be under the control of the local Superintendent of Waterworks, or his authorized agent. 4. Each Superintendent of Waterworks shall have charge of the water system placed in his control; and he shall have authority to grant and sign all permits for water privileges and make all agreements in connection therewith, so long as the same are not at variance with the Rules and Regulations governing the water system over which he has control. He shall be responsible, on his official bond, for all government property connected with and comprising said system, and for all moneys paid by consumers to him or his authorized agent for either services rendered or water used. 5. No person other than the local Superintendent of Waterworks or his duly authorized agent, shall tap main pipes and turn on or turn off water therefrom. 6. The local Superintendent of Waterworks, or his duly authorized agent, shall at all reasonable hours, be permitted to enter upon the premises of a privilege holder for the purpose of inspecting, shutting off, or turning on, the water, or for the purpose of making repairs to the service pipes, stop-cocks or meters, and to see that the provisions herein and the rules and regulations hereof provided for are being complied with. 7. All water rates shall be paid quarterly. They shall be due on the first days of January, April, July and October of each year; shall be payable at the office of the local Superintendent of Waterworks, and shall become delinquent thirty days after due. 8. The local Superintendent of Waterworks or his authorized agent shall at the end of each quarter, promptly make out and present to each consumer a bill for all sums due. The local Superintendent of Waterworks shall acknowledge receipt of all payments made to him upon an official numbered receipt signed by him, the form of which receipt shall be approved by the County Auditor. 9. In all cases of non-payment of water rates within thirty days after the same are due, ten percent in addition to the regular rates shall be charged to, and become due, by the person holding such privileges, and the local Superintendent of Waterworks may forthwith, without notice, shut off the water from such privilege, and charge the expense of the same to the holder of the privilege. The water so shut off from such privilege shall not be again turned on until the rates for such privilege and all expenses incurred, shall have been paid in full. 10. Water rates shall be charged to and payable by, the privilege holder, for all premises, whether occupied or not, until such time as the water is, in writing, ordered shut off, or is actually shut off. 11. The owner of the premises shall be held responsible for the settlement of all water rates. 12. Unless authorized, in writing, so to do, by the Board of Supervisors, persons supplied with water from the Government pipes, shall not be permitted to use, and shall not use, the same for any purpose or purposes other than those stated in their agreement, nor shall they be permitted to supply, and they shall not supply, water in any manner whatever to other persons or property.

- 13. Consumers shall prevent all unnecessary waste of water, and shall make no concealment whatsoever of the purpose for which it is being used. 14. No alteration shall be made in any water pipe or fixture without first giving notice, in writing, to the local Superintendent of Waterworks, of the intended alteration, and having first received his approval thereof. 15. All service pipes shall be kept clean and in good repair by the holder of the privilege at his own expense. 16. Persons having irrigation or other like privileges shall, in case of fire alarm, immediately discontinue the use of all water for such purposes and shut off the same. 17. In all instances where premises are used for residential and commercial purpose under the control and in the occupation of one privilege holder, all water used therein shall be charged for at the prevailing commercial rate. 18. All water sold under these Rules and Regulations for the Waterworks Systems, unless otherwise specially permitted by the Board of Supervisors, shall be sold by Meter measurement. 19. The rates governing the WAILUKU-KAHULUI Waterworks System shall be: (a) For domestic purposes and lawn irrigation six (6) cents per thousand gallons, or fraction thereof. (b) For commercial purposes such as cultivation of fruits and vegetables, and other plants for sale, railroads, manufactories, hotels, lodging houses, offices, stables, garages and other business enterprises ten (10) cents per thousand gallons, or a fraction thereof. (c) Provided, however, the consumer of water shall pay a minimum charge of \$1.50 per quarter for water used even though the meter charge for water consumed may be less than that amount. 20. The rates governing the LAHAINA Waterworks System shall be: (a) For domestic purposes and lawn irrigation six (6) cents per thousand gallons, or fraction thereof. (b) For commercial purposes such as the cultivation of fruits, vegetables, and other plants for sale, railroads, manufactories, hotels, lodging houses, offices, stables, garages and other business enterprises, ten (10) cents per thousand gallons, or fraction thereof. (c) Provided, however, the consumer of water shall pay a minimum charge of \$1.50 per quarter for water used, even though the meter charge for water consumed may be less than that amount. 21. The rates governing the MAKAWAO Waterworks System shall be: (a) Fifteen (15) cents per thousand gallons or fraction thereof. (b) Provided, however, the consumer of water, shall pay a minimum charge of \$1.50 per quarter for water used, even though the meter charge for water consumed may be less than that amount. 22. The rates governing the PAUWELA Waterworks System shall be: (a) For domestic purposes and lawn irrigation fifteen (15) cents per thousand gallons, or fraction thereof. (b) For commercial purposes such as the cultivation of fruits, vegetables, and other plants for sale, railroads, manufactories, hotels, lodging houses, offices, stables, garages, and other business enterprises, twenty-five (25) cents per thousand gallons, or fraction thereof. Provided, however, the consumer of water shall pay a minimum charge of \$1.50 per quarter for water used, even though the meter charge for water consumed may be less than that amount. 23. Rates for shipping: The rates to be charged for water furnished for shipping from any of the public Waterworks herein referred to shall be one dollar and a half (\$1.50) per thousand gallons. 24. Provided, however, the rates to

be charged for water furnished from any of the Waterworks systems covered by this ordinance to any church or schools taking water therefrom shall be as follows: (a) For water furnished and used for domestic and household purposes only one (1) cent per thousand gallons. (b) For water furnished and used for purposes of lawn irrigation three (3) cents per thousand gallons. Provided, however, that a minimum charge of One (1) Dollar per quarter shall be made for water used, even though the meter charge for water consumed may be less than that amount. Any and all churches and schools desiring to avail themselves of the provisions of this Section shall make written application therefor to the Board of Supervisors of the County of Maui; such application shall set forth the facts with sufficient definiteness as to enable the Board of Supervisors to determine whether or not such application is entitled to such privilege. 25. In times of emergency, drouth or scarcity of water in any of the water systems covered hereby, the local Superintendent of Waterworks may with the approval of the Chairman and Executive Officer of the Board of Supervisors, make regulations covering the use of water for purposes of lawn irrigation during such reasonable hours as may be deemed proper and necessary during such emergency, drouth or scarcity of water, and shall give reasonable notice to privilege holders of such regulations. 26. Any privilege holder violating any of the provisions hereof, or any rule or regulation made as hereinabove provided shall be liable to a suspension or termination of such privilege and such privilege shall not be renewed until all water rates due together with costs and expenses incurred in connection with such violation shall have been paid in full; and in the event of such violation of any provision of this ordinance or any rule or regulation made as hereinabove provided, other than the non-payment of water rates, costs, and expenses, the person, firm, or corporation guilty of such violation shall be deemed guilty of a misdemeanor and upon conviction thereof shall be liable to a fine of not more than One Hundred (\$100.00) Dollars for each violation, together with costs of court. 27. Ordinance No. 27 of the County of Maui as heretofore amended is hereby repealed. 28. This Ordinance shall become effective from and after the 1st day of October, 1921. The Board of Supervisors of the County of Maui. By S. E. KALAMA, Chairman & Executive Officer. Attest: WM. FRED KAAE, Clerk. I hereby certify that Ordinance No. 56 of which the foregoing is a true and correct copy, was passed on final reading by the Board of Supervisors of the County of Maui, on the 9th day of September, 1921, at the Regular September 1921 meeting of said Board all of the members of said Board voting in favor thereof, and a true copy thereof ordered to be posted upon a bulletin board in front of or near the rooms occupied by the Board of Supervisors of the County of Maui and copies thereof ordered to be published in one (1) issue of the Wailuku Times and the Maui News, newspapers of general circulation published at Wailuku, Maui, Territory of Hawaii. (Seal.) WM. FRED KAAE, County Clerk of the County of Maui, Territory of Hawaii. (Sept. 13) Tops at the Auto Top Shop. Plate glass side curtains Auto Top

WE ARE PLEASED TO ANNOUNCE THAT The Wailuku Hardware & Grocery Co., Ltd. WAILUKU, MAUI HAVE BEEN APPOINTED AGENTS FOR EAST MAUI, FOR A. G. Spalding & Bros. FAMOUS TENNIS, BASEBALL AND ATHLETIC GOODS E. O. Hall & Son, Ltd. Distributors for the Territory.