



Solomon Islands Government

Statistical Bulletin: No: 13/2014

VISITOR STATISTICS

(Second Quarter 2014)

Solomon Islands National Statistics Office

Ministry of Finance

Honiara

TABLE OF CONTENTS

Introduction.....	3
COMMENTARY OF RESULTS	5
<i>International Arrivals</i>	5
<i>Arrivals by Country of Residence</i>	5
<i>Visitor by Month</i>	5
<i>Tourists</i>	5
<i>Visitors by Purpose of Visit</i>	5
<i>Visitor by Age Group</i>	5
<i>Visitor by Occupation:</i>	5
<i>Visitor by Carrier</i>	5
Charts	
<hr/>	
Chart 1: Arrivals by Category, 2 nd Quarter 2014	6
Chart 2: Visitor Arrivals by Country of Residence by quarter: 2 nd Quarter 2014.....	7
Chart 3: Visitor Arrivals by Month, 2011 to 2 nd Quarter 2014.....	8
Chart 4: Tourist Arrivals by Country of Residence, 2 nd Quarter 2014.....	9
Chart 5: Visitor Arrivals by Country of Residence by Purpose of Visit, 2 nd Quarter 2014.....	10
Chart 6: Visitor Arrivals by Age group category by sex, 2 nd Quarter 2014.....	11
Chart 7: Visitor Arrivals by Occupation by sex, 2 nd Quarter 2014.....	12
Chart 8: Visitor Arrivals by Carrier by sex, 2 nd Quarter 2014.....	13
Tables	
Table 1: Total Arrivals Classified by Purpose of Travel by Sex by Year by Quarter: 2 nd Quarter 2014	6
Table 2: Visitors Arrivals by Country of Residence by Year by Quarter: 2 nd Quarter 2014.....	7
Table 3: Visitors Arrivals by Month: 2006 to 2 nd Quarter 2014	8
Table 4: Visitors Classified as Tourists by Country of Residence by Year, Quarter and Average Length of Stay: 2011 to 2 nd Quarter 2014	9
Table 5: Visitor Arrivals by Country of Residence by Purpose of Visit by sex: 2 nd Quarter 2014	10
Table 6: Visitors Arrivals by Country of Residence by Age Groups by sex: 2 nd Quarter 2014.....	11
Table 7: Visitors Arrivals by Country of Residence by Occupation and Sex: 2 nd Quarter 2014.....	12
Table 8: Visitors Arrivals by Country of Residence by Carrier By Sex: 2 nd Quarter 2014.....	13
Appendix 1	14
<i>Concepts and Definitions</i>	14
Appendix 2.....	15
Table 9: Intending Resident Arrivals by Country of residence by Occupation and sex: 2 nd Quarter 2014.....	15
Table 10: Intending Resident Arrivals by country of Residence by Age Groups by Sex: 2 nd Quarter 2014.....	16
Table 11: Returning Resident Arrivals by country of Residence by Age Groups and sex: 2 nd Quarter 2014....	17
Table 12: Returning Resident Arrivals by country of Residence by Occupation and sex: 2 nd Quarter 2014	18

Introduction

This quarterly bulletin is produced by the National Statistics Office NSO in the Ministry of Finance and Treasury. It provides information on international arrivals comprised of the returning resident, intending resident, and visitor. The explanation of these categories is provided in Appendix 1 of the bulletin.

Visitor category comprised the bigger share of the bulletin, (portrayed in tables 1 to 8); compared to the returning and intending resident category portrayed in Tables 1, and 9 to 12. The bulletin includes twelve tables and eight charts stretched over cross-field tabulation, preferably to meet information need of local, regional, and international researchers.

The information captured through a self fill Disembarkation form that was completed by all disembarking passengers. The forms were collected by Immigration officials at international check-in counters on arrival. The coverage of the bulletin is complete.

Sheer acknowledgement is owed to the Immigration Department for their continuous support of this bulletin, by providing an office space and permitting the statistics office to input completed forms. With the official arrangement in-placed between the Statistics and Immigration departments this bulletin is possible.

The inclusion of four new tables 9 to 12 in Appendix 2 of the bulletin anticipates to complete the distribution portrait of Intending and Returning resident. The distribution is by age groups, occupation and by country of usual residence.

Data limitations, highlighted in the previous bulletin still remain, though some have substantially improved but noted again for ease of reference as follows:-

- Data entry duplication by the Immigration and Statistics departments was a long standing issue. Discussion of the issues had been made by the two departments, though resolution has been recognized, this was yet to be put in place.
- Timeliness of visitor statistics has improved but the bulletin may be delayed by the production process.
- The information contained in the bulletin is based on information captured from the data source by the SINSO.
- The monetary value of the industry is not available and thus not possible in this bulletin. The concepts and definitions of the arrival categories were included in Appendix 1. The symbols that are likely to be used are:

-	zero if representing a value
-	negative change if representing a percentage change
+	positive change if representing a percentage change
p	preliminary figure, subject to revision
r	revised
e	estimate
n/a	not available

For more information contact the Statistics Office, Department of Finance and Treasury:

TELEPHONE : (677) 22154/21427

FACSMILE : (677) 23775

E-MAIL : STATS-management@mof.gov.sb

: STATS-SocialDemography@mof.gov.sb

WEBSITE : **<http://www.spc.int/prism/country/sb/stats>**

Contact persons: 1. Mrs. Irene KALAUMA, Chief Statistician

2. Mrs. Anterlyn TUZAKANA, Senior Statistician

COMMENTARY OF RESULTS

International Arrivals

Total Arrivals for the second quarter of 2014 was 9,657. This figure showed an increase of 3.8% compared to the previous quarter (1st Quarter 2014). Compared to the same quarter a year ago, it showed a decrease of 12.3%.

Arrivals classified by the category for the second quarter of 2014 showed that returning resident comprise of 41%. Visitors recorded 51% and the remaining 8% was recorded for intending resident.

Visitor arrivals for the second quarter showed an increase of 3.6% to 4,925 compared to the first quarter 2014 figure of 4,754. Compared to the same quarter in 2013, a decrease of 20.5% was recorded. Table 1, showed visitor and returning resident categories comprised the larger proportion of all arrivals while the intending resident represents the lesser share during the quarter. Chart 1 gives a clear picture of all the categories.

In this report, the country of China is now added to the list of country of residence. In previous reports 'China' was merged with countries of 'Other Asia'.

Visitor by Country of Residence

Arrivals by country of residence for second quarter continue to show that Australians (45.2%) remains the frequent travellers to Solomon Islands as in the previous quarters, followed by Other Asia (11.8%), US (7.4%), Fiji (7.3%), NZ (7.0%), and PNG (5.3%). Table 2 showed further detailed information.

Visitor by Month

Visitors by monthly arrivals for the quarter showed that June has the highest number of arrivals with 1,949 persons. This was followed by the month of April with a recorded total of 1,514 persons and May the least with 1,462 persons.

Tourists

Tourist¹ arrivals for second quarter of the year recorded a total of 1,444 persons and they spent an average of 14 days in the country. The highest number of tourists recorded for the quarter comes from Australia (51.6%) and staying in the country for an average of 13 days. This was followed by US (14.4%), Other Asia (11.2%), PNG (3.5%), NZ (2.4%), and Vanuatu and Other Europe (2.2%) each.

Visitor by Purpose of Visit

Distribution of visitors by purpose of visit revealed that Business & Conference (39.2%) as most popular during the quarter. This was followed by Holiday & Vocation (28.1%), Other (17.6%), Visit friends & relatives (13.8%) and Transit & stopover the least with 1.2%.

Visitor by Age Group

Visitor Arrivals by broad age groups showed that 78.2% of arrivals were in the 25years to 64years age range. The younger and the older age brackets represent 18.1% while the remaining 3.8% represents visitors who did not state their age. Male represent 71.2% of the arrival and female 28.8%. (Refer to Chart 6)

Visitor by Occupation

Visitor by occupational category revealed that those who stated Professional & Technical (38%) as their occupation recorded the highest during the quarter. This was followed by Other (28.4%), Administration and managerial (9.1%), No work (8.9%), Service Worker (5.1%) and Production & Related Work (4.7%). Table 7 further revealed that Australia not only dominated the Arrivals in terms of markets but also dominated most of the categories of occupations during the quarter. Refer to Table 7 for further analysis.

Visitor by Carrier

The most popular carriers during the quarter were Solomon Airlines (51.2%) followed by Virgin Australia (25.4%), Air Niu Gini (13.8%) and Air Pacific (9.4%).

¹ Refer to Appendix 1 for the definition

Table 1: Total Arrivals Classified by Purpose of Travel by Sex, by Year by Quarter: 2nd Quarter 2014

Year / Quarter	Returning Resident						Intending Resident				Visitor			Total		
	Solomon Islander			Non-Solomon Islander			All	M	F	T	M	F	T	M	F	All
	M	F	T	M	F	T										
2009 3 rd	1,182	709	1,891	425	220	645	2,536	786	355	1,141	3,263	1,519	4,782	5,656	2,803	8,459
4 th	2,145	1,152	3,297	393	197	590	3,887	722	282	1,004	3,177	1,412	4,589	6,437	3,043	9,480
2010 1 st	1,045	695	1,740	550	342	892	2,632	808	380	1,188	3,115	1,095	4,210	5,518	2,512	8,030
2 nd	1,337	707	2,044	494	272	766	2,810	808	307	1,115	3,370	1,384	4,754	6,009	2,670	8,679
3 rd	1,421	730	2,151	485	274	759	2,910	835	316	1,151	4,494	1,768	6,262	7,235	3,088	10,323
4 th	2,783	1,550	4,333	13	4	17	4,350	848	284	1,132	3,766	1,529	5,295	7,410	3,367	10,777
2011 1 st	1,187	724	1,911	694	332	1,026	2,937	1,058	362	1,420	3,972	1,147	5,119	6,911	2,565	9,476
2 nd	1,601	880	2,481	615	292	907	3,388	716	258	974	4,071	1,434	5,505	7,003	2,864	9,867
3 rd	1,716	739	2,455	642	282	924	3,379	930	275	1,205	4,523	1,721	6,244	7,811	3,017	10,828
4 th	3,297	1,765	5,062	4	2	6	5,068	805	268	1,073	4,341	1,732	6,073	8,447	3,767	12,214
2012 1 st	1,915	994	2,909	15	3	18	2,927	1,029	387	1,416	3,554	1,097	4,651	6,513	2,481	8,994
2 nd	1,782	967	2,749	667	312	979	3,728	695	278	973	4,921	2,008	6,929	8,065	3,565	11,630
3 rd	2,169	1,218	3,387	22	12	34	3,421	840	255	1,095	5,123	2,184	7,307	8,154	3,669	11,823
4 th	3,192	1,784	4,976	5	1	6	4,982	631	215	846	3,572	1,466	5,038	7,400	3,466	10,866
2013 1 st	1,966	1,111	3,077	6	-	6	3,083	961	338	1,299	4,034	1,284	5,318	6,967	2,733	9,700
2 nd	2,422	1,344	3,766	1	2	3	3,769	764	279	1,043	4,531	1,664	6,195	7,718	3,289	11,007
3 rd	2,442	1,415	3,857	5	3	8	3,865	715	228	943	5,007	1,880	6,887	8,169	3,526	11,695
4 th	3,577	2,051	5,628	12	12	24	5,652	620	224	844	4,294	1,737	6,031	8,503	4,024	12,527
2014 1 st	2,100	1,287	3,387	3	3	6	3,393	841	318	1,159	3,685	1,069	4,754	6,629	2,677	9,306
2 nd	2,511	1,231	3,742	126	56	182	3,924	604	204	808	3,506	1,419	4,925	6,747	2,910	9,657

	Percentage change															
11 ^{1st} -11 ^{2nd}	34.9	21.5	29.8	-11.4	-12.0	-11.6	15.4	-32.3	-28.7	-31.4	2.5	25.0	7.5	1.3	11.7	4.1
11 ^{2nd} -11 ^{3rd}	7.2	-16.0	-1.0	4.4	-3.4	1.9	-0.3	29.9	6.6	23.7	11.1	20.0	13.4	11.5	5.3	9.7
11 ^{3rd} -11 ^{4th}	92.1	138.8	106.2	-99.4	-99.3	-99.4	50.0	-13.4	-2.5	-11.0	-4.0	0.6	-2.7	8.1	24.9	12.8
11 ^{4th} -12 ^{1st}	-41.9	-43.7	-42.5	275.0	50.0	200.0	-42.2	27.8	44.4	32.0	-18.1	-36.7	-23.4	-22.9	-34.1	-26.4
11 ^{2nd} -12 ^{2nd}	11.3	9.9	10.8	8.5	6.8	7.9	10.0	-2.9	7.8	-0.1	20.9	40.0	25.9	15.2	24.5	17.9
12 ^{1st} -12 ^{2nd}	-6.9	-2.7	-5.5	4346.7	10300.0	5338.9	27.4	-32.5	-28.2	-31.3	38.5	83.0	49.0	23.8	43.7	29.3
11 ^{3rd} -12 ^{3rd}	26.4	64.8	38.0	-96.6	-95.7	-96.3	1.2	-9.7	-7.3	-9.1	13.3	26.9	17.0	4.4	21.6	9.2
12 ^{2nd} -12 ^{3rd}	21.7	26.0	23.2	-96.7	-96.2	-96.5	-8.2	20.9	-8.3	12.5	4.1	8.8	5.5	1.1	2.9	1.7
11 ^{4th} -12 ^{4th}	-3.2	1.1	-1.7	25.0	-50.0	-	-1.7	-21.6	-19.8	-21.2	-17.7	-15.4	-17.0	-12.4	-8.0	-11.0
12 ^{3rd} -12 ^{4th}	47.2	46.5	46.9	-77.3	-91.7	-82.4	45.6	-24.9	-15.7	-22.7	-30.3	-32.9	-31.1	-9.2	-5.5	-8.1
12 ^{1st} -13 ^{1st}	2.7	11.8	5.8	-60.0	-100.0	-66.7	5.3	-6.6	-12.7	-8.3	13.5	17.0	14.3	7.0	10.2	7.8
12 ^{4th} -13 ^{1st}	-38.4	-37.7	-38.2	20.0	-100.0	-	-38.1	52.3	57.2	53.5	12.9	-12.4	5.6	-5.9	-21.1	-10.7
12 ^{2nd} -13 ^{2nd}	35.9	39.0	37.0	-99.9	-99.4	-99.7	1.1	9.9	0.4	7.2	-7.9	-17.1	-10.6	-4.3	-7.7	-5.4
13 ^{1st} -13 ^{2nd}	23.2	21.0	22.4	-83.3	-	-50.0	22.3	-20.5	-17.5	-19.7	12.3	29.6	16.5	10.8	20.3	13.5
12 ^{3rd} -13 ^{3rd}	12.6	16.2	13.9	-77.3	-75.0	-76.5	13.0	-14.9	-10.6	-13.9	-2.3	-13.9	-5.7	0.2	-3.9	-1.1
13 ^{2nd} -13 ^{3rd}	0.8	5.3	2.4	400.0	50.0	166.7	2.5	-6.4	-18.3	-9.6	10.5	13.0	11.2	5.8	7.2	6.3
12 ^{4th} -13 ^{4th}	12.1	15.0	13.1	140.0	1100.0	300.0	13.4	-1.7	4.2	-0.2	20.2	18.5	19.7	14.9	16.1	15.3
13 ^{3rd} -13 ^{4th}	46.5	44.9	45.9	140.0	300.0	200.0	46.2	-13.3	-1.8	-10.5	-14.2	-7.6	-12.4	4.1	14.1	7.1
13 ^{1st} -14 ^{1st}	6.8	15.8	10.1	-50.0	-	0.0	10.1	-12.5	-5.9	-10.8	-8.7	-16.7	-10.6	-4.9	-2.0	-4.1
13 ^{4th} -14 ^{1st}	-41.3	-37.3	-39.8	-75.0	-75.0	-75.0	-40.0	35.6	42.0	37.3	-14.2	-38.5	-21.2	-22.0	-33.5	-25.7
13 ^{2nd} -14 ^{2nd}	3.7	-8.4	-0.6	12500.0	2700.0	5966.7	4.1	-20.9	-26.9	-22.5	-22.6	-14.7	-20.5	-12.6	-11.5	-12.3
14 ^{1st} -14 ^{2nd}	19.6	-4.4	10.5	4100.0	1766.7	2933.3	15.6	-28.2	-35.8	-30.3	-4.9	32.7	3.6	1.8	8.7	3.8

Chart 1: Arrivals by category 2nd quarter 2014

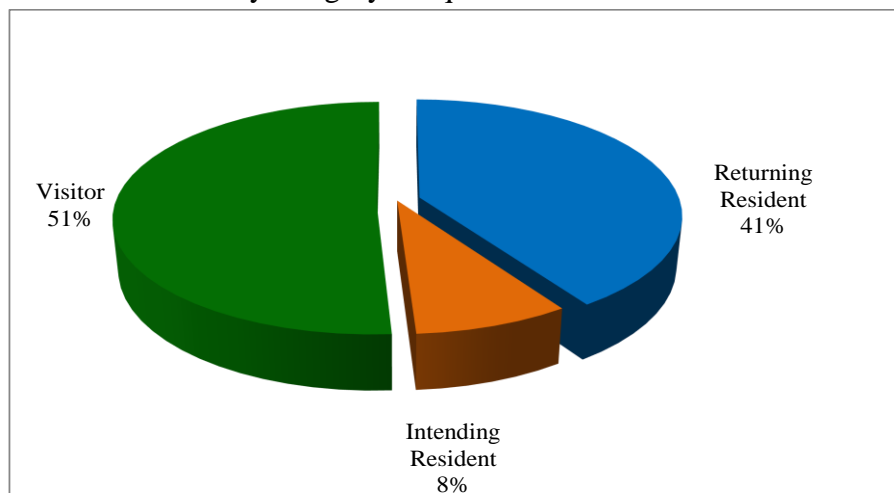


Table 2: Visitor Arrivals by Country of Residence by year by quarter: 2nd Quarter 2014

Country of Usual Residence	2011				2012					2013					2014						
	Q2	Q3	Q4	Total	Q1	Q2	Q3	Q4	Total	Q1	Q2	Q3	Q4	Total	Q1	Q2					
Australia	2,544	3,362	2,758	10,751	2,569	2,763	3,042	3,018	11,392	2,238	2,963	3,404	2,474	11,079	2,282	3,049	3,001	2,849	11,181	2,088	2,225
PNG	248	339	469	1,361	443	479	589	546	2,057	431	602	476	464	1,973	458	417	621	523	2,019	383	260
US	236	287	212	862	188	243	368	241	1,040	183	356	561	234	1,334	231	325	357	248	1,161	231	362
NZ	335	647	454	1,710	385	433	479	427	1,724	285	545	560	357	1,747	381	531	607	386	1,905	277	343
UK	108	141	101	432	78	110	101	91	380	81	84	151	69	385	104	110	152	94	460	65	99
Japan	95	151	177	589	145	106	229	161	641	162	112	211	129	614	128	116	179	178	601	137	84
Germany	33	26	18	101	22	26	38	25	111	22	40	29	26	117	33	19	35	49	136	15	30
Canada	22	25	34	113	51	30	55	56	192	29	25	30	27	111	28	35	40	45	148	38	43
Oth.Pacific	125	123	170	585	185	185	170	223	763	101	811	371	135	1,418	188	142	202	228	760	139	81
Vanuatu	86	126	145	405	125	103	100	185	513	121	148	179	147	595	250	185	191	178	804	117	171
Hong Kong	-	23	5	38	12	12	22	84	130	14	20	21	25	80	16	18	33	14	81	35	11
Fiji	278	273	234	991	262	327	285	330	1,204	300	510	444	301	1,555	451	424	528	397	1,800	351	361
Other Asia	477	509	336	1,825	487	523	562	484	2,056	500	544	577	484	2,105	623	655	743	604	2,625	689	580
Netherlands	9	16	17	53	18	13	20	13	64	12	11	23	11	57	10	6	24	23	63	7	18
Oth.Europe	63	100	66	307	60	62	63	61	246	76	74	121	50	321	53	57	70	107	287	119	76
France	24	24	22	82	10	20	22	8	60	24	19	36	9	88	21	21	26	25	93	21	19
Italy	3	13	19	39	13	17	20	30	80	13	12	40	28	93	16	18	16	33	83	14	10
China*	-	-	-	-	-	-	-	-	-	-	-	-	-	-	-	-	-	-	-	-	103
Oth.Country	68	77	58	277	66	53	79	90	288	59	53	73	68	253	45	67	62	50	224	28	49
Total	4,754	6,262	5,295	20,521	5,119	5,505	6,244	6,073	22,941	4,651	6,929	7,307	5,038	23,925	5,318	6,195	6,887	6,031	24,431	4,754	4,925
Percentage																					
Australia	53.5	53.7	52.1	52.4	50.2	50.2	48.7	49.7	49.7	48.1	42.8	46.6	49.1	46.3	42.9	49.2	43.6	47.2	45.8	43.9	45.2
PNG	5.2	5.4	8.9	6.6	8.7	8.7	9.4	9.0	9.0	9.3	8.7	6.5	9.2	8.2	8.6	6.7	9.0	8.7	8.3	8.1	5.3
US	5.0	4.6	4.0	4.2	3.7	4.4	5.9	4.0	4.5	3.9	5.1	7.7	4.6	5.6	4.3	5.2	5.2	4.1	4.8	4.9	7.4
NZ	7.0	10.3	8.6	8.3	7.5	7.9	7.7	7.0	7.5	6.1	7.9	7.7	7.1	7.3	7.2	8.6	8.8	6.4	7.8	5.8	7.0
UK	2.3	2.3	1.9	2.1	1.5	2.0	1.6	1.5	1.7	1.7	1.2	2.1	1.4	1.6	2.0	1.8	2.2	1.6	1.9	1.4	2.0
Japan	2.0	2.4	3.3	2.9	2.8	1.9	3.7	2.7	2.8	3.5	1.6	2.9	2.6	2.6	2.4	1.9	2.6	3.0	2.5	2.9	1.7
Germany	0.7	0.4	0.3	0.5	0.4	0.5	0.6	0.4	0.5	0.5	0.6	0.4	0.5	0.5	0.6	0.3	0.5	0.8	0.6	0.3	0.6
Canada	0.5	0.4	0.6	0.6	1.0	0.5	0.9	0.9	0.8	0.6	0.4	0.4	0.5	0.5	0.5	0.6	0.6	0.7	0.6	0.8	0.9
Oth.Pacific	2.6	2.0	3.2	2.9	3.6	3.4	2.7	3.7	3.3	2.2	11.7	5.1	2.7	5.9	3.5	2.3	2.9	3.8	3.1	2.9	1.6
Vanuatu	1.8	2.0	2.7	2.0	2.4	1.9	1.6	3.0	2.2	2.6	2.1	2.4	2.9	2.5	4.7	3.0	2.8	3.0	3.3	2.5	3.5
Hong Kong	-	0.4	0.1	0.2	0.2	0.2	0.4	1.4	0.6	0.3	0.3	0.3	0.5	0.3	0.3	0.3	0.5	0.2	0.3	0.7	0.2
Fiji	5.8	4.4	4.4	4.8	5.1	5.9	4.6	5.4	5.2	6.5	7.4	6.1	6.0	6.5	8.5	6.8	7.7	6.6	7.4	7.4	7.3
Oth.Asia	10.0	8.1	6.3	8.9	9.5	9.5	9.0	8.0	9.0	10.8	7.9	7.9	9.6	8.8	11.7	10.6	10.8	10.0	10.7	14.5	11.8
Netherlands	0.2	0.3	0.3	0.3	0.4	0.2	0.3	0.2	0.3	0.3	0.2	0.3	0.2	0.2	0.2	0.1	0.3	0.4	0.3	0.1	0.4
Oth.Europe	1.3	1.6	1.2	1.5	1.2	1.1	1.0	1.0	1.1	1.6	1.1	1.7	1.0	1.3	1.0	0.9	1.0	1.8	1.2	2.5	1.5
France	0.5	0.4	0.4	0.4	0.2	0.4	0.4	0.1	0.3	0.5	0.3	0.5	0.2	0.4	0.4	0.3	0.4	0.4	0.4	0.4	0.4
Italy	0.1	0.2	0.4	0.2	0.3	0.3	0.3	0.5	0.3	0.3	0.2	0.5	0.6	0.4	0.3	0.3	0.2	0.5	0.3	0.3	0.2
China*	-	-	-	-	-	-	-	-	-	-	-	-	-	-	-	-	-	-	-	-	2.1
Oth.Country	1.4	1.2	1.1	1.3	1.3	1.0	1.3	1.5	1.3	1.3	0.8	1.0	1.3	1.1	0.8	1.1	0.9	0.8	0.9	0.6	1.0
Total	100	100	100.0	100.0	100.0	100.0	100.0	100.0	100.0	100.0	100.0	100.0	100.0	100.0	100.0	100.0	100.0	100.0	100.0	100.0	100.0

*Figures for 'China' for previous quarters was included in 'Other Asia'

Chart 2: Visitors Arrival by Country of residence by quarter, 2nd quarter 2014

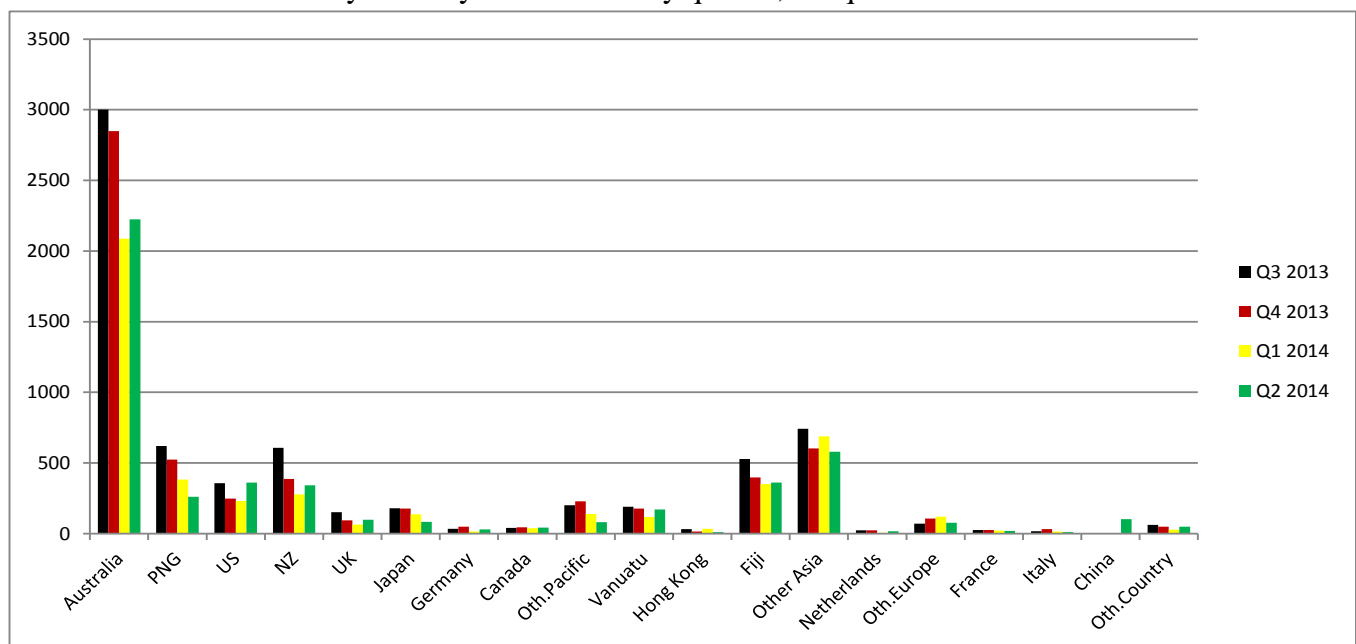


Table 3: Visitor Arrivals by Month: 2006 – 2nd Quarter 2014

Month	2006	2007	2008	2009	2010	2011	2012	2013	2014
January	952	546	889	1,602	1,235	1,600	1,383	1,590	1,415
February	838	1,020	1,282	1,422	1,209	1,658	1,591	1,544	1,523
March	972	1,251	802	1,249	1,766	1,861	1,677	2,184	1,816
April	994	1,452	1,388	1,499	1,820	1,736	1,839	2,021	1,514
May	858	1,137	1,261	1,393	1,137	1,760	1,968	1,857	1,462
June	1,289	1,265	1,552	1,724	1,797	2,009	3,122	2,317	1,949
July	865	822	1,692	1,603	2,264	2,185	2,865	2,574	
August	892	1,299	1,469	1,520	1,845	1,900	2,133	2,022	
September	681	1,299	1,457	1,659	2,153	2,159	2,309	2,291	
October	942	1,260	1,399	1,709	1,813	1,931	1,929	2057	
November	1,118	1,246	1,545	1,475	1,624	2,195	1,545	1981	
December	1,081	1,151	1,528	1,405	1,858	1,947	1,564	1993	
Total	11,482	13,748	16,264	18,260	20,521	22,941	23,925	24,431	9,679

Percentage									
January	8.3	4.0	5.5	8.8	5.5	7.0	5.8	6.5	14.6
February	7.3	7.4	7.9	7.8	5.4	7.2	6.6	6.3	15.7
March	8.5	9.1	4.9	6.8	7.8	8.1	7.0	8.9	18.8
April	8.7	10.6	8.5	8.2	8.1	7.6	7.7	8.3	15.6
May	7.5	8.3	7.8	7.6	5.0	7.7	8.2	7.6	15.1
June	11.2	9.2	9.5	9.4	8.0	8.8	13.0	9.5	20.1
July	7.5	6.0	10.4	8.8	10.0	9.5	12.0	10.5	
August	7.8	9.4	9.0	8.3	8.2	8.3	8.9	8.3	
September	5.9	9.4	9.0	9.1	9.6	9.4	9.7	9.4	
October	8.2	9.2	8.6	9.4	8.0	8.4	8.1	8.4	
November	9.7	9.1	9.5	8.1	7.2	9.6	6.5	8.1	
December	9.4	8.4	9.4	7.7	8.2	8.5	6.5	8.2	
Total	100	100.0	100.0	100.0	100.0	100.0	100.0	100.0	100.0

Chart 3: Visitors Arrival by month, 2011 – 2nd quarter 2014

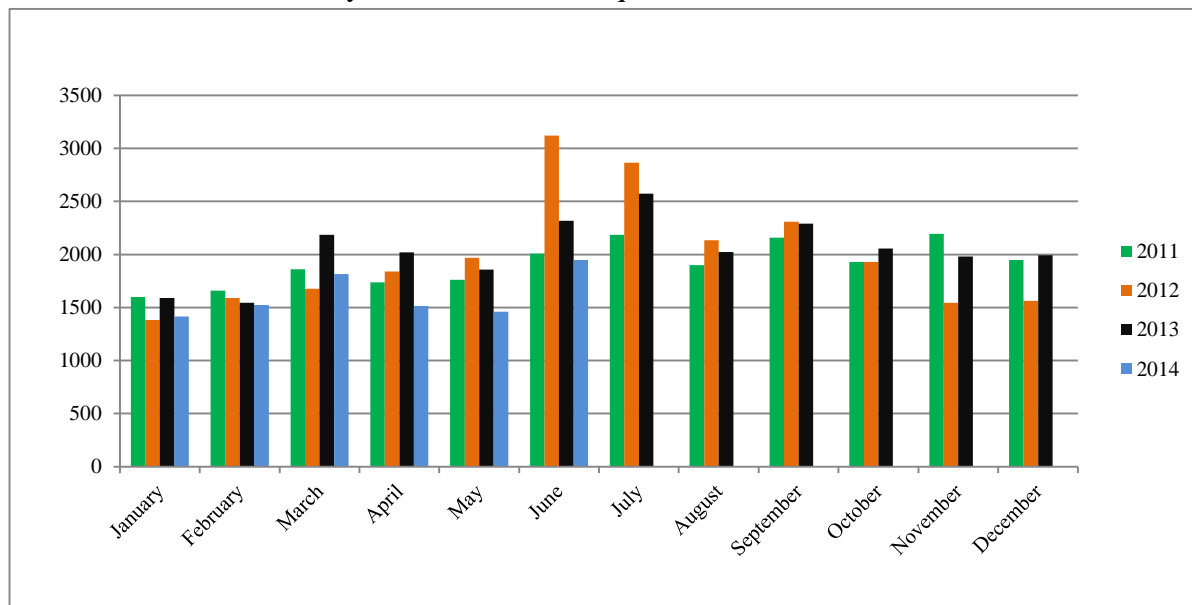


Table 4: Visitors, classified as tourists by Country of residence by year, quarter and average length of stay: 4th Quarter 2011 – 2nd Quarter 2014

Country of Usual Residence	2011		2012								2013								2014			
	Quarter 4		Quarter 1		Quarter 2		Quarter 3		Quarter 4		Quarter 1		Quarter 2		Quarter 3		Quarter 4		Quarter 1		Quarter 2	
	tourist	day	tourist	day	tourist	day	tourist	day	tourist	day	tourist	day	tourist	day	tourist	day	tourist	day	tourist	day	tourist	day
Australia	915	20	511	12	891	13	1,193	12	808	14	507	13	981	11	943	12	914	13	484	13	745	13
PNG	67	30	23	14	54	13	58	15	66	20	43	10	39	12	43	10	105	29	42	14	50	8
US	102	13	65	10	182	12	251	10	116	11	75	11	136	12	182	13	128	14	82	13	208	10
NZ	70	20	24	11	69	13	115	12	57	16	30	15	95	15	62	18	69	22	13	13	35	10
UK	34	16	25	18	28	32	36	20	40	18	31	25	39	21	76	23	31	18	25	24	28	26
Japan	51	7	53	7	41	7	92	9	52	7	38	13	33	19	59	10	75	8	37	7	10	11
Germany	17	12	14	18	21	20	15	12	12	17	25	13	9	11	21	11	33	22	9	16	12	11
Canada	28	15	8	15	10	22	12	15	13	11	14	20	12	10	14	16	20	11	8	11	24	9
Oth.Pacific	21	23	11	14	38	14	68	13	7	17	18	10	16	15	21	15	30	10	8	9	10	8
Vanuatu	27	25	21	7	15	10	19	10	25	19	50	6	17	8	12	13	34	17	17	2	32	6
Hong Kong	23	19	3	18	6	16	8	9	10	20	6	11	8	21	8	14	3	27	10	10	1	7
Fiji	20	21	22	19	29	26	42	20	22	32	29	22	12	18	14	9	37	14	21	14	28	11
Oth.Asia	81	16	107	22	101	22	126	29	104	24	108	21	119	25	164	15	151	20	150	21	162	22
Netherlands	10	20	5	21	7	27	10	14	7	15	1	7	2	13	6	23	13	14	3	13	9	13
Oth.Europe	26	18	43	14	43	14	86	13	17	20	25	13	33	14	30	13	58	15	66	12	32	17
France	4	12	14	16	2	25	19	13	1	14	9	16	8	8	13	17	15	33	7	11	9	12
Italy	18	19	4	21	1	30	28	13	13	54	4	32	7	25	7	11	15	46	5	10	5	11
China	-	-	-	-	-	-	-	-	-	-	-	-	-	-	-	-	-	-	-	-	28	35
Oth.Country	44	16	14	9	9	18	30	12	20	12	9	14	22	7	17	12	23	21	1	20	16	13
Total	1,558	15	967	13	1,547	14	2,208	13	1,390	16	1,022	14	1,588	13	1,692	13	1,754	16	988	14	1,444	14

*Figures for 'China' for previous quarters was included in 'Other Asia'

Chart 4: Tourist Arrivals by Country of Residence, 2nd Quarter 2014

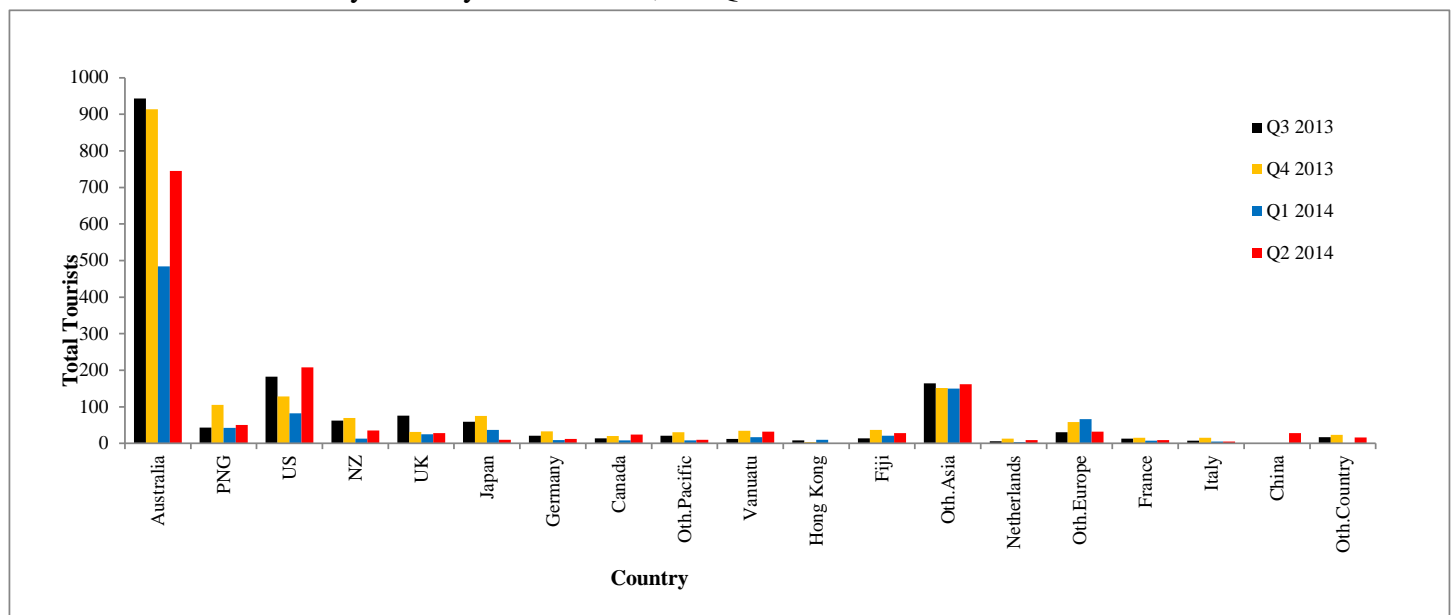


Table 5: Visitor Arrivals by Country of Residence by Purpose of Visit by sex: 2nd Quarter 2014

Country of Usual Residence	Business & Conference			Holiday & Vocation			Transit & Stopover			Visit friends/Relatives			Other			Total		
	M	F	T	M	F	T	M	F	T	M	F	T	M	F	T	M	F	All
Australia	598	172	770	461	280	741	2	2	4	179	159	338	275	97	372	1,515	710	2,225
PNG	108	22	130	13	14	27	18	5	23	21	13	34	37	9	46	197	63	260
US	49	21	70	120	85	205	1	2	3	25	14	39	31	14	45	226	136	362
NZ	139	35	174	23	12	35	-	-	-	26	29	55	53	26	79	241	102	343
UK	30	12	42	16	12	28	-	-	-	2	6	8	14	7	21	62	37	99
Japan	54	1	55	9	1	10	-	-	-	7	3	10	8	1	9	78	6	84
Germany	12	1	13	10	1	11	-	1	1	-	1	1	4	-	4	26	4	30
Canada	8	5	13	14	10	24	-	-	-	2	-	2	4	-	4	28	15	43
Oth.Pacific	23	10	33	6	4	10	-	-	-	6	12	18	16	4	20	51	30	81
Vanuatu	64	18	82	8	7	15	13	4	17	11	11	22	23	12	35	119	52	171
Hong Kong	5	-	5	1	-	1	-	-	-	3	-	3	2	-	2	11	-	11
Fiji	162	61	223	15	11	26	2	-	2	22	18	40	50	20	70	251	110	361
Oth.Asia	192	21	213	119	36	155	6	1	7	73	12	85	103	17	120	493	87	580
Netherlands	5	3	8	6	3	9	-	-	-	-	-	-	-	1	1	11	7	18
Oth.Europe	22	5	27	19	12	31	1	-	1	5	1	6	9	2	11	56	20	76
France	6	-	6	7	2	9	-	-	-	1	-	1	3	-	3	17	2	19
Italy	1	3	4	2	2	4	1	-	1	-	-	-	-	1	1	4	6	10
China	29	10	39	21	6	27	1	-	1	14	4	18	14	4	18	79	24	103
Oth.Country	22	2	24	11	4	15	1	-	1	1	-	1	6	2	8	41	8	49
Total	1,529	402	1,931	881	502	1,383	46	15	61	398	283	681	652	217	869	3,506	1,419	4,925
Percentage																		
Australia	26.9	7.7	34.6	20.7	12.6	33.3	0.1	0.1	0.2	8.0	7.1	15.2	12.4	4.4	16.7	68.1	31.9	100.0
PNG	41.5	8.5	50.0	5.0	5.4	10.4	6.9	1.9	8.8	8.1	5.0	13.1	14.2	3.5	17.7	75.8	24.2	100.0
US	13.5	5.8	19.3	33.1	23.5	56.6	0.3	0.6	0.8	6.9	3.9	10.8	8.6	3.9	12.4	62.4	37.6	100.0
NZ	40.5	10.2	50.7	6.7	3.5	10.2	-	-	-	7.6	8.5	16.0	15.5	7.6	23.0	70.3	29.7	100.0
UK	30.3	12.1	42.4	16.2	12.1	28.3	-	-	-	2.0	6.1	8.1	14.1	7.1	21.2	62.6	37.4	100.0
Japan	64.3	1.2	65.5	10.7	1.2	11.9	-	-	-	8.3	3.6	11.9	9.5	1.2	10.7	92.9	7.1	100.0
Germany	40.0	3.3	43.3	33.3	3.3	36.7	-	3.3	3.3	-	3.3	3.3	13.3	-	13.3	86.7	13.3	100.0
Canada	18.6	11.6	30.2	32.6	23.3	55.8	-	-	-	4.7	-	4.7	9.3	-	9.3	65.1	34.9	100.0
Oth.Pacific	28.4	12.3	40.7	7.4	4.9	12.3	-	-	-	7.4	14.8	22.2	19.8	4.9	24.7	63.0	37.0	100.0
Vanuatu	37.4	10.5	48.0	4.7	4.1	8.8	7.6	2.3	9.9	6.4	6.4	12.9	13.5	7.0	20.5	69.6	30.4	100.0
Hong Kong	45.5	-	45.5	9.1	-	9.1	-	-	-	27.3	-	27.3	18.2	-	18.2	100.0	0.0	100.0
Fiji	44.9	16.9	61.8	4.2	3.0	7.2	0.6	-	0.6	6.1	5.0	11.1	13.9	5.5	19.4	69.5	30.5	100.0
Oth.Asia	33.1	3.6	36.7	20.5	6.2	26.7	1.0	0.2	1.2	12.6	2.1	14.7	17.8	2.9	20.7	85.0	15.0	100.0
Netherlands	27.8	16.7	44.4	33.3	16.7	50.0	-	-	-	-	-	-	-	5.6	5.6	61.1	38.9	100.0
Oth.Europe	28.9	6.6	35.5	25.0	15.8	40.8	1.3	-	1.3	6.6	1.3	7.9	11.8	2.6	14.5	73.7	26.3	100.0
France	31.6	-	31.6	36.8	10.5	47.4	-	-	-	5.3	-	5.3	15.8	-	15.8	89.5	10.5	100.0
Italy	10.0	30.0	40.0	20.0	20.0	40.0	10.0	-	10.0	-	-	-	-	10.0	10.0	40.0	60.0	100.0
China	28.2	9.7	37.9	20.4	5.8	26.2	1.0	-	1.0	13.6	3.9	17.5	13.6	3.9	17.5	76.7	23.3	100.0
Oth.Country	44.9	4.1	49.0	22.4	8.2	30.6	2.0	-	2.0	2.0	-	2.0	12.2	4.1	16.3	83.7	16.3	100.0
Total	31.0	8.2	39.2	17.9	10.2	28.1	0.9	0.3	1.2	8.1	5.7	13.8	13.2	4.4	17.6	71.2	28.8	100.0

Chart 5: Visitors Arrival by Country of Residence by Purpose of Visit, 2nd quarter 2014

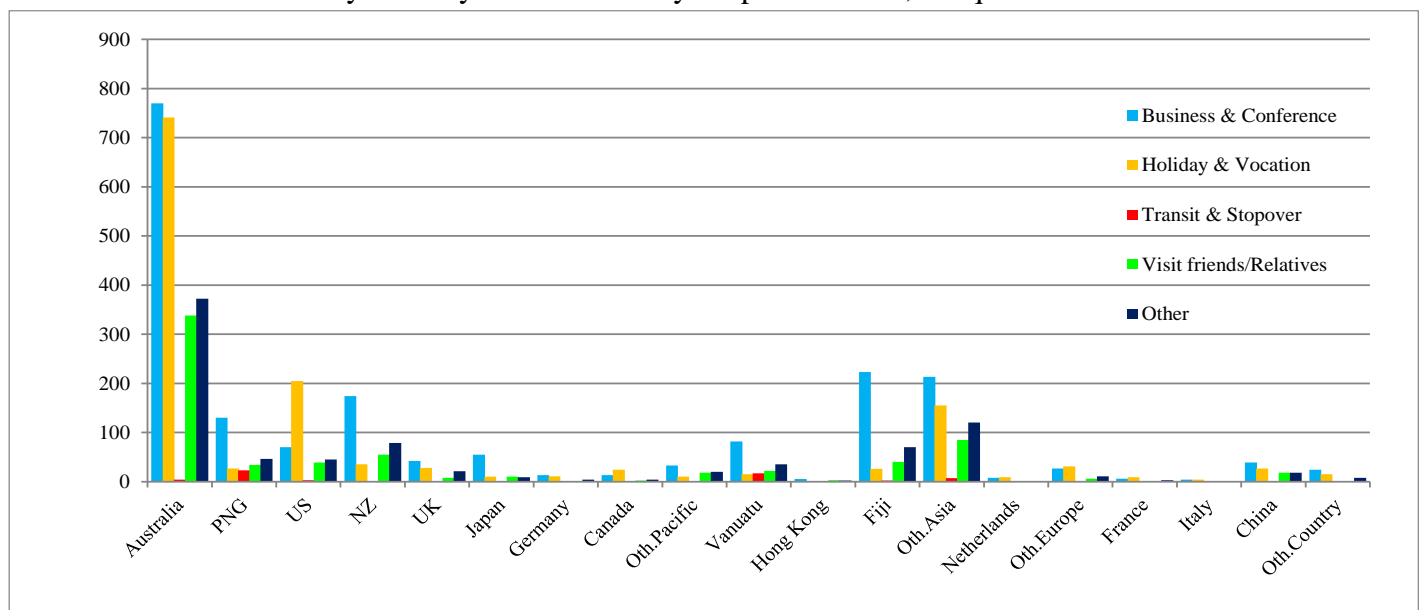


Table 6: Visitor Arrivals by Country of Residence by Age Groups by Sex: 2nd Quarter 2014

Country of Usual Residence	Age-Group																		Total		
	0-14		15-24		25-34		35-44		45-54		55-64		65+		Not Stated		M	F	All		
	M	F	M	F	M	F	M	F	M	F	M	F	M	F	M	F	M	F	All		
Australia	47	22	123	87	207	119	296	118	383	148	288	123	120	54	51	39	1,515	710	2,225		
PNG	2	3	3	7	45	15	46	7	57	16	30	8	3	1	11	6	197	63	260		
US	3	4	8	6	23	12	34	14	43	27	61	36	46	32	8	5	226	136	362		
NZ	2	4	8	12	32	15	47	14	63	24	47	20	33	11	9	2	241	102	343		
UK	1	3	9	5	11	11	14	5	12	5	6	3	7	2	2	3	62	37	99		
Japan	-	-	-	-	11	1	17	1	28	-	15	1	6	2	1	1	78	6	84		
Germany	-	-	5	-	7	1	4	-	6	1	3	2	-	-	1	-	26	4	30		
Canada	-	-	-	-	7	4	5	4	4	1	6	-	6	4	-	2	28	15	43		
Oth.Pacific	-	2	7	3	9	11	11	6	13	3	7	2	4	2	-	1	51	30	81		
Vanuatu	2	1	16	9	35	16	29	10	20	6	7	6	5	1	5	3	119	52	171		
Hong Kong	-	-	-	-	2	-	4	-	1	-	2	-	1	-	1	-	11	-	11		
Fiji	2	1	14	8	54	23	66	30	64	28	37	13	2	1	12	6	251	110	361		
Oth.Asia	-	-	19	10	104	30	124	11	125	15	79	15	29	6	13	-	493	87	580		
Netherlands	-	-	-	-	2	3	5	3	3	-	1	1	-	-	-	-	11	7	18		
Oth.Europe	-	3	12	-	16	4	13	9	5	-	8	1	2	1	-	2	56	20	76		
France	-	-	2	-	2	-	1	1	4	-	5	-	2	1	1	-	17	2	19		
Italy	-	-	-	-	-	2	-	3	-	-	2	1	2	-	-	-	4	6	10		
China	-	-	14	6	23	15	19	3	16	-	7	-	-	-	-	-	79	24	103		
Oth.Country	-	-	3	-	7	4	13	-	7	2	6	1	4	1	1	-	41	8	49		
Total	59	43	243	153	597	286	748	239	854	276	617	233	272	119	116	70	3,506	1,419	4,925		

Country of Usual Residence	Percentage																		
	M	F	M	F	M	F	M	F	M	F	M	F	M	F	M	F	M	F	
Australia	2.1	1.0	5.5	3.9	9.3	5.3	13.3	5.3	17.2	6.7	12.9	5.5	5.4	2.4	2.3	1.8	68.1	31.9	100.0
PNG	0.8	1.2	1.2	2.7	17.3	5.8	17.7	2.7	21.9	6.2	11.5	3.1	1.2	0.4	4.2	2.3	75.8	24.2	100.0
US	0.8	1.1	2.2	1.7	6.4	3.3	9.4	3.9	11.9	7.5	16.9	9.9	12.7	8.8	2.2	1.4	62.4	37.6	100.0
NZ	0.6	1.2	2.3	3.5	9.3	4.4	13.7	4.1	18.4	7.0	13.7	5.8	9.6	3.2	2.6	0.6	70.3	29.7	100.0
UK	1.0	3.0	9.1	5.1	11.1	11.1	14.1	5.1	12.1	5.1	6.1	3.0	7.1	2.0	2.0	3.0	62.6	37.4	100.0
Japan	-	-	-	-	13.1	1.2	20.2	1.2	33.3	-	17.9	1.2	7.1	2.4	1.2	1.2	92.9	7.1	100.0
Germany	-	-	16.7	-	23.3	3.3	13.3	-	20.0	3.3	10.0	6.7	-	-	3.3	-	86.7	13.3	100.0
Canada	-	-	-	-	16.3	9.3	11.6	9.3	9.3	2.3	14.0	-	14.0	9.3	-	4.7	65.1	34.9	100.0
Oth.Pacific	-	2.5	8.6	3.7	11.1	13.6	13.6	7.4	16.0	3.7	8.6	2.5	4.9	2.5	-	1.2	63.0	37.0	100.0
Vanuatu	1.2	0.6	9.4	5.3	20.5	9.4	17.0	5.8	11.7	3.5	4.1	3.5	2.9	0.6	2.9	1.8	69.6	30.4	100.0
Hong Kong	-	-	-	-	18.2	-	36.4	-	9.1	-	18.2	-	9.1	-	9.1	-	100.0	-	100.0
Fiji	0.6	0.3	3.9	2.2	15.0	6.4	18.3	8.3	17.7	7.8	10.2	3.6	0.6	0.3	3.3	1.7	69.5	30.5	100.0
Oth.Asia	-	-	3.3	1.7	17.9	5.2	21.4	1.9	21.6	2.6	13.6	2.6	5.0	1.0	2.2	-	85.0	15.0	100.0
Netherlands	-	-	-	-	11.1	16.7	27.8	16.7	16.7	-	5.6	5.6	-	-	-	-	61.1	38.9	100.0
Oth.Europe	-	3.9	15.8	-	21.1	5.3	17.1	11.8	6.6	-	10.5	1.3	2.6	1.3	-	2.6	73.7	26.3	100.0
France	-	-	10.5	-	10.5	-	5.3	5.3	21.1	-	26.3	-	10.5	5.3	5.3	-	89.5	10.5	100.0
Italy	-	-	-	-	-	20.0	-	30.0	-	-	20.0	10.0	20.0	-	-	-	40.0	60.0	100.0
China	-	-	13.6	5.8	22.3	14.6	18.4	2.9	15.5	-	6.8	-	-	-	-	-	76.7	23.3	100.0
Oth.Country	-	-	13.6	5.8	22.3	14.6	18.4	2.9	15.5	-	6.8	-	-	-	-	-	76.7	23.3	100.0
Total	1.2	0.9	4.9	3.1	12.1	5.8	15.2	4.9	17.3	5.6	12.5	4.7	5.5	2.4	2.4	1.4	71.2	28.8	100.0

Chart 6: Visitor Arrivals by Age group category by sex, 2nd quarter 2014

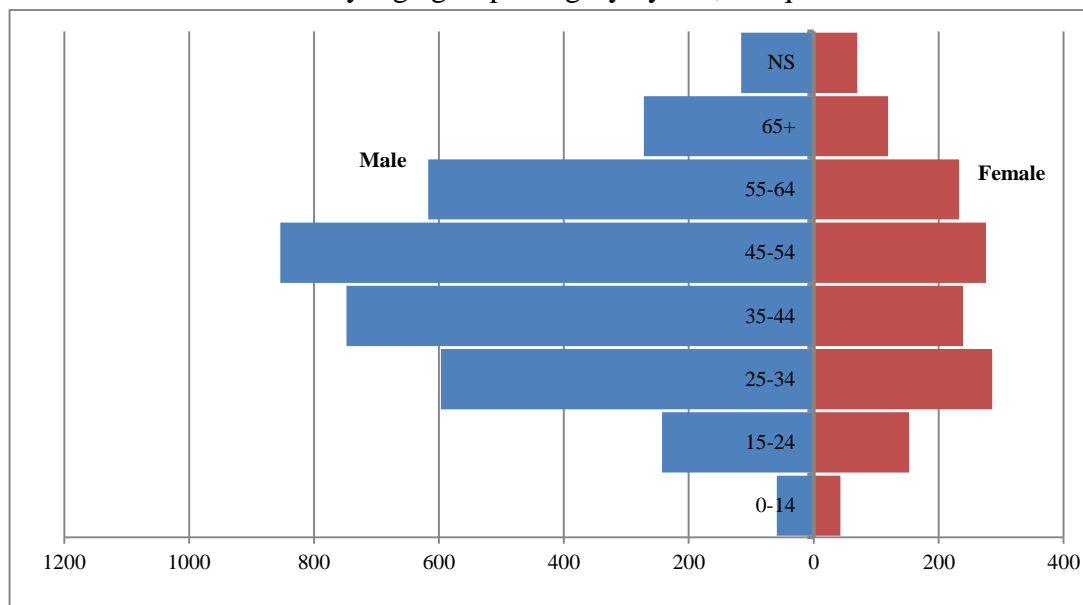


Table 7: Visitor Arrivals by Country of Residence by Occupation and Sex: 2nd Quarter 2014

Country of Usual Residence	Professional and Technical		Administration and Managerial		Clerical & Related Work		Sales Worker		Service Worker		Agriculture Forestry Fishery		Production & Related Work		Other		No Work		Total		
	M	F	M	F	M	F	M	F	M	F	M	F	M	F	M	F	M	F	M	F	All
	Australia	615	352	144	46	12	16	26	6	86	44	22	6	108	2	402	168	100	70	1,515	710
PNG	75	23	26	5	2	1	2	1	11	6	1	-	5	1	72	20	3	6	197	63	260
US	83	51	13	2	2	6	7	-	6	5	-	-	7	1	67	44	41	27	226	136	362
NZ	84	52	43	7	-	4	2	-	13	9	3	1	18	3	70	18	8	8	241	102	343
UK	26	14	3	-	-	1	-	-	2	1	-	-	4	-	23	14	4	7	62	37	99
Japan	44	1	8	-	4	-	2	-	-	2	-	-	1	-	17	2	2	1	78	6	84
Germany	6	1	1	-	-	-	-	-	-	-	-	4	-	-	12	2	3	1	26	4	30
Canada	6	5	4	1	-	1	2	-	-	-	-	-	-	-	10	5	6	3	28	15	43
Oth.Pacific	18	16	1	2	1	1	-	-	7	2	1	-	3	-	18	7	2	2	51	30	81
Vanuatu	63	26	3	6	3	1	1	-	4	7	-	-	-	1	41	5	4	6	119	52	171
Hong Kong	2	-	1	-	1	-	-	-	-	-	-	-	1	-	2	-	4	-	11	-	11
Fiji	90	45	37	3	5	1	3	-	9	6	10	-	4	-	84	50	9	5	251	110	361
Oth.Asia	80	18	56	5	5	3	62	3	8	19	8	1	62	-	144	22	68	16	493	87	580
Netherlands	2	4	1	1	-	-	2	-	-	-	1	-	-	-	4	2	1	-	11	7	18
Oth.Europe	21	10	5	-	-	-	3	1	-	1	5	-	1	-	16	3	5	5	56	20	76
France	3	1	-	-	1	-	1	-	1	-	-	-	1	-	8	1	2	-	17	2	19
Italy	1	5	-	-	-	-	-	-	-	-	-	-	2	-	-	1	1	-	4	6	10
China	14	5	17	5	2	-	15	3	2	1	1	-	2	-	16	5	10	5	79	24	103
Oth.Country	7	2	1	-	2	-	1	-	1	1	1	-	6	-	21	4	2	1	41	8	49
Total	1,240	631	364	83	40	35	129	14	149	104	57	8	225	8	1,027	373	275	163	3,506	1,419	4,925
Percentage																					
Australia	27.6	15.8	6.5	2.1	0.5	0.7	1.2	0.3	3.9	2.0	1.0	0.3	4.9	0.1	18.1	7.6	4.5	3.1	68.1	31.9	100.0
PNG	28.8	8.8	10.0	1.9	0.8	0.4	0.8	0.4	4.2	2.3	0.4	-	1.9	0.4	27.7	7.7	1.2	2.3	75.8	24.2	100.0
US	22.9	14.1	3.6	0.6	0.6	1.7	1.9	-	1.7	1.4	-	-	1.9	0.3	18.5	12.2	11.3	7.5	62.4	37.6	100.0
NZ	24.5	15.2	12.5	2.0	-	1.2	0.6	-	3.8	2.6	0.9	0.3	5.2	0.9	20.4	5.2	2.3	2.3	70.3	29.7	100.0
UK	26.3	14.1	3.0	-	-	1.0	-	-	2.0	1.0	-	-	4.0	-	23.2	14.1	4.0	7.1	62.6	37.4	100.0
Japan	52.4	1.2	9.5	-	4.8	-	2.4	-	-	2.4	-	-	1.2	-	20.2	2.4	2.4	1.2	92.9	7.1	100.0
Germany	20.0	3.3	3.3	-	-	-	-	-	-	-	13.3	-	-	-	40.0	6.7	10.0	3.3	86.7	13.3	100.0
Canada	14.0	11.6	9.3	2.3	-	2.3	4.7	-	-	-	-	-	-	-	23.3	11.6	14.0	7.0	65.1	34.9	100.0
Oth.Pacific	22.2	19.8	1.2	2.5	1.2	1.2	-	-	8.6	2.5	1.2	-	3.7	-	22.2	8.6	2.5	2.5	63.0	37.0	100.0
Vanuatu	36.8	15.2	1.8	3.5	1.8	0.6	0.6	-	2.3	4.1	-	-	-	0.6	24.0	2.9	2.3	3.5	69.6	30.4	100.0
Hong Kong	18.2	-	9.1	-	9.1	-	-	-	-	-	-	-	9.1	-	18.2	-	36.4	-	100.0	-	100.0
Fiji	24.9	12.5	10.2	0.8	1.4	0.3	0.8	-	2.5	1.7	2.8	-	1.1	-	23.3	13.9	2.5	1.4	69.5	30.5	100.0
Oth.Asia	13.8	3.1	9.7	0.9	0.9	0.5	10.7	0.5	1.4	3.3	1.4	0.2	10.7	-	24.8	3.8	11.7	2.8	85.0	15.0	100.0
Netherlands	11.1	22.2	5.6	5.6	-	-	11.1	-	-	-	5.6	-	-	-	22.2	11.1	5.6	-	61.1	38.9	100.0
Oth.Europe	27.6	13.2	6.6	-	-	-	3.9	1.3	-	1.3	6.6	-	1.3	-	21.1	3.9	6.6	6.6	73.7	26.3	100.0
France	15.8	5.3	-	-	5.3	-	5.3	-	5.3	-	-	-	5.3	-	42.1	5.3	10.5	-	89.5	10.5	100.0
Italy	10.0	50.0	-	-	-	-	-	-	-	-	-	-	20.0	-	-	10.0	10.0	-	40.0	60.0	100.0
China	13.6	4.9	16.5	4.9	1.9	-	14.6	2.9	1.9	1.0	1.0	-	1.9	-	15.5	4.9	9.7	4.9	76.7	23.3	100.0
Oth.Country	6.8	1.9	1.0	-	1.9	-	1.0	-	-	1.0	1.0	-	5.8	-	20.4	3.9	1.9	1.0	39.8	7.8	47.6
Total	25.2	12.8	7.4	1.7	0.8	0.7	2.6	0.3	3.0	2.1	1.2	0.2	4.6	0.2	20.9	7.6	5.6	3.3	71.2	28.8	100.0

Chart 7: Visitors Arrival by occupation by sex, 2nd quarter 2014

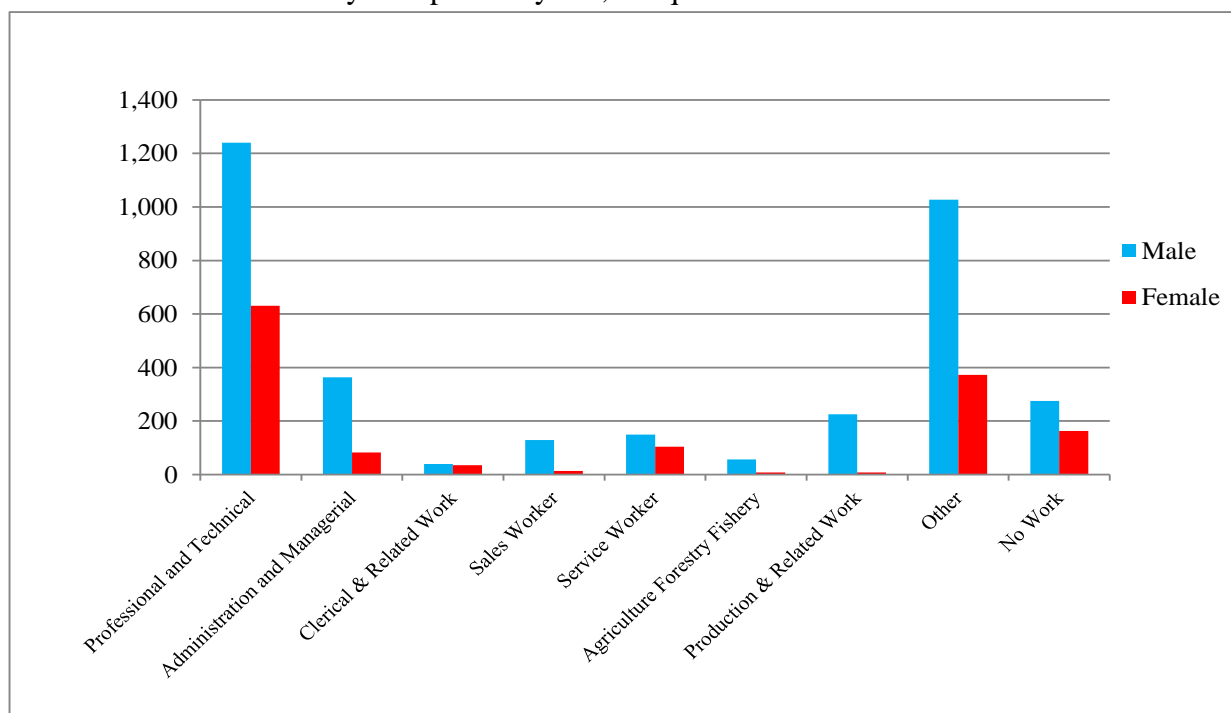
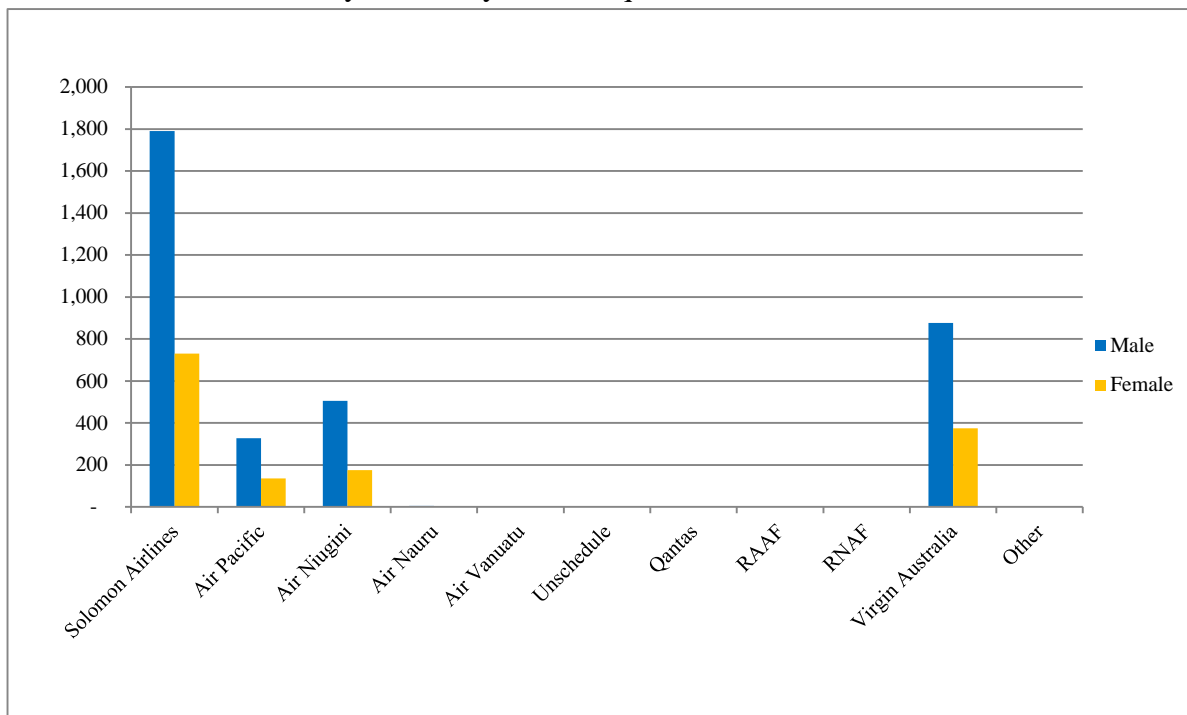


Table 8: Visitor Arrivals by Country of residence by Carrier by Sex: 2nd Quarter 2014

Country of Usual Residence	Solomon Airlines		Air Pacific		Air Niugini		Air Nauru		Air Vanuatu		Unschedule		Qantas		RAAF		RNAF		Virgin Australia		Other		Total																							
	M	F	M	F	M	F	M	F	M	F	M	F	M	F	M	F	M	F	M	F	M	F	M	F	All																					
	Australia	900	462	9	5	28	5	5	2	-	-	-	-	-	-	-	-	-	-	573	236	-	-	1,515	710	2,225																				
PNG	23	5	6	-	165	56	-	1	-	-	-	-	-	-	-	-	-	-	3	1	-	-	197	63	260																					
US	77	40	84	59	44	20	-	-	-	-	-	-	-	-	-	-	-	-	21	17	-	-	226	136	362																					
NZ	120	41	12	1	15	1	-	-	-	-	-	-	-	-	-	-	-	-	94	59	-	-	241	102	343																					
UK	34	15	3	3	6	-	-	-	-	-	-	-	-	-	-	-	-	-	19	19	-	-	62	37	99																					
Japan	41	1	5	-	20	3	-	-	-	-	-	-	-	-	-	-	-	-	12	2	-	-	78	6	84																					
Germany	8	-	8	-	1	2	-	-	-	-	-	-	-	-	-	-	-	-	9	2	-	-	26	4	30																					
Canada	17	11	6	1	-	-	-	-	-	-	-	-	-	-	-	-	-	-	5	3	-	-	28	15	43																					
Oth.Pacific	32	16	10	10	4	2	-	-	-	-	-	-	-	-	-	-	-	-	5	2	-	-	51	30	81																					
Vanuatu	76	35	29	13	13	4	-	-	-	-	-	-	-	-	-	-	-	-	1	-	-	-	119	52	171																					
Hong Kong	1	-	3	-	3	-	-	-	-	-	-	-	-	-	-	-	-	-	4	-	-	-	11	-	11																					
Fiji	93	49	109	35	43	23	-	-	-	-	1	-	-	-	-	-	-	-	5	3	-	-	251	110	361																					
Oth.Asia	281	37	22	4	103	30	-	-	-	-	-	-	-	-	-	-	-	-	87	16	-	-	493	87	580																					
Netherlands	8	2	-	-	3	5	-	-	-	-	-	-	-	-	-	-	-	-	-	-	-	-	11	7	18																					
Oth.Europe	29	4	1	1	6	4	-	-	-	-	-	-	-	-	-	-	-	-	20	11	-	-	56	20	76																					
France	9	1	2	1	3	-	-	-	-	-	-	-	-	-	-	-	-	-	3	-	-	-	17	2	19																					
Italy	2	2	1	2	-	-	-	-	-	-	-	-	-	-	-	-	-	-	1	2	-	-	4	6	10																					
China	20	3	15	1	41	20	-	-	-	-	-	-	-	-	-	-	-	-	3	-	-	-	79	24	103																					
Oth.Country	19	6	2	-	8	1	-	-	-	-	-	-	-	-	-	-	-	-	12	1	-	-	41	8	49																					
Total	1,790	730	327	136	506	176	5	3	-	-	1	-	-	-	-	-	-	-	877	374	-	-	3,506	1,419	4,925																					
	Percentage																																													
Australia	40.4	20.8	0.4	0.2	1.3	0.2	0.2	0.1	-	-	-	-	-	-	-	-	-	-	25.8	10.6	-	-	68.1	31.9	100.0																					
PNG	8.8	1.9	2.3	-	63.5	21.5	-	0.4	-	-	-	-	-	-	-	-	-	-	1.2	0.4	-	-	75.8	24.2	100.0																					
US	21.3	11.0	23.2	16.3	12.2	5.5	-	-	-	-	-	-	-	-	-	-	-	-	5.8	4.7	-	-	62.4	37.6	100.0																					
NZ	35.0	12.0	3.5	0.3	4.4	0.3	-	-	-	-	-	-	-	-	-	-	-	-	27.4	17.2	-	-	70.3	29.7	100.0																					
UK	34.3	15.2	3.0	3.0	6.1	-	-	-	-	-	-	-	-	-	-	-	-	-	19.2	19.2	-	-	62.6	37.4	100.0																					
Japan	48.8	1.2	6.0	-	23.8	3.6	-	-	-	-	-	-	-	-	-	-	-	-	14.3	2.4	-	-	92.9	7.1	100.0																					
Germany	26.7	-	26.7	-	3.3	6.7	-	-	-	-	-	-	-	-	-	-	-	-	30.0	6.7	-	-	86.7	13.3	100.0																					
Canada	39.5	25.6	14.0	2.3	-	-	-	-	-	-	-	-	-	-	-	-	-	-	11.6	7.0	-	-	65.1	34.9	100.0																					
Oth.Pacific	39.5	19.8	12.3	12.3	4.9	2.5	-	-	-	-	-	-	-	-	-	-	-	-	6.2	2.5	-	-	63.0	37.0	100.0																					
Vanuatu	44.4	20.5	17.0	7.6	7.6	2.3	-	-	-	-	-	-	-	-	-	-	-	-	0.6	-	-	-	69.6	30.4	100.0																					
Hong Kong	9.1	-	27.3	-	27.3	-	-	-	-	-	-	-	-	-	-	-	-	-	36.4	-	-	-	100.0	-	100.0																					
Fiji	25.8	13.6	30.2	9.7	11.9	6.4	-	-	-	-	0.3	-	-	-	-	-	-	-	1.4	0.8	-	-	69.5	30.5	100.0																					
Oth.Asia	48.4	6.4	3.8	0.7	17.8	5.2	-	-	-	-	-	-	-	-	-	-	-	-	15.0	2.8	-	-	85.0	15.0	100.0																					
Netherlands	44.4	11.1	-	-	16.7	27.8	-	-	-	-	-	-	-	-	-	-	-	-	-	-	-	-	61.1	38.9	100.0																					
Oth.Europe	38.2	5.3	1.3	1.3	7.9	5.3	-	-	-	-	-	-	-	-	-	-	-	-	26.3	14.5	-	-	73.7	26.3	100.0																					
France	47.4	5.3	10.5	5.3	15.8	-	-	-	-	-	-	-	-	-	-	-	-	-	15.8	-	-	-	89.5	10.5	100.0																					
Italy	20.0	20.0	10.0	20.0	-	-	-	-	-	-	-	-	-	-	-	-	-	-	10.0	20.0	-	-	40.0	60.0	100.0																					
China	19.4	2.9	14.6	1.0	39.8	19.4	-	-	-	-	-	-	-	-	-	-	-	-	2.9	-	-	-	76.7	23.3	100.0																					
Oth.Country	38.8	12.2	4.1	-	16.3	2.0	-	-	-	-	-	-	-	-	-	-	-	-	24.5	2.0	-	-	83.7	16.3	100.0																					
Total	36.3	14.8	6.6	2.8	10.3	3.6	0.1	0.1	-	-	-	-	-	-	-	-	-	-	17.8	7.6	-	-	71.2	28.8	100.0																					

Chart 8: Visitor Arrivals by Carrier by Sex, 2nd quarter 2014



Appendix 1

Concepts and Definitions

Persons entering Solomon Islands classify themselves into three (3) categories; returning resident, intending resident, and visitor. The concepts and definitions of the various categories are as follows:

(i) *Returning residents*

- Solomon Islanders and non-Solomon Islanders who have left the country and are returning to continue their residence.
- Non Solomon Islanders includes resident permit holders and Diplomatic officials, and their immediate family members. This may also includes legal or official arrangements that fall out side of the above.

(ii) *Intending residents*

- Non-Solomon Islander who wish to take up residence in Solomon Islands.

(iii) *Visitors*

- Any traveller who is not a Solomon Islander and who purposely spend less time – at most a period of 120 days², in the country and with the intention and purpose of visiting.
- *Tourist*
 - Visitors who further classify themselves stating their visit are purposely for '*holiday and vacation*'. This exclude, tourist arrivals by cruise ships.
 - Wife accompanying husband on business purpose is a private tourist unless also working.
 - *World Tourism Organization WTO definition of Tourism:*
*It comprises the activities of persons travelling to and staying in places outside their usual environment for not more than one consecutive year for leisure, business and other purposes not related to the exercise of an activity remunerated from within the place visited*³.

(iv) *Markets*

- *Country of Usual Residence*

² Solomon Islands 1993 Statistical Yearbook.

³ Dimensions of Hospitality, Study guide 1. p17

Appendix 2

Table 9: Intending Resident Arrivals by Country of Residence by Occupation and Sex: 2nd Quarter 2014

Country of Usual Residence	Professional and Technical		Administration and Managerial		Clerical & Related Work		Sales Worker		Service Worker		Agriculture Forestry Fishery		Production & Related Work		Other		No Work		Total		
	M	F	M	F	M	F	M	F	M	F	M	F	M	F	M	F	M	F	M	F	All
Australia	19	23	8	6	2	-	1	1	21	6	1	-	3	-	16	29	10	9	81	74	155
PNG	1	-	2	1	1	-	-	-	-	1	-	-	-	3	1	2	1	9	4	13	
US	3	2	2	-	-	-	-	-	-	-	-	-	-	-	1	-	5	3	8		
NZ	4	4	1	-	-	-	-	-	8	3	1	-	-	3	4	1	2	18	13	31	
UK	1	-	-	-	-	-	-	-	-	-	-	-	-	2	-	-	1	3	1	4	
Japan	1	1	1	1	-	-	-	-	-	-	-	-	-	3	2	-	1	5	5	10	
Germany	-	-	-	-	-	-	-	-	-	1	-	-	-	-	-	1	-	1	1	2	
Canada	-	1	-	-	-	-	-	-	-	-	-	-	-	1	-	-	-	1	1	2	
Oth.Pacific	1	1	-	1	-	-	-	-	5	-	-	-	-	1	2	2	1	9	5	14	
Vanuatu	2	-	-	-	-	-	-	-	-	-	-	-	-	-	-	-	-	2	-	2	
Hong Kong	-	-	-	-	-	-	-	-	-	-	-	-	-	1	-	-	-	1	-	1	
Fiji	5	-	3	-	1	-	-	-	1	-	4	-	1	-	9	2	1	3	25	5	30
Oth.Asia	38	19	53	3	-	1	19	2	6	8	43	2	104	1	78	8	31	5	372	49	421
Netherlands	1	-	-	-	-	-	-	-	-	-	-	-	-	-	-	-	1	1	1	2	
Oth.Europe	4	1	-	-	-	-	-	-	-	1	-	-	1	-	3	-	-	-	8	2	10
France	2	-	-	-	-	-	-	-	-	1	-	-	-	-	-	-	-	2	1	3	
Italy	-	-	-	-	-	-	-	-	-	-	-	-	-	-	-	-	-	-	-	-	-
China	6	7	14	6	-	4	4	2	1	5	1	-	1	-	10	3	14	9	51	36	87
Oth.Country	-	-	2	1	-	-	-	-	-	-	1	-	3	-	2	1	2	1	10	3	13
Total	88	59	86	19	4	5	24	5	42	26	51	2	113	1	132	53	64	34	604	204	808
	Percentage																				
Australia	12.3	14.8	5.2	3.9	1.3	-	0.6	0.6	13.5	3.9	0.6	-	1.9	-	10.3	18.7	6.5	5.8	52.3	47.7	100.0
PNG	7.7	-	15.4	7.7	7.7	-	-	-	-	7.7	-	-	-	-	23.1	7.7	15.4	7.7	69.2	30.8	100.0
US	37.5	25.0	25.0	-	-	-	-	-	-	-	-	-	-	-	-	12.5	-	-	62.5	37.5	100.0
NZ	12.9	12.9	3.2	-	-	-	-	-	25.8	9.7	3.2	-	-	-	9.7	12.9	3.2	6.5	58.1	41.9	100.0
UK	25.0	-	-	-	-	-	-	-	-	-	-	-	-	-	50.0	-	-	25.0	75.0	25.0	100.0
Japan	10.0	10.0	10.0	10.0	-	-	-	-	-	-	-	-	-	-	30.0	20.0	-	10.0	50.0	50.0	100.0
Germany	-	-	-	-	-	-	-	-	-	50.0	-	-	-	-	-	-	50.0	-	50.0	50.0	100.0
Canada	-	50.0	-	-	-	-	-	-	-	-	-	-	-	-	50.0	-	-	-	50.0	50.0	100.0
Oth.Pacific	7.1	7.1	-	7.1	-	-	-	-	35.7	-	-	-	-	-	7.1	14.3	14.3	7.1	64.3	35.7	100.0
Vanuatu	100.0	-	-	-	-	-	-	-	-	-	-	-	-	-	-	-	-	-	100.0	-	100.0
Hong Kong	-	-	-	-	-	-	-	-	-	-	-	-	-	-	100.0	-	-	-	100.0	-	100.0
Fiji	16.7	-	10.0	-	3.3	-	-	-	3.3	-	13.3	-	3.3	-	30.0	6.7	3.3	10.0	83.3	16.7	100.0
Oth.Asia	9.0	4.5	12.6	0.7	-	0.2	4.5	0.5	1.4	1.9	10.2	0.5	24.7	0.2	18.5	1.9	7.4	1.2	88.4	11.6	100.0
Netherlands	50.0	-	-	-	-	-	-	-	-	-	-	-	-	-	-	-	-	50.0	50.0	50.0	100.0
Oth.Europe	40.0	10.0	-	-	-	-	-	-	-	10.0	-	-	10.0	-	30.0	-	-	-	80.0	20.0	100.0
France	66.7	-	-	-	-	-	-	-	-	33.3	-	-	-	-	-	-	-	-	66.7	33.3	100.0
Italy	-	-	-	-	-	-	-	-	-	-	-	-	-	-	-	-	-	-	-	-	-
China	6.9	8.0	16.1	6.9	-	4.6	4.6	2.3	1.1	5.7	1.1	-	1.1	-	11.5	3.4	16.1	10.3	58.6	41.4	100.0
Oth.Country	-	-	15.4	7.7	-	-	-	-	-	-	7.7	-	23.1	-	15.4	7.7	15.4	7.7	76.9	23.1	100.0
Total	10.9	7.3	10.6	2.4	0.5	0.6	3.0	0.6	5.2	3.2	6.3	0.2	14.0	0.1	16.3	6.6	7.9	4.2	74.8	25.2	100.0

Table 10: Intending Resident Arrivals by Country of Residence by Age Groups by Sex: 2nd Quarter 2014

Country of Usual Residence	Age-Group																		Total		
	0-14		15-24		25-34		35-44		45-54		55-64		65+		Not Stated		M	F	All		
	M	F	M	F	M	F	M	F	M	F	M	F	M	F							
Australia	7	5	2	5	9	20	17	21	19	10	18	5	4	-	5	8	81	74	155		
PNG	1	1	-	-	1	2	2	1	2	-	1	-	-	-	2	-	9	4	13		
US	-	-	-	-	-	1	1	-	2	1	-	1	1	-	1	-	5	3	8		
NZ	-	-	1	-	2	5	3	1	5	2	6	5	-	-	1	-	18	13	31		
UK	-	1	-	-	-	-	1	-	2	-	-	-	-	-	-	-	3	1	4		
Japan	-	-	-	-	1	-	-	2	2	1	1	1	1	-	1	1	5	5	10		
Germany	-	-	-	-	-	-	-	-	-	-	-	1	-	-	1	-	1	1	2		
Canada	-	-	-	-	1	1	-	-	-	-	-	-	-	-	-	-	1	1	2		
Oth.Pacific	-	-	-	-	3	-	2	1	3	3	-	1	1	-	-	-	9	5	14		
Vanuatu	1	-	-	-	-	-	-	-	-	-	1	-	-	-	-	-	2	-	2		
Hong Kong	-	-	-	-	-	-	-	-	-	-	1	-	-	-	-	-	1	-	1		
Fiji	-	1	2	-	6	2	7	-	5	1	5	1	-	-	1	-	25	5	30		
Oth.Asia	2	4	27	7	77	13	122	9	85	8	48	6	2	-	9	2	372	49	421		
Netherlands	-	-	-	-	-	-	-	-	-	-	1	1	-	-	-	-	1	1	2		
Oth.Europe	-	-	-	-	1	-	1	1	2	1	3	-	-	-	1	-	8	2	10		
France	-	-	-	-	2	-	-	-	-	1	-	-	-	-	-	-	2	1	3		
Italy	-	-	-	-	-	-	-	-	-	-	-	-	-	-	-	-	-	-	-		
China	-	-	15	5	17	23	9	5	5	2	3	1	1	-	1	-	51	36	87		
Oth.Country	-	-	-	-	5	1	2	2	1	-	1	-	-	-	1	-	10	3	13		
Total	11	12	47	17	125	68	167	43	133	29	89	23	10	-	22	12	604	204	808		
	Percentage																				
Australia	4.5	3.2	1.3	3.2	5.8	12.9	11.0	13.5	12.3	6.5	11.6	3.2	2.6	-	3.2	5.2	52.3	47.7	100.0		
PNG	7.7	7.7	-	-	7.7	15.4	15.4	7.7	15.4	-	7.7	-	-	-	15.4	-	69.2	30.8	100.0		
US	-	-	-	-	-	12.5	12.5	-	25.0	12.5	-	12.5	12.5	-	12.5	-	62.5	37.5	100.0		
NZ	-	-	3.2	-	6.5	16.1	9.7	3.2	16.1	6.5	19.4	16.1	-	-	3.2	-	58.1	41.9	100.0		
UK	-	25.0	-	-	-	-	25.0	-	50.0	-	-	-	-	-	-	-	75.0	25.0	100.0		
Japan	-	-	-	-	10.0	-	-	20.0	20.0	10.0	10.0	10.0	10.0	-	-	10.0	50.0	50.0	100.0		
Germany	-	-	-	-	-	-	-	-	-	-	-	50.0	-	-	50.0	-	50.0	50.0	100.0		
Canada	-	-	-	-	50.0	50.0	-	-	-	-	-	-	-	-	-	-	50.0	50.0	100.0		
Oth.Pacific	-	-	-	-	21.4	-	14.3	7.1	21.4	21.4	-	7.1	7.1	-	-	-	64.3	35.7	100.0		
Vanuatu	50.0	-	-	-	-	-	-	-	-	-	50.0	-	-	-	-	-	100.0	-	100.0		
Hong Kong	-	-	-	-	-	-	-	-	-	-	100.0	-	-	-	-	-	100.0	-	100.0		
Fiji	-	3.3	6.7	-	20.0	6.7	23.3	-	16.7	-	16.7	3.3	-	-	-	3.3	83.3	16.7	100.0		
Oth.Asia	0.5	1.0	6.4	1.7	18.3	3.1	29.0	2.1	20.2	1.9	11.4	1.4	0.5	-	2.1	0.5	88.4	11.6	100.0		
Netherlands	-	-	-	-	-	-	-	-	-	-	50.0	50.0	-	-	-	-	50.0	50.0	100.0		
Oth.Europe	-	-	-	-	10.0	-	10.0	10.0	20.0	10.0	30.0	-	-	-	10.0	-	80.0	20.0	100.0		
France	-	-	-	-	66.7	-	-	-	-	33.3	-	-	-	-	-	-	66.7	33.3	100.0		
Italy	-	-	-	-	-	-	-	-	-	-	-	-	-	-	-	-	-	-	-		
China	-	-	17.2	5.7	19.5	26.4	10.3	5.7	5.7	2.3	3.4	1.1	1.1	-	1.1	-	58.6	41.4	100.0		
Oth.Country	-	-	-	-	38.5	7.7	15.4	15.4	7.7	-	7.7	-	-	-	7.7	-	76.9	23.1	100.0		
Total	1.4	1.5	5.8	2.1	15.5	8.4	20.7	5.3	16.5	3.6	11.0	2.8	1.2	-	2.7	1.5	74.8	25.2	100.0		

Table 11: Returning Resident Arrivals by Country of Residence by Age Groups by Sex: 2nd Quarter 2014

Country of Usual Residence	Age-Group																		
	0-14		15-24		25-34		35-44		45-54		55-64		65+		Not Stated		Total		
	M	F	M	F	M	F	M	F	M	F	M	F	M	F	M	F	M	F	All
Australia	1	1	-	2	10	7	12	7	16	5	6	2	4	-	4	3	53	27	80
PNG	-	-	-	-	1	1	1	-	2	-	-	-	-	-	-	-	4	1	5
US	-	-	-	-	-	-	-	-	-	-	-	-	-	-	-	-	-	-	-
NZ	-	1	-	-	-	1	3	2	1	3	3	1	-	-	-	1	7	9	16
UK	-	-	-	-	1	1	-	-	1	-	-	-	-	-	-	-	2	1	3
Japan	-	-	1	-	-	1	1	-	2	1	-	-	-	-	-	-	4	2	6
Germany	-	-	-	-	-	-	-	-	-	-	-	-	-	-	-	-	-	-	-
Canada	-	-	-	-	-	-	-	-	-	-	-	-	-	-	-	-	-	-	-
Oth.Pacific	-	2	-	-	2	-	1	-	1	1	-	-	-	-	1	1	5	4	9
Vanuatu	-	-	-	-	-	-	-	-	-	-	2	-	-	-	-	-	2	-	2
Hong Kong	-	-	-	-	-	-	1	-	-	-	-	-	-	-	-	-	1	-	1
Fiji	1	-	-	1	4	-	-	-	-	-	2	-	-	-	-	-	7	1	8
Oth.Asia	-	-	1	-	2	1	10	2	12	1	10	-	1	2	-	-	36	6	42
Netherlands	-	-	-	-	-	-	-	-	-	-	1	-	-	-	-	-	1	-	1
Oth.Europe	-	-	-	-	1	-	-	-	1	-	1	-	-	-	-	-	3	-	3
France	-	-	-	-	-	-	1	-	-	-	-	-	-	-	-	-	1	-	1
Italy	-	-	-	-	-	-	-	-	-	-	-	-	-	-	-	-	-	-	-
China	-	-	-	2	-	2	-	1	-	-	-	-	-	-	-	-	-	5	5
Oth.Country	-	-	-	-	-	-	-	-	-	-	-	-	-	-	-	-	-	-	-
Solomon Is.	69	51	243	167	613	330	638	321	516	191	253	82	53	20	126	69	2,511	1,231	3,742
Total	71	55	245	172	634	344	668	333	552	202	278	85	58	22	131	74	2,637	1,287	3,924

Country of Usual Residence	Percentage																		
	M	F	M	F	M	F	M	F	M	F	M	F	M	F	M	F	M	F	All
Australia	1.3	1.3	-	2.5	12.5	8.8	15.0	8.8	20.0	6.3	7.5	2.5	5.0	-	5.0	3.8	66.3	33.8	100.0
PNG	-	-	-	-	20.0	20.0	20.0	-	40.0	-	-	-	-	-	-	-	80.0	20.0	100.0
US	-	-	-	-	-	-	-	-	-	-	-	-	-	-	-	-	-	-	-
NZ	-	6.3	-	-	-	6.3	18.8	12.5	6.3	18.8	18.8	6.3	-	-	-	6.3	43.8	56.3	100.0
UK	-	-	-	-	33.3	33.3	-	-	33.3	-	-	-	-	-	-	-	66.7	33.3	100.0
Japan	-	-	16.7	-	-	16.7	16.7	-	33.3	16.7	-	-	-	-	-	-	66.7	33.3	100.0
Germany	-	-	-	-	-	-	-	-	-	-	-	-	-	-	-	-	-	-	-
Canada	-	-	-	-	-	-	-	-	-	-	-	-	-	-	-	-	-	-	-
Oth.Pacific	-	22.2	-	-	22.2	-	11.1	-	11.1	11.1	-	-	-	-	11.1	11.1	55.6	44.4	100.0
Vanuatu	-	-	-	-	-	-	-	-	-	-	100.0	-	-	-	-	-	100.0	-	100.0
Hong Kong	-	-	-	-	-	-	100.0	-	-	-	-	-	-	-	-	-	100.0	-	100.0
Fiji	12.5	-	-	12.5	50.0	-	-	-	-	-	25.0	-	-	-	-	-	87.5	12.5	100.0
Oth.Asia	-	-	2.4	-	4.8	2.4	23.8	4.8	28.6	2.4	23.8	-	2.4	4.8	-	-	85.7	14.3	100.0
Netherlands	-	-	-	-	-	-	-	-	-	-	100.0	-	-	-	-	-	100.0	-	100.0
Oth.Europe	-	-	-	-	33.3	-	-	-	33.3	-	33.3	-	-	-	-	-	100.0	-	100.0
France	-	-	-	-	-	-	100.0	-	-	-	-	-	-	-	-	-	100.0	-	100.0
Italy	-	-	-	-	-	-	-	-	-	-	-	-	-	-	-	-	-	-	-
China	-	-	-	40.0	-	40.0	-	20.0	-	-	-	-	-	-	-	-	-	100.0	100.0
Oth.Country	-	-	-	-	-	-	-	-	-	-	-	-	-	-	-	-	-	-	-
Solomon Is.	1.8	1.4	6.5	4.5	16.4	8.8	17.0	8.6	13.8	5.1	6.8	2.2	1.4	0.5	3.4	1.8	67.1	32.9	100.0
Total	1.8	1.4	6.2	4.4	16.2	8.8	17.0	8.5	14.1	5.1	7.1	2.2	1.5	0.6	3.3	1.9	67.2	32.8	100.0

Table 12: Returning Resident Arrivals by Country of Residence by Occupation and Sex: 2nd Quarter 2014

Country of Usual Residence	Professional and Technical		Administration and Managerial		Clerical & Related Work		Sales Worker		Service Worker		Agriculture Forestry Fishery		Production & Related Work		Other		No Work		Total		
	M	F	M	F	M	F	M	F	M	F	M	F	M	F	M	F	M	F	M	F	All
Australia	15	10	8	2	-	-	1	-	2	4	1	-	6	-	12	8	8	3	53	27	80
PNG	2	-	2	-	-	-	-	-	-	1	-	-	-	-	-	-	-	-	4	1	5
US	-	-	-	-	-	-	-	-	-	-	-	-	-	-	-	-	-	-	-	-	-
NZ	2	4	-	-	1	-	-	-	2	2	-	-	1	-	1	-	-	3	7	9	16
UK	1	1	-	-	-	-	-	-	-	-	-	-	-	-	1	-	-	-	2	1	3
Japan	-	-	-	1	-	-	1	-	1	1	-	-	1	-	1	-	-	-	4	2	6
Germany	-	-	-	-	-	-	-	-	-	-	-	-	-	-	-	-	-	-	-	-	-
Canada	-	-	-	-	-	-	-	-	-	-	-	-	-	-	-	-	-	-	-	-	-
Oth.Pacific	-	3	-	-	-	-	-	-	4	-	-	-	-	-	-	-	1	1	5	4	9
Vanuatu	2	-	-	-	-	-	-	-	-	-	-	-	-	-	-	-	-	-	2	-	2
Hong Kong	-	-	-	-	-	-	-	-	-	-	-	-	1	-	-	-	-	-	1	-	1
Fiji	4	1	2	-	-	-	-	-	-	-	-	-	-	-	-	-	1	-	7	1	8
Oth.Asia	4	1	4	1	-	-	6	-	1	3	-	-	11	-	6	-	4	1	36	6	42
Netherlands	1	-	-	-	-	-	-	-	-	-	-	-	-	-	-	-	-	-	1	-	1
Oth.Europe	1	-	-	-	-	-	-	-	-	-	-	-	1	-	1	-	-	-	3	-	3
France	-	-	-	-	-	-	-	-	-	-	-	-	-	-	1	-	-	-	1	-	1
Italy	-	-	-	-	-	-	-	-	-	-	-	-	-	-	-	-	-	-	-	-	-
China	-	2	-	-	-	-	-	-	-	-	-	-	-	-	-	-	-	3	-	5	5
Oth.Country	-	-	-	-	-	-	-	-	-	-	-	-	-	-	-	-	-	-	-	-	-
Solomon Is.	1,069	516	263	96	53	25	67	5	47	182	50	7	75	6	694	289	193	105	2,511	1,231	3,742
Total	1,101	538	279	100	54	25	75	5	57	193	51	7	96	6	717	297	207	116	2,637	1,287	3,924
	<u>Percentage</u>																				
Australia	18.8	12.5	10.0	2.5	-	-	1.3	-	2.5	5.0	1.3	-	7.5	-	15.0	10.0	10.0	3.8	66.3	33.8	100.0
PNG	40.0	-	40.0	-	-	-	-	-	-	20.0	-	-	-	-	-	-	-	-	80.0	20.0	100.0
US	-	-	-	-	-	-	-	-	-	-	-	-	-	-	-	-	-	-	-	-	-
NZ	12.5	25.0	-	-	6.3	-	-	-	12.5	12.5	-	-	6.3	-	6.3	-	-	18.8	43.8	56.3	100.0
UK	33.3	33.3	-	-	-	-	-	-	-	-	-	-	-	-	33.3	-	-	-	66.7	33.3	100.0
Japan	-	-	-	16.7	-	-	16.7	-	16.7	16.7	-	-	16.7	-	16.7	-	-	-	66.7	33.3	100.0
Germany	-	-	-	-	-	-	-	-	-	-	-	-	-	-	-	-	-	-	-	-	-
Canada	-	-	-	-	-	-	-	-	-	-	-	-	-	-	-	-	-	-	-	-	-
Oth.Pacific	-	33.3	-	-	-	-	-	-	44.4	-	-	-	-	-	-	-	11.1	11.1	55.6	44.4	100.0
Vanuatu	100.0	-	-	-	-	-	-	-	-	-	-	-	-	-	-	-	-	-	100.0	-	100.0
Hong Kong	-	-	-	-	-	-	-	-	-	-	-	-	100.0	-	-	-	-	-	100.0	-	100.0
Fiji	50.0	12.5	25.0	-	-	-	-	-	-	-	-	-	-	-	-	-	12.5	-	87.5	12.5	100.0
Oth.Asia	9.5	2.4	9.5	2.4	-	-	14.3	-	2.4	7.1	-	-	26.2	-	14.3	-	9.5	2.4	85.7	14.3	100.0
Netherlands	100.0	-	-	-	-	-	-	-	-	-	-	-	-	-	-	-	-	-	100.0	-	100.0
Oth.Europe	33.3	-	-	-	-	-	-	-	-	-	-	-	33.3	-	33.3	-	-	-	100.0	-	100.0
France	-	-	-	-	-	-	-	-	-	-	-	-	-	-	100.0	-	-	-	100.0	-	100.0
Italy	-	-	-	-	-	-	-	-	-	-	-	-	-	-	-	-	-	-	-	-	-
China	-	40.0	-	-	-	-	-	-	-	-	-	-	-	-	-	-	-	60.0	-	100.0	100.0
Oth.Country	-	-	-	-	-	-	-	-	-	-	-	-	-	-	-	-	-	-	-	-	-
Solomon Is.	28.6	13.8	7.0	2.6	1.4	0.7	1.8	0.1	1.3	4.9	1.3	0.2	2.0	0.2	18.5	7.7	5.2	2.8	67.1	32.9	100.0
Total	28.1	13.7	7.1	2.5	1.4	0.6	1.9	0.1	1.5	4.9	1.3	0.2	2.4	0.2	18.3	7.6	5.3	3.0	67.2	32.8	100.0