

If you want today's News, today you can find it in THE STAR.

THE HAWAIIAN STAR.

The Hawaiian Star is the paper that goes into the best homes of Honolulu.

VOL. IX.

HONOLULU, H. I., TUESDAY, NOVEMBER 26, 1901.

No. 3026

HE SAVED TEN MEN

ALEX DOUGLAS MIGHT HAVE KILLED MANY.

Only Cut One, Just to Scare the Rest. Verdict in Criminal Cases Before Judge Gear.

"I could have killed ten men easy," said Alex Douglas, a negro defendant, yesterday in Judge Gear's court, giving a vicious swish through the air with a heavy pocket knife by way of illustration. "I could have killed that man I cut and ten more, but I didn't do nothin' but just cut him a bit to scare the crowd."

Douglas was on trial for assault and battery with a weapon obviously and immediately dangerous to life. He was alleged to have attacked one Huihul in Kakaako last September, on the night of a big row there, when two water front gangs met in battle. Huihul was considerably cut, and several witnesses were produced to show that Douglas had done the cutting. Then the defendant told his story for the benefit of the court and jury.

Douglas said that he and two companions were on their way to play a call, when he suddenly observed about fifteen or twenty natives coming towards them in the middle of the street. They were talking a good deal. A white man passed and he heard someone say "Don't hit the haole." Then one of the crowd hit Douglas on the face, and he brought out the knife that might have been so deadly.

"Is this the knife?" asked Deputy Attorney-General, Cathcart, at this stage, handing the defendant a large pocket knife. The defendant said that it was and he proceeded to show how he had used it.

"I just swung this way and cut him," said the sable defendant, while Cathcart quickly stepped beyond the cutting of the knife's swing. "I didn't do like this, to kill him." Douglas here gave many examples of the jab direct, indicating that if he had chosen to offer such a jab to the complaining witness, the coroner would have been sent for at once. "I could have cut this one crowd and killed ten men, said Douglas again, "but I only cut this one. They all ran, when they saw me cut Huihul, and I was safe."

"You're quite an expert with a knife aren't you?" asked Cathcart, taking the knife back and giving an imitation of the slash sideways and the stab direct. Douglas modestly disclaimed the honor.

The jury first came into court with a disagreement, standing 11 to 1. Judge Gear sent the jurors back and they soon over the lonely juror, returning a verdict of guilty of simple assault and battery. The jurors were: Charles E. Lake, James Kahalepua, John A. Noble, Benjamin R. Campbell, Edwin K. Blake, James K. Merseberg, Jonah K. Nakila, A. K. Aona, George W. Harrison, H. E. Bickerton, William Hermit, John M. Davis.

A. Ahrens who, while riding a bicycle on Emma street, ran over and killed a Japanese who was also on a wheel, was acquitted of manslaughter. Both Ahrens and the Jap met at a corner, and the jury decided that the occurrence was purely an accident. The jurors in this case were: Herman Levy, Joseph H. Bray, John W. Smithies, Isaiah Bray, David Notley, Guy Livingston, Harry S. Swinton, Edward Woodward, James M. Sims, A. G. Nichols, George W. Macy and George K. Kaia.

NEWSBOYS' DINNER.

The Star will give its regular Thanksgiving Dinner and Outing to the Newsboys this year as usual.

The Star was the first paper in Honolulu to recognize the services of the Newsboys in this way, and its Newsboys' Thanksgiving Dinner has been an established institution for five years. The dinner to be given next Thursday will be the fifth of the series.

Both The Star and the Newsboys enjoy it more and more each year. Here's to The Star; the Newsboy, and the Thanksgiving Turkey.

LOW PRICED GROUND. Not only is Colles Hills the best residence suburb, but it is also the most reasonably priced. Excellent lots near car line for only six cents per square foot.

THE SEARCHLIGHT. Look out for the searchlight on the Heights.

Houses for Rent

On Beretania Street, Ewa of Thean Square, a partially furnished house for rent. Suitable for small family. And on opposite side of the street, a furnished 8 room house, with ample grounds. Also an unfurnished cottage on Beretania Street, next to Auld Building. For terms and further particulars apply to

HAWAIIAN TRUST CO., LTD
Geo. R. Carter, Treas.
923 Fort Street P. O. Box 447

HAS HUNDREDS OF THOUSANDS

WHERE STRONG AND LADY FRANCIS HOPE GET THEIR STUFF.

STRONG MADE IT IN STOCKS THIS YEAR.

Says He Cleaned Up Over \$200,000 in Northern Pacific—May Yohe Entertaining the Yokohama Bloods.

The secret of the unexpected wealth of Major Strong and May Yohe is out. May has not had to pawn her diamonds as has been reported nor are she and the gallant and erring Major on the verge of a separation. May proposes to remain with her consort just so long as the money lasts, and if recent reports from the Orient prove correct, they can continue their love making indefinitely. Nor is it surprising that May proposes to cling to the Major for it is he who is supplying the cash. He supplies it, not in cheap Mexican 'dobe dollars, but in good hard American double eagles. Where he got the mazzama lies the mystery. Major Strong has tired of all the talk that has been made at his expense, now he is ready to separate, because we are out of funds makes me sick. It is nobody's business if we are out of funds. We have not asked anything from anybody, but we are not running short of money and will not be apt to do so for some time to come. I have plenty of money and we propose to do with it as we like. Where did I get it? \$25,000 won't go very far at this rate? Well, that sum is nothing. I am worth \$200,000 in cash today. I made it in stocks. I made it in Wall Street during that famous jump in Northern Pacific stocks. I got out at the right time and made over \$200,000 on the deal."

But Strong is not only nettled over the insinuation that his consort will leave him when his cash is gone. He feels aggrieved over the insinuation that he treated his mother badly. "When that house being sold in New York," he is quoted as saying, "that was done at my mother's wish. She did not care to reside in it. Besides, my mother and I have not spoken to each other for seven years."

But May? She dear thing is as winsome as a vixen, fascinating as a siren. She has solved the problem of living a virtuous (?) life. Like Becky Sharp, she finds it an easy matter being good on ten thousand a year. May is not quite so extravagant as the little villain of Mayfair though, but now that Strong has admitted how strong he really is financially, she may make a fresh spurge and try to plumb that \$200,000 wad.

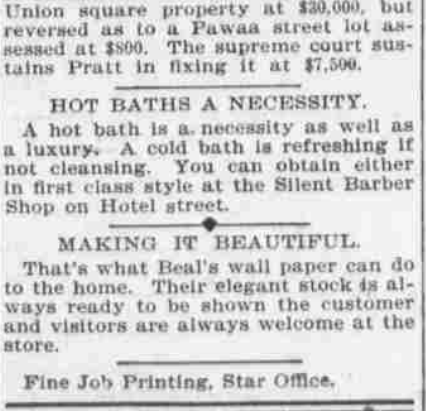
The pair are living in elegant quarters in Yokohama. They are delighted with the climate, the place and the people, that is, May is pleased. She certainly lavishly and has all of the swell young fellows of Yokohama to call and see her. The Major has to play the part of the "Sheep Dog," like Becky used to have at her little house in Mayfair, and growl when the visitors become too amorous in their cups. Ladies of respectability do not attend pink teas at the Strong-Hope resort. Women of the easy code may stray in, once in a while to an afternoon champagne, but as a rule, May reigns alone in her little place. Meanwhile Major is learning to swear dreadfully they say, and mix cocktails like a bartender. Ladies of the Ten Commandments on the road to Mandalay.

TAX APPEALS DECIDED. The supreme court this afternoon handed down two decisions in cases appealed by Tax Collector Pratt from the decisions of the tax appeal court. In the case of Emil K. Merkten the tax collector is sustained in his assessment of \$25,000, and the tax court is reversed in fixing the assessment at \$7,200. In the case of the Bishop estate the tax court is sustained as to an assessment of Union square property at \$30,000, but reversed as to a Pawaas street lot assessed at \$800. The supreme court sustains Pratt in fixing it at \$7,500.

HOT BATHS A NECESSITY. A hot bath is a necessity as well as a luxury. A cold bath is refreshing if not cleansing. You can obtain either in first class style at the Silent Barber Shop on Hotel street.

MAKING IT BEAUTIFUL. That's what Beal's wall paper can do to the home. Their elegant stock is always ready to be shown the customer and visitors are always welcome at the store.

Fine Job Printing, Star Office.



BOOK CASES, OFFICE FURNITURE AND DEVICES

PEARSON & POTTER CO., LTD.
926 Fort Street Telephone Main 317

DELAYED BY STORM

NIIPPON MARU WAS LATE IN MAKING PORT.

Cabin Windows Were Smashed by the Heavy Seas—Brings Many Japanese For Honolulu—The Passengers.

Northeast gales delayed the Nippon Maru on her run from Yokohama and, to general surprise, she did not make port until 2 o'clock this morning, when ordinarily she should have been inside the harbor during the afternoon of yesterday. She lay outside until this morning and then docked at the Channel wharf.

The vessel left Hong Kong, November 5 and Yokohama, November 15. From Yokohama to the 190th meridian the worst kind of weather prevailed, the wind blowing a gale from the northeast and the seas running high, nearly all the time. The vessel was continually shipping seas and, when out of Yokohama several days, she shipped an unusually heavy sea which smashed in four of the port cabin windows. No other damage of consequence was done, although the vessel shows the marks of the big storm. Good weather was not experienced until within a couple of days from Honolulu. The storm had delayed the vessel so up to that time, that it was decided not to crowd on an extra coal required to get her into this port, ahead of her schedule time, so she was not sighted until late at night.

The vessel has 1200 tons of cargo for Honolulu, which is probably the largest brought here in many months by a liner. Most of this consists of gunny bags. There are 20 Japanese and 13 Chinese for Honolulu. This is by far, the largest number of Japanese, which has been brought here in over a year, and it is understood that the emigration to this quarter is to continue. There are 12 Japanese for San Francisco, of whom \$2,000 has been collected.

Among the through passengers is Dr. J. J. Kinyoun, formerly Federal quarantine officer at San Francisco. He is returning from an inspection of the United States quarantine stations in the Orient and Philippines. He passed through the company's port at Honolulu on the Nippon Maru going to the Orient.

J. Ikeda is the Japanese counsellor and minister of communication. He is going to the United States and Europe on a tour of inspection, for the purpose of inquiring into the various postal systems of the western nations. He is accompanied by K. Kume, counsellor to the same department.

M. Kirkwood is an English barrister, who has been legal adviser to the Japanese government for a number of years. He is returning with his family to visit his old home.

H. H. H. is the postmaster at Hilo in the Philippines. He is going home on a leave of absence. J. K. Carpenter is a mining expert from the Korean mines. George F. Dietrick is the travelling agent of the California and Oriental Steamship Company. He has been absent in the Orient, inspecting the various agencies in that section of the globe. He is accompanied home by his wife and family.

Charles Heymann is a representative of the French government who has been studying trade conditions throughout the Orient. His government intends to try and secure the open door in China. The Nippon Maru passed through the Inland Sea before the transport Hancock went aground in the Straits of Shimonoseki, so no details of the accident were learned. The Nippon Maru is scheduled to sail for San Francisco at midnight, but it is doubtful if she will get away before tomorrow morning.

THE CROWN PRINCE. YOKOHAMA, November 15.—H. I. H. the Crown Prince was promoted to the rank of Lieutenant Colonel of the Army and from Junior Captain of the Navy on the occasion of the Emperor's birthday.

A NEW PRINCE OF WALES. SHANGHAI, November 10.—The Duke of Cornwall has been created Prince of Wales and Earl of Chester.

40,000 RATS. YOKOHAMA, November 16.—The Kobe City Assembly has passed an appropriation of ¥2,000 for the purchase of 40,000 rats at the rate of 5 sen apiece.

S. C. ALLEN LEAVES TODAY. The bark S. C. Allen leaves this afternoon for San Francisco, with sugar ballast. Miss Ernestine Coughran who has been engaged in local newspaper work for the past year, is returning to the Coast. Mrs. Pearson is also returning on the Allen. A number of friends of Miss Coughran were at the wharf to bid her adieu.

NIHUA DELAYING SAILING. The steamer Nihoa was delayed yesterday in leaving for Kauai ports and will not sail until this afternoon at 5 o'clock.

PEARL HARBOR CASE. Captain White's testimony was concluded at the morning session. His cross-examination was brief. Tomorrow the court and jury will go to Pearl Harbor, to visit the property and inspect it.

CHAMBERLAIN'S COUGH REMEDY IN CHICAGO. Higen Bros., the popular South Side druggists, corner 69th street and Wentworth avenue, say: "We sell a great deal of Chamberlain's Cough Remedy, and find that it gives the most satisfactory results, especially among children for severe colds and croup." For sale by all dealers. Benson, Smith & Co., general agents, Hawaiian Islands.

THE CHEAPEST HOUSE FOR TOYS. The best and cheapest house for toys is our store. All kinds of toys for boys and girls now on show. L. B. Kerr & Co.

ICE HOUSE DELICACIES. Camarinos California Fruit Market is the place for ice house delicacies. Everything the California market affords at this season of the year can be found at Camarinos.

READY FOR A COMPROMISE

FIRST PEARL HARBOR CASE ON TRIAL BEFORE ESTEE.

BISHOP ESTATE COMPROMISE OFFER.

Would Take \$50 an Acre if Water Front Were Left—Army Coming Next, Says Kinney.

The opening statements in behalf of the United States and in behalf of the Bishop Estate in the first Pearl Harbor suit this morning, threw new light on the proceedings for the benefit of the jury and court, and incidentally showed that some long trials are ahead. Dunne explained for the government what he expected to prove, and let out the secret of a proposed compromise, while Kinney for the Bishop Estate, declared that he understood that the present proceedings was only a first bite by the government, and that the army was coming next, to take whatever of value was left along the harbor.

Dunne first read the long complaint and the answer. He stated to the jury that every contention of the government as to the navy department's need of the land and the use of which it was to be put, had been admitted to be true and that the only contention was between the different valuations, of \$16,000 by the government and \$572,200 by the defendant.

"We shall present an evidence to show you the value of these lands three classes of proof," said the United States District Attorney. "The first will be the testimony of gentlemen of standing who are familiar with the value of the property in the vicinity of this land, and will tell you what it is worth."

"Another class of evidence will be the sworn statements of the defendant itself. The law requires that at certain times of the year taxes shall be collected, and owners of property are required to file sworn statements of the value of their holdings. This the Bishop Estate has done and its statements will be produced here to show you the value of the property. A sworn statement made by the defendant to the tax assessor last January will be collected and we will show you an offer made by the defendant to sell the property."

Kinney here objected on the ground that evidence as to the offer would be allowed to go in, but the court allowed Dunne to proceed.

"We will show you an offer made by the defendant to sell the land to the government for \$50 an acre, whereas they are now asking \$600 an acre," continued Dunne, but Kinney jumped to his feet with a statement that the offer had not been fairly described. It was not for all the land. "The offer, made in September, 1899, and good for one year," said Dunne, "was for \$500 out of the 600 acres, leaving out the island of Kuahua. We will show by evidence the value of the island."

"We hope to show you that the land is fairly divided into three parts. The island of Kuahua is one. It is without timber and the soil is thin and worthless for ordinary purposes. We will show by expert testimony that 135 acres of the rest is largely of the same character, part marshy and generally useless for agricultural purposes. The remaining 500 is largely a rocky belt, with no soil, and not over 300 acres of it available for use. We will show the depth and character of the soil and will show that it is raw undeveloped land, upon which no crop has ever been raised."

Kinney also made an opening statement, being led to do so, he stated, only by Dunne's remarks regarding the compromise offer. "We will show that the land condemned includes 13,000 feet of water frontage on Pearl Harbor," said Kinney. "Practically all the land available for wharf purposes there is owned by the Bishop Estate. We will show that the land agent of the Bishop Estate recommended asking \$150 an acre for land on which Captain Merry asked for an option two years ago and that this land did not include all the water front, but that the trustees decided to offer it for \$50 an acre."

"There will be no difficulty in securing a renewal of the offer, if we are left in possession of our frontage. But when Kuahua island is added and we are told that this is only a first bite, and that the army is coming next to take the balance, and we are left with our frontage, whatever we ask the price named in our pleadings. "We will show that for Kuahua island, which our learned friend says is worthless, we have an offer, which we continue to refuse, of high rental, and that it is sugar cane land of the highest quality."

Dunne here objected because the offer was not evidence. Kinney quoted the offer Dunne proposed to prove, but Dunne said it was different as it was an offer by the defendant. The court allowed Kinney to go on. "If the United States wants to take the land on which it first asked for an option, leaving us in possession of our frontage, we need not waste time over this suit," said Kinney. "If the front is to be taken, we claimed the \$600 an acre as a fair price."

Captain U. S. G. White, civil engineer of the navy department, who is to have charge of the work at Pearl Harbor, was the first witness called. He stated that he had followed his profession for 25 years, 24 of which had been in the naval service. He was familiar with the land in dispute, having made seven visits to it for the purpose of examining it. Dunne asked for a description, and Captain White went to a map and began a long description of the character of the land, showing the amount cleared, how much was ploughed, etc. Testimony of this sort, with expert testimony on values, promises to make the case a long one.

A GOOD APPETIZER. A ride up Pacific Heights is a good appetizer.

MURDER SUSPECTED

A NATIVE IN CUSTODY AT HONOLULU.

Believed He May Be Concerned in the Rather Mysterious Drowning of Wealthy Chinese Recently.

The authorities at Honolulu have placed a native under arrest on suspicion of having caused the death of Wong Kiu, the well-to-do Chinese who was found dead in one of his boats near Honoapua, about three weeks ago. At the time that the body was discovered, it was thought that the man had come to his death by accidentally drowning. Subsequently, the officers learned that the net used by the Chinese, had come rather mysteriously into the possession of a native named Ku.

Ku was employed at the Honoapua warehouse. He was asked to explain how he had secured the net but as his answers were not satisfactory, he was arrested on a charge of stealing the net. This charge was later dismissed and the more serious one of having caused the death of the Chinese was brought against him.

Just how the native killed the Chinese does not appear clear from the rather vague reports brought today by the Mauna Loa. There were not so far as is known by the officers of the body of the Chinese, nor were any signs of a struggle about the pond discovered by the authorities. One theory advanced is that Wong Kiu was held under the water and drowned by a more powerful person. It is reported that Ku had been held to answer to trial at Kailua at the coming term.

Ku was brought to Honolulu this morning on the Mauna Loa to await his trial at the next term of court. The principal evidence against him is the fact that his net and that of the dead Chinese were found, tangled together in the place. Ku claimed to have hidden his own net.

EFFECTIVE WINDOW DISPLAY.

W. W. Dimond and Co., Hit Upon Novel Idea.

W. W. Dimond and Company in advertising their highest class of glass ware and other appurtenances of the various functions of the upper crust of society, have hit upon a happy idea in displaying their wares in the window of a street a table set for twelve, ready to receive the guests and the courses. The table has been laid in accordance with the latest fads. The color scheme adopted is green in the candle shades ranging into royal blue on the porcelain dishes. The table is accompanied by glasses in order from the cocktail, water, white wine and champagne glasses to the liqueur glass for the benedictine or curacao that ends the well regulated dinner. On the other side stands the separate salt cellar, pepper shaker and other accessories, in cut glass.

The whole table, without any extra decoration, shimmers with the facets of the cut glass and the sparkle of the thin goblets and drinking ware. One of the late seasons, which is practically a reversion to the practical English ideas of a quarter of a century ago, reverts itself in the window of King street a table set for twelve, ready to receive the guests and the courses. The table has been laid in accordance with the latest fads. The color scheme adopted is green in the candle shades ranging into royal blue on the porcelain dishes. The table is accompanied by glasses in order from the cocktail, water, white wine and champagne glasses to the liqueur glass for the benedictine or curacao that ends the well regulated dinner. On the other side stands the separate salt cellar, pepper shaker and other accessories, in cut glass.

The whole table, without any extra decoration, shimmers with the facets of the cut glass and the sparkle of the thin goblets and drinking ware. One of the late seasons, which is practically a reversion to the practical English ideas of a quarter of a century ago, reverts itself in the window of King street a table set for twelve, ready to receive the guests and the courses. The table has been laid in accordance with the latest fads. The color scheme adopted is green in the candle shades ranging into royal blue on the porcelain dishes. The table is accompanied by glasses in order from the cocktail, water, white wine and champagne glasses to the liqueur glass for the benedictine or curacao that ends the well regulated dinner. On the other side stands the separate salt cellar, pepper shaker and other accessories, in cut glass.

SNOW IN PEKING.

PEKING, November 13.—Snow began to fall yesterday and has not ceased falling yet. It is now lying on the ground to the depth of eight inches. The thermometer reads 32 degrees.

THE STANDARD.

Dandruff cures may come and go, but Pacheco's Dandruff Killer goes on forever; it is reliable and never-failing.

GRAND SHOW OF XMAS GOODS.

L. B. Kerr & Co., Ltd., Queen Street are showing a big variety of Xmas presents for old and young. For toys or useful articles for presents go to Queen street.

THE LATEST FAD.

Evening parties at the "Tea House" on the Heights is the latest fad.

"A Widow and Her Friends"—C. D. Gibson's new book, has just been received by the Golden Rule Bazaar, and is included in their Great Book Sale. Call and take a look at it.

ROYAL Baking Powder

Made from pure cream of tartar.

Safeguards the food against alum.

Alum baking powders are the greatest menaces to health of the present day.

ROYAL BAKING POWDER CO., NEW YORK.

EARL LI'S FUNERAL

WILL NOT TAKE PLACE TILL DECEMBER.

The Emperor Sends a Prince and One Other to Convey His Grief to The Li Family.

PEKING, November 9.—The funeral of Li Hung Chang will take place after the 9th inst. Li's family here consists of two sons, one grandson and one woman. Li Kingfang is hastening up north from Yangchow having received the news of his father's death.—Japan Times.

PEKING, November 8.—The Emperor despatched a Prince and one other to convey to the Li family his grief at the death of Earl Li. The Emperor has conferred upon the late Earl posthumous honors and has moreover given instruction that the earl's memorial tablet should be placed in the "Temple of Talents."

PEKING, November 9.—Prince Ching is at present in Changfu and, instead of returning to Peking will proceed as originally arranged to Kailongfu to wait there the arrival in the autumn of Wang Wanshiao who is to take charge of the Government at Peking has not yet come.

PEKING, November 14.—The Chinese Emperor is to stay in Kailongfu for about three weeks.—Japan Times.

PEKING, November 15.—The draft of the Manchurian convention is not yet in due form, and as Prince Ching and Wang Wanshiao did not take part in it from the first, the convention, now that Li Hung Chang has died, is likely to be dropped. The Russo-Chinese relation may become complicated in the future. The secret documents are still kept in Li's house, and they will be handed over to Wang Wanshiao on his arrival.

YOKOHAMA, November 15.—According to a Peking special to the Nichi Nichi under date of the 13th inst., Prince Ching was received in audience by the Emperor and the Empress Dowager in Kailongfu and as a result of his memorialization, the Emperor has decided to return to Peking the current year (by the Chinese calendar).

Work has commenced at Peking in cutting through the wall at the Sui Gate near the Chien-men. The Chinese authorities have consented to the railway passing through the Sui Gate into the Tartar city at this point, which will take it close to the Legations.

CREW REFUSED TO WORK.

Three members of the crew of the British ship Euphrates refused to work this morning, and Captain Davies at once sought the aid of the British consul and Captain Flint of the Harbor Police. Warrants may be issued for the arrest of the men. The sailors are trying to be paid off in this port.

THE WEATHER.

Weather Bureau, Punahou, 1 p. m. Light northerly airs; weather very clear. Morning minimum temperature, 63; midday maximum temperature, 78; barometer, 30.0; wind, 29.9 falling (corrected for gravity); rainfall, 24 hours ending 9 a. m., .01; dew point, 5 a. m., 63; humidity, 9 a. m., 70 per cent.

ROANOKE IS PAYING OFF.

The crew of the Roanoke, being paid off today, eight of the crew will probably ship on the Benjamin F. Packard.

GRUENHAGEN'S.

The new confectionery department of Wall, Nichols Co., Ltd., has made a hit with Gruenhagen's delicious candies.

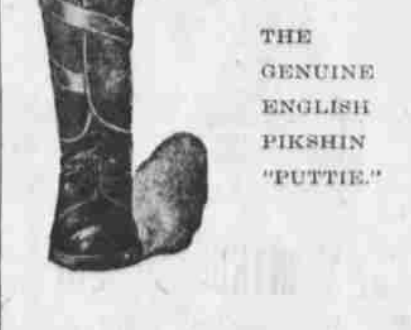
MAGNITUDE OF COMPANIES.

There are sixty-nine American and Canadian companies actively engaged in the business of life insurance. Sixteen of these companies are of such magnitude that they reported one first of this year more than one hundred millions of insurance in force. Among the sixteen we are proud to number the Provident Savings Life Assurance Society. The Provident is represented in Honolulu by A. Newhouse; office: 15-16 Progress Block.

SEMI-WEEKLY STAR.

Honolulu people who are going abroad can have the Semi-Weekly Star mailed to any address for the small sum of twenty-five cents a month. The Semi-Weekly Star contains all the local news of importance, besides the daily stock quotations.

POLO PLAYERS, AHoy



The nicest thing yet, in the legging line. Adopted by the British Army as the most lasting. Recommended so by all who have worn them.

THE GENUINE ENGLISH PIKSHIN "PUTTIE."

MANUFACTURER'S SHOE CO., 1057 FORT STREET

College Hills!

During the dull times of the past eight months 110 LOTS HAVE BEEN SOLD at College Hills. The price paid for these 110 lots was

\$146,375.00

Some of these lots have been re-sold at an advance of from 25 to 60 per cent. No College Hills buyers are offering their lots at the original purchase price; Rapid Transit has made them intrinsically worth at least 25 per cent advance.

SALES AGENTS,
GEO. B. McCLELLAN & CO., and CASTLE & LANSDALE.

Canadian-Australian Royal Mail STEAMSHIP COMPANY

Steamers of the above line, running in connection with the CANADIAN PACIFIC RAILWAY COMPANY between Vancouver, B. C., and Sydney, N. S. W., and calling at Victoria, V. C., Honolulu and Brisbane, Q. are

Due at Honolulu on or about the dates below stated, viz:

From Vancouver and Victoria, B. C., for Brisbane and Sydney.	From Syd. v and Brisbane, for Victoria and Vancouver, B. C.:
MIOWERA DEC. 21	AO-RANGI DEC. 18
ORANGI JAN. 18	MOANA JAN. 15
MOANA FEB. 15	

The magnificent new service the "Imperial Limited" is now running daily.

BETWEEN VANCOUVER AND MONTREAL

Making the run 100 hours without change. The finest Railway service in the world.

Through tickets issued from Honolulu to Canada, United States and Europe. For freights and passage and all general information, apply to

THEO. H. DAVIES & CO., Ltd., Gen'l Agts.

Pacific Mail Steamship Co. Occidental & Oriental S. S. Co. and Toyo Kisen Kaisha.

Steamers of the above Companies will call at Honolulu and leave this port on or about the dates below mentioned:

FOR CHINA AND JAPAN.		FOR SAN FRANCISCO.	
CHINA NOV. 30	NIPPON MARU NOV. 26	PERU DEC. 10	COPTIC DEC. 10
DORIC DEC. 10	AMERICA MARU DEC. 20	AMERICA MARU DEC. 20	AMERICA MARU DEC. 20
NIPPON MARU DEC. 18	AMERICA MARU DEC. 20	AMERICA MARU DEC. 20	AMERICA MARU DEC. 20
PERU DEC. 26	AMERICA MARU DEC. 20	AMERICA MARU DEC. 20	AMERICA MARU DEC. 20
COPTIC JAN. 4	AMERICA MARU DEC. 20	AMERICA MARU DEC. 20	AMERICA MARU DEC. 20
AMERICA MARU JAN. 11	AMERICA MARU DEC. 20	AMERICA MARU DEC. 20	AMERICA MARU DEC. 20
AMERICA MARU JAN. 18	AMERICA MARU DEC. 20	AMERICA MARU DEC. 20	AMERICA MARU DEC. 20
AMERICA MARU JAN. 25	AMERICA MARU DEC. 20	AMERICA MARU DEC. 20	AMERICA MARU DEC. 20
AMERICA MARU FEB. 1	AMERICA MARU DEC. 20	AMERICA MARU DEC. 20	AMERICA MARU DEC. 20
AMERICA MARU FEB. 8	AMERICA MARU DEC. 20	AMERICA MARU DEC. 20	AMERICA MARU DEC. 20
AMERICA MARU FEB. 15	AMERICA MARU DEC. 20	AMERICA MARU DEC. 20	AMERICA MARU DEC. 20
AMERICA MARU FEB. 22	AMERICA MARU DEC. 20	AMERICA MARU DEC. 20	AMERICA MARU DEC. 20
AMERICA MARU FEB. 29	AMERICA MARU DEC. 20	AMERICA MARU DEC. 20	AMERICA MARU DEC. 20
AMERICA MARU MAR. 6	AMERICA MARU DEC. 20	AMERICA MARU DEC. 20	AMERICA MARU DEC. 20
AMERICA MARU MAR. 13	AMERICA MARU DEC. 20	AMERICA MARU DEC. 20	AMERICA MARU DEC. 20
AMERICA MARU MAR. 20	AMERICA MARU DEC. 20	AMERICA MARU DEC. 20	AMERICA MARU DEC. 20
AMERICA MARU MAR. 27	AMERICA MARU DEC. 20	AMERICA MARU DEC. 20	AMERICA MARU DEC. 20
AMERICA MARU APR. 3	AMERICA MARU DEC. 20	AMERICA MARU DEC. 20	AMERICA MARU DEC. 20
AMERICA MARU APR. 10	AMERICA MARU DEC. 20	AMERICA MARU DEC. 20	AMERICA MARU DEC. 20
AMERICA MARU APR. 17	AMERICA MARU DEC. 20	AMERICA MARU DEC. 20	AMERICA MARU DEC. 20
AMERICA MARU APR. 24	AMERICA MARU DEC. 20	AMERICA MARU DEC. 20	AMERICA MARU DEC. 20

For general information apply to

H. HACKFELD & CO., Ltd. Agts.

Oceanic Steamship Company.

TIME TABLE

The fine Passengers Steamers of this line will arrive at and leave this port as hereunder:

FROM SAN FRANCISCO.		FOR SAN FRANCISCO.	
*ALAMEDA Nov. 29	*ALAMEDA Dec. 4	*ALAMEDA Dec. 4	*ALAMEDA Dec. 11
SIERRA Dec. 11	SONOMA Dec. 10	SONOMA Dec. 10	SONOMA Dec. 17
*ALAMEDA Dec. 18	*ALAMEDA Dec. 25	*ALAMEDA Dec. 25	*ALAMEDA Dec. 31
SONOMA Jan. 1	VENTURA Dec. 31	VENTURA Dec. 31	VENTURA Jan. 7
*ALAMEDA Jan. 8	ALAMEDA Jan. 15	ALAMEDA Jan. 15	ALAMEDA Jan. 22
VENTURA Jan. 22	SIERRA Jan. 22	SIERRA Jan. 22	SIERRA Jan. 29
*ALAMEDA Feb. 5	*ALAMEDA Feb. 11	*ALAMEDA Feb. 11	*ALAMEDA Feb. 18
SONOMA Feb. 18	SONOMA Feb. 18	SONOMA Feb. 18	SONOMA Feb. 25
*ALAMEDA Mar. 5	VENTURA Mar. 4	VENTURA Mar. 4	VENTURA Mar. 11
ALAMEDA Mar. 11	ALAMEDA Mar. 18	ALAMEDA Mar. 18	ALAMEDA Mar. 25
VENTURA Mar. 25	ALAMEDA Mar. 25	ALAMEDA Mar. 25	ALAMEDA Apr. 1
*ALAMEDA Apr. 8	SONOMA Apr. 15	SONOMA Apr. 15	SONOMA Apr. 22
SIERRA Apr. 15	*ALAMEDA Apr. 22	*ALAMEDA Apr. 22	*ALAMEDA Apr. 29
*ALAMEDA Apr. 22			

*Ecol Boat.

In connection with the sailing of the above steamers, the Agents are prepared to issue, to intending passengers coupon through tickets by any railroad from San Francisco to all points in the United States, and from New York by steamship line to all European Ports.

For further particulars apply to

W. G. Irwin & Co.

General Agents Oceanic S. S. Company.

AMERICAN-HAWAIIAN STEAMSHIP CO.

Direct Service Between

New York, Hawaiian Islands, via Pacific Coast.

The splendid New Steel Steamers:

- S. S. OREGONIAN 6000 tons to sail about December 20.
- S. S. CALIFORNIAN 6000 tons to sail about January 29.
- S. S. AMERICAN 6000 tons to sail about.....

Freight received at Company's wharf, 42nd Street, South Brooklyn, at all times.

H. HACKFELD & CO., LTD.

E. P. MORSE, General Freight Agent.

AGENTS, HONOLULU.

SHIPPING INTELLIGENCE

ARRIVING.

Monday, November 25.

Schr. Malolo, Moki, from Koolau ports at 2 p. m.

Tuesday, November 26.

Nippon Maru, Greene, from the Orient sighted at 2 a. m. anchored off port till morning.

Stmr. Mauna Loa, Simerson, from Lahaina, Maui, Kona and Kau ports at 7:35 a. m. with 8902 bags sugar, 740 bags coffee, 513 bags taro, 23 bags tea, 161 bundles bananas, 23 kegs butter, 13 bds. hides, 36 pigs, 143 sheep, 30 head cattle, 363 pkgs. sundries.

DEPARTING.

Tuesday, November 26.

Stmr. James Makee, Tullett, for Kapaemahu at 2 p. m.

Stmr. Nihaui, W. Thompson, for Koloa and Hanalei at 4 p. m.

Nippon Maru, Greene, for San Francisco, at midnight.

Stmr. W. G. Hall, S. Thompson, for Kauai ports at 5 p. m.

Stmr. Kinat, Freeman, for Hilo and way ports at noon.

Stmr. Claudine, Parker, for Maui ports at 5 p. m.

Schr. Kawailani, for Koolau ports at 5 p. m.

Bark S. C. Allen, Johnson, for San Francisco at 5 p. m.

Monday, November 25.

Schr. Ada, for Waialua, Kauai, at 7 p. m.

PASSENGERS.

Arriving.

Per stmr. Mauna Loa, November 26, from Lahaina, Maui, Kona and Kau—W. P. Fennell, O. T. Shipton, W. H. Hoettman, A. C. Mahoney, Grayham, Mrs. N. Inakea, J. K. Hale, J. Kaelemakule, Mrs. Kaelemakule, W. F. Drake, James Boyd, M. Campbell, W. C. Achi, Charles Hall, Mrs. Snodgrass, L. P. Lincoln, M. S. Deponte, S. Ali, Miss G. A. P. M. Keawe, Mrs. S. H. Davis, S. Onaha, C. B. Olsen, Kat Poo, C. Yee Yim and 82 on deck.

Per U. S. A. T. Meade, November 25, from San Francisco.—For Honolulu: Capt. L. M. R. Williams and child, Second Lieut. John S. Davis, Mrs. C. L. Lancaster. For Manila: Lt. Col. Charles H. Whipple, wife and 2 clerks, Capt. D. B. Shafter and 2 clerks, Dr. R. P. Strong, wife and 2 servants, N. E. Williamson, James F. Case, wife and son, Livingston Hunt, C. R. O'Leary, E. V. Dickenson, A. W. Butler, A. J. Wakefield, Robert V. Church, Miss Mary Polk, Mathew Muloney, James J. Dunn, P. S. O'Riley, G. A. O'Brien, Mrs. Benjamin F. Wright, 4 children, Mrs. F. L. Payson, Mrs. Glenn and 4 children, Mrs. R. J. C. Irvine, Mrs. E. B. Crowne, Mrs. W. P. Elliott, Mrs. J. M. Love, Sherard Coleman, Mrs. H. Frank and child, Mrs. John Gilbert, Mrs. J. L. A. Braden and 2 children, Mrs. Charles O. Carter, Mrs. J. W. Green and daughter, Mrs. Fred W. Power, Mrs. C. D. Maymen, Mrs. J. N. Boyes, Miss Marjorie Ide, Miss Clara F. Richmond, Miss K. Flarem, Second Lieut. Carace, F. Sylkes, J. N. Detrick, wife and daughter, 14 commissary sergeants and their wives, and 14 detached members of the Signal Corps.

Per S. S. Nippon Maru, from the Orient, Yokohama, November 16, arriving at Honolulu, November 26.—For Honolulu: M. Lemcke, K. N. Hata, N. S. Sachs, Mrs. N. S. Sachs, C. Szwano, Constantine, Mrs. J. M. Alexander, J. A. Alexander, Miss Bacon, J. Becker, George S. Beebe, Capt. F. W. Brunner, R. E. F. H. Callundun, A. Carpenter, J. K. Carpenter, George F. Detrick, Mrs. George F. Detrick and 2 children, Mrs. L. E. Evans, J. M. Frazer, G. Harasaka, Dr. F. R. Harkinson, Charles Heymann, J. Ikeda, S. Isaacs, Mrs. S. Isaacs, Master Irwin M. Isaacs, Master Milton H. Isaacs, Y. Iwakoshi, S. Jacobs, Mrs. E. H. Jones, Miss Elizabeth A. Jones, Miss Grace R. Jones, Miss Mabel E. Jones, F. H. Kingman, Mrs. F. H. Kingman, Dr. J. J. Kinyoun, M. Kirkwood and valet, Mrs. M. Kirkwood, R. Kitajima, K. Kume, Dr. Kurt Pfund, F. M. Ranes, Mrs. F. M. Ranes, W. Schwartz, T. Shimizu, A. Simon, Miss Ruth Strong, J. T. Sullivan, Mrs. J. L. Taylor.

STRATHGYLE COMING.

The British steamer Strathgyle left Kobe for San Francisco via way ports on November 12.

6000-TON STEAMER.

YOKOHAMA, November 15.—It is stated that Nippon Yusen Kaisha have ordered another 6,000-ton steamer from the Mitsui Bishi Dockyard Co. The vessel is intended as a reserve ship for the European line and is to be finished in January, 1903.

JAPANESE COAL.

YOKOHAMA, November 15.—M. Romanoff, the Russian Vice-Minister for Finance, who recently inspected the Miike colliery of the Mitsui Bussan Kaisha, is reported to have signed a contract to take some 500,000 tons of coal yearly for five years on behalf of the East China Railway.

CURTAIN AT NINE.

Mr. Neil has received so many requests to postpone the opening act of "The District Attorney" which is to be given Thursday evening, until 9 o'clock, that he has decided to grant the requests and the first curtain will not rise until that hour Thursday evening. "The District Attorney" is from the gifted pens of Harrison Grey Fisk and Charles Kline. Mr. Fisk is one of the editors of the New York Dramatic Mirror.

Fine Book and Commercial Printing, Star Office.

Foreign Steamer Time Table

The following are the arrivals and departures of foreign steamers:

Leave Honolulu for S. F. or Victoria.	
Peru Dec. 3	
Alameda Dec. 4	
Sonoma Dec. 10	
*Coptic Dec. 10	
Aorangi Dec. 15	
*America Maru Dec. 20	
Alameda Dec. 25	
Peking Dec. 27	
Ventura Dec. 31	
*Coptic Jan. 4	
*Hongkong Maru Jan. 5	
Alameda Jan. 15	
China Jan. 20	
Sierra Jan. 21	
*Doric Jan. 31	
Alameda Feb. 5	
*Nippon Maru Feb. 8	
Sonoma Feb. 11	
Peru Feb. 15	
*Coptic Feb. 25	
Alameda Feb. 26	
*America Maru March 4	
Ventura March 4	
Peking March 12	
Alameda March 15	
*Gaelic March 22	

Sierra March 25	
Hongkong Maru March 25	
China April 2	
Alameda April 9	
*Doric April 15	
Sonoma April 15	
*Nippon Maru April 25	
Alameda April 30	
Arrive Honolulu from S. F. or Victoria.	
Alameda Nov. 29	
China Nov. 30	
*Doric Dec. 10	
Sierra Dec. 11	
*Nippon Maru Dec. 18	
Miowera Dec. 21	
Peru Dec. 26	
Sonoma Jan. 1	
*Coptic Jan. 4	
*America Maru Jan. 11	
Alameda Jan. 11	
Aorangi Jan. 18	
Peking Jan. 22	
Ventura Jan. 23	
*Gaelic Jan. 28	
Alameda Feb. 1	
*Hongkong Maru Feb. 6	
Sierra Feb. 12	
China Feb. 14	
Mauna Feb. 15	
*Doric Feb. 22	
Alameda Feb. 22	
*Nippon Maru Mar. 4	
Sonoma Mar. 5	
Peru Mar. 12	
Alameda Mar. 15	
*Coptic Mar. 15	
Ventura Mar. 26	
*America Maru Mar. 28	
Peking Apr. 5	
*Gaelic Apr. 15	
Sierra Apr. 16	
*Hongkong Maru Apr. 22	
Alameda Apr. 26	
China Apr. 30	
*Carry Mail only.	

SUSUMAGO,

PHOTOGRAPHER.

Good Work Guaranteed.

Corner King and Maunakea Streets.

Wilder's Steamship Co

NOTICE.

On and after December 1st next all freights must be prepaid unless other arrangements be made at the office of the Company, corner Fort and Queen streets, previous to that date.

C. L. WIGHT, President.

Honolulu, November 14th, 1901.

INTER-ISLAND STEAM NAVIGATION CO., LIMITED.

NOTICE TO SHIPPERS.

Shippers are hereby notified that on and after December 1st, 1901, a new freight schedule will go into effect. Information in regard to the changes in rates can be obtained by calling at the office of the Company, Queen street, Honolulu.

J. ENA, President.

THE "KASH" CO., LTD

QUESTION—What are Suspenders used for?

ANSWERS—To keep your trousers up.

Don't you need a pair for each pair of your trousers? If you do we have some crack-a-jacks. Just opened them out.

WE KEEP OUR EYES ON THE FACTORIES

We buy all of our merchandise direct from the Manufacturers.

OUR CLOTHING is widely known for its make, fit and wear.

OUR HATS are of the best material only.

OUR FURNISHING GOODS are the latest patterns, the most stylish and the best productions of the world's makings.

THE "KASH" CO., LTD

TWO STORES, TWO STOCKS.

P. O. Box 658.

TWO TELEPHONES.

Main 96 and Main 376.

Thanksgiving 1901.

ATTRACTIONS FOR THIS SEASON.

Wherever novelties, rare luxuries for your table, were to be found, the delicacies of all climates, they have been purchased and forwarded to Honolulu. Whatever was new for your table, your cooking, the little conveniences for your kitchen, your bath room, your toilet table.

Here you'll find the rarest soaps, brushes and bath accessories; all that is late and new in the world of fashion. At this season we are receiving new

- nuts, raisins, fruits,
- mackerel, figs, honey cake,
- preserves, bon bons, dinner favors

Lewis & Co., Ltd

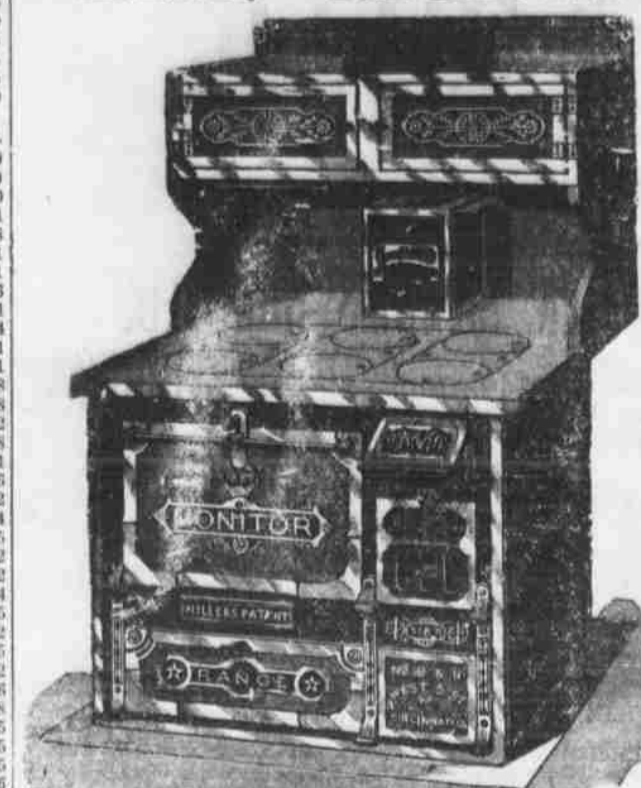
WHOLESALE AND RETAIL GROCERS.

240 THREE TELEPHONES 240.

1060 FORT STREET.

Note Heads, Bill Heads, Statements and Fine Commercial Printing at the Star Office.

THE "MONITOR"



Is all that the name implies JOHN NOTT.

Plumbing, Tin, Copper and Sheet Iron Work
DIMOND BLOCK. 75-79 KING STREET.

Now for Big Bargains in Furniture for 60 Days

THE I.X.L. FURNITURE HOUSE

BERETANIA STREET, NEAR FIRE STATION.

Will Sell for 25 per cent less than any other store. Must make room for new goods to arrive.

S. W. LEDERER, Propr.

P. O. BOX, 535.

GAREY'S MAGNESIA FLEXIBLE CEMENT ROOFING

We have now a large stock of the above on hand. Cement Roofing affords thorough fire protection to the building and is a non-conductor of heat and cold. No Rusting-decaying, Warping, Cracking or Melting. Always flexible, quickly and easily applied. Pure water flowing from the roof can be used for domestic purposes. Can be applied on old shingles or metal roof. Wind and fire proof. For flat or steep surfaces. We solicit your enquiries and will promptly furnish any information desired.

Theo. H. Davies & Co., LIMITED

Sole Agents

CRIBS AND BABIES' BEDS

A new Invoice just opened, Call early or you will miss a choice.

New Furniture Now being unpacked, and put on Sale by the

CITY FURNITURE STORE

H. H. WILLIAMS, Manager

Telephone 846

Love Building, 534 and 536 Fort Street

Oahu Carriage Manuf'g Co., Ltd

1179 RIVER STREET, BETWEEN BERETANIA AND PAUHAU

Dealers in Carriage Materials and rubber tires. Carriages and Wagons built to Order. Repairing and Blacksmithing a Specialty.

Albert R. Cunha, ATTORNEY AT LA NOTARY PUBLIC. 308 Stangenwald Building TELEPHONE-M IN 21.

DR. J. M. WHITNEY, DENTIST. Boston Building, Fort Street Over H. May & Co. Hours: 9-5. Tel. Main 577.

DR. A. E. NICHOLS, DENTIST. Office Hours: 9 to 4. 1123 Alakoa Street, next Masonic Temple, Honolulu.

DR. C. B. HIGH, DENTIST. Philadelphia Dental College, 1892. Office: Masonic Temple. Telephone, Main 318.

DR. A. C. WALL, DR. O. E. WALL, DENTISTS. LOVE BUILDING, FORT STREET, Telephone 434. OFFICE HOURS, 8 a. m. to 4 p. m.

DR. A. J. DERBY, DENTIST. Cott-Smith Building, Cor. For. and Hotel Sts. Honolulu, H. I. Office Hours: 9 a. m. to 4 p. m.

DR. J. UCHIDA, PHYSICIAN AND SURGEON. Office: Beretania, between Fort and Nuuanu streets. Office Hours: 8 to 12 a. m.; 7 to 8 p. m. Telephone, White 1211.

A. C. LOVEKIN, Stock and Bond Broker, REAL ESTATE AND FINANCIAL AGENT 402 JUDD BUILDING.

J. H. FISHER & CO., Members of Honolulu Stock Exchange Stock and Bond Brokers STANGENWALD BUILDING. Advance Made on Approved Security. Telephone Blue 933. WING SING CO. 46 Hotel Street, next door to Iwakami IMPORTERS IN GROCERIES, CALIFORNIA FRUITS, BUTTER.

C. BREWER & CO., LIMITED QUEEN STREET, HONOLULU, H. T. AGENTS FOR Hawaiian Agricultural Company, Ono-Sugar Company, Honoumou Sugar Company, Waiuku Sugar Company, Waihee Sugar Company, Maakee Sugar Company, Haleakala Ranch Company, Kapala Ranch, Planters' Line and Shipping Co., Charles Brewer & Co's Line of Boston Packet Agents Boston Board of Underwriters, Agents Philadelphia Board of Underwriters.

LIST OF OFFICERS. C. M. COOKE, President. GEORGE H. ROBERTSON, Manager. E. F. BISHOP, Treasurer and Secy. COL. W. F. ALLEN, Auditor. Directors: P. C. JONES, H. WATERHOUSE, GEORGE R. CARTER.

OAHU RAILWAY AND LAND CO'S TIME TABLE FROM AND AFTER JANUARY 1, 1901. TRAINS STATIONS (Outward) Daily ex. Sun. Dly ex. Sun. Dly P.M. P.M. Honolulu 7:10 8:15 11:05 3:15 5:10 Pearl City 8:08 9:45 11:40 3:47 5:50 Ewa Mill 8:30 10:08 12:00 4:00 6:10 Waiuku 10:50 12:45 4:45 6:45 Waianae 11:55 5:40 6:15 Kahuku 12:32 6:15

STATIONS (Inward) Daily ex. Sun. Dly ex. Sun. Dly A.M. A.M. P.M. P.M. Kahuku 5:30 6:15 2:30 Waiuku 6:10 6:45 3:15 Waianae 7:10 3:55 Ewa Mill 5:30 7:45 1:55 4:25 Pearl City 6:15 8:35 1:30 4:35 Honolulu 6:10 8:35 2:30 5:20

G. P. DENISON, Superintendent. F. C. SMITH, Gen. Pass. & Tkt. Asst. Note Heads, Bill Heads, Statements and Fine Commercial Printing at the Star Office.

CORPORATION NOTICES.

NOTICE. The annual meeting of the stockholders of the Union Feed Company, Limited, will be held at the Company's office, Judd Building, on Friday, November 29th, 1901, at 2:30 p. m. SOUTHARD HOFFMAN, JLL., Secretary Union Feed Co., Ltd.

ELECTION OF OFFICERS.

WILDER'S STEAMSHIP COMPANY. At the adjourned annual meeting of the stockholders of this Company, held on this day, the following officers were elected to serve during the ensuing year:

C. L. Wight, President. W. M. Giffard, Vice-President. S. B. Rose, Secretary and Treasurer. W. Pfotenhauser, Auditor. The above named officers with E. D. Tenney, E. F. Bishop and G. C. Beckley comprise the Board of Directors. S. B. ROSE, Secretary. Honolulu, Nov. 20, 1901.

NOTICE OF ASSESSMENT.

At a meeting of the directors of the Orpheum Company, Limited, held this day, an assessment of 10 per cent was levied, payable on November 20, 1901, and delinquent December 20, 1901. JOHN F. COLBURN, Secretary pro tem. Honolulu, November 15, 1901.

Kihei Assessment Notices.

THE 12TH ASSESSMENT of 5 per cent or \$2.50 per share became due and payable January 2nd, 1901 and bears penalty from February 2nd, 1901. The thirteenth and final assessment of 5 per cent or \$2.50 per share on the stock of the Kihei Plantation Co., Ltd., has been levied and will become due and payable on the 15th day of June, 1901. Interest bearing after the 15th day of July, 1901. The above assessments are payable at the offices of Alexander & Baldwin, Ltd., Judd Building. J. P. COOKE, Treasurer Kihei Plantation Co. Honolulu, May 18, 1901.

Olaa Assessments.

The 17th and 18th assessments of 50 cents each are now bearing interest at the rate of 1 per cent per month. The nineteenth assessment of 2 1/2 per cent or 50 cents per share has been called to be due and payable November 20, 1901. Interest will be charged on assessments unpaid ten (10) days after the same are due, at the rate of one per cent per month from the date on which such assessments are due. The above assessments will be payable at the office of the B. F. Dillingham Company Limited, Stangenwald Building. ELMER E. PAXTON, Treasurer Olaa Sugar Company, Limited. Honolulu, T. H. July 20, 1901.

INTER-ISLAND STEAM NAVIGATION CO., LIMITED.

NOTICE TO PASSENGERS.

On and after December 1st, 1901, the following charges in passenger fares will go into effect, viz: Cabin rates between Honolulu and Eleele, Makalei, Waimoa, Kapaemahu, Kilauea and Hanaalei on the Island of Kauai will be increased from \$6.00 to \$7.00. Cabin rates between Honolulu and Kealahou and all ports beyond in the District of Kona on the Island of Hawaii will be increased from \$10.00 to \$11.00. Cabin rates between Honolulu and Honouliuli and Punahou on the Island of Hawaii will be increased from \$12.00 to \$13.00. Deck Rates between Honolulu and the Island of Maui will be increased from \$2.50 to \$3.50. Deck rates between Honolulu and the Island of Kauai will be increased from \$2.00 to \$2.50. Deck rates between Honolulu and the Island of Hawaii will be increased from \$2.00 to \$3.00. All special rates, except to Clergymen, will be abolished on the above date. J. ENA, President. Honolulu, November 4, 1901.

CLOSING NOTICE.

Our store will close all day Thursday, November 28, Thanksgiving Day. Kindly place your orders early Wednesday so that they may receive prompt attention. H. MAY & CO.

CLOSING NOTICE.

The Metropolitan Meat Co. will close on Thanksgiving Day, Thursday, November 28, at 10 a. m. Only one delivery will be made in the morning. METROPOLITAN MEAT CO., LTD.

LOST.

On November 17 near Waikiki Inn, one white, male fox terrier. Reward if returned to this office.

OHTA, Contractor and Builder, House Painter

swalo Sheridan Street, near Kina Honolulu, H. I.

AHI

1153 Nuuanu Street Near Pauahi.

Chairs, Tables, Bedroom Sets, Meat Safes, Mattresses, Pillows and Furniture made to order at very low prices. P. O. BOX 962.

Note Heads, Bill Heads, Statements and Fine Commercial Printing at the Star Office.

8 DOLLAR CARPENTER

FRANCISCO DE SA IN VERY HARD LUCK. Alimony of \$1 Out of \$8 Per Week. Kamalo Deposition Is Ordered Taken.

The motion to take a deposition in San Francisco in the Kamalo Sugar case was heard by Judge Humphreys this morning. It was opposed by Davis and Maxson for the plaintiffs, with Robertson representing the defendants. The court granted the order to take the deposition, but stated that it would not postpone the case again, if the deposition was not here when the matter came up. As the case is set for December 10, there is little chance of getting the deposition on here in time, but both sides may agree to await its arrival. The court stated that the defendants had had plenty of time in which to bring on the motion to take the deposition and had failed to do so. Plaintiffs were given until noon today, to prepare cross-examinations for the proceedings at San Francisco it being hoped that the papers may go forward on today's steamer.

Judge Humphreys denied the motion for alimony in the case of Mele N. Manuel vs. Peter Manuel, and granted alimony for alimony in the case of Virginia against Francisco de Sa. The defendant said he was a carpenter and was working for \$8 a week, and could not afford anything. He paid \$1 a week for board, and \$1 a week for washing. "Couldn't you get cheaper board?" asked the judge. "I don't get the food at a place cheaper than \$4 a week," said the high-salaried carpenter. "Do you think your wife likes it?" asked the court.

Francisco said that his wife could live with her mother. He was ordered, however, to pay \$3 a week alimony, and he will therefore have to get along on board cheaper than \$4 per week, and will probably reduce his wish bill from \$1 weekly.

United States Marshal E. R. Hendry was appointed administrator of the estate in Honolulu of the late Marshal D. A. Ray, with bonds fixed at \$1,000.

Judge Gear took the criminal calendar again, and heard the case of Grant Carpenter, a negro charged with assault with a deadly weapon. A verdict of not guilty was returned at noon and Carpenter went free.

Judge Little yesterday signed an order and decree in the case of the Estate of Evelyn Bidwell, of whom Jonathan Shaw was the guardian. The court finds that Shaw owes \$888.06 altogether. Of this sum \$325.56 is for guardian's fees. The court holds that the guardian did not faithfully discharge his duty, he is not entitled to any of the fees that were charged and all are therefore ordered refunded. For the same reason an attorney fee of \$50 is disallowed. Notice of appeal has been given.

A. G. Correa and E. J. Berry have both filed affidavits denying that they were counsel for Kaomoku and C. A. Herring, against whom default was entered in behalf of the Honolulu Plantation company. The defendants sought to reopen the case, claiming to have expected their attorneys to defend it. The attorneys' affidavits state that they were never retained in the case, and were not served with any of the papers.

WORK AT PAGO PAGO

SAMOANS HEARTILY APPROVE AMERICANISM. Absence of Important Witnesses at the Tilley Court Martial—Improvements at Tutuila—Good Roads Achieved. Rear Admirals Henry Glass and Robley Evans, Captain F. H. Cooper and Captain Merry of the United States navy, who came over yesterday morning in the inner sanctum of the naval offices on the water front. The quartet passed the time in reminiscences of times past and present in naval affairs ranging back for a quarter of a century apparently from the fragments of conversation that came over the top of the swinging blind-screen doors. "Say Merry, do you remember the Rappahannock," and so on.

Several of the most important witnesses expected to testify at the Tilley court martial did not appear. One of them was Captain Taylor, a short time ago one of the members of the court martial arrived. Governor Solf, the German Governor at Apia declined to attend the trial. Consul General Osborne died and Lieut. Commander Dorn was invalided home.

Federal matters are getting into shape rapidly at Pago Pago with the erection of the coal sheds and wharf buildings that have sprung up since the government took possession. Natives of the other islands are coming over to Tutuila to live under American protection. New roads are being built round the island and affairs generally are getting into good shape. It is expected that Pago Pago will become a valuable coaling station for ships travelling round the Horn. The depot is a small one with a capacity of 10,000 tons. The natives are apparently contented and the working on the new roads besides their regular occupations of raising coconuts and weaving.

The weather was very rainy during the stay of the commission, the court martial being held on board and none of the officers venturing out more than was necessary. Admiral Evans sustained an attack of rheumatism in his right hand by reason of the prevailing dampness. Several of the chiefs came forward voluntarily to testify on behalf of Capt. Tilley and the natives generally expressed themselves as having been admirably treated under his jurisdiction.

LOOT.

The following advertisement appears in The Standard. "Chinese Wailoot.—Before Disposing of Loot it is advisable to have it valued by an expert. Mr. Larkin, 104 New Bond Street, Values and Buys Oriental Art Specialties.

NOT REDS. A Cincinnati paper says that hereafter the ball team of that city must be called "Red Stockings" and not the "Reds" as has been the custom.

A GOOD THING. There's one good thing when they feel dry. That business men cannot pass by. For far and wide it's fame you hear. They stop to drink of "Rainier" beer On draught or in bottle at Criterion.

BANK OF HAWAII LIMITED.

Incorporated under the Laws of the Territory of Hawaii. PAID-UP CAPITAL - \$600,000.00 RESERVE - 50,000.00 UNDIVIDED PROFITS - 154,000.00 OFFICERS AND DIRECTORS. Charles M. Cooke, President. P. C. Jones, Vice-President. C. H. Cooke, Cashier. F. C. Atherton, Assistant Cashier. Henry Waterhouse, Tom May, F. W. Macfarlane, E. D. Tenney, J. A. McCandless. Solicits the Accounts of Firms, Corporations, Trusts Individuals, and will promptly and carefully attend to all business connected with banking entrusted to it. Sell and Purchase Foreign Exchange, Issue Letters of Credit. SAVINGS DEPARTMENT. Ordinary and Term Deposits received and Interest allowed in accordance with conditions printed in pass-books, copies of which may be had on application. Judd Building, Fort Street.

BISHOP & CO.

Savings Bank. Until further notice, Savings Deposits will be received and interest allowed by this Bank at four and one-half per cent per annum. Printed copies of the Rules and Regulations may be obtained on application. Office at Bank building on Merchant Street. BISHOP & CO. CLAUS SPRECKELS, WM. G. IRWIN. Claus Spreckels & Co. BANKERS. HONOLULU, H. I. San Francisco Agents—The Nevada National Bank of San Francisco. DRAW EXCHANGE ON SAN FRANCISCO—The Nevada National Bank of San Francisco. LONDON—The Union Bank of London, Ltd. NEW YORK—American Exchange National Bank. CHICAGO—Merchants' National Bank. PARIS—Credit Lyonnais. BERLIN—Dresdner Bank. HONGKONG AND YOKOHAMA—The Hongkong and Shanghai Banking Corporation. NEW ZEALAND AND AUSTRALIA—Bank of New Zealand. VICTORIA AND VANCOUVER—Bank of British North America.

Claus Spreckels & Co. BANKERS.

TRANSACT A GENERAL BANKING AND EXCHANGE BUSINESS. Deposits Received. Loans Made on Approved Security. Commercial and Travelers' Credits Issued. Bills of Exchange Bought and Sold. COLLECTIONS PROMPTLY ACCOUNTED FOR. ESTABLISHED, 1858. BISHOP & Co., Bankers. TRANSACT A GENERAL BANKING AND EXCHANGE BUSINESS. COMMERCIAL AND TRAVELERS' LETTERS OF CREDIT ISSUED. AVAILABLE IN ALL THE PRINCIPAL CITIES OF THE WORLD. Interest allowed after July 1st, 1900 on fixed deposits; 7 day notice 2 per cent, (this form will not bear interest unless it remains undisturbed for one month) 3 month 3 per cent; 6 months 3 1/2 per cent; 12 months 4 per cent.

THE YOKOHAMA SPECIE BANK LIMITED.

Subscribed Capital.....Yen 24,000,000 Paid Up Capital.....Yen 18,000,000 Reserved Fund.....Yen 8,510,000 HEAD OFFICE, YOKOHAMA. The Bank buys and receives for collection Bills of Exchange, issues Drafts and Letters of Credit, and transacts a general banking business. INTEREST ALLOWED: On fixed deposits for 12 months, 4 per cent per annum. On fixed deposits for 6 months, 3 1/2 per cent per annum. On fixed deposits for 3 months, 3 per cent per annum. Branch of the Yokohama Specie Bank. New Republic Building, Honolulu H. I. HONOLULU SALOON, A. LUDLOFF, Proprietor. Corner Liliha and School Street. Has opened a resort where refreshments of all kinds are served. PRIMO BEER ON TAP.

Metropolitan Meat Co. LIMITED

Just received ex-Elihu Thompson from Seattle a shipment of Choice beef Veal, Mutton, Lamb, and Pork, also Poultry, Salmon and Halibut. FOR SALE AT Metropolitan Market Co., King Street, Telephone 45. The Booth, Fishmarket, Telephone 379. Central Market, Nuuanu Street, Telephone 140.

IWAKAMI & CO., HOTEL STREET. Gents' Furnishing Goods. A Complete Line of Underwear Just Received. Every Department Fully Stocked.

Light Remarks. Why continue to use kerosene lamps and other poor illuminators when at a small cost we will install a perfect light in your home? There never was a light that gave the satisfaction of the incandescent—a safe brilliant and steady light, always ready for use; no dirt, smoke or smell. Call and have a talk with us about lights, or ring us up Telephone Main 390. We will give you an estimate on all costs. Hawaiian Electric Co., Ltd. King Street Tel. 390.

Three Carloads of Budweiser and Premium Pale Beer. Just to hand Ex. Scher. Helene. Now offered for sale at lowest prices by H. Hackfeld & Co., Ltd.

THE ORIENTAL LIFE INSURANCE CO., Ltd. J. P. McCOY, President. CAPITAL STOCK, \$200,000.00. The only insurance company in the world issuing policies in both ENGLISH and CHINESE languages. Policies contain all modern advantages of the endowment and other forms issued by the leading American companies. Governed by the safest insurance systems. The pioneer Chinese-American company. HOME OFFICE: 301-302 Stangenwald Building Honolulu, H. T.

T. MURATA, Main Store, No. 1044, Nuuanu Street. 1st Branch, corner King and Beretania Sts. 2nd Branch, No. 1032, Nuuanu St. STRAW HAT MANUFACTURERS AND NATIVE HATS. Any Styles Made to Order. Telephone Blue 3311 Telephone Blue 2781 P. O. Box 884. Honolulu, Territory of Hawaii.

THE HAWAIIAN STAR
DAILY AND SEMI-WEEKLY.
Published every afternoon (except Sunday) by The Hawaiian Star Newspaper Association, Ltd.
FRANK L. HOOGS, Manager.
TUESDAY, NOVEMBER 26, 1901.

THE NEWSBOYS.

Every year under the management of Mr. Hoogs it has been the custom of the Star to give its newsboys a Thanksgiving Feast. It is but right that those who help in ever so humble a way, in the prosperity of the paper, should have recognition, and should reap some little reward other than the lawful gains they make by their little traffic. The newsboy has become an institution in Honolulu, as he is an institution in San Francisco, Chicago, New York or London. He may sometimes seem to be a bit of a nuisance, but if we did not have him, the streets would be very dull. The presence of the newsboy gives a metropolitan character to our city, just as much as the electric cars do.

Our newsboys, fortunately for themselves, have not the difficulties to contend against that the New York or London newsboy has to encounter. The bitter, biting cold of November, with the ragged and inadequate clothing is a terrible experience for the little waifs of the great cities. We, in this happy climate, do not know of that phase of life, and our little waifs do not suffer quite such hardships. Yet, in spite of hardship, and perhaps because of it, the New York or London newsboy revels and produces a good, honorable, and at times a very successful man.

The work of the newsboy makes him sharp, alert, and quick. It also develops the idea of honesty, for a dishonest newsboy would soon lose his trade. Time and again has the honesty of the newsboy of Honolulu been called attention to by both residents and passers by. A man has no change, gives the boy a quarter for his paper, away scuds the boy for his change, returns and finds that his customer has gone. That boy will not call the twenty cents a windfall, but he will try and find his man, and it may be two or three days after before he succeeds in his quest, but the change is returned if possible. This is to the credit of the newsboy of this city, and in the main it is to the credit of the newsboys of all cities. After all human nature is far better than we give it credit for, and it is better when it is young than when it is old. The thoughtless, heedless newsboy may, after all, be better than the thoughtful, heedful financier. The former has the world before him and has a fresh, bright spirit. The latter has the world behind him and has a worried and worn brain, calloused by constant attrition with other overreaching brains.

But if the newsboy has his good points, he has also some faults. The trouble is that people are more apt to dwell on his faults rather than on his virtues. He is noisy, but, after all it is the exuberance of youth. His language is not all that one could wish, but he has learned that from his elders. If he swears occasionally, which he certainly should not do, he is only copying the language he encounters in his daily work. Our newsboys in this city are not Anglo-Saxons. They are not brought up at home under Anglo-Saxon influences. They are chiefly Portuguese with a sprinkling of Hawaiians and part-Hawaiians. It is not very much to the credit of the Anglo-Saxon that his worst habits of speech are picked up by these boys. The sin, if it be a sin, does not really rest upon their shoulders but upon the shoulders of exemplars of Anglo-Saxondom that they come across in the streets. You must not be too hard on the newsboy.

But at Thanksgiving time one thinks neither of faults nor of virtues. One thinks of the boys having a good time, and that has ever been provided for them since the Star came under its present management. It was a kindly heart that initiated the idea, and its kindness has affected others. That is the advantage of a good action. It not only does good to those for whom it is intended, but it spreads as the wavelets on the surface of a still pool into which a casual stone has been dropped.

The boys when they eat their turkey and sucking pig, and get through their pot and vegetables and then clamor for their bags of candy won't be thinking of anything which is here set down. They will be, as most of us ever are, considering the enjoyment of the moment. And it is but right that they should so consider it. What has youth to do with crabbed age. Whether it is the poor newsboy or the son of the millionaire, both have that glorious attribute of youth, the capacity for simple enjoyment. The old curmudgeon looking-on may foresee how all this will be lost, but why look at it in that way. Youth has the peach bloom on it, youth has the treasures of the rainbow, youth is in possession of the fairy gold. It all turns to dross, or is brushed away by and bye but let it have the glamour as long as it can. So the Star wishes its newsboys in Shakespearian phrase to "Let good digestion wait on appetite and health on both."

INQUESTS.

Human life in civilized communities is regarded as sacred. We make laws for the preservation of human life, we hedge it round with the greatest care, theoretically, and we punish in fractions of the law with the death penalty. The theory of the law is sound enough, but sometimes the practice of it is by no means as sound.

It has been the policy of this paper

to urge the necessity of coroner's inquests in all cases of sudden death. To a certain extent this urging has done some good. In the city of Honolulu it is not often that a sudden death is not investigated. But even in Honolulu we do not always get a coroner's jury to give a verdict. The law allows the Deputy Sheriff, who acts as coroner, theoretically, and we punish in fractions of the law with the death penalty. The theory of the law is sound enough, but sometimes the practice of it is by no means as sound.

It is useless to cite the many cases which have in the past been cited in these columns and in those of the Gazette of years ago, to prove the necessity of investigation. There is no doubt that there are people living in our midst today who have the stain of murder on their hands. A case, however, which has recently come to light in Hawaii, points the moral which the Star wishes to convey.

A Chinaman of Kau was found drowned. The matter was reported in the newspapers at the time. No inquest was held, and now there is a charge that the Chinaman met with foul play. From the report of the Deputy Sheriff of Kau to the Sheriff of the Island the following is taken: "On November 2, I reported to you the death by drowning of Pa Kua, Ch., at Honuapo and of my not holding an inquest. My reason for so reporting to you was on account of Officer Kua's report to me that he had investigated the matter and had seen nothing that would indicate foul play. I asked him about the net that had disappeared and his reply was that it had probably sunk in the pond."

What one wants to note in this very naïf report is the statement that the reason the Deputy Sheriff did not hold an inquest was because "Officer Kua had investigated the matter and had seen nothing that would indicate foul play." The Deputy Sheriff did not investigate for himself, he merely took the word of a not too responsible police officer. The reasoning is plain. The man was dead. His throat had not been cut, his head had not been mashed in, therefore the astute officer could see "nothing that could indicate foul play" and therefore no inquest was held. This is the position taken constantly by the authorities outside of Honolulu. Curiously enough, this position has always been supported by the Attorney General's department. The writer can well remember the look of almost horror that came over Attorney General W. O. Smith's face when it was argued on the floor of the House of Representatives, that every sudden death should be investigated. The present Attorney General shares the opinion of Mr. Smith.

But with all due deference to both these legal gentlemen, the Star believes that its position is sound that every sudden death should be investigated, and investigated before a jury, with witnesses properly sworn. We are constantly having cases which require investigation when the time for investigation has gone by, as it has in this Kau case. The sanctity of human life whether it be that of an American, a European or an oriental must be preserved. The law is plain on the subject, it says: "Section 2. As soon as any Coroner shall have notice of the death of any person, within his jurisdiction, supposed to have come to such death by poisoning, violence, or in any suspicious manner, he shall forthwith issue his summons to six good and lawful men, of the district where such death may have occurred, or in which the dead body may have been found or is at the time lying, to appear before him at the time and place expressed in the warrant, and there to inquire upon the view of the body of the deceased, when, how, and by what means he came to his death."

Even assuming that the death of this Kau Chinese was due to accidental drowning it was clearly within the statutory provision of death "by violence" requiring an inquest. Death by drowning in both legal and ordinary contemplation is a "violent death." And on this point the Standard Dictionary gives among the definitions of "violent," "Resulting from external force or injury; not in the ordinary course of nature; unnatural; accidental."

We shall have a practical engineer to consider the conservation of our water supply, one of the many advantages we are getting from annexation. The Federal Government can command the very best talent that can be obtained, and we get the advantage of it. There is nothing so important as the conservation of water supply, and a good deal of our water, as was shown in these columns a few days ago, goes completely to waste. What we need is to save every drop of water that we can. A good hydraulic engineer can show us how to do this, and give invaluable advice.

The Pearl Harbor condemnation cases are of great interest to land owners, as establishing the value of sugar lands. There can be no doubt that the Federal authorities have been misinformed as to these values. Years ago, when water had not been brought down to fertilize the plains around Pearl Harbor, the land was not worth much, but the moment that water was obtained, the value of the lands increased enormously. One has only to look at the results of cane growing under these circumstances, to appreciate what the water has done. However the whole matter will be thoroughly threshed out in Judge Estee's court.

Herpicide

**Removes
Dandruff
And
Makes
The
Hair
Grow**

HOLLISTER DRUG CO.
Sole Agents

Be Thankful

We all have something to be thankful for.

Do you ever stop to think how much better off you are than the average person in any other part of the world.

Are there many of us hungry and begging for employment?

Do we have to look forward with dread to the cold winter, which takes all we have saved in the summer, to keep us from freezing?

How about the neat little home you occupy, with the beautiful open-air life?

Some of us may feel blue this year because we foolishly speculated, but do not let that discourage you. It was an expensive lesson, but you will be more careful in the future.

With your family and friends around you next Thursday you will require a few more articles for your table, such as Meat Dishes, Plates, Cups and Saucers, Tumblers, Beer and Wine Glasses, Carvers, Knives and Forks, Spoons, etc.

Whether you are rich or poor, we can supply your wants to your entire satisfaction.

W. W. DIMOND & CO.,
LIMITED
WHOLESALE AND RETAIL
DEALERS IN
**Crockery,
Glass and
House
Furnishing
Goods**
Nos. 53, 55 and 57, King Street
HONOLULU.

The Lace House

Now for the Holidays

Don't leave your shopping until the last. You will surely need handkerchiefs and so we are showing you some this week in all styles, from 50c a dozen to the real thing at \$15 each.

Embroideries

You know from former experience that ours are the prettiest and cheapest. We have some new styles, since you saw them last.

M. BRASCH & CO.

PHONE 157

Incandescent Kerosene Burner.

Electric Light from Kerosene. Entirely new idea. Double the light of an ordinary burner and consumes no more oil! Fits any B Collar Lamp, takes B Wick and No. 2 Chimney. Price 35 cents. Try this Burner and get a pure white light

Eddy Refrigerators.

This is proved to be the BEST and MOST SATISFACTORY REFRIGERATOR ever introduced in this market. The demand has always exceeded our expectations and it has been difficult for us to supply the demands of our customers.

We have JUST RECEIVED a fresh supply in good assortment. The fact that those who have tried other makes have returned to the "Eddy" is a proof of its superiority.

A Car-Load of Michigan Stoves

has just arrived and our assortment is now practically complete.

PACIFIC HARDWARE COMPANY, LTD.

BEAVER LUNCH ROOM,
Fort Street. Opposite Wilder & Co.
H. J. NOLTE, Prop'r.

First-class Lunches served with tea, coffee, soda water, ginger ale - milk.

Smokers Requisites a Specialty.

CONSOLIDATED SODA WATER WORKS
(COMPANY, LTD.)
Esplanade, cor. Allen and Fort St.

Manufacturers of Soda Water, Ginger Ale, Sarsaparilla, Root Beer, Cream Soda, Strawberry, etc., etc.

Grand Opening of Holiday Goods

Presents for Young and Old
Immense Variety of Xmas

Cheap Toys, : Medium-Price Toys : Good Toys

TOYS AT ANY PRICE YOU WISH

Dressed and undressed Dolls from the smallest to the largest size, Musical Toys, Pianos, Drums, Mechanical Toys, Garden Sets, Masks, Games, Kitchen Sets, Dinner Sets, Guns, Horses, Donkeys, Trains, Tops, Carts, Express Wagons.

Toys of Every Kind That are Made, Now on Show

Fancy Bags, Purses, Leather Goods, Jewelry, Rings, Cuff Buttons, Embroidered Linen and Silk Handkerchiefs and hundreds of other useful lines suitable for presents.

All at Prices that will Bring You to Our Store for Xmas Presents

L. B. KERR & CO., LTD.

QUEEN STREET

Kelly-Springfield Tire

CIRCLE THE WORLD



And are recognized everywhere as the standard of excellence, durability and resiliency. Put on by expert mechanics who came direct from shops in San Francisco.

The Charles F. Herrick Carriage Co., Ltd
Merchant Street, next to Stangenwald Building

Just Received

a large assortment of all-over laces from 40 cents a yard and upwards. Figured dimities at 5 cents a yard, color guaranteed, and a large line of pillow-shams, wash stand covers, etc., etc.

A. BLOM.

Progress Block

Fort Street near Beretania



Everybody Wants It

That's what we find when we show our beautiful line of Art Nouveau Papers. These papers are the sweetest ever seen here and we are always glad to show them.

Wall Papers, Linoleums, Window Shades of all kinds at

BEAL'S

BERETANIA STREET, NEXT TO CORNER OF EMMA.

Nearest to Hops

The pure and delightful flavor of choicest imported hops found in

Primo Lager

Its use as a tonic will prove invaluable. For table use it is unequalled. Its purity is absolute. Not fortified with injurious acids to preserve it. TELEPHONE FOR A TRIAL CASE TO BREWERY.

TELEPHONE MAIN 341

JUDD & CO., LIMITED

Stock and Bond Brokers, Real Estate Agents, Insurance, Rents and Bills Collected

Office, 207 Stangenwald Building, Honolulu, T. H. P. O. box 667. TELEPHONE MAIN 223.

Wilder's Steamship Co

NOTICE.
CHANGE IN PASSENGER FARES.
On and after December 1st, 1901, the following change in passenger fares will go into effect, viz:
Deck rates between Honolulu and the Island of Hawaii will be increased from \$2.00 to \$3.00.
Cabin rates between Honolulu and Hana, Hamoa and Kipahulu, on the Island of Maui, will be increased from \$6.00 to \$7.00.
Deck rates from Honolulu to Maui ports will be increased from \$2.00 to \$3.00.
All special rates, excepting to Clergy-men, will be abolished on the above date.
C. L. WIGHT, President.
Honolulu, October 28, 1901.

Hawaiian Curios

Kapa, Calabashes, Lais, Native Hats, Hula Skirts, Ilihu Mats, Fans, Shells, Seeds, Etc., Etc. Hawaiian Stamps and 7-om made Poi Constantly on Hand at

WOMEN'S EXCHANGE
314 FORT ST. HONOLULU H. T.

NOTICE.

Buy your coffee at the KONA ORPHANAGE COFFEE STORE, 145 King Street, Red Front, opposite Young Building. We sell No. 1 old coffee as cheap as you can get it any place. Telephone Blue 1621, orders delivered free.
The money which you spend here is used to support and educate the children in the Kona Orphanage.

AMERICAN SALOON

Wilhelm Schilling Proprietor.

PRIMO BEER ON TAP AND IN BOTTLES
TEN CENTS A SCHOONER.

Also Cigars, Tobacco and Cold Drinks. Liliha Street Near Vineyard.

Note Heads, Bill Heads, Letter Heads and all kinds of Job and Commercial Printing neatly and promptly executed at the Star Office.

For Rent

WE HAVE FOR RENT A LIST OF
Superb New Houses
Rentals at \$125.00, \$50.00, \$40.00 and \$35.00 per month.

FOR SALE

ON THE PLAINS AND ELSEWHERE
Call and talk over a proposition for purchase in the installment plan.

HENRY WATERHOUSE & CO

Stock and Bond Brokers, Fire Insurance and Real Estate

Tel. Main 313. Fort and Merchant Sts.

34N FRANCISCO 215 Front St.
HONOLULU, Queen St.
NEW YORK, 43 Leonard St.

M. S. GRINBAUM & CO., LTD.

Importers and Commission Merchants

Sole Agency FOR

Blanche Bates Cigar

AGENTS FOR
British America Assurance Comp'y, of Toronto, Ontario.
Philadelphia Underwriters

Special attention given to consignments of coffee and rice

ISLAND REALTY CO. LTD
OFFICE
204 JUDD BUILDING
HONOLULU, T. H. P. O. BOX 667
MAIN 310

AGENTS FOR SALE OF REAL ESTATE

Fine Building Sites, Puupueo Tract, Manoa

F. J. LOWREY, President.
A. E. WOOD, Vice-President.
J. A. GILMAN, Secretary and Treasurer.
F. J. AMWEG, Auditor.
CHAS. H. GILMAN, Manager.

C. R. HEMENWAY, LAWYER.

Office: Room 406 Judd Building. TELEPHONE 314 MAIN.

Amusement For All

ERNEST HOGAN

And his Company of Unsurpassed Colored Comedians at the

ORPHEUM

EIGHT COMEDIANS, MALE QUARTETTE, LADY QUARTETTE, PICANINNY QUARTETTE.

A FIRST CLASS PROGRAM OF PICKED PERFORMERS.

A Good Show and No Formality

Prices, 50c, 75c and \$1.00

ERNEST HOGAN

Honolulu's ... Favorite

The Executive Council held a meeting this morning. There was nothing to come before the meeting and no business was done.

A HIT TO ADVERTISE

COMBINATION TO EXPLOIT THE BEAUTIES OF OAHU.

Coming Cable Starts an Advertising Feature—Practical Automobile Line May Run to Waikiki.

Now that the cable promises to be an assured thing, local advertisers particularly those directly interested in the tourist traffic by carrying or feeding the visitors, are mapping out concerted plans of action that promise to open a field for the coming guest to send him away no matter how short his stay. Fully convinced of the manifold beauties of the Paradise of the Pacific.

"The trouble has been hitherto," said a prominent hotel man this morning, "that there has been a lack of concerted action in the matter of advertising and a lack of interest taken in the guest after he or she arrives here. If they stay at the beach and ask for information for further pleasures a trip to the Fall or a drive up Punchbowl seems to exhaust the average information that they can glean from the hotel folks or the casual informant. The fact is that most of the folks here, even the old Kamaainas, do not realize the beauties of the islands or of Oahu itself. The volcano is of course one great attraction but, if other pleasure resorts in America and Europe had one tithe of the attractions that Oahu possesses, they would so exploit their advantages that the tourist's haunts would hide their heads in shame.

"Look at our best scenery, there is no effort made to get the tourist out to see it. You need not force him into a carriage against his will or make no picnic parties that a great many would rather not join, but disseminate the news of these places and pleasures and you will have him asking to go and see them.

"What are they? There are twenty good tourist features at least that have never been exploited. About all the ordinary tourist knows of as special to Hawaii is the surf canoe and many of them are too timorous to attempt it.

"There are the wondrous fishes and coral groves of the lagoons inside these reefs that should provide an inexhaustible means of amusement. All you need is a glass boat in readiness and a veritable fairy land is on view any day or moonlight night. Then there are the lochs at Pearl Harbor, land locked with beautiful scenery teeming with strange fish, ideal waters for a sail in a yacht or a trip in a launch, either of which, with a good engineer or a skipper, should be at the guests' disposal.

"These waters are the envy of many a water-loving visitor in the summer and they mean in the winter when other lakes and sailing grounds are ice bound. There are beaches here too where the turtles lay their eggs on moonlight nights, a feature that has been vigorously advertised as an attraction by certain Southern hotels in the States. There is the fishing, the trolling, torch fishing and spearing, any one of which would be esteemed alone sufficient in another place to attract tourist travel.

"There are picnic grounds, diving pools, waterfalls, drives along the windward side of the island, shooting, already good, and with persimmon and introduction of game possible to be much better. Boar hunting, and wild goat stalking could, with judicious advertising, be made as popular as the famous mouflon, the wild sheep of Corsica and Sardinia. Make automobile trip round the island. They build machines nowadays that can get over any of our roads and hills.

"But you must tell the tourist about these things, saturate him with them subtly not by pamphlets filled with advertisements but by judicious means which are too expensive to be used by the individual perhaps but not so costly when the community takes hold. Tourists benefit the hotels and steamship companies they benefit the town at large.

"In other tourist resorts, everyone bears their share in systematic advertising and every one reaps the harvest. It is not necessary that the pamphlet that attracts however dainty it may be. Too often they are thrown broadcast into the waste basket. One good book by a popular author on Honolulu, bringing in naturally the attractions, would do more good than a million booklets. Magazine articles on branches of the interesting features with good illustrations from photographs and sketches are the great means to the end. They seem initially costly but they are not in the long run.

"Some day there will be a sort of Cook's agency branch down here that will open up the islands and take the tourists on a regularly laid out tour which will include all the attractions. There are many of the wealthier class of visitors who abominate Cooke's tours but the latter will serve the purpose of developing the places to go to."

"There seems to be general intention among the merchants to combine forces and capital and thoroughly exploit the attractions of Hawaii along the lines laid down above. Local places of interest will be made more available and suggestions of launches and yachts to be held at the service of tourists are being considered. The movement has not yet crystallized but the opening up of the cable has greatly helped to bring matters along.

It is almost an open secret that a prominent hotel company has seriously considered closing contracts with a local firm that is exploiting automobiles, not electric ones but carriages whose utility has been fully established elsewhere, and the probabilities point to the establishment of an auto line to Waikiki without waiting for the development of the Rapid Transit. The line will not necessarily be confined to guests of the hotel but will probably be strongly patronized by residents of King, Young and even Beretania streets who will not be benefitted by the electric cars apparently for a long time to come.

The matter of advertising may be taken up in the Merchants Association or there is talk of an advertising bureau being established to supervise the affair with an energetic and first class man at the head.

Everything hangs on the cable. Should that fail to materialize the matter will be dropped. There is a strong realization of the fact that the people who might build winter homes here or care to stay for any length of time will not place themselves out of touch of their financial affairs for days at a time when a crisis might arise and a return to the States find them ex-millionaires without having been able to issue directions or make a fight for their interests.

A SCALY PROBLEM.
Scientists are discussing the question as to how the age of a fish may be determined. Its weight, of course, can be told by the scales.—Kansas City Journal.

A PRISONER TAKEN

Lum Hin the Chinese, who is alleged to have attempted to commit wholesale poisoning at a Chinese work camp at Papaikou, near Hilo, was caught by the authorities at Kawahae last Friday as he was attempting to escape on the Kinau.

This news was brought Saturday by the Kinau. The alleged poisoning occurred on the evening of November 11. Lum Hin is alleged to have placed a large quantity of Paris green in the tea bucket used by the Chinese laborers. All of the gang partook of the tea, and within a short time, the entire seventeen were taken violently ill. Medical aid was promptly secured and the lives of the entire crowd were saved.

Suspicion pointed toward Lum Hin and a warrant for his arrest was issued. He succeeded in escaping however but Sheriff Andrews had circulated, containing the picture and description of the man to be distributed about the territory. Evidently, the Chinese had been secreted in the interior or at near Hilo for some days, for last Friday, he made an unsuccessful attempt to get out of Hawaii.

He had made his way across to Kawahae and had so far eluded the officers, as to get into one of the Kinau's boats to be rowed out to the steamer, when the officers recognized and placed him under arrest. He was to be taken back to Hilo, where he will have to stand every action taken on the charge. High Sheriff Brown learned last Saturday of the capture.

IS HOO-DOO STRAITS

Shimonoseki Straits, the western entrance to the Inland Sea can well be termed the Hoo-doo passage of the Orient. No less than three transports have struck ground in that narrow causeway within the course of a month and the history of the place is marked with similar experiences with passenger liners.

Strange to relate however, the grounding of the vessels is not due to the prevailing weather or to the prevalence of fogs, but to the extreme caution of the Japanese pilots in trying to avoid collisions with smaller craft. In escaping the Scylla of collision though, the pilots run into the Charybdis of grounding their boats and, in consequence, are frequently getting steamships into trouble. According to the opinion of some of the officers of the Pacific liners, the accidents to the transports were brought about by just such causes.

The straits themselves are wide enough, but the channel is, in some places, very narrow, being scarcely more than a quarter of a mile. Vessels traveling through them are constantly annoyed and endangered by the large number of Japanese fishing schooners. These schooners let athwart the fairway and make it impossible for a steamship to take a straight course without striking them.

If there is anything which a pilot dreads, it is collision. So long as he holds his license, he can make a comparatively easy living, but should he run down any of the native craft, he generally loses the license. As a result, the pilots live in mortal terror of suit, the pilots live in mortal terror of suit, the pilots live in mortal terror of suit, the pilots live in mortal terror of suit, the pilots live in mortal terror of suit.

No details of the accident to the transport Hancock are known at present. The transport Warren was pinned on the rocks trying to avoid running down a native craft. It is very likely that the Hancock was grounded in a similar way. The officers of the Nippon Maru think that instead of hitting a sandy bottom as reported, the Hancock struck rocks.

SHIPPING INTELLIGENCE

(Continued from Page 2.)

PASSENGERS.

Departing.
Per str. Kinau, November 26, for Hilo—W. Reinhardt, wife and child, W. Taketa, Alexander Potter, B. Egan, Dr. C. M. Thomas, E. E. Paxton, J. Victor, Miss J. Thomas, Miss J. Teasdale, Judge Little, C. N. Prouty, L. Jockheere, E. F. Patten, T. C. Riggdaway, H. Deacon, and wife, Mrs. B. Walther, B. Walther, J. A. Scott and daughter, Mrs. R. H. Reid, maid and child, H. Dechent, J. Michaels, for Mahukona, Miss May, C. Booth, T. S. Kay, J. H. Achong, W. Booth, for Hana, H. C. Overden, Miss S. Daniels.

WAITING FOR WISCONSIN.

The friends of Commander Tilley are anxiously awaiting the arrival of the battleship Wisconsin, for the result of the court martial of the late governor of Tutuila will, it is understood, be announced by Admiral Casey, instead of by the Washington authorities, as was first reported. The fact that commander Tilley was relieved from arrest and cordially received by all of the officers of the court, after the trial, is taken as indicating that the charges against him did not stick. The battleship is expected here within a few days.

IN THIRTY YEARS.

Judge Wilcox expects soon to take a month's vacation. He has been continuously in public service for over thirty years and in all that time has never been absent from duty more than a week or so at a time, and then usually because of sickness. His health now is not very good and that is why he wants a vacation.

NEW ADVERTISEMENT

FOR SALE.
Furniture of a 7-room cottage on Fort Street with privilege of renting cottage.
Apply to G. T. Kelley, Inter-Island Steam Nav. Co. wharf.

THE BRIGHT SIDE OF LIFE.

It is a feeling common to the majority of us that we do not get quite the amount of happiness we are entitled to. Among the countless things which tend to make us more or less miserable ill health takes first place. Hannah More said that sin was generally to be attributed to biliousness. No doubt a crippled liver with the resulting impure blood, is the cause of more mental gloom than any other single thing. A chronic dyspeptic, says an eminent English physician, is always on the verge of a mental upset. And who can reckon up the fearful aggregate of pain, loss and fear arising from the many ailments and diseases which are familiar to mankind. Like a vast cloud it hangs over a multitude no one can number. You can see these people everywhere. For them life can scarcely be said to have any "bright side" at all. Hence the eagerness with which they search for relief and cure. Remedies like

WAMPOLE'S PREPARATION

have not attained their high position in the confidence of the people by bald assertions and boasting advertisements. They are obliged to win it by doing actually what is claimed for them. That this remedy deserves its reputation is conceded. It is palatable as honey and contains the nutritive and curative properties of Pure Cod Liver Oil, combined with the Compound Syrup of Hypophosphites, Extracts of Malt and Wild Cherry. Nothing has such a record of success in Fevers, Rheumatism, Scrofula, Influenza, Throat and Lung Troubles, and all emaciating complaints and disorders, that tend to undermine the foundations of strength and vigor. Its use helps to show life's brighter side. Effective from the first dose. You cannot be disappointed in it. Sold by chemists everywhere.

NEW ADVERTISEMENTS

Attention Co. "A."

Armory Company A, First Regiment, N. G. H.
Honolulu, November 26, 1901.
Every member of this command is hereby ordered to report at the Drill Shed this TUESDAY EVENING for Company Drill.
By order, H. KLEMM, Captain Commanding.

Original Singer's ..

Extra Fruit Pies!
Extra Squash Pies!
Extra Mince Pies!

Special for Thanksgiving:
FOWL, PIGS, ETC., ROASTED TO ORDER.
Order Early. Telephone Blue 3091.
NOTICE—No delivery of Bread on Thanksgiving.

The Paragon Market

HAS A CHOICE SUPPLY OF

Sucking Pigs

JUST THE THING FOR THANKSGIVING.

BERETANIA AND EMMA STREETS.

CLOSING NOTICE.

The store of Lewis & Co., will close all day Thursday, November 28, Thanksgiving Day.
Orders should be placed early Wednesday so that they may receive prompt attention.
LEWIS & CO.

KOLOA SUGAR CO. MEETING.

Koloa Sugar Company, Ltd., will be held at the office of H. Backfield & Co., Monday, December 2, 1901 at 2 p. m.
T. W. HOBSON, Secretary.

Makaweli Store.

MAKAWELI, KAUALA

WILL OPEN ITS SALE OF

Holiday Goods

ON

Monday, December 2,

AT 9 O'CLOCK A. M.

Offering a choice selection of fine cut glassware, Sterling silver table ware, toilet articles and novelties.

LATEST STYLES IN

NEWEST NOVELS AND BRIC-A-BRAC, CHRISTMAS GOODS IN GENERAL

Call and examine this stock before sending away for your Christmas Presents.

A Summer Proposition.

Well, now there's the **ICE QUESTION!** You know you'll need ice; you know it's a necessity in hot weather. We believe you are anxious to get that ice which will give you satisfaction, and we'd like to supply you. Order from **THE OAHU ICE & ELECTRIC CO.,** HOFFMANN AND MARKHAM.

Telephone 3151 Blue, Postoffice Box 606

E. W. Jordan

Is always well to the front in genuine Goods at Fair Prices.

STILL

the store must keep in line with other stores in frontage to the street

SO

The Government may ask me to move back, which will lessen the size of my store, and I must reduce my Immense Stock to at least one-half. I therefore intend to

GIVE ALL OF MY CUSTOMERS

the opportunity to buy goods at

PRICES

never heard of here. Come before you buy elsewhere and you will say my prices are all right.

E. W. JORDAN,
10 FORT STREET

AB SOP,

King Street, Territorial Stables Block. Dealer in Family Groceries, Tobacco, Cigars, Kala Butter, California and Island Fruits. Orders delivered to any part of the City

W. G. IRWIN & CO., LTD.

Wm. G. Irwin, President and Manager Elmer Spreckels, First Vice-President W. M. Giffard, Second Vice-President W. M. Whitney, Jr. Sec'y and Treasurer Geo. J. Ross, Auditor

Sugar Factors, Commission Agents

AGENTS OF THE OCEANIC STEAMSHIP COMPANY OF SAN FRANCISCO, CAL. Telephone Main 82. P. O. Box 866.

Y. SUGA SHOTEN,

IMPORTER OF Japanese Provisions AND Dry Goods

Wholesale Dealers in Liquors and Beers KING STREET NEAR BRIDGE.

HART & CO., LTD
THE ELITE ICE CREAM PARLORS

Chocolates and Confections Ice Cream and Water Ices Bakery Lunch.

THE FINEST RESORT IN THE CITY

Oriental Goods

NEW IMPORTATION OF Silk Shawls, Decorated Flower Pots, Porcelain Cups and Saucers, Tea Dinner Sets, Carved Ivory, Rattan Ware; Carved Sandalwood Boxes. These Goods are the Handsomest in all Honolulu

WING WO CHAN & CO.

110-112 Nuuanu Street.

H. W. McChesney & Sons.

Wholesale Grocers and Dealers in Leather and Shoe Findings.

Honolulu Soap Works Company and Honolulu Tannery.

S. Kojima.

IMPORTER AND DEALER IN LIQUORS,

Japanese Provisions, General Merchandise, AND PLANTATION SUPPLIES.

101 HOTEL STREET, HONOLULU. Telephone White 1411. P. O. Box 994.

All Run Down

No Appetite, Weak, Discouraged.

Warm climates always debilitate the nervous system. The digestion is slow, and the liver becomes sluggish. Impurities in the blood accumulate, and you go about downhearted and depressed. All this may be quickly changed with proper treatment. Mrs. C. Kennedy, of 29 Erskine St., North Melbourne, Victoria, sends us her photograph and this letter:



"I had lost my appetite, was very weak, and all run down. Nothing did me good, and I was discouraged. I then tried

AYER'S Sarsaparilla

and it brought me right up to my usual health and strength. And I want to add a word here about Ayer's Cherry Pectoral. It has cured me of such hard coughs and colds that I feel I could not do without it. For family remedies I rely on that word, "Ayer's."

Keep your bowels in good condition with Ayer's Pills. Take just enough to produce one good free movement of the bowels daily.

Prepared by Dr. J. C. Ayer Co., Lowell, Mass., U. S. A.

Souvenir Calendars, Xmas Cards

A select line of Children's Books.

A large assortment of office and pocket Diaries for 1902.

The most complete line of Blank Books and Office Supplies.

HAWAIIAN NEWS CO., LIMITED.

We have received an elegant assortment of

Kimonos

Also, a large variety of stylish

Shirts

Moderate Prices

S. OZAKI.

Waverly Block, Hotel Street

S. SHIMAMOTO,

Merchant Street - - Honolulu, T. H.

General Merchandise, Dry Goods, Groceries, Japanese Provisions, Etc., etc., etc.

P. O. Box 884. Telephone 214.

Wm. G. Irwin & Co., Ltd.
FIRE AND MARINE INSURANCE AGENTS

AGENTS FOR THE Scottish Union National Insurance Company of Edinburgh, Wilhelm of Magdeburg General Insurance Company, Associated Assurance Co., Ltd., of Munich and Berlin, Alliance Marine and General Assurance Co., Ltd., of London, Royal Insurance Company of Liverpool, Alliance Assurance Company of London.

THURSDAY FOOTBALL

HEAVY WEIGHTS TO PLAY AT PUNAHOU.

Honolulu Versus Punahou Should Furnish a Good Game—Both Will Play Their Strongest Teams.

Local interest will center on the Thanksgiving Day game next Thursday afternoon between the Honolulu and Honolulu Athletics and there will probably be the biggest turnout of the season to witness the efforts of the opposing teams.

Not even a tropical climate and a lengthy residence therein can diminish the spirit of the Honolulu Athletics. They could get along almost as well without the traditional turkey as without a football game.

It is satisfactory that the two teams scheduled for that date seem likely to put up a first-class game. It will probably be the running of the league and decide the standing of the league for the season.

The Punahou have already one to their credit while the Honolulu have only a draw. Of course if the Punahou win the Thursday game the jig will be up for the rest of the contestants in the running for the league.

It is interesting to note that the Honolulu have made up their minds not to allow the credit of the league to be won by the Honolulu Athletics if they succeed in doing so or draw the game and win from the Athletics they will be in the running for the league membership. At present the Honolulu have played two games of which they have won or drawn each. The Maile Hima have drawn the two games they have played and the Honolulu the one battle they have been in. The only loss of the season stands against the Athletics so that with the exception of the last team all three of the others are liable to tie for first place.

Thursday's game will not see the discrepancies of weight between the teams that the last two league matches have witnessed. The opposing teams are practically evenly matched and if they tinkle low and play hard the game should be interesting.

The Honolulu were working hard last night practicing signals and will play a stiff game with several changes in the line up. Gleason will go back to half and Thompson take his place as quarter back while Chillingworth may take Lawrence's place, the latter having been injured in the last game and not yet being in shape. Chillingworth should make a crack football player if he had time to practice. Hard as nails and quick he is a valuable man of the greyhound type of player to have on a team.

The Punahou have reported no changes from last Saturday's line up although there has been some unpleasantness resulting from the game that may end in Morse standing out of the team.

These displays of umbrage at petty jealousies and imaginary slights and injuries are very childish and unbecomingly ought to be eliminated. "The team first and foremost and personal trouble next" has been the motto of every successful team. Morse is a valuable man and so is any member who has been playing two or three consecutive matches in any team.

The Oahu College team has gone out of training not being able to secure a game. Next season the work of organizing light weight teams will be commenced earlier.

The fund for bringing down the Olympics is steadily growing and has now nearly reached \$700. As soon as the pledges amount to a sum that leaves deficit that the gate money is liable to cover, word will be sent to Manager Muma extending the invitation. Considerable discussion is being held over the admission price for the game. The largest attendance so far this season has resulted in about 1500 which at twenty five cents, the popular price means \$375. It is proposed to place a number of chairs in a roped enclosure and charge an extra fee of ten or perhaps twenty five cents for these reserved seats which will take the place of a temporary grand stand without much expense. This would swell the receipts to \$500 a sum that has been fixed upon as about the needed return.

The Y. M. C. A. Seniors have a hard battle on their hands as being held over the last one, postponed on account of an accident in the gymnasium to one of the members. An important business meeting will be called after the return of the runners.

The Scottish Amateur Athletic Association has an annual meeting tonight at 8:15 in the Scottish Thistle Club rooms.

Ties in the second round of the Honolulu Golfers must be played off this week. Results thus far in this round show Dr. A. E. Nichols (29) beaten by N. Kay (40) and Wentworth Buchanan (15) badly beaten by D. Ross five up and four to play.

A RICH BANKRUPT

DISCHARGED HERE, ARRESTED IN CHINA.

Cashes Money From Here in China, Goes Through Bankruptcy and Leaves for Home Wealthy.

News came from China by the last steamer that one Wung Chung, discharged in bankruptcy by Judge Estee, was promptly arrested on arriving in China, on account of a debt he owed to a firm there, and he is supposed to be still languishing in prison there, unless he has paid up.

The case of Wung presents features which are said to be common to the Chinese bankruptcy cases, in that he is said to have a fortune in China. Chinese bankruptcy cases are rare, and Chinese credit here is high, for the word of a Chinese in business matters is regarded as usually very good, but when a Chinese goes the other way, he has an easy opportunity to cache a fortune in China, go through bankruptcy here and leave for his happy home, confident that he will make it happier with good American money.

Wung Chung is said to have tried this game. He duly turned over his property here, such as there was, to the trustee in bankruptcy, attorney W. W. Thayer. The property was appraised among his unlucky creditors here, and Judge Estee discharged Wung, as a bankrupt, free from all debts. Then Wung wanted to know from his attorney if anything could be done to him in China. He was told that he was free as far as American laws were concerned, but the lawyer didn't know what the Chinese law might do.

and refused to give advice on that subject.

Wung took a steamer for China, and a Chinese creditor put him in book for a debt of \$1,500. The probabilities are, it is stated, that he promptly paid over the amount and went free.

Yesterday another Chinese was discharged in bankruptcy by Judge Estee, after the usual legal proceedings had been gone through. He owed about \$12,000 and had only about \$3,000 with which to pay them off, as far as the court was able to find out, and the Honolulu firms who trusted him are therefore out \$14,000. There are those, however, who say that the Chinese has a fortune in China, made here while he was piling up the big debt he can never be made to pay now. He is known to have been making a very large income for a number of years past, and has long had the reputation of being a wealthy man.

The trick is one easily worked and one which does not appear to be preventable. The American bankruptcy law quickly frees a man from debts he cannot pay, after he has turned over all his property for distribution among his creditors but if a Chinese piles up debts by sending all the money he can to China and then turns over what property he has here and cheerfully takes oath that it is all he has in the world, neither the court nor the creditors have much chance.

LOOTING.

YOKOHAMA, November 15.—It is reported that some sections of both the House of Peers and the House of Representatives have in contemplation the presentation of an interpellation or resolution to the Imperial Diet against the looting committed, it is said, by some military officers of this country during the Chinese disturbances. They are making efforts at present to effect a union of the Higher and Lower Houses with a view of having the said interpellation or resolution included in the day's orders on some one date for both Houses.

A GREAT MEDICINE.

"I have used Chamberlain's Colic, Cholera and Diarrhoea Remedy and find it to be a great medicine," says Mr. E. S. Phipps, of Poteau, Ark. "It cured me of bloody flux. I cannot speak too highly of it." This remedy always wins the good opinion, if not praise, of those who use it. The quick cures which it effects even in the most severe cases make it a favorite everywhere. For sale by all dealers Benson, Smith & Co., general agents, Hawaiian Islands.

Chicago
In Less Than
3 Days
From San Francisco at 10 a. m.

CHICAGO, UNION PACIFIC & NORTHWESTERN LINE

Double Drawing-Room Sleeping Cars, Buffet, Smoking and Library Cars, with barber, Dining Cars, meals a la carte. Daily Tourist Car Service and Personally Conducted Excursions every week from San Francisco at 6 p. m. The best of everything.

R. R. Ritchie, Gen. Agent Pacific Coast San Francisco. 617 Market Street. Palace Hotel.

NOTICE OF LOST CERTIFICATES.

Notice is hereby given that Certificate No. 577 for 50 shares, and No. 578 for 75 shares of the capital stock of the Ewa Plantation Company, standing on the books of the said Company in the name of Mrs. Lucy T. Lewis, have been lost, and transfer of the same on the books of the said Company has been stopped.

All persons are warned against negotiating, purchasing or dealing with said certificates. Said shares are transferable only by endorsement on said certificates and by surrender of the same and the issue of new certificates. No title will pass to the finder of said certificates. Said certificates, if found, should be delivered to the undersigned.

W. A. BOWEN, Treasurer, Ewa Plantation Company.

NOTICE OF LOST CERTIFICATES.

Notice is hereby given that Certificates Nos. 571 for 100 shares, 572 for 80 shares, and 573 for 200 shares, and 574 for 70 shares, of the capital stock of the Ewa Plantation Company, standing on the books of the said Company in the name of Frances M. Wetmore, have been lost and transfer of the same on the books of the said Company has been stopped.

All persons are warned against negotiating, purchasing or dealing with said certificates. Said shares are transferable only by endorsement on said certificates and by surrender of the same and the issue of new certificates. No title will pass to the finder of said certificates. Said certificates, if found, should be delivered to the undersigned.

W. A. BOWEN, Treasurer, Ewa Plantation Company.

NOTICE OF LOST CERTIFICATE.

Notice is hereby given that Certificate No. 190 for two shares of the capital stock of the Hawaiian Electric Co., Ltd., issued July 30th, 1898, standing on the books of the said Company in the name of Mrs. Lucy T. Lewis, has been lost, and transfer of the same on the books of the said Company has been stopped.

All persons are warned against negotiating, purchasing or dealing with said certificate. Said share is transferable only by endorsement on said certificate and by surrender of the same and the issue of a new certificate. No title will pass to the finder of said certificate. Said certificate, if found, should be delivered to the undersigned.

GEO. R. CARTER, Treasurer, Hawaiian Electric Co., Ltd. Fine Job Printing, Star Office.

The Royal Lawn Mower

Keeping up the appearance of the lawn, before the ROYAL LAWN MOWER arrived was one of man's most arduous tasks. The light running and perfect cutting of this wonderful machine makes it now a pleasant duty. Although the ROYAL DOESN'T "cut much ice," it's a wonder on grass. Perfect running, ball bearing throughout and easily adjusted.

First cost a little above some mowers, but saves money and good dispositions in the long run. Oil can and other accessories furnished with each machine without extra charge.

Besides the ROYAL we have many other makes of mowers, ranging in prices from \$5.00 to \$18.00, and have a stock to suit everybody in price and quality. Grass catchers adjusted to any machine. Call and see them.

E. O. HALL & SON, LTD
SOLE AGENTS

Xmas Menu.
Buy the Best At May's

Turkeys and Chickens, Fat and Tender.
Choice Turkey Figs, Delicious Stuffed Dates,
Fresh Mince Meat,
In glass and tins; condensed and in bulk
New Layer Raisins,
In Fancy Cartons
Fancy Crackers, Fresh Bon-bons and Creams
Nuts, Walnuts, Filberts, Pecans, Castanas

H. MAY & CO., LTD., BOSTON BLOCK, FORT STREET
Telephones, 22, 24, 92 P. O. Box 386.

Grand Removal Sale!

For one week only commencing Saturday November 16, our entire stock will be offered at reduced prices on account of removing to Robinson Block Hotel Street, on Saturday, November 23. Give us a call and convince yourself of our low prices.

U. SEKOMOTO,
14 Hotel Street near Nuuanu

M. PHILLIPS & CO., Wholesale Importers And Jobbers of AMERICAN AND EUROPEAN DRY GOODS
Corner of Fort and Queen Sts.

L. KONG FEE, Merchant Tailor, 1263 Nuuanu Street. Fashionable Suits at Reasonable Rates a Specialty. A full line of Cassimeres and Tailoring Goods always in Stock. Dyeing, Cleaning and Repairing at Short Notice. Satisfaction guaranteed.

Hazelwood Market Co., Yosemite Building, Fort near Kukui St.

GROCERIES, FRUIT, TOBACCO AND COLD DRINKS, CIGARS AND BREAD, FRUIT SPECIALTIES.

Telephone 223, Main. P. O. Box 667.

Metropolitan Meat Co
61 KING STREET.

Wholesale & Retail Butchers AND NAVY CONTRACTORS.
G. J. WALLER, : : : Manager.

Japanese Goods
Cotton Crepe Silk Kimonos

American Goods
AND Curios

M. CHIYA
Telephone 3311 White. Corner of Nuuanu and Hotel Streets.

NEW GOODS RECEIVED BY EVERY STEAMER.

WON & LOUI CO. Corner Maunakea and Pauahi Streets. Sanitary Plumbers, Tinsmiths, and Sheet Iron Workers. Water Pipe and Gutter Work in all its branches. Orders filled with dispatch. Fine Job Printing Star Office

ACME

OLD PURE RYE WHISKEY

NECTAR

The Hannis Distillery Co., Philadelphia, U. S. A.

W. C. Peacock & Co., Ltd., Sole Agents

KILOHANA PICTURES

LANDSCAPE SECTION WORTH SECOND VISIT.

Five Best Canvases Include Four Local Subjects—Improvement Shown by Student Members.

The landscape on exhibition in the Kilohana exhibit is well worth a second visit and shows throughout, from the less skilful handlings of the sables to the past masters, conscientious effort and effect that is peculiarly soothing and grateful after some of the so-called studies belonging to the "freak" school of painting that have occasionally crept into the Kilohana gallery; nightmares of color with no drawing as an excuse for their existence.

There are two Chinese exhibitors this season, one of them Lau Sheong, a pupil of Howard Hitchcock, whose efforts from year to year have attracted quite a little attention. Sheong has entirely broken away from the inherited tendency to cling to the accepted canons of Chinese art with its careful application and narrow principles. Sheong's work this year shows much more freedom in drawing and technique generally. Student fashion he has adopted his teacher's palette so far and is apt to be over brilliant.

Miss Tabor shows some interesting watercolors and Miss Kelley's broad treatment of the Poinciana is very successful. Teng Cheong's work, like his fellow countryman's, is interesting and earnest.

Mr. Wores seems to have unearthed a new field at Waianae that is surprising has not been developed. The small canvas showing the back ground of violet and emerald mountain, with cane, a pool of water and taro, in the foreground, is a charming and perfectly natural composition that gives a glimpse of a wealth of color and subject as yet undeveloped. Mr. Hitchcock and others would find it well worth while to travel down the line in that direction.

For choice of the five canvases in the landscape section combining the salient features of drawing, technique, composition, color harmony and fidelity, the connoisseur would be apt to choose Wores' exquisite pastel pastoral "Evening on the South Bay" although the captious critic might have something to say about the drawing of the sheep but its exquisite color, its truisim and feeling of the quiet twilight hour gives it the first place. Howard Hitchcock's "Punchbowl from Judd Street," and "Nuuanu Gap from Palama" are easily his best and with Mr. Kania and a delightful little canvas "Waianae" by Wores, the last named sparkling with the effects of a just passed tropical shower, complete the quintet.

Mrs. Helen Kelly holds the palm in watercolors both from technique, broad treatment and good color. Hitchcock has one water color on the line called Canoe Cave that is pretty enough but has many vagaries of color in the shadows.

THEATRE TONIGHT.
Tonight will be laughter night at the opera house where Mr. Neill and his company will present for the first time in this city the greatest of all fantastic comedies, "Niobe." It is from the pens of Harry and Edward Paulton, the famous authors of "Erminie" and "Niobe" will be seen as "Niobe" and Mr. Neill as "Peter Ames Dunn."

WELCOMING A PASTOR.
Reception This Evening to the Rev. W. N. Lono.
A reception will be given by the members and the Christian Endeavor Society of the Kaunakapili church this Tuesday evening in honor of their new pastor Rev. W. N. Lono. He is one of the most learned Hawaiian pastors of the old school. He received his education at the Lahainaluna Seminary, the Rev. H. H. Parker being one of his teachers.

After graduation he chose to be a missionary and was sent to the South Sea Islands where he remained till ill health compelled him to reluctantly give up his work for more than a year in which was commencing to bear fruit, and he returned to his native land.

He has been pastor of the church at Kekaha, Kona, Hawaii, since his return and resigned to accept the call of the members of the Kaunakapili church, who considered themselves fortunate in securing him as their pastor. He has already won the hearts of his congregation both young and old, it is said, by his preaching, and his kind, genial, pleasant and unassuming ways and manner. The members of the Kaunakapili church extend a cordial invitation to all Christian workers and friends to come.

JAPANESE PRINCESS.
YOKOHAMA, November 15.—H. I. H. Princess Noriko, the royal consort of Prince Yamashina, who has been suffering from fever since the birth of a princess on the 31st inst., passed away on the morning of the 11th inst. The deceased Imperial Princess was born on the 4th of December, 1875, and was twenty-six years of age at the time of her demise. Her Highness was the second daughter of Prince Kujo and elder sister of H. I. H. Princess Sadako, the royal consort to the Crown Prince. The deceased Princess was decorated with the First Order of the Crown on the 9th inst.

QUERER SUICIDE.
Quite a commotion was caused at the Police box near the railway station at Umeda, Osaka, early on Monday morning, by the action of a man who professed to be anxious to secure an officer's attention to an application and then, when the latter was off his guard, suddenly drew the officer's sword and cut his own throat with it. The man proved to be a native of Yehime Ken named Aoki Chihiro. He had been suffering from a serious nervous disorder. The wound inflicted was not mortal and a doctor being attended to by a doctor the unfortunate man was handed over to a relation in the city.—Japan Gazette.

THREE MEN AND A BOAT.
Daring Swimmer Recovers Drifting Fishing Boat in Storm.
As the dusk and darkness of a rainy night were settling over the city last Friday evening a group of watchers on the sea shore at the mouth of the Waikuku river witnessed a little drama of three men and a boat, which though common to Hawaiians never ceases to thrill the hale who is a stranger to the sea. The

HAWAIIAN Engineering & Construction Co.
Rooms 508, 509, 510 Stangenwald Building.

All classes of Engineering work solicited. Examinations, Surveys and Reports made for any class of Waterworks, Steam and Electrical Construction, Plans and Specifications and Estimates prepared, and Construction Superintended in all branches of Engineering Work. Contracts solicited for Railroads, electric and steam; Tunnels, Bridges, Buildings, Highways, Foundations, Piers, Wharves, etc.

SPECIAL ATTENTION given to Examinations, Valuations, and Reports of properties for investment purposes.

FREDERICK J. AMWEC, M. Am. Soc. C. E.,
Engineer and Manager.

W. R. CASTLE, JR., Secretary and Treasurer.

rain had been pouring all day. Waikuku river was coming down to the sea a perfect flood. The school of fishing smacks under the estuary bank were rolling and tugging at the chains that made them fast. The one belonging to A. G. Serrao snapped its moorings and was carried out to sea by the swift current. Johnnie Polokaa, the champion swimmer was standing near. The owner of the boat offered a reward for its capture. Johnnie with the end of a small rope in his hand plunged in and started for the boat which was bouncing about in the mad waters where the current from the river was struggling with the breakers from the sea. He swam to the boat, which had lost its mast before he reached it. He made it fast to his line and then plunged overboard to rescue the mast. Securing the stick, he found it impossible to reach the boat again against current.

Another young native by this time had gained the boat. He picked up a coil of rope and threw a loose end to Polokaa, and quickly drew him in. All this time the crowd that had been gathering on the shore were looking three hundred yards farther out to sea beyond the trail smack. A dark spot was visible on the surface of the muddy water. It was the head of Polokaa's father. The elder man had plunged into the sea a few minutes after the son, but striking an adverse current was carried out to sea. The giant breakers would submerge him from view as they followed each other at intervals of ten seconds. To the boys in the boat the natives on the shore were crying "pilikia, way out," accompanying the warning with wild gesticulations.

The crowd could see the fine old swimmer duck beneath the breakers, coming to the surface between them for breath like a cork. The boys in the boat loosened it and pulled hard out to sea. The old man was now seen to strike out coastwise, toward the foot of Waianae street. A friendly current swept him along much faster than the boat could go and after several minutes of suspense, the watchers saw the old man come tumbling in over the rough rocks. He had rounded the reef in very nasty weather.

While drawing on a pair of trousers that were held out to him he said, "Twenty minutes more and I would be 'make.' (dead)."—Hilo Tribune.

HARRISON MONUMENT.
Probably the most systematic and at the same time the most comprehensive plans ever started for the erection of a monument by popular subscriptions have been mapped out by the Benjamin Harrison Monument association, says an Indianapolis dispatch. During the summer months no attempt was made to push the work, but notwithstanding this fact there has been a total of nearly \$40,000 pledged, and three fourths of this sum is now in the hands of the treasurer of the association. It is believed that the plans now agreed on, and which will be put into active operation at once will swell the amount easily to \$100,000, and \$150,000 may be reached.

DECORATION GIVEN.
YOKOHAMA, November 15.—The Emperor of Japan has conferred on E. A. Hewett, the new agent for the P. & O. S. N. Co. in Hongkong and late chairman of the Shanghai Municipal Council, the Fourth Class Order of the Sacred Treasure.

FAITH CURE.
The extent to which the delusion of faith cure can go is illustrated in the indictments for manslaughter found at Hamilton, O., against Mr. and Mrs. Silver Bishop. Their little girl, Esther, eight years of age, was terribly burned by a gasoline explosion, but the Bishops refused to call a doctor and only alleviated her suffering by surrounding the bedside and offering up prayers for her recovery. Of course the child died in great agony.—New Bedford Republican Standard.

Note Heads, Bill Heads, Statements and Fine Commercial Printing at the Star Office.

For Thanksgiving.

FINE MINCE AND FRUIT PIES AND FANCY CAKES.

Turkeys and Chickens Roasted for Families.

Place your order for delivery early.

LOVE'S BAKERY,
Telephone, White 1431. Nuuanu St.

TURKEYS FOR THANKSGIVING

Place Your Orders Now. A Big Supply on Hand.

Metropolitan Meat Co.

Thanksgiving Mince and Pumpkin Pies

DELIVERED TO ANY PART OF THE CITY.

HART & CO., Ltd.
The Elite Ice Cream Parlors.
TELEPHONE 182.

CASTLE & COOKE, LIMITED
Commission Merchants.

SUGAR - FACTORS.

AGENTS FOR

The Ewa Plantation Company.
The Waialua Agricultural Co., Ltd.
The Kohala Sugar Company
The Waimea Sugar Mill Company.
The Fulton Iron Works, St. Louis, Mo.
The Standard Oil Company.
The G. R. F. B. ke Steam Pu
Weston's Centrifugals.
The New England Mutual Life Insurance Company of Boston.
The Aetna Fire Insurance Company of Hartford, Conn.
The Alliance Assurance Company of London.

Baldness

IS THE RESULT IN THE GREATER NUMBER OF CASES OF ALLOWING THE DANDRUFF SCALES TO ACCUMULATE ON THE SCALP, AND DOING NOTHING TO CURE IT. PACHECO'S DANDRUFF KILLER WILL REMOVE THE DANDRUFF SCALES COMPLETELY AND PREVENT THE HAIR FROM FALLING.

Sold by all Druggists. And at the Union Barber Shop Telephone Main 232.

PACHECO'S DANDRUFF KILLER

P. O. Box 918 Tel. Main 8

H. HAMANO,
IMPORTER OF
Japanese Provisions
AND
General Merchandise
PLANTATION SUPPLIES

King Street, - - - Corner East KATSEY BLOCK

Honolulu Iron Works.

STEAM ENGINES, SUGAR MILL BOILERS, COOLERS, IRON, BRASS AND LEAD CASTINGS.

Machinery of Every Description Made to Order. Particular attention paid to Ship's Blacksmithing. Job Work Executed on Short Notice.

CASTLE & COOKE, LIMITED
Life and Fire Insurance Agents

AGENTS FOR

NEW ENGLAND MUTUAL LIFE INSURANCE CO.
OF BOSTON.

AETNA FIRE INSURANCE CO.
OF HARTFORD CONN.

The Encore Saloon
Corner Nuuanu and Hotel Streets.
We Keep on Hand the Best Brands of Liquors and Cigars

The Depot Saloon,
Opposite the Oahu Railway & Land Co.
We will keep the Honolulu Beer always on tap and in bottles. Also soft drinks and cigars.
RYAN & DEMENT, Proprietors.

Come in and See Our

Wall Papers

And be satisfied that you are getting the best for the least money

LEWERS & COOKE, LTD

DEALERS IN THE WALL PAPERS AND HOUSE DECORATIONS.

WILDER'S STEAMSHIP COMPANY
NOTICE TO SHIPPERS.

Shippers are notified that a new freight schedule will go into effect on and after December 1st, 1921. Information in regard to changes in rates can be obtained at the office of the Company, corner Port and Queen streets, Honolulu.

C. L. WIGHT, President.

BOOK LOVERS!

A glance at the show windows of the GOLDEN RULE BAZAAR will give an idea of the UP-TO-DATE CHARACTER of the NEW BOOKS CARRIED by this house—a second glance will show that the prices are

20 per cent Lower

Than can be obtained elsewhere, and an inspection of the stock will satisfy the intending purchaser that no such complete line of books has ever been offered the public before in Honolulu.

FORT ST., NEAR KING ST.

HIROSE SHOTEN,
1079 Aiea Street.

JAPANESE DRY GOODS AND PROVISIONS

NEW BY EVERY STEAMER.

F. O. Box 885. Tel. Blue 392.

H. W. BARTH, Successor to W. H. Barth and H. W. Barth.

Honolulu Sheet Metal and Corncice Works

Galvanized Iron Skylights and Ventilators Metal Roofing. Conductor Pipe and Gutter Work Jobbing Promptly attended to.

Richard Street between Queen and Merchant Streets, Honolulu.

JUST RECEIVED BY EX "VENTURA"

CAULIFLOWER, CELERY, CRANBERRIES, MINCE MEATS, PLUM PUDDING, APPLES, ORANGES AND LEMONS, LEMON AND CITRON PEEL, NUTS AND RAISINS.

J. E. COEAS,
Cor. Beretania and Emma Sts. Telephone Blue 2812.

W. H. BARTH,
STAR BLOCK 1296 FORT ST.

Tinning and Galvanized Iron Work

Estimates furnished on all kinds of Sheet Metal Work. The patronage of Owners, Architects and Builders solicited.

GERMANIA SALOON
C. WESSELS AND A. BECKER Proprietors.

604 Queen Street cor. South. Headquarters for Honolulu Primo Beer, in bottles and on draught. Always Ice Cold. We can give you the best glass of beer in town. TEN CENTS A SCHOONER.

Home-Made Manila Cigars

Manufacturers, Importers and Dealers in Cigars and Tobacco, also China Teas

Cigars in Bond

Lee Toma & Co., Ltd

33 King Street near Nuuanu, P. O. Box 1034, Honolulu, Territory of Hawaii

Who will do it?

You are going to have your house Papered, Painted or Decorated.

Who's going to do it?
No one does or can do better work than we. Investigation proves that few do as good.
All we ask for it is a fair price—not high, not low. Either extreme is dangerous.
Any one who gives us work gets the best going at the fairest and squarest price.

STERLING, THE PAINTER

Office: Union Street, opp. Bell Tower.

Jas. F. Morgan.....President
Ocell Brown.....Vice-President
F. Hutace.....Secretary
Chas. H. Atherton.....Auditor
W. H. Hoogs.....Treas. and Mgr.

TELEPHONE MAIN 295.

Hustace & Co., Ltd
QUEEN STREET

DEALERS IN Firewood, Stove, Steam and Blacksmith Coal

WHOLESALE AND RETAIL.

Special attention given to DRAYING ALSO, WHITE AND BLACK SAND

C. Q. Yee Hop & Co.

Kahikinui Meat Market And Grocery

Fruits and Vegetables

BERETANIA ST., COR. ALAKEA.

Also at the Fish Market, Stalls 19 and 20 Phone Blue 2511.

The Von Hamm-Young Co., Ltd.,

Importers and Commission Merchants

Queen Street, Honolulu

AGENTS FOR

The Lancashire Insurance Co.
The Baloise Insurance Co.
Union Gas Engine Co.
Domestic Sewing Machine, Etc.

WING LUNG & FAT,
CORNER VINEYARD AND FOI T STREETS.

Received per Sierra

Frozen Oysters, Prunes, Oranges, Pears and Peaches.

Fresh Island Butter and Kona Coffee always on Hand.

Goods delivered to all parts of the City.

Tel. Blue 841. P. O. Box 994.

HING LEE CHAN,
Fort Street, opposite the Popular House

Dealer in Groceries, California and Island Fruits, Poultry, Island Butter, Kona Coffee, Cigars and Tobacco. New goods by every steamer.

TIM CHAN,
MERCHANT TAILOR.

Removed from Nuuanu Street to 614 Queen Street, Magoon Building, Kakaako.

Clothes, cleaned, dyed and repaired. Suits made to order.

SUN HOP LEE,
608 Queen Street, Magoon Building, Kakaako.

BUTCHER.

Groceries, cigars, tobacco, and soda water.

EAGLE SALOON,
Bob Ross, Manager.
Geo. J. Cavanaugh, Proprietor.

REFRESHMENTS OF ALL KINDS.

The Delicious Primo Beers at 10 cents a Schooner. Tobacco and Cigars.
Cor. of Punchbowl and Halekaula Sts.

S. HIROKAWA,
Bamboo Furniture

No. 56 Beretania Street Near Punchbowl.

J. H. & CO., J. H. & CO.,

here's an advantage

In buying furniture from us. We keep the very best grade of goods and here, as nowhere else, can you get a selection to suit you—suit you in quality; suit you in price.

This week we mention from our immense stock:
White Enamelled and Solid Brass Bedsteads, from \$5 up to \$12.
Beautiful Oak Chiffoniers, from \$8.75 upwards.
Mahogany and Oak Library Tables.
Secretary Oak Book Cases, and an elegant new stock of Hartshorn Window Shades made to order.

J. HOPP & CO.
KING & BETHEL STREETS
Phone 111 Main.

J. H. & CO. — J. H. & CO.

W. G. IRWIN & CO.
(Limited.)

AGENTS FOR

Western Sugar Refining Company of San Francisco, Cal.
Baldwin Locomotive Works of Philadelphia, Penn.
Newell Universal Mill Company (National Cane Shredder) New York, U. S. A.
N. Ohlandt & Co.'s Chemical Fertilizers High Grade Fertilizers for Cane and Coffee.
Alex. Cross & Son's High Grade Fertilizers for Cane and Coffee.
Reed's Steam Pipe Cars.

Also Offer for Sale

Paraffine Paint Co.'s P. & B. Paints and Papers.
Lucol and Linseed Oils, raw and boiled.
Indurine (a cold water paint) in white and colors.
Filter Press Cloths, Ceme Lime and Brick.

Fine Job Printing, Star Office.

"The provident man pays no rent
He isn't that kind of a hair pin."
"A Nation of homes is a safe Nation."
"The expenditure of money in the purchase of a home is wise economy."

L. C. ABLES,
Real Estate Agent

TELEPHONE MAIN 139 P. O. BOX 243

Pacific Transfer Co.
JAN. H. LOVE

MAIN 58 MAIN

Office, 147 King Street

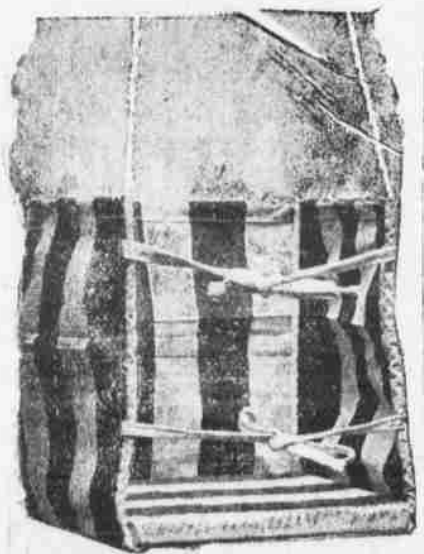
Telephone Main, 101
P. O. Box 683

Harry Armitage,
Stock and
Bond Broker

Member Honolulu Stock and Bond Exchange

Office, Campbell Block,
Merchant Street,
Honolulu, T. H.

Baby Swings,
\$1.50 each



Electric Novelties



TOY DYNAMO SHOCK-
ING MACHINES \$1.50

Electric Bell Outfits
Complete, with push Button, Wire, Staples, Battery, Bell ready to be put up. \$2.00

MOTORS
We carry a nice line of small motors, ranging in price from \$1.50 up.

PEARSON & POTTER CO., LTD
926 FORT STREET
TELEPHONE 317

NEW ADVERTISEMENTS.

Singer's BakeryPage 5
Co. "A" N. G. H.Page 5
Paragon MarketPage 5
Lewis & Co.Page 5
Koloa Sugar Co.Page 5
L. C. AblesPage 8
Whitney & MarshPage 8
H. May & Co.Page 6
E. O. Hall & SonPage 6
Hawaiian Electric Co.Page 3

NEWS IN A NUTSHELL.

Paragraphs That Give Condensed News of the Day.

Company "A" drills this evening. Nearest to hop flavor is Primo Lager, Lewis & Co. close all day Thanksgiving day.
L. C. Ables has some choice residence sites for sale.
Judge Little will probably return to Hilo on Friday.
The Paragon Market has a choice supply of sucking pigs.
Talk on electric light in Hawaiian Electric Co. advertisement.
The executive council held its usual Monday meeting yesterday.
The furniture in a cottage on Fort Street is advertised for sale.
Indoor athletics at the Y. M. C. A. will begin the evening of December 6.
Thanksgiving sale of fine linens at Whitney & Marsh commenced yesterday.
F. E. McStocker is still confined to his room by an attack of bronchitis.—Hawaii Herald.
Turkeys for Thanksgiving at May's. See page 6 for a list of choice delicacies for your Xmas dinner.
Extra mince and fruit pies for Thanksgiving at Singer's Bakery. Fowls and pigs roasted.
The Royal Lawn Mower doesn't cut much ice but it's a wonder on grass. See E. O. Hall & Son's ad.
The 99-ton locomotive for the Hilo Railroad Company arrived on the Rodrick Dhu.—Hawaii Herald.
A net of \$500 was realized at the fair recently held by the Woman's Guild of St. Andrew's Second Congregation.
Captain T. B. Murray of the National Guard has been relieved from duty until further orders on account of ill health.
The adjourned meeting of the Koloa Sugar Co. is called for December 2, at 3 p. m., at the office of H. Hackfeld & Co.
There will be a meeting of the Hawaiian Woman's Club at the residence of Mrs. W. F. Frear, at 3 o'clock this afternoon.
Dr. W. Blake has resigned his position as physician for Olan Sugar Co. and will leave for the coast shortly.—Hawaii Herald.
The Epworth League gave a reception at the Methodist parsonage last evening to Miss Trixy Jackaberry who leaves shortly for the coast.
On the Island of Hawaii there are 600 licensed passenger vehicles. In the city of Hilo there are 72 licensed freight wagons and 45 licensed hacks.—Hilo Tribune.
The Kilohana Art League Exhibit is open to the public every day from 9 to 5 and from 7 to 9 in the evening this week. There is no charge for admittance.
The Missionary Gleaners met at the residence of Mrs. Theodore Richards yesterday afternoon and made plans and appointed committees for the coming year.
There will be a temperance agitation meeting at Queen Emma hall this evening under the leadership of Rev. L. M. Hartley in connection with the work of the Murphy club.
The 20th assessment of 5 per cent or One Dollar a share has been called by the Olan Sugar Company, payable on December 21st. No further assessments will be called prior to June 1, 1902.
The Punch and Judy show to be given at Saturday's Fair and Luau will be one of the most attractive stalls. The show will be made wonderfully happy. Arthur Knight will impersonate Punch and Judy while Guy Livingstone will entice the crowd to enter. Mrs. C. F. Herrick will be in charge assisted by Mrs. James S. Wayson.

ROANOKE DISCHARGING CARGO.
The big ship Roanoke, which put in here in distress yesterday, was hauled over to Naval wharf No. 2 this morning and there began to discharge her cargo of naval coal. A board of inquiry visited the vessel yesterday and decided that she should be discharged without delay. The fire was not found today but all danger from that source is thought to be past.

MAUNA LOA LATE TODAY.
The Mauna Loa was late today in arriving from her trip to Lahaina, Maui, Kona and Kau ports. She got away late last week and was delayed on the return by heavy freight. Shipments of turkeys and pigs for Thanksgiving Day were a cause for the delay, although there was a big supply of sugar brought back. Purser Simerson reports that there was no rain at Honokaa.

Note Heads, Bill Heads, Statements and Fine Commercial Printing at the Star Office.

HAWAIIAN OPERA HOUSE.

Mr. James Neill
—AND—
Neill Company

Direct from twenty weeks of unparalleled triumphs in San Francisco.

PRESENTING TONIGHT.

November 26—"Niobe." The Greatest Laugh-Producing Play of the Neill Season.

November 28—"The District Attorney." Grand Special Holiday Comedy-Drama.

November 29—"A Social Highwayman."

Note.—Between the acts of "A Social Highwayman" the scenes will be set in full view of the audience.

Nov. 30—"A Bachelor's Romance," by Special Request.

LAVISH SCENIC MOUNTINGS.

Children under seven years of age not admitted.

Seats now at sale at Wall, Nichols & Co.

Nov. 28.—Curtain will not rise before nine o'clock.

All other performances begin at 8 o'clock.

Note.—Friday, November 29, the scenery and stage settings will be put in place in full view of the audience.

JAS. F. MORGAN,
Auctioneer and Broker
65 Queen Street
P. O. Box 594 Telephone 72

LEASE

—OF—
Business Property

The undersigned will receive applications to lease lots in the "SCHMIDT CENTRAL BLOCK" on Beretania street, No. 88, adjoining the premises of the Queen's Hospital.
This valuable property will be divided into several business sites and offers a fine chance to investors in Real Estate. Suitable for Stores, Lodging Houses or Dwellings. Applications for lots will be treated in priority and it will pay to make early applications.
An important feature of these leases is that the lessee has the option of purchasing his lot in fee simple during the term of his lease at a figure based on the rental he is paying.
Terms and conditions of lease with amount of rents asked can be had on application to

JAS. F. MORGAN,
65 Queen Street

—OF—
Business Property

JAS. F. MORGAN,
Auctioneer and Broker,
65 Queen Street,
P. O. Box 594 Telephone 72

★
Doll Show
Now Open

Hello! little girl haven't you been to the doll exhibit? The admission is free and the dollies they're just the prettiest imaginable. Great big ones with real hair and eyes that close. WE HAVE MORE THIS YEAR than ever before. Remember that Arch Door. It leads to the Candy Department.

WALL, NICHOLS CO., LTD.

Been Sick!

After sickness, the strength you so much need will come rapidly if you take ROYAL MALT EXTRACT with your meals. It is just the tonic needed; takes right hold and builds up. It does not do this by any mysterious means or strong drugs but

Royal Malt Extract
helps the stomach to digest food, and sends the nutrient through the blood. It brings good appetite, perfect digestion, and sound restful sleep. It is brewed from selected barley and hops and contains all that is best in both.
Insist on having the genuine ROYAL MALT EXTRACT as you will only be disappointed in cheap brands of malt extracts.
Price 25c., \$2.50 by the dozen

Hobron Drug Co.
FORT & KING.
SOLE AGENTS

ALEXANDER & BALDWIN, LTD.

OFFICERS.
H. P. BALDWINPresident
J. B. CASTLE.....First Vice-President
W. M. ALEXANDER.....2d Vice-Pres't
J. P. COOKE.....Treasurer
G. O. SMITH.....Secretary
GEORGE R. CARTER.....Auditor

Sugar Factors and Commission Merchants

AGENTS FOR
Hawaiian Commercial and Sugar Company,
Hauku Sugar Company,
Pala Plantation Company,
Nahiku Sugar Company,
Kihel Plantation Company,
Hawaiian Sugar Company,
Kahului Railroad Company.

—AND—
The California and Oriental Steamship Company

NAKANISHI CO.,
Contractors and Builders
Painting and Paper Hanging
Opp. Oahu Lumber and Building Co.
King street, No. 450 Telephone, Blue 353L

YUEN LEE,
CONTRACTOR, BUILDER,
PAINTER AND PAPER HANGER.....
Kukul near Nuuanu Street, Honolulu.

WHITE LEGHORN EGGS.
For setting, from young healthy well-bred stock.
Also a few Cockerels.
C. ELVIN,
Rose Street, Kailua, H. I.
Note Heads, Bill Heads, Statements and Fine Commercial Printing at the Star Office.

Thanksgiving Sale of Fine Linens

It is the desire of every housekeeper to have her closet shelves piled high with snowy linens. Ireland and Germany have sent us their best for this Thanksgiving time.
Beautiful floral effects in damasks that portray poppies, ivy sprigs, shamrocks, fleur-de-lis, etc. are to be found in the pure flax goods. And in the cheaper grades some close imitations are here that are just as pretty.
The general linen market is advancing, yet our prices are as low as they have ever been and in the worthy grades, lower than for several years past.

NAPKINS and FRINGED DOYLIES.—75c. to \$7.50 doz.
HEMSTITCHED TRAY CLOTHS.—1 row \$1.00 to \$3.25 doz. 2 rows \$3.50 to \$4.00 doz.
HEMSTITCHED SIDEBOARD LINENS.—30c.—35c.—50c. yard.
HEMSTITCHED TABLE CLOTHS.—8x4, \$3.00; 10x4, \$5.00; 12x4, \$6.00.
DAMASK TABLE LINEN.—66 to 72 in.—50c. to \$1.75 yard.
DAMASK TABLE CLOTHS (not hemmed).—2 yards long \$1.20 to \$2.00 each. 2½ yards long \$1.40 to \$2.40 each. 3 yards long \$1.40 to \$2.90 each.

Our Store will be open SATURDAY EVENINGS from now on until after the holidays.

Whitney & Marsh Ltd.
See Lining dept. GILBERT'S For FAST BLACKS

New .. Restaurant
The Harbor Restaurant, Fort Street opposite Allen & Robinson's Lumber yard is now open for business.

WILDER & COMPANY
Established in 1872.
IMPORTERS AND DEALERS IN LUMBER AND COAL

Building Materials
—SUCH AS—
DOORS, SASH, BLINDS,
Builders' Hardware
Paints, Oils, Glass,
Wall Paper, Etc.

Cor. Fort and Queen Streets
HONOLULU, H. I.
P. O. Box 908. Tel. Main 335L

K. ODO,
35 Hotel Street.
IMPORTER OF
Japanese Provisions
AND
General Merchandise
PLANTATIO SUPPLIES.

SING CHAN CO.
229 King Street Between River and Railroad Depot.

Sanitary Plumbers
Sewer Connectors
and Tinsmiths
Fine Job Printing, Star Office.

Just Received
By the Doric
A large line of

Japanese.
Curios,
Silk Goods,
Kimonos,
Etc., Etc.

SA YEGUSA
1120 NUUANU STREET.
TELEPHONE WHITE 327L

HONOLULU HARDWARE CO. LTD
IMPORTERS AND DEALERS IN
General Merchandise,
Tinware, Paints and Oils, Crockery and Glassware

P. O. BOX 609.
29 N. King Street. Tel. Main 393.

Lin Sing Kee,
TINSMITH.
Does Sanitary Plumbing
Nuuanu Street, Opposite Emma Hall.
Note Heads, Bill Heads, Statements and Fine Commercial Printing at the Star Office.