

What is Best for Maui  
is Best for the News

# Maui News.

If you wish Prosperity  
Advertise in the News

VOLUME XX

WAILUKU, MAUI, T. H., SATURDAY, MARCH 1, 1913.

NUMBER 3

## How Bridges Were Built

**Maliko-Haiku Gulches Were Spanned  
By Men Who Know Their  
Work Thoroughly.**

Now that the Haiku extension of the Kahului Railroad is completed, and the two high bridges are already carrying the trains across the Maliko and Haiku gulches, some mention of the men who "did things" and the manner in which they worked, is in order.

The rapid fashion in which the Maliko bridge—highest in the territory—was erected, is the wonder of the community. The huge structure was finished and had trains running over it, just sixty days after the work was started! The steel used in this bridge weighed 934 tons, and skilled men from New York did the work in record time. The "job" ran along without the slightest hitch, and the greatest credit is due to the constructors, Messrs. Hamilton & Chambers, the man who laid out and supervised the foundations, James C. Foss, Jr., and to Superintendent P. V. Shotts with his skilled artisans.

The concrete foundations were laid out and constructed by James C. Foss, Jr., chief engineer of the Kahului Railroad Company. The bridges were erected under the superintendence of Mr. P. V. Shotts, assisted by the following ironworkers who, at one time or

Continued on page 2.

## Freitas Did Crude Work

Louis Freitas, the youth who passed a check that had been raised from \$5 to \$10, in a very crude fashion, was sentenced to one year's jail on Thursday at the Lahaina Police Court. The lad, who was arrested by wireless, upon arrival in Honolulu and brought back, will serve his time at the Wailuku jail.

The whole affair was silly, and the lad who passed the check was not the one who raised the voucher by five dollars. It was brought out during the hearing at the police court that the youth who has been sentenced, was paid for some work done for wireless operator Ralston. A check for five dollars was given him, and with that in his possession he went down town. Meeting a lad named Silva, Freitas asked the latter to change the word "five" to "ten" in the body of the check. This Silva did and then, in lead pencil, the figure five was crossed out and ten substituted.

The pair tried in a dozen Chinese stores to cash the check but without success. Then, eventually, a trusting Japanese was found, who handed over ten dollars for the piece of paper.

Freitas at once boarded the steamer for Honolulu as he wanted to see the Floral Parade. He, however, will be in ample time for next year's parade—if he gets any allowance for good behavior while in jail.

Silva, who is described by Deputy County Attorney Vincent, to be rather simple, will be proceeded against also, and his case will come up later on. Freitas was lucky in being tried for obtaining money under false pretenses, instead of being charged with a more serious offense.

## Will Erect New Plant

Within a short time from now the Haiku Fruit and Packing plant at Haiku will be doubled in capacity. A new cannery, twice as large as the present one, will be erected and modern machinery from new models will be installed. The new cannery will be a little mauka of the present big "factory," and the building will be a two story one. When in full blast the new cannery will be capable of turning out 500,000 cases of canned pines, per annum, and it will also handle all the "by products" of the concern.

The extension of the lands put under pines has made the enlargement of the packing plant a necessity. The Haiku homesteaders will all soon have pines to sell, and every day a larger area is coming under cultivation.

The new cannery will be located a little higher toward the mountains than the present plant. It will be up-to-date in every respect, and the railroad tracks will run right into the warehouses and then back along a "loop" to the main track. Incoming goods, such as wood for cases, tin for cans, and the many other needed articles, will be handled from the freight cars in the best possible manner. The cases of fruit will be also shipped direct from the cannery by freight trains. The old scheme was to cart the pines from Haiku to Paia, a distance of seven miles by road.

The Haiku cannery is running two days a week now, and is finishing up the last season's crop. When pines are not being canned the workmen and women are busy making cans for the coming crop, which is expected to be the largest on record.

The pineapple fields around the Haiku district are looking fine, and the prospects of a heavy crop next season are bright. The homesteaders are putting in good work, and the homes that they are erecting are a credit to Maui.

## Hilo Team Can't Come

It will be heard with regret that the tennis team from Hilo cannot come to Maui next month. D. C. Lindsay has received word to that effect, and the match is all off for the present. However, there is every prospect of the team coming over for the regular August tournament at Puunene.

Should the Hawaii team come along in August, there will be an added interest in the annual tournament. The Honolulu players will be here, as usual, and the matches will assume a three-cornered aspect.

Maui will have another good tennis player after March 15. T. D. Collins, one-time of Ewa, Oahu, is coming to be assistant bookkeeper for the Wailuku Sugar Company. He plays a good game of tennis and is keen on the sport. He learned the game at Ewa, and he and the O'Dowda lads have had many a hard tussle on the plantation courts. Collins also did well on the Honolulu courts when competing in some of the open tournaments.

The addition to the Wailuku bank is being rapidly proceeded with, and the work will soon be finished. Another bookkeeper is being sought, as the business at the bank is increasing so rapidly.

## LEGISLATURE GETTING DOWN SLOWLY TO WORK

**Bigoted Laws Proposed by Makekau and Baker—"The  
Tourist" Causes Controversy—Sunday Barbers  
May be Allowed—Hotels Not Crowded**

(Special Correspondence.)

HONOLULU, Feb. 27.—That which the people in Honolulu, whether strangers or citizens, have been looking for, has fitted by and remains only a memory. But it was a great treat to all, from the landing of Kamehameha to the breaking up of Roaring Camp. It is settled, practically, that the landing stunt shall be an annual because it interested more of the tourists than did the parade of Dennison bedecked autos. John Wise seems to have gone into an old picture gallery and selected subjects to take part in the affair, and the native women were as we read of them in old days when weight was no bar but rather an attribute of beauty. But that was before the days of tight dresses. In fact there were women taking part in the landing who would have filled any skirt so it would have appeared tight to the onlooker. You will

see their pictures in the Gazette this week.

### FINE PARADE.

The floral parade was as good as the best, it is said, and better than some that have been given. The military section was larger and the stunts that were pulled off at Kapiolani Park rather better than were ever seen here. Some of them were really dangerous in the eyes of those who are not familiar with such things. Crowds almost filled the park, and it was long after dark before the cars could relieve the section of its numbers. But the railway service was as good as would be found anywhere and much credit is due the company for the management of it.

### ABOUT FORD.

The first gun in the program of attractions was the presentation of the Tourist by R. P. Irwin and Will Sabin. Miltner wrote the

(Continued on page 3.)

## Rock Found Farther Out

It has been discovered that the reef, or rather rock, that the Claudine scraped against a couple of weeks ago, is not properly charted on the old maps. The survey now being conducted by the officers of the U. S. Survey ship Patterson, has developed that fact.

The Patterson has been working around the coast of Maui for some time past and, among other duties, the charting of the "Cameron Rock," as the projecting reef is called, was proceeded with. It was found that the rock is farther off shore than was supposed.

The Patterson has gone to Honolulu, but three officers and five men were left behind at Hana to go ahead with the sounding and charting of the bay. This work is being proceeded with by a launch party, and by the time the Patterson returns from Oahu, most of the inside harbor work will be completed.

## "T. B. M." Club Is Started

Next Wednesday evening a long felt want will be filled by the starting up of the first contest of the Wailuku business mens' club. The tired business man can go down to the gymnasium and take hold right away of a proposition that will soon make him feel as fit as a two-year old colt. Bowling will be the dope and, after some of the "T. B. M." have rolled 'em along for an hour or so, there will be some reduction in weight to be recorded.

A ten pin tournament will be the first stunt pulled off by the "T. B. M." and that should provide some fun and good sport.

The membership of the club is going ahead in leaps and bounds, and all those who are thinking of joining had better turn up at the Wailuku gymnasium on Wednesday evening next.

## Extension Of Breakwater

Work on the extension of the Kahului breakwater began last Monday. The job will be rushed to a conclusion, and the benefit derived from the addition of 75 feet to the structure will soon be noticed. The contract, which was awarded to the Kahului Railroad, by the War Department, will call for the expenditure of no less a sum than \$45,000.

The present breakwater will end when the seventy-five feet are added to its length, and then it is hoped that the other wing from the Wailuku side will be constructed. The matter is now before Congress, and the engineers have surveyed and charted the proposed line.

It will be remembered that when Secretary Fisher was here, the breakwater was brought to his attention. Although he will soon be out of office it is felt that whatever influence he can wield will be used to the advantage of the Kahului harbor improvements.

## Paia Tennis Cup Play

Tennis is on the boom everywhere, and at Paia the regular tournament for the Richardson cup is now under way. Ten men are battling it out for the honors and, as each man has to play the other, the matches stretch out for some weeks.

The Richardson cup is a handicap affair, and the players are rated anew before each tournament. A. W. Collins is the present holder of the trophy and, as the cup has to be won twice by the same man, he has "one leg in" for the prize.

The Paia courts are in great demand now-a-days, and the players are getting into good form. That is good, as Maui wants the best possible players to be in form for the Inter-Island tournament of August next.

## Deputy Does Good Work

Deputy Sheriff Ferriera made a clever capture last Monday, when he took into custody a Japanese who confessed to robbing a house in one of the Wailuku Sugar Company's camps. The robbery was committed on January 31, and the sum of money taken amounted to \$105.

A watch was also stolen at the same time. This article has not been recovered, and the Japanese declares that he threw it away into a cane field. The money was, however, recovered—twenty dollars on the man's person, and the balance buried in a hole at the graveyard.

Deputy Sheriff Ferriera had a hunch that the Japanese was the man who committed the robbery in January. He knew that the man only worked a couple of days in the month, and yet had plenty of money to spend. That fact was suspicious enough and, late on Monday last, the officer dropped in to see the Japanese. In answer to a question as to whether he had any money in his possession or not, the man replied that he had, and dug up twenty dollars in gold.

The deputy then got busy, and closely questioned the man with the result that, after a little pressure was brought to bear, a confession as to the robbery was obtained, and the Japanese led the way to the place where the balance of the money was hidden.

The man was arrested and will appear in court in due time. The fact that the money was recovered, is a feather in the cap of the deputy sheriff, and he is receiving congratulations on his smart bit of detective work.

## Sunday Trains Run Tomorrow

Tomorrow the first Sunday train will be run over the tracks of the Kahului Railroad Company, and the journey will be from Wailuku to Haiku. The company is starting in right away to cater for the travelling public and the scenery on the new extension of its road is such that there is no doubt that there will be a big traffic over the line before long.

The Haiku extension runs right up to the Haiku pineapple cannery, and the people who take the country trip will be able to visit the packing plant. The officials are always ready to allow visitors to view the canning process, and the sight is a very interesting one.

The different operations that are performed by machinery are wonderful and the pines, from the time they are cut in the field, till they are packed away in assorted sizes of cans, are treated in the most economical way possible.

The country people will now have a chance of coming to Wailuku more frequently than in the days of rigs and surreys—or even automobiles. It is felt that the country people and the town folk will become better acquainted and that the result will be all for the improvement of Maui in general.

The schedule of Sunday trains is advertised, and it is expected that tomorrow a large party will make the journey out to see the two big bridges and the pineapple cannery. The latter, of course, shuts down on Sundays, but the bridges are well worth seeing and the rest of the line is also very picturesque.

## Excursionists Visit Haiku

**Big Maliko Gulch Is Inspected and  
Bridge Is Admired—Fine Road  
Completed.**

On Monday last there was a fine excursion made over the Haiku extension of the Kahului Railroad. About twenty people, who happened to be near Kahului, were invited to step aboard the inspection train that was ready to steam out on a special trip. The party was a jolly one and included both local people and visitors to Maui.

A start was made from Kahului at two o'clock, and the train ran out through the cane fields of the H. C. & S. Co. and the Maui Agricultural Company, to the big Maliko gulch where the highest bridge in the territory spans the huge ravine. The train traveled slowly over the bridge, and the passengers had a good opportunity to view the structure. From the bridge deck to the bed of the gulch, the height is 234 feet and, looking down between the iron work, the distance seems even more. The bridge is constructed of the best steel, and the sides are so guarded that even should a train become derailed, there would be no toppling over into the gulch so many feet below.

A few hundred feet farther on than the Maliko bridge, another bridge is found. This spans the Haiku gulch and is 125 feet high. The engineers could have avoided the second bridge by crossing Maliko lower down, but that would have meant a long detour afterwards to attain the grade that would lead to Haiku. It was, therefore, thought better to cross Maliko higher up, and to then span the Haiku gulch by another bridge.

The deepest cut on the road is located near the Haiku bridge. A

Continued on Page 2.

## Narrow Escape From Death

On Sunday last there was a narrow escape from a fatal accident on the Iao Valley road. An automobile was overturned and three men were thrown under it. Only the fact that the radiator was resting on a big rock, prevented one, or perhaps two men, from being killed.

It appears that at five o'clock on Sunday afternoon last, E. Brune, the well known engineer, was proceeding up the Iao road to his home at Kapaniwai. He is said to have just reached the sharp turn in the road above the pipeline, when another car driven by H. Smythe, of Paia, came down the road and made the turn. Although there was no head-on collision, the down coming car scraped along the running board of the Brune car, and the result was that Smythe's car toppled over the bank and turned turtle.

In the Smythe car were the driver, and two others. All three men were pinned down under the overturned car and, for a while, it looked as if they were killed. However, help was soon rendered, and the men were removed from their dangerous position. One passenger, Adler, was badly bruised but another, Robinson, escaped injury.

The Smythe car was pretty well wrecked, and had to be towed to a garage. The Brune car was uninjured except for a little paint being scraped off.

# THE MAUI NEWS

Entered at the Post Office at Wailuku, Maui, Hawaii, as second-class matter

A Republican Paper Published in the Interest of the People Issued Every Saturday.

Maui Publishing Company, Limited, Proprietors and Publishers.

SUBSCRIPTION RATES, IN ADVANCE \$2.00 per Year, \$1.25 Six Months \$2.50 per year when not in advance

V. L. Stevenson Editor and Manager

SATURDAY, MARCH 1, 1913.

## BOOST.

Now that the Floral Parade of Honolulu is all over, it will soon be time for Maui to get ready for her great celebration of July Fourth next. All Hawaii looks forward to the Maui races of the Fourth, and it is up to the citizens to see that our neighbors are not disappointed. Maui is always alluded to as the most hospitable of the islands, and we must keep up the record. The Maui Racing Association will do its part of the work, and it is up to individual citizens to boost by word of mouth and in letters to friends on the other islands. We want a big crowd here on the Fourth and we are going to get the crowd, too.

Maui is more in the limelight now than ever before. The newspapers of the territory are boosting Haleakala for all they are worth, and the tourists are being told of the beauties of the Valley Island. The rush has already started, and the special excursions to the House of the Sun will soon have brought thousands of people to Maui. The result to Maui and the territory at large can be nothing but good, and the islands will get an enormous amount of advertising.

Mexico must be a nice place to keep away from. The sooner the United States steps in and does the needful, the better it will be, in the long run, for all concerned.

The Sunday trains on the Kahului system will enable many town people who do not own automobiles, to get out in the country and get a mouthful of fresh air.

The cut-throat war between the "movie" shows will, doubtless fill the houses for a while. A nickel for five pictures pays well enough in some parts of the world.

"The Peerless One" has at last landed a job. We wonder how the late general election would have gone had W. J. Bryan run for the presidency.

Why not adopt another name for the big island of the group? One island being called by the name of the whole territory mixes things up a lot.

The appointment of Colonel Goethals to the Wilson Cabinet, is pleasing to most people.

## AUTOMOBILES.

A Few Bargains In Good Cars.

- 5. Passengers, Stoddard-Dayton, A 1 condition \$900
- 4. " Ford, in good order 350
- 3. " Overland Runabout, fine Cars 650
- 5. " Packard, a perfect Car 650

Inspect them at C. J. SCHOENING & Co. The expert Auto repairing headquarters.

Wailuku, Maui.

## Sunday Train Schedule to Take Effect Sunday, Mar. 2, 1913

Leave Kahului	7:30 A. M.	Leave Haiku	8:45 A. M.
Arrive Wailuku	7:40 "	" Pauwela	8:50 "
Leave Wailuku	7:45 "	" Hamakuapoko	8:57 "
" Kahului	7:55 "	" Paia	9:05 "
" Camp One	8:07 "	" Camp One	9:18 "
" Paia	8:20 "	" Kahului	9:30 "
" Hamakuapoko	8:28 "	Arrive Wailuku	9:40 "
" Pauwela	8:35 "		
Arrive Haiku	8:40 "		
Leave Wailuku	12:30 P. M.	Leave Haiku	1:30 P. M.
" Kahului	12:40 "	" Pauwela	1:35 "
" Camp One	12:52 "	" Hamakuapoko	1:42 "
" Paia	1:05 "	" Paia	1:50 "
" Hamakuapoko	1:13 "	" Camp One	2:03 "
" Pauwela	1:20 "	" Kahului	2:15 "
Arrive Haiku	1:25 "	Arrive Wailuku	2:25 "
Leave Wailuku	4:00 "	Leave Haiku	5:00 "
" Kahului	4:10 "	" Pauwela	5:05 "
" Camp One	4:22 "	" Hamakuapoko	5:12 "
" Paia	4:35 "	" Paia	5:20 "
" Hamakuapoko	4:43 "	" Camp One	5:33 "
" Pauwela	4:50 "	" Kahului	5:45 "
Arrive Haiku	4:55 "	Arrive Wailuku	5:55 "
		Leave Wailuku	6:00 "
		Arrive Kahului	6:10 "

## THE HENRY WATERHOUSE TRUST CO. Ltd

BUYS AND SELLS—REAL ESTATE, STOCKS & BONDS  
WRITES FIRE AND LIFE INSURANCE  
NEGOTIATES LOANS AND MORTGAGES  
SECURES INVESTMENTS

A List of High Grade Securities mailed on application  
CORRESPONDENCE SOLICITED

HONOLULU, HAWAII P. O. Box 346

## How Bridges Were Built

(Continued from Page 1.)

the other, have been in the employ of the Hilo Railroad Co., or at Pearl Harbor on Federal ironwork jobs: C. G. Schuttle (foreman), F. Rickley, W. E. Low, Ed. Bauman, F. A. Miller, F. Swanson, O. Kientz, C. Hansen, F. Hendricks, L. Schiefler, Jas. Jennings and J. McEnroe.

The bridges that span Maliko and Haiku gulches were designed by Professor J. M. Young, of the College of Hawaii according to instructions given by the Superintendent of the Kahului Railroad, who determined the wind pressure necessary, the loads the bridges were to carry, and the safety features in connection with possible derailment. The steel work was furnished under contract with Messrs. Hamilton & Chambers, of New York. The same firm which provided the steel for the bridges on the Hilo Railroad system.

While it took sixty days to erect the Maliko gulch bridge, the Haiku one only took eight days. The steel in the Haiku bridge weighs 256 tons, and the mass was handled with great despatch.

The Maliko bridge was designed to stand an enormous wind pressure, and absolute safety was the first consideration of the constructors. While the deck of the Maliko bridge is 235 feet above the bed of the dry creek at the bottom of the gulch, the Haiku bridge is, comparatively speaking, "low," as its height is just 125 feet above the gulch bed.

The remarkable absence of serious accidents is noted in connection with the bridge construction. No lives were lost on the job, and that is a source of great satisfaction to the people who are responsible.

Regular traffic over the whole system of the Kahului railroad, including, of course, the Haiku extension, begins today. Superintendent J. N. S. Williams, of the Kahului Railroad, has brought to a successful termination the work of extending the company's lines. The next move may be a still further extension—beyond the present homestead lands.

## Excursionists Visit Haiku

(Continued from Page 1)

cut of 43 feet was found necessary to carry the train through on a satisfactory grade. There are many fills on the road and some of them are very high and long. Fortunately plenty of "filling" was obtained from the many cuts along the road and one trouble was thus obviated.

After the Haiku bridge is passed, the track runs through long cuts till Pauwela is reached. Then the line curves around and proceeds direct to the Haiku cannery. It was the intention of the engineers to build a spur track to the cannery, and to continue the main line in the direction of Pauwela village. That was abandoned, however, when it was found that, in the event of a still further extension of the system, the easiest way to get to the Haiku homesteaders would be along a route above the cannery. That the extension to the homesteads will come in the future, there is no doubt, and there is a probability that the line will even run out to where new lands are to be opened in the new future.

The visitors who made the trip on Monday were shown all over the cannery, and every moment was enjoyed. Luscious fruit was partaken of, and all the machinery was explained by the courteous employees of the company.

The return trip was made in good order and again were the two bridges inspected with interest. The neat depots along the line were also much admired, and the up-to-date arrangements of the whole system caused favorable comment.

The party arrived in Kahului shortly before five o'clock and the visitors, one and all, thanked Mr. Williams for the unexpected pleasant outing. Tomorrow the general public will have its first opportunity to pay a visit to Maliko, Pauwela and Haiku. No one should miss the chance of seeing the beauty spots of Central Maui.

IN THE CIRCUIT COURT OF THE SECOND CIRCUIT TERRITORY OF HAWAII.

At Chambers—In Probate.  
In the matter of the Estate of ADONIS K. STENDER, late of Kahului, Maui, Deceased.

Order of Notice of Hearing Petition for Probate of Will.

A Document purporting to be the Last Will and Testament of Adonis K. Stender, late of Kahului, Maui, deceased, having on the 25th day of February, A. D. 1913, been presented to said Probate Court, and a Petition for Probate thereof, praying for the issuance of Letters Testamentary to William A. McKay, having been filed by Hermine Stender.

It is Ordered, that Wednesday, the 2nd day of April, A. D. 1913, at 10 o'clock A. M., of said day, at the Court Room of said Court at Wailuku, Maui, be and the same is hereby appointed the time and place for proving said Will and hearing said application.

It is Further Ordered, That notice thereof be given, by publication once a week for three successive weeks in the "MAUI NEWS," a weekly newspaper, printed and published in Wailuku, Maui, the last publication to be not less than ten days previous to the time therein appointed for hearing.

Dated Wailuku, Maui, February 27, 1913.

(Sd.) S. B. KINGSBURY,  
Judge of the Circuit Court of the Second Circuit.

Attest: (Sd.) EDMUND H. HART,  
Clerk Circuit Court of the Second Circuit.  
Mar. 1, 8, 15, 22.

IN THE CIRCUIT COURT OF THE SECOND CIRCUIT TERRITORY OF HAWAII.

At Chambers—In Probate.  
In the matter of the Estate of MARY SYLVA, Deceased.

A Document purporting to be the last Will and Testament of Mary Sylva, deceased, late of Lahaina, Island of Maui, Territory of Hawaii, having on the 27th day of February 1913, been presented to said Probate Court and a Petition for Probate thereof, praying for the issuance of Letters Testamentary to Mary Dunn and Margaret Glenn, the executrices named in said Will, having been filed by the said Mary Dunn and Margaret Glenn.

It is Ordered that Saturday the 5th day of April 1913, at 10 o'clock A. M. of said day, at the Court Room of said Court at Lahaina, Island and County of Maui, be and the same is hereby appointed the time and place for proving said Will and hearing said application.

Dated at Wailuku, Maui, Feb. 27, 1913.

By the Court:  
EDMUND H. HART,  
Clerk.

Mar. 1, 8, 15, 22.

5 HUNDRED DOLLARS  
MIGHT SAVE  
5 Hundred Thousand Dollars  
IF INVESTED IN A

## Paris Gasoline Turbine

It will put 5000 gallons of water where you want it, in a few minutes.

Geo. H. Paris

P. O. Box 35, Honolulu.

## "Everything Photographic"

We carry a complete line of the famous Eastman Kodaks and have all the accessories for amateur and professional work.

## HONOLULU PHOTO SUPPLY CO.

Fort St., Near Hotel. Honolulu.

## Ingersoll Rand Co.'s

Air Compressors,

Hammer Drills,

Rotary Air Drills,

Riveting and Clipping Hammers

are carried in stock by the

## Honolulu Iron Works Co.

HONOLULU

## WHEN IT IS TIME TO Re-Tire

DO NOT FORGET THAT WE CARRY



THE FAMOUS

COME IN AND LOOK AT OUR STOCK

—OF—

AUTOMOBILE SUPPLIES

Recently Received.

## Maui Dry Goods & Grocery Co., Ltd.

Honolulu Letter.

(Continued from Page 1.)

music and it was good, good enough to become standard in Honolulu and in the music halls abroad. He promised to arrange an overture, and have it published so it may remain a fixed thing for the lovers of music. As to the dialogue, opinions differ and, in some cases, I believe, they are formed according to whatever feeling the person giving expression to it may have for the authors of the libretto as well as, for the characters, local, that were portrayed. Personally, I have no opinion for the reason that I was never in a position to form one. There is considerable feeling among the friends of Mr. Ford, and indeed he cherishes a bit of resentment, too, at the way he was lampooned. Some of his friends say it was overdrawn; some say it was as true to nature as it is possible to have a stage character, and others say there was altogether too much personality injected into the play. Ford left after the first act because he could not stand the insult any longer. It may have been an insult, but there are persons who saw the play all three nights who tell me that it was simply "holding the Ford mirror up to nature" and allowing him to see himself as the public sees him.

GOOD WEATHER.

The weather was grand during all of the celebration or the exercises; we had no rain until Monday when the Korea came along to take away a big bunch of visitors. Of course the presence of so many persons has started the agitation again for another hotel because a few did not manage to get accommodations when wanted. The managers of the hotels, from the Waikiki Inn to the Young, deny the impeachment and tell the world that rooms were never so plentiful as at this season. But the new hotel is to come just the same.

NEW LAWS.

Matters are going nicely in the legislature and it appears we are to have a law that will change the complexion of some of the crimes committed in Honolulu and Wailuku. The age of consent is to be brought up to sixteen, which is a tolerable good thing and "rape" cases may be more frequent in consequence. Looks as though the lawyers are going to profit by the change. While on this subject, let me mention the case of Silva, "The Punchbowl Demon," who was acquitted of the charge of rape yesterday through an argument

by his counsel, Mr. Strauss. I saw the attorney a few minutes after the judge had ordered a directed verdict; "jubilant" about expresses his feelings at the time. He did not tell me that the complaining witness had testified that after the crime had been committed she accompanied the prisoner to a Japanese joint where they enjoyed a feast of water melon and ice cream. When that evidence was given, a smile that could not be washed off passed over the jury. Silva has been before the courts a number of times for crimes and misdemeanors, but scarcely ever gets more than a short sentence. Whether it is because he keeps posted and remains within the law or luck stands with him all the time, I do not know. He has served a number of months, off and on, waiting trial, which is about all he ever gets. When he imagined he was a boxer instead of a street corner fighter, he went into bouts for the customary fee and got several severe trouncings before he faded away to his corner; he would never remain standing long enough to get what was coming to him.

BOUNCE THE BUMS.

And that brings to mind the zeal of Policeman Carter who stands on the wharf and keeps undesirables from escaping from the city and inflicting themselves on communities elsewhere. If there is a chance to get rid of them without expense why not let them go? Surely Honolulu can spare a few.

THE LEGISLATURE.

The legislature has hardly warmed up to the situation as yet, but it is promised that something will be doing within ten days. Tucker is the target of the Hilo bunch and he is asked to submit all of the correspondence relating to an exchange of lands with the Waiakea Mill Company. This should make interesting reading for the Hilo people and it may be that Maui will want to know something about lands from the same quarter. An effort is to be made by Makekai to have the motion pictures so censored that anything like a kiss in public, which will of necessity be a silent one, shut from the eyes of the audience. Murders and elopements are also tabued according to the bill. Baker of the lower house is going to see that there will be stricter observance on Sunday. This is in direct opposition to the wishes of the people from the mainland who are rapidly filling Honolulu. They want greater observance of the laws of health as demonstrated on the base ball field and race track. They want theat-

ers opened so they will have some place to go beside church in the evening, because it was customary for them to attend a vaudeville performance any old day on the coast. This being the case, it does not look as though Baker's bill will go far, though I was told many years ago that two strong points in the native character are Sunday observance and an objection to persons who commit crimes.

SUNDAY BARBERS.

On behalf of persons who come from the other islands, arriving here on Sunday, and the tourists who do not save the use of a Gillette, it is intended to repeal the law which forbids barbers plying their trade on Sunday. The law was enacted because the white barbers did not wish to keep open and they did not want to drive the business of Sunday over to the Japanese. Now it is intended that those who do not wish to open their shops on Sunday may keep them closed. It seems like going backward instead of going forward, to tie the people with a lot of blue laws which will surely be violated.

FOR SALE.

No. 7 REMINGTON TYPEWRITER, in good order and repair. Price moderate. Apply "A. B. C." News Office.

COMING! DR. COOK.

Kahului Lyceum One Lecture Only Starting 7 P. M., Tuesday, March 4th. \$1.00 - .75 - .50

Commissioner's Notice of Sale of Real Property.

Pursuant to an Order made by the Honorable Selden B. Kingsbury, Judge of the Circuit Court of the Second Circuit, Territory of Hawaii, on the 22nd day of October, 1912, and filed the 25th day of October, 1912, in a suit then pending in said Court, entitled "Thomas Brown et al vs. John W. Brown et al," suit for Partition, and numbered 60, Equity Division of said Court, the undersigned, as Commissioner will sell at Public Auction, to the highest and best bidder, subject to confirmation of the said Court:

On Saturday, the 15th day of March, A. D. 1913, at 12 o'clock noon of said day, at the front entrance of the Court House, at Wailuku, Maui, the following real property:

All the that certain tract, piece or parcel of land situate at Paeahu, Ulupalakua, Maui, described by metes and bounds as follows:

Commencing at the corner of the wire fence on the boundary between Palaea and Paeahu, on the Makawao Road, thence N. 6 1/2° W. 9.28; N. 20 1/2° W. 3.90; N. 14° E. 3.92; N. 30° E. 5.65; N. 12 1/4° E. 15.23; S. 75° E. 38.75; S. 15° N. 31.07; N. 75 1/2° W. 10.49; N. 76 1/4° W. 5.98; N. 80 1/4° W. 3.93; West 4.98; S. 81 3/4° W. 8.36 to place of beginning, including an area of 112.75 Acres, (area in deed, 122.75 Acres,) and being the same premises that were conveyed to John Brown by deed of James Makee and wife, of record in the Hawaiian Registry of Deeds, in Honolulu, Oahu, in Liber 34, page 26.

TERMS OF SALE: Cash in United States Gold Coin, and a deposit of 10% of the price bid will have to be made by the purchaser at the fall of the hammer. Deeds to be at the expense of the purchaser.

Dated at Wailuku, Maui, February 10, 1913. EDMUND H. HART, Commissioner.

NOTICE TO CREDITORS.

In the Matter of the Estate of PETER JOSEPH, Deceased;

Notice is hereby given to all persons having, or claiming to have claims against the estate of Peter Joseph, Deceased, who died at Pulehu, Kula, Island of Maui, Territory of Hawaii, to present their claims, duly authenticated and with proper vouchers if any exist, even if the claim is secured by mortgage upon real estate, to E. R. Bevins, administrator of the said Estate of

Peter Joseph, deceased, at his place of business at Wailuku, Maui, Territory of Hawaii, within six months from the date of the first publication of this notice or within six months from the day they fall due or they will be forever barred.

Date of first publication, February 1st, 1913.

E. R. BEVINS,

Administrator of the Estate of Peter Joseph, Deceased. Feb. 1, 8, 15, 22, Mar. 1.

NOTICE.

Sealed Tenders will be received at the office of the Maui Loan Fund Commission, at Wailuku, Maui, T. H. until to A. M. Saturday March 15, 1913, and then opened for furnishing and laying a pipeline from the Eastern or mauka end of the Government land called Kalamaula to the Government School tank at Kauhakakai, on the Island of Molokai County of Maui T. H.

Plans and specifications and other information may be had upon application to R. A. Wadsworth, Secretary of the Maui Loan Fund Commission, at Wailuku. A deposit of \$5.00 will be required for the safe return of plans and specifications.

The right is reserved to reject any and all bids.

Tenders must be made on forms furnished by the Commission and must be accompanied by a certified check amounting to not less than 5% of the amount of the tender.

R. A. WADSWORTH, Secretary, Maui Loan Fund Commission. Feb. 22, Mar. 1, 8.

IN THE CIRCUIT COURT SECOND JUDICIAL CIRCUIT.

In the Matter of the Estate of CHONG FOOK, Late of Wailuku, Maui, Deceased.

Notice to Creditors.

The undersigned having been duly appointed the Administrator of the Estate of Chong Fook, late of Wailuku, Maui, T. H., deceased, intestate.

Notice is hereby given to all persons to present their claims against the Estate of the said Chong Fook, deceased, duly authenticated whether secured by mortgage or otherwise, to the undersigned at Wailuku, Maui, within six months from the date hereof, or they will be forever barred.

And all persons indebted to said Estate are hereby requested to make immediate payment to the undersigned.

JAMES R. LOVE, Administrator of the Estate of Chong Fook, Deceased, Feb. 22, March 1, 8, 15.

NOTICE.

The Board of License Commissioners for the County of Maui, will hold a meeting in the public room of the Masonic Temple, at Kahului, on Thursday, the sixth day of March, 1913, at 10 a. m. to consider the application of The Kaupakalua Wine & Liquor Company for a First-Class License, Wholesale, to sell intoxicating liquors in a two-story frame building to be erected on a lot on east side of government road at bottom of Waikina Guleh, Pauwela, Maui, mauka of concrete bridge crossing the stream, under the provisions of Act 119, Session Laws of 1907.

All protests or objections against the issuance of a license under said application should be filed with the Secretary of the Board not later than the time set for said hearing. February 8, 1913.

D. C. LINDSAY, Secretary, Board of License Commissioners. Feb. 8, 15, 22, Mar. 1.

ALOHA LODGE NO. 3 KNIGHTS OF PYTHIAS.



Regular meetings will be held at the Knights of Pythias Hall, Wailuku, on the second and fourth Saturdays of each month.

All visiting members are cordially invited to attend. W. A. SPARKS, C. C. A. MARTINSEN, K. R. & S

LODGE MAUI, No. 984, A. F. & A. M.



Stated meetings will be held at Masonic Hall, Kahului, on the first Saturday night of each month at 7.30 P. M.

Visiting brethren are cordially invited to attend. W. W. WESCOATT, R. W. M. C. E. COPELAND, Secretary

MATSON NAVIGATION CO.

268 Market Street, San Francisco, California.

FREIGHT AND PASSENGERS

San Francisco—Puget Sound

No. 1 HAWAIIAN ISLANDS 1913

Table with columns: Steamer, Leave S. F., Arrive, PUGET SOUND, Arrive, HAWAIIAN ISLANDS, Arrive S. F., Voyage. Lists various steamers like Lurline, Hyades, Enterprise, etc., with their respective schedules.

PORTS OF CALL.

- S. S. WILHELMINA.....To Honolulu and Hilo.
S. S. LURLINE.....To Honolulu and Kahului.
S. S. HONOLULAN.....To Honolulu and Kahului.
S. S. ENTERPRISE.....To Hilo direct.
S. S. HYADES.....To Honolulu and all Hawaiian Ports
S. S. HILONIAN.....To Honolulu and all Hawaiian Ports
\* Indicates that steamer carries combustibles and freight only (no passengers.)

Subject to Change

Cadillac advertisement featuring the Cadillac logo and text: "1913 This wonderful car at so low a price has now arrived on Maui. See C. J. SCHOENING & CO., expert automobile repairers, for Catalogs and other details. WAILUKU, MAUI."

Rexall Remedies advertisement with text: "ORDERS FOR Rexall Remedies Amounting to Five Dollars and accompanied with cash will be delivered to any port on Maui free. Benson, Smith & Co., Ltd. HONOLULU"

Studebaker Line advertisement featuring images of horses and a carriage, with text: "We Sell These. You want the best. Are you ready for it this season? We are prepared as never before to meet your wants in vehicles and harness. There's nothing superior to what we are showing, in taste, style and service. Absolute honesty in make and material. You will agree when we tell you IT'S THE FAMOUS Studebaker Line WE CARRY. No matter what you want—if it's a harness or something that runs on wheels, we've got it or will quickly get it. Come in and figure with us. Everybody knows the place. DAN T. CAREY WAILUKA, MAUI, T. H. P. S. The Studebaker nameplate on a vehicle is its guarantee. Don't forget this."

WALL & DOUGHERTY Wedding Presents advertisement with text: "Our stock of articles suitable for Wedding and Anniversary Presents was personally selected by us, with we believe, a full knowledge of the tastes of our customers. We have dainty bits in gold, silver and glass as well as rich beautiful articles in fascinating variety. We pack all articles so that they can be shipped without danger of injury or breakage."

### T. H. P. In New York Press.

#### "ON THE BOWERY."

"For Sale" signs can now be seen on the old Bowery Theatre and the Atlantic Garden, both famous institutions in their days. Yes, the Bowery has changed since the days of the "B'boys" and volunteer firemen with their "gallus" swagger and soap locks. New races of people now throng the thoroughfare, and many old landmarks have been destroyed to make room for the Manhattan and Williamsburg bridge plazas. Dens like Armory and Suicide halls have been driven out, and the old street is fast becoming a business thoroughfare.

#### SAFETY SANDWICHES.

Millionaire hotel diners may console themselves with the thought that delicatessen stores are open shops and do not employ union waiters.

#### STILL SACRED WITH US.

"It is to weep" when one reads the pathetic story of the farewell Paris gave to its last horse omnibus. The passing of the horse-drawn street conveyance in the French capital to make room for the motor omnibus places New York in the conspicuous position of being the only first class city in the world content to jog along in the first quarter of the twentieth century with an eighteenth century method of transportation. With New Yorkers the horse car remains sacred.

#### CARREL vs. THE BEEF TRUST.

This column long ago jokingly maintained that Rockefeller might soon have Carrel growing monstrous chunks of beef, pork, lamb and turkey in the big incubating tubs in a nourishing liquor—as sea weeds floating grow free of earth in the sea. It begins to look as if Carrel and Loeb up at Rockefeller's Institute may some day put the Beef Trust on the fritz. Results of Carrel and Loeb are grand, glorious and peculiar, but Virchow's theory of 1858 taught that cells could be stimulated to growth through many different means.

#### MAY OUTGROW CANCER.

If swift healing of tissues is obtained as a result of Carrel's newest discovery, then it is not impossible that some modification may lead to the arrest or the cure of cancer, since the application of the activating serums might so stimulate the healthy cells that they could throw off and destroy the cancerous tissues. There are recorded cases of cancer

disappearing strangely without treatment, and maybe some such serum in the healthy tissues accounts for such spontaneous cures.

#### ADS IN RICH CURES.

A big surgeon argues that a rich man ought to pay a bigger fee than anybody else because if the man dies the doctor's reputation is very much harmed. That seems just the wrong end foremost. So few die these days of surgical operations that it would seem more logical for the doctor to charge the big-rich man nothing at all rather than a big fee, because in cases of recovery of the big-rich the surgeon is always sure of a big reputation, which means a large practice and a steady income for life. Somehow it seems pretty hard to settle anything when the doctors disagree about it—even as little a thing as a doctor's bill.

#### KING GEORGE'S BIBLE READING.

King George in 1881 promised Queen Alexandra, his mother, that he would read a chapter of the Bible every day, and the claim is that, no matter where he has been or how busy his job has kept him, he has done so every day since.

#### NOTICE.

The Board of License Commissioners for the County of Maui, will hold a meeting in the public room in the Masonic Temple, at Kahului, on Thursday, the sixth day of March, 1913, at 10 a. m. to consider the application of H. F. Seong for a Second-Class License, Saloon, to sell intoxicating liquors in a one-story frame building adjoining the store premises of Chong Ying, at Keokea, Kula, Maui, under the provisions of Act 119, Session Laws of 1907.

All protests and objections against the issuance of a license under such application should be filed with the Secretary of the Board not later than the time set for said hearing. February 8, 1913.

D. C. LINDSAY,  
Secretary, Board of License Commissioners.  
Feb. 8, 15, 22, Mar. 1.

#### IN THE CIRCUIT COURT, SECOND JUDICIAL CIRCUIT, TERRITORY OF HAWAII.

In Probate—At Chambers.  
In the Matter of the Estate of JOHN ANDERSON, late of Makana, Maui, Deceased.

Order of Notice of Petition for Allowance of accounts, Determining Trust and Distributing the Estate.

On Reading and Filing the Petition and accounts of Charles Wilcox, Administrator of the Estate of John Anderson, deceased, wherein petitioner asks to be allowed \$39.98 and charged with \$83.48, and asks that the same be examined and approved, and that a final order be made of Distribution of the remaining property to the persons thereto entitled and dis-

charging petitioner and sureties from all further responsibility herein:

It is Ordered, that Monday, the 31st day of March, A. D. 1913, at 10 o'clock A. M. before the Judge presiding at Chambers of said Court at his Court Room in Wailuku, Maui, be and the same hereby is appointed the time and place for hearing said Petition and Accounts, and that all persons interested may then and there appear and show cause, if any they have, why the same should not be granted, and may present evidence as to who are entitled to the said property. And that notice of this Order, be published in the "MAUI NEWS," a weekly newspaper printed and published in said Wailuku, Maui, for three successive weeks, the last publication to be not less than two weeks previous to the time therein appointed for said hearing.

Dated the 14th day of February, 1913.  
(Sd.) S. B. KINGSBURY  
Judge of the Circuit Court of the Second Circuit.  
Attest: [Sd.] EDMUND H. HART  
Clerk Circuit Court of the Second Circuit.  
Feb. 22, Mar. 1, 8, 15.

#### NOTICE.

The Board of License Commissioners for the County of Maui, will hold a meeting in the public room of the Masonic Temple, at Kahului, on Thursday, the sixth day of March, 1913, at 10 a. m. to consider the application of M. R. Mendez for a Fourth-Class License, to manufacture and sell wine, in a one story frame building belonging to the applicant, at Kaupakalua, Maui, under the provisions of Act 119, Session Laws of 1907.

All protests and objections against the issuance of a license under said application should be filed with the Secretary of the Board not later than the time set for said hearing. February 8, 1913.

D. C. LINDSAY,  
Secretary, Board of License Commissioners.  
Feb. 8, 15, 22, Mar. 1.

#### IN THE CIRCUIT COURT OF THE SECOND JUDICIAL CIRCUIT, TERRITORY OF HAWAII—At Chambers—In Probate.

In the matter of the estate of MANUEL C. PIMENTAL, Deceased,

#### NOTICE TO CREDITORS.

The undersigned having been duly appointed Executor of the estate of Manuel C. Pimental, deceased, intestate, hereby gives notice to all creditors of said deceased to present their claims duly authenticated and with proper vouchers, if any exist, even if the claim is secured by mortgage upon real estate, to him at his office in Makawao, Maui, within six (6) months from the date of the first publication of this notice, said date being February 22, 1913, or within (6) months from the date they fall due, or the same will be forever barred.

Makawao, Maui, February 19, 1913.  
A. F. TAVARES,  
Executor of the Estate of Manuel C. Pimental, deceased.  
Feb. 22, Mar. 1, 8, 15, 22.

#### NOTICE TO CREDITORS.

Claims against the Estate of JOHN M. VIVAS, deceased, must be filed with the undersigned within six months from the 22d day of February, 1913, or they will be forever barred.

A. F. TAVARES,  
Adm. Est. John M. Vivas, deceased.  
Makawao, Maui.  
Feb. 22, Mar. 1, 8, 15, 22.

#### Notice of Opening of Public Lands in the District of Hamakualoa, Island of Maui.

Notice is hereby given to E. L. Ward, L. E. Case, J. W. H. Schnabel, Robert E. Hughes, B. Henderson, McClaren, John F. Visher, C. G. Livingston, Bess K. Beach, R. Venhuizen, John Venhuizen, Alice Menough, M. T. Dayton, M. Jensen, F. Covington, J. T. Jensen, H. F. Willard, W. G. Scott, F. J. Johnson, Elizabeth W. Brown, L. N. Case, C. H. Metcalf, J. A. Templeton, Mrs. W. A. Ramsay, Edwin Hughes, Wilson Paegler and Cyrus T. Green, and others, if any, members of the Haiku Settlement Association, that Lots Nos. 29, 30, 31, 32, 33, 34, 35, 36, 37, 38, 39, 40, 41, 45, 46, 47, 48, 49, 50, 51, 52, 53, 54, 55, 56, 57 and 58, in the Kaihaha-Kaupakalua Tract, Hamakualoa, County of Maui, Territory of Hawaii, will be opened for homesteading in the following manner, in accordance with the laws relating to public lands in the Territory of Hawaii, subject to withdrawal of any such lots prior to their selection; such opening shall be in the manner set forth in the advertisement of public lands dated April 16, 1912, in respect to the method of application, drawing, selection, and other methods, except as follows:

The lots may be taken only by the Right of Purchase Lease or Cash Freehold Agreement method. Application for participating in the drawing may be made only by members of said Haiku

Settlement Association, and shall be presented to the Commissioner of Public Lands by ordinary mail, on or before Friday, March 7, 1913; the drawing and assignment of the order of selection of lots shall take place at the office of the Commissioner of Public Lands, Honolulu, at 9 o'clock a. m., on Saturday, March 8, 1913; the selection will take place at the Circuit Court House, Wailuku, Maui, at 9 o'clock a. m., Wednesday, March 12, 1913.

These lots are subject to the reservations contained in deed of October 27, 1912, recorded in Liber 372, p. 238-250; and deed of November 15, 1912, recorded in Liber 375, p. 304-309; and third deed dated December 20, 1912; and the right to construct railroads, ditches, pipe lines, flumes, aqueducts, and other waterways, and dams and reservoirs for the storage of water.

For further information, forms, maps, etc., apply at the office of the Commissioner of Public Lands, Honolulu, or at the office of the Sub Agent of the 4th Land District, W. O. Aiken, Makawao, Maui.

JOSHUA D. TUCKER,  
Commissioner of Public Lands.  
Land Office, Honolulu, Dec. 30, 1912.  
Jan. 4, 11, 18, 25, Feb. 1, 8, 23, Mar. 1, 8.

#### IN THE CIRCUIT COURT, SECOND CIRCUIT, TERRITORY OF HAWAII.

In Probate—At Chambers, No. ....  
In the Matter of the Estate of TOSHIRO HORIBE, late of Kula, Maui, deceased.

Order of Notice of Petition for Allowance of Accounts, Determining Trust and Distributing the Estate.

On Reading and Filing the Petition and Accounts of Charles Wilcox, Administrator of the Estate of Toshiro Horibe, late of Kula, Maui, deceased, wherein petitioner asks to be allowed \$311.50 and charged with \$425.15, and asks that the same be examined and approved, and that a final order be made of Distribution of the remaining property to the persons thereto entitled and discharging petitioner and sureties from all further responsibility herein:

It is Ordered, that Monday, the 17th day of March, A. D. 1913, at 10 o'clock A. M. before the Judge presiding at Chambers of said Court at his Court Room in Wailuku, Maui, be and the same hereby is appointed the time and place for hearing said Petition and Accounts, and that all persons interested may then and there appear and show cause, if any they have, why the same should not be granted, and may present evidence as to who are entitled to the said property. And that notice of this Order, be published in the MAUI NEWS, a weekly newspaper printed and published in said Wailuku, Maui, for three successive weeks, the last publication to be not less than two weeks previous to the time therein appointed for said hearing.

Dated the 6th day of February, 1913.  
(Sd.) S. B. KINGSBURY,  
Judge of the Circuit Court of the 2nd Circuit.  
(Attest:) (Sd.) EDMUND H. HART,  
Clerk of the Circuit Court of the 2nd Circuit.  
Feb. 8, 15, 22, Mar. 1, 1913.

#### IN THE CIRCUIT COURT FOR THE SECOND CIRCUIT, COUNTY OF MAUI, TERRITORY OF HAWAII.

In the matter of the Estate of JAMES WILSON FLEMING, late of Makawao, Maui, Deceased.

Order of Notice of Hearing Petition for Probate of Will.  
A Document purporting to be the Last Will and Testament of James Wilson Fleming, deceased, having on the 4th day of February, A. D. 1913 been presented to said Probate Court, and a Petition for Probate thereof, praying for the issuance of Letters Testamentary to Effie Lundy Fleming widow and sole legatee having been filed by said Effie Lundy Fleming.

It is Ordered, that Saturday, the 15th day of March, A. D. 1913, at 10 o'clock A. M., of said day, at the Court Room of said Court at Wailuku, Maui, Territory of Hawaii, be and the same is hereby appointed the time and place for proving said Will and hearing said application.

It is Further Ordered, That notice thereof be given, by publication once a week for three successive weeks in the MAUI NEWS, newspaper, printed and published in Wailuku the last publication to be not less than ten days previous to the time therein appointed for hearing.

Dated at Wailuku, Maui, February 4, 1913.  
(Sd.) S. B. KINGSBURY,  
Judge of the Circuit Court of the Second Circuit.  
Attest:  
(Sd.) EDMUND H. HART,  
Clerk Circuit Court of the Second Circuit.  
Feb. 8, 15, 22, Mar. 1.

## THE FIRST NATIONAL BANK OF WAILUKU.

C. H. COOKE, President C. D. LUFKIN, Cashier R. A. WADSWORTH, Vice-President  
D. H. CASE, 2nd Vice-President J. GARCIA, Asst. Cashier J. GARCIA, Director  
ELEVENTH ANNUAL STATEMENT  
at the close of business, Dec. 31, 1912.

RESOURCES		LIABILITIES	
Loans, Discounts	\$208,872 30	Capital Stock	\$ 35,000 00
United States Bonds	25,000 00	Surplus & Undivided Profits	43,626 80
Other Bonds	82,475 06	Circulation	24,997 50
Cash & Due from Banks	107,147 64	Dividend Unpaid	2,100 00
Banking House, Furniture, etc.	4,500 00	Deposits	324,567 47
Other Real Estate	1,045 77		
Five Per cent. Redem. Fund	1,250 00		
	\$430,291 77		\$430,291 77

TERRITORY OF HAWAII, Island and County of Maui, ss  
I, J. Garcia, Asst. Cashier of the First National Bank of Wailuku, do solemnly swear that the above statement is true and correct to the best of my knowledge and belief.

J. GARCIA, Asst. Cashier.  
Subscribed and sworn to before me this 2nd day of January, A. D. 1913.  
W. F. CROCKETT,  
Notary Public, Second Judicial Circuit.

## Time Table—Hahului Railroad Co.

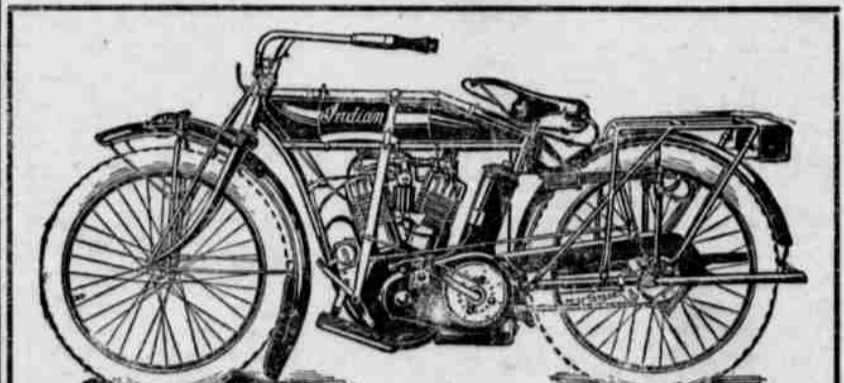
The following schedule will go into effect March 1st, 1913

TOWARDS WAILUKU							TOWARDS HAIKU								
13	11	9	7	3	1										
Daily Pass. Ex. Wee.	Passenger	Passenger	Passenger and Freight	Passenger	Passenger	Distance	STATIONS	Distance	Passenger	Passenger	Passenger and Freight	Passenger	Passenger	Daily Pass. Ex. Wee.	
						Miles	A. Wailuku, L.	0							
							Le. . . . .A	7	7 10 00					1 45 2 04 05	
							Le. . . . .A	7	7 22 15					2 15 2 32 17	
							Le. . . . .A	3.5							
							Le. . . . .L	7.25			9 30			2 40 4 20	
							Le. . . . .L	6.9							
							Le. . . . .L	7.37			10 00			2 52 4 32	
							Le. . . . .A	9.8			10 15			3 05 4 45	
							Le. . . . .L	8 10						3 15	
							Le. . . . .A	8 20						3 25	
							Le. . . . .L	11.9						3 35	
							Le. . . . .L	8 30						3 50	
							Le. . . . .L	8 45						4 00	
							Le. . . . .L	13.9						4 10	
							Le. . . . .A	15.3						4 20	

## PUUNENE DIVISION

TOWARDS PUUNENE					TOWARDS KAHULUI				
9	7	5	3	1					
Passenger	Freight Only	Passenger	Distance		Distance	Passenger	Freight Only	Passenger	
			Miles	STATIONS	Miles				
				Le. . . . .A	2 56 40			10 45	
				Le. . . . .L	06 30			10 30	

- All trains daily except Sundays.
  - A Special Train (Labor Train) will leave Wailuku daily, except Sundays, at 5:30 a. m., arriving at Kahului at 5:50 a. m., and connecting with the 6:15 a. m. train for Puunene.
  - BAGGAGE RATES: 100 pounds or 2 cubic feet of personal baggage will be carried free of charge on each whole ticket, and 50 pounds or one cubic foot on each half ticket, when baggage is in charge of and on the same train as the holder of the ticket. For excess baggage 25 cents per 100 pounds or part thereof will be charged.
- For Ticket Fares and other information see Local Passenger Tariff I. C. C. No. 6, or inquire at any of the Depots.



## Prices of 1913 INDIAN Motorcycles With its Luxurious Cradle Spring Frame

	CASH	INSTALLMENTS
4 H. P. with Magneto	\$220.00	\$230.00
7 H. P. with Magneto	\$270.00	\$280.00
4 H. P. TT Model Magneto, 2 speed gear	\$295.00	\$305.00
7 H. P. TT Model Magneto, 2 speed gear	\$345.00	\$355.00

\$110.00 cash and six monthly payments of \$20.00 each.  
\$130.00 cash and six monthly payments of \$25.00 each.  
\$155.00 cash and six monthly payments of \$25.00 each.  
\$175.00 cash and six monthly payments of \$30.00 each.

## E. O. HALL & SON, Ltd.

Distributors for Hawaii HONOLULU

Telephone 1141 Wailuku, Maui, T. H. P. O. Box 83  
**WAILUKU HARDWARE CO.,**  
Successors to  
**LEE HOP**  
General Hardware, Enamelware, Oil Stoves, Twines, Mattings, Wall Papers, Mattresses, Etc., Etc., Etc.  
COFFINS MADE AT SHORT NOTICE

**FOR SALE CHEAP**

**THREE 300 h. p. HEINE WATER TUBE BOILERS**

Were standing 135 lbs. working pressure when removed from our plant to be replaced by larger boilers.

ONE STEEL SAFE, APPROXIMATELY 6' 3" X 4' X 2' - 10" in good condition \$300.00

FOR FULL PARTICULARS APPLY

**Hawaiian Electric Co., LIMITED.**  
HONOLULU.

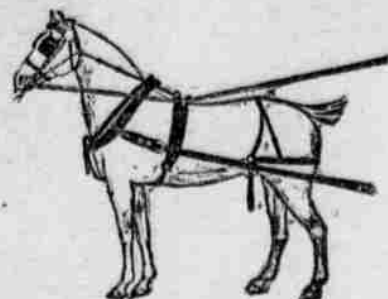
**"De World Am Moovin' Ahead Indeed"**

Convince yourself of the fact, by examining the latest improved 1913, MIGHTY MICHIGAN FORTY. The first Car of that world famous make recently arrived on Maui.

**MAUI NO KA OI**

A letter addressed to us will receive prompt and careful attention and **MAIL ORDERS** handled as you want them.

EST. 1891 **C. R. COLLINS SADDLERY CO.** HONOLULU



**SADDLES, HARNESS,  
COLLARS, MULE and  
HORSE GOODS  
REPAIRING  
DEPARTMENT,  
WORK  
GUARANTEED.**

Automobile Trimmings,  
Pantasote for Auto Tops,  
Curtain Fasteners, Trans-  
parent Celluloid for Curtain  
Lights, Wind Shield Glass,  
Leather Goods, Etc.



**FREIGHT PREPAID ON ALL GOODS ORDERED FROM US.**

Your pocket book need'nt be emptied to get a good smoke—

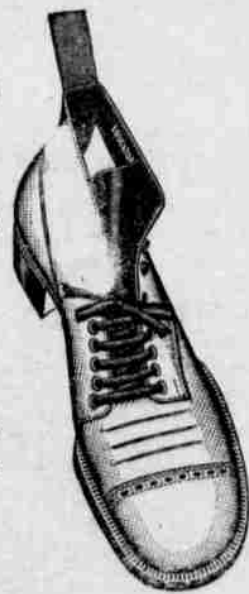
There's the  
**"La Insular"  
Presidentes**

A cigar that is all quality and selling at \$5.00 the box of 100.

No money put in bands, no foil—just quality,

**H. HACKFELD & CO.**  
Wholesale Distributors

**Educator  
\$4.00 shoe**



A Home for the Feet—not a Prison.  
Has room for all five toes to lie perfectly in their natural positions.

**MANUFACTURER'S SHOE COMPANY, Ltd.**  
1051 FORT STREET, HONOLULU.

**DAY CURRENT IS ON**

**FOR**

- Electric Lights
- Electric Irons
- Electric Toasters
- Electric Water Heaters
- Electric Fireless-Cooker-Stoves
- Electric Chafing Dishes
- Electric Fans
- Electric Sewing Machine Motors
- Electric Home-Laundry Machines
- Electric Household Appliances of every kind

YOU CAN NOW BE STRICTLY UP-TO-DATE IN ECONOMICAL HOUSEHOLD MANAGEMENT.

**Island Electric Co., Ltd.**

**Aquatics To Be  
Catered For**

There was a fine meeting of those interested in aquatic sports at the Masonic hall last Tuesday evening. The meeting was attended by over twenty sportsmen, and much interest was taken in the proceedings. At the finish a committee of five was appointed to look into the whole matter, and to report back to the main body within two weeks.

When the meeting came to order, there was a discussion as to why the gathering was in evidence. That matter having been cleared up, a general talk over the proposition was in order, and it quickly developed that the sense of the meeting was to establish a boat club at Kahului and to have a place where members could drop in every afternoon and don bathing suits before diving into the bay and having a good time. The thought of the same sort of things that the Healanis and Myrtles of Honolulu possess, seemed to inspire the people present at the meeting.

The offer of the Puunene Athletic Club to turn over the racing boats of that organization to the new club, was laid aside for a while. Later on, when the new club is underway there may be a deal in connection with the Puunenes.

The first proposition put forward at the meeting was to form a boat club that would represent Maui on Regatta Days in Honolulu. The sense of the meeting, however, was that the new club would cater for aquatic sports of all sorts and, eventually, of course, see that Maui would not be neglected every September in Honolulu.

The committee appointed to look into matters is as follows: J. J. Walsh, C. D. Lufkin, W. S. Searby, R. E. Hughes and H. W. Rice.

The plans are to erect a boat-house near the Claudine wharf, where there is good, deep water, and where the members could get fine swimming every afternoon. Within two weeks it is expected that the committee will report to the organizers of the new club.

**Lahaina News.**

Washington's birthday was celebrated with enthusiasm, and the sports were much enjoyed. The out-door sports included foot races, swimming race, bicycle race, basket ball and a vigorous tug-of-war, in which Lahaina and Molokai were represented. This last contest was declared a tie. Patriotic songs were sung, and the flag was saluted.

Duvaschelle's Sampan conveyed a select party to Molokai, where they were generously entertained by Mr. and Mrs. Conrad.

Contractor Fernandez is getting in the foundations of the school building, and he will also build an armory, near the beach.

**Annual Meeting.**

The annual meeting of the stockholders of the Maui Land & Railroad Company, will be held at the office and principal place of business of the Company at Kahului, Maui, T. H., on Monday, 24th day of March, 1913, at 10 o'clock A. M.

J. N. S. WILLIAMS,  
Secretary pro. tem. and Treasurer.  
Mar. 1, 8, 15, 22.

IN THE DISTRICT COURT OF THE UNITED STATES IN AND FOR THE DISTRICT AND TERRITORY OF HAWAII.

In the matter of ROBERT SYDNEY GRAY A BANKRUPT:  
IN BANKRUPTCY No. 252

To the creditors of Robert Sydney Gray, of South Hilo, Hawaii, a bankrupt:

Notice is hereby given that on the 19th day of February A. D. 1913, said Robert Sydney Gray was duly adjudicated a bankrupt and that the first meeting of his creditors will be held at 846 Kaahumanu Street, Honolulu, on the 22nd day of March, A. D. 1913, at 9 o'clock A. M., at which time said creditors may attend, prove their claims, examine the bankrupt, elect a trustee, and transact such other business as may properly come before said meeting:

GEORGE S. CURRY,  
Referee in Bankruptcy:  
Honolulu, Hawaii, February 20, 1913.

**Kahului Railroad**

**MERCHANDISE DEPARTMENT**

A Large Consignment of

**Imported  
Cement**

In Moisture-Resisting Drums

**Superior Quality  
Price Right**

Discount on Quantity Purchases

If you contemplate any concrete work, write or telephone

**Kahului Railroad Co.'s**

Merchandise Department

**Kahului, Maui.**

TELEPHONE NO. 1062.

### Party Ascends Haleakala

On Wednesday last a party of seven made the ascent of Haleakala and included in the party were Mr. and Mrs. Kemp, the noted moving picture artists. The visitors made the trip in comfort and met with no accident at all.

A start was made at eleven o'clock in the morning from the Maui Hotel, and at half-past one o'clock the party reached Idlewild—eight miles from the summit. A rest was then in order, and, later on, the horses were mounted and the trip along the trail was begun. The day was a clear one, and the travelers had a good time as they slowly wended their way upward to the "House of the Sun."

The summit was reached before dusk and the party soon was comfortably settled in the shelter house. The night was spent there and in the morning the usual rush for the edge of the huge crater was made. The morning was a clear one and not a cloud was to be seen in the pit. The moving picture machine was quickly brought into play and, from half-past five in the morning till eight o'clock, Kemp pumped away taking "movies" of the interior of Haleakala. The traveling man was very pleased with the scene and he thinks that the films, when developed, will make a fine picture.

The air was so clear that the tourists could see the other islands of the group very clearly. The absence of the clouds was, in a way lucky but, to Kemp, it meant somewhat of a disappointment. He had hoped to get a film showing the sea of clouds rolling out through the gap in the side of the grim mountain. Kemp also had hoped to see the cloud sea that, at times, fills the huge crater. However, the pictures that he took will show every detail of the crater and will, doubtless cause a sensation wherever shown.

The party returned to Wailuku in safety and one and all declared that the trip was a delightful one. Those making the trip were: Mr. and Mrs. Kemp, Miss Benedict, Miss Ainsworth, Mr. Duval, Dr. Banning and J. H. Ashdown.

The Wailuku fire laddies gave a good exhibition on Washington's Birthday, and there was a fine turn out of the men.

#### WANTED POHAS.

We will pay Ten cents a Quart for Pohas. At the Wharf in Honolulu.

HONOLULU JAM & CHUTNEY FACTORY LTD.

### Honolulu Music Co.

Jas. W. Bergstrom, Manager. 88 King Street, Honolulu.

Latest Hawaiian Records, Victor and Columbia Talking Machines, Primate and Autopiano Players, Knabe Pianos. Latest Popular Music, etc.

# Califene

### Old Identity Passes Away

One of the old identities passed away last Monday when Mrs. Keapo Manukeokeo joined the silent majority. The old lady was 77 years of age at the time of her death and, prior to her last illness, had never been ill a day. Mrs. Manukeokeo died at the Malulani Hospital, whence she had been removed as soon as it was seen that her time had come. Mrs. W. H. Field, of whom the deceased was the aunt, spent many hours by the bedside of the old lady.

The deceased was the widow of Manukeokeo who, for thirty-two years, was jailer at Wailuku. She was a prominent member of the Nawai Eha Society and numbered among her friends ex-Queen Liliuokalani, from whom she received, from time to time, letters concerning old the times of the Monarchy.

The funeral was held on Tuesday afternoon and it was largely attended. The Nawai Eha society members turned out in numbers, and the service at the grave was impressive. The pall bearers were: L. M. Baldwin, Charles Wilcox, J. N. K. Keola, Captain W. E. Bal, M. P. Waiwaiale and W. B. Keanu.

### Kahuluis Are Final Victors

By the close margin of 82 points, the Kahului billiard players on Thursday evening, defeated the Wailuku cue artists in the long struggle to attain 1,000 points first. The tournament has been going on for weeks and, up till ten days or so ago, it was anybody's match. The Kahuluis, however, got a fast go on and, in the last few games, obtained a lead that the Wailukus could not cut down. The Kahuluis made 1,000 points, while the Wailukus piled up 918.

The greatest interest has been taken in the tournament and every Thursday evening a large crowd has attended to see the matches. There are still some Wailuku fans who declare that their men should have won in the long run.

The Kahuluis will go up against the Puunenes for the billiard championship of Maui. The Wailukus, although defeated in the 1,000 point tournament, intend to have another go at the Kahuluis as soon as that team gets through with the match against Puunene.

#### Church Notes.

Bishop Naptali Luccock, D. D., L. L. D., one of the best known Methodists pastor and preachers will be on Maui with Rev. John M. Wadman on the 9th of March. The Bishop will preach at the Makawao Union Church on the morning of that date and, in the evening he will preach at the Wailuku Union Church.

On Tuesday evening at 7:30 the Bishop will lecture at the Wailuku Union Church on "Twentieth Century Ideals." He is a very well known lecturer, and the people of Maui will be fortunate in having this chance to hear the Bishop. The lecture will be free to all.

The music in the Wailuku Union Church tomorrow evening will be as follows: "The Lord Is My Shepherd," by Concane. The solo by Mrs. L. C. Jones will be Howell's "By the Waters of Babylon."

### Fences and Other Things

F. G. Correa, of Makawao, seems to be playing in bad luck now-a-days and, what with having his fences torn down and his cattle impounded, he appears to be having a bad time altogether.

The story as regards the pulling, or chopping down of fences, was related at the Makawao police court yesterday. It appears that some time ago Correa had several surveys made of his boundary lines. He alleges that the surveyors found that his boundary fences were not correct, and that about fifteen acres more land should be enclosed within his fences. Correa, therefore, got busy and started the job of putting the fences where they should be. Then the music began and David K. Kapiiolo is alleged to have got mad. At any rate, the fence erected by Correa was chopped down. The sequel was that Correa's cattle wandered across the unprotected boundary line, and were at once impounded by David.

Correa's next step was to engage attorneys and fight the charges made for impounding the cattle. D. H. Case and Enos Vincent appeared in court for Correa, and the case was threshed out at length. The decision of Judge Goodness was that the cattle had been legally impounded, and that Correa would have to pay the poundage claims. The attorneys for the defendant have appealed the case on the grounds that the records of the pound are not kept according to law.

C. D. LUFKIN—All those people who are interested in aquatic sports should get in touch with the committee and tell their ideas on the subject.

D. H. CASE—That is some papaia that I raised on my lot. It weighs thirteen pounds and some people think it is a squash.

#### Locals

The Grand Jury meets next week and there are many matters for investigation.

Many prominent Wailukans have left town and some have gone to the mainland.

G. W. Steele, of Hamakuapoko, was registered at the Maui Hotel during the week.

Mrs. H. W. Field, who has been under the weather for some days, is spending a week or so at the beach.

The new boathouse and club that is to be started at Kahului will give many a tired business man a chance to have a dip after work.

The masquerade ball of the Moose will be given on the evening of March 15, and it promises to be the best dance held in Wailuku for years.

Last Saturday, at Kakipi valley, Miss Margaret Anderson was united in marriage to Mr. Herbert Hutchins. The Rev. R. B. Dodge officiated.

Engineer Peacock and his wife returned from Honolulu on Tuesday last. They took in the Floral parade and thought everything was lovely.

Sheriff Crowell paid another visit to Lahaina during the week. The Filipino problem is being worked on, and a general cleaning up of Maui may result.

County Attorney Case has a giant papaia on exhibition in the window of the People's store. The big fruit weighs 13 pounds and it is a curious freak.

J. H. Ashdown and Dr. C. P. Banning, of Winnipeg, Canada, were visitors to Wailuku last week. They went with the Kemp party to the summit of Haleakala.

The road from Kalepolepo to Puhau was flooded by the heavy rains that recently fell in the Kula hills, and the consequence was that traveling was a hardship.

J. Garcia, of the First National Bank of Wailuku, had a good time in Honolulu, although he was disappointed in not getting a game of ball against the All-Chinese team.

The two moving picture shows have reduced their prices, and there is talk of a bonus being given every person attending the shows. That is probably a canard, however.

W. J. Coelho was in town during the week. He came up to attend to some private business.

The Woman's Guild of the Church of the Good Shepherd will hold a social meeting with Mrs. Kingsbury Wailuku, on Tuesday March 4, 2:30 P. M.

The passengers by the Claudine, arriving last Tuesday morning, all declare that the trip was a fierce one, and that the sea was as rough as the Atlantic Ocean can be at times.

E. R. Bevins won his case from plaintiff Wong Young, who sued him for \$300 damages. The case was tried before Judge McKay. H. C. Mossman, counsel for the defense, has noted an appeal.

On March 8 there will be a demonstration of the perfect shortening that housewives can do with Califene. The lady who will give the exhibition, will instruct those interested, in the methods of cooking with Califene.

The Maui Publishing Company, has received from the mainland a power cutter which will replace the old hand cutter that has been in use for years. Even better work than usual will now be turned out from the company's plant.

Miss Ruth Ainsworth, of Alexander & Baldwin, accompanied by Miss Jessica Benedict of the promotion committee staff, were visitors to Wailuku during week. They made the Haleakala trip in company with Mr. and Mrs. Kemp.

E. A. Brune, whose car was mixed up in the auto accident at Iao, is going to pay for the damage done the other car

through the smash. This is thought to be a generous act of Mr. Brune, as the amount for repairs is estimated to be about one hundred dollars.

The Honolulu arrived from the Coast and Honolulu yesterday. She brought a large cargo of general merchandise and some fruit and vegetables.

The Orpheum Theater is now getting its electric light from a dynamo which is located at the rear of the theater. The local electric company notified manager Hart that he would have to discontinue carrying "juice" from the Iao stables, as the wires ran along a thoroughfare.

Harry Armitage, H. Cushman Carter Samuel A. Walker.

### Harry Armitage & Co., LIMITED. Stock and Bonds BROKERS

Member Honolulu Stock and Bond Exchange.

P. O. Box 653, Telephone 2101. Cable and Wireless Address: "Armitage."

**LAHAINA STORE**  
**Importers & Dealers**  
**in**  
**GENERAL MERCHANDISE**  
**WHOLESALE AND RETAIL**  
**GASOLINE and DISTILLATE IN DRUMS**  
**LAHAINA STORE.**

## PUUNENE STORE

### DURING LENT

Many of our customers will want Fresh and Salt Fish. We have arranged to have

### Fresh Salmon, Halibut and Sole

From the Coast February 22 and 28, March 14, 18 and 27

As quantities ordered are limited, you should place your order early

#### Our Salt Fish Consists of

Mackerel, Bloaters, Anchovis, Salmon Bellies  
Tongues and Sounds, Black Cod Fish  
Norway Fish Balls, Salt Herring  
Bismarck Herring

#### In Tin

Clams, Oysters, Crabs, Shrimp, Lobster, Salmon  
Tunny, Kippered Herring, Smoked Haddock  
Sardines, Clam Chowder  
Abalone

## PUUNENE STORE, KAHULUI