

# The Daily Bulletin.

VOL. VIII.—No. 1237.

HONOLULU, H. I., THURSDAY EVENING, JANUARY 28, 1886.

SUBSCRIPTION  
50 CENTS PER MONTH

## THE DAILY BULLETIN

Is printed and published at the office, Queen Street, Honolulu, H. I., every afternoon (Sundays excepted).

Subscription, 50 cents per month.

Address all Communications DAILY BULLETIN.

Advertisements, to ensure insertion, should be handed in before one o'clock P. M.

Daniel Logan.....Managing Editor  
Norman Logan—Associate Editor and Accountant.  
W. A. S. BEALS—Collector and Shipping Reporter

**Bulletin Steam Printing Office.**  
Newspaper, Book and Job Printing of all kinds done on the most favorable terms.  
JAS. G. CLEVIOR, Manager.  
Bell Telephone.....No. 256  
Mutual Telephone.....No. 256

**Commission Merchants.**

JOHN T. WATERHOUSE,  
Importer and Dealer in General Merchandise, Queen st., Honolulu. 1

W. G. IRWIN & COMPANY,  
Sugar Factors and Commission Agents, Honolulu. 1

A. S. OLEGHORN & CO.,  
Importers and Commission Merchants, dealers in General Merchandise, Queen and Kaahumanu sts., Honolulu. 78

WILDER & CO.,  
Dealers in Lumber, Paints, Oils, Nails, Salt and Building Materials of every kind, cor. Fort and Queen sts., Honolulu. 1

S. N. Castle. J. B. Atherton.

CASTLE & COOKE,  
Shipping and Commission Merchants. Importers and Dealers in General Merchandise, No. 80 King st., Honolulu. 1

E. HUYFISON. M. A. GONSALVES.

M. A. GONSALVES & CO.,  
Wholesale Grocers & Wine Merchants  
289 Beaver Block, Honolulu.

M. S. GRINBAUM & CO.,  
Importers of General Merchandise and Commission Merchants, Honolulu, and  
124 California street, San Francisco, Cal. 1

J. LYONS, L. L. COHEN.  
LYONS & COHEN,  
Auctioneers and General Commission Merchants, Beaver Block, Queen st., Honolulu.

Sales of Furniture, Stock, Real Estate and General Merchandise promptly attended to.  
Sole Agents for American and European merchandise. 318

C. BREWER & COMPANY,  
(Limited)  
GENERAL MERCHANDISE AND COMMISSION AGENTS.

LIST OF OFFICERS:  
P. C. JONES, Jr., President & Manager  
J. O. CAITNER, Treasurer & Secretary

DIRECTORS:  
Hon. C. R. BISHOP. Hon. H. A. P. CARTER 383 ly

Geo. W. Macfarlane.—H. R. Macfarlane.

G. W. MACFARLANE & CO.  
IMPORTERS, COMMISSION MERCHANTS AND  
Sugar Factors,  
Fire-Proof Building, 53 Queen street, Honolulu, H. I.

AGENTS for  
The Waikapu Sugar Plantation, Maui,  
The Spencer Sugar Plantation, Hawaii,  
The Hecla Sugar Plantation, Oahu,  
Huelo Sugar Mill, Maui,  
Huelo Sugar Plantation, Maui,  
Paulea Sheep Ranch Co., Hawaii,  
F. Fowler & Co. Steam Flaw and Portable Tramway Works, Leeds,  
Mirreles, Watson & Co's Sugar Machinery, Glasgow,  
Glasgow and Honolulu Line of Packets 185

C. O. BERGER,  
24 MERCHANT STREET,  
General Agent for

The N. Y. Life Insurance Company,  
The City of London Fire In. Co (limit'd  
South British and National Fire & Marine Insurance Co.

Macneale & Urban Safes,  
The Celebrated Springfield Gas Machine  
Gas Fixtures of Mitchell, Vance & Co.  
The Hartford Fire Insurance Co.  
The Commercial Fire & Marine Insurance Co. 238

C. H. WOOLMINGTON,  
GENERAL PURCHASING AGENT.

Special notice to Island orders for Merchandise of every description, at the very lowest rates of commission. Send for samples of Dry Goods, etc., etc. Catalogues and price list free by mail every steamer. Address

309 CALIFORNIA STREET,  
101 tf Room 19, San Francisco.

## Professionals.

ALBERT C. SMITH,  
Attorney at Law and Agent to take Acknowledgments. No. 9 Kaahumanu street. 102 6m

J. ALFRED MAGOON,  
ATTORNEY AT LAW.  
173 42 Merchant street, Honolulu. 1y

JOHN A. HASSINGER,  
Agent to take Acknowledgments to Contracts for Labor. Interior Office, Honolulu.

RICHARD F. BICKERTON,  
Attorney and Counsellor at Law. Money to lend on Mortgages of Freeholds. Office, No. 44 Merchant st. 1

CECIL BROWN,  
Attorney and Counsellor at Law. Notary Public, and Agent for taking Acknowledgments of Instruments for the Island of Oahu. Merchant street, Honolulu. 1

M. THOMPSON,  
ATTORNEY AT LAW,  
and Solicitor in Chancery. Office—Campbell's Block, Second Story, Rooms 8 and 9. Entrance on Merchant Street, Honolulu, H. I. 984 tf

WILLIAM AULD,  
Agent to take Acknowledgments to Contracts for Labor for the District of Kona, Island of Oahu, at the office of the Honolulu Water Works, foot of Nuuanu street. 186

J. M. MONSARRAT,  
ATTORNEY AT LAW  
and Notary Public. Real Estate in any part of the Kingdom bought, sold and leased, on commission. Loans negotiated, Legal Documents Drawn. No. 27 Merchant st. (Gazette Block), Honolulu, Hawaiian Islands 196

W. O. AKANA,  
Chinese and Hawaiian Translator and Interpreter,  
No. 7 King street, near the Bridge. Translations of either of the above languages made with accuracy and dispatch, and on reasonable terms. 209

P. P. GRAY, M. D.,  
PHYSICIAN AND SURGEON,  
Office, first door west of Library Building. Hours, from 9 to 11 a. m., and 2 to 4 and 7 to 8 p. m. Sundays, 9 to 11 a. m. Residence, cor. Kinnau and Pensacola Streets. 943 ly

DR. A. MCWAYNE,  
Physician and Surgeon,  
Office and residence 34 Alakea street. Office hours, 9 to 11 a. m., 6 to 8 p. m. 64 ly

DR. EMERSON,  
PHYSICIAN AND SURGEON.  
Has removed his Residence and Office to 196 Fort Street (lately occupied by Capt. Hayley).  
(8 to 10 A. M.,  
OFFICE HOURS, 1 to 3 P. M.,  
(7 to 8 Evening.  
Telephone (Bell and Mutual), No. 149. 177 tf

DR. M. GOTO,  
Physician and Surgeon,  
Leprosy, Syphilis and Skin Disease a Specialty. Office, mauka of the residence of Hon. James Keau, King Street, Kapalama, Honolulu.  
OFFICE HOURS—1 to 5 P. M.  
SUNDAYS—8 A. M. to 12 M.  
N. B.—Parties on the other Islands can consult by letter. 155 ly

JAMES BRODIE,  
Veterinary Surgeon.

OFFICE and residence, 160 King St., opposite Kawaiahao Church. Mutual Telephone, 354. Office hours from 7 to 9 A. M., and 1 to 3 P. M. Orders left at the Pantheon Stables will be promptly attended to.  
P. O. Box 86. 843 tf

NOTICE.  
M. R. D. L. AHPHART hereby intimates that he has this day withdrawn from the firm of Soyong & Ahphart, and that he will carry on the business of an Employment Agency, Anglo-Chinese Interpreting, Collecting Accounts and other Agency Business at Sun Kim Lung Co.'s, 43 Hotel street. 112 tf

VOLCANO ROUTE.

Wilder's Steamship Co.

Commencing on Monday, October 12th, and thence on the first Monday following the arrival of the Alameda and Mariposa on the 8th and 22nd of each month.

The steamer **Kinuu** will make the Volcano Trip, reaching Keauhou on Wednesday morning, giving Tourists two days and two nights at the Volcano House.

When the 8th and 22nd of the month fall on Monday, the **Kinuu** will leave that day.

Tickets for the Round Trip, \$50, which pays all Charges.

The **Kinuu** will arrive in Honolulu Sunday mornings on Volcano Trips. On Hilo Trips, will leave Honolulu on Tuesdays, and return Saturday mornings. WILDER'S STEAMSHIP CO.  
Honolulu, Sept. 14, 1885. 124 tf

**\$12,000**

To Loan on Real Estate Security, in Sums of not less than \$1,000 each. Apply to J. M. MONSARRAT,  
No. 27 Merchant Street. 164 tf

## JUST RECEIVED AT THE Popular Millinery House,

104 FORT STREET, HONOLULU.

A choice assortment of Solid Colors and Fancy Plaid

## Dress Goods, Dress Goods,

Which we will offer at the low figures of 25 and 35 cents per yard, worth double the money. Also, a large assortment of

All-Over Embroidery at \$1 50 per yard and upward;  
All-Over Puffing and Inserting at 50 cents per yard;  
Embroidery Edgings in all width;  
All-Over Oriental Net and Laces to Match.

We still keep the Lead in

## MILLINERY GOODS!

And offer the latest styles of Ladies and Children's Hats, trimmed and untrimmed at the lowest prices.

Native Straw Sewed into any Shape.

N. S. SACHS, Proprietor,

104 FORT STREET, HONOLULU.

## UNION FEED COMPANY.

Hay, Grain and Chicken Feed.

Corner of Queen and Edinburgh Streets

Telephone 175.

Island orders solicited, and goods delivered promptly.

H. M. BENSON, G. W. SMITH,

## BENSON, SMITH & CO.

Manufacturing & Dispensing Pharmacists,

113 & 115 FORT STREET, HONOLULU,

Depot for Boericke & Schreck's

Homeopathic Medicines, Ricksecker's Perfumes

And Toilet Requisites, The Common Sense Nursing Bottles,

And Allaire Woodward & Co's Pharmaceutical Products.

## Mercantile.

CHR. GERTZ,  
No. 80 Fort street, Honolulu,  
Importer and Dealer in Gent's, Ladies' and Children's boots, shoes and slippers.

Robert Lewers, C. M. Cooke,  
LEWERS & COOKE,  
(successors to Lewers & Dickson.)  
Importers and Dealers in Lumber and all kinds of Building Materials, Fort street, Honolulu 1

HOLLISTER & CO.  
Druggists & Tobacconists,  
WHOLESALE AND RETAIL,  
109 Fort Street, William's Block, Honolulu, H. I.

J. M. OAT Jr. & Co.  
Dealers in all kinds of STATIONERY,

The Latest Foreign Papers always on hand at the *Gazette Block*, Merchant Street 1 by

Wolfe & Company,  
Grocery and Feed Store,  
Corner King and Nuuanu streets.

Fresh Groceries and Provisions received by every Steamer.

P. O. Box 130, Telephone 349. 561 6m

WM. McCANDLESS,  
No. 6 Queen street, Fish Market, Dealer in choicest

Beef, Veal, Mutton, Fish, &c., &c.  
Family and Shipping Orders carefully attended to. Live stock furnished to vessels at short notice, and Vegetables of all kinds supplied to order. 846 ly

THE FISHER CIDER COMPANY  
Factory, 13 Liliha street.

ARE now prepared to furnish this celebrated Champagne Cider at short notice, and in quantities to suit. All orders will meet prompt attention by addressing The Fisher Cider Co.  
M. T. DONNELL, Manager. 189 ly

Mutual Telephone 336.

FOR SALE.  
FANNING'S ISLAND GUANO in quantities to suit. Apply to the PACIFIC NAVIGATION CO.  
103 ly

## Metropolitan Market,

KING STREET,  
G. J. WALLER, Proprietor.

Choicest Meats from Finest Herds.

Families and Shipping

SUPPLIED ON SHORT NOTICE

and at the

Lowest Market Prices.

All meats delivered from this Market are thoroughly chilled immediately after killing by means of a Bell-Coleman Patent Dry Air Refrigerator. Meat so treated retains all its juicy properties, and is GUARANTEED TO KEEP LONGER AFTER DELIVERY THAN FRESHLY-KILLED MEAT. 74 ly

Patronize Home Industry!

J. W. HINCLEY,

Cigar Manufacturer,

Formerly of the Pioneer Cigar Factory, has moved into the front part of the Crystal Soda Works, where he is prepared to fill all orders at the lowest wholesale prices.

Island orders solicited and promptly filled. 190 ly

F. WUNDENBERG,  
71 Queen Street.

AGENT FOR  
Steamer "J. I. Dowsett,"  
AND SCHOONERS

Rob Roy, Mile Morris, and Josephine.

SALT FOR SALE.  
Fine and coarse Paulea Salt; fine Kakaako Salt, in quantities to suit.

Also, large and small Iron Water Tanks, Paints, Oils, Etc., Etc. 63 ly

LAINÉ & CO.  
Have a Large Stock of the

VERY BEST HAY.  
Grain, Etc.,

Which is offered at Lowest Market Prices

—AND—  
Delivered Free to any part of the City

AGENTS FOR THE  
Pacific Mutual Life Insurance Co.  
OF CALIFORNIA.

Agents for the Hoover Telephone.

Commissioner of Deeds for California  
Telephone No. 147. 706

Mechanical.

BROWN & PHILLIPS,  
Practical Plumbers, Gas Fitters and Copper-smiths, No. 71 King street, Honolulu. House and Ship Job Work promptly executed. 102

RHOADS & MACKENZIE,  
CARPENTERS & BUILDERS.  
Jobbing promptly attended to and all work guaranteed. Plans and specifications furnished at short notice. Queen Street, near Alakea. P. O. Box 359. Mutual Telephone 348. 144 ly

Honolulu Carriage Manufactory  
228 and 230 Fort Street,  
Honolulu, Hawaiian Is.  
W. H. PAGE, Proprietor  
980 ly

HONOLULU IRON WORKS,  
Steam engines, sugar mills, boilers, coolers; iron, brass and lead castings; machinery of every description made to order. Particular attention paid to ship's blacksmithing. Job work executed at short notice. 1

J. A. MCKENZIE,  
PRACTICAL PLUMBER  
and Gas Fitter.

All orders for House or Ship work promptly executed.

Shop next to Post Office, Bethel Street. 154 ly

WENNER & CO.  
Manufacturing Jewellers,  
NO. 92 FORT STREET.

Constantly on hand a large assortment of every description of Jewelry, Watches, Gold and Silver Plated Ware, &c. 958 ly

GEO. C. STRATMEYER,  
ARTISTIC SIGNS A SPECIALTY.

78 King Street, Honolulu.

175 P. O. Box 310. 1y

Thos. Lindsay,  
MANUFACTURING JEWELER.

168 No. 60 Nuuanu Street. 1y

ALVIN H. RASEMANN,  
Book-Binder

PAPER-RULER and BLANK-BOOK Manufacturer.

Book Binding of all description neatly and promptly executed.

Gazette Building, Merchant street 723 ly

GEORGE LUCAS,  
Contractor  
and Builder.

Honolulu Steam Planing Mills, Esplanade, Honolulu.

Manufactures all kinds of Mouldings, Brackets, Window Frames, Blinds, Sashes, Doors, and all kinds of Wood-work finish. Turning, Scroll and Band Sawing. All kinds of Sawing and Planing, Morticing and Tenancing.

Orders promptly attended to and work guaranteed. Orders from the other Islands solicited

Telephone 55.

ENTERPRISE  
PLANING MILL,  
Alakea, near Queen St.

C. J. HARDEE, Proprietor.

Contracting & Building  
Mouldings and Finish always on hand.

Orders promptly attended to. 60

FOR SALE  
Hard and Soft Stove Wood,  
984 Cut and Split 1y

R. MORE & Co.,  
Ship's Blacksmith & General Machinist.

All work promptly and neatly performed. 205 3m

PIONEER  
STEAM CANDY FACTORY

AND BAKERY.

F. HORN, Practical Confectioner,  
Pastry Cook and Baker.

71 Hotel St. Telephone 74.

N. F. BURGESS,  
84 King street, Honolulu.

Carpenter and Builder. Baggage and General Express.

Drying and steamer Freight carefully handled.

Carriage painting done by a first-class workman at 78 King street.

Jobbing in above lines attended to with promptness, and charges according to the amount and quality of work.

Office Telephone, 262. Residence, 152. 143 ly

E. R. RYAN,  
Boat Builder.

Boats Built and Repaired to Order.

All Kinds of Boat Material.

Timbers, Knees, Stems, Keels. Also, 1 Decked Surf Boat, 1 Large Twelve-Ton Scow, 1 Four-Oared Race Boat, 2 Small Skiffs, 1 Twelve-Ton Sloop in perfect order, with sails, anchors and chains complete. For sale cheap for cash, Kilauea street, Honolulu. 1005 ly

ALEX. FLOHR,  
Practical Gun and Lock Smith,

Bethel St., next to Post-Office.

Sewing Machines of all kinds repaired.

All kinds of Light Machinery repaired on Short Notice.

N. B.—Good Workmanship and Charges Strictly Moderate. P. O. Box 190. 124 ly

WILLIAM MILLER  
Cabinetmaker

And Upholsterer,  
No. 63.....Hotel street,  
Opposite International Hotel,

Canes and Walking Sticks,  
Made of every kind of

NATIVE WOODS  
rackets, Cornices, Curtain Poles, &c., made of the latest designs.

BAGGAGE EXPRESS.

The undersigned having taken charge of Baggage Express No. 34, for the purpose of carrying on the Express and Dray business, hopes by paying strict attention to business to receive a share of public patronage.

Moving pianos and furniture a specialty. B. BURGERSON.

Residence, corner Punchbowl and Beretania Streets. Mutual Telephone 326. West, Dow & Co., Telephone 179. 39 ly

Beaver Saloon

The Best Lunch in Town,

Tea and Coffee at All Hours

The finest Brand of

Cigars & Tobacco  
always on hand.

H. J. NOLTE, Proprietor.

HUSTACE & ROBERTSON  
DRAYMEN.

All orders for Cartage promptly attended to. Particular attention paid to the

Storing & Shipping  
of goods in transit to the other Islands.

Also, Black and White Sand  
in quantities to suit at lowest prices.

Office, cor. Kaahumanu & Queen sts,  
Hawaiian Bell Telephone No. 33.  
983 ly Mutual Telephone No. 19.

New Goods and New Prices.

JOHNSON & IFTIGERS,  
Saddle and Harness Makers,

CORNER KING & NUUANU STS.

All Goods and work warranted as represented. Lowest rates to plantations and dealers in our goods. Telephone No. 177.

JOHNSON & IFTIGERS,  
Formerly with W. E. Foster.

216 1m

BY AUTHORITY.



To the Inspectors of Election in the several Districts of the Kingdom:—

Inquiries having been made whether persons who are exempt from the payment of personal taxes by reason of being clergymen, teachers, pupils in High Schools, firemen, &c., or by reason of being over the age of sixty years or whose taxes have been excused by the Assessor on account of infirmity or poverty, are allowed by law to vote at the Election for Representatives.

It is my opinion that all such persons are entitled to vote. The Tax Collector should issue to each such person a tax receipt with the words "Qualified to Vote" upon it, which he must sign and in place of the amount of taxes he must write "exempt" or "excused." On the presentation of this Tax Receipt to the Inspectors of Election at their sessions previous to the election, the name of the voter must be put on the list of voters and the Receipt returned to the voter.

At the general Election to be held on the 3rd February, 1886, the votes of such persons must be received, unless challenged for other reasons.

PAUL NEUMANN,  
Attorney-General.  
Honolulu, January 13, 1886. 224

**BISHOP & Co., BANKERS**

Honolulu, Hawaiian Islands  
Draw Exchange on the  
**Bank of California, S. F.**  
And their agents in

NEW YORK, BOSTON, HONG KONG.

Messrs. N. M. Rothschild & Son, London.  
The Commercial Bank Co., of Sydney,  
London.

The Commercial Bank Co., of Sydney,  
Sydney.

The Bank of New Zealand: Auckland,  
Christchurch, and Wellington.

The Bank of British Columbia, Victoria,  
B. C. and Portland, Or.

—AND—  
Transact a General Banking Business.  
669 1v

**The Daily Bulletin.**  
Pledged to neither Sect nor Party.  
But established for the benefit of all.

THURSDAY, JAN. 28, 1886.

**THE INDEPENDENT PLATFORM.**

The canvass of the Independent party in the present contest is made in behalf of—

Economical administration,  
Legislative independence,  
A sound currency system,  
The welfare of the native masses,  
Government by, for and of the people.

Internal development;  
and against—

Visionary and expensive state masquerading,  
A legislature of office-holders,  
A currency that will not pay our debts abroad,  
Deceiving the native people by false pretences and empty promises,  
Government by, for and of alien dictators, and incapable domestic or domesticated adventurers,  
Useless and costly external glitter.

The above generalization may be easily amplified into particulars under each head, by all who have watched the present struggle and are conversant with the Government's record. Objects that the Independents have been contending for and those that they have been strenuously opposing are patent to the whole electorate, and will appear to any comprehension on analysis of the category herein given. This platform is in keeping with the general course of the Independent party in the last Legislature. Can any intelligent body of voters have difficulty in accepting it and the worthy men who represent it, or in rejecting the principles and the men opposed to them? Surely not. Then it is the duty of every man possessed of any power and influence in affairs, to expend all his energies, in the few days remaining before the rendering of the popular verdict, for the promotion of the cause of good government.

**A POOR CAMPAIGN.**

Their own campaign proves the despicable nature of the Government's cause, as well as its desperate position. Has the Administration of this kingdom nothing to stand upon in regard to positive merit, that it should seek perpetuation by means of misrepresentation of opponents, shirking or misstating the issues, surreptitiously gaining control of the people's suffrages, and corrupting and debauching the electors? All these things have been brought home to the Govern-

ment party within the past few weeks. If they do not prove that the Government has neither such a record nor such a policy as would recommend it to an intelligent electorate, they demonstrate that the party is immoral in texture, rascally by instinct and desperate from necessity. The position that the Government party has chosen to occupy in this campaign is at once a proof that the Administration has not been unjustly under condemnation of public opinion all these years of its existence, and an aggravation of all the offenses against constitutional government and the interests of the country which have hitherto constituted the major portion of its record.

**EDITORIAL NOTES.**

A communicated article on the lantana is seized upon by the *Advertiser* as an assault by the Opposition. Strange that noxious weeds should be so readily associated with the Government by its own champion!

Mr. Z. Y. Squires is making up a ticket for Honolulu, composed of Messrs. Carter, Waterhouse, Swinton and himself. His recognition, however, depends entirely on the choice of native Independents, to whom Messrs. Carter and Waterhouse have from the first relegated the selection of two candidates to run with them.

**MORE THIEVING.**

EDITOR BULLETIN:—As evidence of the fact that petty thieving continues to be one of the "industries" of Honolulu, and is likely to until some of its principals receive due attention from those paid for protecting persons and property from midnight marauders, I would inform you that some thief entered my premises last night, tore up by the roots and carried off a quantity of choice and valuable imported rose bushes which I had nursed with great care. Yesterday morning a native was seen at the corner of Nuuanu and Hotel streets with some half-a-dozen rose bushes, without earth upon their roots, for sale. J. H. Wood.  
Honolulu, Jan. 28th.

**SOME VALUABLE NEWSPAPER PROPERTY.**

Millions of dollars have been sunk in newspapers in this city, and there is no easier way to waste money than in newspaper ventures; but it is nevertheless true that there is also no surer or swifter method of accumulating wealth than in a judicious investment of capital in the production of a daily newspaper. The most profitable newspaper in the world, the *London Times*, is valued at \$25,000,000, and the most profitable in France, the *Petit Journal*, earns \$600,000 a year net, although a dozen years ago it was insolvent. The *London Standard* is valued at \$10,000,000, the *Daily News* at \$6,000,000, and \$5,000,000 would not buy the *Telegraph*, it is said. It may be questioned whether New York has any \$5,000,000 newspapers, perhaps, but it has several which it would take \$1,000,000 or more to buy. Mr. North, of the *Utica Herald*, reported in his volume of statistics of the newspaper press, issued from the Government press a year ago, that the gross products of newspaper establishments in the United States amounts to \$87,431,132, and the statement affords a basis of speculation as to the aggregate amount of capital represented by the newspapers of this country.—(N. Y.) *Mail and Express*.

The ladies at Oberlin recently debated the question: "Resolved, That the extreme development of the intellect chills and destroys the affections."

The name of the French Superintendent of Public Instruction is Mr. Goblet. He is a tumbler to all the new school-book rackets.—*Alta California*.

Theodore Roosevelt in his article on "Who Should Go West?" published in *Harper's Weekly*, says: "Several of my classmates in Harvard are now successful ranchmen and first-class cow hands, another of them has turned out to be a very able engine driver; but I question if the former any more than the latter owe their success to their college training."

**WANTED,**

A WOMAN or Girl (German preferred) to do light house work. Apply at 37 3t  
PACIFIC HARDWARE Co.

**Mrs. Gascoyne,**  
CLOAK AND  
Fashionable Dressmaker,  
Corner of Alakea & King Sts.  
Feathers Cleaned and Dyed.  
37 3m

**Knights of Pythias Notice.**

A Regular Convention of "Mystic" Lodge No. 2 K. of P. will be held at Harmony Hall on King Street at 7:30 THIS EVENING. A full attendance is requested. Members of Oahu Lodge and visiting brothers are cordially invited to be present. The "Amplified Knight" Rank will be conferred. Per order of Chaceallor Commander.  
J. A. PALMER, K.R.S.

**AUSTRALIAN**

**Canned Ox Tongue,**

CANNED BEEF &

**BEEF IN KEGS,**

Each 100lbs. For sale by

**H. Hackfeld & Co.**  
37 1w

**Special Sale of Dry Goods, Wines, Beer, etc.**

On Saturday, January 30th,

At 10 a.m., I will sell at Public Auction, a large assortment of

**DRY GOODS,**

Consisting of Silks, China Shawls, Laces, Dress Goods, Quilts, Slippers, Gents fine Shirts, Straw Hats, &c., a full line of Hosiery and a general assortment of Staple Merchandise, also, a line of

**Wines, Brandy, Ale, etc.,**

and 1 large MacNeale & Urban No. 19 Fire-Proof Safe.

**LEWIS J. LEVEY,**

37 2t Auctioneer.

**FOR SALE.**

A LADY'S SIDE-SADDLE, almost new. Apply to N. S. SACHS, 104 Fort Street.  
36 1w

**FOR SALE.**

AN INCUBATOR—Eclipse—self regulating—in perfect order. Apply TAHITI LEMONADE DEPOT, Fort Street. 36 3t

**FOUND.**

A BAY MARE, on the night of January 25th, with a Spanish Saddle and Bridle on, branded S. P. A. Can be found at the PAN-THEON STABLES by paying charges. 34 3t

**Races at Central Park Rink.**

**SATURDAY EVENING,**

Jan. 30th, at 7:30 o'clock,

**A Half-Mile Running Race,**

Entrance free. Prize, Silver Mug.

**Challenge Race,**

One-hour-go-as-you-please, between Jas. Torbert and J. Camara, the latter having a start of 3 laps.

Admission, 25 Cents.  
36 4t

**Special Notice.**

**IMMEDIATELY** after the Sale of Lease of Rice Land on

**SATURDAY, Jan. 30th,**

I will offer at Public Auction,

**1 Large MacNeale & Urban**

**No. 19 Fire-Proof Safe**

**and Stand,**

Now on view at the office of Hustace & Robertson.

**LEWIS J. LEVEY,**

36 3t Auctioneer.

**Harnesses at Auction.**

On **FRIDAY, Jan. 29th,**

at 11 a. m., at Auction Room, without reserve, an Invoice of about

**25 Sets New Harnesses,**

Halters, Reins, etc., etc.

These Harnesses will be sold POSITIVELY without regard to cost.

**Come and See Them.**

**E. P. ADAMS & Co.,**

35 3t Auctioneers.

**Annual Meeting Notice.**

**THE** Annual Meeting of C. Brewer & Co. will be held at their office, Honolulu, on **WEDNESDAY, February 3, 1886,** at 10 o'clock a.m.

216 td J. O. CARTER, Secretary.

**WANTED,**

A **COTTAGE** of 5 or 6 rooms, in good neighborhood, within 15 minutes' walk of the Government Buildings. Plains preferred. Address, giving location, rent, etc., P. O. Box 337, City. 33 1w

**Annual Meeting Notice.**

**THE** Annual Meeting of the Hawaiian Ramic Company (Limited) will be held at the office of A. J. Cartwright, Esq., Kaahumann Street, on **MONDAY, February 8, 1886,** at 10 o'clock a.m.

34 2w W. F. ALLEN, Secy.

**LEASE**

**Of Rice Land**

AT AUCTION.

The Lease of Rice Land described below for the term of six years and eleven months (6 11-12 years) to January 1, 1892, will be sold at Public Auction, at the Salesroom of the undersigned, at 12 o'clock, noon, on

**SATURDAY, Jan. 30, 1886,**

Immediate possession given; rent payable quarterly in advance.

**Description of Premises:**

That portion of the Crown Land of Hauiki, lying between the public road and the Fish Pond of Well and bluffs on either side of the valley; also, the triangular piece mauka of the road, opposite the artesian well, bounded by the public road, the bluff and the water course.

18 41-100 Acres of this Land as per survey is Rice Land of the best quality, in prime condition for immediate planting, abundantly supplied with water from an artesian well on the land, and 4 57-100 Acres of this Land is now covered with Corn, which is included in the purchase of the Lease. The Rice Land acreage may be increased from year to year by breaking up new patches on the mauka side; this Land is two and one-half (2½) miles from Mossman's corner, and is admirably adapted for a vegetable garden on a large scale as well as for raising small stock—pigs, chickens, ducks, &c., for the Honolulu market.

The Lease includes all the buildings and appurtenances on the Land, to wit:

- 1 Dwelling House for Laborers,
- 1 Store House,
- 1 Cook House,

- 1 set of Hog Pens, covered in, supplied with iron feeding troughs, feed house, cooking apparatus for hog feed, together sufficient for the raising and care of 150 Hogs,
- 1 Duck House, sufficient for 1,000 ducks,
- 1 Dwelling House for duck keeper,
- 1 Threshing Machine for rice and horse-power covered with a substantial house,
- 1 large Threshing Floor,

All the above are nearly new and in good condition, ready for immediate use.

After the sale of the foregoing Lease there will be sold, for Cash, the following Live Stock, Agricultural Implements and Tools, which together form a complete outfit for working the farm, viz:

**6 Work Oxen,**

(2 of which are accustomed to the China Rice Harrow),

- 2 Wagon Horses, drive single,
- 1 Ox Cart,
- 3 Ox Yokes, with bows and keys complete,

- 2 China Ox Yokes, for harrowing;
- 5 Ox Chains,
- 3 Steel Plows,
- 1 Cultivating Harrow,
- 2 China Harrows,
- 1 Light Spring Wagon,
- 1 Single Wagon Harness,
- 3 Single Harnesses, Chain Traces;
- 10 Canal Wheel Barrows,
- 7 Picks,
- 3 Mattocks,
- 3 Bush Hooks,
- 1 Sod Cutter,
- 1 Scythe,
- 15 Hoes,
- 6 Long Handled Shovels,
- 1 Short D. Handled Shovel,
- 7 Spades,
- 10 Long Steel Forks, for use on threshing floor;
- 2 Crowbars,
- 11 China Rice Baskets,
- 4 China Rice Sieves,
- 1 China Rice Scoop,
- 11 China Rice Poles,
- 8 China Sickles,
- 12 China Rice Cuffs,
- 27 Rat Trap and Stakes,
- 1 Lot of Cordage,
- 4 Rice Bird Guns, with flasks and pouches;
- 1 Axe,
- 2 Hand Saws,
- 4 Deep Tubs for Hogfeed, Redwood;
- 2 Large Tubs for Hogfeed, Oak;
- 1 Oak Cask,
- 15 Pieces 2x12 N. W. Plank, 18 feet long;
- 3 Bundles Laths,
- 3 Large Sails for covering rice on the threshing floor,
- 50 Hogs, large and small, more or less;
- 12 Bags Seed Rice,
- On view at Saleroom:
- 1 Light Goose-neck Dray, new;
- 1 Two-wheel Break, nearly new.

**NOTICE TO THE**

P. O. Box 297.

Telephone 240.

**LEWIS & CO., GROCERS,**

— IMPORTERS AND DEALERS IN —

**Staple and Fancy Groceries,**

67 and 69 Hotel Street.

Just received, ex O S S Co.'s steamer St. Paul,

**Apples, Pears, Dried Figs, Dried Dates, Dried Apples,**

Dried Peaches, Dried Cherries, Dried Pitted Plums, Dried Prunes, Swiss Cheese, Oregon Cream Cheese, Edam Cheese, Cala Cheese, Smoked Sausages, Smoked Tongues, Smoked Beef, Soused Tongues, Kits Salmon Bellies, Kits Mackerel, Kegs Bunkers, Cala Salt Pork, Kegs Cala Family Corned Beef, Kegs Salt Water Cucumbers, Kegs Sauer Kraut, Kegs Holland Herrings, Sicily Lemons, Eastern Codfish, Boneless Codfish, Stone Jars Soused Pigs Feet,

**A Nice Assortment of Biscuits,**

Graham Wafers, Oaten Flakes, Sea Foam Wafers, Peack and Frean, Raspberry Wafers, Barton & Geisters Salad Oil, Duret Salad Oil, Crosse & Blackwell's Salad Oil, Cala Olive Oil, Russian Gardelles, Russian Caviar, French Eating Chocolate, Instantaneous Chocolate,

**A Fine Lot of Cala. Potatoes and Onions,**

All of which are offered at low prices.

**HELLO HERE !**



IS that YOU, MR. FISHEL ?

" YES."

" Have you any more of

that brown JERSEY cloth-

double width, such as you

sold to Mrs. Jenkinson yes-

terday for \$1 50 a yard ? If

so, send me 20 yards. It is the FINEST MATERIAL I have ever seen for the Money."

" Quite right. It's below value !"

**" GOOD-BYE !"**

94

**M. GOLDBERG,**

CAMPBELL'S BLOCK,

Corner of Fort & Merchant Streets,

Has just opened out a large and carefully selected stock of

**Gent's Fine Furnishing Goods,**

Custom-Made Clothing, and Hats and Caps

In all the Latest Styles and Patterns.

Particular attention is called to an elegant line of Gent's Neckwear.

25 1f

**NOTICE TO THE**

**Ladies and Gentlemen of Honolulu.**

THE FIRM OF S. COHN & CO.,

**TEMPLE OF FASHION !**

Are retiring from the Clothing, Gents Furnishing and Hat business, in order to make room for their large importations of

**DRY GOODS, DRY GOODS,**

And offer for sale at exceptional and genuine bargains their entire unsurpassed Stock of

**Men's, Youth's and Boys'**

**Suits, Hats, Caps, etc., etc.**

The many friends of our Mr. S. COHN will be glad to learn that he has returned from San Francisco and will conduct and superintend this Clearance Sale personally, which alone is a guarantee to our many patrons of its genuineness.

**Come and Secure Your Bargains, No**

**Reasonable Offer Refused.**

**LEWIS J. LEVEY,**

230 9t Auctioneer.

234

STEAMSHIP MOVEMENTS.

OCEANIC S. S. CO. St. Paul, from San Francisco, Feb. 9.

ELDER LINE.

Zealandia, from San Francisco for Sydney, Feb. 2.

ARRIVALS.

January 28—Schr Malolo from Laupahoehoe.

DEPARTURES.

January 28—Btine W G Irwin for San Francisco.

VESSELS LEAVING TO-MORROW.

Schr Kulamann for Kohalaale.

VESSELS IN PORT.

Bk Virginia, Pettigrew; Bk Lady Lamson, etc.

SHIPPING NOTES.

The schooner Malolo brought 1,984 bags of sugar from Laupahoehoe.

LOCAL & GENERAL NEWS.

HARNESSES in galore, by Messrs. E. P. Adams & Co., 11 to-morrow.

The bath-house near the Marine Railway is assuming form and shape.

KNIGHTS of Pythias, please notice call of Mystic Lodge this evening.

The hearing of the J. W. McCarthy extradition case has been postponed.

The trial of Mr. T. B. Walker, on the charge of burglarizing the Post Office, comes up to-morrow.

An item in yesterday's issue, referring to Messrs. Lyons & Cohen's sale, at 40 Nuanuan street, was by mistake inserted one day ahead of time.

THERE will be a sheet and pillow-case party at the Yosemite rink to-morrow evening.

The steam-roller is apparently on the sick list. It is standing in a morbidly-appearing fashion near the boat landing.

THE Wm. G. Irwin got off promptly at 10 o'clock this morning, and at noon passed around Diamond Head.

The new store of Mr. J. T. Waterhouse on Queen street will soon be in readiness.

OPUM was discussed before a goodly congregation in Fort-street Church last evening.

This morning's Press says that two strangers were bathing in Kapena Pool yesterday afternoon.

CAPT. John Rice, of the tug Elen, picked up a redwood log about 15 feet long by three feet thick off the harbor yesterday.

expense would be lessened considerably.

Messrs. I. W. H. Wahineana, S. H. Kalamakee, J. H. K. Kaiwi, J. H. Barenaba (1), J. H. Barenaba (2), and Enoch Johnson were examined, Jan. 16th, for admission to the bar in the inferior courts.

The mail agent of the Mararora reported at the Post Office here having passed the Alameda, when two and a half days out from San Francisco.

The Supreme Court opened yesterday, after recess, at 10 o'clock, Mr. Justice Preston presiding.

Wallace gave me his note. I do not know what became of it. I think it was returned to him.

The hearing of the J. W. McCarthy extradition case has been postponed, by consent of parties, until Monday next.

The trial of Mr. T. B. Walker, on the charge of burglarizing the Post Office, comes up to-morrow at 10 o'clock, in the Supreme Court.

As item in yesterday's issue, referring to Messrs. Lyons & Cohen's sale, at 40 Nuanuan street, was by mistake inserted one day ahead of time.

The steam-roller is apparently on the sick list. It is standing in a morbidly-appearing fashion near the boat landing.

The Wm. G. Irwin got off promptly at 10 o'clock this morning, and at noon passed around Diamond Head.

The new store of Mr. J. T. Waterhouse on Queen street will soon be in readiness.

OPUM was discussed before a goodly congregation in Fort-street Church last evening.

This morning's Press says that two strangers were bathing in Kapena Pool yesterday afternoon.

CAPT. John Rice, of the tug Elen, picked up a redwood log about 15 feet long by three feet thick off the harbor yesterday.

"Are you short-sighted? Read the bill for yourself." Another bill in Mr. Oakley's handwriting was produced, and identified by witness.

The order as taken from Her Majesty's receipt book was then put in evidence and was admitted by the defense, when the prosecution rested their case.

Mr. S. B. Dole for the defendant, then moved for a discharge of his client on the ground that the indictment charges upon defendant an attack upon Mr. Paul Neumann as an attorney at law.

Mr. Hatch, for the prosecution, argued that the specific charge of libel was made against Mr. Neumann acting in the capacity of Attorney-General for the Government.

The judgment of the court was then delivered, as follows: I have considered this indictment very carefully, and have watched the evidence with a view to ascertain the application of it to the facts charged.

The jury, without leaving the box, returned a verdict of NOT GUILTY, upon which the defendant was discharged.

Before Mr. Justice Preston, and a foreign jury. M. P. Robinson vs. L. G. Sresowich et al, assumptis.

District Assembly, No. 53, Knights of Labor, has issued an address on the "Chinese Question" which after reviewing the horrible condition of the heathen of South Asia.

District Assembly, No. 53, Knights of Labor, has issued an address on the "Chinese Question" which after reviewing the horrible condition of the heathen of South Asia.

District Assembly, No. 53, Knights of Labor, has issued an address on the "Chinese Question" which after reviewing the horrible condition of the heathen of South Asia.

District Assembly, No. 53, Knights of Labor, has issued an address on the "Chinese Question" which after reviewing the horrible condition of the heathen of South Asia.

District Assembly, No. 53, Knights of Labor, has issued an address on the "Chinese Question" which after reviewing the horrible condition of the heathen of South Asia.

District Assembly, No. 53, Knights of Labor, has issued an address on the "Chinese Question" which after reviewing the horrible condition of the heathen of South Asia.

less and homeless tramps upon our streets and highways. They have cut off our boys and girls from all hope of employment.

There is but one source of relief. The foreign relations of the republic are wholly under the control of the Federal Government, and Congress, as the legislative branch of the Government, is vested with full power to establish safeguards against the Chinese plague.

A writer in Macmillan's Magazine says: The fall of Plevna, the subsequent passage of the Balkans, the complete and irremediable collapse of the Turkish defense.

The reckoning of percentages, like the minus sign in algebra, is a constant stumbling block to the novice.

From the time of its organization up to January 1, 1885, the Mutual Life Insurance Company has paid to policy holders the sum of \$216,094,209.

THE Wood and Coal Business heretofore carried on by S. F. Graham & Co. has this day been sold to S. M. CARTER.

THE large and commodious Building situated on Nuuanuu Street, a few doors above Hotel Street, and recently occupied as a Drug Store by Messrs. Hollister & Co.

THE large and commodious Building situated on Nuuanuu Street, a few doors above Hotel Street, and recently occupied as a Drug Store by Messrs. Hollister & Co.

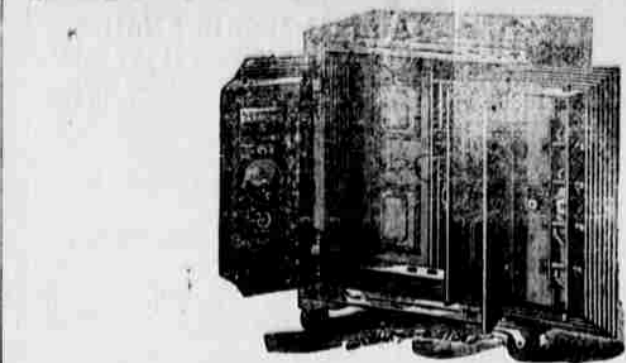
THE large and commodious Building situated on Nuuanuu Street, a few doors above Hotel Street, and recently occupied as a Drug Store by Messrs. Hollister & Co.

THE large and commodious Building situated on Nuuanuu Street, a few doors above Hotel Street, and recently occupied as a Drug Store by Messrs. Hollister & Co.

THE large and commodious Building situated on Nuuanuu Street, a few doors above Hotel Street, and recently occupied as a Drug Store by Messrs. Hollister & Co.

THE large and commodious Building situated on Nuuanuu Street, a few doors above Hotel Street, and recently occupied as a Drug Store by Messrs. Hollister & Co.

THE large and commodious Building situated on Nuuanuu Street, a few doors above Hotel Street, and recently occupied as a Drug Store by Messrs. Hollister & Co.



Messrs. W. B. Wilshire & Co., Agents MacNEALE & URBAN SAFES, 206 California Street, San Francisco, Cal.

GENTLEMEN: In reply to your inquiry concerning the opening of the Burglar-proof Chest in the safe in the office of the Clerk of the Supreme Court—now so well known as THE MCCARTHY SAFE—I will say that I took charge of the office on Wednesday, the 6th inst.

The above was a No. 8 MacNEALE & URBAN Fire and Burglar Safe. C. O. BERGER, General Agent for the Hawaiian Islands.

JOS. E. WISEMAN, General Business Agent. Campbell Block, Honolulu, H. I.

Real Estate Agent, Employment Agent, Wilder's Steamship Agent, Great Burlington Railroad Agent in America.

BUSINESS ITEMS. FRESH Mince Pies daily from and after date at Meller & Halbe's Confectionery.

FRESH Cream Cakes and Eclair's daily from and after date at Meller & Halbe's Confectionery.

Just received by the Alameda, 200 Bags New Zealand Oats. For sale, in quantities to suit, by the Union Feed Company.

THE drivers of the UNITED CARRIAGE CO. make no extra charge for their carriages when called by telephone.

A VERY comprehensive and classified business directory for Honolulu is furnished in the business cards on the outside pages of the BULLETIN.

From the time of its organization up to January 1, 1885, the Mutual Life Insurance Company has paid to policy holders the sum of \$216,094,209.

THE Wood and Coal Business heretofore carried on by S. F. Graham & Co. has this day been sold to S. M. CARTER.

THE large and commodious Building situated on Nuuanuu Street, a few doors above Hotel Street, and recently occupied as a Drug Store by Messrs. Hollister & Co.

THE large and commodious Building situated on Nuuanuu Street, a few doors above Hotel Street, and recently occupied as a Drug Store by Messrs. Hollister & Co.

THE large and commodious Building situated on Nuuanuu Street, a few doors above Hotel Street, and recently occupied as a Drug Store by Messrs. Hollister & Co.

THE large and commodious Building situated on Nuuanuu Street, a few doors above Hotel Street, and recently occupied as a Drug Store by Messrs. Hollister & Co.

THE large and commodious Building situated on Nuuanuu Street, a few doors above Hotel Street, and recently occupied as a Drug Store by Messrs. Hollister & Co.

THE large and commodious Building situated on Nuuanuu Street, a few doors above Hotel Street, and recently occupied as a Drug Store by Messrs. Hollister & Co.

THE large and commodious Building situated on Nuuanuu Street, a few doors above Hotel Street, and recently occupied as a Drug Store by Messrs. Hollister & Co.

THE large and commodious Building situated on Nuuanuu Street, a few doors above Hotel Street, and recently occupied as a Drug Store by Messrs. Hollister & Co.

THE large and commodious Building situated on Nuuanuu Street, a few doors above Hotel Street, and recently occupied as a Drug Store by Messrs. Hollister & Co.

THE large and commodious Building situated on Nuuanuu Street, a few doors above Hotel Street, and recently occupied as a Drug Store by Messrs. Hollister & Co.

THE large and commodious Building situated on Nuuanuu Street, a few doors above Hotel Street, and recently occupied as a Drug Store by Messrs. Hollister & Co.

THE large and commodious Building situated on Nuuanuu Street, a few doors above Hotel Street, and recently occupied as a Drug Store by Messrs. Hollister & Co.

FOREIGN NEWS.

UNITED STATES.

Gen. Sherman publicly denies that he ever used the expression, "Had Gen. C. F. Smith lived, Gen. Grant would have disappeared from history," attributed to him in a recent article in the North American Review.

An expose has been made of a swindling colonizing scheme in Florida, by which a large party in Scotland were induced to place their funds in lands which proved a miserable disappointment to the investors.

K. R. O'Connor, First Secretary of the British Legation at Peking, has been transferred to the Secretaryship of the British Legation at Washington.

The suit against the Government by Basith & Son of New York for duties collected on Australian wool, entered as woolen waste, but which the Collector assessed as scoured wool at 30 cents per pound, resulted in a verdict for the Government of the United States.

MISCELLANEOUS.

Pickard, an absconding jeweler from Montreal, is found to have been defrauding the Canadian customs for three years, his illicit gains in this way amounting to about \$25,000.

Large guano deposits have been discovered in caves on the south coast of Cuba.

Many laborers have left Havana for the Isthmus of Panama, in expectation of obtaining work with more remunerative wages than they can obtain on the island of Cuba.

EUROPE.

Berlin dispatches state that Emperor William and Bismarck are in very good health.

Louise Michel and Prince Krapotkin have been released from the St. Lazare Prison, Paris.

A syndicate of French contractors has been formed to compete with the German syndicate in supplying the Chinese Government with material for the construction of railways.

At the Consistory at Rome, the Pope, referring to his mediation in the dispute between Germany and Spain over the Caroline Islands, said he was gratified to act as a peacemaker between nations.

The King of the Belgians has proposed an international annual prize of 25,000 francs for the purpose of encouraging works of mind. The subject of the third mixed international competition, to be decided in 1889, is the progress of electricity as a motive-power and as a means of illumination, etc.

Archdeacon Farrar, who reserves the most of his opinions on America, declares that the temperance cause of the United States is far in advance of the temperance cause of England.

The Parnellites announce that they will join with the English and Scotch Radicals in supporting an amendment to the address protesting against evictions in Ireland and in the Highlands.

The English Cabinet Jan. 15th unanimously agreed to ask Parliament to re-enact the boycotting clauses of the Crimes Act, and to change the venues in criminal cases with a return to the special jury features of the old coercive statute. It agreed to give Edward Stanhope, the new Secretary for Ireland, a place in the Cabinet and to ask Parliament to enlarge his powers. Mr. Stanhope was Lord Beaconsfield's Indian Under Secretary for a time, and is described as having "an arm of iron in a velvet sleeve."

Administrators' Notice.

HAVING been appointed by the Supreme Court in Probate temporary Administrators of the Estate of Ahuna, otherwise Leong Tat Pio, late of Waialua, of the Island of Oahu, deceased, we hereby notify all creditors of the said Ahuna to present their claims against the said Estate, and all persons owing to the said Estate to make immediate payment to us, at the office of M. S. Grinnham & Co., in Honolulu.

Next Vessel.

Chas. Brewer & Co.'s Line of Boston Packets.

Shipper: will please take notice that the fine Bark

"EDWARD MAY,"

Will sail from Boston for this port on or about APRIL 1st next. For particulars apply to

C. BREWER & Co.,

Queen Street Or to CHAS. BREWER & Co., 219 2m] 27 Kilby Street, Boston, Mass.

Annual Meeting Notice?

THE Annual Meeting of the Kohala Sugar Company is hereby postponed from the 25th of January to the 9th day of February, 1886, at 10 A.M., and will be held at the office of Messrs. Castle & Cooke, Agents, 28 2w J. B. ATHERTON, Sec'y.

Election of Officers.

AT the Annual Meeting of the East Maui Plantation Company, held on the 20th January, 1886, the following officers were duly elected for the current year:

COL. WM. F. ALLEN.....President J. ED. HOFFMANN.....Vice-President P. C. JONES.....Secretary & Treasurer COL. WM. F. ALLEN.....Auditor Director: Col. Wm. F. Allen, Hon. C. R. Bishop and P. C. Jones. J. O. CARTER, Sec'y pro tem E. Maui Plantation Co. 50 1m

MANILA CIGARS

In Bond or Duty Paid.

A Very Choice Lot, Fresh and Full.

The Best in the Market.

HOLLISTER & Co.

216

For Sydney, N. S. W.

The Magnificent Steamship Zealandia.

H. WEBBER.....Commander Will leave for the above port on or about FEBRUARY 2, 1886.

FOR SAN FRANCISCO.

The well-known Magnificent Steamship Australia.

BROGH.....Commander Will leave for the above port on or about FEBRUARY 9, 1886. For freight and passage, apply to

226 H. HACKFELD & CO., Ag'ts.

Corporation Stocks FOR SALE.

Table with 2 columns: Company Name and PAR VALUE. Includes Haw'n Carriage Man'g Co., E. O. Hall & Son, Inter-Island S. N. Co., Bell Telephone, Haw'n Agricultural Co., Wilder's Steamship Co., C. Brewer & Co., Halawa, Woodlawn Dairy, Waialuku Sugar Co., Waimanalo, Star Mill, Reciprocity Sugar Co., L. A. THURSTON, Stock Broker, 35 Merchant Street.

COOL OFF!

ICE CREAM,

DID YOU SAY?

Make your wife and children happy by supplying them with the Celebrated

Elite Ice Cream

made from pure Woodlawn Dairy Cream.

Go and surprise your folks, order a bucket of our delicious Ice Cream. We pack orders for Ice Cream from 1 to 50 quarts in Patent Refrigerator Cans, warranted to keep its delightful flavor and perfect form for many hours.

Families, Parties, Balls and Weddings Supplied.

Our Fancy Cakes are the Favorite with all the Ladies of Honolulu.

CHOICE FRENCH CANDIES,

Imported fresh and in great variety by every steamer.

Ring Up Bell Telephone 182 or Mutual 338.

The Elite Ice Cream Parlors.

No. 85 Hotel Street.

Are open daily until 11 P.M. 214

Yosemite Skating Rink,



Will be open every afternoon and evening as follows:

Monday, Tuesday, Wednesday, Thursday and Saturday Evenings.

To the public in general.

FRIDAY EVENINGS,

For ladies and gentlemen.

Tuesday Afternoons,

For ladies, gentlemen and children.

MUSIC,

Friday and Saturday Evenings; also, at the Tuesday Matinee.

GRAND

Sheet & Pillow-Case Party

On Skates, Jan. 29th.

Prize to the Best Get Up.

THOS. E. WALL, Manager.

147



E. G. SCHUMAN,

CARRIAGE & WAGON MAKER,

Repairing, Blacksmithing,

Painting & Trimming,

in first-class manner and prices to suit the times.

224 King Street, adjoining Geo. W. Lincoln, Contractor and Builder.

B. F. DILLINGHAM, President and Manager.

JAS. G. SPENCER, Secretary and Treasurer.

Pacific Hardware Company,

LIMITED.

Successors to Dillingham & Co. and Samuel Nott.

FORT STREET, HONOLULU

HOLIDAY GOODS,

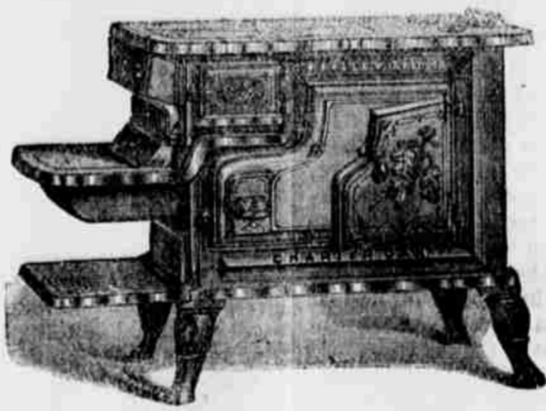
Just received, ex S.S. Alameda and St. Paul, latest designs in

Silver-Plated Ware, Chandeliers & Lamps,

(202) Water Filters & Coolers, Cutlery, etc., etc., etc.

JOHN NOTT, No. 8 Kaahumanu Street.

STOVES!



RANGES!

Granite, Iron and Tin Ware!

Chandeliers, Lamps and Lanterns,

WATER PIPE and RUBBER HOSE,

House Keeping Goods,

PLUMBING, TIN, COPPER AND SHEET IRON WORK.

H. E. McINTYRE & BRO.,

IMPORTERS AND DEALERS IN

Groceries, Provisions and Feed,

EAST CORNER FORT AND KING STREETS.

New Goods received by every Packet from the Eastern States and Europe. Fresh California Produce by every Steamer. All orders faithfully attended to, and Goods delivered to any part of the city free of charge. Island orders solicited. Satisfaction guaranteed. Post Office Box 145. Telephone No. 92. 168 1y

GEO. ENGELHARDT,

(Formerly with Samuel Nott).

Importer and Dealer in

STOVES, CHANDELIERS, LAMPS,

CROCKERY, GLASSWARE, HOUSE FURNISHING HARDWARE,

AGATE IRON and TINWARE.

Agent Hall's Safe and Lock Company.

Beaver Block, - - - Fort Street.

Store formerly occupied by S. NOTT, opposite Spreckels & Co.'s Bank. 169

Two Suburban Cottages to Let.

FIRST—That elegant Cottage hitherto occupied by the owner, John Robello, with fine flower and fruit garden, stables, etc. Terms favorable.

SECOND—The two-story Cottage two doors makai of the above, lately occupied by the late A. T. Baker, having garden, stable, etc. Terms favorable.

Both premises are connected with the city water service. Apply to

Queen Street. HYMAN BROS. 164 1f

Crystal Soda Works,

Manufacturers of

Soda Water, Ginger Ale,

Florida Lemonade, Aerated Waters of all kinds, Fruit Syrups and Essences.

We Use Patent Stoppers

in all our Bottles.

We invite particular attention to our Patent Filter, recently introduced, by which all waters used in our manufactures is absolutely freed from all impurities.

We deliver our Goods free of charge to all parts of the city. We guarantee our Goods to be the best in the market. Careful attention paid to Island Orders. Address

The Crystal Soda Works,

P. O. Box 397, Honolulu.

Bell Telephone : : 298 Mutual Telephone : 330

Orders left with Benson, Smith & Co., No. 11 Fort Street, will receive prompt attention.

We, also, are Agents for the sale of J. W. Higley's Celebrated Cigars, 188 of his own manufacture. 6m

WILDER'S S. S. CO. Limited.

Steamer Kinau

King, Commander, Leaves Honolulu each Tuesday at 4 P.M., touching at Lahaina, Maui Bay, Makana, Mahukona, Kawaihae, Lanipohoehoe and Hilo. Returning, will touch at all the above ports, arriving at Honolulu each Saturday afternoon.

THE FAST SAILING

Schooner EHUKAI

will run regularly

TO WAIALUA EVERY MONDAY,

Returning on Thursday, weather permitting

For freight or passage apply to the Captain on board, or to

PACIFIC NAVIGATION CO., 181 Agents

FOR KOLOA & WAIMEA KAUALI.

The Clipper Schooner

WAIEHU,

F. Kibbling, Master,

Will run regularly to the ports of KOLOA, HANAPEPE & WAIMEA, KAUALI. For freight or passage apply to the Captain on board, or to the

PACIFIC NAVIGATION CO., 890 3m Cor. Nuuanu & Queen sts.

NEW DRESS MAKING ROOM.

MRS. J. LYONS begs to inform the Ladies of Honolulu that she has just opened the large and spacious rooms over the store occupied by C. J. Fishel for carrying on the business of

Dress Making,

in all its branches. Having made arrangements to receive from Europe and America all the latest Fashions, she hopes, by doing work thoroughly and at low prices, to receive a fair share of patronage. Call and see me.

97 3m MRS. J. LYONS.

TO BUTCHERS, GRAZIERS

T. W. RAWLINS,

Soap Manufacturer.

The highest Cash value for any quantity of Tallow.

Honolulu Soap Works, Leleu Bell Telephone 29. P. O. Box 4. 217

Notice of Letters Patent.

ALL persons are hereby notified that Letters Patent were issued by the Hawaiian Government to JAMES KENNEY of Honolulu on the 19th day of December, A.D. 1885, for an improvement in brake, zig and chaise springs, and that said Letters Patent were assigned by the said James Kenney to the Hawaiian Carriage Manufacturing Company on the 22nd day of December, A.D. 1885, wherefore the said Hawaiian Carriage Manufacturing Company hereby warns all persons against infringing on the said Letters Patent.

HAWN CARRIAGE MAN'G Co. Honolulu, Dec. 22, 1885. 208 1f

LIME! LIME!

Patronize Home Manufacture

The Hawaiian Stone Comp'y

Are now prepared to furnish fresh Lime in quantities to suit purchasers, and satisfaction warranted as to both the kind and the price.

93 1y ALLEN & ROBINSON, Agents.

Dwelling House for Rent.

\$45 per Month and Water Rates.

THE large dwelling house and lot occupied by D. D. Baldwin fronting on Dole street, at Panahou, and running through to Beckwith street. The house contains 8 large rooms, 2 pantries, 1 bathroom, 4 large closets, kitchen adjoining. There is a large barn with servant's room on the grounds, also an office separate from the main building. The lot is nearly 2 acres in extent and affords considerable pasture and firewood. Everything in good repair. Government water laid on. Enquire of

132 1f S. B. DOLE.

PIONEER

St'm Candy Factory

and Bakery.

Established 1863.

F. HORN, Proprietor.

No. 71 HOTEL ST., between Nuuanu and Fort Sts.

Has always on hand the largest Stock of Candies, both Plain and Fancy, guaranteed to be STRICTLY PURE.

Wholesale and Retail.

Rich Wedding Cakes

Of a Twenty Years' Reputation, all Sizes always on hand, ornamented in any Style.

Pastries of All Description Made to Order at Short Notice.

Pure and

Wholesome Bread,

Fresh every Day.

Bell and Mutual Telephone, No. 74. P. O. Box No. 75.] 168

MELLER & HALBE'S

Ice Cream Parlor

— AND —

Confectio'ery

Lincoln's 'Block, King st.

A Fine Assortment of

Candies & Cakes

Always on Hand

Parties Supplied

17

Insurance,

CASTLE & COOKE,

Life, Fire & Marine Insur'ce Agents.

AGENTS FOR

MUTUAL LIFE INS. COMP'Y,

of Boston.

The Aetna Fire Insurance Co.,

of Hartford, Conn.

The Union Fire and Marine Insurance Co.,

of San Francisco, Cala. 191 1y

Prussian National

Insurance Comp'y

ESTABLISHED 1845,

Capital, .....9,000,000 Reichsmarks.

THE undersigned, having been appointed agent of the above Company for the Hawaiian Islands, is prepared to accept risks, against Fire, on Buildings, Furniture, Merchandise, Produce, Sugar Mills etc., on the most favorable Terms. Losses Promptly Adjusted and Payable in Honolulu.

H. RIEMENSCHNEIDER, at Wilder & Co's. 670 1y\*

The Equitable Life Assurance Society of the United States.

ESTABLISHED IN 1850.

ISSUES Policies on the most approved plans, viz:—Ordinary Life, Life Limited Payments, Endowments; Tontine Savings Fund, Tontines, Semi-Tontines; A. B. C. Tontines; Life and Survivorship Annuities; Children's Endowments, Joint Life Risks, Partnership Insurance, etc., etc., etc.

Policies both Incontestable and Non-forfeitable.

Contested claims, none.

Before insuring elsewhere, call and get an estimate.

It is calculated that every reasonable wish of the insured is embodied in one or more of the plans.

For full particulars and pamphlets, apply to

ALEX. J. CARTWRIGHT, General Agent for Hawaiian Islands. 66 1y\*

STATEMENT.

THE undersigned, a Committee of Directors of the Equitable Life Assurance Society of the United States, appointed to formulate the views of the Board on the advantages offered by the Society to the public, report:—

1st—The Society issues all the approved forms of assurance, including Ordinary Life, Endowment and Tontine policies. It is immaterial to the Directors which form of policy is taken by intending assurers.

2d—The Life and Endowment forms of policy provide for annual cash dividends and a surrender value, are indispensible after three years and payable immediately after proof of death.

3d—The premiums on a Tontine policy are the same as on the Ordinary Life, but, while the latter is only payable in the event of death, the holder of the Tontine policy has the right to draw the whole of the reserve and the accumulated profits in cash at the end of a stated period; thus, during his own lifetime, after his producing years are past, he can, without any larger premium than on an ordinary policy, secure these greater advantages.

4th—Experience shows that the return paid in cash on maturing Tontine policies approximates to or exceeds the amount of premiums paid by policyholders, so that the average cost of the assurance will be only about the interest on the premiums.

5th—Tontine policies, like others, are paid in full in the event of death at any time during the term of the policy, and are incontestable after three years, and payable immediately after due proof of death.

6th—Experience shows that the mortality is lower among Tontine policyholders, as the better lives seek this kind of assurance, which is a considerable source of profit.

7th—Tontine policies will be made non-forfeitable under the laws of the State, if so desired at the time the assurance is effected.

8th—The Tontine system is fair and just; its accounts are accurately kept, separate from all other business; the funds judiciously invested and improved, and the accumulated profits faithfully guarded and properly apportioned.

9th—The Society has since its organization transacted a larger amount of new business than any other company, while its new business for the first half of the present year is \$1,750,000 larger than that of the first half of 1884. It has Assets of \$60,000,000; over \$14,000,000 of Surplus, and its ratio of Surplus to Liability is greater than that of any other company.

CHAUNCEY M. DEFEW, JOHN A. STEWART, EUGENE KELLY, WILLIAM A. WHELOCK, CHARLES G. LANDOR, JOHN SLOANE, HENRY B. HYDE, Committee of the Board of Directors of the Equitable Life Assurance Society of the United States.