

*Charles Despiau (French, 1875-1946),
SEATED NUDE, sepia drawing.
Gift of the Honorable Clare Boothe Luce, 1971.*

CONTEMPORARY ACQUISITIONS

With the aid of a grant of \$10,000 from the National Endowment for the Arts and matching funds donated by friends and foundations, six works by American artists have been added to the museum's contemporary collection. The selection of paintings and an equal number of three-dimensional works represent diverse viewpoints of artists born in five different decades.

All but one of the group were created in 1971. *Recessional* (oil on canvas, 60¼ x 54¼ in.) was painted in 1950 by George L. K. Morris (b. 1905), whose work since the 1930s has consistently developed out of an interest in the School of Paris, though having its own style with an American flavor. The Academy's picture, chosen from his fall retrospective showing in New York, relates historically to Cubism and Orphism, at the same time anticipating the geometric Op movement of the 1960s, with illusionistic rendering of space skillfully handled in flat patterns of color.

In the late 1950s Kenneth Noland (b. 1924) reached artistic maturity and is now recognized as one of the major masters of the abstract school, working in the field of color painting (as did his friend, the late Morris Louis, whose important canvas entitled *Turning* was acquired earlier this year). Noland's *Pixie's Green*, acrylic on canvas (83⅞ x 26¼ in.) was purchased from his most recent New York show and is a sensuous example of his latest development in which vertical and horizontal bands of color interweave, lacing the whole surface together.

The third painting, *Arrow*, (oil on canvas, 78 x 78 in.) by Robert Cottingham (b. 1935), was also a selection from a New York one-man show. A Los Angeles artist, Cottingham is emerging nationally as a vital young talent dealing with the urban landscape in the photo-realistic style currently receiving critical attention. Cottingham's work can be viewed as an extension of Edward Hopper's scrutiny of the city scene; he concentrates attention on a close-up slice of urban design, transcending the commonplace through a painterly disposition of form and color.

Sounding Sculpture, an 88-inch bronze by Henry Bertoia (b. 1915), offers an unusual gallery experience as a work which visitors are invited to touch. The clusters of bronze rods respond with rhythmic movement and emit their own melodious sounds — a recent development in this distinguished sculptor's work, which includes major commissions in public places from east to west coasts.

Two Honolulu artists are included in the purchase selections, their works having been seen in local exhibitions of this past year. *Night Hawk* by Edward M. Brownlee (b. 1929) is a lyrical bronze state-

ment which captures the essence of bird in flight. A sculptor of versatile talent, Brownlee is represented in numerous public and private collections here and elsewhere. He was given a one-man exhibition at the Academy in 1967.

Parallel Air Streams is an innovative work by Leighton Liu (b. 1944) and was included in a first showing of his "aero sculpture" at the Contemporary Arts Center of Hawaii last May. Liu utilizes the medium of air as an integral element of design, the resulting structures having sophistication and elegance in a combination of such materials as chromium and lucite.

CINDERELLA OPERA PREVIEW

The preview of *Aida* at the Academy was so successful that a similar event will be held for the Hawaii Opera Theater's production of Rossini's *Cinderella*. Andrew Schenck, assistant conductor of the Honolulu Symphony Orchestra, will be commentator again and excerpts from the opera will be performed by a guest singer. Complementing the preview, the Academy will exhibit prints by 18th-century masters of satire, including Hogarth, Isaac Cruikshank and his sons George and Isaac Robert. A speaker or film on the subject will be presented.

DRAWINGS FROM THE ACADEMY'S COLLECTION

Drawings by masters from the 15th century to the present have been selected for a month-long exhibition in the Graphic Arts Galleries. It includes works by Lorenzo di Credi (1459-1537), François Clouet (before 1522-1572), Johann Liss (1570-1629), Giovanni Paolo Pannini (1691-1764) and Giovanni Battista Tiepolo (1696-1770). Also, Paul Cezanne (1839-1906), Pierre Auguste Renoir (1841-1919), Henri Matisse (1869-1954), Charles Despiau (1874-1946), and others.

The drawings of these artists offer an intimate view of stages in their development toward major works.

ATTENTION, PARENTS

The spring term of Young People's Art Classes for grades 1-12 begins on Saturday, January 15. Registration opens Wednesday, January 5, from 10 to 12 and 1 to 4 in the Young People's Office. A class for mothers and their pre-school children aged 3 to 5 will be offered Tuesday mornings from 9:30 to 11 starting January 18 if enrollment is sufficient.

THE EUROPEAN RENAISSANCE—NORTH AND SOUTH

The prodigious talents of artists such as Leonardo, Raphael, Botticelli, Fra Angelico, the Van Eycks and Brueghel changed the course of western art for the centuries that followed. The rich visual treasures created during the 14th to 16th centuries in Europe will be examined in a series of illustrated lectures on six Wednesday mornings, presented by Academy staff and University of Hawaii faculty. Subjects are:

January 19 — *The Scene Is Set.* The social and cultural setting that produced the Renaissance. Miss Helen Nader, Assistant Professor, Department of History, University of Hawaii.

January 26 — *At Your Fingertips.* Miniature book illuminations captured the varied worlds of church and state in exquisite detail. James H. Furstenberg, Curator of Education, Academy of Arts.

February 2 — *An Infinite Richness.* The Van Eycks, Rogier van der Weyden, the Bouts and other painters in the north produced works of jewel-like clarity with a deep religious sentiment. Mr. Furstenberg.

February 9 — *The Descent from Heaven.* Artists of the Italian Renaissance, including Giotto, Duccio, Cimabue, Fra Angelico and Botticelli. Selden Washington, Assistant Director, Academy of Arts.

February 16 — *The Unveiling of Earth.* Leonardo, Raphael and Michelangelo epitomize the High Renaissance in the south. Mr. Washington.

February 23 — *Towards a New Reality.* The art and times of the Flemish artist, Pieter Brueghel. Jonathan Scott, University of Hawaii, Department of Art.

Tickets for the series at \$9 for Members and \$14 for others may be obtained at the Membership Office.

ARTISTS OF HAWAII

Mrs. LaMar Harrington, Assistant Director of the Henry Art Gallery, University of Washington, Seattle, will be the juror of Part II of the 22nd annual exhibition. Henry Gallery collections are composed of 19th and 20th century works. Mrs. Harrington conducts a lively and innovative program of contemporary exhibitions and related activities attracting area-wide attention.

Part II of the exhibition, for the first time given in separate sections, is devoted to three-dimensional objects, to be seen in the round, including sculpture, mobiles, furniture, ceramics, etc.

SPALDING HOUSE EVENTS

DESIGN FOR LIVING IN HAWAII

Authorities in the field and concerned community leaders will take part in an important program series examining the rife question of the Hawaiian environment from various viewpoints: personal, community and state. The program is presented by the Academy and Foster Botanic Garden at Alice Cooke Spalding House. Participants will include architects, planners, environmentalists and historic sites supporters.

Design for Living is a two-part subscription lecture series considering, first, design within our island society today and tomorrow, and secondly, horticulture, its local history and application. Subjects in Part I are:

January 18 — Introduction: The natural and human factors in designing our total environment.

January 27 — Our Personal Environment: Cultural and historical influence and the changing local scene.

February 3 — Our Community Environment: Inherited conditions and projections.

February 10 — Our Statewide Environment: From past to future.

February 17 — Summary: Holding and building heritage.

Subjects for Part II will be announced. Subscriptions are \$6 for Members and \$9 for others and may be ordered at the Membership Office. Attendance is limited.

THE AGE OF KIYONAGA

Torii Kiyonaga (1752-1815), fourth in the Torii line of print artists, lived during the golden age of ukiyo-e when, paradoxically, the finest flowering of this art of the merchant class coincided with the utter moral decay of society.

The ukiyo-e authority, Noguchi, has said: "Most students of the ukiyo-e in the west agree that of all its exponents it is Kiyonaga who approaches most closely to the Grecian ideal." Indeed, this amazing young man of the Edo streets envisioned the Japanese as huge plastic forms, processions of "human gods" moving through a variety of life's activities.

This is the third in a chronological series of exhibitions on the great Japanese print masters from the Michener collection.

For dates and hours, see *Calendar of Events*, back panel.



900 South Beretania Street
Honolulu, Hawaii 96814
Telephone 538-3693

NON-PROFIT
ORGANIZATION
U. S. POSTAGE
PAID
HONOLULU, HAWAII
PERMIT NO. 119

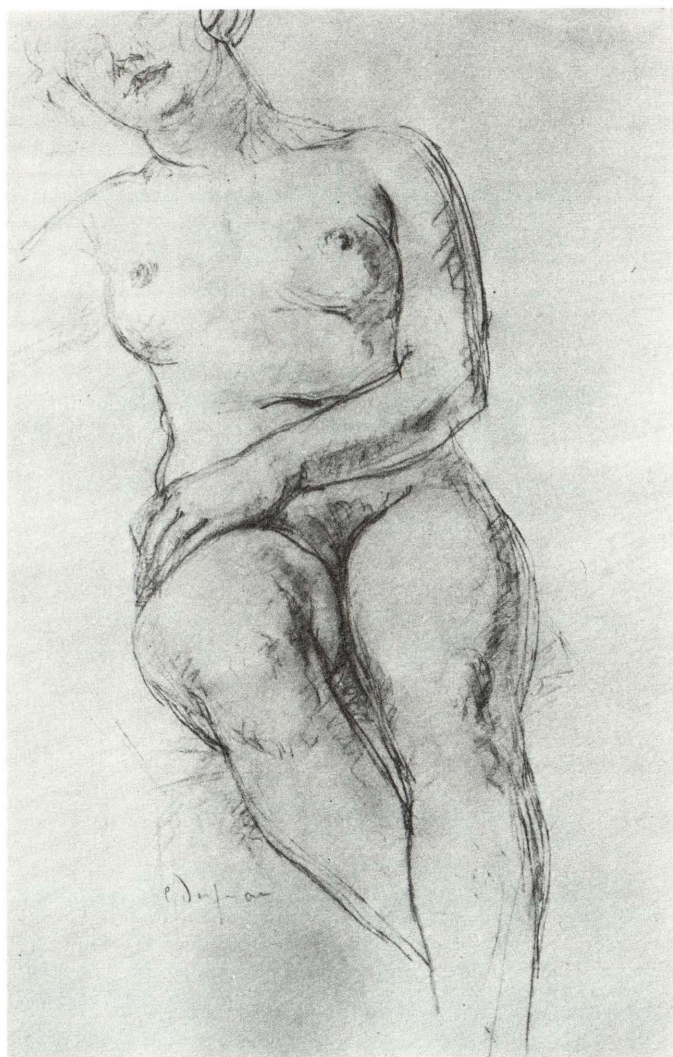
CALENDAR OF EVENTS

JANUARY 1972

- Through January 9 ARTISTS OF HAWAII, Part I.
Through January 9 PRINTS BY ALBRECHT DÜRER.
Through January 23 AGE OF HARUNOBU.
January 4 Garden Cafe reopens.
January 8 CINDERELLA OPERA PREVIEW, 2:30 p.m.
January 9 GALLERY TALK, 2:00 p.m., Monet's *Water Lilies*.
January 13 DRAWINGS FROM THE ACADEMY'S COLLECTION, continues through February 13.
January 13 GALLERY TALK, 11:15 a.m., Monet's *Water Lilies*.
January 19 EUROPEAN RENAISSANCE, Subscription Lecture I, 10:30 a.m.
January 25 PRINTS BY KIYONAGA, continues through March 5, Spalding House.
January 26 EUROPEAN RENAISSANCE, Subscription Lecture II, 10:30 a.m.
January 31 STUDIO PROGRAM, SEMESTER II begins.

HONOLULU ACADEMY OF ARTS

GALLERIES OPEN Tuesday through Saturday, 10 a.m.-4:30 p.m. Sunday, 2-5 p.m.
Closed Monday. SPALDING HOUSE Tuesday through Sunday, 1-4:30 p.m.



*Charles Despiau (French, 1875-1946),
SEATED NUDE, sepia drawing.
Gift of the Honorable Clare Boothe Luce, 1971.*

CONTEMPORARY ACQUISITIONS

With the aid of a grant of \$10,000 from the National Endowment for the Arts and matching funds donated by friends and foundations, six works by American artists have been added to the museum's contemporary collection. The selection of paintings and an equal number of three-dimensional works represent diverse viewpoints of artists born in five different decades.

All but one of the group were created in 1971. *Recessional* (oil on canvas, 60¼ x 54¼ in.) was painted in 1950 by George L. K. Morris (b. 1905), whose work since the 1930s has consistently developed out of an interest in the School of Paris, though having its own style with an American flavor. The Academy's picture, chosen from his fall retrospective showing in New York, relates historically to Cubism and Orphism, at the same time anticipating the geometric Op movement of the 1960s, with illusionistic rendering of space skillfully handled in flat patterns of color.

In the late 1950s Kenneth Noland (b. 1924) reached artistic maturity and is now recognized as one of the major masters of the abstract school, working in the field of color painting (as did his friend, the late Morris Louis, whose important canvas entitled *Turning* was acquired earlier this year). Noland's *Pixie's Green*, acrylic on canvas (83⅞ x 26¼ in.) was purchased from his most recent New York show and is a sensuous example of his latest development in which vertical and horizontal bands of color interweave, lacing the whole surface together.

The third painting, *Arrow*, (oil on canvas, 78 x 78 in.) by Robert Cottingham (b. 1935), was also a selection from a New York one-man show. A Los Angeles artist, Cottingham is emerging nationally as a vital young talent dealing with the urban landscape in the photo-realistic style currently receiving critical attention. Cottingham's work can be viewed as an extension of Edward Hopper's scrutiny of the city scene; he concentrates attention on a close-up slice of urban design, transcending the commonplace through a painterly disposition of form and color.

Sounding Sculpture, an 88-inch bronze by Henry Bertoina (b. 1915), offers an unusual gallery experience as a work which visitors are invited to touch. The clusters of bronze rods respond with rhythmic movement and emit their own melodious sounds — a recent development in this distinguished sculptor's work, which includes major commissions in public places from east to west coasts.

Two Honolulu artists are included in the purchase selections, their works having been seen in local exhibitions of this past year. *Night Hawk* by Edward M. Brownlee (b. 1929) is a lyrical bronze state-

ment which captures the essence of bird in flight. A sculptor of versatile talent, Brownlee is represented in numerous public and private collections here and elsewhere. He was given a one-man exhibition at the Academy in 1967.

Parallel Air Streams is an innovative work by Leighton Liu (b. 1944) and was included in a first showing of his "aero sculpture" at the Contemporary Arts Center of Hawaii last May. Liu utilizes the medium of air as an integral element of design, the resulting structures having sophistication and elegance in a combination of such materials as chromium and lucite.

CINDERELLA OPERA PREVIEW

The preview of *Aida* at the Academy was so successful that a similar event will be held for the Hawaii Opera Theater's production of Rossini's *Cinderella*. Andrew Schenck, assistant conductor of the Honolulu Symphony Orchestra, will be commentator again and excerpts from the opera will be performed by a guest singer. Complementing the preview, the Academy will exhibit prints by 18th-century masters of satire, including Hogarth, Isaac Cruikshank and his sons George and Isaac Robert. A speaker or film on the subject will be presented.

DRAWINGS FROM THE ACADEMY'S COLLECTION

Drawings by masters from the 15th century to the present have been selected for a month-long exhibition in the Graphic Arts Galleries. It includes works by Lorenzo di Credi (1459-1537), François Clouet (before 1522-1572), Johann Liss (1570-1629), Giovanni Paolo Pannini (1691-1764) and Giovanni Battista Tiepolo (1696-1770). Also, Paul Cezanne (1839-1906), Pierre Auguste Renoir (1841-1919), Henri Matisse (1869-1954), Charles Despiau (1874-1946), and others.

The drawings of these artists offer an intimate view of stages in their development toward major works.

ATTENTION, PARENTS

The spring term of Young People's Art Classes for grades 1-12 begins on Saturday, January 15. Registration opens Wednesday, January 5, from 10 to 12 and 1 to 4 in the Young People's Office. A class for mothers and their pre-school children aged 3 to 5 will be offered Tuesday mornings from 9:30 to 11 starting January 18 if enrollment is sufficient.

THE EUROPEAN RENAISSANCE—NORTH AND SOUTH

The prodigious talents of artists such as Leonardo, Raphael, Botticelli, Fra Angelico, the Van Eycks and Brueghel changed the course of western art for the centuries that followed. The rich visual treasures created during the 14th to 16th centuries in Europe will be examined in a series of illustrated lectures on six Wednesday mornings, presented by Academy staff and University of Hawaii faculty. Subjects are:

January 19 — The Scene Is Set. The social and cultural setting that produced the Renaissance. Miss Helen Nader, Assistant Professor, Department of History, University of Hawaii.

January 26 — At Your Fingertips. Miniature book illuminations captured the varied worlds of church and state in exquisite detail. James H. Furstenberg, Curator of Education, Academy of Arts.

February 2 — An Infinite Richness. The Van Eycks, Rogier van der Weyden, the Bouts and other painters in the north produced works of jewel-like clarity with a deep religious sentiment. Mr. Furstenberg.

February 9 — The Descent from Heaven. Artists of the Italian Renaissance, including Giotto, Duccio, Cimabue, Fra Angelico and Botticelli. Selden Washington, Assistant Director, Academy of Arts.

February 16 — The Unveiling of Earth. Leonardo, Raphael and Michelangelo epitomize the High Renaissance in the south. Mr. Washington.

February 23 — Towards a New Reality. The art and times of the Flemish artist, Pieter Brueghel. Jonathan Scott, University of Hawaii, Department of Art.

Tickets for the series at \$9 for Members and \$14 for others may be obtained at the Membership Office.

ARTISTS OF HAWAII

Mrs. LaMar Harrington, Assistant Director of the Henry Art Gallery, University of Washington, Seattle, will be the juror of Part II of the 22nd annual exhibition. Henry Gallery collections are composed of 19th and 20th century works. Mrs. Harrington conducts a lively and innovative program of contemporary exhibitions and related activities attracting area-wide attention.

Part II of the exhibition, for the first time given in separate sections, is devoted to three-dimensional objects, to be seen in the round, including sculpture, mobiles, furniture, ceramics, etc.

SPALDING HOUSE EVENTS

DESIGN FOR LIVING IN HAWAII

Authorities in the field and concerned community leaders will take part in an important program series examining the rife question of the Hawaiian environment from various viewpoints: personal, community and state. The program is presented by the Academy and Foster Botanic Garden at Alice Cooke Spalding House. Participants will include architects, planners, environmentalists and historic sites supporters.

Design for Living is a two-part subscription lecture series considering, first, design within our island society today and tomorrow, and secondly, horticulture, its local history and application. Subjects in Part I are:

January 18 — Introduction: The natural and human factors in designing our total environment.

January 27 — Our Personal Environment: Cultural and historical influence and the changing local scene.

February 3 — Our Community Environment: Inherited conditions and projections.

February 10 — Our Statewide Environment: From past to future.

February 17 — Summary: Holding and building heritage.

Subjects for Part II will be announced. Subscriptions are \$6 for Members and \$9 for others and may be ordered at the Membership Office. Attendance is limited.

THE AGE OF KIYONAGA

Torii Kiyonaga (1752-1815), fourth in the Torii line of print artists, lived during the golden age of ukiyo-e when, paradoxically, the finest flowering of this art of the merchant class coincided with the utter moral decay of society.

The ukiyo-e authority, Noguchi, has said: "Most students of the ukiyo-e in the west agree that of all its exponents it is Kiyonaga who approaches most closely to the Grecian ideal." Indeed, this amazing young man of the Edo streets envisioned the Japanese as huge plastic forms, processions of "human gods" moving through a variety of life's activities.

This is the third in a chronological series of exhibitions on the great Japanese print masters from the Michener collection.

For dates and hours, see *Calendar of Events*, back panel.



900 South Beretania Street
Honolulu, Hawaii 96814
Telephone 538-3693

NON-PROFIT
ORGANIZATION
U. S. POSTAGE

PAID

HONOLULU, HAWAII
PERMIT NO. 119

CALENDAR OF EVENTS

JANUARY 1972

Through January 9 ARTISTS OF HAWAII, Part I.

Through January 9 PRINTS BY ALBRECHT DÜRER.

Through January 23 AGE OF HARUNOBU.

January 4 Garden Cafe reopens.

January 8 CINDERELLA OPERA PREVIEW, 2:30 p.m.

January 9 GALLERY TALK, 2:00 p.m., Monet's *Water Lilies*.

January 13 DRAWINGS FROM THE ACADEMY'S COLLECTION, continues through February 13.

January 13 GALLERY TALK, 11:15 a.m., Monet's *Water Lilies*.

January 19 EUROPEAN RENAISSANCE, Subscription Lecture I, 10:30 a.m.

January 25 PRINTS BY KIYONAGA, continues through March 5, Spalding House.

January 26 EUROPEAN RENAISSANCE, Subscription Lecture II, 10:30 a.m.

January 31 STUDIO PROGRAM, SEMESTER II begins.

HONOLULU ACADEMY OF ARTS

GALLERIES OPEN Tuesday through Saturday, 10 a.m.-4:30 p.m. Sunday, 2-5 p.m.
Closed Monday. SPALDING HOUSE Tuesday through Sunday, 1-4:30 p.m.