

MAILS NEXT WEEK

By request of the Navy Department no mention of movement of vessels will be made in future in the MAUI NEWS.

Maui News

LATEST SUGAR QUOTATIONS

	Cents	Dollars
per lb. per ton		
Today's Quotation	6.055	\$121.10
Last previous	6.005	120.10

NINETEENTH YEAR

WAILUKU, MAUI CO., HAWAII, FRIDAY, AUGUST 9, 1918.

NUMBER 961

LOST ON HALEAKALA FOUR NEARLY PERISH

Honolulu Teachers Make Way To Ocean Through Keanae Gap--Unprecedented Trip--Four Days With Little Food--Awful Experience--Started To Walk Through Crater And Lost Way

Lost in the crater of Haleakala and in the dense jungle on the windward side of the mountain for 4 days, a party of Honolulu school teachers, three women and one man, finally made their way down into Keanae valley at 8 o'clock last night. They were so exhausted that they were unable to stand after falling in their tracks when human habitations were reached.

The party consisted of--

- Henry L. Abell,
- Miss Hazel Abell,
- Miss Edna Lechridge,
- Miss Elizabeth Appleton.

All except the last named are teachers in Mills School, Honolulu. Miss Appleton is a daughter of U. S. District Attorney S. C. Huber.

Terrible Experience

That it would be possible for any human being to come out of the crater through the Keanae valley, as this party did, would have been considered absolutely impossible by anyone who knows that part of the island. So far as can be learned there is no record of its having been done even by natives in olden days.

The party missed the home of George W. Weight and other houses in the upper part of the valley, and traveled clear to the lower village several miles further, before they came to a Chinese where they dropped down utterly exhausted and scarcely able to speak. Word was tel-

phoned to Mr. Weight who went down in his automobile and brought them back to his home. Here they were put to bed after giving a bare outline of their terrible experiences. None of the party, however appear to have suffered any serious injury, and it is expected that they will be able to ride on horses the 15 miles to Kailua this afternoon, where they will be met by an automobile this evening and brought on to Wailuku.

Mainland Experience Useful

The party started on their trip from Wailuku last Sunday morning. They had arrived from Honolulu by the Claudine the day before, and stopped at the Maui Hotel. They planned to make a leisurely trip through the crater, coming out at Kaupo on Monday evening.

Manager Field remonstrated with them, urging them not to attempt such a trip, especially without a guide or better equipment, but they stated that they were familiar with mountain climbing, particularly from a tour they had made afoot through the Yosemite, and refused to be dissuaded or discouraged. At the instance of Mr. Field they took with them a fried chicken, 2 loaves of bread, and some cake chocolate. They had no blankets, not expecting to have to sleep out. They must have suffered severely from the cold of the high altitude at night.

Cut Way Through Jungle

Mr. Weight, who telephoned last night of the arrival of the party at his

(Continued on Page Eight.)

Baseball On Sunday For Red Cross Fund

Cubs Win Cup From Orientals--Wailuku's Challenge Accepted By Paia Cubs And Orientals Will Also Play--Big Crowd Expected

The baseball series in both the senior and the junior leagues are paia. Last Sunday the Cubs won the cup when they took the Orientals into camp with a score of 7 to 5, in one of the hardest fought games of the season. This was the deciding game in the junior outfit. The Wailuku senior team won from Paia two Sundays ago.

However the fans will have at least another chance to see some good games, for Manager Medeiros of the Wailuku has had his challenge for a game next Sunday accepted. Foster Robinson, who represents the Paia seniors, has decided to strengthen his team and take the Wailuku on the terms proposed. The proceeds of the game will go to the Red Cross.

The Orientals and Cubs will also try another whirl at each other on Sunday, and will also contribute their

(Continued on Page Eight.)

Woman Hurt By Car Of Harvey Raymond

Mrs. Kamida, a Japanese woman living near Waikapu, is in the Malulani hospital suffering from injuries which she sustained from being struck by an automobile driven by Harvey Raymond, on Wednesday afternoon. The accident occurred a short distance south of Waikapu. Following the accident Young Raymond picked the injured woman up and brought her to the hospital.

Raymond, who is the 19-year old son of Dr. J. H. Raymond, of Ulupalakua, was driving Lahaina-way in company with a young friend named Johnson, of Honolulu, son of J. A. M. Johnson, of the Royal Hawaiian Garage, who is his guest.

The woman was walking with a number of Japanese along the road ahead of the approaching car, when through confusion on the part of the woman or Raymond, as to what the other intended to do, she stepped in front of the machine and was struck by the fender.

At the hospital it was found that no bones had been broken but just what the extent of her injuries are may not be known for another day or two. The case will probably be investigated in the police court next week, as soon as the nature of the woman's hurts.

Halemano To Take Tax Office At Hana

John Halemano, of Keanae has been appointed deputy tax assessor for the Hana district to succeed Manuel Ross, who will take a clerkship in the Wailuku office on the first of September. Halemano is now working in the main office here getting familiar with the work. Ross is filling out the office force left short since H. C. Mossman resigned to take the position of clerk of the second circuit court.

PRISON LABOR TO BE USED IN CONSTRUCTING HANA WHARF

Prison labor is to be used in the construction of the new wharf at Hana, Maui, according to a decision reached by the board of harbor commissioners yesterday. The board authorized chairman Biechow to employ prison labor in the work, and to make such expenditures as may be necessary to provide quarters for the prisoners, who are to be borrowed from High Sheriff Jarrett. Advertiser.

BIG RUSH OF HAIKU PINES EXPECTED SOON TO SLOW UP

While the big rush at the Haiku Fruit & Packing Co.'s cannery still keeps up with little sign of slackening, it is expected that after this week the most strenuous part of the season will have ended. While a good run of fruit is expected until well into September, it will come in steadily lessening volume from now on. The peak during the month of July amounted to 145,000 cases, or close to 5000 cases per day. Over 7000 cases were canned on several single days.

The cost of the U. S. Food Administration for its first year's work was less than two cents for every person in the United States.

The past can never be undone. The food you should have conserved will never reach a hungry mouth.

Basket Ball Series Is Growing Exciting

Gym Team Leads With Saints At Tail Of Procession--Latter Puts Up Great Fight Against Cubs In An Any Body's Game Friday Night

At the Kahului Community House on Friday, August 2nd those present witnessed two of the fastest games of basket ball that have ever been played on Maui. The first set-to between the Gymnasium and Kahului teams was a fine exhibition of basket ball, which ended in favor of the Wailuku Gymnasium to the tune of 16 to 9. Good team work on the part of both teams, made the play fast and snappy. Throughout, there was no lack of interest.

The second game was called between the Cubs and St. Anthony and proved even more exciting than the first, owing to the fact that first one team and then another would push ahead. Two minutes before the close of the game the score stood at 10 all, but the game went to the Cubs, 19 to 10, a foul and two baskets being thrown in the last two minutes. As was predicted, the games were very close throughout. The teams are indeed well matched. Percentages, to date are as follows:

	Played	Won	Lost	Per.
Wailuku Gym.	2	2	0	1.000
Kahului	2	1	1	.500
Cubs	2	1	1	.500
St. Anthony	2	0	2	.000

Paul Townsley acted as referee for the last games, leaving the same night for the Front. A new man will have to be chosen for his place. Eddie Tam was the official scorer.

Another double header will be pulled off at the Wailuku Alexander House Gymnasium next Friday night, August 9th. If you like to see good clean sport, you should get it at its best. All come.

Effort Being Made To Block Sale Of Grand Hotel Co.

In order to prevent the sale of the Grand Hotel property by the commissioner of the second circuit court, E. R. Devins, advertised to take place tomorrow at noon, Attorney Ferdinand Schmaek, of Honolulu, trustee in bankruptcy, acting on behalf of the unsecured creditors, this afternoon filed a motion in the circuit court to reopen the case on grounds that the debts of the corporation exceeded its capital stock at the time the \$20,000 mortgage was executed. The sale of tomorrow is to satisfy this mortgage. The motion to intervene was opposed by Roy A. Vitousek, an attorney from the firm of Thompson & Cathcart and associated with Case and Vincent representing the mortgagees. The matter is still being argued before the court as we go to press. If the motion is overruled, the sale will probably take place as advertised. Should it be sustained, the matter will again be up in the air as it has been for the past year.

Big Fleet Coming To Take Island's Sugar

That the U. S. shipping board has determined to rush Hawaiian sugar to market with all possible speed, is the news that reached Honolulu agencies this week. It is said that plans now contemplate having the entire season's output moved by November 1. To do this it is reported, some 40 steamers of various sizes, will be turned to the task at once. The need of Hawaiian sugar to offset the dropping off of the world's supply with the ending of the Cuban season, is said to be responsible for the change in plans. Governor McCarthy on Wednesday also received advices from the interior department that an ample supply of ships to move the pineapple pack will also soon be available.

DAN T. CAREY WEDS IN HONOLULU

Word was received from Honolulu this week of the marriage of D. T. Carey, of Wailuku, which took place on Tuesday evening to a lady from Wyoming, who had just arrived from the coast. The name of the bride is not yet known here, but she is said to have been an old time friend of Mr. Carey. Besides Dr. Carey, of Honolulu, a brother of the groom and his family, Mr. and Mrs. George B. Schrader were also members of the wedding party.

Mr. Carey has recently had his home on Main street refurbished. He and his bride are expected home tomorrow.

ALLIES' OFFENSIVE ON NEW FRONT PROGRESSES

Germans Forced Back On Long Line--Many Prisoners And Guns--Marne Drive Complete Success--Montdidier Likely Soon To Fall To Allies--Signs Point To Further Hun Withdrawal

(ASSOCIATED PRESS DISPATCHES)

ISLANDS POPULATION GROWING

Honolulu, August 9--Board of health estimates of last fiscal year, population of territory 256,180. Honolulu, 75,000; balance of Oahu, 41,500; Hilo, 10,550; rest of Hawaii, 58,950; Maui, 36,500; Kauai, 31,000. Kala-wao, 680. Total Japanese, 106,800; Hawaiians, 22,850; haoles, 30,400. Deaths, 4,010, increase of 512; births, 9,404, increase of 697--marriages, 2,572, a decrease of 190.

The above estimate shows a gain in population over estimate for year previous, of 5,554.

HOSPITAL HEAD IS DEAD

Honolulu, August 9--M. T. Clegg, superintendent of Queen's Hospital, died this morning.

BIG BATTLE GOING WELL

Paris, August 9--Battle on south Somme front was resumed early this morning. French and British are progressing favorably, using powerful cavalry forces.

Report at 11 o'clock this morning showed battle is proceeding victoriously and on a great scale.

Situation on front north of the Somme is unchanged.

MONTDIDIER SOON MAY FALL

London, August 9--French and British have advanced a maximum of 11 miles. Cavalry, tanks, and armored cars reached line from Framerville to Lilons. Believed it will be impossible for Germans to long hold Montdidier positions. The advance is believed to have made Amiens safe against enemy attack and thus removes threat against Paris.

Official statement says 14,000 prisoners have been taken and uncounted guns. Cavalry continues pursuit.

French captured Fresnoy and Enechassee. Germans evacuating Lys valley positions in Flanders.

FRENCH REPORT CONFIRMS ADVANCE

French Front, August 9--Advanced 4 miles over a 6 miles front west of Montdidier and took 3000 prisoners and important materials.

BOLSHEVIKI WILL FIGHT ALLIES

Washington, August 9--Consul General Poole informs state department that Lenin recently informed him that Bolsheviki Soviet Russia is in a state of war against the Allies. Tcheternin also told Allied council that statement need not be considered a declaration of war but rather a declaration that Russia is on the defensive against the Allies as she was formerly against the Germans.

CASUALTIES HEAVY

Marines: 4, killed in action; 5, died of wounds; 43, wounded. Army: 90, killed in action; 9, died of wounds; 3 of other causes; 63, wounded; 303 missing.

SPAIN GETTING TIRED OF SUBMARINES

Madrid, August 9--Spain has sent Germany a note protesting against torpedoing of ships.

FIELD OVERWORKED--MUST TAKE REST

Honolulu, August 8--Military surgeons have ordered Captain Field to take a rest because of overwork and to absent himself from his office till next Monday.

SLAYER OF OFFICER TO GET OFF LIGHTLY

Niyashi Inagire today pleaded guilty to second degree murder for killing Lt. Joseph Carso on June 21st. Judge Vaughan will sentence him on Monday from 10 years to life imprisonment. Huber allowed the change of plea because of technicalities which made conviction difficult.

ALLIES MAKING GOOD PROGRESS

Paris, August 8--Progress of French and British offensive continues favorable. They have advanced more than 6 miles in some places.

GERMANS SHOW SIGNS OF FALLING BACK

British Headquarters, August 8--Enemy motor transports are scurrying away from the back before new offensive. Three of Rupprecht's divisions, suffered heavily. Enemy made its only determined stand at Morlancoeur where fighting raged all day. Enemy counters failed. The French did wonderful work.

NEW ALLIES OFFENSIVE PROGRESSING WELL

London, August 8--Bonar Law told house of commons that French and British have reached all objectives. Up to three o'clock this afternoon on over 20 kilometers of front between Morlancoeur and Montdidier they have captured 100 guns and 7000 prisoners. Several villages taken along 4 or 5 miles but at one point they gained 7 miles.

BERLIN ADMITS REVERSES

Berlin, August 8--English have forced their way into positions between the Acre and Ayre rivers.

YESTERDAY'S CASUALTIES

Washington, August 8--12, killed in action; 2, died of other causes; 28, wounded; 55, missing.

VOLUNTEERING SUSPENDED

Washington, August 8--Secretaries Baker and Daniel have suspended voluntary enlistments in army and navy pending enactment of new draft bill to prevent a disruption of industries by a rush to enlist, also and to make the draft really selective. Crowder is calling for 100,000 for August 22nd.

FRENCH REPORTS GOOD

French Army Headquarters, August 8--Allies carried slopes of the Ayre valley region, and on the plateau beyond they progressed further, overcoming all obstacles.

(Continued on Page Eight)

Small Hope Now Of A Civic Convention

Japanese Chamber Of Commerce Votes Against Plan For This Year--Matter To Be Considered Next Thursday--Time Now Very Short

Owing to the absence in Honolulu of Secretary D. H. Case, the meeting of the chamber of commerce, which would have been held yesterday, was continued until Thursday of next week. The most important business to be considered will be the matter of holding the Civic Convention this fall.

Mr. Case, who returned home Wednesday night states that while the Honolulu chamber of commerce, Ad Club and Rotary Club have voted in favor of the convention, he did not find any great enthusiasm over the matter in Honolulu. The Japanese chamber of commerce, he states, has joined with Hilo and Kauai in opposing the meeting this year. Other organizations throughout the territory have not taken the trouble to express an opinion one way or the other, not having answered the committee's letters on the subject.

Secretary Raymond C. Brown, of the Honolulu chamber, while strongly of the opinion that it is a mistake not to hold the convention, stated that it is now probably too late to get a program prepared even if it be decided to hold the meeting.

Camp 1 Woman Takes Ant Poison--Is Saved

Chia Ito, a Japanese woman of Camp 1, attempted to commit suicide on Wednesday morning by drinking a quantity of ant poison. Neighbors who found the woman shortly after she had swallowed the dose, hurriedly summoned Dr. Ohata, of Wailuku, who succeeded in bringing the patient out of danger after strenuous work. The woman is 26 years of age and married. Her husband was at work at the time the suicide was attempted. Dependancy is the only cause assigned for the desire to die.

NEW KINDERGARTNER NAMED

Miss Mary E. Hoffmann has accepted the position of Kindergarten Director for the Alexander House Settlement, taking the place of Miss June J. Mitchell, who has given up her position for war work. It is not known yet who will be Miss Hoffmann's successor in the Gymnasium and Kindergarten work formerly done by her. Miss Hoffmann has had long experience in kindergarten work with the Settlement Association and should be a decided success in the new position.

Ten Days More And Islands Will Be Dry

Planning For Handling Liquor For Medical, Scientific And Sacramental Purposes--One Dispensary In Proposed

How the liquor permitted to be used for medical, scientific and sacramental purposes under the Sheppard prohibition law, is to be administered, is a question that is causing some considerable discussion. The new act goes into effect on the 20th of this month, and after that time the only alcoholic liquors that may be imported, manufactured or sold are such as may be needed for the purposes just mentioned.

At a meeting of the Maui liquor license commissioners held this morning, it was decided to recommend that all liquors used hereafter in the territory be dispensed from a single dispensary to be located in Honolulu, and only upon requisitions issued or approved by boards to be appointed by the Governor for each county. These boards should have power to call upon physicians and others having legal use for liquors, to make reports as often as deemed necessary, and to show by careful records the disposition made of all liquor they might be permitted to purchase.

The Maui board holds that it automatically goes out of existence as a territorial body on the 20th of August, because the territorial law under which it is created at that time becomes nonoperative on account of the new federal statute.

At a meeting held in Honolulu last Monday, which was attended by D. H. Case, representing the local board, it was the plan of Attorney General Harry Irwin that the present liquor boards should continue as heretofore, and should have power to license such agents or dispensaries on each island as seemed necessary.

**PERSISTENCE WON DAY FOR
CHINESE WHO WANTED WIFE**

After trying some 5 different times to get a license to marry Wong Sul Sim, a Chinese maiden of but 16 years, Ah Fook, aged 39, finally succeeded in getting the father of the girl, Ah Yonk, to give his consent. The license was accordingly issued on Tuesday last and the ceremony performed yesterday by the Rev. L. B. Kaunehewa.

Although the girl was known as Wong Sul Sim, the father refused to permit her to be married under this name, but instead described her as Ah Sim, in his affidavit of consent.

The only tear we shed with a smile is the profusion.

American Factors, Limited

Capital Stock \$5,000,000

Board of Directors

(TO BE ANNOUNCED LATER)

IN ACCORDANCE with the reorganization plan proposed by the Alien Property Custodian and adopted by the Stockholders of H. Hackfeld & Company, Limited, a corporation has been organized under the laws of the Territory of Hawaii known as the

American Factors, Limited

having a capital stock of five million dollars (\$5,000,000), fully paid, divided into 50,000 shares of the par value of \$100 each, for the purpose of taking over the entire business and property of H. Hackfeld & Company, Limited, including rights, contracts, agencies, franchises, credits, accounts and other interests of every kind, subject to outstanding obligations.

All of the 50,000 shares will be transferred to seven trustees, namely: George Sherman, R. A. Cooke, F. C. Atherton, C. R. Hemenway, Richard H. Trent, A. W. T. Bottomley and G. P. Wilcox, all of Honolulu, under a trust agreement to continue during the present war with Germany and thereafter for a period of three additional years, under which agreement stock trust certificates will be issued by the Trustees in lieu of the 50,000 shares of stock, which trust certificates will entitle the holders to all of the benefits of stockholders, except the privilege of voting, which will be exercised by the Trustees, and except that sales or pledges may be made only with the approval of the Trustees. Holders of trust certificates will receive payments equal to the dividends, if any, collected by the Trustees upon a like number of shares.

The form of the trust certificates will be as follows:

AMERICAN FACTORS, LIMITED. STOCK TRUST CERTIFICATE.

No. _____ Shares _____

This is to certify that on the expiration of three (3) years after the date of termination of the present war between the United States and Germany, _____ will be entitled, upon the surrender hereof, to receive a certificate or certificates for _____ paid-up shares of the capital stock of American Factors, Limited, of the par value of one hundred dollars (\$100) each; and, until then, from time to time to receive payments equal to the dividends, if any, collected by the undersigned Trustees herein named, or their successors, upon a like number of shares standing in the names of the Trustees.

This certificate is issued under and subject to all of the terms, conditions and limitations expressed in a certain trust agreement made between H. Hackfeld & Company, Limited, and George Sherman, R. A. Cooke, F. C. Atherton, C. R. Hemenway, Richard H. Trent, A. W. T. Bottomley and G. P. Wilcox, as Trustees, dated _____, 1918; and such successive holder of this certificate, by acceptance hereof, hereby expressly assents to and agrees to be bound by all of the provisions of said trust agreement, as though herein fully set forth and signed by each such holder hereof.

No assignment or transfer of this certificate, or any interest herein or in the shares represented, shall be valid or effective for any purposes unless and until such transfer shall be approved by the Trustees and the transfer thereof actually made on the books of the Trustees upon the presentation and surrender of this certificate, and as required by the Trustees; and until so transferred the Trustees shall treat the record holder as the owner thereof for all purposes; PROVIDED, HOWEVER, that during the continuance of said trust agreement the same shall not in any manner be sold, assigned, transferred to or held by any person or persons, in pledge or otherwise, except in accordance with the terms of said trust agreement. Every other attempted transfer shall be null and void.

Passed by the Capital Issues Committee as not incompatible with the National interest, but without approval of legality, validity, worth or security.

This certificate will not be valid unless signed on behalf of said Trustees by the Trent Trust Company, Limited, as their agent and Registrar.

IN WITNESS WHEREOF, the Trustees have caused this certificate to be issued and signed by their said Agent and Registrar this day of _____, 1918.

GEORGE SHERMAN
R. A. COOKE
F. C. ATHERTON
C. R. HEMENWAY
RICHARD H. TRENT
A. W. T. BOTTOMLEY
G. P. WILCOX } Trustees.

By TRENT TRUST COMPANY, LIMITED,
Their Agent hereunder:

Upon the termination of the trust agreement the trust certificates will be exchanged for shares of stock of American Factors, Limited.

Legal Opinion

All legal matters pertaining to the entire reorganization plan and issue of the stock and trust certificates of American Factors, Limited, have been approved by Messrs. Smith, Warren & Whitney, and Robertson & Olson. Copies of their opinions and also of the trust agreement may be seen at the office of Trent Trust Company, Limited.

Agency Business

The American Factors, Limited, will conduct a general agency business, representing plantations, fertilizer works, insurance companies, and manufacturers, and will have agency contracts with the following sugar plantations:

	Tons of Sugar Produced in 1917.
Oahu Sugar Co., Ltd.	37,211
Pioneer Mill Co., Ltd.	33,279
Lihue Plantation Co., Ltd.	20,174
Kekaha Sugar Co., Ltd.	18,354
Makee Sugar Co.	13,509
Koloa Sugar Co., The	9,206
Grove Farm Plantation	3,836
Waimea Sugar Mill Co., The	1,965
Kipahulu Sugar Co.	1,510

Total 139,044 Tons
also with the Pacific Guano & Fertilizer Co., Ltd.

General Merchandise Business

The American Factors, Limited, will continue the general merchandise business which has been conducted so successfully by its predecessor for many years, with branch establishments at Hilo and Kailua, Hawaii. The entire business of the big retail house heretofore conducted as "B. F. Ehlers & Company," of Honolulu, will be continued by the American Factors, Limited, under the name of "The Liberty House." The several departments have contributed materially to the earnings of the business in the past.

Shares 50,000; Par Value \$100 each

Executive Staff

(TO BE ANNOUNCED LATER)

Mainland Branches:

The corporation will continue the San Francisco and New York branches for convenience in the general conduct of its business. These branches also contribute to the earnings.

Assets and Liabilities:

As indicative of the financial status of the business, a condensed statement of the balance sheet of H. Hackfeld & Company, Limited, as of December 31, 1917, follows, certified to by the Audit Company of Hawaii, Ltd., as being in accordance with the accounts of H. Hackfeld & Company, Limited, as of that date:

ASSETS.	
Cash in Bank and on Hand	\$1,410,873.69
Bonds and Stocks	5,235,373.97
Real Estate and Property Investments, etc.	1,612,400.58
Merchandise Inventories	1,232,488.52
Loans Receivable	722,616.42
Notes Receivable	146,040.77
Agency and Personal Accounts Receivable and Trade Debtors	2,121,716.05
Other Assets	28,049.99
	\$12,509,559.99

LIABILITIES.	
Capital Stock:	
Preferred	\$ 300,000.00
Common	3,700,000.00
	\$4,000,000.00
Undivided Profits and Reserves	3,924,993.78
Agency and Personal Accounts and Trade Creditors	4,527,666.51
Sundry Credit Balances	56,899.70
	\$12,509,559.99

Statement of Earnings and Dividends

The following is a summarized statement of the earnings of H. Hackfeld & Co., Ltd., for the past eight years:

For the Year ended Dec. 31.	Net Earnings.	Dividends Paid.
1910	\$ 718,063.68	\$511,000.00
1911	792,819.65	585,000.00
1912	864,893.96	548,000.00
1913	519,104.68	215,000.00
1914	590,978.89	326,000.00
1915	840,305.92	474,000.00
1916	1,491,779.56	770,000.00
1917	1,661,624.22	955,000.00
Average net earnings, eight years	\$934,945.00	
Average annual dividends paid eight years	\$548,000.00	

Subscriptions are now invited

SAMPLE

FORM OF OATH FOR INDIVIDUALS.

United States of America, }
Territory of Hawaii, } SS.

I, _____ do solemnly swear that I am a _____ citizen (natural born or naturalized) of the United States of America; that I will support and defend the Constitution and laws of the United States against all enemies, foreign and domestic; that I will bear full and true faith, allegiance and loyalty to the Government of the United States paramount to every other nation or country; and do hereby particularly disclaim all connection with and declare utter repudiation of the Empire of Germany and all of its Allies, and the German Emperor, and all other enemy nations, powers and rulers, and all enemy activities, influences and propaganda, within and without the United States; and do further denounce and condemn all supporters, adherents and sympathizers of or with Germany and its Allies; that I take this oath freely, absolutely, comprehensively, in full accord with the spirit hereof, and without any qualification, mental reservation or purpose of evasion whatsoever.

Subscribed and sworn to before me this _____ day of August, 1918.

Notary Public, _____

(N. B.—This oath must be signed and sworn to before a notary public.)
(Form of oath for individuals and corporations may be obtained at the office of the Trent Trust Co., Ltd.)

Subscriptions from persons, firms and corporations for the stock trust certificates representing shares of American Factors, Limited, subject to the trust agreement, are now invited upon the following terms and conditions:

- (1) Subscription price, \$150 per share.
- (2) Subscriptions will be received beginning August 5th, and will close at 5 p. m. on August 20th, 1918, at the office of the Trent Trust Company, Limited, Honolulu, Hawaii.
- (3) Subscriptions will be received for any number of shares from 1 up to 2500. A deposit of 20% of the amount subscribed may be required before allotment.
- (4) Subscriptions will be payable on allotment, but in any case on or before August 30, 1918. (Arrangements may be made for payment at the Chase National Bank in New York, and the Mercantile National Bank in San Francisco.)
- (5) Any subscriber may offer part payment in United States Liberty Bonds to a limited amount, at par, with accrued interest to date of allotment, provided he shall have purchased the same directly from the Government prior to August 5, 1918; and if such offer of bonds is not accepted, he will be so notified prior to allotment, and may then elect whether to pay cash in lieu of any bonds not accepted or reduce or withdraw his subscription.
- (6) Applicants must be loyal citizens of the United States and will be required to subscribe to an oath of allegiance.
- (7) No person, firm or corporation will be permitted to acquire or hold trust certificates representing more than 2500 shares of stock of the American Factors, Limited, except by unanimous consent of the Trustees.
- (8) The right is reserved to the Alien Property Custodian to reject any or all subscriptions or to allot such proportion of the amount of subscriptions as in his judgment shall seem advisable.

Subscriptions will be recorded daily as received, and when closed will be tabulated and submitted to the Alien Property Custodian for his approval, modification or rejection.

The services of the Trent Trust Company, Limited, will be rendered without charge of any commission or bonus, and no commissions or bonuses will be allowed to others.

All statements and statistics are derived from authentic sources, or those which we regard as reliable. We do not guarantee, but believe them to be correct.

SAMPLE

FORM OF SUBSCRIPTION FOR TRUST CERTIFICATES FOR SHARES OF AMERICAN FACTORS, LIMITED.

TRENT TRUST COMPANY, LIMITED,
Honolulu, T. H.

I hereby subscribe for and offer to purchase stock trust certificates representing and entitling me to receive _____ shares of the capital stock of AMERICAN FACTORS, LIMITED, a Hawaiian corporation, or any less number of shares that may be allotted to me, under the terms of the trust agreement between H. Hackfeld & Company, Limited, of the first part, and George Sherman, R. A. Cooke, F. C. Atherton, C. R. Hemenway, Richard H. Trent, A. W. T. Bottomley and G. P. Wilcox, as Trustees, of the second part (authorized by resolution of the stockholders of H. Hackfeld & Company, Limited, on July 19, 1918), at the price of one hundred fifty dollars (\$150) for each share represented, which I agree to pay on allotment, but in any case on or before August 30, 1918, and agree to be bound by all of the terms and conditions of said trust agreement to the same extent as though the same were actually signed by me.

As part payment I offer United States Liberty Bonds, at par, amounting to \$ _____; the above subscription being made upon the understanding that if such bonds are not accepted I will be so notified prior to allotment and may then elect whether to pay cash in lieu of any bonds not accepted or reduce or withdraw this subscription.

It is understood that any subscription may be rejected in whole or in part.

My address is: _____

(Subscription forms for individuals and corporations may be obtained at the office of the Trent Trust Co., Ltd.)

Trent Trust Company, Ltd.

IN HONOLULU
Subscription blanks obtainable at the above or from any bank, trust company, or member of the Honolulu Stock & Bond Exchange.
ON THE OTHER ISLANDS
From any bank or trust company.

New Scout Masters For Maui Are Named

Important Meeting Of Boy Scout Council Decides To Keep Up Work — Charter Renewal Ordered — Mosquito Campaign To Taken Up

A special meeting of the Maui Council of the Boy Scouts of America was held at the Alexander Settlement House on last Tuesday, there being present the following members: Dr. W. D. Baldwin, Dr. Osmer, Commissioner Chas. Puck, O. J. Whitehead, A. P. Low, L. B. Kaumeheuiwa, and W. F. Crockett.

The meeting was called to order by the president and the minutes of the previous meeting was read and adopted without correction.

A report from Commissioner Chas. Puck was presented and read in which he presented an outline of the work done by him since his appointment, also making certain recommendations as to renewal of the charter and letters of appreciation to those persons who have recently acted as scout masters to-wit: Messrs. Manuel Joseph, J. N. Souza, and Frank Crockett; motion by Mr. Whitehead and seconded by Mr. Low that the Secretary prepare these letters.

The report was generally discussed with favorable comment as to the results obtained during the past few months.

The report further recommended the appointment of scout masters to fill the present vacancies now existing.

Motion by Mr. Whitehead and seconded by Dr. Osmer, that the following persons recommended for the foregoing positions: Mr. Crockett, of Honokahua; M. S. Pacheco, of Wailuku; Wilson Montgomery, of Wailuku; and John M. Brown, of Camp One, Puunene.

Request by Mr. Puck that O. J. Whitehead be recommended for the duty Commissioner for central Maui. Motion by Dr. Osmer and seconded by L. B. Kaumeheuiwa.

The recommendation of the report as to renewing the charter was taken up and on motion of Mr. Low and seconded by Dr. Osmer it was voted to instruct the treasurer to send the required amount of funds to secure the charter.

New Members

The names of the following persons were presented for membership subject to their acceptance:

- Young Ting
- Rev. E. E. Pleasant, Kahului.
- M. S. Pacheco, Wailuku.
- Wilson Montgomery, Wailuku.
- Judge L. B. Burr, Wailuku.
- E. R. Devins, Wailuku.
- W. A. Baldwin, Haiku.
- A. F. Tavares, Paia.
- Dr. Durney, Waiakoa, Kula.
- Geo. Copp, Waiakoa, Kula.
- Mr. Coursen, Waiakoa, Kula.

Remarks on the general condition of the council were taken up and the following matters were under consideration:

- (1) Mosquito campaign by the boy scouts in the district of Wailuku. Mr. Puck was advised to take this matter up with Health Officer Osmer.
- (2) The matter of holding quarterly meetings of the council; a motion was made by Mr. Whitehead and seconded by Dr. Osmer that the next meeting be held within the first fortnight preceding the 15th of November, 1918, and each quarter thereafter as herein above stated, such meeting to be called by the president.

ALEXANDER HOUSE GYMNASIUM SCHEDULE

- Wednesday, August 7th
 - 3:00 P. M. Girls Gym. Class.
 - 7:00 P. M. Men's Gym. Class.
- Thursday, August 8th
 - 1:30 P. M. Boys Class.
 - 7:00 P. M. Women's Gym. Class.
- Friday, August 9th
 - 1:30 P. M. All Boys Class.
 - 7:00 P. M. Basket Ball: St. Anthony vs. Wailuku Gym. Kahului vs. Cubs.
- Saturday, August 10th
 - 9:00 A. M. Junior Girls Class.
 - 1:30 P. M. Intermediate Boys Clubs.
- Sunday, August 11th
 - 1:30 P. M. to 3:00 P. M. All Boys.
- Monday, August 12th
 - 2:45 P. M. Japanese Girls Class.
 - 3:30 P. M. Junior Girls Class.
 - 7:00 P. M. Boys Class.
- Tuesday, August 13th
 - 1:30 P. M. Japanese Boys, Juniors.
 - 7:30 P. M. Women's Class.

MAUI CASES IN SUPREME COURT

The following cases from Maui are on the supreme court calendar for hearing this week:

- Territory of Hawaii vs. Alfred Fernandez, exceptions from circuit court, second circuit.
- County of Maui vs. Mary do Rego, et al., error to circuit court second circuit.
- Territory of Hawaii vs. Sam Pupuh, exceptions from circuit court, second circuit.
- In the matter of the petition of Mary Ah Sam for support of her bastard child, error to circuit court, second circuit. James Akina, plaintiff-in-error.
- K. Akatsuka vs. W. A. McKay, error to circuit court, first circuit.
- In the matter of the settlement of the boundaries of one part of the Ahupuaa of Puunau, appeal from the commissioner of boundaries, second circuit.
- David K. Kahalelelo vs. Beke Ihihi, et al., error to circuit court, second circuit.

C. E. Societies Give \$100 For Red Cross

The Christian Endeavor societies of Maui, in turning over to the Red Cross \$100 recently collected, expressed the sentiments of the organization in the following letter:

Headquarters of Christian Endeavor Societies of Maui County, Territory of Hawaii.

Wailuku, Maui, Aug. 1, 1918. Mrs. Harold Rice, Paia, Maui, Treasurer Red Cross, Maui County. Dear Madame:

Enclosed please find check for One Hundred Dollars (\$100.00) for the Red Cross Fund.

At the convention of all the Christian Endeavor Societies of Maui County, Territory of Hawaii, comprising the Islands of Maui, Molokai, and Lanai, held last March, 1918, at the Kaahumanu Church, Wailuku, Maui, the Rev. L. B. Kaumeheuiwa, president, presiding, a resolution was introduced and unanimously adopted calling upon all the officers and members of all the various organizations of this County to exert their utmost in aiding the United States government and her Allies in their war and philanthropic measures, both at home and at the various war fronts, and to do all in their power to help destroy, annihilate, and eradicate from this beautiful earth of ours the brutish, hellish aims and ambitions of the Kaiser, a descendant of "The Source of God", as his progenitor Attila the Hun was styled and whose name inspired terror in Europe during the fifth century, or "Wilhelm the Damned" as Col. George Harvey, America's foremost living editor, calls him, together with his fiendish militaristic war-lords, the most savage and ferocious band of barbarian invaders ever resurrected from the regions beyond the Styx and the Inferno, so that the peoples of this earth, the deluded Germans included, may again be permitted to enjoy peacefully and without molestation the blessings of an united and harmonious world, and to this end the following twenty C. E. Societies have each subscribed the sum of \$5.00 making a total of One Hundred Dollars for the Red Cross Fund.

These societies are: Kihel Senior, Camp One Sprecklesville Sr., Camp Five Puunene Sr., Waikapu Sr., Keawalai (Makena) Sr., Wainee both Senior and Juniors, (Lahaina), Honokohau Sr., Kaanapali Sr., and Jr., Kaupo Sr., Hana Sr., Huelo Sr., Wailuku (Kaahumanu) Sr., and Jr., Haiku Sr., Paia Sr., Pailihii Sr., Kaluaaha Sr. and Kalalakamau (Kauanakakai) Sr.

Sincerely yours,
JAS. N. K. KEOLA,
Treasurer C. E. Societies
Maui, County.

Donation Is Appreciated

The following letter of appreciation was written by Mrs. Rice treasurer of the Red Cross for Maui:

The American Red Cross Hawaiian Chapter
Aug. 3, 1918.

Mr. James N. K. Keola, Treas. Christian Endeavor Society, Wailuku, Maui, T. H. Dear Mr. Keola:

The Maui Branch of the American Red Cross acknowledges with thanks the check for \$100.00 from the Christian Endeavor Societies of Maui County. We very much appreciate the generous action taken by the Christian Endeavor Societies of Maui County in sending us this large donation. Will you convey the sincere thanks of the Maui Branch of the American Red Cross to the twenty Christian Endeavor Societies who subscribed this amount.

Kihel Senior, Camp One Sprecklesville Sr., Camp Five Puunene Sr., Waikapu Sr., Keawalai (Makena) Sr., Wainee (Lahaina) both Sr. and Jr., Honokohau Sr., Kaanapali Sr., and Jr., Kaupo Sr., Hana Sr., Huelo Sr., Wailuku (Kaahumanu) Sr., and Jr., Haiku Sr., Paia Sr., Pailihii Sr., Kaluaaha Sr., and Kalalakamau (Kauanakakai) Sr.

Entered Of Record

Deeds
JOSEPH M AMBROSE & WF to Akoni Keaka, 1/2 int in pes land, Apr 13, 1918. \$100.

MANOEL JACINTHO & WF to Joe S Guerilho, pc land, Kaupakalua, Hamakualoa, Maui, Mar 30, 1918. \$550.

C Y CHOW to J N S Williams, Grs 2621, 2667 and Kul 6923, Hana, Maui, Aug 3, 1918. \$575.

KANUI UWEKOOLANI to A. F. Tavares, Gr. 413 Kamaole, Kula, Maui, July 1, 1918. \$100.

HERMAN LAKE & WF. to Robert K. Wilcox, int. in por. R. P. 6345 Kul. 3295, Kalua, Wailuku, Maui, July 29, 1918. \$1.

ROBERT K. WILCOX to Mary M. Lake, int. in por. R. P. 6345, Kul. 3295, Kalua, Wailuku, Maui, July 29, 1918. \$1.

MANUEL N. CALASA to Marcellino N. Calasa, 1 A land (Waiakoa, Kula, Maui, June 25, 1918. \$55.

KAAREA to Garrel Davion, 1/2 int. in Gr. 3030, Lanai, Oct. 29, 1912. \$100.

JAY HOY to C. Y. Chow, Grs. 2621 2667 & Kul. 6923, Hana, Maui, July 22, 1918. \$550.

D. M. KALANA & WF. to R. A. Drummond, int. in 2 A of Gr. 1835, Niunualu, Hana, Maui, July 30, 1918. \$100.

SARAH MOOKINI & HSB. et. als. to Lahaina Arretl. Co. Ltd., 24-109 A of Ap. 5 R. P. 1860 Kul. 6961, Kahoma Valley, Lahaina, Maui, July 26, 1918. \$100.

Agreements
ROYAL HAWAIIAN GARAGE, Ltd., to Wailuku Soda & Ice Works, Ltd. to sell for \$3055.29, Mooreland Truck, Maui, Apr. 25, 1918. \$700.

ROYAL HAWAIIAN GARAGE, LTD., to K. Shimote, to sell for \$924 Chevrolet Automobile, Maui, July 22, 1918. \$250.

DAVID KENOLIO to S. Kanazaki, to sell for \$900, kiawe wood and bean crops on Lot 1 Waiohuli-Keokea Beach Lots, (Kula), Maui, Feb. 1, 1918. \$500.

KOLI KALANA to S. Kanazaki, to sell for \$850, kiawe wood & bean crops on Lot 2 Waiohuli-Keokea Beach Lots, (Kula), Maui, Feb. 1, 1918. \$500.

JOHN HOOPH to S. Kanazaki, to sell kiawe wood on Lot 13, Waiohuli-Keokea Beach Lots, (Kula), Maui, Mar. 14, 1918. \$270.

DAVID NAPAHUELUA to S. Kanazaki, to sell for \$325 kiawe wood and bean crops, on Lot 14, Waiohuli-Keokea Beach Lot Tract, (Kula), Maui, Feb. 1, 1918. \$200.

Those Who Travel

Departed
By Mauna Kea, Aug. 2—P. H. Townsley, Mr. Waiaholo, E. E. Boyum, Mrs. J. A. Gannon, Master Cannon, Miss M. Pele, Miss M. Bege, Raymond Bege, Mrs. Louisa Talent, G. Hennig, Mr. and Mrs. Shimaboko, S. Yamagata, Mrs. Tasuki, Mrs. Tatsumi, Mr. and Mrs. Fujitani and children, K. Kawabara, T. Ogino, Ogita, G. Tatsumi, S. Kuroda, Mr. and Mrs. Y. Suehiro and child, S. Nishimura, Tatamoto, S. Arakaki, C. R. Halton, Kaneshiro, J. M. Lee, C. W. Durant, Miss Bernice Collins, A. C. Halton, Kaneshiro, J. M. Lee, C. W. Durant, Miss Bernice Collins, A. C. Linklater, Mrs. Miyake and 2 children, Judge L. L. Burr, C. D. Luffkin.

By Mauna Kea, August 5, from Maui—Takahashi, H. Tokunaga, Mrs. John Hase, Miss G. Buchanan, Mrs. Rose Mookini, S. K. Yamoto, K. Miyamoto, Mrs. Rose Akana.

Would you object to having your letter published?
Yours sincerely,
(Sd.) CHARLOTTE B. RICE,
Treasurer.

DECK PASSENGERS MUST NOW HAVE PERMIT FROM DRAFT BOARD

Hereafter all male deck passengers on inter-island boats leaving the island, will be required to have a permit signed by the local draft board before they may take passage. This order has been issued from draft headquarters and is designed to enable the board to keep track of all eligible to the draft regardless of how much they may travel among the islands.

Send the home paper every week to YOUR SOLDIER. He will appreciate it as much as anything you can do for him. Besides it is a patriotic service. We will see that the paper reaches him regularly if you give us his address. Subscription to MAUI NEWS, \$2.50 the year; \$1.25, 6 months; 75 cents, 3 months.

Honolulu Wholesale Produce Market Quotations

ISSUED BY THE TERRITORIAL MARKETING DIVISION. Wholesale only.

Week ending, August 5, 1918.

Small consumers cannot buy at these prices.

Island butter, lb.	50 to 60
Eggs, select, doz.	70
Eggs, No. 1, doz.	68
Eggs, Duck, doz.	55
Young roosters, .50 to .55	
Hens, lb.	40
Ducks, Musc., lb.	35
Ducks, Pekin, lb.	35
Ducks, Haw. doz.	8.50
Beans, string, green, lb.	.04
Beans, string, wax, lb.	.04 1/2
Beans, lima, in pod, lb.	.04
Beans, calico, cwt.	10.50 to 11.00
Beans, Maui, red, cwt.	9.50 to 10.00
Beans, small white, cwt.	11.00
Cabbage, cwt.	.04 to .05
Corn, New York, ton	85.00
Beans, dry, lb. cwt.	None
Peas, doz. bch.	30
Carrots, doz. bch.	40
Cucumbers, doz.	20 to 30
Cauliflower, cwt.	4.00 to 5.00
Green peppers, bell, lb.	.07
Green peppers, chili	.06
Potatoes, ls., Irish, cwt.	2.50 to 3.00
Potatoes sweet, cwt.	1.75 to 1.85
Tomatoes, lb.	.03 to .04
Taro, bunch.	.15
Tomatoes, lb.	.03 to .04
Green peas, lb.	.12
Pumpkin, lb.	.01 1/2 to .02

Fruit.

Bananas, Chinese, lb.	.01
Bananas, cooking, bch.	1.25
Figs, 100	.90
Limes, 100	.70
Pineapples, cwt.	1.50 to 1.25
Papayas, lb.	.01 1/2 to .01 1/4
Strawberries, lb.	.20 to .25

Livestock.

Cattle and sheep are not bought at live weight. They are slaughtered and paid for on a dressed weight basis.

Hogs, up to 150 lb.	20 to 22
---------------------	----------

Dressed Meats.

Beef, lb.	14 to 15
Veal, lb.	14 to 15
Mutton, lb.	18 to 20
Pork, lb.	25 to 27

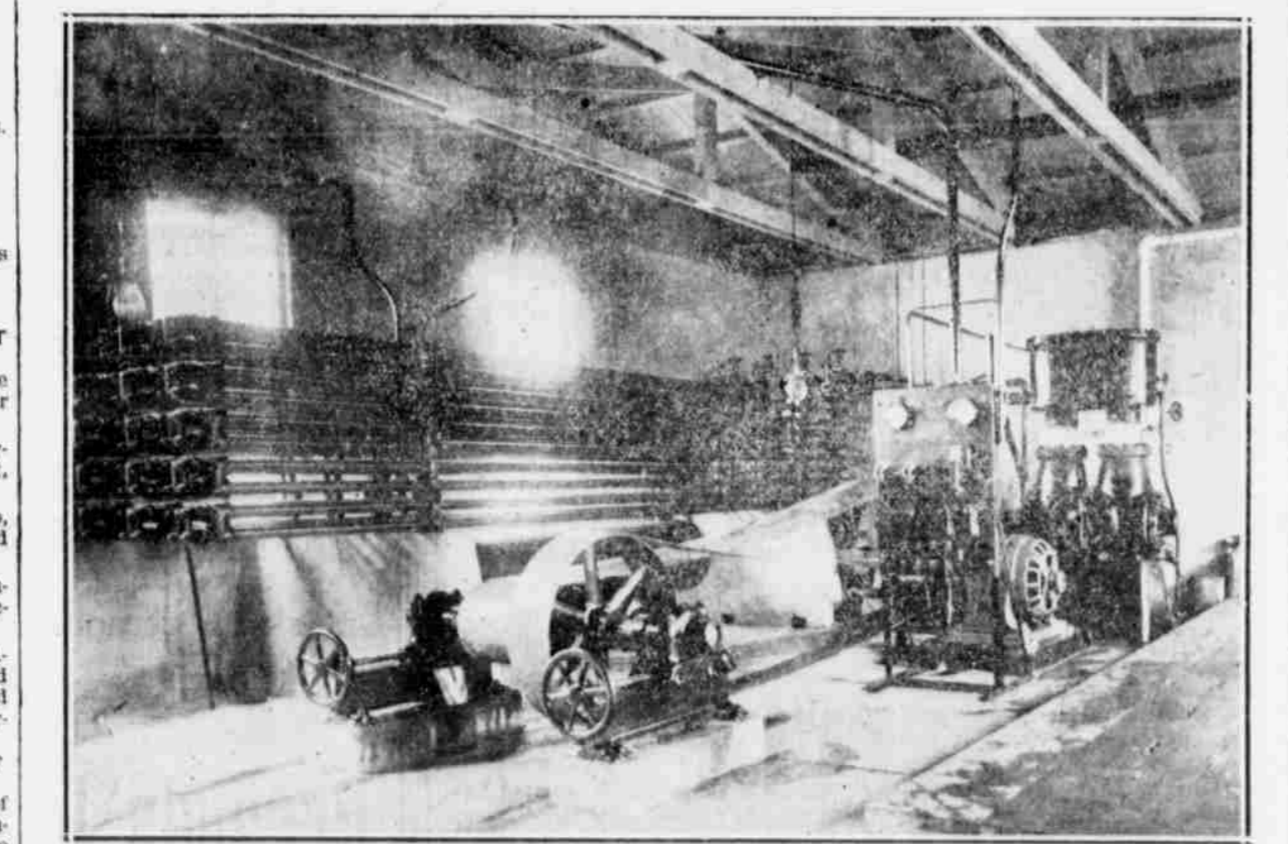
Hides, Wet Salted.

Steer, No. 1, lb.	15
Steer, No. 2, lb.	13
Steer, half-slip, lb.	10
Kips, lb.	13
Goat white	30 to 40

Feed.

Corn, sm. yel. ton	105.00 to 97.00
Corn, lg. yel. ton	100.00 to 90.00
Corn cracked, ton	105.00 to 97.50
Bran, ton	65.00
Barley, ton	76.00 to 73.00
Scratch food, ton	105.00 to 100.00
Chick feed, ton	80.00
Wheat, ton	None
Middling, ton	67.50
Hay wheat, ton	48.00 to 52.00
Hay alfalfa, ton	45.00 to 47.50
Barley middling, ton	71.00 to 66.00

Plant of the Wailuku Soda & Ice Works, Ltd. Installed by The Automatic Refrigerating Co.



View showing the machinery in the new ice plant which was completed last week and which began turning out ice the first of the month. The plant has a capacity of 8 tons of ice per day. It was installed by V. L. Burgess, district manager of the refrigerating company.

BANK OF MAUI, Ltd.

WAILUKU—PAIA—LAHAINA.

STATEMENT

of Condition at the close of Business, June 29th, 1918.

RESOURCES

Loans, Discounts and Overdrafts	\$643,736.01
Cash on Hand and Due from Banks	176,815.54
Bonds and Securities	312,443.67
Commercial Paper	18,363.17
Real Estate and Banking Premises	16,600.00
Furniture and Fixtures	7,700.00
Leasehold	800.00
War Savings and Thrift Stamps	2,434.87
	\$1,178,893.26

LIABILITIES

Capital Stock Paid In	\$150,000.00
Surplus and Profits	25,063.32
Due to Banks	65,162.24
Dividends Unpaid	4,500.00
Deposits	934,167.70
	\$1,178,893.26

Territory of Hawaii
Island and County of Maui)
I, C. D. Luffkin, Vice-President and Manager of the above named Bank, do solemnly swear, that the above statement is true, to the best of my knowledge and belief.
C. D. LUFFKIN, Vice-President and Manager.
Subscribed and sworn to before me this 2nd day of July, A. D. 1918.
HENRY C. MOSSMAN,
Notary Public, County of Maui, Territory of Hawaii.

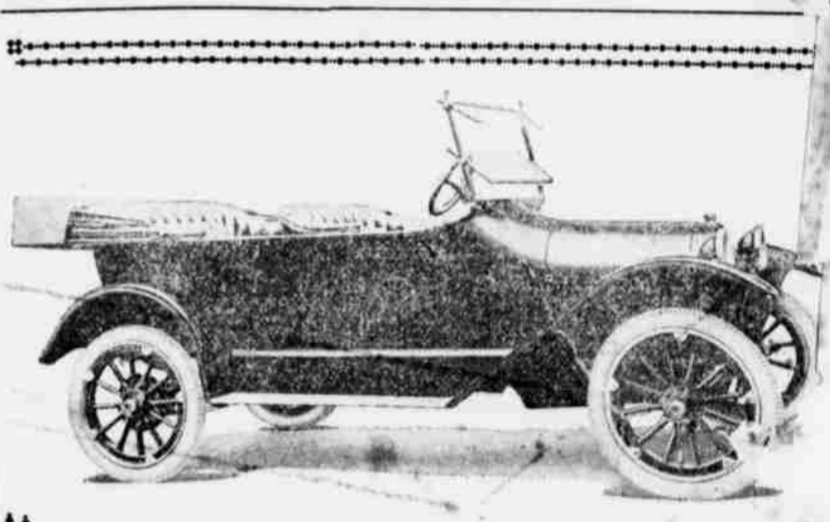
If you are not now receiving the REXALL MONTHLY MAGAZINE please send your name for mailing list. The Magazine has recently been enlarged, and improved by the addition of stories by prominent writers and pictures of current events.

THIS SERVICE IS ABSOLUTELY FREE.

Benson, Smith & Co., Ltd.

SERVICE EVERY SECOND

The Rexall Store Box 426 Honolulu, T. H.



---a car to be proud of, at a price you can readily pay

Chevrolet cars are built for men who want a car to be proud of without paying excessively for it.

They embody those features of refinement and the mechanical perfection which make the high-priced cars desirable.

The Chevrolet price makes it possible for you to realize ownership of a thoroughly high-class car that not only is within your means as to initial cost, but keeps within your means on upkeep.

Every Chevrolet is equipped with a valve-in-head motor. Every Chevrolet is built heavy enough to keep to the road, no matter how fast or hard the going, yet is light enough to be easy on tires. Every Chevrolet is fully equipped - electric starter; lighting system, one-man top, demountable rims, extra tire carrier, tilted windshield, speedometer, robe rail, foot rail—ever thing that comfort and convenience dictates—no "extras" to buy.

The Chevrolet itself proves all we say for it. Let us demonstrate a Chevrolet for you.

Royal Hawaiian Garage

F. H. LOCEY
Local Representative.

THE MAUI NEWS

Entered at the Post Office at Wailuku, Maui, Hawaii, as second-class matter.

A Republican Paper Published in the Interest of the People
Issued Every Friday.

MAUI PUBLISHING COMPANY, LIMITED,
Proprietors and Publishers

SUBSCRIPTION RATES, \$2.50 PER YEAR IN ADVANCE.

WILL J. COOPER : : : EDITOR AND MANAGER

FRIDAY : : : : : AUGUST 9, 1918.

PROBLEM OF DISTRIBUTION

In view of the scarcity and high price of fish in the Islands, and the constant row between the food commission and the fishermen, which further complicates the situation, the report that San Francisco is turning the finest kind of table fish into fertilizer because it cannot be sold comes as something of a shock. Yet this is exactly what happened when the California food commission recently undertook to increase the supply of sea food.

The following report explains the situation: "San Francisco.—The Food Administration in its efforts to provide the public with an adequate supply of fish at a low price, recently organized for this purpose a pool of the fishing industry to increase production.

"This pool has exceeded beyond all expectation in landing large quantities of fish. It was immediately found, however, that the ordinary channels of trade were unable to absorb more than one-third or one-half at the most, of the amount of flat fish caught. Even this excess supply does not represent the full producing capacity of the pool.

"On July 10 the pool produced six tons of excess fish and despite active efforts in advertising them for sale the next day at half the market price, only one-sixth were bought and the remainder had to be turned into fertilizer as the only possible method of utilization as they could not be kept in good condition more than 48 hours.

"It is not possible to successfully preserve these flat fish, which include sanddabs, sole, flounders and other varieties, for consumption in seasons of scarcity. Salmon and halibut, however, can be preserved perfectly and will be available during the winter when the flat fish are scarce and expensive.

"Unless the voluntary response to this food conservation measure is prompt and effective, the food administration may deem it advisable to eliminate salmon and halibut from the fresh fish market during the present over-production of cheap flat fish in order to conserve for use this winter the easily preserved varieties."

And for the lack of cold storage on the vessels coming to the islands, Hawaii must continue to suffer while good food goes to waste.

THE WAILUKU WATERWORKS

The loan fund commission put in a new 6-inch pipe line and installed a new intake basin, some 2 years ago, it was touched that Wailuku's water troubles were a thing of the past. But the dry weather of the past week or two the condition seems to be just as bad as ever. During certain hours of the day residents of the upper part of town are unable to draw water from the lines, the flow being so much diminished that only the lower levels secure any.

Kahului is also experiencing its normal water shortage, only perhaps more so.

The water-works department states that the trouble is due simply to the fact that the 6-inch line is not large enough to carry the quantity of water needed during dry weather. There is no lack of water at the intake.

Unless the pipe is obstructed in some way, it seems probable that the engineer who laid out the work made a mistake in his figures. But whatever the cause the only thing to do now is to find a remedy. Wailuku and Kahului cannot continue indefinitely in this highly dangerous condition. The menace of fire is perhaps the most disquieting, but the danger to health is not to be overlooked.

Unless the county can see its way clear to put in another or a bigger line, the matter will perhaps have to be brought to the attention of the legislature next February. If this last is the case, there is plenty but none too much time, to have the matter carefully looked into by competent engineers with a view to having a job done that will at least not have to be done again in another two years.

THE BALANCE SHEET

Including 291 lost at sea, our forces in Europe had lost up to the middle of this week, a total of 15,191 men. This includes killed, wounded, prisoners and missing. During the month of July alone we sent 300,000 across to France, and now have more than 1,300,000 in the expeditionary forces.

The shipping board announced this week that we are now not simply launching ships faster than the Germans can sink them, but that we are substantially building up the tonnage that has heretofore been lost. On this showing there should be not less than 2,000,000 American fighting men in Europe before the end of the year, and another million by next spring.

American troops appear to have borne the brunt of the terrific fighting of the past three weeks on the Marne, and have fully proven themselves as fighters. Although our losses may seem heavy, they are really extremely light, being but 12.3 per thousand, or less than the normal mortality of most states. For example Hawaii's death rate is 43.96 per thousand of population, while New York state has a death rate of 15.6 per thousand.

FOREIGN LANGUAGES IN PRIMARY SCHOOLS

According to the Honolulu papers Governor McCarthy has compelled the Japanese language schools of the territory, and expressed approval of the custom of teaching the Japanese language to the children of that race. At the Governor expressed these sentiments, he is moved by an appreciation of the very natural and human part of parents of whatever race that makes them wish to retain the customs of their own fatherland.

States now forbid the teaching of any foreign language in grade schools, whether in public or private institutions. It is doubtful that a child whose formative years have had to be spent in a foreign country, must be a better citizen than one who is born here and to think and see and speak through a foreign medium, without objection to the teaching of languages and foreign literature to the older children, but America should insist that these are kept out of the lower grades. This is of course a selfish attitude, but it is one that any nation is justified in imposing upon foreigners. Had we recognized the fact sooner—and acted upon it—the American nation would be the stronger for it today.

PATRIOTISM WITHOUT HESITATION

If our soldier boys deliberated as long over doing their duty as some of our people at home hesitate over doing theirs, the victory would be doubtful.

It is a sort of financial cowardice to hesitate to put your money in United States Government securities, and to deliberate over the wisdom and patriotism of the investment is to hesitate in supporting our soldiers.

URGING UNFAIR REAPPORTIONMENT AGAIN

The Advertiser doesn't say so, but by implication it might be inferred that it will support the democratic ticket if the democrats will promise to insert a plank in their platform pledging the reapportionment of representation in the legislature on the basis provided by the Organic Act.

The reason this reapportionment has never been made is because it would place absolutely the control of the whole territory in the hands of the Oahu delegation. This is so manifestly unfair, that even though the Organic Act may require such reapportionment it will never be enforced if the people outside of Oahu can prevent it. The outside islands should not be ruled by a bunch of Honolulu politicians. On the other hand there should be no valid objection to having the Organic Act so amended that Honolulu might handle her own local affairs, including public work and taxation, on the same basis as mainland American cities.

HOLD YOUR LIBERTY BONDS

To successfully finance the war it is necessary that owners of Liberty bonds hold their bonds if possible. Where for any good reason it is necessary for them to turn their bonds into cash they should seek the advice of their bankers.

Liberty loan bonds are very desirable investments, and crafty individuals are using various means to secure them from owners not familiar with stock values and like matters. One method is to offer to exchange for Liberty bonds stocks or bonds of doubtful organizations represented as returning a much higher income than the bonds.

There are various other methods used and likely to be used, some of the gold-brick variety and others less crude and probably within the limits of the law. All offers for Liberty bonds except for money and at market value should be scrutinized carefully. The bonds are the safest of investments and have nontaxable and other valuable features.

To hold your Liberty loan bonds, if possible, is patriotic. To consult your bankers before selling them is wise.

Brown Portable Elevators and Filers

Money-making Machines for handling sugar in bags and packed material in warehouses, wharves and railroads.

DISTRIBUTORS:

Catton, Neill & Co., Ltd.

ENGINEERS : : : HONOLULU

SARGENT

Locks Hinges Builders' Hardware

Pleasing to the eye and durable in use. A wide variety of designs appropriate for the house, store or shop.

Lewers & Cooke, Ltd.

LUMBER AND BUILDING MATERIALS

169-177, 86. King Street : : : HONOLULU

Time Table - Kahului Railroad Co.

Daily Passenger Train Schedule (Except Sunday)

The following schedule went into effect June 4th, 1918.

TOWARDS WAILUKU					TOWARDS HAIKU							
9	7	5	3	1	Distance	STATIONS	Distance	2	4	6	8	10
PM	PM	PM	AM	AM	Miles		Miles	AM	AM	PM	PM	PM
5:33	3:30	1:25	8:42	6:35	15.3	A. Wailuku L.	0	6:40	8:50	1:30	3:35	5:40
5:23	3:20	1:15	8:30	6:25		L. " " " " " "		6:50	9:00	1:40	3:45	5:50
						A. Kahului L.	3.3	6:52		1:42	3:47	
5:20	3:17	1:12	8:27	6:22	12.0	L. " " " " " "		7:02		1:52	3:57	
						L. Spreckelville L.	6.9	7:03		1:53	3:58	
5:09	3:05	1:05	8:15	6:10	8.4	L. " " " " " "	9.8	7:15		2:05	4:10	
						L. Paia L.		7:17		2:07	4:12	
4:58	2:55	1:03	8:03	6:00	5.5	L. " " " " " "		7:24		2:14	4:19	
4:52	2:47	1:00	7:57	5:55		L. Hama L.		7:25		2:15	4:20	
4:51	2:46	1:00	7:56	5:55	3.4	A. "knapoko L.	11.9	7:33		2:23	4:28	
4:45	2:40	1:00	7:50	5:50		L. " " " " " "		7:35		2:25	4:30	
4:44	2:39	1:00	7:49	5:49	1.4	A. Pauwela L.	13.9	7:35		2:25	4:30	
4:40	2:35	1:00	7:45	5:45	0	L. Haiku A.	15.3	7:40		2:30	4:35	

PUUNENE DIVISION

TOWARDS PUUNENE			TOWARDS KAHULUI		
3	1	Distance	STATIONS	Distance	Passenger
PM	AM	Miles		Miles	AM
2:50	6:00	0	L. Kahului A.	2.5	6:22
3:00	6:10	2.5	A. Puunene L.	0	6:12

- All trains daily except Sundays.
 - A Special Train (Labor Train) will leave Wailuku daily, except Sundays, at 5:30 a. m., arriving at Kahului at 5:50 a. m., and connecting with the 6:00 a. m. train for Puunene.
 - BAGGAGE RATES: 150 pounds of personal baggage will be carried free of charge on each whole ticket, and 75 pounds on each half ticket, when baggage is in charge of and on the same train as the holder of the ticket. For excess baggage 25 cents per 100 pounds or part thereof will be charged.
- For Ticket Fares and other information see Local Passenger Tariff I. C. C. No. 3, or inquire at any of the Depots.



Medium Boiling Points give EASY "PICK UP"

When the traffic policeman signals "Go!" you want a quick, clean start. You want your engine to respond with instant and well-developed power. It is then that Red Crown gasoline, with its full series of medium boiling points, proves its merit.

Red Crown, the Gasoline of Quality, is a straight-distilled, all-refinery fuel, having the full and unbroken chain of boiling points necessary for steady, dependable power: Low boiling points for easy starting, medium boiling points for quick and smooth acceleration, and high boiling points for power and mileage. Be sure it's Red Crown before you fill.

Look for the Red Crown sign. STANDARD OIL COMPANY (California)

LET US

Clean or Dye

that old suit or frock. It may have a year's wear in it yet. Our service is careful and thorough.

FRENCH LAUNDRY

J. ABADIE, Proprietor. Jno. D. Souza, Paia Agent M. Uyeno, Kahului Agent Jack Linton, Wailuku Agent.

The Henry Waterhouse Trust Co., Ltd.

BUYS AND SELLS REAL ESTATE, STOCKS AND BONDS. WRITES FIRE AND LIFE INSURANCE. NEGOTIATES LOANS AND MORTGAGES. SECURES INVESTMENTS.

A list of High Grade Securities Mailed on Application. CORRESPONDENCE SOLICITED. HONOLULU, HAWAII P. O. BOX 346.

Make Your Butter Go Twice As Far

Two pounds of merged butter from one pound of butter and one pint of milk, is possible with



The Wonder Butter Merger

Simple and specially constructed, it merges butter and milk into a truly delicious and creamy product. Tastes like Country Butter.

one size only, \$1.25

E. O. Hall & Son, Ltd.

The house of dependable merchandise. Honolulu, T. H.

Yuba Tractors

ready for delivery

Ask for demonstration on your own ground

Honolulu Iron Works Co.

HONOLULU, T. H.

On The Other Islands

Hilo, has presented a formal request to the commander of the Hawaiian department for a land battery to keep enemy submarines at a respectful distance from the harbor.

Many of the Honolulu retail business firms have reduced deliveries to customers to once a day.

Governor McCarthy will shortly appoint four members to the Hawaii Promotion Committee, to fill places of members whose appointments have expired. The governor indicates he believes the work of the body should be kept alive, but that it should curtail its expenses.

Charles H. Merriam, for over 14 years registrar of conveyances of the territory, resigned his position last week and makes room for P. H. Burnette, who will take over the office on August 15. It is understood that Merriam will take a position with C. Brewer & Co.

R. J. Buckley, cashier of the First National Bank of Honolulu, has made application to the Red Cross for a commission to go to France or Siberia.

David W. Anderson, formerly of the Trent Trust Company, but now a captain in the British forces in France, has recently received a second decoration for conspicuous bravery in action.

C. G. Owen, manager of the San Francisco office of the Hawaiian Fruit Co., has been offered the management of the company to fill the vacancy caused by the resignation of Norman Watkins, who has accepted the management of the mercantile department of the new American Factors Co.

Up to the first of this week there were 359 members of the W. S. S. Limit Club—persons or firms who have bought the limit amount of War Savings Stamps, or \$1000 worth. The maturity value of the holdings of these amounts to \$359,000.

Miss Lillian Munden, daughter of George Munden, of Pahoa, Puna, Hawaii, died at the home of her parents on August 1, after an illness of some duration. She was born on Kauai, and was well known throughout the islands.

O. B. Merritt has been appointed manager of the territorial market by the new territorial marketing commission. He has been acting manager since the division since Superintendent A. T. Leong entered the military service.

The empty iron box, which was stolen from the Wells Fargo office in Honolulu some days ago, together with \$1500 which it contained, has been discovered near Waiakua, Oahu. No other clue to the robbery has yet come to light.

Miss Eva M. Stevens, for 15 years a resident of Honolulu, and well known in musical and religious circles, died on July 30 in a hospital in San Francisco. She had been away from the islands for 2 years and was on her way home when taken ill on the coast. She was a member of Bishop Restarick's household.

The Hawaiian Pineapple Company's big plant in Honolulu canned 24,000 cases of fruit in one day last week. This is believed to be a record in any line of canning.

M. T. Clegg, superintendent of the Queen's Hospital, is seriously ill with kidney trouble. A consultation of physicians has been held and it is admitted that he is very low.

New Members On Board Of Health
Governor C. J. McCarthy has accepted the resignation of H. F. Wichman, president of H. F. Wichman & Co., as a member of the board of health, and has appointed Dr. Frederick E. Trotter, chief quarantine officer of the United States public health service, to succeed him. The governor has also appointed Gilbert J. Waller, Jr., a member of the board, to succeed his father who resigned recently.

Bonds Of The Fourth Liberty Loan
Washington.—Bonds of the Fourth Liberty Loan are now being turned out by the thousands daily by the Treasury's Bureau of Engraving and Printing. The bonds are similar in form and design to those of the third loan, and space has been left on each bond for insertion of the exact terms of the bonds.

It is believed that a sufficient number of the bonds will be ready to make possible immediate delivery of all bonds of the fourth loan as they are purchased.

Sake Brewers Leave
For San Francisco
H. Tsurushima and I. Otake, the local sake brewers who were planning to remove to San Francisco to engage in sake brewing in California, have departed for the Coast. The latter was accompanied by his wife. Tsurushima said before sailing that if they meet with success in getting a license at the Coast city, the entire sake brewing machinery in the local plant of the Hawaii Seishu Kaisha's brewery at Kakaako will be transferred to San Francisco.

Big Row On In Draft Board
Over Mixup Of Hilo Draftees
Because some 18 men were sent to Honolulu from Hawaii by the Big Island draft board, who were in Class 2, or who had no classification at all, a serious row has developed in the draft office. Capt. H. Gooding Field charges the Hilo draft officials with being lax in their duties, and the men of this division indignantly refute such statement and declare that

they simply carried out to the letter specific instructions issued by Field.

And out of this tangle has developed another mixup caused by Capt. Field's summary dismissal of John C. Bridwell, secretary of the medical advisory draft board, on charge of "disloyalty and untruthfulness." Bridwell threatens to lay the matter before Governor McCarthy for investigation before a military court, and he also hints that he may sue Field for libel. Bridwell is said to have furnished the Honolulu newspapers with an account of the stranding of the Hawaii draftees in Honolulu.

Working Reserve Boys To Give Circus On Kauai
The boys of the Camp Baldwin working reserve, have arranged for a "circus" to be given Saturday evening, August 10. The boys have added considerably to the life of things on Kauai, it is reported, besides having given a good account of themselves as workers on the plantation.

Red Cross Leaders Will Be Out Of Politics This Fall
Because the Red Cross does not favor having any of its workers mixed up in politics, Gerritt P. Wilder, member of the house of representatives, has announced that he will not be a candidate for re-election this fall. It is also stated by friends of Senator A. L. Castle, who is now in Washington in connection with Red Cross work, that he also will be out of the legislative race for the same reason.

Men Not In Draft Come To Join Army
According to Capt. H. Gooding Field, in charge of the selective draft, some 30 men have come to Honolulu from the other islands without proper credentials with the apparent understanding that they were to be inducted into the military service of the United States. In explanation Capt. Field states that the men may have had the idea that they could get into the army at once if they came to Honolulu, or else error have been made by outside local boards. One of these men called at the mayor's office yesterday and was given financial aid.

Local Communications May Not Be Taken Over
Although the President's order for taking over by the postoffice department the telegraph, telephone and radio systems of the country went into effect on August 1st, no word has been received in the islands concerning the matter, and Postmaster MacAdam, of Honolulu states that he does not expect any. He does not believe that the act is intended to include the islands.

Merchants Demand Mullet
The pond mullet men of Oahu have asked to have their product handled through the Territorial Marketing Division, and arrangements have been made to do this. These men believe that the sea fishermen may also elect to have their fish handled in like manner.

Honolulu Firm Lands Big Contract
The Honolulu Iron Works Co., has landed a third million dollar contract for a sugar mill for the Philippines this year. W. G. Hall, of the company, will leave soon to look into this and other matters, including a number of prospective mills to be built in the islands. The last contract secured is from the Ynchausti Co., of a place of the same name.

Want Ships To Move Pineapple Pack
On behalf of the pineapple packers of the islands, James D. Dole, president of the Hawaiian Pineapple Company, interviewed Governor McCarthy last week relative to obtaining ships to carry the season's pack to the mainland. This year's pack will run close to 3,400,000 cases, of which about one-sixth has been shipped. Governor McCarthy will take the matter up with the shipping board.

Planters Will Not Ask For Japanese Laborers
E. Faxson Bishop, chairman of the planters' labor bureau, in commenting upon a suggestion of Fred Makino's paper the Hawaii Hochi, that the present understanding, or "gentlemen's agreement" between the United States and Japan by which Japanese laborers are not permitted to come to this country, be lifted for a time, stated that the sugar planters' organization would probably not ask the government for modification of any laws or regulations in favor of the islands. The same course has been taken with reference to the proposal to have the Chinese exclusion act modified for the benefit of Hawaii and certain parts of the mainland.

Send the home paper every week to YOUR SOLDIER. He will appreciate it as much as anything you can do for him. Besides it is a patriotic service. We will see that the paper reaches him regularly if you give us his address. Subscription to MAUI NEWS, \$2.50 the year; \$1.25, 6 months; 75 cents, 3 months.

N. SANO
CONTRACTOR AND BUILDER
Just received a new stock of Mattresses, poultry netting, paints and oils, furniture, etc. Coffins and General Hardware.
Phone Market Street Walluku

Our Island Contemporaries

Reapportionment

If the Democrats include an honest plank in their territorial platform pledging their legislative candidates to a fair reapportionment law, that party will deserve the applause of all fair-minded men in the islands. The record of the Republican party, which has had the legislative majority through successive terms, is badly marred by the cowardice that majority has shown during the past three sessions whenever the matter of reapportionment was broached.

The Organic Act, from which the legislature derives its powers, specifically states that there shall be a proper reapportionment in the matter of the legislative quota from each island at the first session after each decennial census. Because such reapportionment would add to the number of senators and representatives from Oahu and decrease the number from the other islands proportionately, the representatives of Hawaii, Maui and Kauai have made it known that they might combine to defeat Oahu measures if the Oahu delegation pressed for a carrying out of the terms of the Organic Act, and the few Oahu men willing to accept the challenge have never yet received the backing of all their colleagues.

There has always been a majority ready to trade Oahu's rights away for support for some individual bill. These men have lacked the moral courage to support what is right and legal because it is right, and, as the Republicans have been largely in the majority, the chief blame rests necessarily on that party.

Responsibility dodgers have talked of asking congress to put through reapportionment as an amendment to the Organic Act, and it has always been amusing to note that these dodgers have otherwise been in the forefront of the shouters for "home rule."

It may be that the Democrats mean by their proposed cryptic plank to refer the matter to Washington, in which case they will deserve little credit. Surely we can elect a legislature with men from the other islands broad enough to carry out the law, even if the task be disagreeable, and from Oahu brave enough to press for what is right regardless of threats of retaliation.—Advertiser.

A Poor Year For Link

After his usual professions of indecision—ridiculous to all who know him and his obstinate ambitions for office—L. L. McCandless is again out in the open as a candidate for delegate to Congress. He has a better than-even chance of winning the Democratic nomination, for he heads the Democratic machine and he is the moneybags if not the brains of the Democratic party in Hawaii. It thus looks now as if McCandless and Kaho would contest the finals, though Mr. Kaho may show enough strength in the last few weeks seriously to threaten McCandless' chances for the nomination.

McCandless ought to be a political impossibility, but he isn't. He can always get enough voters to sign his nomination papers, and enough people for a stump speech audience, and enough votes each election day to give him hope for next time. It's no use letting your anger rise over McCandless as a candidate for Congress, because his chances of getting elected are always slim, and they are especially slim this year after his violation of the food commission's order and his own niggardly response to patriotic calls.

This is a year of war, a year when patriotic feeling runs high—the poorest kind of a year for McCandless to ask for the votes of his fellow-men.—Star-Bulletin.

His Candidacy An Insult

The Aloha Aina, a Hawaiian publication, carries a notice announcing the candidacy of L. L. McCandless for the Democratic nomination as Delegate to Congress. Heretofore McCandless has declined to make any definite announcement and it has not been necessary to refer particularly to his supposed ambition. He is now out in the open, however, and we take this first opportunity of stating that his candidacy, in view of his record so far in the war, is an insult to the loyal Americans in the Democratic party.

There are very few places left under the Stars and Stripes where a man who has given so grudgingly from his wealth to patriotic causes, who has so limited his investments in government securities and who has so openly demonstrated his lack of decent patriotism, as he has in the matter of his rice deals, would dare stand up before American voters and ask for their support in a race for congress.

There is something decidedly venal about the Democratic party of these islands if it does not properly resent the insult that McCandless has offered in venturing at this time to be its leader.—Advertiser.

Enter Politics

Dr. Pratt's refusal to accept the subordinate position made for him by Governor McCarthy under the board of health "reorganization" leaves the territory without the services of an able and experienced sanitarian, a situation which is fraught with danger and which at the outset lowers the efficiency of the new health administration to a tremendous degree. Public opinion attaches no blame to Dr. Pratt because he preferred entering the U. S. Public Health Service to taking further chances with politics in the territorial department. After years of faithful and effective work, his enforced retirement from the presidency of the board was disheartening, particularly as the governor's plans to name a new presi-

dent were involved in the pull and haul of party politics almost before the prospective vacancy was known. It is not the fact that a Democrat was named by a Democratic administration as Dr. Pratt's successor which causes justified anxiety as to the future of the health board. It is the fact that Democratic party leaders and workers insisted on putting a finger in the board of health pie, and assumed to themselves the right to advise Governor McCarthy not from the standpoint of department efficiency but from the standpoint of party politics.—Star-Bulletin.

New Way To Build Harbor

A headline in one of the papers reads: "Harbor for Kapaa urged by Governor."

The harbor, if one is made at Kapaa, will have to be dug. There is no natural one there. The proposal is, that the swamp land be dredged out to make a basin for the ships, and then cut a channel through to the open sea. This would make it large and deep enough for the Inter-island steamers to come in and tie up along side the wharf.

Now the question is, will the Territory be justified in spending the sum that will be spent, if a harbor is made at Kapaa? Will it give the residents of Kauai that amount of real service? Of course this would be very fine for the immediate residents of Kapaa and the Kapaa homesteads. Keala plantation would profit from a harbor at this point and would profit greatly. The homestead land is rapidly being taken up in this neighborhood and Kapaa is growing very fast. The prospects are that if a harbor should be built at Kapaa that the country around and near there would be settled more rapidly than it is now. But if a harbor at Kapaa is going to benefit the island generally, then let us have one at that point, and that as quickly as possible.—Garden Island.

Better Suited
"I teach my parrot only short words."
"Do you? I should think parrots better adapted to polysyllables."
Clara O'Neill.

Regal Shoes
ARE MADE OF GENUINE LEATHER. HENCE ARE CHEAPEST AT THE END OF THE LONG RUN.
SPECIAL ATTENTION TO MAIL ORDERS.
Regal Shoe Store
HONOLULU

The Blaisdell
Newest, Coolest Hotel in HAWAII
Fort Street, Honolulu
THE HOME OF THE
Steinway and Starr PIANOS
We have a large stock of
Inside Player Pianos
at fair prices and easy terms.
We take old pianos in exchange.
Thayer Piano Co., Ltd
HONOLULU, HAWAII

MAUI DID WELL

In the WAR SAVINGS STAMP Drive but is still far behind the \$20 per capita allotment for the territory.

But We Have Still Time to Make Good

The sale of these BEST SECURITIES ON EARTH will go right on.

Don't Wait

Deny yourself for your country.
"Extravagance costs blood, the blood of heroes", says Lloyd George.
Help save our boys with your dollars.
You are really helping your self for the future.

War Savings Stamps Pay Better Interest than the Savings Banks.

In The Churches

SALVATION

By Rev. J. Charles Villiers
(Church of the Good Shepherd)

St. Paul in his epistle to the Philippians makes use of these words: "Work out your own salvation with fear and trembling. For it is God that worketh in you both to will and to work His good pleasure." From the context of these words, it would seem as if the great apostle was somewhat fearful that the Philippian Christians might miss the meaning and aim of their church membership, and the divine and human fellowship and co-operation which it involved. In the words just quoted he says that the aim of our communicant relations with the Church is "Salvation" and that the means by which salvation is to be attained is both of God and of ourselves. In view of his statement it might be well for us to ask ourselves what we mean by salvation.

What is "Salvation?" In the course of my ministry I have often heard the most confused and superficial notions expressed in connection with this important word. I have even heard preachers of the Gospel say to their congregations that all a man had to do in order to be saved was "to believe," and the information was not always forthcoming in what or in whom he was to believe. Belief, or faith, is an absolute essential of salvation. But such belief must be something more than intellectual assent to what we know as Christian doctrine, be that belief never so broad and comprehensive. Such belief is not synonymous with salvation. Again I have heard salvation spoken of as if it were merely and only escape from some external way from the punishment of sin. It is not so taught by Jesus Christ, nor is it so taught by his apostles. That a man's circumstances are affected by it may be admitted. But no man knows anything of salvation, in the Christian way, until he knows something of it as an internal, moral quality. Strictly speaking, salvation is an inner, vital principle, and progressive movement, at the core and centre of man's moral being, related to the "here and now", and to all the future of his life,—in time, and to eternity. Thackeray, in his saying: "Sow a thought and you will reap an act, Sow an act and you will reap a habit, Sow a habit and you will reap a character, Sow a character and you will reap a destiny," does not comprehend all there is in salvation, but he most certainly touches on one phase of it.

Everywhere in the New Testament, salvation is spoken of not as an isolated act which occurs once for all in a man's experience, at what we call his "conversion," and which is perfected and completed at that time, but as a progressive, spiritual movement in his moral being, begun at what many people call, his conversion, but at what I prefer to call his "regeneration," and from then on, ever advancing and ever increasing in life, and in all the true purposes of life.

The ground-work or foundation of salvation is the forgiveness of sin, through the redemptive ministry of Jesus Christ. But the forgiveness of sin is only the ground-work or foundation of salvation. Upon it is to be built a superstructure of moral character, strong and beautiful,—a character which will commend itself to Jesus Christ, and win from him, his "well done" plaudit.

Salvation according to the New Testament, as I understand it, begins with that new birth about which our Lord spoke to Nicodemus, and is the development of life in all its powers, consistently with that new birth. In a word, salvation pertains to the life of Christ in the soul, and no man is completely, fully saved until he is fully possessed by the spirit of Christ, and by the aims of Christ for him. To be thus saved he needs to constantly keep in mind what St. Paul, in our text, says of his own personal duty and effort. He needs also to keep in mind what St. Paul says of what God does ever and always doing for him.

No man can save himself by his own unaided efforts. But no man can be saved without his own will and purpose, and effort, to be saved. God's will and purpose for our salvation must be joined to our own. Salvation is God's work, but it is ours too.

To stamp out sin in the soul, to crush the desire to indulge the evil passions and lusts of the flesh is no child's play, yet this and more is comprehended in salvation. Not only does salvation call for the conquest of evil within us, but it demands of us the assimilation of every virtue and grace God places within our reach. "God does not give the flowers and fruits of salvation, but the seeds, the sunshine, and the rain. He does not give houses, nor yet beams, nor squared stones, but trees, rocks, and limestones," and as He gives he says: "Child plant thy garden, build thy house, and I will co-operate with thee thy effort."

"So build we up the being that we are. Thus drinking in the soul of things, We shall be wise perforce, and while inspired By choice, and conscious that the will is free, Unswerving shall we move, as if impelled, By sterner necessity, along the path of order, and of good. Whatever we see, whatever we feel, by agency direct, or indirect, Shall tend to feed and nurse our faculties— Shall fix in calmer seats of moral strength, And raise us to loftier heights of love Divine Our intellectual soul."

Moral Botany
Jimmy: "Say, Papa, what kind of grass is a grass-widow?"
Papa: "Wild cats, my son."
Bretz Page.

AT THE THEATERS

Wallace Reid in
"Rimrock Jones"

"Rimrock Jones" is a story resplendent with the romantic values of early mining days in Arizona. The picture gallery of pioneers are there—flourishing cowboys, hardy miners, immaculate gamblers, dance hall girls, Mexican vaqueros, Chinese restaurateurs—all are there,—working, fighting, playing, gambling, drinking, in their mad rush for gold. It is a vivid cross-section of the days that are gone, at one of its most dramatic points.

Rimrock Jones was a successful prospector who had made his find and lost it on a technicality in court. He has found a second. The fight he makes to keep and develop his second "luck" is full of that coarse grained human interest which characterizes the time, but the girl and her win-win fortune and happiness to go with it.

We liked this. So will you. First because the story rings true. It was written by Dane Coolidge who lived that life and knew what he was writing about. And second because the part of Rimrock Jones is taken by Wallace Reid.

Virginia Pearson, the Beautiful
Fox Star, in "When False
Tongues Speak"—Mystery Drama

Virginia Pearson one of the most popular screen actresses, is seen in "When False Tongues Speak." You will see on the screen a mystery play that will hold your undivided attention. The story of a woman's forgiveness, when she learns that her husband is deceiving her is told. There is food for thought in the drama which is enacted on the screen by a cast of competent screen artists from the Fox stocks.

Miss Pearson has the role of Mary Page Walton, a refined and public spirited woman. She knew that Fred Walton had his faults, but like many other women has done, she married him hoping that he would mend his ways. She tried to overlook his faults but when a friend tells her that her husband is seen frequently with another woman, she rebels. She is advised to resort to the divorce courts, but refuses. To escape the unhappiness of her home life she establishes a settlement house in the tenement district. She meets Eric Mann, a reporter, who is assigned to cover the settlement news, and the two become close friends. Shortly after she had left the house of her husband she returns one night for her belongings

and finds her husband entertaining a party of his friends, among them being the girl for whom he had given up his wife. A murder is committed, and the girl is the victim. How the mystery is solved is told in this most interesting mystery drama, with Virginia Pearson in the leading role.

Mary Pickford in Her Best Work
Before Camera, "Stella Maris"

Mary Pickford's latest picture is titled "Stella Maris," dramatized from the famous novel by William J. Locke. Mr. Locke's novel was adapted for screen presentation by Frances Marion, the clever scenarist, who has adapted many of Little Mary's biggest successes.

"Stella Maris" is pronounced by critics of the best-known motion-picture journals as the best work of Mary Pickford. Mary has the part of a little orphan, very wealthy, living with her uncle and aunt in a big castle by the sea. Stella was afflicted with a peculiar disease which had paralyzed her from childhood and her room was always kept lighted. Because she was kept from the world, Stella developed into an angelic person, very beautiful and pure of heart and mind. John Risco had married wisely, his wife being addicted to drink. He separated from her, but always had given generously toward her support. He could not get a servant to remain with her because of her beastly temper. He adopts Unity loved John Risco and her childish regard for him developed into the deep love of a woman. Mrs. Risco, now confined in prison for attempting Unity's life, hears of her husband's Blake (Mary Pickford, Stella Maris) regard for Stella and tells lies concerning her reputation. Unity hearing of this and knowing that Risco is deeply affected, kills the wife in order to prevent Risco from committing suicide.

Gods Law and Man's
Dr. Claude Drummond is a young surgeon in the English army.

Archa is an East Indian girl of mixed Hindoo and English blood. To save her from the corrupt rites of the temple of Krishna, Dr. Drummond buys her as his wife. Then he falls in love with her.

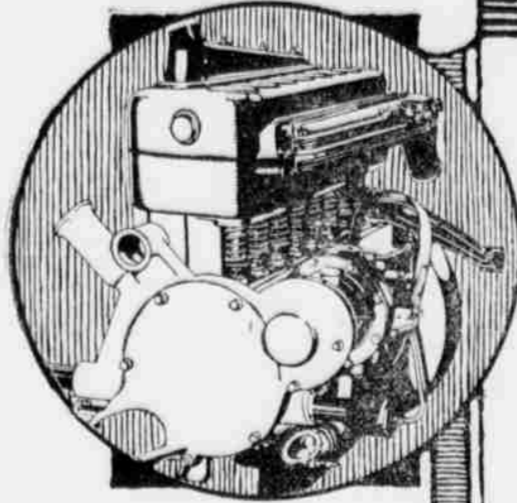
A death in his family calls the surgeon back to England. There he is amazed to learn that his father has chosen a bride for him—a girl who loves another man.

Fate brings the East Indian girl to England. The young surgeon tells his family of her. Believing she would be his happiness, she takes poison. The surgeon saves her life and it is learned that she is the half sister of

the English girl chosen to be his bride. How "the wife by purchase" finds contentment according to the law of God and of man forms a soul-stirring climax to an unusually powerful play.—Advt.

A Fellow Felling
Spectator: "Why do you suppose the judge let that fellow off? It was proven that he had been getting drunk and tearing things up generally."
Court Attendant: "The judge

learned that the prisoner's wife was a suffragette."
"But what had that to do with it?"
"Well, you see, the judge's wife is one, too."
—Clifton B. Dowd.



"Proven Entirely Satisfactory"

Only perfect satisfaction can account for the use of ZEROLENE by the majority of automobile owners.

Leading coast distributors also testify that it is "a most satisfactory motor oil." They know from the records of their service departments—and we know from exhaustive tests—that ZEROLENE, correctly refined from selected California asphalt-base crude, gives perfect lubrication with least carbon deposit.

ZEROLENE is the correct oil for all types of automobile engines. It is the correct oil for your automobile. Get our lubrication chart showing the correct consistency for your car.

At dealers everywhere and Standard Oil Service Stations

STANDARD OIL COMPANY
(California)

ZEROLENE
The Standard Oil for Motor Cars



Correct Lubrication for the "L"-Head Type Engine

Some of the popular automobiles of today are equipped with engines of the "L"-Head type, illustrated here. These engines, like all internal combustion engines, require an oil that maintains its full lubricating qualities at cylinder heat, burns clean in the combustion chambers and goes out with exhaust. ZEROLENE fills these requirements perfectly, because it is correctly refined from selected California asphalt-base crude.

ZEROLENE is made in several consistencies to meet with scientific exactness the lubrication needs of all types of automobile engines. Get our "Correct Lubrication Chart" covering your car. At dealers everywhere and Standard Oil Service Stations.

ATTRACTIONS FOR THIS WEEK AT THE



Saturday, August 10th.
PARAMOUNT PROGRAM
WALLACE REID in
"RIMROCK JONES"
And, "The Hidden Hand"

Sunday, August 11th.
CORRINE GRIFFITH in
"THE MENACE"

Monday, August 12th.
WILLIAM FOX PROGRAM
VIRGINIA PEARSON in
"WHEN FALSE TONGUES SPEAK"

Tuesday, August 13th.
VIOLA DANA in
"GOD'S LAW AND MAN'S"
Benefit to the Late Temple.

Wednesday, August 14th.
MARY PICKFORD in
"STELLA MARIS"
PATHE NEWS

Thursday, August 15th.
BESSIE LOVE in
"THE SAWDUST RING"
Pearl White in "The Fatal Ring"
PATHE NEWS

Kahului Theatre

Saturday, August 10th.
VITAGRAPH PROGRAM
CORRINE GRIFFITH in
"THE MENACE"
And, "One Good Turn", Comedy.

Sunday, August 11th.
NO SHOW.

Monday, August 12th.
WALLACE REID in
"RIMROCK JONES"
And Two Comedies.

Tuesday, August 13th.
WILLIAM FOX PROGRAM

VIRGINIA PEARSON in
"WHEN FALSE TONGUES SPEAK"

Wednesday, August 14th.
VIOLA DANA in
"GOD'S LAW AND MAN'S"
PATHE NEWS

Thursday, August 15th.
MARY PICKFORD in
"STELLA MARIS"
PATHE NEWS

Friday, August 16th.
BESSIE LOVE in
"THE SAWDUST RING"

UNUSUAL VALUE FOR THE MONEY:

Men's Tan Army Bluchers \$5.00

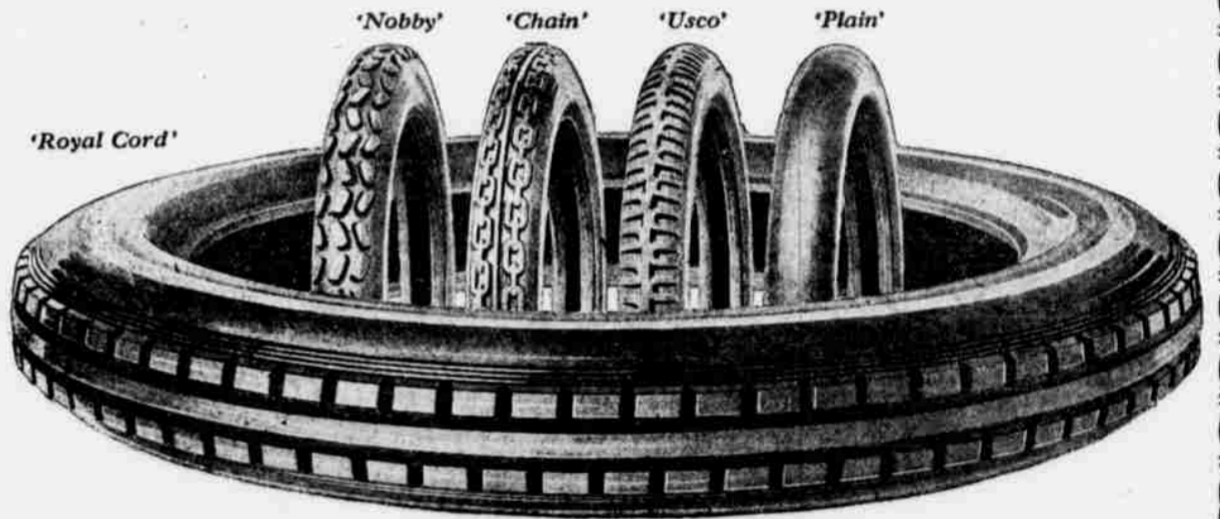
You'll not find a better footwear bargain anywhere. We doubt whether this low price can continue after the present stock is gone.

WE CAN FIT YOU BY MAIL.

Manufacturers' Shoe Co., Ltd.
HONOLULU.

Buy W. S. S.

United States Tires Are Good Tires



A TIRE FOR EVERY ROAD

They wear and wear and continue to wear until, after full and plus-full mileage is obtained, they wear out, not in parts, but as a whole.

Maui Dry Goods & Grocery Co., Ltd.
Distributor for the Island of Maui.

The von Hamm Young Co., Ltd.
HONOLULU.

Latest News By Wireless

PLANS FOR SIBERIAN CAMPAIGN UNDER WAY
 Washington, August 7—Gen. March has announced that General Graves, commander of Camp Fremont, will command American troops going to Siberia. Two regiment of regulars now in the Philippines will form the nucleus and others will follow. The joint commander of allied forces has not yet been selected.

BIG SMASH OF ALLIES SET FOR NEXT SPRING
 Washington, August 8—Gen. March told senate military committee that with American army of 5 million is needed. He said Foch was preparing to hurl against the Germans the entire united military strength of the Allies in order to bring a victorious conclusion in the shortest possible time. Next spring he said will see the terrific conflict in full swing, with Foch's allied army striking with all its power.

MANY WAITING ACCOMMODATIONS TO HAWAII
 San Francisco, August 7—Steamship report nearly 800 waiting transportation to Hawaii including teachers who are worrying as to effect their tardiness will have on their jobs.

RECLASSIFICATION OF DRAFTEES ORDERED
 Honolulu, August 6—Hawaii's quota for draft requires about 1100 to replace men rejected for physical reasons. Field says in a circular to local boards directing reclassification, that it is believed many men now in deferred classes should be in Class 1. Attention is called to the necessity of investigating slacker marriages. The public is asked to report known cases.

DR. SCHURMANN'S LOYALTY BEING INVESTIGATED
 Charges involving the loyalty of Dr. Schurmann, whose wife stole his moustache for the Ad Club, is now being investigated by Washington department of justice. Federal authorities also admit that Wolters of Kauai is being investigated. Both may lose their citizenship.

HONOLULU WOMAN INHERITS QUARTER MILLION
 Mrs. John Waterhouse, wife of Alexander & Baldwin secretary, has inherited a quarter of a million dollars from her mother, Mrs. Martha Alexander, who died in California recently, leaving to her four children one million dollars.

GOVERNOR TO KEEP OUT OF DELEGATESHIP FIGHT
 McCarthy says he knows who he will vote for but he won't support either McCandless or Raymond in the primaries because it is a fight within the party and such action would be improper.

U-BOAT SINKS AMERICAN FISHING BOATS
 Washington, August 6—A German submarine on Saturday sank 3 American fishing schooners off Nova Scotia. Crews landed. One submarine commander boasted that he had sunk other fishing vessels.

GERMAN SOLDIERS LOSING MORALE
 London, August 6—Influx of Americans into war zone is greatly hastening falling of German morale, distrust in enemy's ranks, and has discredited Ludendorff's statements. Troops are getting conscious that truths are being concealed.

CONTRACT WITH HOMESTEADERS AGREED UPON
 Honolulu, August 5—Plantations and Attorney General Irwin agree on form of contract for mills buying homesteads cane, on basis of the Olaa contract. Interest rate is changed from 8 to 7 percent, 10¢ a bag is price fixed for seed.

EIGHT NEW STEAMERS FOR ISLANDS
 The San Francisco Examiner says that the shipping board has allotted to the Matson Co. eight new wooden steamers for sugar planters.

MANY FILIPINOS INELIGIBLE TO DRAFT
 The labor bureau has called Field's attention to the fact that Filipinos arriving here after July 31st, 1917, who did not apply for citizenship, are exempt from the draft. All other aliens are the same way. It is believed that about 1500 of draft age are effected.

MILLS GETS REGULAR JOB
 Harry T. Mills appointed to succeed Buffandeau as clerk of supervisors.

SHIPBUILDING MAKES FINE PROGRESS
 Washington, August 5—President Wilson and wife witnessed the first launching from Hog Island shipyard belonging to government. It is the largest in the world and will build 180 ships. Mrs. Wilson christened the vessel and 50,000 cheered. Chairman Hurley of the shipping board said we are today producing more tonnage than the submarines are sinking. Here after our task is to replace tonnage already lost.

CASUALTY LIST GROWS FAST
 Washington, August 5—Total casualties 15,196. Army, 13,164; Marines, 2,032. Army had 2,373, including 291 lost at sea, killed in action; 907, died of wounds; 1,514, died of disease; 615, died of other causes. Wounded number 7,044; missing and prisoners, 710. Marines losses, 734, dead; 1,220, wounded; 5, prisoners; 73 missing. Total casualties for week ending August 4th, 14,030.

PERSHING SAYS VICTORY AT MARNE WAS COMPLETE
 Pershing's communique of August 3rd says—"Full fruits of the victory in the counter offensive begun by French and Americans on July 18th, were reached today, where enemy, who met their second defeat on the Marne, were driven in confusion beyond the line of the Vesle. Enemy suffering heaviest losses and are incapable of stemming the onslaught. Our troops are fighting Liberty's battle side by side with British and French war veterans."

RAILROAD LABORERS STRIKE
 Honolulu, August 5—Two hundred Japanese freight handlers and section workers on the Oahu Railroad struck for a 30 percent increase of wages from \$2 and \$1.75. Demand has been refused. A few returned to work but others were fired and and new men are being employed to take their places.

FIRST ILLICIT STILL SINCE PROHIBITION IS RAIDED
 Internal revenue officers and police raided first moonshine still in an isolated spot in Kipapa gulch and arrested 2 Japanese.

EVERY CLASS 1 MAN CALLED
 Honolulu, August 3—Capt. Field says that every Class 1 man in Hawaii will be called under reclassification. It may be necessary to draw from Class 2.

MCCANDLESS ADMITS HE'S IN RING
 McCandless today announced his candidacy for democratic nomination for delegate.

WILL RE-EXAMINE REJECTED CLASS 1 MEN
 Honolulu, August 3—Capt. Field has instructed all draft boards to re-classify deferred men with view recruiting Class 1 men deferred because of physical conditions. These are to be re-examined. Between six and seven hundred men are needed because of the large number of rejections.

ARMY NEEDS MANY NURSES
 Washington, August 3—General Gorgas has issued an urgent call for the Red Cross to enroll 1000 nurses each week for two months with American army lighting in France. Need is imperative.

WILL FURNISH OUR OWN INSTRUCTORS NOW
 Washington, August 3—The war department announced that American troops in France reached sufficient proficiency to furnish instructors for new units being organized in the United States.

SECRETARY BAKER ANNOUNCED THAT HE WOULD RECOMMEND TO CONGRESS TO EXTEND DRAFT AGES FROM 18 TO 45 INCLUSIVE.

PUBLIC UTILITIES HERE TO BE EXAMINED
 Honolulu, August 2—Public Utilities Commissioners Carden, Gignoux and Thomas leave tomorrow for a two weeks survey of corporations on Hawaii and Maui.

TERRITORIAL FAIR MADE A PROFIT
 The Territorial Fair cleared almost \$5000 in figures made public today. The receipts were over \$52,600 with expenses of over \$47,700. Reports show 2293 were registered in selective draft. Some plantations are not yet reported.

RED CROSS NOTES

Contributions To Maui Branch Of The American Red Cross, For The Month Of July, 1918.

Wailuku Sugar Co., Tobacco Fund (Fund closed, turned over to Red Cross)	\$152.91
Mrs. F. F. Baldwin, Junior Society Fund	114.32
Mrs. F. F. Baldwin, Collection at 4th July Polo Game ..	160.49
Mrs. F. R. Missner, Circular Parties	14.00
Mrs. Geo. S. Aiken, Sale of James, Jellies, etc. at Fair.	7.00
The Choral Club, Cash	100.00
Maui Dry Goods & Grocery Co., Ltd., Additional	50.00
Mrs. Cora E. Gossin, Cash ..	5.00
Mrs. Wm. Chillingworth, Bridge Club	36.19
G. L. Keeney for Max Weber, Cash	1.00
G. L. Keeney for Sato, Cash ..	2.00
G. L. Keeney for Lahainaluna Japanese Camp	2.80
Mrs. W. L. Decoto, Benefit Jo-do Mission	100.25
Mrs. W. L. Decoto, Fines of Fishermen	100.00
E. Brecht for Mrs. Towa Kagawa, Cash	1.00
	\$846.96

This list does not take in the regular quarterly dues.

If any members of the American Red Cross who have not received their magazines will kindly notify Mrs. James Thomson, at the Red Cross Rooms at Kahului the matter will be looked up.

To Maui Red Cross Knitters

To save any further confusion or misunderstanding regarding Red Cross knitting will all Maui knitters please communicate with the head of the knitting unit in their district, who has been supplied with the very latest printed directions from Washington, dated July 31, 1918.

Miss Castle writes on August 5th, to Mrs. H. A. Baldwin:

"I am as sorry as you are about the changes but they must come, and we must accept them as having been passed upon and approved by Washington, and others in consultation with them from 'Overseas'."

"Plead with the women not to be discouraged over their knitting. It is of vital importance and we must have it continuously."

Weekly Report Of Maui County Agent

Wailuku
 Produce gardens throughout this section looking very well. Much improvement seen in care of places and in all the work.

M. A. Co.'s Farm
 New slaughter house being tried out. Pig feeding rations seem to be working out well. No imported feeds at all used for this work. Old plantation stock butchered and fed to pigs with other produce.

Haiku
 General conditions very good now. Pigeon peas are plentiful and available to any one who wishes to purchase.

Paia Camps
 Camp gardens satisfactory. Dry weather proves no great hindrance to their gardening. Irrigation water is available at all times.

Lahaina
 Dry weather affecting private gardens but everything generally going along nicely.

Difficulties with the working the rules into effect are fast being overcome and very few complaints coming in.

Democratic Platform Very Brief Document

The platform committee of the democratic party met and finally adopted a platform for the party, last Monday night, that is the briefest on record. The committee consisted of Judge E. M. Watson, chairman of the territorial central committee; Wm. McClellan, J. J. Fern, E. K. Simmons, and L. L. McCandless.

The platform is as follows:

PLATFORM
 Woodrow Wilson and Win the War. Practical Patriotism; Prohibition by Plebiscite, and Adequate Appropriation for Promotion Work.

Woman Suffrage by Direct Legislation. Support of Public Schools, including the College of Hawaii, and Sanitation.

Homesteading, with Liberal Recognition of the Claims of Soldiers and Sailors; Suffrage for all Voters of the Territory of Hawaii Engaged in the Active Military or Naval Service of the United States.

Reapportionment, Good Roads, Reclamation and Rural Credits with Federal Aid for the Same.

Consolidation of Territorial and County and City and County Elections; Condemnation of Private Fishing Rights, and Economical Administration of Public Business.

Send the home paper every week to YOUR SOLDIER. He will appreciate it as much as anything you can do for him. Besides it is a patriotic service. We will see that the paper reaches him regularly if you give us his address. Subscription to MAUI NEWS, \$2.50 the year; \$1.25, 6 months; 75 cents, 3 months.

BY AUTHORITY

IN THE CIRCUIT COURT OF THE SECOND CIRCUIT, TERRITORY OF HAWAII.

At Chambers. In Equity.

C. D. LUFKIN, Trustee, Petitioner, vs. GRAND HOTEL COMPANY, Limited, Respondent.

Commissioner's Notice Of Sale

NOTICE IS HEREBY GIVEN that, pursuant to a Decree rendered by the Honorable W. S. Edings, Judge of the Circuit Court, Second Circuit, Territory of Hawaii, on the 7th day of June, 1917, in the above entitled action, where in the Petitioner seeks to foreclose that certain indenture of mortgage made and entered into by the Respondent to the Petitioner under date the 28th day of November, 1916, and in compliance with an order made under date the 24th day of July, 1918 by the Hon. L. L. Burr, then Judge of the Circuit Court of the Second Circuit for the Territory of Hawaii, and in which action, and by the said Decree rendered therein the undersigned was appointed Commissioner of the Court in the foreclosure and sale of the property covered by the said mortgage, I will, on Saturday, the 10th day of August, A. D. 1918, at 12 o'clock noon of said day, at the front door of the Court House in Wailuku, County of Maui, Territory of Hawaii, sell at public auction, to the highest and best bidder therefor, the property described in and covered by the said mortgage sought to be foreclosed, both real and personal, to-wit:

All of that certain piece of parcel of land in the III of Owa, situate on the southerly side of Main Street and on the makai side of Church Street, in the Town of Wailuku, County of Maui, Territory of Hawaii, being a portion of Apana 1, L. C. A. 1742 to Z. Kaauwai and described by metes and bounds as follows:

Beginning at one cut on the South side of sidewalk with an iron pipe driven, on the west angle of this lot, and running by true azimuths described as follows:

1. 345 13' 315.0 feet along Church extension along picket fence to 3/4" galvanized pipe at R. W. Post, being the South angle of this lot;
2. Thence 123.5 feet along Wells Street, along fence to center of R. W. Post at corner of fence;
3. 165 13' 316.0 feet along Wailuku Sugar Company along fence to sidewalk at 3/4" galvanized pipe;
4. 74 20' 123.5 feet along Main Kahului road, along sidewalk to point of beginning, containing 38,964 square feet.

Also all furniture, fixtures, automobiles, horses, carriages, hotel equipment, merchandise, books, accounts due and to become due, contracts, benefits, chattels and effects of every character and nature whatsoever, at present acquired, as well as all such property as may from time to time hereafter be acquired, located and connected and having to do with, and forming a part of the Grand Hotel Company, Limited.

Said sale to be in all ways subject to approval and confirmation by the Court.

Dated at Wailuku, Maui, Territory of Hawaii, this 24th day of July, 1918. E. R. BEVINS, Commissioner.

(July 26, Aug. 2, 9.)

BY AUTHORITY

IN THE CIRCUIT COURT OF THE SECOND CIRCUIT, TERRITORY OF HAWAII.

At Chambers. In Probate.

In the Matter of the Estate of Archibald Grant MacLaren, Late of Paunene, Maui, Deceased.

Petition of John MacLaren for Appointment as Administrator.

It is ordered that Thursday the 5th day of September, 1918, at 10 o'clock A. M. be and the same is hereby appointed for hearing said petition in the Court Room of this Court at Wailuku, Maui, Territory of Hawaii.

Dated the 2nd day of August, 1918.

THE COURT

By HENRY C. MOSSMAN, Clerk.

E. R. BEVINS, Attorney for Petitioner.

(Aug. 2, 9, 16, 23.)

NOTICE

Notice is hereby given that I have bought out the interest of Lam Chew (Sunny Jim) in the Sam Wo laundry and that he has no further interest in the business.

KWONG SUNG. (July 26, Aug. 2, 9.)

GRAND HOTEL


WAILUKU, MAUI, T. H.
 Reasonable Rates
 Dinner parties given special attention.

Operates a vacuum cleaner—the modern and sanitary way to sweep.



The Hawaiian Electric Co., Ltd. Distributors Honolulu.


LODGE MAUI, NO. 984, A. F. & A. M.



Stated meetings will be held at Masonic Hall, Kahului, on the first Saturday night of each month at 7:30 P. M. Visiting brethren are cordially invited to attend.

F. W. PEACOCK, R. W. M. W. A. CLARK, Secretary.

ALOHA LODGE NO. 3 KNIGHTS OF PYTHIAS.



Regular meetings will be held at the Knights of Pythias Hall, Wailuku, on the second and fourth Friday of each month. All visiting members are cordially invited to attend.

H. S. PERRY, C. C. J. C. BLAIR, K. R. & S.

KODAK

finishing

—the better kind.

Send your films and negatives to

Honolulu Photo Supply Company
 P. O. Box 769 : Honolulu.

K. MACHIDA Drug Store

ICE CREAM
 The Best in Town
 And a Up-To-Date Soda Fountain
 Give Us a Trial
 MARKET STREET. : WAILUKU.

Pound Paper for summer SALES

Hurd's Royal Cambrie Note
 60¢ per lb.

Envelopes to match
 25¢ per pkg.

Special attention to mail orders.

HAWAIIAN NEWS CO., LTD.
 Young Hotel Bldg. Honolulu.

COURT VALLEY ISLAND NO. 9239 ANCIENT ORDER FORESTERS

Regular meetings will be held at Moose Hall, Kahului, on the first and third Thursday of each month, at 7:30 P. M. All visiting members are cordially invited to attend.

CARL F. N. ROSE, Financial Secretary.

BOHN SYPHON



Seamless, Porcelain-Lined REFRIGERATOR
 With Rounded Inside Corners

are so constructed that the most delicate tastement is retained in food kept in their clean, wholesome, sanitary food chambers.

Ice Economy, Food Cleanliness, Preservation of Purity, Scientific Refrigeration, are all combined in the Bohn Syphon, sold on easy payments.

W. W. DIMOND & COMPANY, LTD. "The House of Housewares" HONOLULU.

MAUI BOOKSTORE

BOOKS, STATIONERY NEWS DEALERS

Hawaiian Views and Post Cards
 Souvenir Jewelry
 Kodaks and Films
 Koa Novelties
 Fine Candles
 Ukuleles

WAILUKU, MAUI

COOK WITH STAR OIL

Ready to Cook in a Jiffy

Just the touch of a match and your New Perfection Oil Cook Stove is ready for cooking. No waiting for the fire to burn up.

Easier to operate than a coal or wood stove: No smoke or odor; no dust or dirt. Bakes, broils, roasts, toasts,—all the year round. All the convenience of gas. And a cool kitchen in summer.

In 1, 2, 3 and 4 burner sizes, with or without ovens or cabinets. Ask your dealer today.

STANDARD OIL COMPANY (California)

NEW PERFECTION OIL COOK STOVE

These Stoves For Sale by
 KAHULUI STORE, KAHULUI.
 PAIA STORE, PAIA.
 MAUI DRY GOODS & GROCERY CO., WAILUKU.



Trusty Must Answer Charge Of Burglary

Sam Makaena, a trusty in the Wailuku jail, was given a hearing before Judge McKay, in the district court yesterday morning, and held for the October term of court on charge of burglary. Makaena is alleged to have opened the safe in the county clerk's office on July 19, and to have stolen \$50 from it.

Lost On Haleakala Four Nearly Perish

(Continued from Page One.)

place, understood from them that fog in the crater caused them to lose their way on Monday, and that they had finally followed a trail, which had led them into Keanae gap. They could see the ocean, and had been tempted to make the trip straight through the jungle. How they managed to get down the many precipices on the rugged slope they have not yet told, but they mentioned having to cut their way with a small knife through dense places in the forest.

Alarm Allayed

Manager Field was uneasy from the start of the trip, and telephoned repeatedly to Kaupo after sufficient time had elapsed for the party to have reached there, and he became much alarmed when they did not arrive. However his fears were allayed when he learned that L. von Tempisky was in the crater with a party, and it was felt certain that the strangers, if they had met with any mishap had been found by them. As it seems, however, neither party saw the other.

Others Have Been Lost

A good many persons have been lost in Haleakala, including some kamaainas of experience in mountaineering. Among these was the late Herbert M. Ayres, who died recently in Nevada. Ayres had a harrowing experience, finally reaching the outside world at Ulupalakua with his boots cut to pieces on the sharp lava and his feet in terrible condition.

A stranger in the Islands emerged about 2 years ago near Kaupakaha, with a tale of utmost suffering from almost a week spent in the jungle when he tried to escape from the crater by a short cut to the sea.

WILL MAUI LET MEXICANS BEAT US THIS WAY?

El Paso, Texas, July 20—(Associated Press)—San Jose, a little valley settlement on the Mexican border is as patriotic as is Dupont Circle, Washington, D. C. This was demonstrated during the war savings stamp drive. It was having and peach picking time but on the last day of the drive field hands and their overseers laid down their cythres and tramped a mile to the school house to listen an hour to the speeches in Spanish and English explaining the war saving stamp system. Only five native Americans attended this meeting. Of the 109 others, all spoke Spanish. Many had been with Villa or Huerta in Mexico. When pledges were called for each of the 111 present signed cards, many Mexicans making their marks. San Jose's quota was \$2,500. The pledges totaled \$3,500. Many native farmers paid cash or pledged their hay or fruit crops in payment for stamps. San Jose went over the top and over-subscribed her quota by \$1,000.

FORMER MOLOKAI DOCTOR AFTER BIG HEALTH JOB

Dr. H. Homer Hayes, formerly a physician on Molokai, where he will be remembered, has filed his application for the position of chief sanitarian of the board of health, and is said to have the backing of the Honolulu democrats. The job is one created by the special session of the legislature at the instance of Governor McCarthy, and intended as a place for Dr. J. S. B. Pratt, when he should be removed as president of the board. Pratt's joining the U. S. Public Health service has left the place unfilled. A. V. Gear is also said to be groomed for the place of secretary of the board, now filled by Kirk B. Porter.

SMALL BOY GETS BROKEN NOSE AT BASEBALL GAME

During the ball game last Sunday, Walter Garcia, the 4-year old son of Mr. and Mrs. Antonio Garcia, was struck in the face by a swift foul liner hit by H. Inada, and his nose broken. The boy was standing near the score board when the accident happened. The little fellow was rushed to the hospital as quickly as possible where his injuries were dressed.

MARRIAGE LICENSES

August 6—Ah Fook, 39; and Ah Sim, 16; both of Wailuku. Consent of father of female, Ah Yong. Ceremony by Rev. L. B. Kaunohiwa. August 4—Francisco Estrella, 29, Filipino, and Mary Gouveia, 18, Portuguese, both of Haiku. Ceremony by Father Justin.

Personal Mention

M. K. Watkins, of Paia, was a business visitor to Honolulu last week. Mrs. J. E. Gannon, and young son, of Lahaina, are visitors in Honolulu this week.

E. E. Boyum, of the Maui Agricultural Co., went to Honolulu last Friday night by the Mauna Kea.

C. D. Luffkin, of the Bank of Maui, was a visitor in Honolulu the first of the week.

Judge L. L. Burr, of the 2nd circuit court, was a business visitor to Honolulu last Saturday.

Miss Gladys Meinecke, of Paia, expects to leave soon for Los Angeles to resume her studies.

Mrs. von Tempisky and Mrs. Zabriskie, of Makawao, returned this week from Honolulu where they spent a short time visiting relatives.

Mr. and Mrs. E. R. Bevins and family returned to Wailuku on Wednesday from Kula where they spent a pleasant vacation of several weeks.

F. P. Rosecrans, manager of Paia Store, returned last Saturday from Honolulu where he spent a few days on business.

D. H. Case was a visitor to Honolulu last Saturday, being called to the capital for a conference of the liquor license boards.

Miss Agnes Judd and Miss Newcome, of Honolulu, have taken Miss Isa Lindsay's house at Haiku for the month of August.

Miss Lena Hay, formerly a resident of Maui, has returned from Honolulu to make her home with Mrs. Dowsett, of Makawao.

Mrs. A. C. Bowdish and Miss Holliday are guests for a few days this week at the nurses' home of the Kula Sanitarium.

Miss Muriel V. Duncan returned on Tuesday from Honolulu where she has been visiting friends for the past month.

Mrs. W. D. Westervelt, of Honolulu, who has been visiting on Maui for several weeks, expects to return home next week.

Miss Muriel Duncan of Maui has been the house-guest of Lieut. Col. and Mrs. Bush for the past three weeks at their quarters in the 25th Infantry cantonment.—Star-Bulletin.

Mrs. S. D. Weisbaum and daughter arrived last Saturday from Honolulu to join Dr. Weisbaum who has recently located in Wailuku. They are living at the Wailuku Hotel.

Geo. K. Trimble, who has been engineer of the Hilo Electric Light Co. for the past 5 years, has resigned his position and returned to his home in Wailuku last week.

Ferdinand Schneck, a Honolulu attorney, arrived here on Wednesday on business connected with the sale of the Grand Hotel, set for tomorrow at noon.

Mr. and Mrs. C. A. MacDonald of Lahaina, are spending a week or two at Hmakuapoko. Mr. MacDonald has undergone a slight surgical operation in the Paia hospital.

Paul H. Townsley, of the Wailuku Sugar Co., who was recently called for service from the officers' reserve corps, left last Saturday for Honolulu to report for duty.

A very pleasant picnic party to Ulupalakua on Tuesday was composed of Mr. and Mrs. A. C. Bowdish, Mrs. W. H. J. Cooper, Mrs. S. Das, Miss Cecil Holliday, Miss Edna Hill, Miss Wobser and Miss Imhoff.

Mr. and Mrs. V. J. Burgess, who have been living at the Maui Hotel for the past several weeks, left on Wednesday for their home in Honolulu. Mr. Burgess just finished installing the new ice plant for the Wailuku Soda & Ice Works, and another one for the Honolua Ranch.

John Garcia, for a number of years the manager of the Iao Stables Co., Ltd., will leave this evening for Honolulu where he expects to make his home. As stated several weeks ago, Mr. Garcia has severed his connection with the company at the time of the consolidation of the Iao Stables with a number of other firms into the Maui Garage & Transportation Co., Ltd. Mr. Garcia expects to send for his family shortly when he has established himself in the city.

DR. MISSNER HURT

Doctor Missner of the Ambulance Company is attending to his duties on crutches as a result of a painful injury to his ankle. The ambulance company has been camping near Seward valley and has been taking advantage of the terrain to practise with its litter bearers. It was during a demonstration for Col. Robert G. Ebert on Wednesday afternoon that Dr. Missner fell, sustaining the injury to his ankle.—Star-Bulletin.

Wheat is still short and sugar is shorter but nobody is worried—these hammer blows only harden American mettle.

With a population of 40,000,000 France is mothering more than 2,000,000 refugees.

Shall we give our best in men and not in food?—U. S. Food Admin.

Saw wood while the sun shines.

Send the home paper every week to YOUR SOLDIER. He will appreciate it as much as anything you can do for him. Besides it is a patriotic service. We will see that the paper reaches him regularly if you give us his address. Subscription to MAUI NEWS, \$2.50 the year; \$1.25, 6 months; 75 cents, 3 months.

Latest News By Wireless

(Continued from Page One.)

GENERAL SHAKE-UP IN DRAFT BOARD INDICATED

Honolulu, August 8—An official is reported to be coming from Washington to help Hawaiian board reclassify registrants. Gen Crowder is authorized to appoint a provost marshal for territory who might also supervise the draft. Colonel Wayne might get the place, which possibly might mean that Field will be out because he is physically unfit for service abroad.

A. W. T. Bottomley has resigned from reserve and his commission has been accepted.

ALLIES ADVANCE IN PICARDY SECTOR

British Army Headquarters, August 8—French and British attacked between Albert and Montdidier over a front of 28 miles and advanced to a depth of about three miles. South of Somme took number of villages. Germans seemed to have expected the offensive and have retreated locally in three areas in past fortnight.

HILO DRAFTEE GETS STIFF DOSE

Honolulu, August 8—A court marshal has sentenced F. J. Catton of Hilo to 6 months at hard labor at Fort Shafter. He also forfeits two-thirds of his pay, and will then be inducted into the army. He was convicted of insubordination.

FURTHER RETREAT OF HUNS EXPECTED

Washington, August 8—The new German positions along the Avre partially protect them.

French and Americans successfully crossed the Vesle along a five mile front between Braisne and Fismes. Artillery bombardment was intense between Soissons and Reims, but it is believed that Germans are withdrawing and preparing for further evacuation.

MANY PRISONERS TAKEN ON THE SOMME

British Army Headquarters, August 8—North of the Somme two German counters were broken, and the British captured so many prisoners that they experienced difficulty in handling them.

BOLSHEVIKI SAID TO HAVE DECLARED WAR ON ENGLAND

Stockholm, August 8—A Berlin paper prints a confirmed report that Russia has declared state of war with England.

HARD FIGHTING ON SOMME SECTOR

French Army Headquarters, August 8—Around Moreuil and Morisel German resistance has been terrific, but Allies have gained their objectives.

W. M. ALEXANDER, PRES., JOHN GUILD MGR. OF A & B Honolulu, August 8—Alexander & Baldwin directors appointed W. M. Alexander, president; H. A. Baldwin, 1st vice-president; John Waterhouse, 2nd vice-president and manager; C. R. Hemenway, treasurer and assistant manager; F. F. Baldwin and John Guild directors.

ALLIES STARTING NEW OFFENSIVE

Paris, August 8—French and British began an offensive early this morning in the region southeast of Amiens, which is developing favorably.

London, August 8—Gen. Haig reports an offensive launched southeast of Amiens over a wide front. British fourth and French first armies engaged.

HAWAIIAN SWIMMERS ALL RIGHT

New York, August 8—Member of the Hawaiian swimming team have been absolved from the charges of padding their expense account by the Athletic Union, and highly praised men for arousing great interest in sports.

Duke has established another world record for 125 yards; time 1:12 3/4.

ISLANDS TO HAVE PLENTY OF SHIPS

Honolulu, August 7—Assistant Secretary of Interior Bradley cabled McCarthy shipping board would supply tonnage sufficient to move Hawaiian sugar and pineapples.

British Army Headquarters, August 8—British are believed to have captured towns of Marcuil la Motte and St. Enterre.

CASUALTY REPORTS

Washington, August 8—Army: 131, killed in action; 16, died of wounds; 6, died from other causes; 84, wounded. Marines: 2, killed in action; 1, died of wounds; 95, wounded; 10, missing.

AMERICANS FIGHTING HARD

American Army Headquarters on Vesle, August 8—More Americans crossed the Vesle east and west of Fismes late yesterday.

Germans conquered west Fismes but Americans shattered the attack and held ground.

Gen. Graves is a cousin of Col. Merriam, chief of staff of the Hawaiian department.

OUR TROOPS HOLD LINE AFTER TERRIBLE BATTLE

American Army Headquarters, August 7—Under an inferno of fire from machine guns and gas, Americans forced the Vesle crossing last night and early this morning and are now lying in entrenched battle field. Positions at left taken after a terrible battle which has straightened the line between Bazoches and Fismes.

GERMANS GIVE WAY UNDER FURIOUS ASSAULTS

Paris, August 7—Americans and French crossed the Vesle east Braisne and held positions despite furious counters. North of Reims the French pushed back the Germans more than 400 yards.

FRENCH GENERAL PRAISES YANKEE TROOPS

French Army Headquarters, August 7—General Majnir, commanding the sector south of Soissons has issued an order thanking the Americans for their brilliant participation in the offensive saying American trophies of victory were 91 big guns and 7200 prisoners; also a large amount of stores and ten kilometers of reconquered territory.

CASUALTY REPORTS

Washington, August 7—Two army lists: 36, killed in action; 1, died of wounds; 22, died otherwise; 76, wounded; 8, missing.

FRENCH ARE MUCH ENCOURAGED

New York, August 7—Marcel Knecht, French commissioner, said, 1,300,000 French has been killed during the war and the same number wounded. The arrival of Americans has wonderfully cheered the French.

RAILROAD LABORERS' STRIKE OVER

Railroad strike is over. Two hundred section men returned to work. New stevedores are working, and strikers were discharged.

SUBMARINE VERY ACTIVE OFF CANADA

A Canadian Port, August 7—Japanese steamer Tokuyama sunk. 85 were rescued. Was unwarmed.

PLANS ARMY OF 5 MILLIONS

Washington, August 7—Discussing man-power bill, Gen. March said, war department plans an army of 5,000,000 soon as possible.

LLOYD GEORGE MAKES OPTIMISTIC SPEECH

London, August 7—Lloyd George told house of commons that the danger is not over but that the German general staff officer who would predict victory now would have to be a very sanguine man. He declared that the grand offensive was ordered because submarines had tailed. One hundred and fifty submarines have been destroyed and more than half of them during the last year.

ALLIES DEFEAT HUNS ALONG VESLE

French Front, August 7—Allies threw forces across the Vesle defeating German counter. French-American forces gained a foothold on the northern bank east Braisne last night. Enemy's artillery counter failed to dislodge them.

Pertinent Paragraphs

Aloha Lodge No. 3, Knights of Pythias will hold a social session this evening at Castle Hall.

Dr. F. Burt yesterday tendered his resignation to the board of supervisors as county physician of Lahaina.

The monthly meeting of the chamber of commerce, which would ordinarily have been held yesterday, was postponed until next Thursday.

Judge Burr yesterday appointed Moses Kaunohiwa administrator of the estate of C. R. Lindsay, deceased, fixing bond at \$100.

Judge Burr this week granted licenses to practice law in the district courts of the territory to E. K. Devauchelle, of Molokai; H. E. Palakiki, of Hana; and J. N. K. Keola, of Wailuku.

The board of supervisors yesterday granted the Mutual Telephone Company permission to lay certain telephone conduits under ground on Church Street.

The supervisors have approved the appointment of Jacintho Ambrose as policeman for Kihel, at salary of \$20 per month. He succeeds Manuel Ah Sue, resigned.

W. O. Alken has been recommended by the board of supervisors to the Governor as a successor to himself on the Promotion Committee, his term having expired. The board asked that the chamber of commerce take like action.

J. H. Kunewa, tax assessor, expects to go to Hana next week on business connected with the tax office. He will be accompanied by Judge L. L. Burr, who hopes to try out the fishing in Hana waters for a day or two. They purpose walking back to Kailua over the ditch trail.

In the divorce case of Wo Fat vs. Daisy Wo Fat, Judge Burr yesterday granted an order for the libellant to pay the libellee alimony in sum of \$7 per week from August 10, until the case shall have been decided; and also to pay the libellee's attorney the sum of \$25 on or before August 31.

Charley Thompson, of Kamaole yesterday filed suit in the 2nd circuit court against J. Harvey Raymond, asking for damages aggregating \$5000. Thompson claims that Raymond destroyed certain gates and fences in a pasture permitting cattle to get through, thereby resulting in the injury claimed.

A hunting trip planned by Harry Gesner and John Watt, to Molokai, had to be called off yesterday through an accident to the Ida May, the motor boat on which the party expected to go from Lahaina. When off Kaanapali the vessel dropped her propeller and the party returned to shore in a tender.

Kosuke Ono, who is suing his wife, Hatsuyo Ono for divorce, was yesterday ordered by the court to pay \$25 attorney fees to his wife's attorney, as well as the \$7 a week which he is now required to pay for support of his minor child. A petition for further alimony was refused for the present.

A penal summons against the management of the Wailuku Sugar Company for damaging the county road by transporting heavy plantation machinery over it, was nolle prosequed last Saturday, the company expressing willingness to make good any damage done.

Though the disqualification of Judge Conrad to sit in the case, Second District Magistrate Harry C. Mossman will go tomorrow to Molokai to try an assault and battery case in which a number of Molokai people are involved. The case is said to have developed out of a children's quarrel, the parents finally becoming involved. Enos Vincent will also go over as special prosecutor.

PROPOSED TAXES TO RAISE \$250,000,000 REVENUE

More revenue is necessary to meet the constantly increasing appropriations for war and Secretary McAdoo has proposed new taxes aimed at the luxury class from which it is hoped to realize two hundred and fifty millions annually. This will be known as the luxury tax.

Among its provisions are: Those who keep servants will pay thus, one maid exempted: First servant, 25 percent of wages. Second servant, 50 percent of wages. Third servant, 75 percent of wages. On more than three, 100 percent of wages.

Liquor and tobacco tax doubled. Soft drink levies quadrupled. Retail jewelry, 50 percent advance. This includes watches and clocks to civilians.

Gasoline, 10 cents per gallon advance. Hotel bills over \$2.50 per day, 10 percent advance and all restaurant bills are similarly assessed.

Five percent is imposed on theater rentals and the show admission tax will be doubled.

Ten percent is added to all clothing popularly known as of finer fabric or cut.

Ten dollars tax on soda fountains proposed.—Grocers Advocate, July 26, 1918.

There is no deferred classification in food conservation. We are all in Class 1; all in camp, and ready to go "over the top."

Send the home paper every week to YOUR SOLDIER. He will appreciate it as much as anything you can do for him. Besides it is a patriotic service. We will see that the paper reaches him regularly if you give us his address. Subscription to MAUI NEWS, \$2.50 the year; \$1.25, 6 months; 75 cents, 3 months.

Engineers Inspect Local Harbor Work

Col. R. R. Raymond and Inspector R. Quinn, of the U. S. Engineer's office, Honolulu, visited Maui on Wednesday to inspect the dredging and breakwater work in Kabalul harbor. They returned to Honolulu last night.

The dredging work in the main harbor, which has been going on for several weeks, is now completed, and the big dredge of the Hawaiian Dredging Co., is now ready to begin dredging the territory part adjacent the Claudine wharf, which will require another week or more. During the time this is going on the Claudine wharf will be closed, passengers probably being landed in boats.

The government engineers expressed complete satisfaction with the progress of all the local work.

Baseball On Sunday For Red Cross Fund

(Continued from Page One.)

share of the receipts to the Red Cross. The box score of last Sunday's game follows:

CUBS vs. ORIENTALS

Table with columns for team names and statistics (Runs, Hits, Errors, etc.) for Cubs and Orientals.

Richard Linton, of Wailuku, a member of the Maui High School Class of '18, has just received notification that he had passed successfully the examinations for entrance to Harvard university. Mr. Linton took the examination in Honolulu some time ago, and the papers were forwarded to the big university. He expects to leave in a few weeks for Massachusetts to enter for the fall term.

PASSES EXAMINATIONS FOR HARVARD

Richard Linton, of Wailuku, a member of the Maui High School Class of '18, has just received notification that he had passed successfully the examinations for entrance to Harvard university. Mr. Linton took the examination in Honolulu some time ago, and the papers were forwarded to the big university. He expects to leave in a few weeks for Massachusetts to enter for the fall term.

FERNANDEZ LOSES HIS SUIT AGAINST LUSITANIA SOCIETY

A decision handed down by the supreme court affirms the judgment of the lower court in the case of Antone Fernandez against the Lusitania Society, an action for debt. Fernandez claimed the society owed him \$345 for injuries and, during the trial, moved for a verdict in his favor of \$287.50. The court overruled his motion and granted a motion of the defendant for a decreed verdict in its favor. Fernandez was hurt in an automobile accident a year or two ago when the machine ran into a mule.

WOMEN OPERATE SHELL FACTORY IN ENGLAND

Liverpool, England, July 15—Correspondent of The Associated Press—There is a shell factory in this district operated almost exclusively by the daughters of business and professional men. Many are young girls who had never done any kind of work than needle work and a bit of cooking. The heavy work of the establishment is performed by the wives of sailors. This is a non-profit making factory and it is the reply of the Cunard company to the Germans for the sinking of the Lusitania.

BY AUTHORITY

IN THE CIRCUIT COURT OF THE SECOND CIRCUIT, TERRITORY OF HAWAII.

In the Matter of the Estate of C. R. LINDSAY, Late of Lahaina, Maui, Deceased.

Notice To Creditors

Notice is hereby given to all persons having claims against the Estate of C. R. Lindsay, late of Lahaina, County of Maui, Territory of Hawaii to present same, duly authenticated, and with proper voucher, if such exists, to Moses Kaunohiwa, of Wailuku, Maui, within six months from date of publication of this notice, or payment thereof will be forever barred. Dated at Wailuku, Maui, this 9th day of August, A. D. 1918. MOSES KAUNOHU, Administrator.

(Aug. 9, 16, 23, 30.)