

If you want to-day's News, to-day you can find it in THE STAR

# THE HAWAIIAN STAR.

Part 13 of The World's Fair Portfolios Now Ready

The Hawaiian Star is the paper that goes into the best homes of Honolulu

VOL. XII.

HONOLULU, T. H., SATURDAY, SEPTEMBER 10, 1904.

No. 3892

## A MODEL WARSHIP

JAPANESE HERE ARE PREPARING FOR A BIG PROCESSION WHEN THEY GET NEWS OF THE FALL OF PORT ARTHUR—HAVE BUILT A MODEL MAN OF WAR WHICH THEY WILL DRAG THROUGH THE STREETS.

The local Japanese are making elaborate preparations for a celebration when the news of the fall of Port Arthur comes. Among the features of the procession will be a big model warship, which they will drag through the streets. It will be manned by Japs, and is a very perfect little vessel. The model was made at considerable expense and is a very elaborate piece of workmanship.

The celebration is in the hands of a committee of the veterans of the war with China, of which there are a number in Honolulu. They have made arrangements to receive news from the consul when the great fortress falls into the hands of their armies, and will have the parade on the evening following. All the Japanese in line are to carry torches. They will stop and serenade the consul.

Last Sunday afternoon's report that Port Arthur had fallen was due to the similarity between the names Port Arthur and Liaoyang in the Japanese language. The news of the Japanese occupation of Liaoyang was received, and many understood that it was Port Arthur. Preparations had begun to hold the celebration that evening, when inquiry at the consulate by Editor Shiozawa of the Shimpu, elicited the information that Liaoyang was the place that had been taken by the Japanese, not Port Arthur.

There will be a general cessation of business among Japs here when Port Arthur falls, and there is talk of a similar holiday on the plantations. Most of the Japs will want a holiday to properly observe the occasion.

## MONEY FOR THE NATIONAL GUARD

COLONEL JONES GIVES THE WELCOME ORDER TO ASSEMBLE AND BE PAID.

After a wait of three months the officers and men of the First Regiment of the National Guard of Hawaii are to be paid for their services while in encampment last June.

The transport Thomas brought the money from Uncle Sam's coffers today and tomorrow it will be distributed among all ranks.

Colonel Jones, commanding, gave orders this morning for the regiment to assemble tomorrow morning at 8:45 when the pay rolls will be signed and the cash turned over. The pay will be distributed by Col. McClellan, U. S. A., commanding the Artillery District of Honolulu.

### IROQUOIS WILL SAIL TODAY.

Captain Niblack of the U. S. S. Iroquois expects to sail about 5 p. m. today for Midway, with cable station and marine stores. About 27 packages of refrigerated stuff for the cable station people came down by the transport Thomas. The Iroquois has no place to carry such stuff and it is likely that much of it will be spoilt en route.

### HAND CONCERT.

Tomorrow afternoon the band will play the following program at Makae Island, Waikiki, beginning at 3 o'clock.

#### PART I.

Overture—"Don Giovanni".....Mozart  
Polonaise—"The Masquerade".....Faust  
"Annunciations of Verdi".....Godfrey  
Vocal Solo—"Cavalleria Rusticana".....Mascagni  
Mrs. N. Alapai.

#### PART II.

Vocal Duet—"Excelsior".....Balfe  
Mezzos, J. S. and W. S. Ellis.  
Selection—"The Torsador".....Monckton  
Fantasia—"La Comtesse".....Translatour  
Finale—"The Gondolier".....Powell  
"Star Spangled Banner."

Star Want Ads pay 25 cents.

## ESTATES MUST PAY THE TAX

WILLS ADMITTED TO PROBATE WITHOUT PAYMENT OF THE INHERITANCE TAX.

Commissioner George E. Smith yesterday finished his examination of all the wills admitted to probate from 1899 up to the present time and as a result of his investigations thus far the territorial treasury will be slightly enriched. The object of his investigations is to find out what wills have been passed without the payment of the inheritance tax of 5 per cent imposed on legacies to collateral heirs. It will be remembered that a few weeks ago Treasurer Campbell happened to notice that a certain will had been admitted to probate and from personal knowledge of the estate he was aware that some material portion was subject to a tax levy. He made enquiry and as a result \$225 was paid into the public chest.

This led him to have the further investigation made and as it turns out there are seven or eight estates who escaped the tax at the time they were probated but will have to pay it now. From one of these a sum of over \$500 has already been paid to the treasury. It was from a will probated over a year ago. The other estates are smaller but their contributions will be welcome nevertheless.

Encouraged by the showing made, the search will be continued back to 1896 and it seems to be probable that many more sums will be found owing through neglect to impose the tax. From now on, however, the law will be rigidly applied.

### CURE FOR GRIP.

The fame of Anti-Grippe Tablets, the little defenders of the human system against colds and grip, is spreading world over. There's a good reason—they cure cold and grip. Try them. Hobron Drug Co.

### SAVE YOUR MONEY.

The Twenty-Ninth Series of Stock in the Pioneer Building & Loan Association will be issued in July, 1904, and is now open for subscription. The membership fee is fifty cents per share, and the monthly dues are one dollar per month per share. The stock draws much better interest than a savings bank.

Further information can be obtained from A. V. Gear, Secretary, 122 King Street.

Star Want Ads pay 25 cents.

## HUNTER'S SUPPLIES

SHOTGUNS,  
RIFLES,  
REVOLVERS

### Ammunitions

A FULL LINE AT

PEARSON & POTTER CO.,  
Limited

221 FORT STREET.

## Awful Scenes At Port Arthur

## Nagasaki Coal Was Bad And Delayed Transport

THOMAS WAS LATE ARRIVING FROM SAN FRANCISCO TODAY, OWING TO MISERABLE COAL BOUGHT AT NAGASAKI BY GOVERNMENT—VESSEL WILL TAKE FRESH COAL HERE—PASSENGERS FOR HONOLULU.

Bad coal caused the transport Thomas, Captain Lynam, to be nearly nine days making this port from San Francisco. The famous Nagasaki coal that the army transports have been in the habit of loading up with on their homeward trips, because it is so cheap, is not coming up to standard. The coal in the transport this time was miserable. She left San Francisco promptly on time September 1. Her bottom was foul but with decent coal she could have come down near the schedule time of eight days. The Nagasaki coal prevented her making any speed. When Captain Lynam was told by Captain Humphreys that the transport would be given 600 tons of Khokohontsu coal at this port, the master of the transport expressed much satisfaction.

Both the Alameda and China were sighted during the trip. The vessel brought two days later mail from the mainland. Nothing of interest occurred on the voyage.

Mr. Harrison, of T. H. Davies & Co., returned on the transport from a trip to the mainland, accompanied by his wife.

Mrs. W. H. Everett, wife of one of the captains of the American navy, arrived here for a visit.

W. C. Kenake, of the post office, returned from an extended vacation on the mainland.

Miss Maude McAuliffe, a member of the family of the post quartermaster sergeant, arrived.

James Barry, a sergeant of the marine corps, Peter Ford, a naval machinist, and three coast artillery recruits, were the other passengers arriving for Honolulu.

Mrs. Charles F. Pond, wife of Captain Pond of the Navy, is a through passenger, accompanied by her daughter.

General William M. Graham, retired, of the army, is a through passenger for the Philippines. He is accompanied by his wife and daughter.

H. C. Bates and A. F. Odlin, judges of the Philippines, are returning from vacations on the mainland. Judge Odlin is accompanied by his family.

Mrs. Le Tourneau is quite an interesting person as she is the fiancée of Major Scofield and is going out to be married.

A number of army officers, Philippine constabulary officers, Philippine scouts, naval and civil employees, contract surgeons and families of various people in the Philippines are aboard the vessel. The cabin passengers number 141. The vessel is taking eight passengers to Guam. She also carries 325 cavalry infantry and hospital corps recruits and other people to the Philippines.

The vessel brought 50 and odd articles in the way of stores for the cable station people and marine guard on Midway. The stores are to be transferred to the U. S. S. Iroquois which will sail for Midway with them today. The Thomas is scheduled to sail for Guam and Manila at noon on Monday.

## WILL NOT TRANSCRIBE NOTES

P. Maurice McMahon, poet and erst-while official stenographer in Judge Gear's court, intends to leave for Mexico on Tuesday. He intends to leave—but there seems to be a chance that he will stay in order to appear before Judge Gear in order to show cause why he should not be committed for contempt.

The trouble arises out of the refusal of Auditor Fisher to agree to the paying of official stenographers for transcripts of evidence required by the Attorney General's department. Stenographer McMahon resigned at the end of last month and among his notes were those of the evidence taken in the proceedings taken by the Attorney General against the Pacific Hardware and Steel Company and T. A. Hays, agent. McMahon now refuses to transcribe the shorthand notes taken by him of the evidence given in Judge Gear's court.

Attorney General Andrews saw McMahon this morning but met with a point blank refusal to his request for the furnishing of the transcript.

"He told me that he was going away on Tuesday," said the chief law officer at noon today, "and that he would not have time to do the work before then. I offered to pay him out of my own pocket but he simply would not do the work."

The Attorney General conferred with Judge Gear who recognized the seriousness of the situation, but thought that he might be able to arrange matters without going to extremes. He therefore wrote McMahon to call.

What the result of the judge's kindly admonitions to the rebellious poet may be history has yet to record.

## MOTHER TESTIFIED AGAINST HER SON

One of the Naone cases came to an abrupt ending in the police court this morning in the discharge of Kamai the defendant who had been charged with assault and battery on Mrs. Naone. The cases against Kamai are very peculiar ones and she said in some quarters to be a conspiracy against him.

In court this morning, Mrs. Naone claimed that he had struck her. A little girl claimed that Kamai had not struck the woman at all but that Naone had committed the assault. Judge Lindsey discharged the defendant.

The aged mother of Naone suddenly appeared in court evidently laboring under great excitement. She claimed that it had been her own son and not Kamai, who had struck Mrs. Naone. She stated that her reasons for appearing against her son was to do only justice.

Naone and Kamai are employed by the local marine hospital service. A charge of rape against Kamai will be heard on Monday.

Star Want Ads pay 25 cents.

## NABBED A BAD KOREAN THIEF

Deputy Sheriff Jack Fernandez of Ewa brought to the police station today a very bad criminal from the Ewa district. On last Wednesday, the Korean was discovered coming out of the house of a Japanese, with some goods belonging to the Japs. The Japs chased after the fellow and, after diving him through cane fields, vegetable fields, and into the river, caught him. He was tried on the charge of larceny and sentenced to one year's imprisonment.

According to his own admission, he had been a criminal in Korea. Fernandez noticed a number of deep scars in the fellow's legs. In answer to a question the Korean said that he had received those scars in Korea. It was customary back there in order to make a criminal confess or tell the truth, to jab him in the legs with a hot iron rod. He had been so tortured, he claimed.

### LONDON BEETS

SAN FRANCISCO, September 9.—The London price of 88 analysis beets today is 10 shillings, 8½ pence. The last quotation was September 8, 10 shillings, 9 pence.

## Mukden Has Not Been Evacuated

(Associated Press Cable to The Star.)

ST. PETERSBURG, September 10.—Kuropatkin reports heavy rains with no fighting in his field of operations. The Russians are said to be moving north from Mukden, but the evacuation of Mukden is not admitted here in official circles.

## BRITAIN IN THIBET

LHASA, September 10.—Colonel Younghusband of the British expedition says that Great Britain has not annexed the Thibetan territory, but recognizes the Chinese suzerainty over Thibet. Great Britain merely seeks to insure friendly trade and political relations with the country she has just invaded.

### MARINE BARRACKS FOR MARE ISLAND.

WASHINGTON, D. C., September 10.—The Board of Survey recommends the construction of a marine barracks at Mare Island to cost \$400,000.

### CRUISER MILWAUKEE LAUNCHED.

SAN FRANCISCO, September 10.—The cruiser Milwaukee was launched here today.

## SLAUGHTER AT PORT ARTHUR

CHEFOO, August 30.—A special courier has arrived here from Port Arthur, bringing accounts of the recent fighting. At 11 o'clock on the night of August 24 the Japanese, attacking on the east, concentrated a large force of infantry opposite a redoubts battery on a steep, mountainous position.

(Continued on Page Five.)

### NEW GOODS RECEIVED.

N. S. Sachs Dry Goods Co., received on the Alameda a fine new lot of ladies' white linen skirts, ladies' white wash hats, ladies' white lawn shirt-waists and a new supply of water wings.

How to Avoid the Dangers of a Cold.—Everyone must realize the dangers attending a severe cold, and that it is always prudent to remain in-doors until the danger is passed. Many, however, do not feel able to lose the time and will be interested in knowing that a severe cold may be broken up and all danger avoided by the prompt use of Chamberlain's Cough Remedy. It not only cures, but cures quickly and counteracts any tendency toward pneumonia. For sale by all dealers, Benson, Smith & Co., agents for Hawaii.

Thirteen parts of the World's Fair Portfolios now ready at Star office.

**THE OLD RELIABLE**



**ROYAL BAKING POWDER**  
Absolutely Pure  
**THERE IS NO SUBSTITUTE**

**THE NEWEST BOOKS.**  
The Interoiler, The Confessions of a Club Woman, In Search of the Unknown, The Castaway. Arleigh & Co.

**SCHOOL CHILDREN'S BARGAIN STORE.**  
Alice, meet me after school at Wall, Nichols, they are selling great thick 10c. Pencil Tablets for only 5c.—Hurry.

**Heywood**

**Patrol Shoe**



The Patrol Shoe is worn by people who do much walking. It is always in demand and is as good a shoe as can be made.


**\$5.00**  
BUYS A PAIR

Positively waterproof sole, calf vamp, rubber heels.

**CALL AND SEE THEM AT**

**MANUFACTURER'S SHOE LIMITED**  
1057 FORT ST.

Do you not now see the significance of The Prudential's Rock of Gibraltar trademark? It has the largest premium income of any company confining its operations exclusively to the United States, yet it is only half the age of many American companies. Would you know one of the chief reasons for this? If so, examine the features of its new "Ordinary" policies which we will be pleased to send you on request.



**HAWAIIAN TRUST CO., LTD.**  
Fort Street, Honolulu



# Oceanic Steamship Company.

## TIME TABLE

The fine Passenger Steamers of this line will arrive at and leave this port as hereunder:

FROM SAN FRANCISCO.	FOR SAN FRANCISCO.
VENTURA.....AUG. 24	*ALAMEDA.....AUG. 17
*ALAMEDA.....SEPT. 2	SIERRA.....AUG. 24
SIERRA.....SEPT. 14	*ALAMEDA.....SEPT. 7
*ALAMEDA.....SEPT. 22	SONOMA.....SEPT. 15
SONOMA.....OCT. 5	*ALAMEDA.....SEPT. 28
*ALAMEDA.....OCT. 14	VENTURA.....OCT. 4
VENTURA.....OCT. 26	*ALAMEDA.....OCT. 19
*ALAMEDA.....NOV. 4	SIERRA.....OCT. 25
SIERRA.....NOV. 16	*ALAMEDA.....NOV. 9
*ALAMEDA.....NOV. 23	SONOMA.....NOV. 15
SONOMA.....DEC. 7	*ALAMEDA.....NOV. 30
*ALAMEDA.....DEC. 16	VENTURA.....DEC. 6
	*ALAMEDA.....DEC. 21

\* Local Boat

In connection with the sailing of the above steamers, the Agents are prepared to issue to intending passengers coupon through tickets by any railroad from San Francisco to all points in the United States, and from New York by steamship line to all European Ports.

For further particulars apply

## W. G. Irwin & Co.

(LIMITED)

General Agents Oceanic S. S. Company.

## Canadian-Australian Royal Mail STEAMSHIP COMPANY

Steamers of the above line, running in connection with the CANADIAN-PACIFIC RAILWAY COMPANY between Vancouver, B. C., and Sydney, N. S. W., and calling at Victoria, B. C., Honolulu and Brisbane, Q.

Due at Honolulu on or about the dates below stated, viz:

FOR AUSTRALIA.	FOR ANCOOVER.
MANUKA.....SEPT. 24	AORANGI.....SEPT. 21
AORANGI.....OCT. 22	MIOWERA.....OCT. 19
MIOWERA.....NOV. 19	MOANA.....NOV. 16
MOANA.....DEC. 17	AORANGI.....DEC. 14
AORANGI.....JAN. 14	MIOWERA.....JAN. 11
MIOWERA.....FEB. 11	MOANA.....FEB. 8
MOANA.....MAR. 11	AORANGI.....MAR. 8
AORANGI.....APR. 8	MIOWERA.....APR. 5
MIOWERA.....MAY 4	MOANA.....MAY 2

CALLING AT SUVA, FIJI, ON BOTH UP AND DOWN VOYAGES.

THEO. H. DAVIES & CO., Ltd., Gen'l Agts.

## Pacific Mail Steamship Co. Occidental & Oriental S. S. Co

Steamers of the above Companies will call at Honolulu and leave this port on or about the dates below mentioned:

FOR CHINA AND JAPAN.	FOR SAN FRANCISCO.
COPTIC.....SEPT. 15	GAELIC.....SEPT. 16
KOREA.....SEPT. 27	MONGOLIA.....SEPT. 24
GAELIC.....OCT. 8	CHINA.....OCT. 7
MONGOLIA.....OCT. 20	DORIC.....OCT. 18
CHINA.....NOV. 1	MANCHURIA.....OCT. 15
MANCHURIA.....NOV. 9	DORIC.....OCT. 22
DORIC.....NOV. 16	MANCHURIA.....OCT. 29
SIBERIA.....NOV. 24	COPTIC.....NOV. 5
COPTIC.....DEC. 3	KOREA.....NOV. 19
KOREA.....DEC. 13	GAELIC.....NOV. 29
GAELIC.....DEC. 21	MONGOLIA.....DEC. 13
	CHINA.....DEC. 24
	MANCHURIA.....DEC. 31

For general information apply to

## H. Hackfeld & Co.

AMERICAN HAWAIIAN STEAMSHIP COMPANY.

DIRECT MONTHLY SERVICE BETWEEN NEW YORK AND HONOLULU, VIA PACIFIC COAST.

FROM NEW YORK.

S. S. "ALASKAN".....To sail about September 15

FROM SAN FRANCISCO VIA PUGET SOUND.

S. S. "NEVADAN".....To sail September 29

FROM HONOLULU TO SAN FRANCISCO VIA KAHULUI.

S. S. "NEVADAN".....To sail September 12

FROM SEATTLE AND TACOMA.

S. S. "NEVADAN".....From Seattle, October 4

S. S. "NEVADAN".....From Tacoma, October 6

H. Hackfeld & Co.

C. P. MORSE, General Freight Agent.

AGENTS.

## Evaporated Fruits

SPECIAL NEW SHIPMENT JUST RECEIVED.  
THEY MAKE DAINTY TABLE FOODS.

The progress made in drying fruits is one of the most surprising advancements of recent years. The most delicate fruits can now be preserved by drying or evaporation and retain their original flavor without the aid of jars or canning.

OUR NEW STOCK IS PARTICULARLY FINE.

## Henry May & Co., Ltd.,

Retail 22—TELEPHONES—Wholesale 92.

## SHIPPING INTELLIGENCE

(For additional and later shipping see pages 4, 5, or 6.)

Ship	From	To	Arrive	Depart
Alameda	San Francisco	Honolulu	Sept. 17	Sept. 21
Sierra	Honolulu	San Francisco	Sept. 24	Sept. 28
Alameda	San Francisco	Honolulu	Sept. 7	Sept. 11
Sonoma	Honolulu	San Francisco	Sept. 15	Sept. 19
Alameda	San Francisco	Honolulu	Sept. 28	Oct. 2
Ventura	Honolulu	San Francisco	Oct. 4	Oct. 8
Alameda	San Francisco	Honolulu	Oct. 19	Oct. 23
Sierra	Honolulu	San Francisco	Oct. 25	Oct. 29
Alameda	San Francisco	Honolulu	Nov. 9	Nov. 13
Sonoma	Honolulu	San Francisco	Nov. 15	Nov. 19
Alameda	San Francisco	Honolulu	Nov. 30	Dec. 4
Ventura	Honolulu	San Francisco	Dec. 6	Dec. 10
Alameda	San Francisco	Honolulu	Dec. 21	Dec. 25

Times of the tide are taken from the U. S. Coast and Geodetic Survey tables. The tides at Honolulu and Hilo occur about one hour earlier than at Honolulu. Hawaiian standard time is 10 hours 30 minutes slower than Greenwich time, being that of the meridian of 157 degrees 30 minutes. The time whistle blows at 1:30 p. m., which is the same as Greenwich, 4 hours, 6 minutes. The Sun and moon are for local time for the whole group.

### ARRIVING.

Saturday, September 10.  
S. S. Nevada, Green, from Seattle, Tacoma and San Francisco, at 8 a. m.  
U. S. A. T. Thomas, Lynam, from San Francisco, at 9:30 a. m.  
Stmr. Kinau, Freeman, from Hilo and way ports, due.

### Sunday, September 11.

Stmr. W. G. Hall, S. Thompson, from Kauai ports, due early in morning.  
Stmr. Claudine, Parker, from Maui ports, due early in morning.  
Stmr. Likelike, Naopala, from Maui Lanai and Molokai ports, due.

### PASSENGERS.

Departing.  
Per U. S. A. T. Sherman, September 8, for San Francisco: Bishop Restarick, Miss Restarick, Mrs. C. H. Durfee, Master Restarick.

### REALTY TRANSFERS

Entered for Record Sept. 9, 1904.  
Chas S Desky to Lewers & Cooke Ltd.  
Edward S Dunbar to J H Schnack Tr.  
Pacific Land & Imp Co Ltd to L. Sai Hin.  
J Harris Mackenzie to Pacific Land & Imp Co Ltd.  
Charlotte A Meyer and husband to First Am Sav & Tr Co Ltd.  
Est of S C Allen by Trs to Co Yong.  
Akana and wife to Y A Soon.  
L C Able to Bank of Hawaii Ltd.  
John W. Akana Tr. to Henry Van Cieson.  
John J Dower and wife to Miriam H Kahula.  
Miriam H Kahula to J Alfred Magoon.  
Kaula Hore to Waiwala Agri Co Ltd.  
Eliza Y Mackenzie and husband to H R Bryant.  
H R Bryant to James Wright.  
Recorded Sept. 2, 1904.  
J M Kahalemoana and wife to Akako Akana.  
D. Ap 34, R P 4475 Paalaa-kai Waiwala, Oahu; \$70. B 264, p 89. Dated July 22, 1904.  
Wm Kalaehao and wife to Mary N Simerson.  
D. por R P 3588, Kul 2937 Part 2, Secs 1 and 2, Napalana, Honolulu, Oahu; \$1 etc. B 264, p 90. Dated Aug. 31, 1904.  
Western & Hawn Investment Co Ltd to W R Castle.  
Rel; lot 131 and bldgs, cor Beretania and Victoria Sts, Honolulu, Oahu; por Ap 2, Kul 2983 and bldgs, Waikiki Road, Honolulu, Oahu; \$5000. B 192, p 104. Dated Sept. 1, 1904.  
Est of W C Lunall'o by Trs to W L Wilcox.  
Rel; Aps 1 and 2, lots 22 and 23A, blk 2, of R P 2586, 2590, 2593, 3464 and Kul 3555, Nuuanu Val, Honolulu, Oahu; \$4000. B 165, p 299. Dated Aug. 31, 1904.  
Western & Hawn Investment Co to W L Wilcox.  
Rel; pec land and bldgs, Kalihl, Honolulu, Oahu; \$15,000. B 163, p 74. Dated Aug. 31, 1904.  
Mary Lucas and husband (C) et al to Albert Waterhouse et al.  
D; 1-2 int in Grs 2925 and 2926, Aps 1 and 2; Kuls 926, Aps 2, 3, 4 and 5; 1531, Aps 1 and 2; 1521, Aps 1 and 3, 3379 B; 11229, Aps 2 and 3, and 1530, Ap 3, King St, Honolulu, Oahu; \$3000. B 264, p 92. Dated Aug. 31, 1904.  
W. A. Johnston to Stearns Buck.  
Rel; lot 8 of Gr 3553, Nuuanu Rd, Honolulu, Oahu; \$2000. B 215, p 185. Dated Sept. 2, 1904.  
C. Winam to Annie K Hall.  
Sur L; lots B1, B2, B3, and B4 of R P 3606, Aala, Honolulu, Oahu; int in pc land, Beretania St, Honolulu, Oahu; \$1. B 257, p 451. Dated Apr 30, 1903.  
Annie K Hall and by Trs to C Winam.  
L; lot B1, of R P 3606, Kul 6239, King St, Honolulu, Oahu; 25 yrs @ \$50 per mon. B 257, p 453. Dated Rpr 30, 1903.

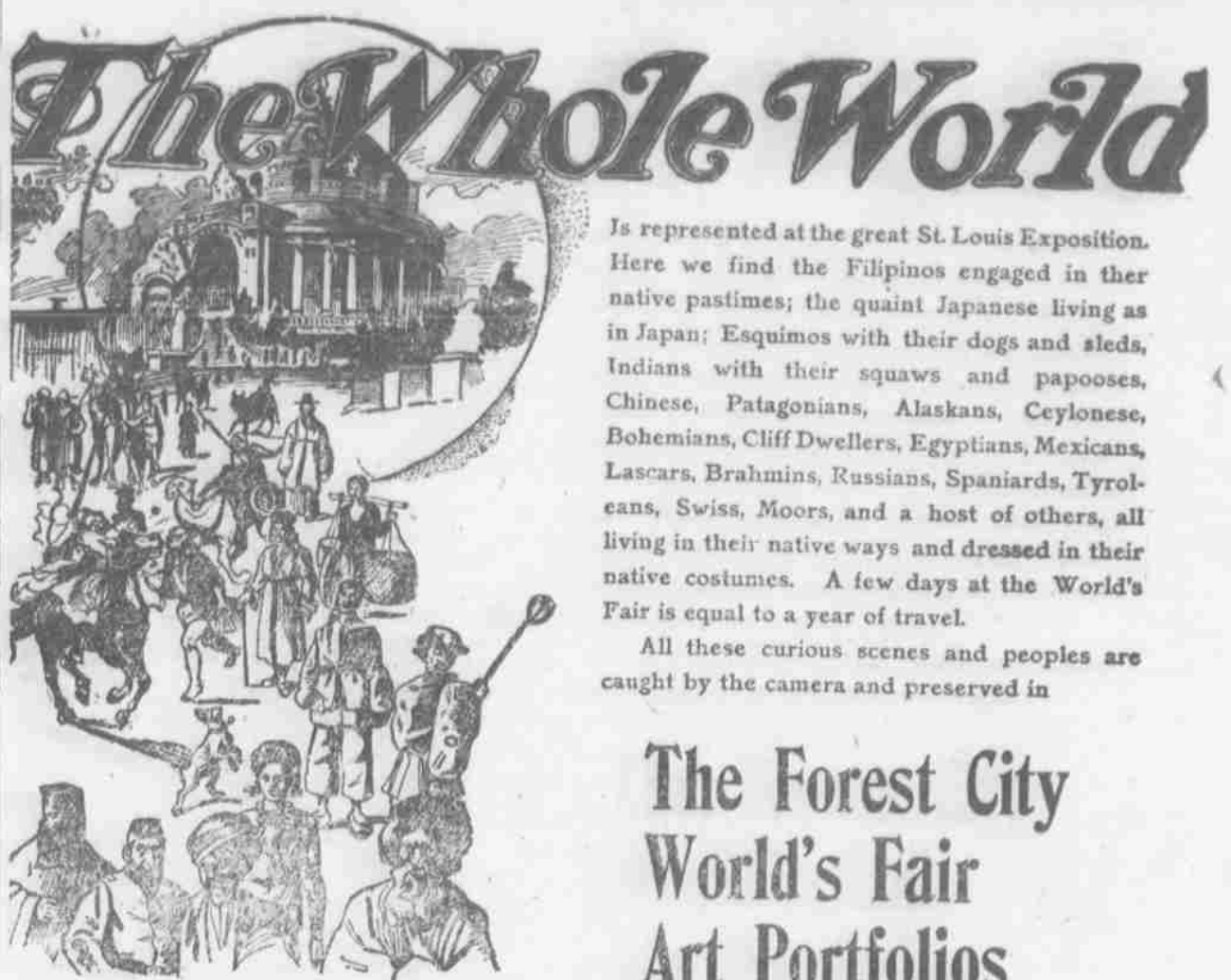
### PINKHAM TO INVESTIGATE.

President Pinkham of the Board of Health will follow his recent visit to the island of Hawaii by a visit to Kauai early next week and will then go to Maui. His trips are for the purpose of making a general inspection into health conditions and for thoroughly examining the different hospitals.

As the president will be away on the regular meeting day, the board will meet on Monday next instead.

Could Scarcely Walk.—Mr. G. S. Purton, a resident of Kyneton, Victoria, Australia, says: "Some time ago I was attacked with severe pains and stiffness in my legs, which affected me so that I could scarcely walk. When I was recommended to try a bottle of Chamberlain's Pain Balm by our local chemist, Mr. Stredwick. I have used it once a day since, and have experienced wonderful relief. I am indeed grateful for the good it has done me and shall be happy to recommend Chamberlain's Pain Balm to anyone suffering from a similar complaint." For sale by all dealers, Benson, Smith & Co., agents for Hawaii.

# ALL NATIONS ARE GATHERED TOGETHER



Is represented at the great St. Louis Exposition. Here we find the Filipinos engaged in their native pastimes; the quaint Japanese living as in Japan; Esquimos with their dogs and sleds, Indians with their squaws and papooses, Chinese, Patagonians, Alaskans, Ceylonese, Bohemians, Cliff Dwellers, Egyptians, Mexicans, Lascars, Brahmins, Russians, Spaniards, Tyroleans, Swiss, Moors, and a host of others, all living in their native ways and dressed in their native costumes. A few days at the World's Fair is equal to a year of travel.

All these curious scenes and peoples are caught by the camera and preserved in

## The Forest City World's Fair Art Portfolios

The Forest City reproductions are bound into thirty beautiful Portfolios, each consisting of 16 pages, 11x14 inches, with 16 views appropriately described, printed on high grade enameled paper, and substantially bound in heavy, durable cover paper for permanent preservation.

## Bear In Mind

The Original Photographs are taken expressly for this work by the Official Photographer of the Fair

If you have not already started, begin NOW with Part 1 and secure the whole Series as Issued

## And Remember

The descriptions are all written by Mr. Walter B. Stevens, Secretary of the Louisiana Purchase Exposition

480 MAGNIFICENT REPRODUCTIONS OF OFFICIAL PHOTOGRAPHS

400 SQUARE FEET OF CHOICE FINE ART ENGRAVINGS

The series is published in weekly Portfolios of 16 views each; it is indeed a prize and we place it within your easy reach at so trifling a cost as to make it a DUTY to secure it.

## Thirteen Parts Now Ready

### How to Secure the Views.

These views, which will constitute a complete reflex and record of the Exposition, are not distributed by us as a matter of profit, but rather to please our readers. Although the regular price is 25 cents, we place the entire series at the reach of every reader at only

### 10c a Part

to cover the cost of HANDLING, WRAPPING, ADDRESSING, MAILING, ETC. Simply fill out the coupon at the right and bring or send to us with ten cents, and Part 1 will be mailed to you at once. Address,

Fill out this Coupon and bring or send to us, with 10 CENTS, as indicated below.  
BE SURE TO STATE WHICH PART YOU WISH

.....1904.  
HAWAIIAN STAR,  
Honolulu, Hawaii:

Enclosed herewith find TEN CENTS to cover cost of postage and expense of mailing No. .... of "The Forest City," to which I am entitled as one of your readers.

Name .....

P. O. .... Island .....

HAWAIIAN STAR, Portfolio Department Honolulu, Hawaii



## THE BANK OF HAWAII

Incorporated Under the Laws of the Territory of Hawaii.

PAID-UP CAPITAL.....\$100,000.00  
SURPLUS.....200,000.00  
UNDIVIDED PROFITS.....\$5,787.85

**OFFICERS AND DIRECTORS.**  
Charles M. Cooke.....President  
P. C. Jones.....Vice-President  
F. W. Macfarlane.....2nd Vice-President  
H. Cooke.....Cashier  
C. Hueston Jr.....Assistant Cashier  
E. F. Bishop, R. D. Tenney, J. A. McCandless and C. H. Atherton

**COMMERCIAL AND SAVINGS DEPARTMENTS.**  
Strict attention given to all branches of Banking.

JUDD BUILDING. FORT STREET.

Claus Spreckels. Wm. G. Irwin.

## Claus Spreckels & Co.

HONOLULU. H. I.

San Francisco Agents—The Nevada National Bank of San Francisco

**DRAW EXCHANGE ON**

SAN FRANCISCO—The Nevada National Bank of San Francisco.

LONDON—Union of London & Smith's Bank, Ltd.

NEW YORK—American Exchange National Bank.

CHICAGO—Corn Exchange National Bank.

PARIS—Credit Lyonnais.

BERLIN—Dresdner Bank.

HONGKONG AND YOKOHAMA—The Hongkong and Shanghai Banking Corporation.

NEW ZEALAND AND AUSTRALIA—Bank of New Zealand, and Bank of Australasia.

VICTORIA AND VANCOUVER—Bank of British North America.

**TRANSACT A GENERAL BANKING AND EXCHANGE BUSINESS.**

Deposits Received. Loans Made on Approved Security. Commercial and Travelers' Credits Issued. Bills of Exchange Bought and Sold.

COLLECTIONS PROMPTLY ACCOUNTED FOR.

ESTABLISHED IN 1858.

## BISHOP & CO.

BANKERS

**BANKING DEPARTMENT.**

Transact business in all departments of Banking.

Collections carefully attended to. Exchange bought and sold.

Commercial and Travelers' Letters of Credit issued on The Bank of California and N. M. Rothschild & Sons, London.

Correspondents: The Bank of California, Commercial Banking Co. of Sydney, Ltd., London.

Drafts and cable transfers on China and Japan through the Hongkong & Shanghai Banking Corporation and Chartered Bank of India, Australia and China.

Interest allowed on term deposits at the following rates per annum, viz.: Seven days' notice, at 2 per cent.

Three months, at 3 per cent.

Six months, at 3 1/2 per cent.

Twelve months, at 4 per cent.

**TRUST DEPARTMENT.**

Act as Trustees under mortgages. Manage estates (real and personal). Collect rents and dividends.

Valuable Papers, Wills, Bonds, Etc., received for safe-keeping.

**ACCOUNTANT DEPARTMENT.**

Auditors for Corporations and Private Firms.

Books examined and reported on. Statements of Affairs prepared.

Trustees on Bankrupt or Insolvent Estates.

Office, 924 Bethel Street.

**SAVINGS DEPARTMENT.**

Deposits received and interest allowed at 4 1/2 per cent per annum, in accordance with Rules and Regulations, copies of which may be obtained on application.

**INSURANCE DEPARTMENT.**

Agents for FIRE, MARINE, LIFE, ACCIDENT AND EMPLOYERS' LIABILITY INSURANCE COMPANIES.

Insurance Office, 924 Bethel Street.

**M. PHILLIPS & CO.,**

Wholesale Importers and Jobbers of

**AMERICAN AND EUROPEAN DRY GOODS**

Corner of Fort and Queen Sts.

**S. YOKOMIZO,**

Contractor for Stone and Cement work

**Crushed Rock**

Prices: No. 2, 1 cubic yard, \$1.70; No. 3, 1 cubic yard \$1.60; No. 4, 1 cubic yard, \$2.05.

Delivered to any part of the city, white and black sand, foundations, curbing and coral stones, ballast for ships and fire wood always on hand. Emma, all corner Beretania & 1 Nuuanu street. Phone Blue 1211

A man in Uluk had four ribs broken by a friendly slap given by a playful friend. The playful friend is just a bit in advance of the practical joker, but not too far from the latter's class to prevent justice from putting both in the same chain gang, where the jocular energy of each could be employed with more benefit to the community in breaking stone.—Baltimore American.

## ALMOST INSTANT EFFECT

Three Patients—Three Testimonials—The House of the Nation Head Their Thanks and Praise for

**Paine's Celery Compound**

Tuesday, Vt.—I began taking Paine's Celery Compound in the spring after having spent a year and a half confined to my bed on account of having pneumonia and a bad knee, due to blood trouble. At the time I began taking your medicine I was very nervous and did not want to see any one—only my own folks.

The doctors all said that there was not anything else they could do for me, and also said they did not think that I would ever be any better, and if I was better I would never be able to walk again.

A friend of mine was taking Paine's Celery Compound at the time and I thought I would try it. I took several bottles before I saw much improvement. But soon my nervousness left me. I again enjoyed seeing all who called at the house.

I kept right on gaining until now I call myself VERY WELL AND HEALTHY.

"I had a light attack of the grippe and I took one bottle of Paine's Celery Compound. It helped me to regain my strength. I can truly say your medicine has been of great benefit to me."—Anna C. Ballou

Grip Was Cured—Blood Was Purified—Her Whole System Strengthened by Paine's Celery Compound



MISS ANNA BALLOU.  
Grip Was Cured—Blood Was Purified—Her Whole System Strengthened by Paine's Celery Compound

## ANNEXATION OF MIDWAY

In the year 1859 the American ship Gambia, Captain N. C. Brooks, came upon an island in the Pacific ocean about 3,500 miles west of San Francisco previously unknown to geographers. It was not much of an island—merely a heap of sand partially covered with brushwood inside an encircling coral reef.

What Captain Brooks wanted with it, or dreamed his country might want it for, is now unknown. Nevertheless, with a prudence that now seems almost inspired, he took possession in the name of the United States, and saw to it that his country's claim was formally recorded. That was how Brooks' atoll, or Midway Island, came to be our first Pacific island, as it probably is now our smallest inhabited possession.

In 1867 the cruiser Lakawanna examined the island, and about 1888 a Norwegian ship was wrecked there, and the crew lived for about two years on fish and birds' eggs, until a Japanese merchantman, looking for guano deposits, found and rescued them. Other-wise for nearly forty years Midway Island remained as unused and apparently as useless as when Captain Brooks discovered it.

Then one February night in 1898 a

mine was exploded under the battleship Maine in Havana harbor, and before the echoes died away the value and importance of Midway Island became apparent. Dewey went to Manila to avenge the Maine and win an empire for freedom and his country. A telegraphic cable under the Pacific became not only desirable, but necessary, and for such a line Midway Island was seen to be a well-nigh indispensable station.

There is an American colony on Midway Island now, composed of about a dozen men, who move along the messages that pass between their native land and the Philippines. They are physically one of the most isolated communities on the globe. Most of their food and all their clothing, books, and other things come at irregular intervals. Yet they know every day all the really important deeds of the world, for its news passes through their hands.

Thus in the fulness of time a use was found for apparently useless Midway Island. That when the need came it was held with a clear title by the nation which could not easily have got along without it speaks volumes for the unconscious foresight of the American navigator who found and took it forty-five years ago.—Chicago Inter-Ocean.

If Oxnard, the California sugar-beet lobbyist, should succeed in buying his way into the United States Senate it would be quite feasible to omit the usual introductions.—Providence Journal.

From the manner in which he guards the cash some Democratic managers feel that Mr. Davis should have been slated for Secretary of the Treasury instead of the Vice-Presidency.—Washington Post.

## AMERICAN NURSES ARE NOT WANTED IN JAPAN



MRS. K. SUFU.  
Photo by J. J. J. J.

MRS. K. SUFU, WIFE OF THE GOVERNOR OF KANAGAWA PREFECTURE AND HEAD OF THE YOKOHAMA BRANCH OF THE JAPANESE RED CROSS VOLUNTEER NURSES, AND MRS. IWAHARA, CHIEF ASSISTANT. THE LARGER PICTURE IS THAT OF MRS. SUFU.

TOKYO, July 17.—An important personage confided to me the other day that of all the difficulties the Japanese government has been compelled to contend with since the beginning of the war, the most perplexing were the newspaper men and the American nurses. They did not want either to come here. Both have been inexpressible nuisances, but they could not be abated for many reasons, chief of which was a desire to make both believe that they were cordially welcome.

In dealing with the war correspondents, however, the Japanese authorities made a very serious mistake, and by their lack of candor have provoked indignation and enmity when they might have had good will and friendship. However, there have been errors on both sides.

The nurses were more easily disposed of. They have been buried under compliments and attentions and gifts, and have been sent to the other end of Japan, where they are supposed to be nursing sick soldiers and prisoners of

war, and so far as we have heard, they are contented and happy and are conscious of being international benefactors, but they do not realize the annoyance and anxiety which the Japanese have suffered on their account. Public sentiment has expressed itself in many forms, both concerning the nurses and the correspondents, and that part of the community who have not been responsible for their well being have manifested the greatest pleasure and gratitude on account of their presence. The nurses were met at the dock when they landed and at every railway station on the railways over which they traveled with addresses of welcome, garlands of flowers and other manifestations of affection and gratitude, and their stay at the capital of the empire was a continuous fête. They were the guests of the nation; they were honored by audience with the emperor and the empress and were entertained by other members of the imperial family. The nobility and the aristocracy struggled for the privilege

## Oregon Restaurant,

KING STREET NEAR NOLAN.

W. A. CHINE is proprietor of the Oregon Restaurant, is serving the best meal in town for 25c. He has in his employ a competent chef and with courteous waiters serves no pains to satisfy patrons.

See it and be wowed every night.

## Administrator's Notice.

The undersigned duly appointed administrator of the Estate of the late Andrew J. Cahill, of Honolulu, Island of Oahu, deceased intestate, hereby gives notice to all persons having claims against said estate, to present same to him in the office of the Inter-Island & Nav. Co., in said Honolulu within six months from date, or they will be forever barred. And all persons indebted to said deceased are hereby requested to make immediate payment to the undersigned at the office aforesaid.

Dated Honolulu, August 19, 1904.

NORMAN E. GEDDIE,  
Administrator Estate Andrew J. Cahill, Deceased.

## No Man Wants to Toss Recklessly

good money for bad returns; and as most men are anxious to look right before the world, they should seek to get the best for the least. Merchant tailors are a doubtful proposition at the best, and you are not sure how you will be made to look until the clothes are delivered. STEIN-BLOCH SMART CLOTHES, prepared for immediate put-on, have that \$60 and \$70 appearance and quality, but can be bought, ready for business, for one-third that cost. Mention to us that mark of rightness, the STEIN-BLOCH label:



M. MCINERNEY, LTD.  
MERCHANT AND FORT STS.

## PICKLES

Some are sweet—some are sour.  
All are good if bearing the name of

## HEINZ

You'll always want to eat Heinz sweet pickles if once you try them.  
Your grocer has a fresh supply that just arrived.

H. HACKFELD & CO., LTD.  
WHOLESALE AGENTS.

## How To Keep Cool

Three simple rules which, if followed, will make the hottest days deliciously cool and delightful.

Rule 1. Order your ice from Hawaiian Electric Co. Telephone Main 390.

This ice is pure and lasting and superior to any other ice sold in this city.

Rule 2. Use incandescent electric light in your home. The heat from kerosene lamps is almost unbearable in this climate.

There is no uncomfortable heat in electricity.

Rule 3. Use an electric fan either in the house or office by attaching to the electric light wire in place of a lamp bulb. Fans cost only \$15 at

Hawaiian Electric Co., Ltd.,  
King Street near Alakea.

## Important to Mandolin Players

Science and inventive genius have at last greatly improved the sweet toned Mandolin.

Numerous attempts have been made by making Mandolins flat, of Aluminum, etc., but it remains for the

NEW GIBSON MANDOLIN

to attain perfection. It is made somewhat like a Viola with swelled front and back, easy to hold with the wonderful Violin quality of tone.

Call and see these new Mandolins and Guitars at

Hawaiian News Co., Ltd.  
Bishop Street. TWO STORES. Merchant Street.

## Savory Meats

For special occasions or for the daily menu, we furnish the meats that fill the need completely.

Telephone orders are carefully filled and promptly delivered. Main 7th.

Island Meat Co., Fort Street

## \$72.50

## Chicago AND RETURN

One way via St. Louis with stop over privileges.

SALE DATES—August 18th, 19th, September 1st, 2nd, 6th, 6th, 7th, 8th, October 3rd, 4th, 5th, 6th.

**TWO FAST TRAINS DAILY**

Via the Southern Pacific Union Pacific and

Chicago and Northwestern Railways

Overland Limited. Vestibuled. Leaves San Francisco at 10:00 a. m. The most

Luxurious Train in the World. Electric Light throughout. Buffet smoking

cars with barber and bath, Booklovers Library, Dining Cars, Standard and

Compartment Sleeping Cars and Observation Cars. Less than three days to

Chicago without change.

Eastern Express Vestibuled. Leaves San Francisco at 6:00 p. m. Through

Standard and Tourist Sleeping Cars to Chicago. Dining Cars. Free Reclining

Chair Cars.

Personally Conducted Excursions—Wednesdays, Thursdays and Fridays at 9 a. m.

Send ten cents in stamps for Russia Japan War Atlas.

**Chicago & Northwestern Ry.**

R. R. RY HIE, G. A. P. C.

617 Market St. (Palace Hotel) San Francisco, or 6 P. Company's Agent.

**THE HAWAIIAN REALTY AND MATURITY CO., LTD.**

Real Estate, Mortgages, Loans and Investment Securities. Homes built on the installment plan.

Home Office: McIntyre Building, T. H. L. K. KENTWELL, General Manager.

Star Want ads day at once.

NO SPORTSMAN.

National Chairman Cortelyou does not care for any kind of sport.

## THE YOKOHAMA SPECIE BANK

Limited.

ESTABLISHED 1880.

Capital Subscribed.....Yen 24,000,000

Capital Paid up.....18,000,000

Reserve Fund.....9,250,000

**HEAD OFFICE, YOKOHAMA.**

**Branches:**

Honolulu, N. W. York, San Francisco,

London, Lyons, Bombay, Hongkong

Newchwang, Peking, Shanghai, Tientsin

Kobe, Nagasaki, Tokio.

The Bank buys and receives for collection Bills of Exchange, Issues Drafts

and Letters of Credit, and transacts a general banking business.

Honolulu Branch 67 King Street

**CONSOLIDATED SODA WATER WORKS**

(COMPANY, LTD.)

Esplanade, cor. Allen and Fort Sts.

Manufacturers of Soda Water, Ginger Ale, Sarsaparilla, Root Beer, Cream

Soda, Strawberry, Etc., Etc.

**S. Kojima.**

Importer of Des. "S" Whisky

LIQUORS, JAPANESE LOVISON GENERAL MERCHANDISE AND PLANTATION SUPPLIES

No. 45 Hotel Street...Honolulu, T. H.

Telephone White 511.

P. O. Box 944.



# The Hawaiian Star, DAILY AND SEMI-WEEKLY.

Published every afternoon (except Sunday) by the Hawaiian Star Newspaper Association, Limited.

**SUBSCRIPTION RATES.**  
Local, per annum, \$ 8.00  
Foreign, " " 12.00  
Payable in Advance.

Frank L. Hoogs, Manager.  
SATURDAY, SEPTEMBER 10, 1904

The Star again takes occasion to impress upon its readers the advice to secure all the portfolios as issued of the "Forest City" series of World's Fair views. The reason for this is obvious, for the views are selected so as to make the whole series embrace every feature of the Fair—architectural, scenic, historic, ethnological, archeological, artistic and sculptural. The most important and necessary points for a complete and descriptive pictorial history will be covered and the series when completed will afford all the information, both for eye and intellect that could be wished for in a perfect souvenir and record of the great event. If any portfolio is missed by just that much will the series be incomplete for remembrance or for the valuable purpose of reference. The worth of the series is attested by the fact that many institutions of learning are among those who are sending in coupons for the parts already issued. The entire series is especially desirable, since it will present in picture and type, all in the highest style of art and within a reasonable space, the entire World's Fair. The views are, of course, accurate and authentic, since the original photographs are secured by the official photographer of the Exposition, especially for the "Forest City" series; and the descriptive portions are also thoroughly authentic, since they are prepared by Walter B. Stevens, secretary of the Louisiana Purchase Exposition.

## Entering Wedge In Thibet

A treaty has been signed by Colonel Younghusband in Lhasa, and it is to be presumed that the British forces are to retire from their picturesque incursion into the forbidden city. The veil is to be lifted again, but never again will it be effective. The soldiers and correspondents who accompanied the expedition have had such an experience as belongs to a past age,—when the world had many unknown cities and vast unexplored regions. Lhasa's complete isolation dates for sixty years back, missionaries having been allowed there up to about 1840. This means that for a whole generation the city has been closed to outsiders. It is no wonder that the members of the expedition found their trip one of absorbing interest, and that the people of Lhasa gazed in wonder at the strange visitors who marched through their streets and pitched camp near the great Potala palace. "Women peeped through every window," says the London Times correspondent, and well they might.

The great Potala palace appears to be an edifice of most imposing dimensions. Says the Times correspondent, who appears to be the only one with the expedition: "Certainly this first bird's-eye view of the Forbidden City is a most magnificent surprise, nothing in all the approach up to the last moment suggesting the exquisite green foliage and towering architecture seen when at last Lhasa from end to end breaks upon the view. Potala would dominate London; Lhasa is almost eclipsed by it. Travelers must indeed have been blind who saw Lhasa in this fleeting moment of perfect summer but left no record, except of the buildings and of the religious importance, of this mysterious, long-hidden city, buried deep in the most inaccessible recesses of the East. There has been no lack of population in her streets, although the Tibetan soldiers, reported to number 4,000 to 5,000 yesterday, have retreated during the night. No malevolence has been displayed, but only an insatiate curiosity as to everything worn and used by the pilgrims."

The Dalai Lama retired to a monastery before the troops arrived. It was given out that he would probably die from shock if Col. Younghusband did not cease advancing into the sacred realms, and the British agreed not to enter any monasteries unless fired upon from them. The Lama left the Seal of State, however, so that a treaty could be negotiated in his absence. The cable which tells of the completion of Younghusband's task does not say whether the Lama finally came forth or not. The treaty was signed. It is a commercial one, and now that it is an accomplished fact Younghusband will go and the Lama may come forth and explain the intrusion to his people as best he can.

Lhasa is to be closed again, but it can never again be the same "Forbidden city." The commercial treaty is modern civilization's entering wedge. Traders will enter under the protection of the treaty, and gradually foreign settlements will take their places in Thibet, which is a wonderfully rich country, as in other lands where barbarism at first tried to keep out civilization. There are reports that Thibet is rich in gold mines, and these reports will attract the prospector no matter what are the dangers. And the killing of foreigners as they prospect will be followed by demands for reparation, and gradually diplomatic and commercial activity will intrude itself until Lhasa will no longer be a mystery and the foreigner will no longer be a wonderful sight to the Thibetans. "Large crowds were seen taking short cuts over the housetops," to get repeated views of the British soldiers as they marched under Col. Younghusband. If they only knew it, the mystified Thibetans who nimbly scrambled from housetop to housetop to see the strange white man with his queer uniform and baggage and his terrible weapon,—unopposed because with beating of drums the Thibetan delegates had announced that there must be no fighting "as the Thibetans would be as dust beneath the British feet,"—the Thibetans who witnessed this, were gazing upon the beginning of the end of their nation.

## Chinese As Laborers

Chinese exclusion is slowly coming to the front as a problem for Mainland discussion. The opening of oriental commerce which will follow the present war will make the question of American relations with China one of great importance, and as China's awakening proceeds and her importance as a nation increases, some changes in the laws will become necessary. As has been pointed out before, there may be hope for Hawaii's labor supply in these developments. Meanwhile some new arguments are brought forward in favor of the Chinese laborer. The Springfield Republican calls attention to an article, entitled "The folly of Chinese exclusion," in the August number of the North American Review, in which Hubert Howe Bancroft, the historian, condemns the policy of preventing the Chinese from coming to the United States. Bancroft characterizes the Chinese as the best working foreign element in the world, the least harmful to American politics and people. One seldom or never sees a drunken or disorderly Chinaman. He is seldom found in institutions supported at public expense. He is not found begging or soliciting. Indeed, the argument of the exclusionists, that the Chinese will not become one of us, marry our daughters, manipulate our primaries, run for office and rule the country, is only an enumeration of reasons why they should be admitted to do the lower class of work which white men do not care to do.

"Some have suggested danger to the republic in thus leaving open the portal for the unrestricted pouring of Asiatic hordes to kill and drive us into the eastern ocean. Yet, they must know that the laboring man in China dares scarcely from one province into another unprotected. The price of passage to California is to them equivalent to a fortune, and the journey like the journey into another world. In times past, he who adventured alone had often to sell or pledge his wife for the necessary means, while contractors for coolie labor would not bring men over at less than some fixed price. As for the rest, the law of supply and demand regulates it. It is a matter of record that, when wages in California fell below \$15 a month, Chinese immigration not only ceased, but the tide turned the other way. Chinamen will not leave home and face the cost and dangers of the ocean voyage unless they can have work at remunerative rates; and work is all that they desire."

A non-intoxicant, sparkling and highly concentrated liquid

## Extract of Malt and Hops

Strengthening, invigorating and sedative.  
Recommended by the Medical Profession.

THE WARM WEATHER TONIC

HOLLISTER DRUG CO.  
FORT STREET

If Kuropatkin has fought a battle with half a million men engaged and has successfully retreated without the loss of a gun or prisoner, and with losses equal, he has performed a great military feat, which will inspire now confidence in his abilities. Probably the Japanese concentration in attack was partially prevented by the rains, and Oyama did not have all the men and guns on hand which he hoped for. If Oyama has lost 25,000 men with no other result than to change the field of battle to one further north it has been a costly victory. However the Japanese 25,000 men can be replaced more quickly than Russia can replace her 25,000.

It is well that Judge Gear has set his foot down on the habit of some of the members of the Honolulu bar of asking for postponements and delays in cases when no adequate cause for such can be given. There can be no doubt that the actions of many attorneys in Honolulu would not be tolerated in most courts in the land. It is not exactly that disrespect is either intended or shown, but there is a free and fairness which does not match well with the common idea of the administration of justice. But it is not so much on this point that the general public has a right to complain as it is on the subject of the reckless waste of time in the conduct of cases. This waste of time may or may not be regretted by the clients concerned, but when juries are required the unfortunates who are drawn for jury duty have a right to consideration. Still not a day passes in court but the valuable time of business men is frittered away by delays which can have no effect on the case other than to exasperate the long suffering jurors. It would be interesting to note the effect if any jurors who happen to be in business should treat the average lawyer with the same scant consideration. Imagine one of the legal lights going into a store to make some small purchase and having anywhere from fifteen minutes to an hour of his time wasted before any business could be done. Surely the climate would become torrid in a very short while. Jury duty is at no times pleasant, but there would be fewer shirkers of that duty if members of the bar would exercise a little ordinary business sense.

The reported loss of 50,000 men at Lipoyang places the battle in the same class, for losses, with Waterloo, Gettysburg and other great military engagements of history. Yet it does not seem

## Classified Ads in Star.

Ads under "Situations Wanted," inserted free with further notice.

### To Rent

Two furnished, mosquito-proof rooms to rent on the 11th. Address S. E. A. Star Office.

### Wanted

A gentleman to share expenses of Waikiki home for two or three months. References exchanged. Address P. O. Box 542.

### For Sale or Rent

House and lot at Kailua; good locality; easy terms. Apply B. H. Norton, 985 Spencer Street.

### Situation Wanted

A German housekeeper seeks a position in hotel or private family. Address "M" Star Office.

### For Sale

A magnificent building site on the Punchbowl slope near Thurston Avenue. Particulars at Star Office.

Building lot corner King and Kamehameha road. Palama terminus of Rapid Transit road. Apply at Star Office.

### Furnished Rooms To Let

A nicely furnished front room. Mosquito proof and electric light. 494 Berea near Punchbowl.

## Small Sums

Invested with us

MONTHLY

will be nearly

DOUBLED

in about

9 YEARS

for particulars apply

## PHOENIX SAVINGS, BUILDINGS

AND LOAN ASSOCIATION

Jeard Building, Honolulu

GUARANTEE CAPITAL


\$250,000.00

PAID UP CAPITAL

\$1,300,000.00

Henry E. Pocock, - - - Cashier

**Are You Far Sighted?**



Do you have to hold your book or paper at an arms length? If you do, your eyes need immediate attention. This is something that should not be put off from time to time but should be your first care to have corrected any defect that is present. The only possible permanent relief is to be had by the use of proper glasses. Consult us immediately and we will give you instant as well as lasting comfort and ease.

H. P. Wichman & Co., Ltd.  
Opticians, Fort Street

to have been decisive and as far as can be judged now, was only one of Kuropatkin's stands en route to the north. The question that arises is, How many men will there be engaged and what will the losses be when he makes his final stand and fights the "decisive battle?"

Russia seems to be very successful in stirring up the national birds and beasts. And there is a bare possibility that our own eagle will add to the uproar.—Cleveland Plain Dealer.

While Mr. Chamberlain is framing a retaliatory tariff he should not forget to extend it over American athletes.—New York World.

In the brief account in "Who's Who" of Wilson Barrett in this characteristic remark: "Recreation—Working." Was his early death a penalty to his "recreation?"—New York Tribune.

Brevity is not the soul of John Sharp William's wit.—New York Herald.

No matter how the election goes, West Virginia will not be able to call itself the "mother of three Vice-Presidents." Mr. Davis is older than West Virginia.—Kansas City Star.

The campaign is now on in earnest. The Republicans want to show Uncle Henry Davis just how popularity doesn't count in this affair.—Pittsburgh Gazette.

It is strange but true that in every strike both sides invariably express themselves to the newspapers as delighted with the situation.—Galveston Daily News.

Star Want ads pay at once.

Thousands of Feet of

# GARDEN HOSE

Anticipating the irrigating season we have imported a large stock of the

**VERY BEST**

GARDEN HOSE OBTAINABLE.

**THE LOW PRICES**

WE ARE ABLE TO MAKE ARE SIMPLY PARALYZING.

## Lawn Sprinklers in Great Variety

A New Invoice of the Favorite

## EDDY REFRIGERATORS

Made to Keep Things Cool and Economize ICE.

# Pacific Hardware Company, Ltd

Merchant Street

M. S. GRINBAUM & CO. LTD.  
LIMITED.

Importers and  
Commission  
Merchants

SOLE AGENTS FOR

## Little Jack Smoking Tobacco

2 and 10c packages.

AGENTS FOR

BRITISH AMERICAN ASSURANCE  
COMPANY of Toronto, Ontario.

DELEWARE INSURANCE CO. of  
Philadelphia.



KEEP YOUR HEAD COOL.

Pacheco's Dandruff Killer is the proper thing to use in these warm days; it invigorates the hair and keeps the head cool all day.

Sold by all Druggists and at the  
Union Barber Shop. Tel. Main 232.

**Richest Soil and  
Black Sand in  
Town, For Sale  
Cheap. See Us  
At Once**

LORD & BEISER.

CASTLE & COOKE, LTD.

Commission Merchants,  
Sugar Factors..

AGENTS FOR

The Ewa Plantation Company,  
The Waiakua Agricultural Co., Ltd.  
The Kohala Sugar Company.  
The Waimea Sugar Mill Company.  
The Fulton Iron Works, St. Louis, Mo.  
The Standard Oil Company.  
The George F. Blake Steam Pumps.  
Weston's Centrifugals.  
The New England Mutual Life Insurance Company of Boston.  
The Aetna Fire Insurance Company of Hartford, Conn.  
The Alliance Assurance Company of London.

## W. G. Irwin & Co.

AGENTS FOR

Western Sugar Refining Co., San Francisco, Cal.  
Baldwin Locomotive Works, Philadelphia, Pa.  
Newell Universal Mill Co., Manufacturers of National Cane Shredder, New York, N. Y.  
Paraffine Paint Company, San Francisco, Cal.  
Oehlert & Co., San Francisco, Cal.  
Pacific Oil Transportation Co., San Francisco, Cal.

## Fire Insurance!

THE B. F. DILLINGHAM CO., LIMITED,

General Agents for Hawaii.  
Atlas Assurance Company of London.  
Phoenix Assurance Company of London.  
New York Underwriters Agency.  
Providence Washington Insurance Company.  
Phoenix Insurance Company of Brooklyn.

Albert Raas, Manager  
Insurance Department office, Fourth Floor, Stangenwald Building.

## The Pacific Hotel.

112 UNION STREET,  
OPPOSITE PACIFIC CLUB.

NEWLY FURNISHED ROOMS

**The Best Restaurant  
in the City . . .**

MRS. HANA, Proprietor.

# We Unhesitatingly Make The Emphatic Statement THAT THE McCall Patterns

With perforations showing basting and sewing lines—not found in any other pattern—are positively the finest shape, the best fitting, and the most simple patterns offered to the public, and are cut to fit the average well-proportioned person.

Millions of these patterns are sold during the year with seldom or never a complaint.

OUR MOTTO IS:

Strictly high grade Patterns at the lowest possible price.

10 AND 15c., NONE HIGHER.

SOLE AGENTS.

# E.W. Jordan & Co., Ltd

NO. 14 STORE, FORT STREET.







# A Summer Proposition.

Well, now, there's the

## ICE QUESTION!

You know you'll need ice - you know it's a necessity in hot weather. We believe you are anxious to get that ice - but will give you better value, and more like to suit you. Order from

**THE ORHU ICE & ELECTRIC CO.,**

Telephone 1151. Office 2194, 2195.

# W. G. IRWIN & CO., LTD.

Wm. G. Irwin - President and Manager  
John D. Speckard - First Vice-President  
J. M. Hildard - Second Vice-President  
H. M. Whitney Jr. - Treasurer  
Richard Ivers - Secretary  
A. C. Lonsdale - Auditor

## BANK FACTORS, COMMISSION AGENTS

AGENTS FOR THE  
Oceanic Steamship Company of San Francisco, Cal.

## AGENTS FOR THE

Reserve Union National Insurance Company of Edinburgh.  
Willsborough of Magdeburg General Insurance Company.  
Alliance Marine and General Assurance Co., Ltd., of London.  
Royal Insurance Company of Liverpool.  
Alliance Assurance Company of London.  
Worcester German Insurance Company.

# HART & CO., LTD

The Elite Ice Cream Parlors.  
Chocolates and Confections.  
Ice Cream and Water Ices.  
Bakery Lunch.

## THE FINEST RESORT IN THE CITY

# Union Pacific

Railroad

SUGGESTS

**Speed and Comfort**

These trains daily through cars, first and second class to all points. Reduced rates take effect soon. Write early.

**S. F. Booth,**  
General Agent.

No. 1 Montgomery Street,  
San Francisco.

## Travellers Agree

THAT

# The Overland, Limited

IS

**Quickest, Finest, Best**

A Train that Supplies All Demands

To St. Louis or Chicago

**IN 3 DAYS**

from San Francisco.

ELECTRIC LIGHTS

READING LAMPS,

CLUB CARS,

ALL GOOD THINGS

# Southern Pacific

Information Bureau  
613 Market Street,  
San Francisco.

## OAHU RAILWAY AND LAND CO'S

## TIME TABLE

MAY 1st, 1903

## OUTWARD.

For Wailanae, Wailanae, Kahuku and Way Stations—7:15 a. m., 7:30 p. m.  
For Pearl City, Ewa Mill and Way Stations—7:30 a. m., 7:45 a. m., 7:55 a. m., 8:15 p. m., 8:30 p. m., 8:45 p. m., 9:00 p. m.

## INWARD.

Arrive Honolulu from Kahuku, Wailanae and Wailanae—8:30 a. m., 5:31 p. m.  
Arrive Honolulu from Ewa Mill and Pearl City—16:50 a. m., 17:46 a. m., 7:35 a. m., 10:55 a. m., 2:05 p. m., 4:31 p. m., 5:51 p. m., 7:40 p. m.  
Daily.  
Sunday Excepted.  
Sunday only.

M. F. DENNISON  
Supt.

F. C. SMITH,  
G. P. A. T. A.

# Bad Blood

Have confidence in Ayer's Sarsaparilla. It has been curing people in all parts of the world for over 30 years. It is the greatest family medicine in the world. It purifies, strengthens, enriches, builds up.



Mr. George Fontaine, of Mt. Vernon, So. Australia, sends his photograph and this interesting letter:  
"I had a very bad case of eczema. Medical men had told me nothing more could be done. I tried several blood purifiers, but without relief. The eruption was over the whole of my body and arms. My friends told me I must try Ayer's Sarsaparilla. To please them, I did so. To tell the truth, I did not have much confidence in it. I had tried so many medicines. To my great surprise, I found that after only one bottle the scales were beginning to disappear. It took just five bottles to make a complete cure. My skin is now perfectly smooth, and not a trace of my former trouble."

# AYER'S Sarsaparilla

There are many imitations of Sarsaparilla. Be sure you get "Ayer's."  
Prepared by Dr. J. C. Ayer & Co., Lowell, Mass., U.S.A.

# Sausage Fresh To-day

Fresh pork sausage in bulk and in casing and smoked sausage as follows:

FRANK FURTERS BOLOGNA, GARLIC, PORTUGUESE SAUSAGE, LIVER SAUSAGE, HEAD CHESSE, BLOOD SAUSAGE, TONGUE SAUSAGE, COMPRESSED HAM ETC.

All our sausages are made fresh every day and you can depend on having the best from us.

# METROPOLITAN MEAT CO.

Limited

Telephone Main 45

# M. Shir-kane

General Employment Office, Japanese and Chinese Laborers Etc., Supplied. Contract Work of Every Kind Undertaken. Corner Emma and Beresford Streets. Telephone Blue 281.

# If You're Planning To Build

This summer—or any time—we want to put in a word for the best building materials at the lowest prices.

A house made of good materials won't have to be repaired after each tenant vacates.

We carry the best lumber, shingles, door and window sashes, builder's hardware, glass, paints, oils, roofing, window shades, etc.

# LEWERS & COOKE, LTD

177 S. KING STREET.

Among the many crimes that are always with us, but especially prominent in dog days, is that of mortal infidelity—if it may be called a crime. The desire to break the bonds which bind men and women together seems to increase with the temperature, and certainly we have on hand at present a large and most varied assortment of cases. Divorces in high life, low life and middle life are being sought in all states and under all sorts of pleas and conditions. Sometimes it is the man, but more often the women, who will have a divorce and other things.—Philadelphia Inquirer.

## A BLACK FOX.

A Waterville (Me) man while on a drive through the woods near Petties pond in Winslow (Me.) saw a coal black fox. The animal did not appear to be disturbed by the presence of human beings, but gazed about for some time in apparent unconcern.

In the future, the dispute over the use of wine at ship launchings might be compromised by buying the bottle at the Subway Tavern.—New York American.

## THE DIFFERENCE.

"As for me," stated the petulant person, "I can see no difference between half a loaf and no loaf of bread." "But there is a difference," replied the practical one. "Wouldn't you prefer a whole doughnut to a doughnut hole?"—Judge.

Want ads in the Star bring quick results. Three lines three times for 25 cents.

# Canterbury Approves The Potter Saloon

THE HEAD OF THE ENGLISH CHURCH SAYS THAT THE EXPERIMENT HAS BEEN TRIED IN ENGLAND AND THAT SUCH A SALOON PERFORMS THE SERVICE IT IS DESIGNED FOR—HOWIE DISAPPROVES.

NEW YORK, August 27.—Right Honorable and Most Venerable Thomas Davidson, D. D., Lord Archbishop of Canterbury and Primate of England, arrived today on the steamship Celtic, accompanied by his wife and the Vicar of Windsor. The Archbishop said he had enjoyed the ocean voyage and was in excellent health. Just before landing, and after meeting Bishop Potter, Dr. Dix and J. Pierpont Morgan, Canterbury encountered the inevitable American interviewers.

"This journey," he said to them, "is undertaken in the belief that it may in the providence of God, have a tendency to promote yet closer unity in our common work; to strengthen our hands for combating the evils that are rife both in England and America; and, further, so far as in us lies the power, to advance the kingdom of our Lord and Savior."

The Primate also said that Rev. Mr. Ellison, one of the two chaplains accompanying him, was authorized to speak for him on any further topics the newspaper men might desire. Ellison was promptly asked about the "Subway Tavern," the saloon which was started here to lessen the drink evil, and which Bishop Potter dedicated. Potter's act has been widely criticized by organizations and individuals who believe in the methods so long and so ineffectively used in the United States in combating the liquor evil. Ellison, speaking for the British Primate, promptly vindicated Potter. Referring to the Subway Tavern, he said:

"The Archbishop approves of that. Mrs. Davidson, the Archbishop's wife, was herself interested in establishing in Surrey, England, a similar institution, and it has been tried successfully elsewhere. It performs the service it is designed for."

The Archbishop will go direct to Quebec, and tomorrow will preach in the Cathedral in that city, the occasion being the one hundredth anniversary of the dedication of the church. With his party he will also go to Montreal and Toronto. Dr. Davidson is to receive an honorary degree from the Toronto University. He will then visit friends on the Coast of Maine, hoping for a much-needed rest while with them. After this he will pay his respects to President Roosevelt and make various visits.

CHICAGO, August 18.—There is now no hope for Bishop Potter. After all the other divines in the country have taken their knocks the climax was reached yesterday afternoon when John Alexander Howie, through the medium of Overseer Bracefield, pronounced his opinion.

"The broad man is the man nearest hell," said the overseer in the course of his denunciation of the Bishop. "He has one foot in the church, and the other in corruption. This constitutes his broadness."

"Bishop Potter and his followers are all of this class," he continued. "They say they are broad. The best Christians are the ones who are called narrow. It takes a narrow man to get through heaven's gate."

Bishop Potter was not the only one, however, who received a reproach from the venerable overseer. The young people are getting bad, he says, and there seems to be a slackening of interest among them in church work, he was forced to admit. They get together on Sunday and leave the meetings on slim excuses, he claims, and as a result some of them have recently been expelled from the walls of the holy city.

"Woe unto them that let their love for pleasure interfere with their religion," he said, glancing severely over the heads of the young men and women who were in the audience. There were many blushing faces among the young people, but none of them appeared to be much alarmed.

Among other charges Overseer Bracefield said that he was afraid the people of Zion are beginning to devote too much attention to the development of her financial and industrial features, and too little to a development of her moral conditions. "Too many young men and women of Zion are going to the devil of lust," he cried. "Officers of the church are even now rounding up the lukewarm ones, and retribution is sure to follow those who have deserted the true call of the Church of Zion."

# ARMY OFFICERS ON THE WAR

AMERICAN WHO WAS AT THE FRONT IS PREPARING AN ACCOUNT OF THE HISTORY.

SAN FRANCISCO, August 19.—A really interesting and presumably authentic account of the various engagements and battles of the Russian-Japanese war is being prepared by the observers of the American army, who are bringing their technical knowledge to bear in explaining the various situations. Captain W. G. Hoan of the general staff, who before his present assignment was one of the valued, intellectual artillery officers at the Presidio, has been given charge of making public the reports of the observers in Japan from time to time. The first publication is an account of the battle of the Yalu, of May 1, 1904. Colonel E. H. Crowder, who made the observations, estimates that the relative force of the contending armies was as follows: Japanese under General Kuroki 5,000 cavalry, 17,000 infantry and 124 guns; Russians under General Zassaulitch, 17,000 infantry, 4,500 cavalry and 72 guns. The proportion of killed to wounded was nearly twice as great in the Russian army as in the Japanese, the Russians having lost 30 officers and 1,063 men killed, 90 officers and 1,100 men wounded, and the Japanese 3 officers and 218 men killed, 33 officers and 763 men wounded.

It is thought, however, that, considering the adverse circumstances, the fact that the strongest point was taken first, and that the enemy had a much larger front, calling for the diffusion of their own forces, the Russians made a good fight. The Japanese general staff supplied Colonel Crowder with a plan of the battle, which was amplified in detail by Captain Peyton C. March. Colonel Crowder and Captain March are two of the best-known officers in the service, both of the general staff. Colonel Crowder's keen mind has won him fame in the judge-advocate department, and Captain March has several victories in the field to his credit, to say nothing of his command of the famous Astor battery during the Spanish-American war.

GOOD PLUMBING is our forte, we don't do cheap work. You will find on exhibition in our store, all the latest fancy designs in bath room apparatus. We carry everything that goes to make up that most important part of a dwelling—the bath room—AND WE INSTALL IT RIGHT. Our plumbing is put in to last, we guarantee all work done by us, and can quote you the names of hundreds of satisfied customers.

It costs no more to have your plumbing and sewer connections done by us and remember WE GUARANTEE THE WORK.

BATH the Plumber, 165 King Street, Telephone 41 Main.

# BIGGEST TURBINE YET LAUNCHED

THE ALLAN LINE STEAMER VICTORIAN BEING COMPLETED AT BELFAST, IRELAND.

BELFAST, Ireland, August 25.—The Allan line steamer Victorian, the largest turbine vessel yet built, was launched here today. It is expected that she will be ready for service before the end of the year. She is 540 feet long, has 90 feet beam and her depth is 48 feet 6 inches.

The Victorian is to be fitted in a most luxurious manner, and is to carry 1,500 passengers, but the chief interest in her lies in her propelling power. Turbine steamers on the Clyde and in cross-channel service have proved very successful, and it is said that they have afforded great comfort to passengers, but considerable modifications had to be devised to meet the requirements of the trans-Atlantic service, including enormous propelling powers and stopping, backing and steering machinery.

These difficulties are said to have been overcome by Charles A. Parsons, the engineer, who has developed the steam turbine and made it suitable for the generation of electricity and the propulsion of mercantile and war vessels.

A special arrangement has been devised for the Victorian's machinery whereby reversing speed equal to that of her forward propeller can be imparted to it, securing the almost instant arrest of the steamer's forward motion and speedy backing in case it is needed. Her propellers are three in number, each on a separate length of shafting.

The Victorian will be fitted with a wireless telegraph apparatus and will carry a complete printing outfit.

Her tonnage is about 12,000, and she is expected to develop about 10,000 horsepower.

## Fine Tools

We have a fine well selected line of Starrett Tools.

## Carpenter's Tools

Everything in this line from the cheapest to the best.

## Blacksmith's Tools

From the big Forges & Bellows down to the smallest hand tools.

## Garden Tools

From Horse Lawn Mowers to small trowels.  
Handy tools of all sorts for the Mill, Shop or Home, are sold at

# E. O. HALL & SON, LTD.

# Another Large Shipment

These safes are now on the floor and ready for inspection.

## The Herring Hall Marvin Safe

is so constructed that its contents are absolutely preserved. A scientific study of the effect of fire on safes, combined with 60 years experience in safe construction, warrants the manufacturers to make the claim that their safes are positively perfect.

We carry a large assortment of safes from \$50.00 up. Cash or installments.

# Theo. H. Davies & Co., LIMITED

Hardware Department

# OUR OWN LINE

San Francisco to Chicago

(WITHOUT CHANGE).

OILED ROAD BED ALL THE WAY  
STANDARD AND TOURIST SLEEPERS DAILY

Trade

Mark

Stopping en route at Los Angeles, also "THE PETRIFIED FORESTS" and the "GRAND CANYON OF ARIZONA."

# World's Fair Dates from San Francisco

July 13-24, September 5-6-7-8, August 5-9-10-12-13, October 3-4-5-6.

SPECIAL RATES.  
San Francisco to St. Louis and Return ..... \$ 57.50  
San Francisco to Chicago and Return ..... 72.50  
San Francisco to New York and Return ..... 107.50  
San Francisco to Boston and Return ..... 108.50

Call on agent of Railroad Lines at Wm. G. Irwin & Co.

# "The Only Way"

To the World's Fair at St. Louis

The Handsomest Trains in the World, consisting of Matchless Chair Cars, Standard and Compartment Sleepers, Cafe-Library-Lounging-Smoking-Observation Cars, all wide Vestibuled, are operated over the Chicago & Alton Railway between KANSAS CITY AND ST. LOUIS, KANSAS CITY AND CHICAGO, AND ST. LOUIS AND CHICAGO. This fact, together with the courteous attention shown everybody, makes the Chicago & Alton Railway indeed "THE ONLY WAY." Nice connections are made with all lines entering Kansas City, St. Louis and Chicago.

Kindly request the Agent to ticket you over the Chicago & Alton Railway, or address: A. P. STEWART, General Agent, Chicago & Alton Railway, 80 Crocker Building, San Francisco, Calif.



ble by going direct to Tsinchau and dismantling.—Philadelphia North Ame



with each purchase of  
and & Co., Ltd  
ing Street, Honolulu.