

Time was when Maui was a house divided against itself. You may remember those good (?) old days. The Maui Spirit has changed all that, and is daily making Maui a better place to live in.

Maui News

NEXT WEEK'S MAILS

From Coast:
Makura, Dec. 27; Persia Maru, Dec. 28; Lurline, Dec. 31; Siberia Maru, Jan. 2.

For Coast:
U. S. A. T. Logan, Jan. 2.

TWENTIETH YEAR

WAILUKU, MAUI COUNTY, HAWAII, FRIDAY, DECEMBER 26, 1919.

NUMBER 1032

Daily Wireless To Quit First Of Year

Never Successful As Business Enterprise, Backers Have Grown Tired Of Supporting It Now That War Is Over—Will Probably Be Missed

The Daily Wireless, which has been published by the Maui Publishing Company for the past six or eight years, will suspend publication on December 31, according to a decision by the board of directors of the company made last Friday afternoon.

The reason for the action is that the daily publication has always been a losing proposition from a commercial standpoint, and it was felt that the business firms which have heretofore contributed to make up the deficit should no longer be asked to do so.

During the war the demand for "red hot" news of the battle front was such that, in spite of highly increased cost, the business interests of Maui were glad to make the service available to the community; and the publishing company was also glad to contribute its service to this end also. But with less sensational news of today, the delay of a day or two is not felt to be a serious matter.

At the meeting of the chamber of commerce, last week, the matter of discontinuing the Wireless sheet was discussed, and the chamber voted, by a close margin, its opinion that this should not be done. The Maui Publishing Company directors, found, however, that this vote did not fairly represent the views of the contributors to the subsidy, and so took the action above noted.

May Be Missed

Because of the condensed form in which the Associated Press dispatches were presented, the Wireless is easily and quickly read, and has come to be considered in light of a hand bill or poster. It is read by practically everybody, but paid for by the few. It is also unquestionably the best advertising medium on Maui, but owing perhaps, to lack of real competition among Maui merchants, it has not been made use of to any adequate extent.

Lt. Peacock, Wounded In France, Arrives Here

Lt. Jack Peacock, who served throughout the war with the Australian forces in France, arrived from Australia by the Sonoma this week and is now the guest of his brother F. W. Peacock of Puunene. He reached Maui on Christmas eve, and met also his brother Lt. Arch Peacock, now a Maui resident, who was in the Canadian Princess Pat's regiment. The reunion was the occasion a very joyous Christmas celebration for the Peacock family.

Lt. Jack has just about recovered from a very serious wound received towards the close of the war in which the bones of his thigh were shattered by a shot. This occurred during a reconnaissance. He was captured by the Germans and his wound neglected to such extent that very serious complications ensued from which he has but now about recovered.

Lt. Peacock will probably make his home in the Islands.

HAWAII SCIENTIST IN SOUTH AMERICA

BUENOS AIRES, Dec. 26—Prof. William Allison Bryan, who is seeking to establish a theory of a lost continent in the Pacific, arrived here today by way of Mexico and the west coast of South America where he has been making a study of the volcanoes of those sections. He will leave soon for Valparaiso en route to the Juan Fernandez islands to make a study of the mollusks and other marine life. If these are sufficiently similar to those of Hawaii he expects to prove that land connection once existed between the two lands.

WILSON HOLDING UP APPROVAL OF McNARY BILL

WASHINGTON, Dec. 26—The White House reports that President Wilson is withholding action on the McNary sugar control bill pending the filing of a memorandum on the subject by the sugar control board. It is stated that this delay is at the instance of the board.

Maui Man Visits Hilo After Long Absence

Charles F. N. Rose, of the Wailuku Sugar Co., staff, returned last Monday from a week's visit to Hilo and other parts of the Big Island. This was the first time he had been on Hawaii for 17 years, and he thoroughly enjoyed his vacation.

Rose says that there have been big changes along the Hamakua coast since he saw it last, some sections being almost unrecognizable to him. But the condition of the cane fields on most of the north coast, he reports, is about as bad as possible owing to the several successive years of drought.

Rose also visited the Volcano, which he says is presenting a wonderful spectacle at present.

DEATH OF BRIGHT CHILD

Dorothy McNicoll, the little 12-year old daughter of Mr. and Mrs. Alex. McNicoll, of Kahului, died last Monday morning after an illness of some months, from tuberculosis. The funeral took place from the family home on Monday afternoon, and was attended by many of the child friends of the deceased, and friends of the family.

The little girl was a bright child and her death is the cause of general sadness in the community in which she lived.

Says Sheriff Beats Him Buying Fish

McMahon Hasn't Been Able To Find 10 Cent Aku On Maui For A Blue Moon—Court Stenographer Try To Get Huber To Fix Prices.

In an effort to get a more reasonable rate for fresh fish on Maui, P. Maurice McMahon, stenographer of the second circuit court, recently wrote to district Attorney C. S. Huber in Honolulu asking him to take steps to regulate the prices here as he did so successfully in Honolulu and later in Hilo.

In reply Attorney Huber wrote: "I have your favor of the 18th instant regarding the price of fish on Maui, and in reply thereto beg to say that what has been done in the fish situation there was to re-establish the prices that prevailed under the Food Administration during the closing months that it operated, which would be during the last months of 1918 and January 1919. As soon as these prices were re-established here I sent a list of them to Sheriff Crowell; and under date of December 6th he sent me a list of prices then charged on Maui, which differed somewhat from our prices here, but taken on the whole were lower.

"I would suggest that you see Sheriff Crowell about this list of prices. Give me any information that you may have and I will be glad to receive and consider any suggestions that may be made that may possibly help your situation."

The list which the District Attorney says is lower than in Honolulu is printed below. McMahon says that they may be the prices at which Sheriff Crowell can buy fish, but he hasn't yet been able to anywhere approach (Continued on page 8, column 6)

TELEPHONE COMPANY PERMITTED TO RAISE RATES

HONOLULU, Dec. 24—The Mutual Telephone Company has been granted authority by the public utilities commission to make practically all of the increase in rates recently asked for. These new rates will become effective January 1 and are conditional upon the proposed wage increase schedule of the company's becoming effective at the same time.

MATSONIA REACHES SAN FRANCISCO

SAN FRANCISCO, Dec. 26—The Matson liner Matsonia reached here last night from the Atlantic where it was engaged as a transport during the war. The vessel was reconducted in Newport News and brought a full list of tourists from the east coast. She will again enter the San-Francisco-Honolulu trade.

Good Progress Being Made On Cannery

Materials To All Be Here In Few Weeks—New Assistant Superintendent Arrives—Was In Army Service In France.

Work on the new cannery being built at Kulaha by the Pauwela Pineapple Co., is progressing well, according to Charles Mel, manager of the enterprise. The grading for the factory is practically completed and 1000 barrels of cement for the building are already on hand and the rest (about 2500 barrels) is due to arrive within the next two weeks. Mr. Mel states that he has advised from the mainland to the effect that all the machinery and supplies ordered from the coast will be on the way by the middle of January.

Besides the main factory building, the company has already quite a little town built up of warehouses, offices and workmen's quarters. Also a large frame building has been constructed a short distance on the makai side of the cannery site which will be subdivided into a number of store rooms, restaurants, etc., to be leased to small dealers anxious to cater to the needs of the workers in the community. Assistant Superintendent Here

By the last Maono arrived from the mainland W. B. Mel, brother to Manager Mel, who comes here to take the position of assistant superintendent under Superintendent Archie Lister. Mr. Mel, who is a graduate of the University of California, of the class of '08 in engineering, recently returned from France where he saw some exciting times with the U. S. artillery corps. He comes to the Islands from a position with the Pacific Gas & Electric Co., in San Francisco.

Archie Lister, formerly superintendent of the Pearl City Fruit Co., but who has been on the mainland for his health for some time, is expected to return to the Islands in a few weeks to take the superintendency of the new cannery.

Lahaina's Community Christmas Huge Success

Lahaina has again demonstrated its ability to get together in its community Christmas celebration held last Tuesday evening in Campbell park. It was attended by children from all sections of west Maui, many of whom were brought to town by the generous use of motor trucks of the plantations.

The committee in charge of the event had arranged for a fine program, in which practically all of the schools of the district had a distinctive part. There was a magnificent Christmas tree, and a real and truly chimney down which old Santa Claus came in most conventional style to the huge delight of the youngsters. Candy and gifts were distributed to all the children present.

The success which has attended the community celebration both last year and this, is such that there is no doubt that it will hereafter be a regular feature of Lahaina.

CHRISTMAS AT WAIKAPU

The children of Waikapu enjoyed a Christmas treat on Wednesday evening arranged by Mrs. Frank Hoogs. A very pretty tree, with gifts of candy and toys was the chief feature of the entertainment.

GERMAN SHIPS TO BE TURNED OVER TO BRITAIN

WASHINGTON, Dec. 26—The shipping board announces that at the direction of the President the ex-German ships of the Imperator type held in the United States are to be delivered to Great Britain.

FINE MUSIC IS FEATURE OF WAILUKU CHURCH SERVICE

The Wailuku Union church was beautifully decorated last Sunday evening for the Christmas service, which was largely of a musical character, delightful selections being rendered by the large choir.

A brief but strong sermon on the "Christmas Spirit" was delivered by the Rev. E. E. Pleasant, who occupied the pulpit for the evening with the Pastor, Rev. W. C. Crider.

New Year's Races Looming Up Big

Keenest Of Interest Among Horsemen And Others Indicates A Record Day At The Kahului Track—Ball Game Looked Forward To.

Horsemen are enthusiastic over the outlook for the big New Year's race meet to be held at the Kahului track. Everything points to this being the biggest and most interesting racing event ever held on Maui. And this means something when it is remembered that Maui's racing history runs back for between 30 and 40 years.

Interest centers especially on the big free-for-all for the \$1000 purse. It is probable that there will be at least 5 entries in this event. Robt. Shingle has several horses here from Honolulu, and a number of local horses have been in training steadily for this particular feature.

Because of the size of the purses and the consequent keen competition, as well as on account of the character of the program, it seems certain that the attendance will be very large.

The baseball contest between the All-Maui team and the Waikikis of Honolulu will also be a feature that will help to swell the crowd as great interest centers around this game.

WAILUKU SUNDAY SCHOOL HAS FINE CHRISTMAS TREE

The Christmas celebration of the Wailuku Union church Sunday school, held last Tuesday evening, was an unusually pretty and pleasant affair this year. Besides the large gathering of children, many of the parents were also present and greatly enjoyed the exercises. Major O. J. Whitehead played Santa Claus in most approved fashion and distributed the candy and gifts from the fine tree. Rev. and Mrs. W. C. Crider had general charge of the celebration.

SURVIVOR OF CRUISER CARL SCHURZ RETURNS

George Hoapili, seaman, United States Navy, bearing one of the names distinguished during the wars of Kamehameha I a century and a quarter ago, who was cast adrift in the Atlantic in an open boat when the U. S. cruiser Carl Schurz sank after a collision, returned home yesterday in the Sheridan.

Hoapili enlisted early in the war and was assigned to the Schurz, formerly the German cruiser Geier, which was seized by the naval authorities on February 4, 1917, at Pier 8, and later towed to Pearl Harbor, where she was remodelled, new guns put aboard, and commissioned as the Schurz. He now rates as a coxswain.

Paymaster R. A. Lambert, U. S. N. R. F., formerly in the navy and for a time at Bishop Museum, who returned to service after the war began, also returned home. He was aboard the Schurz when it met its death blow. He saved only his clothes and lost many of his personal belongings.—Advertiser.

MARRIAGE LICENSES

Charles H. Britten, 21, Kahului, and Balbino Perreira, 19, Makawao, Dec. 19, 1919. Ceremony by Rev. Father James.

Yawaichi Nakamura, 20 and Misao Tanaka, 20, both of Puunene, Dec. 20, 1919. Ceremony by Rev. S. Kurada.

Katsuyoshi Sato, 31 and Tai Shishido, 20, both of Keahua, Dec. 22, 1919. Ceremony by Rev. J. Nishiura.

William D'Emmond, 46, Honolulu, and Mary M. Bal, 20, Wailuku, Dec. 24, '19. Ceremony (to be performed Dec. 27) by Rev. E. E. Pleasant.

Antone Yue, 27, and Theresa Martin, 28, both of Kahului, Dec. 24, 1919. Ceremony by Rev. Father Justin.

Tomoyoshi Murakami, 22 and Sheynaga Murakami, 19, both of Puunene, Dec. 25, 1919. Ceremony by Rev. J. Nishiura.

WAILUKU ORPHEUM IN USE AGAIN

Although condemned as unsafe, the Wailuku Orpheum has been in use for a Japanese show for the past two evenings. It is understood that some temporary repairs were made and that the side seats are prohibited from being used. The performance has been put on by a quartet of Japanese actors who recently arrived from Japan.

Makawao Wine Makers Plead Guilty—Fined

The "Three Musketeers" as the revenue agents in Honolulu facetiously dubbed the three Makawao wine makers, arrested recently for selling liquor, were each fined \$100 and costs, amounting to \$39.80 in the United States district court in Honolulu. The 3 men, Joaquin de Cova, Joe Santos Bars and Manuel Mendes, each pleaded guilty, paid their fines, and returned the following day to their homes.

The 31 barrels of wine seized by the officers is now in Honolulu, and although replevin suits were instituted to recover it by the makers, on claim that it was merely "grape juice," it seems doubtful if they will succeed in getting it back since analyses are reported to have showed that it contained from 5 to 12 percent or more of alcohol. The maximum alcoholic content permitted in beverages is one half of one percent. The recovery suits were filed in the local circuit court and will presumably come up for trial at the new court term next month.

WILL VISIT AUSTRALIA

L. von Tempisky, the well-known ranchman of Makawao, has applied for a passport from the federal authorities in Honolulu for permission to visit Australia. Mr. von Tempisky expects to leave as soon as the necessary permit is secured for a several month's business trip to the southern continent.

Grand Hotel May Be Sold To Maui Hotel

Those Interested Not Ready To Talk But Is Known Negotiations Are In Progress—Price Consideration Said To Be \$50,000.

Negotiations, which have been on foot for some time for the purchase of the Grand Hotel by the Maui Hotel Co., are likely to be concluded shortly, according to apparently reliable reports. If the deal goes through it is understood that the purchase price will be about \$50,000.

The Grand Hotel is now owned jointly by the Bank of Maui and Henry Streubeck. It is known that the Maui Hotel interests have sought for a year or more to acquire it with view to incorporating it with the chain of hotels being established on Maui, now consisting of the Maui Hotel and the Pioneer Hotel, at Lahaina.

Manager W. H. Field, of the Maui Hotel Company, denied this week that the deal had been consummated, but admitted that the negotiations are likely to lead to that.

Appraisers Named To Fix Price On Property

HONOLULU, Dec. 24—Chief Justice Coke today appointed Ralph A. Wadsworth, G. H. Cummings and W. F. Crockett, Sr., as appraisers, upon application of the Kahului Railroad Co., for the condemnation of a right of way across certain lands in Papohaku, Wailuku.

The above dispatch refers to a piece of land occupied by Charles Achua and others across which the spur track of the railroad to the Wailuku Sugar Co.'s warehouses runs. The title to the property is held by a number of persons, including minor heirs, making it necessary to apply to the courts in order to get a clear title under which the right of way can be purchased or leased.

GOOD RAIN HELPS EAST MAUI

The heavy rain which visited central and east Maui on Monday night was of much benefit to the plantations and to agriculture generally. The rainfall was good this time in the ditch country, with result that the ditches supplying Paia and Puunene have been bringing down a larger volume of water than for many weeks past. It is hoped that the long drought has finally been broken.

Election of officers will be the chief feature of the meeting of Aloha Lodge No. 3, Knights of Pythias, this evening. There will also be work in the second rank.

Jury Commissioners Submit 1920 List

No Slip-Up Expected This Time To Ball Up Court Work—Every Precinct Considered And About Every Nationality Represented.

Although the juries of the second circuit court for the year 1919 were recently held by Judge Burr to be invalid on account of a technical error in the selection of the lists from which the juries had to be drawn, Judge Burr reappointed on the first of the month C. D. Lufkin and D. T. Carey as jury commissioners to prepare the jury list for the 1920 term of court. The commissioners last week submitted their report together with the list of 150 names for trial jurors and 50 names of men eligible as grand jurors.

It is believed that the new lists are objection-proof and air-tight, and that there will be no tie-up of judicial proceedings during the coming year on account of the inadequacy of the jury.

The commissioners not only selected their names from the voting lists in proportion to the distribution throughout the various precincts, but they have included Japanese, Chinese, and in fact representatives of practically every nationality which has any voters in the county.

The new term of court will open on the second Monday of January, when the juries for the year will be drawn from the lists submitted.

The commissioners this time tell how they went about selecting their lists. They state—

"That on the 12th day of December A. D. 1919, we proceeded to select and list from the citizens, voters and residents of the several precincts in the Circuit, as near as may be according to and in proportion with the respective number of registered voters last registered in each of such precincts, the names of one hundred (100) persons who, in our opinion, are qualified to serve as trial jurors, and the names of fifty (50) persons who are so qualified to serve as grand jurors, as required by law,—except in precincts 13, 15 and 19, where we were unable to find, so as to select and list, persons who, in our opinion, are so qualified to serve as grand jurors; that we have (Continued on Page Five.)

New System In Force For Paying Teachers

The department of public instruction has sent a circular letter to all school principals advising them that a new system of making out payrolls will go into effect the first of the year by which it is expected that every salary warrant will be sent out by the territorial auditor not later than the 10th of each month—provided the principals do their part. The letter says—

Beginning with January, 1920, the official pay day of the Department of Public Instruction will be the 10th day of each calendar month. This regulation is made upon the specific recommendation of the Auditor's office. The old method, under which the principal of each school submitted a report for the month covered by the days from the 26th of one month to the 25th of next month, has proven to be clumsy, unbusiness-like, and a source of perpetual annoyance. Teachers are paid for calendar months of service and the old method virtually required the keeping of two accounts for each teacher for each month, viz: from the 1st to the 25th and from the 26th to the last day of the month. This antiquated system would not have been tolerated in any modern business house.

The secretary states the new system which is in strict conformity to the best business practice, will effect an increase of 25% in the efficiency of handling the monthly pay rolls of over 1200 employees.

Beginning with January, 1920, each principal will make his report on form No. 2 to cover the entire month, beginning on the first day and ending with the last day of each month. The following note shall be substituted in place of the note which now appears at the foot of Report Form No. 2:

"Note: Make this report out for each month and send to the Secretary (Continued on page 8, column 2)

On The Other Islands

Supposed Dead Man Gets Welcome - Kailopa Kanehaku, the Hawaiian mail carrier, who was rescued after 51 days of drifting in an open boat, and whose death had long since been accepted as a matter of course, returned to his old home at Kawaihine last week and was given a tremendous reception. His wife and 2 children met him at Lahaina. The returned man came ashore at Lahaina and was accorded quite a reception by the west Maui people.

Big Meteor Seen On Hawaii - A giant meteor which flashed through the sky and probably dropped in the ocean very near the Puna coast of Hawaii, caused a big stir on the Big Island, Wednesday evening of last week. Apparently the celestial arrival exploded when it struck for the report is said to have been heard all over the island. From the fact that the seismographs failed to note any disturbance of the earth's surface, it is believed that the meteor did not strike the land, although many were convinced that it did.

MAKAWAO UNION CHURCH HAS DELIGHTFUL CHRISTMAS SERVICES

Christmas services at the Makawao Union church this year were held last Sunday and were unusually interesting and impressive. The music for the two services was an especially attractive feature. The Christmas cantata by Spence, rendered by the choir at the morning service was very effective.

In the evening the Maunaloa Seminary girls rendered a number of selections. At this service also Messrs. C. D. Lufkin, F. N. Lufkin and R. J. Vilim rendered some delightful music on cornet, cello and violin. R. E. Coursen played the organ. The offering, which amounted to \$450, was in part for relief of the Armenians.

On last Saturday the Sunday school of the church held its Christmas celebration, which was much enjoyed by the children.

JAPANESE VOLCANO IN ACTIVITY

TOKIO, Dec. 26—Mount Aso, which has been unusually active for the past several weeks, has thrown out a heavy cloud of ashes which has covered the country for many miles. Many horses and cattle have died from eating the poisoned grass of the fields.

Dr. Imamura declares that the volcano has entered upon the stage of its greatest activity and he does not expect a more disastrous eruption.

Milk Shortage In Germany Serious For Children

LONDON, Nov. 15—(Associated Press)—Miss Ruth Fry, Secretary of the Friends' War Victim Relief Mission, draws an appealing picture of the effects of the shortage of milk on the health of the children in Vienna.

"I have recently paid a visit to Vienna" she says, "and therefore had special opportunities for obtaining information.

"Even the tragic state of Lille after the withdrawal of the Germans when 60 percent of the children were found to be undersized and 40 percent tuberculous, was not so terrible as that of Vienna, now a city of 2,500,000 inhabitants, where one ever sees a normal child in the streets; where practically all the children of the wage earners are undersized, practically all under three suffering from rickets and a large proportion of older children suffering from both rickets and tuberculosis which has reached the proportions of a dangerous epidemic.

"This ghastly state of affairs is the direct result of malnutrition and above all of the absence of milk. In Vienna, milk is reserved for infants under one year, and the most serious cases of illness. But in many cases even the pint of milk allowed has to be cut down one half."

After describing some of the effects of the shortage of milk in Germany, where the conditions are much better than in Austria, Miss Fry asks:

"Could not measures be introduced in those countries which have not yet adopted them, whereby healthy adults should be called on to make a sacrifice in the interests of the children, not only of their own countries, but of Allied and enemy countries as well? The surplus milk could then be dried or condensed for export.

"So long as serious shortage exists anywhere, milk should be reserved everywhere for those whose future health and strength depends on it. The health of the next generation," she says in conclusion, "is an international question."

Those Who Travel

Arrived By Claudine, Dec. 20—Capt. and Mrs. J. C. Lorenzen, Master von Tempisky, Miss L. von Tempisky, Master T. Penhallow, Master K. Penhallow, Master C. Penhallow, Miss E. F. Wells, Mrs. J. R. Chamberlain, Miss T. Miller, Richard Sloggett, Edward Hair, Walter Goule, Miss Irene Garcia, Miss Lucy Palea, Master Walker, Hewitt Sparks, Mrs. J. P. Cooke and maid, Master F. Cooke, Mr. W. O. Aiken, Chas. B. Frazier, Mrs. Aubrey Williams, Miss Marion Jaeger, Mrs. M. Jaeger, Miss A. Nix, Master Cyrella, Miss Y. Shaw, Miss Eva Marcel, Miss L. De Bois, Scott McNeil, F. H. Wells, A. Kuni, O. Kusibayashi, F. Yum Yap, C. Pereira, Mrs. Joe Clement, Mrs. van Inge and child, E. N. Drape, C. Smith, J. Meinocke, G. H. Bailey, Manuel Norbriga, D. A. Doler, John De Bolt, Jr., Mr. and Mrs. Cox, Miss L. Apo, Miss M. Castro, Mr. Morton and daughter, John Brown, S. Sommers, S. Molela.

Departed By Claudine, Dec. 20—Miss Harriet Collins, Miss A. Ling, Mrs. Ting Fuc, Miss Carrie Tom, C. F. White, Mr. G. W. Gerber, Mrs. A. F. Nunes and 2 children, Mr. and Mrs. P. A. MacCaughy, Mrs. Jose M. Trinkle, Willie Aki, Mr. Rathman, Mrs. T. B. Johnson, Mr. Frazier, Miss Lucy B. Sitra, Miss Elizabeth Kaninau, Andrew Partika, Mr. Edward Ing, Mrs. Sabey, Mrs. Stuvbeck, Mrs. C. Mel, Miss Ume S. Kagawa, Mr. T. Okumura, Mr. M. Koda, Mrs. S. Machima, Mrs. S. Mashima, Mr. and Mrs. J. E. Silva, Miss Alma Evans.

Arrived By Claudine, Dec. 23—Lahaina—K. Ohata, Miss May Kay, Mrs. Bert Gibb and infant, John Dolin, S. M. Kamaiopili, J. S. Loeze, Miss E. Kong, Mrs. E. J. Catton.

Kahului—Mrs. A. Stone and daughter, Miss R. Kitcham, Miss A. Fenkler, Miss Dorothy McKee, T. D. Cockett, Mr. and Mrs. S. J. Lyle, Miss E. A. Colburn, N. Chun, Kum Chun, E. Wilhelm, Nelson Kalon, F. A. Lee, Miss H. Meyers, Mr. and Mrs. F. N. Gibson and child, Miss Helen Leondea, M. R. Coelho, L. Herbert, Miss May E. Rea, Miss G. Cravalho, Mrs. Chur. Hana—Miss A. Chalmers, Miss M. Dauson, Mrs. A. N. Kalama, Frank Buchardt, Mrs. Hong Young.

Departed By Mauna Kea, Friday, Dec. 19—Miss Esther Yap, Miss Ruth Yap, Miss Daisy Kong, Miss E. Snyder, Mr. and Mrs. Geo. C. Munro, Geo. Holokau, H. Horiuchi, William Makeani, Miss Annie Lung, Mrs. F. H. Lockwood, Miss E. A. Aylett, Miss Helen Stearns, Mr. and Mrs. K. J. Zedwitz and two children, Miss B. Mitchell, Tuschiyama, Mrs. J. J. Havery, Miss R. Coelho, S. S. Yegusa, S. Salto, Mr. and Mrs. J. P. Cockett and six children, Y. Kodama, S. Miyamoto, W. N. Koloa, H. Hashimoto, T. Y. Chong, John Dolin, H. Claud, T. Kosaki, T. Chong, E. Lindner, K. Ota, S. Uchida, C. A. Short.

Departed By Mauna Kea, Dec. 22—C. M. L. Watson, E. B. Wicke, A. Jungnickel, Mr. and Mrs. H. Streubeck, Carl Miller, Mrs. Kurisaki, Miss M. McCubbin, Albert Lee, Ah Fook, Miss Esther Makana, Chas. Lund, H. St. C. Tait, L. von Tempisky, Miss C. Stevenson.

Circuit Court Notes

In the matter of the estate of the late Mrs. Emma Silva, widow of the late deputy sheriff of Hana district, Judge Burr last week approved the petition of J. A. Medeiros to be appointed administrator.

Asashi Takita was last week granted a divorce from Taisu Takita on grounds of desertion.

In the matter of the estate of Joseph Nunes, deceased, the court last week appointed Joe S. Souza administrator, and ordered that the widow be allowed \$40 per month for the support of herself and minor children pending the final settlement of the estate. The estate inventories at \$5137.50, and consists chiefly of real estate and 50 head of cattle in Peahi.

Matsutaro Fujimura has been granted a divorce from Chiyo Fujimura, on grounds of desertion, the decree becoming effective December 24.

Waka Osaki, on grounds of non-support, has been granted a divorce from Ewata Osaki.

Ella Ah Choy has been granted a divorce from Ah Choy on grounds of non-support.

RADIO PRESS RATES REDUCED

Effective this week, the navy department has put into effect reduced rates for radio press messages on the Pacific, which will effect a material saving to the newspapers in Honolulu and in the Philippines. The rates between San Francisco and Honolulu is now 3 cents per word.

Hilo and Maui also benefit to some extent, with a half-cent per word rate from Honolulu. This is equivalent to perhaps a 33 1/3 percent reduction over the flat rate previously in effect.

ROCKEFELLER GIVES \$100,000,000 TO FURTHER EDUCATION

NEW YORK, Dec. 24—It is announced that John D. Rockefeller is to give the world a Christmas present of \$100,000,000.

One half of this amount is to be used by the general education board to increase college professors' salaries and the other half is to be spent through the Rockefeller Foundation for improving medical education. The donor has urged that both boards proceed to expend both principal and interest from the fund as soon as feasible. He authorized the Foundation to expend a portion of its part in Canada because of Canada's sacrifices in behalf of democracy. It is expected that a portion of the professors' fund will also be spent in Canada.

This donation raises the total of Rockefeller's benefactions to \$450,000,000.

Ward Walker, Dr. J. H. Johnston, Miss Eva Rodriguez, Miss D. A. Lee, Quon Wong, William R. Bartels, V. Celeste, K. Kato, E. K. C. Yap, A. Mahashi, Mr. and Mrs. Masunago, W. G. Silva, Chas. Ah Kee, M. Puentes, T. Hori, F. Kubo, J. Nukul, S. Chinene, N. Ikeda.

By Claudine, Dec. 24—Mrs. Collins, A. Tyler, C. A. Perkins, Chas. Mel, Mr. Reis, Mr. Templeton, Mrs. M. Dutro and child, Miss Dutro, M. R. Klester.

PAPERS RECORDED

Deeds J. K. KAHOOKELE & WF. to C. D. Lufkin, Lots 3 & 4 Mountain View Tract, Wailuku, Maui, Dec. 12, 1919. \$4300.

J. K. KAHOOKELE & WF. to Enos Vincent, Lot 1 Mountain View Tract Wailuku, Maui, Dec. 3, 1919. \$600.

AUGUST M. GUERRERO & WF. to Lahaina Agred. Co. Ltd. 25-100 A of Ap. 1 R. P. 1672 Kul. 393 bldgs. rents, etc., Puuhoowall, Lahaina, Maui, Dec. 19, 1919. \$1000.

JOSEPH F. WELCH & WF. to Kaohu Kauhane, Int. in 295 A land in Book 482 Page 247, Dec. 13, 1919. \$800.

Releases BANK OF MAUI, LTD., to J. K. Kahookole, Mtge. recorded in Book 480 Page 48, Dec. 17, 1919.

EST. OF MAX ECKHART by Tr. to Likepa Kahookole, Mtge. recorded in Book 429 Page 361, Feb. 15, 1919.

Lease AMELIA DO REGO & HSB. to Joe Do Rego, pc. land, Vineyard St. Wailuku Maui, Aug. 22, 1919, 10 yrs. at \$120 per annum.

Assignment of Lease EST. OF TALULA L. HAYSELDEN by Admr. to Lahaina Agred. Co., lease of Ap. 2 R. P. 1877 Kul. 4878, Puunaonui, Lahaina, Maui, Dec. 19, 1919, \$1.

Deeds CONCEICAO DE L. ANDRADE to Manuel S. Deponte, Lot 46 Gr. 6556 Kuiaha-Kaupakalua, Maui, Dec. 8, 1919. \$3500.

THOMAS HOLSTEIN & WF. to Joaquin Lopes, Ap. 1 R. P. 6252 Kul. 8462-B, Waiakoa, Maui, Dec. 16, 1919 \$400.

BALBINA DA SILVA widow to Augusta Cabral, 225-1000 A of Kul. 409 bldgs. etc., Mokuhanu, Wailuku, Maui Dec. 15, 1919. \$2000.

Agreements M. S. DEPONTE to T. Ikeda et. al., to plant & sell pineapples on Lot 46, Kuiaha, Hamakualoa, Maui, Dec. 8, 1919.

MRS. COOKE MAKES HANDSOME PRESENT TO CENTRAL UNION

At the services in Central Union church, Honolulu, last Sunday, announcement was made of the donation by Mrs. Maud B. Cooke of \$25,000 in Liberty Bonds to the church for the purchase of a new organ, or as the nucleus for a building fund for a new church edifice. The gift is made as a memorial to the late Joseph Platt Cooke.

The announcement of the gift is of interest on Maui, the donor being a daughter of Mrs. H. P. Baldwin, of this island.

ANTI-ALIEN LANGUAGE SCHOOL LAW IS UPHELD

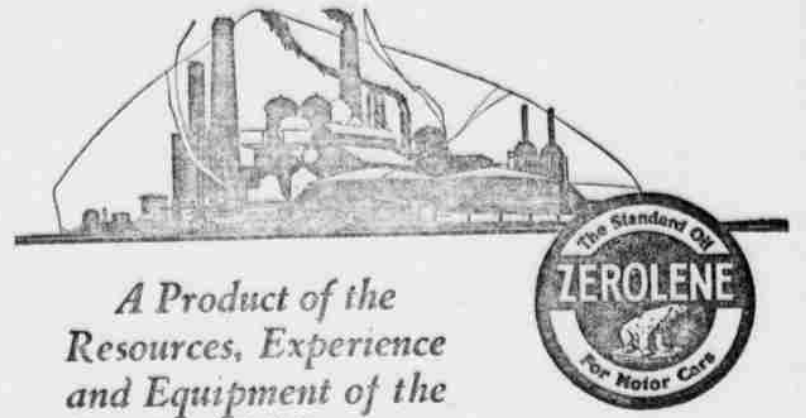
LINCOLN, Neb., Dec. 26—The state supreme court has rendered a decision upholding the new Nebraska law curtailing the use of foreign languages in the schools of the state.

CHURCH OF THE GOOD SHEPHERD SUNDAY SCHOOL HAS TREAT

The annual Christmas of the Sunday school of the Church of the Good Shepherd was held last Tuesday evening in the Parish house, and was greatly enjoyed by the children of the parish and their elders as well. A very pretty Christmas tree was one of the features of the happy event.

HAWAII KNOWN IN SOUTH AUSTRALIA

Writing from Adelaide, South Australia, C. B. Gage, well known in the islands as representative of the Magor cane car company, says that he finds some interest in Hawaii even there, he says, and "de Vis Norton's volcano publicity stories are here too. I expect to return to Hawaii (Honolulu) shortly."



A Product of the Resources, Experience and Equipment of the Standard Oil Company



Zerolene, correctly refined from selected California crude oil, keeps its lubricating body at cylinder heat, holds compression, gives perfect protection to the moving parts and deposits least carbon. Its use will mean better performance and longer life for your car.

The Standard Oil Company Board of Lubrication Engineers has determined the correct consistency of Zerolene for your make of automobile. Their recommendations are available for you in the Zerolene Correct Lubrication Charts. There is a chart for each make of car. Get one for your car. At your dealer's or our nearest station.

STANDARD OIL COMPANY (California)

A grade for each type of engine

If you are not now receiving the REXALL MONTHLY MAGAZINE please send your name for mailing list. The Magazine has recently been enlarged, and improved by the addition of stories by prominent writers and pictures of current events.

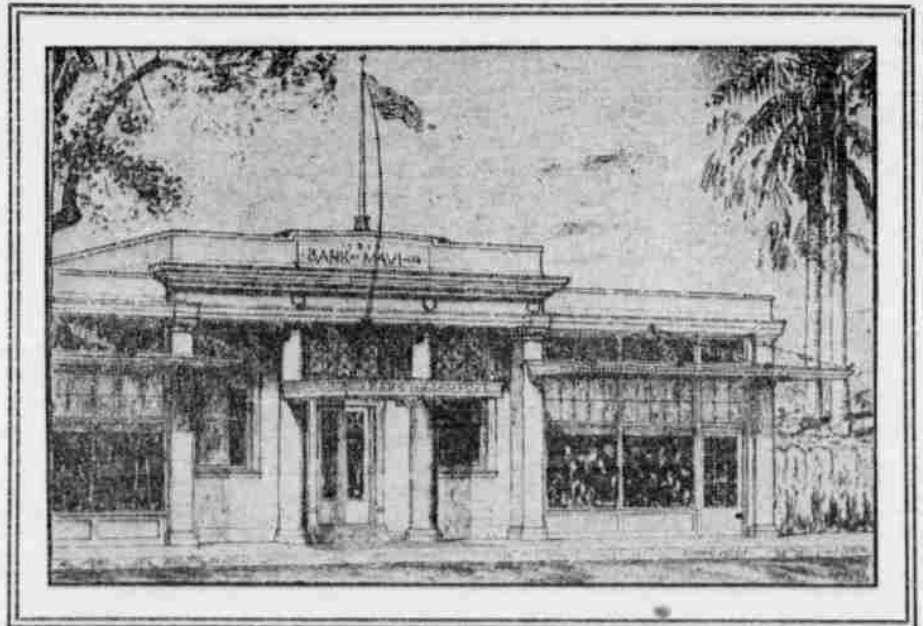
THIS SERVICE IS ABSOLUTELY FREE.

Benson, Smith & Co., Ltd.

SERVICE EVERY SECOND

The Rexall Store Box 426 Honolulu, T. H.

The OFFICERS and DIRECTORS of the BANK OF MAUI, LTD. are pleased to present to their friends a cut of the New Bank Building at Lahaina



On the strength of 18 years record and our unequalled service, we solicit your patronage BANK OF MAUI, Limited WAILUKU LAHAINA PAIA

Big Reduction SALE

Ladies' Trimmed Hats at Greatly Reduced Prices

During the Holidays Most Complete Stock on the Island

THE FASHION

Wailuku, Maui Telephone 224 All kinds of Hats Washed and Dyed—Made to Order Any Style

THEATERS

"The Firing Line"

Irene Castle seems well-suited to the interpretation of the leading character in "The Firing Line," and her charms of movement are well depicted in this Paramount Aircraft Special. She adds more than one personal attraction to the careful illustration of the Chambers novel, but the role she is obliged to assume is hardly one to enlist either sympathy or admiration. It is that of a flighty young female, at one moment concerned about the feelings of the wealthy people who adopted her, lest they know of her legitimate marriage, at another indifferent to their feelings when she decides to give herself to a lover. Loaded to the skies in subtitles, she displays the characteristics of a very thoughtless, if not a thoroughly selfish woman, accepting favors on every hand and giving little in return, until summoned to nurse the loyal man whose happiness she has nearly destroyed, to whom she is released by the suicide of her husband.

This suicide forms one of the few really dramatic incidents of the story, very delicately and effectively handled. In fact, the role of the husband in name only, as impersonated by David Powell, constitutes the nearest approach to genuine human character. R. V. Steele is convincing in the difficult role of a man who overcomes his own infatuation and that of the girl in time to save her from herself.

"Girls"

If you want to see the unconditional surrender of a certain man-haters' club and the sensational capture of its leader and members by Cupid and his agents, see Marguerite Clark and the supporting cast in her new picture "Girls."

Pataela Gordon, the role played by the star, is a confirmed man-hater. In fact her views on the subject are so confirmed that she seeks to convert other girls to her principles and has formed a man-haters' club consisting of herself and two other girls, her room-mates.

But one by one her converts feel the pleasant sting of Cupid's darts and fall out of ranks, leaving the little heroine of the story alone to wage her

warfare on love and man. But her battle is a hard one and the way she is finally bested and forced to capitulate to Commander-in-chief Cupid and his opposing forces, consisting of a young and ardent sweetheart named Edgar Holt, is said to be one of the most delightful comedy-romances ever seen on the screen.

"The Forbidden Room"

Court procedure is always a fascinating subject for stories and at the same time difficult to render in a convincing and satisfying way. This five-reel production, "The Forbidden Room," written by W. S. Van Dyke and directed by Lynn Reynolds, is practically built around political intrigue and its attending litigation. The picture as a whole has an authoritative movement and carries a sustained interest from start to finish. It is quite involved at times and required close watching, but is strong in entertainment value.

Gladys Brockwell does some exceptional work in the role of Ruth Lester. The atmosphere is in keeping with the story. Most of the action occurs in city departments, where political intrigue is rampant, or in the court room, where the denouement is brought out.

"Louisiana"

Few of her pictures have afforded Vivian Martin, the dainty and universally popular little Paramount star, with such an opportunity for dramatic depth and genuine acting as "Louisiana," her latest Paramount picture.

The story starts in the mountains of South Carolina where Louisiana Rogers, who is just reaching maturity, lives with her father, Lem Rogers, a crude mountaineer. His decision to send her to Oakvale Springs, a popular resort, that she may see more of the world, is strenuously objected to by Cass Floyd, a young suitor who lives nearby. Nevertheless, Louisiana goes and in the world of men and money, she meets Laurence Perol, a young playwright, and a love romance between the two is soon budding.

Insanely jealous, Cass goes to the Springs to keep an eye on Louisiana and angrily sees the turn of events. In a fit of rage he shoots at and seriously wounded Laurence. This results in many complications which make the story one of the most romantic in which the star has yet appeared.—Adv.

Kihe School Had Fine Christmas Program

Editor Maui News:

Dear Sir: Everyone in this Kihei corner ought to be proud of the pupils of Kihei school.

You may remember, the Christmas celebration this year took the form of a concert given by the pupils and the guests were expected to buy tickets of admission—juveniles 10 cents, seniors 25 cents. The funds to be devoted to buying the "nucleus" (Capital "N" please) for the Kihei school library.

Now, before giving you the full program, it may be in order to say that the children were pleased to see so many "city visitors" at their concert. And these same visitors were well repaid, as the program will show. I cannot follow the printed program, as there are twenty-six numbers on it, and to tell of the talents of the different boys and girls who took part, would require a special edition of the Maui News. Suffice it to say that the—No, Mister Editor, the task is beyond me, better take the program, "as it was did:"

- Merry Christmas Elizabeth Louis
- Song Shine Out Oh Blessed Star
- Recitation (Bethlehem)..... Alfred Louis
- Holy Night Shepherd & Manger
- Wise Men (Tableau)
- Star Light (Tableau)
- Recitation by Elizabeth Louis
- Music by Asami
- School Song (Santa Claus is Coming)
- Signs of Christmas (Tableau)
- Ukulele Music by Mr. Hookano
- Song by "Three Negro Minstrels"
- Talk to the Pupils and friends of the School, "The Library and the Country School" by J. C. B.
- The Trio
- Misses Lee, Coleman & Tseu.
- Recitation Alice Ambrose.
- Song of the Season by
- Girls of Grades 4, 5, & 6th
- A Three Act Play by
- Six Pupils, 3 boys & 3 girls
- Christmas tableau Nine Boys
- Song On the Brow of Night
- Butterfly Dance
-20 Little Daughters of Nippon,
- In Costume.
- Song, by Class
-Why Do Bells For Christmas Ring?
- Tableau Liberty & the U. S. A.
- Closing Remarks by
- Principal Miss Lee.
- Santa Claus.

Mister Editor,
This is only a beginning. The children of Kihei school have set the pace and it is up to their friends to follow the good work up. After the New Year vacation is over we expect to see many books sent down to swell the Kihei school library.

In closing, we would just say that due credit must be given to these women who are giving all their time and talents to aid in the good work of welding together those children of alien races and tongues into one Glorious Whole; until at last we know that the words of Robert Burns, (spoken so many years ago) may come true.

"It's coming yet for a' that When man to man, the world o'er shall brothers be, for a' that."
That's all tonight.
With all good wishes,
Your respectfully,
J. C. BROWN.
Kihei, Dec. 22, 1919.

ADMIRAL SIMMS REFUSED WAR MEDALS AND TOLD DANIELS WHY

WASHINGTON, Dec. 23—A number of naval officers here have received copies of a letter written by Rear Admiral Simms to Secretary Daniels in which the writer declined to accept various decorations awarded him for his service during the war. Asked about the letter, Daniels refused to discuss it, except to say that excerpts shown him were substantially correct. Admiral Simms declined the distinguished service medal owing to the manner in which awards were made, because some officers which he had recommended for the honor had not received recognition.

THINGS NOT SO LOVELY IN ITALY

NEW YORK, Dec. 23—Several hundred Italians arrived here today completely disillusioned as to the desirability of Italy as a place of residence. They had left America after the armistice with view of living richly and cheaply on their savings in the old country, but found the cost of living so high that they were glad to return to the United States.

LEGISLATIVE COMMISSION TO SAIL JANUARY 2

HONOLULU, Dec. 23—The transport Logan has wireless that she will probably arrive in Honolulu from Nagasaki next Monday, and will probably sail for the coast on January 2. Governor McCarthy and the other members of the territorial legislative commission will probably sail at that time for Washington to present the various territorial problems to Congress.

PALMER PREDICTS LOWER PRICES

WASHINGTON, Dec. 23—Attorney General Palmer, in summarizing the government's efforts to lower the high cost of living, said today that he expects prices to fall in January. He said that prices which are already under the control of the administration will be reduced if producers produce to the utmost and consumers eliminate extravagance.

LETTS WANT PEACE

HELSINGFORS, Dec. 23—According to advices from Riga, the Lettish government has decided to open negotiations with Soviet Russia for an armistice.

TURK LEADER REPORTED ASSASSINATED

ROME, Dec. 23—Mustapha Kemal, leader of the Turkish insurgent party in Anatolia, and head of the Turkish nationalists in Asia Minor, has been assassinated, according to a dispatch from Smyrna.

NO PEACE TREATY SIGNING BEFORE CHRISTMAS LIKELY

PARIS, Dec. 23—The ratification of the peace treaty before the end of the year is considered impossible in official circles, for the reason that the German delegates have made a statement that they must return to Berlin to consult their government on the matter of the Allies' latest communication.

OAHU SUGAR CO. PLEADS NOT GUILTY TO GAMBLING CHARGES

HONOLULU, Dec. 23—The Oahu Sugar Co., recently indicted by the grand jury on two charges of permitting gambling on its premises at Wai-pahu, today entered a plea of not guilty. Owing to the crowded condition of the calendar the cases will probably not come to trial before spring.

MINERS ON PROTEST STRIKE NOW

PITTSBURG, Kan., Dec. 23—Seventeen coal mines in the Kansas district are still idle, the men being on a strike as a protest to the jailing of Howatt, one of their leaders.

BRITISH TROOPS HOLDING BACK TURKS

LONDON, Dec. 23—The British have occupied Batum Baku in order to prevent the Turks from penetrating the Caucasus, according to a Moscow dispatch.

MORE REDS AWAIT DEPORTATION

NEW YORK, Dec. 22—There are still 22 anarchists at Ellis Island awaiting deportation.

It is announced that the Buford's orders permit the commander to make landing on any of the several Russian or Finnish ports for the purpose of relieving himself of his undesirable cargo. This leeway is given in case objection is made at any port to the landing of Berkman and Goldman.

PARLIAMENT PROROGUE FOR FEBRUARY 10

LONDON, Dec. 23—The King today prorogued the house of commons for February 10. In his speech the King expressed his regret at the lack of improvement in the situation in Russia. He declared, however, that relations between Great Britain and the rest of the Allies remain most friendly.

DINNERWARE From Open Stock

You can buy one piece of dinnerware at the same price it would cost you in a 100 piece set. Thus with open stock dinnerware the problem of replacement is solved.

You can start your set with a few pieces and then add to them from time to time as your needs demand or your purse permits.

Sample plates for selection sent at our expense.

Fifty patterns to choose from at

W. W. DIMOND & CO., Ltd.
"The House of Housewares"
53-65 King Street - Honolulu

Weekly Program At Wailuku And Kahului Theatres

The "Hip"

Saturday, December 27th.
IRENE CASTLE
—In—
"THE FIRING LINE"
—Also—
Pearl White in "The Lightning Raider"
—And—
Ben Turpin in "No Mother to Guide Him."

Sunday, December 28th.
VIVIAN MARTIN
—In—
"LOUISIANA"
And
"LURE OF THE CIRCUS"

Monday, December 29th.
GLADYS BROCKWELL
—In—
"THE FORBIDDEN ROOM"
—And—
"CHOOSE YOUR EXIT"
A Sunshine Comedy.

Tuesday, December 30th.
JAPANESE PICTURES
Wednesday, December 31st.
MARGUERITE CLARK
—In—
"GIRLS"
—Also—
"Perils of Thunder Mountain"
—And—
PATHE NEWS

Thursday, January 1st.
MADGE KENNEDY
—In—
"NEARLY MARRIED"
—Also—
"TERROR OF THE RANGE"
—And—
PATHE NEWS.

Friday, January 2nd.
CORINNE GRIFFITH
—In—
"THE UNKNOWN QUALITY"
—And—
"TIGERS TRAIL"

Kahului Theatre

Saturday, December 27th.
VIVIAN MARTIN
—In—
"LOUISIANA"
—Also—
Pearl White in "The Lightning Raider"
—And—
"CHOOSE YOUR EXIT"
A Sunshine Comedy.

Monday, December 29th.
IRENE CASTLE
—In—
"THE FIRING LINE"

Tuesday, December 30th.
GLADYS BROCKWELL
—In—
"THE FORBIDDEN ROOM"
—And—
"Perils of Thunder Mountain."

Wednesday, December 31st.
JAPANESE PICTURES
Thursday, January 1st.
MARGUERITE CLARK
—In—
"GIRLS"
—Also—
"LURE OF THE CIRCUS"
And
PATHE NEWS.

Friday, January 2nd.
MADGE KENNEDY
—In—
"NEARLY MARRIED"

DETROIT'S MAYOR FEELS GENEROUS

DETROIT, Dec. 23—Mayor James Couzens has made announcement that he will make public benefactions on Christmas day amounting to \$2,000,000.

BIG TONNAGE LAUNCHED AT ONE TIME

OAKLAND, Cal. Dec. 20 — The Moore Shipbuilding Co., today launched 3 tankers and 3 freight vessels on one tide, the total aggregating 58,200 tons dead weight.

Kahului Railroad Co.'s

MERCHANDISE DEPARTMENT

1920



HAPPY NEW YEAR

Telephone Nos. 165 & 201
Connecting All Departments

Warehouses
Kahului, Maui, T. H.

THE MAUI NEWS

Entered at the Post Office at Wailuku, Maui, Hawaii, as second-class matter.

A Republican Paper Published in the Interest of the People
Issued Every Friday.

MAUI PUBLISHING COMPANY, LIMITED,
Proprietors and Publishers.

SUBSCRIPTION RATES, \$2.50 PER YEAR IN ADVANCE

WILL. J. COOPER : : : EDITOR AND MANAGER
FRIDAY : : : DECEMBER 26, 1919

A CHRISTMAS REMINDER

That 3000 children of school age in this territory should not be attending any school because there is no room for them—

That 700 children in the city of Hilo alone should have to attend their public school classes in Japanese language school buildings, the basement of a Buddhist temple, and other like places because no other quarters are available—

That from 50 to 70 pupils should be herded in a single room under one teacher in nearly one hundred instances because of lack of teachers or lack of school rooms or both—

That from 8 to 12 teachers should be forced to live in a cottage designed for 4; and that many of the cottages are so poorly built and maintained that teachers sometimes refuse to live in them—

That at least 40 more teachers are imperatively needed but that not a cent can be had to pay for them nor to pay legitimate salary increases of the present staff before September 1921—

That sanitary conditions in some of our schools should be unspeakably bad—

That the entire school system should be working under inconceivable difficulties—

That private and community philanthropy should be supplying kindergartens and night schools in a few communities which should be provided by the school department in every community—

That Hawaii's public school system should be at least 10 years behind the times—

That all these things should be true of this rich and prosperous and proud territory of Hawaii, is something that should make every decent man and woman squirm with mortification.

What do you think about it? What do you think should be done about it? Do you believe we should wait almost 2 years until the regular session of the legislature before trying to do anything?

Yes it is your business—and yours, and YOURS, and YOURS!

WHY WE ARE OVERLOOKED

The chief disadvantage to living in these Islands is perhaps due to the fact that Hawaii is consistently overlooked when anything good is being handed out to the rest of the nation. We get left out of practically all of the federal appropriations except those for military and naval purposes, and these we get because we happen to be where we are. We get precious little that the states get in way of educational and social betterment help, and many other things.

Just as an example of how outside the pale we are may be cited the big distribution of army foods and war materials which is now going on on the mainland. Millions of dollars worth of surplus food and clothing supplies, gathered together for the war, has been distributed to all parts of the country and is being sold through the postoffice department to individuals at cost prices—50 percent or less than the present retail prices.

Millions of dollars worth of auto trucks, explosives, and machinery adapted to road building is being distributed to states that have need of such things.

But Hawaii gets almost none of all this. It is true that a few thousand dollars worth of a limited variety of army foods has been sent to Honolulu for distribution, but before even this could be secured it was necessary for the county of Honolulu to borrow the money to pay for it from the governor's contingent fund and pay in advance. No other section of the country had to do this.

Hilo has been trying to get some of Honolulu's apportionment, but Honolulu refuses to turn any of it loose, and suggests that the Big Island city rustle for its own supply if it wants any. Of course not everybody on Maui would be averse to buying bacon at 25 to 30 cents a pound, or army shoes at \$3.50 per pair, but there isn't much chance of their having an opportunity to do it.

The supply has been so limited in Honolulu that public sentiment has prevented a large part of the fairly well-to-do from buying, leaving the opportunity more open for the class most seriously feeling the high cost of living. But this has not been true in the mainland. There everybody has been encouraged to take advantage of the bargains while they last.

The main point in all this is that Hawaii ought not to be in this position, and if we were really awake as a community she would not be. If we were really represented in Washington as we should be represented, Hawaii could not be, time after time, absolutely ignored. It is not right and is most unjust. If we would only take the trouble to make our sense of this injustice heard we could do it.

It is alright to be independent. Maybe we are rich enough to be able to ignore the money that is being distributed among the states. But we can ill afford to be ignored, not only in money matters, but in most other ways as well. And that's just the position we are in. It is about time we waked up.

PROGRESS THE ARMY CAN'T STOP

Two men from the mainland have asked Governor McCarthy for a permit to establish a commercial aviation business in Honolulu. The Governor was non-committal and will probably be governed by the opinion of the military authorities in deciding the matter.

It is quite possible that the request will be denied because Uncle Sam has a lot of things on Oahu that he does not care to have every Tom, Dick and Harry or every Togo, Ishi and Mori looking down upon. And this consideration may answer for the present.

But it will not answer always. For aviation bids fair to soon reach such an importance that to refuse to sanction flying here will be to put Hawaii in the old-China class. Uncle Sam will have to cover his big guns up. Besides there doesn't seem to be any valid excuse in this objection anyhow. San Francisco might be called a fortified city, yet commercial flying has come to be a commonplace thing there already. It will some day be an indispensable thing here.

Our Contemporaries

The Schools and Their Critics (Star-Bulletin)

Faults that now exist in the public schools of Hawaii are there because of the laxness of the general public in not insisting that sufficiently large appropriations be made to provide adequate teaching forces and for the maintenance of a proper degree of supervision, says a committee report to the chamber of commerce, which clearly exonerates the department of public instruction from all blame.

Recommendations for the establishment of playgrounds, owned, maintained and supervised by the government, and for the teaching of no language but English in any of the schools of the territory in the first seven grades, are so obviously meritorious that further analysis and comment is unnecessary, except to say that The Star-Bulletin indorses them as representing another forward step in Hawaii's Americanization movement.

Our own judgment that the department of public instruction is doing all that can be done with the funds made available for it, is fully confirmed by the committee's report. No suspicion of laxity attaches to any of the executives of the department.

Vaughan MacCaughy, superintendent of public instruction, has invited The Star-Bulletin to make an investigation of any or all branches of his department. He has repeated what this newspaper has known all the time, that he seeks and welcomes publicity concerning the activities of those entrusted with the administration of the schools, and that he does not shrink from fair criticism, when facts are not distorted or disregarded entirely.

The Star-Bulletin feels now as it has felt since soon after Mr. MacCaughy took office, that the public schools of the territory are efficiently and honestly conducted, and that their executive direction is now in more capable hands than at any previous time in the history of Hawaii.

We feel that in saying this we express the sentiments of the community, except, possibly, those of an extremely few individuals who are actuated by personal animus arising from thwarted and impossible ambitions, or by inborn pessimism, or just by natural and general enviousness.

Tax-Eaters and Tax-Payers (Advertiser)

Governor McCarthy's order that territorial employees must pay their taxes just the same as ordinary citizens, and

that if they don't their connection with the territorial government shall be settled, ought to be enforced to the limit. And a similar order should be enforced against municipal employees.

Failure of government employees to pay their taxes has long been a scandal and a crying shame. Many men seem to think that because they make their living by working for the people, they shouldn't be expected to pay their taxes.

It is not only regular employees of the government who figure largely in the list of delinquents. Many members of the legislature, in years past, have had their names published as among those whose obligations to the public rest lightly on their consciences. And we have had sheriffs and city attorneys and policemen who didn't worry any more over the payment of their taxes than do some legislators.

If the plain, ordinary citizen doesn't pay his taxes, his salary is garnished or his property is levied on. The tax assessor gets them all, unless they work for the government and draw their pay from the people.

It's about time thing were evened up and that tax-eaters were all forced to become tax-payers.

JAPANESE WORKERS IN TAHITI THREATEN TO LEAVE

PAPEETE, Tahiti, Nov. 29—(Associated Press)—Japanese workers in Makatea Island, the rich phosphate island northeast of Tahiti, who have struck for higher wages, threaten that if their demands are refused they will leave in a body for Japan.

Labor is scarce in the Islands. Several planters are competing for men to go to some of the outlying islands of the archipelago and an agent from Australia is here trying to recruit laborers for the Solomon Island plantations.

The merchants and planters have issued an appeal to the natives to remain here.

ALLIES DECLARE AGAINST BOLSHEVISM—STAND ENDORSED

PARIS, Dec. 23—The house of deputies today passed a vote of confidence, 458 to 71, for Clemenceau, after hearing the Premier's program.

Clemenceau announced the determination of the Allies to crush Bolshevism. He declared his confidence in the satisfactory conclusion of Anglo-American pacts; and predicted a solution of the Fiume problem. He further announced that he had reached an understanding with Lloyd George.

LONDON, Dec. 23—Premier Lloyd George will go to Paris next week to confer with Clemenceau.

OUR AIM
is to serve you efficiently in financial matters of every description.

WE HAVE
well equipped departments at your service for correspondence or consultation.

OUR COMPLETE TRUST SERVICE
is at your service.

Henry Waterhouse Trust Co., Ltd.
Fort and Merchant Sts. Honolulu.

PRINCESS
DE LUXE ELECTRIC
IRONS

SPECIALLY PRICED DURING THE HOLIDAYS AT
\$5.00

Nickel-plated; guaranteed for 10 years. A handsome, practical iron that any woman is proud to have and use.

A BEAUTIFUL CHRISTMAS GIFT

Lewers & Cooke, Ltd.
LUMBER & BUILDING MATERIAL HONOLULU

FOR HIGH-SPEED, HEAVY-DUTY MACHINES
you will find

MAGNOLIA METAL
STANDARD BABBITT OF THE WORLD

will show lowest co-efficient of friction and longest wearing qualities under heavy pressure. Used in thousands of plants where speeds are high and duty severe, running as high as 5000 r. p. m. It is not uncommon for a Magnolia-lined bearing to run 20 years and longer.

Write us for further particulars

Catton Neill & Co., Ltd.
Queen and Alakea Sts. HONOLULU

MINERS' LEADER TRYING TO END KANSAS STRIKE
INDIANAPOLIS, Dec. 23—Secretary Howatt, of the mine workers union, on account of whose arrest 17 mines in Kansas have been shut down through a protest strike, was released from jail today. He agreed to join the other officials of the union in sending a telegram to the Kansas miners urging the calling off of all the strikes.

COAL WAGE AND PRICE COMMISSION TO MEET NEXT MONDAY
WASHINGTON, Dec. 24—President Wilson has asked the members of the commission recently named by him to study the matter of wages and prices in connection with the coal industry to meet in Washington next Monday.

JAPAN WANTS NO STRINGS ON HER SPOILS OF WAR
PARIS, Dec. 24—The Japanese representatives in the supreme council have objected to the form of mandate under which it is proposed that the former German colonies in the Pacific shall be administered, and have asked for time to refer the matter to the Tokio government.

BOLSHEVIKI CLAIM ANOTHER BIG VICTORY
LONDON, Dec. 24—A Moscow wireless message states that the Bolsheviki forces have captured 15 big guns, 1000 horses and 300 men, defeating Mamonoff and Chelnokoff's forces the Starienski region.

It further stated that more than 1000 Cossacks were killed in the fighting, including Chelnokoff.

PROBABLY FIRST VOTING WAS NOT PROPERLY MANAGED
ROME, Dec. 24—The Giornale d'Italia reports that because of doubts regarding the first plebiscite held in Fiume to learn the opinion of the population as to the future of the city, another was held last Sunday which showed that 75 percent of the voters favors Italian proposals for the future occupation of the district.

Prof. J. Gonsalves
Instructor, Ukulele, Mandolin and Steel Guitar. Studio, Fernandes Hotel. Tel. 52-A Paia.

Dealers In General Merchandise

American Factors Paints
AmFac Red Label Coffee
Yale Locks and Hardware

AMERICAN FACTORS, LTD.
Wholesale Distributors

Give Her a

Persian Ivory Set
---for Christmas

Our Ivory is of superior grain and purity of color. And our stock is new and complete. Let us aid you in your selections.

THE MAUI DRUG CO.
Market Street, Wailuku Telephone 232

CALL

Kahului Auto Stand
FOR GOOD CARS

Three 1919, 5 and 7 Passenger Buicks. Also up-to-date Ford Cars.
Reasonable Rates.

Phone 191-A & 191-B

Time Table--Kahului Railroad Co.
Daily Passenger Train Schedule (Except Sunday)
The following schedule went into effect November 18, 1918.

TOWARDS WAILUKU						TOWARDS HAIKU					
9	7	5	3	1	Distance Miles	Distance Miles	2	4	6	8	10
PM	PM	PM	AM	AM			AM	AM	PM	PM	PM
5:33	3:30	1:25	8:35	6:35	15.3	A. Wailuku..L	6:40	8:40	1:30	3:35	5:38
5:23	3:20	1:15	8:25	6:25		..A	6:50	8:50	1:40	3:45	5:48
						..Kahului..L					
5:20	3:17	1:10	8:20	6:20	12.0	..L	6:52	8:52	1:42	3:47	5:50
5:10	3:07	1:00	8:10	6:10		..A	7:02	9:02	1:52	3:57	6:00
						..Spreckel..L					
5:09	3:05	1:00	8:08	6:08	8.4	..L	7:03	9:03	1:53	3:58	6:01
5:00	2:55	1:00	8:00	6:00		..A	7:12	9:12	2:05	4:10	6:13
						..Paia..L					
4:58	2:53	1:00	7:57	5:57		..L	7:15	9:15	2:07	4:12	6:15
4:52	2:47	1:00	7:52	5:52		..A	7:20	9:20	2:14	4:19	6:22
						..Hama..L					
4:51	2:46	1:00	7:50	5:50	3.4	..L	7:22	9:22	2:15	4:20	6:23
4:45	2:40	1:00	7:43	5:43		..A	7:30	9:30	2:23	4:28	6:31
						..kuapoko..L					
4:44	2:39	1:00	7:44	5:44	1.4	..L	7:32	9:32	2:25	4:30	6:33
4:0	2:35	1:00	7:40	5:40		..A	7:36	9:36	2:30	4:35	6:38
						..Pauwela..L					
						..L					
						..Haiku..A					

PUUNENE DIVISION

TOWARDS PUUNENE				TOWARDS KAHULUI			
3	1	Distance Miles	STATIONS	Distance Miles	2	4	Passenger
PM	AM				AM	PM	PM
2:50	6:00	.0	L. Kahului..A	2.5	6:22	8:18	
3:00	6:10	2.5	A. Puunene..L	0	6:12	8:05	

- All trains daily except Sundays.
- A Special Train (Labor Train) will leave Wailuku daily, except Sundays, at 5:30 a. m., arriving at Kahului at 5:50 a. m., and connecting with the 6:00 a. m. train for Puunene.
- BAGGAGE RATES: 150 pounds of personal baggage will be carried free of charge on each whole ticket, and 75 pounds on each half ticket, when baggage is in charge of and on the same train as the holder of the ticket. For excess baggage 25 cents per 100 pounds or part thereof will be charged.

For Ticket Fares and other information see Local Passenger Tariff I. C. C. No. 3, or inquire at any of the Depots.

Jury Commissioners Submit 1920 List

(Continued from Page One.)
not, except where it was necessary, selected and listed the name of any person who has served as a juror within one year."

The names selected for the two classes of jurors are as follows:
Trial Jurors

Precinct 1. Lani—Robert E. Cockett.

Precinct 2. Napili—August Reimann; Honokahua—Henry F. Chung, Albert J. Cockett.

Precinct 3. Lahaina—George Cockett, Chas. Akana, Antone L. Ricard, Geo. Stephenson, John W. K. Hose, Geo. H. Dunn, Frank F. Stark, Chas. K. Farden, David Adams, Eugene Duvauchelle, Thos. Hussey, Paul Jones, John Pestana.

Precinct 4. Olowalu—Manuel Castro.

Precinct 5. Wai'ku.—Wm. Engle, Ching Sing Ho, Manuel R. Coelho, Amos C. Mozetta, Koichi Okamura, Milton R. Kiestler, Thos. Krueger, John Abreu, Geo. W. Bailey, Henry K. Baker, Jno. R. Bergstrom, Domingo Coelho, Antone Correa, John W. Dart, John de Freitas, C. de Mello; Waikapu—James L. Cornwall.

Precinct 6. Waihee—Smith J. Kaiana, John K. Teixeira, Antone Silva; Waiehu—Jos. Whitford, William Morris.

Precinct 7. Kahului—Tom T. Chong, Bill Napala, Manuel M. Gomes, Steven K. Lake, Chas. Larsen, Hugh McNeil; Puunene—David Kuakahi, Edmand K. Cockett, Edmand F. Deinert, Frank Pestano, Jr., Henry Freeman, Jr., Edward R. Lindsay, Warren Mason; Kihai—Antone Pereira.

Precinct 8. Peahi—David Kiakona; Haiku—Edward L. Y. Shim, Aki Tom.

Precinct 9. Honouliuli—George Uwekoolani, Edward Wilcox.

Precinct 10. Waikeka—Frank C. da Cambra; Kaonani—Joe Pereira; Keokea—Harry F. S. Fong; Kamaole—Edgar Morton, Jr.

Precinct 11. Makawao—Joe Freitas, Chas. S. Miner, D. K. Morton.

Precinct 12. Paia—E. A. Campbell, Manuel Dolim, Geo. Kaluna, A. C. Bowdish, Simon Hocking, Rufus A. Hudson, James Shaw, John Torres, Manuel Williams; Haiku—L. Bolim,

Manuel Vincent.

Precinct 13. Huelo—Joseph K. Emestey.

Precinct 14. Keanae—E. Wilhelm, Jr., Geo. E. Akiu.

Precinct 15. Nahaiku—Marion Cabral Hana—G. H. Kauloku, John A. Medeiros, L. N. Lake, Joseph Pa, Joseph Oliveira, C. A. Moon.

Precinct 17. Kipahulu—Hans Fasoth, J. Torres.

Precinct 18. Kaupo—Albert J. Abuhl, M. K. Reuter.

Precinct 19. Halawa, Molokai—Solomon K. Kaalilikaua.

Precinct 20. Napulehu, Molokai—James C. Crane; Pukoo, A. Dudoit; Kamalo—Eddie McCarrison, T. T. Meyers, John K. Rodrigues.

Precinct 21. Kalae, Molokai—Edward V. Dunn; Kaunakakai—Albert A. Meyer, Ahi Levi.

Grand Jurors
Precinct 1. Lahaina—Geo. K. Richardson.

Precinct 2. Honouliuli—Richard K. Searle, Jr.

Precinct 3. Lahaina—A. W. Collins, Geo. L. Keeney, August Pestano, Antone Peter, John S. Pires, Joe Vierra.

Precinct 4. Olowalu—Alexander Valentine.

Precinct 5. Wailuku—D. S. Wadsworth, C. P. Bento, Frank A. Lufkin, Chas. Savage, Joe S. Leval, Jno. K. Kahookole, Jno. W. Evans, Antone Estrella, Demas Pacheco.

Precinct 6. Waihee—Edwin Soper, Charles Wallace, Peter Hale.

Precinct 7. Puunene—C. C. Campbell, James T. Fantom, J. A. Hannon, Makawao—S. A. Baldwin; Puunene, Camp 1—Alfred Gerner, Antone Gomes, William Lougher.

Precinct 8. Haiku—W. A. Baldwin, Manuel F. Santos.

Precinct 9. Ulupalakua—James H. Raymond, Sr.

Precinct 10. Kamaole—Isaac Wallace; Kula—Frank Summerfeld.

Precinct 11. Makawao—Manuel F. Tavares, Geo. Tripp.

Precinct 12. Hamakua—Wm. S. Nicoll; Paia—D. C. Lindsay, H. A. Baldwin, Henry P. Robinson, Kemble W. Watkins.

Precinct 14. Keanae—John Plunkett.

Precinct 16. Hana—Gordon Errett, Charles Reinhardt, John Wilcox.

Precinct 17. Kipahulu—Joe Torres.

Precinct 18. Kaupo—A. V. Maciel, Jr.

Precinct 20. Moanui—Olaf Tollefson; Kamalo—Frank H. Foster; Na-

Americanization To Be Big Feature In Boy Scout Work

NEW YORK, Dec. 16.—The Executive Board of the National Council, Boy Scouts of America, at its November meeting just held, decided to take full advantage of the action of the American Legion at its Minneapolis Conference, urging the local posts to co-operate in securing scoutmasters.

Lieut-Col. Roosevelt Makes Motion
Upon motion of Lieut-Col. Theodore Roosevelt, the Chief Scout Executive was directed, in co-operation with the National Commander of the American Legion, to have the resolution given practical effect, in order that a large number of the American Legion members might be recruited at once for an aggressive campaign through Scouting for Americanization and citizenship training.

Reports presented showed that throughout the whole country the boys were anxiously waiting to be enrolled as scouts but could not do so for the lack of scoutmasters.

Strong Program for Americanization
The Executive Board decided to training in order that even a greater emphasis than before would be placed upon developing patriotism and Americanization.

It was also agreed that special effort would be made to develop a program for older boys, affording them an opportunity to "learn by doing" in preparing for citizenship responsibilities.

Notable Members Present

The Executive Board meeting was attended by Messrs. Walter W. Head, of Omaha; John M. Phillips, of Pittsburgh; George D. Porter, of Philadelphia; Alfred W. Dater, of Stamford; Hon. James J. Storrow, of Boston; Charles P. Neill and Colin H. Livingstone, of Washington, D. C.; Mr. Daniel Carter Beard, of Flushing; John Sherman Hoyt, George D. Pratt, Lieut-Col. Theodore Roosevelt, Jeremiah W. Jenks and James E. West, of New York City.

Move to Aid World Scouting
Mr. Mortimer L. Schiff was selected as the representative of the Boy Scouts of America on the International Scout Committee.

pulehu—Wm. F. Jones.

Precinct 21. Kaunakakai—James G. Munro.

BOY HAS NARROW ESCAPE FROM DEATH

Little Ross Kiestler, son of M. R. Kiestler, of the Maui Publishing Co., had a narrow escape from death a few weeks ago, according to a letter received by the last mail from Mrs. Kiestler, who is visiting relatives in El Paso, Tex.

The boy, a few days after his arrival in El Paso in company with another boy about the same age, climbed an electric light pole. The other child grasped a live wire and was instantly killed. Young Ross was within a foot or so at the time but escaped uninjured.

MERGER PLANS OF TRUST COMPANIES CALLED OFF

HONOLULU, Dec. 24.—Announcement was made here today that the talked-of merger of the Henry Waterhouse Trust Company, the Bishop Trust Company and the Guardian Trust Company, had fallen through. Officials of the companies said that the plan had been abandoned on account of opposing public sentiment.

NO MORE LICENSES TO SEND MUNITIONS TO MEXICO

WASHINGTON, Dec. 24.—The state department has announced that after January 1 all licenses to ship arms or munitions into Mexico, granted by the war board prior to September 30, will be revoked.

NOTICE

The Public Utilities Commission of the Territory of Hawaii will begin an investigation of the affairs of the Island Electric Company, Limited, under the provisions of Sections 2225, 2229 and 2234 of the Revised Laws of Hawaii, 1915, on Thursday, January 22, 1920, on which day at 7:30 P. M., a formal hearing will be held in the offices of the Commission, 415 Kauikeolani Building, Honolulu, City and County of Honolulu, Territory of Hawaii, and from time to time thereafter, of which notice will be given, as the investigation may require.

The public is invited to attend such hearings and to present any matter pertinent to such investigation.

PUBLIC UTILITIES COMMISSION OF THE TERRITORY OF HAWAII,
(By) WILLIAM T. CARDEN,
Chairman.

Honolulu, T. H., Dec. 19, 1919.
(Dec. 26; Jan. 2, 9.)

Wacs Win Hot Game From Crack Gyms

Latter Still Head List By Good Margin—Junior Basket Ball Series Getting Interesting—Too Soon Yet To Predict Final Outcome.

The basketball game last Friday night between Maui High School and the Trade Team was of intense interest throughout, and ended with the score in favor of the latter team, 19 to 5.

The junior basketball series has developed any amount of interest, as well as new players, and fast playing by these teams and the remarkable close scores, has more than kept up the interest. In fact, the clean and open playing of this series, far outshines the work of any other basketball series heretofore held.

Wacs Win From Gym

The second game played between the A. H. S. Gym team and Wacs, was even closer and went to the last named team by a score of 12 to 10. While the first half of this game was not as exciting as the Maui High School—Trade Team game throughout, the last half more than made up by the intensive playing on the part of both teams.

	P	W	L	Pct.
A. H. S. Gym	5	4	1	800
Trade	3	2	1	666
M. H. S.	4	2	2	500
Saints	4	1	3	250
Wacs	4	1	3	250

Seeing that over half of the series is yet to run, it is impossible yet to judge any probable championship team. However the next game to be played this evening between A. H. S. Gym and the Maui High School, and the second game between the Wacs and Trades will undoubtedly make quite a difference in the standing of the teams.

REFINED SUGAR PRICES INDICATED

NEW YORK, Dec. 23.—H. H. Howell Son & Co., has announced the wholesale price of refined granulated at 15.20 cents per pound, less 2 percent for cash, for the new Cuban crop. This indicates a retail price of between 17 and 18 cents.

TWO AVIATORS KILLED IN FALL

RIVERSIDE, Cal. Dec. 23.—2nd-Lieutenant Herbert Tuchborne and Private Allister Lima, were killed today when their airplane fell near here.

Complete New Stock of

Excelsior Diaries

FOR 1920

In all sizes, for office, shop and pocket use; cloth and morocco binding. Place your order early as they sell fast.

Hawaiian News Co. L.T.D.

Bishop Street Honolulu

E. Giesecke

REPRESENTING

THAYER PIANO Company, Ltd.

Of Honolulu

Is on Maui on his Regular Tuning Trip.

He is located at the Wailuku Hotel.

OVER FIFTY HUNDRED DOLLARS IN PURSES

AT THE

KAHULUI RACE MEET

JANUARY 1, 1920

AT KAHULUI FAIR GROUNDS

FOURTEEN RACES and BASEBALL

Baseball—All Maui vs. Waikiki Athletic Club

RACING PROGRAM

	1st	2nd
1. 3/4 Mile, Hawaiian Bred Race, w. f. a.	\$ 250	\$100
2. 3/4 Mile, Free For All, w. f. a.	250	100
3. 1 Mile, Japanese Race	350	150
4. 1 1/2 Mile, Free For All, w. f. a.	1000	250
5. 1 Mile Portuguese Race	350	150
6. 5/8 Mile, Free For All, w. f. a.	250	50
7. 1 Mile, Free For All, w. f. a.	600	150
8. 1 Mile, Hawaiian Bred Race, w. f. a.	600	150
9. 1/2 Mile, Cowboy Dash	150	50
10. 1 1/2 Mile Cowboy Relay Race	225	75
11. 1/2 Mile Pony Race, 14.3 and under	75	25
12. 3/8 Mile Ladies Race	Cup	
13. 1/2 Mile Mule Race	75	25
14. BUCKING HORSE CONTEST	100	50

Races Start

9:30 A. M.

Baseball Starts

3:00 P. M.

The Meet is Conducted under the Auspices of the Maui County Fair & Racing Assoc.

CONDITIONS

- All races to be run under the Pacific Coast Jockey Club Rules.
- In all races except the Cowboy Relay Race, Four (4) to enter and Three (3) to start.
- ENTRIES TO CLOSE at 12 O'clock noon, December 20, 1919, at the Executive Office of the Maui County Fair & Racing Association (under the Grandstand.) All entries must be sent to the Secretary of the Racing Committee in sealed envelopes and accompanied by the Entrance Fee of 10 Percent of the Purse, and must be received by him on or before the date of closing.
- In all Cowboy events, the horses contesting must be bona fide Hawaiian bred Cattle Horses. All horses that have run in a race for a purse of \$100.00 value, are barred.
- The order in which the races will be run will be arranged to suit the majority of horses entered.

Civilization Soon To Wipe Out Last Of Marquesas Islanders

PAPEETE, Tahiti, Nov. 29—(Associated Press)—The Marquesas, fiercest cannibals among the Polynesians in the South Pacific, are disappearing. A few years ago they numbered more than 50,000. The last census showed only 3,000 survivors.

Opium, introduced by white men into the Marquesas Islands, the most northerly French settlement in Oceania, is held responsible by many for the approaching extinction of this race. This drug is no longer sold in the islands but it is said its effect is shown in a death rate of 25 percent a year.

Physically the Marquesas were magnificent. Before tattooing was forbidden the bodies of the natives were adorned by the most intricate and beautiful designs, and some of these may yet be seen. Although they had a number of admirable qualities, the Marquesas in the olden days constantly engaged in tribal wars with the consequent feasts of human flesh.

So much has been heard in song and story of the "Cannibal Islands" of the "South Sea" that many persons believe these comprise the myriad islands dotting the Pacific south of the equator. In some of the islands, scientific research workers found, man eating was practiced but in many, notably in Tahiti and other islands of the Society Group, cannibalism was unknown.

DENMARK TO BUILD

BIG RADIO PLANT

COPENHAGEN, Denmark, Dec. 22—The Danish government has sanctioned an appropriation for the erection of a long distance wireless plant to establish communication with the United States.

PROPOSES WAY TO REACH

AGREEMENT

WASHINGTON, Dec. 20—Senator Underwood today introduced a resolution proposing that the President appoint a committee of 10 senators who shall confer on means of reaching an agreement on the peace treaty. Senator Lodge blocked the immediate consideration of the resolution pending a conference with parliament senators.

WILL INVESTIGATE RUSSIAN

ACTIVITIES IN U. S.

WASHINGTON, Dec. 20—By a resolution adopted today by the senate the senate foreign relations committee is instructed to probe the activities of Russian propagandists in the United States.

SUGAR CONTROL BILL

PASSES SENATE

WASHINGTON, Dec. 20—The senate today by vote of 40 to 12 adopted the compromise on the bill to continue the government control of sugar during 1920. As passed the bill accepts the house amendments increasing the authority of the equalization board but limiting its licensing powers to June 10, 1920.

POOR REFLECTION ON

MILWAUKEE

MILWAUKEE, Dec. 20—Victor Berger, socialist candidate, convicted of disloyalty during the war, and rejected from the house of representatives after a lengthy investigation, has been re-elected by a strong majority over the republican fusionist candidate Henry Bordenstab. Berger's vote was 24,236, while that of his opponent was 19,561.

WASHINGTON, Dec. 20—Representative Dallinger, chairman of the election committee of the house, stated today that Berger is ineligible to a seat in congress.

SENATE COMMITTEE

HAS ARMY PLANS

WASHINGTON, Dec. 24—An army of 280,000 men organized with the primary object of protecting the nation from attack by foreign powers, is the basis of tentative plans of the senate sub-committee on military affairs for an army bill to be submitted. The plans include compulsory military training of young men covering a period of from 18 to 20 months.

CHOOSING FOOTBALL

TEAM TO PLAY HILO

HONOLULU, Dec. 24—An elimination game between two teams composed of the best players of the Honolulu association football league, will be played tomorrow to decide the lineup of the team to go to Hilo on January 4 to play for the Kennedy cup championship of the Islands.

OPENING SUGAR PRICE

IS 13.48 CENTS

HONOLULU, Dec. 24—C. Brewer & Co., today announced that the opening price of refined sugar to wholesalers, of the new Cuban crop, of 15.20 cents per pound, is based on a duty paid price of 13.48 cents for raws.

HILO PLEASED TO GET NEXT CIVIC CONVENTION

"After all the work the committee did, it is a great satisfaction to know that Hilo is to have the next civic convention." This is the statement of F. J. Cody, chairman of the Board of Trade convention committee, when an Associated Press telegram from Honolulu announcing this fact was called to his attention, says the Hilo Post-Herald.

"This means a big year for Hilo," said Cody, "for among the other big things already in prospect are the races here on Washington's birthday, the Fourth of July carnival that is fast becoming Hilo's big day, and the Labor Day sports of next year, which it is hoped will eclipse those of this year. Adding to these the civic convention makes it a pretty full program."

Cody called to mind the fact that Hilo was the proposer of the civic convention scheme, and that its continuance depends largely upon her following the idea up at this time. He urges the laying of plans at an early date in order that committees may have sufficient time to carry out their plans. He is particularly in hopes that satisfactory arrangements for summer service can be made, as the success of the convention must depend so largely upon this factor.

WILSON STARTS WAGE

INVESTIGATION

WASHINGTON, Dec. 20—President Wilson has appointed a commission of three to investigate the matter of wages and conditions of labor in the coal industry throughout the United States. The commission is made up of Henry Robinson, who during the war was connected with the shipping board and who will represent the public in the investigation; John P. White, one of the chief advisors of the fuel administration, who will represent the miners; and Rembrandt Pearte, who will take the part of the operators.

ACTION TO FREE SAILORS

HELD IN MEXICO

WASHINGTON, Dec. 20—Secretary Daniels of the navy department has requested Secretary Lansing to take action to secure the release or prompt trial of two American blue jackets held in the Mazatlan jail since November 12, charged with having participated in a street fight. It is reported that the men are not sufficiently fed.

ITALY PROBABLY CAN'T

RISK A VOTE

FIUME, Dec. 20—The plan proposed of holding a plebiscite has been abandoned, and D'Annunzio announced today that he will remain in Fiume.

STANFORD JAZZ BAND

TO SEE VOLCANO

HONOLULU, Dec. 19—The Stanford University jazz band of 4 members arrived today by the steamer Maui for a visit in the Islands. They will go to the volcano tomorrow.

SENATE COMMITTEE TAKES UP

TREATY MATTERS AGAIN

WASHINGTON, Dec. 19—The senate foreign relations committee will take up tomorrow consideration of the various treaty issues in an effort to formulate a compromise plan to submit after the holiday recess. It is understood that the Knox resolution declaring peace to already exist is to be the basis of the committee's work.

WASHINGTON, Dec. 19—The conference of democratic senators called for tomorrow to select a minority leader, has been postponed to January 15.

KOREAN EDITOR DENIES

FUNDS FROM HAWAII

WERE TO HELP REVOL

HONOLULU, Dec. 24—Editor V. W. Seoung, of the Korean National Herald, of this city, denies the truth of Tokio dispatches to the Hawaii Shinpo to effect that the Japanese authorities in Seoul had discovered that \$1000 in American money had been sent to Seoul to aid the independence plot, by a Korean women's patriotic association in Honolulu.

Seoung says that the only money sent from Honolulu by Korean women has been relief funds sent to the American Christmas relief association in Seoul to help the institution of that society established in the Korean city.

BIG COMMERCE DURING

NOVEMBER

WASHINGTON, Dec. 24—The department of commerce announces that the exports and imports of the United States for the month of November reached the second highest level in the nation's history. The exports amounted to \$741,000,000, compared to \$622,000,000 for October. Imports reached the high figure of \$429,000,000 compared to \$402,000,000 for October.

PARIS, Dec. 23—The German peace delegates have decided not to return to Berlin to consult upon the Allies' terms, as was announced yesterday.

Prominent Educator Urges Teachers Not To Join Labor Unions

LOS ANGELES, Cal., Dec. 20—Associated Press)—Emphasizing the need of teachers for increased compensation, Dr. William T. Foster of Reed College, Portland, Ore., told delegates to the California State Teachers' Convention here today that it would be a mistake for teachers to organize unions affiliated with the American Federation of Labor.

"Let us not be too hard on school principals, superintendents and college presidents who with the wolf at the door have not maintained the morale of their teaching staffs," he said.

"Is there a department store manager who could have kept any staff at all on the wage scale of five years ago? Is there a shipyard, or a street railway or a bank or a mine or a hospital or a laundry or a theater that could have continued doing business at all without large increases in wages. Not one! Yet there is scarcely a school system in America that pays its teachers, in purchasing power, three fourths as much as it did five years ago."

"Every teacher with the professional spirit, Dr. Foster said, desires above all else unrestricted opportunities to serve. He is loathe, the speaker said, to surrender all this to a labor union. "Teachers should deal directly with those to whom they are responsible—all the people," said the professor. "Judges, members of congress and policemen would make the same mistake in affiliating with the American Federation of Labor or with any other minority organization. Among servants of the people divided allegiance cannot be tolerated."

AMERICAN PEACE

COMMISSIONERS ARRIVE

NEW YORK, Dec. 22—The American peace commissioners who arrived here today report that the sale of war materials in England, France, Belgium, Italy and Germany brought \$700,000,000 liquidation.

During their voyage home the baggage of the commissioners was looted, it is reported.

FASTS 40 DAYS AND DIES

HONOLULU, Dec. 20—Rev. John Kekipi Maia, pastor of the Kealaula native church, died today after a fast which he claimed had lasted for 40 days.

TIRES

TUBES

OILS &

GREASES

Lahaina Auto Supply Co.

Shimamura Hotel Bldg., Lahaina

BICYCLE

SUPPLIES

PARTS

ACCESSORIES

Armco Iron Resists Rust

In every kind of building, new or altered, residential, industrial, warehouse or garage, ARMCO IRON can most profitably be employed for roofing, coping, skylights, ventilators, water tanks, window frames, metal lath.

Wherever a metal surface is exposed use

Armco Iron---Resists Rust

Honolulu Iron Works Co.

WHOLESALE DISTRIBUTORS


Offices and Store

Nuuanu Street

Works

Allen Street

When in Honolulu stop at



The Blaisdell

EUROPEAN PLAN

Running water in every room; rooms singly or with baths; comfortable beds; close to best restaurants and all car-lines. Highest class service.

Centrally located in the theatre and shopping centers.

J. F. CHILD, Proprietor

MORE REDS WHO SHOULD BE DEPORTED

NEW YORK, Dec. 22—Led by a woman, who said her husband had been deported to Russia, a mob of 150 reds attacked the entrance to the Ellis Island ferry today in an effort to reach their fellow radicals awaiting deportation. The police finally restored order.

HOPE TO RATIFY TREATY

BY CHRISTMAS

PARIS, Dec. 22—The supreme council is making every effort to reach an agreement with Germany on the question of reparation on account of the sinking of the German fleet at Scapa Flow, so that the protocol may be signed and ratification of the treaty effected before Christmas.

COMMERCE DEPARTMENT

REPORTS ON SUGAR

WASHINGTON, Dec. 22—The department of commerce reports that during the first 10 months of 1919 the United States exported 1,250,000,000 for the period amounted to more than \$4 billion pounds of a value of \$481,400,000.

TRANSPORT CREW REBELS

NEW YORK, Dec. 22—When the transport America landed here today she brought 11 members of her civilian crew in irons with the report of open rebellion which broke out on the vessel since sailing from here November 6. It is stated that a number of other arrests are probable. Six I. W. W.s on the ship are blamed for the trouble.

INVESTIGATION OF

MUTINY BEGUN

NEW YORK, Dec. 22—Two petty officers and 9 members of the crew of the transport America today faced an official investigation aboard the vessel. They are charged with mutiny and other crimes.

William Calkins, ordinary seaman, who joined the vessel just before she sailed from Hoboken for the round trip, is reported to be an I. W. W. and one of the ring-leaders of the mutiny. During the voyage 6 of the crew died of pneumonia and one was lost by drowning.

SEAPLANE MISSING—

SEARCH BEING MADE

MOBILE, Dec. 20—The naval seaplane NC-4, which left Galveston for this place yesterday on a non-stop flight, is several hours overdue and vessels have been sent out to look for the missing aviators.

INDICTMENT AGAINST EX-KAISER REPORTED

LONDON, Dec. 23—The crown's law officers have consulted with the law officers of the French and Belgian governments regarding action against the ex-emperor of Germany. It is reported that they have made out a case against Hohenzollern and have framed an indictment against him.

EXPLAINS DEPORTATION

OF REDS

WASHINGTON, Dec. 23—The state department has sent cable messages to various foreign capitals explaining the deportation of the 249 Russian radicals by the transport Buford yesterday. The message asked for the safe conduct and humane treatment of the men and women in question at the hands of the governments under whose jurisdiction they must pass until they reach soviet Russia.

BUFORD IS HUMAN

GARBAGE SHIP

NEW YORK, Dec. 22—The army transport, Buford sailed from here today with Alexander Berkman, Emma Goldman and 247 other deported anarchists and other types of undesirable aliens, under sealed orders for Russia. As the ship passed the statue of liberty the anarchists assembled at the rail and cursed the United States.

IRISH RAIDERS ACTIVE

LISDORFF, Ireland, Dec. 23—A group of armed men last night raided the Fairway works near here, surprised and overpowered the sentries, and carried away a quantity of explosives including a large amount of gelignite.

LODGE TO INVESTIGATE

MARTENS

WASHINGTON, Dec. 23—Senator Lodge has been named a sub-committee of one of the senate committee on foreign relations to investigate the activity of Martens, the so-called soviet envoy from Russia. Martens is charged with having been active in spreading Bolshevik propaganda in this country.

SAYS COAL SITUATION

MUCH IMPROVED

WASHINGTON, Dec. 23—At a session of the cabinet this morning, Railroad Director Hines reported that the coal situation has greatly improved, with a much higher production than for many weeks.

K. MACHIDA Drug Store

ICE CREAM
The Best in Town
And a Up-To-Date Soda Fountain
Give Us a Trial
MARKET STREET, WAILUKU.

Send your gowns to the best

CLEANERS IN THE ISLANDS

Expert Operators Prompt Service

FRENCH LAUNDRY

J. ABADIE, Prop. HONOLULU, T. H.

Write Us For

1920 Catalog

of

Kodaks
Brownies
Premos
and Supplies

Honolulu Photo Supply Company

Everything Photographic

Kodaks Films Finishing Framing

1059 Fort Street HONOLULU

Christmas Presents

Our stock is now on display—all new goods

BOOKS, TOYS, GAMES, KOA, LEATHER,
IVORY & SILVER NOVELTIES,
FOUNTAIN PENS, XMAS CARDS & TAGS

We have the largest selection of gifts on the Island

Maui Book Store, Wailuku



REGAL SHOES

The One Store In Honolulu That Sells

Dependable Shoes "REGALS"

Our Mail Order Department is Always At Your Service

OUR SHOE REPAIR DEPARTMENT IS BEST IN CITY

It Pays to Have Your Old Shoes Repaired

"In The REGAL Way"

½ soles and heels sewed..... 2.25

Whole soles and heels sewed..... \$3.25

All Work Guaranteed

JAPANESE WILL TRY AGAIN BEFORE STRIKING HONOLULU, Dec. 22—The second Japanese labor convention has decided not to call a strike unless peaceful means to get higher wages fail.

KILAUEA BREAKS OUT UPON KAU DESERT HILO, Dec. 22—A lava stream from Kilauea has broken out six miles southwest of the big crater and is flowing slowly down across the Kau desert.

The outbreak is near the Kau road and at about 3500 foot elevation. It is on comparatively level country and may flow across the road, or may flow southward.

The new phenomenon is of striking character, and while it may die out soon, Prof. Jaggard does not think so, but believes that tremendous activity is presaged.

BIG UPRISING PREDICTED IN KOREA—SAY MISSIONARIES INVOLVED HONOLULU, Dec. 23—The Advertiser's Tokyo correspondent writes that in spite of the Japanese censorship, reports from Korea indicate that a great revolution there is imminent.

TWO PARLIAMENTS FOR IRELAND IS NOW PLAN SAYS LLOYD GEORGE LONDON, Dec. 23—Self government in all parts of Ireland is the plan of England, according to Lloyd George in addressing the house of commons today.

The premier stated in discussing the Irish question that the government purposes establishing two parliaments—one for north Ireland and the other for south Ireland. Every opportunity will be given these parliaments to establish unity.

A council to be selected by these two parliaments will be the connecting link between the two sections of the island.

Each parliament is to have taxation powers similar to that of the congress of the United States. Customs, excise and income profits taxes are to be administered impartially, Ireland to get all duties and taxes above a fair contribution to the imperial services.

The Irish parliaments are to have sole control of all local matters except those of the higher judiciary, and of the army and navy, the Premier explained.

SAYS PETLURA'S TROOPS ARE SURROUNDED LONDON, Dec. 23—A soviet dispatch from Moscow says that the troops under Petlura have been surrounded in the vicinity of Berdichev.

KNOX SUGGESTS DECLARATION OF PEACE WASHINGTON, Dec. 20—Senator Knox today placed before the senate foreign relations committee a resolution to declare that a state of peace now exists between the United States and Germany.

CHICAGO BRINGS SEAPLANES HONOLULU, Dec. 19—The cruiser Chicago, which arrived here today for station, brought with her the first naval unit of 4 seaplanes.

BENJAMIN IDE WHEELER URGES ABOLISHING LANGUAGE SCHOOLS HONOLULU, Dec. 19—Superintendent MacCaughy has received a letter from Benjamin Ide Wheeler, president emeritus of the University of California, urging the abandonment of teaching all alien languages in the schools except in the higher grades.

BOOZE DECISION GOES OVER WASHINGTON, Dec. 22—The supreme court took a recess today until January 5 without passing upon the constitutionality of the Volstead prohibition law sections affecting beer.

The court, however, ordered the government to show cause by January 5 why New Jersey and Rhode Island retailers should not be granted their prayer to institute original proceedings to determine the constitutionality of the prohibition amendment.

PICTURE BRIDE BAN NOT FOR HAWAII HONOLULU, Dec. 20—Officials at the Japanese consulate stated today that the ban which Japan will impose on February 25 upon picture brides leaving Japan, will not apply to the islands, but to the mainland of the United States only.

HORRIBLE TALES OF SUFFERING IN RUSSIA LONDON, Dec. 22—A Moscow wireless reports that 700 soldiers of Kolchak's army died from freezing in a hospital near Omsk. The same authority says that severe fighting is taking place in the Narva, Kiev and Kharkov regions.

FIRST CUBAN SUGAR ARRIVES NEW YORK, Dec. 22—The first cargo of the new Cuban sugar crop, amounting to 240,000 bags, arrived today consigned to American refiners.

BELGIUM NEUTRALITY PLAN ABANDONED PARIS, Dec. 22—The abandonment of the British plan for guaranteeing the neutrality of Belgium is reported by the Petit Parisienne. The French and British are now seeking, the paper says, to reach an agreement which will be entirely satisfactory to Belgium.

REMAINS OF JAMES P. STEWARD FOUND HONOLULU, Dec. 19—A skeleton identified as that of James P. Steward was discovered today in the foothills of the mountains near Kahaluu. A bullet hole through the skull indicated the cause of death.

FEDERAL BUILDING TO START SOON—MAYBE HONOLULU, Dec. 19—R. W. Atkinson, president of the Hawaiian Contracting Co., and E. F. Cykler, chief engineer of the same company, arrived today by the steamer Maui from the coast, bringing with them the contract for the new federal building to be constructed in this city.

IMMIGRANTS KILLED IN RAILROAD WRECK ONAWA, Maine, Dec. 20—Thirteen passengers were killed and 9 injured when a freight train collided with a passenger special loaded with steerage passengers from the steamer Empress of France. The wreck occurred on the Canadian Pacific railroad near here.

WASHINGTON, Dec. 19—The senate committee on military affairs has reported favorably on many army nominations, including 7 major generals and brigadiers.

Plantation Managers Attention!

Many of our former men remained in Honolulu upon leaving the service. They are rapidly tiring of the streets. We will gladly gather them and send them where they are needed if transportation is provided.

For information apply to Pacific Service Institute, P. O. Box 1352, Honolulu.

ALOHA LODGE NO. 3 KNIGHTS OF PYTHIAS. Regular meetings will be held at the Knights of Pythias Hall, Wailuku, on the second and fourth Friday of each month.

All visiting members are cordially invited to attend. J. H. PRATT, C. C. A. MARTINSEN, K. R. & S. LODGE MAUI, NO. 472, F. & A. M.

Stated meetings will be held at Masonic Hall, Kahululu, on the first Saturday night of each month at 7:30 P. M.

Visiting brethren are cordially invited to attend. J. H. Pratt, W. M. W. A. CLARK, Secretary.

TERRITORY OF HAWAII Treasurer's Office, Honolulu, Oahu In re Dissolution of the Wailuku Construction and Drayage Company, Limited.

Whereas, the Wailuku Construction and Drayage Company, Limited, a corporation established and existing under and by virtue of the laws of the Territory of Hawaii, has pursuant to law in such cases made and provided, duly filed in this office, a petition for the dissolution of the said corporation, together with a certificate thereto annexed as required by law.

Now, therefore, notice is hereby given to any and all persons that have been or are now interested in any manner whatsoever in the said corporation, that objections to the granting of the said petition must be filed in this office on or before January 12, 1920, and that any person or persons desiring to be heard thereon must be in attendance at the office of the undersigned, in the Executive Building, Honolulu, at 12 o'clock noon of said day, to show cause, if any, why said petition should not be granted. HENRY C. HAPAI, Acting Treasurer Territory of Hawaii. Honolulu, October 20, 1919. (Nov. 7, 14, 21, 28; Dec. 5, 12, 19, 26; 1919; Jan. 2, 9, 1920.)

SEALED TENDERS Sealed tenders for the furnishing and delivery of one 8" Venturi Meter complete with automatic Register—Indicator—Recorder to the Wailuku Waterworks, Wailuku, Maui, T. H., will be received by the Board of Supervisors of the County of Maui at the County Clerk's Office, Wailuku, T. H. until 2:00 P. M., Friday, January 9th, 1920, at which place and hour they will be publicly opened and read.

Specifications are now on file at the office of the County Engineer, Wailuku Maui, T. H., can be obtained upon application. The right is reserved to reject any or all bids.

SEALED TENDERS Sealed tenders for the construction of a One Room Addition to the One Room School Building at the Kaluaaha School, Molokai, Territory of Hawaii will be received by the Board of Supervisors of the County of Maui at the County Clerk's Office, Wailuku, T. H. until 2:00 P. M., Friday, January 9th, 1920, at which place and hour they will be publicly opened and read.

Plans and specifications are now on file at the office of the County Engineer, Wailuku, Maui, T. H. and can be obtained upon application. A deposit of \$5.00 will be required for each set of plans and specifications. The right is reserved to reject any or all bids.

IN THE MATTER OF THE PETITION OF TSUSHIO ONISHI FOR CHANGE OF NAME. Decree. On consideration of the petition of TSUSHIO ONISHI, of the Island and County of Maui, Territory of Hawaii, for a decree changing his name to SATORU ONISHI, and there appearing to me to be good reason for granting the said petition:

NOW, THEREFORE, by virtue of the authority in me by law vested, and thereunto enabling, I, C. J. McCarthy, Governor of the Territory of Hawaii, do hereby order and decree that the name of TSUSHIO ONISHI be and is hereby changed to SATORU ONISHI, and that a copy of this decree be published for at least four consecutive weeks in the "Maui News," a newspaper of general circulation in the Territory of Hawaii, published at Wailuku, Island of Maui, in said Territory.

Dated November 13th, 1919, at Honolulu, Territory of Hawaii. C. J. MCCARTHY, Governor of Hawaii. (Dec. 5, 12, 19, 26.)

SEALED TENDERS Sealed tenders for the furnishing and delivery of two 5 ton Pierce Arrow or Packard Motor trucks, complete with standard equipment C. I. F. Wailuku, Maui, T. H. to the County of Maui will be received by the Board of Supervisors of the County of Maui at the County Clerk's Office, Wailuku, T. H., until 2:00 P. M. Thursday, January 8th, 1920, at which place and hour they will be publicly opened and read.

Specifications are now on file at the County Engineer, Wailuku, Maui, T. H. and can be obtained upon application. The right is reserved to reject any and all bids.

IN THE CIRCUIT COURT OF THE SECOND JUDICIAL CIRCUIT, TERRITORY OF HAWAII. At Chambers. In Probate, No. 1842.

In the Matter of the Estate of Wong Akau, also known as W. Akau, Late of Wailuku, County of Maui, Deceased. Petition of Wong Ahu a Son of the Deceased, for the Appointment of said Wong Ahu as Administrator of said Estate.

IT IS ORDERED, that Thursday, the 22nd day of January, A. D. 1920, at 10 o'clock A. M., or as soon thereafter as the same may be heard, be and the same is hereby appointed for hearing said petition in the Court Room of this Court at Wailuku, County of Maui, Territory of Hawaii. Dated December 16th, 1919. BY THE COURT: HENRY C. MOSSMAN, Clerk of Said Court. (Dec. 19, 26; Jan. 2, 9.)

IN THE CIRCUIT COURT OF THE SECOND JUDICIAL CIRCUIT, TERRITORY OF HAWAII, JANUARY 1919, TERM.

Territory of Hawaii by Lyman H. Bigelow, its Superintendent of Public Works, Plaintiff and Petitioner, vs. Margaret Nahaolelua, Emily Nahaolelua, Margaret Nahaolelua, Dorothy Nahaolelua, and Ruth Nahaolelua, Minors, by Henry Smith, their Guardian; George Nahaolelua, John Nahaolelua, Mrs. Annie Renicke, Charles Kia Nahaolelua, and Alice K. Nahaolelua, Minors; Albert Nahaolelua, Alexander Nahaolelua, Alice N. Lane (Mrs. John C. Lane), Emma N. Dunne, John Doe, Mary Doe, and Richard Roe, Unknown owners and claimants. Defendants & Respondents. Term Summons

You are commanded to summon Margaret Nahaolelua; Emily Nahaolelua, Margaret Nahaolelua, Dorothy Nahaolelua, and Ruth Nahaolelua, Minors, by Henry Smith, their guardian; George Nahaolelua John Nahaolelua; Mrs. Annie Renicke; Charles Kia Nahaolelua and Alice K. Nahaolelua, Minors; Albert Nahaolelua; Alexander Nahaolelua; Alice N. Lane (Mrs. John C. Lane), Emma N. Dunne; John Doe, Mary Doe, and Richard Roe, unknown owners and claimants, defendants and respondents, in case they shall file a written answer within twenty (20) days after service hereof, to be and appear before the said Circuit Court at the term thereof pending, immediately after the expiration of twenty (20) days after service hereof, PROVIDED, HOWEVER, if no term be pending at such time, then to be and appear before the said Circuit Court at the next succeeding term thereof to wit, the January 1920 term to be holden at Wailuku, County of Maui, on the second Monday in January, 1920, at ten o'clock A. M. to show cause why the claim of the Territory of Hawaii, by Lyman H. Bigelow, Superintendent of Public Works, Plaintiff and Petitioner, should not be awarded to it pursuant to the tenor of its annexed complaint, and have you then and there this writ with a full return of your proceedings thereon.

WITNESS THE HONORABLE PRESIDING JUDGE of the Circuit Court of the Second Judicial Circuit, at Wailuku aforesaid, this 1st day of October, A. D. 1919.

(S) J. A. THOMPSON, Clerk, Supreme Court Territory of Hawaii, and Ex-Officio Clerk, Circuit Court Second Circuit. (Seal of Court.)

COUNTY OF MAUI, SECOND JUDICIAL CIRCUIT, TERRITORY OF HAWAII. I, HENRY C. MOSSMAN, Clerk of the Circuit Court of the Second Judicial Circuit, Territory of Hawaii, do hereby certify that the foregoing is a full, true, and correct copy of the original summons in the case of the TERRITORY OF HAWAII v. MARGARET NAHAOLELUA, et al. as the same appears of record and on file in the office of the Clerk of said court.

I further certify that the Petition prays the condemnation for use as an extension of the public school grounds of Kamehameha III School at Lahaina, Maui, and for the purpose of erecting thereon, teachers' cottages and or school play ground purposes, the following described land and its appurtenances, situate at Lahaina, County of Maui, Territory of Hawaii, to wit:

Beginning at a 3/4" pipe, the co-ordinates of which referred to the Government Trig. Station "Laina," are 9262.2 feet south 2849.9 feet West, same being by true azimuth and distance from the County of Maui Street Monument at the intersection of Prison Road and Front Street, 336° 59' 118.15 feet, and running thence by true azimuth:

1. 06° 36' 85.0 feet along fence along L. C. A. 6325 to M. Kekauonohi to stone wall, thence feet along stonewall in

2. 147° 15' 35.8 feet along stonewall in

N. SANO CONTRACTOR AND BUILDER Just received a new stock of Mattresses, poultry netting, paints and oils, furniture, etc. Coffins and General Hardware. Phone Market Street Wailuku

WASHINGTON, Dec. 16—The house agricultural committee ordered and unfavorable report on bill for repeal of wartime prohibition.

L. C. A. 8515 Keoni Ana, thence feet along stone wall across L. C. A. 8515 Keoni Ana to 2" pipe, thence

3. 65° 20' 120.4 feet along old fence and low stone wall along L. C. A. 10806 Kamehamehe III.

Part 77 Pa Halekamanu, passing over a "X" cut in stone at 97.8 feet thence,

5. 244° 19' 216.2 feet across L. C. A.'s 8515, Keoni Ana and 6325, M. Kekauonohi to a 3/4" pipe in Front St. at the foot of a low stone wall thence,

6. 152° 22' 06.7 feet along C. A. 6325 M. Kekauonohi along low stone wall and picket fence to point of beginning and containing an area of 19,330 sq. feet.

All persons having any interest in, or claim to the land and its appurtenances sought to be condemned, are hereby warned that unless they appear before said Circuit Court of the Second Judicial Circuit, on or before the 2nd day of February, A. D. 1920, they will be forever barred from contesting said petition or any judgment entered thereon.

IN WITNESS WHEREOF I have hereunto set my hand and affixed the seal of the said Circuit Court this 10th day of October, A. D. 1919.

HENRY C. MOSSMAN, Clerk. (Seal of Court.) (Oct. 17, 24, 31; Nov. 7, 14, 21, 28; Dec. 5, 12, 19, 26; 1920, Jan. 2, 9, 16, 23.)

SEALED TENDERS Sealed proposals for the construction for the Maui High School Building, Hamakua, Maui, Territory of Hawaii will be received by the Board of Supervisors of the County of Maui, at the County Clerk's Office, Wailuku, Territory of Hawaii until 2:00 P. M., Friday, January 9th, 1920, at which place and hour they will be publicly opened and read.

Copies of proposal blanks, plans and specifications can be obtained at the Office of the County Engineer, Wailuku, Maui, T. H. and C. W. Dickey & Hartwood, Honolulu, Oahu, T. H. A deposit of \$15.00 will be required which will be refunded upon the return of the plans and specifications. Tenders must be made out on the blank forms supplied by the County Engineer, and enclosed in the envelope furnished, sealed, and sent to the County Clerk so as to reach his office not later than 2:00 P. M., Friday, January 9, 1920. Any and all bids not in accordance with this section will be at once rejected.

No tender will be entertained unless accompanied by a certified check in an amount equal to at least 5 per cent of the amount of the tender made payable to the order of S. E. Kalama, Chairman and Executive Officer of the Board of Supervisors.

The right is reserved to reject any or all bids. By Order of the Board of Supervisors for and Within the County of Maui By WM. FRED KAAE, County Clerk, County of Maui. (Dec. 19, 26, Jan. 2.)

Honolulu Wholesale Produce Market Quotations ISSUED BY THE TERRITORIAL MARKETING DIVISION Wholesale Only. Week Ending, December 22, 1919. Small Consumers Cannot Buy at these Prices. Island butter, lb. .55 Eggs, select, doz. 1.00 Eggs, No. 1, doz. None Eggs, Duck, doz. .75 Young Roosters, lb. .65 to .70 Rabbits, live weight lb. .25 Hens, lb. .50 to .55 Turkeys, lb. .65 Ducks, Muse, lb. .35 to .40 Ducks, Pekin, lb. .30 to .35 Ducks, Haw. doz. 13.00 Vegetables Beans, string green lb. .05 Beans, string, wax, lb. .05 Beans, Lima in pod, lb. .05 Beans, Maui red, cwt. 5.50 to 6.00 Beans, Calico, cwt. 5.50 to 6.00 Beans, Speckled, cwt. 5.00 Beans, S. W. cwt. 7.00 Beans, L. W. cwt. 5.00 Peas, dry Is. cwt. 7.00 Peas, doz. bch's. .25 Carrots, lb. .05 Cabbage, cwt. 3.00 to 5.00 Corn, Sweet 100 ears. 3.00 Corn, Haw. sm. yel. ton. 75.00 Corn Haw. lg. yel. ton. 65.00 Peanuts, lg. lb. .09 to .10 Peanuts, sm. lb. .10 to .11 Green peppers, bell lb. .05 Green peppers, chili, lb. .05 Pot. Is. Irish, cwt. 3.00 Pot. Sweet wh. cwt. 1.60 Pot. Sweet, red cwt. 1.60 Taro, cwt. 2.00 to 2.50 Taro, bch. .15 Tomatoes, lb. .04 to .05 Green peas, lb. .08 to .10 Cucumbers, doz. .02 Pumpkins, lb. .02 Corn Haw. yel. lg. ton. 70.00 Fruit Bananas, Chinese, lb. .02 Bananas, Apple, lb. .02 1/2 Bananas, Cooking, bch. 1.75 Bananas, Apple, lb. .02 1/2 Figs, 100 .1000 Grapes, Isabella, lb. .10 Limes, 100 .02 Pineapples, cwt. 2.00 Papayas, lb. .02 1/2 Strawberries, lb. .15 Oranges, Is. 100 1.75 Livestock Cattle and sheep are not bought at live weight. They are slaughtered and paid for on a dressed weight basis Hogs up to 150 lb. .25 Pork, lb. .25 to .30 Dressed Meats Beef, lb. .16 to .18 Veal, lb. .18 to .22 Mutton, lb. .26 Pork, lb. .20 to .25 Hides Wet Salted Steer, No. 1 .16 Steer, No. 2, lb. .12 Steer, hair slip, lb. .10 Kips, lb. .16 Goat, white each .25 to .30 Feeds Corn, sm. yel. ton. None Corn, lg. yel. ton. 66.00 Corn Cracked, ton. 70.00 Bran, ton. 56.00 Barley, ton. 80.00 Scratch food, ton. 93.00 Oats, ton. 80.00 Middling, ton. 75.00 Wheat, ton. 98.00 Hay Wheat, ton. 48.00 Hay Alfalfa, ton. 48.00

Citizenship Worker Plays Santa Claus

Three Big Community Entertainments Under Direction Of R. A. Judd Prove Big Success — Everyone Delighted With Program.

During the past week R. Judd, who is in charge of the American Citizenship work on Maui, staged three large Community Christmas entertainments. They all centered about three schools, Punene, Paia and Spreckelsville. The necessary financial assistance has been most generously given by interested plantation managers.

The program each time has consisted of about twelve numbers, including Christmas carols, exercises and concluding with an honest-to-goodness Santa Claus who has been very happy to present each school with appropriate equipment for carrying on outdoor sports.

A volley ball set was given the Punene School and each of the other two schools seemed just as happy to be the proud possessors of the best basket balls that Santa Claus could make.

The purpose of the occasions was three-fold, primarily to give the children one full evening of real Christmas joy; second, to furnish an occasion when the children might give free expression to their pent-up talents and lastly to increase the parent's interest in the accomplishments of their children. In this way only can we ever hope to Americanize the fathers and mothers of our island-born children.

The packed houses in every place indicate a fine spirit. It is to be hoped that another year Santa Claus will again order us all to meet in the old familiar meeting places, so that he may again find his hundreds of expectant, happy faces awaiting him.

The following program of the Punne entertainment is similar to those at the other schools:

- Program**
- Quartet—"Noel" and "Holy Night" Waialuku People.
 - Mrs. Buck's five girls.
 - "Christmas Fairies"
 - Paia Orchestra Two Numbers
 - Story "Miss Hill Boy Scouts—"Flag of the Free" Eight Boys.
 - Mr. John Brown and children "Under the Stars."
 - Punene School Children "All Through the Night."
 - Waialuku Orchestra "Three Songs in One."
 - Solo—"Way Up in the North" Mary Fletcher.
 - Santa Claus Appears "America" All Together.
 - Moving Picture

Christmas Music At Kahului Next Sunday

The combined choirs of the Waialuku Union church and the Kahului Union church, together with the children of the Sunday school, will give the Christmas cantata entitled "The Christmas Story" Sunday evening, December 28th, in the Kahului Church. This service will be a union service for the two congregations, as there will be no service that evening in the Waialuku Union church. Mrs. Mary Kunewa will preside at the organ and the Christmas sermon will be preached by Rev. H. V. White. Following is the program:

- Organ Prelude
- Hymn—"Joy to the World" Congregation
- Invocation
- Gloria
- "Praise Him in Song" Combined Choirs
- "How Beautiful Upon the Mountains" Senior Choir
- Prayer
- Response
- "Hear the Bells" Combined Choirs
- "Thou Bethlehem" Senior Class
- "Merry Bells" Primary Class
- Responsive Reading
- Duet—Mrs. Weight & Miss Crickard
- "There Were Shepherds" Senior Choir
- "Little White Snowflakes" Primary Class
- Sermon—"Unto Us A Child Is Born" Rev. H. V. White
- "Thanks Be To God" Senior Choir
- "Christmas Praise" Combined Choirs
- Benediction
- Postlude.

BOLSHEVIKI SEND ENVOY TO ITALY
PARIS, Dec. 26—The Soviet republic of Russia has sent an envoy charged with a special mission to Italy, who has arrived in Naples, according to a dispatch from Rome.

Senator and Mrs. George P. Cooke and family arrived Monday night at Lahaina from Honolulu on their way to their Molokai home to spend the Christmas holidays.

SOCKET

County Fair New Year's Dance

To Be Big Social Event Of Season
The social event of the season spelled with a big "T" will be the ball and musicale on New Year's eve which is to mark the opening of the new Territorial building at the fair grounds, and at the same time the big New Year's sports features of the following day.

The committee in charge of this feature held a meeting this week and checked up on the various features of the event, and it is quite evident from their plans that there will be nothing for a long time to come that will approach it in quality.

As before announced, the ball is to be open to the public of Maui generally and everybody will be welcome. For this reason no invitations have been sent out, it having been decided that too many sensitive feelings would be unintentionally hurt through inadvertently missing persons who would feel that they should not have been overlooked.

Punahou Musicians Coming
The fact that the Punahou Faculty Music Club has consented to come up as guests of the Fair Association, is a matter of congratulation to all music lovers of Maui. It is understood that these distinguished artists will give a short concert preceding the dancing which will be in order later. A letter from Mr. George Cooke, in Honolulu, states that the program will be one that will appeal to every one, not being of the ultra-heavy variety.

The members of the Faculty Club who are coming are—Mrs. Durrel, Violinist; Miss Pasmores, cellist; and Mr. Frank Morse, pianist. The piano for the concert is a splendid new instrument donated for the occasion by Jack Bergstrom.

For the dancing, Mrs. Kunewa's orchestra has been engaged; and for those who prefer cards, the spacious balconies are to be supplied with tables and chairs for this amusement.

Reception To New Minister and Wife

The reception tendered to Rev. and Mrs. H. V. White, at the Kahului Community House, last Friday evening, was a very delightful event, and was thoroughly enjoyed by the large number of Maui people who called to meet the new pastor and his wife. A very pleasing little musical program was rendered during the evening.

Mr. and Mrs. White are very pleasant young people who will doubtless soon come to fill an important place in the community.

Little Alma Katherine Vincent, daughter of Mr. and Mrs. Enos Vincent, celebrated her fourth birthday last Monday afternoon with a very jolly party to some 20 or more of her children friends, at her home on High street. The youngsters had a great afternoon with games and with the ice cream and other beautiful refreshments. One of the biggest features of the occasion was the search about the lawn for peanuts and other things hidden for the purpose before hand.

New System In Force For Paying Teachers

(Continued From Page One.)

of the Department of Public Instruction promptly on the last school day of the month. Head list with name of principal and list names of assistant teachers in alphabetical order. Give names of both regular teachers and substitutes complete, accurate and correct; prefix Mrs. where proper."

It is imperative that principals submit reports promptly.

Failure to send reports by the first outgoing mail causes a delay of at least three days. It takes an additional three days for the vouchers to pass through our main office and the office of the Auditor. It can readily be seen that ten days is a very short period to allow for the proper drafting, checking pay rolls and issuing of

Mill Dance Delightful Affair

The event of the present holiday season was that staged at the mill of the Waialuku Sugar Company last Saturday evening, when about 400 invited guests assembled there and were accorded the hospitality of Manager Penhallow and his co-workers. To say that it was an enjoyable affair, would be putting it mildly, as it was far beyond the expectations of the large gathering.

For several years past the company has turned its big sugar warehouse building into one large pavilion for a dance and other means of entertainment one night during the holiday season, and the 1919 event far eclipses those of former years.

Upon entering the grounds the guests were greeted by a large tree which had been lighted with electric lights and presented the Christmas spirit. The interior of the mill had been most tastefully decorated with long streamers of ferns drawn from the center to each side of the structure, showing much painstaking work on the part of the decorators.

A large dance platform taking up nearly half of the building, had been specially provided for this one occasion, and that the devotees of the terpsichorean art thoroughly enjoyed themselves and the beautiful music of the orchestra, was evidenced by the number of dancers who lingered until the last dance was played. Not alone were the dancers loath to leave the pavilion, but a number who had spent the evening playing cards and in social converse, lingered until the wee hours.

During the evening refreshments of ice cream and cake, sandwiches, coffee and punch were served at the card tables by a number of oriental waitresses, and the wants of all the guests were carefully looked after.

The marriage of Miss Mary Bai, daughter of Capt. and Mrs. William Bai of Waialuku, to Mr. William D'Esmond, will take place tomorrow evening at the home of the bride's parents. Following the ceremony a wedding dinner and reception will be held at the Maui Hotel.

Following their honeymoon, the young couple will make their home in Honolulu where Mr. D'Esmond is employed as engineer in the public works department.

Christmas was celebrated in jolly style at the Kula Sanitarium yesterday. There was a big Christmas tree, almost breaking beneath its load of gifts for the children and older folks as well, and there was a fine program rendered in the big assembly hall. Quite a number of "lower country" folk drove up to attend the event. P. H. Ross, of the Bank of Maui, delighted and mystified the audience with some clever slight of hand tricks. The day was a very happy one for both ill and well at the big mountain institution.

some 1300 salary checks, which amount to about \$122,590.00 each month.

Principals who do not submit their reports at the proper time should not expect to receive their pay checks on the 10th.

PERSONAL MENTION

Miss Clare Stevenson, of Lahaina, is visiting friends in Honolulu during the Christmas holidays.

Mr. and Mrs. K. J. Zedwitz and 2 children, of Lahaina were passengers to Honolulu last Saturday.

Mrs. C. J. Willett, daughter of Mr. and Mrs. Ed. Soper, of Wahee, returned to Honolulu by the transport Sheridan on Monday after a several months visit on the mainland. She has joined her husband, who is now connected with the Pioneer Mill Co., at Lahaina.

Miss Nina Vasconcellos is home from Honolulu to spend the holidays with her family in Kahului.

PERSONAL MENTION

Manuel Oliveira, a Waialuku boy who several years ago was a member of the Maui News' family, returned from Oahu this week dressed in the natty white uniform of one of Uncle Sam's navy "gobs." He enlisted several months ago at Pearl Harbor and is home on a 10-day leave. He is attached to the U. S. S. Beaver, and will probably be leaving the islands shortly.

T. H. Gibson, deputy superintendent of schools, accompanied by his wife, arrived on Maui on Wednesday to spend Christmas with their daughter, Mrs. Ray Reitow, of Waialuku.

J. T. Templeton, of the Pauwela Pineapple Co., was called to Honolulu on Wednesday evening on business. He will probably be back tomorrow.

Capt. and Mrs. J. C. Lorenzen, of Honolulu, are spending the Christmas tide on Maui, the guests of Mrs. Rose Kepoikoi, of Waialuku.

Judge L. L. Burr, who has been ill for a number of weeks, is somewhat better, but is still far from well. He was able to preside in court one day last week.

Mrs. Laura Sabey, of Spreckelsville, is spending the holidays in Honolulu with relatives.

Master Richard Sloggett is home from the Honolulu Military Academy to spend the holidays with his parents Mr. and Mrs. H. D. Sloggett, of Hamakua-poko.

Scott Nicoll is home from Honolulu for the holidays with his parents, Mr. and Mrs. W. S. Nicoll, of Hamakua-poko.

Hewitt Sparks is spending the Christmas vacation with his parents, Mr. and Mrs. W. A. Sparks, of Kahului. He is a student at the Honolulu Military Academy.

Miss Emily Wells arrived from Honolulu last Saturday and is visiting friends and relatives in Makawao and Haiku.

Miss Trinkle, of the Maui high school faculty, is spending her Christmas holidays with friends in Honolulu.

Mrs. Charles Mel, of Haiku, went to Honolulu last Saturday and was joined there by her husband, the manager of the Pauwela Pineapple Co., who went down on Wednesday of this week to spend Christmas.

Miss Gladys Meinicke, daughter of Joseph Meinicke, engineer of the Pala mill, returned home last Saturday from San Francisco where she has been attending school. She was met in Honolulu by her father.

Mrs. H. C. Chamberlain, of Southern California and Arizona, arrived on Maui last Saturday accompanying W. O. Aiken from the mainland, and will make her home in the future with her daughter, Mrs. Aiken, in Makawao.

Mr. and Mrs. W. A. Clark, of Makawao, departed last Saturday from Honolulu by the Manoa for a several months vacation on the Coast.

Mr. and Mrs. Henry Streubeck were passengers to Honolulu this week to spend Christmas with their daughter, Mrs. L. D. Timmons.

The three Penhallow boys arrived home last Saturday from the Honolulu Military Academy to spend the Christmas holidays.

Mrs. J. P. Cooke and young son arrived from Honolulu last Saturday to spend the Christmas holidays with Mrs. H. P. Baldwin, in Makawao.

Douglas Wells, son of Mr. and Mrs. W. I. Wells, is home from the College of Hawaii to spend the holidays.

Charles R. Frazier, the advertising man, was on Maui last Saturday on business.

Prof. and Mrs. I. M. Cox, of Honolulu, are spending the Christmas week with their son and daughter, Mr. and Mrs. Joel Cox of Punene.

Miss Margaret McCubbin returned to Honolulu on Monday night after visiting friends in Lahaina and other parts of Maui for some days.

Miss Eva Rodriguez was a passenger to Honolulu by Monday night's Mauna Kea to spend Christmas.

William R. Bartels, of the Waialuku Sugar Co., is spending the Christmas week in Honolulu.

Dr. George L. Broadrup, who for a year or more served as government physician at Hana during the absence of Dr. Lichtenfels in the army, is now located at Pepeekeo, island of Hawaii.

Deputy Internal Revenue Collector H. St. C. Tait, of Waialuku, departed last Monday night for Honolulu to spend Christmas with friends.

L. von Tempsky, of Makawao, was in Honolulu this week on business.

Miss Gussie Silva, of Waialuku, will leave this evening for Kauai where she will visit her sister, Mrs. N. B. Fernandez in Lihue for about two weeks.

Says Sheriff Beats Him Buying Fish

(Continued from Page One.)

them. He is therefore still working on the matter.

The list in question follows, the first column being the wholesale and the second column the retail prices:

Aawa	\$.10	\$.15
Aholehole16	.25
Aku06	.10
Akule (net)14	.22
Akule (hook)16	.25
Amama17	.25
Awa15	.23
Awa Kalamoho11	.19
Aweoweo12	.20
Hahala17	.25
Hapupu18	.27
Humuhumu05	.09
Kahala24	.30
Kaku24	.30
Kala07	.10
Kalili24	.30
Kawakawa09	.16
Kumu24	.30
Lai13	.20
Mahimahi15	.20
Manini15	.20
Mikawa10	.15
Moana24	.30
Moi24	.30
Nehu04	.10
Oio16	.25
Ono24	.30
Opakapaka24	.30
Opelu14	.22
Opelu Palahu11	.18
Palani04	.08
Papiopio24	.30
Uku24	.30
Ulaula24	.30
Ulua24	.30
Uu24	.30
Lahi24	.30
Sword Fish10 dressed	.25
Lobster		

Miss Aileen McCarriston, Miss Naomi Foster and Miss Hannah Meyer, of Kamalo, Molokai; Miss Dorcas Myer, of Kalae, Molokai; Miss Alice West, of Kamuela, South Kohala, Hawaii, and Miss Beatrice Drummond, of Hana, Maui, all of whom have been attending the Academy of the Sacred Hearts, Honolulu arrived home this week to spend the Christmas holidays.

Auction Sale

Mares and Colts

To Be Held

Saturday, Jan. 17, 1920

3:00 P. M., AT

Haiku Corral

Near the M. A. Co.'s Corn Mill

20 Head of Draft Mares and

Two and Three Year Old Colts and Fillies

By Order of HALEAKALA RANCH CO.

W. F. CROCKETT, Auctioneer

Big Holiday Shipment of Musical Instruments

Pianos, Player Pianos, Electric Players and Phonographs

Instruments sold on easy payments if desired. Have you heard "WAHINE UT" on the player piano? A few good bargains in 2nd hand pianos.

Honolulu Music Co., Ltd., Waialuku
JACK BERGSTROM
WARE-ROOMS NEXT TO MAUI HOTEL.