

THE ELECTION CONTEST IS ENDED

FERNANDEZ ABANDONS HIS FIGHT

RECOUNT OF REJECTED BALLOTS COMES TO AN END IN THE SUPREME COURT—BALLOTS ARE FOUND TO HAVE BEEN REJECTED FOR GOOD CAUSE AND THE CONTESTANT ABANDONS THE FIGHT.

Fernandez' contest of the election of Supervisor at Large Adams was discontinued this afternoon in the Supreme Court. The Court held that ballots marked for more officers than were to be elected were properly rejected by the precinct officers, and this ruling applied to practically all the rejected ballots which were being recounted. The rejected ballots of four precincts, 125 in all, were examined and Fernandez gained one vote. The Adams rejected votes were not examined by the court so that it is not known whether he would have gained any or not. That the whole County election is void on account of the use of illegal ballots. (Continued on page five.)

NOEAU WAS IN DANGER OF SINKING

SO CAPTAIN PEDERSON PUT BACK FROM THE MOLOKAI CHANNEL YESTERDAY AFTERNOON IN ORDER TO HAVE HIS VESSEL LIGHTENED—VESSEL NEARLY FOUNDERED IN THE HEAVY SEAS FORWARD DECK AND ALLEYS COMPLETELY SUBMERGED.

The steamer Noeau, Captain Pederson, nearly went to the bottom yesterday afternoon in the channel off Makapuu Point. If Captain Pederson had not put the vessel about and returned to Honolulu, she would probably have foundered. A heavy deck load forward and a heavy sea in the channel were the causes that placed the vessel in jeopardy. However sufficient of the cargo was discharged to lighten the vessel and enable her to proceed to sea this morning without risk. (Continued on page eight.)

NEW CROP OF JAPAN RICE.

K. Yamamoto wholesale dealer has received the new crop of Japan rice by the S. S. China and same is very first shipment for this country. Ring up Main 359.

Lutted's Hawaiian Poi in Pound cans for sale by all druggists and grocers.

DO NOT BE INFLUENCED.

Never hesitate to say "No" to your dealer if he offers you a substitute for Chamberlain's Cough Remedy. It has no equal on the market for the prompt cures of coughs, colds, croup and whooping cough and you make no mistake in buying this medicine. For sale by all dealers, Benson, Smith & Co., agents for Hawaii.

A Trust Company as Trustee

A trust company is preferable to individual trustees, because it possesses every quality of desirability which the individual might lack, viz:

- Permanency, integrity, experience, attention to business, opportunities for investment, etc.

HAWAIIAN TRUST CO. LTD
Fort Street, Honolulu

The hearing of the charges against the New York Life, by the Hawaiian Trust Company, is before Treasurer Campbell this afternoon.

A GOOD WORD.

Everyone has a good word to say for the Criterion, the liquors served there are the very best in town.

A GOOD REASON.

If all beers were as pure and palatable as Rainier Beer, people wouldn't prefer Rainier Beer.

NEW ANIMALS AT THE ZOO.

The Kaimuki Zoo has just received the following new animals: Wild Cat, Ring Tail Possum, Storks, Coyote, Crows, etc. Take a trip to the Zoo and see the animals and birds and get some fresh, cool breezes.

THE EARLY BUYER.

The early buyer of holiday goods secures first choice of the new novelties and better attention to his wants. We are now ready with the largest line of Xmas goods ever shown in Honolulu. Come early. Wall, Nichols Co.

Underwood Typewriter

SOME ACTUAL ADVANTAGES. Visible Writing that places the character directly in front of the operator. Speed that comes of itself without additional effort from the operator. Touch of a lightness, elasticity and uniformity, that materially lessens the labor. Paper Insertion of such simplicity, accuracy and rapidity as to be practically automatic. Corrections that are inserted without loss of time. Ruled Lines written on instantly. Marginal Stops that are instantly adjusted.

The J. A. M. Johnson Co. LIMITED
931 Fort St., Phone Main 348.

PEASANTS GET THIRD OF RUSSIA

(Associated Press Cable to The Star).

ST. PETERSBURG, November 15.—A ukase has been promised giving to the peasants a large portion of the imperial domain covering a third of European Russia.

ISLE OF PINES TO BE FREE

HAVANA, November 15.—The citizens of the Isle of Pines have declared the independence of that section from Cuba and have formed a territorial government and asked for recognition by the United States.

BIG STRIKE IS BEGUN

ST. PETERSBURG, November 15.—The general strike threatened because of delay on the part of the government in putting the promised reforms into operation was begun here today. The rioting continues.

ULTIMATUM TO THE TURK

LONDON, November 15.—The Powers have given the Porte twenty-four hours in which to reply to their ultimatum demanding that Turkey relinquish to them general control over Macedonia.

DILLINGHAM FLOATS \$2,000,000 OLAA BONDS

NEGOTIATIONS HAVE NOW REACHED THE POINT WHERE AUTHORIZATION OF THE STOCKHOLDERS IS REQUIRED FOR TAKING UP THE OLD BOND ISSUE AND CONSOLIDATING AND REFUNDING BOTH THE BONDED AND THE FLOATING DEBT.

B. F. Dillingham is understood to have made the financial arrangements for floating a new issue of \$2,000,000 of Olaa Sugar Company bonds, refunding the present issue of three quarters of that amount, and taking up the floating debt.

As a result of this successful financing deal, a special meeting of the stockholders of Olaa has been called for a week from tomorrow, November 23, for the purpose of considering and acting upon the following proposition: To (a) Refund the present bonded and floating indebtedness of the company; (b) Issue First Mortgage coupon bonds for the aggregate principal sum of two million dollars; and (c) Execute a Mortgage Deed of Trust to secure said proposed issue of bonds.

The present issue of bonds is \$1,250,000 dated August 1, 1900, payable after August 1, 1905 and due August 1, 1920. According to the company's report, there had been sold of these bonds on December 31, 1904, \$709,000, and the remainder, \$541,000, were held as collateral to secure the payment of bills payable of \$465,000. Besides this there were unsecured bills payable of \$400,000. (Continued on page five.)

Waialeale Has Been Sold To a Seattle Concern

COOK AND COMPANY PURCHASE THE STEAMER FROM THE LOCAL COMPANY FOR USE ON PUGET SOUND—WILL SEND CAPTAIN RENNIE FORMERLY OF THE S. S. MARIPOSA TO BRING VESSEL TO SEATTLE—HE MAY ARRIVE NEXT WEEK.

The steamer Waialeale of the Inter-Island Steam Navigation Company's fleet has been sold. The vessel has been purchased by Cook and Company of Seattle, the agents of the American-Hawaiian S. S. Company in that city. The deal has not been made however, in the interests of the latter company as Cook and Company are acting directly for themselves. It is intended to use the boat for work about Puget Sound and various British Columbian ports. A letter from the Seattle concern has been received stating that Captain Rennie who was formerly on the S. S. Mariposa—he is well known to Honolulu people—would be sent in company with other officers and engineers to Honolulu to bring the steamer Waialeale to Seattle. It is expected that they will arrive by some steamer this month, possibly the S. S. Mongolia next week.

INSURANCE CHAMBER OF COMMERCE INQUIRY GOES OVER

The investigation into the affairs of the New York Life, in so far as the case of the policy of John Ena is concerned, was commenced by Territorial Treasurer A. J. Campbell, as Insurance Commissioner this afternoon. For some unknown reason the proceedings were commenced at 1:30 instead of at 2 as the Commissioner had announced.

The New York Life was represented by Attorney A. F. Judd. Attorney Ballou was present in the interests of Ena the policy holder who claims that his policy was altered without his consent and Deputy Attorney General M. F. Prosser represented the government. F. A. Wickert, agent for Hawaii of the New York Life and Z. K. Meyers secretary of the Hawaiian Trust Company, attorneys in fact for Ena also attended.

Upon the opening of the proceedings Attorney Judd informed the Commissioner that he had just been instructed by the company and he moved for a continuance until such time as answers could be received from the head office of the company to letters which had been sent by the agency here regarding the case in point. He filed copies of these letters duly certified. He took the point that while it was necessary to satisfy the Commissioner of the bona fides of the company, it was with respect, even more necessary to satisfy the policy holders.

There was no objection to the continuance and after a brief colloquy, the date fixed for further proceedings was made December 21.

Ship Captain Threatened The Officer

MASTER OF THE W. H. SMITH DIDN'T WANT FEDERAL OFFICER AS A GUEST.

Deputy United States Marshal Winter this morning received the following letter from E. B. Friel, who was placed in charge of the ship W. H. Smith, when the ship was libelled last night: "I am having lots of trouble here. Last night the Captain ordered me ashore and told me that he had cleared the ship at the Custom House yesterday at 3 p. m. and would leave this morning as soon as he could get the tug boat to tow him out, and that he would put me ashore and he didn't give a damn for the marshal or any one else. I am having a h— of a time. What shall I do?" Friel was left to hold his ground as best he might, but the captain was invited to make a visit to the district attorney's office, and it is understood that Breckons gave him some advice as to what might happen if he tried to leave while under attachment. The ship is libelled by Dunne and Douthitt, in behalf of a Japanese named Naka, who received injuries by falling into her hold through a hole in the decks, and claims \$10,000 damages. Fine Job Printing, Star Office

LARGE PART OF VLADIVOSTOK DESTROYED.

(Associated Press Cable to The Star.) VLADIVOSTOK, November 15.—A large part of the city has been destroyed by the fires that were started by the rioters. Three hundred of the rioters mostly sailors and artillerymen have been killed and wounded during the course of conflicts.

WORTH READING.

"Pam" by Bettina von Hutton. The Purple Parasol by Geo. Barr McCutcheon, at the book store of Arleigh & Co.

Automobiles can be hired day or night at Club Stables, Fort Street.

Want ads in The Star bring quick results. Three lines three times for 25 cents.

A MATTER OF HEALTH

ROYAL BAKING POWDER

ABSOLUTELY PURE HAS NO SUBSTITUTE



QUALITY, VALUE and SERVICE

are the first thoughts of every man who intends purchasing a pair of shoes. You get all these essential advantages at our store. A shapely Genuine Good Year Tan Hal made on the British last; a model foot form shoe for men. Price \$4.00.

MANUFACTURERS' SHOE CO., LIMITED
1051 FORT SREET
Phone, Main 28

STOP COUGHING!

Don't experiment but take a well-tried remedy that always gives satisfaction and is known as the people's cough and cold cure. It is none other than the well-known

Putnam's Cherry Cough Comfort

This safe, pleasant-to-take remedy will cure your cough if curable. It nips the troublesome cough at once and a speedy cure follows. It is a particularly good medicine for children because it is safe and they can take it without nausea. It is used more than any other remedy in the homes where there are little ones. Get a bottle of Putnam's Cherry Cough Comfort today. Nip the cough at the start when it is easy and save further distress.

Two Sizes: 25 and 50 cent Bottles

HOBRON DRUG CO.

EHLERS' BLOCK, FORT STREET



PICKLE PERFECTION

HEINZ

Sweet Pickles

Have a flavor quite their own. They are thoroughly permeated with the sugar spices and vinegar in which they are prepared. Your grocer is headquarters for the celebrated "57 Varieties": Ketchups, Pickles, Vinegars, Preserves, Sauces, Baked Beans, etc. He will return the full purchase price if you do not like any article of Heinz goods purchased from him. Could anything be fairer.

H. HACKFELD & CO., Ltd.,
WHOLESALE DISTRIBUTORS.

"HYLO"

Incandescent Lamps

We have a large stock to furnish to our customers, at 75 cents each, that being the price they are sold for all over America. You will find them a great convenience, especially in the sick-room and where children require a low light during the night. When burning low, they reduce your electric light bill five-sixths. They are simply a small lamp within a large one and a pull at the cord at the side will reduce the light from sixteen to one candlepower and vice versa. Call or telephone your order.

Hawaiian Electric Co., L'd

Office, King and Alakea Streets. Phone, Main 390.

Queen Zixi of Ix

A Marvelous Story
For Boys and Girls

Queen Zixi of Ix is by L. Frank Baum, author of the Wizard of Oz, and maintains a wonderful thread of interest from beginning to end. Printed in large, black, legible type and just the kind of a story boys and girls like to have read aloud.

PRICE \$1.50.

HAWAIIAN NEWS CO, LTD

YOUNG BUILDING STORE.

K. UYEDA

1028 Nuuanu Street, Honolulu, T. H.
Between King and Hotel Street.
Straw Hat Manufactory. Any Style
of Straw Hat made to order. Panamas
and Felt Hat Cleaned.

T. HAYASHI.

Clothes Cleaned, Dyed and Repaired.
637 Beretania Street.
Opposite Queen's Hospital.

Hawaiian Office Specialty Co.

72 King St., Waikiki Block.
Tel. Main 15.
P. O. Box 304

Remington Standard TYPEWRITER

Burroughs Adding Machine,
Bergner Steel Cabinets,
Wabash Cabinets,
Edison Mimeographs,
Oscillators and Rotaries,
Mimeograph Supplies,
Typewriter Supplies,
McMillan Loose Leaf Ledgers
Edison & Bates
Numbering Machines,
Victor Safes & Vault Fixtures
Special Manganese Safes and
Vault Fixtures for Banks
Leopold,
Darby,
Macey,
Remington and
G. H. Fuller's
Desks,
Swinging Typewriter Stands,
Monarch Telephone Desks,
Pelouze Scales,
Telephone Brackets,
Office Supplies
Of every description.
REPAIRING and ADJUSTING
Of Automatic Machinery
A Specialty.

Want ads in the Star bring quick results. Three lines three times for 25 cents.

FOREIGN STEAMER TIME TABLE

STEAMERS TO ARRIVE.		
Date.	Name.	From.
Oct. 3-Coptic	Yokohama
4-Manchuria	San Francisco
6-Alameda	San Francisco
15-Nevadan	San Francisco
17-Ventura	Colonies
19-Sonoma	San Francisco
19-Moana	Colonies
19-Korea	San Francisco
21-Miowera	Victoria
27-Mongolia	Yokohama
27-Alameda	San Francisco
28-Coptic	San Francisco
Nov. 3-Nebraskan	San Francisco
7-Sierra	Colonies
7-China	Yokohama
8-Ventura	San Francisco
11-Siberia	San Francisco
15-Aorangi	Colonies
17-Alameda	San Francisco
18-Moana	Victoria
21-Doric	Yokohama
22-Mongolia	San Francisco
24-Nevadan	San Francisco
25-Manchuria	Yokohama
25-Sonoma	Colonies
29-Sierra	San Francisco
Dec. 2-China	San Francisco
3-Alameda	San Francisco
12-Korea	Yokohama
13-Miowera	Colonies
16-Aorangi	Victoria
16-Doric	San Francisco
19-Ventura	Colonies
20-Sonoma	San Francisco
22-Coptic	Yokohama
23-Manchuria	San Francisco
23-Alameda	San Francisco

STEAMERS TO DEPART.		
Date.	Name.	For.
Oct. 3-Coptic	San Francisco
4-Manchuria	Yokohama
11-Alameda	San Francisco
17-Nevadan	San Francisco
17-Ventura	San Francisco
18-Sonoma	Colonies
19-Moana	Victoria
19-Korea	Yokohama
21-Miowera	Colonies
27-Mongolia	San Francisco
28-Coptic	Yokohama
Nov. 1-Alameda	San Francisco
5-Nebraskan	San Francisco
7-Sierra	San Francisco
7-China	San Francisco
8-Ventura	Colonies
11-Siberia	Yokohama
15-Aorangi	Victoria
15-Moana	Colonies
21-Doric	San Francisco
22-Mongolia	Yokohama
22-Alameda	San Francisco
23-Nevadan	San Francisco
23-Manchuria	San Francisco
23-Sonoma	San Francisco
29-Sierra	Colonies
Dec. 2-China	Yokohama
12-Korea	San Francisco
13-Alameda	San Francisco
13-Miowera	Victoria
16-Aorangi	Colonies
16-Doric	Yokohama
19-Ventura	San Francisco
20-Sonoma	Colonies
22-Coptic	San Francisco
23-Manchuria	San Francisco

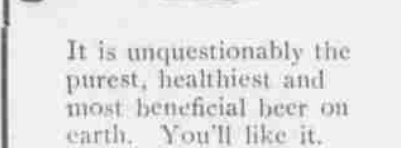
U. S. A. transports will leave for San Francisco and Manila, and will arrive from same ports at irregular intervals.
* Calling at Manila.
† Date of departure via Kahului.

BRO. BENJAMIN'S HERBAL

Cures Constipation,
Makes New, Rich
Blood,
Stomach and Liver
Tonic.
GOOD FOR THE
KIDNEYS
At All Druggists

The Decided Individuality

Accounts for the popularity of the beverage which is used so extensively that after a fair, impartial trial everyone prefers



It is unquestionably the purest, healthiest and most beneficial beer on earth. You'll like it.

Rainier Bottling Works
Phone White 1331
HONOLULU

SISAL PLANTS FOR SALE

True Sisal (Agav rigidus / Isalana) in quantities to suit purchaser.
Enquire of
WALTER C. WEDDON,
McIntyre Building,
Honolulu.

REALTY TRANSFERS

Entered for Record November 13, 1905.
From 9 a. m. to 4 p. m.
W M Campbell to George Osborne... D
Henrich Gumpfer to G Cordes... B S
G Cordes to Seattle Brewing & M Co... C M
Bertha Peck and hsb to trs of First By of Hilo Ltd... M
Ho Sun to Ho Yuen Soy... B S
Maggie Fisher to J Alfred Magoon... D
D K Wallehua et al to Mary E Low... D
Hawn Realty & Mat Co Ltd to Benjamin B Kaooa... R
Hawn Realty & Mat Co Ltd to Mary A Maikal... R
Mary A Maikal and hsb to Geo H Kentwell... M
Hawaiian Trust Co Ltd to Notice... N
Mrs. Walea Wallehua to Mary E Low... R D
Kalanionehu and hsb to R Kekula Kaauka... D
Orpheum Co Ltd by comr to George Touray... C D
Entered for Record November 14, 1905.
From 9 a. m. to 4 p. m.
Cabrinhá & Co to Antonio R Pimental et al... R
Antonio R Pimental et al to Manuel R Pimental Sr... M
Kamealani Kaahu and hsb to Edgar Henriques and wf... D
B Kaooa to Andrew Adams... L
Mrs. Keilikuwa Akini et al to Pacific Sugar Mill... L
C Ah Tong Tai Lung to See Chee Tong... D
John M Bright to Pioneer Mill Co Ltd... L
Luck K Henriques to M W Tschudi... A M
Recorded November 8, 1905.
Luka Nakapahu and wf to Mikahala, D; kul 1976 Ap 1, Namoeha, Waimea, Kauai. \$100. B 277, p 74. Dated Oct 29, 1905.
L. Aho to H Hackfeld & Co Ltd, Add Secy; ap 1 and 2 R P 5474 and ap 1, R P 7958, bldgs, livestock, crops, etc, Waiaina, Oahu; ap 3 R P 2503, ap 2, R P 4928, R P 1394 and 5368, livestock, crops, etc, Kaneohe, Koolau, Oahu. \$1. B 271 p 402. Dated Oct 11, 1905.
Aug Dreier to Rosa Lando, Rel; gr 2532 and por R P 1452, Beretania St, Honolulu, Oahu. \$350. B 237, p 252. Dated Oct 6, 1905.
Mark P Robinson to K P Kanelehu, Rel; R P 3977, kul 199, Honene, Ewa, Oahu. \$50. B 179, p 492. Dated Nov 4, 1905.
Lal Kahikapu and wf to Mark P Robinson, D; 1-2 int R P 3077 kul 909, Hoesue, Ewa, Oahu. \$250. B 278, p 16. Dated Nov 4, 1905.
Allen & Robinson Ltd to J M Little Rel; lot 82 bldgs, etc, Pawa tract, Honolulu, Oahu. \$2875. B 237, p 453. Dated Oct 31, 1905.
Recorded November 9, 1905.
Hoopi Apele to Makaanu (k), D; 1-3 int in pe land, Puako, Waialuku, Maui. \$40. B 277, p 76. Dated Nov 8, 1905.
Mioi to R A Wadsworth, M; ap 19 sec 2, Pala, Hamakua, Maui. \$100. B 271, p 494. Dated Nov 8, 1905.
Kaimikaua (k) to Mahiole (k), D; int in por R P 1663, Mallepal, Kaanapali, Maui. \$10. B 277, p 76. Dated Nov 3, 1905.
Mary K Smith to Joseph Paakaula, Rev. P A; powers granted in Iber 162, fol 290. B 274, p 351. Dated Nov 7, 1905.
Mary K Smith to Ellen Cathcart, D; R P 4399 and 9175 sq ft land, etc, Pihonua, etc, Hilo, Hawaii. \$1. B 277, p 77. Dated Nov 8, 1905.
Walter H Bradley et al to A J Tate, Agrmt; to seal for \$1600, 7440 sq ft land and furniture, Wilder Ave, Honolulu, Oahu. \$1. B 274, p 348. Dated Nov 4, 1905.
Alwine W Conradt and hsb (C C) et al to First Am Sava & Tr Co of Hawaii Ltd, M; 10 pcs land, sea fishery, fish pond, Mapulehu, Molokai. \$5000. Dated Nov 7, 1905.
Nalielua (widow) et al to Gonsalves & Co., Ltd, M; ap 1 R P 453 kul 5956, Waimalu, Ewa, Oahu. \$379.38. B 275, p 245. Dated May 11, 1905.
Luiza Mendonca and hsb (M F) to Gonsalves & Co., Ltd, C M; int in lease hold, Kaulauna, Honolulu, Oahu. \$500 B 275, p 247. Dated May 31, 1905.
E. G. Ferreira to Marions W Hendry (Mrs.) A M; mtg E Kaipu on lot P of por gr 3590, Dominis St, Honolulu Oahu. \$400. B 275, p 249. Dated Nov 8, 1905.
Oahu College by trs to Protestant Episcopal church in Hawn Islds, D; por grs 123 and 125, Beretania St, Honolulu, Oahu. \$18,000. B 277, p 779. Dated June 9, 1905.

MIKAHALA ARRIVED TODAY.

The steamer Mikahala arrived this morning from her run to Kauai ports. Pleasant weather on Kauai is reported. The barkentine Puako had 650 tons of coal discharged at Eleee yesterday. The Mikahala will depart on her run to Kauai ports at 5 p. m. tomorrow.

A SEWING SOCIAL.

The Ladies' Society of Central Union Church will have a social at the home of Mrs. Alwater on Pensacola street, tomorrow afternoon from 3 to 6. A cordial invitation is extended to all to come and bring their sewing.

BORN.

FRAZIER—In Honolulu, November 15, 1905, to Mr. and Mrs. Charles R. Frazier, a son.

UNKIND FATHER.

"Paw, what's a man trap?" "Well, I wouldn't swear to it, Johnny but I think your big sister would come under that heading."—Detroit Tribune.

TAKE NO RISK.

If you have heart trouble, do not fail to take Dr. Miles' Heart Cure. In doing this you run no risk, because it cures when everything else fails. It is so sure to help you that every druggist is instructed to return your money if first bottle does not prove beneficial. In either case you take no risk.

CHICAGO...

IN LESS THAN 3 DAYS

and over The Only Double-Track Railway between the Missouri River and Chicago.

Three Fast Trains Daily
VIA
SOUTHERN PACIFIC, UNION PACIFIC AND
CHICAGO & NORTHWESTERN RAILWAYS.
OVERLAND LIMITED, VESTIBULED. Leaves San Francisco daily 11:00 a. m.
The most luxurious train in the world. New Pullman drawing room and stateroom cars built expressly for this famous train. Gentleman's buffet and Lady's parlor observation car. Book-lovers Library. Dining car—meals a la carte. Electric lighted throughout.
EASTERN EXPRESS, VESTIBULED. Leaves San Francisco at 6:30 p. m. Daily. Through Pullman Palace and Tourist Sleeping Cars to Chicago. Dining Cars. Free Reclining Chair Cars.
ATLANTIC EXPRESS, VESTIBULED. Leaves San Francisco at 6:00 p. m. Daily. Standard and Tourist Sleepers.
PERSONALLY CONDUCTED EXCURSIONS
Wednesday, Thursdays and Fridays. The best of everything.
Chicago & Northwestern Ry
R. R. RITCHIE, G. A. P. C.,
or S. P. Company's Agent. 617 Market St. (Palace Hotel) San Francisco.

Fire Insurance!

Atlas Assurance Company of London
Phoenix Assurance Company of London
New York Underwriters Agency,
Providence Washington Insurance Company.

PHB B. F. DILLINGHAM CO., LIMITED
General Agents for Hawaii,
Fourth Floor, Stangenwald Building.

BEAVER LUNCH ROOM,
Fort Street, Opposite Wilder & Co.
H. J. NOLTE, PROP'R.

First-Class Lunches served with tea, coffee, soda water, ginger ale or milk.

Smokers Requisites a Specialty.

CONSOLIDATED SODA WATER WORKS
COMPANY LTD.
Ereplan de, cor. Allen and Fort Sts.

Manufacturers of Soda Water, Ginger Ale, Sarsaparilla, Root Beer, Cream Soda, Strawberry, Etc., Etc.

Want Ads in The Star bring quick results. Three lines three times for 25 cents.

When You Tire of Meat

try a change and let it consist of, say, FRESH, SMOKED OR SALT FISH. There is nothing that spurs the appetite as much as a bit of fish especially if it be of the smoked or salt variety. We are constantly receiving consignments of fine fish, cured when in prime condition and by the most approved processes. Let us assist you in tastefully varying your menu.

METROPOLITAN MEAT CO.

Telephone Main 45

Want Ads in The Star bring quick results. Three lines three times for 25 cents.

The Hawaiian Star, DAILY AND SEMI-WEEKLY.

Published every afternoon (except Sunday) by the Hawaiian Star Newspaper Association, Limited.

SUBSCRIPTION RATES.

Local, per annum \$ 8.00 Foreign, " 12.00 Payable in advance.

FRANK L. HOOGS, MANAGER WEDNESDAY, NOVEMBER 15, 1905

A Clever Political Move

Whoever is handling the fight of the railroad against the proposed regulation of freight rates by Congress, is showing ability and much keenness of judgment.

the proposed policy of the President and the assault is from a quarter that is bound to wield an influence. Yesterday a delegation representing organized railroad employees waited upon the President and presented a protest against the proposed railroad freight rate legislation.

When the pocketbook of a man is threatened, he views the public weal through entirely different spectacles. The railroad men see a future ahead of them which they have been persuaded or at least a considerable proportion of them, is bad for their interests, and they have begun to combat the proposed changes.

The Advertiser's Grievance

The Advertiser complains bitterly because on November 9, the day it published a report that the Perry and Paul Jones were coming here, the Star published the following: "Inquiry was made at the Naval Station this morning regarding the report that the torpedo-boat destroyers Perry and Paul Jones would sail from Mare Island November 16 for a cruise to Honolulu.

What occasion of grief there is in this to the Advertiser it is hard to see. But if there is any occasion of grief the grievance is against the officers at the Naval Station. Certainly it was very proper, and in the very line of newspaper work to make inquiries regarding the matter from a source likely to have information.

Railroad Across Australia

Australia, a country almost as large as continental United States has one problem that is almost identical in conditions with a problem that confronted the United States a half a century ago. That is the problem of transcontinental communication.

Australia now has the same problem. The great bulk of the population and the wealth of the Commonwealth is on the eastern side of the continent. On the western side of the continent a considerable and an enterprising state has grown up, largely the result of the discovery of gold, as was the case in the United States.

In the case of the United States, the first transcontinental line has been followed by half a dozen others, each constructed to answer commercial needs, while the thousand miles of desert and mountain have melted into fertile and flourishing states.

RUBBER GOODS!

Did you ever own a DAVISON Hot Water Bag and it's combinations? If not try one next time you are in need of one.

The Best Made!!

HOLLISTER DRUG CO., LTD FORT STREET - - - HONOLULU

VISIT THE ZOO

A trip to the zoo at Kaimuki is enjoyable to children and parents alike. Besides the wonderful collection of animals and birds there are other delights too numerous to mention.

Rapid advertisement featuring an illustration of a water heater and text describing its benefits for a hot water bath.

M. PHILLIPS & CO., Wholesale Importers and Jobbers of AMERICAN AND EUROPEAN DRY GOODS

M. OHTA, Contractor and Builder House Painter Kewalo, Sheridan Street, near King.

S. SAIKI, Bamboo Furniture AND PICTURE FRAMES. Neat and Handsome Designs made to order.

ELIMINATE THE ELEMENT OF DOUBT By consulting us when your eyes trouble you. Our advice—gained through many years of practical experience—will be cheerfully and honestly given.

H. F. Wichman & Co., Ltd Opticians. FORT STREET. Telephone Main 101 P. O. Box 583.

HARRY ARMITAGE Stock and Bond Broker. Members of Honolulu Stock and Bond Exchange.

Few shares of following stocks for sale: Pioneer Mill Co., Oahu Sugar Co., Ewa Plantation Co., Hawaiian Sugar Co., Waiialua Agricultural Co., Etc.

Office, Campbell Block... Merchant St. Honolulu, T. H. wounded twenty more, and from this it is to be deduced that the remaining nine of the traditional forty escaped.

Roosevelt must have felt that there was something lacking in his trip back to Washington on the cruiser West Virginia. There were no stops with crowds gathering on the station platforms, with cheers and calls for a speech.

Judge Joseph E. Gary, who presided at the trial of the anarchists, Spies, Feiden, Parsons and others, in Chicago many years ago, headed the Republican Judiciary ticket at the recent election in Chicago. He has been continuously on the bench for forty-two years.

M. W. Pinckney, who was a classmate of William Jennings Bryan at the Union College of Law, more than twenty years ago, was a candidate for election to fill the unexpired term of Judge Dunne, now Mayor of Chicago, on the bench.

William T. Stead seems to be having a lot of trouble. Russia won't evolve along the lines he has marked out for her in his magazine articles.

SHOTS AT SHAW. George Bernard Shaw thinks that Sir Henry Irving was an uncultivated egotist. Cultivated people don't even take the trouble to think of George Bernard.—Portsmouth Chronicle.

George Bernard Shaw's attacks upon Sir Henry Irving savor of profanation, though they appear to entertain Shaw, and do the honored dead actor no harm. Incidentally, these Shaw attacks are disgusting to the decent people of two continents.—Syracuse Post-Standard.

An Art Bargain. A rare opportunity to Beautify Your Homes. Pictures at a Great Reduction! UNFRAMED PICTURES. Former price... 10c. to \$3.00 Reduced price... 5c. to 50c.

Pacific Hardware Co., ART ROOM Honolulu Iron Works, CASTLE & COOKE, LTD. STEAM ENGINES, SUGAR MILLS, BOILERS, COOLERS, IRON, BRASS AND LEAD CASTINGS.

HUSTAGE PECK CO., LTD QUEEN STREET DEALERS IN Firewood, Stove, Steam and Blacksmith Coal WHOLESALE AND RETAIL. Special Attention Given to DRAYING

NOTICE. Beginning November 15, 1905, owing to a change in the price of certain sizes of crushed rock, prices will be as follows: No. 1—\$1.55 per cubic yard. No. 2—\$1.80 per cubic yard.

TRANS-PACIFIC CABLEGRAM. Commercial Cable and Postal Telegraph Companies in the United States. San Francisco Nov. 10, 1905, 10 a. m.

Shipping Receipt Books SOLD AT STAR OFFICE OAHU RAILWAY & LAND CO. INTER-ISLAND S. N. COMPANY

BEAUTIFUL ARRAY OF NEW GOODS

Latest styles in vogue in fashion's centers of Europe and America. Prices That Are Exceedingly Low

A swell assortment of Lingene Waists. Made of sheer Mull, trimmed with dainty laces or sheer embroideries from \$3.25 to \$9.00. Ladies Nuns Velling Waists. Handsomely embroidered; colors, cream, tan and navy blue, all sizes at \$3.00. Ladies Wool Knit Blouses. Latest styles, light weights in white and cardinal. All sizes, at \$4.00. A new assortment of Ladies Black Vell Skirts with silk drops, all sizes, including extra sizes. A sample line of White Serge Skirts, very handsome only one of a kind. All Wool Panama Skirts very new, in Black, Brown and Navy. A new line of Walking Skirts, made of the latest materials newest cut. \$3.50 upwards. Ladies Neckwear. The largest assortment ever shown in this city. Right up to date styles. The new lace fronts, new lace yoke effects, collar and cuff sets in battenberg and lace. Visit our neckwear department it will pay you.

N. S. SACHS' DRY GOODS CO. LTD., Cor Fort and Beretania Sts.

PIANOS!

NEW PIANO WAREROOMS OF THAYER PIANO CO. JUST OPENED—156 AND 158 HOTEL STREET

STEINWAY PIANOS THE BEST IN THE WORLD!

STARR PIANOS

A high-grade instrument first built by James and Benjamin Starr in Richmond, Ind., in 1872. The factory now turns out 25 pianos daily. It is the third largest factory in the country. KRANICH & BACH and other Pianos of different styles. Come and see us and we will show you the finest stock of Pianos ever displayed in Honolulu. THAYER PIANO CO.

THE GAIN IN HAWAIIAN VOTERS

SINCE THE FIRST ELECTION AFTER THE ORGANIZATION OF THE TERRITORY, THERE HAS BEEN A GAIN OF 580 HAWAIIAN VOTERS AND OF 61 OF ALL OTHER NATIONALITIES—TABLES PREPARED SHOWING WHERE THE GAINS ARE.

A table has been made up by Chief Clerk Buckland of the Secretary's office showing the number of registered voters in the various districts of the islands and giving comparisons of the numbers for different years. It shows the somewhat unexpected fact that the only substantial increase among voters is of Hawaiians. The last election showed a big increase except in the fourth district, where there was a loss of Hawaiians and gain of American born. There are gains shown of the voters born in Portugal, Great Britain, Sweden, Germany, China and other foreign countries. In some of the districts, there is a loss of white voters. The final result is a gain of 580 Hawaiian voters and a gain of only 61 of all the others together. This is believed to be due more to the registering of Hawaiians who didn't take part in the first Territorial elections than to the growing up of new voters. Their gain of 580 in one election gives the Hawaiians 2,269 voters and the total of all others is 3,993. The table prepared by Buckland for statistical use is as follows:

COMPARATIVE SHEET OF NUMBER OF REGISTERED VOTERS, TERRITORY OF HAWAII

District	Year	Hawaiians	America	Portugal	China	Germany	Other Foreigners	Sweden	Japan	Hawaiians	Others
1st District	1902	1,032	238	131	79	28	20	15	3	1,032	514
	1904	1,087	196	184	89	25	19	13	..	1,087	526
Loss or Gain		+55	-42	+53	+10	-3	-1	-2	-	+55	+12
2nd District	1902	1,299	65	21	43	5	8	1	8	1,299	151
	1904	1,403	48	23	34	12	7	1	4	1,403	129
Loss or Gain		+104	-17	-2	+9	+7	-1	-	-	+104	-22
3rd District	1902	1,911	144	58	36	18	30	6	5	1,911	294
	1904	2,181	155	87	33	29	55	1	3	2,181	263
Loss or Gain		+270	+11	+29	-3	+11	+25	-5	-	+270	-69
4th District	1902	1,627	936	89	235	102	92	24	32	1,627	1,502
	1904	1,464	1,079	213	252	119	171	23	31	1,464	1,918
Loss or Gain		-163	+143	+124	+57	+17	+79	-1	-	-163	+416
5th District	1902	1,608	997	198	251	108	153	26	64	1,608	1,807
	1904	1,144	992	115	111	111	113	26	23	1,144	1,111
Loss or Gain		-464	0	-83	-140	-1	-40	-	-	-464	-696
6th District	1902	2,010	284	13	84	35	88	8	42	2,010	559
	1904	2,269	334	82	78	46	82	8	89	2,269	722
Loss or Gain		+259	+50	+69	-6	+11	-6	-	-	+259	+163
Loss or Gain	1904	2,246	434	126	77	49	49	9	109	2,246	865
	1902	1,627	936	89	235	102	92	24	32	1,627	1,502
Loss or Gain		+619	-502	+37	-158	-53	-43	-15	-	+619	-637
6th District	1902	705	72	89	28	93	42	2	7	705	333
	1904	735	63	100	28	78	28	2	5	735	308
Loss or Gain		+30	-9	+11	-	-15	-14	-	-	+30	-25

SUMMARY.

District	1900	1902	1904
1	Hawaiians 1,032, Others 514	Hawaiians 1,087, Others 526	Hawaiians 1,087, Others 526
2	Hawaiians 1,299, Others 151	Hawaiians 1,403, Others 129	Hawaiians 1,403, Others 129
3	Hawaiians 1,911, Others 294	Hawaiians 2,181, Others 263	Hawaiians 2,181, Others 263
4	Hawaiians 1,627, Others 1,502	Hawaiians 1,464, Others 1,918	Hawaiians 1,464, Others 1,918
5	Hawaiians 1,608, Others 1,807	Hawaiians 1,144, Others 1,111	Hawaiians 1,144, Others 1,111
6	Hawaiians 2,010, Others 559	Hawaiians 2,269, Others 722	Hawaiians 2,269, Others 722
Total	Hawaiians 8,680, Others 3,932	Hawaiians 9,260, Others 3,993	Hawaiians 9,260, Others 3,993

INVESTIGATING A TRAGIC DEATH

last week. It was at first reported that death had occurred through an accidental discharge of a gun, but the local authorities desire to be present at the coroner's inquest.

Assistant Sheriff Henry Vida went to Aiea today to inquire into the death of a boy who was shot near that place

Is It a Cruel And Unusual Punishment?

CLAIM ADVANCED IN SUPPORT OF A PETITION FOR HABEAS CORPUS THAT IT IS CRUEL AND UNUSUAL PUNISHMENT TO REQUIRE CONVICTS IN PRISON GARB TO WALK TO AND FROM THEIR WORK ALONG THE PUBLIC HIGHWAYS.

A claim that it is "cruel and unusual punishment" to march a convict along the public streets and make him work in public, clothed in convict garb, has been advanced in the Supreme Court by L. M. Strauss & Mossman, in support of a petition for a writ of habeas corpus for Wong Lung. The hard labor gangs of Oahu jail are marched to and fro in public every day and if Wong's point is well taken there will have to be a very radical change in Oahu prison methods. Wong is under sentence of six months for receiving stolen goods and recently begun a habeas corpus petition before Judge De Bolt, who denied a writ. The grounds urged before De Bolt, that the complaint on which a conviction was had failed to charge any offense and that High Sheriff Henry was not the officer authorized by law to imprison Wong, are urged again in the new proceeding filed today, with the cruel punishment proposition added, as follows:

"Because the said William Henry, High Sheriff aforesaid, has since receiving the said Wong Lung into his custody and more particularly during five days last past prior to and including the 10th day of November, A. D. 1905, inflicted upon the said Wong Lung the indignities of cruel and unusual and infamous punishment, by compelling the said Wong Lung, clothed in convict garb, to perform hard labor in said Honolulu before the public eye and to pass along the public highways in said Honolulu in going to and coming from such hard labor, which punishment will mark the said Wong Lung with infamy in the minds of his fellows as long as he lives, and which has brought upon the said Wong Lung great humiliation, pain, shame and disgrace, all in violation of the laws of the Territory of Hawaii and the Constitution of the United States of America."

Chief Justice Frear signed an order directing the High Sheriff to produce Wong in court next Wednesday morning, when the matter will come up for hearing.

DILLINGHAM FLOATS \$2,000,000 BONDS

(Continued from page one.) and advances by agents of \$394,244.11. By issuing bonds to the amount of \$2,000,000 the former issue of bonds can be taken up and the floating debt, whether represented by bills payable or agents advances can be funded. A large part of the floating debt is due banks and others in San Francisco, and it is with these that B. F. Dillingham has been negotiating. The fact that the outstanding bond issue may be paid now makes a new bond issue possible, providing arrangements can be made for taking up the old issue and floating the new. This it seems has been done, or at least the negotiations have reached a stage where it is considered necessary to secure the authorization of the stockholders. With the debts of the company consolidated and funded in one bond issue it is believed that the finances of the company will be greatly simplified, and the progress out of debt will be much facilitated.

If the ballots are good the court will undertake a recount and credit the candidates with what they are entitled to. On the other hand a ruling in favor of Judge Edings' claim that none of the ballots are good, means an end of the recount, though it may open the way to proceedings which would turn all the County officers out altogether. It is too late, it is said, for the starting of new election contests, but the matter of the right of alleged officials to act might be brought up in some other way. When the case was called this morning in the Supreme Court, Judge Edings, appearing for C. W. Ashford, asked for a postponement, as Ashford was busy before De Bolt. Douthitt and Milverton appeared for Supervisor Adams. Douthitt said he would not oppose a continuance, but the court did. After considerable consultation with the other justices, Chief Justice Frear said: "The Court is of the opinion that the case should proceed now." Edings wanted to withdraw, saying the case was Ashford's. The Court said that every postponement had been at the plaintiff's request and that the setting of the case for this morning had been to suit his convenience. The court thought Ashford should have been present. Ashford was sent for, and Chief Justice Frear told him he should have been present in person, as he had had the case set. Ashford pleaded his other engagement, but the court refused a continuance. Ashford then turned the matter over to Edings, much to the evident disgust of the latter, and the court ordered the hearing to go ahead. Chief Clerk Buckland of the Secretary's Office was called as a witness and he produced the ballots. The opening of the bundles then began and after the examination of the first bunch, the court heard argument on the question of rejections.

WHAT THE BALLOTS DISCLOSE

(Continued from page one.) ballots and that any and all the County officers of Oahu may be ousted from office because never legally elected, is the proposition raised in the Supreme Court this morning and apparently regarded with considerable approval at least by one of the justices, in the election contest of Fernandez vs. Adams. Judge Edings, as counsel for Fernandez, claimed that under the law there should have been separate ballots for each office, and Justice Wilder intimated that he was disposed to hold the same view. This would mean that none of the ballots are legal, and Fernandez' recount would fall to the ground at once, but the way might be opened, it is said, to contest by quo warranto or other proceeding, the right of any supposed County officer to hold his office. Incidentally, the recount promises to disclose a number of sensations. The first bundle of ballots opened is a very interesting one, though it did not disclose a possible gain of enough to bring success to Fernandez in the present contest, if it is an average bundle. It showed that A. M. Brown lost more by rejected ballots than did Fernandez and it showed that some very extraordinary ballots were allowed to be counted. The bundle is that of the first precinct of the Fourth district, in which the election officers were A. F. Clark, S. K. Kamalopill and J. K. Kaohi. The ballots which were counted by the election officers are not before the court as evidence, but they are open to inspection just the same as the rejected ones. An examination of the same showed three on which not a mark was made for any candidate at all. There is no way to tell for whom they were counted, but at least it is clear that they were not voted for anyone at all. Other ballots counted have the voters' crosses very evidently in the wrong places. There were 23 rejected ballots in the precinct. On examination of them this morning it was found that 5 were for Adams or for neither and 16 were claimed for Fernandez. The vote for sheriff showed Brown 18, Poepeo 7, Henry 5. Two ballots were for both Brown and Poepeo and had been rejected on that account, and one was without any mark for sheriff. Most of the ballots had been rejected because too many marks had been made on them. In eleven cases there were votes for four district supervisors, though only three were to be elected. In other cases the voters had voted for both Adams and Fernandez, for two county sheriffs, clerks, deputy sheriffs or some other officer. A few of the ballots were utterly spoiled. The question before the court and on which a ruling at two this afternoon was pronounced during the morning session, was whether the election officers were right in rejecting ballots for these reasons.

QUARANTINE IS COSTLY LUXURY

IT COST UNCLE SAM NEARLY \$800 FOR WATER FOR THE TRANSPORT BUFORD ALONE.

"I hope it will not be long before these quarantine regulations are raised," remarked Captain Humphrey of the U. S. A. Quartermaster's Department this morning "When the transport Buford was in I had an extra expense bill of nearly \$800 for water alone. I could have brought her alongside, but there was just the off chance of something happening and that would have meant ten days quarantine for her in San Francisco, at the least." Captain Humphrey was a busy man this morning seeing the transport Sherman away. The next transport to arrive will be the Logan from San Francisco on December 2, followed by the Thomas from Manila on December 6.

KALAKAUA'S BIRTHDAY

FOR THE FIRST TIME FOR MANY YEARS THERE WILL BE NO PUBLIC CELEBRATION.

For the first time in many years the anniversary of the birth of the last of the king's of Hawaii, David Kalakaua will be uncelebrated publicly. The occasion is tomorrow and in former years miniature yacht races used to be undertaken, Prince David taking a special interest in the sport. Now it happens that David is out of town and as arranged Kulo will leave for British Columbia and thence for Washington by the S. S. Aorangi due today, so that there is no person here to take hold of the celebration.

A PRISONER'S NERVE

The federal penalty for forging a post office money order, of which Julio Silva and Ragnas were convicted yesterday is very heavy. The minimum is two years' hard labor or a fine of

\$5,000. Judge Dole will pass sentence on Friday. In the meantime, Silva has asked that the district attorney help him to get back the \$20 he refunded. When the forgery was discovered, Silva dug up \$20 and paid it to the victim. Now that he is to suffer for the crime he thinks he ought to have the twenty.

THE COUNTRY CLUB LEASES.

Leases for the Rooke property in Nuuanu Valley have been received by W. W. Thayer. It is expected that the club will be formally installed within a short time.

NEW ADVERTISEMENTS. NOTICE.

Notice is hereby given that CHANG SUN has this day withdrawn as a member of the firm of L. A. FAI & CO. doing business as general merchandise on King street, Honolulu, Oahu. L. A. FAI & CO. Dated Honolulu, November 15, 1905.

TERRITORY OF HAWAII. COURT OF LAND REGISTRATION.

TERRITORY OF HAWAII To GEORGE RODIEK, MRS. MARY FOSTER, H. A. ISENBERG, TERRITORY OF HAWAII by LORRIN ANDREWS as ATTORNEY GENERAL and by J. W. PRATT as COMMISSIONER OF PUBLIC LANDS; ELIZABETH K. PRATT, NIHOUI (K), MAKANUI (W), LUKALIKIA KEAWEHANO or her heirs, and to all whom it may concern: Whereas, a petition has been presented to said Court by CARL du ROI and JOHANN FRIEDRICH HUMBURG to register and confirm their title in the following-described land:

- Beginning at a 2 1/2 inch galvanized iron pipe marking the west corner of this Grant and the north corner of Grant 4543 to F. Harrison, from which Government Survey Trig. Station Naahuia is by true azimuth 93° 29' 24.22 8-19 feet, and azimuth to Leahi (Diamond Head) is 356° 59', and running by true azimuths:
 1. 207° 30' 101 0-10 feet along Government Land;
 2. 245° 50', 152 0-10 feet along Government Land to a 2 1/2 inch galvanized iron pipe at the north corner of this lot and the west corner of Grant No. 4541 to J. F. Hackfeld;
 3. 338° 05', 334 5-10 feet along Grant 4541 to J. F. Hackfeld;
 4. 351° 05', 145 0-10 feet along Grant 4540 to Chas. F. Peterson;
 5. 75° 40', 173 5-10 feet along the Kukui Drive;
 6. 154° 30', 382 0-10 feet along Grant 4543 to F. Harrison, to the initial point. Area 2.21-100 acres; Being Land Patent No. 4542 to C. du Roi and J. F. Humburg, situated on Tantalus Heights, Kona, Oahu, part of IIs of Poloke and of Opu.

You are hereby cited to appear at the Court of Land Registration to be held at Honolulu, Island of Oahu on the 24th day of November A. D. 1905, at one o'clock and thirty minutes in the afternoon to show cause if any you have, why the prayer of said petition should not be granted. And unless you appear at said Court at the time and place aforesaid your default will be recorded, and the said petition will be taken as confessed, and you will be forever barred from contesting said petition or any decree entered thereon. Witness, PHILIP L. WEAVER, Esquire, Judge of said Court, this 24th day of October in the year nineteen hundred and five. Attest with Seal of said Court. (Seal) W. L. HOWARD, Registrar. 4th-Oct. 25, Nov. 1, 5, 15.

BY AUTHORITY BIDS.

For furnishing the following Road building machinery will be received by the Board of Supervisors, County of Kauai, Hawaii.

- 1 Steam Road Roller.
- 1 Rock Crushing Plant Complete.
- 2 Traction Engines.
- 1 Sprinkling Cart.
- 10 Spreading Dump Carts for macadam.
- 2 Road Graders.

Copies of specifications may be had by addressing C. H. Sweezy, County Road Supervisor, Lihue, Kauai. All bids must be in the hands of the Board of Supervisors by 9 a. m. January 2, 1906.

The Board of Supervisors reserves the right to reject any and all bids. By order of the Board of Supervisors, H. D. WISHARD, Chairman. Lihue, Kauai, T. H., November 11, 1905.

SHERIFF'S SALE NOTICE.

Under and by virtue of a certain execution issued by Wm. L. Whitney, District Magistrate of Honolulu, Island and County of Oahu, Territory of Hawaii, on the 24th day of October A. D. 1905, in the matter of H. Hackfeld & Co., plaintiff vs. Lin Tai, defendant, I did in said Honolulu, County of Oahu aforesaid, Territory of Hawaii aforesaid, on the 24th day of October A. D. 1905 aforesaid, levy upon and shall offer for sale and sell at Public Auction to the highest bidder at the Police Station, Kalakaua Hale, in said Honolulu, Territory of Hawaii, at 12 o'clock noon of Saturday the 25th day of November, A. D. 1905, all the right, title and interest of the said Lin Tai, defendant in



Worth While!

If you will compare the cost of one of our Safe Deposit Boxes with the protection derived from its use, you will surely decide that it is "worth while." You can rent a box for \$5 per year; place your valuables in it and have access to it at all times during business hours.

Henry Waterhouse Trust Co., Ltd

Corner Fort and Merchant Streets, Honolulu, - - - - - Hawaii.

Classified Advertising

Situation Wanted

Young lady desires situation as assistant in office work; afternoons only. Address "S", Star office.

Lost

Child's neck chain, with small heart attached. Lost between Punahou school and Makiki street. Liberal reward for return to Star office.

For Rent

Nice comfortable room only \$6 month. Large grounds, bath, telephone and every convenience. 68 Kukui street near Fort.

Cottage to Rent. 1111 Kinau street, corner Pensacola. \$30.00 per month. Inquire W. C. Atwater, Hawaiian Electric Co.

Watch Lost

In the Makiki District, a lady's gold watch with Monogram engraved, attached to fob with Indian Gold Chain. Finder will be rewarded on delivering watch to Mr. F. M. Swanzy, at Theo. H. Davies & Co., Ltd.

Carpenters Wanted

For Military Post at Kahakui only first class men with modern tools need apply. Long job and going wages. Address applications to H. H. Burrell, Box 638 Honolulu.

and to all the following described personal property, unless the sum of ninety-nine and 77-100 dollars (\$99.77), that being the amount for which a said execution was issued, together with interest, costs, my fees and expenses are previously paid:

- 5 Chairs.
- 2 Sewing Machines (Wheeler & Wilson.)
- 6 Calico Sheets.
- 2 Mosquito Nets.
- 1 Piece Lace.
- 11 Petticoats.
- 1 Waist.
- 19 Pillow cases.
- 2 Child's vests.
- 1 Combination Chemises.
- 4 Stools.
- 46 Calico Chemises.
- 2 Baby's Dresses.
- 1 Clock.
- 5 Mosquito frames.
- 1 Girl's P. Coats.
- 2 White Dresses.
- 3 Girl's Drawers.
- 7 Aprons.
- 1 Round-top table.
- 59 Calico Holokus.
- 1 Hanging Lamp.
- 5 Pieces Lace.
- 15 White Chemises.
- 1 Over Dress.
- 2 Bed Sheets.
- 4 Combination Chemises.
- 3 Petticoats.
- 2 Waists, also a lot of buttons, tapes, thread, and Mosquito trimmings.

A. M. BROWN, Sheriff, County of Oahu. Dated at Honolulu, October 24th, 1905.

Notice is hereby given that all Registered Treasury Warrants will be paid at the Treasury on and after November 15, 1905. A. J. CAMPBELL, Treasurer, Territory of Hawaii. Treasurer's Office, Honolulu, T. H., November 14, 1905.

NOTICE.

Notice is hereby given that the partnership formerly existing between Gus Cordes and H. Gumpfer has this day been dissolved. GUS CORDES, H. GUMPFER. Honolulu, November 10, 1905.

Now Located in Offices 2 and 3, McIntyre Building. J. S. MARTIN, MERCHANT TAILOR. Fort Street - - - - - Honolulu, T. H.

ASummer Proposition

Well, now, there's the ICE QUESTION!

You know you'll need ice, you know it is a necessity in hot weather. We believe you are anxious to get that ice which will give you satisfaction, and we'd like to supply you. Order from

THE OAHU ICE AND ELECTRIC CO.

Telephone 1151 Blue, Postoffice Box 606.

W. G. Irwin & Co., Ltd

Wm. G. Irwin, President and Manager
John D. Sprockels, First Vice-President
W. M. Giffard, Second Vice-President
H. M. Widney, Treasurer
Richard J. Ivers, Secretary
E. L. Spalding, Auditor

SUGAR FACTORS, COMMISSION AGENTS

AGENTS FOR

Oceanic Steamship Co., San Francisco, Cal.
Western Sugar Refining Co., San Francisco, Cal.
Baldwin Locomotive Works, Philadelphia, Pa.
Newall Universal Mill Co., Manufacturers of National Cane Shredder, New York, N. Y.
Pacific Oil Transportation Co., San Francisco, Cal.

HART & CO., LTD

The Elite Ice Cream Parlors,
Chocolates and Confections
Ice Cream and Water Ices
Bakery Lunch.

THE FINEST RESORT IN THE CITY

Union Pacific

Railroad

SUGGESTS

Speed and Comfort

Three trains daily through cars, first and second class to all points. Reduced rates take effect soon. Write now.

S. F. Booth

General Agent.

No. 1 Montgomery Street,
San Francisco.

Travellers Agree

THAT

The Overland,

Limited

IS

Quickest, Finest, Best

A Train that Supplies
All Demands

To St. Louis or Chicago

IN 3 DAYS

from San Francisco.

ELECTRIC LIGHTS
READING LAMPS,
CLUB CARS—
ALL GOOD "TINGS"

Southern Pacific

Information Bureau
613 Market Street,
San Francisco.

Oahu Railway and Land Co.'s

TIME TABLE

OCTOBER 6, 1904.

OUTWARD.

For Waianae, Waialua, Kihuku and Way Stations—9:15 a. m., 9:30 p. m.
For Pearl City, Ewa Mill and Way Station—17:30 a. m., 9:15 a. m., 11:05 a. m., 2:15 p. m., 3:20 p. m., 5:15 p. m., 9:30 p. m., 11:15 p. m.

INWARD.

Arrive Honolulu from Kihuku, Waialua and Waianae—8:36 a. m., 5:21 p. m.

Arrive Honolulu from Ewa Mill and Pearl City—17:45 a. m., 8:36 a. m., 10:38 a. m., 1:40 p. m., 4:51 p. m., 6:53 p. m., 7:30 p. m.
Daily.
Sunday Excepted.

The Haleiwa Limited, a two hour train, leaves Honolulu every Sunday at 8:30 a. m. returning arrives in Honolulu at 16:10 p. m. The Limited stops only at Pearl City and Waianae.

H. P. DENNISON, F. C. SMITH,
Supt. G. P. & T. A.



Losing your hair? Do you bring out a combful each morning? Has it lost its natural brightness? Is it beginning to look faded and dead? Do you like this condition of things? Certainly not. Then stop this falling of the hair at once. Stop it before your hair is thin, short, and lifeless. Buy a bottle of

Ayer's Hair Vigor

and make your hair beautiful, glossy, silky, abundant.
If your hair is gray, and you don't care to look at thirty as if you were sixty, then you should use Ayer's Hair Vigor. It always restores color to gray hair, all the deep, rich, beautiful color it had when you were young. Do not be deceived by cheap imitations which will only disappoint you. Be sure you get AYER'S Hair Vigor.
Prepared by Dr. J. C. Ayer & Co., Lowell, Mass., U. S. A.

Castle & Cooke, Ltd

Life and Fire

Insurance Agents

AGENTS FOR

New England Mutual Life Insurance Co OF BOSTON.

Etna Fire Insurance Co., OF HARTFORD, CONN.

ALEXANDER & BALDWIN, LTD

J. P. Cooke, Manager.

OFFICERS:

H. P. Baldwin, President
J. B. Castle, First Vice-President
W. J. Alexander, Second Vice-President
L. T. Peck, Third Vice-President
J. Waterhouse, Treasurer
G. M. Rolph, Secretary
W. O. Smith, Auditor

Sugar Factors and Commission Merchants

AGENTS FOR

Hawaiian Commercial & Sugar Company,
Haiku Sugar Company,
Paia Plantation,
Maui Agricultural Company,
Kihei Plantation Company,
Hawaiian Sugar Company,
Kahuku Plantation Company,
Kahului Railroad Company,
Haleakala Ranch Company.

C. BREWER & CO, LTD.

QUEEN STREET,
HONOLULU, H. T.

AGENTS FOR

Hawaiian Agricultural Company, Onomea Sugar Company, Honoumou Sugar Company, Haiku Sugar Company, Ookala Sugar Plantation Company, Haleakala Ranch Company, Kapapala Ranch.

Planters' Line Shipping Company.
Charles Brewer & Co's Line of Boston Packets.

LIST OF OFFICERS.

Charles M. Cooke, President
Geo. H. Robertson, V. Pres. & Mgr.
E. Faxon Bishop, Treas. & Secy.
F. W. Macfarlane, Auditor
P. C. Jones, Director
C. H. Cooke, Director
J. R. Galt, Director
All of the above named constitute the Board of Directors.

HIS OPINION.

"What do you consider the most remarkable work in American literature?" said the man who asks idle questions. "My life insurance company's prospectus," replied the rueful policy holder.

COLD FEET.

You have cold feet because your blood does not circulate freely, which is due to the weak condition of the nervous system. Dr. Miles' Nervine will give strength and force to the nerves, stimulate and equalize the circulation, and your extremities will have the same warmth as other parts of the body. At the same time improve your general health. If first bottle is not beneficial, you get your money back.

FOREIGN NEWS BY CABLE

ARMENIANS MASSACRED.

TIFLIS, November 15.—It is reported that seven hundred Armenians have been massacred by four hundred Tartars who afterwards plundered and burned their property.

RUSSIAN WORKMEN SUSPICIOUS.

ST. PETERSBURG, November 15.—Owing to the delay in putting reforms into operation, the workmen have decided upon a general strike tomorrow. The Agrarian troubles continue in the central provinces.

TRYING TO CURB LAWSON.

BOSTON, November 15.—A warrant has been issued for the arrest of Thomas Lawson of "Frenzied Finance" fame on the charge of criminal libel. The complaint was sworn to by Barron.

GREAT NAVAL INVENTOR DIES.

LONDON, November 15.—Whitehead, the inventor of the torpedo, is dead.

DISAFFECTION SPREADS TO FRANCE.

PARIS, November 15.—One-third of the entire force employed at the government arsenal have gone out on a strike. The situation in Toulon is serious.

TAKE JUSTICE IN THEIR OWN HANDS.

WARSAW, November 15.—Peasants here killed eleven thieves and injured twenty more.

TURKEYS BAD FORESTRY.

Forestry is neglected by the Turkish Government, as witness the following remarks by an explorer: "The most marked feature of all this eastern district is the entire absence of wood, not from any natural condition, as trees would evidently grow in most parts, according to species and to altitude limits, but owing to willful destruction and neglect to replant. Firewood now comes four and more days' journey to Erzerum and is in that city the most expensive household necessity, while across the border, on the Russian side, there are magnificent pine forests. This regrettable destruction extends all over Asiatic Turkey, square miles of forest being burnt where as many square acres of clearing near some village are desired. Around villages great walls of magnificent logs rise up and around fields also, so that soon no forests will remain except in the most inaccessible mountains."



MISS LYDIA J. FARRELL.

A Case of Dyspepsia.

Dyspepsia is caused by acute inflammation of the nerves of the stomach.

It is by nervous energy that the muscles of the stomach contract and expand, and the digestive fluids are secreted. The muscular walls of the stomach must be kept in vigorous action until the process of digestion is made complete.

The nerve fibres, like other tissues of the body, may become inflamed and diseased by worry or other causes; then they must be nourished and their strength restored. It is when the nerve fibres are overstrained by worry of mind, overtaxing or neglect that they become exhausted and weak.

Dyspepsia is but one instance where the vital nerve force is necessary.

Discontent, ill-temper, low spirits, despondency, dizziness, sick headache, heartburn, palpitation of the heart, distension of the stomach, are some of the many forms that dyspepsia takes.

The true cure must be the restoration to strength of the nerves which govern the digestive organs.

MISS FARRELL'S CASE AN EXAMPLE OF THOUSANDS.

"I have been greatly benefited by the use of Paine's Celery Compound. Until I tried it I was a great sufferer from dyspepsia and constipation. I spent considerable money trying various preparations without success, until I tried the Compound. Before I completed the first bottle I noticed a change for the better, but I continued until I had taken six bottles in all, which effected an entire cure. I feel better to-day than I have at any period of my life. It affords me great pleasure to endorse Paine's Celery Compound." Lydia J. Farrell, 129 DeKalb Avenue, Brooklyn, N. Y., August 12, 1904.

Paine's Celery Compound is curing thousands of dyspeptics every day, in just this way. By feeding and restoring the nerves to their full strength. It never fails to cure.

Sick headache, palpitation, dizziness, and heartburn are usually relieved by a single dose of Paine's Celery Compound.

Remember this.—Paine's Celery Compound is the prescription of one of the most famous physicians this country has ever known, and all reputable Druggists sell and recommend it.

WELLS, RICHARDSON & CO.,
BURLINGTON, VERMONT.

Ties ! Ties ! Ties !

We are making a specialty of Ties this week and can boast of the newest styles direct from the East.
SEE OUR DISPLAY.

K. ISOSHIMA

KING STREET NEAR BETHEL.



Trade

Mark

California Limited

TO

Chicago in 3 Days

Leaves Mondays and Thursdays
At 9:30 a. m.
With Dinners and Sleepers.

Passenger Agent, W. G. Irwin & Co., Office



When You
Feel Like
This

You need to commence drinking at meal times a glass of

Primo Lager

SOLD BY ALL DEALERS.

Holiday Goods!

We have unpacked and are displaying our stock of

Christmas Goods

consisting of Japanese Silks, Curios, Toys, Etc.
Come and examine them. No trouble to show goods.

Sayegusa

NUUANU STREET NEAR HOTEL.

HOW THE PASHA DOES THE TRICK

CONSTANTINOPLE, November 4—

Among the few theaters which cater to the amusement of the foreign colonies in the Turkish capital is the Theatre des Petites Champs, where during the season, French and Italian companies give operatic performances. This playhouse is under the direct supervision of Redvan Pasha, the Prefect of Stamboul, who fell madly in love with the leading woman of a French operatic company. He suspected that the fair actress was not indifferent to M. Labany, the handsome first tenor, Redvan Pasha was not a man to tolerate a rival, so he ordered M. Labany to be succeeded by M. Depere, a singer of fewer physical attractions.

The younger members of the French colony had, however, learned of the affair, and attended the performance in force one evening this week to show their discontent. Before the curtain rose a noisy contingent started shuffling with their feet, cries of "Down with the management!" being distinctly heard. The appearance of M. Depere on the stage was the signal for an ear-splitting din. But Redvan Pasha was prepared for all eventualities. A number of rough men, armed with leather tongs, had been distributed by his orders among the audience, and his immediately got to work. An indescribable scene followed, the innocent suffering with the guilty. Many persons were badly hurt by the throng, and several of the young demonstrators were marched off to prison, only to be released the next day through the intervention of the French Consul.

Fine Job Printing, Star Office.

CHAMBERLAIN'S COUGH REMEDY IN OLD VIRGINIA.

The Hutchinson Drug Company which is located at Perry, Oklahoma, U. S. A., in speaking of the sale of Chamberlain's Cough Remedy, says: "We take pleasure in recommending it to our customers because we believe it honestly made and a meritorious preparation. We sold it in Old Virginia and several other states, covering a period of over twenty years, and have always found it to give perfect satisfaction." For sale by all dealers, Benson, Smith & Co., agents for Hawaii.

Fine Job Printing, Star Office.

ORPHEUM THEATER

J. C. COHEN - - - - - Manager

The Eminent Young Actor,

Richard Buhler

Supported by the

National Stock Co.,

Presenting a Repertoire of High Class Plays

MONDAY AND TUESDAY,
"All the Comforts of Home"

WEDNESDAY AND THURSDAY
"The Three Musketeers"

FRIDAY AND SATURDAY,
"Man of Mystery"

POPULAR PRICES: 25c, 50c, 75c.

BANK OF HAWAII LIMITED.

Incorporated Under the Laws of the Territory of Hawaii.

PAID-UP CAPITAL.....\$500,000.00
SURPLUS.....500,000.00
UNDIVIDED PROFITS..... 48,255.47

OFFICERS.
Charles M Cooke.....President
P. C. Jones.....Vice-President
F. W. Macfarlane.....2nd Vice-President
C. H. Cooke.....Cashier
C. H. Cooke, Jr.....Assistant Cashier
F. B. Damon.....Assistant Cashier
F. B. Damon.....Secretary
DIRECTORS: Chas. M. Cooke, P. C. Jones, F. W. Macfarlane, E. F. Bishop, E. D. Tenney, J. A. McCandless, C. H. Atherton, C. H. Cooke.

COMMERCIAL AND SAVINGS DEPARTMENTS.
Strict attention given to all branches of Banking

JUDD BUILDING. FORT STREET.

ESTABLISHED IN 1858.

BISHOP & CO. BANKERS

BANKING DEPARTMENT.

Transact business in all departments of banking.
Collections carefully attended to.
Exchange bought and sold.

Commercial and Travelers' Letters of Credit issued on the Bank of California and N. M. Rothschild & Sons, London.

Correspondents for the American Express Company, and Thos. Cook & Son.

Interest allowed on term and Savings Bank Deposits.

TRUST DEPARTMENT.
Act as Trustees, collect Rents and Dividends.
Safety Deposit Vault.

ACCOUNTANT DEPARTMENT, 923 Bethel street.

Auditors and Trustees in Bankruptcy Books examined and reported on.

INSURANCE DEPARTMENT, 924 Bethel Street.

Agents for Fire, Marine, Life, Accident and Employers Liability Insurance Companies.

Claus Spreckels, Wm. G. Irwin.

Claus Spreckels & Co. BANKERS

HONOLULU, I. I.

San Francisco Agents—The Nevada National Bank of San Francisco.

DRAW EXCHANGE ON SAN FRANCISCO—The Nevada National Bank of San Francisco.

LONDON—Union of London & Smith's Bank, Ltd.

NEW YORK—American Exchange National Bank.

CHICAGO—Corn Exchange National Bank.

PARIS—Credit Lyonnais.

BERLIN—Dresdner Bank.

HONGKONG AND YOKOHAMA—The Hongkong and Shanghai Banking Corporation.

NEW ZEALAND AND AUSTRALIA—Bank of New Zealand, and Bank of Australasia.

VICTORIA AND VANCOUVER—Bank of British North America.

TRANSACT A GENERAL BANKING AND EXCHANGE BUSINESS.

Deposits Received. Loans Made on Approved Security. Commercial and Travellers' Credits Issued. Bills of Exchange Bought and Sold.

COLLECTION PROMPTLY ACCOUNTED FOR.

THE YOKOHAMA SPECIE BANK Limited.

ESTABLISHED 1850.

Capital Subscribed.....Yen 24,000,000
Capital Paid Up..... 18,000,000
Reserve Fund..... 9,940,000

HEAD OFFICE, YOKOHAMA.

Branches and Agencies:

Honolulu, New York, San Francisco, London, Lyons, Bombay, Hongkong, Newchwang, Peking, Shanghai, Tientsin, Kobe, Nagasaki, Tokio, Osaka.

The Bank buys and receives for collection Bills of Exchange, issue Drafts and Letters of Credit, and transacts a general banking business.

Honolulu Branch 67 King Street

L. de L. Ward,
ACCOUNTANT AND AUDITOR

McInerney Building - Honolulu, T. H.

IF YOU WISH TO ADVERTISE IN NEWSPAPERS ANYWHERE AT ANYTIME
Call on or Write
E. C. DAKE'S ADVERTISING AGENCY
124 Sansome Street
SAN FRANCISCO, CALIF.

THE BEAR BACK FROM THE ARCTIC

RETURN OF THE REVENUE CUTTER FROM HER SUMMER CRUISE IN THE FAR NORTH.

SAN FRANCISCO, November 5.—The revenue cutter Bear, under command of Captain Hamlet, has returned from a cruise into the Arctic, where for several weeks during the summer she was engaged in breaking up the illicit traffic in liquor between the white men and the Indians, and in meeting out punishment to Americans who had betrayed the natives in other ways. In many instances trials were held aboard the Bear, with Captain Hamlet sitting as Judge. With him were associated Assistant United States District Attorney W. N. Landers, United States Marshal Hugh Lee and an interpreter, all from Nome, who made the cruise to more northerly points on the Bear.

While the whisky traffic among the natives was bad, resulting in one instance in two murders among the Indians, the immorality of whalers who trafficked in young native girls was a source of trouble, and warrants were issued for various men who had lured native girls from their homes. It is reported that Captain Newth of the whaling steamer Jeanette is charged with kidnapping a young girl from her people, but he could not be apprehended because of his vessel being frozen in for the winter in the Arctic. Jerome, a shore whaler at Wainwright inlet, was tried aboard the Bear for procuring girls from the Indians and bound over to the Grand Jury at Nome. A man known as "Pig Iron" Jones was arrested for his illicit traffic in liquor among the natives north of Point Hope. A number of native girls gave testimony against whalers and others who had taken advantage of them.

DIED.

HICKEY—At Queen's Hospital, Honolulu, November 14, 1905, John Hickey, aged 68.

The funeral will take place at 2 p. m. today from the Honolulu Undertaking Parlors, the interment being at Pearl City.

AORANGI MAY BE DAY LATE.

According to private advices the S. S. Aorangi left Suva a day late on her up trip from the Colonies so may not arrive until tomorrow morning. The vessel was evidently delayed at Suva by having to load sugar at one of the sugar ports near that place. She may arrive this afternoon. A fair sized crowd of passengers has booked to depart by her for Victoria and Vancouver.

Please Job Printing, Star Office

POULTRY MEN IN SESSION

ARRANGEMENTS GOING AHEAD FOR THE HOLDING OF THE HAWAIIAN SHOW NEXT MONTH.

At a meeting of the Hawaiian Poultry Association held last night in the office of Will E. Fisher the following new members were declared elected: S. G. Wilder, A. F. Clark, Jason Andrede, Albert Waterhouse, J. D. Paris.

Applications for membership were received from August Ahrens, Clarence Macfarlane, Eben Low, Ray B. Reidy, R. H. P. Lishman, A. T. Brock and Messrs. Krause and Arneemann. Details of the coming show were reported on at some length both J. H. Craig and Col. Fisher giving accounts of the preparations. The secretary read a communication from T. E. Orr, secretary and treasurer of the American Poultry Association, acknowledging receipt of a letter from St. C. Sayre asking for information as to membership in the association and stating that the local association is eligible for membership with the mainland body.

It was decided to forward an application for life membership in the American Poultry Association, together with \$10 membership fee, at once.

BAND CONCERT

The Hawaiian band will give a public concert this evening at 7:30 o'clock at the Palama railroad station. Following is the program:

- PART I.
- March—"The Gladiators".....Sousa
- Overture—"Jolly Students".....Suppe
- Waltz—"Paradise in the Pacific".....Berger
- Selection—"Popular Airs".....Mackie
- PART II.
- Vocal—Hawaiian Songs, ar. by Berger Mrs. N. Alapai.
- Intermezzo—"True Love".....Kretschmer
- Waltz—"Paradise in the Pacific".....Berger
- Polka—"Nuuanu Valley".....Berger
- "Star Spangled Banner."

CORONER'S VERDICT LAST NIGHT

The coroner's jury in the case of the native who was killed at the Honolulu Iron Works yesterday afternoon, returned the following verdict last evening at the inquest. "That the name of the deceased was Kahala, that he was a native of the Territory of Hawaii, that he was about fifty-three years of age and that he came to his death on the fourteenth day of November, 1905, from a shock and crushing of the skull caused by an accident, to wit, the striking by the shaft of a mill roller in the machine shop of the Honolulu Iron Works."

SPRECKELS VS. WESTERN REFINERY

A SAN FRANCISCO REPORT OF THE IMPENDING SUGAR FIGHT BETWEEN THE SPRECKELS AND THE CROCKETT REFINERY.

SAN FRANCISCO, November 1.—The arrival of Max Lorenz at the St. Francis Hotel lends additional interest to the impending sugar fight between Spreckels' Western Sugar Refinery and the independent plantations of Hawaii, which are represented by the Sugar Factors Company of Honolulu. The latter some months ago bought for \$2,000,000 a controlling interest in the Crockett refinery across the bay in Contra Costa county, so as to be able to fight the Spreckels combine. Lorenz has been sent here from Honolulu to be superintendent of that establishment and he will proceed to get things in shape to open it on March 1, 1906. George M. Rolph is to be business manager of the refinery. The latter has been closed for a little over two years owing to an agreement with the Spreckels people. That agreement will end on the last day of next February. Spreckels has been paying \$200,000 a year to keep the place closed.

The Spreckels people have therefore demanded of the Hawaiian planters and have received a discount of three-eighths cents a pound, equal to \$7.50 a ton of sugar less than the New York market price. As the amount of Hawaiian sugar sold on the coast equals 150,000 tons a year, this has meant an annual tribute paid by the Hawaiian planters to the Spreckels people of \$1,250,000. For this the Hawaiian planters have received nothing. They have paid it simply because it was demanded, and they were not in a position where they could protect themselves against extortion. It is this enforced tribute more than any other cause that has led to the creation of the Sugar Factors Company with the fight now on the tapis.

The Sugar Factors Company controls 340,000 of the 400,000 tons of the annual sugar crop of Hawaii and has renewed for three years its contract with the provision of being allowed to refine up to 150,000 tons on this coast. This large control of the Hawaiian crop will force the Spreckels people to buy raw sugar in Java and elsewhere.

HE WAS TIRED OF LIVING.

Chan Wo, a young Chinese, attempted suicide Monday in his room in a house on Aala Lane near the Chinese Joss House. He shoved the blade of a pocket knife into his throat near the larynx. He was discovered yesterday and sent to the Japanese Hospital where Dr. Mori was called to attend him. It was stated at noon that the patient had but small chance for recovery. It is not known why the Chinese desired to die.

Want ads in the Star bring quick results. Three lines three times for 25 cents.

Bishop Hall, Punahou

FRIDAY EVENING, AT 8 O'CLOCK, NOVEMBER 17.

THE STORY OF A SHIPWRECK

As Told by Captain W. L. Josselyn, Under the auspices and for benefit of

KUNALU ROWING CLUB

Tickets, 50c; For sale by club members and at Hobson Drug Co.

Commissioner's Sale OF VALUABLE REAL ESTATE

SITUATED IN
Kaala, Paoua, Island and County of Oahu, Territory of Hawaii.

Pursuant to a Decree of Foreclosure and Sale made by the Honorable W. J. Robinson, Third Judge of the Circuit Court of the First Judicial Circuit, Territory of Hawaii, at Chambers in Equity on the 4th day of May, A. D. 1905, in an action entitled "Ellen Albertina Polyblank otherwise known as Sister Albertina, Trustee for Stella Keomallant Cockett, and Stella K. Cockett, sole beneficiary under said trust, complainants, vs. David Kawanakoa, Jonah Kalaniannole, Abigail W. Kawanakoa, Elizabeth K. Kalaniannole, The German Savings and Loan Society, a corporation, respondents, Bill for Foreclosure of Mortgage," (Equity Division, No. 1431), the undersigned, as Commissioner, duly appointed by said decree, will sell at Public Auction, to the highest and best bidder, subject to confirmation of the Court, on

Saturday, the 18th Day of November A. D. 1905

at 12 o'clock noon of said day,

at the front (mauka) entrance of the Judiciary Building, in Honolulu, Island and County of Oahu, Territory of Hawaii, all and singular the lands and premises situated in Kaala, Paoua, Honolulu aforesaid, more particularly bounded and described as follows, to-wit:

FIRST.

A portion of Kaalaalua, Honolulu, Kona, Oahu, L. C. Award 729 to B. Namakeha.

Beginning on the new south line of Paoua Road, on the East boundary of L. C. A. 2957 B, to Kaholoan, said point being 193.3 feet from the intersection of the new South line of Paoua Road and Nuuanu Avenue, as shown on Government Registered Map No. 2904 and running by true azimuths:

1. 276° 06' 39" 441.1 feet along new South line of Paoua Road;
2. 335° 48' 241.0 feet along Ulu's place;
3. 58° 10' 216.5 feet along L. C. A. 85 PL and 6059;
4. 56° 15' 125.0 feet along L. C. A. 236;
5. 62° 05' 82.6 feet along same;
6. 74° 10' 112.0 feet along same;
7. 179° 28' 9.8 feet along L. C. A. 11144 B. Ap. 2;
8. 86° 50' 52.8 feet along same;
9. 147° 33' 71.3 feet along same;
10. 45° 10' 61.0 feet along same;
11. 138° 28' 160.3 feet along same;
12. 45° 27' 6.0 feet along same;
13. 154° 15' 9.5 feet along Kaalaalua;
14. 223° 10' 110.5 feet along same;
15. 259° 17' 9.7 feet along same;
16. 223° 00' 117.5 feet along same;
17. 158° 09' 65.0 feet along same;
18. 189° 51' 95.2 feet along L. C. A. 2957 to point of beginning.

Area 5.17 acres, together with all and singular the tenements, hereditaments and appurtenances thereunto belonging or in any wise appertaining.

SECOND.

All that portion of Royal Patent No. 4371, L. C. A. 7260, to B. Namakeha, at Kaala, Paoua, Honolulu, Oahu, bounded and described as follows:

Beginning at the West corner of this land on Paoua Road, the same being the North corner of L. C. A. 2957 B, Ap. 3 to Kaholoan, and running by true meridian:

1. 84° 50' E. 107.4 feet along Paoua Road;
2. 88° 40' E. 54.0 feet along same;
3. 88° 20' E. 80.5 feet along same;
4. 24° 45' E. 52.0 feet along fence;
5. 54° 20' W. 33.0 feet along same;
6. 60° 55' E. 222.3 feet along same;
7. 5° 00' E. 103.0 feet along same;
8. 85° 15' W. 23.0 feet along L. C. A. 236 to Kaholo;
9. 5° 05' W. 36.0 feet along remainder of this land;
10. 84° 12' W. 150.8 feet along stone wall;
11. 12° 07' E. 133.0 feet along L. C. A. 2957 B. Ap. 4 to Kaholoan;
12. 70° 25' W. 125.0 feet along same;
13. 9° 20' E. 171.5 feet along L. C. A. 2957 B. Ap. 3 to Kaholoan to the initial point, and containing an area of 1.95-100 acres.

Terms of Sale: Cash in United States Gold Coin; ten (10) per cent to be paid upon the fall of the hammer; balance upon the execution and delivery of deed by the Commissioner. Deed at expense of purchaser.

For further particulars apply to E. A. Douthitt, Esq., attorney for complainants, at his office McIntyre Block, Honolulu, or to the undersigned at his office in the Judiciary Building, in Honolulu, aforesaid.

M. T. SIMONTON, Commissioner.

Dated Honolulu, November 6, A. D. 1905.
1115—Nov. 6, 7, 8, 9, 10, 11, 12, 13, 14, 15 and 17, 1905.

CORPORATION NOTICES.

NOTICE TO HOLDERS OF BONDS OF THE Wai'alea Agricultural Company, Ltd.

Pursuant to a Resolution passed by the Directors of the Wai'alea Agricultural Company, Ltd., at a regularly called meeting held on October 24, 1905, and acting under authority of a Resolution passed by the Shareholders of the said Wai'alea Agricultural Company, Ltd., at a duly called special meeting held on October 19th, 1905, the existing issue of Bonds for One Million Dollars in all will be refunded on March 31st, 1906.

Under authority of the said Resolutions a new issue of Bonds for One Million Five Hundred Thousand Dollars (\$1,500,000.00) in all will be made, said Bonds to be dated March 31st, 1906, bearing interest at the rate of 5 per cent, per annum, payable semi-annually on the last days of March and September of each year, for a term of 20 years, with the option reserved to the Wai'alea Agricultural Company, Ltd., of redeeming the whole or any part of said Bonds on March 31st, 1916, or on any interest paying date thereafter; said Bonds to be secured by Deed of Trust on the property of the Company, which shall provide for the annual payment to the Trustee of 10 per cent of the net profits of the Company, to be invested as a sinking fund for the redemption of said Bonds.

Holders of the existing issue of Bonds may exchange their holdings for an equivalent face-value of the new issue, on the basis of 98 for the latter, (difference to be paid to bondholders either in U. S. Gold Coin or in additional Bonds at 98, or partly in Bonds and partly in U. S. Gold Coin, at Company's option) provided they execute an agreement to this effect, and deliver same, not later than January 6th, 1906, to the Hawaiian Trust Company, Limited. Blank forms of this agreement will be furnished on application, or may be had at the office of the Hawaiian Trust Company, Limited.

G. P. CASTLE, Treasurer Wai'alea Agr'l. Co., Ltd. Honolulu, November 2, 1905.

ELECTION OF OFFICERS.

Notice is hereby given that at the Annual Meeting of the Shareholders of the Honomu Sugar Company, held this day, the following persons were elected as Officers and Directors of the company for the ensuing year, viz:

- F. C. Jones.....President.
- James A. Kennedy.....Vice-President.
- Geo. H. Robertson.....Treasurer.
- E. F. Bishop.....Secretary.
- T. Richard Robinson.....Auditor.
- C. M. Cooke.....Director.
- W. G. Brash.....Director.

E. F. BISHOP, Secretary. Honolulu, T. H., October 26, 1905.

DIVIDEND NOTICE.

Notice is hereby given that a dividend will be due and payable on Nov. 15th 1905 at the office of the undersigned.

Mutual Telephone Co., Ltd., Per Godfrey Brown, Treasurer. Honolulu, November 11, 1905.

GAS RANGE COOKING....

How to be Economical

"Be thoughtful. There are so many little ways of saving gas, and just as many ways to waste it. Follow these three simple rules, which cover almost the entire question of economy:

1. Never light the gas until everything is ready.
2. Never use a stronger flame than is necessary.
3. Turn out the gas the instant cooking is finished.

Honolulu Gas Co., Ltd.,

Office: Alexander Young Building

CALIFORNIA RESTAURANT

Hotel Street near Nuuanu, Best 2-Cent Meal Served. T. ODA, MANAGER. OPEN ALL NIGHT.

WING TAI

1119 Nuuanu St., Honolulu, Hawaii. Manufacturer of Ladies', Gentlemen's and Children's Underwear. Orders from the Country will receive prompt attention.

Social Tragedy



Women Who Brave Death for Social Honors.

In the midst of one of the most brilliant social functions of the season, a noted society woman started suddenly from her chair with a scream of agony and fell insensible to the floor.

A few hours later the distinguished physician told her anxious husband that she was suffering from an acute case of nervous prostration brought on by female trouble, and hinted at an operation. Fortunately a friend advised her to try




Lydia E. Pinkham's Vegetable Compound

The result was that she escaped the surgeon's knife and to-day is a well woman.

The derangement of the delicate female organism sets every nerve in the body quivering with pain. Headaches, backaches, torturing bearing down pains and dragging sensations make women nervous and hysterical.

DEAR MRS. PINKHAM:—I was troubled for eight years with irregularities which broke down my system and brought on extreme nervousness and hysteria. I could neither enjoy my meals nor sleep nights, became easily irritated and nervous and very despondent. Lydia E. Pinkham's Vegetable Compound proved to be the only medicine which helped me. After taking the third bottle, my general health began to improve. At the end of the fifth month I was well and could attend to my household and social duties and enjoy life.
Mrs. CHESTER CURRY, 42 Saratoga Street, East Boston, Mass.

Mrs. Curry, whose portrait appears on the right, is the leader of the Ladies' Symphony Orchestra. The following letter is from Miss Goode, President of the Bryn Mawr Lawn Tennis Club of Chicago:

DEAR MRS. PINKHAM:—I tried many different remedies to try to build up my system, which had become run down from loss of proper rest and unseasonable hours, but nothing seemed to help me. Mother is a great advocate of Lydia Pinkham's Vegetable Compound for female troubles, having used it herself some years ago with great success. So I began to take it, and in less than a month I was able to be out of bed and out of doors, and in three months I was entirely well. Really I have never felt so strong and well as I have since.
Miss CORA GOODE, 355 E. Chicago Ave., Chicago, Ill.

Mrs. Pinkham's advice is free to all. Her address is Lynn, Mass.

Lydia E. Pinkham's Vegetable Compound Cures Where Others Fail

Cut Flowers

We have added a floral department to our curio store and are prepared to take orders for all kinds of flowers and plants.

WOMAN'S EXCHANGE HOTEL STREET NEAR FORT.



The Best Way

To keep your hair and scalp in a healthy condition is by the use of

PACHECO'S DANDRUFF KILLER.

It cleanses the scalp and invigorates the hair. Try it. Sold by all Druggists and at the Union Barber Shop, Tel. Main 232.

TO GIVE THE THREE MUSKETEERS

THE BEAUTIFUL ROMANTIC PLAY OF THE THREE MUSKETEERS TO BE GIVEN AT THE ORPHEUM.

To-night at the Orpheum the cap and bells of comedy will be cast aside and the crown and sword of romance will be substituted in the shape of the great play 'The Three Musketeers,' a dramatization of Dumas Pere's wonderful novel.

The big dredger Governor is still out of commission at the new Alakea street slip, owing to the necessity of repairs on her boiler.

The condition of some of the gutters in the Ewa, end of the city is such as to require the immediate attention of the Health officials.

At the meeting of the Woman's Board yesterday interesting papers were read descriptive of the three ancient religions of Japan.

Henry May & Co. have just received a wonderful array of goodies for the Thanksgiving Dinner. See advertisement and window display.

Mrs. Richards, the president of the Ladies Musical Club, desires to have the announcement made that the meeting which was arranged for today is postponed.

The work of putting a new cement sidewalk around the post office is hourly watched by a large number of interested, but apparently not very busy citizens.

Erle Thompson, the infant son of Mr. and Mrs. James Wakefield will be christened at St. Clement's church this afternoon at 3 o'clock.

Mrs. F. W. Carter, wife of Manager Fred Carter of the Parker Ranch, with her children, returned to her home by the Kinau yesterday after a visit of some weeks in Honolulu.

Charlie Bishop will be a passenger on the R. M. S. Aorangi for Vancouver B. C. tonight. He will stay in Vancouver for a few days and will go thence to Seattle, Portland, San Francisco and Mexico City.

The Hawaiian Trust Co. is empowered by law to receive trust monies. Being entirely removed from speculative venture, it is better fitted to act as administrator or executor than is the private individual.

Quite a party of lawyers started for Kaula by the steamer W. G. Hall yesterday. It included Cecil Brown, W. T. Rawlins and Frank Thompson.

NEW ADVERTISEMENTS.

- Jas. F. Morgan.....Page 8
Hawaiian Trust Co.....Page 1
Thayer Piano Co.....Page 5
Sealed Tenders.....Page 5
Henry May & Co.....Page 2
Pacheco's Dandruff Killer.....Page 8

NEWS IN A NUTSHELL

Paragraphs That Give Condensed News of the Day.

WEATHER REPORT.

Local Office U. S. Weather Bureau.

Temperatures: 6 a. m. 73; 8 a. m. 76; 10 a. m. 77; noon 78; morning minimum 71.

Barometer 8 a. m. 30.08; absolute humidity 8 a. m. 5.73 grains per cubic foot; relative humidity 8 a. m. 69 per cent; dew point 8 a. m. 60.

Wind velocity: 4 a. m. 10, northeast; 8 a. m. 14, northeast; 10 a. m. 12, northeast; noon 15, east.

Rainfall during 24 hours ended 8 a. m. .02 inches.

Total wind movement during 24 hours ended at noon 298 miles.

ALEX. McC. ASHLEY, Section Director.

Otto Bierbach is quite ill at his home in Pawa.

Pacheco's Dandruff Killer cleanses the scalp and invigorates the hair.

The Hawaiian band will play at the Palama railway station this evening.

There was a large attendance at the football game yesterday-afternoon.

Work is progressing rapidly on the buildings for the army post at Kahauliki.

Saturday noon Morgan will hold a number of mortgagee's foreclosure sales.

This is the last day to pay taxes. The tax office will be open until 9 o'clock tonight.

A meeting of the Finance committee of the Hawaiian Board was held this morning.

There was a dance at the Moana Hotel last evening complimentary to the Fifteenth Infantry.

The Regimental band gave a concert at 7 o'clock.

Don't forget that Friday evening is the date set for the true story of the wreck of the Coringa on the Malay Peninsula.

The Board of Supervisors of the County of Kauai advertises for bids for a steam roller, rock crushing plant, etc. in this issue.

The big dredger Governor is still out of commission at the new Alakea street slip, owing to the necessity of repairs on her boiler.

The condition of some of the gutters in the Ewa, end of the city is such as to require the immediate attention of the Health officials.

At the meeting of the Woman's Board yesterday interesting papers were read descriptive of the three ancient religions of Japan.

Henry May & Co. have just received a wonderful array of goodies for the Thanksgiving Dinner. See advertisement and window display.

Mrs. Richards, the president of the Ladies Musical Club, desires to have the announcement made that the meeting which was arranged for today is postponed.

The work of putting a new cement sidewalk around the post office is hourly watched by a large number of interested, but apparently not very busy citizens.

Erle Thompson, the infant son of Mr. and Mrs. James Wakefield will be christened at St. Clement's church this afternoon at 3 o'clock.

Mrs. F. W. Carter, wife of Manager Fred Carter of the Parker Ranch, with her children, returned to her home by the Kinau yesterday after a visit of some weeks in Honolulu.

Charlie Bishop will be a passenger on the R. M. S. Aorangi for Vancouver B. C. tonight. He will stay in Vancouver for a few days and will go thence to Seattle, Portland, San Francisco and Mexico City.

The Hawaiian Trust Co. is empowered by law to receive trust monies. Being entirely removed from speculative venture, it is better fitted to act as administrator or executor than is the private individual.

Quite a party of lawyers started for Kaula by the steamer W. G. Hall yesterday. It included Cecil Brown, W. T. Rawlins and Frank Thompson.

Senator Dickey is sure to interest the young men in the subject of "Law-making" tomorrow, speaking at 6:40 to all men who can be at the hall at that time, and answering questions until 7:30. Now is the time to telephone Secretary Brown to set a plate for you at the table for the 6 o'clock dinner of the Thursday Club in the Y. M. C. A. building.

IDENTIFIED

The man in the custody of the federal officers here as G. L. Brokaw, wanted in Spokane for land frauds has been positively identified as the right man. A photograph of him was sent to Spokane by Marshal Hendry as soon as the arrest was made.

CHOICE ALGAROBA

FIRE WOOD SAWED AND SPLIT OR IN 4 FEET LENGTHS DELIVERED TO ANY PART OF THE CITY. LEAVE ORDERS WITH W. W. DIMOND & CO. Agents for East Niu Ranch.

NOEAU WAS IN DANGER OF SINKING

(Continued from page one.)

The vessel got away yesterday morning shortly before 11 o'clock. She had a cargo in her hold and as deck load carried 22 tons of coal a quantity of cases of coal oil forward, 14,000 feet of lumber in her alleyways and some tubs of saki in the after part of the vessel.

In any event the vessel ran into a strong northeast swell as she rounded Diamond Head. About 11:30 o'clock yesterday she suddenly plunged her nose into what seemed to be tremendous sea that swept over her and from that time on, she was constantly bucking into the seas. The water submerged the forward part of the boat, completely flooding the forward deck and the alleyways and getting down into the forecastle so that nobody could remain inside.

It was first thought to cut away the forward bulwarks in order to allow the vessel to free herself of the water that held her down and threatened at any time to send her to the bottom, but it was impossible to do this and Captain Pederson did not give the order.

It seems probable that incident over these being too much load on deck would not have arisen had not there been an urgent order for more coal yesterday. The fuel was sorely needed on Hawaii so it was thought that the vessel would be able to pack the load as she had carried as large and even larger loads in the past.

AYRES-NICHOLAS CASES CONCLUDED

NOLLE PROSEQUIS ENTERED THIS MORNING IN THE AFFRAY AND ASSAULT CASES.

The Ayres-Nicholas cases were concluded in the police court this morning in the case of assault with a deadly weapon against Alec Nicholas who was charged with having attacked Ayres with a heavy cane, the prosecution entered a nolle prosequi at the request of Ayres.

DAILY STOCK REPORT

Table with columns for Board Sales, Session Sales, Dividends, and Quotations. Includes items like Ewa, Haw. Agr. Co., Hawaiian Com'l., etc.

James F. Morgan, AUCTIONEER AND BROKER. 517-557 Kaahumanu St. Tel. Main 72. P. O. Box 694.

FOR SALE ON VIEW

At Kapiolani Building, corner of Alakea and King streets, VALUABLE RECHERCHE collection of GENUINE

Eastern Rugs

Valued at \$20,000.00. Auction sale commences ON MONDAY, NOV. 20, AT 10 O'CLOCK A. M.

JAS. F. MORGAN, AUCTIONEER.

Saturday

November 18, 1905 12 O'CLOCK NOON.

Mortgages' Foreclosure Sales!

AT MY SALESROOM.

A. K. Hart to W. R. Castle, Trustee, Assignee.

AT JUDICIARY BUILDING.

Trustee for Stella Cockett, et al. vs. D. Kawanankoa, The German Savings & Loan Society et al.

JAS. F. MORGAN, AUCTIONEER.

Table listing various sugar and commodity prices. Includes items like Oookala, Oloa Sugar Co., Pacific, Pala, etc.

DAVIS DECLINES MOILILII JOB

FORMER SUPERINTENDENT OF PUBLIC INSTRUCTION INTENDS TO TAKE A VACATION.

Superintendent of Public Instruction Babbitt has received the following letter:

"My Dear Mr. Babbitt: In reference to our conversation regarding my taking the principalship of the Moililii school, I would say that after due consideration I would have decided that it would not be best for me physically or mentally to return to work just now.

"I am very much in need of a rest, both physical and mental. I thank you for the kind consideration I have received from you and I hope soon to be able to renew my connection with the department. Sincerely yours, JAMES C. DAVIS."

ZENOLEUM

The following extract from a letter from one of the largest users of ZENOLEUM in the Islands, speaks for itself:

"It is almost a year since I last wrote you, but you will be glad to know that we are still using your ZENOLEUM in our Agricultural Department with the same satisfactory results as reported to you over a year ago.

Zenoleum is also the Best Wash Known for Dogs

To be had by the bottle, or gallon, at E. O. HALL & SON, Ltd.

Every living being depends upon the sun. Each sunrise brings life, joy and good-will to plants and to human beings.

so the Sunrise Creamery Butter

brings joy and happiness to the families who use it on their tables.

For Sale By C. Q. YEE HOP & CO. WHOLESALE AND RETAIL BUTCHERS.

For Your House!



Someone said there's nothing like leather. But we know better. In the rainy weather when the roof starts to leak and the color looks faint there's nothing to touch good honest paint.

STANLEY STEPHENSON THE PAINTER

You need 'em in your business—S. S. Signs Phone 426—137 King Street.

Camara & Co.

LIQUOR DEALERS. Corner Queen and Alakea Streets

Orders Delivered to All Parts of the City

Phone Main 492 Honolulu, T. H.

Beautiful Lamps Ornamental

We carry the most complete assortment of PIANO, PARLOR, DINING ROOM, LIBRARY, STUDENT, BRACKET, HALL and NIGHT LAMPS.

All kinds of Lanterns in Tin, Brass and Nickel. Special attention is called to the

FAMOUS COLONIAL READING LAMPS. These Lamps give a beautiful, soft light. No Library is complete without one. We also have a nice assortment of PORTABLE ELECTRIC LAMPS.

W. W. DIMOND & CO., Ltd.

Dealers in Household Necessities 53, 55, 57 King Street, . . Honolulu

SHIPPING INTELLIGENCE

DEPARTING. Wednesday, November 15. Steamer Noeau, Pederson, for Makena, Mahukona, Honokaa and Kukulhaele at 10:15 a. m.

PASSENGERS.

Arriving. Per S. S. Enterprise, November 14, from San Francisco for Honolulu—Mr. Farringham; for Hilo, D. Richmond, E. E. Richmond, wife and two children, Mr. Curtis, Master Bowman, Miss L. Montevello, J. Harrison, Robert Lilly, C. Kennedy.

DR. RUSSEL AS A JOURNALIST.

A recent report from Japan says that Dr. Nicholas Russel, a Russian naturalized American and late resident of Oloa, has taken up the editorship of "Japan and Russia," a Russian journal published at Kobe. After the withdrawal of the Russian prisoners, who are the principal subscribers to the journal at present, the paper will change its title to the Oriental Weekly.

MONGOLIA MAY BE LATE.

Private advices state that the S. S. Mongolia due to leave San Francisco for Honolulu and the Orient today would sail a day late owing to a delay in discharging her cargo of freight.

MOTHER GOOSE—REVISED.

Eaa baa Babbitt, have you any pull, Yes, my little master, two bags full. One for the Governor, one for myself, But none for the gentleman who's laid upon the shelf.

—The Garden Island.