

The Garden Island.

ESTABLISHED 1904. VOL. 17. NO. 40.

LIHUE, KAUI, TERRITORY OF HAWAII, TUESDAY, OCTOBER 11, 1921

SUBSCRIPTION RATES, \$2.50 PER YEAR 5 CENTS PER COPY

PRESS CONFERENCE MEN COMING 28TH

Plans for the Nawiliwili breakwater celebration and the entertainment of the Press Conference delegates are beginning to take more definite form. It has been definitely decided to invite the delegates to come to Kauai on the Kinau on the morning of October 28. They will probably return on Saturday afternoon, October 29.

It is now planned that Kauai citizens will meet the delegates at the boat and take them to their homes for entertainment. After the citizens have had a little time to rest and have had breakfast, they will be taken wherever their hosts wish to take them to see some of Kauai's beauty spots. They will probably be taken to the Haena side of the island one day and to the Waimea side the following day, or vice versa.

The breakwater celebration will, in all probability, be held the afternoon of October 28. It will be necessary for all people to arrange to have their guests back in Lihue in ample time for this occasion.

The celebration will be held at the breakwater. As the big crane drops the first stone of the breakwater, Governor Wallace R. Farrington will make an address of the day. The rope which will release the first stone will probably be pulled by a Kauai man whose influence has counted heavily in getting the breakwater started.

After this celebration the editors will probably be taken to the various houses to which they will be assigned and allowed to get a little rest before the evening's activities.

The evening's program will be held in the Lihue armory. The ladies of the Mokihana Club are to be asked to handle the dinner proposition. A number of speeches will be made by the most prominent visiting delegates and by one or two prominent local men. A regular smoker and general good time for all is promised.

NEW SALVATION ARMY MAN STATIONED AT KOLOA

Adjutant O. R. Kennedy, who has been stationed at Koloa for the past five years, doing Salvation Army work, has been transferred to San Francisco. His place at Koloa is being filled by Lieutenant Haan, who recently graduated from the Army's San Francisco training college.

Lieut. Haan comes to Kauai highly recommended by Brigadier C. W. Bourne, who is in charge of all the Salvation Army work of Hawaii. Brigadier Bourne states that Lieut. Haan is an energetic young man with more than usual personality and that undoubtedly he will make good on Kauai.

Lieut. Haan wishes to thank Kauai residents for the support they have given the Salvation Army in the past and he asks that the same kind of support be continued.

SUNDAY-SCHOOL CLASS PICNIC AT KOLOA BEACH

Mrs. H. D. Sloggett entertained her Sunday-school class at Waihai on the Koloa beach last Saturday afternoon. About a dozen members of the class were present.

A good lively indoor baseball game was enjoyed for an hour. Then a fine swim came. This was a much-enjoyed event for the diminutive girls of Mrs. Sloggett's class had the joy of giving their Sunday-school superintendent a good ducking and a plastering with wet sand.

After a delicious picnic supper the party motored back to Lihue by moonlight.

M. R. Aguiar was a returning passenger on today's Kinau.

Kapaa Notes

Court Walaiale, local order of Ancient Foresters, celebrated the first anniversary of its existence with a grand Hawaiian luau at the Hawaiian hall on Friday evening. Four tables, neatly decorated with ti-leaves awaited the members of the order, their wives and friends, totaling in all about 125 persons. Brother Reed, chief ranger, from San Francisco, Brother Charles A. Rose, chief ranger of Hawaii, and Brother J. Ordstein, were the guests of honor.

The Makee baseball team, twenty-five strong, including mascot, scorer and manager, departed on the Kinau Saturday to invade Maui via Honolulu. This is the first time in the history of Kauai that a baseball team has been sent away to seek additional glory on foreign fields.

Mrs. A. Horner Jr., accompanied by her mother-in-law, Mrs. Albert Horner Sr., arrived from Honolulu last Friday. Mrs. Horner Jr. has been visiting her parents at Pasadena, California, and only returned to Honolulu a week ago. Mrs. Horner Sr. is here to visit her sons, Foster and Albert Horner Jr.

There is much joy locally, but particularly in the region of the homesteads, as the dry spell has at last been broken with four days of rain.

Local supporters of the Makees who are taking the trip to Maui include T. Yamamoto, John Rodrigues, H. Nagahisa, and others. Among the players' wives, Mrs. Dan Arcia was the only one fortunate enough to persuade her husband to allow her to make the trip.

H. Wolters, manager of Makee Sugar company, departed on the Mikahala Saturday on a business trip to Honolulu. He expects to return Tuesday.

Yoshitomo Nagahisa, expert wielder of bamboo sticks and a teller in the Bank of Kauai, Ltd., joined the ranks of the benedicts last week, the bride being Miss M. Tanaka, daughter of S. Tanaka, local dry-goods merchant. The couple departed on the Kinau Saturday for a short honeymoon in Honolulu.

At a meeting of the Kapaa homesteaders association held last Sunday, the question of signing up with East Kauai Water Co. for water for irrigation and other purposes was taken up, and after considering the matter carefully, the association selected Joseph Correa Jr. and J. F. Bettencourt Jr. to proceed to Honolulu this week to confer with the proper government officials before taking action. The main objection of the homesteaders seems to be based on provisions in the contract providing for certain rights to be given the water company, for which they claim no adequate compensation is being made.

LIHUE UNION CHURCH

The Bible school meets regularly at 10 o'clock every Sunday morning and is thoroughly reorganized under the leadership of the new superintendent, Olen C. Markwell, physical instructor of the Kauai high school. An adult Bible class is being organized this coming Sunday morning. Anyone interested in a study, not about the Bible but of the Bible, will be welcomed.

A midweek devotional service will be conducted in this church every Wednesday night at 7 o'clock. The first meeting will be October 12.

Regular services next Sunday morning to which the people of the community are cordially invited.

R. W. BAYLESS, Pastor.

COUNTY LIBRARY TO BE ORGANIZED

A mass meeting of the interested citizens of Kauai is to be held next Saturday afternoon in the Mokihana hall, Lihue at 2 o'clock. The object of this meeting is to organize a county library association. Each community on the island is requested to see that it is represented so that the island needs may be carefully considered.

CARS CRASH DRIVERS ESCAPE

Calamity Corner near the Lihue school house was again the scene of an accident last Friday.

Two cars, one being Grove Farm bound, and the other for Koloa, came together with a resounding crash, turning the larger car over in the ditch. Fortunately no one was hurt.

If drivers would use a little more discretion and judgment on these so-called bad turns, these turns would lose their reputation for being the scene of accidents.

It is only fair to note that neither of the drivers in the above accident was an oriental.

The Kauai Automobile Club has arranged with Mr. Pugh to have this curve marked with a danger sign. But all the signs in the world will not prevent accidents if automobile drivers refuse to use common sense and obey the rules of the road.

SOCIAL SERVICE ASSOCIATION ORGANIZED

The Social Service Association of Kauai was organized at Mokihana hall last Saturday afternoon. There was a good attendance quite representative of the people of the island interested in such work.

The constitution was adopted and the officers were elected for the ensuing year. The association officers are as follows:—Miss Elsie Wilcox, president; Dr. R. H. Hagood, vice president; Rev. Royal G. Hall, secretary and treasurer; Miss Margaret Pepper and Mrs. M. C. Sisson, members of the executive committee.

The association was favored in its organization meeting by the presence of Miss Bergen, director of the Social Service Bureau of Honolulu. She spoke briefly from her rich experience in such work and of the value similar organizations had proven both in Honolulu and on the mainland.

It is the desire of the association to enlist all those interested in charitable, philanthropic, educational and institutional work here on Kauai. The association has a three-fold object—the development of co-operation among all social workers, to serve as a clearing house for the discussion of subjects relating to social work and the fostering of community interests in social work. It is planned to hold meetings at least once a month.

The association has made a good beginning and it is hoped that it may prove a vital factor in the making of a better Kauai.

MOKIHANA CLUB HOLDS MEETING

The Mokihana Club held its first meeting of the season last Wednesday afternoon. A large number of ladies attended. Eight new members were elected.

The club decided to hold its regular semi-annual rummage sale in November. Considerable money is always realized by this means and many people get very good merchandise at low prices there. People who have salable things which they can give should start saving them up and getting them ready to give.

The governor's clean-up week was emphasized. The ladies determined to help make this week a success. And surely no more worthy cause could be backed by this leading club.

Miss Culbert of the Lihue grammar school entertained with two much enjoyed readings. Miss Irwin of the Kapaa school delighted her hearers with a beautiful saxophone solo. Then the cake was served and the husbands waited at home with the customary remarks: "Well, did you bring any of that cake back home? Just as I expected. I wish I had cut a hunk out of it before you took it."

FOUR INDICTMENTS QUASHED BY ERROR

Four indictments were quashed in the fall meeting of the Circuit court this morning. All four indictments were thrown out due to errors in the drawing of the indictment, the court holding the county attorney's office responsible for the errors.

In the case of the Territory of Hawaii vs. Louis Rego, Wm. Rollins, attorney for the defendant, moved to quash the indictment, on the grounds that the defendant was indicted for murder, whereas the evidence in the indictment showed that the charge should have been manslaughter. The court sustained motion and the defendant was discharged.

In the case of the Territory of Hawaii vs. Paleman Albanto, who was charged with assault and battery with a weapon obviously and imminently dangerous to life and limb, the indictment stated that the crime was committed in the year 1901. Phillip Rice, attorney for the defendant, filed a demurrer on statute limitations. Demurrer was sustained and the defendant discharged.

In the third case, Territory vs. Claudio Stiviano, with the same charge as above, this indictment also stated that the crime was committed in 1901. Charles Dole, attorney for the defendant, filed a demurrer on the same grounds. The demurrer was sustained and the defendant discharged.

The fourth case, the Territory of Hawaii vs. Ventura Labino, on a statutory offense, also stated that the crime was committed in 1901. Abe Kalaukou, attorney for the defendant, entered a plea in bar on the same grounds which was sustained by the court and the defendant discharged.

After he had sustained the last plea, Judge Achi arraigned the county attorney for these palpable errors in the indictments and said in part:

"I suggest that the county attorney be more careful in his future indictments before they are presented to the grand jury. It strikes me that the county attorney has shown a lack of attention in the discharge of his duties."

All four defendants were immediately re-arrested, the county attorney having anticipated their discharge, due to the errors in indictment.

The grand jury has been recalled and will meet Wednesday morning at 9:30 for further proceedings in these cases.

WORK STARTED ON WILCOX MEMORIAL

Work was started on Monday morning on the new community house in the Lihue church yard. The house, which is being erected by Mr. and Mrs. S. W. Wilcox as a memorial to their sons, Ralph and Charles, will probably be complete in about six months.

The community house, as the name indicates, is being erected by Mr. and Mrs. Wilcox for the use of the community and the church. It will have a large auditorium, a good stage, a fully equipped kitchen, several smaller meeting rooms and a fine large lanai.

The work is being done by S. Goss, Lihue architect and contractor. Mr. Goss states that if he can get the material as soon as he thinks he can, the work can be done in a much shorter time than the contract specifies.

Haruo Noshi sustained painful injuries when the truck he was driving went off the road and turned over, Sunday night, near Kipu. It was found that the accident was due to a defective steering gear and not to any carelessness on the part of the driver. Another Japanese, who was a passenger with Noshi, escaped with slight bruises.

Charles Amalu, general salesman of the von Hamm-Young Co. of Kapaa, has been a busy man during the past week, making delivery of new cars to customers during Walter Eklund's absence in Honolulu.

Personals

Charles A. Rice returned from Honolulu this morning.

Mrs. R. D. Moler gave a delightful afternoon tea Monday afternoon to a number of her Lihue friends.

Miss Edith Rice returned to Lihue last Friday after an extended sight-seeing trip to Europe. A number of Miss Rice's entertaining and descriptive letters have been printed in the Garden Island during the past few months.

Mrs. A. Horner Jr. returned on the Kinau last Friday from an extended trip to the mainland. She was accompanied to Kauai by her mother, Mrs. A. Horner Sr.

E. Gieseke, well known piano man of Honolulu, arrived at Lihue last Friday morning. Mr. Gieseke will remain on the island for a week.

Mrs. I. J. Hogg and daughter Isabelle returned this morning from a two months' trip to the mainland.

Judge Lyle A. Dickey returned from a short business trip to Honolulu this morning.

Karl Jensen, Kapaa homesteader, was a passenger on Tuesday's Kinau.

Miss Juliet Rice returned Friday from a short trip to Honolulu where she had gone to meet her sister Edith, who has returned from an extended trip to Europe.

Sam Decker was an incoming passenger on the Kinau last Friday. Mr. Decker is visiting his sister, Mrs. Fred Trowbridge of Kealia.

Miss Ebeling of Makaweli returned to her home last Friday after several months in the metropolis.

F. B. Cook of Waimea, who has been in Honolulu for a short business trip, returned to Kauai last Friday morning.

Walter Eklund, salesman for von Hamm-Young, is making a business visit to the Garden Island.

P. H. G. Deverill of the Bank of Hawaii is taking the place of Frank Crawford in the Lihue branch of the Bank of Kauai, while Mr. Crawford is convalescing in a Honolulu hospital.

R. E. Hodgson, of the American Factors, is on Kauai this week beating up trade.

BACHELOR DINNER FOR DR. MORGAN

Friends of Dr. Morgan entertained him with a stag dinner at the Lihue Hotel last Friday evening to mark his last few hours of bachelorhood.

A few appropriate and previous gifts and plenty of advice were presented. The seriousness of the step he was about to take was impressed upon him by many of the married men. It must be said for him that he showed no signs of faltering.

After the dinner the ladies were brought forth and dancing until a late hour was indulged in.

KAUAI COUNCIL BOY SCOUTS OF AMERICA

A special meeting of the Kauai Council is called for next Saturday afternoon at 3:30 in the Mokihana Club, Lihue, Kauai.

This is a very important meeting since the future program and policy of the Scout movement will be decided upon at this time. All members of the Scout Council and any others interested in this type of program for boys, and young men are urgently requested to be present.

KAUAI POSTMASTERS NAMED BY PRESIDENT

Nine postmasters of Hawaii were confirmed last week by President Harding. They are all holdovers from the democratic administration. The administration is to be congratulated upon letting politics play no part in local appointments.

The two Kauai appointments are Maria Silva for Eleole and B. D. Baldwin for Makaweli.

GYMKHANA, FEATURE ON ARMISTICE DAY

Plans for the American Legion Armistice Day celebration are nearly completed. The only part of the day's sport in which the plans are not definite is in regard to the steer-roping contest. The usual program of races will be held in the morning.

The program for the Gymkhana are as follows:

- Potato race.
- Doughnut eating on horseback.
- Saddling race.
- Bending race.
- Egg and spoon race.
- Dressing race.
- Musical chairs.
- Balloon spearing hurdle race.
- Hand in hand race.
- Cossack race.
- Pig sticking race.

Each entrant for the potato race will be furnished with the spear and he will run fifty yards to a box containing three potatoes and will be required to bring one potato at a time on a spear to the starting place. First man to bring the three potatoes will win.

The doughnut eating race, each rider will run fifty yards and there eat a doughnut hanging from a string—upon finishing eating the doughnut he will run back to the starting place.

The saddling race, each rider rides one-eighth of a mile on bareback, saddles his horses and returns to the starting place.

The bending race, poles will be set up every 20 feet for 25 yards, and each rider will weave his horse in and out by the poles. Any rider who knocks down a pole will be disqualified.

The egg and spoon race, each rider will carry an egg in a spoon for fifty yards.

The dressing race, each rider rides fifty yards and dismounts, puts on a holoku, a sun bonnet, opens a parasol, mounts his horse and rides back to the starting place.

The musical chairs is the same as the parlor game, each to play on horseback and when the music stops each rider dismounts and holding to the reins seats himself in the nearest chair.

The balloon spearing hurdle race—the obstacle consists of a two-foot hurdle and just on the far side is a balloon which the rider must spear. Each rider will jump three hurdles and break three balloons with the spear.

Hand-in-hand race will be in pairs. Two riders hold each other by the hand, race 100 yards and return. They are not allowed to lose clasp at any time during the race.

The Cossack race—the rider will cross the stirrups and ride one-eighth of a mile standing up.

In the grand finale which will be the pig-sticking contest, each rider will be equipped with a spear and pursue a man on horseback drawing a gunny-sack filled with straw. First man to stick a "pig" wins.

These races are to be ridden with English or army saddles only. Each rider will be allowed only one horse for the gymkhana and will be allowed to enter as many events as he likes. All the entries will be post entries. First place in each event will be five points, second place three points, and third place one point. The rider winning the most points in the Gymkhana will win the prize, a handsome silver cigarette case.

All jockeys, cowboys, and stable-boys will be barred in entering the Gymkhana. They will be allowed, however, to enter any of the rodeo events.

FRANK CRAWFORD SICK

Frank Crawford, vice president of the Bank of Hawaii, and manager of the Lihue branch, went to Honolulu last Tuesday night on the Kinau. On Wednesday he was operated upon for appendicitis.

Mr. Crawford is getting along nicely and his Kauai friends hope to see him back with us in the near future.

BIRTHDAY OF Y.M.C.A. FOUNDER OBSERVED

Sir George Williams, the founder of the Y. M. C. A., will be honored throughout the world Tuesday, Oct. 11th when the date of his birth will be observed by the association members and friends.

No more interesting or romantic story of the rise of a poor and obscure country boy to eminence and honor can be found than that of George Williams and no greater example of the rewards of a life spent in unselfish service for his fellow-men.

George Williams was born October 11, 1822 near London, England. His ancestors were farmers but after George had managed to tip over a load of hay on a smooth and straight road his parents decided that he did not possess the qualities of a successful farmer. They accordingly secured a place for him in a London draper's shop where with boys of his age he worked from sun-up to dark.

His employer was an ardent churchman and invited George to attend Sunday morning services with him the first Sunday the boy was away from home. Something was said in the sermon that inspired the boy with a desire to better his own and the conditions of those with whom he worked. Drinking, gambling and other forms of dissipation were proving the downfall of many boys away from home restraints.

After consultation with his newly made chum, Charley, it was decided to call together a small group of fellows in George's room and see what could be done. The result was an agreement to get together at least once a week for Bible study, prayer and discussion of ways and means to improve the prevailing moral conditions. Wayward young men found the companionship of this group an incentive to worthier living.

The influence of this work soon made itself so evident in the improved morale of the employees that the proprietors encouraged its promotion among the other establish-

ments in the city and from this humble beginning of a few earnest minded young men has grown the world known organization of the Young Men's Christian Association.

Williams after acquainting himself with the drapery business established a business of his own which was a success from the start. He gave all his spare time to the development of the work among young men which he had started as an apprentice and finally became so much interested that he gave up his business to devote his entire time to it.

Queen Victoria during her long reign was an ardent admirer of this work for the young men of the world to which proportions the organization had grown. Thoroughly convinced of its marked influence for good in the lives of all who came under its activities she honored George Williams with a knighthood—a long step from the obscure draper's apprentice to beloved knight defending the young manhood of the world.

OFFICERS OF Y. M. C. A. CLUBS ARE ELECTED

Forty young men were present last Monday night at the first meeting of the Filipino Y. M. C. A. club at Koloa.

The adoption of the constitution, election of officers and choice of discussion course constituted the business part of the evening. A short talk by Dr. A. W. Waterhouse and a few spirited games conducted by Secretary Neil Locke concluded the program. The stimulating game of hot-hand, old but seemingly new to the boys of Kauai, created a bushel of merriment and opportunity for a bit of good natured, get-even emphasis.

Similar organizations have been completed in Lihue and Kapaa. The newly elected officers of these clubs are:

Koloa—President, Regino Domino; vice president, Agaton Ladesma; secretary, Zacarias; treasurer, Lorenzo Ortiga; club leader, Edward Emin. Lihue—President, Amado Saniel; vice president, Marcelo Bayuga; secretary, Pedro Bosoboso; treasurer, Teodoro Rosete.

Kapaa—President, Domingo Velasco; vice president, Marcelo Asuncion; secretary, Marcelo Agueppa; treasurer, Felicimo; leader, Theodore Somonte.

McBRYDE MAN TO IMPORT SQUIRRELS FOR HUNTING

George Little has made another important discovery. He has found that there is a nut loose in the McBryde boarding house and is preparing to send to the coast for a pair of hunting squirrels in order to capture the same.

George will not send for the hunters until he hears from Lloyds in London. He has asked the Lloyds if they will carry squirrel insurance on him, as he does not care to be a casualty in case the squirrels should become ferocious.

Many McBryde people think that George will be unable to carry the insurance as they believe that the premium will be more than he can afford.

OUR CHEMICAL INDUSTRIES

Five million dollars and seventeen years were spent in Germany in chemical research before artificial indigo was perfected—but the discovery brought a monopoly of the world's production of this commodity, rendering the indigo crops of India comparatively valueless. The commercial significance of this achievement is concretely indicated by the fact that in 1897 the indigo crop in India was worth twenty million dollars, while at the time of the opening of the war it was valued at only three hundred thousand dollars. Another instance of the result of such instinted research work was Professor Haber's discovery of a process for nitrogen of the air in the form of ammonia and nitric acid. Previously, for the nitric acid necessary for munitions, fertilizers and various other industries, all countries were largely dependent on the nitrate beds of Chile. Having as much air as the next country, Professor Haber's discovery made Germany independent of all external resources for all nitrogenous compounds. Otherwise she would not have held out more than a couple years in the war, under the British blockade.

The moral of these things is obvious. Chemical science progresses

so rapidly that any nation wishing to continue "self-supporting" in the tremendously broadening field of chemical products must let its chemical industries be constantly guided by scientific research and discovery and must be willing to devote vast sums of money and unlimited time to such research.

Since the war so rudely awakened us to our deplorable dependency on Germany for dyes and many drugs and necessitated our making a belated start in such productions as well as in regard to those other products of chemical industry, war gases and high explosives, we have for the first time become free and independent as to most of the chemical products. But it is plain that we must clearly recognize that we cannot afford to rest on our laurels. To maintain our position in this field of chemical industry—which has come to mean the protecting of a great part of our national industry and the insuring of our ability to produce munitions for our defense in war, if need be—our chemical industries must consent to spare the time and money that Germany has.

Happily, this is being realized. And in safeguarding our position a fine start has been made in the organizing of The Chemical Foundation, a body comprising five hundred of the biggest chemical firms in the country. This association has acquired from the Allen Proprietor during the war covering dyes, stuffs and various other chemicals, with the idea of licensing their use by Americans and thus with the aid of the government defeating the Germans and all other encroachment in these industries which has come to mean so much to us. The Foundation is a corporation run without profit, aiming only to help us retain what we have won in the chemical world. It constitutes in itself, a most helpful sign that we will succeed in doing this. And it should encourage us meanwhile to build up our high-school courses, our college staffs and laboratories in the research end of the chemical industries field. Here, as elsewhere eternal vigilance is the price of safety. If our chemical industries continue to realize this, we would seem to have good ground to hope for a future in these activities incalculably better than our past.—Popular Magazine.

Waimea Stables, Ltd.
At Waimea and Nawiliwili

The Most Famous Garages on Kauai.

The place to get transportation to

The Barking Sands, Olokele Canyon, Waimea Canyon, Kokee Camps, Kukuolano Park, Wailua Falls, Hanalei, Haena Caves

Our automobiles are comfortable, our drivers are reliable and have been with us for many years, and know every inch of the country.

We rent Ford Cars Without Drivers.

We do draying and hauling by trucks all over the island. We run the stage line between Lihue and Kekaha three round trips per week.

WAIMEA BRANCH
Tel. 43-W
A. GOMEZ, Mgr.

NAWILIWILI BRANCH
Tel. 492-L
CLEM GOMES, Mgr.

The K. C. Hopper News Agency
Lihue, Kauai

Subscriptions received for
Magazines, Newspapers and Periodicals
from all parts of the world.

All Languages
Foreign and Domestic

Patronize Home Industry and Save Money

READ THE GARDEN ISLAND

Sweeping Reductions in Used and Re-conditioned Cars

8 CYL. CADILLAC

7 Passenger Touring

"I'm going for

\$750.00

but they are nutty selling me so cheap"

1917 BUICK

5 Passenger, New paint, car in excellent condition.

This boat should be able to climb everything except telephone poles

\$763.00

1920 DODGE

An unusual offer for this fine Touring car

The Car that helped win the war

\$985.00

CHEVROLET

1917 Touring, Tires 90% new.

Going at a sacrifice

Even Barney Oldfield would convert this into a Speedster

Take it for 171 Shekels

1917 FORD

A Roadster equipped with Bosch Magneto

A real bargain for

\$345.00

OVERLAND

1920 Model Roadster

100 inch wheel base, 130 inch spring base
This rides like a \$3000 car

\$672.00

DODGE

1919 Touring Car

"They say I am Kauai's Favorite Motor Car"

Faithfully yours for

\$765.00

BUICK

1917 4 Cylinder Touring

This Car has a brand new battery

Ready to run for

\$345.00

1920 FORD

Touring Car with 2 new Cord Tires

Some Lizzie for

\$583.00

Walter Eklund, Mgr.

The von Hamm-Young Co. Ltd., of Kapaa

Phone 585

- SPORTS -

LEGION INDOOR BASEBALL SCHEDULE

The American Legion indoor baseball league starts its schedule at Makaweli Community House next Saturday evening at 7:30. The committee in charge wants it understood that any man eligible for the legion may play on a team even if not a member by handing in an application to the adjutant before the games start. The Lihue team will meet the Makaweli-Waimeas, while Koloa-McBryde will tangle with Kawahau. The Lihue team has an edge on most of the teams as they have been together twice and will present a strong front against West-enders. Kawahau is famed for its baseball teams and expects to bring home the bacon in the indoor league as well. Koloa-McBryde have a strong team and are after the scalps of the boys from the east side. Frank Cox has confidence in the line-up he will put in the field to represent Makaweli-Waimea and a large evening can be expected.

The Koloa-McBryde team will have the following men to pick from: Braue, Monsarratt, J. Lopes, D.C. Lovell, J. S. Kondo, J. Jacinto, Frank Pugh, Y. Yamada, Herman Brandt, and other men in the district who are eligible.

The Makaweli-Waimea team will have the following men to pick from: J. Catton, E. L. Damkroger, Frank Cox, J. Fernandez, C. T. Hatrick, G. K. Kekaouha, N. Miyake, G. S. Sissons, R. C. Turner, W. H. Wright, E. K. Watase.

The Kapaa will pick from the following: C. Alalu, M. Boite, A. Branco, J. Corstorphine, J. Cummings, J. Fujita, Dan Hano, Dr. Haggood, W. F. Horner, A. Horner Jr., I. Kahu, E. Livesey, J. Mandrigues, K. Miyoshi, S. Nogami, S. Opio, A. Raposa, J. Raposa, G. Raymond, A. Rais, H. Sheldon, J. E. Silver, S. Spalding, J. Taber, E. Waiwaloie, N. E. Weight, H. K. Yim, J. Bodrero.

INDOOR BASEBALL

The American Legion indoor baseball team defeated the Nawiliwili team in a wild and wooly game at the armory Monday evening.

The final score was 33 to 24 and was marked by heavy hitting by both teams.

Phillip Rice heaved a good game for the Legionaires while Prioste and Frank worked for the automobile men.

FOOTBALL

Sheriff Rice's Court House Gang took the Lihue American Legion indoor baseball team into camp last Wednesday evening after a strenuous battle. The final score was 15 to 11. The outstanding features were the pitching of Jimmy Burgess and Phillip Rice and the fielding of Sheriff Rice and Adrian Englehard.

Charlie Rice umpired and his decisions were terribly impartial and impartially terrible.

KAUAI SOCCER LEAGUE MEETING

A meeting of the Kauai Soccer League has been called for Wednesday evening, October 12, 1921, at 7:30 p. m., Honolulu time, at the residence of Dr. A. H. Waterhouse, Koloa, Kauai. Anyone interested in good soccer for Kauai for the coming season is invited to attend. The annual election of officers will be held. The meeting will be open for any business that may come before the meeting.

E. A. CREEVEY,
Secretary,
Kauai Soccer League.

INDIVIDUAL BATTING AVERAGES

The following is the "Vital Statistics" of the Makees for the season of 1921:

Name of Player	g	ab	r	bh	po	e	av.
P. Cummings	1	2	1				.500
K. Hee	13	58	8	19	27	25	7.328
Joseph Rodrigues	12	44	10	14	8	110	7.318
M. Tsunehiro	13	52	11	16	40	26	12.398
J. Yoshida	6	25	5	7	2	6	.280
D. Doi	12	54	15	15	1	17	3.278
J. Cummings	12	39	11	10	19	6	6.256
Nick Hoopli	1	4	1	1	4	2	.250
H. Holt	4	9	4	2		25	2.222
K. Soong	13	50	12	11	23	95	12.220
K. M. Ahana	12	41	13	9	21	19	7.219
King Kano	13	53	4	7	1	13	2.132
M. Morita	6	18	3	2	1	6	1.111
Joseph Scharsch	1						.000
J. Pereira	2	2					.000
B. Palmeira	2	2			1		.000
N. Fugitani	1	1			1	3	.000
Dan Arcia	3	8	2			1	.000
Lee Shin	2	5	2		6	3	.000
Totals	13	467	101	114	115	357	59.244

Games won 17 (including five forfeited games). Games lost 1. Winning per centage .544.
Average runs scored per game 7.78
Average runs scored by opponents 4.15
Average hits made per game 8.77
Average hits made by opponents 5.85
Errors per game 5.54
Errors per game by opponents 6.90

School Notes

On Friday, September 30, the Lihue school had a game of playground ball, played against the Hanamaulu school on the Lihue ground. We played the game squarely and won the game that afternoon.

Though the Hanamaulu team was defeated they played their best and were good losers.

There are some sick teachers in the Lihue school. They are Mrs. Keahi and Mrs. Lane. In their places Mrs. Wood and Mrs. Otani are teaching.

Each room of the Lihue school has a flower garden along the school building. Every pupil is working hard to have a pretty garden. They work on them when they have time. Some of them are finished and some are just beginning. Flowers are planted in them.

Miss Young is the music teacher of the sixth, seventh and eighth grades.

In last week's paper we noticed an article stating that the school teachers should teach the children which side of the road to walk on. Mr. Simpson and the other teachers have talked to us ever since school began about this. Teachers of the lower grades have given illustrations such as using a child for an auto; and if the other child was on the wrong side of the road, the child playing that he was the auto would bump into him. Then it was explained that cars would do the same thing. The teachers are surely doing their duty along this line. They have also instructed us to keep off the water pipe near the Japanese school, and not to cross the railroad tracks at the mill, only at the crossing. These things were also told us last year. We are trying to aid the community and auto club by picking up glass and nails on the road.

KAUAI HIGH

Two new political parties have been born in the Kauai high school. The freshman class has decided to elect its class officers in accordance with the election laws of the territory of Hawaii. Its members have divided into the Square Deal and Hold Steady parties. The latter will organize tomorrow.

The Square Deal party has elected the following central committee: Ellen Sisson, Grete Glud, Risaboro Miyoshi, Bobby Anna and Emily I. They have chosen the following slate for the primary election to be held on Thursday: President, Noboru Kiyonaga; vice president, Margaret Sloggett; secretary, Ah San Ahana; treasurer, Eileen Scharsch. Risaboro Miyoshi is party boss.

The central committee of the Square Deal party has issued an appeal to the freshman class to support its candidate on the following platform:
1. We shall, if elected, try in every possible way to keep the school clean and sanitary.
2. We believe that as much time as possible should be devoted to athletics.
3. We favor the development of a system of student self-government.
4. We promise, if elected, more get-together school parties.
5. We pledge ourselves to stand in school affairs for unity, co-operation and a square deal for all.

LIGHTNING KILLS THREE HEAD OF CATTLE

An aftermath of the electrical storm of a week ago was the discovery of three cattle on Lihue plantation that had been struck by lightning.
Cowboys discovered the bodies about two days after the storm and all three were badly burned, proving that they were victims of the storm.
So far these are the only casualties reported.

FREAK HOT WATER WELL FLOWS 18 DAYS, FLORIDA

SEBRING, Fla.—Hot water which began flowing 18 days ago from a well being driven for a local concern still is coming to the surface today at a rate of 40 gallons a minute. Throughout the period the flow has been maintained an even temperature of 130 degrees. It is said to be the second instance of a hot flowing well observed in Florida, one having been drilled at Pensacola about 20 years ago. The flow of the Pensacola well was lost when the drill broke through the rock and diverted the water into a subterranean lake.
Sebring is about 40 miles northwest of Lake Okechobee, and in that part of the state whose formation indicates it was once open sea, the land having been built upon coral reefs.

NIGHT SCHOOLS FOR TEACHING ENGLISH ARE STANDARDIZED

One of the most hopeful signs of the times is the increasing demand among non-English speaking peoples for the teaching of the world language.

The county Y. M. C. A. has been fostering this work in the past with some very encouraging results. That these demands may be met and carried on in the most efficient way, a committee consisting of representatives of the Y. M. C. A. and public schools was appointed by Dr. A. H. Waterhouse, chairman of the county Y. M. C. A. committee to draw up regulations governing the future conduct of night schools under Y. M. C. A. supervision.

Three emphases will be maintained in the work of these schools:

1. Classes will be confined to the teaching of English. The purpose being to aid in eliminating misunderstandings and lost motion in the handling of individuals and groups.
2. Americanization will be given major consideration.
3. Other points incorporated are:

To form a class personal request must come from at least ten persons. If any class drops below the number of ten it will be discontinued.

Teachers for classes will be approved and appointed by the educational committee.

Uniform salaries, tuition fees, size and number of classes and hours of teaching will be uniform throughout the county. Monthly reports will be kept and submitted to the executive secretary of the educational committee.

The following people compose the committee:

- Dr. A. H. Waterhouse, chairman.
- Nel Locke, executive secretary.
- Miss Elsie Wilcox.
- H. D. Sloggett.
- Prof. F. J. Dollinger.

A scientist claims to have discovered that blonds lack the mental acumen usually possessed by brunettes. From which we gather that said scientist has a blonde stenographer and a brunette wife—and the wife has just gotten wise to the fact.

We hope that Mr. Dawes carries out his purpose of suppressing The Congressional Record. It will save money and keep members from talking too much.—New York World.

President of the Dairymen's League was a trifle indiscreet when he announced that the price of milk would be advanced on account of drought.—Wall Street Journal.



DON'T

be so absorbed in building an estate that you neglect to protect it.

Instruct your attorney to draw your will and nominate **Hawaiian Trust Company** as **Executor** thereby securing protection for those dependent upon you when you are no longer here to guard them.

CORRESPONDENCE INVITED

We Are Here to Serve You

Hawaiian Trust Company, Limited

Honolulu, Hawaii

The Oldest and Largest TRUST COMPANY in the Territory of Hawaii.

Capital, Surplus and Undivided Profits Over One Million Dollars.

SAFE DEPOSIT VAULTS

Household Goods

WE HAVE

Just Received Direct from the Factory
New Lines In

CANE SEAT and BACK STEAMER CHAIRS
CANE and WOOD SEAT DINING CHAIRS
CANE and WOOD SEAT SEWING ROCKERS
CANE SEAT and BACK ARM ROCKERS.
REED SEAT and BACK ROCKERS and CHAIRS
WOOD SADDLE SEAT ROCKERS and CHAIRS
CHILDREN'S WOOD SEAT ROCKERS and CHAIRS
CHILD'S HIGH CHAIRS—CANE, WOOD and LEATHER
SEATS—FOLDING CHAIRS and STOOLS, WOOD STOOLS

CARD TABLES—FELT and LEATHER TOP

Enameled Iron Beds

FOLDING STEEL COTS, HANDY COUCHES, MATTRESSES
—BED-SPRINGS

Deltax Rugs and Mats

NIAGARA BATH RUGS, AXMINSTER RUGS.

A Few Samples In Our Window

THE STOCK IS UP STAIRS

Come In And Look It Over

LIHUE STORE
Kauai's Emporium

THE GARDEN ISLAND

Issued Every Tuesday

KENNETH C. HOPPER

Managing Editor

TUESDAY

OCTOBER 11, 1921

WHY NOT TELL US?

Hardly a week passes but we bump into someone who asks: "Why didn't you have something in the paper about so-and-so; I thought everybody knew about it?" And that is where they make a mistake. The thing you hear may be a long time getting to the editor. You may think it is common talk, when, in fact, not more than a half dozen know anything about it. So don't think the editor is a mind-reader, or that he has a way of finding out news without people telling it to him. March right up and tell him that which you have heard and which you believe would interest others when they see it in the paper. It takes but a few seconds, and it may help wonderfully to make the very kind of paper you want printed in your home-town. Don't wait until the paper has come to tell him the things that are news to you. Practice the modern slogan, "Do It Now!"

GET THE THRIFT HABIT

If young people were taught the value of money fewer old people would be dependent upon charity.

Parents are too apt to gratify the whims of their children by giving them money to spend for candy, ice cream or other dainties. They give freely a nickel, a dime or a quarter, and the child spends the money as freely as it receives it. Every unearned piece of money given to a child to spend is contributing to the formation of a habit that may make him or her poor all the days of their lives.

Children who acquire the thrift habit at a tender age carry it with them to manhood and womanhood, and it is the foundation of a home and life-long happiness.

Suppose the child spends a nickel a day that does not appear to be much, but there are 365 days in the year and 3,652 days in ten years, and a nickel a day means something.

It is not altogether the nickel, but it is the habit of spending that is injurious to the prospects of the future of the individual.

Look around you and you will see many beautiful homes and many people in good circumstances. They have acquired the thrift habit, and instead of spending more money than they could afford, they have saved until they have been able to live in the proper way and enjoy comforts and the good things of life that the spendthrift can never know.

The spendthrift's purse is always empty. He may, and generally does blame his condition upon others or upon his surroundings; but nine times out of ten the individual is the architect of his own destiny. He has sowed the seeds of poverty and is reaping the harvest at the time when he should be living well and in the enjoyment of a competency that would drive from his mind the cares, worries and troubles that come to the spendthrift.

Teach your children to be thrifty. Teach them the value of a nickel, the value of a dime and a dollar, and they will bless you in after life.

An armistice has been called in the rolled stocking war. Just as the deciding battle was about to be fought Dame Fashion decreed that skirts shall be longer. Thus the question has been settled. There will be no bare knees, and self-determination has been forced to yield to the decree of fashion.

When a man considers himself well up in the prominent citizen class his neighbors begin to see something in him that they did not notice while he was a commoner, and often that something is not altogether to his credit. Self-determination along these lines is not as a rule productive of harmony in the community. A man is not usually measured by his own opinion of himself.

Ambulance calls have fallen off 30,000 a year in New York since the Volstead act went into effect. In other words, people are now watching their steps.

French engineers have evolved a plan to harness the tides for the development of power. Old ocean may yet heat, light and energize the homes and workshops of the world.

Thrift is the art of buying a complexion to match a hat instead of buying a hat to match a complexion.—St. Louis City Journal.

Golf is an ideal diversion, but a ruinous disease.—Forbes.

THE WILCOX MEMORIAL

At the close of the church services at the Lihue Union church, Sunday morning, Rev. Bayless showed the congregation an architect's drawing of the Wilcox Memorial building and gave a brief description of it.

It would be hard to imagine a finer or more worthy tribute that could be paid by the parents to two such worthy men and sons. As their lives stood for service in this community, so this building will stand for many, many years to come, perpetuating their memories. No marble monument could keep their memories so green, no epitaph could speak so eloquently of their noble lives while they were with us.

DON'T BE DOWN-HEARTED

Of 3,250 French villages in which life was suspended during the war, 3,216 have come back to life. The inhabitants have returned to rebuild their homes and their fortunes.—The remaining forty villages were so shot to pieces as to be totally uninhabitable.

We human beings are a wonderful breed after all, even with our faults. We were knocked down and out; but before long we were on our feet again, and, wiping the blood from our faces, we go back with a smile to whatever we happened to be doing. Cities crumble, fortunes are wiped out, but faith and hope and love are eternal, and together they resume their song in men's hearts soon after the first shock of disaster. What American soldier believed the inhabitants of those French villages would ever return to the homes from whence they had fled? Desolation and ruin seemed complete. As a picture of despair it seemed nothing could be added to the scene.

The fact of the business is, there is no irreparable desolation except that which we nurture in our own hearts. There is no hopelessness except that which we hold to our bosoms as if it were a treasure of rare price. Hope and faith are trying to sing in our hearts always, if we will but listen.

WHY WORRY?

Says Ted Robinson in the Cleveland Plaindealer:

An Indiana lecturer committed suicide the other day. The subject of his most popular lecture was "Why Worry?" The papers say that financial difficulties drove him to this rash act.

It is very easy to write facetious paragraphs about a thing like this: to say "physician, heal thyself," and quote old bromides about practicing what one preaches.

But it is probable that such comments would miss the point entirely. Without knowing anything about this unfortunate lecturer, we are willing to venture the opinion that his tragedy was the result, not of failing to obey his own philosophy, but of following it too literally. It is possible that he said "why worry?" when a little worrying was what was called for; that he refused to be bothered with annoying details, until at last they accumulated and overwhelmed him.

Of course we may be all wrong about this particular case; but on its surface it looks like another deserved blow for the don't worry school of philosophy.

Personally, we never worry at all, and that's why it is so hard for us to pay our taxes and our rent and to get a little money saved up for a chilly day.

We wish it were our nature to worry a bit—then we should be rich and slender, and perhaps famous.

But the fact that we have no talent for worrying ourselves shall not prevent us from preaching the gospel of worry to others.

We envy and admire the worriers; they get things done; they are not satisfied with vegetative comfort, and fatness, and dolce far niente and laissez faire, and all that sort of idle idioy.

If they should write poems, they worry lest the poems should not be quite perfect, and write better ones.

If they make fortunes, they worry lest the fortune should not be sufficient for their old age, and so they make bigger fortunes.

Whereas, your don't worrier is satisfied with the sloppy work and a mere pittance.

Long live Worry!
It may wrinkle your face, but it keeps you figure down.—From *Toots*.

The idleness of five million people is explained by the circumstances that employers can't afford to pay the price and the idlers can evidently afford to remain idle—Houston Post.

JAS. F. MORGAN

Company, Limited
REAL ESTATE AND INSURANCE
STOCKS, BONDS,
No. 125—131 Merchant St.
P. O. Box No. 594 Honolulu

CALIFORNIA FEED CO. LIMITED

Dealers in
Hay, Grain and Chicken Supplies
SOLE AGENTS FOR
International Stock, Poultry Food
and other specialties. Arabic for
cooling Iron Roofs. Petaluma In-
cubators and Brooders.
King's Special Chick Food
P. O. Box 452 Honolulu

Honolulu Paper Co. Limited

Wholesale Paper Dealers
and Stationers.

821-823 Alakea Street
HONOLULU, HAWAII.

HOTEL LIHUE

(The Fairview)

Twenty-two Elegant Rooms
in Main Building
Three Airy Cottages
Cuisine Unexcelled in Coun-
try Districts

W. H. Rice, Jr.,
Proprietor



KEEP YOUR PICTURES IN PHOTO ALBUMS

It preserves them for future entertainment.

Complete new assortment from 35c to \$10.25.

Special Attention to Orders by Mail

HONOLULU PHOTO SUPPLY CO.
Everything Photographic
1059 Fort Street .. Honolulu

Koloa Plantation Store

Wholesale and Retail Groceries
Dry Goods of all Descriptions

General Plantation
Supplies

The Bank of Hawaii Ltd.

LIHUE BRANCH

BANKING HOURS:

9 A. M. TO 3 P. M.

Faith Moves the World

It is faith in one form or another which is responsible for the permanence of our whole economic and social life.

No business can grow, no community become prosperous and beautiful, no people contented and happy without a certain amount of faith in each other and in the community in which they live.

Only by faith is it possible for the Greater Hawaii to become more than the dream of men who have given their best to the community.

For nearly two decades the name Waterhouse Trust has been a symbol for the faithful performance of work entrusted to it. As the community grows this company is growing and still will continue to serve faithfully when the Greater Hawaii becomes a reality.

WATERHOUSE TRUST CO., LTD.
HONOLULU

Exchange

Do you want
to send money away?

If you do, let this
bank handle the
transaction for you.

We can remit money
by check or cable
to any part of
the world.

THE BANK OF BISHOP & CO., LTD.

Waimea, Kauai.



Copyright Hart Schaffner & Marx

Silva's Toggery, Honolulu.

JOHNS-MANVILLE PACKINGS

are as familiar to you mill men as
pots and pans are to the housewife

This advertisement is not to point out the merits of this brand of packing, but simply to remind you that for the fall repairs in the mills, Johns-Manville products are at hand.

THE HONOLULU IRON WORKS CO.

Sole Agents in Hawaii for Johns-Manville Power
Specialties.

Plating Makes Old Things New Again

Silver which has become dull and tarnished can be restored to its original beauty by silver plating. Hardware about the house will profit by plating. Nickel plating of automobile parts — hub caps, reflectors, bumpers, instruments, will make the car look far better.

Our plating plant is equipped to turn out any kind of plating finish desired, in a short time and at moderate cost.

Lewers & Cooke, Ltd.
Honolulu.

GOOD MEALS IN HONOLULU

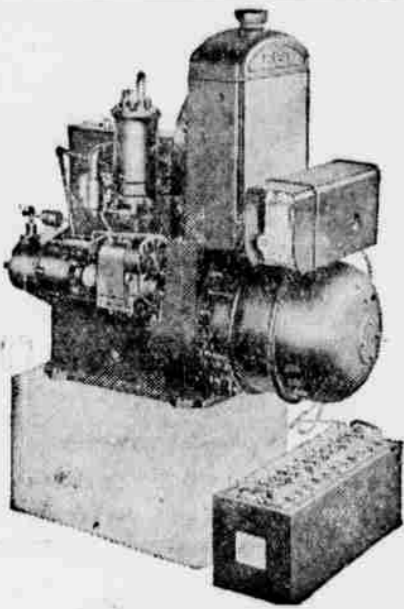
Await you at Child's

New, modern, high class restaurant, centrally located. Cool and comfortable. Intelligent, courteous service. European plan. Operated in connection with the



Blaisdell Hotel

J.F. CHILD, Proprietor.



Make Your Own Light and Power

Here is the complete Kohler Automatic Power and Light outfit. Note the simplicity of its construction, its clean-cut appearance, its sturdy build—note, above all, the entire absence of the usual bank of large glass battery cells. There are but three simple units in the Kohler system: its efficient four-cylinder, water-cooled motor; its dependable generator connected directly to the motor, and a small automobile-type battery for starting the motor.

SOLD BY

The Hurd-Pohlman Co., Ltd.,
HONOLULU, HAWAII

Dealers in General Merchandise

American Factors Paints
AmFac Red Label Coffee
Yale Locks & Hardware

AMERICAN FACTORS LTD.
WHOLESALE DISTRIBUTORS



E. O. HALL & SON Ltd.

HONOLULU

Distributors

for the

TERRITORY OF HAWAII

Get our latest prices

GARDEN ISLAND MAKES AN AWFUL ERROR

Occasionally a really big piece of news "gets by" the best of reporters. And certainly one big piece of news slipped right here in Lihue. Sandy Hutton can't understand it. Neither do we. We wouldn't blame Sandy much if he told us he didn't want our valuable paper any longer. The piece of news should have read:

"Last Wednesday morning a fine baby boy was born to Mr. and Mrs. A. G. Hutton at Niumalu. Mother and son and father are doing well. First child."

But some way or another that news wasn't printed. Every member of the staff congratulated the happy parents but forgot to do it publicly. We'll do better next time, Sandy.

JAPAN MAY FIGHT IF NOT ALLOWED TO EXPAND, SAYS BUNKER

"With Japan's population increasing at 700,000 a year and the doors of Australia, New Zealand, Philippine islands, Canada and the United States closed to oriental immigration that nation is confronted with perhaps the most serious of the world's problems," asserted Dr. F. F. Bunker, of the Pan-Pacific Union in his lecture last evening on the subject, "An Important Factor in the Inter-Relation of Pacific Peoples," at the Y. M. C. A., Honolulu. If the United States and the British Empire refuse to consider the problem of Japan's forced expansion, then it is but natural that she should fight, Dr. Bunker said in effect.

"There are now in Japan proper from 60 to 70 million people and they are increasing at the rate of about 700,000 annually. During the life-time of many of us, Japan must find place for 25,000 new people. But what is the situation in Japan right now with respect to the relation of population and food supply?"

"The great bulk of population is centered in the agricultural area, about one-sixth of the total area of Japan. According to the latest Japanese year-book, there are five and a half million families engaged in farming, comprising about forty million persons. Each of two millions of these farmer families is farming an area less than an acre and a quarter in extent. With another two million families the acreage of each does not exceed two and a half acres. Moreover there are three and a half million of these families who do not own their own land, but rent, paying 47 per cent to 55 per cent of their crops for the use of the land.

What's Japan Going to Do.

"With Japanese population increasing at the rate of 700,000 a year and China's population increasing at the rate of eight million a year and with present populations in these countries almost at the starvation point what are they going to do? What is to become of them?"

"New Zealand says they can't come there. Australia won't permit them there. They can't enter the United States. If they begin flocking to Mexico in many numbers, an awful fuss will be made. You know what a furore it created a few years ago when a handful of Japanese was discovered at Magdalena Bay. What is to be done?"

"I am not attempting to answer these questions; I am concerned now with only stating the case. However, I don't want to say that the answer won't be reached if New Zealand and Australia and the British Empire and the United States, all stand aloof saying, 'It's none of our affair what becomes of you.' America Must Go Slow.

"When a business firm faces a crisis in its affairs because of untoward conditions, one should not be too harsh in one's criticism and condemnation if the managers of the firm seem somewhat sensitive as to their rights and privileges under the law or if they appear somewhat overzealous in taking advantage of every opening that appears to us to be self-centered. We must not forget with them their whole future is at stake, while our's isn't. So we can well afford to be patient and magnanimous and very slow at taking offense or in giving offense through harsh criticism.

"The peoples of the Pacific, particularly those living in Australia, New Zealand, Canada, the Philippines, Hawaii and the mainland states, need to be informed about these powerful forces which are at work fashioning the destiny of our peoples and races. With a clear understanding of our brother's problems and difficulties will come sympathy for him and a willingness, to help him in reaching the right solution. One of the functions, surely of the Pan-Pacific Union is that of helping open the minds of men to these significant things and of co-operation with all other agencies working to this end."—Nippu Jiji.

CHRISTIAN AMERICANIZATION IS BEING PROMOTED

Rev. Royal A. Hall, of Koloa, assisted by Mrs. A. W. Waterhouse and Secretary and Mrs. Nell Locke, organized the Lawai Sunday-school last Sunday afternoon. Seventy-five scholars and six visitors constituted the attendance at the initial meeting. Mr. Hamamoto and Mrs. Takahashi have been the local boosters. An enrollment of 100 is expected within the next month.

The purpose of these organizations is not alone to teach the principles of the Christian religion but the work is all conducted in English, this affords another opportunity to increase the scholars' use and knowledge of that language and to instill loyalty to the country of which he is to be a future citizen.

The establishment of similar schools is contemplated at other points on the island.

RUBBER MAN MAKES TOUR

Edward G. Wilmer, president of the Goodyear Tire & Rubber Co., Akron, Ohio, has just returned from a "swing around the Goodyear circle" in which he studied the company's production activities outside of Akron.

Summarizing operations in the rubber industry during the past half year, Mr. Wilmer declared in an interview on his return to Akron—which has been released on the coast by A. F. Osterloh, vice president of the California Goodyear company today—his conviction that the foundations are being soundly laid for future stability and progress.

"Our sales during the summer have exceeded our expectations of last spring," he said. "There was a larger use of automobiles than we had thought there would be, compelling our production of tires to go with as high as \$5 per cent of its peak volume. Part was due undoubtedly to the fact that there hadn't been the normal buying during last fall and winter. Neither consumers nor dealers did any stocking up this summer, and they are still buying carefully, from hand to mouth.

"We can reasonably expect, based on the summer's experience, that the volume of business in post-war years, should exceed this year's business. And this summer's business has been, all things considered very satisfactory.

"At the Canadian plant at Toronto," he reports, "they have completed their re-adjustment to new conditions and are moving ahead. Progress is being made in the domestic field and even more encouraging progress in export.

"All along the Pacific coast we find business conditions were better than in the country generally. They have felt the readjustments much less than in the country generally. They have felt the readjustments much less than we have in the east.

"I was more than pleased over the new Goodyear factory at Los Angeles. It is a wonderful plant, physically, ideally adapted to serve its purpose, and it is serving admirably a most wonderful territory.

The California factory reached a peak production of 4100 tires a day this summer. A large volume of business that will use proportionately more of its facilities will greatly improve its showing, but already it is meeting the demands upon it, both from the standpoint of production and current earnings.

"In Arizona, where the company has its cotton plantations, I found a section of America which had gone through great reverses during last winter and spring, but which is now showing real signs of revival.

"They had in the Salt river valley -80,000 acres in cotton last year. They had only been in the business of raising long staple cotton for three or four years, and were not prepared to carry them thru a year in which the prices of their product slumped substantially under the cost of production.

"Although this year's crop was hypothecated, and a great deal of it is still unsold, they planted 65,000 acres of cotton this year, along with other crops, convinced that the market would turn in time, and that cotton had come to stay in the southwest.

"I was passing through there just about the time that the recent rise occurred in the price of short staple cotton and a corresponding rise in the price of long staple cotton, together with actual buying and selling contributed much to a generally better business tone in the valley.

"It is very reasonable to expect that the first substantial movement of our crops may be expected to provide a healthy stimulant to general business throughout the country."

We Have It

Whatever you may need in the line of Dry Goods, Groceries, and General merchandise, we have it.

J. I. SILVA'S
Eleele Store

JOHN HANSEN
CONTRACTOR
AND BUILDER

OFFICE - LIHUE HOTEL

The Board of Lubrication Engineers

knows the needs of each make of engine and recommends a grade of ZEROLENE for its correct lubrication

STANDARD OIL COMPANY (CALIFORNIA)



A grade for each type of engine

Save Your Clothing

ECONOMY demands that the expensive shirt, the fine gown or the suit be laundered, cleaned or dyed only by

THE METHOD EXQUISITE
of the

FRENCH LAUNDRY
and DYEING AND CLEANING WORKS

J. ABADIE, Prop.

(Send the package by Parcels Post)

Honolulu

READ THE GARDEN ISLAND

TIP TOP THEATRE

WEEKLY PROGRAM



KATHLEEN CLIFFORD
in "ANGEL CHILD"
A PLAZA PICTURE

THURSDAY

Kathleen Clifford

in

"ANGEL CHILD"

FRIDAY

Elliott Dexter

in

"The Witching Hour"

SATURDAY

Walter Niebuhr

in

"His Brother's Keeper"

SATURDAY MATINEES ARE DISCONTINUED



ADOLPH ZUKOR PRESENTS
ELSIE FERGUSON
in
WILLIAM D. TAYLOR'S PRODUCTION
"Sacred and Profane Love"

SUNDAY

Paramount Picture

TUESDAY

David Powell

in

"The Mystery Road"

PUUNENE MYSTERY HAS CENTRAL MAUI GUESSING VAINLY

Puunene has a mystery which has roused the interest of not only that community, but of all central Maui as the news of it spread about, says the Maui News. Stones are being thrown, fairly showered upon and around a house and from unknown senders letters or notes are being delivered. Though the police officials have been working on the case for some time, they have not discovered the source of the annoyance. As many as 300 or 400 persons had gathered around the house of a night to witness the strange happenings. Though the stones appear to fall out of a clear sky and though the notes are delivered by someone unseen, there has been no hint of "ghosts," or discarnate spirits in any one of the numerous notes the family have received. There appears to be no occasion to refer the matter to the Psychological Research Society, since the writer has said he will "stay with" the family he is annoying "until my death."

Police Story.
From police sources it is learned that the family which is suffering the annoyances is Portuguese and consists of father, mother and daughter. Their troubles started when the notes began to arrive shortly after it was announced that the daughter was to marry her cousin. Then and since, following a warning whistle, a note written in lead pencil, large letters on brown wrapping paper, would be found under the door or on the porch or somewhere about the house. In time the family came to expect and look for the letters after hearing the whistle, and they always found one. The language of the letter is fairly grammatical but it is evident that the writer disguises his handwriting. The writer says that the family knows who he is and adds that he will never be caught. He makes fun of the police for failing to detect him and details happenings in the house and about the camp.

Long Continued.
For months past dating as far back as June, the family would be showered with gravel and broken stones when returning from the picture shows, on reaching the stone quarry or perhaps not until almost home, but none of the stones ever struck any of them. Recently the stones have fallen in the crowd around the house, not striking any one, though one narrowly missed the sheriff. They appear to come from no particular direction nor do they bounce or roll along the ground from where they strike as a stone ordinarily would when thrown near the ground, but on the contrary, bounce or roll a very short distance more as if they came from above. Larger stones and a piece of iron weighing six or seven pounds have struck upon the roof of the house.

Day as Well as Night.
It is not only at night and in the evening that the annoyances occur. In broad daylight stones and gravel have fallen on or about the house but no thrower of them has been seen. So also, in the daytime the whistle has been heard and letters have been found at the door or under it.

The sheriff has quite a collection of such letters including one received Friday night in which references to his office are couched in highly complimentary terms.

Parties organized in Wailuku went up several nights last week and members of such parties came home mystified.

So persistent has been the annoyance that the members of the family have become extremely nervous and close-by neighbors are becoming almost as much so. The section is very closely settled.

Relief Promised.
Saturday morning the family found one of the notes lying on the stove. It said the writer was very sorry for all the annoyance caused and would cease the stone throwing and the letter writing. Since then there have been no repetitions of the troubles and mysterious incidents, and the police believe their activities have brought an end to the affair, though investigations are still in progress.

SIAMESE RULER GIVES \$1000 TO PAN-PACIFIC UNION; ACCEPTS OFFICE
The king of Siam has accepted an offer to become an honorary president of the Pan-Pacific Union, and as a token of his appreciation of the good work which the union is doing instructed the Siamese legation at Washington to send a draft of \$1000 as a contribution to the funds of the union.

The notification was received by Alexander Hume Ford, director of the Pan-Pacific Union, in the form of a letter from Phra Sanpakitch, charge d'affaires in the Siamese delegation at Washington.

CHRISTIAN AMERICANIZATION

(By Kakuichi Oshimo, in The New American)
Yesterday I saw a vast stretch of green and fertile land, watered by a hundred streams and rivers winding their way thru the deep ravines and lowland valleys, wild and untouched by human hands; I saw the narrow and broken trails, at places hardly distinguishable, leading to the sea-coast, and I saw scattered here and there, over the plains and on the seashore, the native grass huts, crude and unfinished, with their uncovered tenants. But I saw nothing, nothing that would suggest even the slightest trace of civilization.

Yet, to-day, I see a huge plantation, scientifically managed, and employing thousands of men engaged in producing food from the virgin soil. And I see, here and there a great network of nicely paved streets, with motor-vehicles moving about as little ants industriously at work. I see massive structures of concrete and steel, housing great factories and plants, and I see lesser buildings, where are accumulated all the world's store of knowledge and invention. Surely nobody can view without surprise and wonderment, this wonderful transition of Hawaii from a state of uncivilized isolation to civilization.

If you will concede that to external pressure and influences brought to bear upon her, is due her very rapid progress, you will agree that the pressure and influence came largely from the west, and to a very large extent from the mainland. The influence of, among others, that small band of Christian missionaries, and other unselfish, God-loving people, was truly great and lasting. We can truthfully say,—and we can not pay a better tribute to these Christians, who braved the uncharted Pacific and sought these unfamiliar shores, to bring a new civilization—that they were responsible for the remarkable development of this country. Just as we can say that the Christian missionaries have been largely responsible for civilization and development of China, Japan, and even the remotest section of darkest Africa. Civilization has always traveled in the trail of these missionaries.

But these Christians have only sown the seeds of Christian civilization in Hawaii. More will depend on the Christians of to-day and tomorrow, who must carry on the work, nurturing the plants germinated from the seeds thus sown. The early Christian missionaries had only to start the stupendous task of Christianizing the people Hawaii, and unless the work is continued by the Christians of today, Christianization in Hawaii will not thrive. For with the continual flow into this country of Orientals, who nearly all profess the Buddhist faith, the undertaking of this great missionary work has become increasingly difficult.

To any person who has given the matter of Americanization any thought at all, it will become plain that the foundation upon which is built and moulded an American life, is the Christian religion. The Declaration of Independence is a typical Christian document, the Federal Constitution is based on the Bible, and the lives of our great Americans further bear testimony to this assertion. And any Americanization program that is not Christian in its scope will not in the truest sense train our youth for American citizenship, however much it may contribute to it in a general way. Moreover, Americanization that is not Christian Americanization is so fraught with possible corruption, and contamination, that it too often unconsciously becomes an unwelcome propaganda.

We believe that Christianity will save Hawaii, that it will Americanize her cosmopolitan population. But because Christianizing Hawaii is difficult, concerted action on the part of the Christians of Hawaii is very urgent and vital. Urgent, because unless the growing boys and girls of oriental parentage, who constitute the greatest part of Hawaii's citizenry, are won over to Christ, before the great arm of Buddhism reaches out to every corner of the Territory, Hawaii will be lost to Christianity.

The future citizens of Hawaii, come mostly from Buddhist homes, and when Buddhism becomes powerful, the logical conclusion is that these citizens will be sympathetic with the Buddhist movement. Vital, because Christianity is the hope of Hawaii, and if Christianity is lost to Hawaii, the identity of Hawaii as a constituent part of the United States will also be lost. Hawaii must be American in its composition or not according as her citizens will be Christian or not.
Hawaii is now experimenting with

a new science—with a number of elements of race, to form a new compound, a new American. How successful she will be, will depend upon the work of the Christians of the territory, and on the attitude of American citizens of Oriental extraction. The work of Christians in treating the elements will determine the relative affinity of the different races, and the treatment of the Japanese element, constituting and contributing the largest share to this new compound, will determine the nature and features of the new compound. We believe that a new American, made up of the different races, is within the range of possibility, and we owe it to the world to demonstrate it, for the world is looking to us for a solution of this great racial problem. To the Christian leaders of the territory, we must delegate the task of building up first a Christian community among the American citizens of Oriental extract, and to the Christian churches, we must look for these leaders. And all the Christians must concentrate their efforts and pledge undivided support of the church. Christianization is the harmonizing and unifying of the different elements, and this is the best form of Americanization.

DEEPER THAN MOST
Bacon—I see a vocational school for its employees has been established in an Idaho mine 14,000 feet underground.
Egbert—Evidently trying to make deep thinkers of the men.—Yonkers Statesman.

P. M. Kodaira
SANITARY PLUMBER
P. O. Box 47 Lihue, Kauai

JEWELERS
Everything in the Silver and Gold Line, Rich Cut Glass and Art Goods
Merchandise of the Best Quality Only.
H. F. WICHMAN & CO. LIMITED
Leading Jewelers.
P. O. Box 342 Honolulu

KEEN KUTTER
CUTTING TOOLS
No. KS14
No. KS30
No. K1
If seeds are worth sowing
—your lawn, garden, hothouse or flower beds are worth caring for. Planting and then just letting things grow never gets the same results as careful cultivation.
Nor can you get from inferior tools the results that come from the use of KEEN KUTTER Farm and Garden Tools because there's a tool responsiveness in the steel, design, balance, swing and handle finish of KEEN KUTTER that keeps you enthusiastic in their use.
Every KEEN KUTTER is built to last, and guaranteed.
SIMMONS HARDWARE CO.
"The recollection of QUALITY remains long after the PRICE is forgotten."—E. C. Simmons, Trade Mark Registered.
No. K
No. K24
No. KNDH16

HOFGAARD'S Special Sale

OCTOBER 17 to 22

REMNANTS

Voiles
Organdies
Tissues
Silk and Cotton Mixtures

REMNANTS

Gingham
Muslin
Nainsook
Lawn

REMNANTS

Ribbon
Embroidery
Lace
Drapery

SPECIAL VALUES in

Blankets	Hosiery	Shirts
Comforters	Mens' U'wear	Dresses
Bed Spreads	Ladies U'wear	Middies
Towels	Sweaters	Shoes

Chinese Rattan Furniture

*STORE WILL REMAIN OPEN UNTIL 8 P. M.
DURING SALE*

C. B. HOFGAARD & CO., LTD.

WAIMEA

Announcing
the arrival in Kauai
during the first part of
NOVEMBER

of
Mr. Blackshear

representing
DETOR & CO.

With the finest and most distinctive collection of beautiful jewelry ever brought to the Garden Island.

Our buyers have just returned from the Mainland, where they secured a wonderful collection of platinum and diamond rings, lavallieres, bar pins, wrist-watches; novelty gifts in silver and leather, and high grade watches, all representing the latest shapes and designs.

We give prompt attention to mail orders.

Detor & Company

Fort and Hotel Streets
Honolulu, T. H.

Theo. H. Davies & Co., Ltd.
HONOLULU AND HILO

Sugar Factors and Commission Merchants
IMPORTERS OF GENERAL MERCHANDISE

GENERAL HARDWARE

- | | | | |
|--------------------|----------------|-------------|-------------|
| Builders' Hardware | Crockery | Glassware | Silverware |
| Sporting Goods | Fishing Tackle | Firearms | Ammunition |
| Safes | Refrigerators | Spark Plugs | Flashlights |
| Paints | Varnishes | Brushes | Oils |
| Harness | Saddlery | Roofing | Trunks |
| | etc. | etc. | Suit Cases |

GROCERIES

Fancy and Staple Lines, Feed, etc.

DRY GOODS

Shoes Toilet Supplies Stationery etc. etc.

INSURANCE AGENTS

Writers of Fire, Marine, Compensation, Automobile and Miscellaneous Insurance Policies.

AGENTS FOR

Canadian-Australian Royal Mail Steamship Line.

Upon application information will be cheerfully furnished in regard to any of our lines in which you may be interested.

Kapaia Garage Co.

Exclusive Kauai
Agents for

U. S. TIRES

AND



Automobile--Motorcycle--Gas
Engine and General Repairing

VULCANIZING

Tel. 228 - - - P. O. Box 236
Kapaia, Lihue

TERRITORIAL MESSENGER SERVICE

TAKES ORDERS FOR ALL KINDS OF

Dry Cleaning and Laundry Work

SEND BY PARCEL POST TO

1112 UNION ST. - - - HONOLULU

CLAIMS HE PRODUCED
ARTIFICIAL RAIN BY
ELECTRICAL METHOD

Rain being an essential thing for agriculture and other purposes, says the Nipu Jiji it has been a universal desire to produce rain when it was needed, especially in days of drought. That rain can be caused by artificial method of electric vibrations has been a scientific idea of long standing, according to the Toyo Hochi which has often been experimented on in Europe in the latter 19th century. Some reasonable success has been attained. But it has not been experimented upon in Japan on large scale.

But now comes Masataka Nobuhara of Aichi prefecture, 55 years old, who claims that he has succeeded with his experiment in inducing moisture to localize by means of 10,000 volts of electricity sent forth from the ground and released in the air. The electricity was released by means of a machine placed in a balloon, whose duty it was to transmute the power sent up from the ground. He is said to have caused Would Aid Koreans.

Mr. Nobuhara has an ambition to utilize his method in relieving the regions in Korea from want of rain. He designed a machine of his own for releasing electricity and ordered it to be manufactured by Nippon Wireless Mfg. Co. of Ebisu, Tokyo, and also balloon manufacturing company. The work on the two machines which was commenced on July 20, was completed on August 28 and all other preparations finished.

The experiment was arranged to be held on August 30 in Hadano, Kanagawa prefecture. The machine for releasing electricity as invented by Mr. Nobuhara is placed on a balloon which measures about 60 feet long, 18 feet wide, comprising 250 cubic meters space. The balloon is sent up 1000 meters in the air, and electricity is sent up to the machine from the ground by a transmission wire. The electricity is released in the air constantly for more than 24 hours. The electric waves will then induce moisture in the neighborhood of the balloon to assemble and will cause it to cool, thus causing the rain to fall over a space of 625 acres.

Apparatus Costs 50,000 Yen. A complete outfit costs 50,000 yen. As gas is needed for flight, one flight will cost 1000 yen. If successful in the practical experiment, the Hochi says that it will be regarded as a great invention in Japan, regardless of the cost of operation. It has been a custom among Japanese farmers in the past to beat drums or build bonfires on mountains in their prayers to heaven for rain in days of drought. Then it happened that after a military manoeuvre in which rifles and guns were fired, with great frequency, often it rain ed.

Mr. Nobuhara took a hint from that fact to invent his method, because if rain can be caused by primitive methods it should be possible to cause rain by more efficient method of using electricity, he says.

THE HOUR OF FATE

(By Victor Murdock)

What is the hour of fate in a young man's life? I should say 7 p. m.

That hour is the springboard from which most men leap to success or fall off to failure.

I am also convinced that 7 p. m. is the fork in the roads, one of which leads to character and the other to the lack of it.

There are twenty-three other hours in a day, but there is no hour better as this 7 p. m.

Why? This is the answer: a man's waking hours are divided between industry and leisure. To a majority of mankind, seven in the evening marks the end of work and the beginning of leisure. It is the hour when a man makes a choice of the kind of leisure he is to have.

If he turns to the leisure that means improvement in his mind, his body and his soul, he wins; if he turns to the pleasure-seeking frivolities he loses. It is a cold-blooded proposition, but it is true. Genius is ninety-nine per cent hard work and the best of leisure is a shift from one kind of work to another kind of work.

Ninety-nine out of every hundred men who win in this world use the time when they are not at work in activities which look like work to the lazier.

Now, my idea of success in life, mathematically expressed, is this: between a man's fifteenth and twenty-fifth birthdays there are 3130 week days 7 p. m.'s in an hour of decision! A man looks at the clock and out of the window. If he decides that his next three hours are to be spent in winning he wins; if he decides that the next three

hours are to be spent in indulging the physical senses for mere pleasure he loses.

This does not mean that any man should make all the 3130 hours moments of decision. Social converse which is part of any complete life, will take some, the services of friendship will take many and heart affairs will claim a lot. But after all these claims have been met, a young man should have saved for his own decision a majority of his 7 p. m.'s.

After a man reaches forty perhaps he may take liberties with the right decision at 7 p. m. But if he is uncertain over it at fifteen, or twenty, or twenty-five, he is dawdling, and he will pay the dawdler's debt in life—the humiliation that comes to age in the self-confession of failure.

COULDN'T DO IT

A modest son of the Golden State makes affidavit to this story:

An easterner who had bought a home in California heard of his neighbor's talent for raising tomatoes. So the newcomer sent over to get a hundred pounds of the toothsome vegetable.

"Please say to your boss," said the talented farmer to the messenger, "that to my regret, I am unable to cut a tomato for anybody!"

WHAT HE SAID

The Sunday school was talking to her class about Solomon and his wisdom.

"When the Queen of Sheba came and laid jewels and fine raiment before Solomon, what did he say?" she asked presently.

One small girl, who evidently had experience in such matters, replied promptly: "Ow much d'yer want for the lot?"—The Evening News (London).

NOTICE OF SALE OF
GOVERNMENT LEASES

At 10 o'clock A. M., Saturday, October 29, 1921, at the office of the Sub Land Agent, Mr. G. W. Sahr, Lihue, Kauai, there will be sold at public auction to the highest bidder, under Section 380 of the Revised Laws of Hawaii, 1915, General Leases covering the following described Government Lands:

1. Portion of Kalalau, below Forest Reserve, Napali, Kauai, containing an area of 530 acres, more or less; term of lease, 10 years from January 1, 1922; upset rental \$100.00 per annum, payable semi-annually in advance.
2. Government land at Mokihana, Kauai, containing an area of 6770 acres more or less; term of lease, 15 years from October 29, 1921; upset rental, \$500.00 per annum, payable semi-annually in advance.

Should any portion of this land be put under cultivation, the areas so cultivated to bear a rental of \$3.00 per acre for the balance of term of lease.

3. Portion of land of Waimea, Kauai, containing an area of 5,400 acres, more or less; term of lease, 15 years from October 29, 1921; upset rental, \$750.00 per annum, payable semi-annually in advance.

Portions of this land now under cultivation are excluded from this lease and such portions as the Commissioner of Public Lands may deem suitable for agriculture may at any time be withdrawn from the leasehold, the rental to be rescinded in proportion to the area so withdrawn.

The purchasers to pay the first six months' rental bid at the drop of the hammer.

The purchasers to pay costs of advertising and other charges in connection with the preparation of these leases.

The sale of the above General Leases is subject to the terms of Government General Leases issued by the Office of the Commissioner of Public Lands.

For maps, form of General Lease, and other particulars, apply at the office of the Sub Land Agent, Mr. G. W. Sahr, Lihue, Kauai, or at the Office of the Commissioner of Public Lands, Capitol Building, Honolulu, T. H.

C. T. BAILEY,
Commissioner of Public Lands.
Dated at Honolulu,
September 26, 1921.
(Sept. 27-Oct. 4-11-18-25.)

TYPEWRITER WANTED

Second-hand typewriter, Remington or Underwood wanted. Communication to P. O. Box 11, Lihue, Kauai.

FOR SALE—\$250 cash, or \$275 time payments to responsible parties. 1920 electrically equipped Scout Indian motorcycle with side car having top and windshield. In excellent condition. Economical and dependable. See Mr. Fera, or write Box 7, Eleele, for demonstration.

FOR SALE—White Rotary sewing machine. Wireless Station.

PUBLIC NOTICE

Notice is hereby given that, pursuant to the provisions of Act 20, Session Laws 1921, the Attorney General and the Surveyor General of the Territory and the Tax Assessor for the County of Kauai will, beginning Tuesday, the 8th day of NOVEMBER, 1921, conduct public hearings throughout the County of Kauai for the purpose of investigating and reporting on all claims to a preference right to purchase Government lands in said county.

All applicants are required to obtain from the Tax Assessor of the County or from the Deputy Tax Assessor in the district in which such applicant resides a form of application which must be filled out, sworn to and deposited with such Tax Assessor or Deputy.

The first meeting of these Territorial officials will be held at the office of the Tax Assessor for the County of Kauai at Waimea, on Tuesday, the 8th day of November, 1921, at 9 o'clock a. m.

All applicants for a preference right to purchase, who have duly filed their applications as aforesaid, will be notified of the time and place in their district when and at which their applications will be heard and considered. All such applicants must present themselves with their witnesses and all other evidence tending to establish their claim to a preference right to purchase at the time and place set forth in the last mentioned notice.

Under the provisions of the Hawaiian Organic Act any citizen of the United States, who has or whose predecessors in interest have improved any parcel of public land and resided thereon continuously for ten years prior to the date of application, is qualified to apply for such preference right to purchase.

For the purpose, however, of guarding against an evasion of that provision of the Organic Act, which provides that the lands covered by these preference right claims shall be sold to citizens only, the Commissioner of Public Lands has made the following regulations, namely:

1. That no transfer made by an alien to the applicant within one year prior to the date of application will be recognized as a bona fide transfer within the meaning of the Act; and
2. That no minor who is living with alien parents on the land applied for will be regarded as residing on the land in question within the meaning of the Act and such minor will not therefore be considered a qualified applicant.

HONOLULU, HAWAII, October 10, 1921.
HARRY IRWIN,
Attorney General.
(Oct. 11-18-25-Nov. 1)

HOOLAHA AUPUNI

Ke hoolaha ia aku nei i kulike ai me ka manao o ke Kanawai 20 o ke Kau Ahaolelo 1921, o ka Loio Kuhina ame ke Ana Aina Aupuni o ke Teritoro a me ka Luna Auhau o ke Kalana o Kauai, e hoomaka ana ma ka Poalua ka la 8 o Novemaba, 1921, no ka ninaninau ame ka hoike ana ma ke akea no na noi apau no ka pono hookuonoano ana o na aina Aupuni ma ia Kalana.

Ua koia na poe noi apau ma keia e loa ma ae ia lakou ma ka Luna Auhau ae o ke Kalana, a i ole hope luna-auhau paha maloko o ka apana kahi a ka mea noi e noho ana i palapala noi palakalaka no ka hoopihapiha ana a hooikiia, a waiho ae me ka Luna Auhau a i ole hope luna auhau paha.

O ka halawai mua a na Luna Aupuni o ke Teritoro e noho ana ia ma ke keena o ka Luna Auhau o ke Kalana o Kauai ma Waimea ma ka Poalua ka la 8 o Novemaba, 1921, i ka hora 9 kakahiaka.

For maps, form of General Lease, and other particulars, apply at the office of the Sub Land Agent, Mr. G. W. Sahr, Lihue, Kauai, or at the Office of the Commissioner of Public Lands, Capitol Building, Honolulu, T. H.

C. T. BAILEY,
Commissioner of Public Lands.
Dated at Honolulu,
September 26, 1921.
(Sept. 27-Oct. 4-11-18-25.)

FOR SALE—\$250 cash, or \$275 time payments to responsible parties. 1920 electrically equipped Scout Indian motorcycle with side car having top and windshield. In excellent condition. Economical and dependable. See Mr. Fera, or write Box 7, Eleele, for demonstration.

FOR SALE—White Rotary sewing machine. Wireless Station.

na mea noi, e hoomaopopola he kua! pono maloko o ka manao o ke Kanawai, a

(2) Aole no hoi ke kahi keiki oo ole e noho ana me kona mau makua kupa o na aina e ae noho nei ma ka aina i oleloia, ua kupono ma ka manao o ke Kanawai, a e manao ia o kana noi aole i kupono.

HARRY IRWIN,
Loio Kuhina,
Honolulu, Oct. 10, 1921.
(Oct. 11-18-25-Nov. 1)

IN THE CIRCUIT COURT OF THE
FIFTH DISTRICT—TERRITORY
OF HAWAII—AT CHAMBERS—
IN PROBATE.

NOTICE OF HEARING PETITION
FOR ADMINISTRATION

In the Matter of the Estate of RENICHI NAGATA, Deceased.
ON READING and Filing the Petition of William O. Crowell, of Waimea, Kauai, alleging that said Renichi Nagata of Pakala, Waimea, Kauai, died intestate at Pakala aforesaid on the 4th day of December, A. D. 1920, leaving property in the Hawaiian Islands necessary to be administered upon, and praying that Letters of Administration issue to WILLIAM O. CROWELL.

IT IS ORDERED that Thursday, the 27th day of October A. D. 1921, at 9 o'clock A. M., be and hereby appointed the time for hearing said Petition in the Court Room of this Court at Lihue, County of Kauai, at which time and place all persons concerned may appear and show cause, if any they have, why said Petition should not be granted.

Dated at Lihue, County of Kauai, T. H., September 20, 1921.
(Seal) BY THE COURT:
(S) J. C. CULLEN,
Clerk,
Circuit Court, Fifth District.
S. K. KAE0, Esq.,
Counsel for Petitioner.
(Sept. 20-27-Oct. 4-11.)

IN THE CIRCUIT COURT OF
THE FIFTH JUDICIAL DISTRICT,
TERRITORY OF HAWAII — AT
CHAMBERS — IN PROBATE.

Probate No. 851
In the Matter of the Estate
of CHU KONG, late of Ka-
paia, Deceased.

ORDER OF NOTICE OF HEARING
PETITION FOR ADMINISTRATION.

ON READING and Filing the Petition of CHU NG SEE, otherwise known as Ellen Chu, widow of said deceased, of Kapaia, Kauai, Territory of Hawaii, alleging that said Chu Kong, of said Kapaia, died intestate at said Kapaia on the second day of October, A. D. 1921, leaving property in the Territory of Hawaii necessary to be administered upon, and praying that Letters of Administration issue to K. C. Ahana of Lihue, said County.

IT IS ORDERED that Friday, the 18th day of November, A. D. 1921, at 9:30 o'clock A. M., be and hereby appointed the time for hearing said Petition in the Court Room of this Court at Lihue, County of Kauai, at which time and place all persons concerned may appear and show cause, if any they have, why said Petition should not be granted.

Dated at Lihue, County of Kauai, T. H., October 10th, 1921.
(Seal) BY THE COURT,
(Sgd.) J. C. CULLEN,
Clerk.
(Oct. 11-18-25-Nov. 1, 1921)

VACCINATION NOTICE

Notice is hereby given that a physician from the District of Hanalei will start vaccinating the children attending the Koolau and Haena Schools October 3rd; Hanalei School October 10th; and Kilauea School October 17, 1921.

This notice is given in pursuance of Section 962 Revised Laws of Hawaii.
F. E. TROTTER,
President, Board of Health.
(Oct. 4-11-18.)

TENDER FOR
MACADAMIZING

The Board of Supervisors of the County of Kauai will receive bids up to ten o'clock of November 2, 1921, for furnishing all labor, tools, machinery and equipment, necessary for the grading and macadamizing of 1875 lineal feet (width 14 feet) of the Anahola Homestead road.

Plans and specifications may be obtained upon application to the undersigned, accompanied by a deposit of ten dollars.

The Board of Supervisors reserves the right to reject any or all bids.

Each bid to be accompanied by certified check for 5 per cent of amount bid.
(S) R. F. MIDDLETON,
County Engineer.

SUNDAY NIGHT COMMUNITY MEETING WELL ATTENDED

Between forty and fifty young people of Lihue were present at the inauguration of the Sunday night community gathering held in the Mokihana club house.

Under the leadership of Rev. R. W. Bayless, familiar songs were enthusiastically sung and enjoyed by all. Selections by the stringed orchestra from the Kapaia Filipino camp added measurably to the evening's program.

The purpose of the gathering was briefly outlined by Neil Locke, the county Y. M. C. A. secretary. He stated that a number of requests had come from various sources for some form of a Sunday night gathering that would be of interest to the young people of the community. With the requests had come the suggestion that if such a gathering were inaugurated, it include all nationalities and local groupings and that the program be in nature of a forum rather than formal addresses and talks. It was the sentiment of all present that there was a place for such a gathering and that they would lend their influence to furthering its influence and increasing the attendance.

Prof. Forrest Dollinger, in a few brief sentences, gave a number of practical suggestions of how individual, group and community betterment might be attained. His topic was pertinent to the occasion and gave abundant food for thought.

The second of these gatherings will be held in the same place next Sunday evening at 7 o'clock. Come and enjoy the good things with the rest of the good people.

BISHOP TRUST COMPANY'S WEEKLY LETTER

The following figures show the original crop estimates of some of the plantations, but owing to the labor shortage, these estimates had to be revised. Most of these plantations will have to continue grinding until the end of the year. Ewa, for instance, expects to continue harvesting the 1921 crop until about February 15th, 1922. Although cane ground after December 31st will be included in next year's crop, yet actual grinding of the 1922 crop will probably not start until the 1921 cane is finished. This accounts for the last estimate of about 27,850 tons which is expected to be taken off by December 31st.

The condition of the Maui Agricultural company (known in the past as Haiku and Paia) is similar to that of Ewa. They expect to finish grinding about the end of October or the first of November, taking off up to that date about 19,500 tons leaving about 2,500 tons of this year's crop to be harvested next year. Hawaiian Commercial & Pioneer have just recently finished grinding, taking off 1,500 and 1,000 tons, respectively, less than their original estimate.

Plantation—	Original Estimate	Latest Estimate
Ewa	34,000	27,850
Waialua	30,155	27,150
Maui Ag. Co.	23,750	19,500
H. C. & S. Co.	50,000	48,500
Hawaiian Sugar	21,680	18,700
Pioneer	27,000	26,000
Oahu	43,000	43,000
McBryde	17,000	17,000
Olaa	27,500	28,500

The delay in taking off this year's crop can be directly attributed to the labor shortage now existing in the territory. It also must be remembered that the standard of efficiency of the labor now in the fields is far below that of previous years. The Hawaiian Sugar Planters Association estimates the shortage of plantation labor at about 6,000, half of this number, if available, would in all probability be allotted to the above plantations.

Labor and Wages.

The following article was not written in regard to conditions in Hawaii but does it not apply here?

"Workers cannot get better living conditions by raising the cost of production against themselves and all their customers. Shorter hours and less work produce fewer goods out of which wages can be paid. Industry, whether agricultural or otherwise, cannot pay any worker more than he himself helps to produce, without soon going bankrupt. Labor must come down to a wage which industry can afford to pay. The alternative is no wage at all."

Local Stocks.

Ewa and Waialua have been steadily dropping since the announcement was made of the reduction in dividends beginning this month. Ewa has been offering for several days at 21. Waialua dropped this morning's exchange to 17 7/8. H. C. & S. sagged to 28 1/2 at which price it is slightly in demand at the present time. McBryde has dropped with offerings today at 5 7/8. Oahu

is selling at par (\$20). Olaa declined 4 1/2 yesterday, however buying orders were received in the afternoon from San Francisco for several hundred shares at 41-2 which was to a certain extent, responsible for a strengthening of the market to 4 5/8. Pioneer has dropped to 14 3/4, this being the lowest figure at which this stock has changed hands since the par value was reduced from \$100, to \$20, April 4, 1912. The recent heavy rains have been very beneficial to the Pioneer. All the pumps on this plantation have been shut down as the irrigation ditches are running full. Waialua in all probability was greatly benefitted as well as the Pioneer. The rains as well as the Pioneer. The rains and Paia are located was very light.

Engels Copper.

We are just in receipt of a letter from the Engels Copper Co. with a comparative statement of mill results for the months of August 1920 and 1921, which shows that 610,242 pounds of copper was milled in August 1920, and 1,066,535 during August 1921, an increase of 73.1 per cent. The actual extraction of copper from ore milled being 86.31 per cent. This is the best extraction obtained, we are told, at any mill in the United States turning out as high grade of concentrates.

Bonds.

Last fall money rates were as high as 8 1/4 per cent on the mainland. During 1921 they have been gradually declining until today they are around 6 per cent. Bond prices are steadily strengthening. The opportunity to obtain high grade bonds yielding approximately 7 per cent, is fast slipping by.

CUBA'S TARIFF CLAIM

A report published a few weeks ago by the tariff commission set forth in considerable detail the colonial tariff systems in force between various nations and their colonial possessions and dependencies, says Facts About Sugar. The most striking feature of the report was its revelation of the extent to which the policy of preferential tariff treatment has progressed. Concessions in favor of the products of the mother country in the markets of the dependency and vice versa are the general rule and in some instances this has been carried to the point of endeavoring to create a virtual monopoly.

The most significant change with in recent years in this respect has been, of course, the one adopted by Great Britain during the war which establishes, first, substantial protection for certain industries of the home country and, second, preferred treatment for the products of the overseas portion of the empire. Prior to that time the United Kingdom had maintained only light revenue duties on imports, and the various dominions and colonies had been on exactly the same basis as foreign countries so far as concerned the admission of their products to the markets of the mother country.

In the United States freedom of trade between the various states and territories is guaranteed by the constitution. The only part of the country to which the question of special colonial tariff policy would apply is in the trade relations of the Philippines. Formerly the quantity of Philippine sugar admitted to the United States free of duty was limited, but this limitation disappeared with the amendment of the Underwood tariff law and apparently there is no disposition to revive it.

In one quarter, however, the United States had before it a question of tariff policy akin in its nature to those discussed in the report referred to. This is the question of the degree of preference to be extended to Cuban sugar, which has been raised by the memorial of the Cuban commercial mission.

Cuba, to be sure, is not a colony or dependency of the United States. It is an independent nation. But the extremely close and friendly business and political relations that exist between the two countries, and the fact that for eighteen years Cuban sugar has been admitted to the markets of this country on terms more favorable

than have been extended to any other nation, make it incumbent to extend fair treatment to Cuba in any readjustment of tariffs that may be made.

When the reciprocity treaty was arranged Cuba's annual sugar crop was about one-fourth of its present volume. Its expansion to 2,500,000 tons before the war was due very largely to the fact that the Cuban product enjoyed a preference of over a third of cent a pound in this market. Its further rapid growth during the war period was in response to the imposition of a heavy European demand on top of that from the United States. At the time when this preference was originally provided it was not anticipated that Cuba's output, plus home production, would exceed the total requirement of the United States.

With the enactment of the emergency tariff law the duty on Cuban sugar went up from one cent to 1.60 cents a pound and Cuba's preference against other sugars at the time was increased from one-fourth (the rate established by the tariff act of 1913) to two-fifths of a cent. It is this change that has brought a protest from Cuba and a request for a reduction in the duty or an increase in the preferential rate which would have practically the same effect.

The reason why this increase in duty was felt with particular force by Cuban producers is that it was made at a time when they were marketing their crop at a loss and when conditions were such that they were forced to bear the full amount of the advance.

The very fact that Cuban production is now more than is needed to fill the gap between domestic supply and the requirements of the country undoubtedly will lead congress to consider carefully the effect upon sugar production within the United States of any change in the existing duty. The national policy of maintaining the home industry naturally forbids its provide a larger market for sugar produced abroad. The question of what customs rates will serve to maintain the domestic industry and at the same permit Cuba to hold her preferred position and, to supply the additional requirements of the United States market obviously can be answered only by accurate information as to costs of production in both countries.

Statistics of cost of production in the various sections of the United States have been collected for several years past by the tariff commission. Similar information was obtained from Cuba for a large number of properties during the war. Since the end of the war, however, the responses to the tariff commission's request for information have fallen off and it is stated that only six answers were received to the request figures covering the past year. If Cuba seeks a rate of duty that will measure approximately the difference in cost of production between Cuba and the United States it would seem that one

of the most practical steps that her producers could take in their own interest would be to supply the exact information as to the actual cost of producing the crop.

CIRCUIT COURT SESSION STARTS WEDNESDAY MORN

A grand jury met last Thursday afternoon and reported six cases for the trial jury. These cases were to have started Monday morning but were held up until Wednesday until some legal questions could be decided by the lawyers. Court is to be held tomorrow morning at 9:30 o'clock.

One of the cases to be brought up to this time is the Louis Rego case. Rego was indicted during the last term of court for his au-

to accident in which a Lihue man received fatal injuries. But Rego was himself so badly hurt at that time that he was unable to attend court. His case is attracting considerable attention. Attorney Rawlins of Honolulu has been engaged to defend him.

CONSISTENT

"Can I have the five pounds I lent you?"

"You can have it next week."

"You told me that last week!"

"Yes: do you think I'm a man to say one thing one day and another the next?"—Karlakuren (Christiania).

A RARA AVIS

A photographer had been taking movie pictures of farm life. On his way to the station he met the old farmer.

"I got some excellent pictures of your men at work."

"Did ye?" If I come to your place can I see pictures of my men at work?"

"Well, well, well! Modern wonders will never cease!"

WHAT IS HOME?

Man (angry to spouse)—Don't quarrel with me on the street. What have we got a home for?—Overheard by J. M. C. and reported to the Christian Evangelist.

If you can't get your FAVORITE MAGAZINES from your Newsdealer—send to FISHER'S P. O. Box 1224 Honolulu

DO NOT FAIL TO SEE ELLIOTT DEXTER in his Masterpiece

"THE WITCHING HOUR"



Edward Sutherland and Mary Aiden in a scene from the Paramount Picture "The Witching Hour"

This Wonderful Picture has been shown to packed houses all over the States and in Honolulu.

This exceptional play was made famous a few years ago by John Mason on the legitimate stage.

TIP TOP THEATRE
FRIDAY, OCTOBER 14th
No Change in Prices

Authorized by Law to Act as **Executor and Administrator** **Trustee under Will or Deed**

Life Insurance in Trust

Your family can be protected against their inexperience and the tendency to spend recklessly if you leave your insurance money in trust.

A policy, whether now in force or written later, can be made payable to this Company as trustee for your family. The agreement can direct how the money shall be invested and distributed to those whom you wish to benefit.



Bishop Trust Co., Ltd.

921 Bath Street

Tel. 6177

FIFTEEN YEARS EXPERIENCE IN SETTLING AND MANAGING ESTATES

Smashing Price Reductions in USED CARS

We need room and money for a shipment of new cars.

**TO SELL THEM QUICK
WE'VE CUT PRICES**

So low that all these cars should be sold within a week

	WAS	NOW	SAVING
1918 OLDSMOBILE '8' 7 Pass. Tour.	\$1200	\$985	\$215
1917 CHALMERS '6' Touring	950	750	200
1916 BUICK '6' Touring	850	585	265
1915 BUICK '4' Touring	300	135	165
1918 DODGE Touring	900	685	215
1914 CADILLAC Touring	950	635	315
1918 CHEVROLET Touring	450	350	100
1917 DODGE Touring	650	485	165
1921 FORD Touring Demountable Rims	625	575	50
1918 FORD Touring	425	325	100
1919 FORD Runabout	475	390	85
1915 FORD Touring	350	269	81

COME EARLY - - EASY TERMS

If, at the end of thirty days you are not satisfied with the car you selected, we will allow you the full price you paid for it, in trade for any other used car we have in stock

Nawiliwili Garage, Ltd.

From the Other Islands

—OAHU— PRESS CONGRESS DELEGATES ARRIVE IN HONOLULU

One hundred and eight publishers, editors, and newspaper men and women, representing the United States and nearly a dozen foreign countries, arrived Tuesday morning on the S. S. Matsonia as official delegates to the second Press Congress of the World.

Honolulu, aided by army and navy and perfect island weather extended to the visitors a typically Hawaiian welcome. Off Diamond Head the Matsonia was met by Eagle boats 6 and 40, which conveyed her to a point outside the harbor, where four submarines did stunts for the newcomers. Seaplanes 42 and 45, shooting here and there like silver darts in the morning sunlight, circled over the big steamer as it neared the harbor. Army airplanes swooped and swung above the water.

A launch with members of the reception committee, lei girls, musicians and newspaper men aboard, met the Matsonia as it came to anchorage within the harbor. As the launch came to within hailing distance, official and unofficial greetings were shouted back and forth. Acquaintanceships were formed even before the reception committee went aboard the liner.

Accompanying the reception committee's launch were three big outrigger canoes, which later towed the Matsonia into her dock.

OAHU TEACHERS INDORSE EMERGENCY LABOR BILL

At a meeting of the Oahu Teachers Association held at McKinley high school last night the Hawaii emergency labor bill now before Congress was practically unanimously endorsed. Only three voted against the measure.

Arguments in favor of the measure were presented by Delegate Kalanialoale, George W. Wright, a Honolulu labor leader, who recently went to Washington to oppose the measure and whose expenses were partially paid for by a group of Japanese, addressed the meeting in opposition to the measure.

CHINESE SEIZED WITH OPIUM KEEPS MUM REGARDING PALS

Although Yee Bun, a Chinese pantryman aboard the China Mail liner, was captured Friday with 60 tins of opium as he was coming down the gangplank, and was arraigned before the federal court, no information has been gained from him as to whether he was acting for others on board, or with any one in Honolulu.

Whether he was taking initiative in an effort to sell opium in Honolulu, "taking a chance" on securing a customer, or whether he had confederates, has not been divulged, it is said, but before he is brought to trial some information may be secured.

Collector of Customs Harry E. Murray was fortunate in having an efficient force of inspectors in the seizure of so much opium aboard the water barge Bennington to which the dope had been taken from the Tenyo Maru, and in the opinion of the collector, this seizure will have a far-reaching effect on the smuggling business.

WAIALUA PLANTATION IS HIT BY LABOR SHORTAGE

The directors of the Waialua Agricultural company made an investigation of the physical condition of the plantation last Friday, says the Advertiser. They found ample evidence the situation is serious. The management has been unable to keep the weeds down or even irrigate to the extent desirable with the abundance of water available.

"We saw 1,500 acres of cane that ought to be well along for the 1923 crop dried and withering," Frank C. Atherton, one of the directors, stated after his return from the plantation. "The 1921 crop will not be harvested until December. It is going to be a full 2,000 tons less than the January estimate. Furthermore, unless we get more labor right away the crop will be from 3,000 to 5,000 tons short the next two years."

He stated that the lack of labor has delayed the 1921 harvest so long that work will have to be started on cutting the 1922 crop just as soon as the mill can be put in repair after the January shut-down.

Cheap! Cheap!

The San Francisco Store will be at Kapaa for 2 weeks with a full line of Ladies' and Children's ready-to-wear garments.

Also a lot of Shoes for men, women and children, and a line of boys' woolen suits, all sizes.

Everything must be sold in two weeks.

We have a number of Ladies' Exclusive Novelties direct from Paris.

Come and see these goods, ladies, for you surely will see something that you want.

Our sale starts at 8:30 a. m. on Saturday, October 15th at Kapaa, formerly the Filipino Tailor Shop.

Yours truly,

SAN FRANCISCO STORE

STORE OPEN UNTIL 8:00 P.M.

Lower Priced
Feminine
Footwear
in the
Popular Styles

\$6.85 up

Better values than you've been able to get in the past three years. Oxfords; also sport pumps in the modish one- and two-strap effects, same as illustrated above, except for the strap, which is fastened with buttons rather than buckles.

White and Tan
White and Black
All White

Manufacturers' Shoe Store
1051 Fort Street Honolulu, T. H.

If you are not now receiving the REXALL MONTHLY MAGAZINE please send your name for mailing list. The Magazine has recently been enlarged, and improved by the addition of stories by prominent writers and pictures of current events.

THIS SERVICE IS ABSOLUTELY FREE.

Benson, Smith & Co., Ltd.

SERVICE EVERY SECOND

The Rexall Store Box 426 Honolulu, T. H.