

DAILY HONOLULU PRESS.

VOLUME I.

HONOLULU, HAWAIIAN ISLANDS, TUESDAY, SEPTEMBER 22, 1885.

NO. 19

HE CROSSED WITH BLONDIN.

Harry Colcord, the man who, when a youth, was carried over the falls of Niagara on the shoulders of Blondin, the rope-walker, writes his recollections of that famous event as follows:

Blondin had instructed me what I should do. I was to put my weight on his shoulders by my arms and clasp his body about with my legs. But I could not put my weight on his shoulders. I had to keep all the weight on his shoulders. In July, 1866, we went across. I took my place on Blondin's back and he began the descent from the Canadian side on the rope. By reason of the fact that I had to bear my weight on his shoulders, and had to use my arms and with main strength to support myself, frequent rests were necessary. I told Blondin when I wanted to rest, and then I dropped down on the rope on one foot and waited till my arms were relieved, when I would spring up again, using only my arms to lift and hold myself in place. There was a great crowd there. I did not see them at first. I do not remember what I thought. From my place on Blondin's back I could look out to the other shore and see below me the stunted pines thrusting their sharp points up from the edge of the foaming water, ready to split us if we fell. I remember, too that I was anxious to get over, and I recall, too, that the great rope before us made swings from side to side. We afterward knew that the rope swung forty feet at the centre, and I felt the necessity of preserving myself-possessed, and I did it. There was a forty-foot length between the guy one side and those of the other that it was impossible to make steady.

It was the middle span. Below us 250 feet roared the river, and over it we swung from side to side, still moving on steadily, however. Blondin never trembled. When we had gone about ten feet on the middle span, somebody on the American side pulled the outer guy-line. We afterward found out it was done intentionally, and the rope was stopped in its swing. Blondin stopped, and his pole went from side to side, in a vain effort to enable him to secure his balance. At one time it was up and down on the right side, at another up and down on the left, and I recall now with wonder that I was only curious to know whether he would succeed in getting control of himself or not.

I didn't feel any fear. Failing of getting his balance, he started to run across the horizontal span, and we safely reached the point where the guy-rope came out from the American shore. Then, to steady himself, Blondin put his foot on the guy-rope and tried to stop, but the guy-line broke, and with a dash of speed he ran swiftly twenty-five feet further to the next point, and there the guys met the main rope. Then he recovered his balance, and whispered, rather than said: "Descendez vous." The perspiration stood out on his neck and shoulders in great beads, and we balanced ourselves on the swaying rope. Presently he said, "Allons," and I raised myself to his shoulders, and we went on in safety and without incident toward the shore. It was not until we landed that I appreciated what had been done. Then it occurred to me that the man who pulled the guy-line was one of those who bet that the feat would never be accomplished, and my indignation mastered any reactionary feeling of fear.

You see, many thousand dollars were bet upon the ability of Blondin to carry a man over, and human cupidity stops at no sacrifice. Then there were the congratulations and the praise of pluck and the rest of it, so that in my foolish, boyish elation I forgot everything else. I do remember—as we approached the shore—the wonderful table of the 100,000 people who stood gazing at us. Thousands of them turned their faces away, or half-turning, cast glances over their shoulders at us.

I remember their white faces, their strained positions of anxiety—women who stared, white and motionless, and men who wept, and as we drew near the bank the crowd surged toward us, and Blondin stopped, fearing they would push each other over the precipice. Then the crowd was still again, and with a quick run we came to the ground. I remember one man seizing me in his arms and lifting me high in the air, saying: "Thank God, this thing is over!" Tom Hyer, the prize fighter, was there, and looked at me through the tears that fell so rapidly as to almost blind him, and said: "Oh, you little cuss!"

The removal of the impediments to the navigation of the Danube at the "Iron Gate" is to be carried out at last, in conformity with the stipulations of the treaty of Berlin. The Hungarian Government has decided to have the work executed within four years from January next. The cost is estimated at 12,000,000 florins, one-fourth of which amount will be provided for in budget for the year 1886. By thus opening a free communication by water between Vienna and the Black Sea, Austria will gain politically as well as commercially.

Professional Cards.

D. R. A. McWAYNE,
PHYSICIAN AND SURGEON.
OFFICE AND RESIDENCE—34 Alakea street.
OFFICE HOURS—9 TO 11 A. M.; 6 TO 8 P. M.

GEO. L. BABCOCK,
Teacher of the Piano-forte.
Address, care Messrs. West, Dow & Co.,
No. 103 FORT STREET, HONOLULU.
REIDERS—No. 11 Emma street. 237-238

J. M. WHITNEY, M. D., D. D. S.
Dental Rooms on Fort Street,
HONOLULU.
Office in Brewer's Block, corner Hotel and Fort Streets, entrance on Hotel Street. 210-211

JONATHAN AUSTIN,
Attorney and Counsellor at Law,
And Agent to take Acknowledgements.
No. 14 KAAMUANU STREET, HONOLULU.
221-222

J. N. O. A. HASSINGER,
Agent to take Acknowledgements to Contracts for Labor.
INTERIOR OFFICE, HONOLULU.
221-222

JOHN H. PATY,
Notary Public and Commission of Deeds,
For the States of California and New York. Office at the Bank of Bishop & Co.
HONOLULU, OAHU, H. I. 210-211

JULBS TAVERNIER,
Artist.
STUDIO: Room 6, Spreckels Block,
FORT STREET, HONOLULU.
HOURS: 3 TO 5 P. M. 6-31

L. A. THURSTON,
(SUCCESSOR TO SMITH & THURSTON)
Attorney at Law,
No. 35 MERCHANT STREET, HONOLULU.
225-227

P. P. GRAY, M. D.,
PHYSICIAN AND SURGEON.
Office, next door to the Honolulu Library.

OFFICE HOURS:
9 TO 10 A. M.
10 TO 4 P. M.
7 TO 8 P. M.
SUNDAYS, 9 TO 11 A. M.
RESIDENCE, cor. Kinau and Penacola Sts.
234-235

S. B. DOLE,
Counsellor at Law and Notary Public,
OFFICE,
No. 15 KAAMUANU STREET, HONOLULU.
235-237

W. R. CASTLE,
Attorney at Law and Notary Public.
No. 19, MERCHANT STREET, HONOLULU.
Attends all the Courts of the Kingdom. 210-211

Business Cards.

A. L. SMITH,
Importer and Dealer in Glassware,
Meridian Silver-Plated Ware,
Brooklets, Fuses,
No. 53 FORT STREET, HONOLULU.

King's Combination Spectacles and Eyeglasses,
Lustral Wire Ware, Fancy Soaps, Picture Frames,
Woolen Goods, Pocket Cutlery, H. I. Chase's Island
Views, Clark's Spool Cotton, Machine Oil, all
kinds of Machine Needles, "Domestic" Paper
Sewing Machines, Sole agent of the universally
acknowledged Light-Running Domestic Sewing Machine.
210-211

A. S. CLEGHORN & Co.
Importers and Dealers in General Merchandise.
Corner Queen and Kaahumana Streets, Honolulu.
210-211

A. W. PEIRCE & Co.
Ship Chandlers and Commission Merchants.
No. 15 QUEEN ST., HONOLULU.
Agents for Brand's Guns and Bomb Lances and Perry
David's Pain Killer. 210-211

ALLEN & ROBINSON,
Dealers in Lumber and all kinds of Building
Materials, Paints, Oils, Nails, etc.,
No. 41 QUEEN STREET, HONOLULU, H. I.

AGENTS OF SCHOONERS
Haleakala, Kulamann, Kekaulohi, Mary Ellen,
Ulukoua, Panahi and Leahi.
At Robinson's Wharf. 210-211

BISHOP & CO., Bankers
HONOLULU, HAWAIIAN ISLANDS.
Draw Exchange on
NEW YORK, BOSTON, HONG KONG,
Messes N. M. ROTHSCHILD & SONS,
LONDON.

THE COMMERCIAL BANKING CO.,
OF SYDNEY, LONDON.
THE COMMERCIAL BANKING CO.,
OF SYDNEY, SYDNEY.

THE BANKS OF NEW ZEALAND:
AUCKLAND, CHRISTCHURCH,
AND WELLINGTON

THE BANKS OF BRITISH COLUMBIA,
VICTORIA, B. C. AND PORTLAND, OR.
—AND—
Transact a General Banking Business.
235-236

C. BREWER & COMPANY,
(Limited).
General Merchants and Commission Agents
QUEEN STREET, HONOLULU.
Officers—P. C. Jones, Jr., president and manager;
Joseph O. Carter, treasurer and secretary; Directors:
Messrs. Charles R. Bishop and H. A. J. Carter; W. F.
Allen, auditor. 211-212

Business Cards.

C. C. COLEMAN,
Blacksmith, Machinist, Carriage Work,
Horse Shoeing,
HONOLULU.
Plantation Machinery, etc. Shop on King Street
next to Castle & Cooke's. 210-211

C. E. WILLIAMS,
IMPORTER AND DEALER IN
Furniture of Every Description. Also
Upholsterer and Manufacturer.
Furniture Warehouses No. 111 Fort Street. Work-
shop at old stand on Hotel Street. All orders promptly
attended to. 210-211

C. HUSTACE,
(FORMERLY WITH BOLLES & CO.)
Wholesale and Retail Grocer,
111, KING STREET, UNDER HARMONY HALL.

Family, Plantation, and Ship stores supplied at short
notice. New goods by every steamer. Orders from
the other islands faithfully executed. 223-224

CASTLE & COOKE,
Shipping and Commission Merchants,
No. 80 KING STREET, HONOLULU.

IMPORTERS AND DEALERS IN
GENERAL MERCHANDISE.
Agents for
The Hitchcock & Company's Plantation,
The Alexander & Baldwin Plantation,
R. H. Heineke, or Waiwai Plantation,
A. H. Smith & Company, Koloa, Kauai,
J. M. Alexander, Hahaione, Maui,
The Haku Sugar Company,
The Kohala Sugar Company,
Hamakua Plantation

The Union Insurance Company of San Francisco,
The New England Life Insurance Company of Boston,
The Blake Manufacturing Company of Boston,
D. M. Weston's Patent Centrifugal Machines,
The New York and Honolulu Packet Line,
The Merchants' Line, Honolulu and San Francisco,
Dr. Jaynes & Son's Celebrated Medicines,
Wilson & Gibb's Singer Manufacturing Company,
Wheeler & Wilson's Sewing Machines. 210-211

E. P. ADAMS,
Auctioneer and Commission Merchant,
No. 46 QUEEN STREET, HONOLULU.
210-211

E. D. HOFFSCHLAGER & Co.
Importers and Commission Merchants,
No. 41 QUEEN STREET, HONOLULU, OAHU, H. I.
210-211

E. D. ROWE,
House and Sign Painter,
PAPER HANGER, etc.,
No. 107 KING STREET, HONOLULU.
211-212

E. O. HALL & SON, (Limited).
IMPORTERS AND DEALERS IN
Hardware and General Merchandise,
CORNER OF KING AND FORT STREETS, HONOLULU.

OFFICERS:
William W. Hall, President and Manager
L. C. Allen, Secretary and Treasurer
W. F. Allen, Auditor
Directors—Thomas Mavi, E. O. White 210-211

F. A. SCHAEFER & Co.
Importers and Commission Merchants,
No. 20 MERCHANT STREET, HONOLULU.
210-211

F. H. OEDING,
Express and Drayman.
Office, No. 81 King Street.
Residence, No. 47 Panchbowl Street,
Honolulu, Oahu, H. I.

Freight, Packages, and Baggage delivered to and from
all parts of Honolulu and vicinity. Careful at-
tention paid to moving furniture. With
WAGONS EXPRESSLY FOR THE PURPOSE.
Office Telephone, No. 86.
House Telephone, No. 99. 239-240

F. RANK GERTZ,
Boot and Shoemaker.
Boots and Shoes made to Order.
No. 103 FORT STREET, HONOLULU.
16-177

G. W. MACFARLANE, H. E. MACFARLANE,
G. W. MACFARLANE & Co.
Importers, Commission Merchants
and Sugar Factors.
Fire-proof Building, Queen street, Honolulu.
AGENTS FOR
Punjab Sheep Ranch Co. Hawaii,
J. Fowler & Co's Steam Plow and Portable Tramway
Works, Leeds,
Mills, Watson & Co's Sugar Machinery, Glasgow
Glasgow and Honolulu Line of Packets,
Liverpool and Honolulu Line of Packets,
London and Honolulu Line of Steamers,
San Fire Office of London. 243-244

H. HACKFELD & Co.
General Commission Agents,
COR. FORT AND QUEEN STREETS, HONOLULU.
210-211

HOLLISTER & Co.
Wholesale and Retail Druggists and To-
baccoists.
No. 59, NUUANU STREET, HONOLULU.
210-211

HOPP & CO.,
Upholsterers, Drapers and Dealers in all
kinds of Furniture.
Telephone No. 143.
228-229

HONOLULU IRON WORKS Co.,
Steam Engines, Boilers, Sugar Mills,
Coolers, Iron, Brass and Lead Castings.
HONOLULU. H. I. 210-211

Machinery of every description made to order.
Particular attention paid to Ship's Blacksmithing.
Job work executed on the shortest notice. 210-211

H. E. MCINTYRE & BROTHER,
Grocery and Feed Store,
COR. KING AND FORT ST., HONOLULU.
210-211

Business Cards.

J. N. O. FOWLER & Co.,
LEEDS, ENGLAND,
Are prepared to furnish Plans and Esti-
mates for Steel

PORTABLE TRAMWAYS,
With or without Cars and Locomotives, Specially
ADAPTED FOR SUGAR PLANTATIONS.

Permanent Railways and Locomotives, and Trac-
tion Engines and Road Locomotives, Steam
Ploughing and Cultivating Machinery, Port-
able Engines for all purposes, Winding
Engines for inclines.

Catalogues with Illustrations, Models and Photo-
graphs of the above Plans and Machinery may be seen
at the offices of the undersigned, W. L. GREEN and
G. W. MACFARLANE & CO., Agents for J. N. O.
Fowler & Co. 210-211

JOHN T. WATERHOUSE,
Importer and Dealer in General Mer-
chandise.
No. 25-27 QUEEN STREET, HONOLULU.
210-211

J. M. OAT, JR., & Co.
Stationers and News Dealers.
Red Rubber Stamp Agency
GARETT BLOCK, No. 25 MERCHANT STREET
237-238 HONOLULU, H. I.

JOHN NOTT,
Tin, Copper and Sheet Iron Worker,
Stoves and Ranges,
of all kinds, Plumbers' stock and retails, house furnish-
ing goods, chandeliers, lamps, etc.
No. 8 KAAMUANU STREET, HONOLULU.
210-211

L. AINE & Co.,
Commission Merchants,
Importers and dealers in Hay, Grain and General
Produce.
HONOLULU. H. I. 210-211

LEWERS & COOKE,
(SUCCESSORS TO LEWERS & DICKSON),
Importers and Dealers in Lumber and all
kinds of Building Materials.
No. 25 FORT STREET, HONOLULU.
210-211

L. AHLG,
Dealer in Dry-Goods, Rice, Tea, Silks and
Fancy Goods, Hats, Boots and
Shoes, Bron, Feed and Flour,
Cigars and Tobacco.
Also proprietor of Rice and Sugar Plantations at
Kaneohe, Koolau, Waipio, Ewa, and Heala.
COR. NUUANU AND CHAPMAN STS., HONOLULU.
209-210

LYONS & COHEN,
Auctioneers and Commission Merchants,
CORNER FORT AND QUEEN STREETS, HONOLULU.

Sales of Furniture, Stock, Real Estate and General
Merchandise promptly attended to. Sole agents for
American and European merchandise. J. J. LYONS,
210-211 L. L. COHEN

M. PHILLIPS & Co.
Importers and Wholesale Dealers in Cloth-
ing, Boots, Shoes, Hats, Men's Fur-
nishing Goods, Fancy Goods, Etc.
No. 10 KAAMUANU STREET, HONOLULU.
210-211

M. W. MCHESNEY & SON,
DEALERS IN
Leather, Hides, Tallow and Commission
Merchants.
Agents for the Royal Soap Company.
No. 49 QUEEN STREET, HONOLULU.
16-177

M. S. GRINBAUM & Co.,
Importers of General Merchandise and
Commission Merchants,
QUEEN STREET, HONOLULU, H. I.
No. 124 California street, San Francisco, Cal.
1-177

M. S. GONSALVES & Co.,
Wholesale Grocers and Wine Merchants,
BEAVER BLOCK, QUEEN STREET, HONOLULU.
Post Office Box No. 309. Telephone No. 263.
16-177

PACIFIC HARDWARE CO.,
Importers and Dealers in Hardware, Cut-
lery, Tools,
Paints and Oils, and General Merchandise.
No. 74 AND 76, FORT STREET, HONOLULU.
210-211

**THE WESTERN AND HAWAIIAN IN-
vestment Company (limited).**
Money loaned for long or short periods on approved
security. Apply to
W. L. GREEN,
Office Beaver Block, Fort St. Manager
244-245

THEO. H. DAVIES & Co.
(Late J. H. DANIEL, GREEN & Co.)
Importers and Commission Merchants,
No. 4 KAAMUANU ST., HONOLULU.
AGENTS FOR
Lloyd's and the Liverpool Underwriters,
British and Foreign Marine Insurance Company, and
Northern Assurance Company. 210-211

THOS. G. THURM,
IMPORTING AND MANUFACTURING
Stationer, Book-binder, Printer, Book-
binder, etc.,
And publisher of the Hawaiian Almanac and Annual.
Dealer in Fine Stationery, Books, Music, Toys and
Fancy Goods.
FORT STREET, NEAR HOTEL, HONOLULU.
241-242

G. WEST, H. M. DOW, G. W. MACFARLANE,
WEST, DOW & CO.,
Importers and Dealers in all kinds of
Music, Fancy and Juvenile Goods.
No. 109 FORT STREET, HONOLULU.
240-241

WILLIAM McCANDLESS
Dealer in Choice Beef, Veal, Mutton, Etc.
No. 6 QUEEN STREET, FISH MARKET.

Family and Shipping orders carefully attended to.
Live Stock furnished to Vessels at short notice.
Vegetables of all kinds supplied to order.
No. 212 FORT STREET, HONOLULU.
258-259

Insurance Notices.

BOSTON BOARD OF UNDERWRITERS.
C. BREWER & Co.,
Agents for the Hawaiian Islands.
210-211

**BRITISH FOREIGN MARINE INSURANCE
Company (Limited)**
THEO. H. DAVIES, AGENT.

The above agent has received instructions to re-
duce the rates of Insurance on Honolulu and
Ports in the Pacific, and is now prepared to issue poli-
cies at the lower rates, with a special reduction on
freight per steamer. 210-211

BREMEN BOARD OF UNDERWRITERS.
F. A. SCHAEFER & Co., Agents.
Also agents for the
Dresden Board of Underwriters,
Venice Board of Underwriters.
For the Hawaiian Islands. 210-211

**FORTUNA GENERAL INSURANCE COM-
pany of Berlin.**
F. A. SCHAEFER & Co., AGENTS.

The above Insurance Company has established a
General Agency here, and the undersigned, General
Agents, are authorized to take risks against the dangers
of the Seas at the most reasonable rates, and on the most
favorable terms. 210-211

**GERMAN LLOYD MARINE INSURANCE
Company of Berlin**
F. A. SCHAEFER & Co., AGENTS.

The above Insurance Company has established a
General Agency here, and the above-named, General Agents,
are authorized to take risks against the dangers of the
Seas at the most reasonable rates, and on the most fa-
vorable terms. 210-211

**HAMBURG-MAGDEBURG FIRE INSURANCE
Company of Hamburg.**
A. JAEGER, AGENT.

Building, Merchandise, Furniture and Machinery
Insured against Fire on the most favorable terms.
210-211

**HAMBURG-BREMEN FIRE INSURANCE
Company of Hamburg.**
F. A. SCHAEFER & Co., AGENTS.

The above firm having been appointed agents of this
company are prepared to insure risks against fire on
Stone and Brick buildings and on Merchandise stored
therein at the most favorable terms. For particulars
apply at their office. 210-211

**NEW ENGLAND MUTUAL LIFE INSURANCE
Company of Boston.**
CASTLE & COOKE, AGENTS.

INCORPORATED 1815.
The oldest Purely Mutual Life Insurance
Company in the United States.
Policies Issued on the most Favorable Terms
Losses paid through Honolulu Agents, \$40,000
210-211

**NORTH-GERMAN FIRE INSURANCE
Company of Hamburg.**
H. HACKFELD & Co., AGENTS.

Capital and Reserve, Reichsmark 8,150,000,
their Re-Insurance Companies, 35,000,000.
The Agents of the above Company, for the Hawaiian
Islands, are prepared to insure Buildings, Furniture,
Merchandise and Produce, Machinery, etc., also Sugar
and Rice Mills, and vessels in the harbor, against loss
or damage by fire, on the most favorable terms.
210-211

**PHILADELPHIA BOARD OF UNDER-
writers.**
C. BREWER & Co.,
Agents for the Hawaiian Islands.
210-211

**TRANS-ATLANTIC FIRE INSURANCE
Company of Hamburg.**
H. HACKFELD & Co., Agents.

Capital and Reserve, Reichsmark 6,000,000,
their Re-Insurance Companies, 101,650,000.
Total, Reichsmark 107,650,000.
The Agents of the above Company, for the Hawaiian
Islands, are prepared to insure Buildings, Furniture,
Merchandise and Produce, Machinery, etc., also Sugar
and Rice Mills, and vessels in the harbor against loss
or damage by fire, on the most favorable terms.
210-211

**THE LIVERPOOL AND LONDON AND
Globe Insurance Company.**
BISHOP & Co., AGENTS.

ESTABLISHED 1836.
Unlimited Liability to Stockholders.
Assets, January 1st, 1884, nearly \$17,
000,000.
Reserve, 6,750,000
INCOME FOR 1877:
Premiums received after deduction of re-
insurance, \$3,378,335
Losses promptly adjusted and paid here.
210-211

**UNION MARINE INSURANCE COMPANY
of San Francisco.**
CASTLE & COOKE, AGENTS.

INCORPORATED 1875. 210-211

**NEW ENGLAND MUTUAL LIFE
Insurance Company of Boston, Mass.**
INCORPORATED 1815.
Assets January 1st, 1884, nearly \$17,
000,000.
Reserve, 6,750,000
Policies issued on the most favorable terms, and
absolutely Non-Forfeitable after Two
Payments.
EXAMPLE OF NON-FORFEITURE PLAN:
Insured age 35 years—20 years Endowment Plan for
\$5,000.
Annual Premium \$248.50.

At the end of the Year: C'ash-Surr. Yr. Pd-up Ins.
3d " 466.70 840
4th " 643.25 1,130
5th " 811.55 1,415
6th " 1,009.00 1,905
7th " 1,226.15 1,975
8th " 1,469.75 2,235
9th " 1,756.25 2,500
10th " 2,071.65 2,755
11th " 2,427.90 3,005
12th " 2,815.45 3,255
13th " 3,236.00 3,485
14th " 3,697.70 3,700
15th " 4,199.50 3,945
16th " 4,742.35 4,165
17th " 5,326.15 4,380
18th " 5,950.00 4,590
19th " 6,613.70 4,800
20th " 7,318.00 5,000

* The second and subsequent premiums are likely to
be reduced by increasing annual distributions of sur-
plus.
** Applications can be had of, and full information
will be given by the Agents.
210-211 CASTLE & COOKE.

General Advertisements.

N. F. BURGESS,
CARPENTER AND BUILDER,
Respectfully announces to the public that
he has purchased the

BAGGAGE EXPRESS
Business recently conducted by Mr. G. M. Lake, at
No. 84 King street, which will be under the manage-
ment of his son B. F. BURGESS.
The Express will attend the arrival of every steamer
and promptly deliver

FREIGHT, PACKAGES & BAGGAGE,
In Honolulu and vicinity.

FURNITURE & PIANOS
Moved with care.

HE, ALSO, HAS PURCHASED THE
Tobacco, Cigar and Soda Water

Business heretofore kept by Mr. J. W. Hingley,
No. 84 King street, which will be conducted by his
son, G. W. BURGESS, and where everything in
the line of SMOKERS' ARTICLES can be found, of
the best quality.
Thanking the public for past favors and guaranteeing
to promptly execute all orders in either line of busi-
ness, at reasonable charges would respectfully solicit a
share of public patronage.
Office Telephone No. 209.
Residence Telephone No. 123
No. 84 King Street, Honolulu.
243-244

BEAVER SALOON,
H. I. NOLTE, PROPRIETOR.

Begs to announce to his friends and the public in gen-
eral that the above Saloon provides

First-Class Refreshments
From 3 A. M. till 10 P. M.

The finest
Cigarettes, Tobaccos, Cigars, Pipes and
Smoker's Sundries
CONSTANTLY ON HAND.

One of Brunswick & Balke's celebrated
Billiard Tables
Is connected with the establishment, where lovers of
the cue can participate.
253-254

C. GERTZ,
IMPORTER AND DEALER IN

BOOTS & SHOES,
—AND—
FRENCH DRESSING.

No. 80 Fort Street, Honolulu, H. I.
The largest and best assortment of

Ladies, Gentlemen's and Children's
Boots, Shoes, Slippers, Dancing Pumps, etc.

To be found on the Islands.
Prices as low as elsewhere for similar quality of
goods. Island orders solicited and promptly executed.
213-214

THE DAILY HONOLULU PRESS IS PUBLISHED EVERY MORNING, Except Sundays.

At the Office, No. 29 Merchant St.

TERMS OF SUBSCRIPTION. Per annum \$6.00 Six months 3.00 Three months 1.50 Per month .50

Subscriptions Payable always in Advance. Brief communications from all parts of the Kingdom will always be very acceptable.

TUESDAY, SEPT. 22, 1885

By Authority.



HONOLULU WATER WORKS.

WATER RATES.—A list of delinquent water rates payers has been with the Department of the Attorney-General for action.

After Sept. 15th action to compel payment will be taken not only by suit at law, but also shutting off water and advertising a list of delinquent water rate payers.

Attorney-General's Office, Honolulu, Sept. 16, 1885.

SANITARY CONDITION OF HONOLULU.

The Lancet of the date of August 8th, 1885, has an article headed "Return of Cholera at Marseilles" in which it says: "Anyone who has read the special report we recently published on the sanitary condition of Toulon and Marseilles would not be surprised to hear that cholera has again broken out in at least one of these towns."

There have been so many reports concerning the New Sugar Contracts both at San Francisco and Honolulu that the following may be taken as the correct statement:

When the Delegates left Honolulu in July last they were instructed to offer the crop of sugar for 1886—comprising about 55,000 tons—to the California Sugar Refinery.

On arrival at San Francisco, Messrs. Glade, Atherton and Jones called upon Col. Claus Spreckels, President of the California Sugar Refinery and formally offered him the crop of 1886.

Mr. Spreckels stated that he was not prepared to talk that day but appointed Monday, July 20th, four days after the first meeting, as the time when he would be prepared to discuss the subject.

At the appointed hour the delegates met Col. Spreckels and proceeded at once to business.

The whole crop was offered. Mr. Spreckels said it was too early to talk about contracts for next year. He was reminded that the contracts for 1885 were signed July 15th, 1884.

He then said that the crop was too large, that he could not handle so much, as he wanted to swing himself in other markets and that he had 23,000 tons of sugar in hand at present.

He was offered part of the crop and asked if he would take 30,000, 35,000 or 40,000 tons, but he declined. An allowance of 3/4c. was offered him as an offset for interest on the large quantity of sugar carried by him at mid-summer. This proposition was also declined.

He was then asked if he would make an offer for the whole or any part of the crop but he declined, saying he did not want the sugar and advised shipping it to New York or to San Francisco in the open market.

Being convinced that nothing more could be done the delegates retired.

It is necessary to know early in the year what disposition is to be made of the crops for the following year, and feeling the importance of placing the sugar if possible, negotiations were then entered into with the American Refinery of San Francisco.

The Directors of the American Refinery proposed a contract for three years, saying they would not be justified in increasing their works for one-year contracts and proposed to increase its capital to \$1,000,000 paid up.

The result was that contracts were made for a term of three years. The sugar is to be purchased on the basis of Cuban sugars in the New York market less 3/4c per pound.

The refinery is allowed a fixed rate for refining and the profits of refining are divided between the refinery and the planters, according to the percentage agreed upon, each planter participating in the profits pro rata according to the amount of his sugars.

The sugars sold are those controlled or represented by H. Hackfeld & Co., C. Brewer & Co., Castle & Cooke, T. H. Davies & Co., F. A. Schaefer & Co., and M. S. Grinbaum & Co.—Planters' Monthly.

perience of four outbreaks of cholera in Merthyr and was ready to express his opinion that the spread of cholera was greatly caused by filth. If filth were removed, cases of cholera would not occur."

Surgeon-General Cornish said the subject of cholera had attracted his attention for the past thirty years. "The spread of the disease could be greatly lessened by attending to the cleanliness of cities, and to the water supply."

A number of physicians said that impure water spread the disease. So much for cholera. For months various of the medical journals of the Eastern States of America have been bringing to our notice account of an epidemic of typhoid fever which has ravaged the town of Plymouth, Lucerne, in Pennsylvania.

"The town of Plymouth, during nine months out of the twelve, is supplied from a mountain stream. * * * The stream is a small one, and at one point a dwelling is situated about eighty feet from its bed. In this dwelling a case of typhoid fever, which lasted from January to March, had occurred; and the excreta had been regularly deposited in the ground towards the stream.

Until the thaw and rain referred to, the mass of typhoid fever excreta was frozen; but when the frost abated, the lower reservoir, and within fifteen days an epidemic resulted which amongst 3,000 people, caused 1,200 attacks of typhoid fever and 100 deaths."

That drinking impure water causes more diseases than typhoid fever, instances too numerous to mention prove. Under the new system of surgery introduced by Lister, commonly known as Listerism, and which has been called the "gospel of cleanliness."

The mortality from surgical operations and in maternity hospitals has enormously decreased. Listerism is really nothing more or less than absolute cleanliness, a thing hard to attain to, but which every one should strive after.

Above all, persons living in tropical climates, should pay the strictest attention to this matter. These remarks will be supplemented with a specific examination of the present sanitary condition of Honolulu.

The Contract with the American Refinery for the Crops of 1886-7-8.

There have been so many reports concerning the New Sugar Contracts both at San Francisco and Honolulu that the following may be taken as the correct statement:

When the Delegates left Honolulu in July last they were instructed to offer the crop of sugar for 1886—comprising about 55,000 tons—to the California Sugar Refinery.

On arrival at San Francisco, Messrs. Glade, Atherton and Jones called upon Col. Claus Spreckels, President of the California Sugar Refinery and formally offered him the crop of 1886.

Mr. Spreckels stated that he was not prepared to talk that day but appointed Monday, July 20th, four days after the first meeting, as the time when he would be prepared to discuss the subject.

At the appointed hour the delegates met Col. Spreckels and proceeded at once to business.

The whole crop was offered. Mr. Spreckels said it was too early to talk about contracts for next year. He was reminded that the contracts for 1885 were signed July 15th, 1884.

He then said that the crop was too large, that he could not handle so much, as he wanted to swing himself in other markets and that he had 23,000 tons of sugar in hand at present.

He was offered part of the crop and asked if he would take 30,000, 35,000 or 40,000 tons, but he declined. An allowance of 3/4c. was offered him as an offset for interest on the large quantity of sugar carried by him at mid-summer. This proposition was also declined.

He was then asked if he would make an offer for the whole or any part of the crop but he declined, saying he did not want the sugar and advised shipping it to New York or to San Francisco in the open market.

Being convinced that nothing more could be done the delegates retired.

It is necessary to know early in the year what disposition is to be made of the crops for the following year, and feeling the importance of placing the sugar if possible, negotiations were then entered into with the American Refinery of San Francisco.

The Directors of the American Refinery proposed a contract for three years, saying they would not be justified in increasing their works for one-year contracts and proposed to increase its capital to \$1,000,000 paid up.

The result was that contracts were made for a term of three years. The sugar is to be purchased on the basis of Cuban sugars in the New York market less 3/4c per pound.

The refinery is allowed a fixed rate for refining and the profits of refining are divided between the refinery and the planters, according to the percentage agreed upon, each planter participating in the profits pro rata according to the amount of his sugars.

The sugars sold are those controlled or represented by H. Hackfeld & Co., C. Brewer & Co., Castle & Cooke, T. H. Davies & Co., F. A. Schaefer & Co., and M. S. Grinbaum & Co.—Planters' Monthly.

DEATH OF TWO AMERICAN ACTORS.

An Actor's Sudden Death.

George Galloway died suddenly of heart disease at his residence, in Oakland, last Sunday afternoon, and was buried on Tuesday afternoon under the auspices of San Francisco Lodge, No. 3, B. P. O. E. He leaves a wife and two children in straitened circumstances.

Mr. Galloway was born in New York in 1834, and made his first appearance on the stage at the old Royal Hawaiian Theatre, Honolulu, in 1855, with Louise Graves and W. H. Wilder, with whom he returned to San Francisco. He subsequently made his appearance at the old American Theatre on Sansome street and Maguire's Opera House on Washington street.

In those days his line of business was "singing walking gent." In 1858 he joined the famous Alleghenians—vocalists and Swiss bell-ringers—as tenor and buffo singer, with whom he made a tour of the world until 1861, and eventually returned to California. At the opening of the Grand Opera House on Mission street, he played Lord Vervex in the original production of "Snowflake." Winetta Montague and J. C. Anderson, the Queen and Lord Chamberlain of that cast, are also dead.

Mr. Galloway was a conscientious and reliable actor, and enjoyed the respect of all who knew him. His last appearance on the stage was during the recent run of "The Silver King," at the Grand Opera House.

An Old Actor's Suicide.

In a small hall bedroom, on the third story of No. 816 East Fourteenth street, yesterday, lay the dead body of William Carleton, actor and playwright, who had committed suicide. He had occupied the room only a few months, and when he lived in it he was broken in health and nearly destitute. His trunk was in pawn with his landlady, Mrs. Therry, for rent, and he owed Mrs. Charles, of No. 925 East Fourteenth street for his meals. For several days he had suffered so much from gastritis that he could only take milk punches, and he lived on a small allowance of that kind of nourishment since Sunday.

Believing that his illness was incurable, and dependent on account of want, he locked himself in his room on Tuesday night, closed the window and suffocated himself by turning on the gas. His misfortunes were said to be due to long-continued habits of drunkenness. In his room at the time of his suicide were only a few articles of clothing, some manuscripts of plays which he had written, and a few worthless trinkets which he had not been able to pawn. On a bureau was a woman's skull which he had kept in his possession for many years. A paper pasted on it bore these lines:

Within this ghastly skull once lived and throbb'd A human brain, with human passion fraught; Here envy, doubt and scorn, and love and hate.

Within this shrine there came the birth of thought, The hopes, the fears, the pangs we felt dwelt here.

This was the house of that we call the soul. Fright house! Bereft of all thy garniture, E'en now an idiot can thy fate control. These empty sockets once held orbs that shamed

The diamond lustre of the peerless stars. The music of the tongue wagged within this skull. Held ears in bondage by its magic spell, And left a thousand hearts with twice a thousand scars.

Where now is all the glory of that beauteous head, When tresses waved the wind to kiss them shun? Alas! its loveliness is destroyed and dead, But this remains to tell us what has been.

WILLIAM CARLETON.

Carleton was fifty-eight years of age and was born in Dublin, Ireland, being named after his uncle, who was a novelist. He came to this city about thirty years ago and obtained an engagement at the old Comique Theatre as a variety actor. Becoming well-known as an Irish comedian he received a large salary, which he spent freely. In his best days as an actor he was called "The Great Carleton." One of his songs, called "The Whistling Thief," became popular and encouraged him to write songs for other actors.

At length he began to write plays and was so successful that he gave up acting and devoted himself altogether to writing. His best known work is "Fritz in Ireland," written for J. K. Emmet. Other plays by him are "Rags and Riches," "Irish Aristocracy," "Wreck of the Dauntless," "McFarlan, the Detective," "Dumb Luck," "The Two Foundlings," "Little Casino," "Gottlieb, the Wanderer," and "The Broken Brokers." He married in 1866 a Mrs. Peck, the divorced wife of a Cincinnati merchant, but she died ten years ago. He afterward married a woman who kept a boarding house in Philadelphia. His second wife died about six years ago, leaving a daughter, who is in the care of her relatives in Philadelphia. Carleton's dissipation led to losses of money and unfitted him for work. Lately he became a pensioner on the Actors' Fund and was sent to a hospital for a time, but when he returned to his former habits in the use of liquor the managers refused to assist him longer.

Carleton recently wrote a play called "Zitka," intending it for J. K. Emmet, and his failure to sell the play was one cause of his dispendency. It was said yesterday that the expenses of Carleton's burial would be paid out of the Actors' Fund.—N. Y. Tribune, August 20.

The ancient heroes were kings in their day, to-day they are ashes.

A Wall from a Working Man.

EDITOR DAILY HONOLULU PRESS—

Sir: The clanging of church bells on Sabbath mornings in times gone by, when congregations were scattered and every one had not a newspaper or time piece, may have been essential to notify worshippers of the hour of church service. Now it is a positive nuisance and should be suppressed.

The butcher shops open here on Sunday mornings at 4 o'clock. With as much propriety may they not ring a bell to announce their business if their churches, are permitted to do so. People who have worked hard all the week and who look forward to Sunday as a day of rest, are rudely awakened from their well-earned repose by the din of bells at 5 o'clock in the morning, and I am quite sure their first words are not what church-goers call devotional. If I recollect aright it was in the puritan state, Massachusetts, that a party once obtained an injunction from the Supreme Court forbidding bell-ringing at early hours.

If some one here would make a test case of this matter he would be hailed as a benefactor to many and especially to the WORKING MAN.

General Advertisements.

BISHOP & CO'S Savings Bank

THE UNDERSIGNED WILL RECEIVE MONEY AT THEIR SAVINGS BANK UPON THE FOLLOWING TERMS:

On sums of Five Hundred Dollars or under, from one person, they will pay interest at the rate of five per cent. per annum, from date of receipt, on all sums that shall have remained on deposit three months, or have been on deposit three months at the time of making up the yearly accounts. No interest will be computed on fractions of dollars or on fractions of a month.

No interest will be allowed on money withdrawn within three months from date of deposit.

Thirty days notice must be given at the Bank of an intention to withdraw any money; and the Depositor's Pass-book must be produced at the same time.

No money will be paid except upon the Draft of the Depositor, accompanied by the proper Pass-book.

On the first day of September of each year, the accounts will be made up, and interest on all sums that shall have remained on deposit three months or more, and unpaid, will be credited to the depositors, and from that date form part of the principal.

Sums of more than Five Hundred Dollars will be received, subject to special agreement.

The Bank will be open every day in the week except Sundays and Holidays.

BISHOP & CO.

General Advertisements.

Crystal Soda Works.

SODA WATER, GINGER ALE, FLORIDA LEMONADE, Aerated Waters of All Kinds, Fruit Syrups and Essences.

Our Goods are acknowledged the BEST. NO CORKS WE USE PATENT STOPPERS In all our Bottles.

We invite particular attention to our Patent Filter, recently introduced, by which all waters used in our manufactures is absolutely freed from all impurities.

We deliver our Goods free of charge to all parts of the city.

Careful attention paid to Orders. Address THE CRYSTAL SODA WORKS, P. O. BOX, 357, HONOLULU, H. I. Telephone No. 208.

Orders left with Benson, Smith & Co., No. 11 Fort Street, will receive prompt attention.

We also, are agents for the sale of J. W. Hingley's CELEBRATED CIGARS

P. McInerney Has removed his

Boot and Shoe Store, No. 93, Fort Street, (adjoining S. J. Levey & Bros.)

Where he will be pleased to serve the public from

A SELECT STOCK of fresh goods

BOUGHT CHEAP FOR CASH, Which will be sold at "living rates."

A FULL LINE OF Ladies', Children's and Men's Ware

In the Boot, Shoe and Slipper line.

General Advertisements.

Crystal Soda Works.

SODA WATER, GINGER ALE, FLORIDA LEMONADE, Aerated Waters of All Kinds, Fruit Syrups and Essences.

Our Goods are acknowledged the BEST. NO CORKS WE USE PATENT STOPPERS In all our Bottles.

We invite particular attention to our Patent Filter, recently introduced, by which all waters used in our manufactures is absolutely freed from all impurities.

We deliver our Goods free of charge to all parts of the city.

Careful attention paid to Orders. Address THE CRYSTAL SODA WORKS, P. O. BOX, 357, HONOLULU, H. I. Telephone No. 208.

Orders left with Benson, Smith & Co., No. 11 Fort Street, will receive prompt attention.

We also, are agents for the sale of J. W. Hingley's CELEBRATED CIGARS

P. McInerney Has removed his

Boot and Shoe Store, No. 93, Fort Street, (adjoining S. J. Levey & Bros.)

Where he will be pleased to serve the public from

A SELECT STOCK of fresh goods

BOUGHT CHEAP FOR CASH, Which will be sold at "living rates."

A FULL LINE OF Ladies', Children's and Men's Ware

In the Boot, Shoe and Slipper line.

General Advertisements.

Crystal Soda Works.

SODA WATER, GINGER ALE, FLORIDA LEMONADE, Aerated Waters of All Kinds, Fruit Syrups and Essences.

Our Goods are acknowledged the BEST. NO CORKS WE USE PATENT STOPPERS In all our Bottles.

We invite particular attention to our Patent Filter, recently introduced, by which all waters used in our manufactures is absolutely freed from all impurities.

We deliver our Goods free of charge to all parts of the city.

Careful attention paid to Orders. Address THE CRYSTAL SODA WORKS, P. O. BOX, 357, HONOLULU, H. I. Telephone No. 208.

Orders left with Benson, Smith & Co., No. 11 Fort Street, will receive prompt attention.

We also, are agents for the sale of J. W. Hingley's CELEBRATED CIGARS

P. McInerney Has removed his

Boot and Shoe Store, No. 93, Fort Street, (adjoining S. J. Levey & Bros.)

Where he will be pleased to serve the public from

A SELECT STOCK of fresh goods

BOUGHT CHEAP FOR CASH, Which will be sold at "living rates."

A FULL LINE OF Ladies', Children's and Men's Ware

In the Boot, Shoe and Slipper line.

C. J. FISHEL'S

This Space is Reserved.

New Advertisement.

Light on his airy crest his slender head, His body short, his loins luxuriant spread; Muscles on muscle knots his brawny breast; No fear alarms him, no vain shouts molest; O'er his high shoulder, flowing full and fair, Sweeps his thick mane and spreads his pomp of hair; Swift wings his double spine, and earth around Rings to his solid hoof that wears the ground—(VINDIC.)

VENTURE.

This well-known Trotting Stallion is now standing at the corner of Punchbowl and Queen streets, and breeders, horsemen and stock-owners should take advantage of the opportunity to obtain his blood while they have the chance. He is now looking and feeling nearly as well as he ever did in his life, and moves as lively and his eye is as bright and he is as vigorous as a four-year-old horse.

It does not require a special horseman to discover great points of excellence in VENTURE. The ordinary citizen, upon beholding, will be impressed immediately with his grand and magnificent length, and elegant finish. If he is not the greatest horse that ever came to this country, he is one of the greatest, and as a turf performer, he towers far above them all as he does above a sucking colt.

A great deal of importance has lately been attached to the value of a horse that is being kept for stock purposes, whether he is standard or not, and the President of the National Association of Trotting Horse Breeders in America strongly advises people not to patronize stallions that do not stand bred, and he also advises them to select one not only standard bred, but if possible, one that is standard by his own performance, which is a public record of 2700, or better, and even more than this by the performance of his get also. Now, if this rule was rigidly applied it would exclude all such great horses as Electioneer and the sires of Maid S. and Jay Eye See, etc., for while they have become greatly renowned by the performance of their get, they never were turf performers themselves.

Now, we will see, for curiosity, how near VENTURE comes to possessing these three qualifications, namely: Breeding, performances and performances of his get.

As to breeding, he is the peer of any horse on earth, and I don't except the great Hermit, who is the most popular stallion in England, and whose service for is \$500, he being the sire of three Derby winners.

As to his own performances, he meets the requirements, having a public record of 2700—270 being the standard of admission.

His get are now just beginning to be appreciated in California, one of which (Vengrango) won a good race quite lately in Sacramento, in straight heats, making a record of 2:14, and is said to be able to trot close to 2:00, when called upon to do so.

With these facts before us, VENTURE looms up as one of the greatest horses, not only in this but in any other country, and the day is fast when people will breed anything but the very best; and while the death of two such great horses as Rowell and Bazar is greatly deplored by all true horsemen, still it is a great consolation that there is so good a horse as VENTURE to fill their place.

VENTURE is an aged horse, but he is one year younger than Dictator, who was sold only last year in Kentucky for \$25,000, on the strength of his being the sire of Jay Eye See. His stud fee is \$500. He is also ten years younger than Volunteer (sire of St. Julien), whose fee is \$500. All things taken into consideration, I cannot see why VENTURE is not as desirable a horse to breed from as any of them, or why he is not as worthy of the patronage of the public. Below I will give his pedigree, of which I invite a comparison with that of any other horse in the country:

VENTURE, chestnut horse, 16 hands, foaled in 1864; sired by Belmont, he by American Boy, he by Sea Gull, he by imp. Expedition.

1st dam, Miss Moxey, by American ad dam, by Kenner's Gray Meloc; 2d dam, Mrs. Lady Moxey, by Ten 4th dam, Lyralia, by Whisker; 5th dam, Helen, by Hamiltonian; 6th dam, Susan, by Overton; 7th dam, Drowsy, by Drone; 8th dam, by Old England; 9th dam, by Galien Arabian; 10th dam, Miss Cade, by Cade; 11th dam, Miss Mackintosh, by son of Greyho; 12th dam, by Partner; 13th dam, Miss Snow, dam by Woodcock; 14th dam, by Croft's Bay Barb; 15th dam, Dendragmas, dam by Maklees; 16th dam, by Brimmer; 17th dam, by Dickey Pierson; 18th dam, Burton Barb. Mare

For any additional particulars, terms, etc., apply to C. B. MILES, Proprietor.

Pacific Hardware Company

LIMITED. Successors to Dillingham & Co., and Samuel Nott. IMPORTERS AND DEALERS IN

Hardware, Agricultural Implements, House Furnishing Goods & General Merchandise. Just received Eddy's Refrigerators and Ice Chests, new styles of Chandeliers and Library Lamps, Stoves and Ranges, Kerosene Oil Stoves.

FAIRBANKS & HOWES SCALES. All of which are offered upon favorable terms. PACIFIC HARDWARE COMPANY. 234-1f

HENRY DAVIS & CO.,

IMPORTERS AND JOBBERS OF ALL KINDS OF Groceries, Provisions and Produce. Kits Mackerel, Kits Salmon Bellies, Kits Smoked Haddock, Kits Halibut Fins and Napes, Kits Tongues and Soundings, Boneless Codfish, Tomato Catsup, Chow Chow, Worcester Sauce, (to keep), California Cider Vinegar, (castle and kept), Dried Apples, Peaches, Etc., Assorted Assorted Table and Pie Fruits, Jams and Jellies, COLUMBIA RIVER SALMON, 1884 CATCH, (Ebls. and half Ebls.) CALIFORNIA FRESH FRUIT AND BUTTER BY EVERY STEAMER, Which are offered at Lowest Market Rates for Cash.

SOLE AGENTS FOR Scammon Packing Co., E. J. Bowen's Seeds, Lynde & Hough, Z. K. Mevers, Agent, San Francisco. "THE HARDEN HAND GRENADE FIRE EXTINGUISHER." Goods delivered to any part of the city free of charge. Island Orders solicited and satisfaction guaranteed.

No. 73 Hotel Street, Honolulu, Oahu, H. I. POST OFFICE BOX No. 435. (213-261) TELEPHONE No. 274.

ST. MATTHEW'S HALL, SAN MATEO, CAL. A SCHOOL FOR BOYS. Under Military Discipline.

Located in the beautiful village of San Mateo, on the Southern Pacific R. R., 4 miles from San Francisco. Established in 1867. Fourteen instructors of reputation and ability. The buildings are extensive, are heated by steam and are in every way arranged for the health and reformation of the cadets. Trinity Session begins July 24. For further information and catalogue, list out, address Rev. ALFRED LEE BREWER, M. A., Principal.

TO THE PUBLIC!

We respectfully solicit your subscription for one or more copies of the Daily Honolulu Press.

Our claims for asking your support are these: 1st. THE DAILY HONOLULU PRESS is an independent morning paper established in the interests of morality and good government and will be devoted to advancing the prosperity of this kingdom.

2nd. The paper will be conducted in a fearless, just and logical manner, aiming to fairly represent public opinion and to be entirely free from all offensive personalities and everything objectionable in a family newspaper. Our policy will be as is more fully set forth in our prospectus.

3rd. It will be our aim to make the DAILY HONOLULU PRESS the leading paper in this kingdom. With this object in view we have secured the best literary talent, both at home and abroad, at our command, while the subscription price has been established at the low rate of fifty cents per month, with free delivery, so as to bring the paper within the reach of all.

4th. As an advertising medium the DAILY HONOLULU PRESS possesses unequalled advantages, having retained all the subscribers to the late "Saturday Press" in addition to a new subscription list which is daily increasing, so that the paper is not only enjoying a large circulation in this city and vicinity but is, also, mailed by every steamer to subscribers at almost every landing on the other islands and also to foreign countries, thus combining the advantages of both daily and weekly editions.

We, therefore, ask your co-operation in our enterprise and trust you will send us your name as a subscriber if even for only a month's trial.

Very Respectfully Yours, etc. Proprietors of the Daily Honolulu Press.

THE DAILY Honolulu Press

Will be for sale Daily at the Following Places: J. M. OAT, Jr. & Co., Merchants street; T. G. THURM, King street; N. F. BURGESS, King street; WOLFE & CO., King and Nuuanu streets; C. J. MCCARTHY, Hotel street; CRYSTAL SODA WORKS, Hotel street.

LOCAL NEWS.

Ladies' night at the Central Park Skating Rink; the boys will all be there. Mr. Berger and his boys gave another of their enjoyable concerts at Emma Square last night.

The Honolulu's senior boat crew were out for practice last evening in their new boat. The boys all declare that the boat is a good 'un.

Mr. Ed. Mayhew, the contractor, is making some alterations in Mr. Paul Neumann's residence, adding two wings and building another story.

The steamer Planter went on the dry dock after her arrival yesterday. She has had two new state rooms put in below and four new ones built on deck.

During last Saturday afternoon between one and four o'clock a watch and chain and several other articles were stolen from the fore-castle of the bkine Kikikat.

Professor Yardley's singing class will meet this evening at 7:30 o'clock in the Y. M. C. A. Hall. All persons desiring to join the class are invited to be present.

The lease of the premises of Mr. David Oxley, on Queen street, known as the C. P. Ward place, will be sold to-morrow at 10 A. M. instead of 12 M. as previously advertised by E. P. Adams & Co.

Mr. J. H. Black informs us that, as far as he is concerned, he knows nothing about the rumor published in the Press yesterday with regard to the starting of a new job office and newspaper with the old Daily Hawaiian plant.

Mr. Goo Kim has the management of a two story building which is now being finished in the district known to the natives as Pauhi, off Beretania street back of the residence of Mrs. Dickson. The building when completed, will be used for a house for indigent Chinese.

Two Japanese who had been lately discharged from the Hospital were yesterday taken to the store of Messrs. Hackfeld & Co. to be shipped to the plantation. The Japs refused to go and desired to be taken back to the Hospital again, claiming that they were sick.

The following are the senior crew of the Myrtle Boat Club as they are practicing now: Oscar Branch, stroke; Alex. Lyle, Fred Wundenburg, Charles Purdy, Harry Robinson and Jimmie Savidge. As Mr. Alex. Lyle is at present sick, Mr. Alfred Branch will pull his oar until Mr. Lyle recovers.

Messrs. Henry Davis & Co. will receive by the Alameda to-day another large consignment of nice things brought down on ice. Oysters in the shell and in tins, besides all kinds of fruits and vegetables will be found at their store on Hotel street as soon as the steamer lands. Call early to secure first choice.

Last Sunday morning at least 60 young gentlemen enjoyed the privilege of a salt-water bath and around the Myrtle boat house. The club's new raft and the immigration depot landing were filled with a wet and happy crowd of divers. Billy Moore was engaged most of the time in his usual healthy employment of chasing sharks out of the neighboring waters.

Yesterday there appeared in the Fish Market a large quantity of small fish seldom seen here and which are known to the natives as 'paki'. The chief peculiarity of this fish is the same as that of the sole which inhabits English and American waters, i. e. it lies flat upon the mud at the bottom and has both eyes on the upper side of its head. The under side of this fish is white and the upper side is grey. The largest are about 5 by 3 1/2 inches in size and are oval-shaped.

Mr. H. S. Davidson the pitcher of the Honolulu, who unfortunately broke his arm a short time since, appeared at the Makiki diamond Saturday last for the first time since his accident. It is quite probable that Mr. Davidson left his room too soon as he spent a restless and painful night on Sunday. Dr. McGrew was called in early Monday morning and was obliged to administer chloroform to give him relief. We are happy to state that Mr. Davidson is better to-day and will be able to get out in a few days.

The schooner Waihu of the Pacific Navigation Company returned a few days ago from a special trip to the Island of Nihoa. When the schooner reached the Island she landed some twenty native passengers who remained on shore all night. Captain Kibling reports that the fire, which was still burning when the former excursion party left the Island, did not extend over more than twenty acres. Grave fears were entertained when the former party left that the entire Island would be burnt over and much damage done. The fine palm groves also escaped uninjured. Captain Kibling brought back a sample of soil deposited on the Island, which will be subjected to analysis. He doubts it having any commercial value as guano.

They say: that cat-concerts toward midnight are said to be very amusing to some people; that a Honolulu young-man was inclined to be pretty homesick as he went down Fort street about 6 A. M. yesterday trying to whistle "Home Sweet Home," that very pretty ferns can be obtained in a certain spot in Pauoa Valley; that another official decaipitation will take place shortly; that a portion of the grand army of Hawaii will be detailed to bivouac in Kona a sufficient length of time to carry the election; that

Last night a most enjoyable affair took place at the residence of the Rev. E. C. Ogel, on Nuuanu street. Major H. C. Dane and a number of invited friends of that gentleman, including General Secretary Fuller, of the Y. M. C. A. met at the residence of Pastor Ogel. The eloquent lecturer was as much at home entertaining his friends in private as he is while interesting the public generally from the platform. Pastor Ogel was in his best vein and the company parted with many regrets that the night was all too short.

A native curiosity is to be seen in the yard of Mr. Charlie Kahai on Manuakea street. It is a land turtle or tortoise. This tortoise came from some of the islands south of the coast of Mexico. This one is young but is very strong and will walk off with a child seven or eight years old standing on its back. The gentleman who showed us this tortoise says that they grow to an immense size in their native islands, and that the children there make pets of them and ride upon their backs. This is no fish story as the "critter" can be seen and "fooled with" by calling at Charlie's place.

Messrs. Jules Tavernier and Horace Wright, the compilers of "the Rain-boat Land," have been fortunate enough to secure the promise of Hon. Ahaahu Forannder, of Lahaina, to contribute a chapter to their work. There are not many writers possessed of similar qualifications for the task he has undertaken than the learned judge. With ripe experience, a perfect mastery of his subject, an erudite mind and the gift of imparting solid information while he delightfully enchains the attention of his readers, Judge Forannder may be relied upon as a most valuable contributor, and one whose statements may be accepted as absolutely reliable.

During last Sunday a boy supposed to be one of the Reformatory School "chicks" entered the house of a Portuguese servant of Rev. C. E. Goren, at Palama, and stole \$66 dollars—all the money the poor fellow had. Such stealings are of frequent occurrence around the Reformatory School and many complaints have been made by residents of that vicinity. Chickens, eggs, and in fact all things that these boys can get off with and sell to the Chinamen are taken whenever the occasion offers, and they are generally stored away in the surrounding banana patches until they can be disposed of. Complaints have been made, we are informed, to the authorities of this school, who take the precaution to reply that the boys even steal from themselves and they cannot stop it. If all this is so, Palama district needs reforming.

Mr. Henry Hart and Mr. George Vogt were engaged in catching a cat that was bivouacing under Fishel's sidewalk last Saturday morning. "If she doan come out mit this meat vat den?" said George, as he angled for her with a piece of beef-steak on the end of a string. "We'll take up a plank and catch her anyhow, you bet George!" said Mr. Hart, as he adjusted his eyeglasses and strolled through the cracks of the sidewalk with a buggy whip. "Vell, all right Henry, you lift dot board up and I catch her—doan it, eh?" Mr. Hart unlimbered his avoirdupoise and yanked up one end of the plank. Two wahines were standing by watching developments. The cat suddenly came to the opening. Billy Moore saw it and yelled "boo!" behind the wahines who thought it was old Nick and both broke up Hotel street on a dead run. George and Hart both made a plunge for the cat and landed heels over head in the gutter. The cat took refuge in the Astor House. When George and Henry came to, they both sat facing each other in the gutter. George was so mad he couldn't articulate and Hart was holding both hands upon braised portions of his rotundity.

Tuckeha forfeited \$10 bail for an assault and battery. Sam Berford was fined \$26.20 for keeping a gambling house. A. Turnbull was fined \$7 and \$1 costs for assault and battery. Ah Hee charged with having opium in possession was remanded until the 22nd inst. "Ah Sin was his name" and he was fined \$4 and \$1.10 costs for "ways that were dark" on the Sabbath.

Kanio, George Albert, Kalai, Perera, Ah Sen, and Richard Roe, paid \$6 each for the pleasure of tipping a bottle. Wm. King, remanded from the 19th inst for having opium in possession was released by the prosecution entering a nol. pro. W. H. Pond was fined \$150, \$3.50 costs and was sentenced to three months imprisonment at hard labor for importing opium. W. Wilson, C. Fisher, J. King, C. James and A. Travers all plead not guilty except Wilson to a charge of gambling. J. King was discharged. Wilson was fined \$6.10 and 6 months imprisonment and C. Fisher was fined \$11.10 and 5 days imprisonment.

Police Court Items: Tuckeha forfeited \$10 bail for an assault and battery. Sam Berford was fined \$26.20 for keeping a gambling house. A. Turnbull was fined \$7 and \$1 costs for assault and battery. Ah Hee charged with having opium in possession was remanded until the 22nd inst. "Ah Sin was his name" and he was fined \$4 and \$1.10 costs for "ways that were dark" on the Sabbath. Kanio, George Albert, Kalai, Perera, Ah Sen, and Richard Roe, paid \$6 each for the pleasure of tipping a bottle. Wm. King, remanded from the 19th inst for having opium in possession was released by the prosecution entering a nol. pro. W. H. Pond was fined \$150, \$3.50 costs and was sentenced to three months imprisonment at hard labor for importing opium. W. Wilson, C. Fisher, J. King, C. James and A. Travers all plead not guilty except Wilson to a charge of gambling. J. King was discharged. Wilson was fined \$6.10 and 6 months imprisonment and C. Fisher was fined \$11.10 and 5 days imprisonment.

LADIES' NIGHT. CENTRAL PARK SKATING RINK. Tuesday, Sept. 22nd. Professor Berger will furnish the following new music for the first time: Marches. 1. Hawaii, 2. Maui, 3. Oahu, 4. Kauai, 5. Ahiku Aukake, 6. Wailupe, 7. Wailale, 8. Mother Hubbard. Waltzes. 9. Malika Iuka, 10. Makiki, 11. Honolulu Rifles, 12. Good-bye Charlie. Open at 7 o'clock P. M. Dancing commences at 9 o'clock P. M. if majority so desire. 19-11

BUTTER. In order that parties who have always used the BOYD RANCH BUTTER should not be misinformed where to obtain the same, the undersigned begs to say that not one pound can be obtained elsewhere than at their store. They will be pleased to receive orders for the same and will charge the old price. HENRY DAVIS & CO., No. 73 Hotel street. Mutual Telephone Co.'s No. 130; Hawaiian Bell Telephone Co.'s No. 274.

ICE DEPOT. On, and after Monday, September 21st, parties wishing ice can obtain the same in quantities to suit at HENRY DAVIS & CO., No. 73 Hotel street. Mutual Telephone Co.'s No. 130; Hawaiian Bell Telephone Co.'s No. 274.

SHIPPING. Vessels Expected from Foreign Ports. SAN FRANCISCO, SIME ALAMEDA, Morse Due September 22nd. W. G. Irwin & Co., Agents. SAN FRANCISCO, Am. Schr. ANNA, McCulloch. Due at Kahului Sept. 5-10. PORT TOWNSEND, Am. bk HOPE, Penhallow. Due Sept. 5-10. LEWERS & COOKE, Agents. PORT BLAKELEY, Am. bk AMELIA, Newhall. Due Sept. 20-25. Allen & Robinson, Agents. PORTLAND, Or, Am. bk ALDEN BESSIE, O'Brien. Due Nov. 1-5. R. W. Lane Agent. NEW YORK, Am. bk MARTHA DAVIS, Benson. Due Nov. 1-5. C. Brewer & Co., Agents. NEW YORK, Nov. bk LOVSRING, Thompson. Due Nov. 20-25. Casel & Cooke, Agents. LIVERPOOL, Brit. bk JUPITER, Jones. Due Sept. 8-15. T. H. Davies & Co., Agents. LIVERPOOL, Brit. bk CHATELAIN, Davies. To sail in Aug. T. H. Davies & Co. Agent. HONGKONG, Haw brig ALLIE ROWE, Holland. Due Oct 25-30. HONGKONG, Brit. s.s. MOUNT LEBANON, Maxwell. Due Aug. 27-30. GLASGOW, Brit. bk LIZZIE IREDALE, Iredale. Due Nov. 15-20. A. A. Schaefer & Co., Agents. ESQUIMALT, H. B. M. CONSTANCE, Doughy. Due Sept. 1. JALUIT, Haw. schr JENNIE WALKER, Anderson. Due Nov. 1-10. Pacific Navigation Co. Agents. BREMEN, Ger. bk C. R. BISHOP, Due Nov. 5-10. H. Hackfeld & Co., Agents.

Merchant Vessels Now in Port. Bkine MARY WINKELMAN, Backus. Bkine W. G. IRWIN, Turner. Bkine KIKIKAT, Cutter. Bkine CAIBARIEN, Hubbard. ARRIVALS. MONDAY, September 21st—Schr Mary Foster from Kau. Schr Domitila from San Francisco. Stmr Planter from San Francisco. DEPARTURES. MONDAY, September 21st—Schr Waihu for Waimea and Hanalei. Sch Mannokawai for Koolau. Sch Leahi for Hanalei. Stmr Waimanalo for Waimanalo. Stmr Likelike for Maui. Stmr Mokoli for circuit of Molokai. Stmr James I Dowsett for Molokai. Schr Rob Roy for Koolau.

ARRIVALS. MONDAY, September 21st—Schr Mary Foster from Kau. Schr Domitila from San Francisco. Stmr Planter from San Francisco. DEPARTURES. MONDAY, September 21st—Schr Waihu for Waimea and Hanalei. Sch Mannokawai for Koolau. Sch Leahi for Hanalei. Stmr Waimanalo for Waimanalo. Stmr Likelike for Maui. Stmr Mokoli for circuit of Molokai. Stmr James I Dowsett for Molokai. Schr Rob Roy for Koolau.

ICE CREAM PARLOR. Which has been neatly fitted up to meet the requirements of our trade. Our ice cream will be only of superior quality, made of genuine cream from the WOODLAW DAIRY with whom we have arranged to supply us regularly with pure cream, which, having frequently tested, enables us to guarantee a first-class article, of ice cream equal to that made in any of the large cities. The following varieties of Ice Cream and ICES will be furnished at our opening, and several other varieties, if our trade will justify it. ICE CREAM. VANILLA, COFFEE GLACE, LEMON, CHOCOLATE, STRAWBERRY, PINEAPPLE ICES. ORANGE and STRAWBERRY. Parties supplied any day except Sunday. Those wishing Ice Cream for Sunday must leave their orders on Saturday before 9 P. M., which will be delivered before 9 A. M. Sunday. The cream will be packed so that they will keep eight hours in a first-class condition. Hoping to receive a share of public patronage in this line of our business, and thanking them for their liberal favors in the past we remain, respectfully,

MELLER & HALBE, King Street near Alakea St. Pantheon Stables, Corner Fort and Hotel Streets.

ARRIVALS. MONDAY, September 21st—Schr Mary Foster from Kau. Schr Domitila from San Francisco. Stmr Planter from San Francisco. DEPARTURES. MONDAY, September 21st—Schr Waihu for Waimea and Hanalei. Sch Mannokawai for Koolau. Sch Leahi for Hanalei. Stmr Waimanalo for Waimanalo. Stmr Likelike for Maui. Stmr Mokoli for circuit of Molokai. Stmr James I Dowsett for Molokai. Schr Rob Roy for Koolau.

ARRIVALS. MONDAY, September 21st—Schr Mary Foster from Kau. Schr Domitila from San Francisco. Stmr Planter from San Francisco. DEPARTURES. MONDAY, September 21st—Schr Waihu for Waimea and Hanalei. Sch Mannokawai for Koolau. Sch Leahi for Hanalei. Stmr Waimanalo for Waimanalo. Stmr Likelike for Maui. Stmr Mokoli for circuit of Molokai. Stmr James I Dowsett for Molokai. Schr Rob Roy for Koolau.

ARRIVALS. MONDAY, September 21st—Schr Mary Foster from Kau. Schr Domitila from San Francisco. Stmr Planter from San Francisco. DEPARTURES. MONDAY, September 21st—Schr Waihu for Waimea and Hanalei. Sch Mannokawai for Koolau. Sch Leahi for Hanalei. Stmr Waimanalo for Waimanalo. Stmr Likelike for Maui. Stmr Mokoli for circuit of Molokai. Stmr James I Dowsett for Molokai. Schr Rob Roy for Koolau.

ARRIVALS. MONDAY, September 21st—Schr Mary Foster from Kau. Schr Domitila from San Francisco. Stmr Planter from San Francisco. DEPARTURES. MONDAY, September 21st—Schr Waihu for Waimea and Hanalei. Sch Mannokawai for Koolau. Sch Leahi for Hanalei. Stmr Waimanalo for Waimanalo. Stmr Likelike for Maui. Stmr Mokoli for circuit of Molokai. Stmr James I Dowsett for Molokai. Schr Rob Roy for Koolau.

New Advertisements. SLOOP FOR SALE. AT AUCTION!! The Sloop "LARK," Nearly new, 30 feet long, about 4 feet depth of hold, 8 feet beam, with Sails, Masts, Yards, Anchors, Ropes, Etc., As the now late BREWERS' WHARF, by order of J. E. WISEMAN, I will sell at public auction the above described Sloop on Thursday, Sept. 24th, At 12 o'clock noon at the wharf named above. For particulars apply to LEWIS J. LEVEY, Auctioneer. Or to J. E. WISEMAN, Campbell's Block. 19-11

FOR SALE CHEAP! Cigar Stand on Hotel Street. With a years lease at \$15.00 per month, and now doing a good business. Furniture, fixtures, improvements and stock, will be sold at a low price on account of departure. Apply to the Proprietors of the Daily Honolulu Press. 19-11 HUSTACE & ROBERTSON, Draymen. All orders for cartage promptly attended to. Particular attention paid to the STORING AND SHIPPING OF GOODS in transit to the other Islands. Also, BLACK SAND AND WHITE SAND in quantities to suit at lowest prices. OFFICE—Corner Kahanamau and Queen streets. Hawaiian Bell Telephone No. 33. Mutual Telephone No. 19

General Advertisements. NOTICE TO THE PUBLIC. We take pleasure in announcing that, in addition to our CONVEYANCE AND CARE BUSINESS, we will open on SATURDAY, APRIL 25th, an ICE CREAM PARLOR. Which has been neatly fitted up to meet the requirements of our trade. Our ice cream will be only of superior quality, made of genuine cream from the WOODLAW DAIRY with whom we have arranged to supply us regularly with pure cream, which, having frequently tested, enables us to guarantee a first-class article, of ice cream equal to that made in any of the large cities. The following varieties of Ice Cream and ICES will be furnished at our opening, and several other varieties, if our trade will justify it. ICE CREAM. VANILLA, COFFEE GLACE, LEMON, CHOCOLATE, STRAWBERRY, PINEAPPLE ICES. ORANGE and STRAWBERRY. Parties supplied any day except Sunday. Those wishing Ice Cream for Sunday must leave their orders on Saturday before 9 P. M., which will be delivered before 9 A. M. Sunday. The cream will be packed so that they will keep eight hours in a first-class condition. Hoping to receive a share of public patronage in this line of our business, and thanking them for their liberal favors in the past we remain, respectfully,

General Advertisements. NOTICE TO THE PUBLIC. We take pleasure in announcing that, in addition to our CONVEYANCE AND CARE BUSINESS, we will open on SATURDAY, APRIL 25th, an ICE CREAM PARLOR. Which has been neatly fitted up to meet the requirements of our trade. Our ice cream will be only of superior quality, made of genuine cream from the WOODLAW DAIRY with whom we have arranged to supply us regularly with pure cream, which, having frequently tested, enables us to guarantee a first-class article, of ice cream equal to that made in any of the large cities. The following varieties of Ice Cream and ICES will be furnished at our opening, and several other varieties, if our trade will justify it. ICE CREAM. VANILLA, COFFEE GLACE, LEMON, CHOCOLATE, STRAWBERRY, PINEAPPLE ICES. ORANGE and STRAWBERRY. Parties supplied any day except Sunday. Those wishing Ice Cream for Sunday must leave their orders on Saturday before 9 P. M., which will be delivered before 9 A. M. Sunday. The cream will be packed so that they will keep eight hours in a first-class condition. Hoping to receive a share of public patronage in this line of our business, and thanking them for their liberal favors in the past we remain, respectfully,

General Advertisements. NOTICE TO THE PUBLIC. We take pleasure in announcing that, in addition to our CONVEYANCE AND CARE BUSINESS, we will open on SATURDAY, APRIL 25th, an ICE CREAM PARLOR. Which has been neatly fitted up to meet the requirements of our trade. Our ice cream will be only of superior quality, made of genuine cream from the WOODLAW DAIRY with whom we have arranged to supply us regularly with pure cream, which, having frequently tested, enables us to guarantee a first-class article, of ice cream equal to that made in any of the large cities. The following varieties of Ice Cream and ICES will be furnished at our opening, and several other varieties, if our trade will justify it. ICE CREAM. VANILLA, COFFEE GLACE, LEMON, CHOCOLATE, STRAWBERRY, PINEAPPLE ICES. ORANGE and STRAWBERRY. Parties supplied any day except Sunday. Those wishing Ice Cream for Sunday must leave their orders on Saturday before 9 P. M., which will be delivered before 9 A. M. Sunday. The cream will be packed so that they will keep eight hours in a first-class condition. Hoping to receive a share of public patronage in this line of our business, and thanking them for their liberal favors in the past we remain, respectfully,

General Advertisements. NOTICE TO THE PUBLIC. We take pleasure in announcing that, in addition to our CONVEYANCE AND CARE BUSINESS, we will open on SATURDAY, APRIL 25th, an ICE CREAM PARLOR. Which has been neatly fitted up to meet the requirements of our trade. Our ice cream will be only of superior quality, made of genuine cream from the WOODLAW DAIRY with whom we have arranged to supply us regularly with pure cream, which, having frequently tested, enables us to guarantee a first-class article, of ice cream equal to that made in any of the large cities. The following varieties of Ice Cream and ICES will be furnished at our opening, and several other varieties, if our trade will justify it. ICE CREAM. VANILLA, COFFEE GLACE, LEMON, CHOCOLATE, STRAWBERRY, PINEAPPLE ICES. ORANGE and STRAWBERRY. Parties supplied any day except Sunday. Those wishing Ice Cream for Sunday must leave their orders on Saturday before 9 P. M., which will be delivered before 9 A. M. Sunday. The cream will be packed so that they will keep eight hours in a first-class condition. Hoping to receive a share of public patronage in this line of our business, and thanking them for their liberal favors in the past we remain, respectfully,

General Advertisements. NOTICE TO THE PUBLIC. We take pleasure in announcing that, in addition to our CONVEYANCE AND CARE BUSINESS, we will open on SATURDAY, APRIL 25th, an ICE CREAM PARLOR. Which has been neatly fitted up to meet the requirements of our trade. Our ice cream will be only of superior quality, made of genuine cream from the WOODLAW DAIRY with whom we have arranged to supply us regularly with pure cream, which, having frequently tested, enables us to guarantee a first-class article, of ice cream equal to that made in any of the large cities. The following varieties of Ice Cream and ICES will be furnished at our opening, and several other varieties, if our trade will justify it. ICE CREAM. VANILLA, COFFEE GLACE, LEMON, CHOCOLATE, STRAWBERRY, PINEAPPLE ICES. ORANGE and STRAWBERRY. Parties supplied any day except Sunday. Those wishing Ice Cream for Sunday must leave their orders on Saturday before 9 P. M., which will be delivered before 9 A. M. Sunday. The cream will be packed so that they will keep eight hours in a first-class condition. Hoping to receive a share of public patronage in this line of our business, and thanking them for their liberal favors in the past we remain, respectfully,

General Advertisements. NOTICE TO THE PUBLIC. We take pleasure in announcing that, in addition to our CONVEYANCE AND CARE BUSINESS, we will open on SATURDAY, APRIL 25th, an ICE CREAM PARLOR. Which has been neatly fitted up to meet the requirements of our trade. Our ice cream will be only of superior quality, made of genuine cream from the WOODLAW DAIRY with whom we have arranged to supply us regularly with pure cream, which, having frequently tested, enables us to guarantee a first-class article, of ice cream equal to that made in any of the large cities. The following varieties of Ice Cream and ICES will be furnished at our opening, and several other varieties, if our trade will justify it. ICE CREAM. VANILLA, COFFEE GLACE, LEMON, CHOCOLATE, STRAWBERRY, PINEAPPLE ICES. ORANGE and STRAWBERRY. Parties supplied any day except Sunday. Those wishing Ice Cream for Sunday must leave their orders on Saturday before 9 P. M., which will be delivered before 9 A. M. Sunday. The cream will be packed so that they will keep eight hours in a first-class condition. Hoping to receive a share of public patronage in this line of our business, and thanking them for their liberal favors in the past we remain, respectfully,

Shipping. Wilder's Steamship Company. (LIMITED.) New Route to the Volcano! Via Keauhou. ROUTE AND TIME TABLE THE KINAU KING, COMMANDER Leaves at 6 o'clock P. M.: Touching at Lahaina, Maiala, Maheua, Mahukona, Kawahai, Laupahoehoe, Hilo and Keauhou. Commencing on Monday, October 12, and thence on the first Monday following the arrival of the Alameda and Mariposa, due here on the 8th and 22nd of each month. The steamer KINAU will make the VOLCANO TRIP, reaching Keauhou on Wednesday morning, giving Tourists two days and two nights at the Volcano House. When the eighth and 22nd of the month fall on Monday, the KINAU will leave that day. Tickets for the round trip \$50.00, which pays all charges. The KINAU will arrive in Honolulu Sunday mornings on Volcano Trips. On Hilo Trips, will leave Honolulu on Tuesdays, and return Saturday morning.

Shipping. THE KILAUEA HOU, COMMANDER Leaves regularly for Paauhau, Kohala, Oohala, Kakaia, Honohina, Laupahoehoe, Hakala and Onomono. Will leave regularly for same ports as the Kilauea Hou. THE LEHUA, COMMANDER Will leave regularly for same ports as the Kilauea Hou. THE MOKOLII, COMMANDER Leaves each Monday at 8 P. M. for Kaula, Kaula, Pukoa, Lahaina, Moani, Halawa, Wailua, Pele-ua and Kalaupapa. Returning leaves Pukoa Friday Paauhau Honolulu, arriving Saturday morning. S. G. WILDER, Pres. S. B. ROSK, Sec'y. 21-11

Shipping. INTER-ISLAND Steam Navigation Company, (LIMITED). Stmr. W. G. Hall (Malulani) Will run regularly to Maiala, Maui, and Kona and Kau, Hawaii. CAMERON, COMMANDER Leaves every Tuesday at 4 P. M. for Nawiliwili, Koloa, Elele and Waimea. Returning, will leave Nawiliwili every Saturday at 4 P. M., arriving at Honolulu, every Sunday at 5 A. M. FREEMAN, COMMANDER Will run regularly to Hanalei, Maui, and Koolau, Hanalei and Paauhau, Hawaii. STEAMER C. R. BISHOP, COMMANDER Leaves every Saturday at 8 A. M. for Waimea, Oahu, Hanalei and Kilauea, Kauai. Returning, leaves Hanalei every Tuesday at 4 P. M., and touching at Waimea and Waialeale Wednesdays, and arriving at Honolulu same day at 4 P. M. STEAMER JAMES MAKEE, COMMANDER Will run regularly to Kapa, Kauai. New Route to the Volcano. Through Tickets to the Volcano and return, can now be had at the office of the Inter-Island Steam Navigation Co. Tourists and others leaving Honolulu per Steamer "W. G. Hall" will be landed at Paauhau, where a first-class Hotel is now opened for the accommodation of travelers; thence by Railroad to Pahala, thence by Stage Coach to Halfway House, where Hotel and Guides will be in attendance to convey them to the Volcano. By this route, the round trip can be made in 7 days, giving 1 day and a night at the Volcano. Tickets for the round trip, includes Conveyances, Guides, Board and Lodging, \$60.00. For further particulars, inquire at the office of Inter-Island Steam Navigation Co., Honolulu. J. E. NA, Secretary. T. R. FOSTER, President. 243-204

Shipping. PACIFIC NAVIGATION CO. (LIMITED). Coasting and Commission Agents. CORNER QUEEN & NUUANU STREETS, HONOLULU. Regular vessels for the ports of Malilo on Maui. Laupahoehoe, Honoma, Paukaa and Hilo on Hawaii. Koloa, Hanapepe and Waimea on Kauai, and Waialua on Oahu, And any other ports when inducements offer. Persons having freight for any part of the islands to be forwarded from San Francisco by way of Honolulu, or direct shipments from Honolulu will do well to engage freight arrangements. Goods intended for shipment by any of our vessels received and stored free of charge in our fire-proof building at any time. Apply to the captain on board, or to A. F. COOKE, Manager Pacific Navigation Co. 21-11

Shipping. PLANTERS' LINE FOR SAN FRANCISCO. C. BREWER & COMPANY, Agents. Merchandise received Storage Free, and liberal cash advances made on shipments by this line. 210-261 CHARLES BREWER & CO. 27 KILBY STREET, BOSTON. AGENTS OF HAWAIIAN PACKETS. General Commission Agents. Special attention given to the purchasing of goods for the Hawaiian trade. Freight at lowest rates. 210-261

Shipping. SPECIAL NOTICES. NOTICE. At a special meeting of the stockholders of the PEOPLE'S ICE AND REFRIGERATING CO., held on the 18th day of Sept., 1885, it was voted to increase its capital stock by an addition of Thirty Thousand Dollars, making a total capital stock of One Hundred and Fifty Thousand Dollars. J. E. NA, Secretary. 17-22

Shipping. SPECIAL NOTICES. HENRY MAY & CO., Beg to inform their patrons that they will deliver goods at "Waikiki" early on the mornings of Wednesday and Saturday, and would respectfully ask that orders may be sent not later than Tuesday and Friday evenings. They also, beg to notify their friends that they deliver goods twice a day on the "Plains," "Nuuanu Valley" and "Palama," and would ask that orders for morning delivery should reach them by 9 o'clock, and for afternoon delivery not later than 3 o'clock. HENRY MAY & CO., Have just received from Oregon a choice lot of FINE BISCUITS. Telephone No. 22. Fort Street. 15-17

Shipping. ADMINISTRATOR'S NOTICE. The undersigned having been duly appointed administrator of the estate of Robert C. Austin, late of Honolulu, deceased, all persons having claims against the said estate are hereby notified that they must present the same to the undersigned within six months from the date of this notice or they will be forever barred; and all persons indebted to said estate are requested to make immediate payment to me. A. P. PETERSON, Administrator, with the will annexed, of the estate of Robert C. Austin. HONOLULU, September 2, 1885. 3-10-97-24

Shipping. ADMINISTRATOR'S NOTICE. The business heretofore carried on under the firm name of LYONS & LEVEY, is this day dissolved by mutual consent of L. J. Levey, retiring, and J. Lyons carrying on the business as heretofore, who will assume all liabilities of said firm, and who alone is authorized to collect all Outstanding Debts. Signed L. J. LYONS, T. G. THURM, L. L. COHEN, Honolulu, H. I., Sept. 14, 1885. NOTICE OF CO-PARTNERSHIP. The undersigned, have this day entered into co-partnership under the firm name of LYONS & COHEN, for the purpose of carrying on business as Auctioneers and Commission Merchants, at the old stand, corner of Fort and Queen streets. Hoping for your kind support, etc., we are, yours respectfully, L. J. LYONS, L. L. COHEN, Honolulu, H. I., Sept. 14, 1885. NOTICE. Referring to the above, I am now prepared to continue the business of Auctioneer at the store formerly occupied by S. Nett, Fort street, next to E. W. Macfarlane & Co., until more spacious premises are ready. My first Regular Cash Sale will be held on Thursday, Sept. 17, at 10 A. M. Telephone No. 218. LEWIS J. LEVEY, Auctioneer. MONTHLY ACCOUNTS. In accordance with the desire of many patrons, and to meet the exigencies of the times the undersigned will hereafter render and collect all accounts monthly. T. G. THURM, J. M. OAT, JR., & CO., P. M. OAT, JR., & CO., WEST DOW & CO., FRANK GERTZ, A. L. SMITH, H. E. MCINTYRE & CO. DAILY HONOLULU PRESS 213-266. MANAGER SATURDAY PRESS. MANAGERS' NOTICE. All accounts overdue the SATURDAY PRESS are desired to be settled immediately. All unexpired subscriptions or advertisements will be completed by the Daily Honolulu Press. MANAGER SATURDAY PRESS. ROOMS TO RENT. Furnished or unfurnished, centrally located, within ten minutes walk of the Post Office. 4-99 Address, P. O. Box 307.

Shipping. Special Notices. NOTICE. At a special meeting of the stockholders of the PEOPLE'S ICE AND REFRIGERATING CO., held on the 18th day of Sept., 1885, it was voted to increase its capital stock by an addition of Thirty Thousand Dollars, making a total capital stock of One Hundred and Fifty Thousand Dollars. J. E. NA, Secretary. 17-22

Shipping. Special Notices. HENRY MAY & CO., Beg to inform their patrons that they will deliver goods at "Waikiki" early on the mornings of Wednesday and Saturday, and would respectfully ask that orders may be sent not later than Tuesday and Friday evenings. They also, beg to notify their friends that they deliver goods twice a day on the "Plains," "Nuuanu Valley" and "Palama," and would ask that orders for morning delivery should reach them by 9 o'clock, and for afternoon delivery not later than 3 o'clock. HENRY MAY & CO., Have just received from Oregon a choice lot of FINE BISCUITS. Telephone No. 22. Fort Street. 15-17

Shipping. ADMINISTRATOR'S NOTICE. The undersigned having been duly appointed administrator of the estate of Robert C. Austin, late of Honolulu, deceased, all persons having claims against the said estate are hereby notified that they must present the same to the undersigned within six months from the date of this notice or they will be forever barred; and all persons indebted to said estate are requested to make immediate payment to me. A. P. PETERSON, Administrator, with the will annexed, of the estate of Robert C. Austin. HONOLULU, September 2, 1885. 3-10-97-24

Shipping. ADMINISTRATOR'S NOTICE. The business heretofore carried on under the firm name of LYONS & LEVEY, is this day dissolved by mutual consent of L. J. Levey, retiring, and J. Lyons carrying on the business as heretofore, who will assume all liabilities of said firm, and who alone is authorized to collect all Outstanding Debts. Signed L. J. LYONS, T. G. THURM, L. L. COHEN, Honolulu, H. I., Sept. 14, 1885. NOTICE OF CO-PARTNERSHIP. The undersigned, have this day entered into co-partnership under the firm name of LYONS & COHEN, for the purpose of carrying on business as Auctioneers and Commission Merchants, at the old stand, corner of Fort and Queen streets. Hoping for your kind support, etc., we are, yours respectfully, L. J. LYONS, L. L. COHEN, Honolulu, H. I., Sept. 14, 1885. NOTICE. Referring to the above, I am now prepared to continue the business of Auctioneer at the store formerly occupied by S. Nett, Fort street, next to E. W. Macfarlane & Co., until more spacious premises are ready. My first Regular Cash Sale will be held on Thursday, Sept. 17, at 10 A. M. Telephone No. 218. LEWIS J. LEVEY, Auctioneer. MONTHLY ACCOUNTS. In accordance with the desire of many patrons, and to meet the exigencies of the times the undersigned will hereafter render and collect all accounts monthly. T. G. THURM, J. M. OAT, JR., & CO., P. M. OAT, JR., & CO., WEST DOW & CO., FRANK GERTZ, A. L. SMITH, H. E. MCINTYRE & CO. DAILY HONOLULU PRESS 213-266. MANAGER SATURDAY PRESS. MANAGERS' NOTICE. All accounts overdue the SATURDAY PRESS are desired to be settled immediately. All unexpired subscriptions or advertisements will be completed by the Daily Honolulu Press. MANAGER SATURDAY PRESS. ROOMS TO RENT. Furnished or unfurnished, centrally located, within ten minutes walk of the Post Office. 4-99 Address, P. O. Box 307.

Shipping. ADMINISTRATOR'S NOTICE. The business heretofore carried on under the firm name of LYONS & LEVEY, is this day dissolved by mutual consent of L. J. Levey, retiring, and J. Lyons carrying on the business as heretofore, who will assume all liabilities of said firm, and who alone is authorized to collect all Outstanding Debts. Signed L. J. LYONS, T. G. THURM, L. L. COHEN, Honolulu, H. I., Sept. 14, 1885. NOTICE OF CO-PARTNERSHIP. The undersigned, have this day entered into co-partnership under the firm name of LYONS & COHEN, for the purpose of carrying on business as Auctioneers and Commission Merchants, at the old stand, corner of Fort and Queen streets. Hoping for your kind support, etc., we are, yours respectfully, L. J. LYONS, L. L. COHEN, Honolulu, H. I., Sept. 14, 1885. NOTICE. Referring to the above, I am now prepared to continue the business of Auctioneer at the store formerly occupied by S. Nett, Fort street, next to E. W. Macfarlane & Co., until more spacious premises are ready. My first Regular Cash Sale will be held on Thursday, Sept. 17, at 10 A. M. Telephone No. 218. LEWIS J. LEVEY, Auctioneer. MONTHLY ACCOUNTS. In accordance with the desire of many patrons, and to meet the exigencies of the times the undersigned will hereafter render and collect all accounts monthly. T. G. THURM, J. M. OAT, JR., & CO., P. M. OAT, JR., & CO., WEST DOW & CO., FRANK GERTZ, A. L. SMITH, H. E. MCINTYRE & CO. DAILY HONOLULU PRESS 213-266. MANAGER SATURDAY PRESS. MANAGERS' NOTICE. All accounts overdue the SATURDAY PRESS are desired to be settled immediately. All unexpired subscriptions or advertisements will be completed by the Daily Honolulu Press. MANAGER SATURDAY PRESS. ROOMS TO RENT. Furnished or unfurnished, centrally located, within ten minutes walk of the Post Office. 4-99 Address, P. O. Box 307.

Shipping. ADMINISTRATOR'S NOTICE. The business heretofore carried on under the firm name of LYONS & LEVEY, is this day dissolved by mutual consent of L. J. Levey, retiring, and J. Lyons carrying on the business as heretofore, who will assume all liabilities of said firm, and who alone is authorized to collect all Outstanding Debts. Signed L. J. LYONS, T. G. THURM, L. L. COHEN,

Some Great Merchant Ships. The New York Sun compiles a list of some of the great wooden and iron sailing ships...

The list of large wooden ships built during the past few years in America, with their present nationalities, is here appended:

Table with columns: VESSELS, Tons, Flag, Where built. Lists various ships like Three Brothers, Ocean King, etc.

A majority of the great iron sailing ships are built on the Clyde and at Belfast. A list of the largest is here appended:

Table with columns: Vessels, Tons, Flag, Where built. Lists ships like New York, Lord Worsley, etc.

Steamships of a much larger tonnage have been built in this country and in Europe. The Peking and Tokio in the China line...

Mr. Wrangdoodle smoked two cigars last evening on the front veranda. Several small boys whose names and ages we are unable to learn...

Our readers will be glad to know that Mrs. Pennyroyal's cat is convalescent. Grave fears were entertained at one time as to her ultimate recovery.

General Advertisements. THE PRESS PUBLISHING CO. LIMITED. NEWS-BOOE.

Job Steam Printing Office, CAMPBELL'S NEW BUILDING (Merchant block).

WEDDING VISITING OR BUSINESS CARD INVITATIONS, MENU CARDS, CARDS.

SHIPPING RECEIPTS, MONEY RECEIPTS, CERTIFICATES OF STOCK, CONTRACTS, BILLS OF LADING, CHECKS, DRAFTS, ORDERS, NOTES, TICKETS.

Legal and Mercantile Blanks, LABELS, BOOKS, PAMPHLETS, ETC.

Book-Bindery, Paper-Ruling and Blank Book Manufactory. Enables the office to lay claim to competency in all departments...

METROPOLITAN MARKET. KING STREET. C. J. WALLER, Proprietor.

THE GENUINE ARTICLE. COLUMBIA RIVER SALMON. Salmon Bellies, 1884 Catch. CASTLE & COOKE.

General Advertisements. M. W. McChesney & Son. No. 42 Queen Street.

Assorted Merchandise. Consisting in part of Bbls. Flour, Golden Gate, Bbls. Flour, El Dorado.

Best California Leather. Sole, Insole, Harness, Siding and Uppers. French and American Callings.

WESTON'S PATENT CENTRIFUGALS COMPLETE. ALSO ON CONSIGNMENT. California Hay, Barley, Potatoes, Barrels.

SEWING MACHINES. Wilson and Gible's Automatic; Singer Manufacturing Company; Acme; Remington Company; Family; Wilson.

CHAS. HUSTACE. DUPEE HAMS AND BACON. California Comb Honey. Old Virginia Sweet and Sour Pickles.

LAINÉ & CO. No. 34 Fort St., Clock Building. Have received a consignment of the most Economical and Valuable Feed for all kinds of stock.

Electric & Downer's Kerosene Oil. Centrifugal Linings. Cases Brown Soap.

General Advertisements. CASTLE & COOKE. HONOLULU, H. I. Would call attention to their Large and varied Stock of

AGRICULTURAL IMPLEMENTS. Consisting of the unrivalled Paris Steel Breaking Plow, The Molise Steel Breakers, and Furrowing Plow.

SUGAR BAGS, SUGAR KEGS, Cumberland Coal. Sperm Oil, Kerosene Oil, Perfect Lubricators, Plumbers, Albany Grease, Disston's and S. and J. Files.

Staple Groceries. No. 1 and 2 Flour, No. 1 and 2 Rice, Crushed Sugar, China and Japan Teas, Oysters, Clams, Salmon, Lobsters.

WESTON'S PATENT CENTRIFUGALS COMPLETE. ALSO ON CONSIGNMENT. California Hay, Barley, Potatoes, Barrels.

SEWING MACHINES. Wilson and Gible's Automatic; Singer Manufacturing Company; Acme; Remington Company; Family; Wilson.

CHAS. HUSTACE. DUPEE HAMS AND BACON. California Comb Honey. Old Virginia Sweet and Sour Pickles.

LAINÉ & CO. No. 34 Fort St., Clock Building. Have received a consignment of the most Economical and Valuable Feed for all kinds of stock.

General Advertisements. HOLLISTER & CO. INVITE THE ATTENTION OF THE PUBLIC & COUNTRY MERCHANTS

LUNDBORG'S PERFUMERY. just received. This is acknowledged to be the finest perfume in the world.

PARKE DAVIS & CO'S. J. C. AYER & CO'S. Patent Medicines.

HOLLISTER & CO. are also Proprietors and Manufacturers of the celebrated Rheumatic Liniment.

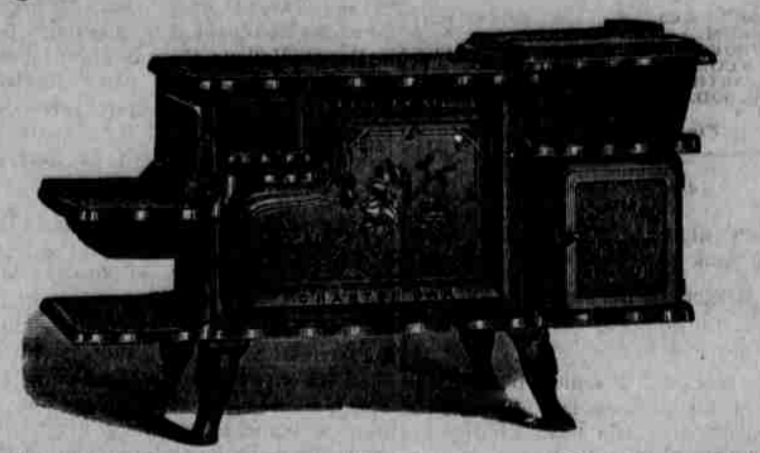
OUR GINGER ALE & SODAWATER. has always been recognized as the best in the market.

OUR GINGER ALE EXTRACT. being manufactured from our own private formula in New York.

GEORGE LUCAS, CONTRACTOR and BUILDER. Steam Planing Mills. Manufacture all kinds of

Mouldings, Brackets, Window frames, Blinds, sashes and Doors and all kinds of wood-work finish.

General Advertisements. JOHN NOTT. At the Old Stand, No. 8 Kaahumanu St., Honolulu.



Plumbing, Tin, Copper and Sheet Iron Work, OF ALL KINDS, ATTENDED TO.

E. O. HALL & SON, (Limited). Have just received Ex Barly Mendota and other arrivals.



PLOWS AND BREAKERS, OF ALL SIZES. Owing to the unusual demand for the above our stock on hand was very much reduced.

A LARGE STOCK OF SOAPS, INCLUDING Colgate's Toilet Soap, Harness Soap, No. 1 Laundry Soap (in case), Sterling Soap (in case), Erasive Soap (in case), Boiled and Raw Linsced Oil, Turpentine.

PAINTS OF EVERY DESCRIPTION, And a very Superior Stock of all Kinds of HARDWARE, All to be had at the LOWEST MARKET RATES.

Readers of the "Daily Honolulu Press" Will find it an advantage to SEND FOR OUR LARGE ILLUSTRATED CATALOGUE, which, together with Samples, is SENT FREE TO ANY ADDRESS.

WEINSTOCK & LUBIN, 400, 402, 404, 406, 408 K ST., SACRAMENTO, CAL. 250-261