

If you want today's News to-day you can find it in THE STAR.

# THE HAWAIIAN STAR.

The Hawaiian Star goes into the homes of Honolulu

VOL. VI.

HONOLULU, H. I., MONDAY, JANUARY 15, 1900.

No. 2455.

## KOHALA AND HAMAKUA ACT

### THEY PROTEST AGAINST HILO'S MADNESS.

#### The "Rainy City" Laying up Wrath for Herself Against the Day of Wrath. Sheriff Andrews.

KOHALA, January 1.—To say that Kohala people are indignant over the edict that has gone forth from Hilo is putting the feeling mildly. Sheriff Andrews having been delegated by the Honolulu Board of Health to establish all necessary regulations for quarantine for this island sends forth these decrees: No steamship or any other boat shall enter any port than Hilo; all mail, freight, etc., shall not be landed unless first fumigated under the supervision of the Board of Health of Hilo; all passengers who have certificates from the Honolulu Board of Health may be required to land on quarantine grounds of Coconut Island and submit to a strict quarantine at their own expense for eight days. We beg to know why mail and freight once fumigated in Honolulu and passengers just out of Honolulu quarantine must go through these processes again under Hilo supervision or if Hilo has any right to interfere with U. S. mails. It is also a little strange to us that in spite of these ironclad regulations 12,000 bags of rice were landed today at Hilo from the Kinau and that it has been impossible all day until this evening to have the privilege of speaking with any of the Hilo authorities over the telephone.

A large meeting was held at the court house today similar in purpose to one held in Hamakua yesterday. It was decided that a committee should meet the Kinau at Mahukona tomorrow demanding the landing of freight, mail and passengers, also appointed today will make an overland trip to Hilo demanding a modification of these regulations. Hamakua has sent a protest to the Honolulu authorities. I have hardly described the indignation felt here at the injustice of Hilo's regulation. The "We are the people" spirit of Hilo is only distinguishing itself again, they say, and will only bring the usual censure upon the town. Another correspondent in Kohala, writing under date of January 12, says: "In re the plague situation I would like to give you some facts from the portion of this island not included in, or represented by the district of Hilo. The S. S. Kinau came up on her regular trip and went first to Hilo where she was subjected to about every regulation and rule that the crazy authorities of that small town could devise, and these authorities not only acted for themselves, but for the rest of the island and Hamakua are perfectly willing to do as well. The districts of Kohala and Hamakua are perfectly willing to receive any freight and passengers that the health authorities in Honolulu may see fit to send out, and this feeling was very plainly manifested in both districts at public meetings held yesterday, when the health authorities of Honolulu were upheld, and the Hilo authorities were condemned in no unmeasured terms. Simply, I should like much to have your people understand that the actions of the Hilo authorities are thoroughly repudiated and condemned by the people of Kohala and Hamakua districts, this expression having been made at public and very representative meetings which have been held in both districts. It is the town of Hilo against the rest of the island."

### MESSANGER SERVICE.

The Honolulu Messenger Service delivers messages and packages. Telephone 378.

## NEW ADVERTISEMENTS BY AUTHORITY

Office of the Board of Health, Honolulu, January 14, 1900. All persons found in or about the grounds of the Kaili detention station, except workmen or those having special permission, will be arrested and detained in quarantine. By order of C. B. WOOD, President Board of Health.

## Sugar Plantation Bonds...

Are desirable investments for trust funds. We make a specialty of the bonds of such companies as have first been subjected to a thorough legal and financial examination; and we are prepared to furnish full data regarding the properties of the companies whose bonds we have purchased and offer for sale at prices to yield a safe income and good investment. We will take subscriptions for the following at 2 1/2% premium: KAHUKU, 5-10 year 6% gold bonds; security, \$750,000; issue, \$200,000. EWA, 5-10 year 6% gold bonds; security, \$5,000,000; issue, \$500,000. We are TRUSTEES for both of the above issues.

HAWAIIAN TRUST & INVESTMENT CO., LTD. GEO. R. CARTER, Treasurer. Tel. 184 409 Fort St., Honolulu

## FLAMES AT WORK AGAIN

### MORE PLAGUE BACILLI GO UP IN SMOKE.

#### A Dozen Buildings Near the Occidental Hotel Given to the Fire—Benefit to Near-by Property.

Another large fire was begun this morning by the fire department, destroyed the Union block, bounded by Alakea, Richard, Merchant and King streets. Everything in the block except the Occidental hotel is to go, making a dozen buildings consumed. The property condemned is valued at about \$10,000. The work of destruction was begun at 11 o'clock this morning. Three buildings occupying the space on Alakea street from the hotel to Merchant street were burned by noon, when the fire was put out for an hour. It was started again at 1 o'clock on the King street side of the hotel. The small brick building occupied by the Hawaiian Marble Works and the paint shop of Spanton & Rand was sent up in smoke in short order, the firemen keeping three streams constantly on the hotel building to prevent the flames from catching it. Windows in the upper story of the hotel were broken by the streams and the top story was flooded.

This afternoon the flames are eating away the rest of the block. The hotel has a space burned away all round it and, as all the other buildings to be burned are isolated from any other, the fire may go ahead rapidly without danger. The old free dispensary, the buildings of fire engine number one and a half a dozen cottages and Chinese stores are going. The fire building was the best in the lot. It is two stories, with a stable in the rear. This one of the largest buildings was destroyed by the fire department. The old bell was still hanging in the tower when the firemen went to work.

In the cottages and stores, nearly all the goods were left to the flames. The monuments of the Marble Works were disinfected and moved away yesterday. In the Chinese restaurant on Merchant street, chairs, tables, pottery and some provisions were scattered about when the flames began to eat the structure away and the little Chinese soda water, tobacco and gambling joints had piles of cigars that went heavenward with the buildings and all the bacilli therein. From the private home furniture was nearly all taken, being well fumigated in the marble works building before removal. Several white families were moved out of the block yesterday and furnished with quarters in Alex. Robinson's cottage in Printer's lane. Mr. and Mrs. Fummerfield and Mr. and Mrs. Bolt occupied houses in the burned district, and other white families were also moved. The rest of the inhabitants of the block were natives, Chinese and Japanese. The block, excepting the hotel and fire department buildings, was a row of ugly shanties, opposite to a bit of the very great In-town. Property owners on the other side will be benefited by the destruction of the dirty shacks, in which a lot of Chinese tailors, laundrymen, tobacco dealers, etc., were doing business. The value of the fire to the Occidental hotel will be very great. In the improvement of the neighborhood when the flames die out finally the block will be a clear empty space throughout, but for the hotel building on the corner of King and Alakea.

### PASS THE TIME PLEASANTLY.

Steamer men in quarantine pass the time pleasantly by playing gramophones purchased from The Bergstrom Music Co. New improved gramophones sold on easy payments.

### ALWAYS ON HAND.

Beautiful trimmed hats, choice ribbons and flowers. The latest patterns as shown in the Delineator at Mrs. Hanna's Fort street.

### EXQUISITE RUGS.

If you want to decorate your home buy one of those 14-4 rugs that are being sold at L. B. KERR'S for \$17. They are good value, exquisite patterns, charming colors, and must be seen to be appreciated. Do not fail to see them before they are all sold.

Going out of the business of importing harness and vehicles. Rare chance for bargains. W. W. Wright.

### IN BEAUTIFUL DESIGNS.

Dress goods in beautiful designs can be found at L. B. Kerr's, Queen street, and at prices that are remarkably low.

### Fine Job Printing, Star Office.

### You're Another

Sufferer from the result of poor repair work. But if you bring your Bicycle, Gun, Typewriter or any article of fine mechanism to us when it needs repairs, and it will be overhauled and put in such shape that it will meet with your thorough satisfaction. Better still, telephone us 565, and we will SEND FOR AND DELIVER WITHOUT EXTRA CHARGE.

We employ only the best skilled help and guarantee all our work. Kodaks repaired, Tennis Rackets re-strung. Keys made. Fine enameling a specialty. A fact repairing done in all its branches.

### PEARSON & POTTER CO., LTD.

312 Fort Street Remember the 'Phone 565

(Continued to Page Five)

## CASE AT THE ARLINGTON

### JAPANESE SERVANT STRICKEN WITH PLAGUE.

#### Board of Health Moves Promptly and There Will be no Necessity of Quarantine—News of Today.

The immediate cause for the great alarm in town this morning was the case of plague that developed early in the yard of the Arlington hotel. The patient is a Japanese woman, who has been attending to indoor work about the caravansary. Dr. Burgess was the woman's physician. At an early hour this morning he decided that the case was suspicious and notified Mr. Krouse. The latter reported the matter at once to the Board of Health office and Dr. Howard was sent to investigate.

In the meanwhile Dr. Burgess had decided in his own mind that the case was one of plague. Dr. Howard, upon examination of the case, reached the same conclusion. Guards were immediately placed around the hotel premises and a strict quarantine established. Many business men and others who were taking breakfast there were closed in. Seen about the matter this afternoon President Wood, of the Board of Health, gave out this statement: "We are not alarmed about the Arlington. The Japanese woman taken with the plague lived in an isolated house on the grounds. This house is of brick with plastered walls and a cement floor and can be thoroughly fumigated. Every movement of the woman for the past several days has been traced, so that we are able to act intelligently in the matter."

"We will first of all attend to the house in which the woman lived. Then we will pay proper attention to parts of the hotel visited by her recently. Certain requirements have been made of the guests at the place, and when these are complied with the quarantine on the hotel will be raised. I think this will occur during the afternoon. For a week guests will be required to appear twice each day for examination. "No, there is no idea of quarantining the whole block. There is in the first place no evidence of connection between the infected premises and other parts of the hotel, let alone between there and other portions of the block."

This case at the Arlington created more excitement than any that has yet been since yesterday. There were a most conspicuous place it attracted extraordinary attention. Great credit is due Mr. and Mrs. Krouse that they insisted upon letting the facts be known at once.

### MRS. BOARDMAN.

The case most talked about yesterday was that of Mrs. George E. Boardman, on Kinau near Kapiolani streets. Drs. Auger, Day and Herbert, as well as physicians of the Board, have watched this case since yesterday. There were symptoms of plague yesterday and a guard was placed about the premises.

This afternoon Mrs. Boardman is better. The swelling is perhaps more pronounced, but the temperature of the lady is lower and she is more rational than yesterday. The patient had been in charge of the art department in the store of E. W. Jordan, on Fort street. Investigation yesterday showed that a dead rat had been found in the department some days ago, and it was strongly alleged that Mrs. Boardman had removed it. This matter has not, however, been fully determined. One of the ladies in the store affirms that such was not the case. It is not a fact that the case has positively been adjudged plague. All the physicians agree that it is suspicious, but that as far as the matter has now gone, pending developments it can be regarded merely as suspicious and nothing more.

The fact remains that the lady is improving. It may be that her sound constitution, and some natural immunity possessed by Caucasians from the plague, that she is able to master it. There is a report that the case is one of blood poisoning. This is a hopeful view, though it lacks official confirmation. Jordan's store, M. R. Counter's jewelry shop and Mrs. Hanna's millinery have been closed. Some of the dry goods stores thought of closing this morning out of sympathy for Mrs. Jordan, but decided later not to do so as such a course would not be understood by natives and some of the more ignorant people and might cause unnecessary alarm.

### CASES YESTERDAY.

Inspectors found a sick Chinese woman last night near the corner of King and Keolu streets. Her name is Wong She, aged 32. There were evidences of plague and all the persons living in the neighborhood were taken in charge. Today this case is said to be one of undoubted plague.

Kaouli, the young driver of an odorless excavator wagon, who was taken ill in Kewalo some days ago, died yesterday at the pest house. The body was cremated at Maunaloa. Kaneho, the soldier of the National Guard whose illness was reported about the middle of last week, also died at the pest house and his body was cremated. There was a doubt in some minds about this case but the bacteriological examination showed unmistakable evidences of the plague.

### CASES SATURDAY.

The Chinaman, Ling Wing Sing, who died in a lane near Kaunakapili early Saturday afternoon had plague. During Saturday afternoon a native man named Makoua died in a house out of sympathy for Mrs. Jordan, but on Mr. Damon's place at Maunaloa. There were strong indications of plague and the bacteriological examinations showed unmistakable evidences of it. The body was cremated, and yesterday morning agents of the Board burned the premises and the house next door. A Hawaiian girl named Kala, aged 13, died at the Pest premises in Kewalo Saturday night of plague. One of the

Hanan creates the style and leave others to follow. M'INERNEY SHOE STORE.

## EXTRA!

### THE TOWN DISTRICTED.

#### 4:30 P.M.

The Board of Health this afternoon established a district system of inspection of the whole city, defining forty districts that include all the town from Moanalua to Waialae. The proposition was presented by a Citizens' Sanitary committee of ten members, which was appointed to go ahead with the arrangements for the districting. A call was at once made for volunteers and many people offered their services to the Citizens' Committee.

The districts are not to be separately quarantined. The inspectors will take a complete census and make examination of every house twice a day. No moving from one district will be allowed. Upon his own responsibility the Minister of Education has closed all the schools in the district of Honolulu.

## A DANGEROUS PRACTICE

### SCAVENGING AND RAG PICKING BRIGADE.

#### Liabie to Scatter Infection—Its Danger and the Remedy Pointed Out. Public Spirited Portuguese Active.

A. V. Peters, who with other well known members of the Portuguese colony, is using his best efforts to secure observance of strict hygienic and sanitary measures among the Portuguese, calls attention to the dangerous practice of many, especially children going about town gathering up wood, cut off clothing and other rubbish and carrying it to their homes. "This is a matter that everybody sees or can see," said Mr. Peters, "children, boys and men and women among the natives and Portuguese especially. They go to rubbish heaps and gather up wood, old clothes and shoes, and sometimes potatoes, onions and other things of the sort. These are carried to their homes and the vegetables are eaten. This practice can only be described as 'scavenging,' and as there is no means of knowing where all these things come from, or what conditions of infection they may have been subjected to it seems a most dangerous practice, one more likely than almost any other to spread infection. Even if none of the things thus gathered should actually be infected, the practice is one incompatible with thorough cleanliness and hygienic and sanitary measures. It ought to be stopped. The health and police authorities ought to use all their power in the preparation of their influence and efforts to stop it. Merchants and householders whose rubbish heaps are largely the source of this practice ought to prevent it by destroying their rubbish heaps."

A number of public spirited Portuguese have joined in the preparation of a circular printed in Portuguese and circulated among the Portuguese, urging individual and family sanitary measures and explaining in a clear and easily understood way some of the means each individual and household can use.

### DEPIES THE KAHUNA.

Big Jim in Piliika. But Will Not Cry "Quits."

James Kupihie, "Big Jim," is believed to be the victim of the most effective kahuna that ever made incantations over a hair or a nail paring. Big Jim is suffering from an affection of the eyes which the oculist says is caused by the coal dust in the ships he has searched for stowaways. The condition of his eyes together with the dark glasses he is compelled to use render him almost blind. Getting up early in the morning before it was very light and in his almost blinded condition, he made a mistake in leaving the veranda of the house and fell to the ground injuring himself severely and putting his arm in a sling. As Jim is charged in the District Court with deserting his wife, his fall is attributed to the work of some kahuna employed on behalf of the wife. Jim stoutly challenges the kahunas to do their worst.

### TRUTH.

The truth should be spoken at all times, and held back when you are acknowledging Christmas gifts.

### HAS FEW EQUALS.

For light running, easy adjustments, and good work the Singer Sewing machine has few equals and no superiors—B. Bergersen, agent, Bethel street.

### HERE AT LAST.

"The Hawaiian Sonic Calendar" published only by The Golden Rule Bazaar, 316 Fort Street, was received by the S. S. "Mariposa" and is the handsomest piece of work in this line ever offered the public. Secure one and send it to the folks at home—they will greatly appreciate it, and it only costs 50 cents.

Hanan creates the style and leave others to follow. M'INERNEY SHOE STORE.

## NEW FEDERAL ORDERS

### THE QUARANTINE OF AUSTRALIA PASSENGERS.

#### The Rule Keeping Them at Home is Withdrawn—Several Probably Cut From the List.

Consul-General Haywood and Dr. Carmichael, federal quarantine officer, received new instructions on the steamship Gaelic regarding the course to be taken here in quarantine matters. The plan already adopted by the Consul's office was in general in line with the instructions received, but slight modifications were decided upon this morning, in view of the advices received. Hereafter the passengers booked for the Australia will not be required to keep in their homes. "The news of the plague here is taken very quietly by the authorities on the Mainland," said the Consul-General "and in view of the instructions sent us, we thought it well to discontinue the order to keep people in their homes. The passengers who are booked will have to call upon Dr. Carmichael once every day for examination. If any district which we now regard as healthy should become infected, as is possibly the case now with the Arlington, we shall have to prevent those who have booked from such districts from going. If the Arlington case is really plague, none of the people there can hold their bookings for the coast. Whether we shall also keep back people from houses near by, is to be decided after consultation with the Board of Health.

"If my personal wishes could be carried out, we should have a dozen steamers and allow all the people who are scared and who want to leave get away at once. People who become frightened only make matters worse. Many of this class are tourists, who are here with nothing to do but think about the plague and get frightened about it, and it would be really a good thing if they could be accommodated with passports."

The usual large crowd formed in line at Dr. Carmichael's office this morning. The doctor felt pulses and asked questions and one by one the prospective passengers hurried away, hoping that they would not find guards lingering round when they reached their homes. The list of nearly a hundred and fifty is already cut down several, unless the Arlington scare proves groundless.

### SOME CHANGES.

L. A. Thurston is in charge of the work of placing guards around infected premises. James A. Kennedy has taken Mr. Thurston's place at the Kaili detention camp.

### GIVING GARBAGE AWAY.

It has been reported to the Board of Health that drivers of garbage wagons have been guilty of allowing natives and others to select bottles and other articles from the carts. The garbage did not come from Chinatown. Anyhow, the matter is regarded seriously and the Board would be obliged to have anyone noticing such proceeding report the matter at once to headquarters.

### NO REGULARS.

A report gained currency this morning that Colonel Mills had offered the services of United States regulars at Camp McKinley for guard duty at the Pail and other outside points. "There is nothing in the story," answered Colonel Mills over the telephone. "My disposition would be favorable to rendering any assistance possible, but the law forbids. Our business here is to handle cases of violence, rebellions, riots and the like if necessary, but we are not permitted to take a hand in anything else."

### A MIDNIGHT CALL.

Armed Natives Looking for Sailors. Seize Henry Brower.

Henry Brower, who is at present living in a cottage on John Emmeluth's place on Judd street, reports an experience that bears on its face an air of mystery and is at least disquieting. Early Sunday morning at 2 or 3 o'clock he was awakened by voices and coming to the door to see what it was he was seized by a band of five or six natives all armed who claimed to be looking for a couple of runaway sailors and insisted at first that he was one of them. They showed no warrant or other legal authorization, nor did they wear uniforms. They did their talking partly in English and partly in Hawaiian. After questioning him closely they finally released him and went away. A little later he heard loud and excited talking in the direction of some native houses not far away.

### NEW ISLAND SCHOONER.

The schooner Alice Kimball, Captain Anderson, which arrived this morning from San Francisco, has been purchased by the Wilder Steamship Company for use in the island trade. The new vessel is about the size of the Golden Gate, owned by the same company. She was built recently and has a new coat of paint. The Alice Kimball made the trip from San Francisco in 22 days, bringing 300 tons of merchandise.

### DR. POSHEY.

Specialist for Eye, Ear, Throat and Nose diseases and Catarrh. Masonic Temple.

### FOR CAMARINOS REFRIGERATOR.

Per S. S. Australia—Peaches, Grapes, Oranges, Lemons, Limes, Celery, Cauliflower, Cabbage, Pears, Plums, Fresh Salmon, Flounders, Crab, Crabs, Eastern and California Oysters (in Tin and Shell), all Game in Season, Turkeys, Chickens, New crop of Nuts and Dried Fruits, Onions, Burbank Potatoes, Swiss, Parmesan, Roquefort, New Zealand and California Cream Cheese, Olives. All kinds of Dried Fruits.

Fine Book and Commercial Printing at the Star Office.

## HEROIC MEASURE ADVISED

### GENERAL EMBARGO AND GOOD CLEANING-UP.

#### Business to Stop for a Time and the Whole Population Devote Itself to Ending the Plague.

The Board of Health will meet at 3 o'clock this afternoon to consider the matter of quarantining the whole city. There was a suggestion this morning to make this quarantine last until next Monday. Another idea was that the time was not long enough, and that it should be kept up for ten days. Merchants of the city are practically unanimous in favor of a general quarantine. In fact, leading business houses have today urged such a step upon the Board of Health. They feel that the most radical steps would be at once taken, no matter what the sacrifice or cost. If such a quarantine is decided upon this afternoon it is certain that the Citizens' Guard, or militia, will be ordered out. Every member of the First regiment, N. G. H., will be taken into quarantine and there kept day and night. In other words there will be no such thing as attending to business during the day and standing guard at night.

The effect of the quarantine will be to place an embargo on public meetings of every sort and travel. It will be maintained from block to block, as in cholera times. Under the present suggestion business would suspend entirely, only the necessities of life being allowed to leave the groceries and markets. This idea has been urged upon the Board of Health this morning by business men, physicians and others. "What will be done can not now be foretold. There may be some modification of the general idea."

"If the Board of Health wants more inspectors to volunteer it will have to provide homes for them to live in," said a well known citizen this morning, after expressing his readiness to help the Board if his services were wanted. "I am ready to do duty as an inspector or anything else, but I do not propose to go home every night after entering infected districts. The Board could get many men if it would see that they have places to live in without exposing their families to the danger of contagion."

The same view is expressed by many people. It has been suggested that the Board secure some large building for the use of the men who volunteer.

### COMING ON WEDNESDAY.

The following were booked at San Francisco at last advice to arrive here by the Australia Wednesday morning: Frank Davis, W. W. Bierce, Miss D. E. Griswold, Dr. Galbraith and wife, A. W. Anderson and wife, children and servant, Mrs. French, Mrs. M. C. Kaulou, Harry King, Mr. Shaw, Dr. P. Jauss and wife, Geo. Greenwald, J. C. Esser and wife, J. O. Pickands and wife, Miss M. L. Smith, Mrs. M. Babcock, Mrs. S. T. Dexter, H. M. Jeone, P. S. Finthoff, B. D. Butler, C. George Krogness, W. A. Bowen, H. C. Brown and wife, J. T. Morrison, R. B. Campbell, H. C. Perry, wife and child, R. C. Rawlins, H. Glimach, W. D. Cull, R. S. Moore and wife, Mrs. Lawrence, Miss Hyde, H. A. Baldwin, J. E. Pope, Mr. Darling and wife, Miss Umben, G. H. Umben, Mr. Lawrence, Mr. Barney and wife, A. H. Bacheider, Mr. Melrose, H. L. Mays, Mr. Marens, Dr. R. J. Wreckinson and Capt. Taylor.

### HAVING A GREAT RUN ON CHAMBERLAIN'S COUGH REMEDY.

Manager Martin, of the Pierson drug store, informs us that he is having a great run on Chamberlain's Cough Remedy. He sells five bottles of that medicine to one of any other kind, and it gives great satisfaction. In these days of a gripe there is nothing like Chamberlain's Cough Remedy to stop the cough, heal up the sore throat and lungs and give relief within a very short time. The sales are growing, and all who try it are pleased with its prompt action.—South Chicago Daily Calumet. For sale by all dealers and druggists. Benson, Smith & Co., general agents, Hawaiian Islands.

Fine Book and Commercial Printing at the Star Office.

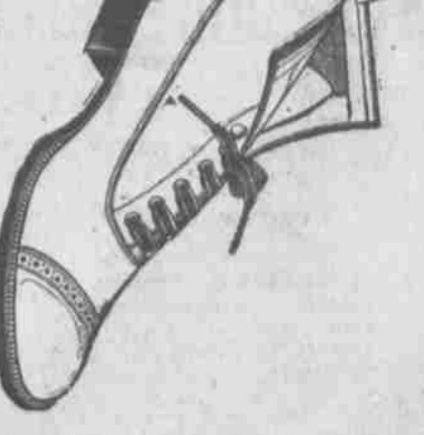
### Right up to date is the "LANCER"

### A gentleman's superior shoe

Tan, Black or Red. Made by the world-famous makers James A. Bannister Co. Enough said

### MANUFACTURERS' SHOE

Sold Dealers SIGN OF THE BIG SHOE



Fine Book and Commercial Printing at the Star Office.

# THE VON HAMM-YOUNG CO., LTD.

Importers and  
Commission Merchants  
QUEEN STREET

Full Line of American and European

**DRY GOODS  
HARDWARE .. GROCERIES  
NOTIONS**

As well as all kinds of General Merchandise

.. SOLE AGENTS FOR ..

The Lancaster Fire and Life Insurance Co., of Manchester, England  
The Balaise Insurance Co., of Basel, Switzerland  
The Union Gas Engine Co., of San Francisco  
The Domestic Sewing Machines  
The Hand Sewing Machine "New Pacific"—and other agencies

Established 1860 Insure Your Life in the Assets \$25,211,910.15

## Germania Life Insurance Co. OF NEW YORK

The Gold Bond Endowment Policy is better than United States Government Bonds

Merchant St. side Judd Building EMMETT MAY, Manager

## Canadian-Australian Royal Mail STEAMSHIP COMPANY

Steamers of the above line, running in connection with the CANADIAN PACIFIC RAILWAY COMPANY between Vancouver, B. C., and Sydney, N. S. W., and calling at Victoria, B. C., Honolulu, and Brisbane, (Q.), are

Due at Honolulu on or about the dates below stated, viz:

from Vancouver and Victoria, B. C., for Brisbane and Sydney:	From Sydney and Brisbane, for Victoria and Vancouver, B. C.:
1900	1900
AORANGI ..... JAN. 12	MIOWERA ..... JAN. 17
MIOWERA ..... FEB. 17	AORANGI ..... FEB. 21
WARRIMOO ..... MAR. 17	WARRIMOO ..... MAR. 14
AORANGI ..... APRIL 14	MIOWERA ..... APRIL 11
	WARRIMOO ..... MAY 9

The magnificent new service the "Imperial Limited" is now running daily

### BETWEEN VANCOUVER AND MONTREAL

Making the run 100 hours without change. The finest Railway service in the world.

Through tickets issued from Honolulu to Canada, United States and Europe.

For Freight and Passage and all general information, apply to

**THEO. H. DAVIES & CO., Ltd., Gen'l Agts.**

## Pacific Mail Steamship Co. Occidental & Oriental S. S. Co and Toyo Kisen Kaisha.

Steamers of the above companies will call at Honolulu and leave this port on or about the dates below mentioned:

FOR JAPAN AND CHINA:		FOR SAN FRANCISCO:	
	1900		1900
GALIC ..... JAN. 12	CHINA ..... JAN. 6	HONGKONG MARU ..... DEC. 30	
HONGKONG MARU ..... JAN. 23	DORIC ..... JAN. 13		
CHINA ..... JAN. 21	NIPPON MARU ..... JAN. 23		
DORIC ..... FEB. 8	COPTIC ..... FEB. 10		
NIPPON MARU ..... FEB. 15	AMERICA MARU ..... FEB. 17		
RIO DE JANEIRO ..... FEB. 24	GALIC ..... MAR. 6		
COPTIC ..... MAR. 6	HONGKONG MARU ..... MAR. 15		
AMERICA MARU ..... MAR. 14	CHINA ..... MAR. 24		
PEKING ..... MAR. 22	DORIC ..... MAR. 31		
GALIC ..... MAR. 30			

For general information apply to

**H. HACKFELD & CO., Ltd. Agts.**

## Oceanic Steamship Company.

### TIME TABLE

The Fine Passenger Steamers of This Line will arrive at and Leave this Port as Hereunder:

FROM SAN FRANCISCO:		FOR SAN FRANCISCO:	
AUSTRALIA ..... JAN. 17	AUSTRALIA ..... JAN. 23	ALAMEDA ..... FEB. 2	AUSTRALIA ..... FEB. 2
MOANA ..... JAN. 31	ALAMEDA ..... FEB. 2	AUSTRALIA ..... FEB. 20	MARIPOSA ..... MAR. 2
AUSTRALIA ..... FEB. 14	AUSTRALIA ..... FEB. 20	AUSTRALIA ..... MAR. 2	AUSTRALIA ..... MAR. 20
ALAMEDA ..... FEB. 28	AUSTRALIA ..... MAR. 2	AUSTRALIA ..... MAR. 20	MOANA ..... MAR. 20
AUSTRALIA ..... MAR. 14	AUSTRALIA ..... MAR. 20		
MARIPOSA ..... MAR. 28			

In connection with the sailing of the above steamers, the Agents are prepared to issue, to intending passengers coupon through tickets by any railroad from San Francisco, to all points in the United States, and from New York by steamship line to all European Ports.

For further particulars apply to

**W. G. Irwin & Co.**  
(LIMITED)  
General Agents Oceanic S. S. Company.

## SHIPPING INTELLIGENCE

### ARRIVING.

Saturday, January 13.  
S. S. Aorangi, Hepworth, from Vancouver January 6: 59 tons mdse.  
Stmr. James Makee, Tullett, from Kapaa: 2450 bags sugar.  
Br. bk. Holywood, McCauley, from Antwerp July 27: 294 tons mdse.  
Schr. Lillebonne, Hansen, from Aberdeen December 13: 18,052 pieces rough pine, 774 pieces dressed pine, 200 bdls. shingles.

Monday, January 15.  
Schr. Alice Kimball, Anderson, from San Francisco, December 23: 300 tons merchandise.  
Jap. S. S. Doyo Maru, Asari, from Yokohama, December 30: 895 tons coal, 526 immigrants.

Sunday, January 14.  
Stmr. Kaula, Bruhn, from Makaweli January 13: 670 bags sugar.  
Stmr. Iwalani, Gregory, from Kaula January 13: 5400 bags sugar.  
Stmr. W. G. Hall, Thompson, from Kaula January 13: 675 bags sugar, 30 cattle.

Haw. bk. Nuanuu, Josselyn, from New York.  
Bk. Alex McNeil, Jorgensen, from Newcastle with coal.

### DEPARTING.

Saturday, January 13.  
S. S. Gaelic, Finch, for China and Japan.  
Stmr. James Makee, Tullett, for Kapaa.

Sunday, January 14.  
Stmr. Kinau, Freeman, for Hilo.  
U. S. transport Westminster, Petrie, for Manila with horses and mules.  
S. S. Aorangi, Hepworth, for the colonies.

Jap S. S. Nanyo Maru, Tomita, for Yokohama.

### PASSENGERS.

ARRIVING.  
Per S. S. Aorangi, from Vancouver January 13.—Hecker, Mackenzie, A. Mackenzie, Rose Weigand, Anne Mui, H. Campbell, Ah Sai, Ng Ong.  
Departing.  
Per stmr. James Makee, for Kapaa January 13.—H. Anderson, F. Pall, D. Braden.

### HONOULU.

To sail, Jan. 11, schr. R. R. Hind for San Francisco.

## GERMANY'S NEW AIR SHIP

COUNT VON ZEPPELIN'S GREAT INVENTION.

Structure Four Hundred and Ten Feet Long—Will Skim Through the Air Like a Bird.

"The air-ship now in the course of erection in Germany by Count von Zeppelin is 410 feet long. The supporting body is a cylinder 29 feet in diameter, the ends being tapered so as to offer the least possible resistance to the air. The skeleton frame of this cylinder is composed of aluminum. Sixteen rings separated from one another 26 feet hold the framework together. These rings are not circular, but form a twenty-four-sided polygon; their shape is determined by numerous strong aluminum wires radiating from a central circle like the spokes of a bicycle wheel. Horizontal bars are used to hold the rings together. The entire framework will be surrounded by a netting of ramie-fiber cord, remarkable for its great toughness and tensile strength. Within the framework and on each side of the rings a similar netting will be disposed.

"The sixteen rings divide the cylinder into seventeen compartments, as it were, each of which will contain a balloon or gas-bag. If one of these seventeen independent balloons be injured, the others will remain intact and will still support the air-ship. The principle evidently resembles that of the water-tight compartments of a steamship. But the system is far safer than that employed in vessels, for no connecting doors or openings are used.

"The balloons are made of a light, but tough and impenetrable, cotton fabric covered with a gas-tight rubber composition. The aluminum framework is still further protected by an outer water-tight envelope which serves chiefly to protect the balloons from the direct rays of the sun and from rain. The ramie netting serves the purpose of separating the balloons from one another and from the outer envelope.

"The balloons will have a capacity of 351,150 cubic feet, and will be filled with hydrogen gas kept under pressure in cast-iron cylinders, each of which contains 175 cubic feet. Two thousand cylinders will, therefore, be required. The cylinders will be stored on a float which will be towed to the housing when the balloons are to be inflated."

### WHEN THE KINAU CAME.

What Hilo Did to the Mail and Passengers.

HILO, January 12.—When the Kinau arrived here shortly after 6 o'clock Wednesday evening, she was at once boarded by Sheriff Andrews who informed Captain Clark of the new regulations. The officers of the steamer protested that these regulations were contrary to the orders of the National Board of Health, that the passengers aboard had all undergone quarantine, the freight had been fumigated and was from sources free from infection, and that the mail had been thoroughly fumigated. The protests were unavailing. After a long discussion the mail was taken to the fumigating plant on Coconut Island where it was fumigated for six hours. Each envelope and wrapper was cut open and the contents placed in one pile and the envelopes and wrappers in another. When the fumigating process was complete an effort was made to distribute the mail. But it had become thoroughly mixed, and the process was a slow, tedious and exasperating one, and was not completed when the Kinau left.

The passengers were given the privilege of landing by first going into an eight day quarantine at their own expense. Major Purdy who came with \$125,000 to open the Hilo bank of the First American Bank of Hawaii, went into quarantine aboard one of the sailing vessels in the harbor. The other passengers refused and returned with the Kinau.

Owing to the representations of the consignees of a large quantity of rice that it was absolutely necessary as food supply, it was permitted to be landed on Coconut Island to be fumigated for eight days unless it was needed for food. The Kinau was then sent back to Honolulu.

## It Will Serve Your Interest

to call and inspect the elegant assortment of the choicest

**Dress Goods,  
Laces,  
Rugs,  
Etc, Etc.,**

which we are opening daily. These goods were personally selected during my European Tour. This display excels anything yet produced in Honolulu.

## E. W. JORDAN.

FORT NO. 10 STREET

### ARTESIAN WELLS

L. E. PINKHAM, Contractor  
Office with the Pacific Hardware Co. Honolulu, H. I.

Estimates given and contracts made for wells on any of the Islands.

### SIX NEW PLANTS

For heavy work operated by the most skillful highest class drillers.

## The Kash

### Fall Suits

Which we are showing in such lavish profusion, one wonders if further improvement is possible. Its a line fully consistent with fashion's requirements, magnificent specimens of tailoring—perfect examples of fabric, fit and finish; and a strong point about them is, they are exclusively ours and you need not fear duplication. As to Prices, "Come" expecting to find some surprises and you'll not be disappointed.

### A Message Just Received

From our boys' and children's department.  
Say, don't forget to tell the parents of Columbus about the splendid offerings we are making in boys' and children's clothing. Here is what it says:

Suits from 3 to 8 yrs. \$2 and up  
Suits from 8 to 16 yrs. \$3.50 and up

## "THE KASH"

TELEPHONES 676 AND 96.

2-LARGE STORES-2  
Of the Best Furnishings

Nos. 9 and 11 Hotel Street  
and Cor. Fort and Hotel Streets

## The Tea Department

Is one of the special features of our business. Thirty years of close application, study and varied experience enable us to select teas unsurpassed both in quality and price. For richness, strength, quality, tone, flavor and purity we claim our teas unsurpassed.

For rich aromatic blends of great strength, combining the delicious "fragrance of the Orient," we specially recommend our "Maltese Cross" blends. These are the perfection of the tea expert's skill. Their sale is very large and steadily increasing, demonstrating the value of judicious blending.

## LEWIS & CO.

111 Fort Street. Telephone 240

### BEAVER LUNCH ROOM.

Fort Street. Opposite Wilder & Co. H. J. NOLTE, Prop'r.

First Class Lunches served with tea, coffee, soda water, ginger ale or milk.

Smokers' Requisites a Specialty.

## Metropolitan Meat Co.

81 KING STREET.

Wholesale & Retail Butchers  
AND NAVY CONTRACTORS.

G. J. WALLER, : : : Manager.

## Cannon Cigarettes



New and Superior Brand  
Best Value for 5c.  
Holder for each Cigarette

For sale at all Retailers. Limited Supply at Wholesale by

## HYMAN BROS.

White as Snow.

## PORT COSTA FLOUR.

Washington Mercantile Co., Ltd.

SOLE AGENTS

CORNER FORT AND QUEEN STREETS

## THE "MONITOR"



Is all that the name implies.

JOHN NOTT

Plumbing, Tin, Copper and Sheet Iron Work  
DIMOND BLOCK. 75-79 KING STREET.

## Honolulu Iron Works.

STEAM ENGINES, SUGAR MILLS, BOILERS, COOLERS, IRON, BRASS, AND LEAD CASTINGS.

Machinery of Every Description Made to Order. Particular attention paid to Ship's Blacksmithing. Job Work Executed on Short Notice.

### BY AUTHORITY

IRRIGATION NOTICE.

Holder of water privileges, or those paying water rates, are hereby notified that the hours for irrigation purposes are from 6 to 8 o'clock a. m. and from 4 to 6 o'clock p. m.

ANDREW BROWN,  
Superintendent of Water Works.  
Approved: ALEX YOUNG,  
Minister of the Interior  
Honolulu, November 9, 1899.

## EDISON ELECTRIC INCANDESCENT LAMPS

16 and 32 candle-power  
100 and 110 volts

## OCEANIC GAS & ELECTRIC CO.

(LIMITED).

Fine Book and Commercial Printing at the Star Office.  
Note Heads, Bill Heads, Statements and Fine Commercial Printing at the Star Office.

## CLEVELAND FRUIT STORE

KING STREET, Next to Occidental Hotel.

Fresh California Fruits Always on Hand. Dealer in Tobacco's, Cigars, Butter, and Kona Coffee.

1900..MODEL..1900

## Kodaks OF ALL KINDS...

Premo, Korona, Vee, Buckeye, Empire State, and a dozen other makes of cameras

50,000 card mounts, fresh films, plates, paper, etc.

## The Le Munyon Photo-Supply Co.

426 FORT STREET

## Hawaiian Curios

Kapa, Calabashes, leis, Native Hats, Hair Skirts, Nihau Mats, Fans, Shells, Seeds, etc. Home-made Poi constantly on hand. Mending done neatly and Cut Flowers furnished by THE WOMAN'S EXCHANGE

Cor. Hotel and Union Streets, Honolulu

Telephone 659.

## Honolulu Sheet Metal Works

Galvanized Iron Skylights and Ventilators, Metal Roofing, Conductor Pipe and Gutter Work. Jobbing Promptly Attended to.

Richard Street, between Queen and Merchant, Honolulu.

Note Heads, Bill Heads, Statements and Fine Commercial Printing at the Star Office.  
Fine Book and Commercial Printing at the Star Office.

**A. L. G. ATKINSON** **ALBERT F. JUDD, JR.**  
**ATKINSON & JUDD**  
 Attorneys and Counsellors at Law  
 Office, over Bishop & Co.'s Bank.  
 Cor. Kaahumanu and Merchant Sts.

**F. M. BROOKS**  
 ATTORNEY-AT-LAW.  
 Spreckel's Building.  
 Fort Street, Honolulu.

**DR. WALTER HOFFMANN.**  
 Beretania St. opposite Hawaiian Hotel.  
 Office Hours: 8 to 10 a. m.; 1 to 3 p. m.; 7 to 9 p. m.  
 Sundays: 8 to 11 a. m.  
 Tel. 510. P. O. Box 601.

**DR. I. MORI**  
 136 Beretania St., bet. Emma and Fort  
 Telephone 277; P. O. Box 843  
 Office hours: 9 to 13 a. m. and 7 to 8 p. m.; Sundays, 9 to 12 a. m.

**DR. A. C. WALL, DR. O. E. WALL,**  
**DENTISTS.**  
 LOVE BUILDING, FORT STREET.  
 OFFICE HOURS, 8 a. m. to 4 p. m.

**M. S. GRINBAUM & CO.**  
 Limited.  
 HONOLULU, H. I.  
 Commission Merchants and Importers  
 of General Merchandise.

San Francisco Office, 215 Front Street.  
**Equitable Life Assurance Society**  
 OF THE UNITED STATES.

**BRUCE CARTWRIGHT,**  
 General Manager for Hawaiian Islands  
**O. G. TRAPHAGEN,**  
**ARCHITECT.**  
 223 MERCHANT ST., HONOLULU.  
 Between Fort and Alakea.  
 Telephone 743.

**WILLIAM SAVIDGE**  
 STOCK AND BOND  
 BROKER.  
 McInerney Block, Fort Street.

**THOMAS LINDSAY**  
 JEWELER.  
 DIAMONDS, WATCHES, CLOCKS  
 AND FINE JEWELRY.  
 Fine Watch and Jewelry Repairing  
 A Specialty.  
 434 Fort street. Honolulu, H. I.  
 P. O. Box 544.

P. O. Box 371. Telephone 328.  
**EDMUND R. BIVEN**  
 STOCK BROKER.  
 Island Stocks Bought and Sold.  
 Trustee for non-resident stockholders  
 OFFICE: CAMPBELL BLOCK.

**CHARLES J. FALK**  
 STOCK AND BOND BROKER  
 Member of the Honolulu Stock  
 Exchange.  
 Room 301, Judd Building.

**G. DOHI**  
 223 King Street, Honolulu.  
 STRAW HATS MADE TO ORDER.  
 Good ready made stock on hand and  
 for sale at low prices.

**HOWARD & TRAIN**  
 ARCHITECTS  
 Suite 7, Model Block, Fort Street  
 Telephone 989.

**CONSOLIDATED SODA WATER WORKS**  
 (COMPANY, LTD.)  
 Esplanade, cor. Allen and Fort Sts.  
**HOLLISTER & CO., AGENTS.**  
**H. K. MEEMANO & CO.**  
 CONTRACTORS AND BUILDERS  
 Painters, Paperhangers and Decorators  
 All Work Neatly Done.  
 Office: Fort Street, Honolulu

**THE CLUB STABLES, LTD.**  
 Fort Street, Near Hotel. Tel. 47.  
**Livery Boarding and**  
**Sales Stables.**  
 Prompt Service. Stylish Turnouts  
 Safe Drivers.  
 We are especially equipped to cater  
 to your trade. Fair dealing and good  
 service is what we depend upon to  
 get it.  
 Hack stand—Bell Tower, Union  
 Street, Telephone No. 319. Hacks Nos.  
 92, 65, 81, 125, and 180.  
 C. H. BELLINA, Manager.

**OYSTER COCKTAILS UP TO DATE.**  
  
**HART & CO.**  
 HONOLULU

**ELITE ICE CREAM PARLORS.**

**BANK OF HAWAII, LTD.**  
 JUDD BUILDING, FORT ST.  
 In incorporated Under the Laws of the  
 Republic of Hawaii.

**CAPITAL, - - - \$400,000.00**  
**OFFICERS AND DIRECTORS.**  
 Chas. M. Cooke ..... President  
 P. C. Jones ..... Vice-President  
 C. H. Cooke ..... Cashier  
 Directors—Henry Waterhouse, Tom  
 May, F. W. Macfarlane, E. D. Tenney,  
 J. A. McCandless.

Solicits the Accounts of Firms, Corporations, Trusts, Individuals, and will promptly and carefully attend to all business connected with banking entrusted to it. Sell and Purchase Foreign Exchange, Issue Letters of Credit.

**Savings Department**  
 Ordinary and Term Deposits received and Interest allowed in accordance with rules and conditions printed in pass books, copies of which may be had upon application.

**THE FIRST AMERICAN BANK**  
 OF HAWAII, LTD.  
 Incorporated Under the Laws of the  
 Republic of Hawaii.

Authorized Capital, \$1,000,000  
 Subscribed Capital, 750,000  
 Paid Up Capital, 500,000

**OFFICERS AND DIRECTORS:**  
 Cecil Brown ..... President  
 Mark P. Robinson ..... Vice-President  
 B. F. Dillingham ..... Vice-President  
 W. G. Cooper ..... Cashier  
 E. M. Boyd ..... Secretary  
 Directors—Cecil Brown, W. G. Cooper,  
 H. M. von Holt, Mark P. Robinson and  
 Bruce Cartwright.

**DRAW EXCHANGE ON:**  
 San Francisco—The Anglo-Californian Bank, Limited.  
 Chicago—The Merchants Loan and Trust Company.  
 New York—J. & W. Seligman & Company.  
 London—The Anglo-Californian Bank, Limited.  
 Paris—Societe Generale.  
 Hamburg—M. M. Warburg & Company.  
 Hongkong and Yokohama—The Chartered Bank of India, Australia and China.  
 Australia—The Union Bank of Australia, Limited.  
 Canada—Bank of Montreal.  
 Berlin—Gebruder Meyer.

Exchange bought and sold. Letters Credit issued on all parts of the world.  
 ESTABLISHED 1858.  
**BISHOP & Co.,**  
**Bankers,**  
 TRANSACT A GENERAL BANKING  
 AND EXCHANGE BUSINESS.

**COMMERCIAL AND TRAVELERS' LETTERS OF CREDIT ISSUED, AVAILABLE IN ALL THE PRINCIPAL CITIES OF THE WORLD.**  
 INTEREST allowed on fixed deposits: Three months, 3 per cent; six months, 3½ per cent; twelve months, 4 per cent.  
 CLAUS SPRECKELS, WM. G. IRWIN.  
**Claus Spreckels & Co.**  
**BANKERS.**  
 HONOLULU, H. I.  
 San Francisco Agents—The Nevada National Bank of San Francisco.  
**DRAW EXCHANGE ON**  
 SAN FRANCISCO—The Nevada National Bank of San Francisco.  
 LONDON—The Union Bank of London, Ltd.  
 NEW YORK—American Exchange National Bank.  
 CHICAGO—Merchants' National Bank.  
 PARIS—Credit Lyonnais.  
 BERLIN—Dresder Bank.  
 HONGKONG AND YOKOHAMA—The Hongkong and Shanghai Banking Corporation.  
 NEW ZEALAND AND AUSTRALIA—Bank of New Zealand.  
 VICTORIA AND VANCOUVER—Bank of British North America.

TRANSACT A GENERAL BANKING AND EXCHANGE BUSINESS.  
 Deposits Received. Loans Made on Approved Security. Commercial and Travelers' Credits Issued. Bills of Exchange Bought and Sold.  
 COLLECTIONS PROMPTLY ACCOUNTED FOR.

**BISHOP & CO.**  
**Savings Bank**  
 Until further notice, Savings Deposits will be received and interest allowed by this Bank at four and one-half per cent per annum. The terms, rules and regulations of the Hawaiian Postal Savings Bank will be adopted as far as it is practicable to apply them, and the Cash Reserve of \$50,000 as required under the Postal Act will be maintained.  
 Printed copies of the Rules and Regulations may be obtained on application.  
**BISHOP & CO.**

**Antiseptic Solution.**  
 A law is in vogue in Paris that this shall be used in all barber shops.  
**In use at**  
**THE SILENT BARBER SHOP,**  
**Joseph Fernandez,**  
 Proprietor, Arlington Block, Hotel

**THE SILENT BARBER SHOP,**  
 Joseph Fernandez,  
 Proprietor, Arlington Block, Hotel

**THE SILENT BARBER SHOP,**  
 Joseph Fernandez,  
 Proprietor, Arlington Block, Hotel

**THE SILENT BARBER SHOP,**  
 Joseph Fernandez,  
 Proprietor, Arlington Block, Hotel

**THE SILENT BARBER SHOP,**  
 Joseph Fernandez,  
 Proprietor, Arlington Block, Hotel

**THE SILENT BARBER SHOP,**  
 Joseph Fernandez,  
 Proprietor, Arlington Block, Hotel

**THE SILENT BARBER SHOP,**  
 Joseph Fernandez,  
 Proprietor, Arlington Block, Hotel

**THE SILENT BARBER SHOP,**  
 Joseph Fernandez,  
 Proprietor, Arlington Block, Hotel

**THE SILENT BARBER SHOP,**  
 Joseph Fernandez,  
 Proprietor, Arlington Block, Hotel

**SUIT IN WELCH ESTATE**  
**R. P. RITHET MUST ACCOUNT TO IT.**

Estate Owns Productive Investments in the Hawaiian Islands—Profits of Nearly \$100,000 a Year Adjudicated.

SAN FRANCISCO, January 4.—Judge Seawell has decided that Robert Paterson Rithet must take an accounting to the estate of Andrew Welch. The judge ruled that Rithet, who was Welch's partner, was not justified in converting the partnership into a corporation after Welch's death in 1889. Welch had four children and the eldest of them, Charles J. Welch, wished to use the privilege reserved to him of entering the partnership on reaching his majority. He now has legal shares, the suit, which was brought to have the partnership and estate affairs passed on judicially, was begun by the trustees of the Welch estate, Mrs. Bertha Louise Welch, Rithet and Robert Y. Hayne. The children, Charles J. Welch, Bertha M. Russell, Andrew P. Welch and Aloysius J. Welch, were the defendants. The trial before Judge Seawell was with closed doors, and all the proceedings showed that the case was regarded as a private affair, about which the public had no right to know, although a public court was employed for the settlement of it.

It was found at the trial that at the death of Welch his interest in the partnership with Rithet in the shipping and commission business amounted to \$184,967.77. On the formation of the corporation of Welch & Co. in 1889 the estate received 1500 of the 3000 shares, the par value of which was \$100 each. The shares were worth \$300 each when the suit was brought, exclusive of the earnings for 1898. Rithet, who was president of the corporation, received \$6000 yearly as salary, in addition to dividends on his stock, from 1889 to 1898, which amounted to \$159,260. He had not paid for all of his stock and the interest on what he owed, amounting to \$36,540, was deducted from the dividends in these nine years.

The gross earnings of the corporation from January 1, 1889, to December 31, 1898, were \$71,827.93, and the disbursements, including dividends, \$64,823.37, leaving as undivided profits at the beginning of this year \$7,975.56. The dividends paid to the Welch estate on the stock amounted to \$147,950. The estate received an interest from all sources in this period \$283,122.82. The gross revenues of the estate from July 25, 1889, to December 31, 1898, were \$1,033,097.50, and out of this sum only \$37,243.17 had to be expended. The corporation had investments in Hawaiian sugar plantations and in other places.

Judge Seawell found that by the formation of the corporation Rithet was making much more out of the business than he would have been entitled to if it were conducted under the terms of the partnership, and he must repay the Welch estate the excess that he has received.

**OFFICIAL REPORT.**

Deaths From Plague to and Including January 13.

Office of the Board of Health, Honolulu, H. I., Jan. 13, 1900.  
 Report of cases of bubonic plague in Honolulu to week ending date:

Week ending	Cases	Deaths
Dec. 16, 1899	2	2
Total	2	2
Nationality—Chinese, 1;		
S. S. Islander, 1.		
Week ending Dec. 23, 1899	1	2
Total	3	3
Nationality—Norwegian, 1.		
Week ending Dec. 30, 1899	6	5
Total	9	8
Nationality—Chinese, 5;		
Hawaiian, 1.		
Week ending Jan. 6, 1900	12	8
Total	21	16
Nationality—Chinese, 7;		
Hawaiian, 2; Japanese, 2.		
Week ending Jan. 13, 1900	13	11
Total number cases to date	34	27
Nationality—Chinese, 4;		
Hawaiian, 7; Japanese, 2.		

C. B. REYNOLDS,  
 Executive Officer, Board of Health.

**KEEPING TO THE FRONT.**  
 "What makes Kirby tell such stupid jokes?"  
 "He likes to be called on to explain them."

**BUSINESS MEN'S MEMO.**  
 Monday, Jan. 14, 1900.  
 Five per cent (\$1 per share) assessment is due and payable on the assessable stock of the McBryde Sugar Co., Ltd. on August 15, 1899. Five per cent (\$1 per share) on October 1, 1899 and 5 per cent (\$1 per share) on January 1, 1900.

Two and one-half per cent assessment on the assessable stock of Oha Sugar Co., Ltd., is due and payable October 1, 1899, and 2½ per cent additional on the 1st of each succeeding month, including July, 1900.

Sixty per cent assessment on the 10,000 new issue of shares of Waialae Agr. Co., Ltd., due Jan. 15, 1900, delinquent February 15, 1900.

Second assessment of 25 per cent on the assessable stock of the Honolulu Stock-Yards Co., Ltd., due January 1, 1900.

Fourth assessment of five per cent or one dollar per share on the assessable stock of Kamalo Sugar Co., due December 15, 1899, delinquent January 15, 1900.

Seventh assessment of 10 per cent on Rapid Transit & Land Co., due January 1st, delinquent February 1st.

Sixth assessment of 10 per cent on the assessable stock of Kona Sugar Co., Ltd., due January 2, 1900.

The fifth assessment of 10 per cent or \$5 per share on the assessable stock of Kihel Plantation Co. is due and payable January 2, 1900.

The fourth assessment of 10 per cent or \$10 per share on the assessable stock of Maniala Sugar Co., Ltd., is due January 1, 1900 delinquent January 21, 1900.

Fourth and last assessment of 25 per cent on the assessable stock of Oahu Sugar Co., Ltd., due February 1, 1900.

**THE TELEPHONE ON MAUI**  
**BIG INCREASE IN BUSINESS THE PAST YEAR.**

More Than Thirty Unfilled Orders for Instruments—Greatly Increased Facilities Proposed.

PAIA, Maui, January 11.—The annual meeting of the stockholders of the Maui Telephone Co. took place on Tuesday afternoon last at the office of the Paia plantation. Superintendent E. B. Carley reported a large increase of business during the past year, in fact so much so that the present facilities are unable to meet it, and he asked the stockholders to take immediate action upon making needed improvements. The Superintendent's report and suggestions were referred to a committee of three, which is to report upon the same at a special meeting of the stockholders to be called when the committee is ready. The improvements asked for include a new wire through to Haiku from Paia, to be used solely for connections between the two offices; two new wires for the same purpose between Paia and Kahului; new lines to Kula, Kihel, Makawao, Wailuku and elsewhere; new, up-to-date switchboards, and a large supply of modern instruments. That improvements and additions to the system are imperative is very evident, and the committee will doubtless decide to do what is needed, and give the Island a much better service. The company has at present 290 subscribers, with orders for thirty odd more phones, which it is unable to fill now. The proposal made is to increase the capital stock sufficiently to meet the expenditures required, the method of disposing of the same to be determined later. The officers of the company were re-elected for the ensuing year, and are: H. P. Baldwin, president; D. C. Lindsay, vice-president; C. H. Dickey, secretary and E. B. Carley, treasurer. W. J. Lowrie and W. O. Alken were elected directors to fill expired terms.

**A VETERAN.**  
 Germany's last veteran of the "Freiheldskrieg" against Napoleon has just died at the age of 105 years at Wolgast in Pomerania. His name was Schmidt, and he fought in the great battle of Leipzig and at Waterloo. The Kaiser was represented by an official at the funeral.

**THE EXPECTED.**  
 It is the expected that happens under the mistletoe.

**A GOOD THING.**  
 There's one good thing when they feel dry  
 That business men cannot pass by,  
 For far and wide it's fame you hear,  
 They stop to drink of "Rainier" beer.  
 On draught or in bottle at Critterion.

**Just Received**

A large assortment of all kinds of Leather.  
 Black Harness Leather No. 1 and 1  
 Russet Saddle Leather No. 1 and 1  
 Sole Leather, Spits Leather.  
 Buffe Leather, French Calf Skins  
 Sheep Skins, Lace Leather, Alum  
 Leather, Satigo, Etc. Mule and  
 horse cougars. Assorted sizes. Harness and Straps, Trace Chains. A large assortment of Carriage Whips

A large variety of Harness Buckles, Bridle Buckles, Harness Rings, Etc. Single and Double Harness for Buggies, Dump Cart Harness complete.  
 Double Mule Harness in Sets. A fine lot of Mexican Saddles, just what the Cow Boys wanted. Hair Cinchas and Cincha Straps.

Please call and examine our goods, we are willing to sell them at lowest market prices.

**THE HAWAIIAN HARDWARE CO**  
 FORT ST., opp. Spreckel's Bank.

**PACHECO'S DANDRUFF KILLER**  
 IS FOR SALE BY ALL DRUGGISTS AND AT THE Union Barber Shop; Telephone 699.

**Grand Display of Christmas Goods!**

**SILK PAJAMAS**  
**SILK SHIRTS**  
 in up to date colors and styles, and at prices to beat the lowest

**IWAKAMI**  
 The Great  
 Hotel Street Bazaar  
 Two Stores, Robinson Bk., Hotel St.

**THE HAWAIIAN HARDWARE CO**  
 FORT ST., opp. Spreckel's Bank.

**PACHECO'S DANDRUFF KILLER**  
 IS FOR SALE BY ALL DRUGGISTS AND AT THE Union Barber Shop; Telephone 699.

**Grand Display of Christmas Goods!**

**SILK PAJAMAS**  
**SILK SHIRTS**  
 in up to date colors and styles, and at prices to beat the lowest

**IWAKAMI**  
 The Great  
 Hotel Street Bazaar  
 Two Stores, Robinson Bk., Hotel St.

**IWAKAMI**  
 The Great  
 Hotel Street Bazaar  
 Two Stores, Robinson Bk., Hotel St.

**IWAKAMI**  
 The Great  
 Hotel Street Bazaar  
 Two Stores, Robinson Bk., Hotel St.

**"WHITE" SEWING MACHINES**

Are recommended the world over for their beauty, durability and ease of running.

A large assortment of styles always carried in stock by

**H. HACKFELD & CO., Ltd.**  
 SOLE AGENTS FOR THE HAWAIIAN ISLANDS.

**HONOLULU TOBACCO CO., Ltd.**  
 .. IMPORTERS OF ..

Havana and Manila Cigars  
 Smokers' Articles  
 Fine Grades of Smoking Tobacco

Cor. Fort and Merchant Sts., Honolulu, H. I.

**WE INVITE INSPECTION Pacific Heights**

Residence lots on Pacific Heights are now offered for sale. No residence property having similar advantages and attractions, as far as healthfulness of location, having an elevation of from 170 to 800 feet, and affording the grandest marine and scenic views, as also its proximity to the business part of the city being less than a mile from the Progress Block, has ever before been presented to the people of Honolulu.

One of the main features of this property, and procured at great expense, is the abundant supply of pure spring water, pronounced by Dr. C. B. Wood as being the purest and best drinking water obtainable in the Island, which is now being conducted into storage reservoirs upon the property by an independent pipe line, and I will be supplied to residents at Government rates.

OUR GUARANTEE.—We guarantee to all purchasers of lots on Pacific Heights that we will, within six months, provide rapid transportation to the highest lots on the property, connecting the same with the Honolulu Rapid Transit Co.'s line on PAUOA Road at the beginning of Kaulani Drive.

TERMS.—One-third cash, ½ in one year, ½ in two years; interest, six per cent per annum on deferred payments. Our carriage will convey parties desiring to inspect the property to and from the same.

For maps and full particulars, call at our office, rooms 7 and 8, Progress Block.

**BRUCE, WARING & CO.**

**Parlor Furniture, Rattan Chairs**

A LARGE ASSORTMENT JUST TO HAND  
 EXPR. P. RITHET

**Coyne-Mehrten Furniture Company**  
 PROGRESS BLOCK, FORT ST.

**Schrader's Wailuku Hotel**  
 Situated at the mouth of the scenic wonder of the Islands, the IAO VALLEY, Maui. This house is a convenient starting point for tourists visiting the world-famous crater of Haleakala, the largest extinct volcano in the world. The house is modern in its appointments and genuine home cooking is provided guests.

MRS. G. D. SCHRADER, Proprietor.

**NOTICE.**  
 Notice is hereby given that the undersigned has appointed J. ALFRED MAGOON General Manager for the Hawaiian Islands for the Provident Savings Life Assurance Society of New York. All premiums on policies held by people in the Hawaiian Islands are payable at his office.

I. R. BURNS, Honolulu, December 22, 1899.  
 Fine Job Printing, Star Office.  
 Fine Book and Commercial Printing at the Star Office.

**Capstan Navy Cut Gold-tipped 3 Castles Cigarettes**  
 Ivory Goods, Sofas, Chairs, Tables, Bureaus Silk Table Covers  
**LUN CHONG CO.**  
 Hotel Street, opposite the Arlington.  
**JUST ARRIVED!**  
 A complete line of assorted amusing playing toys for children.  
 Call and see us before you make your Christmas purchases.  
**STEIGMAN & DARLINGER**  
 Removed from the Orpheum Block to 101½ King Street, opposite the Metropolitan Meat Market.

**THE HAWAIIAN STAR**

DAILY AND SEMI-WEEKLY

Published every afternoon (except Sunday) by The Hawaiian Star Newspaper Association, Ltd.

ALATAU T. ATKINSON, Editor  
FRANK L. HOOGS, Business Manager

**SUBSCRIPTION RATES:**  
Per Year (in advance).....\$ 8.00  
Three Months (in advance)..... 2.00  
Per Month (in advance)..... .75  
Foreign (per year, in advance).... 12.00

**SPECIAL ADVERTISING AGENTS**  
Chicago—James E. Colby, 309 Stock Exchange Building.  
San Francisco—Duke's Advertising Agency, 61 Merchants' Exchange.

**SEMI-WEEKLY SUBSCRIPTION:**  
Local Subscribers, per annum.....\$2.00  
Foreign Subscribers, per annum.... 5.00  
(Strictly in Advance).

MONDAY, JANUARY 15, 1900.

Call out the Citizens' Guard. District the city. Clean every part of the city. Make a hard fight to the last.

Mr. Krouse made no hesitation this morning in at once reporting a case of sickness among one of the servants in his hotel. It is commendable when a citizen does his duty and he should receive credit for it.

**THE CALL TO DUTY.**

The plague has broken its bounds and we are now face to face with another and more serious phase of the disease. The effort to confine the disease to Chinatown has failed. Now what are we to do. We must meet this as W. O. Smith met the Cholera. The City must be districted and sub-districted and there must be a house to house inspection twice a day. Every single person in the sub-district must be accounted for at each inspection. We are up against a serious epidemic and must meet it with even more determined force.

The Board is to blame for issuing too many permits to enter the infected districts. Why, for instance, should photographers be allowed to pass in and out at will. It is also to blame for using an inefficient and careless set of guards. Why not call out the Citizens' Guard. It was suggested some days ago. There would be close upon a thousand men, there are officers to take charge of the men, and a minute inspection of each district might be carried out.

Another regulation which should be passed is the closing of all assemblies from churches downwards. There should be as little mingling of the people as possible, outside of what is absolutely necessary. The schools on the outskirts should be closed. It is cruel to force the children to school, who are many of them frightened, it is equally cruel to ask the teachers, many of whom are nervous, to face the chances of coming in contact with pupils who come from insanitary homes. As things stand now no one can tell where an outbreak may occur.

We may have had, and really have had drastic measures in the past, what we want are effectual methods. The allowing of a crowd to assemble round the fire at King street, seems little short of madness. There were people from all parts of the town and freely mingling together, heated and perspiring and ready to catch infection if any were about. The street cars are another source of danger. It may be necessary to take them off altogether, but if not, they should be thoroughly washed and disinfected twice a day at least.

There is no time for half measures or consideration of any one's personal feelings. The most stringent measures should be taken and the Board of Health will be loyally backed up by the citizens. If business comes to a stand still it must. If the plague is not beaten we shall be ruined anyhow.

This then should be the program:

1. Call out the Citizens' Guard.
2. District and sub-district the town.
3. House to house inspection twice a day.
4. Stop all assemblies and public meetings.
5. Close all schools, churches and places of amusement.
6. Thorough cleansing of all premises in every part of the district. Burning of all trash and rubbish which may be a receptacle for microbes of disease.

This is the most important of the whole program, and the first three sections make it possible to do it thoroughly.

And when this is done, some measure of the evil may be taken and all chance of hiding cases till a man is turned out the street to die will be prevented.

**SCAVANGERS.**

Some of the residents of the Punchbowl ask that the attention of the authorities should be called to the small Portuguese scavengers who infect the wharves and all the portions of the city. They gather rotten wood, old shoes, old bottles, old rags and refuse of all kinds, which they bring up to their small houses on Punchbowl.

The better and more thrifty class of Portuguese object to this, because they fear lest through some carelessness the contagion of plague might be brought into that part of the town. A. V. Peters has been very earnest in the work of disseminating among his fellow countrymen sanitary ideas, and has got up and circulated a number of hygienic rules in the Portuguese language, but he says, and those who think as he does, agree that they are powerless to prevent the children from scavenging and bringing piles of filth up to their homes.

It is pointed out that the children trot about the lowest slums barefooted. That only the day before the second case of plague broke out in the block abutting upon Union Square, any quantity of these little street rats were picking over the piles of rubbish on that portion of Merchant street which is now in strict quarantine.

It is no wonder that many of the Punchbowl residents feel alarmed over the scavengers. They are most persistent little creatures and to gain some particularly attractive bit of garbage will pay no attention to quarantine regulations, while their small size enables them to hide and slip passed even a lynx-eyed guard.

One does not clearly see what can be done in the premises, but possibly a regulation of the Board of Health might abate the evil. At such a time as this no stone should be left unturned to prevent the dissemination of disease. Any one can see a possible danger in this direction, and Mr. Peters and others are to be commended for putting the subject before the citizens.

**IMPROVEMENTS.**

The proposal to acquire the property between King and Merchant street, where infected buildings are to be burned down, as a site for a Post Office, commensurate with the increased accommodations required by the Postal Bureau, is favored by the officials of that department, but does not meet with favor from many of the business community, who would rather have the Post Office where it is, as being more convenient for merchants, and business men in general.

Another proposal is that the site should be acquired for an open space to be added to Union Square. At one time there was no Union Square, but the buildings along the King street and Merchant street lines extended to almost opposite the Opera House. It was old Governor Kanoa's property, and on his death was purchased by the government. It may be wise to extend the air space still further, now that there is opportunity.

Further proposal is made that air space be left in Chinatown, when it is decided to rebuild it. The fault of the building of the city is leaving too few recreation grounds and squares, which so beautify cities on the mainland and help their sanitation and hygiene.

We shall have an opportunity to lay out portions of our city on broad lines. The past has been full of errors in this regard. The result has been narrow streets and insanitary buildings. Now that we have had to repair those short comings by drastic hygienic measures, we should grasp the chances of making permanent improvement, for which the rising generation will thank us, when it comes to years of discretion. Out of evil cometh good. Our dire misfortune at this moment, may prove a blessing in disguise after all.

**OPERA BOUFFE IN HILO.**

That Hilo does not represent Hawaii is made quite clear by letters received from Kohala and Hamakua, the principal citizens of which support the Board of Health and resent the ukase of Hilo's self-appointed Czar. It is really most remarkable how people of shallow intellect can lose their heads and perform acts which are outside of their powers, simply because they are "dressed in a little brief authority."

The powers given to Sheriff Andrews by the Board of Health were to carry out the orders of that Board not to make special orders for himself of his own volition. But as Mr. Cooper has said in a letter to a Hilo citizen the sheriff must have misunderstood his instructions. That Sheriff Andrews is a man utterly lacking in judgment is well known. But that he should defy orders from his superior officers is more than those who had the meaneast idea of his capacity could believe, until his wonderful "ukase" couched in the terms of a comic opera potentate, was received yesterday.

One can fully appreciate the earnest desire of Sheriff Andrews to prevent the plague from reaching the Island of Hawaii, but he can be no more anxious about it than the Board of Health, which is straining every nerve not only to stamp out the disease in Honolulu, but to prevent it from spreading to any other districts. At the same time it is desired to prevent an utter collapse of trade and the ruin of hundreds and thousands of people. For this purpose while certain freight is shut out, other freight is carefully disinfected and forwarded. Regulations have been made with regard to the Post Office, such as are in use in other countries.

But this does not satisfy Sheriff Andrews. He draws up a set of regulations which ignore the Board of Health, interfere with the delivery of mails, and in a notice attempts to force the people of the various districts to sign certain petitions. It is distinct coercion to say that "those who are so narrow-minded, selfish or indifferent, that they do not care to take any part in the against the plague, or put up with any inconvenience or less, need not sign, in either column." This certainly is no way to get a true expression of Public Opinion. But most probably 'er this Sheriff Andrews will be writing "T" in a private capacity and not as an official. It is understood that the Frank B. McStocker will be asked to oversee the health regulations of Hawaii. He is a man of firmness, of excellent judgment, and will not make a long eared spectacle of himself like the hysterical sheriff.

**HOLLISTER DRUG CO.**

The Old Reliable

Pure  
Drugs

MEDICINES

Disinfectants

OF EVERY DESCRIPTION

Dea Iersin

Photographic  
Material and  
Chemicals

Prescriptions Carefully Com-  
pounded

Fort Street,

Honolulu, H. I.

January 12, 1900.



Novelties  
House  
Furnishing  
Goods

Cork Mats

Prevent colds and cold feet and absorb the moisture. Just what is wanted for the bath-room floor. It is a pleasure to stand on one of these mats after your bath.

Ocean Churns

Make butter in half the time of any other kind and are easily cleaned. Simple and effectual.

Fly Catching Plates

They hold six sheets of sticky fly-paper. As soon as one is filled it can be pulled off without soiling the fingers, is self protecting and will not soil carpets or furniture, and is non-poisonous. Protection from first to last. The cleanest and surest Sticky Fly Catcher on the market.

House Furnishing Goods Department is on the Second Floor. Take the Safety Elevator.

**W. W. DIMOND & CO., LIMITED.**

Importers of Crockery, Glass and House Furnishing Goods, Wickless Blue Flame Oil Stoves, "Jewel" Stoves for wood and coal, "Gurney" Cleanable Refrigerators.

Store Open from 7 a.m. to 5:30 p.m.

**You Cannot Complain**

This Christmas for want of a nice line of Men's Slippers to remember your friends with!

There is nothing a man appreciates or enjoys more than a good, easy-fitting Slipper; one that is built for perfect comfort, and we've got them, direct from Hanan's factory; perfect gems—without equals! All styles.

**McInerny's Shoe Store**

FORT STREET, HONOLULU.

**FINE CUT GLASS**

The very latest patterns direct from Eastern manufacturers

**DINNER SETS, 100 PIECES**

Just to hand by the "Martha Davis"

**IRONSTONEWARE**

By the "County of Merioneth"

Additions to our stock of Japaneseware, including screens, by the "Carmarthenshire"

The "W. H. Dimond," "Alden Besse" and "Australia" have brought us lines of regular supplies, which have been "short" in the market. Just opened ex "Alameda" a full line of English Cutlery

**PACIFIC HARDWARE COMPANY, LIMITED.**

Fort and Merchant Streets.

King and Bethel Streets.

**Opening Invitation to  
L. B. Kerr's New Store  
Queen Street**

New and Seasonable Goods and Millinery at  
Special Prices.

**DRESS GOODS IN BEAUTIFUL DESIGNS**

NEW MILLINERY, the latest shapes, designs and colors. NEW TABLE LINENS, most appropriate Christmas Gifts. NEW CURTAINS, beautiful designs and great variety; bought with care and judgment. NEW RUGS, all sizes and colors. And all at prices that cannot be beaten in this city. Special prices here mean bargains.

**L. B. KERR, QUEEN STREET IMPORTER.**

# The Century Stock Taking Sale!

Will Commence on SATURDAY next at N. S. Sachs Dry Goods Co., Ltd.

We have applied the knife with a vengeance, and have cut prices in half.

The Bargains we shall offer will convince you that we mean business.

The Stock must be reduced regardless of Cost.

Don't Fail to Secure Your Share of the Good Things.

## N. S. Sachs Dry Goods Co., Ltd.

THE PEOPLE'S PROVIDERS

### For Sale Cheap! ON EASY TERMS

### BUILDING LOTS AT PAWAA

This desirable property, bounded by Beretania, Punahou and King streets, on the town side of the McCully homestead, is now offered for sale. The extension of Young street passes through the land. An artesian well on the premises supplies the purest water. The breezes from Manoa valley render the locality extremely healthful. The property is on the line of cars, and the Rapid Transit cars will run through or by it.

There is no better or more refined neighborhood in Honolulu.

For terms, etc., apply to.

F. WUNDENBERG,

At J. A. Magoon's office, next to P. O.

Or to J. LIGHTFOOT, on the adjoining premises.

### During Quarantine

The Harness Factory, and Office of C. R. COLLINS is situated in the "Lincoln Block" King St. near Alakea.

Any orders entrusted to me will receive prompt attention, orders already booked will be delivered from there.

C. R. Collins,

Largest Manufacturer of Harness and Horse Goods in the Islands.

Telephone No. 502.

P. O. Box No. 507

#### ASSESSMENT NOTICE.

WAIALUA AGRICULTURAL CO., LTD.

Notice is hereby given that an assessment of 50 per cent has been levied upon the 10,000 shares, new issue, of the Waialua Agricultural Co., Ltd., and that the same will be due and payable at the office of Castle & Cooke, Ltd., January 15th, 1900.

E. D. TENNEY, Secretary Waialua Agr. Co., Ltd.

Fine Book and Commercial Printing at the Star Office.

#### NOTICE OF ASSESSMENT.

Notice is hereby given that the seventh assessment of ten (10) per cent on the capital stock of the Honolulu Rapid Transit and Land Company, will be due and payable to J. H. Fisher, Treasurer, at 411 Fort street (upstairs), Honolulu, on the 1st day of January prox. The shares upon which any assessment may remain unpaid after thirty days from said date, will be declared delinquent.

J. A. GILMAN, Secretary H. R. T. & L. Co. Honolulu, 3rd January, 1900.

#### NOTICE

Notice is hereby given that MESSRS. W. G. IRWIN & CO., LTD., have this day been appointed RESIDENT AGENTS for the Hawaiian Islands of the following insurance companies: ROYAL INSURANCE COMPANY, of LIVERPOOL. ALLIANCE ASSURANCE COMPANY of LONDON. SCOTTISH UNION AND NATIONAL INSURANCE COMPANY of EDINBURGH. ALLIANCE MARINE AND GENERAL ASSURANCE COMPANY of LONDON. MR. JOHN S. WALKER will continue to be associated with the business of the above named companies.

R. C. MEDCRAFT, General Agent and Attorney.

#### NOTICE.

Notice is hereby given that J. H. Fisher retired from the firm of Blehner & Co., on the 31st day of December, 1899. The firm now comprises Samuel M. Damon and Henry E. Waity.

BISHOP & COMPANY.

#### OLAA ASSESSMENTS.

THIRD ASSESSMENT of 50 cents per share was DELINQUENT Dec. 31, 1899; delinquent shares will be sold at 12 o'clock noon, January 27th, 1900, if said assessment is not settled for, with interest, before that date.

FOURTH ASSESSMENT of 50 cents per share is now subject to penalty and will be delinquent Jan. 15th, 1900.

FIFTH ASSESSMENT of 50 cents per share is now DUE AND PAYABLE.

All assessments are payable at the office of Alexander & Baldwin, Jud building.

J. P. COOKE, Treasurer OIaa Sugar Co. Honolulu, Jan. 2, 1900.

#### For Sale

Forty acres, more or less, Kalea, Waikiki, a frontage on the beach of 1550 feet. For particulars apply at Room 4, Love Building.

#### ELECTION OF OFFICERS.

At the annual meeting of the stockholders of the Hawaiian Star Newspaper Association, Limited, held this day the following officers were elected for the ensuing year: President.....F. J. Lowrey Vice-President.....J. B. Atherton Treasurer.....Frank L. Hoogs Secretary.....Chas. W. F. Allen Auditor.....Chas. H. Atherton The above officers comprise the Board of Directors.

W. F. ALLEN, Secretary.

Honolulu, January 10, 1900. Fine Job Printing, Star Office.

## A Bargain House and Lot!

Makiki Street, Waikiki side, above Wilder Avenue.

House contains seven rooms.

Nice lawn, abundance of shrubbery and trees.

Size of lot, street frontage,

225x101

deep.

PRICE, \$6,500.00

For further particulars, see

WILL E. FISHER

Real Estate Agent & Auctioneer FORT AND MERCHANT STS.

#### BY AUTHORITY

Office of the Board of Health, Honolulu, H. I., Jan. 11, 1900.

Public attention is called to the terms of the following laws relating to the sanitary conditions of dwelling-houses and tenements, viz:

"Section 1. Every house or tenement used or occupied as a dwelling for lodgers or contract laborers shall be kept by its owner in good repair, with the roof water tight, and shall have the capacity of not less than three hundred cubic feet of space for each adult, or nine hundred cubic feet for one man and woman and two children.

"Sec. 2. The yards and grounds about all dwellings shall be well drained and kept free from rubbish of every description, with a closet, or privy, also to be kept in repair by the lodging-house keeper or employer of laborers, for every six adults.

"Sec. 3. Every owner or keeper and every other person having the care or management of a lodging-house or of a dwelling for contract laborers, shall at all times, when required by the Board of Health or its Agents, give free access to such house or any part thereof.

"Sec. 4. Every lodging-house keeper or employer of laborers who shall fail to comply with the provisions of this act shall pay a fine not exceeding fifty dollars.

"Section 5. Every person who shall keep his dwelling in so filthy a state as to be a nuisance or injurious to health, or who shall refuse or neglect to remove any nuisance or substance he may have caused or placed in the vicinity of the dwelling he occupies or any other dwelling, or shall commit any nuisance in any stream or thoroughfare, shall on conviction pay a fine not exceeding three dollars, or be imprisoned at hard labor for any term not exceeding thirty days."

C. B. WOOD,

President Board of Health.

#### QUARANTINE NOTICE.

Office of the Board of Health, Honolulu, H. I., January 11, 1900.

For the more efficient enforcement of quarantine against that portion of the City of Honolulu bounded by and including both sides of Nuuanu street, Queen, River and Kukui streets, it is hereby ordered that that portion of Queen and River streets extending from Nuuanu street to King street bridge be closed against all traffic between the hours of 6 o'clock p. m. and 6 o'clock a. m.

C. B. WOOD,

President Board of Health.

### LITTLE WORK BEING DONE

WATERFRONT MEN PREPARING FOR DISTRICT QUARANTINE.

Custom House Employees and Other Workmen Will Sleep on the Scene of Their Labors.

The plague was threatened to paralyze business on the waterfront this morning, without the intervention of the Board of Health with its order keeping people at home, or within certain district boundary lines. The scarcity of laborers in some lines was more noticeable than ever and the island steamship companies were doing little work. In the case of Wilder & Company this was mainly because the vessels have all left, the larger ones with a prospect of a ten days' wait at Hilo. If Hilo manages to stick to Sheriff Andrews' rule, the week will be a dull one for those who want to use island steamers. The Inter-Island company's vessels returned on Sunday with loads of sugar from Kauai and the news that there are about 50,000 bags on the island awaiting shipment. Owing to the difficulties in shipping the grinding is getting far ahead of the exportation. The report was current along the wharves, as in other places this morning that the Board of Health was about to put the district plan into immediate operation. The idea seemed to meet with general approval. Those who wanted to remain at work began to look after the possibilities of getting their clothes away from home before the order came. There will be some camps established on the front by men whose business requires their presence and the custom house men are preparing to sleep in the custom house building and any other places they can find. Some of them took opportunities to get enough clothes for use during the emergency.

The Japanese steamer Nanyo Maru, left the harbor yesterday on her way to Japan and anchored outside to be fumigated. Another Japanese tramp, with the ever welcome load of immigrants, arrived at daylight and entered the harbor after examination of those on board by Dr. Day.

#### HONOLULU STOCK EXCHANGE.

Morning session—Sales on the Board: 30 Ewa \$25.00.

Sales: Between boards, none.

Quotations.	Bid.	Asked.
American, paid up.....	105.00	105.00
Ewa .....	25.00	26.50
Hawaiian Sugar .....	225.00	225.00
Honolulu .....	185.00	185.00
Honokaa .....	26.50	30.00
Haleiwa .....	300.00	300.00
Kahuku .....	145.00	160.00
Kihel, assessable.....	7.50	8.50
Kipulu .....	115.00	115.00
Koloa .....	185.00	185.00
Kona, assessable.....	50.00	50.00
McBryde, assessable.....	5.75	5.75
McBryde, paid up.....	18.75	18.75
Oahu, paid up.....	125.00	140.00
Ookala .....	17.00	17.00
Olan, paid up.....	10.00	10.00
Olowalu .....	165.00	165.00
Pala .....	300.00	300.00
Papeete .....	225.00	225.00
Pioneer .....	210.00	210.00
Waialua, assessable.....	50.00	53.50
Waialua, paid up.....	90.00	93.50
Waimea .....	120.00	120.00
Wilder Steamship.....	125.00	125.00
Inter-Island .....	160.00	160.00
Hawaiian Electric.....	177.50	177.50
Mutual Telephone.....	15.00	15.00
Oahu Railway Stock.....	200.00	200.00
Peo, Ice & Iceing, Co.....	185.00	185.00
Hawaiian Govt. 6's.....	102.00	102.00
Oahu Railway Bonds.....	105.50	105.50
Ewa 8 per cent.....	101.50	102.50
Kahuku 6 per cent.....	101.50	102.50

#### HARVARD'S DEBATER.

Prize Debater of the Old University Bears Honored Name.

The young man who won the prize debate for Harvard in the recent contest with Princeton was Roscoe Conkling Bruce, a son of the late Senator Bruce of Mississippi, the last colored man to occupy a seat in the United States senate. While he was still a freshman young Bruce won the Pastor prize in the interclass debate against seniors, juniors and sophomores, and is now reckoned as the best debater among the 3000 students at Harvard. He is a modest, unassuming young man, but seems to have marked elements of popularity as well as ability, for he has not only overcome the prejudice against his color, but is as great a favorite among the underclass men at Harvard as he was in the preparatory school at Exeter, New Hampshire, where the students unanimously selected him to preside over the ceremonies of graduating day.

He bears the name of Roscoe Conkling because the great senator from New York was the first man to introduce himself to and welcome as his colleague Senator Bruce when the latter entered the senate chamber a total stranger, of the despised race, in 1875, and was his closest friend and adviser during the eight years that he remained a member of that body. Senator Bruce died about two years ago. His widow, who is herself a woman of brilliant intellectual attainments, from Cleveland, O., is now principal of the woman's department at Booker Washington's industrial school at Tuskegee, Ala.

#### SUPPLYING THE FACTS.

Common Person—"Have you ever met the talented Miss Bung?" Great Author—"No, never. The talented Miss Bung has met me several times, however."

Fine Job Printing, Star Office.

#### COPARTNERSHIP NOTICE.

Mr. H. Renjes retires as partner of our firm by mutual consent, and Messrs. H. Focke and W. Lanz are admitted as partners in our firm, from and after January 1, 1900.

F. A. SCHAEFER & CO.

Honolulu, Jan. 10, 1900.

#### KAMALO SUGAR CO., LTD.

Interest will be charged from December 15th, 1899, on all assessments remaining unpaid on January 15th, 1900, at the rate of 1 per cent per month.

FRANK HUSTACE, Treasurer.

#### LOST

A small monthly time book. A suitable reward will be paid for its return to Star Office.

### NO ROOM FOR THE JAPS

SEVEN HUNDRED AND TWENTY-SIX ARRIVE.

Quarantine Island Has Two Thousand Now—The Doyo Maru at the Pacific Mail Wharf.

The Japanese steamer Doyo Maru arrived this morning, sixteen days from Yokohama, with 726 immigrants on board. Of this number 439 are contract laborers, the others being "free" immigrants. The steamer was docked at the Pacific Mail wharf upon entering the harbor. An order came for her to be moved at once in to the stream, but before it was executed it was countermanded and the vessel was allowed to stop at the dock. Everyone was satisfied except those who had spent time beginning to carry out the first order.

The Doyo Maru has 964 tons of coal on board. The captain refused other freight at Yokohama. This was a lucky circumstance for him, as he would have been subjected to long delay if he had had case goods on board. The Pacific Mail wharf is still crowded with Japanese and Chinese freight.

The Doyo Maru's load of human freight will have to wait a long time before being discharged at quarantine island. The passengers are dirty-looking lot, but they have a clean bill of health and are supposed to be free from dangerous diseases. At the quarantine station now are over two thousand immigrants like them. As none of these can be sent to plantations or other islands than Oahu, the prospect of making room for those on board the new arrival is not very good. They will have to stay on board and the vessel will probably be anchored in the stream when her coal is discharged. The Doyo Maru is probably about the last of the Japanese tramps coming here with loads of laborers. One or two more vessels will complete the number which it is thought have been contracted for.

### CASE AT THE ARLINGTON

(Continued from Page One)

plague patients of the odorless excavator was her brother. The premises were immediately placed in strict quarantine and will be burned. All the persons of the neighborhood have been removed to the detention camps.

#### TO RELIEVE HAWAIIANS.

The Hawaiian Relief Society, by its officers, this morning applied to the President of the Board of Health for permission to arrange separate accommodations at the Kalihi and Kakaako detention camps for native Hawaiians. It was pointed out by the society that it would be imprudent to mix these people. Dr. Wood referred the matter to Minister Young with the recommendation that the request be granted. A meeting with Minister Young was held at 11:30 at which arrangements were made whereby the Hawaiians will have separate quarters.

#### TO COUNTERACT RUMORS.

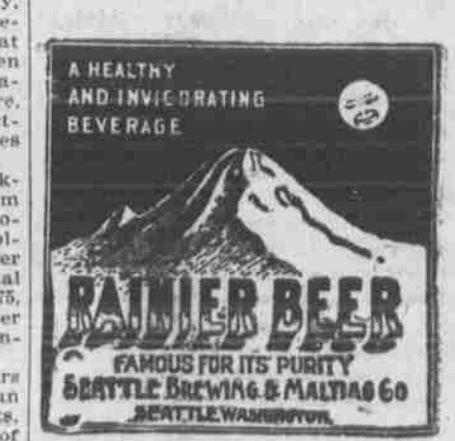
In view of the wild, absurd and baseless rumors which follow each other so thick and fast throughout the community, adding to the general feeling of unrest and panic, J. M. Vivas suggests that the Board of Health issue hourly bulletins covering the cases of plague reported. In addition to this he suggests that the newspapers and merchants reproduce these bulletins at their places of business, so that every baseless rumor started will have its antidote in an official bulletin near by.

#### SIMPLY HAD TO BE AN ACTRESS.

"What induced Nancy to go on the stage?"

"She has such little feet."

### A Favorite with Everyone!



Its Ideal for home use—a trial convinces.

#### OAHU RAILWAY AND LAND CO'S



#### TIME TABLE

From and After January 1st, 1899. TRAINS

STATIONS (Outward)	Daily		Daily		Daily	
	ex. Sun.	Dly	ex. Sun.	Dly	Dly	Dly
	A.M.	A.M.	A.M.	P.M.	P.M.	P.M.
Honolulu.....	7:10	8:15	11:45	3:45	5:30	5:30
Pearl City.....	8:00	9:05	11:40	3:40	5:20	5:20
Ewa Mill.....	8:30	9:35	12:00	4:00	5:10	5:10
Waialua.....	10:50	10:50	4:45	4:45	4:45	4:45
Kahuku.....	11:30	11:30	6:15	6:15	6:15	6:15

G. P. DENISON, Superintendent. F. C. SMITH, Gen. Pass. & Tkt. Act.

H. Hackfeld & Co. (LIMITED.) SOLE AGENTS FOR Portland Flouring Mills and Sperry Flour Co.

HAVE JUST RECEIVED A LARGE QUANTITY OF THE FOLLOWING POPULAR BRANDS: Golden Gate Flour, Superb Flour, Olympic Flour, Cascadia Flour, C. and C. Flour, Golden Lily Flour, Portland Flour, Dayton Flour, Eldorado Flour.

For sale at Lowest Prices. H. HACKFELD & CO. (LIMITED.)

THEO. H. DAVIES & CO. (LIMITED.) Merchants and Commission Agents.

to call the attention of the trade to their complete line of Hardware, Crockery, Saddlery Etc.

Paints and Oils General Plantation Supplies.

A fine assortment of Kitchen: Furnishings. Gray Agate Ware A Specialty.

Kaahumanu Street. Hawaiian Electric Company.

The cleanest, brightest, safest and really in the long run, the cheapest and best light for use in the family residence, is the incandescent electric light.

M. W. McChesney & Sons. Wholesale Grocers and Dealers in Leather and Shoe Findings.

SNEEZE And sneeze again. Then keep on sneezing. Perhaps you think you can sneeze La Grippe out of you in this way! But the trouble is La Grippe isn't in your head alone. It's in your back, your blood, your nerves, your muscles; all through the body, everywhere.

Ayer's Cherry Pectoral is the cure. It's a sure cure and a quick cure. It quiets your restlessness, controls your fever, stops your coughing, and drives La Grippe right out of the system.

HOLIDAY Toys Toys Toys books books books For sale by HAWAIIAN NEWS CO. (LIMITED.) 117 MERCHANT STREET, Near the Postoffice.

CASTLE & COOKE, LIMITED Life and Fire Insurance Agents AGENTS FOR NEW ENGLAND MUTUAL LIFE INSURANCE CO. OF BOSTON.

ETNA FIRE INSURANCE CO. OF HARTFORD CONN.

THE YOKOHAMA SPECIE BANK LIMITED. Subscribed Capital Yen 24,000,000 Paid Up Capital Yen 12,000,000 Reserve Fund Yen 7,500,000

INTEREST ALLOWED. On fixed deposits for 12 months, 4 per cent per annum. On fixed deposits for 6 months, 3 1/2 per cent per annum.

JOHN H. SOPER Stock & Bond Broker 116 MERCHANT STREET

Note Heads, Bill Heads, Statements and Fine Commercial Printing at the Star Office.

ANDREWS IS TURNED DOWN

CZAR OF HAWAII LOSES HIS AUTHORITY. Board of Health Disapproves His Action as Its Agent at Hilo—Mr. Cooper Goes to the Scene.

At the meeting of the Board of Health Saturday afternoon the commission of Sheriff Andrews, of Hawaii, as agent of the Board was cancelled. Henry E. Cooper was instructed to proceed at once to Hilo and take charge. He took with him a blank commission and before returning to Honolulu will install a new agent.

Following the Board of Health meeting a conference of the Cabinet was held in regard to Sheriff Andrews. It is understood that condemnation of the official was general. Attorney-General Cooper left with a blank commission for the office of sheriff of Hawaii, which will be filled out with the name of another man in case the sheriff continues obstreperous.

Mr. Cooper went aboard the Kinau at 10 o'clock Saturday night. At 11:15 the vessel got under way and sailed. W. Thompson, W. Beckwith and one other, besides 200 Japanese are still aboard.

THE WESTMINSTER LEAVES.

Captain Petrie Finds a New Chicken Coop Necessary. Considerable alterations were made in the transport Westminster before she left for Manila. The high upper decks that were loose were made fast and the hay that was piled high up, making the vessel top-heavy and causing her to roll to the great injury of the animals on board, was put below.

Captain Petrie has had a new chicken coop made while in Honolulu. When he left San Francisco he had eighteen fowls in a coop forward, which he anticipated making use of on the trip. Then they began to cast hungry eyes at the chickens awaiting the axe. One night a party was organized to forage and when morning came Captain Petrie had only four chickens left. He had them all killed and dressed at once to make sure that they would not go too.

ON THE JUST AND THE UNJUST. KOHALA, January 11.—There has been a heavy downpour of rain all day today. It is much needed after the long dry season.

KOHALA FOREIGN CHURCH. KOHALA, January 11.—Last Sabbath was Communion Sunday at the Foreign Church. Miss Mary Gardner, Miss Helen Gardner and Miss Julia Bond joined the church by letter.

THEFT IN KOHALA. KOHALA, January 11.—About \$160 was stolen from the Japanese quarters of the Kohala plantation recently.

IN KOHALA. KOHALA, January 11.—Miss Walker is teaching in Honomakau school. A farewell dance was given Miss Harriet Keely at the hall Tuesday night. Wight Atkins has accepted a position as sugar boiler in Laupahoehoe.

WAY OF THE TRANSGRESSOR. MAKAWAO, January 11.—Joseph Kaninau, the boy burglar of Hamakua-poko, was ordered Tuesday last sentenced to the Reform school for five years, by the Makawao District Magistrate. On the same day Yamamoto, for assaulting a native at Huelo with a knife, was sentenced to one year imprisonment at hard labor, but entered an appeal.

MAUI TRANQUIL. Still Has Confidence in the Board of Health.

KAHULUI, January 12.—The Maui health authorities did not decide to prohibit all traffic from Honolulu as reported. The fifteen days' quarantine is the most stringent measure they have yet adopted, and they still repose faith in the Board of Health.

SPRECKELSVILLE DITCH. SPRECKELSVILLE, January 11.—C. Jensen, contractor for the new Spreckelsville ditch, has moved his headquarters to Hamakua, as the work has gotten down that way. A large building has been erected on the road to Maliko for his use. The store and premises at Peahi will be maintained as a branch station.

W. E. BECKWITH BETTER. PAIA, January 11.—W. E. Beckwith, who is quite ill at the Paia Hospital, is reported as a little better today.

COFFEE TREES BURNED. Last Friday, through the carelessness of a Japanese who started a trash fire in the vicinity of the Hackfeld coffee plantations, about seventy acres of the latter's coffee trees were burned. Manager Souza says that some of the trees are entirely destroyed but a majority will be saved by being topped. It will put them back in their growth about two years.—Hawaii Herald.

A PESSIMIST. A pessimist is a man who won't spend more than he can afford at Christmas.

Waikiki Inn

SATURDAY NIGHT DINNER Green Turtle Soup, Shrimp Curry with Rice, Etc., Etc.

SUNDAY, Extra Lunch and Dinner.

Fine Bathing, high tide in afternoon

POWER OF ATTORNEY. During my absence from the Islands, Samuel Dwight will act for me in all business matters under full power of attorney. W. H. CUMMINGS, Honolulu, November 1, 1899.

REDUCTION SALE FOR TWO WEEKS

Commencing MONDAY August 21, 1899

Owing to a change in the firm all goods in stock will be sold during the coming two weeks at greatly reduced prices.

A Rare Chance for Bargains

CHIYA & CO. SUCCESSORS TO MURATA & CO. Hotel Street, corner Nuuanu Street.

Refrigerated Poultry —AND— Fresh Salmon CONSTANTLY ON HAND.

Metropolitan Meat Co. TELEPHONE NO. 45.

CHAS. HUSTACE. 212 KING STREET. TEL. 119. Between Fort and Alakea Sts. DEALER IN

GROCERIES and PROVISIONS. Fresh California Roll Butter and Island Butter always on hand.

Fresh goods received by every steamer from San Francisco. SATISFACTION GUARANTEED.

M. PHILLIPS & CO. Wholesale Importers and Jobbers of AMERICAN & EUROPEAN DRY GOODS.

Corner of Fort and Queen Sts.

C. BREWER & CO., LTD Queen St., Honolulu, H. I.

AGENTS FOR Hawaiian Agricultural Co., Onomes Sugar Co., Honomu Sugar Co., Wailuku Sugar Co., Waihee Sugar Co., Makoe Sugar Co., Haleskalia Ranch Co., Kapapala Ranch.

Planters' Line San Francisco Packets. Chas. Brewer & Co.'s Line of Boston Packets. Agents Boston Board of Underwriters. Agents Philadelphia Board of Underwriters.

LIST OF OFFICERS: P. C. JONES, President. Geo. H. ROBERTSON, Manager. E. F. BISHOP, Treas. and Secy. Col. W. F. ALLEN, Auditor. C. M. COOK, H. WATERHOUS, Geo. R. CARTER, Directors.

Alexander & Baldwin, Sugar Factors

Commission Merchants.

AGENTS FOR THE CALIFORNIA & ORIENTAL STEAMSHIP CO.

FUDD BUILDING, FORT STREET, HONOLULU.

Note Heads, Bill Heads, Letter Heads, and all kinds of Job and Commercial printing neatly and promptly executed at The Star Office.

Lubricating Oils

Will be used very freely for the next 6 or 8 months so we wish again to call the attention of all Mill men and users of machinery to our TROPIC LUBRICATING OILS. For years this brand has been used on these Islands and each season the demand has increased so that this year we have had to build a special oil warehouse at Kakaako to hold the hundreds of barrels of oils we have to carry in stock.

Benton Boiler Compound

This compound is entirely vegetable, contains no oil or acid, it being a natural preservative for iron or steel. It rots the scale in the boiler and gradually cleans same. After the boiler becomes clean, the compound, if used according to directions, will keep the scale forming properties of the water in the form of solution or pendent, and the boiler can be kept clean, and the scale forming properties of said water can be blown out in the form of mud.

E. O. Hall & Son, Ltd

Vapo-Cresolene Cures while you Sleep Whooping Cough, Asthma, Croup, Catarrh, Colds. Cresolene when vaporized in the sick room will give immediate relief. Its curative powers are wonderful, at the same time preventing the spread of contagious diseases by acting as a powerful disinfectant, harmless to the youngest child. Sold by druggists. Valuable booklet free. HOLLISTER DRUG CO., HONOLULU, H. I. Agents.

... TWO RETAIL STORES ... Corner Fort and King Streets and Waverley Block, Bethel Street

HENRY MAY & CO., LTD.

SUCCESSORS TO J. T. WATERHOUSE, HENRY MAY & CO., H. E. McINTYRE & BRO.

Wholesale and Retail Grocers Tea Dealers and Coffee Merchants

Retail Stores: Corner Fort and King Streets, Waverley Block, Bethel Street. Wholesale Department, Bethel Street. P. O. Box 386 Telephones: Fort Street, 22 and 92 Bethel Street, 29 and 949

Wheeler & Wilson Family Sewing Machine

The Rotary Motion and Ball Bearings make it the lightest running machine in the world. Sold on monthly installments.

L. F. PRESCOTT Dealer in Sewing Machines Fort Street, near Hotel

W. G. IRWIN & CO. (Limited.)

AGENTS FOR Western Sugar Refining Co. of San Francisco, Cal.

Baldwin Locomotive Works of Philadelphia, Penn. Newell Universal Mill Co., (National Cane Shredder.) New York, U. S. A.

N. Ohlandt & Co.'s Chemical Fertilizers. Alex. Cross & Son's High Grade Fertilizers for Cane and Coffee. Reed's Steam Pipe Cars.

Also Offer for Sale Paraffine Paint Co.'s P. & B. Paints and Papers. Lucol and Linseed Oils Raw and Boiled. Indurine (a cold water paint) in White and Colors. Filter Press Cloths, Cement, Limes and Bricks.

WILDER & COMPANY Established in 1872. Estate S. G. Wilder W. C. Wilder IMPORTERS AND DEALERS IN LUMBER AND COAL Building Materials —SUCH AS— DOORS, SASH, BLINDS, Builders' Hardware Paints, Oils, Glass, Wall Paper, Etc.

Cor. Fort and Queen Streets HONOLULU, H. I. Note Heads, Bill Heads, Letter Heads, and all kinds of Job and Commercial printing neatly and promptly executed at The Star Office.

# United States of America

By act of their Congress have authorized the World's Columbian Commission at the International Exhibition held in the City of Chicago, State of Illinois, in the year 1893, to decree a medal for specific merit, which is set forth below over the name of an individual judge acting as an examiner upon the finding of a board of international judges, to Kihel Hesegeawa, Japan, Hyoga; Exhibit, Mineral Water; Award for alkaline water, well carbonated and well bottled. Permanent in quality, clear and sparkling a good table water.

(Signed)  
A. H. BRENNEMAN, Individual Judge.  
JOHN BOND THATCHER, Chairman Executive Committee on Awards.

THE ABOVE AWARD TO

## "HIRANO WATER"

Was the only prize secured by an Eastern Mineral Water at the World's Columbian Exposition.

FOR SALE BY

### W. C. PEACOCK & CO., Ltd.

SOLE AGENTS

48 Bottles Price, \$3.50 per case

## Baby Carriages and Pictures

A new invoice just opened, and they are selling fast. Call early or you will miss a choice.

## New Furniture

Now being unpacked, and will be on sale in a few days.

### CITY FURNITURE STORE

H. H. WILLIAMS, Manager Tel. 846 Love Building, Fort Street

## THE HAWAIIAN TOBACCO CO.

Successors to Lee Toma & Co.

Cor. Nuuanu and Merchant Sts.

IMPORTERS AND DEALERS IN

## American Mexican Manila Cigars

## G. B. D. French Pipes and Smokers' Articles THE BEST CHINESE TEAS

## Who will do it?

You are going to have your house Papered, Painted or Decorated. Who's going to do it? No one does or can do better work than we. Investigation proves that few do as good. All we ask for it is a fair price—not high, not low. Either extreme is dangerous. Any one who gives us work gets the best going at the fairest and square price.

THE

## STERLING, PAINTER

Office: Union Square, opp. Bell Tower

## C. A. GROTE

### Merchant Tailor

CLOTHES CLEANED, REPAIRED AND DYED. First-Class Work Guaranteed. P. O. Box 280. Union Street. Honolulu, H. I.

## WILDER'S STEAMSHIP CO., LTD

TIME TABLE  
**S. S. KINAU,**  
FREEMAN, Master.  
MOLOKAI, MAUI, HAWAII.

## Change in sailing of Str. "Kinau"

On and after Tuesday, Nov. 6, the steamer KINAU will sail from Honolulu on Tuesdays at 12 noon, for Kaunakakai, Lahaina, Maalaea Bay, Kihel, Makena, Kawaihae, Mahukona, Laupahoehoe and Hilo. Returning, will sail from Hilo on Fridays at 2 p. m. for above named ports, arriving at Honolulu on Saturdays. Passengers and freight will be taken for Makena, Mahukona, Kawaihae, Hilo, Hakalau, Honoumuli, Papaikou and Pepeekeo. Passengers and PACKAGES ONLY will be taken for Kaunakakai, Lahaina, Maalaea Bay, Kihel and Laupahoehoe.

## S. S. CLAUDINE,

CAMERON, Master. MAUI.

Will leave Honolulu every Tuesday at 5 P. M., touching at Lahaina, Kahului, Nahaia, Hana, Hamoa and Kipahulu, Maui. Returning, touches at above named ports, arriving at Honolulu Sunday mornings. Will call at Nuu, Kaupo, once each month.

## S. S. LEHUA

BENNETT, Master. MOLOKAI, MAUI, LANAI.

Sails every Monday for Kaunakakai, Kamalo, Maunaloa, Kalaupapa, Lahaina, Honolulu, Olowalu. Returning arrives at Honolulu Saturday mornings.

This company reserves the right to make changes in the time of departure and arrival of its steamers WITHOUT NOTICE, and it will not be responsible for any consequences arising therefrom.

Consignees must be at the landing to receive their freight. This company will not hold itself responsible for freight after it has been landed. Live stock received only at owner's risk.

Passengers are requested to purchase tickets before embarking. Those failing to do so will be subject to an additional charge of twenty-five per cent.

The company will not be liable for loss of, nor injury to, nor delay in the delivery of baggage or personal effects of the passenger beyond the amount of \$100.00, unless the value of the same be declared, at or before the issue of the ticket, and freight is paid thereon.

All employees of the company are forbidden to receive freight without delivering a shipping receipt therefor in the form prescribed by the Company, and which may be seen by shippers upon application to the purser of the Company's steamers.

Shippers are notified that if freight is shipped without such receipt it will be solely at the risk of the shipper.

C. L. WIGHT, President.  
S. B. ROSE, Secretary.  
CAPT. T. K. CLARKE, Port Supt.

Note Heads, Bill Heads, Statements and Fine Commercial Printing at the Star Office.

Note Heads, Bill Heads, Statements and Fine Commercial Printing at the Star Office.

Note Heads, Bill Heads, Statements and Fine Commercial Printing at the Star Office.

Note Heads, Bill Heads, Statements and Fine Commercial Printing at the Star Office.

Note Heads, Bill Heads, Statements and Fine Commercial Printing at the Star Office.

Note Heads, Bill Heads, Statements and Fine Commercial Printing at the Star Office.

Note Heads, Bill Heads, Statements and Fine Commercial Printing at the Star Office.

Note Heads, Bill Heads, Statements and Fine Commercial Printing at the Star Office.

Note Heads, Bill Heads, Statements and Fine Commercial Printing at the Star Office.

Note Heads, Bill Heads, Statements and Fine Commercial Printing at the Star Office.

Note Heads, Bill Heads, Statements and Fine Commercial Printing at the Star Office.

Note Heads, Bill Heads, Statements and Fine Commercial Printing at the Star Office.

Note Heads, Bill Heads, Statements and Fine Commercial Printing at the Star Office.

Note Heads, Bill Heads, Statements and Fine Commercial Printing at the Star Office.

Note Heads, Bill Heads, Statements and Fine Commercial Printing at the Star Office.

Note Heads, Bill Heads, Statements and Fine Commercial Printing at the Star Office.

Note Heads, Bill Heads, Statements and Fine Commercial Printing at the Star Office.

Note Heads, Bill Heads, Statements and Fine Commercial Printing at the Star Office.

Note Heads, Bill Heads, Statements and Fine Commercial Printing at the Star Office.

Note Heads, Bill Heads, Statements and Fine Commercial Printing at the Star Office.

Note Heads, Bill Heads, Statements and Fine Commercial Printing at the Star Office.

Note Heads, Bill Heads, Statements and Fine Commercial Printing at the Star Office.

## Just Received

### A New Line of Plain and Fancy Bathing Suits and Trunks,

Also a Large Assortment of

Footless Golf Stockings  
Suitables for Football,  
Baseball, Cycling,  
Golfing and Tramping.

## PACIFIC CYCLE & MFG. CO.

R. A. DEXTER, Manager. FORT ST. EHLERS BLOCK.

## Johnson's

### Parquetry Floors Are the Best!

Parquetry is becoming very popular on account of its great beauty, durability, cleanliness and moderate cost. We have a few patterns in stock now and can execute ordinary orders without delay. Special designs are furnished to order only. Designs and estimates are cheerfully furnished upon application to the Sole Agents

## LEWERS & COOKE.

Fort Street.

JOHNSON'S FLOOR BRUSHES,  
JOHNSON'S FLOOR WAX,  
JOHNSON'S POWDERED WAX,  
JOHNSON'S FLOOR RESTORER,  
JOHNSON'S SOLVENT.

ROBT. LEWERS, F. J. LOWREY,  
C. M. COOKE.

## LEWERS & COOKE,

Lumber and Builders' Hardware.

DOORS, SASH, BLINDS,

PAINTS, OILS, GLASS,

WALL PAPER, MATTING.

CORRUGATED IRON,

LIME, CEMENT, ETC.

## Let Us Do Your Baking?

You certainly don't want to be in a hot kitchen, working about a red-hot stove such days as these. Save yourself that disagreeable trouble. Order all the BREAD, ROLLS, CAKES and PASTRY here. We'll send everything fresh; 'twill be as toothsome as the home-made kind, and cost considerably less. Kindly give us a trial.

## The German Bakery

823 FORT ST. TELEPHONE 67.

## CASTLE & COOKE, LIMITED

Commission Merchants.

## SUGAR FACTORS.

—AGENTS FOR—

The Ewa Plantation Co.

The Waialua Agricultural Co., Ltd

The Kohala Sugar Co.

The Waimea Sugar Mill Co.

The Kolos Agricultural Co.

The Fulton Iron Works, St. Louis, Missouri.

The Standard Oil Co.

The George F. Blake Steam Pumps.

Weston's Centrifugals.

The New England Mutual Life Insurance Co., of Boston.

The Aetna Fire Insurance Co., of Hartford, Conn.

The Alliance Assurance Co., of London.

## HAWAIIAN SCENIC CALENDAR

FOR 1900

THIRTEEN BEAUTIFUL VIEWS!

FOUR PIECES HAWAIIAN MUSIC!

RAINFALL AND TEMPERATURE TABLES

A Neat Remembrance to Send to the Folks at Home

PRICE 50 CENTS

Published and for sale only by

## THE GOLDEN RULE BAZAAR

316 FORT STREET, HONOLULU.

## CZAR ANDREW'S DECREE

PROCLAIMS A CAMPAIGN OF FIRE.

Refuses Landing to Freight, Passengers and Mail from Oahu—Imperialism Closes all Ports but Hilo.

The following is Sheriff Andrews' pronouncement declaring the Island of Hawaii quarantined from Oahu, and forbidding on the mail, unless all wrappers sealed or bearing adhesive stamps are immediately burned.

To the People of the Island of Hawaii:

When we learned that the black or bubonic plague had reached Honolulu I asked the people of the various districts of the island to select Health Committees, and I forwarded the names selected to the Board of Health in Honolulu with the request that authority be given to these committees to make quarantine regulations to protect the Island of Hawaii from the plague. After consideration of the matter the Board of Health decided to place upon me personally the responsibility of keeping out the plague or keeping it from becoming implanted on the Island of Hawaii. While this is not an enviable position to be placed in, I do not intend to shirk from any of the responsibility of it. In order to do drastic measures, aiming first to keep the Island of Hawaii altogether free from plague by stringent quarantine, and second, to stamp out the plague as soon and effectively as possible if it should reach this island.

I feel that it is due to the residents of this island that I declare in no uncertain way the policy or plan of campaign which I intend to follow in fighting the plague. I therefore announce that it is my intention.

First. To make and enforce quarantine regulations that will keep all persons from Oahu from landing on this island, except such as have submitted to every precaution known to medical science, prevent the landing of all freight from Oahu except that of which is of a character as will permit of absolute disinfection, prevent the distribution of all mail from Oahu that is sealed or sealed adhesive postage stamps, or is enclosed in wrappers fastened with mullage or other matter which may convey to this island the sputum of the residents of Oahu.

Second. As the physicians not only of Honolulu but of all places throughout the world where plague exists, freely use fire as the only effective means of stamping out this most dreadful disease known to mankind, I intend to use fire without fear or favor of rich or poor to stamp out the disease if we are so unfortunate as to get it on this island, and to spare no dwelling, shops, stores, warehouses, factories, goods or merchandise that there is reason to believe is infected with the germs of the disease.

I fully realize that it is impossible for the authorities to properly enforce laws or regulations that are in opposition to the wishes of the people and that there is little use of making regulations that will not be enforced, so in order to insure temporary safety I have made and published some temporary quarantine regulations for ten days only awaiting developments.

I am sending to all the districts of this island a letter, a copy of this letter and wish to secure in separate columns the signature of each person who wishes to have the plague kept from the Island by strict quarantine regulations, and is willing to support the authorities in enforcing the same in the one column and in the other column the signature of each person who is in favor of relaxation of the quarantine regulations and who will pledge himself to contribute his time, strength and wealth to stamp out the disease in case it appears on this Island.

Those who are so narrow-minded, or selfish, or indifferent, that they do not care to take any part in the fight against the plague, or put up with any inconvenience or loss, need not sign in either column. And those who are willing to take part in the fight but wish to suggest some other way of doing it, will please do so in writing over their own signatures.

Respectfully yours,

L. A. ANDREWS,

Special Agent appointed by the Board of Health for the purpose of establishing quarantine on the Island of Hawaii.

## THE PATHFINDER.

The officers of the steamer Pathfinder are making surveys of the bays in this vicinity for the purpose of correctly charting the harbors.—Hawaii Herald.

## MAIL BURNED.

The Japanese mail arriving by the Kinau did not receive as much consideration as the American mail; only the wrappers of the latter were burned, but the former was dumped into the flames in toto.—Hilo Tribune.

## CIRCUIT COURT TERM.

Thus far 37 cases have been before Judge Wilder in the Circuit Court. Of these ten were continued owing to inability of attorneys from Honolulu to be present. Of the criminal cases there was one conviction, two acquittals, three in which bonds were forfeited, and several continued.—Hawaii Herald.

## USE OF FRUIT.

Prunes afford the highest nerve or brain food, supply heat and waste, but are not muscle feeding. They should be avoided by those who suffer from the liver. The great majority of small fresh seed fruits are laxative. All one fruits are considered to be injurious for those who suffer from the liver, and should be used cautiously. Apples supply the higher nerve and muscle food, but do not give stay. Oranges are refreshing and feeding, but are not good if the liver is out of order. Lemons and tomatoes should not be used daily in cold weather; they have a thinning and cooling effect.

## HE ONLY REPEATS WHAT HAS BEEN SAID AROUND THE GLOBE.

It has been demonstrated repeatedly in every state in the Union and in many foreign countries that Chamberlain's Cough Remedy is a certain preventive and cure for croup. It has become the universal remedy for that disease. M. V. Fisher of Liberty, W. Va., only repeats what has been said around the globe when he writes: "I have used Chamberlain's Cough Remedy in my family for several years and always with perfect success. We believe that it is not only the best cough remedy, but that it is a sure cure for croup. It has saved the lives of our children a number of times." This remedy is for sale by all dealers and druggists. Benson, Smith & Co., general agents, Hawaiian Islands.

Fine Job Printing, Star Office.

## FOR RED ROUGH HANDS ITCHING BURNING PALMS



## FOR PAINFUL FINGER ENDS

One Night Treatment. Soak the hands on retiring in a strong, hot, creamy lather of CUTICURA SOAP. Dry, and anoint freely with CUTICURA, the great skin cure and purest of emollients. Wear, during the night, old, loose kid gloves, with the finger ends cut off and air holes cut in the palms. For red, rough, chapped hands, dry, fissured, itching, feverish palms, with shapeless nails and painful finger ends, this treatment is simply wonderful.

## HOW TO CURE TORTURING, DISFIGURING HUMORS.

Bathe the affected parts with HOT WATER and CUTICURA SOAP, to remove the crusts and scales, and soften the inflamed, cracked, bleeding, or thickened cuticle. Next apply CUTICURA Ointment, the great skin cure and purest of emollients, to allay itching, irritation, and inflammation, and soothe and heal. Lastly, take a full dose of CUTICURA RESOLVENT, to cool and cleanse the blood, and expel HUMOR GERMS.

This single treatment affords instant relief, permits rest and sleep, and points to a speedy, permanent, and economical cure of the most torturing, disfiguring, itching, burning, and scaly skin and scalp humors, rashes, and irritations, with loss of hair, when all other remedies, and even the best physicians fail.

Sold everywhere. Price, The Box, \$1.50; Soap, 25c; Ointment, 25c; Resolvent, 50c. CUTICURA SOAP & OINTMENT, Preps. Boston, U.S.A. British Depot: F. NAYLOR & SONS, London. How to Use CUTICURA SOAP & OINTMENT.

## THE ORPHEUM

FAMILY THEATRE.

SEASON OF GRAND AND COMIC OPERA.

## Boston Lyric Opera Go

WEEK OF JANUARY 8th.

Monday and Tuesday—"MIKADO."

Wednesday and Thursday—"CAVALERIA RUSTICANA" and "TRIAL BY JURY."

Friday, Saturday and Saturday Matinee—"OLIVETTE."

Telephone Number 540.

Box Office open at 10 a. m.

## POPULAR PRICES

50 Cents and 75 Cents.

J. H. & CO.—J. H. & CO.—

The Best at the Lowest Prices at Hopp's

## THE BEST FURNITURE IN TOWN

Upholstering a Specialty

## J. HOPP & CO.

LEADING FURNITURE DEALERS

KING & BETHEL STREETS

J. H. & CO.—J. H. & CO.—

## BOOKS! BOOKS! BOOKS!

Books for Children

Books for Boys and Girls

Books for You

Just received ex Alameda and other Ships.

Books lent to read, 5 cents a volume. Old Books bought or exchanged.

Dolls, Toys, etc., for Christmas.

The cheapest house in town. Give us a call.

## White Enamel Steel Beds

In all varieties and every size. Spectacles from 25c. to \$1.50 to suit all sights.

## L. S. MATHEWS & SONS

Furniture Dealers

26 Beretania St. Opp. Progress Block

Note Heads, Bill Heads, Letter Heads, and all kinds of Job and Commercial printing neatly and promptly executed at The Star Office.

## Lands For Sale!

Lots in King Street Tract from \$1350 to \$1500 a lot, formerly known as G. N. Wilcox's premises.

20 lots in Manoa Valley formerly Montano's Tract, \$3000 a lot.

400 lots in Kaiulani Tract from \$200 to \$250 a lot.

50 lots in Kekio Tract opposite Makee Island, \$500 a lot.

20 lots in Puunui Tract. 100 x 200, \$1000 a lot.

Etc., etc., etc.,

For further particulars apply to

## W.C. Achi & Co.

Real Estate Brokers

January 11, 1900.

## W. G. IRWIN & CO., Ltd.

Wm. G. Irwin, President and Manager

Claus Spreckels, First Vice-President

W. M. Giffard, Second Vice-President

H. M. Whitney, Jr., Sec'y and Treasurer

Geo. J. Ross, Auditor

## SUGAR FACTORS, Commission Agents,

AGENTS OF THE

## OCEANIC STEAMSHIP COMPANY

OF SAN FRANCISCO, CAL.

## H. W. FOSTER & CO.

Gold and Silversmiths

P. O. Box 834 209 Hotel Street

## Souvenir Jewelry A Specialty

UP-TO-DATE DIAMOND WORK

Manufacturing and Repairing, Engraving and Fine Watchwork

NEW ADVERTISEMENTS.

BY AUTHORITY. Board of Health Page 1

NEWS IN A NUTSHELL.

Bits of Paragraphs that Give Condensed Notes of the Day.

Joseph Little has been given charge of China Engine No. 5.

The People's Ice Company have declared a dividend of per cent.

A small cottage on Nuuanu road was accidentally burned yesterday.

Directors of the Y. M. C. A. will hold their regular monthly meeting this evening.

The Board of Health wants all the reliable volunteers it can get for inspection duty.

A police guard now has charge, day and night of the disputed tramways ground on King street.

The Mutual Telephone Co. has voted \$200 to be given to the firemen in recognition of their services.

The President of the Board of Health warns all persons to keep away from the detention station at Kalihi.

It is no good getting needlessly alarmed, but the situation must be met with every nerve strained.

Three drunks were fined \$2 and costs each in the District Court this morning and all the rest of the cases were continued.

Oahu College and Punahou Preparatory school rooms will be open from 9 to 12 tomorrow to enable pupils to get their books.

"Deaths to Rats," will surely kill rats and also cause them to leave the premises before dying. For sale by the Hollister Drug Co.

Mr. Reynolds and C. Charlock went to Moanalua yesterday morning and burned the house from which the native patient was taken on Saturday.

Chinese and Japanese servants of the Orpheum hotel were discharged this morning and work there will in future be performed by white ladies.

The First Regiment, N. G. H., will go into strict quarantine tomorrow. Tents for the purpose are being erected on the Waikiki end of the Executive building grounds.

Pohukaina school, in Likelike street, has been taken by the Board of Health for temporary use as a public dispensary of medicines and treatment of ordinary illnesses among the poor.

There will be a special meeting of the Hawaiian Medical Association at the office of C. B. Cooper this evening at 8:30 o'clock. All medical men are urged to be present.

Consul-General Haywood talks sense when he says it would be an advantage to give permits to depart to those who are afraid. It is no time for any one who suffers from cold feet.

The repertoire of the Boston Lyric Company as arranged for this week will be Boeaceto for Monday and Tuesday; Chimes of Normandy for Wednesday and Thursday and Bohemian Girl for Friday evenings.

The hearing of the cases against W. H. Pain and his foreman, A. Gangesbargen, and his three Chinese laborers, Ah Piu, Ah Hui and Ah Gun, was continued until January 23 in the District Court this morning.

Whitney and Marsh have closed their store temporarily in consideration of the imminent danger under present conditions. This action on their part was voluntary and they wish it stated that they are not quarantined.

DRACONTIAN MEASURES.

The Plan Col. Thompson of the Lyric Proposes.

Col. W. R. Thompson of the Boston Lyric suggests a program he thinks would be effective to end the plague.

He says that the epidemic while confined now practically to Asiatics and natives is eventually bound to spread to the whites. He therefore proposes that a suitable place be secured, a tract of forty or fifty acres to which all Asiatics and the natives living in crowded quarters shall be taken and kept and fumigated daily, for a period of three weeks. Meanwhile the quarters from which they are taken shall be burned and their sites put in thorough sanitary order.

THE WEATHER.

Weather Bureau, Punahou, 1 p. m. Wind fresh southwest; weather fine; south winds likely to continue.

Morning minimum temperature, 66; midday maximum temperature, 79; barometer, 9 a. m., 29.97, falling (corrected for gravity); rainfall, 24 hours ending 9 a. m., .0; dew point, 9 a. m., 59; humidity, 9 a. m., 58 per cent.

CURTIS J. LYONS, Observer.

LATE LOCALS.

The Cabinet today discussed various applications of the Hilo Railway Company for way rights in the town of Hilo. The same will be referred to the government at Washington.

F. J. Cross' wireless telegraphy project has been approved by the Attorney General and stock is now being issued. In view of the plague and the importance of island communication work will be pushed as much as possible.

Minister Young was this morning subpoenaed as a witness in the Pain case in police court but was too busy to attend.

Office desks and chairs

Just arrived.

Wernicke bookcases

For home and office, will soon arrive and should be ordered ahead

The Globe Company's

Desks, Filing-Cases and all kinds of office novelties secured at lowest rates.

Stocks and Bonds

Bought and Sold.

Members of Honolulu Stock Exchange.

HENRY WATERHOUSE & CO.

QUEEN STREET. Warehouse Telephone 313.

MEDIATION.

America May be Asked to Offer It.

WASHINGTON, January 3.—There is reason to believe that the Transvaal Government has but recently requested this Government to use its good offices to bring an end to its war with Great Britain. The proposition, I understand, came through the American Consul at Pretoria. No answer has been given by the State Department, and unless Great Britain intimates that she is desirous of the President exercising his good offices there is no reason to believe that he will comply with the Boer request. It is to be expected that a reply will be made acknowledging the receipt of the Consul's representation, which he will transmit to State Secretary Reitz, but this probably, is as far as the Government will care to go at this time.

In certain quarters there is a disposition to urge American mediation on the ground that under the agreement of The Hague conference the United States could extend its mediation to Great Britain without offending that power.

REV. MACKINTOSH ILL.

Rev. Alexander Mackintosh was seized with a chill Saturday evening and was unable to officiate at yesterday's services of the Second Congregation of St. Andrew's. Bishop Willis officiated in his stead. Rev. Mackintosh is better today.

CANE AND UMBRELLA.

A Washington man has designed a combination cane and umbrella, which comprises a hollow tube with internal screw threads at each end, with the central rod of the umbrella carrying screw-threaded sleeves, which can be fitted in the ends of the tube to hold the latter over the umbrella.

Choice Real Estate Bargains FOR SALE.

- 1.—Fine Lot and Residence near Thomas Square. The lot has a frontage on Beretania street of 400 feet, and is tastefully laid out with shade and fruit trees. 2.—Fine Residence lot Kewalo street, 135 feet frontage, 260 feet deep. 3.—Residence and Lot Kinau street, Lot 175 feet front, 150 feet deep. Two story house, stables and outhouses. 4.—Peninsular Lot, 50 feet water frontage, 214 feet deep, area 14,000 square feet.

For further particulars apply to HARRY ARMITAGE CAMPBELL BLACK, MERCHANT ST Telephone 899.

NOTICE

LOVE'S BAKERY.

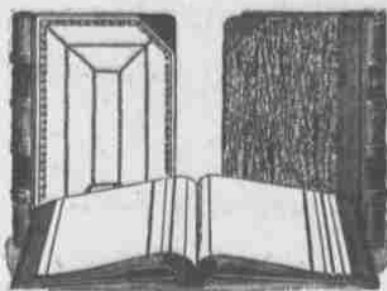
Having purchased the Bakery of L. Andrade, we are now prepared to furnish all of our former customers and all new ones with bread.

The new Bakery will be conducted by Mr. F. Johnson formerly Chief Baker at Love's Bakery.

Send orders to Telephone 72.

LOVE'S BAKERY, Per Jas. F. Morgan,

★★★ BLANK BOOKS



ALL KINDS, ALL SIZES, ALL PRICES.

Special: See Our New BROAD DEBIT SALES LEDGER

WALL, NICHOLS CO., LTD. King Street, Honolulu

Stop that Cough

In Time By Taking

Putnam's Cherry Cough Comfort

The first dose will ease the cough considerably while a few more will cure it entirely. Nothing nasty about this cure that will make one stop taking it, but on the other hand it is a very agreeable mixture, being pleasant to take, curing in a short time, while others fail.

For Sale by

HOBRON DRUG CO.

Cor. King and Fort Sts.

NEW ENGLAND BAKERY AND CANDY COMPANY

IS MAKING THE

Genuine Christmas Mince Pies

With lots of brandy in them, same as mother made. Also a large assortment of all kinds of

CAKES SUITABLE FOR THE HOLIDAYS.

Ice Creams and Sherberts. Hand-made Chocolates and Marshmallows.

Also, French Candles packed in elegant boxes, suitable for Christmas presents.

Candy Rings and Cakes, for the little folks.

Come early and avoid the rush!

THE NEW ENGLAND BAKERY AND CANDY CO.

J. OSWALD LUTTED, Manager.

Our 'phone is No. 74.

FOR SALE.

\$2,500 House and Lot at Punahou, consisting of 3 Bed Rooms, Parlor, Dining Room, Kitchen, Etc.

Size of Lot 75x125. A bargain.

\$1000 Lot at Kalihi, 80x150.

\$950 Lot at Kalihi, 75x150.

\$400 Lots at Kalihi, 50x100 each.

Apply to WILLIAM SAVIDGE 310 Fort Street

WHITNEY & MARSH, Ltd.

Ribbons Handkerchiefs Hosiery

Ladies' and Gents' Furnishings

WHITNEY & MARSH LIMITED

Telephone 436 519 Fort Street

Damaged by Fire! CHINATOWN

If you want to keep your Chinese cook home we can sell you ready hemmed

SHEETS

- 1 1/2 yards x 2 1/2 yards..... 65c. 2 yards x 2 1/2 yards..... 85c. 2 1/2 yards x 2 1/2 yards..... 75 c. and 85c. 2 1/2 yards x 2 1/2 yards..... 75c. and \$1.00

BLANKETS from \$1.00 up. SPREADS from \$1.00 up. COMFORTABLES from \$2.50 up.

We have lots of.....

REMNANTS

Not damaged by fire but are just as cheap as if they were, call and look them over. All kinds.



Christmas Tokens

NEW PERFUMES NEW STYLES NEW ODORS

In Dainty Baskets, Cases and Bottles

Toilet Sets and Cases in New Designs

Atomizers and Toilet Waters

Maile Cologne

BENSON, SMITH & CO., Ltd.

Fort Street, Honolulu.

Holiday Neckwear!

For Men and For Women

M. McINERNEY

C. FARIA

Merchant Tailor BERETANIA STREET.

Clearing and Repairing Neatly Done.

Painting Paper Hanging

And all work in this line promptly and carefully attended to. Glazing for the trade on short notice.

GEORGE TURNER, Beretania Street. Telephone 923.

Revolvers, Guns, Air Rifles

LARGE ASSORTMENT

Pearson & Potter Co., Ltd. FORT ST. Telephone 565