

- sity Press. ISBN 052178879X; 400 pages.
- Langdon, Robert. 2001. The Bamboo Raft as a Key to the Introduction of the Sweet Potato in Prehistoric Polynesia. *The Journal of Pacific History*, 36(1):51-76.
- Lee, Georgia. 2001. *Te Moana Nui. Exploring the Lost Isles of the South Pacific*. Easter Island Foundation, Los Osos.
- Pacific News Bulletin*, 16(4-5) for April/May 2001. Published by the NFIP Movement, 83 Amy Street, Toorak, Suva, Fiji.
- Payne, Bob. 2001. Faces of the Past. *Islands Magazine*, 21(6):122-131; 166-9.
- Pitcairn Miscellany*, 2001. For subscriptions, write to the Pitcairn Miscellany, Pitcairn Island, South Pacific Ocean, via New Zealand. Subscriptions are US\$10 per annum. This newsletter is posted quarterly. Profits are given to the island school.
- Reilly, Michael. 2001. Sex and War in Ancient Polynesia. *The Journal of the Polynesian Society*, 110(1):31-57.
- Rongorongo Studies. A Forum for Polynesian Philology* 11(1):2001. PO Box 6965, Wellesley Street, Auckland 1, New Zealand. This issue contains "The Maori Grammars and Vocabularies of Thomas Kendall and John Gare Butler", by Phil Parkinson; and "Rapanui-Spanish Bilingualism" by Miki Makihara.
- Society for Hawaiian Archaeology Newsletter* 2(7), May 2001. Web site: <http://www.sha.hawaii.edu>
- Szabo, Katherine. 2001. Molluscan Evidence for Late Holocene Climate Change on Motutapu Island, Hauraki Gulf. *The Journal of the Polynesian Society* 110(1):79-87.
- USP Beat* (News from the University of the South Pacific, Suva) 1(6-7) 2001.
- Weisler, Marshall I. 2001. Precarious Landscapes: Prehistoric Settlement of the Marshall Islands. *Antiquity* 75:31-32.

CONFERENCES

SAA SYMPOSIUM ON RECENT ARCHAEOLOGICAL RESEARCH IN RAPANUI

A symposium entitled Archaeology at the Center of the World: Advances in Rapanui Research will be part of the 67th Annual Meeting of the Society for American Archaeology in Denver, March 20 - 24, 2002. For information: thunt@hawaii.edu

ISLANDS OF THE WORLD VII. NEW HORIZONS IN ISLAND STUDIES, JUNE 26-30, 2002. University of Prince Edward Island, Charlottetown, Prince Edward Island, Canada. Papers are invited for the 7th *Islands of the World* conference, to be hosted by the Institute of Island Studies at the University of Prince Edward Island in Charlottetown, PEI, Canada.

The conference committee will consider proposals for presentations on a broad range of topics related to small islands, including small islands' internal, self-determining activities and their activities in relation to the wider world. Those interested in presenting papers should submit their proposed title and an abstract of not more than 300 words to:

Islands VII Conference Secretariat Institute of Island Studies; University of Prince Edward Island; 550 University Avenue, Charlottetown, PEI Canada C1A 4P3; Telephone: 902-566-0611 Email: islandsvii@upe.ca <http://www.upei.ca/islandstudies/islandsvii/>

17TH CONGRESS OF THE INDO-PACIFIC PREHISTORY ASSOCIATION, SEPTEMBER 9-15, 2002. Academia Sinica, Taipei, Taiwan. Cooperating institutions will be the Institute of History and Philology, Academia Sinica, the Department of Anthropology, National Taiwan University, the National Museum of Prehistory, Taitung, and the National Museum of Natural Sciences, Taichung. For further information, contact Dr. Peter Bellwood, IPPA, School of Archaeology and Anthropology, ANU, Canberra, ACT 0200, Australia. ippa@anu.edu.au

INTERNATIONAL PACIFIC ARTS ASSOCIATION CONFERENCE. This conference will be held in Christchurch, New Zealand in June, 2003. Contact: Dr Karen Stevenson, k.stevenson@fina.canterbury.ac.nz

PACIFIC ARCHAEOLOGY: ASSESSMENTS AND PROSPECTS: An International Conference for the 50th Anniversary of the First Lapita Excavation (July 1952) will be held in Koné - Nouméa, New Caledonia, July 31- August 7, 2002. The conference is organized by the Département Archéologie, Service des Musées et du Patrimoine, Government of New Caledonia and the Department of Archaeology, New Caledonia Museum, BP: 2393, 98846 Nouméa, New Caledonia. (Coordinated by Christophe Sand; sand.smp@gouv.nc In 1952, American Professor E. Gifford with the assistance of R. Shutler Jr. conducted the first modern archaeological program recorded for New Caledonia. In all, 53 prehistoric sites were surveyed and 11 excavated. The work of Gifford and Shutler, published in 1956, had a considerable scientific impact. During the survey of the West Coast, Site 13 near the Foué peninsula, pottery sherds were found that bore dentate-stamped motifs. It was called "Lapita" after the indigenous name heard in the local Haveke language. The importance of this site became apparent when the ¹⁴C dates came back, showing the settlement of Lapita and the manufacture of dentate stamped pots as early as 800 BC, a period far older than the then-supposed date of first human colonization of the Pacific. Since then, interest in the pottery has expanded. Dentate-stamped sherds have now been discovered in more than 100 seashore sites from New Guinea in the northwest to Western Polynesia in the east.

The conference will mark the 50th anniversary of the Lapita discovery. Broad themes include "Works in Process in Pacific Archaeology"; "New methods and Research Topics in Pacific Archaeology"; and "Pacific Archaeology: Assessments." Tours to the Lapita sites are included in the program.

EASTER ISLAND FOUNDATION NEWS

WHAT'S NEW AT THE EIF OFFICE

Greetings from the Easter Island Foundation office in Baywood Park! Our latest publication, *Te Moana Nui. Exploring the Lost Isles of the South Pacific* is now available for \$25. It is a lovely book with chapters describing some of the more well-known islands of the Pacific, along with places that few have the opportunity to visit, such as Rai'vavae, Rapa Iti,

Marotiri, Pitcairn, Henderson, Sálas y Gómez, Juan Fernández and the atolls of Ducie and Oeno. Of course there is a chapter devoted to Rapa Nui. The book is based on twenty years of research and travels by author Georgia Lee. In addition to maps and photographs, each chapter includes an historical timeline and other pertinent and interesting information and lore about each island. If you can't go there yourself, this book will help you get a feel for what life is like in some of the more remote spots in the Pacific.

In addition to the gorgeous book by José Miguel Ramírez and Carlos Huber, *Rapa Nui, Land of Rocky Dreams*, we are now selling full color posters of some of the images in the book. We have stunning aerial views of Rano Kau and Rano Raraku, as well as a nice shot of a *moai* at Rano Raraku, and another poster of Ahu Tongariki showing three views: one of the moonrise, one of the sunset, and one of the sun's rays through the clouds, all showing the *moai* in black silhouette. These posters are available for \$10 each. Shipping is extra.

The editing of papers from the Pacific 2000 conference is nearing completion. We hope to have the book published by the end of this year. See details below. We have only a few copies left of *Speak Rapanui!* and *Death of a Moai*, so please let us know ASAP if you need a copy of either of these books before we run out completely! Please call, email or write us if you are interested in any of the items mentioned here, have any questions about the Foundation or if you want to renew your *Rapa Nui Journal* subscription. Remember, a \$100 donation to the Foundation includes a full year's subscription to the Journal! Stop by and see us if you are ever in the neighborhood!

THE PAPERS PRESENTED AT THE PACIFIC 2000 conference, held last August in Kamuela, Big Island of Hawai'i, are nearing publication. This volume, containing 580 pages, includes 12 chapters plus Preface by Kay Kenady Sanger; Introduction by Christopher Stevenson; and Keynote Address by Peter Bellwood, "*Pacific Prehistory and the Rest of Mankind*." The chapters are: 1. *New Horizons in Pacific Research*; 2. *Archaeology on Rapa Nui*; 3. *Hawaiian Archaeology*; 4. *Western Pacific Research*; 5. *Samoan Prehistory*; 6. *French Polynesian Prehistory*; 7. *Arts of the Pacific I*; 8. *Arts of the Pacific II*; 9. *Anthropology on Rapa Nui*; 10. *Polynesian Languages and Literature*; 11. *Polynesian Physical Anthropology*; 12. *Conservation Problems in the Pacific*. We hope to have this book in print by the end of the year. We can take orders for this important volume, but are unable at this time to quote prices.

A WORD FROM OUR PRESIDENT

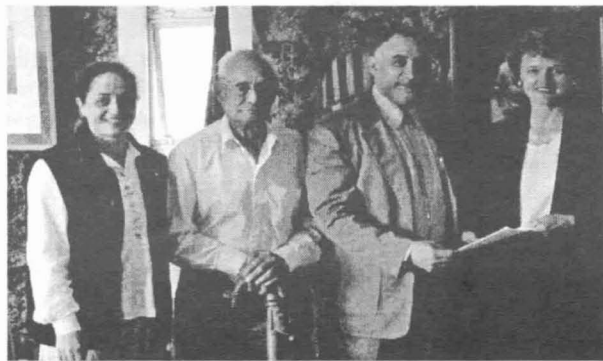
As a result of the generous support of our dedicated Easter Island Foundation members, we have made some significant donations to the island's school this year. In April, we sent dictionaries and world maps to the island with our office manager, Antoinette Padgett, and in October we sent world globes and other learning equipment with Elaine and Don Dvorak. These much-needed supplies were presented to the school by our EIF liaison on the island, Viki Haoa. In June, new board member Marla Wold delivered a large illustrated atlas (in Spanish) to the island's school. Thank you to all who helped to make these gifts possible.



Marla Wold, chairman of the scholarship committee of the EIF, presents an atlas for the island's school to Carlos Henriquez Valencia, director. Viki Haoa Cardinale (right) is the EIF's on-island representative for the scholarship program.

Progress on the new addition to the William Mulloy Library on Easter Island continued during the past few months and is now completed. The EIF was pleased to contribute to the construction work, which expanded the library's public reading space and provided better climatic conditions for storing books.

The EIF has provided two grant awards for research and study on Easter Island. One went to Dr Vincent Stefan to assist with his research dealing with Rapanui crania curated at the Museo Antropológico Padre Sebastián Englert, Rapa Nui, as well as other museums in Chile that have collections. The other award went to Tandy Toomey for research leading to her Masters Degree. Both have reports in this issue.



Marla Wold presenting the scholarship papers to Rapa Nui's governor, Don Enrique Pakarati Ika. Ricardo Tuki Hereveri, one of the judges of the award, and teacher Viki Haoa look on.

The EIF has received an invitation to hold the sixth international conference on Rapa Nui and Polynesia at the University of Valparaíso in Chile, in 2004. Should this work out, the meeting would be sponsored by the new Centro de Estudios Rapa Nui, which is soon to be opened on the Viña del Mar campus under the direction of professor José Miguel Ramírez.

We want to extend a warm welcome and thanks to our two newest board members: Marla Wold, from Wyoming and Gail

Rose, of New Jersey. Both Marla and Gail bring new enthusiasm and generosity to the board and it's many projects to benefit Easter Island.

A scholarship award for a Rapanui student has been initiated by the Easter Island Foundation, thanks to a grant from board member, Marla Wold. The deadline for applications is 1 October 2001, for an award to be presented for the school year, 2002. This is a first step in our scholarship program. The scholarship award was advertised on the island on TV and we quickly had two dozen applications. We are extremely proud to be in a position to make such a tangible and useful contribution to benefit the people of Easter Island.

Board member Alan Drake has been working on our web site to make it more useful and appealing. Pass it on – this is THE place to find information about the EIF and our projects on the island, with links to other island sites. Please check it out and give us your feedback. Website: www.islandheritage.org

Thank you all for your generous support. You are helping to make a difference in a very special and unique place in the world – Rapa Nui.

Maururu,
Kay Sanger, President
Easter Island Foundation

THE EASTER ISLAND FOUNDATION IS PREPARING A PERMANENT PLAQUE that will be installed in the Mulloy Library. The plaque will recognize donors who have contributed \$1000 or more toward the establishment of the Mulloy Library on Easter Island. If you have given close to that amount and wish to have your name added to the plaque, please bring your contribution up to \$1000 as soon as possible by sending the additional funds to the Easter Island Foundation, PO Box 6774, Los Osos, CA 93412-6774. If you believe your name should be on list and is not included below please contact the EIF immediately (805-528-8558; rapanuibooks@worldnet.att.net). Thank you.

\$1000+

Norma Ackel	University of Wyoming
Joan Amico	Tom Hoskinson
Ben Baldanza	Ben Leaf
Avonne Bradshaw	Georgia Lee and Frank Morin
Sandra Broadrick Allen	James and Virginia Parker
Carlos Cardoen	Kay K. and Thomas C. Sanger
Robert Chisnell	Nelle Tobias
Tom Christopher	Marla Wold
Orson Clay	
Gary Comer	

\$5000+

Barbara and Marks Hinton
Emily Ross Mulloy

\$10,000+

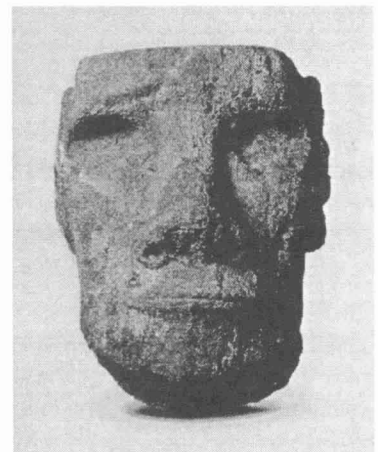
William Liller	Peter Stern / Don Lippincott
Joan Seaver Kurze	Hannah Marie Wormington

Splendid Isolation: Art of Easter Island

December 11, 2001 - August 4, 2002
The Michael C. Rockefeller Wing
The Metropolitan Museum of Art, New York

The first ever American exhibition devoted to the Polynesian art of Easter Island will open at The Metropolitan Museum of Art on December 11, 2001. Featuring some 50 works, including a celebrated stone head, *Splendid Isolation: Art of Easter Island* will explore the island's distinctive art forms as expressions of supernatural and secular power. Dating from the 13th to the late 19th century, works in the exhibition will range from a monumental stone head to refined wooden sculptures, painted barkcloth figures, and inscribed tablets. They will be brought together from the Museum's own collection as well as from museums and private collections in the United States and Canada. Many will be on public display for the first time.

The art on Easter Island both embodied and signified the supernatural power of the gods and the chiefs who were believed to be their direct descendants. To harness this power, their artists created images of diverse supernatural beings, who mediated between the divine and material worlds and sought to tap the supernatural power, or mana, of the gods for the benefit of human society.



Moai head from Ahu O'Pepe will be featured at the Met's exhibit, opening in December.

The centerpiece of the exhibition is the massive head of a *moai*, whose weight is over a half ton (Smithsonian Institution).

One of only two examples in North America, it was brought to the United States by an American expedition in 1886. Easter Island also artists created a diversity of other art forms. Working in wood and stone as well as more delicate materials such as feathers, reeds, and barkcloth, artists produced highly refined objects. Among the most striking is a birdman figure (American Museum of Natural History), which was associated with the annual birdman ritual. Admired by early-20th century European artists and intellectuals, birdman and other figures from Easter Island became an important influence on the Surrealists, particularly Max Ernst, whose works often include birdmen inspired by Easter Island imagery.

Also featured in the exhibition will be a painted barkcloth-covered human figure (Peabody Museum of Archaeology). Among the finely crafted ornaments is an elegant *reimiro* (Indiana University Art Museum). Two extremely rare wooden tablets inscribed with the island's unique hieroglyph-like script called *rongorongo* will also be on view. Lenders to the exhibition are: National Museum of Natural History, Smith-