

STEAMER TABLE	
From San Francisco:	
Alameda	Sept. 2
Siberia	Sept. 6
Per San Francisco:	
Korea	Sept. 3
Alameda	Sept. 7
From Vancouver:	
Mlowera	Aug. 27
Per Vancouver:	
Aorangi	Sept. 21

There are times when an Ad. will do more than cash for

EVENING BULLETIN

3:30 O'CLOCK Your Business EDITION

Count 100 before you speak if you are angry—if the other fellow is the biggest, count 10,000. But do not hesitate at any time to be helped by a BULLETIN AD.

Vol. XVI. No. 2857

HONOLULU, TERRITORY OF HAWAII, WEDNESDAY, AUGUST 31, 1904

Price 5 CENTS

Son Administrates Jewelry While Land Is In Trust

Judge Gear this morning appointed Edgar Knust administrator of the estate of Adolph Knust, deceased. Property involved is worth in the neighborhood of three or four thousand dollars.

When the matter came on for hearing this forenoon P. E. R. Strauch appeared by his attorney, Lyle A. Dickey, contesting the issuance of the letters of administration.

Attorney Dickey stated that his client, Strauch, held a deed of trust which included all the property described in the petition for letters of administration; that this deed was made on the sixth day of April of this year and that Adolph Knust came to his death on the fifteenth day of the same month.

The deed included a leasehold interest in land in Kakaako valued at about \$1,725; a judgment against one Patz for the sum of \$225, and a mortgage of Otto Ludloff for \$1,100.

It was shown, however, that the property above described and included in the trust deed was not the entire property of the estate; that there remained some \$75 or \$100 worth of personal effects, jewelry, and so forth, inasmuch as there was this to administer, contest to the issuance of the letters of administration to Edgar Knust, the son of deceased, was withdrawn and the court made an order appointing Edgar administrator.

This does not end the contest, however, for the battle will now be waged between the administrator and the holder of the trust deed to the real estate as to the merits of possession.

ly interested in the ranch of the American Sugar Company, Limited, doing business of a similar character to the Parker ranch, but denies that there is any clash of interests, though when J. S. Low has one share of the Hamakua Ditch Company in his name of the value of \$10, Carter claims that Low is an unfit and improper person to act as next friend of the minor.

Carter admits that the forest lands are not fenced off and are not protected from stock; that the ranch should have more paddocks than it now has. That he has submitted to the asserted retarded development of the ranch through the impotency of Samuel Parker for funds, though he claims a portion of the said ranch would be for the interest of the minor. Carter admits that more chutes could be profitably made and utilized on the ranch.

Buffalo Recalled, IROQUOIS Ordered To Midway

A cablegram was received at the Naval Station this morning stating that the United States cruiser Buffalo will not come here after all. She will go on a cruise to the Behring Sea instead of going to Manila and thence around the world.

On account of this the U. S. S. Iroquois has been ordered to go to Midway Island. The Buffalo was to have carried supplies for the detachment of marines stationed at Midway, and now since her plans have been altered the Iroquois will have to take her place.

The supplies which are to be sent to Midway will be brought here from San Francisco by a U. S. Army transport which is due to arrive at Honolulu about September 8. As the transport does not want to stop at Midway she will leave the supplies here. The Iroquois will take them on board and will probably leave for Midway September 9 or 10.

WHAT CARTER ADMITS

PROBABLE ARGUMENTS IN PARKER RANCH CONTROVERSY

MATTER OF THE COMMISSIONS CHARGED MINOR AND DETAILS IN RANCH MANAGEMENT.

The reply of A. W. Carter in the Parker case completes the array of assertions and denials previous to the final argument on the merits of the case. The attitude of the Low interests among other things will be to point out admissions believed to have been made in Carter's reply.

It is claimed that Carter admits that his commissions and fees average over \$5100 per annum and of this the minor pays \$4000 while Sam Parker pays only \$100.

It is not denied that Carter's brother is an incompetent bookkeeper. Carter justifies the employment of his brother because of Sam Parker's wish in the premises, yet, Carter, throughout the litigation does not appear to have had a very high regard for Parker's executive ability as a ranch manager or as a financier.

Carter does not deny that he is large

NETS STOLEN

Some valuable Tahitian fish nets were last week found missing from John de Fries' house at Paouloa. Sheriff Fernandez investigated the affair. He found two half-white boys, named Archer and Taylor, who stated that about two months ago they, together with a boy named Jones, went to the place in a sloop. Jones entered the house and took the nets. Jones lives in Honolulu.

SAN FRANCISCO PRICES

Waterhouse & Co. this noon received the following cablegram from Politz, showing Hawaiian stock prices on the Coast: Hawaiian Commercial & Sugar Co., \$57 1/2 bid, asked; Honokaa, \$14 1/2; Makaweli, \$27 1/2.

BIG FIGHT COMING CONTESTANTS READY IN PARKER MUDDLE

Elizabeth Jane Knight, mother of Annie Thelma K. Parker, minor, files motion this afternoon in Circuit Court, asking that her motion attacking the authority of J. S. Low "as pretended next friend" of the child above mentioned, to sue A. W. Carter as the minor's guardian, be set for hearing.

The Samuel Parker interests represented by J. A. Magdon and J. Lightfoot have also a motion just filed, praying that the court, Judge Gear, set a day for hearing the cause proper on its merits.

Both sides, Parker on the one and A. W. Carter, guardian, and Mrs. Knight, mother of the child, on the other, seem anxious to get to trial on the merits.

Incidentally, the Parker representatives seem pleased that A. W. Carter has at last filed an answer to allegations made against him. The atmosphere is cleared somewhat thereby and the main fight will soon be on—the contest over the Parker ranch management.

BARNHART DISCHARGED

The case of W. O. Barnhart, charged with assault and battery on Superintendent Pratt of the Rapid Transit Company, came up in the Police Court this morning. Judge A. S. Humphreys appeared for the defendant and secured his discharge.

Lui Kallihui was fined \$5 and costs for an assault and battery on Ah Moy, a Chinese woman. The quarrel arose from a dispute about the possession of a certain taro patch. Another charge against Lui, of assault and battery on Kin Tai, was nolle pro'd.

Manuel Thomas, charged with assault and battery on Halehu (w), was reprimanded and discharged.

The cases of Ramona Lopez, charged with larceny in the second degree; August Guerrero and Ah Hong, both charged with assault and battery; Yong Pong, charged with selling liquor without a license; and of Juan Oiti, Amerino Reveira and Ullian Rondon, all three charged with vagrancy, were all continued until tomorrow.

PODMORE ROBBED

J. W. Podmore this morning discovered that some rugs, valued at about \$30, had been taken from his place of business on the corner of King and Bethel street. He does not know when they were taken. Hoffschlaeger's store next door, was robbed a short time ago. The police think that Podmore was victimized on the same occasion.

The steamer Likelike arrived from Maui and Molokai ports at about 3 o'clock this afternoon. She will sail for Maui, Molokai and Lanai ports this afternoon as soon as she can get the freight on board.

E. A. Mott-Smith today files \$10,000 bond as receiver of the Hana Plantation Company, in the matter of S. Grinbaum et al. vs. Hana Plantation Co. et al.

Read "Wants" on page 6.

Japanese Fishermen In Sea Fight Capture von Holt

Deputy Sheriff Jack Fernandez of Ewa arrived in town this morning. He brings the report of a great amount of trouble which the Honolulu ranch has of late been having with Japanese fishermen. These men fish on the beach controlled by the ranch and the part of the sea belonging to it and strenuous measures had to be taken to put a stop to it. The Japanese were defiant; would not stop fishing and finally kidnapped Harry von Holt, Louis Warren and several men employed on the ranch, holding them for several hours. During the beginning of last week Sheriff Fernandez made a raid on the Japanese and caught fifteen of them in the act of fishing in the forbidden territory. The men were tried yesterday at the Ewa court. They all pleaded guilty. Sentence was suspended for thirteen months.

The second raid made on the fishermen was vastly more exciting. Last Friday night Harry von Holt, the superintendent of the O. R. & L. Co.'s ranches, and Louis Warren, the manager of Honolulu ranch, conducted an expedition against the fish poachers, accompanied by three ranch employees. They saw several sampans having on board Japanese who were fishing for all they were worth.

Von Holt gathered his forces and all embarked in a boat belonging to the ranch and set out for the poachers. The Japanese were evidently not afraid. They did not flee. The had formed a plan that they would emulate the example of their fighting admirals in the Far East and prepared for a battle. When the ranch boat came close to

the sampans the naval engagement began in full earnest. One large sampan swept down upon the boat. The sampan was crowded with Japanese. They were in threatening attitudes and showed that they meant business. Other sampans surrounded the boat from other sides and it soon became evident that the Japanese fleet had the single opponent at its mercy.

The Japanese lashed the boat to their sampans and began towing it about with them wherever they went. The men in the boat dared not offer any resistance to their captors on account of their overpowering numbers.

Luckily one of Von Holt's crew, a Chinese, had escaped being captured with the others. He jumped overboard when the Japanese fleet advanced, and swam to the shore. He ran to the ranch house and notified Louis Warren's wife of the plight of the men in the boat. Mrs. Warren telephoned to Sheriff Fernandez, who immediately hastened to the scene.

In the meantime the men in the boat were being towed all over the place by their captors. For about three hours they enjoyed this experience. Then finally a Japanese, who came to the spot in a sampan, advised his fellow countrymen that they had better let their captives go. The others had evidently become tired of the fun so they finally let the boat and its crew go.

The police reached the beach at about the same time as Harry von Holt, Louis Warren and the other men returned from durance vile. The police waited until the sampans returned from sea.

(Continued on Page 8.)

HURRYING REPORT TO WASHINGTON

Governor To Complete Task Before His Maui Trip.

SYNTHESIS OF CONDITIONS FOR PUBLIC INFORMATION

RECOMMENDATIONS FOR LEGISLATION BY CONGRESS MAY ALSO BE INCLUDED. HARD WORK.

Since the executive's report on Territorial affairs is expected to reach Washington early in October, Governor Carter is now devoting himself almost entirely to preparing this exhaustive and comprehensive document.

Said the Governor this morning: "If I am to get away for my trip to the Island of Maui on the 6th of next

S. S. ALAMEDA, Sept. 7

Will carry away a shipment of choice pineapples at the same low rates as heretofore. Prices will soon begin to jump.

Leave orders with F. C. Enos, agent, Wells Fargo & Co.

JAPS TURN THE RUSSIAN LEFT FLANK

[Associated Press Special Cable.] LIAOYANG, Manchuria, August 31.—The Japanese forces are getting around the Russian left flank and the course of the battle appears to be unfavorable to the Russians.

Over half a million men and 1,200 guns are engaged in the battle, which is an incessant struggle. Practically the whole Russian force is on the firing line.

Two Battalions Of Japanese Captured By Russian Force

[Associated Press Special Cable.] ST. PETERSBURG, Russia, August 31.—General Sakaroff reports that the Russians have lost 3,000 men at Liaoyang.

Forty-six Japanese guns have been taken and it is stated that Samsonoff has captured two Japanese battalions.

No More Use For Chefoo Station

[Associated Press Special Cable.] WASHINGTON, D. C., August 31.—The Russian wireless telegraph station at Chefoo has been dismantled.

SAN FRANCISCO, Cal., August 30.—SUGAR: 88 analysis, Beets, 10s 8 1/4d. Previous quotation, 10s 7 1/2d.

GREAT BRITAIN'S NAVY

London, Aug. 9.—Replying to criticisms of the naval expenditure in the House of Lords today Lord Selbourne, First Lord of the Admiralty, warmly defended the outlay. He said it was more important now than ever before that British battleships especially should be of the largest and best type.

Referring to submarine boats Lord Selbourne said their value for defensive purposes had been abundantly proved. They were a great addition to the national strength. He did not believe submarine boats had reached their limit of improvement or usefulness. The lessons from the war in the Far East were the importance of the personnel, the necessity for having a margin of strength and the fact that without battleships no power could hold nor win command of the sea.

Lord Selbourne said the offer of Lord Goschen, made when he was First Lord of the Admiralty, that if other nations would agree to diminish their rate of ship building Great Britain would not be slow to join the movement had not been withdrawn, but the conditions now were more complicated. A few years ago it would have sufficed if France and Great Britain had agreed to diminish their shipbuilding, but now there were almost half a dozen great naval powers, and Great Britain and France must consider the expenditure of other powers. The two-power stand was convenient as regards battleships, but had never had its application to cruisers or torpedo-boats.

Continuing Lord Selbourne referred to the newspaper comparison of the gunnery and strength of the German vessels which recently had visited England and pointed out that the German ships carried eighteen 6-inch guns compared with twelve on the ships of the British channel squadron. But without battleships no power could hold nor win command of the sea.

Lord Selbourne said the offer of Lord Goschen, made when he was First Lord of the Admiralty, that if other nations would agree to diminish their rate of ship building Great Britain would not be slow to join the movement had not been withdrawn, but the conditions now were more complicated. A few years ago it would have sufficed if France and Great Britain had agreed to diminish their shipbuilding, but now there were almost half a dozen great naval powers, and Great Britain and France must consider the expenditure of other powers. The two-power stand was convenient as regards battleships, but had never had its application to cruisers or torpedo-boats.

Fresh prunes, 6 pounds for 25 cents. Getz Bros., Phone White 2231.

CORRECT CLOTHES for MEN

LET your choice of clothes be guided: 1. By the stylish effect. 2. By the fit. 3. By the pattern and quality of the fabric. 4. By the general workmanship. This label



Alfred Benjamin & Co. MAKERS NEW YORK

is on clothes that comply with these requirements yet cost you little more than ordinary ready-made, which will never meet them.

Equal to fine custom-made in all but price. The makers guarantee, and ours, with every garment. We are Exclusive Distributors in this city.

THE KASH CO., Limited.

WE ARE SATISFIED

that there isn't a case of headache anywhere that Head Ease will not stop. We have great confidence in this remedy and our faith is founded on its universal success for the past dozen years. We have yet to hear of a failure. Try

HEAD-EASE and if it does not do all that we claim it will it needn't cost you a cent—we'll return the money. It is safe, effective and agreeable to take.



LADIES' FACIAL MASSAGE

By telephoning Main 227 (SILENT BARBER SHOP) ladies desiring facial massage can secure the services of an expert operator at their homes.

Married Women

Who have separate property can be relieved of all responsibility in the management of such property and of the transaction of any business in relation thereto.



CLOSING OUT AT ABSOLUTE COST

I have determined to sell out my entire stock at absolute cost and retire from business.

If you wear collars, cuffs, neckwear, shirts, underclothing, hats or anything represented in my large stock, this is your chance.

The selling out will be done quickly and it will be done absolutely.

Island orders given prompt attention

I. Levingston, Alexander Young Building.



Newest Style Heywood Shoe No. 216

Fresh new model just received from the factory. It is the latest correct style for Fall and Winter wear and offers an absolutely perfect fitting shoe for every size of foot.

Made in three different leathers to suit, viz.: Vici kid, velours and calf skin.

Price \$4 50.

Manufacturers' Shoe Co., Ltd., Fort St.

MASONIC TEMPLE



WEEKLY CALENDAR.

MONDAY Le Progres—Regular. TUESDAY WEDNESDAY Perfection—4th and 5th Degrees. THURSDAY Rose Croix—Regular. FRIDAY Le Progres—Third Degree. SATURDAY Aloha Temple—Regular—12 m.

HARMONY LODGE, No. 3, I. O. O. F.

Meets every Monday evening at 7:30 in I. O. O. F. Hall, Fort street.

MYSTIC LODGE, No. 2, K. of P.

Meets every Tuesday evening at 7:30 o'clock in K. of P. Hall, King street.

CAHU LODGE, No. 1, K. of P.

Meets every Friday evening at 8 P. M. in K. of P. Hall, King street.

HONOLULU LODGE 616, B. P. O. E.

Honolulu Lodge No. 616, B. P. O. E., will meet in their new hall, on Miller and Beretania streets, every Friday evening.

By order of the E. R. HARRY H. SIMPSON, Secretary.

Wm. M'KINLEY LODGE No. 8, K. of P.

Meets every Saturday evening at 7:30 o'clock in K. of P. Hall, King street.

HONOLULU HARBOR, No. 64, A. A. of M. & P.

Meets on first and third Sunday evenings of each month at 7 o'clock at K. of P. Hall.

FIRE INSURANCE

The B. F. DILLINGHAM CO., Ltd. General Agent for Hawaii

Allas Assurance Company of London Phoenix Assurance Co. of London. New York Underwriters' Agency.

ALBERT RAAS

MANAGER INSURANCE DEPT'MT. Office 4th floor, Stangenwald Bldg.

ICE

Manufactured from pure distilled water

Delivered to any part of city by courteous drivers.

Oahu Ice and Electric Co., Honolulu Telephone Blue 8181

COTTON BROS. & CO.

ENGINEERS AND GENERAL CONTRACTORS. Plans and estimates furnished for all classes. Contracting work.

P. H. Burnette, Attorney-at-Law and Notary Public.

Restaurants. HONOLULU MINODE CO. 16 N. HOTEL ST.

Building Materials OF ALL KINDS. Dealers in Lumber and Coal

ALLEN & ROBINSON, Queen St., Honolulu

Restaurant. HONOLULU MINODE CO. 16 N. HOTEL ST.

The Evening Bulletin, 75 cents a month.

WE Develop AND Print Films and Plates

WITH GREAT CARE.

Mail Orders Given Special Attention.

KODAKS REPAIRED.

THE Hollister Drug Co., LIMITED.

1056 Fort Street.

GENUINE APPLE CIDER

The most delicious, the most healthful drink.

75c a Gallon

LIQUOR DEPARTMENT.

Hoffschlaeger Co., Limited, 25 King Street, near Bethel

Wm. G. Irwin & Co., Ltd.

WM. G. IRWIN, President and Mgr. JNO. D. SPRECKELS, 1st Vice Pres.

SUGAR FACTORS AND COMMISSION AGENTS

Agents for the SCOTTISH UNION & NATIONAL INSURANCE COMPANY OF EDINBURGH.

WILHELM OF MARCHBURG GENERAL INSURANCE COMPANY.

AGENTS OF THE Oceanic Steamship Company OF SAN FRANCISCO, CAL.

A. Fernandez & Son,

Importers and Dealers in HARDWARE, CUTLERY, STOVES, PAINTS, OILS, BRUSHES, and GENERAL MERCHANDISE

Nos. 44-50 KING STREET, Katsy Block, bet. Nu'uanu and Smith Sts. TEL. MAIN 189.

DAVID DAYTON

187 MERCHANT STREET.

Lots for Sale in KAPIOLANI PARK ADDITION-KALIHI, and other desirable localities.

Also 1 JUMP-SEAT BUCKBOARD, second-hand; good as new.

BUILDING MATERIALS

OF ALL KINDS. Dealers in Lumber and Coal

ALLEN & ROBINSON, Queen St., Honolulu

Weekly Edition of the Bulletin, \$1 per year.

LOCAL AND GENERAL

Send to or immediately notify the Board of Health of all rats found dead from unknown causes.

Read "Wants" on page 6. Wizard golf balls, 50 cts., Wall-Nichols.

Attorney J. M. Vivas returned to Maui by the Claudine.

The Club Stables Co. have some very good pasture near the city.

Paul Jones, Rye or Bourbon, at the Pantheon—same old stand.

The best cup of Hawaiian coffee in the city. N. England Bakery.

Have your old Panama hat made like new. Globe Clothing House.

Mrs. Edmund Hart and children left for Maui in the Claudine last evening.

New school supplies and text books just received, more coming. Arleigh & Co.

Have your painting done by. Enos Bros., headquarters Sterling's old stand.

Hon. Clothes Cleaning & Pressing Co. Tel. Main 147. Suits called for and delivered.

The Garden Island says Robert Puukui is a candidate for the Legislature from Kauai.

Neatly furnished rooms at the Popular. \$1, \$1.50 and \$2 per week. 1249 Fort Street.

The Garden Island brings out the candidacy of George H. Fairchild for legislative honors.

Great bargain sale at Pacific Import Co. in ladies' and men's handkerchiefs. Stock must be cleared out.

Members of the Maui and Kauai polo teams returned to their homes by last night's outgoing steamers.

Mr. Stodart of Eleese, Kauai, is in Honolulu to meet his wife and child soon to arrive from the Coast.

A meeting of the Bar Association takes place in the court room of Judge De Bolt at 4 o'clock this afternoon.

Small sums invested monthly with the Phoenix S. B. and Loan Association will in nine years be very nearly doubled.

For exercise, recreation, health and sport go to the Horseshoe Saloon, Bowling alley free of charge. Hotel street, near Nuuanu.

Judge Hardy of the Kauai Circuit Court has granted a divorce to Mary Paukuanani from Joseph Paukuanani with alimony of \$150.

Jas. F. Morgan will sell at auction at his salesroom, September 1st, a choice lot of silverware, furniture, crockery and a large bookcase.

Services in memory of the late Mrs. Alice Mackintosh will be held in St. Andrew's Cathedral at 4 o'clock this afternoon. The Bishop delivers an address.

Now is your chance to get a good harness cheap. The Schuman Carriage Co. will sell harness of all kinds at greatly reduced prices for one week only beginning Monday, the 22d.

Harmony and quality is the keynote of Stanley Stephenson's well established business. With this as a motto do you wonder at their ability to please all their customers.

September 1st, for a few days only at the Pacific Importers our Wash Tub and Regatta brand boys' knee pants, 3 pairs for \$1.

Charles Sweetser, Kauai's road engineer, is busy with government work at Hanalei, where he expects to be engaged for some time on the two new roads to be made in that district.

The Merchants' Protective Association is here to stay. It is the oldest and most successful collection agency in the world, and are already doing good work for the merchants in the Islands.

Brewer & Co.'s warehouse on Queen street is now being torn down in order to remove it from the makai to the mauka side of the present road. This is done in connection with the widening of Queen street. The warehouse is built of brick. It is only about six or seven years old.

PASSENGERS DEPARTED.

For Maui ports, per str. Claudine, AUG. 30.—Miss Z. Rogers, Miss E. Groves, Miss L. K. Tilton, F. L. Baldwin and wife, L. K. Tilton, E. A. Baldwin, F. E. Steere, Mrs. Kapu and child, Miss Awana, B. K. Kaiwaha and wife, Mrs. Penhallow, Miss N. Crook, Miss Julia Betts, S. B. Harry, L. von Tempack, A. Martinson, Miss V. Mossman, Miss E. Hoomey, Mrs. M. K. Keokoka, Mrs. H. Hart, 3 children and nurse, Mrs. W. Hopkins, J. M. Vivas, W. P. Deaha, D. M. Deaha, E. A. Peck, F. G. Atherton and wife, Miss C. L. Turner, Miss C. Mosser, Miss E. Lewthwaite, Mrs. R. Paele, Miss L. Wong Kwong, Mrs. E. H. Hart, 3 children and nurse, Mrs. J. Plunkett and child, Robert Plunkett, W. Haywood, E. R. Hendry, C. D. Lufkin, Captain McLeod, C. C. Krumhaar, W. O. Aiken, Dr. G. S. Aiken, R. D. Mead and wife, W. C. Crook, Sr., Miss I. Crook, Mrs. J. Kawaiwa, Miss C. S. Scholtz, A. W. Dunn, S. E. Taylor, J. W. L. Marshall, W. Marshall and wife, L. K. Smith, F. Wittrock, M. D. Monsarrat.

THE TERRITORIAL BAND PLAYS AT 7:30 O'CLOCK THIS EVENING AT THOMAS SQUARE

rendering the following program:

PART I. March—"United Flags"..... Gabriel Overture—"The Golden Wand"..... Laurendeau Ballad—"Don't Be Cross"..... Zeller Selection—"Autila"..... Verdi

PART II. Selection—"Pirates of Penance"..... Sullivan "Uncle Sam's Patrol"..... Hall Wait—"Zingaro"..... Andrew Intermezzo—"The Gondolier"..... Powell "The Star Spangled Banner".....

The Inter-Island Steamship Company's new building at Nawiliwili is nearing completion. The old warehouse was taken down and a new building, consisting of a spacious waiting room and a modern office with all necessary accommodations and five large storerooms, with wide veranda from one end to another was put up. The rooms are all well ventilated and supplied with sufficient seats. This is a great addition toward the accommodation of the public.

WORLD NEWS BY CABLE

(Associated Press Cable.)

BIG JAPANESE LOSS. Tokio, Aug. 31.—Two thousand Japanese were killed and wounded at Anping and eight Russian guns captured.

SEARCHING THE BRITISH. Madrid, Aug. 31.—Ten Russian warships are cruising on the coasts of Spain, Portugal, France and Africa, searching British colliers bound to Japan.

HEAVY WAR LOAN. St. Petersburg, Aug. 31.—A war loan of \$250,000,000 is being arranged with German bankers.

A BISHOP DIES. London, Aug. 31.—Bishop Ridding is dead.

The Rt. Rev. George Ridding has been Bishop of Southwell since 1884. He was born at Winchester, March 19, 1828.

MARATHON CONTEST. St. Louis, Aug. 31.—The Marathon race of forty kilometers, with 21 participants, was won by Corey, Chicago second. Time, three hours and twenty-nine minutes.

BLUE LAWS AND RIOT. Pittsburg, Aug. 31.—A crusade to enforce the blue laws resulted in a riot last night in which one man was killed.

FIGHTING A WATERLOO. Liao-yang, Aug. 31.—The entire Japanese army, commanded by Marshal Oyama and including the divisions of Kuroki, Nodra and Oda, attacked General Kurapatkin's position yesterday.

The Japanese brought 1200 guns to bear and the contending forces numbered 400,000 men. All arms of the service were engaged and the fighting was desperate. The Russian cavalry made several effective charges. The losses of life on both sides were enormous. The Russian hospitals in Liao-yang are full.

Today the Japanese made several attempts to turn the Russian flank but were unsuccessful. They lost ten guns. Tonight (note difference in time between the eastern and western hemispheres) the artillery fire has ceased. The battle will be resumed tomorrow when the fighting promises to be of the bloodiest character. On it depends the fortunes of the entire war. General Kuroki's forces took no part in today's action.

TAKAHIRA'S REPORT. Washington, Aug. 30, 1904. (Received at 5:25 p. m.)

Mr. Miki Saito, Honolulu.

Pressing engagements in the direction of Liao-yang have taken place. Our first army commenced the attack on the 25th of August. The enemy was strongly posted on steep mountain ridges twenty-three miles southeast of Liao-yang. In the night we used our army's central column and after a bayonet charge our infantry succeeded in carrying the enemy's position of that side, but the enemy's right and left wings continued to offer desperate resistance. On the 26th severe fighting was resumed, but the enemy's resistance remained unshaken. At that night our right column, after a sanguinary engagement, carried the enemy's left and captured guns. On the 27th our whole column resumed the attack, and at sunset the entire line of the enemy's position fell into our hands. Our casualties were about 2000. At the same time our other armies marched to wards Aushan-shan, where the enemy retired without resistance. Our armies pursued while our detachment intercepted the enemy who thereupon fell back toward Liao-yang in utter confusion, apparently suffering considerable damage from our fire. We also captured eight field guns, a large quantity of ammunition and many carts.

TAKAHIRA.

THOMAS SQUARE CONCERT.

The Territorial band plays at 7:30 o'clock this evening at Thomas Square rendering the following program:

PART I. March—"United Flags"..... Gabriel Overture—"The Golden Wand"..... Laurendeau Ballad—"Don't Be Cross"..... Zeller Selection—"Autila"..... Verdi

PART II. Selection—"Pirates of Penance"..... Sullivan "Uncle Sam's Patrol"..... Hall Wait—"Zingaro"..... Andrew Intermezzo—"The Gondolier"..... Powell "The Star Spangled Banner".....

WASHING TON LIGHT CO., SOLE AGENTS.

TEL. MAIN 145.

COOLING - DRINKS

For the Long Summer Time.

APOLLINARIS

Sparkling, Refreshing. Quarts, Pints, Splits.

With a dash of Delicious Fruit Syrup, a dozen flavors better than any soda water ever concocted.

Also, Sole Agents for the Celebrated Apenta Water

LEWIS & CO., LTD., 169 KING STREET. 240—2 Telephones—240

RICHEST SOIL

and BLACK SAND

In town for sale cheap. See us at once.

Lord & Belser.

The Lewin-Meyer Co.

Epicurean and Palace Goods

E. J. WALKER,

Wholesale Agent.

IF YOU WISH TO ADVERTISE IN NEWSPAPERS

ANYWHERE AT ANYTIME Call on or Write

H. C. DAK'S ADVERTISING AGENCY 64 & 65 Merchants' Exchange SAN FRANCISCO, CAL.

Mrs. HARRIET G. EVANS,

Hair Dressing, Facial Massage, Manicuring and Chiropody.

No. 210 Boston Bldg. HONOLULU. Evening Work by Appointment Only.

ALEXANDER COCKBURN,

VALUATOR, BUSINESS AGENT, NOTARY PUBLIC.

940 KAAHUMANU ST., Honolulu.

EYES EXAMINED



"Eyes examined" may mean something for you or it may mean nothing. It depends upon the skill, knowledge and fitness of the examiner.

Our examinations are conducted after the most approved methods, and, back of all, we have adequate knowledge of the eye and its needs.

A. N. SANFORD,

OPTICIAN. BOSTON BUILDING, FORT STREET Over May & Co.

Fire! Fire! Fire!

Another residence destroyed by fire for want of water in time, but had a

Quick Action Fire Extinguisher

been in the house the fire could have been extinguished. So avoid the 10 to 20 minutes delay of the Fire Department by having your house equipped with our Fire Extinguishers, for when you need it you need it badly, and there is no other machine manufactured which you can rely upon to work properly at that critical moment.

Can be operated as successfully by a Woman, Child or Man as when in the hands of a trained fireman. For further particulars and circular inquire of

WASHINGTON LIGHT CO., SOLE AGENTS. TEL. MAIN 145.

COOLING - DRINKS

For the Long Summer Time.

APOLLINARIS

Sparkling, Refreshing. Quarts, Pints, Splits.

With a dash of Delicious Fruit Syrup, a dozen flavors better than any soda water ever concocted.

Also, Sole Agents for the Celebrated Apenta Water

LEWIS & CO., LTD., 169 KING STREET. 240—2 Telephones—240

RICHEST SOIL

and BLACK SAND

In town for sale cheap. See us at once.

Lord & Belser.

The Lewin-Meyer Co.

Epicurean and Palace Goods

E. J. WALKER,

Wholesale Agent.

IF YOU WISH TO ADVERTISE IN NEWSPAPERS

ANYWHERE AT ANYTIME Call on or Write

H. C. DAK'S ADVERTISING AGENCY 64 & 65 Merchants' Exchange SAN FRANCISCO, CAL.

Mrs. HARRIET G. EVANS,

Hair Dressing, Facial Massage, Manicuring and Chiropody.

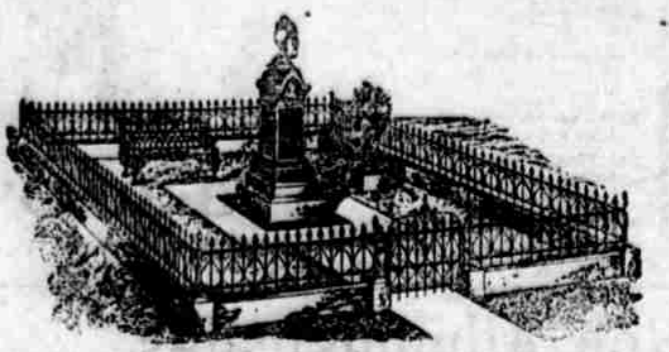
No. 210 Boston Bldg. HONOLULU. Evening Work by Appointment Only.

ALEXANDER COCKBURN,

VALUATOR, BUSINESS AGENT, NOTARY PUBLIC.

940 KAAHUMANU ST., Honolulu.

Granite and Bronze Monuments At Prices To Suit.



Hawaiian Iron Fence and Monument Works, Ltd 176-180 KING STREET.

NOW WE'RE OFF?

We are prepared to supply the People of Honolulu with Freshest of ISLAND MEATS. Also, Garden Produce of all kinds; Butter, Eggs, Chickens, Turkeys, Sucking Pigs, Bacon, Ham; in fact, everything that a FIRST CLASS MARKET is called upon to furnish.

The ISLAND MEAT CO., JAS. E. WESTBROOKE, Manager.

TELEPHONE MAIN 76. FORT ST., OPP. LOVE BLDG.

NEW IDEAS IN NEW FURNITURE FOR THE SUMMER TIME.

PORTER FURNITURE COMPANY, YOUNG BUILDING, HOTEL STREET.

TELEPHONE 35. THE FAMOUS DOUGLAS

BISMARCK STABLE CO., LTD. WAILUKU, MAUI.

TELEPHONE 228. BISMARCK BRANCH STABLES LAHAINA, MAUI.

Hacks, Carriages, Buggies and Saddle Horses on short notice.

Carriages meet all steamers. Competent drivers, reasonable rates, new vehicles and live stock.

Alexander & Baldwin LIMITED.

OFFICERS. J. B. Castle, First Vice President W. M. Alexander, Second Vice Pres. J. P. Cooke, Treasurer W. O. Smith, Secretary Geo. R. Carter, Auditor

Sugar Factors and Commission Agents

AGENTS for Hawaiian Commercial & Sugar Co., Haku Sugar Co., Paia Plantation Co., Nahiku Sugar Co., Kihui Plantation Co., Hawaiian Sugar Co., Kahului Railroad Co.

WM. G. IRWIN & CO., LTD.

Agents for Western Sugar Refining Co., San Francisco, Cal. Baldwin Locomotive Works, Philadelphia, Pa. Newell Universal Mill Co., Manufacturers of National Candy Shredder, New York, N.Y. Paraffin Paint Company, San Francisco, Cal. Olin & Co., San Francisco, Cal. Pacific Oil Transportation Co., San Francisco, Cal.

Castle & Cooke, Ltd. Importers

LIFE and FIRE Insurance - Agents

AGENTS FOR NEW ENGLAND MUTUAL LIFE INSURANCE CO. OF BOSTON. AETNA FIRE INSURANCE COMPANY OF HARTFORD.

Castle & Cooke, Ltd. Honolulu.

Commission Merchants Sugar Factors

AGENTS FOR The Ewa Plantation Co. The Waihua Agricultural Co. The Kohala Sugar Co. The Waihua Sugar Mill Co. The Fulton Iron Works, St. Louis, Mo. The Standard Oil Co. The Geo. F. Blake Steam Pump Weston's Centrifugals. The New England Life Insurance Co. of Boston. The Aetna Fire Ins. Co. of Hartford, Conn. The Alliance Assurance Co. of London.

C. Brewer & Co., Ltd.

Queen Street, Honolulu, T. H.

Agents for Hawaiian Agricultural Co., Oahu Sugar Plant Co., Oonomea Sugar Co., Honouliuli Sugar Co., Haleakala Ranch Co., The Planters' Line of San Francisco Packets, Chas. Brewer & Co.'s Line of Boston Packets.

List of Officers: C. M. Cooke, President; George Robertson, Manager; E. F. Bishop, Treasurer and Secretary; Col. W. F. Allen, Auditor; P. G. Jones, C. M. Cooke and Geo. R. Carter, Directors.

P. O. Box 861. Tel. White 931.

SANG CHAN, MERCHANT TAILOR.

HOTEL STREET, HONOLULU. Suits made to order in the latest styles. Perfect fit guaranteed. Clothing cleaned, dyed and repaired.

Tam Kim Kee,

KING ST. NEAR RIVER. Hardware, Haviland Crockery, Glass ware, Plated Silverware, Milk Pans, Etc. 283-1m

S. SAIKI,

Dealer in Bamboo Furniture, Picture Frames, Grass Linen, Drawn Linen, Table Cloths, Collars, Neckties, etc.

563 S. BERETANIA ST.

\$100 Reward FOR PROOF that I did not make my samples. Anyone who cannot make good samples cannot do good work. For

These New Things Now On Parade At Sachs'

Pretty novelties in embroidered Oxford waist patterns are just in and we want you to see them in all their freshness and beauty.

Among the other new goods are French waists by the yard for ladies' wear. They are both pretty and practical. Colors are white, embroidered either in white or black, and tan, embroidered in black.

Here's a new line of Galateas and Cheviots for men's and boys' shirts. Also for boys' suits. Width 30 inches. 20c and 25c a yard.

Ladies are delighted with our new dainty white back combs with brilliant settings. They're especially pretty for evening wear.

See the celebrated "Money-Bak" black silks in the show window. Guaranteed not to split, crack or break. Money returned if they do.

N. S. Sachs Dry Goods Co.,
Limited,
CORNER FORT AND BERETANIA STREETS

BEFORE AND AFTER.



This was the attitude of Germany and England toward Russia a few months ago.



But now that Japan has demonstrated a thing or two it is different. —Minneapolis Journal.

ZAMLOCH A KAMAANA

MADE SUCCESSFUL TRIPS
HERE IN OLDEN DAYS

FIRST PERFORMANCE BEFORE
KING KALAKAUA AND ROYAL
FAMILY—ALWAYS HAS
SOMETHING NEW.

Zamloch, the Austrian conjurer, a well known and every-time favorite with people in this Paradise of the Pacific, is now mystifying and delighting audiences nightly, at the cozy Orpheum. Professor Zamloch is now making his fourth visit to Hawaii. The first was made in 1850, the second in 1852; on both of those occasions he played before King Kalakaua, Queen Kapiolani, Princess Likelike (then) Princess Liliuokalani and members of the Royal family. The first of these performances was held in Buffum's Hall on Hotel street, a landmark wiped out by the great fire of 1886. In 1896 Zamloch made his third appearance before Prince Luigi of Italy, under the patronage of Consul and Mrs. F. A. Schaefer, and, in the same year, gave a benefit performance at the Y. M. C. A. hall in aid of the Stranger's Friend Society, under the patronage of (then) President Dole and lady and the late Mrs. Alexander Mackintosh, who was the president of the society.

Since his last visit Zamloch has travelled from the most chilly portion of Canada to the most torrid of Mexican cities, always being well received and carrying away with him valued, tangible evidences of the appreciation of the different peoples. At the Orpheum the conjurer presents mystery and mirth, his many mystifications being interspersed with mirthful murmurings which induce the audience to pass a pleasantly remembered evening. Professor Zamloch is not alone a performer but is, besides, an inventor and improver of the tricks in use in his profession. He prides himself on his ability in being able to so entirely renovate "any old thing" in conjuring that the expert may recognize but will be still mystified in regard to "how it is done." "Weary Willie," his assistant, is an able adjunct in causing the audience to wonder "what is he there for" and he has a happy way of impugning himself on their attention. The closing act which Professor Zamloch presents as his "Mephistolican Mystery or the Superminent Supination" is one that baffles explanation and should be seen to be appreciated. In this closing scene the professor has the assistance of Miss Gladys Louise, whose store of dormant electrical power and magnetism is a wonder and is displayed in the wireless performance in which she takes part. Performances will be given nightly during the rest of the week.

U. S. DEPARTMENT OF AGRICULTURE

WEATHER BUREAU.

The following data, covering a period of 29 years, have been compiled from the Weather Bureau and McKibbin records at Honolulu, T. H. They are issued to show the conditions that have prevailed, during the month in question, for the above period of years, but must not be construed as a forecast of the weather conditions for the coming month.

Month, September, for 29 years.
Temperature—Record for 29 years: Mean or normal temperature, 75; the warmest month was that of 1891, with an average of 80 degrees; the coldest month was that of 1887, with an average of 76 degrees. Record for 14 years: The highest temperature was 88 degrees on September 9th and 16th of 1890; 25th of 1891; 14th of 1892; 10th of 1896; 12th of 1900. The lowest temperature was 65 degrees on September 15th of 1890.

Precipitation (rain or melted snow).—Record for 27 years: Average for the month, 1.84 inches; average number of days with .01 of an inch or more, 17; the greatest monthly precipitation was 6.09 inches in 1886; the least monthly precipitation was 0.36 inches in 1883.

Clouds and Weather—Record for 18 years: Average number of clear days, 14; partly cloudy days, 13; cloudy days, 3.

Wind—Record for 29 years: The prevailing winds have been from the northeast.

Station: Honolulu, T. H.
Date of issue: August 30th, 1904.
ALEX. McC. ASHLEY,
Section Director, Weather Bureau.

ONE SHARE ONE DOLLAR PER MONTH.

The Twenty-ninth Series of stock in the Pioneer Building & Loan Association will be issued in July, 1904, and is now open for subscription. The membership fee of fifty cents per share, and the monthly dues are one dollar per month per share. The stock draws much better interest than a savings bank.

Further information can be obtained from A. V. ORAH, Secretary, 127 King St.

Blank books of all sorts, ledgers, etc., manufactured by the Bulletin Publishing Company.

THE CHESS GAME BY WIRELESS

HONOLULU vs. HILO

Position in Game B (Queen's Gambit Declined.)
(BLACK)



(WHITE)

HILO, White.	HONOLULU, Black.
Moves. Hilo.	Moves. Honolulu.
1. P-Q 4	1. P-Q 4
2. P-Q B 4	2. P-K 3
3. Kt-Q B 3	3. Kt-K B 3
4. B-K 5	4. Q-Kt-Q 2
5. P-K 3	5. B-K 3
6. Kt-B 2	6. Castles.
7. B-Q 3	7. P-Q Kt 2
8. Castles.	8. B-K 2
9. P x P	9. Kt x P
10. B x B	10. Q x B
11. Kt x Kt	11. P x Kt
12. Kt-K 5	12. Kt-K B 3
13. Q-B 2	13. P-Q R 4
14. P-Q R 3	14. P-B 4
15. B-Kt 5	15. K R-B 1
16. Q-B 5	16. P-R 5
17. Q-Q 3	17. R-R 4

Carter Makes Reply In Parker Fight Charging Accusers

A. W. Carter, guardian of the property of Annie T. K. Parker, minor, files an answer to the numerous charges made against him by those who seek his removal, in the Parker ranch fight, meeting sensational allegations with equally strenuous assertions, in brief, as follows:

He denies that John P. Parker, father of the minor, was intimate with Low or interested in the minor, until very recently when for motives of self-interest and out of no regard to said minor or his relations with her said father, the said J. S. Low has taken a great but wholly discreditable and selfish interest in the affairs of said minor and in her property rights; that said J. S. Low is representing and has personal and property rights which are hostile to and in conflict with the person and property interests of said minor.

That the services rendered by him (A. W. Carter) to said minor are well worth the commission charged; that the estate of said minor is worth more than half a million dollars; that the bulk of said estate consists of the right or share of said minor in said Parker Ranch; that said Parker Ranch consists of some 270,000 acres of land, an area more than two-thirds as large as the island of Oahu of this Territory, and of over 30,000 head of cattle and horses.

He protests against reflection upon him for the acceptance of the commissions conferred upon him by law; and charges that J. S. Low's claim that he was moved to institute these proceedings partly by reason of excessive commissions charged against said minor, is false, and has no foundation in fact. Carter shows that his fees and commissions amount to about \$6100 per annum. Of this the ward pays \$4300, while Parker pays only \$2100.

He denies that the ranch is a partnership.

That the allegation of a partnership has nothing to do with Carter's fitness as a guardian and served no purpose or object in promoting his removal as guardian, and offers no support to and has no bearing upon the accusations elsewhere contained in said petition.

He says that said paragraph was inserted in said petition by the lawyers of said J. S. Low, to-wit, Messrs. Magoon & Lightfoot, and was sworn to by J. S. Low by way of admission against the interest of said minor and in the interest of Samuel Parker, the client of said Magoon & Lightfoot in said issues now pending against said minor; and that Low in inserting said admission was acting merely as the tool and accomplice of said Samuel Parker and his said attorneys, and against the interests of said minor.

Defendant admits that for several years last past his brother, F. W. Carter, has been sub-manager of said ranch under salary, but denies that said F. W. Carter is incompetent, or has mismanaged the affairs of the ranch.

He denies that his interests in the American Sugar Company, carrying on business on the island of Molokai, clash with his duties with reference to the Parker Ranch and as guardian of the minor.

That said Samuel Parker's requests for money have retarded the development of said ranch.

That very substantial improvements have been made upon said ranch, to such an extent in fact that the methods of conducting said ranch have been revolutionized within the past four years.

That for many months prior to the institution of these proceedings relatives and partisans of said Samuel Parker have been upon and over said Parker Ranch hunting for this, that and the other things upon which to

Read--Understand--"Drink More"

What the American Cyclopaedia says:—

"Carbonic Acid Water (SODA WATER) improves the taste and increases the sanitary effect of drinks; is the best antidote for alcohol and lessens the desire for spirituous liquors. It has a generally exhilarating effect upon the system, essentially promotes digestion, checks too great acidity in the stomach and is a much esteemed remedy in febrile diseases."

LET US SUPPLY YOU WITH OUR CARBONATED BEVERAGES—YOURS FOR HEALTH

Consolidated Soda Water Works Co.,
LIMITED. Tel. Main 71

ANOTHER LARGE SHIPMENT

These safes are now on the floor and ready for inspection—THE HERRING HALL MARVIN SAFE is so constructed that its contents are absolutely preserved. A scientific study of the effect of fire on safes combined with 80 years' experience in safe construction, warrants the manufacturer to make the claim that their safes are positively perfect. We carry a large assortment of safes from \$50 up. Cash or installment.

THEO. H. DAVIES & Co., Limited,



J. HOPP & Co.,

Of King and Bethel Streets, have received a fine shipment of Ostermoor Patent Elastic Felt Mattresses. These are now on sale. Anyone looking for health, comfort and sleep should not fail to inspect these, as they are the best mattresses made for this climate.

NEW LINE OF

Clothing, Pajamas and Neckwear, Ties,

Etc., at

J. Lando, Hotel St. Store.

Weekly Bulletin, \$1 a Year

Or would you travel in an up-to-date railway train, even though it should cost a little more money? Then why put up with troublesome kerosene lamps when at a very little extra cost you can have your home fitted with

INCANDESCENT LIGHT

Call or write for estimate.

Hawaiian Electric Co.,

Limited,
Office King Street Tel. Main 390

THE BULLETIN. 75c per month

Choice Table Delicacies

Some choice kinds of cheese and other eatables at our delicacy counter that will prove a great addition to the table. Try them:

Edam, Pineapple, Oregon Full Cream Brick, California Full Cream Frommage de Brie, Camembert, Neuchâtel, Sierra, Schloss, Kase and Breakfast Cheese.

Spiced and Sweet Pickles, German Dill Pickles, Mixed Pickles, and Extra Fine Ripe Olives, Spanish Queen Olives and California Green Olives—all these in bulk.

Smoked Beef Tongue, Chipped Beef, New Smoked Salmon, Blatens, and Aberdeen Herrings, Bismarck, Holland and Spiced Herring a specialty.

If you are not getting good butter try our CRYSTAL SPRINGS BUTTER. It is the best obtainable.

Metropolitan Meat Co., Ltd.

Merchants' Parcel Delivery.

Parcels, Furniture, Baggage, Etc., moved to any part of the City. Will meet steamers and check outgoing baggage. Prompt and reliable service.

'Phone Main 109.



Be Progressive.

If you are thinking of erecting a monument investigate

WHITE BRONZE

Its half the price of stone, don't crack, crumble, decay, corrode or rust. Endorsed by The Scientific American. Beautiful designs and prices from \$25 up.

H. CANNON
Sole Agent for Islands
Office corner King and Hotel. Box 1.

HORSE SHOEING.

W. W. Wright Co. Ld.

have opened a horse-shoeing department in connection with their carriage shop, etc. Having secured the services of a first-class shoer, they are prepared to do all work entrusted to them in a first-class manner.

The Weekly Edition of the Evening Bulletin gives a complete summary of the news of the day.

Blank books of all sorts, ledgers, etc., manufactured by the Bulletin Publishing Company.

RATES FOR WANT ADS.

Ad in this column will be inserted

Per line, one insertion . . . 15c
 Per line, two insertions . . . 25c
 Per line, one week 80c
 Per line, two weeks 40c
 Per line, one month 80c

This is the cheapest advertising ever offered the people of Honolulu.

EVERYDAY WANTS AND BUSINESS DIRECTORY

HAWAII'S GREATEST OPPORTUNITY FOR LARGE RETURNS ON SMALL INVESTMENTS

For every dollar a man wins on fast horses he loses two on slow ones.

THE LIVE ADVERTISER WINS ALL THE TIME.

WANTS

See Page 8, NEW TO-DAY, for New Ads.

SITUATIONS WANTED.

An expert accountant, with several hours each day at his disposal, would like to take charge of one or more small sets of books, at reasonable charge. Address X., this office. 2841-tf

SPECIAL NOTICES.

FOR SALE.
 Have 5 Houses for sale at Palama; \$20 cash; balance WITHOUT INTEREST at \$1000 per month.
 P. E. R. STRAUCH,
 No. 74 S. KING ST. TEL. MAIN 386.

Wallace Jackson is now prepared to deliver small packages and to move furniture to any part of the city. Terms reasonable. Satisfaction guaranteed. Stand, Merchant and Alakea Streets. Telephone Main 343. Give me a trial.

H. L. White. — Automobile, Bicycle, Typewriter, Cash Register, General Repairing. Merchant and Alakea.

WANTED

Young woman for office work; one capable of keeping small set of books and who is a fair stenographer; state salary wanted. Address X. N., Bulletin. 2854-1w

A sound gentle work-horse, weight about 1300 lbs., for use 1 dump cart. Apply Dr. Sloggett, Superintendent Insane Asylum. 2855-1w

A sound Hawa-bred horse for light delivery work; also a light wagon or brake. Address "Cash," Bulletin. 2856-1w

A white lady desires a position to take care of children and do light house-work. Address A., Bulletin. 2852-1w

Position as cook with private family. Apply Mura, 1996 Beretania St. 2856-1m

A position as collector or office work. Address B., Bulletin. 2855-1w

Two or three good collectors. Address K., Bulletin office. 2816-tf

A half-grown goat. Address A. D. S., Bulletin. 2853-1w

TO LET.

A 4-room cottage with bathroom, stationary bath tub, water closet and washstand on Artesian St.; \$20 per month. Apply P. McInerney, 1130 Fort St. 2833-tf

Furnished rooms at 1223 Emma Street. Mrs. McConnell. 2863

UNEQUALLED SHORT TRIPS FOR TRAVELLERS.

Tourists who wish to see the wind ward side of Molokai, with its wonderful cliffs, deep gulches and fertile valleys, with the most unique and beautiful prospects on every hand, should take the trips on the new steamer Likiekie. Around Molokai in daylight with night run to Lahaina, the ancient capital.
 Sailing, Monday at 5 p. m., returning Tuesday night.

New steamer, all deck staterooms, airy and commodious.
 Full particulars at Wilder's Steamship Company Office.

International Stok Food is the best thing yet introduced on the Islands, cheap and very effective. California Food Co. and City Feed Store.

PARTNER WANTED.

TO LET.

Cottage on Vineyard St.; parlor, 2 bedrooms, dining room, kitchen, pantry, and bath; sewer connections. 352 Vineyard St. 2848-tf

Six stores in the Kaploian Building, size 15 x 40 with cellar will be rented at \$30 a month each. Kaploian Estate Ltd. 2793-tf

Furnished Rooms—Housekeeping allowed; cool and mosquito-proof. Alakea House, Alakea St. bet. Hotel and King. 2265-tf

Nicely furnished room; \$5; suitable for day sleeper. 7514 Lunalilo lane, between Lunalilo and Kinuau Sts. 2852-1w

2 modern 7-room houses on Kinuau St., mosquito proof, electric lights, servants' quarters. Phone 1961 Blue. 2846-tf

Cottage on Makiki St. near Wilder Ave. formerly occupied by Mr. S. S. Peck. Enquire 1527 Makiki St. 2841-tf

Store on Alakea St. between Merchant and King. Apply J. W. Podmore, King and Bethel Sts. 2797-tf

4-room cottage, sanitary plumbing, on River St. Apply J. W. Podmore, King and Bethel. 2792-tf

At Haeleka Lawn, cor. Richards and Hotel, nicely furnished rooms and cottages. 2834-1m

Newly furnished rooms, all modern conveniences. At No. 84 Vineyard St. 2728-tf

Waiata lots on easy terms. A. V. Gear. 132 King St. 2770-tf

FOR SALE.

The corner lot in Makiki. Curbing, water, fruit and ornamental trees and all improvements. Two minutes' walk from cars and Punahou College. Address R. F., this office. 2516-tf

Waiata house and lot, 356 acres of land, cattle, horses, mules, wagons, harness, etc. Apply to W. P. Pennell, Honolulu, or C. Meinecke, Waiata, Hawaii. 2856-1m

A second-hand National Cash Register in good condition. Address O., this office. 2854-1w

Black Minorca eggs, setting, \$1.50. Leave orders at City Feed Store. 2839-1m

"For Sale" cards at Bulletin office.

Books, Bookish People and Things

We get no good by being ungenerous even to a book. E. B. Browning.

"Clinical Lectures on Mental Diseases." By T. S. Clouston, M. D., physician superintendent Royal Edinburgh Asylum for the Insane. Lecturer on Mental Diseases in the University of Edinburgh. 5th edition; cloth, 5 1/2 x 7 1/2, 727 pp., index, 19 colored plates.

While Dr. Clouston may not have the "classical" style of Dr. Mandley (whose splendid words on the Mind have long deserved their reputation), he is forcible and clear, and his experience with and intimate knowledge of the different phases of insanity enable him to present to the student an impressive picture of each case reviewed.

Beginning with "Hereditary" he says: "The facts of nature compel the physician to see that purely mental and moral qualities and mental defects are transmissible from parent to child, and prepare him for the great part that heredity plays in psychological development and in mental disease." I regard Dr. Clouston's classification as being particularly logical while it is concise enough to be practicable.

"All states of morbid mental depression and painful feeling" are classed under melancholia.

Mania includes "all the states of morbid mental exaltation or excitement without depression."

Regularly alternating mental states, the Folle Circulaire of the French, is termed "alternating insanity."

Fixed delusional states, or monomania, generally classed in Germany and America as Paranoia, general mental enfeeblement or dementia.

Stupor is the "outward negation of mentalization resulting from disease."

States of want of inhibitory mental power "without marked mental depression, exaltation, delusion, or enfeeblement," are placed under "Defective Mental Inhibition."

Lastly, all forms of mental instability, such as the hysterical, neurotic present, he calls "Psychoneurosis."

Although the work is intended for students and practitioners of medicine it will be deeply interesting to those who have a liking for psychological subjects, sociology or criminology, and certainly no lawyer should be without the book. Its general discussion of sane and insane states, the borderland between the two, is more fascinating than a story.

In regard to mental pain, Dr. Clouston says: "The most casual study of the affective capacity in human beings shows us that it differs enormously in different persons. One man will lose his children or his fortune, or see the most terrible sights, and he will not feel keenly at all, because his brain convolutions that subserve feeling are not in their essential nature very receptive and sensitive.

Another person will be thrown into very great grief and feel acute agony at the loss of a favorite dog. I had a lady patient once . . . who would be for days depressed and suffer mentally if a friend did not receive her as cordially as usual any day. She suffered mental torture if a relative spoke sharply to her, and she was once absolutely paralyzed in feeling and volition by the death of a sister. . . . There can be no doubt whatever that the finer moulds of brain are mostly very sensitive, and the poetic, emotional and sympathetic nature have always been subject to states of painful depression of mind at the critical periods of life, and when the physical vigor was below par.

Half the poets and men of literary genius give ample proof in their biographies and writings and in the characters they have created or founded on their own experience, that they suffered at times intense mental pain. Goethe clearly looked on a period of melancholy as one phase in the development of genius. The lives and writings of Goethe, Schiller, Carlyle, Cowper, Byron, J. S. Mill, Hume and Geo. Eliot show that they all had periods when they suffered intense mental pain and at least one of them did actually pass the undefined borderland that separates physiological mental depression from pathological melancholia."

The persons most liable to "go crazy" are "those liable to lose their sense of well-being from slight causes from within or without them. Their surplus stock of animal spirits and vis nervosa is soon exhausted. They want emotional balance and relative power. They are very often persons with strong unreasoning likes and dislikes, who are swayed by their instincts which they cannot correct and guide by their reasoning power."

The half-flippant remark that every man is more or less crazy is more true than not. Every man in his relation to other men is not crazy because he remains objectively sane and in all es-

entials is so; the unreasonable part of him is kept in abeyance. But let sickness or anything that weakens control come to him and perhaps the debelion will assert itself and rule every other faculty.

A man carries certain destructive germs in his nose, mouth and throat. They remain innocuous because the resistive forces are normal; but let those safeguards be weakened by any cause whatever and phthisis, diphtheria or what-not will develop.

Some persons are almost normal in all respects; some have more "blinks," some less. Many indeed who go about as sane are really on the verge of mental bankruptcy.

"When a man of common sense, who has been of the ordinary type as to conduct, demeanor and speech, undergoes, without sufficient outward cause, such an intellectual change that he becomes loquacious, talking constantly to everyone who will listen to him about anything under the sun, especially his own private affairs,—when his judgment is manifestly not to be depended on, and his views as to himself, his prospects, his capacities, mental and bodily, and his possessions manifestly exceed what the facts warrant,—when he becomes fickle, restless, unconventional in conduct, and foolish in his manner, when, in fact, his common sense has gone, and his power of self-control has become manifestly lessened, and when this lasts for days and weeks, we say he labors under simple mania. . . .

"I would go to the length of placing the 'lively moods' to which some people are subject, in the category of a direct kinship to simple mania, just as I would place the 'dull moods' of some people among the relationships of simple melancholia. The longer I live the more I am impressed with the fact that some of the important acts in the lives of certain persons are the result of brain conditions . . . that cannot be reckoned as being quite normal."

A certain class of persons whom physicians let down gently by calling them "neurosthenics" tremble perpetually on the brink of insanity. They crave stimulation constantly though they have force enough to keep from becoming alcoholics or opium habitues. But they do depend on milder stimulants and must have them. These instables become our light-fingered shop lifters; they steal books, pictures, lose all relations of meum and tuum; they have some oddity or unconventional habit, fall into temper and lose their balance; in other words, they are "cranks." Or they profess literary or artistic enthusiasms, and are generally "invalids."

In worse cases they wander from home in order to "throw off the restraints of society" (phantomania), and are sometimes found in distant regions of the earth living a new life.

"Bi-Annual Report of the Board of Control for the Leper Home of the State of Louisiana to the Governor and General Assembly." 1904. The Advocate Print, Baton Rouge, La.

A statement of the improvements made in the buildings of the Home since 1902, with the present needs. The secretary says: "The day has come when medieval methods have been discarded along with medieval fear and superstitious despair, and the treatment of the patient suffering from leprosy has undergone as radical and humane a change as that of the insane. The seriousness of the danger of the public of this State from leprosy, however, cannot be exaggerated so long as large numbers of lepers are scattered about among the people, receiving perhaps no medical treatment and taking no precautions against infecting others."

In a sub-report the physician in charge says: "Of the Sisters of Charity in charge of the domestic arrangements and nursing no praise can be too high, their noble devotion to their duties speaks eloquently for itself."

Of the cases in the Home 20 were Creole, 8 German, 7 negro, 2 Russian, 2 Irish, 1 Swiss, 8 native and 5 unascertained. The types were 18 tubercular, 17 anaesthetic and 18 mixed leprosy.

All communications, books and periodicals for this department should be sent to the "Bulletin Bookman," Honolulu, North Kona, T. H.

BORN.

PHILLIPS—In this city, August 30, to the wife of M. Phillips, a daughter.

Blank books of all sorts, ledgers, etc., manufactured by the Bulletin Publishing Company.

For Love of Country

By CYRUS TOWNSEND BRADY.
 Author of "The Grip of Power," "The Southland," "The Liberty Bells," "The Doctor of Philosophy," etc.

Copyright, 1904, by Charles Scribner's Sons
 CHAPTER XXXV.

Another week had elapsed. The Yarmouth had been driven steadily northward and by contrary winds prevented from making her course. She was in a precarious condition, too. A further examination had disclosed that some of her spars, especially the mainmast, had been so severely and seriously wounded, even more so than at first reported, as scarcely to permit any sail at all to be set on them and not fit in any way to endure stress of weather. The damages had been made good, however, as far as possible, the rigging knotted and spliced, the spars fished and strengthened as well. The ship had been leaking slightly all the time, from injuries received in the fight in all probability, but a few hours at the pumps daily had hitherto kept her free, and though the carpenter had been most assiduous in a search for the leaks and had stopped as many as he had been able to come at, some of them could not be found. The weather had steadily changed for the worse as they had reached higher latitudes, and it was now cold, rainy and very threatening. The captain and his officers were filled with anxiety and foreboding. Katharine kept sedulously in her cabin, devoured by grief and despair, and the once cheery colonel, full of deep sympathy for his unfortunate daughter, went about softly and sadly during the long days.

The day broke gloomily on one certain unfortunate morning. They had not seen the sun for five days, nor did they see it then. No gladsome light flooded the heavens and awoke the sea. The sky was deeply overcast with cold, dull, leaden clouds that hung low and heavy over the mighty ship; a horror of darkness enshrouded the ocean. Away off on the horizon to the north-east the sky was black with great masses of frightful looking clouds. Through the glass the watchful officers saw that rain was falling in torrents from them, while the vivid lightning played incessantly through them. Where the ship was had fallen suddenly calm, and she lay gently rolling and rocking in the moderate swell. But they could see the hurricane driving speed upon them, coming at lightning speed, standing like a solid wall and flattening the waves by sheer weight. All hands had been called on deck at once at the first glimpse of the coming hurricane.

Desborough had the trumpet. The alert and eager toymen were sent aloft to strip the ship of the little canvas the heavy weather and weakened spars had permitted them to show. It was a race between them and the coming storm. The men worked desperately, madly. Some of them had not yet reached the deck when the rain and the wind were upon them. By the captain's direction the colonel had brought Katharine from below, and she was standing on the quarter deck sheltered by the overhang of the poop above, listlessly watching. Desborough had made no progress in his love affairs. He had too much tact and delicacy to press his suit under the present untoward circumstances and indeed had been too incessantly occupied with the pressing exigencies of the shattered ship and the duties of his responsible position thereon to have any time to spare for more than the common courtesies.

The awful storm was at last upon them. A sudden change in its direction caused the first fierce blow to fall fairly upon the starboard side of the ship. It pressed her down on her beam ends. Over and over she went, down, down. Would she ever right again? Ah, the spiced shrouds and stays on the weather side, which had been attacked by the Randolph, finally gave way, the mainmast went by the board about half way below the top, the foremast at the cap and the mizzen topmast too. Relieved of this enormous mass of heavy top hamper, the ship slowly righted herself. The immense mass of wreckage beat and thundered against the port side. It was a fearful situation, but all was not yet lost.

Gallantly led by Desborough himself, who saw in one sweeping glance that Katharine was still safe, the men, with axes and knives, hacked through the rigging which held the wreck of the giant spars to the ship, and after a few moments of sickening suspense she drifted clear. A bit of storm canvas was spread forward on the wreck of the foremast, and the ship got before the wind and drove on, laboring and pitching in the heavy sea.

BUSINESS DIRECTORY

BALLASTING. Hawaiian-Japanese Ballasting Co. — Best black sand from \$2 to \$3 a load according to distance hauled. Coral rocks for stable, roads and sidewalks. Third door below King, Maunakaa St.; P. O. box 520. Telephone Main 296.	MESSAGE. S. Ochiai, removed to Beretania St. near Maunakaa. 2831
CLEANING AND DYEING. T. Hayashi—Clothes cleaned, repaired and dyed. 637 Beretania St.	MESSENGERS. Territorial Messenger Service—Union St. near Hotel; Tel. 361 Main.
EXPRESS. Moana Express, 910 Alakea St.; Tel. 511 Blue; good service; moderate rates. 2655-tf	MUSIC. If you are in need of a first-class pianoforte or organ tuner or repairer leave orders for Mr. Jas. Sheridan at 1165 Miller St. or at Hawa. News Co. Young Bldg. MRS. ANNA B. TUCKER, VOCAL STUDIO. High School grounds, Emma Street.

The decks were cleared and indeed there was little left to clear, the waves having broken over her several times when she lay in the trough of the sea, sweeping everything out with them, and the vessel was a total wreck, the spars gone, rails and bulwarks battered in and smashed, boats lost, the starboard side and the wreck on the sea having destroyed those on the starboard side, a launch capable of holding about forty persons in a pinch, and still seaworthy. It was by the captain's order, promptly made as serviceable as possible in view of the probable emergency.

About 4 o'clock in the afternoon the carpenter came aft with the sounding rod of the well in his hand. The strain had been too much for her; some of the weakened timbers had given away, or some of the seams had opened, or perhaps a butt had started, for the ship was leaking badly. Still those dauntless men did not despair. The crew were told off in gangs to work, and all night the clank, clank of the pumps was heard. Katharine dutifully laid down as she was bidden. But there was no sleep for her nor any one else on the ship that long night. The day broke again finally, but brought them no cheer. Their labor had been unavailing; the leak had gained on them so rapidly that the ship lay low in the trough of the sea. The wind had abated somewhat, and a boat well handled might live in the water now.

By Captain Vincent's direction the men were sent to their stations on the spar or upper deck. The boat's crew was chosen by selecting every fifteenth man in the long lines, the division of-

VETERAN HOSTS SMALL.

Chicago, Aug. 7.—The report of the adjutant general of the Grand Army of the Republic to be made at the national encampment at Boston will show an active membership of a quarter of a million. The total number of Civil War veterans still living is estimated by the Pension Commissioner at 800,000.

During the year ending June 30, 1904, 9,029 members of the order died. The Pension Commissioner reports that but a few more than 30,000 veterans passed away during the same period. It is a plain inference therefore that the Grand Army of the Republic is composed of the younger and more active survivors of the great war. During the last year the gains in the Grand Army aggregated 23,000, while the actual losses were slightly in excess of the gains.

The order is organized into forty-five departments, embracing about 8,200 Grand Army posts. During the last year thirty-three new posts were organized, sixty-five surrendered their charters and about 100 failed to make reports.

THE Weekly Bulletin IS A BUSINESS TONIC

Nothing stimulates business more than well placed advertisements.

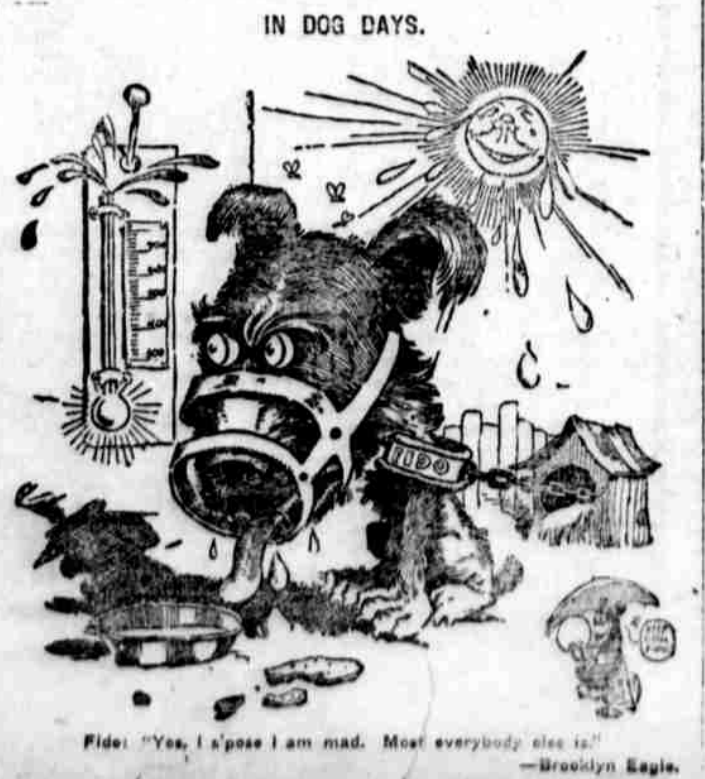
WE CAN PLACE THEM

Where thousands of Island people will read them. A

MAIL ORDER BUSINESS

Is what is needed, and an Ad. in the WEEKLY BULLETIN is a Business Builder. Circulation constantly increasing—the proof is on view to advertisers at the

Bulletin Office



Pommery & Greno's Champagnes. Emperor Sherry. Acme Rye Whiskey. Canadian Club Whiskey. O.V.G. Special Reserve and the Very Finest Scotch Commemorator Port. King William IV. V.O.P Scotch Whiskey. Siegert's Angostura Bitters

Brandies of Marie Brizard & Roger and James Hennessy & Co. Eagle Cherries in Maraschino. Special Selected Highland Whiskey "Whyte & Mackay's." Table Water, "White Rock"

Buchanan's "Black and White" Whiskey. Rums, some of Jamaica's Finest Productions. A.B.C. Bohemian Beer, Natoma Brandy, Duffy's Malt Whiskey. Sparkling Hock and Moselle Wines.

Are on sale in all first-class Hotels and Bars.

REAL ESTATE TRANSACTIONS

Entered for Record Aug. 29, 1904, From 10:30 a. m. to 4 p. m. Carl of lot by rear. Notice John N. Sappha and wife to Walter...

LEAGUE PLAYERS' RECORDS

League baseball players' individual statistics to date are as follows: FIELDING RECORDS. All Who Have Played in Five or More Games.

Business Notices.

NOTICE. Messrs. Wong Chow, Wong Chew Yui, Lam Kai Chow and Lam Ying Chin have sold their interests in the firm of Yee Wo Chan Co., doing business on Kaimuki street, Honolulu, to the following:

Oceanic Steamship Company TIME TABLE

Table with columns: FROM SAN FRANCISCO, FOR SAN FRANCISCO. Lists ship names and dates for routes to Alameda, Sonoma, and Ventura.

In connection with the sailing of the above steamers, the agents are prepared to issue, to intending passengers, coupon through tickets, by any railroad from San Francisco to all points in the United States, and from New York by any steamship line to all European ports.

Wm. G. Irwin & Co., Ltd. OCEANIC S. S. CO. GENERAL AGENTS.

Pacific Mail Steamship Co. Occidental and Oriental Steamship Co. and Toyo Kisen Kaisha

Table with columns: FOR JAPAN AND CHINA, FOR SAN FRANCISCO. Lists ship names and dates for routes to Sibiria, Korea, and other destinations.

For general information apply to H. Hackfeld & Co., Ltd., Agents.

AMERICAN-HAWAIIAN S. S. CO. Direct Service between New York and Hawaiian Islands, via Pacific Coast

Table with columns: From New York, From San Francisco, From Seattle and Tacoma, From Portland, Or. Lists ship names and dates.

For further information apply to G. P. MORSE, General Freight Agent, H. Hackfeld & Co., Ltd. AGENTS, HONOLULU.

Canadian-Australian Royal Mail Steamship Company.

Steamers of the above line, running in connection with the CANADIAN-PACIFIC RAILWAY CO. between Vancouver, B. C., and Sydney, N. S. W., and calling at Victoria, B. C., Honolulu and Suva, Fiji and Brisbane, AUSTRALIA, DUE AT HONOLULU on or about the dates below stated, viz:

Table with columns: From Vancouver and Victoria, B. C., From Sydney and Brisbane, (For Brisbane and Sydney), (For Victoria and Vancouver, B. C.)

Hustace-Peck Co., Ltd. DRAYMEN, 63 QUEEN ST.

DEALERS IN Firewood, Stove and Steam Coal. ALSO WHITE AND BLACK SAND. TELEPHONE MAIN 88.

Union Express Co., Ltd., 63 Queen Street,

Having baggage contracts with the following Steamship Co.'s Lines: Oceanic Steamship Co., Pacific Mail Steamship Co., Occidental & Oriental Steamship Co., Wilder S. S. Co., Toyo Kisen Kaisha Steamship Co.

H. J. NOLTE, O. R. & L. Co. TIME TABLE

May 1st, 1903. OUTWARD. For Waianae, Waialua, Kahuku and Waipahoehoe Stations—7:15 a. m., 9:30 p. m.

GILLMAN HOUSE BOUQUET CIGAR

Beaver Lunch Room

MOANA HOTEL WAIKIKI BEACH

Rapid Transit Electric Cars arrive at and depart from the main entrance of the Moana Hotel, every ten minutes. MOANA HOTEL CO., LTD.

Legal Notices.

Commissioner's Sale OF Valuable Real Estate SITUATE IN MANOA, HONOLULU, OAHU, TERRITORY OF HAWAII.

Pursuant to a decree made by the Honorable Geo. D. Gear, Second Judge of the Circuit Court of the First Judicial Circuit, Territory of Hawaii, filed on the 27th day of July, A. D. 1904, in a cause entitled "The First American Savings and Trust Company of Hawaii, Limited, a corporation, complainant, vs. Mary Jane Montana and A. A. Montana, respondents, Bill for Foreclosure of Mortgage," (Equity Division, No. 1493), the undersigned, Commissioner, duly appointed, will sell at Public Auction, to the highest and best bidder, subject to confirmation by the Court, on

SATURDAY, THE THIRD DAY OF SEPTEMBER, A. D. 1904.

At 12 o'clock Noon of said day,

at the salesrooms of James F. Morgan, Esq., 547-557 Kaahumanu street, in Honolulu aforesaid, the following described real estate, situate, lying and being in Manoa, Honolulu, Territory of Hawaii, and more particularly described as follows, to-wit:

All that certain piece of land situate in Manoa, Honolulu aforesaid, bounded and described in Royal Patent Grant No. 256 to Manual, containing an area of 7 1/2 acres, and being the same premises that were conveyed to the said party of the first part by deed dated September 2, 1886, and of record in Liber 103, page 348.

Together with all and singular the tenements, hereditaments and appurtenances unto the above described premises belonging or in any wise appertaining, and also all the estate, right, title and interest of the said party of the first part, of, in and to the above described premises and every part and parcel thereof, with the appurtenances.

TERMS OF SALE: Cash, in United States gold coin, Ten (10) per cent. of the purchase price to be paid on the fall of the hammer; balance upon execution and delivery of deed to purchaser by the Commissioner.

For further particulars apply to Messrs. C. A. Long and E. A. C. Long, attorneys for complainant, rooms 1 and 2, Kapolianni Building, Honolulu, or to the undersigned, at his office in the Judiciary Building, in Honolulu aforesaid.

M. T. SIMONTON, Commissioner. Honolulu, August 1, 1904. 2821-4w

ADMINISTRATOR'S NOTICE.

The undersigned having been duly appointed administrator of the estate of Hugh C. Reid, late of Honolulu, Island of Oahu, deceased, notice is hereby given to all creditors of the deceased to present their claims, whether secured by mortgage or otherwise, duly authenticated and with proper vouchers, if any exist, to the undersigned within six months from date hereof, or they will be forever barred, and all persons indebted to the said deceased are requested to make immediate payment to the undersigned at his office, No. 137 Merchant street, Honolulu.

DAVID DAYTON, Administrator of the Estate of Hugh C. Reid. Honolulu, Aug. 3, 1904. 2823—Aug. 3, 10, 17, 24, 31.

Corporation Notices.

QUARTERLY MEETING.

UNION FEED COMPANY, LIMITED. The regular Quarterly Meeting of the Stockholders of the Union Feed Company, Ltd., will be held at the office of the Company, Kakaako, on Wednesday, the 31st inst., at 2:30 p. m.

UNION FEED CO., LTD., By H. R. MACFARLANE, Jr., Secretary. Honolulu, August 29, 1904. 2855-2t

Legal Notices.

Commissioner's Sale OF Valuable Real Estate SITUATE ON Union Street and Adam's Lane IN THE DISTRICT OF HONOLULU, ISLAND OF OAHU, TERRITORY OF HAWAII.

Pursuant to a decree made by the Honorable J. T. De Bolt, First Judge of the Circuit Court of the First Judicial Circuit, Territory of Hawaii, filed on the 23rd day of August, A. D. 1904, in a cause entitled LOUISA I. LAINE, Plaintiff, vs. M. D. MONSARRAT, THE FIRST AMERICAN SAVINGS & TRUST COMPANY OF HAWAII, LIMITED, a corporation, CALVIN E. CAMP, WALTER HOFFMAN, and THE FIRST NATIONAL BANK OF HAWAII AT HONOLULU, a corporation, Defendants. Bill to Foreclose a Mortgage, Equity Division No. 1417; the undersigned, as Commissioner duly appointed, will expose for sale at Public Auction, to the highest bidder, subject to confirmation by the Court, on

SATURDAY, SEPTEMBER 17th, A. D. 1904.

At 12 o'clock Noon of said Day,

at the main (front) entrance of the Judiciary Building, in Honolulu, Island of Oahu, Territory of Hawaii, all the right, title and interest of the Mortgagee, M. D. Monsarrat, in and to the following described property, to-wit:

All that certain parcel of land situate on Union Street and Adams Lane in said Honolulu, and bounded as follows:

Commencing at the marked south corner of this lot on Northwest side of Union Street joining A. Adams' premises on said street and running: N. 25° 30' E. 1 chain, 29.8-12 feet along Union Street to mauka E. corner of this lot, thence, N. 25° 30' W. 12-10-12 feet to mauka North corner (bound) of this lot; thence,

S. 78° 15' W. 1 chain 57 feet along Union Street and Northwest boundary of this lot to marked West corner at Mrs. Dowsett's dwelling house lot; thence, S. 48° 30' E. 1 chain 42-12 feet along Mrs. Dowsett's and Alex. Adams' lots to place of commencement, including an area of 6400 sq. ft., 164 feet 7"; and being the same premises that were conveyed to M. D. Monsarrat by James I. Dowsett by deed dated March 1st, 1882, and recorded in the Register's Office in said Honolulu, in Liber 72, page 202.

TERMS OF SALE ARE CASH IN U. S. GOLD COIN; DEED AT EXPENSE OF PURCHASER. For further particulars inquire of Messrs. KINNEY, McCLANAHAN & COOPER at their offices, Rooms 302-305 in Judiciary Building on Fort Street, Honolulu, T. H., or to the undersigned at his office in the Judiciary Building.

P. D. KELLETT, JR., Commissioner. Dated at Honolulu, Oahu, August 23rd, 1904. 2850—Aug. 23, 24, 31; Sept. 7, 14, 16.

By order of the Honorable J. T. De Bolt, First Judge of the Circuit Court of the First Circuit, made and filed on the 31st day of August, 1904, the foregoing

SALE HAS BEEN POSTPONED UNTIL NOON ON SATURDAY, SEPTEMBER 24th, 1904.

P. D. KELLETT, JR., Commissioner. Dated at Honolulu, Oahu, August 31st, 1904.

NATIVE HATS AND NIIHAU MATS.

Also CURIOS of all descriptions at living prices.

THE WOMAN'S EXCHANGE, HOTEL, NEAR FORT.

"For Sale" cards at Bulletin office

The Weekly Edition of the Evening Bulletin gives a complete summary of the news of the day.

Recorded Aug. 24, 1904.

B H Norton and wife to P F Ryan; D; lot 6 of Gr 3577, Middle St, Honolulu; \$1,500 and mtg \$1,000. B 261, p 382. Dated Apr 23, 1902.

Est of S C Allen by tra to Walter F Drake; Rel: lot 6 of Gr 3577, Kalia, Honolulu; \$1,400, B 187, p 382. Dated July 22, 1904.

Patrick F Ryan and wife to John Kelly; D; 879-1000 acre land, Middle St, Honolulu; \$500, B 261, p 382. Dated May 24, 1904.

Jose Mendonca and wife to Manuel C Pereira Sr; D; 1-3 1/2 in R P 2751, Kulioupi, Ap 1, Kalahele, Koloa, Kauai; \$25, B 264, p 59. Dated Aug 12, 1904.

Hulupala and husband to Manuel C Pereira Sr; L; por R P 4712, Kulioupi, Ap 1, Koloa, Kauai; 10 yrs at \$6 per acre, B 257, p 446. Dated July 6, 1904.

Jen Tai Kee (firm) to Colin Campbell; BS; stock in trade, fixtures, etc. 1988 Beretania St, Honolulu; \$60, B 265, p 131. Dated Aug 23, 1904.

Charles H Bishop to Harry Armitage; PA; general powers. B 265, p 133. Dated Aug 23, 1904.

Samuel Nowlein and wife to A C Dowsett; D; Gr 1722, Wallua, Koolau, Mo'ohai; \$50, B 264, p 51. Dated August 22, 1904.

Wm W Bruner to Bishop & Co; M; pe land, 2 leaseholds, bldgs, mchry, fixtures, etc. Waipunaia, etc, S Kona, Hawaii; \$6,000 and advs \$12,000. B 259, p 283. Dated Aug 23, 1904.

Young Ping to Young Long; PA; general powers. B 265, p 134. Dated July 29, 1904.

Choi Sam to Wong Mow Leong; D; 1-20 in is real, personal and mixed property of Chong Sing Wai Co; \$1,000, B 264, p 52. Dated July 29, 1904.

Recorded Aug. 25, 1904. Kahuku, Baker (w) to Altha Adams; D; Ap 2, R P 3587, Kulioupi, Mo'ohai, Lahaina, Maui; \$5, etc. B 258, p 332. Dated Oct 7, 1902.

To McCarriston to J M Dowsett; AM; mtg Pang Chong on por Gr 177, bldgs, etc. Pawa, Honolulu; \$1,000, B 269, p 104. Dated Aug 22, 1904.

Wm R Castle to S M Damon; Sur L; por Gr 11276, Honouliuli, S Kona, Hawaii, B 218, p 154. Dated Aug 25, 1904.

G Schuman to J C Quinn; Agrmt; to sell for \$1750 lot 6, blk 2, bldgs, etc. Kaimuki tract, Honolulu, B 265, p 136. Dated Aug 20, 1904.

FAIRBANKS MUST WORK.

Chicago, Aug. 15.—That Senator Fairbanks, Republican Vice Presidential candidate, will participate almost continuously in the campaign and tour the country in behalf of the ticket was made known today as a result of a visit by him to Republican headquarters in this city. His tour, as now roughly planned, will extend to the Pacific Coast.

Senator Fairbanks has entered into an engagement to open the Kansas State campaign at Marion on September 1 and there are calls for him for earlier dates in Vermont. He also today indicated his positive acceptance of an invitation to speak at Saratoga on the 14th of September, on the occasion of the celebration of the fiftieth anniversary of the organization of the Republican party. Later he will visit the Far West and other sections in which the National Committee may wish to have him speak, but the details cannot be decided until Chairman Cortelyou's wishes are known.

Tawney, in charge of the speakers' bureau, announced today that Secretary Shaw would enter the campaign next week, beginning in Montana. He will proceed thence to the Pacific Coast and return through Colorado and Kansas.

CANAL WORK BEGINS.

Washington, Aug. 15.—Work of constructing the Panama canal is about to begin in earnest. At the headquarters of the commission in this city large quantities of dynamite and powder for blasting purposes are being filled.

To meet the demand for the considerable amount of printing required in connection with the enterprise, a full printing outfit has been authorized and this will go forward at the earliest possible moment.

Recorded Aug. 24, 1904.

B H Norton and wife to P F Ryan; D; lot 6 of Gr 3577, Middle St, Honolulu; \$1,500 and mtg \$1,000. B 261, p 382. Dated Apr 23, 1902.

Est of S C Allen by tra to Walter F Drake; Rel: lot 6 of Gr 3577, Kalia, Honolulu; \$1,400, B 187, p 382. Dated July 22, 1904.

Patrick F Ryan and wife to John Kelly; D; 879-1000 acre land, Middle St, Honolulu; \$500, B 261, p 382. Dated May 24, 1904.

Jose Mendonca and wife to Manuel C Pereira Sr; D; 1-3 1/2 in R P 2751, Kulioupi, Ap 1, Kalahele, Koloa, Kauai; \$25, B 264, p 59. Dated Aug 12, 1904.

Hulupala and husband to Manuel C Pereira Sr; L; por R P 4712, Kulioupi, Ap 1, Koloa, Kauai; 10 yrs at \$6 per acre, B 257, p 446. Dated July 6, 1904.

Jen Tai Kee (firm) to Colin Campbell; BS; stock in trade, fixtures, etc. 1988 Beretania St, Honolulu; \$60, B 265, p 131. Dated Aug 23, 1904.

Charles H Bishop to Harry Armitage; PA; general powers. B 265, p 133. Dated Aug 23, 1904.

Samuel Nowlein and wife to A C Dowsett; D; Gr 1722, Wallua, Koolau, Mo'ohai; \$50, B 264, p 51. Dated August 22, 1904.

Wm W Bruner to Bishop & Co; M; pe land, 2 leaseholds, bldgs, mchry, fixtures, etc. Waipunaia, etc, S Kona, Hawaii; \$6,000 and advs \$12,000. B 259, p 283. Dated Aug 23, 1904.

Young Ping to Young Long; PA; general powers. B 265, p 134. Dated July 29, 1904.

Choi Sam to Wong Mow Leong; D; 1-20 in is real, personal and mixed property of Chong Sing Wai Co; \$1,000, B 264, p 52. Dated July 29, 1904.

Recorded Aug. 25, 1904. Kahuku, Baker (w) to Altha Adams; D; Ap 2, R P 3587, Kulioupi, Mo'ohai, Lahaina, Maui; \$5, etc. B 258, p 332. Dated Oct 7, 1902.

To McCarriston to J M Dowsett; AM; mtg Pang Chong on por Gr 177, bldgs, etc. Pawa, Honolulu; \$1,000, B 269, p 104. Dated Aug 22, 1904.

Wm R Castle to S M Damon; Sur L; por Gr 11276, Honouliuli, S Kona, Hawaii, B 218, p 154. Dated Aug 25, 1904.

G Schuman to J C Quinn; Agrmt; to sell for \$1750 lot 6, blk 2, bldgs, etc. Kaimuki tract, Honolulu, B 265, p 136. Dated Aug 20, 1904.

FAIRBANKS MUST WORK.

Chicago, Aug. 15.—That Senator Fairbanks, Republican Vice Presidential candidate, will participate almost continuously in the campaign and tour the country in behalf of the ticket was made known today as a result of a visit by him to Republican headquarters in this city. His tour, as now roughly planned, will extend to the Pacific Coast.

Senator Fairbanks has entered into an engagement to open the Kansas State campaign at Marion on September 1 and there are calls for him for earlier dates in Vermont. He also today indicated his positive acceptance of an invitation to speak at Saratoga on the 14th of September, on the occasion of the celebration of the fiftieth anniversary of the organization of the Republican party. Later he will visit the Far West and other sections in which the National Committee may wish to have him speak, but the details cannot be decided until Chairman Cortelyou's wishes are known.

Tawney, in charge of the speakers' bureau, announced today that Secretary Shaw would enter the campaign next week, beginning in Montana. He will proceed thence to the Pacific Coast and return through Colorado and Kansas.

CANAL WORK BEGINS.

Washington, Aug. 15.—Work of constructing the Panama canal is about to begin in earnest. At the headquarters of the commission in this city large quantities of dynamite and powder for blasting purposes are being filled.

To meet the demand for the considerable amount of printing required in connection with the enterprise, a full printing outfit has been authorized and this will go forward at the earliest possible moment.

REMOVAL NOTICE.

THE TOWNSEND UNDERTAKING CO. and HONOLULU MUTUAL BURIAL ASSN. have moved next door to the more commodious quarters formerly occupied by Pacific Vehicle & Supply Co. Roomy office and parlors are neatly and comfortably arranged.

THE HAWAIIAN REALTY AND MATURITY CO., LTD.

Real Estate Mortgage Loans and Investment Securities. Homes Built on the Installment Plan. Home Office: McIntyre Bldg., Honolulu, T. H. L. K. KENTWELL, Gen'l Mgr.

BOWERS' MERCHANT PATROL AND CONFIDENTIAL AGENCY.

Competent watchmen furnished for business houses and residences. Office, Room 8, Model Block, P. O. Box 284.

NOTICE.

E. S. Dunbar will not be responsible for any debts contracted in his name for other persons. 2855-4

THE OREGON RESTAURANT.

At No. 9 King St. near Nuuanu, serves the best meal in town for 25 cents. Specialties as follows: Fruit in season with breakfast, salads and homemade bread with lunch, and ice cream every day with dinner. 2842-1m W. A. CHUNG, Prop.

TO VIOLET LOVERS.

Beautiful fresh Mountain Violets, long-stemmed and very fragrant, for sale at reasonable prices at the corner of Hotel and Fort streets, Saturday and Tuesday afternoons. 2656-1t

BY AUTHORITY

CONCRETE ARCH CULVERT AND APPROACHES AT WAIAMA GULCH, SOUTH HILO, HAWAII.

Proposals will be received at the office of the Superintendent of Public Works, until 12 o'clock of Sept. 19, 1904, for constructing a Concrete Arch Culvert and Approaches at Waiama Gulch, District of South Hilo, Hawaii, T. H.

Plans and specifications are on file at the office of the Asst. Supt. of Public Works, Honolulu, and with E. E. Richards, Agent Public Works Department, Hilo, Hawaii, copies of which will be furnished intending bidders on receipt of \$5.00, which sum will be returned intending bidder after he has deposited his bid and returned the plans.

Proposals must be submitted on the blank forms, which will be furnished by the Asst. Supt. of Public Works and enclosed in a sealed envelope addressed to Hon. C. S. Holloway, Superintendent of Public Works, Honolulu, T. H., endorsed "Proposal for Concrete Arch Culvert and Approaches at Waiama Gulch, District of South Hilo, Hawaii, T. H."

Each proposal must contain the full name of the party or parties making the same and all persons interested therein and must be accompanied by a certified check of 5% of the amount of the proposal, payable to C. S. Holloway, Superintendent of Public Works, as security that if the proposal be accepted a contract will be entered into.

No proposal will be entertained unless made on the blanks furnished by the Asst. Supt. of Public Works and delivered at the office of the Superintendent of Public Works previous to 12 o'clock m. on the day specified.

The Superintendent reserves the right to reject any or all bids. C. S. HOLLOWAY, Superintendent of Public Works. Honolulu, T. H., Aug. 30th, 1904. 2856-3t

POSTPONEMENT NOTICE.

Proposals advertised to be opened September 5th, for constructing certain buildings at the Insane Asylum grounds, Honolulu, will be opened on the following day, September 6th, at 12 o'clock noon.

C. S. HOLLOWAY, Superintendent of Public Works. Honolulu, T. H., Aug. 30th, 1904. 2856-2t

Henry C. Vida, CONTRACTOR.

Sidewalks, Curbing, Filling, and Jobbing Promptly Attended to. TELEPHONE MAIN 10. Fine Job Printing at the Bulletin

THE BUSINESS MAN'S HANDY INDEX, published in the Saturday Bulletin and the Weekly Edition, gives a concise and complete resume of all legal notices, calls for tenders, judgments, building permits and real estate transactions. Evening Bulletin, 75 cents per month. Weekly Bulletin, \$1 per year.

PAINT HARMONY



If you are at all in doubt about the harmonious combination of paint for your building let us help you.

The Sherwin-Williams Co., makers of S.W.P., have a department for furnishing good combinations free of charge. Let us send a photograph or architect's drawing to them for you. They'll send back three correct color combinations for you to choose from.

This won't bind you to use their paint and won't cost you a cent.

E. O. HALL & SON, Limited.

Song Recital

The eminent artiste MADAME

Fried-Griselda

Tuesday Evening,

Sept. 6th, 8.30 P.M.

Alexander Young Hotel

Tickets \$1 each at Wall, Nichols Co. and Bergstrom Music Co.

RENT OR LEASE.

The second storey of the "Metropole" Building

Suitable for Lodging, etc. Possession given Sept. 1, 1904.

Apply Allen & Robinson, Limited.

Jos. Schwartz,

Watchmakers' Materials and Jewellers' Supplies.

COR. FORT and KING ST.

NEW KAUAI VOTERS

Lihue, Kauai, Aug. 29.—During the last term of court the following residents of Kauai took out full papers of naturalization, and as naturalized American citizens will become voters at the next election:

Koloa—Antone Perry, Bernt Johnson, Frank Kot, Antone Joaquin.

Waimua—Edwin B. Andersen, Aug. Souza, Jose de Souza, Manuel de Silva, Jose de Melis, Manuel Pavao, Manuel Pavao, Jr., John Ignocio, Frank Canara.

Kapaa—Manuel Correa, John Mendis, Manuel Ornelias, Victorine Bonito, Jinh Downie, Manuel Pavao, Frank Fernandez, Manuel Bonito, Jose Victorine, Manuel Craveiro, John Craveiro, Antone Teves, Manuel Maurriquez, Manuel Laila.

Kilauea—Frank Scott, Jose de Braga, John Pacheco, Antone Baptista.

Dusty: Nuttin' doin'. Willie: dem people is wegtarians. Willie: Day in! Dusty: Yes; when I ast de lady fer sometin' to eat she heaved a squall at me.

Do Not Be Deceived

By a few samples. Anyone can buy samples, but it is not every one can do you good work. We buy our material at wholesale prices therefore can give you the best work at the lowest prices. Get our prices and compare them with others. No charge for examinations and an estimate of your work. Lady Assistant.

THE EXPERT DENTISTS,

HOURS, 9 to 5; Sundays, 9 to 12.

Eureka Wickless Blue Flame Cook Stoves.

No kindling—no dirt—no ashes—no hot, fiery kitchen. Splendid for all kinds of cooking and baking.

Portable Ovens

This stove generates fuel gas from kerosene or common coal oil. Is so simple that anyone can operate it.

On exhibition at HAWAIIAN TRADING CO., Ltd 1142 Fort Street, Love Building.

AGENTS WANTED.

IT'S IN TOWN!

The Celebrated

GORDON DRY GIN

Is here and can be had at all First Class bars and hotels. Try it and be convinced of its merits. We respectfully call your attention to the official analysis on the back of the bottle. This gin is strictly pure and free from fusel oil and we take a pride in presenting it to the public, with the assurance that it will meet with universal favor.

Ask For It Decline Imitations

Thos. F. McTighe & Co.,

Sole Distributors for Territory of Hawaii. TEL. MAIN 140 95 & 95 KING ST. P. O. BOX 755

NEW - TO-DAY

The Merchants' Protective Association.

THE LARGEST, OLDEST, MOST SUCCESSFUL COLLECTION AGENCY IN THE WORLD.

Established Twelve Years.

Publishers of Rating Book for the Hawaiian Islands.

Offices: Rooms 5 and 6 Progress block, HONOLULU, H. T.

NOTICE TO CREDITORS.

The undersigned having been appointed Administratrix of the Estate of Ben Kainahi, deceased, notice is hereby given to all creditors of said estate to present their claims, duly authenticated with proper vouchers, if any exist, even if the claim is secured by mortgage on real estate, to Charles Costa, at his place of business (Garbage Department), Executive Building, Honolulu, T. H., within six months from date hereof, or they shall be forever barred.

WAHINELAWAIA MAEWA, Administratrix of the Estate of Ben Kainahi, Deceased. 2857—AUG. 31; Sept. 7, 14, 21, 28.

HUIHUI ACCEPTS

Clever Bill Huihui, the native light-weight who has become quite famous as a boxer, has at last agreed to meet Tim Murphy at any time, place or weight that might suit Murphy. This all came about by Murphy's recent challenge in which he agreed to stop Huihui in six rounds. The two men met on the street yesterday and it looked as though they would tangle and then come to blows and settle without a referee their little dispute. Murphy was so positive in his statements that he could beat the native in the ring that Bill cast all precedents to the winds and before an interested crowd of spectators agreed to accept Murphy's challenge and, besides, talked of a side-bet.

This will be a very interesting bout as it will be novel in Honolulu, there having never been a contest in which one man agreed to stop another in a certain length of time. If the match can be properly arranged it will be a good drawing card.

Both men are anxious to have the Honolulu Athletic Club handle the null.

THE BUSINESS MAN'S HANDY IN DEK, published in the Saturday Bulletin and the Weekly Edition, gives a concise and complete resume of all legal notices, calls for tenders, judgments, building permits and real estate transactions. Evening Bulletin, 75 cents per month. Weekly Bulletin \$1 per year.



TEETH Without Plates. 2'S HOTEL ST., opp. Young Hotel

SHIPPING INTELLIGENCE

TIDES.	
High Water	Low Water
8:15 a.m.	4:15 p.m.
9:15 a.m.	5:15 p.m.
10:15 a.m.	6:15 p.m.
11:15 a.m.	7:15 p.m.
12:15 p.m.	8:15 p.m.
1:15 p.m.	9:15 p.m.
2:15 p.m.	10:15 p.m.
3:15 p.m.	11:15 p.m.
4:15 p.m.	12:15 a.m.
5:15 p.m.	1:15 a.m.
6:15 p.m.	2:15 a.m.
7:15 p.m.	3:15 a.m.
8:15 p.m.	4:15 a.m.
9:15 p.m.	5:15 a.m.
10:15 p.m.	6:15 a.m.
11:15 p.m.	7:15 a.m.
12:15 a.m.	8:15 a.m.
1:15 a.m.	9:15 a.m.
2:15 a.m.	10:15 a.m.
3:15 a.m.	11:15 a.m.
4:15 a.m.	12:15 p.m.
5:15 a.m.	1:15 p.m.
6:15 a.m.	2:15 p.m.
7:15 a.m.	3:15 p.m.
8:15 a.m.	4:15 p.m.
9:15 a.m.	5:15 p.m.
10:15 a.m.	6:15 p.m.
11:15 a.m.	7:15 p.m.
12:15 p.m.	8:15 p.m.
1:15 p.m.	9:15 p.m.
2:15 p.m.	10:15 p.m.
3:15 p.m.	11:15 p.m.
4:15 p.m.	12:15 a.m.
5:15 p.m.	1:15 a.m.
6:15 p.m.	2:15 a.m.
7:15 p.m.	3:15 a.m.
8:15 p.m.	4:15 a.m.
9:15 p.m.	5:15 a.m.
10:15 p.m.	6:15 a.m.
11:15 p.m.	7:15 a.m.
12:15 a.m.	8:15 a.m.
1:15 a.m.	9:15 a.m.
2:15 a.m.	10:15 a.m.
3:15 a.m.	11:15 a.m.
4:15 a.m.	12:15 p.m.
5:15 a.m.	1:15 p.m.
6:15 a.m.	2:15 p.m.
7:15 a.m.	3:15 p.m.
8:15 a.m.	4:15 p.m.
9:15 a.m.	5:15 p.m.
10:15 a.m.	6:15 p.m.
11:15 a.m.	7:15 p.m.
12:15 p.m.	8:15 p.m.
1:15 p.m.	9:15 p.m.
2:15 p.m.	10:15 p.m.
3:15 p.m.	11:15 p.m.
4:15 p.m.	12:15 a.m.
5:15 p.m.	1:15 a.m.
6:15 p.m.	2:15 a.m.
7:15 p.m.	3:15 a.m.
8:15 p.m.	4:15 a.m.
9:15 p.m.	5:15 a.m.
10:15 p.m.	6:15 a.m.
11:15 p.m.	7:15 a.m.
12:15 a.m.	8:15 a.m.
1:15 a.m.	9:15 a.m.
2:15 a.m.	10:15 a.m.
3:15 a.m.	11:15 a.m.
4:15 a.m.	12:15 p.m.
5:15 a.m.	1:15 p.m.
6:15 a.m.	2:15 p.m.
7:15 a.m.	3:15 p.m.
8:15 a.m.	4:15 p.m.
9:15 a.m.	5:15 p.m.
10:15 a.m.	6:15 p.m.
11:15 a.m.	7:15 p.m.
12:15 p.m.	8:15 p.m.
1:15 p.m.	9:15 p.m.
2:15 p.m.	10:15 p.m.
3:15 p.m.	11:15 p.m.
4:15 p.m.	12:15 a.m.
5:15 p.m.	1:15 a.m.
6:15 p.m.	2:15 a.m.
7:15 p.m.	3:15 a.m.
8:15 p.m.	4:15 a.m.
9:15 p.m.	5:15 a.m.
10:15 p.m.	6:15 a.m.
11:15 p.m.	7:15 a.m.
12:15 a.m.	8:15 a.m.
1:15 a.m.	9:15 a.m.
2:15 a.m.	10:15 a.m.
3:15 a.m.	11:15 a.m.
4:15 a.m.	12:15 p.m.
5:15 a.m.	1:15 p.m.
6:15 a.m.	2:15 p.m.
7:15 a.m.	3:15 p.m.
8:15 a.m.	4:15 p.m.
9:15 a.m.	5:15 p.m.
10:15 a.m.	6:15 p.m.
11:15 a.m.	7:15 p.m.
12:15 p.m.	8:15 p.m.
1:15 p.m.	9:15 p.m.
2:15 p.m.	10:15 p.m.
3:15 p.m.	11:15 p.m.
4:15 p.m.	12:15 a.m.
5:15 p.m.	1:15 a.m.
6:15 p.m.	2:15 a.m.
7:15 p.m.	3:15 a.m.
8:15 p.m.	4:15 a.m.
9:15 p.m.	5:15 a.m.
10:15 p.m.	6:15 a.m.
11:15 p.m.	7:15 a.m.
12:15 a.m.	8:15 a.m.
1:15 a.m.	9:15 a.m.
2:15 a.m.	10:15 a.m.
3:15 a.m.	11:15 a.m.
4:15 a.m.	12:15 p.m.
5:15 a.m.	1:15 p.m.
6:15 a.m.	2:15 p.m.
7:15 a.m.	3:15 p.m.
8:15 a.m.	4:15 p.m.
9:15 a.m.	5:15 p.m.
10:15 a.m.	6:15 p.m.
11:15 a.m.	7:15 p.m.
12:15 p.m.	8:15 p.m.
1:15 p.m.	9:15 p.m.
2:15 p.m.	10:15 p.m.
3:15 p.m.	11:15 p.m.
4:15 p.m.	12:15 a.m.
5:15 p.m.	1:15 a.m.
6:15 p.m.	2:15 a.m.
7:15 p.m.	3:15 a.m.
8:15 p.m.	4:15 a.m.
9:15 p.m.	5:15 a.m.
10:15 p.m.	6:15 a.m.
11:15 p.m.	7:15 a.m.
12:15 a.m.	8:15 a.m.
1:15 a.m.	9:15 a.m.
2:15 a.m.	10:15 a.m.
3:15 a.m.	11:15 a.m.
4:15 a.m.	12:15 p.m.
5:15 a.m.	1:15 p.m.
6:15 a.m.	2:15 p.m.
7:15 a.m.	3:15 p.m.
8:15 a.m.	4:15 p.m.
9:15 a.m.	5:15 p.m.
10:15 a.m.	6:15 p.m.
11:15 a.m.	7:15 p.m.
12:15 p.m.	8:15 p.m.
1:15 p.m.	9:15 p.m.
2:15 p.m.	10:15 p.m.
3:15 p.m.	11:15 p.m.
4:15 p.m.	12:15 a.m.
5:15 p.m.	1:15 a.m.
6:15 p.m.	2:15 a.m.
7:15 p.m.	3:15 a.m.
8:15 p.m.	4:15 a.m.
9:15 p.m.	5:15 a.m.
10:15 p.m.	6:15 a.m.
11:15 p.m.	7:15 a.m.
12:15 a.m.	8:15 a.m.
1:15 a.m.	9:15 a.m.
2:15 a.m.	10:15 a.m.
3:15 a.m.	11:15 a.m.
4:15 a.m.	12:15 p.m.
5:15 a.m.	1:15 p.m.
6:15 a.m.	2:15 p.m.
7:15 a.m.	3:15 p.m.
8:15 a.m.	4:15 p.m.
9:15 a.m.	5:15 p.m.
10:15 a.m.	6:15 p.m.
11:15 a.m.	7:15 p.m.
12:15 p.m.	8:15 p.m.
1:15 p.m.	9:15 p.m.
2:15 p.m.	10:15 p.m.
3:15 p.m.	11:15 p.m.
4:15 p.m.	12:15 a.m.
5:15 p.m.	1:15 a.m.
6:15 p.m.	2:15 a.m.
7:15 p.m.	3:15 a.m.
8:15 p.m.	4:15 a.m.
9:15 p.m.	5:15 a.m.
10:15 p.m.	6:15 a.m.
11:15 p.m.	7:15 a.m.
12:15 a.m.	8:15 a.m.
1:15 a.m.	9:15 a.m.
2:15 a.m.	10:15 a.m.
3:15 a.m.	11:15 a.m.
4:15 a.m.	12:15 p.m.
5:15 a.m.	1:15 p.m.
6:15 a.m.	2:15 p.m.
7:15 a.m.	3:15 p.m.
8:15 a.m.	4:15 p.m.
9:15 a.m.	5:15 p.m.
10:15 a.m.	6:15 p.m.
11:15 a.m.	7:15 p.m.
12:15 p.m.	8:15 p.m.
1:15 p.m.	9:15 p.m.
2:15 p.m.	10:15 p.m.
3:15 p.m.	11:15 p.m.
4:15 p.m.	12:15 a.m.
5:15 p.m.	1:15 a.m.
6:15 p.m.	2:15 a.m.
7:15 p.m.	3:15 a.m.
8:15 p.m.	4:15 a.m.
9:15 p.m.	5:15 a.m.
10:15 p.m.	6:15 a.m.
11:15 p.m.	7:15 a.m.
12:15 a.m.	8:15 a.m.
1:15 a.m.	9:15 a.m.
2:15 a.m.	10:15 a.m.
3:15 a.m.	11:15 a.m.
4:15 a.m.	12:15 p.m.
5:15 a.m.	1:15 p.m.
6:15 a.m.	2:15 p.m.
7:15 a.m.	3:15 p.m.
8:15 a.m.	4:15 p.m.
9:15 a.m.	5:15 p.m.
10:15 a.m.	6:15 p.m.
11:15 a.m.	7:15 p.m.
12:15 p.m.	8:15 p.m.
1:15 p.m.	9:15 p.m.
2:15 p.m.	10:15 p.m.
3:15 p.m.	11:15 p.m.
4:15 p.m.	12:15 a.m.
5:15 p.m.	1:15 a.m.
6:15 p.m.	2:15 a.m.
7:15 p.m.	3:15 a.m.
8:15 p.m.	4:15 a.m.
9:15 p.m.	5:15 a.m.
10:15 p.m.	6:15 a.m.
11:15 p.m.	7:15 a.m.
12:15 a.m.	8:15 a.m.
1:15 a.m.	9:15 a.m.
2:15 a.m.	10:15 a.m.
3:15 a.m.	11:15 a.m.
4:15 a.m.	12:15 p.m.
5:15 a.m.	1:15 p.m.
6:15 a.m.	2:15 p.m.
7:15 a.m.	3:15 p.m.
8:15 a.m.	4:15 p.m.
9:15 a.m.	5:15 p.m.
10:15 a.m.	6:15 p.m.
11:15 a.m.	7:15 p.m.
12:15 p.m.	8:15 p.m.
1:15 p.m.	9:15 p.m.
2:15 p.m.	10:15 p.m.
3:15 p.m.	11:15 p.m.
4:15 p.m.	12:15 a.m.
5:15 p.m.	1:15 a.m.
6:15 p.m.	2:15 a.m.
7:15 p.m.	3:15 a.m.
8:15 p.m.	4:15 a.m.
9:15 p.m.	5:15 a.m.
10:15 p.m.	6:15 a.m.
11:15 p.m.	7:15 a.m.
12:15 a.m.	8:15 a.m.
1:15 a.m.	9:15 a.m.
2:15 a.m.	10:15 a.m.
3:15 a.m.	11:15 a.m.
4:15 a.m.	12:15 p.m.
5:15 a.m.	1:15 p.m.
6:15 a.m.	2:15 p.m.
7:15 a.m.	3:15 p.m.
8:15 a.m.	4:15 p.m.
9:15 a.m.	5:15 p.m.
10:15 a.m.	6:15 p.m.
11:15 a.m.	7:15 p.m.
12:15 p.m.	8:15 p.m.
1:15 p.m.	9:15 p.m.
2:15 p.m.	10:15 p.m.
3:15 p.m.	11:15 p.m.
4:15 p.m.	12:15 a.m.
5:15 p.m.	1:15 a.m.
6:15 p.m.	2:15 a.m.
7:15 p.m.	3:15 a.m.
8:15 p.m.	4:15 a.m.
9:15 p.m.	5:15 a.m.
10:15 p.m.	6:15 a.m