

SUGAR:
Raws, 6.25
Beets, no sale
Mkt. Unsteady

The Garden Island.

The
Garden Island
Represents
All Kauai.

ESTABLISHED 1904. VOL. 10. NO. 36.

LIHUE, KAUAI, TERRITORY OF HAWAII. TUESDAY, SEPTEMBER 15, 1914

SUBSCRIPTION RATES, \$2.50 PER YEAR 5 CENTS PER COPY

KUHIO IS NOMINATED.

A CHILD DROWNED IN ELEELE DITCH

A Japanese child (boy) Hitio, about 2 years of age, father's name Yatagai, fell into a ditch near Pump 3, of the McBryde Sugar Company, in Hanapepe Valley, about 12:30 Sunday afternoon and was drowned.

The body disappeared quickly from the locality and was found about 9 o'clock Monday morning at Pump 1, near the Eleele hospital.

Deput. Sheriff Henry Blake went to Hanapepe a short time later and held a coroner's investigation, the verdict returned being accidental drowning.

MAN SENTENCED AND BREAKS JAIL

A Filipino named Jose Lagaman started a row last Thursday in Camp 7 of the McBryde Sugar Co. and landed in the jail at Koloa. The following day he was arraigned before Judge Kapahie and charged with being a disorderly person, under the Vagrancy Act. Upon being found guilty he was sentenced to imprisonment for six months.

Then the fun started. A half hour after being taken to jail, he stepped aside from the guard and in some way got out of the jailyard and vanished.

The police got on his trail shortly afterward and the next morning found him hiding in a lot of bricky pear, or cactus, trees, near Kukuikuli. When pulled out from his hiding his flesh and clothes were torn and he showed every evidence of having had a hard time of it.

Yesterday he was arraigned again in the Koloa court and charged with breaking jail. For that offense the court gave him additional sentence of three months.

THE HIGH SCHOOL HAS FINE START

The Kauai Grammar And High School opened yesterday morning, making a very promising start; and in a very few days will be down to hard work. There are three school rooms, a library and a laboratory.

The start was made with thirty pupils, six being in the high school and twenty-four in the lower grades. Others expecting to enter at the start failed to appear, but will probably enroll on Monday.

The hours of study have been made 8 a. m. to 12:30 p. m. for the present. This is merely an experiment, and if it is found not to suit pupils and parents a change will be made.

Mr. Avery takes the classes in general sciences, physiology and hygiene and mathematics. Miss MacIntyre takes the English studies. Miss Katharine Ommanney has the lower grade work.

A few odds and ends of work, it appears, on the building are not as they should be, but these defects will be remedied within a few days.

DELEGATE KUHIO SECURES NOMINATION OVER RICE

The Prince Carries Every District In The Islands Except Kauai, And Comes Near Leading All The Other Candidates Combined

Delegate Kuhio carried every district in the group except Kauai, in the primary election on Saturday, and came very near polling as many votes as all the other candidates combined. He polled a total of 6309 votes, while the total of all the others was only 6555, with, however, a few small precincts to hear from. The votes of the candidates as now known were:

Kuhio	6309
Rice	3818
McCandless	2356
Woods	168
Carter	166
Notley	29
Kahaulelio	18

The total vote cast for Delegate, subject to some small additions from out-of-the-way precincts, was 12, 864.

Probably the greatest surprise of the election was the defeat of Rice in the fourth district of Oahu, where the Kauai man was supposed to be exceedingly strong. In that district he polled 1358 to Kuhio's 1611. The fifth district, also on Oahu, gave Rice 719, while Kuhio received 1844. The totals for Oahu were: Kuhio, 3453; Rice, 2078.

MAUI AND HAWAII	
Kuhio	Rice
Hawaii, First	881 346
Maui	346 183

Results in District of Kauai.

VOTE BY PRECINCTS FOR DELEGATE.						
Precinct.	Rice	Kuhio	McCandless	Carter	Woods	Notley
1-Niihau	31	2	1			
2-Kekaha	29	13	17			
3-Waimea	35	39	36			1
4-Makaweli	16	34	10	10		
5-Wahiawa	50	6	33			
6-Koloa	39	12	37		1	
7-Lihue	164	31	12	1	3	
8-Kawailua	46	35	55	1	1	
9-Kilauea	13	7	6			
10-Hanalei	32	72	8	5		1
Totals	455	251	215	17	5	2

Votes by precincts for senator.

Knudsen (R)		Mikale (D)		Total
1-Niihau	33			33
2-Kekaha	46		14	60
3-Waimea	37		55	92
4-Makaweli	31		33	64
5-Wahiawa	28		50	78
6-Koloa	22		56	78
7-Lihue	122		35	157
8-Kawailua	31		78	109
9-Kilauea	16		6	22
10-Hanalei	40		48	88
Totals	406		375	781

Votes by precincts for the house.

Cooey					Kula		Fassoth		Lota		Chandler (D)	
1-Niihau	33	34	33	34	1							
2-Kekaha	42	43	40	44	16							
3-Waimea	49	55	47	36	51							
4-Makaweli	47	42	43	44	31							
5-Wahiawa	50	46	35	43	41							
6-Koloa	39	50	23	43	45							
7-Lihue	154	157	146	157	18							
8-Kawailua	48	63	25	79	63							
9-Kilauea	20	22	18	24	5							
10-Hanalei	52	91	48	106	38							
Totals	534	603	458	610	309							

Election day on Kauai.

The election on Kauai went off quietly at all of the voting booths. There were ample accommodations everywhere for the voters, and as

Hawaii, Second 747 85 197
Maui, Third 977 885 286

Woods Carter Notley
Hawaii, First 15 29 5
Hawaii, Second 32 27 6
Maui, Third 11 3 5

Kahaulelio's total vote outside of Oahu was fifteen.

It is thought that Carter, Notley and Kahaulelio may withdraw, as they now have no show of doing anything-leaving the arena to Kuhio and McCandless for the final battle.

RICE'S STATEMENT.

Charles A. Rice, the defeated Republican candidate, has issued the following letter:

I wish to express to the successful Republican nominee, J. K. Kahaulelio, my congratulations on the very large vote received by him and to pledge to him the same hearty and sincere support that I believe he would have accorded me had I been the successful nominee.

"I further ask my friends who so generously gave me their time and support at the primaries to now support the Republican nominee, believing as I do that the success of the Republican party should be the desire of all well-wishers of the territory of Hawaii.

(Signed) CHARLES A. RICE"

Niihau were known. About 8 o'clock the Wahiawa returns arrived.

THE RETURNS DISPLAYED

It had been the intention to display the returns in the front of THE GARDEN ISLAND office, but on account of the windy night they were put up on neat card board inside the composing room. Quite a large crowd gathered and remained until the last despatches came in from Honolulu and the other islands, which was a little after midnight. Owing to an unexpectedly and exasperatingly slow service at the Honolulu end, the telegrams during the night were very incomplete and of a sorry quality. However, shortly after midnight the special wireless from Chas. A. Rice, elsewhere published, acknowledged his defeat, came in, this being the first and only complete statement concerning the delegateship situation received during the night.

IN THE PRECINCTS

On the island of Niihau the election was held at the schoolhouse and was presided over by the following officers: E. K. Kacholaulu, chairman; Edward K. Kahele and William Kuahi. There were 36 votes in this precinct, 35 being Hawaiian and one British.

The second precinct was presided over by G. Hansen, as chairman, Louis Kilamno and W. B. Nanuu. There were no special features of the day in this precinct, except that the vote was divided between the candidates of the two principal parties.

Waimea, the third precinct, was presided over by John Fassoth, as

Continued on page 5.

TODAY'S AND LATEST NEWS BY WIRELESS

Sugar: Raws, 6.25

THE EAST PRUSSIA BATTLE.

London—The battle between the German army in east Prussia under General von Hindenberg and the Russians, which began forty miles southeast of Konigsberg September 9, ended yesterday in the defeat of the Germans, who lost 50,000 men, according to advices from Petrograd to the Central News.

The initial phase of this battle had been a victory for the German's who cut the Russian line of communications west of Konigsberg. General Hindenberg reported officially that he had defeated the Russians on his front and had captured guns and many prisoners. Russians admitted defeat when von Hindenberg followed up his advantage. Russians made stand near Miawa.

Germans have now evacuated Poland. 2,100,000 men were engaged. Total losses to German-Austrian forces 180,000 men, 450 field guns, 1,000 pieces fortress artillery, 4000 transport vehicles and 7 aeroplanes.

Petrograd—The Germans have released 2500 Slav captives on account of expense of maintenance.

TROUBLE IN MOROCCO.

Gibraltar—Trouble has broken out in Morocco, the Moorish tribesmen being up in arms.

REPORT FROM WASHINGTON

Washington—Bryan's arbitration agreements will be signed by the United States today. Foreign diplomats here regard the reported military operations in Central Africa as significant as being a development of British ambition to link possessions in northern and southern Africa.

House members are opposing war tax on freight transportation. Underwood's tax measure would not pass without President's unqualified endorsement.

THE ASIATIC SIDE

Peking—23,000 Japanese are believed to have landed yesterday on Shantung peninsula are advancing on Kaiochau.

GERMANS MAKE A STAND

Paris—The Germans after falling back nearly 40 miles from advanced positions before Paris have made a stand back of Aisne river and apparently are ready to resist further advances.

North of the Allies yesterday, Allies continued to harass retiring Germans.

Official statements yesterday from General French are to effect that army has everywhere caught up with rear guards of the main body of enemy. The French have entered Amiens.

London—According to Sir John French, the German lines have been without food for two days.

Continued on page 5.

BURGLAR AGAIN IN THE COFFEE SHOP

For the second time in three months and the third time in a short while, Lihue Coffee Shop was burglarized sometime during Saturday night.

The thief gained entrance in almost exactly the same manner as on the former occasion. First, he ran a bolt into the staple of the door of the rear cottage occupied by the Chinese, thus closing them in. Then with a brace and bit he bored several holes into the back door until he located the lock, which he shoved up and loose from the catch. The rest was easy.

Investigation Sunday morning showed that quite a quantity of canned goods, cigars and other articles of merchandise were stolen. A large piece of pork was also taken from the ice chest.

It is quite evident that the burglar of a few months ago and the one of Saturday night are one and the same man, as the earmarks of the job are almost identical.

The proprietor of the shop thinks the burglary was committed in the early hours of the morning, for the reason that the place was not closed until about 10:30 and it was sometime after that when the men had gone to bed.

LUAU AND DANCE BY M'BRYDE TEAM

The McBryde baseballers royally entertained the other baseball men of the island, their friends and themselves at Eleele Saturday evening. Probably 600 people were present, and all seemed to have had a fine time.

For the occasion Eleele hall had been elaborately decorated, under the supervision of John Kanama, with ferns and malle being liberally used. Over the stage was the legend "McBrydes Champions 1914", worked in green.

The reception committee consisted of J. C. Moura, Iseoo Akana and Mrs. Harry Onena, Sr.

The luau started at six o'clock and was served on ten tables arranged at the left side of the building. There were two sittings, about 300 people each.

Dancing began soon after the luau was over and kept up until about 2 a. m.

All of the towns from Kilauea around to Kekaha were represented in the big gathering.

Mrs. Lydgate Entertains

Mrs. I. M. Lydgate, pleasantly entertained a dinner Saturday evening, the party afterward enjoying bridge. The affair was complimentary to the new teachers of the High School.

J. M. Lydgate Returning

Rev. J. M. Lydgate will be expected back tomorrow morning from the Coast. He has been away a month and a half.

There will be services in Lihue Union church at Sunday morning.

MAN BADLY CUT IN MAKAWELI CAMP

A serious cutting affray, the direct outcome of a drunken orgy, took place in a camp belonging to one Kanekiyo, above Camp 2, Makaweli plantation, about 10 o'clock Sunday evening, as a result of which Kanda Ikumadsu is in the hospital and may die, while the man who did the cutting, Fakurai Takizo, is in Waimea jail.

A third man, named Nada Kanibaro, was also slashed but not sufficiently hurt to make hospital treatment necessary.

It appears that a number of Japanese in the camp had been having a feast Sunday night, during which liquor flowed freely and all became more or less intoxicated. Along about 10 o'clock an argument started in the heat of which Takizo is alleged to have gathered up a cane knife and started in to clean out the house.

Kanda Ikumadsu is believed to have been the man with whom he had the dispute, for it was he upon whom Takizo levelled his principal attack. The man Kanibaro is thought to have stepped in to interfere or stop the alleged assailant, when he too was cut.

The police have a report that bad feeling had existed between the three men immediately concerned in the fight before. Their differences were believed to have been patched up, but liquor evidently opened the old sores and started the fight.

TIME TO RESTORE THE SUGAR DUTY

The following editorial appearing in the Washington (D. C.) Herald, just to hand, strikes at the main points contained editorially in last week's GARDEN ISLAND, but on account of additional facts on the same subject it is presented in full:

Of all the products of daily consumption which have advanced in price since war began in Europe sugar easily takes the lead, having almost doubled in cost to the consumer in the last ten days. The enactment of the Underwood tariff bill dealt a staggering blow to the sugar producing industry of the United States, reduced the national revenues \$50,000,000 but failed to reduce the cost of the product to the consumer to any appreciable extent. The outbreak of the war finds us with our own sugar industry paralyzed and our people forced to pay famine prices for sugar without putting one additional penny in the Treasury.

With importations of all products from Europe practically suspended, cutting off our customs revenues from that source, the administration is confronted with the problem of raising \$100,000,000 annually by additional taxation. With the income tax already in operation, to offset the reduction in customs revenue brought about by the Underwood bill, and with food prices soaring to unheard of heights the government is at its wits end to discover a means of raising the money. It seems almost inevitable that it must restore customs duties in some directions. While our trade with Europe is practically shut off, we are still importing valuable cargoes from other parts of the world and these should be made to restore our depleted revenues to a considerable extent. Above all, the duty on sugar should be promptly restored, not primarily because of any immediate revenue that may thus be produced, but in order to rehabilitate the sugar producing industry in this country. It may be argued that the prevailing war prices offer sufficient encouragement for the resumption of production, but producers who have been driven out of business by the

FINAL PROGRAMS OF BOSTONIANS

An account of the closing evenings of the Juvenile Bostonians in Lihue was unavoidably crowded out of last issue. The Saturday night show was before almost a packed house. Monday evening's audience was not so large, on account of threatening weather. Both of the entertainments were very much enjoyed.

Tuesday afternoon the company was treated to a picnic at the residence of Hon. J. H. Coney, many of them also going in surfing.

At the Nawiliwili landing Mr. and Mrs. Lang and all of the players, including the musicians, were decorated with leis, which were provided by the committee on entertainment.

The exact amount turned over to the Bostonians after all of the committee's expenses were paid was \$888.95. This was regarded as quite satisfactory, inasmuch as the guarantee had been \$800. The money was all in and was paid over to Manager Lang prior to the sailing of the troupe for Honolulu.

Prof. Jaggars' Lecture

Prof. T. A. Jaggars, the volcanologist, was not favored with an overlarge audience in Lihue Social last Wednesday evening for his illustrated lecture on Sakurajima volcano, but it was an intelligent and appreciative gathering. The colored slides exhibited were particularly interesting, while the motion films of the eruption gave a clear idea of the phenomenon.

tariff law and forced into other enterprises cannot be expected to return to the sugar industry merely to take advantage of an emergency, with the prospect of being left in their original plight when it passes. The sugar industry can only be rehabilitated by a permanent tariff provision to insure it a profitable existence.

The sacrifice of \$50,000,000, annually sugar duties, with no benefit accruing to the consumer, was a mistake which the administration must have recognized by this time. Now is its opportunity to rectify it.

SUBSTITUTE FOR CIRCUS PLANNED

Program For 1915 Carnival To Be Completed, Says Director-General

(Special Correspondence.) Honolulu.—The fact that I may not be able to secure from Germany the several hundred costumes intended for the Circus Comique, one of the main features of the Mid-Pacific Carnival next year, does not mean that the probable postponement of this event is going to leave a hole in the program," said James D. Dougherty, director-general of the 1915 celebration, today. "I am now making plans for another event which, if necessary, can be substituted for the Circus Comique and which doubtless will be just as interesting and attractive."

A short time ago the carnival directors authorized Mr. Dougherty to purchase from Germany, through H. Hackfeld and Company, several hundred unique and picturesque costumes and effects for the proposed circus, to cost 4700 marks. Owing to the war in Europe, Hackfeld and Company have notified Mr. Dougherty that it probably will be impossible to have these costumes made.

"It may be possible that the trouble in Europe will cease to such an extent that the costumes may be made and shipped here," says the director-general. "However, in case they cannot be secured, another attraction will be arranged to take the place of the circus. Meanwhile, the carnival plans are progressing most satisfactory."

Mr. Dougherty expects within a few days to commence the selection of chairmen of the various committee which will assist him in making arrangements for the various carnival events. Owing to his experience with former carnivals, George Angus probably will be asked to take the chairmanship of the committee on the Mardi Gras ball which will be held in the National Guard Armory. The Mardi Gras ball of this year's carnival was an unusual success, and the one next year is to be carried out on even a greater and more elaborate

SPRECKELS DITCH TO BE REOPENED

Says the Maui News:

By the pressure of his finger upon an electric switch, Governor Pinkham will bring into use for the first time, the great new half million dollar irrigation project of the East Maui Irrigation Company. Two hundred or more Delegates to the Third Civic Convention will witness this interesting event, and with the Governor will witness the first surge of water through the big ditch on its way to give life to the Punnehe plantation, miles away.

This is one of the features of the Civic Convention, which the committee in charge of the arrangements is now considering. It is the suggestion of President F. F. Baldwin, and in all likelihood will be carried out in connection with the visit of the delegates to the Kula home district on Sunday, October 4. The ditch to be opened is the relocated Haiku ditch, or as it is commonly known the old Spreckels ditch. Work on the big project has been progressing steadily for over two years. It is now virtually completed, and, according to President Baldwin will be ready to carry water by the time the big convention is held.

The waterway is for the most part tunnels, completely concrete lined, and will bring water from Kailua, a distance of nearly 20 miles, to the plantation. Where the ditch cuts through the homestead tract, it is the idea to have arrangements made by which the Governor may open the gate, some six miles away, and the visitors may see the flow of water when it first arrives. At the same place, it is the intention that the delegates shall be served to lunch by the homesteaders.

Steamers Sail Earlier

In order to give their crews the opportunity of voting, both the W. G. Hall and Kinau returned to Honolulu Friday night in place of Saturday.

Several hundred costumes for this ball are to be brought here from the mainland.

Waimea Stables LIMITED

Up-to-date Livery, Draying and Boarding Stable and Livery Business.

AUTOMOBILE STAGE-LINE

BETWEEN LIHUE and KEKAHA

Leaving Lihue every Monday, Wednesday and Friday.
Leaving Kekaha every Tuesday, Thursday and Saturday.

ARRIVING AT THEIR DESTINATION IN THREE HOURS

W. WEBER Manager.

Telephone 4 W Waimea P. O. Box 48

STAR SHIRTS

As a mariner is guided by a Star, so is a smart dresser guided by a "STAR SHIRT."

\$1.50, \$2, \$2.50 and up

Silva's Toggery, Honolulu

"PACKARD" shoes are made for men only.

Has some one sold you a shoe supposed to be Packards, but without the Packard brand?

If so, you have been fooled. Worse than that, swindled.

Every Packard shoe has the Packard brand.

You can't miss it, look for it.

Prices \$4.50, \$5.00 and \$5.50.

McInerny Shoe Store Fort Street HONOLULU

SOLE AGENTS

Let Us Do Your

LAUNDRY

Address

Territorial Messenger Service

HONOLULU

HONOLULU MUSIC COMPANY, Ltd.

Home of the Autopiano

88 KING STREET HONOLULU, T.H.

Miss Kate MacIntyre returned by Frank Howes, of the Schuman the Kinau after visiting her old Carriage Co., is making a business home in California. Tour of Kauai.

RECORD OF MCBRYDE BASEBALL PLAYERS IN 1914.

	G	AB	R	H	2B	3B	HR	TB	SH	SB	BB	SO	Pct.
J. Gabriel	11	45	15	18	5	0	2	29	1	4	2	4	400
I. Akana	10	34	9	11	0	1	0	13	3	1	1	4	323
H. Morse	2	7	2	2	0	0	0	2	0	0	1	1	286
J. Spalding	9	40	10	11	2	1	0	15	2	11	0	3	275
K. Kobayashi	3	11	2	3	0	0	0	3	0	0	1	2	273
D. Takeuchi	7	29	6	8	1	0	0	9	0	2	4	3	272
J. Pacheco	9	41	6	11	0	0	0	11	0	3	0	6	268
J. Costa	11	50	14	12	0	0	0	12	0	16	2	6	249
J. Aka	9	30	7	7	1	0	0	7	1	3	3	2	233
Ako	10	42	9	9	0	1	0	11	1	10	6	6	214
K. Takitani	9	25	4	5	1	0	0	6	3	1	2	7	200
T. Pacheco	11	45	8	9	2	0	0	11	1	3	1	11	200
A. Perreira	5	18	5	3	1	0	0	4	0	3	3	5	167

This includes the two championship games.



A FAINT INDICATION

Has George ever hinted marriage to you? Only once. Coming home from the Bostonians one night he looked at said that any how it costs no more to run an automobile for two than for one.

RED CROWN Gasoline is STANDARD OIL Gasoline

Red Crown is in no sense a new grade or manufacture of gasoline. It is the same product which automobilists have known and relied on for years as "Standard Oil Gas." We have always called it Red Crown and now we wish you to know it by that name.

If you purchase Red Crown you are sure of obtaining a thoroughly uniform, reliable gasoline—not a "mixture" but a straight product of refining—the best gasoline the Standard Oil Company can make.

Red Crown signs are furnished to all dealers handling Red Crown Gasoline. Watch for the Sign or ask our nearest agency about delivery in bulk.

Standard Oil Company (California) Honolulu

UNIVERSAL LUNCH BOX



No man or woman who eats lunch away from home--no child who remains at school during the noon hour--can be without a Universal lunch box. Its vacuum bottle guarantees a steaming hot, or icy cold cup of tea, coffee or milk. Its food drawer with its ventilating features assures fresh wholesome food at all times. Positively the most perfect box known. Price \$2.25 each.

W. W. Dimond & Co., Ltd.
53-55 King St. Honolulu

Paper

Paper Bags, Twines, Stationery

THE LARGEST
PAPER HOUSE
IN THE TERRITORY

MAIL ORDERS PROMPTLY ATTENDED TO

AMERICAN-HAWAIIAN PAPER CO., LTD.
Fort and Queen Streets

GEO. G. GUILD, Vice-Pres & Mgr

E. R. Stackable, formerly collector of customs at Honolulu, has been made president and manager of the La Zaculpa Rubber Company in Mexico, the stock of which is largely owned in the Hawaiian Islands.

Bishop & Co. BANKERS
Established 1859

HEAD OFFICE - HONOLULU
BRANCHES AT HILO AND WAIMEA, - KAUAI

Transact a General Banking and Exchange Business
Commercial and Travelers' Letters of Credit issued available in all principal cities of the world.

Interest allowed at the rate of 4 per cent per annum on Savings Bank deposits.

Interest paid on Time Deposits at the following rates:
3 Months 3 per cent per annum.
6 Months 3 1-2 per cent per annum.
12 Months 4 per cent per annum.

All business entrusted by customers on other islands receives careful and prompt attention.

Office Supply Co., Ltd.
HONOLULU, T. H.

Agents for the
REMINGTON TYPEWRITER

and dealers in Office Stationery and Filing Systems.

Carry a complete stock of the Globe-Wernicke Filing Cabinets and Bookcases.

All repairs on typewriters guaranteed satisfactory.

CRIME RAMPANT ON HAWAII ISLE

Hilo, Sept. 10.—A series of fatal accidents and crimes have stirred Hilo during the present week. Drownings, murders, attempted murders and hold-ups are among the happenings of the past three days.

While crossing the flooded gulch at Kapalema last Monday the two children of Joseph and Mary Hamae were drowned. Every effort to save the youngsters was made but all proved fruitless.

The following day, Tuesday, a Hawaiian was stabbed by a Japanese at Hakalau and was immediately removed to the hospital where he is now dying.

Three Filipinos yesterday held up John Tiada and Manuel Oliviera on the government road near Pepekeo. Tiada was shot dead while Oliviera received four bullet wounds and is in a serious condition.

Miss Ommaney, of the new High School, and mother arrived in the Kinaiu from Honolulu. They came to the islands only a few days ago from Colorado. The Ommaneys will make their home, temporarily at least, with the J. C. Doris.

JAS. F. MORGAN
Co. Ltd.

Stocks, Bonds,
Real Estate and Insurance

NO. 125-131 MERCHANT ST.
P. O. Box No 594 Honolulu

WAR CAUSES BEEF PRICES TO SOAR

According to prevailing opinion at Honolulu the islands are in for high beef prices (along with everything else) in the near future. The following appeared in the Advertiser of last Thursday:

The directors of the Hawaii Meat Company, at their meeting yesterday, decided to advance the wholesale price of prime dressed beef from ten cents to eleven cents per pound.

The management stated to The Advertiser that this action was forced by an advance in the prices of Australian beef. Prime Australian beef, delivered in cold storage at this port, costs a minute fraction over eleven cents per pound. California beef cannot be landed here under fourteen cents. There are not enough cattle in this Territory to supply the local markets during the winter months, when the rate of consumption increases.

Live cattle on the hoof are now selling in Chicago at eleven cents, the price at which dressed beef sells here in Honolulu.

Prime dressed carcasses are selling at fifteen to sixteen cents in Chicago. According to the latest commercial quotations from the mainland files, the cost of beef is lower today in Hawaii than anywhere in the mainland. Latest Australian quotations shade about twenty per cent under Hawaiian wholesale prices, but with the cable cut and transportation interrupted it is a question how long beef can be secured from that locality at any price.

HAWAII'S SUGAR GOES TO CROCKETT

The Advertiser, Honolulu, of last Wednesday contained the following interesting information:

Recent developments foreshadow a complete reorganization of the sugar trade of Hawaii. With the final completion of the plans admittedly under way the Crockett refinery is to be increased to at least double its present capacity. This refinery and the Western have handled over half of the sugar crop harvested in the year 1914. If worked at maximum capacity this plant is now capable of refining one thousand tons of sugar daily. The Pacific Coast refiners are getting ready to handle double that amount.

The market west of Chicago has been surrendered to its rightful owners, the western beet producers and raw cane refiners as a result of the recent inter-state commerce commission's rate decision.

The Crockett refinery is largely owned by Hawaiian capital. Hawaiian capital will be forthcoming to enlarge the capacity of this plant and enable it to prepare the entire raw sugar crop for the ultimate consumer, the man who buys white sugar to put in his coffee.

If refinery profits are large it will increase the dividends paid shareholders in Hawaiian plantations. In addition to the refinery profits transporting the entire Hawaiian crop to one West coast refinery will work a tremendous saving in freights.

This foreshadows the release of a part of the American-Hawaiian sugar fleet, which, as soon as available will find ready employment on the Atlantic seaboard where American-owned freighters are in great demand to take over the South American trade. Freight rates are higher on the Atlantic than on the Pacific. Opportunities for the extension of the American export trade are tremendous. The change in destination of Hawaiian sugar cargoes from New York to Crockett is going to work out to the financial betterment of all concerned.

The European entanglement has

SENATE APPROVES PEACE TREATIES

WASHINGTON: The Senate on Thursday ratified 13 of the 20 peace treaties with other nations, providing for commissions of inquiry before resort to arms in international disputes which ordinary resources of diplomacy fail to settle. The treaties with the Dominican Republic and Panama were held for further consideration.

Treaties ratified are with Norway, The Netherlands, Portugal, Switzerland, Denmark, Italy, Salvador, Guatemala, Honduras, Nicaragua, Bolivia, Persia, Costa Rica, Venezuela, Uruguay, Argentina, Brazil and Chile.

Postponement of action on the treaty with the Dominican Republic was due to the attempts of the United States to settle a revolution there.

Senator Fall led opposition to ratification of the Panama treaty in its present form. Under the Panama canal act, ships of that republic may pass through the canal free of tolls. Senator Fall urged that any new convention should prevent the possibility of complications arising through arrangements between citizens of Panama and those of other countries to purchase ships.

The treaties ratified are generally of the same character and scope. They provide for the establishment of an international commission with each country, to which disputes which diplomatic methods fail to adjust shall be referred for investigation and report, and the parties to the treaties agree not to declare war on or begin hostilities during such investigation and before the report is submitted.

The duration of the treaties is limited to five years. The contracting parties are not bound by the finding of facts as made by the international commission, but each reserves the right to act independently upon the dispute after the report of the commission shall be submitted.

Treaties with Salvador, Guatemala, Panama, Honduras, Nicaragua and Persia contained a provision, which the Senate eliminated, providing that the contracting parties agree not to increase their naval or military programs unless possibility of attack from a third power should compel such increase, pending report of the international commission.

The committee report of this provision "would increase complications and might embarrass this government by more than benefit it."

Given our planers the opportunity to do more, what would have been done for its accomplishment had there been no war, and no increase in our military power.

WHY PERU SUGAR MAY REACH COAST

Some days ago the wireless reported talk on the coast of importing sugar from Peru to meet the demand over there, it being claimed that the supply from the beet factories and Hawaii was insufficient for the market. The following from San Francisco explains the matter:

San Francisco Cal., Sept. 6—The scarcity of sugar in the east, induced by the stoppage of production in the beet countries of Europe, the turning of Great Britain for her supply to the West Indies and South and Central America, and the granting of lower freight rates from the west has raised the question on the Pacific coast of importing for Western American sugar needs from Peru. This is the first time that such a proposal has been seriously considered in California.

Yesterday this matter was reported in the San Francisco Examiner, which said:

"For the first time in the history of San Francisco an inquiry is under way to decide whether or not it is feasible to import Peruvian sugar. The refiners recognize the fact that with the lowering of the transcontinental freight rates on refined sugar from the coast more sugar will be required than California and Hawaii can produce and that more sources of supply for raw sugar must be sought.

"Peruvian sugar offered in this market might be called refined elsewhere, but this country demands an absolutely white sugar, while the Peruvian product is cream colored and retains much of the molasses taste.

"With the formation of exporting companies in prospect, made up of half a dozen concerns, the problem of financing customers in South America is likely to be relieved."

Historical Society

A program-meeting of the Hawaiian Historical Society has been called by the secretary, Miss Elsie Wilcox, to take place in the Lihue Library at 7:30 p. m. Thursday of this week. An interesting hour is in store for all members who may attend.

Individual Phones

Superintendent Morrow is endeavoring to get all of the principal telephones of Lihue on individual lines. Persons having these individuals will be saved the bother of other persons cutting in on the same circuit, and the improvement in that respect will be very great. A small extra charge is made for the individual line.

Great Show Coming!

PHAROS

Exponent of Indian Black Art, presenting the most weird and unique performance of the present century.



BABY ALMA, The phenomenal child performer, in a repertoire of latest American successes.

Come and see for yourselves.

Entertainment under direction of **Eddie Fernandez.**

THE GREATEST OF LIVING CONJURERS

The man whose show baffles description

Four reels of fine pictures and four complete acts, playing two nights at each place, with complete changes of programs.

Waimea Hall Wednesday and Thursday evenings, September 16 and 17.
Eleele Hall Friday and Saturday evenings, September 18 and 19.
Makaweli Hall Monday and Tuesday evenings, September 21 and 22.
Lihue Hall Friday and Saturday, September 25 and 26.

General Admission, 35 cents. Reserved Seats, 50 cents. All children, 15 cents.



DOUGLAS I. MCKAY

Douglas I. McKay, who was sworn in as police commissioner in a ceremony at the Police Station between the old and new administrations.

THE GARDEN ISLAND

TUESDAY SEPT. 15, 1914

Issued-Every Tuesday. Entered at the post office at Lihue, Kauai, as second-class matter. SUBSCRIPTION RATES \$2.50 PER YEAR, \$1.50 FOR SIX MONTHS IN ADVANCE

ADVERTISING RATES, 75 CENTS AN INCH PER MONTH.

L. D. TIMMONS : : : Editor K. C. HOPPER : : : Manager

The New Situation

Now that Kūhio has won the nomination to run on the Republican ticket for the office of Delegate in Congress to succeed himself (whether by worthy or honorable means matters not for practical, political purposes), it will be the duty of Republicans, of all islands and factions, to lend him their cordial support. We realize that, with the heat of the recent campaign—and more or less alienation of loyalty occasioned by preceding events—still uppermost an appeal for staunchness in support of the Prince at this time will fall upon deaf ears in some quarters. But the understanding of the campaign to support the nominee of the party, whomsoever he might be, should be constantly remembered; and the only graceful thing to do is to accept the mandate of the majority as expressed at the polls. The great saving quality of American politics is that the majority rules. It not infrequently turns out, admittedly, that the majority is wrong; but it is scientific deduction that the majority cannot stay wrong and continue, at the same time, as the majority. Those things adjust themselves. The late Robert Wilcox and his following had some interesting experiences along this line.

The first bridge has been crossed. Thus far only the nominees have been selected. The main struggle is yet to come. The real contestants will be the same as two years ago—Kalaniana'ole and McCandless. In 1912 the total votes cast for Delegate were: Kalaniana'ole, 7,023; McCandless, 5,770; Notley, 346; Byron O. Clark, 201. This year Clark is eliminated, and the 201 votes then cast for him may be reasonably counted for Carter. Kahaulelio is a negligible quantity. Notley will likely poll fewer votes than two years ago.

Has Kalaniana'ole gained or lost strength in the past two years? Either way, to what extent? Has McCandless gained or lost strength in the same period?—and, to what extent?

These are questions which can only be answered by the results in November. The primary affords no solutions, for party lines were crossed wholesale throughout the group.

At present the field is chaotic, and alignments too indefinite for reasonable prognostications; and, for our own part, we would prefer to "pass the buck" for the time being. If indications count for anything, however, it appears quite likely at this time that Kūhio will need every vote he can command in November, and every vote Kauai can give him will count.

The War News

The apparent collapse of the German army's movement against Paris, after approaching triumphantly and with enthusiasm to the very gates of the city, is a most extraordinary thing. In fact it would seem unbelievable were the statements not corroborated from so many sources; and we are still inclined to suspect that the stories of disaster are overdrawn.

From the beginning, men as nearly neutral as it is possible to feel and be on the European war question have been of the opinion that unless most extraordinary and improbable complications arose, Ger-

many had encountered the task of her history. Her one hope lay in rapidity of action and mammoth results in a short period; and if the Allies were successful in prolonging the struggle, Germany would eventually be worn down and out.

The rapidity of action and accumulation of more or less important results were all realized, but right at the moment of the greatest possibility of all, the German army plans appear to have collapsed, or, at any rate, to have been completely reversed.

There is much behind the scenes in the past several days of which the world, away from the battle fields, knows nothing; and our information, far away out here in Kauai, is confined to the merest hint here and there—hit or miss—of what is taking place. We are able to frame opinions of conditions only upon the general outline of the more important news.

The next week will probably solve what now seems largely a mystery, and will doubtless show that either Germany is making a strategic move of an unusual and unexpected sort, or has been foiled and disappointed in her first great plans.

Volcano Observatory

The work of the Hawaiian Volcano Observatory, at first wholly under the Massachusetts Institute of Technology, began in 1909 with visits from Professors Jaggar and Daly, the first going on to Japan to study the remarkable humane work of the Japanese Earthquake Commission, the second developing his theory of volcanic gas action. In 1910 Dr. Albert Brun, of Geneva, came to Kilauea, and published his remarkable conclusion that there is no primary steam in volcanoes. In 1911 Mr. Perret and Dr. Shepherd came and determined the temperature of the lava fountains to be unexpectedly low, 1010 degrees Centigrade. In 1912 Dr. Day and Shepherd collected gases at the liquid lava vents, proved the existence of steam and other gases of sulphur and carbon, and of unexpected heat reactions. In this year also the Hawaiian Volcano Research Association was started. In 1913 Mr. Green, of the U. S. Coast Survey, determined extraordinary magnetic variations of fully 16 degrees at Halemauau. In 1914 the Observatory sent its Director, who is also professor of geology in the Massachusetts Institute of Technology, to investigate the eruption of Sakurajima and assist the Japanese men of science. The principal outcome of this investigation is the remarkable demonstration of the practicability of saving thousands of lives from volcanoes, and some new data on methods of construction.

All of this work in the past six years has been accomplished at very small expense owing to the fact that most of the men and institutions involved gave their services to the work with the utmost enthusiasm. Hawaii is an ideal volcanic land for scientific study that has in view the minimizing of such disasters as the San Francisco earthquake. The Hawaiian Volcano Research Association has suffered like other subscription undertakings during the past year from business depression and unless there is a prompt and generous rallying of new patrons to its support, it will not be able to carry out its program of completing the endowment, toward which the Massachusetts Institute now has \$25,000. The United States possesses a quarter of all the active volcanoes in the world. It will be unfortunate if America, stimulated by its largest school of engineering, and up to this time supported in this work liberally by Hawaii, has to give up to German or French scientists the honor of establishing a permanent central Pacific volcano observatory. There is a strong movement abroad for such establishments. Washington, Japan, Russia, England, the Philippines, France, Germany and Italy are all interested. Volcanoes, like war, flood and famine, rob the

world of its capital, and also lock up secrets of chemistry, meteorology, mining and geology.

The Hawaiian Volcano Research Association needs \$5000 per annum for this year 1914 and three years' income added to its funds. It may consist of a set, not a purchase, of equipment or library. Anyone can join and receive the reports which cost \$5 per annum to the subscriber. R. W. Shinn, Honolulu, has a list of names who are, with few exceptions, and of give generously. And if there are any people who would think a great benefit to the world, the Hawaiian Volcano Research Association would be glad to have a great benefactor. It is a great honor to have a benefactor. It is a great honor to have a benefactor. It is a great honor to have a benefactor.

THE START of the Kauai High and Grammar School yesterday was highly satisfactory. The enrollment was not large, but such was not to be expected at the beginning. Co-operation will now be needed on the part of the people of Kauai, in the important duty of building up the school and making it the success it ought to be; and we are inclined to feel that that co-operation will be given.

MORE ATTENTION should be given by the authorities to the question of the qualifications of chauffeurs, drivers of auto trucks and of private automobiles on this island. Accidents of one kind or another are far too frequent, and something should speedily be done to minimize them. Life and limb of the public (as well as of the drivers of cars) must come in for more consideration.

MAUI HAS definitely invited twenty delegates from Kauai to the Civic Convention at Wailuku, and we hope that that number of "live ones" may find it convenient to make the trip. If Kauai expects to capture the next convention (and we know of no reason why such should not be the case) she should be well represented here by some of her strongest men.

IT IS REPORTED from Maui that the Nahiku Rubber Company is shipping its rubber by parcels post in order to reach the market during the prevalence of the present very high prices. This is rather stretching the supply to meet the demand, even for these strenuous days.

WE WOULD like to be able to give our readers, on this page, a picture showing the devil on one side, the deep sea on the other and Kauai in the middle. It would express our opinion of the new delegate-ship situation, as developed by Saturday's primary, clearer by far than could words of type.

THE MERCHANT who happens to have a stock of Christmas toys left over from last year will be the "man of the hour" along in December.

HOW ABOUT a tennis season all over the island in the period between baseball and football?

THE PRIMARY SYSTEM is, of course, a good thing, and we favor it strongly, but the way it has turned out on Kauai it amounts only to a double election.

ONE AUTOIST killed two dogs and a goose at Kapaa last week. At that rate the price of sausage hereabouts should stay down for awhile, anyway.

THE ELECTRIC on Kauai was out again last night, and it was a very bad one.

THE ELECTRIC on Kauai was out again last night, and it was a very bad one.

THE ELECTRIC on Kauai was out again last night, and it was a very bad one.

THE ELECTRIC on Kauai was out again last night, and it was a very bad one.

THE ELECTRIC on Kauai was out again last night, and it was a very bad one.

THE ELECTRIC on Kauai was out again last night, and it was a very bad one.

THE ELECTRIC on Kauai was out again last night, and it was a very bad one.

THE ELECTRIC on Kauai was out again last night, and it was a very bad one.

THE ELECTRIC on Kauai was out again last night, and it was a very bad one.

THE ELECTRIC on Kauai was out again last night, and it was a very bad one.

THE ELECTRIC on Kauai was out again last night, and it was a very bad one.

THE ELECTRIC on Kauai was out again last night, and it was a very bad one.

THE ELECTRIC on Kauai was out again last night, and it was a very bad one.

THE ELECTRIC on Kauai was out again last night, and it was a very bad one.

THE ELECTRIC on Kauai was out again last night, and it was a very bad one.

THE ELECTRIC on Kauai was out again last night, and it was a very bad one.

THE ELECTRIC on Kauai was out again last night, and it was a very bad one.

THE ELECTRIC on Kauai was out again last night, and it was a very bad one.

THE ELECTRIC on Kauai was out again last night, and it was a very bad one.

THE ELECTRIC on Kauai was out again last night, and it was a very bad one.

THE ELECTRIC on Kauai was out again last night, and it was a very bad one.

THE ELECTRIC on Kauai was out again last night, and it was a very bad one.

THE ELECTRIC on Kauai was out again last night, and it was a very bad one.

THE ELECTRIC on Kauai was out again last night, and it was a very bad one.

THE ELECTRIC on Kauai was out again last night, and it was a very bad one.

THE ELECTRIC on Kauai was out again last night, and it was a very bad one.

THE ELECTRIC on Kauai was out again last night, and it was a very bad one.

THE ELECTRIC on Kauai was out again last night, and it was a very bad one.

WHEN POI BUCKET OPENED IN MAIL

Poi is said to be a fine thing in its place, but a recent experience has led the local postoffice people to doubt that that place is in the mail bags.

At Honolulu an extremely well-meaning person took a bucket of poi down to the postoffice and wanted it sent parcels post to Lihue. Now, it is possible to send poi by parcels' post, but the propriety of putting it into a bag with other mail might be questioned.

However, somebody at the other end didn't think, didn't know or didn't care and the worst stuck up bunch of mail anybody ever saw arrived in one of the bags at Lihue the next morning.

The matter is being followed up, and undoubtedly there will be some specific instructions to mail clerks in the very near future on the subject of shipment of poi by parcels' post.

A MODERN BARBER SHOP FOR LIHUE

Lihue is to have a modern barber shop—first class in every respect and prepared to do all classes of tonsorial work. It will be in charge of R. T. Snyder, proprietor of the Fleu de Las barber shop in the Blaisdell hotel, at Honolulu, who arrived here last Friday and received his entire shop appliances this morning.

Mr. Snyder is one of the new homesteaders at Waipouli, so that he will be a permanent resident of Kauai. His wife is in charge of a ladies' department of the tonsorial business at Honolulu, and probably will not come over for a while yet, but she will soon also make her home here.

Several locations for his shop were offered to Mr. Snyder, but he finally decided on quarters in the office building in front of the County Building.

Mr. Snyder expects to draw trade from all over Kauai. He is, from all accounts, the only white barber to be regularly engaged in the business on this island.

Hyades A Visitor

The freighter Hyades arrived at Port Allen last Friday morning from Honolulu, bringing 453 tons of general cargo and 48,000 feet of lumber. She sailed at noon Sunday for Kahului, taking 22,500 bags of sugar, 200 empty gasoline drums and 8,000 cases of pineapples.

Very rough swells were experienced while the vessel was loading at Port Allen Saturday.

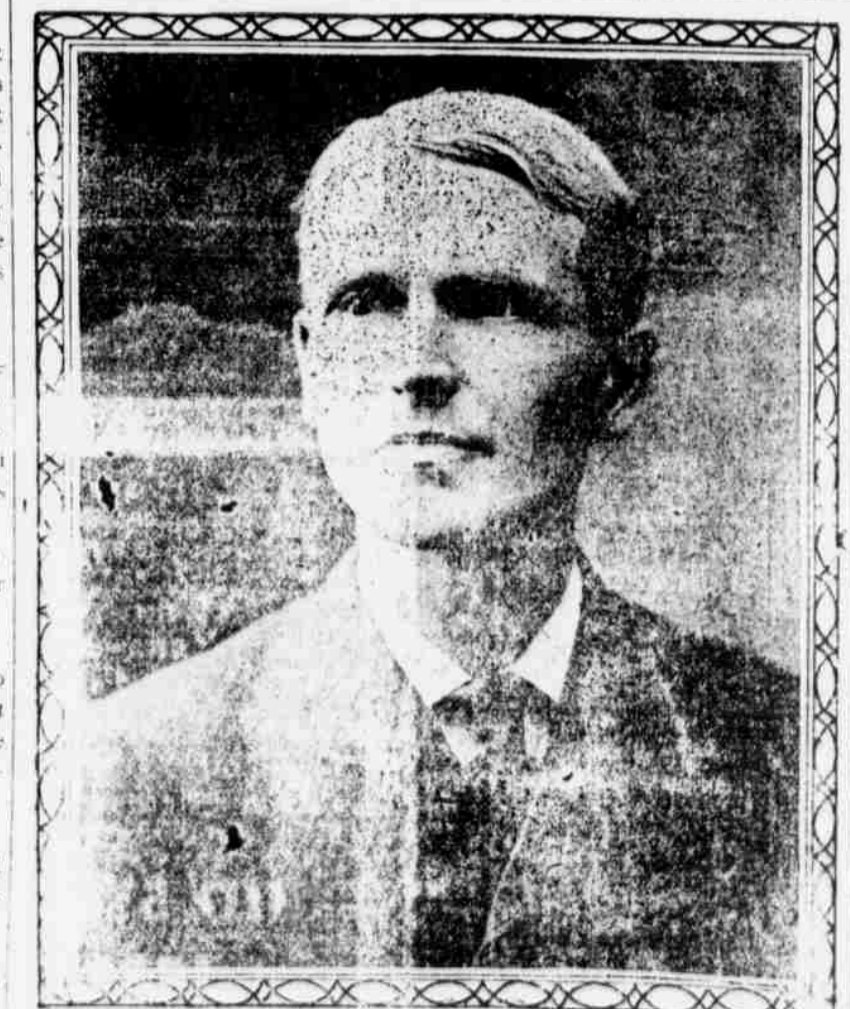
Awful At Hanalei

The following self-explanatory letter has been received:

Dear Editor:—Will you publish these few lines in your paper?

There is some gambling business, furnishing opium, intoxicating liquor going on Hanalei, Kauai.

From a Subscriber.



Governor W. N. Ferris of Michigan. Governor Ferris was in the world's time light a few months ago in connection with the investigation of the Michigan mine strike and murders.

Stationery and Paper

We carry all the best grades of paper, stationery, and office supplies. We will give your mail order the same care and prompt attention that you would receive in person. Drop us a line.

Hawaiian News Co., Ltd. Young Bldg. Honolulu

Souvenirs We neatly pack and mail Hawaiian Souvenirs. Hawaii & South Seas Curio Co. HONOLULU.

HOTEL LIHUE (The Fairview) Twenty-two elegant rooms In Main Building Three Airy Cottages Cuisine unexcelled in country districts W. H. Rice, Jr., Proprietor

JEWELERS EVERYTHING IN THE SILVER AND GOLD LINE, RICH CUT GLASS AND ART GOODS. MERCHANDISE OF THE BEST QUALITY ONLY. H. F. WICHMAN & CO., Ltd. LEADING JEWELERS P. O. Box 342 Honolulu

HOTEL WAIMEA WAIMEA, KAUI Breakfast : : : \$.50 Lunch : : : .75 Dinner : : : 1.00 Room : : : 1.00 DICK OLIVER, Manager

THE BANK OF HAWAII, Limited LIHUE BRANCH LIHUE, KAUI, HAWAII Deposits are received subject to check. Certificates of deposit issued payable on demand. Loans made on approved security. DRAFTS DRAWN ON Honolulu Bremen San Francisco Berlin New York Hong Kong London Yokohama SAVINGS DEPARTMENT Interest paid on Savings Deposits, 4 per cent on ordinary and 4 per cent on Term Deposits. Ordinary Savings Deposits will be received up to \$2,500 in any one account. SAFE DEPOSIT BOXES FOR RENT \$2 AND \$3 A YEAR

Manuel Silva Homestead Has added a new six-seater Studebaker to his garage and is in a position to give his patrons even better service than ever before. Careful drivers, comfortable cars, and always ready to start. DAY OR NIGHT SERVICE TELEPHONE 84L

Nawiliwili Garage

C. W. SPITZ, Prop.

NAWILIWILI, KAUAI TELEPHONE 104

Automobiles to all Parts of Kauai,
all hours, Day and Night

Careful Chauffeurs

Autos and light machinery repaired.
Plumbing and gas fittings. Agents for Fisk
and Goodrich Tires and Tubes, Chalmers,
Ford, Studebaker, Velie, Federal and
Velie Truck.

Agents for the Inter Island Steam Navigation
Co., Ltd., at Nawiliwili, Kauai

The Honolulu Iron Works Company,
Limited, are Mill Engineers, Consulting
Engineers, Designers and Manufacturers
of Complete Modern Equipment for Cane
Sugar Factories. Experts in the Remodel-
ing and Modernizing of Factories, and
Territorial Agents for Standard Gas En-
gines, etc., etc., etc.

They solicit correspondence
and will gladly submit esti-
mates.

Honolulu,
Hawaii.

Used by All the Big College Nines

The Official Ball

If you attend any of the big college games you will find that the ball almost invariably used is the REACH OFFICIAL AMERICAN LEAGUE BALL. College men won't have anything but the BEST—that's why they all use

The Reach Ball

College men know too that the Reach Ball has been adopted by the American League for ten years, and is the Official League Ball. No other ball can be used in any League game. Price everywhere \$1.25.

The Reach Trade-mark on all Sporting Goods is a guarantee of quality—it means satisfaction, a new article or your money back (except on Balls and Bats under \$1.00).

The REACH OFFICIAL BASE BALL GUIDE. The recognized authority of the American League. History and photos of series. Schedules, records, etc. 10 cents at dealers' or by mail.

Theo. H. Davies & Co., Ltd.

Sole Agents
for the Territory of Hawaii

FISK

C. W. SPITZ
AGENT FOR KAUAI

BY MILES THE BEST TIRE

They average 25 per cent
more than other Tires.

A full stock carried at the
NAWILIWILI GARAGE

Tires

READ THE GARDEN ISLAND

SENATOR KNUDSEN'S TOUR OF AMERICA AND EUROPE

Part V.

(Continued from last issue.)

Of course what has made Florence most famous is her great collection of art and in the two large galleries the old Medici family has surely managed to gather together the best work of Italy's most famous painters, and for days you could wander through these immense old palaces and gaze at the old masterpieces.

In the Tribune hung a Venus gazing calmly down on the eager tourists; and there she had been for over four hundred years, the admiration of men and the envy of women—and it must have amused her to see this daily stream of people, guide book in hand, rushing past—having paid their 20 cents to get in and 2 cents to ride up in the elevator, they seemed eager to see as much as possible in as short a time as possible, whereas to her time seemed as nothing at all, and she looked as fair as the first day she entered the palace.

The guards were a nuisance. Every room had one and they persisted in telling you all about the pictures, yet none of them could speak five words of English and it was very trying to listen to them. Yet it was impossible to get away from them and they all wanted a tip for troubling you. Ten centimes, or about 2 cents, was enough, so by paying in advance you cut him off and he left you to enjoy the pictures and read the English guide-book in peace. One guide could talk English, so I gave him 4 cents, and he felt quite flattered. He told me that the reason the guards could not talk English was because English was not taught in the public schools. He had been a sailor and had learned English in foreign lands.

Next in interest to the pictures were the Duomo, a splendid cathedral; the bell tower of Campanelli and the Baptistery, with its wonderful bronze doors, covered with numberless pictures in relief of the most well known bible stories. I tried to make them all out, but soon gave up and spent my time looking at the other tourists trying to make them out—gazing at a door and then at their Badekers, and all the time trying to brush off a mass of boys and young men trying to sell them picture postal cards.

The only way to avoid the latter was to buy a pack of cards the first day and carry them around with you, and as soon as one of them came rushing at you, produce the cards and flash them in his face, whereupon, noting that you had been stung once, he would respect you and leave you alone.

All three buildings were of white marble and made a very beautiful and imposing center of the town.

Not far from the gallery, and older than it, was a large ugly building of red brick, splendidly built to resist attack. It had once been the headquarters of the Medici family, and its walls had seen many a bloody deed, they said. High up in its lofty tower, from which you could get a grand view of the city and see if any enemy were approaching, they showed a tiny room barely large enough for

a man to sit in and the guide said it had been the prison of Savanarola—the famous old Priest who was burned at the stake for sayings that have now made him famous; while outside, in the square, a large cross on a flag stone marks the spot where he stood on the day of his martyrdom. It seems strange but true that the man who is burned at the stake lives on in memory and fame forever, while those who seek thus to destroy soon pass out in dishonorable graves and the mould of ages covers them with oblivion.

There was much to see in Florence, but in an hour or two in a gallery is enough for one day. By that time your neck and back feel as though pierced by a thousand darts, and you feel as though you would surely die if you couldn't escape to the streets once more.

It seems to me that if criminals were sentenced to ten hours a day looking at pictures instead of to the rock pile, our jails would be almost empty.

OFF TO VENICE

Spring was coming and our time was up, so we said good-bye to Florence and ran over the mountains once more and in the afternoon found ourselves in Venice—City of Romance and Story; but, Alas! the Venice of today is not the Venice of the Merchant Of Venice, and the old, faded homes, looking tumble-down and deserted, are not as attractive as one is led to believe. The motor boat man has killed the charm of the lacy gondola. The motor boats went "Put-put-put" down the grand canal and threw such waves against the hotel landing place that it was almost impossible at times to get in or out of your gondola, and once safely on board the boatman had to be constantly spinning the boat around to take the waves bows on, the gondola spinning in the air on the first wave and coming down with a loud thud anything but agreeable—the gondoliers meanwhile uttering most murderous yells at the offending motor boat.

We had rooms in the Grand Hotel, and our rooms looked out over the grand canal; and out in bay lay Emperor William's fine yacht, the Meteor, where the King of Italy paid him a visit and neat German launches were passing up and down all the time. (One day a large procession of boats came past, loaded with beautiful wreaths of flowers to put on the graves of Italian and German sailors drowned in an accident in the harbor.) The guns of the ship were booming in salute all the time and the church bells rang between times, so as far as noise went there was plenty—and yet there were no autos nor trolley cars, the things which make the most noise in European cities. (The noise curse is something terrible in the larger cities.)

Venice luckily had no noise, and we loved to wander through the narrow streets and look at the lace shops and glass and coral works, and not have to dodge out of the way of some reckless auto driver.

(To be continued.)

Waipouli School

The Land Department seemed to have made a mistake when it told the Kauai supervisors to go ahead and erect the proposed new Waipouli school house on Lot 88, for, as a matter of fact, an original homesteader is found to have a perfectly legal claim to the property. Mr. Morange has found another site on a sort of plateau, near by, which was originally set aside for a reservoir and which, it is thought, will answer the purpose and the school house will likely be built there.

Railroad Man Here

A. B. Hutchins, traveling auditor of a railway company with headquarters at Minneapolis, is touring Kauai in company with Max Greenbaugh, the Honolulu commission merchant, Mr. Hutchins being a brother-in-law of Mr. Greenbaugh. The railroad man is suffering of rheumatism and will travel all over the islands in the hope of improving his health. He states that he already feels better and has much hope that the climate of Hawaii will entirely cure him.

LATEST WIRELESS NEWS

Continued from page 1
Monday Afternoon

Sugar: Raws, 6.405.

Honolulu—Today's stock transactions were as follows: Oloa, 6³/₄; 1290 McBryde, 6⁷/₈; 140 Waialua, 110; H. C. & S., 35¹/₄; 325 do., 34¹/₄; 90 Oahu, 20¹/₄; 65 do., 20¹/₂; 50 Oahu, 20³/₄; 5 Haku, 130; 150 Pioneer, 25¹/₂; 400 Hawaiian Sugar, 37¹/₄; 50 Hawaiian Sugar, 37³/₈; 100 Pineapple, 32¹/₄; 19 Kekaha, 125; 30 Onomea, 36¹/₂; 45 H. B. & M., 16³/₄.

PILIKIA FOR CATHCART

The Attorney-General holds that the election of Cathcart to be county attorney is illegal.

DAVIS JUMPS THE PARTY

George A. Davis, defeated candidate for County Attorney, has gone back to the Progressive Party.

REPORT FROM PARIS

Paris—On the Allies' left the enemy has been obliged to abandon their defenses between Compiègne and Soissons and beyond the river Aisne. In the region of Argonne the enemy has turned northward. On the right the enemy's retreat is general from Nancy to the Vosges.

French territory in this vicinity has been completely evacuated. General Joffre sends word that victory is incontestable. The advance of the Allied forces is continuing all along the line.

GLOOMY RUMORS IN BELIN

Berlin—Gloomy rumors regarding the outcome of the contest between the Allies and Germany are so rife in this city that it has become necessary for the authorities to deny rumors that the United States is contemplating joining forces with the Allies and warring against Germany.

LONDON'S VERSION

London—Despite stubborn opposition all day, the Allies forced a passage across the Aisne. Headquarters of Kronprinz's army have been driven from St. Menchould to Montfaucon.

Panic caused in Vienna when learned that Servians occupied Emlin.

Monday, Sept. 14.

Sugar: Raws, 6.195.

ELECTION ON OAHU

Honolulu—The nominations made by the primary election on Saturday were as follows:

For Congress—Kalaniana'ole, Republican; McCandless, Democratic.

For the Senate (Oahu)—A. L. Castle, Chas. F. Chillingworth and E. W. Quinn, Republican; Edward F. Hanapi, Gabriel K. Keawehaku and George Low, Democratic.

For the House—C. H. Brown, C. H. Cooke, W. T. Rawlins, Norman Watkins, Isenberg (other names unintelligible), fourth district, Republican; Aiea (?), Crawford, W. H. Crawford, E. K. Mahoe and Henry Vierra, fifth district, Republicans. The Democratic nominees for the House (12 in two districts) are: Kaiwi, Kapana, Keiki, Liftee, Naole, Archie Robertson, Ahuna, Gay, Kalakela, Kaniho, Kupihee and J. McCandless.

For Mayor—John C. Lane, Republican; Joseph J. Fern, Democratic.

For Auditor—James Bicknell, Republican; Jesse P. Makainai, Democratic.

For Treasurer—D. L. Conkling, Republican; M. G. K. Hopkins, Democratic.

(From the vague tenor of the despatches it is inferred that County Attorney Cathcart and County Clerk Kalaokalani were elected at the primaries—Ed. Gard. Isl.)

For Supervisors—Alia, Hollinger, J. C. Quinn, C. Arnold, W. Larsen, D. Logan, Robert Horner. (Democrats not given in message.)

NEWS FROM THE WAR

London—All of the German armies except the one before Verdun are retreating. The great battle on the River Marne is regarded by war critics as the most remarkable reversal of roles by two opposing armies ever shown in history.

It is believed that the first phase of the war has been decided and that the plans of the Germans are frustrated. Experts still recognize, however, the possibility of a German rally.

The Belgians are pushing the Germans to the southwest, and have determined to re-take Brussels.

French military authorities consider the position of the Germans as critical.

ON THE RUSSIAN FRONTIER

After seventeen days fighting, Russia claims victory over the German and Austrian armies, with operations in Galicia completed as planned.

Russia proposes to march direct to Vienna.

Battle at Rawa Russign, Poland, will decide Austria's fate.

They are now enrolling the last class of reservists in Austria, whose armies are surrounded and surrender seems impending. 60,000 prisoners have been taken.

IS ITALY GOING IN?

Paris—Italians are disembarking in Albania.

REPORT FROM FRENCH SIDE

Reports from General Joffre, commander in chief of the Allies, says that the results of the five days battle were undeniably in favor of the Allies, and that the enemy everywhere is retreating.

Nancy has been evacuated by the Germans.

Continued on page 6

RACES SUNDAY AT WAIPOULI TRACK

There had another race meet at Waipouli Sunday morning, and although no world's records were broken, some 500 people present seemed to enjoy the events very much. The day was fine and the track was in excellent condition.

The principal race was a half-mile dash between a bay mare owned by Inouye and a dark horse owned by Fujimoto. The former won handily in 56. This race settled an old controversy and was a matter of considerable interest to those present on the field. The purse was \$200.

There were a number of minor events, the horses coming from the neighboring.

The events started at 11:30 in the morning and were over in the early hours of the afternoon.

COUPLE OF CASES FOR THE CORONER

Two deaths under unusual circumstances have taken place in the Koloa and Homestead neighborhoods lately. The first was a Porto Rican, living near Lindemann's, in Koloa, who deliberately drank himself to death. He drank a number of different kinds of things, and, although not clearly established, probably took a jolt or two of wood alcohol along with the rest. One unusual thing taken by the man was a half bottle of bay rum.

The other case was of a Portuguese woman living at the Homesteads. She had carried a small boy up the hill toward her home, shortly after which she dropped dead, heart failure being the cause.

The public schools of Kauai opened yesterday for the fall term.

LATEST WIRELESS NEWS

Continued from page 5.
Sunday, September 13.

Sugar: Raws, 6.195.

RICE SENDS THANKS

The following wireless from Chas. A. Rice was received shortly after midnight last night. "Kuhio nominated by a large vote. Thank Kauai people for supporting me."

THE ELECTION ON KAUAI

Following were the totals polled by the various candidates on the island of Kauai (not including the 36 votes of Niihau, which have not yet been heard from): Chas. A. Rice, 424; Kuhio, 249; McCandless, 214; Carter, 17; Woods, 5; Notley, 2; Kahauleiua, 0. For the Senate: Mikaele, 375; Knudsen, 373. For the House: Lota, 576; Kula, 569; Coney, 501; Fassoth, 425, and Chandler, 308. Full details of vote by precincts in Tuesday's Garden Island.

ELECTION RESULTS IN HONOLULU

Honolulu—Incomplete returns indicate the election of Hawaiian tickets with few exceptions. Cathcart, for county attorney, and Conkling, for county treasurer, are nominated. Charles Rose is probably elected sheriff of Oahu. Kuhio landed about 400 more votes than Rice. Woods polled a total of 32 votes, with Carter 10 behind him. Lane leads for Mayor, with Cohen second. Thirteen precincts to hear from.

THE MAUI VOTE

With a few very small precincts to hear from, the results on Maui were as follows: Kuhio, 977; Rice, 883; McCandless, 286; Woods, 7; Carter, 31; Notley, 5.

ISLAND OF HAWAII

Reports from the island of Hawaii are very incomplete, but indicate a big lead by Kuhio over Rice. Woods ran surprisingly low on his home island.

BACK TO THE WAR

Paris—A despatch received by the war ministry announces continued retreat of the Germans from Northern France, in some cases the retreat assuming the appearance of a route. Allies are vigorously pursuing the enemy. After five days fighting the railways between Belfort and Nancy have resumed operations.

An aeroplane battle took place yesterday in the vicinity of Troyes, a French machine going in pursuit of a German flyer. The German machine was winged and came down, two German officers being killed by the fall.

Rome—Germany and Austria have resumed efforts to induce Italy to stand by the agreement of the Triple Alliance.

CROWN PRINCE DEAD?

London—A Reuter's despatch from Ostend states that the German Crown Prince and his brother, Prince Adalbert, and Prince Carl, of Wurtemberg, are all dead from wounds received in battle. Bodies, according to this report, are lying in Brussels hospital.

GERMANS HOLD 200,000.

Rotterdam—Despatches from Berlin say that 200,000 prisoners of war are being held by Germans.

London—Belgians buried 1239 dead Germans after the battle of Termonde, where the Germans were defeated.

Conditions of country through which Allies are marching is said to be indescribable. The roads are littered with dead horses and cattle.

San Francisco—Mildred Gear, widow of the late Judge George D. Gear, of Honolulu, has been arrested here for obtaining an auto under false pretenses.

Saturday Afternoon.

London—The British admiralty announces that the British fleet has occupied Herberthaere, capital of the Bismark archipelago, German possession in the Solomon Islands.

The Servians are pushing their way against Austria.

Bordeaux—The supply of gasoline used by the Germans in France is running low, seriously handicapping the moving of heavy artillery.

Aeroplanes today report that the retreat of the enemy is very rapid. Our troops have crossed the river Oureq and are rapidly pursuing them.

London—It is officially announced that the French third army captured the entire artillery equipment of one German army corps.

Enemy retiring from France and offering feeble resistance on the left. Germans are retreating between rivers Oise and Marne. Their cavalry is exhausted. Allies pursuing fleeing soldiers have encountered slight opposition.

Germans have evacuated Viehy le Francois on right wing, which they had fortified.

German forces are occupying Argonne region. Have begun to sway to northwest in Lorraine. Allies are making slow progress. Germans have evacuated St. Die. German prisoners suffering from bayonet wounds brought to Paris after the route of the Germans say that the retreat across the River Oureq was disastrous.

Saturday Sept. 12.

Sugar: Raws, 6.195.

London—Announcement is made from Berlin of the defeat yesterday of Russian forces on the border of East Prussia. At Lyack, the Russians, consisting of the 2nd army corps of Finnish troops, were met by the Germans on the line and signally defeated, the invaders being driven back toward Bilystceck.

A despatch from Copenhagen confirms defeat of the Russians, which cuts Russian line to the South and opens the way for an offensive German movement against the Russian rear.

Petrograd reports Russian victory near Lyack.

Russians took Spolie and Tourbane by assault. Russians now besieging Grojce in Poland. Second Austrian army defeated at Tomaszow, which was captured after sanguinary battle.

Russians and Servians are meeting with continued successes against the Austrians.

Copenhagen—Austria will not make peace except with the consent of Germany.

London—The Belgian movement against the German right continued yesterday, resulting in the reoccupation of Termonde by the Belgians.

BRITONS AND EGYPT.

Cairo, Egypt—All right of suzerainty by Turkey in Egypt was swept away yesterday when the British military authorities here invited the German and Austrian diplomatic agents to leave the country, which they did at once, without protest from the Khedive, to whom they were accredited. The British have assumed sovereignty over Egypt by this move.

Paris—Foreign ambassadors, including the German representative, have notified the Sultan of Turkey that the Powers could not accept the abolition of treaty rights now accorded foreigners within Turkish dominions, as proposed yesterday.

London—Roumania, Greece and Bulgaria will remain neutral in the present war if Turkey stays out of it.

An intercepted wireless message sent to Belgium by German General reads: "Great disaster has overtaken us. We are badly in need of horses and supplies". This confirms the official despatches that the German right wing has been entirely crushed and remnants are retreating in disorder.

Washington—At the German Embassy yesterday it was officially announced that the German left wing held its own against the Allies for two days and captured fifty guns and several thousand prisoners, finally retiring before superior numbers. The French Embassy announces that marked advance against the German right continues and that Allies have advanced in places from 36 to 47 miles.

There is no confirmation of the report that Maulberge had fallen.

ZEROLENE

Keeps the Motor Cool



Dealers everywhere. Ask our nearest agency about delivery in bulk.

Standard Oil Company
(CALIFORNIA)
Honolulu

CONSUL RODEIK REPORTS.

Honolulu—German Consul George Rodeik announces cable advice that the German right wing in France has been ordered to retreat for strategical reasons, whereby some losses were suffered through separation of several detachments. The German center is advancing satisfactorily between Sezanne and Mailly and the left wing near Vitrey. Fort at Verdun has fallen. New reinforcements are sent for. Decisive battle attack by Alsace-Lorraine army steadily progressing. The situation in east Prussia is very satisfactory. The east army has encroached on the Russians and forced them to retire on Jemen, while southwest Poland is now occupied by Germany and Austria.

HONOLULU NEWS

Honolulu—Chas. A. Rice closed his campaign at the Bijou theater with a record crowd. Kuhio had an audience of 2,000 in Athletic park for his closing speech.

Passengers by the Ventura report the removal of German reservists from that steamer at Sydney with force. Three others were taken quietly.

Mobilization of troops in Australia continues actively. Tozawa, a Japanese subject, was denied naturalization by Clerk Murphy yesterday.

Friday Afternoon.

Sugar: Raws, 6.265; beets, no sale.
Honolulu—Stock transactions today were as follows: 750 Oloo, 57s; 740 do., 6:100 do 6:1s; 285 do, 6:1; 210 do, 6:1; 150 McBride, 6:5s; 1340 do., 6:3; 110 Onomea; 365 Hawaiian Sugar, 37:310 Oahu, 20:129 do., same. 35 Hawaiian Commercial, 35; 100 do., 35:1; 10 Waiialua, 110; 225 Brewery, 16:1; 8000 Oloo, 6.

GERMANS ARE IN RETREAT

London—Official announcement made here says that the general retirement of the German forces from the battleground of France still continues.

Many German infantry detachments have been found hiding in the woods, evidently left behind on account of the hasty retreat of the main body.

It is admitted in Berlin that German evacuation of France continues. Germans are fatigued, while the Allies are fresh. Rifled villages and drunkenness among prisoners is taken to indicate demoralization of the retreating Germans.

The Servians have occupied Semlin, which lies opposite Belgrade on the farther bank of the Danube.

The Austrians are preparing to re-take Lemberg.

London—Roumania, Greece and Bulgaria have signed a compact to interfere if Turkey joins Germany in the war.

The Nord Deutscher liner Bethanin, carrying 600 German reservists, 100 tons of coal and six months provisions for the cruisers Karlsruhe and Dresden has been captured and brought here.

Honolulu—Mail advices today tell of small British fleet capturing South Sea garrison (German) without bloodshed. (This is probably lauit in the Marshall Islands—Ed. Gard. Isl.)

Friday September 11.

Sugar: Raws, 6.26; beets, no sale.

TURKEY BEGINS TO STRUT.

Washington—Turkey has notified all nations that she has abrogated the series of conventions, treaties and privileges originating in the eleventh century, whereby foreigners in the Ottoman Empire have been exempt from jurisdiction of the local Turkish authorities in civil and criminal cases. Foreigners lose the extra territorial rights and privileges which they have enjoyed, and Turkey declares absolute independence and freedom from the domination of other powers.

THE BATTLE IN FRANCE.

London—After battling for four days the main German force invading France have been pushed back 37 miles and is still falling back, reports Sir John French, commander of the English forces. The movement of the Germans is actual retreat, and not a strategic one in any sense. It is believed that one entire German corps has been cut off from the main body by Allies lines between Compiagne and Meuse. Body of troops in precarious situation. Germans now investing Loos and Laferre. Thousands of prisoners are being taken by the Allies. Approaches to Antwerp were closed by the breaking of the dykes. Belgian military operations in Antwerp continuing satisfactory. It is reliably reported that among the German wounded is Prince Joachim, the youngest son of the Kaiser.

South Africa cables that the loyalty of the Boers to England may be relied on. Volunteer forces are ready to co operate.

British forces met and defeated 400 Germans in battle in Nyassaland yesterday.

Bordeaux—The French troops are advancing into upper Alsace, as the Germans retire. Advices via Paris from Munich state that the Berlin garrison, which has taken to the field, is reported to have lost 42,000 men killed and wounded since the war began.

London—At the British Admiralty the following report was issued: Yesterday and today numerous strong squadrons and flotillas have advanced into the bight of the German stronghold at Heiligoland, without meeting opposition. The Russians are now bombarding Koenigsburg and the part of the city being shelled is in flames.

Honolulu—The Canadian steamship Marama has arrived from Vancouver.

An Austrian Baron, arriving in the city by the Manchuria, has disappeared after failing to keep appointment with Consul Schaefer. When last seen he was near the Pall.

The safest flower or vegetable seeds to use in your garden are

Luther Burbank's Seeds

Up until very lately it has been impossible to secure Burbank Tested Seeds—the seeds that succeed when all others fail—but now a complete line of them is kept in stock by

Lewers & Cooke, Ltd.

177 King Street

Honolulu.

There is a special assortment of 12 packages of seeds—both flower and vegetable—that sells for only \$1.00.

TRY IT.

TO THE TRADE

WE ARE DISTRIBUTORS FOR

"LOOPUYT" GIN "OLYMPIA" BEER
"REWCO" WHISKEY "TIPO" CLARET

A FINE SELECTION OF GROCERIES AND LIQUORS ALWAYS ON HAND

GONSALVES & CO., LTD.

74 QUEEN ST., HONOLULU

DON'T HURT YOUR EYES OR YOUR GOOD HEALTH BY POOR LIGHTING.

Use WESTINGHOUSE MAZDA LAMPS.

DON'T LOSE SALES IN YOUR STORE BY REASON OF POOR LIGHTING.

Use WESTINGHOUSE MAZDA LAMPS.

And thirdly,

USE GOOD FIXTURES IN THE LIGHTING OF YOUR PLACE.

Let us solve your lighting problem for you.

LIHUE STORE

Behold All Things Are New.

We meet the season half way.

The multitude of big and little cases

piling in upon us proclaims in unmistakable fashion that we are ready for

business if business is ready for us.

The ovation received by our recent

arrivals nerves us to new efforts. Hereafter, as heretofore, our aim will be to supply and satisfy every want

of the million and millionaire.

We will shortly move into our new quarters on Hotel

St.—in the meantime your orders will get our usual

careful attention and be charged at the prevailing

clearance sale prices.

N. S. Sachs Dry Goods Co.

HONOLULU

Had No Notary

A report from Honolulu says: Mr. Thayer yesterday struck a snag when he received from Niihau, a precinct of the Kauai representative district, the signed oath of Kaohilauii who was recently appointed as chairman of the board of inspectors of election. The oath was no oath, after all, for it had not been sworn to. Kaohilauii stating that there was no notary

public or any other official on the Island of Niihau who was authorized to administer oaths. He could not find the time to cross the Kaimukahi Channel to Kauai, and wanted to know what to do. The secretary has written to the sworn chairman of inspectors that the other two members of the board may, since there exists a vacancy, appoint him a member and swear him as such, but somebody else will have to act as chairman. This was one way out of the pillkia.

THE "PUROLA BRAND"
Household Remedies
Household Specialties
Toilet Specialties

In this day and age, in our home for our family, we want the Best; and when we say the Best we mean the Highest Quality. The "Purola" Brand of Household Remedies and Toilet specialties, which we have just put in, is another line in the chain that binds us to our customers. Why? Because "Purola" is synonymous with the Highest Type of Purity and Quality and bears the guarantee of an old-established firm of more than thirty years experience. Ask to see our "Purola" Line. No trouble to show goods.

The
Makaweli Store



This severe little frock was of white ratine with snugly folded little bodice having a deeply cut armhole into which was set the long sleeve. The neck was finished with a rather close little rolling collar of black silk and the broad girdle with flat loops and end at the back was of the same. The oddly shaped shirt gives an air of distinction to the frock. Flat smoked pearl buttons trimmed bodice and sleeve.

Passengers In And Out

The following arrived by the Kinohiwa last Wednesday morning from Honolulu: D. Leith, Frank Howes, Mrs. S. D. Heapy, Mrs. Thurtell, Miss B. Fursey, Mrs. Wm. Schimmelfennig, Miss H. Schimmelfennig, H. W. Robbins, H. K. Muddon, Miss G. R. Wilson, Miss E. M. Wilson, Miss A. E. Starkweather, Miss Mary Honan, Miss G. Macfie, Richard Silva, Mrs. B. Baldwin, Miss May Hillhouse, Miss Hillhouse, A. K. Conchee, C. B. Morse and wife, Hon. Fo and infants, Miss E. Chong, Miss M. Chong, Miss H. Chong, Miss G. Chong, Miss V. Chong, Chas. Gav. W. Ziz, C. O. Smith, Miss Mary Bryant, Miss Carmelia Johnson, Miss Mengler, Max Greenbaugh, Miss Marion Hastie, Miss Eva Hastie, Miss Harriet Sheldon, Miss Daisy Sheldon, Miss Hannah Sheldon, Miss L. Weight, Miss M. McClymont, Miss A. M. Mengler, Miss M. Ah Ping, Miss Rose Achiu, Mrs. C. L. Hodge, Miss K. McIntyre, Miss Hodge, Miss K. C. Omannney, Miss M. A. Omannney, K. Morim, Mrs. Henry Peters, Mrs. Kolise, Rev. and Mrs. Chong and 69 deck.

The following arrived by the W. G. Hall Friday morning from Honolulu:

G. N. Wilcox, B. D. Baldwin, Aubrey Robinson, Judge L. A. Dickey, Ben Vickers, Miss S. Muller, Miss L. E. English, Miss M. Ellis, Miss Grace Ing, Miss Ruth Ing, Miss Rath, Miss Helen Cellur, Miss M. C. Jackson, Mrs. Rath, F. L. Scudder, Mrs. Scudder, I. A. Akina, Rev. Kimma, Wm. Kuaawe, C. H. Alspaugh, J. L. Huddy, M. J. Fassoth, Miss Alice Ai, Miss M. Cummings, Miss L. Jordan, Mrs. I. Mesiek, Mrs. L. Akina, Miss Z. T. Kan, Miss S. T. Kan, Miss M. Dunn, Miss E. Dunn, Miss M. Anderson, Mrs. F. Johnson, Miss H. S. Cummings, Miss Eita Lee, Miss Peabody, Mrs. K. Bonke, Mrs. D. R. Peiler, R. T. Snider, Miss L. Day, Tom Onokea, J. H. Coney, G. F. Winter, John Neil, C. W. Spitz and 27 deck.

The following sailed by the W. G. Hall last Tuesday afternoon for Honolulu:

A POSTER DESIGN FOR THE CARNIVAL

(Special Correspondence.)
Honolulu—The poster design for the 1915 Mid-Pacific Carnival is perhaps one of the most attractive and typically Hawaiian works of art seen in Honolulu in a long while. The design was selected by the Promotion Committee out of a collection of 18, and after considerable discussion as to the merits of each individual work submitted. The designer, Cirilo, Salonga, a young Filipino, is a local newspaper artist, and has done some exceedingly clever work during his brief stay in Honolulu.

The design is patterned after an idea suggested by the board of directors of the Carnival, the members having stated, when the matter was first brought to their attention, that it was their idea to this year stay as far away as possible from posters depicting surf riders. The 1915 poster design depicts a Hawaiian girl, beautiful of face and form, and dressed in grass skirt with head and shoulders adorned with leis, seated under a clump of banana trees and scattering flowers over a crowd of persons bathing at Waikiki Beach in the shadows of Diamond Head. The entire design is one which spells Hawaii at first glance.

The Promotion Committee shortly will call for bids for printing the posters, and for the reproduction of the design on mailing cards, postal cards and stickers.

Misses Marion and Eva Hastie and Miss Margaret McClymont returned last Wednesday from Honolulu where they had been spending part of the Summer.

M. Keawe, S. Keawe, S. Ahoi, L. Veng, Miss O. Kounea, Mrs. A. Adams, J. Huddy, Mrs. Huddy, Geo. K. Ewaliko, Paul Talley, Geo. Bromley, F. A. McBryde, B. D. Baldwin, Dr. Derby, J. B. Blacksheer, B. H. Atwood, L. A. Dickey, N. C. Hayes, Miss A. Heuer, Miss M. Kleugel, E. Broadbent, J. H. Coney, Mrs. Hanson, M. Hanson, C. W. Spitz, members of Juvenile Postonians and 42 deck.

THE EXCURSION TO MAUI CONVENTION

The Kauai Chamber of Commerce has been definitely apportioned twenty delegates to the Civic Convention on Maui, which will take place October 3-5. The Likelike will take the party from here to Honolulu, leaving the afternoon of October 1. To Maui the excursionists will travel in the Mauna Loa.

So far sixteen members of the Chamber have signified their intention of going, but it is doubtful that some of them will be able to get away. The roll will be kept open for a couple of weeks more, when it is expected that it will be full.

The Kauai excursionists will be away from the island from Thursday afternoon to Wednesday morning, or five full days and six nights. One day going and one returning will be spent in Honolulu, giving three days to Maui. The fare for the round trip will be \$18.

Intimation has come from Honolulu that the Honolulu Chamber of Commerce will back Kauai in her efforts to secure the 1915 Civic Convention, although the matter is still to come before the Honolulu Chamber for definite action.

Of the arrangements on Maui for the Convention, the Weekly Times of Wailuku, says:

A meeting of the Civic Convention Committee of the Maui Chamber of Commerce was held on Thursday of last week at which Director E. R. Bevins made a report of the progress of arrangements for the Convention which is to be held here October 3rd to 5th inclusive.

The report showed the arrangements progressing satisfactory. Replies from all of the civic bodies in the Territory have been received expressing the intention of participating, and large delegations will attend from all of these bodies. The board of supervisors of the various counties have been invited also and everything points to a fine attendance and much good will undoubtedly result from the convention.

From information at hand there will be close to 200 delegates from the other Islands when the Convention opens. These are apportioned approximately as follows: Kauai 20, Hilo 35, Kona 5, Kohala 3, Oahu 125. Governor Pinkham will be present as the guest of the Chamber of Commerce.

An interesting program is being worked out and topics of general interest will be discussed, all for

HIGH SUGAR FOR TWO YEARS MORE

The Christian Science Monitor draws the following conclusions of the sugar outlook:

It is getting to be the general opinion of the sugar trade that sugar prices will be high throughout the world for the next two years. Perhaps the present level may be too high and some recession may be in order. But the outlook is so strong for continued high prices for two years that estimates of the United Fruit Company's sugar earnings for 1915 are being roughly computed. It would not be surprising if the Fruit Company cleared between \$2,000,000 and \$3,000,000 from its 1915 sugar operations. This is based upon the supposition that the dry spell which is affecting the south side of Cuba does not cut down the cane yield of the Fruit Company plantations on the north shore and that the European war will produce the expected shortage in the beet sugar crops of the continent.

In 1911 and 1912, when adverse weather reduced the beet sugar yield of Company, Austria and France by 1,000,000 tons, sugar went to 6.61 cents per pound for refined and 4.60 for raws. This was higher than any prices for raws and refined which have yet been named.

No one can possibly estimate the decrease in the European crop which will come from war conditions. Europe produces 8,400,000 tons of beet sugar yearly, and of this total 75 per cent comes from Germany, Austria, Russia and France, the countries where military operations are expected to do the most damage to the fields, and where loss of agricultural help will bring about the greatest deminution of yield. It will not be surprising if the war does mean more than a 1,000,000 ton decrease in the harvest due to start in the next three weeks and no one can possibly foresee what the decrease in plantings for the 1915 crop will amount to. A 2,000,000-ton shrinkage in 1915 would not be at all surprising, and it might easily run more.

the good of the Territory of Hawaii. Sunday October 4th will be a sort of recreation day when the visiting delegates will be shown over the Island from one end to the other. A number of the visiting delegates will undoubtedly avail themselves of the opportunity of going to the top of Haleakala. Those who wish to make this trip will be notified that they will be expected to provide their own saddles, rain-coats etc., outside of these items all arrangements will be made locally.

You must know that
"In 'UNION' there is Strength"

If you are a fuel user you're sure that in

- "UNION" Gasoline
- "UNION" Distillate
- "UNION", Kerosene

there is more strength and less waste during combustion than other brands can claim.

SPECIFY "UNION" FUEL OILS
WHEN YOU CALL AT YOUR DEALER'S

S. OZAKI
WAIMEA

Wholesale Liquor Dealer

Telephone No. 102.

You can trust us to send the kind and quality of shoes you HOPE to get-- (for men, women or children)--and we are glad to prepay the postal charges. Your order will be filled the day we receive your letter.

Manufacturer's Shoe Store

Honolulu

Henry Waterhouse Trust Co., Ltd.

buys and sells
REAL ESTATE and
STOCKS and BONDS
and rents
SAFE DEPOSIT BOXES

Fort and Merchant Sts. Honolulu



Bakes to Perfection

"I had no idea this Oil Cook Stove would bake bread and cook everything just like my steel range. But it does. And best of all my kitchen stays cool these hot days. Besides, there's no coal or wood or ashes to lug. Oh, I'm delighted with it."

New Perfection OIL COOK STOVE

It bakes, broils, roasts and toasts—perfectly. It does all that any wood or coal stove can do—and at less cost. It doesn't smoke; doesn't taint the food. Clean, safe, convenient. Ask to see it at your dealer's.

FOR BEST RESULTS
USE HONOLULU
STAR OIL

STANDARD OIL COMPANY
(California)
Honolulu

C. B. Morse, of Eleele, who was in business, returned home last Wednesday morning.

THE PRIMARY ELECTION

Continued from page 1

chairman; M. J. Perriera and H. M. Nawai. Peculiarities were that both Kuhio and McCandless ran ahead of Rice, Mikaele ahead of Knudsen, while Kula and Chandler led Coney, Fassoth and Lota in this precinct.

Makaweli, the fourth precinct, reputed the stronghold of George R. Carter, was in charge of Guy F. Ranken, chairman; E. G. K. Deverill and Oscar Paulua. This precinct gave Kuhio its majority vote, that candidate polling 56 to Rice's 16. Carter and McCandless broke even at 10 apiece. Mikaele ran ahead of Knudsen here also, 33 to 31. All of the Republican candidates for the House ranged in the 40's, while the Democrat, Chandler, received 31 votes.

Wahiawa (McBryde Mill) precinct was presided over by R. D. Moler, as chairman; Noa Maopoi and Kapahu Kanekahi. At this place Rice ran high, polling 50 votes to McCandless 33 and Kuhio only 6. For the Senate Mikaele again ran ahead of Knudsen, the vote being 50 to 28. Coney was high man for the House, polling 50 votes.

At Koloa the polls were presided over by J. K. Farley, as chairman; G. K. Hoopii and Geo. Manoho Rice and McCandless ran close together here, the former receiving 39 and the latter 37 votes. Kuhio had to be content with 12. As was to have been expected, Kula ran high for the House there, his vote being 50. The next highest was Chandler, the Democrat, with 45.

Lihue precinct was presided over by Herman Wolters as chairman, H. Kanikanihia and Makai Kealuala. Rice, of course, carried that precinct by a large majority, he polling 164 to Kuhio 31, McCandless 12, Woods 3 and Carter 1. For the Senate, Knudsen ran away ahead of Mikaele, showing up with 122 to the latter's 35—although Mikaele spent the whole day at these polls, smiling and button-holing voters. A little surprise was that both Kula and Lota ran slightly ahead of J. H. Coney (This being Coney's precinct), those candidates polling 157 each to Coney's 154.

The eighth precinct (Kawaihau) was in charge of C. B. Gray, chairman; Philip Migell and J. K. Kaaui. McCandless led there for delegate, polling 55 to Rice's 46 and Kuhio's 35. Mikaele again ran ahead of Knudsen, 78 to 31. Lota headed the House ticket, with 79, being followed by Kula and

Chandler with 63 each. Kilauea precinct was looked after by Robert Scott, chairman; Dan Lovell and John Akana. Rice, Knudsen, Lota and Kula took the honors in this precinct.

The Hanalei officers were W. F. Sanborn, chairman; Noa Kai-leiki and J. K. Kuapuni. As has been figured, Kuhio led with 77 votes, Rice coming next with 32, while the other candidates trailed far behind. For the Senate, Mikaele polled 48 against Knudsen's 40. Lota, quite naturally, led for the House, his vote being 106. Kula was next high, with 91.

WHAT PRIMARY MEANS

The results of the primary election mean to Kauai simply that Rice and Palmer Woods will not be in the running for Congress on November 3. The names of Kuhio, McCandless, Carter and Kamahele will appear on the ticket to be voted for delegate to congress, unless, indeed, one or more of them should withdraw, which is not improbable. The ticket for the Senate will remain the same—Knudsen vs. Mikaele and the House ticket will also remain the same (Coney vs. Kula, Fassoth, Lota and Chandler) on account of the provision in the Organic Act which indirectly requires that members of the Legislature shall be elected in November.

Rice, being a hold-over senator, will finish his term of two or more years in the upper house of the Legislature.

J. O. Lutted has received a sampan load of pineapple plants from Oahu which he is busy setting out on his place at Waipouli. He is going into the business on quite a large scale.

Elections Of Officers

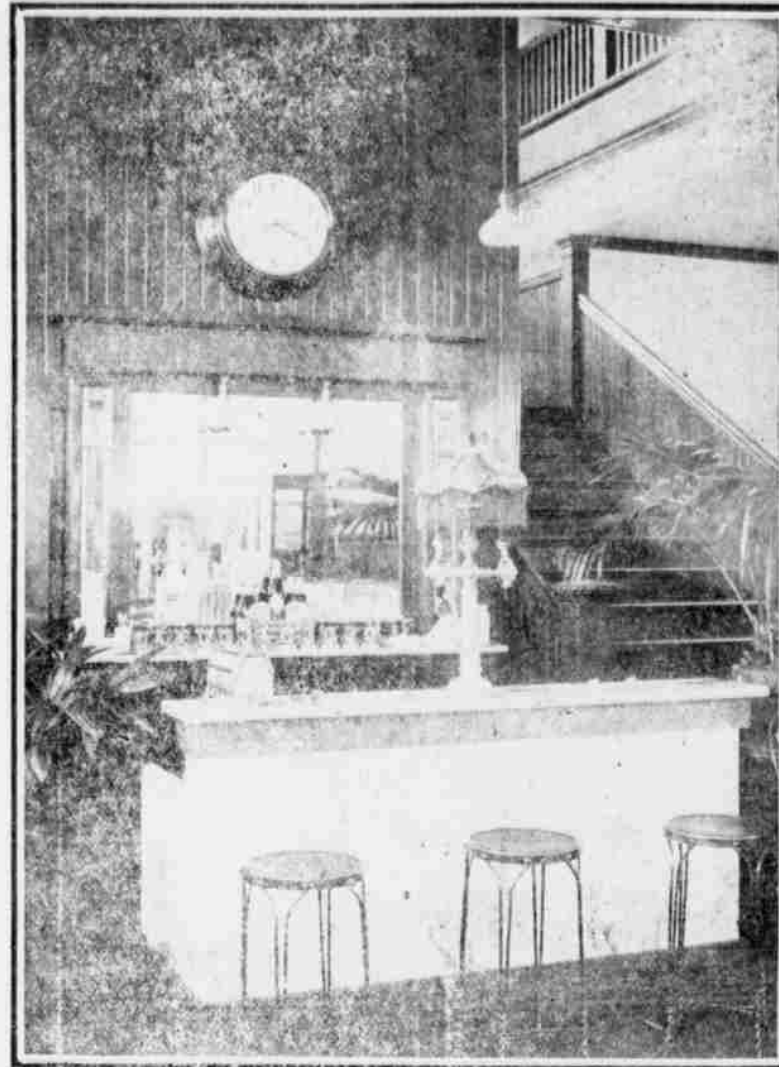
At the annual meeting of the Wainiha Ina Land held at Wainiha, Kauai, on the 3rd. Sept. 1914, the following officers were re-elected to hold office for the ensuing year.

James K. Apolo, President and Director; James K. Lota, Luna nui and Director; Wm. Werner, Secretary and Director; Henry Birkmyre, Treasurer and Director; D. Kanealii, Director; E. Kuapuni, Director; S. K. Kapua, Director; J. M. Lydgate, Auditor. (Sgd.)

WM. WERNER, Secretary.

Hanalei, Kauai, Sept. 8th, 1914. 4t.

The Coolest Place in Town



Lihue Store Soda Fountain

ELEELE STORE

J. I. Silva, Prop.

ONE of the LEADING HOUSES for all kinds of DRY GOODS, BOOTS & SHOES, MEN'S FURNISHINGS, CIGARS & TOBACCOS and NOTIONS of every description. FOR WINE, BEER and OTHER LIQUORS. Ring Up 73 W. Main Office, Eleele, Kauai. Tel. 71 W.

MAX GREENBAUGH

MANUFACTURERS' AGENT

KAUAI CORRESPONDENCE INVITED

Office: HAWAIIAN HOTEL

P. O. Box 524

HONOLULU

TENDERS MACADAMIZING

The Supervisors of the County of Kauai will receive sealed Tenders until 10 o'clock a. m. of Oct. 7th 1914, for furnishing all Material, Tools, Labor and Machinery and macadamizing three miles of road between Waikoko Bridge and Hoensopu Bats. Also for furnishing all Material, Tools, Labor and machinery and macadamizing 4500 feet of road from the residence of Wm. Werner to the Hanalei Landing, and 850 feet of road from the Hanalei Landing to the main road and to the landing road.

All in the District of Hanalei Bids to be accompanied by a certified check in our firm to 80% of the amount of bid.

Bonds as required by law. Plans and specifications will be furnished for the sum of \$5.00 on application to the undersigned.

J. H. MORAGNE, County Road Supervisor, Lihue, Kauai, Sept. 8-15-22-29, Oct. 6.

Wanted young girl to assist in taking care of young child in Honolulu. Address stating age, experience, references, salary required and nationality. D. P. O. Box 561 Honolulu. 3t.

ANNOUNCEMENTS

(In this column, continuing until election day, will appear the cards of candidates for the Hawaiian Legislature. Voters are urged to read them over carefully each week, and act accordingly).

FOR THE SENATE

Kekaha, Kauai, Sept. 15, 1914. To The Voters Of Kauai:

I wish to extend my sincere thanks to the voters of Kauai for the support given me in the primary for the Republican nomination for the Senate.

I feel that I can rely upon my past record in the Senate as a legitimate and reasonable basis of appeal to the voters of Kauai for their support at the polls in November.

Very truly yours,

E. A. KNUDSEN.



HON. J. H. CONEY.

FOR THE LEGISLATURE

To The Voters of Kauai:

I beg to acknowledge, with thanks, the support given me in all the precincts in the primary for the nomination on the Republican ticket for the House.

Soliciting your individual and united support, in the campaign, and at the polls in November, I am, Cordially yours,

J. H. CONEY,

Representative Sixth District, Sept. 15, 1914.

FOR THE HOUSE OF REPRESENTATIVES

To the Voters of Kauai:

I take this occasion to thank everyone who voted for me in the primary and gave me the nomination as a Republican candidate for the House of Representatives.

If elected, I promise the people of this island a vigorous and intelligent administration of their affairs.

I solicit your support and votes at the regular election in November.

Sincerely yours,

JAMES K. KULA

Koloa, Kauai, Sept. 15, 1914.

The Honolulu Construction & Drying Co. Ltd., Owners of Hawaiian Express Co. and Nieper's Express, solicit the handling of your baggage upon arrival at Honolulu. Our men meet all Kauai Steamers and special attention is paid to Kauai baggage. Prompt and Reliable delivery. Advt.

Dr. Derby, the dentist, will return from Honolulu by the W. G. Hall next Friday, the 18th. Advt.

LOST

Check No. 316 on Bank of Hawaii, drawn by W. H. Rice in favor of R. Puuki. Payment is stopped on same.

Sept. 15-22-29-Oct. 6.

Koloa Plantation Store

Wholesale and Retail Groceries. Dry Goods of all Descriptions. General Plantation Supplies.

BY AUTHORITY

IN THE CIRCUIT COURT, FIFTH CIRCUIT, TERRITORY OF HAWAII

At Chambers - In Probate.

In the Matter of the Estate of Kamaliwahine Kahukina, deceased.

Notice to Creditors.

Notice is hereby given that the undersigned has been appointed and has qualified as Administrator with the will annexed of the estate of Kamaliwahine Kahukina, deceased. All persons indebted to the Estate of Kamaliwahine Kahukina, deceased, are hereby notified to make immediate payment to the undersigned at its office No. 120 South King Street, Honolulu, Territory of Hawaii. All creditors of the said Estate of Kamaliwahine Kahukina, deceased, are hereby notified to present their claims, duly authenticated and with proper vouchers attached (if any exist) even though such claims be secured by mortgage of real estate, to the undersigned at said office of Hawaiian Trust Company, Limited, Honolulu, Territory of Hawaii, within six months from date hereof which is the date of the first publication of this notice, or within six months after the same shall become due or such claims shall be forever barred.

Dated at Honolulu, T. H. Aug. 25th, 1914.

HAWAIIAN TRUST COMPANY, LIMITED.

Administrator with the will annexed of the estate of Kamaliwahine Kahukina, deceased. Aug. 25th. Sep. 1, 8, 15 and 22.

YOU will always remember your trip ACROSS

THE AMERICAN CONTINENT

If you travel via

The Seaside Line of the World

Through the

Feather River Canyon and the

Royal Gorge.

Denver & Rio Grande

Western Pacific

FRED L. WALDRON, LTD., Agents Honolulu

SCHOOL SHOES.

Big stock—every pair new—plenty of every size—all good, sturdy shoes for school wear.

In Black Vici Kid and Tan Calf— and also in White Nu-Buck for lighter wear.

Children, sizes 6 1-2 to 8.....\$2.25

" " 8 1-2 to 11..... 2.50

Misses, sizes 11 1-2 to 2..... 2.75

For Young Ladies, College Boots with Low Heels, \$3, \$3.50 and \$4.

REGAL SHOE STORE

Pantheon Building.....Honolulu.

We pay Parcel Post Charges.

FOR SALE

Two seater and double rumble Overland automobile in good condition. Will sell for cash very low.

Apply, M. J. Fassoth, Makaweli.

CALIFORNIA FEED CO.

LIMITED.

Dealers in

HAY, GRAIN AND CHICKEN SUPPLIES.

Sole Agents for

International Stock, Poultry Food and other specialties. Arable for cooling Iron Roofs, Petaluma Incubators and Brooders.

KING'S SPECIAL CHICK FOOD

P. O. Box 452, Honolulu

WALL & DOUGHERTY

Announce that

Mr. Dougherty

will visit Kauai during

October or November and

will take pleasure in

showing to their patrons

many rare and exclusive

articles in jewelry, gold

and silver ware, and glass

that have been critically

selected with the view of

pleasing the most painstaking

holiday giver.

ORDER A BOX OF

Haas's Delicious Candy

"ALWAYS FRESH"

Prepared by

BENSON, SMITH & CO., LTD.

Box 428, Honolulu

Assorted Chocolates and Bon Bons 50c per pound; \$1.25
Dollars. Milk Chocolates 30c small boxes; \$1.00
large boxes. No charge for postage.

THE REXALL STORE