



PROFESSIONAL CARDS

ATTORNEYS

JOHN RICHARDSON
ATTORNEY AT LAW
AND NOTARY PUBLIC
LAHAINA, MAUI

ANTONIO F. TAVARES
ATTORNEY AT LAW
AND NOTARY PUBLIC.
MAKAWAO, MAUI

J. M. KANEKUA
ATTORNEY AND COUNSELLOR
AT LAW.
Office: Occidental Hotel, corner of King and
Alakoa Streets.
HONOLULU, T. H.

P. N. KAHOKUOLUNA
ATTORNEY AT LAW
&
NOTARY PUBLIC
LAHAINA MAUI

PHYSICIANS

WILLIAM PETERS, M. D.
PHYSICIAN & SURGEON
LAHAINA MAUI

DR. JOHN WEDDICK,
WAILUKU.
OFFICE HOURS:
8 to 10 A. M. 1 to 4 P. M. OFFICE
10 A. M. HOSPITAL 7 to 8 P. M. OFFICE
Except when away on urgent Call.

DR. ROBT DINEGAR.
PHYSICIAN & SURGEON
SPECKELSVILLE; Monday, Wednesday
and Saturday. KIHU; Tuesday, Thurs-
day and Friday.
Telephone Connection.

W. F. McCONKEY, M. D.
PHYSICIAN & SURGEON
PAIA, MAUI

DR. K. SOGA.
PHYSICIAN & SURGEON
OFFICE HOURS 9 to 12 A. M.
VINEYARD St. : : WAILUKU

DENTISTS

W. RUSSELL BOOTE, D. D. S.
DENTIST
Office, MAIN AND MARKET
WAILUKU, MAUI

GEO. S. AIKEN, D. D. S.
DENTIST
Office Hours, 9 A. M. to 4 P. M.
SUNNYSIDE, PAIA, : : MAUI.

SURVEYORS

H. ELDREDGE.
Civil Engineer and Surveyor
WAILUKU MAUI

P. E. LAMAR
Civil & Mining Engineer
and
Surveyor
WAILUKU MAUI

R. C. SEARLE
Auctioneer
FOR THE DISTRICT OF
Lahaina Maui, T. H.
HENRY DICKENSON,
NOTARY PUBLIC.
LAHAINA, MAUI

GEO. H. DUNN
NOTARY PUBLIC
LAHAINA, MAUI

HARRY ARMITAGE,
STOCK AND BOND BROKER.
Member of Honolulu Stock Exchange, Office
Campbell Block, Merchant Street,
Telephone Main 101, P. O. Box 688

RESTAURANT
ICE CREAM ON SATURDAYS
IN NEW K. of P. HALL
Wailuku, Maui.
AH KEE Prop.

TONSORIAL PARLORS
AT
MAUI HOTEL
Artistic Hair Cutting & Shaving
GUS. HUTCHISON Prop.

Candy
Send 75c \$1.00 \$1.25
or \$1.50 for a nice box of Chocolates
and confections, sent post or freight
free to any part of the Islands.

Hart & Co., Ltd.
Honolulu, H. T.

L. M. Vetlesen
ACCOUNTANT & GENERAL BUSINESS
Agent

LIFE AND FIRE INSURANCE
BILLS COLLECTED
LAHAINA, MAUI

KAHULUI & WAILUKU
Transportation Co.
C. T. GREEN, Prop.
Hauling of all Kinds at reason-
able rates
Office at Kahului & Wailuku
Storage at Kahului if desired.

LIVERY STABLES
NOTICE.

WAILUKU-LAHAINA STAGE,
Hacks between WAILUKU and
LAHAINA, two or three passen-
gers, \$2.50 each person.

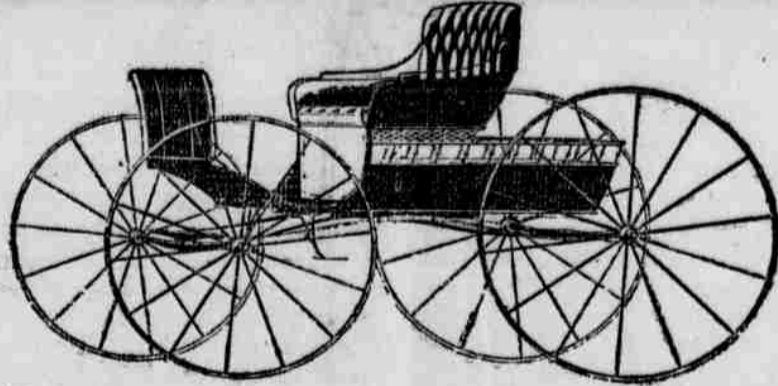
A. DO REGO & CO.
LADY STABLES, WAILUKU, TEL. 13.
LAHAINA STABLES, LAHAINA, TEL 183

Paia Stables
E. H. PIEPER, Prop.

Hacks and Carriages to let
at all hours.
Meet all
PAIA TRAINS.
Tel. No. 244.
PAIA MAUI

OKAMURA STABLES
OKAMURA, Prop.
Hacks, Buggies & Saddle Horses
At All Hours.
Cheap Rates Between
Lahaina and Wailuku
LAHAINA, MAUI

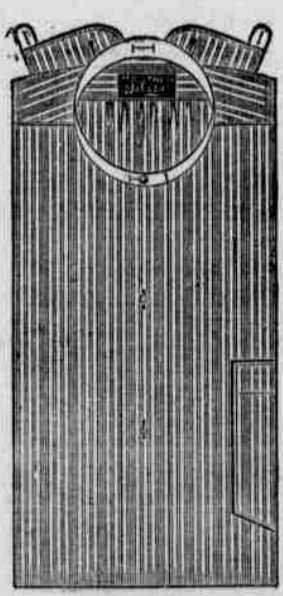
The Singer Mfg Co.
WE SELL MACHINES ON INSTALLMENT
Plan of \$5.00 Per Month
OLD MACHINES TAKEN IN EXCHANGE
Office "CORNER STORE."
L. J. EKBERG, Agent Wailuku, Maui.
We Carry the Largest and Most Complete Line of Vehicles on the Islands



We Can Furnish Anything From a Dump Cart to a Carriage
at a PRICE Lower Than You Can Get Elsewhere
Agents For STUDEBAKER MFG CO.
G. SCHUMAN, Ltd. MERCHANT St., HONOLULU.

A KODAK IN THE HOME
THE children grow up and you have a pictured
story of their growing. Not only that, but all the
interesting events of the year.
THE cost is small, because we are selling EAST-
MAN KODAKS at 20 per cent below regular
price.
THE outdoor exercise add to health, education
and enjoyment.
WRITE FOR PRICES AND CATALOGUES.
Honolulu Photo Supply Co
HONOLULU, H. T.

Gold & Silver



Gold Shirt Waists
Silver Shirts

Fit Right
Look Right
Are Right

Wear one and You are Right
KAHULUI STORE.



WAILUKU & LAHAINA DAILY STAGE
IAO STABLES WAILUKU
LAHAINA STABLES LAHAINA
Hacks, Carriages, Buggies and Saddle Horses
at all hours. Meet all Steamers and Trains.
Mail Stage Leaves {Lahaina 8 a. m.} Daily
{Wailuku 12 a. m.}
A. DO REGO, Manager.

TELEGRAPHIC ITEMS

China objects to the exclusion of
her subjects from the Philippines.
The meat trust of New York is
planning to form a colossal food trust.
The British Navy has accepted
one of the Holland submarine torpedo
boats.

The Cuban bill passed the House,
with an amendment aimed at the
trusts.
New York is to erect another large
apartment hotel, eighteen stories in
height.

Joseph Austin, a prominent San
Franciscan has just died of blood poi-
soning.
The House has agreed to accept
the amended Senate bill for the ex-
clusion of Chinese.

The rebellion in Southern China is
very serious, all trade beyond Nan
Ning being paralyzed.
3,500 street car men have gone on
a strike in San Francisco, practically
tying up street car travel.

The prices of wheat and flour in
Great Britain have been sharply ad-
vanced by British dealers.
The Chamber of Representatives
of Belgium refused, by a vote of 84
to 64, to grant universal suffrage.

The treaty just signed between
Russia and China compels Russia to
evacuate Manchuria within a year.
Serious riots have occurred at
several points in Belgium, and many
socialists have been killed by the civic
guards.

Rev. Henry B. Restarick, rector of
St. Paul's Church, of San Diego,
Cal., has been selected as Bishop of
Honolulu.

Senator von Plehwe has been ap-
pointed to succeed the assassinated
M. Sipaguine as Minister of the In-
terior, in Russia.

Taft will visit the Vatican, on his
way back to the Philippines, to settle
the question respecting the Philip-
pine friars' lands.
Malvar, the last prominent Filipino
leader has unconditionally surren-
dered, and the end of the Philippine
war has been reached.

J. Pierpont Morgan has effected a
combine of nearly all the great Trans-
atlantic steamship companies, ex-
cept the German lines.
Mrs Muriata, widow of the once
noted California desperado, Joaquin
Muriata, was recently killed by a
passing train, at Bakersfield.

A recent earthquake recently up-
heaved the beds of the Black and
Caspian seas, rendering several har-
bors unapproachable by large vessels.
Louis Bird, an English "remit-
tance man" recently attempted sui-
cide, in Shasta County, California,
through grief at the death of a pet
dog.

Gov. James P. Clark of Arkansas
will succeed Senator Jones, in the
United States senate, having won in
the recent primaries by a handsome
majority.

Six thousand textile workers at
Vienne, Department of Isere, France
are on strike, and in resulting riots
several troops and several rioters
were killed.

An American syndicate is said to
be seeking sites near Manchester,
England, for the erection of two
mammoth mills for the spinning of
American grown cotton.
Chief of Police Whitman officially
announced that the murderer of
Nora Fuller was C. R. Hadley, for
fourteen years accountant in the
business office of the Examiner.

England and Germany strongly
object to the rebate allowed on Ma-
nila hemp shipped to the United
States, as it would practically de-
stroy the English and German trade.

Prominent Republican senators are
endeavoring to induce President
Roosevelt not to remove General
Miles, and Roosevelt has consented
upon condition the Miles ceases his
offensive tactics in politics.

PAIA PLANTATION STORE

NEW

S H I R T

W A I S T S

CHEAP
Telephone
No. 55

THE CORNER STORE.

Dealers in Groceries and
Fancy Fruits.
The Grocery Department
of Mr. A. J. Rodrigues' Store
has been transferred to the
Corner Store.
Just drop in at Rodrigues'
Block, Corner Main and
Market Street, and try our
line.

Rodrigues & Rodrigues,
Proprietors.

MOON SING. MERCHANT TAILOR

Cor. of Market and Kalua Avenue,
WAILUKU, MAUI.
A new stock of TWEEDS, SERGES,
and SUIT PATTERNS
Clothes cleaned and
Pressed.

Maui News
 PUBLISHED EVERY SATURDAY.
 OFFICE, BAILLY BLOCK, MAIN ST.
 WAILUKU, MAUI, T. H.

SUBSCRIPTION RATES.
 One year, (in advance) \$2.50
 Six months 1.50

The printer of the News admits complicity in the circulation of the paper. When your name which will be kept confidential is listed.

G. B. ROBERTSON, Ed. and Prop.
 MRS. G. B. ROBERTSON, Bus. Mgr.

Saturday, May 1913

MAUI BLUE BOOK

Hon. J. W. Kania, Circuit Judge.	Wailuku
L. R. Crook, Clerk, Circuit Court.	Wailuku
Judge W. A. McKay, Dist. Magistrate.	Wailuku
Chas. Crook, " "	Makawao
Kahaloa, " "	Lahaina
Kahaloa, " "	Honouliuli
Joseph, " "	Hana
Pihonui, " "	Kipahulu
Maloe, " "	Molokai
Katoohalahala, " "	Hana
L. M. Baldwin, Sheriff.	Wailuku
A. B. Sweeney, Deputy Sheriff.	Wailuku
S. Kalama, " "	Makawao
O. R. Lindsay, " "	Lahaina
F. Whitrock, " "	Hana
G. Trimble, " "	Molokai
Captain Police.	Wailuku
H. O'Connell, " "	Makawao
W. H. Keane, " "	Lahaina
E. C. Galloway, " "	Hana
J. M. Williams, " "	Kahaloa
W. T. Robinson, Tax Assessor.	Wailuku
J. N. K. Keala, Deputy Assessor.	Wailuku
W. O. Allen, " "	Paia
G. Dunn, " "	Lahaina
J. Gross, " "	Hana

HARDLY WORTH READING.
 In the Streets of Cairo.

One of the most picturesque places in the world is undoubtedly the Egyptian city of Cairo, and not the least of its attractions are the varied and often musical street cries which assail the ears on all sides. Not only the street musicians who tap their tambourines to the admiring "Allahs" of the crowd, but the merchants and peddlers, contribute to the chorus.

A fruit seller, basket on head, with grapes and figs, will saunter by singing in a quaint minor: "Oh, grapes, oh, sweet grapes, that are larger than doves' eggs and sweeter than new cream! Oh, angels' food, delicious figs, bursting with honey, restorers of health!"

Another street cry which may be heard in the main street of Abbassieh, a suburb, contains the following enticing announcement: "Tomorrow, O people, I am going to kill a camel. The doctor says it is young and healthy. Oh its flesh will be tender as the quail and juicy as lamb. Its price is but 1 1/2 piasters (7 1/2 cents) the pound. Do you love the sweet flesh of a camel? Then come early and be satisfied!"

Not the least picturesque figures in the streets are the city police in their neat white and red uniforms in summer and blue serge in winter.—Detroit Free Press.

FOREIGN NEWS
 Early Peace Expected.

PRETORIA, April 20.—General De Wet has gone to Heilbron, Orange River Colony; General Botha, the Transvaal commander in chief, has gone to Vryheid, Transvaal, and General Delarey, together with Mr. Steyn, ex President of the Orange Free State, has gone to Klerksdorp, Transvaal. They have arranged to meet the burghers at different of the points and submit the British terms. It is believed the Transvaalers will everywhere accept the terms, as they are in no way anxious for a winter campaign. The only difficulty likely to occur will be, it is thought, with the Orange Free Staters, many of whom are expected to prove recalcitrant. In the meantime there will be no cessation of hostilities.

LONDON, April 21.—The Pretoria correspondent of the Standard cables that there is good reason to believe a tentative agreement has been arrived at which will prove mutually cordial and lead to an early cessation of hostilities.

ENGINEERS, CONTRACTORS AND BUILDERS.

CHAS. CROWELL
 CARPENTER AND CONTRACTOR
 Plans and Estimates
 Furnished on Short Notice
 Office and Shop in Gilas Building
 High St. WAILUKU.

P. E. LAMAR & CO.
 Contractors & Engineers.
 We solicit all kinds of construction work, such as Railroad, Gov't Roads, Reservoirs, Ditches, Wells, Tunnels, etc., etc.
 P. E. LAMAR,
 MEM. TECH. SOC. PAC. COAST.
 MANAGER
 Wailuku, Maui

Kalei Nani Saloon
 Wm. WHITE, Prop.
 Complete Stock
 Of
 First Class Wines & Liquors
 Primo, Seattle & Budweiser
 ICE COLD
 LAHAINA, MAUI.

If we are to have any races on Maui this year it is about time that the Maui Racing Association should begin to move in the matter. Racing on Maui has practically been killed by offering microscopic purses and confining the entries to Maui bred horses. All this should be changed. Suppose for instance that \$1200 should be hung up for purses for the July races, divided as follows: \$500 for a trotting race, best two in three, free for all; \$300 for running race, three in five, free for all; \$100 running mile dash free for all; \$100 trotting and pacing, free for all; \$100 running mile dash for Maui bred and \$100 trotting and pacing for Maui bred, with small purses or trophies for minor events. Such a program would bring all the best horses on the Islands and possibly one or two from the Coast, and the Maui people would be offered racing that they would come and pay to see, and by interspersing minor events, two good days of racing could be had. From \$400 to \$500, if not more, would be returned to the Association as entrance fees, which leaves from \$600 to \$800 to be provided for. One-third of this is now on hand, and with two days' racing, the admission tickets and privileges would make up the balance. It will go, if the Association has the nerve and energy to undertake it.

Wild Horses In Russia.

In the steppes of Russia, where wolves abound and the horses lead a wild life and have to shift for themselves, it is said that a young colt will sometimes be made so furious by the persecutions of his enemies that he will rush wildly among a drove of wolves and bite and strike until he has slaughtered a large number of them. These horses are exceptionally fierce, rendered so, it is supposed, by the extreme variations in the climate. At one time of the year they suffer from the intense heat of a tropical sun and at another they live among raging snowstorms and extreme cold.

Bryan Opposes Hill.

NEW YORK, April 20.—New York friends of William J. Bryan will fight the plan to make ex-Governor David B. Hill leader of the Democratic party in the State. The liberal Democratic party is the name of the new organization through which the Bryanites expect to encompass the defeat of Mr. Hill and his friends. Announcement of the formation of this party was made yesterday. Several of Mr. Bryan's most devoted followers are members of the subcommittee on organization.

Belgian Strike Ended.

BRUSSELS, April 20.—At a general council of the Labor party held here today it was resolved that work by the strikers in all sections should be resumed. The council issued a manifesto to the working men to this effect this afternoon. The anticipated announcement by the King of the dissolution of Parliament has not yet been made.

Frank R. Stockton Dead.

WASHINGTON, April 20.—Frank R. Stockton, the well-known novelist, died suddenly here this morning from paralysis immediately resulting from a hemorrhage of the brain. He was a guest at the banquet held Wednesday night at the National Academy of Sciences, when he was taken suddenly and mysteriously ill. The ailment did not at that time appear to be serious, and for a while the sufferer seemed to be improving, but a change for the worse came this morning and death occurred at 11 o'clock.

Philippine Cholera Conditions.

MANILA, April 19.—The United States Philippine Commission has passed a law authorizing municipalities to appropriate funds for combating epidemic diseases. The cholera situation shows no improvement. There has been a total of 388 cases and 300 deaths in Manila and 852 cases and 692 deaths in the provinces.

J. A. HARRIS
 Sign Painting, House Painting, Paper Hanging and Interior Decorating.
 Carriage Painting a Specialty. Send your carriages and buggies to my shop for repainting.
 SKATING RINK, Wailuku, Maui.

JAMES H. PAINTER
 Scientific Horse Shoeing
 CARRIAGES, BUGGIES AND WAGONS BUILT, REPAIRED AND PAINTED.
 GENERAL BLACKSMITHING
 SHOP IN OLD J. H. KING BUILDING, NEAR CORNER MAIN & MARKET STREETS.
 WAILUKU, MAUI.

The Aloha Saloon
 T. B. LYONS, PROP.
 Ice Cold Beer
 ALWAYS ON HAND
 First Class Wines & Liquors
 Primo and Seattle Beer
 MARKET ST., (Adjoining old Meat Market).
 WAILUKU MAUI.

McFarlane & Co.
 OPPOSITE WAILUKU, DEPOT
 Wholesale & Retail Liquor Dealers
 AGENTS FOR
 Schlitz Beer that made Milwaukee famous, Anheuser Busch & John Wieland New Brew. O. P. S. Bourbon, Rye & Sour-mash. Old Gov't, Old Pepper & Cape Horn Whiskey. Duffy's pure malt & Tread's pure malt Whiskey Spruance-Stanley's famous O.F.C. Ken-favorite Celebrated John Dewar & D.C.L. Scotch Whiskey D. C. L. Old Tom, & London Dry, Honey-suckle Palm Tree, & Palm Boon Gin. Hennessy's *** Brandy & Australian Boomerang Kohler & Van Bergens wine & the famous Inglo nook wines, G.H. Mumm & Co. ex-dry Champagne
 We make a specialty of shipping.

From present indications, it may be surmised that the Home Rulers have the situation well in hand. If it be true, as his friends now claim, that Prince Cupid is simply awaiting the arrival of Wilcox, in order to enroll under his banner, it may be assumed that a large number of the more intelligent Hawaiians, who allowed themselves to be led "over the pall" politically by the republicans and democrats at the last election, will follow the leadership of Prince Cupid into the Home Rule ranks. This will give the Home Rulers plenty of excellent material to draw from in making their legislative nominations, thus excluding the riff-raff whom they were compelled to foist upon the people two years ago. In the meantime the Honolulu republican press will likely, in the future as in the past, continue their vindictive and debilitating war upon each other, thus leaving the Home Rulers to serenely and successfully work out their own plans.

Fish Bites In Submarine Cables.

Interference with submarine cable service due to fish bites occurs from time to time in shallow water, but lines in deep water have not hitherto suffered from this cause. An English telegraph company, however, now reports that in repairing a fault in one of their cables at a depth of 330 fathoms the section removed was found to contain a tooth firmly fixed in the core of the cable, although the core was protected by the usual sheathing of thick iron wires and insulating material. An examination of the tooth showed it to be from some species of shark.

Dread of the "Foreign Devil."

A high premium seems to be placed upon the foreigner's power in the Chinese courts, at least in a certain country in Eastern Shantung. A certain man had a lawsuit which seems to have gone against him in spite of all ordinary measures. He suddenly left for Chefoo, but soon returned and announced to his adversary that he has bought a foreign title. To prove the genuineness of his claim in official rack, he donned a suit of foreign clothes and flourished a cane. This was enough. The opposing parties sued for peace and gave up the case.

T. BURLEM
 Contractor & Builder
 (Formerly Head Carpenter at Kihoe.)
 Has located at Wailuku. Building Contracts taken in all parts of the Island. A large force of skilled assistants always on hand.
 P. O. Box 63 Tel. No. 293

LAHAINA SALOON
 MATT. McCANN PROPRIETOR
 Choice Brands
 Of
 America & Scotch Whiskey
 Beer, Ale AND Wine
 Ice Cold Drinks.
 Lahaina, Maui T. H.

The real work which the United States has to do in the Philippines has just now begun. It was merely a matter of expensive detail to thrash the half savage Filipinos into submission, and it will be an easy matter to keep them so. But the real task of the United States will be to educate these semi-savages, to teach them the elementary principles of higher civilization and self government and to unify them into a Filipino nation. This can and will be done, but it will not be the work of one, perhaps not of two generations. But if the work of our country, begun on so high a plane as it has, be patiently persevered in, one century will see the Philippines one of the most prosperous and enlightened countries on earth.

Salvation Army Meetings.

SATURDAY.
 Waikapu. Junior meeting at 2 p.m. Wailuku. Open Air at 7 p. m. and Indoor meeting at 7:30 p. m.
SUNDAY.
 Wailuku. Knee drill at 10 a. m. Jail meeting at 10:30 a.m. Junior meeting at 3 p. m. Open air at 7 p. m. Indoor meeting at 7:30.
 Paunene. Junior meeting at 9 a. m. Open air at 9:30 a.m. Indoor meeting at 10 a. m.
 Spreckelsville. Junior meeting at 11 a. m.
 Kahului. Junior meeting at 1 p. m.
MONDAY.
 Wailuku. Soldiers meeting at 7:30 p. m.
TUESDAY.
 Hamakua. Junior meeting at 3 p. m. Open air at 7 p. m. Indoor meeting at 7:30 p. m.
WEDNESDAY.
 Pauwela. Junior meeting at 2 p. m. Open air at 7 p. m. Indoor meeting at 7:30 p. m.
THURSDAY.
 Kihel. Junior meeting at 2 p. m. Wailuku. Open air at 7. m. Indoor meeting at 7:30 p. m.
FRIDAY.
 Waihee. Junior meeting at 2 p. m. Open Air at 7 p. m. Indoor meeting at 7:30 p. m.

KAHULUI
R. R. CO.
 IMPORTERS
 And Dealers in
LUMBER
COAL
BUILDING MATERIAL
AGENTS
Wilder S. S. Co.
 Terminals at Wailuku, Spreckelsville and Paia.
 CENTRAL OFFICE
Kahului, Maui.

Famous Bartlett Water
 The Best Medical and Table Water in the World.
 Bottled only at the celebrated Bartlett Springs, Lake County, Cal., without exposure to the air.
 Thousands of remarkable cures have been effected by this water.
DRINK IT AT HOME
LOVEJOY & CO.
 Sole Distributors for the Territory of Hawaii
 Corner Market and Main St. Wailuku, Maui

There is a duty which the ladies of Wailuku owe to the social side of our community, and which should be deferred no longer, and that is to unite for the promotion of social evening gatherings. We are a young community in one sense, and are hardly acquainted with each other yet, in a social way. The young men of Wailuku are sometimes contented for seeking risqué methods of relaxation, but what can they do? There is practically no social side to our village life, and the ladies,—they only,—have it in their hands to organize a series of evening socials, ranging from blind man's buff to pink teas, which would bring together the best element of Wailuku society. Please do, ladies.

The native camels of Siberia are a source of constant wonder to travelers. On the Mongolian plateau, for instance, the thermometer often registers a temperature of 40 degrees below zero, but the camels do not mind it at all, walking about as blithely as if the weather were as balmy as spring. On the other hand, the temperature on the Gold desert in summer is sometimes 140 degrees above zero, and the beasts mind that heat just as little as they do the extreme cold.

The latest fake story afloat is that Emperor William of Germany is trying to arrange a match between his eldest son and Miss Alice Roosevelt. We are willing to wager that when this young lady finally marries, her husband will be a big husky young American without a title attachment to his name. No royalty for her, mark the prophecy.

KAHULUI
R. R. CO.
 IMPORTERS
 And Dealers in
LUMBER
COAL
BUILDING MATERIAL
AGENTS
Wilder S. S. Co.
 Terminals at Wailuku, Spreckelsville and Paia.
 CENTRAL OFFICE
Kahului, Maui.

LAHAINA SALOON
 MATT. McCANN PROPRIETOR
 Choice Brands
 Of
 America & Scotch Whiskey
 Beer, Ale AND Wine
 Ice Cold Drinks.
 Lahaina, Maui T. H.

With the indorsement of Gov. Dole by President Roosevelt, the path is cleared for harmonious action by the people of the territory; and all would be harmonious, if the Honolulu press would lead the way. The Advertiser, which should take the initiative, must change its vindictive tone, Yardley's bitter and stinging political cartoons should be suppressed, Walter Smith's editorials should flow with milk and honey, opposition men and their opinions should be treated with the respect due them, and a coalition of the best haole and Hawaiian element should be sedulously fostered. All of this can and should be done.

The News predicted several months ago that a ground swell would come from deep down in American politics when the Cuban crisis arrived, and that Hawaii and the beet sugar interests would be protected, and the last advices from the Coast emphatically confirm the glad news. It required no profound foresight to foretell this, because no one man, not even Roosevelt himself, can direct Americans against their own interests. And if President Roosevelt does not learn and profit by the lesson just read to him, he will plunge both himself and the republican party into hopeless defeat at the next general election.

The question of what caused the growth of Wailuku during the past two years and why it should continue to grow is frequently asked. The answer is easy. To begin with, there is not a more desirable town site on the Islands, owing to its high and healthful location, its cool, balmy air, and its abundant supply of fresh, mountain water. Then, there were a number and are still some dormant business openings to be developed. Again, Wailuku is by virtue of its location the central or key town of Maui. Finally, the county seat will be located at Wailuku. It must grow more yet,—and it will.

KAHULUI
R. R. CO.
 IMPORTERS
 And Dealers in
LUMBER
COAL
BUILDING MATERIAL
AGENTS
Wilder S. S. Co.
 Terminals at Wailuku, Spreckelsville and Paia.
 CENTRAL OFFICE
Kahului, Maui.

LAHAINA SALOON
 MATT. McCANN PROPRIETOR
 Choice Brands
 Of
 America & Scotch Whiskey
 Beer, Ale AND Wine
 Ice Cold Drinks.
 Lahaina, Maui T. H.

The question of what caused the growth of Wailuku during the past two years and why it should continue to grow is frequently asked. The answer is easy. To begin with, there is not a more desirable town site on the Islands, owing to its high and healthful location, its cool, balmy air, and its abundant supply of fresh, mountain water. Then, there were a number and are still some dormant business openings to be developed. Again, Wailuku is by virtue of its location the central or key town of Maui. Finally, the county seat will be located at Wailuku. It must grow more yet,—and it will.

The latest fake story afloat is that Emperor William of Germany is trying to arrange a match between his eldest son and Miss Alice Roosevelt. We are willing to wager that when this young lady finally marries, her husband will be a big husky young American without a title attachment to his name. No royalty for her, mark the prophecy.

The question of what caused the growth of Wailuku during the past two years and why it should continue to grow is frequently asked. The answer is easy. To begin with, there is not a more desirable town site on the Islands, owing to its high and healthful location, its cool, balmy air, and its abundant supply of fresh, mountain water. Then, there were a number and are still some dormant business openings to be developed. Again, Wailuku is by virtue of its location the central or key town of Maui. Finally, the county seat will be located at Wailuku. It must grow more yet,—and it will.

KAHULUI
R. R. CO.
 IMPORTERS
 And Dealers in
LUMBER
COAL
BUILDING MATERIAL
AGENTS
Wilder S. S. Co.
 Terminals at Wailuku, Spreckelsville and Paia.
 CENTRAL OFFICE
Kahului, Maui.

LAHAINA SALOON
 MATT. McCANN PROPRIETOR
 Choice Brands
 Of
 America & Scotch Whiskey
 Beer, Ale AND Wine
 Ice Cold Drinks.
 Lahaina, Maui T. H.

LOCALS

April showers on Maui this week. There was very light travel on the steamers from Honolulu this week. For a neat rig and a nice ride, ring up the Bismirk Stables. Prompt service. Preparations are being made for boat races at Kahului, on the Fourth of July. The Iao Stables have established a regular stage line between Wailuku and Kihui. For a nice Sunday dinner, drop in at the Maui Hotel tomorrow from 6 to 7:30, P. M. This is "steamer week" in Wailuku, and money is changing hands at a lively rate. A meeting of the stockholders of the Maui Drug Co. is called for next Saturday evening. More "doings."

Hot, cold, wet, dry, sweet, sour,—you can get 'em all at Dave Meyer's Saloon, opposite Wailuku Depot. The Ladies' Guild of Wailuku will meet at the residence of Mrs. G. B. Robertson on next Tuesday afternoon. The new Enos block on Market street is nearing completion, and is a decided addition to the appearance of the street. The recent and continuous rains on Maui have produced luxurious pasturage, and the cattle on the ranges are rolling fat. Drop in to the Aloha Saloon, if you feel the need of a "refresher," and don't be afraid that Jack will give you the "shake."

The ladies should turn to the first page of this issue and look attentively for a moment at the Kahului ad. So should the men. Three sailors from the Kinross have been held for trial at the June term for alleged burglary of a saloon between Wailuku and Kihui. See the card of Mr. George B. Schrader this week. He is a fine pianist and will doubtless prove a successful teacher of music. The former law office of Attorney A. N. Kepoikai has been leased by Mr. and Mrs. Jas. H. Painter, who are remodeling and repainting it for a residence. Attorney George Hons left for Honolulu on last night's Kinau, to obtain medical treatment for his throat, which has been troubling him for some time.

MONEY TO LOAN—\$5000, in amounts of \$100 to \$2000, on approved security, may be had on reasonable terms. JAMES L. COKE Trustee Wailuku, Maui. The Maui Athletic Association have been busy this week preparing League Base Base rules. The regular monthly meeting will be held on Monday evening. David Lawrence & Co., the enterprising Honolulu tobacconists have just received 1,000,000 stogies in one order from the Collins Cigar Co. of Pittsburg, Penn.

ANNOUNCEMENT.—Mr. George B. Schrader is now prepared to give lessons on the piano forte either at his residence or at residence of pupils. For terms and particulars, write or call at Wailuku Hotel, Wailuku, Maui. Work has been commenced on the oil tank cars at Kahului, the first one having been completed in a very substantial manner. There will be eight of these tank cars in all. Col. W. H. Cornwell will hold a final auction of horses and mules at the Paia Plantation Pen on next Saturday, May 10, at which the entire band will be sold without reserve.

NOTICE.—There is still one store to let on the first floor of Pythian Hall building, and any one desiring to secure it should make immediate application to D. L. MEYERS. The meeting of the Maui Racing Association called for this evening has been postponed till next Wednesday evening, on account of the unavoidable absence of several of its prominent officers. The telephone wire between Wailuku and Lahaina was broken by a heavy wind storm one day this week, but it is needless to say that Charley Braun, the energetic line repairer at Wailuku soon had the line in working order again.

ATHLETIC NOTES.

The regular monthly meeting of the Maui Athletic Association will be held at the Wailuku court-house on Monday evening, and as the annual election of officers for the ensuing year is to be held on that evening, there should be full attendance of the members. The committee on League Rules and a schedule of games of base ball have been busy this week, and the schedule of games is appended. There are now four teams in the League, the Maui Alerts of Wailuku, the Morning Stars of Wailuku, the Waikapus and the Puenenes. On last Sunday afternoon, the Waikapus played their maiden game at Wells' Park with the Maui Alerts, and the Waikapu boys didn't do a thing to the Alerts, who by the way were much weakened by the loss of Cummings and Cornwell, who will play in the Waikapu team. When the Waikapus cross bats with the Morning Stars, fun may be expected. At a meeting of the four captains of the four Maui nines, the following gentlemen were named as Official Umpires, C. B. Cottrell and T. M. Church; the following were named as substitute Umpires, Geo. L. Keeney and E. W. Baumberger. George W. Maxwell and Jas. N. K. Keola will be Official Scorers; M. C. Ross, substitute.

There is a silver cup in sight for the winning team, and there is not the slightest doubt but that the greatest enthusiasm will be shown this season, and each team will no doubt strive hard to win the cup. A small admission fee, probably 25 cents will be charged to witness the league games, in order to raise funds for supplies. The following members comprise the respective teams: Maui Alerts. L. R. Crook, Capt.; W. R. Boote, V. L. Boeck, G. B. Schrader, J. J. Coral, Wm. Nawai, Jr., J. Potter, N. V. Aluli, Nicholas, J. Yates, John Gomes. Morning Stars. J. Garcia, Capt.; J. Pahlia, A. Jackson, T. Pickard, N. Krueger, A. Garcia, A. Palapala, T. Krueger, H. Meyers, K. Smith, Joe. Ross. Waikapus. G. Cummings, Capt.; W. H. Cornwell, Jr., W. Searle, S. Kellinoi, T. Brown, W. Enos, Opiopio, K. Silva, J. Enos. Puenenes. G. B. Henderson, Capt.; W. Dixon, C. McKinney, J. Prophet, C. R. Shaw, H. Myhre, J. S. Medeiros, W. McGerrow, A. Allen.

The following is the schedule of League Base Ball games for the season: **Maui League Baseball Schedule.** May 4 Puenene vs Maui Alerts 11 Morning Stars vs Waikapu 18 Puenene vs Waikapu 25 M. Stars vs Maui Alerts June 8 Puenene vs Morning Stars 15 Waikapu vs Maui Alerts 22 Puenene vs Maui Alerts 29 Morning Stars vs Waikapu July 6 Puenene vs Waikapu 13 M. Stars vs Maui Alerts 20 Puenene vs Morning Stars 27 Waikapu vs Maui Alerts Aug. 3 Puenene vs Maui Alerts 10 Morning Stars vs Waikapu 17 Puenene vs Waikapu 24 M. Stars vs Maui Alerts 31 Puenene vs Morning Stars Sept. 7 Waikapu vs Maui Alerts

On last Saturday afternoon the Wailuku and Puenene Polo Club played an interesting practice game at Kahului. The track has been leveled, but is very heavy and sandy in spots, sorely taxing the temper and patience of the players. Frank Baldwin captained one quartette and L. R. Crook the other, and some good playing was done, although some of the team are novices at the game. This afternoon, there will be a match game of polo at Sunnyside, between the Wailukus and Makawaos. The mallet wielders for the Makawao team will probably be D. C. Lindsay, L. von Tempky, W. O. Aiken and G. W. Wilbur, and the Wailuku team will probably be Frank Baldwin, L. R. Crook, W. H. Cornwell, Jr. and J. Thompson. This will be the first game between these two teams and the outcome will be awaited.

Huelo Happenings. The average output of sugar of Huelo Sugar Mill is at present 10 tons per day. The bridges which were damaged by the recent storms have been repaired with the exception of Pauwela bridge which was entirely washed away. Mr. G. M. Hancock, the engineer who had the management of the erection of the mill went to Hana

last Wednesday, and returning last Saturday. He reports that Hana has had its share of the recent storms, and that the pastures resemble an immense velvety green carpet. Mr. J. W. Johnson, the former sugar boiler of Hamao has accepted a similar position in Huelo plantation. Mr. P. Jones and Mr. P. Snyder, representatives of the Risdon Iron Works of San Francisco, are visiting the Huelo mill. The Huelo plantation last week made its first shipment of sugar, 1,350 bags.

LAHAINA ECHOES.

The first annual meeting of the stockholders of the Lahaina Ice Co. under its new charter was held at the Pioneer Mill Company's office last Monday evening, Apr. 28th, when the following officers were elected to serve for the ensuing year: W. L. Decoto, President; W. Henning, Vice President; A. Aalberg, Secretary; C. L. Scrimger, Treasurer and T. Koehler, Auditor. These gentlemen also constitute the Board of Directors. Several accidents have occurred lately on the new flume being constructed by the Pioneer Mill Co. in the Kahoma gulch near Mount Retreat, due, it would seem to carelessness on the part of the victims themselves. On Friday last, the 25th inst. a Japanese was killed by falling from the flume to the bottom of the gulch, a height of over 1000 ft. The sides of this canyon are said to be very precipitous, almost perpendicular, and it is supposed that he was seized with a fit of dizziness, or perhaps blown off by a sudden gust of the wind, a very strong breeze prevailing that day. Last Monday afternoon the 29th, another Japanese met his death in the same place, a rock falling from above striking him on the head and knocking him off the flume into the abyss below. A coroner's inquest was held in both cases. C. A. Buchanan of Pukoo, Molokai, came over on "Lehua" last Thursday week, and was greeted by his numerous friends. Mr. Leong Kee, merchant tailor has made an assignment for the benefit of his creditors, and Mr. L. M. Vetlesu has been appointed assignee.

The bark "C. D. Bryant," Capt. Colly, arrived at Kaanapali last Sunday, the 27th inst. 28 days from Seattle, with a cargo of coal for the Pioneer Mill Co. The schr. "C. H. Merchant" Anderson, master, finished discharging her cargo of lumber last Tuesday and cleared for Port Townsend Wednesday 30th inst. Two of the sailors left the vessel just as she was getting ready to weigh anchor, and the captain experienced "a bad quarter of an hour" in consequence, but decided to go short-handed and got away at 3:30 p.m. The weather was very blustering, with an occasional sprinkle of rain, the early part of this week, but is now of the beautiful, bright quality typical of Lahaina.

District Court Items.

Two interesting cases were tried this week, in the District Court in Wailuku. The first was the Territory vs Cyrus Green to abate a nuisance. In this case, Mr. Green, as contractor, was employed in the construction of a building on premises owned by Mrs. Aluli, on Market street. The question of the true boundary line of the street was involved, and the Sheriff who claimed that the foundations of the building encroached on Market street, ordered Mr. Green to move the building back. Mr. Green refused to do so, claiming that he was on private property, and was therefore arrested. At the trial of the case it appeared from the testimony of Mr. E. H. Bailey and Surveyor Eldredge, and from data obtained from the old Monsarrat plat of Market street that the building encroached on the street, and Mr. Green was found guilty and fined \$10. The case will be appealed. The second was the Territory vs Jack Neill, charged with the allowing the shaking of dice at the Aloha Saloon. The law provides that this is an offence in licensed saloons, and as the prosecution failed to prove to the court that the act was committed in a licensed saloon, defendant was acquitted.

NOTICE

Draft No. 1450 drawn on A. & B., for \$120, in favor of H. B. Weller has been lost. Payment has been stopped, and all persons are warned against negotiating the same. Suitable reward will be paid, if returned to Wailuku Depot. H. B. WELLER.

AUCTION SALE

At Paia Plantation Pen, Paia Maui, Saturday, May 10th, 1902. Horses, Geldings, Mares, Colts and Mules. Without Reserve. W. H. CORNWELL.

BY AUTHORITY

SEALED TENDERS.

Will be received by the Superintendent of Public Works until 1 P. M., of Monday, May 5th, 1902, for the Construction of Reservoir, Screen and Stone Chamber, etc. for Lahaina Water Works. Plans and specifications on file in Office of Superintendent of Public Works. The Superintendent reserves the right to reject any and all bids. JAMES H. BOYD, Superintendent of Public Works.

SEALED TENDERS.

Will be received by the Superintendent of Public Works until 1 P. M., on Monday, May 5th, 1902, for Laying 6 inch and 5 inch cast iron pipe, 4 inch, 3 inch, and 2 inch wrought iron pipe, hydrants, stand pipes, etc. for Lahaina Water Works. Plans and specifications on file in office of Superintendent of Public Works. The Superintendent reserves the right to reject any and all bids. JAMES H. BOYD, Superintendent of Public Works.

NOTICE

Notice is hereby given that all accounts due me are payable to J. L. Coke Attorney of Law, Wailuku Maui, and all parties indebted to me are requested to come forward at once and settle the same. Dr. K. SOGA, M. D. Wailuku Apr. 12, 1902.

NOTICE

R. A. Wadsworth of the Maui Soda & Ice Co., is agent for fresh Kahikinui Rancho Butter, put up in pound cubes and neatly wrapped in oiled paper. Orders may be left with him. Kahikinui Rancho.

Legal Notices.

Notice to Creditors. Notice is hereby given that the undersigned has been appointed Administrator of the Estate of Auwekoalani, deceased, late of Kaunaloa, Maui, and all persons having claims against said Estate even if the same are secured by mortgage upon real property, are hereby requested to present the same duly authenticated, and with proper vouchers if any exist, to the undersigned, at his office in Wailuku, Maui, H. T., within six months from the first publication of this notice. All claims not so presented will be forever barred. Dated at Wailuku, Maui, March 30th, 1902. JAMES L. COKE, Administrator of the Estate of Auwekoalani, deceased.

NOTICE.


IN THE CIRCUIT COURT OF THE SECOND Circuit, Territory of Hawaii. At Chambers, In Probate. In the Matter of the Estate of Tang Ming or Ah Ming late of Kahului, Maui, deceased, intestate. ORDER OF HEARING. On Reading and Filing the Petition of Daug Wong, Administrator of the Estate of Ah Ming, praying for an Order of sale of that undivided one-third interest, belonging to said Estate, in that certain assignment of Lease, of certain premises situated in Wailuku, Maui, and setting forth certain reasons why such interest should be sold; to wit:—That it is for the best interest of said Estate that its said interest in said lease be sold. It is hereby Ordered, that the next of kin of the said deceased and all persons interested in said Estate, appear before this Court on Thursday, the 13th day of June, A. D. 1902, at 10 A. M. at the Court House in Wailuku, Maui, then and there to show cause why an order should not be granted for the sale of such Estate. Dated at Wailuku, this 1st day of May, 1902. By the Court. (Seal) L. R. CROOK, Clerk.

Wood For Sale

CHOICE KIAWE WOOD FOR SALE BY SAM KUULA Kihui Promptly Delivered on Order Orders may be left with Geo. Maxwell, Maui News Office Ring up Telephone No. 132.

Read the Maui News.

AGENCY
Globe
Wernicke
Book Cases
and
Office Devices
Insect and
Dust Proof
Always complete but
Never Finished



Write for Catalogue and Printed List.
Pearson & Potter Co., Ltd.
THE MAIL ORDER HOUSE (Corner Union and Hotel Streets, Honolulu, H. T. P. O. Box 784.)

A FIRST-CLASS MODERN and UP-TO-DATE HOTEL
SAMPLE ROOMS FOR COMMERCIAL TRAVELERS
Large and Well Ventilated Bed Rooms and Spacious Lobbies

PIONEER HOTEL CO., Ltd.

GEO. FREELAND, Manager.
LAHAINA, ISLAND OF MAUI, H. T. (DIRECTLY OPPOSITE LAHAINA WHARF.)
Commanding View of the Pacific Ocean, Lahaina Harbor and Surrounding Islands
Billiard Room, Restaurant, Reading Room and Modern Conveniences



ROAD WAGONS, CANOPY TOP & CURTAINS \$90. AND UPWARDS
SURREYS, " " " \$140. " "
TWO SEAT WAGONS " " " \$95. " "
TOP BUGGIES " " " \$90. " "
PHAETONS " " " \$140. " "
BRAKES \$82.50 " "
HARNESS \$12.00 UP PET SET.
OUR PRICES THE LOWEST,
OUR GRADE THE HIGHEST,
OUR TERMS THE EASIEST.
P. R. ISENBERG, PRESIDENT, P. O. Box 234

Chas. F. Herrick Carriage Co., Ltd.

125 MERCHANT STREET, HONOLULU, NEXT TO STANGENWALD BUILDING.

1867 1902 HYMAN BROS.

WITH THEIR THIRTY-FIVE YEARS EXPERIENCE IN THE
Dry Goods and General Merchandise
Business Carry the best Selected Stock for ISLAND TRADE Which They Offer and Sell to THE TRADE ONLY, at Prices and Terms Most Favorable.

We Fear No Competition

SOLE AGENTS for LITTLE JOKER and CROSS CUT TOBACCO, CAMEO and CYCLE CIGARETTES.
Orders Will Receive the Best and MOST PROMPT ATTENTION

THE FIRST NATIONAL BANK

OF
WAILUKU
Incorporated under the Laws of the United States at Washington, D. C., 1901.
W. J. LOWRIE, PRESIDENT, W. T. ROBINSON, VICE-PRESIDENT
C. D. LUFKIN, CASHIER.
F. J. WHEELER and R. A. WADSWORTH, DIRECTORS.
Solicits accounts of Corporations, Firms and Individuals.
DRAWS EXCHANGE on all Parts of the World.

THE MAUI BAZAAR.

Hawaiian Curios, Ivory Wreaths, Lahaina Hats, Mats and Baskets of Hawaiian Manufacture, and Hawaiian Quilts. Hawaiian Tapas and Koa Calabashes, Birds' Nest Fern Work, Such as Napkin Rings, etc. We Also Receive Articles on Consignments. Order Will Receive Prompt and Careful Attention.
K. OF P. HALL BUILDING WAILUKU, MAUI,
Mrs. J. K. Kahookole, Business Manager.

BE COMFORTABLE.

You can now have your **Spring Mattresses Parlor Sets Old Furniture Sofas, Chairs, etc.,** neatly Upholstered at my Upholstering Shop, in rear of Macfarlane & Co.'s Saloon, opposite the Wailuku depot. Many Years' experience. Prompt attention to country orders by mail or telephone.

D. L. MEYER.
WAILUKU, MAUI.
Tel. 94.

The Bank of Hawaii

INCORPORATED UNDER THE LAWS OF THE REPUBLIC OF HAWAII.
CAPITAL \$600,000.00
OFFICERS AND DIRECTORS:
SURPLUS & UNDIVIDED PROFITS \$171,564.94
Chas. M. Cooke, President
P. C. Jones, Vice-President
C. H. Cooke, Cashier
F. C. Atherton, Assistant Cashier
Directors—Henry Waterhouse, Tom May, F. W. Macfarlane, E. D. Tenny, J. A. McCandless.
Solicits the Accounts of Firms, Corporations, Trusts, Individuals, and will promptly and carefully attend to all business connected with banking entrusted to it. Sell and Purchase Foreign Exchange, Issue Letters of Credit.

SAVINGS DEPARTMENT.
Ordinary and Term Deposits received and Interest allowed in accordance with rules and conditions printed in pass books, copies of which may be had on application. Judd Building, Fort St., Honolulu

Metropolitan Meat Co.

LIMITED
GILBERT J. WALLER,
Manager.

Wholesale and Retail
BUTCHERS
MANUFACTURERS OF
Hams
Bacon
Lard
All Kinds of Sausages

Dealers in Poultry, Game, Butter & Eggs
Orders promptly attended to.
108 KING STREET,
HONOLULU, H. T.

Inter-Island Telegraphic Co.

Limited
Telegrams to all Points of Hawaii, Lanai and Oahu can now be forwarded by
Wireless Telegraph

Twenty cents per word
Minimum rate
\$2.00 per message
Central Station for Maui at
Lahaina
Telephone No.

MOULDINGS

—in the—
Latest Styles

INTERIOR HOUSE FINISH

An excellent selection comprising—
Crown, Spring Cove, Nosings, Return Beads, Quarter and Half Round, P. O. G. & Bead Stops, Astragals, Base and Band moulding, Wainscoting, Caps, Cornices, Ceilings, Frames, (windows and doors), Sills and Porch Rails, Etc.

Sash, Doors & Blinds

all sizes and styles
Nor'West Lumber—Surfaced and Rough
Redwood Lumber—Surfaced and Rough

Cedar, Spruce, Ash, Oak

KAHULUI RAILROAD CO.
Kahului Maui.

Hollister Drug Co.

HONOLULU, H. T.
This name on a Package of Drugs or Medicine is a guarantee of the SUPERIOR QUALITY of the Article.
All first class stores handle our goods.

YEE SANG

TINSMITH and CABINET MAKER
Stove pipes and Tin Ware.
Furniture Repaired; Glass Put in. Coffins and Cabinet Work on Hand for Sale.
MARKET ST. WAILUKU.

Y. KASHINOKI

General Merchandise
Japanese Fancy Goods & Wares.
Large Stock of Canned Goods & Fruits.
MARKET ST. WAILUKU

WO SANG & CO.

Ice Cream Parlors.
THREE ELEGANT ROOMS, 25 cents a Dish.
ONE ROOM, 10 cents a Dish.
Fine Stock Canned Goods and Fruit, Cakes and Cigars. Fresh Goods received every week. Special courtesies to ladies and gentlemen.
MARKET ST. WAILUKU.
Tel. No.—

PIANOS



BERGSTROM MUSIC CO.
FORT ST. HONOLULU

Read the MAUI NEWS

Personal Mention.

John Richardson Jr., of Lahaina, has been with us several days this week.

Lunakanawai J. K. Iosepa of Hana visited Honolulu by last Saturday's Claudine.

Mr. James Gunn and wife of Paia left for Honolulu last Saturday, on a brief visit.

Mr. E. H. Bailey of Kahului spent Monday in Wailuku as witness in a road case.

Mrs. Randal von Tempsky and two children took last Saturday's Claudine for Honolulu.

On last Saturday, Surveyor Hugh Howell of Hana touched at Wailuku, enroute to Honolulu.

Rev. E. Kekipi of Pauwela was in attendance on the Circuit Court at Wailuku, this week.

Mrs. Walter Lowrie and child left for Honolulu last Saturday, to be gone several weeks.

Mr. M. H. Reuter, the assessor of Hana District spent several days in Wailuku this week.

Attorney John Richardson of Lahaina has been in Wailuku several days this week on legal business.

Mr. G. H. Paul of Honolulu came over on Wednesday's Claudine, on a brief visit to Maui, returning today.

Mr. M. L. Decker has severed his connection with the Maui Hotel, and is planning to take in the Honolulu races.

Mr. Fred. Peterman's duties at the Maui Hotel are terminated, and he left for Honolulu by Thursday's Mauna Loa.

Mr. Chas. D. Lufkin and family took a trip to the crater last Monday, returning to Wailuku on Tuesday morning.

Capt. and Mrs. Murray of the "Kinross," and Capt. Murray of the "Antiope" were guests at the Maui Hotel on Wednesday.

Judge Charles Copp of Makawao was in Wailuku on Monday. The judge has practically recovered from his recent severe illness.

Attorney A. Tavares of Makawao was in Wailuku on Wednesday and Thursday of this week engaged in the trial of a case in the Circuit Court.

Attorney A. N. Kepoikai has been appointed temporary school inspector, to hold until Prof. King of Kamehameha is ready to accept the position.

Mr. and Mrs. W. I. Ball left Wailuku for Honolulu last Saturday. Mr. Ball was undecided whether he would locate in Honolulu or proceed to England.

Mr. Cushingham, chief engineer at the Paia Plantation Mill died of dysentery on last Saturday morning, and the remains were at once forwarded to Honolulu on the tug "Leslie Baldwin."

Manuel Ross, the efficient post-office clerk at Wailuku has accepted the position of assistant postmaster and station agent at Punehene. Mr. Robert Nawahine of Waihee succeeds Mr. Ross as assistant postmaster at Wailuku.

Mr. and Mrs. Junius Kaae of Honolulu, who are visiting at Lahaina, drove over to Wailuku on Tuesday, and stopped for a day or two as the guests of Judge Kalua. Mr. Kaae was the Registrar of Conveyances prior to Thrum's appointment.

Mrs. Potter, of Vallejo, Cal., who has been visiting Wailuku for some weeks as the guests of Mr. and Mrs. A. Enos, leaves for Honolulu this afternoon, where she will visit for a short while, before leaving for the Coast. She will be accompanied as far as Honolulu by her son Joe, who will spend a week or ten days amid the festive scenes of the metropolis, before returning to Wailuku.

BORN

LANDGRAF—At Paia, Maui, April 27, 1902, to Mr. and Mrs. A. H. Landgraf, a son.

NAONE—At Wailuku, Maui, April 29, 1902, to Mr. and Mrs. A. B. Naone, a daughter.

MARRIED

RALSTON—COPP—At the residence of the bride's father, Makawao, on Thursday, May 1, 1902, by Rev. Canon Ault, Miss Lydia Koma Copp, to Mr. John Stanley Ralston of Honolulu.

SHIPPING NEWS

The "Kinross," Capt. G. W. Murray, and the "Antiope," Capt. G. E. Murray, will leave Maui on the same day next week, in ballast, for the sound, and the race to the Coast between these two noted clippers will be watched with much interest by the many friends of the two captains, who, by the way are father and son. The two vessels are of similar size as regards ballast and cargoes, the "Kinross," Murray Sr., being ship rigged, and the "Antiope," Murray Jr., being bark rigged. Both vessels are race winners, and if they do not arrive off Flattery in company, it may readily be guessed that Capt. Murray will be in the lead.

A heavy north wind at Lahaina last Saturday caused the "Merchant" to drag anchor. Mr. Geo. H. Dunn with twelve Hawaiians and Japanese and a horse on board a whale boat, left Lanai for Lahaina that day, and was driven out of his course, landing near Olowalu, from which point Mr. Dunn rode to Lahaina on the rudder of a passing buggy.

The tug "Leslie Baldwin," had an unusually rough trip to Honolulu last Sunday, and if she were not a regular water duck she would have foundered having filled with water several times, in the channel between Molokai and Oahu.

Vessels in Port—Kahului

Br. Bark Antiope, Murray, from Ladysmith Coal.

Arrivals

Apr. 30, S. S. Claudine, Parker, from Honolulu.

May 3, S. S. Claudine, Parker, from Hana.

Departures

Apr. 26, S. S. Hyades, Garlick, for San Francisco with sugar.

Apr. 30, S. S. Claudine, Parker, for Hana.

May 3, S. S. Claudine, Parker, for Honolulu.

Expected.

Ship Emily Reed, Baker, from Newcastle, coal.

Schr. Bertie Miner, from the Sound, lumber.

Am. Bark Nuuanu, Joslyn, from Honolulu.

Oceanic Time Table.

DATE	NAME	FROM
May 3	Peru	Yokohama
" 6	Ventura	Colonies
" 7	Sonoma	S. F.
" 7	Miwera	Colonies
" 8	Doric	S. F.
" 10	Coptic	Yokohama
" 10	Moana	Victoria, B. C.
" 16	Alameda	S. F.
" 16	Nippon Maru	S. F.
" 20	America Maru	Yokohama
" 24	Peru	S. F.
" 27	Sierra	Colonies
" 28	City of Peking	Yokohama
" 28	Ventura	S. F.

FOR

May 3	Peru	S. F.
" 6	Ventura	S. F.
" 7	Sonoma	Colonies
" 7	Miwera	Victoria, B. C.
" 8	Doric	Yokohama
" 10	Coptic	S. F.
" 10	Moana	Colonies
" 16	Nippon Maru	Yokohama
" 20	America Maru	S. F.
" 21	Alameda	S. F.
" 24	Peru	Yokohama
" 27	Sierra	S. F.
" 28	City of Peking	S. F.
" 28	Ventura	Colonies

HAWAIIAN NAVIGATION CO.

LIMITED

Fast Gas Schooner "ECLIPSE" Sails from HONOLULU, for Lahaina, Kihai, Makana, Honolulu and Kahului (Maui)

at 3 p. m Tuesday, May 20.

Freight received up to hour of sailing For general information, apply to the office of the Company, 306 Judd Building, Honolulu.

Telephone Main 294

AMERICAN SHIPPING CO.

LIMITED

P. O. Box 799.

BOXING GLOVES & PUNCHING BAGS

ALSO

A Full Line of Spalding's BASEBALLS, BATS, MASKS and GLOVES.
TRIBUNE AND PATEE BICYCLES AND SPORTING GOODS
Hardware, Crockery and Glassware
Mail Orders Treated With Accuracy and Dispatch.

WHITMAN & Co.

91 KING ST., 643 FORT ST.

Polo and Australian Saddles

WE HAVE JUST RECEIVED
A SHIPMENT OF CHOICE

Polo and Australian Saddles

ALSO

Polo Sticks and Balls

Theo. H. Davies & Co.,

LIMITED

Hardware and
Saddlery Department

I. De Turk's

TABLE WINE

Justly known to be the Choicest California Product. A large supply of the different varieties just received by

H. Hackfeld & Co.

LIMITED.

Sole Agents and General Distributors for Hawaii Territory.

Bismark Stable Company, Ltd.

Successor to

THE BISMARK STABLES OF WAILUKU

NEW BUILDINGS, NEW RIGS, NEW TEAMS, NEW MANAGEMENT.

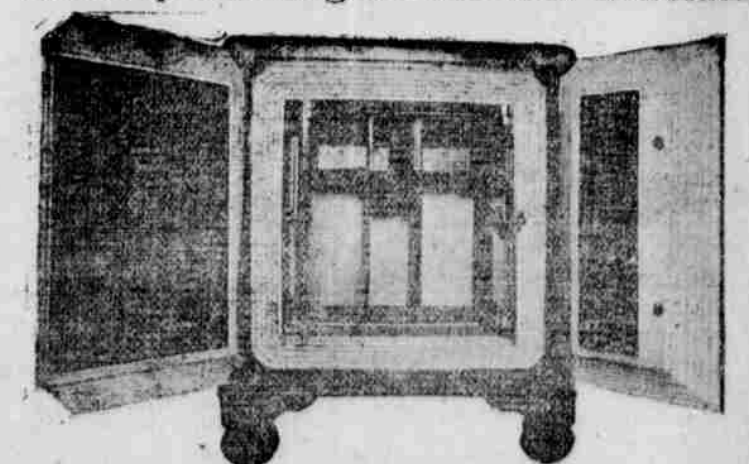
The BISMARK STABLES Co. propose to run the Leading Livery Stable Business on Maui.

LIVERY, BOARD and SALES STABLES

HACKS, Carriages, Buggies and Saddle Horses at all Hours. A New System of Press Buttons. New and first class rigs and teams, and competent drivers.

SAFES

We Keep the Largest Stock in Honolulu



Monuments & Headstones Delivered in 10 Days

Hawaiian Iron Fence & Monumental Co.

176-180 KING ST., HONOLULU

H. E. HENDRICK, Prop.