

HAWAIIAN STAR.

Telephone 365 Star Business Office

SECOND EDITION

VOL. XVII.

HONOLULU, HAWAII TUESDAY, SEPTEMBER 14, 1909.

No. 5444

NO MORE POLING FOR PEARY

HOME RULE FOR HAWAII

LOCAL SELF-GOVERNMENT THE DOMINANT NOTE OF SPEECHES AT CLOSING MEETINGS OF INTER-ISLAND TOUR OF CONGRESSIONAL PARTY—LANE'S SUGGESTION THAT HAWAII MAKE ITS OWN LAND LAW STRIKES RESPONSIVE CHORD.

Very strong expressions in favor of local self-government marked the last speeches of the Congressional visitors on their inter-island tour. There was no comfort for those who have talked or written of disfranchisement of Hawaiians in those speeches. On the contrary it was the emphatic view of all who dwelt on the subject that Hawaii must solve her own local problems through the efforts of her own people.

The final speech making of the Congressional party on their inter-island tour at Waialua and Lahaina, while still dealing much with the land question, developed two other features, aside from the most eloquent expression of thanks for entertainment and of what Hawaiians might call aloha for the stars and stripes. The two features were emphatic endorsement of the principle of local self-government and a more earnest praise of Delegate Kuhio, in which Dr. Bartholdt, dean of the party, led with very strong expressions.

Judge S. B. Kingsbury presided at the Waialua meeting and his opening address contained some remarks all who heard them will remember. Referring to some of the mainland labor and anarchistic troubles, he spoke of "Hawaiianizing America." In very happy expression he gave a new argument in support of Hawaii's claim to be the Paradise. The snake that was at least particeps criminis in Eve's great misstep must surely have been driven from Eden when Eve and her life partner suffered banishment and thus the fact that there are no snakes in Hawaii, said the judge, added force to other reasons for regarding these islands as the original Paradise.

Ex-Judge Kepoikai followed. He drew attention to the free suffrage given to all by the form of government under annexation and said he was glad the islands were under the flag. Under American government the poorest Hawaiian had the suffrage just the same as the richest.

Senator Coelho made an address next mingling his welcome with remarks palpably addressed to the Hawaiian gathering with an eye to future votes.

Senator John C. Lane's speech furnished almost a text for subsequent speech-making on the trip, as far as the land question is concerned. He made the suggestion that the legislature of Hawaii pass a land law for itself, to be ratified by Congress if it was a proper act. He remarked that the land problem was one of the local problems to be solved locally and his suggestion of this way of doing it evidently made a hit with the Congressional visitors, judging by their many references to it.

H. P. Baldwin made some very graceful remarks of welcome and then Hon. Bartholdt was called upon as dean of the party. He called upon

Hon. Prince, who had not done much talking so far, but proved to be a powerful speaker. He favored harbor improvements and said he would like to see at least two safe harbors on each island of the group. He also spoke for reclamation of arid lands. As to other matters, he said that "local questions belong to the people of the islands rather than to us."

Hon. Padgett closed the meeting, speaking with patriotic eloquence up to the time to take autos for Lahaina. At Lahaina the Congressional speakers were Dr. Bartholdt, and Representatives Miller, Houston and Dawson. The first named, as dean of the party, expressed thanks for the great reception and gave a tribute to Kuhio, who had been compelled to leave for Honolulu.

A thousand people, of more than a dozen races, crowded under and around the great banyan tree while the speeches were being made. The eloquence, the compliments to Hawaii and the political sentiments, aroused great applause. There were strong expressions in favor of local self-government and Judge Houston approached the limits of English poetry and rhetoric in the force and rhythm of his tributes to the scenery and the lovely women of Hawaii Nei.

Representative Pali mounted the table next and he thundered with all the vigor that marked him as a lawmaker in days of yore, giving an eloquent speech, which closed the Maui meeting.

INFANTRY BAND AT MOANA TONIGHT

The transport Logan arriving today will have on board the celebrated 21st Infantry band, which will play during intermissions at the dance given tonight, at the Moana Hotel, in honor of the officers and ladies on board the transport. This will be an opportunity for hearing one of the finest bands in the Army. Army, Navy and society folk are cordially invited to attend.

HANA WAS MUCH DISAPPOINTED

The great disappointment of the inter-island trip of the Congressional party was in the passing of Hana, Maui, where most elaborate preparations had been made to entertain the visitors at breakfast. Tables had been laid for the entire party, and ladies who had worked for hours before daylight to have things ready, were on hand to receive. The steamer schedule would not permit a stop for breakfast, and but few of the party were willing to attempt the overland trip from Hana to the other end of the island.

The result was that the steamer went by Hana with most of the Congressional party on board, leaving the hospitable citizens, male and female, of Hana, much disappointed.

Have your typewriter, cash registers and adding machines repaired by the Office Supply Co. They have a complete repair department for this work.

BLAZE OF GLORY AT OLD LAHAINA

THE ANCIENT CAPITAL OUTDOES ALL OTHER TOWNS IN GORGEOUS AND PICTURESQUE WELCOME TO THE NATIONAL LAW-MAKERS. LUAU UNDER W. O. SMITH'S BANYAN TREE INSPIRES ELOQUENCE —FAREWELL FIREWORKS REFLECTED IN OCEAN.

Lahaina closed the inter-island tour of the Congressional party last night in a blaze of glory. It was a rather tired company that reached the ancient capital just in time for dinner after a noon luau at Waialua and a very interesting meeting at Waialua court house. But Lahaina roused the travelers. Under the long-reaching branches of a huge banyan tree, a tree planted in 1873 by W. O. Smith, a member of the party,—was another luau, a last one, and while some may have felt that they had hardly had time enough between luaus, none failed to respond in spirit to the enthusiasm of the great crowd gathered, and the indescribable picturesqueness of the scene under that enormous illuminated tree. The result was some splendid speeches, delivered at the luau tables, while around the edges of the immense shade stood hundreds of men, women and children of all Hawaii's races. In numbers it was as large a meeting as even Hilo had gathered.

Most of the party landed on Maui at Kahului early Sunday morning. Citizens entertained them at private homes according to a plan of assignments before agreed on and Sunday was a day of rest,—needed as such by some of those who had made the strenuous Hawaii trips.

Yesterday morning saw the Rivers and Harbors Congressmen meeting at

the Kahului railroad office to discuss Kahului harbor affairs, with Superintendent J. N. S. Williams, Pilot Captain Parker and others and next came a great Iao valley luau. Waialua and Kahului had spread a splendid feast in this "Yosemite of Hawaii" and it was thoroughly enjoyed. Then came the Waialua court house meeting, a quick run to Lahaina and while the after-luau meeting was in progress there, the Mauna Kea arrived to take the party to Honolulu.

For miles before Lahaina was reached patriotic decorations brightened the highway. There were flags and streamers of bunting across the road and on the country homes and when Lahaina was reached the party found it decorated magnificently. Manager L. Weinheimer of Pioneer plantation had freely supplied power and so the illumination was most liberal and lights shone all over the great banyan tree chosen for the place of feast and meeting.

As the steamer left fireworks broke out over a coast length of more than a mile and their brightness and coloring doubled in the clear ocean, made a scene that was a splendid climax to the many beautiful sights of the inter-island tour. Before the colored lights had burned out the steamer lifted anchor and started for Honolulu with her distinguished party.

NO ROOM FOR PUPILS

The schools of the Territory are over-crowded more than ever, from the meagre information which can be obtained. In many of the local institutions dozens of children are being turned away on account of the fact that there is no room for them. The increase comes mainly among the Japanese, but they are not being turned away more than any other nationality.

Superintendent Babbitt stated this morning that he had not received the reports from the local schools as yet, but that he had heard unofficially that at one school over a hundred children had been refused admission on account of lack of space. Mr. Babbitt stated that he had not heard whether Mrs. Scott had assumed charge of the Honolulu school in Kona or not.

TURRILL RAMPANT

SOAKING THE WASHMEN—SAILOR TRIES TO KILL CAPTAIN—THREE IN FIGHT.

Fred Turrill is after the license delinquents with a vengeance and, unlucky for the failures to pay, he is handling batches of thirteen.

This morning in police court there were thirteen Chinese laundrymen who had failed to pay their license fees to the City and County, whose cases went over till September 21.

And now Turrill has warrants out for the arrest of thirteen cleaning and dyeing proprietors.

A Porto Rican, Gomes by name, was arrested today for shooting at a fellow countryman while a third party, one Dias, was assaulting the target. All three are in jail for investigation and assault.

A sailor from the Benicia is at present in the insane asylum, where he is likely to remain, having arrived here the other day in irons. He attempted to kill the captain and otherwise disturb the peace and tranquility of the voyage. His mania is homicidal. Dr. Mackall deems him dangerous.

A Porto Rican is languishing in a station cell for beating his wife.

AUTUMN MILLINERY OPENING
The grand opening of Fall millinery is now in progress at Sachs Dry Goods Co. and continues for several days. Ladies are cordially invited to see the beautiful exhibition.

SAM JOHNSON PROMOTED

MADE GENERAL MANAGER OF J. B. CASTLE'S OHIA INTERESTS—OUT OF POLITICS.

Col. Sam. Johnson is in this city and will return to Puna on Friday, soon coming back to Honolulu for a trip to the coast in the interest of the Castle ohia plant. Johnson will take complete charge of the business, handling both the local and Puna ends of the proposition.

Col. Johnson states that he is completely out of politics and that he will not be a lieutenant of Lorrin Andrews in the next campaign, while Mr. Andrews says that he has nothing whatever to do with politics. Col. Johnson also says that he will not return to the National Guard, where he has been greatly missed.

DON'T TAKE THE RISK.

When you have a bad cough or cold do not let it drag along until it becomes chronic or develops into an attack of pneumonia, but give it the attention it deserves and get rid of it. Take Chamberlain's Cough Remedy and you are sure of prompt relief. For sale by all dealers. Benson Smith & Co., agents for Hawaii.

NEW RICE MILL.
The K. Yamamoto Rice Mill is the largest as well as the finest in the islands. All the machinery is of the very latest pattern. The famous Tengu Rice is cleaned at this mill. With the large cleaning capacity they are able to handle considerable outside particular work which they guarantee.

COOK'S ACCUSER QUILTS EXPLORING

(Associated Press Cable to The Star.)

BATTLE HARBOR, September 14.—Captain Peary announces that he is done with exploring and will venture on no further expedition.

HAWAIIAN BANKER AT CHICAGO MEET

CHICAGO, September 14.—The Territory of Hawaii was represented today at the opening of the convention of the American Banker's Association.

SPRECKELS' WIDOW GETS HER SHARE

SAN FRANCISCO, September 14.—Judge Coffey has ordered a distribution of the widow's share in the estate of the late Claus Spreckels the value of which is estimated at three millions. No opposition has been made to the distribution. The widow's claim to an interest in The Call building in this city is temporarily withdrawn.

MEXICAN TIDAL WAVE SWEEPS DISTRICT

MEXICO CITY, September 14.—The district of Mulege was swept by a tidal wave on September 4th, several lives being lost.

TAFT TALKS IN BOSTON

BEVERLY, Mass., September 14.—President Taft left here today to speak tonight in Boston, from whence he will depart on his tour to the Pacific Coast tomorrow.

WASHINGTON, D. C., September 14.—Admiral Stuart will retire from service in the U. S. Navy on the 15th of this month, tomorrow, his retirement effecting the promotion of Niles.

MORITA AT WAIALUA

Morita, the defendant in the Waipahu riot trial who was not on hand yesterday morning, was located by Attorney Lightfoot last night and arrested by Officer Clark at 4 o'clock this morning. He was brought in from Waialua, where he was hiding in the

No. 4 camp, and the trial commenced this morning.

The first witness was Surveyor Wall, who identified certain maps, which will be used in the trial as his own work. Special Officer Eugene Scoville was been put on the stand to testify in regard to the riot. His story was similar to that told in the first hearing of the case.

MR. BUSINESS MAN, KEEP IN TOUCH WITH YOUR AFFAIRS WHILE AWAY!

The cable code we supply to our clients will enable you to do this. Let us explain our system.

TRUST DEPARTMENT.



Hawaiian Trust Company, Ltd.

223 Fort Street.



ROYAL BAKING POWDER
Absolutely Pure

The only baking powder made with Royal Grape Cream of Tartar
No Alum, No Lime Phosphate



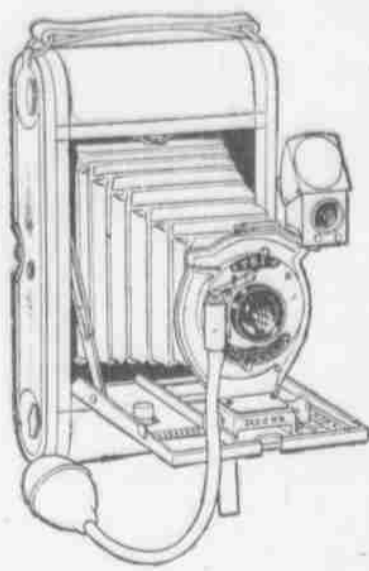
A Pat. COLT Dress SHOE No. 663

\$6.50

Open Saturday Evenings

MANUFACTURER'S SHOE CO. LIMITED

1061 Fort Street, Phone 122.



Take Pictures of Beautiful Hawaii

Show Your Friends At Home the Unparalleled Beauty of Hawaii's Scenery in Kodak Snap-Shots

Films, Plates, Supplies Kodaks and Cameras from \$1.00 Up

Honolulu Photo Supply Co. "Everything Photographic" Fort Street near Hotel

Oceanic Steamship Company

Alameda Schedule

LEAVE S. F.	ARRIVE HON.	LEAVE HON.	ARRIVE S. F.
SEPT. 18	SEPT. 24	SEPT. 29	OCT. 5
OCT. 9	OCT. 15	OCT. 20	OCT. 26
OCT. 30	NOV. 5	NOV. 10	NOV. 16
NOV. 20	NOV. 26	DEC. 1	DEC. 7

Rates from Honolulu to San Francisco. First Class, \$60; Round Trip, \$110.

FOR PARTICULARS, APPLY TO

W. G. Irwin & Co., Ltd

AGENTS FOR THE OCEANIC STEAMSHIP CO.

Canadian-Australian Royal Mail Steamship Co

Steamers of the above line running in connection with the CANADIAN-PACIFIC RAILWAY COMPANY between Vancouver, B. C., and Sydney, N. S. W., and calling at Victoria, B. C., Honolulu and Brisbane, Q.

FOR FIJI AND AUSTRALIA. FOR VANCOUVER.
MAKURA.....SEPT. 17 AORANGI.....SEPT. 15
AORANGI.....OCT. 15 MABAMA.....OCT. 13

CALLING AT SUVA, FIJI, ON BOTH UP AND DOWN VOYAGES.
Theo. H. Davies & Co., Ltd., Gen'l Agents

American - Hawaiian Steamship Company

From New York to Honolulu—Weekly Sailings via Tehuantepec

Freight received at all times at the Company's Wharf, 41st Street, South Brooklyn.

FROM SAN FRAN. TO HONOLULU FROM SEATTLE AND TACOMA TO HONOLULU DIRECT.
S. S. PLEIADES to sail.....Sept. 14
S. S. COLUMBIAN.....Sept. 17
S. S. NEBRASKAN.....Oct. 2

Freight received at the Company's Wharf, Greenwich Street.
FROM HONOLULU TO SAN FRANCISCO.
S. S. PLEIADES to sail.....Sept. 24

H. HACKFELD & CO., LTD., Agents, Honolulu.
C. P. Morse, General Freight Agent

Pacific Mail Steamship Co. Toyo Kisen Kaisha S. S. Co.

Steamers of the above Companies will call at HONOLULU and leave this port on or about the dates mentioned below:

LEAVE HONOLULU FOR ORIENT.	LEAVE HONOLULU FOR S. F.
CHIYO MARU.....SEPT. 21	MONGOLIA.....SEPT. 18
ASIA.....SEPT. 30	TENYO MARU.....SEPT. 24
MONGOLIA.....OCT. 11	KOREA.....OCT. 2
TENYO MARU.....OCT. 19	NIPPON MARU.....OCT. 16
KOREA.....OCT. 26	SIBERIA.....OCT. 22
NIPPON MARU.....NOV. 9	CHINA.....OCT. 30
SIBERIA.....NOV. 15	MANCHURIA.....NOV. 6
CHINA.....NOV. 23	CHIYO MARU.....NOV. 12
MANCHURIA.....NOV. 29	ASIA.....NOV. 20
CHIYO MARU.....DEC. 7	MONGOLIA.....DEC. 4
ASIA.....DEC. 14	TENYO MARU.....DEC. 10
MONGOLIA.....DEC. 27	KOREA.....DEC. 21

FOR FURTHER INFORMATION APPLY TO
H. HACKFELD & CO. LTD

MATSON NAVIGATION COMPANY

Schedule S. S. HILONIAN in the Direct Service between San Francisco and Honolulu.

Arrive Honolulu.	Leave Honolulu.
S. S. HILONIAN.....SEPT. 29TH	OCT. 5TH
S. S. HILONIAN.....OCT. 27TH	NOV. 2ND
S. S. HILONIAN.....NOV. 24TH	NOV. 30TH

S. S. Hyndes of this line sails from Seattle for Honolulu direct on or about September 15.
S. S. Lurline of this line sails from San Francisco for Honolulu direct September 17, 1909.

Castle Cooke Limited, Agents

UNION-PACIFIC TRANSFER CO. LTD

126 KING ST.

BAGGAGE, SHIPPING,
STORAGE, WOOD,
PACKING, COAL.

PHONE 58

FURNITURE AND PIANO MOVING.

SHIPPING INTELLIGENCE

(Later Shipping News on Page Five)

TIDES, SUN AND MOON.

New Moon September 14 at 4:37 a. m.

Time	High Tide	Low Tide	High Tide	Low Tide	Sun Rises	Sun Sets	Moon Rises	Moon Sets
A. M.	P. M.	A. M.	P. M.	A. M.	P. M.	A. M.	P. M.	A. M.
13	8:16	1:7	8:17	9:30	8:52	5:47	6:02	5:50
14	7:44	1:5	9:50	10:09	9:31	5:47	6:01	Sets
15	4:19	1:4	4:22	10:31	10:11	5:48	6:00	7:07
16	4:44	1:3	4:44	10:55	10:36	5:48	6:00	7:44
17	5:21	1:4	5:11	11:37	11:28	5:49	6:08	8:15
18	6:00	1:4	6:08	11:48	12:16	5:49	6:07	8:39
19	6:48	1:5	6:54		1:19	5:49	6:06	9:26

Times of the tide are taken from the U. S. Coast and Geodetic Survey tables. The tides at Kahului and Hilo occur about one hour earlier than at Honolulu. Honolulu standard time is 10 hours 30 minutes slower than Greenwich time, being that of the meridian of 157 degrees 30 minutes. The time whistle blows at 1:30 p. m. which is the same as Greenwich, 0 hours, 0 minutes. The Sun and Moon are for local time for the whole group.

Shipping in Port

(Army and Navy)
Iroquois, U. S. station tug, Moses, Kukul, U. S. L. T.
U. S. Pacific Fleet (eight cruisers), Sebree, San Francisco, Sept. 10. (Merchant Vessels.)
Aloha, Am. sc., Tacoma, Sept. 10.
Benicia, Am. bktn. Gray's Harbor, Sept. 11.
Flaurence Ward, Am. schr. Plitt, Midway, Aug. 11.
G. W. Watson, Am. sch., Stream, Aberdeen, Sept. 6.
Helene, Am. sch. Thompson, Gray's Harbor, Sept. 11.
Missourian, Am. S. S., Lyon, Seattle, Sept. 11.
S. C. Allen, Am. bk. Willer, Eureka, Sept. 6.
Scottish Monarch, Br. S. S., Sibbald, Newcastle, Sept. 2.

The Mails

(Incoming.)
From San Francisco, Chiyo Maru, September 21.
From Yokohama, Mongolia, Sept. 18.
From Colonies, Aorangi, Sept. 15.
From Vancouver, Makura, Sept. 17.
(Outgoing.)
For San Francisco, Mongolia, Sept. 18.
For Yokohama, Manchuria, Sept. 14.
For Colonies, Makura, Sept. 17.
For Vancouver, Aorangi, Sept. 15.
(U. S. A. Transports.)
Dix, from Honolulu for Manila Sept. 7.
Logan from San Francisco, for Honolulu, Sept. 7.
Sheridan arrived Manila from Honolulu Sept. 3.
Buford, left Nagasaki for San Francisco, Aug. 21.
Thomas, arrived San Francisco from Honolulu, September 10.

PASSENGERS.

Arrived.
From Lahaina per Mauna Kea, September 14—G. A. Kennedy, E. A. Mott-Smith, W. A. Thomas, W. A. Rodenberg, A. J. Watkins, E. S. Candler, Judge Houston, R. Bartholdt, C. F. Scott, Mrs. Scott, J. M. Miller, Mrs. Miller, H. A. Young, Mrs. Young, A. F. Dawson, E. W. Prince, Mrs. Prince, W. R. Ellis, Mrs. Ellis, D. Kahalelo, C. F. Chillingworth, Masters Prince (3), Miss McLachlan, Miss Rieder, Judge F. M. Hatch, W. O. Smith, J. A. Wil-

liams, J. W. Good, Miss Good, W. A. Rieder, Mrs. Rieder, L. P. Poutt, Mrs. Poutt, G. H. Soper, A. G. Barchied, W. E. Woodward, Mrs. Woodward, L. P. Rieder, B. J. Humphreys, G. W. Taylor, J. M. McLachlan, E. S. Theall, G. B. McClellan, W. R. Farrington, R. G. Matheson, George F. Henshall, A. P. Taylor, A. D. Castro, J. C. Lane, Rev. S. L. Desha, J. M. Coney and son, Master Weinzheimer, Miss Weinzheimer, J. Burkinaaw, W. P. Fennel.
Per P. S. S. Manchuria from San Francisco, September 14:
For Honolulu—Miss M. H. Armstrong, Miss E. L. Barnes, Miss Florence Bateman, F. Bradley, Mrs. A. M. Bradstreet, G. I. Brown, Miss Carolyn Church, J. L. Coke, Geo. R. Colby, Mrs. George R. Colby, Miss Emily Cooke, Platt Cooke, J. P. Cooke, W. J. Cooper, G. A. Davis, W. A. Dickson, E. Dobson, Mrs. E. Dobson, E. Dobson, Jr., Mrs. Bradley A. Flske, Miss Carolyn H. Flske, C. S. Guthrie, R. S. Hosmer, Mrs. W. Lanz, infant and servant, Mrs. J. B. Lathrop, Miss Helen W. Lathrop, Miss Bertha Lanz, C. C. L. Hommedien, Mrs. G. L. Lincoln, Miss C. L. Lincoln, H. F. Lucas, Andrew MacArable, Miss C. Marshall, Mrs. E. C. Perry, L. A. Petrie, E. W. Quinn, C. Du Roi, G. E. Schaefer, Mrs. G. E. Schaefer, J. Schwartz, Mrs. Schwartz, Miss Henrietta Schwartz, Miss Josephine Schwartz, Mrs. Uriel Sebree, E. R. Shaw, B. H. Smith, Mrs. B. H. Smith, Miss D. Smith, J. R. Stanton, Mrs. J. R. Stanton, Miss M. Vanderburgh, F. L. Waldron, Mrs. F. L. Waldron, Allen Wilcox, Mrs. L. Wilbur, Mrs. G. K. Wilder, Mrs. H. W. Wright, Mrs. F. A. Lemmon, Mrs. G. K. Burgner, Lieut. B. G. Lewis.

Lay over at Honolulu—Mrs. W. R. Linn, Miss Mabel Linn, Miss Dorothy Linn, Mrs. F. S. Menage, Mrs. E. W. Poore, Mrs. Chas. Adams, Mrs. S. G. Evans, Mrs. Mark St. C. Ellis, Mrs. Waldo Evans, Mrs. J. G. Field, H. Gaylord, Miss L. Gaylord, Miss A. Kelly, Mrs. R. H. Leigh, A. MacKillip, Mrs. L. R. Sargeant, Mrs. T. H. Taylor, Mrs. Chester Wells and maid.
From Honolulu—Miss F. Howell, Miss H. W. Howell, Miss F. Hogg, Col. W. C. Lemert, Mr. Mackin, Mrs. Mackin, Miss E. Reppert, R. T. Sterling, Mrs. R. T. Sterling, Guy Sumpter, Mrs. Guy Sumpter, Miss Anna Sumpter, A. Van Rensselaer, Mrs. A. Van Rensselaer.

Departed.
Per Mauna Kea, for Hawaii and Maui, Sept. 14.—Rev. D. Murray, D. W. Napohoa, Miss Coiton, Mrs. H. D. Wishard and 2 children, Mr. and Mrs. Chas. Gay, H. W. Mist, A. C. Alexander, Miss June Rankin, Miss E. Rankin, R. T. Guard, E. Wight, J. Guild, D. B. Murdoch, H. J. Bias and wife, Mrs. A. Lidgate, J. S. Silva, Rev. M. Nakama, Mrs. G. G. Leong and child, J. K. Notley, Mrs. L. Meyers, E. I. Spalding, Thos. McLean, Mrs. R. G. Peters and wife, Mrs. J. R. Judd, Miss Emma Barker, W. B. Olsson, O. H. Gulick, J. Mendonca and wife, Rev. J. J. Mathews, C. W. Renear, Chas. Akl.
Booked to Depart.
Per Mauna Loa for Kona and Kau, Sept. 14.—Miss Shields, Mrs. J. Lono, Rev. W. Kalaiwaa, L. E. Wooley, G. J. Campbell, E. J. Haldee, W. K. Ragsdale, Mrs. W. Barber, Judge Stanley, M. E. Menezes, M. M. Johnson, J. Wallace, Mrs. J. Aea, Mrs. J. A. Magoon, P. Born, R. A. McWayne, A. H. Smith, C. W. Ashford, G. K. Mills, H. M. Wells.

Per Kinau for Maui and Molokai, Sept. 14.—Miss Julia Given, A. V. Peters, H. M. Gillet, Mrs. E. Miller, Mrs. Lydia Miller, E. Mohler and wife, E. Langer, W. O. Crowell and wife, Miss Hattie Johnson, Miss Mercy Akau, Miss J. Jardin, Mrs. H. Jardin.

The steamer Mauna Kea left on her regular trip to Maui and Hawaii ports at noon today.

The schooner G. W. Watson will not get away for Hanalei until tomorrow afternoon or Thursday morning. The reason for the delay is that the schooner Admiral is still discharging coal in the bay of Hanalei.

Fine Job Printing, Star Office.

HAWAIIAN Macaroni Manufacturing Co., LIMITED

Beretania Street near Aala Street.

MANUFACTURERS OF

MACARONI (HOSHI UDON)

—AND—

BUCKWHEAT (HOSHI SOBA)

The Largest and Only Incorporated Concern of Its Kind in Honolulu.
A New Enterprise Launched by Enterprising Merchants.

K. Yamamoto

SALES AGENT.

Tel. 399. Hotel Street near Nuuanu. P. O. Box 819.

Draying and Heavy Teaming

—PHONE 295—

Hustace-Peck Co. LTD.

SAME OLD NUMBER 63 QUEEN STREET.

We are always equipped to handle any thing in the draying line, from a keg of nails to a sugar mill.

SPECIAL ATTENTION

PROMPT DELIVERY

DEFY FIRE AND CRACKSMEN WITH A

Hall Safe

SMALL, MEDIUM AND LARGE SIZES AT

H. Hackfeld & Co., Ltd.,

HARDWARE DEPARTMENT.

Steam-Roller and Traction Engine

With our new combination engine we are prepared to undertake rolling, plowing and heavy hauling. See us for rates.

Honolulu Construction & Draying Co., Ltd.

Fort St Opposite W. G. Irwin & Co. Phone 281

SCHOOL BOOKS AND SUPPLIES

School Books at List Prices. We also have Composition Books, Pencil Tables, Inks, Pencils, Rubber Erasers, School Bags and Everything you can think of in the school line.

REMEMBER THE PLACE.

WALL NICHOLS CO., LTD.

Corner Fort and Merchant.

Forcegrowth
WILL DO IT.

Cleaning and Dyeing
F. Thomas Dyeing Works
San Francisco.
FRENCH LAUNDRY—Agents
J. Abadie, Prop. Phone 1491

Latest Paquin Models
FOR
The Swellest Gowns
Davison
YOUNG BUILDING ROOM 73

THE BOOM
IS COMING
SIGNS
--TELL YOU OF IT--
Sharp
Makes Good Signs
Elite Building. Phone 297

DR. F. SCHURMANN
OSTEOPATHIC PHYSICIAN, OSTEO-PATHIC OCULIST
Hours:—Consulting, 2-3 p. m. Saturdays Excepted. Operating, 8-12 a. m., 3-6 p. m.
Office, 222 Emma Square
HONOLULU, T. H.

WE INVITE INSPECTION OF OUR GOODS
K. FUKURODA
Hotel near Nuuanu. Honolulu

CONSOLIDATED SODA WATER
IS ABSOLUTELY PURE
PHONE 71

Carriage manufacturers and repairing in all its branches.
NEW OAHU CARRIAGE CO.
Queen Street near River.

Primo
The Beer that's brewed to suit the climate.

Honolulu Iron Works
STEAM ENGINES, SUGAR MILLS, BOILERS, COOLERS, IRON, BRASS AND LEAD CASTINGS.
Machinery of Every Description Made to Order. Particular Attention Paid to Ship's Blacksmithing. Job Work Executed on Short Notice.

The Regal
are the shoes that prove.
REGAL SHOE STORE
King and Bethel Streets.

BEAUTIFUL ROCKERS
Chairs, Bureaus and Furniture of all kinds made from select Koa.
Wing Chong Co.,
Corner King and Bethel.



The Visiting Congressmen

will all use
PACHECO'S DANDRUFF KILLER
because it will help to keep them cool and comfortable. There is nothing like it for the relief of prickly heat and eczema.
Sold by all druggists and at Pacheco's Barber Shop. Phone 232.

Y. WO SING CO.
GROCERIES, FRUITS, VEGETABLES, ETC.
California Butter, 40c lb.; Cooking Butter, 35c lb.; Fresh Dried Fruits.
1186-1188 Nuuanu Street.
Telephone Main 238. Box 253

Autos
INDEPENDENT AUTO STAND.
King and Bishop Streets.
Phone 609.

Smoke Manila Cigars Now 5c.
L A I N S L A R

LEE TOMA
P. O. Box 1034. 33 N King St.
PHONE 640.

The J. CARLO
LOAN OFFICE
Fort Street near Hotel

Just received from the East. High Grade Taffeta and Satin Ribbons. Ruchings in all Colors. Fancy Neckwear in latest patterns.
K. L. WONG
32 Hotel St. opp. Bethel.

EUREKA PERFECTION ROOF PAINT
The Best Roof Paint for use in Hawaii. Postal to P. O. Box 93 brings booklet.
THEO. H. DAVIES & CO. AGTS.

PAPER
All kinds WRAPPING PAPERS and TWINES, PRINTING and WRITING PAPERS.
AMERICAN-HAWAIIAN PAPER & SUPPLY CO., LTD.
GEO. G. GUILD, General Manager
Fort and Queen Streets.
Honolulu. PHONE 411

USE Sweet Violet BUTTER
C. Q. YEE HOP TEL. 251

JOHN K. COOK
Practical Tailor, Busheler and Presser. Gentlemen's Own Cloth Made Up. Thirty-five Years Experience. Give Me a Call.
Room 4, Oregon Block upstairs. Hotel and Union, Entrance 111 Union.

LEADING HAT CLEANERS
1154 Fort Street, opp. Convent
All kinds of Hats Cleaned and Blocked. We sell the Latest Styles of Porto Rico Panama and Felt Hats. All work Guaranteed, Called for and Delivered on Short Notice. Prices Moderate.
FELIX TURRO, Specialist

FOR SALE.
Solar Water Heaters, 30 to 120 gallons, Galv. Iron Tanks any size and weight, Sheet Metal Work of all kinds made to order on short notice, Water Pipe and Fittings 1-4 to 2 in. in size, Plumbing and Pipe Fitting.
Job work given prompt attention.
EMMELUTH & CO., LTD.
Phone 211. 145 King St.

Territorial Board of Immigration
OFFICE: 405 Stangenwald Bldg. HONOLULU.

CONTROVERSY GROWS NASTY

(Associated Press Morning Service.)
ST. JOHN'S, September 14.—Stealing the provisions which Dr. Cook had cached for use in case of dire emergency is the charge that has been preferred against Captain Peary, the U. S. Navy civil engineer who claims that Cook did not reach the Pole. Allen Whitten, who acted as boatswain on Peary's ship on the expeditions of 1905 and 1908, is the man who accuses Peary of the despicable act.
Whitten's statement corroborates the charge preferred by Dr. Cook, who said that his treasure of provisions was robbed by the rival explorer.

SUTTON NO SUICIDE.
WASHINGTON, September 14.—Sutton did not shoot himself, according to Dr. Vaughn, who represented Mrs. Sutton at the autopsy performed on the exhumed remains of the marine lieutenant yesterday. Dr. Vaughn stated yesterday that there were no powder marks nor signs of burned hair about the wound which caused the death of the young man, and said it would have been a physical impossibility for Sutton to have inflicted the wound upon himself.
The mother of the dead officer was present when the body was exhumed, and later witnessed its reinterment in consecrated ground.

PRESIDENT'S WESTERN TOUR.
BEVERLY, September 14.—President Taft will start on his long western trip tomorrow. Yesterday the President finished his packing, and today will complete all of his arrangements for the journey.

TAKAHIRA WILL NOT RETURN.
TOKIO, September 14.—It is stated here in well-informed circles that Ambassador Takahira will not return to Washington. Report says that his successor will be Uchida.

NEW YORK, September 14.—John W. Castles, president of the Union Trust Company, committed suicide here yesterday by cutting his throat. Ill health is the excuse given for his desperate deed.

TO DIVIDE GOLDEN STATE.
LOS ANGELES, September 14.—The South California State League, the object of which is to secure the division of the State, has been organized.

RIOT TRIAL POSTPONED

The trial of the Waipahu riot case before Judge De Bolt was postponed yesterday on account of the non-appearance of Horita, one of the defendants. Horita was ill during the examination of the veniremen last week and court was adjourned a couple of times for a few minutes on this account. It is believed that illness is the cause of his non-appearance. The prosecution, however, wishing to be on the safe side, asked that his bond be declared forfeited and that a bench warrant be issued for him, which was done by Judge De Bolt.

LEIGHTON APPROVES OBSERVATORY

The following was written in the Volcano House register by Mr. Leighton of the reclamation service:
"This is the climax of an astounding journey that has covered the four major islands of the Territory of Hawaii. One might reasonably prophesy that all subsequent travel will constitute an anti-climax. Should this prove not to be so, it will not be because other regions furnish more entrancing impressions but because our capacity—to appreciate—has been re-created by Kilauea.
"This crater has more than spectacular significance. It presents a unique opportunity for the study of seismic phenomena. Mankind has always been prostrate while eruptions have snuffed out countless lives and laid waste cities and lands. The hand of man can never restrain these outbreaks but by a proper study of habits and symptoms the disturbances may be predicted and the people thereby prepared for flight. Now we are ignorant, having little or no acquaintance with the significant facts and conditions that would enable the man on guard to predict. Therefore let everyone appreciate and support the plans recently made to establish a seismological laboratory on the brink of the fire pit. The scope of the proposed studies will be broader than the predictions of eruptions but the feature alone makes it well worthy of the nation's support and maintenance."
"M. O. LEIGHTON,
"Washington."

BRITONS SLOW TO CREDIT COOK

INCLINED TO WAIT FOR PROOF BEFORE ADMITTING HE FOUND THE POLE

LONDON, September 2.—Dr. Cook's narrative of his thrilling journey to the North Pole, while it has not removed the doubts raised as to his having really accomplished the feat, has at least set at rest the improbable suggestions advanced in some quarters yesterday that he had not attained the North Pole, but the magnetic pole.

Captain Roald Amundsen, in an interview at Christiania, on this point, says:
"Such a position is nonsense. The magnetic pole is situated on the American side and it is quite impossible that Dr. Cook could have been driven so far from his planned route. I feel certain that Dr. Cook has expressed nothing definitely about the result. I know him to be absolutely discreet and taciturn. Other people have misunderstood him, and it will be necessary to await his arrival at Copenhagen for the facts."

LONDON SLOW TO ACCEPT.
The London newspapers are not wholly convinced by the narrative and persist that it will be necessary to await more details and reports. They are unable to conceive how a task which has beaten the ablest polar explorers, provided with everything that money could purchase, would have been achieved in such a seemingly offhand and unpremeditated manner and with such ease and quickness. At the same time they pay tributes of admiration to Cook.
The Daily Telegraph says: "It is for the moment beside the question to discuss the accuracy or probability of Dr. Cook's statement. It is neither just nor generous to question in any way the genuineness of such a claim before full details are made public by the traveler. Indeed, we have much sympathy because of the difficulties by which Dr. Cook or any other solitary explorer is hampered in attempting to convince a skeptical world of geographical experts of the reliability of his observations and reports. We trust Dr. Cook will meet with the fairness his particular case especially invites."

OTHERS MAY FOLLOW NEW ROUTE.
The Morning Post says: "If Dr. Cook has found a new track to the Pole in so short a time as thirty-five days, others can follow in his footsteps and verify his story for themselves. When the matter has been settled beyond all doubt the civilized world will acclaim Cook as one of the greatest explorers of all time."
Dr. Hugh R. Hill, former librarian of the Royal Geographical Society, is skeptical, but says that great weight must be attached to the opinion of polar experts in America.
Sir Martin Conway, a noted explorer, thinks that Dr. Cook's claim could be accepted if his story on examination is found to hang together.
Professor Milne, the seismologist, thinks that if Dr. Cook has a few properly taken photographs of the sky at the Pole on April 21, 1908, they may assist in determining the position he reached.

BRUSSELS, September 2.—Belgium newspapers comment with enthusiasm on Dr. Cook's achievement. They recall how he came to join the Belgian expedition to the South Pole. On the very day the doctor, who had been previously engaged, was notified to join the party, Dr. Cook cabled from New York asking if by chance there was a place vacant aboard the Belgica. Instructions were immediately sent him to join the ship at Rio Janeiro. Dr. Cook's assistance on that expedition was most valuable. He was the life of the party and worked under in cheering up the Belgians time after time when their courage failed.

RELIGIANS SATISFIED THAT POLE HAS BEEN FOUND.
BRUSSELS, September 2.—Belgium newspapers comment with enthusiasm on Dr. Cook's achievement. They recall how he came to join the Belgian expedition to the South Pole. On the very day the doctor, who had been previously engaged, was notified to join the party, Dr. Cook cabled from New York asking if by chance there was a place vacant aboard the Belgica. Instructions were immediately sent him to join the ship at Rio Janeiro. Dr. Cook's assistance on that expedition was most valuable. He was the life of the party and worked under in cheering up the Belgians time after time when their courage failed.

SAYS NOTHING BUT SAWS WOOD
The whirl around the islands with the Congressional party has not been altogether a pleasure jaunt for Secretary E. A. Mott-Smith. He has put in every possible moment preparing two papers, both of which will be heard from in the immediate future. The first one, which is entitled "The Brighter Side of the Leprosy Problem" will be read at the Bonina picture entertainment to the visiting Congressmen in the Young Hotel roof garden this evening. The second paper is a compilation of facts concerning immigration, and will be presented to Senator Dillingham for use of the Labor Commission, of which he is chairman.

You Want the News First?

You want Your Ads Read?

Here is some advice---

Honolulu more than any other city in the World, is a place where the EVENING PAPER gets the news first. The clock here is over two hours behind the clock at San Francisco, five hours behind New York and ten to eleven hours behind the clocks in the European capitals.

This means that when THE STAR is going to press The Day Is Closed In Washington, Chicago, New York and Europe and almost over in San Francisco. The news of the day is here for THE STAR.

Under modern conditions it takes practically no time to prepare and transmit news and

The Star gets every Evening the Cable Dispatches giving

The News of all the World

For the day just ended

Here are some of the features that go to make the evening paper the predominating factor in an advertising campaign:

It is delivered at the home each night when the whole family has plenty of time to read it.

It is carried home by the business man when his day's work is done and it stays there. A morning paper is usually carried down town by the head of the family and hurriedly read.

The evening paper is not read hurriedly, but thoroughly, so that all the advertisements receive their share of attention.

It presents the store news a little ahead, giving the prospective purchaser time to plan a shopping tour for the next morning.

The evening paper presents the news the day it happens. The morning paper the day after.

The evening paper presents the news first. The morning paper merely elaborates it.

The Evening Paper

Prints Daylight News

The morning paper takes what is left.

The Hawaiian Star

DAILY AND SEMI-WEEKLY.

Published every afternoon (except Sunday) by the HAWAIIAN STAR NEWSPAPER ASSOCIATION.

SUBSCRIPTION RATES:

Local, per annum \$ 8.00
 Foreign, per annum 12.00
 Payable in Advance.

Entered at Post Office at Honolulu, Hawaii, as second class mail matter.

Subscribers who do not get their papers regularly will confer a favor by notifying the Star Office: Telephone 365.

The Supreme Court of the Territory of Hawaii has declared both THE HAWAIIAN STAR (Daily) and THE SEMI-WEEKLY STAR newspapers of general circulation throughout the Territory of Hawaii, (suitable for advertising proceedings, orders, judgments and decrees entered or rendered in the Courts of the Territory of Hawaii.)

Letters to THE HAWAIIAN STAR should not be addressed to any individual connected with the office, but simply to THE HAWAIIAN STAR, or to the Editorial or Business Departments, according to tenor or purpose.

GEORGE F. HENSHALL.....MANAGER

TUESDAY.....SEPTEMBER 14, 1909

GREAT SEASON FOR HAWAII.

It is hard to say whether Hawaii is more fortunate this summer in the opportunities here or those on the mainland for presentation of her claims upon the national government. The Territory is having the advantage of visits from a large and influential body of Congressmen as its guests, of two hydrographic experts connected with the reclamation service and of a contingent including the chairman, of the immigration commission. On the mainland the Territory has been officially represented at several of the important national and sectional congresses dealing with matters of agricultural and commercial development, and in these cases it has been possible for the Governor to commission as delegates men thoroughly conversant with local conditions, as well as capable of expressing their opinions orally, in writing or by dictation with force and precision.

Among the commercial representatives who have had opportunity to plead the various causes of the Territory on the mainland, in either public or private capacity, are President James F. Morgan and Vice-President Joseph P. Cooke of the Chamber of Commerce and Fred L. Waldron, president of the Merchants' Association and for some time chairman of the Hawaii Promotion Committee. A. F. Knudsen, brought up in close familiarity with the main industry of the Islands, a man thoroughly posted in Hawaiian affairs generally, has been a tower of strength for the Territory as a commissioner at the Alaska-Yukon-Pacific Exposition, besides appearing as a duly credentialed delegate at the congresses where conservation and reclamation were the subjects handled.

Perhaps no single representative of Hawaii, however, has rendered more valuable service, taking the shortness of time at his disposal into consideration, than Ralph S. Hosmer, the Territorial forester. His address before the Senate committee on irrigation and reclamation at Seattle was able in its succinct presentation of the claim of Hawaii to be included in the national scheme of reclamation, and his concluding appeal to national responsibility for placing this Territory on a basis where it may become a self-reliant American community leaves nothing to be desired in telling eloquence. Besides his spoken address Mr. Hosmer presented to the committee documents that, if goes without saying, contained nothing but exact and trustworthy information.

To Messrs. Hosmer and Knudsen may fairly be credited the result for Hawaii gained at the seventeenth national irrigation congress at Spokane, in which they actively participated as delegates from Hawaii. This result is indeed a triumphant one, so far as securing the influence of that influential body is concerned. It appears in the following resolution passed August 13:

We urge the Congress of the United States to extend the Reclamation Act to the Territory of Hawaii.

And the resolution passed by the first national conservation congress at Seattle, at which Messrs. Hosmer and Knudsen had also presented the claims of Hawaii, equally attests the value of their services. It bears date of August 28 and reads as follows:

Since the Territory of Hawaii is approaching the limit of its ability to develop the natural resources along the usual industrial lines and would be enabled to increase materially the number of American homes through a comprehensive system of irrigation, we urge the Congress of the United States to extend the Reclamation Act of June 17, 1902, to that Territory.

It would seem that scientific men, when they engage in a squabble over honors, can indulge in personalities that put potheuse politicians in the shade. The limit appears to be reached when Captain Peary is accused of stealing grub. It is all the more deplorable when all the evidence indicates that the cause of Dr. Cook does not need such aid.

Lahaina is still the capital of Hawaii when it comes to royal hospitality.

It is cold comfort the local nullification party always gets from national statesmen. "Government by commission" is a phrase that can only be useful in the education of parrots.

President Taft will leave for his western tour tomorrow. While his itinerary does not extend to Hawaii the invitation elicited an expression of his desire to come here some time. On the approaching occasion perhaps Hawaii can find a way to be appropriately represented in San Francisco's welcome to the President.

Never has mother's devotion been more triumphant than in the success of Mrs. Sutton's long and often apparently hopeless fight to have the stain of self-murder removed from the memory of her son.

No more than on the mainland, or in any country where the problem arises, will the land question of Hawaii be settled until it is settled right.

Banking	Commercial News	Trade
Stocks		Shipping
Bonds		Travel

BY L. D. TIMMONS

Onomea was the center of interest in stock circles between boards, yesterday afternoon and this morning. Orders from San Francisco for the stock at \$50 started a small sized stampede here, and \$49.50 money was quickly increased to \$50. From there there was a swift jump to \$50.50, at which several deals were made. On the board this morning the bid was still at \$49.75, while stock at \$50.50. Sales also were 50 shares at \$50 and 100, 100 and 50 at \$50.50. The sale of Waiialua at \$116, referred to yesterday, was reported on the basis of the last sale. For

the stock \$190 was asked, but no further bidding was recorded.

A sale of interest between boards was \$2,000 Waiialua five per cent bonds, they bringing \$100.25.

On the board this morning five shares of Pineapple went for \$27.75. For the stock \$27.50 was bid and \$27.875 asked.

If the Mongolia reaches port on her scheduled date, Consul General Sammons of Seoul, Korea, will address the Chamber of Commerce at 3 o'clock Friday afternoon. What the gentleman will talk about is not known here; but it is assumed to be something of importance, inasmuch as he volunteered his services to the Chamber.

BANK OF HAWAII.

An important special meeting of the Bank of Hawaii will be held at 9 o'clock tomorrow morning.

The most important matter to come up will be the election of a president to succeed the late Charles M. Cooke. This election may result in a readjustment of the list of officers.

REFINED SUGAR UP.

The cable last night reported that refined sugar had been advanced from 5.25 to 5.35, a rise of ten points. The sweeping advance is due directly to the strong market for raws.

KAIMUKI CAR TRAVEL.

The statement in this column that 94 passengers had been taken from Kaimuki by an early car yesterday proved to be of more interest than had been expected of it, and was investigated officially by the Rapid Transit Company. The explanation was made that the crush was caused by mothers accompanying their children to school. The facts are that there were 45 full fares and 49 half fares collected on the car. Last night there was general rain over Kaimuki and Paloto, so that few school children came to the city. It was noted, however, that the same car brought in 53 full fare passengers and 26 children.

MR. WALDRON RETURNS.

Fred L. Waldron returned this morning from an extensive tour of the mainland, Canada and England. While his trip was largely for pleasure, he lost no opportunity in looking up matters of interest to Hawaii and boosting the islands. He reports having had an excellent time and returns in the best of health.

CABLE COMPANY LOSES.

SAN FRANCISCO, September 8.—By an opinion written by Circuit Judge Ross in the United States Circuit Court of Appeals yesterday the Commercial Pacific Cable Company is the loser and the Pacific Mail Steamship Company the gainer in the sum of \$30,000. It was an appeal from the judgment of the United States District Court of Hawaii awarding the Commercial Pacific Cable Company \$56,000 salvage for the alleged action of its repair ship, the Restorer, in pulling the stranded Manchuria off the rocks in Waimanalo bay on the northeasterly

side of the island of Oahu September 15, 1906.

Of the judgment awarded by the Hawaiian court \$30,000 was for bonus, but Judge Ross held that the action of the cable company's people indicated that it was an entirely commercial transaction with them and that it was not understandable how they could come into court asking for a bonus. He was not at all sure, from the record, that the Restorer rendered any very material assistance at best, but he remanded the cause to the Hawaiian court with instructions to strike out the bonus allowance amounting to \$30,000 and so amended the judgment is affirmed the Pacific Mail to recover its costs of this appeal.

PAPERS FILED.

The following papers have been filed for record at the bureau of conveyances up to 1:30 this afternoon:

- Mrs. Hannah Cook to Ching Yue, lease.
- Christopher J. Holt and wife to Jas. B. Castle, deed.
- James B. Castle to Kanamu Noda and husband, exchange lease.
- Olan Sugar Co., Ltd. to John Souza, deed.
- Geo. Sniffer to Tr. J. H. Raymond, et al, deed.
- M. O. Blackstad and wife to Ah Ko, deed.
- Ah Ko and wife to Waiamea Sugar Co., deed.
- Ida E. Lamb, by atty to George A. Martin, release.
- Bank of Hawaii to S. P. Jacobsen, deed.
- S. P. Jacobsen and wife to Mutual Bldg. and Loan Ass. mtg.
- S. H. Hook and wife to Henry Hook, deed.
- Sam Kauka to Tai Hoy, lease.
- Hawn. Trust Co. to Abbie J. Root, deed.
- Lilla Manuakea and hsb et al to J. Alfred Magon, tr, mtg.
- Chas. S. Desky to James D. McInerny, deed.
- Henry Waterhouse Trust to Maud A. Pfluger, release.
- Mabel W. Brash and hsb to Waterhouse Trust Co., mtg.
- G. J. Waller to Lum Foo Chin, et al release.
- San Antonio Society of Hawaii to Oionizo de Abreu, release.

PLUMBING PERMITS.

The following new plumbing permits have been issued:

- G. B. Henderson, one story dwelling Kauniki. W. G. Let, plumber.
- S. Katsumonono, one story servants quarters, Metcalf street. M. K. Goto, plumber.
- Mrs. McGregor, one story cottage, Kaimuki. Lin Sing Kee, plumber.

GENERAL.

William H. Gill, train despatcher of the Oahu Railway, will leave with his family by the Aotangi tomorrow for a visit to St. Paul. This will be Mr. Gill's first vacation in ten years. He will be away about three months.

(Continued on page five.)

Kee Lox Carbon Has No Equal

We know that KEE LOX will give more satisfaction than any other typewriter carbon made. We do not hesitate to guarantee it. It is strictly non-smudge and it wears longest.

Hawaiian News Company, Ltd.,
 Alexander Young Building.

Pastry that is light and tasty. Cakes that will float on air made of only pure materials will be found only at the palm Cafe, Hotel near Union Street

"Old Hats for New"

We are Selling a HAT RENOVATOR that Excels All Others. It Leaves the Hat Practically as GOOD AS NEW and Without Injurious Effects. Ask for "BENSONS" When Your Hat Needs It.

Benson, Smith & Co., Ltd.
 HOTEL AND FORT STREETS.

SALE OF NOTIONS

— A T —

Jordan's


Now On

Congressmen and Other Visitors

who wish scenic, genre and portraits of Island subjects are respectfully invited to see our big assortment. We act as a clearing house for all the views taken in the Islands and our assortment is the largest.

Honolulu Photo-Supply Co.

"Everything Photographic." Fort St. below Hotel.



On the Wave of Prosperity.

THE SHERWIN-WILLIAMS PAINT rides on the very top of the wave. It has reached that position because of its great worth and it will stay there. No other paint does good work so well and so economically. No other paint has gained such popularity. Color cards on application.

E. O. HALL & SON, LTD
 CORNER FORT AND KING STREETS

GLASSWARE
 TABLEWARE—TUMBLERS: Water, Lemonade, Claret, Rhinewine, Beer, Punch, Cocktail, Whiskey, Highball, Ice-Tea, Egg-Nogg.
 COMFORTS, WATER BOTTLES, CHEAPEST GLASSWARE IN HONOLULU
LEWIS & COMPANY, LTD
 149 King Street. THE CROCKERY EMPORIUM. Telephone 240

Jas. W. Pratt, Telephone 602, P. O. Box 451
 125 Merchant Street, adjoining Stangenwald Building.
 Real Estate For Sale and Lease
 CITY AND SUBURBAN LOTS. FARMING LANDS.

Ironing made easy by the use of an electric Iron.

Cool, clean, comfortable, simplicity itself.

Telephone 390 and our solicitor will call.



The Hawaiian Electric Co.,

AMUSEMENTS.

THE ART

BIG DOUBLE FEATURE.

FEATURE FILM

Secretary's Revenge

THE FAREWELL PERFORMANCE OF THE LESSOS.

Three changes a week

MONDAY, WEDNESDAY and FRIDAY

THE EMPIRE

TONIGHT

MOTION PICTURES

PROGRAM CHANGED

TIMES WEEKLY 3

Engagement Extraordinary: Henry Clark, Hawaiian Tenor, tonight.

The PARK

Fort Street Below Beretania.

Motion Pictures

Vaudeville

MONDAY, WEDNESDAY AND FRIDAY. Admission: 10c and 15c; Children, 5c.

ORPHEUM THEATER

The Home of Vaudeville

J. C. Cohen, Proprietor

11—COUNT THEM—11

Engagement of the world-famous creators of humorous situations.

Wise & Milton

A company of eleven Song and Dance and Musical artists.

PRICES.....10c, 20c, 30c

MATINEES:

WEDNESDAY AND SATURDAY

HONOLULU

ATHLETIC PARK

Sunday, September 19

GAMES TO BE ANNOUNCED LATER

Bleachers 10c Reserved Seats 15c and 20c Seats on sale at Wall, Nichols Co., Ltd., King street.

Iron Beds Furniture Mattresses

COYNE FURNITURE CO

AMUSEMENTS.

Baseball

Honolulu Baseball League

Saturday, Sept. 18, 1909

3:30 P. M.

ST. LOUIS VS. DIAMOND HEAD

Tickets on sale at M. A. Gunst & Co.

THE

Princess Rink

Open Every Afternoon And Evening

AFTERNOON SESSION, 3 TO 5

EVENING SESSION, 7:30 TO 10:30

EXHIBITION OF

Fancy Skating

BY

Miss Emma Wiener

Champion Lady Skater of the World.

ADMISSION: 15c; Skates, 15c.

HONOLULU ATHLETIC PARK

Moving

Picture

Vaudeville

Auction Sale

OF

FURNITURE

AT THE KNUTSFORD,

Makai-Ewa corner of Union and Beretania Streets, formerly the residence of Dr. Miner.

WEDNESDAY, SEPTEMBER 15, AT 10 O'CLOCK.

GOLDEN OAK DRESSERS, HEAVY IRON BEDS, LEGGART SPRINGS, OSTERMOOR MATTRESSES, HEAVY OAK ROCKERS, PARLOR TABLES, CHAIRS, WARDROBES, BOX COUCH, Washstands, Toilet Sets, Refrigerator, Etc., Etc.

Jas. W. Pratt, AUCTIONEER

J. W. KERSHNER Automobile Tire Repairs

1177 Alakea St. Phone 434.

Catton, Neill & Co. LIMITED

Engineers, Machinists, Blacksmiths and Boiler-makers. First class work at reasonable rates.

TO HALEIWA.

For the week end. Why not this week and if you are an enthusiastic motorist there is no better run than to Haleiwa Saturday afternoon and return Sunday. If you have no auto, take the 3:20 train Saturday and return on the "Two hour" limited Sunday evening. Or run down on the limited leaving Honolulu at 8:22 Sunday morning and enjoy the day in the country. It will do you good. Good bathing. Golf. Saddle horses.

BOWEL COMPLAINTS IN CHILDREN

Children when weething are liable to attacks of diarrhoea and this trouble, especially in warm weather, should never be neglected. The best medicine in use for ailments of this kind is Chamberlain's Colic, Cholera and Diarrhoea Remedy. When reduced with water and sweetened, it is not unpleasant, which is of great importance when giving medicine to children. For sale by all dealers. Benson Smith & Co., agents for Hawaii.

Fine Job Printing, STAN OMA.

MANCHURIA BROUGHT MANY

The P. M. S. S. Manchuria arrived from San Francisco this morning and will continue her voyage to the Orient at 5 p. m. today.

The steamer had 150 cable passengers on arriving here, 83 of whom were for this port, including 20 lay-overs.

The passenger list contained the names of such well known residents as Mr. and Mrs. J. P. Cooke, W. J. Cooper, Judge Davis, W. A. Dickson, R. S. Hosmer, L. A. Petrie, E. W. Quinn, C. Du Roi, Mr. and Mrs. Joseph Schwartz, B. H. Smith and wife, F. L. Wadron and Mrs. G. K. Wilder.

Among the passengers for here were a party of Los Angeles tourists bound for a tour of the Orient, under the direction of the steamship department of the German-American Savings Bank of Los Angeles.

Those in the party are: Mr. and Mrs. Sidney A. Butler, Mrs. S. W. Church, Miss Ruth Church, Miss Genevieve Church, Mr. and Mrs. R. V. Day, Miss Gretchen Day, Mr. and Mrs. A. C. Freeman, Mr. and Mrs. P. Gilbert, Mrs. W. W. Hadley, Mrs. Ada S. Lux, Mr. and Mrs. B. C. Lattin, Mr. and Mrs. A. Leed, Mr. and Mrs. C. McIntosh, Mr. and Mrs. Charles Lloyd, Mrs. E. P. Nichols, Miss Fay Nichols, Miss J. T. Ogden, Mrs. A. L. Ryan, Mrs. M. G. Ryland, Mrs. O. B. Warnock.

The steamship made the trip in 5 days 17 hours. Pleasant weather was experienced throughout. Last night an enjoyable dance was given aboard. Mrs. Urie Sebree, wife of Admiral Sebree, now here in command of the Pacific fleet, was a passenger for this port by the Manchuria.

The Manchuria brought 232 tons of cargo for here and a heavy lot of mail. The transport Logan, bound here, was passed yesterday morning.

HELLO CO. IS HURT

The Mutual Telephone Company has taken the ordinance which the County Supervisors propose to pass in regard to the tearing up of the streets for the laying of underground conduits, very much to heart and, it is understood, will have the backing of Superintendent of Public Works Marston Campbell in their fight. This may mean a ruction between the Territorial and the County governments which should prove interesting.

When the Mutual Telephone Company increased its capital stock recently it was necessary to amend the charter and articles of incorporation, and this was not allowed by the Attorney-General till certain sections had been changed to allow the Superintendent of Public Works to have general jurisdiction over the work to be done in the future. Now the Board of Supervisors, through an ordinance, proposes to get in and assume like jurisdiction. Here the telephone company balks. Attorney Abe Lewis representing the company, states that the power of supervision rests with the Superintendent of Public Works and that the Supervisors have no right to interfere. He has called the matter to the attention of the Attorney General and wishes the assistance of that officer in settling the question.

COMMERCIAL NEWS

(Continued from Page Four.)

Joseph Schwartz, the well known wholesale jeweller, returned by the Manchuria this morning from California, whither he went to look into his mining interests. He reports the Merced river properties a big lot of stock of which is held locally, as looking up and having a very promising outlook.

DAILY STOCK REPORT.

Session Sales: 5 Hawaiian Pineapple Co., \$27.75.

Between Boards: 80 Onomea \$50.00; 100 Onomea \$50.50; 100 Onomea \$50.50; 15 Ewa \$30.00; 15 Waiialua \$116.00; 100 Oahu Sugar Co. \$32.00; 15 Pioneer \$188.00; \$2000 Waiialua \$5, \$100.25.

Table with columns: Stock, Bid, Asked. Includes items like Ewa Plant Co., Hawaiian Agri., Raw. C. & S. Co., Hawaiian Sugar, Honomu Sugar Co., Honokaa Sugar Co., Haiku Sugar Co., Koloa Sugar Co., Oahu Sugar Co., McBryde Sug. Co., Onomea Sugar Co., Ookata Sugar Co., Olaa Sugar Co., Panuham, Pala Plant Co., Pepeekeo, Pioneer Mill, Waiialua Agri., Waimanalo, Waimea Sugar Co., Haw. Elec. Co., Hon. R. T. Co. pfd., Hon. R. T. Co. com., Nahiku Rub. Co.

SAYS HIDALGO IS ALL RIGHT

Brainerd Smith, the vendor of rubber stocks, returned by the S. S. Manchuria, after a lengthy sojourn in San Francisco, caused by the state of his health. He is accompanied by his wife and daughter.

Mr. Smith was questioned by a Star reporter this morning as to the Hidalgo Plantation & Commercial Co., the shares of which are heavily held here and about which there were many disquieting rumors some months ago.

"Hidalgo looks as attractive a proposition as it ever did and nothing to my knowledge has happened to cause the rumors which I hear have been circulated in Honolulu about the property. If the report of Mr. F. T. P. Waterhouse had been published I am certain that all holders of Hidalgo shares would have been reassured.

"All the property is planted and is looking very well and things are going ahead as well as could be desired. "The business end of the concern is O. K. and I have no hesitation in predicting a great future for it."

FLEET TOOK ON BIG PROVISIONS

The cruiser fleet before leaving San Francisco took on large quantities of supplies and it is estimated that each ship steamed through the Golden Gate with \$20,000 worth of provisions aboard, the greater portion of which was taken aboard in San Francisco.

About \$150,000 was in this way distributed among the merchants of San Francisco. On leaving the Californian port the provisions on each of the eight cruisers included 60,000 pounds of flour, 30,000 pounds of potatoes, 40,000 pounds of beef, with other items in like amounts.

It is understood that when the fleet returns to California in February all the cruisers will be fitted with the new military masts, as well as the new style of bridges, and that this work will occupy several months which will be spent at the two navy yards on the Pacific coast.

DANCE AT SEASIDE HOTEL TONIGHT

There will be a dance given at the Seaside Hotel tonight for the officers of the Pacific Fleet. Officers and ladies of the transport Logan, officers and ladies of the local Army and Navy posts, guests of the several hotels, society people, all of whom cordially invited. Kaal's glee club will furnish the music during the dinner hour and for the dance. Parties wishing reserved tables for dinner please telephone 834.

WHO'S ON THE LOGAN

The U. S. A. transport Logan arrived from San Francisco this afternoon.

Captain Campbell E. Babcock, U. S. A., considered the most experienced quartermaster-captain in the transport service, is taking the troopship to the Philippines. Captain Babcock, who was recently relieved from that position on the Sheridan, having filled the required time, was suddenly called upon to take the place of Captain T. J. Hanson of the Logan, the latter having been ordered to Fort Leavenworth. There is also a new navigating officer on the Logan, Captain Charles Williams, who succeeds Captain Stinson.

The Logan will carry to the Philippines the Twenty-first Infantry, Colonel C. A. Williams, ranking officer, for service at Fort Kitchley. Minut band are aboard. In addition to the Twenty-first, the Logan has aboard 124 first-class passengers, 105 marines for Manila and 50 casuals.

Prominent among the passengers on the troopship is Congressman A. W. Rucker of Colorado, who is on an official mission to the Philippines. Colonel W. F. Schuyler of the Fifth Cavalry now at Leliehua, Honolulu, Col. H. L. Rogers, paymaster, U. S. N., and Colonel Mark L. Hersey, assistant to the chief of the Philippine Constabulary, are bound for Manila. In the holds of the Logan are stored several thousand tons of quartermaster and commissary stores and ammunition, and in the specie tanks \$300,000 in pesos.

Table with columns: Stock, Bid, Asked. Includes items like C. R. & L. Co., Hilo R. R. Co., Hon. B. & M. Co., Haw. Pineapple Co.

Sugar, 4.16c Beet, 1 1/2, 9d

Henry Waterhouse Trust Co. Members Honolulu Stock and Bond Exchange. FORT AND MERCHANT STS. TELEPHONE 736

LATEST SHIPPING

Honolulu, September 14, 3 p. m. Arrived Since 2 p. m. Yesterday. Sch. Mol Wahine from Hawaii p. m. S. S. Manchuria from San Francisco 9 a. m.

Sailed Since 2 p. m. Yesterday. Str. Noeau for Kauai ports 5 p. m. Sch. Ka Mol for Hawaii and Maui 9 a. m. Str. Mauna Kea for Hilo 12 m. Str. Mauna Lea for Kona and Kauai 12 m. Str. Iwailani for Hawaii ports 12 m.

SAILING TODAY. Str. Kinai for Kauai 5 p. m. Str. Mikahia for Moikoi 5 p. m. S. S. Manchuria for Yokohama 5 p. m.

DUE TOMORROW. Str. W. G. Hall from Kauai ports a. m. S. S. Aorangi from Sydney a. m.

SAILING TOMORROW. S. S. Aorangi for Vancouver p. m.

LOADING TOMORROW. S. S. Aorangi for Vancouver and Victoria. Str. W. G. Hall for Kauai ports. S. S. Missourian for Salina Cruz via Island ports.

BORN. CRAWFORD—In this city, September 14, 1909, to Mr. and Mrs. W. H. Crawford, a son.

New Advertisements

HOLIDAY NOTICE.

Saturday, September 18, 1909, Re-zatta Day, being a legal holiday, all Territorial offices will be closed. By order of the Governor. E. A. SMITH, Secretary of Hawaii.

Executive Building, Honolulu, September 14, 1909.

IN THE CIRCUIT COURT, FIRST Circuit, Territory of Hawaii. In Probate—At Chambers No. 4119. In the Matter of the Estate of James H. O'Neil, Deceased.

Order of Notice of Petition for Allowance of Accounts, Determining Trust and Distributing the Estate.

On Reading and Filing the Petition and accounts of John Neill, of the City and County of Honolulu, Territory of Hawaii, Administrator with the Will annexed of the Estate of James H. O'Neil, deceased, wherein petitioner asks to be allowed \$1,615.10, and charged with \$1,349.74, and asks that the same be examined and approved, and that a final order be made of Distribution of the remaining property to the persons thereto entitled and discharging petitioner and sureties from all further responsibility herein:

It is Ordered, that Monday, the 11th day of October, A. D. 1909, at 10 o'clock a. m. before the Judge presiding at Chambers of said Court at his Court Room in the Judiciary Building, in Honolulu, County of Honolulu, be and the same hereby is appointed the time and place for hearing said Petition and Accounts, and that all persons interested may then and there appear and show cause, if any they have, why the same should not be granted, and may present evidence as to who are entitled to the said property.

Dated the 9th day of September, 1909. BY THE COURT: (Seal) M. T. SIMONTON, Clerk of the Circuit Court of the First Circuit.

4ts—Sept. 9, 16, 23 and 30.

WANTED TO BUY

Old books, magazines, Hawaiian stamps and curios. Books exchanged. Weedon Curio Bazaar. Fort Street, above Pauahi.

SAILORS' Money Belts Leg Straps Coin Purses

Everything needed aboard ship in the toilet and sundry line.

Hollister Drug Co. Established 1879. Image of a person.

WATERHOUSE TRUST

REAL ESTATE.

For Sale in College Hills. A very desirable home, located near the car line, on high ground commanding a splendid view of Manoa valley. Size of lot 100x150. House consists of living room, dining room, breakfast room two bed-rooms, kitchen, bath, servants' quarters, etc. Newly painted inside and out and modern in every particular. Price \$4,500.00 cash or easy payments.

FOR RENT.

Furnished Cottages at Punahou, Beretania St., and Waikiki Beach. Unfurnished homes in all sections of the city.

Waterhouse Trust

Corner Fort and Merchant Streets.

WIRELESS

Inter-Island Communication. Low Rates. Quick Service.

Classified Advertising

WANTED.

Furnished room, with or without meals, by refined American gentleman. Describe accommodations and state terms. "Permanent," this office.

PIANO-TUNING AND REPAIRING.

James Sheridan, tuner and repairing of pianos and organs. No. 162, Hotel street, orders left at Hawaiian News Co., Young building. Good pianos to rent or sell at cheapest rates.

FOR RENT.

First class furnished rooms centrally located. Hot and cold baths, Lexington Hotel, 215 Hotel St.

IN THE CIRCUIT COURT, FIRST

Circuit Court, Territory of Hawaii. In Probate—At Chambers, No. 3899. In the Matter of the Estate of William E. Taylor, Deceased.

Notice of Petition for Allowance of Accounts, Determining Trust and Distributing the Estate.

On Reading and Filing the Petition and accounts of Bertha S. Taylor, Executrix under the will of decedent of Honolulu, Oahu, wherein petitioner asks to be allowed \$730.96 and charged with \$1470.10, and asks that the same be examined and approved, and that a final order be made of Distribution of the remaining property to the persons thereto entitled and discharging petitioner and sureties from all further responsibility herein:

It is Ordered, that Monday, the 11th day of October, A. D. 1909, at 10 o'clock a. m. before the Judge presiding at Chambers of said Court at his Court Room in the Judiciary Building, in Honolulu, County of Honolulu, be and the same hereby is appointed the time and place for hearing said Petition and Accounts, and that all persons interested may then and there appear and show cause, if any they have, why the same should not be granted, and may present evidence as to who are entitled to the said property.

Dated the 31st day of August 1909. By Order of the Court, J. A. THOMPSON, Clerk.

Smith & Lewis for Petitioner. 4ts—Aug. 31, Sept. 7, 14, 21.

GERMAN DELICACIES

At the Aloha Cafe, Junction of King and Beretania Sts.

Pickled Pig's Feet, All Kinds of Swiss, German and American Cheese, Pickled Lamb's Tongue, Pickled Herring, Pickled Hard Boiled Eggs and all kinds of Pickles and Delicacies. Regular Meals and Short Orders at all hours Day or Night.

All Kinds of Liquors, Beers and Wines at Popular Prices. Well Trained Waiters and the very best of service.

Special Welcome to the Men of the Pacific Fleet.

Harry Klemme PROPRIETOR.

A crown of glory—is a beautiful head of hair. An Australian lady now in London writes under date Jan. 28, 1907:



"Ayer's Hair Vigor has done my hair a world of good. Thanks to it, my hair is now thick, glossy, and soft, and when plaited in 55 inches long, Ayer's Hair Vigor ought to be used by every woman who takes pride in her appearance."

You also may have such a crown of glory if you will follow the example of this lady and use

Ayer's Hair Vigor

It will remove all dandruff and make your hair rich and abundant.

Prepared by Dr. J. C. Ayer & Co., Lowell, Mass.

Is Your Home Up-to-date?

The Johnson floor finishes are necessary in beautifying the modern home. We carry a complete line of these goods, including Johnson's Prepared Wax, Johnson's Wood Dyes, Johnson's Floor Finishes, Johnson's Restorer, etc.

Fine booklet, "The Proper Treatment of Floors, Woodwork and Furniture" free for the asking.

Lewers & Cooke, Ltd.
177 S. King St. Phone 775.

68 HOURS To Chicago

From San Francisco. The Fastest transcontinental train.

OVERLAND LIMITED

Electric Lighted, Buffet, Library and Drawing Room compartment, observation car, with diner. Telegraphic message posted on train.

Southern Pacific

NEW ARRIVALS IN SILK GOOD

For years our line of silk goods has been the best in town and our last shipment proved no exception.

Iwakami & Co., - Hotel St
STEINWAY
STARR AND OTHER PIANOS.
THAYER PIANO CO.
156 Hotel St., Opp. Young Hotel.
Phone 218.
TUNING GUARANTEED.

M. OHTA
CONTRACTOR & BUILDER
Estimates given on all kinds of work.
636 South Hotel St. between Punchbowl & Alapai.

REGISTERED MAIL.
WASHINGTON, September 14—Postmaster-General Hitchcock yesterday issued an order that the registration fee for mail shall be ten cents after November 1. The maximum indemnity penalty, under the new ruling, is \$50.

SPORTS

SAILORS TO ROW IN REGATTA EVENT

Now that the ball has been started rolling in connection with the observation of Regatta Day which falls next Saturday, arrangements are proceeding merrily, and it looks as if the town would have a good Regatta Day after all.

Two races have been provided for the men of the visiting cruisers; a race for 12-oared racing cutters, and a race for 12-oared service cutters. A cup will be offered for each of these events.

The yacht Hawaii will act as judges' boat and will be stationed off the old Kinau wharf at the foot of Fort street, the finishing point of the races being an imaginary line from the wharf to the bows of the yacht.

The sailors' races will be over a straightaway course. The starting point will be from a stake boat anchored at the entrance of the harbor, and the distance from start to finish will be 1 1/2 miles. A launch with the naval judges aboard will follow the competing crews.

Entries are now being received at the store of the Hawaiian News Co., and will close at 5 p. m. on Thursday.

A special race has been added to the program in the shape of a four-paddle canoe race for women.

This year all the paddle canoes will use a straightaway course, mix-ups at the turns thus being obviated.

The officials will be as follows: Judges, A. G. M. Robertson, B. H. Shepley and Captain T. K. Clark. Special judge for fleet races, Lieutenant F. D. McMillan. Starter, George Tur-

Championship Polo Game For Tomorrow

Tomorrow afternoon will see the big polo game for the championship of the Territory. The game will take place at Moanalua and will start at 5 p. m. The Maui ponies have been brought back from Lilehua and players and ponies are fit to battle for their lives.

The game promises to be one of the closest and most exciting that has ever been played on a local field. The teams are about as evenly matched as they could possibly be and it may easily happen that a deduction for foul or penalty may decide the winning or losing of the match.

All who go out to Moanalua tomorrow will be well rewarded for their trouble. It is to be hoped that the crowd will be a bumper one for it costs money to run a polo team and the Oahu Polo Club are under heavy expense in bringing the Maui players to Honolulu. A baseball outfit may be purchased for \$100 but it costs the best part of \$1000 for a man to outfit himself for polo.

The horseflesh which will be used in tomorrow's game may be set down as worth in the neighborhood of \$2,000.

The Maui players have shown up well at practice and certainly play a hard, if somewhat rough game.

Of the Oahu team Dr. Baldwin is perhaps the weakest spot. When he is right he plays brilliantly. He is subject to off days, however, and it is to be hoped that tomorrow won't be one of them.

John Fleming is perhaps the fastest player of the side. He is always on and off but is unfortunately poorly mounted—the only Oahu player who suffers in this respect, by the way.

Sam Baldwin, perhaps the best polo player in the country, has three cracker jack ponies, Sure Kela, the recently purchased Lilehua gray, and George Denison's black mare.

E. H. Lewis has the Oahu string in excellent shape. It would be hard to find race-horses in better shape than nine of the Oahu ponies are.

Walter Dillingham has two good imported horses, also "W. R." the stand-bred he rode in the last tournament. Dillingham's style of play in his position can't be beaten here.

Maui has a good all round team of whom Frank Baldwin and David Fleming are the best. They have the advantage over the local players of using their ponies all the time in plantation work, thus being in the saddle practically all of the time. The Oahu players are business men whose opportunities of riding their ponies are comparatively limited.

In tomorrow's game six periods of five minutes each will be played and no time will be taken out. The length of the intermission has not yet been decided upon.

There is no doubt that an All-Hawaii team could be selected from the men playing in the game tomorrow which would be capable of holding its own in almost any company. Such a team as the following for instance: No. 1, Frank Baldwin; No. 2, Sam Baldwin; No. 3, Walter Dillingham; No. 4, David Fleming.

RUNNERS TO TRY AGAIN

It is probable that Anton Kaoo and Tsukamoto will race again over a ten-mile course next Saturday afternoon at the Athletic Park.

The management of the Athletic Park announces their willingness to offer a purse of \$300 for the race, \$200 to go to the winner and \$100 to the loser.

Both Tsukamoto and Kaoo expressed their willingness, this morning, to run the race again under the conditions mentioned, and final arrangements will be made this afternoon.

PACKARDS REORGANIZE

The Packard Motor Car Company was originally started some eleven years ago as a West Virginia corporation. It will become a Michigan corporation September 1, 1909. In reorganizing the company under the Michigan laws the capital stock will become five millions preferred and five

ner. Timekeepers, F. J. Kruger, S. A. Walker and G. S. Harris. Clerk of course, H. F. Murray, Recorder, H. A. Witler. Regatta committee, T. V. King, L. Spalding and R. McCorriston.

All races with the exception of the naval races will be governed by the rules of the Hawaiian Rowing Association. The naval races will be governed by their own rules.

There must be three starters in order to have a second prize awarded. The first race will start at 9 a. m. The official program and list of prizes follows:

First race.—5-oared whaleboats (no spoon oars) \$20.
Second race.—Senior 6-oared barge. \$25 trophy.

Third race.—6-paddle canoe, \$30 and \$15.
Fourth race.—Freshman 6-oared barge. \$25 trophy.

Fifth race.—4-paddle canoe. \$20 and \$10.
Sixth race.—Senior pair-oars. \$20 trophy.

Seventh race.—4-paddle canoe (modern). \$20 and \$10.
Eighth race.—Junior pair-oars. \$20 trophy.

Ninth race.—12-oared U. S. S. racing cutters. \$25 cup.
Tenth race.—Sailing canoes. \$15 and \$10.

Eleventh race.—12-oared U. S. S. service cutters. \$25 cup.
Twelfth race.—Sailing canoes (modern). \$15 and \$10.

Thirteenth race.—4-paddle canoe for women. \$10 and \$5.

SPORTDRIFT

The yacht Hawaii has returned from an unsuccessful trip to reach Maui. The visitors who intended coming down on the yacht for the polo game took passage by the steamer Mauna Kea, arriving this morning.

There is talk of a naval tennis tournament being arranged to take place on Beretania courts.

There will be two games of baseball at the Athletic Park this afternoon, admission being free. At 1:30 the Kalihis will play the U. S. S. California, and at 3:30 p. m. the U. S. S. Washington will play the U. S. S. West Virginia. The second game is the third of a three out of five series for the championship of the fleet.

The U. S. S. West Virginia has won two games of the series being played

they win from the U. S. S. Washington today, the championship will be theirs.

The semi-finals of the McInerney golf cup tournament will be played on the Country Club's links next Saturday and Sunday. The games will be Munro vs. Gil, and Giffard vs. Campbell.

E. Campbell beat Cushman Carter last Sunday, thereby qualifying for the semi-finals of the McInerney golf cup.

The Chinese Minors at a recent meeting elected the following officers to serve for the ensuing year: Yip Gunn, president; Tan Chock, vice president; Ah Hoe Ahana Jr., secretary; Chun Min, manager; John Lo, auditor; Kui Fa, captain of A team; John Alina captain of B team; Yip Gunn, captain of C team; S. C. Wong, vice captain of C team; Ni Cheu, treasurer.

Secretary Mott-Smith this morning distributed a hundred tickets of admission to tomorrow's polo game among the officers and petty officers of the fleet.

WANTS HER LETTER PUBLISHED

For Benefit of Women who Suffer from Female Ills



Minneapolis, Minn.—"I was a great sufferer from female troubles which caused a weakness and broken down condition of the system. I read so much of what Lydia E. Pinkham's Vegetable Compound had done for other suffering women I felt sure it would help me, and I must say it did help me wonderfully. My pains all left me, I grew stronger, and within three months I was a perfectly well woman."

"I want this letter made public to show the benefit women may derive from Lydia E. Pinkham's Vegetable Compound."—Mrs. JOHN G. MOLDBAN, 215 Second St., North, Minneapolis, Minn.

Thousands of unsolicited and genuine testimonials like the above prove the efficiency of Lydia E. Pinkham's Vegetable Compound, which is made exclusively from roots and herbs.

Women who suffer from those distressing ills peculiar to their sex should not lose sight of these facts or doubt the ability of Lydia E. Pinkham's Vegetable Compound to restore their health.

If you want special advice write to Mrs. Pinkham, at Lynn, Mass. She will treat your letter as strictly confidential. For 20 years she has been helping sick women in this way, free of charge. Don't hesitate—write at once.

SUN CHUNG KWOCK BO LTD

CHINESE NEWSPAPER PUBLISHING AND JOB PRINTING.
No. 49 Cor. of Smith and Hotel Sts

Furniture

Bailey's Celebrated Woven Wire Mattresses.
HONOLULU WIRE BED CO.
King and Alakea Streets.

Castle & Cooke, LIMITED

Honolulu, T. H.
SHIPPING AND COMMISSION MERCHANTS.
SUGAR FACTORS and GENERAL INSURANCE AGENTS.
—representing—
Ewa Plantation Co.
Waihua Agricultural Co., Ltd.
Kobala Sugar Co.
Waima Sugar Mill Co.
Apokaa Sugar Co., Ltd.
Fulton Iron Works of St. Louis.
Blake Steam Pumps.
Westons Centrifugals.
Babcock & Wilcox Boilers.
Green's Fuel Economizer.
Marsh Steam Pumps.
Matson Navigation Co.
Planters Line Shipping Co.
New England Mutual Life Insurance Company of Boston.
Aetna Insurance Co.
National Fire Insurance Co.
Citizens Insurance Co. (Hartford Fire Insurance Co.)
The London Assurance Corporation.

Lost --- Reward

Today about noon, between the Fishmarket and Waikiki, Lady's black leather satchel, with letter "K" on outside, contents useful only to owner. Suitable Reward to finder, upon its return to this office.

Special Stockholders' Meeting.

Notice is hereby given that a special meeting of the Stockholders of The Bank of Hawaii, Limited, will be held at the offices of the Bank, corner of Fort and Merchant streets, on Wednesday, Sept. 15, 1909, at 9 a. m.
F. C. ATHERTON,
Secretary.

Fraternal Meetings

HONOLULU LODGE No. 616, B. P. O. ELKS.
Meets in their hall on King Street, near Fort, every Friday evening. Visiting Brothers are cordially invited to attend.

E. A. DOUTCHITT, E. R. H. C. EASTON, Secretary.

HARMONY LODGE, No. 3, I. O. O. F.
Meets every Monday evening at 7:30 in Odd Fellows' Hall, Fort street. Visiting brothers cordially invited to attend.

F. D. WICKE, N. G. E. R. HENDRY, Sec.

DIVISION No. 1, A. O. H.
Meets every first and third Wednesday, at 8 p. m., in C. B. U. Hall, Fort Street. Visiting brothers are cordially invited to attend.

FRANK C. CREEDON, Pres. JAMES T. CAREY, Sec.

Aloha Cafe

Junction Beretania and King Streets.
MEALS AT ALL HOURS.
Best Wines, Liquors and Beers.
HARRY KLEMMME, Prop.

Y. Yoshikawa

163 King Street, opp. Young Building
Good, new bicycle, \$25; second hand, any kind, cheap. Tricycles for sale. Motorcycles repaired and re-tired.

FIRE INSURANCE

ATLAS ASSURANCE COMPANY OF LONDON.
NEW YORK UNDERWRITERS AGENCY.
PROVIDENCE WASHINGTON INSURANCE COMPANY.

The B. F. Dillingham Co., Ltd.
General Agents for Hawaii.

Paragon Market

F. W. KLEIN, Prop.
SPECIAL DELIVERY SERVICE.
Give Us a Trial for Prime Cuts.
Beretania and Alakea. Phone, 104.

ALEXANDER & BALDWIN LTD

OFFICERS and DIRECTORS.
H. P. BALDWIN.....President
J. B. CASTLE.....1st Vice-President
W. M. Alexander.....2nd Vice-President
J. P. Cooke.....3rd Vice-Pres. & Mgr.
J. Waterhouse.....Treasurer
E. E. Paxton.....Secretary
W. O. Smith.....Director
J. R. Galt.....Director
W. R. Castle.....Director

SUGAR FACTORS AND COMMISSION MERCHANTS

AGENTS FOR
Hawaiian Commercial & Sugar Company.
Haiku Sugar Company.
Paia Plantation.
Maui Agricultural Company.
Hawaiian Sugar Company.
Kahuku Plantation Company.
Kahului Railroad Company.
Haleskela Ranch Company.
Honolua Ranch.

FINE ROLLS AND CAKES, BUNS, PIES

and all the delicacies of the table at
ASAHI BAKERY
Beretania near Alakea.

IF YOU WISH TO ADVERTISE IN NEWSPAPERS ANYWHERE AT ANYTIME Call on or Write
C. C. DAKE'S ADVERTISING AGENCY
124 Sansome Street
SAN FRANCISCO, CALIF.
Fine Job Printing, Star Office.

Porcelain

Comb, Brush and Mirror Sets.
Handsomely Decorated
From \$2.75 to \$10.00 a Set

Hollister Drug Co.
Established 1879.

A Properly Drawn Will

is a great comfort to the man or woman with property for, no matter what happens, the estate will be disposed of according to the expressed last wishes.
We draw up wills free of charge if we are made one of the executors.

Bishop Trust Co., Limited

Bethel Street

Your Picture Taken With Greatest Care

HONOLULU ART PHOTO GALLERY.
Hotel near Nuuanu.

School Books AND SUPPLIES

A. B. ARLEIGH & CO., LTD.
Hotel Street, opp. Union.

WHITE SERGE SUITS
New line just in.
Silva's Toggery
KING near FORT.

PEEK, FREN & CO.
Crackers and Wafers.
HENRY MAY & CO., LTD
AGENTS.

PARAGON PAINT AND ROOFING CO

PETER HIGGINS, Manager.
Estimates Free of Charge.
PHONE 60.
Office No. '039 Bethel St. near Hotel.

FURNITURE

Your Credit Is Good
J. HOPP & CO. - King St

Watch REPAIRING

Done by us is fully GUARANTEED.
Popular Prices
J. A. R. Vieira & Co.
115 Hotel St. Phone 512

HOT WEATHER does not effect INTEREST. It works just as hard for you at 98% as at 65%.

SET INTEREST at work for you by depositing your surplus funds in our Saving Department.

ONE DOLLAR will open an account. Interest at four and one-half per cent.

THE BANK OF HAWAII, LTD. Capital and Surplus, \$1,000,000. Fort and Merchants Sts.

Claus Spreckels. Wm. G. Irwin. CLAUS SPRECKELS & CO. BANKERS. HONOLULU: T. H. San Francisco Agents—The Nevada National Bank of San Francisco.

Forester Hosmer On Hawaii's Need

Seattle Post-Intelligencer, August 31.—Immediately following an illustrated lecture by J. P. Blanchard, statistician of the United States Reclamation Service, delivered in the lecture hall of the Hawaiian building yesterday afternoon, the United States senate committee on irrigation and reclamation districts and projects heard a delegation from Hawaii who presented reasons for extending the reclamation law to that territory.

Senator Thomas H. Carter, of Montana, presided at the hearing. The other members of the senate committee present were Senators George E. Chamberlain, of Oregon; Francis E. Warren, of Wyoming, and Thomas H. Payne, of Kentucky.

SENATORS ARE DECORATED. The senators were decorated with leis and served with pineapples grown on the island, which they ate while listening to Mr. Hosmer and Mr. Cooke.

Mr. Hosmer, who presented the brief on behalf of Hawaii, said in part: "I want to see the Pay street, or streak, or whatever they call it," said one of the senators to another in an undertone.

NEED GOVERNMENT AID. "Because of its unique geographic position, the territory of Hawaii is called upon by the nation to perform

certain duties that require for their most efficient fulfillment a larger population of American citizens than is now present on the islands. The people of Hawaii have for many years, and are now, making every effort to increase the number of white residents in the territory, but the task is too large a one for that small and isolated community successfully to handle alone.

"There are in the territory considerable areas of semi-arid public land that with irrigation can be available for settlement. This land is of the type which the reclamation act is designed to make available for use.

"Because of its geographical position, Hawaii has an importance out of all proportion to its area or population. Lying as the islands do in the center of the Pacific, 2,100 miles southwest of San Francisco, Hawaii is the only land from which a hostile fleet could menace our western coast.

"The time has now come when federal aid is required to enable the territory efficiently to perform the duties laid upon it by the nation. Adequately to perform the work that lies ahead, there is needed on the island an aggressive, self-reliant American community of sufficient numerical size to control the local situation.

The following wireless was received from the S. S. Alameda by the local agents yesterday: "Eight p. m., All well. 1147 miles out. Fresh N. E. winds, rough head sea, and cloudy."

Captain Weikwaat of the schooner Aloha is making his first trip to this port in seven years.

BY AUTHORITY

RESOLUTION.

BE IT RESOLVED by the Board of Supervisors of the City and County of Honolulu that the sum of Two Thousand Three Hundred and Seventy Dollars (\$2370.00) be and the same is hereby appropriated out of the general fund for the payment of the amounts due under certain agreements executed on the 16th day of August 1909, relative to removal of buildings and other structures now situated upon the proposed right of way of the Kalaanui Beach Road, in the District of Koolauloa, City and County of Honolulu.

Introduced by J. C. QUINN, Supervisor. Date of Introduction: August 17th, 1909.

I do hereby certify that the foregoing Resolution was duly presented to the Mayor on Tuesday, August 31, 1909, for his approval and that he did not, within ten days after being so presented to him, return the same with his disapproval.

D. KALAUOKALANI, JR., Clerk, City and County of Honolulu. 10th—Sept. 10, 11, 13, 14, 15, 16, 17, 18, 20, 21.

W. G. Irwin & Co.

AGENTS FOR THE Royal Insurance Co. of Liverpool, Eng. Scottish Union & National Ins. Co., of Edinburgh, Scotland. Commercial Union Assurance Co. of London. The Upper Rhine Ins. Co., Ltd.

NOTICE TO SUBSCRIBERS.

Notice is hereby given that a new Directory of Subscribers of the Mutual Telephone Co., Ltd., will shortly be published.

All subscribers desiring any change of name or address are earnestly requested to leave instructions, in writing, at the office of the Company, corner of Alakea and Merchant Sts., on or before Wednesday, September 15th, 1909 after which date no changes will be made for the new Directory.

MUTUAL TELEPHONE CO., LTD. Honolulu, September 1st, 1909.

C. BREWER & CO. LIMITED.

QUEEN STREET Honolulu, T. H. AGENTS FOR

Hawaiian Agricultural Company, Onomea Sugar Company, Honoumua Sugar Company, Wailuku Sugar Company, Ookala Sugar Plantation Company, Pepeekeo Sugar Co., Kapapala Ranch.

Charles M. Cooke, President. Geo. H. Robertson, V. Pres. & Mgr. E. Faxon Bishop, Treas. & Secy. F. W. Macfarlane, Auditor. P. C. Jones, Director. C. H. Cooke, Director. J. R. Galt, Director.

W. G. CHALMERS GENERAL CONTRACTOR AND BUILDER

Estimates Furnished Free. Telephone—Office 60; Residence 1224 Honolulu, T. H. Offices 1053 Bethel near Hotel.

Empire Chop House

(Lately Palace Grill.) Bethel St. Opp. Empire Theatre. Open Day and Night. Cuisine Unsurpassed. BEST MEALS AT ALL PRICES!

C. N. TAI King St. Ewa of Nuuanu.

HARDWARE, CROCKERY, FISHING TACKLE, at lowest prices. Baseball Goods a Specialty.

BLANK BOOKS for bookkeepers

OAT & MOSSMAN Merchant St. near Postoffice.

IN THE DISTRICT COURT OF THE UNITED STATES, for the Territory of Hawaii.

THE UNITED STATES OF AMERICA, Plaintiff, vs. HAIKU SUGAR COMPANY, et al. Defendants.

Action brought in said District Court, and the Petition filed in the office of the Clerk of said District Court, in Honolulu.

The President of the United States of America, Greeting:

To HAIKU SUGAR COMPANY, a Corporation organized and existing under and by virtue of the Laws of the Territory of Hawaii; R. MIA, whose full and true name is unknown; KAHOPEWAI, (w) wife of R. MIA; W. P. KEPAA, whose full and true name is unknown; ANNE KALAAUHINA (w); B. W. KEPAA, whose full and true name is unknown; PAIA KAHOE; KAIANUI KAHOE, wife of PAIA KAHOE; HOLOWAHINE ANETONO; C. W. ANTONE, whose full and true name is unknown; MRS. L. K. TILTON, known; L. K. TILTON, whose full and true name is unknown; JOHN KAUI, WILLIAM MAUI, MARY NIHAU and HELEN WAIMEA, unknown heirs at law of AIAWALE, deceased; HIKOOPAOA; W. B. KIKOOPAOA, whose full and true name is unknown; HOLAKA; ISERAELA HOOKAELA; ISERAELA; HOOKAELA; H. KAAIKAUOLA, whose full and true name is unknown; M. H. KAAIKAUOLA, whose full and true name is unknown; S. KAIO, whose full and true name is unknown; GEORGE BROOKS; KIA, wife of GEORGE BROOKS; G. KAIMOKU, whose full and true name is unknown; KAEHA KAIMOKU, wife of G. KAIMOKU; HOLO; KAIMOKU; M. KAHIAPO, whose full and true name is unknown; KEKAE; S. P. N. KAHIAPO, whose full and true name is unknown; GENKURO CHIMEN; KAPIHE; KAHOE (w); KEKANE (w); MOWALE II; MIA; MAKANUI (w); KANAHUNA; W. D. KUKAUA, whose full and true name is unknown; MELEANA MOMONA; HOP HING; DAVID MOMONA; PAKEKEPA (w); LOUISE WAIALUA; HARRIET WAIANAE, GEORGE KOOLAU and CLARENCE EWA unknown heirs at law of MOMONA, deceased; M. KANIKANIHILA, whose full and true name is unknown; LAHELA, wife of N. KANIKANIHILA; Rev. J. E. KEKIPI, whose full and true name is unknown; MARY DOE, wife of REV. J. E. KEKIPI; KAHOPEWAI (w) wife of R. MIA; MOO; MI; R. K. PUOWAINA, whose full and true name is unknown; A. KAAHA, whose full and true name is unknown, wife of R. K. PUOWAINA; J. NAKUALI, whose full and true name is unknown; JONA NAKILA; KEKAI; ADA KONA, IDA KAU, MOSES LANAI, and ELIZABETH KAUPU, unknown heirs at law of NAKILA, deceased; KALUAHINENUI KAUMAKAOLE; P. KAUMAKAOLE, whose full and true name is unknown, husband of KALUAHINENUI KAUMAKAOLE; JOSEPA KAUMAKAOLE; KAEU (w); POKA (k), LUCY WAIKIKI, ROSE MAKIKI, AUGUSTUS KALIH, ALSTON PALAMA, unknown heirs at law of NIAUHOE, deceased; NIAUHOE KEKIPI; AA KEKIPI; OINA; PALAUOLELO; KAHAKUI WAIWAIOLE, husband of KAHAKUI; KAAHAANUI; AIONA, husband of KAAHAANUI; PAIA KAHOE; NAMAILEIALOHA; PILI-

PILI; PAKA; ELIZABETH PAHIA; YOUNG MEN'S SAVINGS SOCIETY LIMITED, a corporation organized and existing under and by virtue of the Laws of the Territory of Hawaii; KAEU; J. H. HANA, whose full and true name is unknown; KUAEAU; MOONONIO; KAILI (w) and KOEUI POKA, heirs at law of POKA, deceased; E. M. PAAHAO whose full and true name is unknown; L. K. WAIPA, whose full and true name is unknown; PULEHU; KAHEAKULANI, wife of PULEHU; HIKO; MAKANUI (w); MAKANUI (w) wife of R. MIA; KANAHUNA; HOOMANA; KALUA (w), wife of HOOMANA; KAHOOMANA; KAIPU; HOOKANO, wife of KAIPU; D. KEKALOHE, whose full and true name is unknown; KUAPUU, wife of D. KEKALOHE; PAIA KAHOE; KAIANUI, wife of PAIA KAHOE; HOLOWAHINE (w); K. WAIWAIOLE, whose full and true name is unknown; PAIA; KAIANUI, wife of PAIA; KUAPUU (w); KANE KEALOHA (w); KEALOHA and HOLOLAH, heirs at law of KAOMEHA, deceased; KALIA; KALAAUALA; J. KANAKAOLE; KELIAE; J. PAIWI KEPOU, whose full and true name is unknown and KEKAHUNA (w) heirs at Law of KEPOU, deceased; A. KUHAILUA, whose full and true name is unknown; MAKEE, whose full and true name is unknown; KUHIU; KUPA; M. KAPIHE, whose full and true name is unknown; CLARA WHITE; JOSEPHINE BLUE; SAMUEL BROWN, JOSHUA PURPLE unknown heirs at law of KEKALOHE deceased; KEAWE (k) and KALELEMAUOLE, heirs at law of WAHIELOA, deceased; ELENA II; KUPA PIOHIA; KAHAU PIOHIA, wife of KUPA PIOHIA; KAUKAU KANEIAKALA; JACK PIOHIA; KEOMAKA PAPOKO; L. KEOMAKA, whose full and true name is unknown, husband of KEOMAKA PAPOKO; HELEN NAKILA HANOHAHO; SOLOMON HANOHAHO, husband of HELEN NAKILA HANOHAHO; J. B. WATSON, whose full and true name is unknown; C. P. WEST, whose full and true name is unknown; J. B. WATSON and C. P. WEST doing business under the firm name and style of WATSON & WEST; KEONI MALIKO; KAONOHI, wife of KEONI MALIKO; AKONA; PUAKUNI; NAINA; KALA KIKOOPAOA; HAINA; WAHINELAWAIA; PAOAO; J. P. KAPIHE, whose full and true name is unknown; ELVIRA KONA; MILDRED WAIAKEA; MARION PUUEO; MARIE PAHOA; KATHLEEN HAKALUA; LILIOE HALAWA; SARAH LAHAINA; CHARLOTTE MANELE, EDITH MAUNALEI; GRACE KIHAI; FRANCES WAIHEE; MABEL PAIA; ELSIE HONOMU; LULU MAKENA; EMMELINE HANA-LEI; CHARLES LIHUE; ROBERT KAUPU; CHRISTIAN HALEAKALA; OTTO WAIALEALE; PAUL HUALALAI; WALTER KOLOA; EMIL ALAPAI; FEDERICK AALA; MANUEL PAUOA; WILFRED NAHUKU; ALEXANDER KILAUEA; HAROLD KAWILOA; VINCENT IAO; HERBERT NANAKULI; ANTONIO PUNIWA; CLIFTON HAIKU; FERDINAND ULUMALU; ANTHONY PUULO; PETER HUELO, unknown owners and claimants, MALAEA POO, LEIALOHA KUA, JULIAN NOHO, ROSALIE MOKU, MALCOLM WAI, JULIA KAMAKA, and BENTON AIEA, unknown heirs at law of KAAIMOKU, deceased; HOOLAPA; Defendants.

You are hereby directed to appear, and answer the Petition in an action entitled as above, brought against you in the District Court of the United States, in and for the Territory of Hawaii within twenty days from and after service upon you of a certified copy of Plaintiff's Petition herein, together with a certified copy of this Summons.

And you are hereby notified that unless you appear and answer as above required, the said Plaintiff will take judgment of condemnation of the lands described in the Petition herein and for any other relief demanded in the Petition.

WITNESS THE HONORABLE SANFORD B. DOLE, Judge of said District Court, this 12th day of July in the year of our Lord one thousand nine hundred and nine and of the independence of the United States the one hundred and thirty-fourth.

(Sgd.) A. E. MURPHY, Clerk. (Endorsed)

"No. 61. DISTRICT COURT OF THE U. S. for the Territory of Hawaii, THE UNITED STATES OF AMERICA vs. HAIKU SUGAR COMPANY, et al. SUMMONS. ROBERT W. BRECKONS, Plaintiff's Attorney." UNITED STATES OF AMERICA,) Territory of Hawaii City of Honolulu,)

I, A. E. MURPHY, Clerk of the District Court of the United States of America, in and for the Territory and District of Hawaii, do hereby certify the foregoing to be a full, true and correct copy of the original Petition and Summons in the case of THE UNITED STATES OF AMERICA vs. HAIKU SUGAR COMPANY, et al., as the same remains of record and on file in the office of the Clerk of said Court.

IN WITNESS WHEREOF, I have hereunto set my hand and affixed the seal of said District Court this 12th day of July, A. D. 1909.

(SEAL) A. E. MURPHY, Clerk of United States District Court, Territory of Hawaii.

ESTABLISHED IN 1830. BISHOP & CO. BANKERS. Commercial and Travellers' Letters of Credit issued on the Bank of California and The London Joint Stock Bank, Limited, London.

The Yokohama Specie Bank Ltd. Capital (Paid Up).....Yen 24,000,000 Reserve Fund.....Yen 15,940,000 HEAD OFFICE, YOKOHAMA. The bank buys and receives for collection bills of exchange, issues Drafts and Letters of Credit, and transacts a general banking business.

The Two Jacks The Most Popular Saloon in the City. THE FASHION. Jack Scully, Prop. Jack Roberts, Mgr. Hotel Street near Fort. Phone 482

Orpheum Saloon Finest Glass of Beer in Town.

Auto Fenders, \$2.50 up. Will Examine Gutters free of charge also do Plumbing Work. Lowest Prices. Work Guaranteed. JOHN MATTOS. 1175 Alakea St.

Be Not Deceived

There is only one cleanable Refrigerator and therefore GERM PROOF, and that is the Gurney Refrigerator handled by us. No other make has ever stood the test and by means of the removable ice chamber as well as removable shelves, drain pipes, traps, etc., we have solved the problem.



THE GURNEY

Listen to idle talk and arguments put forth in favor of cleanable provision compartment. All refrigerators have this feature. You cannot deny that unless ALL COMPARTMENTS can be kept absolutely pure and wholesome that a refrigerator is germ-proof. Go from the provision chamber to the receptacle for the ice and it is here where all other makes fail. There's the weakness that cannot be overcome by them.

The Gurney with its removal ice Chamber feature has supplied the great want and therefore.

Is the Only Cleanable Come in and bring forth your arguments and if we fail to convince you we are ready to take your decision. A full line always on hand. They are used in almost every household. Do you possess one? If not why not, it costs no more than other makes. GREATEST ICE SAVERS.

W. W. Dimond & Co., Ltd 58-55-57 King Street.

A SOUVENIR

A souvenir of Hawaii makes an acceptable gift the whole year round. The line of curios and novelties at the Woman's Exchange is the largest in the city.

Woman's Exchange
Hotel and Union Streets.

W.G. Irwin & Co., Ltd

SUGAR FACTORS, COMMISSION AGENTS

Wm. G. Irwin, President and Manager
John D. Spreckels, First Vice-President
W. M. Giffard, Second Vice-President
E. M. Whitney, Treasurer
Richard Ivers, Secretary
O. G. May, Auditor

AGENTS FOR

Oceanic Steamship Co., San Francisco, Cal.
Baldwin Locomotive Works, Philadelphia, Pa.
Hawaiian Plantation Co., Hilo Sugar Company, Honolulu Plantation Co., Hutchinson Sugar Plantation Co., Kilasno Sugar Plantation Co., Olo-walu Company, Pahuhau Sugar Plantation Co., Waimanalo Sugar Co.

Navy Men

will please note that the
Best Cafe

"The Alexander Young"

Hotel Street Corner of the Young Hotel Building.
Open From 6 a. m. to 11:30 p. m.

NEW ENGLAND MUTUAL LIFE INSURANCE COMPANY

of Boston, Massachusetts.

NEW POLICY

The contract embodies, in an absolutely COMPLETE and PERFECT form, the principle of strictly MUTUAL life insurance.

Castle & Cooke, Ltd.

AGENTS

Also representing
Aetna Insurance Co.
National Fire Insurance Co.
Citizens Insurance Co.
The London Assurance Corporation.

Myrtle and Healani Pennants

Made of felt in the correct colors, with ribbons for attaching to canes, etc.

75c. each

Ehlers

SOUVENIRS AND CURIOS

At Wholesale! Special prices to dealers. Post cards and shell novelties.

HAWAII & SOUTH SEAS CURIO CO.
Young Building
Next to Cable Office

Artistic Framing

Paintings or Prints
PACIFIC PICTURE FRAME CO.
Nuuanu below Hotel Street.

Fine Job Printing, Star Office

NEW ADVERTISEMENTS.

Aloha Cafe.....Page 3
Hollister Drug Co.....Page 4
Hawaiian Trust Co.....Page 1
Jordans.....Page 1
Lewers & Cooke.....Page 6
Hawaiian News Co.....Page 4
Bank of Hawaii.....Page 7
Holiday Notices.....Page 5

THE WEATHER.

Local Office, U. S. Weather Bureau, Young Building, Honolulu, September 14, 1909.
Temperatures, 9 a. m., 5 a. m.; 10 a. m.; and morning minimum.
72; 70; 75; 79; 70.
Barometer reading, absolute humidity (grains per cubic foot); relative humidity and dew point at 8 a. m.: 30.00; 6.943; 87; 66.
Wind: Velocity and direction at 6 a. m.; 8 a. m.; 10 a. m.; and noon: 8 NE; 16 NE; 8 E; 14 NE.
Rainfall during 24 hours ending 8 a. m.: .02 inch.
Total wind movement during 24 hours ended at noon 250 miles.
W. S. STOCKMAN,
Section Director.

NEWS IN A NUTSHELL

Paragraphs That Give Condensed News of the Day.

Standard meals, properly cooked and served. Nolte's.
Senator E. W. Quinn returned in the Manchuria.

Mr. and Mrs. Fred L. Waldron returned in the Manchuria from a tour extended to the United Kingdom.

Everything needed for a sailor aboard ship in the toilet and sundry line can be had at Hollister Drug Co.

No new stand but new cars. The old reliable Auto Livery Co., phone No. 6.

The business man requires a quick lunch, but wants it first class, both as to quality and service. Try Nolte's.

For hardware, crockery and fishing tackle at lowest prices see C. M. Taf, King street. Specialty in the baseball line.

The meeting of the Manoa Improvement Club announced yesterday will be held at Judge Cooper's house at 8 this evening.

Dr. C. B. Cooper has been appointed a member of the Lunacy Commission to serve during the absence of Dr. W. L. Moore.

Premier Wood of New Zealand will pass through here in the Makura on Friday, according to a cablegram received by J. D. McNerny.

Nolte's is open from early morning until business hours are over at night. Albert F. Judd has resigned as a member of the Board of Education. Albert Waterhouse has resigned from the Board of Agriculture.

For the best automobile service, ring for J. A. McLeod, seven seated Thomas Flyer. Telephone 609, Independent Auto Stand.

Kahuku wireless station was in communication with the mainland the other night, exchanging messages with the station at Table Bluff, Mendocino, California.

Norman Watkins has been appointed a liquor license commissioner in place of Alfred Castle, resigned. He was formerly a member of the board, resigning when he went to the mainland some months ago.

The Hawaiian Trust Company Ltd., supplies to its clients a cable code that enables them to keep in touch with their affairs cheaply and conveniently while away. Call and they will explain.

Hawaiian News Co. do not hesitate to guarantee Kee Lox Carbon paper to be the very best in the market. It is strictly non-smudge and wears longest. Call at our store in Alexander Young Building and see it.

Is your home up-to-date? Fine booklet "The Proper Treatment of Floors, Woodwork and Furniture," free for the asking at Lewers & Cooke, Ltd. Full line of the celebrated S. C. Johnson and Son's wood finishes carried.

How nice it would be to get away from this hot weather and put in a new weeks vacation where it is cool. Open a saving account at the Bank of Hawaii right now and each week put in your surplus funds and next year you will have enough saved to take a vacation.

The Mutual Telephone Co. lost sixty feet of 200-pair cable in the fire near Alapai street this morning. A gang of men were immediately put to work repairing the damage and will work all night in order that subscribers may be subjected to as little inconvenience as possible.

Mrs. Gardner K. Wilder returned from the mainland in the Manchuria this morning accompanied by her sister Miss Barnes and her cousin Charles L. Mommiedou.

A deed was recorded with Registrar Marriam this morning by which Geo. A. Martin transfers his house and lot, located on Hackfeld street, to Samuel P. Jacobson, for the consideration of \$3,000.

The start of the Congressmen on their trip to the local schools tomorrow will be made at 9:30 instead of at 10 o'clock. This will be done that all may have time to attend the polo game in the afternoon.

The administrator of the Mary Dame Hall estate paid over \$5315 to the Territory a san inheritance tax yesterday. It was decided not to take the case to the United States Supreme Court.

NO MUSIC IN OCTOBER

HAWAIIAN BAND GETS 30 DAYS HOLIDAY—CHARLIE CLARK AS INSPECTOR.

Supervisor Kane, at this morning's brief business meeting of the City and County Supervisors, with the Mayor, introduced a resolution, which was adopted, to the effect that the members of the Hawaiian band be granted thirty days holiday, every year, during the month of October. This means no music next month.

Outside the above resolution and the passing of maintenance and pay-roll bills, the only business of the Board was the authorization that the City Engineer appoint Charlie Clark inspector of the Kalaupapa road work, the contract for which was signed yesterday, Picanco & Wood being the contractors.

The question was raised by Aylett as to whether the Board had the right to make this appointment and Quinn amended his motion so that the Board authorized Engineer Gere to appoint. Then the question was put whether or not five affirmative votes were required, Quinn holding that in the matter of a temporary appointment the rule did not hold.

Quinn first moved that Charlie Clark be appointed inspector of the new road work under the Kalaupapa contract. McClellan seconded. Aylett regretted that the City Attorney was not present to say whether or not the Board had a right to so act.

Quinn thereupon amended his motion to read that the City Engineer be authorized to appoint Clark. Logan showed that already had the Mayor and the board approved the course of action contemplated in the appointment of Chas. Clark. McClellan seconded Quinn's amended motion. Carried, Aha voting no.

Logan, for ways and means committee, presented report: \$138 for janitors' payroll, and the following bills were also approved: Clerk's office employees \$222.50; Attorney's deputies and office employees, \$317.50; District court employees, \$170; Hawaiian band maintenance, \$785; roads, Honolulu, \$505; parks, \$120; engineering and surveying work, \$240; donation Kapiolani park, \$184.50; collection and disposition garbage, \$110; Pupukea homestead road, \$499.22; Paumotu homestead road, \$427.46; maintenance of parks, \$75; police force payroll, \$3,430; maintenance alms, payroll, \$432.50; fire station and apparatus maintenance and payroll, \$1,837.50; electric light system, \$342.50; police and fire alarm, \$62.50; City physician, \$75; milk inspector, \$50; meat inspector 75; fish inspector, \$42.50; morgue attendant, \$42.50; building and plumbing inspector, \$87.50; sanitary inspectors, \$85; electric system, \$50; fire alarm system, \$50; City physician, \$37.50; building and plumbing inspector, \$37.50.

KAHULUI WILL GET A BREAKWATER

Kahului seems likely to get her harbor improvements judging by the expressions of the members of the Rivers and Harbors Committee of Congress, who were present at a meeting held in Kahului yesterday morning. The plan presented by citizens of Kahului involves an extension of the breakwater which the Kahului railroad company has already constructed for a considerable distance, and some dredging of the harbor. The attitude of the Congressmen was generally favorable to the plan.

CONTEMPT CASE PAU

In the Supreme Court this morning Henry Van Glesen, who had been cited to appear and show cause why he should not be punished for contempt, stated that he had obeyed the order of the court and signed the deed, as he had been instructed and the citation was dismissed. The matter is now resolved into a question between Van Glesen and Attorney Magoon.

GREAT RELIGIOUS MEETING.

Next Sunday evening at 7:30 o'clock there will be an Army and Navy Platform meeting held at the First Methodist Episcopal Church, corner Berehania avenue and Miller street. Chief Yeoman H. O. Emmons of the West Virginia will have charge of the meeting. A number of Christian soldiers and seamen will address the meeting. The music will be furnished by the members of the Army and Navy, consisting of solos, duets, and quartettes. All navymen, marines, and soldiers, and the public generally are most cordially invited to attend this service.

JONES POETICAL IN LETTER HOME

Governor Frear received a long letter from Col. J. Walter Jones, the adjutant general of the National Guard of Hawaii, today, the missive being sent from Camp Perry. Col. Jones states that he has had two long conversations with Secretary of War Dickenson and with General Fred Grant, both asking many questions concerning conditions in Hawaii. The Hawaiian quintet played for General Dickenson and he was very much pleased with the music, stating that the climate of Hawaii must be wonderfully good as it was proven by the sweet and soulful music.

PROMPT WORK SAVES WORKS

A fire occurred about 9 o'clock this morning in a paint shop adjoining Wright's carriage works King street. But for the prompt attention of the department, the Wright works must have gone.

As it was all that was destroyed was the little paint shop and the wall of the carriage factory was only scorched.

The hose was first screwed to the hydrant near Kawalahao church, but no water could be coaxed. There was something radically wrong with the tap. Then there was a hustle for the next hydrant and the carriage works were saved.

If the first hydrant had worked, the carriage factory wall would not have been even scorched.

JAP WANTS MARATHON

Nothing definite had been decided in the matter of the ten-mile race between Anton Kaoo and Teukamoto up to 2 p. m. today.

Kaoo was to have given an answer to the Athletic Park people this morning with regard to whether he was willing to race again with Teukamoto for a purse of \$300, \$200 to go to the winner and \$100 to the loser. No word has been received from him, however.

Teukamoto has issued a challenge to Nigel Jackson to run him over the Marathon course for the championship of the Territory. He asks that an answer be given on or before the 16th inst.

DIRECT STEAMERS

On account of the present congested condition of travel between San Francisco and Honolulu, the Matson Navigation Company will dispatch its ships from San Francisco to Honolulu direct, the Lurline leaving San Francisco on September 17, the Hilonian on September 22, and the Enterprise on September 28, whereas whereas before the Enterprise went to Hilo.

HILO CASE IS BEING TRIED HERE

The trial of the assumed suit of Guard vs. Reinhart commenced this morning before Judge Whitney. The case is one brought from Hilo on a change of venue. It has already been tried twice on Hawaii, a mistrial resulting in each case. Attorney Irwin of Hilo, represents the plaintiff and Attorney Milverton, the defendant. The amount involved is \$119. B. Castle, deed.

Fine Job Printing, Star Office.

HAWAIIAN TOBACCO PLANTATION CO. Limited

Capital Stock \$100,000.00
5000 SharesPar Value \$20.00

Subscription list now open at the office of
HARRY ARMITAGE
Stock and Bond Broker, F. O. Box 529,
Campbell Block, Merchant Street,
Prospectus may be had on application.

JAMES F. MORGAN STOCK and BOND Broker

Member of Honolulu Stock and Bond Exchange.
Stock and Bond Orders receive prompt attention.
Information furnished relative to all STOCKS AND BONDS.
LOANS NEGOTIATED.
Phone 72. P. Box 594.

Grand Millinery Opening Autumn 1909

We beg to call the attention of the Ladies of Honolulu to our
Autumn Millinery Opening Now In Progress

A showing of Imported HATS in all of the new shades, among which are Porcelain, Olive, Mustard, Salmon and Delf Blue.

Also, we shall have on display, many beautiful Hats of our own creation in all of the new shapes and shades.

N. S. Sachs' Dry Goods Co., Ltd

Our Butter

Is superior to that sold elsewhere not alone because it is kept in absolute perfect cold storage but because it is superior when we buy it. The cold storage merely keeps it as fresh as when it left the creamery.

Metropolitan Market

W. F. Heilbron, Proprietor. Phone 45.

IT TASTES CLEAN BECAUSE IT IS CLEAN.

The Pond Dairy Milk

is pleasant and wholesome. "There's a difference." The Baby notices it instantly.

The Pond Dairy

PHONE 890. P. O. BOX 162.

TRUE TRED SCHOOL SHOES

Every boy and girl should be shod with a pair of TRUE TRED SHOES. They can learn more; you can eat more; you can sleep more; you can grow more; when you wear True Tread Boys and Girls Shoes. Because you don't know you have feet when you wear them.

PRICES: \$1.50, \$2.00 and \$2.50.
Sizes 6 to 8, 8 to 11, 11½ to 2.
We repair school shoes cheap and quick.

Regal Shoe Store

McCandless Building. Corner King and Bethel.

CLOTHES SATISFACTION

Made to your measure, with goods and linings to suit the climate. Not ready-made.

W. W. AHANA CO., LTD. 62 King St. Phone 529

ALWAYS in the LEAD

"JEWEL" Stoves and Ranges



GURNEY Refrigerators and Ice Boxes

W. W. Dimond & Co., Ltd.
53, 55, 57 King Street Honolulu