

# The Garden Island.

When you buy War Savings Stamps you do two things, you help your country and yourself. Put your money in the government's hands.

While Some One gives his LIFE -- what are YOU giving? Think a minute of the Red Cross War and goes for War Relief

ESTABLISHED 1904. VOL. 14. NO. 49.

LIHUE, KAUAL, TERRITORY OF HAWAII, TUESDAY, DECEMBER 10, 1918

SUBSCRIPTION RATES, \$2.50 PER YEAR 5 CENTS PER COPY

## Prof. Harper Tells His War Experiences

The meeting at the Tip Top Friday evening was perhaps, on the whole, the best of the series of patriotic meetings held on Kauai.

Mr. Warner, of the Y. M. C. A., introduced Prof. Harper with a word of explanation and appreciation, and then he took charge with characteristic vigor and efficiency, betokening much ability and experience.

By the way of getting the audience warmed up for the occasion, he led them in some very hearty and vigorous singing of familiar patriotic songs. This was by way of introduction to the address of the evening in which he held the audience spellbound and charmed for an hour or more while he gave them graphic and vivid experiences of Chateau Thierry and other sections of the French front. Combined with a first-hand, therefore vivid knowledge, of what he was talking about, there was a freedom and facility in the use of high class English which was most enjoyable.

There was also a pleasing personality and a dignity of character behind it which gave it charm and weight. Following the address the Working Reserve medals were distributed to the boys and girls of the Lihue district entitled to them. Unfortunately it was a stormy evening, so that the Hanamaulu section was not represented, and many even, from Lihue were missing, but gradually the stage filled up as the names were called out—the audience applauding heartily as they went up one by one, especially when several girls were added to the number.

The meeting was closed with the singing of America.

Last Wednesday evening at a meeting in the Kilaua Social Hall, Prof. Harper gave a very interesting talk on the war. A good deal of patriotism was stirred up among the various nationalities represented. The working reserve boys who were present responded with numerous patriotic songs.

A similar meeting was held outdoors on the athletic field at Makaweli on Thursday afternoon. Prof. Harper is an entertaining talker and at both meetings kept his audience bound in bonds of sympathy for our boys over there and for our wonderful allies.

## Power Plant Repairs

Mr. Thurtell, managing electrician of the Waihi Electric Company, is having a busy and arduous time of it overhauling the generating plant, and the transmission line, to put things into good shape for the winter service.

The excessively damp climate of the generating station in the mountains is very hard on the generators, and one of them is pretty badly burned out, so that it will need some considerable repairs. Thanks to the splendid concrete poles, the transmission line is, on the whole, in good shape, but the wooden cross arms and the wire guys are giving out, and the towers at either end of the main line are pretty well gone.

The necessary repairs will involve occasional intermissions in the flow of the current, which, however, will be for the shortest possible time, and at hours when they will cause the least possible inconvenience. The plant has been running for four or five years now, and in all this time the regularity and reliability of the service has been phenomenal and most commendable.

## The Red Cross Shop

The Lihue Red Cross Shop begs to express its grateful appreciation and its hearty thanks to the kind givers in Lihue, Hanamaulu and Koloa for their generous and continuous response to the needs of the store. Not only have private individuals responded most generously, but the stores also, especially some of the stores in Kapaa, and the Lihue Store, have contributed most liberally. To one and all the shop makes grateful acknowledgment.

Recent sales are as follows: Dec. 4th, 199 sales, proceeds \$52.05; Dec. 7th, 203 sales, proceeds \$88.80.

## A Garden Party For Belgian Children

There have been many calls for aid from the various organizations that have taken upon themselves the Herculean task of caring for the needy people in the war ravaged districts of Europe. Very recently we have been asked to help the French babies, and the request has met with a generous response. But the small Belgians are quite as needy, for it is their homeland that has been the greatest sufferer during the last four terrible years. We have heard very little indeed about any special Belgian relief work and it is quite a year since the public of Kauai has been asked to contribute toward such a fund.

Now, however, we are to have an opportunity of helping and of doing it in a very pleasant manner. Mrs. Swan is to give a Belgian garden party at her home in Grove Farm, Lihue, next Saturday afternoon at from two until five o'clock. The admission will be ten cents, and the public is invited. Coffee or tea, and cookies or sandwiches will be served for twenty-five cents. Lemonade—the regular old fashioned kind—ten cents the glass or two for a quarter. Genuine souvenirs from the front will be on exhibition and for sale. The money raised is not alone for the helpless babies of Belgium but a portion of it is for the helpless aged people. They have passed through sorrow and suffering beyond anything we, in our peaceful island, are capable of comprehending, and they now appeal to us to give them aid that will enable them to endure until their kinsmen can reassume the responsibility of their care.

## A Youthful Forger

Judge Lyle A. Dickey has under consideration the case of a fifteen year old Chinese boy of Waimea who is charged with forgery and raising a check.

Mrs. C. B. Hofgaard of Waimea, had made out a check to Heinrich Reinhart for seventy-five cents and turned the same over to the Chinese boy asking him to deliver it to Reinhart. Evidently wishing to receive a commission for his share in the transaction, the Oriental raised the check to \$75.00, took it to the Waimea bank and endorsed it with the forged name of Heinrich Reinhart. On presenting the check at the bank he was questioned regarding his name, and maintained that he was Reinhart. In spite of his Oriental appearance, which did not seem to coincide with the indorsement on the check, the bank paid over the \$75.00 called for.

Not wishing Reinhart to loose out on the transaction, the Chinese boy displayed neat faithfulness in the trust placed in him by actually delivering seventy-five cents to Reinhart, only keeping \$74.25 for himself.

The forgery was noticed at the bank soon after the money had been paid out, and the culprit was rounded up before he had a chance to spend his ill gotten gold. Judge Dickey has not yet decided just what course to pursue in the matter, as the boy's record has been perfectly clean up to this time.

H. H. Jones, representing the Standard Oil Company, and H. Faria, with Armand Weil of the defunct Levenson-Weill Company, are at the Hotel Lihue.

T. Kresky of the Honolulu Iron Works, is on Kauai, having arrived last Friday.

L. N. McComiskey and A. M. Endzies visiting Kauai are Internal Revenue men from the mainland.

## The Lihue Mill

The Lihue Mill, with the recent additions and reconstructions, is well up in the front ranks of the mills on the Islands for efficiency and economy. Among the additions to the equipment for this season may be mentioned a new 25 ton vacuum pan, and an extension of one of the old pans to make it a 20 ton pan. There are now four pans, two of which are used for high grades, and the other two for low. The roof of the mill has been raised so that the upper regions are light, airy and comfortable. The plant is now good for about 100 tons a day of 24 hours.

## A Disaster With A Moral

A serious accident happened to a truck belonging to the Hanapepe store recently which might have been much more serious had it not been for the timely aid which was rendered by the Kauai Trading Co. The truck was returning from Kapaa and had reached the foot of the hill on the main road west of Koloa, when a gasoline fire developed, due probably, to leakage from the gasoline feed pipe. The driver immediately despatched his helper to Koloa for assistance. Mr. Jacobs of the Trading Company, sent one or two of his men with a two and a half gallon fire extinguisher, and later followed, himself.

When he got there the chemical fire extinguisher was exhausted and the fire was under full headway, having melted off the fittings of the supply tank, and a great sheet of fire was flaming up, fed from the tank. Realizing that the truck was doomed if the tank staid there, they ripped off the seat so that they could get at it, and then at considerable risk, got a rope round it and snaked it out of the truck and into the ditch, where they were able to smother the fire by shoveling dirt onto it. The damage to the car will amount to \$500 or \$600, covered by insurance. Much credit is due to Mr. Jacobs for his courage and executive in dealing with the situation.

If an extinguisher had been available at the start, the fire could have been put out immediately, with little or no loss. By the time the extinguisher got there the fire had got too big a start.

Moral—Always carry an extinguisher in your car.

## District Court News

Saburo Akamina Okinawan Jehu of Waimea, auto No. 598, drove his machine from Lihue to Koloa landing Friday morning early to meet the Kinau, without any headlight or taillight. On Saturday Akamina failed to show up in Lihue District Court before Judge Hjorth so his bail of fifteen dollars was declared forfeited and a bench warrant for Akamina's arrest was issued by his Honor.

Manuel Pavao, Portuguese chauffeur of Homestead, arrested on the charge of driving his auto without head or taillights from Nawiliwili to Koloa on Friday morning, appeared in Court and pleaded guilty. The Court took occasion to lecture Manuel on the danger of his careless habits and as further balm to his ruffled feelings imposed a fine of twenty-five dollars and three dollars cost of court, which was grudgingly paid, and the defendant discharged.

Watanabe, Lihue Japanese, was caught on Sunday last selling Port wine to one Alphonso. In court on Monday Watanabe pleaded guilty to the charge and was fined one hundred dollars and three dollars cost of court.

Kim Yun Soon, Korean of Halehaka, used extreme profane language towards Kuaihenoku, an elderly Hawaiian lady, on Sunday last. In court the man pleaded not guilty but was speedily convicted on the testimony of several reliable witnesses. In sentencing the culprit, the Court said it felt sorry the law did not permit it to punish the offender more heavily. As it was, thirty days in jail and three dollars cost was given the defendant.

Saburo Akamina, having failed to appear in court on Saturday, was re-arrested on a bench warrant and came up on the carpet. He pleaded guilty to driving a licensed automobile from Lihue to Koloa without taillight, was given a lecture and, having already forfeited \$15.00 bail on Saturday, a one month's suspended sentence and discharged.

## THE ANNUAL MASQUERADE

Invitations are out for the annual masquerade ball to be given Tuesday evening, December 31, by the employees of Makaweli Plantation. This affair is looked forward to with a great deal of pleasure by the young folks of Kauai, as the good people of Makaweli are royal entertainers and see to it that everybody has a good time.

## The Wainiha Pole Line Is Renewed

The Wainiha power transmission line is now some twelve or thirteen years old, and for some time back it has shown serious need of overhaul and reconstruction. The rebuilding of thirty-five miles of high tension line through the inaccessible fastness of the mountains was a difficult problem, and to accomplish this without shutting down the plant or interfering with the transmission of the power was a still more difficult one, but both have been solved very successfully.

In order not to interfere with the working of the line, the rebuilding was done in sections of a third of a mile at a time, the new section being set up along side of the old line 20 feet away, and when this was all ready the power was switched over onto the new section. This meant, of course, that the released wire and insulators and any other material that was good on the old line, could be moved ahead onto the advance section of the new line.

Strange to say, the wire—stranded aluminum—has stood the years of service wonderfully well, being practically as good as new. The insulators also have stood the service very well. It is the wooden poles and cross arms that have deteriorated. Because of the short life of these wooden poles, and of the phenomenally high cost of them at present, an effort has been made to replace them as far as possible with concrete poles which shall be good for all time. These poles are being made on the ground and really cost little more than cedar or redwood, and are easier to install because of less cost of transportation.

This work of reconstruction has been going on all summer and is now nearly completed. It has been done under the supervision of Mr. Menefoglio, manager of the Wainiha plant, who has given it his close personal attention, being in camp a good deal of the time along the line.

## The Kekaha Lands

Honolulu papers report the transfer of short remaining balance of the lease of the Kekaha lands to the Kekaha Sugar Company by the Knudsen, for the sum of \$200,000. This lease, which was originally secured long ago—way back in the time of the Kamehamehas—will expire in June 1920. It is not to be supposed that the year and a half to run is worth any such sum, simply as a lease. But it will, no doubt, give Kekaha a valuable advantage in that it will be able to deal with the government at first hand.

That Kekaha should stake so large a sum on the chances of the future would seem to indicate that they have reason to hope for, or even expect, a renewal of the lease,—in which case what about the plans for homesteading this region?

## Repairs at Ahukini

The Ahukini landing is being thoroughly overhauled and reconstructed under the supervision of J. H. Moragne.

The wooden piles which were all gone, so that the wharf was just hanging, are being replaced by concrete ones, thoroughly reinforced and banded together and braced so that when finished it will make a first-class job that will last indefinitely. The Waialua Bridge gang is being employed on the job, which furnishes them welcome employment during the slack season when there is no bridge work going on, and keeps the money on the island.

## SCHOOL NOTES

Waimea School  
Colonel: Shizero Tsuchiya.  
Major: Hilda Silva.  
Captains: Antone Silva, Eddie Robinson, Kui Pat Chong, John Freitas, Shigeru Ojama.  
Corporal: Ah Kum Pah Ahama.  
The Waimea school has sold Thrift Stamps to the value of \$451.00. The school also has thirty-five Victory Boys and Girls, promising a total amount of \$106.00. The amount already subscribed being \$26.25.

## No Place For German-Made Goods

That the arrival in New York of 10,000,000 pounds of toys, every piece said to bear the words "Made in Germany," may possibly set a precedent for the flood of German goods to be sent into this country from neutral countries on the plea that they are no longer owned by citizens in Germany, is the contention of Richard M. Hurd, chairman of the Boycott Committee of the American Defense Society. In a statement made public at the national headquarters of the society, he says:

**Made in Germany Toys**  
"This huge shipment of toys bearing the abominated words "Made in Germany," arrived in New York on Wednesday on board the steamship Nieuw Amsterdam, of the Holland-American Line, which made the voyage from Rotterdam under guarantee of safety by the German Government. It is reported that the Government officials at Washington admitted this importation on the ground that the toys were bought and paid for before the United States declared war on the Huns, and have been in storage in Holland for the past two years.

**Beware of this Precedent**  
"It is my sincere hope that this will not set a precedent for a flood of German goods to be sent into this country from neutral countries on the plea that they are no longer owned by citizens of Germany and, hence, that the money paid for them does not directly help Germany. The indirect help to Germany is entirely obvious in that if the United States absorbs German products now held by neutrals, they will leave a vacuum in neutral countries into which Germany can dump her products immediately after the end of the war, or even today. This is one of Germany's strategic moves in her war for economic world domination, the plans for which have gone on steadily, despite her unfavorable military situation.

**Beware of Commercial Conquest**  
"Shall American babies handle toys made by the baby-killers of Germany? Americans should never forget that the present war is only a part of Germany's plan to dominate the world commercially, and that even if she fails to gain territorial enlargements, she has won the war if she emerges from it in a stronger economic position. All Germany's actions in the war have taken the commercial factor into consideration; the destruction of Allied and neutral merchant ships is aimed to leave Germany, after the war, the water carrier of the world; in Belgium and Northern France, the removal of machinery, the destruction of factory buildings and the deportation of trained factory operatives is aimed to remove industrial competition.

**Equipped With Stolen Machinery**  
After the war Germany, filled with stolen machinery, with her own buildings and lands untouched, with raw materials already ordered from all parts of the world, would soon be in a position to supply the world with cheap German goods while the Allied countries are rebuilding their industrial plants and transportation facilities. Could anything be more repulsive than to put into the hands of American children toys made by the German hands which drip with the blood of countless innocent non-combatants. It is the legal individual right of every American citizen to make such careful inquiry as shall prevent their consciously purchasing these toys, if they be minded so to do.

Rather rough weather at Nawiliwili last week Tuesday, caused considerable difficulty for the sailors of the Kinau in making landings with the small boats. One of the small boats that was in tow of the gasoline launch turned over and broke her tow line while making the trip back to the steamer.

At the parting of the tow line the launch sped away from the small boat she was towing and was unable to recover the same due to the fact that it drifted into dangerous water. Enoka Lovell, of Nawiliwili, finally succeeded in bringing the boat into a safe place. Mr. Lovell now has the boat safely moored at Nawiliwili, where he is holding it for salvage.

## Local News

Gathered from here and there

Mrs. Raymond A. McNally returned to Honolulu after a week in sight-seeing on Kauai.

A. Delmont Shortt, the Alexander Hamilton Institute man, returned to Honolulu Tuesday.

E. B. Gerald, the tobacco man, is with us, as also Dave L. Austin of Davies & Company.

Mortimer Lydgate has been elected captain of the Punahou foot ball team for the next season.

H. C. Berg arrived this morning to take a responsible position with the Koloa Sugar Company.

C. W. Grote has severed his connections with the Lihue Plantation Company after 27 years' service.

Mrs. D. L. Larsen returned from town this morning. She has been in Honolulu for two or three weeks.

Substitute pupil teachers, who have been receiving a dollar a day for their services, have had a raise, and are now to get \$1.50.

Mrs. A. Menefoglio returned by the Kinau this morning. She has been absent for about three months visiting friends and relatives on Hawaii.

The weather was so stormy and the seas so boisterous last Friday morning that the Kinau could not land at Nawiliwili, and went on to Koloa.

Tommy Evans, territorial surveyor, was in Hanapepe last week laying out roads and lots in the tract of government property there that is soon to be sold at auction.

Captain Frank Cox, formerly of Waimea, and now commanding Co. M of the 2nd Hawaiian Infantry, U. S. A., at Schofield, arrived last Tuesday on furlough. He returned to Honolulu Saturday evening.

The regular monthly meeting of the Mokihana Club will take place tomorrow at the Lihue Hall. The subject will be "Patriotic Music," with Mrs. Grote as leader and Mrs. Moler, Mrs. Hogg, Mrs. Grandhomme and Mrs. Stewart as hostesses.

The Kauai Chapter of the American Defense Society held a well attended meeting on Wednesday last at the Koloa school. The annual meeting of the chapter will be held at the residence of Dr. Waterhouse at Koloa on Wednesday, January 15th, 1919.

F. W. Carter of Honolulu, Sheriff of Kauai about twenty years ago, is on Kauai in the interest of the Board of Harbor Commissioners. The wharf at Nawiliwili will be repaired and the shed extended, as also the wharf at Hanalei. Mr. Carter will also make borings of Ahukini, Kapaa and Anahola harbors.

The entertainment and dance at Waimea last Saturday evening for the benefit of the Kauai National Guard was a great success according to those who attended and enjoyed the general festivities.

Moving pictures and a clever vaudeville stunt by Henry Vierra made up the first part of the entertainment. Vierra entertained with a clever little sketch of his own—an impersonation of a Chinese laundryman who was having difficulty collecting his bills from various prominent Waimea people. His complaints were quite humorous and caused a good laugh to be had at the expense of local people.

After the show the people turned to dancing. Bad weather prevented many who had purchased tickets from being present, but as it was, there were about thirty couples dancing at all times. Music was furnished by the Kekaha Quintet Club.

On account of weather conditions there was not much of an audience at the Tip Top last night, but those who were present went away well satisfied with the show.

A performance will be given in Keala tonight, Wednesday night at Kapaa, Thursday night at Kapaa, and Friday night at Koloa.

The benefit ball game which was to have been played in Lihue last Sunday was called off on account of rain.

## And a Little Child Shall Lead Them

By L. W. de Vis-Norton

This has nothing to do with the Good Book, neither does it even concern our good Food Commissioner, but it concerns each one of us nevertheless, and has to do a great deal with our duty towards our victorious fighting armies, our Government and ourselves. Therefore let us read, mark, learn and inwardly digest it, if we are really interested in any of these things.

Probably many will remember an amusing picture of a bedraggled looking hen, with a woe-begon expression, leaning against a doorway in an attitude of utter pessimism. She was disgusted with life in general and with mankind in particular, and as a tear ran down her cheek, she said "After all, what's the use? Today we're eggs, and tomorrow we're bloomin' feather dusters!" That was on a par with the well-known adage to the effect that life is just one thing after another, for we may well say that life, today is just one drive after another, and no sooner have we finished with one than we start another. And we do it mightily cheerfully, for Hawaii has made a name for herself a name of extreme honor from one end of the American continent to the other for she has gone over the top in everything she has been asked to undertake, and has even helped out one of her great sisters at a time of dire stress.

But stay a moment. Have we gone over the top in all our undertakings? Have we the right to crown ourselves with the laurels of the victor and to be lauded before all America as an example of the highest form of loyalty and patriotism?

No, Sir, we have not. We have done magnificently, but our task is not yet complete, and it cannot be complete until we have met our obligations and discharged the whole of

our debts to the Nation. In what have we failed? Here is the whole proposition in a nutshell. We have failed in one respect only, but in that respect we are still five hundred and fifty thousand dollars in the hole. The Nation asks us to buy War Savings Stamps to that amount before the end of the year, and there are no two ways about it. It's one of the things that has to be done, and, since Hawaii does not know the meaning of final and definite failure, it is GOING TO BE DONE.

What precedent have we for doing this? We have, surely, two of them. First, we have the magnificent example we have provided for ourselves by the performances that have made Hawaii an honored name throughout the continent, and second, we have a still greater precedent, which the text of this little preachment supplies, "A little child shall lead them."

What are the children doing? Let me tell you. They are setting us an example of thrift and loyal patriotism that should sink right down into the heart of each and every one of us today, and lead us to try and copy them. In the Central Grammar School there is a little girl, but she has a heart of gold and a determination fed by the fire of loyalty that should make us honor her all the rest of her life. This little girl went out and got busy last October. She put energy and impulse into her work; infected all whom she saw with the spirit of loyalty from her brave little heart, and, by the end of the month had sold War Savings Stamps to the tune of over \$2,500.00!! I do not give her name, but it ought to be emblazoned in letters of gold on the honor boards of the nation.

And this is but one instance of the way in which the little children are leading us in the lesson of patriotism. The Junior Academy out at Punahou opened its campaign on the 19th of October. By the end of the month those little kiddies had accounted for nearly \$4,000.00 worth of War Savings Stamps, and had 4 Colonels, 3 Majors and 11 Captains in their regiment. Bless their loyal little hearts: They

are still going strong, and they are not going to stop as long as we elders continue to fail in our duty.

The Punahou Elementary School accounted for 2,591 Thrift Stamps and 44 War Savings Stamps in the first week of its campaign, while the children of the Kaula High School turned in \$3,336.09 in only twelve days. And, speaking of Kaula, there is one tiny little school at Kilauea on that island. Its pupils are few in number and so poor in pocket that many of them have hardly any pockets at all. And yet, they have accounted for \$273.00 worth of War Savings Stamps in less than a month. God bless their little hearts.

Another tiny school at Holoisua, away over in Kona, Hawaii, whose pupils are almost all children of Orientals, has already turned in \$390.50, with more to follow, while the kiddies of the West Hawaii district, administered by that splendid woman, Miss Bertha Ben Taylor, have bought with their own little nickels, no less than \$5,703.73 worth of stamps. Think of the poverty of these little tots and then remember that this sum represents \$5.42 apiece. Isn't it just a record to be mighty proud of?

The list could be extended over columns of this paper, but space is limited. We have already more than a dozen full generals of the W. S. S. Army, among the islands. Do you realize that for a child to attain this rank, he or she must account for \$1000 worth of War Savings Stamps? It may be more easy for the child of high social standing, but the odd part of it is that nearly all the Generals in the Territory are the children of the very poor.

Is my text justified or not? Are the children setting us a high example or are they not? Are we proud of them, or are we not? Of course we are, but are we going to let it go at that, or are we going to get out and do some digging on our own?

It all comes back to the fact that we owe \$550,000.00 on a debt of honor, and debts of honor always have to be paid. Even the little kiddies realize that much, and they are nobly doing their bit in order to help us pay it off. How about our Christmas presents? Can we make them help? The Oahu Sugar Company is giving a 3 percent Christmas present to its stockholders, in addition to its usual dividend. That makes a little gift of over \$240,000.00, almost half of our War Saving Stamp debt. Can't we all make a Christmas

## THE OATH

By KENNETH G. DUFFIELD  
Member Author's Committee,  
American Defense Society

I will not drink from a German cup.  
Or eat from a German plate.  
I will not deal with a German man.  
All foul with German hate.

I'll use no drug with a German name.  
That's grown on German land.  
I'll eat no food and drink no beer  
If made by German hand.

I will not use a German tool,  
Razor, or knife, or saw.  
I will not trade with a German shop  
That lives by the German law.

I will not sail on a German ship,  
Where German songs are sung.  
I will not breathe where God's clean air  
Is soiled by a German tongue.

I'll not forget those awful deeds,  
To girls and little boys.  
No more I'll hang on Christmas trees  
Those blood-stained German toys.

I will not take a German's word,  
He'll break it if he can.  
There is no love in a German heart,  
Or faith in a German man.

This is my oath, when war is done,  
I'll swear to keep it true.  
And since I know you feel the same,  
I'll pass it on to you.

present to ourselves of some W. S. S.? Why not? It will discharge our debt to the Nation; it will put us over the top in the only thing in which we have failed; and it will be a safe and good investment which will all come back to us in the near future.

What are we going to do about it? The children are leading us today. We cannot afford, for our honor's sake to let them do the work. Let's all go to it, and wipe out that debt before Christmas comes. Lord knows we have plenty to be thankful for, when we think of those black Christmases of the past four years when our dear ones were dying for us "over there."

Let us say "God bless the children" and then get out and put this thing so far over the top that we shall astonish even ourselves.

And so shall Hawaii celebrate this coming Christmas with honor, and a thankful heart.

# Peet's Crystal White

washes woolens perfectly

The things you knit, and the things from which you hope to get longer wear--deserve such care. It cleans, softens, lengthens the life of fabrics.

It's the perfect family soap for all household purposes and helps in the "save and serve" campaign.

Tell your grocer to send you a cake of CRYSTAL WHITE today.

**American Factors, Ltd.**

Wholesale Distributors for Hawaii

## CHRISTMAS

# Gift Suggestions

CARVING SETS	SHEARS
KNIVES	RAZORS
TOOL SETS	WRENCH SETS
	MECHANICS' TOOL BOXES
	HOUSEHOLD TOOL SETS

Mail Orders Solicited

**Lewers & Cooke, Ltd.**

Honolulu

169-177 So. King St.

# CHRISTMAS GREETINGS

We extend to you a most cordial invitation to visit our store and inspect our line of Christmas goods. You will find many beautiful articles to choose from; articles suitable for presents for every member of the family.

## TOYS TOYS TOYS

Our line of Toys will delight the heart of every child. We have a complete line of CUT GLASS, JAPANESE SILK GOODS, KIMONOS, Etc.

MAKAWELI STORE

Try to find new ways of making the old clothes do, says Uncle Sam. Send us your old suits, gowns, draperies, linens, etc., for

### CLEANING AND DYEING

and general restoring to usefulness.

### French Laundry

J. ABADIE, Proprietor  
Honolulu, T. H.

### CALIFORNIA FEED CO

LIMITED.  
Dealers in  
HAY, GRAIN AND CHICKEN SUPPLIES.  
Sole Agents for  
International Stock, Poultry Food and other specialties. Arabic for cooling Iron Roofs. Petaluma Incubators and Brooders.  
KING'S SPECIAL CHICK FOOD  
P. O. Box 452, Honolulu

### HOTEL LIHUE

(The Fairview)

Twenty-two elegant rooms  
In Main Building  
Three Airy Cottages  
Cuisine unexcelled in country districts.

W. H. Rice, Jr.,  
Proprietor

### Koloa Plantation Store

Wholesale and Retail Groceries  
Dry Goods of all Descriptions.  
General Plantation Supplies.

"We have not studied cost nor economy as we should, either as organizers of industry, statesmen, or as individuals."

---President Wilson.

But there is yet time to start to save--and that time is NOW.

### Bishop & Company

Savings Department  
WAIMEA BRANCH  
KAUAI

### Kuraoka & Co.

CONTRACTOR AND CARPENTER  
Building, Painting, Moving Buildings and General Carpentering.  
Manufacturer of All Kinds of Furniture.  
P. O. Box 265 - Lihue, Kauai

## MINUTES OF SUPERVISOR'S MEETING

The Board of Supervisors of the County of Kauai held its regular monthly business meeting at its office on Wednesday, December 4th, 1918, at 9:30 a. m. Present: H. D. Wishard, chairman; T. Brandt, W. D. McBryde, J. F. Bettencourt Jr. A. Menefoglio.

The minutes of the last meeting were read and the same as read were approved.

The Board after examination, approved the several demands submitted against the following appropriations, namely:

Salary County Rd. Supervisor	250.00
Pay of Police:	
Specials	250.00
Waimea	290.00
Koloa	170.00
Lihue	180.00
Kawaihau	175.00
Hanalei	170.00
	1,235.00

Coroner's Inquest	117.00
County Bldg: Jan. Service	44.70
County Jail	581.47
County Lot & Bldg.	325.15
District Courts, etc.:	
Waimea	44.00
Koloa	10.00
Kawaihau	5.05
	60.05

Expenses of Election	4.50
Expenses of Liquor Licenses	50.00
Expenses of Witnesses	12.50

Hospitals:	
Eleele	50.00
Koloa	50.00
Kealia	50.00
Lihue	200.00
Sam Mahelona	500.00
Waimea	100.00
	950.00

Incidentals:	
Attorney	5.00
Auditor	57.65
Clerk	59.63
Sheriff	134.40
Supervisors	2.00
Treasurer	40.10
Co. Rd. Sup.	156.50
License Col.	2.35
	457.35

Pay of Police Specials Extra	250.00
Registration Automobiles	65.00

Schools:	
Jan. Serv. & Sup.	19.41
New Sch Bldgs	1,464.32
Rep. & Maint. Sch.	
Bldgs & Grds.	665.67
	2,149.40

Support of Prisoners	427.11
----------------------	--------

Water Works:	
Waimea	45.00
Kalaheo	98.55
Omao	27.00
Koloa	34.60
Kapaa	59.40
Anahola	7.00
	262.55

Road Work:	
County Road Machinery	12.04
Waimea: Mana New Rd (P.I.)	239.00
Rd. Tax Spec. Dep.	689.93
Koloa: Resurf. Koloa Mac. (P.I.)	40.50
Oiling Rds.	1,811.02
Rds. & Bldgs.	654.71
Lihue: Wailua Bg. (P.I.)	1,392.67
Oiling Rds. (R.T.S.D.)	4.00
Road Tax Spec. Dep.	541.85
Kawaihau: Kannele Rd. Con.	105.50
Laipo Rd. Con.	74.00
Pueo Rd. Con.	9.99
Valley Rd. Con.	4.00
Rds. & Bldgs.	881.83
Hanalei: Oiling Rds.	392.30
Rds. & Bldgs.	285.56
Total	\$14,367.87

Financial Reports Nos. 223, 223a, 223aa, and 223b for the month of October, were referred to Mr. Brandt for advice.

Upon the motion of Mr. McBryde, seconded by Mr. Bettencourt Jr., the sum of Five thousand Eight hundred and eight and 50/100 Dollars (\$5,808.50) was appropriated as additional appropriations, for the uses below named, same to be paid out of available moneys in the Treasury, viz:

General Fund:	
County Lot & Bldg.	350.00
Water Works Kalaheo	100.00
Water Works Omao	35.00
Water Works Kapaa	40.00
Oiling Rds. Koloa	300.00
Rds. & Bridges Koloa	550.00
Kannele Rd. Contract	60.00
Laipo Rd. Contract	74.00
Pueo Rd. Contract	9.50
Roads & Bridges	870.00
Oiling Roads Hanalei	390.60

Roads & Bridges 400.00  
Pern: Improvement Fund:  
    Mana New Road 230.00  
    Wailua Bridge 1,400.00  
Reports (P1583 and 1696) of the Poundmaster of Kawaihau for the quarter ending June 30th and September 30th last, respectively, were approved upon the recommendation of Mr. Menefoglio.

Report (P1697) of the same Poundmaster for October was referred to Mr. Menefoglio for report.

A communication (P1698) from Mr. Brodie of Hanapepe for repairs to be given the Hanapepe school cottage was received and consideration thereof postponed until the next January meeting of the Board.

A requisition (P1698) for much needed repairs to be given the Lihue School main building, was received and as this work has been attended to already the same was placed on file, the expenditure for the repairs, however, was approved by the Board. Another requisition (P1698a) for repairs to be given the Kapaa School main building and for storm-curtains to be placed on the school's lungalows were received and the Board ordered that the repairs much needed be given during the coming vacation of schools. A requisition (P1698b) from the Kauai High School for the extension of the electric line of the local electric company to the school for the benefit of the latter's science classes, the students of the classes paying for the monthly rent of same was allowed upon the motion of Mr. Menefoglio, seconded by Mr. McBryde.

Communications between H.W. Kinney, Superintendent of Public Instruction, and the chairman in regard to new school houses and cottages to be built for this County respectively dated October 23, and November 23, 1918, were read and placed on file to be taken up for more definite action at the next meeting to be held on the 16th inst.

Reports (P1609) on school buildings etc. for November were received from Anahola, Haena, Hanalei, Hanamanu, Huleia, Kalaheo, Kapaa, Kapahi, Kauai High (2), Kekaha, Kilauea, Koloa, Koolau, Lihue, Mana, Omao, and Waimea, and were placed on file. The report (P1610) of the County Road Supervisor for October and November last were received and placed on file. It is as follows:

"No special work was done on the roads on except Wailua Bridge. A small force was employed on foundation work up to Nov. 26 when the work was suspended as directed by the board on account of shortage of money.

"Asphalting at Kallihwai was extended to the grade to a point near Kilauea school. The buildings at the new Huleia school were completed at the middle been piped to the school. Grove Farm of November, but water has not yet has given permission to connect a half inch pipe with their main near their stable which point of connection is about half a mile distant from the school.

"Considerable repair work was done at Koloa school. The cook house at Kapaa school was finished. The roof of the main building at Lihue school has just been repaired by covering it with a single thickness of felt paper stuck to the old shingles with hot asphaltum. Mr. Brodie wants his cottage at Hanapepe overhauled. It appears that the water supply at Kalaheo Water Works ran very low during the last few months and many of the customers were out of water repeatedly, some for days at a time. Since the heavy rains two weeks ago there is plenty of water which will probably hold up until next summer."

The Board upon motion of Mr. McBryde seconded by Mr. Bettencourt Jr., ordered the laying of a 1/2 inch pipe to the Huleia school from Grove Farm Plantation main situate in the vicinity, also the building of a tank on the school premises for the use of the school.

A suggestion (P1611) by the Kanoa Estate that the County take up the proposal of building a retaining wall to the Nawiliwili Stream was received and upon the motion of Mr. Brandt seconded by Mr. Bettencourt Jr., the Board unanimously voted to refer the estate to the Superintendent of Public Works as it was a matter that properly belonged to his office, although the County was very much interested in the matter and hoped to acquire additional area for the parking of automobiles of people intending to take passage on the steamers, and further hope that the estate will take the matter up with the Superintendent of Public Works and at the same time suggest propositions that will solve the problem.

## TIP TOP THEATRE

Tuesday, Dec. 10  
DOUGLAS FAIRBANKS  
—IN—  
"Mr. Fix-It"

THE IDEA OF THIS STORY WAS SO GOOD THAT DOUG TEMPORARILY FORSOOK SPURS AND CHAPS FOR SPATS AND A MONOCLE TO PLAY IT FOR YOU.  
MACK SENNETT COMEDY.



DOUGLAS FAIRBANKS  
in "Mr. Fix-It"  
An AIRCRAFT Picture

HEARST PATHE WEEKLY NEWS PICTORIAL

Thursday Dec. 12

### JACK PICKFORD

### "MILE-A-MINUTE KENDALL"

AN ADVENTRESS, A WILD YOUTH, AN ANGRY FATHER AND A PRETTY NURSE. SEASONED WITH LOTS OF ACTION ALWAYS MAKES AN EXCEPTIONAL PICTURE.

Second Episode of "THE BULL'S EYE"



JACK PICKFORD  
in "Mile-A-Minute Kendall"  
A Paramount Picture

Saturday, Dec. 14

### Pauline Frederick

### Resurrection

A VAST DRAMA OF TRUE LOVE AND TRAGEDY DELINEATED BY A GREAT ACTRESS

SIXTEENTH CHAPTER OF



### "THE EAGLE'S EYE"



PAULINE FREDERICK  
in "Resurrection"  
A Paramount Picture

"Mr. Fix-It" program will be also shown at

ELEELE, WED., DEC. 11; MAKAWELLI, THUR., WAIMEA, FRI., KEKAHA, SAT., KAPAA, MON.

"Resurrection" program will be shown at

WAIMEA, MON., DEC. 16; MAKAWELLI, TUES. KOLOA, WED. KAPAA, FRI.

The clerk was instructed also to notify the Superintendent of Public Works of the above matter and to request that any action to be taken in the premises be referred to the Board here before final action is taken.

A statement (P1612) of the total assessment in the County of Kauai for 1918, was received from the office of the Tax Assessor, 4th Division, (County of Kauai), and action to be taken in connection therewith was deferred until the meeting of December 16th next which is the next meeting of the Board.

A communication (P1612) from Hon. D. Kalaokalani, City and County Clerk, Honolulu County, enclosing demands from Henry Freitas, general contractor, of Honolulu, amounting, in the aggregate, to \$1,001.50 for labor and materials, tables, cartage and erection of booths for the primary and General Elections held at the Posts, in Honolulu, and incurred in behalf of the County of Kauai, also a bill for \$187.00 from the Hawaiian Gazette Co., Ltd., of Honolulu, for printing election supplies, together with a letter from the County Clerk as a reply to the foregoing communication at same time asking for a detail explanation of the above demands, were submitted to the Board but action on the matters was deferred until after the Clerk receives the reply he asked for.

Upon the motion of Mr. McBryde, seconded by Mr. Bettencourt Jr., the superintendent of Water Works at Kalaheo, Lawai and Omao was allowed to install a telephone in his office at the expense of the County.

Upon the motion of Mr. Menefoglio, Mr. Moraga was instructed to construct an out-house for the use of the Hanalei school as soon as practicable. A communication (P1614) from the Hawaii Promotion Committee through

its secretary, Fred J. Halton, asking for the submission before the Board of a resolution offered by the Hawaii Promotion Committee which requested "that immediate telegraphic representation be made to the proper authorities by the Honolulu Chamber of Commerce pointing out the need for adequate passenger service between Honolulu and the mainland" was received and the Board by unanimous vote strongly endorsed the resolution, upon the motion of Mr. Menefoglio, seconded by Mr. Brandt. At 11:30 a. m. the meeting adjourned to meet again on Monday, Dec. 16th, next at 9 o'clock a. m.

Celebrate  
Peace Christmas  
by buying a pair of new  
**REGALS**

Made of best grade of real leather, they'll help you continue to observe real economy.

WE'LL FIT YOU BY MAIL  
**REGAL SHOE STORE**  
HONOLULU

Souvenirs  
We neatly pack and mail Hawaiian Souvenirs.  
Hawaii & South Seas Curio Co.  
HONOLULU.

## JAS. F. MORGAN

Co. Ltd.  
Stocks, Bonds,  
Real Estate and Insurance

NO. 125-131 MERCHANT ST.  
P. O. Box No. 594 Honolulu

### DELCO-LIGHT

The complete Electric Light and Power Plant

Will give your family all of the benefits of a cheerful, modern home.

HAWAIIAN ELECTRIC CO., LTD.  
Honolulu Distributors

### Kauai Steam Laundry

FIRST-CLASS  
WASHING AND IRONING

HATS CLEANED

Kapaa : : P. O. Kealia

SUPPORTS ANY AND ALL GOVERNMENT MEASURES AT ALL TIMES.	<b>THE GARDEN ISLAND</b> Kauai First, Last and all the time.	PUBLISHED EVERY TUESDAY  LIHUE KAUAI
	KENNETH C. HOPPER, Managing Editor	
	TUESDAY - - - - - DECEMBER 10, 1918	

**PUNISHMENT FOR HOHENZOLLERN**

THERE must be personal punishment for the super-criminals of this war. They must be brought before an international Tribunal, tried for definite violations of International Law (like the ravishing of Belgium, the sinking of the Lusitania, the bombing of Red Cross hospitals, the starving and brutalizing of helpless civilians on land and sea) and sentenced to personally pay the clearly provided penalties for these crimes, so that posterity may never forget their wickedness. Napoleon Bonaparte was personally punished for his crime. Charles Stewart was personally punished. Nicolas Romanoff has been personally punished. And now William Hohenzollern must be personally punished.

No money indemnities, no territorial adjustments, no overthrow of Prussian autocracy can relieve the arch-criminal and his guilty advisors from their personal responsibility for this war and its hideous consequences. They must suffer in their own bodies for their own sins. The dead would rise from their graves on the battlefield if these monsters of cruelty and rapacity escape personal punishment.

We believe that an overwhelming majority of American citizens will cry out in horror against any peace that does not provide adequate personal punishment for those who deliberately by their own acts brought upon the world the greatest misery mankind has ever known.

**REGISTER YOUR STAMPS**

HOLDERS of War Savings Stamps are reminded that they can have their Stamp cards registered at the post office so that they will be practically safe from loss or theft. This is a very simple matter and will be a great safeguard against loss.

The Lihue post master informs us that so

far he has registered only 51 cards, which seems a very small showing in view of the fact that there must be hundreds of holdings.

For those who have safety deposit boxes in the bank or iron safes at home it may not be so necessary to register, but for the ordinary child or plantation laborer who keeps his valuables in a drawer, or on a shelf, or in a box, where thieves may easily break through and steal, it will surely be the part of wisdom to register. Do it now.

**KEEP YOUR WAR SAVINGS STAMPS**

ONLY second to the duty of buying War Savings Stamps is the duty of keeping them. We learn from the post offices that a good many people are cashing in their stamps, and are thus depriving Uncle Sam of the money which they had given him to understand he could depend on until maturity in 1923. Such Indian giving belies and defeats true patriotism.

Extreme need may justify the raising of money on these securities, but this should be done by hypothecation or transfer to some other investor so that the investment may remain intact as far as the government is concerned.

**MORE ROOM AT THE LANDING**

WE are glad to learn of the proposition to build a retaining wall to the banks of the Nawiliwili stream at the landing by which the occasional ravages of that stream may be restrained and a larger space be secured for the parking of automobiles in connection with the landing.

We most heartily recommend the scheme to the favorable consideration of the Public Works Department, and would suggest that the Kauai Chamber of Commerce lend the project the benefit of its effective influence.

**LETTERS FROM THE PEOPLE**

Editor the Garden Island—I wish to call your attention to an editorial that appeared in your paper of December 3, 1918, from which I quote the following:

"The experience of the steamer 'Barrington,' Captain Sorenson, at Port Allen at that time, necessitating the ship having to leave its moorings after a hard struggle to prevent it from going on the rocks, and proceed to Honolulu, where the steamer arrived on Tuesday, after a hard tussle with the elements."

This statement is absolutely in correct, as the steamer "Barrington" was in no danger whatever while at Port Allen, when she left her moorings, she had not the slightest trouble in so doing, nor was there any struggle to prevent her from going on the rocks, nor did she experience any trouble on her trip to Honolulu.

I do not know where you got your information regarding the "Barrington" having such a hard struggle to keep from going on the rocks at Port Allen, it would be well to ring up the undersigned, Harbor Master in charge of Kauai Ports, for correct information, which will prevent any such unreasonable report from appearing in your paper.

Kindly correct your statement in the Garden Island of December 3rd, under the heading, "Near Disaster at Port Allen."

I must emphatically object to erroneous reports regarding shipping at Port Allen.

Very truly yours,  
GEO. B. LEAVITT,  
Harbor Master, Port Allen.

The above complained of editorial was based on a news item appearing in the Honolulu newspapers of Nov. 27th was written in good faith.—Ed.

Editor the Garden Island—We, the undersigned Chinese, some of us born here and others residents of many year past of these islands, most emphatically protest against the holding up of the Chinese to the ridicule of the public as it was done by Mr. Viera in his performance in Waimea Public Hall on Saturday, the 7th inst. a performance which is to be repeated in other places on Kauai.

There may be no specific law to prohibit such a proceeding but it is certainly tactless and offensive in the extreme and not likely to promote that feeling of tolerance, good feeling, and consideration existing between the many nationalities composing the population of these islands.

People of the Hawaiian Islands have always been proud of the fact that all Nations here live harmoniously together and anything that would have a tendency to irritate or ridicule anyone of the many races should be frowned upon and discouraged.

- Waimea, Kauai, Dec. 9th, 1918.
- L. Pah On
  - Chang Yau
  - H. Hong See
  - C. Y. Ako
  - Z. C. Ching
  - Mrs. Rose A. Ching
  - Ching Yuen
  - Ah Sung
  - Chang Kee
  - Chang Fong
  - Quang Sam Sing
  - L. Ah Hoy
  - Ah Hong
  - Lee Tan
  - Lock Chong
  - Wm. F. Ing
  - Chong Ham Fo
  - Ah Chong
  - Mon Chong
  - Sun Kwong Sing Co.
  - Esther S. T. Chong
  - Quong Cheu Young
  - T. Y. Chong
  - Ah Wo
  - H. W. Ako

**NOTICE**

**ANNUAL RED CROSS MEETING**

On account of the Belgian Orphan Death being held on Saturday afternoon of December 14th, the Annual Meeting of the Kauai Branch, Hawaiian Red Cross will be held at 10:30 a. m. at the Lihue Armory, instead of 3 o'clock as announced last week.

Business: Election of Executive Committee, considering reports and transacting such other business as the Branch may be competent to transact.

W. D. MCBRYDE, Chairman.  
N. A. AKANA, Secretary  
Kauai Branch, Hawaiian Chapter  
American Red Cross

**NOTICE**

Anyone found shooting on any of the Lihue Plantation lands will be prosecuted to the fullest extent of the law.

R. D. MOLER, Manager.  
PAUL R. ISENBERG, Lessee.

Lihue, July 16, 1918. Advertisement

**Kapaia Garage Co.**

EXPERT

**Automobile Repairing And Machine Work**

STORAGE BATTERIES REPAIRED AND RECHARGED  
VULCANIZING

Telephone 258 L P. O. Box 236

Save Money by Using

**FEDERAL**

Double-Cable-Base

**TIRES**

WE RECOMMEND THEM

A full stock in all styles and sizes  
RUGGED and PLAIN TREADS

**McBryde Store**

Agents For Kauai.

**Waimea Stables**

LIMITED

Up-to-date Livery, Draying and Boarding Stable and Auto-Livery Business.

**AUTOMOBILE STAGE-LINE**

BETWEEN LIHUE and KEKAHA

Leaving Lihue every Monday, Wednesday and Friday,  
Leaving Kekaha every Tuesday, Thursday and Saturday.

ARRIVING AT THEIR DESTINATION IN THREE HOURS

ALFRED GOMEZ, Manager.

Telephone 43 W Waimea P. O. Box 71

**Experts Say, "Zerolene Is Better"**

Why are the majority of cars now lubricated with ZEROLENE? Because—ZEROLENE does hold better compression, does give better protection to the moving parts, does deposit less carbon. And this is the testimony of the leading automobile distributors of the Coast.

They know from the records of their service department—and we know from exhaustive tests—that ZEROLENE, correctly refined from selected California asphalt-base crude, gives perfect lubrication with less wear and less carbon deposit. ZEROLENE is the correct oil for all types of automobile engines. It is the correct oil for your automobile. Get our lubrication chart showing the correct consistency for your car.

At dealers everywhere and Standard Oil Service Stations.

**ZEROLENE**  
The Standard Oil for Motor Cars



Correct Lubrication for the "T"-Head Type Engine

The "T"-Head, illustrated here, is one of several types in popular use today. Engines of this type, like all internal combustion engines, require an oil that maintains its full lubricating qualities at cylinder heat, burns clean in the combustion chambers and goes out with exhaust. ZEROLENE fills these requirements perfectly, because it is correctly refined from selected California asphalt-base crude.

ZEROLENE is made in several consistencies to meet with scientific exactness the lubrication needs of all types of automobile engines. Get our "Correct Lubrication Chart" covering your car. At dealers everywhere and Standard Oil Service Stations.

**HENRY VIERRA**  
The Chinese Comedian

In a Rip-Roaring Comedy  
for the Benefit of

**The Kauai National Guard**

Will appear at

**ELEELE, TONIGHT**

**KEALIA, WEDNESDAY**

**KAPAA, THURSDAY**

**KOLOA, FRIDAY**

Also a splendid Program of

**MOTION PICTURES**

**JEWELERS**

EVERYTHING IN THE SILVER AND GOLD LINE, RICH CUT GLASS AND ART GOODS.

MERCHANDISE OF THE BEST QUALITY ONLY.

**H.F. WICHMAN & CO., LD.**

LEADING JEWELERS.

P. O. Box 342 Honolulu

**Notes of the Life of a Prominent Man**

Herbert Clark Hoover, born West Branch, Iowa, August 10, 1874, Quaker parents. After death of parents in 1883, sent to Oregon in charge of relatives, residing at Newburg and Salem, Oregon, until 1891. Became self supporting at 13 years of age.

Went to Stanford University, California, 1891, graduated as mining engineer. Employed professionally in New Mexico, Colorado, California and Oregon until 1897, part time under the United States Geological Survey. In 1897 went to Australia in administrative charge of metallurgical and mining works.

Returned to California in 1899. In 1900 left for China as the engineering advisor to Chinese Government. Returned to California 1901 after outbreak of Boxer Rebellion. After few months left California for China as general manager of industrial works, comprising coal mines and works, fleet of twenty ships, canals railways and harbor works, employing some 25,000 men. Returned to California in 1901 thereupon opening offices in San Francisco, New York and London, visiting all points annually. Employed in administration of and in advisory capacities to large industrial works, embracing railways, metallurgical works, mining, iron and steel, shipping, land, electrical enterprises in California, Colorado, Alaska, Mexico, India, Russia, and China, until the war broke out in 1914. At this time these concerns were employing about 125,000 men.

Is a trustee of Stanford University, California, and spent much time there 1909-1914, on affairs of that institution and in conduct of business of present world war and upon outbreak of hostilities became engaged in the organization of return of stranded Americans.

In October, 1914, organized Commission for Relief in Belgium and remained in Europe during the war, with the exception of a return to the United States in the fall of 1915 and the winter of 1917.

The Commission of Relief in Belgium from October 1914, until April

1917, handled the import of upwards to 100,000,000 bushels of wheat, rice, beans, peas, and other cereals, together with many thousands of tons of meat products; operating its own fleet of from fifty to seventy ships, its own mills, and in addition thereto, acquired and re-distributed cereals and several other staples in the occupied territory, involving between 30,000,000 and 40,000,000 bushels of other cereals and large quantities of meats, etc. The Commission for Relief in Belgium organized and distributed a ration to 10,000,000 people, directly employing upwards of 125,000 people in its operations. The personnel was in a great majority volunteer, and the total overhead expenses of the Commission up to April 1917 were three-eighths of one percent. The aggregate of money expended through the organization on imported food-stuffs up to June 1st has been about \$300,000,000 and in the purchase of native food supplies, approximately \$200,000,000 additional.

Never sought public office in any shape or form. Returned to the United States on the direct request of the Government, acting entirely as a volunteer for services during the war only.

**Working Reserves Are Rewarded**

In connection with the public assemblies out to hear Prof. Harper at Kilauea, Makaweli and Lihue last week, the members of the U. S. Boys Working Reserve and of the Hawaii Junior Working Reserve on Kauai were awarded their medals, the ceremonies being in charge of Mr. Jay O. Warner, director of the Reserve for the county of Kauai.

It was a fitting tribute to the boys and girls that they should receive their medals under the thrill of Prof. Harper's report from the front. For were they not an important part of the forces back of the fighting lines and did not the U. S. Government recognize them as such? Surely, and not only so but they are invaluable leaders in the vast work of reconstruction, in the immense business of feeding a famished world!

Mr. Warner, before awarding the badges, explained briefly the history and rules of the organization on the mainland and in Hawaii. On the

mainland the Boys' Working Reserve is over two years old and confined to highschool and regularly employed boys between the ages of 15 and 21. So successful has the movement been that many states have organized Junior Divisions, being careful to comply with the regulation principles of the Child Welfare Bureau.

In Hawaii, so many boys and girls responded to the appeal that it was thought wise to organize the Hawaii Junior Working Reserve, under local management, and adapted to local conditions. Girls may not be admitted to the Federal Division which is officially organized under the Department of Labor and known as the U. S. Boys' Working Reserve. In addition to the medal awarded to the boys of the Senior division, a service bar is awarded to those who worked the entire summer vacation period, and their names are enrolled at Washington.

The Juniors however seem pleased to be recognized by the territorial government and with their medal, which was especially designed by Mr. Warner as executive secretary, and approved by Mr. W. R. Farrington, territorial director of the Reserve. The badge was manufactured by the same company making the senior badges for the federal government.

So important has the Reserve become before the signing of the armistice that the Reserve designed and adopted a special uniform of the same cut and color of the Army uniform and approved by the War Department. Whether this will now be worn while the army is demobilizing is not definitely understood as yet.

It is officially estimated at Washington that the members of the Reserve by their extra work last summer produced enough food to provide a million people for one year. Hawaii comes in for her share of this as the amount of pineapples canned and sugar cane planted by the boys and girls last summer has swelled Hawaii's output very considerably and sugar planters and pineapple men, at first rather skeptical about the wisdom of bothering with such an organization of Hawaii's youth, now warmly praise it. At Makaweli, camp Baldwin, alone enough cane was planted by the boys to produce normally 1000 tons of sugar.

The Reserve is to be conducted another year, Jan. 20th being the date of the national enrollment. Mr. G. A. Young, of Nuuanu Y. M. C. A. has been appointed executive secretary.

**W. H. ZIMMERMAN**  
Manufacturer



JOHN. RAPOZO, Lihue, Kauai. Kauai Agent.

**For CHRISTMAS**

NOVELTIES CARDS RIBBONS CHILDREN'S BOOKS FICTION WAR BOOKS  
A big stock to select from.

**Hawaiian News Co., Ltd.**  
Honolulu Young Hotel Bldg.

**AUTOMOBILE**

**Painting and Varnishing**

ALL WORK GUARANTEED FIRST CLASS

**NOSAKI**

Back of Bishop Park WAIMEA

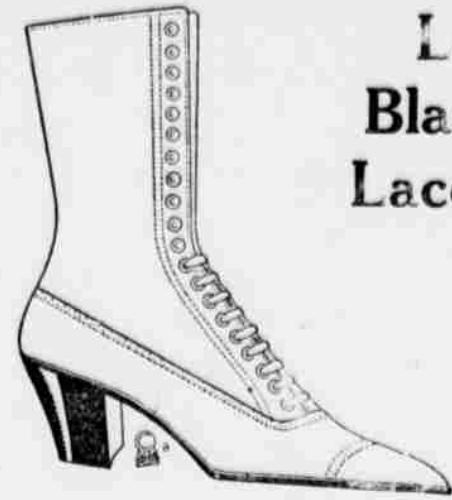
War Savings Stamps

Lihue Branch Bank of Hawaii, Ltd.

Thrift Stamps

Dorothy Dix says, "Do your Christmas shopping early"—and do it at  
**HOFGAARD'S**  
Waimea.

Buy more War Savings Stamps



**Ladies' Black Kid Lace Boots**

**\$5, \$5.50 and \$6**

We are able to sell these lace boots with cloth tops at the prices quoted for a short time only.

We cannot buy more to sell at these figures, our advices from the manufacturers being conclusive that shoes will cost more.

**Manufacturers' Shoe Store**

HONOLULU

**"A COMPLETE TRUST SERVICE."**

Great discrimination should be used in the selection of your investment this time.

Let our years of experience be of assistance to you. Call or write

**HENRY WATERHOUSE TRUST COMPANY, LIMITED,**  
Honolulu.

Bonding — Insurance — Real Estate

**LIHUE HARNESS SHOP**

MAKER OF

*Automobile Tops, Sofas, Harness and Saddles. Shoe Repairing*

PRICES REASONABLE

**CHANG HING KEE, Prop.**

**Catton, Neill & Co., Ltd. Engineers**

Works 2d and South Streets

General Offices

Merchandise Dept. } Queen and Alakea Sts.  
Electrical Dept. }

Hawaiian Representatives for  
**Jeffre Manufacturing Co's**

Link Belt Chains

Conveying Machinery

Pulverizers—Algaroba Bean, Lima, Coral, Alfalfa

**MICHELIN**



**The Michelin Universal Tread is not only Thick but it is Broad and Flat as well:**

**T**O show this graphically we have ruled off one unit in the accompanying illustration.

Count the number of squares on the raised part of the tread. They total over 54 whole squares or more than three-fourths of the entire surface that is ruled off.

The large, flat wearing surface of the Michelin Universal means increased mileage. Once you try Michelines you will use no other. They give the utmost tire economy.

**Kauai Garage**

Mr. J. A. Hogg, Prop.

# "J-M" Exterior Washable Paint

*Especially efficient and economical for mill work*  
Sanitary—weatherproof—fireproof.  
A high grade cold water paint for exterior and interior work. Put up in 350 pound barrels. "A reputation behind it" and approved by the National Board of Fire Underwriters.

**Honolulu Iron Works Co.**  
Honolulu, T. H.

## Items of Interest to Our Homesteaders

By G. W. SAHR, County Agent

### Kapahi Homesteaders Organize

With the labor situation so acute the homesteaders find that the harvesting of their crops is a very uncertain proposition. Accordingly the homesteaders of the Kapahi section of Kapaia have taken steps to form a cooperative organization to handle the harvesting problems.

In past years it has been customary for the Makee Sugar Company to furnish labor for the harvesting of the homesteaders' cane. During the last cutting season a few of the planters hired contractors to harvest their cane, while others waited for the plantation to furnish the labor.

As it will be utterly impossible for the plantation to furnish any considerable amount of labor for this coming season, the homesteaders are driven to making some provision for themselves, and hence they are forming this organization for the solution of this and other problems which may come up.

Mr. H. Wolters, manager of the Makee Sugar Company, suggested some time ago that he would help them whenever he could, and among other things, said that the plantation would advance money for the purpose of establishing a labor camp of their own if they would get together on the proposition.

Acting on this suggestion, Mr. A. M. Souza, a prominent homesteader of the Kapahi section, devised a plan for the formation of an organization to be known as "The Kapahi Homesteaders' Harvesting Association."

Plans and estimates were made for a camp that would accommodate forty men, and the whole matter was then brought before a meeting of the homesteaders in an informal gathering last Saturday evening at John Ornellas' store. The outcome of the discussion was that they decided to organize and adopted the plans outlined by Souza. This involved a pro rata tax of each member according to the amount of cane to be harvested, which they estimated would come to only twenty-five cents. The camp for the forty men they figured would cost about \$3,000.

Manuel Aguilar promised to furnish a site for the camp at a reasonable rental.

Another meeting was held the next day, with John Raposa acting as chairman, at which definite steps were taken to establish the camp and the contract was let to Joe Aguilar to build the same.

There is no question as to the ultimate success of the organization, if they only pull together, and exercise a reasonable degree of common confidence in one another; and if they only do this there is no doubt that they will all benefit thereby. Such mutual benefit organizations have been tried before with great success. This is a fine start they have made, and it is to be hoped they will make it go, in the interest of everyone involved,—themselves, the Makee Sugar Company and the general public.

Since the heavy rains small farmers have been busy putting in plantings of corn on various parts of the island. At Moloaa, a large planting has been made and has already made a little growth.

In making corn plantings do not plant too close. The hills should be 3½ feet apart. Experience has proven that close planting lessens the yield. Corn needs lots of cultivation, and 3½ feet is about as narrow as it is possible to plant and allow the use of a horse cultivator.

Lihue Plantation Company has just recently completed a large enclosed lumber yard directly behind the mill.

### HOW TO GET A STAND OF ALFALFA

Alfalfa will grow on your homestead. It adapts itself to all kinds of conditions of soil and climate, except sour bog land, and even this can be drained and limed and made suitable for alfalfa.

Alfalfa is rich in protein, the backbone of all feeding-rations. Alfalfa will supply protein cheaper than any other feed. Feed alfalfa and you can cut down the grain ration in your feed, without injury to your stock. Alfalfa is relished by work stock, pigs, dairy stock and beef cattle. It can be fed to all kinds of farm animals and has no superior as a hog pasture. Because it is rich in protein, the very thing which corn and many other concentrates are deficient in, it helps balance the ration, and makes it especially adaptable for young stock which require protein to build up the muscle.

No piece of ground will yield greater profit to the owner than a few acres of alfalfa, provided the work is done properly and a good stand is secured. Alfalfa adds humus to the soil, and draws very little on the fertility of the land.

Alfalfa does well planted any time of the year. It is best to avoid the season of cut worms. In humid districts deep plowing and harrowing of the land is all that is necessary before planting. The plowing must be thoroughly done in order to leave the soil in good condition. More than one plowing may be necessary, depending on the condition of the land. The final harrowing should be done with a smoothing harrow, in order to leave the surface in condition to receive and sprout the seed. Plant the seed shallow, covering it with less than half an inch of soil. If the field is weedy plant in rows 18 inches apart. This will allow for cultivation with a wheel hoe. If your land is not very weedy the seed may be broadcast at the rate of 20 lbs to the acre, working the seed with a brush harrow after it has been broadcast. Do not sow when the land is dry and baked from the sun. The best time to plant is a few days after a rain when the soil is still moist, but not too moist to be worked. Inoculation is hardly ever necessary under our conditions. If the soil is very poor, manure is better than fertilizer, and it should be applied before the land has been plowed.

In dry regions, alfalfa must be planted in level patches, or, if the land is steep, in furrows. It will not do as well in furrows unless it is possible to flood the entire surface of the soil with irrigation water. Alfalfa is so deep rooted that ordinary irrigation, such as practiced in cane-cultivation, does not reach all the roots of the plant, and it will not grow as luxuriantly as it should. Level patches produce the best yields, due to the fact that they may be flooded with several inches of water at a time, allowing the irrigation water to soak deep into the soil. Alfalfa need not be irrigated frequently provided it receives a heavy irrigation at the right time. One irrigation a month is sufficient after the first cutting, provided sufficient water is applied at the time of irrigation.

When planting alfalfa in patches, planting in rows has been found most satisfactory for our conditions. Rows 18 inches apart are sufficient to allow for cultivation with a wheel hoe. Sow shallow as in planting under humid conditions. The patches should be flooded as soon as possible after planting to prevent the seed from baking in the heat of the sun. Until the young plants have attained a considerable root growth they need very frequent irrigations, sometimes twice a week if the weather is very dry and warm. As the plants increase in size they require less water, as the roots will be able to draw on the moisture deeper in the soil. Do not try to save seed in planting alfalfa. Plant thick; using 20 to 30 lbs. of seed to the acre.

At Kekaha, N. Nasu and other Japanese farmers who have leased small tracts of sandy lowland from the Knudsen estate, are also taking advantage of the weather and planting their corn.

## Nawiliwili Garage

C. W. SPITZ, Prop.

NAWILIWILI, KAUAI TELEPHONE 494

Automobiles to all Parts of Kauai, all hours, Day and Night

### AUTOMOBILES AND LIGHT MACHINERY REPAIRED

FORD CARS, McFARLAN, STANLEY STEAMER, LOCOMOBILE, COLE, REO, CHEVROLET (except Model "490") AND SAJON, also REO, COMMERCE, LOCOMOBILE AND MORELAND TRUCKS. We carry a complete stock of U. S. L. Batteries and Battery Parts also Automobile and Tire Accessories. A COMPLETE LINE OF FORD PARTS

Goodyear Tires and Tubes  
The best in the Market for the Money.

## GOODYEAR



NAWILIWILI GARAGE, Agents for Kauai.

## Order It By Mail!

OUR MAIL ORDER DEPARTMENT is exceptionally well equipped to handle all your Drug and Toilet wants thoroughly and at once.

We will pay postage on all orders of 50¢ and over, except the following:

Mineral Waters, Baby Foods, Glassware and articles of unusual weight and small value.

**Non-Mailable: Alcohol, Strychnine, Rat poisons, Iodine, Ant poison, Mercury Antiseptic Tablets, Lysol, Carbolic Acid, Gasoline, Turpentine, Benzine and all other poisonous or inflammable articles.**

If your order is very heavy or contains much liquid, we suggest that you have it sent by freight.

**Benson, Smith & Co., Ltd.**  
"Service Every Second"

The Rexal Store Box 426 Honolulu

## Theo. H. Davies & Co., Ltd.

HONOLULU and HILO

### Sugar Factors and Commission Merchants

IMPORTERS OF GENERAL MERCHANDISE

#### GENERAL HARDWARE

Builders' Hardware	Crockery	Glassware	Silverware
Sporting Goods	Fishing Tackle	Firearms	Ammunition
Safes	Refrigerators	Spark Plugs	Flashlights
Paints	Varnishes	Brushes	Oils
Harness	Saddlery	Roofing	Trunks
	etc.	etc.	Suit Cases

#### GROCERIES

Fancy and Staple Lines, Feed, etc.

#### DRY GOODS

Shoes Toilet Supplies Stationery etc. etc.

#### INSURANCE AGENTS

Writers of Fire, Marine, Compensation, Automobile and Miscellaneous Insurance Policies.

#### AGENTS FOR

Canadian-Australian Royal Mail Steamship Line

Upon application information will be cheerfully furnished in regard to any of our lines in which you may be interested.

LET US DO ALL YOUR

### Laundry and Dry Cleaning

WE ARE STILL IN THE BUSINESS

Address

### Territorial Messenger Service

HONOLULU



Copyright Hart Schaffner & Marx

Silva's Toggery, Honolulu.

## ELEELE STORE

J. I. SILVA, Prop.

ALWAYS LEADS IN LOWEST PRICES ON

Dry Goods, Boots and Shoes, Mens Furnishings, Cigars and Tobacco, Notions of all kinds.

MAIN STORE, ELEELE, PHONE 72 W.

BRANCH STORE, KALAHEO HOMESTEAD



# **BUY MORE W. S. S.**



**We Must Raise Our  
Quota Before  
December 31**

## ANCIENT CIVILIZATION OF HAWAII

Mr. Augustus Knudsen delivered a very interesting address with the above title before the recent teachers' convention. He spoke substantially as follows:

"We are apt to think of the early Hawaiians as a savage race. But this is not so. Many years before the advent of the missionaries to these islands several competent scientific investigators came here and made more or less careful studies of the condition and attainments of the people, and reported them to the world.

**Evidence of Early Navigators**  
Beginning with Cook, these investigations were continued even more carefully and intelligently by Vancouver and La Perouse. And these visitors report very favorably of the advanced condition of the people. They recommend the Polynesian Islands as safe to visit, so much so that Cook gave the distinctive name "Friendly Islands" to one of the earliest groups he visited. In the other islands of the Pacific they found no government, no proper authority, no law and order, but in the Polynesian Islands they found these essential elements of civilization well developed.

"The population of the Islands when Cook visited them was probably a million and a half; the island of Kauai having 100,000. That a million and a half human beings should exist and thrive on so limited an area, and with such limited resources, involves a large degree of organization.

"In some respects, to be sure, they were crude and brutal, just as a great deal in the Bible seems crude and brutal. They lived in a different age and had a different outlook on life.

**An Educated People**

"They were an educated people. They did not have any books to be sure, but books are not essential to education. Some years ago an entomologist came to the Islands to make a collection of bugs and beetles. When he came to Kauai we hunted up an old Hawaiian who was familiar with these things in a Hawaiian way, and he gave him a long list of Hawaiian bugs, and told him how and where he could find them. Acting on these instructions the collector went out, and after a long and careful search found about one third of them; and many of these were new to science. When President Jordan, of Stanford, the great authority on fishes, was here on the Islands, some one told him of a sea-snake that was reported to be found in our Island waters. Jordan simply scouted the idea. It could not be found in these latitudes. They got hold of an old fisherman at the market who assured them that there WAS such a snake, gave it a Hawaiian name, and said he would get one for them. He sent word to Kaneohe and one or two other places on the Islands, and in a few days they had specimens from each of the places. The same is true of the birds, and of the plants. The old Hawaiian botanist would go into the mountains and no single plant would faze him. He would know them all, and have names for them all.

"They were an educated people. And education for them did not mean a few years of schooling, which they promptly forgot when they got out of school, but it was a life long devotion to the absolute mastery of the art or profession which they had undertaken.

**Favored Position of Women**

"Another significant evidence of a high degree of civilization was the favored position of women among them. Actually the Hawaiian woman possessed more freedom and was treated with more consideration, than is her modern sister in these days, say in England. She was never the chattel of man, as she is in too many so called civilized lands. She was also entitled to the care and disposition of her children.

"I admit that there are some indications which seem to contravene this point of view. Recently when I gave this same talk before the Honolulu Historical Society, I was unguardedly asked to suggest that if any one endeavor to answer them. And this question was put to me, 'Why then were women not allowed to eat bananas?' I confess that I was nonplussed for the moment, and couldn't give any satisfactory answer. But thinking it over since I have come to the conclusion that bananas would be too fattening, and for that reason they were tabooed.

"The old Hawaiians were a busy people, much less given to idleness than they are now. The monumental works of a public nature—fish ponds, terraced and walled up taro lands, roads, ditches, etc., are an eloquent testimony to the tireless industry of

the race. Alexander Campbell, a sailor who was unfortunate enough to have both his feet frozen on the North-West Coast, so that they had to be amputated, and who came to the Islands in 1809, and remained here for a year, more or less—in the employ of Kamehameha as a minor chief, speaks in the highest terms of the industry of the people; he knew of no land in any part of the world which equaled these Islands in the industry of its people.

**Richness of the Language**

"We are apt to think of the Hawaiian language as meagre and defective, inadequate to the expression of the finer shades of thought and meaning. But this is a mistake. It was a language wonderfully rich and flexible for the needs of the people, and along many lines it outran even the English in variety and fullness of expression. That the language of the modern Hawaiian is cramped and poverty-stricken, this is no reflection on the language of his fore-fathers. They were woefully handicapped in an industrial and constructive way by lack of metals. They had no iron, or copper, and were thus precluded from the large industrial possibilities which go with these valuable metals. They had nothing but wood and stone, and the stone was of poor quality. Where others had obsidian, jade or flint, the Hawaiians had only lava, mostly soft and porous, and at best, in the basaltic form, unable to take much of a cutting edge. Yet, notwithstanding these handicaps, consider what the Hawaiians were able to accomplish by means of industry and skill, the great canoes they heaved out of koa logs, and the beautiful calabashes and other articles of furniture that they fabricated with rude stone adzes that would seem to us unfitted to cut butter.

**Wonderful Navigators**

"As navigators they held very high rank. In their frail canoes they frequently made distant voyages across the trackless Pacific, extending to 2000 or 3000 miles. And they did this not by blind chance, or phenomenal good luck. When they set out for Tahiti they knew which way to go, and just how to get there. To find such small islands in the wide waste of sea, without chart, compass or chronometer,—this manifestly betrayed a large amount of skill. They did it as the best navigators do today, by the stars. They were no mean astronomers, in their way. They knew that the world was round; they knew the stars and constellations, and had given names to hundreds of them.

**Artistic Sense**

"They were keenly alive to a sense of beauty, and largely appreciative of the things of beauty. You all know how passionately fond of leis the Hawaiians are, and how the vines and flowers of the forest appeal to them. In the olden days feather work was a fine art, much cultivated, and the feather leis, and feather cloaks of those times vie in beauty and value with the gems and jewels, and royal regalia of modern courts.

**Liliha Trains for Court**

"When Boki and Liliha accompanied Liholiho on his trip to England, accustomed to wearing only the most abbreviated skirts then current in Hawaii, Liliha made up her mind that she must acquire the art of handling long skirts and trains; so she had sail cloth skirts made on board ship and practiced with them, and with such good success that when she landed in London and was invited to a Court reception she bore herself with such grace and dignity that a prominent lady of the Court said, 'Would that our European princesses could carry themselves with the grace and dignity of this dark-skinned beauty!'

**Why a Decadent Race**

"How is it, you may ask, that so sturdy and so intelligent a people went to the wall so easily? Why was it that so highly civilized themselves, they were not able to stand the civilization of the world around them? Well, they fell an easy prey, I believe, to the evils of civilization, to physical disease and destruction because of their age-long protection from these things. Through exposure to generations of contact with physical disease a certain hardness has been developed in the modern civilized races. They have become immune so that they can resist the epidemic that attack the world. But the Hawaiians had a pure, unsophisticated blood, so to speak, which had not developed the necessary serum to render them immune, consequently they fell an easy prey to the epidemics, and the constantly prevalent diseases, to which contact with European civilization exposed them, and which the white man could resist much more successfully because of his long exposure to them.

**A Sturdy Race**

"That the Hawaiians were physically a sturdy race, no one who knows them will deny. No sailors that went up to the Arctic in the old whaling days stood the cold and exposure like the Hawaiians. And none of the various peoples who have come to these Islands as laborers can compete with the Hawaiians in their ability to perform the arduous tasks of the "uku-pau."

**The Key Word: "Aloha"**

"Hawaii has taught the world a wonderful lesson of hospitality and fellowship, in welcoming to her shores the various races that are gathered here, and of treating them with that courteous and kindly consideration, which has made them, one and all, our brothers. And so doing she has but signified, in these modern days, the characteristic virtue of her ancient civilization, which finds expression in that significant word she has given to the world—Aloha."

### THE FORNANDER FOLK-LORE

An additional volume of the *Fornander collection of Hawaiian Antiquities and Folk-Lore* has just been published by the Bishop Museum.

*Fornander*, he it said for the benefit of our malihini readers, was a circuit Judge, resident at Lahaina some 30 or 40 years ago who devoted his spare time most assiduously to the study of the legendary and early history of Hawaii, and to the collection and preservation of Hawaiian meles and legends. Much of this material he embodied in his monumental work, "The Polynesian Race," but he left, in addition, a great mass of more or less undigested original material which finally came into the possession of the Bishop Museum, and is now being put into shape, translated, and published. The editorial and translation work has been done by Thos. G. Thrum, one of the very few men fitted for such a task. The present volume of 225 quarto pages is the second of the series. It consists of the legendary stories of famous heroes and demigods of Hawaiian history.

Among these, that of Kowelo, is of particular interest to us, since tradition ascribes to him the conquest of Kauai, and a romantic reign over the island with his royal residence at Hanamaulu.

### IN THE CIRCUIT COURT OF THE FIFTH CIRCUIT, TERRITORY OF HAWAII—AT CHAMBERS—IN PROBATE.

In the Matter of the Estate of Manuel Ferreira, late of Kapaa, Kauai, Deceased.

#### NOTICE TO CREDITORS

Notice is hereby given by the undersigned Administrator of the estate of Manuel Ferreira, deceased, to all persons having claims against said decedent or his estate to present the same, duly authenticated, and with proper vouchers, if any exist, to the undersigned Administrator, at his office in Kapaa, within six (6) months from December 10, 1918 (the date of the first publication of this notice), or they will be forever barred.

Dated this 10th day of Dec., A. D. 1918.

M. S. HENRIQUES,  
Administrator of the Estate of Manuel Ferreira, deceased.  
P. O. Address: Kapaa, Kauai.

## Steady Power



### The Gasoline of Quality

A continuous, uniform chain of boiling points makes "Red Crown" dependable. No "mixture" can give the same satisfactory results. Look for the Red Crown sign before you fill.

STANDARD OIL COMPANY  
(California)

### IN THE CIRCUIT COURT OF THE FIFTH CIRCUIT Territory of Hawaii

At Chambers—In Probate, No. . . .

In the Matter of the Estate of Francisco Ferreira, deceased.

Order of Notice of Petition for Allowance of Accounts, Determination of Trust and Distribution of the Estate.

On Reading and Filing the Petition and accounts of Louis A. Cabral, Administrator of the Estate of Francisco Ferreira, deceased, wherein petitioner asks to be allowed \$185.98, and charged with \$1237.23, and prays that his accounts be examined and approved, that he and his securities be discharged from all further responsibilities concerning said estate and that a final order of distribution be made of the property remaining in his possession to the persons thereunto entitled.

It is ordered, that Saturday, the 21st day of December A. D. 1918, at 9:30 o'clock A. M. at the Court Room in Lihue, Kauai, of this Circuit, be and the same hereby is appointed the time and place for hearing said Petition and Accounts, and that all persons interested therein and there appear and show cause, if any they have, why said petition should not be granted, and present evidence as to who are entitled to the said property.

Dated the 14th day of November, 1918.

(Sgd) LYLE A. DICKEY,  
Judge of the Circuit Court of the Fifth Circuit.

Attest:  
(Sgd) D. WM. DEAN,  
Clerk of the Circuit Court of the Fifth Circuit.

Nov. 19-26, Dec. 3-10.

#### FOR SALE

Buick Six, newly painted and in first-class condition. Price reasonable. Apply to Garden Island for information.

#### FOR SALE

Ford Touring Car Body, set of 33x4 Non-Skid Chains. Enquire at this office.

## Christmas Suggestions



### Exquisite Oriental Wares

A half year's journey by our representatives to the Orient has yielded the many striking examples of artistic merchandise now displayed here.

You will enthuse over our Satsuma and Kutani Wares, Figures, Bowls, Vases and Koros, Bronze Animals in great variety, etc.

A more fitting Christmas gift cannot be purchased than a Thermos Bottle; it keeps liquid hot or cold for 24 hours. Price from \$2.50 to \$10.00.

### W. W. Dimond & Co., Ltd.

The House of Housewares  
35-65 S. King St.  
HONOLULU, HAWAII

When in Honolulu stop at

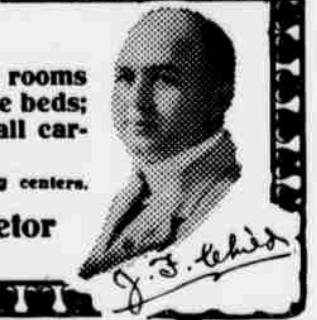
## The Blaisdell

EUROPEAN PLAN

Running water in every room; rooms singly or with baths; comfortable beds; close to best restaurants and all car lines. Highest class service.

Centrally located in the theatre and shopping centers.

J. F. CHILD, Proprietor



Mr. A. T. R. Jackson, who recently

took charge of the Ahukini landing for Lihue Plantation, has been very busy looking after several improvements being installed there since his arrival. Among other things Mr. Jackson intends to make the location a more attractive one. He has al-

ready done some grading between the main sugar house and the landing, and made a graded cinder path to the landing. Later on he will plant grass and various shrubs on the former eyesore to those who at some time or other had to crawl up the bank on all fours while burdened with heavy luggage.

# CHRISTMAS

Celebrate our great victory by making appropriate Christmas gifts to your family and friends.

Our display of Holiday Goods is most complete and you will be sure to find something appropriate for everyone you wish to remember.

J. I. SILVA'S Eleele Store.