

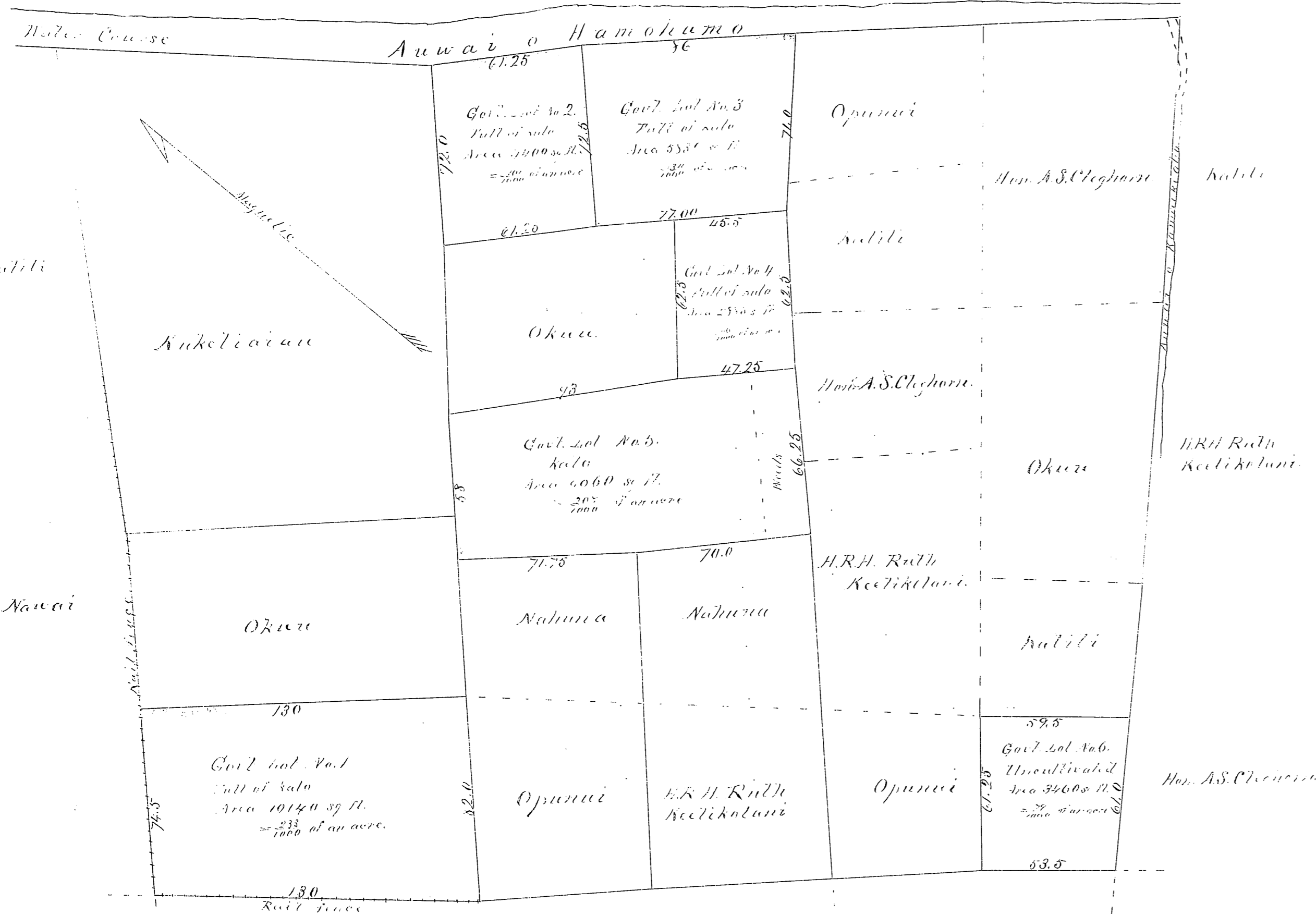
Plan of Govt. Kalo Patches in Anaukai, Waikiki, Oahu
 applied for by Hon. A.S. Cleghorn.

Scale 40 ft. to an inch

| Area Lot No. | Sq. Ft. | Acres |
|--------------|--------------|--------------|
| 1 | 10140 | 0.233 |
| 2 | 4400 | 0.101 |
| 3 | 5830 | 0.134 |
| 4 | 2885 | 0.066 |
| 5 | 9060 | 0.208 |
| 6 | 3460 | 0.079 |
| Total | 35775 | 0.821 |

Joseph S. Emerson, Surveyor
 Nov. 6, 1877

Note.
 This survey was made from points given by
 Kamaainas, without reference to previous surveys,
 which could not be obtained at the time.
 The bearings and distances are taken by protractor
 + scale from the plot.



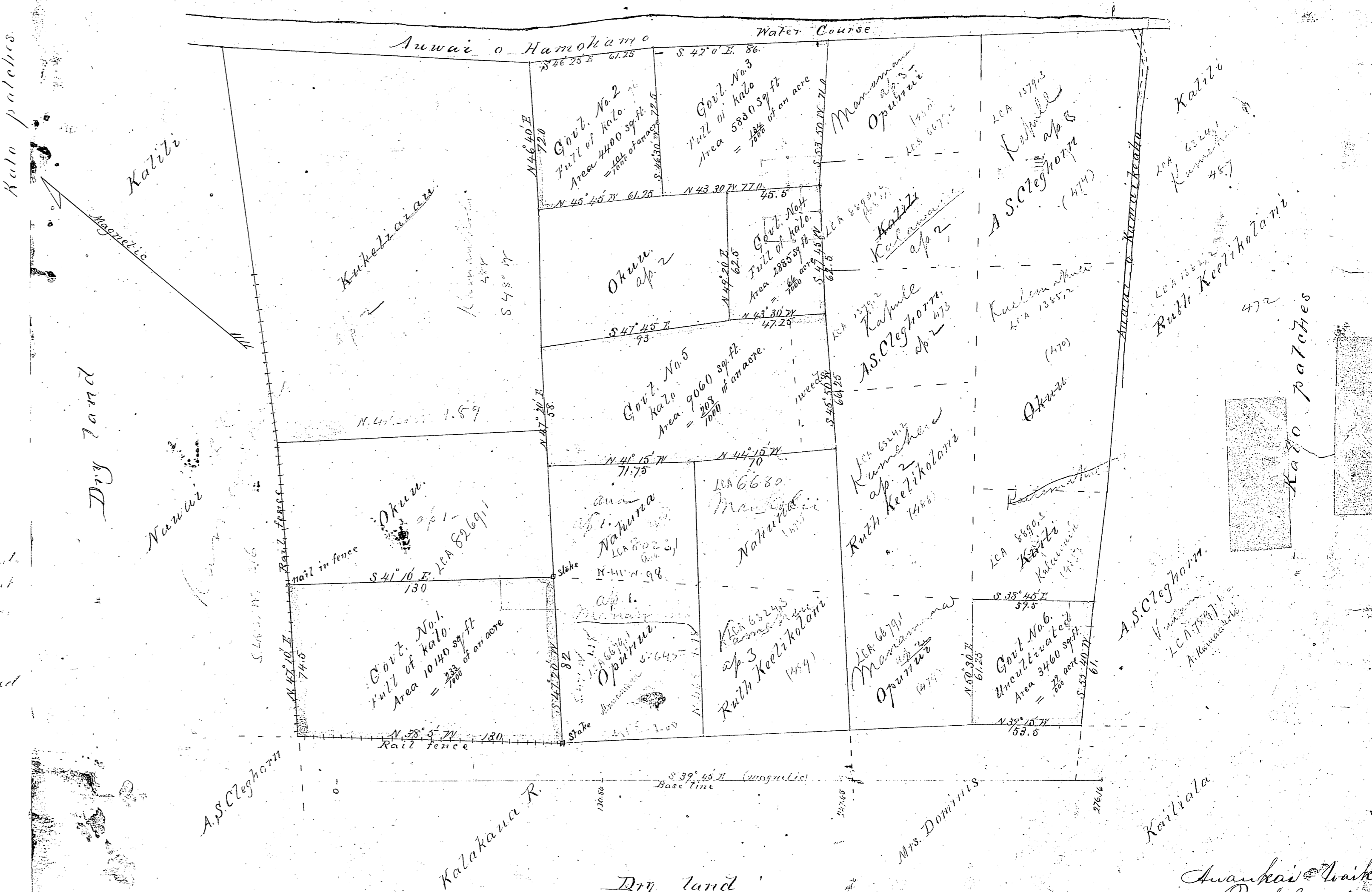
Plan of Govt. Kalo Patches situated in
 Anaukai, Waikiki, Oahu, applied for by
 Hon. A.S. Cleghorn.

| Area Lot No. | Sq. Ft. | Acres |
|--------------|--------------|--------------|
| 1 | 10140 | 0.233 |
| 2 | 4400 | 0.101 |
| 3 | 5830 | 0.134 |
| 4 | 2885 | 0.066 |
| 5 | 9060 | 0.208 |
| 6 | 3460 | 0.079 |
| Total | 35775 | 0.821 |

Scale 40 ft. to an inch

Joseph S. Emerson, Surveyor
 Nov. 6, 1877

Note.
 This survey was made from points
 given by Kamaainas, without
 reference to previous surveys,
 which could not be obtained
 at the time.
 The bearings and distances are
 taken by a brown surveyor.



HAWAIIAN GOVERNMENT SURVEY.
 Register No. 213
 Drawer 1977
 Number 1