

SUGAR:
Raws, 6.00
Beets, no sale
Mkt. Weak

The Garden Island.

The
Garden Island
Represents
All Kauai.

ESTABLISHED 1904. VOL. 10. NO. 33.

LIHUE, KAUAI, TERRITORY OF HAWAII, TUESDAY, AUGUST 25, 1914

SUBSCRIPTION RATES, \$2.50 PER YEAR 5 CENTS PER COPY

THE I. I. S. N. CO. STATES POSITION

The following letter has been received from James L. McLean, vice president of the Inter Island Steam Navigation Co., in reply to a short editorial appearing in this paper a few weeks ago:

EDITOR GARDEN ISLAND:

My attention has recently been called to an editorial published in your issue of August 4th, 1914, headed "As to Tuesday's steamer," the last two paragraphs of said article reading as follows:

"Lihue and neighborhood want a steamer regularly every Tuesday morning and should have it."

"It has never been claimed that there is not sufficient business for it, so it seems to be a case of 'don't care' at the Honolulu end."

In reply to your comment on the omission of our steamer "W. G. Hall" to make the trip from Kauai to Honolulu and return on the occasion referred to, I respectfully beg to say that the facts are these: Under our mail contract we are only required to run our S. S. "W. G. Hall" to Lihue ports and return once a week and the extra trip each week that this steamer has been making is simply to help out in the bringing of sugar to Honolulu, so in order to expedite the work when the two trips are made, we arrange to take the Ahukini freight by the steamer leaving Honolulu on Mondays.

Owing to the necessity of having an extra day in which to clean boiler, under date of July 16th, we wrote our agent at Nawiliwili to notify all people interested on Kauai, that the "Hall" would leave Honolulu one day late on Friday, July 24th instead of Thursday. This would cut out one day of her working time on Kauai and as the Agents of the Plantation did not require sugar on that particular trip, it was decided to have the "Hall" return from Kauai on her regular mail schedule leaving Nawiliwili Tuesday afternoon. There is nothing new in doing this, as it has been done repeatedly in the past whenever boiler cleaning becomes necessary, so your remarks as to it being a case of "don't care" at the Honolulu end, does not seem to be justified.

The Management of the Company which it is my privilege to represent, has always endeavored to give to Kauai the best possible service commensurate with the business it receives and will continue to carry out this policy in future.

JAS. McLEAN,
Vice-President, Inter-Island Steam Navigation Co., Ltd.

An Unlucky Dog

Some Koloa household lost its pet dog the other day and in an altogether unusual way.

Chas. Ebinger's rent car, of Kealia, arrived at the Lihue restaurant after a rapid trip from Koloa, to find that a dog (or the remains of what was once a lusty barker) was dangling behind one of its wheels. The rope with which the dog was tied had either been coiled up in the wheel by some mischief-maker at Koloa, or had become entangled by accident; and it was plain that the unlucky canine had been dragged to death over ten miles of macadam, unknown to the driver of the car.

The British collier Strathdee sailed from Port Allen Saturday or Port Angeles.

PUTMAN SELECTS HIS COMMITTEES

Dr. F. L. Putman, the new president, has named the following to be members of the various committees of the Chamber of Commerce for the ensuing year:

Finance—H. Rohrig, Lihue, chairman; B. D. Baldwin, Makaweli, and Frank Crawford, Lihue.
Commerce, Manufactures and Agriculture—Gaylord P. Wilcox, Kealia, chairman; F. Weber, Lihue, and James Donald, Koloa.
Nomination—F. A. Alexander, Elele, chairman; J. M. Kanekua, Kapaa, and W. F. Sauborn, Hanalei.

Local Promotion—G. Hansen, Kekaha, chairman; Chas. Wilcox, Lihue, and J. I. Silva, Elele.
Legislation—Hon. E. A. Knudsen, Kekaha, chairman; Hon. J. H. Coney, Lihue, and John Fassoth, Waimea.

Homesteads and Homesteading—E. H. W. Broadbent, Lihue, chairman; F. R. Tracey, Waipouli; T. Brandt, Waimea.

Membership—H. H. Brodie, Hanapepe, chairman; C. B. Gray, Kealia, and S. E. Haunestad, Lihue.

Village Improvement—W. D. McBryde, Homestead, chairman; J. M. Lydgate, Lihue, and C. Maser, Lihue.

Harbors, Shipping and Transportation—H. D. Wishard, Lihue, chairman; Sinclair Robinson, Makaweli, and M. B. Fernandez, Kapaa.

Entertainment—W. H. Rice, Jr., Lihue, chairman; R. L. Hughes, Elele, Richard Oliver, Waimea, K. C. Hopper, Lihue, and Mrs. Sarah B. Deverill, Hanalei.

The new Board of Directors is as follows: Dr. F. L. Putman, L. D. Timmons, E. E. Mahlum, F. A. Alexander, G. Hansen, H. Rohrig and G. P. Wilcox.

THE BOSTONIANS WILL TOUR KAUAI

All arrangements have been completed for a tour of the three largest towns of Kauai, Waimea, Koloa and Lihue by the Juvenile Bostonians.

The little, star actresses will arrive at Waimea by the Kinau on the morning of Wednesday, September 2, and will appear there that evening and the following evening.

The next evening (Friday) the company will appear in Koloa, and Saturday and Monday evenings programs will be given in Lihue hall, Lihue.

The sketches to be put on will include the following, being among the best of the company's repertoire: "The Princess Chic", "The Daughter of the Regiment", "The Dream Girl", "Iroma", "The Rose of Blandeen", "The Gypsy Love", "My Congo Maid" and "The Isle of Spice".

The Juvenile Bostonians Company is the best show troupe appearing on Kauai in a very great while - it is not actually the best ever attempting this tour; and none of their entertainments should be missed. The programs will be entirely different at each appearance.

Tickets are on sale at Hofgaard's, in Waimea; Kauai Trading Company (Mr. Donald), in Koloa, and at the Lihue Store.

Baseball Next Sunday

The McBryde-Lihue play-off game of baseball has been dropped, and the McBrydes and Makawelis will begin their championship series of three games on Elele field next Sunday afternoon at the usual hour.

TODAY'S AND LATEST NEWS BY WIRELESS

Sugar: Raws, 6.00; beets, no sale.

London—Desperate and sanguinary fighting in vicinity Namur since Friday. French and British troops engaged with Germans north Charlerois Saturday. French troops, spread out from Lille, met German right wing in East Flanders.

NAMUR CAPTURED

Namur fell yesterday. Charlerois invested by Germans. Thirty thousand Germans attacking Malines near Antwerp.

FRENCH ADMIT DEFEAT

Paris—Failure of original plans of allies and defeat of combined armies by the Germans in Belgium is admitted in official bulletin issued by French war office last night. Allies have retired, covering their position.

WASHINGTON REPORT.

Washington—While all reports received through various capitals yesterday afternoon from Brussels are agreed that strenuous fighting had been going on all along the line between Germans and French and British forces, attempting to hold the Germans in check, despatches are contradictory as to results. Today Germans report many successes. German Embassy reports that Crown Prince's army defeated five French corps northeast of Diedenhofen, cutting line of retreat of southern French wing toward Verdun. French unable to face terrific infantry fire were forced across the Meuse. Forts at Liege still hold out. Belgian minister to U. S. notified State department investigation will be asked of German cruelties. Hamlets burned and peaceful citizens murdered.

NEWS FROM PARIS

Paris—German officer states that army was compelled to burn village because women shot on their advancing troops. Germans are advancing over line 200 miles long. Heavy fighting reported yesterday.

ANOTHER BATTLE COMING

London—As the two great armies are advancing over a front of 70 miles along German border, general engagement with Germans will develop within three or four days, so as to coincide with conflict on French frontier. Making it impossible for Germany to detach troops from any part of battlefield on either frontier, Russia's advance on both Germany and Austria is well under way, and appears so formidable that Austria has been forced to suspend operations against Serbia and Montenegro and divert strength to holding back Russia.

FRANZ JOSEPH ILL

Copenhagen—Emperor Franz Joseph is reported seriously ill. Monday Afternoon

Paris—The great battle between the major part of the three allied forces and the German army continues desperately, both sides suffering severe losses in the fight that sways back and forth along the fighting line.

The Germans occupy Luneville, Amance and Dieulouard, inside the French border. The main positions of the opposing armies are unchanged.

The mission of the allies is to hold the entire German army in Belgium while Russia continues her operations along the eastern border of Germany.

Zeppelins are proving useful in war. Wind squalls believed to have wrecked three. Zeppelin No. 8 was shattered by French shells near Luneville.

REPORT FROM BERLIN

Berlin—The Germans defeated the French near Meufchatel.

AROUND AUSTRIA

Nishi—Serbian spoils in recent fight include 45,000 prisoners, many guns, eight howitzers, 114 caissons, three field hospitals, complete medical columns, 14 field kitchens, 15 ammunition wagons, telegraph and held hospitals. Austria is abandoning offensive operations against Serbia. Crown Prince Wilhelm, reported wounded at Liege, was not there but is at Metz. Capture of Liege regarded by experts as brilliant feat.

WILL TAKE KIAOCHAU

New York—German ambassador arriving from Rotterdam today said Japan will undoubtedly take Kiaochau from the Germans by sheer weight of numbers, and assures that result when the war is ended Japan will have supremacy of the Pacific. She took advantage of present situation for that sole purpose.

CHINA CUT OFF

Tokio—Communication with China has been severed for twenty four hours.

GERMANS IN BELGIUM

Rotterdam—The German right flank is south of Antwerp and moving on Lille. Second division in Belgium is moving on Maubeuge. The main northern army, 300,000 strong, is moving along the line.

REPORTED RUSSIAN SUCCESS

London—Russia's offensive operations against Germany are declared to be brilliantly successful.

THAT McCARN CASE

Washington—It is said that the McCarn case has greatly angered the President, who ordered the investigation. It is believed here that McCarn will be removed.

HONOLULU NEWS

Honolulu—Mr. Thomas arrived today to relieve McCarn for sixty days. Cruisers West Virginia and South Dakota leave at 5 tonight for Hilo.

STOCK QUOTATIONS

Oahu, 17 1/2; H. C. & S., 30 1/2; Waialua, 96 1/2; Ewa, 21 1/2; Pioneer, 24 1/4.

Continued on page 3

Berlin, Germany, Aug. 18—Before leaving for the front, Kaiser Wilhelm issued an imperial proclamation in which he said, "I am firmly confident that with the help of God, the bravery of our army and navy and the unquenchable unanimity of the German people, victory will crown our cause."

Smiddy For Marshal

News arrived last Thursday that James J. Smiddy had been named United States Marshal to succeed the late Mr. Hendry. It is claimed that Smiddy belongs to the Palmer Woods faction of the Democratic party.

FINAL PLANS FOR THE HIGH SCHOOL

Wm. C. Avery, principal of the Kauai Grammar and High School, which will open in a few weeks, has written the following, for the information of people of the island, concerning the work it is purposed to take up in the institution:

The Kauai Grammar and High School offers advanced educational opportunities to the people of the Garden Island, and plans to work along two definite lines.

The first aim will be to develop a strong Grammar School department which will prepare students to go on with high school work. Every effort will be made to keep the pupils up to a high standard, so that they may transfer to any other school without loss of standing, and may have the thorough foundation needed for advanced study.

In order to accomplish this aim, the instruction will be divided, as far as possible, along departmental lines. English and Mathematics will receive special emphasis.

The second aim will be to establish a High School department that will prepare its graduates for any of the mainland Universities, not only in the required courses of study, but in other school activities as well.

This year, three courses will be offered: College Preparatory, General and Business, dependent on the number of students wishing to follow a specified course. The courses will cover the first year only, as the students eligible for advanced standing are too few in number to justify the organization of the upper classes.

In school activities the members of the faculty have had experience in debating, dramatics and athletics, and will be glad to encourage the students to take part in them, by a hearty interest and helpful supervision.

Parents who wish their children to board in Lihue during the school year, should write at once to the principal, who will try to find accommodations for them.

WRECKED HIS CAR TO SAVE A WOMAN

Govo Genko, driver of an automobile, deliberately ran his machine into the ditch opposite J. H. Morange's residence, Lihue, about 4 o'clock Saturday afternoon, badly wreking the car and came near losing his own life, in order to save a Japanese woman driving a small cart along the road in front of him.

Genko was proceeding along the Grove Farm road to Nawiliwili. When some distance from the little wagon (which was in the middle of the road) he began sounding his horn, expecting that the woman would turn farther away from his side of the road. In place of that, however, she appeared to be confused and turned directly in front of the speeding machine.

In less time than it takes to tell it, the chauffeur turned his machine off into the ditch, where it landed with a crash and stopped dead.

As a rather unusually fortunate after-occurrence, (for the chauffeur) it is stated that the woman has volunteered to pay for repairs to the car, which will amount to considerable.

MAKAWELIS WIN SECOND SERIES

Makaweli, 8; Kilauea, 2; McBryde, 5; Kawaihau, 1; Lihue, 15; Koloa, 2.

That tells the story in a nutshell of Sunday afternoon's baseball game. The day's results left the Makawelis undisputed champions of the second series, with the McBrydes and Lihues tied for second place. The latter two teams have one unplayed game - postponed at the time the Japanese wrestlers were using Lihue park.

LIHUE - KOLOA GAME.

The Koloas had an off-day at Lihue park, the homers having the best of the argument almost from the start. A careless period of five minutes on the part of the Lihue pitcher, in the seventh inning, gave the visitors the only two runs made.

Two home runs were recorded by the Lihues, one by Fernandez (this, however, being assisted by an error of the right fielder); and the other by John Malina, in the sixth inning. With bases crowded Malina batted a fly far over beyond the bandstand, scoring four men, including himself.

SCORE BY INNINGS.

	1	2	3	4	5	6	7	8	9	Total
Koloa	0	0	0	0	0	0	2	0	0	2
Lihue	0	1	3	0	0	7	2	2	15	15

MCBRYDE VS KAWAIHAU

The Kawaihau threw up and forfeited this game at the beginning of the eighth inning on account of dissatisfaction with the ruling of the umpire. The McBrydes had made one run in the first inning, one in the fourth and three in the seventh, while the Kawaihau had tallied only once in the fifth frame.

MAKAWELI-KILAUEA

Makaweli played a very strong game, recording three home runs, while Pitcher Kruse killed fifteen men. The score by innings was as follows:

	1	2	3	4	5	6	7	8	9	Total
Makaweli	2	0	2	0	1	0	1	2	0	8
Kilauea	0	0	0	0	1	0	1	0	0	2

Exciting Runaway

A horse belonging to B. Bremer, attached to a brake, tore loose from his moorings in front of the County building last Thursday afternoon, made a circuit of the building and scampered for safety, no one being hurt. On the highway the horse was confronted by an unexpected peril in the shape of K. C. Akana, with a couple of arms waving in the air like a candidate making a political speech. This was too much for the horse, and he fell down on his knees and capitulated.

Some Lucky Sugar

Following is a list of sugar now on the way to market, or on hand, of plantations listed on the Stock Exchange, which will come in for high prices now prevailing:

	Tons.
Ewa	5,000
Hawaiian Commercial	6,100
Waialua	8,600
Hawaiian Sugar	7,000
Onomea	6,053
Pioneer	7,300
Hawaiian Agricultural	7,300
McBryde	5,350
Olaa	7,000
Maui Agricultural	4,400
Honokaa	3,000
Pacific Mill	2,000
Kahuku	800
Kekaha	5,000
Waimanalo	1,500
Wailuku	2,500
Oahu	7,600
Totals	87,583

In addition to these lots are sugars of plantations not listed, which will bring the grand total up to more than 100,000 tons.

A KAUAI CITIZEN SUED BY BUILDERS

Honolulu, August 18—A suit for the recovery of \$56,602.39 claimed to be due under a building contract, was filed yesterday in the office of the circuit court clerk against Z. S. Spalding of Kealia, Kauai, by James Stewart & Company of Portland Oregon, through their local attorneys, Frear, Prosser, Anderson & Marx.

The plaintiff company, which consists of A. M. Stewart and James C. Stewart, claims that on July 29, 1909, at Portland, a contract was entered into between Z. S. Spalding and the contractors for the construction of the Spalding Building, at the northwest corner of Washington and Third streets, on lots three and four of block forty-seven, Portland. The plaintiff company was to furnish and provide all material and perform all work for the general construction and completion of the said Spalding Building, for which the firm was to be paid \$482,314, besides a ten per cent contractor's commission of \$38,000, making a total of \$520,314.

They claim further, that they were to be allowed a ten per cent commission on the difference between \$482,314 and the actual cost of the work provided they succeeded in making it less. They aver that the building, less the contractors' commission of \$38,000 cost \$451,888.88. Changes were also made which cost \$62,983.18, on which the contractors claim commission in the sum of \$6,352.85. Their commissions on \$30,425.12, or the difference between \$482,314 and \$451,888.88, amounted to \$3,042.51.

On the total operations under the contract James Stewart & Company claim that Z. S. Spalding is owing them the sum of \$56,602.39, an amount, they state, they have demanded but payment of which has been refused by Mr. Spalding.

CARNIVAL PLANS RUSHING ALONG

(Special Correspondence)

Honolulu, August 17.—In a statement issued by James D. Dougherty, director general of the Mid-Pacific Carnival, the declaration is made that, under no circumstances, will the 1915 celebration of Washington's Birthday be postponed on account of the present war situation in Europe. In connection with the statement, it has been announced by the officials of the Panama-Pacific International Exposition that the plans for the fair in San Francisco are progressing as originally laid down, and that they will not be affected by the European embargo.

That the time has come for Hawaii to gain increased prominence as an all-the-year-round tourist resort, is the opinion of local business men and commercial organizations. Thousands of tourists who will be unable to go to Europe during the coming winter and next spring will seek other lands in which to spend those months. With the Mid-Pacific Carnival as an attraction next February, it now is believed that those tourists may be headed toward Hawaii if the proper promotion work is accomplished and the islands advertised to a greater extent.

As the proposition now stands, the Honolulu Ad Club shortly is to commence a campaign to secure more subscribers to the fund of the Promotion Committee. The Promotion Committee, in turn, is giving every possible assistance to the Mid-Pacific Carnival Company, and the Carnival Company is sparing no efforts toward producing in February, 1915, a Carnival which will cover a greater scope and which will be more elaborate than any other event of its kind ever held in the islands.

It now is an assured fact that thousands of tourists are going to visit the islands this winter and next spring. Hundreds of Australians, en route to the exposition, are going to stop over in Hawaii, take in the carnival and then, possible tour the islands. As one Honolulu business man here has said:

"Hawaii's golden opportunity is at hand and must be grasped."

Makaweli-Koloa

Following are the individual records in the Makaweli-Koloa baseball game (won by the former), they being crowded out last issue:

MAKAWELI

	AB	R	H	S	B	A	E
A. Fernandes	ss	5	2	2	2	1	0
Joe Fassoth	c	4	1	0	2	1	0
Hans Fassoth	3b	5	2	1	2	0	0
Thompson	rf	4	0	0	0	0	0
Costa	2b	4	2	0	2	2	1
Akina	3b	2	1	0	1	1	1
M. Fernandes	lf	1	2	1	0	1	0
Rapozo	cf	3	0	0	0	1	0
Kruse	p	4	1	2	0	5	0

32 11 6 9 11 3

KOLOA

	AB	R	H	S	B	A	E
Melciros	ss	4	0	1	0	2	0
Kuwamoto	1b	4	1	1	0	0	0
Lorenzo	2b	4	1	1	0	2	0
Hamauku	cf	4	0	1	1	2	1
Mitsu	lf	4	0	0	1	0	0
Fujishima	c	4	0	0	1	3	0
Sasaki	rf	2	0	0	0	1	0
Honan	3b	3	0	1	0	3	1
Kuhlman	p	1	0	0	0	1	0
Tanaka	lf	2	0	1	0	1	2
Kula	rf	1	0	1	1	0	0

33 2 9 11 2 9

Gonsalves To Leave

Geo. A. Gonsalves, bookkeeper at Silva's Elele store since last February, will shortly leave Kauai to resume work in the office of Gonsalves & Company, at Honolulu. Mr. Gonsalves has made many friends on Kauai who will sincerely regret his departure from the island.



This charming little frock is made of white accordion pleated chiffon cloth, the tunic being of plain chiffon cloth with little frillings of the pleated material. The sash is white silk and against it, as well as against the pleated neck frill, are caught clusters of tiny pink and blue roses.

Paper Goes Up

News and print papers are soaring as a result of the war in Europe, due, it is assumed, to the impossibility of getting shipments of paper out from important mills. Paper mills in the United States made a sweeping advance two weeks ago, news concerning which was cabled to Honolulu, causing prices there to go up. Another advance is predicted for the very near future. The big jump in the prices of paper will make an increase in the quotations on printing throughout the United States, including Hawaii—and perhaps the entire world—absolutely necessary at once.

Portuguese Consul

Senior Angello Lopes da Cunha Pessao, the new Portuguese consul to Hawaii, appointed to succeed the late Mr. Cannavaro, arrived in Honolulu yesterday and will assume his duties at once. Dr. Luiz R. Gaspar has been acting consul since the death of Mr. Cannavaro.

Couple Of Campers

Jamie Wilder, of Boy Scout fame, and Harry S. Hayward, manager of the Merchant street branch of the Honolulu Star-Bulletin, returned to the city Saturday night, after completing a camping-out experience on Kauai. Landing at Waimea, they first made camp far up in Olokele, staying there several days. Then they motored across the island to Haena, where they built another camp and roughed it until Saturday morning. They were both well tanned, but expressed themselves as having greatly enjoyed the outing.

The Official Time

The great clock at the top of the county building was set going last Wednesday afternoon. The official time was obtained by wireless from Honolulu, and the big hands were set to the second. It is claimed that the clock is regulated to perfection so that it will not vary from the truth in a very long time. The clock will prove a great thing on Kauai, for it will give to people all over the island the official time without question, and clocks may be set accordingly.

Morse To Coast

C. B. Morse, principal of the Elele school, received a hurry call to the coast on business in connection with property interests there and left last week. His stay there will depend upon circumstances, but when he left he fully expected to be able to return in time for the opening of school in September.

Waimea Stables

LIMITED

Up-to-date Livery, Draying and Boarding Stable and Auto-Livery Business.

AUTOMOBILE STAGE-LINE

BETWEEN LIHUE and KEKAHA

Leaving Lihue every Monday, Wednesday and Friday.
Leaving Kekaha every Tuesday, Thursday and Saturday.
ARRIVING AT THEIR DESTINATION IN THREE HOURS

W. WEBER Manager.

Telephone 4 W Waimea P. O. Box 48

As a mariner is guided by a Star, so is a smart dresser guided by a "STAR SHIRT."
\$1.50, \$2, \$2.50 and up

Silva's Toggery, Honolulu

THE Packard SHOE FOR MEN

A "PACKARD" shoe, has their trade mark on the strap, the sole, and the lining of every shoe.

If the "PACKARD" name is not there, then you are not wearing a Packard shoe.

Don't be fooled---There are no others just as good.

McInerney Shoe Store Fort Street HONOLULU
SOLE AGENTS

Let Us Do Your

LAUNDRY

Territorial Messenger Service
HONOLULU

HONOLULU MUSIC COMPANY, Ltd.

Home of the Autopiano
88 KING STREET HONOLULU, T.H.

READ THE GARDEN ISLAND



Representative Robert Gann Brewer, of New Jersey, a new member of Congress who is a favorite of President Wilson. Brewer is a newspaper man and is only 39 years of age.

BOY'S CLUB FOOT IS STRAIGHTENED

An unusual operation has been carried out at the Lihue hospital, it being the straightening of what is known as a "club foot." The patient is a grand son of S. K. Kaou, less than two years of age.

Drs. Putnam, Waterhouse, Hoffmann, Yanagihara and Yoshizawa performed the operation.

The foot was completely straightened, and then placed in a plaster cast to enable the bones to establish themselves in their new positions. This cast will remain on for at least a month, and in three months the little fellow will have a perfect foot in place of the distorted one.

LATEST WIRELESS NEWS

Continued from page 1
Monday, August 24.

Sugar: Raws, 6.00; beets, no sales.

JAPAN DECLARES WAR.

Honolulu—The Japanese consul reports that the Japanese Consulate (at Honolulu) has this day received from our foreign office, through the Japanese Embassy at Washington, a cablegram saying that no answer having been given to the ultimatum of Japan to Germany, Japan had found herself in a state of war with Germany at noon August 23.

"And further, that she declared war against Germany at 6 o'clock that same evening."

MUST FIGHT FOR TSINGTAU.

Tsingtau—The German governor has issued a proclamation that if the enemy wants Tsingtau he must take it. Germans have been making every preparation to fight.

WASHINGTON NEWS.

Washington—The United States has been officially asked to assume charge of Japanese interests in Germany. President Wilson will make formal declaration of neutrality.

It is not believed that the railways between Tien Tsin and Nanking will be interfered with in the present war as they belong to China.

A TOKIO RUMOR

Tokio—It is rumored here that Germany is making effort to turn over German railroad interests in Shantung to the United States, but it is not believed possible that the transfer will be accepted by the American government.

LEIPZIG AGAIN APPEARS

San Francisco—A steamer was nearly run down by the German cruiser Leipzig eight miles off shore at Point Arenas. The second mate says his signals were disregarded and that the vessels came so close together that a line could have been passed to either.

GERMAN SHIPPING MAY LEAVE.

Tokio—German shipping in Japanese ports will not be seized at once, but will be given fourteen days in which to get out of reach.

The Austrian cruiser Kaiserin Elizabeth is reported to have left the Chinese German port with the intention of going to a neutral port and disarming.

SAN FRANCISCO REPORT

San Francisco—Consul Newman has received a private despatch today saying Japan has fifty million dollars immediately available for war funds.

The S. S. Mazatlan left port under bonds to deliver her cargo of coal where consigned. This was on orders to that effect from Washington.

The schooner Pasadena was burned at her dock yesterday afternoon. Her cargo of lumber was saved.

The transport Buffalo and the S. S. Honolulan are making ready to sail through the Panama canal, the latter to take 25 passengers.

THE AUSTRIAN SIDE.

Rome—An unconfirmed report states that the Austrian naval vessels were lost in battle in the Adriatic. Also that Greece has sent troops to the aid of Serbia.

ZEPPELIN DESTROYED.

Paris—Another Zeppelin has been destroyed by French shells, twenty miles from Luneville.

ORDERED TO DISARM.

London—An official press bureau despatch says that Austria has ordered the Kaiserin Elizabeth, on the China coast (referred to above) to disarm.

Sunday, August 23.

London—The battle of the giants has begun, after three weeks preparation.

The Germans with a huge army is attempting to work around the flank of the Allies in Belgium by a tremendous sweeping movement from Liege, past Brussels, south along the territory between Brussels and Ghent.

The advance of the flanking army has turned south through Wetzlar, apparently advancing on Oudenards.

The French are attempting to turn the German flank by crumpling up the German lines along the Rhine from Mulhausen.

Fighting yesterday was severe between the Germans and French and British allies from Namur to Charlerois. A severe conflict raged on the historic battlefield of Waterloo. British and German cavalry coming together in several fierce encounters.

REPORT FROM PARIS.

Paris—The Minister of War stated yesterday that France would not consider she had done her duty if one German was allowed to remain on Belgian soil.

It is officially reported that the Germans have shot a number of non-combatants, including the burgomaster of Oerschot.

REPORTED GERMAN SETBACK.

Washington—It is officially reported that the Germans received a severe set-back at the hands of the Russian invaders in east Prussia. The Russians also defeated the Austrians on the Galician border.

JAPAN'S ULTIMATUM

Washington—Japan's ultimatum to Germany expired at 10 o'clock last night.

Steps will immediately be taken to enforce the terms.

PATENT RIGHTS CANCELLED

London—The British government has cancelled all German and Austrian patent rights.

THE MATZATLAN CASE

The British government has intimated that she would regard the sailing of the steamer Mazatlan with a cargo of coal as violation of neutrality as it is known that the coal is intended for the cruiser Leipzig. (Yesterday's despatch, mentioning "Mazatlan", was interpreted here to mean Mazatlan, Mexico, but it now appears that it is the name of a steamer. She has evidently been taking coal at some American port. Ed. Gard. Isl.)

HONOLULU NEWS

Honolulu—In the Advertiser today (Sunday) L. A. Thurston publishes a long statement telling the people why Kuhio is opposed by the leading Republicans.

The population of the group is now 227,391.

John A. Baker has entered the mayoralty contest on the Democratic ticket against Joe Fern.

(LATE SATURDAY)

GERMANS WIN A VICTORY.

Washington—The Germans have won a magnificent victory between Metz and the Vosges mountains.

DEFEATED OR RETREATED?

London—The Belgians have retreated to Antwerp. An army of the allies estimated to be fifteen French and three English army corps if not decisively defeated they are in retreat.

The Germans have seized two millions in cash and ask ten millions more.



For Reliability

"There's no holes in it." That's what Lincoln Beachey, the loop the loop aviator, says about Red Crown. That means there's power in every drop—it never fails him. It is those same qualities that make Red Crown a good gasoline for your automobile.

RED CROWN

the Gasoline of Quality

is the old reliable kind, that gets you there and back. It is quick acting—starts easily—and burns up clean. It may cost you a bit more *per gallon* but it costs you less *per mile*. Red Crown is not a mixture, but a straight distilled, refinery gasoline—the best we can produce. Make it a practice to ask for Red Crown.

Red Crown signs are furnished to all dealers handling Red Crown Gasoline. Watch for the Sign or ask our nearest agency regarding delivery in bulk.

Standard Oil Company

(California)

Honolulu

General Leman, commander of the forces at Liege, has been captured by the Germans and taken to Cologne.

RUSSIANS ARE ADVANCING

London—The Russian advance against Germany and Austria is pressing forward without interruption.

JAPANESE ON THE MOVE

Shanghai—The tenth division of the Japanese army, numbering

Continued on page 6

THEY ARE COMING!

20 CLEVER GIRLS THE JUVENILE BOSTONIANS 20 CLEVER GIRLS

ONLY COMPANY IN THE WORLD COMPOSED ENTIRELY OF GIRLS.

Presenting up-to-date musical comedy and comic opera---Each production complete in every detail.

Appearing in the following musical successes:

"The Princess Chic"

"The Dream Girl"

"Iroma"

"My Congo Maid"

"The Daughter Of The Regiment"

"The Rose of Blandeen"

"The Gypsy's Love"

"The Isle Of Spice"

EVERY ARTIST A GIRL AND EVERY GIRL AN ARTIST

STAGELAND'S GREATEST NOVELTY

WAIMEA, Wednesday and Thursday evenings, September 2 and 3. Tickets on sale at C. B. Hofgaard & Company's store.

KOLOA, Friday evening, September 4. Tickets on sale at Kauai Trading Co.

LIHUE, Saturday and Monday evenings, September 5 and 7. Tickets on sale at Lihue Store.

KAUAI'S GREATEST TREAT---A MUSICAL BANQUET EXTENDING OVER FIVE EVENINGS

Reserved Seat Tickets Are Limited And Should Be Obtained At Once.

THE GARDEN ISLAND

TUESDAY AUG. 25, 1914

Issued Every Tuesday.

Entered at the post office at Lihue, Kauai, as second-class matter.

SUBSCRIPTION RATES \$2.50 PER YEAR, \$1.50 FOR SIX MONTHS IN ADVANCE

ADVERTISING RATES, 75 CENTS AN INCH PER MONTH.

L. D. TIMMONS : : : Editor
K. C. HOPPER : : : Manager

"Walter G." Smith

The late Walter G. Smith was, perhaps, the most versatile and forceful newspaper writer ever engaged in journalism in Hawaii. He was well informed on most subjects of general concern, and had a peculiarly smooth and convincing way of presenting arguments. In controversies (and he seemed to have the faculty, or misfortune - as one may care to look at it - of incurring many) he was a past master, whether as the aggressor or on the defensive; and most editors side-stepped his pen as they would a battery of artillery. Some close observers of the work of the late Mr. Smith seemed to be of the opinion that he had the fault of being over aggressive, frequently much to his own discomfiture; and that feature of the general estimate may not have been far wrong.

However, with that and withal, Mr. Smith will long be remembered for many sterling traits of character, honesty of purpose and firmness. Most of his newspaper co-workers had an abiding affection for "Walter G.", and they will long remember him for his kindly qualities.

Mr. Smith was intensely loyal to Hawaii, and its business and political interests. After leaving newspaper work at Honolulu, he made a tour of a year for the Hawaii Promotion Committee in the interest of tourist travel, and while away was called to Washington to assist in making Hawaii's fight against free sugar. More recently he was engaged for a lecturing tour by the promoters of the San Francisco exposition and was presumably undertaking that responsibility when stricken down.

Ill And Good Fortune

Despite the low prices of sugar at the beginning of the present campaign, Kauai has been favored in two extraordinary particulars and the year as a whole promises well for the island. In the first place, the excess of production for the island is running nearly 15,000 tons - that is to say, the total production will be about that much over and above the official estimates at the first of the year. This item in itself will run into very large money.

Then there is the matter of high prices incident to the war, and Kauai will come in for even greater benefits from this source. Of course it is not to be expected that sugar will hold to the high figures recently, and still prevailing; but even at what they are apt to be, this island will realize big on a large part of the year's output.

Therefore, leaving aside the anxiety many of our people may feel on account of the war, our island domain is being peculiarly and particularly favored by circumstances, and we have much to cheer us. Surely there is no cause for the blues on account of the business situation here, and if we can reconcile ourselves to the thought that the future may take care of itself, we should regard conditions as quite satisfactory.

Let not a feeling of contentment, however, permit us to lose sight of the free sugar cloud which still rests upon the horizon, and of the necessity of doing everything in our power to remove it before the evil day of low prices comes around

again - as it surely will come. The fight against free sugar will be made all the harder by virtue of the present war prices, and the task should be tackled with all our might and persevered in most vigorously.

We are most unfortunate, at this critical period, when hard and intelligent work is so necessary, that we have no representation in Washington. At the same time we are fortunate in having so close at hand the opportunity of selecting and electing a delegate who will appear and remain in Congress after March 4, next, to fight this great free sugar evil and protect our interests.

Thus it is to be noted that while we have had, and still have, the annoying and perplexing features, we are able to discern at each hand the silver lining of unusual good fortune and opportunity. While being most thankful for the good fortune, we should not fail to seize the opportunity held out to us and vote on September 12 for the protection of our interests in the future.

Duty Of Hawaiians

Hawaiians of Kauai contemplating throwing their votes to Kuhio in the hope of returning that candidate to Congress should pause and reflect a moment on the possibilities.

It often occurs in life that facts are not comely things to look squarely in the face; but it is sometimes necessary that we do so, however unpleasant.

We do not believe, in the first place, that Kuhio has any show of obtaining the nomination at the hands of the voters on September 12. Reports from all over the group indicate that he has too much against him, and that he will be badly beaten at the polls. Therefore, that part of Kauai's vote cast for him would be lost at best.

Every man likes to feel that his vote has served a good purpose - that he has supported the man in whom the people at large have the most confidence. It must by this time be clear to most Hawaiians (as it is to others) that Kuhio no longer has that confidence, while, on the other hand, the confidence in and endorsement of Charles A. Rice for the delegateship is increasing every day.

Kuhio will be defeated at the polls on September 12.

Charles A. Rice will be nominated at that time.

Would it not be better for the Hawaiians of Kauai to come in with and be a part of the majority, and share in the enthusiasm of victory rather than in the qualms of defeat?

Most certainly it would.

And in selecting Mr. Rice as the nominee of the party for Congress, the Hawaiians should remember always that they have chosen one of their own people - a son of Kauai - nei.

PRESIDENT WILSON'S offer to mediate in the interest of peace in Europe concluded with the phrase: "Either now or any other time that might be thought more suitable." The latter may have been an afterthought but it is striking.

"CROPS IN SWITZERLAND are rotting in the ground" states a cable despatch. What's that? The only crops we ever heard of in Switzerland are cheese, milk, chocolates, watches, silk manufactures and tourists, and from all accounts neither grow in the ground. Must be a mistake somewhere.

KAUAI is to have an unusual treat in the tour of the Juvenile Bostonians next week. Never before, perhaps, has a theatrical combination of this class visited the island, and Kauai should show its appreciation of the consideration to be shown by turning out en masse to the entertainments. We sincerely hope that the houses at Waimoa, Koloa and Lihue will be packed to the doors each evening, showing to the visiting Bostonians that we appreciate their con-

sideration thoroughly. The programs of the Bostonians are, indeed, highly interesting and pleasingly interpreted, and their music is simply grand.

IF THE NEWS coming from Europe nowadays is to be believed in its entirety, they must certainly have remarkable range to the guns they are using in the present war. The despatches of the other day calmly announced that the Germans had fired into Italian barracks, killing eight men. To fire across the Republic of Switzerland over the great Alps, etc., into Italian barracks is some shooting; and if the Germans are armed with guns like that we cannot see why they cannot throw out a skirmish line along the Belgian border and riddle Paris with bullets.

IN ADDITION to the world's troubles, war has broken out between L. A. Thurston and Judge Withington, the casus belli being the question of whether or not Delegate Kalaniana'ole's secretary in Washington keeps official hours. No casualties to date.

AS A SIDELIGHT on conditions in military ridden Europe and western Asia, we find that for the current year Turkey's appropriations were as follows: For war department, \$26,400,000; navy \$5,891,301, and education \$2,540,206. Those figures in themselves preach a sermon, and indicate a really horrible condition of affairs.

RICE WILL BEAT ALL ON MAUI

The following comes from the Honolulu Advertiser:

"While Maui is not so solidly for Charles A. Rice as is his home island of Kauai, resent word from the Valley Isle is to the effect that Rice is going to poll a bigger vote there than all the other candidates for the delegateship combined. It is estimated that Maui will poll a total of 2,400 votes at the primary and that Rice will get a clean majority of them all.

"While Mr. Rice, in letters received from him yesterday, does not claim the big vote that his friends there appear to think he will poll, he expresses delight at the enthusiasm with which he is being received. He held a number of meetings in the Hana district and was able to meet face to face practically every voter there, while his other meetings have been big ones. Maui kamaainas say that Rice will get a bigger vote; it appears as if for anything, than Kuhio ever got on the island.

Rice will be back in Honolulu Saturday to resume his campaign here and stay in and about Honolulu until the primary date. It is felt by his local lieutenants that he is gaining daily in strength here and that he will have a substantial majority on Oahu as well as on Kauai and Maui.

Reports from Hawaii are that there has been a big change in the political situation since Palmer Woods began his campaign. Word from Hilo is that Woods will beat McCandless on the Big Island by a three-to-one majority.

A report from Hilo, Hawaii, arriving yesterday, says: Generally speaking, the Woods candidacy is regarded as an aid to Rice, on this island. Woods is personally so popular on this island that he is bound to get a lot of votes which Kuhio would have against Rice. Kahaulelio is not taken seriously, except as an aid to Woods.

Boy Has Appendicitis

Sam, the young son of Mr. and Mrs. Chas. Wilcox, was operated on recently by Drs. Putman and Waterhouse for appendicitis. This is the second case of a very young child having appendicitis in this neighborhood lately, the other being the little daughter of Mr. and Mrs. H. Rohrig.

Manuel Silva

Homestead

Has added a new six-seater Studebaker to his garage and is in a position to give his patrons even better service than ever before. Careful drivers, comfortable cars, and always ready to start.

DAY OR NIGHT SERVICE
TELEPHONE 84L

THE BANK OF HAWAII,

Limited

LIHUE BRANCH

LIHUE, KAUAI, HAWAII

Deposits are received subject to check. Certificates of deposit issued payable on demand. Loans made on approved security.

DRAFTS DRAWN ON

Honolulu Bremen
San Francisco Berlin
New York Hong Kong
London Yokohama

SAVINGS DEPARTMENT

Interest paid on Savings Deposits. 4 per cent on ordinary and 4 per cent on Term Deposits. Ordinary Savings Deposits will be received up to \$2,500 in any one account.

SAFE DEPOSIT BOXES FOR RENT \$2 AND \$3 A YEAR

HOTEL WAIMEA

WAIMEA, KAUAI

Breakfast : : \$.50
Lunch : : : .75
Dinner : : : 1.00
Room : : : 1.00

DICK OLIVER, Manager

JEWELERS

EVERYTHING IN THE SILVER AND GOLD LINE, RICH CUT GLASS AND ART GOODS.

MERCHANDISE OF THE BEST QUALITY ONLY.

H. F. WICHMAN & CO., LD.

LEADING JEWELERS
P. O. Box 342 Honolulu

Souvenirs

We neatly pack and mail Hawaiian Souvenirs. Hawaii & South Seas Curio Co. HONOLULU.

HOTEL LIHUE

(The Fairview)

Twenty-two elegant rooms
In Main Building
Three Airy Cottages
Cuisine unexcelled in country districts
W. H. Rice, Jr., Proprietor

Stationery and Paper

We carry all the best grades of paper, stationery, and office supplies. We will give your mail order the same care and prompt attention that you would receive in person. Drop us a line.

Hawaiian News Co., Ltd.
Young Bldg. Honolulu

Nawiliwili Garage

C. W. SPITZ, Prop.

NAWILIWILI, KAUAI TELEPHONE 104

Automobiles to all Parts of Kauai, all hours, Day and Night
Careful Chauffeurs

Autos and light machinery repaired. Plumbing and gas fittings. Agents for Fisk and Goodrich Tires and Tubes, Chalmers, Ford, Studebaker, Velie, Federal and Velie Truck.

Agents for the Inter Island Steam Navigation Co., Ltd., at Nawiliwili, Kauai

There are two kinds, Marine and Stationary, of

The Frisbie Motor

which is an automobile type of motor adapted for Motor Boats. Called by engineers "The All-Day Motor."

15 Models, 1 to 6 cylinders. Marine and Stationary. 3 to 75 Horsepower. Self-Starter if desired.

There are so many things about the Frisbie Motor that make it supremely desirable that we can't say it all here. Will you write for full particulars?

Honolulu Iron Works Co.

HONOLULU

Used by All the Big College Nines

The Official Ball


If you attend any of the big college games you will find that the ball almost invariably used is the REACH OFFICIAL AMERICAN LEAGUE BALL. College men won't have anything but the BEST - that's why they all use

The Reach Ball

College men know too that the Reach Ball has been adopted by the American League for ten years, and is the Official League Ball. No other ball can be used in any League game. Price everywhere \$1.25.

The Reach Trade-mark on all Sporting Goods is a guarantee of quality - it means satisfaction, a new article or your money back (except on Balls and Bats under \$1.00).

The REACH OFFICIAL BASE BALL GUIDE - third authority of the American League. History and photos of the record Series, Subseries, records, etc. 10 cents at dealers or by mail.



Theo. H. Davies & Co., Ltd.

Sole Agents for the Territory of Hawaii

FISK

C. W. SPITZ
AGENT FOR KAUAI

BY MILES THE BEST TIRE

They average 25 per cent more than other Tires. A full stock carried at the NAWILIWILI GARAGE

TIRES



READ THE GARDEN ISLAND

UNIVERSAL LUNCH BOX



No man or woman who eats lunch away from home--no child who remains at school during the noon hour--can be without a Universal lunch box. Its vacuum bottle guarantees a steaming hot or icy cold cup of tea, coffee or milk. Its food drawer with its ventilating features assures fresh wholesome food at all times. Positively the most perfect box known. Price \$2.25 each.

W. W. Dimond & Co., Ltd.
53-65 King St. Honolulu

Office Supply Co., Ltd.
HONOLULU, T. H.

Agents for the

REMINGTON TYPEWRITER

and dealers in Office Stationery and Filing Systems.

Carry a complete stock of the Globe-Wernicke Filing Cabinets and Bookcases.

All repairs on typewriters guaranteed satisfactory.

Paper

Paper Bags, Twines, Stationery

THE LARGEST

PAPER HOUSE

IN THE TERRITORY

MAIL ORDERS PROMPTLY ATTENDED TO

AMERICAN-HAWAIIAN PAPER CO., LTD.
Fort and Queen Streets

GEO. G. GUILD, Vice-Pres & Mgr

JAS. F. MORGAN

Co. Ltd.

Stocks, Bonds, Real Estate and Insurance

NO. 125-131 MERCHANT ST. P. O. Box No 594 Honolulu

Bishop & Co.

BANKERS

Established 1859

HEAD OFFICE - HONOLULU
BRANCHES AT HILO AND WAIMEA, - KAUAI

Transact a General Banking and Exchange Business Commercial and Travelers' Letters of Credit issued available in all principal cities of the world.

Interest allowed at the rate of 4 per cent per annum on Savings Bank deposits.

Interest paid on Time Deposits at the following rates:

- 3 Months 3 per cent per annum.
- 6 Months 3 1/2 per cent per annum.
- 12 Months 4 per cent per annum.

All business entrusted by customers on other islands receives careful and prompt attention.

MR. ROHRIG'S ADDRESS TO CHAMBER OF COMMERCE

The following is the address, or report, complete, of retiring President H. Rohrig to the Kauai Chamber of Commerce delivered on the occasion of the annual meeting and which was crowded out of last issue:

Gentlemen of the Kauai Chamber of Commerce:

The Kauai Chamber of Commerce was one year old yesterday, its first meeting having been held at 10 a. m., August 14 1913, in Lihue hall. There were present at that first meeting eighteen gentlemen, and from the number a president, vice president, secretary, treasurer and auditor were elected. A committee on Constitution and By Laws was appointed, and a second committee was sent out to enroll new members. Adjournment was then taken until August 21, and at that meeting the new Constitution was reported and adopted; the four additional directors therein provided for were elected and committees were appointed. The Chamber was then considered to be fully under way.

The next meeting of the Chamber was held October 16, at which the resignation of Secretary Belr was accepted with regrets and Mr. Philip L. Rice elected in his stead. At this meeting the President made a brief report of the inter-island convention of civic bodies which he had attended at Honolulu on the preceding September 17. There were 13 officers and members present at this meeting.

The fourth meeting, held December 18, was given over largely to discussion of plans for a float, etc., for the Carnival at Honolulu in February and the appointment of a committee on the same.

The fifth meeting was held February 14, of this year. At this meeting the President reported the resignation of Mr. Philip L. Rice from the office of secretary, and Mr. L. D. Timmons, our present secretary, was elected to fill the vacancy.

Arrangements for the Kauai float in the Floral Parade, a proposed tour of the island by Photographer Baker with his Kauai views, correspondence in regard to a proposed visit to Kauai by the Honolulu Ad. Club, the site of the proposed new Kauai high school and several other matters engaged the attention of this meeting.

Next came a special meeting held in the court house at Waimea, there being thirty members present, at which complete data concerning the proposed visit of the Honolulu Ad. Club was presented, a tentative program mapped out, sub-committees appointed, etc. Numerous interesting matters came up at this meeting for discussion, and several important resolutions were adopted.

Between that time and the coming of the Honolulu Ad. Club in the last days of March, numerous meetings by the committees were held. The tour of the Ad. Club as the guests of the Chamber of Commerce will be well remembered by all of you and calls for no comment from me.

The sixth regular meeting was held April 16 and was given over largely to reports of the committees on Honolulu Carnival and on entertainment of the Honolulu Ad. Club.

The seventh regular meeting was held June 11 in the dining room of the Fairview Hotel, and was in the nature of a luncheon-session. There were 47 members present at this meeting, and 27 applications for membership in the Chamber were favorably acted upon. This meeting was voted a great success in every way.

Thus you will note that the Chamber has been quite active in the first year of its infancy. In the meanwhile it has grown in membership, and, we believe, in force and power and influence for the betterment of Kauai. From an original membership of 18 it has developed a membership of 94 in good standing at this date, and with every prospect of a considerable increase in the near future.

Our relations with the Honolulu Chamber of Commerce and the other commercial and civic bodies of the Islands have become more cordial, and I feel that these friendly relations will be of value to this Chamber in the future.

We have had occasion during the year to take up important questions with the Territorial authorities and with the government at Washington, invariably, we believe, with credit to ourselves; and where we have not succeeded in carrying our points, the matters are still pending and are being followed up with due vigor.

Continued on page 6

RICE CAMPAIGN ON ISLAND OAHU

Some Estimates By A Man On The Inside Of Events

The following is a part of a letter received from a prominent worker for Charles A. Rice on Oahu, a man who is particularly well placed to get accurate data as is obtainable on the situation:

Our campaign is going along well. I just had a letter from Maui in which a conservative estimate of the Rice vote on that island was given at 1200. Kuhio between 700 and 800, and that the balance of the vote would be divided between the other candidates with Woods in the lead.

Rice will surely carry the 4th. of the 4th. and is steadily gaining in the 5th. of the 4th. Hawaiians from the latter district are daily coming to headquarters and are telling us that many former Kuhio supporters in that district are dissatisfied with the "race issue campaign" carried on by the Kuhio supporters. Particularly do they object to methods used by Desha and Wise.

From Laie and Kahuku we have word that they wish us to have a meeting at Laie on the 29th. of this month and that if we will assign them this date that a free train will be run from Kahana on one side and the Reform School on the other, to the meeting and that 90% of the votes cast within these limits will be for Rice. Ewa, Oahu and Honolulu plantations have sent in word that if we will assign each place a night they will erect a speakers' platform and will supply light and seats and large sympathizing audiences. Waimanalo is solid. Kailua and Kaneohe will give Rice about 50% of their vote. Coming nearer town in the 5th, it is estimated that Kuhio will poll two for every one polled for Rice, in those precincts where the Hawaiians predominate. Two weeks ago it was estimated that it was 5 for Kuhio to 1 for Rice. There are but few Hawaiians shouting for Kuhio now as compared to the number shouting for him a couple of weeks ago. We feel we are gaining solid support there and that it will not again be deflected.

There is much quiet house work being done in that district and it is surely breaking through the opposition forces.

On Hawaii the vote for Rice will be between 1000 and 1200, but on that island we think Kuhio will likely get a larger vote than Rice, but not as large as he would have gotten if Woods had not come out. We have word from Hawaii that Woods is actually running strong. He is getting much Hawaiian Democratic support and many Hawaiians who did not want to support McCandless and might have voted for Kuhio.

We have been making estimates of the probable outcome at the primaries and we believe that we will win over Kuhio by a majority of from 800 to 1200 votes.

Waimea "Sojers"

Waimea is about to have a military company—a full-fledged branch of the National Guard of Hawaii, to be organized 60 strong. James A. Crawford, the new acting manager of the Lihue Ice & Electric Power Co., at Waimea, has taken the matter up with Colonel Jones, at Honolulu, and the National Guard heads have expressed approval of the plan. George A. Bertam, also of Waimea, a former German soldier, is also prominently identified with the work of organizing.

Hilonian Calls

The Hilonian, which sailed from Port Allen last Saturday night, took away 6,000 cases of canned

SENATOR KNUDSEN'S TOUR OF AMERICA AND EUROPE

Part IV.

(Continued from last issue.)

TOWN OF MUNICH

I found that the town of Munich had changed a great deal. Many of the old, narrow streets had been exchanged for new, wide boulevards, built through the heart of the old town. The old Kings of Bavaria seem to have had a friendly rivalry with the Kings of Saxony, and have collected as fine a lot of pictures as you can find in any part of the world. A week there is well worth the time spent, and as we were there in one of their festival weeks, we saw the old dance established by the King at the time of the black plague visitation to distract the common people from their woes.

INTO SWITZERLAND

Leaving Munich on January 31, we passed into Switzerland and after spending the night at a little town called Chur, we reached the famous Winter sport place of the world, St. Moritz, after passing through and over a constant succession of tunnels and bridges. We spent the whole month of February in St. Moritz, and greatly enjoyed the cold, bracing weather. During the night the thermometer would go as low as 5 degrees but during the day, as soon as the sun came up over the mountains, at about nine o'clock, the temperature would rise to 35 or 40 degrees, and you could go about in ordinary golf suits and enjoy the skating or tobogganning to your hearts content.

SPORT OF BOB-SLEIGHING

The famous Cresta bob-sleigh run was only a short way from our hotel and it was great fun to see the big bobs come flying down, making the turns at great speed and covering a distance of 5 kilometres (about 2.7 miles) in one minute and 38 seconds. Sunny Corner was one of the most difficult to pass, and a grand stand was built around the corner, which was banked up to a height of thirty feet—a perpendicular wall of snow and ice—and a bob-sleigh coming fast would fly up around this curved wall as high as twenty feet.

One day, as we were watching the races, a large bob came down at a great speed and as it approached the curve the steering wheel broke. The sled kept straight on up the wall and flew over the edge of the grand stand, turning the seats full of spectators over backwards and smashing them into kindling wood. The six members of the crew fell off two backwards down into the bob-sleigh course and the other four on top of the jumbled up mass of spectators, who were yelling and shrieking, and what with ladies fainting and going into hysterics and a dozen injured, some rather severely—the white snow being stained red in several places—we had quite an exciting day's sport. Strange to say, the crew weren't injured a bit and the bob was found sixty feet beyond, up side down. The driver, who would most likely have been killed had the accident happened on the next curve, stood looking at his demolished car in a dazed sort of way, muttered a few quiet words and promptly went into the big derby the next week and won the cup—his sled selling for over a thousand dollars in the pool, the highest paid of any of the competitors.

SKI RUNNING POPULAR

Ski running was very popular, and we tried and enjoyed it very much (our Norwegian ancestry being of great help of course). Towards the end of February they had a great Ski jumping day. All of the great men of the country came together and made some great jumps the longest being 94 feet. I tried it once, and it was a great sensation to feel my feet going higher and higher and my head lower and lower. Luckily snow is soft. Riding a bucking horse is easier.

Out on the lake they had horse races every Sunday, and when the Skijoring Club joined the races it was a gay scene. The ladies, among whom were two Italian countesses and the Duchess of Westminster, also took part, and when they came down the course at full speed the 5000 spectators gave great applause.

CZAR'S BROTHER THERE

The brother of the Czar of Russia was a constant attendant at all the sports, and presided over the great ball given as a wind-up to the bob-sleigh Derby. The ball was held in the large dance hall of the Palace hotel, and though the tickets were 20 francs apiece, still the hall was packed, and we were enabled to see all the sports of Russia, France, England, Germany and America—not to mention Kauai-dressed in splendid style, which I will not attempt to describe, but they certainly looked chic—and enjoying the one-step as though their lives depended upon it. Among the dancers were the men who had competed down the first course.

EVENING IN DOORS

As soon as the sun went down behind the mountains to the west, everybody quit the fields and rinks and went indoors and had tea and cakes, while fine string bands played the latest music of the day. One old bandmaster was so particular that he wouldn't begin a piece until everybody in the large room had quit talking and absolute silence prevailed. One afternoon while we were sipping our tea and he was in the midst of one of his touching pieces, a tall lankeg waiter boy who was leaning against a pillar suddenly skidded on the polished floor and fell with a crash. All who saw it tried to keep a straight face, but the effort to suppress a laugh was too great and the poor bandmaster was almost routed by a joyous shout of laughter.

SNOW STORM IN FEBRUARY

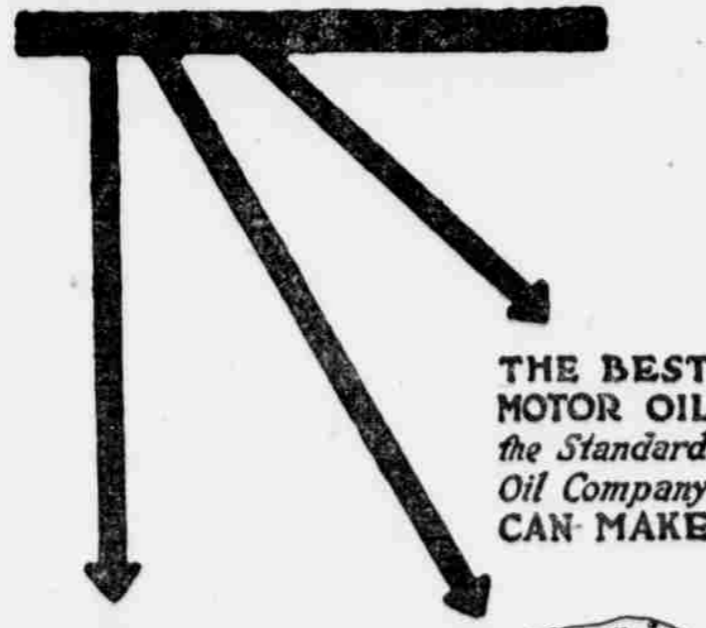
Towards the end of February we had a grand snow storm. It lasted two nights and a day, and when it was over snow lay piled up all over the country to a depth of three feet. We all went out and romped in the soft snow and found it great sport. The hills, however, became very dangerous and avalanche notices were posted in all of the hotels. One man who posed as an expert, wrote an article warning tourists against the snow and telling them how to avoid danger, and then went out with a party and lost his life, buried under a mass of the very snow that he had warned others against—showing how very treacherous the snow is after the Spring begins to come on.

The first day of Spring was ushered in by all the small boys of the town arming themselves with bells and going around from house to house, ringing in the news and holding them all up to a treat of cakes and other dainties.

(To be continued.)


ZEROLENE

The Standard Oil for Motor Cars



THE BEST MOTOR OIL the Standard Oil Company CAN MAKE

IT KEEPS THE MOTOR COOL



T. C. Boylan, of the Standard Optical Company, completed a tour of the island at the week end, returning to the city Saturday evening. He was accompanied by an expert oculist from the coast, who is visiting the Islands.

Allen she went to Kahului to complete her cargo. The Hilonian arrived last Friday morning. Captain Soule, her master, was a clothing merchant in Honolulu for a number of years.

TODAY'S AND LATEST NEWS BY WIRELESS

Continued from page 3.

160,000 men have embarked in transports at Okuna.

BRITISH RESERVES CALLED

Washington—Notice was issued today from the British Embassy recalling all reservists in the United States to report to the Mother Country for duty.

PRICES DROP IN PARIS

Paris—Meat is selling at the lowest price in twenty years, as a result of the Government's efforts to provide foodstuffs at low figures. Vegetables abundant and cheap.

JAPANESE IDZUMA SAILS

San Francisco—The cruiser Idzuma sailed from this port today.

Honolulu—Five hundred shares Olaa stock sold yesterday at \$4.00 and 400 McBryde at 4.75.

Saturday, August 22.

Sugar: Raws, 6.00; beets, unchanged.

GERMANS INVEST NAMUR.

Paris—It is officially reported that the Belgian city of Namur, with its fortifications, is now partly invested by the Germans, who have brought artillery from Liege. Firing upon the Namur fortress began at noon yesterday.

The westward movement of the German front continues.

Occupation of Brussels is now complete.

Telegraph wires between Antwerp and the Capital were cut yesterday. The Paris lines were severed during the afternoon.

A war tax totalling \$40,000,000 has been levied against the city of Brussels by Germany. The penalty for non-payment is not stated.

Eighty three German prisoners have been brought to Clermont, charged with robbing dead under guard of Red Cross soldiers.

A thousand German prisoners are being sent to England.

FRENCH HELP AMERICANS

The state department of France has notified the American state department that the French department will attempt to send all Americans stranded in Switzerland to French seaports for transportation home. There is much suffering for food.

2,500,000 MEN IN BATTLE

Fighting is in progress along a line 250 miles. It is estimated that the number of men engaged in the battle is two and a half million.

NEWS FROM SERBIA

London—The Servian Minister charges that the Austrians are arming the Albanians for the purpose of having them raid Servian territory. The Servian government has filed a protest with Italy against this action.

Austria has called out all reserves.

The main Russian army for the invasion of Germany is on the move, being led by Grand Duke Nicholas.

GERMANY CONTROLS BALTIC.

Germany is in complete control of the Baltic sea, and the north coast is open to supply ships from Scandinavian ports.

RUSSIAN FLEET BOTTLED UP.

Every Russian warship is blocked in some Russian harbor.

GERMANS MOVING WEST.

London—It is believed that the German army will attack the Belgians near Antwerp.

Substantial gains were made by the Germans yesterday. Marching through Brussels, a part of the great army following the railway line captured the town of Alost, fifteen miles distant, and ten miles farther they took Ghent, which is in East Flanders.

German Uhlans have been seen at Waterloo.

BATTLE IN SERBIA.

Nishi—The Servians defeated the Austrians in a great battle near Losza, which lasted four days. Very heavy losses on both sides.

A MONGREL ARMY.

Paris—Forty-five thousand Jews of all nations, 3,000 Belgians, 40,000 Spaniards, 100 Americans and 800 Roumanians are seeking to enlist in one division or another to fight against Germany. All will be welded into a Foreign Legion within a week.

GREAT BATTLE COMING.

Paris—Military experts believe that within a few days will occur the most formidable battle in the history of the world. This battle will be between the Belgians, French and English, and will be on Belgian soil.

ITALY REMAINS NEUTRAL.

Paris—Italy has declined mobilization of her army, and will issue a proclamation defining the government's policy.

JAPAN-GERMANY BREAK

Tokio—Ambassador Von Rex, German representative, leaves here tomorrow, breaking off diplomatic relations with Japan. He will proceed via Honolulu to San Francisco in the steamship China.

The Japanese Minister to China has been given a warm welcome in Peking.

POSITION OF U. S.

Washington—Japan has received from the president of the United States formal declaration of policy bearing on the delivery of Japan's ultimatum to Germany.

The United States regrets that differences have arisen between the powers, but she must refrain from expressing any opinion in regard thereto.

SAFEGUARDING NEUTRALITY.

San Francisco—A United States torpedo boat was today ordered by the navy department to remain alongside a German steamer at Mazatlan, Mexico, to see that there is no violation of the neutrality laws.

AFTER HIGH PRICES.

Washington—A fresh probe is being made into the cause of high prices in the United States, and Attorney-General McReynolds expects that several indictments will be returned by the grand jury.

LADY SHOTS A LADY.

Honolulu—Mrs. Charles Herrick was shot in the hip by Mrs. John Craig, wife of contractor Craig, while running away from her home to escape the anger of Mrs. Craig at being the cause of the separation of the Craigs.

The wound is not serious.

MAUI WILL ECONOMIZE.

Waikuku, Maui—The Maui board of supervisors has decided to discontinue the allowance hitherto made for promotion publicity.

Friday, August 21.

Sugar sags: Raws, 6.31; beets, no sale.

GERMANS OCCUPY BRUSSELS

London—Official despatches by way of Paris last night say that the Germans occupy Brussels, the advance guard entering the city during the night, followed by strong columns. Belgians made no resistance.

The movement is toward Antwerp by way of the Valley of the Meuse. Apparently stopped by the strong defenses of the allies, and the result is a turning movement to the north, with the idea of reaching French territory by way of West

CHAMBER OF COMMERCE

Continued from page 5

Taking the year as a whole, I feel that the Chamber, in its growth, development and accomplishments, has nothing for which it need be ashamed. It has made a good start. It is no longer a small organization, however, and must in the future accept larger responsibilities to be thrust upon it. It must be progressive and aggressive, but at the same time it must at all times and under all circumstances be right. That is the keynote. In looking back over the twelve months now behind us, I feel that we have several times narrowly escaped making blunders, but some how or other we have managed to keep on and even keel and do the right thing at the proper time.

There is much to be done in the future. A casual student of our problems may ask: "Why a Chamber of Commerce in a small community like this? What is there to do?"

If the Kauai Chamber of Commerce did no more than bring the business men of this island together so that they might exchange views, touch shoulders and spend a few pleasant hours together now and again, it has and will accomplish a very great deal. But there is much real work to do—much that should and must be accomplished. These matters will be assembled, worked out and presented to you from time to time by your committees. If you attend the meetings regularly and follow up the various subjects and phases of each as they are unwound in the future months, you will soon discover the answers to these questions, and realize that there are the very greatest reasons for the Kauai Chamber of Commerce.

Personally, I wish to congratulate you upon the first year of your history as an organization. The development of the Chamber has been due to your individual and united efforts, and I take this occasion to thank you, one and all, for the assistance you have rendered me in my efforts to preside over the business and general affairs of the Chamber.

THE BOSTONIANS.

Letters presented at the meeting by members from the Waimea side in regard to a proposed tour of Kauai by the Bostonians were read, and various expressions were advanced favorable to bringing the troupe over here. The following committee was appointed to organize a stock company, raise the \$800 required and set the music going: E. H. W. Broadbent, chairman; Judge C. B. Hofgaard and Erling Mahlum.

Halawai Makahiki

E malamaia ana ka Halawai Makahiki o ka Hui Kuai Aina o Wainiha, Kauai ma ka la 30 o September 1914 hora 10 a. m. A ke kauoha ia aku nei na poe apau i loa he kuleana iloko o ka Hui i oleloia maluna ae E hiki kino mai lakou ma ko lakou keena maua Wainiha, Kalana o Kauai T. H.

James K. Apolo, Peresidena,
H. K. A. o Wainiha, Kauai.
Kapaa, Kauai Aug. 1 1914.

4-t.

Olelo Hoolaha

E malamaia ia ana ka Halawai o ka Hui Kuai Aina o Haena, Kauai ma ka la 4 o September 1914 hora 10 a. m. A ke kauoha ia aku nei na poe apau i loa he kuleana oiaio ko lakou iloko o ka Hui i olelo ia maluna ae. E hiki kino mai lakou ma ke Keena Oihana o ka Hui o Wainiha ma ka manawa i oleloia maluna ae.

James K. Apolo, Peresidena,
H. K. A. o Haena, Kauai.
Kapaa, Kauai Aug. 1 1914.

4-t.

READ THIS OVER

Check the items you are interested in, and write for full particulars:

- LUMBER
- BUILDERS' HARDWARE
- DOORS, SASHES & TRANSOMS
- CEMENT, LIME & PLASTER
- LAVA BRICK
- RED PRESSED BRICK
- CONCRETE PIPE
- LAWN MOWERS, HOSE & SPRINKLERS
- WALLPAPER, PAINTS & OIL & VARNISHES
- LUTHER BURBANK'S SEEDS
- WHEELBARROWS & HAND-CARTS
- FLOWER, PALM & ORCHID POTS
- ROAD SCRAPERS
- TOOLS OF ALL KINDS.

LEWERS & COOKE LTD.
Honolulu

Kerosene the clean, cheap, fuel

Do you realize the convenience and economy of the modern oil stove? The fuel—kerosene—is the cheapest you can get—clean, safe, easy to handle. The stove has been perfected until it is as good as a wood or coal range for any kind of cooking. The

New Perfection OIL COOK STOVE

will cook a quick, light breakfast for you, or it will cook a big dinner with roast and bread and pastry. The New Perfection doesn't overheat the kitchen. It doesn't smoke or taint the food. Think of the comfort of summer cooking in a cool kitchen. No wood or coal to lug; no ashes to dirty up the house. Why not ask your dealer to show you the New Perfection.

Standard Oil Company
(California)
Honolulu



FOR BEST RESULTS USE HONOLULU STAR OIL

TO THE TRADE

WE ARE DISTRIBUTORS FOR

"LOOPUYT" GIN "OLYMPIA" BEER
"REWCO" WHISKEY "TIPO" CLARET

A FINE SELECTION OF GROCERIES AND LIQUORS ALWAYS ON HAND

GONSALVES & CO., LTD.
74 QUEEN ST., HONOLULU



Have those delicious hot-cakes made right at the table on a

Westinghouse DISC STOVE
LIHUE STORE

Behold All Things Are New.

We meet the season half way.

The multitude of big and little cases piling in upon us proclaims in unmistakable fashion that we are ready for business if business is ready for us. The ovation received by our recent

arrivals nerves us to new efforts. Hereafter, as heretofore, our aim will be to supply and satisfy every want of the million and millionaire.

We will shortly move into our new quarters on Hotel St.—in the meantime your orders will get our usual careful attention and be charged at the prevailing clearance sale prices.

N. S. Sachs Dry Goods Co.
HONOLULU

J. I. Silva, of Eleele, who has been visiting Honolulu on business, will return home tomorrow morning.

ORDER A BOX OF Haas's Delicious Candy

"ALWAYS FRESH"

from BENSON, SMITH & CO., LTD.

Box 426, Honolulu

Assorted Chocolates and Bon Bons 65c per pound; \$1.25 two pounds. Milk Chocolates 50c small box; \$1.00 large box. No charge for postage.

THE REXALL STORE

Flanders.

Belgians have held the Germans in check two weeks and given the allies the opportunity to get in the field, and will now join the allies' attack on Brussels, made by a line extending eighty miles, with left wing resting on Wamme river.

FRENCH IN LORRAINE

Paris—The French have won and lost two battles in Lorraine, and are held in check by strong German force in Lorraine.

SHIPS CAPTURED IN WAR.

London—The government press bureau announces that 200 German and Austrian ships are held as prizes of war, totalling million in tonnage and of a value of not less than \$300,000,000. Five hundred others are liable to capture.

THE RUSSIAN INVASION.

St. Petersburg—The Russians are twenty miles inside of German territory.

THE "PUROLA BRAND"
Household Remedies
Household Specialties
Toilet Specialties

In this day and age, in our home for our family, we want the Best; and when we say the Best we mean the Highest Quality. The "Purola" Brand of Household Remedies and Toilet specialties, which we have just put in, is another line in the chain that binds us to our customers. Why? Because "Purola" is synonymous with the Highest Type of Purity and Quality and bears the guarantee of an old-established firm of more than thirty years experience. Ask to see our "Purola" Line. No trouble to show goods.

The
Makaweli Store

You must know that

"In 'UNION' there is Strength"

If you are a fuel user you're sure that in

- "UNION" Gasoline
- "UNION" Distillate
- "UNION", Kerosene

there is more strength and less waste during combustion than other brands can claim.

SPECIFY "UNION" FUEL OILS
WHEN YOU CALL AT YOUR DEALER'S

S. OZAKI

WAIMEA

Wholesale Liquor Dealer

Telephone No. 102.

It's a good time to buy
Ladies' Pumps



- Colonial
- Dull Kid
- White Nu-buck
- Canvas
- Dull Calf

Four-fifty to Six-fifty

Manufacturer's Shoe Store
Honolulu

Henry Waterhouse Trust Co., Ltd.

buys and sells
REAL ESTATE and
STOCKS and BONDS
and rents
SAFE DEPOSIT BOXES

Fort and Merchant Sts. Honolulu

Hon. W. O. Smith, of Honolulu, last Friday and has been visiting in, came up on the W. G. Hall, Koloa and other places.

**LITTLE DISCUSSIONS
OF LOVE AND MARRIAGE**

BY BARBARA DOYD

Different Classes Marrying



"Don't you think it an unwise thing for people who belong to different classes of society to marry?" asked the Bachelor Girl.

"You and I belong to the same class," observed the Bachelor.

"I was thinking of a friend of mine who is quite wrapped up in a man who belongs to a very different grade of society from what she does," said the Bachelor Girl severely.

"I thought that there were no grades of society or classes in this country," expostulated the Bachelor.

"I don't mean the Four Hundred, or Society with a capital S. But I mean the grades of society people make for themselves. In this country, it is one's breeding that, after all, places one; or so it seems to me. A few may get into certain circles by means of money or birth; but if they don't fit there, they find no real companionship. And so to get the society they really enjoy, they finally drift to those whose outlook on life and manner of living are the same as their own. And thus we really do have classes or grades of society. They are not arbitrarily fixed, as in some countries; but they are none the less definite. And I do not think these grades mix. In fact, they are not apt to mix so satisfactorily, as where the barriers are arbitrarily settled; for in the latter case there may be no real difference. But where the class one settles into depends upon something within one's self, there is a real difference."

"I suppose that is true," reflected the Bachelor. "I would not want to marry our cook, for instance, not because she is a cook,—for a cook is a rare and precious possession. But after the dinner was discussed, we probably would have no other topic of conversation."

"That's exactly what I mean. Of course, between you and the cook the gulf is easy to see. But sometimes, it is not quite so plain. Often the little points of difference in the manner of living will not crop up until after marriage. But they will crop up then, and they'll cause many a heart-ache, if nothing worse."

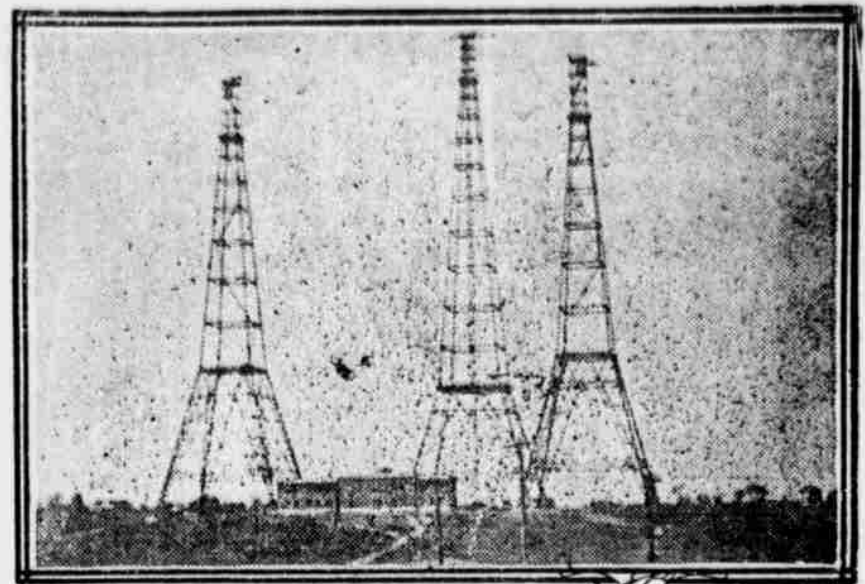
"What is worse than a heart-ache?" mused the Bachelor.

"You know what I mean," replied the Bachelor Girl. "These points of difference may cause quarrels; or if one or the other is too well-bred to quarrel, there'll be continual thorns that will prick and hurt and hurt, till there won't be much happiness left for them. When a person of refinement and fastidious tastes has to live, day in and out, with one who has not been brought up to know all the little niceties of living, there are going to be rough places for him or her. People may be mentally congenial; but there needs to be similarity of tastes on some of the lower planes of living for them to get along happily together. If a person has an awfully nice disposition he may mend his ways in these small matters. But not many of us like to be told to clean our finger-nails, or not to pick our teeth, nor leave hair in the comb, or a lot of other such personal details. And it is not at all pleasant to have to put up with such things. And yet when people come from different grades of society they are apt to regard such things very differently."

"My disposition is very angelic," observed the Bachelor. "And I am willing to put into practice any suggestions you may wish to make."

"Nonsense!" said the Bachelor Girl. "Probably that's what the others say. But not with the same intention."

Barbara Doyd.



Most Powerful Wireless Tower in the World

There is not in all the world an institution better equipped to disseminate information than the marvelous new wireless station at Radio. It is indeed the most powerful station in the world and is capable of transmitting messages across the ocean and beyond. To say that this new giant among wireless plants is located at Radio, Virginia, probably conveys nothing to the average reader. But this bump of locality will become effective if it be explained that Radio is located on the hills of Virginia, just opposite the city of Washington, D. C.—for the newspapers have made frequent mention of the government's new record-breaking wireless plant "at Washington." In reply Radio adjoins Fort Myer, the military post which serves as a "show place" for the national capital and which was the scene,

it will be remembered, of the original flights of the first Wright aeroplane built for the U. S. Government.

The Radio wireless station, which stood Uncle Sam the tidy sum of \$200,000, is enabled to transmit its signals great distances—3,000 miles and more—because of the extreme height of the towers or aeriels. There are three steel towers arranged in the form of a triangle. At the apex of the triangle is a tower more than 600 feet high, or considerably higher than the Washington National Monument, at the base of the triangle are two towers each 450 feet in height. The antennae are suspended between the tallest tower and the other two. This takes full advantage of the height of the tallest tower and affords the greatest possible spread for the wires.

**FRENCH AUTO MAN
TALKS ABOUT WAR**

The following comes from Detroit, Michigan:

"Germany must reckon with starvation. With the British fleet commanding the North Sea and the French navy blockading the ports of the Adriatic, the Teutons will be completely cut off from all outside sources of food supply. If the war is prolonged for three months, hunger will force Germany to make terms with France and Great Britain."

This prediction is made by R. N. Goode, who arrived in Detroit yesterday from Paris. He crossed the Atlantic on the Lorraine, one of the last French liners to dock in New York harbor.

Monsieur Goode points out that Germany is over populated and cannot rely on her own resources to feed her millions. That is why the Kaiser has made such desperate efforts to force the hands of the other powers.

Monsieur Goode states that when he left Paris ten days ago he had no intimation that the Austro-Serbian dispute was to culminate in a great continental war. He expressed no surprise, however, that this pretext should be sufficient to explode the bomb that has been smouldering for many years.

"This war," he says, "has been presaged for a long time. Each of the great powers has been developing its army and navy to the highest degree of efficiency. The explosion was only a matter of time, and the Serbian affair was the cap that set it off."

"The French are entering into this contest with eyes wide open. They are not plunging into the struggle blindly, actuated by feverish Latin enthusiasm, but are going about their preparations silently and grimly, determined to make it a fight to the finish. Will all their hatred for the Teutons, they do not underestimate Germany's strength, but realize that the task that lies before them is a stupendous one."

"France will not be beaten this time even if Germany is able to seize Paris as she did during the Franco-Prussian war. The spirit of nationalism that pervades France is illustrated in the striking

**WILLETT & GRAY
ON SUGAR OUTLOOK**

Willet & Gray, New York, leading sugar authorities, after reciting the war situation in Europe, make the following interesting observations:

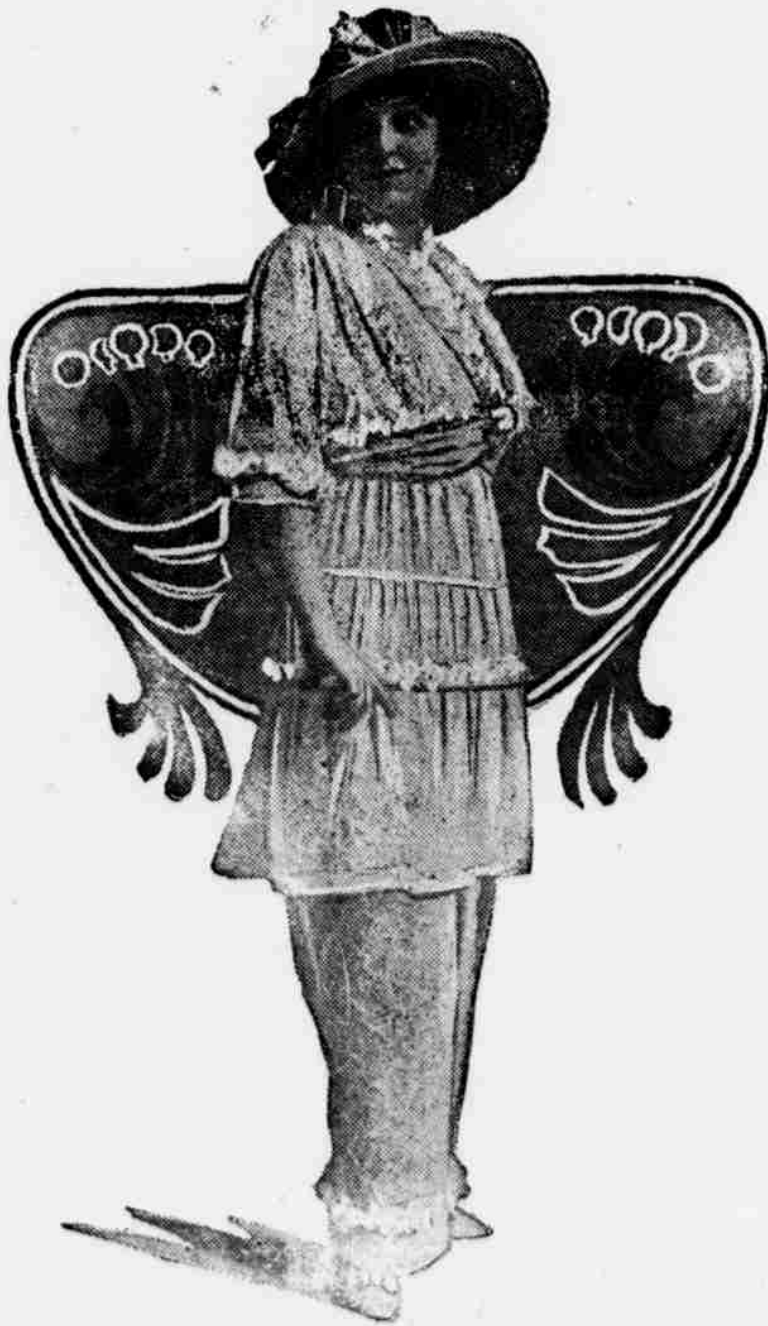
Evidently this critical crop period is to witness the tramp of armies over these beet fields and an almost entire absence of male labor to gather what may remain of the crops. Female labor alone, under such conditions, means that only a small amount of this season's European beet crop will ever reach its usual markets, perhaps sufficient for home consumption.

The United Kingdom, by its declaration of war against Germany, is already debarred from its sugar supplies from Germany, so largely depended upon for the United Kingdom consumption, both of raw and refined sugar. Naturally the United Kingdom turns to the only direction in which it can secure sugar supplies, to the United States and already quite large purchases of refined sugar have been made during the past two days for the European account.

Our raw sugar has responded to these very unusual conditions prevailing, due to the war conditions in Europe and consequent demand from the United Kingdom for Cuba sugars. The scarcity of steamer freight from Cuba, advancing freight rates, increased insurance premiums, high cost of war risk insurance, the actual risk of shipping sugars from Cuba, increased demand from the country for refined and refined for export were also important factors. Under these conditions a series of advances occurred since last week.

heroism of the aviator, Garros, who rammed the monster Zeppelin with his light plane, riding as he knew to certain death but with the knowledge that he was carrying with him to destruction a large number of the enemy. The French will fight as long as there is a Frenchman left that can stand up on two legs."

Monsieur Goode is the manager of the Packard Motor Car Company of Paris.



A SUMMER DAY FROCK OF LACE OVER NET

What could be more airy and diaphanous than this pretty frock of inexpensive lace all over, mounted on a foundation of white net? The tunic is shirred midway of its length, under cord, and a similar cord heads the flounce at the tunic-edge. Beneath this bouffant tunic the skirt is very narrow, and is draped upward a trifle at the back in the new bustle effect. Note the arrangement of the sash with ends crossed in front. This arrangement is very smart just now and it is very easy to adjust such a sash with snap buttons, the bow at the back remaining untouched.

By Authority

PUBLIC NOTICE OF PRIMARY ELECTION.

I, J. Mahiai Kaneakua, County Clerk of the County of Kauai, Territory of Hawaii, do hereby certify that I have on the 12th day of August, A. D. 1914, received from the Honorable Wade Warren Thayer, Secretary of Hawaii, a Public Notice of Primary Election, and in accordance with paragraph 2. of section 4 of Act 151 of the Session Laws of 1913, I do hereby publish so much of said Notice as is applicable to the County of Kauai, Territory of Hawaii, as follows:

PUBLIC NOTICE OF PRIMARY ELECTION.

Notice is hereby given that in accordance with the terms of Act 151 of the Session Laws of 1913 a Primary Election for the purpose of making nominations for a Delegate to the House of Representatives of the United States and for a Senator and Representatives of the Legislature of the Territory of Hawaii, as more particularly hereinafter set forth, will be held on **SATURDAY THE 12th DAY OF SEPTEMBER, A. D. 1914**, within the County of Kauai, Territory of Hawaii, between the hours of 8 o'clock A. M. and 5 o'clock P. M.

SENATORIAL DISTRICT.

The Senatorial District and the number of candidates for Senator to be nominated by each political party is as follows:

Fourth District—Islands of Kauai and Niihau—One.

REPRESENTATIVE DISTRICT

The Representative District and the number of candidates for Representatives to be nominated by each political party, as follows:

In the **SIXTH DISTRICT**—four.

The Representative District, precincts and polling places are as follows:

SIXTH REPRESENTATIVE DISTRICT—FOURTH SENATORIAL DISTRICT.

The Islands of Kauai and Niihau, constituting the County of Kauai.

First Precinct: The Island of Niihau. Polling place, Niihau school-house.

Second Precinct: The portion of the District of Waimea, on the Island of Kauai, west of the boundary between the Kekaha and Waimea plantations and a line in extension thereof along the western edge of Waimea Valley to the southern boundary of Na Pali. Polling place, Kekaha school-house.

Third Precinct: The portion of the District of Waimea, on the Island of Kauai, between the second precinct and the bed of the Mahinau Valley. Polling place, Waimea courthouse.

Fourth Precinct: The remainder of the District of Waimea. Polling place, Makaweli schoolhouse.

Fifth Precinct: The portion of the District of Koloa west of the west boundary of the land of Koloa. Polling place, office of the McBryde Sugar Company at Wahiawa.

Sixth Precinct: The remainder of the District of Koloa. Polling place, Koloa courthouse.

Seventh Precinct: The District of Lihue. Polling place, Lihue Social Hall.

Eighth Precinct: The District of Kawaihau. Polling place, Kapaa Courthouse.

Ninth Precinct: The portion of the District of Hanalei east of the Kalihwai stream. Polling place, Kilaua schoolhouse.

Tenth Precinct: The remainder of the District of Hanalei. Polling place, Waioli courthouse.

In testimony whereof, I have hereunto set my hand and caused the Great Seal of the Territory of Hawaii to be affixed.

Done at the Capitol in Honolulu, this 5th day of August, A. D. 1914.

WADE WARREN THAYER,
Secretary of Hawaii

In testimony whereof I have hereunto set my hand and caused the seal

of the County of Kauai, Territory of Hawaii, to be affixed hereto. Done at the County Seal at Lihue, this 14th day of August, A. D. 1914.

J. MAHIAI KANEAKUA,
County Clerk, County of Kauai.

Ma Ke Kauoha

HOOLAHA KOHO BALOTA
WAE MOHO.

Owau o J. Mahiai Kaneakua, Kakaoolelo ke Kalana o Kauai, Teritoro o Hawaii, ma kei ke hoioia nei au ua loa mai ia'u ma ka la 12 o Augate, M. H. 1914 mai ka Mea Hanohano Wade Warren Thayer, Kakaoolelo o Hawaii nei, he Hoolaha Koho Balota Wae Moho; a i kulike ai me ka makemake o ka mahele 2 o ka pauku 4 o ke Kanawai 151 o na Kanawai o ka Ahaolelo o ka M. H. 1913, ma keia ke hoolaha aku nei au i kekahi mahele o ua Hoolaha la a elike hoi me ka mea i pili mai i ke Kalana o Kauai, Teritoro o Hawaii nei, e like penei:

HOOLAHA KOHO BALOTA
WAE MOHO.

Ke hoolahaia aku nei ma keia e like me na olelo o ke Kanawai 151 o na Kanawai o ka Ahaolelo o ka M. H. 1913, e malamaia ana he Koho Balota Wae Moho no ka wae ana i Moho Elele i ka Hale o na Lu namakainana o Ameika Huipuaia a i Senatoa a i mau Lunamakainana no ka Ahaolelo o ke Teritoro o Hawaii nei, a e like hoi me ia i hoike ia mahope aenei, ma ka POAONO KA LA 12 O SEPATEMABA, M. H. 1914, maloko o ke Kalana o Kauai, Teritoro o Hawaii, mawaena o ka hora 8 A. M. ame ka hora 5 P. M.

APANA KOHO SENATOA.
O ka Apana Koho Senatoa ame ka nui o na moho no ka noho Senatoa e waeia ai e kela ame keia aaoa kalaiaina, penei no:

APANA EHA.—Na Mokupuni o Kauai ame Niihau, - Hoookahi.
APANA KOHO LUNAMAKAINANA.

O ka apana koho Lunamakainana ame ka nui o ka moho Lunamakainana e waeia ai e kela ame keia aaoa kalaiaina, penei no:—
Hoko o ka APANA EONO.—EHA.

O ka Apana Koho Lunamakainana, na mahele koho ame na wahi e koho ai, penei no:—

APANA KOHO LUNAMAKAINANA EONO—APANA KOHO SENATOA EHA.

Na Mokupuni o Kauai ame Niihau, oia no hoi ke Kalana o Kauai.

Mahele Ekahi:—Ka Mokupuni o Niihau. Wahi koho: Halekula o Niihau.

Mahele Elua:—Kela Mahele o ka Apana o Waimea ma ka Mokupuni o Kauai, ma ka aaoa komohana aku o ka palena mawaena o na mahiko o Kekaha ame Waimea, ame kekahi kaha loihi e pili ana me ke kae komohana o ke Awawa o Waimea a hiki i ka palena hema o Na Pali. Wahi Koho:—Halekula o Kekaha.

Mahele Eklou:—Ka mahele o Waimea ma ka Mokupuni o Kauai, e waiho ana mawaena o ka mahele elua ame lalo o ke Awawa o Mahinau. Wahi koho:—Hale hookolokolo o Waimea.

Mahele Eha:—Ke koena aku o ka Apana o Waimea Wahi koho: Halekula o Makaweli.

Mahele Elima:—Ka mahele o ka Apana o Koloa ma ka aaoa komohana aku o ka palena komohana o ka aina o Koloa. Wahi koho:—ma ke Keena Kupakako o ka Hui Mahiko o McBryde ma Wahiawa.

Mahele Eono:—Ke koena mai o ka Apana o Koloa. Wahi Koho:—Hale hookolokolo o Koloa.

Mahele Ehiu:—Ka Apana o Lihue. Wahi Koho:—Lihue Social Hall.

Mahele Ewalu:—Ka Apana o Kawaihau. Wahi Koho:—Hale hookolokolo o Kapaa.

Mahele Ewiwa:—Ka mahele o ka Apana o Hanalei ma ka aaoa hiki na o ke kahawai o Kalihwai. Wahi Koho:—Halekula o Kilaua.

Mahele Umi:—Ke koena aku o ka Apana o Hanalei. Wahi Koho:—Hale hookolokolo o Waioli.

The Coolest Place in Town



Lihue Store Soda Fountain

ELEELE STORE

J. I. Silva, Prop.

ONE of the LEADING HOUSES for all kinds of DRY GOODS, BOOTS & SHOES, MEN'S FURNISHINGS, CIGARS & TOBACCOS and NOTIONS of every description.

FOR WINE, BEER and OTHER LIQUORS, Ring Up 73 W.
Main Office, Eleele, Kauai. Tel. 71 W.

MAX GREENBAUGH

MANUFACTURERS' AGENT

KAUAI CORRESPONDENCE INVITED

Office: HAWAIIAN HOTEL

P. O. Box 524 HONOLULU

I hoike no ka oiaio o keia, ke kau nei au malalo aenei o keia i ko'u lima me ka hoopili pu ana mai i ka Sila Nui o ke Teritoro o Hawaii nei. Hanaia ma ka Hale Aupuni Poo ma Honolulu i keia la 5 o Augate, M. H. 1914.

(Sila)

WADE WARREN THAYER,

Kakaoolelo o Hawaii. I hoike no ka oiaio o keia, ke kau nei au malalo aenei o keia i ko'u lima me ka hoopili pu ana mai i ke Sila o ke Kalana o Kauai, Teritoro o Hawaii nei.

(Sila)

Hanaia ma ke Kahua Hale Poo Oihana Aupuni ma Lihue i keia la 14 o Augate, M. H. 1914.

J. MAHIAI KANEAKUA,
Kakaoolelo, Kalana o Kauai.

Public Notice

Notice is hereby given that the proposed new ESTRAY ORDINANCE for the island of Kauai will be considered by the Board of Supervisors at 2 o'clock, Wednesday afternoon, September 2.

All persons interested in the purpose of said ordinance are requested to be present at that time and express their views.

H. D. Wishard,
Chairman Board of Supervisors.
Lihue, August 24, 1914.

Koloa Plantation Store

Wholesale and Retail Groceries
Dry Goods of all Descriptions.
General Plantation Supplies.

ANNOUNCEMENTS

(In this column, continuing until election day, will appear the cards or announcements of candidates for Congress and the Hawaiian Legislature. Voters are urged to read them over carefully each week, and—act accordingly.)

FOR THE SENATE

Kekaha Kauai,
July 28, 1914.

To The Voters Of Kauai:

I hereby formally announce myself a candidate for nomination by the voters of Kauai at the primary election to be held September 12, 1914, as a Republican, for the Senate of the Territory of Hawaii.

I feel that I can rely upon my past record in the Senate as a legitimate and reasonable basis of appeal to the voters of Kauai for their support in the primary and at the polls in November

Very truly yours,
E. A. KNUDSEN.



HON. J. H. CONEY.

FOR THE LEGISLATURE

To the Voters of Kauai:

I hereby give formal notice that I will be a candidate in the primary election on September 12 for nomination as a Republican to succeed myself in the House of Representatives of the Territory of Hawaii.

I have been urged to seek election at your hands to the Senate this time, but after due consideration have concluded that I can best serve you and the island of Kauai in the House.

Soliciting your individual and united support, in the campaign, and at the polls, I am,

Cordially yours,
J. H. CONEY,

Representative Sixth District.
July 17, 1914.

FOR THE HOUSE OF REPRESENTATIVES

To the Voters of Kauai:

I hereby announce myself a candidate, as a Republican, for nomination by the primary to be held September 12, 1914, for the House of Representatives.

If nominated and elected, I promise the people of this island a vigorous and intelligent administration of their affairs.

I solicit your support and votes in the primary and at the regular election in November.

Sincerely yours,

JAMES K. KULA
Koloa, Kauai, July 20, 1914.

To The Taxpayers

KAWAIHAU DISTRICT
Mr. M. R. Teves, has been duly re-commissioned, from July 1, 1914, as Deputy Tax Assessor and Tax Collector, of Kawaihau District, County and Island of Kauai.

J. K. FARLEY,
Assessor, Fourth Division.

Koloa, Kauai, August 11, 1914.
Aug. 18-25.

THE GARDEN ISLAND
has received a large quantity of vegetable and melon seeds from Washington for free distribution to small farmers and gardeners of Kauai.

These seeds will be cheerfully supplied to growers who may call at this office.

BY AUTHORITY

IN THE CIRCUIT COURT, FIFTH CIRCUIT, TERRITORY OF HAWAII

At Chambers—In Probate. In the Matter of the Estate of Kamaliwahine Kahukina, deceased.

Notice to Creditors.

Notice is hereby given that the undersigned has been appointed and has qualified as Administrator with the will annexed of the estate of Kamaliwahine Kahukina, deceased. All persons indebted to the Estate of Kamaliwahine Kahukina, deceased, are hereby notified to make immediate payment to the undersigned at its office No. 120 South King Street, Honolulu, Territory of Hawaii. All creditors of the said Estate of Kamaliwahine Kahukina, deceased, are hereby notified to present their claims, duly authenticated and with proper vouchers attached (if any exist) even though such claims be secured by mortgage of real estate, to the undersigned at said office of Hawaiian Trust Company, Limited, Honolulu, Territory of Hawaii, within six months from date hereof which is the date of the first publication of this notice, or within six months after the same shall become due or such claims shall be forever barred.

Dated at Honolulu, T. H. Aug. 25th, 1914.

HAWAIIAN TRUST COMPANY, LIMITED.

Administrator with the will annexed of the estate of Kamaliwahine Kahukina, deceased.
Aug. 25th, Sep. 1, 8, 15 and 22.

YOU will always remember your trip ACROSS THE AMERICAN CONTINENT

If you travel via The Scenic Line of the World Through the Feather River Canyon and the Royal Gorge.

Denver & Rio Grande Western Pacific

FRED L. WALDRON, LTD., Agents Honolulu

REGAL WEAR



The only two ideas behind the manufacture and sale of REGAL SHOES are:—to give the maximum of style and comfort for the most reasonable price.

Sold in this Territory by **REGAL SHOE STORE** Honolulu (Parcel Post Charges Prepaid)

FOR SALE

Two seater and double rumble Overland automobile in good condition. Will sell for cash very low.

Apply, M. J. Fassoth, Makaweli.

CALIFORNIA FEED CO.

LIMITED. Dealers in HAY, GRAIN and CHICKEN SUPPLIES. Sole Agents for International Stock, Poultry Food and other specialties. Also for cooling Iron Roofs, Petaluma Incubators and Brooders. KING'S SPECIAL CHICK FOOD P. O. Box 452, Honolulu

L. Y. TIM

Has entered the rent service, and has provided himself with a big **Five-Seater Buick**

Special attention paid to commercial travelers. Reasonable rates to all parts of the island.

'Phone 172