

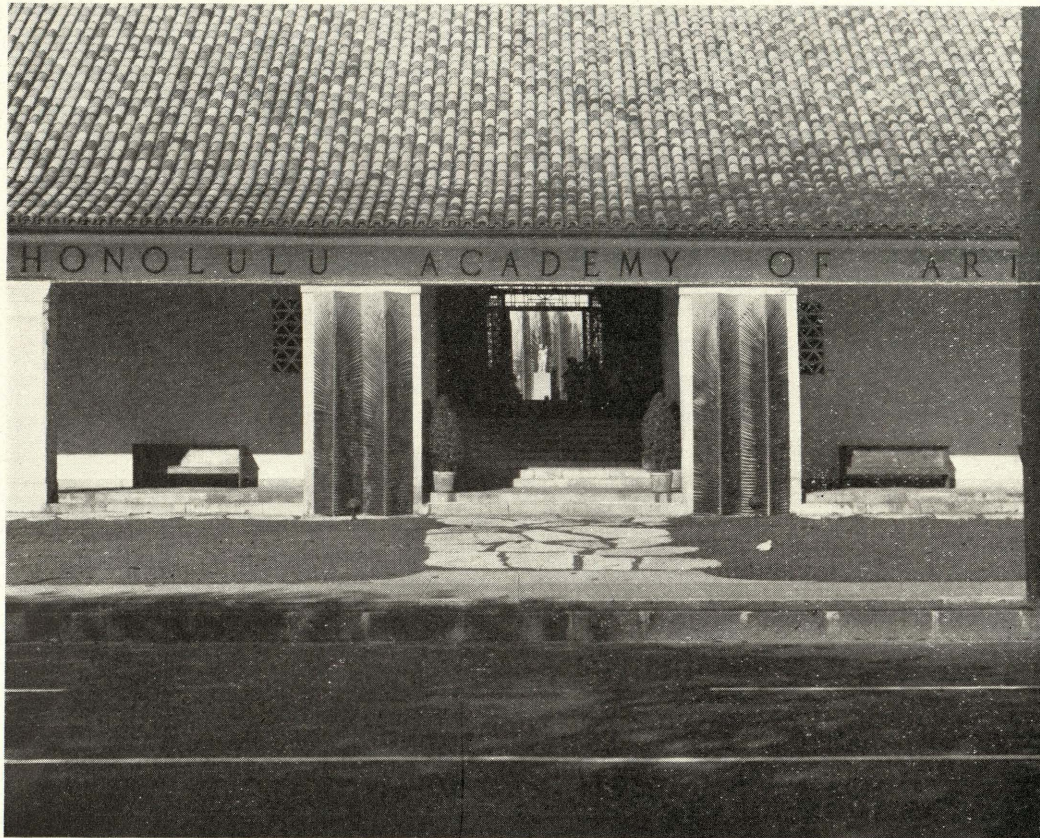
HONOLULU ACADEMY OF ARTS

NEWS BULLETIN AND CALENDAR

VOLUME VII

DECEMBER, 1945

No. 9



A VIEW OF THE HONOLULU ACADEMY OF ARTS DURING THE CHRISTMAS SEASON

HAWAIIAN SCULPTURE ACQUIRED

The Academy has recently purchased for its collection of primitive art a fine example of stone-age Hawaiian sculpture. This figure was found in 1935 near Waimea, Oahu, in a cave just above the road on the east side of the valley. When discovered it was clothed in ragged pieces of ancient tapa and the entire figure had been wrapped in a similar covering before it had been deposited in the cave. It would be impossible to determine just when this occurred, but since the making of such images, particularly those of the temple gods, ceased with King Liholiho's breaking of the tabu in 1819, and

(Continued on Page 2)

"CHRISTUS PARVULUS"

Few people whose memories of the Academy go back to 1928 will have forgotten the Christmas mystery play given here in December of that year. Once again, seventeen years later, this play—"Christus Parvulus"—is to be presented at the Academy by Punahou School. In order to accommodate all those who will undoubtedly wish to see it, two performances will be given in the large central court—the first, at 8:00 o'clock on Thursday evening, December 20, and the second, at 5:00 o'clock on Sunday afternoon, December 23.

As in 1928, the story will be presented entirely in Latin from the Vulgate version of the Bible (a

HONOLULU ACADEMY OF ARTS

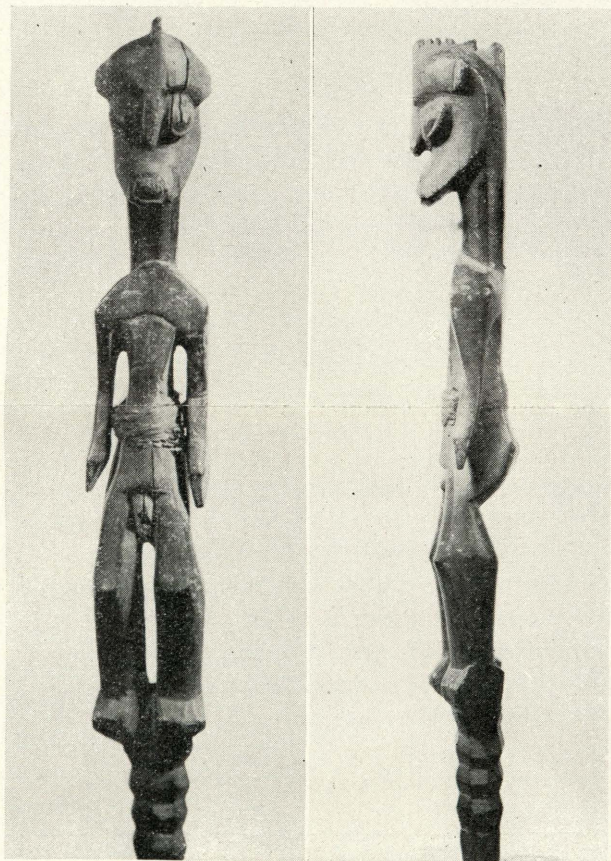
C. M. Cooke, Jr., *President*

Honolulu, Hawaii

T. A. Cooke, *Assistant Treasurer*

translation ascribed to St. Jerome, 340-420 A.D.). In this presentation many of the old traditions and much of the symbolism of the middle ages have been retained. Since at this period comparatively few people had acquired the art of reading, the Bible story was told for the most part by word of mouth—the people weaving into the narrative their own interpretations of the Christmas story. The Story of the Annunciation appealed particularly to these medieval people and they thought of the Virgin as a gentle maid who loved animals and flowers, picturing her in silent meditation in contemporary cloisters and gardens.

Miss May Fraser is again designing the costumes, keeping them as much as possible in the clear colors and naive spirit of the middle ages, when the people clothed the Nativity story in a beauty all their own.



HAWAIIAN ANCESTRAL FIGURE

HAWAIIAN SCULPTURE ACQUIRED

(Continued from Page 1)

since many existing images were burned then, one may imagine that the cave burial took place prior to that time.

The figure measures thirty-two and one-half inches tall and represents one of the ancestral deities, probably the bird god. It is fashioned entirely in the Hawaiian convention, with the long neck, protruding jaw, characteristic arms, legs and coxcomb.

Following the Christmas holidays, this very typical example of early Hawaiian sculpture will be placed on view in one of the main galleries.

HONOLULU ART SOCIETY

"HOMES IN THE MAKING"

The second lecture in the Honolulu Art Society's "Homes in the Making" series will be given at 8 o'clock on Thursday evening, December 6, at which time Mr. Harold W. Boynton, vice-president and manager of the Honolulu Gas Company, will speak on the all important subject, "Finances and Home Building," stressing the need for obtaining sound advice. Mr. Boynton, who has made an extensive study of this phase of home building, will discuss such questions as "Can you afford to build?", "What investment does your income warrant?", and "Have you considered the cost of maintenance and insurance?" These points may sound discouraging to the person eager to build and already immersed in house plans, landscape gardening and ideas for interior decoration, but they are all matters that call for careful consideration before building a home.

While this series of lectures is sponsored by the Art Society, it is open to all interested people free of charge.

CHRISTMAS SUGGESTION

A reminder that a membership in the Honolulu Art Society makes a most acceptable Christmas gift. Mrs. Arthur E. Restarick, Executive Secretary, will be pleased to arrange this for you. Three types of membership are offered: \$2.00 Annual; \$10.00 Contributing; and \$100.00 Life. These may be deducted from ones Federal income tax. Members have the privilege of borrowing books from the Academy library, receive invitations to all Academy functions, and to programs arranged by the Art Society.

HONOLULU ACADEMY OF ARTS NEWS BULLETIN AND CALENDAR

CHRISTMAS PARTY

A Christmas Party is planned for all children of Art Society members, to be held at 10:00 o'clock on Saturday morning, December 22. There will be a special performance of "The Christmas Nightingale," and refreshments will be served. All children are invited, though the play will have a special appeal for those from eight to twelve years of age.

CHRISTMAS SHOWS

As usual at the beginning of December, the Academy is arranging its Christmas shows and during the coming week these will be open to visitors. Just what the exhibition will be cannot be revealed until December 5, but it is rumored that Christmas greens, candles and a number of the Academy's paintings of the Madonna and Child, and an 18th Century Italian Crèche will be used in the main galleries to celebrate this first post-war Christmas.

Decorations in the front lobby will be by Mrs. Caroline Peterson, whose original ideas throughout the year make the Academy's flower arrangements a popular feature of the exhibits.

In the Educational Wing the Early American Room will be gay, as usual, with a pop-corn laden tree trimmed by members of the Story Hour group. Here Christmas stories will be told to classes of children who visit the Academy during the three weeks before the holidays.

A section of fine books and a gallery of well-designed toys will interest both children and parents, and may be a guide for those in search of ideas for gifts. A number of the toys are "home-made" and will furnish excellent patterns for the amateur craftsman who wishes to make Christmas toys this year.

STAFF NOTE

The appointment of Mr. Willson Young Stamper of Cincinnati, Ohio, Technical Advisor and Instructor in Adult Creative Art, is announced by the Academy. Mr. Stamper arrived with his family during the past week.

Following his graduation from Hamilton Institute for Boys in 1930, Mr. Stamper enrolled at the Art Students' League in New York and later



"MISSIONARY MEMORY"

MADGE TENNENT

Watumull Foundation Purchase Prize

at the Cincinnati Art Academy, studying there with Walter H. Siple, Romould Kraus and Kimon Nicolaides. Prior to entering the U. S. Navy, from which he recently received his discharge, he held the position of Technical Advisor at the Cincinnati Art Museum and Instructor of Drawing, Painting and Composition at the Cincinnati Art Academy.

In addition to being an expert restorer, Mr. Stamper is an artist of outstanding ability, his work being represented in the collections of the Museum of Modern Art, the Cincinnati Art Museum, the Flint Museum in Michigan, and in numerous private collections. He has exhibited his work in the San Francisco Museum of Art, the Columbus Art Museum, the Cincinnati Art Museum and in several New York galleries.

An announcement of the course to be given by Mr. Stamper will be made in the near future.

"THE CHRISTMAS NIGHTINGALE"

A little lost boy, a scene in a dark woods, a Polish dance and a marionette play of the Nativity story are thrilling incidents in "The Christmas Nightingale," the play soon to be given at the Academy by members of Miss Frances Ellison's Saturday morning Drama Class. Many of these same children will be remembered for their presentation last summer of "The Golden Cockerel."

The Christmas play, which is in five scenes, is based on a fairy tale of old Poland by Eric Kelly. The children have dramatized the story, designed the costumes and made the stage properties.

The first performance will be given on Friday evening, December 21, at 7:30 o'clock, and will be open to all children. There is no admission charge. On Saturday morning a special performance of the play will be given for children of Honolulu Art Society members.

DECEMBER CALENDAR ACTIVITIES

DECEMBER

- 1—2:00 p.m.—Public Phonograph Concert.*
- 2—4:00 p.m.—Piano Recital by Lt. (jg) James Wolfe.
- 5—9:00 a.m.—Community Singing for Children, conducted by Fritz Hart.
- 5—3:00 p.m.—Art Clinic for Primary Teachers.
- 6—8:00 p.m.—"Finances and Home Building: Start with Sound Advice," talk by Mr. Harold W. Boynton. Honolulu Art Society's "Homes in the Making" Series.
- 7—2:45 p.m.—Story Hour for Children—8 to 12 years old. Movie: "Anne and the Snow Man"; Christmas Story.

- 12—3:00 p.m.—Art Clinic, Upper Elementary Teachers.
- 13—8:00 p.m.—Concert by G.I. Chorus.
- 14—2:45 p.m.—Story Hour for Children—Christmas Story. Movie: "Anne's Christmas."
- 16—4:00 p.m.—Vocal Recital by Cpl. Orva R. Hoskinson.
- 19—9:00 a.m.—Community Singing for Children, conducted by Fritz Hart.
- 20—8:00 p.m.—Christmas Mystery Play—"Christus Parvulus," presented by Punahou School.
- 21—7:30 p.m.—"The Christmas Nightingale," Christmas Play given by members of Miss Frances Ellison's Drama Class.
- 22—10:00 a.m.—"The Christmas Nightingale"—performance for children of Honolulu Art Society members only.
- 23—5:00 p.m.—Christmas Mystery Play—"Christus Parvulus," presented by Punahou School.
- 30—4:00 p.m.—Piano Recital by Wallace W. Pancoast.

NEW EXHIBITIONS

- To Dec. 9—Prints in the Modern Trend. Gallery 3.
- To Dec. 30—How to Make a Christmas Card; How to Make a Plaster Toy—Educational Court.
- Dec. 5 to 23—Christmas Books and Toys for Children. Gallery 27 and Educational Court.
- Dec. 5 to 30—Christmas Shows. Galleries 1 and 2.
- Dec. 5 to 30—Christmas Crèches; Early American Christmas Room. Gallery 25.
- Dec. 9 to 30—Christmas Cards Through Fifteen Years—Alice Poole's Collection. Gallery 3.

SEMI-PERMANENT EXHIBITIONS

- To Indefinite Date—French Decorative Arts. Gallery 8.
- To Indefinite Date—Mediterranean Art. Gallery 4.
- To Indefinite Date—Medieval and Renaissance Art. Gallery 5.
- To Indefinite Date—Modern Art. Gallery 6.
- To Indefinite Date—Oriental Art—Chinese, Japanese, Korean, Indian. Gallery 10.
- To Indefinite Date—English Silver. Gallery 9-A.

* Concerts given on Tuesdays, Thursdays, Saturdays and Sundays at 2:00 p.m.

HOURS OF ADMISSION—Free at all times: Open Tuesday, Wednesday, Friday and Saturday from 10 a.m. to 4:30 p.m. Thursdays from 10 a.m. to 9 p.m. Sunday from 2 to 5 p.m. **EDUCATIONAL DEPARTMENT**—The lending collection of objects, pictures, slides and phonograph records is available to all teachers. Schools wishing appointments for visiting the Academy for talks by staff members may make them by calling the Educational Office. **PRINT ROOM AND REFERENCE LIBRARY**—Open during Academy hours. **THE HONOLULU ART SOCIETY**, affiliated with the Academy, has an office in the building. Executive Secretary, Mrs. Arthur E. Restarick.

EDGAR CRAIG SCHENCK, *Director.*

MARVELL ALLISON HART, *Editor.*

HONOLULU ACADEMY OF ARTS

900 SOUTH BERETANIA STREET
HONOLULU 34, HAWAII

Sec. 562, P.L. & R.
U. S. POSTAGE

PAID

Honolulu, T. H.
Permit No. 119