

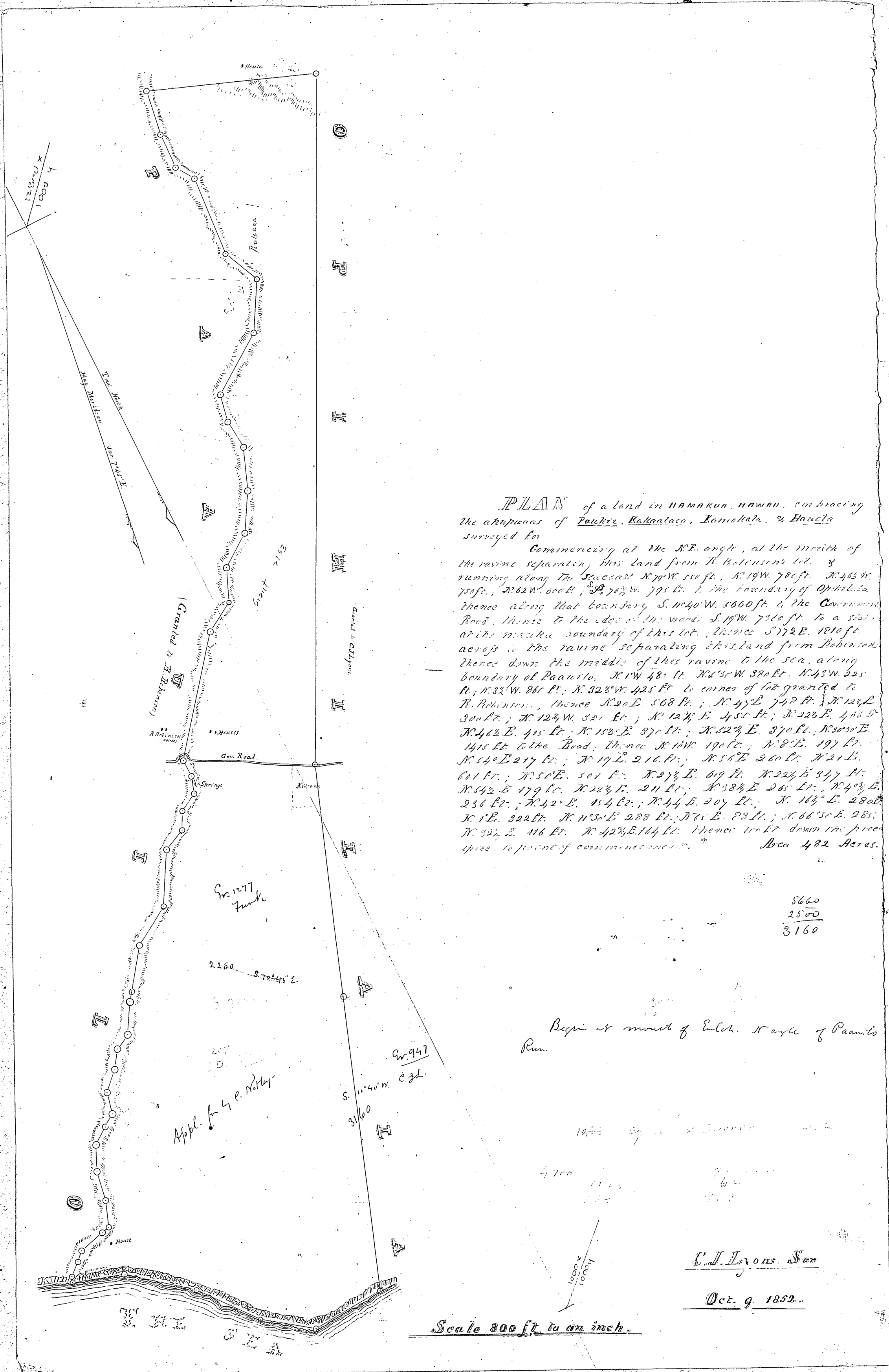
HAMAKUA HAWAII

Iyous Survey 1852

Survey including Paaka, Kamaoka and Hanalei

HAWAIIAN GOVERNMENT SURVEY.	
Register No.	3
Drawer	182
Number	3

30 1/2 x 22 =



PLAN of a land in HAMAKUA, HAWAII, embracing the ahupua'a of Paaka, Kamaoka, & Hanalei surveyed for

Commencing at the NE angle, at the mouth of the ravine separating this land from H. Robinson's lot, & running along the Seacoast N 77° W 510 ft. N 58° W 780 ft. N 42° W 750 ft. N 62° W 600 ft. S 76° W 790 ft. to the boundary of Opheliza thence along that boundary S 10° W 5600 ft. to the Government Road thence to the edge of the woods S 17° W 750 ft. to a station at the mauka boundary of this lot, thence S 77° E 1010 ft. across the ravine separating this land from Robinson thence down the middle of this ravine to the sea, along boundary of Paauilo, N 17° W 480 ft. N 54° W 380 ft. N 45° W 320 ft. N 33° W 380 ft. N 32° W 425 ft. to corner of lot granted to H. Robinson, thence N 20° E 568 ft. N 45° E 742 ft. N 14° E 300 ft. N 124° W 520 ft. N 124° E 450 ft. N 22° E 400 ft. N 42° E 410 ft. N 150° E 370 ft. N 52° E 370 ft. N 50° E 145 ft. to the Road, thence N 10° W 190 ft. N 8° E 197 ft. N 54° E 217 ft. N 17° E 210 ft. N 56° E 260 ft. N 21° E 610 ft. N 50° E 501 ft. N 53° E 600 ft. N 22° E 347 ft. N 42° E 179 ft. N 24° E 210 ft. N 38° E 260 ft. N 43° E 250 ft. N 42° E 114 ft. N 44° E 207 ft. N 113° E 280 ft. N 1° E 322 ft. N 130° E 288 ft. N 71° E 78 ft. N 61° E 280 ft. N 32° E 116 ft. N 42° E 164 ft. thence north down the precipice to point of commencement. Area 482 Acres.

5660
2500
3160

Begin at mouth of Ench. N angle of Paauilo Run

C.J. Lyons Sur  
Dec. 9. 1852.

Scale 800 ft. to an inch.

FILE 4 3 03.01.07

70  
54  
15  
3