

Fine feathers make fine feathers. Good adverbs.

# EVENING BULLETIN

3:30 O'CLOCK

Good Business

EDITION

### STEAMER TABLE.

From San Francisco:	
Ventura	Aug. 14
Doric	Aug. 25
For San Francisco:	
Coptic	Aug. 23
Alameda	Aug. 17
From Vancouver:	
Mowera	Aug. 27
For Vancouver:	
Mannika	Aug. 24

Vol. XVI. No. 2843

HONOLULU, TERRITORY OF HAWAII, AUGUST 15, 1904

## KAMIMURA'S REPORT

WASHINGTON, Aug. 15, 1904. (Received 2 p. m.)

To JAPANESE CONSUL, Honolulu:

Admiral Kamimura's report runs as follows:

"At dawn on the 14th of August our squadron found off Ulsan, in the southeastern coast of Korea, three ships of the Vladivostok squadron steaming southward.

"The latter on sight of us attempted to escape northward, which we obstructed, and fighting was commenced at 5:23 a. m.

"The enemy's ships all caught fire several times by our shells and apparently suffered heavily, especially the Rurik.

"Eventually the enemy fled at full speed to the north, leaving behind the Rurik, which afterward sunk. Thereupon our whole squadron started to rescue the drowning Russians and picked up about 600."

TAKAHIRA.

## Parker Puts Forward Sensational Counter Accusations

Samuel Parker, J. S. Low and Fred Wundenberg today file counter affidavits to the motions of Elizabeth Jane Knight and A. W. Carter for dismissal of suit against Carter as guardian of Anne Thelma K. Parker, minor, whose interests in the Parker ranch on Hawaii are being fought over in two courts.

It will be remembered that Elizabeth Jane Knight, the mother of Anne Thelma K. Parker, made most serious charges against Samuel Parker, J. A. Nagoon, J. Lightfoot, Fred Wundenberg and E. P. Low, alleging that they were conspiring against the interests of the child and looking only to the interests of the Hamakua Ditch Company. Now counter affidavits charge A. W. Carter, the minor's guardian, and others, these affidavits containing many sensational allegations.

Samuel Parker declares that he believes that Elizabeth's (Elizabeth Jane Knight) motive in marrying his son (her first husband, who died), who was then under 15 years of age (she being 23), an invalid, afflicted with

inflammatory rheumatism and heart trouble of the most serious nature, was to get control of his property.

Parker also alleges, speaking of the Hamakua Ditch Co., that the action of Attorneys Kinney and Ballou in now attacking him and working against his interests therein, "if any interest he has in said enterprise," is a gross violation of their professional duties to him, and, he believes, readers, their duty to practice in the courts of the Territory. He says he advanced between \$15,000 and \$20,000 in the enterprise, while Kinney and Ballou advanced not over \$500.

Parker attacks A. W. Carter as the minor's guardian and charges him with despoiling the estate of the minor by extortionate commissions and otherwise mismanaging the child's affairs. He says Carter should be removed.

It is generally denied that a right-of-way for the ditch company is sought for to the disadvantage of the minor in any way.

Affidavits above referred to appear in full on page 7.

## Maui Delegates Present in Person to Vote For Kuhio

[Special to The Bulletin.]

Wailuku, Maui, Aug. 13.—All the Maui delegations to the Territorial convention at Hilo are making arrangements to get to the convention so as to cast their personal votes for Delegate Kuhio.

All the delegates are pledged for Kuhio. At street corners Kuhio's name is heard, and the mention of any other name for the Delegateship would end disastrously for the one who offers it, so firm and steadfast is their faith in Delegate Kuhio's ability to represent Hawaii at Congress for another term.

It is the belief of Republicans all over this electoral district that Kuhio would poll more votes this time than two years ago, for various reasons, in

some precincts prominent Home Rulers have come out and openly espoused the Republican cause.

Said a Home Rule delegate at the last Home Rule convention: "Before, I was blind, but I am glad I have come here to find out the density of your ignorance." He is a staunch Republican today.

## STOCKS IN PRISCO

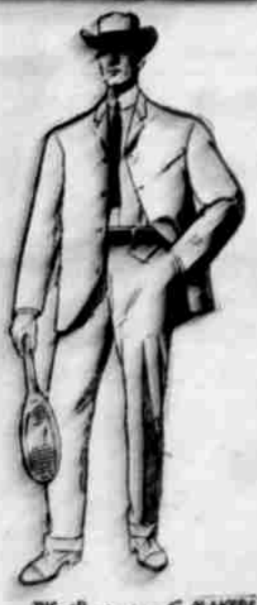
The Henry Waterhouse Trust Co. today received the following cable, so prices of Hawaiian stocks listed on the San Francisco Stock & Bond Exchange:

Sales of Haw. Com. & Sugar	
Honokaa, bid	\$54.00
Hutchinson offered at	13 1/2

Detective McDuffie this afternoon arrested a sailor, named F. Fisher, on a charge of larceny in the second degree. Fisher is alleged to have stolen some canvas.

## CORRECT CLOTHES for MEN

LET your choice of clothes be guided: 1. By the stylish effect. 2. By the fit. 3. By the pattern and quality of the fabric. 4. By the general workmanship. This label



is on clothes that comply with these requirements yet cost you little more than ordinary ready-mades, which will never meet them.

Equal to fine custom-made in all but price. The makers' guarantee, and ours, with every garment. We are Exclusive Distributors in this city.

THE KASH CO., Limited.

## EXECUTIVE PARK'S ELEGANT NEW PATHS OPENED

The Capitol grounds' new pathways have been completed and great is the improvement.

After several months' protracted delay, occasioned by lack of funds and the decreasing of labor forces on account of economy measures, the short cut from the corner of Richards and King street to the main entrance of the executive building, through shaded lawns, has been thrown open to the public, the new gateway having been on its hinges generally. This path is crossed by one from the large entrance to the grounds on Richards street to the main entrance to the park on King street.

Nicely curbed and landscaped, bedded, so that the foot enjoys no hardship in traversing them, these just completed footways add greatly to the convenience of all who have business in the Capitol.

## Court House Floors Declared Dangerous

The floors of the Court House are declared dangerous and the building is closed to the public.

The floors of the Court House are declared dangerous and the building is closed to the public. The floors are in such a state of decay that it is deemed unsafe for the public to enter the building.

## Maui Candidates in Place Of Pogue

Wailuku, Maui, Aug. 13.—W. E. Pogue and S. Fuller Kaulihama have both refused to accept positions on the Maui Board of Registration, and the Maui Executive of District Commission met on Thursday and named two more Republicans, Mr. S. Kapa of Lahaina and W. F. Crockett.

These names were voted to Acting Governor. It is hoped that they will be appointed. Mr. Kaulihama is understood to have accepted a position as teacher at Lahaina in the planting department. He was for nearly ten years employed at Messrs. T. H. Co.

(Continued on Page 5)

## KAUAI POLO PONIES

Charles Rice and John Haines from Kauai Sunday bringing several polo ponies to be entered into the Kauai and Maui match at the Muesum field this month. The ponies will be kept at Waikiki until the game. The balance of the Kauai team will be down tomorrow.

## DEMOCRATIC DELEGATES

The Democratic delegates from the Eighth Precinct of the fifth district Saturday's primaries were as follows: F. J. Tule, H. A. Bussman, J. K. Fredrickson, Daniel J. Lamb, Wm. John Kamehaha, and two others.

## BECKLEY SACRIFICED

Judge Gear, having returned from Hilo on Saturday, says that all this backs "Admiral" George Beckley for Delegate to Washington, but that Beckley says he won't run if Prince Cupid wants the office.

None of the self players at the big polo links yesterday equaled the "Bogey" score of last night. George H. Bruen was the winner with six goals on his last stroke.

A Japanese named Takahama and a Portuguese named Manuel Alva, were arrested this afternoon, both charged with assault and battery.

Warden: I want a neat sign for the outside of the electric car. How would you letter it? Hilo, August of the Hilo—Princeton Times.

## WE ARE SATISFIED

That there isn't a case of headache anywhere that Head-Kash will not stop. We have great confidence in this remedy and our faith is founded on the universal success for the past dozen years. We have yet to hear of a failure.

## HEAD-EASE

and if it does not do all that we claim it will it needn't cost you a cent—we'll return the money. It is safe, effective and agreeable to take.



## Hilo Boy in Danger

Severe frost predicted.

## FORWARD BUSINESS

Arrived at Hilo.

## WINDY

Strong wind predicted.

## WINDY

Strong wind predicted.

## WINDY

Strong wind predicted.

## WINDY

Strong wind predicted.

## WINDY

Strong wind predicted.

## WINDY

Strong wind predicted.

## WINDY

Strong wind predicted.

## WINDY

Strong wind predicted.

## WINDY

Strong wind predicted.

## MAUI DELEGATES

Arrived at Hilo.

## WINDY

Strong wind predicted.

## WINDY

Strong wind predicted.

## WINDY

Strong wind predicted.

## WINDY

Strong wind predicted.

## WINDY

Strong wind predicted.

## WINDY

Strong wind predicted.

## WINDY

Strong wind predicted.

## WINDY

Strong wind predicted.

## WINDY

Strong wind predicted.

## WINDY

Strong wind predicted.

## WINDY

Strong wind predicted.

## MAUI DELEGATES

Arrived at Hilo.

## WINDY

Strong wind predicted.

## WINDY

Strong wind predicted.

## WINDY

Strong wind predicted.

## WINDY

Strong wind predicted.

## WINDY

Strong wind predicted.

## WINDY

Strong wind predicted.

## WINDY

Strong wind predicted.

## WINDY

Strong wind predicted.

## WINDY

Strong wind predicted.

## WINDY

Strong wind predicted.

## WINDY

Strong wind predicted.

S. S. ALAMEDA AVE. 77

Wells Fargo & Co.



Clearance Sale

10 PER CENT

Levingston's



# Republicans Ratify National Ticket and Respeak Local Harmony and Victory

The Republican meeting at the... (text continues) ...

... (text continues) ...

... (text continues) ...

... (text continues) ...

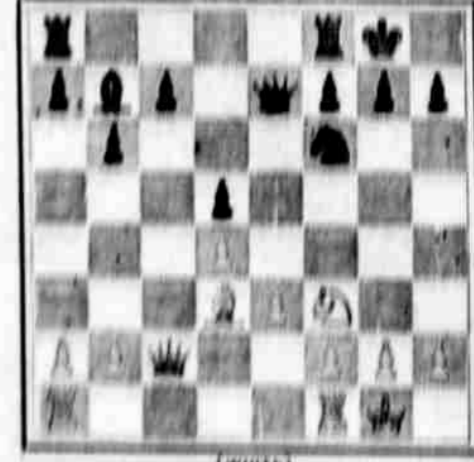
... (text continues) ...

... (text continues) ...

## THE CHESS GAME BY WIRELESS

### HONOLULU vs. HILO

Position in Game II (Queen's Gambit Declined) (BLACK)



(WHITE)

White	Black
1. P-K4	1. P-K4
2. N-K3	2. P-K3
3. P-K3	3. P-K3
4. N-K4	4. P-K3
5. Castles	5. P-K3
6. P-N3	6. P-K3
7. P-K3	7. P-K3
8. P-K3	8. P-K3
9. P-K3	9. P-K3
10. P-K3	10. P-K3
11. P-K3	11. P-K3
12. P-K3	12. P-K3

## Don't Melt

For \$15 you can procure a cool-breast-creating electric fan that will counteract the effects of hot weather.

All ready to be attached to your incandescent light wire in place of a lamp.

HAWAIIAN ELECTRIC COMPANY, Limited.

## Bulletin 75c per month

### GOOD THINGS TO EAT

The usual supply that comes in the "Alameda" and includes FRESH CALIFORNIA FISH, CRABS and (perhaps) SHRIMPS, POULTRY, CRYSTAL SPRINGS BUTTER And the choicest fruits and vegetables in season at the vegetable stand.

Metropolitan Meat Co., Ltd., Telephone Main 45.

### Merchants' Parcel Delivery.

Parcels, Furniture, Baggage, Etc., moved to any part of the City. Will meet steamers and check outgoing baggage. Prompt and reliable service.

'Phone Main 109.



### No Progression.

WHITE BRONZE

### HORSE SHOEING.

W. W. Wright Co. La.

have opened a branch in the Department in connection with their carriage shop, etc. Having secured 100 pairs of a new steel shoe, they are prepared to do all work in connection with a horse shoeing.

### Jos. Schwartz,

Watchmaker, Jeweler and Jewelry Supplier.

### Henry C. Vida,

CONTRACTOR, Masonry, Plumbing, Painting, and

COR. PORT and KING ST.

## A week of special bargains in SUMMER DRESS GOODS

Beginning Monday morning, August 9th, for one week only, the following special inducements are open at the Sachs store:

Our entire stock of Scotch Ginghams and Zephyrs, which sell regularly for 20c and 25c a yard.

This week at 10c

Pretty White Goods, with lace stripes and dots.

Regular 20c quantities at 15c yd.

Regular 15c and 10c 2-3c quantities at 12-12c yd.

Pretty stripes and checks that sell regularly for 8 yards for \$1.00.

This week 11 yards for \$1.00.

A large assortment of children's silk and muslin hats and bonnets, at all prices, now on hand.

S. S. Sachs Dry Goods Co., Ltd.

## Doctors Say 'Drink More'

... (text continues) ...

## Consolidated Soda Water Works Co., Limited.

### ANOTHER LARGE SHIPMENT

... (text continues) ...

## THE H. DAVIS & Co., Limited.



### H. HOBBS & Co.,

Clothing, Pajamas and Neckwear, Ties, d. Lands, Hotel St. Store. Weekly Bulletin, \$1 a Year

# EVINGING BULLETIN

Published Every Day Except Sunday at 190 King Street, Honolulu, T. H., by the

BULLETIN PUBLISHING CO., LTD.

MAILED BY H. F. HARRINGTON, Editor

Entered at the Postoffice at Honolulu as second-class matter.

### SUBSCRIPTION RATES.

**Evening Bulletin.**  
 Per month, anywhere in U. S. . . . \$ .75  
 Per quarter, anywhere in U. S. . . . 2.00  
 Per year, anywhere in U. S. . . . 8.00  
 Per year, anywhere in U. S. . . . 8.00  
 Per year, postpaid, foreign . . . 11.00  
**Weekly Bulletin.**  
 Six months . . . . . \$ .50  
 Per year, anywhere in U. S. . . . 1.00  
 Per year, postpaid, foreign . . . 1.50

Telephone . . . . . 218  
Postoffice box . . . . . 718

MONDAY . . . . . AUG. 15, 1904.

### PUBLIC OFFICE AND PARTISAN POLITICS.

The Bulletin's great and good friend, the Advertiser promoter makes statements that are amusing. Though of force in the utmost seriousness, they speak with wit to which the public responds with good natured smiles. In increasing evidence of anger against the Advertiser's comment on our morning friends, the Bulletin finds very general support of its views throughout the community.

Experience has proved that the management of a District or Territorial campaign deserves, requires, the undivided time and attention of the directing head, the chairman. Incidents are not lacking of District chairmen who have been allowed a salary that they might be in a position to give all their time to campaign work. We find in the Fourth District, men like George W. Smith and F. E. Thompson refusing to consider the acceptance of a District chairmanship because they could not afford to take from their private business the time necessary to do the work properly.

The situation the Bulletin presents is merely this: Can the administration, Attorney General Andrews, the thoughtful members of the Republican party afford to go on record as holding that a public trust is less worthy of consideration than a private interest?

Is it right? Is it fair to the taxpayers? The Bulletin is not alone in its negative response. We warrant that Mr. Bishop's acceptance of a nomination for the chairmanship at the last minute, when direct and open opposition to Mr. Andrews was still in the air, was not the result of personal opinion but of the only other possible candidate because the only other candidate mentioned as possibilities were the gentlemen who put his name before the convention.

Governor Carter's administration has stood for absolute fair play to the taxpayers, regardless of partisan politics. The necessity does not now exist to record an exception to prove the rule. A feature of the discussion that should not be overlooked is that our friends of the morning amusement bureau do not openly support the proposal for the Attorney General to serve in dual capacities. They merely use the Bulletin. This, of course, hurts our feelings but does not cry down the principle we support.

There is a limit, however, not imaginary, to the amount of time a public servant can devote to political offices without doing an injustice to the taxpayers by whom he is employed. The Bulletin places this limitation where participation in politics merges into campaign management, and, notwithstanding the comment of our morning friends, the Bulletin finds very general support of its views throughout the community.

Experience has proved that the management of a District or Territorial campaign deserves, requires, the undivided time and attention of the directing head, the chairman. Incidents are not lacking of District chairmen who have been allowed a salary that they might be in a position to give all their time to campaign work. We find in the Fourth District, men like George W. Smith and F. E. Thompson refusing to consider the acceptance of a District chairmanship because they could not afford to take from their private business the time necessary to do the work properly.

The situation the Bulletin presents is merely this: Can the administration, Attorney General Andrews, the thoughtful members of the Republican party afford to go on record as holding that a public trust is less worthy of consideration than a private interest?

Is it right? Is it fair to the taxpayers? The Bulletin is not alone in its negative response. We warrant that Mr. Bishop's acceptance of a nomination for the chairmanship at the last minute, when direct and open opposition to Mr. Andrews was still in the air, was not the result of personal opinion but of the only other possible candidate because the only other candidate mentioned as possibilities were the gentlemen who put his name before the convention.

Governor Carter's administration has stood for absolute fair play to the taxpayers, regardless of partisan politics. The necessity does not now exist to record an exception to prove the rule. A feature of the discussion that should not be overlooked is that our friends of the morning amusement bureau do not openly support the proposal for the Attorney General to serve in dual capacities. They merely use the Bulletin. This, of course, hurts our feelings but does not cry down the principle we support.

# GOLF AT HALEIWA

## FIRST CONTEST OF THE NEW HALEIWA CLUB

### GOOD NUMBER OF CONTESTANTS AND GOOD SCORES MADE RECORD OF SUNDAY CONTEST.

The first tournament of the new Haleiwa Golf Club was played over the Haleiwa links on Sunday, August 14th. It was still and fine in the earlier part of the day, but a stiff breeze interfered somewhat with the later stages of the competition.

E. R. Ellsworth and J. Little accompanied by George Lettwood were the first pair away, the former succeeding in compiling a steady 113.

Judge Mahala played the best game he has ever played, putting up a Sunday record of 84 at his first attempt. Church also played a star game and showed much better form than he has of late.

Perhaps the most improved member of the Haleiwa Golf Club is Dr. Wood who took first prize with a very creditable gross score of 114 and a net of 91.

Lettwood might have done better, but was tired as he scored four times in the morning, and this fact heavily against him his second attempt.

Mayall was erratic, making very poor scores on the long holes, besides driving into the sea.

H. Johnson nearly repeated his success of the last Haleiwa Golf tournament.

The handicapping committee, who based the handicap on 108 are to be congratulated on the even scores made by the players.

Next week there will probably be a scratch event to decide position each member shall take in event of a challenge from any of the other island clubs.

Appended is the final score of the first tournament held under the auspices of the new Haleiwa Golf Club.

Dr. H. Wood	58	55	114	91
E. R. Ellsworth	54	55	109	84
J. Little	55	55	110	85
G. W. Church	55	55	110	85
George Lettwood	55	55	110	85
Howard Johnson	55	55	110	85
Judge Mahala	55	55	110	85
C. W. O. George	55	55	110	85
E. R. Ellsworth	55	55	110	85
E. R. Ellsworth	55	55	110	85
A. M. Webster	55	55	110	85
H. B. Grant	55	55	110	85
J. B. O'Connell	55	55	110	85
J. Little	55	55	110	85
A. E. W. Todd	55	55	110	85
A. A. Deas	55	55	110	85

# NO THANK YOU, I CAN ONLY ENJOY A GENERAL ARTHUR CIGAR.



KERDS, WERTHEIM & SCHIFFER, NEW YORK.

# The General Arthur Cigar

Has the real Havana flavor without the Havana price nor the injurious Havana strength. It is beautiful to the eye, sweet to the taste and wholesome.

**CU CIGAR CO.,**  
Distributors.

## HOBSON AND DUNN

(Special to The Bulletin.)  
 Waialua, Maui, Aug. 13.—T. H. Hobson and Allan Dunn, from the yacht Gladys, which arrived at Lahana yesterday 27 hours from Honolulu, came to Waialua from Lahana yesterday afternoon and reported that they made very slow progress coming up. When asked about the La Paloma, they did not know where she was, but suspected she was in tow of a Russian destroyer on the way to Vladivostok. Years ago, the vessel ran for the schooner Nettie Merrill, Captain Crane, from Lahana to Honolulu was about six hours, but today it is even hard for a steamer to make that.

## NOT S. K. RAWAA.

Editor Evening Bulletin:—In the "Local and General" of your last Friday paper (Aug. 13) I noticed the following:  
 "Mrs. Morse and S. Rawaa, both charged with adultery, had their names made public in the Police Court this morning."  
 The above publication cast reflection on me, and some of my friends have been misled, and, in order to clear myself, I wish to state that one of the parties referred to is not the undersigned, but a relative who has no right to use my name. His right name is S. K. RAWAA.

## THE BUSINESS MAN'S HANDY IN

DEK, published in the Saturday Bulletin and the Weekly Edition, gives a concise and complete resume of all legal notices, calls for tenders, judgments, building permits and real estate transactions. Evening Bulletin, 75 cents per month. Weekly Bulletin, \$1 per year.

The Weekly Edition of the Evening Bulletin gives a complete summary of the news of the day.

**A Part Of Our Business**

It is a part of our business to procure Bonds, Mortgages and other high grade securities for investors.

**THE HENRY WATERHOUSE TRUST COMPANY, LIMITED,**  
 Corner Fort and Merchant Streets, Honolulu, Hawaii.

## Democrats Hold Lively Primaries

The Democratic primaries awakened a great deal of interest Saturday afternoon among the faithful. The vote was surprising in some precincts and much interest was shown considering the fact that in many precincts there was no contest.

Partial returns are as follows:  
 Fourth District, First Precinct—Eighty-five votes cast. Stephen Maun, 74; H. M. Kahalepona, 9; J. K. Kaimanipaku, 7; A. A. Wilder, 5; Jan. Kaima, 2; H. B. Kidd, 7; Thos. Kaima, 5; Abraham Kawahara, 6; Frank Koo, 7; Wm. Nam, 6; Kaima, 4; W. K. Kaima, 7; Kaima, 6.

Fourth District, Fourth Precinct—10; D. Timmons, 10; L. B. Medeiros, 10; Henry Reinton, 9; Matt Hanlon, 10; John Hanlon, 9; W. F. Keating, 10; Thomas Kennedy, 10; W. F. O'Halloran, 9; P. Sullivan, 9; A. S. Nascimbeno, 9; J. H. Holt, 9; E. M. Watson, 10; Chas. McKeone, 10; S. B. Medeiros, 9.

Fourth District, Fifth Precinct—About sixty votes cast, but many thrown out on account of irregularities. Samuel Kahi, Wm. A. Hall, K. Kubi, Joe Lillie, E. Kahana, Sam and Kahi, Joe, Mosen, Henry Mosen, Joe, Auld, Geo. Kahi, F. Turill.

Fourth District, Sixth Precinct—H. F. Winters, 48; J. B. Spitzer, 47; W. H. Moss, 52; J. Coffee, 48; J. McGuire, 49; T. Canham, 51; A. Herring.

## A Huge Plateau In The Clouds

situated on the top of Mount Kaala in the Waianae range, the highest peak on Oahu, 4030 feet above the sea. On Sunday, Aug. 21st, Manager Church of Haleiwa Hotel will personally conduct a trip to the summit. The trail passes through the

## Land of the Wild - Goat and Wild Boar

climbing thence through a wondrous Tropical jungle, where beautiful flowers and aromatic shrubs that do not dwell on the lowland, are to be found. Where can be heard the song of native Hawaiian birds—where the almost extinct

## Royal Oo Bird

still lives and thrives. Think of it!

## A LUNCH ABOVE THE CLOUDS

Go down to Haleiwa Saturday, Aug. 20, and be sure and engage rooms and horses in advance.

## HALEIWA HOTEL.

F. J. CHURCH, Mgr.

## MUTINOUS MEN ON HAWAIIAN ISLES

The American ship Hawaiian Isles, which was docked at the railroad wharf at Saturday, after having arrived with a cargo of coal from Australia, at Saturday night and Sunday morning the crew of an armed mutinous crew on the part of three of the sailors of the crew.

## Home Rulers Will

OPEN Hawaii Campaign

The Home Rule party will file its first statement of the campaign on Hawaii. The preliminary work on Hawaii will be followed by a skit on Maui, after which the leaders will meet in Honolulu to attend the District Convention.

## Your Money EARNS 4 1/2 p.c. Interest

And can be withdrawn on Demand. Amounts received from \$1.00 to \$5,000.00.

## Steamers Bring Many Prisoners

During the past few days a small crowd of prisoners have been brought to the local prison from the other islands. The Hawaii last Saturday brought two prisoners who were convicted and sentenced at the Roberts court term. They were those, a Hawaiian, sentenced to three years imprisonment for burglary in the first degree, and one, a Japanese who is to be confined ten years for manslaughter; with them came an insane Japanese named Takayama, who was sent from Hawaii to be placed in the insane asylum.

## Artistic Signs

And Satisfaction Guaranteed when made by

## JEWETT,

CORNER HOTEL and UNION.

## Willcox & Gibbs is the Only Automatic

# No Tension Silent Sewing Machine

STANDS PRE-EMINENT. It will be appreciated by those seeking the BEST.

## Pacific Hardware Company, Limited.

SOLE AGENTS.

## Stanley Stephenson, THE PAINTER.

Ads that add money to your business—S. S. SIGNS Phone 426 317 King St.

## LINOLEUM.

Although linseed oil is one of its chief elements linoleum is not merely oil cloth. In buying watch for thickness. Thin stuff will wear through in a short time but the real material will last a lifetime. We carry several grades at prices from 50c. to \$1.50 a square yard, but no cheap stuff. It wouldn't pay us nor you either if we did. In our excellent new stock are in laid, plain and print patterns.

## Lewers & Cooke, Limited.

177 S. King Street.

## Artistic Signs

And Satisfaction Guaranteed when made by

## JEWETT,

CORNER HOTEL and UNION.



Don't be held up by impure beers.

Bear, when pure, is one of the most healthful of beverages and a wonderful tonic. The purity of

# PRIMO LAGER

is guaranteed and it is free from all fortifying acids so common among imported beers.

On draught and in bottle everywhere.

### LOCAL AND GENERAL

If greatly troubled with mosquitoes notify the Board of Health.

Read "Wants" on page 6.

For choice store wood rings up Main 250.

The new Conover typewriter \$30.00, at Wall, Nichols.

Don Paul is dead but Paul Jones still lives—at the Pantheon.

Miss Eva Kinney is visiting friends at Paia and Kula, Maui.

The Appeal Court sat this morning, hearing plantation appeals.

Nearly furnished rooms at the Poplar, \$1, \$1.50 and \$2 per week, 1249 Fort Street.

Get that habit—buying your Brewed from Main 250, People's Express Co., Merchant St.

## In Shoes

What Do You Want?

On the Outside— "Looks"  
On the Inside— "COMFORT"  
Throughout All— "Wear"  
And After That— "Price"

Well, if that's what you're really looking for then you cannot come to our store too quickly. It's where you belong.

**McINERNEY SHOE STORE,**  
FORT STREET

### HONOLULU STOCK EXCHANGE

HONOLULU, Aug. 15, 1934.

NAME OF STOCK	LAST	CHG	AMOUNT
AMERICAN	100.00	0.00	100.00
AMERICAN SUGAR	100.00	0.00	100.00
AMERICAN TUBACCO	100.00	0.00	100.00
AMERICAN WINE	100.00	0.00	100.00
AMERICAN WHISKY	100.00	0.00	100.00
AMERICAN BEER	100.00	0.00	100.00
AMERICAN CIGARETTES	100.00	0.00	100.00
AMERICAN TOBACCO	100.00	0.00	100.00
AMERICAN SUGAR	100.00	0.00	100.00
AMERICAN TUBACCO	100.00	0.00	100.00
AMERICAN WINE	100.00	0.00	100.00
AMERICAN WHISKY	100.00	0.00	100.00
AMERICAN BEER	100.00	0.00	100.00
AMERICAN CIGARETTES	100.00	0.00	100.00
AMERICAN TOBACCO	100.00	0.00	100.00
AMERICAN SUGAR	100.00	0.00	100.00
AMERICAN TUBACCO	100.00	0.00	100.00
AMERICAN WINE	100.00	0.00	100.00
AMERICAN WHISKY	100.00	0.00	100.00
AMERICAN BEER	100.00	0.00	100.00
AMERICAN CIGARETTES	100.00	0.00	100.00
AMERICAN TOBACCO	100.00	0.00	100.00
AMERICAN SUGAR	100.00	0.00	100.00
AMERICAN TUBACCO	100.00	0.00	100.00
AMERICAN WINE	100.00	0.00	100.00
AMERICAN WHISKY	100.00	0.00	100.00
AMERICAN BEER	100.00	0.00	100.00
AMERICAN CIGARETTES	100.00	0.00	100.00
AMERICAN TOBACCO	100.00	0.00	100.00
AMERICAN SUGAR	100.00	0.00	100.00
AMERICAN TUBACCO	100.00	0.00	100.00
AMERICAN WINE	100.00	0.00	100.00
AMERICAN WHISKY	100.00	0.00	100.00
AMERICAN BEER	100.00	0.00	100.00
AMERICAN CIGARETTES	100.00	0.00	100.00
AMERICAN TOBACCO	100.00	0.00	100.00
AMERICAN SUGAR	100.00	0.00	100.00
AMERICAN TUBACCO	100.00	0.00	100.00
AMERICAN WINE	100.00	0.00	100.00
AMERICAN WHISKY	100.00	0.00	100.00
AMERICAN BEER	100.00	0.00	100.00
AMERICAN CIGARETTES	100.00	0.00	100.00
AMERICAN TOBACCO	100.00	0.00	100.00
AMERICAN SUGAR	100.00	0.00	100.00
AMERICAN TUBACCO	100.00	0.00	100.00
AMERICAN WINE	100.00	0.00	100.00
AMERICAN WHISKY	100.00	0.00	100.00
AMERICAN BEER	100.00	0.00	100.00
AMERICAN CIGARETTES	100.00	0.00	100.00
AMERICAN TOBACCO	100.00	0.00	100.00
AMERICAN SUGAR	100.00	0.00	100.00
AMERICAN TUBACCO	100.00	0.00	100.00
AMERICAN WINE	100.00	0.00	100.00
AMERICAN WHISKY	100.00	0.00	100.00
AMERICAN BEER	100.00	0.00	100.00
AMERICAN CIGARETTES	100.00	0.00	100.00
AMERICAN TOBACCO	100.00	0.00	100.00
AMERICAN SUGAR	100.00	0.00	100.00
AMERICAN TUBACCO	100.00	0.00	100.00
AMERICAN WINE	100.00	0.00	100.00
AMERICAN WHISKY	100.00	0.00	100.00
AMERICAN BEER	100.00	0.00	100.00
AMERICAN CIGARETTES	100.00	0.00	100.00
AMERICAN TOBACCO	100.00	0.00	100.00
AMERICAN SUGAR	100.00	0.00	100.00
AMERICAN TUBACCO	100.00	0.00	100.00
AMERICAN WINE	100.00	0.00	100.00
AMERICAN WHISKY	100.00	0.00	100.00
AMERICAN BEER	100.00	0.00	100.00
AMERICAN CIGARETTES	100.00	0.00	100.00
AMERICAN TOBACCO	100.00	0.00	100.00
AMERICAN SUGAR	100.00	0.00	100.00
AMERICAN TUBACCO	100.00	0.00	100.00
AMERICAN WINE	100.00	0.00	100.00
AMERICAN WHISKY	100.00	0.00	100.00
AMERICAN BEER	100.00	0.00	100.00
AMERICAN CIGARETTES	100.00	0.00	100.00
AMERICAN TOBACCO	100.00	0.00	100.00
AMERICAN SUGAR	100.00	0.00	100.00
AMERICAN TUBACCO	100.00	0.00	100.00
AMERICAN WINE	100.00	0.00	100.00
AMERICAN WHISKY	100.00	0.00	100.00
AMERICAN BEER	100.00	0.00	100.00
AMERICAN CIGARETTES	100.00	0.00	100.00
AMERICAN TOBACCO	100.00	0.00	100.00
AMERICAN SUGAR	100.00	0.00	100.00
AMERICAN TUBACCO	100.00	0.00	100.00
AMERICAN WINE	100.00	0.00	100.00
AMERICAN WHISKY	100.00	0.00	100.00
AMERICAN BEER	100.00	0.00	100.00
AMERICAN CIGARETTES	100.00	0.00	100.00
AMERICAN TOBACCO	100.00	0.00	100.00
AMERICAN SUGAR	100.00	0.00	100.00
AMERICAN TUBACCO	100.00	0.00	100.00
AMERICAN WINE	100.00	0.00	100.00
AMERICAN WHISKY	100.00	0.00	100.00
AMERICAN BEER	100.00	0.00	100.00
AMERICAN CIGARETTES	100.00	0.00	100.00
AMERICAN TOBACCO	100.00	0.00	100.00
AMERICAN SUGAR	100.00	0.00	100.00
AMERICAN TUBACCO	100.00	0.00	100.00
AMERICAN WINE	100.00	0.00	100.00
AMERICAN WHISKY	100.00	0.00	100.00
AMERICAN BEER	100.00	0.00	100.00
AMERICAN CIGARETTES	100.00	0.00	100.00
AMERICAN TOBACCO	100.00	0.00	100.00
AMERICAN SUGAR	100.00	0.00	100.00
AMERICAN TUBACCO	100.00	0.00	100.00
AMERICAN WINE	100.00	0.00	100.00
AMERICAN WHISKY	100.00	0.00	100.00
AMERICAN BEER	100.00	0.00	100.00
AMERICAN CIGARETTES	100.00	0.00	100.00
AMERICAN TOBACCO	100.00	0.00	100.00
AMERICAN SUGAR	100.00	0.00	100.00
AMERICAN TUBACCO	100.00	0.00	100.00
AMERICAN WINE	100.00	0.00	100.00
AMERICAN WHISKY	100.00	0.00	100.00
AMERICAN BEER	100.00	0.00	100.00
AMERICAN CIGARETTES	100.00	0.00	100.00
AMERICAN TOBACCO	100.00	0.00	100.00
AMERICAN SUGAR	100.00	0.00	100.00
AMERICAN TUBACCO	100.00	0.00	100.00
AMERICAN WINE	100.00	0.00	100.00
AMERICAN WHISKY	100.00	0.00	100.00
AMERICAN BEER	100.00	0.00	100.00
AMERICAN CIGARETTES	100.00	0.00	100.00
AMERICAN TOBACCO	100.00	0.00	100.00
AMERICAN SUGAR	100.00	0.00	100.00
AMERICAN TUBACCO	100.00	0.00	100.00
AMERICAN WINE	100.00	0.00	100.00
AMERICAN WHISKY	100.00	0.00	100.00
AMERICAN BEER	100.00	0.00	100.00
AMERICAN CIGARETTES	100.00	0.00	100.00
AMERICAN TOBACCO	100.00	0.00	100.00
AMERICAN SUGAR	100.00	0.00	100.00
AMERICAN TUBACCO	100.00	0.00	100.00
AMERICAN WINE	100.00	0.00	100.00
AMERICAN WHISKY	100.00	0.00	100.00
AMERICAN BEER	100.00	0.00	100.00
AMERICAN CIGARETTES	100.00	0.00	100.00
AMERICAN TOBACCO	100.00	0.00	100.00
AMERICAN SUGAR	100.00	0.00	100.00
AMERICAN TUBACCO	100.00	0.00	100.00
AMERICAN WINE	100.00	0.00	100.00
AMERICAN WHISKY	100.00	0.00	100.00
AMERICAN BEER	100.00	0.00	100.00
AMERICAN CIGARETTES	100.00	0.00	100.00
AMERICAN TOBACCO	100.00	0.00	100.00
AMERICAN SUGAR	100.00	0.00	100.00
AMERICAN TUBACCO	100.00	0.00	100.00
AMERICAN WINE	100.00	0.00	100.00
AMERICAN WHISKY	100.00	0.00	100.00
AMERICAN BEER	100.00	0.00	100.00
AMERICAN CIGARETTES	100.00	0.00	100.00
AMERICAN TOBACCO	100.00	0.00	100.00
AMERICAN SUGAR	100.00	0.00	100.00
AMERICAN TUBACCO	100.00	0.00	100.00
AMERICAN WINE	100.00	0.00	100.00
AMERICAN WHISKY	100.00	0.00	100.00
AMERICAN BEER	100.00	0.00	100.00
AMERICAN CIGARETTES	100.00	0.00	100.00
AMERICAN TOBACCO	100.00	0.00	100.00
AMERICAN SUGAR	100.00	0.00	100.00
AMERICAN TUBACCO	100.00	0.00	100.00
AMERICAN WINE	100.00	0.00	100.00
AMERICAN WHISKY	100.00	0.00	100.00
AMERICAN BEER	100.00	0.00	100.00
AMERICAN CIGARETTES	100.00	0.00	100.00
AMERICAN TOBACCO	100.00	0.00	100.00
AMERICAN SUGAR	100.00	0.00	100.00
AMERICAN TUBACCO	100.00	0.00	100.00
AMERICAN WINE	100.00	0.00	100.00
AMERICAN WHISKY	100.00	0.00	100.00
AMERICAN BEER	100.00	0.00	100.00
AMERICAN CIGARETTES	100.00	0.00	100.00
AMERICAN TOBACCO	100.00	0.00	100.00
AMERICAN SUGAR	100.00	0.00	100.00
AMERICAN TUBACCO	100.00	0.00	100.00
AMERICAN WINE	100.00	0.00	100.00
AMERICAN WHISKY	100.00	0.00	100.00
AMERICAN BEER	100.00	0.00	100.00
AMERICAN CIGARETTES	100.00	0.00	100.00
AMERICAN TOBACCO	100.00	0.00	100.00
AMERICAN SUGAR	100.00	0.00	100.00
AMERICAN TUBACCO	100.00	0.00	100.00
AMERICAN WINE	100.00	0.00	100.00
AMERICAN WHISKY	100.00	0.00	100.00
AMERICAN BEER	100.00	0.00	100.00
AMERICAN CIGARETTES	100.00	0.00	100.00
AMERICAN TOBACCO	100.00	0.00	100.00
AMERICAN SUGAR	100.00	0.00	100.00
AMERICAN TUBACCO	100.00	0.00	100.00
AMERICAN WINE	100.00	0.00	100.00
AMERICAN WHISKY	100.00	0.00	100.00
AMERICAN BEER	100.00	0.00	100.00
AMERICAN CIGARETTES	100.00	0.00	100.00
AMERICAN TOBACCO	100.00	0.00	100.00
AMERICAN SUGAR	100.00	0.00	100.00
AMERICAN TUBACCO	100.00	0.00	100.00
AMERICAN WINE	100.00	0.00	100.00
AMERICAN WHISKY	100.00	0.00	100.00
AMERICAN BEER	100.00	0.00	100.00
AMERICAN CIGARETTES	100.00	0.00	100.00
AMERICAN TOBACCO	100.00	0.00	100.00
AMERICAN SUGAR	100.00	0.00	100.00
AMERICAN TUBACCO	100.00	0.00	100.00
AMERICAN WINE	100.00	0.00	100.00
AMERICAN WHISKY	100.00	0.00	100.00
AMERICAN BEER	100.00	0.00	100.00
AMERICAN CIGARETTES	100.00	0.00	100.00
AMERICAN TOBACCO	100.00	0.00	100.00
AMERICAN SUGAR	100.00	0.00	100.00
AMERICAN TUBACCO	100.00	0.00	100.00
AMERICAN WINE	100.00	0.00	100.00
AMERICAN WHISKY	100.00	0.00	100.00
AMERICAN BEER	100.00	0.00	100.00
AMERICAN CIGARETTES	100.00	0.00	100.00
AMERICAN TOBACCO	100.00	0.00	100.00
AMERICAN SUGAR	100.00	0.00	100.00
AMERICAN TUBACCO	100.00	0.00	100.00
AMERICAN WINE	100.00	0.00	100.00
AMERICAN WH			



# SENSATIONAL RESPONSE OF LOW, PARKER AND WUNDENBERG IN FAMOUS PARKER RANCH CASE

Following is the answer of J. S. Low, joined by Samuel Parker and Fred Wundenberg to the sensational motion by Mrs. Knight in the famous Parker ranch case. These affidavits were filed in court this morning:

BY THE CIRCUIT COURT OF THE FIRST JUDICIAL CIRCUIT, TERRITORY OF HAWAII.  
IN PROBATE NO. 2926. AT CHAMBERS.

IN THE MATTER OF THE GUARDIANSHIP

OF

IN RE REMOVAL OF GUARDIAN.

ANNIE T. K. PARKER,

A minor

COUNTER AFFIDAVITS TO MOTIONS OF ELIZABETH JANE KNIGHT AND A. W. CARTER FOR DISMISSAL OF SUIT.  
COUNTER AFFIDAVIT OF J. S. LOW.

CITY OF HONOLULU,  
TERRITORY OF HAWAII.

ISLAND OF OAHU,

Now comes J. S. Low and being first duly sworn on oath deposes and says that he has read the motions of Elizabeth Jane Knight and A. W. Carter, filed in the above entitled matter on the 1st day of August, 1904, the former being hereinafter referred to as "Knight motion" and the latter as "Carter motion", and deposes as follows:

Sec. 1. That the allegations contained in paragraphs one of said Knight and Carter motions are wholly false and untrue.

Sec. 2. That the allegations contained in paragraphs two of said Knight and Carter motions charging this deponent with being a mere intermeddler and not a bona fide next friend of said minor, and all the other allegations in the said paragraphs with the exception of the allegation that said J. S. Low is a stockholder and officer of the Hamakua Ditch Company, are wholly false and untrue.

That as to the allegation last mentioned, deponent says that he has no beneficial interest of any kind in said Ditch Company, other than that he holds one share in his name of the par value of \$10.00 as a matter of accommodation to John Hind, and that he gave no consideration therefor, and intends at any time upon the request of said John Hind to transfer the same to him, said John Hind, without consideration. That deponent holds said share so as to enable him to fill the office of Secretary of said Company, which office is merely honorary, and for which deponent receives no compensation whatsoever, and deponent holds said office as an accommodation merely. That if it shall appear to this Honorable Court that there is any impropriety in deponent's holding said share of stock and said office, he will, upon intimation of the Court to that effect, immediately transfer the one and resign the other. That deponent has no knowledge or information of any interest whatever of the said Samuel Parker in said Hamakua Ditch Company. That deponent denies that he is trying for as small a consideration as possible to secure for the Hamakua Ditch Company a right-of-way over that portion of the land owned exclusively by said minor, and denies that he desires to promote a sale of the fee of said interest of said minor in said land of Paauhau, upon terms acceptable to the said Paauhau Plantation Company irrespective of the interest of said minor in the premises, but deponent says that he is desirous that the said Ditch Company shall pay to said minor full compensation for any right-of-way that it may acquire over any portion of said lands, and that in case of the sale of said lands to said Paauhau Plantation Company, that said Company shall pay the very highest price therefor, and all that this deponent is trying to do in the premises is to have the matter fully investigated by the Court, and have it judicially determined whether or not under all the circumstances it is for the best interest of said minor that said right-of-way be acquired by said Ditch Company, or that said land be sold in the customary manner at the upset price of \$124,000.00 cash, now being offered by said Paauhau Plantation Company; and this deponent charges that the action of said Elizabeth Jane Knight, in trying to prevent the Court from investigating the matter, is conspiring with said A. W. Carter to injure her own child.

Sec. 3. That this deponent denies each and every allegation contained in paragraphs three of said Knight and Carter motions.

Sec. 4. This deponent admits that said Elizabeth Jane Knight is the mother of said minor and should be her natural guardian and protector, but this deponent charges that said Elizabeth Jane Knight is acting in an unnatural manner towards her own child, and is playing into the hands of said A. W. Carter, who is abusing her confidence; that she is permitting her daughter's estate to be plundered, not only by said A. W. Carter, in his charge of extortionate commissions, but also by the employment of four legal firms, comprising ten different attorneys, whom deponent is informed and believes it is her intention to have paid out of the estate of said minor, and for that reason deponent charges that said A. W. Carter, Kinney, McClanahan & Cooper, Robertson & Wilder, Ballou and Marx and J. J. Dunne, are all conspiring together for the purpose of despoiling the estate of said minor, and are all working for their own private ends, and that the said Elizabeth Jane Knight is so lost to the interest of her child that she fails to recognize this conspiracy, or else wilfully connives therein.

Sec. 5. This deponent admits the allegations contained in sections "first," "second," "third" and "fourth" on pages 3 and 4 of said Knight motion.

Sec. 6. That this deponent is not otherwise informed, than by said Knight motion, as to the allegations contained in sections "fifth," "sixth," "tenth," "eleventh" and "fourteenth," with reference to the knowledge possessed and results accomplished by and actions of said Elizabeth Jane Knight, as therein set forth.

Sec. 7. That this deponent has no information with reference to the allegations contained in sections "seventh" and "eighth" of said Knight motion, other than is shown by the records in this matter.

Sec. 8. That as to the allegations contained in section "ninth" of said Knight motion, this deponent says that the same is a conclusion of law and not being learned in the law he cannot answer the same.

Sec. 9. That as to the allegations contained in section "twelfth" of said Knight motion, this deponent does not know, excepting as therein alleged, the reasons that moved said Elizabeth Jane Knight to ask for the appointment of said A. W. Carter as Guardian of her daughter's estate, but this deponent charges that if her statements in respect thereof are true, it appears that she craftily connived with said A. W. Carter to deprive said Samuel Parker of the possession, management and control of his interest in the Parker Ranch.

Sec. 10. That as to the allegations contained in section "thirteenth" of said Knight motion, this deponent says that he believes that satisfactory relations were maintained between said Elizabeth Jane Knight and said Samuel Parker until the beginning of these proceedings. That this deponent admits that the said Samuel Parker notified the said A. W. Carter of the appointment of E. P. Low as manager of the Parker Ranch, as appears by the exhibits on file in this matter in a suit for partition of the Parker Ranch, now pending in the Third Judicial Circuit, but this deponent does not pretend to be learned in the law and does not know whether or not the contention of said Samuel Parker (that he, as surviving partner of the partnership of said Ranch is entitled thereto) is correct.

Sec. 11. That as to the allegations contained in section "fifteenth" of said Knight motion, this deponent has no knowledge of anything that said John P. Parker, the husband of said Elizabeth Jane Knight, said to her about deponent or about E. P. Low, except her statements therein, but this deponent reiterates that the relations of said John P. Parker and deponent were as friendly as though they were brothers, and although they were thrown together almost constantly from youth to manhood, there was never one harsh word passed between them, and deponent believes it to be false that the said John P. Parker ever told said Elizabeth Jane Knight, or any other person, that he thoroughly distrusted deponent and that he had no use for him; and deponent denies positively that the relations between him and said

Elizabeth Jane Knight have been very limited, but on the other hand says that the same have been most cordial and intimate. That from about the year 1889, at which time deponent first met the said Elizabeth Jane Knight, then Miss Dowsett, up to the time of the filing by him of his said motion or petition herein, she has always acted friendly towards deponent, and prior to the said filing has never shown any signs whatever of distrust or dislike to deponent. That from the time of her marriage to said John P. Parker and up to the time of her marriage with her present husband, she was treated by deponent as a member of his family, and she and deponent would kiss each other at meeting and parting, and while the relations between this deponent and said Elizabeth Jane Knight since her marriage with her present husband have not been so cordial and intimate as before her said marriage, still, deponent has never ceased to have a brotherly interest in said Elizabeth Jane Knight, and said minor has always called deponent "Uncle Jack." That while said Elizabeth Jane Knight and her present husband were residing at the Freeth premises on Emma street, and later at the Buchanan premises on Beretania street (said minor living with them at the time), deponent frequently called on them, and not, as alleged in her said motion, only once, and upon the departure of said Elizabeth Jane Knight for Hawaii, on her first trip after returning to the Islands this last time, deponent went down to the steamer to see her, and said minor, and to say good-by.

Sec. 12. That deponent admits the allegations contained in section "sixteenth" of said Knight motion, excepting as to that portion which charges that the increased intimacy between deponent, said E. P. Low and Samuel Parker has arisen out of the concerted plans on their part to secure possession of the Parker Ranch as aforesaid, against the interests of said minor; and as to this charge and every part thereof this deponent says that the same is maliciously false, wilful and untrue. And this deponent says that the intimacy between himself and said Samuel Parker is neither greater nor less than it ever has been. That deponent never conversed with said Samuel Parker with reference to his proposed action in the filing of his first motion or petition herein. That since the filing thereof he has conversed with said Parker but very little, and chiefly for the purpose of ascertaining whether or not his action in the premises was agreeable to said Parker, and what said Parker's views were with reference to the best interests of said minor. That deponent thoroughly believes that said Samuel Parker loves said minor, his grandchild, and desires to keep said Parker Ranch intact, in accordance with the wishes of J. P. Parker the first and second, as stated in their respective wills, and to share the proceeds realized from said Parker Ranch equally between himself and said minor. That as to the allegation of strained relations existing between deponent and said E. P. Low, deponent says that there was a misunderstanding between him and his brother E. P. Low, in a matter entirely disconnected with the Parker Ranch and said minor. That the difference between them was amicably settled several months prior to any knowledge or information by deponent as to the extortionate charges of said A. W. Carter, as in deponent's motion and amendment thereto alleged, and when deponent had every confidence in the integrity of said Carter, when he had no information which led him to suspect the conduct of said Carter, and while deponent was under the impression that said Carter was, taking it all in all, managing said Ranch in a fairly proper manner, though deponent had heard criticisms of the conduct of F. W. Carter; but that deponent's confidence in the integrity and wisdom of said A. W. Carter was such that deponent did not even suspect the existence of the shocking mismanagement which he has since discovered.

Sec. 13. That as to the allegations contained in sections "seventeenth" and "eighteenth" of said Knight motion, this deponent says that every word therein contained is maliciously

(Continued on Page 9.)

## FOR SALE.

The mountain section of the Mt of Kalaehine, containing an area of 18 1/2 acres.

This land extends from a short distance above the Lunafilo Home to the peak of Tantalus and thence to the head of Manoa valley. It includes a portion of the upper section of Paooa Valley.

The Government Tantalus Road winds through the property for about three miles, making easy access available to all parts. It contains all of the choice, available locations for Mountain Homes.

There are never-falling springs at the upper end of the property which could be opened up and made to furnish an ample water supply. There are several houses and gardens on the property.

The land is heavily timbered and reaches an elevation at its highest point of over 3,000 feet. In the region high elevations bring health. For further information apply to

A. V. GRAB,  
125 King St.

## UNEQUALLED SHORT TRIPS FOR TRAVELLERS.

Tourists who wish to see the windward side of Molokai, with its wonderful cliffs, deep gulches and fertile valleys, with the most unique and beautiful prospects on every hand, should take the trips on the new steamer Likelike. Around Molokai in daylight with night run to Lahaina, the ancient capital.

Sailing, Monday at 5 p. m., returning Tuesday night.

Sailing, Wednesday at 5 p. m., returning Friday night.

New steamer, all deck staterooms, airy and commodious.

Full particulars at Wilder's Steamship Company Office.

In England, Australia and America 75 per cent of the hay used is cut, for it is the most economical; no dirt, no waste. Order some from California Feed Co.

## Oceanic Steamship Company

### TIME TABLE

The steamers of this line will arrive and leave this port as hereunder:

FROM SAN FRANCISCO:	FOR SAN FRANCISCO:
VENTURA . . . . . AUG. 24	ALAMEDA . . . . . AUG. 11
ALAMEDA . . . . . SEPT. 2	SIERRA . . . . . AUG. 29
SIERRA . . . . . SEPT. 14	ALAMEDA . . . . . SEPT. 1
SONOMA . . . . . SEPT. 15	SONOMA . . . . . SEPT. 17

In connection with the sailing of the above steamers, the agents are prepared to issue, to intending passengers, coupon through tickets, by any route from San Francisco to all points in the United States, and from New York by any steamship line to all European ports.

FOR FURTHER PARTICULARS APPLY TO

## Wm. G. Irwin & Co., Ltd

OCEANIC S. S. CO. GENERAL AGENTS.

## Pacific Mail Steamship Co. Occidental and Oriental Steamship Co. and Toyo Kisen Kaisha

Steamers of the above companies will call at Honolulu and leave this port on or about the dates below mentioned:

FOR JAPAN AND CHINA.	FOR SAN FRANCISCO.
DORIC . . . . . AUG. 25	COPTIC . . . . . AUG. 23
SIBERIA . . . . . SEPT. 9	KOREA . . . . . SEPT. 3
COPTIC . . . . . SEPT. 15	GARLIC . . . . . SEPT. 13
KOREA . . . . . SEPT. 27	MONGOLIA . . . . . SEPT. 24
GARLIC . . . . . OCT. 8	CHINA . . . . . OCT. 7
MONGOLIA . . . . . OCT. 20	MANCHURIA . . . . . OCT. 16
CHINA . . . . . NOV. 1	DORIC . . . . . OCT. 22
MANCHURIA . . . . . NOV. 9	SIBERIA . . . . . OCT. 29
DORIC . . . . . NOV. 16	COPTIC . . . . . NOV. 2
SIBERIA . . . . . NOV. 24	KOREA . . . . . NOV. 19

For general information apply to

## H. Hackfeld & Co., Ltd, Agents.

### Pommery & Greno's Champagnes.

Emperor Sherry  
Acme Rye Whiskey  
Canadian Club Whiskey. [Whiskies.  
O.V.G. Special Reserve and the Very Finest Scotch  
Commandador Port.  
King William IV. V.O.P Scotch Whiskey  
Sieger's Angostura Bitters.

Brandies of Marie Brizard & Roger and James Hennessy & Co.  
Eagle Cherries in Maraschino.  
Special Selected Highland Whiskey "Whyte & Mackay's."

Table Water, "White Rock"

Buchanan's "Black and White" Whiskey.  
Rums, some of Jamaica's Finest Productions.  
A.B.C. Bohemian Beer,  
Natoma Brandy,  
Duffy's Malt Whiskey.  
Sparkling Hock and Moselle Wines.

Are on sale in all first-class Hotels and Bars.

## AMERICAN-HAWAIIAN S. S. CO.

Direct Service between New York and Hawaiian Islands, via Pacific Coast

From New York

S.S. "CALIFORNIAN" . . . . . to sail about AUG. 10  
Freight received at all times at the Company's Wharf, 41st Street, South Brooklyn.

From San Francisco

S.S. "NEVADAN" . . . . . to sail AUG. 25  
Freight received at Company's Wharf, Greenwich Street, and each month thereafter.

From Honolulu to San Francisco.

S.S. "NEVADAN" . . . . . to sail AUG. 10

From Seattle and Tacoma

S.S. "NEVADAN" . . . . . to sail about SEPT. 1

From Portland, Or.

For further information apply to

G. P. MORSE, H. Hackfeld & Co., Ltd  
General Freight Agent. AGENTS, HONOLULU.

## Canadian-Australian Royal Mail Steamship Company.

Steamers of the above line, running in connection with the CANADIAN-PACIFIC RAILWAY CO. between Vancouver, B. C. and Sydney, N. S. W. and calling at Victoria, B. C., Honolulu and Suva, Fiji and Brisbane, and DUE AT HONOLULU on or about the dates below stated, viz:

From Vancouver and Victoria, B. C. (For Brisbane and Sydney.)  
From Sydney and Brisbane. (For Victoria and Vancouver, B. C.)

MOWERA . . . . . AUG. 27	MANUKA . . . . . AUG. 24
MANUKA . . . . . SEPT. 21	AORANGI . . . . . SEPT. 21
AORANGI . . . . . OCT. 22	MOWERA . . . . . OCT. 19

Through Tickets issued from Honolulu to Canada, United States and Europe. For Freight and Passage and all general information, apply to

Theo. H. Davies & Co., Ltd. General Agents.

J. F. Morgan, President; C. J. Campbell Vice President; J. L. McLean, Secretary; A. F. Clark, Treasurer; N. E. Gedge, Auditor; Frank Hueston, Manager.

## Hustace-Peck Co., Ltd. DRAYMEN, 63 QUEEN ST.

DEALERS IN

Firewood, Stove and Steam Coal. ALSO WHITE AND BLACK SAND. TELEPHONE MAIN 88.

## Union Express Co., Ltd., 63 Queen Street,

Having baggage contracts with the following Steamship Co.'s Lines:  
Oceanic Steamship Co. Pacific Mail Steamship Co.  
Occidental & Oriental Steamship Co.  
Wilder S. S. Co. Toyo Kisen Kaisha Steamship Co.  
We check your outgoing baggage at your homes, saving you the trouble and annoyance of checking on the wharf.  
Incoming baggage checked on steamers of above companies and delivered with quickness and dispatch at your homes.  
TELEPHONE MAIN 88.

H. J. NOLTE.

## SMOKE GILLMAN HOUSE BOUQUET CIGAR

BEAVER LUNCH ROOM

MOANA HOTEL

WAIKIKI BEACH

Rapid Transit Electric Cars arrive at and depart from the main entrance of the Moana Hotel, every ten minutes.

MOANA HOTEL CO., LTD.

MOANA HOTEL

MOANA HOTEL

MOANA HOTEL

MOANA HOTEL

MOANA HOTEL

MOANA HOTEL

MOANA HOTEL

MOANA HOTEL

MOANA HOTEL

MOANA HOTEL

MOANA HOTEL

MOANA HOTEL

MOANA HOTEL

MOANA HOTEL

GREAT EXCITEMENT AT THE DOCK!  
GREAT CROWDS ASSEMBLE!  
THE BAND PLAYS! CANNONS FIRE!

And all because the steamer brought another large shipment of

### SHERWIN-WILLIAMS PREPARED PAINT

GET A COLOR CARD  
FROM

E. O. HALL & SON, Ltd.

### PUNS AND ELKS

5-3 Beat 8-2

### MAILES AND H.A.C.

Punahou scored a victory over the Mailes Saturday afternoon in an entertaining but rather slow game, 5-3. In a very lively and highly interesting match the Elks put it all over the Honolulu to the tune of 8-2. In the first event the Mailes had more than one opportunity to even up things. Davis on second was out of his proper sphere. He is a good player but has little business on second, where Cusack is at home. When pitched well for the Mailes, striking out ten men against Castle's three, while but three base hits were made off the former, ten being made off the latter. When given numerous bases on ball; Castle gave none and, indeed, has given none this year.

In the Elks-Honolulu game Pitcher Joy, after the Elks had made five runs, was batted out of the box in the eighth inning. Kiley appeared in the blue uniform of the Elks, playing on first and doing splendidly. He was much applauded. Stone a new man from Manila, playing center for the Elks, did little to demonstrate his ability. Carvalho, who caught for the Honolulu, proved himself an able man and an acquisition to be proud of.

In the first inning of the Punahou-Mailes game, the former scored twice and the latter once. Steere went around the diamond on errors by catcher and center. The Punahous made two more runs in the third inning and the Mailes chalked up one in the second and another in the fifth. The Punahous made their fifty run in the ninth, when Woods base hit and started for second. Roberts threw wild, Delorie let the ball pass between his legs and Woods came home.

The eighth inning of the Elks-Honolulu game was full of the wildest excitement and the big crowd was kept roaring throughout. Because of an error by Louis, Bushnell reached second; Russell smashed toward center for first and Bob White, being hit by the pitcher, was given his base. Bases were full and no one was out. Then Wilder hit a daisy to center and brought home Bushnell and Russell. Kiley sacrificed most artistically, slamming to first and White churned the dust at the home plate. Kaal went out by the air line to man on second but Wilder, on the throw in, reached the pan in safety. Stone base hit and then made a spectacular steal of second, picking up all the dirt around that bag on his heroic slide. Evers knocked one to right and Stone, gathering no moss, rolled home in glory, Louis throwing home wildly. Five runs for the Elks!

The present standing of the teams is as follows:

Teams.	P.	W.	L.	Per.
H. A. C.	13	9	4	.692
Kamae	12	7	5	.583
Elks	13	7	6	.538
Maile Hinas	12	5	8	.384
Punahou	13	4	9	.307

PUNAHOU.

ABRBH O A E	
Woods, lb.	2 1 16 1 0
Steere, ss.	5 2 1 4 1 0
Castle, p.	3 1 0 3 3 0
Ahrens, rf.	3 0 0 1 1
Desha, 3b.	3 0 1 0 6 1
Waterhouse, cf.	2 0 0 0 1
Tucker, lf.	4 0 0 1 0 0
Williams, 2b.	4 0 0 1 1
McCorriston, c.	4 0 0 3 2 1
Total	32 5 3 27 15 5

MAILES.

ABRBH O A E	
Hampton, ss.	5 0 3 2 2 1
Roberts, rf.	5 0 1 1 0 1

### Do Not Be Deceived

By a few samples. Anyone can buy samples, but it is not every one can do you good work. We buy our material at wholesale prices therefore can give you the best work at the lowest prices. Get our prices and compare them with others. No charge for examinations and an estimate of your work. Lady Assistant.

### THE EXPERT DENTISTS,

HOURS, 9 to 5; Sundays, 9 to 12.

### Eureka Wickless Blue Flame SHIPPING INTELLIGENCE

#### Cook Stoves.

No kindling—no dirt—no ashes—no hot, fiery kitchen. Splendid for all kinds of cooking and baking.

#### Portable Ovens

This stove generates fuel gas from kerosene or common coal oil. It is so simple that anyone can operate it.

On exhibition at

HAWAIIAN TRADING CO., Ltd

1142 Fort Street, Love Building.

AGENTS WANTED.

### IT'S IN TOWN!

The Celebrated

### GORDON DRY GIN

Is here and can be had at all First Class bars and hotels. Try it and be convinced of its merits. We respectfully call your attention to the official analysis on the back of the bottle. This gin is strictly pure and free from fusel oil and we take a pride in presenting it to the public, with the assurance that it will meet with universal favor.

Ask For It Decline Imitations

### Thos. F. McTighe & Co.,

Sole Distributors for Territory of Hawaii.

TEL. MAIN 140 93 & 95 KING ST.

P. C. BOX 755

when repaired, should be reserved entirely for the courts. At present that building is dangerous, the floor-beams are rotten; you know we had to put a new floor in the Supreme Court room. It was absolutely unsafe. New floors in the upper stories at least, are needed in the other chambers. The walls are strong enough, but the flooring is rotten, worm-eaten.

"I hope the Legislature will find it possible to appropriate \$150,000 for a new department building. This would take eight or nine months to construct. I do not know, as yet, where the Public Works will find accommodations meanwhile. There is no room in the basement of the Capitol.

"I believe Governor Carter has seen Secretary of War Taft concerning the acquisition by the Territory of the drill-shed grounds. There would be just the place for the government office building. We want no more buildings in the Capitol grounds."

At present the Government offices and courts are very crowded. There is practically no accommodation for juries, Federal or Territorial, in the Judiciary building. The Attorney General, in the Capitol, with his deputies and office force, have scarcely room to move around and when the Legislature meets and the Senate demands its chamber, the Public Works will have to move. Just now there is no place in view to which this office can be transferred. It cost the department over \$200 to move out early this year to make way for the Senate at the special session.

In the matter of the dangerous flooring in the Judiciary building it may be remarked that on the opening days of term in criminal court some three or four hundred lawyers, prisoners, grand and petit jurors, witnesses, clerks, reporters and spectators gather—not to mention the judge who presides at the coming term and who is a great man in the physical as well as the judicial sense.

There is time, between now and the opening of the new term of court, on September 6, to permit a temporary fortification of the floor beams in Judge Gear's court room, where the largest crowds will gather, and it is probable that the Public Works will act in the matter. Temporary supporting pillars can be placed beneath the floor. Offices of the Department of Public Instruction are immediately below Judge Gear's room, a heavy tread in this court room shakes the whole floor. Lawyers in moving about in their eloquence often rattle the foundations of the bench, jarring the worm-eaten beams. Judge Gear says he would not be surprised if he fell through on Superintendent of Public Instruction Atkinson some day unless something is done to strengthen the flooring very soon.

There was a young man said : I would—like to poke my face under her hood—And snatch a sweet kiss; It would fill me with bliss.—But he didn't. He wasn't much good.—Houston Post.

#### TIDES.

Time	High	Low
Aug. 15	5:47	1:25
Aug. 16	6:38	2:16
Aug. 17	7:30	3:07
Aug. 18	8:21	3:58
Aug. 19	9:12	4:49
Aug. 20	10:03	5:40
Aug. 21	10:54	6:31
Aug. 22	11:45	7:22
Aug. 23	12:36	8:13
Aug. 24	1:27	9:04
Aug. 25	2:18	9:55
Aug. 26	3:09	10:46
Aug. 27	4:00	11:37
Aug. 28	4:51	12:28
Aug. 29	5:42	1:19
Aug. 30	6:33	2:10
Aug. 31	7:24	3:01

New moon Aug. 11 at 2:27 a. m.  
Tides from the United States Coast and Geodetic Survey Tables.  
The tides at Kahului and Hilo occur about an hour earlier than at Honolulu.  
Hawaiian Standard Time is 10h 30m slower than Greenwich time, being that of the meridian of 157.30. The time whistle blows at 1:30 p. m., which is the same as Greenwich, 0h 0m.

Weather Bureau, Punahou, Aug. 15.  
Temperature—Morning minimum, 72; midday maximum, 83.  
Barometer at 9 a. m., 29.98, steady.  
Rainfall, .02.  
Absolute moisture at 9 a. m., 7.5 gra per cubic foot.  
Humidity at 9 a. m., 70 per cent.  
Wind, light N. E.; weather, clear.  
R. C. LYDECKER,  
Territorial Meteorologist

#### ARRIVED.

Sunday, Aug. 14.  
Stmr. W. G. Hall, Thompson, from Kauai ports.  
Stmr. Kaual, Bruhn, from Maui ports.  
Stmr. Maui, Parker, from Maui ports, Monday, Aug. 15.  
Oil stmr. Argyll, Gilboy, from San Francisco, off port at 1:30 a. m.

#### SAILING TODAY.

Stmr. Likelike, Napala, for Maui and Molokai ports, at 5 p. m.  
Stmr. Nocu, Pedersen, for Kapaa, Anahola, Kilauea, Kailihwai and Hanalei, at 5 p. m.  
Stmr. Kaual, Bruhn, for Maui and Hanalei ports, at 5 p. m.

### A SPORTSMAN'S PARADISE

Eugene Duvauchelle, formerly of the mounted police, is at present in town on a business. Duvauchelle is now located at Puukoa, Molokai, where he is fitting up an ideal place for vacation seekers who are inclined towards sport. Deer and other game abound near his place and for the pursuit of these fine host Duvauchelle is ready to furnish his guests with guns and ammunition. For the fishermen there will be rowboats, sailing boats, canoes, nets and fishing tackle galore. The place will be a unique one of its kind and one which should draw many sportsmen, as this vicinity is especially favored in the way of game and inhabitants of the sunny tribe.

#### HILO POSTOFFICE

(Continued from Page 1.)  
Rose had shipped a few days before on a sugar vessel for Delaware Breakwater and from various things we know we suspected young Rose. I communicated the facts to the inspector in that part of the States and the arrest followed.

"I do not know whether Rose will be returned to Hawaii for prosecution or not. The regular procedure would be to take him before the U. S. Commissioner at Delaware Breakwater. If he is bound over it would be for trial in the United States District Court of this Territory. The boy's youth and the long and expensive trip to Honolulu, coupled with the trivial value involved, may affect the case.

"The penalty for embezzling mail by a postoffice employee is imprisonment from one to five years. The same offense by one not an employee is a \$500 fine or imprisonment one year or both. The laws and regulations regard the postal service as a sacred trust and the penalties for tampering with the mails are very severe. To embezzle a postal card involves just as severe penalties as to take an article of money value.

"The incident will serve to show that the United States mails are sacred and jealously guarded in all parts of the world."

The Weekly Edition of the Evening Bulletin gives a complete summary of the news of the day.

Blank books of all sorts, ledgers, etc., manufactured by the Bulletin Publishing Company.

### NEW - TO-DAY

Hay, Grain and Fancy Groceries

the cheapest in the market at the KALIH STORE cor. King and Beckley Sts. Tel. White 3161. We call for your orders.

### BUSINESS DIRECTORY

H. L. WHITE.—Automobile, Bicycle, Typewriter, Cash Register, General Repairing, Merchant and Alakea.


## WHITNEY & MARSH

WILL have their usual REMNANT SALE on Monday morning. Some pretty remnants in all kinds of Wash Goods for Holokus and Shirt Waist Suits—10 yard lengths. Short lengths for Shirt Waists—in 3 and 3 1-2 yards—in Lawn Pique, Madras, Oxfords and many others. Also Embroideries and Laces in shot lengths at a great sacrifice. These materials are all new, and we are making room for our new stock

DO NOT FORGET THE DATE

## WHITNEY & MARSH

## STOCKYARDS STABLES.



Better go with us on the around-the-island trip. We leave Tuesday, August 15th. TELEPHONE BLUE 3143. E. H. LEWIS, Proprietor.

### The Bike Doctors

Take your sick wheel



To WOODS & SHELTON, 91 KING STREET. Open Saturday Afternoons.

WE ARE AGENTS FOR THE CELEBRATED

### Winthrop Medicines

### U-Ric-Sol-Vent Kidney Tea Blood Purifier

Booklet on the Kidney Free.

### Chambers Drug Co., LIMITED.

Cor. King and Fort Sts. PHONE MAIN 131.

## POLO GAMES

## Maui

vs.

## Kauai

HON. S. M. DAMON'S MOANALUA POLO GROUNDS August 24th and 27th. TICKETS, 50 CENTS

Tickets will be on sale at stores of E. O. Hall & Sons, Woods & Sheldon, Pearson & Potter.

NATIVE HATS AND NIHAU MATS. Also CURIOS of all descriptions at living prices.

### THE WOMAN'S EXCHANGE, HOTEL, NEAR FORT.

THE PACIFIC MUTUAL LIFE Insurance Co. provides for the usual payment at death, but pays for disability as well without extra charge.

920 Fort St.

The matchless policy of

## JAS. F. MORGAN

Auctioneer and Broker.

### Auction Sale OF Household Furniture And Effects

TUESDAY, AUG. 16, 1904, AT 10 O'CLOCK A. M.

I am instructed by Dr. Wilson to sell at his residence on Beretania avenue, next house to Ewa corner of Pihoko street, all the furniture contained in his seven roomed house. There is Oak, Reed and Rattan Furniture, Enamel Iron Beds, Chairs, Iron Crib, new Springs, new Mattresses, Nice Rugs, Ice Chest, Chinaware, Glassware, Stove, Etc.

JAS. F. MORGAN, AUCTIONEER.

### Auction Sale OF GROCERYMEN

Please take notice. CORNED BEEF, LUNCH TONGUE, HAM ROLL.

### New Goods! New Goods!

I will sell at my auction room, 847 Kaahumanu St., on account of whom it may concern, on WEDNESDAY, AUG. 17, 1904 AT 10 O'CLOCK A. M., About 125 cases

### Al Groceries

as above.

### Jas. F. Morgan, AUCTIONEER.

### Auction Sale OF Matting! Matting!

CHINESE AND JAPANESE. WEDNESDAY, AUG. 17, 1904 10:30 O'CLOCK A. M.

I will sell at my salesroom, 847 Kaahumanu St., Lot of Chinese and Japanese Matting.

JAS. F. MORGAN, AUCTIONEER.

### Across the Continent on the NEW OVERLAND LIMITED

CHICAGO IN LESS THAN 3 DAYS NEW YORK 3 DAYS 19 HOURS

### LUXURIOUS EVERY DAY TRAIN

Bath, Barber, Buffet, Library, Electric Reading Lamps in every Booth, Observation Car, Telephone Service.

### SOUTHERN PACIFIC

C. S. FEL, Passenger Traffic Manager. T. H. GOODMAN, General Passenger Agent. San Francisco, CALIFORNIA. 5-10-03.



### Three Trains Daily VIA UNION PACIFIC TO Omaha, Kansas City, Chicago, St. Louis And All Principal Eastern Points

### No Change

To Denver, Kansas City, Omaha, Chicago.

Be sure your ticket reads via the UNION PACIFIC

For full information call on S. F. BOOTH, G. A., 1 Montgomery St., San Francisco, Cal.