

EVENING BULLETIN

THE BEST WAY IS BY USE OF THE BULLETIN'S ADVERTISING COLUMNS

THE READER'S UNCONSCIOUS QUESTION. The question that any reader asks quite unconsciously to himself, as he reads an advertisement is: "Why should I buy Jones' articles in preference to Brown's?" and it is for the advertiser to supply a satisfactory answer.

STEAMER TABLE. From San Francisco-- China, Dec. 10; Zealandia, Dec. 12. For San Francisco-- Nippon Maru, Dec. 5; Fern, Dec. 13. For Victoria-- Monna, Dec. 17. From Victoria-- Aorangi, Dec. 20.

VOL. XII No. 2318 HONOLULU, TERRITORY OF HAWAII, WEDNESDAY, DECEMBER 3, 1902

PRICE 5 CENTS.

TO VISIT CAPTAIN COOK'S MONUMENT

Purpose of Shearwater In Coming To Islands.

TAKES PLACE OF ILL-FATED SLOOP CONDOR

IS SISTER SHIP TO LOST MAN-OF-WAR--OFFICERS WILL BE EXTENSIVELY ENTERTAINED HERE.

The British screw sloop Shearwater, which arrived from Esquimaux yesterday, in many ways recalls the ill-fated British warship Condor, which started from Esquimaux December 3d last year for this port but which was never heard of since, and is now supposed to have foundered in one of the terrific storms which vessels in the same waters at the same time report were raging.

The Shearwater is a sister ship to the Condor, whose station she is now taking. She started from England on her first commission about thirteen months ago and has since that time spent part of the summer in the Bering Sea during the sealing season.

She is now making exactly the same trip as that which the Condor started out to make. She made her start earlier than that vessel in order to escape the storms which generally prevail in these waters in the early part of December.

The Shearwater will stay here until December 12, during which time a run will be made to Kealaekua Bay to visit Captain Cook's burial place and to make such repairs to the monument as may be required.

Local Britishers are of course glad to receive the officers and men of the warship and will do their best to entertain them during their stay. An effort will be made to arrange an Association football match between the local players and a team from the vessel.

COMMITTEE ON COUNTY BILL IS APPOINTED

The Senate met yesterday afternoon at 2 o'clock for the purpose of acting on the report of the committee appointed to investigate the affairs of the Public Works office. It will be remembered that the report was handed in at the forenoon session.

Senator McCandless was the first man on the floor and he moved that the report be adopted. Senator Kalaupokalani moved an amendment to the effect that the report be laid on the table for action at the regular session of the Legislature in February of next year. This motion was lost by a vote of 8 to 5, Senator Woods voting with the Republicans as he had signed the report as a member of the committee.

The next motion put was that of Senator McCandless for the adoption of the report. This was carried by a vote of 8 to 4, Senator Kaohi not voting. This was the final action in relieving James H. Boyd of his position as chief of the Public Works Department.

On motion of Senator Achi the following committee was appointed to call on the Governor for the purpose of informing him that the Senate would adjourn very quickly if he had no further business to present for its consideration. Senators Baldwin, Wilcox and Iseberg.

Senator Achi introduced a resolution to the effect that the pay given the officers at the last session of the Senate be given the present officers. An amendment was made to the effect that the chaplain receive \$5 a day. Senator Achi accepted the amendment and the resolution went through without a dissenting vote.

President Crabbe appointed the following committee to prepare county and municipal bills in accordance with the resolution of Achi which was adopted during the first days of the present special session of the Senate: C. L. Crabbe and L. L. McCandless of Oahu; Senators P. R. Woods of Hawaii; Senator B. E. Kaue of Maui; Senator S. W. Wilcox of Kauai.

CABLE SHIP IS DUE

San Francisco, Nov. 22.--The big steamer Silverton, carrying the cable that she will lay between the ocean beach, near the Cliff House, to Honolulu, is expected in the port in about a week from London. She sailed from Coronel, where she stopped for coal, on November 6, and she will come straight through to this harbor. It is thought that she will only stay in port long enough to replenish her coal supply sufficient to carry her to the islands and back on the cable-laying trip, and she will start out to put down the long wire that will connect the new United States Territory in the Pacific with the Mainland. It is expected that by the end of the year the cable will be in operation and that a year later will see the completion of the cable line through to the Philippines.

NEWS OF THE NAVY

FINE LAUNCH SOON TO COME TO NAVY STATION

SHEARWATER FURNISHED WITH CARDIFF COAL--MONUMENTS FOR NAVAL RESERVATION.

By the last mail from the Coast Captain Whiting, Commandant of the Naval Station, received word from the Navy Department to the effect that the transport Solace, due here in a little while, would bring a fine new forty-foot launch for the station. This boat was recently built at Mare Island for the express purpose of having it sent here. The craft will be the very finest of its kind ever seen here.

In this connection, it might be stated that the old launch was damaged this morning while returning from a trip to the Shearwater with one of the coal barges. Her valve pin was broken.

The Naval Station is furnishing the Shearwater with 78 tons of Cardiff coal today because of the fact that the British screw sloop was unable to secure any of the much desired article at any other place. The Naval Station, learning of this, very kindly offered the amount necessary to the Shearwater people.

The Naval Station is soon to be equipped with a complete outfit of desk telephones. The principal telephone will be at the desk of the Commandant's clerk and the connections with the various offices will be made from this point.

Arrangements are now being made for the erection of stone boundary monuments on the lines of the naval reservation up on the slopes of Punchbowl. In addition to this, the lot set aside for the Commandant's residence is to be fenced off.

News was received by the last steamer from the Coast that Carpenter D. B. Pender who was attached to this station for a long period and who left here to take a place under the naval inspector at the Union Iron Works, recently left the latter place, on sick leave.

The Navy coal barges are going on the marine railway for repairs very soon. The damages in question came about while coaling the Oregon outside recently.

KILLED BY EXPLOSION

The steamers arriving from Kauai this morning bring the news of the death of two Japanese laborers by an accidental discharge of giant powder. The men were laborers on the Makaweli plantation. Last Friday afternoon they were engaged in work on a ditch which is being made in the mountains, mauka of Makaweli. The men had placed a charge of giant powder to blast away some rock, but, after waiting for some time for the discharge to take place, they thought that the fuse had burned out and started towards the place to renew the fuse.

It seems, however, that as they arrived near the place the blast went off. The men were both frightfully mangled but still alive. They were taken to the plantation and word was sent to Dr. Wirthlach. Both men expired from the effect of their injuries before the physician's arrival.

The chinaware belonging to King Edward is valued at \$2,000,000, and it is guarded with the most scrupulous care.

Senate Considers the Reports Of Three Committees

The Senate came together this forenoon at 10 o'clock in its tenth day's session. All the senators with the exception of Cecil Brown were present. After the usual preliminaries, the secretary read a number of communications from A. G. Hayes, secretary to the Governor, replying to various letters of information sent to the Governor yesterday at the instance of the Senate. On motion of Senator Kalaupokalani, these communications were received and placed on file.

Senator Wilcox presented the following report of the committee appointed to investigate the affairs of the Department of Public Instruction:

Hon. C. L. Crabbe, President of the Senate, T. H. Sir:--Your committee to whom was referred the Department of Public Instruction would report as follows: Your committee have interviewed the Superintendent and inquired into the working of the department.

We find that the books appear to be correct although they have not been audited for over two years or since the present Superintendent has been in charge.

The only money handled by the department is rents from school lands amounting to about \$1000 per annum which is paid into the treasury as a government realization. This is also true of money received from book sales and for sales of articles from the reform school. These amounts are paid into the treasury.

The payment of teachers is made by treasury warrant.

Your committee find that the department is carried on in a systematic and satisfactory manner and reflects credit on those in charge.

Respectfully submitted, S. W. WILCOX, J. D. PARIS, L. NAKAPAAU.

This report was the subject of a good deal of comment before it was finally adopted. Senator McCandless starting the ball rolling by asking if the committee had inquired into the matter of the removal of the reform school from its present location to a place in Kahuku.

In commenting on this matter, Senator McCandless stated that he believed it to be a matter of had judgment on the part of those concerned to have the reform school moved. It would be a source of great expense to the government continually. It would be more advisable to have the institution located nearer to Honolulu, the source of supplies.

Senator Iseberg said he did not believe that the committee had been appointed to look into such matters and moved the adoption of the report as presented. Senator McCandless objected, saying that the moving of the reform school was to take place some time next week and something should be done at once.

Senator Dickey moved an amendment to the motion of Senator Iseberg to the effect that the report be accepted and placed on file. There were no recommendations contained.

Senator Baldwin said that he did not believe the Senate had any right to be inquiring into the matter of the removal of the reform school to Kahuku. It had been settled at the last session of the Legislature by the Senate and House of Representatives acting together. Anything the Senate might do

and counter checks are such as to make it almost an impossibility for errors to occur or the Government to be defrauded. It would be well for a similar system to be adopted throughout the islands.

Your committee recommends that the next Legislature, in case the County Bill does not greatly reduce the work of the Department, should appropriate a salary for an additional assistant to the Attorney General, as the present force is entirely inadequate to perform the labor required.

Respectfully submitted, C. H. DICKKEY, Chairman, JOHN T. BROWN.

I agree with the other members of the committee in the above report, with the exception of the last part in regard to an additional assistant to the Attorney General. I do not believe that a good policy to increase the numbers of officers.

W. C. ACHI. Senator McCandless presented the following report for the committee appointed to investigate the affairs of the Land Office and this too was accepted and placed on file without comment.

Honolulu, Dec. 3, 1902. Hon. C. L. Crabbe, President of the Senate.

Sir:--Your committee appointed to examine the Department of Public Lands, beg to report as follows: On Saturday, November 22, we began our examination. Owing to the illness and absence of the cashier, our first act was to seal the strong box in the safe, which contained the cash.

The balance of the day was devoted to checkings and examinations. On Monday the cashier appeared, the cash was counted and found to contain the following: Gold and silver coins \$154.25

Receipts for salaries and incidentals 772.60 Treasury warrants 208.55 Plantations draft 195.85 Plantation draft 43.82

Making a total of \$1,375.17 But for lack of sufficient time, we have been unable to verify this balance.

Criticize Remittances. Your committee disapproves most emphatically of the custom of the Commissioner allowing his sub-agents to remit as cash warrants and receipts for warrants of incidentals, as this allows the employees of the Department to realize on accounts for incidentals, instead of allowing them to pass through the regular channels, the same as the general public. We would like to mention the fact that the methods of keeping the accounts are obsolete and cumbersome; and while they are apparently plain to the employees of the Department, they are by no means so to the uninformed, and without the aid of the employees, who, by the way, have grown up with the Department, it would require much time and trouble to make a complete and satisfactory proof of the actual conditions existing. We would suggest and advise radical changes--the condensing and systematizing of all accounts, making them readily understood by any one at all familiar with accounts.

No Serious Irregularities. So far as the examinations have gone, there have been discovered no serious irregularities, but we have

(Continued on Page 5.)

and counter checks are such as to make it almost an impossibility for errors to occur or the Government to be defrauded. It would be well for a similar system to be adopted throughout the islands.

Your committee recommends that the next Legislature, in case the County Bill does not greatly reduce the work of the Department, should appropriate a salary for an additional assistant to the Attorney General, as the present force is entirely inadequate to perform the labor required.

Respectfully submitted, C. H. DICKKEY, Chairman, JOHN T. BROWN.

I agree with the other members of the committee in the above report, with the exception of the last part in regard to an additional assistant to the Attorney General. I do not believe that a good policy to increase the numbers of officers.

W. C. ACHI. Senator McCandless presented the following report for the committee appointed to investigate the affairs of the Land Office and this too was accepted and placed on file without comment.

Honolulu, Dec. 3, 1902. Hon. C. L. Crabbe, President of the Senate.

Sir:--Your committee appointed to examine the Department of Public Lands, beg to report as follows: On Saturday, November 22, we began our examination. Owing to the illness and absence of the cashier, our first act was to seal the strong box in the safe, which contained the cash.

The balance of the day was devoted to checkings and examinations. On Monday the cashier appeared, the cash was counted and found to contain the following: Gold and silver coins \$154.25

Receipts for salaries and incidentals 772.60 Treasury warrants 208.55 Plantations draft 195.85 Plantation draft 43.82

Making a total of \$1,375.17 But for lack of sufficient time, we have been unable to verify this balance.

Criticize Remittances. Your committee disapproves most emphatically of the custom of the Commissioner allowing his sub-agents to remit as cash warrants and receipts for warrants of incidentals, as this allows the employees of the Department to realize on accounts for incidentals, instead of allowing them to pass through the regular channels, the same as the general public. We would like to mention the fact that the methods of keeping the accounts are obsolete and cumbersome; and while they are apparently plain to the employees of the Department, they are by no means so to the uninformed, and without the aid of the employees, who, by the way, have grown up with the Department, it would require much time and trouble to make a complete and satisfactory proof of the actual conditions existing. We would suggest and advise radical changes--the condensing and systematizing of all accounts, making them readily understood by any one at all familiar with accounts.

No Serious Irregularities. So far as the examinations have gone, there have been discovered no serious irregularities, but we have

(Continued on Page 5.)

PORTO RICAN LABOR

New Orleans, Nov. 19.--The committee on resolutions reported this morning at the convention of the American Federation of Labor on the resolution that Porto Rican laborers taken into Hawaii are being ill-treated and should be returned by the United States Government to Porto Rico. The resolution recommends that the charges of ill-treatment be investigated and if found to be correct a provision for the return to Porto Rico be made by the Government.

In the United States District Court, on motion of Mr. Lewis, for the Plaintiff, Judge Keece granted the defendant until January 12 to file depositions in the cases of Catherine Plitz and Thos. Tortensen against Wilber's Steamship Company.

MAUNA LOA'S TIME

TO LAHAINA IN ABOUT FIVE AND HALF HOURS

PRESIDENT WIGHT HAD GIVEN ORDERS TO KINAU PEOPLE NOT TO RACE WITH OTHER BOAT.

This morning, President J. A. Kennedy of the Inter-Island Steam Navigation Company, received a wireless telegram from Lahaina that the company's flagship Mauna Loa arrived there at 6:20 last night, thus making the trip from Honolulu to Lahaina in 5 hours and 25 minutes and arriving thirty-six minutes previous to the Wilder flagship Kinau, which arrived at Lahaina at 6:56 last night.

As the Kinau passed the lighthouse six and a half minutes later than the Mauna Loa on leaving Honolulu harbor, this makes the actual difference in steaming time of just about one half hour to the Mauna Loa's credit.

The Inter-Island people naturally feel much elated over this result of the run as it had been looked forward to with much expectation now that the Kinau returned from the San Francisco shops with new boilers and many other improvements.

President Wight of the Wilder Steamship Company, when seen this morning, stated that he also had received from Lahaina a wireless message to the effect that the Mauna Loa had beaten the Kinau by about half an hour.

"However, it was not a race in any way," said Mr. Wight. "The Mauna Loa is a faster boat than the Kinau and we acknowledge it. The Mauna Loa certainly ought to be faster as she has about twice the horse power of the Kinau. The Mauna Loa has, I believe, 1200 horse power, while the Kinau has only about 657."

"Furthermore, I had given strict orders, forbidding the Kinau to enter into a race. To go a few knots faster than the usual speed requires about one-half times as much more horse power. Horse power means coal and coal means money."

KAENA NEEDS REPAIRS. The tug Kaena, which for a long time has been engaged in the Pearl Harbor dredging operations, arrived from that place last night in order to lay up in Honolulu for some time to undergo an overhauling. The Kaena has been doing a good lot of hard work at Pearl Harbor and is in need of general repairs.

THE BULLETIN has added 616 new subscribers to its lists in the last three months.

"For Sale" cards at Bulletin office.

(Continued on Page 4.)

THOMPSON ONCE MORE ON TRIAL

Nolle Prosequi Granted Woodward To Allow Him To Testify.

JURY IS OBTAINED EARLY THIS FORENOON

JUDGE DE BOLT DELIVERS AN ADDRESS ON DECORUM TO THE GENTLEMEN OF THE BAR.

At ten minutes after 10 o'clock this morning, both the Territory and the defendant expressed satisfaction with the twelve men then in the jury box, when the trial of Alexander D. Thompson under the second indictment of himself and Woodward for embezzlement of public moneys, proceeded. The jury was sworn standing thus:

K. R. O. Wallace, P. H. Burnett, E. H. Clapp, K. B. Porter, William Jenkins, Edward Nuhoff, D. T. Bailey, A. K. Viera, Chas. H. Bellina, F. Kruger, Raymond Reyes and J. H. Black.

Immediately after the swearing of the panel, Juror Wallace arose and stated his doubt that he was qualified to serve, as he received regular Government pay as clerk to the Board of Fire Commissioners. Deputy Attorney General Cathcart held that the juror should serve now since the jury had been sworn. George A. Davis for the defendant said the juror might be withdrawn and another substituted, the defendant waiving objections to such procedure. Judge De Bolt doubted if the position stated was a disqualification under the law. Mr. Davis said it was not right that one receiving Government pay should be a juror in a criminal case, and began searching the pages of a book. The court said the law made a distinction between a Government official and a Government employe. Mr. Davis withdrew his objection.

Jurors of the regular panel were excused until 9:30 tomorrow morning and the foreman identified.

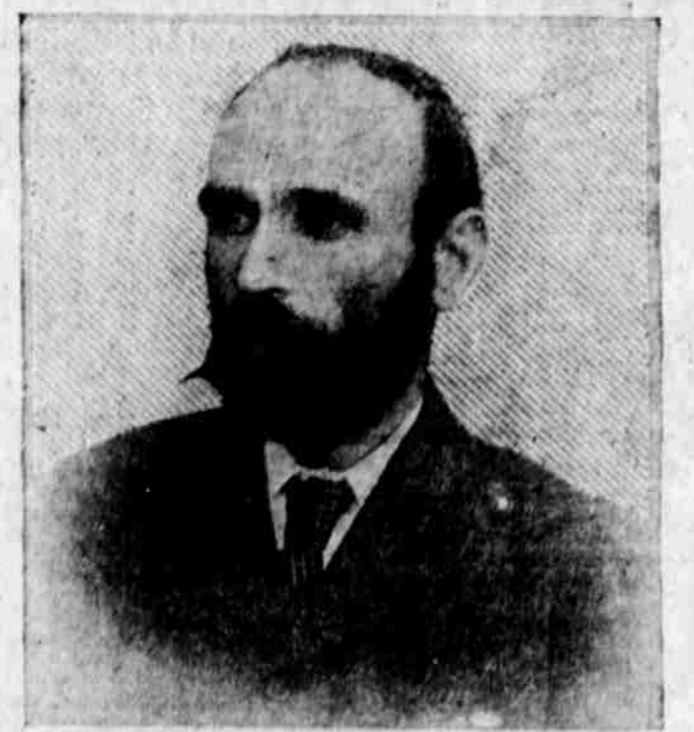
At the outset of proceedings, Mr. Davis called attention to an article in the Hawaiian Star, attacking himself for his conduct of the defense in the trial of Thompson under the first indictment.

Judge De Bolt made quite lengthy remarks on this question of privilege, in which he stated that it was improper for any newspaper to comment upon a pending case. At the same time he said the best way for counsel to avoid public criticism was to act in a manner not inviting it. The court reverted to the occasion, on the previous trial, when it felt constrained to instruct a juror that they must not address remarks to each other nor talk to one another in addressing the court. Judge De Bolt mentioned Mr. Davis down when he began a reply to the court, and stated that his remarks were not intended to be personal further than the words implied.

Mr. Davis, in examining the first juror called after the discourse from the bench, asked him if he had read the article in yesterday's Star referring to himself. Mr. Cathcart objected but the court allowed the question. It was put to every juror afterward examined, but all answered like the first. Not one of them had read the Hawaiian Star of yesterday.

Judge De Bolt, in ordering the trial to proceed, again made remarks for the benefit of counsel, saying he trusted the trial would be conducted in a regular and orderly manner. Mr. De

(Continued on Page 4.)



MICHAEL DAVITT, WHO IS VISITING THE UNITED STATES.

The present visit to this country of Michael Davitt, the noted Irish patriot and journalist, was undertaken because of his desire to attend the convention of the United Irish League of America, whose sessions have just been concluded in Boston. Accompanying Mr. Davitt are John Dillon and John E. Redmond, both men of international reputation. Redmond is chairman of the Irish Nationalist party in the house of commons. As a journalist Davitt has long been conspicuous in the Irish cause and in consequence has spent many months in English prisons.

ROBINSON REFUSED

Mark P. Robinson was notified yesterday that he was the choice of the executive committee of the Republican party for the Treasuryship and the Governor was also notified of the action taken by the committee at its afternoon meeting. The Governor wrote to Mr. Robinson that he was the unanimous choice for the position and the latter wrote back that he could not under any circumstances accept the billet. This closed the incident and put the people interested in a very difficult position. It was thought that when the whole matter was laid before Mr. Robinson he would surely accept it on the score of duty alone.

However, nothing could prevail on Mr. Robinson, he having a long time ago, when his name was first suggested, stated that he would not accept if the position were offered him.

It was thought yesterday that the Senate would be able to adjourn today but the Treasuryship matter has mixed things a little and so the upper house in special session will have to continue a little longer in its work.

Weekly Edition of the Bulletin, \$1 per year.

Wells, Fargo & Co. EXPRESS

OFFICE MASONIC TEMPLE, with American Messenger Service. TELEPHONE MAIN 199

THE PACIFIC SURETY CO., OF CALIFORNIA

A. V. GEAR, Agent acts as bondsman on all kinds of bonds, such as

- Administrators, Appeal for Costs, Attachment of Realty, Assignees, Bookkeepers, Bank Officials and Clerks, Benevolent Societies, Corporation Officials, Contractors, City Officials, County Officials, Executors, Employers, Guardians, Government Officials, Internal Revenue, Postoffice Officials, Receivers, Territorial Officials, Etc., Etc., Etc.

For further information inquire at office of HONOLULU INVESTMENT CO., JUDD BUILDING, MERCHANT STREET

Advertisement for 'TWO SOLES' shoes. Features an illustration of a woman in a long dress and hat. Text includes: 'As fine as can be bought. Best shoes made under sun. Who can make more words express a graceful line a superbly shaped last? Who can define style? But you know it when you see a pair of All America \$3.50 SHOES. You literally see style sticking out all over them. The smartest show in town. It is a pleasure to show it. MANUFACTURERS' SHOE COMPANY, LIMA, ORE.'

### HOUSE LIST

**FURNISHED**  
 Simmons, Manoa ..... \$12.50  
 Weaver, Manoa ..... \$25.00

**UNFURNISHED**  
 Aiea, Keeaumoku St. .... \$75.00  
 Heikura, Kinau St. .... \$15.00  
 Alwata, Kinau St. .... \$10.00  
 Pratt, Magazine St. .... \$35.00  
 Cummings, Arislan St. .... \$27.00  
 Alwata, Pensacola St. .... \$30.00  
 Weaver, Makiki St. .... \$27.00  
 Camara, Young St. .... \$27.00  
 Ouderkirk, Makiki St. .... \$21.00  
 Haynes, Keeaumoku St. .... \$18.00

**Henry Waterhouse & Co.**  
 STOCK, BOND & REAL ESTATE BROKERS.  
 Fort and Merchant St.  
 Telephone Main 312

### MASONIC TEMPLE

**WEEKLY CALENDAR.**

**MONDAY**  
 Hawaiian States—Election.

**TUESDAY**  
 Pacific—Third Degree.

**WEDNESDAY**  
 Hawaiian—First Degree.

**THURSDAY**  
 Rose Croix—Regular.

**FRIDAY**  
 Pacific—Third Degree.

**SATURDAY**  
 Aloha Temple—Business Meeting.

All visiting members of the order are cordially invited to attend meetings of local lodges.

### HARMONY LODGE, No. 3, I. O. O. F.

Meets every Monday evening at 7:30 in Harmony Hall, King Street. Visiting brothers cordially invited to attend.

### MYSTIC LODGE NO. 2, K. O. F.

Meets every Tuesday evening at 7:30 in Harmony Hall, King Street. Visiting brothers cordially invited to attend.

### GAURU LODGE, No. 1, K. O. F.

Meets every Friday evening at 7:30 in Harmony Hall, King Street. Visiting brothers cordially invited to attend.

### WILKINSON LODGE No. 8, K. O. F.

Meets every Saturday evening at 7:30 in Harmony Hall, King Street. Visiting brothers cordially invited to attend.

### HONOLULU LODGE 616, B. F. O. E.

Honolulu Lodge No. 616, B. F. O. E. will meet in their new hall, 600 Mission Street, Honolulu, every Friday evening.

### THEOSOPHICAL SOCIETY.

Will meet after December 1st at the Ideal Building, 1000 Union St. and 1st Street. MARY D. HENNING, President.

### B. W. Quinn,

modern plumbing  
 REPAIRS OF Ovens, Appliances and Stoves put in.

### French Laundry

ALL WORK DONE BY HAND  
 LARGEST CARRYING A SPECIALTY.  
 Telephone Blue 3355.

### Gonzales & Co.,

WHOLESALE CROCKERY AND WINE MERCHANTS.  
 225 E. Union St., Honolulu, H. I.

### Artistic Floral Pieces

Flowers  
 T. O. McGuire

## The NEW ENGLAND BAKERY

have enlarged and refitted their popular dining room in order to accommodate their many customers.

### handsome private rooms

for ladies, with Electric Lights and Fans—Cool and Pleasant.  
**LIGHT LUNCHEON**  
 served, suitable for this climate and at such prices that only a First-Class Bakery could afford to make, including the finest cup of coffee in the city.

### FOR RENT

Just completed fine large 9-room house (3 bedrooms), electric lights, Modern plumbing. Lot 623125, Corner of Wilder Ave. and Alexander St. On Rapid Transit line. Low rental.

### Castle & Lansdale, REAL ESTATE AND INVESTMENT AGENTS.

505-507 Stangenwald Bldg. Tel. Main 70.

### WINE WITH WORTH TO IT!

From us you can get the sort of wine that will give you health and make you feel that the purchase was worth while.

**Our Bottle of Jefferson Whisky** is highly recommended. Ask anyone that has tried it and hear its merits. Remember we guarantee it to be straight WHISKY. It is used by nearly all the doctors for medicinal purposes, and can be used by anyone the same way.

### Hoffschlaeger Co LIMITED.

25 King St., near Bethel

### Honolulu Investment Co LIMITED.

**Real Estate and Insurance Agents**

**OFFICERS:**  
 A. V. Gear, President  
 Henry Smith, Vice President  
 Emmett May, Secretary  
 J. H. Fisher, Treasurer  
 J. D. Holt, Auditor  
 W. G. Amley, Auditor  
 T. E. Wall, Auditor

### JUDG BUILDING, MERCHANT ST.

Property Bought and Sold  
 Life, Fire, Marine and Plate Glass Insurance.

### HUMPHREYS, THOMPSON & WATSON

Attorneys and Counselors-at-law  
 Corner King and Bethel Streets  
 Telephone Blue 601

### ICE Manufactured from pure distilled water

Delivered to any part of city by chauffeurs drivers.  
**Oahu Ice and Electric Co**  
 Renewal. Telephone Blue 3151.  
 HOFFMAN & MARKHAM

### Fred. L. Waldron SHOKER AND COMMISSION MERCHANT.

P. O. Box 565; Tel. Blue 791; Mon & Spreckels Building.  
**P. H. Burnette**  
 Agent to Grant Marriage Licenses. Notary Public and Typewriter. Real Estate, Insurance, Collections.  
 Office, 79 Merchant Street, Honolulu.

### LOCAL AND GENERAL

Head "Wants" on page 6.  
 Head Morgan's column on page 5 for some good bargains.  
 Head Harrison, bookkeeping in evenings, 208 School street.  
 Notice of power of attorney to J. Peck appears on page 5.  
 Grandeur Butler will play at Kamehameha chapel Friday night.  
 Kona coffee to be good must be pure. O. J. Day sells it; 130 per lb.  
 Register today—the for a glass of Bohemian Beer at the Pantheon.  
 Judge Gear has come to Maui to hold court in place of Judge Kalia, who is ill.  
 The Catholic Benevolent Society will meet at the usual time and place this evening.  
 The band will give a concert in Thomas Square this evening at the usual time.  
 J. Andrade will open the Territory Bakery at Kinau and (unknown) streets, on Dec. 4.  
 The Territorial Messenger boys take orders for cut flowers, wreaths and leis. Ring up Main 861.  
 The Weekly Edition of the Evening Bulletin gives a complete summary of the news of the day.  
 For baby carriages and sewing machines and stoves and safes, call on Hoffschlaeger Co., Ltd.  
 All the PRESERVING PRESERVING PAINT CO. ask is a trial and you will be convinced of its merits.  
 Primo Lager has a firm hold on the community, owing to its healthful properties and delightful flavor.  
 The Regies will meet at San Antonio hall this evening at 7:30 o'clock. Visiting brothers cordially invited.  
 The McInerney shoe store is offering suggestions to the wives, sisters, mothers and daughters of Elks. See page 5.  
 Judge Gear appointed Avon H. Crook as administrator of the estate of F. W. McChesney in place of A. H. Wood, resigned.  
 The annual meeting of the Honolulu Yacht & Boat Club will be held in the boat house this evening. Officers will be elected.  
 Patronize home industry, when you need starch, dyes, or Hawaiian goods. All goods here for sale; costs no more and is superior to any imported.  
 Invitations have been issued for the Elks Memorial Day exercises to take place in the Hawaiian Opera House on the afternoon of Sunday, December 7, at 2:30 p. m.  
 Marshal Hendry has received from the Attorney General of the United States authorization to expend what money is necessary in the execution of Tanbara Osaburo.  
 Mrs. Hunter of San Francisco, instead of Mrs. Henry Highton, will talk on Women's Clubs in California tomorrow afternoon at 5 o'clock in the Y. W. C. A. rooms.  
 The twenty taxmen summoned for the second trial of Deputy Assessor Thompson were not sufficient and another venire was issued by Judge De Witt for twenty-five.  
 Near New Zealand on this voyage the steamer Sierra struck and killed a whale. The body hung across the bow and the steamer had to stop and back to get rid of the incubus.  
 Wu Ting Fang spoke in the students of Mills Institute yesterday. He advised the boys to get the most liberal education possible but to remain Chinese and help the empire.  
 Latest advice are to the effect that Commander Bernard who was in command of the French cruiser Protet when that vessel was here not long ago, is now a vice-admiral.  
 Ochiaki, a very expert navigator, has opened parlors on Beretania street near the bridge. His art in Japan is one of the adjuncts of the new profession of medicine as practiced there.  
 Don't forget Camarinos of the California Fruit Market when you want fruit and vegetables. He always has on hand a fresh supply of both California and island fruits; Telephone Main 278.  
 The wireless telegraph service is now open for business to Malibuana and all points on Hawaii and Maui. Telegrams will be received at the Inter-island Telegraph Company's office, 14 Kamehameha street.  
 Camp Theodore Roosevelt, No. 349, Spanish-American War Veterans, will hold its annual election of officers in the quarters in the Oregon block, next Monday evening, December 8, at 8 o'clock. All members are expected to be present.  
 There will be a fair concert, Hawaiian melodies and dancing at Progress Hall, Saturday, December 6, for the benefit of the Kailua-waena organ. Fair and music from 10 to 5. Concert and grand orchestra from 7:30 to 9:30 p. m., to be followed by dancing until 11:30 p. m.  
 During these hard times it behooves every one to make the dollar go as far as possible. This is the privilege now offered by the Golden Rule Bazaar, who are saving their customers from 10 per cent to 50 per cent on all purchases from 50c up. Open evenings, 150 Hotel street.  
 Arrangements have been made by the local clubbers to meet the Yentura upon her arrival today and to give the clubbers of Lord Hawke's Yacht club a hearty welcome to Honolulu. Being that the steamer did not arrive this morning, it is hardly probable that a match can be arranged between the local and visiting teams.  
**CORNER IN POTATOES.**  
 Chicago, Nov. 30.—The agents of Armour & Co. have been busily at work and have almost completed arrangements by which the entire potato crop of the Northwest will be in the hands of that firm. Whole trainloads of potatoes are already standing on sidings throughout Minnesota and Michigan, awaiting introduction to the cold storage warehouses of Armour. A jump to 60 cents a bushel is expected by December 15th.

### Open Work Hoslery Stopped Wedding

New York, Nov. 18.—The marriage of Miss Margaret Mother of Elmhurst, N. J., and Terence Sheehan of Newark, N. J., did not take place as scheduled last evening, in consequence of the discovery by Sheehan that Miss McBerrett wore open-work hoslery. The couple went to an office of a Justice of the Peace in Jersey City, accompanied by two friends, and said that they had come to get married.  
 Just before the ceremony was about to begin the trying of the bride's loosened shoe lace disclosed the fact to the bridegroom that she wore open-work stockings. The bridegroom remarked that he agreed with the views of the Brooklyn clergyman who recently lost his pastorate by denouncing open-worked stockings. In the course of the ensuing dispute between the loving couple the groom said he would not marry a girl who wore such flimsy stockings, and the girl said she would wear whatever she liked. It all ended by the intended bride and bridegroom leaving the Justice's office in angry moods without the marriage taking place.

### WRECK OF ELINGAMITE

An entertainment was held in the social hall of the steamer Sierra on November 20, for the benefit of the survivors of the steamer Elingamite. The proceeds amounted to \$20, which Captain Houdlette forwarded. As the Elingamite was last sighted, before her wrecking on the Three Kings, from the Sierra this action was deemed very appropriate. Prof. Val Vonsden, a mimic and ventriloquist, contributed three sketches as the first part, besides two in the second part. Mrs. Stewart Dawson sang "Because I love you," with Mrs. Lamb accompanying. Miss E. Gray gave a recitation, Mrs. McLean sang, "Sweetest story ever told," with Miss Lyle accompanying. The Star Spangled Banner and God Save the King, by the audience, concluded the entertainment.  
 The Sierra passed within close view of the Three Kings in clear weather. It was thick when the Elingamite struck and her captain is blamed for holding the steamer so far off the New Zealand coast when he knew the dreaded rocks were in his vicinity. The New Zealand Graphic has a fine lot of pictures of the picking up and landing of the survivors, etc. It was one of the most sensational shipwrecks in the South Seas for a long time. On one of the life rafts half a dozen people had but two apples for food in 15 days.

### THOMAS SQUARE CONCERT.

The band will play the following selections at a concert to be given in Thomas Square this evening, beginning at 7:30 o'clock:  
**PART I.**  
 Overture—Life a Dream... Eilenberg  
 Cornet Solo—Eleanor Polka... Wiegand  
 Mr. Charles Kreuter.  
 Grand Selection—Il Trovatore... Verdi  
 Vocal Solo—  
 (a) A Tale of a Bumble Bee.  
 (b) On a Saturday Night.  
 Miss J. Kellins.  
 (c) Honey-suckle and Ben.  
 (d) A Soldier in the Banks.  
 Mrs. N. Adams.  
**PART II.**  
 Selection—Topsy-Turvy Hotel...  
 Monckton  
 "Dance of the Fire-Flies" (new)...  
 Dalbey  
 Waltz—The Skaters... Waldteufel  
 Finale—Coney Corner... Bratton  
 The Star Spangled Banner.

### MRS. MOLINEUX'S DIVORCE.

Stout Falls, N. D., Nov. 18.—Mrs. Roland B. Molineux today gave out in her own handwriting the following statement: "It is true I am in Stout Falls for the purpose of instituting divorce proceedings. I have no plans except that I shall be a resident here for the next six months."  
 Senator Kittredge, her attorney, has enjoined her not to talk further to newspaper representatives.

### BULLETIN newboys out-number those of all other Honolulu papers combined.

Stout Falls, N. D., Nov. 18.—Mrs. Roland B. Molineux today gave out in her own handwriting the following statement: "It is true I am in Stout Falls for the purpose of instituting divorce proceedings. I have no plans except that I shall be a resident here for the next six months."  
 Senator Kittredge, her attorney, has enjoined her not to talk further to newspaper representatives.

The Greatest Tonic in the World Manufactured

**Quina LAROCHE**  
 A Ferruginous Tonic

A combination of the best Cinchona, Rich Wine and Iron as a specific remedy for Malarial Fevers, Colds, Anemia and Slow Convalescence.

W. VOYER & CO.,  
 25, RUE BOULEVARD, PARIS.



"Suddenly attacked" by serious illness on the first morning of school.—Chicago Record Herald.

**THE HALF**  
 has never been told of the excellent tonic properties and delightful flavor of **PRIMO LAGER**  
 Order a case from the brewery, Telephone **MAIN 341**

**Christmas Exhibition**  
 of Fancy European Crockery, Cut Glass, Genuine Vienna Statuary, Bronze Bric-a-brac and Metal Goods,  
 Just to hand ex. German bark "Werra"  
**A FULL LINE**  
 of above goods open for inspection and sale at the store-room of  
**H. Hackfeld & Co., Ltd.**  
 A Special Opportunity for Purchasers to Select Suitable Christmas Presents.  
 Liberal Terms Moderate Prices

**Fancy Parlor Goods**  
 PORTER FURNITURE COMPANY  
 FORT STREET

Just received by the B. N. Castle. Very latest in design and best of workmanship.  
 These goods are not equalled in town either in quality or price.

**why not try HERPICIDE**  
 FOR THAT FALLING OUT OF THE HAIR, DANDRUFF AND OTHER SCALP DISEASES ! ! !

For LEMON SODA ROOT BEER GINGER ALE CREAM SODA ORANGE CIDER PINEAPPLE KOMEL STRAWBERRY Etc., Etc.  
 RING UP TEL. MAIN 11  
 Our goods and methods are standards of the trade  
 Consolidated Soda Water Works Co., Ltd.  
 601 Fort St.

**Hollster Drug Company**  
 FORT STREET.

**A HAPPY DAY**

**C. Q. Yee Hop & Co.**  
 Kahlioni Meat Market and Grocery,  
 FRUITS AND VEGETABLES  
 Beretania Street, Corner Alakea  
 Phone Blue 2511.  
**ALSO AT THE FISHMARKET**  
 MEAT STALLS 19 AND 20.

**SANG CHAN**  
 MERCHANT TAILOR  
 Fine English and American Goods  
**TWO STORES**  
 65 Hotel street, and Hotel near Nuuanu  
 F. G. Box 61. TEL.—WARR 21

**A.B.C. BEERS**  
 Guaranteed Pure. None So Good.  
 Sold Everywhere.

**AH PAT & CO.,**  
 1266 Fort St. above Orpheum.  
 MERCHANT TAILORS.  
 AH PAT, expert cutter, late foreman I. D. Tregloan. Suits latest styles and best cleaning and repairing.  
**Bambon Furniture**  
 —AND—  
 PICTURE FRAMES.  
 All Kinds of Fancy Work Made to Order.  
**S. SAKI.**  
 563 South Beretania St., Near Punchbowl  
 Weekly edition of the Bulletin, \$1 a year.



EVENING BULLETIN
Published Every Day Except Sunday, at 150 King Street, Honolulu, T. H., by the BULLETIN PUBLISHING CO., LTD. WALLACE R. FARRINGTON, Editor

Subscription Rates: Evening Bulletin, Per month, any where in U. S. \$ .75 Per quarter, anywhere in U. S. \$ 2.00 Per year, anywhere in U. S. \$ 7.00

Telephone 356 Postoffice Box 1718

WEDNESDAY, DECEMBER 3, 1902.

Free schools, railroads and newspapers. When China adopts these three leaders of progress as outlined by Minister Wu, her people will overcome all present barriers of prejudice raised by Americans.

If Wu Ting Fang can escape the literal interpretation of heading officials which the Emperor Dowager has a way of practicing, he ought to be able to aid in the inauguration of the reforms so necessary to the progress of China and the Chinese.

It stands to reason there should be a general reduction of Territorial salaries by the next Legislature. The men who are to pass the county and municipal government law must see to it that the threat of local self-government doubting the amount paid in salaries is not made good.

Senator Achi's point on the Attorney General's Department is well taken. From the majority report of the committee on this Department, it appears the Territory is paying a first-class salary for the head of the Department to render opinions and sign vouchers. There is nothing in the report to show the head of the Department to be overworked.

Not long after a Brooklyn minister preached a sermon on the evil of women wearing open-work hose, a wedding was put off because the prospective bridegroom discovered, when trying his fiancée's shoes, that she wore the latest style in socks. Thus ministers and bridegrooms furnish material to explain the truth in "What fools these mortals be."

The Oakland candidate who received a box of poisoned candy previous to the election but did not discover the character of the stuff till after he was defeated furnishes an example of ill luck deserving sympathy. The poisoner's purpose was doubtless to put the candidate out of the running and at least an apology is due for nearly killing the man after the votes were counted.

The Governor and his Senatorial advisors are doing well to make haste slowly on the matter of appointments. The heads of departments have very important work before them. There is a great deal to do and it requires the most painstaking care. The officials must not only be thoroughly capable but able to work together with the harmonious energy needed to whip department affairs into proper shape for the session of the Legislature.

BROTHERS AND POLITICS.

The Republicans reverse in the State of Rhode Island has brought to general public attention the differences of political opinion in United States Senator Aldrich's family. It appears that Democratic supremacy this year puts that party in a fair way to carry the Legislature two years hence and elect a Democratic successor to Senator Aldrich. The present leading candidate among the Democrats whose campaign for the next Legislature has already begun, is Clarence A. Aldrich, the present Senator's brother. Although these brothers are leaders in their respective parties, have been political opponents in many campaigns and bid fair to be pitted against each other for a seat in the United States Senate, it has yet to be recorded that their opposing political views have in any way interfered with proper friendly family relations.

While the situation in the Aldrich family of Rhode Island is somewhat unusual, it represents in many of its phases the true basis of American politics—that citizens should be guided by their honest convictions on political principles and respected accordingly. We in Hawaii have a somewhat similar situation in the person of two leading Hawaiian-Americans, brothers and representatives of a royal family, who are leaders in the Republican and Democratic parties respectively. As a general rule, however, Hawaii's political differences are carried out on such high ground and at times on such highly dignified lines. An element of politeness usually rears opposing political opinions as next door to criminal acts, being the highest motives any able citizen

allow their enthusiasm or bigotry to lead them into a strain of personal bitterness and at times evil innuendo which is as far removed from the principles of good politics or good citizenship as is possible. Some citizens are so far convinced of the righteousness of their personal political opinions as to lead many to think that they claim a degree of infallibility on a par with the generally recognized power of the Divinity. The inevitable result in an American community is extreme measures that pass beyond the boundaries of common sense and decency. The people see the folly and uselessness of it all and the fair minded sentiment gains its proper sway.

American history has furnished plenty of instances of political contentions that have given rise to the most bitter personal warfare, families estranged and homes broken up. Hawaii has had its experience with just such conditions. The prevailing characteristic of American political activity, however, is its freedom from petty personality and its recognition of the right of self-respecting honest men to differ on matters of principle and public policy and yet retain the cordial personal relations which mark men of broad character. Honest motives and purity of purpose are the highest standards by which American citizenship can be gauged. The man or men who go after their fellow countrymen with the political whip and sledgehammer of personal vituperation and malicious misrepresentation are soon sized up by fair minded, free born citizens who refuse to be driven or dictated to like a herd of beasts or slaves.

W. R. Hearst now talks seriously with the men who are grooming him for the Democratic Presidential nomination in 1904. Had it not been for D. B. Hill, Hearst had a good chance for a try at the New York Governorship. Hill ruled otherwise, and Coter's defeat with Hearst's big Congressional victory make many things possible for the young newspaper owner. Should Hearst ever become President it would be interesting to note what change of opinion he would undergo on the subject of cartooning.

THOMPSON ONCE MORE ON TRIAL

(Continued from Page 1.)

He declared he had never been censured by any court of record until he came to this country. Judge De Bolt, with a conciliatory gesture, made this soothing statement: "I have known Mr. Davis for a number of years, and found him to be a gentleman of high character and a lawyer of great ability." Mr. Cathcart opened the Territory's case to the jury, reading the indictment presented jointly against Thompson and Joseph Woodward. It contained three counts, each charging the embezzlement of \$5,000.

Mr. Davis objected to the calling of any witnesses or the giving of any evidence, on the ground that there was no provision in the laws for the office of deputy tax assessor, nor authorizing any such official to collect or disburse public moneys. The objection was overruled and exceptions were noted.

J. W. Pratt, tax assessor for the first division, was called to prove the position held by the defendant. Mr. Cathcart reserved the privilege of recalling the witness. Mr. Davis objected to allowing evidence to be presented by piecemeal. Judge De Bolt said of course it was somewhat irregular, but there were cases where it would be impossible for the prosecution to make its proof if the general rule were strictly enforced. The objection was overruled and exceptions were noted.

Mr. Davis objected to the introduction of defendant's commission because it was produced in court by the defendant at the previous trial. Mr. Cathcart withdrew the exhibit. When the prosecution was through with the witness, Mr. Davis instead of cross-examining him renewed his objection to allowing one witness to testify at different times. He handed up Abbott on Criminal Cases to the bench, pointing out where it said a prosecution should not present its case by piecemeal. Judge De Bolt did not understand the rule to prevent a witness being called, apart from his chief testimony, merely to prove a formal point. Exceptions were noted to the ruling.

Mr. Davis, cross-examining, asked witness if a nolle prosequi had been granted to Woodward in the first case. This was disallowed and he then asked if a nolle prosequi was to be requested for Woodward in this case. Mr. Cathcart's objection was sustained. Joseph Woodward was called. Mr. Davis objected to the swearing of the witness because an indictment was pending against him in the same case. The objection was sustained. Mr. Cathcart then asked that a nolle prosequi be entered to the second indictment against Woodward. This was granted and the witness was sworn.

VENEZUELA'S TROUBLES

CAUSE OF DIFFICULTIES WITH GREAT BRITAIN

CASTRO CLAIMS BRITISH ARE ASSISTING THE REVOLUTIONARY FORCES—ATTITUDE OF GERMANY.

Willmstad (Island of Curacao), Nov. 20.—It is considered remarkable that President Castro has not resumed the functions of the Presidency of Venezuela, which he gave over to the vice-president when he took the field prior to the battle of La Victoria. This delay on the part of President Castro is regarded by the diplomatic corps as an indication that he is not satisfied that the revolution is over, although he informed the foreign Ministers that it would be completed not later than December.

The strain of the relations between Great Britain and Venezuela, already great, has been intensified by the refusal of the British Government to give satisfaction in the San Righ matter and by the publication by the Government of Trinidad of the decree announcing that the blockade of the Orinoco river ports declared by the Venezuelan Government is null and of no effect. The Trinidad Government has also failed to recognize the Presidential proclamation made the day following the flight of General Matos, and President Castro regards this omission as further evidence that the British are encouraging the revolution.

Mr. Haggard, the British Minister at Caracas, reiterated a few days ago to the Venezuelan Government that Great Britain did not hold herself liable for the action of the San Righ, that she continues perfectly neutral and that as an indication of her conciliatory attitude she refused the San Righ to reit at Trinidad. This statement is not acceptable to President Castro, who insists on having satisfaction.

The organ of the Venezuelan Government of the Trinidad Government, and bitterly attacks Great Britain on that score. It says that Trinidad has been the headquarters of General Matos' revolution, that men and ammunition have been sent from that island and that Great Britain has incited and prejudiced the world against President Castro. The journal declares that the blockade is effective and that British vessels will be seized if they violate it. Minister Haggard declines to make any statement, but in diplomatic circles it is understood that Great Britain would release her ships by force, and that this was one of the purposes of the recently reported entrance of one of her war ships into the Orinoco. Germany is upholding Great Britain and is threatening a rupture of relations with Venezuela.

LIKE SAMOA DECISION.

Berlin, Nov. 19.—The Lokal Anzeiger, commenting on the decision of King Oscar in the Samson arbitration, the text of which has been made public recently, says: "The decision is a splendid justification of the behavior of Germany's representatives in Samoa in 1889 toward American and English. It is a splendid justification of the standpoint that armed intervention without the assent of the German Consul could not be recognized as justifiable, is expressly indorsed, and the rejoinder of England and the United States that this assent was unjustly withheld is rejected."

ASHES OF COLUMBUS.

Seville, Spain, Nov. 17.—The ceremony of depositing the ashes of Christopher Columbus in a special mausoleum, was carried out in the cathedral today. The coffin containing the ashes of the illustrious navigator was borne on the shoulders of a party of naval seamen and behind it walked in procession the Archbishop of Seville, the Cathedral chapter, the Minister of Marine and a number of other dignitaries.

\$100,000 TO HARVARD.

Boston, Nov. 21.—James Stillman, president of the National City Bank of New York, has presented \$100,000 to Harvard University for the endowment of a professorship in comparative anatomy. The fact of this gift was made known at a meeting of the Harvard Overseers held here today, and the professorship endowment was formally accepted.

STEAMER SINKS AND 30 DIE.

Vienna, Nov. 21.—A Danube steamer crowded with workmen sank off Orsova, a frontier town of Servia, on an island in the Danube, yesterday evening. Thirty of those who were on board were drowned. Owing to the darkness the boats from the shore were able to rescue only five persons.

EDITOR BOUTON DEAD.

Cambridge, Mass., Nov. 18.—John Bell Bouton, for about thirty years an editor and proprietor of the New York Journal of Commerce, died here today, aged 72 years. He was the author of a number of works of fiction and of travel.

ASSENT TO YERKES' PLANS.

London, Nov. 18.—Royal assent was given today to all the bills relating to Charles T. Yerkes' "tube" railroad plans for London. The bills providing for the construction of the roads cover an aggregate of 109 miles of underground and surface tracks.

PACIFIC HARDWARE CO. GARLAND STOVES AND RANGES. "Garlands" are made from the Best Grades of Iron Mixed with a quantity of Aluminum, making smooth and durable castings. Only long-experienced workmen are employed in each department for the manufacture of "Garlands". Every part of a "Garland" Stove or Range which comes in contact with fire is fortified to the best advantage against wear. All the desirable conveniences known to Stove making are adapted to "Garlands". No more is asked for "Garland" than for other high-grade Stoves and Ranges, while they possess advantages not to be found in any others. THE BEST IS CHEAPEST IN THE END. PACIFIC HARDWARE CO., LTD. BETHEL STREET, ABOVE KING

The Mutual Reserve Life Ins. Co. OF NEW YORK. Writes Term, Life, Limited Payment, Endowment Policies which contain the essential qualities of Life Insurance Contract. ABSOLUTE SECURITY, LIBERAL, ABSOLUTELY NON-FORFEITABLE ASSURANCE. Special Propositions, Anticipated Surplus, Monthly Pension, Child's Endowment. Liberal Commissions to Good and Reliable Producers. Address all inquiries to FRANK L. WINTER, GENERAL AGENT ROOM 6, McINTYRE BLOCK

A. R. Gurrey, Junior Hotel & Alakea Sts HONOLULU. Furniture Designed—Artistic but not Expensive Framing of Pictures, Pictures, Pottery, Books Agent for Elder & Shepard's Publications A Hawaiian Calendar with Photographs by Miss C. Haskins

LIFE VOYAGE ENDED CAPT. LAURIE DIED AS HIS SHIP MADE PORT. BAD ENDING FOR SHIP GANTOCK ROCK'S TRIP FROM HONOLULU—SHIP'S ESCAPE. San Francisco, Nov. 17.—The good ship Gantock Rock rides at her moorings off Meigs wharf, swinging with the ebb and flow of the tide, but the chains groan wearily in the hawse holes, the orders of the mates are for once low toned and the men move about the decks with softer tread, for in his cabin is the cold form of Captain Lauria the weighty responsibility of the master mariner lifted from his shoulders and his arrival at his final haven recorded by the hand of death. It had been a rather uneventful passage from Iquique whence the vessel cleared with 999 tons of nitrates eighty-nine days ago. Honolulu was mentioned in the charter of W. R. Grace & Co. as a port of call and it was sixteen days ago that a departure was taken from Koko Head, the Paradise of the Pacific dipped below the horizon and the course of the sturdy British ship was laid for the Golden Gate.

COL. EDWARDS HONORED. Washington, Nov. 21.—Secretary Root has taken the first act of the executive branch under the Philippine act by designating Captain Clarence R. Edwards, Tenth Infantry, to be chief of the Insular Bureau of the War Department, with the rank, pay and allowances of Colonel. Colonel Edwards has held the same position, by special detail, under the existing law for the past two years, and in that time has practically erected the bureau into the important instrument of administration that it has become.

VON HOLLEBEN LEAVES BERLIN. Berlin, Nov. 18.—Ambassador von Holleben sailed today for New York on the steamer Kaiser Wilhelm des Grosse from Bremen. The ship was in sympathy with her master, a factor in speed which the first mate on whom the responsibility of command fell, had not realized; she had cheated the log, and when the fog rolled thick yesterday afternoon the mate felt sure that he was still safely off soundings, for sixteen days was a short passage from port to port.

W. G. Irwin & Co LIMITED. AGENTS FOR—Western Sugar Refinery Company of San Francisco. Baldwin Locomotive Works of Philadelphia, Pa., U. S. A. Newell Universal Mill Co. (National Cane Shredder), New York, U.S.A. N. Ohlandt & Co.'s Chemical Fertilizers. Alex. Cross & Sons' high-grade Fertilizers for Cane and Coffee. Reed's Steam Pipe Covering. ALSO OFFER FOR SALE—Paraffine Paint Co.'s P. & B. Paints and Papers; Lucol and Linseed Oil, raw and boiled. Indurine (a cold-water paint) in white and colors. Filter Press Clothes, Cement, Lime and Bricks. CASTLE & COOKE, LTD HONOLULU. Commission Merchants Sugar Factors

AGENTS FOR—The Ewa Plantation Co. The Waiwala Agricultural Co. The Kohala Sugar Co. The Waimea Sugar Mill Co. The Fulton Iron Works, St. Louis, Mo. The Standard Oil Co. The Geo. F. Blake Steam Pumps. Weston's Centrifugals. The New England Life Insurance Co. of Boston. The Aetna Fire Ins. Co. of Hartford, Conn. The Alliance Assurance Co. of London. ALEXANDER & BALDWIN, LTD OFFICERS: H. F. Baldwin, President; J. E. Castle, First Vice President; W. M. Alexander, Second Vice Pres; J. F. Cooke, Treasurer; W. O. Smith, Secretary; Geo. R. Carter, Auditor. Sugar Factors and Commission Agents

AGENTS FOR HAWAIIAN COMMERCIAL SUGAR CO., HAIKU SUGAR CO., PAIA PLANTATION CO., NAIKUU SUGAR CO., KIBBE PLANTATION CO., HAWAIIAN SUGAR CO., KAUAI RAILROAD CO. Wm. G. Irwin & Co LIMITED. Wm. G. Irwin, President and Manager; Claus Spreckels, Vice President; W. M. Giffard, Second Vice President; H. M. Whitney, Jr., Treasurer and Sec.; Geo. J. Ross, Auditor. Sugar Factors and Commission Agents. AGENTS OF THE OCEANIC STEAMSHIP CO. OF SAN FRANCISCO, CAL. Castle & Cooke Importers. LIFE and FIRE Insurance - Agents. NEW ENGLAND MUTUAL LIFE IN SURANCE CO. OF BOSTON. AETNA FIRE INSURANCE COMPANY OF HARTFORD. C. Brewer & Co., Ltd. Queen Street, Honolulu, T. H.

Agents for—Hawaiian Agricultural Co., Okala Sugar Plant Co., Onomea Sugar Co., Honoumuli Sugar Co., Waialua Sugar Co., Hales Sugar Co., Haleakala Ranch Co., The Planters' Line of San Francisco Packets, Chas. Brewer & Co.'s Line of Boston Packets. LIST OF OFFICERS: C. M. Cooke, President; George Robertson, Manager; E. F. Bishop, Treasurer and Secretary; Col. W. F. Allen, Auditor; P. C. Jones, A. W. Waterhouse and Geo. R. Carter, Directors. THE VON HAMM-YOUNG CO., LIMITED. Dr. Archibald N. Sinclair. Offices—Rooms 208-209 Boston Building, Fort Street. Telephone—5851. Hours—11 a. m. to 1 p. m.; 3 to 5 p. m.; 7 to 8 p. m.; Sundays, 12 to 1 p. m. P. O. Box 591. A. C. WALL, D.D.S. O. B. WALL, D.D.S. DENTISTS. Love Building, Fort Street. Hours, 9 to 4. Telephone Main 408.

The First American Savings and Trust Co. OF HAWAII, LTD. CAPITAL, \$250,000.00. President, Cecil Brown. Vice President, M. P. Robinson. Cashier, W. G. Cooper. Office: Corner Fort and King Sts. SAVINGS DEPOSITS received and interest allowed for yearly deposits at the rate of 4-1-2 per cent per annum. Rules and regulations furnished us on application.

BISHOP & CO BANKERS Established in 1888. BANKING DEPARTMENT. Transact business in all departments of Banking. Collections carefully attended to. Exchange bought and sold. Commercial and Travelers' Letters of Credit issued on the Bank of California and N. M. Rothschild & Sons, London. Correspondents—The Bank of California, Commercial Banking Co. of Sydney, Ltd., London. Drafts and cable transfers on China and Japan through the Hongkong & Shanghai Banking Corporation and Chartered Bank of India, Australia and China. Interest allowed on term deposits at the following rates per annum, viz: Seven days' notice, at 2 per cent. Three months, at 3 per cent. Six months, at 3 1-2 per cent. Twelve months, at 4 per cent. TRUST DEPARTMENT. Act as Trustees under mortgages. Manage estates (real and personal). Collect rents and dividends. Valuable papers, Wills, Bonds, etc., received for safe-keeping. ACCOUNTANT DEPARTMENT. Auditors for Corporations and Private Firms. Books examined and reported on. Statements of Affairs prepared. Trustees on Bankrupt or Insolvent Estates. OFFICE, 924 BETHEL ST. SAVINGS DEPARTMENT. Deposits received and interest allowed at 4-1-2 per cent per annum, in accordance with Rules and Regulations, copies of which may be obtained on application. INSURANCE DEPARTMENT. Agents for Fire, Marine Life, Accident and Employers' Liability Insurance Companies. Insurance Office, 924 Bethel St.

Claus Spreckels & Co. BANKERS HONOLULU, T. H. San Francisco Agents—The Nevada National Bank of San Francisco. San Francisco—The Nevada National Bank of San Francisco. London—The Union Bank of London, Ltd. New York—American Exchange National Bank. Chicago—Merchants' National Bank. Paris—Credit Lyonnais. Berlin—Dresdner Bank. Hongkong and Yokohama—Hongkong-Shanghai Banking Corporation. New Zealand and Australia—Bank of New Zealand. Victoria and Vancouver—Bank of British North America. Deposits received. Loans made on approved security. Commercial and Travelers' Credits issued. Bills of Exchange bought and sold. Collections Promptly Accounted For.

Pioneer Building and Loan Association. ASSETS, JUNE 30, 1902, \$70,735.73. Money loaned on approved security. A Saving Bank for monthly deposits. Houses built on the monthly installment plan. Twenty-fifth Series of Stock is now opened. OFFICERS—J. L. McLean, President; J. A. Lyle, Vice President; Geo. P. Denison, Treasurer; A. V. Gear, Secretary. DIRECTORS—J. L. McLean, A. A. Wilder, A. V. Gear, Geo. P. Denison, J. D. Hoyt, A. W. Keel, I. A. Lyle Jr., J. M. Little, E. S. Bo. A. V. GEAR, Secretary. JUDD BUILDING, MERCHANT ST.

The Yokohama Specie Bank LIMITED. Subscribed Capital, Yen 24,000,000. Paid Up Capital, Yen 18,000,000. Reserved Fund, Yen 5,910,000. HEAD OFFICE, YOKOHAMA. The bank buys and receives for collection Bills of Exchange, issues Drafts and Letters of Credit, and transacts a general banking business. INTEREST ALLOWED. On Fixed Deposit, Per cent. For 12 months, 4. For 6 months, 3. For 3 months, 2. Branch of the Yokohama Specie Bank, New Republic Bld., 111 King Street, HONOLULU.

LOTS FOR SALE In Kaplani, Park Addition and Kalia. DAVID DAYTON 187 MERCHANT STREET. Public Typewriting by Miss Ella Dayton

COST PRICES FOR LAMPS



INCANDESCENCE FROM KEROSENE The Best Light Ever in Home and the Cheapest for all purposes to suit the climate.

TRANSCENDENT LIGHT

Received gold medal at Pan American Exposition. For its long life and especially for its safety in case of fire.

No wick to change No chimney to clean No smell No danger

One old fashioned wick lamp is more expensive than two Transcendent System Lamps.

Far cheaper than electricity and a much better quality of light. Lamps for indoor, outdoor, Street Lighting, Projection Work, Etc.



Hanging Lamp

WASHINGTON LIGHT CO., C. W. MACFARLANE, Manager SOLE AGENTS

KAWAIAKEAKUA

From the Springs at Puna.

Arrangements have been made to have this fine mineral water bottled in this city at the Fountain Soda Works.

TERMS:— One Case of 100 Bottles (pints) \$2.50 One case of 50 Bottles (pints) \$4.25

A rebate of One Dollar will be made upon the return of shipping case and 100 bottles. Telephone Main 279.

volcano mineral water

MONUMENTS 100 IN STOCK

Call, we can save you Money.

Scotch & American Granite and Blue Stone



SAFES

MARBLE REPOLISHED AND SET

HAWAIIAN IRON FENCE AND MONUMENTAL CO. 174-180 King St., next to Young Building, H. E. HENDRICK, PROPRIETOR



SANTA CLAUS EMPORIUM NOW OPEN

Two stores; 1,150 square feet of floor space. The largest stock of Toys, Dolls, Games, Wagons, Velocipedes in town. Art Goods, Framed Pictures, European Novelties, Fine Leather Goods. It will pay you to visit us. Open every evening until Xmas.

WALL NICHOLS COMPANY, Ltd

EVEN THE CABLE MAKES NO DIFFERENCE

Our arrangements with San Francisco are such that the choicest California fruits and vegetables are shipped on every steamer carrying freight. Watch the steamers and get fresh good things to eat. We always have them. The last boat brought us

Oranges, Grapes, Limes, Cranberries, Cauliflower, Celery, Cabbage, Squash, Eastern and Cocktail Oysters and the Choicest Creamery Butter

H. MAY & CO. 22 Telephones 92

Beaver Lunch Rooms

Fort St., bet. Queen and Merchants Breakfast, Lunch and Dinner Served.

Everything first-class. Complete Bar. Key West and Domestic Cigars always on hand.

H. J. NOLTE, Proprietor.

Woman's Exchange

HOTEL STREET. Carries the best assortment of Hawaiian and Samoan Curios in town; also Dinner Cards, Calendars, Booklets, Home-made Jellies, Jams and Peas.

"For Rent" cards on sale at Bulletin office.

'Xmas

Christmas Tree Ornaments BON BONS

Largest Assortment in the City

New Styles

Special Discount

Lewis & Co. Ltd

LEADING GROCERS, 1050 FORT STREET.

FIRE INSURANCE

The B. F. DILLINGHAM CO., Ltd. General Agent for Hawaii

Atlas Assurance Company of London Phoenix Assurance Co. of London New York Underwriters Agency Providence Washington Insurance Co Phoenix Insurance Co. of Brooklyn.

ALBERT RAAS MANAGER INSURANCE DEPT. Office 4th floor, Stangenwald bldg.

Rupture

Dr. Patten's Electric's... MAGNETIC ELECTRIC CO., 23 West Side Street, San Francisco, Cal.

THE BULLETIN has added 816 new subscribers to its lists in the last three months.

H. V. AND B. G. MEETING

At the meeting of the members of the Hawaiian Boat Club this evening the election of officers for the coming year will take place and the matter of increasing the club dues will be decided upon.

This latter matter of business, it is expected, will cause a good deal of discussion, and as all the members are interested in it, there should be a good attendance at the meeting.

It is proposed to make the dues double what they are now. Considerable opposition to this move has already been noticed, but those who have the best interests of the club at heart seem to think there is no way out of the woods but by increasing the monthly dues.

The election of officers is apparently of secondary importance, as no slates have been made so far as is known. It is probable that all the old officers will be re-elected to serve again unless other men can be found who will be willing to serve.

The meeting will take place at the club house at 7:30 o'clock this evening.

BASEBALL LEAGUE

The baseball league met last night for the purpose of discussing the season of 1921. It was decided to allow the question of grounds and the like to go over until the meeting to be held on Tuesday night of next week. There was a good attendance when President Chillingworth called the meeting to order. The committee consisting of one member from each of the clubs of the league was called upon to report on the matter of grounds but asked for further time to take up the matter with others interested. It is probable that there will be something tangible to present inside of a week's time.

Secretary Lorin Andrews and A. E. Murphy appeared on behalf of the Elks baseball team with a proposal that they be admitted into the league. There was opposition to action at this time and the matter finally went over for action at the special meeting next week.

President Chillingworth notified the members of the league of his intention to resign. The league by resolution refused to accept the resignation and the utmost pressure will be brought to bear upon Mr. Chillingworth to reconsider his determination.

FLATIRONS AS WEAPONS

The last act of another Magoon building drama was, as is frequently the case, enacted in the Police Court this morning. Henry Kuuli was charged with having beaten a Chinese laundryman who was a neighbor of his. All the parties concerned reside in the structure called the Magoon building at the corner of Queen and South streets. Numerous bellies of Kuuli's testified. Attorney Brooks conducted the prosecution, while H. W. Robinson appeared for the defendant. The drift of the testimony was that Henry had had an altercation with his sister. The sister seemed to have an aloha for the Chinaman and this apparently was returned, for the gallant Mongolian rushed to the rescue accompanied by cohorts of laundrymen who armed with flatirons presented an awe inspiring spectacle.

One Chinaman blew a whistle. Officer Akau soon arrived on the scene. He testified in court this morning that when he arrived the lady in question was in bed in the bliss resulting from the use of alcoholic stimulant. The officer trotted the lady out on the floor to ascertain if she was hurt. No wounds or bruises could be found on her. Neither did the Chinese complainant make any statement that he had been attacked. The defendant was discharged.

TO CUT EXPENSES

From the talk heard on the streets during the past week or so, there is to be a determined stand by the Legislature against the proposed salaries of the Territorial officials. The argument is that since county and municipal government is a practical certainty and since the system will involve a large number of officers as well as a taking over of a great deal of the work now being carried on by the Territorial government, the positions in question will not be worth what they are now. The legislators, and more particularly the House of Representatives, seem determined that there shall be a cutting down of all appropriations to the very lowest limit. It is known that the expenses of the legislative session are to be cut down very materially.

HALL AT LIHUE.

The Lihue Hall Co. has filed articles of association, with the purpose of establishing a public hall at Lihue, Kauai. Its capital stock is \$5,000 in \$10 shares with privilege of increase to \$10,000, and the following are the officers: Rev. Hans Isenberg, president; W. H. Rice Jr., vice president; H. D. Wabard, secretary; H. Rohrig, treasurer; J. H. Coney, auditor. Paul Isenberg takes 100 shares, A. S. Wilcox, and G. N. Wilcox 50 each and others from one to five, the aggregate amount paid up at incorporation being \$2,950. The hall has already been erected, being valued at \$4,000 upon a 30-year leasehold of half an acre of land.

American architects are asked by the municipality of Patras, Greece, to enter a contest for the furnishing of plans for a church to cost \$250,000, which will take the place of the present Church of St. Andrew. The prizes are \$2000, \$800, and \$400. The general character of the architecture must be Byzantine.

Sixteen thousand emigrants have left Norway this year, chiefly for North America. Last year's total was 11,800.

LOCAL AND GENERAL

T. H. Petrie is back from Kauai. Masonic Temple souvenir spoons at G. Dietz.

German girl desires housework. See ad. page 8. Rainier and Primo beers on draught at Criterion. 10c a glass.

The place to get pure Kona coffee is at C. J. Day's grocery, 25c per lb.

The attorneys were still arguing Na'auva vs. Schneck this morning.

Ex S. S. Tampico, Bohemian Beer. Sold only at the Pantheon Saloon.

Five of maiden hair ferns at Morrison's, Thursday, December, at 10 a. m.

The best of liquor and the best drink mixers in town are what patrons of the Columbia get.

Blank books of all sorts, ledgers, etc. manufactured by the Bulletin Publishing Company.

Mark P. Robinson is offering for rent a furnished house on Nuuanu street. See To Let column on page 8.

Butler organ recital for benefit of the Kona Orphanage. Kamehameha chapel is just off the King street car line.

John Ena was this morning called on with reference to the vacant trusteeship but he declined on account of ill health.

Corns and ingrowing nails successfully treated without pain. Dr. Hogue, Oregon block, Hotel street. Office hours 12m to 1 p. m.

The Coyne Furniture Co. has made great reductions in the price of iron bedsteads for a short time in order to reduce their stock.

The only garment fastener that can be relied on is the Notiahook. See illustrated ad in his issue. N. S. Sachs Dry Goods Co. is sole agent.

At the meeting of the members of the Hawaiian Boat Club this evening the matter of increasing the dues and the election of officers will be taken up.

Execution for \$189.87 in the suit of Haseko Mataui vs. Hamada Taji is returned not satisfied for lack of property of defendant on which to levy.

Eight personal tax receipts identified by Woodward constituted all the evidence in Thompson's case produced while that witness was on the stand up Hill road.

The Honolulu Symphony Society will have a rehearsal at the quarters on Hackfeld street this evening at 7:30 o'clock. All members are expected to attend.

W. S. B. Mathews, the American critic, says of Mr. Butler: "He handles his instrument with the mastery we are accustomed to expect of pianists, but rarely find in organists."

An auxiliary police alarm box has been installed close to the entrance of the Public Works office and directly opposite the Senate chamber in the main corridor of the Executive building.

British Consul Hoare and Captain Unproville of the Shearwater, accompanied by an aide, called on Governor Dole this forenoon. The band played on the grounds in honor of the distinguished visitors.

Among the departures for Kauai ports in the W. G. Hall yesterday afternoon were the following: Arthur Rice, Mr. and Mrs. C. A. Rice, M. F. Prosser, M. M. O'Shaughnessy, T. R. Keyworth and J. M. Coulson.

Attorney Kaulukou is today wearing his usual genial smile for David Kapili, who faithlessly shocked his confidence by skipping out after the judge had gotten him from behind the bars by furnishing a bond, was caught yesterday by Officer Puhelu. He is now safely behind the bars.

This morning Stanley Beardmore, president of the Honolulu Association Football League, sent a challenge to the warship Shearwater men to play a game of football on the Makiki grounds on the afternoon of this coming Saturday. The warship has a complement of about 105 men and it is thought that a good team can be picked from them.

Artist Will Lead Polar Expedition

New York, Nov. 17.—The Herald says: Anthony Pala of Brooklyn has been selected to lead the next Ziegler polar expedition. He is only 33 years old, and was born in Jersey City. The greater part of his life he has spent in Brooklyn. He attended the public schools, and on reaching manhood became an artist. He joined Troop C, one of Brooklyn's volunteer cavalry organizations, and served with it through the Spanish-American war. On coming home from Porto Rico he was elected Lieutenant in the 14th Regiment of the National Guard, which position he resigned to go on his first polar expedition, with Baldwin. During the many months he was in the north his abilities won him high commendation, and on the return of Baldwin, Ziegler's attention was centered on the young man because of the praise given him by the Arctic explorers. Ziegler and Pala are now planning the details of the new expedition, which will start in the spring. The arrangements are still very incomplete, but it is known that many members of the Baldwin party will go with Pala. The ship will proceed north to the upper end of Franz Joseph land, and thence a dash will be made for the Pole.

The Toronto Monetary Times records the curious fact that last year, owing to the growth of the automobile habit, something like 30,000 additional fur coats were called for in the European trade. The advance in the scale of prices is from 10 to 30 per cent.—Chicago Inter Ocean.

"I have a grand idea," exclaimed the wild-eyed man. "Try playing ping-pong in an auto with a football and golf sticks!" But his friends, weeping, led him away. The stress of modern life had proved too much for him.

HOW to MAKE 10 per cent a day

Beginning Monday, Dec. 1st.

THE GOLDEN RULE BAZAAR WILL GIVE 10 PER CENT DISCOUNT ON ALL SALES FROM 50 CENTS UP.

EXCEPT TOYS These will be sold at ABOUT HALF PRICE! SALE WILL BE SPOT CASH

—AND— WILL CONTINUE 30 DAYS

Golden Rule Bazaar 186 HOTEL STREET

BIG SALE OF IRON BEDS

We are going to reduce our stock of iron bedsteads. We have too many in stock and have more on the way.

We have made great reductions in prices to assure a rapid sale and you will find now a very profitable time to buy. Come and see them; they are all on exhibition in our store and in the window.

COYNE FURNITURE CO., Limited PROGRESS BLOCK, Corner Fort and Beretania Sts.

SHARP & WISE

HOUSE SIGN and DECORATIVE PAINTERS

CALL and SEE US

761 Alakea St. Phone Main 62

1,000 Signs in 1,000 Hours for \$1,000

The CLIFTON

T. K. JAMES, Proprietor. Private Apartments on suite and single. Finest appointed and furnished house in Hawaii. Mosquito proof throughout. HOTEL STREET NEAR ALAKEA.

AN 'ELK'S' CHRISTMAS PRESENT! We are now showing the most appropriate Christmas gift ever suggested, and if your brother or your husband or your best fellow is an 'Elk' nothing would suit better, be more useful, more practicable or more acceptable. We have a large line of MEN'S SLIPPERS in all styles, which you must see. McINERNEY SHOE STORE

Do you intend to Build? An important feature to a building—either residence or business—is the door locks and other builders' hardware. We carry a full line of only the best, including Corbin and Yale goods. There isn't anything in the line of building materials we do not carry. Lumber, Paints, Oils, Glass, Etc. Besides Artistic Builders' Hardware. Goods are always on display. LEWERS & COOKE LIMITED.

KODAK DEVELOPING MACHINE This is the greatest achievement made in recent years in the direction of a mateur photography. A machine to develop your kodak films in broad daylight and do it as well as is possible in the darkness. We have two sizes; the largest takes a 3 1/2 x 5 1/2 size under 5 x 7; bring your films and we will show you how it works. HONOLULU Photo Supply Co., Fort St.

H. F. BERTELMAN'S Carpenter Shop 15 - MOVED To rear of old stand. Entrance on King street. Orders left at either shop or office at John Nait's store, King St., will receive prompt attention. Weekly edition of the Bulletin, 61¢ a year.

SHARP & WISE

Christmas Presents LACES A splendid lot of Hand Made Lace in Houlton, Dushess, Point Applique, Maltese and Irish Crochet HANDKERCHIEFS Real Lace Handkerchiefs in Brussels, Houlton and Silk Maltese Also a beautiful line of Ladies' Embroidered - Linen - Handkerchiefs including some exceedingly fine ones in hand work. Now being shown at E. W. JORDAN & CO., Ltd No. 10 Store, Fort Street

HONOLULU STOCK EXCHANGE

Table with columns: NAME OF STOCK, QUANTITY, PRICE, etc. Includes sections for MERCANTILE, SUGAR, BOND, and MISCELLANEOUS.

Sales—20 McHryde, \$4.75; 20 McHryde, \$4.75; \$2,500 Waiwala Bonds; 100; 9 McHryde, \$4.75; 5 Oiaa, paid up, \$12.

She Wanted To Feel Like Mary McLane

Chicago, Nov. 21.—Led on by the fascination of a romance to drive away, deliberately, a horse and buggy belonging to another, with the expectation of being pursued and taken to the police station, in order that she might put herself in the place of a criminal and experience all the feelings incident to arrest, Viola Larsen declares herself to be a second Mary McLane. According to the story she told Justice Chott in the Police Court this morning, this 19-year-old girl had freak method in her madness.

"I am writing a thrilling novel," she exclaimed, rather sedately, "and I wanted to feel the part of one of the characters I have created. He is a criminal, and is pursued by the police, who finally overtake him and place him in jail. I wanted to know just how he would feel so that I could describe the character more vividly in my book."

Viola's wild lark, it is believed, was prompted by the story of Mary McLane. The girl seems to have assimilated the essence of the strange philosophy of the cynical miss from Butte. "Yes, I have read Mary McLane," the fair young prisoner admitted, "but I am a stranger character than that. I have an innate desire to experience all the feelings that a human being is capable of in this world. Weird things strike the keynote of my nature."

Dr. Boyd, whose rig Viola stole, will not prosecute.

Fine Job Printing at the Bulletin

Keystone-Elgin WATCHES DURABLE AND ACCURATE The Keystone Watch Case Co. Philadelphia, U.S.A. America's Oldest and Largest Watch Factory For sale by The Principal Watch Dealers in Hawaiian Islands

Jos. Schwartz - Importer of - WATCHMAKERS' AND JEWELERS' TOOLS AND MATERIALS. Drills for Drilling Rod Bars. Room 203 Boston Building.

RATES FOR WANT ADS.
Per line, one insertion ... 15c
Per line, two insertions ... 30c
Per line, one week ... 2.00
Per line, two weeks ... 3.50
Per line, one month ... 6.00
This is the cheapest advertising ever offered the people of Honolulu.

EVERYDAY WANTS AND BUSINESS DIRECTORY

HAWAII'S GREATEST OPPORTUNITY FOR LARGE RETURNS ON SMALL INVESTMENTS

DO YOU WANT ANYTHING?
If so, consult these columns.
If you want employees or if you want employment.
If you want lodging or boarding, or have them to let, if you want to rent rooms advertise in the Bulletin Want Column.
Advertise any want you have and advertise your business.

WANTS

SITUATIONS WANTED.

SPECIAL NOTICES.

HELLO! Have you dandruff? Try Pacheco's Dandruff Killer. At Union Barber Shop.

BOWERS MERCHANT PATROL AND CONFIDENTIAL AGENCY—Competent watchmen furnished for business houses and residences. Office, 178 Beretania St.; Tel. White 991; P. O. Box 234.

WANTED—Purchasers for our "For Rent", "For Sale", "For Lease", and numerous other cards. Apply Bulletin Office.

FOR SALE.

FOR SALE—Household furniture of 5 room house; cheap. Apply 658 Beretania. 2312-1W

FOR SALE—Sorel mare; suitable for family use; kind and gentle. Apply Hawaiian Trading Co., Love block, city. 2312-1W

FOR SALE—100 shares paid up stock in the Olan Sugar Company. Address August Iten, Mountain View, Hawaii. 2311-1W

FOR SALE—Masonic Temple and Kahameha Souvenir Spoons. G. Dietz, Jeweler, 1066 Fort St. 2303-1M

FOR SALE—Cheap cord or filling material for nasty roads and walks; ring up Main 244, M. Yamada. 2303-1F

TO LET.

TO LET—Three unfurnished rooms in Keanah cottage. Apply Honolulu Hotel. 2317-1W

TO LET—Furnished rooms at Mrs. McConnell's Garden lane. 2317-1W

FOR RENT—Two new 2-story cottages, situated on Kukul lane, containing eight rooms each; modern conveniences; rent \$31 per month. Apply to "Landlord," P. O. box 697, Honolulu. 2302-1F

FOR RENT—Furnished Rooms—Nice, cool, mosquito proof rooms; \$2 per week. Alakea St. House, Alakea St. bet. Hotel & King. 2285-1F

FOR RENT—New sewing machines; \$3 per month. Tel. Main 274; the von Hamm-Young Co. 2300-1M

TO LET—Cards for sale at the Bulletin office.

FOR RENT—House of eight rooms, kitchen, pantry and bath. No. 1475 Thurston Ave., near Victoria St. Apply to C. B. Reynolds, 1940 Green St. 2300-1F

TO LET—Cottage on Kalia road, Wai-kihi; cheap. Apply Tramway office, Punahou. 2289-1F

FURNISHED HOUSE FOR RENT—signs for sale at the Bulletin office.

TO LET—Furnished rooms with board at 488 King St.; mosquito proof; hot and cold bath; running water in every room; electric light, etc.; first-class service. 2313-1W

TO LET—Roomy bath tub, with either hot or cold water and all modern improvements. Call at Silent Barber Shop. 2019-1F

FOR RENT.

J. W. PODMORE, 39 S. King St. cor. Bethel, is offering:

FOR RENT. ONE STORE on Alakea and corner of Merchant and Alakea. New Building. Fireproof.

—AGENT—Phoenix Insurance Co. of Hartford. Columbia Bar-Lock Typewriters. Toledo Self Computing Scale Co.

LEASE

FOR LEASE—signs for sale at the Bulletin office.

ROOM AND BOARD.

UNFURNISHED ROOMS TO LET—Cards for sale at the Bulletin office.

HELEN'S COURT—Most centrally located mosquito-proof rooms (town); \$2.50 and up per week; Adama Iano, Mrs. J. Duggan, Prop.

FURNISHED ROOMS TO LET—Cards for sale at the Bulletin office.

LOST.

LOST—Many thousands of dollars through neglecting to have stock sufficiently insured. Honolulu Investment Co. represent four of the strongest fire insurance companies. 2051-1F

FOUND.

FOUND—Insurance against the breakage of plate glass at The Honolulu Investment Co. 2061-1F

HELP WANTED.

F. E. KING'S LIST.

FOR RENT. COTTAGE at Cottage Grove. Five rooms. AT THE BEACH—Cottage; barn and bath house. \$15 per month.

FOR SALE. THE LEASE of 6 lots at the Beach with cottage, barn and bath. House of 11 rooms. 18 yrs. to run. Price, \$1,500; \$300 down; balance \$25 per month. WANTED to trade \$800 residence lot in San Francisco for sugar stock or Honolulu property.

FOR LEASE. LOT at the BEACH, with water, fenced; bath-house. Lease \$75 per year. F. E. KING, Cottage Grove, King Street. Tel. White 1461.

HIGHER BICYCLES

New York, Nov. 17.—Negotiations are pending between the American Bicycle Company and independent manufacturers which will probably lead to an increase in the price of bicycles. Albert Pope and President Coleman attended the convention of the independent manufacturers, which was held here last week, and discussed with them the feasibility of an increase. The American Company's representatives told the independents that if the latter should arrive at a decision to increase prices within judicious limits the American Bicycle Company would seek permission from the courts to join in the maintenance of such prices. There is every prospect that the American Bicycle Company will be turned over to the stockholders before the end of the month. Vermilye & Co. are to finance the reorganization of the company, and their plans are rapidly approaching completion. The reorganization plan involves a radical reduction in the capital stock.

LEOPOLD WILL STAY.

Brussels, Nov. 18.—King Leopold is absolutely unaffected by his narrow escape from assassination. All rumors concerning his abdication are ridiculous and unfounded. The King is stronger and more energetic than ever. Two hours after Saturday's assault he was engaged in conference with his architects over his plans for the beautifying of Brussels and Ostend. His majesty has just bought a large block of newly built houses in this city, which he intends to pull down, as it ruins the appearance of the capitol. He is strongly opposed to sky-scraper architecture. Princess Clementine has renounced her idea of becoming a nun, and purposes devoting herself to her mother's work of protecting struggling artists.

Exposure to Wm. Campbell and cold invariably results in a sudden chill, which if not attended to immediately will cause a cold. By mixing a teaspoonful of Perry Davis' PAIN-KILLER in Laffy a glass of warm water or milk, the whole system will be heated and the danger of cold avoided. Avoid substitutes, there is but one Pain-Killer, Perry Davis'. Price 25c. and 50c.

"House for Rent" signs on sale at Bulletin Office.

Legal Notices.

IMPORTANT PUBLIC NOTICE

The Kona Sugar Co., Limited

RECEIVERS' SALE

Public notice is hereby given that the undersigned receiver of the Kona Sugar Co., Ltd. (a corporation), will, under and by virtue of a decree and Order of Sale made and entered by the Hon. W. S. Edging, Judge of the Circuit Court of the Third Judicial Circuit of the Territory of Hawaii, at chambers on the 5th day of November, 1920, in a certain cause pending before the said Honorable Judge at chambers, entitled, R. W. McCheesney, J. M. McChesney, and F. W. McChesney, partners, etc., vs. the Kona Sugar Co., Ltd., a corporation, and the First American Savings and Trust Co., Ltd., a corporation, sell, at public vendue at the front door of the Court House at Kailua, N. Kona, Island of Hawaii, Territory of Hawaii, on Thursday, the 4th day of December, 1920, at the hour of 11 o'clock a. m., of said day, subject to confirmation by the said Honorable Judge, all and singular the goods, chattels, effects, and property, real, personal and mixed, whereover the same may be situated, of the Kona Sugar Co., Ltd., now in the possession of or under the control of the Receiver in the above entitled cause, or which the Receiver may be entitled to possess or control, that is to say: all of the lands, tenements and hereditaments, all interests in lands, leases and leasehold in-

terests, easements, railroad, railroad equipment, locomotives, flat cars, cane cars, sugar mill and equipment, cane trolleys, cane conveyors, buildings, lumber, tools, agricultural implements, wagons and other vehicles, growing crops, harness, live stock, choses in action, franchises and all rights of said Company and the good will of said Company, and all and every the property of whatever kind or nature, belonging to the said Kona Sugar Co., Ltd., whether the same be mentioned in the schedule below, or not, said estate and property will be sold as a whole and not in parcels.

Terms of Sale.—The Receiver before accepting any bid will require that the person making the same shall deposit with him five per cent of the amount of such bid and upon the acceptance of the same an additional five per cent; the balance (90 per cent) of the purchase price to be paid upon confirmation of the sale by the said Honorable Judge; or the purchaser may give a bond for that amount, to the Receiver, with sureties, to be approved by the said Honorable Judge, that he (the purchaser) will, to the amount, pay such persons as the Court shall order such sums as may be in such order directed to be paid.

Schedule.—The following is the schedule of the property to be sold in pursuance of the foregoing notice and such schedule is believed to be correct: viz: One triple effect sugar mill, two Smith-Valle pumps, duplex, two 4 in. pipe vices, one 2 1/2 in. pipe vice, three sets pipe dies, two 30 centrifugals, one 25 ton vacuum pan. Engines, boilers, cane carriers, etc., one 9 ton locomotive, one 19 ton locomotive, seven miles narrow gauge railway, 35 lb. rails, 330 sections portable track, 16 ft. 20 lb. rails, 4 portable switches, fish plates, bolts, etc., 1 Howe scale, track, 16 cane cars, 28 ft. long, 17 cane cars, 12 ft. long. Wire cables, 2 reels 1-2 in. P. L. rope, 2540 ft., 2 reels 1-2 in. P. L. rope, 2660 ft., 2 reels 1-2 in. P. L. Rope, 5280 ft., 1 reel 1-2 in. rope, 7920 feet, 24 Crosby clips, 8 pairs hauling clamps, 16 patent steel draft hooks, 300 trolleys, 6 in., 400 trolleys, 5 in., 300 trolleys, 4 in. Implements: 11 plows, 9 cultivators, 3 feed cutters, 2 wagons, 2 tons, 2 wagons 3 tons; 2 blacksmith shops, anvils, tools, forges, etc., bellows, blowers, 2 frame store buildings with shelving, counters, etc., 1 large double door safe, 1 desk. Stock of miscellaneous goods in stores, about \$300. 1 frame boarding house, stoves, table furniture, etc., 12 beds, 5 bedroom sets, 2 dozen chairs, 1 frame manager's dwelling house, 4 frame lunas' dwelling houses, 83 laborers' houses, from 10x12 to 10x50, 32 work horses, 19 mules, 35 colts, 5 pack mules, 30 bridles, 4 dokkeys, 10 sets double harness, 9 pack horses, 1 set single harness, 6 saddle horses, 33 sets single harness, 1 dray, 50 halters, 1 dump cart, 20 water tanks 700 gals., 1 survey, 2 water tanks 20,000 gals., 1 brake, 5 water tanks 10,000 gals., 3 cable carts, 2000 feet lumber, 12 pairs wheels, 4 saddles, 1146 acres growing cane, 1903 crop, 45 pack saddles, 618 acres growing cane, matured.

(1) All of the right, title, interest and estate of the Kona Sugar Company, Limited, in and to those certain premises leased to said Company by W. Olson, by lease dated November 2, A. D. 1899, for the period of 20 years, computing from said date, and which lease is recorded in Liber 211, p. 284 of the Register Office of Oahu, to which reference is hereby made. Said lease having been assigned by said Scott to said Company on the 12th day of July, A. D. 1900, which assignment is recorded in Liber 211, p. 284 of the Register Office of Oahu, and to which reference is hereby made.

(2) All of the right, title, interest and estate of the Kona Sugar Company, Limited, in and to those certain premises leased to said Company by A. D. 1899, for the period of 20 years, computing from said date, and which lease is recorded in Liber 211, p. 284 of the Register Office of Oahu, to which reference is hereby made. Said lease having been assigned by said Scott to said Company on the 12th day of July, A. D. 1900, which assignment is recorded in Liber 211, p. 284 of the Register Office of Oahu, and to which reference is hereby made.

(3) All of the right, title, interest and estate of the Kona Sugar Company, Limited, in and to those certain premises leased to said Company by W. Olson, by lease dated November 2, A. D. 1899, for the period of 20 years, computing from said date, and which lease is recorded in Liber 211, p. 284 of the Register Office of Oahu, to which reference is hereby made. Said lease having been assigned by said Scott to said Company on the 12th day of July, A. D. 1900, which assignment is recorded in Liber 211, p. 284 of the Register Office of Oahu, and to which reference is hereby made.

(4) All of the right, title, interest and estate of the Kona Sugar Company, Limited, in and to those certain premises leased to said Company by W. Olson, by lease dated November 2, A. D. 1899, for the period of 20 years, computing from said date, and which lease is recorded in Liber 211, p. 284 of the Register Office of Oahu, to which reference is hereby made. Said lease having been assigned by said Scott to said Company on the 12th day of July, A. D. 1900, which assignment is recorded in Liber 211, p. 284 of the Register Office of Oahu, and to which reference is hereby made.

(5) All of the right, title, interest and estate of the Kona Sugar Company, Limited, in and to those certain premises leased to said Company by W. Olson, by lease dated November 2, A. D. 1899, for the period of 20 years, computing from said date, and which lease is recorded in Liber 211, p. 284 of the Register Office of Oahu, to which reference is hereby made. Said lease having been assigned by said Scott to said Company on the 12th day of July, A. D. 1900, which assignment is recorded in Liber 211, p. 284 of the Register Office of Oahu, and to which reference is hereby made.

(6) All of the right, title, interest and estate of the Kona Sugar Company, Limited, in and to those certain premises leased to said Company by W. Olson, by lease dated November 2, A. D. 1899, for the period of 20 years, computing from said date, and which lease is recorded in Liber 211, p. 284 of the Register Office of Oahu, to which reference is hereby made. Said lease having been assigned by said Scott to said Company on the 12th day of July, A. D. 1900, which assignment is recorded in Liber 211, p. 284 of the Register Office of Oahu, and to which reference is hereby made.

more or less, being the same premises leased to said Company by Peter Box, on April 27, 1901, for the period of 10 years. Said lease is of record in the Register Office of Oahu, in Liber 225 p. 219 to which reference is hereby made.

(16) All of the right, title, interest and estate of the Kona Sugar Company, Limited, in and to those certain premises leased to said Company by George Clark, on the 1st day of June, A. D. 1899, for the term of 30 years, computing from said date. Said premises are situated in North Kona, Island of Hawaii, and containing an area of 51 acres more or less. Said lease is of record in Liber 197 p. 489, to which reference is hereby made.

(17) All of the right, title, interest and estate of the Kona Sugar Company, Limited, in and to those certain premises leased to said Company by Poepeo on August 22d, A. D. 1899, for the period of 15 years, computing from said date. Said premises being situated in North Kona, Island of Hawaii, and being the same premises described as Apana 1 of R. P. 3682 of 113-100 acres more or less. Said lease is recorded in Liber 190 p. 440 of the Register Office of Oahu, to which reference is hereby made.

(18) All of the right, title, interest and estate of the Kona Sugar Company, Limited, in and to those certain premises leased to said Company on the 1st day of March, A. D. 1899, by John A. Maguire, for the period of 25 years, computing from said date, and being the same premises described in R. P. 1744 to Kahaunaleale and containing an area of 112 acres more or less, situated in North Kona, Island of Hawaii. Said lease is recorded in Liber 185 p. 398 of the Register Office of Oahu, to which reference is hereby made.

(19) All of the right, title, interest and estate of the Kona Sugar Company, Limited, in and to those certain premises situated in North Kona, Island of Hawaii, and conveyed to said Company by deed of Eunis Auhai, dated May 29, A. D. 1899, and recorded in the Register Office of Oahu, in Liber 194 p. 180, to which deed reference is hereby made.

(20) All of the right, title, interest and estate of the Kona Sugar Company, Limited, in and to those certain premises conveyed to it, situated in North Kona, Island of Hawaii, and being the same premises conveyed to it by deed of Jacob Coeper, dated January 18th, 1901, said deed being recorded in Liber 210 p. 491 in the Register Office of Oahu, to which deed reference is hereby made.

(21) All of the right, title, interest and estate of the Kona Sugar Company, Limited, in and to those certain premises situated in North Kona, Island of Hawaii, and conveyed to it by deed of Jacob Coeper, dated January 18th, 1901, said deed being recorded in Liber 210 p. 491 in the Register Office of Oahu, to which deed reference is hereby made.

(22) All of the right, title, interest and estate of the Kona Sugar Company, Limited, in and to those certain premises leased to said Company by William Kamana, by lease dated August 25th, 1901, for the period of 15 years, computing from said date, and being the same premises described in Apanas 1 and 2 of R. P. 4944, and situated in North Kona, Island of Hawaii. Said lease is recorded in Liber 228 p. 124 of the Register Office of Oahu, and reference to the same is hereby made.

(23) All of the right, title, interest and estate of the Kona Sugar Company, Limited, in and to those certain premises leased to said Company by J. Manakaa, for the period of 20 years, from the first day of July, A. D. 1899, being the same premises described in R. P. 5221, and situated in North Kona, Island of Hawaii. Said lease is recorded in Liber 190 p. 344, to which reference is hereby made.

(24) All of the right, title, interest and estate of the Kona Sugar Company, Limited, in and to those certain premises situated in North Kona, Island of Hawaii, and being the same premises conveyed to said Company by deed of East Kahuia, dated June 25, A. D. 1899, and being the same premises described in R. P. 6716, L. C. A. 4887. Said deed is of record in Liber 195 p. 255 in the Register Office of Oahu, and reference thereto is hereby made.

(25) All of the right, title, interest and estate of the Kona Sugar Company, Limited, in and to those certain premises situated in North Kona, Island of Hawaii, and being the same premises conveyed to said Company by Emil Le Clair, dated January 30, 1901, and recorded in Liber 219, p. 86 in the Register Office of Oahu, to which said assignment reference is hereby made.

(26) All of the right, title, interest and estate of the Kona Sugar Company, Limited, in and to those certain premises described in a lease made to said Company by deed of E. C. Greenwell and others to said Company, for the period of 20 years, computing from March 25th, A. D. 1899. The premises described in said lease contain an area of 96 acres more or less, and are situated in North Kona, Island of Hawaii. Said lease is recorded in Liber 190 p. 290 of the Register Office of Oahu, and reference thereto is hereby made.

(27) All of the right, title, interest and estate of the Kona Sugar Company, Limited, in and to those certain premises described in a lease made to said Company by Emanuel Gomes on August 29th, 1901, and recorded in Liber 228 p. 119, to which reference is hereby made.

(28) All of the right, title, interest and estate of the Kona Sugar Company, Limited, in and to those certain premises situated in North Kona, Island of Hawaii, and described in an assignment of lease to said Company by Jacob Coeper, dated August 7th, 1899, and recorded in Liber 185 p. 451, to which assignment reference is hereby made.

(29) All of the right, title, interest and estate of the Kona Sugar Company, Limited, in and to those certain premises situated in North Kona, Island of Hawaii, and described in an assignment of lease made to said Company by Emanuel Gomes on August 29th, 1901, and recorded in Liber 228 p. 119, to which reference is hereby made.

(30) All of the right, title, interest and estate of the Kona Sugar Company, Limited, in and to those certain premises situated in North Kona, Island of Hawaii, and described in an assignment of lease to said Company by Emanuel Gomes on August 29th, 1901, and recorded in Liber 228 p. 119, to which reference is hereby made.

(31) All of the right, title, interest and estate of the Kona Sugar Company, Limited, in and to those certain premises situated in North Kona, Island of Hawaii, and described in an assignment of lease made to said Company by Emanuel Gomes on August 29th, 1901, and recorded in Liber 228 p. 119, to which reference is hereby made.

(32) All of the right, title, interest and estate of the Kona Sugar Company, Limited, in and to those certain premises situated in North Kona, Island of Hawaii, and described in an assignment of lease made to said Company by Emanuel Gomes on August 29th, 1901, and recorded in Liber 228 p. 119, to which reference is hereby made.

(33) All of the right, title, interest and estate of the Kona Sugar Company, Limited, in and to those certain premises situated in North Kona, Island of Hawaii, and described in an assignment of lease made to said Company by Emanuel Gomes on August 29th, 1901, and recorded in Liber 228 p. 119, to which reference is hereby made.

(34) All of the right, title, interest and estate of the Kona Sugar Company, Limited, in and to those certain premises situated in North Kona, Island of Hawaii, and described in an assignment of lease made to said Company by Emanuel Gomes on August 29th, 1901, and recorded in Liber 228 p. 119, to which reference is hereby made.

(35) All of the right, title, interest and estate of the Kona Sugar Company, Limited, in and to those certain premises situated in North Kona, Island of Hawaii, and described in an assignment of lease made to said Company by Emanuel Gomes on August 29th, 1901, and recorded in Liber 228 p. 119, to which reference is hereby made.

(36) All of the right, title, interest and estate of the Kona Sugar Company, Limited, in and to those certain premises situated in North Kona, Island of Hawaii, and described in an assignment of lease made to said Company by Emanuel Gomes on August 29th, 1901, and recorded in Liber 228 p. 119, to which reference is hereby made.

BUSINESS DIRECTORY

ATTORNEYS.

M. BROOKS—Attorney; rooms 9-10, Spreckels bldg.; Tel. Main 544.

CHARLES A. LONG—Attorney; 15 Kahaunaleale St.; Tel. 581 Main.

BUILDERS.

MCDONALD & LANGSTON—Contractors and Builders; 1108 Union St.

BICYCLE REPAIRING.

C. A. COWAN—1154 Union, opp. Pacific Club; typewriters for rent.

BROKERS.

E. J. WALKER—Coffee Broker; room 4, Spreckels bldg.

CLOTHI-G.

THE KASH CO., LTD.—Two stores 23 27 Hotel St. and cor. Fort & Hotel.

CARPENTERS.

E. SHIRAH—Carpenter and Contractor—Day work. Tables, safes, etc., made. Cor. Nuuanu and Kukul.

CLEANING AND DYEING.

TANAKA—Clothes cleaned, dyed and repaired. 777 Alakea near Fishmarket.

T. HAYASHI—Clothes cleaned and repaired. 637 Beretania cor. Punchbowl.

DRESSMAKING.

MRS. F. T. KELLY—Dressmaker. Stylish street and evening gowns. Fancy waists made at short notice. 381 Beretania street next to Central Union Church.

DENTISTS.

ALBERT S. CLARK, D.D.S.—Cor. Beretania and Miller; hours 9 to 4.

DR. DERBY—Dentist; Fort and Hotel Sts.; Gas administered for extracting.

FLORISTS.

MRS. A. L. KING, Florist—Limited supply of Violets and Lilies of the Valley for Xmas trade; Potted Plants, Hawaiian Curios, Calabashes a specialty. Orders for fancy work.

GUITARS AND UKULELES.

J. E. SANTOS—Maker of guitars and ukuleles. Beretania and Alapai.

GROCERY.

YOUNG TIM KEE—Fresh Island butter, meat, and eggs; California fruits. Nuuanu and Kukul Streets.

GROCERIES AND MERCHANDISE.

M. M. SILVA & CO.—Dealers in general merchandise and groceries; 59 Beretania between Punchbowl and Alapai.

HOTELS.

OCCIDENTAL HOTEL—All conveniences. Hot and cold baths. Telephone. First-class system. Fine rooms \$2 per week. King and Alakea Streets. Best 25c meals in city.

HORSE-SHOERS.

J. A. NUNES—Richards Street, near Queen. Shoeing a specialty. Work neatly done and guaranteed. Tel. Blue 41.

JEWELER.

THOS. LINDSAY—Mfg. Jeweler and watchmaker; 650 Fort St.; Low bid; latest in novelties.

LOGGING HOUSES.

THE VILLA HOUSE—1269 Fort St.; nicely furnished rooms for gentlemen. Prices reasonable. Central location.

MUSIC.

HENRY C. DAVIES—Piano and organ tuner. Address Post Office Box 230. 2289-1M

COOK'S MUSIC SCHOOL—Love bldg., Fort St. Its methods are the result of 30 years' experience in teaching.

PIANO TUNING AND REPAIRING. JAMES SHERIDAN—243 King St., near Opera House. 2290-1F

ANNIS MONTAGUE TURNER—Vocal Instructor; "Mignon," 1024 Beretania St.

E. K. KAAI—Teacher of string instruments; studio, Love bldg., Fort St. Telephone Main 231.

MILLINERY.

HAWLEY'S MILLINERY PARLORS—The latest in millinery, etc.; Boston bldg.; Tel. 264 Main.

MESSANGER SERVICE.

TERRITORIAL MESSANGER SERVICE—Union St. nr. Hotel; Tel. 361 Main.

RESTAURANTS.

ORPHEUS CAFE—Star Block, Fort St. First-class meals 25c. Neat dining rooms for ladies. Polite waiters.

STRAW HATS.

V. DOHI—Straw hats of all kinds made to order; dry goods. Hotel Street near Bethel.

E. MORIKUCHI—14 Hotel St., nr. Nuuanu. Felt, raw, panama hats

PHYSICIANS.

DR. SLOGGETT—Eye, Ear, Nose and Throat; office at Eye and Ear Infirmary, Alakea St. Hours 9 a. m. to 4 p. m.

PICTURES AND FRAMES.

J. H. KAHN—Largest lot of pictures, medallions and mirrors just arrived. Pictures framed to order. Prices low. 1301 Fort Street.

RESTAURANTS.

NEW ORPHEUS—Good 25c meals; 6 a. m. to 8 p. m. New manager and cook. Everything clean. 1250 Fort St. 2228-1M

TAILORS.

BUSINESS MEN CAN SAVE MANY HOURS



ACROSS THE CONTINENT FROM San Francisco-Portland THE TRAINS DAILY FROM SAN FRANCISCO TWO TRAINS DAILY FROM PORTLAND.

Only THREE DAYS to Chicago. Only FOUR DAYS to New York. Pullman Palace Sleepers, Buffet, Smoking and Library Cars, with Barber Shop and Pleasant Reading Rooms.

HAWAIIAN TRAMWAYS CO. TIME TABLE KING STREET LINE.

Waikiki to Town and Palama-Cars leave Waikiki at 5:45, 6:00, 6:15 and 6:30 a. m., and every 15 minutes thereafter until 11:00 p. m.

Rifle Range (Pawaa) to Town-Cars leave Pawaa at 5:04, 6:04, 6:19 and 6:34 a. m., and every 15 minutes thereafter until 11:19 p. m.

Fort and King Sts. Corner for Palama-Cars leave at 5:18, 6:18, 6:33 and 6:48 a. m., and at 15-minute intervals thereafter until 11:33 p. m.

Palama for Town and Waikiki-Cars leave at 5:08, 5:23, 6:33 and 6:08 a. m., and every 15 minutes thereafter until 10:23 p. m.

Fort and Queen Sts. Corner for Nuuanu Valley-Cars leave at 5:10, 6:10, 6:25, 6:40, 7:00 and 7:20 a. m., and thereafter at the even hour, at 10 minutes and at 30 minutes past the hour until 10:10 p. m.

Oahu College for Town and Waikiki-Cars leave at 6:30, 6:50, 7:10 and 7:40 a. m., and thereafter at 20, 40 and 50 minutes past each hour until 9:50 p. m.

Fort and Queen Sts. Corner for Nuuanu Valley-Cars leave at 6:10, 6:30 and 6:50 a. m., and at intervals of 10 minutes thereafter until 10:50 p. m.

Fort and Queen Sts. Corner for Punahou-Cars leave at 6:05, 6:25, 6:45 and 7:05 a. m., and every 10 minutes thereafter until 11:05 p. m.

Fort and Queen Sts. Corner for Punahou-Cars leave at 6:05, 6:25, 6:45 and 7:05 a. m., and every 10 minutes thereafter until 11:05 p. m.

Fort and Queen Sts. Corner for Punahou-Cars leave at 6:05, 6:25, 6:45 and 7:05 a. m., and every 10 minutes thereafter until 11:05 p. m.

Fort and Queen Sts. Corner for Punahou-Cars leave at 6:05, 6:25, 6:45 and 7:05 a. m., and every 10 minutes thereafter until 11:05 p. m.

Fort and Queen Sts. Corner for Punahou-Cars leave at 6:05, 6:25, 6:45 and 7:05 a. m., and every 10 minutes thereafter until 11:05 p. m.

Fort and Queen Sts. Corner for Punahou-Cars leave at 6:05, 6:25, 6:45 and 7:05 a. m., and every 10 minutes thereafter until 11:05 p. m.

Fort and Queen Sts. Corner for Punahou-Cars leave at 6:05, 6:25, 6:45 and 7:05 a. m., and every 10 minutes thereafter until 11:05 p. m.

Fort and Queen Sts. Corner for Punahou-Cars leave at 6:05, 6:25, 6:45 and 7:05 a. m., and every 10 minutes thereafter until 11:05 p. m.

Fort and Queen Sts. Corner for Punahou-Cars leave at 6:05, 6:25, 6:45 and 7:05 a. m., and every 10 minutes thereafter until 11:05 p. m.

Fort and Queen Sts. Corner for Punahou-Cars leave at 6:05, 6:25, 6:45 and 7:05 a. m., and every 10 minutes thereafter until 11:05 p. m.

Fort and Queen Sts. Corner for Punahou-Cars leave at 6:05, 6:25, 6:45 and 7:05 a. m., and every 10 minutes thereafter until 11:05 p. m.

Fort and Queen Sts. Corner for Punahou-Cars leave at 6:05, 6:25, 6:45 and 7:05 a. m., and every 10 minutes thereafter until 11:05 p. m.

Fort and Queen Sts. Corner for Punahou-Cars leave at 6:05, 6:25, 6:45 and 7:05 a. m., and every 10 minutes thereafter until 11:05 p. m.

Fort and Queen Sts. Corner for Punahou-Cars leave at 6:05, 6:25, 6:45 and 7:05 a. m., and every 10 minutes thereafter until 11:05 p. m.

Fort and Queen Sts. Corner for Punahou-Cars leave at 6:05, 6:25, 6:45 and 7:05 a. m., and every 10 minutes thereafter until 11:05 p. m.

Fort and Queen Sts. Corner for Punahou-Cars leave at 6:05, 6:25, 6:45 and 7:05 a. m., and every 10 minutes thereafter until 11:05 p. m.

Fort and Queen Sts. Corner for Punahou-Cars leave at 6:05, 6:25, 6:45 and 7:05 a. m., and every 10 minutes thereafter until 11:05 p. m.

Fort and Queen Sts. Corner for Punahou-Cars leave at 6:05, 6:25, 6:45 and 7:05 a. m., and every 10 minutes thereafter until 11:05 p. m.

Fort and Queen Sts. Corner for Punahou-Cars leave at 6:05, 6:25, 6:45 and 7:05 a. m., and every 10 minutes thereafter until 11:05 p. m.

Fort and Queen Sts. Corner for Punahou-Cars leave at 6:05, 6:25, 6:45 and 7:05 a. m., and every 10 minutes thereafter until 11:05 p. m.

Fort and Queen Sts. Corner for Punahou-Cars leave at 6:05, 6:25, 6:45 and 7:05 a. m., and every 10 minutes thereafter until 11:05 p. m.

Fort and Queen Sts. Corner for Punahou-Cars leave at 6:05, 6:25, 6:45 and 7:05 a. m., and every 10 minutes thereafter until 11:05 p. m.

NERVOUS WRECKS



Dr. McLaughlin's Electric Belt. It cures ailments, has been used by the millions of suffering humanity.

BY AUTHORITY

EXTENSION OF THE DATE FOR RECEIVING TENDERS.

The date of opening tenders for the erection of the new Reform School building at Kahuku is hereby postponed to Friday, December 12th, 1902.

ALATAU T. ATKINSON

Superintendent of Public Instruction, Honolulu, Dec. 1st, 1902. 2316-3t

Pound-Master's Notice of Estrays

Notice is hereby given that the animals described below have been impounded in the Government Pound at Makiki, Kona, Island of Oahu, and unless the pound fees and damages are sooner satisfied will be sold at the date hereafter named according to law:

Nov. 27, 1902-Black mare, branded H on left hind hip; white spot on forehead.

The following animals will be sold Saturday, Dec. 13, 1902, at 12 noon, if not called for before the date mentioned.

K. KEKEUNE, Poundmaster. 2315-3t

Public notice is hereby given that the undersigned Superintendent of Public Works has returned to the city of Honolulu and resumed his duties as such; that all and every act of any person who has assumed or pretended to act as Superintendent of Public Works, to which office I was duly appointed on May 23d, A. D. 1901, by the Governor, by and with the advice and consent of the Senate of the Territory of Hawaii, at any time since said date, is wholly null, void and of no effect whatever, and will be so regarded, held and treated by me.

JAS. H. BOYD, Superintendent of Public Works, Honolulu, H. T., Oct. 29, 1902.

Corporation Notices.

NOTICE

We hereby give notice that MR. T. F. LANSING is in no way connected with the former insurance agency of Gear, Lansing & Co., which on Sept. 2d, 1901, transferred all their rights, title, interest and good-will of their insurance department to the Honolulu Investment Co., Ltd., and that Mr. T. F. Lansing is not entitled to the patronage formerly given to the Gear, Lansing & Co. Insurance agency, by reason of his sale and value received from us for all his interests in the above named insurance agency.

In view of the above we respectfully solicit the renewals of all fire insurance policies formerly carried by the Gear, Lansing & Co. Agency.

HONOLULU INVESTMENT CO., LTD., Judd Building, Merchant street. 2272-4t

MEETING NOTICE.

The Annual Meeting of the Heolani Yacht and Boat Club will be held Wednesday, December 3, 1902, at 7:30 p.m., at the Club House.

C. C. RHODES, Secretary. 2316-3t

Business Notices.

Jas. Not Jr. has removed his plumbing establishment from Beretania and Emma streets to 1048 Alakoa street, near King, where he will be pleased to see his patrons and friends. Telephone White 1801; correct this in your telephone books. 2250-4f

Curse DRINK

Remember we connect with the G. N., N. P. and C. P. Rys. and offer competitive rates from the East. Ships leave Seattle the 10th of each month. Order NOW for Sept. sailing.

L. E. BEBE, Agt., Phone Main 201, Brewer Bldg.

HAWAIIAN ENGINEERING AND CONSTRUCTION CO.

ENGINEERS AND CONTRACTORS. Rooms 508-510 Stangenwald Bldg. Tel. Main 50. P. O. Box 537.

Jas. T. Taylor

CIVIL AND HYDRAULIC ENGINEER. 108 Judd Building, Telephone Main 294.

Get your "To Let" signs at the Bulletin office.

WHITE RIBBON REMEDY

White Ribbon Remedy will cure or destroy the disease appetite for alcoholic stimulants, whether the patient is a confirmed habitue, a sipper, social drinker or drunkard. It is a powerful and safe medicine for the cure of all cases of alcoholism.

White Ribbon Remedy. DRUGGISTS EVERYWHERE. Members of our Union are delighted to find a practical and economical remedy to aid in their temperance work.

White Ribbon Remedy. DRUGGISTS EVERYWHERE. Members of our Union are delighted to find a practical and economical remedy to aid in their temperance work.

White Ribbon Remedy. DRUGGISTS EVERYWHERE. Members of our Union are delighted to find a practical and economical remedy to aid in their temperance work.

White Ribbon Remedy. DRUGGISTS EVERYWHERE. Members of our Union are delighted to find a practical and economical remedy to aid in their temperance work.

White Ribbon Remedy. DRUGGISTS EVERYWHERE. Members of our Union are delighted to find a practical and economical remedy to aid in their temperance work.

White Ribbon Remedy. DRUGGISTS EVERYWHERE. Members of our Union are delighted to find a practical and economical remedy to aid in their temperance work.

NEW MILITARY POST HERE

District Attorney R. W. Breckons received important advice from Washington by the Hongkong Maru's mail. As Mr. Breckons stated to a Bulletin reporter yesterday afternoon: "The War Department desires a site for a new military post here. We will try to get the matter through to have the work under way before the 10th of June. That is the end of the fiscal year and the quicker the site is obtained and work started on the village the better chance there will be of getting as large an appropriation as possible."

The military authorities here will select the land. If arrangements cannot be made amicably for possession, we shall take proceedings to condemn the site the same as was done for the naval station. The Government has land of its own but probably what will be wanted is under long lease, in that case the leasehold would have either to be purchased directly or condemned. It may be at Diamond Head, or Kauhauki or down Ewa way."

Major Edward Davis and Captain Williamson of the local garrison will cooperate with District Attorney Breckons in carrying out the order of the War Department. The expense will come out of the current year's appropriation of \$2,000,000 for military posts.

A. H. S. S. CO. WHARVES.

San Francisco, Nov. 20.-Neither Commissioner Mackenzie nor Secretary English was present at the regular meeting of the Harbor Commission yesterday afternoon, and all the business was transacted by Commissioners Kilburn and Kirkpatrick. Chief Engineer Norton reported that necessary repairs to Washington street wharf would cost \$6000 or \$7000, and the secretary was instructed to advertise for bids, for doing the work.

Williams, Dimond & Co., agents for the American-Hawaiian Steamship Company, made application for berths at one of the new wharves between Union and Lombard streets, with the evident intention of displacing the Stuart street wharf.

GAELIC REPORTS WATERSPOUT.

San Francisco, Nov. 17.-Captain Finch of the steamship Gaelic has reported to the branch hydrographic office that on his last trip to the Orient a huge waterspout was seen from the steamer's deck at a point 700 miles southwest of this point. The spout was following a zig-zag course, at some distance from the Gaelic off the port bow, and while in no immediate danger from the deluge that might have come from contact with the strange traveler. Captain Finch and the other people on the Gaelic were pleased to see it disappear in the mist that hid the horizon.

Removal Sale

Mrs. Cressman of the Wonder Millinery Parlors, now on Beretania street, wishes to announce that she has secured a store now being built on Fort street and will locate there as soon as finished and in order to reduce the very large stock of trimmed hats now on hand, will sell for the next two weeks at a very low figure. All wishing fine millinery at low prices should not miss this opportunity. Remember the place, 248 Beretania street.

Can a woman give to another woman the unswerving loyalty which an ideal friendship should exact? Will a woman be faithful to her friend not merely while she is her friend, but after? If for any reason, jealousy or envy or the poison of suspicion part the two, will each be loyal to the past, keep its secrets and respect its obligations? If ever two men who have once been friends wear out their friendship and perhaps exchange it for open enmity, they still respect the tie that has been broken. For the future, they will strike as hard as they are able, but in doing so they will not violate their old friendship, nor use the opportunities which it gives them for inflicting pain—but is this the case with women? Does honor mean the same to a man as to a woman? These are some of the questions which Rafford Pyke asks in the article he contributes to the November Cosmopolitan on "What Women Like in Women."

TO CURE A COLD IN ONE DAY

Take Laxative Bromo Quinine Tablets. All druggists refund the money if it fails to cure. E. W. Grove's signature is on each box; 25 cents.

THE BULLETIN has more liveliness each day than all other papers combined.

SYMPATHY FOR THE NIMRODS.



The Deer: "There certainly should be a law against this promiscuous hunting."

The Chick: "Your buckskin's whole; what you kicking about?"

The Deer: "But just think of the poor hunters!"

—Minneapolis Journal.

S.S. SIBERIA'S TRIAL

San Francisco, Nov. 22.—The delay of the Pacific Mail's new liner Siberia in leaving Newport News for this port is said to be due to the necessity of making alterations which the experience of her sister ship, the Korea, has proved necessary. The Siberia made her trial trip on the Atlantic several weeks ago and was expected to be far on her way to this port by this time, but the voyage of the Korea to the Orient developed the fact that there was great need of a change in the plans for ventilating the forenoon, and the Siberia, built after the same plan, was held at Newport News to be altered in this respect. During her trip to the Orient, it is said, the Korea had a temperature of 180 to 190 degrees in the forenoon, and there was a failure of the funnels to draw this intense heat from that part of the ship. On the homeward run from Japan, along the northern circle, the Korea suffered little from this lack of ventilation and was therefore able to make very good time, but ordinarily, it is said, would be unable to reach a maximum of her speed on account of the lack of ventilation. The Siberia will possess a better system of ventilation, and is therefore expected to be speedier ship of the two.

OCEAN WIRELESS.

New York, Nov. 19.—A special to the Herald from North Sydney, N. S., says: From Cornwall to Nova Scotia the Carlo Alberto, an Italian cruiser, made the trans-Atlantic voyage without once breaking communication with shore. Wireless signals were exchanged from mid-ocean with both the new and old worlds. Finally signals were exchanged between the Marconi stations at Poldhu, Cornwall and Table Head, N. S. Marconi confirms all this.

Aboard the Carlo Alberto there is great rejoicing. The ship is gayly decorated with bunting. Messages of congratulation have been received by Signor Marconi from all over the world, and he has sent to the King of Italy a message announcing all that has been accomplished and complimenting His Majesty upon the part Italy has played in the undertaking.

SUMNER SURVEYED.

San Francisco, Nov. 16.—The Army transport Sumner was being surveyed yesterday by a naval board, and may finally be turned over to the Navy, following the Hancock. Relief and some of the others that have been discarded by the War Department. In some respects the Sumner is the most attractive of the troopships. More money has been expended by the Government in fitting her up than has been devoted to any of the other ships of the transport fleet in proportion to her size, and she is regarded as the yacht of the Army.

European Patterns

J. P. Rodrigues, the Fort street tailor, who was burned out of the shop he had occupied for fifteen years, in the Washington Mercantile Co.'s fire six months ago, has just returned from Europe and the States, where he personally selected a fine assortment of tailor goods; and has reopened on Alakoa street, one door above merchant, where he will be glad to see his old patrons and friends.

S. S. CALIFORNIAN.

San Francisco, Nov. 1.—The American-Hawaiian Steamship Company's steamer Californian, now forty days out from New York for this port, arrived at Coronet on coal last Wednesday. The new steamer J. L. Luckenbach of the opposition line left New York six days ago for this port, and is to be followed soon by the new steamer Lewis Luckenbach. The two last named steamers are over 3000 tons net register, but are not such great carriers as the American-Hawaiian vessels.

FULLERTON PROVES FAST.

San Francisco, Nov. 17.—The completion of the second voyage of the new barkentine Fullerton, with oil, to the Hawaiian Islands has proved her to be one of the fastest sailers of the Coast fleet. The Fullerton's first round-trip hence to Honolulu and Kahului carrying a cargo of 15,000 barrels of oil, was made in remarkably good time, but the second voyage is even better. The run from the islands was made in sixteen days, the round-trip occupying forty-one days. The voyages of the Fullerton, including the time consumed in loading and discharging the two big cargoes of oil, has occupied only eighty-nine days. When nearing the Coast, two or three days ago, the barkentine was in very rough weather, the effects of which were greatly lessened by oil bags placed over her side.

PASSENGERS DEPARTED.

For Maui ports, per str. Claudiine, Dec. 2—Miss F. C. Chamberlain, Mrs. J. E. Meyer, G. W. Wilbur and wife, L. von Tempky, wife and child, G. S. Alkon, W. O. Alkon, G. L. Keoney, G. H. Schrader, E. K. Bull, H. A. Baldwin, H. P. Baldwin, Mr. Walker, H. B. Webster, Lap Quon, H. Segelken, Mrs. C. E. King.

\$20 Belt for \$5.

"Dr. Alden's Electric Belt." "Warranted genuine." Bots for \$5. No humbug. It cures without drugs. Cures for \$5. Buy by mail on receipt of \$5. Try Electricity. No Agents.

DR. ALDEN'S ELECTRIC BELT. Call or write to J. P. BROWN, 33 West 24th Street, NEW YORK, N. Y.

Fine Job Printing at the Bulletin of Rec.

REAL ESTATE TRANSACTIONS

Filed for Record December 2. M. Pedorozo—V. M. Souza. B2 D K Egueni—B. Ozaki. B8 L. Kato—M. R. de Sa. M D E Whitman et al. COPD Kapiolani Est.—Lok Hop Co. L. L.

Recorded November 21. L. Vasconcellos to H. A. Bigelow et al. T. D. real, personal and mixed property. B 241, p. 305. Dated Nov 18, 1902.

E. Lillehua to E. M. Nakuna; D. por R P 474, Kalaupapa, Molokai; \$25 and mize \$1,050. B 241, p. 210. Dated Nov 18, 1902.

Recorded November 24. M. T. Enos to M. J. Carvalho; D. R P 4250, Kul 5401, Koloa, Kauai; \$300. B 242, p. 173. Dated Oct 6, 1902.

Manuiki to A. K. Kalawaoa; D. int in pes land, Namoooko, Waimea, Kauai; \$10, etc. B 242, p. 174. Dated Nov 7, 1902.

Mahuliki to S. Makalia Jr.; D. int in Kul 5396, Waimea, Kauai; \$10, etc. B 242, p. 175. Dated Nov 7, 1902.

M. V. da Camra to A. S. Correa; D. por lot 36, Gr 3961, Katiwiki, Hilo, Hawaii; \$200. B 242, p. 176. Dated Nov 14, 1902.

M. Lee to H. Fisher; D. int in R P 799, Awa 1 and 2, R P 828, Awa 1 and 2, R P 815, and in pes land, Walpo, Ewa Oahu; \$160. B 242, p. 181. Dated Nov 24, 1902.

T. B. Cummings to D. L. Peterson; D. 1-8 int in Gr 3993, Manoa, Honolulu; \$50. B 242, p. 180. Dated Nov 8, 1902.

Kanohoa to et al to Wm. Kalua; D. por R P 429 and 2 acres in R P 126, Kul 6446, Kamaole, Kula, Maui; \$140. B 242, p. 178. Dated Sept 5, 1887.

G. J. Kauhaha and wf to L. S. Aungst; D. 1 share in hui land of Honolulu 1 and 2, N. Kona, Hawaii; \$80. B 242, p. 177. Dated Nov 8, 1902.

Recorded November 25. Kona-Kau Tel & Telegraph Co Ltd to Prot Epie Ch in Hawn Isl; D. por Gr 4643, Waiohu, Kau, Hawaii; \$1. B 241, 211. Dated Nov 8, 1902.

T. Bishop Est to W. Sing Wai Co; L. 12-5-19 acres land, Waiawa, Ewa, Oahu; 9 yrs 3 mos at \$400 per an. B 240, p. 257. Dated Oct 28, 1902.

H. Williams et al to A. Z. Hadley; M; 1-2 int in Ap 3, R P 135, Kul 1559, Kakaopua, Honolulu; \$150. B 243, p. 39. Dated Nov 25, 1902.

J. W. Kalua and wf to Mrs. M. A. Borland; D. lots 1 and 14, Kalaia tract, Waiuku, Maui; \$900. B 241, p. 312. Dated Nov 25, 1902.

Mrs. C. H. Banning to J. W. Kalua; Par. Rel; lots 1 and 14, Kula 8559 and 2459, Kalaia tract, Waiuku, Maui; \$1. B 243, p. 38. Dated Nov 25, 1902.

Recorded November 26. J. A. M. Johnson to J. A. M. Johnson Co Ltd; BS; stock stationery, fixtures, etc. King St, Honolulu. B 245, p. 77. Dated Nov 17, 1902.

F. T. P. Waterhouse to J. A. M. Johnson; Rel; 25 National cash registers, etc. 39 So King St, Honolulu; \$2700. B 239, p. 221. Dated Nov 10, 1902.

David Keolaha and wf to C. S. Martin; M; R P 7855, Kul 7277B, Keel, S. Kona, Hawaii; \$60. B 239, p. 435. Dated Aug 26, 1902.

F. H. Stace to Seattle Brewing & Malting Co; D. right of way for water pipes across land at Kewaiki, Honolulu; \$1, etc. B 241, p. 314. Dated Mar 1, 1902.

Recorded November 29. Fire Fong Co to Hoo See; Agmt; fire claim No. 2184, for \$3435; \$1. B 245, p. 78. Dated Oct 16, 1902.

Queen's Hospital to McCully Land Co Ltd; Agmt; in re release of mortgage on sales of lots in McCully tract, Honolulu. B 245, p. 79. Dated Nov 26, 1902.

Recorded December 1. R. K. Rose and hb to M. Kaeo; D. pc land, Waiopuli, Kawaihau, Kauai; \$10. B 241, p. 315. Dated Nov 21, 1902.

Kamaokahaku to J. G. Serrao; D. R P 2538, Kauhulu, Hilo, Hawaii; \$200. B 241, p. 315. Dated Sept 4, 1902.

E. Peck to S. Peck; PA; genl powers. B 245, p. 83. Dated Dec 1, 1902.

Chung Poy Fat to R. Hashimoto & Co; BS; leasehold, live stock, bldgs, etc. Papaakole, Koolauloa, Oahu; \$4500. B 245, p. 82. Dated Nov 25, 1902.

Onomea Sug Co to Babella; Rel; 9 acres land, Kalaos, Hilo, Hawaii; \$300. B 207, p. 150. Dated Nov 17, 1902.

Recorded December 1. R. K. Rose and hb to M. Kaeo; D. pc land, Waiopuli, Kawaihau, Kauai; \$10. B 241, p. 315. Dated Nov 21, 1902.

Kamaokahaku to J. G. Serrao; D. R P 2538, Kauhulu, Hilo, Hawaii; \$200. B 241, p. 315. Dated Sept 4, 1902.

E. Peck to S. Peck; PA; genl powers. B 245, p. 83. Dated Dec 1, 1902.

Chung Poy Fat to R. Hashimoto & Co; BS; leasehold, live stock, bldgs, etc. Papaakole, Koolauloa, Oahu; \$4500. B 245, p. 82. Dated Nov 25, 1902.

Onomea Sug Co to Babella; Rel; 9 acres land, Kalaos, Hilo, Hawaii; \$300. B 207, p. 150. Dated Nov 17, 1902.

Recorded December 1. R

# TROPIC OILS

Just to hand from New York, a big supply of Tropic Oils

Engine, Cylinder  
Machine, Dynamo  
Carbox, Roller Gear  
Cup Grease.  
We also have other oils, such as  
Castor, Neatsfoot  
Sperm, Lard

and sell them by the barrel,  
gallon or bottle. When you  
wish to oil up, call on

**E. O. HALL & SON, Limited**

## STICK TO IT!

If the beer you now drink is perfectly satisfactory stick to it—'t not, try

### Manilla Anchor Lager

Manilla Anchor Lager combines a delightful flavor with purity, proper age and quality.

**LOVEJOY & CO., Ltd**  
NUUANU STREET. TELEPHONE MAIN 308.

### See that Illustration

## IT'S THE NOTTAHOOK

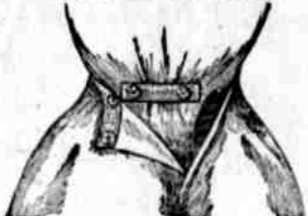
The only garment fastener made. Keeps placket securely closed. Holds skirt and waist snug and firm. One of those indispensable necessities that means so much to a woman's apparel and yet costs so little.

By the way, when you come into our store to-day, ask the saleslady to show it to you.

## N. S. SACHS'

DRY GOODS COMPANY, LIMITED  
Sole Agents  
Corner Fort and Beretania Sts.

### SKIRT SUPPORTER.



For the placket  
For children's clothes  
For the drop skirt  
For bathing suits  
For boys' waists and pants  
For belts  
To take place of button and button holes on all garments.



PLACKET

### KAUAI SHIPPING NEWS

The steamer Nihau arrived from Kauai ports this morning at 4:25 o'clock with two deck passengers. The following sugar is reported left at Kauai ports ready for shipment: K. S. M., 2500 bags; V. K., 400; W., 600; Mak., 277; G. & R., 277; McB., 1042; and L. P., 1600, making a total of 7291 bags.

Purser Kaas reports as follows: "The barkentine Benicia was at Elelee discharging coal. She had 150 tons coal out. The steamer Ke Au Hou was on her way to Hanalei from Kilauea discharging. It was rough at Elelee and Koloa on December 1, so we could not work at either place, but went straight to Hanalei to land all the Ahukini freight that day. On the following day we went back to Elelee and Koloa and landed the rest of the freight. The sea was moderate at Elelee and Koloa when we left. Had fine weather going across the channel, and as well as on the way back. Plenty of rain on Kauai.

The steamer Mikahala arrived from Kauai ports this morning at 3:01 o'clock with 1300 bags of K. S. M. sugar, 1 horse, 13 barrels of pf. 67 bags empty bottles and 59 packages sundries.

Purser Hapal reports as follows: The steamer Ke Au Hou was at Hanalei but couldn't work there and had to leave for Kilauea for shelter. Reported very heavy northerly swells and rough seas. The steamer Nihau was at Koloa discharging freight when we arrived there. Bad weather at Waimea since Sunday evening. Pleasant trip on our way home.

The steamer Waialeale arrived from Kilauea this morning at 8:09 o'clock. Purser Wright reports the steamer Ke Au Hou at Kilauea. Crossing the channels outward trip light southeast winds; light northwest winds on return.

Fine job printing at the Bulletin

### POTTER RETURNED MONEY.

Duluth, Minn., Nov. 16.—Bishop Henry C. Potter of New York came from his home to Duluth to lecture in the star lecture course of the First Methodist Episcopal church, November 12, and the following day he returned the \$150 which was paid him for his services. He stipulated that half should go to the star lecture course and half to Bishop Morrison for missionary work. The check was on a New York bank, and it was at first supposed the return of the money was purely an act of generosity, but today a local clergyman admitted that Bishop Potter had returned it because he had learned the audience was disappointed both as to the brevity and quality of his lecture. The subject of the lecture was, "Civil Responsibility of Individuals."

### BY AUTHORITY

Sealed Tenders will be received by the Superintendent of Public Works until 12 m. of Saturday, the 6th of December for removing the sewer pipes, manholes, etc., stored in yard corner of Richard and Halekua streets to Alaia Warehouse and properly pile same according to size. Breakage will be charged against Contractor at market rates.

The Superintendent reserves the right to reject any and all bids.  
**HENRY E. COOPER,**  
Superintendent of Public Works.  
2318.

### Organ Recital

—AT—  
**KAMEHAMEHA CHAPEL**  
—BY—  
**Alfred Appling Butler,**  
Friday Evening, Dec. 5th

ADMISSION 75c. Tickets on sale at Bergstrom's Music Store.

### See the new Climax Arc Lamp

100 to 600 candlepower. This is the best lamp on the market. Manufactured by The Standard Gas Lamp Company.

The Best of All Creams  
**HIGHLAND CREAM**  
and  
**PET CREAM**

**HAWAIIAN TRADING CO., Ltd**  
SOLE AGENTS.  
1142 Fort Street, Love Building.

### SENATE CONSIDERS THE REPORT OF THREE COMMITTEES

(Continued from Page 1.)

found clerical errors, discrepancies and delays. We also wish to state that we have had quite a number of complaints, more especially by those who have been delayed in receiving their patents, after having fully complied with the laws; and among those some were well founded.

We have also had complaints of favoritism being shown, those from persons on Hawaii and elsewhere; but thus far we have been unable to verify them. From lack of time to complete at present, these investigations, we would recommend that a committee consisting of three members of the Senate, be appointed to complete the examinations of the Department, and that a thorough investigation of all complaints be made and the general conditions now existing, at the regular session of the Senate in February, A. D. 1903. Respectfully submitted,  
**L. L. McCANDLESS,**  
**C. H. DICKKEY,**  
**J. B. KAOHL.**

On motion of Senator Isenberg the Committee on Accounts was granted until 2 o'clock this afternoon to present its report on the expenses of the present special session of the Senate. At 11 o'clock the Senate took a recess until 2 o'clock this afternoon.

### REALESTATE TRANSACTIONS

Filed for Record December 2  
Kaplan Est.—Lok Hop Co. . . . .L  
K Matsuda et al.—First Natl Bank of  
Wailuku . . . . .CM  
Malaloa—C D Lufkin . . . . .M  
H L Brock and hsb.—Bank of Hawaii  
Ltd . . . . .M  
Filed for Record December 3  
Pelani—Kim Wa . . . . .L  
Kim Wa—K Takaki . . . . .AL  
K Takaki—T H Davies & Co Ltd. . . . .CM

### KAUAI WEATHER.

Word comes from Kauai that the weather on the northern coast of the island has been very rough lately, the steamer Ke Au Hou, which was up there, having had to go to Kilauea for shelter.

Yesterday while that steamer was attempting to land freight at Kalihua one of her boats was swamped as it was going from the steamer with a load of freight. The members of the boat crew were all good swimmers and only saved their own lives but also managed to recover the boat and practically all the freight.

Weekly edition of the Bulletin, \$1 a year.

### Paris Blackmailer Worked Royalty

Paris, Nov. 17.—The latest disclosures concerning the recently printed story about the infatuation of the Crown Prince of Germany for Miss Gladys Deacon, bring to light an astounding story of blackmail by a Paris journalist. It is stated on the best authority that a man claiming to represent the newspaper that first printed the story collected 10,000 francs (\$2000) from Mrs. Deacon and 50,000 francs (\$10,000) from Prince Radolin, the German Ambassador to France, by threatening to exploit the story further.

Even this did not satisfy the blackmailer. He went after more, and only the intervention of the Minister of Foreign Affairs and the States Attorney broke up the scheme. After Mrs. Deacon had paid the money to the blackmailer, she reported the matter to Prince Radolin, who, it is said, commended her for her prompt action in preventing further publication.

Within a short time the blackmailer made a call upon Prince Radolin. He produced a mass of alleged affidavits from English servants purporting to reveal facts that would astonish the world if printed in connection with the flirtation between the Crown Prince and the American girl. These alleged affidavits had not been presented to Mrs. Deacon.

Radolin paid 50,000 francs and secured possession of these affidavits. It was not long before the blackmailer again called on Mrs. Deacon, this time with copies of the affidavits he had sold to Radolin and demanded 50,000 francs. She secured a delay, and then notified Radolin, who appealed to the French authorities to curb the blackmailer.

No confirmation of this story can be gained from either Prince Radolin or the Minister of Foreign Affairs, although both admit that the Prince parted with 50,000 francs. But not for blackmail. The money, they assert, was donated for "hygienic purposes" to aid some philanthropic undertaking.

THE BULLETIN has added 616 new subscribers to its lists in the last three months.  
The Bulletin, 75 cents per month.

### SHIPPING INTELLIGENCE

DAY.	TIDES.			
	High Tide	Low Tide	High Tide	Low Tide
Monday	4:34	10:54	5:11	11:30
Tuesday	4:53	10:35	5:10	11:24
Wednesday	5:12	10:16	5:09	11:17
Thursday	5:31	9:57	5:08	11:10
Friday	5:50	9:38	5:07	11:03
Saturday	6:09	9:19	5:06	10:56
Sunday	6:28	9:00	5:05	10:49
Monday	6:47	8:41	5:04	10:42

First quarter of the moon on the 7th at 7:56 p. m.  
Tides from the United States Coast and Geodetic Survey Tables.  
The tides at Kahului and Hilo occur about an hour earlier than at Honolulu.

Hawaiian Standard Time is 10h 30m slower than Greenwich time being that of the meridian of 157.30. The time whistle blows at 1:30 p. m., which is the same as Greenwich, 6h 0m.

### ARRIVED.

Tuesday, Dec. 2.  
Str. Lehua, Naopala, from Molokai ports, at 6:10 p. m.  
Wednesday, Dec. 3.  
Str. Nihau, Pedersen, from Kauai ports, at 4:25 a. m.  
Str. Mikahala, Gregory, from Kauai ports, at 3:10 a. m.  
Str. Waialeale, Piltz, from Kauai ports, at 8:09 a. m.  
Four-masted schr. off Diamond Head at 2 p. m.

### DEPARTED.

Tuesday, Dec. 2.  
Str. Claudine, Parker, for Maui ports.  
Str. W. G. Hall, S. Thompson, for Kauai ports.  
Str. Noeau, Pederson, for Lahaina, Kaanapali, Honokaa and Kukuihaele.  
Gas. schr. Eclipse, Townsend, for Molokai, Maui and Hawaii ports.  
S. S. Hongkong Maru, Filmer, for the Orient and Manila.  
S. S. Sierra, Houdlette, for San Francisco.

### SAILING TODAY.

Str. Lehua, Naopala, for Maui, Molokai and Lanai ports, at 5 p. m.  
Str. Mikahala, Gregory, for Elelee, Hanapepe, Makawili, Waimea and Kekaha; mail and passengers only for Nawiliwili and Koloa, at 5 p. m.

### TO SAIL TOMORROW.

Str. Maui, Bennett, for Mahukoua, Paunohu, Kukuihaele, Okaia, Laupahoehoe and Papanoa, at 5 p. m.  
Str. Kauai, Bruhn, for Honouapo and Panaluu, at 12 m.

### PASSENGERS ARRIVED.

From Kauai ports, per str. Mikahala, Dec. 2.—Mrs. G. Hansen, Capt. W. Goodman, T. H. Petrie, Charles Bickstadt, Mrs. W. Bushman, Tai Hong and 30 deck.  
From Kalaupapa, per str. Lehua, Dec. 2.—J. D. McVeigh.

### PASSENGERS DEPARTED.

For Kauai ports, per str. W. G. Hall, Dec. 2.—Arthur Rice, C. A. Rice, wife, two children and servant; Ah See, Miss Emma Becker, M. F. Prosser, M. M. O'Shaughnessy, C. A. Bruns, L. Arnstein, T. R. Keyworth, Father Sylvester, Chas. Day, J. M. Coulson.

## THIS WEEK

Getting ready for the HOLIDAYS  
Opening - extensive stocks of

Fans, Purses, Wrist Bags, Shell Goods, Novelties, Notions, and Fancy Goods Generally. . . .

Popular prices will prevail in our Holiday Goods Department this year. We have received a complete line of

Berlin Zephyr, Ice Wool, Germantown Yarn, Shetland Wool, Shetland Floss and Fairy Zephyr.

## WHITNEY & MARSH, LTD

## Moved to 1057 Fort St.

THE NEW YORK DENTAL PARLORS HAVE MOVED TO FORT STREET BETWEEN KING AND HOTEL

We have opened larger and more convenient offices, where we will be better able to serve our patrons in that manner which is most pleasing to patient and dentist alike. OUR PRICES ARE THE LOWEST FOR RELIABLE WORK. ALL WORK AND MATERIAL GUARANTEED. TEETH EXTRACTED WITHOUT PAIN. COME AND SEE US. NO CHARGE FOR EXAMINATIONS.

## New York Dental Parlors, 1057 Fort St.

THE PAINLESS DENTAL SPECIALISTS

## WANTS

For Want Column See Page Six  
SITUATION WANTED.  
WANTED—German girl desires position to do housework and cooking. Address A. K. Bulletin office. 2318-1w

FOR RENT.  
FURNISHED HOUSE FOR RENT—On Nuuanu Ave. above School and next door to residence of Capt. Fuller. Apply M. P. Robinson, Stangenwald Bldg. 2318-1w

BUSINESS DIRECTORY  
PICTURE FRAMES.  
T. SATAKA—Carpenter. Picture frames made to order. 98 Beretania St.

MASSAGE.  
OHIAI—Expert massage treatment for sick people. Beretania St. near Bridge.

## NEW - TO-DAY

NOTICE.  
During my temporary absence from the Territory, Mr. Sol Peck will act for me under full power of attorney dated December 1st, 1922.  
Honolulu, Dec. 3, 1922.  
2318-4t E. PECK.

## F.O.E.

The regular meeting of Honolulu Aer. No. 140, F. O. E., will be held this Wednesday evening, at 7:30 o'clock at St. Antonio Hall.  
All visiting brothers are invited, and members requested to attend.  
H. T. MOORE,  
2318-1t Secretary pro tem.

## FAIR and DANCE

PROGRESS HALL,  
SATURDAY, DECEMBER 6th  
For benefit of organ fund  
KALIHU WAENA CHURCH  
Fair from 10 a. m. to 5 p. m.  
Dancing, Tableaux and Concert from 7:30 to 11:30 p. m.

Admission to Fair 25c  
Admission to Concert \$1.00  
Honolulu Hotel Restaurant  
Will open tomorrow, the 3d inst., under new management. All white labor. French chef. Everything clean and first-class. B. DEFAZIO.  
2317-4f

THE BULLETIN has more live news each day than all other papers combined.

## JAS. F. MORGAN

Auctioneer and Broker  
85 Queen St.

## FINE MAIDEN HAIR FERNS AT AUCTION

On Thursday, Dec. 4th  
AT 10 O'CLOCK A. M.  
At my salesroom, 65 Queen Street. I will sell at Public Auction, a fine lot of MAIDEN HAIR FERNS.  
Jas. F. Morgan, Auctioneer.

## REAL ESTATE AT AUCTION

ON SATURDAY, DEC. 6,  
AT 12 O'CLOCK NOON,  
At my salesroom, 65 Queen street. I will sell at Public Auction, a valuable piece of property situate at Kaula-wala, Honolulu, majal of School street, between Liliha street and School street bridge.  
Property is situated on a lane leading from School street to Beretania street fronting on a proposed Government road. Lot has a frontage of 65 feet on lane.  
Contains an area of 20,591 square feet. The lot has a very great depth and can be divided into several building sites.  
For further particulars apply to  
Jas. F. Morgan, AUCTIONEER.

## AUCTION SALE

OF  
Land at Kaiulani Tract.  
ON SATURDAY, DEC. 6,  
AT 12 O'CLOCK NOON,  
At my salesroom, 65 Queen street. I will sell at Public Auction.  
Lots 1 and 2 of Block 21, of the Kaiulani Tract, near the Kamehameha Schools.  
Lot has a frontage on Road "O" of 112 feet and a depth of 71 to 100 feet; contains 9100 square feet.  
Land is fenced and has a small cottage.  
JAS. F. MORGAN, AUCTIONEER.

## Across the Continent

on the  
**NEW OVERLAND LIMITED**  
CHICAGO in  
LESS THAN 3 DAYS  
NEW YORK  
3 DAYS 19 HOURS  
A LUXURIOUS EVERY DAY TRAIN

Bath, Barber, Buffet, Library  
Electric Reading Lamps in every Booth, Observation Car, Telephone Service

## SOUTHERN PACIFIC

E. O. McCORMICK,  
Passenger Traffic Manager.  
T. H. GOODMAN,  
General Passenger Agent.  
SAN FRANCISCO . . . CALIFORNIA  
5-10-03

## Hawaiian Hardware Co., Ltd.

816 Fort Street, Honolulu, T. H.  
Agents For—  
Haviland Ware  
Victor Safe & Lock Co.  
Ideal Ready Mixed Paints.  
Pansy Stoves.  
Improved Stone Filters.  
And the Steel Aermotor.

## FOR RENT!

Premises of MRS. S. W. LEDERER, 782 Kinau Street. Three large bedrooms, parlor, dining room, pantry, kitchen and bath. Large yard. Stables and servants' quarters.  
Good drainage. On high side of street.  
JAS. F. MORGAN, AUCTIONEER.

## FOR RENT

Two cottages on Waikiki Beach road. Six bedrooms each. Rent \$20 each. Includes water rates.  
JAS. F. MORGAN, 65 QUEEN STREET.

## JAS. F. MORGAN

Auctioneer and Broker  
85 Queen St

For honest, up-to-date dentistry at low prices, and as near painless as can be produced have the

**TEETH Without Plates.** **NO PLATES REQUIRED**

**EXPERT DENTISTS**

IN ARLINGTON BLOCK, HOTEL STREET, OFF UNION, in front of the Young Building.  
Do your work. They have the Largest Dental Offices in the City, and the very latest appliances known to science. All instruments thoroughly sterilized before being used each time. No charge for examinations. Lady assistant. Work and material fully guaranteed.