

EVENING BULLETIN

From the Progressive Bulletin.

Advertisers Their Money's Worth.

Vol. IX. No. 1632.

HONOLULU, TERRITORY OF HAWAII, TUESDAY, SEPTEMBER 11, 1900

PRICE 5 CENTS.

CALIFORNIA STATE'S ADMISSION JUBILEE

Splendid Celebration of Event at Hawaiian Hotel Last Night.

SPEECHES BY ABLE AND PROMINENT MEN

The Banqueting Area Finely Decorated -- Music by the Second Infantry Band and the Hawaiian Quintet Club.

Last night the men of Honolulu entitled to do it celebrated the 50th anniversary of the admission of California as a State of the Union.

However, "honor to whom honor is due" is a principle that the pencil-pushers observe truly.

Mr. Levingston formally introduced Mr. Alexander Newhouse as toastmaster in a happy speech.

Judge Frear responded with a speech of rare eloquence and diction. He claimed to be first of all a son of Hawaii.

Mr. Newhouse proffered the excuse of Governor Dole, which was that of family bereavement.

Dr. Groseman, while disclaiming oratorical practice, made one of the speeches of the evening.

Judge M. M. Estee was called to respond to the toast, "The State of California," and delivered an address that made him approved as a world-statesman.

Hon. Paul Neumann, an early adopted son of California, was greeted with the first real ovation of the evening.

Major Ennis and Captain Merry, local representatives, respectively, of the United States Army and Navy, delivered most thoughtful addresses.

Hon. A. V. Gear made one of the best speeches of the evening. It was based on the symbolism of the flag and California's great place in the Union.

The merry meeting broke up after midnight. Before the company sat down and for some time thereafter the band of the Second Infantry, from the transport Logan, played most admirably.

DELEGATES FROM 4TH BERKELEY TAKES LEAD

Permanent Officers of Convention Chosen--Committee on Permanent Organization Hands In Report.

The delegates of the Fourth District met in Co. B's room at the drill shed yesterday afternoon according to the decision reached at the meeting held there Friday afternoon.

1. That the temporary officers of this District Committee be made the permanent officers.

2. That the chairman appoint an executive committee of seven members--one from each precinct.

3. That a permanent vice president and treasurer be elected.

4. That an auditing committee, composed of three members of the Executive Committee, be appointed by the chairman; that all bills must be approved by at least two members of the committee.

5. That district headquarters be secured for this committee.

6. All purchases made and expenses incurred must be through the chairman of this District Committee.

The report, as read, was unanimously adopted. M. P. Robinson was chosen vice president and Henry Waterhouse, treasurer.

It was voted that the officers of the convention be made ex-officio members of the Executive Committee.

W. R. Farrington introduced the following resolution:

Resolved, That the delegates of the Fourth District endorse the action of the Executive Committee in calling the Territorial Convention to meet at Hilo.

Mr. Farrington explained that he had introduced the resolution because he had heard some talk of the reconsideration of the proposition to go to Hilo.

Mr. Hoogs stated it as his opinion that such a resolution was not necessary. He made the charge against the committee that the proposition was carried through by only four members.

In this he was corrected by Mr. Crabbe and it was then stated, that not a vote against Hilo was recorded at the meeting of the committee.

Mr. Gear stated that no reasons why the convention should not be held in Hilo had been advanced.

Mr. Richards of Hilo, one of the members of the committee, was in favor of having the convention there.

Mr. Cooke moved that the meeting adjourn to Tuesday, September 11, at 9 o'clock to await the permanent settlement of the Hilo question. Carried.

2ND DISTRICT FOR PARKER

In the District Convention, Second Representative District, Territory of Hawaii.

Resolved, That the twelve delegates this day elected to attend the Republican Territorial Convention called as of the 20th and 21st days of September, 1900, be instructed and are hereby instructed that Samuel Parker is the choice of this convention for Delegate to Congress--both for the long and short terms--and that said delegates shall use their best efforts to secure the nomination of said Samuel Parker and be it further

Resolved, That the president and secretary of the District Committee sign and promulgate the foregoing.

H. L. HOLSTEIN, President District Committee. HARRY T. MILLS, Secretary District Committee.

STANDS SECOND ONLY TO HARVARD UNIVERSITY

Wonderful Progress of California's State University in Last Two Years -- Attendance Over 3000.

Berkeley, Aug. 31.--The attendance at the University of California has now far outgrown the expectations of the college authorities at the opening of the year, and as more and more students try to find places in the halls the overcrowding of the institution becomes more apparent each day.

The total figures are almost made up, but applicants continue to come in. The total number of students in the whole university this year, according to President Wheeler's estimate, will be more than 3000, placing it in advance, in point of numbers, of all the great Eastern colleges with the exception of Harvard.

The University has made a great leap in advance of its standing point of two years ago. The freshman class is 41 per cent larger than the one that entered in 1898.

The attendance in the upper classes shows an increase of 15 per cent over last year. The total number of new students entering during the present month is 704. Of these 60 are graduate students, leaving 539 regulars and 110 specials in the freshman class.

The number of regular freshmen a year ago was 371. The total attendance in the colleges at Berkeley last year was 1988. This year it will be at least 2300. Adding the students in the professional departments the whole number in the University will reach 3000.

The figures for the professional schools are uncertain, as work does not commence in them until next week, but the estimates are conservative.

Circuit Court Items.

Orders have been filed, signed by Judge Humphreys, appointing William O. Smith administrator of the estate of Louisia J. Bindt, and Ira Eskew administrator of the estate of Donald G. Campbell alias James Osborne.

Wm. G. Irwin by his attorney, Wm. O. Smith, has given notice of appeal from the assessment for benefits made by the commissioners on the extension of Millard street from Queen to Halekuanwila street.

Henry Federhen petitions to be paid his one-half of \$541.69 in the hands of the Clerk of Judiciary, he having come of age.

Nuisance on the Streets.

A Japanese dray driver was arrested by Captain Fox this morning on one of the principal streets of the town. He was on his way from Kewalo to the Board of Health scows and had on his dray, four metal containers full of material that really belonged in the odorous excavators. The stench was something sickening.

Rev. S. L. Desha Hurt.

Rev. Stephen L. Desha intended returning to Hilo in the Kinau today but, unfortunately, he met with an accident last night which prevented his carrying out his plans.

Gomes-d'Amaral.

Mr. A. P. Gomes and Miss Rosie d'Amaral were united in marriage on Saturday evening, Sept. 8, 1900, at 6:30 p. m. at the Catholic Cathedral.

Police Court Notes.

In the Police Court this forenoon the following cases were disposed of: Lopes and Walola, larceny in the second degree, committed for trial to the next term of the Circuit Court; Ah Sunz, assault and battery on Langfield, \$5 and costs; Geo. Durke, leaving a horse unattended in the street, \$5 and costs.

Mauna Loa's Good Work.

The Mauna Loa left Honolulu on her last trip, a full day late and she took a very large cargo for various ports on Maui and Hawaii.

Full line of above goods are shown in Iwakami Hat Manufacturing Department.

IN HONOLULU CONVENTION WILL NOW BE HELD

Date Set for Sept. 24th and 25th-- Chairman Smith Casts Deciding Vote--Hughes Against Hilo.

The Republican Territorial convention will be held in Honolulu, Monday and Tuesday, Sept. 24 and 25. This is final, and instructions to this effect were sent out to delegates of the other islands by the Kinau this noon.

The decision was reached after much laborious discussion pro and con and finally made unanimous.

The Executive Committee met at 9 o'clock this morning in the Chamber of Commerce rooms. Chairman G. W. Smith and members John Hughes, Enoch Johnson, Clarence Crabbe and A. V. Gear present.

S. T. Mills of Kona appeared before the committee and in behalf of the Kona delegates urged that the convention be held in Honolulu. The discussion was then carried on to considerable length.

A vote was finally taken which resulted in a tie, Crabbe and Gear voting for Hilo and Johnson and Hughes voting for Honolulu. Chairman George W. Smith cast the deciding vote in favor of Honolulu.

On motion of Crabbe seconded by Gear the vote was made unanimous.

A resolution was then passed unanimously recommending that the next convention be held in Hilo, and that this be urged upon the incoming Territorial committee.

Yankee St. Paul Won Ocean Race

New York, Aug. 31.--The American line steamer St. Paul, Captain Jameson, arrived here today from Southampton and Cherbourg after a quick passage of six days, seven hours and six minutes.

This time is the best made by the St. Paul between this port and Cherbourg and beats the best time of the big fleet of ocean greyhounds plying between Cherbourg and this port, with the one exception of the present record holder the Kaiser Wilhelm der Grosse, whose time is five days, seven hours and thirty-seven minutes.

After the St. Paul reached her dock tonight the passengers told of the great race the liner made with the Cunarder Campania. They said the interest in the race was so great that nearly all the passengers remained awake Tuesday night and until dawn Friday morning.

On Thursday evening before nightfall the Campania was then ahead of the St. Paul by about four miles. A race was inevitable. The St. Paul made a burst of speed and steadily forged ahead.

The nerves of every passenger and of the crew were keyed to the straining point. The interest in the race continued while the vessels were in sight of one another, but before dawn the St. Paul was so far ahead that the Campania could not be seen.

Thomas Square Concert.

The band will play the following selections at a concert in Thomas Square this evening, beginning at 7:30 o'clock:

- Part I. Overture--Road to Glory. Kilg. Finale--Carmen. Bizet. Grand Selection--The Lombardians. Verli. Four Waltz Songs (by request)-- (a) When Roses Bloom Again, (c) Leonora. Miss J. Keltina. (b) Sweet Bunch of Daisies, (d) I Love Somebody. Mrs. N. Alapai.

Mauna Loa's Report.

The Mauna Loa came in from Maui and Hawaii ports this morning. Purser Tuft reports as follows: We left 1254 bags of sugar at Punaluu and 1620 at Honuapo; also 624 at Honuapo mill. Fine weather all the trip. No rain at Kau. Rain every afternoon at Kona. The Noeau expected to leave Hamakua at 4 p. m. Monday, September 10. She leaves 6000 bags at H. S. Co. and 2500 at P. S. M. Good weather and no rain. The Upolu left Kailua Sunday morning for Kawaihae with Republican electioneers.

A Kona Nightingale.

Capt. Thompson of the W. G. Hall, who has been off on a vacation with his wife and family, returned in the Mauna Loa this morning.

THE WATERMAN IDEAL FOUNTAIN PEN. All sizes, all shapes. H. V. WICHMAN.

LAYSAN ISLAND AFFAIR IN THE POLICE COURT

Japanese Laborer On Stand Greater Part of Day--Story Practically Same as Already Told.

Captain J. Spencer appeared in the Police Court this morning on the charge of murder in the first degree in connection with recent trouble between the Japanese and white men on Laysan Island.

The prosecution was conducted by High Sheriff Brown. Attorneys Kinney and Chillingworth appeared for the defendant.

Among those present at the examination were Japanese Consul, Miki Saito, Paul Isenberg, Attorney General Dole, Dr. Averdam, Dr. Katsunuma, Alex. Isenberg and others.

The first witness on the stand was one of the four Japanese who first mounted the platform, just previous to the shooting.

He stated that four or five of the laborers were told to mount the platform and treat with the white men in regard to rice and water.

There was some talk on the part of the white men about defending themselves and he with the others said they were not looking for a fight.

Immediately after this, the firing began. This is totally different from the story told by the white men who claim that Captain Spencer warned the Japanese that the first man who mounted the platform would be shot down.

GREETING OF THE ALLIES

London, Aug. 29.--A Sun cable from London says: Accounts from Peking describe the wild enthusiasm which marked the meeting between the besieged foreigners and their relievers.

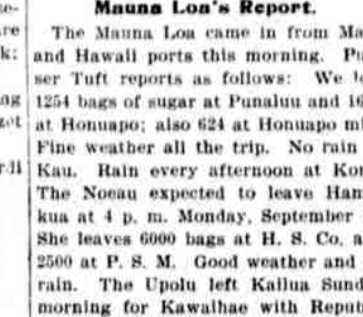
The men and women cheered and shook hands with the officers, soldiers, camp followers--in fact, with anybody who accompanied the allies. The food supply had not failed, though the people in the legations had to eat horse-flesh.

The Chinese pushed their attacks feebly. Pincards were posted throughout the city declaring that the foreigners must be exterminated in five days.

It was only the cowardice of the Chinese, who feared to meet the foreigners in a hand-to-hand fight, which prevented their success.

The consensus of opinion is that the imperial city should be razed and the palace destroyed. The Chinese are likely to interpret the forbearance of the allies as weakness.

Our Bob



An Up-to-Date ROUGH AND READY SCHOOL SHOE.....

..... IN CALF AND KID ..... IN ALL SIZES --

Blacks & Tans.

MADE IN AUSTRIA

MANUFACTURERS SHOE COMPANY

WAILUKU CONVENTION YESTERDAY UNANIMOUSLY ENDORSES.

INSTRUCTIONS GIVEN TO EIGHTEEN DELEGATES

Were 35 Present at Convention-- Names of Delegates From Various Precincts--Baldwin, Kahaulelio and Kepoikai.

The delegates to the District Convention of the Third District (Maui and Molokai) met in Wailuku yesterday.

There were 35 present. Several members who were unable to get to the convention, had their proxies on hand.

A. N. Kepoikai took the chair as temporary chairman and the following officers were then nominated and elected:

President--H. P. Baldwin. Vice President--Judge Kahaulelio. Secretary--A. N. Kepoikai. Treasurer--W. J. Lowrie. Auditor--W. O. Aiken.

These officers constitute the Executive committee.

The following delegates to the Territorial Convention were then nominated and elected:

Hana--E. M. Hanuna, J. Hanuna and W. Reuter. Hamakua--A. N. Kepoikai, W. J. Lowrie and George Hons. Molokai--D. H. Kahaulelio, Judge McCann and R. C. Searle. Molokai--D. H. Kahaulelio, Judge Mahoe and J. K. Kahina.

Before adjournment the convention endorsed Samuel Parker unanimously as the Republican Delegate to Washington and instructed the delegates to the Territorial Convention to vote along those lines.

Trouble at Orpheum.

A number of soldiers from the transport Logan went to the Orpheum in a somewhat hilarious mood last night and started a disturbance by making fun of the colored performance.

This became so noticeable after awhile that one of the performers made a "joke" that was not considered a joke.

The soldiers were on their feet at once and, for a while, things were lively. The soldiers were finally escorted outside.

One of the number made a pass at Manager Cohen and was straightway knocked down for his pains.

To Welcome Mrs. Gulick.

The ladies of the Japanese church will give a tea party at the home of Rev. T. Okumura, Kukui street, at 7:30 o'clock this evening by way of welcoming home Mrs. O. H. Gulick who recently returned from New York.

Mrs. Gulick has consented to speak.

The registration of voters in Honolulu has passed the 2100 mark.

Advertisement for Gessler's Magic Headache Wafers, Cure morning headaches before breakfast. Includes image of a person and text: 'MANUFACTURERS SHOE COMPANY'.

**WASHINGTON BLOCK**  
**The Lace House**  
 Correct Styles  
 In  
**Silk Petticoates**  
 THE FINEST SELECTION  
 IN HONOLULU.  
**Umbrellas and Parasols**  
 for LADIES and CHILDREN  
 Phone 157 **M. BRASCH & CO.** Phone 157

**Paternal Directory.**  
**HARMONY LODGE No. 3.**  
 I. O. F.  
 Meets every Monday evening at 7:30 in Harmony Hall, King street.  
 L. H. DEE, N. G.  
 E. R. HENDRY, Secretary.  
 All visiting brothers very cordially invited.

**MYSTIC LODGE No. 2, K. of P.**  
 Meets every Wednesday evening at 8:30 o'clock, Castle Hall, Fort street.  
 Visiting brothers cordially invited to attend.  
 S. J. SALTER, C. C.  
 A. E. MURPHY, K. R. S.

**HONOLULU CHAPTER No. 1, R. A. M.**  
 Meets every third Thursday evening in Masonic Temple. All visiting companions cordially invited.  
 A. F. GILFILLAN, H. P.  
 J. D. TUCKER, Secretary.

**HONOLULU COMMANDERY No. 1, K. T.**  
 Meets in Masonic Temple on the second Thursday evening of each month. All visiting Knights courteously invited.  
 HENRY E. COOPER, E. C.  
 D. TUCKER, Recorder.

**OAHU LODGE No. 1, K. of P.**  
 Meets every Friday evening at their hall, 420 1/2 Fort street, at 7:30. Members of Lodge No. 2, and visiting brothers, cordially invited.  
 A. N. SINCLAIR, C. C.  
 ALFRED ARENDI, K. of R. and S.

**WUAIU CHAPTER, ROSE CROIX, No. 1, A. & A. S. R.**  
 Meets the first Thursday in each month, at Masonic Temple. Sojourning and visiting brothers cordially invited to attend all meetings.  
 W. M. FRANK B. AUERBACH.  
 ALLAN B. SCRIMGEOUR, Secretary.

**LODGE Le PROGRES DE L'OCEANIE, No. 124, A. & A. S. Rite.**  
 Stated meetings on the last Monday of each month, in its hall, Masonic Temple.  
 C. M. WHITE, W. M.  
 H. B. FRIEL, Secretary.

**GEO. W. De LONG POST No. 45, G. A. R.**  
 Department of California and Nevada, meets at Harmony Hall, King street, first Thursday evening of every month. Sojourning comrades are cordially invited to attend.  
 W. L. EATON, P. C.  
 SAs. T. COPELAND, Adjt.

**HAWAIIAN LODGE, No. 21, F. & A. M.**  
 Stated meetings, first Monday each month. Special meetings, when called (will be noted in this space.)  
 Members of Lodge Le Progres, Pacific Lodge, and all sojourning brethren cordially invited.  
 J. M. JAT, W. M.  
 E. R. G. WALLACE, Secretary.

**THE ALOHA BRANCH OF THE THEOSOPHICAL SOCIETY.**  
 Every Saturday at 7:30 p. m. The Aloha Branch of the Theosophical Society, will hold its regular meeting in the Knights of Pythias Hall, next door to Hollister & Co., Fort street. Public cordially invited. Books lent at the library on Mondays, Wednesdays and Fridays, from 3 to 4 p. m. Information on Theosophy given by writing to P. O. Box 554.

**Markets and Grocers.**  
**Potatoes,**  
**Naval Oranges, Lemons,**  
**Dried Fruit, Ranch Eggs,**  
**Butter, Cheese, &c.**  
**Per Australia**  
**J. R. MILLS**  
 Lincoln Block, King street.

**Novelties**  
 for dinner giving and for luncheons and for entertaining may be had here constantly . . . . .  
**LEWIS & CO., Grocers.**  
 Telephone 240. 111 Fort St.

**Cure morning headaches while dressing.**  
**GESSLER'S MAGIC HEADACHE WAFERS**  
 10 cents all druggists.

**PER S. S. AUSTRALIA.**  
 Just landed a full line of grapes, apples, oranges, lemons, celery, cabbage, cauliflower, cranberries, burbank and red potatoes, dates, salmon, flounders, halibut, crabs, Eastern and California oysters (in tin and shell), turkeys, chickens, ducks, quail. A full line of canned goods. CAMARINOS' REFRIGERATOR.  
 For that tired feeling—take a ride up Pacific Heights.

**CHAS. D. WALKER,**  
 Designer and Builder of High-Grade Yachts, Boats and Launches!  
 Works, 624 KING ST.  
 P. O. Box 522. Telephone 960.

**Q.—What is Champagne?  
 A.—It is**  
**Moët & Chandon**  
**'WHITE SEAL'**

N. B.—The accuracy of this answer is endorsed by connoisseurs the world over.  
**LOVEJOY & CO.,**  
 SOLE AGENTS—  
 FOR TERRITORY OF HAWAII.

**GEO. RODIEK PROMOTED.**  
 Hilo, Sept. 6.—In recognition of valuable services rendered as manager of the Hilo branch of H. Hackfeld & Co., Ltd., George Rodiek has been made a director of that corporation. Hackfeld & Co. have a plan of promoting employees when their services warrant it, and at the last meeting of the company Messrs. Rodiek, Klamp, Protenhauer and J. F. Humburg received the material reward.  
 Mr. Rodiek came out from Germany ten years ago to take a position with the firm and from the position of junior clerk he worked his way step by step until he was made manager of the Hilo branch. After three years in Hilo the business of the local house has become the fourth largest in the entire group and Mr. Rodiek's efforts have been recognized. He will leave here during the current month and will sail from Honolulu on the next trip of the steamship Australia en route to his former home in Germany where he will spend a six months' vacation. On his return he will take an important position in the Honolulu house. August Humburg, who has been associated with Mr. Rodiek in the local store, will succeed him as manager.—Herald.

**EDUCATION OF HAWAIIANS.**  
 (Maui News.)  
 Are Hawaiian children being educated in the right direction? Formerly they were an industrious race, but the young Hawaiian of today, educated in the public schools of the islands, can sit in the shade and twang his ukulele while the old father digs taro and pounds poi, with the same sang froid which marks some of his young American brothers who have been educated out of the idea of good, honest, hard work. Frankly, there should be no schools on the islands except such as teach the mechanical arts as well as the three R's. No boy should graduate without a certificate that he can shoe his horse, mend his shoes, and build his barn, as well as to spell metempsychosis and give the lateral boundaries of Burrabullagoo.

**POLICE MUST PAY DEBTS.**  
 Chicago, Aug. 31.—A lieutenant of police, a sergeant and forty-one patrolmen were suspended from the police force today for non-payment of debt. The suspension was ordered by Chief of Police Kiple and will be effective until the policemen have paid their creditors. The Civil Service Commissioners sanctioned the order of the Chief. The debts consist of accounts for groceries, meats and furnishings. It is the first time the police department has taken a rigorous course to enforce the payment of debts by policemen.  
 The suspension was ordered by Chief Kiple after numerous complaints had been made by the creditors and after he had endeavored to secure a settlement for them.

**JUICY FRUIT PULPS.**  
 The freshest in town at BOURBON, Smith & Co.'s.

**CHAS. D. WALKER,**  
 Designer and Builder of High-Grade Yachts, Boats and Launches!  
 Works, 624 KING ST.  
 P. O. Box 522. Telephone 960.

**LOCAL AND GENERAL.**  
 The climate has no effect on the Peacock Preserving Plant.  
 The Mary Wickham from Kahului arrived in Eureka August 30.  
 The Robert R. Hind from Hilo arrived in San Francisco August 3.  
 The Jennie Wood cleared at San Francisco for Lahaina August 31.  
 The schooner Bertie Minor arrived in Eureka from this port August 27.  
 Two great sales are on for this week at the Pacific Import Co. See ad.  
**WEDDING STATIONERY.** Engraved Cards, Embossing.  
**H. F. WICHMAN.**  
 The schooner W. H. Smith arrived in Port Townsend from this port, August 30.  
 You can rely on the workmanship of the Tribune and Orient, the leading wheels.  
 The band will give a concert in Thomas Square at the usual time this evening.  
 The schooner Robert Lewers from Honolulu arrived in Port Townsend, August 28.  
 Nicely furnished rooms at the Popular House, 154 Fort street, from \$1.00 per week up.  
 The schooner Annie M. Campbell sailed from Port Townsend for Honolulu, August 31.  
 Very desirable furnished rooms are offered for rent in a central location. See To Let column.  
**REGISTRATION ROLLS FOR THE NOVEMBER ELECTIONS ARE OPEN. REGISTER TODAY.**  
 David Haugh, chief forester of the Agricultural Department, leaves for Makawao, Maui, today.  
 The schooner H. D. Bendixen and barkentine Planter from Honolulu both arrived in Port Townsend, August 31.  
 E. R. Hendry, Republican Territorial Secretary, has received McKinley and Roosevelt buttons in various beautiful styles.  
 The barkentine W. H. Dimond arrived in San Francisco from this port, August 31. She was 31 days making the trip.  
 The St. Katharine was to have sailed yesterday afternoon for San Francisco but was unable to get away until this morning.  
 Having been given a one month's vacation, Rev. T. Okumura left for Hilo in the Kinau today. He will visit Maui before returning.  
 The regular annual reception of the Y. M. C. A. to new members will take place next Monday evening. An excellent program has been arranged.  
 The Mariposa will be in from San Francisco in the morning. Although the China is not due until the 13th she will undoubtedly be in tomorrow afternoon.  
 The adjourned meeting of the Young Hawaiians' Institute will be held in the office of Dr. Huddy at 7:30 o'clock this evening. Officers for the ensuing year will be elected.  
 The barkentine Geo. C. Perkins from Mahukona and the barkentine Irmgard from Honolulu, both arrived in San Francisco, August 31. The Irmgard was 28 days making the trip.  
 H. Kinoshita, owner of the store at the corner of Kinau and Makiki streets has turned his place into a theater. The opening performance was given last night. A large crowd was in attendance.  
 There was a special service for soldiers at the Christian church last evening. There was quite a large attendance. There will be another service at 7 o'clock this evening. Rev. A. E. Cory will preach.  
 While trucking rails from the John F. Currier on the Irmgard wharf yesterday afternoon, one of the dock laborers had his foot badly crushed by the falling of a piece of iron weighing about 1000 pounds. The man was taken to the hospital.  
 Ladies should not fail to take advantage of the special sale values that are offered this week at the Pacific Import Co., Fort street. White pique dress skirts made to sell at \$5, \$6 and \$7 are going at \$3, \$4 and \$5 apiece; this is an unparalleled offer. Percale wrappers are on sale at only \$1.25. Do not miss this great opportunity.  
 One of the soldiers from the Transport Logan, somewhat under the influence of liquor, made himself very obnoxious in the vicinity of the Hart home in Waikiki yesterday afternoon. A lot of children were on the beach at the time. It is very fortunate for the fellow that all the men were in town at work; otherwise he might have been given a good thrashing for exposing his person as he did.  
 The use of the Singer in millions of homes shows the unprecedented success of these ideal sewing machines. It is convincing proof that the Singer excels in all kinds of family sewing and art needle work. All our sewing machines are of the best construction, beautifully decorated, and are mounted on selected woods in finely finished cabinets of artistic design. B. Bergersen, agent, 16 1/2 Bethel street.

**New York Central & Hudson River Railroad Co.**  
 GRAND CENTRAL DEPOT.  
 New York, Jan. 1, 1917.  
 Messrs. S. Olinberg & Co.,  
 New York.  
 GENTLEMEN: If you think it will add anything to the value of the legal notice you make of this property under a better notice than any now in the market, it will be a great pleasure to give you the right to use my name and address.  
 Yours very truly,  
**CHAUNCEY M. DEPEW.**

**Chauncey M. Depew Cigars!**  
**The Washington Mercantile Co., Ltd.**  
 Corner Fort and Queen streets.  
 Distributing Agents for the HAWAIIAN ISLANDS  
 L. W. MERRILL. H. G. MIDDLEBROCK.

**The Merchants' Collecting Agency,**  
 Custom House Brokerage  
 113 KAAHUMANU ST.  
 Makes A SPECIALTY of Monthly Accounts and Rents.

**White Teeth!**  
 are generally perfect and sound, and at all events are a much prettier feature of the mouth than dirty and discolored teeth.  
 Then again when kept clean and white are less liable to decay which rather is due to thoughtlessness in teeth care.  
 All teeth preparations, in a general way are good—we have them all—some better than others.  
**Prophylactic Tooth Powder 25 cts.**  
 we know it as near a perfect tooth cleaner and antiseptic as it is possible to make because every one of its ingredients is the purest obtainable.  
 That's the feature of our tooth powder.

**Hollister Drug Co.**  
 FORT STREET.

**Waikiki Inn.**  
 Beginning Thursday, Aug. 30, THE WAIKIKI INN will run a wagonette for the benefit of its patrons, leaving the corner of Fort and King streets as follows:  
 FOR WAIKIKI INN.  
 A. M. P. M.  
 9:30 12:30  
 5:30  
 FROM WAIKIKI INN.  
 7:40 4:30  
 10:00  
 Single Fare, 25 cents; 8 tickets, \$1.00.  
**H. N. ALMY,**  
 Manager.

**Baby Goose!!**  
**HIS ADVENTURES**  
 Just the book for  
**THE LITTLE ONES,**  
 For sale by the  
**HAWAIIAN NEWS CO., Ltd.**

**B. F. EHLERS & CO.**  
 We have just finished stock taking and find we have quite a number of short ends on hand which must be  
**Cleared at once on Wednesday at 8 p. m.**  
 We will start a sale of these goods at prices that will be bound to close the lot in a very few days. Among the lot are  
 Wash Goods, Bilks, Wool Wash Goods, Laces and other pieces of various goods.  
**Come early and get first choice**  
**B. F. EHLERS & CO.**  
 By the Barks "J. C. Pflueger" and "M. E. Watson"

**WE HAVE RECEIVED A LARGE ASSORTMENT OF : :**  
 Morton's and Crosse & Blackwell's Groceries—Bicarbonate of Soda, Wash Soda, Caustic Soda, Paints & Oils, Corrugated Iron, Ridging, &c., Cement Firebricks, Carbolineum, Stockholm Tar, Tubs Buckets, Tinplates, Sauce pans, Teakettles, &c., &c.

**H. HACKFELD & CO., LTD.**  
**Canned Meats**  
 CORN BEEF  
 ROAST BEEF  
 CHIPPED BEEF  
 SMOKED BEEF  
 LUNCH TONGUE  
 DEVILED HAM  
 DEV.'d TONGUE  
 VILINA SAUSAGE  
 FRANKFURT SAUSAGE  
 BRATWURST SAUSAGE  
 SAUSAGE MEAT  
 HAM LOAF  
 YEAL LOAF  
 CHICKEN and COTTAGE LOAF

**SALTER & WAITY, Grocers**  
 ORPHUM BLOCK, Fort St.  
**BY : THE : AUSTRALIA**  
 On Ice . . .  
 All Seasonable Fresh Fruits and Vegetables  
 TURKEYS, DUCKS and CHICKENS. Try one of our TENDER BROILERS.  
 FRESH SALMON and Flounder, Smoked Salmon and Halibut.  
 FRESH POTATOES and Onions. Cervelat Sausages (in foil), "And in Sweet"  
 FROZEN OYSTERS both California and Eastern. Cream Cheese (in foil).  
 GRUENHAGEN'S BON BONS and Marshmallows.

**H. MAY & CO., Ltd.**  
 2—Big Stores—2  
 The Waterhouse Store | The McIntyre Store  
 BETHEL ST. COR. KING AND FORT STS.  
 TELEPHONE 24. TELEPHONE 22.

**Burnham's CREAM CUSTARD**  
 CONTAINS NO CORN STARCH.  
 Requires no eggs, no cooking. Prepared in a moment by simply adding one quart boiling milk ACCORDING TO DIRECTIONS. Will produce ten cups of delicious Custard or two quarts of rich Ice Cream that cannot be surpassed.  
 For sale by **CHAS. HUSTACE.**  
 Telephone 119. 212 King street, next to the Arlino

**Before insuring Your Life consult the best company and secure the best and most liberal policy as issued by the**  
**GERMANIA LIFE INSURANCE CO.**  
 —of New York—  
**EMMETT MAY, Judd Building,**  
 Manager for Hawaii.

**S. SHIMAMOTO**  
 General Merchandise, Dry Goods, Groceries.  
 Japanese Provisions, etc.  
 MAGOON BLOCK, MERCHANT STREET.  
**P. O. Box 886 Main 215**  
 Telephone **FSO CO. P. O. Box 878**  
 Contractors and Builders  
 GENERAL BUSINESS AGENCY  
 All kinds of Laborers' Supplies  
 King Street, near Liliha (Ewa side), Honolulu, T. of H.  
 Telephone 503. P. O. Box 984.

**GOO KIM**  
 IMPORTER AND DEALER IN  
 HEAVY PONGEE SILK FOR MEN'S SUITS AT REASONABLE PRICE.  
 GROSS LINED HANDKERCHIEFS WITH BORDER.  
 MERCHANT TAILORING  
 210 Nuuanu Street. Between Hotel and Paahi.  
 P. O. Box 995. TEL. 15.  
**WING WO CHAN**  
 THE OLDEST CHINESE FIRM IN HONOLULU.  
 COMMISSION MERCHANTS.  
 Dealers in Fine Silks and Grass Linens. Chinese and Japanese Goods of All Kinds.  
 P. O. Box 818 Telephone 808  
**H. HAMANO**  
 IMPORTER AND DEALER IN  
**JAPANESE PROVISIONS GENERAL MERCHANDISE**  
 509 BERNANIA STREET - OPPOSITE QUEEN'S HOSPITAL

# The "Renown" Cigar

DAVID LAWRENCE  
532 FORT ST

## JUST RECEIVED A LARGE SHIPMENT - - - Alsen Portland Cement

The strongest and most workable cement made and will permit the admixture of a larger amount of water than any other brand. It is therefore the most economical. ALSEN has NO EQUAL in COLOR, FINENESS and SAND CARRYING CAPACITY. IT WEIGHS LESS PER BUSHEL (measured at 100° F.) MORE CEMENT TO A BARREL than other brands, which very materially REDUCES the cost as compared with other cements. It is therefore an ECONOMICAL cement to use and SPECIALLY ADAPTED FOR FIRE CONCRETE WORK.

**COMPARATIVE TESTS.**  
Tensile Strength in Pounds Per Square Inch Made at Royal Testing Station, Berlin, 1899-1900.

Brand	After 7 days	After 28 days	After 56 days
ALSEN	7475	8475	9075
DYCKERHOFF	7075	7875	8475
PREMIUMS	7075	7875	8475

Capacity and Sales.—The output of the "ALSEN" factories in, at the present time, larger than that of any other Portland Cement in Europe. The yearly sales of Alsen's Portland Cement in the United States is greater than that of any other brand. The following test made in actual work by Col. D. C. Houston, Corps of Engineers, U. S. A., at the sea wall around Governor's Island, New York Harbor, has never been equaled by any other cement. It is as follows:

**TENSILE STRENGTH PER SQUARE INCH.** One day, 34 pounds; Seven Days, 60 pounds; Thirty Days, 105 pounds. For Sidewalks it gives the best color and the most durable wearing surface. Testimonials from most eminent engineers, architects and contractors endorsing the high grade quality of "ALSEN" furnished on application to

**Theo. H. Davies & Co., Ltd.**

### PHILADELPHIA ICE CREAM

.....With Crushed Fruits.....

ONLY AT  
**HONOLULU - DRUG - CO.**

All others are imitations  
Families and Parlors Supplied at SHORT NOTICE.

Our Ice Cream Soda is the talk of the town.

**HONOLULU DRUG CO.,**

### We Watch While You Sleep

**BOWER'S MERCHANT PATROL AND CONFIDENTIAL AGENCY**

Reliable Watchmen furnished for stores and property. Best City references furnished. Detective and confidential work of all sorts.

Office Room 4 Model Block - - - TEL. 706.  
P. O. BOX 284.

### SPARKLETS

make a large drink for small money.

**ASK FOR THEM AT YOUR DRUGGISTS.**

If you are not acquainted with sparklets he will explain the working of them, which is so simple that a child can operate the aerating of the bottle. Cheaper than other aerated waters. All families should use Sparklets in their drinking water.

All the leading DRUGGISTS and Storekeepers on the Islands are supplied with SPARKLETS and the prepared bottles.

**W. C. PEACOCK & CO., LTD.**  
Sole Agents

.....THE.....  
**Honolulu - Tobacco - Co., - Ltd.,**  
COR. FORT AND MERCHANT STREETS

HAS RECEIVED PER "AUSTRALIA" FROM  
**New York**  
The World Renowned Brand of Cigars.....  
**Lillian Russell**  
PURITANOS.

This elegant CIGAR can be purchased for FIVE CENTS only.  
TRY THEM. NONE BETTER.

Architects, Contractors and Builders

**Fred Harrison,**  
CONTRACTOR AND BUILDER

Jobbing: Promptly: Attended: To.

**WM. T. PATY,**  
Contractor and Builder.

Store and Office Fitting, Plans and Estimates Furnished.

1488 Hotel Street, near Barracks  
**G. A. HOWARD, JR.** ROBT. F. TRAMP

**HOWARD & TRAIN,**  
Architects.

247 7/2 Model Block, - HONOLULU, OAHU, H. I.  
P. O. Box 703. Telephone 976

**H. L. KERR & CO.,**  
Architects and Builders

Rooms 11-12  
---PROGRESS BLOCK.

Telephone 137.  
Geo. W. Page Tel. 229  
F. W. Beardslee P. O. Box 178

**BEARDSLEE & PAGE**  
Architects & Builders

Office: Rooms 2-4, Arlington Annex, Honolulu, H. I.  
Sketches and Correct Estimates furnished at Short Notice. 1441

### A Specialty!

## FLAT TOP DESKS

FOR OFFICE USE

ALSO  
**Desks,**  
FOR TYPEWRITERS

Call and see them.  
We also have a Fine line of.....

**WERNICKE BOOK CASES**  
IN ALL SIZES  
Hundreds in use in this city.

\*\*\*\*\*

**Henry Waterhouse & Co.**  
---QUEEN STREET---  
AND SEE THE DISPLAY.

### Put on a Good Front Anyhow

ARTISTIC METAL SIGNS  
---and---  
ARTISTIC WINDOW DISPLAY FIXTURES

will help you to do it.....

THE BEST IS CHEAPEST—  
because there are no better goods made than those we sell—  
—When you are fixing up the old store or planning a new one—consult us regarding how to do it in style.  
—Besides Signs and Display Fixtures we are prepared to figure with you on any kind of interior finish or furniture in the way of office or store fixtures partition shelving, etc., in hard woods of all kinds.

Plans and designs for the making of

**Lewers & Cooke,**  
Fine Job Printing at the Bulletin Office.

## RUSSO-AMERICAN PLAN IN DETAIL

### Full Text of American for Withdrawal From China.

### UNITED STATES HAS ACCOMPLISHED ITS TASK

### Must Afford Protection to All People in China—Integrity of the Empire to be Maintained.

Washington, Aug. 31.—The Russian note relative to the withdrawal of Russia from China, and the United States' response thereto, were made public today by the state department after the cabinet had fully considered the expediency of so doing. The correspondence is unique in the history of diplomatic exchange. It may be said to illustrate a clever move by which the United States government again has assumed the lead in prescribing the policy of the powers respecting the Chinese trouble. This was accomplished by the state department availing itself of a Russian note to address the powers with an inquiry as to their policy, an answer to which scarcely can be avoided.

Various meanings may be placed upon the statements of the two principals in this correspondence. Thus, on the one hand, it may be noted that while Russia announces a purpose to withdraw her troops from China, still as to the occupying force at Niuchwang a condition is attached that almost negatives the proposition as to that point. Respecting our own attitude, it appears that while believing the best course to pursue is to remain in Peking, our government is still willing to withdraw. Perhaps this means that if there is to be separate action by the powers in China, the United States proposes to deal with the situation with a free hand. It may be noted in connection with our withdrawal statement that whereas Russia proposes to withdraw from China, our offer is to withdraw from Peking. A significant fact in that connection is that General Chaffee, who is well advised of the situation, having several days ago been directed to prepare for just such an emergency as that precipitated by the Russian action, continues his preparations for wintering the American troops in China. Indeed, unless the men are afloat and out of the Peiho within the next six weeks, they are likely to remain in China perforce, being incapable of being withdrawn.

Chinese correspondence, August 28th and 29th, 1900. Purposes of Russia in China. Telegrammatic instructions sent to the representatives of the United States in Berlin, Vienna, Paris, London, Tokio and St. Petersburg.

Department of State, Washington, Aug. 29, 1900.—The Russian charge d'affaires yesterday made to me an oral statement respecting Russia's purposes in China, to the following effect: That, as already repeatedly declared, Russia has no designs of territorial acquisition in China; that, equally with other powers now operating there, Russia has sought the safety of the legations at Peking and to help the Chinese government to repress the troubles; that, incidentally to necessary defensive measures on the Russian border, Russia has occupied Niuchwang for military purposes, and as soon as order is re-established will retire troops therefrom. If other powers be no obstacle thereto, the representatives of the various governments have co-operated for the relief of the legations in Peking has been accomplished; that, taking the position that as the Chinese government has left Peking there is no need for her representative to remain, Russia has directed the Russian minister to retire, with his personnel, from China; that the Russian troops will likewise be withdrawn, and that when the government of China, Russia has the reins of government and accord an authority with which the other powers can deal and will express a desire to enter into negotiations, the Russian government will also name its representative. Holding these views and purposes, Russia expresses the hope that the United States will share the same opinion.

To this declaration our reply has been made by the following memorandum: "Memorandum in response to the Russian charge's oral communication, made on August 28th to the acting secretary of state touching the purposes of Russia in China: "The government of the United States receives with much satisfaction the relevant statement that Russia has no designs of territorial acquisition in China, and that, equally with the other powers now operating in China, Russia has sought the safety of her legation in Peking and to help the Chinese government to repress the existing troubles. The same purposes have moved and will continue to control the government of the United States, and the frank declarations of Russia in this regard are in accord with those made to the United States by the other powers. All the powers, therefore, having disclaimed any purpose to acquire any part of China, and now that adherence thereto has been renewed since relief has reached Peking, it ought not to be difficult, by

concurrent action through negotiations, to reach an amicable settlement with China by which the treaty rights of all powers will be secured for the future, the open door assured, the interests and property of foreign citizens conserved and full reparation made for wrongs and injuries suffered by them.

"So far as we are advised, the greater part of China is at peace, and earnestly desires to protect the life and property of all foreigners, and in several of the provinces active and successful efforts to suppress the Boxers have been taken by viceroys, to whom we have extended encouragement through our consuls and naval officers.

"The present good relation should be promoted for the peace of China. While we agree that the immediate object for which the military forces of the powers have been co-operating, viz., the relief of the ministers at Peking, has been accomplished there still remain the other purposes which all the powers have in common, which are referred to in the communication of the Russian charge d'affaires, and which were specifically enumerated in our note to the powers of July 2d.

"These are: To afford all possible protection everywhere in China to foreign life and property; to guard and protect all legitimate foreign interests; to aid in preventing the spread of disorders to other provinces of the empire and recurrence of such disorders, and to seek a solution which may bring about permanent peace and safety in China, preserve Chinese territorial and administrative entity, protect all rights guaranteed by treaty and international law to friendly powers and safeguard for the world of the principle of equal and impartial trade with all parts of the Chinese empire.

"In our opinion these purposes could best be obtained by the joint occupation of Peking under a definite understanding between the powers until the Chinese government shall have been re-established and shall have been in a position to enter into new treaties with adequate provisions for reparation and guarantees of future protection. With the establishment of recognition of such authority the United States would wish to withdraw its military forces from Peking and remit to a permanent movement in negotiation our just demands. We consider, however, that a continued occupation of Peking would be ineffective to produce the desired result, unless all the powers unite therein with entire harmony of purpose. Any power which determines to withdraw its troops from Peking will necessarily proceed thereafter to protect its interests in China by its own method, and we think that this would make a general withdrawal expedient.

"As to the time and manner of withdrawal, we think that, in view of the imperfect knowledge of the military situation resulting from the interruptions of telegraphic communication, the several military companies at Peking should be instructed to confer and agree together upon the withdrawal as a concerted movement as they agreed upon the advance.

"The result of these considerations is that, until there is such general expression by the powers for a continued occupation as to modify the views expressed by the government of Russia and lead to a general agreement for continued occupation, we shall give instructions to the commander of the American forces in China to withdraw our troops from Peking after the conference with the other commanders as to the time and manner of withdrawal.

"The government of the United States is much gratified by the assurance given by Russia that the occupation of Niuchwang is for military purposes incidental to the military steps for the security of the Russian border provinces menaced by the Chinese, and that as soon as order shall be re-established Russia will retire her troops from these places if the action of the other powers be not an obstacle thereto.

"No obstacle in this regard can arise through any action of the United States, whose policy is fixed and has been repeatedly proclaimed.

"ALVEY A. ADEE,  
Acting Secretary,  
Department of State, Washington, August 29, 1900.

"You will communicate the foregoing to the minister of foreign affairs and invite careful consideration and a response."

**Californian Reinsured**  
San Francisco, Sept. 1.—Thirty-six days have passed since the new steamer Californian sailed from Honolulu for Manila, and the vessel has not yet arrived at the Philippine port. She was posted yesterday at the Merchants' Exchange as overdue and 25 per cent re-insurance is quoted on her, but the figure will rapidly climb upward if the steamer remains out many more days. Shipping men as well as the owners of the Californian do not believe that any great disaster has befallen the big steamer, the opinion being general that nothing more serious than a break down has occurred. This, however, would be serious under most circumstances, unless the Californian is near her journey's end, where she would be liable to be picked up or at least reported without undue loss of time.

The fact that the Californian is on her maiden voyage lends foundation to the belief that her machinery has caused a delay at sea and that otherwise she is all right.

**Mission Children's Society.**  
About sixty people were present at the meeting of the Hawaiian Mission Children's Society at the home of Mrs. Dillingham Saturday evening. The meeting was called to order by Rev. C. Westervelt. Mr. and Mrs. O. H. Gulick and Mrs. B. F. Dillingham related their experience at the missionary convention in New York. Miss Chamberlain reported on the Missionary Album. Music was furnished by Mrs. Turner, Miss Carrie Castle and C. N. Prouty, Jr.

The Evening Bulletin, 75 cents per month.

## HAWAII LAND CO. LIMITED.

Capital Stock - - - \$100,000.  
Capital, paid up, - - \$48,800

OFFICERS:  
W. C. Achi, President & Manager  
M. K. Nakulua, Vice President  
J. Makinai, Treasurer  
Rooh Johnson, Secretary  
L. Desha, Auditor

BOARD OF DIRECTORS:  
Jonah Kumaiio,  
J. Makinai,  
J. W. Bipiiano.

The above Company will buy, lease, or sell lands in all parts of the Hawaiian Islands; and also has houses in the City of Honolulu for rent. 1489-91

### J. J. WILLIAMS,

Photographer.

### PORTRAIT WORK A SPECIALTY.

Visitors are cordially invited to all and inspect our gallery of life-size royal photos, from Kamehamehs I. to date.

At the Old Stand  
On Fort Street—:—

### W. C. ACHI & CO.,

Brokers & Dealers

### REAL ESTATE

We will Buy or Sell Real Estate in all parts of the group.  
We will Sell Properties on Leasehold Commissions.

OFFICE, 10 WEST KING STREET

### DAVID DAYTON,

Real Estate Broker.

223 MERCHANT ST.

FOR SALE.

Property in town and suburbs and HOUSES TO LET.

### T. R. MOSSMAN

Real Estate Agent

Abstractor and Searcher of Titles . . .  
Loans negotiated  
Rents collected.

Campbell Building,  
Merchant street.

### P. E. R. STRAUOH,

Real Estate Broker

Financial Agent and Collector

No. 9 Bethel St., near P. O.  
Telephone 611.

### THE ORPHEUM CAFE

The Best Meal  
—AND—  
The Best Service

IN THE CITY

At Popular Prices ::  
MEALS AT ALL HOURS: A la carte or Table D'Hotel.

WE OFFER YOU THE

### Best 5c. Cigar

To be had for the money.

CLOSING OUT ALL OUR DOMESTIC CIGARS.

### Beaver Lunch Rooms.

H. J. NOLTE.

### CHAS. CBAMER

C. A. GROTE

Merchant -:- Tailors

CLOTHING

Cleaned and Repaired

OUR SPECIALTY.

FIRST - CLASS - WORK - GUARANTEE.  
Union St. near Hotel 1507

## ALEXANDER & BALDWIN, Ltd

OFFICERS:  
H. P. BALDWIN, President  
J. B. CASTLE, 1st Vice-President  
W. M. ALEXANDER, 2nd Vice-President  
J. P. COOKE, Treasurer  
W. O. SMITH, Secretary and Auditor

### Sugar Factors and Commission Agents

AGENTS FOR—  
Hawaiian Commercial & Sugar Co.  
Olan Sugar Co.  
Haku Sugar Co.  
Paia Plantation Company.  
Nahiku Sugar Company.  
Kihel Plantation Co.  
Hawaiian Sugar Co.  
Kahului Railroad Company.

### The California and Oriental S. S. Co.

### W. G. Irwin & Co. Limited

AGENTS FOR—  
Western Sugar Refinery Co., of San Francisco.  
Baldwin Locomotive Works, of Philadelphia, Penn., U. S. A.  
Newell Universal Mill Co. (National Cane Shredder), New York, U. S. A.  
N. Ohlandt & Co.'s Chemical Fertilizers.  
Alex. Cross & Sons, high grade Fertilizers for Cane and Coffee.  
Reed's Steam Pipe Covering.

ALSO OFFER FOR SALE—  
Paraffine Paint Co.'s P. & B. Paints and Papers; Lucol and Linseed Oils, raw and boiled.  
Indurine (a cold-water paint), white and colors.  
Filter Press Cloths, Cement, Lime and Bricks.

### CASTLE & COOKE

LIMITED.  
HONOLULU.  
Commission Merchants  
SUGAR FACTORS.

AGENTS FOR  
The Eve Plantation Co.  
The Waialea Agricultural Co., L. I.  
The Kohala Sugar Co.  
The Waialea Sugar Mill Co.  
The Kona Agricultural Co.  
The Foston Iron Works, St. Louis, Mo.  
The Standard Oil Co.  
The Geo. F. Brier Steam Pumps.  
Weston's Centrifugals.  
The New England Life Insurance Co., of Boston  
The Anna Fire Ins. Co. of Hartford, Conn.  
The Alliance Assurance Co. of London.

### Wm. G. Irwin & Co. (LIMITED).

Wm. G. Irwin, President and Manager  
Claus Spreckels, Vice President  
W. M. Giffard, Second Vice President  
H. M. Whitney Jr., Treas. and Sec.  
Geo. J. Ross, Auditor

### Sugar Factors

---AND---  
Commission Agents

AGENTS OF THE  
OCEANIC STEAMSHIP COMPANY  
OF SAN FRANCISCO, CALIF.

### The Von Hamm-Young Co., Ltd

Importers and Commission Merchants

QUEEN ST., - HONOLULU.

AGENTS FOR—  
The Lancashire Insurance Co.  
The Balaio Insurance Co.  
Union Gas Engine Co.  
Domestic Sewing Machine, Etc

### BREWER & CO., LTD.,

Agents for—  
Hawaiian Agricultural Company, American Sugar Company, Okaloa Sugar Plant Co., Onoia Sugar Co., Honouliuli Sugar Co., Waialea Sugar Co., Haku Sugar Co., Haleakala Ranch Co., Molokai Ranch, Pioneer's Line San Fr. 15000 Packet, etc. See our Co.'s Line of Boxes on Factors.

LIST OF OFFICERS  
C. M. Cooke, President; George J. Robertson, Manager; E. F. Bishop, Treasurer and Secretary; Col. W. J. Allen, Auditor; P. C. Jones, H. Waterhouse, Geo. R. Carter, Directors.

### BRUCE CARTWRIGHT,

General Manager of  
The Equitable Life Assurance Society  
Of the United States for the Hawaiian Islands  
Office: Merchant street, How

### M. PHILLIPS & CO.,

Wholesale Importers and Jobbers  
European and American Dry Goods

For 1 and Queen Streets.

### H. HACKFELD & CO., Ltd

GENERAL COMMISSION AGENTS.  
Cor. Fort and Queen Streets Honolulu



If you want . .

Hardware, Groceries, Glassware, Paints, Oils and Varnishes, Electric Wires, Chandlery, Linens and Livery Fixtures.

House Furnishing Goods,

Silver Plated Ware, Cutlery, Pocket Knives, Wares and Butchers' Razors.

Rubber Hose, either plain or wire bound, Manila or Sisal rope, Lawn Mowers, Lawn Sprinklers, Highgrass Cutters, Etc. Etc.

Plantation Supplies or Agricultural Implements

BUY THEM FROM

The Hawaiian Hardware Company

Fort St., opposite Spreckels Bank.



The Piano Question

is a serious one to consider for many reasons, but chiefly because it is a life investment and a good instrument should be bought in the first place.

We have FORTY NEW PIANOS in our store to choose from, consisting of the best known makes. Every one guaranteed and with such an assortment you have advantage over many cities of three times the size of this.

Call and see us. BERGSTROM MUSIC CO. FORT STREET.

The Evening Bulletin, 75 cents per month.

DELICIOUS CANDIES

- Ceylon and Mosaic, CHOCOLATE CREAM and PRALINES, HAND-DIPPED FRENCH BON-BONS, PEANUT CRISP, COCONUT CRISP, MOLASSES CANDY, FRENCH BOSS, Etc.

Our goods are made FRESH every day and cost about HALF the price of State Imported Goods.

NEW ENGLAND BAKERY, J. Oswald Lutted, Manager, Hotel St.

A WINDOW FULL OF . .

SMALL WHITE STANDS

We have reduced the price and are now offering them AT 70 CENTS

Six Different Styles

Unqualed for Displaying Ferns

Wall, Nichols Co., Ltd.

LOCAL AND GENERAL

Judge Bower left in the Kilauea today. A notice to yacht owners appears under New Today.

The Kilauea should be in from Hawaii ports this afternoon.

A Postmaster's notice appears in the By Authority column today.

P. Scott was a passenger from Anahulu in the Nihoa this morning.

The transport Logan will very probably get away for Manila tomorrow.

The Hawaii for Maui and Hawaii ports yesterday afternoon towed a scow to Kahului.

Work in the second degree will be taken up in the meeting of Lodge Le Progress tonight.

REGISTRATION ROLLS FOR THE NOVEMBER ELECTIONS ARE OPEN. REGISTER TODAY.

The Healan March, composed and copyrighted by Prof. W. E. Sharp, will be on sale at Wall, Nichols Co.

David Haughis, chief forester of the Agricultural bureau, leaves for Maui in the Claudine this afternoon.

When you buy a Cleveland wheel you get honest value for your money. This is the testimony of all Cleveland owners.

The Board of Registration for the Island of Oahu will hold sessions as advertised in page 8 in the By Authority column.

Governor Dole, Robert Andrews and E. S. Cunha were the last three voters to register at the closing of the Board session this morning.

It was not until this morning that United States Marshal Ray decided to accompany his daughter to Hilo. He left with Miss Ray in the Kinau.

D. H. Kahaulelo, the leading Republican of the Island of Molokai, came down in the Mauna Loa this morning and left again for home in the Kinau.

Col. Will E. Fisher, although the times are unpropitious for auctions, is getting very good prices for the knick-knacks at the far end of the Arlington hotel sale.

There will be a meeting of the yacht owners at the Hawaiian hotel at 7:30 o'clock this evening to make arrangements for the yacht races to be held on Regatta Day.

The Wilder Steamship Co. has an ad in today's paper to the effect that the Kinau will be back in Honolulu September 22 (regular time) on account of a change of plans as to holding the Territorial Convention in Hilo.

David Lawrence, the Fort street cigar dealer, desires to call the attention of the officers and all soldiers aboard the transport Logan to the fact that he is the only American in town exclusively in the tobacco business and solicits their patronage on that score.

Among the passengers for Hilo and way ports in the Kinau today were the following: Miss Massey, J. F. Woods, J. C. Cohen, Mrs. Robert Laing, E. Avery, H. Wise, W. A. Fetter, Father Matthias, Rev. O. H. Gulick, Mrs. G. F. Maydwell, Rev. O. P. Emerson, W. E. Sharp, R. L. Colburn, G. E. Thrum, H. S. Pratt, E. K. Wood, J. C. Baird and Wm. Macdonald.

Among the arrivals from Maui and Hawaii ports in the Mauna Loa this morning were the following: C. McWayne, Dr. C. B. Wood, J. Coepper, J. T. Taylor, G. K. Wilder, W. E. Rowell, J. Greenwell, R. McWayne, J. A. McCandless, Capt. Thompson and wife, J. Cornwell and wife, W. H. Cornwell, W. D. Baldwin, Capt. Lorenzen, Geo. Dunn, Rev. J. J. Makiato and Rev. J. Keipi.

Professors Martin Van Praag and C. R. Stickney have opened a studio for violin, flute, piano and harmony studies at 619 Hotel street, near Punch-bowl. The gentlemen come to Honolulu well recommended as thorough musicians and gentlemen and are a valuable acquisition to the musical circles. Prof. Stickney was a pupil of Volke of San Francisco and is also a regular contributor to the Carl Fischer music publishers of New York. Prof. Van Praag is a graduate of the Crystal Palace Conservatory of Amsterdam, Holland. They can be engaged for teas, parties and receptions.

THE FIRST OF THE SEASON.



The only thing in a dress shoe is a BUTTON BOOT of the latest last, and we have them in Patent Leather and Tan, something nice, nobby and stylish.

McINERNEY SHOE STORE.

Fall Styles!

CHANTILLY LACES, Comprising Edgings, Bands, Insertions and Wave Patterns. ALSO SILK APPLIQUE TRIMMINGS white and black

A Beautiful line of Allover Laces, Chiffons and Embroidered Liberties AND 600 Pieces of Ribbons JUST OPENED WHITNEY & MARSH, LTD. IMPORTERS 519 Fort Street. Telephone 436.

Vacation is over and School has commenced!

No more lunches at home for a time. There are many ways of carrying lunch, but only one convenient and practical method, and that is to use the Patent Folding Lunch Box. This looks like a Camera and folds flat when empty which enables you to strap it together with your books, or put it in your pocket. They are WATERPROOF and the Price is 25 cents each. See them displayed in our front window.

W. W. & Dimond Co. Ltd.

IMPORTERS OF—Crockery, Glass and House Furnishing Goods. SOLE AGENTS Territory of Hawaii—Detroit Jewel Stoves, Gurney Refrigerators, Puritan Wickless Blue Flame Stoves, Double Oval Granite Iron Ware, Primus Stoves.

Why Has Little Joker Tobacco

The largest circulation in the islands? The quality and flavor is recognized as the best, and cannot be excelled by any other brand. For sale at every retail store, or by

HYMAN BROS., Exclusive Agents.

We are showing

the largest assortment of

EUROPEAN RUGS

We have ever handled at prices that cannot be repeated, as the present Duty on these lines is prohibitive. They comprise: Tapestry, Axminster, Kidderminster, Velvet Pile, Kingswood, Dag Dag, and Body Brussels in center, Sofa and Door Mats, Hall and Stair Carpet in Tapestry, Velvet Pile and Body Brussels in great variety.

Japanese Jute Rugs, Straw Mats and Matting Linoleum Oilcloth, Cocoa Fibre Matting, Door Mats always on hand at

E. W. Jordan, No. 10 Fort Street.

GUNN DESKS

Roll Top Flat Top Standing Desks

IN ALL SIZES AND STYLES

This is the most roll top desk made in the world and

WE ARE

Sole Manufacturer's Agents

for them for the Hawaiian Islands.

CALL and let us show them to you and quote you Our Prices on them.

COYNE FURNITURE COMPANY

JEWELRY AT REDUCED PRICES Fine Watch Repairing

by Experienced Watch-Maker . . . All work guaranteed. M. F. LUCAS, 205 Hotel Street . . . P. O. Box 990

HONOLULU STOCK EXCHANGE

Honolulu, September 11, 1920.

Table with columns: NAME OF STOCK, Capital Paid up, Shares, Bid, Ask. Lists various stocks like American Sugar Co., Ewa Plantation Co., etc.

Sales—10 Walluku, \$160.00; 100 Oiaa, \$14.00; 10 Ooaka, \$16.00; 5 Ooaka, \$16.00; 10 Ooaka, \$16.00; 10 Ooaka, \$16.25; 10 Ooaka, \$16.25

Mourning for Uncle.

(Chicago Times-Herald.) Somehow the rumor had spread that he Had gold concealed about; He let the harmless story stand, And presently his niece and His nephews sought him out. They took him home and housed him well And tried to make him glad; Last week he died—today they know He had no money hidden—oh Their loss is very sad.

Seattle Brewing & Malting advertisement featuring a woman holding a beer bottle and the text 'RAINIER BEER THERE'S NEW VIGOR AND STRENGTH IN EVERY DROP.'

The Bulletin, 75cts. per month

**Attorneys.**  
**M. E. ATKINSON and A. F. JUDD, JR.**  
**ATKINSON & JUDD,**  
 Attorneys and  
 Counsellors at Law.  
 Office over Bishop & Co.'s Bank, over  
 Andrews and Merchant Streets.  
**DEO. A. DAVIS — GEO. D. GEAR**

**DAVIS & GEAR**  
 Attorneys and Counsellors at Law  
 Rooms 202, 203, 204, Judd Building,  
 Cor. Fort and Merchant Sts., Honolulu

**CHARLES F. PETERSON**  
 Attorney at Law and  
 Notary Public.  
 Kaahumanu Street.

**J. M. KANEAKUA,**  
 Attorney and Counsellor at  
 Law.  
 Office: In the Occidental Hotel,  
 Corner of King and Alakea Streets,  
 Honolulu.  
**W. E. ACHI.** Enoch Johnson.  
**ACHI & JOHNSON,**  
 Attorneys and Counsellors  
 at Law.  
 Office No. 19 West King Street.  
 Telephone 884.

**B. A. MOTT-SMITH,**  
 ATTORNEY.  
 HAS MOVED TO THE JUDD  
 BLOCK, FORT STREET.

**Surgeons, Physicians and Dentists.**

**DR. W. E. TAYLOR,**  
 Has removed to Beretania street, opposite  
 Hawaiian Hotel, from corner of Richard  
 and Beretania streets.  
 1506-1m Tel. 517. Hours: 9 to 5.

**DR. C. A. PETERSON**  
 Has reopened his office at . . .  
 26 Emma Street

HOURS: (9-11 A.M.) TELEPHONE: 493  
 (2-4 P.M.)  
 (7-8 P.M.)

**DR. E. C. WATERHOUSE**  
 Office and Residence: King St.,  
 near Alakea. Telephone 1111.  
 OFFICE HOURS: 9 to 11 A.M.  
 1 to 3 P.M.  
 7 to 9 P.M.  
 SUNDAYS: 9 to 11:30 A.M.  
 TELEPHONE 3031, WHITE. 1522

**Dr. W. J. Galbraith.**  
 Office and Residence: Beretania and  
 Alakea streets.  
 Office Hours: 9 to 10 a. m.; 2 to 4  
 p. m.; 7 to 8 p. m.  
 TELEPHONE 204.

**DR. WALTER HOFFMANN.**  
 BERETANIA STREET, (opposite the  
 Hawaiian Hotel.)  
 Telephone 510. P. O. Box 501.  
 Office hours, 8 to 10 a. m.; 1 to 3  
 p. m.; 7 to 9 p. m. Sundays, 8 to 11 a. m.

**DR. A. N. SINCLAIR**  
 School Street, between Emma and Fort.  
 Hours: 9 to 10 a. m., 2 to 4 p. m.  
 7 to 9 p. m.; Sundays, 9 to 10 a. m.

**DR. R. I. MOORE,**  
**Dentist.**  
 Office: 222 Hotel Street.  
 Office Hours: 9 to 12 and 1 to 4.

**A. C. WALL, D. D. S.,**  
**O. E. WALL, D. D. S.,**  
**DENTISTS**  
 Howe Building, Fort Street.  
 Hours: 8 to 4. Telephone 484.

**PERFECT** TELEPHONE 2000.  
**PRINTING** Prepared to fill or  
**REDUCED** orders until 4 p. m.  
**PROMPTLY** Saturdays. . . .

**The MERCANTILE PRINTING**  
**COMPANY, Limited.**  
 Queen Street,  
 Corner of Fort Street

**DIAMOND**  
 And other Rings, Watches, Brace  
 lets, Pins, and an extensive variety  
 of Jewellery.

**EL. G. BLART,**  
**Manufacturing Jeweller**  
 404 1/2 FORT STREET.

**F. W. THURM**  
**Surveyor.**  
 ROOM NO. 16, SPRECKELS BLOC  
 Plantation Work a Specialty.  
 1238

Subscribers to the BUL-  
 LETIN not receiving their pa-  
 pers promptly will confer a  
 favor by notifying the Busi-  
 ness Office, Telephone 256.

**Beer and Wine Dealers.**

**LOVEJOY & CO.**  
 Importers and Wholesale  
 Wine and Liquor Dealers  
 1025 to 1030, Queen Street, Honolulu.  
 Sole Importers of  
 FONSALVES & CO., Ltd.  
 WHOLESALE GROCERS AND  
 WINE MERCHANTS.  
 1025 Queen Street, Honolulu, H.

**Consolidated Soda Water Co., Ltd.**  
 Esplanade,  
 Corner Allen & Fort Sts., Honolulu.

**HOLLISTER & CO.,**  
 Agents

**"Wela Ka Hao"**

You will find it at the corner  
 of Hotel and Bethel streets.

Headquarters for ALL the  
 Sports and Race Horse Men.

A No. 1 Liquors a specialty.

B. Lemon and F. Woodman  
 will attend to the WANTS of  
 the Weary.

Seattle Beer kept at a Tem-  
 perature Unequaled in Town.

John Dewar, Kellock's AA,  
 Green River and Old Govern-  
 ment Whiskies and the very  
 best of everything else.

Chinese and Japanese Firms.

**Y. MASUDA,**  
**Portraits**  
 DONE IN CRAYON OR OIL.  
 Pictures Framed in any style.  
 Framed Pictures for sale.  
 New Mouldings for Frames have  
 arrived.

King and Alapai streets,  
 Near Honolulu Stock Yards.  
 Telephone 869

**T. KATSUNUMA & Co.**  
 A. K. OZAWA, Manager.  
 GENERAL BUSINESS AGENCY.  
 Temporary Office: Room 7 upstairs Spreckels build-  
 ing. Tel. 544.

**Wong Sai Kee**  
**MERCHANT - TAILOR**  
 A PERFECT FIT GUARANTEED  
 —404 Fort St., near King St.—  
 HONOLULU, H. I.  
 Cleaning, Dyeing and Repairing a Specialty  
 1522

**Y. MAN SING**  
 Has Removed From Fort Street to 311  
 Nuuanu Street, opp. Goo Kim's.

**LADIES' UNDERWEAR.**  
 Dresses Made To Order.

**HOP HONG,**  
**Merchant Tailor,**  
 A FINE ASSORTMENT OF AMERICAN, ENGLISH AND  
 SCOTCH CLOTH OR HAND  
 No. 319 Nuuanu Street, Honolulu, H. I.  
 Good work and first-class fit guaranteed  
 Clothes Cleaned and Repaired

**WING LUNG**  
 CORNER ALAKEA AND KING STREETS.  
 GROCERY AND FRESH FRUITS  
 always on hand. FRESH PINEAPPLES  
 for special order, and CALIFORNIA  
 FRUITS by every steamer and also ISL-  
 AND BUTTER. Delivery Free. Tel. 363  
 1486

**The . . .**  
**Astor House Restaurant**  
 Corner King and Alakea streets  
 FIRST CLASS FAMILY RESTAURANT  
 Meals at all hours 12:30  
 Ah Chuck Proprietor  
 1522-1m

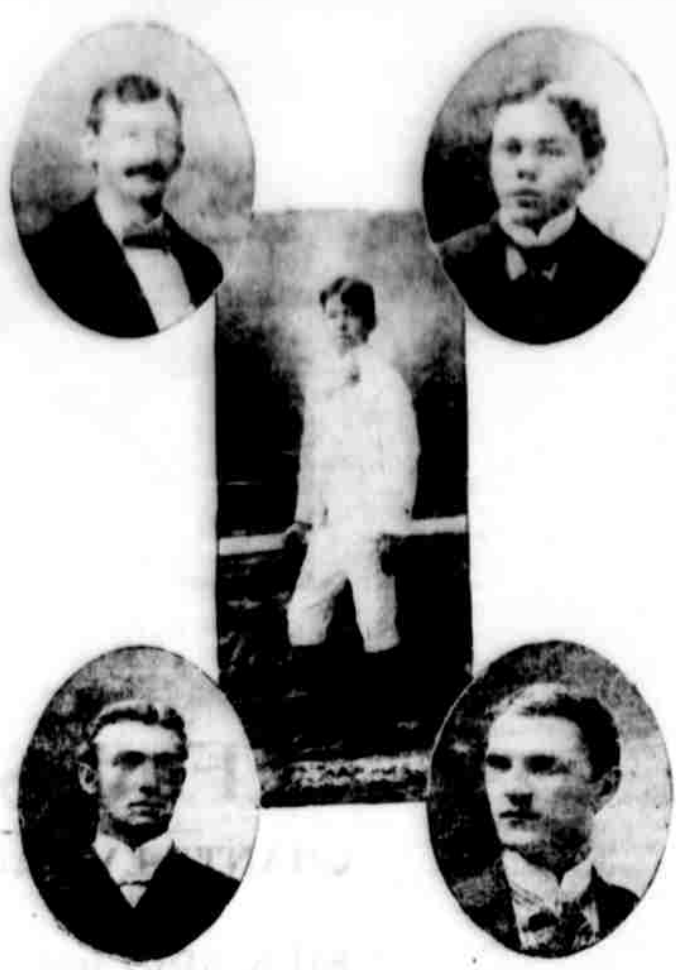
**REAL ESTATE TRANSACTIONS**  
 Subscribers are furnished with from  
 five to six lists per week, giving an ac-  
 curate record of deeds, mortgages,  
 leases, releases, powers of attorney,  
 etc., etc., which are placed on record.  
 SUBSCRIPTION PRICE, \$2.00 PER  
 MONTH.

**A. V. GEAR,**  
 Judd Building, Honolulu.

**Mrs. Annis Montague Turner,**  
**WINTER SEASON.**  
**Vocal Studio, "Mignon"**  
 720 Beretania street; Tel. 1114. 1627-1f

**NOTICE.**  
 The following resolution was passed  
 unanimously at meeting of the Executive  
 Committee:  
 "That it is the sense of the Executive  
 Committee that the District Committees  
 have the power to fill all vacancies that  
 may occur in said District Committee."  
 GEO. W. SMITH,  
 Chairman.  
 E. R. HENDRY,  
 Secretary. 1628

# VICTORIOUS HEALANI CREW



## ENGLAND DISTRUSTS LI

London, Sept. 1.—A special cable says  
 As for the idea of recognizing Li  
 Hung Chang, it is pointed out that the  
 Viceroy has for years been anti-English  
 and on the other hand, has cultivated  
 rather close relations with Russia, es-  
 pecially since the good offices of that  
 power enabled China to deprive Japan  
 of most of the solid results to which  
 her military successes entitled her. It  
 is urged that Russian confidence in the  
 possibility of negotiating with the Chi-  
 nese imperial authorities is in itself  
 significant and seems likely to imply a  
 curious knowledge of the sentiments  
 entertained by the fugitive govern-  
 ment. No doubt it would suit Russia  
 well that the allied troops should be  
 sent back to their respective countries  
 and a lasting peace patched up with  
 the now weakened and discredited Manchu  
 dynasty, which would have to rely ab-  
 solutely for support on its powerful  
 northern neighbor. China would then  
 be reduced to a condition of tutelage  
 and meanwhile the partition would be  
 averted and matters would be kept out-  
 wardly quiet till Russia had completed  
 the trans-Asiatic railway and had  
 amassed enormous forces in Siberia,  
 when she would be ready for a final  
 stroke. This represents one and per-  
 haps the most emphatic line of British  
 opinion on the subject.

Meanwhile the Foreign Office, with-  
 out going into larger questions of Chi-  
 nese policy, will probably be content  
 for the present to urge that negotia-  
 tions will be useless unless they can  
 be undertaken with the properly ac-  
 credited plenipotentiaries of a govern-  
 ment that can be considered reasonably  
 stable, and that this condition would  
 have to be insisted on, whether the al-  
 lied troops were withdrawn from Pe-  
 king or not.

## SWEDEN WANTS MONEY

Chicago, Aug. 29.—The latest for-  
 eign power to knock at the financial  
 door of the United States is Sweden.  
 Her government is now offering in the  
 financial marts of this country \$10,000,-  
 000 worth of Government bonds, with  
 a view of procuring money with which  
 to build railroads and other remunerative  
 properties under the control of the  
 Government.

Sweden is the fourth foreign Govern-  
 ment to appeal to this country for a  
 loan inside of one and one-half years.  
 While the amount sought is compara-  
 tively small, it furnishes another straw  
 which shows that the financial wind  
 is blowing toward the New World. On  
 learning of the matter yesterday one  
 of Chicago's most experienced and con-  
 servative bankers said: "The United  
 States has become the credit nation of  
 the world. She is not supplanting Eng-  
 land. She has already done so."  
 The facts are more significant be-  
 cause it appears that the loan was of-  
 fered to England and France, and they  
 were unable to place it. The bonds have  
 therefore been sent to this country,  
 and the matter is being engineered by  
 the National Park Bank of New York  
 City. That institution has already sent  
 circulars to its correspondents giving  
 details concerning the loan and bond  
 issue. At least two banks in this city  
 have been offered a portion of the  
 bonds, and it is not unlikely they will  
 be accepted.

Heretofore England has been Swe-  
 den's public banker, and Sweden has  
 not had any difficulty in getting what  
 she wanted in the old country. The  
 bonds she is now seeking to float bear  
 4 per cent interest and are being offered  
 at 98.

The Amateur Orchestra meets for re-  
 hearsal in the Y. M. C. A. hall at 7:45  
 o'clock this evening. Every member  
 is expected to be present.

## PROGRAMME

OF THE  
**Fifth Celebration**  
 —OF—  
**Regatta - Day**  
 TO BE HELD  
 SATURDAY, SEPT. 15TH, 1900  
 IN HONOLULU HARBOR,  
 COMMENCING AT 9:30 A. M.

- 1—WHALEBOAT RACE. First prize, \$100 second, \$50.
- 2—SIX-OARED SLIDING SEAT BARGE. Prize, \$30 trophy.
- 3—TUG OF WAR of oared shoreboats not less than two boats on a side. Prize, \$20.
- 4—SIX-OARED SLIDING SEAT BARGE RACE. "Old Timers." Prize—Glory.
- 5—FIRST-CLASS YACHT RACE. First prize, \$50 trophy; second, \$25.
- 6—SECOND-CLASS YACHT RACE. First prize, \$40 trophy; second, \$25 trophy.
- 7—THIRD-CLASS YACHT RACE. First prize, \$30 trophy; second, \$20 trophy.
- 8—FOURTH-CLASS YACHT RACE. First prize, \$30 trophy; second, \$20 trophy.
- 9—SIX-OARED GIG RACE: stationary seats. Prize, \$10.
- 10—SWIMMING RACE: 100 yards straightaway. Prize, \$15.
- INTERMISSION FOR LUNCH.
- 11—SIX-PADDLE CANOE RACE. First prize, \$20; second, \$10.
- 12—SIX-OARED SLIDING SEAT BARGE. Prize, \$25 trophy.
- 13—TUG OF WAR between steamer service boats in actual use. Prize, \$25 trophy.
- 14—TWO-OARED SHORE BOAT. First prize, \$15; second, \$10.
- 15—DIVING CONTEST FOR DISTANCE. Prize, \$15.
- 16—STEAMER BOAT RACE. First prize, \$20; second, \$15.
- 17—SAILING CANOE RACE. First prize, \$20; second, \$10.
- 18—HALF-MILE, MORE OR LESS, SWIMMING CONTEST. Prize, \$15.
- 19—FOUR-OARED MERCHANT SHIPS BOATS. First prize, \$20; second, \$10.

Above program subject to change. Races open to all. No entry fees. Swimming and diving races entries open until the start of races.

All rowing races are to be governed by the racing rules of the Hawaiian Rowing Association.

Each entry shall include the name of the boat, or if it have none, the name of the person who enters it in the race.

For further information apply to the Regatta Committee, or the Secretary, J. W. Smithies. 161115

## VALUABLE REAL ESTATE AND SHARES OF CORPORATION STOCK AT AUCTION.

**RARE CHANCE FOR CAPITALISTS AND INVESTORS.**

By order of Henry Smith, Esq., who desires to change the form of his investments, the undersigned will sell for sale at Public Auction at his exposure, Queen street, in Honolulu, at 12 o'clock noon on WEDNESDAY, Sept. 25th, 1900. The following pieces or parcels of land and shares of stock, viz:

**REALTY**

1. Land on makai side of King street Ewa side of Catholic Cemetery, lately vacated by James Carty, being Lot 4 of L. C. A. 706; has 96 feet frontage on King street, 160 feet deep, contains 14,700 of an acre more or less. Possession to be given immediately.
2. Two pieces of land in Kalaupapa, Ewa, Oahu, being parcels 1 and 2 of L. C. A. 615'E both containing 12.72 chains, kula and wet land more or less, leased to Chin Wo Co. for \$30.00 per annum, rent payable annually in advance, last rent collected July 1, 1900. Has about seven years more to run.

Terms for the above 50% cash, 50% on mortgages for three years at 7%.

**CORPORATION SHARES.**

- 14 shares Waimanalo Sugar Co. stock, par value, \$100.00 each.
- 40 shares Mutual Tel. Co. stock, par value \$10.00 each.
- 1 share Hamoa Sugar Co. stock, par value \$100.00.

Terms cash for shares. Deeds and stamps at expense of purchasers. Titles to real estate are perfect.

For further particulars enquire of  
**JAS. F. MORGAN,**  
 Auctioneer and Broker,  
 33 Queen St., Honolulu. 1631

## CASTLE & COOK IMPORTERS

**LIFE and FIRE INSURANCE AGENTS.**

AGENTS FOR  
**NEW ENGLAND MUTUAL LIFE INSURANCE CO. OF BOSTON**  
**ETNA FIRE INSURANCE COMPANY OF HARTFORD**

HENRY ST. GEAR  
 EDWARD POLLITZ

**Members Stock and Bond Exchange.**

**EDWARD POLLITZ & Co**  
 COMMISSION BROKERS  
 AND DEALERS IN  
 INVESTMENT SECURITIES . . . . .

Particular attention given to purchase and sale of Hawaiian Sugar Stock  
 Loans Negotiated. Eastern and Foreign Stocks and Bonds.

408 California St.,  
 San Francisco, Cal. 1177

**WILLIAM SAVIDGE,**  
**Stock and Bond Broker**  
 Member of Hawaiian Stock Exchange.  
 McInerney Block, Fort Street.

**BOYD, SCOTT & CO.,**  
 Custom House & Internal  
 Revenue Brokers  
 315 FORT ST., opposite Irwin & Co.

**A. J. CAMPBELL,**  
 Stock and Bond Broker  
 Member of the Honolulu Stock Exchange.  
 Office Queen street, opposite Union Feed Company.  
 Telephone 505. P. O. Box 373

**FRED J. CROSS,**  
 Consulting and Superintending  
**Electrical & Hydraulic**  
 ENGINEER.  
 Electro-hydraulic Power Transmission  
 REPORTS AND ESTIMATES  
 FURNISHED.  
 With Catton-Neil Co., Queen street.  
 Office next to Post-office. 1281

**JAMES T. TAYLOR,**  
 M. Am. Soc. C. E.  
 CONSULTING  
**Hydraulic Engineer**  
 206 Judd Block. Tel. 633.

**Honolulu Iron Works Co.**  
 Improved and modern SUGAR-MA-  
 CHINERY of every capacity and de-  
 scription made to order. Boiler work  
 and RIVETED PIPES for irrigation  
 purposes a specialty. Particular at-  
 tention paid to JOB WORK, and repairs  
 executed at shortest notice.

**For Sale.**  
 No. 1. Business property on Smith  
 street, between Pauahi and Beretania  
 streets.  
 No. 2. Residence property on Punch-  
 bowl street, near Vineyard street, suit-  
 able for cottages.  
 No. 3. Fine suburban property front-  
 ing on McCully street and running  
 from Beretania to King streets.  
 Will sell on easy terms, viz.: part in  
 cash, or approved stocks or bonds, bal-  
 ance on mortgage.

**For Sale or Lease.**  
 Valuable business property, corner of  
 King and Smith streets.

**For Rent.**  
 A few office suites in Model Block.  
 For particulars apply to  
**BRUCE CARTWRIGHT,**  
 Cartwright Building, Merchant Street.  
 1623-1f

**The World Register**  
 Keeps the Cash while you are busy  
 Try one

**Rock Prices**  
**On Marble and Granite**  
**MONUMENTS**  
**and CEMETERY**  
**WORK.**

**Fences and Lawn Furniture.**  
**Haw's Iron Fence and Monumental Co.**  
 441 King Street

**ASSESSMENT NOTICE.**  
 Stockholders are hereby notified that the  
 Fourth Assessment of 5 per cent or two and  
 one-half dollars per share on the Capital  
 Stock of THE INTER ISLAND TELE-  
 GRAPH CO., LTD., is due and payable  
 July 1st, at the office of the undersigned,  
 111 Fort street. J. H. FISHER,  
 Actg. Treas. Inter Island Telegraph Co.,  
 Limited.  
 Honolulu, June 1, 1900. 1550

**Art Embroidery Taught.**  
 Having resumed my classes in ART  
 EMBROIDERY, I will receive pupils  
 every morning from 9:30 to 11:30 during  
 vacation. Good Stamping done.  
**MRS. H. H. WILLIAM,**  
 777 Fort St., near Vineyard 1604m1

## haus Spreckels & Co. BANKERS

HONOLULU . . . . . H. I.

For American Agents—THE NEVADA  
 NATIONAL BANK OF SAN FRANCISCO,  
 SAN FRANCISCO—The Nevada National  
 Bank of San Francisco,  
 LONDON—The Union Bank of London  
 Ltd.  
 NEW YORK—American Exchange Na-  
 tional Bank.  
 CHICAGO—Merchants National Bank.  
 PARIS—Credit Lyonnais.  
 BERLIN—Disconto Bank.  
 HONOLULU AND YOKOHAMA—HONGKONG  
 SHANGHAI BANKING CORPORATION.  
 NEW ZEALAND AND AUSTRALIA—Bank  
 of New Zealand.  
 VICTORIA AND VANCOUVER—Bank of  
 British North America.

Transact a General Banking and Exchange Business—  
 Deposits Received. Loans made on Ap-  
 proved Security. Commercial and Travelers  
 Credits Issued. Bills of Exchange bought  
 and sold.  
 COLLECTIONS PROMPTLY ACCOUNTED FOR.

**THE BANK OF HAWAII, Ltd.**  
 JUDD BUILDING.  
 (INCORPORATED UNDER THE LAWS  
 OF THE HAWAIIAN REPUBLIC.)  
 Capital . . . . . \$400,000

OFFICERS AND DIRECTORS:  
 CHAS. M. COOKE, President.  
 P. C. JONES, Vice-President  
 C. H. COOKE, Cashier.  
 F. C. AHERTON, Assistant Cashier.  
 Henry Waterhouse,  
 Tom May,  
 F. W. Macfarlane,  
 E. D. Tenney,  
 J. A. McCandless.

Solicits the Accounts of Firms, Corpora-  
 tions, Trusts, Individuals, and will  
 carefully and promptly attend to all  
 business connected with banking ex-  
 trusted to it. Sell and purchase Foreign  
 Exchange, issue Letters of Credit.

**SAVINGS DEPARTMENT!**  
 Ordinary and Term Deposits received,  
 and interest allowed in accordance with  
 rules and conditions printed in Pam-  
 phlets, copies of which may be had upon  
 application.

**BISHOP & CO.**  
 Savings Bank  
 Savings Deposits will be  
 received and interest allowed by this  
 Bank at four and one-half per cent.  
 per annum.  
 Printed copies of the Rules and Regu-  
 lations may be obtained on application.  
 Office at bank building on Merchant  
 street.  
**BISHOP & CO.**  
 —Established 1855—

**BISHOP & Co. BANKERS.**  
 Transact a General Banking  
 and Exchange Business.  
 Commercial and Travelers  
 Letters of Credit issued, avail-  
 able in all the principal cities  
 of the world.  
 Interest allowed after July  
 1, 1898, on fixed deposits 7  
 day notice 2 per cent., (this  
 form will not bear interest  
 unless it remains undisturbed  
 for one month), 3  
 months 3 per cent., 6 months  
 3 1/2 per cent., 12 months 4  
 per cent.

**Pioneer Building and Loan Association.**  
 ASSETS, DEC. 31, 1899, \$112,677.00  
 Money loaned on approved security.  
 A Savings Bank for monthly deposits.  
 Houses built on the monthly install-  
 ment plan.  
 Twentieth Series of Stock is now  
 opened.  
 OFFICERS—T. F. Lansing, Presi-  
 dent; S. B. Rose, Vice President; C. M.  
 Gray, Treasurer; A. V. Gear, Secretary.  
 DIRECTORS—T. F. Lansing, S. B.  
 Rose, A. V. Gear, A. W. Keech, Henry  
 Smith, J. L. McLean, J. D. Holt, C. M.  
 Gray, W. L. Howard.  
 A. V. GEAR,  
 Secretary.  
 Chamber of Commerce rooms.  
 Office Hours: 12:30—1:30 p. m.

**The Yokohama Specie Bank**  
 LIMITED.  
 Subscribed Capital . . . Yen 24,000,000  
 Paid Up Capital . . . . . Yen 18,000,000  
 Reserved Fund . . . . . Yen 8,000,000

The Bank buys and receives for col-  
 lection Bills of Exchange, issues Drafts  
 and Letters of Credit, and transacts  
 a general banking business.

**INTEREST ALLOWED—**  
 On Fixed Deposit for 12 months, 4 per cent p. a.  
 On Fixed Deposit for 6 months, 3 1/2  
 On Fixed Deposit for 3 months, 3  
**INTEREST ALLOWED—**  
 By the Head Office, at Yokohama, on Current De-  
 posits, 1 to 30 days per day  
 On Fixed Deposit for 12 months, 4 per cent p. a.

New Republic Building, 111 King St., Honolulu.

**E. K. KAAI,**  
 Teacher of . . . . . Mandolin, Zither  
 Ukulele and Taro Patch.  
 Orders to be left over of Wall, Nichols  
 Co. . . . . Astrom Muzio Co.'s 1268

# Oceanic Steamship Company

## TIME TABLE.

The Fine Passenger Steamers of This Line Will Arrive at and Leave This Port as Hereunder.

From San Francisco:	For San Francisco:
MARITIMA	MARITIMA
ALABAMA	ALABAMA
ALABAMA	ALABAMA
ALABAMA	ALABAMA
ALABAMA	ALABAMA

In connection with the sailing of the above steamers, the Agents are prepared to issue, to intending passengers, coupon through tickets by any railroad from San Francisco, to all points in the United States, and from New York by any steamship line to all European ports.

# Wm. G. Irwin & Co., Limited

General Agents Oceanic S. S. Co.

# Pacific Mail Steamship Co.

Occidental and Oriental Steamship Co. Toyo Kisen Kaisha

Steamers of the above companies will call at Honolulu and leave this port on or about the dates indicated.

For Japan and China:	For San Francisco:
China	China
Doric	Doric
Nippon Maru	Nippon Maru

# H. Hackfeld & Co., Ltd., Agents.

# Canadian - Australian Royal Mail Steamship Company.

Steamers of the above line, running in connection with the CANADIAN PACIFIC RAILWAY CO. and calling at Victoria, B. C., Honolulu and Brisbane as per schedule below.

FROM VANCOUVER AND VICTORIA, B. C.	FROM SYDNEY AND BRISBANE
Warrior	Warrior
Warrior	Warrior
Warrior	Warrior
Warrior	Warrior

Through tickets issued from Honolulu to Canada, United States and Europe. For Freight and Passage and all general information, apply to

# Theo. H. Davies & Co., Ltd., Gen'l Agents.

# American-Hawaiian S. S. Co.

Direct Service between NEW YORK, SAN FRANCISCO AND HAWAIIAN ISLANDS.

S. S. "AMERICAN" will leave New York for San Francisco and Portland en route to Honolulu about October 10th. Chartered S. S. "HYADES" will leave New York for San Francisco on September 1st.

Freight received at Company's new wharf, 42d Street, South Brooklyn, at all times by lighters in cars. For general information, apply to

# H. HACKFELD & CO., LTD., Agents, Honolulu

# Wilder Steamship Co., Ltd.

S. S. Kinau, FREEMAN, Master. MOLOKAI, MAUI, HAWAII.

Will sail from Honolulu on Tuesdays at 12 noon, for Kaunakakai, Lahaina, Maalea Bay, Kihel, Makana, Kawaihae, Mahukona, Laupahoehoe and Hilo.

Returning will sail from Hilo on Fridays at 10 a. m., for above named ports, arriving in Honolulu on Saturdays.

Passengers and freight will be taken for Makana, Mahukona, Kawaihae, Hilo, Hakalau, Honoumou, Papekou and Pepeekeo.

Passengers and PACKAGES ONLY will be taken for Kaunakakai, Lahaina, Maalea Bay, Kihel and Laupahoehoe

S. S. Claudine, McDONALD, Master. MAUI.

Will leave Honolulu every Tuesday at 5 p. m. touching at Lahaina, Kahului, Nahaia, Hana, Hamoa and Kihel, Maui. Returning, touches at above named ports, arriving in Honolulu Sunday mornings.

Will call at Nuu. Kaupo, once each month.

S. S. Lehua, BENNETT, Master. MOLOKAI, MAUI, LANAI.

Sails every Monday for Kaunakakai, Kamalo, Maunaloa, Kalaupapa, Lahaina, Honolulu, Olowahu. Returning arrives at Honolulu Saturday mornings.

This company reserves the right to make changes in the time of departure and arrival of its steamers WITHOUT NOTICE, and it will not be responsible for any consequences arising therefrom.

Consignees must be at the landing to receive their freight. This company will not hold itself responsible for freight after it has been landed.

Live stock received only at owner's risk.

This company will not be responsible for money or valuables of passengers unless placed in the care of the purser.

Passengers are requested to purchase tickets before embarking. Those failing to do so will be subject to an additional charge of twenty-five per cent.

The company will not be liable for loss of, nor injury to, nor delay in delivery of baggage or personal effects of passengers, or freight if shipped beyond the amount of \$100, unless the value of the same be declared when received by the Company, and an extra charge be made therefor.

All employees of the company are forbidden to receive freight without delivering a shipment receipt therefor in the form prescribed by the Company, and which may be seen by shippers upon application to the pursers of the Company's steamers.

Shippers are notified that if freight is shipped without such receipt it will be solely at the risk of the shipper.

C. L. WIGHT, President. S. B. ROSE, Secretary. CAPT. T. K. CLARKE, Port Supt.

# Curios!

WOMAN'S EXCHANGE 112 Hotel Street, H. I.

Kapa, Calabashes, Leta, Native Hats, Hula Skirts, Nihao Mats, Fans, Shell, Seeds, Etc. Home-made Poi, constantly on hand. TELEPHONE 459

# SHIPPING INTELLIGENCE

DAY	ARRIVAL	DEPARTURE
Monday	...	...
Tuesday	...	...
Wednesday	...	...
Thursday	...	...
Friday	...	...
Saturday	...	...
Sunday	...	...

Last Quarter of the Moon on the 11th at 10:27 a. m.

Tides from the United States Coast and Geodetic Survey Tables.

The tides at Kahului and Hilo occur about an hour earlier than at Honolulu.

Hawaiian Standard Time is 10h. 30m slower than Greenwich time, being that of the meridian of 157 30'. The time whistle blows at 1:30 p. m., which is the same as Greenwich time.

# VESSLS IN PORT.

ARMY AND NAVY. U. S. S. Iroquois, Pond, Midway Island, Aug. 5.

U. S. A. T. Logan, Stinson, San Francisco for Manila, Sept. 9.

MERCHANTMEN. (This list does not include coasters.) Albert, Am. bk., Griffiths, San Francisco, Aug. 10. H. Hackfeld & Co. Alice Cooke, Am. schr., Penhallow, Port Townsend, Aug. 24. Lewers & Cooke.

Andrew Welch, Am. bk., Drew, San Francisco, Aug. 14. C. Brewer & Co.

Archer, Am. bkt., Calhoun, San Francisco, Aug. 28.

City of Hankow, Br. sp., Thompson, Newcastle, July 27. W. G. Irwin & Co.

Carned Llewellyn, Br. sp., Griffith, Hamburg, Germany, Aug. 23. (For Seattle). Hawaiian Fertilizer Co.

Dunreggan, Br. bk., Dixon, London, Aug. 9. Haw. Fert. Co.

Dechmont, Br. sp., Alston, Newcastle, Aug. 10. Coal to order.

Emily F. Whitney, Am. sp., Pendleton, San Francisco, Aug. 7. W. G. Irwin & Co.

F. S. Redfield, Am. schr., Jorgensen, Port Gamble, Aug. 18. Allen & Robinson.

Florence Am. sp., Ryder, Tacoma, August 29. O. R. & L. Co.

Haleyson, Am. schr., Chas. Mellin, Eureka, May 31.

Invincible, Am. sp., Mackenzie, Newcastle, Aug. 24. Coal to order.

J. B. Brown, Am. sp., Knight, Newcastle, Aug. 14. Coal to order.

J. M. Weatherwax, Am. schr., Sorenson, Port Blakely, Aug. 31. Lewers & Cooke.

John Currier, Am. sp., Murchison, Tacoma, Aug. 28. J. Bissett.

Kilmory, Br. sp., Corrance, Liverpool, Aug. 7. H. Hackfeld & Co., Ltd.

Philadelphia, Ger. sp., Wachter, Glesermunde, Germany, Aug. 4. H. Hackfeld & Co., Ltd.

Sebastian Bach, Br. bk., Nagasaki, February 17.

S. G. Wilder, Am. bkt. Jackson, San Francisco, Aug. 6. F. A. Schaefer & Co.

Standard, Am. sp., Getchell, Tacoma, Aug. 18. O. R. & L. Co.

S. C. Allen, Am. bk., Johnson, San Francisco, Sept. 3. T. H. Davies & Co.

# VESSLS EXPECTED.

Vessel. From. Mary Winkleman, Am. bkt. Gray's Harbor.

Helen Brewer, Haw. sp. New York Challenger, Am. sp. New York Henry Failing, Am. sp. New York J. F. Fuller, Am. sp. Nagasaki Hayden Brown, Am. bk. Newcastle John C. Potter, Am. sp. Newcastle Euterpe, Haw. sp. Newcastle Star of Russia, Haw. sp. Newcastle Washnet, Am. sp. Newcastle Emipde, Am. bk. Newcastle Perseverance, Br. sp. Newcastle King Cyrus, Am. schr. Newcastle Yosemite, Am. sp. Newcastle Columbia, Am. schr. Newcastle Prince Albert, Nor. sp. Newcastle Prince Victor, Nor. sp. Newcastle Clan Macpherson, Br. sp. Newcastle Anceis, Br. sp. Newcastle Fantasi, Nor. bk. Newcastle Invincible, Am. sp. Newcastle Stjorn, Nor. bk. Newcastle Wrestler, Am. bkt. Newcastle Drumbranton, Br. sp. Newcastle Fresno, Am. bk. Newcastle Alex. McNeil, Am. bk. Newcastle Golden Shore, Am. sp. Newcastle Dominion, Br. bk. Newcastle James Nesmith, Am. sp. Newcastle Marion Lightbody, Br. sp. Newcastle Eng.

Quickstep, Am. bk. Tacoma Carned Llewellyn, Br. sp. Hamburg Ventura, Br. sp. Antwerp Yola, Br. sp. London

# Her Maiden Voyage.

San Francisco, Aug. 31.—The new schooner Rosamond reached port yesterday, twenty-seven days from Hilo, with a cargo of 15,648 bags of sugar.

It was the first voyage of the Rosamond, which was built at Benicia a few months ago by Captain Matthew Turner. A number of passengers were brought up from Hilo by the Rosamond.

# TO CURE A COLD IN ONE DAY.

Take Laxative Bromo Quinine Tablets. All druggists refund the money if it fails to cure. E. W. Grove's signature is on each box. 25 cents.

The Evening Bulletin, 75 cents per month.

# HAWAII SHIMPO SHA

The Pioneer Japanese Printing Office, The Publisher of "HAWAII SHIMPO," the only daily Japanese paper published in the Territory of Hawaii.

Y. SOGA, Editor. C. SHIOZAWA, Proprietor.

Editorial and Printing Office, near King bridge, King street. P. O. Box 907.

Fine Job Printing at the Bulletin Office.

# Hundreds of British Prisoners Released

London, Aug. 31.—Lord Roberts, under date of Belfast, August 29th, reports to the war office as follows: "Buller telegraphs from Helvetia that only a few of the enemy are there, and that this morning French's and Pole-Carew's forces will move on their flank. The advance of Dunderberg's mounted troops on their front caused them to abandon a very strong position. The country thus cleared, our troops moved eastward. The South African Light Horse, after little opposition, entered Watervalhooven and drove the remnant of the enemy through the town.

"French's column reached Doornbosk, overlooking Watervalhooven, with slight opposition. Dunderberg, with Strathcona's Horse, is further near Nootgedacht. We have occupied Watervalhooven and Watervalhooven. Buller reports that Nootgedacht is apparently deserted, except by British prisoners who are passing in a continuous stream up the line toward Watervalhooven. No Boers are visible. The natives report that Krueger and all the commandos left yesterday for Pilgrim's Rest.

"French reports the railway intact as far as Watervalhooven, except for a small bridge near the station, which has been destroyed.

The following dispatch has been received at the war office from Lord Roberts, dated Belfast, August 31st: "About 1,800 British prisoners released at Nootgedacht have reached French and Pole-Carew. They are badly clothed and some are said to be half starved. Ambulances are out picking up many of the sick and weary ones. The captured officers are reported to have been taken to Barberton. Some of them escaped, including the Earl of Lofting and Viscount Ennismore. The prisoners report that Krueger, Steyn, Botha, Lucas Meyer and Schalkburger left Nootgedacht August 29th for Nelspruit. The Boers seem to be scattering."

# EXECUTOR'S SALE

OF Valuable Beach Property

Mr. R. W. Cathcart, executor of the will of the late Jas. Dodd, by order of the Circuit Court, will sell at Public Auction on WEDNESDAY, Sept. 22nd, 1920, at the salesroom of J. F. Morgan, 33 Queen St., Honolulu, to the highest bidder for cash, the following described leasehold of valuable real estate.

That large lot, originally three lots, and two-story frame dwelling house, formerly the residence of the late Mr. Dodd, fronting on the new beach road and the sea shore, a little on the town side of John Ema's place, the lease of which has 47 years to run from Sept. 1st, 1920. The annual rental is \$287.50, payable semi-annually in advance, and is paid to March 1st, 1921. The building is insured, taxes prepaid, the water rates paid to Jan. 1st, 1921.

UPSET price \$6000. Terms of the sale CASH, U. S. Gold Coin. All expenses at the expense of the purchaser.

The above sale is subject to the confirmation of the court.

For further particulars, enquire of the executor or of JAS. F. MORGAN, Auctioneer, Honolulu, Sept. 6th, 1920.

# News of the Transports.

The transport Rosecrans which was scheduled to sail today will not leave until September 1st. She goes to Nagasaki. The Logan will leave port also on Saturday, being the first transport since the China troubles arose to go by the regular route to the Orient. She will sail by way of Honolulu and Guam.

The transport Grant sailed on Tuesday, August 28th, from Manila for San Francisco, having on board 361 sick; eight insane persons and fifty-nine prisoners. The transport Benmore reached Manila Tuesday from Taku, and will leave for San Francisco at once. The transport Thomas is due in San Francisco.

# Large Shipment to Hilo.

San Francisco, Sept. 1.—The bark Roderick Dhu, Captain Johnson, will take an unusually large shipment of plantation machinery to Hilo on her next trip. It consists principally of twenty vacuum pans, each weighing six and one-half tons, for the Olaa sugar plantation, the plant of which, it is said, is the largest of its kind in the world when in full operation.

# The Oregon at Nagasaki.

Washington, Aug. 31.—The battleship Oregon arrived at Nagasaki, Japan, today. She eventually will return to the United States for the complete repair of her injuries sustained in her grounding, but will first go to China.

# Big Shipment of Coin.

San Francisco, Aug. 31.—A shipment of \$2,750,000 in English sovereigns is coming on the Oceanic steamer Moana, which sailed from Sydney on August 25th for this port.

# Villard Has Arrived.

The ship Henry Villard with a full cargo of sugar from Hilo, arrived in Philadelphia August 28.

# BORN.

PETERSON—In Honolulu, Sept. 10, 1920, to the wife of C. F. Peterson, a daughter.

# HOSTETTER'S



# STOMACH BITTERS Pure Blood

is the best defense against disease—and Hostetter's Stomach Bitters makes healthy blood.

If you want to get well and keep well, take it regularly. It will keep the bowels active and cures all such stomach disorders as dyspepsia, indigestion, sluggish liver, weak kidneys, malaria, fever and ague. See that a Private Revenue Stamp covers the neck of the bottle!

# A Saffron HOSTETTER'S Against STOMACH SICKNESS BITTERS

# EXECUTOR'S SALE

OF Valuable Beach Property

Mr. R. W. Cathcart, executor of the will of the late Jas. Dodd, by order of the Circuit Court, will sell at Public Auction on WEDNESDAY, Sept. 22nd, 1920, at the salesroom of J. F. Morgan, 33 Queen St., Honolulu, to the highest bidder for cash, the following described leasehold of valuable real estate.

That large lot, originally three lots, and two-story frame dwelling house, formerly the residence of the late Mr. Dodd, fronting on the new beach road and the sea shore, a little on the town side of John Ema's place, the lease of which has 47 years to run from Sept. 1st, 1920. The annual rental is \$287.50, payable semi-annually in advance, and is paid to March 1st, 1921. The building is insured, taxes prepaid, the water rates paid to Jan. 1st, 1921.

UPSET price \$6000. Terms of the sale CASH, U. S. Gold Coin. All expenses at the expense of the purchaser.

The above sale is subject to the confirmation of the court.

For further particulars, enquire of the executor or of JAS. F. MORGAN, Auctioneer, Honolulu, Sept. 6th, 1920.

# IN THE DISTRICT COURT OF THE UNITED STATES, FOR THE TERRITORY OF HAWAII.

The President of the United States of America, to the Marshal of the United States of America for the Territory of Hawaii—Greeting:

Whereas, a Libel hath been filed in the District Court of the United States for the Territory of Hawaii, on the 6th day of September, A. D. 1920. By H. D. Parkinson, Frederick Birkin, Nabor Felix and Manuel Suarez, Libellants, vs. the American Schooner "Enterprise," her tackle, apparel and furniture, boats, cargo, and Capt. Fritch, the master of said vessel, Libellees, for the reasons and causes in the said Libel mentioned, and praying the usual process and motion of the said Court in that behalf to be made, and that all persons interested in the said vessel, her tackle, etc., and cargo may be cited in general and special to answer the premises, and all proceedings being had that the vessel, her tackle, etc., and cargo may for the causes in the said Libel mentioned, be condemned and sold to pay demands of the Libellants.

You are therefore hereby commanded to attach the said vessel, her tackle, etc., and cargo and to retain the same in your custody until the further order of the Court respecting the same, and to give due notice to all persons claiming the same, or knowing or having notice of any claim, and to sell pursuant to the prayer of the said Libel, that they be and appear before the said Court, to be held in and for the Territory of Hawaii, on the 18th day of September, A. D. 1920, at ten o'clock in the forenoon of the same day, if that day shall be a day of jurisdiction, otherwise on the next day of jurisdiction thereafter, then and there to interpose a claim on the same, and to make their allegations on that behalf. And what you shall have done in the premises, do you then and there make return thereof, together with this writ.

Witness, the Hon. Morris M. Este, Judge of said Court, at the City of Honolulu, in the Territory of Hawaii, this sixth day of September, A. D. 1920, and of our independence, the one hundred and twenty-fifth.

Attest: A true copy. WALTER B. MAILING, Clerk.

D. H. RAY, United States Marshal. E. R. HENDRY, Chief Office Deputy U. S. Marshal. Davis & Gear, Proctors for Libellant, 1620-13

# MAPS

Set of 5 maps, \$2.00 50 CENTS EACH

On sale at office of . . . THE . . . EVENING BULLETIN

# SEATTLE BEER.

The ever popular Rainier beer is becoming a household word and "will you have a glass of Seattle," is more often heard than anything else. The Criterion Saloon has the beer on tap or in bottles.

# Druggists will refund the money if they fail to cure.

GESSLER'S MAGIC HEADACHE WAFERS

Price 10 cents.

# Plumbers, Etc. John Nott, PLUMBER,

75 and 79 King Street

TELEPHONE NO. 31

NOW is the time to get leaks and breakages seen to, and your

# Roofs Put in Order

By competent workmen

# For the Plumbing

On that new house that you are about to build or the alterations you are intending to make on your property. Call and see me and get an estimate.

# JAS. NOTT, Jr

Practical Tinsmith and Plumber, Shop: Beretania street, 4 doors east of Punchbowl. Phone 544. Hours 7 a. m. to 5 p. m. Jobbing promptly attended to.

# Honolulu Sheet Metal Works

Galvanized Iron Skylights and Ventilators, Metal Roofing, Conductor Pipe and Gutter Work.

Richards Street, bet. Queen and Merchant. Honolulu. Jobbing promptly attended to. Tel. White 41. P. O. Box 370.

# The Walkiki

# BOARDING AND LIVERY

Stables

Rigs sent to any part of the City.

# HACKS - AT - ALL - HOURS

Waikiki Road, - - Waikiki. TEL. BLACK 141.

# When You Want a Rig

.....RING UP THE.....

# C - L - U - B

Livery, Boarding and Sales Stables, : : : 615 FORT STREET.

Stable Phone, 477 Hack Stand Phones, 319 and 77. C. H. BELLINA.

# ROCK..... FOR BALLAST !!

(White and Black Sand) In Quantities to Suit.... EXCAVATING - CONTRACTED

CORAL AND SOIL FOR SALE. Dump Carts furnished by the day on Hour's Notice.

H. R. HITCHCOCK. Bethel St., next to P. O.

# A GOOD THING 4-U-2-C

Ohio, Algebroa and Pine Firewood Out and Split (ready for the stove). Also. STOVE, STEAM & BLACKSMITH COAL

WHITE AND BLACK SAND Lowest Prices, delivered to any part of the City. TELEPHONE 414

# HUSTACE & CO.,

21 Queen Street.

# Pacific Transfer Co.

307 King St., next to Bailey's Cycles.

EXPRESS WAGONS, DRAYS LUMBER WAGONS and DUMP CARTS : : : : Always on Hand.

Trunks, Furniture and Safes Carefully Handled. TELEPHONE 50 1927

# Hack Stand No. 82.

Bay! do you know where I can get a good carriage? Sure! At the Hawaiian Hotel Carriage Co., corner Hotel and Richards streets. Tel. 22. Note—We have but first class carriages and experienced drivers

# MAIN 199

Masonic Temple

# Druggists will refund the money if they fail to cure.

GESSLER'S MAGIC HEADACHE WAFERS

Price 10 cents.

Just arrived on the Archer 30 HEAD OF FINE DRIVING AND DRAFT HORSES

which are now on exhibition in our yard Cor. King and South Streets.

Honolulu Stock Yards Co., Ltd.

Jas. F. Morgan AUCTIONEER AND BROKER 23 Queen Street

NEW TO-DAY

NOTICE.

The Steamer "Kinau" will return to Honolulu, September 22nd on regular time...

Lodge Le Progrès de l'Océanie, No. 124, A & S. RITE.

There will be a meeting of Lodge Le Progrès de l'Océanie, No. 124, A & S. R., at its hall, Masonic Temple...

WORK IN SECOND DEGREE. Members of Hawaiian Lodge No. 21 and Pacific Lodge No. 822 and all sojourning brethren are cordially invited to be present.

By order of the W. M. E. B. FRIEL, Secretary.

1632-11

BY AUTHORITY

REGISTRATION NOTICE.

The Board of Registration for the Island of Oahu will hold sessions as follows:

Monday, Sept. 17.—Puuloa Point, 7:30 a. m. to 9 a. m.; Alaia R. R. Station, 10 a. m. to 1 p. m.; Manana Court House, 4 p. m. to 6 p. m.

Tuesday, Sept. 18.—Waipahu Mill, 8 a. m. to 12 noon; Ewa Mill, 1 p. m.; Wai-anae Court House, 5 p. m. to 9 p. m.

Wednesday, Sept. 19.—Malua P. R. Station, 10:30 a. m.; Waiolu Court House, 1 p. m. to 9 p. m.

Thursday, Sept. 20.—Kahuku Mill, 2 p. m. to 4 p. m.; Laie Hall 7 p. m. to 10 p. m.

Friday, Sept. 21.—Hauula Court House, 10 a. m. to 1 p. m.; Kuaioa Court House, 6 p. m. to 9 p. m.

Saturday, Sept. 22.—Waikane Court House, 9 a. m. to 12 noon.

Sunday, Sept. 23.—Kaneohe Court House, 10 a. m. to 1 p. m.; Waimanalo, 3:30 p. m. to 6 p. m.

Tuesday, Sept. 25, until October 9.—In Honolulu, 10 a. m. to 1 p. m.; 5 p. m. to 8 p. m.

LORPIN ANDREWS, Chairman.

D. L. NAONE, M. A. GONSALVES, Board of Registration, Island of Oahu.

1632-13

Pound Master's Notice of Estrays.

Notice is hereby given, that the animals described below have been impounded in the Government Pound at Maiki, Kona, Island of Oahu, and unless the pound fees and damages are sooner satisfied, will be sold at the date hereunder named, according to law:

Sept. 9, 1900.—1 red mare branded JI on right hind leg, four feet black.

Sept. 9, 1900.—1 red mare brand indistinguishable, white stripes on the back, white spots on forehead and four feet black.

Sept. 9, 1900.—1 red horse branded M on left hind leg, white spot on the back and also on the forehead, four feet black and shod.

Sept. 9, 1900.—1 cream horse branded O on left hind leg, white spots on the back, white stripe on the forehead, one left front foot black and three white, all shod.

Sept. 10, 1900.—1 red horse branded AK on right hind leg, sore back, white spot on forehead, one white left hind foot, three feet black and all shod.

All owners of the above described animals are hereby notified that I will set them at public auction on Saturday, Sept. 20, 1900, at 12 m., if not called for before that date.

K. KEKUENE, Poundmaster

At a scientific congress sitting in Rome, Dr. Casagrandi conclusively demonstrated both the inconvenience and dangers of trailing skirts.

In order to give his fellow congressmen ordinal proof of the beneficial effects of this uncleanly fashion, Dr. Casagrandi sent into the streets a number of ladies attired according to the latest dictates of it, and gave them instructions to walk about for an hour.

On their return the garments were examined with a microscope, and, of course, were found to harbor whole colonies of microbes and bacilli.

Dr. Oliver Wendell Holmes inveighed against the thing many years ago; and, witty though he was, he was not as witty as a monk who wrote an indictment against long trains, in the reign of Edward I. "I heard of a proud woman who wore a white dress with a long trail, when, trailing behind her, raised a dust even so far as the altar and crucifix. But as she left the church and lifted up her dress on account of the dust a certain holy man saw the devil laughing, and, having asked him why, he replied: 'A companion of mine was just now sitting on the train of that woman, using it as a chariot, but when she lifted it up my companion was shaken off into the dust and so I laughed.' The devil would find no food for laughter nowadays. The fin-de-siècle elegance does not raise her dress out of the dust.

Tribune Bicycles have always borne the highest reputation in respect to the quality of the enamel, blue or black.

SHIPPING INTELLIGENCE

MOVEMENTS OF STEAMERS

Steamers due and sailing for the remainder of this and the whole of next month are as follows:

Table with columns: Steamers, From, Due. Includes entries for Sierra-R. F., China-R. F., Doris-R. F., Australia-R. F., Nippon Maru-R. F., Warrimoo-Victoria.

DEPART

Table with columns: Steamers, For, Due. Includes entries for Moana-R. F., Rio de Janeiro-R. F., Nippon Maru-R. F., Coptic-R. F., Mowree-Victoria, Australia-R. F., America Maru-R. F.

Weather Bureau, Panahou, September 11.—Temperature—Morning minimum, 71; Midday maximum, 85.

Barometer at 9 a. m. 29.86. Steady. Rainfall 6.99.

Dew Point 70F. Humidity at 9 a. m. 68 per cent.

Diamond Head Signal Station, September 11.—Weather hazy; wind light SW.

ARRIVALS.

Tuesday, September 11. Stmr Mauna Loa, Simerson, from Maui and Hawaii ports; 6721 bags sugar, 28 lbs coffee, 31 kegs butter, 55 bds, bananas, 11 lbs tobacco, 1 horse, 1 donkey, 1440 ft koa and 211 pigs sundries.

Stmr Nihaui, Thompson, from Anahou.

DEPARTURES.

Monday, September 10. Stmr Hawaii, Nicholson, for Honolulu, Hialeah, Honolulu, Panahou and Papeete.

Stmr Helene, Sachs, for Paauhau, Kulaia, Kihai, Papeete, Laupahoehoe.

Stmr Waiatale, Green, for Kilauea and Hanalei.

Stmr Mikahala, Thomas, for Makaweli and Waimea.

Stmr Kinau, Clarke, for Hilo and way ports.

Tuesday, September 11. Am. bk. St. Katherine, Saunders, San Francisco.

TO SAIL THIS AFTERNOON.

Stmr Claudine, Weil, for Maui ports at 5 p. m.

Stmr W. G. Hall, Thompson, for Kauai ports at 5 p. m.

Stmr Lehua, Bennett, for Molokai at 5 p. m.

TO SAIL TOMORROW.

Stmr Keahou, Mosher, for Kilauea at 4 p. m.

Stmr Nihaui, Thompson, for Molokai and Punaluu at 10 a. m.

PASSENGERS ARRIVED.

From Anahou, per stmr Nihaui, Sept. 11.—F. Scott, Miss Ekelela, Mrs. H. M. Stillman and children and Mrs. S. C. Bertlemann and children and 9 on deck.

From Maui and Hawaii ports, per stmr. Mauna Loa, Sept. 11.—Mrs. G. J. Campbell and children, Mrs. Kahaliwai, Miss Kuaina, H. W. Freck, Sam Kaai, Lizzie Wassman, Fred Wassman, Y. Aona, C. McWayne, A. C. Robinson, J. Morgan, Jr., J. Cooper, Dr. C. B. Wood, W. Muller, J. T. Taylor, G. K. Wilder, K. Ah Sin, W. E. Rowell, Julian Yates, J. Greenwell, Mary Ahman, Dora Todd, H. Mills, Mrs. Lemon, R. McWayne, J. A. McCandless, Capt. Thompson, wife and child, F. Grouvia, L. Vasconille, P. John and wife, Mrs. Kauepe, J. Cornwell and wife, W. H. Cornwell, Miss E. Holt, Mabel Robertson, C. B. Wells, W. D. Baldwin, Capt. Lorenzen, D. Kanakalani, Master Kona, Mrs. Kealina, Miss Kealina, A. A. Fairley, Geo. Dunn, S. H. Makapu, Rev. J. J. Makaloa, Rev. J. Kepipi, Mrs. Kaurinaole, D. H. Kahaleilo and 68 on deck.

PASSENGERS DEPARTED.

For Kauai ports, per stmr. Mikahala, Sept. 10.—J. A. Ah Kina, Dr. Sandow, J. J. Souza and Mrs. Jager.

For Hilo and way ports, per stmr. Kinau, Sept. 11.—Harry Hapai, W. H. Lambert, H. T. Brattelle, A. S. Cantin, Miss Julia Mahoe, Jare B. Massey, J. F. Woods, A. H. Wagner, J. C. Cohen, Judge Ester, Mrs. E. J. Silva and 2 children, Miss Kate Horner, Mrs. Robert Lang, S. I. Seaw, J. R. Shaw, J. Machado, F. Gardner, J. Rawton, E. Avery, C. Arnold, L. P. Rookies, F. Poole, Jerry Mills, H. Wise and wife, C. Alexander and wife, W. A. Fetter, Father Mathias, D. A. Ray and Miss Ray, Mrs. Aho and child, C. J. Ah Kana, Ah Kano, C. Ah Wing, Rev. T. Oikumura, Rev. O. H. Gulick, Mrs. G. B. Moydwell, Miss Van Deering, Mrs. W. A. Smith and daughter, Ah Kana, John Kauhahao, Rev. O. P. Emerson and wife, W. E. Sharp, Guy Livingston, R. L. Colburn, G. E. Thrum, H. S. Pratt and wife, E. K. Wood and wife, Rev. Kamaikawoole, F. L. Richmond, H. E. Cooper, Mrs. A. L. Smith, Mrs. Helen Rosa, W. B. Maling, J. C. Baird, Wm. Macdonald and wife, Miss McCriston, Mrs. M. Meine and child, David Douglas and Mrs. Conrad.

For Maui ports, per stmr. Claudine, Sept. 11, at 5 p. m.—F. Waterhouse, J. Cushingham, H. Howell, Geo. W. Carr, C. S. Holloway, Mrs. Anna P. Chung, E. Morton, F. Garcia, Mrs. Sarah A. Kahokuiluna, Mrs. Esther Kaneakua, D. Haughs, Mrs. Back and daughter, Kenneth A. Atkinson, D. W. Driscoll, Mrs. Lum Chee and child, J. Gonsalves and daughter, Miss Alice Gay, Mrs. A. Martinson, Mrs. Edna Scoby, Mrs. Christofersen, Mrs. R. R. Berg, maid and children.

BOOKED.

For Maui ports, per stmr. Claudine, Sept. 11, at 5 p. m.—F. Waterhouse, J. Cushingham, H. Howell, Geo. W. Carr, C. S. Holloway, Mrs. Anna P. Chung, E. Morton, F. Garcia, Mrs. Sarah A. Kahokuiluna, Mrs. Esther Kaneakua, D. Haughs, Mrs. Back and daughter, Kenneth A. Atkinson, D. W. Driscoll, Mrs. Lum Chee and child, J. Gonsalves and daughter, Miss Alice Gay, Mrs. A. Martinson, Mrs. Edna Scoby, Mrs. Christofersen, Mrs. R. R. Berg, maid and children.

NOTICE.

TO YACHT OWNERS. There will be a meeting at the Hawaiian Hotel at 7:30 THIS (Tuesday) EVENING of yacht owners to arrange for Regatta Day races.

1632-11 REGATTA COMMITTEE.

WANTS.

HELP WANTED. Japanese with wife, 10 to 15 dollars per month, with board and room. Apply to J. W. Leonard, 101-103, King Street.

SITUATION WANTED. European Cook for month board and room. American boy as driver for week. Apply to J. W. Leonard, 101-103, King Street.

Complaints against equipment furnished through our agency will be received and you sent out. BLACK LIST

FOR SALE. A large stock of Manila Cigars at 1/25 per hundred. Apply to J. W. Leonard, 101-103, King Street.

FOR SALE. A NICE MODERN COTTAGE with fruit and shade trees. Corner Anapuni and Duomo streets. Easy terms. Apply to J. W. Leonard, 101-103, King Street.

FOR SALE. A pair of black coach horses formerly the property of Wm. G. Irwin, Esq., between James Carr, American Sables, Merchant and Richardson streets.

FOR SALE. One Shetland PONY with bridle and harness. Apply to J. W. Leonard, 101-103, King Street.

FOR SALE. A large lot of Panahou. Apply to J. W. Leonard, 101-103, King Street.

FOR SALE. Large Warehouse in good location. Apply to J. W. Leonard, 101-103, King Street.

FOR SALE. Lots of land in Nuuanu tract for sale per month. J. H. Schack, 403, Merchant Street.

FOR SALE. LANDS IN ALL PARTS OF THE CITY. By J. M. VIVAS.

TO LET.

FOR RENT. Very desirable furnished rooms, at 443 Beretania street, corner of Punchbowl.

TO LET. Small cottage (cheap) in Green Street near Victoria. Apply to J. W. Leonard, 101-103, King Street.

FURNISHED Cottage to Rent suitable for man and wife. Inquire at this office.

TO LET. NEW COTTAGES. To Let at Pauna, corner of South Street, between Fort and Alakea.

TO LET. A nicely furnished room. Apply at 619, Hotel street.

NEELED furnished rooms, with board. Setten near Victoria. Apply at 101-103, King Street.

TO LET. Cottage on Alapai street. Cottage on Beretania street. WILLIAM SAVIDGE, No. 27, Merchant Street.

FOR RENT. OFFICE. Apply to J. M. Monarrat, No. 12, Merchant Street.

FOUND.

FOUND. A receipt for Postal Savings Bank Book, No. 618 B. Owner can obtain same by calling at this office and paying this advertisement.

WANTED.

WANTED. STENOGRAPHER, experienced in general office work. Haven Electric Co., Ltd. 153-155.

WANTED. Young man of good character wishes room in private family in Panahou. Address O. W. Evening Bulletin.

WANTED. A good strong boy about 17 years old, not afraid to work. Apply The Triangle Store, corner of South Street, between Fort and Alakea.

WANTED. At once two ladies of pleasing address for special work among ladies. For particulars address Mrs. Harmony, P. O. 120.

WANTED. POSITION wanted by an Engineer and Machinist. Address J. A. J. Bulletin Office.

WANTED. WATCHES to repair by jeweler of 14 years experience. G. DIETZ, 417 Nuuanu St.

OLD PAPERS TO EXCHANGE for clean Cotton Bags. Apply at Bulletin Office.

EXPERIENCED SEWING GIRLS in dressmaking department. Whitney & Marsh.

THE OWL LUNCH AND OYSTER ROOM. Oysters served in the shell only. Try his famous Ham and Egg Sandwiches and Coffee. Cor. Nuuanu and Hotel streets. DICK DALY, Proprietor.

SPECIAL NOTICES.

NOTICE to Owner's Architects & Builders. E. L. L. Co., 101-103, King Street, is prepared to furnish estimates on first class modern plumbing. Patronage solicited. P. O. Box 152.

NOTICE TO BUILDERS.—The Union Express Co. has WHITE SAND FOR SALE.

LOST.

LOST. Certificate of deposit of the Bank of Hawaii Ltd. No. 222, dated Aug. 20, 1900, for \$250.00, favor of Harry Press. Payment has been stopped. Finder please return same to the Bank.

LOST. Certificate No. 922 of the Pioneer Mill Company, Ltd. for 100 shares, standing in the name of Mrs. N. S. Kelsey, has been lost, and transfers are stopped. Holder is requested to deliver the same at the office of H. Backfield & Company, Ltd. at once.

LOST. A gold enamelled pin; monogram U. S. in crimson and gold. Finder please return to this office and receive reward.

Although Massachusetts takes a leading part in matters educational the school committee of Boston has come to the conclusion that many of the public schools there are in dangerously unsanitary condition. There are more than 100 of such school buildings, according to the Board of Health, many of them in such a shocking condition that were they private property the board would order their immediate repair or condemnation. In dealing with public property the board can only act in an advisory capacity, and its advice has often been spurned by the school committee.

REGISTRATION ROLLS FOR THE NOVEMBER ELECTIONS ARE OPEN REGISTER TODAY.

PER 8 8. "AUSTRALIA" The Latest 1900 Bicycles COLUMBIAS The standard BICYCLES of the world. E. O. HALL & SON, Ltd. Next door to Bulletin Office, up stairs.

THE I. X. L. FURNITURE HOUSE Has made another Big Reduction in Bedroom Sets, Sideboards, Tables, Chiffoniers, Chairs, Rockers, Baby Carriages, Bureaus, Ice Chests and Refrigerators, American and Hawaiian Flags, Etc.

Selling Agents for MACNEALE & URBAN FIRE and BURGLAR PROOF SAFES S. W. LEDERER, Propr. Day Building Beretania St., near Fire Station

Constantly - On - Hand BURNETTE & DECKER Real Estate Brokers and Collectors PROPERTY FOR SALE in All Parts of the City METROPOLITAN MEAT CO. BUTCHERS Navy Contractors.

Pacific Import Co. INCORPORATED Fort St. Progress Block FOR THIS WEEK 2=Great Specials=2 We call attention to a large line of LADIES' PERCALE WRAPPERS, which we are offering this week at \$1.25 LADIES' WHITE P. K. DRESS SKIRTS With Embroidery Insertion. Goods that were manufactured to sell at \$5.00, \$6.00 and \$7.50; we have placed on sale at— \$3.00, \$4.00 AND \$5.00! Call soon, as the lot will not last long.....

A New Invention! BETTER TONE QUALITY. USES FLAT PAPER RECORDS. THE VITAPHONE. Very latest invention in talking machines; the records are made of pressed paper, therefore giving better tone quality than any machine, made regardless of cost.

We Want Good Representatives everywhere. Will give exclusive territory. This is a money maker for good live business houses. Write us today for territory. KOHLER & CHASE, San Francisco, California, U. S. A.

PROPOSALS FOR FIRE HOSE. Sealed proposals will be received at the office of the Board of Commissioners of the Honolulu Fire Department, until 12 o'clock m., Oct. 6th, 1900, for furnishing 1000 feet of 2 1/2 inch cotton-covered Fire Hose, to be delivered within sixty days after notification of acceptance of tender. All tenders must be accompanied by samples.

Republican Delegates. The Republican Territorial Convention will be held at Honolulu on September 24 and 25. EXECUTIVE COMMITTEE, Per. E. R. Hendry, Secretary.

GESSLER'S MAGIC HEADACHE WAFERS E-Z to carry E-Z to take E-Z way to cure a headache. To cents all druggists.