

TELEPHONE 365
STAR
BUSINESS OFFICE

The Star Is An Intelligent, Progressive Newspaper

HAWAIIAN STAR

SECOND
EDITION

Want Ads---Three Lines, Three Times, 25 Cents

VOL. XVI.

HONOLULU, HAWAII, WEDNESDAY, APRIL 29, 1908.

No. 5018

KOREANS WATCH REV. WADMAN

BEATING THEIR WAY AROUND THE WORLD

A POUAMANIAN GRANDEE WITH A HEBREW COCKNEY AS SECRETARY IN THE ROLE OF CRIMBED STOWAWAYS ON BOARD THE AORANGI—WELL TREATED BUT ONLY COIN WILL SAVE THEM FROM JAIL AT VANCOUVER.

"His lordship's card!"
It was at Suva and a London Jew, with smooth voice and as smooth manners, handed a pasteboard to an officer of the C.-A. R. M. S. S. Aorangi.
The card bore the name of C. Statisco, Roumanian, who was advertised thereon as a "globe-trotter." The slick gentleman who presented the card said his name was Torres and he was the nobleman's secretary. Not that Statisco is a lord, but Torres spoke of him as "his lordship," that probably being the only ship they could pay passage on.
They went aboard the Aorangi and behought them that they were an-hungered, and the Jew from London and the Gentle from Roumania went below to get some "tucker."
Incidentally, oh, very incidentally, they discovered, when asked by the purser for their fare, that they had no tickets. They assured Mr. Coxall, the genial holder of the coin and keys,

that there would be scads of wealth awaiting them at Honolulu, in the Sandwich Islands.
They arrived here prisoners, however, and unless they can raise the money on their passage before the steamship sails at 6 o'clock this evening they will be taken on to Vancouver and thrown in jail.
They appear to be nothing better than elegant stowaways, although they have papers which would indicate they have traveled all over the world, their passports having been viced by consuls in the Occident and the Orient.
When the Aorangi arrived here this morning they were locked in a cabin, that they might not escape and for breakfast "his lordship and his lordship's secretary" were sent a nice mess of bread and marmalade and a pot of tea by one of the stewards.
"When you've fed the kangaroo," said the steward, "take this bit of breakfast to the toffy blokes in the brig."

THE BEACH PARK MAY BE SHUT UP

SUPERVISORS' REFUSAL TO APPROPRIATE MONEY MAY CAUSE THE PARK COMMISSIONERS TO CLOSE THE FREE PUBLIC SEA BATHING ESTABLISHMENT—WORK ON KAPIOLANI PARK. ALSO, MAY BE SUSPENDED, PENDING AN APPROPRIATION.

The action taken last night by the Board of Supervisors in refusing to make any appropriation for the care of Kapiolani Park and the new Beach Park at Waikiki has stirred up quite a hornets' nest. From the present appearance of the matter the two parks will go entirely without care and the bathing facilities will be completely shut down. Whether this policy will be in force when the battleships arrive here is not known as yet, for the Supervisors may reconsider their action.
The matter of old bills, which was the cause of cutting off the appropriation, is explained by a statement made by the treasurer of the Park Commission. The county has allowed the sum of \$700 per month for the care of the two parks and besides this there have been many improvements needed at the beach park, which was recently turned over to the Park Commission by the County. The \$1,100 in old bills about which the supervisors complain, was incurred mainly in making these improvements. In the period from July 22, 1906, to March 31, 1908, the Park Commission has expended the sum of \$2,448 on the maintenance and improvement of the Beach Park alone. In addition

to this the Park Commission has obtained from the Territory 7,792 days labor of prisoners at this place and paid \$1,800 in salaries to prison inmates. This work has been piled on more and more with the many improvements which have been made and the work has been rushed through rapidly.
It was expected by the members of the Park Commission that when things were in good running order they could save enough from the \$7,700 which has been given by the county each month, to pay these back bills, but now that the appropriation has been cut off completely there is nothing left to do.
PASSENGERS ARRIVED.
Per French S. S. Ceylan, April 29, from Yokohama, for Honolulu—Serapion Von Hook, Namiki. Through—Mr. and Mrs. Adams, Mr. and Mrs. Sutton, Mr. and Mrs. Greenfield, Mr. Briand, Mr. O'Kelly, Mr. Webber, Mr. Abbott, Mr. Numinink, Mrs. Learmont, Mrs. Merrill, Mrs. Franklyn.
HANDSOME ORIENTAL GOODS.
Sachs is showing this week a very fine line of the most beautiful Oriental goods, at very attractive prices.

STAR FLEET EDITION THAT WILL ATTRACT WORLD WIDE ATTENTION

The Hawaiian Star's special fleet edition will be issued simultaneously in San Francisco and Honolulu, on the lines of the plan whereby the London Daily Mail issues simultaneous editions in London and Manchester, and the New York Journal and San Francisco Examiner frequently issue at the same hour papers in many respects identical, though the width of a continent apart from one another.
The existence of a cable line between here and San Francisco makes such an enterprise possible. It will be the first time such a journalistic feat was ever attempted in the Pacific. It will give the Hawaiian islands one of the greatest advertisements they ever had, for the publication will arouse comment all over the United States and Europe.
To Honolulu advertisers this edition offers the best opportunity ever given, without exception. TWENTY THOUSAND officers and men of the fleet will be reading and referring to this paper all the eight or nine days of their trip here.
They will get the paper just when they are looking for information about Hawaii,—when they are leaving San Francisco with Hawaii as their next stopping place. They will look it over every day, for information about Hawaii.
More than three quarters of the officers and men have never been here, and they will be deeply interested in a Honolulu newspaper.
Prominent business men of the Territory in commenting upon the plan above outlined have expressed the opinion that the fleet edition of The Star, issued in this way, will be one of the greatest bits of Promotion work ever done here.

COAST MARKET EXCITED

Henry Waterhouse Trust Co., Ltd., this afternoon received a cablegram which concluded:
"The market closed excited."
Hawaiian Commercial & Sugar Co. was quoted at 86.50. Other quotations are private, being furnished in answer to inquiries.
Local stock brokers are jubilant over both the activity in Honolulu and the strong market in San Francisco.

KAUAI SUGAR SHIPMENTS

News arrived from Kauai this morning by the Mikahala which means the probability of new shipping arrangements of sugar on that island. Within the last few days the railroad line of the Makaweli plantation has reached the Hanapepe river, which brings it to the fee simple lands of the McBryde plantation. The railroad tracks of the McBryde plantation are only a quarter of a mile distant from this point.
As the result of this news it is conjectured that within a short time the two plantations will reach a combination which will result in all the sugar being shipped from Eleese, instead of from two or three different points as it is now. This in turn will mean that the American-Hawaiian boats will be able to take the McBryde and Makaweli sugar direct, in place of transshipping at this port.

WILLIAMSON'S BIRTHDAY.
William Williamson, Commissioner of Public Instruction and Henry Waterhouse Trust Co.'s stock exchange representative, is celebrating his birthday on this instant.

TRANSPORT DANCE AT SEASIDE

A farewell dance for the Transport Crook will be given at the Seaside tonight. Friends of the Army and Navy and of the Seaside are cordially invited to attend.
New England Bakery candies are nourishing and delightful. Try them.

DEMAND FOR TIME

MANAGER FAIRCHILD EMPHATICALLY OBJECTS TO EFFORTS TO HASTEN KAPAA LAND MATTER.

It looks as if the Kapaa land matter might be tied up badly. The following letter, which is self-explanatory, was given, out by Acting-Governor Mott-Smith this morning with no comment:
"James W. Pratt, Commissioner of Public Lands, for the Territory of Hawaii, Honolulu.
"Dear Sir:—I am in receipt of yours of the 21st inst., giving me until the 28th inst. in which to either accept or reject your general proposition as outlined in yours of the 18th.
"It seems to me common justice that I should be allowed to communicate with Col. Spalding before acting on your offer or committing myself for or against your proposition. The Government has taken long periods of time in the past before acting upon various phases of the land matters now under consideration, and I feel so emphatically the impropriety of passing judgment for Col. Spalding on these matters of such far-reaching consequence to him without hearing fully from him that I must decline to take action on your offer before this can be done.
"The Makee Sugar Co. has been in business for a long time in this Territory, has developed a large business interest here and paid thousands of dollars into the public treasury in one way and another. It has been a tenant of the Government for many years and I believe that you will see the impropriety of considering negotiations between the Makee Sugar Company and the Government in reference to the lands in question closed because I stand firmly to the right of communicating fully with my principal and obtaining his views upon these important issues. Yours very truly,
"GEORGE H. FAIRCHILD."

RESTAURANT WRECKED

(Associated Press Cable to The Star.)
SANTA BARBARA, April 29.—A number of sailors belonging to the Atlantic battleship fleet, wrecked a restaurant here today, on account of being overcharged for food.

WIRELESS FOR FLEET

(Associated Press Cable to The Star.)
WASHINGTON, D. C., April 29.—One battleship will stop at Fiji. Wireless auxiliary headquarters for the fleet will be established at Suva with cable connections with this city.

CONSUL TO AMOY

(Associated Press Cable to The Star.)
WASHINGTON, D. C., April 29.—Julian Arnold, a Californian, has been appointed Consul to Amoy.

ENGAGEMENT ANNOUNCED

(Associated Press Cable to The Star.)
LONDON, April 29.—The engagement of Ambassador Reid's daughter to John Herbert Ward, brother of the Earl of Dudley, has been announced.

THREE NEW SQUADRONS

(Associated Press Cable to The Star.)
SHANGHAI, April 29.—Three new squadrons have been proposed for the Chinese Navy.

ENLARGING AALA PARK.

The matter of enlarging Aala Park is being hurried along by the Territorial Government. Superintendent of Public Works Campbell has asked the Survey office to furnish such maps as will show the location, size and ownership of the various lots which should be acquired and has appointed a board of appraisers to place a valuation on the land. This board consists of Harry Armitage, R. H. Trent and A. N. Campbell.

REAL BOSTON STYLE.

The genuine Boston pork and beans and brown bread made fresh every Wednesday and Saturday at the Alexander Young Cafe are very popular. Arrival of marama is now a gamble

WARNED IN TIME

(Associated Press Cable to The Star.)

SAN FRANCISCO, April 29.—Bishop Harris, warned of a plot of Koreans to assassinate him at this port, landed at Oakland to foil the plotters.

BISHOP HARRIS IS MENACED

KOREANS IN HONOLULU CALL UPON THEIR COUNTRYMEN IN SAN FRANCISCO TO DO TO THE METHODIST MISSIONARY AS THEY DID TO COUNSELLOR STEVENS—THE BISHOP HAS CABLE WARNING OF HIS DANGER.

Evidences accumulate that some local Koreans are implicated in a plot to have the Rev. Bishop Harris "seen" by Koreans in San Francisco just as the late Durham W. Stevens was. It is known, in fact, that local Koreans sent a cable asking their countrymen in San Francisco to do this.
It is also stated on good authority that the Rev. J. W. Wadman, of Honolulu, is under a sort of espionage by Koreans. The Rev. Wadman, as far as known, has not expressed any opinions on the Korea-Japanese situation, but as the local Christian leader among Koreans, he was thrown into the society of Bishop Harris a good deal. Since then he has been shadowed, it is said.
District Attorney Breckons is another man who is being watched. It is known that cables have been sent to Washington on the situation, and the federal government will probably order the district attorney to make an investigation that may land some Koreans in jail.
U. S. District Attorney Breckons is working on the case at present with the forces of U. S. Marshal Henry at his service. He stated this afternoon that he had not received any instructions or cablegrams from Washington on the subject but refused to deny that he had received messages of this character from the Federal authorities in California. There is no evidence which has been obtained up to this time which would warrant an arrest, but it seems likely that information may be gathered which may lead to the placing of a charge of conspiracy against some of the local Koreans of the radical type.
Just after Bishop Harris left Honolulu a message was sent to the "Korean" (Continued on Page Eight.)

HIGH CONSIDERATION FOR NEWSPAPERMEN

The Hawaii will make her first trip on Saturday afternoon, leaving the harbor about noon. For some reason known only to the committee, press representatives have been barred from being on the yacht when she starts.
It has always been the custom in other parts of the world to invite representatives of the press to be present at all trial trips, whether it was a man-of-war, merchant ship or yacht.
The Hawaii has received many newspaper write-ups, and to a large extent, the success of the Hawaii has been made possible by the press.
Secretary McInerney stated this morning, that the committee were not anxious to take any chances with guests on the Hawaii, until they knew how she behaved herself under canvas.
McInerney also stated that it was the intention to have a sail in the Hawaii up to Lahaina in the event of the race being called off, as it probably will be.
It is understood that representatives of the yacht club will be aboard on the trial trip, but the yacht committee have found members of the press very valuable in many ways in aiding their work, and appear to feel that their lives are too valuable to risk on the thrilling trial trip. There will be terrible anxiety until the yacht returns with all on board safe.

JUST The Thing

to stand the knocks and scuffles of every day life.

This "Diamond" No. 321 Box Calf Bal is built to stand rough usage, and to wear and last. The price is \$3,000—that's good shoe value for you. We solicit and promptly attend to Island orders.

MANUFACTURERS' SHOE Company Limited.

1051 Fort St., P. O. 469 Phone 282.

Merchants!

Your store is insured against an unusual, but possible, contingency—fire. And it's right that it should be.
But how about your PLATE GLASS? Is it insured against the everyday occurrence—a tarpon stone, an explosion, an accident, or the wilful intention of some unruly person?
Do you remember what your plate glass cost you? It's worth insuring, isn't it?

Hawaiian Trust Co., Limited, 923 Fort Street

SPRING CLEARANCE SALE!

Bargains in all Departments for one week only.

L. B. KERR & CO., LTD
ALAKEA STREET.

TRANSPORT DANCE AT SEASIDE

A farewell dance for the Transport Crook will be given at the Seaside tonight. Friends of the Army and Navy and of the Seaside are cordially invited to attend.

New England Bakery candies are nourishing and delightful. Try them.

Fine Job Printing, Star Office.

AN ENTERPRISING MERCHANT

K. Yamamoto is the biggest importer of Japanese goods in Hawaii. Every steamer from the Orient (tramp or passenger) brings him the largest shipment consigned to one firm. By getting his goods in large quantities the freight and other charges are greatly reduced which enables him to undersell all competitors.

Best cup of coffee in the city. New England Bakery.

GET A BOTTLE TODAY.

Colic, pains in the stomach, and diarrhoea are not only painful, but may indicate a serious disorder. Chamberlain's Colic, Cholera and Diarrhoea Remedy relieves promptly and cures permanently. For sale by all dealers, Benson, Smith & Co., agents for Hawaii.

ROYAL BAKING POWDER

Absolutely Pure

The only baking powder made with Royal Grape Cream of Tartar
No Alum, No Lime Phosphate

Oceanic Steamship Company

Alameda Schedule

ARRIVE HONOLULU.	LEAVE HONOLULU.
S. S. ALAMEDA.....MAY 8	S. S. ALAMEDA.....MAY 13
S. S. ALAMEDA.....MAY 29	S. S. ALAMEDA.....JUNE 3
S. S. ALAMEDA.....JUNE 19	S. S. ALAMEDA.....JUNE 24

In connection with the sailing of the above steamers, the Agents are prepared to issue to intending passengers coupon through tickets by any railroad from San Francisco to all points in the United States and from New York by steamship line to all European Ports.

FOR FURTHER PARTICULARS, APPLY TO

W. G. Irwin & Co., Ltd

AGENTS FOR THE OCEANIC S. S. CO.

Canadian-Australian Royal Mail Steamship Co

Steamers of the above line running in connection with the CANADIAN-PACIFIC RAILWAY COMPANY between Vancouver, B. C., and Sydney, N. S. W., and calling at Victoria, B. C., Honolulu and Brisbane, Q.

DUE AT HONOLULU ON OR ABOUT THE DATES BELOW STATED, VIZ:

FOR AUSTRALIA.	FOR VANCOUVER.
MARAMA.....MAY 2	MANUKA.....MAY 27
AORANGI.....MAY 30	MARAMA.....JUNE 24
MANUKA.....JUNE 27	AORANGI.....JULY 24
MARAMA.....JULY 25	MOANA.....AUG. 19
AORANGI.....AUG. 22	MANUKA.....SEPT. 16

CALLING AT SUVA, FIJI, ON BOTH UP AND DOWN VOYAGES.

Theo. H. Davies & Co., Ltd., Gen'l Agen

American - Hawaiian Steamship Company

FROM NEW YORK TO HONOLULU.
Weekly Sailings via Tehuantepec.

Freight received at all times at the Company's wharf, 41st Street, South Brooklyn.

FROM HONOLULU TO SAN FRANCISCO.

FROM HONOLULU TO SAN FRANCISCO.	FROM SEATTLE AND TACOMA TO HONOLULU.
S. S. NEVADAN.....TO SAIL MAY 1	S. S. ALASKAN.....TO SAIL APR. 29
S. S. NEBRASKAN.....TO SAIL MAY 16	S. S. TEXAN.....TO SAIL MAY 13
FROM SAN FRAN. TO HONOLULU	H. HACKFELD & CO., LTD.,
S. S. NEBRASKAN.....TO SAIL MAY 1	Agents, Honolulu.
S. S. NEVADAN.....TO SAIL MAY 16	C. P. MORSE,
Freight received at Company's wharf	General Freight Agent.
Greenwich Street.	

MATSON NAVIGATION COMPANY

The S. S. "HILONIAN" of this line, carrying passengers and freight, will run in a direct service between this port and San Francisco, sailing and arriving on or about the following dates:

Leave S. F.	Arrive Honolulu.	Leave Honolulu.
APR. 8	APR. 15	APR. 21
MAY 6	MAY 13	MAY 19
JUNE 3	JUNE 10	JUNE 16

PASSENGER RATES TO SAN FRANCISCO: FIRST CABIN, \$60.00.
ROUND TRIP, FIRST CLASS, \$110.00.
For Further Particulars, Apply To

Castle & Cooke Limited, Agents

Pacific Mail Steamship Co. Occidental & Oriental S. S. Co. Toyo Kisen Kaisha S. S. Co.

Steamers of the above companies will call at Honolulu and leave this port on or about the dates mentioned below:

FOR THE ORIENT.	FOR SAN FRANCISCO.
HONGKONG MARU.....MAY 2	AMERICA MARU.....MAY 2
KOREA.....MAY 15	SIBERIA.....MAY 9
AMERICA MARU.....MAY 26	CHINA.....MAY 16
SIBERIA.....JUNE 1	MANCHURIA.....MAY 23
CHINA.....JUNE 8	NIPPON MARU.....MAY 30
MANCHURIA.....JUNE 15	ASIA.....JUNE 6
NIPPON MARU.....JUNE 23	MONGOLIA.....JUNE 13
ASIA.....JUNE 30	HONGKONG MARU.....JUNE 23

FOR FURTHER INFORMATION APPLY TO

H. HACKFELD & CO., LTD.

Union-Pacific Transfer Co., Ltd

126 King Street. FURNITURE AND PIANO MOVING.

Baggage Shipping
Storage Wood
Packing Coal

PHONE 58

STAR

Printing Office

For years the Star's printing office has been a busy place. We have gained a reputation for doing good work at fair prices and delivering the job when promised. Few printing offices can make a similar claim. With addition to our plant we are in a better condition than ever to handle commercial printing. Our three Linotypes are at your service for book and brief work. If you are not a Star customer, send us a trial order; you will be pleased with the result.

Star Printing Office

McCandless Building. Telephone 365

WEEKLY WEATHER BULLETIN

Ending April 25, 1908.

GENERAL SUMMARY.

Honolulu, April 27, 1908.
The mean temperatures were higher than those of the preceding week, 1.0 deg. to 2.8 deg., in the southern portion of the Hilo district of Hawaii, at Hana and Kahului, Maui, and on Kauai, and lower, 2.0 deg. to 2.2 deg., in the Hamakua and the extreme northern portion of the Hilo districts of Hawaii. Elsewhere in the section the changes were less than 1.0 deg., and varied on Hawaii, from -.7 deg. in the eastern Puna to +.8 deg. in the northern Kau districts; on Maui from -.8 deg. at Puunene to +.6 deg. at Haiku and Wailuku; on Oahu from -.4 deg. in the Waianae district to +.6 deg. at Kaluku and Ewa; and on Molokai from +.1 deg. to +.4 deg.

The rainfall, as a rule, was in the form of light showers, the only reported rains of 1.00 inch or more in 24 consecutive hours being at Honokaa and Ooakala, Hawaii. Light to brisk "trades" generally prevailed, shifting to light variable or southerly the latter part of the week at several stations. It was generally cloudy on Hawaii and Molokai, clear to partly cloudy on Maui and Oahu, and generally clear on Kauai.

Weekly rainfalls of 1.12 to 2.50 inches occurred on Hawaii at all stations in the Hilo and Hamakua districts, and at Waimea and Kaulaleau; and on Maui at all stations in the Hana, Hamakua, and Hamakuaopoko districts. Elsewhere in the Group less than 1.00 inch fell, the amounts ranging on Hawaii from .00 inch in the Kau district to .76 at Kealakakua (Davis); on Maui from .00 inch in the Kula district to .97 in the Koolau; on Oahu from .00 inch at Ewa and Waianae to .76 in the Koolauopoko district; on Kauai from .20 inch in the Kona district to .82 in the Puna, and on Molokai from .31 to .60 inch.

At stations having a record of ten or more years the amount was above the average, on Hawaii: .46 to .49 inch at all such stations in the Hamakua district and .91 inch at Waimea; and on Kauai .09 inch at Makaweli; at all other like stations it was below by the following amounts, .36 to .85 inch on Hawaii, .15 to .79 inch on Oahu, and .71 inch in the Koolau district of Kauai.

As compared with the preceding week, the total rainfall was considerably less: from 1.53 to 9.66 inches in the northern portion of the Kona district of Hawaii, and from 1.86 to 4.33 inches in the Koolau and Hamakuaopoko districts of Maui, and 1.41 in the Koolau district of Kauai. Elsewhere the changes did not amount to 1.00 inch, and ranged on Hawaii from .03 to +.91 inch; on Maui from -.65 to +.23 inch; on Oahu from -.72 to +.24 inch; on Kauai from -.63 to +.11 inch, and on Molokai from -.40 to +.07 inch.

The following table shows the weekly averages of temperature and rainfall for the principal Islands and for the Group:

	Temperature.	Rainfall.
Hawaii	67.9 deg.	1.21 inches.
Maui	72.5 deg.	0.56 inch.
Kauai	73.1 deg.	0.44 inch.
Oahu	73.1 deg.	0.21 inch.
Molokai	70.4 deg.	0.46 inch.
Entire Group	70.7 deg.	0.73 inch.

At the local office of the U. S. Weather Bureau in Honolulu measurable rainfall occurred on two dates, amounting to .10 inch, .04 more than last week's, and .50 below the normal. Southwesterly winds prevailed on the 23rd and 24th, and NE. to E. on the remaining dates, with an average hourly velocity of 8.6 miles. The mean temperature was 72.6 deg., .5 deg. below the normal, and 2 deg. higher than last week's; a maximum temperature of 82 deg. occurred on the 25th. The mean relative humidity was 69.1 per cent and the mean daily barometer 30.08 inches.

C. R. DEWING, Official, Temporarily in Charge.

U. S. DEPARTMENT OF AGRICULTURE, WEATHER BUREAU.

The following data, covering a period of 33 years, have been compiled from the McKibbin and Weather Bureau records at Honolulu, T. H. They are issued to show the conditions that have prevailed, during the month in question, for the above period of years, but must not be construed as a forecast of the weather conditions for the coming month.

Month, April for 33 years.

TEMPERATURE.
(18 years 1890-1907.)
Mean or normal temperature, 73 deg.
The warmest month was that of 1893, with an average of 75 deg.
The coldest month was that of 1898, with an average of 71 deg.
The highest temperature was 86 deg. on the 25th, 1893.
The lowest temperature was 59 deg. on the 21st, 1899.

PRECIPITATION.
(Rain 21 years, 1877-94, 1905-7.)
Average for the month, 2.33 inches.
Average number of days with .01 of an inch or more, 13.
The greatest monthly precipitation was 7.95 inches in 1890.
The least monthly precipitation was 0.18 inch in 1906.
The greatest amount of precipitation recorded in any 24 consecutive hours was 3.30 inches on the 30th, 1885.

RELATIVE HUMIDITY.*
Average 9 a. m., 68 per cent; average 9 p. m., 74 per cent (1893-1904).

Average 8 a. m. 65 per cent; average 8 p. m., 69 per cent (1905-7.)

CLOUDS AND WEATHER.
(18 years, 1890-1907.)
Average number of clear days, 11; partly cloudy days, 14; cloudy days, 5.

WIND.
(Direction, 23 years; velocity, 3 years.)
The prevailing winds are from the NE. (1875-94, 1905-7.)
The average hourly velocity of the wind is 9.4 miles (1905-7.)
The highest velocity of the wind was 36 miles from the NE., on the 3d, 1905, (1905-7.)

Station: Honolulu, T. H.
Date of issue: March 31, 1908.
*9 o'clock averages from records of Territorial Meteorologist; 8 o'clock averages from Weather Bureau records.

WM. B. STOCKMAN,
Section Director, Weather Bureau.

SHIPPING INTELLIGENCE

ARRIVING.
Wednesday, April 29.

S. S. Mikahala, Gregory, from Kauai 5 a. m.
C.-A. S. S. Aorangi, J. D. S. Phillips, from Colonies, 7 a. m.
Fr. S. S. Ceylon, from Yokohama, 10:30 a. m.

DEPARTING.
S. S. W. G. Hall, Thompson, for Ka-

ual ports, 5 p. m.
S. S. Iwalandi, Self, for Maui and Molokai ports, 5 p. m.
Wednesday, April 22.
A.-H. S. S. Mexican, Nichols, for Kahului, Kaanapali, Hilo and Salina Cruz 5 p. m.
C.-A. S. S. Aorangi, Phillips, for Vancouver and Victoria, 6 p. m.

Thursday, April 30.
U. S. A. transport Crook, Williams,

TIDES, SUN AND MOON.

New Moon April 30th at 5:10 a. m.

Date	High Tide	Low Tide	High Tide	Low Tide	High Tide	Low Tide	High Tide	Low Tide
May	1	2	3	4	5	6	7	8
A. M.	1:24	1:4	2:19	2:48	3:19	3:50	4:23	4:47
P. M.	2:50	3:15	3:40	4:05	4:30	4:55	5:20	5:45
A. M.	3:10	3:35	4:00	4:25	4:50	5:15	5:40	6:05
P. M.	4:30	4:55	5:20	5:45	6:10	6:35	7:00	7:25
A. M.	5:50	6:15	6:40	7:05	7:30	7:55	8:20	8:45
P. M.	7:10	7:35	8:00	8:25	8:50	9:15	9:40	10:05
A. M.	8:30	8:55	9:20	9:45	10:10	10:35	11:00	11:25
P. M.	9:50	10:15	10:40	11:05	11:30	11:55	12:20	12:45

U. S. Coast and Geodetic Survey tables. The tides at Kahului and Hilo occur about one hour earlier than at Honolulu. Honolulu standard time is 10 hours 30 minutes slower than Greenwich time, being that of the meridian of 157 degrees 30 minutes. The time Times of the tide are taken from the whistle blows at 1:30 p. m. which is the same as Greenwich, 0 hours, 0 minutes. The Sun and Moon are for local time for the whole group.

Shipping in Port

(Army and Navy.)
U. S. S. Iroquois, Carter, Pearl Harbor, April 22.

U. S. A. transport Crook, Williams, Manila and Nagasaki, April 25. (Steamships.)

A.-H. S. S. Mexican, Nichols, Seattle, April 24.

C.-A. S. S. Aorangi, Colonies, Ap. 29. Nor. S. S. Orland, Lie, Pleasant Island, April 28.

Fr. S. S. Ceylan, Yokohama, April 29. (Sailing Vessels.)

Am. sp. John Ena, Madsen, Norfolk, April 2.

Am. sp. Dirigo, Goodwin, Baltimore, April 16.

Russ. sp. Dundee, Gustafson, Leth, April 16.

Br. sp. Celtic, Monarch, Thomas, Hamburg, April 17.

Am. bk. Foohing Euey, Banfield, New York, April 13.

Am. bkt. Aurora, Samuelson, Newcastle, April 27.

Am. bkt. Benicia, Trainor, Newcastle, April 27.

Am. sc. R. C. Slade, Sonerud, Newcastle, April 28.

The Mails

OUTGOING.
For Victoria, Aorangi, April 29.

For Orient, Hongkong, Maru, May 2.

For S. F. America Maru, May 2.

For Colonies, Marama, May 5.

INCOMING.
From Victoria, Marama, May 5.

From Orient, America Maru, May 2.

From S. F., Hongkong Maru, May 2.

U. S. A. TRANSPORTS.
Logan, at Manila.

Logan at San Fran.
Buford at S. F.

Dix at Seattle.
Sherman left Hon. for Manila, April 16.

Warren at Manila.
Crook in port.

S. S. Kinau, (on Mikahala's run) for Kauai ports, 5 p. m.

Friday, May 1.

A.-S. S. Nevada, Greene, for San Francisco, 5 p. m.

S. S. Claudine, Bennett, for Hawaii and Maui ports, 5 p. m.

T. K. K. S. America Maru, for San Francisco, may sail p. m.

PASSENGERS.
Arrived.

Per C.-A. S. S. Aorangi, April 29 from the Colonies, for Honolulu—Mr. and Mrs. Lister, T. H. Stryker, P. A. Garvie, Mr. CeCrindle, Miss Morris, D. S. Scott, D. Crawford, Max Pohle, G. Lourean, C. Statisco, S. Torres.

Per S. S. W. G. Hall, April 28, for Kauai: W. Waterhouse and wife, E. H. W. Broadbent, R. W. T. Purvis, W. Kassebeer and child, H. Kuhlmann, F. H. Buch.

Per S. S. Iwalandi, April 28, for Pukoo: Mrs. S. B. Wood.

Per S. S. Kinau, April 30, for Kauai: A. F. Knudsen and wife, children and maid, Mrs. C. M. Cooke, R. Cotton and wife, W. Alexander, J. P. Cooke, Mrs. Noonan.

Per S. S. Nevada, April 29, for San Francisco: Charles Clapp, Mrs. R. J. Bachly and child, Miss M. A. Peck, A. H. R. Vieira, Mrs. John A. Scott, Mr. and Mrs. Clinton J. Hutchins, J. P. Rego, E. Omsted, Frank Winter, Miss Irene Barber, Miss Maud Jones, Miss Dagmar Bisgaard.

FOREIGN MAIL SERVICE

STEAMERS TO ARRIVE.
Date. Name. From.

May 2—Hongkong Maru...S. Francisco

2—America Maru.....Yokohama

2—Marama.....Victoria

HAWAIIAN Macaroni Manufacturing Co., LIMITED

Beretania Street near Aala Street.

MANUFACTURERS OF MACARONI (HOSHI UDON) and BUCKWHEAT (HOSHI SOBA)

The largest and only incorporated concern of its kind in Honolulu.

A new enterprise launched by enterprising merchants.

K. Yamamoto

SALES AGENT.

Tel. 399. Hotel St. near Nuuanu. P. O. Box 810

日布時事社

To ATTRACT THE JAPANESE TRADE advertise in THE DAILY NIPPUN JIJI, the most popular and widely circulated evening paper among the Japanese colony.
JOB PRINTING A SPECIALTY with either language of Japanese, Chinese, Korean or English.

The Nippun Jiji Co., Ltd.

Y. SOGA, Manager.

Phone Main 48. Hotel Street near Nuuanu.

8—Alameda.....San Francisco	15—Manchuria.....Yokohama
9—Siberia.....Yokohama	16—Hilonian.....San Francisco
9—Nebraskan.....San Francisco	23—Nippon Maru.....Yokohama
12—Hilonian.....San Francisco	23—Hongkong Maru...S. Francisco
15—Korea.....San Francisco	24—Alameda.....San Francisco
16—China.....Yokohama	24—Marama.....Victoria
23—Nevadan.....San Francisco	27—Manuka.....Colonies
26—America Maru...San Francisco	27—Nevadan.....San Francisco
27—Manuka.....Colonies	30—Asia.....Yokohama
29—Alameda.....San Francisco	U. S. A. Transports wth leave for San Francisco and Manila, and will arrive from same ports at irregular intervals.
30—Nippon Maru...Yokohama	
30—Aorangi.....Victoria	
June 1—Siberia.....San Francisco	
6—Nebraskan.....San Francisco	
6—Asia.....Yokohama	
8—China.....San Francisco	
10—Hilonian.....San Francisco	
13—Mongolia.....Yokohama	
15—Manchuria.....San Francisco	
19—Alameda.....San Francisco	
20—Nevadan.....San Francisco	
23—Nippon Maru...San Francisco	
22—Hongkong Maru...Yokohama	
24—Marama.....Colonies	
27—Manuka.....Victoria	
30—Asia.....San Francisco	

DISTANCES FROM HONOLULU, HAWAII, TO THE LEADING PORTS OF THE PACIFIC.

Ports.	Distances.
Acapulco.....	3,319
Apia.....	2,240
Auckland.....	3,850
Callao.....	5,147
Cape Horn.....	6,485
Guam.....	3,337
Guaymas.....	2,696
Hongkong.....	4,961
Levuka.....	2,738
Manila.....	4,778
Melbourne.....	4,940
Pago Pago.....	2,263
Panama.....	4,665
Portland, Oregon.....	2,318
Punta Arenas.....	6,379
Salina Cruz.....	3,667
San Diego.....	2,280
San Francisco.....	2,100
San Pedro.....	2,232
Seattle.....	2,401
Sitka.....	2,395
Sydney.....	4,124

\$50 per Month will rent a modern SIX BED-ROOM HOUSE in PUNAHOU DISTRICT Electric Lights—Artesian Water.

BISHOP TRUST CO., LTD. 924 BETHEL ST.

SUPPLIES ALL KINDS Cash Register Typewriter Mimeograph and Globe Wernicke CARD SYSTEMS

Hawaii Office Specialty COMPANY 931 Fort Street & Col. Main 148

L. Kong Fee MERCHANT TAILOR. Hotei ex. near NUUANU. Fashionable Suits at Reasonable Rates a Specialty. Rates very reasonable. Give us a call.

ALWAYS AHEAD THE ROUGH RIDER CIGAR Fitzpatrick Bros. and Myrtle Cigar Store.

Union Pacific Railroad SUGGESTS Speed and Comfort Three trains daily, through cars, first and second class to all points. Reduced rates take effect soon. Write now.

S. F. Booth GENERAL AGENT. NO. 1 Montgomery Street, SAN FRANCISCO.

C. BREWER & CO., LTD. QUEEN STREET, HONOLULU, T. H. AGENTS FOR Hawaiian Agricultural Company, Onomea Sugar Company, Honomu Sugar Company, Waialua Sugar Company, Ooala Sugar Plantation Company, Pepeekeo Sugar Co., Kapapala Ranch Charles M. Cooke, President Geo. H. Robertson, V. Pres. & Mgr. E. Faxon Bishop, Treas. & Secy. F. W. Macfarlane, Auditor P. C. Jones, Director C. H. Cooke, Director J. R. Galt, Director All of the above named constitute the Board of Directors. Fine Job Printing, Star Office.

YACHT HAWAII ATTRACTS NOTICE

New York Tribune Gives Space to Account of The Challenger. ALSO THE LOS ANGELES NEWS. The California Paper Makes Note of Popular Ownership. Feature.

A condensed story of the yacht Hawaii and her purpose appears as special correspondence of the New York Tribune in its issue of April 5.

The following article is from the Los Angeles News of March 30: Representing the islands of Hawaii in the Trans-Pacific Yacht race, which will be held the latter of next June, starting from San Pedro harbor, will be a yacht in which hundreds of men and women of the islands will have a personal interest and share.

The yacht is being built by popular subscription, and will be entered under the appropriate title of the "Hawaii." Every item from hull and rigging down to the blue sweaters and yachting caps of the crew will be donated by residents of the islands, and already the greater part of the cost has been subscribed.

All the Hawaiians are enthusiastic over their vessel and will leave nothing undone to bring the victory in the cross-ocean race to the mid-sea land. A list was prepared, when the idea was originated, detailing each item in the makeup of the boat, and donations were asked on each item. The cost of these donations ranges from \$25 to \$500 according to the importance of the article given. By this plan the people will follow with a personal interest the reports of the vessel's doings.

It is estimated that the yacht will cost complete about \$15,500. Of this sum more than \$12,000 has been subscribed already. A peculiar feature of the donations is the fact that the island of Hawaii is at the bottom of the list in the amount of funds subscribed, it having furnished only \$190. The island of Oahu leads with a deposit to date of more than \$8,600. In the second place comes the island of Kauai which has subscribed \$1,265 and the island of Maui is third with \$475 subscribed.

FINAL REHEARSAL

The final rehearsal of "The Mascot" is to be held tonight. This is not the dress rehearsal as that was held most successfully last Saturday. Tonight the finishing touches will be made and the final instructions given.

"The Mascot" will be staged tomorrow night in a particularly finished condition. It has been ready to produce for the past week but owing to unavoidable circumstances was earlier production than tomorrow was possible. However "The Mascot" has lost nothing by the delay and the public will no doubt be better satisfied with the finished performance.

The Kunalas and their friends helping them have worked hard and long to make "The Mascot" a record breaking success and every bit of the applause which is sure to be forthcoming tomorrow night will be thoroughly well deserved.

All of Honolulu's best known principals have done their best to surpass themselves in "The Mascot" and the chorus climbs up merrily behind them, all eager and keen for final success.

A glance at the list of principals is all that is necessary to assure the public that they will get their money's worth. Mr. Hugo Herzer, a great popular favorite on the comic opera stage, will once more delight his very many admirers in his rendition of Pippo. Mr. Herzer has not been seen in public for the past two years, which fact makes "The Mascot" still more eagerly anticipated.

"Jimmie" Dougherty who can always draw a large crowd, has several particularly fine solos and his excellent work in "The Mascot" is bound to delight all. Mrs. L. R. Crook, who, it may be said, is Honolulu's prima donna of comic opera, has an exceedingly suitable role in that of Bettina. Mrs. Crook can always be depended on for some particularly fine solo work and in this "The Mascot" will be no exception.

Mrs. Hugo Herzer, who has a leading part in "The Mascot" will prove a revelation to the audience. It is hard to imagine a more pleasing or sympathetic voice than Mrs. Herzer's and there is no doubt of her being popularly received tomorrow night.

"Sonny" Cunha, that king of fun-makers, will be in great form. Nobody is more popular than "Sonny" on or off the stage. His wit is proverbial and in "The Mascot" he will shine even more than ever. There is nothing that "hurts" in "Sonny's" wit, a thing which can be said of very few comedians who very often tinge their wit with an undercurrent of sarcasm which cuts into some particular person's feelings far more than is often realized. "Sonny's" wit on the other hand is the best natured and genial fun that could be found, and it is well known that that is the true and genuine wit and is

WHERE FREAR WILL APPEAR

Conference Of Governors To Have Two Sessions a Day For Three Days.

FAMOUS MEN WILL ATTEND. Some Presidential Possibilities Are Among Those Invited.

WASHINGTON, D. C., April 11.—James J. Hill, chairman of the board of directors of the Great Northern railroad, will make one of the leading addresses at the White House conference of governors in May on the conservation of natural resources. His subject will be, "The Relation Between Rail and Water Transportation." It is understood Hill's subject will lead him into discussion of the competitive relations between the railroads and canals of this country. President Hill is one of five noted citizens who have been personally invited to attend the conference. The others are Grover Cleveland and William Jennings Bryan, John Mitchell and Andrew Carnegie.

WILL ENTERTAIN NOTED GUESTS. These guests, with the governors of the states, will be entertained by President Roosevelt at a dinner on the evening of May 12. The sessions will begin the following morning. The plan is to hold two sessions a day for three days. President Roosevelt will open the conference with an address and he also is expected to preside at each session. The meetings will be held in the east room of the White House. Indications already are that the room will be crowded. Each governor will be attended by three delegates and forty great national organizations will be represented. Cabinet members, the Justices of the Supreme court and members of congress and the inland waterways commission have been invited and arrangements also will be made for the accommodation of newspaper and magazine writers.

AFFAIR TO BE NONPARTISAN. The importance of the conference and its notable personnel, as well as its nonpartisan character, is indicated by the fact that it happens that practically all of the Republican and Democratic presidential probabilities are on the invitation list. Taft and Cortelyou will be there in their capacity as cabinet members. Knox and La Follette are invited as senators. Fairbanks and Cannon have received invitations because of their positions as presiding officers of the two houses of congress. Hughes will be on hand as the governor of New York. Bryan is one of the five to receive a personal invitation. Johnson has the same standing as Hughes by virtue of being governor of Minnesota. Judge Gray will attend as a delegate from Delaware.

SUDDEN FLIGHT. The Chicago man who had read so much about the famous Southern Flyer on the far southern road looked out of the coach window and imagined he was riding on a trolley car in a crowded city street.

"Look here, Pete," he exclaimed, when the porter came through, "is this the celebrated Southern Flyer?" "Dat's what it am, sah," replied the knight of the whiskbroom with a low bow.

"How fast are we going?" "Bout eighteen miles an hour, sah."

"Then why in thunderation do you give it such a ludicrous name as Southern Flyer?"

The porter laughed. "Well, Ah'll tell yo', boss. De reason dey call it a flyeh am because it's liable to fly off de track at any time."

PHILIPPINE COMMISSION TO CONTROL ISLAND SHIPPING. WASHINGTON, April 15.—The House Insular Committee, after listening to a statement by Secretary of War Taft, voted to report favorably a bill, which has already passed the Senate, placing within the control of the Philippine Commission all regulations of shipping between ports of the United States and ports or places in the Philippine ports, and postponing the application of United States continental coastwise laws to the Philippine territory. Taft explained to the committee that failure to enact such post-emption would mean the throwing away of more than \$5,000,000 of export trade annually, which is now created by such shipments of American goods to the islands.

far more clever than the cutting kind. For thorough and genuine enjoyment give us "Sonny" and it may be said that in "The Mascot" we will get what we want from him.

Mr. H. M. Webb is another exceedingly "funny man" and his business with "Sonny" in "The Mascot" is excellent. Mr. Webb, as Lorenzo XXIII, is going to keep the house in an uproar, and there is no doubt of the hit he will make.

With such a list of principals there is little wonder that the tickets have gone so fast as they have and by this time tomorrow seats will probably be at a premium.

GREAT ASSEMBLY AT SONG RECITAL

MRS. MACKALL SCORES A DECIDED MUSICAL TRIUMPH AT THE YOUNG HOTEL.

Between five and six hundred of the music lovers of the city crowded the main pavilion of the Young Hotel last night to enjoy the song recital of Mrs. Bruce McV. Mackall. They were not disappointed by the quality of the entertainment furnished, for each number proved good and after the crowd had scattered many took the opportunity to congratulate those who had taken part on their excellent work.

The first number on the program consisted of three French songs by Mrs. Mackall, all of which were delightfully rendered, the second, "Hah's 'Si Mes Vies Avalent des Alies,' being specially pleasing. This was followed by Mrs. Whitney's piano solo, for which she chose the "Gondellera" of Liszt's. This proved to be one of the best numbers of the evening and received the applause it deserved.

Miss Grace Webster, the San Francisco songstress, who is visiting here for a few weeks, rendered two selections which were very much enjoyed. The first, "Tootsie's Goodbye," was sung in a way which attracted special attention. Miss Webster's voice is of a very deep contralto and in the masterpiece of "Tootsie" she used it with a covered effect which caused a great deal of discussion among those interested in music, some being delighted and others criticizing her work. Her "Take Me, Jamie, Dear," was full of sentiment and gave her a much better chance to show the full range and quality of her voice.

Four German songs by Mrs. Mackall followed. "Im Volkston" being most charmingly rendered as was "Winter-nacht." Mrs. (Dr.) Humphris followed with three recitations, all of which were on the dramatic order. The first of these was "A Mother's Love," one of Yvette Gilbert's favorites. It was delightfully handled and Mrs. Humphris, dressed in a black evening gown, added greatly to her art by her personation. In the second recitation, "Lady-Bird's Race," Mrs. Humphris had a rather hard task. The poem seemed hardly as well suited to her voice as others, but still was well carried through. "The Fan," which ended Mrs. Humphris' part in the program, was just as dainty as could be imagined and brought forth laughter and applause enough to satisfy the most fastidious of artists.

Mrs. Mackall ended the program with four English songs, all of which were finely rendered. "Over Hill, Over Dale," was unusually well handled, but in Foot's "Irish Folk Song," Mrs. Mackall charmed her audience with its low sweet melody, which gave her voice a full opportunity to achieve its need of praise.

THE PRESS COMMITTEE. The Press Committee met yesterday afternoon in the Chamber of Commerce rooms in the Stangenwald building, and formulated plans for the entertainment of the visiting correspondents who will arrive here with the fleet.

A committee consisting of W. E. Farrington, L. S. Conness and S. Sheba was appointed to see about headquarters and to arrange for a dinner which will be given the visiting press.

The names of Messrs. Poepeo, Like, W. D. Adams and Bonine were suggested as additional members for the press committee. Secretary Brewster was authorized to communicate with Admiral Thomas regarding the number of correspondents who would probably arrive with the fleet.

Those present at the meeting were Messrs. Farrington, Conness, Brewster, Sheba, Hanohano and Ho Fon.

The committee will meet again on Friday afternoon, to report on its success in several matters.

BRITAIN SUPPORTS OPEN-DOOR POLICY. LONDON, April 15.—Japan is candidly reminded by the Times this morning that England supports America in demanding strict observance of the open door in Manchuria. Some days ago the Peking correspondent of the Times telegraphed: "China's sovereignty in Manchuria is being ground small between the millstones of Russian ascendancy in the north and Japanese ascendancy in the south."

Hence the Thunderer welcomes Consul Fisher's action against Russian pretensions in Harbin, both on its own account and because "it is a quiet reminder to Japan that America, in common with the other power, expects both signatories to the treaty of Portsmouth to respect Chinese rights."

The Times says that the situation in Manchuria seems with difficulties, requiring the most careful watching.

CHRONIC DIARRHOEA CURED. Some physicians claim that chronic diarrhoea cannot be cured. Don't you believe it. There are incurable cases, but none so bad that they cannot be helped by Chamberlain's Colic, Cholera and Diarrhoea Remedy, and even temporary relief means much to one so sorely afflicted. For sale by all dealers Benson, Smith & Co., agents for Hawaii.

Realty Transactions

Entered of Record April 29, 1908. Alfred Magoon to H G Bertelmann. Henry G Bertelmann and wf to Mary N Lucas. Dept of Public Instruction to Tef ofg Est of James Campbell. ExD Dept of Public Instruction to American Sugar Co. William M Maku et al by pdg to Territory of Hawaii. Judgment Antonio Francisco to Pioneer Mill Co Ltd. Maria Bailey to Jacob S Bailey. AL E Makamakole to Mrs. Kealohapanoole Kani. Est of Naomi Kaahue by adm to Kala Kaahue. Keawe Mataio by migeo to Kala Kaahue. Fore Adft Keawe Mataio by migeo to John K Prendergast. Hattie K Kekino to C P Janke German Sav & Loan Soc by atty et al to E A C Long Tr. Kapioiani Est Ltd to E A C Long Tr. German Sav & Loan Soc et al by Tr to E A C Long Tr. ParRel Eida A C Long Tr to Manuel K do Monte. Recorded April 29, 1908. A G Curtis and wf to John Fitzgerald, M; lot 1, land patent 4460, cane, etc, Olan, Puna, Hawaii. \$2100. B 303, p 290. Dated Apr 7, 1908. Isabella H Woods et al to Kohala Ranch Co Ltd, L; lands, N and S Kohala, Hawaii. 30 yrs at \$1 per yr. B 298, p 135. Dated Apr 2, 1908. A Z Hadley to C B Cockett and wf, Rel; ap 3, R P 1862, lot 10,568, pe land and bldgs, Poianui, etc, Lahaina, Maui. \$1000. B 303, p 289. Dated Apr 4, 1908. Charles K Simpson to Central Mill Co Ltd, D; lot 15, bul land, Kua, Hamakua, Maui. \$75. B 300, p 376. Dated Apr 16, 1908. Mankaa and hsb to Antone Sylva, D; R P 7873, lot 611,22, Waiolihi, Kula, Maui. \$40. B 300, p 377. Dated Feb 12, 1898. Antone Sylva to S M Kanakanui, D; R P 7873, lot 11,022, Kapiolihi, Kula, Maui. \$60. B 300, p 378. Dated Apr 8, 1908. Recorded April 21, 1908. A Lewis Jr and wf to Manuel De Mello, D; int in lots 1 and 2, blk 12, Kapiolihi tract, Honolulu, Oahu. \$336. B 300, p 384. Dated Mar 5, 1908. Bishop of Zeugma to Pacific Sug Mill, L; 1 4-5a land, Hamakua, Hawaii. 9 yrs and 3 mos at \$7 per y. B 298, p 128. Dated Apr 20, 1908. Gillis Goodman to Henry Holmes, C M; furniture, furnishings, etc, in lodging house "Langton," King st, Honolulu, Oahu. \$225. B 303, p 295. Dated Apr 18, 1908. Lucinda N Buchy and hsb (R J) to George D Russell and wf, D; por lot 4, gr 1639, Wylie st, Honolulu, Oahu. \$1000. B 300, p 386. Dated 21, 1908. Recorded April 22, 1908. L Tuekong by atty to Wong Leong, D; int in ap 3, R P 7251, lot 8989, Kailua, Kooilaupoko, Oahu. \$200. B 300, p 387. Dated Apr 17, 1908. Tin Look to Trent Trust Co Ltd, M;

MANY WIRE MEN AGREE TO STRIKE

Telegraphers Will Go Out on June 1st if Demands Are Not Granted.

NEW YORK LOCAL NO. 18 LEADS. The Western Union Company Shows A Big Deficit For Last Year.

NEW YORK, April 15.—Local officials of the Commercial Telegraphers' Union have been notified that the following locals have adopted the resolution of Local No. 1 of Chicago, declaring for a strike against the Western Union Telegraph Company June 1st if the wages paid before the strike are not restored: Local 49, Montreal; Local 60, Atlanta; Local 2, Milwaukee; Local 6, Pittsburg; Local 12, Memphis; Local 34, San Francisco; Local 38, Los Angeles; Local 39, Albany; Local 113, Hamilton, Ont.; and Local 50, Winnipeg, Manitoba.

New York Local No. 16, was the first to endorse the resolution. Within the next week or two other locals will act on the resolution, but as most of the locals meet once a month the result will not be known until the end of April. Secretary McInerney of the New York local says that dispatches received from nearly all the locals which have not acted say they will favor a strike.

COMPANY SHOWS DEFICIT. The Western Union Telegraph Company in applying to the New York Stock Exchange to list \$1,230,100 new stock, has submitted an income account for the year 1907. It shows the total gross income to be \$30,700,554; total expenses, \$27,161,205; net revenue, \$3,539,349; balance available for dividends, \$1,918,538; amount appropriated for dividends, \$3,651,073; deficit for the year \$1,732,536; total surplus, \$14,077,081.

FLAG THE TRAIN. When your train is flying for the open switch, and the danger signals of sleeplessness, headache, irritability, and general nervousness are flashed before you, flag your engine before disaster, by taking Dr. Mills' Nervine. At druggists. Money back if first bottle fails to benefit.

pes land, Fort st, Honolulu, Oahu. \$350. B 303, p 300 Dated Apr 22, 1908. John D Holt Jr by High Sheriff to George T Holt, D; int in lot 24 blk 29, Pearl City, Ewa, Oahu; ap 2, R P 2412, kul 5537, Heala, Koolauapoko, Oahu; int in real and personal property of Hanakaulani Holt, decl., 1-9 int in pe land, Queen st, Honolulu, Oahu. \$100. B 300, p 388. Dated Apr 22, 1908. Kaannana (w) to Hamakua Mill Co, L; por gr 1565, Manatee, Hamakua, Hawaii. 6 yrs at \$4 per y. B 298, p 140. Dated Apr 4, 1908.

Printing, Binding, ...BOOKMAKING...

The Hawaiian Star Office has a complete, new, up-to-date outfit for all kinds of JOB WORK.

It has a reputation for neat, accurate, quick work at reasonable prices.

Hawaiian Star Newspaper ASSOCIATION, LTD. BETHEL STREET, BETWEEN KING AND...

From May 1st, 1908, all subscription to magazines and periodicals at publisher's price. Call, Chronicle or Examiner, \$1.00 per month. Wall, Nichols Co., Ltd. Wall, Nichols Co., AGENTS.

W. G. IRWIN & Co. AGENTS FOR THE Royal Insurance Co. of Liverpool, Eng. Scottish Union & National Ins. Co. of Edinburgh, Scotland. Wilhelmina of Madgeburg General Insurance Company. Commercial Union Assurance Co. of London.

Y. WO SING CO. GROCERIES, FRUITS, VEGETABLES, ETC. California Butter, 40c lb; Cooking Butter, 30c lb; Island Butter, 35c lb. 1186-1188 Nuuanu Street. Telephone Main 238. Box 963.

ALEXANDER & BALDWIN LTD. J. P. COOKE, Manager. OFFICERS and DIRECTORS. H. P. Baldwin, President W. M. Alexander, 1st Vice-President J. P. Cooke, 2nd Vice-President J. P. Cooke, 3rd Vice-President J. Waterhouse, Treasurer E. E. Paxton, Secretary W. O. Smith, Director G. R. Carter, Director W. R. Castle, Director

SUGAR FACTORS AND COMMISSION MERCHANTS AGENTS FOR Hawaiian Commercial & Sugar Company. Haiku Sugar Company. Pala Plantation. Maui Agricultural Company. Kihel Plantation Company. Hawaiian Sugar Company. Kahuku Plantation Company. Kahului Railroad Company. Haleakala Ranch Company. Honolulu Ranch.

Catton, Neill & Co. LIMITED. Engineers, Machinists, Blacksmiths and Bellmeters. First class work at reasonable rates. M. OHTA, JAPANESE CONTRACTOR AND CARPENTER. House No. 762 Sheridan St Telephone Whit 601.

NEW CHOP HOUSE. P. John, late of the Manhattan Lunch Rooms, has opened a new Chop House on Hotel street near Nuuanu. First class meals served at all hours. HOFFMAN CHOP HOUSE. Is there any reason why our advertising matter should not help your business? Let's see. HAWAII PUBLICITY CO. Telephone 173.

F. S. NAGAMI - Photographer Kodak Developing, Printing, Enlarging and Interior Photographing. GOOD WORK GUARANTEED. 220 Hotel St., bet. Nuuanu and Bethel Sts., Honolulu, T. H.

CASTLE & COOKE LTD. Honolulu, T. H. SHIPPING AND COMMISSION MERCHANTS. SUGAR FACTORS AND GENERAL INSURANCE AGENTS. representing Ewa Plantation Co. Waialua Agricultural Co., Ltd. Kohala Sugar Co. Waimea Sugar Mill Co. Apokaa Sugar Co., Ltd. Fulton Iron Works of St. Louis. Blake Steam Pumps. Westons Centrifugals. Babcock & Wilcox Boilers. Green's Fuel Economizer. Marsh Steam Pumps. Matson Navigation Co. Planters Line Shipping Co. New England Mutual Life Insurance Company of Boston. Aetna Insurance Co. National Fire Insurance Co. Citizens Insurance Co. (Hartford Fire Insurance Co.) Protector Underwriters of the Phoenix of Hartford. More than 49,000,000 food animals were slaughtered in the United States during the last calendar year.

The Hawaiian Star

DAILY AND SEMI-WEEKLY.

Published every afternoon (except Sunday) by the HAWAIIAN STAR NEWSPAPER ASSOCIATION, LIMITED.

SUBSCRIPTION RATES:

Local, per annum\$5.00
Foreign, per annum12.00
Payable in advance.

Entered at Post Office at Honolulu, Hawaii, as second class mail matter.

Subscribers who do not get their papers regularly will confer a favor by notifying the Star Office; Telephone 365.

The Supreme Court of the Territory of Hawaii has declared both THE HAWAIIAN STAR (daily) and THE SEMI WEEKLY STAR newspapers of general circulation throughout the Territory of Hawaii, "suitable for advertising proceedings, orders, judgments and decrees entered or rendered in the Courts of the Territory of Hawaii."

Letters to THE HAWAIIAN STAR should not be addressed to any individual connected with the office, but simply to THE HAWAIIAN STAR, or to the Editorial or Business Departments, according to tenor or purpose.

GEORGE F. HENSHALL.....MANAGER

WEDNESDAY APRIL 29, 1908

KOREAN OUTRAGES.

If Japan is ruling Korea with an iron hand the Koreans who are on American soil seem to be giving evidence of reasons why she can follow no other policy. The assassination of Durham W. Stevens, and movements here regarding Bishop Harris which exactly correspond with what was done before Stevens was killed, constitute proceedings which call for that kind of a rule. Several years ago on the island of Hawaii six or eight Koreans bound a countryman who had offended or injured them and slowly beat and burned him to death. Since that there has been at least one other example of a similar tendency to ignore law and take private vengeance for wrongs. There is evidence that the killing of Stevens was the result of a plot hatched by the so-called educated Koreans, and with the disclosures of today there is evidence to justify the conclusion that this same class, here and in San Francisco, planned a program very similar in the case of Bishop Harris.

The Korean people will not get the sympathy of the United States by this sort of thing. Reading of such cowardly plots as these, the average American will be likely to remark that if that is the sort of method the Koreans like to adopt, it is just as well for Japan to go ahead and be as harsh as necessary until they can learn better. So that if the majority of the Koreans do not approve of this sort of thing, the best way they can serve their country is by helping to punish the criminal conspirators.

THE TRUST AGE.

Following the great manufacturing and middlemen's trusts in order of evolution have naturally come the trusts of producers. The combination of cotton growers, formed to hold the crops for living prices, is some years old. Next to loom up was the association of tobacco growers for the same purpose, out of which has come the fearfully wanton devastation of the "Night Riders"—a lawless body that recalls the terrors of the Ku Klux Klan of the reconstruction period. Now we hear of the western sheepmen, with flocks aggregating 20,000,000 sheep and a total capitalization of \$80,000,000, forming a trust also to secure and maintain prices which they may deem adequate. Labor has before all the rest had its trust in gradually developing perfection through the federating of its countless unions.

All of the interests mentioned and unnumbered ones that might be cited are within their rights of self-preservation and self-advancement in organizing. Yet when any of them trespass beyond the bounds of the public interests to gain their ends, there ought to be law of nation or state or both to define the line of "thus far and no farther" which cannot be transgressed with impunity. The public as the great body of consumers forms a trust of immemorial antiquity with prescriptive rights which can never for long be placed in abeyance.

For legitimate trusts, regulation. For destructive combines like the banana trust, extermination. There is no more generally recognized national issue in this Presidential campaign than the Rooseveltian policy of trust control and regulation. Whether a "Roosevelt man" be nominated or not, the Republican candidate who enters the contest with any hope of success must have his feet squarely planted upon the Roosevelt policy.

It is rather an ironical spectacle, a press committee doing the executive session stunt. But nobody should know better what to "keep out of the papers" than newspapermen.

A pension bill carrying \$163,000,000 forty-three years after the pensioners laid down their arms is one evidence that America's most variable climate is not inconducive of longevity.

Britain's alleged support of the "open door" if maintained will tend to a weakening of the Anglo-Japanese alliance, or else Japan must soon pull in her horns somewhat in the neighboring countries she is now exploiting.

Evidently the financial panic was a strong buttress to New Year's resolutions this year. The reduced internal revenue receipts from booze and smoke are significant. Perhaps the prohibition wave had something to do with it.

Governor Frear will have a good opportunity, and no doubt able to take advantage of it, in the conference of governors to advance the cause of a water survey of this Territory. The Star has published information on the coming event which shows that President Roosevelt is going to feature the subject of conservation of water resources by both nation and state.

As a plain and direct showing of how murder and anarchy hurts the cause it assumes to aid, it may be mentioned that there arrived by the late mails from the Far East some interesting and even sensational accounts of alleged Japanese oppression of Korea. But no newspaper is likely to deem them proper for publication in view of the signs that they are likely to encourage cowardly murder.

Superintendent Babbitt might be asked if it was the Legislature that named the Kaulani school or the Kaahumanu school, or even in terms created the Honolulu high school. In his absence the Board of Education unanimously approved of naming the high school after President McKinley. The patriotic motive was not unfelt and the incidental benefits coming to the institution were wisely recognized. It is too late for Mr. Babbitt to resume his unreasoning opposition to the plan.

Elsewhere will be found a mail amplification of the Star's cablegram regarding the nature of the Philippine shipping bill. The injury that Secretary Taft desires to have avoided for the Philippines relates to American merchandise. Hawaii asks for relief from the coastwise laws only in the matter of passenger traffic. The restriction in this regard is said not to be regarded by American steamship owners as of advantage to them but rather the reverse. So far as this American Territory's people are concerned the restriction is quite



THE PERFECT SEGAR

LEWIS & CO. Ltd.

HONOLULU, H. I.

DISTRIBUTORS FOR

Waldorf-Astoria Segar Co. Ltd.

NEW YORK HABANA KEY WEST

NOTICE TO BONDHOLDERS.

THE KOLOA SUGAR COMPANY.

In accordance with the terms under which its Bonds were issued, The Koloa Sugar Co. will pay with accrued interest (\$15,000.00) of its Bonds. The numbers of Bonds to be paid are:

26, 27, 29, 35, 48, 50, 73, 78, 103, 109, 111, 155, 157, 188, 240.

Notice is hereby given to the holders of these Bonds to present the same for payment at the office of the Trustee of the Bond issued, The Bank of Hawaii, Ltd., in Honolulu, on May 1, 1908 and that interest on the same will cease from and after that date.

W. PFOTENHAUER,

Treasurer, The Koloa Sugar Co.

Honolulu, April 10, 1908.

MEETING NOTICE.

UNION FEED CO. LTD.

The regular quarterly meeting of the stockholders of the Union Feed Company, Limited, will be held at the office of the company in this city on Thursday, April 30, 1908, at 10 o'clock a. m.

F. W. MACFARLANE, JR.,

Secretary Union Feed Co., Ltd.

Honolulu, April 28, 1908.

WE HAVE IT

IF ITS ANYTHING IN THE

Dry Goods Line

EHLERS

WAKAMI & CO.,

Importers and dealers in JAPANESE and AMERICAN DRY and FANCY GOODS, STRAW HAT FACTORY. All kinds of FELT and PANAMA HATS always on hand.

DECORATE FOR THE FLEET

Tom Sharp CAN HELP YOU.

FOR SALE.

1000 ft. more or less, 2 1/4-in. galv. Pipe, second hand.

Lot of fittings for above.

1 Krogh Triple-acting Power Force Pump No. 5, 4-in. suction and discharge.

1 Barnes Saw table, complete.

Iron Fence Posts, Slate, and 8-in. cast iron pipe in lots to suit.

EMMELUTH & CO., LTD.
145 King St. Phone 211.

New Suitings JUST RECEIVED

Suits Made to Order at "Ready Made" prices.

Sang Chan

McCandless Building, King Street next to W. W. Dimond & Co.

NONSUIT GRANTED

STRONG FIGHT OVER CAR BRAKE IN DAMAGE SUIT OVER MAN'S LIFE.

The fight going on Judge De Bolt's court in the suit of Vierra vs. the Wai-ana Agricultural Company for \$25,000 damages was one of the liveliest which has taken place in the Circuit Court for some time. Attorney Lightfoot for the plaintiff has completed his case and the defence succeeded in obtaining a non-suit from Judge De Bolt. Lightfoot's case depended primarily on one point. He claimed that the accident was caused through a faulty brake on the car on which the deceased husband of the plaintiff was riding and which was allowed to run over the end of a wooden trestle.

His theory is to the effect that the straight iron rod of the brake bent when pressure was applied and then sprung back into its former shape when the pressure was released. The defence ridiculed this theory and as a result Lightfoot challenged the defence to an inspection of the car and believes that he showed the jury that what he had claimed was correct.

The fun started yesterday when the entire day was taken up with a motion for a non-suit which was most ably argued by the opposing attorneys, Lightfoot for the plaintiff and Cathcart and Milverton for the Wai-ana plantation.

The Molokai Expedition

The U. S. S. Iroquois will leave for Molokai at 7 o'clock tomorrow morning with the Government party to inspect the Settlement. It will arrive about 1 p. m. and returning leave Kalaupapa for home at the same hour on Friday.

Acting Governor Mott-Smith made the request for the naval station boat. Among those forming the expedition will be the Acting Governor, Dr. L. E. Cofer, Dr. Brinckerhoff, U. S. District Attorney Breckons, Attorney General Hemenway and President Morgan of the Chamber of Commerce.

No representatives of the press will be taken.

as absurd as would be a prohibition of international passenger traffic by the two great Canadian railways entering the United States, one of which has for half a century had its Atlantic winter port in the United States.

GOOD WORK DONE

At the second meeting of the fleet entertainment committee, held this morning, there were present Chairman F. L. Waldron, Secretary E. A. Berndt, W. H. Hoogs, Abram Lewis Jr., J. O. Lutted, J. M. Levy, Ho Fon, W. T. Lucas, A. L. C. Atkinson, Dr. Mitamura, J. Guild, H. F. Bertelmann, J. A. Wilder, F. Archer, M. Phillips, Capt. Rees, Mr. Sheba.

Three grand divisions of work were decided as falling within the functions of this committee, namely, the Fish-market reception affairs, excursions to Pearl Harbor and Kapena Falls, a grand garden party at Walkiki beach.

For the trip to Pearl Harbor, taking 110 officers, it was agreed that one-half the party should go by auto and the other half by steamer, these sections reversing modes of transportation in returning to town. Thus all of the guests will be introduced to both the sea and the land approaches of the coming greatest naval station in the world.

Instead of a ball, the great evening entertainment will take the form of a garden party. For this purpose both the Moana and the Seaside hotels will be utilized. Both will be gorgeously illuminated. Dancing platforms will be erected upon the lawns fronting the ocean.

Committees on expenses of the different divisions were appointed, consisting of Hoogs, Atkinson and Wilder for the garden party; Lewis, Rees and M. Phillips for the reception, and Bertelmann, Wilder and Sheba for the Falls.

ARRIVING.

Wednesday, April 29.

S. S. Nihaun, Ouess, from Koloa, 8:45 a. m.

DEPARTING

Wednesday, April 29.

S. S. Maui, Bruha, for Laupahoehoe and Papaloa, 12:15 p. m.

PASSENGERS.

Arrived.

Per S. S. Mikahala, April 29, from Kaula—J. H. Cremer E. Fernandez, Rev. Scudder, W. A. Kinney, H. A. Jaeger, E. E. Mahlum, C. W. Spitz and 40 deck.

Man Pio, charged with illicit distilling, has been found guilty in Judge Dole's court, the jury returning at 2 o'clock this afternoon. Sentence will be pronounced tomorrow morning.

IT'S YOUR TURN

to try our new Soda Fountain. Everyone who has tried it, so far, has agreed with us that it simply can't be beat for pure, unadulterated deliciousness.

Our Soda Man knows how. He has seven new drinks that you haven't heard of.

TRY ONE OF THEM.

HOLLISTER DRUG CO. LIMITED.

FORT STREET.

H. F. WICHMAN & CO., LTD

OPTICIANS

All kinds of complicated lenses ground to order. Frames adjusted and repaired.

Factory on the premises.

H. F. WICHMAN & CO., LTD

1042-1050 FORT STREET.

STEINWAY

STARR AND OTHER PIANOS.

THAYER PIANO CO.

156 Hotel St., Opp. Young Hotel.

Phone Main 378

TUNING GUARANTEED

EL PALENCIA

The Choice of the Smoker.

Hayselden Tobacco Co.

SOLE DISTRIBUTORS.

Alexander Young Building.

MEN USED TO TRAVEL

generally look well wherever and whenever you meet them, because they are in possession of one of our

TRAVELER'S CASES.

We have them beautifully finished and sell them at prices varying between

\$1.50 AND \$4.00.

HOTEL AND FORT STS.

Benson, Smith & Co., Ltd

Hotel and Fort Street.

HARRY ARMITAGE

Stock and Bond Broker...

MEMBER OF HONOLULU STOCK AND BOND EXCHANGE.

Office: Campbell Block, Merchant Street, HONOLULU, T. H.

SUN CHUNG KWOCK & CO., LTD

CHINESE NEWSPAPER PUBLISHING AND JOB PRINTING.

No. 49 Cor. of Smith and Hotel Sts.

Koa Furniture

UPHOLSTERING AND REPAIRING

WING CHONG CO.

Cor. King and Bethel. P. O. Box 1998

THE BEST DRESSED LADIES OF TODAY

BUY McCALL'S PATTERNS AND THEN

Buy Their Material SAVING MONEY BY SO DOING

Look at our LAWNES, PRICES and QUALITY CANNOT BE BEATEN.

E. W. JORDAN & CO., Ltd.

"Do not let the good things of life do you out of the BEST things."

The best light is the Electric Light.

It is always the same old story with oil lamps—daily trimming and filling, broken chimneys, smoking, ill smelling lamps and unsatisfactory light.

Electricity has no disagreeable features. Just press the button and the house is filled with a light that rivals the light of the day.

Let us estimate the cost of wiring your house.

Hawaiian Electric Co., Ltd

King Street near Alakea. Telephone 390

Ham and Bacon

The real thing, well smoked and as tender as chicken. We have it and good beef, also.

The Metropolitan Meat Co.

TELEPHONE 45.

Pastry Butternut Bread

PALM CAFE :: HOTEL STREET NEAR FORT

FRANKLIN Automobiles

"If air-cooling would cool," the doubters say, "it would be the best."

"If"—"If"—And more than five thousand air-cooled Franklins in use every day.

Ask any Franklin owner.

Demonstration on request.

E. O. HALL & SON, Ltd.,

or Associated Garage.

Fine Job Printing, Star Office. Fine Job Printing, Star Office.

If You Know

the danger you are running when you read till your eyes burn and blur the print, and then cover them one at a time to rest them, you wouldn't do it.

And if you knew the risk you are taking every day that you defer having them examined and fitted with the right pair of glasses, we should see you tomorrow.

A. N. Sanford,
OPTICIAN.

Boston Bldg. Fort St.

In the Spring

a young man's fancy lightly turns to thoughts of beer. Beer is our specialty and you will find our Primo a little better than that served anywhere else in town. Also the glasses hold more.

"The Hoffman"
Hotel Street near Nuuanu.

RAINIER BEER

is the
Most Frequently
CALLED
FOR

Wholesale at the
Rainier Bottling Works
Phone 1331

YOU Can Have

Shoes repaired to your satisfaction at this establishment or you can have a pair made to your order so they will fit to a T. There is no other place where they make fine shoes to order.

COME AND SEE THE
WORK DONE AT
VICKERS'
SHOE REPAIR SHOP.
1119 Union St.

NOTICE.

Dear Sir:—In reply to the question put to me today by your Mr. Wight, I have to say that I have no reason to think that the fire which destroyed my residence on the night of the 14th inst., was caused by gas. I will rebuild on the site of my former residence at once and it is my intention to use your product in the new house for illuminating as well as for fuel. For either purpose I regard gas as BETTER and, when used with discretion, CHEAPER and quite as SAFE as any other product.

Yours truly,
A. S. HUMPHREYS.

Messrs. Honolulu Gas Co., Ltd.

NOTICE.

On and after June 24th, 1908, the SALOON RATES between Honolulu and San Francisco per S. S. ALAMEDA will be as follows:

Round Trip, 110.00
Single Fare, \$ 65.00
Family Rooms extra.

WM. G. IRWIN & CO., LTD.
General Agents, Oceanic Steamship Co.

NOTICE TO KIHAI STOCKHOLDERS

Definite arrangements having been made for the sale of the property of Kihai Plantation Co., Ltd., on July 1st, 1908, the Agents of said Company, Messrs. Alexander & Baldwin, Limited, beg to announce that on and after the 1st day of May, 1908, they are willing to purchase any and all shares of stock of said Kihai Plantation Company, Limited at the rate of \$10 per share, said sum being the estimated amount per share which is expected will be realized as net proceeds from the sale of said property.

J. WATERHOUSE,
Treasurer, Alexander & Baldwin, Ltd.

NOTICE.

The undersigned having purchased the General Merchandise business of Ah Yen of Kalahele, Koolau-poko, Oahu, hereby gives notice that from and after this date he will not be responsible for any debts contracted by said Ah Yen.

YUEN HING.

Dated, Honolulu, April 27, 1908.

NOTICE.

Notice is hereby given that I, Tam Yung Shi, widow of the late Tam Ping Yee, of the city of Victoria in the colony of Hongkong, have this day sold my sole right and interest in the business of the New Oahu Carriage Manufacturing Co. of Honolulu to Tam Quay of said Honolulu. All debts due to and by the said New Oahu Carriage Manufacturing Co. will be settled with and by the said Tam Quay who will continue the said business under the same firm name.

TAM YUEN SHI.
Hongkong, March 21, 1908.

THE LOG-BOOK

(Continued from Page Two).

of the financial stringency in their country. In other words, times were so bad that even the millionaires could not afford to keep floating palaces. Then we smiled, as we remembered that at that very moment four of the finest steam yachts that have yet been built were under construction in Scottish shipyards for rich American owners, and we decided that if there was really to be a jumble sale of yachts in America the reason was not "financial stringency," for kings and millionaires are more likely to be getting new toys than disposing of their old with a flourish of trumpets. I have said kings and millionaires because first among the fine floating palaces now completing in Scotland is his majesty's ship Alexandra. The Alexandra was placed so long ago as March, 1905, but it was only this week that she ran her final trials and was considered practically ready for sea. The Alexandra is 275 feet in length between perpendiculars and 328 feet 6 inches over all; 40 feet in breadth, 33 feet in depth and, as already stated, of 2,157 tons. King Edward has already two steam yachts—the old Osborne, a paddle steamer dating from 1850, and the Victoria and Albert, a twin-screw vessel built in 1899. The Alexandra however, is a great advance even on the latest of these.

S. S. Mikahala, from Kauai this morning brought 4 bundles of hides, 170 bags taro and 98 packages of sundries, besides 3,435 bags of sugar.

S. S. Nihau this morning brought 6,502 bags of sugar from Koloa.

Canadian-Australian Royal Mail steamship Aorangi, Captain J. D. S. Phillips, was off port at daylight this morning from the Colonies and docked at the Oceanic wharf at 7:30 o'clock. She left Sydney April 13; Brisbane, April 16; and Suva, April 21. She experienced fine weather throughout. She stopped half an hour at Sydney Island, just to see that all was well. Cargo for Honolulu amounts to 311 tons and includes, 1,900 carcasses of mutton, 100 carcasses of lamb, 1010 bags of sulphate of ammonia and 1369 crates of onions.

Among her through passengers is Mr. Conlay of Lever Brothers, the great soap men, of Port Sunlight, England. The Honorable Alkman is a member of the Australian parliament. Captain F. A. Hemming, formerly commander of the S. S. Miowera, is a through passenger for Vancouver, T. T. Stryker and P. A. Garvie have been touring the Pacific islands and will stop here a while and go to San Francisco in the Alameda. Mr. and Mrs. Lister are Auckland people for Honolulu.

MANY GAMBLERS

Forty-two cases were on the calendar this morning in Police Court, but were finished in very short order considering the number. The thirty Japanese and Chinese gamblers who were gathered in last night by Acting Chief of Detectives Joe Leal were fined sums amounting to \$206.

George Courtney was given fifteen days and fined \$110 for assault and battery. McElroy and Jim Jack, two leading members of the "Boozers' Club" were each sent over for thirty days and fined \$1 each for being drunk last night.

Tom Saffery, another habitual, was fined \$4 for the same thing. The rest of the cases were continued.

Fine Job Printing, Star Office.

Secretary Metcalf on Naval Plans

Following is the text of the letter sent by the Secretary of the Navy to the Senate Naval Committee:

"Mr. Dear Senator Hale: Referring to my conversation with you on Saturday, I consider it advisable that the naval committee should be clearly advised as to the actual circumstances under which the plans for the Delaware and North Dakota were officially approved by the department and the unanimity with which the salient features of these vessels were approved by the board of construction, the special board on designs, the chief of the bureau of navigation, and the commander-in-chief of the Atlantic fleet.

"As you may recall, the plans for these vessels were prepared in competition with those submitted by naval architects not connected with the Navy Department, this competition having been provided for specifically by the act of Congress approved June 29, 1906.

"After the designs had been thoroughly considered by the board on construction (more than 20 tentative designs having been considered by that board preliminary to the selection of the one finally approved), these plans and all other plans submitted to the department in competition were referred to a special board under the presidency of the assistant secretary of the navy, Hon. Truman H. Newberry. The other members of this board were Rear Admiral Merrell, Captain Rodgers, and Captain Wainwright, who were at that time members of the general board, the chief constructor, the engineer-in-chief, and the chief of the bureau of ordnance, so that a majority of the members of the board had nothing whatever to do with the designs of the vessel submitted by the board on construction.

"The features of the various designs submitted were carefully examined by this board, and my predecessor, Mr. Secretary Bonaparte, in his report for the fiscal year 1906, stated as follows:

"In accordance with the proviso attached to the last naval appropriation bill, the plans for the battleship authorized by the said bill are, simultaneously with this report, transmitted to Congress. These plans were selected by a board of officers, under the presidency of the assistant secretary, after a very careful consideration of various designs submitted by different naval constructors in the United States and one in England and by the board on construction of the department. The type of vessel selected has a length of 310 feet. In the language of the board: 'It will carry as heavy armor and as powerful armament as any known vessel of its class; it will have a speed which is believed to be the highest practicable for a vessel of this type and class, in the present state of

knowledge; it will have the highest practicable radius of action, and can be built within the limit of cost fixed by the act of Congress.' This plan, therefore, complies in all respects, in the judgment of this highly competent board, with the terms of the authorization, and the department has no hesitation in approving the report of the board.

"In due course, the report of this special board, and the approved plans of the Delaware and North Dakota were transmitted to Congress, and the naval appropriation bill approved March 2, 1907, contained the following proviso:

"That, for the purpose of further increasing the naval establishment of the United States, the President is hereby authorized to have constructed, by contract, or in navy yards, as hereinafter provided, one first class battleship to cost, exclusive of armor and armament, not exceeding six million dollars, similar in all essential characteristics, and additional to, the battleship authorized by the act, making appropriations for the fiscal year ending June 30, 1907, plans and specifications for which last named vessel have already been prepared and submitted by the secretary of the navy for the information of Congress, as required by the provisions of the aforesaid act."

"It is thus obvious that the designs of these vessels received the fullest consideration, and were, in effect, approved by Congress.

"Shortly after my assumption of the duties of secretary of the navy, however, it was brought to my attention by an officer attached to the general board that, in his opinion, the armor belt on the Delaware and North Dakota should be raised 30 inches. This officer subsequently made a formal statement to that effect. His communication was referred to the board on construction, and was given most careful consideration, and the board on construction promptly and unanimously submitted its report recommending, in the most definite terms, that no change whatever be made in the designs as approved, since, in their judgment, the armor belt was properly placed.

"The officer making the original statement that the location of the armor belt was in error, was permitted to see the report of the board on construction and made rejoinder thereto. While the department had no doubt whatever as to the correctness of the judgment of the board on construction in this instance, it was deemed advisable to obtain the opinion of the then chief of the bureau of navigation, Rear Admiral Brownson, and the present commander-in-chief of the Atlantic

fleet, Rear Admiral Evans. Rear Admiral Brownson, after carefully looking into the matter, stated specifically that the location of the waterline belt armor of the Delaware and North Dakota, as decided upon by the board of construction, was entirely correct, and that, in his judgment, no change should be made.

"Rear Admiral Evans, who had previously made a statement that, in his judgment, the armor belt was too low, entirely changed his mind after fully considering the plans of those vessels, informing me, in effect, that he had previously been misinformed as to conditions and that after actual examination he entirely approved of the armor protection of the Delaware and North Dakota, and its location as determined by the board on construction. Admiral Evans, so I am informed, made subsequently the same statement to Rear Admiral Converse, the president of the board on construction, and to Rear Admiral Capps, the chief constructor, as he did to me in reference to his concurrence in the opinion of the board on construction with respect to the location of the waterline belt on the Delaware and North Dakota.

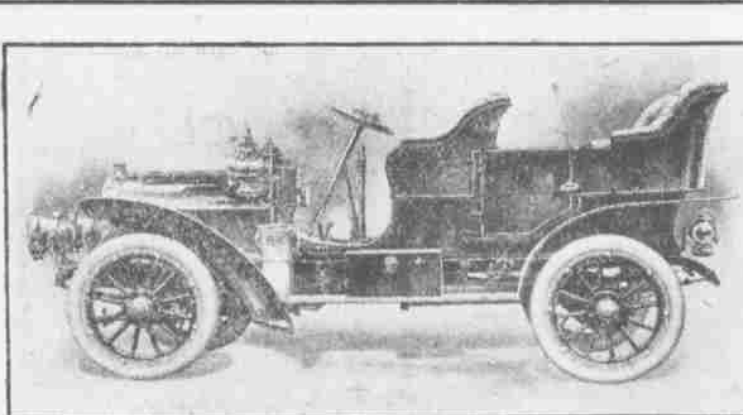
"As the only point criticized in the designs of the Delaware class is that of waterline armor distribution, and since this criticism has been disposed of by the unanimous opinion of the most competent authorities upon whom the department must rely in matters of this kind, I am convinced that there is no ground whatever for further criticism or justification for any change in the essential seagoing and military characteristics of the vessels of the Delaware class.

"In conclusion, and as indicating the character of work performed by the board of construction, I invite your attention to the performance of a new type of vessel whose designs were wholly prepared by that board. I refer to the recent trial of the United States steamship Chester. This vessel was designed to meet certain requirements of the general board, for a vessel of high speed and great endurance, which could be used for scouting purposes. The Chester, Birmingham, and Salem were, in a measure, an answer to foreign vessels of that class which had been designed to make 25 knots speed. The American designers insisted on having a vessel sufficiently large to maintain a good average speed in all ordinary weather, and that she should have a much larger coal endurance than any foreign vessel of this type.

"In the recent official trials the scout cruiser Chester maintained an average speed of 26.52 knots for four hours, and had in her bunkers during that trial an amount of coal practically equal to that carried by the fastest foreign scout cruisers when their bunkers were full, and the Chester actually had on board during the trial three times the amount of coal carried by the largest and fastest of her foreign rivals at the time of their speed trials.

Very truly yours,
V. H. METCALF, Secretary.

Hon. Eugene Hale, Chairman, Committee on Naval Affairs, United States Senate, Washington, D. C.



(Telegram)

BIG SIX

STEVENS-DURYEA

WINS FORT GEORGE HILL CLIMB, N. Y.

Time 37 3-5 seconds.

The BIG SIX Stevens-Duryea made the best time of the day for regular stock cars.

LIGHT SIX

Stevens-Duryea Model U

Repeats its victory of 1907 winning Event F.

The above event took place in the recent free-for-all class race in the Fort George Hill Climb, which is one of the regular events of the Spring Season.

The von Hamm-Young Co., Ltd
AGENTS.

Fine Job Printing, Star Office.

Kangaroo Passenger

Occupying a specially arranged deck cabin aft, there is an interesting passenger for Victoria aboard the U.S.S. S. Aorangi in the person of a young kangaroo. He is being shipped by the Zoological Society of Sydney to a gentleman in Canada for his private collection.

Being young and impressionable, he has made many friends among the passengers during the voyage.

His prescribed ration is molasses bran, but he gets little bits from the second saloon table regularly and has won the hearts of the children. The only thing he regrets is that there is no room to jump in his present quarters. Were it not for his cage he would make the jump from the vessel's deck to the wharf most easily.

ARRIVAL OF MARAMA IS NOW A GAMBLE.

A musician who has heard both Kubelik and Starie Hall, and who thinks well of the latter, said at the Maunaloa concert last night that "while Starie Hall is one of the most sympathetic musicians he had ever listened to, there was a degree of sympathy in the playing of Kubelik that had not been reached by any other player. He has a manner of expression which at once wins his audience." Curious is quoted in almost the identical language in referring to "Musicians I Have Met."

In the Davies Company's offices there is a lot of guessing as to when the Marama will arrive. The morning paper mentions someone as saying she would be here on Tuesday morning. Mr. Buchanan, who is in charge of the steamship department of The H. Davies & Co., agents for the Canadian-Australian line, said yesterday that the men in the office had her coming in a, any old time from Sunday evening until Tuesday morning. Personally he looked for her Monday afternoon. It is all a guess and the only advice Adams is giving is to buy tickets; if the concert does not take place the money will be refunded. Wall, Nichols Co., Ltd., has them for sale.

ROUNDING THE GLOBE

Chargeurs Reunis S. S. Ceylan, Captain Jouan, formerly master of the Amiral Jaurequeberry of the same line, arrived this morning from Yokohama on a round the world trip, docking at the channel wharf about 11 o'clock.

She brought two passengers for Honolulu, Serapion Von Hook and Nami-ki, the latter a Japanese.

She has fourteen through passengers, people who are experiencing one of the most delightful circumnavigations imaginable. Hence the Ceylan goes to San Francisco, Vancouver, Victoria, Mexican and South American ports in both the Pacific and Atlantic, going through the Straits of Magellan, across the Atlantic to England, France, Italy, Egypt, through the Suez and down the Red Sea to India and Australia, thence to China and Japan again and so back to Honolulu and around once more.

The Ceylan left Yokohama on April 17 and enjoyed a pleasant passage. She brought 2000 tons of general Oriental freight for Honolulu and has no immigrants.

She is a splendid ship and is exceeded among boats visiting this port only by the big vessels of the Pacific Mail line.

Her purser, Monsieur Lebeaud, is an officer in the French reserve, as are some of her other officers and the Ceylan is ready at any time to be used by the French Government as a transport.

She expects to sail for San Francisco at noon of Friday.

SUCCESSFUL OPERATION. William Lucas is doing well at the Queen's Hospital after an operation for appendicitis performed last Saturday by Doctors Judd and Waterhouse.

NEW ADVERTISEMENTS

Notice.
On or about the first of June, A. D. 1908, I will open a branch of my Honolulu office at Walluku, on the Island of Maui, for the practice of my profession in the Second Judicial Circuit. A young man of character will be in charge in my absence.

GEO. A. DAVIS,
Counsellor-at-Law.



FOR SALE

Punahou District, College Street,
Lot 75x125, three bedroom modern cottage, \$3200

Makiki District, Kinohi Street,
Lot 50x90, two bedroom cottage, \$1500

Pacific Heights, modern bungalow, \$1100

All Bargains.
Cash or Installments.
Corner Fort and Merchant Streets.

"Waterhouse Trust"

Corner Fort and Merchant Sts.

Classified Advertising

FURNISHED ROOMS.
The Lanston, 629 S. King Street, near South. Mosquito proof. Hot and cold water. Low rates.

STRAYED.
One Bay Colt, one year old. Two hand fetlocks white. Has halter on. Return or notify P. W. Carter, 2103 Kalia Road, Waikiki.

FOUND.
A Japanese sampan was found. Owner can have same by inquiring of John Kamalu at Enkuluano and paying expenses.

LOST.
A coral necklace at Waikiki. Large reward if returned immediately.
MRS. NEWELL,
Moana Hotel.

TO LET.
Pleasant house in town. Rent covered by sub-letting. Furniture for disposal. "H. G." Star Office.

FOR RENT.
Furnished cottage and housekeeping rooms \$12 to \$25. P. E. King, Cottage Grove.

WANTED.
The Union Barber Shop needs another first class barber, highest wages to a popular man. H. Jeffs, Prop.

ACCOUNTED FOR.
Naturally she turned to her husband for information.

"Why are so many of the police mentioned as plain-clothes men?" she asked.

"I suppose," he answered "that they are like the rest of us. It takes all their pay to keep their wives from being plain-clothes women."

IN THE DISTRICT COURT OF THE UNITED STATES, FOR THE DISTRICT OF HAWAII.

In the Matter of W. K. Harnden, Bankrupt.—In Bankruptcy, No. 165. To the Creditors of W. K. Harnden of Honolulu, Island of Oahu, Territory of Hawaii.

Notice is hereby given that on the 28th day of April, A. D. 1908, said W. K. Harnden was duly adjudged a bankrupt, and that the first meeting of his creditors will be held at 603-4 Stangenwald building, Honolulu, on the 12th day of May, A. D. 1908, at 9:30 o'clock a. m., at which time said creditors may attend, prove their claims, examine the bankrupt, elect a trustee, and transact such other business as may properly come before said meeting.

WADE WARREN THAYER,
Referee in Bankruptcy.
Honolulu, April 28, 1908.

NOTICE TO CREDITORS.
ESTATE OF CHOCK YOU SIN, Deceased.

The undersigned, Chock War Sin, having been appointed Administrator of the Estate of Chock You Sin, late of Honolulu, deceased, hereby gives notice to all persons having claims against the estate of said decedent to present the same to him at the office of Wade Warren Thayer, his attorney, 603 Stangenwald Building, in Honolulu, Oahu, within six months from the date of the first publication of this notice, whether such claims be secured or not, or they will be forever barred.

Dated, Honolulu, Oahu, April 29th, 1908.
CHOCK WAR SIN,
Administrator of the Estate of Chock You Sin, deceased.
K. W. Breckons and Wade Warren Thayer, attorneys for Administrator.
4th—April 29, May 6, 13, 20.

SPORTS

THREE QUAKES AND ONE TIGER

MANY MILLIONS FOR NATIONAL UNIVERSITY



Why be bald headed and old looking before your time? Neglect of the hair causes dandruff, and dandruff is the forerunner of falling hair and baldness. The remedy is

Ayer's Hair Vigor

A gentleman residing at Dunedin, N.Z., writes under date Jan. 7, 1907:

"It is with gratitude I write you that I have now a splendid head of hair, both thick and very soft, all owing to my having used your wonderful Hair Vigor. I was almost bald headed before I used the Hair Vigor. I still use it once a day, rubbing it well into the roots of the hair. I used to wear a skull-cap, and I am very grateful to Ayer's Hair Vigor for the improvement it has made in my looks."

Be warned in time. Use Ayer's Hair Vigor and preserve your youth.

Prepared by Dr. J. C. Ayer & Co., Lowell, Mass., U.S.A.

Terra Cotta WARE

We have the cheapest and most serviceable Terra Cotta Ware in the city. Flower Pots with Saucers, Water and Sewer Pipes, and Chimneys, all of the finest workmanship and material, plain and ornamental.

Call and see them before you buy Terra Cotta Ware next time.

LEWERS & COOKE LIMITED.

177 S. King Street. Phone Exchange 20.

68 HOURS To Chicago

From San Francisco, The Fastest transcontinental train.

OVERLAND LIMITED

Electric lighted, Buffet, Library and Drawing room compartment, observation car, with dinner. Telegraphic news posted on train.

Southern Pacific

The Fleet

Is one absorbing question of the hour. How to raise money is the other. Let us help you by buying for cash your diamonds, watches, jewelry, old gold and silver.

J. CARLO

1018 Nuuanu, near King.

CHOICE EGGS FOR HATCHING

PRIZE WINNER STOCK. "Crystal" White Orpingtons, S. Gray Dorkings, Black Minorcas, White Leghorns "Nonpareils," Brown Leghorns and Buff Wyandotters. Orders filled in rotation and carefully packed.

WALTER C. WEEDON, P. O. Box 658, Honolulu.

EMBASSADOR REID SICK.

LONDON, April 15.—Embassador Reid, whose health has been unsatisfactory lately, is now confined to his bed with a severe chill.

Fine Job Printing, Star Office.

As soon as arrangements have been completed, one of the most interesting golf matches that have ever been played in the Territory will take place between Austin White, champion of the Territory, Harold Giffard and Alex McLaren, the Country Club's professional.

The plan is to have McLaren meet the best ball of either of the other two, one hundred and eight holes to be played before the match is decided.

The first thirty-six holes will be played at the Country Club, the next at Moanaina, and the third and last thirty-six holes at Haleiwa.

The cricket team that arrived this morning on the Aorangi from the Colonies is not the team that was first expected, but is made up entirely of good cricketers who are bound for home via Vancouver. Among the players who will play on the Aorangi team is Capt. Hemming, who has been captain of the Miowara for some time, and who is going back to take another ship for his company.

The game will start at one o'clock on the Makiki field, and stumps will be drawn at five thirty. The team that will represent Honolulu today is composed of the following players: K. Anderson, W. L. Stanley, R. J. Buckley, W. Brown, L. G. Blackman, R. H. Catton, J. H. Pridde, E. Grant, J. R. M. McLean, J. C. McGill, C. P. Moore.

All four principals who are to take part tomorrow night in the boxing bouts at Fort Shafter, are in the best possible condition, and the fortunate ones who have cards to the bouts will see some good work in the squared arena.

The entries for the Boys' Club field day, which will be held on Saturday afternoon on the Boys' Field, are double the number of last year, and some interesting races will no doubt be in order. The first race will be run promptly at two thirty.

The Hawaiian Kennel Club met last night at the Young Hotel and talked over at length the plans for the coming dog show which will probably be given during the stay of the fleet, although the date and the place for the show was not decided upon at the meeting.

A committee was appointed to look over the places which are available for the show, and to report back at the next meeting of the club which will be held in the near future.

The directors of the club were authorized to contract debts for the coming show. The last show cost \$75, and it is thought that this show will cost a little more. About seventy-five entries have been promised for the show, and about fifty more are expected.

The following new members were elected at the meeting last night: J. Stewart, T. Robinson and Harry Klemme. Those present at the meeting were: Mr. Sharp, chairman; C. F. Littlejohn, secretary; Dr. Rowat, J. Kelly, W. Charlock, Roscoe Perkins, Jas.

after trainload of sound bananas into the river at that point.

The United Fruit Company holds a club over the heads of the jobbers of the United States. In some cities of the country the trust does not ask the jobber how much fruit he wants, but its representative goes to him and says that "we are going to supply you with two cars of bananas a week," or perhaps five cars a week, according to the representative's judgment of what the firm can handle. The dealer must take it or go out of business.

There have been no less than a dozen fairly well established banana importing concerns put out of business by the trust within the last five years. The octopus has started insurrections in the growing sections merely to destroy the property of its competitors. It is reported.

When the trust got out of the law suit which was begun in New York a few weeks ago it apparently was not through with its antagonist on this score. Several thousand dollars has been spent in collecting evidence against the United Fruit Company. Inquiries have been held among the growers, and the evidence is down in black and white.

The opening shot of a real investigation was fired by Senator Johnston of Alabama Tuesday. The banana buying public is very much interested and will await with pleasure the progress of the proposed inquiry.

None but the banana buyers of the United States and several former competitors of the trust who have made investigations as to the methods the trust used in its fight can fully realize the iniquity of the workings of this organization.

Ever since the United Fruit Company and its Western distributing company, the Fruit Dispatch Company, have been organized these methods have been employed. Down in lower Illinois about ten years ago the fruit company began its system of destroying outright sound bananas for the simple purpose to get them out of the market to keep up prices. At one time the citizens of a small town on one of the smaller rivers of Illinois made a protest to the Governor, in which the protest was presented that their entire section fairly reeked with infectious disease on account of the United Fruit Company dumping trainload

Lenon, Mr. Sproule, W. J. White and A. T. R. Jackson.

The regular weekly meeting of the Kallhi A. C. will be held tonight at the regular time. Every member is requested to be present, as matters of importance will be discussed.

A special meeting of the Valley Side Baseball League has been called for tonight to decide a protest.

A meeting for the purpose of taking action on the proposed field day during the stay of the fleet will be held tonight in the Y. M. C. A. rooms. A cordial invitation is extended to every one interested in athletics.

The Kapiolani Baseball League will meet tonight at the residence of President Silva.

Tomorrow night the Board of Arbitration of the Riverside Baseball League will meet in A. L. C. Atkinson's office to decide on a protest filed by the Japanese A. C. against the Chinese Alohas. Barney Joy, as official umpire of the league, will also be there, as his decision has been the cause of the protest.

The baseball team on the transport Crook will play against the Punahou team this afternoon on the Punahou grounds, commencing at three o'clock. The Puns will line up as follows: C. Davis, p; Lyman, c; Lidgate, 1b; Lowrey, 2b; Hoogs, 3b; J. Desha, ss; W. Desha, lf; Aitina, cf; Townsend, rf.

The first weekly shoot of the Hawaiian Gun Club will be held this afternoon at the Kakaako traps commencing at five thirty sharp. The event will be a 10-bird handicap match.

The Young Tidal Waves have withdrawn from the Kapiolani Baseball League, and their places will probably be taken by the Kallhi A. C.

Mitsuka and Roberts put in a hard day's work yesterday in getting in shape for their coming match Saturday night at the Orpheum. Mitsuka has gone back to his old stunt in lifting 100-pound rice bags, to get more strength. Another thing that Mitsuka is allowing his training partners to do is to butt him in the stomach as hard as possible, but none of them seem to do him any harm.

Roberts is still gaining weight and yesterday he did a good deal of swimming and wrestling with Professor Barton in the water. Roberts is very confident as to the outcome, and stated yesterday that he would beat Mitsuka without any trouble.

The sale of seats opens tomorrow morning at the Orpheum and from all indications there will be more people present Saturday night than there was the first night when Kanae wrestled with Froelcher. Harry Cobb will again act as referee, and the arrangements are under the direction of H. M. Ayres.

Met in Mexico By Prof. Chamberlain Of The University Of Chicago.

VIVID STORIES ARE RELATED.

He Returns Safe And Sound With Valuable Specimens Of Rare Palm.

Thrilling stories were told by Prof. Charles J. Chamberlain of the University of Chicago, who returned today from a botanizing expedition in Mexico with remembrances of three earthquakes he passed through unharmed and an escape from a tiger which pursued him for an hour along a desolate mountain trail. The Chicago botanist has also returned with the prize he went to seek on behalf of the Botanical Society of America, the dioon, a species of the sago palm which furnishes the little sprays of green that will be worn tomorrow in honor of Palm Sunday.

HAPPY OVER RARE SPECIMEN.

Prof. Chamberlain rejoices far more over his triumph in bringing back the dioon than on his success in surveying the earthquakes and the tiger. The dioon is descended from the geological period and not until recently has it been known that any specimens of that rare and ancient plant were still in existence. But the university by the Midway is eagerly discussing today stories which have leaked out about the professor's adventures.

"Three earthquakes are about enough for one trip," declared Prof. Chamberlain, with a laugh, as he turned from showing a specimen of the dioon not as big as a man's head to his colleague, Prof. W. J. G. Land, in botany hall at the university. "I ran afoul of one at Puebla, another on the railroad between Puebla and Jalapa and the third at Mitla."

EXPERIENCE IN EARTHQUAKES.

"The quake which I passed over while riding on the train was scarcely noticeable to the passengers, although it did much damage to the surrounding country. The shock at Mitla was much more disquieting to nervous people. It came in the night time and woke me out of a sound sleep. The first thing I felt when I woke up was the bed rocking and twisting under me. That didn't feel very pleasant and it wasn't at all helpful in the comforting line to hear the brass candlestick on the table at the head of the bed dancing and clattering around as if it were bewitched."

"But the worst experience of all was at Puebla. I hope I never have to go through another like it. I was in a store belonging to a man and his wife who used to live in Chicago. The store opens on an arcade where there are a lot of other shops. The first I knew was that the floor began to tilt and undulate."

NATIVES PRAY IN THE STREETS.

"Everybody else in that store and the other places along the arcade dashed for the doors, and the natives, as soon as they got out into the open, began to drop on their knees, clasp their hands and pray with shrieks and groans for mercy. I guess I was too green to realize that the proper thing to do when you get caught in an earthquake is to get outdoors and away from the danger of toppling walls, because I stayed right where I was and grabbed the edge of the door to keep from being swayed over."

"As the floor waved and the walls rocked, the dishes and ornaments and pictures with which the store was filled were thrown to the floor, dashing all around me. It certainly kept me pretty busy for a while dodging the pieces and keeping on my feet. That was the quake which did so much damage to Jalapa. It threw down one house which was being built in Puebla and killed three men who were hurled under the falling walls."

FOLLOWED BY TIGER.

"A little while after the earthquake at Puebla I was riding near Tuxtepec one night when I heard a noise made by an animal a little behind me, but a trifle to the right. I pulled out my knife and my guide and I halted and faced the beast. It was black darkness and we couldn't see six feet in any direction. The guide said it was a tiger and that we would better look out; but when we stopped, the tiger did likewise. The chapparal was so dense that we couldn't chase the tiger and it wouldn't do any good to stay in our tracks all night, so we went on. Then we could hear the tiger stalking after us."

"During the next hour we halted a dozen times when the beast got too close to us and every time we stopped the tiger slunk back. It wasn't until we got right up to the village that the tiger ceased his pursuit."

SEEDS CARVED BY NATIVES.

The nut of the dioon (pronounced dye-o-on, with the accent on the first syllable), which Prof. Chamberlain brought back is covered with a greenish gray shell possessing a fuzzy exterior. Inside every nut are sixty or seventy seeds which are about as big as a plum, hard and look like old ivory. The only place where the dioon is known to have survived the destructive influences of the centuries is a

REPORT THAT CARNEGIE WILL GIVE \$25,000,000 FOR FIRST ENDOWMENT—ROOSEVELT TO BE CHANCELLOR—STATEMENT THAT THE PRESIDENT WILL TAKE CHARGE AFTER YEAR ABROAD—DREAM OF GEORGE WASHINGTON.

WASHINGTON, April 15.—Andrew Carnegie has decided to give \$25,000,000 to endow a great national university, to be located in Washington, and make President Roosevelt chancellor of it, after he shall have made his world tour. This is a laudable given out here today by a Wall street man, who claims to have positive knowledge that arrangements for this step have been perfected.

It is represented that Secretary of State Root, who secured from Carnegie a gift of \$750,000 for a building to house the Bureau of American Republics, has been the medium through which Carnegie decided to found a national university. This would be in line with Carnegie's founding of those "universities for the people," which are founded in so many municipalities, with his endowments of Edinburgh University and with his gift to the Carnegie Institute.

With such an endowment as a beginning, the national university could be made the most powerful educational institution in the world, and patriotic Americans would be told that it came as a realization of one of the dreams of George Washington.

SALVATION ARMY HOME

CAUSES BREEZE AMONG SUPERVISORS—BISHOP STREET EXTENSION BUSINESS.

The Board of Supervisors held a meeting last night which was enlivened to a slight degree when Archer and Charlie Hustace had a lively set-to over the question of giving money to the Salvation Army Home. Archer made a number of rather unpleasant remarks to the chairman before subsiding.

The usual bills for the month were passed but the monthly park appropriation was cut out on account of the fact that old bills have been coming in and there is some explanation needed by the board. A letter was received from the Waterhouse Trust Company asking that the Bishop street extension through the Mahukua property be graded and macadamized as soon as possible and another letter, officially notifying the board that the title to the proposed extension was now with the Territory, was received from the Superintendent of Public Works.

A letter from Admiral Very thanking the Board and highly commending Fire Chief Thurston and his assistant, Augustus Deering, was read. A letter was received from Dr. Coter, president of the Board of Health, asking that certain board sidewalks in the Chinese and Japanese sections of the city be replaced with cement walks, on account of the fact that the board walks formed perfect rat harbors.

ACCIDENTS WILL HAPPEN IN THE BEST REGULATED FAMILIES.

The average home is frequently in need of a good liniment, as accidents will happen and slight ailments appear when least expected. For a cut or bruise, a burn or scald, Chamberlain's Pain Balm is excellent. It is also good for sprains and swellings and for lame back it is superior to any plaster. For sale by all dealers, Benson Smith & Co., agents for Hawaii.

DIED.

KEALOHA—At Aiea, April 28, Kalua Kealoa, relict of Iosepa, aged fifty-nine years. Funeral from the Silva undertaking parlors on Fort street at 3 p. m. today.

primitive section of old Mexico, where the natives gather the nuts for seeds, which they carve into whistles and toys.—Chicago Daily News, April 11.

Fine Job Printing, Star Office.

of the simple statement lately published to rebuilding alone. Out of the mitee. Announcement is made to the world that San Francisco stands today in the position of being one of the cleanest and most healthful cities in the United States. In the short two years that have gone since flames laid the community in ruin and despair no less than \$100,000,000 has been devoted by the California Promotion Commission then wrought there has sprung into being a stronger and nobler structure. The disaster has been turned to profit.

"This is a record of quick and complete conquest over terrifying adversity which, we believe, could not be matched anywhere in the world. A performance like San Francisco's gives us the right to claim something more for American character than the foreign observer is commonly willing to credit to it."

YOU TAKE AN UMBRELLA

if you think it will rain. On the same principle, take a Dr. Miles' Anti-Pain Pill, "the Little Comforter," when you have reason to believe you will have an attack of headache, tooth ache, neuralgia, indigestion—or those terrible bearing-down pains. They will prevent the attack, and keep you immune from pain just as an umbrella will prevent the rain from falling upon you. Money back if first package fails to benefit.

THE SPERRY FLOUR CO.

Offer to the Trade

Their Mill Products including the following Celebrated Brands "GOLDEN GATE," "SPERRY," "DRIFTED SNOW," "MAPLE LEAF," "SOUND RING," "RED SHIELD." And other Family and Baker Flour.

BRAN, SHORTS, MIDDINGS, ROLLED BARLEY, and the Famous CAPITOL MILLS CEREALS.

The Sperry Products have been for over fifty years the standard of quality for the Pacific Coast.

Ask your Grocer for them and insist upon having them.

ROBERT INNES LILLIE, RESIDENT MANAGER. Honolulu Office: Robison Bldg., Queen St. Hilo Office: Spreckels Bldg., King St.



HE NEEDS to drink with his meals, a glass of PRIMO BEER The Best Natural Tonic.

EXQUISITE MILLINERY

TAILORED HATS, VEILS, FLOWERS

Mrs. Dunn's Hat Shop, HARRISON BUILDING, FORT STREET.

LOS ANGELES LIMITED DAILY TO SALT LAKE CITY OMAHA CHICAGO 'tis truly A PALATIAL TRAIN FOR PARTICULAR PEOPLE

Your next trip to Chicago or East will be much more enjoyable if you go through Los Angeles, thence on this superb "Limited" through Salt Lake City and Omaha. Only 3 days Los Angeles to Chicago—with beautiful scenery to view. Just remember to Ask For Tickets via Salt Lake Route

URINARY DISCHARGES RELIEVED IN 24 HOURS SANTAL MIDY

BANK OF HAWAII
LIMITED.

Incorporated Under the Laws of the Territory of Hawaii.

CAPITAL, SURPLUS AND PROFITS,
\$1,021,459.65

OFFICERS:
Chas. M. Cooke, President
P. C. Jones, Vice-President
F. W. Macfarlane, 2nd. Vice-President
C. H. Cooke, Cashier
C. H. Hustace, Jr., Asst. Cashier
F. B. Damon, Asst. Cash. & Secty
Z. K. Meyers, Auditor
Board of Directors: Chas. M. Cooke,
P. C. Jones, F. W. Macfarlane, E. F.
Bishop, E. D. Tenney, J. A. McCandless,
Geo. R. Carter, F. C. Atherton, G.
H. Cooke, F. B. Damon.

COMMERCIAL AND SAVINGS DEPARTMENTS.

Strict attention given to all branches of Banking

JUDD BUILDING, FORT STREET.

Class Spreckels. Wm. G. Irwin.

Claus Spreckels & Co.
BANKERS

HONOLULU, H. T.

San Francisco Agents—The Nevada National Bank of San Francisco
DRAW EXCHANGE

SAN FRANCISCO—The Nevada National Bank of San Francisco.
LONDON—Union of London & Smith's Bank, Ltd.

NEW YORK—American Exchange National Bank.
CHICAGO—Cora Exchange National Bank.

PARIS—Credit Lyonnais.
BERLIN—Dresdner Bank.
HONGKONG AND YOKOHAMA—The Hongkong and Shanghai Banking Corporation.

NEW ZEALAND AND AUSTRALIA—Bank of New Zealand, and Bank of Australasia.

VICTORIA AND VANCOUVER—Bank of British North America.
TRANSACT A GENERAL BANKING AND EXCHANGE BUSINESS.

Deposits Received, Loans Made on Approved Security, Commercial and Travellers' Credits Issued. Bills of Exchange Bought and Sold.
COLLECTING PROMPTLY ACCOUNTED FOR.

ESTABLISHED IN 1858.
BISHOP & CO.
BANKERS

Commercial and Travellers' Letters of Credit issued on the Bank of California and The London Joint Stock Bank, Limited, London.
Correspondents for the American Express Company, and The Cook & Son.
Interest allowed on term and Savings Bank Deposits.

THE **YOKOHAMA SPECIE BANK**
Limited.

Capital (Paid Up).....Yen 24,000,000.00
Reserved Fund..... 15,050,000.00
Special Reserved Fund 2,000,000.00

HEAD OFFICE, YOKOHAMA.

Branches and Agencies:
Tokio, Kobe, Osaka, Nagasaki, London, Lyons, New York, San Francisco, Bombay, Hong Kong, Shanghai, Hankow, Chefoo, Tientsin, Peking, Newchang, Dalny, Port Arthur, Antung-Halen, Liaoyang, Mukden, Tientsin, Chungking.

The bank buys and receives for collection bills of exchange, issues Drafts and Letters of Credit, and transacts a general banking business.

Honolulu Branch 67 King Street

Fire Insurance

Atlas Assurance Company of London

New York Underwriters Agency

Providence Washington Insurance Company

The B. F. Dillingham Co., Ltd.
General Agents for Hawaii.

Fourth Floor, Stangenwald Building.

IF YOU WISH TO ADVERTISE IN NEWSPAPERS

ANYWHERE AT ANYTIME
Call on or Write
S. C. DAKE'S ADVERTISING AGENCY
124 Sansome Street
SAN FRANCISCO, CALIF.

YOU WANT The News First.....

You Want Your Ads Read

Here Is Some Advice---

Honolulu more than any other city in the World, is a place where the Evening Paper gets the news first. The clock here is over two hours behind the clock at San Francisco, four hours behind Chicago, five hours behind New York and ten to eleven hours behind the clocks in the European capitals.

This means that when The Star is going to press THE DAY IS CLOSED in Washington, Chicago, New York and Europe and almost over in San Francisco. The news of the day is here for The Star.

Under modern conditions it takes practically no time to prepare and transmit news and THE STAR gets every evening the cable dispatches giving

The News Of All The World For The Day Just Ended--

Here are some of the features that go to make the evening paper the predominating factor in an advertising campaign:

It is delivered at the home each night when the whole family has plenty of time to read it.

It is carried home by the business man when his day's work is done and it stays there. A morning paper is usually carried down town by the head of the family and hurriedly read.

The evening paper is not read hurriedly, but thoroughly, so that all the advertisements receive their share of attention.

It presents the store news a little ahead, giving the prospective purchaser time to plan a shopping tour for the next morning.

The evening paper presents the news the day it happens. The morning paper the day after.

The evening paper presents the news first. The morning paper merely elaborates it.

The evening paper prints daylight news. The morning paper takes what is left.

NEWS SNIPS

First Lieut. William S. Bowen of the 66th Coast Artillery, stationed at the Presidio, San Francisco, on April 14 was notified of his trial by court martial for neglect of duty. The same afternoon, while out alone at target practice, he accidentally shot himself in the knee with a pistol.

Representative Clark, of Florida, was knocked down in a hotel lobby in a fight with an unknown young man caused by a revolving door "mixing it up."

Representative Dalzell, refusing to report a bill to reduce the duty on wood pulp and print paper, declared in the House that absolutely no tariff revision would be allowed at this session.

Discovery that Vice President Fairbanks had been branded a falsifier in a Senate document which he had introduced led Senator Foraker to apologize and secure the suppression of the pamphlet.

Prohibition is declared to be growing in strength in Congress, where certain members were forcing it to the front for political effect.

The cruiser Chicago which arrived at Norfolk on April 7, will be fitted out as a naval academy practice ship.

Norcross Brothers, of Worcester, Mass., have been awarded the contract for the construction of the new home of the International Bureau of American Republics, in Washington, toward which Andrew Carnegie contributed \$750,000. The work is to begin at once.

The Japanese Official Gazette announces that on April 30 payment will be made of about \$10,000,000 as the first installment of the redemption of the \$50,000,000 national loan.

Chairman Knapp estimated that it would cost \$3,000,000 and take three years to obtain a valuation of the railroads of the United States.

Germany's colonies are five times as big as herself, those of France 18 times and those of Britain 97 times.

W. J. Bryan, in a speech in Kansas City, advocated the nomination of Senator LaFollette for President by the Republicans, declared that President Roosevelt was a failure as a reformer and characterized Secretary Taft as a candidate without a polley.

Two eight-hour shifts of men are working in the Frankford Arsenal to fill orders for cartridges for a new type of the Springfield magazine rifle, which is to replace the Krag-Jorgensen 1898 model.

A large decrease in the Government's revenue from beer, whisky, cigars and cigarettes is shown in figures compiled by the Collector of Internal Revenue. The greatest proportionate decrease has been in tobacco. In the first two months of this year the decrease in these receipts was nearly \$70,000. The decrease from sales of beer was \$5074,50, from whisky \$6730.19 and from cigars and cigarettes \$55,842.44.

Hiram Maxim, the inventor, was before the Naval Torpedo Board lately with an invention which is said to be well adapted for naval use. Nothing as to the machine's design or use was given out by the board.

Ten to 15,000 miners and prospectors will go to Alaska before July, because more rich gold strikes have been made this winter than ever before. Fabulous riches are reported from Nolan Creek, Koyukuk district, where single pans run to \$750 each.

With the hope of saving the life of his wife, Emilia, Dr. Luis de Lazo, Consul General of Honduras in New York, gave of his own blood, submitting to the operation of transfusion, but the desperate expedient failed, and the woman, who was 29 years old, died in the French Hospital. Her husband became seriously ill both from the effects of the operation and the shock of his wife's death.

After having warned the managers of a crematory ten days previously not to be surprised if they found his body on the crematory steps, Melvin A. Root, 69 years old, a rich real estate owner of Bay City, Mich., shot himself three times at the place he had indicated in Buffalo, N. Y. He was not expected to live. Both Root, who was reckoned to be worth \$50,000, and his wife were Spiritualists. After her death he deeded to Jared M. Snyder, of Washington, half of his property in return for a home for life, but soon brought suit to set aside the transaction, because, he said, his wife's spirit did not want the Snyders around the place, he lost the suit.

Henry Huntington's entire interests in California steam and electric railroads have been taken over by E. H. Harriman, his old rival. Huntington has retired from the field. The transfer, which involves something like \$50,000,000, means that the Southern Pacific will be in control of the trolley lines of southern California, in addition to a majority of the railroad lines.

THE CAUSE.

To be short of breath when you walk, climb stairs, are frightened, or agitated, is caused by heart weakness, and will develop into serious heart troubles if not speedily remedied. Weak heart is caused by exhausted nerves. The one sure, safe Heart Remedy is Dr. Miles' New Heart Cure, which feeds the nerves of the heart, and gives them new strength and vigor. At druggists. Money back if first bottle fails to benefit.

LATE NEWS BY CABLE

TEHERAN, April 29.—The Kabis have pillaged thirty-six villages and murdered two thousand people.

FLEET GOES TO FIJI.
SUVA, April 29.—The United States fleet will visit Fiji.

CHINA'S WELCOME PREPARING.
PEKING, April 29.—Arrangements have begun for the entertainment of the United States fleet when it arrives at Shanghai.

SAFEGUARDING KING MANUEL.
LISBON, April 29.—Extra precautions have been taken to protect the person of the King at the opening of the Cortes today.

THE PREMIER BURIED.
MEIGH, April 29.—The late Premier Campbell-Bannerman was buried yesterday by the side of his wife.

THE PENSION BILL.
WASHINGTON, April 29.—The Senate has passed the pension appropriation bill, calling for an expenditure of \$163,000,000.

ATTORNEY GENERAL'S VIEWS

EDITOR STAR:—The reply from the Department of Justice at Washington has been received with considerable surprise by some of the people of Hawaii. The Attorney General states: "The Department is of the opinion that the Edmunds Act ought not to be used in connection with a matter of purely local concern." The Federal law known as the Edmunds Act, which applies to Territories, forbids fornication and adultery, with heavy fines, or imprisonment or both, for such offences. All such cases must be first of local concern. If the law is not to apply to local cases, for all cases must be local somewhere, is practically makes the Edmunds Act of no effect, or places the enforcement or non-enforcement of the law at the pleasure of the local officials.

That the Department of Justice at Washington will support a definite stand against the enforcement of United States laws comes as a shock to some American citizens. Especially so when the Department is fully informed that a representative body of citizens, representing all religious de-

nominations, have signed a written request that the laws be enforced. Some of the people in certain localities may prefer that the Federal laws be not enforced. But shall the representative of the United States Government, who has sworn to enforce the law, yield to the desire of some, and allow the laws to be openly broken? Fortunately for Honolulu, the local authorities have at last taken the matter up, and although it now appears that this United States law may be disregarded without fear of punishment, the local laws against the evil are to be enforced.
E. W. THWING.

Fine Job Printing, Star Office.

PAPER

All kinds WRAPPING PAPERS and TWINES, PRINTING and WRITING PAPERS.
AMERICAN-HAWAIIAN PAPER & SUPPLY CO., LTD.
Geo. G. Guild, General Manager.
Fort and Queen Streets,
Honolulu. PHONE 410.

ANY COFFEE isn't good enough for you. Get MAY'S OLD KONA COFFEE.

THE AETNA FIRE INS. CO.

OF HARTFORD.
PAID DOLLAR FOR DOLLAR
—IN—
SAN FRANCISCO.

CASTLE & COOKE, LTD.

Are the Agents for this Company in Hawaii.

(Conflagration Proof Policies).

RING UP EXCHANGE 23.
Immediate attention given to Phone Orders.

Fraternal Meetings

HARMONY LODGE NO 3, I. O. O. F.

Meets every Monday evening at 7:30 in Odd Fellows' Hall, Fort Street. Visiting brothers cordially invited to attend.

BEN F. VICKERS, N. G.
E. R. HENDRY, Sec.

HONOLULU LODGE 616, B. P. O. E.

will meet in their hall, King street, near Fort, every Friday evening. By order of the E. R.

WM. H. McINERNEY, E. R.
H. C. EASTON, Secy.

Honolulu Iron Works.

STEAM ENGINES, SUGAR MILLS, BOILERS, COOLERS, IRON, BRASS AND LEAD CASTINGS.

Machinery of Every Description Made to Order. Particular Attention paid to Ship Blacksmithing. Job Work Executed on Short Notice.

PORTO RICAN HATS.

A large assortment of the best Porto Rican hats just received. Lowest Prices prevail. See our window display.

LEADING HAT CLEANERS.

Fort St. Opp. the Convent.
Telephone 493.

Misses Johnson & Olsen

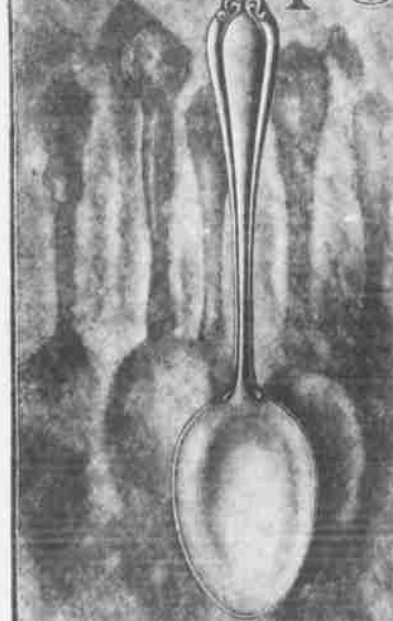
Dressmaking and Tailoring
Are now in their new quarters, Elite Building. The latest New York and Parisian styles.
179 Hotel street, opp. Young Hotel.

HONOLULU PAINTING CO

Removed from Beretania Street near Emma to 221 King street opposite Aala Park with a full fine line of paints, brushes, etc.

YOUR SUMMER SUIT is ready at SILVA'S TOGGERY

Out of the Fog



COMMUNITY SILVER

is out of the fog of uncertainty which surrounds the purchase of ordinary plated ware, because it is made in Only One Grade—The Best. Its quality is as fixed as Sterling. In buying it, every dollar spent becomes a sure investment. Made only in a plate heavier than triple, Community Silver is sold at about the price of ordinary plate.

W. W. Dimond & Co., Ltd.
Distributors

Curios! Curios!!

Everything in the curios line is carried by us. We make a specialty of hand made fancy work and are always pleased to show the goods.

WOMANS EXCHANGE. Hotel St. near Union.

W.G. Irwin & Co., Ltd

Wm. G. Irwin, President and Manager. John D. Sprockels, First Vice-President. W. M. Giffard, Second Vice-President. H. M. Whitney, Treasurer. Richard Ivers, Secretary. W. F. Wilson, Auditor.

SUGAR FACTORS, COMMISSION AGENTS

AGENTS FOR Oceanic Steamship Co., San Francisco, Cal. Western Sugar Refining Co., San Francisco, Cal. Baldwin Locomotive Works, Philadelphia, Pa. Newall Universal Mill Co., Manufacturers of National Cane Shredder, New York, N. Y. Pacific Oil Transportation Co., San Francisco, Cal.

Ring up 71 for a case of the purest and liveliest soda water that ever went into a glass.

CONSOLIDATED SODA WATER WORKS COMPANY, LTD.

What's

THE Matter

With installing a Gas Stove in your house before the arrival of the fleet?

QUICK HEATING

will be the order of the day and there is nothing like gas.

Honolulu Gas Co., LIMITED

BISHOP STREET - HONOLULU

FURNITURE

J. HOPP & COMPANY. Lewers & Cooke Building.

ANNUAL Reduction Sale!

FOR 3 WEEKS FROM APRIL 2ND. EVERY ARTICLE REDUCED FROM 25 TO 50 PER CENT.

YAT LOY CO.

King Street near Nuuanu.

4 SUITS FOR \$1.50.

We will clean and press 4 suits a month for \$1.50 if you join our clothes cleaning club. Good work guaranteed. JOIN NOW.

The Ohio Clothes Cleaning Co.

Harrison Block, Beretania nr Fort.

Won Loui & Co.

Plumbers and Tanners

71 Hotel Street near Maunakea.

HOP WO

All kinds of Ladies' Woolen Overcoats, Dresses ready made or made to order at very reasonable prices.

1121 Nuuanu St. near Pauahi.

Y. ISHII

Corner Beretania and Nuuanu Sts JAPANESE DRUGGISTS GENERAL MERCHANDISE All kinds of American Patent Medicines at Low Prices.

NEW ADVERTISEMENTS.

Bankruptcy Notices Page 4 Wall, Nichols Co. Page 5 Notice (300, A. Davis) Page 6 von Hamm-Young Co. Page 6 Primo Beer Page 6

THE WEATHER.

Local Office, U. S. Weather Bureau, Young Building.

Honolulu, T. H., April 29, 1908. Temperatures, 6 a. m.; 8 a. m.; 10 a. m.; and morning minimum. 79; 76; 78; 79; 79.

Barometer reading: absolute humidity (grains per cubic foot); relative humidity and dew point at 8 a. m.: 30.95; 6.682; 65; 63.

Wind: Velocity and direction at 6 a. m.; 8 a. m.; 10 a. m.; and noon. 10, NE; 3, NE; 4, NE; 8, NE.

Rainfall during 24 hours ending 8 a. m., 0.

Total wind movement during 24 hours ended at noon, 231 miles.

WM. B. STOCKMAN, Section Director.

NEWS IN A NUTSHELL

Paragraphs That Give Condensed News of the Day.

Auto at hack fare, F. Lillis, Tel. 361. The fleet is coming. Let us clean up the city.

Try Lutton's Tabasco Sauce. For sale at all grocers.

Hawaii homesteaders will plant pineapples.

A bankruptcy notice is published in today's issue.

George A. Davis will open a branch office at Waikuku about June 1st.

Nicely furnished room at very low rates at the Langton, 629 King street.

A notice to creditors of the estate of Chock You Sin appears in this issue.

Wall, Nichols Co., Ltd., are taking subscription to magazines and newspapers at publisher's prices.

A map of the Kapaa village site has just been completed by Fred E. Harvey of the Survey department.

E. H. Lewis obtained licenses for the operation of three automobile hacks this morning.

The laying of the corner stone of the Cooke Library at Oahu College will be held Wednesday, May 13, and not this afternoon.

The plans for the wooden block pavement on Queen street have been submitted to the Rapid Transit Company.

The Pacific baseball team will practice this afternoon at the Oih tank grounds. All members are requested to be on hand.

Surgeon G. C. Smith is relieved from duty at Honolulu naval station and will be succeeded by Corey D. Langhorne who will arrive in the Alameda.

A glass of Primo Beer taken with your meals will make you feel better all day. It rebuilds waste tissue, and restores lost energy.

Buy a Stevens-Durage touring car and you will have a machine to be proud of. Now on exhibition at von Hamm-Young Co., Ltd.

Lloyd Conkling, of the Governor's office, is celebrating his birthday today and receiving congratulations from many friends of both sexes.

Ah Wan, found guilty of illicit distilling, was sentenced to jail for six months and to pay a \$500 fine by Judge Dole today.

Wade Warren Thayer has been appointed a referee in bankruptcy, A. T. Brock, who also fills that position here, having gone to the Coast.

The widow of Frank Luwelko obtained an order from Judge Lindsay this morning that she be paid \$10 per month from the Luwelko estate.

Dr. McDonald, who is attending Dr. Hiram Bingham, stated this afternoon that the patient was very much better, and he hoped that he would be able to be about again in a few days.

Plans are being made to open the trail to the Kapena swimming pool in Nuuanu valley for the coming of the fleet. The pool will be cleaned out and placed in good condition.

A decree granting title to land in Ewa district, assessed at \$1,000, was granted to Elsie M. Wundenberg, the widow of Fred Wundenberg, by Judge Weaver yesterday.

An up-to-date map of the entire group of the islands of this Territory will be commenced in the near future by H. E. Newton of the Territorial Survey office.

An exchange has been made between the Government and the Wailua Agricultural Company for the new road from Wailua. The land of the old road is given for that of the new.

The deeds for land exchange in connection with the straightening out of the Diamond Head road near the Campbell estate are ready to be recorded.

Articles of co-partnership for the Sing Loy Company have been filed in Treasurer Campbell's office. The company will do a feed, produce and general merchandise business and is composed of nine Chinese.

The fleet committee on information would be pleased to have hotels, boarding houses and persons having rooms to rent communicate with it, giving rates by the week or by the single night. C. H. Dickey, chairman.

\$2500

will buy a fine home. Easy terms.

TRENT TRUST CO

NOBLE SPORT ON AORANGI

KILLS TWO SHARKS HERE—RECORD OF TWO ELEPHANTS WITH ONE GUN

A bag of two elephants, a bull and his mate, right and left from the same gun, is the huntsman's record of Sir Edmund Arthur Lechmere now aboard the C. A. S. S. Aorangi in this port. He did that in South Africa.

This morning Sir Edmund killed two sharks off this harbor, right and left, with the same double-barrel, just to entertain the passengers. When the Aorangi got off the harbor and was waiting for the doctor, there was a score of sharks off port, an unusual gathering. Several of the passengers took pot shots at the school, but it remained for Sir Edmund to kill two without lowering his gun. He has the reputation of being one of the most successful huntsmen in Great Britain and is known all over the world as a crack shot.

Sir Edmund Arthur Lechmere and Lady Katherine are touring the world. Sir Edmund, baronet, was born in 1865, being the son of the third Marquis and Louisa, daughter of John Haigh, of White-Hiding, Yorkshire, in 1885 he married Alice, who died in 1896, daughter of E. Samuels, of Canterbury, New Zealand. In 1897 he married Katherine, the youngest daughter of the late K. B. Wright.

DAILY STOCK REPORT

Between Boards—Sales: 450 Oiaa \$4.00; 45 Ewa, \$28.00; 200 Oiaa \$4.00; 80 Ooakala (\$85) \$7.00; 20 Ooakala (\$85) \$7.00; 35 Ewa, \$28.00; 10 Oahu Sugar Co., \$28.25; 32 Pioneer \$130.00; 55 Paauhau \$17.50; 124 McBryde \$4.625; 190 Paauhau \$17.50; 10 Wailua \$32.50; 20 O. R. & L. Co., \$95.50; 170 Oiaa \$4.00. Session Sales: 50 Ooakala \$7.00; 5 Oahu Sugar Co., \$28.25.

Table with columns: Quotations, Bid, Asked. Lists prices for Ewa Plant Co., Hawaiian Agri., Hawaiian Cgm., Hawaiian Sugar, Pionner, Honokaa, Haiku, Kahuku, Kihel, McBryde, Oahu Sugar Co., Onomea, Ooakala, Paauhau, Pacific, Paha Plant Co., Pioneer, Wailua Agri., Waikuku, Waimanalo, Waimea, Hawaiian Electric, Hon. R. T. Co. com., Nahiku Rub. pd., Nahiku Rub. Co., O. R. & L. Co., Hon. B. & M. Co., Haw. Pineapple Co., Haiku fs., Hamakua Ditch fs., McBryde fs., O. R. & L. Co. fs., Oahu Sugar fs., Pacific Sugar fs., Wailua Agri. fs.

His Excellency the Governor of Massachusetts has again appointed Geo. A. Davis a Commissioner of Deeds for Massachusetts in this territory. The judge has held this appointment since 1890.

H. W. Prouty, a well-known Chicago lawyer, who will represent the Berce company in the replevin suit over a bond against the Waterhouse estate, was admitted to practice in this Territory today. The suit involves \$22,000.

A request from the Waterhouse Trust Company that a gang of prison laborers be set at work to clear the Mahukua site was made to Acting Governor Mott-Smith yesterday. Until the matter of title is definitely settled it will not be granted.

Paul Super, of the local Y. M. C. A., called upon Acting Governor Mott-Smith this morning in connection with the placing of a drinking fountain at the corner of Hotel and Ala-ka streets. He was referred to the Board of Health. The fountain is the one proposed by the W. C. T. U.

Fine Job Printing, Star Office.

A PERFECT FIT

Guaranteed

With our expert cutter who has just returned from the coast we guarantee every suit to fit.

W. W. AHANA CO., LTD.

Merchant Tailors. Wally Building King Street.

SUGAR QUOTATIONS

96° TEST

Table with columns: Date, Per Lb., Per Ton. Lists sugar prices for Apr. 8, 10, 11, 13, 14, 15, 16, 21, 22, 23, 25, 27, 28.

LONDON BLETS

Table with columns: Price. Lists prices for 11 shillings, 6 3-4 pence, 11 shillings, 6 pence, 11 shillings, 8 1-4 pence, 11 shillings, 9 pence, 11 shillings, 9 3-4 pence, 11 shillings, 9 pence, 11 shillings, 6 3-4 pence, 11 shillings, 10 1/2 pence, 11 shillings, 9 pence, 11 shillings, 11 1/4 pence, 12 shillings, 11 shillings, 11 1/4 pence.

BISHOP HARRIS

(Continued from Page One.)

League, 232 Assin avenue, San Francisco, by Koreans in Honolulu, asking the league to take with Harris exactly the course which the league took with Durham W. Stevens before he was assassinated. It will be remembered that the Koreans called at Stevens' hotel in San Francisco with a copy of the San Francisco Call, asked him if his interview in it was correctly reported, and when he acknowledged the interview, attacked him. A cable message from Honolulu last Thursday quoted an article saying Harris had said certain things, and closed with the words "WILL YOU ASK HIM?"

The discovery that such a message had been sent caused considerable alarm, and long before the Korea docked at San Francisco this morning, Bishop Harris had cable advices on the subject.

One message was sent from here to be taken to the Korea by the pilot telling Harris what he might expect.

The following from the Chronicle of March 23 shows how exactly this course of action tallies with what was done with Stevens:

"A mass meeting of the Korean patriotic and education societies of San Francisco was held and four prominent members, Eal Lee, C. K. Chung, Y. M. Moon and U. S. Choy, all enthusiastic and intelligent young men, were appointed a committee to interview Stevens to ascertain his views as expressed in the press.

The four patriots called shortly after 9 o'clock last night at the Fairmont while the strains of soft music floated from the balcony through the large lobby and the after dinner groups were engrossed in small talk in the luxurious chairs. Lee went to the clerk and asked for Stevens, who came down stairs to meet the delegation. He walked with them to a room at the extreme north end of the corridor, where the party was soon engaged in earnest conversation.

"The spokesman of the committee was Lee, who speaks the vernacular fluently. He asked Stevens if he had made the statements attributed to him in the press, and the diplomatic adviser replied in the affirmative. The interrogations took the form of a cross-examination, Stevens being questioned categorically on each sentence. He added more about the great work Japan is doing for Korea and how well the Koreans love the Japanese Government and policy in their home land."

At this stage of the interview Stevens was murderously attacked.

"The man who led in the assault, Eal Lee, gave the following written explanation: City, March 22, 1908.—To the Editor of the 'San Francisco Chronicle.'—Dear Sir: I am a Korean and my name is Eal Lee and living at 1254 Greenwich street, city. Although I am not able to write very well in English, I dare to explain to you the statement of D. W. Stevens, which was published in your paper of 21st inst., on the page one, under the title of 'Japanese Control a Benefit to Korea,' so the people will not be mistaken.

"In the first place, Mr. Stevens said: 'Korean people have been greatly benefited by Japanese protection and that they are beginning to look more favorably on it,' but according to what I learned of the papers from Korea recently, Mr. Stevens' statement is but a false.

Since the Japanese began to control Korea against the Koreans will, they killed thousands of thousands of people who were rightly resisting them from robbing their properties and doing cruelties. So they had to take up arms against them from all parts of the country, and they are fighting harder still.

To these can neither be called the benefit of the Koreans since the Japanese control nor the Koreans looking favorably on it. In the second place he said: 'The Korean peasants have welcomed the Japanese.'

In this place, I can not say that Mr. Stevens is only wrong, but it is an untruth; because the most Koreans in the fight with Japanese are the peasants who deserted their homes and families to join the struggle for the safety of the life of Korea, which Japan try to

James F. Morgan's

AUCTIONEER AND STOCK BROKER

Member of Honolulu Stock and Bond Exchange.

Stock and Bond Orders receive prompt attention.

Information furnished relative to all STOCKS AND BONDS. LOANS NEGOTIATED.

Phone 72. P. O. Box 594.

take away from them altogether. We can not believe whatever good the Japans say.

In the third place, he said, 'Japanese are doing for Koreans what America is doing for the Philippines.'

At this part of his conversation, I began to think that he is not a subject of the United States of America. As it is published many times in your paper what the Japanese are doing in Korea is barbarous and they try to kill as many Koreans as they think will be enough to make room for the Japanese to live, and they sent all the coolies to Korea to fill the Government positions. I think he said these things were there was no American.

As far as I know, that the American policy is not a bit like the Japanese in Korea, and I believe the world recognizes it, too. If the American policy was like the Japanese in Korea, America would have never been the best-honored nation on the earth, as it is today. I should think that Mr. Stevens is the one who has been helping the seven thieves of Korean government, who willfully let the Japanese take control of Korea for their own benefit, without the knowledge of the Korean people, and yet Mr. Stevens is the one helping Japan in destroying Korea.

What will be good to Mr. Stevens if we, the Koreans, become Japans slaves or be killed all.

If you will kindly publish this in your paper, and help us from heart-breaking, I will esteem your paper as the savior of our lives.

If any question that I have to answer, I shall be glad to do it, without a moment's delay, and all these are not only what I know, but they were published in the papers from Korea. Very respectfully yours,

EAL LEE.

GOOD LAND EXCHANGE. The Government, through the Department of Public Works, has just completed an advantageous transfer by which its land in the block bounded by Maunakea, Queen, King street and the proposed extension of Smith street is all in one parcel. The exchange was made with the Honolulu Iron Works, which bought the land referred to from Mr. and Mrs. E. S. Cunha and from F. M. and A. M. Swan, for about \$11,000, then exchanging this with the Government for a smaller piece of land on the other side of the proposed extension of Smith street, which was worth more on account of the buildings on it. The Government obtained 15,102 square feet of land for 5287 feet.

It is expected that Smith street will be opened through to the waterfront in the near future, as here is only one piece of land in the way at present. This belongs to the Dowsett estate. There are negotiations on at present for a right of way through this property.

SAY! MY FRIEND, WAKE UP

Kilauea Volcano has resumed its activity of twenty years ago, and "Pele" is doing stunts which make even her neighbors take notice. Don't let the coming of the fleet absorb all your attention. The biggest show on earth is "ON," NOW and right here in Hawaii.

Its moving picture of the world. Don't lose the opportunity to see a pit full of liquid fire, it may never come again. It costs only \$42.50 to make the round trip and spend two nights at the crater's brink.

For information regarding trip apply to Henry Waterhouse Trust Co., Ltd. Corner Fort and Merchant Streets.

ORIENTAL GOODS

NEW IMPORTATION Direct from the Orient

Grass, Linens, Embroidered Linens, Pineapple Silk, Hand Embroidered Grass Linen Squares, in two different sizes, 27 inch and 34 inch; Cherry Blossom, Rose pattern, Wisteria, Chrysanthemum and Dragon.

TEA CLOTHS, 40 inches square, Cherry Blossom, Rose, Wisteria and Dragon.

SIDEBORD RUNNERS, size 18x54, Wisteria, Cherry Blossom, Rose and Chrysanthemum.

TABLE CENTERS, scalloped edge, Cherry Blossom, Dragon and Rose pattern.

TABLE COVERS, beautifully embroidered, square oblong and round in all sizes, with Napkins to match.

EMBROIDERED Plate and Glass Doilies.

WHITE and BLUE GRASS LINEN by the piece and yard, extra good value.

PINEAPPLE SILK in leading colors. A small amount of Grass Linen Embroidered Shirtwaist Patterns

N. S. Sachs' Dry Goods Co., Ltd

THE STORE WITH THE MONEY-BACK POLICY.

In Playing Cards

You see the face of your own cards, and the back of three other hands.

That's all right, if they are

M GRES S CARDS

The back designs of these cards are gems of Italian art, and the cards themselves are thin, springy, gold-edged, and as smooth as ivory. We have a large new assortment.

We sell the Bridge Score Pad.

Hawaiian News Company, Ltd., Young Building



Most Popular Man

in town, just now, is the HEINZ "57" man. He's popular wherever he goes, and he goes wherever there are people who know and appreciate TABLE LUXURIES at prices within the reach of all.

There's a new shipment just in. Order your supply from your Grocer now.

H. Hackfeld & Co. LIMITED DISTRIBUTORS.

HUSTACE-PECK CO., LTD. - DRAYMEN -

Phone 295. 63 Queen Street. P. O. Box 212.

ESTIMATES GIVEN ON ALL KINDS OF TEAMING

DEALERS IN

FIRE WOOD, STOVE, STEAM AND BLACKSMITH COAL

Crushed Rock, Black and White Sand,

Garden Soil.

HAY, GRAIN, CEMENT, ETC., ETC.



You Don't Feel The Expenditure When Buying a New Dinner Set

From an open-stock pattern. Know why? Next time you need a dozen dinner plates select them from an "Open-Stock" pattern. When you want a meat platter—choose from the same pattern. Keep adding to this nucleus and the first thing you know your odd purchases comprise a handsome set.

Now, if you had bought different decorations that struck your fancy, every time you needed special items your aggregate purchases would look like a job-lot.

Think it over—or better yet, come in and talk it over—and look the patterns over. We have 25 "Stock-patterns" to choose from.

W. W. DIMOND & CO., LTD. 53-57 King St., Honolulu.