

DISTILLERY HUNG UP

OPINION AWAITED FROM THE ATTORNEY GENERAL

The Government Refused to Sell Land to Promoters Because Hawaiian Law Forbids the Industry.

Captain John M. Saxe, with Frank Brown and others, has for some time been promoting the erection of a distillery on this island.

The promoters have secured all necessary data from the planters regarding the supply of raw material and have calculations of profits down to a dot.

Arrangements were concluded with the Dowsett Estate for a tract of government land near Waianae on the seashore containing twenty-five acres, being part of a leasehold having eleven years of its term yet to run.

They applied to Land Commissioner E. S. Boyd for the purchase of the building site of five acres.

The distillery promoters were not satisfied with the reply. They had not yet asked the Territory for permission to manufacture rum.

Cecil Brown, attorney for the promoters, being consulted wrote a letter in reply to the Land Commissioner taking exceptions to the summary rejection of the application for land.

The Commissioner stated that the attorney's letter was upon its receipt handed to the Attorney General with a request for his official opinion upon the question raised, and it was impossible to say anything further would be heard about it.

Attorney General E. P. Dole is away getting married and his deputy and two assistants are immersed in business in several counts.

ST. CATHERINE AT HILO

Hilo, Sept. 10.—The bark St. Catherine arrived in the harbor Sunday, fourteen days from San Francisco.

HAVE YOU SEEN THE Trolley Cars

They are out for a trial every day or two now, and in a few days will run every 20 minutes to

College Hills

Have you seen the excavation on Wilder avenue opposite Alexander street? The foundations are now ready to bolt down the new high-lift pumps to supply the water for College hills.

Two weeks will give residents in College Hills Transportation and Water.

Give the Sales Agents a chance to show you the property.

McClellan, Pond & Co. or Castle & Lansdale

REJECTED LABORERS ESCAPE FROM KEEPER

Two of the rejected Japanese immigrants of several confined at the Channel wharf, awaiting transportation to Japan, have escaped.

Although the rejected people are under watch by a guard in the employ of the steamship agents, they managed to elude his vigilance and some time late Sunday night or early Sunday morning they slipped.

Several of the other rejected passengers will be sent home in the Hongkong Maru, due to sail for the Orient tomorrow.

For groceries ring up Blue 911.

KLONDIKE HARDSHIPS

JUDGE LITTLE TRIES CASE OF HOBRON vs. HELM

Will E. Fisher Gives Expert Evidence and Is Excused From Answering a Personal Question.

T. W. Hobron vs. P. R. Helm, suit to recover \$2000, the amount of advance on a Klondike outfit, was before Judge Little without a jury this morning.

W. E. Fisher, a returned Klondiker, gave expert evidence. The mines were 90 to 150 miles from Dawson City, the witness said, and a man could not travel there more than ten miles a day.

Judge Little wanted to know if the witness meant to say, as he had answering questions at different times, that it cost twice as much to go out by the ice while it was cheaper to return by the ice route.

Mr. Fisher told of his own hardships, he having been frozen badly and made ill. This recalled the false report published in San Francisco that Mr. Fisher had lost both feet in the Klondike, which was republished here before his arrival in the islands.

The witness refused positively to state what his own expenses between Seattle and the Klondike were.

Mr. Hobron, the defense having rested, was put on the stand in rebuttal. The Court sustained an objection to the first question and the witness was withdrawn.

Judge Little took the case under advisement.

Rita C. Tewksbury was granted a divorce against Irving Q. Tewksbury, on the grounds of desertion and non-support, by Judge Little this morning.

Question Practically Settled.

There was another conference in Governor Dole's office this morning over the Kohala mountains water question.

Mr. Desky Not Ill.

The mishearing of a telephone interview yesterday caused the printing of a report that Charles S. Desky was ill.

Yesterday morning the Advertiser came out with a "freak" story that was a freak.

These coupons are detachable and must be torn from the subscription receipts and deposited in the ballot box the same as the first page coupons.

The prize offered by the Bulletin is on exhibition in the window of H. E. Wichman, 517 Fort street, and will be presented to the player receiving the greatest number of votes at the close of the contest Oct. 15.

A JAPANESE SUICIDES TO CLOSE ITS DOORS

STEWART AT J. F. BROWN'S IS FOUND DEAD TODAY

Had Quarrel With His Wife at 2 a. m.—Slashed at Her With Knife and Then Ran Away.

Evidently believing that he had killed his wife and that therefore there was no chance for him to be a free man again, a Japanese, left by name, an dthe steward at the home of J. F. Brown on the lower Waikiki road, committed suicide at an early hour this morning.

"I learned the whole story from the wife of the dead Japanese. It seems that, at about 2 o'clock this morning she and her husband had a quarrel in their room in the servants' quarters. The quarrel continued for a long while until she accused his wife of being unfaithful to him and would not listen to any of her protestations of innocence.

"Finally, Ichi seemed to become frenzied. He procured a carving knife and told the woman he intended to kill her. She made an attempt to save herself by running out of the room, but the jealous husband ran after her and, before she could get away, struck with the knife. Fortunately the blade did not enter the woman's body but caught her arm and gashed it frightfully.

"At this point, the woman screamed. This woke up the three Japanese living at High Sheriff Brown's place and they ran to the assistance of the woman. She told her story as briefly as possible and they started out on a search after the assailant.

"The body was removed to the morgue and a Coroner's jury having been summoned, the remains were viewed.

The Coroner's jury is composed of the following: J. S. Walker, E. E. Mossman, E. L. Berndt, H. Cooke, A. Lucas and O. St. John Gilbert. The inquest will be held this afternoon.

Blank books of all sorts, ledgers, etc. manufactured by the Bulletin Publishing Co.

JIM GORMAN AGGRESSIVE

Table with 2 columns: Player Name and Vote. Gorman 3,741; Robertson 3,452; Thompson 1,777; Leslie 918; Mossman 811; Herrick 743; Mahuka 391; Jackson 357; Babbitt 355; Joy 352; Chillingworth 338; Williams 310; Dayton 209; Brown 167; Kaa 152; Bowers 151; Louis 47; Gleason 43; Gay 42; Sheldon 34; Wright 28; Simers 26; Babcock 22; Lucas 20; Freitas 20; Welsh 18; Marcallino 18; Moore 14; Richardson 14; Scattering 129.

In addition to the coupons to be cut from the first page of the Bulletin, new subscribers are to be given receipts with coupons attached, entitling them to votes as follows:

One month 40 votes; Three months 150 votes; Six months 350 votes; One year 750 votes; Weekly Edition, 1 year 100 votes.

These coupons are detachable and must be torn from the subscription receipts and deposited in the ballot box the same as the first page coupons. It will be seen that for \$5, the subscription price of the Evening Bulletin for one year, 750 votes are allowed to a new subscriber, whereas the same amount of money would buy only 160 votes if spent for single copies of the Bulletin on the street. The sum of \$4

CHINESE THEATRE WILL GO OUT OF BUSINESS

impossible to Get Talent From China Under American Laws -- Government Will Lose Source of Income.

No longer will residents of lower Little street and those living within a radius of a half mile or so, be forced to listen to the squeak of the Chinese addle, the clash of the cymbals and the gallow sound of the Chinese drum that have been wont to send forth nightly for months past, a combination of our splitting, discordant noises.

"One of the members of the hat that rented the new building from Yee Wo and others, said today: "American laws make it impossible for us to obtain professionals from China any longer and so we will be forced to discontinue our performances. We have run the present company for a longer time than we had anticipated at first but their plays have become old and the Chinese theater goes have become tired of them.

"No, there is no possibility of our getting any more players. We might get some from California but it has not been decided whether they can get back to the Coast again when once they have landed here. Besides that, what talent we could get from San Francisco would not be of the best. To get the talent that pays to put before the theater goes, you must send straight to China.

"It has not yet been decided what shall be done with the theater building. The company that owns it will very likely have partitions put in and rent out various parts as store or living rooms.

The cessation of the plays at the Chinese theater means quite a loss to the government. The management has been in the habit of paying \$31 every week—\$30 for six days' license and \$1 for the stamp.

MERRILLS FAUST WON

Hilo, Sept. 10.—The sporting fraternity was all assembled at the race track Saturday afternoon to witness the match race between Merrill's Faust and Humbert's Fiero. It was a three-quarter mile dash Merrill's Faust won out in 1:19 1/2.

BRING QUICK RETURNS.

Honolulu, Sept. 9, 1901. Evening Bulletin.—As a result of my advertisement in your valuable paper I placed a good-sized order this day for opal rings. Yours respectfully, G. DIETZ.

There has been a great rush all along the waterfront this morning. It is regular steamer day and all the vessels leaving are taking full cargoes and many passengers.

FAIK IS SUSPENDED PENDING SETTLEMENT

At a special meeting of the Honolulu Stock Exchange held yesterday afternoon, the matter of the insolvency of broker Chas. J. Falk a member, was discussed.

In view of his assignment the board took action in the premises and he was suspended from the board pending the settlement of his financial difficulty. This action was taken according to the by-laws, as there is another member of the exchange, a creditor of the insolvent brokers.

No statement of the condition of Mr. Falk's affairs has as yet been made by the assignee and it is not known how much the liabilities exceed the assets. Mr. Falk's failure was due to the continued dropping of securities bought on margins, and his inability to put up more security, as demanded for loans.

All his personal property, life insurance policies, and the seat in the exchange have been assigned to George R. Carter for the benefit of the creditors.

FUNNY FIRE CLAIMS

JOHN HAPA TELLS VERY DRAMATIC TALE OF WOE

Prodded With a Bayonet He Drops His Treasure When Fleeing From the Burning Town.

John Hapa, the well-known character, did his part in contributing to the safety of nations before the Fire Claims Commission this morning. His claim is for \$697. It is fearfully and wonderfully made, like the human anatomy.

Seven new suits of clothes never worn at \$175 was one item, but under fire of questioning this princely wardrobe dwindled to five more or less threadbare suits and two suits yet to be broken in.

A saddle, bridle and blanket stood for \$29 although the pannoply had done valiant service for six years. Then a pair of spurs was charged separately at \$12, rusty though the rowels were with the equine blood they had been drawing for thirteen years.

One item in Hapa's account was of peculiar dramatic interest. It was for \$150 cash. When the flight from the burning town was at panic height, Hapa picked up a trunk containing his treasure and ran with it. As he sprinted along a soldier prodded him with a bayonet, which caused him to drop the trunk and, remembering Lot's wife he never turned back.

Of course the Commissioners gave full credence to Hapa's story.

One native claimant today testified about a razor for which he claimed \$3. On being asked from whom he bought it, he said it was a sailor on one of the local steamers. Judge Kepoiki asked if the fact was not that he had won the implement playing craps. The claimant meekly replied that it was even thus.

At 9:30 tomorrow morning the Commissioners will hear the Kaumakapili church claim.

MONEY FOR HILO DOCK

Hilo, Sept. 10.—C. C. Kennedy leaves in the Kinau this week for Honolulu. It is his present plan to accompany B. F. Dillingham to the Coast in the interests of the Hilo dock improvements.

The barkentine Coronado, soon to arrive here from San Francisco, has a bridal couple aboard. They are Dr. Frederick R. Starr and wife, who are coming here to pass their honeymoon.

The Oregonian was sighted off Koko Head at 1:05 this afternoon.

LOCAL MEN AID STRIKE

MEMBERS OF MAINLAND UNIONS ARE ASSESSED

Send Money to Strike Headquarters in San Francisco to Buy Food for Strikers.

From reports brought by the Mariposa of strike conditions existing in San Francisco at the time the vessel left there, there is liable to be news of a serious clash between the strikers and the authorities, brought by the Hongkong Maru, due here this afternoon.

When the Mariposa sailed great preparations were being made for a big demonstration of labor interests on Labor Day. A parade having all the striking Union men in it was being prepared and it was anticipated that this would lead to some overt act on the part of the strikers or guardians of the peace, thereby precipitating riot.

Honolulu is taking its share in the fight of the strikers to enforce their demands and members of labor federations here which are affiliated with the organizations on the Mainland, have already been assessed for funds, which go towards providing for the needs of the strikers.

This local strike in San Francisco is not the drain on the unions which a general strike all over the United States would be and the reason that it has been so stubbornly continued is that from all parts of the United States funds are pouring in weekly to the strikers, who are able to live for the time being without working. Every one of the thousands of Union laborers in the United States is being taxed a small sum to help the strikers in the enforcement of their demands, and so far as funds go, there is no immediate probability of an end being put to the lockout by the strikers.

It is said that many of the strikers not wishing to become a charge on their associations, have gone out into the country to pick fruit and hops. The fruit pickers have nearly all been taken to San Francisco to do the work left by the strikers so the country and city laborers have in a measure changed places.

ALLENS IN A SMASH-UP.

Mr. and Mrs. W. F. Allen met with an accident while driving into town on King street this morning. They stopped in front of Singer's bakery to get some bread. Having accomplished this mission, Mr. Allen picked up his reins with one hand and, with the other, took hold of the lap robe with which to cover himself and his wife. He did not notice that there was a brake belonging to a Chinaman, tied a short distance down the street. When he did see this vehicle, it was too late and his carriage collided with that of the Chinaman. The result was that both were overturned.

Fortunately, in the throwing over of Mr. Allen's carriage, the horse was also thrown. This gave a Japanese near by, time to catch the head of the animal and thus prevent further damage. Mrs. Allen was gotten away from the smash-up and both rigs were righted. Mr. Allen says that he has been driving for nigh upon fifty years in Honolulu and this is his very first accident. He states that he was entirely to blame. Fortunately, no one was hurt in the accident.

M.P.D. The Merchants' Parcel Delivery COMPANY.

Delivers packages to any part of the city for 10c upwards. Try them. Phone Blue 621. Packages shipped to all parts of the United States and Europe. Office, 1047 Bethel St., opposite Honolulu Market.

FROM A BUSHEL OF CORN. The Distiller Gets 4 gallons of Whiskey, which Retail for \$16. The Government Gets 4; the Farmer Who Raised the Corn Gets 50c (sometimes); the Railroad Gets 20c; the Manufacturer Gets 4; the Retailer Gets \$7; the Bartender Gets a Rake-off and the Consumer Gets DRUNK. But Drunk or Not Drunk, Buy Your Footwear of Us and Save Money. Manufacturers Shoe Co., 1057 Fort Street.

Trimmed Hats

\$1.00 each

Our windows this week will contain Ladies' and Children's trimmed hats at \$1.00 each and upward.

You will need only to see them to know they are the prettiest hats to be found anywhere, and the prices will show them to be great bargains.

DON'T MISS THIS SALE.

M. E. KILLEAN CO., LTD.

HOTEL STREET.

Sanitary Steam Laundry

COMPANY, LTD.

Great Reduction in Prices

having made large additions to our machinery, we are now able to launder

spreads, sheets, pillowslips, table cloths, - table napkins, and towels :::::

at the rate of 25 cents per dozen, cash. satisfactory work and prompt delivery guaranteed. no fear of clothing being lost from strikes. we invite inspection of our laundry and methods at any time during business hours.

Ring Up Main 73

and our wagons will call for your work.

MASONIC TEMPLE

WEEKLY CALENDAR.

MONDAY

Pacific—Regular.

TUESDAY

Hawaiian—First Degree.

WEDNESDAY

Perfection—14th Degree.

THURSDAY

Commandery—Regular.

FRIDAY

Hawaiian—First Degree.

SATURDAY

Mystic Shrine—Election.

All visiting members of the order are cordially invited to attend meetings of local lodges.

Grand Directory

HARMONY LODGE, NO. 3, I. O. O. F.
Meets every Monday evening at 7:30 in Harmony Hall, King street.
C. CHARLOCK, N. G.
E. R. HENDRY, Secretary.

All visiting brothers very cordially invited.

MYSTIC LODGE NO. 2, K. of P.
Meets every Tuesday evening at 7:30 o'clock in Harmony Hall, King street. Visiting brothers cordially invited to attend.

H. J. GALLAGHER, C. C.
A. E. MURPHY, K. R. S.
HONOLULU CHAPTER, NO. 1, R. A. M.

Meets every third Thursday evening at Masonic Temple. All visiting companions cordially invited.

A. F. GILFILLAN, E. C.
J. D. TUCKER, Secretary.
HONOLULU COMMANDERY, NO. 1, K. T.

Meets in Masonic Temple on the second Thursday evening of each month. All visiting Sir Knights courteously invited.

A. F. GILFILLAN, E. C.
J. D. TUCKER, Recorder.
OAHU LODGE, NO. 1, K. of P.

Meets every Friday evening at Harmony Hall, King street, at 7:30. Members of Mystic Lodge, No. 2, and visiting brothers cordially invited.

G. ERICSON, C. C.
ALEX. ARENDT, K. of R. and S.
NUUANU CHAPTER ROSE CROIX, NO. 1, A. & A. S. R.

Meets the first Thursday in each month at Masonic Temple. Sojourners and visiting brothers cordially invited to attend all meetings.

M. W. M. ALBERT VAN CLIEP GEAR
ALLAN B. SCRIMGEOUR, Secretary.
LODGE LE PROGRES DE L'OCEANIE,

No. 124, A. & A. S. Rite.
Stated meetings on last Monday of each month in its hall, Masonic Temple.

L. de L. WARD, W. M.
E. B. FRIEL, Secretary.
HAWAIIAN LODGE, NO. 21, F. & A. M.

Stated meetings first Monday each month. Special meetings, when called (will be noted in this space).
Members Lodge Le Progres, Pacific Lodge and all sojourning brethren cordially invited.

W. M. H. WRIGHT, W. M.
K. R. G. WALLACE, Secretary.
Subscribers to the BULLETIN not receiving their papers promptly will confer a favor by notifying the Business Office; Telephone 250.

LOCAL AND GENERAL

Mike and Charity at the Pantheon—also gold whisky.

Mystic Lodge, No. 2, K. of P., meets tonight in Harmony Hall, King street. Gomez & McTigue, successors to Camara & Co., liquor dealers, 95 King st.

J. D. Avery is prepared to do general reporting and typewriting. See ad on page 5.

Jas. F. Morgan will hold auction sale of household furniture on Thursday at 10 o'clock.

W. H. E. Fisher has a Steinway parlor grand piano for sale. See For Sale column on page 8.

The weekly edition of the Evening Bulletin gives a complete summary of the news of the day.

Fresh films plates, paper, chemicals, etc., received per Meriposa for the Honolulu Photo Supply Co.

The band will give a concert on the grounds of the Hawaiian hotel this evening at the regular time.

Dr. Bogle removes corns without pain. Improving nails treated successfully. Arlington, Hotel street.

Choice Claret or Port, 2 udeira, Zinfandel, 75 cents a gallon at Hoffschlaeger Co.'s, King near Bethel.

There will be an inspection of the First Battalion, U. S. H., by Major Sleeter this evening at 7:30 o'clock.

At the invitation of the faculty of Kamehameha school, Francis Murphy will speak at that institution tonight. His words will be particularly addressed to the natives.

The Castle Home Kindergarten opened yesterday with an enrollment of forty-five pupils. Miss Panabaker, who is in charge at the kindergarten, is assisted by four Hawaiian girls.

Don't forget Camarinos of the California Fruit Market when you want fruit and vegetables. He always has on hand a fresh supply of both California and Island fruits. Telephone Main 378.

A. P. Ryan, a printer, died at his home on the Waikiki road Sunday of consumption. Deceased was 38 years of age. He had been ill two years. Interment took place in Nuuanu cemetery.

Mr. and Mrs. E. B. McClanahan leave for Lihue, Kauai, in the W. G. Hall this afternoon to be gone about a fortnight. Mr. McClanahan goes to attend the Kaui term of the Circuit Court.

Andrew Kernes, second mate of the ship Emily Reed, who pleaded guilty to assault on a sailor upon the high seas, as reported in yesterday's Bulletin, was sentenced by Judge Estee to 30 days' imprisonment.

Tonight the wedding of Captain Samuel Johnson of the National Guard and Miss Olive Pearl Cameron will take place. The ceremony will be at the home of Mrs. E. Williams, Chaplain Lane, at 8:30 o'clock. Rev. Alex. Mackintosh will officiate.

The funeral of the late T. McDonald took place from the undertaking parlors of H. H. Williams yesterday afternoon. D. H. Davis, Charles Dickerson and others connected with the Club Stables Co., accompanied the remains to Pearl City.

Members of the Second Congregation of St. Andrew's Cathedral should remember that there is to be an important meeting of that body in the Sunday school rooms of the Cathedral this evening at the usual time. Every member is urged to be present.

The British bark Senator which put into Hilo several months ago leaking has arrived at Victoria. After arriving at Hilo and being repaired, the Senator started for Liverpool with her cargo of lumber and sprang a leak again. Captain Harrison decided not to risk the trip and put back to sea Sunday.

The steamer Mariposa from San Francisco arrived Saturday evening after a voyage of six days and seven hours. She was a day late in leaving as a crew could not be obtained in time. The vessel brought many passengers a big mail and a full cargo of supplies and general merchandise. She will sail tomorrow at 3 o'clock.

THE JURY OUT ALL NIGHT

The jury trying Ah Fong for assault and battery went out at 1 o'clock yesterday afternoon. It came in later and reported hopeless disagreement on a verdict. After being locked up all the afternoon with no better result, the jury was sent to a cottage at the Hawaiian hotel for the night. Ah Fong's alleged offense was committed on a policeman, Ah On, while the latter was suppressing a disturbance in the Chinese theater.

Ah Soon, charged with obstructing justice on the same occasion, was placed on trial in the afternoon. Judge Gear denied a motion to discharge him for lack of warrant of arrest. The trial was not concluded yesterday evening.

Following is the jury: J. S. Walker, J. M. Camara, B. F. Vickers, W. D. Adams, F. M. Whitney, William Blaisdel, H. A. Giles, F. C. Bertelmann, V. Fernandez, J. R. Shaw, J. A. McGuire, James Oils Jr.

THE SCHOOL OPENING

Following is the attendance at the public schools in Honolulu district yesterday, the opening of the new term:

Kalihiwaena, 106; Kuakoupa, 229; Maunaloa, 86; Kaahumanu, 379; Kamohiui, 29; Waikiki, 57; Royal, 251; Emma, 74; Pohukaina, 125; Kawaiahao, 69; Normal, 193; Kalanani, 242; High, 500.

CHAR. D. WALKER,

Designer and Builder of High-Grade YACHTS, BOATS and LAUNCHES!

Works, 692 King St. P. O. Box 633. Telephone, 1, us 131

Baby Brand Condensed Milk

The Very Best Milk for Babies. Prepared especially for Babies.

In a word, the "Baby Brand" Condensed Milk is "Best for Babies" because:

It is a perfect food, making children stout and strong.

It is put up in sterilized glass jars, hermetically sealed.

It is also the most economical infant's food in the world.

Its purity and richness is unexcelled.

The Washington Mercantile Co., - Ltd.

Agents.

FOR SALE

A Few Beautiful Lots with unexcelled view over College Hills tract, Waikiki and the Ocean. With good access :::::

Lowest Prices on Best Terms

Good Building Lots in Nuuanu Valley

near the Brickyard, of varied sizes. :::::

\$225 UP on easy installments.

Good Lots near Insane Asylum from \$500 to \$1,000 each, according to size and location. Easy terms. :::::

J. H. SCHNACK,

REAL ESTATE DEALER.

WHITE CLOVER SOAP

is the best and the cheapest in the market.

Absolutely Pure

Per Box.

25c

Hollister Drug Co.

FORT STREET.

Kahikinui Meat

FROM MAUI fresh every day. For Sale at the :::::

FISH MARKET, Stalls 19 and 20

AND AT Butcher Shop, Cor. Ber. & Alakea

C. Q. YEE HOP & CO.

PROPRIETORS.

For Sale.

Firebrick

Fireclay

Manmoth Rockers

APPLY TO...

C. BREWER & CO., Ltd.

QUEEN STREET.

HONOLULU BREWING AND MALTING CO., LTD.

Queen Street.

Primo Beer

STRICTLY PURE BEER HOME BREWED

We do not have to Fortify our Beer.

Bottled and Draught Beer promptly delivered ::::: Cold Storage for Rent.

Telephone--Main 341.

McKECHNIE PAINT AND WALL PAPER CO.

Dealers in Paints, Oils, Varnishes, Stains, Putty and Glass, ornamental and plain :::::

Wall - Paper

In all shades and at prices to suit. Window Shades, Curtain Poles and Fixtures, House Lining, Room Mouldings, Linerusta Walton and EVERYTHING FOR INTERIOR DECORATIONS. ::::: Try our

Diamond Head Floor Paint

Guaranteed to dry hard and glossy and will not crack, peel or chalk.

OUR MIXED PAINTS are the best on the market. Send for sample card. :::::

1178-1184 Union St. P. O. Box 522. Tel. 62 Main

Waikiki Inn.

Good Cheers

Good Beddes here

Good Entertainment

For thirsty throates

a-hungered stomachs

Weary headdes

Motor, Carriage and Machine Co.

Gunsmithing, Locksmithing,

Typewriter Repairing

and all kinds of intricate Machine Work.

We Want Your Work.

SCHOENING & STEWART,

UNION STREET, NEAR HOTEL. Phone Blue 721. P. O. Box 112.

Sauerbrunnen

A natural mineral water and the purest in the world.

Cool

Delicious

Satisfying

If you are feeling right, drink Sauerbrunnen and keep right.

If you are not feeling right, drink Sauerbrunnen and get right.

H. Hackfeld & Co., Ltd.

SOLE AGENTS.

The Pasteur Germ Proof Filter

Is the only Filter on the market that frees the water from all impurities and eradicates the Germs. The PASTEUR is one of the greatest foes to ill health ever invented.

Every Store, Office, Hotel, Restaurant and Home should have one without delay

SOLE AGENTS

A. R. HANCOCK & Co

315 FORT ST.

SHREVE & CO., San Francisco,

To facilitate trade with the Hawaiian Islands, will deliver all goods purchased or ordered of them, free of all charges for transportation to Honolulu, or returning same to San Francisco. Goods will be sent on select'ion to those known to the firm, or who will furnish satisfactory references in San Francisco.

Jewelers, Gold and Silverware Manufacturers, Market & Post Sts., S. F. —Illustrated CATALOGUE and prices furnished upon receipt of request. We have the largest manufactory of Jewelry and Silverware west of New York City, and are prepared to furnish special designs.

Slopes of Punchbowl

Two houses for sale, situated so as to command extensive view. \$2,000 and \$5,500.

For Rent on Kinau street. Seven room cottage on good sized lot. \$35 per month.

Valuable business property on Smith street near Hotel street for sale or for lease.

Several building lots on Wilder avenue and Alexander street, Punahou, immediately on the trolley line.

Castle & Lansdale,

REAL ESTATE AND INVESTMENTS.

Rooms 506 and 507, Stangenwald Bldg. TELEPHONE—MAIN 70

THE WESTER-MAYER PIANOS

BERLIN MAKE with the latest improved Paris action and specially constructed to withstand the deteriorating influences of this climate.

Made of selected curly Caucasian Walnut, most artistically carved and finished in LOUIS XIV STYLE. :::::

Hoffschlaeger Co.

LIMITED.

King St., near Bethel

38 SAFES IN STOCK

AUGUST 26th.



Hawaiian Iron Fence and Monumental CO. LTD.

TEL—47 MAIN. 104 KING STREET.

Five Cent Cigar

FOR SALE EVERYWHERE! 'La Insular of America'

Trade Mark Registered and owned by DAVID LAWRENCE & COMPANY.

Five Cent Cigar

Great Under-Price Sale of Lace Curtains!

Our great clearing sale of Lace Curtains will be in full swing with many specially attractive offerings on Monday next, September 16th, and continues ONE WEEK ONLY.

Point d'Espirit, Irish Point, Arabian, Fish Net, Applique, Nottingham, Etc., Etc., Lace, Curtains.

Specially marked away down so that they will first command your attention, then find themselves hung in your homes. Fine Figured Swiss Curtains with Ruffles, reduced from \$6.75 to 4.50 per pair.

Fine Sailor Hats At Prices that Woo You

There never was a hat that looked more becoming than the Sailor Hat. Rivals have come and gone, but the sailor 'hats up serenely' every season more bewitching than ever.

Irresistible Sailors at Irresistible Prices

Start the girls off to school with them; they're good company even though they are cheap.

Rough and Ready Straws in White, Black, Brown and Mixed.

3 THINGS MORE

Boy's New Windsor Ties—Just the thing that will tickle the boy to death—to speak. Plaids and stripes are here in the largest variety of new designs ever shown.

New White P. K's—All kinds, many of them you've never seen before. Prices run 6 yards for \$1.00, and 25c and 35c per yard.

English Muslins—The colors are fast and the goods are the very finest imaginable. 31 inches wide and only 15c per yard.

Sachs' Dry Goods Co., Ltd.

FORT STREET.

Just Arrived

EX. SHIP HENRY VILLARD

10,000 Barrels

ROCHE HARBOR LIME

FOR THE WHOLESALE TRADE.

Also Big Shipment of CAL. RED BRICK.

THEO. H. DAVIES & CO., Ltd

Hardware Department.

KIMONAS

JUST RECEIVED

A beautiful and dainty assortment.

ALSO

KIMONA MATERIALS

We would like to have you call and inspect this stock.

U SEKOMOTO,

14 Hotel Street, near Nuuanu.

S. SHIMAMOTO

General Merchandise, Dry Goods, Groceries, Japanese Provisions, etc.

MAGDOON BLOCK, MERCHANT STREET.

P. O. Box 886

Main 210

GOO KIM, 1116 Nuuanu St.

New Line of European Goods, Gentlemen's, Ladies' and Children's Hats, Chinese Grass Linen, all colors, Dress Goods, Pongee Silks.

MERCHANT TAILOR, A large variety of cloths made up in the latest styles.

P. O. Box 995

TEL. 18

WING WO CHAN

THE OLDEST CHINESE FIRM IN HONOLULU.

COMMISSION MERCHANTS

Dealers in Fine Silks and Grass Linens, Chinese and Japanese Goods of All Kinds

The Bulletin, 75cts. per month

HIIHIMANU IN WATER CALIFORNIANS HAPPY

WATERHOUSE'S NEW BOAT LAUNCHED YESTERDAY

Gives Promise of Being Very Speedy --Built on Kittywick's Lines Improved--Trial Tomorrow.

Albert Waterhouse's new yacht, the Hiihimanu, was launched yesterday afternoon and tomorrow will be placed in commission and make an acceptable addition to the growing mosquito fleet.

The new boat was built under the supervision of T. W. Hobron, by Yamaguchi, who will begin on a second boat immediately for H. E. Cooper; then a third boat for T. W. Hobron will be built.

YELLOW CALEDONIA CANE

For some time past the managers of the various plantations on the windward side of the island of Hawaii have been experimenting with several varieties of sugar cane.

In many cases the Yellow Caledonia takes the lead and is being extensively planted, and beyond question is the ideal cane for the Hilo district on Hawaii.

The great question with the plantations is to procure a cane that will, while being a good grower, yield a rich juice.

SCHOOLHOUSE BUILDING

The following bids for building new schoolhouses were received at the Department of Education yesterday.

Hanapepe, three-room schoolhouse.—F. Gangel, \$3202.69; A. Evanson, \$2756; J. A. Aheong, \$2565; W. T. Paty, \$2481; John Cook, \$2200; W. H. Russell, \$1984.

Every Day Affords New Proofs of the peculiar effects of PAIN-KILLER, in cases where a disordered condition of the stomach, liver and bowels is combined with great debility, nervous weakness, and intense melancholy.

SONS AND DAUGHTERS CELEBRATE ADMISSION

Judge Estee the Orator in Musical and Literary Program Followed By Gay Dance

California Admission Day was fittingly celebrated at Progress hall last night by the sons and daughters of the Golden State.

The place was finely decorated with flags, the national banner prevailing. California's old bear flag was conspicuous back of the stage.

A literary and musical program came before the hall. Prof. Sharpe's orchestra played, songs were given by Mrs. Austin, James Donaghy and Miss Lamb, while B. L. Marx rendered a violin solo.

Arrangements—W. E. Wall, W. P. Barry, G. W. R. King, W. S. Fleming, W. Naylor, I. Livingston.

DANGERS IN DANCING.

Laird & Lee of Chicago have just published Pitfalls of the Ballroom, by George F. Hall, the well known lecturer and author, preceded by a strong endorsement by the famous evangelist Sam. P. Jones.

Honolulu is an ideal place for picture taking. Honolulu Photo Supply Co. is an ideal place for picture making.

BEST CIGARS

HAWAIIAN TOBACCO CO., Ltd., Corner Merchant and Nuuanu Sts., also HOTEL ST., opposite Bethel.

Hawaiian Engineering and Construction Co.

ROOMS 508, 509, 510 STANGENWALD BUILDING. P. O. BOX 834. TEL. MAIN 70

All classes of Engineering Work solicited; Examinations, Surveys and Reports made for any class of Waterworks, Steam and Electric Construction; Plans and Specifications and Estimates Prepared, and Construction Superintended.

FREDERICK J. AMWEG, M. AM. Soc. C. E., Engineer and Manager.

Advertisement for a fan, featuring an illustration of a fan and text: 'A MAN IN ARKANSAS Could not repair his roof when it rained and would not in fair weather because it did not need it.'

The Hawaiian Electric Co., Ltd.,

Metropolitan Meat Co., LIMITED.

Fresh Meats and Fish by Every Steamer

From the Coast that has Cold Storage.

Choice Beef, Veal, Mutton, Lamb and Pork always on hand.

Also Poultry, Salmon and Halibut.

FOR SALE AT The Metropolitan Market, King St., Tel. 45; The Booth, Fishmarket, Telephone 379; Central Market, Nuuanu St., Telephone 104.

THE GERMANIA LIFE INSURANCE COMPANY

OF NEW YORK. ASSETS, \$27,378,531.30

Paid to Policy Holders since 1860 for Death Claims, \$24,373,469.65

For Matured Policies..... 7,507,608.27

Dividends and Surrenders..... 13,699,134.37

Total.....\$45,572,212.29

B. METT MAY, Manager for Hawaiian Islands. JUDD BUILDING.

THE ORIENTAL LIFE INSURANCE CO., LTD.

J. P. MCCOY, President. CAPITAL STOCK..... \$200,000.00.

The only insurance company in the world issuing policies in both the ENGLISH and CHINESE languages.

Policies contain all modern advantages of the endowment and other forms issued by the leading American companies.

Governed by the safest insurance systems. The pioneer Chinese-American company.

TEL. MAIN 75. HOME OFFICE, 301-302 Stangenwald Building, Honolulu, T. H.

Advertisement for Peacock & Co., Ltd. featuring an illustration of a man reaping grain and text: 'Reaping the grain from which the world renowned Cyrus Noble whiskey is distilled.'

W. C. PEACOCK & CO., LTD., Sole Agents

EVENING BULLETIN
Published Every Day Except Sunday,
at 210 King Street, Honolulu,
T. H., by the

BULLETIN PUBLISHING CO., LTD.
WALLACE R. FARRINGTON, Editor

Entered at the Post Office at Honolulu as second-class matter.

SUBSCRIPTION RATES.
Per month, anywhere in U. S. . . . \$.75
Per year, anywhere in U. S. . . . \$ 8.00
Per year, postpaid, foreign . . . \$ 13.00
Payable invariably in advance.

Telephone 256
Post Office Box 718
TUESDAY, SEPTEMBER 10, 1901.

When the Governor wants anything in the line of business blocked, all that is required is reference to the Attorney General's department.

The San Francisco strike seems to be fast reaching the point where the militia will be called out and lives sacrificed. This means the approach of the end. The inevitable close of a strike is becoming so well established that the people will soon wake up to the point of enacting sensible legislation requiring compulsory arbitration.

Governor Dole is "thinking" over the special session. While the Governor spends his time thinking what are the families to do whose members are thrown out of work on account of the lack of funds to carry on public work? The Governor should remember that the present situation means a shortage of bread and butter in the homes of the laborers.

Hawaii is getting a lesson in stock dealing it will be a long time in forgetting. In every business transaction there comes a day when the fiddler has to be paid for furnishing a speculative dance and the community that does not put aside its fund for the period of depression fails to consider the inevitable swing of the business pendulum.

Criticisms passed upon District Attorney Baird in his dealing with ship captains and mates make it clear that the duty of a public official under the Federal law is of no consequence in some quarters. Fortunately for the good name of the Nation, Mr. Baird is an American whose loyalty is not characterized by the easy virtue of those condemning him.

Superintendent Atkinson seems to think the object of public schools is to serve private ends. His claim that the night schools should be closed because Asiatics are the principal patrons is the wildest kind of nonsense. The same is likely to be true of day schools if the Asiatic population continues to increase. Following out the Atkinson method of reasoning the day schools should then be closed.

It is a pity Honolulu cannot summon sufficient public spirit to do away with the advertising signs that adorn the side of the streets along our principal driveways. The latest evidence of the sign painting fiend is on the Chinese shacks along the Waikiki road. It would pay the Chamber of Commerce to raise a fund to paint these diverse and sundry shacks in all the hues acceptable to the Oriental mind rather than allow the driveways to become decorated in the present style.

Since the agents of the Standard Oil Trust have been kind enough to contribute oil for street sprinkling experiments they will do well to keep up the good work and contribute for the campaign against mosquitoes. Householders are willing to pay for oil needed in tanks or pools about their premises but experiments by the sanitary officers in large tracts of swamp land will require a good sized supply of oil. If these officials are willing to give their time to the work, the business community ought to be able to find ways and means to supply the material.

No statement has yet been published which gives the public an opportunity to reach a conclusion on the affairs of the Francis Murphy Club that is fair to both sides. It is a notable fact that those attacking Mr. Austin by furnishing material for certain newspapers reflecting on the expenditure of funds have taken good care not to allow their names to be given publicly. The Bulletin is not prepared to express an opinion on the merits of the case but the methods of Austin's opponents do not appeal to an honest sense of fair dealing. There are men of good sound sense connected with the Murphy Club and if they have any regard for the continued success of the movement, they will give the matter now before the public a few moments of undivided attention; state facts and put an end to the innuendo that is spread abroad by authority that thus far remains nameless.

Saturday's street railway accident was no less unfortunate in the injury suffered by passengers and damage to the property of the corporations interested than the endeavor of the Rapid Transit organ to give a plainly biased statement of the affair which is probable to come before a jury. The honest opinion of independent witnesses is decidedly at variance. A representative of the Bulletin who witnessed the accident from the street corner considers the tramcar driver at fault for attempting to cross the Transit track, and it also seemed to him that the brakes on the electric car were defective on account of the inability of the motorman to bring his car to a sudden stop in an emergency. There were plenty of witnesses to the incident from which a jury can sift a fair conclusion as to responsibility, if not subjected to a series of screeds published with a view to securing a conviction before the trial, after the manner of the Bar Association in dealing with Humphreys.

BAD HORSE KICKER CAUSES TROUBLE

James Antone, a driver for Lewis the drayman, was arrested this forenoon on the charge of cruelty to animals. His case came up in the Police Court before Judge Wilcox. Antone was not very happy in his tone of voice and he was assailed by his employer, who tried to tell the District Magistrate that the horse on account of which he was arrested, was one of the most vicious in the city.

The driver stated that he had been told to drive the horse. The employer said it was impossible to get the horse broken in any other way than by driving him constantly. The swollen hind leg had come about by means of the animal kicking. The judge said he had seen the horse and that it was an extreme case of cruelty. The employer said he had seen a veterinary surgeon and had learned from him that the swelling was nothing and that it would not hurt the horse to drive it. The judge answered back that the veterinary could not know much and thereupon fined the driver \$20 and costs and sentenced him to ten days' imprisonment at hard labor remarking the while that if the employer was not able to recognize the seriousness of the offense he should get a little imprisonment himself.

The horse referred to was tied outside the police station this morning. Attorney Hitting went up and felt of the animal's swollen leg. He received a kick in the leg for his trouble. Later on, one of the drivers for the Hawaiian Soda Works went in to a store near the police station to deliver some soda water. He had to pass by the horse and, as he did so, the animal let fly, hitting the man in the back and making a wound that caused him great pain.

RESULTS IN MISTRIAL

After being out twenty-two and a half hours the jury that tried Ah Fong, the Chinese policeman, for assault and battery, were discharged by Judge Gear at 11:20 this forenoon. They had stood evenly divided from the first and were unable to come to any agreement. A mistrial was entered and the following jury were empaneled forthwith for a new trial, which is now proceeding: W. M. Buchanan, M. P. Robinson, Joseph Kucwa, D. K. Hoapili, Vincent Fernandez, Geo. Kekauoha, A. Fernandez, J. Zablan, R. W. Davis, Henry Bertelmann, Jas. D. Cocklet and W. R. Chilton.

In the case of Ah Soon, assault and battery connected with the former one, Judge Gear directed the jury to find a verdict of not guilty on account of lack of evidence.

W. D. Adams, A. E. Wall and H. G. Crabbe have been excused from the jury panel for the rest of this term.

FIRE CLAIM IN PROBATE

Ching Hong Wa Ahl petitions that he be appointed administrator of the estate of his dead father, Ching Ahl, which is valued at \$53,900, the largest item being a fire claim of \$43,000 for buildings and furniture destroyed by the authorities.

In the equity suit of E. S. Taylor vs. M. M. Kohn et al., bill for specific performance, Hatch & Sidman for defendant, Kohn filed objections to signing and filing of decree in favor of plaintiff.

Judge Gear has signed a decree allowing Henry May & Co., Ltd., to file an amended complaint against Waikiki Beach Co., Ltd., F. J. Taylor et al. garnishees, F. J. Russell for plaintiff.

HIGH SHERIFF DERELICT

Some days ago Judge Little issued an order to A. S. Cleghorn, administrator of Antone Phillips, to show cause why he should not be adjudged in contempt of court. The writ was returnable in court this morning. As the fact was published in the papers, Mr. Cleghorn appeared in person with his attorneys, Robertson & Wilder. Mr. Robertson informed the court that the order had never been served on the respondent.

Judge Little thereupon called High Sheriff Brown into court to explain why the writ had not been served. The High Sheriff had a bad five minutes at the bar, being unable to give any satisfactory explanation.

For Sale at a Sacrifice

LOT 50 x 150 planted with fruit trees, 300 feet from Wilder Avenue.
Apply to
J. M. VIVAS
POST OFFICE LANE.

NEW IMPORTATION OF THE FAVORITE BRADLEY and HUBBARD LAMPS
For sale by the
PACIFIC HARDWARE CO., Ltd.

These goods were ordered from advance sheets of the catalogue of the above manufacturers, and are the latest in design and mechanism. Call early and make your selections.

Garden Hose
In addition to the 10,000 feet of Garden Hose lately received, the "Emily F. Whitney" brought us 10,000 ft. more, making **TWENTY THOUSAND FEET.** We have all grades, and our prices are lower than ever quoted in this market.

Pacific Hardware Co., LIMITED.

Shipment of Good Young MULES

Broken to harness, just received via the "OLYMPIC," for sale at the lowest figures.

G. SCHUMAN, LTD,
Merchant Street, between Fort and Alenukai.



BEALS

WATER PROOF PAPER

IN VARIETY. UP-TO-DATE Colorings and Effects

Call and ask for BEALS' wall - paper measurement scale. We are distributing them FREE

BEALS
Alenukai Street, BELOW MERCHANT
PHONE MAIN 358
P. O. BOX 838



Here is something to go down the speedway with. If you are proud of your horse hitch him to a wagon that will not detract from his value either in speed or appearance.

TRY THIS ONE.

CHAS. F. HERRICK
CARRIAGE COMPANY, LIMITED.
125 MERCHANT ST. Next Door to Stangenwald Building.



Gonsalves & Co., LIMITED.
WHOLESALE GROCERS AND WINE MERCHANTS.
225 Queen St., Honolulu, H. I.

The New
DEPOT SALOON
opposite the R. R. depot.

PRIMO LAGER
ON DRAUGHT AND IN BOTTLE.

Ryan & Dement
Also proprietors of the popular **ENCORE SALOON.**

KOMEL
Is steadily growing in favor among people who appreciate good things, and is rapidly becoming the favorite family drink.

CA-BONATED BY THE **CONSOLIDATED**

Soda Water Works Co., Ltd.
Sole Agts. for the Territory of Hawaii.
Office and Works, 601 Fort and Alenukai streets.
Telephone No. 71 Main.
Soda Water, etc., delivered free to all parts of the city. Island orders so limited.

Opening Announcement!

JOSEPH HARTMANN AND COMPANY.

Wholesale Liquor Dealers

BETHEL STREET
WAVERLEY BLOCK.

All Orders Promptly Filled.
Telephone 219.

HENRY ST. GOAR
EDWARD POLLITZ
Members Stock and Bond Exchange.

Edward Pollitz & Co.
COMMISSION BROKERS AND DEALERS IN INVESTMENT SECURITIES.
Particular attention given to purchase and sale of Hawaiian Sugar Stock.
Loans Negotiated.
Eastern and Foreign Stocks and Bonds.
405 California St., San Francisco, Cal.

W. C. ACHI & CO
Brokers & Dealers

REAL ESTATE

We will Buy or Sell Real Estate in all parts of the group.
We will Sell Properties on Reasonable Commissions.

OFFICE, 10 WEST KING STREET

To Let or Lease

A Fine House and Lot

on the makai side of Beretania street between Piikoi and Keaumoku Sts. The house has several rooms and all modern improvements.

DAVID DAYTON
233 MERCHANT STREET.

A. C. LOVEKIN
STOCK AND BOND BROKER
REAL ESTATE AND FINANCIAL AGENT

402 JUDD BUILDING

A. J. Campbell,
Stock and Bond Broker.

Member of Honolulu Stock Exchange
Office Queen Street, Opposite Union Feed Company.

WOMEN'S EXCHANGE
314 FORT ST.,
Has the Best Assortment of PACIFIC ISLAND CURIOS in the City.
FRESH HOME-MADE POLI ON TUESDAYS AND FRIDAYS.

MRS. W. L. EATON,
TEACHER OF MUSIC.
Tel. Blue 1903.
WILTON LODGE, PAWAA.
Has returned teaching. Vacancies for limited number of pupils. Special terms for beginners or more than one pupil in a family. 1925-1w

Razo's Honed and Set
at the
Hawaiian Hotel Barber Shop.
FOR 25 CENTS.

Architects, Contractors and Builders.

Edward R. Swain,
ARCHITECT
STANGENWALD BLD., HONOLULU
CROCKER BUILDING, SAN FRANCISCO.

V. HOFFMANN, J. F. RILEY.
Hoffman & Riley
GENERAL CONTRACTORS AND BUILDERS.
Estimates Furnished. P. O. Box 160
Geo. W. Page, Tel. 229
F. W. Beardale, P. O. Box 778

BEARDSLEE & PAGE
Architects and Builders.
Office, Rooms 2-4, Arlington Annex, Honolulu, T. H.
Sketches and Correct Estimates furnished on Short Notice. 1441

BUILDING MATERIALS
OF ALL KINDS.
Dealers in Lumber and Coal.

Allen & Robinson,
Queen Street, Honolulu.

Fred Harrison,
CONTRACTOR AND BUILDER
Jobbing promptly attended to.

H. F. BERTELMAN'S
Carpenter Shop
18 - MOVED
To rear of old stand. Entrance on King street. Orders left at either shop or office at John Nott's store, King street, will receive prompt attention. 1451-tf

Dainty Biscuits
at
Lewis & Co.
Leading Grocers.
Owing to the consolidation of Lewis & Co. with Biscuit Co's in America, we can offer to the public the following choice makes of biscuits:

Athens
Oswego
Romona
Afternoon Tea
Bremers Ccelian Tea
Dainty Minnets
" French Wafers
Original Bent's Water Biscuits
Dr. Johnson's Educators
Full Line of Unecda Biscuits
Give Us a Sample Order.

Waialua Beach Hotel
CHAS. DAVID, Manager

Now Open for Business.
Finest of Accommodation.
Finest of Bathing.
Be Sure to Get Off at
Waialua Station
RATES - \$2.50 per day
Special Rates by Week or Month.
For further information address:
HALBIWA P. O.

Prize Shooting
AT
GERMANIA
SHOOTING GALLERY
HOTEL STREET.
W. H. THONE, Proprietor.

When You Want a Rig
RING UP THE
C-L-U-B
LIVERY BOARDING and SALES STABLES.
518 FORT STREET
Stable Phone, 109 Main.
Hack Stand, Phones 319 and 72.
J. J. SULLIVAN.

THE UNION EXPRESS CO.
Safes, Pianos, Furniture MOVED
Drays for Freight and Lumber.
Our representative meets all incoming steamers from the Coast, and we check baggage on all outgoing steamers.
White and Black Sand For Sale
Office with Evening Bulletin, 210 King street. Tel. 86.
W. LARSEN, Mgr.
The Evening Bulletin, 75 cents per month.

Plumbers, Etc.

JOHN NOTT,
Plumber
75 and 79 King Street
TELEPHONE NO. 31.

NOW is the time to get leaks and breakages seen to, and your
Roofs Put in Order.
By competent workmen.

The Plumber's Strike

is over, and I am again prepared to do Plumbing, Sewering and Sheet Iron Work as heretofore. Estimates furnished. Workmanship and material guaranteed.

Jas. Nott, Jr.,
Store, Beretania Near Emma St.
Tel. White 3571.

HONOLULU SHEET METAL WORKS
H. W. BARTH.
Galvanized Iron Skylights and Ventilator Metal Roofing.
Conductor Pines and Gutter Work.
Mechanic Street, Tel. Queen and Merchant.
Jobs promptly attended to.
Tel. White 41 P. O. Box 270.

Notice to Property Owners.

I have in my employ FOUR FIRST-CLASS PLUMBERS from the Coast. I am now ready to figure on your work at the lowest prices. My men are Union Men. Give me a trial.

C. H. BROWN,
Territory Stables, King St.

Albert R. Cunha
ATTORNEY AT LAW.
NOTARY PUBLIC.

308 Stangenwald Building
TELEPHONE - MAIN 21.

W. Anita Whiting,
W. J. Robinson,
LAW OFFICES

Removed to Room 306, Judd Building

J. M. KANEAKUA,
ATTORNEY AND COUNSELLOR AT LAW,
NOTARY PUBLIC.

Office—Bethel St., Near the Postoffice.

Telephone to All Parts of the Island.

KONA LIVERY STABLES
KEALAKEKUA, - HAWAII
J. G. HENRIQUES, PROP.
Horses and Carriages
For Excursions
To the Volcano or the Mountains.
An excellent chance is offered for tourists to

SEE THE COUNTRY.
Carriages meet the S. S. Mauna Loa at Kailua and take passengers overland to Hilo, where the steamer is met.

ICE
Manufactured from Pure Distilled Water - - - -
Delivered free to any part of city by courteous drivers.

Jahu Ice and Electric Co.
KEWALO
Tel. BLUE 3151
HOFFMAN & MARKHAM.

Just Received
a New Lot of . . .
Key West and Domestic Cigars!
Beaver Lunch Rooms
H. J. NOLTE.

F. W. Thrum,
Surveyor

ROOM 400, BOSTON BLOCK
TEL. MAIN 64.

Mrs. H. H. Williams
Art Embroidery and Stamping.
Full line of Art Materials : : :
Art Embroidery Taught : : :
Love Building, Fort Street

TEL. MAIN 159.
OCCIDENTAL FRUIT STORE
CORNER KING AND ALAKA STREETS.

CALIFORNIA AND ISLAND FRUITS
ICE HOUSE GOODS
Received by Every Steamer.

Surgeons, Physicians and Dentists.

Dr. Archibald N. Sinclair.
OFFICES: ROOMS 206-209, BOSTON BUILDING, FORT STREET.
TELEPHONES: OFFICE, MAIN 38; RESIDENCE, WHITE 3951.
HOURS—11 A. M. TO 1 P. M.; 7 TO 9 P. M.; SUNDAYS—12 TO 2 P. M.
P. O. Box 801.

DR. W. H. MAYS
881 Beretania Street.
HOURS—10 to 11 SUNDAY—9 to 11
7 to 8 Telephone 622

DR. J. T. WAYSON,
445 BERETANIA ST.

OFFICE HOURS (10 a.m. to 1 p.m. 1:30 p.m. to 7:30 p.m.)
SUNDAYS—10-12. TEL. Main 146

Dr. F. J. Rayner,
DENTIST.
Crown and Bridge Specialist.
HOURS 9 TO 4.
204 Boston Block.

Dr. Albert E. Nichols
DENTIST.
1154 Alakea Street.
Office Hours 9 to 4

A. C. WALL, D.D.S.
G. E. WALL, D.D.S.
DENTISTS.
Love Building, Fort Street.
Hours, 9 to 4. Telephone, 431.

DR. J. ATCHERLEY
M.R.C.S. L.R.C.P.
708 FORT ST., ABOVE KUKUI.
Hours—10 a. m. to 4 p. m.
Residence, Kalihi.
Tel., Blue 1251.

Dr. W. H. Jones
M.P.C.V.S., M.V. M.A., LONDON.
Veterinary Surgeon.

OFFICE WAIKIKI STABLES.
RESIDENCE—"THE CALIFORNIA,"
1916-3M. EMMA STREET.

Dr. Wm. C. Rogers,
SURGON AND SPECIALIST.
Eye, Ear, Nose and Throat Exclusively
REMOVED to new office, 1146 Alakea Street, opp. Hawaiian Hotel.
Hours, 9 to 12, 3 to 5:30, 7 to 8; Sundays, 9 to 11.

A. N. SANFORD,
MANUFACTURING OPTICIAN,
BOSTON BLDG., FORT STREET
OVER MAY & CO.
Chinese and Japanese Firms.

SANG CHAN
MERCHAND TAILOR
Fine English and American Goods

TWO STORES
65 Hotel Street, and
Hotel near Nuuanu
P. O. Box 651. TEL.—WHITE 93

CLEANING!
Ladies' skirts cleaned, clothing cleaned, dyed and repaired.
Suits made to order.
Fit guaranteed. Loose fit free.

TIM WO
Four Street, near Kukui, and near Orpheum Theatre.
Prices: Cleaning 25c suit, 75c; Dyeing suit \$1.00.

A. Harrison Mill Co., Ltd.
KAWAIAHO STREET, KEWALO.
Tel. White 1221. P. O. Box 552.

Sawing, Planing, Turning and Mill Work in all its branches.
Lumber - Kifn - Drying a specialty, and in large or small quantities.

New Map of Oahu.
Compiled from Government Surveys and Charts. Map is of Size of Postcard. Contains all the latest Reliable Sources. THE MAP IS IN ENGLISH, with artistic colorings and most interesting, making a very useful as well as ornamental map. THE PRICE OF THE MAP IS \$2.00. Copies can be obtained from
JAS. T. TAYLOR,
P. O. Box 799, 100 Judd Building, Honolulu T. H. or HAWAIIAN NEWS CO., LTD.

COTTON BROS. & CO.
ENGINEERS AND : : :
GENERAL CONTRACTORS
Plans and estimates furnished for all classes contracting work.
ROOM 10, BOSTON BLOCK, - HONOLULU

Honolulu Iron Works.
Improved and modern SUGAR MACHINERY of every capacity and description made to order. Boiler work and RIVETED PIPES for irrigation purposes a specialty. Particular attention paid to JOB WORK, and repairs executed at shortest notice.

Fine Job Printing at the Bulletin office.

THE LUALUALEI LAND
ITS DIVISION SETTLED
BY EXECUTIVE COUNCIL

Appportioned Between Waianae Company and Mikalua Ranch Under Certain Conditions and Reservations.

One of the matters before the executive council yesterday, which was settled, was the disposition of the Lualualei land in the Waianae district. It was recommended to Commissioner E. S. Boyd that a division of certain other lands be made, and the Mikalua ranch be sold under lease as grazing ranch for agricultural land. The entire Lualualei tract contains 14,772 acres. The Waianae Company obtains from the deal 800 acres of sugar cane land under lease for five years at \$2000 rental a year, or \$10 an acre. The Mikalua ranch, which is operated by Mr. Dillingham for the Dowsett estate, by complying with conditions under possible competition may obtain between 5000 and 6000 acres of pastoral land. For the remainder of the tract, the government reserves from 1000 to 1200 feet from the Oahu railway line, also all of its shoreline. The lands have the condition that at any time the land is wanted for home-stead purposes it will revert to the government.

LILIPUTIANS COMING FOR SEASON HERE

A. H. Pollard, the business manager of the above company, arrived here from San Francisco on Saturday evening. He says the company left Australia for S. S. Sierra on Sept. 3d, arriving in Honolulu on the 17th inst., and will play a three weeks' season in the Opera House. The company is composed of some sixty juvenile artists, their ages ranging from 7 to 13 years. They have played nearly all over the world; India, China (Hongkong and Shanghai), Japan, Java, Manila, Straits Settlements, Ceylon, Mauritius and Tasmania. During their two months' season in Manila the first American audience the company have ever played to, they met with such wonderful success that they decided to tour through the United States. The company closed their Melbourne season recently, having played right through the Duke of York's visit there, and were honored with His Royal Highness' patronage and attendance. The company will open in the Opera House on Sept. 18 with the Geisha. The sale of tickets will begin tomorrow at Wall, Nichols Co. Judging by the notices from the different parts of the world, they have visited, a great treat is in store for Honolulu theater goers. The following is from the New American, Manila, Feb. 11: "The audiences at the Zorilla Grand Opera House still continue to grow. Last evening's audience being up to the high water mark, both in attendance and enthusiasm. 'The Geisha' seems to strike the popular chord, as did 'The Belle of New York.' 'The Geisha' was produced here last year by Henry Dallas' English Opera Co., but we can safely say that the Pollard's Liliputian Opera Co. gave 'The Geisha' when the verdict of the vast audience was unanimous in its favor both as a production on the whole and individual characters. The most exciting could not wish for better than witnessed last night. Master Willie Pollard added to his laurels by a finely conceived and well executed rendering of the Chinese role of Won Hi, his work was applauded to the echo; The more one sees of this boy, the more one feels inclined to say with Goldsmith: "And still they gaz'd, and still they wonder grew, That one small head could carry all he knew."

The boy is nothing short of a marvel. He seems intuitively to grasp the humorous side of every line he has to speak. Little Madge Williams, age 3 years, who was so delightful as Fife Fifer, in the "Belle of New York," was the pet of every one, her pretty acting, dancing and singing in the part of Molly Seymour, fairly brought down the house. The four girls, Miss Ivy Trott, age 11, as Reginald Fairfax, Miss Lily Thompson, age 12, as Dick Cunningham, Miss Irene Goulding, age 11, as Arthur Cuddy, and Miss Emma Thomas, age 12, as George Grimstone, all officers of H. M. S. Turtle, in their naval uniforms, were very attractive, and one lost sight of their being girls, by their clever acting and singing, while little Daphne Trott, age 6 years, as Tommy Stanley, the Middy, kept the audience in convulsions of laughter with her neat impersonation of the comedy element. May Topping was to the manner born as the French adventuress, Julie, a Diamant, and although having a minor part, called for much applause. Her dancing was a very finished product. This young lady is 7 years old. Miss Alice Bennett, age 12 years, made a charming O Miroosa San, her clever young voice was heard to great advantage in the many pretty numbers in which the Geisha abounds. Master Fred Stewart as Captain Katana, showed the possession of a remarkably fine voice, for so young a

boy as 10 years. Master Harold Hill's acting as the Marquis Imari, was a splendid piece of work, but we would advise him not to speak his lines so loud. Miss Minnie Topping made a very handsome Lady Constance Wynne while there was not a poorly executed part in the entire cast. A special word of praise must be given to the staging and dressing of "The Geisha." As the Messrs. Pollard produced the latter in Japan, of course everything is perfect, while the scenery was painted by Mr. Brunton of the Princess Theater, Melbourne. We anticipate a good run for "The Geisha."

Hotel Band Concert.
The band will play the following selections at a concert to be given on the grounds of the Hawaiian hotel this evening, commencing at 7:30 o'clock: Part I. Overture—La Dame Blanche. Boeldien Introduction—Lohengrin. Wagner Selection—The Belle of Bohemia. (new) Englander Song— (a) Aloha Ihihi Mal. (b) Na Meleloha. Miss J. Kellian. (c) He Inoa no Waiho. (d) Nani Hali Po Ika Lihua. Mrs. N. Alapai. Part II. Suite—Italian. Tschakoff Andante—Surprise Symphony. Haydn Waltz—The Shalters. Waldteufel March—The Kangaroo. Luderer The Star Spangled Banner.

Dray Team Runaway.
A dray team belonging to Gar Selman ran away from the yard back of the telephone company's building yesterday afternoon. They tore down a part of the Queen street fence and then turned up Alakea. At the corner of King and Alakea the horses were going at a very dangerous speed. One of them slipped and both of his hind legs went into the new surface drain that was recently put in at the place mentioned. The result was a broken leg. The horse was shot. Mrs. Buchanan, who was standing on the corner, was knocked down and bruised. Her hip was hurt and her foot was trampled on by one of the team.

GET LEADER'S BROTHER.
London, August 21.—Lord Kitchener, telegraphing from Pretoria, says: "Garratt has captured Piet Delany, brother of the assistant Commandant General." A dispatch from Lord Kitchener, dated Pretoria today, says: "A train was blown up today between Waterfall and Hamans Kraal by 250 Boers, who at once fired on the train, setting it on fire. Lieut. Col. Vandaleur of the Irish Guards, a most promising officer, was killed. The other casualties have not yet been reported."

Those who appreciate the class of photographic work done by MISS CAROLINE HASKINS are cordially invited to inspect specimens of her skill in her reception room at the rear of KING BROS. Art Store and Photo Studio, 120 Hotel St.

RUPTURE CURED
FOR TEN DOLLARS
I have been cured of my hernia for ten dollars. I was cured by the use of the "Hernia Cure" which is a simple and safe method of curing hernia. No operation, no pain, no danger. The cure is guaranteed. Write to me for full particulars. My name is J. J. Williams, 120 Hotel St., Honolulu, T. H.

HOSTETTER'S
CELEBRATED

BITTERS
STOMACH
'Good Digestion

waits on appetite. Lack of appetite usually indicates weak digestion. Hostetter's Stomach Bitters taken before meals will create a healthy desire for food, by cleansing the clogged bowels and stimulating the secretions of the stomach. It also purifies the blood, strengthens and invigorates the liver and kidneys. It is undoubtedly the most efficient medicine in the world for stomach troubles. A Private Revenue Stamp covers the neck of the bottle.

Accept no substitutes if You Value Health Bitters

Money loaned on approved security. A Saving Bank for monthly deposits. Houses built on the monthly installment plan. Twentieth Series of Stock is now opened. OFFICERS—J. E. Lansing, President; S. B. Rose, Vice President; C. E. Gray, Treasurer; A. V. Gear, Secretary. DIRECTORS—T. F. Lansing, S. B. Rose, A. V. Gear, A. K. Keech, Henry Smith, J. L. McLean, J. D. Holt, C. E. Gray, W. L. Howard. A. V. GEAR, Secretary. Chamber of Commerce rooms. Office Hours: 12:30-1:30 p. m.

BISHOP & CO.
BANKERS.

Transact a General Banking and Exchange Business. Commercial and Travelers' Letters of Credit issued, available in all the principal cities of the world. Interest allowed after July 1, 1898, on fixed deposits 7 day notice 2 per cent. (this form will not bear interest unless it remains undisturbed for one month), 3 months 3 per cent., 6 months 3 1-2 per cent., 12 months 4 per cent.

Pioneer Building and Loan Association.
ASSETS, DEC. 31, 1899, \$112,077.00. Money loaned on approved security. A Saving Bank for monthly deposits. Houses built on the monthly installment plan. Twentieth Series of Stock is now opened. OFFICERS—J. E. Lansing, President; S. B. Rose, Vice President; C. E. Gray, Treasurer; A. V. Gear, Secretary. DIRECTORS—T. F. Lansing, S. B. Rose, A. V. Gear, A. K. Keech, Henry Smith, J. L. McLean, J. D. Holt, C. E. Gray, W. L. Howard. A. V. GEAR, Secretary. Chamber of Commerce rooms. Office Hours: 12:30-1:30 p. m.

BISHOP & CO.
BANKERS.

Savings Bank
Savings Deposits will be received and interest allowed by the Bank at four and one-half per cent per annum. Printed copies of the Rules and Regulations may be obtained on application. Office at bank building on Merchant street. BISHOP & CO.

The Yokohama Special Bank
LIMITED.
Subscribed Capital . . . Yen 24,000,000
Paid Up Capital . . . Yen 18,000,000
Reserved Fund . . . Yen 8,500,000
Head Office, Yokohama.
The Bank buys and receives for collection Bills of Exchange, issues Drafts and Letters of Credit, and transacts a general banking business. INTEREST ALLOWED— On Fixed Deposit for 12 months, 4 per cent p. a. On Fixed Deposit for 6 months, 3 1/2 per cent p. a. On Fixed Deposit for 3 months, 3 per cent p. a. Branch of the Yokohama Special Bank, New Republic Bld., 111 King Street HONOLULU.

Hawaiian Bricks
Patronize Home Industry
An article which has stood severe tests, and which can be furnished as wanted, in good condition. Sample can be seen at the store of
Lewers & Cooke,
LIMITED.
Sole Agents.

J. D. Jewett
WITH
J. J. WILLIAMS
FOTO GALLERY
Artist
in Pastels
Crayons
Water Colors
and
OIL PORTRAITS.

Agents, Brokers and Jobbers.
ALEXANDER & BALDWIN, Ltd
OFFICERS:
H. P. BALDWIN, President
J. B. CASTLE, 1st Vice President
W. M. ALEXANDER, 2nd Vice Pres
J. P. COOKE, Treasurer
W. O. SMITH, Secretary
GEO. R. CARTER, Auditor

Sugar Factors and Commission Agents
AGENTS FOR—
Hawaiian Commercial & Sugar Co.
Haku Sugar Company.
Paia Plantation Company.
Nabiku Sugar Company.
Kihai Plantation Company.
Hawaiian Sugar Company.
Kahului Railroad Company.
— AND —
The California and Oriental S. S. Co.

W. G. Irwin & Co.
LIMITED
AGENTS FOR—
Western Sugar Refinery Company of San Francisco.
Baldwin Locomotive Works of Philadelphia, Pa., U. S. A.
Newell Universal Mill Co. (National Cane Shredder), New York, U. S. A.
N. Oblander & Co.'s Chemical Fertilizers.
Alex. Cross & Sons' high-grade Fertilizers for Cane and Coffee.
Reed's Steam Pipe Covering.
ALSO OFFER FOR SALE:
Paraffine Paint Co.'s P. & B. Paints and Papers; Lucol and Linseed Oils, raw and boiled.
Indurine (a cold-water paint), in white and colors.
Filter Press Cloths, Cement, Lime and Bricks.

CASTLE & COOKE
LIMITED.
HONOLULU.
Commission Merchants
SUGAR FACTORS.
AGENTS FOR—
The Ewa Plantation Co.
The Waiakua Agricultural Co., Ltd.
The Kohala Sugar Co.
The Waiakua Sugar Mill Co.
The Standard Oil Co.
The Geo. F. Blake Steam Pumps.
Weston's Centrifugals.
The New England Life Insurance Co. of Boston.
The Etha Fire Ins. Co. of Hartford, Conn.
The Alliance Assurance Co. of London.

Wm. G. Irwin & Co.
(LIMITED.)
Wm. G. Irwin, President and Manager
Claus Spreckels, Vice President
W. M. Giffard, Second Vice President
H. M. Whitney, Jr., Treas. and Sec.
Geo. J. Ross, Auditor

Sugar Factors
— AND —
Commission Agents
AGENTS OF THE
Oceanic Steamship Co.
OF SAN FRANCISCO, CAL.
C. BREWER & CO., LTD.
Queen Street, Honolulu, T. H.

Agents for—
Hawaiian Agricultural Co., Ooakala Sugar Plant, Co., Onomea Sugar Co., Honoumuli Sugar Co., Walluku Sugar Co., Makee Sugar Co., Heaekala Ranch Co., The Planters' Line of San Francisco, Packet; Chas. Berwer & Co.'s Line of Boston Packets.
LIST OF OFFICERS.
C. M. Cooke, President; George Robertson, Manager; E. F. Bishop, Treasurer and Secretary; Col. W. E. Allen, Auditor; P. C. Jones, H. Waterhouse and Geo. R. Carter, Directors.

The Von Hamm-Young Co. Ltd
Importers and Commission Merchants
QUEEN ST., - HONOLULU.
AGENTS FOR—
The Lancashire Insurance Co.
The Paloise Insurance Co.
Union Gas Engine Co.
Domestic Sewing Machine, Etc.
Subscribers to the BULLETIN not receiving their papers promptly will confer a favor by notifying the Business Office; Telephone 256.

Bankers.
Claus Spreckels. Wm. G. Irwin
Claus Spreckels & Co.
BANKERS.
HONOLULU, T. H.
San Francisco Agents—The Nevada National Bank of San Francisco. San Francisco—The Nevada National Bank of San Francisco. London—The Union Bank of London, Ltd.
New York—American Exchange National Bank.
Chicago—Merchants' National Bank.
Paris—Credit Lyonnais.
Berlin—Dresdner Bank.
Hongkong and Yokohama—Hongkong-Shanghai Banking Corporation.
New Zealand and Australia—Bank of New Zealand.
Victoria and Vancouver—Bank of British North America.
Deposits received. Loans made on approved security. Commercial and Travelers' Credits issued. Bills of Exchange bought and sold. Collections Promptly Accounted For.
— Established 1858 —

BISHOP & CO.
BANKERS.

Transact a General Banking and Exchange Business. Commercial and Travelers' Letters of Credit issued, available in all the principal cities of the world. Interest allowed after July 1, 1898, on fixed deposits 7 day notice 2 per cent. (this form will not bear interest unless it remains undisturbed for one month), 3 months 3 per cent., 6 months 3 1-2 per cent., 12 months 4 per cent.

Pioneer Building and Loan Association.
ASSETS, DEC. 31, 1899, \$112,077.00. Money loaned on approved security. A Saving Bank for monthly deposits. Houses built on the monthly installment plan. Twentieth Series of Stock is now opened. OFFICERS—J. E. Lansing, President; S. B. Rose, Vice President; C. E. Gray, Treasurer; A. V. Gear, Secretary. DIRECTORS—T. F. Lansing, S. B. Rose, A. V. Gear, A. K. Keech, Henry Smith, J. L. McLean, J. D. Holt, C. E. Gray, W. L. Howard. A. V. GEAR, Secretary. Chamber of Commerce rooms. Office Hours: 12:30-1:30 p. m.

BISHOP & CO.
BANKERS.

Savings Bank
Savings Deposits will be received and interest allowed by the Bank at four and one-half per cent per annum. Printed copies of the Rules and Regulations may be obtained on application. Office at bank building on Merchant street. BISHOP & CO.

The Yokohama Special Bank
LIMITED.
Subscribed Capital . . . Yen 24,000,000
Paid Up Capital . . . Yen 18,000,000
Reserved Fund . . . Yen 8,500,000
Head Office, Yokohama.
The Bank buys and receives for collection Bills of Exchange, issues Drafts and Letters of Credit, and transacts a general banking business. INTEREST ALLOWED— On Fixed Deposit for 12 months, 4 per cent p. a. On Fixed Deposit for 6 months, 3 1/2 per cent p. a. On Fixed Deposit for 3 months, 3 per cent p. a. Branch of the Yokohama Special Bank, New Republic Bld., 111 King Street HONOLULU.

Hawaiian Bricks
Patronize Home Industry
An article which has stood severe tests, and which can be furnished as wanted, in good condition. Sample can be seen at the store of
Lewers & Cooke,
LIMITED.
Sole Agents.

J. D. Jewett
WITH
J. J. WILLIAMS
FOTO GALLERY
Artist
in Pastels
Crayons
Water Colors
and
OIL PORTRAITS.

Agents, Brokers and Jobbers.
ALEXANDER & BALDWIN, Ltd
OFFICERS:
H. P. BALDWIN, President
J. B. CASTLE, 1st Vice President
W. M. ALEXANDER, 2nd Vice Pres
J. P. COOKE, Treasurer
W. O. SMITH, Secretary
GEO. R. CARTER, Auditor

Sugar Factors and Commission Agents
AGENTS FOR—
Hawaiian Commercial & Sugar Co.
Haku Sugar Company.
Paia Plantation Company.
Nabiku Sugar Company.
Kihai Plantation Company.
Hawaiian Sugar Company.
Kahului Railroad Company.
— AND —
The California and Oriental S. S. Co.

W. G. Irwin & Co.
LIMITED
AGENTS FOR—
Western Sugar Refinery Company of San Francisco.
Baldwin Locomotive Works of Philadelphia, Pa., U. S. A.
Newell Universal Mill Co. (National Cane Shredder), New York, U. S. A.
N. Oblander & Co.'s Chemical Fertilizers.
Alex. Cross & Sons' high-grade Fertilizers for Cane and Coffee.
Reed's Steam Pipe Covering.
ALSO OFFER FOR SALE:
Paraffine Paint Co.'s P. & B. Paints and Papers; Lucol and Linseed Oils, raw and boiled.
Indurine (a cold-water paint), in white and colors.
Filter Press Cloths, Cement, Lime and Bricks.

CASTLE & COOKE
LIMITED.
HONOLULU.
Commission Merchants
SUGAR FACTORS.
AGENTS FOR—
The Ewa Plantation Co.
The Waiakua Agricultural Co., Ltd.
The Kohala Sugar Co.
The Waiakua Sugar Mill Co.
The Standard Oil Co.
The Geo. F. Blake Steam Pumps.
Weston's Centrifugals.
The New England Life Insurance Co. of Boston.
The Etha Fire Ins. Co. of Hartford, Conn.
The Alliance Assurance Co. of London.

Wm. G. Irwin & Co.
(LIMITED.)
Wm. G. Irwin, President and Manager
Claus Spreckels, Vice President
W. M. Giffard, Second Vice President
H. M. Whitney, Jr., Treas. and Sec.
Geo. J. Ross, Auditor

Sugar Factors
— AND —
Commission Agents
AGENTS OF THE
Oceanic Steamship Co.
OF SAN FRANCISCO, CAL.
C. BREWER & CO., LTD.
Queen Street, Honolulu, T. H.

Agents for—
Hawaiian Agricultural Co., Ooakala Sugar Plant, Co., Onomea Sugar Co., Honoumuli Sugar Co., Walluku Sugar Co., Makee Sugar Co., Heaekala Ranch Co., The Planters' Line of San Francisco, Packet; Chas. Berwer & Co.'s Line of Boston Packets.
LIST OF OFFICERS.
C. M. Cooke, President; George Robertson, Manager; E. F. Bishop, Treasurer and Secretary; Col. W. E. Allen, Auditor; P. C. Jones, H. Waterhouse and Geo. R. Carter, Directors.

The Von Hamm-Young Co. Ltd
Importers and Commission Merchants
QUEEN ST., - HONOLULU.
AGENTS FOR—
The Lancashire Insurance Co.
The Paloise Insurance Co.
Union Gas Engine Co.
Domestic Sewing Machine, Etc.
Subscribers to the BULLETIN not receiving their papers promptly will confer a favor by notifying the Business Office; Telephone 256.

Oceanic Steamship Company TIME TABLE

Lines of Travel.

The steamers of this line will arrive and leave this port as hereunder:

FROM SAN FRANCISCO		FOR SAN FRANCISCO	
VENTURA	SEPT. 18	ALAMEDA	SEPT. 11
ALAMEDA	SEPT. 28	SIERRA	SEPT. 17
SIERRA	OCT. 9	SONOMA	OCT. 8
ALAMEDA	OCT. 19	ALAMEDA	OCT. 23
SONOMA	OCT. 29	VENTURA	OCT. 29
ALAMEDA	NOV. 9	ALAMEDA	NOV. 13

Local Boat. In connection with the sailing of the above steamers, the agents are prepared to issue, to intending passengers, coupon through tickets to any railroad from San Francisco to all points in the United States, and from New York by any steamship line to all European ports.

FOR FURTHER PARTICULARS APPLY TO

Wm. G. Irwin & Co., Ltd. GENERAL AGENTS OCEANIC S. S. CO.

Pacific Mail Steamship Co.

Occidental and Oriental Steamship Co. and Toyo Kisen Kaisha

Steamers of the above companies will call at Honolulu and leave this port on or about the dates below mentioned.

FOR JAPAN AND CHINA		FOR SAN FRANCISCO	
HONGKONG MARU	SEPT. 11	NIPPON MARU	SEPT. 12
CHINA	SEPT. 19	PERU	SEPT. 21

FOR GENERAL INFORMATION APPLY TO P. M. S. S. CO. H. HACKFIELD & CO., LTD. AGENTS.

Canadian-Australian Royal Mail Steamship Company.

Steamers of the above line, running in connection with the CANADIAN PACIFIC RAILWAY CO. between Vancouver, B. C. and Sydney, N. S. W. and calling at Victoria, B. C., Honolulu and Brisbane, are DUE AT HONOLULU on or about the dates below stated, viz:

From Vancouver and Victoria, B. C.		From Sydney and Brisbane.	
MIOVERA	SEPT. 28	AORANGI	SEPT. 23

Through Tickets issued from Honolulu to Canada, United States and Europe. For Freight and Passage and all general information, apply to TACO, H. DAVIS & CO., LTD., Gen'l Agents.

American-Hawaiian S. S. Co.

DIRECT SERVICE BETWEEN NEW YORK AND HAWAIIAN ISLANDS, via Pacific Coast.

S. S. AMERICAN, 6,000 tons, sailed.

S. S. HAWAIIAN, 6,000 tons, to sail Oct. 15.

S. S. CALIFORNIA, 6,000 tons, sailed from NEW YORK June 16; will load at PUGET SOUND about SEPT. 1 for HAWAIIAN PORTS.

Freight received at Company's wharf, 42nd Street, South Brooklyn at all times. For further particulars, apply to C. P. MORSE, General Freight Agent. H. HACKFIELD & CO., Ltd. AGENTS, HONOLULU.

Business Men Can Save Many Hours



ACROSS THE CONTINENT FROM San Francisco-Portland THE TRAINS DAILY FROM SAN FRANCISCO. TWO TRAINS DAILY FROM PORTLAND.

Only THREE DAYS to Chicago. Only FOUR DAYS to New York. Pullman Palace Sleepers, Buffet, Smoking and Library Cars, with Barber Shop and Pleasant Reading Rooms. Dining Cars (Meals a-la-carte). Free Reclining Chairs. Pullman Ordinary Sleepers.

J. H. LOTHROP, General Agent, 135 Third Street, Portland, Oregon.

D. W. HITCHCOCK, General Agent, No. 1 Montgomery St., San Francisco.

E. L. LOMAX, G. P. & T. A., 1472 Omaha, Nebraska.

O. R. & L. Co. TIME TABLE

From and After January 1, 1899.

STATIONS.		DAILY TRAINS.	
Outward	Return	Outward	Return
San Francisco	San Francisco	San Francisco	San Francisco
Portland	Portland	Portland	Portland
Chicago	Chicago	Chicago	Chicago
New York	New York	New York	New York

G. C. SMITH, Gen'l Pass. & Ticket Agt. P. C. DENISON, Superintendent.

Wilder's Steamship Company

FREIGHT AND PASSENGERS FOR ISLAND PORTS.

Bruce Cartwright General Manager of THE EQUITABLE LIFE ASSURANCE SOCIETY Of the United States for the Hawaiian Islands. Office: Merchant St., Honolulu.

SEND YOUR BUSINESS ORDERS BY TELEGRAPH YOU CAN DO IT NOW

THE INTER-ISLAND TELEGRAPH COMPANY

Is transmitting messages to all the Islands of the group except Kauai. MINIMUM RATE IS 25.

Honolulu Office, 315 Fort St. Below Merchant. TBL., MAIN 131.

Messenger will call for your message if desired.

Hawaiian Tramway's Time Table.

KING STREET LINE.

Cars leave Waikiki for town at 5:45 A. M. and every 15 minutes thereafter till 10:15 P. M. Then at 10:45 P. M. and 11:15 P. M. Cars leave town for Waikiki at 6:15 A. M. and every 15 minutes thereafter till 10:15 P. M. Then at 10:45 P. M. and 11:15 P. M. Cars leave town for King streets corner for Waikiki at 6:45 A. M. and every 15 minutes thereafter till 10:15 P. M. Then at 10:45 P. M. and 11:15 P. M. Cars leave King streets corner for town at 6:15 A. M. and every 15 minutes thereafter till 10:15 P. M. Then at 10:45 P. M. and 11:15 P. M. Cars leave town for King streets corner for Waikiki at 6:45 A. M. and every 15 minutes thereafter till 10:15 P. M. Then at 10:45 P. M. and 11:15 P. M.

COLUMBIA WINS FAIR

Newport, R. I., Aug. 31.—The Columbia, splendidly handled, beat the Constitution today four minutes and nineteen seconds, corrected time, over a course of fifteen miles to windward and back in the first trial race to select the cup defender. The defeat was decisive, and admirers of the Constitution are at her wits' end to make apologies for her bad behavior. She was fresh from the Herreshoff shipyard, where her bottom was burnished until it glistened like plate glass in the sunlight. Her sails fluted her admirably, with the exception of the balloon jib topsail, which she set on the homeward track. Thus she had no drawback to act as a detriment to her speed. Moreover, Nat Herreshoff, her designer and builder, was aboard.

The Constitution was beaten fairly on her merits and unless she sails better on Monday and Wednesday the committee which has the matter in charge may decide upon selecting the Columbia to meet Shamrock II.

H. Hackfeld & Co., Ltd. General Commission Agents.

Cor. Fort and Queen Streets, Honolulu.

M. Phillips & Co.

Wholesale Importers and Jobbers. European and American Dry Goods. Fort and Queen Sts.

The Hawaiian Realty and Maturity Co., Ltd.

General Agents for—

The New Hampshire Fire Insurance Co. of Manchester, N. H.

ASSETS \$3,357,026 27

Dealers in Real Estate, Loans, Mortgages and Etc.

Office, 32 King St. Over Castle & Cooke's. Phone, Main 141. P. O. Box, 282.

INTERNATIONALSINGERS GLEEFUL WARBLER ON THE STEAMER DORIC

Tune of "Flanagan the Lodger" Turned to Account in a Song on General McArthur.

On the last trip of the steamer Doric from the Orient there was one of the jolliest lot of passengers aboard ever on the popular boat. During the long voyage, numerous ways for beguiling the monotony of the trip were invented and as nearly every amusement known on shipboard had been tried the proposition to have an international singing tourney was gladly received. There were Yankee traveling men some Britishers many Germans and a few Frenchmen in the cabin so they got to work to arrange matters. They could not all speak English but all managed to get along famously and with merry songs in many languages and bumpers of sparkling wine to help out the greater part of the voyage was spent with great pleasure. The aggregation of vocalists were known as the Gleeeful Warblers' Society. One song which it was necessary to know thoroughly before one could be taken into the organization was a ditty written by an officer of Uncle Sam's feet in the Orient having General Arthur MacArthur Governor General of the Philippines and his trials, as the subject.

The song has become very popular in Manila and Hongkong and has many verses made up as occasion demands. The air is the same as that of "Flanagan the Lodger"; the words of two verses and the chorus being as follows: Oh, I'm having some awful times since I came to the Philippines, I'd rather drive a hobbit car and live on pork and beans. I eble home to Washington and to myself I say—

Chorus— Oh, am I a boss or am I a fool? Am I governor general or a hobo? Oh, I'd like to know, Who's the boss of the show, Is it me or Emilio Aguinaldo?

Some say the trouble's at an end, I think it's just begun. The rebels are up at old Tarlac; Four men to every 200; I'd send the boys to turn them out. The rebels fade away, I eble home to Washington and to myself I say—

Chorus— Oh, am I a boss or am I a fool? Am I governor general or a hobo? Oh, I'd like to know, Who's the boss of the show, Is it me or Emilio Aguinaldo?

MARIPOSA GOES EARLY HAS MANY PASSENGERS

The Mariposa will sail for San Francisco tomorrow afternoon at 2 o'clock instead of at 5 o'clock as previously noted. It is agreed that by leaving this port two hours early the steamer will make port at San Francisco on Tuesday in time to land passengers and mail during the afternoon of that day. The vessel will be hustled along as fast as possible and should make the trip in a little over six days.

The passengers booked to sail in the vessel are as follows: A. Enos and son, Dr. C. F. Humphreys, Clement G. Smith, Miss L. A. Curtis, Miss Collins, M. E. Sturgeon, F. C. Baldwin, Rev. C. A. Hyde and child, Miss M. Reynolds, Miss F. Grimane, C. C. Kennedy and wife, Mrs. McQuade and wife, W. E. T. Neumann, E. M. Clark, Master Beckley, Miss H. E. Ormsby, Mrs. A. Ormsby, J. H. Estes, A. H. Wagner, Miss M. E. Hitchcock, J. S. Espy, W. J. Grimane, W. Thompson, A. Fries, R. E. Peake, C. I. Lewis, F. Whymman, M. Duffy, B. G. Holt, H. A. Spencer, H. K. Selby, C. W. Duxton, S. T. Alexander, C. A. De Cew, R. C. Brown, C. H. Johnson, G. Johnson, W. O. Smith, L. K. Smith, Mrs. McQuade, Miss McQuade, C. C. Hopkins, M. Rosenblatt, J. H. Schaeck, Juan Gerardy, A. H. Conby.

Case Falls Down.

Hawaiian Trust & Investment Co. vs. A. L. Barton and others came to an abrupt end before Judge Lattie. A motion for nonsuit was granted early yesterday afternoon on the ground that plaintiff had not proved title in itself and could only sue as trustee.

Corporation Notices.

CO-PARTNERSHIP NOTICE.

Notice is hereby given that the undersigned having on the first day of June, A. D. 1901, formed a co-partnership, under the name and style of WING HING CHAN, doing business at Anala Lane, Honolulu, Territory of Hawaii. The nature of said business being the buying and selling all kinds of Chinese and other groceries and merchandise.

YIM FAI, (Signed) CHU ON SANG, LANG NEE, CHEONG FAT, KONG LING, Honolulu, August 12th, 1901. 1926-31

MAUI HOTEL, WAILUKU, ISLAND OF MAUI.

A. T. HAGENKAMP, Manager.

Located in the Famous Coalinga Oil Fields of California.

Proven oil lands, completely surrounded by as rich oil-producing wells as there are in the State, yielding from 50 to 250 barrels per day.

Contract prices for oil at the Coalinga wells, 70 cents per barrel.

With twenty-five producing wells of 100 barrels each per day, you can make your own calculation as to profits.

The oil industry of California is in its infancy, yet many fortunes have been made by judicious and lucky investments in oil stock. Many more will be made in the near future.

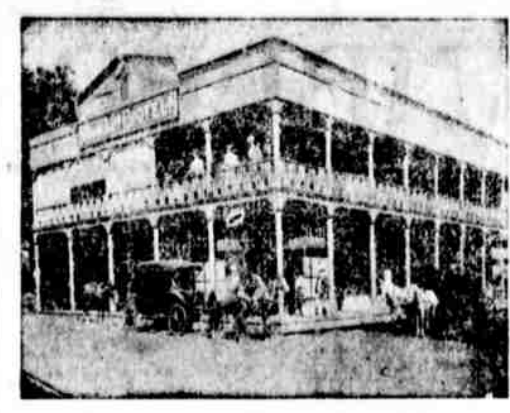
The average advance on original sales of oil stock in twenty leading companies in California has been from \$1 to \$108 per share.

Oil lands have advanced from \$1.25 to \$1,000 and \$2,000 per acre.

When the Pacific Union Oil Company has a number of producing wells on its property, its stock will have the same show for even a greater advance, as some oil stock has advanced from \$1 to \$1,500 per share.

The Pacific Union Oil Company has no salaried officers, and is controlled by well-known gentlemen of integrity, who will see that the money derived from the sale of stock will be legitimately applied to the development of its property.

For further information, apply to J. H. FISHER & CO., Stock and Bond Brokers, and Hawaiian agents for the sale of a limited amount of Pacific Union Oil Company stock, Stangenwald building, Merchant street, 1932-6mo.



At the entrance to the Famous Iao Valley, and easy access to Haleakala, the largest extinct volcano in the World.

Headquarters for Tourist and Commercial Travelers.

Commissioner's Sale OF Several Valuable Pieces OF REAL ESTATE AT AUCTION.

By virtue of an Order issued out of the Circuit Court of the First Judicial Circuit, Hon. George D. Gear, presiding, in a cause at Chambers entitled Adelaide Schief et al. versus Joseph Clarke et al., Equity Division, Number 1208, the undersigned will sell at Public Auction to the highest bidder, subject to confirmation by said Court,

ON SATURDAY, SEPT. 14, 1901, AT 12 O'CLOCK NOON,

At the mauka entrance to the Judiciary Building, in said Honolulu, Oahu, the following described lands and improvements thereon, to wit:

1. That certain piece or parcel of land situate on the N. E. corner of King and Punchbowl Streets, in Honolulu, Oahu, Territory of Hawaii, and bounded and described as follows: Commencing at North corner and running South 29° East 75 links along Keolu's; thence South 81° 30' West 389 links along Hanna Halliolo's; thence North 67° West 37 links along King Street; thence North 42° East 342 links along Punchbowl street; thence to place of commencement, area 1.5 acre. The same being R. P. 5795 of L. C. A. 247 to Honolulu, and being the same conveyed to the said Joseph Lazarus by Mrs. J. K. Effe and D. K. Effe, her husband, as per deed dated Nov. 2nd, 1882, and recorded in Liber 83, pages 194-195.
2. Royal Patent Grant Number 2596. That certain piece or parcel of land situate at the south slope of Punchbowl Hill, Honolulu, Island of Oahu, and described as follows: Lot No. 592. Beginning at a point on mauka side of Kinan Street and 290 ft. Westward from iron pin at West angle of Boardman's premises, thence the boundary runs by true bearings: N. 21° 12' E. 285 ft. along lots 503 and 505; S. 81° 31' W. 115 ft. along Lanihilo St.; S. 21° 12' W. 229 ft. along Lot 501; S. 68° 48' E. 109 ft. along Kinan St. to initial point. Area 25750 sq. ft.
3. Two lots No. 117 and No. 118 on Beretania Street, being lots or parcels of land described in Royal Patent No. 284, and described as follows: Commencing at the mauka South corner of Lot No. 116 (T. Metcalf's) and running South 78° 15' East 290 ft. along mauka street to West corner of Lot No. 119 (R. H. Rowlin's), thence North 11° 45' East 159 ft. along Lot No. 119 to its mauka North corner, thence North 78° 15' West 290 ft. to mauka E. corner of Lot No. 116, thence North 11° 45' West 159 ft. along Lot No. 116 to place of commencement.
4. That certain piece or parcel of land situate at the mauka corner of Punchbowl and Palace Walk Streets, in said Honolulu, described as follows: Apana 1. Commencing at a point on

Legal Notices.

Notice to Creditors.

The undersigned having been duly appointed Executor of the will of William C. Wilde, late of Honolulu, Oahu, deceased, hereby gives notice to all persons having claims against the estate of the said William C. Wilde, deceased, to present the same to her duly appointed and duly qualified executor, at any time, whether or not by mortgage or otherwise, at the office of George D. Gear, Esquire, at the corner of King and Punchbowl streets, Honolulu, within six months from date, or such claims will be barred.

Honolulu, August 10, 1901.

WILHELM WILHELM, Executor of the will of William C. Wilde, deceased.

IN THE CIRCUIT COURT OF THE FIRST CIRCUIT.

Island of Oahu, Territory of Hawaii. —at Chambers.

Order for Special Term.

Deeming it essential to the promotion of justice, I do order that a special term of the Circuit Court of the First Circuit be held in the Judiciary Building in Honolulu, commencing MONDAY, the 16th day of SEPTEMBER, A. D. 1901, at TEN of the clock in the forenoon of said day and continuing for the period provided by law.

Done at Chambers this 13th day of September, A. D. 1901.

Second Judge, Presiding.

The foregoing order is hereby approved. A. PERRY, Associate Justice of the Supreme Court of the Territory of Hawaii. Dated Sept. 4, 1901. 1925-Sept. 6, 7, 10, 12, 14.

Business Notices.

THE HAWAIIAN LABOR BUREAU

Will engage laborers in the Hawaiian Islands and furnish them to plantations, individuals, firms or corporations. Will undertake contract work and furnish experienced and reliable contractors. Orders promptly attended to.

Telephone 259 Main. P. O. box 577. Temporary office, Spreckels Building, Room 11, Fort street, Honolulu. 1924-1m

NOTICE.

All parties are hereby cautioned against negotiating Certificate No. 3223 for ten shares of Oahu Sugar Company, as the said shares are claimed by BISHOP & CO. 1 26-31

TO CURE A GOLD IN ONE DAY

Tate's Laxative Bromo Quinine Tablets. All druggists refund the money if it fails to cure. E. W. Grove's signature is on each box. 25 cents.

"Is that Mrs. Brown of Boston?" I dunno her name, but she's Boston bred." "Then she's brown of course." —Cleveland Plain Dealer.

WATERBURY'S GREAT CURE

This is a non-poisonous remedy for Gonorrhoea, Syphilis, and all other venereal diseases. It is a safe and reliable cure, and is sold by all druggists. Price, 50 cents per bottle. Waterbury's Great Cure, Waterbury, N. Y.

Everybody Wants 'em
Get Yours First!

RAMBLER

BICYCLES

100

AT

E. O. HALL & SON

COME - EARLY -
Don't Wait Till
they are all gone

F. A. Schaefer & Co.

Sole Agents

JOHN DEWAR & SONS, Ltd.



Appointed by Royal Warrant
Purveyors of Scotch Whiskey
to His Majesty, King Edward
VII.

Finest Extra Special Old
Highland Whiskey.

Large Consignment Just
Received.

Golden Rule BAZAAR

316 Fort Street.

BOOKS AND STATIONERY!

All the Latest Books—both
in cloth and paper bindings.
Largest stock of miscellane-
ous books in the Islands to
select from. Any book not
in stock will be procured on
short notice.

FINE SOCIETY STATIONERY
OUR SPECIALTY.

J. W. WEBB

New Rigs
New Horses

STOCK YARDS STABLES

We are now in the Automobile
Building and are prepared to turn
out the finest livery in town.

Boarders safe from fire, as
the building is FIRE-PROOF.

RING US UP!

Tel. Main 301

THIS SPACE RESERVED FOR
B BERGERSON.

John R. Bergstrom,
PIANO AND
ORGAN TUNER

Bergstrom Music Company
Telephone 391.

SHIPPING INTELLIGENCE

Weather Bureau, Honolulu, September 10.—Temperature—Morning minimum, 69; Midday maximum, 84. Barometer at 9 a. m. 30.00. Steady. Rainfall 0.00. Dew Point 66F. Humidity at 9 a. m. 61 per cent. Diamond Head Light Station, September 10.—Weather cloudy; wind light NE.

ARRIVED. SAILING TODAY. DEPARTED.

Monday, Sept. 9.
Schr. Malolo, for Hanalei and Kailua.
Schr. Concord, for Paaulo.
Str. Lehua, Napala, for Molokai.
Str. James, Makee, Tullett, for Ka-paa.

Tuesday, Sept. 10.
Str. J. A. Cummins, Searle, for Oahu ports.
Str. Kinan, Freeman, for Hilo and way ports.

SAILING THIS AFTERNOON.
Str. Claudine, Parker, for Maui ports, at 5 p. m.
Str. W. G. Hall, Thompson, for Kauai ports, 5 p. m.

Schr. Twilight, for Hilo at 5 p. m.
Str. Niihau, Thompson, for Anahola and Hanalei, at 5 p. m.
Schr. Eclipse, Townsend, for Kona ports at 3 p. m.

PASSENGERS DEPARTED.
For Hilo and way ports, per str. Kinan, September 10.—John Kaapua, F. P. Rosenkrans, wife and child; Miss E. Jones, Rev. S. Kamaala, Rev. J. Akina, O. W. Suffer, Maj. W. C. Purdy, Mrs. Medows, Mrs. M. Machado, M. P. Shepherd, W. A. Bailey, Mrs. K. Hall, D. Pundt, S. Am. Edgar Halstead, Frank Halstead, R. G. Henderson, H. Kendall, Miss Kate Woodward, E. P. Mabie, Lal Kahlbaum, H. Haneberg, W. H. Greenwell, D. B. Macdonald, A. Almslee, H. S. Gray, Mrs. E. W. Fuller, F. A. Horne, John Silva, W. H. Burdick, F. Ganzes, J. H. Robertson, J. G. Dawson, Miss S. Mahelona, Miss B. K. Manlum.

PASSENGERS BOOKED.
For Maui ports, per str. Claudine, September 10.—Maria Pukoi, Mrs. H. Kolomoku, Mrs. A. T. Hagenkamp, Mrs. L. Joseph, John Kamanuwal, E. L. Cutting, R. B. C. Urub, J. M. Koko, Teng Wong, C. Yakan, Mrs. C. H. Jennings, A. Sinclair, J. W. Robertson, Rev. J. E. Kikipi, S. N. Laku, Miss H. Akuna, Miss M. E. Alexander, Miss E. Coolege, Miss K. Burgnier.

CHINESE BRING SUIT.

Wong Quai, Wong Chow, Lum Gow and Wong Mung have brought suit against Kum Chong, Ah Nang, Ah Hee and Ah Po for damages alleged to have been done by the defendants to the property of the plaintiffs in Palolo valley during the months of June, July, August and September of this year. The plaintiffs claim they have been damaged in the sum of \$1000 in that the defendants have, at various times, wantonly and oppressively and with force and arms appropriated water belonging to them and by ancient custom to the lands mentioned.

The same plaintiffs have brought a like suit for the same amount against A. P. Cooke and Loo Chit Sang. The complaint is the same. Kinney, Ballou & McClanahan for the plaintiffs.

Bellina On Deck Again.

As was stated in the Bulletin yesterday, Charles Bellina is now the manager of the Club Stables Co. This was settled on at a meeting held yesterday afternoon. The men who purchased the stock that gives the control into their hands are Charles Bellina and H. H. Perry. These men now hold 252 shares between them, a controlling amount. Mr. Bellina will be assisted in his duties as manager by his brother, W. E. Bellina. Perry will have charge of the Kukui street stables. At the meeting yesterday afternoon, the following officers were elected: President P. R. Isenberg; vice president, C. H. Bellina; treasurer, C. Bolte; secretary, W. E. Bellina; auditor, H. H. Perry.

NEW TO-DAY

THE HAWAIIAN LABOR BUREAU will engage laborers in the Hawaiian Islands and furnish them to plantations, individuals, firms or corporations. Will undertake contract work and furnish experienced and reliable contractors. Orders promptly attended.

Telephone 230 Main. P. O. box 877. Office room 207, Judd building, Fort street, Honolulu.

Notice to Creditors.

THE UNDERSIGNED, W. K. AZBELL, hereby gives notice that he has been appointed administrator of the estate of Charles Roesch, late of Honolulu, deceased. All creditors of said deceased are notified to present their claims duly authenticated and with proper vouchers if any exist, whether secured by mortgage or otherwise, at the Queen Hotel, in Honolulu, within six months from this date, or they will be forever barred, and all persons indebted to said estate of Charles Roesch are requested to make immediate payment to the undersigned.

W. K. AZBELL,
Administrator of Charles Roesch, deceased.
Honolulu, Sept. 10, 1901. 1928-31

Honolulu Rapid Transit and Land Company.

School Children's Tickets

Half-fare school children's tickets may be purchased from the conductors on the cars, or at the company's office in Alapai street. These will be good for the transportation of school children up to 17 years of age in going to and coming from school, between the hours of 7:30 and 9:30 a. m., and 1 and 2:30 p. m. on regular school days.

C. C. Ballentyne,
Manager, H. R. T. & L. Co.



Seems - Strange

THAT WE SHOULD BUY MORE

Wash Skirts

when we already had the completest stock in town. Yet if you knew the inner history of this purchase the wonder would cease. It was one of those ONCE-IN-A-SEASON CHANCES, that brook not a moments hesitation, much less refusal. Indeed, had we not accepted at sight, would we not have been traitors to our interests?

If you have use for one more summer skirt, these invite your inspection. Every skirt absolutely perfect. Styles the latest; some plain; some with elaborate trimmings; some with flares and flounces. There are all these materials—these good materials—Coverts, Denims, Crashes, Linens, Khakis and Fiques. And prices to suit all purses.

Whitney & Marsh, LIMITED.

FROM
50c to 5.00

WANTS.

Ads. in this column will be inserted at 15 cents a line one insertion; 25 cents two insertions; 30 cents one week; 40 cents two weeks, and 60 cents one month. This is the cheapest advertising ever offered the people of Honolulu.

SPECIAL NOTICES.

GET OUR PRICES on billiard and pool tables before buying elsewhere; sold on easy payments. Our cushions are guaranteed for twenty years, and are made by a new vulcanizing process. Old tables fitted with our cushions are as good as new; satisfaction guaranteed or money refunded. See our advertisement of "Manager Wanted" for lawlul slot machine, Palmer Billiard Table Works, Chicago, Ills. 1937-2m

MRS. HORTON having returned from her visit to the Coast, will resume Pianoforte Tuition Wednesday, September 11. Residence, 54 Vineyard St. 1937-1m

REDHOUSE—The Watchmaker, is located at 115 Alakea St. Special attention given to fine watch repairing. 1918-1m

IF YOU HAVE a house for rent or want to rent a house, see A. R. BINDT. Collections carefully attended to and promptly remitted. Office 115 Kaahumanu street. 1937-1f

NOTICE—The grounds of the Alexander Young building, and the private street to be known as Bishop street, are closed to the public until further notice.

(Signed) WM. MITCH, 1878-3m Supt. Alex. Young Bldg.

NOTICE TO BUILDERS—The Union Express Co. has WHITE SAND FOR SALE. 1543-1f

WANTED.

MANAGER WANTED in every large county to appoint agents for the famous "Game of Skill" nickel slot machine for drinks or cigars; lawlul everywhere; takes place of all forbidden slot machines. Rented or sold on easy payments. Secure territory quick. Palmer Billiard Table Works, Chicago, Ills. 1937-2m

WANTED—Young lady stenographer to act also as cashier; must be good at figures. Address Postoffice Box 497. 1935-1w

WANTED—Two or three rooms for light housekeeping, furnished or unfurnished. American couple, no children. Address D. P. O. Box 454. 1933-1w

WANTED—A position as bookkeeper by lady with fifteen years' experience. Address A. C. A. E. Postoffice box 231. 1932-2w

WANTED—To sell Diamond and Opal Rings, in the latest styles. Watches repaired by a Jeweler of 35 years' experience. G. DIETZ, Fort street, near Hotel. 1808-1f

ROOM AND BOARD.

ROOMS AND BOARD—Newly and nicely furnished mosquito proof, electric lights, also best table board; terms reasonable; Hotel's Court, adjoining Elite building, on Adam's lane, off Hotel street. Telephone White 2461. 1915-1m

TO LET.

TO LET—Furnished room, \$5 per mo. Third room furnished, only \$14. 53 Vineyard St. 1937-1f

TO LET—Two front rooms. No. 9 Garden lane. 1880-1f

TO LET—One furnished room, mosquito proof; No. 2 King Place, off Beretania. 1936-1w

TO LET—One large furnished room for two, mosquito proof, electric light, adjoining bath room, good location on car lines. Address O. Bulletin office. 1934-1w

TO LET—House at present occupied by Mrs. D. Center, Young street extension near McCully tract. Apply E. P. Bishop, C. Brewer & Co., Queen St. 1932-1f

TO LET—Newly furnished rooms, mosquito proof, terms reasonable. Third house above German Bakery, Fort St. 1930-1f

FOR RENT—One-half of store in Lincoln block, 176 King street. H. E. Hendricks. 1935-1w

FOR RENT—Furnished and unfurnished rooms, Fort street, corner Vineyard, upstairs. Mrs. J. F. Scott. 1935-1w

FOR RENT—One four room cottage, with one 2-room cottage adjoining on Peterson lane, Palama. Address M. F. P. this office. 1934-1w

OFFICES FOR RENT—In Brewer building, Queen St., on reasonable terms. Apply to C. Brewer & Co., Ltd. 1861-3m

WANTS.

TO LET.

TO RENT—Residence of Dr. J. S. McGrew, cor. of Beretania and Richard Sts., suitable for doctor's office or private residence. Apply to Dr. J. S. McGrew, Lumallo, cor. Hackfeld, or J. T. McGrew, Bishop Bldg. 1937-1f

FOR RENT—Nicely furnished five-room cottage on Vineyard St., between Emma and Punchbowl. Address P. O. Box 612. 1928-1f

TO RENT—A mosquito proof room, five minutes' walk from tramcar in cool district; board if required; telephone service. Address "E." Bulletin office. 1925-1f

FOR RENT—A new house on Arrian St., of six rooms with all modern improvements. Enquire of Chas. E. Frasher, Consolidated Soda Works. 1922-1f

FOR RENT—Two (2) story houses at Kelaulike-pa, on Young St., containing two bedrooms, parlor, dining-room, kitchen, bath room and patent water closet downstairs. Kapulani Estate, Ltd. 1921-1f

IF YOU HAVE a house for rent, or want to rent a house, call on A. R. BINDT, office with Guide Publishing Co., Campbell block, Merchant St. Telephone Main 374. 1847-1f

FOR SALE.

FOR SALE—Steinway parlor grand piano; perfect condition. Call on Will E. Fisher. 1938-1f

FURNITURE—For sale, furniture of 5-room cottage (new) with privilege of renting cottage at \$17 per month. Call No. 325 Marion St. 1938-1f

FOR SALE—New and second-hand Smith Premier typewriters for sale or rent. All makes repaired. Wasington Light Co. 1933-1m

FOR SALE—Furniture and lease of a 13-room house in good location. Inquire 59 Beretania St., between Fort and Nuuanu Sts. 1925-1f

FOR SALE—Lot in McCully tract, 190x90, \$2,200; three lots in Kapulani, 19,000 square feet, \$1,100; lot on Beretania St., 150x50, Judd & Co., Ltd. Office No. 307 Stangenwald building; telephone Main 223; P. O. Box 667. 1919-1f

STEAM LAUNCH FOR SALE—The "Tajula," as she now lies in the harbor. She is a nearly new boat, to perfect working order, and has been of late used in towing at Kahului harbor. W. H. Pain. 1895-1f

FRESH STRAW—The Union Express Co. has a lot of fresh rice straw for sale. 1931-1f

FOR LEASE.

FOR LEASE—Large warehouse on Queen St. Apply Campbell block, room 38. 1927-2w

FOR LEASE—Premises on Union St., with a frontage of 242 feet and a depth of 70 feet. Long term given without onerous conditions. Apply to J. M. ONSARRAT, Rooms 20-21, Campbell block. 1925-1f

LOST.

LOST—If the young lady, who, by mistake or otherwise, took away from Progress Hall last SATURDAY evening a white cashmere, blue satin-lined cape, with white swansdown edging, will return it to the Bulletin office, she will confer a favor. 1932-1f

FOUND.

THE WOMAN that found silver ring, with blue set in water near stone wall below quarantine station, return to this office and receive liberal reward. 1937-2f

Will Teach French.

Madame d'Alligny of Paris, wife of C. Schoellkopf, lessee of the Royal Hawaiian tontorial parlors, who lately arrived from the Mainland, will, on October 1, open up a class for the teaching of the French language, at her home on the continuation of Hotel street formerly known as Printers lane. In addition to teaching the French language Mrs. Schoellkopf is a thorough musician and has already established a class of pupils. On the Mainland at such places as Eureka, Blue Lakes, etc., she was an instructor in French. Contrary to many teachers of the French language, the lady in question has perfect command of English.

The Bulletin, 75 cents per month.

Jas. F. Morgan

AUCTIONEER AND
BROKER

85 Queen Street

Auction Sale

Household - Furniture

ON THURSDAY, SEPT. 12,
AT 10 O'CLOCK A. M.,

At my salesroom, 65 Queen street, I will sell at Public Auction a choice selection of household furniture, consisting of beds, bureaus, washstands, chairs, sideboard, extension dining table, wardrobe, pictures, mirrors, no rugs, fine roller top office desk and chair, two bicycles, etc., etc.

Jas. F. Morgan,
AUCTIONEER.

Auction Sale

FERNS AND PLANTS

ON THURSDAY, SEPT. 12th,
AT 10 O'CLOCK A. M.,

At my salesroom, 65 Queen street, I will sell at Public Auction a large number of choice ferns, palms and plants.

JAS. F. MORGAN,
AUCTIONEER.

No More Dread OF THE Dental Chair

TEETH EXTRACTED AND FILLED ABSOLUTELY WITHOUT PAIN by our late scientific method applied to the gums. No sleep-producing agents or cocaine.

These are the only dental parlors in Honolulu having PATENTED APPLIANCES and ingredients to extract, fill and apply gold crowns and porcelain crowns undetectable from natural teeth and warranted for ten years, WITHOUT THE LEAST PAIN. All work done by GRADUATED DENTISTS of from 12 to 20 years' experience, and each department in charge of a Specialist. Give us a call, and you will find us to do exactly as we advertise. We will tell you in advance exactly what your work will cost by a FREE EXAMINATION.

Get Teeth.....\$5.00
Gold Crowns.....\$5.00
Gold Fillings.....\$1.00
Silver Fillings......60c



Our name alone will be a guarantee that your work will be of the best.
New York Dental Parlors,
Room 4, Elite Building, Hotel Street.
LADIES IN ATTENDANCE.