

The Daily Bulletin.

VOL. XIV.—No. 2421.

HONOLULU, H. I., FRIDAY EVENING, DECEMBER 6, 1889.

SUBSCRIPTION 50 CENTS PER MONTH

THE DAILY BULLETIN

Is printed and published at the office, Queen Street, Honolulu, H. I., every afternoon (Sundays excepted).

Subscription, 50 cents per month.

Address all Communications DAILY BULLETIN.

Advertisements, to ensure insertion, should be handed in before one o'clock P. M.

WALTER HILL, Editor and Proprietor

Bulletin Steam Printing Office. Newspaper, Book and Job Printing of all kinds done on the most favorable terms.

Telephone, No. 256

THE DAILY BULLETIN Weekly Summary.

An interesting and comprehensive publication, contains 32 columns of reading matter on local topics, and a complete resume of Honolulu and Island News. It is the best paper published in the Kingdom to send to friends abroad.

Subscriptions: Island \$4.00 year Foreign 5.00

COMMISSION MERCHANTS.

H. HACKFELD & Co.
General Commission Agents.
HONOLULU

G. W. MACFARLANE & Co.
IMPORTERS AND COMMISSION MERCHANTS.
Queen street, Honolulu, H. I. 1843

GONSALVES & CO.,

Wholesale Grocers & Wine Merchants
Beaver Block, Honolulu.

C. BREWER & COMPANY,
(Limited).
GENERAL MERCHANTS AND COMMISSION AGENTS

LIST OF OFFICERS:
P. C. JONES, Jr., President & Manager
J. O. CARTER, Treasurer & Secretary

DIRECTORS:
Hon. C. R. BISHOP, S. C. ALLEN,
H. WATERHOUSE, 365 1/2

JOHN T. WATERHOUSE,

Importer and Dealer in General Merchandise, Queen st., Honolulu. 1

B. N. Castle, J. B. Atherton, G. P. Castle
CASTLE & COOKS,
Shipping and Commission Merchants. Importers and Dealers in General Merchandise, No. 50 King st., Honolulu. 1

Class agencies. Wm. G. Irwin.

W. G. IRWIN & COMPANY,

Sugar, Factors and Commission agents, Honolulu. 1

WILDER & CO.,
Dealers in Lumber, Paints, Oils, Nails, Sails, and Building Materials of every kind, cor. Fort and Queen streets, Honolulu. 1

Lowers, F. J. Lowrey, C. M. Cooke.
L. EWERS & COOKS,
(successors to Lowers & Dickson), Importers and Dealers in Lumber and all kinds of Building Materials, Fort street, Honolulu. 1

Pioneer Shirt Factory

104 Fort St., Upstairs.

The undersigned begs to inform the public of these Islands that he is making shirts by measurement in directions for self-measurement will be given on application.

White Shirts, Overshirts & Night Gowns

A fit guarantee by making a sample shirt to every order.

Island order solicited—Bell Telephone 410

661y A. M. WELLS.

H. G. CRABBE,

DEALER IN HAY and GRAIN,

51 King Street, opposite the Old Station House.

Mutual Telephone No. 4

87 1/2

A. H. RASEMANN,

Book-binder, Paper-ruler & Blank-book Manufacturer.

No. — Merchant street. Up stairs.

oct-1-89-ly

Professionals.

J. M. MONSARRAT,
Attorney at Law & Notary Public
149 Merchant Street, Honolulu. 1/2

J. ALFRED MAGOON,
Attorney at Law & Notary Public
173 42 Merchant street, Honolulu. 1y

David Dayton

Will practice in the lower courts of the Kingdom as attorney, attend to collect in all its branches, renting of houses and any other business entrusted to him
Office—91 King Street—Upstairs.
Feb-5-89

PIONEER

STEAM CANDY FACTORY

AND BAKERY.

F. HORN, Practical Confectioner,
Pastry Cook and Baker.
71 Hotel St. Telephone 74.

HOLLISTER & CO.,

Druggists & Tobacconists

WHOLESALE AND RETAIL,

109 Fort Street, William's Block,
215 Honolulu, H. I.

H. M. BENSON, G. W. SMITH.

BENSON, SMITH & CO.,

Manufacturing and Dispensing

Pharmacists,

118 & 116 Fort Street, Honolulu
Depot for Boerick & Spenck's

HOMOEOPATHIC MEDICINES,

Rick-ecker's Perfumes and Toilet Requisites, 12y

WENNER & CO.

Manufacturing Jewellers,

NO. 92 FORT STREET.
Constantly on hand a large assortment of every description of Jewelry, Watches and Silver Plated Ware, &c.
968 1/2

Thomas Lindsay,

Manufacturing Jeweler & Watchmaker

Kukui Jewelry a Specialty.
King Street, Honolulu, H. I.

Next door to the Hawaiian Tramway Company's Office.

Particular attention paid to all kinds of repairs
Jan-19-89

BEAVER SALOON

The Best Lunch in Town,
Tea and Coffee at All Hours

The Finest Brand of

Cigars, Tobacco

Always on Hand.

H. J. NOLTE, Proprietor.

Hustace & Robertson,

DRAYMEN.

All orders for Carriage promptly at all times. Particular attention paid to the

Storing & Shipping

of goods in transit to the other Islands.

Also, Black and White Sand in quantities to suit at lowest prices.

Office, next door to Jas. F. Morgan's auction room.

982 1/2 Mutual Telephone No. 19.

J. N. S. WILLIAMS,

Engineer & Contractor,

Is prepared to design and contract for all classes of Sugar Extraction Machinery, Irrigating Machinery, Evaporating Apparatus, Vacuum Pans, Engine of all kinds and for all purposes, Water Wheels, Water Conduits, 1 inch pipes and flumes, Steam Boilers of various kinds, Railroad Material and rolling stock, &c.

DIFFUSION MACHINERY.

In all its branches a specialty.

Plantations supplied with Chemical and Analytical apparatus of the very best description to order.

Close attention paid to all orders and satisfaction to the purchaser guaranteed. P. O. Box 380, Fort street, Honolulu.

sept-8-89-ly

New Goods! -- Latest Novelties!

NOW OPEN AT THE

POPULAR MILLINERY HOUSE,

104 Fort Street, Honolulu,

N. S. SACHS, PROPRIETOR.

Latest Novelties in fine Millinery Goods

We are now showing the LATEST STYLE TRIMMED HATS and BONNETS. Showing the latest combinations and new style of trimmings. Choice assortment of

Fine Flowers, New Ribbons, New Birds, Wings & Eglettes!

Immense assortment of ELEGANT PLUMES and FANCY TIPS. A choice assortment of CHILDREN'S TRIMMED HATS.

Our Dress Goods Department is Complete!

We are now exhibiting the LATEST FABRICS IN WOOL and MIXED SUITINGS, in stripes, solid colors and fancy plaids.

New Combination Suits and Box Dresses!

In wool, silk mixed and wash materials. LATEST STYLE INDIA DRAPERIES. The very latest is

The Fisherman's Net! The Fisherman's Net!

We have it in light blue, cream, leghorn, pink, cardinal and black. NEW LAWN TENNIS FLANNELS.

SHAWLS

Immense variety and latest style. FRINGED MOHAIR SHAWLS and SCARF SHAWLS, in cream, pink, baby blue and cardinal. SASH RIBBONS and SURRAH SASHES immense assortment in all colors.

INFANT CLOAKS! INFANT CLOAKS!

Long and short Cloaks in white, cream and tan color.

Handkerchiefs, Handkerchiefs,

In this line we are enabled to offer special bargains, we have an immense variety, and all bought less than the regular prices.

WHITE & COLORED EMBROIDERED HANDKERCHIEFS!

DRAWNWORK HANDKERCHIEFS, INITIAL HANDKERCHIEFS, FANCY SILK HANDKERCHIEFS, all at bargain prices.

STAMPED GOODS STAMPED

Immense variety! Latest designs! STAMPED SPLASHERS, SIDEBOARD SCARFS, TRAY COVERS, PLATE COVERS, TIDIES, DOYLIES, Etc. Also, STAMPED LAUNDRY BAGS, DUST BAGS, BUTTON BAGS.

TOILET & NEWSPAPER HOLDERS.

LINEN FLOSS in all colors. INSPECTION SOLICITED.



Meat Company

31 KING STREET,

G. J. WALLER, - - Manager

Wholesale & Retail Butchers

NAVY CONTRACTORS.

1717 1/2

Choicest Mutton!

Beef, Pork,

Fish, Vegetables, &c., &c.

Always on hand at the

HONOLULU MARKET

(Successors to Wm. McCandless),

No. 6 Queen St. : Fish Market.

Honolulu, H. I.

Family and Shipping Orders carefully attended to. Live Stock furnished to vessels at short notice. my 17-88

JOS. TINKER,

BUTCHER.

City Market,

Nuuanu Street.

Beef, Veal,

Lamb, Mutton, & Pork.

Cambridge Pork Sausages!

Fresh Every Day.

His noted Sausages are made by the very best machinery, and all orders entrusted to his care will be delivered with promptness and dispatch, and his prices are as low as anywhere in the city.

Try his Bologna Sausages. oct-8-88

H. E. MCINTYRE & BRO.,

IMPORTERS AND DEALERS IN

Groceries, Provisions and Feed,

EAST CORNER FORT AND KING STREETS.

New Goods received by every Packet from the Eastern States and Europe

fresh California Produce by every Steamer. All orders faithfully attended to and Goods delivered to any part of the city free of charge. Island orders solicited. Satisfaction guaranteed. Post Office Box 145, Telephone No. 92 [nov-4-85]

Telephone 240. P. O. Box 297.

LEWIS & CO., 111 Fort Street,

HONOLULU, H. I.,

IMPORTERS, WHOLESALE & RETAIL DEALERS IN GROCERIES & PROVISIONS.

ON ICE

By each steamer of the O. S. S. Co. from California

Fresh Cal. Roll Butter, Frozen Oysters & Fresh Cal. Fruits,

Fish, Game, Vegetables, Etc., Etc.

A complete line of Crosse & Blackwell's & J. T. Morton's Canned & Bottled Goods

Always on hand. Also, just received a fresh line of

German Pates & Potted Meats & Bottled Preserved Fruits,

Lewis & Co.'s Maltose Brand Sugar Cured Ham & Bacon,

New Breakfast Cereals, Cream Oat Flakes & Cream Wheat Flakes,

Slightly Lemons & Cal. Riverside Oranges,

Oregon Burbank Potatoes, etc., etc., Etc.

ap-16] Satisfaction Guaranteed. [87

Chas. Hustace, King Street,

HAS RECEIVED per "AUSTRALIA,"

Kits Tongues & Sounds, Kits Salmon Bellies, Mackerel, Smoked Beef, Block

Codfish, Hams & Bacon, Cheese, Libby's Compressed Pig's Feet, smoked

Herrings, German Sausages, Lunch Tongues, Boned Chicken, Brawn, Fresh

Apples, Yellow Turnips, Potatoes, Onions, Table Fruits, Raisins, Dried Apples,

Fruits, Dried Peaches, Cal. Jams & Jellies in glass, French Pies &

Mushrooms, Sardines, Top O'Can Butter, Whitney's Butter in 1 and 2 lb

tins, Desiccated Coconut, Dates,

A FULL LINE OF PETALUMA JARS TABLE FRUITS,

Condensed Milk, Plum Pudding, Gelatine, Almonds, Walnuts, Jars Table

Prunes, Golden Gate, Extra Family Flour, Japan Tea, Comet Tea, Maple

Syrup, Citron Peel, Pearline, Sapollo, Star of the Kitchen Soap, Caviar, Ham

Sausages, Vienna Sausages, N. Z. Mullet, Curried Fowl, Glams, Chocolate,

Cocoathets, Ridges' Food, Imperial Granum, Farina, Mushroom Catsup,

Dusset's Olive Oil, Sauces, Salad Dressing.

And a Complete Assortment of Choice Goods at Lowest Prices

ENTERPRISE

PLANING MILL.

Alakea, near Queen St.

Telephone 55.

WALKER & REDWARD,

Contractors & Builders.

Brick, Stone and Wooden Buildings; estimates given. Jobbing promptly attended to. 76 King street. Bell Telephone No. 2. P. O. Box, 455. ap-8-ly

GEORGE LUCAN,

Contractor and Builder.

Honolulu Steam Planing Mills, sapinade, Honolulu.

Manufactures all kinds of Mouldings, Brackets, Window Frames, Blinds,

Sashes, Doors, and all kinds of Wood-work finish. Turning, Scroll and Band

Sawing. All kinds of Sawing and Planing, Moulding and Tenoning.

Orders promptly attended to and work guaranteed. Orders from the other islands solicited.

HONOLULU IRON WORKS,

Steam engines, sugar mills, boilers, coolers; iron, brass and lead castings; machinery of every description made to order. Particular attention paid to ship's black smithing. Job work executed at short notice. 1

J. E. BROWN & CO.,

28 Merchant St., Honolulu, H. I.

COMMISSION MERCHANTS

ACCOUNTANTS,

Conveyancers & General Agents

REAL ESTATE FACTORS & COLLECTORS.

Sole Agents for the Burlington Route Across America, and to the Azores.

Sole Agents for Pitt & Scott's Foreign Parcel Express & General Shipping Agency.

Sole Agents for Atlantic Rubber Stamp Company

Sole Agents for Masfield Bros' New Zealand Mullet and Canned Goods.

Special Agents for Leading New Zealand and Australian Mercantile Firms.

Special Agents for the California Land Association.

Special Agents for the Honolulu Business Directory.

Also, Other Special Agencies.

Customs' Entries Passed. Pro

perties Managed. Assignees and Auditors' Work done promptly. Houses Leased and Rents Collected.

New Business Solicited

Bell Tele. No. 172—Mutual Tele. No. 360. Dec-5] Post Office Box 469. [88-ly

F. O. Box 231. Bell Tele. 274.

Hawaiian Business Agency

Corner Fort & Merchant Streets, Honolulu, H. I.

GENERAL AGENTS,

Accountants & Collectors

FOR THE—

Hawaiian Bell Telephone Co.

Manager of Advertising Department

FOR THE—

"Nupepa Kuokoa."

DEPARTMENTS of BUSINESS:

Collections will receive special attention and returns promptly made.

Real Estate bought, sold and leased.

Taxes Paid and property safely insured Houses, Cottages, Rooms and Offices, leased and rented, and rents collected.

Fire and Life Insurance effected in first class Insurance Companies.

Conveyancing a Specialty—Records searched and correct Abstracts of Title furnished.

Legal Documents and Papers of every description carefully drawn and hand-somely engrossed.

Copying and Translating in all languages in general use in this Kingdom.

Custom House Business transacted with accuracy and dispatch.

Loans negotiated at favorable rates.

Gold, Silver and Certificates bought and sold.

Advertisements and Subscriptions solicited for publishers.

Skilled and Unskilled Labor furnished. Any Article purchased or sold.

Inter-Island Orders will receive particular attention.

To Let, Furnished and Unfurnished Cottages in desirable localities at reasonable rental.

Several Valuable Properties in and around the city now for sale and lease on easy terms.

All business entrusted to our care will receive prompt and faithful attention at moderate charges. Feb-4-89

NEW YORK

Life Insurance

COMPANY.

Assets, : : \$95,000,000.00

"Facts are Stubborn Things."

At every age, on every premium table, and in every year, the ACTUAL RESULTS of Tontine Policies of the New York Life Insurance Co. have been LARGER than those OF ANY OTHER COMPANY issuing similar policies.

For particulars apply to

C. O.

THE Daily Bulletin

Pledged to neither Sect nor Party, But established for the benefit of all.

FRIDAY, DEC. 6, 1889.

THE MEN WE WANT.

The time of the biennial elections is approaching. The first Wednesday of February is the day specified by law for the choosing of the members for the Legislature of the kingdom...

Measures are what make or break a country, and men are the authors of measures. Measures are wanted, and so are men—men of measures.

It is of prime and fundamental importance in a country of mixed population and diversified interests, like this, that laws should be constructed and the Government conducted on a broad and liberal basis...

Nor is this enough. Honesty and earnestness may be allied with ignorance and stupidity. Knowledge and ability must be added to the qualifications already named.

There are certain weighty propositions that were made prominent at the last election which need reviving, re-affirming, and re-adopting at the coming election.

Hawaii is competent to manage her own affairs—is fully capable of self-government—is just as able to do her own business as any other country is to do it for her, and a trifle abler.

Economy in disbursing the public funds is a matter of which every member should have a correct understanding, as well as a determined will to enforce.

law. A correct understanding of what is meant by economy in the use of the public funds implies a clear perception in regard to the proper objects of its expenditure...

There are also new measures which the condition and requirements of the country call for, some of which have been publicly discussed and others that have had but little attention.

Now, if the people want sound, just, and beneficial measures, let them in their political organizations nominate, and at the polls vote for, only those men whom they have good reason to believe are willing and able to produce such measures.

ANNUAL MEETING. THE adjourned annual meeting of the Woodlawn Dairy & Stock Co. (Ltd.) will be held at the office of the Secretary, W. O. Smith, Fort street, on FRIDAY, December 6, 1889, at 2 o'clock P. M.

TO LET. ROOMS—Furnished or Unfurnished, at No. 35 Emma street. No children, 40c if.

House & Lot For Sale. I WILL sell or lease my Dwelling House and Lot at reasonable terms. For further particulars apply to RAYMOND REYES, At Waterhouse's Queen-st. store, Kalihī Waena, Dec 3, 1889. 419 1/2

House & Lot For Sale. A LOT and Cottage situated on the banks of St. Louis College. Also, 1 back, harness and 2 horses. For particulars apply to SAMUEL KANOE, 418 2/2

A LONG felt want supplied! Now open the largest, coolest, free from the moistening flies, airy and most comfortable Ice Cream Parlor in Honolulu, where families or parties to the number of 30 persons can quietly and undisturbedly enjoy a plate of F. Hox's delicious pure Ice Cream with cake and other delicacies in the line of confectionery and pastries of home manufacture.

AT THE Pioneer Steam Candy Factory, Bakery & Ice Cream Parlors, established 1808, pure, rich and fine flavored Ice Cream will from this day be kept and served from Porcelain lined Ice Cream Containers, procured at great expense, which will retain the natural fine flavor of good Ice Cream and avoiding the injurious metallic taste imparted to ice cream if kept in tin lined cans after the freezing process is completed.

Auction Sales by James F. Morgan.

Imported Gelding AT AUCTION. On SATURDAY, Dec. 7th, AT 11 O'CLOCK A. M. At my Sale-room, Queen street, I will sell at Public Auction,

1 Imported BLACK GELDING, (Woodnut Stock); 5 Years Old. Broken to Single and Double Harness.

Regular Cash Sale! On SATURDAY, Dec. 7th, AT 10 O'CLOCK A. M. At my Sale-room, Queen street, I will sell at Public Auction,

DRY GOODS! Clothing, Groceries, Household Furniture, CROCKERY and GLASSWARE,

GENUINE CUT-GLASS! A few pieces of this Handsome Ware FOR SALE BY THE Hawaiian Hardware Co., Fort Street, Honolulu, 416 1/2

W. G. FISCHER'S Famous Grand Active & Golden Anvil WROUGHT STEEL Cooking-Ranges WITH Broiler and Hot Water Attachments!

CREDIT SALE ON LIBERAL TERMS! I am instructed by Messrs THEO. H. DAVIES & Co. to sell at Public Auction at my Sale-rooms, corner of Fort and Queen streets,

TAILOR'S GOODS! Including—Tweeds, Cashmeres, Diagonals, Short Lengths of Fine Goods for Suits, Etc., Etc.

CROCKERY, SADDLERY, GROCERIES, HARDWARE! Including—Sauce Pans, Fry Pans, Kettles, Tin Ware, Etc., Etc.

Reversible Grates! This Grate is of a triangular form, having three surfaces which are reversible, so that a separate top surface can be used on alternate days; or if the one surface in course of use shows any wear then the other can be turned up, and so on the other, making it equal in durability to three distinct Grates.

Hawaiian Hardware Co., Fort Street, Honolulu, 416 1/2

Dr. M. E. GROSSMAN, DENTIST, 101 FORT STREET. OFFICE HOURS: 9 A. M. to 12 M. and 7 P. M. to 10 P. M.

LEWIS J. LEVEY, REAL ESTATE AND GENERAL AUCTIONEER. EVENING Auction Sale!

Under instructions from Messrs G. W. MACFARLANE & Co., I will offer for sale at my Sale-rooms on next Saturday Evening, Dec. 7th, AT 7 O'CLOCK.

FINEST DOUBLE Axminster Parquet Rugs! All sizes. Also, Mecca, Persian, Tanjoro & Khyber Rugs, Of Latest Oriental Patterns and Colors.

Sets Silver & Gold Spoons. Napkin Rings, Gold & Silver Watches, Rings, Etc., Etc.

French Bronzes, Bi-que & Bronze Statuary, Chariot Figures of Chaste and Artistic Patterns.

Fairy Lamps, Flower Stands, Center Pieces, Flower Pots, newest styles. Oil Paintings, Gravure Prints, Etc., Etc., Etc.

Worcester & Doulton Ware, Of most exquisite shapes and designs, selected within the last two months from the leading London dealers in this most beautiful Ware.

GENUINE ROYAL CREDIT SALE ON LIBERAL TERMS! I am instructed by Messrs THEO. H. DAVIES & Co. to sell at Public Auction at my Sale-rooms, corner of Fort and Queen streets,

TAILOR'S GOODS! Including—Tweeds, Cashmeres, Diagonals, Short Lengths of Fine Goods for Suits, Etc., Etc.

CROCKERY, SADDLERY, GROCERIES, HARDWARE! Including—Sauce Pans, Fry Pans, Kettles, Tin Ware, Etc., Etc.

Reversible Grates! This Grate is of a triangular form, having three surfaces which are reversible, so that a separate top surface can be used on alternate days; or if the one surface in course of use shows any wear then the other can be turned up, and so on the other, making it equal in durability to three distinct Grates.

Hawaiian Hardware Co., Fort Street, Honolulu, 416 1/2

Dr. M. E. GROSSMAN, DENTIST, 101 FORT STREET. OFFICE HOURS: 9 A. M. to 12 M. and 7 P. M. to 10 P. M.

Dr. M. E. GROSSMAN, DENTIST, 101 FORT STREET. OFFICE HOURS: 9 A. M. to 12 M. and 7 P. M. to 10 P. M.

THE MUTUAL LIFE INSURANCE CO., OF NEW YORK

Is testing a new form of insurance which provides, in the event of death, for a return of all premiums paid in addition to the amount of the policy, or, should the insured survive a given number of years, the Company will return all the premiums paid with interest; or, instead of accepting the policy and profits in cash the legal holder may, WITHOUT MEDICAL EXAMINATION and WITHOUT FURTHER PAYMENT OF PREMIUMS, take in lieu thereof the amount of policy and profits in FULLY PAID UP insurance, participating annually in dividends.

Remember, this contract is issued by the oldest Life Insurance Company in the United States, and the Largest Financial Institution in the World, its assets exceeding One Hundred and Twenty-Six Millions of Dollars.

S. B. ROSE, General Agent for the Hawaiian Islands.

"Temple of Fashion," Cor. Hotel & Fort Sts.

JUST OPENED A LARGE STOCK OF NEW NOVELTIES IN DRY and FANCY GOODS SUITABLE FOR THE COMING SEASON.

Great Bargains! 40 pcs of New Dress Goods, striped and checked at 12c. An elegant line of New Embroidered Swisses.

300 doz. Handkerchiefs! The largest assortment and lowest prices. New novelties in Handkerchiefs, suitable for presents.

Silks! Silks! Black Brocaded Silk, heavy, at \$1.50 a yard. Surah Silks, at low prices.

Gloves! Gloves! Have you seen our 5-button Kid Gloves, at \$1.50 a pair? A full line of Silk Gloves and Mitts.

TAHITI LEMONADE WORKS COMPANY. D. T. BAILEY, Manager.

TAHITI: LEMONADE, LEMON, : CREAM :-and:- PLAIN : SODA,

Ginger Ale, Hop Ale Grenadine, Raspberryade, Sarsaparilla, MINERAL WATERS, ETC., ETC., ETC.

TELEPHONE 297. All communications and orders should be addressed to BENSON, SMITH & CO., Agents.

Oahu Railway & Land Co's TIME TABLE: Trains will leave Honolulu over the Oahu Railroad & Land Co. as follows:

Table with columns: LEAVE HONOLULU, ARRIVE HALAWA. Times: 8:00 A. M., 8:45 A. M., 11:00 A. M., 11:45 A. M., 3:00 P. M., 3:45 P. M.

HAWAIIAN HARDWARE CO., (LIMITED). Opps. Spreckels' Bank, Fort Street, Honolulu. IMPORTERS and DEALERS IN—

Hardware, :- Crockery, :- Glassware, Chandeliers, Electrolers, Lamps & Lamp Fixtures, Paints, Oils & Varnishes, Lard Oil, Cylinder Oil, Powder, Shot & Caps, Machine-loaded Cartridges, Chamberlain's Patent;

HOUSE :- FURNISHING :- GOODS, Silver Plated Ware, Table & Pocket Cutlery, Plows, Planters' Steel Hoes, and other Agricultural Implements.

PLANTATION SUPPLIES of EVERY DESCRIPTION! Hart's Patent "Duplex" Die Stock for Pipe & Bolt Cutting, Manila & Sisal Rope, Rubber Hose, Wire Bound Rubber Hose, Spinner-grip; Sprinklers & Sprinkler Stands,

Daily Bulletin

FRIDAY, DEC. 6, 1889.

ARRIVALS.
Stmr J A Cummins from Koolau

DEPARTURES.
Am bktn W H Dimond, Drew, for San Francisco
Stmr Kinau for Hilo and way ports at 2 p m

PASSENGERS.
For San Francisco, per bktn W H Dimond, Dec 6—Mrs E P Drew and child, H Lorenzo, Miss M Tuck, G Christianson, wife and 4 children, S Scharsch, H J Stein.

SHIPPING NOTE.
The steamers Likelle and Lehua are due on Sunday morning.

MARRIED.
GILMAN—BROWN—At the residence of the bride's mother, Waikiki, November 25th, by the Rev. E. G. Beckwith, D. D., Joseph Atherton Gilman to Miss Minnie Brown, both of Honolulu.

A SEASIDE WEDDING.

Mr. J. A. Gilman and Miss Minnie Brown United in Marriage.
Yesterday evening a very interesting event took place at the residence of Mrs. C. H. Brown, Waikiki. It was the marriage of Mr. Joseph Atherton Gilman to Miss Minnie Brown.

The invited guests, who included a large number of our prominent society people, were cordially received as they arrived, by Mr. and Mrs. J. F. Brown, and conducted to the main parlor.

HONOLULU FIRE DEPARTMENT.

Installation of New Officers at the Monthly Meeting.
The monthly meeting of the Board of Representatives of the Honolulu Fire Department was held yesterday evening at the Bell Tower.

Under "communications," letters from companies were received, announcing changes in membership and the following named delegates to the Board: Engine Co. 1, Thos. Wright; Engine Co. No. 2, Henry Smith; Engine Co. No. 4, J. M. Kaneaku; Engine Co. No. 5, Ho Fon.

AUCTION SALES TO-MORROW.

BY J. F. MORGAN.
At 10 a. m., regular cash sale, when will be offered dry goods, clothing, groceries, crockery and glassware, wagon and double harness.

BY L. J. LEVEY.

At 7 p. m., evening sale of a choice line of holiday goods selected for the Christmas season.

LOCAL & GENERAL NEWS.

CORRESPONDENCE ON FOURTH PAGE.

The Mechanics' Union meets this evening. Important business.

The S. S. Australia is leaving San Francisco to-day for Honolulu.

Mr. R. W. Wilcox will open the political ball at the Fish Market tomorrow afternoon.

The Kinan on her next trip leaves December 17th, and will return Tuesday morning the 24th.

For a whole week the P. C. A. has been advertising a store to keep open every night until 9:30!

Business of importance will be brought up at the meeting of the Honolulu Arion this evening.

Crowds are attracted every day by the beautiful display of jewelry suitable for presents in Wenner & Co.'s window.

One of the events for next Monday evening will be the organ recital at Kaumakapili church. The programme will appear to-morrow.

The baseball games to-morrow afternoon at Makiki will be as follows: Alliolanis and Roads & Bridges at 1:30; Iolanis and Valley Boys at 3:30.

Mr. John A. Hasegawa, chief clerk of the Interior Department, has written for a copy of the new election law, in handy pamphlet form with cover.

The Interior Office received tenders yesterday for a new jail at Lahaina, Maui, but as they were all in excess of government estimates, no contract has been awarded.

In the Police Court this morning, Garley, an habitual drunkard, was fined \$11, and a native \$6 for drunkenness. Seven Chinese charged with gaming and three for having opium unlawfully in possession were remanded to the 10th.

A CHINAMAN was arrested yesterday and taken to the Police Station, information having been given that he was the murderer of the old Chinese couple at Koolau some time ago. When confronted with the sons of the murdered people they said he was not the man and he was at once discharged.

The Hawaiian Social Club was re-organized yesterday evening with the following officers: President, J. H. Reist; Vice-President, W. Wolters; Secretary, N. Fernandez; Treasurer, A. Genns. Preparations are being made for the next reception which will take place some time during holiday week, and the committee will spare no pains to make it the affair of the season.

At noon to-day Auctioneer Hasegawa of the Interior Department sold the following awa licenses for this island for the year 1890: Honolulu No. 1, J. I. Dowsett \$590, No. 2, W. H. Cummings \$590, No. 3, C. Manalo \$550; Koolau, W. P. Wood \$400; Koolauloa, W. H. Cummings \$110; Waialua, Kaiaikawahis \$250; Ewa and Wainane, C. B. Maille \$395. Total \$2,885.

Mr. L. J. Levey's auction room presents a very beautiful appearance, filled as it is with the holiday goods to be sold Saturday evening by order of G. W. Macfarlane & Co. There are some articles entirely new to this market and Mr. Levey has shown much taste in arranging them. The goods are now on exhibition, so do not fail to see them. Special accommodation will be provided for ladies at the sale.

PROBABEE NOMINATIONS.

The native paper, Ka Oiaio, of Dec. 6th, states that they have information that the following names are likely to be presented by the two organizations now in the field: For Nobles—J. S. Walker, H. A. Widemann, John A. Cummins, C. T. Gulick, D. Dayton, A. Fekakalubi, Capt. A. Tripp, D. W. Pus, and C. B. Maille.

WANTED

BY a Japanese Carpenter, a situation, Apply at Japanese Employment Office, No. 26 King street. 419 3/4

WANTED

TWO Girls in the Millinery Department at CHAS. J. FISHEL'S, Leading Millinery House. 417 1/2

MEETING NOTICE.

A MEETING of the Board of Directors of the Hawaiian Rifle Association will be held at the Hawaiian Hotel on the EVENING of SATURDAY, Dec. 7, 1889, at 7:30 o'clock, for the purpose of arranging a programme for the 9th annual competition on January 1, 1890, and to elect a secretary and treasurer for the ensuing term. By order J. H. SOPER, President. 419 4/5

The Secretary then read his report as chairman of election, returning Class B. Wilson, Geo. Norton, and Jas. H. Boyd as Chief Engineer, First and Second Assistant Engineers, respectively, for the ensuing two years. He also reported having received protests from the opposing candidates—Julius Asch, E. B. Thomas, and Henry Kama—against the declared results of election.

Thus, R. Lucas moved, seconded by Chas. Clark, that the report be accepted, the chairman and tellers of election be discharged, and the new officers take their seats. Mr. Asch insisted that they should take their seats subject to the protests entered, which being agreed to the motion carried, and Norton and Boyd took the seats vacated for them by Asch and Norton respectively.

The Secretary having read the protests, they were received on motion of T. R. Lucas and R. More, after which the former moved that the parties be notified that the protests had been received and that the Board had taken no action on them.

Mr. Asch rose at this and said there was no intention on the part of himself and colleagues in the election to make any disturbance, but it was due to themselves to have an investigation of reports of improper practices. The interval had, however, been too short to produce specifications and witnesses, but he demanded the right of taking the required proceedings.

His claim was informally recognized and the matter dropped for the time being. Henry Smith was unanimously re-elected Secretary and Treasurer, and he thanked the Board for the renewed expression of confidence.

Chief Engineer Wilson gave a brief inaugural address. He supposed this was the first time a protest of this kind had been entered, but fortunately he was still their chief and could remain so until another was duly elected, and he had no doubt the members of the Board had been legally elected under the new laws. From the tenor of the protests he did not see any sufficient point on which to base their claims. It seemed the only basis of the protests was supposition, and he hoped when the matter is thoroughly investigated it would result so. Letting the protests rest he wished to make a few remarks on the prospects of the coming term. They all knew that the Department was not amply provided for, although the apparatus was sufficient. They were lacking in accommodation for the members. The companies were up to their complement of members, having polled the other evening within eighteen of their full legal number, about the biggest showing the Department had ever made. But it was his intention to place the Department, if the requisite assistance could be obtained from the Government, in an A1 condition. They had been encouraged by the Government in regard to a new Bell Tower. He hoped and the Ministry themselves hoped that the appropriation would be granted by the coming Legislature. The Ministry would do their part towards the Department's support, and if they were successful there was no doubt of the Department being properly served. He closed with a reference to the efficiency displayed by the Department during the past eighteen months. There had been fifty or sixty fires in that time, but nearly every one was speedily controlled. It was not because the fires were small, but through the energy of the companies, that numbered one less than formerly. With his new assistants, he hoped for equal efficiency the ensuing term. Thanking them for their support in the past, he hoped it would be continued in the future. (Applause.)

The First and Second Assistants also made brief speeches, promising to do their duty to their utmost ability.

FOR THE WEARF—Cars will leave Paoua every fifteen minutes, commencing at 6:30, 6:47, 7:03, 7:17 a. m. and so on until 7:47 p. m., after which they will leave every half hour until 10:17 p. m. Those leaving at 2 and 2 1/2 min past the hour, proceed via School and Fort streets; all others except the 8:17 and 9:17 p. m., via Queen street. These cars will pass the Central Union Church at 10:16, 1:05, 4:05, and 7:05 p. m., passing Fort street 6 min. later, after which the service will be half hourly.

FOR CHINESE THEATRE—Cars will leave for the Waikiki Road and proceeding as far as the new loop at 1:30, 1:46, 1:59, 2:12, etc., until 7:02 p. m., passing the R. R. 7 min. later, after which the service will be half hourly.

FOR THE WHARF—Cars will leave the inner island wharf every fifteen minutes, commencing at 6:30, 6:47, 7:03, 7:17 a. m. and so on until 7:47 p. m., after which they will run every half hour until 10:17 p. m. Those leaving at 2 and 2 1/2 min past the hour, proceed via School and Fort streets; all others except the 8:17 and 9:17 p. m., via Queen street. These cars will pass the Central Union Church at 10:16, 1:05, 4:05, and 7:05 p. m., passing Fort street 6 min. later, after which the service will be half hourly as on week days.

FOR THE WHARF—Cars will leave the inner island wharf every fifteen minutes, commencing at 6:30, 6:47, 7:03, 7:17 a. m. and so on until 7:47 p. m., after which they will run every half hour until 10:17 p. m. Those leaving at 2 and 2 1/2 min past the hour, proceed via School and Fort streets; all others except the 8:17 and 9:17 p. m., via Queen street. These cars will pass the Central Union Church at 10:16, 1:05, 4:05, and 7:05 p. m., passing Fort street 6 min. later, after which the service will be half hourly as on week days.

FOR THE WHARF—Cars will leave the inner island wharf every fifteen minutes, commencing at 6:30, 6:47, 7:03, 7:17 a. m. and so on until 7:47 p. m., after which they will run every half hour until 10:17 p. m. Those leaving at 2 and 2 1/2 min past the hour, proceed via School and Fort streets; all others except the 8:17 and 9:17 p. m., via Queen street. These cars will pass the Central Union Church at 10:16, 1:05, 4:05, and 7:05 p. m., passing Fort street 6 min. later, after which the service will be half hourly as on week days.

FOR THE WHARF—Cars will leave the inner island wharf every fifteen minutes, commencing at 6:30, 6:47, 7:03, 7:17 a. m. and so on until 7:47 p. m., after which they will run every half hour until 10:17 p. m. Those leaving at 2 and 2 1/2 min past the hour, proceed via School and Fort streets; all others except the 8:17 and 9:17 p. m., via Queen street. These cars will pass the Central Union Church at 10:16, 1:05, 4:05, and 7:05 p. m., passing Fort street 6 min. later, after which the service will be half hourly as on week days.

FOR THE WHARF—Cars will leave the inner island wharf every fifteen minutes, commencing at 6:30, 6:47, 7:03, 7:17 a. m. and so on until 7:47 p. m., after which they will run every half hour until 10:17 p. m. Those leaving at 2 and 2 1/2 min past the hour, proceed via School and Fort streets; all others except the 8:17 and 9:17 p. m., via Queen street. These cars will pass the Central Union Church at 10:16, 1:05, 4:05, and 7:05 p. m., passing Fort street 6 min. later, after which the service will be half hourly as on week days.

FOR THE WHARF—Cars will leave the inner island wharf every fifteen minutes, commencing at 6:30, 6:47, 7:03, 7:17 a. m. and so on until 7:47 p. m., after which they will run every half hour until 10:17 p. m. Those leaving at 2 and 2 1/2 min past the hour, proceed via School and Fort streets; all others except the 8:17 and 9:17 p. m., via Queen street. These cars will pass the Central Union Church at 10:16, 1:05, 4:05, and 7:05 p. m., passing Fort street 6 min. later, after which the service will be half hourly as on week days.

FOR THE WHARF—Cars will leave the inner island wharf every fifteen minutes, commencing at 6:30, 6:47, 7:03, 7:17 a. m. and so on until 7:47 p. m., after which they will run every half hour until 10:17 p. m. Those leaving at 2 and 2 1/2 min past the hour, proceed via School and Fort streets; all others except the 8:17 and 9:17 p. m., via Queen street. These cars will pass the Central Union Church at 10:16, 1:05, 4:05, and 7:05 p. m., passing Fort street 6 min. later, after which the service will be half hourly as on week days.

FOR THE WHARF—Cars will leave the inner island wharf every fifteen minutes, commencing at 6:30, 6:47, 7:03, 7:17 a. m. and so on until 7:47 p. m., after which they will run every half hour until 10:17 p. m. Those leaving at 2 and 2 1/2 min past the hour, proceed via School and Fort streets; all others except the 8:17 and 9:17 p. m., via Queen street. These cars will pass the Central Union Church at 10:16, 1:05, 4:05, and 7:05 p. m., passing Fort street 6 min. later, after which the service will be half hourly as on week days.

FOR THE WHARF—Cars will leave the inner island wharf every fifteen minutes, commencing at 6:30, 6:47, 7:03, 7:17 a. m. and so on until 7:47 p. m., after which they will run every half hour until 10:17 p. m. Those leaving at 2 and 2 1/2 min past the hour, proceed via School and Fort streets; all others except the 8:17 and 9:17 p. m., via Queen street. These cars will pass the Central Union Church at 10:16, 1:05, 4:05, and 7:05 p. m., passing Fort street 6 min. later, after which the service will be half hourly as on week days.

FOR THE WHARF—Cars will leave the inner island wharf every fifteen minutes, commencing at 6:30, 6:47, 7:03, 7:17 a. m. and so on until 7:47 p. m., after which they will run every half hour until 10:17 p. m. Those leaving at 2 and 2 1/2 min past the hour, proceed via School and Fort streets; all others except the 8:17 and 9:17 p. m., via Queen street. These cars will pass the Central Union Church at 10:16, 1:05, 4:05, and 7:05 p. m., passing Fort street 6 min. later, after which the service will be half hourly as on week days.

FOR THE WHARF—Cars will leave the inner island wharf every fifteen minutes, commencing at 6:30, 6:47, 7:03, 7:17 a. m. and so on until 7:47 p. m., after which they will run every half hour until 10:17 p. m. Those leaving at 2 and 2 1/2 min past the hour, proceed via School and Fort streets; all others except the 8:17 and 9:17 p. m., via Queen street. These cars will pass the Central Union Church at 10:16, 1:05, 4:05, and 7:05 p. m., passing Fort street 6 min. later, after which the service will be half hourly as on week days.

FOR THE WHARF—Cars will leave the inner island wharf every fifteen minutes, commencing at 6:30, 6:47, 7:03, 7:17 a. m. and so on until 7:47 p. m., after which they will run every half hour until 10:17 p. m. Those leaving at 2 and 2 1/2 min past the hour, proceed via School and Fort streets; all others except the 8:17 and 9:17 p. m., via Queen street. These cars will pass the Central Union Church at 10:16, 1:05, 4:05, and 7:05 p. m., passing Fort street 6 min. later, after which the service will be half hourly as on week days.

FOR THE WHARF—Cars will leave the inner island wharf every fifteen minutes, commencing at 6:30, 6:47, 7:03, 7:17 a. m. and so on until 7:47 p. m., after which they will run every half hour until 10:17 p. m. Those leaving at 2 and 2 1/2 min past the hour, proceed via School and Fort streets; all others except the 8:17 and 9:17 p. m., via Queen street. These cars will pass the Central Union Church at 10:16, 1:05, 4:05, and 7:05 p. m., passing Fort street 6 min. later, after which the service will be half hourly as on week days.

FOR THE WHARF—Cars will leave the inner island wharf every fifteen minutes, commencing at 6:30, 6:47, 7:03, 7:17 a. m. and so on until 7:47 p. m., after which they will run every half hour until 10:17 p. m. Those leaving at 2 and 2 1/2 min past the hour, proceed via School and Fort streets; all others except the 8:17 and 9:17 p. m., via Queen street. These cars will pass the Central Union Church at 10:16, 1:05, 4:05, and 7:05 p. m., passing Fort street 6 min. later, after which the service will be half hourly as on week days.

FOR THE WHARF—Cars will leave the inner island wharf every fifteen minutes, commencing at 6:30, 6:47, 7:03, 7:17 a. m. and so on until 7:47 p. m., after which they will run every half hour until 10:17 p. m. Those leaving at 2 and 2 1/2 min past the hour, proceed via School and Fort streets; all others except the 8:17 and 9:17 p. m., via Queen street. These cars will pass the Central Union Church at 10:16, 1:05, 4:05, and 7:05 p. m., passing Fort street 6 min. later, after which the service will be half hourly as on week days.

FOR THE WHARF—Cars will leave the inner island wharf every fifteen minutes, commencing at 6:30, 6:47, 7:03, 7:17 a. m. and so on until 7:47 p. m., after which they will run every half hour until 10:17 p. m. Those leaving at 2 and 2 1/2 min past the hour, proceed via School and Fort streets; all others except the 8:17 and 9:17 p. m., via Queen street. These cars will pass the Central Union Church at 10:16, 1:05, 4:05, and 7:05 p. m., passing Fort street 6 min. later, after which the service will be half hourly as on week days.

FOR THE WHARF—Cars will leave the inner island wharf every fifteen minutes, commencing at 6:30, 6:47, 7:03, 7:17 a. m. and so on until 7:47 p. m., after which they will run every half hour until 10:17 p. m. Those leaving at 2 and 2 1/2 min past the hour, proceed via School and Fort streets; all others except the 8:17 and 9:17 p. m., via Queen street. These cars will pass the Central Union Church at 10:16, 1:05, 4:05, and 7:05 p. m., passing Fort street 6 min. later, after which the service will be half hourly as on week days.

FOR THE WHARF—Cars will leave the inner island wharf every fifteen minutes, commencing at 6:30, 6:47, 7:03, 7:17 a. m. and so on until 7:47 p. m., after which they will run every half hour until 10:17 p. m. Those leaving at 2 and 2 1/2 min past the hour, proceed via School and Fort streets; all others except the 8:17 and 9:17 p. m., via Queen street. These cars will pass the Central Union Church at 10:16, 1:05, 4:05, and 7:05 p. m., passing Fort street 6 min. later, after which the service will be half hourly as on week days.

Hawaiian Tramways Co., (LIMITED.) Alteration of Time Tables!

ON AND AFTER Wednesday, Dec. 4th, CARS WILL RUN AS FOLLOWS:

Kapalama, King Street and Waikiki Service.

TO WAIKIKI—A half hourly through service will be maintained throughout the day. The first car will leave the Company's Stables at Kapalama at 5:47 a. m., the next 6:17, 6:47 a. m. etc., and the last at 9:47 p. m., all running through to Waikiki. These cars will pass Fort street at 2 and 2 1/2 min past every hour and the Rifle Range at 2 and 5 1/2 min, past. A car leaves Kapalama at 11:17 p. m. for the Rifle Range only.

FROM WAIKIKI—Cars will leave Waikiki Bridge at 6:47, 7:17, 7:47 a. m., and every 15 min, running through to Kapalama, and passing the Rifle Range at 2 and 2 1/2 min past every hour; Fort street at 2 and 5 1/2 min past. The 10:17 p. m. from Waikiki runs to the Rifle Range only (except on Saturdays and Sundays, when it runs through to Kapalama street); and the 10:47 p. m. from Waikiki is the last through car.

THE BUSINESS CAR—To meet the convenience of the business community the 12 o'clock and 5 o'clock p. m. cars from town for Waikiki will pass Fort street at 6 min. past the hour, instead of 2 min. past.

Extra Service on Saturday & Sunday Afternoons.

During the busy portion of Saturday and Sunday afternoons the service will be doubled between the new loop on the Waikiki Road and the Chinese Theatre—that is, four cars will run each way within the hour instead of two, as at other times.

FOR TOWN—Cars will leave the new loop on Waikiki Road at 12:46, 1:16, 1:46, etc., until 7:02 p. m., passing the Rifle Range 7 min. later, after which the service will be half hourly.

FROM CHINESE THEATRE—Cars will leave for the Waikiki Road and proceeding as far as the new loop at 1:30, 1:46, 1:59, etc., until 7:02 p. m., passing Fort street 6 min. later, after which the service will be half hourly as usual.

Nuanuu Valley Service.

TO THE WHARF—Cars will leave Paoua every fifteen minutes, commencing at 6:30, 6:47, 7:03, 7:17 a. m. and so on until 7:47 p. m., after which they will leave every half hour until 10:17 p. m. Those leaving at 2 and 2 1/2 min past the hour, proceed via School and Fort streets; all others except the 8:17 and 9:17 p. m., via Queen street. These cars will pass the Central Union Church at 10:16, 1:05, 4:05, and 7:05 p. m., passing Fort street 6 min. later, after which the service will be half hourly as on week days.

FOR THE WHARF—Cars will leave the inner island wharf every fifteen minutes, commencing at 6:30, 6:47, 7:03, 7:17 a. m. and so on until 7:47 p. m., after which they will run every half hour until 10:17 p. m. Those leaving at 2 and 2 1/2 min past the hour, proceed via School and Fort streets; all others except the 8:17 and 9:17 p. m., via Queen street. These cars will pass the Central Union Church at 10:16, 1:05, 4:05, and 7:05 p. m., passing Fort street 6 min. later, after which the service will be half hourly as on week days.

FOR THE WHARF—Cars will leave the inner island wharf every fifteen minutes, commencing at 6:30, 6:47, 7:03, 7:17 a. m. and so on until 7:47 p. m., after which they will run every half hour until 10:17 p. m. Those leaving at 2 and 2 1/2 min past the hour, proceed via School and Fort streets; all others except the 8:17 and 9:17 p. m., via Queen street. These cars will pass the Central Union Church at 10:16, 1:05, 4:05, and 7:05 p. m., passing Fort street 6 min. later, after which the service will be half hourly as on week days.

FOR THE WHARF—Cars will leave the inner island wharf every fifteen minutes, commencing at 6:30, 6:47, 7:03, 7:17 a. m. and so on until 7:47 p. m., after which they will run every half hour until 10:17 p. m. Those leaving at 2 and 2 1/2 min past the hour, proceed via School and Fort streets; all others except the 8:17 and 9:17 p. m., via Queen street. These cars will pass the Central Union Church at 10:16, 1:05, 4:05, and 7:05 p. m., passing Fort street 6 min. later, after which the service will be half hourly as on week days.

FOR THE WHARF—Cars will leave the inner island wharf every fifteen minutes, commencing at 6:30, 6:47, 7:03, 7:17 a. m. and so on until 7:47 p. m., after which they will run every half hour until 10:17 p. m. Those leaving at 2 and 2 1/2 min past the hour, proceed via School and Fort streets; all others except the 8:17 and 9:17 p. m., via Queen street. These cars will pass the Central Union Church at 10:16, 1:05, 4:05, and 7:05 p. m., passing Fort street 6 min. later, after which the service will be half hourly as on week days.

FOR THE WHARF—Cars will leave the inner island wharf every fifteen minutes, commencing at 6:30, 6:47, 7:03, 7:17 a. m. and so on until 7:47 p. m., after which they will run every half hour until 10:17 p. m. Those leaving at 2 and 2 1/2 min past the hour, proceed via School and Fort streets; all others except the 8:17 and 9:17 p. m., via Queen street. These cars will pass the Central Union Church at 10:16, 1:05, 4:05, and 7:05 p. m., passing Fort street 6 min. later, after which the service will be half hourly as on week days.

FOR THE WHARF—Cars will leave the inner island wharf every fifteen minutes, commencing at 6:30, 6:47, 7:03, 7:17 a. m. and so on until 7:47 p. m., after which they will run every half hour until 10:17 p. m. Those leaving at 2 and 2 1/2 min past the hour, proceed via School and Fort streets; all others except the 8:17 and 9:17 p. m., via Queen street. These cars will pass the Central Union Church at 10:16, 1:05, 4:05, and 7:05 p. m., passing Fort street 6 min. later, after which the service will be half hourly as on week days.

FOR THE WHARF—Cars will leave the inner island wharf every fifteen minutes, commencing at 6:30, 6:47, 7:03, 7:17 a. m. and so on until 7:47 p. m., after which they will run every half hour until 10:17 p. m. Those leaving at 2 and 2 1/2 min past the hour, proceed via School and Fort streets; all others except the 8:17 and 9:17 p. m., via Queen street. These cars will pass the Central Union Church at 10:16, 1:05, 4:05, and 7:05 p. m., passing Fort street 6 min. later, after which the service will be half hourly as on week days.

FOR THE WHARF—Cars will leave the inner island wharf every fifteen minutes, commencing at 6:30, 6:47, 7:03, 7:17 a. m. and so on until 7:47 p. m., after which they will run every half hour until 10:17 p. m. Those leaving at 2 and 2 1/2 min past the hour, proceed via School and Fort streets; all others except the 8:17 and 9:17 p. m., via Queen street. These cars will pass the Central Union Church at 10:16, 1:05, 4:05, and 7:05 p. m., passing Fort street 6 min. later, after which the service will be half hourly as on week days.

FOR THE WHARF—Cars will leave the inner island wharf every fifteen minutes, commencing at 6:30, 6:47, 7:03, 7:17 a. m. and so on until 7:47 p. m., after which they will run every half hour until 10:17 p. m. Those leaving at 2 and 2 1/2 min past the hour, proceed via School and Fort streets; all others except the 8:17 and 9:17 p. m., via Queen street. These cars will pass the Central Union Church at 10:16, 1:05, 4:05, and 7:05 p. m., passing Fort street 6 min. later, after which the service will be half hourly as on week days.

FOR THE WHARF—Cars will leave the inner island wharf every fifteen minutes, commencing at 6:30, 6:47, 7:03, 7:17 a. m. and so on until 7:47 p. m., after which they will run every half hour until 10:17 p. m. Those leaving at 2 and 2 1/2 min past the hour, proceed via School and Fort streets; all others except the 8:17 and 9:17 p. m., via Queen street. These cars will pass the Central Union Church at 10:16, 1:05, 4:05, and 7:05 p. m., passing Fort street 6 min. later, after which the service will be half hourly as on week days.

FOR THE WHARF—Cars will leave the inner island wharf every fifteen minutes, commencing at 6:30, 6:47, 7:03, 7:17 a. m. and so on until 7:47 p. m., after which they will run every half hour until 10:17 p. m. Those leaving at 2 and 2 1/2 min past the hour, proceed via School and Fort streets; all others except the 8:17 and 9:17 p. m., via Queen street. These cars will pass the Central Union Church at 10:16, 1:05, 4:05, and 7:05 p. m., passing Fort street 6 min. later, after which the service will be half hourly as on week days.

FOR THE WHARF—Cars will leave the inner island wharf every fifteen minutes, commencing at 6:30, 6:47, 7:03, 7:17 a. m. and so on until 7:47 p. m., after which they will run every half hour until 10:17 p. m. Those leaving at 2 and 2 1/2 min past the hour, proceed via School and Fort streets; all others except the 8:17 and 9:17 p. m., via Queen street. These cars will pass the Central Union Church at 10:16, 1:05, 4:05, and 7:05 p. m., passing Fort street 6 min. later, after which the service will be half hourly as on week days.

FOR THE WHARF—Cars will leave the inner island wharf every fifteen minutes, commencing at 6:30, 6:47, 7:03, 7:17 a. m. and so on until 7:47 p. m., after which they will run every half hour until 10:17 p. m. Those leaving at 2 and 2 1/2 min past the hour, proceed via School and Fort streets; all others except the 8:17 and 9:17 p. m., via Queen street. These cars will pass the Central Union Church at 10:16, 1:05, 4:05, and 7:05 p. m., passing Fort street 6 min. later, after which the service will be half hourly as on week days.

FOR THE WHARF—Cars will leave the inner island wharf every fifteen minutes, commencing at 6:30, 6:47, 7:03, 7:17 a. m. and so on until 7:47 p. m., after which they will run every half hour until 10:17 p. m.

STEINWAY PIANOS!

The Best American Pianos in the World:

WESTERMAYER'S PIANOS!

The Best German Pianos for this Climate.

Ed. HOFFSCHLAEGER & Co., Sole Agents for the Hawaiian Islands for Steinway & Sons, New York; and Ed. Westermayer, Berlin.

FISCHER'S PIANOS!

Cabinet Uprights & Boudoir Uprights.

For Sale at Moderate Prices by

Ed. HOFFSCHLAEGER & Co., King and Bethel Streets.

406 1m-114 4t

UNION FEED CO.,

OFFER AT BED ROCK PRICES

California Hay, Oats, Bran,

Oil Cake Meal, Linseed Meal,

Barley, Rolled Barley,

Middling Ground Barley,

Wheat and Corn Flour.

FLOUR - Alta, Golden Gate & Sallinas - FLOUR

Telephones, No. 175. Cor. Edinburgh & Queen Sta.

HOLLISTER & CO.,

109 FORT STREET, HONOLULU.

NEW GOODS JUST TO HAND

A FULL ASSORTMENT OF

Colgate & Co.'s Celebrated Perfumes & Toilet Soaps,

Photographic Goods of All Kinds.

BUHACH

WARRANTED GENUINE & IN QUANTITIES TO SUIT.

Fine Chemicals, Patent Medicines

Cigars, Cigarettes & Tobaccos.

Bell Telephone, 50 - Mutual Telephone, 371

HAWAIIAN WINE CO.,

No. 24 Merchant Street, Near Fort Street.

HAVE THE BEST QUALITY

EACH AND EVERY KIND OF

CALIFORNIA WINES

IMPORTED INTO THIS KINGDOM.

Our "PEDRO JIMENEZ"

IS SIMPLY SUBLIME.

Which will be sold AT LOWEST RATES by

FRANK BROWN,

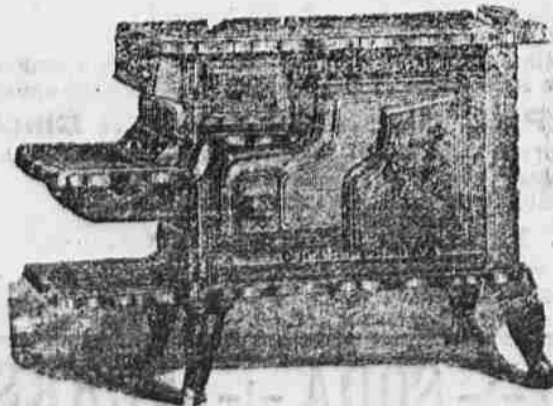
2170

Manager.

JOHN NOTT,

"Diamond Block," Nos. 95 & 97 King Street.

STOVES!



RANGES!

Granite, Iron and Tin Ware!

Chandeliers, Lamps and Lanterns,

WATER PIPE and RUBBER HOSE,

House Keeping Goods,

PLUMBING, TIN, COPPER AND

Sheet Iron Work.

993

Oceanic Steamship Compy.

TIME TABLE:

Leave Honolulu: Alameda, December 14 219 11

Australian Mail Service

FOR SAN FRANCISCO.

The new and fine A1 steel steamship

"Alameda,"

Of the Oceanic Steamship Company, will be due at Honolulu from Sydney and Auckland on or about

December 14, 1889.

And will leave for the above port with mails and passengers on or about that date.

For freight or passage, having SUPERIOR ACCOMMODATIONS, apply to

WM. G. IRWIN & CO., Agents.

For Sydney and Auckland

The new and fine A1 steel steamship

"Zealandia,"

Of the Oceanic Steamship Company, will be due at Honolulu from San Francisco on or about

December 21, 1889.

And will have prompt dispatch with mails and passengers for the above ports

For freight or passage, having SUPERIOR ACCOMMODATIONS, apply to

WM. G. IRWIN & CO., Agents

A. G. SILVA,

67 Hotel St., opposite Bethel St.

Cabinet Work Neatly Done.

Furniture Repaired & Polished.

Matting & Carpets Laid.

Work well and promptly done at reasonable prices.

Prof. G. SAUVLET,

PIANO, VIOLIN & SINGING LESSONS.

Residence: No. 195 Nuuanu Avenue.

Mutual Telephone No. 399. nov-26-3m

WANTED

An Experienced Sugar Boiler. Apply by letter with references and copies of testimonials to the HAWAIIAN BUSINESS AGENCY.

Furnished House To Let

At Waikiki, a two story House, containing six rooms nicely furnished with kitchen, lanai, bath and servant's rooms, stable, etc., to let for a few months at a reasonable rate.

HAWAIIAN BUSINESS AGENCY.

Valuable Property For Sale

On Nuuanu Avenue, a newly furnished 2-story House containing 8 rooms, kitchen, bathroom, closets, carriage house, stable, henry, etc. Grounds contain 2.210 acres, well laid out in lawns, shade and fruit trees, flowers, etc. Will be sold low, with or without furniture, horses, carriages, live stock, and all the appointments needed in a first-class residence, as the owner intends leaving these islands.

HAWAIIAN BUSINESS AGENCY.

Spelterine.

The best remedy for wounds, ulcers, galls, proud flesh and sores of every description to persons or animals. Adopted by leading horse railroad, club and livery stables, etc., in the United States and elsewhere. We are prepared to prove this statement by testimonials and references to planters and liverymen in this Kingdom.

Apply to HAWAIIAN BUSINESS AGENCY

Island Views.

A LARGE assortment of Photographs and Stereoscopic Views of the most attractive scenery, buildings, etc., in these islands, for sale at reasonable prices.

HAWAIIAN BUSINESS AGENCY. Corner Fort and Merchant streets. 2908 11

LADIES' NURSE.

MRS. MONROE, ladies' nurse, has removed to No. 3, Kukui lane. Feb-14-89

FOR SALE

A NEW Wilcox & White Parlor Organ with eight stops. Suitable for school or church. A fine instrument. Apply at 57 Punchbowl street, opposite N. P. Mission Institute. 273 11

VETERINARY.

A. R. ROWAT, Veterinary Surgeon, office and pharmacy at Hawaiian Hotel Stables, corner Hotel and Richard streets. Scientific treatment in all diseases of domestic animals. Orders for plantation and race stock promptly attended to. Mutual Telephone 354, P. O. Box 326. mh-15-89

NOTICE.

HAVING bought out Mr. W. H. Page in the "Honolulu Carriage Manufacturing" at 125 Fort street, I am prepared to continue the above business under the old name of Honolulu Carriage Manufacturing, and being an old experienced carriage builder I solicit the patronage of my old friends and the public in general, and with my thorough knowledge of the business and with experienced workmen and using only the best material I guarantee general satisfaction. Please call and see me before going elsewhere. (Signed) GIDEON WEST. Honolulu, Oct. 28, 1889. 291 11

A WORKINGMAN ON THE SECOND PLANK.

EDITOR BULLETIN:—By condemning the system instead of the men, as the dodge used to be, our politicians have taken a broader view of the principles that should govern politics.

Of course the men who uphold a bad system of government must go with it; still, they who profit by the present system consider it the best, and, as the discussion on the second plank of the Mechanics' and Workingmen's platform seems to indicate, would insist in upholding the division of voters in two classes, the privileged and the unprivileged, as the only safeguard of our liberties and prosperity.

It seems to have struck a Hawaiian (of the narrow-minded missionary pattern I should judge) that the said second plank is an invitation to submit to the rabble.

Now, for myself, I'd as lief have the qualification of voting for Nobles raised to \$5,000 worth of property, or \$1,000 annual income. But you know it wouldn't be just and fair, it would shut out so much of the intelligence of the country, you know; and—ahem—we don't want to do that; we only want to keep out the ignorant kanaka rabble, you know; 'tisn't safe to give them too much power, you know; and the \$3,000 property or \$600 annual income clause is just the thing, you know, so say the narrow-minded clique. How the large property or annual income test is to be a proof of higher intelligence I cannot see.

Who says and believes that the possession of a \$3,000 property or \$600 annual income means higher intelligence? (Place a problem from the integral calculus before the large property and annual income men and see how many can boast of their higher intelligence.)

Now, on the same principle, will not the higher qualification, of say \$5,000 property or \$1,000 annual income test, be better still? Will it not include only the more intelligent, the men of real business capacity, and the men who possess the capital of the country?

Since we have only one legislative chamber, why have a half of its members elected by and from a certain class only, and the other half by all the voters? If class distinction is the object, why not let the poorer class alone? If better intelligence is the plea, do away with the ridiculous property qualification, and let an educational test be established. If conservatism, will not a Noble elected by a majority of all the voters of a district better represent the ideas of the time of his election, than one elected by a certain class? And what justice and fairness are there in a system that deprives a large majority of our citizens of the right to elect the other half of the Legislature? Perhaps it would hurt the class or clique conscience a little to answer these questions honestly.

Yet some people think that large property holders should have special representation, and, as we have seen, confound intelligence with money. This we all know is a false light upon so good a subject, for is it not true that labor produces capital? And would you, Mr. Editor, believe that the laboring men, who produce capital, would do anything to destroy that capital or the means of producing it? Not much.

Some one has written that 11,000 of our fellow citizens are "too shiftless or too ignorant to understand an ordinary newspaper or to receive a gross income of \$50 a month, consequently, could not think for themselves nor be trusted with the liberties of our country!" This charge is a gross injustice to our poorer citizens and in the face of well-known statistics on illiteracy it is a downright lie, for which the creature who wrote those lines should be pitted.

There is nothing noble in the man who indiscriminately brands the common kanaka or Portuguese laborer, that is doing all the hard work about the canefields, and is rearing a large family besides on \$20 a month, as "too shiftless!" And when these hardworking men (whom he calls the rabble that must be kept down with as little liberty as possible) take up their Kuokos, Pae Aina, or Luso Hawaiian, to con the news by lamp light, he considers them "too ignorant to understand an ordinary newspaper!" Men whose thoughts run in such narrow grooves should be pitted.

They do not seem to understand that the laboring men—not always ignorant men either—who are striving for a livelihood in the lower walks of life, are placed there by circumstances over which they have no control; and really intelligent men would not despise them. Of course he thinks these men must be fools not to strike for higher wages, get \$50 a month, then—why, become "intelligent citizens fit to be trusted with our liberties!"

Under the present unfair system of voting for Nobles the poor man, no matter how intelligent, whose labor produces the planters' wealth must remain content with his paltry \$20 a month and have very little influence in the making of laws to improve his condition. If he should desire to better his lot, circumstances over which he has no control crowd him out with some cheap Asiatic coolie; which evil the opening up of the Noble franchise to the intelligent voters in the lower walks of life might modify, and give the

workingman such a little control of one of the circumstances over him as would gradually better his condition.

Their love of fair play and justice is one of the boasts of the Anglo-Saxon race. Let them show how much of these noble qualities have survived the soft climate and easy conditions of this island kingdom; and what justice and fairplay will they give the poor working men, whose labor is producing the wealth of this nation, making it a Paradise for the capitalist but not the

WORKINGMAN.

Maui, Dec. 1, 1889.

Holiday Goods

NOW FOR SALE AT

Theo. H. Davies & Co.'s

FANCY ARTICLES,

Suitable for presents;

Dressing Cases, silver mounted; Hand Bags & Valises,

Decorated Vases

China Dinner Sets, China Tea Sets,

Hand Painted Dessert Sets,

Fancy Majolica Ware, Fancy Glassware,

Japanese Ware,

Fancy Work Baskets, Fancy Screens & Lamps, Etc., Etc., Etc., Etc.

Dolls! Dolls! Dolls!

Bisque Dolls, Wax Dolls,

Indestructible Dolls

Rag Dolls, Etc., Etc., Etc.

An Immense Variety.

TOYS, Toys, TOYS.

Tin Toys, Drums,

Doll Sets, Carts,

Musical Toys, Etc., Etc.

A Large Assortment.

Christmas & New Year Cards,

Direct from Raphael Tuck & Son, and S. Hildesheimer.

Theo. H. Davies & Co.

405 1m

Ex. "S. S. Mariposa"

November 25, 1889.

ATTRACTIONS

At the Double Stores of the

Hawaiian News Co.,

25 & 27 Merchant St.

Our Holiday Stock of Novelties

Comprise the largest and choicest line of

ART -- GOODS

By "Prang," of Boston; and R. Tuck & Sons, of London; ever before shown in Honolulu.

Xmas Card by the Million,

From 5 cts to \$5.

Books & Booklets,

For old and young. Many other Goods impossible to enumerate.

Call early and get first choice

The Hawaiian News Co.'y

414 11

FOR SALE!

MR. HARRY J. AGNEW, on account of leaving the Kingdom to locate in California, offers for sale the property owned by him. Said property consists of his present residence at Kapiolani Park known as "Greenfield," this property must be examined to be appreciated. The House is newly new and well built and of the best material. The Stables are commodious, very handy and ample room for the storage of carriages, feed, etc., in addition to that it has been the home of such horses as "Angie A.," "Johnny Goldsmith," "Queen Kapiolani," "Mink," and others that will long be remembered by the public of Honolulu. Also, the Household Furniture in said house. The Land has a frontage on the main avenue of the Park of 250 feet and a depth of 200 feet. Also,

About 10 Acres of Land, formerly a part of the Luualilo Estate, and lying between the property of W. H. Bailey and Jas. Campbell, Esq. Also,

A Beautiful Building Lot of about 3 1/2 Acres joining the fine residence of Cecil Brown, Esq. Also,

About 20 Lots in Kapiolani Park. Also,

All that Piece of Land with Improvements, corner Pensacola and Kinohiki streets, now occupied by Chas. A. Brown, Esq. Also,

Shares in Waimanalo Sugar Co., Mutual Telephone Co. and Kapiolani Park Association.

1 Fine Top Buggy, 1 Road Cart, 1 Phaeton, 1 Sulky, Double and Single Harness, Boots, Bits, Bridles, Saddles, and a complete outfit for breaking and training horses.

For particulars and prices apply to

H. J. AGNEW.

OF, PHIL OFFERLETT. 291 11

The Thoroughbred Stallion



"MARIN"

Will stand at service at

WAIALAE,

AT

\$50 and \$75 Insurance.

RECORD 2:29 3/4, Sacramento, Sept. 15, 1887.

PROBANDER:—Marin was sired by Quinn's Patchen, he by Geo. M. Patchen, Jr.; Marin's dam by Emigrant, he by Billy McCracken; Billy McCracken by McCracken's Black Hawk, 767, (the sire of Lady Dooley, and of the dam of Overman, 2:19 1/4). McCracken's Black Hawk, 767, by Vermont Black Hawk, 5; 2nd dam by Marshall's Black Hawk, he by Easton's Black Hawk. The dam of Quinn's Patchen by Stockbridge Chief, he by Vermont Black Hawk, 5.

R. T. Carroll of San Francisco, the former owner of Marin, vouches, that out of thirty-six mares served by this horse during his last season in California, thirty-five proved with foal.

PAUL R. ISENBERG.

July 29-89.

Anderson & Lundy,

Dentists.

Artificial Teeth from one to an entire set inserted on gold, silver, aluminum and rubber bases. Crown and Bridge Work a specialty. To persons wearing rubber plates which are a constant source of irritation to the mouth and throat, we would recommend our Prophylactic Metal Plate. All operations performed in accordance with the latest improvements in dental science. Teeth Extracted without pain by the use of Nitrous Oxide Gas.

Office at Old Tregloan Residence Hotel street. Feb-20-89

DRY GOODS!

Large, Varied & Selected Stock.

FANCY GOODS,

Dressing Cases, Mirrors, Wicker Ware, Etc.

GROCERIES,

A full line

Grocery and Glassware!

A large assortment.

BOOTS, SHOES & LEGGINGS,

Saddlery

AND

Carriage Lamps,

Bags, Sugar & Burlaps,

Filterpress

AND

Other Varieties.

STATIONERY!

Latest Novelties.

FLAGS!

Hawaiian, English, American and Portuguese

PERFUMERY!

CEMENT!

SALT!

Rock, Liverpool and Higgin's Dairy.

Oils! Oils!

Bolled & Raw Linseed, Castor.

Paints & Zinc!

Flower Pots,

Fern Stands & Wire Baskets,

HOLLOW WARE,

Saucepans, Kettles, Frypans, Etc., Etc.

IRON! IRON!

Corrugated & Plain.

TIN WARE!

In all varieties.

Fence Wire!

Annealed, Galvanized Barbed, Patent Steel Barbed

BEASTEADS of IRON,

CUTLERY, FENCE WIRE, WIRE NETTING.

California Groceries,

Of all varieties, always in stock. Also,

Hay, Feed & Flour

Theo. H. Davies & Co., HONOLULU.

THE Handsomest Billiard Parlors in the city, and fitted up in the most approved style. Four tables with all the latest improvements.

J. P. BOWEN & CO., Proprietors.

270 11

O LUSO HAWAIIANO.

ALL persons who want to communicate with the Portuguese, either for business, or for procuring workmen, servants or any other helps, will find it the most profitable way to advertise in the Lusos Hawaiian, the new organ of the Portuguese colony, which is published on Hotel street, and only charges reasonable rates for advertisements.