



RESOURCES and DEVELOPMENT

High Commissioner Edward E. Johnston • Department of Resources and Development • Wyman X. Zachary, Director

Vol. 1 No. 1

December 18, 1970

Tourist Explosion Forecast:

Coleman Emphasizes TT-Guam Teamwork

The Trust Territory and Guam are in for an overflow of visitors in the next five years.

"This influx can be dangerous because it can lead to complacency," Stanton E. Read, research director, Pacific Area Travel Association (PATA), told a joint meeting of the Trust Territory-Guam Tourist Promotion Committee Dec. 8 at the Guam Tokyo Hotel.

The travel executive also warned that the local tourist industry will be facing "severe neighboring Okinawa.

"Okinawa is rapidly developing into an international destination. Everything Guam has, likewise Okinawa," Read said. "The only difference is you have more palm trees."

He warned of possible pitfalls in the Guam-TT tourist trade.

"Your tourist industry is dependent now on the influx of Japanese honeymooners. Any short-term economic upset in Japan can change the whole picture," Read said.

Read advised the industry "not to put all the eggs in one basket" and to

look for other marketing outlets.

"With the rising income of a majority of the people of the world, more tourists will be traveling abroad. By 1975, you can expect 227,000 from North America alone," the PATA official noted.

Some 2.6 million Japanese are expected to travel abroad by 1975--mostly to Hawaii and the U.S.

The PATA official said a great number of these visitors will be flooding Guam and the TT.

"The Pacific has the greatest growth potential and Hawaii will be the primary destination point," he said.

Governor Carlos G. Camacho who keynoted the meeting said: "The novelty of tourists coming to Guam and the Trust Territory 'will soon fade' and warned local tourist industry leaders to provide and preserve all of the tourist attractions."

"We must move ahead to fully capitalize on our tourist potentials while at the same time preserve our cultural identity," Camacho said.

TT Deputy High Commissioner Peter T. Coleman who welcomed the gathering said, "Micronesia's traditional friendliness, warmth and hospitality of the people must remain a lasting resource and a permanent asset."

He expressed hope that Guam and TT will be partners in the ever-expanding tourist industry.

The TT was represented by Department of Resources and Development Director Wyman X. Zachary; Mrs. Elizabeth Udui, Resources and Development economist; Frank Diaz, chairman, Marianas Tourist Commission, and Jonas Olkeriil, executive director Palau Tourist Commission.

Also attending were Ambros Minginfel and Kunio Nakamura, Yap Tourist Commission; Lee Mendiola, manager Ponape Kaselehli Inn; Norman Knott, Chief, Land Resources Branch and Larry Sakamoto, information specialist.

BELOW :

TT DELEGATION WITH GUAM GOV.
CARLOS G. CAMACHO (R & D PHOTO)



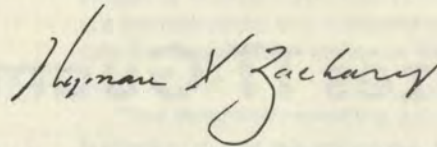
PER
PAC
HZ
870618
.190

New Spirit of Purpose

There is no denial the Trust Territory of the Pacific Islands today is on the move toward a more viable economy. The leadership displayed by High Commissioner Edward E. Johnston and his staff in moulding a better life for the Micronesians has gained steadfast recognition.

Our excellent R&D teamwork readily typifies this new spirit of purpose in Micronesia.

The Department of Resources and Development's mass communication media "Resources and Development" will keep you informed on the multitude of exciting and significant goals in the fields we are dedicated to attain for the people of Micronesia.



\$2 Million Hotel Set For Saipan

A \$2 million luxury hotel and resort village complex will be built on Saipan early next year.

Plans for the 100-room "Princess Kalou" Hotel and "Kalou Village" were announced jointly by Mrs. Louise I. Stout and Trust Territory Government Department of Resources and Development Director Wyman X. Zachary.

Trans-Pac Financial, Inc., a Hawaii corporation, is financially supporting the multi-million dollar project.

Mrs. Stout said the hotel and village complex will be located on a 73-acre site at Laulau Beach on the southern tip of Saipan.

"I wish to publicly acknowledge the help given by the Trust Territory Government, especially to the Department of Resources and Development," Mrs. Stout said.

The department, headed by Wyman X. Zachary, was instrumental in introducing the investment into Micronesia.

The complex will be located within the Papot Latte sites where ancient Chamorro villages flourished.

It will contain the luxury hotel and village, restaurant, snack bars, cocktail lounges, retail shops and village store, swimming pool, entertainment and recreational facilities, riding stables, beauty and barber shops, boating, fishing and skindiving services.

"We are planning to preserve the Latte sites for future historical value and maintain a museum to house and preserve Chamorro artifacts," Mrs. Stout said.

She added that the company will institute and maintain a soil and water conservation program on the premises.

"We are planning to staff the complex with more than 100 Micronesian employees," Mrs. Stout said.

"Micronesian participation in the company will be a major part of the program," she emphasized.

Trans-Pac Financial, Inc., is headed by James Riley, of Honolulu.

Economic Development

Marine Resources

Marine Resources Division Chief Peter T. Wilson has been elected chairman of the South Pacific Islands Fisheries Development Agency's Consultative Committee.

Wilson, who recently returned from the first SPIFDA meeting in Noumea, New Caledonia, announced that the agency is now operating with a budget of almost \$900,000.

He said six projects—all of which are aimed at developing promising ocean resources in the Pacific—are now or will be started in the near future.

These include:

- Conservation and farming of marine turtles.
- Development of the long dormant trepang (sea cucumber) industry.
- Conservation and improvement of the spiny lobster fishery.
- Development of improved vessel design and construction techniques including the use of Ferro-Cement.
- An in-depth study of the productivity of reefs, lagoons and atolls, and
- Development of mariculture for such species as oysters, pearl shell, fish, clams, etc.

"Each of the projects listed above will be headed by a highly-skilled and trained specialist," Wilson said.

The SPIFDA was established by the United Nations Development Program (UNDP) at the request of the participating governments of the South Pacific Commission.

The Food and Agriculture Organization (FAO) was named the executing agency and the administrative offices for SPIFDA were set up in Noumea.

SPIFDA's Consultative Committee members include representatives from American Samoa, Fiji, the Gilbert and Ellice Islands Colony, French Polynesia, New Caledonia, New Hebrides, the Trust Territory of Papua-New Guinea, Western Samoa, the Trust Territory of the Pacific Islands, FAO and other officials.

Agriculture

Two dozen prize pigs were airlifted from Hawaii to Guam and was to be shipped to Saipan this month.

Trust Territory Veterinarian Dr. Raymond Sullivan said the cargo will contain 12 Yorkshires and 12 Hampshires—eight female and four male, each breed—purchased from the Hana Pig Parlor on Maui.

"The pig are due on Guam Monday (Dec. 14) aboard a U.S. Air Force C-141 cargo plane," Sullivan said. "The airlift is part of the Air Force Civic Action program."

The pigs will be transported to Saipan aboard the Saipan Shipping Co.'s "Mas Mauleg".

"We plan to keep the main breeding stock at the Aslito Agriculture Station and eventually distribute the off-spring to farmers throughout the Territory," Sullivan said.

The two dozen prize animals were purchased by the TT Resources and Development Department's Agriculture Division at a cost of \$2,400.



Trust Territory Lands and Surveys Conference Participants

(R&D Photo)

Lands and Surveys Confab Ends

The eight-day Trust Territory Lands and Surveys Conference ended Nov. 24 setting several significant precedents.

"We hope the conference will pave the way for further improvements in our program," Paul D. Dennis, Chief of Lands and Surveys Division, Department of Resources and Development, said.

"We've listened to a rather unique group of speakers from outside our own organization who were critical of our lands and surveys programs," he added, "but we should never fear or reject constructive criticism."

One of the speakers was Saipan Attorney Bill Nabors who alleged that the Mariana District Land Commission was "failing to provide solutions to pressing land problems."

Nabors added that if criticism of the Land Commission in the Marianas is justified, "the fault must be shared by both the local officials as well as the top policy makers at headquarters (Trust Territory Government)."

The attorney noted that if the Land Commission is to serve its ultimate function, "official attitudes must change because the job cannot be solved in the next five years or the next 10 years, but many more."

Another speaker was J. Raymond Carpenter, consultant to the Trust Territory Manpower Advisory Council.

"There are few, if any, Trust Territory officials or Micronesian citizens

that would deny that the Agriculture Homesteading Program throughout the Territory has been and continues to be a colossal failure," Carpenter said.

"The farther-reaching policy implications of this lack of success are likely to be far more costly to present and future generations of Micronesians than either the Administration or local politicians would care to admit," he added.

Carpenter described the Agriculture Homesteading Program as "just political-ly oriented land give-away program."

Dennis told the conferees to review the speakers comments and suggestions and filter out the facts from the half-truths, the misinformation, the misleading statements and more important undertake a comprehensive program to correct the deficiencies pointed out.

"A speaker remarked that the districts are where the action is," Dennis said, "and the districts, gentlemen, are just as much a part of the higher echelon decision making as headquarters."

"I would like to emphasize that the districts must always be involved in our entire lands and surveys structure--working together as a team toward the overall success of our objectives," Dennis added.

Earlier, Dennis told the conferees that the first year of the Micronesian Land Cadaster Program--packed with many problems--has successfully built

a "solid foundation and framework" for future progress.

He said that the Micronesian Land Cadaster Program, when completed, will have a land records and registration system which will be the envy of the entire Pacific area.

"Original estimates were made that the Land Cadaster Program would require five years for completion. We are now on record that at the present level of funding, the program will require eight years--and I am not completely convinced that we will accomplish everything that we want to accomplish even in this period of time," he added.

The conference was opened by R&D Director Wyman X. Zachary and the opening day speakers included Deputy High Commissioner Peter T. Coleman.

Palikir Farmers Form Cooperative

The farmers of Palikir, are teaming up to collectively market their produce through the Ponape Producer Cooperative Association.

Previously, they sold their produce individually in Kolonia.

MERRY CHRISTMAS
AND A
HAPPY NEW YEAR

TT Exports Pass \$5 Million Mark

The Trust Territory has recorded a new high in export income.

During the fiscal year ending June 30, 1970, commodity exports, mainly copra, fish, meat and handicrafts, hit \$4.1 million. With the addition of nearly \$1 million from the "invisible" export of tourism, the Territory's total export income for the year topped \$5 million. The year before, the amount was \$2.8 million.

Copra, marketed by United Micronesia Development Association (UMDA), remains the territory's biggest export item with 15,688 short tons valued at \$2.6 million. This represents a 1,600 ton and \$484,000 dollar increase over 1969.

The price of copra on the world market fluctuated widely during the year from a low \$146.00 per ton in August 1969 to \$209.00 in December, dropping to \$167.00 in January, rising to \$208.00 in March and dipping again to \$164.00 in June.

As this price averaged about \$180.00 for the year, the purchase price of copra leveled at \$112.50. The Copra Stabilization fund rose from \$870,000 to \$971,000.

Trust Territory officials have started a coconut grove rehabilitation program to sustain the top TT export item.

Two cooperative officers are now assigned in the Marshalls and Ponape Districts to assist coconut production rehabilitation.

The second largest export item was fish. This outlet rose from \$343,000 in 1969 to \$989,000 in 1970.

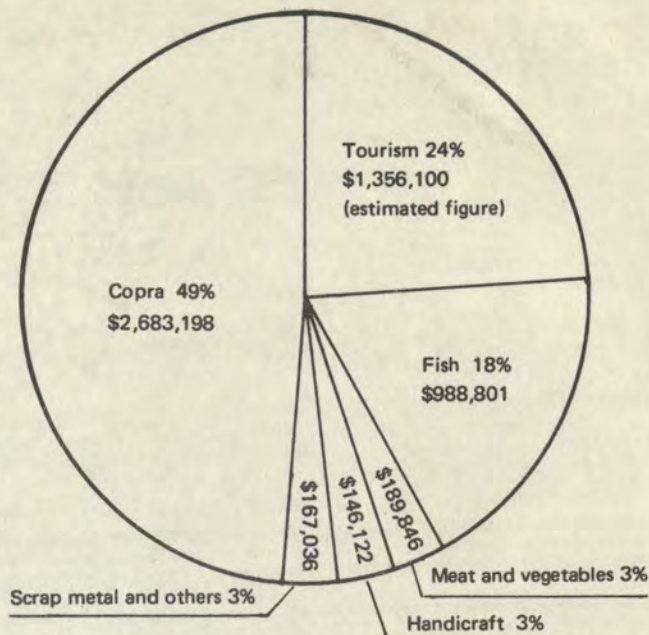
The tourism industry, which brought in \$906,500 was the third largest income source.

Meat exports, mainly beef and pork from the Marianas, amounted to \$135,600. This is a tremendous growth over the previous year's figures of only \$1,300.

Handicraft, at \$147,000 was about the same as the prior year's \$144,000.

The value of scrap metal exports was reduced almost by half: 1969's figure was \$95,000, while for the year ending June 30, 1970, about \$54,000 worth of scrap metal was salvaged and sold.

Other exports showing growth were vegetables, from \$10,000 to \$52,000, and trochus shells exports which rose



(Graph by PIO)

from \$14,600 to \$52,200. Export of cacao and pepper declined.

Goods imported into the Trust Territory reached an all-time high of nearly \$21 million, showing an increase of nearly \$6 million during the past three years.

While there was no significant percentage increase in the amount of rice, flour, sugar, and alcoholic beverages consumed, there was jump of about 75 percent in imports of canned meat and fish. Both tobacco products and building materials rose about 50 percent during the one year period, and the amount of imported clothing and textiles doubled.

The greatest commodity increase was petroleum products, which rose nearly 240 percent over the previous year, from \$953,000 to \$3.2 million. This figure is tied closely to the increase in automobiles which showed Micronesian ownership of cars went up 18 percent, from 3,577 vehicles to 4,218. The 99 more motor bikes, 209 additional sedans, and 463 new pickups. The number of Micronesian-owned jeeps, on the other hand, dropped 20 percent during the year.

Total vehicle ownership, Micronesian, non-Micronesian, and Government, also increased about 18%, from 5,037 two years ago to 5,933 last year.

A summary of the statistics would indicate that residents of Micronesia are eating more canned meat and fish, smoking more, dressing better, improving their homes and building new ones, as well as driving more cars for many more miles.

Earnings also have increased. Micronesian wages for the year ending June 30, 1970 totalled \$17,857,000. The year before the amount was \$14,742,000. The increase in Micronesian wages for the year was approximately \$3.1 million more than the previous year.

Starfish Killed

The Marine Resources four Starfish Killer Teams so far have wiped out more than 90,250 Crown of Thorns Starfish.

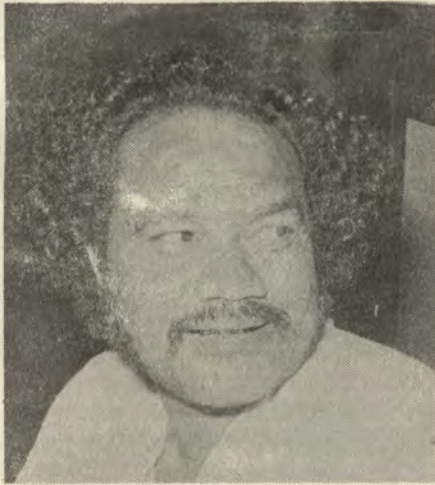
Starfish Control Specialist Milton McDonald reported the Marianas accounted for 25,384; Palau, 14,216; Truk, 36,137 and Ponape, 14,517 of the total starfish kill.

895 Alien Labor Force

There are 895 non-resident workers representing 16 nationalities working in the Trust Territory.

Statistics released by the Labor Division listed Filipinos leading with 324, the Japanese second with 203 and Ryukyuan, 193.

The list includes Americans, 82, Chinese, 43, Britons, 21, Koreans, 15, Austrians, 4, Canadians, 2, Fijians, 2 and Dutch, Italian, New Zealander, Norwegian, Pakistani, and Taiwanese, 1 each.



Congressman Mangefel:

'Yapese Outrunning Nature'

But Mangefel, admits that little or no effort is being made to make use of Yap's rich land and sea resources.

"I say, bring in the expert farmers and fishermen to teach our people. I say, do it now! Not next week, not next year, not three years from now," Mangefel said.

"For example, our farmers have set up a market. There are plenty of betelnuts in the market, of course, but not enough vegetables," Mangefel said.

The Congressman wants a massive farm training to meet the needs in Yap today.

"If we have enough vegetables we could ship them to Joeten Store in Saipan and exchange them for cows. And if we have the cows we can have plenty of fresh meat," he said.

"And the same thing goes for chickens. We can raise plenty of chickens here," Mangefel said.

Contrary to common belief of the Yapese "not wanting" outsiders, Mangefel feels that the time has come to invite foreign capital to get things rolling.

Mangefel noted that Yap now has only a 10-room hotel. He added that Yap needs a nice, big hotel right now to bring in the tourist dollars.

The Congressman insisted, however, that any big hotel investments by outsiders must be on a 50-50 basis.

"The Yapese don't have plenty of money so we need investors to start the business and leave the way open for our people to business when they have the money," he said.

Asked how the Yapese could raise this money, Mangefel said, "Easy. We start regular payroll deductions for those who want to buy the business."

"And the same goes for any other outside businesses coming into Yap," he added.

Congressman Mangefel injected a note of caution to his people. "The Yapese are outrunning nature. Now we must help nature, so in return, it will help us," Mangefel warned.

"So far, all we have been doing is taking away almost all the things nature produces, and we have not encouraged it to produce more," he said.

"Now, we have to start the farms, raise chickens and cows and harvest more fish to feed the people," he said.

"The job will not be easy. "It will take plenty of teamwork, imagination, drive and guts to overcome the everyday obstacles, in order to solve the problems." And these, the Yapese have.

Colonia, Yap--The magic formula for good living in Yap is team work.

"And I think we are facing the same problems like in the other districts in the Trust Territory--the need for better roads, water and power--but the Yapese are progressing slowly, but surely," Congressman John Mangefel said in a recent interview.

"We have a good leader in Yap--District Administrator Leonard Aguigui. He is fair and a hard worker. And I think he is doing an effective job," Mangefel said.

Asked about economic development, the Congressman replied, "We Yapese must put our heads together and start raising more vegetables, chickens and cows. And we have plenty of fish."

Population Now 102,250

The population of the Trust Territory has exceeded the 100,000 mark.

As of June 30, this year, the total population showed 102,250. This is about 4,250 more than the 1969 figure of 98,009.

By district, Truk continued to be the most populous with 29,208. Pohnpei and the Marshalls continued in close second and third positions, with Pohnpei counting 20,808 residents and the Marshall Islands with 20,206.

Palau recorded 12,525 and the Mariana Islands 12,256. The TT's smallest district, Yap, counted 7,247 residents.

In total population there were nearly three percent more men recorded than women. And of the 102,250 total, almost 56,000, or more than half of the citizens of the Trust Territory are under age 24.



PRIVATE ENTERPRISE--Yap District Administrator Leonard Aguigui signs documents on Oct. 28 transferring the ownership of the TT-operated Rai View Hotel to the Yap Hotel Corporation--a 100 percent Micronesian-owned company. Looking on are Joseph Tamag (center), YHC president and Mike Kilian, Senior Land Commissioner, Yap.

(R&D Photo)

R&D Programs Gaining Momentum Says Zachary

The Trust Territory Government's Resources and Development programs have taken root and the forward momentum is gaining speed.

"We've come a long way toward improving the overall economic posture of the territory," Wyman X. Zachary, director of Department of Resources and Development, declared recently.

But there are major problems to be tackled and solving them is not an easy task.

"It has been necessary to establish priorities which will benefit the people of Micronesia the most," Zachary said. "We are progressing rather rapidly in most of our major programs."

Marine Resources is probably the best source of income existing in the Trust Territory.

"We can develop a large fishing industry, but we have three major hurdles--first, the financing of large refrigeration and ice plant facilities; second, the training of Micronesian fishermen and furnishing them the tools necessary to exploit the ocean riches; and third, to develop suitable marketing outlets," Zachary said.

He said his department is developing modern techniques of harvesting drugs from the sea, aquaculture and looking into the possibility of oyster farming.

"I might add that some of the largest canneries and packers--Van Camp, Bumble Bee, Starkist, Beatrice Foods and other companies--are presenting propositions which would establish new revenue-producing outlets. We are looking into these projects with great care so that the people of Micronesia

can benefit to the greatest degree from the ocean resources," Zachary added.

Another significant topic discussed was the Economic Development Loan Fund (EDLF) tailored to assist the Micronesians in business.

"The fund is exhausted, but we keep struggling to replenish the fund. There is a bill before the U.S. Congress which calls for a new EDLF ceiling of \$5 million.

"The thing we're sweating out now is whether or not this ceiling will be passed and if so when. It looks now that it couldn't possibly happen before the first of the year when the new Congress meets because the current Congress is finishing up its session.

"The Congress of Micronesia recognized this problem and has set up in their new budget a \$600,000 EDLF appropriation but this too, is a 1972 item so it won't be of any help to us this year," Zachary said.

He emphasized that the fund is exhausted and new applications are not being accepted until additional money is received.

The Micronesia Land Cadaster Program is almost a year old. It developed into a rather controversial subject in the beginning but today, the program is gaining the support of the people.

"I have to in all honesty say that the Land Cadaster program is progressing rather slowly and this is due to many factors. The biggest problem is to get adequately-trained personnel do the job. We have brought in the U. S. Bu-

reau of Land Management and the Geological Survey personnel to establish land control points and boundary surveys. And at the same time we have to train Micronesians to do this job.

"As I said before, the lack of manpower is the biggest problem so far. And there are bad terrains, weather conditions and a great number of reasons--rather than excuses--for the Land Cadaster program not progressing faster than it is," Zachary said.

One of the biggest factors was to have the people of Micronesia accept the Land Cadaster program.

"There has been some reluctance on the part of the people of several districts to give the program their entire support . . . but this situation is improving.

"In Yap, the people are concerned whether or not this (Cadaster) is a way to get the land properly described so that somebody can levy rather heavy taxes on them.

"Levying real property tax will be with the municipality. So the people of Yap can be pretty well assured that the only taxation that they will be subject to as far as their land is concerned, is the tax they themselves levy on those lands. I don't think the fear is a real one," Zachary said.

"In the Marshalls, the people are wondering if one individual or a group of people could own the land. And the answer to that question is that it can be on an individual or group ownership basis.

"The customary traditions and cultures of the people will not be disregarded. The people can pretty well be assured the issuance of land titles will be as they want it to be," he said.

Zachary reported that the Land Cadaster program is progressing smoothly in the Truk, Ponape, Palau and the Marianas Districts.

He emphasized that the main objectives of the Land Cadaster program is to establish a "records keeping system" to protect the land owners.



**RESOURCES
and
DEVELOPMENT**

RESOURCES
and

DEVELOPMENT is published monthly by the Trust Territory Department of Resources and Development. Larry Sakamoto, Editor.

Saipan, Mariana Islands 96950

HICOM EDUCATION LIBRARY

LIBRARY USE
ONLY