

WAILUKU WEATHER			
	Max.	Min.	R'fall
Dec. 9	87	67	.00
Dec. 10	83	65	.00
Dec. 11	84	65	.00
Dec. 12	74	68	1.96
Dec. 13	75	67	.27
Dec. 14	73	66	.22
Dec. 15	82	65	.00
Rainfall 2.45 inches.			

SEMI-WEEKLY MAUI NEWS

"FOR THE VALLEY ISLE FIRST"

THIS WEEK'S MAILS	
From the Coast:	Saturday, China and Makura, (Vancouver); Tuesday, Maui.
To the Coast:	Tuesday, Tenyo Maru and Ventura; Wednesday, Manoa.
From the Orient:	Tuesday, Tenyo Maru.

22nd YEAR—No. 1150. SEMI-WEEKLY MAUI NEWS, FRIDAY, DECEMBER 16, 1921. PRICE 5 CENTS

Injured Man Was Nearly 12 Hours Without Doctor

Commander of Eagle Boat Not Notified of White's Hurts Until Well Into Sunday Morning.

After H. T. White, member of the engine crew of Eagle No. 53 received his injuries which later resulted in his death, nearly 12 hours elapsed before he received medical attention and was taken to the hospital. The time fixed as that when he was injured is between 12 and 1 o'clock and he was not taken to the hospital until noon that day. The commander of the Eagle boat was given no information that one of his men had been injured until shortly before.

Reports received by the sheriff are to the effect that when White was found by companions between 2 and 3 o'clock Sunday morning he was helped onto the wharf and that he walked up the gangway to the naval vessel and went to his bunk. It was between 10 and 11 o'clock, it is said, that one of the naval men told the commander that one of those who was ashore the previous night seemed to be pretty sick. When he was washed up it was found he was bleeding from the nose and ear and then a physician was summoned. Then he was taken to the hospital.

From Pearl Harbor a naval inquiry board came over on an Eagle boat, Wednesday evening. Yesterday it was going into the medical aspects of the affair and today it is expected to take up the facts and circumstances of the evening and night of his death. It is not expected that any information will be given to the public by the board until after its report has been rendered to and considered by authorities of the naval department. The investigation was held yesterday in the Masonic Temple in Kahului.

As yet the inquest has not been held. It was expected to hold it yesterday but that plan was abandoned when the investigation by the navy was started. It is planned to hold it today.

Cases of Hookworm Come From Porto Rico

Hook worm was brought to Maui by Porto Rican laborers who came on the Hawk Eye State several weeks ago. Associated Press dispatches from Honolulu yesterday said that the board of health reported that 17 cases of the disease were found here among Porto Ricans in the month of November.

Sanitary Inspector George Weight confirmed the news yesterday afternoon but did not appear to lay special importance upon the matter and said it was not the first time the malady had been found among immigrants. Three of the cases were among workers who came to the Wailuku district and the others among those who went to Puuene.

Weight said the laborers should not, in his opinion, have been sent from Honolulu while suffering from the disease as there is a quarantine station there where they could be treated. He said they were so treated before leaving the capital city.

From other sources it is learned that a treatment for the malady was sent here by the Planters Association and is being administered to the sufferers by plantation physicians at the hospitals.

ERUPTION IN ANDES

(ASSOCIATED PRESS) BUENOS AIRES, Dec. 16.—The volcano reported to be in eruption in the Andes is believed to be Mount Rinahu. Three Chilean townships have been damaged, ashes cover the grazing lands and livestock faces starvation.

FRENCH CRAFT SUNK

(ASSOCIATED PRESS) MADRID, Dec. 16.—On official report received this morning says that a Spanish gunboat has sunk a French sailing vessel and captured two others that were found engaged in smuggling arms to the Moroccans.

Administration Seeks To Aid Sugar Growers In Face of Surplus

(ASSOCIATED PRESS) WASHINGTON, Dec. 16.—It is learned that negotiations between the administration and the sugar industry interests to find means to handle the sugar surplus are continuing but thus far have been without definite results. In some quarters it is believed that whatever plan is adopted, the price to the consumer will not exceed six cents.

(ASSOCIATED PRESS) SAN FRANCISCO, Dec. 16.—Though the Pacific Coast refiners pay the Hawaiian and Philippine planters 25 cents less than Eastern refiners pay for raws this gives the Westerners no advantage because the Eastern refiners own plantations through subsidiary companies, W. H. Howard testified yesterday before the Interstate Commerce Commission which is here getting views on the claim that railroads from the Pacific are unduly handicapped by competition by Louisiana, Porto Rican and Cuban sugars in the Chicago market.

Howard said a tariff is necessary to protect Hawaiian, Philippine and mainland planters. He said that little was left of last season's Hawaiian crop but the carry over of a million tons of Cubans was depressing the market.

Replying to Howard's statement today, Joseph Abbott, representing the American Sugar Refining Company said that the American owns only an eighth of the stock in the plantations whose sugars it refines.

The hearing then adjourned to meet in New Orleans on January 12, when the Hawaiian, Louisiana and Western beet interests will conclude their cases.

New Channel Blasted To Save Fields When Iao River Runs Full

Blasting which was heard about noon Tuesday and afterward through the afternoon and on Wednesday morning was done by the Wailuku Sugar Company to open the course of Iao River at the curve above the mill and to prevent the washing away of the bank of the stream where it was cutting into and under cane fields of the company. At that point there was an island where the stream had been cut out previously to check washage of the bank and in order to relieve the situation which resulted from high water occasioned by the recent heavy rains it was decided to cut a course through the island. This was completed Wednesday forenoon.

This week's rain has swelled the river to the highest level it has reached since the flood of 1916, and is two feet higher than the highest last December. This high point was reached Tuesday and the river began to slobber over its bank nearly opposite the company's mill, threatening to tear away the three feet of soil which prevented it from flowing in a new course across fields, fences and houses. In this emergency it was decided to blast a new course for the water and thus save the field, which was started immediately.

By Wednesday morning the water had gone down so as to no longer threaten the fields, but the work of changing the river's course went on as a safety measure, so that next flood will not cut away the bank.

This same high water swept away a new and heavy stone wall which the Wailuku Sugar Company had erected in Iao Valley to protect a ditch intake, but the damage was not large.

Proposed Constitution Is Referred to Various Unions

(ASSOCIATED PRESS) HONOLULU, Dec. 16.—A meeting of the so-called "Rank and File" labor union was held last evening and adopted the name of "United Workers of Hawaii." A constitution drawn up by George Wright was discussed and referred back to the various unions represented by delegations in the meeting.

HAVANA TO PROTEST.

(ASSOCIATED PRESS) HAVANA, Dec. 16.—President Zayas has approved a public demonstration against the Fordney tariff bill by consenting to review the parades that are planned for next Sunday.

Precautions will be taken to prevent anything which will tend to give the affair an anti-American aspect.

SOUTH GAINS STRENGTH

(ASSOCIATED PRESS) AMOY, Dec. 16.—The province of Kansu is reported to have joined the South China movement thus forcing the province of Shensi to act similarly. The government of the South claims to be gaining strength owing to what is termed the failure of the delegation at Washington to obtain protection for China's interests.

Higher Tax Rate Sure and Revenue Will Be Smaller

Board Prepares Tentative Budget in Worrisome All Day Session; Large Curtailments Necessary.

Up goes the tax rate and even so the county's income will be smaller next year than this. It is estimated that the total tax rates next year will be 3.14 as against 2.94 this year.

All day yesterday from in the morning until darkness had set in the board of supervisors labored over county finances and the preparations of a budget for the next year's expenses. They pruned and they pared and they cut to the bone, and then they went through the operation again and yet again. The result was a tentative budget which will not be formally adopted until the board has something more definite on probable assessed valuation.

In yesterday's figuring the board estimated that the assessed valuation will probably be about \$35,000,000 instead of about \$44,000,000 or a decrease of something like \$8,500,000 and produce about \$300,000 less income. The board will end this year with a surplus of \$10,000 approximate.

Wherever possible expenses are to be cut. Salaries not fixed by the legislature will be generally reduced except in the county engineer's office, automobile upkeep, allowances will be shaved, the road funds will be cut down, there will be smaller funds available for child welfare work, and for support of the indigents. Every department where reductions can be made will feel the pruning knife and liberality toward enterprises of Maui shown in the past will be correspondingly curtailed. A period of strict economy is coming.

Could the board have reduced salaries fixed by the last legislature, including the salaries of their own members, they would have done so. It was a trying and a difficult session. The board are in session again this morning.

Steamer Kilauea Will Move Sailing Forward

Change in the schedule of the Kilauea for next week was announced this morning. She will arrive in Kahului Friday instead of Saturday morning and will leave Friday instead of Saturday night. Those who had been contemplating sending Christmas mail upon her will have to speed up a day.

The change in the schedule of the Kilauea is made to allow her officers and crew to have more of a Christmas season. They will be enabled to have three days in Honolulu under the arrangement.

Grand Jurors Drawn For Coming Sessions

Fifty names were drawn for the grand jury and are announced by the clerk of the circuit court as follows: Daniel Kaopuiki, R. C. Searle, A. Gross, John Andrecht, Chas. A. Buchanan, C. B. Cockett, Geo. H. Dunn, Chas. K. Farden, E. B. Smith, David K. Kinney, Wm. Buck, W. H. Field, J. Garcia, Frank Medeiros, M. H. Sylva, V. A. Vetlesen, D. S. Wadsworth, Wm. E. Bal, Sr., Peter W. Eichinger, Edwin Soper, Masichi Fukunaga, Hugh McNeil, F. F. Baldwin, Henry C. Daniels, Conrad Hansen, W. A. Baldwin, Paul Townsley, John Pacheco, Sam Baldwin, Edgar Morton, Jr., F. B. Cameron, Jos. Meinecke, John H. Bonnell, James N. Fanfata, C. C. Pogue, John Pinnick, Sam Ailing, Frank Cabral, James Smith, Kiyoichi Uyeda, John Wilcox, Ah Chong K. Yeong, Joaquin Torres, John Fassoth, Jr., Charles Fassoth, William Range, Wm. F. Jones, Waldemar Devauchelle, George Rosa, Joseph Raphael.

ATROCITIES REPORTED

(ASSOCIATED PRESS) SAN DOMINGO, Dec. 16.—Witnesses testifying to alleged atrocities during the American military occupancy, before the United States senate's special investigating committee, related alleged incidents of cutting off the ears of prisoners and pouring salt upon the wounds.

(ASSOCIATED PRESS) WASHINGTON, Dec. 15.—(Associated Press)—The annual report of the commissioner of navigation says the tonnage of American ships used in foreign trade last year was almost eleven times greater than that of 1914. The report shows a gain of 2801 vessels of a gross tonnage of 18,282,156 of American registry which is an increase over 1920 of 1,958,114 gross tons, the total including 5951 vessels of 11,077,398 gross tonnage, in foreign trade, 21,478 vessels having a tonnage of 7,165,136 in coastwise trade and 583 vessels of 41,600 tons in fishing trade.

Congressman Takes His Life by Drowning

(ASSOCIATED PRESS) WASHINGTON, Dec. 16.—The body of John A. Elston of Berkeley, California, was found floating in the Potomac River yesterday. In his pocket was found a letter which said he was "caught in a chain of circumstances which spell ruin although my offense was innocently committed in the beginning. I hope all of the facts will come out. My stay means embarrassment to my district."

Elston was greatly concerned over the failure of the government to undertake the Alameda naval base project, which was to be in his district and it is understood he did not intend to run for re-election.

British Parliament Adopts Irish Treaty By Large Majorities

(ASSOCIATED PRESS) LONDON, Dec. 16.—Both houses of parliament this morning ratified by overwhelming majorities the treaty with Ireland creating it a free state.

Dispatches from Dublin last night said that Dail Eireann which was in secret session through yesterday adjourned last evening without having reached a decision but that it would resume consideration of the treaty today.

It is reported from Ulster that plans for home defense are going forward and that the Grand Orange Lodge of Ireland has called upon all of its members to enroll in the loyalist defense association.

China Looks Forward To Radio Service

(ASSOCIATED PRESS) SHANGHAI, Dec. 7.—(Associated Press)—Commercial interests of Shanghai and of China generally are looking for hopefully to the opening of radio communication between Shanghai and America through the erection of a wireless station, said to be second to none in the world, here within the next few months.

The station and the general radio system for the interior of China will be built by the Federal Telegraph company of America, under agreements concluded between China and America.

According to the announced plans, the station will have six towers, 1,006 feet in height and will have mechanical equipment equal in power to the great station at Bordeaux, France. The system in the interior will include stations to be built at Harbin, Peking and Canton. R. R. Beal, engineer in chief of the company, is here carrying forward the preparations for the various stations and a considerable portion of the equipment is being manufactured now.

In addition to the ordinary service to be provided, it is said that a daily news service from the United States is to be supplied. This will fill a long-felt want in China, it was declared.

LONG ACCEPTABLE

(ASSOCIATED PRESS) WASHINGTON, Dec. 16.—The state department has indicated to Berlin that Carl Long will be acceptable as German charge d'affairs. Long is reported to have sailed for the United States.

DIVIDEND REDUCED

(ASSOCIATED PRESS) HONOLULU, Dec. 16.—Announcement is made by Alexander & Baldwin that dividends on its capital stock will be reduced to 50 cents monthly beginning January 1, to continue until further notice.

BOLZANO, ITALY, DECEMBER 15

(Associated Press)—Fires in the Sesto valley of the upper Adige region destroyed several villages and made hundreds homeless.

PANAMA, DECEMBER 15

(Associated Press)—Fifteen members of the crew of the American bark Harvard which was enroute from Tahiti to Honolulu were picked up at sea after drifting 48 hours in life boats by the British steamer Baroninch Cape and brought to Balboa. They will be sent to San Francisco aboard the liner Hawk Eye State.

Definite Plans For Transporting School Children Presented

Plans contemplating the free transportation to and from schools of about 85 children were presented to the board of supervisors by the special committee composed of the county attorney and the county engineer yesterday afternoon and tenders are to be sought for the carrying of the youngsters. Some of them are now walking 10 to 12 miles a day good and bad weather, in sunshine or in rain, through dust or mud. If the tenders should not come within the \$300 allotted for the biennial period plans will have to be changed.

As reported to the board there would be accommodations for about 70 children who have passed beyond the grades taught in their districts and about 15 who have no school near their homes. Of the latter number 12 are in Honokohau and now tramp from 5 to 7 miles each way to and from school as was told last Tuesday. It is proposed to spend the money on Molokai and in the West Maui and the Hana districts.

On Molokai transportation would be furnished to Kaluaaha from Wailuku and Kamalo for 10 and 12 children respectively. This is one of the suggestions of the department of public instruction.

To Kamehameha III School there would be transportation for not less than 13 between Honokohau and 18 from Olowalu. These are mostly children who have passed beyond the school nearer their homes.

From Honokohau to Honokowai not less than 12 would be accommodated. There is no school at Honokohau at present, the school having been abandoned because of decreasing population. It is there that one mother said it was unfortunate she had children when she was so far from a school.

In the Hana district there would be accommodations for 11 from Kalekulu and 9 from Haou to the Hana school.

Germany Unable To Meet Next Payment

(ASSOCIATED PRESS) PARIS, Dec. 16.—The reparations commission met this morning to consider Germany's note to the effect that she is unable to meet payments of 538,000 marks on January 15. The note said that payment in full depended on the results of efforts to secure a foreign loan.

The commission decided to act without consulting the allied governments.

Germany did not ask for a moratorium nor for a release from its obligations but merely laid the case before the commission, saying it has raised a part of the installment but has been unable to raise the balance.

Trial Jurors Drawn For Circuit Court Will Meet on 20th

The following citizens of Maui have been drafted for jury duty at trial jurors and will be called for December 20:

- V. M. Fitzimmons, Henry Gibson, Albert J. Cockett, James Kaunaha, Olivia Lum Lung, Peter Ah See, Sam Aki, Charles Book, Antone Ricard, Wm. I. Lewis, Antone Pestana, Joseph J. Canno, George Cockett, William Cockett, Antone Freitas, John F. Freudenberg, A. D. Furtado, Frank Gonsalves, Thomas Hussey, Eugene Haneberg, Fred W. Walker, Alexander Valentine, Harry L. Bailey, Wm. Bal, Jr., J. C. Cabral, Jas. Casswell, Joseph Cockett, Charles Puck, Manuel Dutro, A. Garcia, Henry Y. Shim, Joseph G. Silva, Wm. Sniffen, Young Ting, Noah P. Waiwalole, Frank D. Bal, John Baptist, Jr., Joe Borba, Sam Kahale, George Morris, John Teasdale, Edward Apo, Wm. Morris, John Martin, Joaquin Cabral, M. de Cambra, Edward K. Cockett, Henry E. Cook, Wm. Feuerville, E. J. Freitas, N. Omsted, Jas. Cummings, A. F. Tavares, Jerry Burns, George K. Uwekoolani, James Brown, Jr., Manuel Lopes, Ira W. Newton, Ernest J. Morton, W. A. Clark, Joe G. Freitas, S. E. Hubbard, L. F. Jones, William Hokoana, Frank Vasconcellos, Dan Driscoll, W. F. Alfonso, Harry Alu, John Andrade, Grant Bailey, Carsten W. Gerner, Jos. Emmesley, Chas. Plunkett, Joseph C. Chong, Jas. K. Hueu, Marion Cabral, John Oliveira, Jr., John Cabral, Frank Estrella, Loo Goon Chew, Henry P. Bush, Jack Aikau, George M. Hoopai, John K. Kaulakuni, John K. Napihaa, Jos. K. Kaulakuni, Jos. B. Fassoth, Samuel Kahue, Francis V. Marciel, A. V. Marciel, Jr., Sam Apo, Henry Gibson, John Akina, Geo. K. Buchanan, Peter Dudoit, Edward K. Devauchelle, Edward McCarrison, Wong Leong, Edward L. Devauchelle, Henry Peelua, Jr.

Will Sell Railway

The Japanese delegation has accepted the Chinese proposal for the purchase of the Kiachou-Tsinfu railway for 53,000,000 gold marks subject to the approval of Tokio. The Chinese delegation said the consortium has agreed to finance the project. It is understood that Japan consented to the sale several days since subject to China's attitude on other subjects.

France Springs Surprise

French delegates ask for a naval increase so great that it would upset the entire 5-3 plan, according to members of the British delegation who understand that France seeks to build ten super-dreadnaughts of the 35,000 ton, Maryland type in the ten years following 1925, giving a capital tonnage of 350,000 in comparison to Japan's 315,000.

It is reported that Italy disapproves the French program but has declared that if France builds ten ships, Italy will have to do the same.

The British announcement of France's naval request struck conference circles with stunning force, her proposals being so out of accord with the theories upon which the conferees are proceeding. There is a strong inclination in British and American circles not to take the proposals seriously.

Big Three Agree On Terms Naval Force Reduction

Some Slight Modifications Are Made But French Proposals Might Upset Them; Great Progress Making.

(ASSOCIATED PRESS) WASHINGTON, Dec. 16.—Official announcement of agreement upon the 5-3 basis for United States, Britain and Japan in naval strength was made by the state department last evening.

Under the agreement reached it is understood that Japan will retain the Hutsu instead of the Senu and the United States will retain the Colorado and Washington of the Maryland Class instead of the Delaware and North Dakota. Great Britain will build two super-dreadnaughts similar to the Maryland and the Mulsu and scrap four that were originally scheduled for retention.

The agreement contains a status quo understanding for the fortification of Pacific Island except Hawaii and those along the Australian, New Zealand and Japanese coasts. With such exceptions the agreement coincides with the original plan but questions of submarine strength, aircraft carriers and possible modification of the ten years ship-building holiday are reserved for consideration by the naval committee of 15.

The agreement also provides for maximum size of replacement at 37,000 tons; American measurement and an ultimate capital ship tonnage at the end of ten years as follows: Britain and United States, 525,000 tons each and Japan 315,000 while the original plan put replacement at 35,000 and the ratio at 500,000-500,000 and 300,000. During the next ten years United States will have 18 capital ships aggregating 525,850, Britain 20, aggregating 582,050 and Japan 10, aggregating 313,000. Britain's excess is due to the greater age of her ships.

The official announcement said that the agreement was dependent upon an agreement with France and Italy relative to their limit but the ratio of the big three will not be affected by negotiations with those two countries.

Vessels to Be Scrapped

Under the agreement the United States will scrap 30 ships, the same number as originally planned but the tonnage to be scrapped is 820,000 instead of 825,000. Japan will scrap the same number of ships as originally suggested but 435,000 instead of 448,000 tons and Great Britain will scrap 23, instead of 19, and 605,000 tons instead of 583,000. It is announced that the naval and fortification agreement will be embodied in a treaty to be signed by United States, Britain, Japan, France and Italy and it was further stated that no plenary session will be held to consider the naval agreement until the entire subject, including auxiliary ships, is settled. It was officially stated that the United States will save about \$20,000,000 annually through this revision.

Will Sell Railway

The Japanese delegation has accepted the Chinese proposal for the purchase of the Kiachou-Tsinfu railway for 53,000,000 gold marks subject to the approval of Tokio. The Chinese delegation said the consortium has agreed to finance the project. It is understood that Japan consented to the sale several days since subject to China's attitude on other subjects.

Senator Reed of Missouri Has Launched Another Attack on the Proposed Quadruple Entente Characterizing It as a "Gold Brick" and an "Japanese-American Alliance"

He said that coupled with the naval agreement it will make "Great Britain mistress of the seas for ten years and in substance binds the United States never to have a navy larger than Britain and gives to Japan a navy out of proportion to its wealth and population."

France Springs Surprise

French delegates ask for a naval increase so great that it would upset the entire 5-3 plan, according to members of the British delegation who understand that France seeks to build ten super-dreadnaughts of the 35,000 ton, Maryland type in the ten years following 1925, giving a capital tonnage of 350,000 in comparison to Japan's 315,000.

It is reported that Italy disapproves the French program but has declared that if France builds ten ships, Italy will have to do the same.

The British announcement of France's naval request struck conference circles with stunning force, her proposals being so out of accord with the theories upon which the conferees are proceeding. There is a strong inclination in British and American circles not to take the proposals seriously.

SPORTS

Final Football of Season Scheduled at Lahaina on Sunday

What will probably be the last game of football among the senior teams of Maui will be played at Lahaina Sunday afternoon. Tuesday a challenge from Joe Meinecke on behalf of the Paia eleven was received in Wailuku asking an exhibition game between that squad and the Wailuku Blues and was promptly accepted. A game between the two teams had been scheduled to be played at Lahaina on December 11, but owing to the unexpected appearance of the Navy champions had to be postponed indefinitely.

West Maui fans may now rest assured of seeing their expressed wish fulfilled in a game which promises to be the most hotly contested gridiron battle on Maui this year. Paia is out for revenge, and Wailuku vows she will not be shaken, even for a moment of doubt, from her pinnacle of championship.

Paia Favorite

That East Maui will be the favorite at the opening of the game is assured, for no one has forgotten the wonderful exhibition of real football coupled with good headwork and generalship that Paia displayed against the Marines in their meeting last month, nor has any one forgotten the overwhelming defeat that the Maui champions received at the hands of the same Pearl Harbor squadron.

Sunday's game too, against the strong Navy team has thrown Paia players more forcibly into the lime light and shown the ability of that eleven as individuals. Coleman and Sousa in the backfield with Robinson, Machado and Misener on the line all of whom are stars of proved ability and the other players of the Maroon eleven whose playing has been beyond reproach will form a wall against which Wailuku will have no "easy pickings."

Champions Determined

Wailuku, too, will enter the game with players that have distinguished themselves in former contests. Reports from the "Blues" camp are that they will enter the contest with a determination to win that they expect must turn the tide to a victory. Crippled by the loss of Pogue and Penhallow, it may be an uphill struggle for the champions but with the aid of Morris, Yeckman, Baldwin, Char and Kalua they hope to overcome the loss of two of their stars. Wailuku field is the scene of grueling training every afternoon and evening under the guidance of Captain Morris in preparation of the coming meet which promises to be one that will live in the memories of those who witness it until the whistle blows for the opening kickoff next year.

Lahaina Prepared

West Maui field has been the scene of considerable activity in the past week and everything possible has been done to turn it into a gridiron worthy of the contest to be played upon it and before the whistle blows on Sunday afternoon will see an exodus of fans from Olowalu to Honokohau.

Tennis

Eddie Tam, championship singles player of Maui, won the final match in the men's handicap singles tournament of the Settlement Tennis Club, last Saturday afternoon, playing against Harold Chang and thereby became possessor of the beautiful trophy presented by the Wailuku Hardware & Grocery Company. The score was 7-5, 7-5, 3-6 and 6-2, and each game and set was hotly contested for, with the exception of the last set in which Tam shaded his opponent down to a short score.

The next tournament to be pulled off by the Settlement Tennis Club in the near future, will probably be a handicap mixed-doubles tournament.

Mixed Doubles Championship

In the All-Maui mixed-doubles championship tournament, Phelps-Todd of Lahaina defeated Alfred Hansen-Maybelle Taylor on the Puunene courts last Saturday afternoon. The score was 6-3 and 8-6.

Handicap Novice

The following matches were played off in the handicap novice tournament last week.

Geo. Bal defeated A. Y. Jim, score 6-3, 6-4; K. S. Chun defeated Ben do Rego, score 6-2, 6-4; Aho Wong defeated A. C. Wong, score 6-4, 6-1; Walter Garcia defeated Ah Yun Yee, score 6-1, 6-1; Apo Wong defeated Ah Wai Yee, score 6-3, 3-6, 9-7; Bunny Garcia defeated W. Y. Young, score 6-4, 5-7, 6-3.

In the All-Maui mixed doubles championship tournament, Engle-Fitzgerald won from Baldwin-Baldwin by default.

Today Eddie Tam-Mrs. Paris will play W. A. Baldwin-Mrs. Deinert at 4 p. m. on the Puunene court. The winners of that match will play the winners of the Lindsay-Grady and Phelps-Todd match in the semi-finals. Deinert-Hassell will play Engle-Fitzgerald at a later date, also in the semi-finals.

JUNIOR FOOTBALL

Maui High School's football eleven will clash with the Wailuku Town Team on Sunday afternoon at Wailuku Field in what will be the third junior football meet of the season. Each of these teams have defeated St. Anthony, the high school by a 19-0 score and the Town Team romping over the "Saints" to the tune of 13-0.

Neither of the opposing teams has suffered a defeat and the ultimate outcome of Sunday's game is the subject of much topic in junior sport circles.

HOW TO PLAY TENNIS

By WILLIAM T. TILDEN
World's Grass and Hard Court Lawn Tennis Champion
Copyright 1921, by Public Ledger Co.

Wild Volleying Usually Result of Defective Footwork on Court

"WHY did I miss that volley?" This remark was made so often during one afternoon of practice at the Germantown Academy's grounds in Philadelphia that the person who was coaching nearly lost his voice explaining and reiterating the following terse sentence: "You hit off the wrong foot, kid." There was nothing else to say. Nine times out of ten volleys are missed because of poor footwork or taking the eye off the ball. The relation between them will be about even over a long period of play.

In volleying it is not always possible to get the feet in the exact position wished owing to the lack of time, but the effect will be the same if the weight of the body is on the correct foot.

For the forehand volley: If there is time get the left (or front) foot over and ahead of the right. The weight is on the right foot until the ball is met, and then it shifts toward and on to the left with the shot. To volley cross court meet the ball in front of the body and using a stiff wrist and short swing, chop the ball across. This shot should be made with the left foot way across the right, with the weight coming forward to it. For the straight volley the feet should be nearly parallel with the side line and the left foot advanced about sixteen inches.

Backhand Volley

For the backhand volley shot the same rules apply, only substitute right foot for the left foot as the one to advance into the ball. Volley always with your weight coming into the ball, not away from it.

If the return to you is so quick, if speed so great that there is not time to set your feet in position, have your weight on the foot nearest the ball and coming into the line of its flight.

Never volley a ball in front of your body. Always make your footwork such that the volley will be made at your side and about a foot and a half from your body. If the ball is coming directly at you, do not advance your front foot, as this would bring your body into the ball's flight, but retreat your back foot, thus removing your body from the line of the shot, yet allowing it to pass close to you so as to volley comfortably.

In taking up the question of footwork and the overhead smash, or kill,

it must be said that every man will develop his own method of hitting this shot, usually based on his service, but there are several fundamentals necessary to grasp fully before the overhead can be made a winning or individual shot.

First—Do not jump into the air to make this shot unless absolutely necessary. It takes your eye off the ball and your weight off the shot.

Second. Keep your right foot on the ground, with your full weight on it. Make your shot at the top of your serving, taking the ball a little in front of your head, and hit with a flat racket face, swinging your full weight onto your left foot with the shot. If this is made correctly your racket would continue to the ground and land between your feet. This puts all the force and weight of your body into the shot. It adds speed and direction.

Third. Do not start off your left end on your right foot, as this will pull your weight out of the shot.

All short lobs should be hit overhead and hit hard, and the only way to hit a ball consistently is to have your footwork correct. Therefore, in summing up the two articles on footwork the following is found:

FOREHAND SHOTS

Ground Stroke or Volley

Left foot ahead of right, weight travels from back (or right) foot on to front (or left) at the moment of meeting the ball. Cross court shot right foot is farther across or nearer side line than for the straight shot down the line.

Overhead

Left foot ahead of right and nearly parallel to side line (or the line of the desired shot); weight travels from right to left always at moment of hitting ball.

My next article will be on "Court Position" and "Court Generalship."

Manoa in Port—The Matson liner Manoa arrived in Kahului this morning with 42 passengers, mail and freight and will sail for Honolulu at 10 o'clock this evening

Hawaii Homes Plans Before Supervisors

For the first time affairs connected with the Hawaiian Homes project on Moikakai came before the board of supervisors yesterday. George P. Cooke, executive secretary of the commission, was over from Honolulu to ask the supervisors for their cooperation when it may be needed.

Mr. Cooke spoke very briefly and to the point in his short call upon the board, outlining in clear cut style something of the project and asking nothing of the supervisors at this time.

Probable need of the relocation of a road was one of the chief points the executive called attention to. The road from Olowalu to the cocconut grove, about a mile in length is the one referred to and is too low down to answer the needs of their plans. He told the board that Jorgen Jorgensen had been named engineer for the board and would survey and plan for the changes that are desired but it would probably be asked later to have the county engineer check over his work.

BALL TEAM STRANDED

The All-Hawaii baseball team that has been playing exhibition games in a tour of the Orient, was left stranded in Japan without funds and forced to borrow money for their return passage to Honolulu by the mysterious vanishing of their manager on the eve of their departure from Tokio, says a dispatch received by the Honolulu Nippu Jiji Wednesday night.

The cable says that the Manager of the team, Sentaro Miyamoto, disappeared suddenly shortly before the liner sailed taking with him all the funds of the team.

Wailuku Grind—The Wailuku Sugar Company's mill at Wailuku expects to begin the winter grind about December 20.

"THE YELLOW JACKET"

PRODUCED BY CHINESE STUDENTS' ALLIANCE OF HAWAII

Kahului Theater, Wednesday, Dec. 28, 8:00 P. M.
Pioneer Theater, Lahaina, Thursday Dec. 29, 7:30 P. M.
Wailuku Hippodrome, Friday, Dec. 30, 8:00 P. M.

Tickets on Sale at Maui Drug Store and Wailuku Hardware & Grocery Co. Reserved Seat Exchanges made with Eddie Tam at Baldwin Bank, Kahului. Exchange for Kahului performance now open, for the Wailuku performance opens Monday.



Select The Gifts You Want Before Crowds Come To Buy

The earlier you buy Christmas Gifts the better are your opportunities for selection. Goods are bought by us to sell; we advertise them and we plan to sell them; we do not want to carry them over. We offer unusual gift ideas at unusually low prices. We know the crowds are going to flock here and take this stock, so we warn you to select early and to buy early. You get best choice by early selection and you'll complete your Christmas shopping to a better satisfaction.

THE MAUI DRUG CO., LTD.

Wailuku

Tel. 232
"The Home of Service"

Maui

FOR CHRISTMAS


MAKE YOUR GIFT THE SEMI-WEEKLY MAUI NEWS

A year's subscription means a gift that will go to the recipient 105 times in the year, twice each week, as practically a new gift each time.

It will carry to your friend all of the home news and the latest dispatches from the outside world sent in by the greatest of news gathering agencies, The Associated Press.

SEND IN YOUR ORDER


With \$4.00 and Maui News will be sent twice a week to such name and address as you may designate. No more bother, nothing more for you to do and yet an ever varying but always acceptable reminder of yourself and of your good feeling. If you called personally twice a week you could not do better.



Like A Candle

to a powerful incandescent light is the old-fashioned way to modern electrical equipment

Gifts that Please



- Boudoir Sets
- Curling Irons
- Hair Driers
- Boudoir Lamps
- Radiant Stoves
- Socket Ovens
- Sewing Machines
- Vacuum Cleaners

- Coffee Percolater
- Percolater Sets
- Tea Pots
- Flat Irons
- Waffle Irons
- Toasters
- Grills
- Washing Machines

All at Mainland Prices, Saving Cost of Freight or Expressage.

MAUI ELECTRIC CO., LTD.

Main Street, Wailuku

Phone Wailuku 121

TOYS!! TOYS! TOYS!

Of every variety and description; Books, Dolls and hundreds of novelties.

Hats, Neckwear and Shirts, latest styles and best makes. Japanese Silk and Cotton goods; Kimonos made to order

R. SHIBANO

Market Street near Central Store, Wailuku

ALOHA LODGE NO. 3 KNIGHTS OF PYTHIAS.



Regular meetings will be held at the Knights of Pythias Hall, Wailuku, on the second and fourth Friday of each month, at 8 p. m. All visiting members are cordially invited to attend.

F. A. LUFKIN, C. C.
C. E. CHATTERTON, K. R. & S.

SATISFACTION?

Are you content to remain a book-keeper — clerk — correspondent — merely one of the office help; — or are you ambitious to stand out from the other men in your organization? An important position will be open; waiting for you when you are ready to fill it. Have you the will power to give some of your spare time to preparation?

SPARE TIME TRAINING is the practical stepping-stone to mastery of business analysis.

If you are AMBITIOUS, Anxious to FORGE AHEAD: Fill out the coupon and mail today:

- Business Management
- Law Degree of LL. B.
- Banking and Finance
- Public Accounting
- Expert Bookkeeping
- Business Letter Writing
- Modern Foremanship
- Industrial Management Efficiency
- Commercial Law
- Business English

La Salle Extension University

14 Pantheon Bldg., Honolulu

Kindly mail full particulars regarding course I have marked with an X.

Name
Address.....

PROMPT SERVICE

and expert work on auto, motorcycle and bicycle tires and tubes, rubber shoes and retreading.

WAILUKU VULCANIZING WORKS

Phone 147-A.

Paia Mercantile Co.

GENERAL MERCHANDISE
Groceries, Cigars, Refreshments
Lower Paia, Maui.

Keep Your Pictures in Photo Albums

It preserves them for future entertainment.

Complete new assortment from 35¢ to \$10.25.

Special Attention to Orders by Mail.

HONOLULU PHOTO SUPPLY COMPANY

Everything Photographic
1059 Fort Street Honolulu.

Singer Sewing Machines

Cash or Easy Payments

K. OHTA, Agent.

Phone 160c. Wailuku. Main Street.

Alexander & Baldwin

Limited

SUGAR FACTORS
COMMISSION MERCHANTS
and
INSURANCE AGENTS

AGENTS FOR—

- Hawaiian Commercial & Sugar Company
- Haiuku Sugar Company
- Paia Plantation
- Maui Agricultural Company
- Hawaiian Sugar Company
- Kahuku Plantation Company
- McBryde Sugar Company
- Kahului Railroad Company
- Kaui Railroad Company
- Honolua Ranch
- Kaui Fruit & Land Company

JAMES M. CAMERON

SANITARY PLUMBER

Estimates Furnished. Old Post Office Building, Wailuku

HEMSTITCHING AND PICOTING

HEMSTITCHING, PICOTING,.....12½ Cents a Yard
SCOLLOPS, POINTS,.....17½ Cents a Yard

MRS. ALICE PHELPS
PHONE 66 LAHAINA, MAUI

With Maui's Girl Scouts

Kahului
Following is the report from the "Scribe" of the Roselani Troop. Next week will appear the account of the party given by the Roselani Troop to the Narcissus Troop at the home of Miss DeKay:

"Kahului, Dec. 7, 1921.

"Dear Editor:
"The regular meeting of the Roselani Troop was held at the Community House, December 6 at four o'clock. There were just four girl scouts who were present and since there are just five members left in our troop we have determined to combine the Narcissus Troop girls and register as Troop 1, Roselani Troop, Kahului. They have passed the tenderfoot tests but have not registered so we all think it is a very good idea.

"Miss Gardner is to take charge of her girls and Miss DeKay with the older girls.

"We have planned to invite the Narcissus Troop to a swimming party which is going to be held at Miss DeKay's home, Wednesday afternoon, December 15th at four o'clock. A good time is expected from everyone. "Every member of the Roselani Troop is ready for her second class test at any time, consequently we are getting prepared. Some are working on the scout badges. "Be Prepared" is our motto and at every meeting we are going to give part of the test. Watch for the girls whose name will come out first in passing the second class.

"Miss Seibert has told us that a new troop is to be formed at Puunene. In that case we regret to miss scouts Puna Kiakona and Ah Moi Foo Sun, who recently joined our troop.

"Everybody watch out for the next report about the fun we are all going to have this coming Wednesday.

"Cordially yours,
"E. M. YAMAMOTO,
"Scribe, Roselani Troop."

Waituku

A new troop has been organized here. A captain has not been secured but we feel sure that we will have one by the first of the year. Competition between Kahului and Waituku ought to be keen.

Spreckelsville

Thirteen scouts met at the schoolhouse Wednesday afternoon with Capt. Johnston and Lieut. Steuwe. Nature tests have been passed by several of the girls and first aid and hygiene are making great strides under the capable supervision of Lieut. Steuwe. The scouts are practicing a dance to be given at the Christmas program, December 24th.

Lahaina

No regular report received from these troops but we are certain they are holding their usual interesting meetings. Rumor has it that the new troop has chosen "Mokihana" for its name. That is a pretty name and typical of the islands.

Maunaolu Seminary

Here is the first report from the Cup of Gold Troop and they have sent us their song too, girls. I am sure you will all enjoy reading it.

"Maunaolu Seminary,
"Dec. 13, 1921.

"Dear Miss Seibert:
"It's a long time since you have heard from the Cup of Gold Troop. Nine of our girls passed the tenderfoot test. We are making a flag now.

"On Saturday we went for a hike. We took our supper with us. We came back at 8:00 p. m. Our captain, Miss Collins, told us something about the compass.

"We always have our meeting at Maunaolu Seminary on Monday at 10:00 a. m. and close at 12:00 m.

"This is our song:
"(Tune: Three Blind Mice)
"Cup of Gold Scouts;
"Cup of Gold Scouts;
"See how they work,
"See how they play.

"They all live up at the Seminary. They're the life of the school where the breezes are airy,
"They're as gay as a lark or a yellow canary,
"Cup of Gold Scouts."

"We have sixteen members in our

troop, just enough to make two patrols.

"Our president is Esther Wong; secretary, Mary Kohoiokula; treasurer, Helen Brown.

"I close this letter with love to all Girl Scouts.

"Your friend,
"HELEN BROWN, Scribe."

Makawao

Miss Seibert will present your pins next week, girls, as she understands you are all through with the tenderfoot tests.

Keahua and Haiku

No report from these troops and we are quite sure they are doing interesting things. Please write us soon, girls.

CAT DOUSES GLIM

OSAKA, Japan, Dec. 7—(Associated Press)—The entire city of Osaka sat in darkness for fifty minutes because a cat died one night recently. The animal fell across the master switch at the Ajikawa power house, causing a short circuit which blew out all the fuses.

YOU'RE SATISFIED

with your personal appearance when you wear a well fitted suit made to your measure by

I. NAKAGAWA

Merchant Tailor
Market St. Wailuku

Don't Make Your Final Decision

On Furniture Until You Have Seen Us.

We offer a fine grade of furniture at the most reasonable prices in Honolulu.

Four-Piece Ivory Enamel Bedroom Suite \$139.50

Five-Piece Breakfast Room Suite \$28.50

The Home Furniture Co.

594 S. Beretania St.
Jack Drew, Manager.

A. KUTSUNAI

PHOTO STUDIO
Kodak Developing and Printing Enlarging
Formerly S. S. Kobayashi Studio
PUUNENE AVE., KAHULUI, MAUI

Theaters



"THE OUTSIDE WOMAN" WITH WANDA HAWLEY IS DELIGHTFUL COMEDY

"The Outside Woman" is a clever domestic comedy, revolving around a giddy little wife whose love of selling things to the junk man gets her into a peck of trouble involving the dwellers in the apartment above, a jealous wife of Spanish extraction and an artist with a penchant for living models.

A most unattractive looking Aztec idol causes all the trouble, because, after said idol has been exchanged for a couple of shawls, the thing proves to be worth many thousands of dollars. The methods which the poor little wife adopts to get back the idol results in many misunderstandings. The fire escape really ought to have special mention, as it is of great aid in the desperate plight of the various characters who wish to avoid compromising situations.

Wanda Hawley is as easy to look at as usual and enacts the star role with all that dimpled mischievousness which has brought her such a big share of popularity. Big, good-looking Clyde Fillmore is convincing as the doctor husband, while Sidney Bracey makes a properly amusing third angle of a most unexpected triangle.

MARY PICKFORD IN "LONGLEGS"

A screen version of "Daddy Long Legs," the famous story by Jean Webster, starring Mary Pickford. The picture, which is not only a triumph for Miss Pickford but also for Wesley Barry, the freckled faced kid who plays through the first part of the story with her. The picture was directed by Marshall Neilan.

Miss Pickford is supported in "Daddy Long Legs" by Mr. Neilan, who has the part of a young college man in love with Judy; by Mahlon Hamilton, who has the part of Jarvis Pendleton, Judy's benefactor; by Milla Davenport, as the tyrannical head matron of the asylum; by Fay Lempert, as Angelica Wyckoff, an ill-mannered little girl reared in luxury; and by one of the most charming groups of child actors ever seen on the screen, as well as half a dozen other adult actors.

The first half of the picture is laid

in the John Grier Orphan Asylum. Mr. Neilan has filled it with a surprising succession of humorous and pathetic incidents.

"THE ORPHAN"

William Farnum stands at the very apex of an extraordinarily successful theatrical career. Coming to motion pictures backed by fame won in the spoken drama, his long chain of successes since he made his debut on the silver sheet remains unbroken—and will continue so if his latest William Fox production, "The Orphan," in which he will be presented at the Maui Theaters this week, is a criterion of what he will do in the future.

Mr. Farnum stands in a class by himself. This fact was established long ago, and each succeeding picture he has made for William Fox has but served to attest the fact. His correctness in minor details of characterization and his remarkable ability to "feel" a part, to make live the hero he impersonates, are the result of the keen interest he always has taken in his work.

Born in Boston, the son of an actor. Mr. Farnum was quick to follow in the footsteps of his father after a brief career as a musician.

"A BROKEN DOLL"

"A Broken Doll," the new Allan Dwan comedy drama which comes to the Hip Theater this week, is the story of a chap who finds himself in the most amazing and dangerous situations with but one fear in his heart—the wrath of a little girl whose doll he haplessly broke. In a frantic effort to replace it he finds himself with the crimes of theft, murder and arson piling up against him but he has only one objective—the village store where he can buy a new doll. The picture is packed with laughs original twists and thrills, for the troubles that beset the hero are as exciting as they are amusing.

The hero as played by that sterling character actor, Monte Blue, is one of the most winning screen characters ever seen. Mary Thurman is happily cast in the role of a vigorous outdoor girl who goes out hunting bandits, and little Mary Jane Irving plays the child of the story in appealing fashion.

Particular attention has been paid to beauty of settings, artistic lighting and camerawork.

JAPANESE GOODS A SPECIALTY

J. ONISHI
GENERAL MERCHANDISE
KAHULUI.

Japanese Mercantile Company

GENERAL MERCHANDISE
PHONE 281-A. KAHULUI.

BEST SERVICE ON MAUI

With our new equipment we are able to give the most dependable, prompt and efficient service in cleaning, pressing, repairing and dyeing of Men's and Women's Clothing. Our steam presser can do the work in 15 minutes.

Satisfaction Guaranteed
MAUI CLOTHES CLEANING SHOP

Market St., opp. Kalua Ave.

IN MAUI'S THEATRES

WAILUKU HIP

Saturday, December 17th.
MONTE BLUE
—In—
"THE BROKEN DOLL"
—also—
"THE MOON RIDERS"
—and—
"INTERNATIONAL NEWS"

Sunday, December 18th.
WANDA HAWLEY
—In—
"THE OUTSIDE WOMAN"
—and—
"THE PURPLE RIDERS"

Monday, December 19th.
WILLIAM FARNUM
—In—
"THE ORPHAN"
—also—
"THE DRAGON'S NET"
—and—
MUTT and JEFF

Tuesday, December 20th.
JAPANESE PICTURES

Wednesday, December 21st.
MARY PICKFORD
—In—
"DADDY LONG LEGS"
—also—
"THE TIGER'S BAND"
—and—
PATHE NEWS

Thursday, December 22nd.
CONSTANCE TALMADGE
—In—
"TWO WEEKS"
—also—
PATHE NEWS
And a Good Comedy

Friday, December 23rd.
ALLAN HALE
—In—
"THE SHE TIGER"
—and—
BURTON HOLMES

KAHULUI THEATER

Saturday, December 17th.
ETHEL CLAYTON
—In—
"WEALTH"
—also—
"THE MOON RIDERS"
—and—
"Hard Luck"—Comedy

Monday, December 19th.
WANDA HAWLEY
—In—
"THE OUTSIDE WOMAN"
—also—
"THE TIGER'S BAND"
—and—
BURTON HOLMES

Tuesday, December 20th.
WILLIAM FARNUM
—In—
"THE ORPHAN"
—also—
"THE DRAGON'S NET"
—and—
MUTT and JEFF

Wednesday, December 21st.
JAPANESE PICTURES

Thursday, December 22nd.
MONTE BLUE
—In—
"THE BROKEN DOLL"
—also—
"THE PURPLE RIDERS"
—and—
PATHE NEWS

Friday, December 23rd.
CONSTANCE TALMADGE
—In—
"TWO WEEKS"
—also—
PATHE NEWS
—and—
A Good Comedy

PLATING MAKES OLD THINGS NEW AGAIN

Silver which has become dull and tarnished can be restored to its original beauty by silver plating. Hardware about the house will profit by plating. Nickel plating of automobile parts—hubcaps, reflectors, bumper, instruments—will make the car look far better.

Our plating plant is equipped to turn out any kind of plating finish desired, in a short time and at moderate cost.

LEWERS & COOKE, LTD.
HONOLULU

good meals in Honolulu

AWAIT YOU AT CHILD'S

New, modern, high class restaurant, centrally located. Good and comfortable. Intelligent, courteous service. European plan. Operated in connection with the

Blaisdell Hotel

J. F. CHILD, Proprietor

KAHULUI RAILROAD COMPANY'S MERCHANDISE DEPARTMENT

GALVANIZED CORRUGATED COPPEROID SHEETS

8-3" Corrugations—24 Gauge—26" wide after corrugating. Manufactured by The Youngstown Sheet and Tube Company.

MADE IN THE FOLLOWING LENGTHS:

6 ft. 7 ft. 8 ft. 9 ft. 10 ft.

REMEMBER "COPPEROID" IS ALWAYS THE BEST

May we serve you in some of these sizes?

Tel. Nos. 201 - 202 and 203
Private Exchange
Connecting All Departments

WAREHOUSES,
KAHULUI, MAUI.

BANK OF MAUI

Has my Savings Account



WHO HAS YOURS?

CHRISTMAS EVE

MILITARY DANCE

Around the Merry Christmas Tree

LAHAINA ARMORY

Saturday, December 24, 1921

Remember the NEW YEAR'S EVE MILITARY BALL

At. Lahaina

SPECIAL PRICES

Values up to \$50 at 10% Discount

My Christmas Offer
LATEST IN RIDING SUITS

M. HIRO, TAILOR
Market St., Wailuku



SEMI-WEEKLY MAUI NEWS

"FOR THE VALLEY ISLE FIRST"

A Republican Paper Published in the Interests of the People
Issued Every Tuesday and Friday

MAUI PUBLISHING COMPANY, LIMITED
Proprietors and Publishers

M. R. PEREIRA, Manager

SUBSCRIPTION RATES: \$4.00 PER YEAR IN ADVANCE

Entered at the Post Office at Wailuku, Maui, Hawaii, as second-class matter.

MEMBER OF THE ASSOCIATED PRESS—The Associated Press is exclusively entitled to the use for republication of all news dispatches credited to it or not otherwise credited in this paper and also the local news published herein.

JOSEPH H. GRAY, : : : EDITOR

FRIDAY, : : : DECEMBER 16, 1921.

BOOZE IS TO BLAME.

For the death of H. T. White, member of the engine crew of Eagle Boat 58 and for the trouble in which Louis Lake finds himself, illicit liquor is primarily and chiefly responsible. The question arises what the Maui community is going to do about it, whether or no it will continue to tolerate and acquiesce in the conditions which produced the tragedy at Kahului. The sentiment of Maui's citizenry will determine the question.

For months past there have been complaints that violations of the prohibition law were growing in frequency and disregard of the provisions relating to its sale and transportation more openly displayed. Some citizens ceased to go to certain dances asserting that there was so much liquor consumed in cars outside the places of holding the dances that the participants showed the effects on the dancing floor. Later there was a dance in Wailuku at which it was reported a number of boys under 16 years of age were badly inebriated. A few months since there was a highly disorderly occurrence at the corner of Main and Market streets in which more than a score of young men were involved. This indicates that the patronage of illicit liquor dealers extends into and through various grades of Maui social life and is confined to none in particular.

Maui has been advertised rather extensively through the Islands as being the home of production of "corn whisky" and the thirsty visitor immediately seeks a source of supply. As a matter of fact there is very little corn whisky that reaches the general public and the bulk of the stuff sold for it is colored okolehao. Plantations have had to fence molasses tanks so that illicit booze manufacturers could not get the molasses there for illicit booze making or for the coloring and doctoring of the stuff. That is what is most commonly consumed though it is reported that in addition to the limited amount of corn whisky there are importations of bottled stuff. It is the fact that Maui is reported to be so "wet" that attracts more attention to common violations of the law here which are possibly no more frequent than in any of the other islands. However, it is reported that liquor can readily be secured at no less than six places within five minutes walk of the corner of Main and Market streets.

There is no federal law which makes it an offense to drink liquor but the person who purchases it is abetting in the offense of selling de facto even if not de jure. It is the fact that so large a proportion of Maui citizenry thus encourages law breaking that makes such drinking parties as that of last Saturday night nothing exceptional or unusual. Sounds of similar revelry can be heard almost any week end.

It is often said that it is the sworn duty of county officers to enforce the prohibition law and the answer is that it is no more their duty than of any private citizen. Their oath of office is no stronger than the plain duty of the average citizen. They are not required to make arrests, if they do make them they have to turn offenders over to federal authorities to be tried in the federal courts and as witnesses for the prosecution have to pay from their own pockets excess of expenses to, at and from Honolulu over witness fees.

This paper believes that education is more productive of morality than is legislation and the example of those who stand generally for law enforcement even when not enthusiastic for prohibition law enforcement would be an important educational influence upon those of less education and social culture.

The outstanding fact is that Maui sentiment has not been for strict enforcement of and obedience to the prohibition law but rather a tacit when not an open acquiescence to its open violation. As said, it may be no different here than elsewhere but there has been a concrete example of disastrous results.

HELP THE HELPLESS.

At no other season of the year does the child appear so prominently and enter so much into the thoughts of the adult as during the Christmas season. Then if ever the greatest efforts are extended to make the lives of the little folk happier and more joyous, then if at any time the heart responds to the call of childhood and generous impulses toward children are given freest rein. And it is appropriate that such should be the case in every Christian community. "The Christ is born, let joy be unconfined."

In every happy home where there are children the Christmas spirit is seen and felt and it extends out from those homes into the community and is evidenced in community trees and entertainments. But there are and will be homeless kiddies here on Maui for whom the Christmas season means little more than perhaps a bright spot in a sordid, hopeless, homeless life, unfortunates left orphaned and dependent, kiddies with no place to hang stockings and no stocking to hang. A gift to such unfortunates is the fullest and most effective response to the call of the Christmas spirit, to help the helpless.

It is appropriate that the season now at hand should be the signal for a renewal of the efforts to secure for Maui a home for unfortunate children, to raise further funds for the proposed children's home. Plans are making for the early opening of such a home on much more modest and less extensive scale than at first proposed. Even for the carrying out of the present modest plans more funds are needed and a Christmas gift to the children's home fund is a gift to the helpless, otherwise hopeless little ones of Maui who are to become its cared for inmates.

RIGHTS OF PEDESTRIANS.

There has come to Maui News a letter which complains that careless and thoughtless automobile drivers pay no heed to pedestrians who have to walk roads of Maui where there are no sidewalks and in wet, rainy weather, spatter those on foot whom they pass from head to foot with dirty, slimy water from the wheels of their speeding cars, never slowing down to avoid such unkindly acts.

It is well to remember, as was called to mind in connection with the pedestrian ordinance which failed of passage last week, that

THE OPTIMISTIC PESSIMIST

It is better to be safe than sorry but the common practice is to pay little heed to safety until the lesson has been learned through sorrow.

It is now reported that germs get used to antiseptics and thrive on those that were formerly fatal to them. If man was as persistent as the little germ his accomplishments would be vast indeed.

Dry toast is not so much a feature of the American breakfast of today as of its banquets.

Landis is accused of selfishness in that he holds two jobs himself and insists on Babe Ruth holding down only one that does not occupy his entire year.

With some folk all debts are easily acquired except the debt of gratitude. And that debt, by the way, is the one that is least often paid.

Many a girl of 18 thinks her mission in life is to prevent her poor, dear mother from growing up in ignorance.

It is reported that a search light has been invented that will throw its rays five miles up in the air. Fortunately it has not been discovered by Maui motorists as yet for they would not turn its rays upward, more than enough to strike the optics of the driver of approaching cars.

It is remarked that the real optimist is the man who has become so emaciated by lack of food that his garters will not fit and then blames the situation on the rubber in the hose supporters having stretched.

With the Yap difficulties all settled the country can forget there is such a place. As a matter of fact it never was sure whether it was talking about an Island or a mongrel pup.

the pedestrian has the first right to the road. Over the paths which he walked next came the man on horseback who was expected to look out for the pedestrian and turn aside to his prior right. Next came horse drawn vehicles, next motor driven vehicles, and the equestrian, the wagon and the carriage driver and the motorist has each in turn infringed more and more upon the rights of the pedestrian which are, as a matter of fact, prior to their own, until there are some who insist a person afoot has no right to be in the roads, that they are designed for vehicular traffic.

In fairness to those who have to travel the roads afoot, some thought, some consideration should be shown them. If children stood at the roadside and hurled mud into passing cars there would be a great to do but many a motorist treats the pedestrian, large or small, with no greater consideration by spattering with mud those whom he passes.

Agreement has been reached on the naval ratio of the United States, Britain and Japan on the 5-5-3 basis, Japan yielding promptly on the basis of settlement of the proposed four sided treaty on Pacific affairs. Questions of submarines, radio, land armaments and methods of warfare still remain to be determined but big things are accomplishing at Washington.

Football is to make its exit from the Maui field of sports for the season following a game in Lahaina next Sunday. The sport attained a wonderful popularity in a very short time and will become still more prominent in another year. For beginners the Valley Island boys made an excellent showing.

Sheriff Crowell is entitled to due credit for the prompt and efficient way in which he handled the investigation of the death of H. T. White. The sheriff lost no time and had a full and detailed story of the affair in less than 30 hours after it was placed in his hands.

It is gratifying to see Island concerns underbid mainland houses for Island business and get the contracts as was the case in the letting of tenders for the Maui County Free Library equipment.

And now Peru and Chile loom up as probable belligerents. The League of Nations appears to have failed completely in adjusting the differences of the two South American countries.

Jupiter Pluvius has recently been seeking to make up for past omissions in the rain he bestows upon Wailuku.

One week more to do that Christmas shopping.

TRY A DEFINITE PLAN

Most of the people of the United States plan to accumulate money and many actually try. A fairly large number succeed. The majority fail.

With the exception of those who have met unfortunate circumstances, those who do not accumulate money usually fail because they have not adopted a definite plan for building up financial independence.

If you are one of those who have not yet started on the road to financial ease, would it not be well to try a definite plan and stick to it?

WATERHOUSE TRUST CO., LTD.
HONOLULU.



That your engine shall deliver

—the maximum power and the maximum speed it was designed to develop.

The refining of Red Crown gasoline to make a high-quality motor fuel is based on a thorough scientific knowledge of the fuel requirements of the automobile engine.

These requirements have been met by the Standard Oil Company out of its years of experience and in accord with a policy of true service in its field.

Look for the Red Crown sign on garages and service stations.

STANDARD OIL COMPANY
(California)

HOLIDAY REDUCTION SALE

Hats For Ladies, Children and Men

At Greatly Reduced Prices

Your old hat is hardly suitable for the Christmas Season when one wants to look in harmony with the spirit of joy and festivity. And there's no need to wear it longer. This is the opportunity of the year to supply the whole family with stylish, attractive, seasonable headwear at remarkable cost savings.

THE FASHION

Main and Market Streets, Wailuku
HATS EXCLUSIVELY

Christmas Joy

There is something in the words that always suggests chiming bells, sweet voices singing carols, harmony, melody, MUSIC.

So it comes that there is no more acceptable and appropriate gift in the Christmas season than to bring music into the home.

BRUNSWICK PHONOGRAPHS PIANOS
Records Sheet Music

PLAYER PIANOS
Rolls

Musical Instruments of all sorts for Christmas Gifts.

HONOLULU MUSIC CO., LTD.

JACK BERGSTROM, REPRESENTATIVE.

Maui Musical Headquarters

MAIN AND HIGH STREETS, WAILUKU.

T. OKUMURA

PHOTO STUDIO
Kodak Developing and Printing
ENLARGING
Island Views and Post Cards
Market Street Wailuku, Maui

M. TANIOKA

Photographer
Day and Night Service
Tel. 133-A Main Street, Wailuku

RESTAURANT

Food to tempt the appetite of the most fastidious and delicious enough to set before a king.

T. AH FOOK ——— Kahului

JOHNS-MANVILLE PACKINGS

are as familiar to you mill men as pots and pans are to the housewife.

This advertisement is not to point out the merits of this brand of packing, but simply to remind you that for the fall repairs in the mills Johns-Manville products are at hand.

The Honolulu Iron Works, Ltd.

Sole Agents in Hawaii for Johns-Manville Power Specialties

Dealers In General Merchandise

American Factors Paints
AmFac Red Label Coffee
Yale Locks and Hardware

AMERICAN FACTORS LTD.
WHOLESALE DISTRIBUTORS

IT'S A PLEASURE TO SHOP

In the handsomest store on Maui, where one finds a complete stock of Dry Goods, Furnishings, Notions, Groceries and general merchandise, where service and attention are the best

THE LAHAINA STORE

Phone 27-B, Lahaina.

Branch at Puukoli.

CHRISTMAS MESSAGE

Office of the Postmaster General, Washington, November 22, 1921.
To the Boys and Girls of the United States:

(Postmasters should deliver this message or have it presented to the school authorities so that it may be read in the public schools Monday, December 5, and published, without cost, in local newspapers, if possible.)
Christmas is almost here. Your great Post Office Department has a big job ahead and needs your help.

Think what it means to be Santa Claus to our 100,000,000 people and to deliver Christmas parcels to every family in this great country within the short space of a few days and without disappointment.

It can be done, and we're going to do it if we may have your help. I want to enlist the active assistance of every boy and girl in the schools of our country in getting parcels mailed This Week to relieve the rush that comes directly before Christmas.

Will you go home today and take this message to your parents and friends:
"Our postmaster has asked us to mail our Christmas parcels This Week, for, unless we do, Uncle Sam's load may be so heavy the last few days before Christmas that he won't be able to deliver all the presents by Christmas eve."

The parcels must be well wrapped and tied and addressed plainly in order that they may arrive in good condition with their Christmas appearance unspoiled. You can put on your packages, "Do not open until Christmas."

And, there must be a number on your house and a mail receptacle, too, for, if there isn't, Santa Claus's messenger, your letter carrier, may not be able to find the house where the present belongs.

There are some other things, too, in which you can all assist in improving the mail service and in saving our great Government millions of dollars a year that is now wasted because of our carelessness—yours and mine.

Every day that you drop a letter in the mail box 40,000,000 other letters are already pushing and jamming through the postal machinery. One letter a day for each family of five persons in the United States is given to Uncle Sam to deliver.

When you send a parcel to the post office for mailing any day there are about 8,000,000 other parcels ahead of yours passing through the postal hopper. This is in ordinary days; at Christmas time it is multiplied many times.

One family in about every ten puts a badly addressed letter in the mail every day. This mixes up over 2,000,000 half addressed letters with the 20,000,000 fully addressed letters. That means the fully addressed letters must wait on the slow moving poorly addressed letters just like the larger boys and girls are delayed by a bunch of "bad kids" tagging along.

You boys and girls can help the Postal Service and save your father some money, because he has to help pay the cost of searching addresses on letter and parcel sent out by this one careless and thoughtless family in every ten.

First find out if your family is the careless one, then bear in mind that your letters must be handled by skilled mail distributors standing in post offices and on swaying postal cars of a mile-a-minute mail trains, often under poor light.

The address on every letter, card, or package must be correct, complete and legible, including the house number and name of street, and the "Form" address should be in the upper left-hand corner so that the mail will be returned to you in case it is not delivered. Do not abbreviate names of States, because so many look alike when abbreviated.

Put the proper amount of postage on your letters and wrap the parcels carefully. Avoid fancy writing,

which causes post-office clerks and letter carriers to stop and study, and thus lose time. Make the address plain and easily read, and always use pen and ink or typewriter and light-colored envelopes, so as to save the eyes of the post-office clerks. Do not use envelopes of unusual size. The little ones that are so frequently used for cards and notes at Christmas and other holiday times cause an untold amount of trouble and labor, as they will not fit our canceling machines and must therefore be canceled by hand. Because of their size and tendency to slip out of a package these small envelopes are more likely to be overlooked or lost.

Mail your letters and packages early in the day, because this avoids overloading and delaying mail at the end of the day.

Your local postmaster and your teachers will tell you more about the Postal Service.

Do these things, and you will win the grateful appreciation of the people in your post office and especially of Your Postmaster General, WILL H. HAYS.

P. S.—Don't forget to mail Christmas package This Week.
Those keen Eastern business men learn something every day. A candy store operator who has been making a 300 per cent profit says he can cut prices in half and still make a profit.—Seattle Times.

The Most Modern Barber Shop in Wailuku
4 Chairs Quickest Service
R. ISHIZU
Market St., Wailuku

Clothes left with us for more than three months and not called for will be burned or otherwise destroyed. Customers who change their address will please let us know.
KATO CLOTHES CLEANING SHOP
Wailuku, Maui.

Dear Santa Claus

We are writing you this early because we want all the children and their fathers and mothers to know that our stock of personally selected Christmas Cards is the most beautiful and varied that we have ever had.

We have an exceptionally fine lot of Books too, which would make fine Christmas presents. It may lighten your burdens somewhat for them to have this information.

Yours for a Merry Christmas.

The Hawaiian News & Thrum's, Ltd.

Young Hotel Building Honolulu.

Officials Must Use Trains Instead of Traveling By Auto

MANILA, P. I., Oct. 31—(Associated Press Mail)—Government officials travelling in the provinces will be no longer be allowed to hire automobiles for their official use where a railroad train is available unless there is urgent need for haste, according to a circular just issued from the governor general's office. It was declared that the governor general has decided to enforce strict economy in the public service, without impairing its efficiency.

After approving a bill for the hire of an automobile by an official of one of the provinces, the governor general's secretary issued the circular which says:

"The governor general has instructed me that this will be the last case of approval of bills covering automobiles in cases where railroad trains are available and there is no urgent need for haste. Will you please pass this word to other persons who may be sent out on investigations. Of course, if there is urgent need for haste, automobiles may be hired."

Special Cash Sale

HOLIDAY GOODS
Dec. 10, 1921 to Jan. 2, 1922
It is your chance to get your Christmas Gifts and your own needs at bargain prices
SAITO CASH STORE
Lower Paia, Maui

TINN CHONG STORE

Dry Goods, Groceries and General Merchandise
Bakery & Restaurant
Cigars, Tobaccos, Fruits, etc.
Main Street, Kahului, Maui.

WHEN YOU WANT HAULING, CARTING TRUCKING and want prompt service call
W. B. SNIFFEN
P. O. Box 144 Phone 183-A WAILUKU

Telephone 96-A P. O. Box 141
GEORGE SOON
Up-to-date
Gents' Furnishings
Foresters' Bldg. KAHULUI

HOLIDAY GIFTS USEFUL AND SENSIBLE
Our Christmas Goods are all in and on display.
STEP IN
and see the variety of offerings we have to choose from.
Tam Chong
Lower Paia, Maui

K. Machida Drug Store

ICE CREAM
The Best in Town
And a Up-To-Date Soda Fountain Give Us a Trial
KAHULUI WAILUKU

HOUSE PAINTING

Paper Hanging and Interior Decorating
Estimates Furnished on Application
H. YAMAGUCHI
Contractor and Painter
Near Chinese Church.
Vineyard Street. Phone 247-A Wailuku
Gasoline, Automobile Parts and Automobile Painting

SUITS MADE IN LATEST STYLES
SHIRTS NECKTIES
S. FUJITA
TAILOR SHOP WAILUKU

Harada Auto Stand
Prompt auto service on call day or night
Meet every steamer
Kahului, Maui. Phone 217-E.

SAITO RESTAURANT
The Best Meals in Wailuku
Served from 5 a. m. to 8:30 p. m.
Market Street, Wailuku, Maui

NOW SMILE
New Up-To-Date
PHOTOGRAPH STUDIO
Kodak Developing and Printing Enlargements Made
H. IWANAGA
Tavares' New Block Lower Paia

WE ARE PLEASED TO ANNOUNCE THAT
The Wailuku Hardware & Grocery Co., Ltd.
WAILUKU, MAUI
HAVE BEEN APPOINTED AGENTS FOR EAST MAUI, FOR
A. G. Spalding & Bros.
FAMOUS
TENNIS, BASEBALL AND ATHLETIC GOODS
E. O. Hall & Son, Ltd.
Distributors for the Territory.

MAUI SODA & ICE WORKS, LTD.
"We Serve Your Needs"
ICE, PURE SODA WATERS, DISTILLED WATER, COLD STORAGE
The Oldest Establishment of Its Kind on Maui.
Phone, 128 Wailuku.

Cleaning and Dyeing---
should be trusted only to experts. The same is true of fine garments to be washed. Otherwise such injury to the fabric may result as to cause serious loss. You can depend absolutely on the Method Exquisite of
THE FRENCH LAUNDRY
J. Abadie, Proprietor, Honolulu.
MAUI AGENCIES:
M. UYENO KAHULUI
JOHN D. SOUZA PAIA

JUST CALL FOR NICK
and get where you want to be when you want.
1920 PAIGE, 1919 CADILLAC, 1919 NASH AND FIVE-SEATERS ALSO
NED NICHOLAS
Meets All Steamers. Sightseeing Trips. Reliable Chauffeurs.
Wailuku, Maui. Phone 17.

Theo. H. Davies & Co.
Limited
SOLE DISTRIBUTORS
HAWAIIAN ISLANDS

Sixty years of experience with preparation of food products are represented in the distinctive goodness of Del Monte Brand Canned Fruits and Vegetables.
Demand the Del Monte Brand From Your Grocer.

YOU'RE INVITED

The next time you are in Honolulu, come into our office and introduce yourself. We like to know our friends by sight as well as by name. If we are already acquainted pay us a visit anyway.

You are invited to avail yourself of our facilities and equipment. If our service is a bit vague to you, if you don't know exactly what a Trust company does, and how, ask us to tell you. We will be glad to consult with you even though you may not have at present any business to place with us.

TRENT TRUST CO LTD
HONOLULU

So To Serve That We May Continue to Serve

HOW ABOUT THE JAPANESE?

Are you getting all the business from them you want? If not, you can reach them in only one sure way, in their own language. Tell them what you have that they want in advertisements and in hand-bills.

Issued Semi-Weekly **MAUI RECORD** N. K. Otsuka, Prop.
JOB PRINTING
Translations from English to Japanese and Japanese to English

If you are not now receiving the **REXALL MONTHLY MAGAZINE** please send your name for mailing list. The Magazine has recently been enlarged, and improved by the addition of stories by prominent writers and pictures of current events.

THIS SERVICE IS ABSOLUTELY FREE.

Benson, Smith & Co., Ltd.
SERVICE EVERY SECOND
The Rexall Store Box 426 Honolulu, T. H.

SHOP EARLY



FOR THE CHILDREN:
Toys of all kinds from a Whistle to a Go-Cart. Dolls, Aluminum Cooking and Tea Sets, Mechanical Toys, Bats, Balls, etc.

FOR THE LADIES:
Toilet Accessories, Perfumes, Hair Brushes, Mirrors Toilet Sets, Stationery, Shirt Waists, Handkerchiefs, Laces Candies.

FOR THE MEN:
Tennis Rackets and Balls, Rifles, Shot Guns, Sporting Goods, Neckties, Shirts, Pajamas, Shaving Sets, Razors and Safety Razors.
And Scores of Other Suitable Gifts for Boys and Girls, Men and Women.

Wailuku Hardware & Grocery Co., Ltd.
Main and Market Streets, Wailuku. Phone 214

KEEP HAWAII FORTIFIED IS URGED IN NEW HAVEN PAPER'S EDITORIAL

From Hiram Bingham 3rd who spent last summer with his family on Maui there has come a copy of the New Haven Courier Journal with an editorial marked which Mr. Bingham rightly believes will be of interest to Maui readers as showing an Eastern States attitude toward Hawaii.

The editorial which is entitled "Hold Hawaii" follows: "When Admiral Dewey took Manila in the leafy month of May, 1898, most of us had to hurry to our attases to find out where the Philippines were. Even today our knowledge of the geography of the Pacific is still so hazy that when Japan proposes that we do not fortify our islands in the Pacific, some of us are inclined to group Hawaii, Guam, and the Philippines under the same heading, as 'foreign possessions,' the fortification of which only serves to annoy Japan and postpone the fruition of practical plans for disarmament. As a matter of fact, these three groups of islands are scattered over such a wide area that the fortifying or non-fortifying of them present radically different problems. Hawaii which is about 2,000 miles from San Francisco, is more than 4,000 miles from the Philippines. Even Guam is as far from Honolulu as Liverpool is from New York. On the other hand the distance from the Philippines or from Guam to Nagasaki is only about 1,600 miles. Powerful fortifications in the Philippines or at Guam might properly be construed by Japan as bases from which we could make a successful attack on the Asiatic coast but fortifications in Hawaii no more constitute a menace to Japan. (It is 3,445 miles from Honolulu to the nearest Japanese port) than fortifications at Sandy Hook constitute a menace to Germany.

"The Japanese do not like the climate of the Philippines. Guam is a mere speck on the ocean. In Hawaii, however, more than 125,000 Japanese have found their homes. The climate agrees with them—more would like to come. Of the 10,000 babies born each year in the Hawaiian Islands 5,000 are Japanese. We are told on good authority that most of these Japanese are not even 'hyphenates.' There is practically no such thing as a Japanese-American. They maintain their own language, religion, political loyalty, and patriotic devotion to the homeland just as we, Americans, would do were we to find ourselves on a group of Japanese islands. Thus Japan already has a foothold in Hawaii. The Treaty of Versailles has given her, in the port of Jaluit, the Marshall Islands, a naval base which is as near Honolulu as San Francisco is. If we relax our vigilance in defending Hawaii, we shall tempt Japan to take advantage of the fact that nearly half of the population is already Japanese, and that a conquest of these islands would be a comparatively easy matter. This could only lead to a long and terrible war. The best way to prevent such a war is to make of Hawaii a veritable Gibraltar. Such a procedure could not be construed as an aggressive move against any Asiatic power, for Hawaii is too far away from Asia to serve as a base of attack. On the other hand, Hawaii is near enough to our own mainland to serve as the keystone of our defense of the Pacific coast. Without it, Japanese submarines could not act against our coastwise trade, nor could a Japanese fleet carry on naval operations in the vicinity of San Francisco.

"We can well afford to agree not to fortify the Philippines or Guam. As long as Japan holds the Carolines and the Marshalls, it would be practically impossible for us to carry on war for the defense of the Philippines. The proposal that Japan shall

not fortify the two naval bases in the Carolines and Marshalls which she inherited from Germany, namely, Turk and Jaluit, is of little importance. They do not need fortifications. The Carolines and Marshalls are so poorly charted there are so many strong currents and dangerous shoals, that it would be a simple matter to protect Turk or Jaluit by laying mines which would preclude the possibility of any of our warships reaching their vicinity. Using those islands as bases for fleets or destroyers and submarines, Japan can easily control our Philippine communications. Jaluit puts her within easy striking distance of Hawaii, just as the possession of Hawaii would put her within easy striking distance of San Francisco. It is obvious that it would be just as foolish for us to reduce the fortifications of Honolulu as those of San Francisco Bay. Our safety and happiness as a nation bordering on the Pacific depends on our holding Hawaii at all costs. In our desire for peace, we must not neglect the key to the situation. We long ago gave up duels and private warfare, but we still lock our front doors. To fortify the Philippines might be considered an act of aggression; to fortify Hawaii is merely locking our front door"

More Americans As Teachers Required In the Philippines

MANILA, P. I., Nov. 2—(Associated Press Mail)—Sixty additional American teachers are to be employed by the bureau of education at the beginning of the next school year, according to an announcement just made by the secretary of the department of public instruction.

Dr. W. V. Marquardt, Philippine educational agent in the United States has been called to secure that number of teachers who are wanted here to teach English to the Filipino teachers.

The announcement said the new teachers will be employed at salaries ranging from 3,000 pesos (about \$1500) to 3200 pesos (about \$1600) per annum.

It was stated that the employment of additional American teachers is in line with the policy of the department of public instruction of extending the use of English in the Philippines.



Greater Yields and Better Crops
P. O. Box 484 Phone 8197
2365 N. King St., Honolulu

REGISTRATION OF TITLE LAND COURT

TERRITORY OF HAWAII to William Hinaiu, C. R. Lindsay, Aiku, Pioneer Mill Co., Ltd., Lahaina Agricultural Co., Ltd., Kauhane, Puupai Kauhane, Isabelle Namau, Heirs of Kaluakomano, Heirs of John Hinaiu, Kalnana; Territory of Hawaii by Harry Irwin, Attorney General; County of Maui by Sam Kalama, Chairman and Executive Officer of the Board of Supervisors; and to ALL whom it may concern:

WHEREAS, an application for registration of title has been presented to said court by Charles Bennett Cockett, of Lahaina, Maui, to register and confirm his title in the following described land:

SITUATE in Kamani and Polanui, Lahaina, Maui, T. H., being Royal Patent 3460, Land Commission Award 642, to Kaluakomano, and Royal Patent 1859, Land Commission Award 278-B, to Hinaiu, and more particularly described by metes and bounds as follows:

Beginning at a pipe on the Makai side of Front Street, by true azimuth and distance 132° 23' 22.8 feet from a concrete post marked "K" on the mauka side of said street, at the south corner of Bishop Estate land in Puunuu, the coordinates of said pipe, referred to "Laina" triangulation station, being 11387.7 feet south and 1556.0 feet west, and running thence by true azimuths and distances:

1. 56° 45' 115.0 feet along L. C. A. 364, apana 4, to J. White, to seashore at high water mark;
2. 140° 59' 198.3 feet along seashore at high water mark;
3. 235° 30' 115.0 feet along fence, along L. C. A. 3846 to Puniwai, to pipe;
4. 321° 03' 209.8 feet along wall, along Front Street, to the point of beginning, and containing an area of 0.52 acres, a little more or less.

YOU ARE HEREBY cited to appear in the Land Court, Judiciary Building, Honolulu, T. H., on Saturday, the 7th day of January, 1922, at 9 o'clock in the forenoon, to show cause, if any you have, why the prayer of said application should not be granted. And unless you appear in said court at the time and place aforesaid, your default will be recorded, and the said application will be taken as confessed, and you will be forever barred from contesting said application or any decree entered thereon.

WITNESS the Honorable J. T. DE BOLT, Judge of said court, this 29th day of November, 1921.

Attest with the seal of said court. (Seal) ANDREW V. HOGAN, Registrar.

William B. Lymer, Attorney for applicant, Honolulu, T. H. (Dec. 9, 16, 23, 29.)

MORTGAGEE'S NOTICE OF INTENTION TO FORECLOSE AND OF SALE.

Notice is hereby given that, under the power of sale, contained in that certain indenture of Mortgage of date June 28th, 1919, made, executed and delivered by T. Sakamoto, (Shika Sakamoto, his wife, releasing dower) as mortgagor, to the Bank of Maui, Limited, a domestic banking corporation, as mortgagee, and of record in Liber 522, on pages 201 and 204, said Bank of Maui, Limited, as the owner and holder thereof, intends to foreclose said mortgage, and sell the mortgaged properties therein named, because of the non-payment of the principal and interest due on the promissory note secured thereby.

The above mentioned mortgage was given to secure the payment of a promissory note of Five Hundred Dollars, of date June 28th, 1919, payable one day after date, and drawing interest at the rate of eight percent per annum; said note being signed by said T. Sakamoto.

Notice is likewise given that, after the expiration of three weeks from the date of first publication of this notice, to-wit, on Saturday, the 7th day of January, 1922, at twelve o'clock noon of said day, said mortgaged properties, for the reasons above stated, will be sold at public auction, at the front entrance to the Court House, in the Town of Wailuku, County of Maui, Territory of Hawaii. Said mortgaged properties will be sold in the order hereinbelow described; and, as soon as a sum is obtained from sales sufficient to meet all indebtedness and expenses, sales will discontinue.

Terms of sale—Cash. Deeds at expense of purchaser. For further particulars apply to the Bank of Maui, Limited, at Wailuku, Maui, or D. H. Case, its Attorney, of said Wailuku.

Dated at Wailuku, Maui, this 25th day of November, 1921.

BANK OF MAUI LIMITED
By C. D. LUFKIN,
Its Vice-President and Manager

Description of Properties to be Sold:

(1) That certain piece, parcel or lot of land lying mauka of the Government of the property described in and known as Grant 282 to James Louzada.

ernment road between the Waikapu stream and Kaina Sylva premises, containing an area of Two and one-half acres, more or less, and being (2) That certain piece, parcel or lot of land lying immediately makai of the Government road, and opposite portion (1) above mentioned, containing an area of three-quarters of an acre more or less, and being a part of the premises described in and known as Grant 2747 to Eugene Bal.

(3) That certain piece, parcel or lot of land lying on the mauka side of the Government road, at the extreme south end of the premises heretofore belonging to Antone Sylva, deceased, at Waikapu, within the present fence; having a frontage of about 170 feet, and containing an area of three-quarters of an acre more or less.

(4) That certain piece, parcel or lot of land comprising 12 adjoining taro patches, situate at Kaopala, in the said District of Waikapu, and known as and described in Royal Patent 6699. (Dec. 2, 9, 16, 23.)

IN THE CIRCUIT COURT OF THE SECOND JUDICIAL CIRCUIT, TERRITORY OF HAWAII.

At Chambers—In Probate No. 1900.

In the Matter of the Estate of John W. L. Marshall (k) late of Wailuku, County of Maui, T. H. Deceased.

Petition of Jennie Dumas Marshall, for the appointment of D. H. Case, as administrator of said Estate.

It is ordered, that Thursday the 12th day of January, A. D., 1922, at 10 o'clock a. m. be and the same is hereby appointed for hearing said Petition at the Court Room of this Court, in Wailuku, County of Maui, Territory of Hawaii.

Wailuku, Maui, T. H., December 3rd 1921.

BY THE COURT,
MANUEL ASUE,
Clerk.

(Seal of Court.)
D. H. Case, Attorney for Petitioner.
(Dec. 9, 16, 23, 30.)

S. MAKINO

HARNES AND SHOEMAKER
Latest model Landis' Stitching Machine. We repair Shoes While You Wait
Market St. Wailuku, Maui

NOTICE OF PARTNERSHIP

Notice is hereby given that the undersigned, Leland C. Lewis and Frank J. Weissblatt have this day entered into and formed a co-partnership under the firm name of Maui Sporting Goods Company for the conduct of a general merchandise business. The principal place of business of the said co-partnership firm will be in the town of Wailuku, County of Maui and Territory of Hawaii. All obligations incurred in the past by Leland C. Lewis under the name of Maui Sporting Goods Company are assumed by the said co-partnership firm.

MAUI SPORTING GOODS CO.
LELAND C. LEWIS.
FRANK J. WEISSBLATT.

Dated, Wailuku, Maui, December 6, 1921.
(Dec. 9, 13, 16.)

STOP! LOOK! READ!

IF YOU ARE GOING TO MEET THE STEAMER AT LAHAINA

CALL UP
KAHULUI AUTO STAND
PHONE 191-A

JOHNNIE J. KOHAMA—For comfortable, easy riding cars.

Regular trips on Mondays, Wednesdays, Fridays and Saturdays.

THE GIFT THAT GROWS

Give the child a gift that will work and earn for it in years to come.

OPEN A SAVINGS ACCOUNT

In its name and encourage thrift that will become a trait in manhood or womanhood.

The Baldwin Bank, Ltd.
Kahului Wailuku

\$1580
ESSEX
\$1580
HOLT & LOCEY
Foresters' Building, Kahului Phone 53-H

CHRISTMAS SUGGESTIONS
Perfumes\$1.00 to \$20.00 Rouge and Powder Metal Vanity Powder80c to \$3.75 Cases75c to \$1.50 Hair Nets.....\$1.00 per dozen Spanish Combs.....\$1.75 to \$20.00
MARINELLO SHOP
H. C. La Moe, Prop. 1110 Fort Street. Phone 2091

FOR SAFE AND CAREFUL DRIVING
IF YOU VALUE YOUR LIFE MORE THAN SPEED, CALL
M. H. SILVA, Phone 171, Wailuku
AND GET WHERE YOU WANT WHEN YOU WANT TO

Child Drowned; Would Be Rescuer In Peril

Running to the rescue at the call of a frightened child, and jumping overboard regardless of the heavy sea, Yamamoto of Kihel on Tuesday placed himself in a dangerous predicament, from which he was rescued by a rope thrown from the pier by more rescuers.

Seichi Fugi, a little six year old Japanese boy, had left his parents at ten o'clock in the morning and with a few companions was playing on the end of the pier at Kihel. The next that was heard from the children was the report of one of them about two o'clock that little Seichi had fallen into the water. Yamamoto, who was the first to hear the story, ran out the pier and seeing the body in the water, jumped after it not thinking of his own safety. The sea proved too strong for him, and he, too, would have been drowned but for the rope thrown from the pier. He was pulled up safely, but Seichi was dead. It is thought that the strong wind must have blown the child over. The body was buried Wednesday.

JEWELRY
Watch Making and Repairs
Make your selection of Holiday Gifts early.
Make a Deposit and We'll Put them Aside For You.
U. OGAWA
Market St. Wailuku

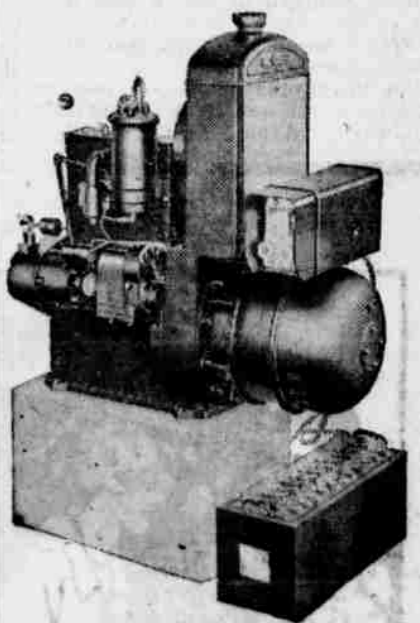
MOURA GARAGE
THE OLD RELIABLE AUTO REPAIR SHOP
Phone 159
Main Street. Wailuku.

Just the Razor he has always wanted—The KEEN KUTTER—Make his Christmas gift a Keen Kutter Safety Razor. He knows Keen Kutter means highest quality and reliability. Keen Kutter Razors are scientifically adjusted for right shaving. Blades are flawless—tempered-to-last—make shaving easy. Razor and extra blades in a neat box for \$1.00. Other more complete outfits to suit the most careful Christmas buyer.
All Keen Kutter goods are guaranteed for quality or money refunded.
SIMMONS HARDWARE COMPANY
KEEN KUTTER
CUTLERY AND TOOLS
"The Recollection of QUALITY Remains Long After the PRICE is Forgotten."
(Trade Mark Registered) —E. C. SIMMONS

Carnation Milk
Cream of Tomato
Celery Soup
Pea Soup
Corn Chowder
Clam Chowder

For Cream Soup

DO YOU KNOW What This Means?



Hurd, Pohlman & Co.
will tell you in their Tuesday's advertisement

RESTAURANT
CHINESE CHOP SUEY
BREAD FOR SALE
GENERAL MERCHANDISE
KWONG SUN LOY
Lower Paia, Maui

T. HOSHI
CLOTHES CLEANED AND PRESSED
HATS CLEANED
KALUA AVENUE WAILUKU

ALOHA GARAGE
GENERAL AUTO REPAIR SHOP
Day and Night Service
Phone 104-A Paia
LOWER PAIA, MAUI

NEWLY OPENED

NEW CLEAN GOODS AT NEW PRICES

We announce the opening last Tuesday of our new store in a new building next to the Foresters' Building, Kahului, and issue a cordial invitation to call and look over our establishment.

All goods are new, bought at the latest declining prices and we have no old stock that we have to unload upon the public above present market values in order to get our money back. We have bought right and we are selling right.

GROCERIES
CANNED GOODS
FRESH VEGETABLES
FRESH FRUITS
GENERAL MERCHANDISE
CHINA AND CROCKERY
LIFETIME ALUMINUM WARE
AJAX TIRES AND TUBES

HOME SUPPLY CO., LTD.
Next to Foresters' Building Kahului
WE WILL DELIVER YOUR WANTS PROMPTLY

Christmas Joys Are Assured Children in All Maui Districts

Maui children are already congratulating themselves that they have been good boys and girls all year, for Santa Claus is getting ready to visit them with all of his usual generosity. Indeed some of the districts are having their trees early. Halehaku under the direction of Mrs. Crockett, has already had its tree and at Kula, Miss Macfarlane is today holding Christmas Tree festivities for about 360 children.

As Christmas day draws near, Santa Claus will undoubtedly have to rise early and work late, for most of the other trees are planned for the day or two immediately preceding Christmas. At Makawao Mrs. S. A. Kalama, is chairman of the committee that is preparing fun for 500 kiddies; at Spreckelsville, Mrs. Fantom and her committee are expecting about the same number; M. G. Paschoal at Puunene and C. A. Puck at Wailuku have the largest crowds on their hands, taking care of 1000 and 1400 respectively, while Mrs. Hoogs at Waikapu and Miss Lani at Waihee are getting ready for about 350 each. At Hailu Mrs. W. A. Baldwin is chairman of the committee which is providing Christmas cheer for its 500 children.

Telegraphic Brevities

WASHINGTON, Dec. 12—(Associated Press)—In the report to Congress, the assets of the Shipping Board and the Emergency Fleet Corporation as of June 30, last, were given as \$3,070,599,518; ships owned and controlled numbered 1,740, including 987 ships tied up. Liabilities amounted to \$126,497,879.

WASHINGTON, Dec. 12—(Associated Press)—Secretary of the Navy Denby's annual report declared he had "no recommendation to make at this time relative to the naval establishment"; and omitted all reference to the Disarmament Conference. It further stated that the naval budget of \$431,754,000 was based on the policy of an "American navy second to none."

WASHINGTON, Dec. 12—(Associated Press)—The Department of Commerce reported the November exports total as the lowest of the year, while the imports total is the highest in the last six months. Exports were \$295,500,000 as compared with \$343,500,000 for October, and \$686,500,000 for November of last year. Imports totaled \$211,300,000 as compared with \$188,000,000 for October, and \$321,000,000 for November of last year. Exports for the past eleven months were \$4,191,000,000, as compared with \$7,608,000,000 for the corresponding period last year. Imports were \$2,272,000,000 as compared with \$5,012,000,000 for the corresponding period last year.

WASHINGTON, Dec. 12—(Associated Press)—Representative Samuel E. Winslow of Massachusetts introduced a bill into the House authorizing the purchase of the Cape Cod canal property for \$11,500,000.

JERSEY CITY, Dec. 12—(Associated Press)—Frank Calabrese has been arraigned here and charged with the theft of mail packages in connection with the \$2,000,000 mail robbery in New York several weeks ago. Calabrese's secretary was also arrested.

WASHINGTON, Dec. 12—(Associated Press)—The Supreme Court has issued a temporary order, permitting the Board of Trade to operate after December 24, when the futures trading act goes into effect.

OTTAWA, Dec. 12—(Associated Press)—The police office of the Government Finance Department is under surveillance as a result of a discrepancy in accounts, alleged to aggregate \$33,000.

SAN ANTONIO, Texas, Dec. 14—(Associated Press)—Warnings are being sent from Mexico City to all towns in the vicinity of Popocatepetl volcano, saying that the volcano has reached its highest stage of violence since it began spouting lava Sunday night. Dangerous eruptions are expected.

WASHINGTON, Dec. 14—(Associated Press)—Chairman Fordney of the house ways and means committee announces that the soldiers bonus question will be taken up immediately after the Christmas recess. Opinion is general that the bill must provide some means for raising the funds intended for distribution.

NEW YORK, Dec. 14—(Associated Press)—"Tex" Rickard today handed lightweight champion Johnny Wilson \$35,000 which was his share in the Wilson-Downey fight at Jersey City last September. The money had been held up on a court order, pending an investigation of charges that Wilson had stalled.

SAN FRANCISCO, Dec. 14—(Associated Press)—R. H. McCormack, Assistant United States attorney general in California, notified federal officials that the Volstead act does not contemplate the arrest of persons for drinking liquor and that persons found drinking in public places could not be compelled to tell the origin from whence the liquor came.

WASHINGTON, Dec. 14—(Associated Press)—A joint congressional commission of agricultural inquiry reported to the senate thirteen recommendations, including legalization of cooperative marketing combinations, lower freight rates on agricultural products, and the appointment of agricultural attaches in European capitals.

French Bank of China Closes, Forced to Pay

SHANGHAI, Dec. 7—(Associated Press)—Depositors of the branch of the Banque Industrielle de Chine at Yunnanfu, capital of the distant southwestern province of Yunnan, rose in a body, soon after all branches of the bank throughout China closed on word from Paris that the institution was in financial difficulties, attacked the bank's quarters at Yunnanfu, mishandled the French manager of the bank, insulted the French consul and compelled payment of all their accounts, according to advices reaching here.

As the result, French residents of Indo-China have united in urging their government to take measures of reprisal, reports said.

A band of Chinese forced entrance into the Yunnanfu branch early in the afternoon, took forcible possession and, in making their demands, assaulted and heaped indignities upon the French officials who sought to interfere. The leader of the intruders confronted the French consul on his arrival at the scene.

"It is now ten o'clock," he is quoted as saying. "If we are not paid in half an hour we shall spit in your face and then shall pay a visit to your residence."

Under this and other threats the Consul is said to have been forced to issue an order to repay all accounts. This was done.

"It is necessary that a raid be made upon Yunnanfu," the Avenir du Tonkin said regarding the incident. "It is necessary that troops be directed rapidly toward this city with artillery tanks and airplanes. This will doubtless be a simple military promenade. When our forces are in sight of Yunnanfu, our guns in position, our tanks in marching order with our airplanes soaring over the city, we shall see the Chinese authorities, incapable yesterday of curbing the blackguards who maltreated our Consul, coming to make the ancient prostration before our flag."

JAPANESE SUICIDES

Omaye Kametaro, 64 years old, a Japanese laborer in the employ of the Wailuku Sugar Co., for the past 20 years, committed suicide Wednesday by hanging, near the Waikapu reservoir. Kametaro is reported to have been in bad health and in debt for some time. He was last seen at 7 o'clock Thursday morning. He had no relatives. The body was buried in the Japanese cemetery Thursday.

NEW YORK, Dec. 14—(Associated Press)—Marshall Ferdinand Foch called for France today, taking with him six huge cases filled with gifts ranging from a gold sword and boy medals to a Montana wild cat and a Union bricklayers card. Foch traveled more than 15,000 miles and has made more than 600 speeches since his arrival in the United States last October.

GIFTS FOR THE HOME

Folks of Wailuku and Maui long ago learned to associate this store with their thoughts of useful Christmas Gifts.

We want this to be so and each year we are more and more careful in our selection of stocks suitable for Christmas Gifts.

- | | |
|-------------------------------|--------------------------|
| Koa Furniture | Card Tables |
| Leather Davenport | Dining Tables |
| Ivory Bed Room Sets | Lamp Stands |
| Wicker and Rattan Pieces | Rocking Chairs |
| Simons' Beds, Brass and Steel | Sea Grass Sewing Baskets |

A Line of Chinese Furniture Just Received from Hong Kong

RUGS BEAUTIFY THE HOME

Our assortment is large, varied and attractive and those of Sea Grass are especially pleasing. Carpets, Linoleums, Oil Cloth.

- | | |
|-------------------------|----------------------------|
| For the Children | For the Kitchen |
| Komfy Kribs | Oil Stoves—All Best Makes |
| Dolls' Furniture | Wood Stoves |
| Toy Automobiles | Hot Water Heaters |
| Bicycles | Complete for immediate use |

Our stock of Furniture is the most complete and the lowest priced to be found anywhere on Maui. Make your gift a useful one that every member of the family will enjoy.

FOR EVERY DAY USE

Cistern and Hand Pumps of all sizes. Stove Pipes, everything in plumbing. Roofing Paper, etc.

MAUI DRY GOODS & GROCERY CO.

FURNITURE AND PLUMBING DEPARTMENT

K. OF P. BUILDING MILL STREET, WAILUKU
PHONE WAILUKU 215-A.

BEST IN THE LONG RUN
BEST IN ANY RUN
GOODRICH TIRES
Full Line of Tires and Full Line of Tubes
Solid Tires Pressed On
DAN T. CAREY
Main Street. Wailuku.

LAHAINA ICE CO., LTD.
Manufacturers of Ice and Pure, Delicious Soda and Mineral Waters
Distributors of Electric Power and Light
WILLIAM SMITH, Manager
Phone Lahaina, 50-A.

The Ability To Pay---
depends upon the Companies whose financial and moral standing guarantees the reliability of their insurance contracts, both under ordinary conditions and in settling claims which have arisen in conflagrations.
Why Stand In Jeopardy?
We represent leading companies of the world.
C. Brewer & Company (Limited)
(Insurance Department)
P. O. Box 347 : : Honolulu, T. H.

PLANTATION MARKET
Lahaina.
Choicest Cuts of the Choicest Home-Raised Meats on Maui
A Trial is Worth Your While.
ANTONE FURTADO, Proprietor.

MATSON NAVIGATION COMPANY
DIRECT SERVICE BETWEEN HONOLULU, HILO AND SAN FRANCISCO
For San Francisco:
MANOA.....Dec. 21, 10 a. m., Pier 15
MAUI.....Dec. 28, 10 a. m., Pier 15
WILHELMINA.....Jan. 4, 4 p. m., Pier 15
Sailing from Seattle, Manukai, Dec. 24.
For particulars apply to—
CASTLE & COOKE, LTD.
AGENTS, HONOLULU
FORT AND MERCHANT STS.

TIME TABLE—KAHULUI RAILROAD CO.

Daily Passenger Train Schedule (Except Sunday)
The following schedule went into effect November 18, 1918.

TOWARDS WAILUKU						TOWARDS HAIKU																	
9	7	5	3	1	Distance	Distance	2	4	6	8	10												
P	M	P	M	A	M	Miles	STATIONS	Miles	A	M	P	M	P	M									
5	33	3	30	1	25	8	35	6	35	5	38												
5	23	3	20	1	15	8	23	6	25	15.3	A. Wailuku..L	0	6	40	8	40	1	30	3	35	5	38	
											L.A		6	50	8	50	1	40	3	45	5	48	
											L.Kahului												
5	20	3	17				8	20		12.0	A.L	3.3	6	52									
5	10	3	07					10			L.A		7	02									
											L.Spreck	6.9											
5	09	3	05					8	08	8.4	A.L		7	03									
5	00	2	55						8	00	L.A	9.8	7	12									
											L.A												
4	58	2	53						7	57	A.L		7	15									
4	52	2	47						7	52	L.A		7	20									
											L.A												
4	51	2	46						7	50	A.L		7	22									
4	45	2	40						7	45	L.A		7	30									
											L.A												
4	44	1	39						7	44	A.L	13.9	7	32									
4	02	3	35						7	40	L.A	15.3	7	36									

PUUNENE DIVISION

TOWARDS PUUNENE			TOWARDS KAHULUI							
3	1	Distance	Distance	2	4					
Passenger	Passenger	Miles	STATIONS	Passenger	Passenger					
P M	A M	Miles	Miles	A M	P M					
2	50	6	00	.0	L. Kahului..A	2.5	6	22	3	15
3	00	6	10	2.5	A. Puunene..L	.0	6	12	3	05

- All trains daily except Sundays.
 - A Special Train (Labor Train) will leave Wailuku daily, except Sundays, at 5:30 a. m., arriving at Kahului at 5:50 a. m., and connecting with the 6:00 a. m. train for Puunene.
 - BAGGAGE RATES: 150 pounds of personal baggage will be carried free of charge on each whole ticket, and 75 pounds on each half ticket, when baggage is in charge of and on the same train as the holder of the ticket. For excess baggage 25 cents per 100 pounds or part thereof will be charged.
- For Ticket Fares and other information see Local Passenger Tariff I. C. C. No. 3 or inquire at any of the Depots.

Join the Live Ones and Boost With Semi-Weekly Maui News



CHRISTMAS GIVING

JEWELRY PLEASURES BEST

Make your choice of presents for your dear ones from the largest stock of Diamonds, Watches and other Jewelry and at the lowest prices to be found on Maui.
RINGS—Diamonds and other precious and semi-precious Stones. We offer a special bargain in a beautiful white one and one-half karat Diamond. See it first.

WATCHES—Open-face, Hunting Cases, gold and silver, Wrist Watches in wide variety.
NECKLACES—gold, coral and beads. **PINS** and **BROOCHES**, plain and jeweled. **NOVELTIES** in wide variety. **JADE ARTICLES** a specialty.

HOLIDAY SPECIAL BARGAIN SALE
H. KANESHIGE KAULUI, MAUI

PUENE AVENUE

Personal Mention

Rev. E. E. Pleasant is in Lahaina today. Mrs. J. K. Bruss was a home comer this morning. F. N. Maire of Honolulu arrived in Wailuku Wednesday. S. A. Baldwin was a returning passenger on the Manoa. Senator H. A. Baldwin came home on this morning's Manoa. W. A. Clark is out again after a short siege with the "flu." D. Leith of Davies and Co., arrived from Honolulu Wednesday. Walter P. Dillingham came over from Honolulu on the Manoa. A. W. T. Bottomley of American Factors is in Maui on business. George P. Cooke was the guest of Senator Harold Rice yesterday. Mr. and Mrs. H. B. Weller came over from Honolulu this morning. F. F. Baldwin returned from a business visit to Honolulu this morning. James S. Wakefield of Davies and Co., arrived from Honolulu Wednesday. Mr. and Mrs. D. H. Case are now occupying a part of the Marshall home. Dr. J. H. Raymond and Harvey Raymond were home comers this morning. Mrs. George S. Aiken and children returned Wednesday afternoon from Honolulu. R. H. Christy of the Pan-Pacific Trades arrived from Honolulu Wednesday night. Mrs. Wm. Allen Jr. was a home comer from Honolulu on the Manoa Kea yesterday. L. R. Medeiros of the Schuman Carriage Co., arrived from Honolulu Wednesday night. Dick Harris, manager of the Maui theaters, went to Honolulu on the Kilauea last night. F. E. Carioff of the Royal Hawaiian Sales Co., came over from Honolulu Wednesday night. Secretary of the Territory Raymond C. Brown was an arrival on the Manoa this morning. Gus Schumann and Walter Beal of Schuman Carriage Co., came over from Honolulu this morning. R. A. Drummond was unable to get over from Hana for the budget meeting of the board of supervisors. Mr. and Mrs. Sam Kaluauawa have the sympathy of their many friends in the loss of their baby on Tuesday. Dick and Jack Walker of Hamakua-poko returned from school in Honolulu this morning for the Christmas holidays. Hamilton P. Agee, head of the Planters Experiment Station was in Wailuku a few hours Wednesday while the Kilauea was in port. Miss Mildred Sprohl, assistant to Dr. Osmer at the Alexander House Dispensary is to leave for Honolulu tonight to take up private nursing. Mrs. Vivian Richardson of Kapaa, Kauai is visiting her parents Mr. and Mrs. W. E. Bal of Wailuku. She will be a Maui visitor until after the holidays. Mrs. R. C. Harris, who has been on the mainland was an arrival this morning. Her husband went to Honolulu to accompany her to her new home. L. A. Thurston, president of the Advertiser Publishing Co., and John F. Ness, its general manager, returned to Honolulu on Wednesday night's Kilauea. James Lewis, Jr., will soon be leaving Wailuku and returning to the Big Island where he will accept a position as head of the used car sales department of the Volcano Garage. Mr. and Mrs. William D'Esmond of Honolulu are on Maui to spend the holidays with their relatives Mr. and Mrs. W. E. Bal of Wailuku. Mrs. D'Esmond was formerly Mary Bal. Lt. Commander Loder of the Baltimore, Lt. Commander Dickinson, paymaster of the fleet; Lt. Pomeroy, fleet surgeon, and Lt. Farnsworth, fleet dentist paid a visit to Wailuku from Lahaina Wednesday night. L. R. Medeiros, president of the San Antonio Society is over from Honolulu on business for Schumann Carriage Co. He says the new trust company in Honolulu in which San Antonio Society is greatly interested is making truly remarkable growth and progress. Worth O. Aiken, manager of the Pauwela Pineapple Co., who was expected to leave San Francisco for Honolulu, December 14, will be unable to do so. Mr. Aiken was called to New York on business and expects to return to San Francisco about December 21. F. W. Thrum, of the public works department returned to Honolulu Wednesday night after an inspection of the wharves at Kahului and Hana. Mr. Thrum came on the Kilauea Tuesday but was unable to land at that time. On the return trip he landed long enough to make an inspection and returned on the same boat. WACO, Dec. 14—(Associated Press)—An infuriated mob lynched and hung "Curley" Hackney, a white man who was charged with attacking a girl here.

Pertinent Paragraphs

Ladies Aid Meeting—The Kahului Ladies Aid will meet Tuesday at 2:30 in the Community House, Kahului. Choir Meeting—The Chinese Christian Endeavor choir will meet at the home of Mrs. E. E. Pleasant, Iao Valley road, this evening. Masonic Installations—The Maul Lodge of Masons will hold its annual installation of officers on December 27, St. John's day. Christmas Carols—There will be another rehearsal for those interested in singing carols on Christmas eve at the home of Mrs. E. E. Parsons, Iao Valley road, Sunday night at 8:45. Naval Jazz Band—It is reported that the Eagle boat fleet in Lahaina holds within itself an extra quality, 26 piece, jazz orchestra, which would like to give a dance in Wailuku in January. Dividends Suspended—C. Brewer & Co., issued notice last week that dividends of Wailuku Sugar Company will be suspended after this month until further notice. A similar notice as to Onomea was issued. Messenger Fills Vacancy—District Magistrate Harry Mossman handles the business of the Lahaina District court while Magistrate George Freeland is recovering after a recent operation. He went to Lahaina Wednesday and was accompanied by Miss Maggie Rodrigues as stenographer since the Lahaina stenographer and court clerk was a witness in one of the cases to be heard. A busy session was held gambling charges and charges of driving without a license predominating. Autos Collide—Two automobiles smashed into each other on the beach road between Wailuku and Kahului last night about 9 o'clock. Joe Pereira was on his way to Wailuku and J. Goldstein was going towards Kahului when the two machines brushed by each other smashing a fender and front wheel on Goldstein's. No one was hurt. Deputy Sheriff Cummings happened along about five minutes after the accident and took charge. Christmas Trees—About 200 grown-ups and children attended the Christmas tree of the Alexander House Settlement Kindergarten this morning at 9 o'clock. Miss Frances Marshall issued many invitations and nearly everyone attended. The tree, donated by Mr. Penhallow, was decorated with ornaments made by the children and each mother and father had a present made by their child. Santa was too busy to attend in person, but the presents he left were appreciated as was also the candy furnished for 121 children.

Big Improvements in Maui Drug Company's Store Are Announced

Chock Chong, president and manager of the Maui Drug Company, told today of having ordered the soda fountain and other equipment for the Maui store. He says the fountain will be of the liquid carbonic type, constructed entirely of handsome Tennessee marble and purchased directly from the factory where it is being specially built. The back bar is composed of a similar grade of marble, has an iceless refrigerating chest and is constructed of marble throughout. It will cost \$500. "It is our aim," says Chock Chong, "to better our service and the new fountain will be larger and finer than the one we are now operating. We shall be in a position to give service that cannot be excelled for the fountain is up to the minute. Along with the installation of the fountain we shall install porcelain or enamel stools and tables in white. We are expecting the fountain on this Manoa.

Lunch Service An innovation which the new store will make will be light lunch service such as chocolate, sandwiches, salads etc., and the equipment for that department is also coming. A special man for the installation of the fountain is coming to Maui and Chock Chong says it will be installed as soon as can be done conveniently. He thinks the quick lunch feature is one that will be much appreciated by people coming in from up country, and says that the store will seem like a new establishment when the extensive proposed changes have been completed. The old fountain has been sold in Honolulu. Maui Drug Company has been one of the liveliest and most progressive establishments of the island ever since it was started after Chock Chong came from Hilo. He has associated himself with live wires such as L. L. Roberts and the firm constantly strives to better and improve the service it renders.

Store in Lahaina Work is going forward on the new building in Lahaina which will contain the Lahaina Branch of the Maui Drug Company and four other stores. The building has a concrete foundation to support a one story frame structure 110 by 60 feet. The store to be occupied by the drug company will be the largest, 30 feet in width about the size of but if anything somewhat larger than the Market street Wailuku store. The building is expected to be completed about the first of February and then equipment will be installed and the Lahaina branch opened as speedily as possible, conducted on the same progressive lines as the Wailuku establishment.

New Establishment Opens in Kahului

In a new building next door to the Forester's building in Kahului there was opened on Tuesday a new store by a new firm known as the Home Supply Company, Ltd. As a matter of fact it is so new that not all of its goods were on the shelves the opening day and the work of placing the stock is still going on. It is the cleanest and most spick and span, brand new establishment of its kind in Central Maui.

The new establishment is large and spacious and carries a large line of staple and fancy groceries, canned fruits and vegetables, fresh vegetables and will do a general merchandising business as well. In the latter lines are shown some attractive tableware, a large stock of aluminum ware, crockery, hardware, some haberdashery and other articles to meet the general needs of the home. The management announces that all goods are newly purchased thereby taking advantage of declining prices and enabling the concern to offer goods lower than could older concerns. It also announces it will establish a delivery system and render prompt service in the filling of all orders.

MARQUETTE, Dec. 12—(Associated Press)—During a prison riot yesterday, Warden T. B. Catlin was stabbed and cut nine times and is in a serious condition. Deputy Warden Fred Menhennit was beaten and his son Arthur stabbed in the lung. The Chairman of the State Prison commission has ordered three riot ringleaders to be flogged.

DANVILLE, Kentucky, Dec. 14—Center's football squad has accepted the invitation to play the University of Arizona at San Diego on December 26.

BOSTON, Dec. 14—(Associated Press)—Former Mayor J. M. Curley, was again elected mayor of this city. Curley received a plurality of 2315 over his opposing candidate, a former fire commissioner.

MORRISON, Colo., Dec. 14—(Associated Press)—Six miners were asphyxiated while fighting a fire in the Satanic Mine near here.

MOSCOW, Dec. 14—(Associated Press)—Trotsky, issuing warlike appeals to the Russian army and navy declared that Japan "in hoping to strengthen her Siberian position at the Washington conference, had launched an attack against the Far Eastern Republic."

BY AUTHORITY

SEALED TENDERS

Tenders will be received up to 12 o'clock M., Wednesday, December 28, 1921, at which time they will be publicly opened by the County Clerk of the County of Maui, for the transportation of school children: From Wailuku and Kamalo to Kailua School, Molokai and return. From Puukohli, Honokowai and Keaka and Olowalu to Kamehameha III School, Lahaina and return. From Kaeleku and Haou to Hana School, Hana and return; and From Honokohau to Honokohua School and return, in accordance with specifications on file in the office of the County Clerk of the County of Maui. Proposals must be on forms which may be procured from the County Clerk. The right is reserved to reject any and all bids. Dated December 15th, 1921. WM. FRED KAAE, County Clerk, County of Maui. (Dec. 16, 20, 23, 27.)

Notice to Holders of Temporary Chauffeur's Certificates.

All holders of temporary chauffeur's certificates for the County of Maui are hereby notified and warned that such temporary certificates will not be recognized on or after January 1, 1922, and holders thereof are subject to arrest for operating motor vehicles on the public highways. P. J. GOODNESS, Examiner of Chauffeurs. (Dec. 16, 20, 23, 27, 30.)

Entered of Record

Notice of Lien Dickey & Wood (firm) by Atty. Advs. Harry Gesner, July 31, 1920. Mechanic's Lien HARRY GESNER to Dickey & Wood Ad. Damnum \$2389.22, material furnished for garage bldg & on premises, Main St., Wailuku, Maui, July 31, 1920.

The Stock Market

Table with 2 columns: Stock Name and Price. Includes Ewa, H. C. & S. Co., McBryde, Oahu, Olaa, Pioneer, Wailuku, Engels, Waituku, Haku Fruit, Sugar, Honolulu Oil.

Today's Quotation on RAW SUGAR:

3.86

CENTS PER POUND Copper...14c lb. Rubber, N. Y...18c lb. Rubber, Singapore...20c lb. For further information regarding local and foreign securities see—

WATERHOUSE TRUST CO., LTD. PHONE 5701

MARRIED

TEHEIRA-LONO—In Wailuku, December 13, 1921, Miss Sarah Lono to Manuel Teheira, Rev. L. B. Kamehameha officiating.

LICENSE GRANTED

ENOS-POOHINA—To be married in Wailuku, December 17, 1921, Miss Irene K. Poohina to James Enos, Father Justin to officiate.

Passengers arrived per S. S. Manoa—Henry Paoa, Raymond C. Brown, Mr. and Mrs. D. W. Fahlgreen, Walter Beal, Gus Schumann, C. L. Smith, Miss H. Sunakawa, Miss T. Yamaga, Mrs. J. C. Rodrigues and infant, Mrs. J. K. Bruss, Mrs. S. E. Scott and baby, Frank F. Baldwin, H. A. Baldwin, Mr. and Mrs. F. C. Gilliland, Mr. and Mrs. R. C. Harris, Mrs. Vera Pixley, Mr. and Mrs. H. B. Weller, S. A. Baldwin, Mrs. J. S. Zabriski, John McLaren, Douglas S. Brewster, Dr. J. H. Raymond, Harvey Raymond, H. L. Eigenbrot, Walter F. Dillingham, Master Henry Benson, Master Dick and Jack Walker, A. W. T. Bottomley, Miss E. Farden.

In The District Court

December 13 Territory of Hawaii vs. Tanaka and 11 others of Puunene. Gaming with dice. Forfeited bail of \$5 each. Territory of Hawaii vs. Juan Dospitalo of Waihee. Drunkenness. Forfeited bail of \$12. Territory of Hawaii vs. Batariano Sobeoba of Waihee. Drunkenness. Forfeited bail of \$12. Territory of Hawaii vs. William Leopoldo of Makawao. Desertion and non-support of wife and children. Not guilty of desertion and non-support of wife, but guilty of non-support of children. Fined \$25 and \$3.40 costs. December 15 Territory of Hawaii vs. Sam Ham of Wailuku. Opium in possession. Forfeited bail of \$25. Territory of Hawaii vs. Antonio Abalos of Wailuku. Driving auto without chauffeur's license. Guilty. Fined \$25 and \$3 costs. In default of payment defendant was placed in Maui County jail to work out the sentence. Territory of Hawaii vs. Jim Ah Hoy, doing business under the name of Jim Fut Kum of Wailuku. Violating board of health laws by keeping for sale tainted meat. Postponed to December 16. YELLOW JACKET SEATS Tickets for "The Yellow Jacket" may be exchanged for reserved seats with Eddie Tam at the Baldwin Bank. For the performance at Kahului exchanges may now be made and for the Wailuku performance the exchange will open Monday.—Adv.

In the Churches

Church of the Good Shepherd 4th Sunday in Advent. December 18th. Holy Communion, at 8 a. m. Sunday school at 10 a. m. Morning prayer and sermon at 11. A welcome to all. You are cordially invited. J. Charles Villiers, rector. Makawao Union Church Rev. Augustine Jones, Minister. Morning Worship, 11 a. m. Wailuku Union Church. Rev. Augustine Jones, pastor. Evening Worship, 7 p. m. Phillips Brooks will be the subject of the address of the hours, the first in a series to be given from time to time on Great Preachers of the Nineteenth Century. The Community Church, Lahaina W. A. Tate, Minister and Director of Americanization for West Maui Services held the first and third Sunday evenings in the month at 7:30 p. m. in Baldwin Kindergarten. Bible School every Sunday at 10 a. m. All are cordially welcomed to these services. SERVICES IN THE CATHOLIC CHURCHES St. Anthony's Church Rev. Father Justin, Pastor. Masses at 8 and 10:00 a. m. Our Lady of Victory Church Rev. Father Bruno. Masses 8 and 10 a. m.

GIFT SHOP

From Monday until Friday of next week the Gift Shop will be at the Grand Hotel. With a very choice assortment of hand made Christmas gifts.—Adv. (Dec. 16, 20.)

LETTERS

HAVE A HEART Wailuku, Maui, Dec. 14, 1921. To the Editor of Maui News: Much criticism has been voiced during these days of rainy weather, on what seems to have been a neglect or oversight or just carelessness on the part of automobile drivers, both in the rent service and the owners of private cars who appear to use no more discretion in this matter than the rent drivers. These thoughtless drivers, when passing pedestrians on the road, be they school children on their way to classes or persons in pursuit of their daily tasks, leave them no alternative other than to choose a liberal shower of mud and muddy water or to leave the road entirely and stand or walk off the side which in many cases is a ditch and full of water or mud. There the pedestrian may stay until the machine has passed in order to save his or her clothes from the cloud of dirty spray thrown out by the road hogs. A few days ago I saw a little girl running away from one of these "death monsters," who slipped and fell to the muddied road and though not badly hurt had her clothes dirtied. I picked her up and took her home to her parents to have her clothes changed and then brought her back to school. Few have come to the conclusion or awakened to the fact that a very small act is necessary to remedy this evil. Slow down and give the people a chance, an act of kindness so small as this can be done by any driver without even noticeable inconvenience. Yours very truly, M. H. SILVA.

WANT ADS

FOR SALE—Koa and Mahogany furniture and other pieces including China Closet. Call Mrs. R. B. Rietow, Kahului. Dec. 16, 20, 23.) LOST—One new 32x4 Goodyear fabric tire, between Lower Pala and Wailuku. Finder address box 287, Hamakua-poko. (Dec. 13, 16) WANTED—To buy a small or medium sized office safe. Address P. O. Box 138, Wailuku. tf. FOR SALE—Furniture for sale apply H. H. Moore, Puunene Dairy, Phone 156 B. (Dec. 6, 9, 13, 16.) FOR SALE—House and lot on Iao Valley Road above Maui Hotel, price \$2600. Inquire of John Martins, Spreckelsville, Phone 78-E.—tf. FOR SALE—Chickens and ducks. Also three well bred horses. Inquire, P. W. Eichinger, Waihee, Maui, Phone 138C.

OPEN EVENINGS For the purpose of those who find it inconvenient to do their shopping in the day time, this store will follow a time honored custom with it and will be open evenings until Friday night, December 23.

PUUNENE STORE KAHULUI, MAUI

FULPER POTTERY

New to the Islands, just received from the factory, shown on Maui for the first time and handled by us exclusively. This is easily the most exclusively. This is easily the most dled. It comes in a large variety of articles in exquisite colors and shades and is ideal for Christmas giving.



- Majolica Pottery, Brass Ware, Lacquer Ware, Bronze Work, Lauhala Work, Traveling Sets, Manicure Sets, Leather Articles, Carved Picture Frames, Ivory Picture Frames, Unframed Works of Art, Choice Hawaiian Tapa, Beads and Necklaces, Vanity Cases and Bags, Candles and Sticks, Kodaks and Cameras, Fountain Pens, Desk Sets, Stationery, Silk Slippers, Canton Ware, Boudoir Clocks, Games, Books

Koa Wood, more than 100 Articles An Annex Store Filled with Toys

MAUI BOOK STORE

Main Street Wailuku

Coming Events

THURSDAY, DECEMBER 22 Christmas tree of the Sunday School of the Church of the Good Shepherd. SATURDAY, DECEMBER 24 Community Christmas trees. Military dance at Lahaina Armory. WEDNESDAY, DECEMBER 28 The Yellow Jacket at Kahului Theater. THURSDAY, DECEMBER 29 The Yellow Jacket at Pioneer Theater, Lahaina. FRIDAY, DECEMBER 30 The Yellow Jacket at Wailuku Hippodrome. SATURDAY, DECEMBER 31 Military dance at Lahaina Armory. Fancy Dress Ball of Maui County Fair and Racing Association at Teritorial Building, Kahului.