



Solomon Islands Government

Statistical Bulletin: No: 5/2015

VISITOR STATISTICS

(Fourth Quarter 2014)

Solomon Islands National Statistics Office

Ministry of Finance

Honiara

TABLE OF CONTENTS

Introduction	3
COMMENTARY OF RESULTS	5
<i>International Arrivals</i>	5
<i>Arrivals by Country of Residence</i>	5
<i>Visitor by Month</i>	5
<i>Tourists</i>	5
<i>Visitors by Purpose of Visit</i>	5
<i>Visitor by Age Group</i>	5
<i>Visitor by Occupation:</i>	5
<i>Visitor by Carrier</i>	5

Charts

Chart 1: Arrivals by Category, 4 th Quarter 2014.....	6
Chart 2: Visitor Arrivals by Country of Residence by quarter: 4 th Quarter 2014.....	7
Chart 3: Visitor Arrivals by Month, 2011 to 4 th Quarter 2014	8
Chart 4: Tourist Arrivals by Country of Residence, 4 th Quarter 2014.....	9
Chart 5: Visitor Arrivals by Country of Residence by Purpose of Visit, 4 th Quarter 2014.....	10
Chart 6: Visitor Arrivals by Age group category by sex, 4 th Quarter 2014.....	11
Chart 7: Visitor Arrivals by Occupation by sex, 4 th Quarter 2014.....	12
Chart 8: Visitor Arrivals by Carrier by sex, 4 th Quarter 2014.....	13

Tables

Table 1: Total Arrivals Classified by Purpose of Travel by Sex by Year by Quarter: 4 th Quarter 2014.....	6
Table 2: Visitors Arrivals by Country of Residence by Year by Quarter: 4 th Quarter 2014	7
Table 3: Visitors Arrivals by Month: 2006 to 4 th Quarter 2014.....	8
Table 4: Visitors Classified as Tourists by Country of Residence by Year, Quarter and Average Length..... of Stay: 4 th Quarter 2012 to 4 th Quarter 2014	9
Table 5: Visitor Arrivals by Country of Residence by Purpose of Visit by sex: 4 th Quarter 2014.....	10
Table 6: Visitors Arrivals by Country of Residence by Age Groups by sex: 4 th Quarter 2014.....	11
Table 7: Visitors Arrivals by Country of Residence by Occupation and Sex: 4 th Quarter 2014	12
Table 8: Visitors Arrivals by Country of Residence by Carrier By Sex: 4 th Quarter 2014.....	13

Appendix 1	14
<i>Concepts and Definitions</i>	14
Appendix 2.....	15

Table 9: Intending Resident Arrivals by Country of residence by Occupation and sex: 4 th Quarter 2014.....	15
Table 10: Intending Resident Arrivals by country of Residence by Age Groups by Sex: 4 th Quarter 2014	16
Table 11: Returning Resident Arrivals by country of Residence by Age Groups and sex: 4 th Quarter 2014	17
Table 12: Returning Resident Arrivals by country of Residence by Occupation and sex: 4 th Quarter 2014	18

Introduction

This quarterly bulletin is produced by the National Statistics Office NSO in the Ministry of Finance and Treasury. It provides information on international arrivals comprised of the returning resident, intending resident, and visitor. The explanation of these categories is provided in Appendix 1 of the bulletin.

Visitor category comprised the bigger share of the bulletin, (portrayed in tables 1 to 8); compared to the returning and intending resident category portrayed in Tables 1, and 9 to 12. The bulletin includes twelve tables and eight charts stretched over cross-field tabulation, preferably to meet information need of local, regional, and international researchers.

The information captured through a self fill Disembarkation form that was completed by all disembarking passengers. The forms were collected by Immigration officials at international check-in counters on arrival. The coverage of the bulletin is complete.

Sheer acknowledgement is owed to the Immigration Department for their continuous support of this bulletin, by providing an office space and permitting the statistics office to input completed forms. With the official arrangement in-placed between the Statistics and Immigration departments this bulletin is possible.

The inclusion of four new tables 9 to 12 in Appendix 2 of the bulletin anticipates to complete the distribution portrait of Intending and Returning resident. The distribution is by age groups, occupation and by country of usual residence.

Data limitations, highlighted in the previous bulletin still remain, though some have substantially improved but noted again for ease of reference as follows:-

- Data entry duplication by the Immigration and Statistics departments was a long standing issue. Discussion of the issues had been made by the two departments, though resolution has been recognized, this was yet to be put in place.
- Timeliness of visitor statistics has improved but the bulletin may be delayed by the production process.
- The information contained in the bulletin is based on information captured from the data source by the SINSO.
- The monetary value of the industry is not available and thus not possible in this bulletin. The concepts and definitions of the arrival categories were included in Appendix 1. The symbols that are likely to be used are:
 - zero if representing a value
 - negative change if representing a percentage change
 - + positive change if representing a percentage change
 - p preliminary figure, subject to revision
 - r revised
 - e estimate
 - n/a not available

For more information contact the Statistics Office, Department of Finance and Treasury:

TELEPHONE : (677) 22154/21427

FACSMILE : (677) 23775

E-MAIL : STATS-management@mof.gov.sb

: STATS-SocialDemography@mof.gov.sb

WEBSITE : **<http://www.spc.int/prism/country/sb/stats>**

Contact persons: 1. Mrs. Irene **KALAUMA**, Chief Statistician
 2. Mrs. Anterlyn **TUZAKANA**, Senior Statistician

COMMENTARY OF RESULTS

International Arrivals

Total Arrivals for the fourth quarter of 2014 was 10,999. This figure showed an increase of 7.3% compared to the previous quarter (3rd Quarter 2014). Compared to the same quarter a year ago, it showed a decrease of 12.2%. Arrivals classified by the category for the fourth quarter of 2014 showed that returning resident comprise of 48%. Visitors recorded 44% and the remaining 8% was recorded for intending resident.

Visitors' arrival for the fourth quarter showed a decrease of 10.5% to 4,908 compared to the third quarter 2014 figure of 5,483. Compared to the same quarter in 2013, a decrease of 18.6% was recorded. Table 1, showed visitor and returning resident categories comprised the larger proportion of all arrivals while the intending resident represents the lesser share during the quarter. Chart 1 gives a clear picture of all the categories.

The country of China is now added to the list of country of residence. In previous reports 'China' was merged with countries of 'Other Asia'.

Visitor by Country of Residence

Arrivals by country of residence for fourth quarter continue to show that Australians (46.9%) remains the frequent travellers to Solomon Islands as in the previous quarters, followed by Other Asia (10.1%), NZ (7.8%), PNG (6.6%), Fiji (5.5%), and US (4.5%). Table 2 showed further detailed information.

Visitor by Month

Visitors by monthly arrivals for the quarter showed that October has the highest number of arrivals with 1,798 persons. This was followed by the month of December with a recorded total of 1,595 persons and November the least with 1,515 persons.

Tourists

Tourist¹ arrivals for fourth quarter of the year recorded a total of 1,538 persons and they spent an average of 16 days in the country. The highest number of tourists recorded for the quarter comes from Australia (50.8%) and staying in the country for an average of 16 days. This was followed by US (8.2%), Other Asia (7.3%), PNG (6.2%), NZ (5.3%), and China (3.8%).

Visitor by Purpose of Visit

Distribution of visitors by purpose of visit revealed that Holiday & Vocation (30.4%) as most popular during the quarter. This was followed by Business & Conference (28.7%), Other (23.3%), Visit friends & relatives (16.6%) and Transit & stopover the least with 1%.

Visitor by Age Group

Visitor Arrivals by broad age groups showed that 75.8% of arrivals were in the 25years to 64years age range. The younger and the older age brackets represent 18.2% while the remaining 6.0% represents visitors who did not state their age. Male represent 70.9% of the arrival and female 29.1%. (Refer to Chart 6)

Visitor by Occupation

Visitor by occupational category revealed that those who stated Other (34.9%) recorded the highest during the quarter. This was followed by Professional & Technical (31.7%), No work (10.9%), Administration and managerial (10.2%), Service Worker (5.5%) and Production & Related Work (3.4%). Table 7 further revealed that Australia not only dominated the Arrivals in terms of markets but also dominated most of the categories of occupations during the quarter. Refer to Table 7 for further analysis.

Visitor by Carrier

The most popular carriers during the quarter were Solomon Airlines (56.8%) followed by Virgin Australia (26.7%), and Air Niu Gini (14.3%).

¹ Refer to Appendix 1 for the definition

Table 1: Total Arrivals Classified by Purpose of Travel by Sex, by Year by Quarter: 4th Quarter 2014

Year / Quarter	Returning Resident						Intending Resident			Visitor			Total			
	Solomon Islander			Non-Solomon Islander			All	M	F	T	M	F	T	M	F	All
	M	F	T	M	F	T										
2011 1 st	1,187	724	1,911	694	332	1,026	2,937	1058	362	1,420	3,972	1,147	5,119	6,911	2,565	9,476
2 nd	1,601	880	2,481	615	292	907	3,388	716	258	974	4,071	1,434	5,505	7,003	2,864	9,867
3 rd	1,716	739	2,455	642	282	924	3,379	930	275	1,205	4,523	1,721	6,244	7,811	3,017	10,828
4 th	3,297	1,765	5,062	4	2	6	5,068	805	268	1,073	4,341	1,732	6,073	8,447	3,767	12,214
2012 1 st	1,915	994	2,909	15	3	18	2,927	1,029	387	1,416	3,554	1,097	4,651	6,513	2,481	8,994
2 nd	1,782	967	2,749	667	312	979	3,728	695	278	973	4,921	2,008	6,929	8,065	3,565	11,630
3 rd	2,169	1,218	3,387	22	12	34	3,421	840	255	1,095	5,123	2,184	7,307	8,154	3,669	11,823
4 th	3,192	1,784	4,976	5	1	6	4,982	631	215	846	3,572	1,466	5,038	7,400	3,466	10,866
2013 1 st	1,966	1,111	3,077	6	-	6	3,083	961	338	1,299	4,034	1,284	5,318	6,967	2,733	9,700
2 nd	2,422	1,344	3,766	1	2	3	3,769	764	279	1,043	4,531	1,664	6,195	7,718	3,289	11,007
3 rd	2,442	1,415	3,857	5	3	8	3,865	715	228	943	5,007	1,880	6,887	8,169	3,526	11,695
4 th	3,577	2,051	5,628	12	12	24	5,652	620	224	844	4,294	1,737	6,031	8,503	4,024	12,527
2014 1 st	2,100	1,287	3,387	3	3	6	3,393	841	318	1,159	3,685	1,069	4,754	6,629	2,677	9,306
2 nd	2,511	1,231	3,742	126	56	182	3,924	604	204	808	3,506	1,419	4,925	6,747	2,910	9,657
3 rd	2,399	1,295	3,694	5	4	9	3,703	823	244	1,067	3,792	1,691	5,483	7,019	3,234	10,253
4 th	3,290	1,937	5,227	20	5	25	5,252	692	147	839	3,481	1,427	4,908	7,483	3,516	10,999
Percentage change																
11 th -12 th	-3.2	1.1	-1.7	25.0	-50.0	-	-1.7	-21.6	-19.8	-21.2	-17.7	-15.4	-17.0	-12.4	-8.0	-11.0
12 ^{3rd} -12 ^{4th}	47.2	46.5	46.9	-77.3	-91.7	-82.4	45.6	-24.9	-15.7	-22.7	-30.3	-32.9	-31.1	-9.2	-5.5	-8.1
12 ^{1st} -13 ^{1st}	2.7	11.8	5.8	-60.0	-100.0	-66.7	5.3	-6.6	-12.7	-8.3	13.5	17.0	14.3	7.0	10.2	7.8
12 ^{4th} -13 ^{1st}	-38.4	-37.7	-38.2	20.0	-100.0	-	-38.1	52.3	57.2	53.5	12.9	-12.4	5.6	-5.9	-21.1	-10.7
12 ^{2nd} -13 ^{2nd}	35.9	39.0	37.0	-99.9	-99.4	-99.7	1.1	9.9	0.4	7.2	-7.9	-17.1	-10.6	-4.3	-7.7	-5.4
13 ^{1st} -13 ^{2nd}	23.2	21.0	22.4	-83.3	-	-50.0	22.3	-20.5	-17.5	-19.7	12.3	29.6	16.5	10.8	20.3	13.5
12 ^{3rd} -13 ^{3rd}	12.6	16.2	13.9	-77.3	-75.0	-76.5	13.0	-14.9	-10.6	-13.9	-2.3	-13.9	-5.7	0.2	-3.9	-1.1
13 ^{2nd} -13 ^{3rd}	0.8	5.3	2.4	400.0	50.0	166.7	2.5	-6.4	-18.3	-9.6	10.5	13.0	11.2	5.8	7.2	6.3
12 ^{4th} -13 ^{4th}	12.1	15.0	13.1	140.0	1100.0	300.0	13.4	-1.7	4.2	-0.2	20.2	18.5	19.7	14.9	16.1	15.3
13 ^{3rd} -13 ^{4th}	46.5	44.9	45.9	140.0	300.0	200.0	46.2	-13.3	-1.8	-10.5	-14.2	-7.6	-12.4	4.1	14.1	7.1
13 ^{1st} -14 ^{1st}	6.8	15.8	10.1	-50.0	-	0.0	10.1	-12.5	-5.9	-10.8	-8.7	-16.7	-10.6	-4.9	-2.0	-4.1
13 ^{4th} -14 ^{1st}	-41.3	-37.3	-39.8	-75.0	-75.0	-75.0	-40.0	35.6	42.0	37.3	-14.2	-38.5	-21.2	-22.0	-33.5	-25.7
13 ^{2nd} -14 ^{2nd}	3.7	-8.4	-0.6	12500.0	2700.0	5966.7	4.1	-20.9	-26.9	-22.5	-22.6	-14.7	-20.5	-12.6	-11.5	-12.3
14 ^{1st} -14 ^{2nd}	19.6	-4.4	10.5	4100.0	1766.7	2933.3	15.6	-28.2	-35.8	-30.3	-4.9	32.7	3.6	1.8	8.7	3.8
13 ^{3rd} -14 ^{3rd}	-1.8	-8.5	-4.2	0.0	33.3	12.5	-4.2	15.1	7.0	13.1	-24.3	-10.1	-20.4	-14.1	-8.3	-12.3
14 ^{2nd} -14 ^{3rd}	-4.5	5.2	-1.3	-96.0	-92.9	-95.1	-5.6	36.3	19.6	32.1	8.2	19.2	11.3	4.0	11.1	6.2
14 ^{3rd} -14 ^{4th}	37.1	49.6	41.5	300.0	25.0	177.8	41.8	-15.9	-39.8	-21.4	-8.2	-15.6	-10.5	6.6	8.7	7.3
13 ^{4th} -14 ^{4th}	-8.0	-5.6	-7.1	66.7	-58.3	4.2	-7.1	11.6	-34.4	-0.6	-18.9	-17.8	-18.6	-12.0	-12.6	-12.2

Chart 1: Arrivals by category 4th quarter 2014

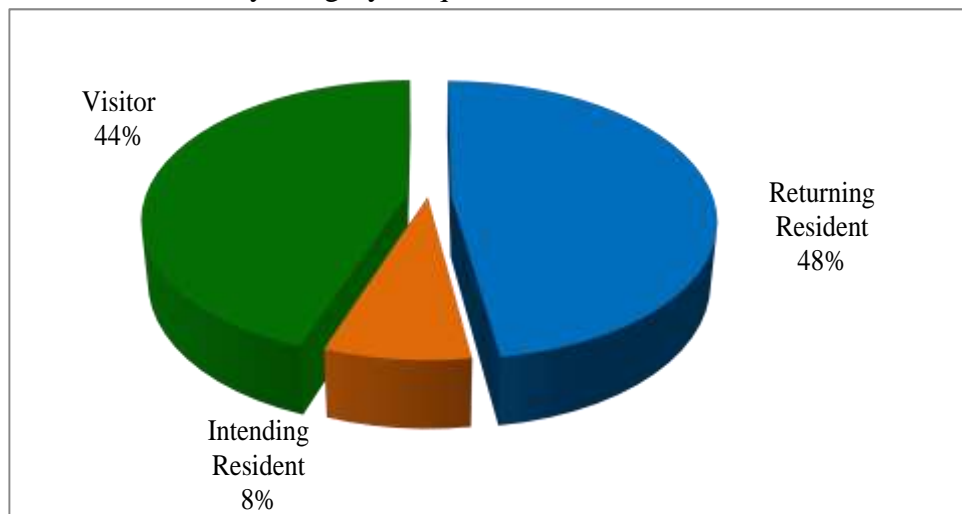


Table 2: Visitor Arrivals by Country of Residence by year by quarter: 4th Quarter 2014

Country of Usual Residence	2011			2012					2013					2014			
	Q3	Q4	Total	Q1	Q2	Q3	Q4	Total	Q1	Q2	Q3	Q4	Total	Q1	Q2	Q3	Q4
Australia	3,042	3,018	11,392	2,238	2,963	3,404	2,474	11,079	2,282	3,049	3,001	2,849	11,181	2088	2,225	2,521	2,300
PNG	589	546	2,057	431	602	476	464	1,973	458	417	621	523	2,019	383	260	275	325
US	368	241	1,040	183	356	561	234	1,334	231	325	357	248	1,161	231	362	324	220
NZ	479	427	1,724	285	545	560	357	1,747	381	531	607	386	1,905	277	343	404	382
UK	101	91	380	81	84	151	69	385	104	110	152	94	460	65	99	77	96
Japan	229	161	641	162	112	211	129	614	128	116	179	178	601	137	84	172	112
Germany	38	25	111	22	40	29	26	117	33	19	35	49	136	15	30	35	22
Canada	55	56	192	29	25	30	27	111	28	35	40	45	148	38	43	42	26
Oth.Pacific	170	223	763	101	811	371	135	1,418	188	142	202	228	760	139	81	184	167
Vanuatu	100	185	513	121	148	179	147	595	250	185	191	178	804	117	171	100	141
Hong Kong	22	84	130	14	20	21	25	80	16	18	33	14	81	35	11	28	21
Fiji	285	330	1,204	300	510	444	301	1,555	451	424	528	397	1,800	351	361	273	270
Other Asia	562	484	2,056	500	544	577	484	2,105	623	655	743	604	2,625	689	580	658	497
Netherlands	20	13	64	12	11	23	11	57	10	6	24	23	63	7	18	13	11
Oth.Europe	63	61	246	76	74	121	50	321	53	57	70	107	287	119	76	130	103
France	22	8	60	24	19	36	9	88	21	21	26	25	93	21	19	33	13
Italy	20	30	80	13	12	40	28	93	16	18	16	33	83	14	10	21	30
China	-	-	-	-	-	-	-	-	-	-	-	-	-	-	103	167	155
Oth.Country	79	90	288	59	53	73	68	253	45	67	62	50	224	28	49	26	17
Total	6,244	6,073	22,941	4,651	6,929	7,307	5,038	23,925	5,318	6,195	6,887	6,031	24,431	4,754	4,925	5,483	4,908
Percentage																	
Australia	48.7	49.7	49.7	48.1	42.8	46.6	49.1	46.3	42.9	49.2	43.6	47.2	45.8	43.9	45.2	46.0	46.9
PNG	9.4	9.0	9.0	9.3	8.7	6.5	9.2	8.2	8.6	6.7	9.0	8.7	8.3	8.1	5.3	5.0	6.6
US	5.9	4.0	4.5	3.9	5.1	7.7	4.6	5.6	4.3	5.2	5.2	4.1	4.8	4.9	7.4	5.9	4.5
NZ	7.7	7.0	7.5	6.1	7.9	7.7	7.1	7.3	7.2	8.6	8.8	6.4	7.8	5.8	7.0	7.4	7.8
UK	1.6	1.5	1.7	1.7	1.2	2.1	1.4	1.6	2.0	1.8	2.2	1.6	1.9	1.4	2.0	1.4	2.0
Japan	3.7	2.7	2.8	3.5	1.6	2.9	2.6	2.6	2.4	1.9	2.6	3.0	2.5	2.9	1.7	3.1	2.3
Germany	0.6	0.4	0.5	0.5	0.6	0.4	0.5	0.5	0.6	0.3	0.5	0.8	0.6	0.3	0.6	0.6	0.4
Canada	0.9	0.9	0.8	0.6	0.4	0.4	0.5	0.5	0.5	0.6	0.6	0.7	0.6	0.8	0.9	0.8	0.5
Oth.Pacific	2.7	3.7	3.3	2.2	11.7	5.1	2.7	5.9	3.5	2.3	2.9	3.8	3.1	2.9	1.6	3.4	3.4
Vanuatu	1.6	3.0	2.2	2.6	2.1	2.4	2.9	2.5	4.7	3.0	2.8	3.0	3.3	2.5	3.5	1.8	2.9
Hong Kong	0.4	1.4	0.6	0.3	0.3	0.3	0.5	0.3	0.3	0.3	0.5	0.2	0.3	0.7	0.2	0.5	0.4
Fiji	4.6	5.4	5.2	6.5	7.4	6.1	6.0	6.5	8.5	6.8	7.7	6.6	7.4	7.4	7.3	5.0	5.5
Other Asia	9.0	8.0	9.0	10.8	7.9	7.9	9.6	8.8	11.7	10.6	10.8	10.0	10.7	14.5	11.8	12.0	10.1
Netherlands	0.3	0.2	0.3	0.3	0.2	0.3	0.2	0.2	0.2	0.1	0.3	0.4	0.3	0.1	0.4	0.2	0.2
Oth.Europe	1.0	1.0	1.1	1.6	1.1	1.7	1.0	1.3	1.0	0.9	1.0	1.8	1.2	2.5	1.5	2.4	2.1
France	0.4	0.1	0.3	0.5	0.3	0.5	0.2	0.4	0.4	0.3	0.4	0.4	0.4	0.4	0.4	0.6	0.3
Italy	0.3	0.5	0.3	0.3	0.2	0.5	0.6	0.4	0.3	0.3	0.2	0.5	0.3	0.3	0.2	0.4	0.6
China*	-	-	-	-	-	-	-	-	-	-	-	-	-	-	2.1	3.0	3.2
Oth.Country	1.3	1.5	1.3	1.3	0.8	1.0	1.3	1.1	0.8	1.1	0.9	0.8	0.9	0.6	1.0	0.5	0.3
Total	100.0	100.0	100.0	100.0	100.0	100.0	100.0	100.0	100.0	100.0	100.0	100.0	100.0	100.0	100.0	100.0	100.0

*Figures for 'China' for previous quarters was included in 'Other Asia'

Chart 2: Visitors Arrival by Country of residence by quarter, 4th quarter 2014

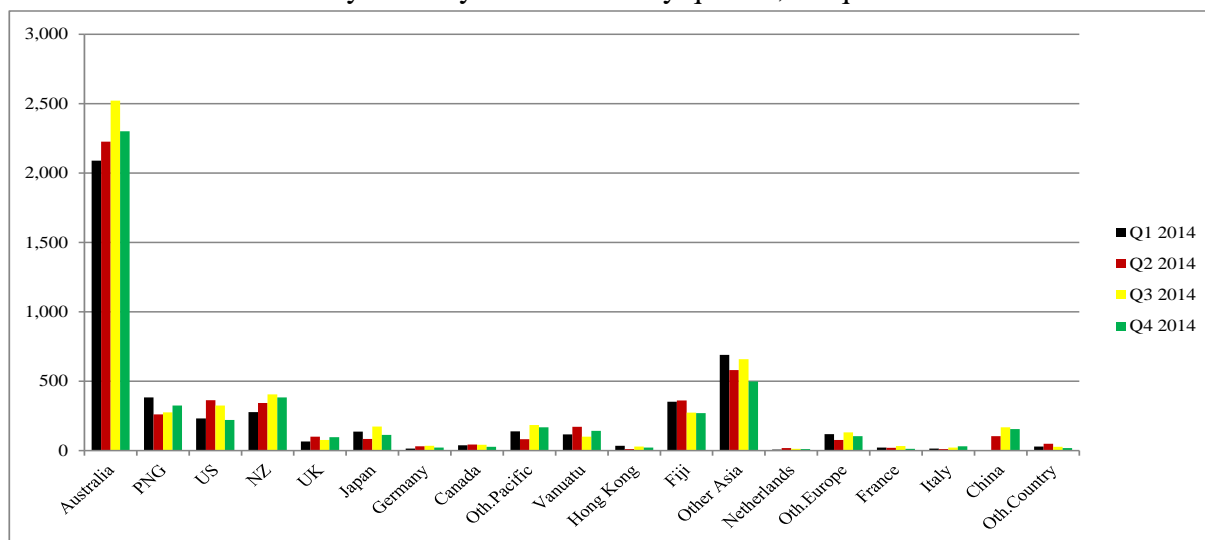


Table 3: Visitor Arrivals by Month: 2006 – 4th Quarter 2014

Month	2006	2007	2008	2009	2010	2011	2012	2013	2014
January	952	546	889	1,602	1,235	1,600	1,383	1,590	1,415
February	838	1,020	1,282	1,422	1,209	1,658	1,591	1,544	1,523
March	972	1,251	802	1,249	1,766	1,861	1,677	2,184	1,816
April	994	1,452	1,388	1,499	1,820	1,736	1,839	2,021	1,514
May	858	1,137	1,261	1,393	1,137	1,760	1,968	1,857	1,462
June	1,289	1,265	1,552	1,724	1,797	2,009	3,122	2,317	1,949
July	865	822	1,692	1,603	2,264	2,185	2,865	2,574	2,114
August	892	1,299	1,469	1,520	1,845	1,900	2,133	2,022	1,639
September	681	1,299	1,457	1,659	2,153	2,159	2,309	2,291	1,730
October	942	1,260	1,399	1,709	1,813	1,931	1,929	2,057	1,798
November	1,118	1,246	1,545	1,475	1,624	2,195	1,545	1,981	1,515
December	1,081	1,151	1,528	1,405	1,858	1,947	1,564	1,993	1,595
Total	11,482	13,748	16,264	18,260	20,521	22,941	23,925	24,431	20,070
Percentage									
January	8.3	4.0	5.5	8.8	5.5	7.0	5.8	6.5	7.1
February	7.3	7.4	7.9	7.8	5.4	7.2	6.6	6.3	7.6
March	8.5	9.1	4.9	6.8	7.8	8.1	7.0	8.9	9.0
April	8.7	10.6	8.5	8.2	8.1	7.6	7.7	8.3	7.5
May	7.5	8.3	7.8	7.6	5.0	7.7	8.2	7.6	7.3
June	11.2	9.2	9.5	9.4	8.0	8.8	13.0	9.5	9.7
July	7.5	6.0	10.4	8.8	10.0	9.5	12.0	10.5	10.5
August	7.8	9.4	9.0	8.3	8.2	8.3	8.9	8.3	8.2
September	5.9	9.4	9.0	9.1	9.6	9.4	9.7	9.4	8.6
October	8.2	9.2	8.6	9.4	8.0	8.4	8.1	8.4	9.0
November	9.7	9.1	9.5	8.1	7.2	9.6	6.5	8.1	7.5
December	9.4	8.4	9.4	7.7	8.2	8.5	6.5	8.2	7.9
Total	100	100.0	100.0	100.0	100.0	100.0	100.0	100.0	100.0

Chart 3: Visitors Arrival by month, 2011 – 4th quarter 2014

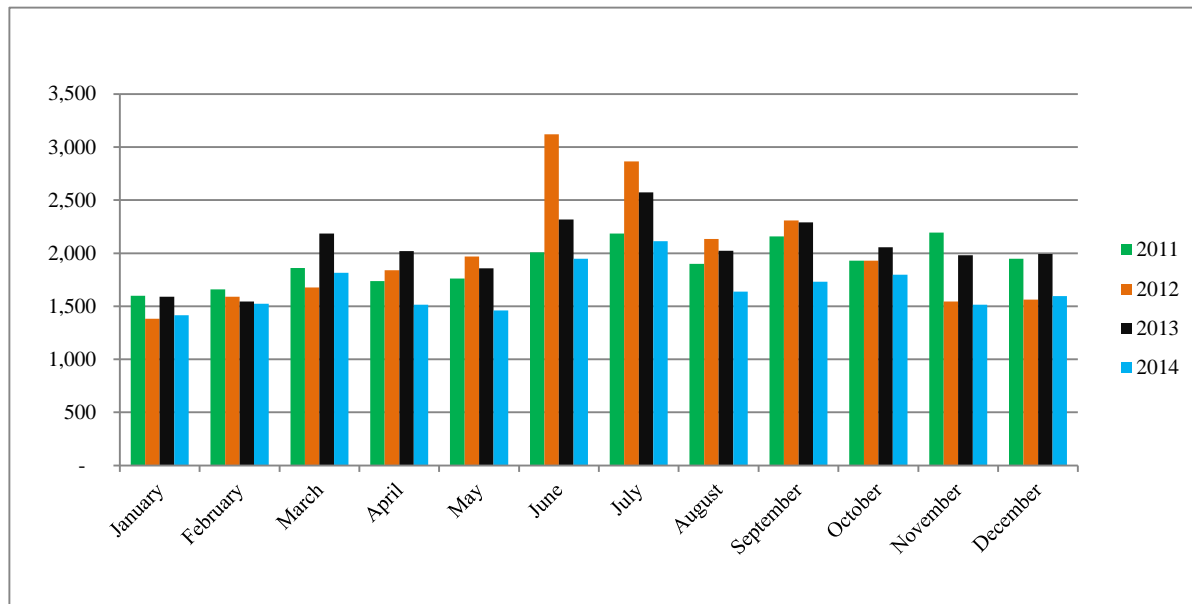


Table 4: Visitors, classified as tourists by Country of residence by year, quarter and average length of stay: 4th 2012 – 4th Quarter 2014

Country of Usual Residence	2012		2013								2014							
	Quarter 4		Quarter 1		Quarter 2		Quarter 3		Quarter 4		Quarter 1		Quarter 2		Quarter 3		Quarter 4	
	tourist	day	tourist	day	tourist	day	tourist	day	tourist	day	tourist	day	tourist	day	tourist	day	tourist	day
Australia	808	14	507	13	981	11	943	12	914	13	484	13	745	13	890	15	782	16
PNG	66	20	43	10	39	12	43	10	105	29	42	14	50	8	42	12	95	19
US	116	11	75	11	136	12	182	13	128	14	82	13	208	10	169	13	126	12
NZ	57	16	30	15	95	15	62	18	69	22	13	13	35	10	63	17	81	18
UK	40	18	31	25	39	21	76	23	31	18	25	24	28	26	34	23	52	14
Japan	52	7	38	13	33	19	59	10	75	8	37	7	10	11	69	14	47	7
Germany	12	17	25	13	9	11	21	11	33	22	9	16	12	11	26	17	11	18
Canada	13	11	14	20	12	10	14	16	20	11	8	11	24	9	20	14	11	13
Oth.Pacific	7	17	18	10	16	15	21	15	30	10	8	9	10	8	19	14	22	25
Vanuatu	25	19	50	6	17	8	12	13	34	17	17	2	32	6	23	17	37	10
Hong Kong	10	20	6	11	8	21	8	14	3	27	10	10	1	7	9	13	4	6
Fiji	22	32	29	22	12	18	14	9	37	14	21	14	28	11	20	14	21	27
Oth.Asia	104	24	108	21	119	25	164	15	151	20	150	21	162	22	196	21	113	23
Netherlands	7	15	1	7	2	13	6	23	13	14	3	13	9	13	9	23	2	30
Oth.Europe	17	20	25	13	33	14	30	13	58	15	66	12	32	17	80	17	51	18
France	1	14	9	16	8	8	13	17	15	33	7	11	9	12	24	18	5	9
Italy	13	54	4	32	7	25	7	11	15	46	5	10	5	11	16	13	14	31
China	-	-	-	-	-	-	-	-	-	-	-	-	28	35	57	25	59	12
Oth.Country	20	12	9	14	22	7	17	12	23	21	1	20	16	13	10	13	5	18
Total	1,390	16	1,022	14	1,588	13	1,692	13	1,754	16	988	14	1,444	14	1,776	16	1,538	16

*Figures for 'China' for previous quarters was included in 'Other Asia'

Chart 4: Tourist Arrivals by Country of Residence, 4th Quarter 2014

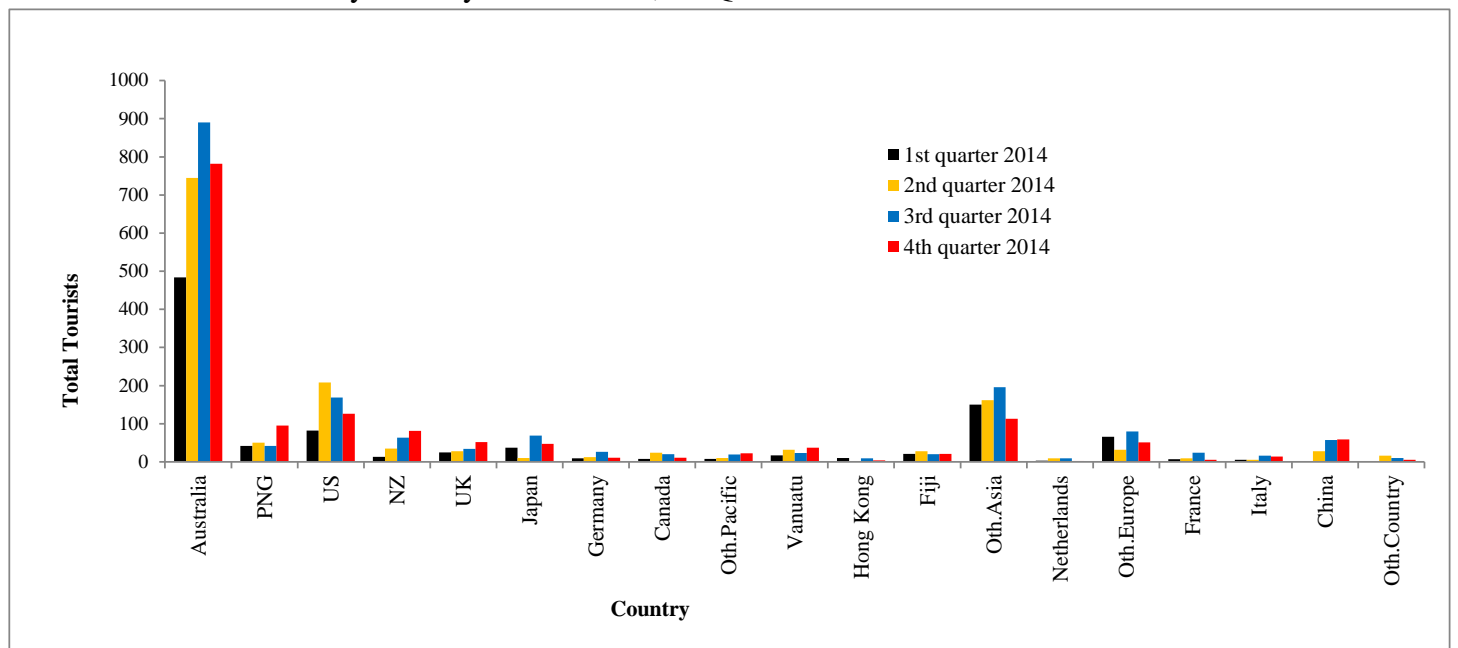


Table 5: Visitor Arrivals by Country of Residence by Purpose of Visit by sex: 4th Quarter 2014

Country of Usual Residence	Business & Conference			Holiday & Vocation			Transit & Stopover			Visit friends/Relatives			Other			Total		
	M	F	T	M	F	T	M	F	T	M	F	T	M	F	T	M	F	All
Australia	383	128	511	490	289	779	3	-	3	221	184	405	449	153	602	1,546	754	2,300
PNG	88	14	102	46	34	80	9	6	15	58	34	92	30	6	36	231	94	325
US	36	8	44	74	47	121	4	1	5	7	4	11	24	15	39	145	75	220
NZ	123	26	149	43	36	79	2	-	2	43	24	67	71	14	85	282	100	382
UK	8	5	13	34	16	50	1	1	2	7	8	15	11	5	16	61	35	96
Japan	37	6	43	32	13	45	1	1	2	8	2	10	7	5	12	85	27	112
Germany	3	-	3	6	5	11	-	-	-	1	-	1	5	2	7	15	7	22
Canada	6	1	7	8	2	10	-	1	1	4	2	6	1	1	2	19	7	26
Oth.Pacific	56	33	89	15	7	22	-	-	-	7	8	15	33	8	41	111	56	167
Vanuatu	40	11	51	21	9	30	4	3	7	12	11	23	26	4	30	103	38	141
Hong Kong	5	1	6	2	2	4	-	-	-	1	1	2	8	1	9	16	5	21
Fiji	94	38	132	11	8	19	2	-	2	21	18	39	61	17	78	189	81	270
Oth.Asia	162	17	179	92	18	110	2	1	3	64	23	87	108	10	118	428	69	497
Netherlands	3	-	3	2	-	2	-	-	-	1	3	4	2	-	2	8	3	11
Oth.Europe	18	5	23	34	16	50	-	1	1	3	4	7	19	3	22	74	29	103
France	3	3	6	2	3	5	-	-	-	-	1	1	1	-	1	6	7	13
Italy	1	-	1	9	5	14	-	-	-	5	1	6	7	2	9	22	8	30
China	42	5	47	47	11	58	1	-	1	15	7	22	22	5	27	127	28	155
Oth.Country	1	1	2	5	-	5	-	-	-	1	-	1	6	3	9	13	4	17
Total	1,109	302	1,411	973	521	1,494	29	15	44	479	335	814	891	254	1,145	3,481	1,427	4,908

	Percentage																	
Australia	16.7	5.6	22.2	21.3	12.6	33.9	0.1	-	0.1	9.6	8.0	17.6	19.5	6.7	26.2	67.2	32.8	100.0
PNG	27.1	4.3	31.4	14.2	10.5	24.6	2.8	1.8	4.6	17.8	10.5	28.3	9.2	1.8	11.1	71.1	28.9	100.0
US	16.4	3.6	20.0	33.6	21.4	55.0	1.8	0.5	2.3	3.2	1.8	5.0	10.9	6.8	17.7	65.9	34.1	100.0
NZ	32.2	6.8	39.0	11.3	9.4	20.7	0.5	-	0.5	11.3	6.3	17.5	18.6	3.7	22.3	73.8	26.2	100.0
UK	8.3	5.2	13.5	35.4	16.7	52.1	1.0	1.0	2.1	7.3	8.3	15.6	11.5	5.2	16.7	63.5	36.5	100.0
Japan	33.0	5.4	38.4	28.6	11.6	40.2	0.9	0.9	1.8	7.1	1.8	8.9	6.3	4.5	10.7	75.9	24.1	100.0
Germany	13.6	-	13.6	27.3	22.7	50.0	-	-	-	4.5	-	4.5	22.7	9.1	31.8	68.2	31.8	100.0
Canada	23.1	3.8	26.9	30.8	7.7	38.5	-	3.8	3.8	15.4	7.7	23.1	3.8	3.8	7.7	73.1	26.9	100.0
Oth.Pacific	33.5	19.8	53.3	9.0	4.2	13.2	-	-	-	4.2	4.8	9.0	19.8	4.8	24.6	66.5	33.5	100.0
Vanuatu	28.4	7.8	36.2	14.9	6.4	21.3	2.8	2.1	5.0	8.5	7.8	16.3	18.4	2.8	21.3	73.0	27.0	100.0
Hong Kong	23.8	4.8	28.6	9.5	9.5	19.0	-	-	-	4.8	4.8	9.5	38.1	4.8	42.9	76.2	23.8	100.0
Fiji	34.8	14.1	48.9	4.1	3.0	7.0	0.7	-	0.7	7.8	6.7	14.4	22.6	6.3	28.9	70.0	30.0	100.0
Oth.Asia	32.6	3.4	36.0	18.5	3.6	22.1	0.4	0.2	0.6	12.9	4.6	17.5	21.7	2.0	23.7	86.1	13.9	100.0
Netherlands	27.3	-	27.3	18.2	-	18.2	-	-	-	9.1	27.3	36.4	18.2	-	18.2	72.7	27.3	100.0
Oth.Europe	17.5	4.9	22.3	33.0	15.5	48.5	-	1.0	1.0	2.9	3.9	6.8	18.4	2.9	21.4	71.8	28.2	100.0
France	23.1	23.1	46.2	15.4	23.1	38.5	-	-	-	-	7.7	7.7	7.7	-	7.7	46.2	53.8	100.0
Italy	3.3	-	3.3	30.0	16.7	46.7	-	-	-	16.7	3.3	20.0	23.3	6.7	30.0	73.3	26.7	100.0
China	27.1	3.2	30.3	30.3	7.1	37.4	0.6	-	0.6	9.7	4.5	14.2	14.2	3.2	17.4	81.9	18.1	100.0
Oth.Country	5.9	5.9	11.8	29.4	-	29.4	-	-	-	5.9	-	5.9	35.3	17.6	52.9	76.5	23.5	100.0
Total	22.6	6.2	28.7	19.8	10.6	30.4	0.6	0.3	0.9	9.8	6.8	16.6	18.2	5.2	23.3	70.9	29.1	100.0

Chart 5: Visitors Arrival by Country of Residence by Purpose of Visit, 4th quarter 2014

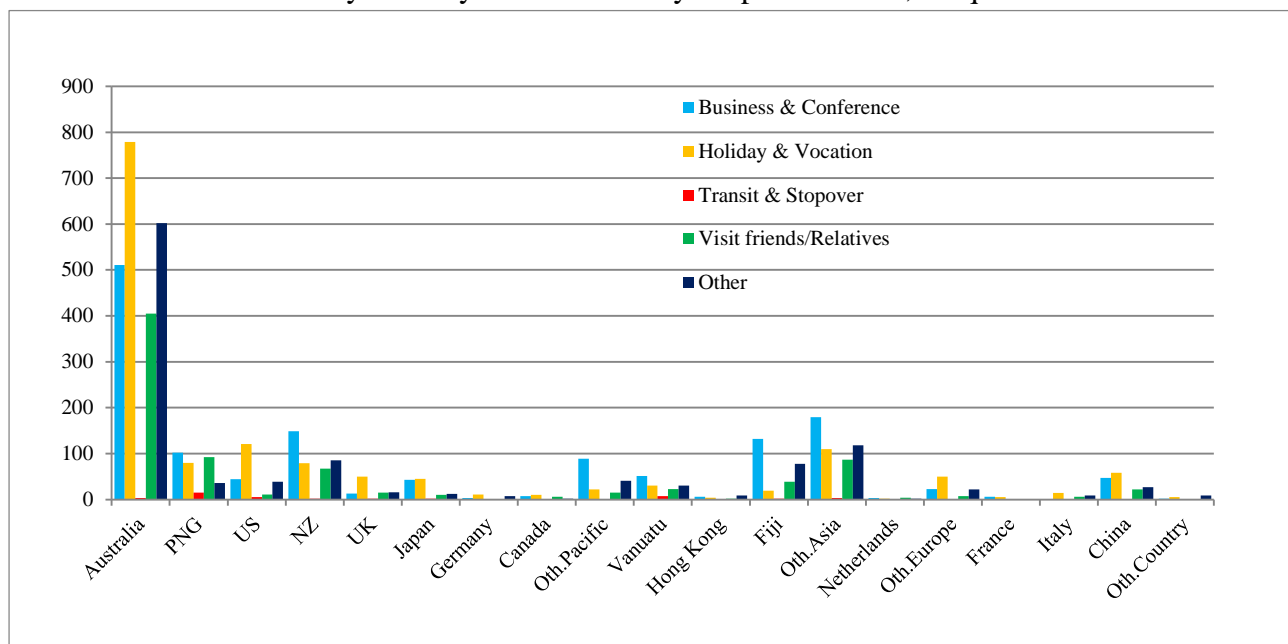


Table 6: Visitor Arrivals by Country of Residence by Age Groups by Sex: 4th Quarter 2014

Country of Usual Residence	Age-Group																Total		
	0-14		15-24		25-34		35-44		45-54		55-64		65+		Not Stated		M	F	All
	M	F	M	F	M	F	M	F	M	F	M	F	M	F	M	F	M	F	All
Australia	44	23	115	120	243	153	297	127	360	151	271	93	118	36	98	51	1,546	754	2,300
PNG	8	9	16	19	50	25	37	12	58	14	27	7	7	1	28	7	231	94	325
US	-	-	6	8	13	7	21	10	28	17	41	20	31	7	5	6	145	75	220
NZ	7	6	18	13	43	13	44	19	70	24	54	14	34	6	12	5	282	100	382
UK	-	-	4	2	13	7	5	3	14	9	12	5	13	7	-	2	61	35	96
Japan	-	-	1	-	8	7	21	10	21	2	10	1	17	6	7	1	85	27	112
Germany	-	-	1	-	3	2	6	2	3	3	2	-	-	-	-	-	15	7	22
Canada	1	1	-	1	4	-	2	1	4	1	3	2	5	1	-	-	19	7	26
Oth.Pacific	-	1	9	10	25	16	31	17	31	7	8	3	4	-	3	2	111	56	167
Vanuatu	5	4	6	5	19	13	23	6	30	4	5	2	4	1	11	3	103	38	141
Hong Kong	-	-	-	-	3	1	2	1	4	1	5	2	1	-	1	-	16	5	21
Fiji	2	2	16	7	43	24	50	18	44	13	19	9	4	-	11	8	189	81	270
Oth.Asia	4	3	21	9	70	14	113	11	124	19	62	9	11	-	23	4	428	69	497
Netherlands	1	-	-	-	1	-	1	-	3	1	1	-	1	2	-	-	8	3	11
Oth.Europe	-	-	5	-	16	12	22	5	18	4	10	4	3	3	-	1	74	29	103
France	-	-	2	-	-	3	1	1	1	-	-	2	2	1	-	-	6	7	13
Italy	-	-	1	1	4	2	3	-	3	1	6	2	4	2	1	-	22	8	30
China	1	-	9	5	44	4	24	7	27	4	13	6	5	2	4	-	127	28	155
Oth.Country	-	-	-	-	1	-	8	-	1	-	1	4	2	-	-	-	13	4	17
Total	73	49	230	200	603	303	711	250	844	275	550	185	266	75	204	90	3,481	1,427	4,908
	Percentage																		
Australia	1.9	1.0	5.0	5.2	10.6	6.7	12.9	5.5	15.7	6.6	11.8	4.0	5.1	1.6	4.3	2.2	67.2	32.8	100.0
PNG	2.5	2.8	4.9	5.8	15.4	7.7	11.4	3.7	17.8	4.3	8.3	2.2	2.2	0.3	8.6	2.2	71.1	28.9	100.0
US	-	-	2.7	3.6	5.9	3.2	9.5	4.5	12.7	7.7	18.6	9.1	14.1	3.2	2.3	2.7	65.9	34.1	100.0
NZ	1.8	1.6	4.7	3.4	11.3	3.4	11.5	5.0	18.3	6.3	14.1	3.7	8.9	1.6	3.1	1.3	73.8	26.2	100.0
UK	-	-	4.2	2.1	13.5	7.3	5.2	3.1	14.6	9.4	12.5	5.2	13.5	7.3	-	2.1	63.5	36.5	100.0
Japan	-	-	0.9	-	7.1	6.3	18.8	8.9	18.8	1.8	8.9	0.9	15.2	5.4	6.3	0.9	75.9	24.1	100.0
Germany	-	-	4.5	-	13.6	9.1	27.3	9.1	13.6	13.6	9.1	-	-	-	-	-	68.2	31.8	100.0
Canada	3.8	3.8	-	3.8	15.4	-	7.7	3.8	15.4	3.8	11.5	7.7	19.2	3.8	-	-	73.1	26.9	100.0
Oth.Pacific	-	0.6	5.4	6.0	15.0	9.6	18.6	10.2	18.6	4.2	4.8	1.8	2.4	-	1.8	1.2	66.5	33.5	100.0
Vanuatu	3.5	2.8	4.3	3.5	13.5	9.2	16.3	4.3	21.3	2.8	3.5	1.4	2.8	0.7	7.8	2.1	73.0	27.0	100.0
Hong Kong	-	-	-	-	14.3	4.8	9.5	4.8	19.0	4.8	23.8	9.5	4.8	-	4.8	-	76.2	23.8	100.0
Fiji	0.7	0.7	5.9	2.6	15.9	8.9	18.5	6.7	16.3	4.8	7.0	3.3	1.5	-	4.1	3.0	70.0	30.0	100.0
Oth.Asia	0.8	0.6	4.2	1.8	14.1	2.8	22.7	2.2	24.9	3.8	12.5	1.8	2.2	-	4.6	0.8	86.1	13.9	100.0
Netherlands	9.1	-	-	-	9.1	-	9.1	-	27.3	9.1	9.1	-	9.1	18.2	-	-	72.7	27.3	100.0
Oth.Europe	-	-	4.9	-	15.5	11.7	21.4	4.9	17.5	3.9	9.7	3.9	2.9	2.9	-	1.0	71.8	28.2	100.0
France	-	-	15.4	-	-	23.1	7.7	7.7	7.7	-	-	15.4	15.4	7.7	-	-	46.2	53.8	100.0
Italy	-	-	3.3	3.3	13.3	6.7	10.0	-	10.0	3.3	20.0	6.7	13.3	6.7	3.3	-	73.3	26.7	100.0
China	0.6	-	5.8	3.2	28.4	2.6	15.5	4.5	17.4	2.6	8.4	3.9	3.2	1.3	2.6	-	81.9	18.1	100.0
Oth.Country	-	-	-	-	5.9	-	47.1	-	5.9	-	5.9	23.5	11.8	0.0	-	-	76.5	23.5	100.0
Total	1.5	1.0	4.7	4.1	12.3	6.2	14.5	5.1	17.2	5.6	11.2	3.8	5.4	1.5	4.2	1.8	70.9	29.1	100.0

Chart 6: Visitor Arrivals by Age group category by sex, 4th quarter 2014

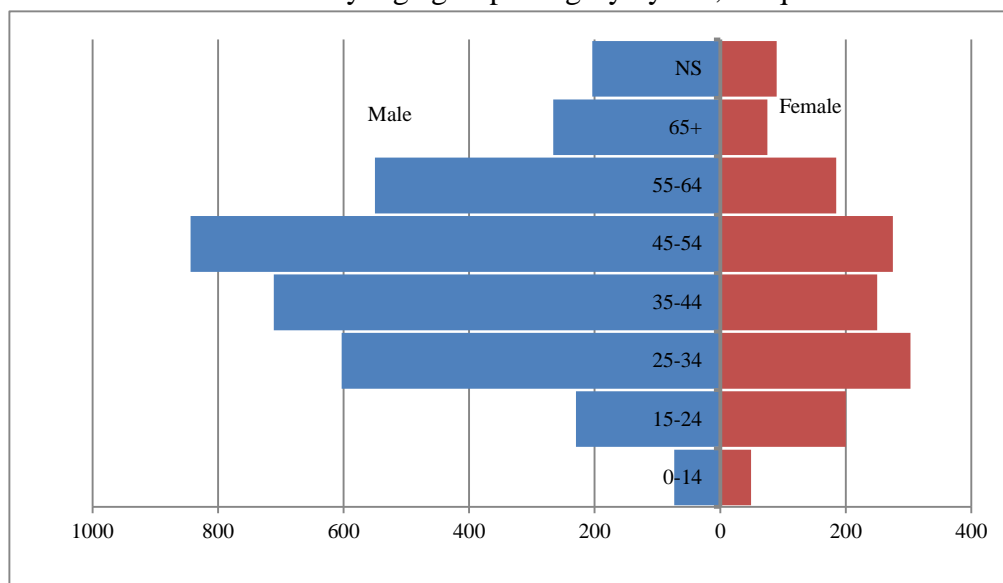


Table 7: Visitor Arrivals by Country of Residence by Occupation and Sex: 4th Quarter 2014

Country of Usual Residence	Professional and Technical		Administration and Managerial		Clerical & Related Work		Sales Worker		Service Worker		Agriculture Forestry Fishery		Production & Related Work		Other		No Work		Total		
	M	F	M	F	M	F	M	F	M	F	M	F	M	F	M	F	M	F	M	F	All
Australia	509	281	168	51	8	14	13	3	115	38	5	2	110	-	485	280	133	85	1,546	754	2,300
PNG	89	44	20	4	2	1	2	-	5	9	1	-	3	-	89	25	20	11	231	94	325
US	62	29	3	6	2	2	-	1	-	2	-	-	2	-	50	24	26	11	145	75	220
NZ	89	32	45	11	-	2	1	-	30	3	4	-	12	-	84	43	17	9	282	100	382
UK	19	9	11	6	-	-	1	-	-	3	-	-	1	-	19	8	11	8	61	35	96
Japan	11	3	6	1	3	1	-	-	1	-	-	-	-	-	47	14	17	8	85	27	112
Germany	8	4	-	-	-	1	-	-	-	-	-	-	-	-	6	2	1	-	15	7	22
Canada	6	3	2	1	-	-	-	-	-	-	1	-	-	-	8	1	2	2	19	7	26
Oth.Pacific	30	17	5	4	-	-	1	1	22	7	-	-	-	-	49	23	4	4	111	56	167
Vanuatu	34	14	3	3	3	1	1	-	7	3	8	1	-	-	40	14	7	2	103	38	141
Hong Kong	2	-	4	-	1	3	1	-	-	-	-	-	-	-	7	2	1	-	16	5	21
Fiji	71	28	23	11	-	1	-	-	2	3	-	-	4	-	82	30	7	8	189	81	270
Oth.Asia	69	19	51	5	2	-	33	2	2	8	4	-	32	-	163	18	72	17	428	69	497
Netherlands	2	1	-	-	-	-	1	-	-	2	-	-	-	-	3	2	-	-	8	3	11
Oth.Europe	24	9	12	2	4	2	-	-	1	-	-	-	-	-	26	12	7	4	74	29	103
France	2	-	1	1	-	-	-	-	-	2	-	-	-	-	2	3	1	1	6	7	13
Italy	7	2	1	-	1	1	-	-	-	1	-	-	2	-	9	2	2	2	22	8	30
China	17	9	31	3	-	1	9	4	2	3	1	-	3	-	38	2	26	6	127	28	155
Oth.Country	2	1	4	1	1	-	2	-	-	-	-	-	-	-	3	1	1	1	13	4	17
Total	1,053	505	390	110	27	30	65	11	187	84	24	3	168	1	1,210	504	357	179	3,481	1,427	4,908
	Percentage																				
Australia	22.1	12.2	7.3	2.2	0.3	0.6	0.6	0.1	5.0	1.7	0.2	0.1	4.8	-	21.1	12.2	5.8	3.7	67.2	32.8	100.0
PNG	27.4	13.5	6.2	1.2	0.6	0.3	0.6	0.0	1.5	2.8	0.3	-	0.9	-	27.4	7.7	6.2	3.4	71.1	28.9	100.0
US	28.2	13.2	1.4	2.7	0.9	0.9	0.0	0.5	-	0.9	-	-	0.9	-	22.7	10.9	11.8	5.0	65.9	34.1	100.0
NZ	23.3	8.4	11.8	2.9	-	0.5	0.3	-	7.9	0.8	1.0	-	3.1	-	22.0	11.3	4.5	2.4	73.8	26.2	100.0
UK	19.8	9.4	11.5	6.3	-	-	1.0	-	-	3.1	-	-	-	1.0	19.8	8.3	11.5	8.3	63.5	36.5	100.0
Japan	9.8	2.7	5.4	0.9	2.7	0.9	-	-	0.9	-	-	-	-	-	42.0	12.5	15.2	7.1	75.9	24.1	100.0
Germany	36.4	18.2	-	-	-	4.5	-	-	-	-	-	-	-	-	27.3	9.1	4.5	-	68.2	31.8	100.0
Canada	23.1	11.5	7.7	3.8	-	-	-	-	-	-	3.8	-	-	-	30.8	3.8	7.7	7.7	73.1	26.9	100.0
Oth.Pacific	18.0	10.2	3.0	2.4	-	-	0.6	0.6	13.2	4.2	-	-	-	-	29.3	13.8	2.4	2.4	66.5	33.5	100.0
Vanuatu	24.1	9.9	2.1	2.1	2.1	0.7	0.7	-	5.0	2.1	5.7	0.7	-	-	28.4	9.9	5.0	1.4	73.0	27.0	100.0
Hong Kong	9.5	-	19.0	-	4.8	14.3	4.8	-	-	-	-	-	-	-	33.3	9.5	4.8	-	76.2	23.8	100.0
Fiji	26.3	10.4	8.5	4.1	-	0.4	-	-	0.7	1.1	-	-	1.5	-	30.4	11.1	2.6	3.0	70.0	30.0	100.0
Oth.Asia	13.9	3.8	10.3	1.0	0.4	-	6.6	0.4	0.4	1.6	0.8	-	6.4	-	32.8	3.6	14.5	3.4	86.1	13.9	100.0
Netherlands	18.2	9.1	-	-	-	-	9.1	-	-	18.2	-	-	-	-	27.3	-	18.2	-	72.7	27.3	100.0
Oth.Europe	23.3	8.7	11.7	1.9	3.9	1.9	-	-	1.0	-	-	-	-	-	25.2	11.7	6.8	3.9	71.8	28.2	100.0
France	15.4	0.0	7.7	7.7	-	-	-	-	-	15.4	-	-	-	-	15.4	23.1	7.7	7.7	46.2	53.8	100.0
Italy	23.3	6.7	3.3	-	3.3	3.3	-	-	-	3.3	-	-	6.7	-	30.0	6.7	6.7	6.7	73.3	26.7	100.0
China	11.0	5.8	20.0	1.9	-	0.6	5.8	2.6	1.3	1.9	0.6	-	1.9	-	24.5	1.3	16.8	3.9	81.9	18.1	100.0
Oth.Country	11.8	5.9	23.5	5.9	5.9	-	11.8	-	-	-	-	-	-	-	17.6	5.9	5.9	5.9	76.5	23.5	100.0
Total	21.5	10.3	7.9	2.2	0.6	0.6	1.3	0.2	3.8	1.7	0.5	0.1	3.4	0.0	24.7	10.3	7.3	3.6	70.9	29.1	100.0

Chart 7: Visitors Arrival by occupation by sex, 4th quarter 2014

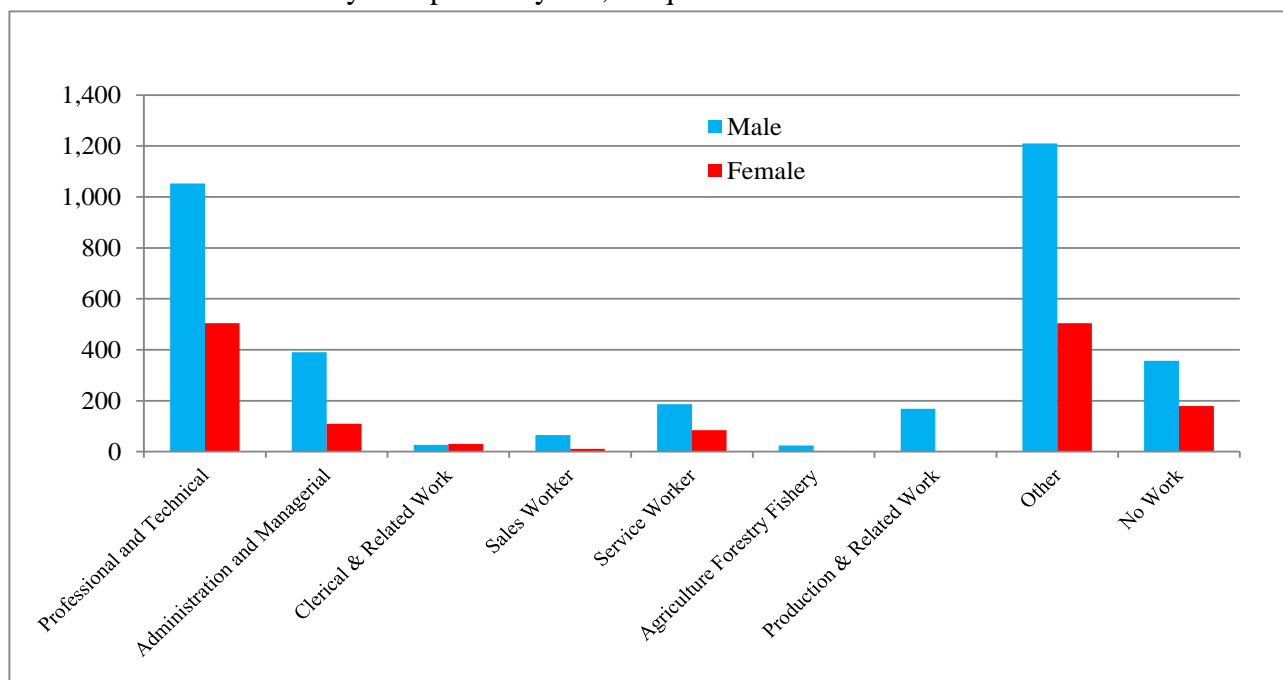
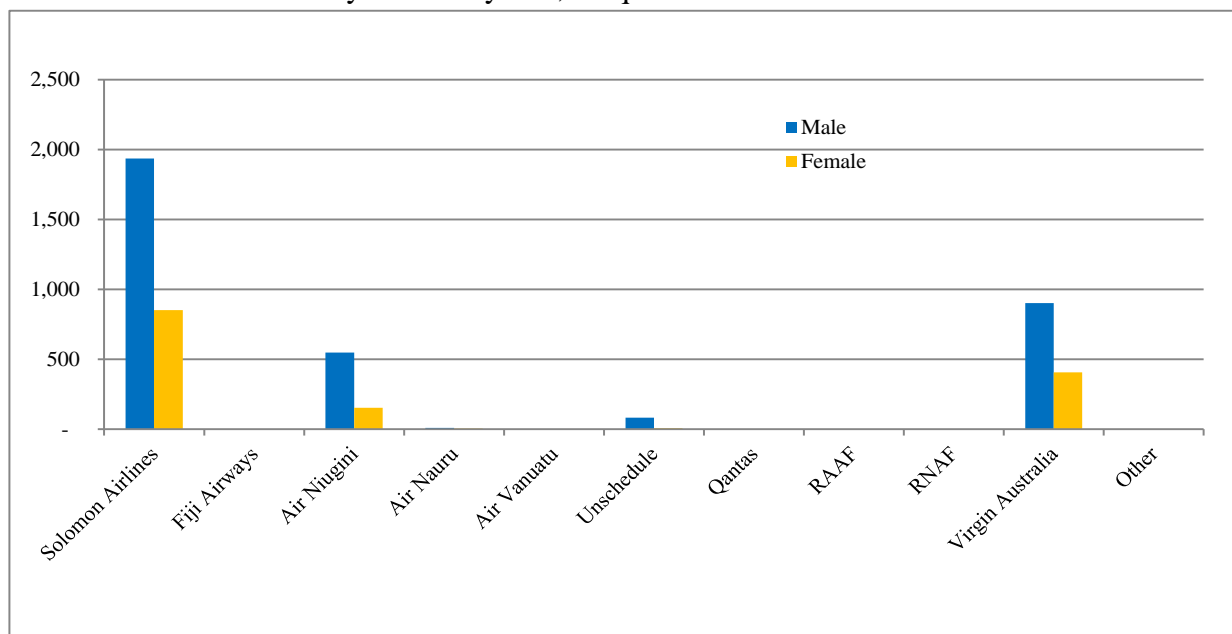


Table 8: Visitor Arrivals by Country of residence by Carrier by Sex: 4th Quarter 2014

Country of Usual Residence	Solomon Airlines		Fiji Airways		Air Niugini		Air Nauru		Air Vanuatu		Unschedule		Qantas		RAAF		RNAF		Virgin Australia		Total		
	M	F	M	F	M	F	M	F	M	F	M	F	M	F	M	F	M	F	M	F	M	F	All
	Australia	931	484	-	-	30	8	-	-	-	-	50	3	-	-	-	-	-	-	535	259	1,546	754
PNG	27	9	-	-	199	84	-	-	-	-	-	1	-	-	-	-	-	-	5	-	231	94	325
US	79	41	-	-	18	8	-	-	-	-	-	-	-	-	-	-	-	-	48	26	145	75	220
NZ	129	43	-	-	10	-	2	-	-	-	24	1	-	-	-	-	-	-	117	56	282	100	382
UK	38	23	-	-	9	3	-	-	-	-	-	-	-	-	-	-	-	-	14	9	61	35	96
Japan	28	14	-	-	48	7	1	-	-	-	-	-	-	-	-	-	-	-	8	6	85	27	112
Germany	8	3	-	-	4	1	-	-	-	-	-	-	-	-	-	-	-	-	3	3	15	7	22
Canada	12	5	-	-	1	-	-	-	-	-	-	-	-	-	-	-	-	-	6	2	19	7	26
Oth.Pacific	77	44	-	-	10	2	-	-	-	-	-	-	-	-	-	-	-	-	24	10	111	56	167
Vanuatu	89	33	-	-	4	2	5	2	-	-	-	-	-	-	-	-	-	-	5	1	103	38	141
Hong Kong	7	5	-	-	7	-	-	-	-	-	-	-	-	-	-	-	-	-	2	-	16	5	21
Fiji	140	58	-	-	21	9	2	2	-	-	-	-	-	-	-	-	-	-	26	12	189	81	270
Oth.Asia	257	46	-	-	86	6	-	1	-	-	9	2	-	-	-	-	-	-	76	14	428	69	497
Netherlands	5	3	-	-	-	-	-	-	-	-	-	-	-	-	-	-	-	-	3	-	8	3	11
Oth.Europe	45	22	-	-	10	2	-	-	-	-	-	-	-	-	-	-	-	-	19	5	74	29	103
France	5	5	-	-	-	1	-	-	-	-	-	1	-	-	-	-	-	-	1	-	6	7	13
Italy	20	8	-	-	1	-	-	-	-	-	-	-	-	-	-	-	-	-	1	-	22	8	30
China	32	6	-	-	89	19	-	-	-	-	-	-	-	-	-	-	-	-	6	3	127	28	155
Oth.Country	8	1	-	-	2	2	-	-	-	-	-	-	-	-	-	-	-	-	3	1	13	4	17
Total	1,937	853	-	-	549	154	10	5	-	-	83	8	-	-	-	-	-	-	902	407	3,481	1,427	4,908
	Percentage																						
Australia	40.5	21.0	-	-	1.3	0.3	-	-	-	-	2.2	0.1	-	-	-	-	-	-	23.3	11.3	67.2	32.8	100.0
PNG	8.3	2.8	-	-	61.2	25.8	-	-	-	-	-	0.3	-	-	-	-	-	-	1.5	-	71.1	28.9	100.0
US	35.9	18.6	-	-	8.2	3.6	-	-	-	-	-	0.0	-	-	-	-	-	-	21.8	11.8	65.9	34.1	100.0
NZ	33.8	11.3	-	-	2.6	0.0	0.5	-	-	-	6.3	0.3	-	-	-	-	-	-	30.6	14.7	73.8	26.2	100.0
UK	39.6	24.0	-	-	9.4	3.1	0.0	-	-	-	-	-	-	-	-	-	-	-	14.6	9.4	63.5	36.5	100.0
Japan	25.0	12.5	-	-	42.9	6.3	0.9	-	-	-	-	-	-	-	-	-	-	-	7.1	5.4	75.9	24.1	100.0
Germany	36.4	13.6	-	-	18.2	4.5	-	-	-	-	-	-	-	-	-	-	-	-	13.6	13.6	68.2	31.8	100.0
Canada	46.2	19.2	-	-	3.8	0.0	-	-	-	-	-	-	-	-	-	-	-	-	23.1	7.7	73.1	26.9	100.0
Oth.Pacific	46.1	26.3	-	-	6.0	1.2	-	-	-	-	-	-	-	-	-	-	-	-	14.4	6.0	66.5	33.5	100.0
Vanuatu	63.1	23.4	-	-	2.8	1.4	3.5	1.4	-	-	-	-	-	-	-	-	-	-	3.5	0.7	73.0	27.0	100.0
Hong Kong	33.3	23.8	-	-	33.3	0.0	-	-	-	-	-	-	-	-	-	-	-	-	9.5	-	76.2	23.8	100.0
Fiji	51.9	21.5	-	-	7.8	3.3	0.7	0.7	-	-	-	-	-	-	-	-	-	-	9.6	4.4	70.0	30.0	100.0
Oth.Asia	51.7	9.3	-	-	17.3	1.2	-	0.2	-	-	1.8	0.4	-	-	-	-	-	-	15.3	2.8	86.1	13.9	100.0
Netherlands	45.5	27.3	-	-	0.0	0.0	-	-	-	-	-	-	-	-	-	-	-	-	27.3	-	72.7	27.3	100.0
Oth.Europe	43.7	21.4	-	-	9.7	1.9	-	-	-	-	-	-	-	-	-	-	-	-	18.4	4.9	71.8	28.2	100.0
France	38.5	38.5	-	-	0.0	7.7	-	-	-	-	-	7.7	-	-	-	-	-	-	7.7	-	46.2	53.8	100.0
Italy	66.7	26.7	-	-	3.3	0.0	-	-	-	-	-	-	-	-	-	-	-	-	3.3	-	73.3	26.7	100.0
China	20.6	3.9	-	-	57.4	12.3	-	-	-	-	-	-	-	-	-	-	-	-	3.9	1.9	81.9	18.1	100.0
Oth.Country	47.1	5.9	-	-	11.8	11.8	-	-	-	-	-	-	-	-	-	-	-	-	17.6	5.9	76.5	23.5	100.0
Total	39.5	17.4	-	-	11.2	3.1	0.2	0.1	-	-	1.7	0.2	-	-	-	-	-	-	18.4	8.3	70.9	29.1	100.0

Chart 8: Visitor Arrivals by Carrier by Sex, 4th quarter 2014



Appendix 1

Concepts and Definitions

Persons entering Solomon Islands classify themselves into three (3) categories; returning resident, intending resident, and visitor. The concepts and definitions of the various categories are as follows:

(i) Returning residents

- Solomon Islanders and non-Solomon Islanders who have left the country and are returning to continue their residence.
- Non Solomon Islanders includes resident permit holders and Diplomatic officials, and their immediate family members. This may also includes legal or official arrangements that fall out side of the above.

(ii) Intending residents

- Non-Solomon Islander who wish to take up residence in Solomon Islands.

(iii) Visitors

- Any traveller who is not a Solomon Islander and who purposely spend less time – at most a period of 120 days², in the country and with the intention and purpose of visiting.
- *Tourist*
 - Visitors who further classify themselves stating their visit are purposely for '*holiday and vacation*'. This exclude, tourist arrivals by cruise ships.
 - Wife accompanying husband on business purpose is a private tourist unless also working.
 - *World Tourism Organization WTO definition of Tourism:*
*It comprises the activities of persons travelling to and staying in places outside their usual environment for not more than one consecutive year for leisure, business and other purposes not related to the exercise of an activity remunerated from within the place visited*³.

(iv) Markets

- *Country of Usual Residence*

² Solomon Islands 1993 Statistical Yearbook.

³ Dimensions of Hospitality, Study guide 1. p17

Appendix 2

Table 9: Intending Resident Arrivals by Country of Residence by Occupation and Sex: 4th Quarter 2014

Country of Usual Residence	Professional and Technical		Administration and Managerial		Clerical & Related Work		Sales Worker		Service Worker		Agriculture Forestry Fishery		Production & Related Work		Other		No Work		Total		
	M	F	M	F	M	F	M	F	M	F	M	F	M	F	M	F	M	F	M	F	All
Australia	9	9	5	2	1	-	-	-	17	6	-	-	1	-	22	19	5	4	60	40	100
PNG	6	-	5	-	-	-	-	-	1	1	-	-	-	-	1	1	1	-	14	2	16
US	2	-	-	-	-	-	-	-	-	-	-	-	-	1	1	1	1	4	2	6	
NZ	3	2	3	-	-	1	-	-	3	4	-	-	-	3	2	1	1	13	10	23	
UK	-	-	3	-	-	-	-	-	-	-	-	-	-	2	-	-	-	5	-	5	
Japan	-	-	-	-	-	-	-	-	-	-	-	-	-	7	1	-	-	7	1	8	
Germany	-	-	-	-	-	-	-	-	-	-	-	-	-	-	1	-	-	-	1	1	
Canada	1	-	-	-	-	-	-	-	-	-	-	-	-	-	1	-	-	1	1	2	
Oth.Pacific	3	-	-	-	-	-	-	-	16	1	-	-	-	2	-	-	1	21	2	23	
Vanuatu	-	-	-	-	-	-	-	-	1	-	-	-	-	-	-	-	-	1	-	1	
Hong Kong	-	-	-	-	-	-	-	-	-	-	-	-	-	-	-	-	-	-	-	-	
Fiji	-	-	2	2	-	-	-	-	1	-	-	1	1	5	1	2	-	10	5	15	
Oth.Asia	20	7	49	8	2	2	13	-	10	4	19	-	63	2	167	11	87	9	430	43	473
Netherlands	-	-	1	-	-	-	-	-	-	-	-	-	-	-	1	-	-	1	1	2	
Oth.Europe	2	1	-	-	-	-	-	-	-	-	-	-	-	2	2	2	1	6	4	10	
France	-	-	-	-	-	-	-	-	-	-	-	-	-	-	-	-	-	-	-	-	
Italy	-	-	-	-	-	-	-	-	-	-	-	-	-	-	1	-	1	-	2	-	2
China	8	4	23	2	-	1	10	2	3	1	1	-	-	28	7	43	16	116	33	149	
Oth.Country	-	-	-	-	-	-	-	-	-	1	-	-	-	-	-	-	1	1	1	2	3
Total	54	23	91	14	3	4	23	2	52	18	20	1	64	3	241	48	144	34	692	147	839
	Percentage																				
Australia	9.0	9.0	5.0	2.0	1.0	-	-	-	17.0	6.0	-	-	1.0	-	22.0	19.0	5.0	4.0	60.0	40.0	100.0
PNG	37.5	-	31.3	-	-	-	-	-	6.3	6.3	-	-	-	-	6.3	6.3	6.3	0.0	87.5	12.5	100.0
US	33.3	-	-	-	-	-	-	-	-	0.0	-	-	-	-	16.7	16.7	16.7	16.7	66.7	33.3	100.0
NZ	13.0	8.7	13.0	-	-	4.3	-	-	13.0	17.4	-	-	-	-	13.0	8.7	4.3	4.3	56.5	43.5	100.0
UK	-	-	60.0	-	-	-	-	-	-	-	-	-	-	-	40.0	-	-	-	100.0	-	100.0
Japan	-	-	-	-	-	-	-	-	-	-	-	-	-	-	87.5	12.5	-	-	87.5	12.5	100.0
Germany	-	-	-	-	-	-	-	-	-	-	-	-	-	-	-	100.0	-	-	-	100.0	100.0
Canada	50.0	-	-	-	-	-	-	-	-	-	-	-	-	-	-	50.0	-	-	50.0	50.0	100.0
Oth.Pacific	13.0	-	-	-	-	-	-	-	69.6	4.3	-	-	-	-	8.7	-	-	4.3	91.3	8.7	100.0
Vanuatu	-	-	-	-	-	-	-	-	100.0	-	-	-	-	-	-	-	-	-	100.0	-	100.0
Hong Kong	-	-	-	-	-	-	-	-	-	-	-	-	-	-	-	-	-	-	-	-	-
Fiji	-	-	13.3	13.3	-	-	-	-	6.7	-	-	6.7	6.7	33.3	6.7	13.3	-	-	66.7	33.3	100.0
Oth.Asia	4.2	1.5	10.4	1.7	0.4	0.4	2.7	-	2.1	0.8	4.0	-	13.3	0.4	35.3	2.3	18.4	1.9	90.9	9.1	100.0
Netherlands	-	-	50.0	-	-	-	-	-	-	-	-	-	-	-	-	50.0	-	-	50.0	50.0	100.0
Oth.Europe	20.0	10.0	-	-	-	-	-	-	-	-	-	-	-	-	20.0	20.0	20.0	10.0	60.0	40.0	100.0
France	-	-	-	-	-	-	-	-	-	-	-	-	-	-	-	-	-	-	-	-	-
Italy	-	-	-	-	-	-	-	-	-	-	-	-	-	-	50.0	-	50.0	-	100.0	-	100.0
China	5.4	2.7	15.4	1.3	-	0.7	6.7	1.3	2.0	0.7	0.7	-	-	18.8	4.7	28.9	10.7	77.9	22.1	100.0	
Oth.Country	-	-	-	-	-	-	-	-	-	33.3	-	-	-	-	-	-	33.3	33.3	33.3	66.7	100.0
Total	6.4	2.7	10.8	1.7	0.4	0.5	2.7	0.2	6.2	2.1	2.4	0.1	7.6	0.4	28.7	5.7	17.2	4.1	82.5	17.5	100.0

Table 10: Intending Resident Arrivals by Country of Residence by Age Groups by Sex: 4th Quarter 2014

Country of Usual Residence	Age-Group																		Total		
	0-14		15-24		25-34		35-44		45-54		55-64		65+		Not Stated		M	F	All		
	M	F	M	F	M	F	M	F	M	F	M	F	M	F	M	F	M	F	All		
Australia	-	-	-	-	10	12	12	11	21	8	9	6	1	1	7	2	60	40	100		
PNG	-	-	1	-	1	-	8	1	1	-	1	-	1	1	1	-	14	2	16		
US	-	-	1	-	-	-	1	-	1	-	-	-	1	2	-	-	4	2	6		
NZ	-	1	-	-	1	4	2	3	3	1	4	-	2	1	1	-	13	10	23		
UK	-	-	-	-	-	-	-	-	4	-	-	-	1	-	-	-	5	0	5		
Japan	-	-	-	-	7	-	-	1	-	-	-	-	-	-	-	-	7	1	8		
Germany	-	-	-	-	-	-	-	-	-	1	-	-	-	-	-	-	0	1	1		
Canada	-	-	-	-	-	1	-	-	1	-	-	-	-	-	-	-	1	1	2		
Oth.Pacific	-	-	1	-	9	-	8	1	3	-	-	-	-	1	-	-	21	2	23		
Vanuatu	-	-	-	-	-	-	1	-	-	-	-	-	-	-	-	-	1	0	1		
Hong Kong	-	-	-	-	-	-	-	-	-	-	-	-	-	-	-	-	0	0	-		
Fiji	-	-	-	-	2	2	2	-	1	1	3	-	-	-	2	2	10	5	15		
Oth.Asia	4	1	18	3	95	8	145	15	102	8	37	3	5	-	24	5	430	43	473		
Netherlands	-	-	-	-	-	-	1	-	-	1	-	-	-	-	-	-	1	1	2		
Oth.Europe	-	-	2	-	1	2	1	-	-	-	1	1	-	1	1	-	6	4	10		
France	-	-	-	-	-	-	-	-	-	-	-	-	-	-	-	-	0	0	-		
Italy	-	-	-	-	-	-	-	-	-	-	1	-	1	-	-	-	2	0	2		
China	-	1	21	4	37	20	29	2	10	1	6	-	-	1	13	4	116	33	149		
Oth.Country	-	-	-	-	-	1	1	1	-	-	-	-	-	-	-	-	1	2	3		
Total	4	3	44	7	163	50	211	35	147	21	62	10	12	8	49	13	692	147	839		
	Percentage																				
Australia	-	-	-	-	10.0	12.0	12.0	11.0	21.0	8.0	9.0	6.0	1.0	1.0	7.0	2.0	60.0	40.0	100.0		
PNG	-	-	6.3	-	6.3	-	50.0	6.3	6.3	-	6.3	-	6.3	6.3	6.3	-	87.5	12.5	100.0		
US	-	-	16.7	-	-	-	16.7	-	16.7	-	-	-	16.7	33.3	-	-	66.7	33.3	100.0		
NZ	-	4.3	-	-	4.3	17.4	8.7	13.0	13.0	4.3	17.4	-	8.7	4.3	4.3	-	56.5	43.5	100.0		
UK	-	-	-	-	-	-	-	-	80.0	-	-	-	20.0	-	-	-	100.0	-	100.0		
Japan	-	-	-	-	87.5	-	-	12.5	-	-	-	-	-	-	-	-	87.5	12.5	100.0		
Germany	-	-	-	-	-	-	-	-	-	100.0	-	-	-	-	-	-	-	100.0	100.0		
Canada	-	-	-	-	-	50.0	-	-	50.0	-	-	-	-	-	-	-	50.0	50.0	100.0		
Oth.Pacific	-	-	4.3	-	39.1	-	34.8	4.3	13.0	-	-	-	-	4.3	-	-	91.3	8.7	100.0		
Vanuatu	-	-	-	-	-	-	100.0	-	-	-	-	-	-	-	-	-	100.0	-	100.0		
Hong Kong	-	-	-	-	-	-	-	-	-	-	-	-	-	-	-	-	-	-	-		
Fiji	-	-	-	-	13.3	13.3	13.3	-	6.7	6.7	20.0	-	-	-	13.3	13.3	66.7	33.3	100.0		
Oth.Asia	0.8	0.2	3.8	0.6	20.1	1.7	30.7	3.2	21.6	1.7	7.8	0.6	1.1	-	5.1	1.1	90.9	9.1	100.0		
Netherlands	-	-	-	-	-	-	50.0	-	-	50.0	-	-	-	-	-	-	50.0	50.0	100.0		
Oth.Europe	-	-	20.0	-	10.0	20.0	10.0	-	-	-	10.0	10.0	-	10.0	10.0	-	60.0	40.0	100.0		
France	-	-	-	-	-	-	-	-	-	-	-	-	-	-	-	-	-	-	-		
Italy	-	-	-	-	-	-	-	-	-	-	50.0	-	50.0	-	-	0.0	100.0	-	100.0		
China	-	0.7	14.1	2.7	24.8	13.4	19.5	1.3	6.7	0.7	4.0	-	-	0.7	8.7	2.7	77.9	22.1	100.0		
Oth.Country	-	-	-	-	-	33.3	33.3	33.3	-	-	-	-	-	-	-	-	33.3	66.7	100.0		
Total	0.5	0.4	5.2	0.8	19.4	6.0	25.1	4.2	17.5	2.5	7.4	1.2	1.4	1.0	5.8	1.5	82.5	17.5	100.0		

Table 11: Returning Resident Arrivals by Country of Residence by Age Groups by Sex: 4th Quarter 2014

Country of Usual Residence	Age-Group																		Total		
	0-14		15-24		25-34		35-44		45-54		55-64		65+		Not Stated		M	F	All		
	M	F	M	F	M	F	M	F	M	F	M	F	M	F	M	F	M	F	All		
Australia	-	-	-	-	-	-	-	-	-	-	-	-	-	-	-	-	-	-	-		
PNG	-	-	-	-	-	-	-	-	-	-	-	-	-	-	-	-	-	-	-		
US	-	-	-	-	-	-	-	-	-	-	-	-	-	-	-	-	-	-	-		
NZ	-	-	-	-	-	-	-	-	-	-	-	-	-	-	-	-	-	-	-		
UK	-	-	-	-	-	-	-	-	-	-	-	-	-	-	-	-	-	-	-		
Japan	-	-	4	1	3	1	8	1	1	1	2	-	-	1	1	19	5	24			
Germany	-	-	-	-	-	-	-	-	-	-	-	-	-	-	-	-	-	-	-		
Canada	-	-	-	-	-	-	-	-	-	-	-	-	-	-	-	-	-	-	-		
Oth.Pacific	-	-	-	-	-	-	-	-	-	-	-	-	-	-	-	-	-	-	-		
Vanuatu	-	-	-	-	-	-	-	-	-	-	-	-	-	-	-	-	-	-	-		
Hong Kong	-	-	-	-	-	-	-	-	-	-	-	-	-	-	-	-	-	-	-		
Fiji	-	-	-	-	-	-	-	-	-	-	-	-	-	-	-	-	-	-	-		
Oth.Asia	-	-	-	-	-	-	-	-	-	-	-	-	-	-	-	-	-	-	-		
Netherlands	-	-	-	-	-	-	-	-	-	-	-	-	-	-	-	-	-	-	-		
Oth.Europe	-	-	-	-	-	-	-	-	-	-	-	-	-	-	-	-	1	-	1		
France	-	-	-	-	-	-	-	-	-	-	-	-	-	-	-	-	-	-	-		
Italy	-	-	-	-	-	-	-	-	-	-	-	-	-	-	-	-	-	-	-		
China	-	-	-	-	-	-	-	-	-	-	-	-	-	-	-	-	-	-	-		
Oth.Country	-	-	-	-	-	-	-	-	-	-	-	-	-	-	-	-	-	-	-		
Solomon Is.	136	118	636	480	793	443	636	345	492	254	227	95	75	22	295	180	3,290	1,937	5,227		
Total	136	118	640	481	796	444	644	346	493	255	229	95	75	22	296	181	3310	1942	5,252		

Country of Usual Residence	Percentage																		
	M	F	M	F	M	F	M	F	M	F	M	F	M	F	M	F	M	F	All
Australia	-	-	-	-	-	-	-	-	-	-	-	-	-	-	-	-	-	-	-
PNG	-	-	-	-	-	-	-	-	-	-	-	-	-	-	-	-	-	-	-
US	-	-	-	-	-	-	-	-	-	-	-	-	-	-	-	-	-	-	-
NZ	-	-	-	-	-	-	-	-	-	-	-	-	-	-	-	-	-	-	-
UK	-	-	-	-	-	-	-	-	-	-	-	-	-	-	-	-	-	-	-
Japan	-	-	17	4	13	4	33	4	4	4	8	-	-	4	4	79	21	100	
Germany	-	-	-	-	-	-	-	-	-	-	-	-	-	-	-	-	-	-	-
Canada	-	-	-	-	-	-	-	-	-	-	-	-	-	-	-	-	-	-	-
Oth.Pacific	-	-	-	-	-	-	-	-	-	-	-	-	-	-	-	-	-	-	-
Vanuatu	-	-	-	-	-	-	-	-	-	-	-	-	-	-	-	-	-	-	-
Hong Kong	-	-	-	-	-	-	-	-	-	-	-	-	-	-	-	-	-	-	-
Fiji	-	-	-	-	-	-	-	-	-	-	-	-	-	-	-	-	-	-	-
Oth.Asia	-	-	-	-	-	-	-	-	-	-	-	-	-	-	-	-	-	-	-
Netherlands	-	-	-	-	-	-	-	-	-	-	-	-	-	-	-	-	-	-	-
Oth.Europe	-	-	-	-	-	-	100	-	-	-	-	-	-	-	-	-	100	-	100
France	-	-	-	-	-	-	-	-	-	-	-	-	-	-	-	-	-	-	-
Italy	-	-	-	-	-	-	-	-	-	-	-	-	-	-	-	-	-	-	-
China	-	-	-	-	-	-	-	-	-	-	-	-	-	-	-	-	-	-	-
Oth.Country	-	-	-	-	-	-	-	-	-	-	-	-	-	-	-	-	-	-	-
Solomon Is.	2.6	2.3	12.2	9.2	15.2	8.5	12.2	6.6	9.4	4.9	4.3	1.8	1.4	0.4	5.6	3.4	62.9	37.1	100.0
Total	2.6	2.2	12.2	9.2	15.2	8.5	12.3	6.6	9.4	4.9	4.4	1.8	1.4	0.4	5.6	3.4	63.0	37.0	100.0

Table 12: Returning Resident Arrivals by Country of Residence by Occupation and Sex: 4th Quarter 2014

Country of Usual Residence	Professional and Technical		Administration and Managerial		Clerical & Related Work		Sales Worker		Service Worker		Agriculture Forestry Fishery		Production & Related Work		Other		No Work		Total		
	M	F	M	F	M	F	M	F	M	F	M	F	M	F	M	F	M	F	M	F	All
Australia	-	-	-	-	-	-	-	-	-	-	-	-	-	-	-	-	-	-	-	-	-
PNG	-	-	-	-	-	-	-	-	-	-	-	-	-	-	-	-	-	-	-	-	-
US	-	-	-	-	-	-	-	-	-	-	-	-	-	-	-	-	-	-	-	-	-
NZ	-	-	-	-	-	-	-	-	-	-	-	-	-	-	-	-	-	-	-	-	-
UK	-	-	-	-	-	-	-	-	-	-	-	-	-	-	-	-	-	-	-	-	-
Japan	9	3	1	-	1	-	1	-	1	-	-	-	-	-	4	2	2	-	19	5	24
Germany	-	-	-	-	-	-	-	-	-	-	-	-	-	-	-	-	-	-	-	-	-
Canada	-	-	-	-	-	-	-	-	-	-	-	-	-	-	-	-	-	-	-	-	-
Oth.Pacific	-	-	-	-	-	-	-	-	-	-	-	-	-	-	-	-	-	-	-	-	-
Vanuatu	-	-	-	-	-	-	-	-	-	-	-	-	-	-	-	-	-	-	-	-	-
Hong Kong	-	-	-	-	-	-	-	-	-	-	-	-	-	-	-	-	-	-	-	-	-
Fiji	-	-	-	-	-	-	-	-	-	-	-	-	-	-	-	-	-	-	-	-	-
Oth.Asia	-	-	-	-	-	-	-	-	-	-	-	-	-	-	-	-	-	-	-	-	-
Netherlands	-	-	-	-	-	-	-	-	-	-	-	-	-	-	-	-	-	-	-	-	-
Oth.Europe	1	-	-	-	-	-	-	-	-	-	-	-	-	-	-	-	-	-	1	-	1
France	-	-	-	-	-	-	-	-	-	-	-	-	-	-	-	-	-	-	-	-	-
Italy	-	-	-	-	-	-	-	-	-	-	-	-	-	-	-	-	-	-	-	-	-
China	-	-	-	-	-	-	-	-	-	-	-	-	-	-	-	-	-	-	-	-	-
Oth.Country	-	-	-	-	-	-	-	-	-	-	-	-	-	-	-	-	-	-	-	-	-
Solomon Is.	1,847	991	252	97	9	20	35	9	46	176	23	4	64	1	784	448	230	191	3,290	1,937	5,227
Total	1,857	994	253	97	10	20	36	9	47	176	23	4	64	1	788	450	232	191	3,310	1,942	5,252
Percentage																					
Australia	-	-	-	-	-	-	-	-	-	-	-	-	-	-	-	-	-	-	-	-	-
PNG	-	-	-	-	-	-	-	-	-	-	-	-	-	-	-	-	-	-	-	-	-
US	-	-	-	-	-	-	-	-	-	-	-	-	-	-	-	-	-	-	-	-	-
NZ	-	-	-	-	-	-	-	-	-	-	-	-	-	-	-	-	-	-	-	-	-
UK	-	-	-	-	-	-	-	-	-	-	-	-	-	-	-	-	-	-	-	-	-
Japan	37.5	12.5	4.2	-	4.2	-	4.2	-	4.2	-	-	-	-	-	16.7	8.3	8.3	-	79.2	20.8	100.0
Germany	-	-	-	-	-	-	-	-	-	-	-	-	-	-	-	-	-	-	-	-	-
Canada	-	-	-	-	-	-	-	-	-	-	-	-	-	-	-	-	-	-	-	-	-
Oth.Pacific	-	-	-	-	-	-	-	-	-	-	-	-	-	-	-	-	-	-	-	-	-
Vanuatu	-	-	-	-	-	-	-	-	-	-	-	-	-	-	-	-	-	-	-	-	-
Hong Kong	-	-	-	-	-	-	-	-	-	-	-	-	-	-	-	-	-	-	-	-	-
Fiji	-	-	-	-	-	-	-	-	-	-	-	-	-	-	-	-	-	-	-	-	-
Oth.Asia	-	-	-	-	-	-	-	-	-	-	-	-	-	-	-	-	-	-	-	-	-
Netherlands	-	-	-	-	-	-	-	-	-	-	-	-	-	-	-	-	-	-	-	-	-
Oth.Europe	100.0	-	-	-	-	-	-	-	-	-	-	-	-	-	-	-	-	-	100.0	-	100.0
France	-	-	-	-	-	-	-	-	-	-	-	-	-	-	-	-	-	-	-	-	-
Italy	-	-	-	-	-	-	-	-	-	-	-	-	-	-	-	-	-	-	-	-	-
China	-	-	-	-	-	-	-	-	-	-	-	-	-	-	-	-	-	-	-	-	-
Oth.Country	-	-	-	-	-	-	-	-	-	-	-	-	-	-	-	-	-	-	-	-	-
Solomon Is.	35.3	19.0	4.8	1.9	0.2	0.4	0.7	0.2	0.9	3.4	0.4	0.1	1.2	0.0	15.0	8.6	4.4	3.7	62.9	37.1	100.0
Total	35.4	18.9	4.8	1.8	0.2	0.4	0.7	0.2	0.9	3.4	0.4	0.1	1.2	0.0	15.0	8.6	4.4	3.6	63.0	37.0	100.0